



Road Development Corporation Limited

Republic of Maldives

Terms of Reference for

Procuring a T650- Drive Motor for Bobcat Skid Loader -02nd Announcement-

1. BACKGROUND

Road Development Corporation Limited, an incorporated limited liability company operating under the registration number C10482019 and having its registered office at MSL Building, First Floor, Male', Republic of Maldives (herein after called and referred to as "the Employer"), wishes to receive bids for the Procuring a Bobcat Skid Loader – T650 Drive Motor.

2. DRIVE MOTOR SPECIFICATION

Type: Bobcat Skid Loader

MNR: R921812275

Typ: MCR10F1070F250Z32B5V1L48S F42S0395M

SN: 2409217

FD: 16W35 7481

3. SCOPE OF WORK

The employer will be financing for the Purchasing of T650- Drive Motor of Bobcat Skid Loader.

4. EXPECTED OUTPUTS

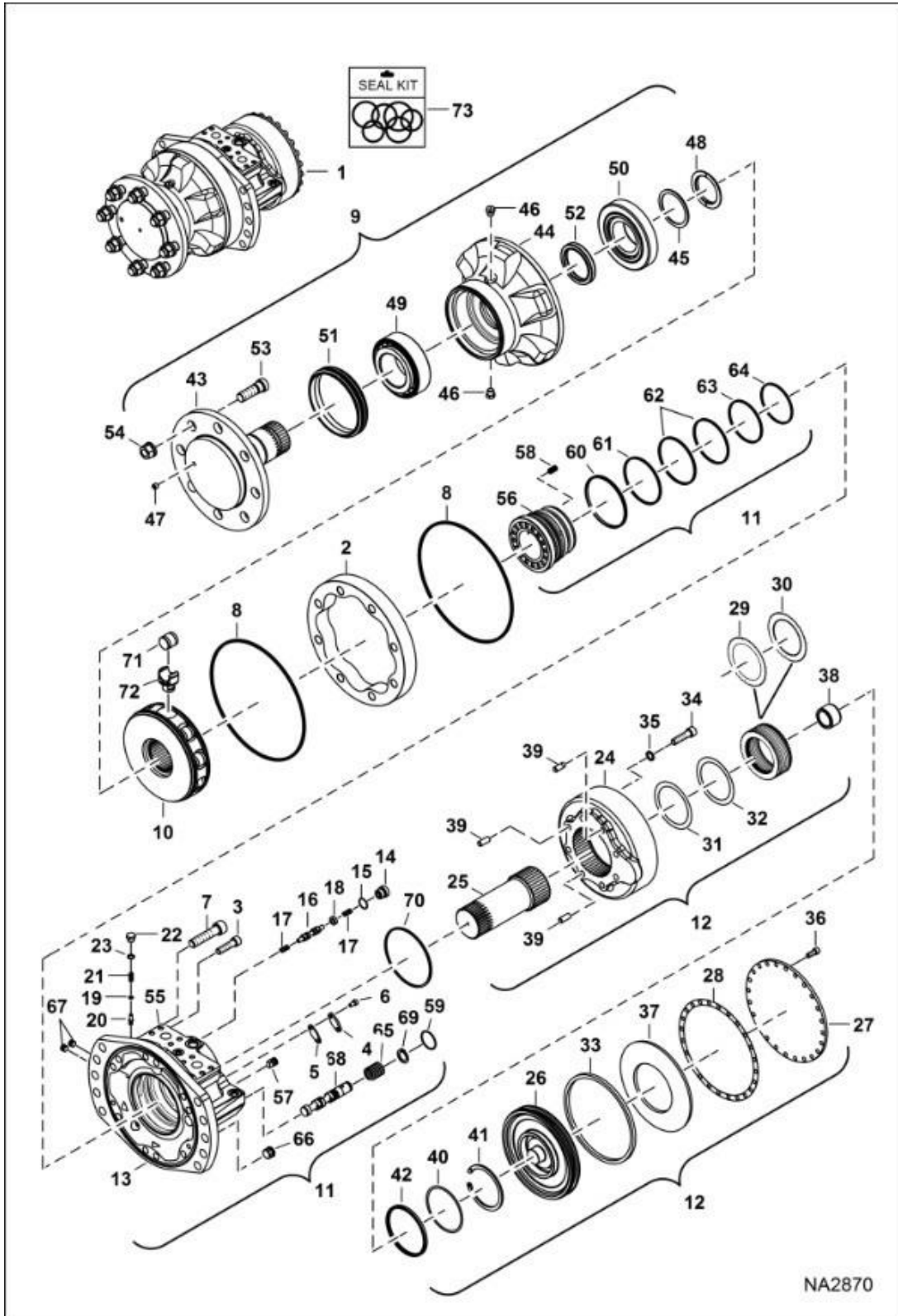
The expected outputs we wish to have in this will be updated in the catalogue 1-73. The catalogue will be attached with this.

5. SPECIFICATION

Title: Hydrostatic Motor & Brake (2-Speed)

Model Number: (S/N A3P011001 - A3P014874, A3P111001 - A3P112374)T650

Serial Number: A3P011001 & Above, A3P111001 & Above



NA2870

| Ref. | Part Number | Description | S/N | Qty |
|------|-------------|--|-----|-----|
| 1 | | MOTOR, DRIVE HYD 2-SPD, MOTOR, DRIVE HYD 2-SPD, Model R921810899 - Ref. 2-70 - NLA - Use 7010257REM - Was 7010257, A | | 1 |
| 1 | 7010257REM | MOTOR, DRIVE HYD 2-SPD | | 1 |
| 1 | 7349882 | MOTOR DRIVE HYDR 2-SPD | | 1 |
| 1 | 7349882REM | MOTOR DRIVE HYDR 2-SPEED | | 1 |
| 1 | | MOTOR, DRIVE HYD 2-SPD, MOTOR, DRIVE HYD 2-SPD, NLA - Model R921812129 - Ref. 2-70 - Was 7281453, D | | 1 |
| 2 | | CAM, CAM, NLA - Order motor - Was 7020889, A | | 1 |
| 3 | 7020890 | BOLT | | 2 |
| 4 | 6688716 | COVER | | 1 |
| 5 | 6688377 | GASKET, Was 6688717, A | | 1 |
| 6 | 7020891 | BOLT | | 2 |
| 7 | 7020892 | BOLT | | 10 |
| 8 | 6676597 | O-RING, Was 6691216, A | | 2 |
| 9 | 7020893 | CASE, FRONT ASSY, Ref. 44-52 - does not include Ref. 53 or 54 | | 1 |
| 10 | 7273676 | BLOCK CYLINDER, Was 7024971, A | | 1 |
| 11 | 7020895 | HOUSING, ASSY, Ref. 56-70 | | 1 |
| 12 | 7020896 | BRAKE, ASSY, Ref. 24-42 | | 1 |
| 13 | 7020897 | HOUSING | | 1 |
| 14 | 6691227 | PLUG | | 1 |
| 15 | 6689133 | O-RING | | 1 |
| 16 | 6675866 | SPOOL, Was 6690041, A | | 1 |
| 17 | 6674841 | SPRING, Was 6690042, D | | 2 |
| 18 | 6675867 | WASHER, Was 6690043, D | | 1 |
| 19 | 6674343 | SHIM, Was 6690044, D | | 1 |

| Ref. | Part Number | Description | S/ N | Qty |
|------|-------------|--|---------|-----|
| 20 | 6675868 | POPPET, Was 6690045, A | | 1 |
| 21 | 6674344 | SPRING, Was 6690046, D | | 1 |
| 22 | 6674345 | PLUG, Was 6690047, D | | 1 |
| 23 | 6676038 | O-RING, Was 6689132, D | | 1 |
| 24 | 7020898 | HOUSING | | 1 |
| 25 | 7020899 | SHAFT | | 1 |
| 26 | 6681638 | PISTON, Was 6691230, A | | 1 |
| 27 | 6691098 | COVER, Was 6691231, A | | 1 |
| 28 | 6674720 | GASKET, MOTOR HYD, Was 6691232 | | 1 |
| 29 | 6674713 | BRAKE, DISC, inner | | 16 |
| 30 | 6674714 | BRAKE, DISC, outer | | 21 |
| 31 | 6674722 | SHIM, Was 6691235, A | | 1 |
| 32 | 6691236 | SHIM | | 1 |
| 33 | 6674728 | SEAL, RING, Was 6691237, A | | 1 |
| 34 | 6691238 | BOLT | | 5 |
| 35 | 6674708 | WASHER, Was 6691239, A | | 5 |
| 36 | 6689128 | BOLT, Was 6691240, A | | 24 |
| 37 | 6678780 | WASHER, Was 6691241, A | | 1 |
| 38 | 6674734 | BUSHING, Was 6691243, A | | 1 |
| 39 | 6691244 | PIN | | 3 |
| 40 | | O-RING, O-RING, A | | 1 |
| 41 | | SNAP RING, SNAP RING, W/O pin holes, A | | 1 |
| 42 | | SEAL, SEAL, A | | 1 |
| 42 | 7414710 | SEAL BRAKE | | 1 |
| 42 | | O-RING, O-RING, A | | 1 |

| Ref. | Part Number | Description | S/N | Qty |
|------|-------------|-------------------------------------|-----|-----|
| 43 | 6674054 | SHAFT, Was 7020900, A | | 1 |
| 44 | 7020901 | HOUSING | | 1 |
| 45 | 6691208 | KIT WASHER | | 1 |
| 46 | 7008700 | PLUG | | 2 |
| 47 | 6680019 | PLUG, Was 6691209, A | | 1 |
| 48 | 6660016 | RING, SPLIT, Was 6691210, A | | 1 |
| 49 | 6660017 | BEARING, Was 6689117, A | | 1 |
| 50 | 6660018 | BEARING MOTOR DRIVE, Was 6689118, A | | 1 |
| 51 | 6691211 | SEAL | | 1 |
| 52 | 6674056 | SEAL, Was 6691212, A | | 1 |
| 53 | 7020902 | STUD | | 8 |
| 54 | 7020903 | NUT | | 8 |
| 55 | 7020904 | ROLLER | | 8 |
| 56 | 7020905 | DISTRIBUTOR | | 1 |
| 57 | 6660032 | STOP PIN, Was 6691220, A | | 1 |
| 58 | 6660033 | SPRING, Was 6691221, A | | 16 |
| 59 | 7020906 | SEAL, Was 7020706, B,D | | 1 |
| 60 | 7020907 | SEAL | | 1 |
| 61 | 7020908 | SEAL | | 1 |
| 62 | 7020909 | SEAL | | 2 |
| 63 | 7020910 | SEAL | | 1 |
| 64 | 7020911 | SEAL | | 1 |
| 65 | 7020912 | SPRING | | 1 |
| 66 | 6689129 | PLUG | | 1 |
| 67 | 7020913 | PLUG | | 2 |

| Ref. | Part Number | Description | S/N | Qty |
|------|-------------|---|-----|-----|
| 68 | 7020914 | SPOOL | | 1 |
| 69 | 7020915 | CLIP | | 1 |
| 70 | 7020916 | SEAL | | 1 |
| 71 | 7020904 | ROLLER | | 1 |
| 72 | 7024972 | PISTON, MOTOR | | 1 |
| 73 | 7024970 | KIT, SEAL, Ref. 8, 15, 23, 28, 33, 40, 51, 52, 59-64 & 70 | | 1 |