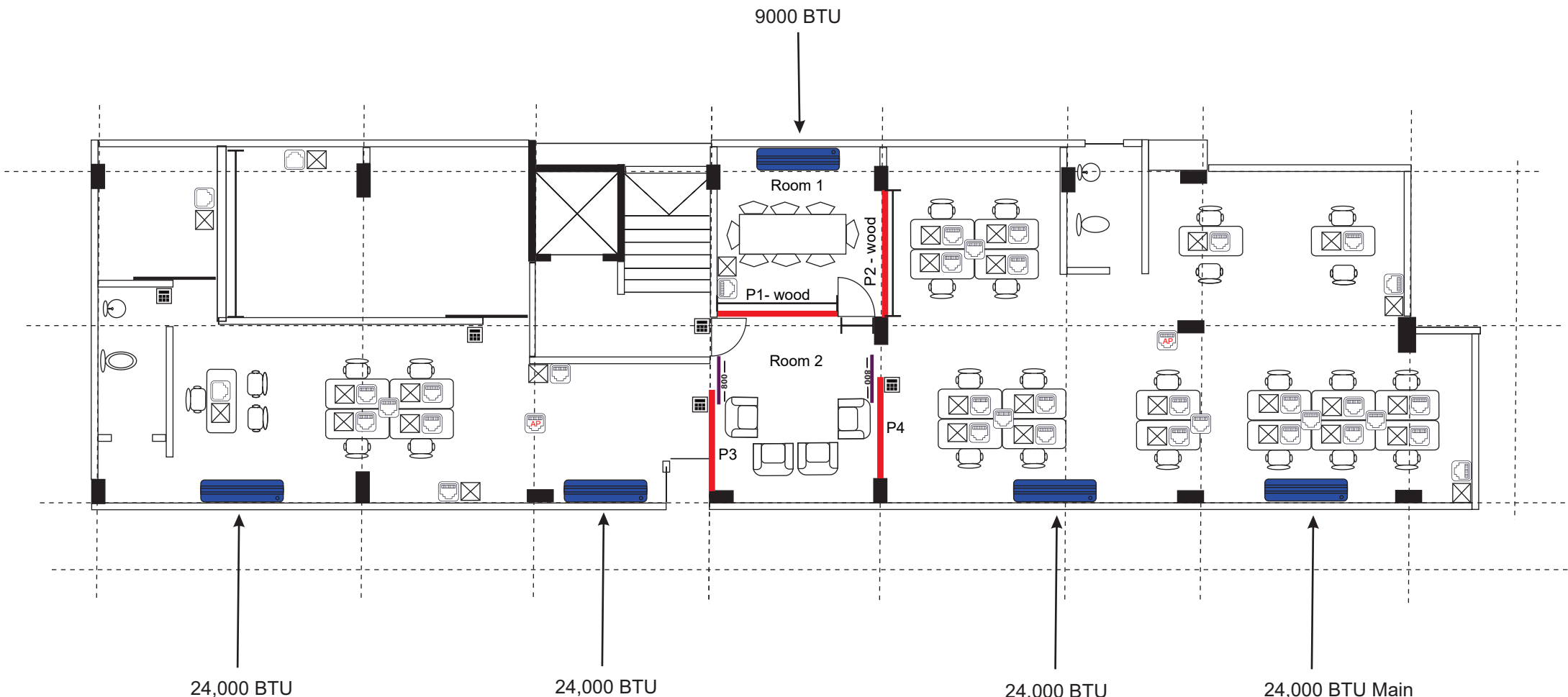


# SDFC (OFFICE 2) LAYOUT

## FOURTH FLOOR



9000 BTU

24,000 BTU

24,000 BTU

24,000 BTU

24,000 BTU Main

- Partitions
- Sliding Doors
- Access Control Point
- Ethernet Port
- Double Gang Switch

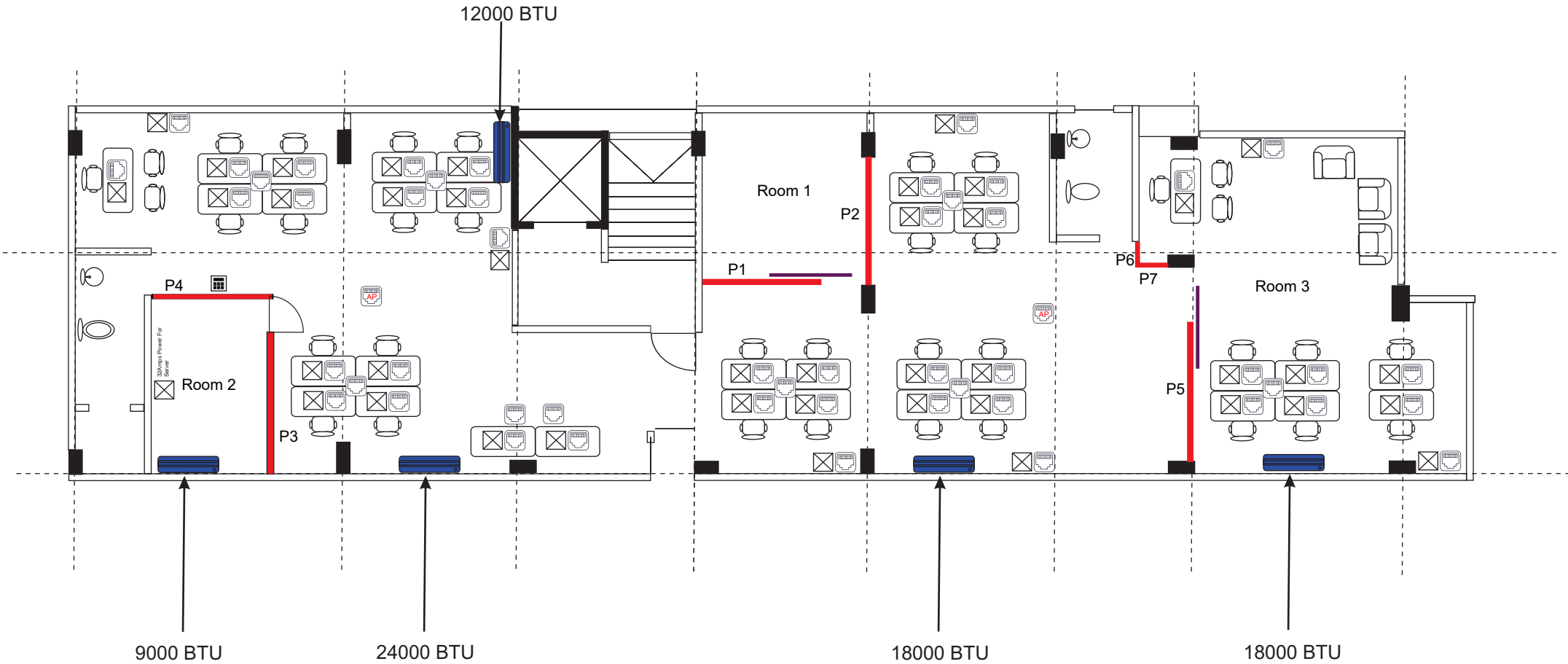
**Room 1**  
 Length P1 2860 x P2 2330  
 Height 2740  
 Material Wood  
Panel Door  
 Width 800  
 Height 2000  
 \*All Measurements are in mm

**Room 2**  
 Length P3 1520 x P4 1600  
 Height 2200  
 Material Glass, Aluminium.  
2x Slide Door  
 Width 800  
 Height 2000

Panel Door  
 Width 900  
 Height 2000  
 Material Glass, Aluminium.

# SDFC (OFFICE 2) LAYOUT

## FIFTH FLOOR



- Partitions
- Sliding Doors
- Access Control Point
- Ethernet Port
- Double Gang Switch

<b>Room 1</b>	<b>Room 2</b>	<b>Room 3</b>
Length P1 2000 x P2 2377	Length P3 2740 x P4 1820	Length P5 3000 P6 1060 P7 560
Height 2740	Height 2740	Height 2440
<u>Slide Door</u>	<u>Panel Door</u>	<u>Slide Door</u>
Width 800	Width 800	Width 800
Height 2000	Height 2000	Height 2000

\*All Measurements are in mm  
 \*Material to be used are Aluminium and glass.