

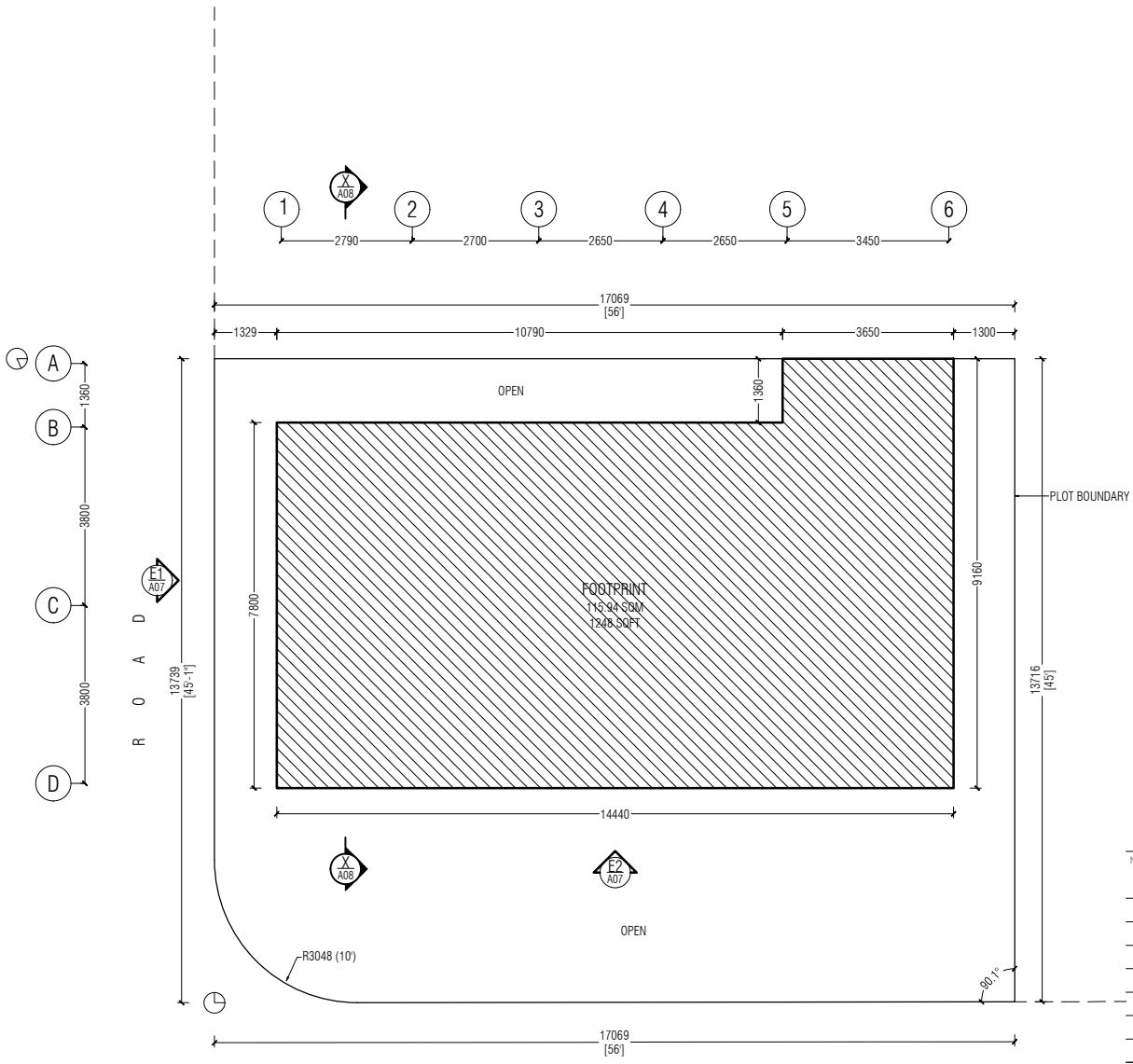
P R O P O S E D  
S I N G L E S T O R Y  
A G R O  
W A R E H O U S E

ADDU CITY

C L I E N T : A G R O N A T

2 9 S E P T E M B E R 2 0 2 1





H A R B O R F R O N T

NOTES

---



---



---



---



---



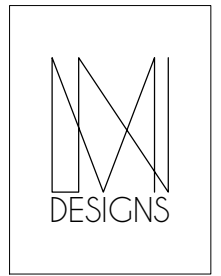
---



---



---



M.A. NOOFINOLHU (FL/5)  
 JAVAAHIRU GOALHI  
 MALE' 20241, MALDIVES  
 0960-7785741

THE CONTENTS ON THIS PAGE ARE AN INTELLECTUAL PROPERTY OF MN DESIGNS PVT LTD & SHALL NOT BE USED WITHOUT AUTHORIZATION.

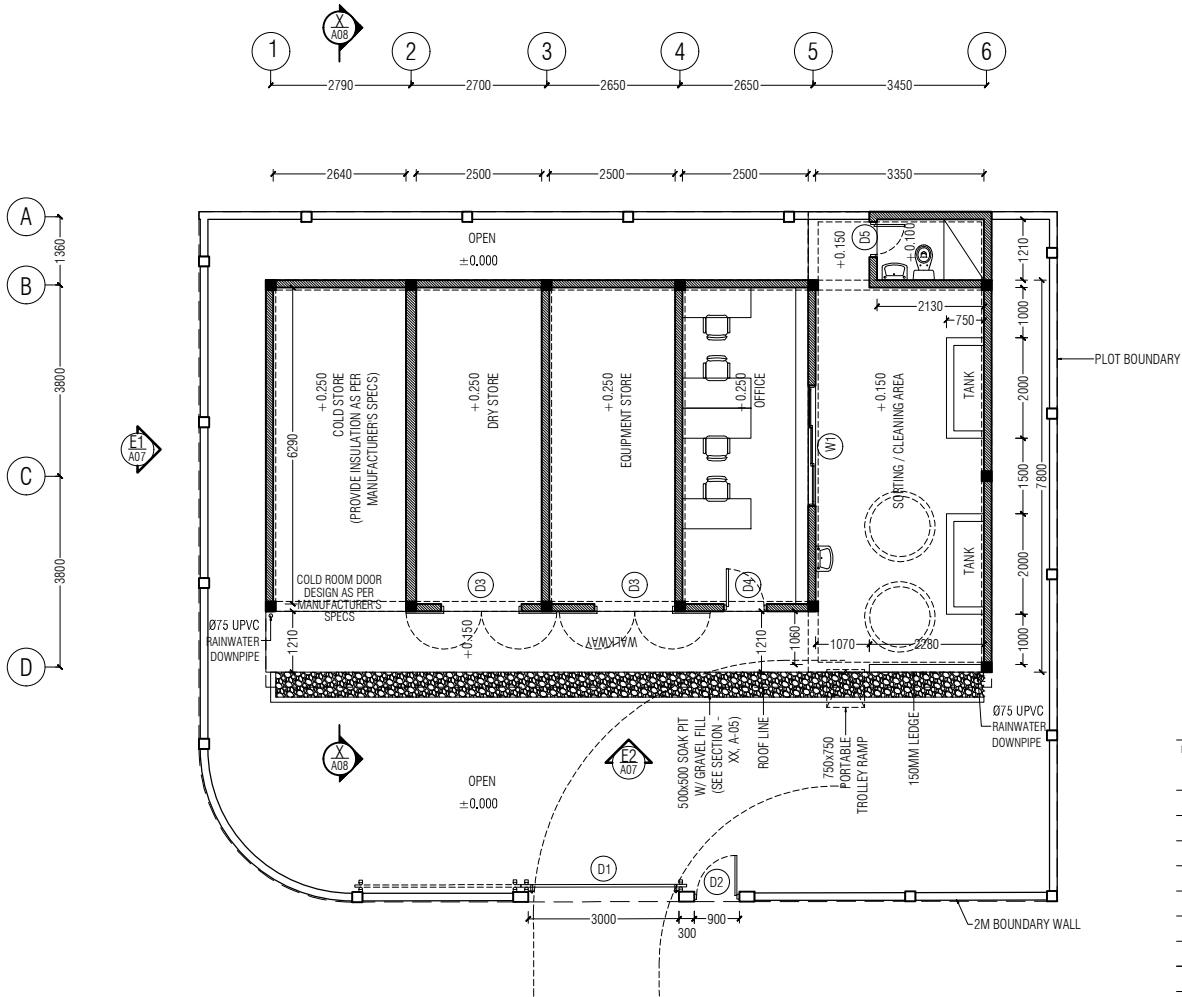
PROJECT  
**WAREHOUSE**  
 SINGLE STORY

CONTENTS AS GIVEN	
SITE	CLIENT AGRO NAT.
DISCIPLINE ARCH	DESIGN STAGE DETAIL DESIGN
PROJECT NO. 21MN24	SCALE AS GIVEN
REVISION NO. --	SHEET NO. <b>A02</b>
DATE 19 SEP 21	
ARCHITECT MARYAM NOONA	ENGINEER
CHECKER ARCHITECT	CHECKER ENGINEER

**AREA**  
 PLOT AREA  
 232.31 SQM  
 2500.6 SQFT  
 FOOTPRINT  
 115.94 SQM  
 1248 SQFT



SITE PLAN  
 SCALE 1:100



NOTES

---



---



---



---



---



---



---



---



---



---

**NOTES:**

- PROVIDE DAMP PROOF LAYER BELOW GROUND SLAB
- PROVIDE 8MM GYPSUM CEILING ON ALL INTERIOR SPACES W/ PUTTY SMOOTH FINISH
- PROVIDE 8MM CEMENT BOARD CEILING ON TOILET, SORTING/CLEANING AREA & WALKWAY W/ PUTTY SMOOTH FINISH
- ALL ENCLOSED SPACES ARE MECHANICALLY VENTILATED
- USE TILE ADHESIVE CEMENT TO INSTALL ALL FLOOR & WALL TILES

**COLOR CODES**

- ALL EXTERIOR WALL SURFACE: SW6252 (SHERWIN WILLIAMS 'ICE CUBE WHITE' OR EQUIVALENT)
- ALL CEILINGS: PURE WHITE
- ALL BOUNDARY WALL CONCRETE SURFACE: PURE WHITE
- ALL BOUNDARY WALL BRICK SURFACE: SW6204 (SHERWIN WILLIAMS 'SEA SALT' OR EQUIVALENT)
- CHECK ELEVATION - E1, A-05 FOR BOUNDARY WALL DETAILS & FINISHES
- ALL TIMBER DOORS: SW7064 (SHERWIN WILLIAMS 'PASSIVE GRAY' LACQUER OR EQUIVALENT)
- ALL ALUMINUM DOOR/WINDOWS: 2MM POWDER-COATED MATT GRAY FRAMES & 6MM CLEAR TEMPERED GLASS
- CHECK DOOR/WINDOW SCHEDULE A-06 FOR DETAILS
- ALL PAINT FINISHES IN SATIN



M.A. NOOFINOLHU (FL/5)  
 JAVAHIRU GOALHI  
 MALE 20241, MALDIVES  
 0960-7785741

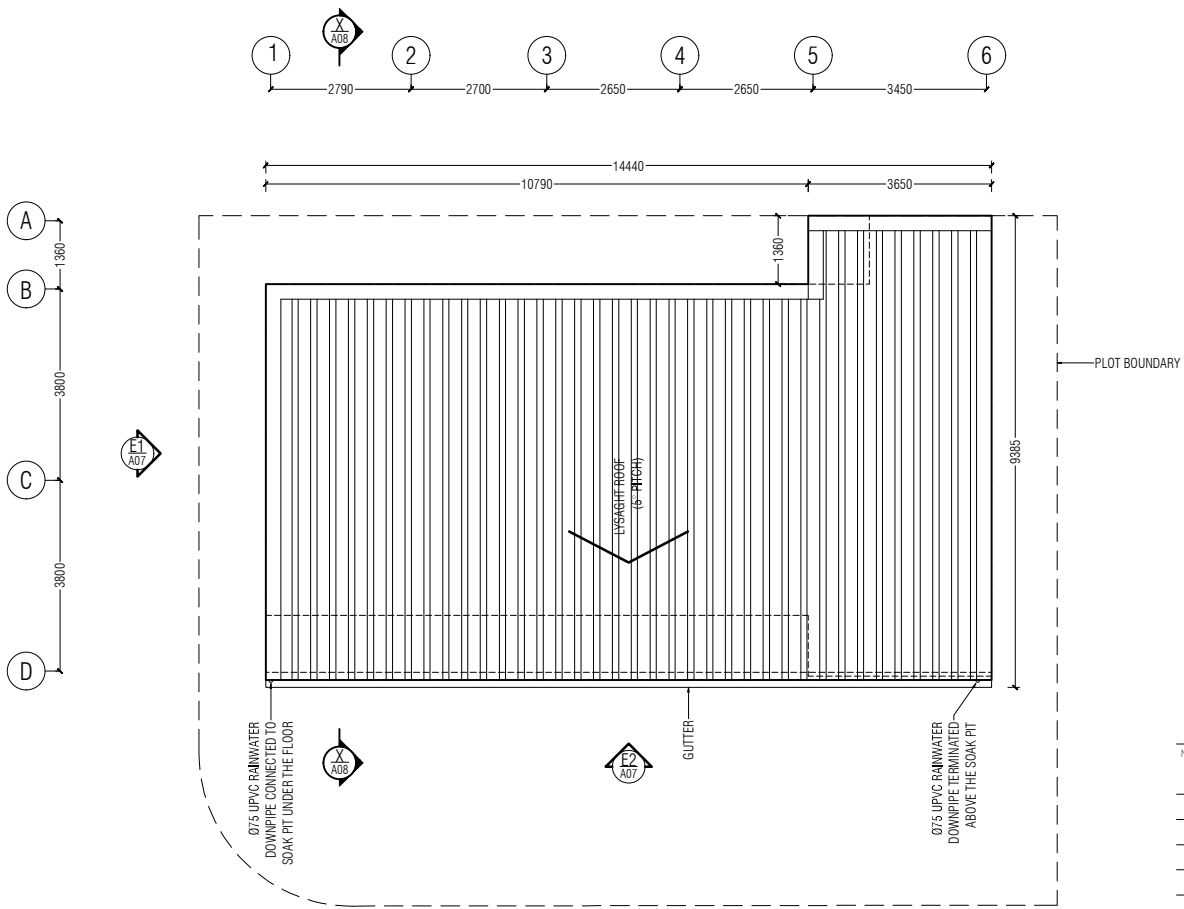
THE CONTENTS ON THIS PAGE ARE AN INTELLECTUAL PROPERTY OF MN DESIGNS PVT LTD & SHALL NOT BE USED WITHOUT AUTHORIZATION.

PROJECT  
**WAREHOUSE**  
 SINGLE STORY

CONTENTS AS GIVEN	
SITE	CLIENT AGRO NAT.
DISCIPLINE ARCH	DESIGN STAGE DETAIL DESIGN
PROJECT NO. 21MN24	SCALE AS GIVEN
REVISION NO. --	SHEET NO. <b>A03</b>
DATE 19 SEP 21	
ARCHITECT MARYAM NOONA	ENGINEER
CHECKER ARCHITECT	CHECKER ENGINEER

**GROUND FLOOR PLAN**  
 SCALE 1:100





NOTES

---



---



---



---



---



---



---



---



M.A. NOOFINOLHU (FL/5)  
 JAVAAHIRU GOALHI  
 MALE' 20241, MALDIVES  
 0960-7785741

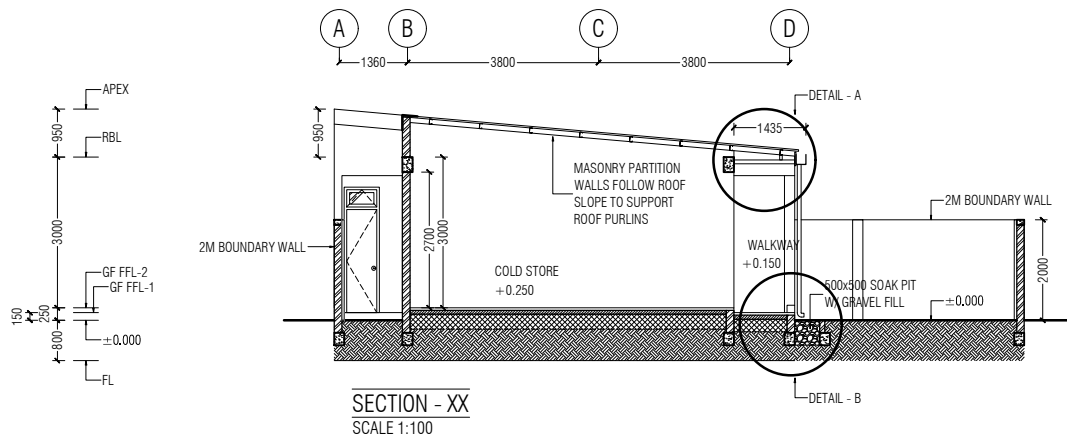
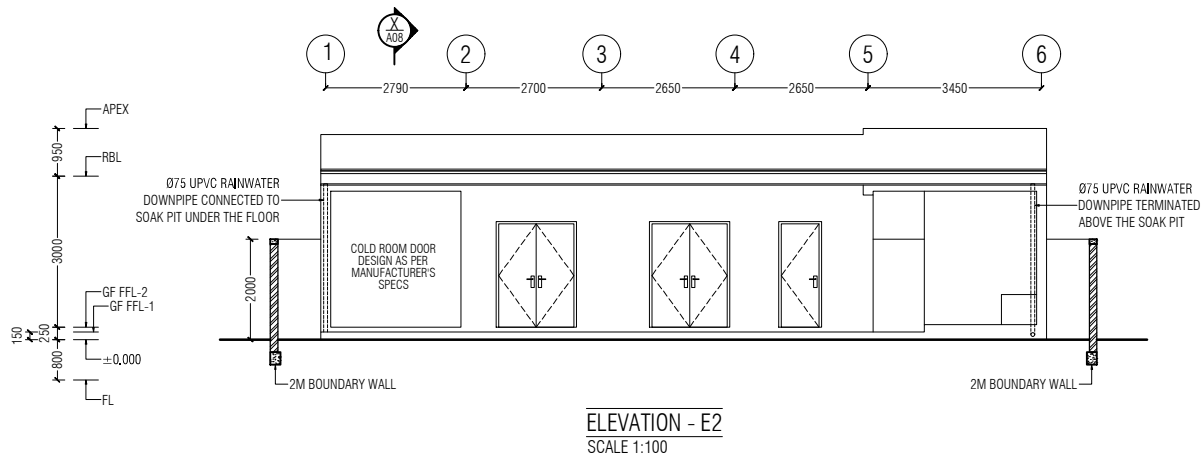
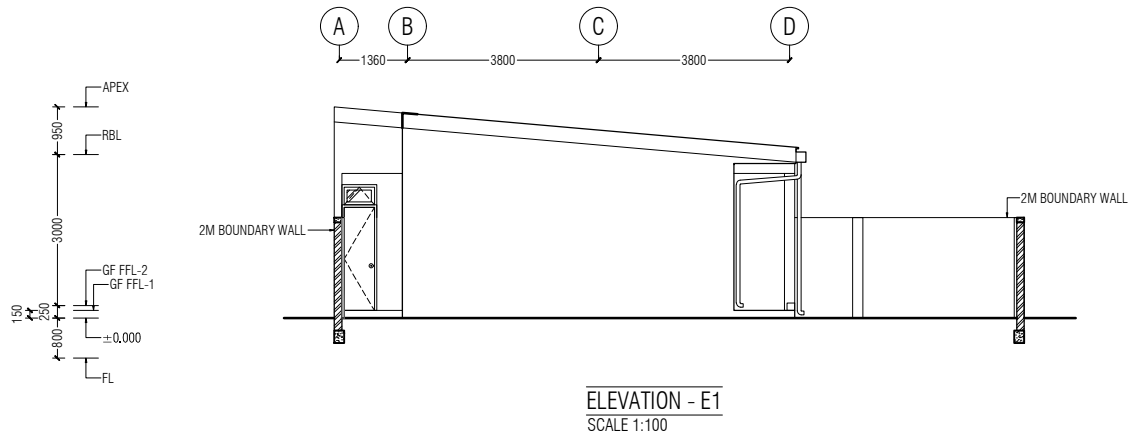
THE CONTENTS ON THIS PAGE ARE AN INTELLECTUAL PROPERTY OF MN DESIGNS PVT LTD & SHALL NOT BE USED WITHOUT AUTHORIZATION.

PROJECT  
**WAREHOUSE**  
 SINGLE STORY

CONTENTS AS GIVEN	
SITE	CLIENT AGRO NAT.
DISCIPLINE ARCH	DESIGN STAGE DETAIL DESIGN
PROJECT NO. 21MN24	SCALE AS GIVEN
REVISION NO. --	SHEET NO. <b>A04</b>
DATE 19 SEP 21	
ARCHITECT MARYAM NOONA	ENGINEER
CHECKER ARCHITECT	CHECKER ENGINEER



**ROOF PLAN**  
 SCALE 1:100



NOTES

---



---



---



---



---



---



---



---



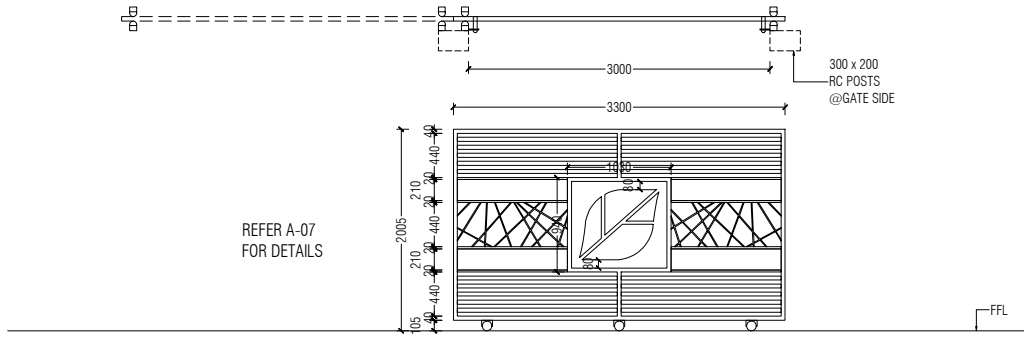
M.A. NOOFINOLHU (FL/5)  
 JAVAAHIRU GOALHI  
 MALE' 20241 - MALDIVES  
 09969-7785241

THE CONTENTS ON THIS PAGE ARE AN INTELLECTUAL PROPERTY OF MN DESIGNS PVT LTD & SHALL NOT BE USED WITHOUT AUTHORIZATION.

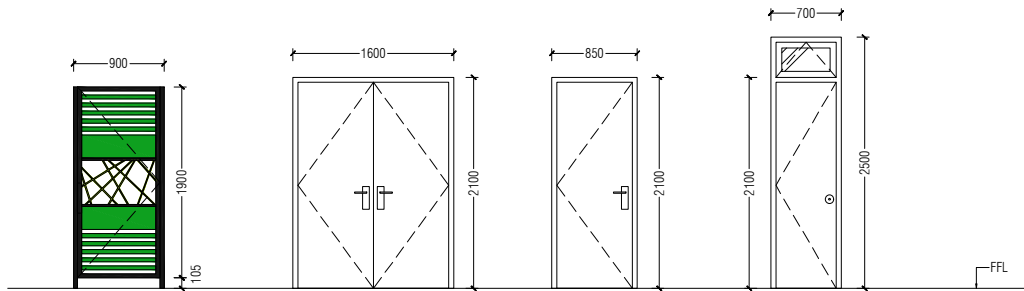
PROJECT  
**WAREHOUSE**  
 SINGLE STORY

FINISHING SCHEDULE			
SPACE	FLOOR	WALL	CEILING
SORTING / CLEANING AREA, WALKWAY, DRY STORES	EPOXY PAINT ON 50MM CEMENT SCREED	2 COATS EXTERIOR PAINT ON WALL SEALER OVER 2 COATS CEMENT PLASTER + PUTTY FINISH	2 COATS EXTERIOR PAINT ON WALL SEALER OVER 2 COATS CEMENT PLASTER + PUTTY FINISH
OFFICE	600x600 HOMOGENOUS TILE FINISH ON MOTAR BED OVER 50MM CEMENT SCREED	2 COATS INTERIOR PAINT ON WALL SEALER OVER 2 COATS CEMENT PLASTER + PUTTY FINISH	2 COATS EXTERIOR PAINT ON WALL SEALER OVER 2 COATS CEMENT PLASTER + PUTTY FINISH
TOILET	300x300 CERAMIC TILE FINISH ON MOTAR BED OVER 50MM CEMENT SCREED	300x600 CERAMIC TILE FINISH OVER 2 COATS CEMENT PLASTER	2 COATS EXTERIOR PAINT ON WALL SEALER OVER 2 COATS CEMENT PLASTER + PUTTY FINISH
COLD STORE	600x600 HOMOGENOUS TILE FINISH ON MOTAR BED OVER 50MM CEMENT SCREED + INSULATION AS PER MANUFACTURER'S SPECS	INSULATED WALLS & AIR-TIGHT DOOR AS PER MANUFACTURER'S SPECS	INSULATED CEILING WALLS AS PER MANUFACTURER'S SPECS

CONTENTS AS GIVEN	
SITE	CLIENT AGRO NAT.
DISCIPLINE ARCH	DESIGN STAGE DETAIL DESIGN
PROJECT NO. 21MN24	SCALE AS GIVEN
REVISION NO. --	SHEET NO. <b>A05</b>
DATE 19 SEP 21	
ARCHITECT MARYAM NOONA	ENGINEER
CHECKER ARCHITECT	CHECKER ENGINEER



D1	
QUANTITY	01 NOS
TYPE	SL
MATERIAL	ST
VENT. AREA	NA
NOTES	-

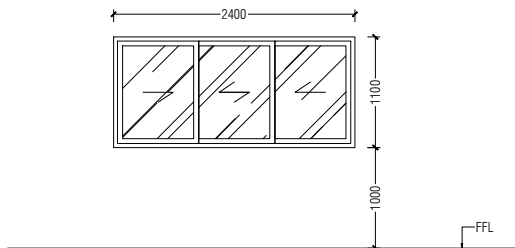


D2	
QUANTITY	01 NOS
TYPE	SW
MATERIAL	TM
VENT. AREA	NA
NOTES	-

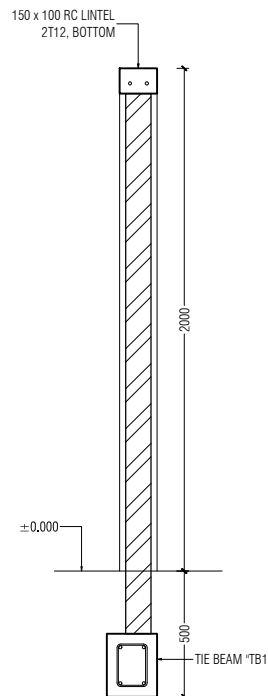
D3	
QUANTITY	02 NOS
TYPE	DS
MATERIAL	TM
VENT. AREA	NA
NOTES	-

D4	
QUANTITY	01 NOS
TYPE	SW
MATERIAL	TM
VENT. AREA	NA
NOTES	-

D5	
QUANTITY	01 NOS
TYPE	SW + AW
MATERIAL	TM + GL
VENT. AREA	0.21 SQM
NOTES	-



W1	
QUANTITY	01 NOS
TYPE	SL
MATERIAL	AL + TG
VENT. AREA	1.54 SQM
NOTES	-



BOUNDARY WALL SECTION DETAIL  
1:20

**NOTE:**

- COLD ROOM DOOR DESIGN AS PER MANUFACTURER'S SPECS
- ALL MEASUREMENTS ARE IN MM
- ALL MEASUREMENTS TO BE CHECKED ON SITE PRIOR TO FABRICATION
- RC LINTEL & SILL BEAMS TO BE PROVIDED AT THE TOP & BOTTOM (WHERE THE DOOR / WINDOW OPENINGS DO NOT TOUCH THE FLOOR OR AN RC STRUCTURAL SURFACE)
- ALL ALUMINUM FRAMES IN 2.0MM POWDER-COATED MATT GRAY
- STEEL GATE: MATT DARK GRAY FINISH
- ALL TEMPERED GLASS IN 6MM CLEAR
- ALL TIMBER DOOR FRAMES IN SOLID WOOD, PUTTY SMOOTH SANDED, SW7064 (SHERWIN WILLIAMS "PASSIVE GRAY" LACQUER OR EQUIVALENT) DOOR SWING DIRECTIONS AS PER PLANS
- LEGEND
  - SW SWING
  - DS DOUBLE SWING
  - FX FIXED
  - TH TOP-HUNG
  - SL SLIDING
  - TM TIMBER
  - AL ALUMINUM
  - TG TEMPERED GLASS
  - GL GLASS

NOTES

---



---



---



---



---



---



---



---

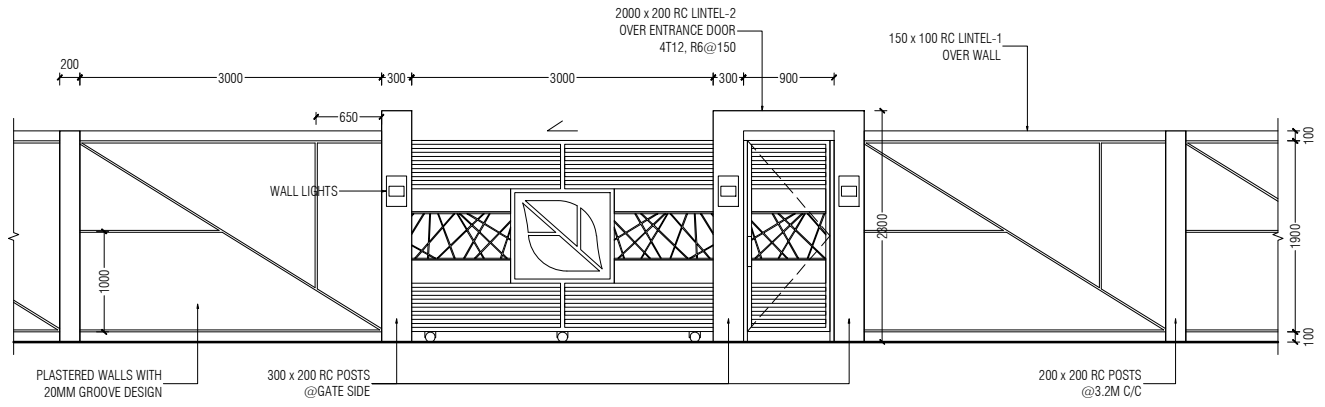


M.A. NOOFINOLHU (FL/S)  
JAVAHIRU GOALHI  
MALE' 20241, MALDIVES  
0960-7785741

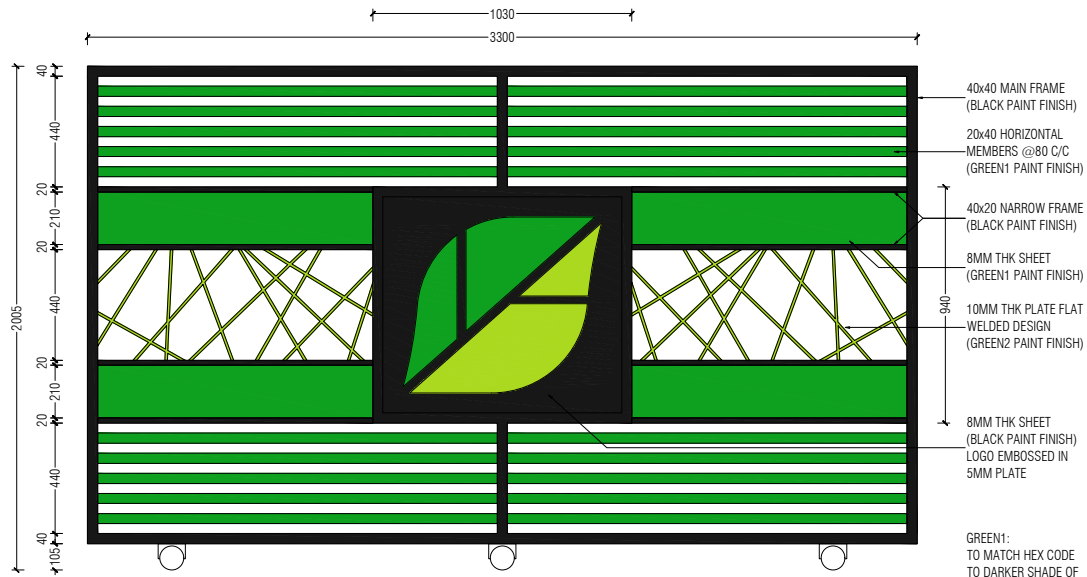
THE CONTENTS ON THIS PAGE ARE AN INTELLECTUAL PROPERTY OF MN DESIGNS PVT LTD & SHALL NOT BE USED WITHOUT AUTHORIZATION.

PROJECT  
**WAREHOUSE**  
SINGLE STORY

CONTENTS	
AS GIVEN	
SITE	CLIENT AGRO NAT.
DISCIPLINE ARCH	DESIGN STAGE DETAIL DESIGN
PROJECT NO. 21MN24	SCALE AS GIVEN
REVISION NO. --	SHEET NO. <b>A06</b>
DATE 19 SEP 21	
ARCHITECT MARYAM NOONA	ENGINEER
CHECKER ARCHITECT	CHECKER ENGINEER



**BOUNDARY WALL & GATE ELEVATION DETAILS**  
SCALE 1:50



**STEEL GATE "D1" DETAILS**  
SCALE 1:20

GREEN1:  
TO MATCH HEX CODE  
TO DARKER SHADE OF  
GREEN ON OFFICIAL  
AGRONAT LOGO

GREEN2:  
TO MATCH HEX CODE  
TO LIGHTER SHADE OF  
GREEN ON OFFICIAL  
AGRONAT LOGO

NOTES

---



---



---



---



---



---



---



---

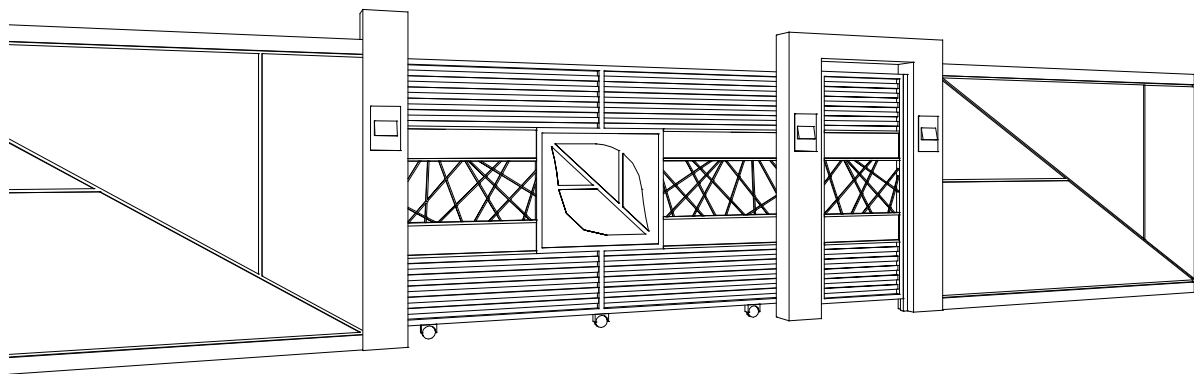


M.A. NOOFINOLHU (FL/S)  
JAVAHIRU GOALHI  
MALE' 20241, MALDIVES  
09960-7785741

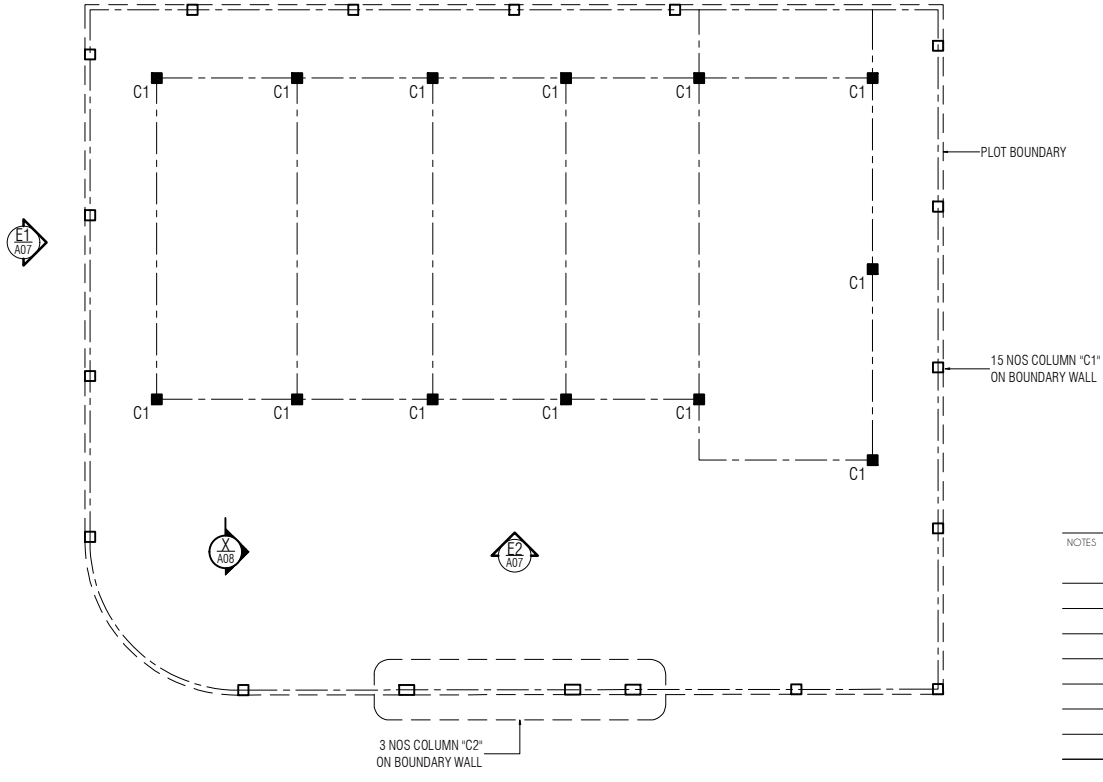
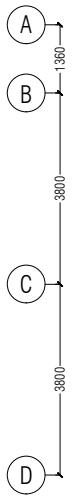
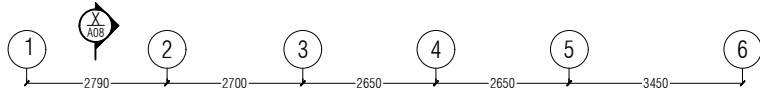
THE CONTENTS ON THIS PAGE ARE AN  
INTELLECTUAL PROPERTY OF MN DESIGNS  
PVT LTD & SHALL NOT BE USED WITHOUT  
AUTHORIZATION.

PROJECT  
**WAREHOUSE**  
SINGLE STORY

CONTENTS AS GIVEN	
SITE	CLIENT AGRO NAT.
DISCIPLINE ARCH	DESIGN STAGE DETAIL DESIGN
PROJECT NO. 21MN24	SCALE AS GIVEN
REVISION NO. --	SHEET NO. <b>A06</b>
DATE 19 SEP 21	
ARCHITECT MARYAM NOONA	ENGINEER
CHECKER ARCHITECT	CHECKER ENGINEER



**STEEL GATE "D1" 3D VIEW**



NOTES

---



---



---



---



---



---



---



---



---



---



M.A. NOOFINOLHU (FL/5)  
 JAVA AHIRU GOALHI  
 MALE' 20241, MALDIVES  
 0960-7785741

THE CONTENTS ON THIS PAGE ARE AN INTELLECTUAL PROPERTY OF MN DESIGNS PVT LTD & SHALL NOT BE USED WITHOUT AUTHORIZATION.

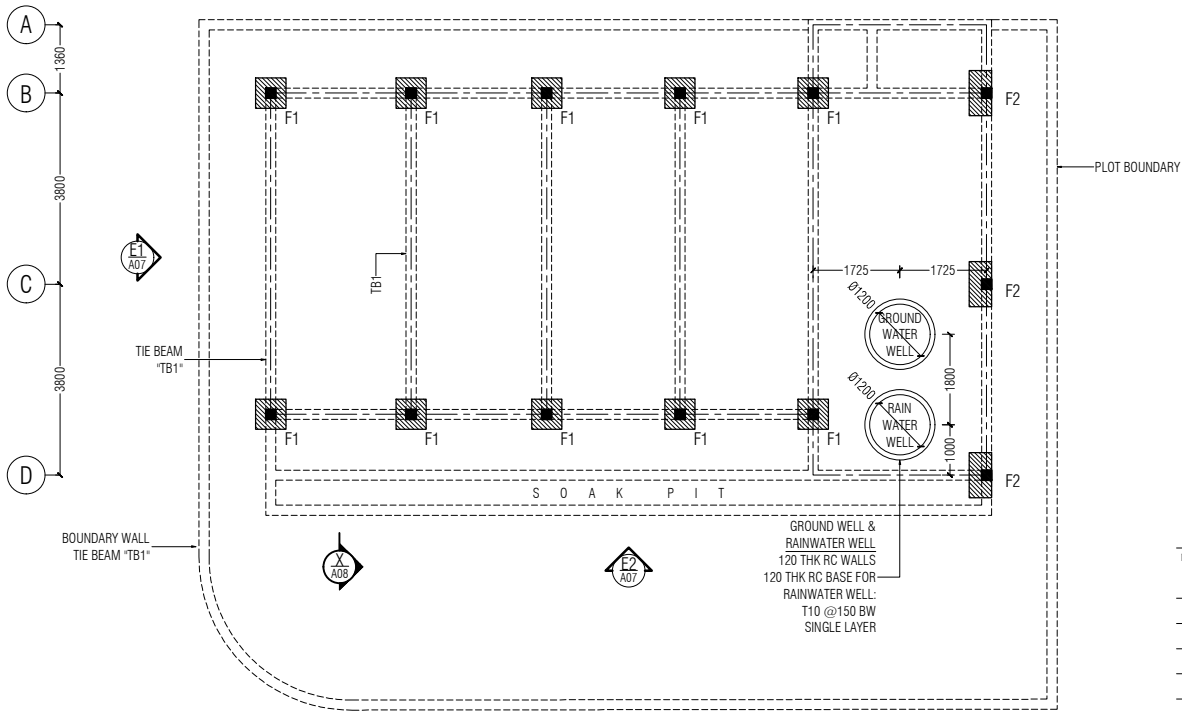
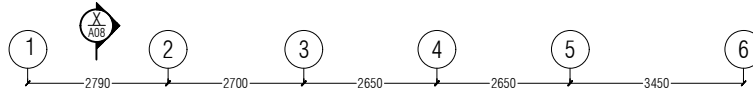
PROJECT  
**WAREHOUSE**  
 SINGLE STORY

CONTENTS AS GIVEN	
SITE	CLIENT AGRO NAT.
DISCIPLINE ARCH	DESIGN STAGE DETAIL DESIGN
PROJECT NO. 21MN24	SCALE AS GIVEN
REVISION NO. --	SHEET NO. <b>SO1</b>
DATE 19 SEP 21	
ARCHITECT MARYAM NOONA	ENGINEER
CHECKER ARCHITECT	CHECKER ENGINEER



**COLUMN SETOUT PLAN**  
 SCALE 1:100





GROUND WELL &  
RAINWATER WELL  
120 THK RC WALLS  
120 THK RC BASE FOR  
RAINWATER WELL:  
T10 @ 150 BW  
SINGLE LAYER

NOTES

---



---



---



---



---



---



---



---



M.A. NOOFINOLHU (FL/S)  
JAVAAHIRU GOALHI  
MALE' 20241 - MALDIVES  
0960-7785741

THE CONTENTS ON THIS PAGE ARE AN  
INTELLECTUAL PROPERTY OF MN DESIGNS  
PVT LTD & SHALL NOT BE USED WITHOUT  
AUTHORIZATION.

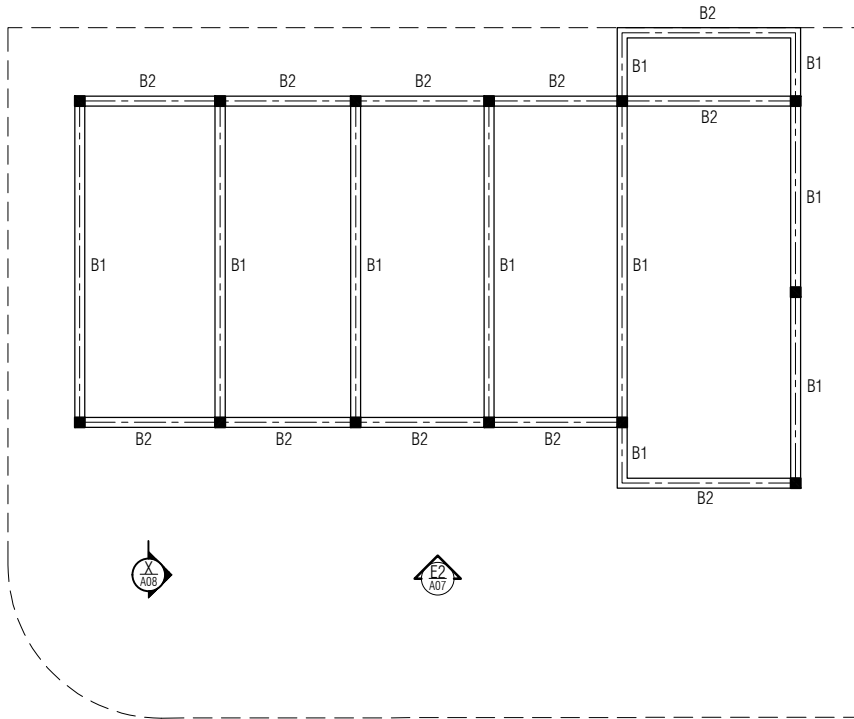
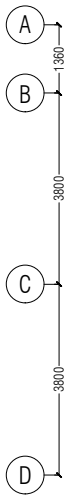
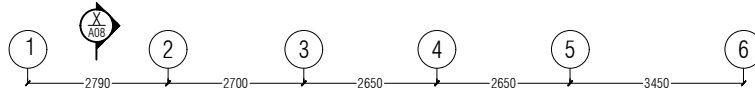
PROJECT  
**WAREHOUSE**  
SINGLE STORY

CONTENTS AS GIVEN	
SITE	CLIENT AGRO NAT.
DISCIPLINE ARCH	DESIGN STAGE DETAIL DESIGN
PROJECT NO. 21MN24	SCALE AS GIVEN
REVISION NO. ---	SHEET NO. <b>S02</b>
DATE 19 SEP 21	
ARCHITECT MARYAM NOONA	ENGINEER
CHECKER ARCHITECT	CHECKER ENGINEER

- NOTES:
- FOUNDATION DEPTH = 0.8M BELOW GROUND LEVEL
  - PROVIDE TB1 TIE BEAM BELOW ALL WALLS (AS SHOWN)
  - 75 THK GROUND SLAB W/ R6@200 BW, SINGLE NET.
  - 1000 GAUGE DAMP PROOF MEMBER OVER COMPACTED GROUND BEFORE CASTING GROUND SLAB



**FOUNDATION PLAN**  
SCALE 1:100



— PLOT BOUNDARY



NOTES

---



---



---



---



---



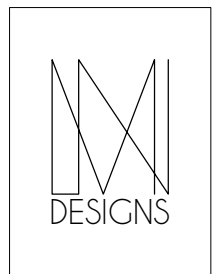
---



---



---



M.A. NOOFINOLHU (FL/5)  
 JAVAAHIRU GOALHI  
 MALE' 20241, MALDIVES  
 0960-7785741

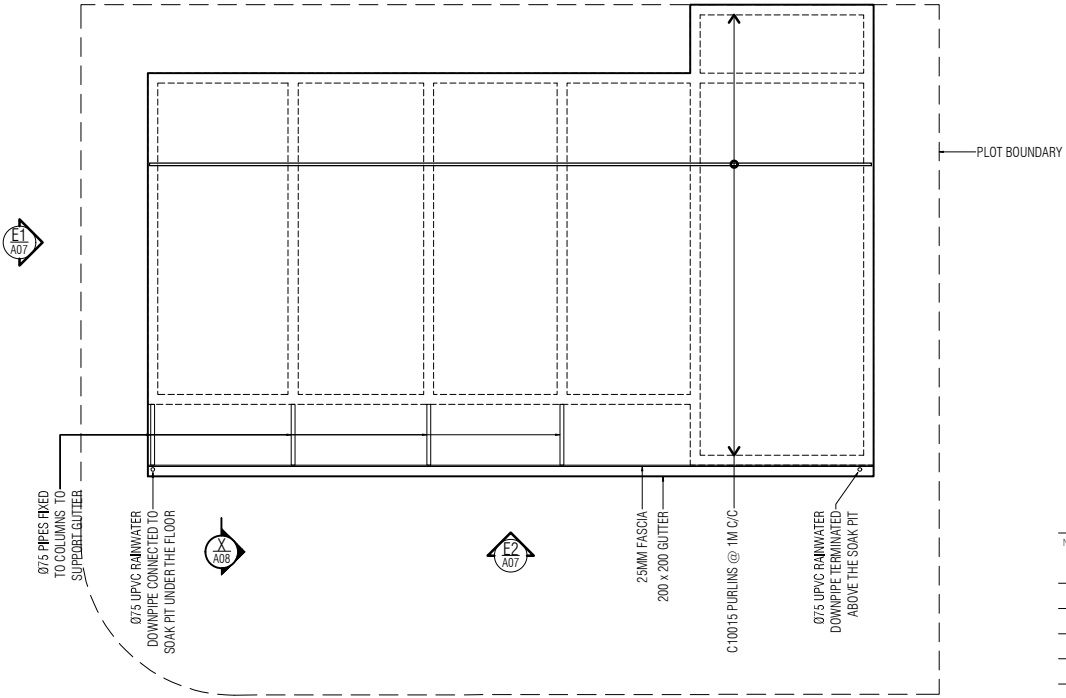
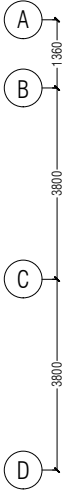
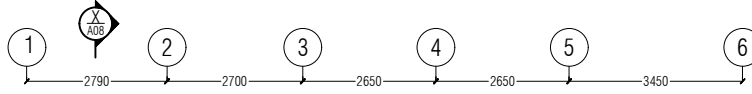
THE CONTENTS ON THIS PAGE ARE AN INTELLECTUAL PROPERTY OF MN DESIGNS PVT LTD & SHALL NOT BE USED WITHOUT AUTHORIZATION.

PROJECT  
**WAREHOUSE**  
 SINGLE STORY

CONTENTS AS GIVEN	
SITE	CLIENT AGRO NAT.
DISCIPLINE ARCH	DESIGN STAGE DETAIL DESIGN
PROJECT NO. 21MN24	SCALE AS GIVEN
REVISION NO. --	SHEET NO. <b>S03</b>
DATE 19 SEP 21	
ARCHITECT MARYAM NOONA	ENGINEER
CHECKER ARCHITECT	CHECKER ENGINEER



**ROOF BEAM PLAN**  
 SCALE 1:100



NOTES

---



---



---



---



---



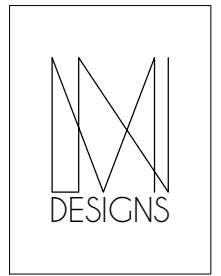
---



---



---



M.A. NOOFINOLHU (FL/5)  
 JAVAAHIRU GOALHI  
 MALE' 20241, MALDIVES  
 0960-7785741

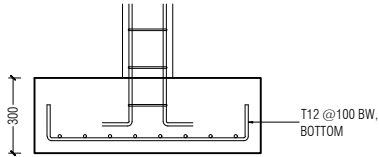
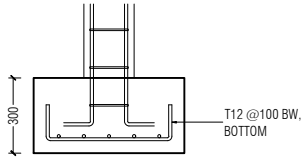
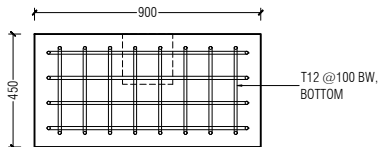
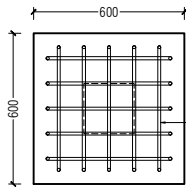
THE CONTENTS ON THIS PAGE ARE AN INTELLECTUAL PROPERTY OF MN DESIGNS PVT LTD & SHALL NOT BE USED WITHOUT AUTHORIZATION.

PROJECT  
**WAREHOUSE**  
 SINGLE STORY

CONTENTS AS GIVEN	
SITE	CLIENT AGRO NAT.
DISCIPLINE ARCH	DESIGN STAGE DETAIL DESIGN
PROJECT NO. 21MN24	SCALE AS GIVEN
REVISION NO. --	SHEET NO. <b>SO4</b>
DATE 19 SEP 21	
ARCHITECT MARYAM NOONA	ENGINEER
CHECKER ARCHITECT	CHECKER ENGINEER

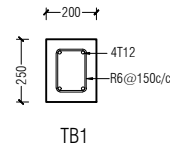


**ROOF FRAMING PLAN**  
 SCALE 1:100

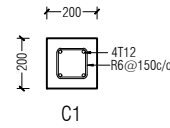


F1

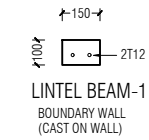
F2



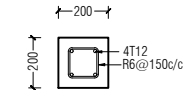
TB1



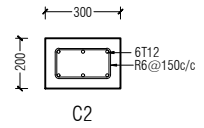
C1



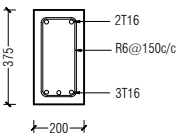
LINTEL BEAM-1  
BOUNDARY WALL  
(CAST ON WALL)



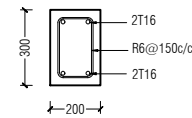
LINTEL BEAM-2  
BOUNDARY ENTRANCE



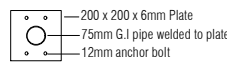
C2



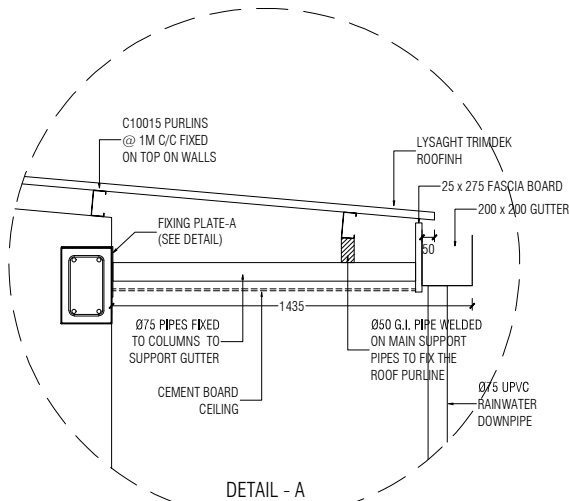
B1



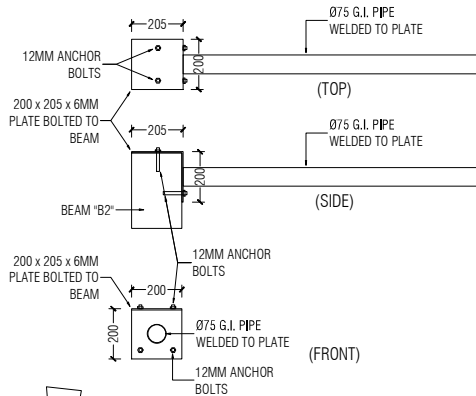
B2



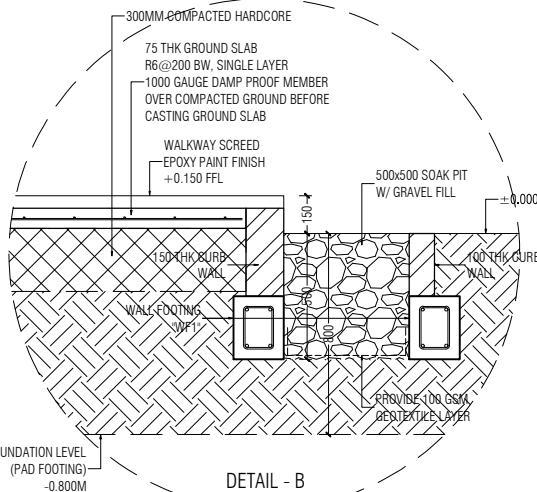
EAVE RAFTER FIXING PLATE



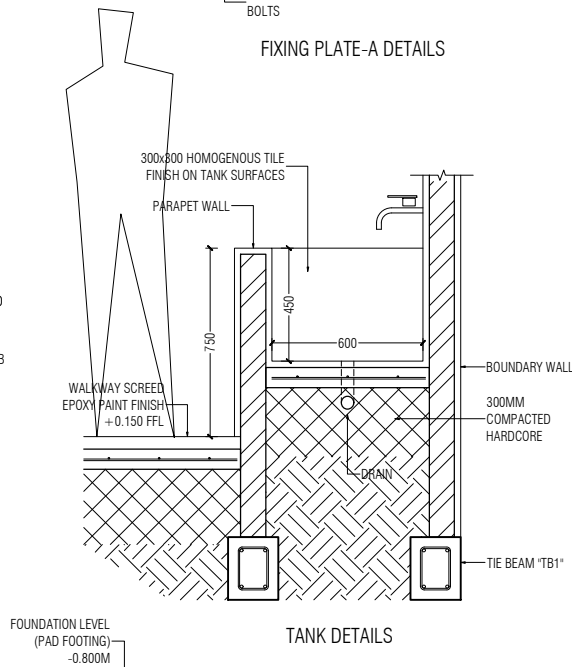
DETAIL - A



FIXING PLATE-A DETAILS



DETAIL - B



TANK DETAILS

NOTES

---



---



---



---



---



---



---



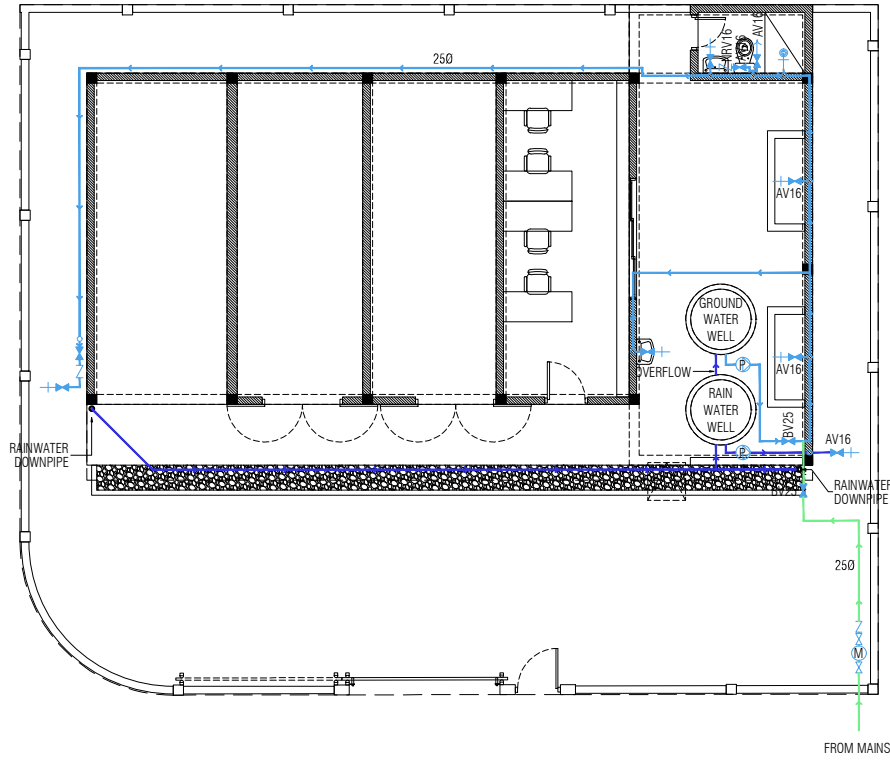
---



M.A. NOOFINOLHU (FL/5)  
 JAVAAHIRU GOALHI  
 MALE' 20241 - MALDIVES  
 0960-7785741  
 THE CONTENTS ON THIS PAGE ARE AN  
 INTELLECTUAL PROPERTY OF MN DESIGNS  
 PVT LTD & SHALL NOT BE USED WITHOUT  
 AUTHORIZATION.

PROJECT  
**WAREHOUSE**  
 SINGLE STORY

CONTENTS AS GIVEN	
SITE	CLIENT AGRO NAT.
DISCIPLINE ARCH	DESIGN STAGE DETAIL DESIGN
PROJECT NO. 21MN24	SCALE AS GIVEN
REVISION NO. ---	SHEET NO. <b>S05</b>
DATE 19 SEP 21	
ARCHITECT MARYAM NOONA	ENGINEER
CHECKER ARCHITECT	CHECKER ENGINEER



NOTES

---



---



---



---



---



---



---



---



M.A. NOOFINOLHU (FL/5)  
 JAVAAHIRU GOALHI  
 MALE' 20241, MALDIVES  
 0960-7785741

THE CONTENTS ON THIS PAGE ARE AN INTELLECTUAL PROPERTY OF MN DESIGNS PVT LTD & SHALL NOT BE USED WITHOUT AUTHORIZATION.

PROJECT  
**WAREHOUSE**  
 SINGLE STORY

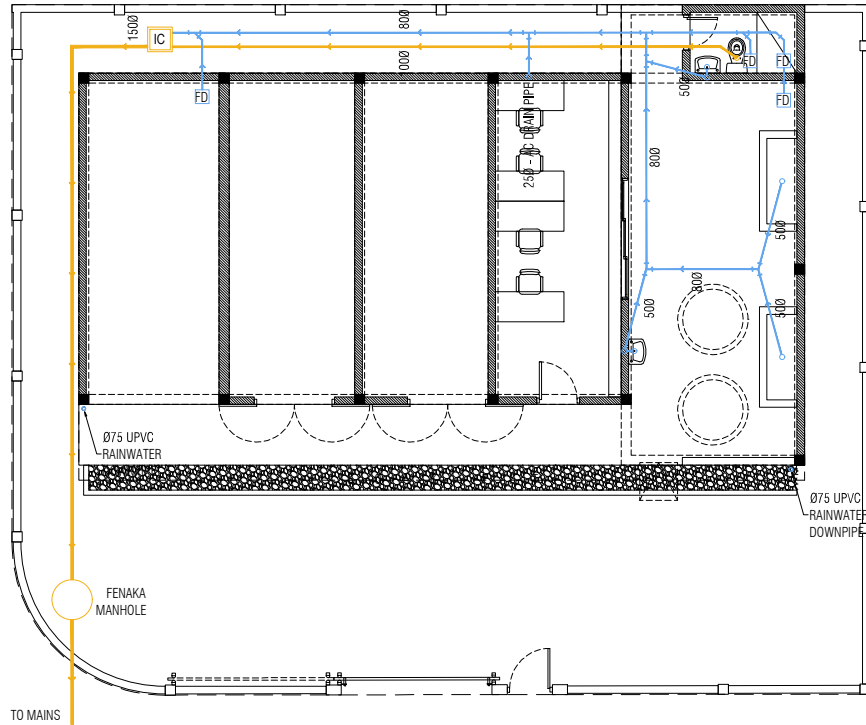
CONTENTS  
 AS GIVEN

SITE	CLIENT
	AGRO NAT.
DISCIPLINE	DESIGN STAGE
ARCH	DETAIL DESIGN
PROJECT NO.	SCALE
21MN24	AS GIVEN
REVISION NO.	SHEET NO.
--	
DATE	<b>MO1</b>
19 SEP 21	
ARCHITECT	ENGINEER
MARIYAM NOONA	
CHECKER ARCHITECT	CHECKER ENGINEER

LEGEND:

SYMBOLS	DESCRIPTION
	GROUNDWATER SUPPLY PIPE (PPR-PN 10)
	RAINWATER SUPPLY PIPE (PPR-PN 10)
	MAINS SUPPLY PIPE (PPR-PN 10)
	WATER MIXER TAP
	WATER TAP
	MUSLIM SHOWER
	WATER MIXER SHOWER
	ANGLE VALVE
	BALL VALVE
	NON-RETURN VALVE (CHECK VALVE)
	GATE VALVE
	WATER METER
	WATER HEATER (ELECTRIC, TANKLESS, MOUNTED ON WALL)
	WATER PUMP

GROUND FLOOR FRESH WATER SUPPLY PLAN  
 SCALE 1:100



TO MAINS

Ø75 UPVC  
RAINWATER

Ø75 UPVC  
RAINWATER  
DOWNPIPE

FENAKA  
MANHOLE

2.5"  
DRAIN PIPE

NOTES

---



---



---



---



---



---



---



---



M.A. NOOFINOLHU (FL/5)  
JAVAAHIRU GOALHI  
MALE' 20241, MALDIVES  
0960-7785741

THE CONTENTS ON THIS PAGE ARE AN  
INTELLECTUAL PROPERTY OF MN DESIGNS  
PVT LTD & SHALL NOT BE USED WITHOUT  
AUTHORIZATION.

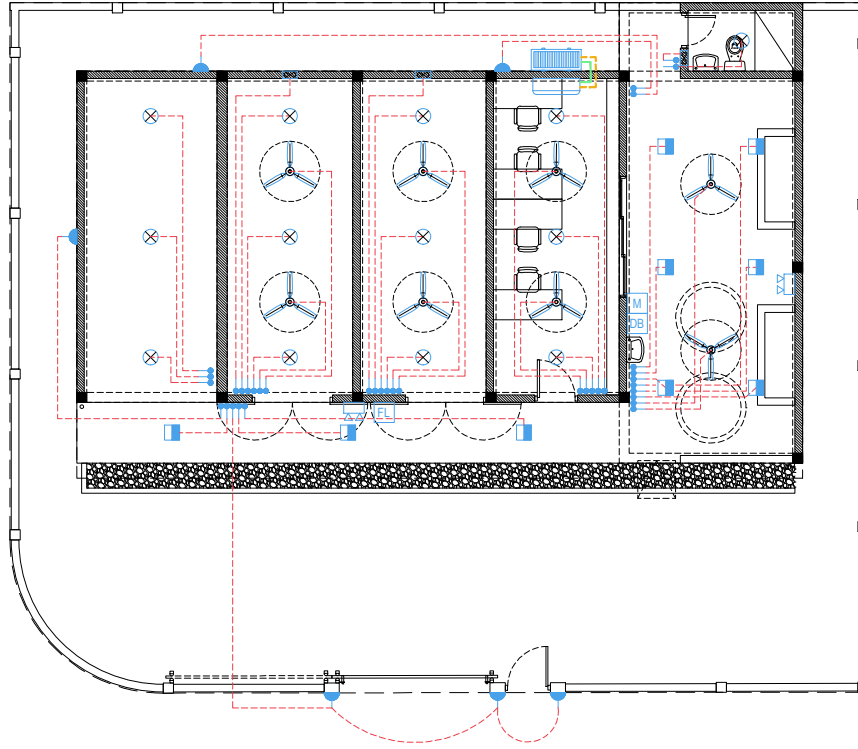
PROJECT  
**WAREHOUSE**  
SINGLE STORY

CONTENTS AS GIVEN	
SITE	CLIENT AGRO NAT.
DISCIPLINE ARCH	DESIGN STAGE DETAIL DESIGN
PROJECT NO. 21MN24	SCALE AS GIVEN
REVISION NO. --	SHEET NO. <b>M02</b>
DATE 19 SEP 21	
ARCHITECT MARYAM NOONA	ENGINEER
CHECKER ARCHITECT	CHECKER ENGINEER

LEGEND:

SYMBOLS	DESCRIPTION
	SEWER LINE
	WASTE WATER LINE

GROUND FLOOR SANITARY DRAINAGE PLAN  
SCALE 1:100



**NOTES:**

- MARK ALL POINTS ON SITE & APPROVE PRIOR TO FABRICATION
- STANDARD HEIGHTS TO BE FOLLOWED UNLESS SPECIFIED
- ALL FIXTURES TO BE APPROVED BY CLIENT
- SOLAR PANEL & SOLAR POWER PROVISIONS TO BE MADE AS PER MANUFACTURER'S SPECS

**LEGEND:**

SYMBOLS	DESCRIPTION
	DISTRIBUTION BORAD
	ELECTRICAL METER
	FLOOD LIGHT
	EMERGENCY LIGHT
	CEILING MOUNT LIGHT
	CEILING MOUNT LIGHT (WEATHERPROOF)
	CEILING RECESSED LIGHT
	WALL MOUNT LIGHT (WEATHERPROOF)
	CEILING FAN
	LIGHT SWITCH
	2-WAY LIGHT SWITCH
	INSULATED LIQUID PIPE
	INSULATED GAS PIPE
	FAN COIL UNIT
	CONDENSER UNIT
	120CMH WALL MOUNTED EXHAUST FAN

NOTES

---



---



---



---



---



---



---



---

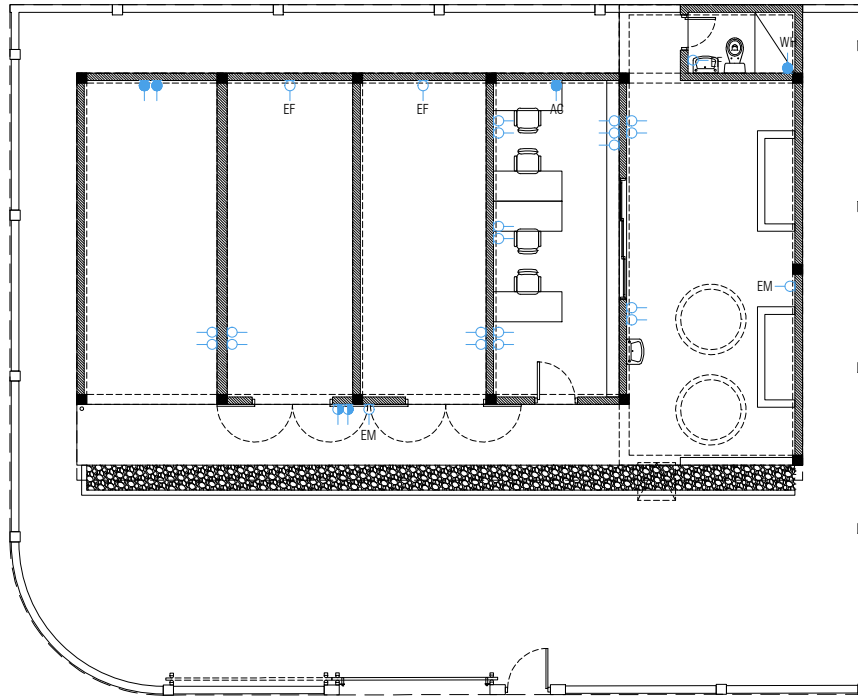


M.A. NOOFINOLHU (FL/S)  
 JAVA AHIRU GOALHI  
 MALE' 20241, MALDIVES  
 0960-7785741

THE CONTENTS ON THIS PAGE ARE AN INTELLECTUAL PROPERTY OF MN DESIGNS PVT LTD & SHALL NOT BE USED WITHOUT AUTHORIZATION.

PROJECT  
**WAREHOUSE**  
 SINGLE STORY

CONTENTS AS GIVEN	
SITE	CLIENT AGRO NAT.
DISCIPLINE ARCH	DESIGN STAGE DETAIL DESIGN
PROJECT NO. 21MN24	SCALE AS GIVEN
REVISION NO. --	SHEET NO. <b>M03</b>
DATE 19 SEP 21	
ARCHITECT MARYAM NOONA	ENGINEER
CHECKER ARCHITECT	CHECKER ENGINEER



NOTES

---



---



---



---



---



---



---



---

**NOTES:**

- SWITCHES @1.2M FROM FFL
- SOCKETS @400MM FROM FFL UNLESS SPECIFIED
- STANDARD HEIGHTS TO BE FOLLOWED FOR DESIGNATED SOCKETS
- ALL POINTS TO BE MARKED ON SITE & APPROVED BY CLIENT BEFORE CUTTING OR INSTALLATION
- PROVISIONS TO BE MADE FOR THE COLD ROOM & ROOF SOLAR PANELS AS PER MANUFACTURER'S SPECS
- AC: AIR-CONDITIONING UNIT
- EF: EXHAUST FAN
- EM: EMERGENCY LIGHT
- WH: WATER HEATER

**LEGEND:**

SYMBOLS	DESCRIPTION
	13A POWER SOCKET
	13A POWER SOCKET (WEATHERPROOF)
	15A POWER SOCKET
	15A POWER SOCKET(WEATHERPROOF)
	20A POWER SOCKET



M.A. NOOFINOLHU (FL/S)  
 JAVAAHIRU GOALHI  
 MALE' 20241 - MALDIVES  
 0960-7785741

THE CONTENTS ON THIS PAGE ARE AN INTELLECTUAL PROPERTY OF MN DESIGNS PVT LTD & SHALL NOT BE USED WITHOUT AUTHORIZATION.

PROJECT  
**WAREHOUSE**  
 SINGLE STORY

CONTENTS AS GIVEN	
SITE	CLIENT AGRO NAT.
DISCIPLINE ARCH	DESIGN STAGE DETAIL DESIGN
PROJECT NO. 21MN24	SCALE AS GIVEN
REVISION NO. --	SHEET NO. <b>MO4</b>
DATE 19 SEP 21	
ARCHITECT MARYAM NOONA	ENGINEER
CHECKER ARCHITECT	CHECKER ENGINEER