

SME Hub Interior Design and Services (First Floor)
Client: Business Center Corporation (BCC)
February 2022

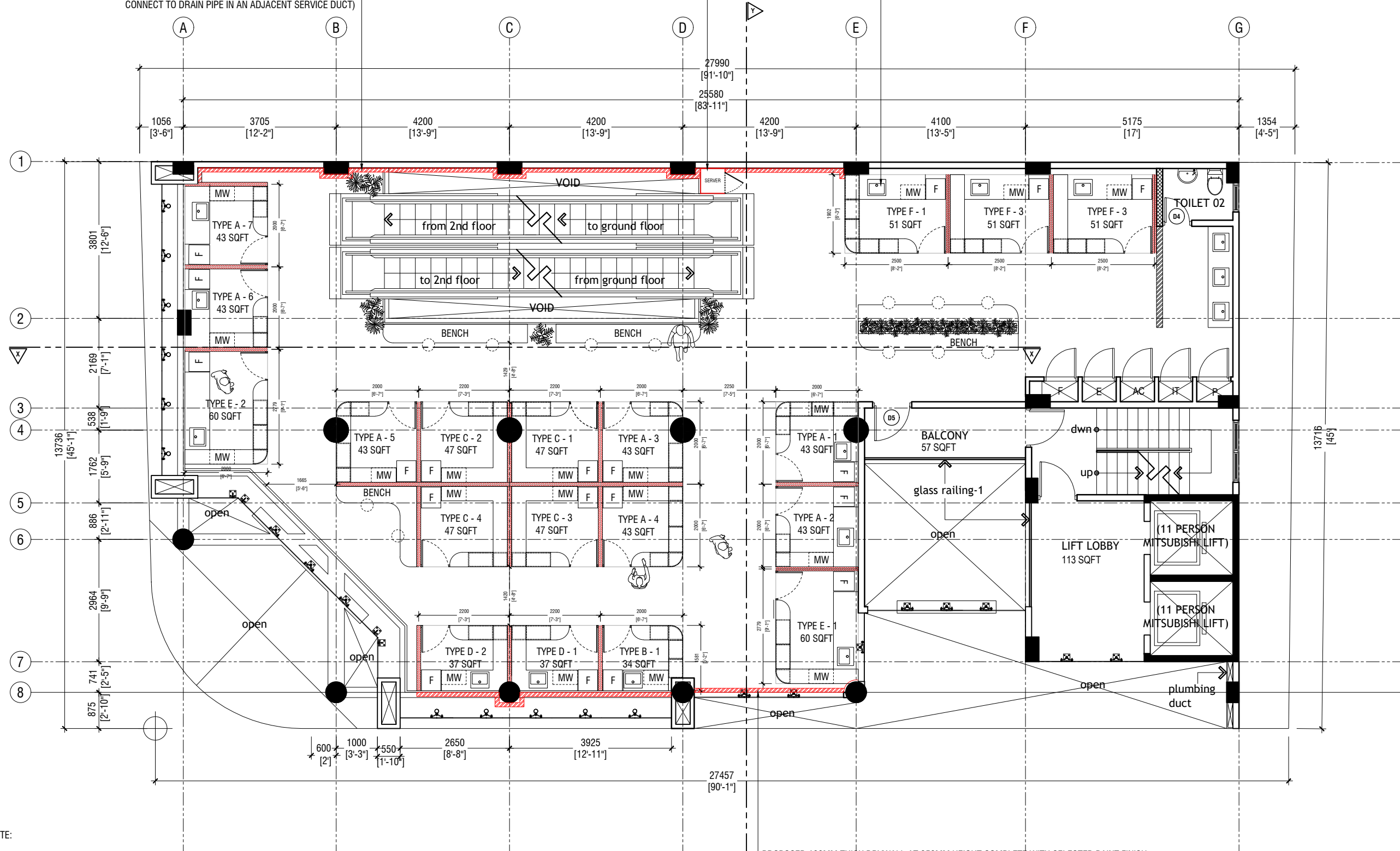


RIYAN PRIVATE LIMITED
t: +9603315049 f: +9603310776
e: info@riyan.com.mv
w: www.riyan.com.mv
3rd floor, H. Azum, Aneeneemoggu, Male'

PROPOSED 100MM THICK DRYWALL AT 950MM HEIGHT COMPLETE WITH SELECTED PAINT FINISH
(TO BE BUILT TO HIDE DRAIN PIPES IN CASE DRAINAGE OF STALL TYPE A7, A6, E2 CANNOT
CONNECT TO DRAIN PIPE IN AN ADJACENT SERVICE DUCT)

GYPSUM PANEL BOXING WITH VENTILATION HOLES FOR
SERVER RACK - WITH CONCEALED PUSH LOCK DOOR

380X380 STAINLESS STEEL SINK



PROPOSED 100MM THICK DRYWALL AT 950MM HEIGHT COMPLETE WITH SELECTED PAINT FINISH
(TO BE BUILT TO HIDE DRAIN PIPES IN CASE DRAINAGE OF STALL TYPE B1, D1, D2 CANNOT BE
CONNECTED TO DRAIN PIPE IN AN ADJACENT SERVICE DUCT)

NOTE:

- PROPOSED 100MM THICK DRYWALL (12MM THK GYPSUM + STEEL FRAMING STUDS) COMPLETE WITH SELECTED PAINT / COATING FINISH
- PROPOSED 150mm THICK SOLID MASONRY WALL COMPLETE WITH SELECTED PAINT / TILE FINISH
- PROPOSED 100MM THK DRYWALL (12MM THK CEMENT BOARD + STEEL FRAMING STUDS) WITH FROSTED ACRYLIC LOW PARTITION FOR STALLS (REF. TO DETAILS)
- PROPOSED GYPSUM PANNELLING WITH TIMBER FRAME WITH SELECTED WALL FINISH
- PROPOSED 100MM THICK DRYWALL (12MM THK CEMENT BOARD + STEEL FRAMING STUDS) AT 950MM HEIGHT COMPLETE WITH SELECTED PAINT FINISH

FIRST FLOOR PLAN - REVISION 5

SCALE 1:100



SME Hub Interior Design
Client: Business Center Corporation (BCC)

Rev no By Date

Project Number: R2117BCC
Date: February 2022
Architect: -
Engineer: -
Drawn by: Abdulla Aman Mohamed
Services: Ashraf Ahmed
Interior: Abdulla Aman Mohamed



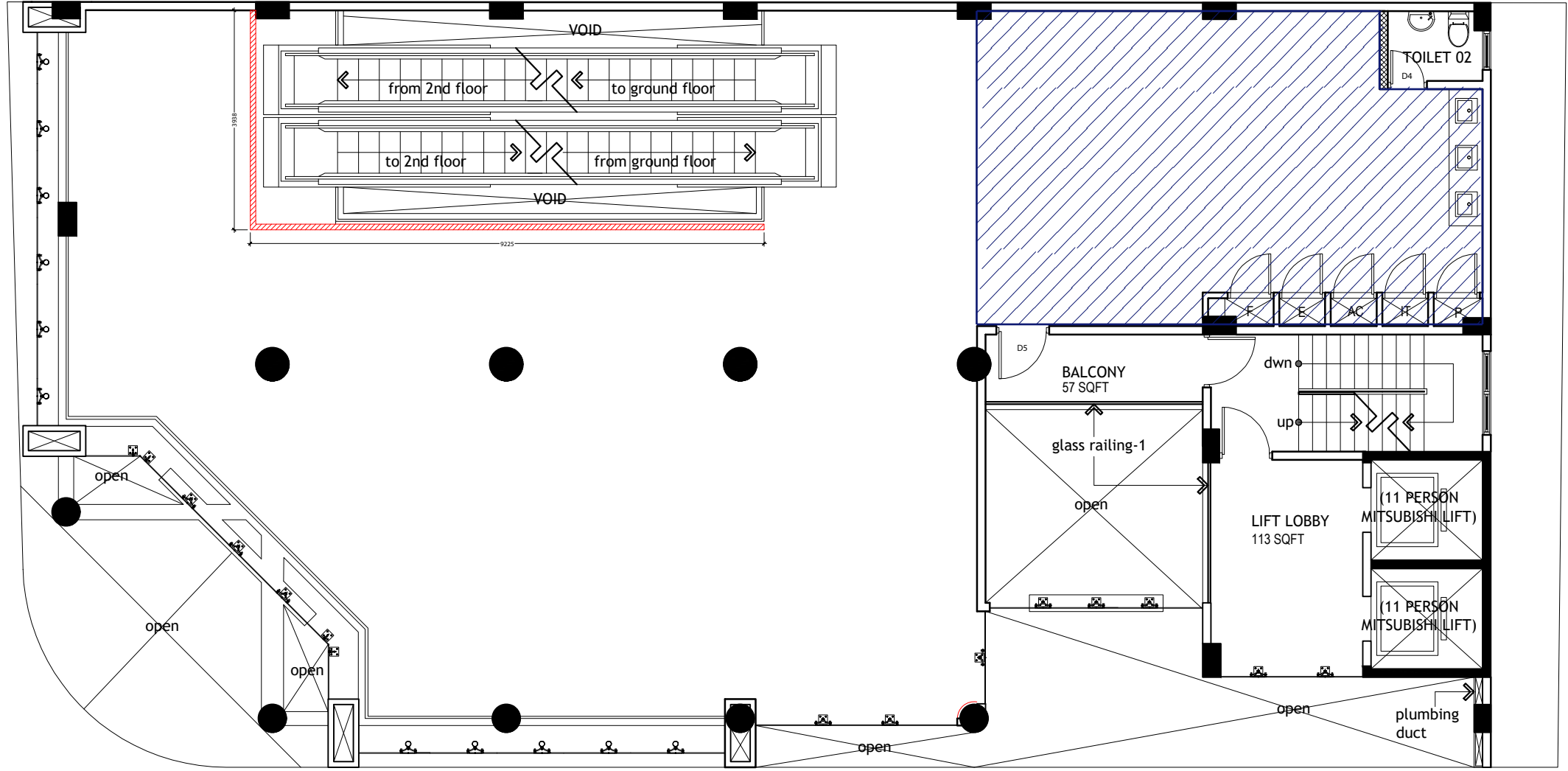
RIYAH PRIVATE LIMITED

t: +9603315049 f: +9603310776
e: info@riyah.com.mv
w: www.riyah.com.mv
3rd floor, H. Azum, Ameenemaguu, Male'

Title: Ground Floor Plan

Page: A-01/17

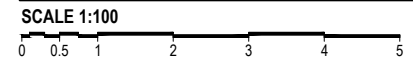
The contents of these drawings remain as a property of Riyah Private Limited. Any use other than those expressly stated is a violation of this copyright.



NOTE:

- DRYWALL PARTITION TO BE DEMOLISHED
- CEILING TO BE REMOVED

FIRST FLOOR - DEMOLITION PLAN



SME Hub Interior Design
Client: Business Center Corporation (BCC)

Project Number: R21117BCC
 Date: February, 2022

Rev no	By	Date

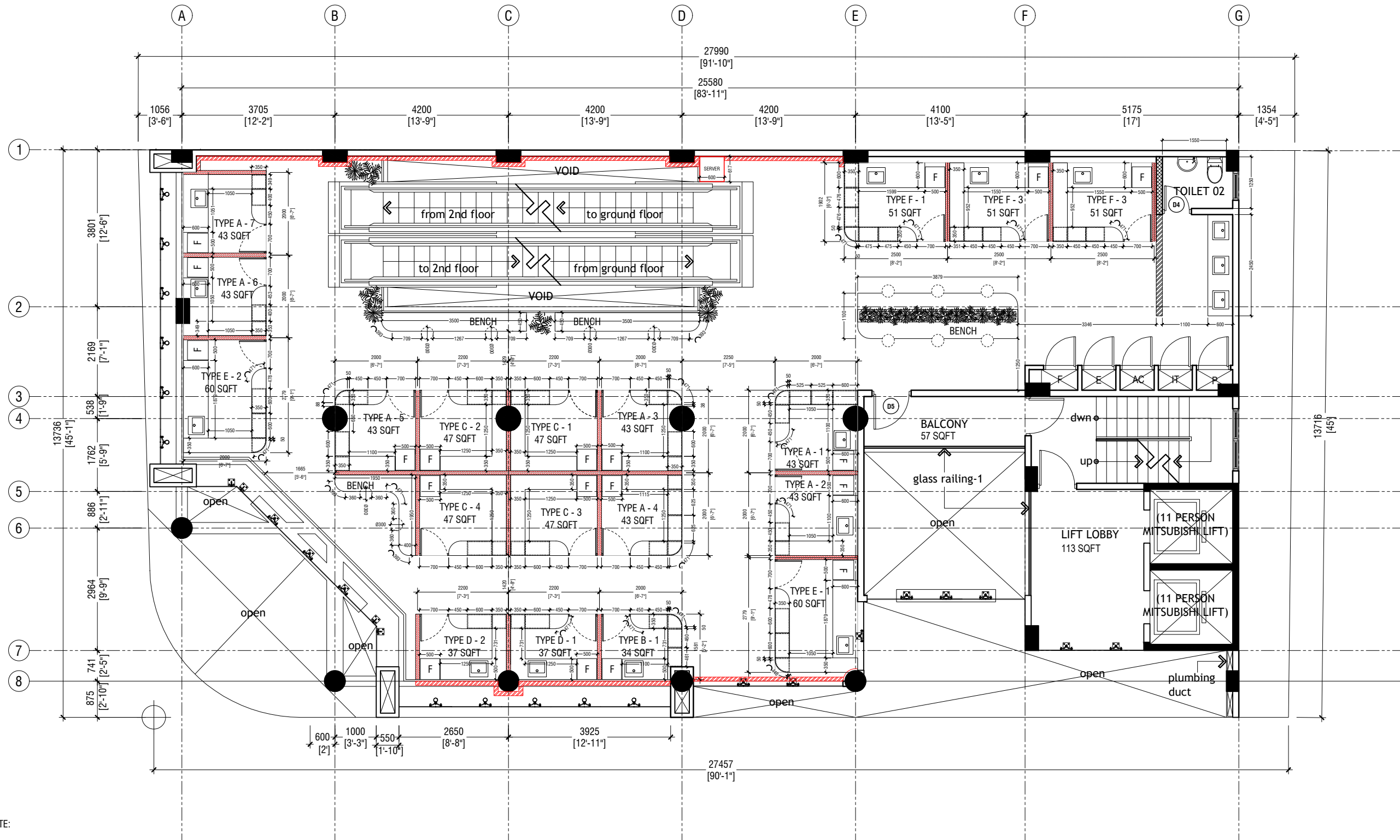
Architect : -
 Engineer : -
 Drawn by : Abdulla Aman Mohamed
 Services : Alshahin Ahmed
 Interior : Abdulla Aman Mohamed



RYAN PRIVATE LIMITED
 t : +9603315049 f : +9603310776
 e : info@ryan.com.mv
 w : www.ryan.com.mv
 3rd floor, H. Azum, Ameenemaguu, Male'

Title:

The contents of these drawings remain as a property of RYAN PRIVATE LIMITED. Any use other than those expressly stated is a violation of this copyright.



NOTE:

- PROPOSED 100MM THICK DRYWALL (12MM THK GYPSUM + STEEL FRAMING STUDS) COMPLETE WITH SELECTED PAINT / COATING FINISH
- PROPOSED 150mm THICK SOLID MASONRY WALL COMPLETE WITH SELECTED PAINT / TILE FINISH
- PROPOSED 100MM THK DRYWALL (12MM THK CEMENT BOARD + STEEL FRAMING STUDS) WITH FROSTED ACRYLIC LOW PARTITION FOR STALLS (REF. TO DETAILS)
- PROPOSED GYPSUM PANNELLING WITH TIMBER FRAME WITH SELECTED WALL FINISH
- PROPOSED 100MM THICK DRYWALL (12MM THK CEMENT BOARD + STEEL FRAMING STUDS) AT 950MM HEIGHT COMPLETE WITH SELECTED PAINT FINISH

FIRST FLOOR - DIMENSION PLAN

SCALE 1:100



SME Hub Interior Design
Client: Business Center Corporation (BCC)

Rev no	By	Date

Project Number: R2117BCC
Date: February 2022
Architect: -
Engineer: - Abdullah Aman Mohamed
Drawn by: - Ashraf Ahmed
Interior: - Abdullah Aman Mohamed



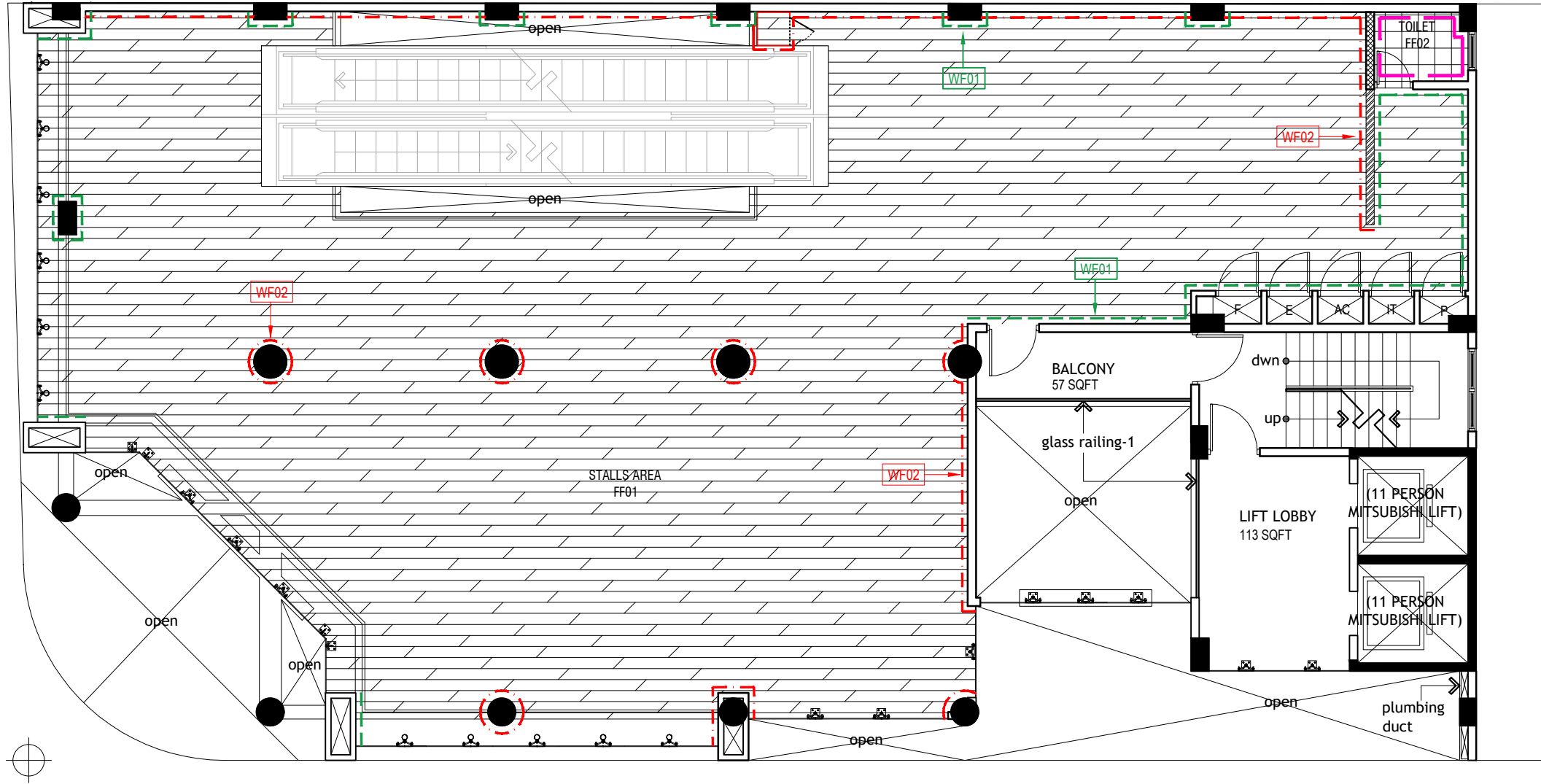
RIYAH PRIVATE LIMITED

t: +9603315049 f: +9603310776
e: info@riyah.com.mv
w: www.riyah.com.mv
3rd floor, H. Azum, Ameenemaguu, Male'

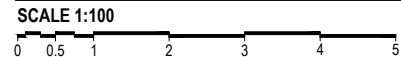
Title:

Page: A-03/17

The contents of these drawings remain as a property of Riyah Private Limited. Any use other than those expressly stated is a violation of this copyright.



FIRST FLOOR - FLOOR FINISH / WALL FINISH PLAN



FLOOR FINISH LEGEND

CODE	SYMBOL	DESCRIPTION
FF01		1380X190 LAMINATE FLOORING COLOUR: SOFT OAK GREY CODE: IMPRESSIVE IM3558
FF02		300X300 PORCELAIN TILE COLOUR: GREY FINISH: MATTE NON SKID

WALL FINISH LEGEND

CODE	SYMBOL	DESCRIPTION
WF01		INTERIOR WALL PAINT COLOUR: DARK GREY FINISH: SATIN FINISH
WF02		TITANIUM WALL COATING FINISH COLOUR: LIGHT GREY FINISH: SEMI POLISHED
WF03A		600X300 PORCELAIN TILE COLOUR: GREY FINISH: SEMI GLOSS

SME Hub Interior Design
Client: Business Center Corporation (BCC)

Project Number: R2117BCC
Date: February 2022

Architect: -
Engineer: -
Drawn by: -
Services: -

Interior: -
By: -
Date: -

Abdulla Aman Mohamed
Ashraf Ahmed
Abdulla Aman Mohamed



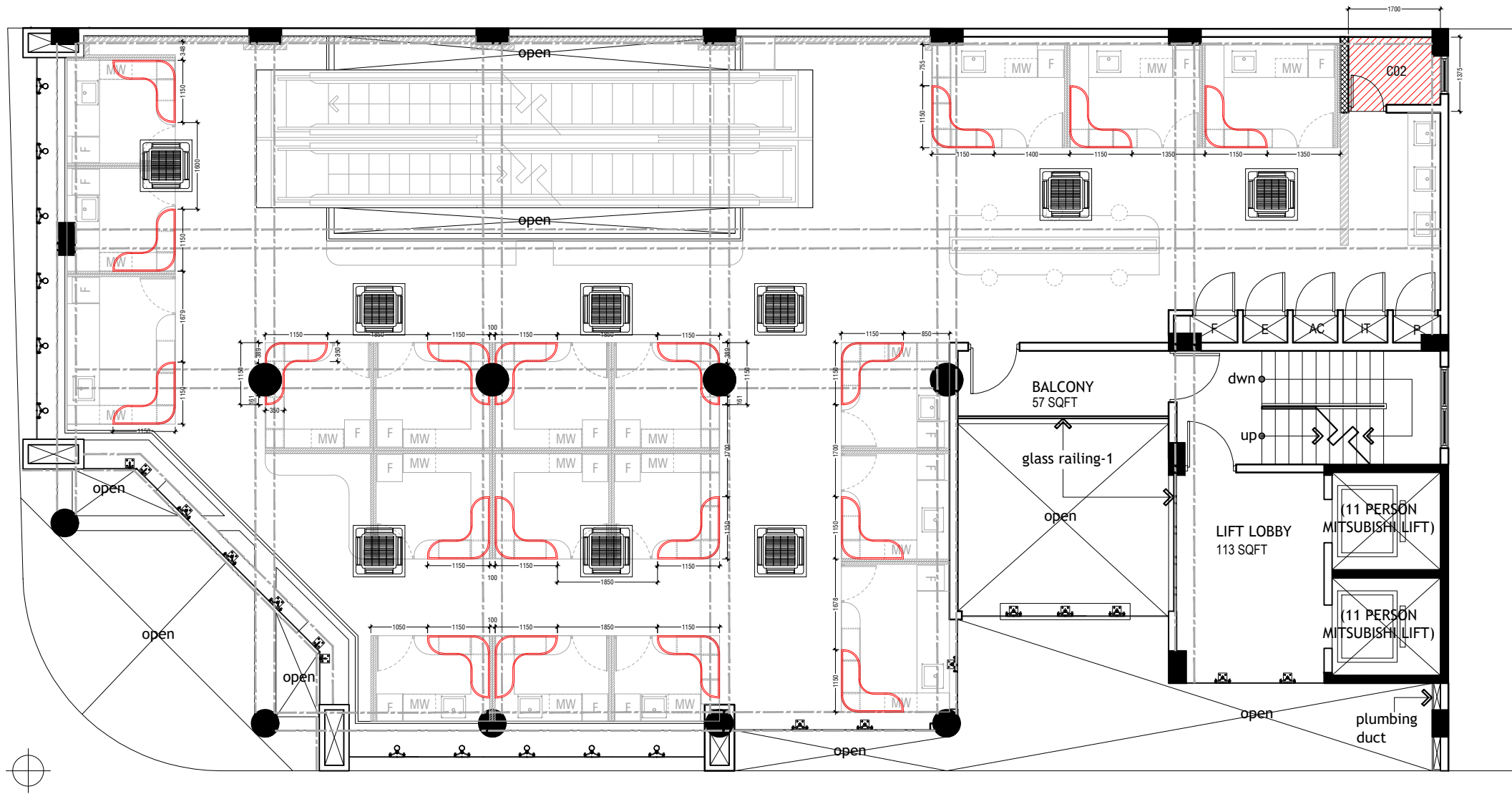
RIYAN PRIVATE LIMITED

t: +9603315049 f: +9603310776
e: info@riyan.com.mv
w: www.riyan.com.mv
3rd floor, H. Azum, Ameenemaggu, Male'

Title:

Page: A-04/17

The contents of these drawings remain as a property of Riyan Private Limited. Any use other than those expressly stated is a violation of this copyright.



FIRST FLOOR - REFLECTED CEILING PLAN

SCALE 1:100
 0 0.5 1 2 3 4 5

CEILING FINISH LEGEND

CODE	SYMBOL	DESCRIPTION
C02		12MM THK CEMENT BOARD CEILING AT 2700MM FINISH: WF01 (DARK GREY PAINT FINISH) FRAMING: STEEL STUD FRAMING CHANNEL
HSL		HANGING SIGNAGE LIGHT REFER TO DETAIL.

NOTE:
 ALL DIMENSIONS TO BE CHECKED BY CONTRACTOR PRIOR TO FABRICATION OF ANY CARPENTRY WORKS

SME Hub Interior Design
 Client: Business Center Corporation (BCC)

Project Number: R2117BCC
 Date: February, 2022

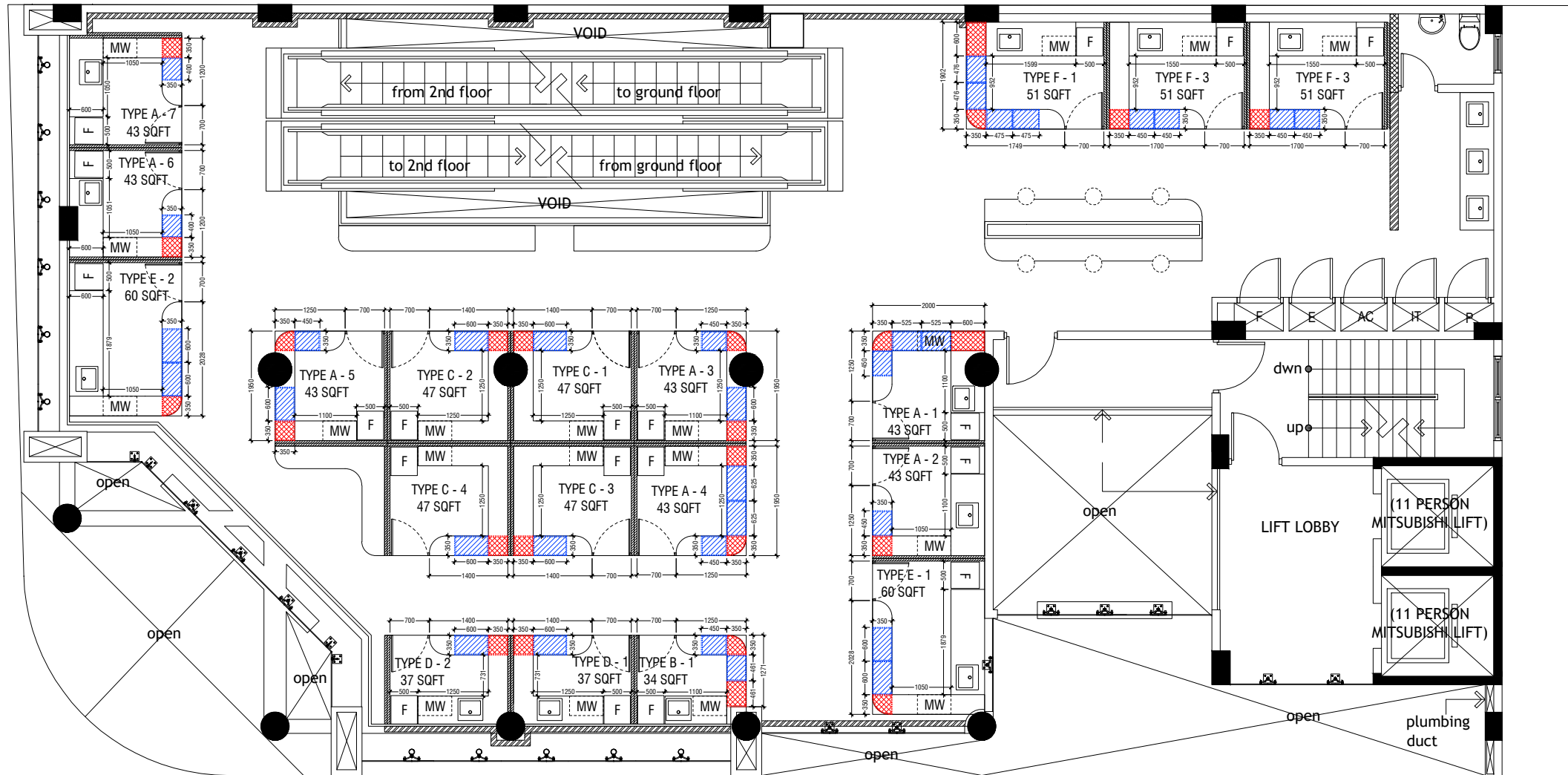
Rev no	By	Date

Architect :
 Engineer :
 Drawn by :
 Services :
 Interior :



RIYAN PRIVATE LIMITED
 t: +9603315049 f: +9603310776
 e: info@riyan.com.mv
 w: www.riyan.com.mv
 3rd floor, H. Azun, Ameenemaguu, Male'

The contents of these drawings remain as a property of Riyan Private Limited. Any use other than those expressly stated is a violation of this copyright.

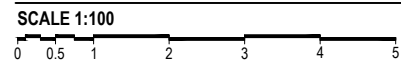


STALL DISPLAY TYPE LEGEND

CODE	SYMBOL	DESCRIPTION
DP01		COUNTER TOP GLASS DISPLAY UNIT TYPE FINISH: STAINLESS STEEL AND LAMINATED GLASS HEIGHT: 250MM
DP02		COUNTER RECESSED GLASS DISPLAY UNIT TYPE FINISH: STAINLESS STEEL AND LAMINATED GLASS HEIGHT: 450MM

NOTE:
 ALL DIMENSIONS TO BE CHECKED BY CONTRACTOR PRIOR TO FABRICATION OF ANY CARPENTRY WORKS
 REFER TO DIMENSION PLAN AND TYPICAL STALL DETAIL FOR ADDITIONAL SIZE, DIMENSION, AND FINISHING DETAILS

FIRST FLOOR - STALL COUNTER DISPLAY TYPE KEY PLAN



SME Hub Interior Design
 Client: Business Center Corporation (BCC)

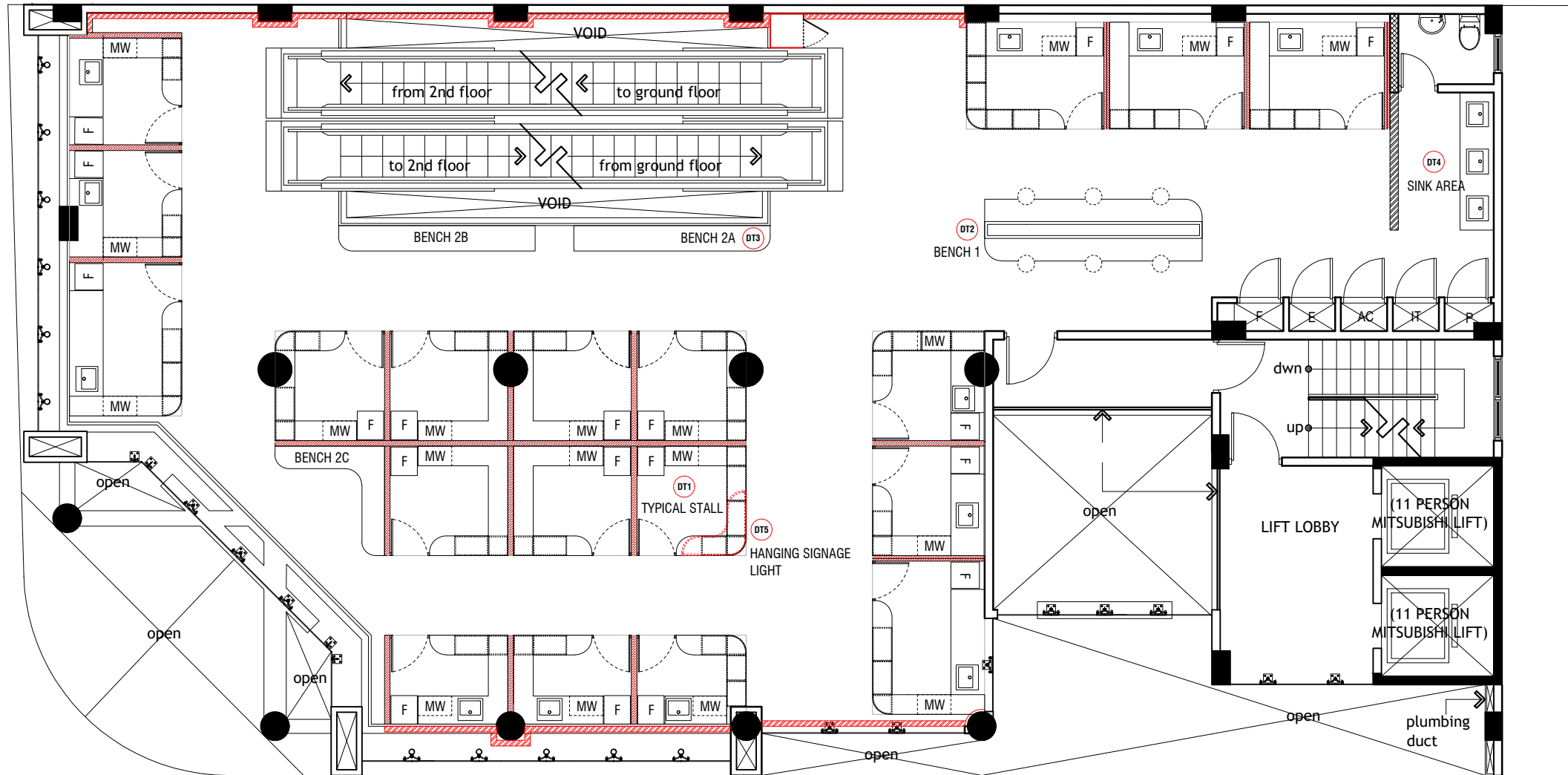
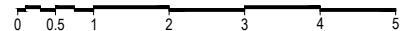
Rev no	By	Date

RIYAN PRIVATE LIMITED
 t: +9603315049 f: +9603310776
 e: info@riyan.com.mv
 w: www.riyan.com.mv
 3rd floor, H. Azum, Ameenemaguu, Male'

The contents of these drawings remain as a property of Riyan Private Limited. Any use other than those expressly stated is a violation of this copyright.

FIRST FLOOR - DETAIL KEY PLAN

SCALE 1:100



SME Hub Interior Design
Client: Business Center Corporation (BCC)

Rev no	By	Date

Project Number: R2117BCC
 Date: February 2022
 Architect: -
 Engineer: - Abdulla Aman Mohamed
 Drawn by: - Ashraf Ahmed
 Interior: - Abdulla Aman Mohamed



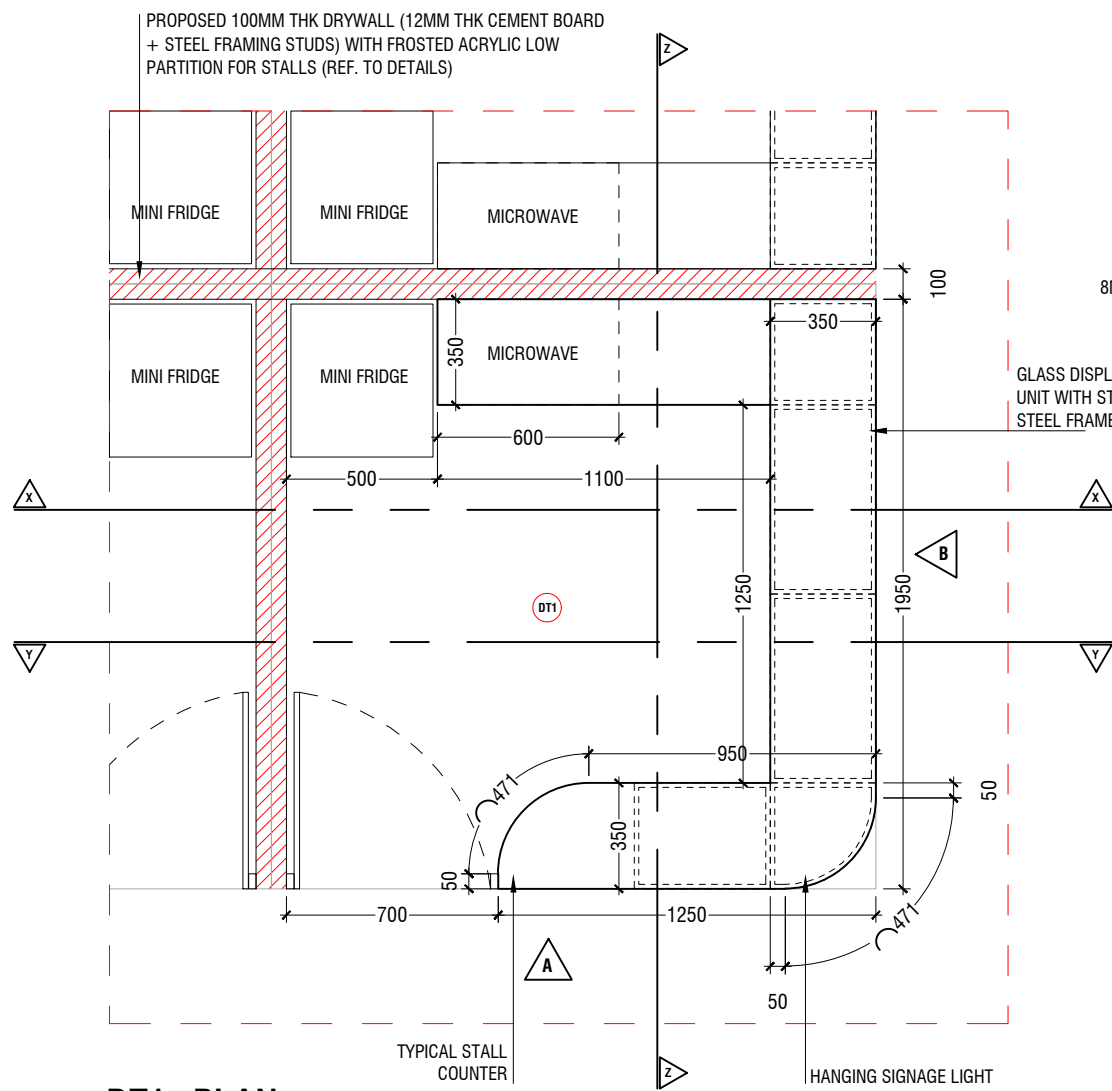
RYAN PRIVATE LIMITED

t: +9603315049 f: +9603310776
 e: info@ryan.com.mv
 w: www.ryan.com.mv
 3rd floor, H. Azum, Ameenemaguu, Male'

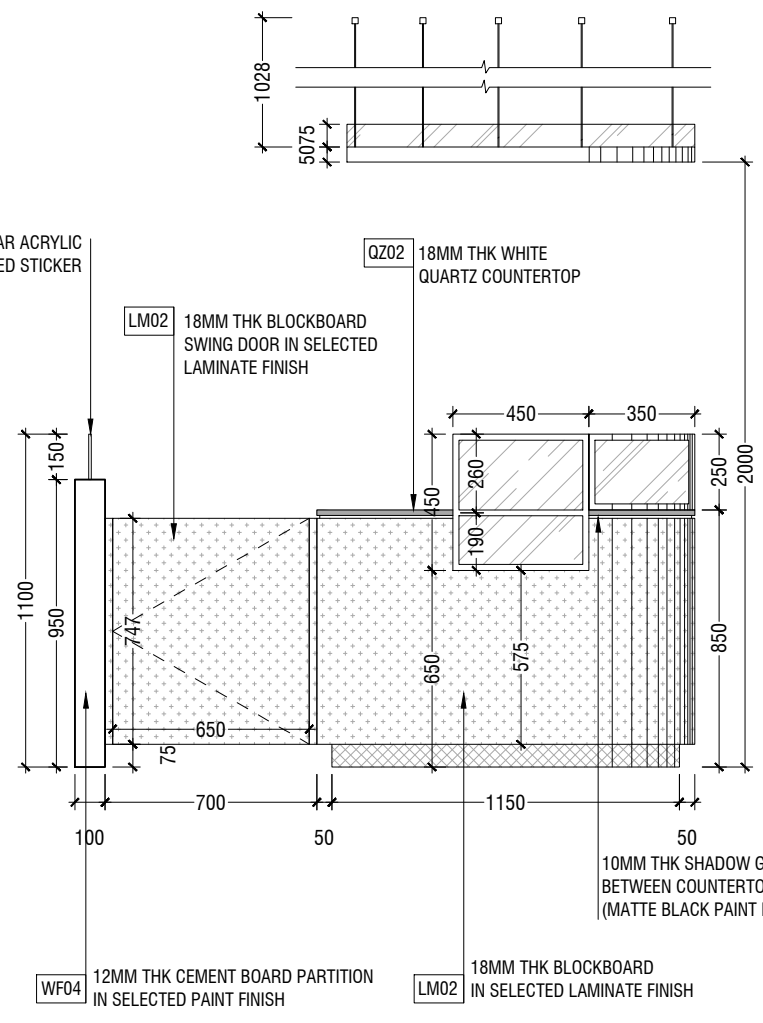
Title:

Page: A-07/17

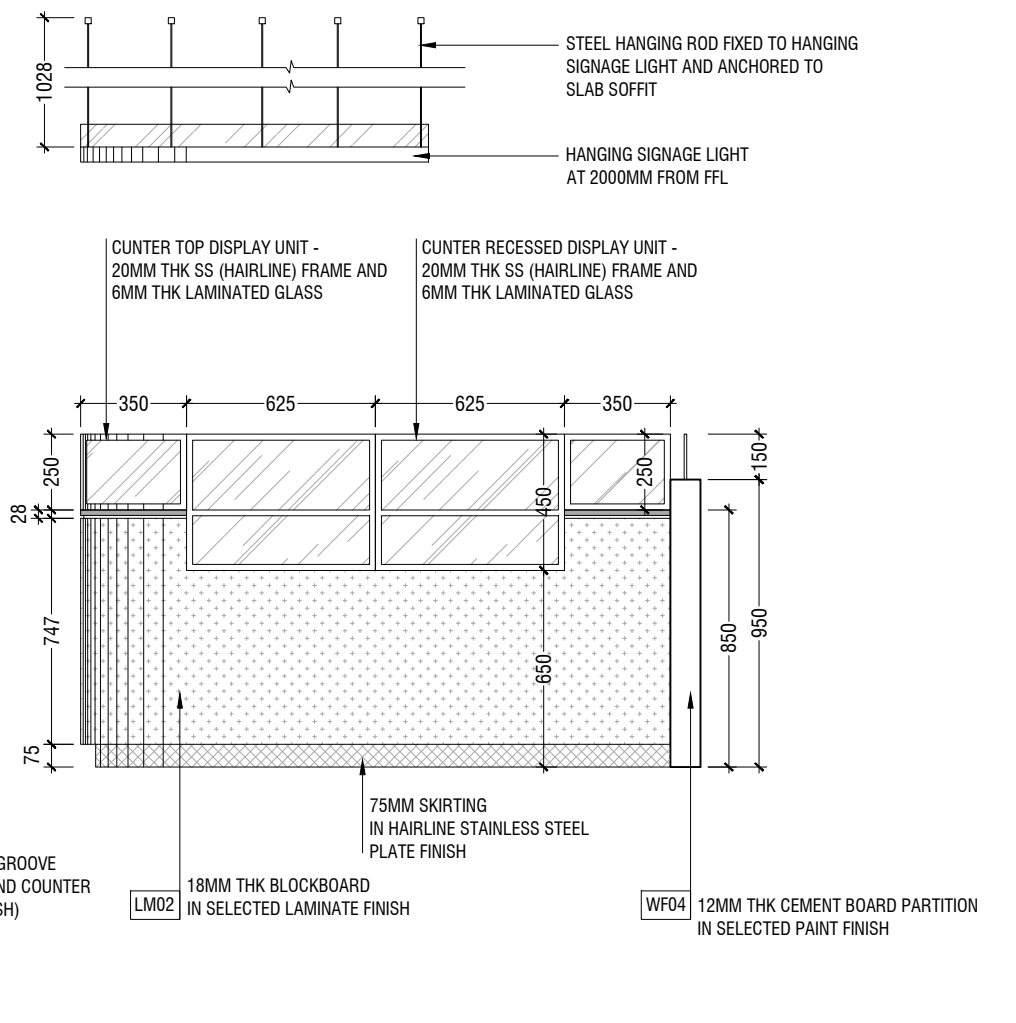
The contents of these drawings remain as a property of RYAN PRIVATE LIMITED. Any use other than those expressly stated is a violation of this copyright.



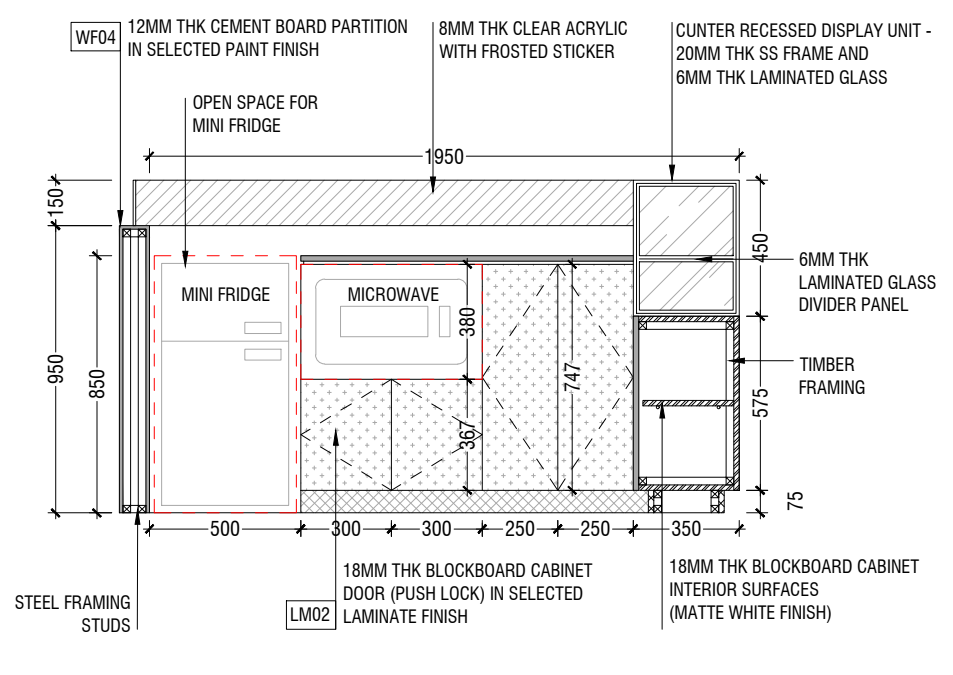
DT1 - PLAN



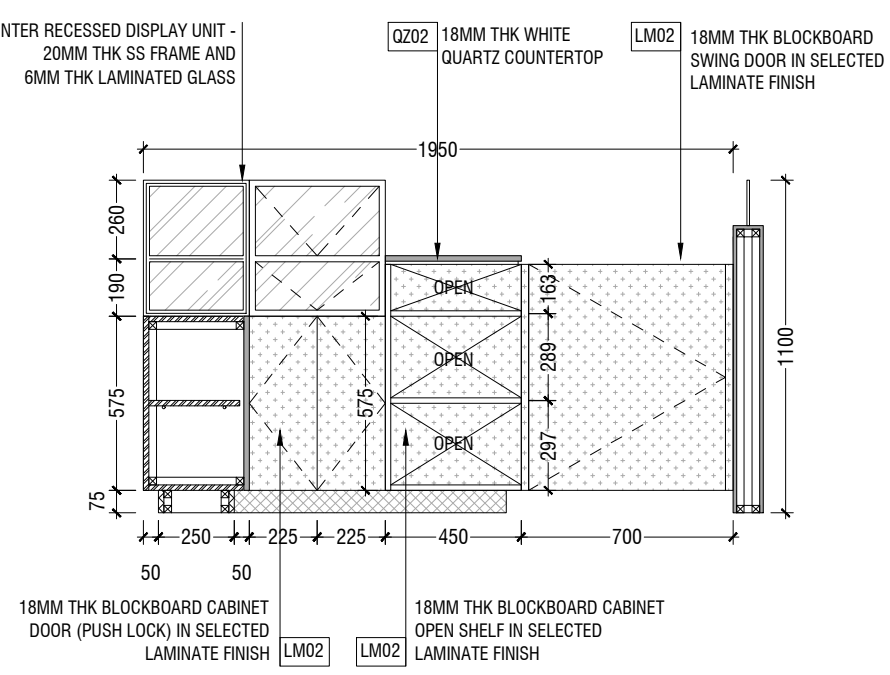
DT1 - ELEVATION A



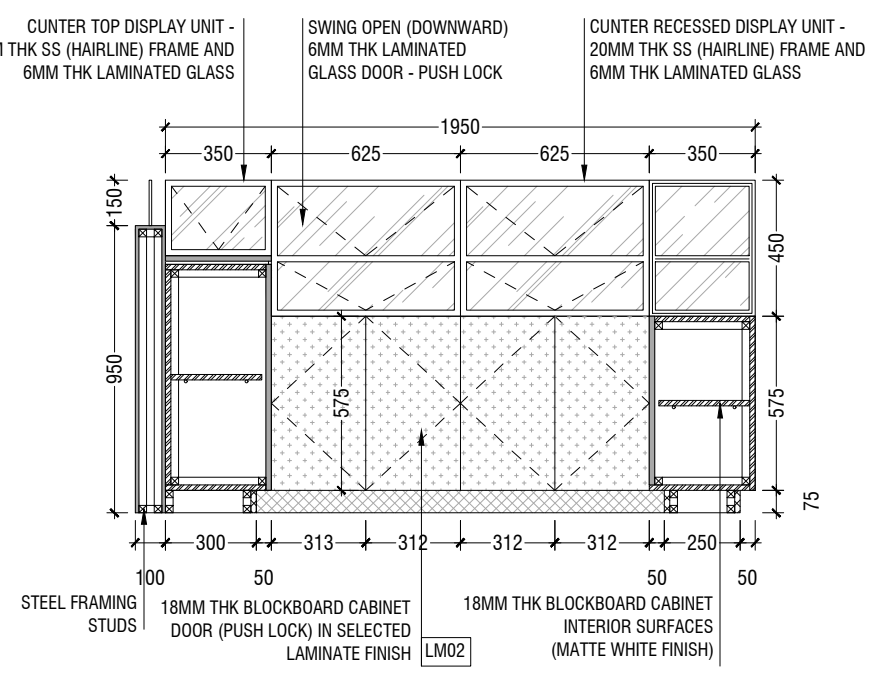
DT1 - ELEVATION B



DT1 - SECTION X-X



DT1 - SECTION Y-Y



DT1 - SECTION Z-Z

DT1 - TYPICAL STALL DESIGN



NOTE:

- DIMENSIONS WILL VARY BETWEEN DIFFERENT STALLS - REF. TO DIMENSION PLAN AND STALL COUNTER DISPLAY TYPE KEY PLAN FOR ADDITIONAL DIMENSIONS AND DETAILS.
- ALL DIMENSIONS TO BE CHECKED BY CONTRACTOR PRIOR TO FABRICATION OF ANY CARPENTRY WORKS.
- TYPICAL STALL DESIGN TO APPLY TO ALL 19 STALLS - WITH REFERENCE TO LAYOUT PLAN, DIMENSION PLAN AND STALL COUNTER DISPLAY TYPE KEY PLAN.

SME Hub Interior Design
Client: Business Center Corporation (BCC)

Project Number: R2117BCC
 Date: February 2022
 Architect: -
 Engineer: -
 Drawn by: -
 Services: -
 Interior: -

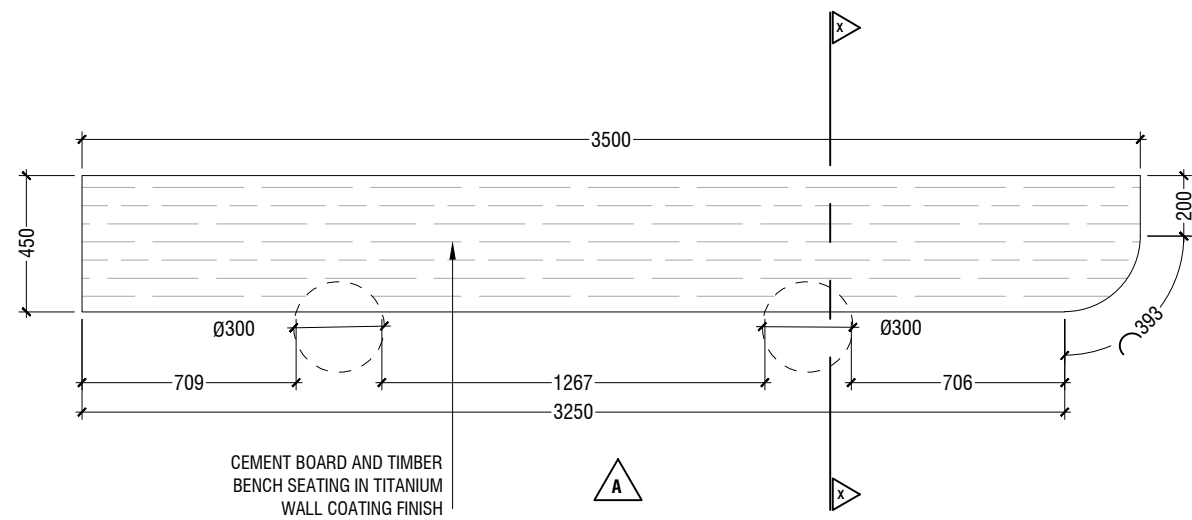
Rev no By Date

RIYAN PRIVATE LIMITED

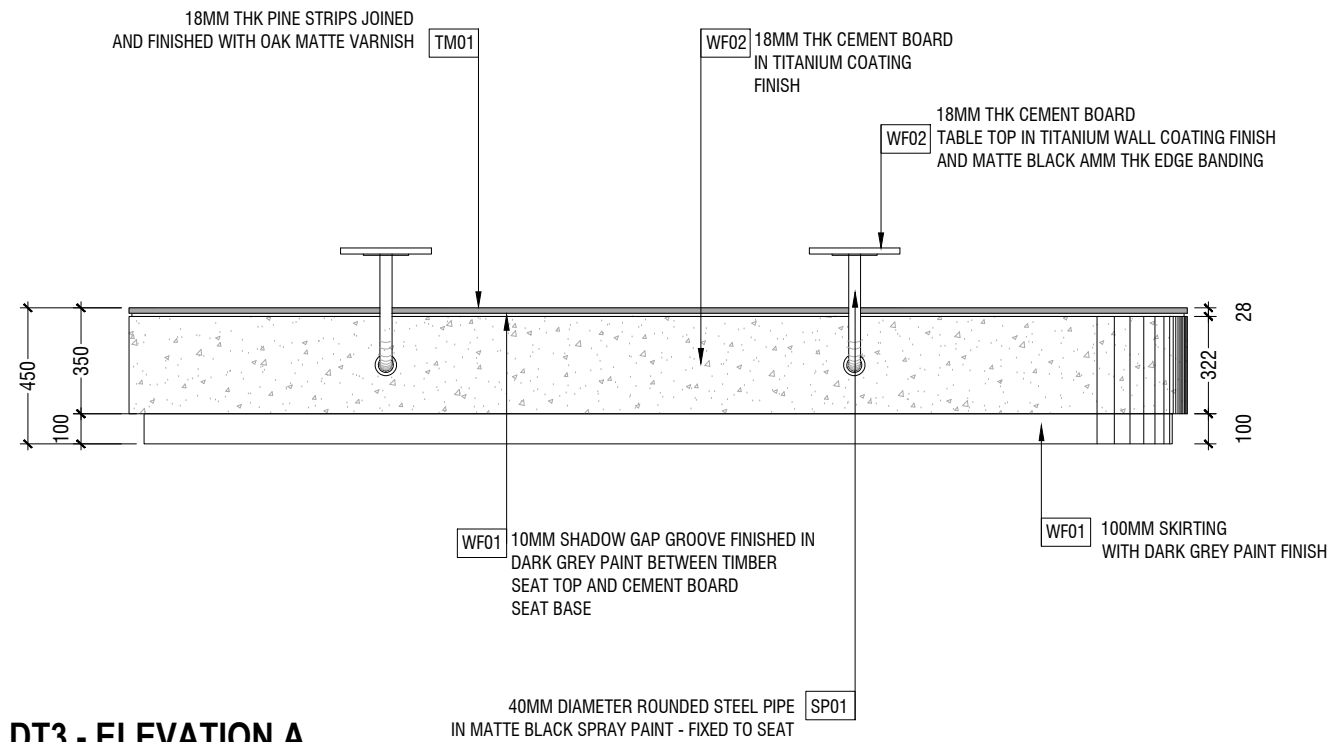
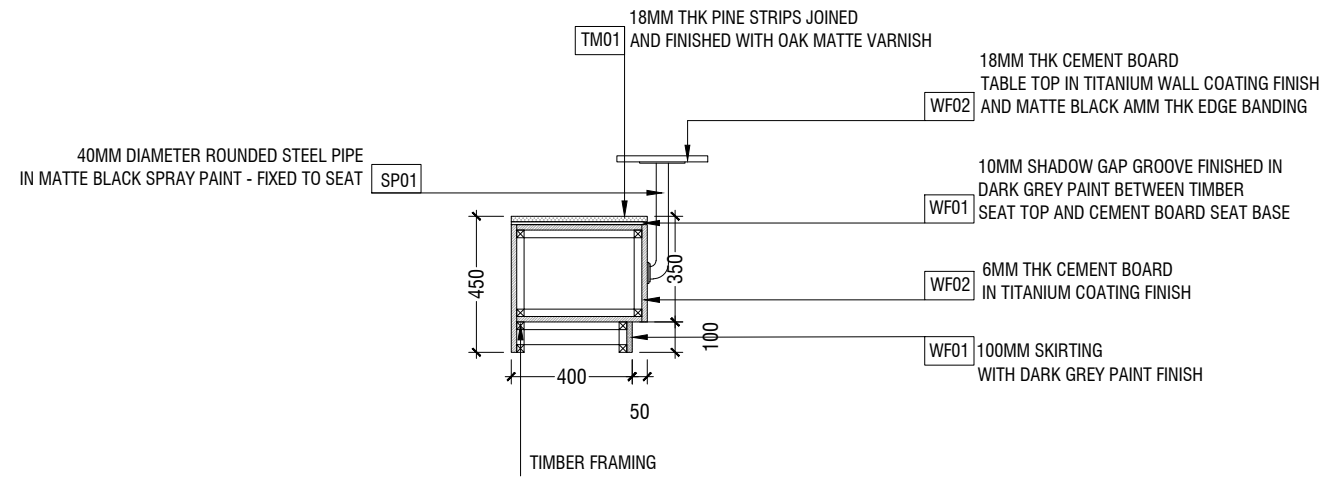
t: +9603315049 f: +9603310776
 e: info@riyan.com.mv
 w: www.riyan.com.mv
 3rd floor, H. Azum, Ameenemaggu, Male'

Title: -
 Page: A-08/17

The contents of these drawings remain as a property of Riyan Private Limited. Any use other than those expressly stated is a violation of this copyright.

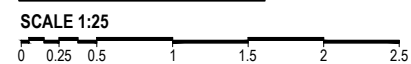


DT3 - PLAN



DT3 - ELEVATION A

DT3 - BENCH 2A



NOTE:

- ALL DIMENSIONS TO BE CHECKED BY CONTRACTOR PRIOR TO FABRICATION OF ANY CARPENTRY WORKS.
- TYPICAL BENCH DESIGN TO APPLY TO 3 BENCHES (BENCH 2A, 2B AND 2C) WITH REFERENCE TO LAYOUT PLAN AND DIMENSION PLAN.

SME Hub Interior Design
Client: Business Center Corporation (BCC)

Rev no	By	Date

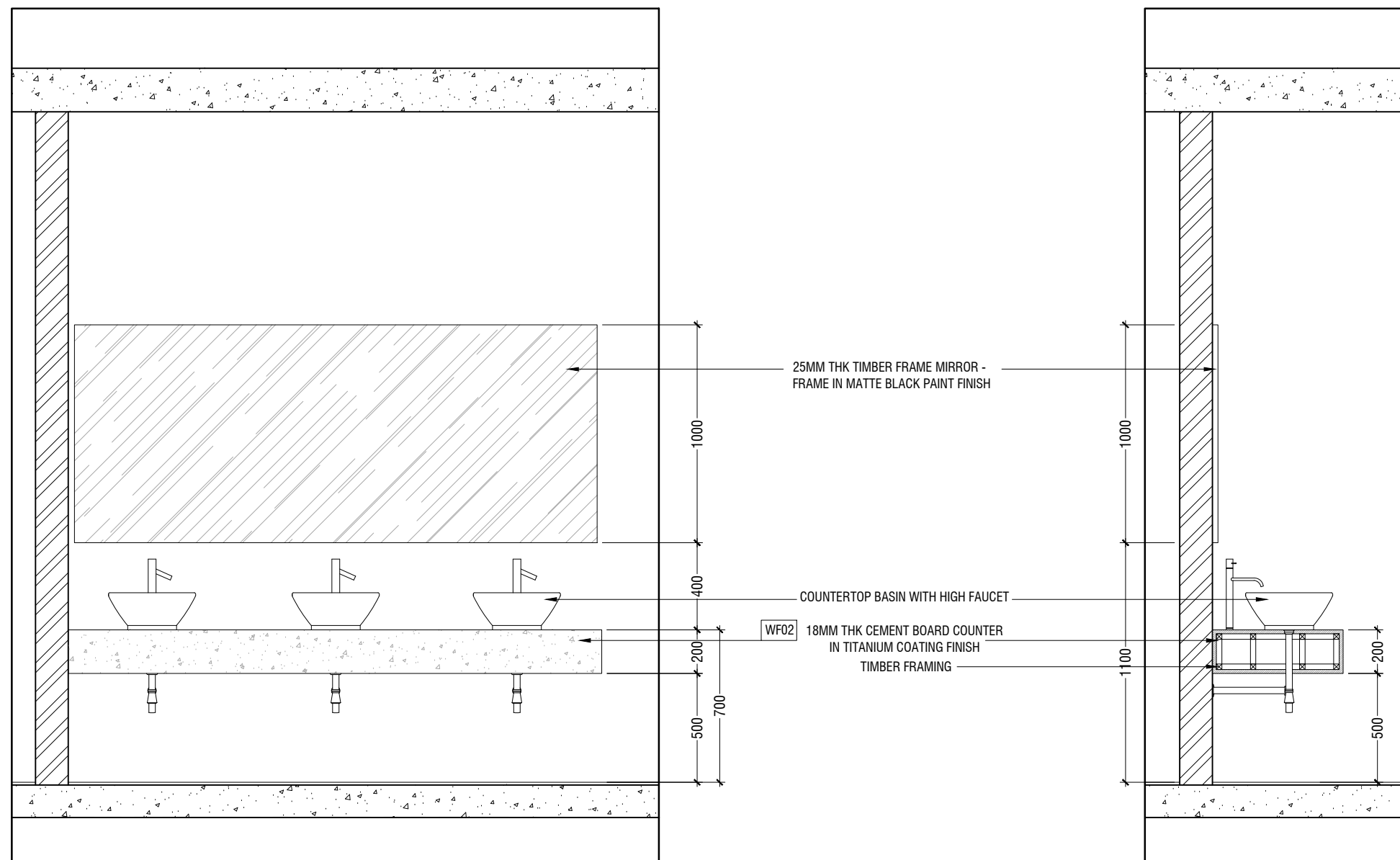
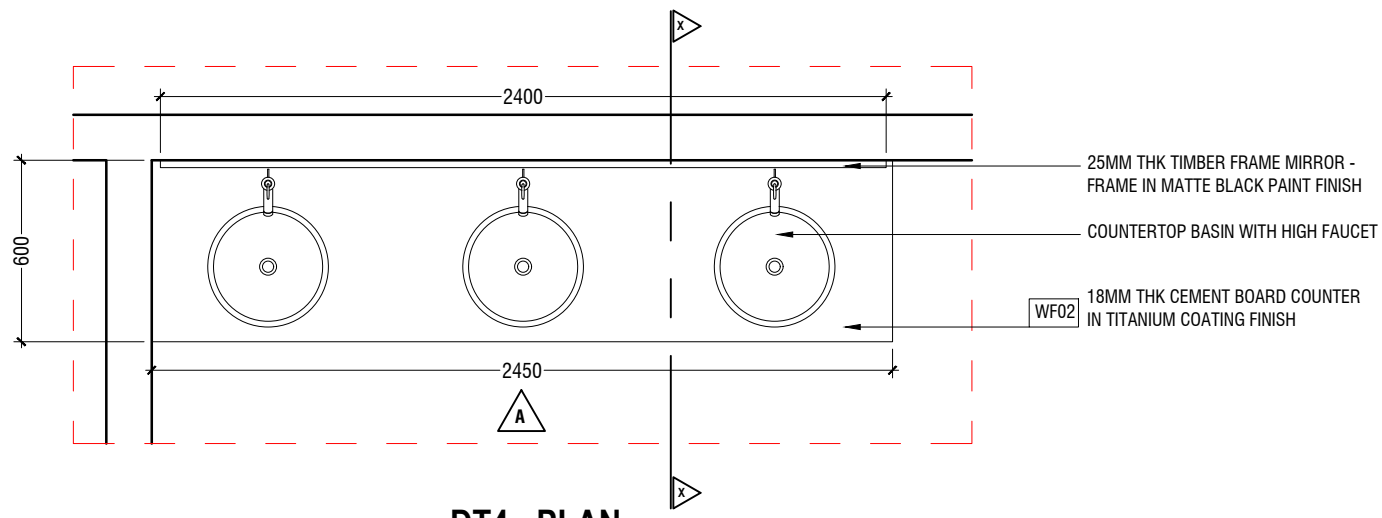
Project Number: R2117BCC
Date: February 2022
Architect: -
Engineer: -
Drawn by: Abdullah Aman Mohamed
Services: Ashraf Ahmed
Interior: Abdullah Aman Mohamed



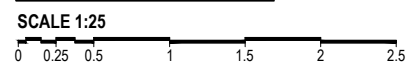
RYAN PRIVATE LIMITED

t: +9603315049 f: +9603310776
e: info@ryan.com.mv
w: www.ryan.com.mv
3rd floor, H. Azum, Ameenemaggu, Male'

Title:



DT4 - SINK AREA



SME Hub Interior Design
Client: Business Center Corporation (BCC)

Rev no	By	Date

Project Number: R2117BCC
Date: February 2022
Architect :
Engineer :
Drawn By : Abdulla Aman Mohamed
Services : Ashraf Ahmed
Interior : Abdulla Aman Mohamed

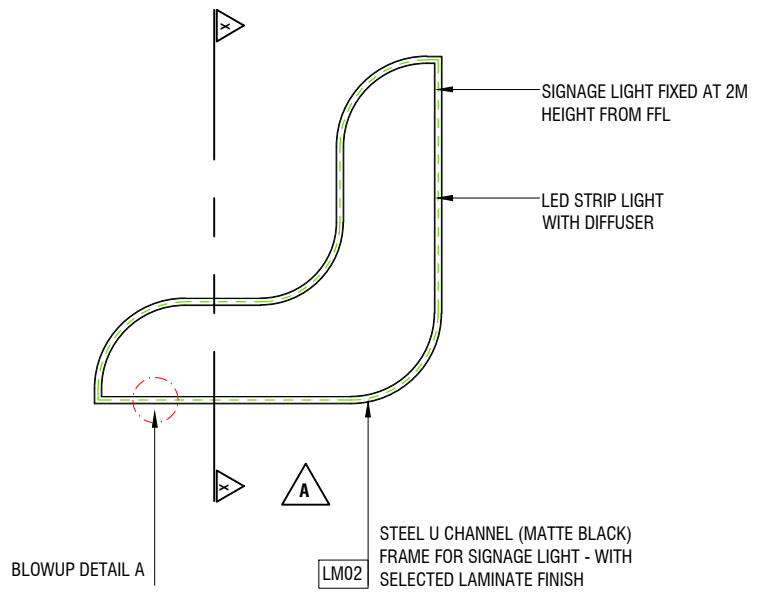


RYAN PRIVATE LIMITED

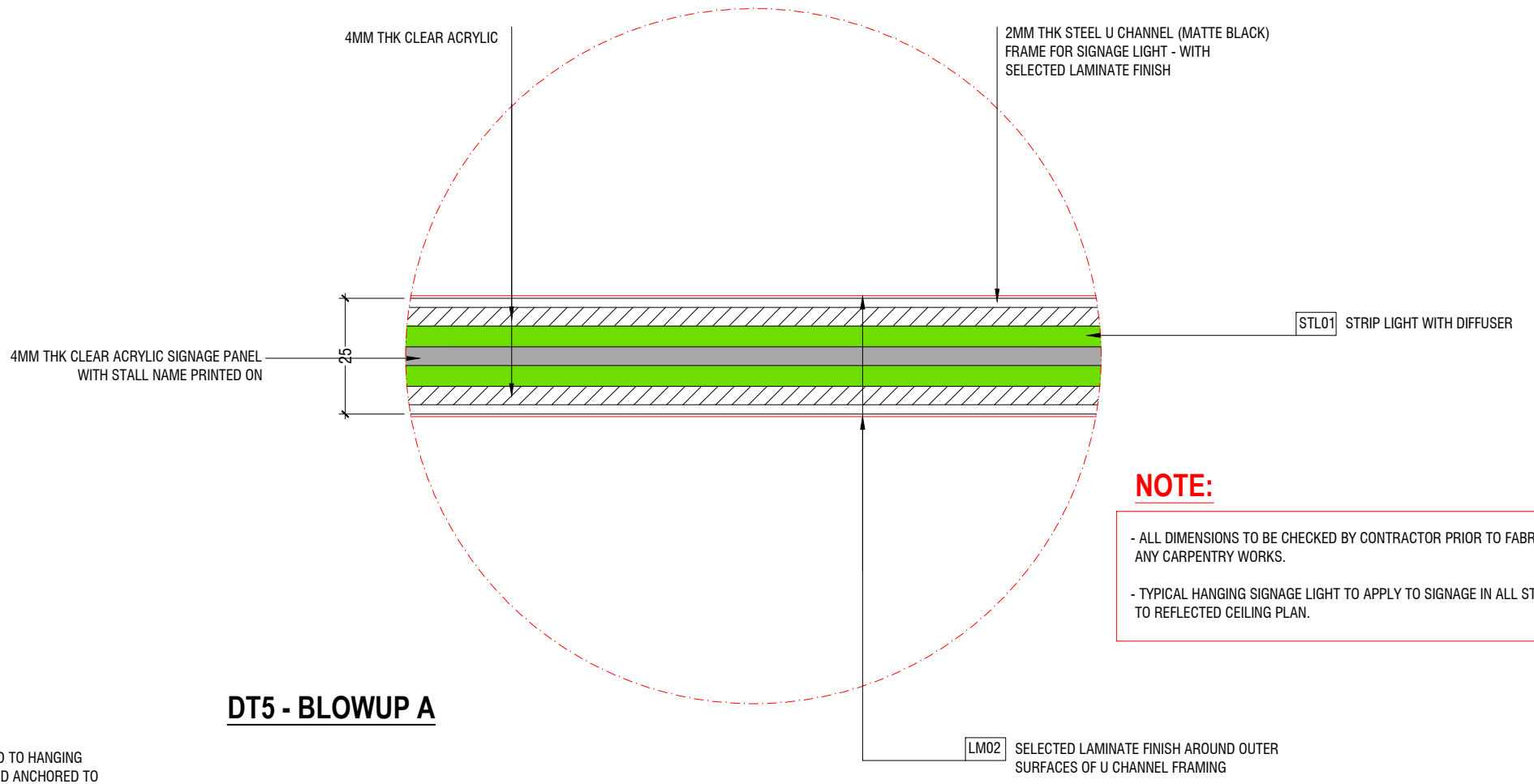
t : +9603315049 f : +9603310776
e : info@ryan.com.mv
w : www.ryan.com.mv
3rd floor, H. Azun, Ameenemaguu, Male'

Title:

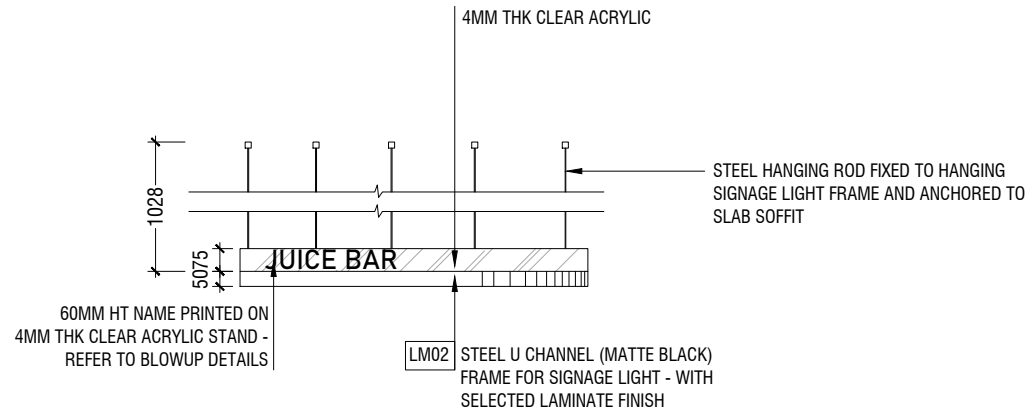
The contents of these drawings remain as a property of RYAN PRIVATE LIMITED. Any use other than those expressly stated is a violation of this copyright.



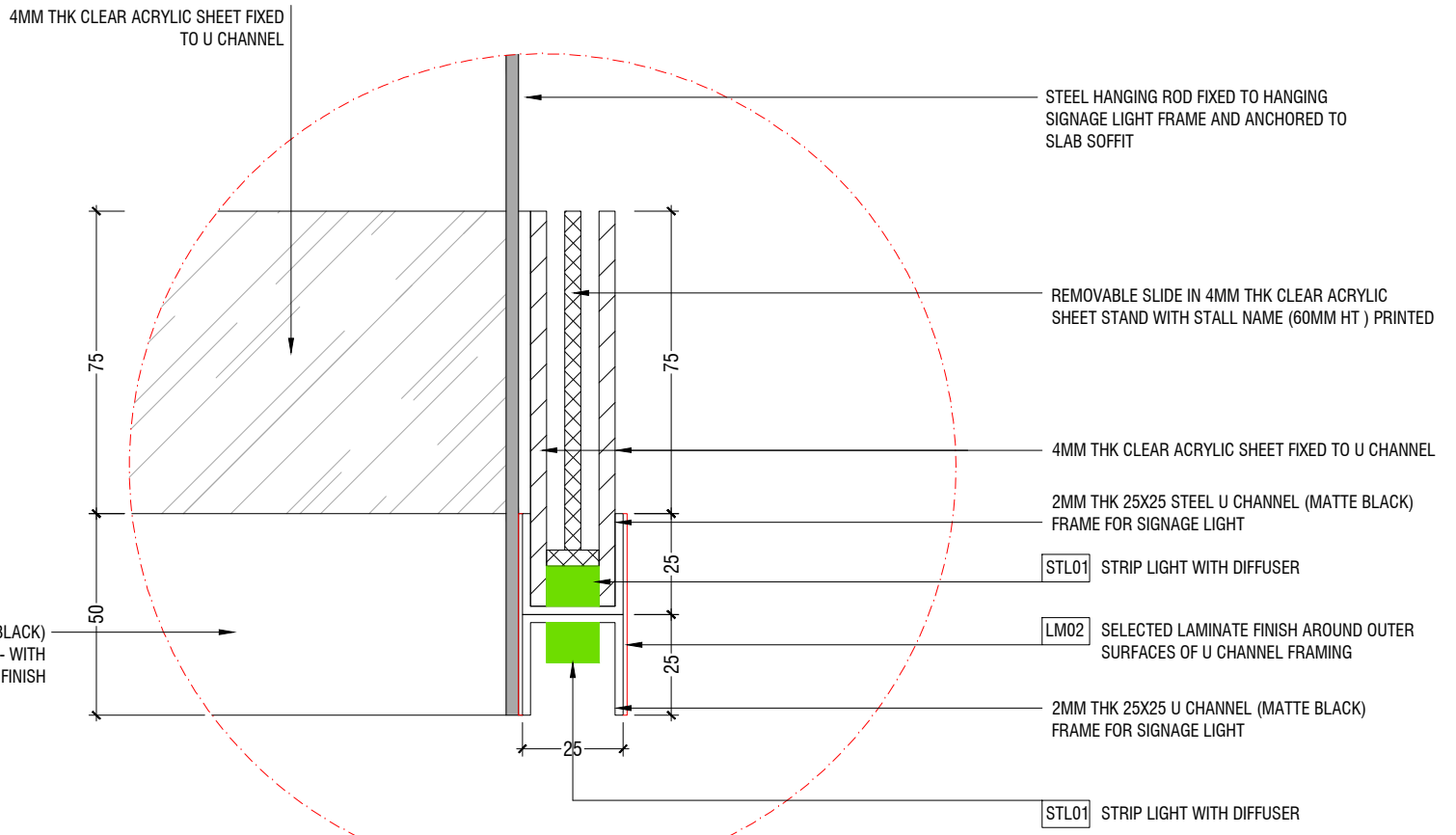
DT5 - PLAN



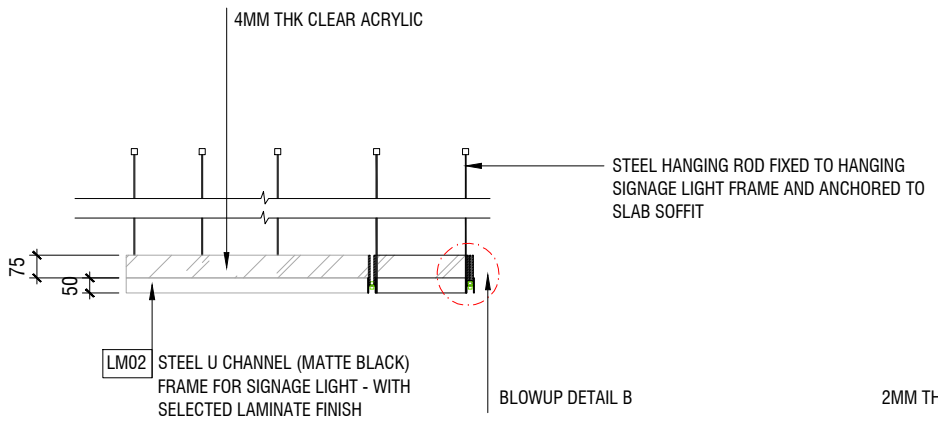
DT5 - BLOWUP A



DT5 - ELEVATION A

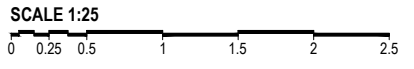


DT5 - BLOWUP B



DT5 - SECTION X-X

DT5 - HANGING SIGNAGE LIGHT DETAIL



SME Hub Interior Design
Client: Business Center Corporation (BCC)

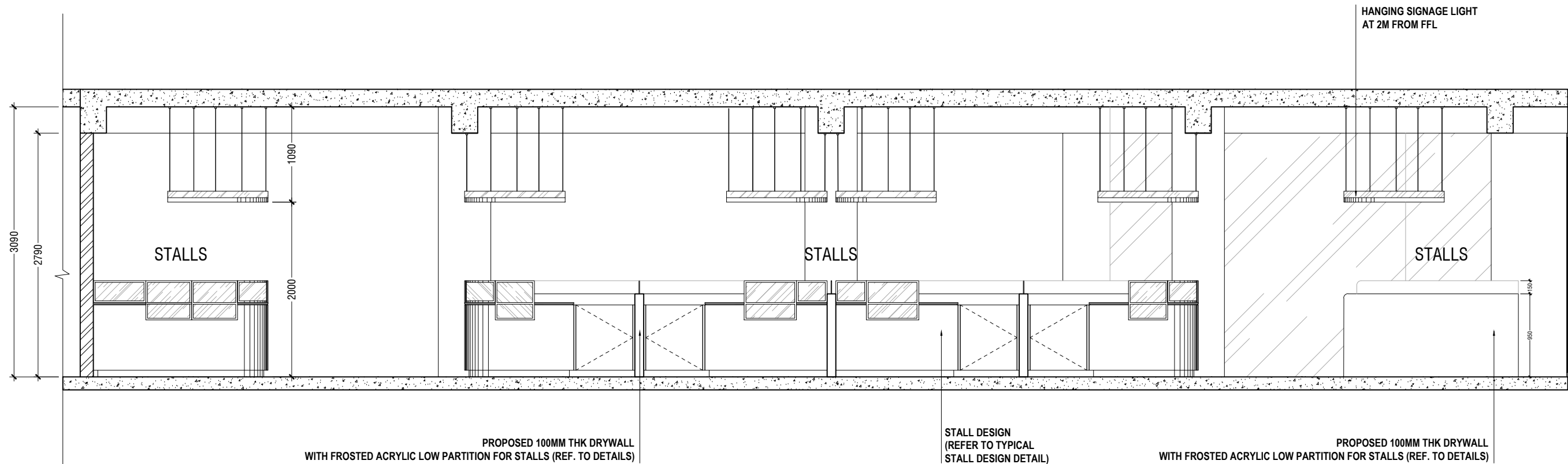
Project Number: R2117/BCC
 Date: February 2022
 Architect: -
 Engineer: -
 Drawn by: Abdullah Aman Mohamed
 Services: Ashraf Ahmed
 Interior: Abdullah Aman Mohamed

Rev no	By	Date

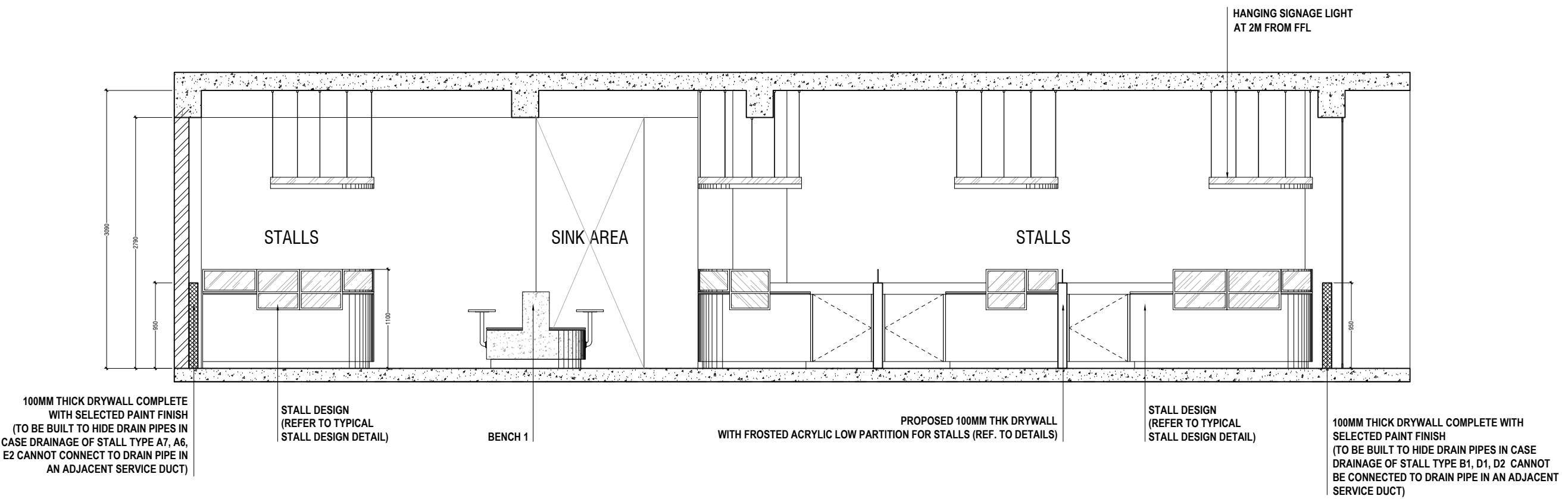
RIYAN PRIVATE LIMITED
 t: +9603315049 f: +9603310776
 e: info@riyan.com.mv
 w: www.riyan.com.mv
 3rd floor, H. Azum, Ameenemaguu, Male'

The contents of these drawings remain as a property of Riyan Private Limited. Any use other than those expressly stated is a violation of this copyright.

Title: -
 Page: A-12/17



SECTION X-X



SECTION Y-Y

FIRST FLOOR - SECTIONS

SCALE 1:100



SME Hub Interior Design
Client: Business Center Corporation (BCC)

Rev no	By	Date

Project Number: R2117BCC
Date: February 2022
Architect: -
Engineer: -
Drawn by: -
Services: -
Interior: -



RYAN PRIVATE LIMITED

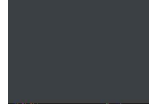



t: +9603315049 f: +9603310776
e: info@ryan.com.mv
w: www.ryan.com.mv
3rd floor, H. Azum, Ameenemaguu, Male'

Title:

The contents of these drawings remain as a property of RYAN PRIVATE LIMITED. Any use other than that expressly stated is a violation of this copyright.

FURNITURE & FINISHING SCHEDULE

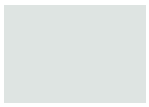

WALL FINISH

CODE	IMAGE	DESCRIPTION	PRODUCT DETAILS
WF01		GROUND SMOOTH AND COMPLETE WITH DARK GREY INTERIOR PAINT FINISH	PRODUCT NAME: NIPPON INTERIOR PAINT - BLACK MAGIC (SATIN FINISH) PRODUCT CODE: NP N 1988A
WF02		LIGHT GREY TITANIUM WALL COATING FINISH	PRODUCT NAME: GB COATINGS - TITANIUM WALL FINISH (LIGHT GREY) - SEMI POLISHED FINISH SUPPLIER: GB COATING (SRI LANKA) CONTACT: +94773062477
WF03A		600X300 PORCELAIN TILE	PRODUCT NAME: 600X300 PORCELAIN WALL TILE GREY COLOUR (SEMI GLOSS) SUPPLIER: CONTACT:
WF04		GROUND SMOOTH AND COMPLETE WITH WHITE INTERIOR PAINT FINISH	PRODUCT NAME: NIPPON INTERIOR PAINT - REMEMBRANCE (EASY WASH SATIN FINISH) PRODUCT CODE: NP OW 1053P




FLOOR FINISH

CODE	IMAGE	DESCRIPTION	PRODUCT DETAILS
FF01		LAMINATE FLOORING	PRODUCT NAME: 1380X190 LAMINATE FLOORING - QUICKSTEP COLOUR: SOFT OAK GREY CODE: IMPRESSIVE IM3558 SUPPLIER: ESSENTIA
FF02		300X300 PORCELAIN TILE	PRODUCT NAME: 300X300 PORCELAIN FLOOR TILE GREY COLOUR (NON SKID) SUPPLIER: CONTACT:

OTHER

CODE	IMAGE	DESCRIPTION	PRODUCT DETAILS
QZ02		WHITE QUARTZ	PRODUCT NAME: 18MM THK PLAIN WHITE QUARTZ SUPPLIER: SCOPE
LM02		LAMINATE FINISH	PRODUCT NAME: 4FT X 8FT LAMITAK SHEET - WITH EDGE BANDING CODE: IBIZA NOGAL - WY 1244D SUPPLIER: SONEE HARDWARE



LIGHTS

CODE	IMAGE	DESCRIPTION	PRODUCT DETAILS
PL01		PENDANT LIGHT INDUSTRIAL (BLACK CASING)	PRODUCT NAME: LED 18 WATT PENDANT LIGHT (WARM WHITE) SUPPLIER: LUMIERE
PL02		LINEAR PENDANT LIGHT (BLACK CASING)	PRODUCT NAME: LED 18 WATT LINEAR PENDANT LIGHT (WARM WHITE) SUPPLIER: LUMIERE
TR01		TRACK LIGHT (BLACK CASING)	PRODUCT NAME: LED 8W TRACK LIGHT 3 HEAD (WARM WHITE) SUPPLIER: LUMIERE
STL01		LED LIGHT STRIP	PRODUCT NAME: LED 12W LIGHT STRIP WITH DIFFUSER (WARM WHITE) SUPPLIER: LUMIERE
RL01		RECESSED LIGHT	PRODUCT NAME: LED 12W RECESSED LIGHT (WARM WHITE) SUPPLIER: LUMIERE

SANITARYWARE SCHEDULE

CODE	IMAGE	DESCRIPTION	PRODUCT DETAILS
T01		COUNTERTOP CERAMIC WASH BASIN - BLACK	PRODUCT NAME: COUNTERTOP CERAMIC ROUND WASH BASIN - MATTE BLACK QUANTITY: 3 SUPPLIER: RAINBOW CONTACT:
T02		WASH BASIN TALL TAP	PRODUCT NAME: WASH BASIN TALL TAP - BRUSHED FINISH QUANTITY: 3 PCS SUPPLIER: BLANC VELIGAA CONTACT:
T03		KITCHEN SINK	PRODUCT NAME: TOP MOUNT SINGLE BOWL KITCHEN SINK (380X380) CODE: 1515 YINGAO QUANTITY: 12 PCS SUPPLIER: ASTERS CONTACT:
T04		KITCHEN FAUCET	PRODUCT NAME: KITCHEN FAUCET - BRUSHED FINISH QUANTITY: 12 PCS SUPPLIER: BLANC VELIGAA CONTACT:

APPLIANCES

CODE	IMAGE	DESCRIPTION	PRODUCT DETAILS
AP1		MINI REFRIGERATOR	PRODUCT NAME: MIDEA REFRIGERATOR 470X505X848 - WHITE COLOUR CODE: MDRT113FGF01 QUANTITY: 19 SUPPLIER: ASTERS CONTACT:
AP2		INBUILT MICROWAVE	PRODUCT NAME: MIDEA IN BUILT MICROWAVE 595X344X388 CODE: AG820BS9 QUANTITY: 19 PCS SUPPLIER: ASTERS CONTACT:

FURNITURE

CODE	IMAGE	DESCRIPTION	PRODUCT DETAILS
FX3		SWIVEL HEIGHT ADJUSTABLE STOOL QTY: 19 PCS	FINISH: PU LEATHER (MATT BLACK) CODE: YMBAR-C SUPPLIER: HANGZHOU IMAGE TECHNOLOGY CO LTD CONTACT: jessie@imageindustry-china.com

NOTE:

ALL PRODUCTS TO BE THE EXACT PRODUCT AS INDICATED IN THE PRODUCT DETAILS.

ALL PRODUCTS TO BE APPROVED BY CLIENT / CONSULTANT PRIOR TO PURCHASE

PLEASE REFER TO 3D VISUALS FOR ADDITIONAL CLARIFICATION OF THE REQUIRED PRODUCTS

ALL LAMINATE FINISH TO RECEIVE EDGE BANDING OF SAME MATERIAL/COLOUR WHEREVER NEEDED

SME Hub Interior Design
Client: Business Center Corporation (BCC)

Rev no	By	Date

Project Number: RZ1178CC
Date: May 2022
Architect: -
Engineer: -
Drawn by: Abdulla Aman Mohamed
Services: -
Interior: Abdulla Aman Mohamed

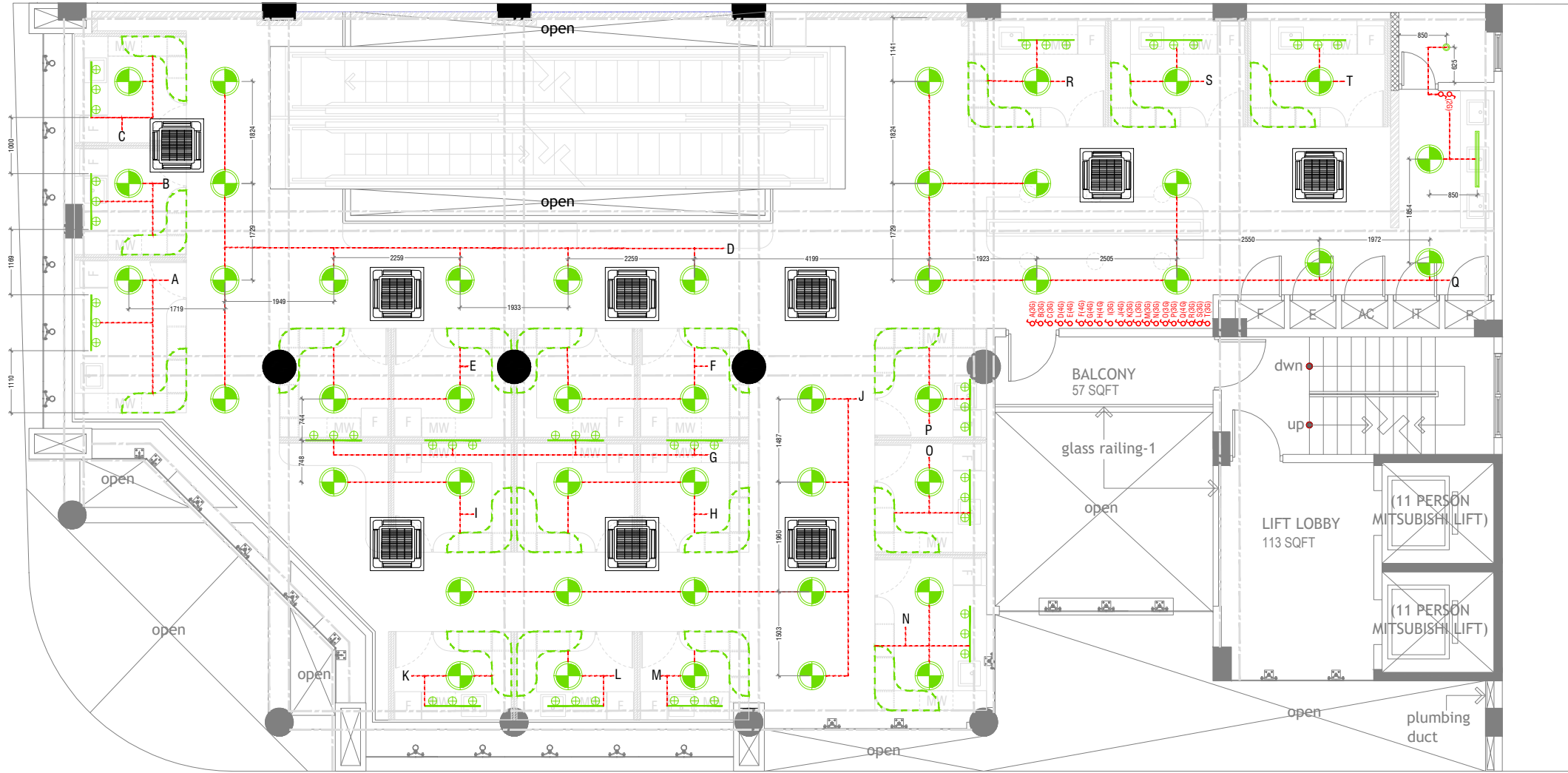


RIYAN PRIVATE LIMITED

t: +9603315049 f: +9603310776
e: info@riyan.com.mv
w: www.riyan.com.mv
3rd floor, H. Azum, Ameenemaguu, Male'

Title:

Page: A-14/17



LEGEND

- PL1 PENDANT LIGHT LED 18W AT 2400MM HT (WARM WHITE)
- PL2 LINEAR PENDANT LIGHT LED 18W AT 2400MM HT (WARM WHITE)
- TR1 TRACK LIGHT LED 8W - 3 HEAD HUNG AT 2400MM HT (WARM WHITE)
- STL1 LED STRIP LIGHT 12W (WARM WHITE)
- RL1 RECESSED LED 12W LIGHT (WARM WHITE)

- LIGHT SWITCH
- SWITCHING LINE

ALL SWITCH LOCATION AND HEIGHT NEEDS TO BE CONFIRMED BASED ON SITE CONDITION

ACV LAYOUT TO REMAIN AS EXISTING AT SITE - POSITION TO BE ADJUSTED IF NEEDED, WITH PIPES RUN THOUGH BLACK ALUMINIUM CABLE TRAYS

CONDUITS TO BE LAID BASED ON SITE CONDITIONS

FIRST FLOOR - LIGHTING LAYOUT

SCALE 1:100



SME Hub Interior Design
Client: Business Center Corporation (BCC)

Project Number: R21178CC
Date: February 2022

Rev no	By	Date

Architect :
Engineer :
Drawn By : Abdulla Aman Mohamed
Services : Ashraf Ahmed
Interior : Abdulla Aman Mohamed

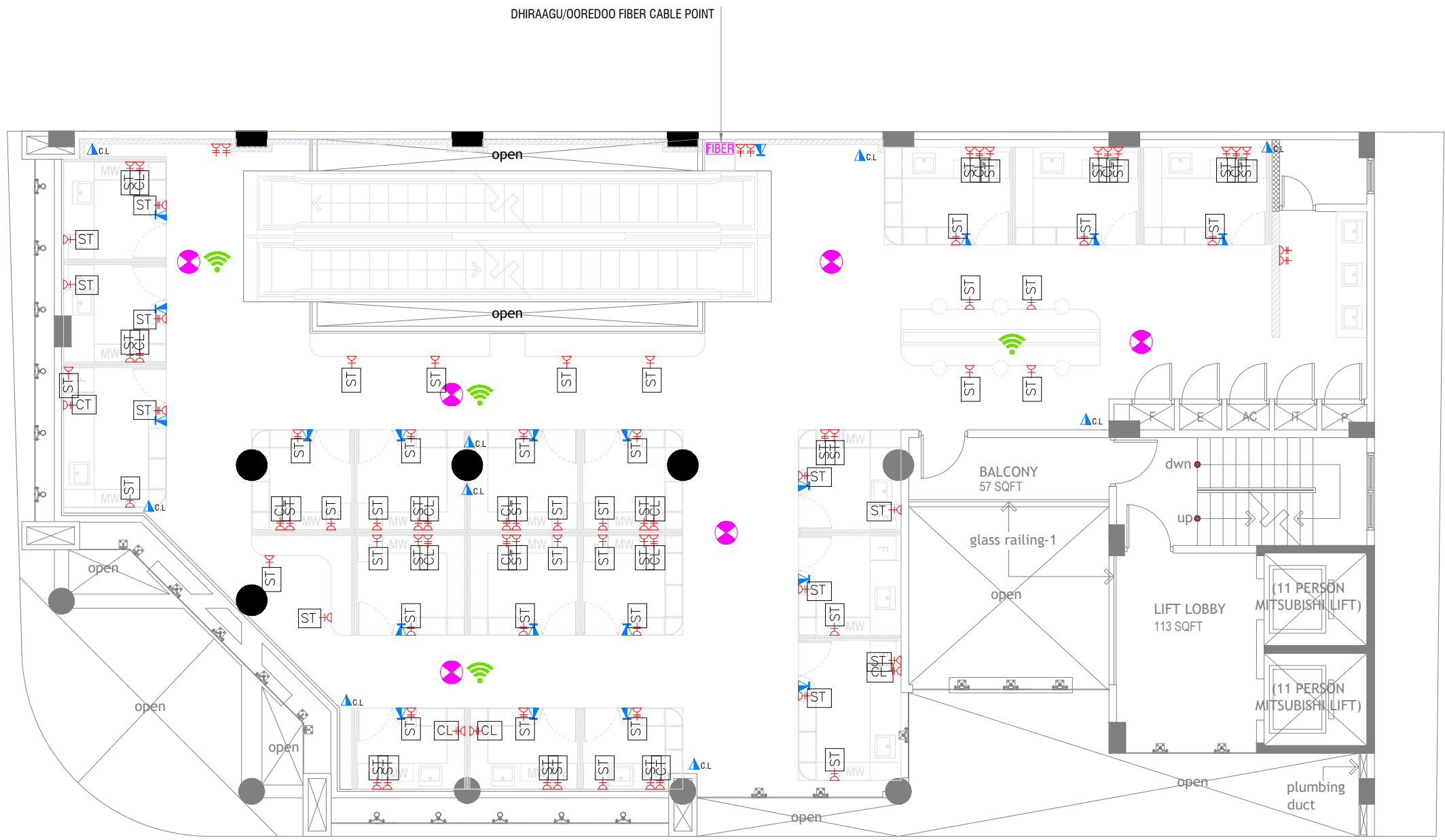


RIYAN PRIVATE LIMITED

t: +9603315049 f: +9603310776
e: info@riyan.com.mv
w: www.riyan.com.mv
3rd floor, H. Azum, Ameenemasu, Male'

Title:

The contents of these drawings remain as a property of Riyan Private Limited. Any use other than those expressly stated is a violation of this copyright.

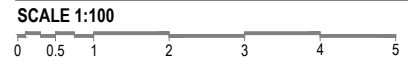


LEGEND

- 13A POWER OUTLET
- 13A TWIN SOCKET OUTLET
- DISTRIBUTION BOX
- HIGH LEVEL
- SEAT LEVEL (300MM)
- COUNTER LEVEL (900MM)
- COUNTERTOP
- FLOOR LEVEL
- NETWORK OUTLET
- TWIN NETWORK OUTLET
- NETWORK OUTLET AT CEILING LEVEL FOR CCTV
- WIFI POINTS AT CEILING LEVEL
- CEILING SPEAKER POINT AT CEILING LEVEL

-ALL IT AND POWER CABLES TO BE CARRIED VIA BLACK ALUMINIUM CABLE TRAYS / THROUGH SCREED (BASED ON SITE CONDITIONS)

FIRST FLOOR - POWER LAYOUT



SME Hub Interior Design
Client: Business Center Corporation (BCC)

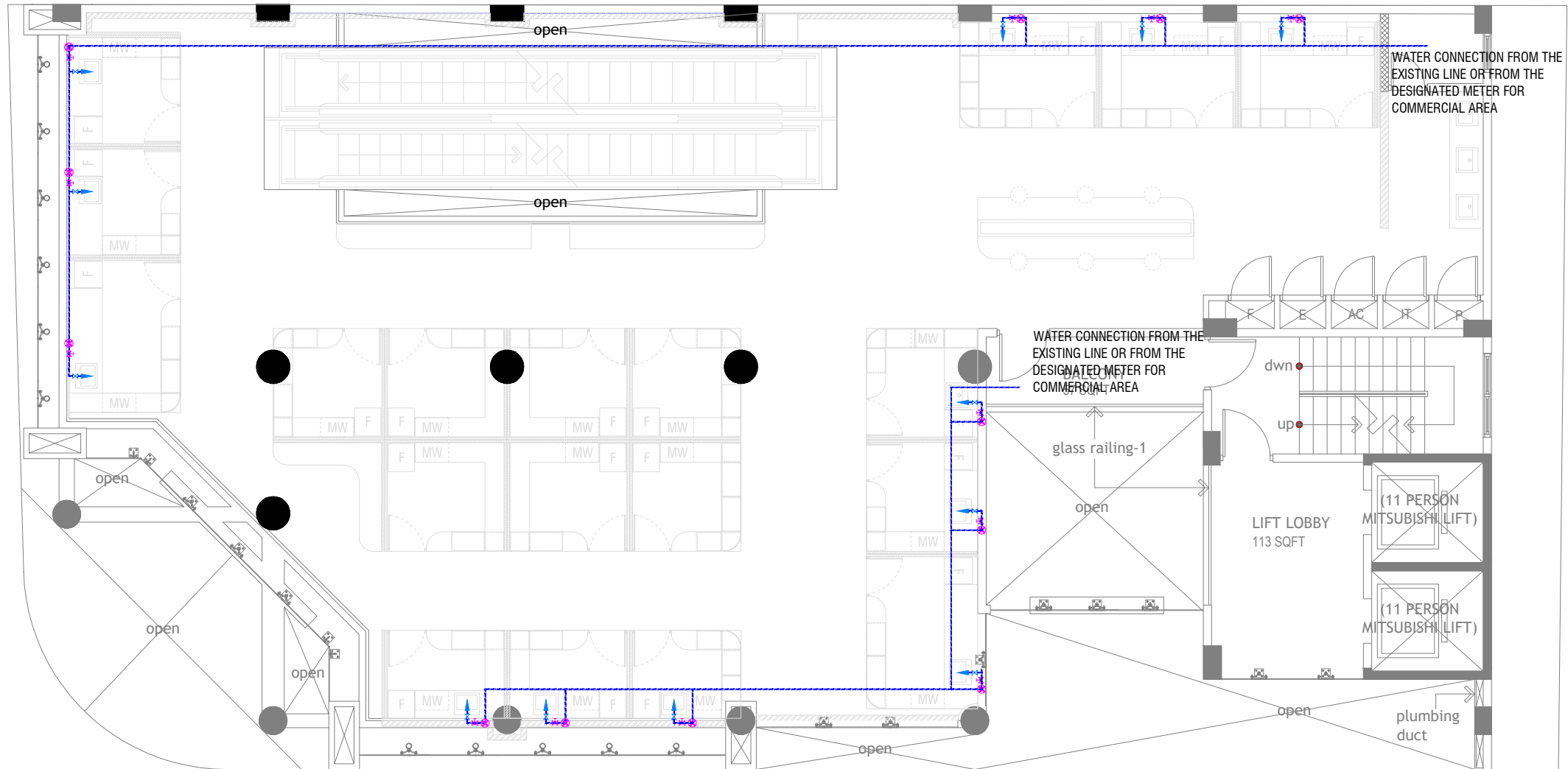
Rev no	By	Date












RIYAN PRIVATE LIMITED
t : +9603315049 f : +9603310776
e : info@riyan.com.mv
w : www.riyan.com.mv
3rd floor, H. Azun, Ameenemaguu, Male'

Title:

The contents of these drawings remain as a property of Riyan Private Limited. Any use other than those expressly stated is a violation of this copyright.



LEGEND

-  16 Ø COLD WATER SUPPLY TO CISTERN
-  16 Ø COLD WATER SUPPLY TO BIDET SHOWER
-  16 Ø COLD WATER SUPPLY TO BASIN FAUCET / SINK
-  16 Ø COLD WATER SUPPLY TO WALL TAP
-  GV GATE VALVE
-  25 Ø COLD WATER SUPPLY PIPES RUN UNDERGROUND
-  25 Ø COLD WATER SUPPLY PIPES RUN IN WALL / UNDER FALSE CEILING
-  RISE IN WALL
-  DROP IN WALL
- CWS** COLD WATER SUPPLY
- HWS** HOT WATER SUPPLY

THE PIPE CONNECTION MIGHT VARY BASED ON THE SITE CONDITIONS.

SINK DRAIN CONNECTED TO NEAREST EXISTING WASTE PIPE OR NEAREST RAINWATER DOWN PIPE

FIRST FLOOR - PLUMBING LAYOUT

SCALE 1:100



SME Hub Interior Design
Client: Business Center Corporation (BCC)

Project Number: R21178CC
Date: February 2022

Rev no	By	Date

Architect :
Engineer : - Abdulla Aman Mohamed
Drawn by : - Ashraf Ahmed
Services : - Ashraf Ahmed
Interior : - Abdulla Aman Mohamed



RYAN PRIVATE LIMITED

t : +9603315049 f : +9603310776
e : info@ryan.com.mv
w : www.ryan.com.mv
3rd floor, H. Azun, Ameenemasu, Male'

Title:

The contents of these drawings remain as a property of RYAN PRIVATE LIMITED. Any use other than those expressly stated is a violation of this copyright.