

بِسْمِ اللَّهِ الرَّحْمَنِ الرَّحِيمِ



دائرة التعليم والتعليم المهني، منطقة الرياض، إدارة التعليم
دوما، الرياض، 11561



مواصفات التركيب

مواصفات التركيب

- عتق التركيب سعة راحة العتق 40 X 20 حجة
- راحة التركيب العتق 4 حجة العتق حجة راحة التركيب
- عتق التركيب العتق حجة العتق حجة راحة التركيب.
- راحة التركيب العتق حجة العتق حجة راحة التركيب
- عتق التركيب حجة العتق حجة راحة التركيب.
- سوية العتق حجة العتق حجة راحة التركيب. (سوية العتق 9 حجة)
- راحة العتق حجة العتق حجة راحة التركيب. (راحة العتق حجة العتق 7 حجة)
- سوية العتق حجة العتق حجة راحة التركيب
- عتق التركيب حجة العتق حجة راحة التركيب 20 حجة
- سوية العتق حجة العتق حجة راحة التركيب. (عتق التركيب حجة العتق حجة راحة التركيب).
- عتق التركيب
- راحة التركيب حجة العتق حجة راحة التركيب
- راحة التركيب حجة العتق حجة راحة التركيب
- سوية العتق حجة العتق حجة راحة التركيب حجة العتق حجة راحة التركيب

TURF INSTALLATIONS

Supply and installation of infilled artificial grass with manufactures instructions and allow for infill materials which are silica sand and rubber granules as described

Turf Specification (ISO Standard or equivalent)

Dtex: 12000

Pile Height: 40 mm

Stitch Rate: 14 Stitches / 10cm +/- 10%

Gauge: 5/8 inch

Density: 8820 Stitches /SQM +/- 10%

Pile Weight: 1491g/SQM (±5%)

Backing: 3 Layers (composite PP+Net)

Second Backing: Latex

Color: Verde green & Lime



Turf Specification (ISO Standard or equivalent)
Turf area (40/20m) (pile height 40mm)
Adhesive bicomponent
Seaming Tape (30cm wide)
SBR Rubber Granules for infilling (0.8-2.5mm)
Silica Sand for Infill (0.5-1.0mm) (washed dried cleaned and processed)

LIGHTING, POWER POINTS

All lights shall be of 'Cree' or equivalent brand or equivalent, led tube light shall be pure white
all switches, sockets etc. shall be 'Legrand' brand or equivalent

Light Specification

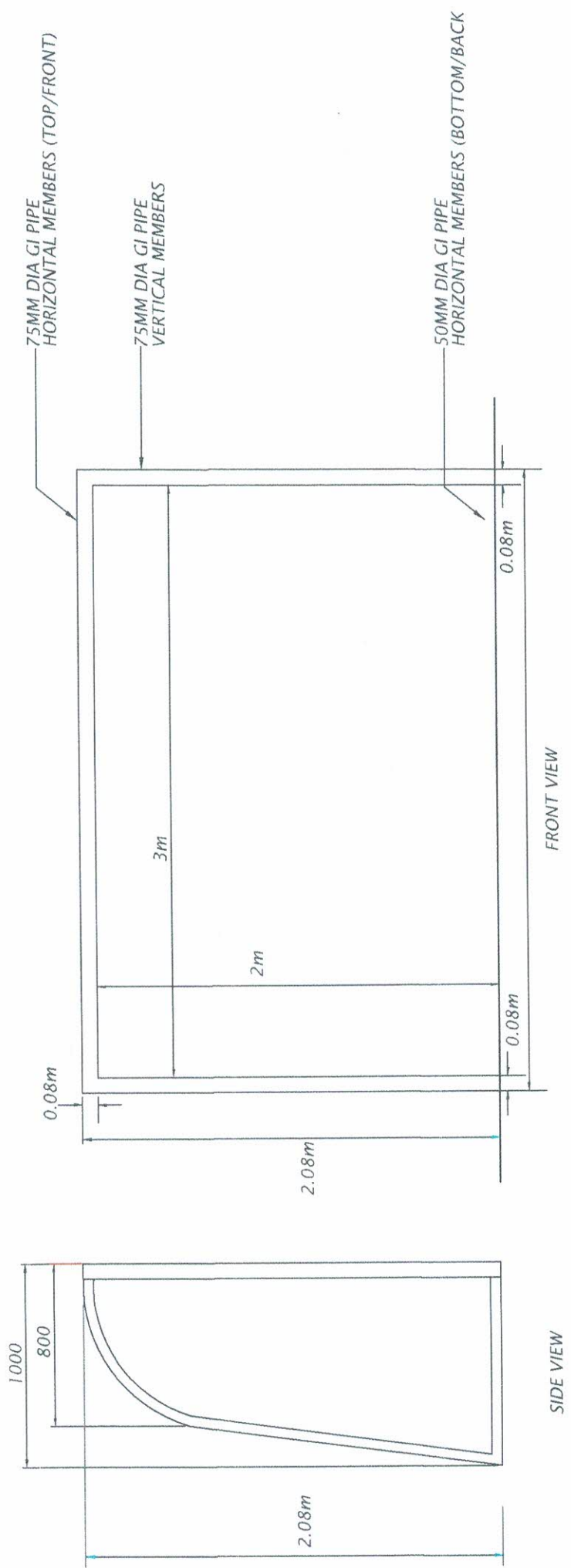
Item Type:400W LED Floodlight
LED Type: Epistar/Bridgelux/Cree
Power:400W
Lamp Luminous Flux:7000-9000lm
Lamp Luminous Efficiency: 70-90lm/W
CRI: ≥ 75 Ra
Color Temperature: 6000~7000K(CW)
Beam Angle: 120-140 degree
IP Grade: IP65
Input Voltage: AC85-265V
Frequency: 50/60HZ
Lamp Body Material: Aluminum Alloy
Lifetime: ≥ 35000 hours
Working Temperature: $-20^{\circ}\text{C} \sim +45^{\circ}\text{C}$
Shell Color: Grey or Black
Dimension: 290*290*90mm
Appliance Class: Class I
Certification: CE, RoHS, FCC
Warranty: 2 years
Led flood light (400watts)
Switch (manual control)

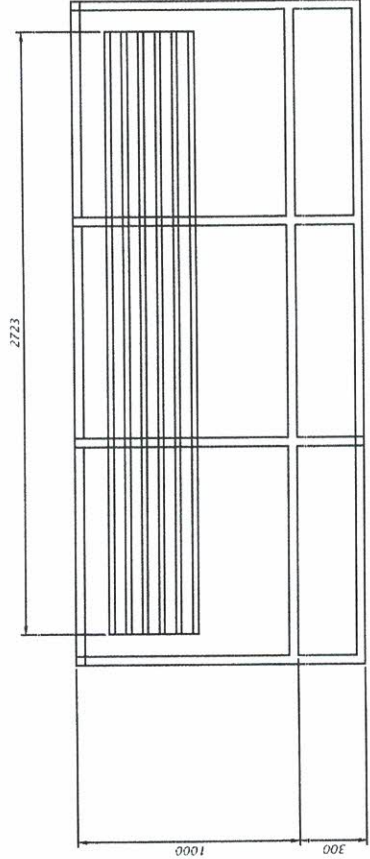
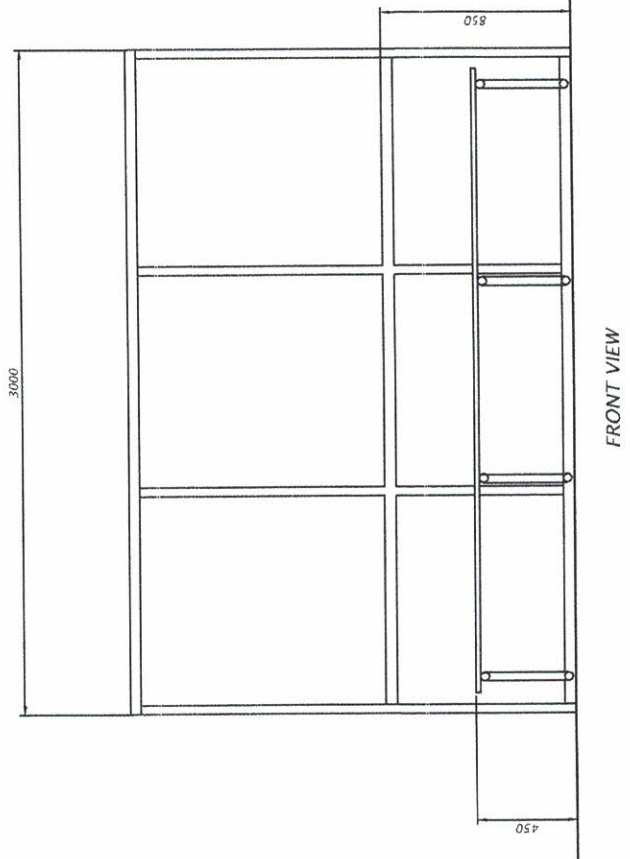
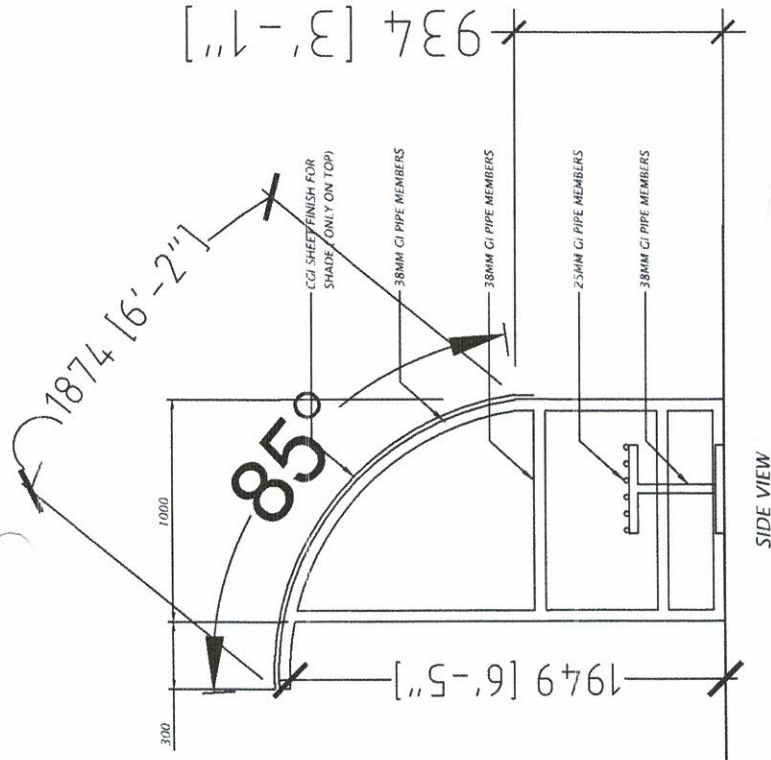
LIGHTING POLES

Supply and fixing of Gi pipe single arm lighting pole with hot dip galvanized smooth finish as described.

Lighting pole as per drawing







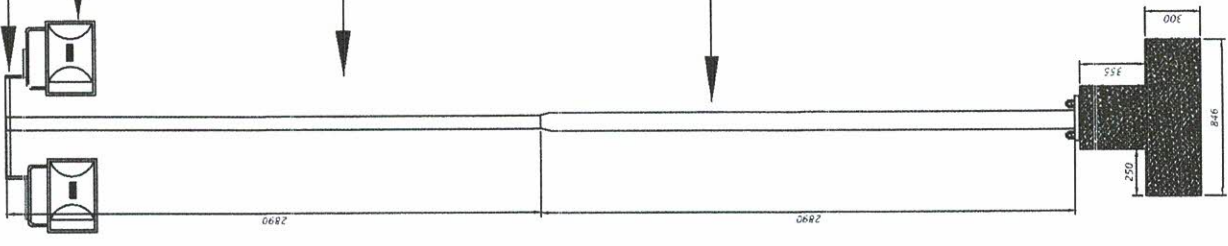
DETAIL-GIB BENCH
 Scale - 1:30

SUPPORT BRACKET

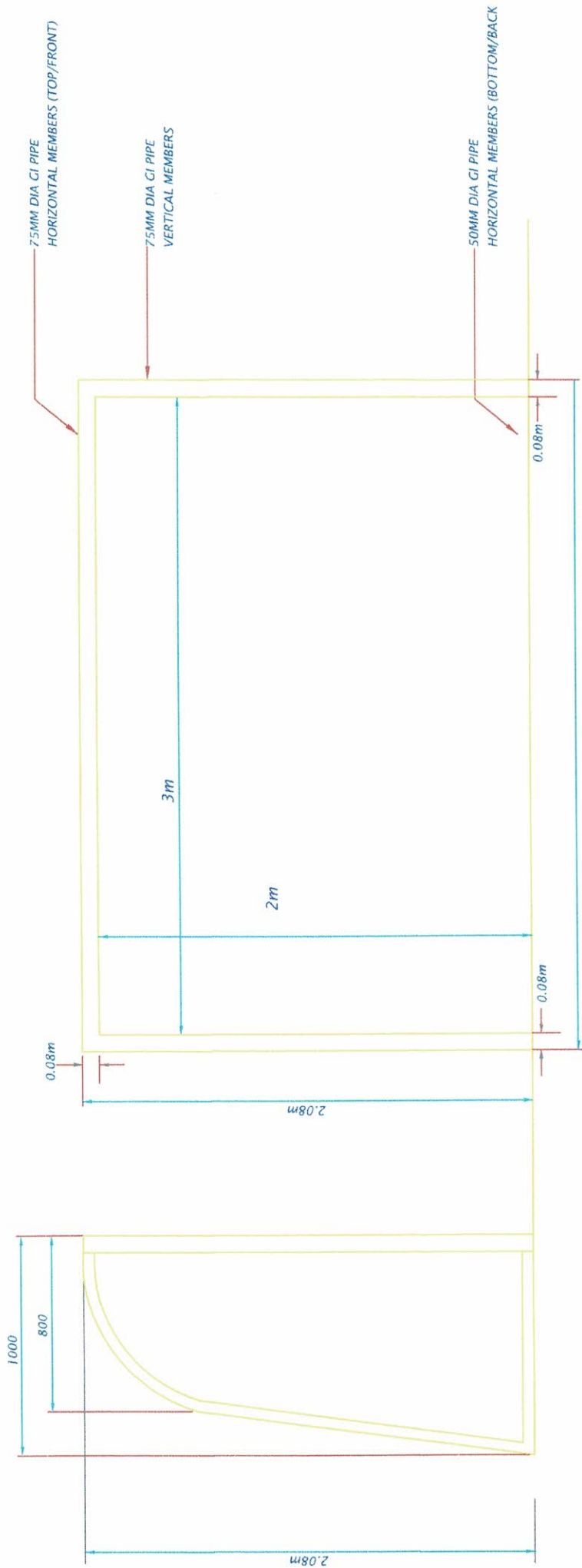
400W LEDLIGHT

75MM GI PIPE

100MM GI PIPE

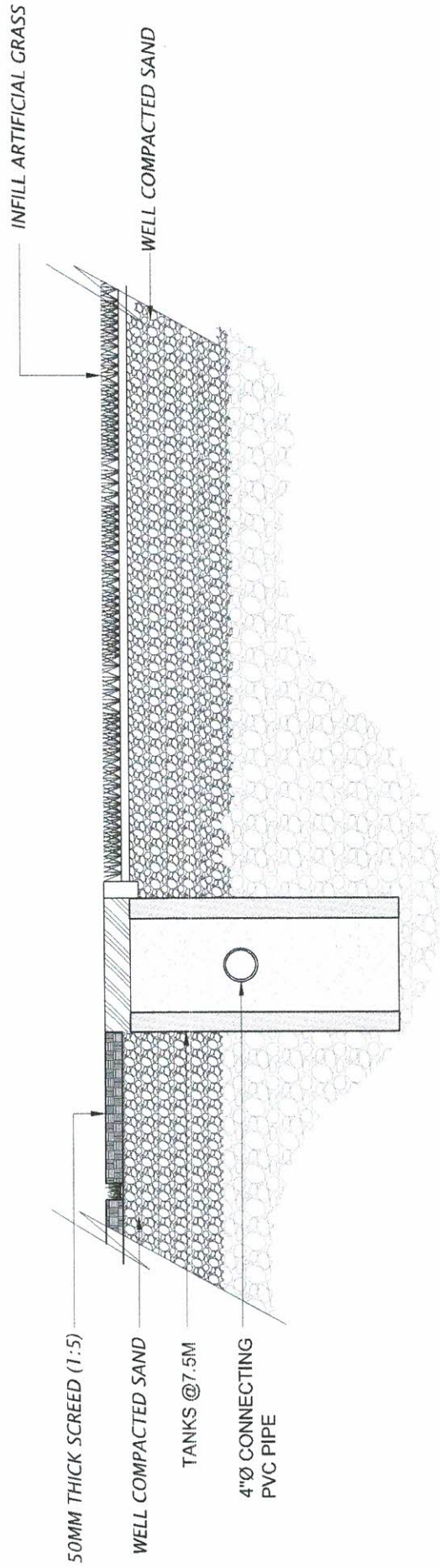


DETAIL-LIGHT POST
Scale: 1:30



FRONT VIEW

SIDE VIEW



DETAILS- OUTDOOR PITCH

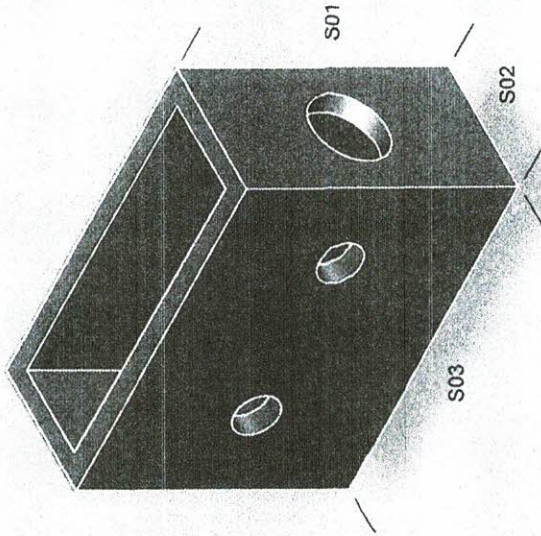
Scale 1:20

SETTLEMENT TECHNICAL DATA SHEET

Settlement Tank

MRDC's engineering quality quality cement concrete products (MRDC Blocks) are durable, high strength bricks, specially manufactured to cope with exposure to abrasive conditions.

This can be used to collect water from gutterline.



■ Settlement Tank

- S01 : 800mm
- S02 : 400mm
- S03 : 1000mm

Settlement Tank Specification

Form	Solid PCC settlement tank
Appearance	Standard gray colour – untreated surface
Size	1000mm x 400mm x 800mm and 60mm thickness
Composition	OPC + coral sand + coral stone
Density	Average 2174.9kg/m ³
Dry Weight	330kg approximately
Strength	Average 13.6N/mm ²
Surface treatment	Untreated
Area coverage	N/A
Presentation	Pellet containing 5 Nos
Pack Weight	1665kg approximately including pellet
Approx Pack Dimension	1.0m x 1.0m x 1.0m height approximately

GUT-CVR TECHNICAL DATA SHEET

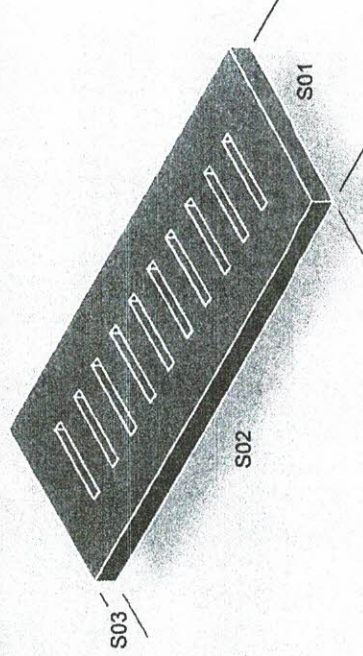
RCC Settlement Tank Cover

MIRDC's engineering quality cement concrete products (MRDC Blocks) are durable, high strength bricks, specially manufactured to cope with exposure to abrasive conditions.

This can be used in the gutter line to cover the gutter line.

Settlement Tank Cover Specification

Form	RCC grating gutter cover
Appearance	Standard gray colour - untreated surface
Size	1000mm x 400mm x 500mm and 80mm thickness
Composition	OPC + River sand + Aggregates
Density	Average 2567.6kg/m ³
Dry Weight	90kg approximately
Strength	Average 19.0N/mm ²
Surface treatment	Untreated
Area coverage	N/A
Presentation	Pellet containing 30 Nos
Pack Weight	2715kg approximately including pellet
Approx Pack Dimension	1.0m x 1.0m x 1.0m height approximately



RCC Settlement Tank Cover

S01 : 400mm
S02 : 1000mm
S03 : 80mm