

**SCOPE OF WORK**

**FOR**

**Repair and Maintenance Works**

**Of**

**HAQ Kashima Lounge**

**14<sup>th</sup> March 2022**

**PROJECTS AND MAINTENANCE | FACILITIES**

## **1.0 BACKGROUND AND PURPOSE**

**1.1** Island Aviation Services Ltd. has a repair and maintenance requirement in HAQ Kashima Lounge.

### **1.2 GENERAL**

- 1.1.1 The Contractor shall provide personnel, equipment, material and supervision to complete the technical requirements in this scope of work. The contractor shall be responsible for hiring labor, equipment vendors and shall follow safety and security directives.
- 1.1.2 The Contractor shall not to be admitted to areas of the property outside the areas designated for the project except with permission.
- 1.1.3 The Contractor shall address the impact of the consequent disruption caused by the proposed work.
- 1.1.4 The Contractor shall always clear the work site upon completion of work and remove any excess material immediately from the site and maintain cleanliness.
- 1.1.5 Required measurements shall be taken during the Site visit.
- 1.1.6 All finishing materials shall be approved by employer prior installation.

## **2.0 SCOPE OF WORKS**

### **2.1 STRUCTURAL**

2.1.1 Replacing existing 02 roofing valleys.

2.1.1.1 Valley flashing material shall be marine based ZINCALUME steel.

2.1.2 Seal all holes on the roof with tar tape.

2.1.2.1 Tar tape shall be provided by IASL.

### **2.2 KITCHEN AREA**

2.3.1 Fabrication and installation of new Sink Cabinet same as the existing cabinet size.

2.3.1.1 BLK board, granite counter top, teak, door hinges, drawer slides, black screw 2" shall be provided by IASL.

2.3.1.2 Existing sink shall be used for new cabinet.

2.3.1.3 Water and drain Connection of new cabinet to existing connection.

### **2.4 TOILET**

2.4.1 Replacing 02 existing Toilet bowl with a quality product.

### **2.5 STORE**

2.5.1 Fabrication and installation of 02 drywall partitions.

2.5.1.1 Partition 1 - 4572mm

2.5.1.2 Partition 2 – 3048mm

2.5.2 Fabrication and installation of Wooden frame gypsum board ceiling

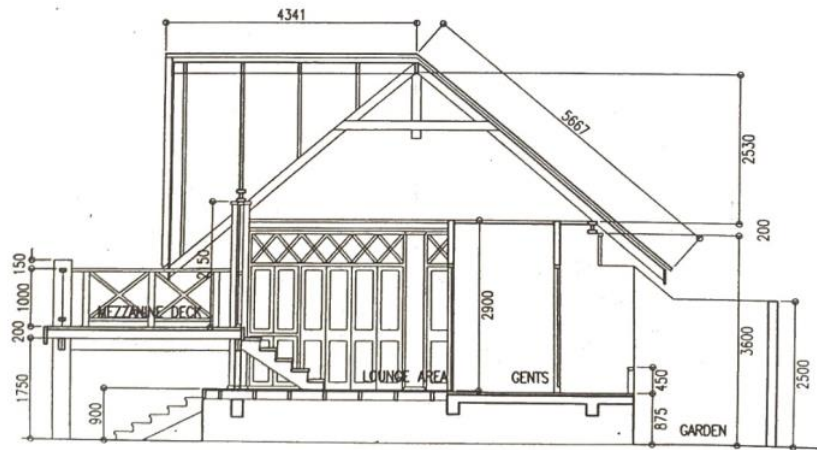
2.5.2.1 Install 04 18w ceiling mount LED lights.

2.5.2.2 Install 01 15A socket and 13A socket.

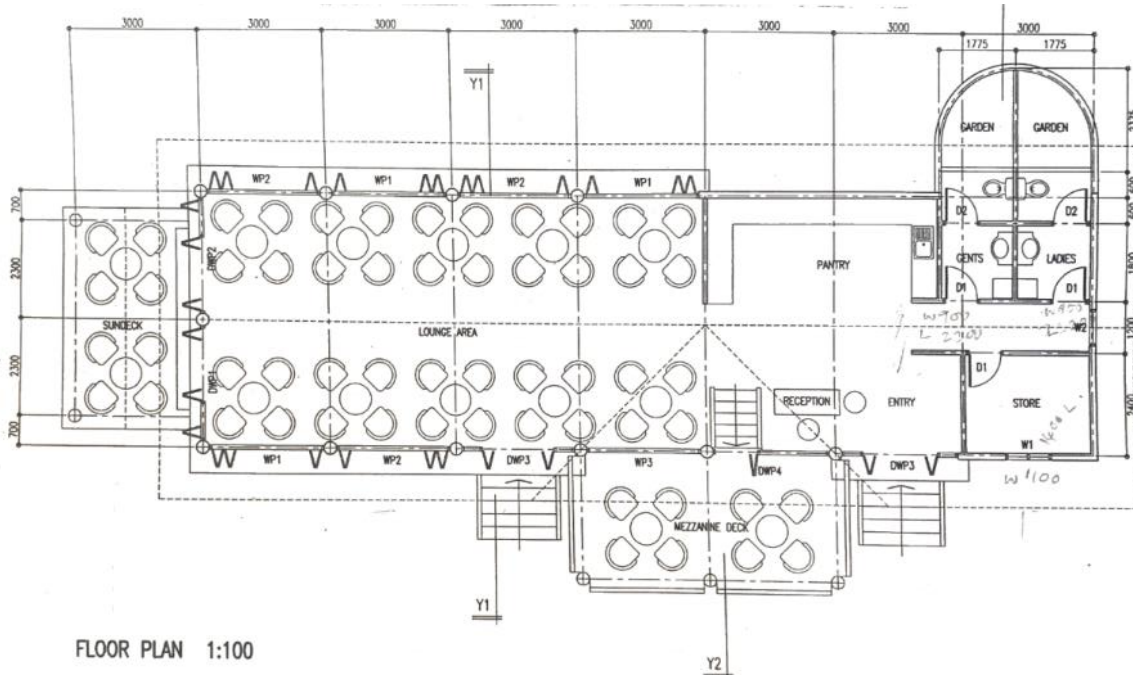
2.5.3 Painting all areas inside the store.

2.5.4 Fabrication and installation of wooden frame cover for the drain tank inside the store.

### 3.0 FLOOR PLANS



CROSS SECTION Y2-Y2 1:100



FLOOR PLAN 1:100

#### 4.0 MATERIAL LIST

#	ITEM	DETAILS	UNIT	QTY
Finishing Works				
1	Paint Brush 3"	Specialized for Varnish	Nos	10
2	Paint Brush 2"	Specialized for Varnish	Nos	10
3	Masking Tape 2"	-	Nos	10
4	Sanding Paper 240 Grit	-	Roll	1
5	Varnish Stained Walnut	Color Varnish Outdoor	Liters	20
Door Fabrication				
6	Marine Teak 38.1mm x 85mm x 4310mm		Nos	13
7	Clear Glass 6mm 1068mm x 285mm		Nos	4
8	Clear Glass 6mm 860mm x 285mm		Nos	4
9	Clear Glass 6mm 1070mm x 270mm		Nos	1
10	Door Hinges SS 75mm		Nos	16
11	Door Closer Rust Proof		Nos	2
Store				
1	Air Condition 9000BTU	Inverter	Nos	1

Scope approved:



Nashath Hameed,  
GM F&M