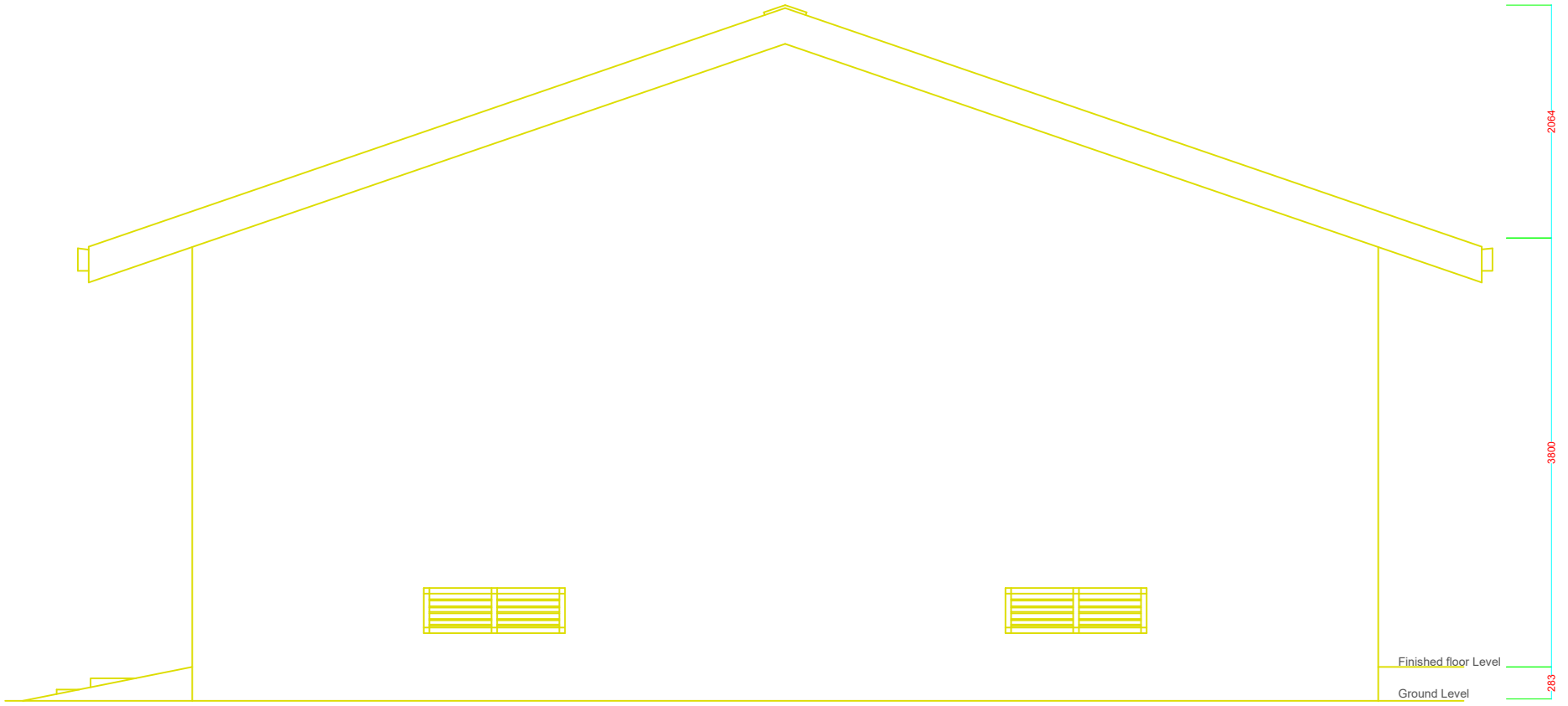
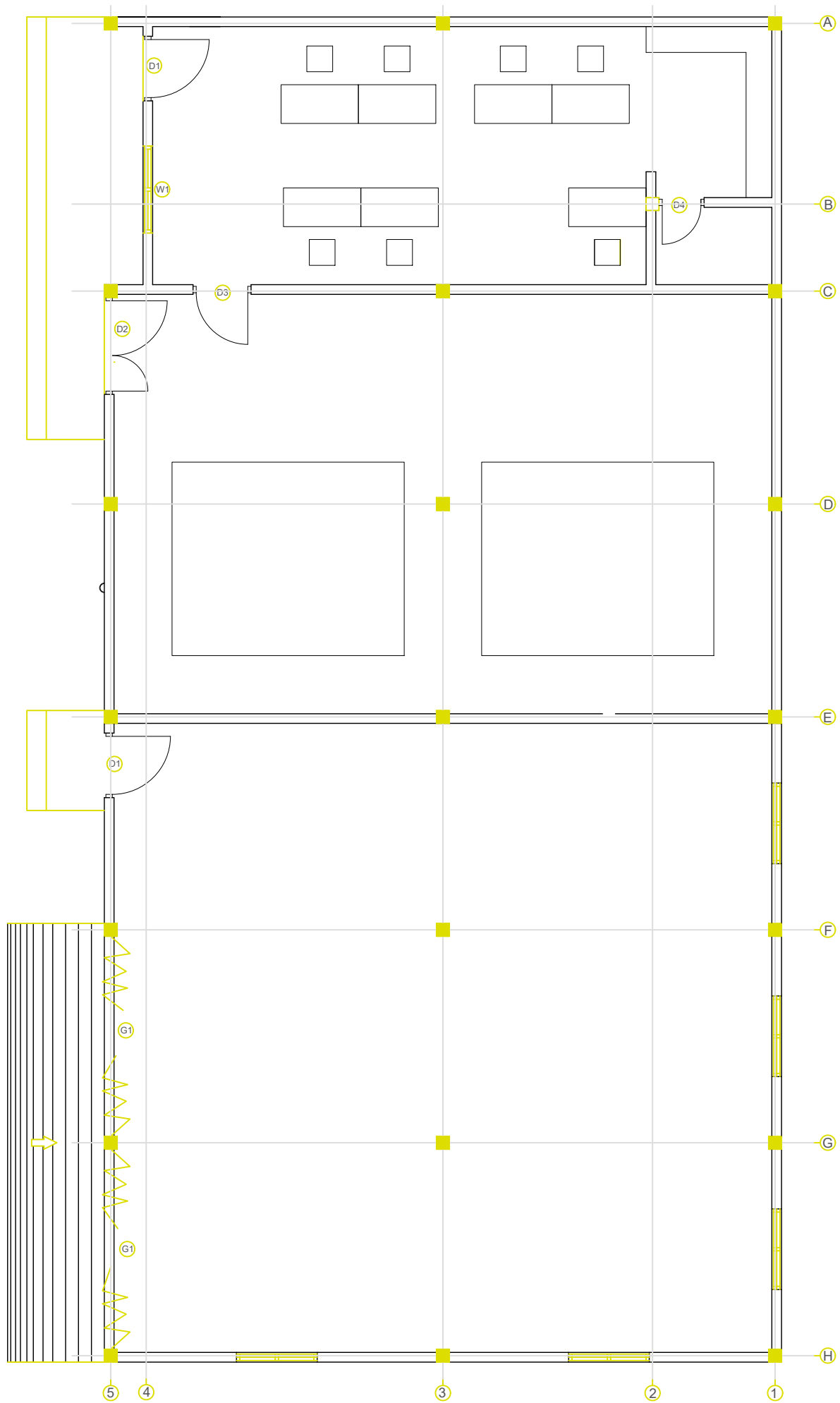


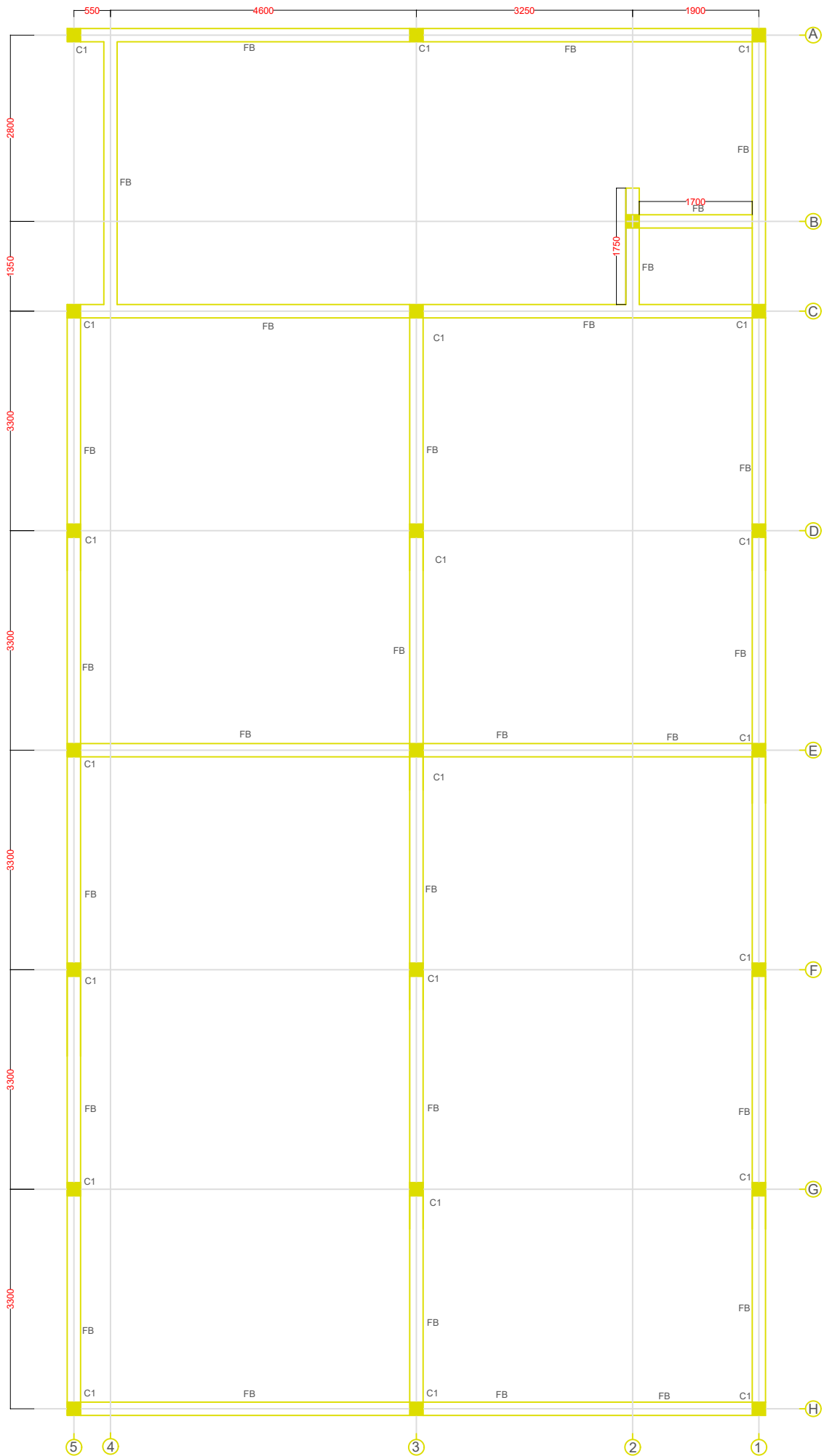
Front Elevation



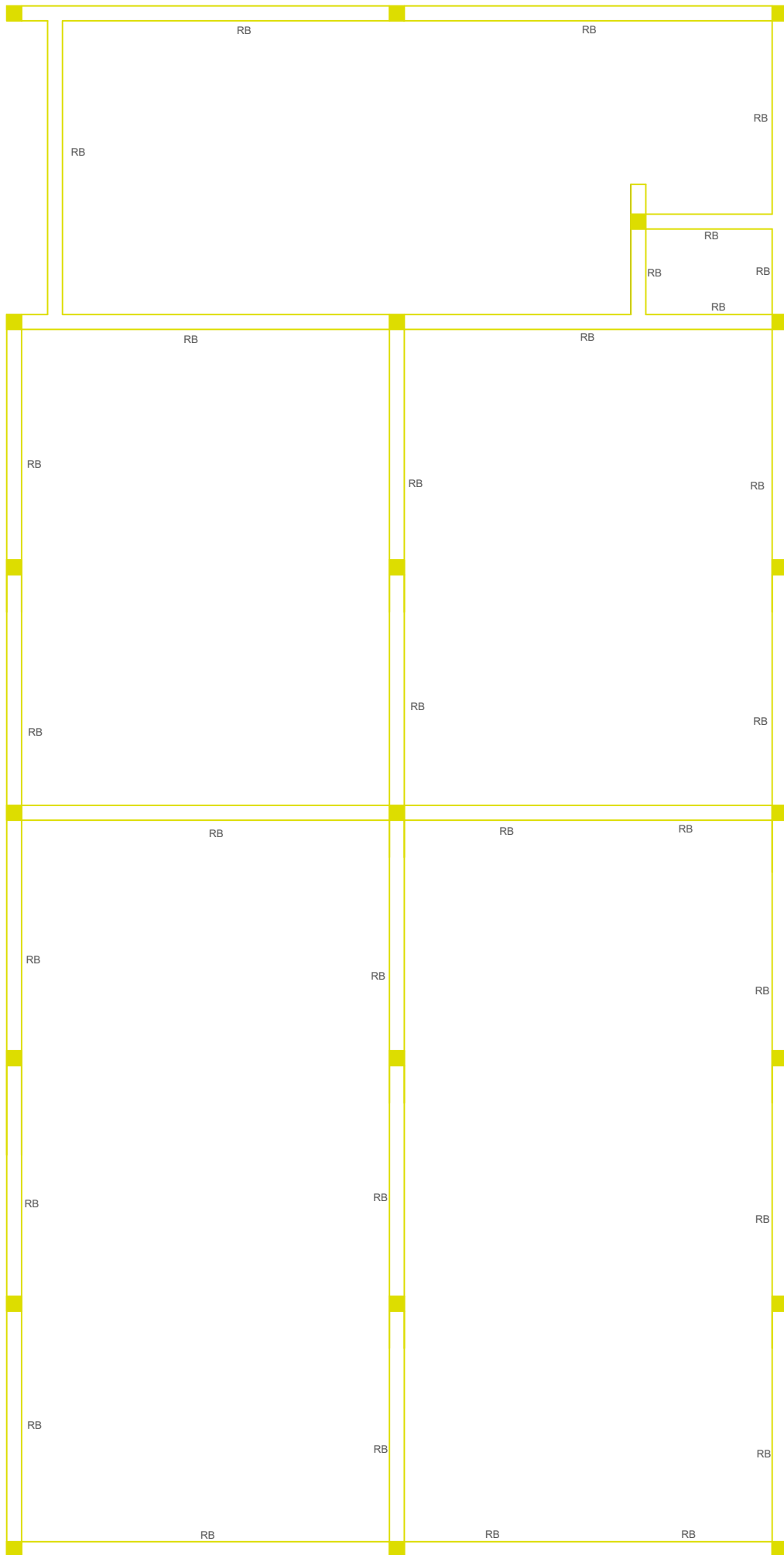
Side Elevation



Floor Plan

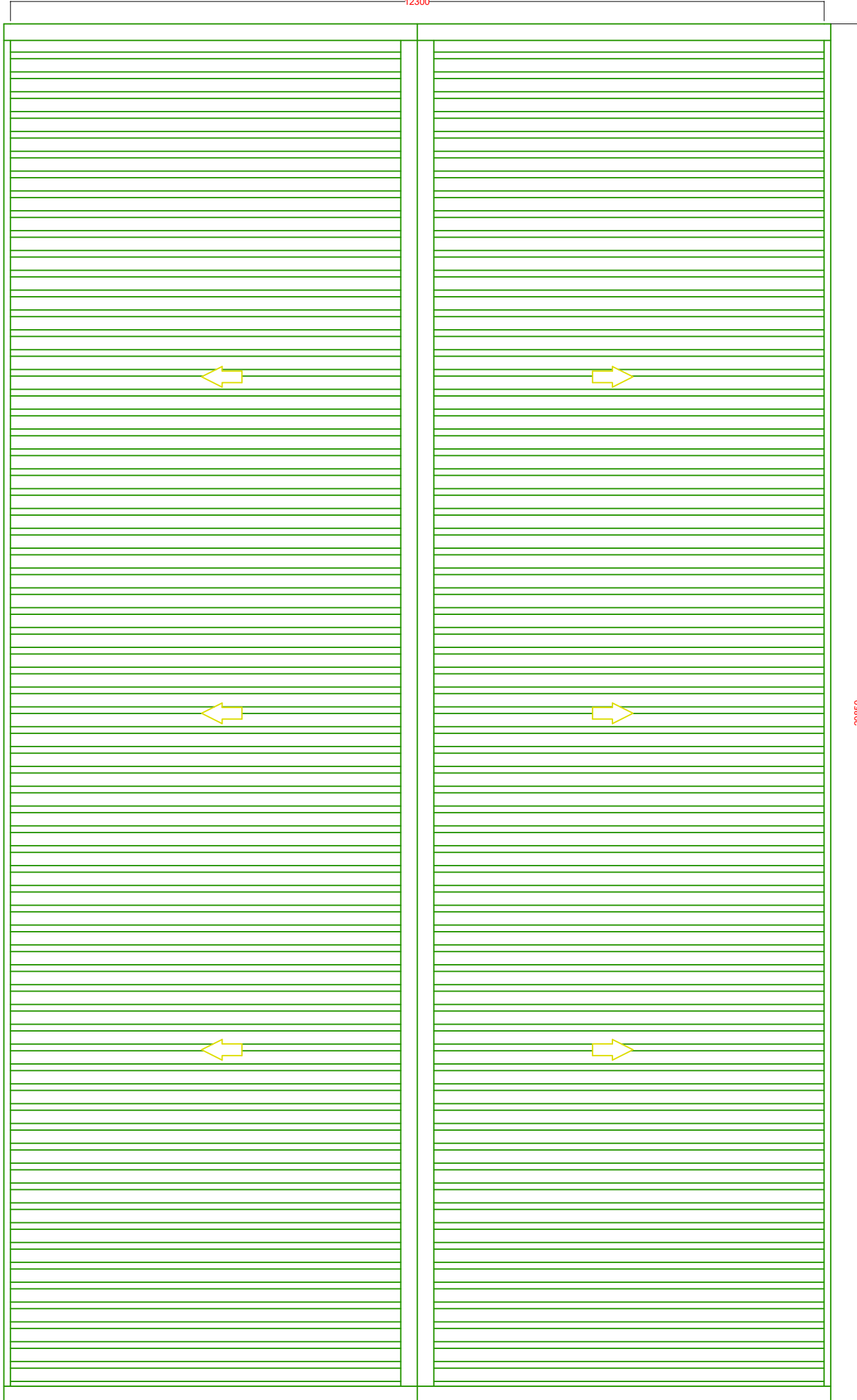


Foundation Plan



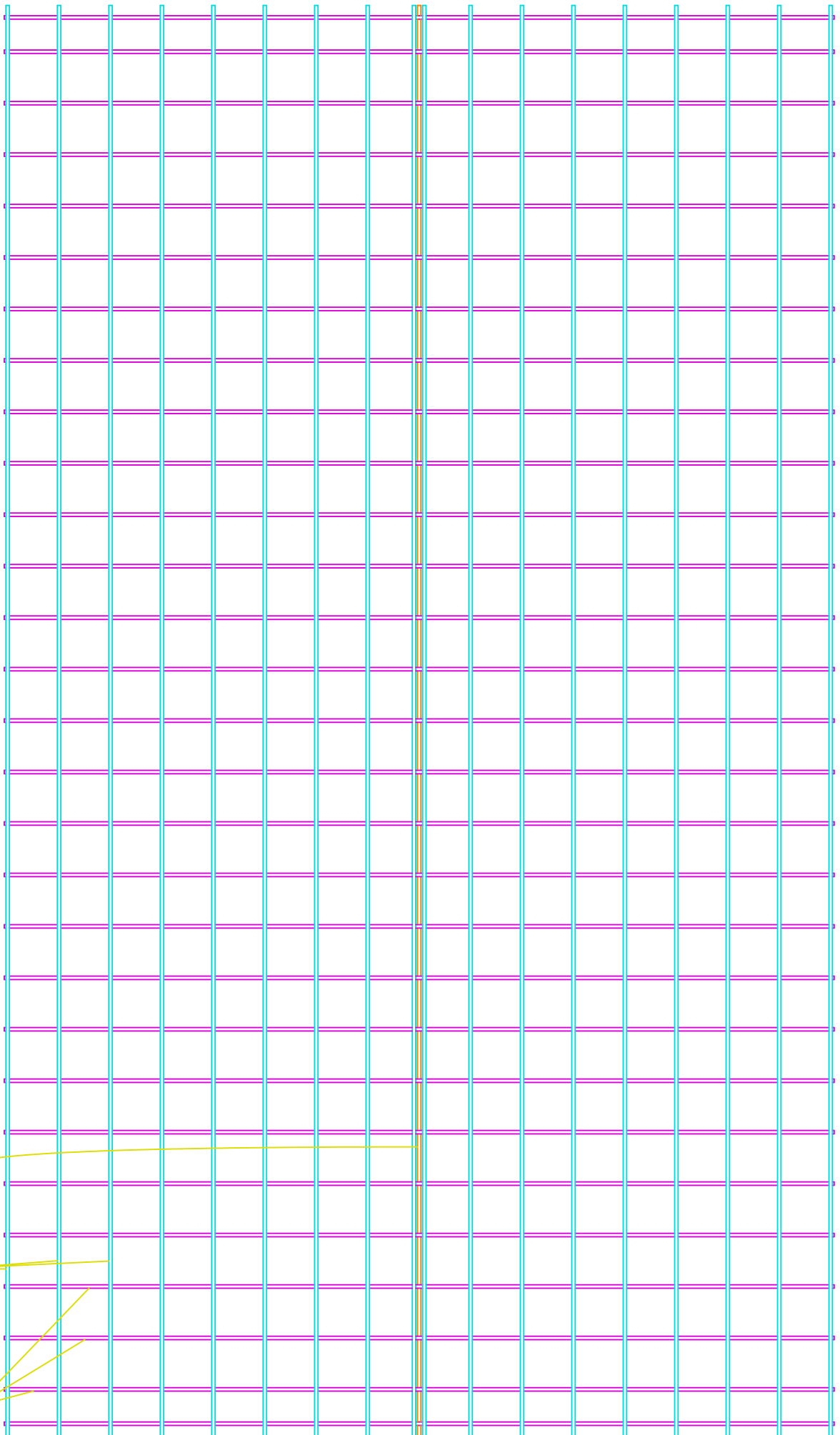
Roof Beam Plan

12300



20850

Roof Plan

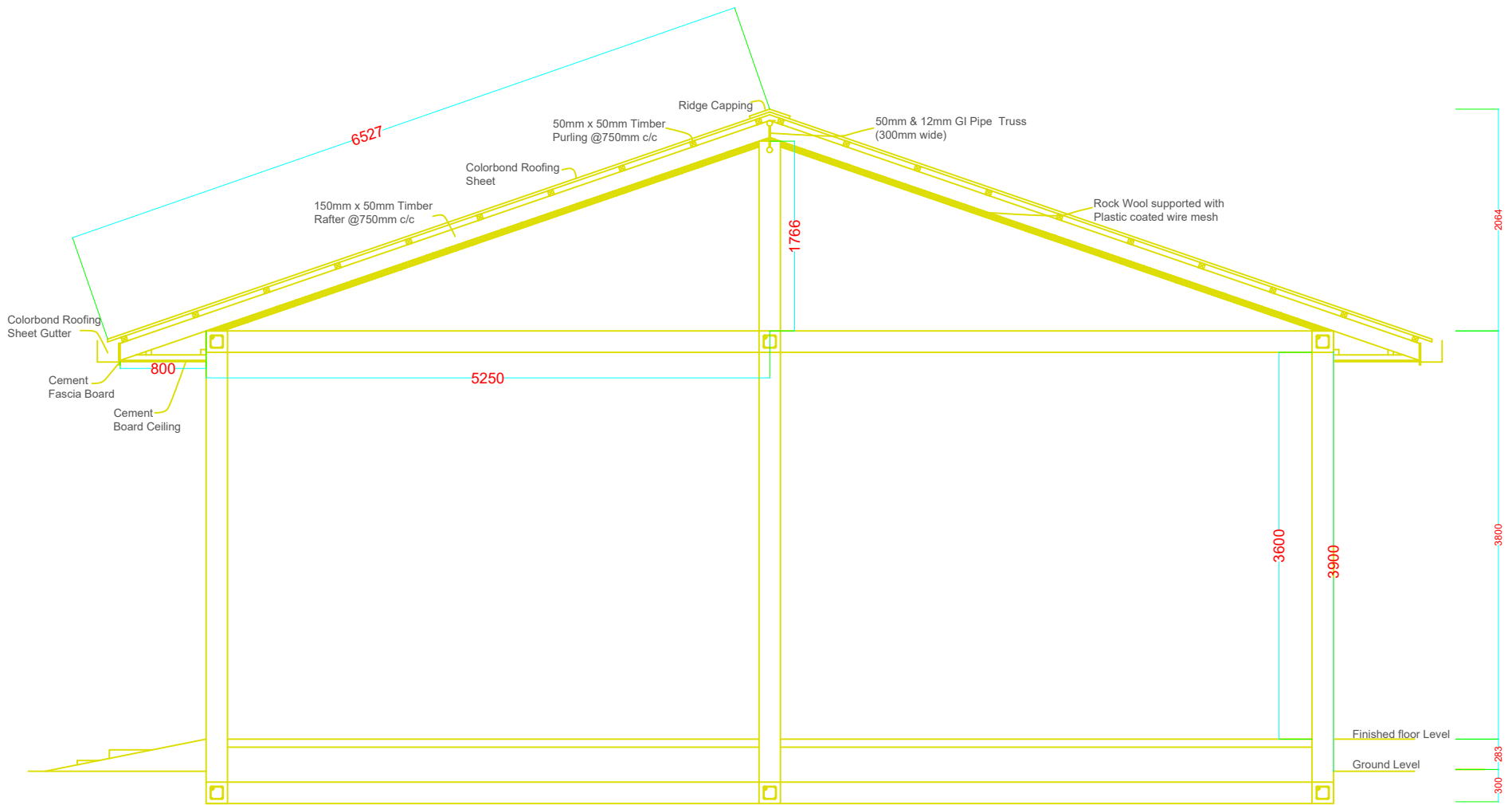


50mm & 12mm GI Pipe
Truss (300mm wide)

50mm x 50mm Timber
Purling @750mm c/c

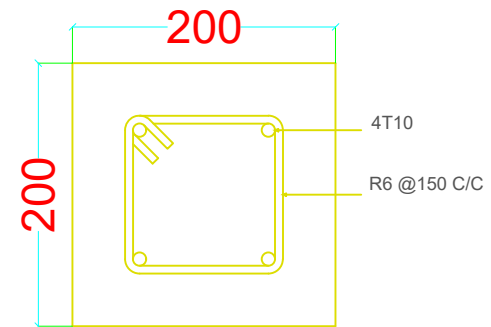
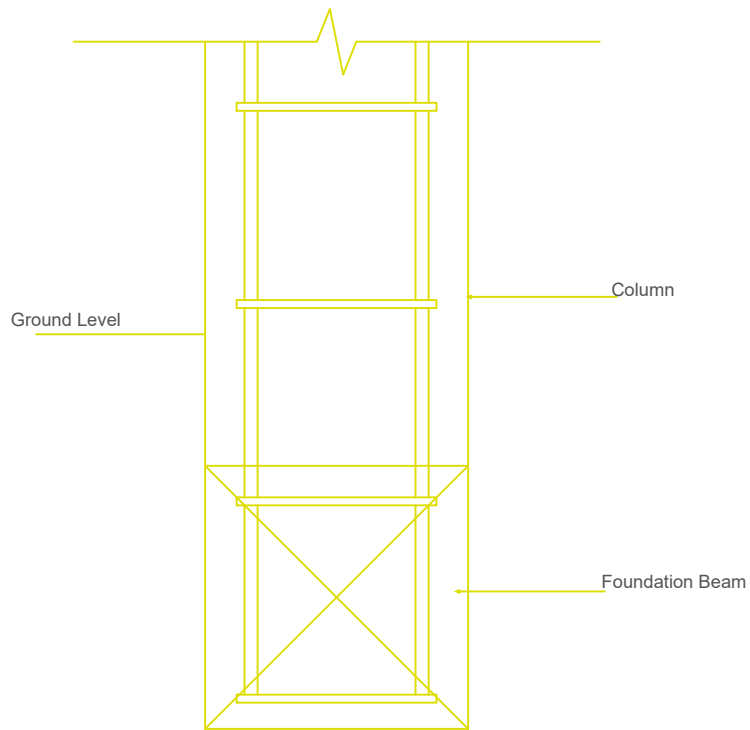
150mm x 50mm Timber
Rafter @750mm c/c

Roof Plan

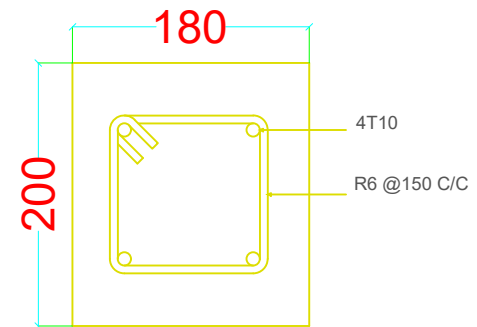


Section

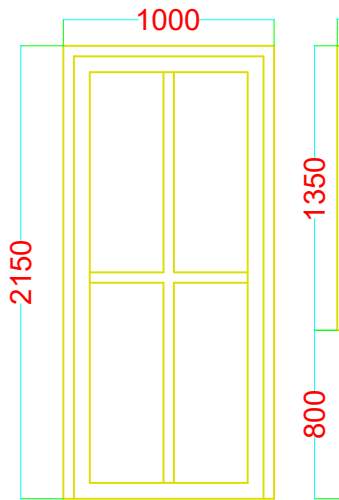
Details



FB,C1

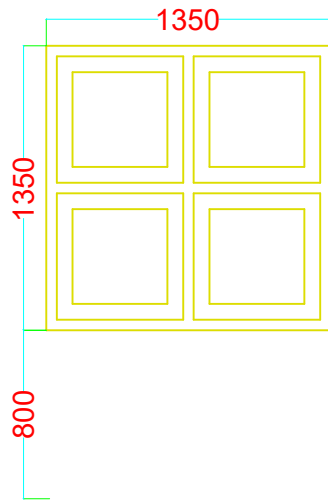


RB



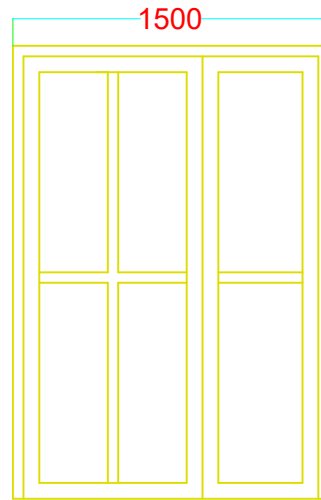
D1

Aluminium Door
with Aluminium Sheet



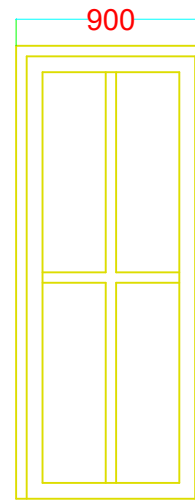
W1

Aluminium Window
with Glass



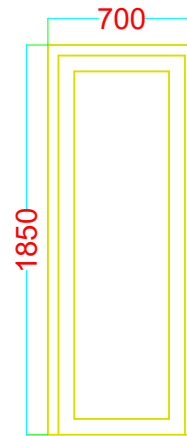
D2

Aluminium Door
with Aluminium Sheet



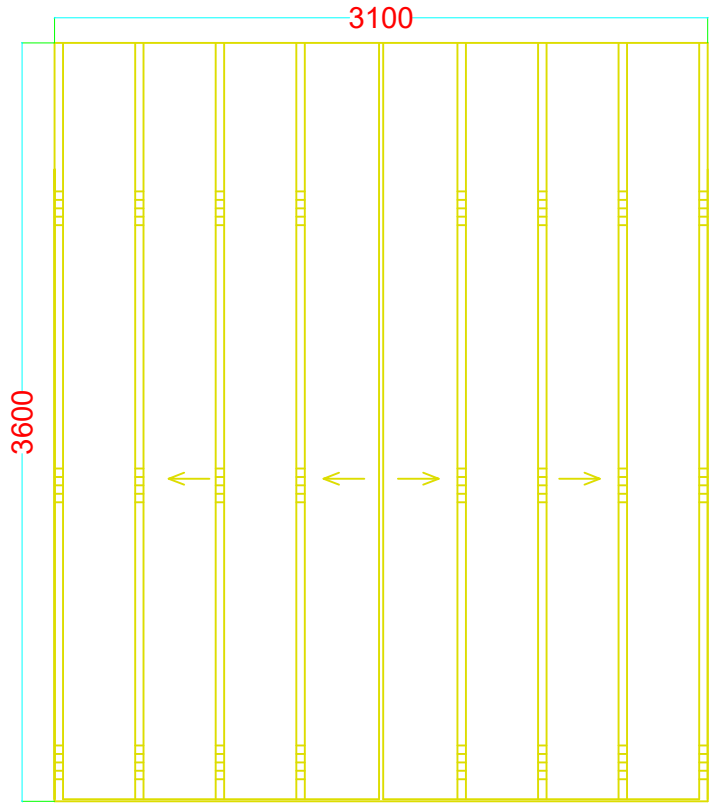
D3

Aluminium Door
with Aluminium Sheet



D4

Aluminium Door
with Aluminium Sheet



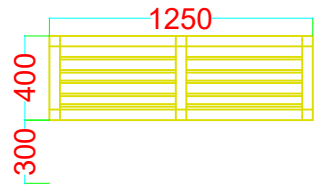
G1

Folding Gate with GI pipe and Tin Sheet



V1


















Ventilation with Aluminium Grill

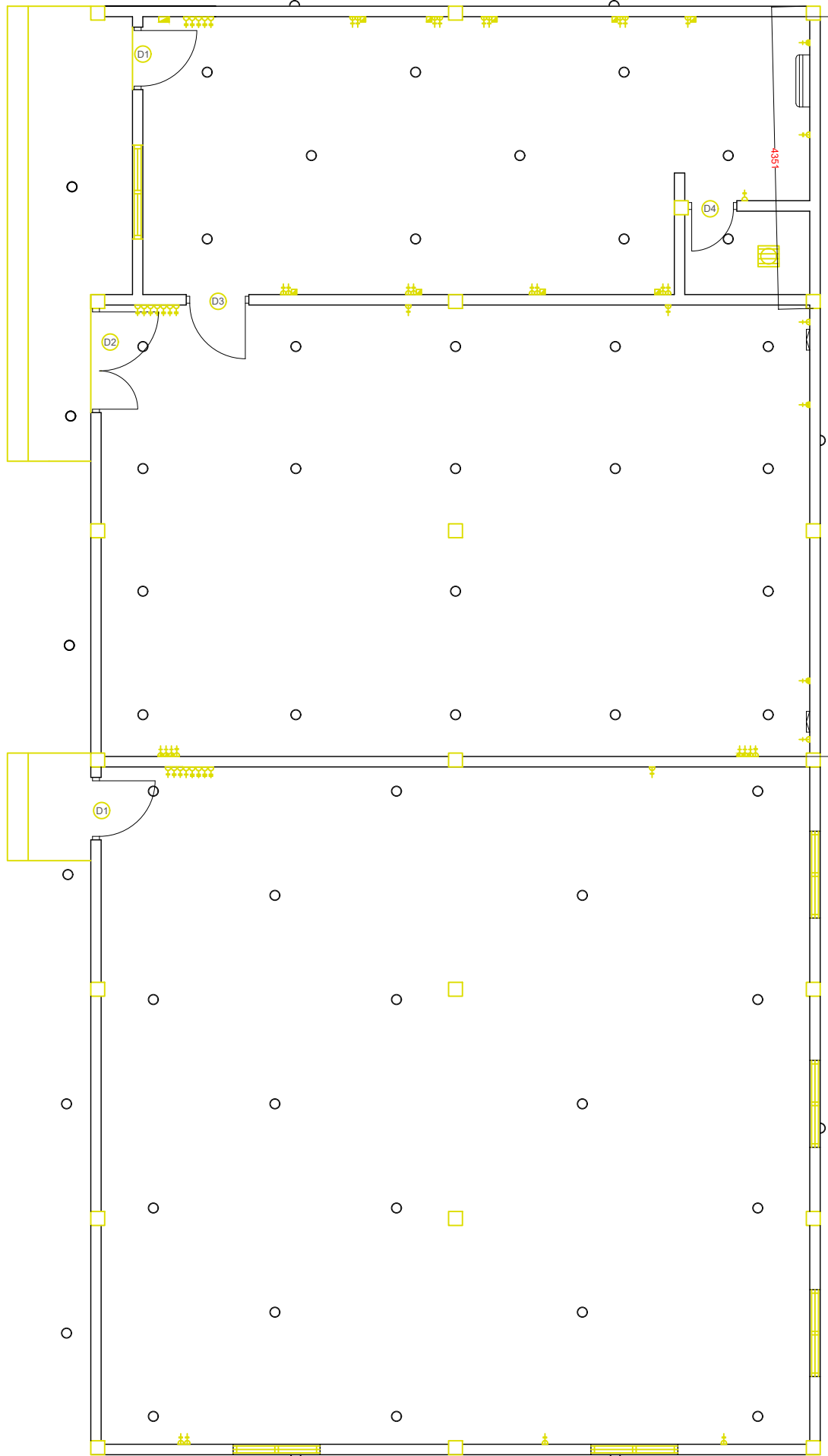


V1

Ventilation with Aluminium Grill

LEGENDS

-  One gang switch
-  Two gang switch
-  Three gang switch
-  Four gang switch
-  Five gang switch
-  1 x 13A Socket Outlet
-  2 x 13A Socket Outlet
-  1 x 15A Socket Outlet
-  1 x 15A AC Socket Outlet
-  Telephone Socket
-  Distribution Board
-  Emergency Light
-  AC Outdoor Unit
-  AC Indoor Unit, Ceiling cassette type
-  Network Switch
-  Earth Pit
-  Ceiling Mount Light



Electrical Plan