



HRL FOODS PVT LTD.

Rice Manufacturers & Exporters



www.hrlfoods.com

About Us



Establishment



The amalgamation of knowledge, skill, experience and exuberance laid the foundation of HRL Foods Private Limited in the year 2010. Spread in acres of land, situated at the border of Delhi, amidst the lush green farms of Haryana, leads maximum proximity to nature and ensures production in congenial environment.

Experience



Age and experience of two mills i.e. Maheshwari Mills, Mainpuri (U.P.) established in late 1970s and D.M. Rice Mills, Tohana (Harayana) established in early 1990s, when taken a step further into modernization and expansion, led to the evolution of HRL Foods Pvt. Ltd.

Vision



To preserve and enrich the legacy of Basmati in India by ensuring the genetic integrity of the seed, by encouraging farmers to adopt scientific agricultural practices and by leveraging world-class rice processing technologies, so as to emerge as the industry benchmark for product quality and customer service



Indian Basmati

It is one of the most treasured grains, and is grown only once a year in the Indo-Gangetic Plain beneath the Himalayan sub ranges. It is a remarkably long variety of rice and has a distinct aroma and discrete nutty taste. When cooked, the Basmati is longer, lighter and fluffier than standard white rice, and does not stick together.



Wonderful Aroma



Low Cholesterol

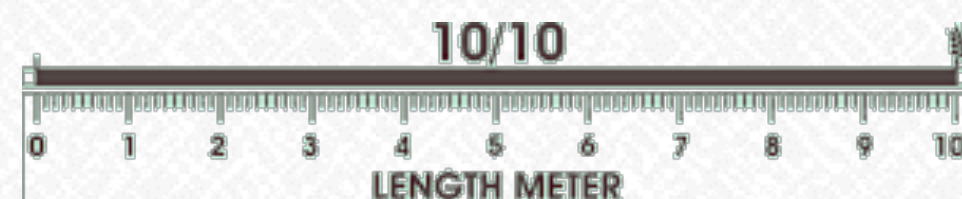


Taste Sensation



Harvested with Love

Pusa 1121 Basmati



It is the longest basmati grain in the world- before as well as after cooking and gives 30% more volume than any other basmati variety.

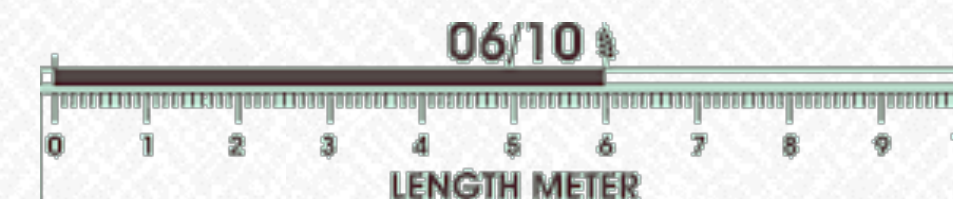
Pusa Basmati - 1



A boon for farmers and their growing concerns, this variety has been developed after R&D from the Pusa institute in the early 1990's.



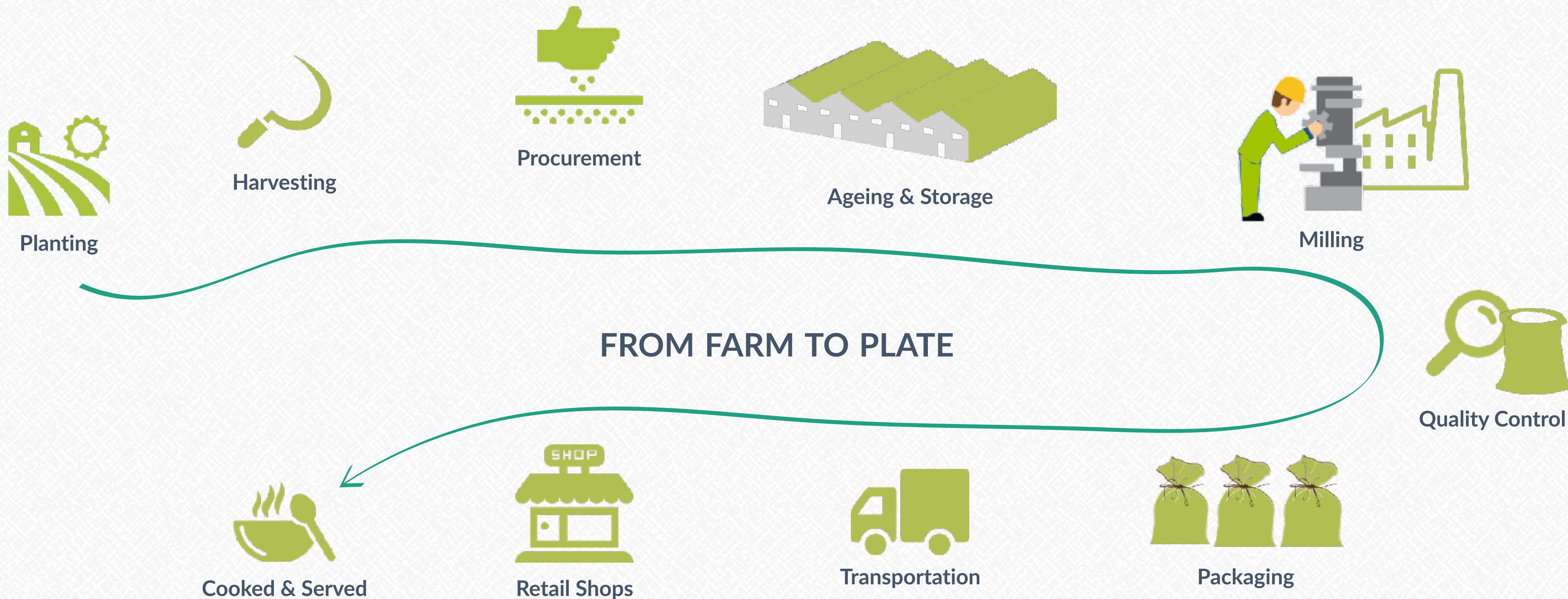
Traditional Basmati



This common phrase is used to refer to older varieties that are in still production. Two popular varieties 370 and HBC 19 amongst others are collectively called Traditional.



The Process





Product Range



We provide wide range of varieties of Basmati Rice to suit the needs of our valuable clients worldwide and for the huge potential domestic market in India.

www.hrlfoods.com

© HRL Foods Pvt Ltd. All Rights Reserved.



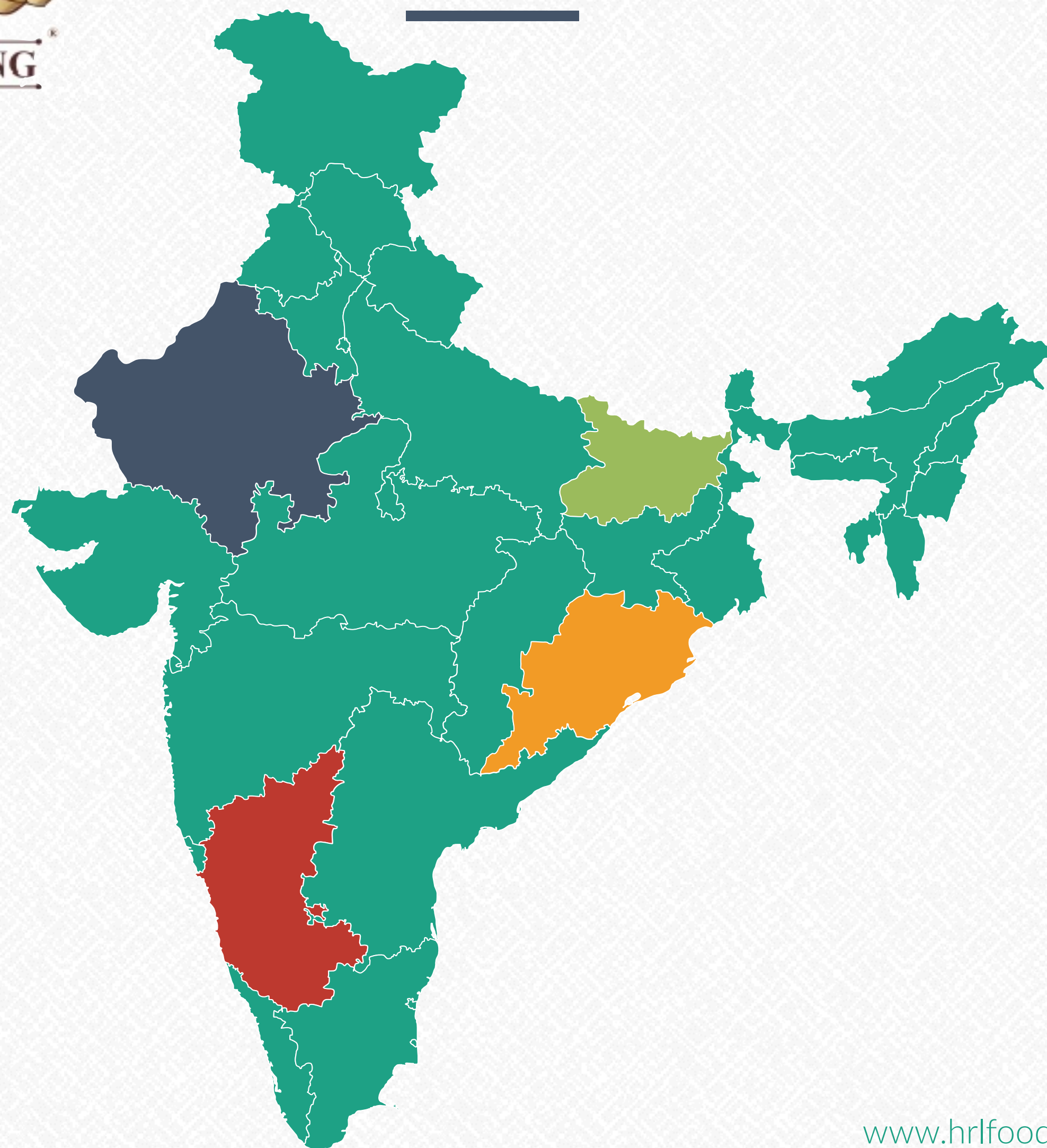
Our Products

Available in various sizes to suit all your needs

		Sub-Brands			
		25 Kgs	10 Kgs	5 Kgs	1 Kg
Brands	Haryana King (Steamed Range)	Royal Special Premium	Royal Special Premium Rozana Harroz Mogra Mini Mogra Long Grain	Royal Special Premium Rozana Mogra Special	Royal Special Premium
	Haryana Kesri (Raw White Range)	-	Premium Rozana Dubar Mogra Mini Mogra Broken	-	Classic



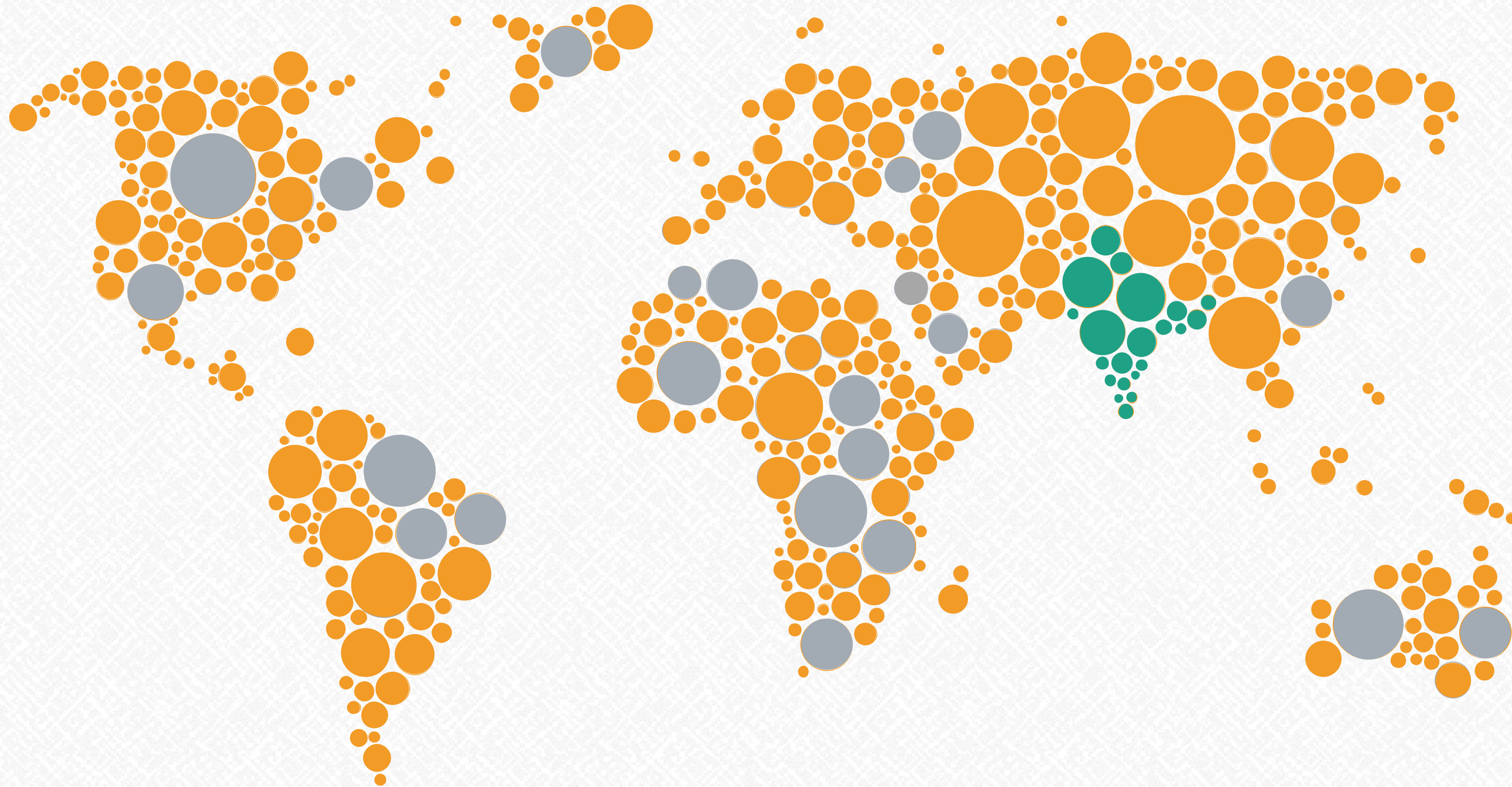
Domestic Dealer Network



Modern Retail



International Presence



Our rice is marketed in more than 45 countries.

Our major expertise is to deliver big volumes to various governmental organisations across the globe including Iraq, Iran, Saudi Arabia, Kuwait, Qatar, Oman, Jordan, Japan, Philippines, South Korea, Indonesia and many other major rice importing countries.



Infrastructure

HRL Foods Pvt Ltd, employs excellent and latest technology for production and quality control of Basmati Rice.



Sortex



Satake



ETP Plant



Our Strengths

People know us for

01

Quality



Consistent Quality Our participation in the entire chain from sourcing the raw materials to the finished product is your guarantee that we deliver a consistent product.

Reliability



Trust and Reliability We act with integrity, respect and responsibility, knowing that trust is the foundation of all our relationships.

Certification

03



Certification and Standardisation We are ISO 22000:2005 certified and have HACCP Certification for food Safety Management Standard.



Contact Us

Mr. Mukesh Bansal

+91 9871410029

Mr. Rajesh Jain

+91 9871365583

Mr. Sushant Taparia

+91 8221001172

Email : harayanaking@yahoo.in

HEAD OFFICE

2692, Gali Pattewali,
Naya Bazaar, Delhi-6
Phone : 011 65180200

FACTORY

HRL Foods Pvt Ltd
Village Sanpera, Ganaur
Harayana

CUSTOMER CARE

Mr. Vijay Pareek
+91 9717712680