



Lander

AGRIBUSINESS

EXPORTERS – ALIANCE





Transparent and Traceable Origination

We originate and track directly from our partner farmers.



Quality Control

Quality analysis with classification and standardization processes.



Logistics Control

Safety, agility and sustainability in the transport of beans, pulses and special crops.



On demand spot availability

Quality grains, great prices and better logistics to your port

FROM PARTNER PRODUCERS AND EXPORTERS TO THE WORLD.



PARTNER EXPORTER

We originate and track directly from our partner exporter.





Transparent and Traceable Origination

We originate and track directly from our partner exporter.

Quality Control

Quality analysis with classification and standardization processes

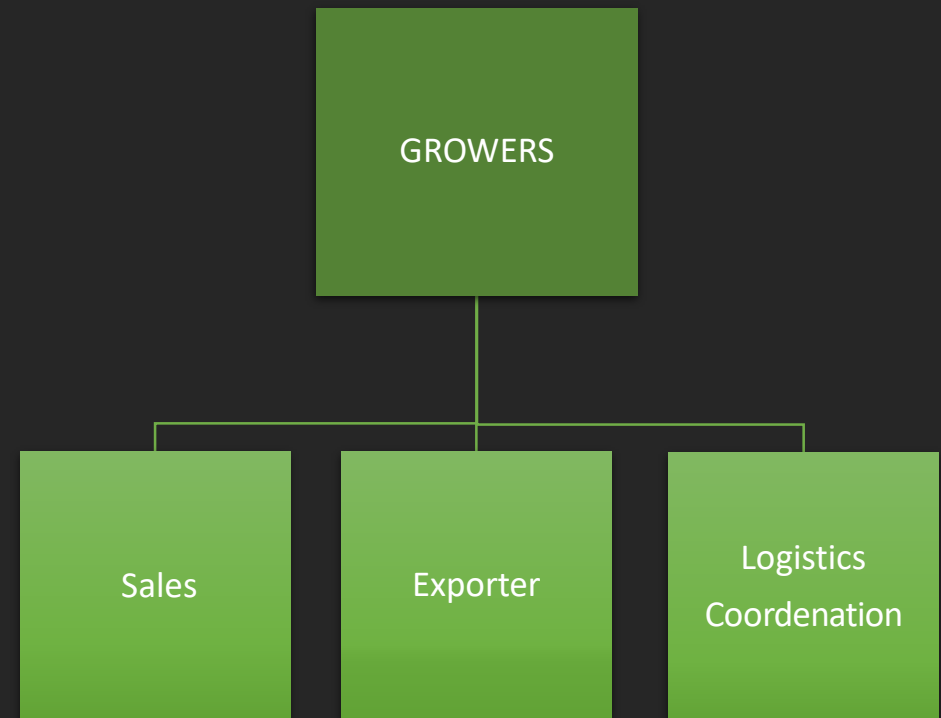
Logistics Control

Safety, agility and sustainability in the transport of cereals.

On demand spot availability

Quality grains, great prices and better logistics to your port.

ALL PRODUCTS



Products | PULSES

GREEN MUNG BEAN

SCIENTIFIC NAME: Vigna radiata L.

**BRAZILIAN GREEN MUNG BEANS
MOISTURE MAX 14%, SORTEX,
SIZE 3,5MM. MACHINED
CLEANED, AND SORTEX.**



BLACK EYE BEAN

SCIENTIFIC NAME: VIGNA UNICULATA

BRAZILIAN BLACK EYE BEANS
SIZE 440-460 GRAINS IN 100
GRAMS, MOISTURE MAX. 14%,
TOTAL DAMAGED MAX. 3,5%,
MACHINED CLEANED AND
SORTEX.



Products | PULSES

BROWN EYE BEAN

SCIENTIFIC NAME: Vigna Uniculata

**BRAZILIAN BROWN EYE BEAN
POLISHED, SIZE 480 - 520 IN 100
GRAMS, MOISTURE MAX. 14%,
TOTAL DEFECTS MAX 3,5%
MACHINED, CLEANED AND
SORTEX.**



Products | PULSES

BROWN EYE BEAN JUMBO

SCIENTIFIC NAME: Vigna Uniculata

**BRAZILIAN BROWN EYE BEAN
UNPOLISHED, SIZE 450 - 470 IN 100
GRAMS, MOISTURE MAX. 14%,
TOTAL DEFECTS MAX 3,5%
MACHINED, CLEANED AND
SORTEX.**



Products | PULSES

BROWN EYE BEAN SUPER JUMBO

SCIENTIFIC NAME: Vigna Uniculata

**BRAZILIAN BROWN EYE BEAN
UNPOLISHED, SIZE 420 - 440 IN 100
GRAMS, MOISTURE MAX. 14%,
TOTAL DEFECTS MAX 3,5%
MACHINED, CLEANED AND
SORTEX.**



Products | PULSES

COWPEA

SCIENTIFIC NAME: Vigna Uniculata

**BRAZILIAN COWPEA BEANS,
MOISTURE MAX. 14%, TOTAL
DEFECTS MAX 3,5% MACHINED,
CLEANED AND SORTEX.**



Products | PULSES

RED BAMBOO

SCIENTIFIC NAME: vigna angularis

**BRAZILIAN RED BAMBOO BEANS,
MOISTURE MAX. 14%, TOTAL
DEFECTS MAX 3,5% MACHINED,
CLEANED AND SORTEX.**



Products | PULSES

POPCORN

SCIENTIFIC NAME: Zea mays

BRAZILIAN POPCORN SIZE 40/42



PEANUT

SCIENTIFIC NAME: Arachis Hypogaea

BRAZILIAN RAW PEANUTS, GRADE 1, 38/42 COUNT, HUMAN GRADE. HIGH OLEIC. SPECIFICATIONS: MOISTURE 8% MAX; SPLIT 4% MAX; DAMAGE TYPE 1: 1% MAX; DAMAGE TIPO 2: 2% MAX.



PEANUT BLANCHED

SCIENTIFIC NAME: Arachis Hypogaea

**BRAZILIAN PEANUTS BLANCHED,
GRADE 1, 38/42 COUNT, HUMAN
GRADE. HIGH OLEIC.
SPECIFICATIONS: MOISTURE 8%
MAX; SPLIT 20% MAX;**



Products | SPECIAL CROPS

BRAZIL NUT

SCIENTIFIC NAME: *Bertholletia excelsa*



Products | SPECIAL CROPS

BRAZILIAN CASHEW

SCIENTIFIC NAME: *Anacardium occidentale*



Products | SPECIAL CROPS

BRAZILIAN WHITE SESAME SEEDS

SCIENTIFIC NAME: Sesamum indicum

PURITY: 99 MIN% MACHINED CLEANED;
OIL: 48% MINIMUM FFA: 2% MAX.
MOISTURE: 6% MAX.



Black Mapte

Size 3mm above
Total defects max. 3,5%, including
1% of Splits.



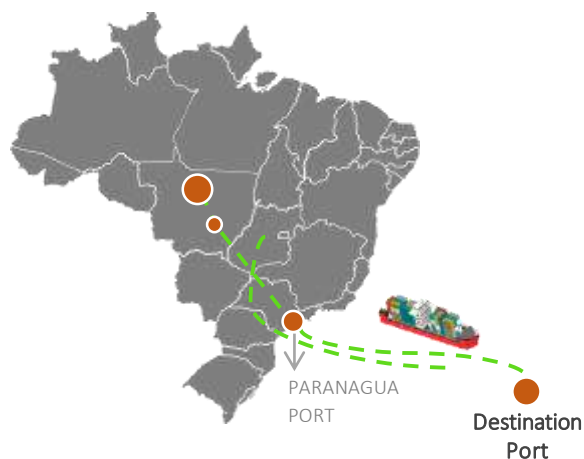
Pegeon Peas

Cajanus cajan or **toor dal**



Know Aliance Operation

PROCESS



1	Farm	From farm to exporter warehouse to clean and processing.
2	Packing	Processing and packing of product according to the importer's specifications;
3	Logistic	Road transport from Mato Grosso state to Paranaguá Port.
4	Port area	Receives the products and stuffs the containers according to the shipping instructions.
5	Weight Certificate	Control Quality partner company inspects the empty container (Food Grade Standard), accompanies stuffing and takes samples for quality analysis, Weight Certificate;
6	Fumigation	Fumigation.
7	MAPA	MAPA inspection to defer the cargo and issue a Phytosanitary certificate, you can follow an Import Permit if you have one.
8	Port	Full container transport to Paranaguá port.
9	Sea	Confirmation of departure of the ship and sea transit to the destination. Release of shipping documents;
10	Documents	Sending documentation according to instructions and releasing payment to Origin Farms x Importer bank.



Know Own Operation

FROM FARMS TO ALL PORTS

USA	Houston
VENEZUELA	Puerto Cabello
PORTUGAL	Sines
ITALY	Palermo

TURKEY	Mersin
ISRAEL	Ashod
Pakistan	Karachi
JORDAN	Aqaba

EMIRATES	Jebel Ali
INDIA	Nhava Sheva
VIETNAM	Haipong
INDONESIA	Surabaya
SOUTH AFRICA	Durban



WHO WE ARE?

We are a company specialized in facilitating the commercial transactions of these agricultural products all over the world.

Our target is to connect reliable suppliers and potential buyers to ensure efficient and successful negotiations.



Camila Regina Lander

Graduation: International Commerce
Pos graduation: International Business

Position: CEO

