

Main Features

- ✓ Ideal weighing kit for high-capacity silos: up to 30t per support point
- ✓ High-quality stainless steel components with IP68 protection rating and EN-1090 certification
- ✓ **Assembly accessories** with integrated anti-tilt systems and expansion compensation
- ✓ Digital dual-connector compression **load cells**
- ✓ High-speed weight **transmitter** with integrated fieldbus (PROFINET, EtherNet IP, Modbus TCP, etc.) fully configurable from keyboard, PC/PLC and web server
- ✓ **XSPEED TOOL** program for PC to optimise weighing performance and transmitter configuration




For More Information
CONTACT OUR
**SALES
DEPARTMENT**

Tel. +39 0536 843418

“YOUR WORLDWIDE PARTNER
FOR WEIGHING”

 **DINI AR GEO**
Scales - Weighing systems
A RICE LAKE WEIGHING SYSTEMS COMPANY

Via Della Fisica, 20
41042 Spezzano di Fiorano
Modena • Italy

 www.diniargeo.com
 *Dini Argeo*

DIGITAL TECHNOLOGY WEIGHING KIT

The Next Frontier in Silo
and Hopper Weighing



 **DINI AR GEO**
Scales - Weighing systems
A RICE LAKE WEIGHING SYSTEMS COMPANY

SILOSDIG-FLEN

Main Advantages Over Conventional Analogue Systems

For Installers

- ✓ The “cascading” cell connection reduces and simplifies wiring and does not require a junction box
- ✓ **Digital technology** load cells that do not require calibration operations
- ✓ Predictive diagnostics
- ✓ Remote control and configuration via the integrated **web server**

For Users

- ✓ Lower maintenance costs
- ✓ Easier and faster load cell replacement, less downtime
- ✓ More reliability in the presence of interferences
- ✓ **Remote monitoring** of system status and performance via web server (Industry 4.0)
- ✓ Low energy consumption (Industry 5.0)

How Does It Work?

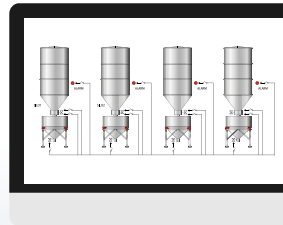
Once installed, the digital load cells constantly monitor the weight of the silos and send it to the weight transmitter via a **485 communication protocol**, making the system reliable even in the presence of interferences.

The transmitter calculates the total weight of the silo and makes it available together with the diagnostic parameters via fieldbus port and on a web page.

Assembly Kit with Digital Cell



PC/PLC



Transmitter



RS485 Communication



Web Server

