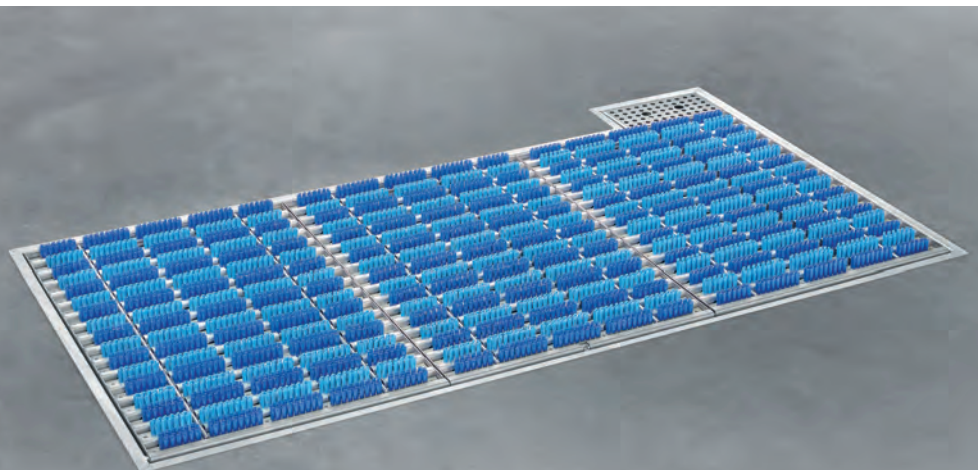


KOHLHOFF



HYGIENE TECHNOLOGY
MADE IN GERMANY

CLEAN-FIELD
Sole and Wheel Cleaning

CLEAN-FIELD

Semi-active Sole and Wheel Cleaning

CLEAN-FIELD

Stainless steel AISI 304

The CLEAN-FIELD pass-through disinfection/cleaning trays with brushes have been developed in order to prevent contamination or dirt carry-over from dirty black to clean white areas or from outdoor to inside areas when transporting goods with vehicles such as pallet trucks or forklift trucks.

Presented as a novelty the CLEAN-FIELD optimises hygiene conditions in all areas of food production and processing.

Simply by driving or stepping onto the cleaning field, a large number of integrated self-swinging brush elements are immediately set in motion and thus semi-actively (mechanically) clean both castors and wheels of mobile equipments as well as shoe soles – optionally wet or dry.

With the wet cleaning option, the system is additionally equipped with an automatic detergent dosing station. It ensures that sufficient cleaning or disinfecting liquid is always available. In this case, the cleaning field requires a wastewater connection with odour trap installed on site. Due to the low installation depth of only approx. 60 mm, the systems designed exclusively for floor installation are not only suitable for new buildings but also for a variety of refurbishment projects.

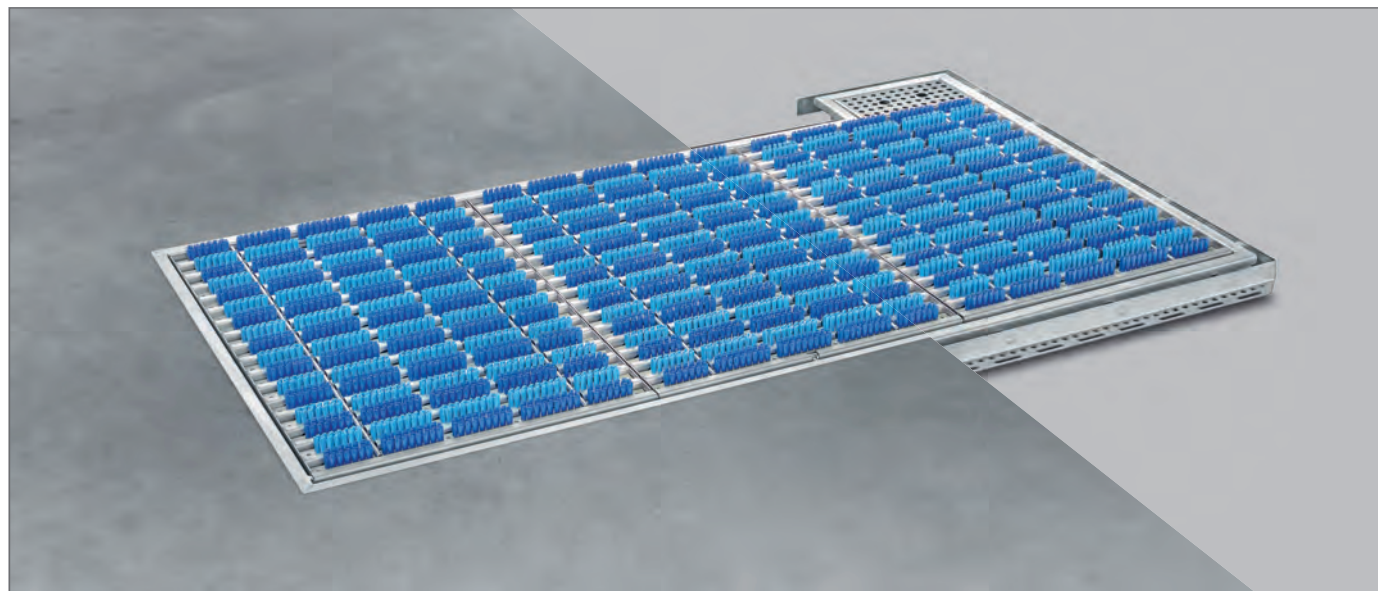
Due to their modular design, the cleaning fields are available in different sizes. They can also be adapted to individual hygiene requirements. If, for example, access control is required, the additional equipment with an automatic swivel gate is possible. For increased hygiene requirements, further components are available - ranging from hand disinfection or entrance control devices with turnstile to a complete compact hygiene lock. The system only allows access to the downstream hygiene-sensitive areas after all hygiene measures have been carried out.

Technical data CLEAN-FIELD

Dimensions (W x D x H):	Different sizes available
Water outlet:	1 1/2"

Automatic detergent dosing station

Dimensions (W x D x H):	400 x 200 x 400
Water connection:	3/4" CW
Electrical connection:	230 V/N/PE, 50/60 Hz



CLEAN-FIELD

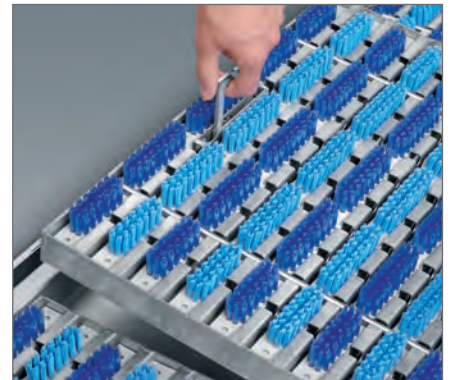
Semi-active Sole and Wheel Cleaning

In wet operation, every CLEAN-FIELD has a floor drain with a standpipe. An additional stainless steel cover ensures that the floor can be safely walked over without any tripping hazards.

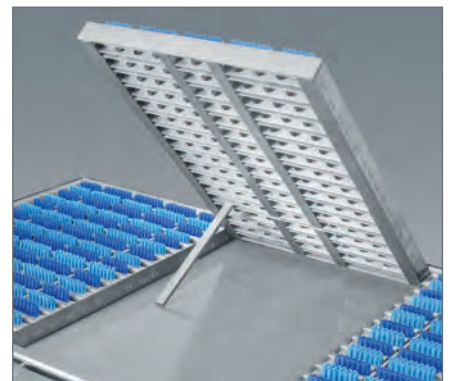
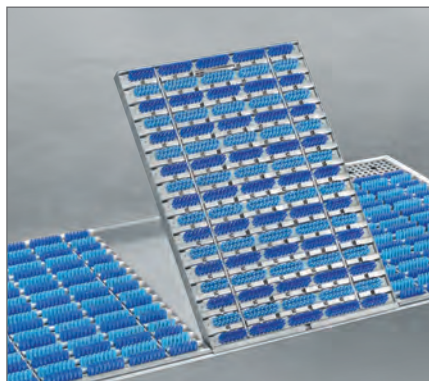
Optionally, the wet version can also be equipped with an automatic detergent dosing station.



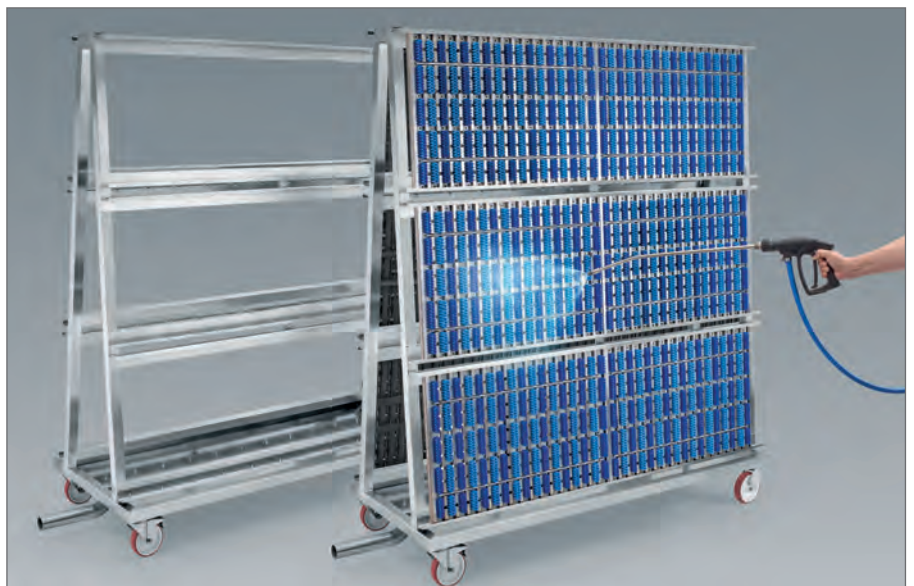
Each cassette can be easily opened and removed by hand if desired.

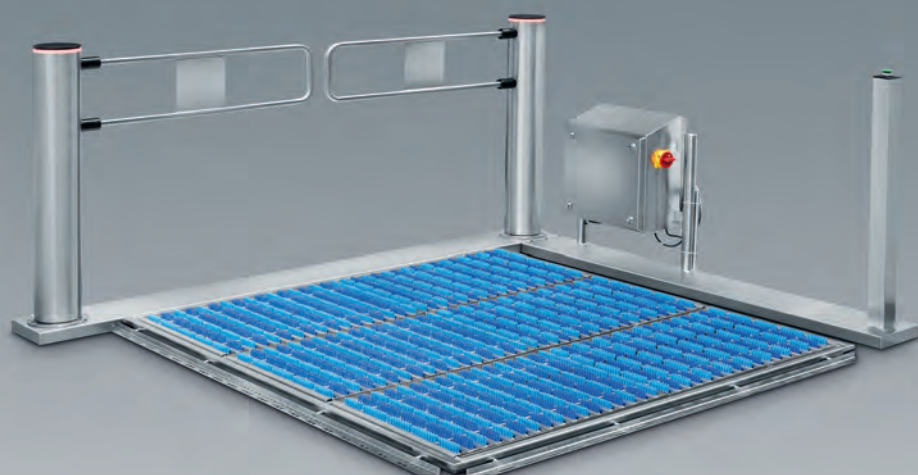


For cleaning purposes, the individual modules can be folded up or removed completely with no need for tools.



A trolley for holding the cassettes is also available as an option. This enables easy and thorough cleaning of the cassettes.





Kohlhoff Hygienetechnik GmbH & Co. KG

Isaac-Newton-Straße 2 · 59423 Unna · Germany

Phone: +49 (0) 2303-98183-0

Telefax: +49 (0) 2303-98183-33

E-Mail: info@kohlhoff-hygiene.de

Internet: www.kohlhoff-hygiene.de