



# The Book

INTERNATIONAL

Detpak

NOVEMBER 2023

# Why Choose Detpak?

Detpak is a family-owned, Australian business with a worldwide network of manufacturing and sales locations. We design, manufacture and supply the food service, grocery and fast-moving consumer goods industry with world-class packaging solutions.



## RESPONSIBLE BY DESIGN

With world leading innovation aligned with global sustainability principles, we ensure every product is designed to not just meet the world's best environmental, quality and safety stands but remain ahead of them for years to come.



## AN INNOVATION EDGE

With our dedicated innovation studio for concept creation and rapid prototyping, and an agile team of engineering, commissioning and manufacturing leaders, there's no faster way to get new packaging in market.



## SUPPLY CHAIN FLEXIBILITY

With owned manufacturing in seven countries, an agile supply chain and a dedicated sourcing team, you can rest assured that when you partner with Detpak, packaging will never be your weakest link.



## TRUE PARTNERSHIP

With partnerships of over 50 years with leading global brands, we build trusted relationships that solve the commercial realities of today and can be relied on to deliver on the evolving needs of tomorrow. So don't just choose packaging, choose a packaging partner.

# Contents

Elevate your Brand

02



Choose Sustainable

04

Bags



08

Cartons & Trays



18



Cups & Cup Accessories



28

Plates, Bowls & Cutlery



39

Wraps



45



Napkins



50

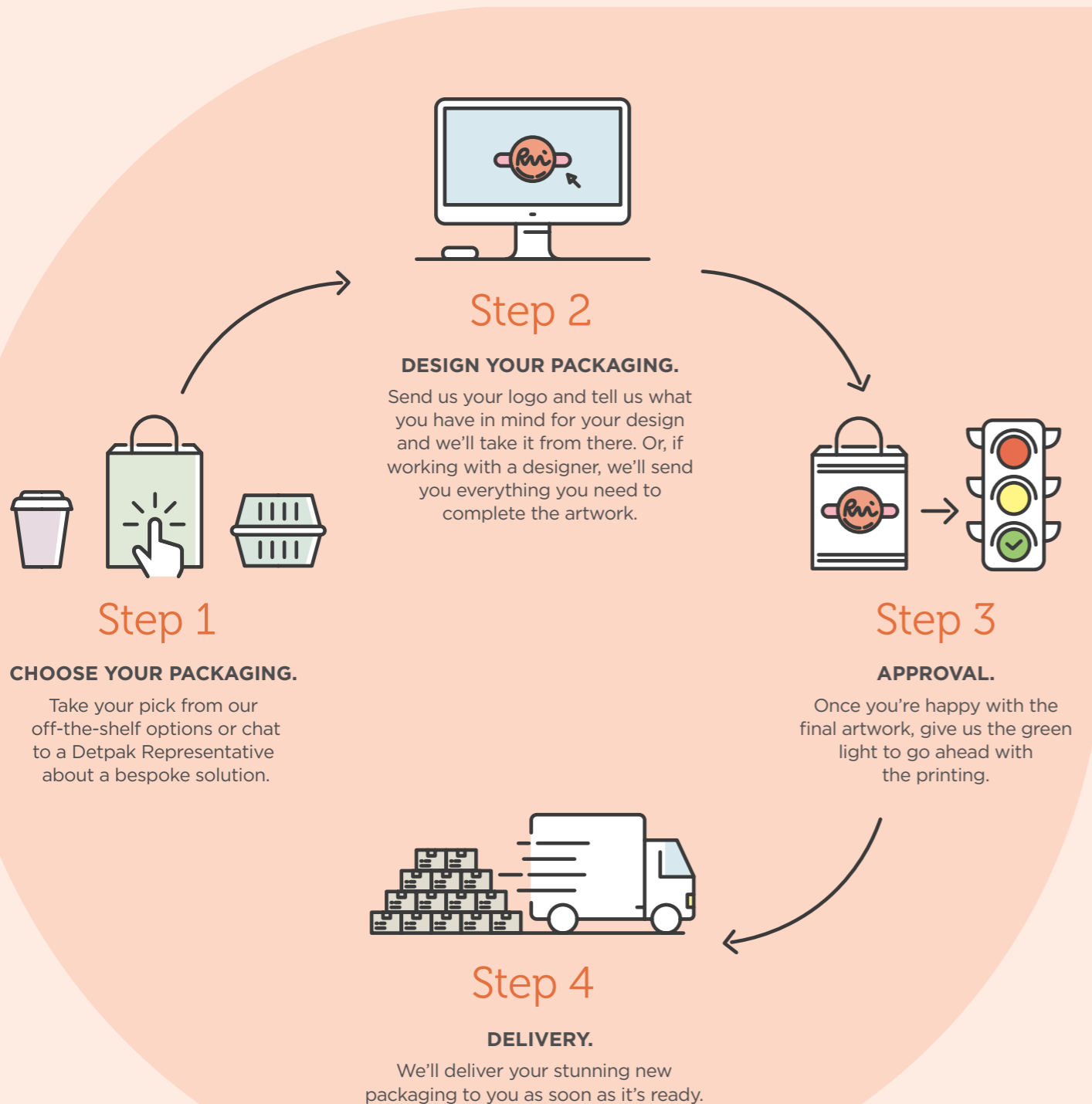
Understanding our Packaging Terms

53

# Elevate Your Brand

## CUSTOMISE WITH DETPAK

Packaging isn't just a means to hold and transport food products, it's a way to elevate your brands' visibility and enhance your customers' experience. There is no limit to the imagination when it comes to customising your packaging items, with Detpak's comprehensive range of over 1,000 paper, board and fibre packaging solutions customisable to help elevate your brand. From Cups & Cup Accessories, to Cartons, Bags, Napkins, Trays, and Wraps; the biggest brands around the world trust us with their branded packaging solutions.



# Choose Sustainable



QUALITY MANAGEMENT SYSTEMS



ENVIRONMENTAL MANAGEMENT SYSTEMS



FOOD SAFETY MANAGEMENT SYSTEMS



PACKAGING PARTNERSHIP PROGRAMME



ETHICAL CERTIFICATION



## SUSTAINABLE MATERIALS

At Detpak, we only use paper and board from large, reputable raw material suppliers, which means no old growth forests are used. We keep the use of inks and adhesives to a minimum and prioritise the use of water-based and soy inks wherever possible. As part of our commitment to sustainable sourcing, we use ethically sourced raw materials in all our manufactured products including greater than 70% forestry certified or recycled paper and board.



## RESPONSIBLE MANUFACTURING

At Detpak, our purpose is to make a positive impact for our people, our partners and our planet. That's why we work closely with industry bodies, local and federal government, to bring you the best in sustainable packaging. We maintain the most highly recognised global standards for food safety and quality consistency, including ISO 9001, ISO 14001 and BRCS. Our products are manufactured in food grade packaging environments, so our customers can be assured of the highest quality standards.



## FROM START TO FINISH

Detpak works with waste management and resource recovery stakeholders to develop increasingly sustainable options for product disposal, including diverting products into recycling and composting streams. As part of our membership with peak industry bodies, such as the Singapore Packaging Partnership Programme, Detpak is proactive in driving resource efficient packaging design; the recovery and recycling of used packaging; and reducing the incidence and impact of litter. The Detpak team can advise you on the best packaging options to suit your packaging end of life expectations.



## CARING FOR COMMUNITY

Detpak takes pride in being a manufacturer, not simply an importer. We work to a strict Corporate Social Responsibility Policy, which covers fair wages and working conditions. As a family-owned company, Detpak chooses to positively impact our local communities all around the world, from our headquarters in Adelaide, to supporting initiatives in the countries where we operate, and beyond. Many of our charitable initiatives focus on improving communities in a long term, sustainable way.

# We've got you covered.



## Countries are now taking action against single-use problematic plastics (SUPPs).

Led by Ellen MacArthur, in collaboration with the UN Environment Programme, 'The Global Commitment' has united more than 500 organisations behind a common vision of a circular economy for plastics as they work towards 2025 targets to tackle plastic pollution.

At Detpak, we provide sustainable packaging solutions to help you achieve the global targets and drive progress to help realise that common vision.



**WE MAKE RESPONSIBLE CHOICES,  
TO MAKE YOUR CHOICE EASY**



Scan to discover sustainable packaging solutions and make the switch to paper

## No added PFAS

### What is PFAS?

PFAS (per- and poly-fluoroalkyl substances) are a group of chemicals used in a range of applications in common household items, to provide them with water, heat, sticking or grease resistance properties. PFAS are considered forever chemicals as they remain present in organisms and the environment indefinitely.

### Products Containing PFAS



Over 90% of Detpak's products don't contain PFAS, with all remaining products with greaseproof properties transitioning by end of 2023. This is in alignment with global initiatives to phase out PFAS in fibre-based food contact packaging globally.

Introducing our Renewable Wraps (read more on Page 46), crafted from natural and renewable sources like sunflower seeds and canola, our wraps are not only eco-friendly but also compostable, ensuring minimal environmental impact. Most importantly, they are free from any PFAS chemicals, giving you a safer and more sustainable choice for your packaging needs. We believe in providing you with options that align with your values, and our goals, and our Renewable Wraps are a testament to our dedication to a greener, healthier future.



# Bags

## TAKEAWAY & CHECKOUT BAGS

Takeaway and Checkout Bags are constructed from heavyweight materials for holding multiple items. They are free-standing and easy to load.



COMPOSTABLE



RECYCLABLE



SUSTAINABLY SOURCED



**#4 SOS BAG**  
 White - C589S0001 **I C P V**  
 Brown - C589S0010 **I C V IN**  
 Black - C589S0029 **I**  
 248 x 127 x 77  
 2000 Ctn | 500 Slv



**#6 SOS BAG**  
 White - C582S0001 **I C**  
 Brown - C582S0010 **I C IN**  
 Black - C582S0029 **C**  
 273 x 147 x 92  
 2000 Ctn | 500 Slv



**#8 SOS BAG**  
 White - C156S0001 **I C**  
 Brown - C243S0010 **I C IN**  
 Black - C243S0029 **C**  
 314 x 154 x 100  
 1000 Ctn | 500 Slv



**#12 SOS BAG**  
 White - C572S0001 **I C**  
 Brown - C572S0010 **I C IN P**  
 Black - C572S0029 **C**  
 330 x 178 x 112  
 1000 Ctn | 500 Slv



**1/8 SOS BAG**  
 C323  
 Brown **I**  
 360 x 260 x 160  
 250 Ctn



**#20 SOS BAG**  
 C511S0010  
 Brown **V**  
 430 x 305 x 175  
 250 Ctn



**C SOS BAG**  
 C606S0010  
 Brown **I IN**  
 305 x 215 x 121  
 1000 Ctn | 250 Slv



**NEW**

**D BAG (DIE-CUT HANDLE)\***  
 White - C040S0001 **C**  
 Brown - C040S0010 **C V IN I**  
 Black - C040S0029 **C**  
 280 x 280 x 150  
 500 Ctn  
 Holds up to 5kg



**NEW**

**LARGE D BAG (DIE-CUT HANDLE)\***  
 Brown - C341S0010 **C I**  
 Black - C341S0029 **C**  
 350 x 320 x 180  
 200 Ctn  
 Holds up to 5kg



**ECO D BAG (BOARD HANDLE)**  
 C040S0231  
 Brown **C**  
 280 x 280 x 150  
 500 Ctn  
 Holds up to 5kg

\* Remove Poly Patch from D Bag (Die-Cut Handle) before recycling or composting.

In stock in: **C** China **H** Hong Kong **P** Philippines **I** Indonesia **V** Vietnam **IN** India | Minimum runs apply: **C H P I V IN**

# PAPER TWIST HANDLE CARRY BAGS

Paper Twist Handle Carry Bags are strong, sturdy and stand upright on counters for easy loading.



COMPOSTABLE



RECYCLABLE



SUSTAINABLY SOURCED



# FLAT HANDLE CARRY BAGS

Flat Handle Carry Bags are strong, sturdy and stand upright on counters for easy loading.



COMPOSTABLE



RECYCLABLE



SUSTAINABLY SOURCED



NEW

**SMALL PAPER TWIST HANDLE CARRY BAG**  
White - C400S0001 ☐  
Brown - C400S0010 ☐☐☐  
Black - C400S0029 ☐  
280 x 280 x 150  
500 Ctn  
Holds up to 13kg



**LARGE PAPER TWIST HANDLE CARRY BAG**  
White - C734S0001A ☐  
Brown - C734S0010D ☐☐☐☐  
305 x 305 x 175  
250 Ctn  
Holds up to 16kg



**JUMBO PAPER TWIST HANDLE CARRY BAG**  
White - C723S0001 ☐  
Brown - C723S0010 ☐  
370 x 355 x 220  
150 Ctn  
Holds up to 16kg



**#8 PETITE PAPER TWIST HANDLE CARRY BAG**  
White - C146S0001 ☐  
Brown - C744S0010 ☐  
215 x 180 x 85  
250 Ctn  
Holds up to 13kg



**#1 PAPER TWIST HANDLE CARRY BAG**  
C015S0010  
Brown ☐  
300 x 280 x 120  
500 Ctn  
Holds up to 13kg



**#2 PAPER TWIST HANDLE CARRY BAG**  
White - C347S0001 ☐  
Brown - C347S0010 ☐  
165 x 140 x 75  
250 Ctn  
Holds up to 13kg



**#10 PAPER TWIST HANDLE CARRY BAG**  
White - C285S0001 ☐  
Brown - C285S0010 ☐  
275 x 205 x 110  
250 Ctn  
Holds up to 13kg



**#11 PAPER TWIST HANDLE CARRY BAG**  
White - C275S0001 ☐  
Brown - C275S0010 ☐  
180 x 220 x 80  
250 Ctn  
Holds up to 13kg



**#16 PAPER TWIST HANDLE CARRY BAG**  
White - C493S0001 ☐  
Brown - C180S0010 ☐  
355 x 240 x 120  
250 Ctn  
Holds up to 13kg



**#18 PAPER TWIST HANDLE CARRY BAG**  
White - C210 ☐  
Brown - C374S0010 ☐  
420 x 320 x 110  
250 Ctn  
Holds up to 13kg



**#D LARGE PAPER TWIST HANDLE CARRY BAG**  
White - C705S0001 ☐  
Brown - C705S0010 ☐  
Black - C705S0029 ☐  
350 x 320 x 180  
200 Ctn  
Holds up to 13kg

NEW



**#40 FLAT HANDLE BAG**  
C486S0010  
Brown ☐  
275 x 205 x 110  
500 Ctn  
Holds up to 10kg



**#60 FLAT HANDLE BAG**  
White - C209S0001 ☐  
Brown - C209S0010 ☐  
300 x 240 x 100  
250 Ctn  
Holds up to 10kg



**#75 FLAT HANDLE BAG**  
White - C167 ☐  
Brown - C167S0010 ☐  
340 x 320 x 145  
250 Ctn  
Holds up to 10kg



# BREAD & BOTTLE BAGS

Bread bags are made from quality paper, perfect for showcasing and protecting delicious baked goods. Eco Bread Bags feature a viewing window made with bioplastic (PLA) which is compostable.



COMPOSTABLE



RECYCLABLE



SUSTAINABLY SOURCED



**COB WINDOW BAG\***  
B207S0019  
Brown ☐  
400 x 200 x 110  
500 Ctn



**LOAF BAG\***  
B293  
Brown ☐  
400 x 140 x 70  
500 Ctn



**LARGE FRENCH STICK WINDOW BAG\***  
B132S0019  
Brown ☐  
700 x 110 x 40  
500 Ctn | 500 Slv



**ECO FRENCH STICK WINDOW BAG**  
B463  
Brown ☐  
600 x 110 x 40  
500 Ctn | 500 Slv

\*Remove window before recycling or composting.

In stock in: ☐ China ☐ Hong Kong ☐ Philippines ☐ Indonesia ☐ Vietnam ☐ India | Minimum runs apply: ☐☐☐☐☐☐☐☐

# I AM ECO™ WINDOW RETAIL BAGS

I am eco™ Window Retail Bags are PLA lined allowing them to be commercially composted. They are a great choice for a variety of foods such as coffee beans, tea and muesli. They can be easily resealed with the tin-tie.



COMPOSTABLE  
EN 13432



SUSTAINABLY  
SOURCED



# RETAIL BAGS

Retail Bags are poly-lined for freshness. They are a great choice for a variety of foods such as coffee beans, teas and muesli. They can be easily resealed with the tin-tie. The polylining and window are BPA-free.



SUSTAINABLY  
SOURCED



**SMALL WINDOW TIN-TIE BAG\***  
C433S0231  
I am eco™ Brown (PLA)   
260 x 88 x 47  
500 Ctn | 50 Slv



**MEDIUM WINDOW TIN-TIE BAG\***  
C469S0231  
I am eco™ Brown (PLA)   
246 x 115 x 72  
400 Ctn | 40 Slv



**LARGE WINDOW TIN-TIE BAG\***  
C382S0231  
I am eco™ Brown (PLA)   
242 x 155 x 70  
400 Ctn | 40 Slv



**MEDIUM WINDOW TIN-TIE BAG**  
White - C575S0001   
Brown - C575S0010   
246 x 115 x 72  
400 Ctn



**LARGE WINDOW TIN-TIE BAG**  
White - C615S0001   
Brown - C615S0010   
242 x 155 x 70  
400 Ctn



**250G BAG**  
C003S0010  
Brown   
235 x 88 x 47  
500 Ctn



**500G BAG**  
White - C591S0001   
Brown - C591S0010   
275 x 100 x 60  
500 Ctn



**1KG BAG**  
White - C435S0001   
Brown - C435S0010   
327 x 127 x 76  
500 Ctn



**3KG BAG**  
C157S0010  
Brown   
447 x 202 x 110  
400 Ctn



# RETAIL BAGS

Retail Bags are poly-lined for freshness. They are a great choice for a variety of foods such as coffee beans, teas and muesli. They can be easily resealed with the tin-tie. The polylining and window are BPA-free.



SUSTAINABLY  
SOURCED



**250G TIN-TIE BAG**  
White - C464S0001   
Brown - C464S0010   
235 x 88 x 47  
500 Ctn



**500G TIN-TIE BAG**  
White - C559S0001   
Brown - C559S0010   
275 x 100 x 60  
500 Ctn



**1KG TIN-TIE BAG**  
White - C532S0001   
Brown - C532S0010   
327 x 127 x 76  
500 Ctn



**SMALL WINDOW TIN-TIE BAG**  
White - C644S0001   
Brown - C644S0010   
260 x 88 x 47  
500 Ctn



**SMALL WINDOW RETAIL BAG**  
C474  
Brown   
260 x 88 x 47  
500 Ctn



**MEDIUM WINDOW RETAIL BAG**  
White - C414S0001   
Brown - C414S0010   
246 x 115 x 72  
400 Ctn



**LARGE WINDOW RETAIL BAG**  
White - C426S0001   
Brown - C426S0010   
242 x 155 x 72  
400 Ctn

# FLAT & SACHEL BAGS

Flat & Satchel Bags are made with quality Kraft paper. They are ideal for a variety of purposes including confectionery, bakery and sandwiches. Satchel bags feature a gusset which allows extra room for bigger items.



COMPOSTABLE



RECYCLABLE



SUSTAINABLY SOURCED



# FLAT & SACHEL BAGS

Flat & Satchel Bags are made with quality Kraft paper. They are ideal for a variety of purposes including confectionery, bakery and sandwiches. Satchel bags feature a gusset which allows extra room for bigger items.



COMPOSTABLE



RECYCLABLE



SUSTAINABLY SOURCED



**#1/4 FLAT BAG STRUNG**  
A367S0001A  
White   
123 x 115  
4000 Ctn | 500 Slv



**#0 FLAT CONFECTIONERY BAG**  
A083S0001A  
White   
133 x 92  
1000 Ctn | 1000 Slv



**#1/2 FLAT BAG STRUNG**  
A151S0001A  
White   
155 x 115  
4000 Ctn | 500 Slv



**#1 SQUARE FLAT BAG**  
White - A530S0001B   
Brown - A530S0010B   
187 x 175  
2000 Ctn | 500 Slv



**#6 FLAT BAG STRUNG**  
White - A403S0001A   
Brown - A571S0010B   
346 x 240  
2000 Ctn | 500 Slv



**#8 FLAT BAG STRUNG**  
White - A013S0001A   
Brown - A013S0010    
346 x 273  
1000 Ctn



**#10 FLAT BAG**  
A218S0010B  
Brown   
346 x 310  
250 Ctn



**#11 FLAT BAG**  
A058S0010A  
Brown   
396 x 310  
250 Ctn



**#2 FLAT BAG**  
A530S0010C  
Brown   
187 x 180  
500 Ctn



**#2 FLAT BAG STRUNG**  
A523S0010A  
Brown   
237 x 175  
2000 Ctn | 500 Slv



**#3 FLAT BAG**  
A577S0010B  
Brown   
212 x 180  
500 Ctn



**#3 FLAT BAG STRUNG**  
White - A421S0001C   
Brown - A421S0010B   
237 x 200  
2000 Ctn | 500 Slv



**#24 FLAT BAG**  
A163S0010  
Brown   
187 x 150  
1000 Ctn



**#2 SQUARE FLAT BAG STRUNG**  
White - A177S0001A   
Brown - A177S0010A   
212 x 200  
2000 Ctn | 500 Slv



**#4 SQUARE FLAT BAG STRUNG**  
A251S0001A  
White   
320 x 273  
1000 Ctn | 500 Slv



**#4 FLAT BAG**  
A110S0010A  
Brown   
238 x 203  
500 Ctn



**#4 FLAT BAG STRUNG**  
White - A308S0001B   
Brown - A308S0010A   
269 x 240  
2000 Ctn | 500 Slv



**#5 FLAT BAG**  
A112S0010B  
Brown   
269 x 241  
500 Ctn



**#6 FLAT BAG**  
A355S0010B  
Brown   
295 x 241  
250 Ctn



**SMALL SACHEL BAG**  
White - B444S0001   
Brown - B313S0010   
219 x 108 x 40  
2000 Ctn | 500 Slv



**LARGE SACHEL BAG**  
White - B088S0001A    
Brown - B088S0010    
212 x 125 x 80  
2000 Ctn | 500 Slv



**CUTLERY FLAT BAG**  
A217S0001  
White   
238 x 80  
1000 Ctn

NEW

## GREASE RESISTANT & GREASEPROOF BAGS

Grease Resistant (GR) bags are ideal for foods with a small amount of grease, such as bakery items.

Greaseproof bags are made with greaseproof paper, making them ideal for greasy or fried foods.



RECYCLABLE



SUSTAINABLY SOURCED



## QUICK SERVICE BAGS & SPECIALTY BAGS

Foil Lined Bags protect against grease and oil, whilst also retaining heat. They are safe in a conventional oven up to 150°C. The 'Hot Chicken Tasty Tender' Chicken Bag features a poly-lining, protecting against grease and oil. Specialty bags are made from high quality materials and are designed to perform strongly in most scenarios.



SUSTAINABLY SOURCED



**EXTRA SMALL GREASEPROOF SACHEL BAG**  
B102S0223  
White   
160 x 110 x 44  
3000 Ctn | 500 Slv



**SMALL GREASEPROOF SACHEL BAG**  
B364S0001  
White   
213 x 108 x 40  
2000 Ctn | 500 Slv



**MEDIUM GREASEPROOF SACHEL BAG**  
B406S0001  
White      
219 x 125 x 80  
2000 Ctn | 500 Slv



**LARGE GREASEPROOF SACHEL BAG**  
B127S0001  
White   
288 x 125 x 80  
2000 Ctn | 500 Slv



**CHICKEN BAG (POLY-LINED)**  
B433S0199  
Hot Chicken Tasty Tender   
340 x 167 x 77  
500 Ctn | 100 Slv



**FOIL SACHEL BAG**  
B460S0001  
White   
220 x 108 x 40  
1000 Ctn



**LAMINATED FOIL SACHEL BAG**  
B233P0004  
White    
320 x 165 x 68  
1000 Ctn



**EXTRA LARGE GREASEPROOF SACHEL BAG**  
B206  
White   
324 x 165 x 67  
2000 Ctn | 500 Slv



**EXTRA SMALL FRY GREASEPROOF FLAT BAG**  
A179  
White   
98 x 108  
2000 Ctn | 500 Slv



**SMALL FRY GREASEPROOF FLAT BAG**  
A570S0001  
White        
102 x 118  
5000 Ctn | 1000 Slv



**MEDIUM FRY GREASEPROOF FLAT BAG**  
A160  
White   
130 x 118  
4000 Ctn | 1000 Slv



**MOTION SICKNESS SACHEL BAG**  
B065S0001  
White (Poly Laminated)   
260 x 167 x 77  
1000 Ctn | 1000 Slv



**COOKIE GREASE RESISTANT SACHEL BAG**  
B553S0001  
White   
215 x 150 x 40  
4000 Ctn | 500 Slv



**SMALL BURGER POUCH**  
White - B987P0566   
Brown - B987P0622   
White - 116 x 116 x 40  
Brown - 113 x 118 x 40  
1000 Ctn



**LARGE BURGER POUCH**  
B987P0621  
White   
135 x 145 x 60  
1000 Ctn

# Cartons & Trays

## ENDURA RANGE

The Endura Range is made with sturdy, fluted board, making it ideal for hot and greasy foods such as nachos, wedges, chicken, salads and dumplings. The snack, burger, hot dog and dinner boxes are perforated so can be easily separated into two. All boxes feature vent holes to keep food crispy.



COMPOSTABLE



RECYCLABLE



SUSTAINABLY SOURCED



NEW

**ENDURA BURGER BOX**  
White - M458S0001 ☐  
Brown - M458S0010 ☑  
Black - M458S0029 ☐  
105 x 102 x 83  
260 Ctn



**ENDURA EXTRA LARGE BURGER BOX**  
White - M705S0001 ☐  
Brown - M705S0010 ☑  
110 x 110 x 105  
150 Ctn | 75 Slv



NEW

**ENDURA REGULAR SNACK BOX**  
White - M274S0001 ☐  
Brown - M274S0010 ☑  
Black - M274S0029 ☐  
175 x 90 x 85  
200 Ctn



NEW

**ENDURA LARGE SNACK BOX**  
White - M275S0001 ☐  
Brown - M275S0010 ☑  
Black - M275S0029 ☐  
205 x 107 x 78  
200 Ctn | 50 Slv



**ENDURA DINNER BOX**  
White - M420S0001 ☐  
Brown - M420S0010 ☑  
178 x 160 x 75  
150 Ctn | 75 Slv



**ENDURA FAMILY DINNER BOX**  
White - M304S0001 ☐  
Brown - M304S0010 ☑  
290 X 170 X 85  
100 Ctn | 25 Slv



**ENDURA HOT DOG BOX**  
White - M479S0001 ☐  
Brown - M479S0010 ☑  
210 x 70 x 77  
400 Ctn | 100 Slv



NEW

**ENDURA CHIP CUP**  
White - M429S0001 ☐  
Brown - M429S0010 ☑  
Black - M429S0029 ☐  
70 x 45 x 90  
Brown 500 Ctn | 100 Slv  
White & Black 500 Ctn | 50 Slv



**ENDURA #1 FOOD TRAY**  
White - M393S0001 ☐  
Brown - M393S0010 ☑  
131 x 91 x 50  
500 Ctn | 125 Slv



**ENDURA #2 FOOD TRAY**  
White - M384S0001 ☐  
Brown - M384S0010 ☑  
178 x 178 x 45  
240 Ctn | 60 Slv



**ENDURA #3 FOOD TRAY**  
White - M279S0001 ☐  
Brown - M279S0010 ☑  
180 x 134 x 45  
White - 250 Ctn | 50 Slv  
Brown - 400 Ctn | 100 Slv



**ENDURA #4 FOOD TRAY**  
M437S0010  
Brown ☑  
228 x 152 x 45  
260 Ctn | 63 Slv



**ENDURA #5 FOOD TRAY**  
M467S0010  
Brown ☑  
255 x 179 x 58  
100 Ctn | 50 Slv

\*Please note that the Endura Range is not available for sale in China

In stock in: ☑ China ☒ Hong Kong ☒ Philippines ☒ Indonesia ☒ Vietnam ☒ India | Minimum runs apply: ☐ ☒ ☐ ☐ ☐ ☐ ☐ ☐





# WINDOW PATISSERIE & CUPCAKE BOX RANGE

The Patisserie and Cupcake Box Ranges feature a large viewing window to show off cupcakes, cakes, pastries and other baked goods. A light claycoat provides protection against grease. Remove window before recycling or composting.



**FLAT LONG PATISSERIE BOX\***  
900ml  
Q314S0001  
White   
200 x 150 x 30  
200 Ctn | 50 Slv

**5in LONG PATISSERIE BOX\***  
1100ml  
K506S0001  
White   
130 x 110 x 80  
800 Ctn | 100 Slv

**7in LONG PATISSERIE BOX\***  
1500ml  
K621S0001  
White   
180 x 110 x 80  
400 Ctn | 50 Slv

**10in LONG PATISSERIE BOX\***  
2200ml  
K212S0001  
White   
260 x 110 x 80  
300 Ctn | 50 Slv



**7in SQUARE PATISSERIE BOX\***  
2400ml  
Q093S0001  
White   
180 x 180 x 75  
200 Ctn | 50 Slv

**9in SQUARE PATISSERIE BOX\***  
3900ml  
Q103S0001  
White   
230 x 230 x 75  
200 Ctn | 50 Slv

**9in DEEP SQUARE PATISSERIE BOX\***  
6900ml  
Q404S0001  
White   
240 x 240 x 120  
100 Ctn | 50 Slv

**11in SQUARE PATISSERIE BOX\***  
7800ml  
Q006S0001  
White   
280 x 280 x 100  
100 Ctn | 50 Slv



**2 CUPCAKE INSERT**  
Q122S8602  
White   
215 x 146  
1200 Ctn | 200 Slv  
Fits K621S0001  
7 inch Long Patisserie

**6 CUPCAKE WINDOW BOX\***  
5000ml  
Q746S0001  
White   
255 x 200 x 100  
100 Ctn | 50 Slv

**6 CUPCAKE INSERT**  
Q122S8604  
White   
290 x 236  
600 Ctn | 100 Slv  
Fits Q746S0001  
6 Cupcake Window Box

**12 CUPCAKE WINDOW BOX\***  
9000ml  
Q307S0001  
White   
365 x 255 x 100  
80 Ctn | 40 Slv

**12 CUPCAKE INSERT**  
Q122S8601  
White   
396 x 291  
240 Ctn | 80 Slv  
Fits Q307S0001  
12 Cupcake Window Box

# PAIL-PAKS™

Pail-Paks™ are poly-lined creating an excellent moisture and grease barrier. They are ideal for meals like pasta, curries, noodles, rice, and salad. They have a low profile for easy loading and access to the food. They are pre-formed with a built-in lid.



**#1 PAIL-PAK™ | 656ml**  
White - L534S0001   
Brown - L534S0010   
105 x 90 x 63  
450 Ctn | 50 Slv

**#1.5 PAIL-PAK™ | 954ml**  
White - L237S0001   
Brown - L237S0010   
142 x 111 x 64  
300 Ctn | 50 Slv

**#2 PAIL-PAK™ | 1073ml**  
White - L075S0001   
Brown - L075S0010   
197 x 139 x 48  
200 Ctn | 50 Slv

**#4 PAIL-PAK™ | 2146ml**  
White - L096S0001   
Brown - L096S0010   
197 x 139 x 89  
100 Ctn | 25 Slv



# FOOD PAILS

Food Pails are perfect for a variety of hot and cold foods. They're poly-lined, so can handle saucy foods like noodles and pasta, and salads with dressing. Pails are free standing for quick and easy filling. Our Wire Handle option means you can carry the pail without a bag.



**8oz FOOD PAIL | 240ml**  
L009S0001  
No Handle  
White   
62 x 46 x 66  
450 Ctn | 50 Slv

**16oz FOOD PAIL | 477ml**  
No Handle - L343S0001  
Wire Handle - L229S0001  
White   
76 x 55 x 85  
450 Ctn | 50 Slv

**26oz FOOD PAIL | 775ml**  
No Handle - L100S0001   
Wire Handle - L358S0001   
White  
79 x 66 x 103  
450 Ctn | 50 Slv

**32oz FOOD PAIL | 954ml**  
No Handle - L513S0001  
Wire Handle - L565S0001  
White   
89 x 69 x 110  
450 Ctn | 50 Slv

## SNACK BOXES & CHIP CARTONS

Snack Boxes and Chip Cartons are made from single-side coated board for grease resistance and have built-in lids as well as vent holes to keep food crispy.



COMPOSTABLE



RECYCLABLE



SUSTAINABLY SOURCED



**EXTRA SMALL SNACK BOX**  
White - K480   
Hot Food Fast - K480S0247   
130 x 103 x 57  
500 Ctn | 50 Slv



**SMALL SNACK BOX**  
White - K016S0001   
Hot Food Fast - K382S0247   
172 x 103 x 57  
500 Ctn | 50 Slv



**MEDIUM SNACK BOX**  
White - K213S0001   
Hot Food Fast - K340S0247   
172 x 103 x 70  
500 Ctn | 50 Slv



**LARGE SNACK BOX**  
White - K537S0001   
Hot Food Fast - K440S0247   
200 x 115 x 70  
400 Ctn | 50 Slv



**SMALL CHIP CARTON**  
K227S0247  
Hot Food Fast   
71 x 71 x 105  
500 Ctn | 50 Slv



**LARGE CHIP CARTON**  
K028S0247  
Hot Food Fast   
91 x 91 x 135  
500 Ctn | 50 Slv



**LARGE RECTANGULAR CHIP CARTON**  
K337S0247  
Hot Food Fast   
100 x 59 x 151  
500 Ctn | 50 Slv

## MARKET TRAYS

Market Trays are made of heavyweight Kraft board, providing a sustainable packaging solution for fruit and vegetable produce. The trays are sturdy and can withstand over-wrapping application as well as chilled storage.



COMPOSTABLE



RECYCLABLE



SUSTAINABLY SOURCED



**6x5in MARKET TRAY**  
P419S0010  
Brown   
141 x 105 x 30  
600 Ctn | 150 Slv



**7x5in MARKET TRAY**  
P052S0010  
Brown   
165 x 115 x 30  
600 Ctn | 150 Slv



**500G MARKET TRAY**  
P207S0010  
Brown   
200 x 130 x 40  
400 Ctn | 100 Slv



**1KG MARKET TRAY**  
P644S0010  
Brown   
220 x 140 x 50  
300 Ctn | 75 Slv

## CARRY PACKS

Carry Packs are able to hold a number of items for pre-packaged meals, or meal deals. They are made from sturdy board, with a convenient die-cut carry handle for easy transport.



COMPOSTABLE



RECYCLABLE



SUSTAINABLY SOURCED



**MEDIUM CARRY PACK**  
2700ml  
K394S0001  
White   
220 x 115 x 114  
250 Ctn | 25 Slv



**LARGE CARRY PACK**  
3800ml  
K092S0001  
White   
254 x 152 x 102  
200 Ctn



**EXTRA LARGE CARRY PACK**  
6400ml  
K428S0001  
White   
250 x 150 x 175  
200 Ctn

## FISH & CHIP BOXES & FOOD CONES

Fish & Chip Boxes are made from single-side coated board, with vent holes to help fried foods stay crispy. Food Cones are ideal for a premium presentation of finger-foods. They feature a grease-resistant varnish and are easy to hold while standing.



COMPOSTABLE



RECYCLABLE



SUSTAINABLY SOURCED



**SMALL FISH & CHIP BOX**  
1400ml  
K123S0043  
Fresh from the Sea   
245 x 90 x 63  
500 Ctn | 50 Slv



**MEDIUM FISH & CHIP BOX**  
1900ml  
K236S0043  
Fresh from the Sea   
245 x 95 x 85  
400 Ctn | 50 Slv



**LARGE FISH & CHIP BOX**  
3300ml  
K188S0043  
Fresh from the Sea   
250 x 150 x 90  
250 Ctn | 25 Slv



**SMALL FOOD CONE**  
Q148S0001  
White   
198 x 152  
500 Ctn | 125 Slv



**LARGE FOOD CONE**  
Q216S0001  
White   
256 x 190  
500 Ctn | 125 Slv

# Cups & Cup Accessories

## I AM ECO™ SINGLE WALL HOT CUPS

I am eco™ Hot Cups are made with a commercially compostable Polylactic Acid (PLA) bio lining for a great environmental choice. Single Wall hot cups are an economical hot cup option, with smooth flat sides for quick and easy branding with stamps or stickers.



COMPOSTABLE



SUSTAINABLY SOURCED



iam eco™



**4oz SINGLE WALL HOT CUP | 118ml**  
R618S0231  
I AM ECO™   
62mm Rim  
1000 Ctn



**8oz SINGLE WALL HOT CUP | 240ml**  
R173S0229  
I AM ECO™   
80mm Rim  
1000 Ctn



**12oz SINGLE WALL HOT CUP | 360ml**  
R257S0229  
I AM ECO™   
89mm Rim  
1000 Ctn



iam eco™



## I AM ECO™ SMOOTH DOUBLE WALL HOT CUPS

I am eco™ Hot Cups are made with a commercially compostable Polylactic Acid (PLA) bio lining for a great environmental choice. The Smooth Double Wall Hot Cups feature an outer wall which keeps coffee warm and hands cool, with a one-lid-fit solution.



COMPOSTABLE



SUSTAINABLY SOURCED



**8oz SQUAT SMOOTH DOUBLE WALL HOT CUP | 300ml**  
R794S0275  
COFFEE ORIGINS™   
89mm Rim  
500 Ctn | 25 Slv



**8oz SQUAT SMOOTH DOUBLE WALL HOT CUP | 300ml**  
I AM ECO™ White - R794S0229   
I AM ECO™ Brown - R794S0231   
89mm Rim  
500 Ctn



**12oz SMOOTH DOUBLE WALL HOT CUP | 360ml**  
R417S0229  
I AM ECO™   
89mm Rim  
500 Ctn



**16oz SMOOTH DOUBLE WALL HOT CUP | 480ml**  
R440S0229  
I AM ECO™   
89mm Rim  
500 Ctn



## COMBO SINGLE WALL & DOUBLE WALL HOT CUPS & LIDS

Combo Single Wall and Combo Smooth Double Wall Hot Cups have a one-lid fit solution. The smooth sides are ideal for easy branding with stamps or stickers. The Combo Double Wall cups features an outer wall to keep coffee warm and hands cool.



SUSTAINABLY  
SOURCED\*  
CUPS ONLY



**8oz COMBO SINGLE WALL HOT CUP | 250ml\***  
R280S0001  
White   
86mm Rim  
500 Ctn | 25 Slv



**12oz COMBO SINGLE WALL HOT CUP | 365ml\***  
R261S0001  
White   
86mm Rim  
500 Ctn | 50 Slv



**16oz COMBO SINGLE WALL HOT CUP | 440ml\***  
R276S0001  
White   
86mm Rim  
300 Ctn | 50 Slv



**8oz COMBO SMOOTH DOUBLE WALL HOT CUP | 250ml\***  
R192S0029  
Black   
86mm Rim  
500 Ctn | 25 Slv



**12oz COMBO SMOOTH DOUBLE WALL HOT CUP | 365ml\***  
R124S0029  
Black   
86mm Rim  
500 Ctn | 25 Slv



**16oz COMBO SMOOTH DOUBLE WALL HOT CUP | 440ml\***  
R125S0029  
Black   
86mm Rim  
300 Ctn | 20 Slv



**8/12/16oz COMBO HOT CUP LID | 86mm**  
White - V302S0001   
Black - V302S0029   
Fits: 86mm cup  
1000 Ctn | 100 Slv

## SUGARCANE HOT CUP LIDS

Sugarcane Hot Cup Lids offer a smooth mouthfeel and clear surface for baristas to write customers' names for orders.



COMMERCIALY  
COMPOSTABLE  
EN 13432



SUSTAINABLY  
SOURCED



**8oz SUGARCANE HOT CUP LID | 80mm**  
V747S0001  
White   
Fits: 80mm rim cup  
1000 Ctn | 50 Slv



**8oz SQUAT/12/16oz SUGARCANE HOT CUP LID | 89mm**  
V865S0001  
White   
Fits: 89mm rim cup  
1000 Ctn | 50 Slv



## CPLA HOT CUP LIDS

CPLA Hot Cups Lids are made from crystalline polylactic acid, a renewable bioplastic. These commercially certified compostable lids provide a tight seal for a no-spill solution, ideal for hot drinks on the go.



COMMERCIALY  
COMPOSTABLE  
AS 4736 | ABAP 10246



**4oz CPLA HOT CUP LID | 62mm**  
V551S0379  
Opaque White   
Fits: 62mm rim cup  
2000 Ctn | 50 Slv



**8oz CPLA HOT CUP LID | 80mm**  
V063S0379  
Opaque White   
Fits: 80mm rim cup  
1000 Ctn | 50 Slv



**8oz SQUAT/12/16oz CPLA HOT CUP LID | 89mm**  
V779S0379  
Opaque White   
Fits: 89mm rim cup  
1000 Ctn | 50 Slv

## HOT CUP LIDS

Smooth Hot Cup Lids provide an ideal space for baristas to record orders or customer names. Spout Hot Cup Lids are an excellent choice for easy 'on-the-go' consumption of hot drinks, designed to reduce chance of spillage. Click Back Hot Cup Lids feature a convenient sipper hole that can be opened and resealed with the click-back lid, ideal for drive-through hot drink purchases.



**4oz HOT CUP LID | 62mm**  
V942S9525  
White   
Fits: 62mm rim cup  
1000 Ctn | 50 Slv



**8oz SMOOTH HOT CUP LID | 80mm**  
White - V784S0001   
Black - V784S0029   
Fits: 80mm rim cup  
1000 Ctn | 100 Slv



**12/16/20oz SMOOTH HOT CUP LID | 89mm**  
White - V668S0001   
Black - V668S0029   
Fits: 89mm rim cup  
1000 Ctn | 100 Slv



**8oz SPOUT HOT CUP LID | 80mm**  
White - V543S0001   
Black - V543S0029   
Fits: 80mm rim cup  
1000 Ctn | 100 Slv



**8oz CLICK-BACK HOT CUP LID | 80mm**  
White - V221S0001   
Black - V659S0029   
Fits: 80mm rim cup  
1000 Ctn | 100 Slv



**12/16/20oz CLICK-BACK HOT CUP LID | 89mm**  
White - V220S0001   
Black - V851S0029   
Fits: 89mm rim cup  
1000 Ctn | 100 Slv



**8oz BUTTON HOT CUP LID | 80mm**  
White - V053S0001D   
Black - V053S0029   
Fits: 80mm rim cup  
1000 Ctn | 100 Slv



**12/16/20oz BUTTON HOT CUP LID | 89mm**  
White - V051S0001D   
Black - V051S0029   
Fits: 80mm rim cup  
1000 Ctn | 100 Slv

# HOT CUPS & LID GUIDE

Detpak offers a range of lids to suit our hot cups. Match the right lid to the right cup with our handy guide.



62mm Lid



Fits 4oz Cup

80mm Lid



Fits 8oz Cup

86mm Lids



Fits 8/12/16oz Combo Cup

89mm Lids



Fits 8oz Squat, 12/16/20oz Cup



## DRINK TRAYS

Drink Trays are constructed from study board and securely hold up to four drinks, with a space in the middle for straws or snacks. Our Moulded Drink Trays are made from recycled paper and are strong and sturdy for carrying hot beverages.



# Plates, Bowls & Cutlery



**4 CUP DRINK TRAY**  
M283S0010  
Brown   
290 x 174 x 37  
100 Ctn | 50 Slv  
Fits 4oz - 20oz Hot Cup



**ENDURA MIGHTY DRINK TRAY**  
M905S0010  
Brown   
198 x 174 x 37  
100 Ctn



**2-CUP PULP DRINK TRAY**  
P547S0010  
Brown   
216 x 112 x 48  
600 Ctn | 100 Slv  
Fits 4oz - 20oz Hot Cup



**4-CUP PULP DRINK TRAY**  
P391S0010  
Brown   
220 x 220 x 49  
300 Ctn | 150 Slv  
Fits 4oz - 20oz Hot Cup



## ENDURA PAPER STRAWS

An alternative to plastic straws, the Endura Paper Straws have been designed with quality in mind and tested to last for over an hour in cold and frozen beverages. Endura Paper Straws are suitable for soft drinks right through to thick shakes.



**6MM ENDURA PAPER STRAW**  
Y285S0001  
White   
6mm x 197mm  
5000 Ctn | 250 Slv



**8MM ENDURA PAPER STRAW**  
Y527S0001  
White   
8mm x 185mm  
4000 Ctn | 200 Slv



**8MM WRAPPED ENDURA PAPER STRAW**  
Y448S0001  
White   
8mm x 185mm  
6000 Ctn | 250 Slv



**10MM ENDURA PAPER STRAW**  
Y581S0001  
White   
10mm x 210mm  
5000 Ctn | 250 Slv



## PAPER PLATES

Paper Plates are compostable, recyclable and made of quality board.



COMPOSTABLE



RECYCLABLE



SUSTAINABLY SOURCED



**6in PLATE**  
N384S0001  
White   
150mm  
1000 Ctn | 50 Slv



**7in PLATE**  
N144S0001  
White   
175mm  
1000 Ctn | 50 Slv



**9in PLATE**  
N601S0001  
White   
230mm  
1000 Ctn | 50 Slv

## I AM ECO™ PAPER BOWLS & PLA LIDS

I am eco™ Paper Bowls are great for salads, fruit salads, yoghurt and soup. The bowls are made from paperboard with a commercially compostable Polylactic Acid (PLA) lining.



COMPOSTABLE  
EN 13432



SUSTAINABLY SOURCED  
BOWLS ONLY



**8oz I AM ECO BOWL | 240ml**  
N700S0229  
I am eco™ white   
87 x 87 x 58 | 87mm Rim  
1000 Ctn | 50 Slv



**12oz I AM ECO BOWL | 360ml**  
N701S0229  
I am eco™ white   
104 x 104 x 59 | 104mm Rim  
500 Ctn | 25 Slv



**16oz I AM ECO BOWL | 480ml**  
N702S0229  
I am eco™ white   
104 x 104 x 75 | 104mm Rim  
500 Ctn | 25 Slv



**8oz PLA LID**  
V350S0001  
Opaque   
Fits 87mm Rim bowls  
1000 Ctn | 50 Slv



**12/16oz PLA LID**  
V375S0001  
Opaque   
Fits 104mm Rim bowls  
500 Ctn | 50 Slv



## WOODEN CUTLERY

The Wooden Cutlery Range is made from 100% sustainably sourced Birchwood and has a premium, smooth surface. The Cutlery Pack contains a generous napkin, wooden fork and knife coated in non-toxic, plant-based Carnauba Wax, all sealed inside a recyclable paper bag.



COMPOSTABLE



SUSTAINABLY SOURCED



**16cm COATED WOODEN CUTLERY FORK, KNIFE & NAPKIN PK**  
Y707S0350  
Natural   
200 x 70 x 5  
400 Ctn



**16cm UNCOATED WOODEN FORK**  
Y813S0350  
Natural   
158 x 27 x 2  
2000 Ctn | 100 Slv



**16cm UNCOATED WOODEN SPOON**  
Y674S0350  
Natural   
158 x 32 x 2  
2000 Ctn | 100 Slv



**16cm UNCOATED WOODEN KNIFE**  
Y798P0001  
Natural   
165 x 21 x 2  
2000 Ctn | 100 Slv



## UNI-CUP RANGE

The Uni-Cup Range is poly-lined on the inside for leak-proof performance, and can be used for hot or cold foods. They're easy to hold, and are great for soups and noodles, as well as fruit salad and yoghurt. The Uni-Cup comes with a one-lid-fit solution.



SUSTAINABLY SOURCED  
CUPS ONLY



**8oz UNI-CUP | 240ml**  
U783S0001  
White   
97 x 97 x 54 | 97mm Rim  
500 Ctn | 50 Slv



**12oz UNI-CUP | 360ml**  
U805S0001  
White   
97 x 97 x 75 | 97mm Rim  
500 Ctn | 50 Slv



**16oz UNI-CUP | 480ml**  
U680S0001  
White   
97 x 97 x 111 | 97mm Rim  
500 Ctn | 50 Slv



**8/12/16oz UNI-CUP LID**  
V432S0001  
White   
97mm  
500 Ctn | 50 Slv

## ICE CREAM, SAVOURY BOWLS & CONTAINERS

Ice Cream, Savoury Bowls & Containers are all poly-lined. Making it a versatile choice for serving hot, cold and frozen foods such as ice cream, soups, and salads.



SUSTAINABLY  
SOURCED



**3oz ICE CREAM BOWL | 89ml**  
White - N647S0001   
Glacier - N647S0260   
70 x 70 x 41 | 70mm Rim  
1000 Ctn | 50 Slv



**5oz ICE CREAM BOWL | 148ml**  
White - N735S0001   
Glacier - N735S0260   
86 x 86 x 52 | 86mm Rim  
1000 Ctn | 50 Slv



**8oz ICE CREAM BOWL | 236ml**  
White - N825S0260   
Glacier - N825S0260   
95 x 95 x 62 | 95mm Rim  
1000 Ctn | 50 Slv



**12oz ICE CREAM BOWL | 355ml**  
White - N899S0001   
Glacier - N899S0260   
114 x 114 x 53 | 114mm Rim  
500 Ctn | 50 Slv



**16oz ICE CREAM BOWL | 473ml**  
White - N745S0001   
Glacier - N745S0260   
114 x 114 x 72 | 114mm Rim  
500 Ctn | 50 Slv



**24oz ICE CREAM BOWL | 708ml**  
White - N876S0001   
Glacier - N876S0260   
114 x 114 x 99 | 114mm Rim  
500 Ctn | 50 Slv



**12oz SAVOURY BOWL**  
N899S0259  
Harvest   
114 x 114 x 53 | 114mm Rim  
500 Ctn | 50 Slv



**16oz SAVOURY BOWL | 473ml**  
N745S0259  
Harvest   
114 x 114 x 72 | 114mm Rim  
500 Ctn | 50 Slv



**24oz SAVOURY BOWL | 708ml**  
N876S0259  
Harvest   
114 x 114 x 99 | 114mm Rim  
500 Ctn | 50 Slv



**32oz SAVOURY BOWL | 946ml**  
N636S0259  
Harvest   
114 x 114 x 104 | 140mm Rim  
600 Ctn | 50 Slv



**13oz BROWN BOWL | 390ml**  
N492S0001  
Brown   
115.4 x 97 x 62  
500 Ctn | 50 Slv



**18oz BROWN BOWL | 520ml**  
N378S0001  
Brown   
115.4 x 97 x 78  
500 Ctn | 50 Slv



**29oz BROWN BOWL | 850ml**  
N388S0001  
Brown   
140 x 116 x 74  
600 Ctn | 50 Slv



**37oz BROWN BOWL | 1090ml**  
N478S0001  
Brown   
164.8 x 142 x 63  
300 Ctn | 50 Slv



**500ml KRAFT RECTANGULAR CONTAINER**  
N114S0010  
Brown   
169 x 117 x 41  
300 Ctn



**750ml KRAFT RECTANGULAR CONTAINER**  
N202S0010  
Brown   
169 x 117 x 56  
300 Ctn



**1000ml KRAFT RECTANGULAR CONTAINER**  
N307S0010  
Brown   
169 x 117 x 76  
300 Ctn

# ICE CREAM, SAVOURY BOWL & CONTAINER LIDS

Our bowls and containers are complemented with a range of dome and flat lids which are recyclable.



RECYCLABLE



# Wraps



**3oz PET DOME LID**  
V689S0001  
Clear   
70 Rim  
2000 Ctn | 50 Slv



**5oz PET DOME LID (NO HOLE)**  
V803S0001  
Clear   
86 Rim  
1000 Ctn | 50 Slv



**8oz PET DOME LID (NO HOLE)**  
V782S0001  
Clear   
95 Rim  
1000 Ctn | 50 Slv



**12/16/24oz DOME BOWL LID (PET WITH SPOON HOLE)**  
V643S0064N  
Clear   
114 Rim  
500 Ctn | 50 Slv



**12/16/24oz PP FLAT BOWL LID**  
V853S0064  
Natural   
114 Rim  
500 Ctn | 50 Slv



**32oz PP FLAT BOWL LID**  
V727S0064  
Natural   
140 Rim  
600 Ctn | 50 Slv



**13/18oz BROWN BOWL LID**  
V446S0001  
Clear   
115.5 Rim  
500 Ctn



**29oz BROWN BOWL LID**  
V437S0001  
Clear   
140 Rim  
600 Ctn



**37oz BROWN BOWL LID**  
V473S0001  
Clear   
164.8 Rim  
300 Ctn



**500/750/1000ml PP FLAT RECTANGULAR LID**  
V154S0064  
Clear   
169 x 117  
300 Ctn



# RENEWABLE WAXED WRAP

Renewable Waxed Wraps are made from natural renewable plant based wax and paper. They are Home Compostable to Australian Standard AS 5810 and Commercially Compostable to Australian Standard AS 4736.



HOME COMPOSTABLE  
AS 5810 (ABAP 20171)



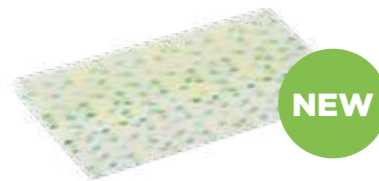
COMMERCIALY COMPOSTABLE  
AS 4736 (ABAP 10312)



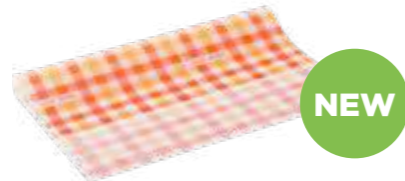
SUSTAINABLY SOURCED



NO ADDED PFAS\*



**RENEWABLE WAXED SANDWICH WRAP\***  
F875S0414  
Leaf   
380 X 330  
3000 Ctn | 1000 Slv



**RENEWABLE WAXED BURGER WRAP\***  
F856S0413  
Gingham   
380 X 330  
3000 Ctn | 1000 Slv

## The Renewable Wrap



**Plant-based wax**  
Made from natural and renewable sources like sunflower seeds and canola.



**No GMO**  
Free from GMO and animal products.



**Up to 500kgs**  
Of Paraffin Wax saved per 1 million wraps.



**Less energy**  
Less energy used in production.



**Industry leading**  
One of the first of its kind.



**Compostable**  
Certified Commercially Compostable to Australian Standard AS 4736 and Home Compostable to Australian Standard AS 5810



**Palm oil free**  
No Palm or Mineral oil inputs.



**No Added PFAS**  
Made without fluorine-based chemicals.



## DELI-WRAP™

Our Deli-Wrap™ has a light wax coverage on both sides, creating a food wrap with a good moisture barrier, whilst also allowing breathability. They're perfect for wrapping sandwiches, baguettes and bakery items.



SUSTAINABLY  
SOURCED



## BURGER & GREASE RESISTANT WRAP

Burger Wraps are tissue paper with a generous wax or foil layer on one side, providing excellent grease resistance. Ideal for wrapping juicy burgers, kebabs and hot rolls.



SUSTAINABLY  
SOURCED



**LARGE PICK-UP SHEET DISPENSER**  
F408S0001A  
White   
198 x 198  
16000 Ctn | 1000 Dispenser



**SMALL DELI-WRAP™ DISPENSER**  
F443S0001  
White   
200 x 330  
5000 Ctn | 1000 Dispenser



**MEDIUM DELI-WRAP™ DISPENSER**  
F322S0001  
White   
380 x 247  
5000 Ctn | 1000 Dispenser



**LARGE DELI-WRAP™**  
F325S0001  
White   
400 x 330  
3000 Ctn | 1000 Slv



**SMALL WAXED BURGER WRAP**  
F178S0039  
Fresh 'N' Tasty   
330 x 305  
2000 Ctn | 1000 Slv



**WAXED BURGER WRAP**  
F120S0001  
White   
380 x 330  
3000 Ctn | 1000 Slv



**WAXED BURGER WRAP**  
F120S0010A  
Brown   
380 x 330  
2000 Ctn | 1000 Slv



## FRESH, PARCHMENT & VERSA-WRAP

Fresh Wraps have a protective poly layer and Versa-Wraps have a layer of extruded polyethylene that provides good moisture & grease resistance on the poly side. Both wraps are ideal for cold meats, cheese and small goods, keeping them fresher for longer.



SUSTAINABLY  
SOURCED



**FOIL BURGER WRAP**  
F304S0039  
Fresh 'N' Tasty   
330 x 300  
2000 Ctn | 500 Slv



**SMALL GREASE RESISTANT WRAP**  
F456  
Brown   
305 x 305  
2000 Ctn



**LARGE GREASE RESISTANT WRAP**  
F953P0018  
White   
380 x 375  
2000 Ctn



**FRESH WRAP**  
F066S0035  
Italian   
400 x 330  
1500 Ctn



**VERSA-WRAP**  
F062S0001  
White   
310 x 305  
3000 Ctn | 1000 Slv



**SILICON PARCHMENT WRAP**  
F832  
White   
229 x 229  
1000 Ctn

# Napkins

## NAPKINS

Our Napkins are made from thick quality materials for everyday use. We also have a range of dispenser options for the Exacta napkin.



COMPOSTABLE



SUSTAINABLY SOURCED



**1 PLY C FOLD DISPENSER NAPKIN**  
G599S0001  
White   
230 x 220  
5000 Ctn | 500 Slv



**1 PLY QUARTER FOLD NAPKIN**  
White - G603S0001   
Brown - G603   
320 x 320  
3000 Ctn | 250 Slv



**2 PLY QUARTER FOLD NAPKIN**  
G562S0001  
White   
320 x 320  
3000 Ctn | 500 Slv



**1 PLY M FOLD LUNCHEON NAPKIN**  
White - G334S0001   
Brown - G334   
320 x 320  
3000 Ctn | 500 Slv



**2 PLY M FOLD LUNCHEON NAPKIN**  
G416S0001  
White   
320 x 320  
3000 Ctn | 500 Slv



**2 PLY DINNER NAPKIN (GATE FOLD)**  
G158S0001  
White   
400 x 400  
1000 Ctn | 100 Slv



**2 PLY EXACTA NAPKIN**  
White - G982S0001   
Brown - G724S0010   
232 x 157  
10000 Ctn | 200 Slv  
Fits Small and Large Exacta Countertop Dispensers



# Black Range, available now



## Understanding our Packaging Terms

### What is 'Sustainably Sourced'?

The paper or board materials used in our products are responsibly sourced, and the supplier has been audited for evidence of sustainable and ethical practices. Our range of I am eco™ Sugarcane Products is made from either renewable resources or post-consumer recycled content.

### What is 'Recyclable'?

A product or material is recyclable if it can be collected and re-manufactured into a new product. If a Detpak product is listed as recyclable, it means this product can be readily recycled via kerbside recycling streams once food residue has been removed.

### What is 'Compostable'?

Our compostable packaging is made from organic materials that break down naturally in optimal conditions, leaving no toxic residue. Microorganisms, humidity, and heat is required to break packaging down effectively and when combined with green waste and food scraps, can create a nutrient dense compost to improve our soils.

Detpak's range of paper and unlined board products are readily compostable and for all other items, various global certification standards exist, enabling consumers to understand how to responsibly dispose of their packaging. Certain packaging requires commercial composting facilities with the right amount of heat and moisture to break down, and other items may be compostable in a home compost environment. We recommend you check with your local council re acceptance of food soiled compostable packaging through green waste collection.



#### Commercial Compostability

AS 4736 – Australian Standard Certification  
EN 13432 – European Certification



#### Home Compostability

AS 5810 – Australian Standard Certification

### Our Materials

#### Paper and wood

Our paper and board is sourced only from responsible forestry, meaning no old growth forests are used. We use quality papers and board when making all our products for premium quality assurance.

#### PLA (Polylactic Acid)

Polylactic acid is a bioplastic derived from plants such as corn, tapioca and potato. It is a rapidly renewable resource and can be certified as industrially compostable. Our PLA options include CPLA (crystallised polylactic acid) or PLA-lined packaging.

#### Sugarcane (Bagasse)

Sugarcane bagasse, a byproduct from sugarcane production, is an example of fibre-based packaging and is a rapidly renewable resource. Our sugarcane can be certified as either home or industrially compostable.

#### Plastic

Our traditional plastic options include cups, lids and bowls and are made from PET, polystyrene or polypropylene. These items are marked with a Plastics Identification Code (PICs) between 1 and 7, which denotes the type of plastic used to make the product.

### How we measure our products

Measurements throughout The Book are displayed in millimeters.



#### Bags & Wraps

L x W x G  
Length x width x gusset (where applicable)



#### Bowls

L x W x H  
Diameter x diameter x height



#### Cartons & Trays

L x W x H  
Length x width x height

<b>Sustainably Sourced</b>	When you see this statement, it refers to the definition above, 'What is Sustainably Sourced?'
<b>^ Compostable</b>	When you see this statement, it means that the product with ^ symbol against it is the <b>Compostable</b> item within that range.
<b>+ Recyclable</b>	When you see this statement it means that the product with + symbol against it is the <b>Recyclable</b> item within that range.



# Detpak

View our range online to see full specifications, features & benefits plus to keep up to date with our latest innovation & updates visit :

[detpak.com](http://detpak.com)  
[connect@detpak.com](mailto:connect@detpak.com)

