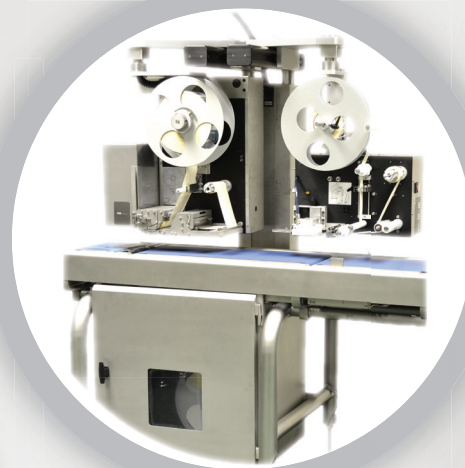
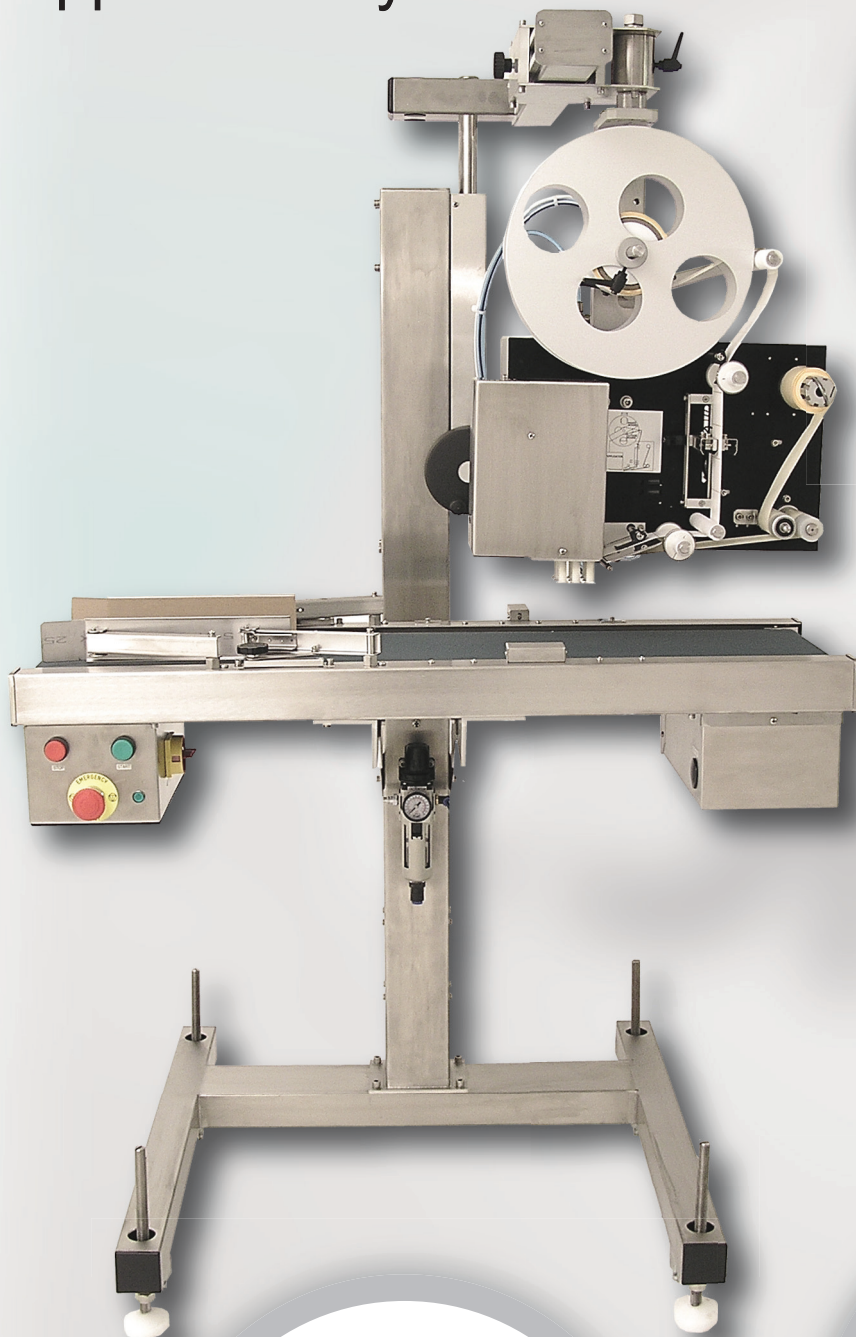


LA-3600

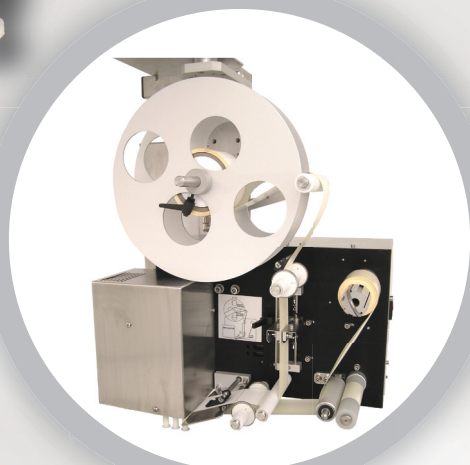
automatic label
application system



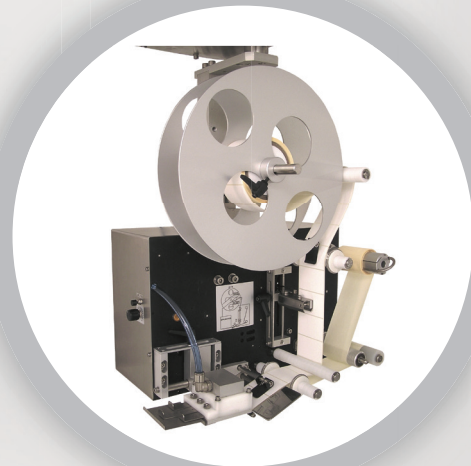
Compatible with Digi labeller systems



Application system with stand only



Blow down or touch applicator



Concave shoe applicator

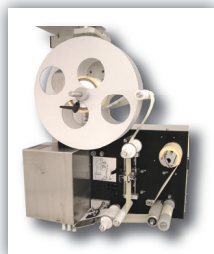
Digi - a leading company in PC Based weigh priced labelling systems

The Digi LA-3600 is an independent automatic label applicator, capable of labelling up to 120ppm and compatible with the Digi range of weigh price labellers.

As a multi-purpose applicator for use as either a stand-alone unit or integrated into the Digi range of dynamic weigh-price labellers and checkweighers, the LA-3600 benefits from a selection of pack guide, frame, conveyor and applicator options to meet most automatic labelling needs.

The LA-3600 has been designed with a versatility to be introduced as a complete in-line system or as an individual label applicator to complement existing production lines.

Machine Options



The Digi LA-3600 is a compact label applicator with suitability for a wide range of application requirements. The labeller is supplied with a choice of 6 or 9 finger touch, air box or concave shoe applicators and can apply labels from 20mm to 120mm high at a respective rate of up to 120 packs per minute.

The LA-3600 can be mounted on a stand enabling the label applicator to be placed above most conveyor systems and to complement existing production lines.

To further enhance the stand, the LA-3600 can also be supplied with a conveyor which can be incorporated into new or existing food processing lines as a complete and integrated unit. With the potential to accurately label up to 120 packs per minute and the small 1000mm long footprint of the conveyor, the LA-3600 proves a cost effective solution to most label application needs.

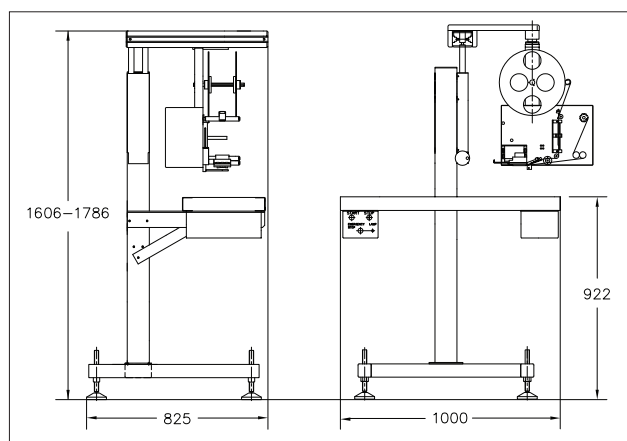
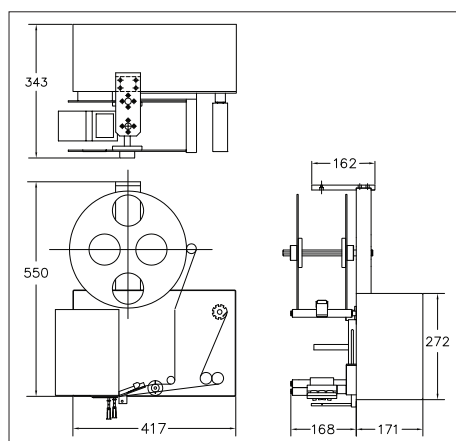
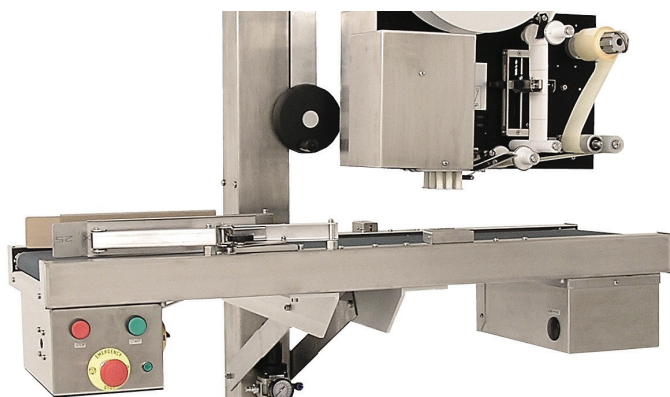
In accompaniment with the range of Digi's weigh price labellers, the LA-3600 can be mounted as an additional label applicator on our labelling stations (model dependant). This can allow for the application of supplementary or promotional labels during the weigh-price-labelling process.

Additional Options*

- A twin LA-3600 variant where two applicators can be mounted on one stand.
- Gap sensor options for conditions where the application of transparent labels may be required.
- Modified concave shoe applicator to accommodate labels of up to 150mm long.
- A choice of adjustable pack guides.

Specifications

Power:	220-240V AC 50Hz 105-115V AC 60Hz
Air:	4-6 bar 50-300 ltrs/min
Speed:	up to 120ppm* * dependant on label size
Applicator:	Air Box/Touch/Concave Shoe
Label Size:	
Airbox or Touch Applicator:	W 36mm-120mm (1.41in-4.72in) H 40mm-120mm (1.57in-4.72in)
Concave Shoe Applicator:	W 20mm-120mm (0.79in-4.72in) H 20mm-120mm* (0.79in-4.72in) <small>*150mm with extended shoe applicator and unique software (*5.91in)</small>
Label Roll:	Diameter 300mm (11.81in)
Label Core:	Diameter 76mm out or inside wound (2.99in)
Conveyor:	Length - 1000mm or 1500mm* (39.37in or <small>*Optional 59.06in*</small>)
Line height:	755mm-920mm or 920mm-1085mm (29.72in-36.22in) (29.72in-42.71in)
Rating:	Labeller - IP20 standard Conveyor - IP53 standard



*Custom options available, please contact marketing@us.digi-group.com

Issue 1. Document subject to change without notice (E.&O.E) ERRORS AND OMISSIONS EXCLUDED.

DIGI America Inc. (DAI)
 Corporate Headquarters
 76 Veronica Avenue
 Somerset, NJ, 08873
 TEL (732) 828-3633

West Coast Office
 530 West Central Ave, Suite C
 Brea, CA 92821
 TEL (714) 671-7911

