

- 100% EOU
- ISO 14001 & 9001 Certified
- CE Certified Products
- Registered Supplier of UN Agencies
- Exported to 63+ Countries
- Made in India Products



GOYUM GROUP

• EXTRACTION • REFINING • RECYCLING

A Govt. of India Recognised Star Export House

Manufacturer & Exporter of Mechanical Oil Extraction Plant and Spare Parts



AN ISO 9001 & 14001 CERTIFIED COMPANY CERTIFIED





GOYUM

OIL MILL FOR SELF EMPLOYMENT

We Manufacture and Export Complete Edible and Non-edible Oil Extraction Plant on Turnkey Basis Worldwide for Various Oilseeds and Nuts such as :



Soybean / Soyabean



Groundnut / Peanut



Sunflower Seed



Cottonseed



Palm Kernel



Copra / Coconut



Mustard / Canola / Rapeseed



CSNL / Cashew Nut Shell



Shewanut Kernel



Sesame Seed



Castor Seed



Neem Seed



VCO / Virgin Coconut



Corn Germ



Jatropha Seed



Niger Seed



Flax Seed



Safflower Seed



Layout Plan for 1 TPD and 3 TPD Oil Extraction Plant
Land Requirement (Shed)
About 300 sq. ft.: 15' X 20' (5 Mtr. X 6 Mtr.)

S.NO.	CONTENT	PAGE NO.
1	Chairman Message	4
2	Introduction	5
3	Manufacturing Facilities	6-7
4	Flow Diagram For Oil Extraction Unit	8-9
5	Flow Diagram For Soyabean Processing	10-11
6	Oil Mill Process Equipment	12-13
7	Oil Expellers / Oil Presses	14-23
7a	Model : Goyum 10 & 20	14
7b	Model : Goyum 60	14
7c	Virgin Coconut Oil Expeller	15
7d	Model : Goyum MK 3	16
7e	Model : Goyum MK 4	16
7f	Goyum 150	17
7g	Model : Goyum MK 5 C	17
7h	Model : Goyum 240	18
7i	Model : Goyum 600	19
7j	Model : Goyum 1500	20-21
7k	Model : Goyum 2400	22-23
8	Palm Kernel Oil Expeller / Oil Press (Model No. : 15, 27 & 33)	24
9	Soyabean Oil Expeller / Oil Press	25
10	Soyabean Extruder	25
11	Oil Filtration Equipment	26-27
12	Oil Expeller / Oil Mill Spare Parts	28
13	Spare Parts For Palm Kernel Oil Expeller (Model No. : 15, 27 & 33)	29
14	Spare Parts For Soyabean Extruder	29
15	Few Worldwide Installations	30-33
16	Service & After Sales Support	34
17	Notes	35

“A customer is the most important visitor on our premises. He is not dependent on us. We are dependent on him. He is not an interruption in our work. He is the purpose of it. We are not doing him a favour by serving him. He is doing us a favour by giving us the opportunity to serve him.”

- Mahatma Gandhi

CHAIRMAN'S MESSAGE



It is our immense pleasure and pride to speak about our growth oriented profile over the decades. The company has attained prominent global leadership in the field of Edible & Non-edible Oil Extraction, Oil & Fats and Allied Industry.

We are serving our valued customers to their complete satisfaction through efficient management and excellent workmanship, which we continue to maintain with our untiring efforts. We believe in competence, competitiveness and timely delivery with highest quality standards.

The best practice of operational standards, reliability and commitment to quality is the preferred choice for our customers at GOYUM.

As we look to the years ahead, we renew our pledge to remain committed to excellence, keep abreast of changes and innovation, adopt better manufacturing techniques and successfully overcome the challenges before us.

With open arms, we welcome you to Goyum Group.

Vinod Jain





GOYUM

INTRODUCTION

GOYUM Group is a leading Project Engineering Company established in 1971 and now a prominent name in the Edible & Non Edible Oil Processing Plants & Allied Industry.

We at **GOYUM** with our manufacturing units in India are pioneer in Planning, Engineering, Manufacturing, Installation and Commissioning of Complete Mechanical Oil Extraction Plants (Soyabean Oil Extraction Plant, Palm Kernel Oil Extraction Plant & Other Oilseeds and Nuts Oil Extraction Plant) Solvent Extraction Plant, Edible Oil Refinery Plant, Poultry, Fish & Animal Feed Plant, Oleochemical Plant, Fat Modification Plant, Rice Mill Machinery, Flour Mill Plant, MSW, Plastic & Industrial Shredder, Used Engine Oil Re-Refining Plant, Used Tyre Pyrolysis Plant, Industrial Steam Solution, Solar PV Solution, Water & Waste Water Treatment Plant, Food Processing Solutions and Pre Engineering Building.

We have supplied more than 750 projects on Turnkey basis which are performing successfully in 6 continents covering 63+ countries. We are registered with United Nation Agencies.

The plants offered by **GOYUM** are robust, flexible, versatile, safe, reliable and efficient. These plants are based on the commercially proven technologies, which are not only energy efficient & environment friendly, but also cost effective.

Further, we also undertake the expansion of the existing plants with modern technologies.

GOYUM is backed by a strong leadership, dedicated workforce and progressive update in technology.

OUR CERTIFICATIONS





GOYUM

MANUFACTURING FACILITIES

State-of-the-art-manufacturing units



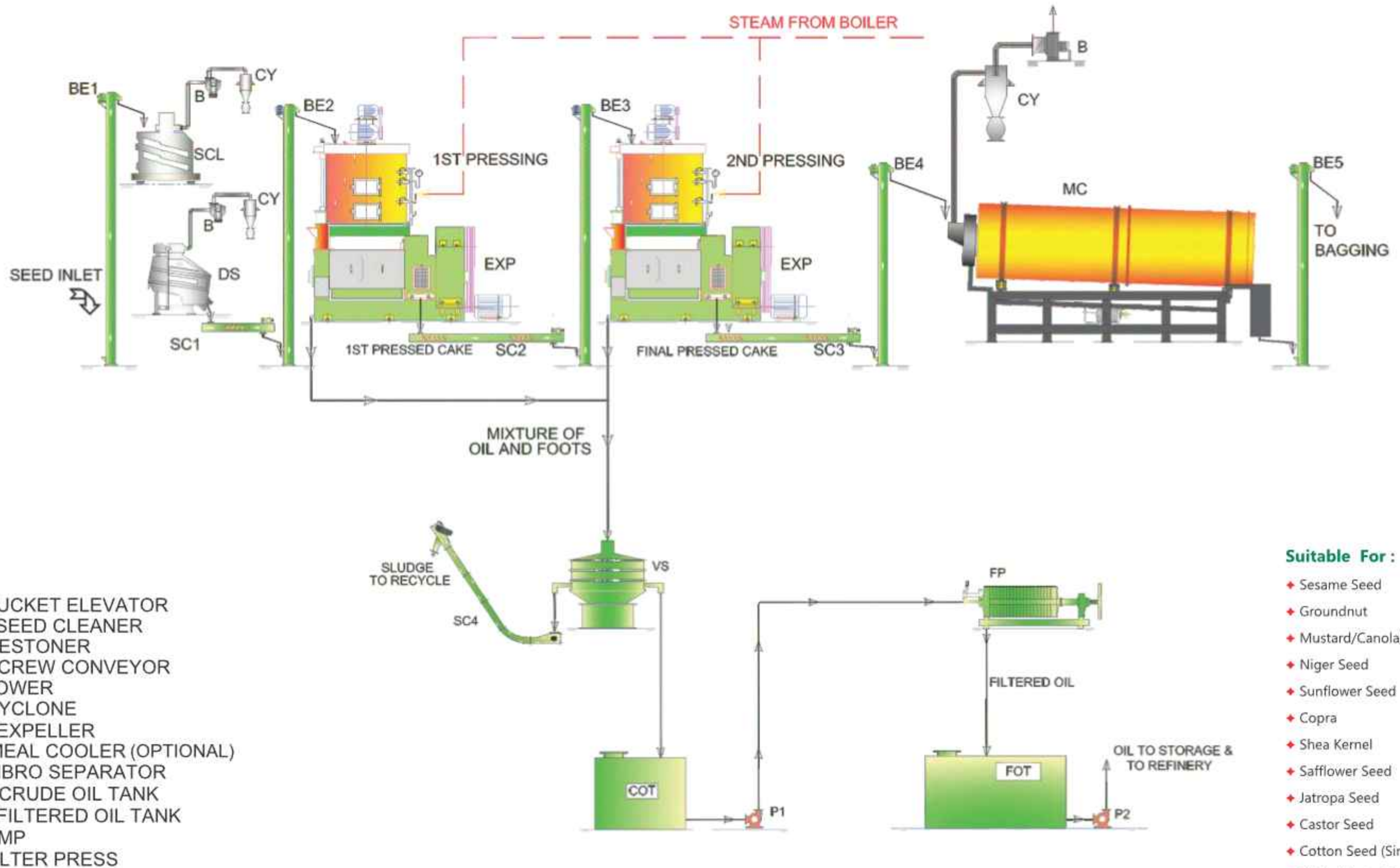


GOYUM

MANUFACTURING FACILITIES



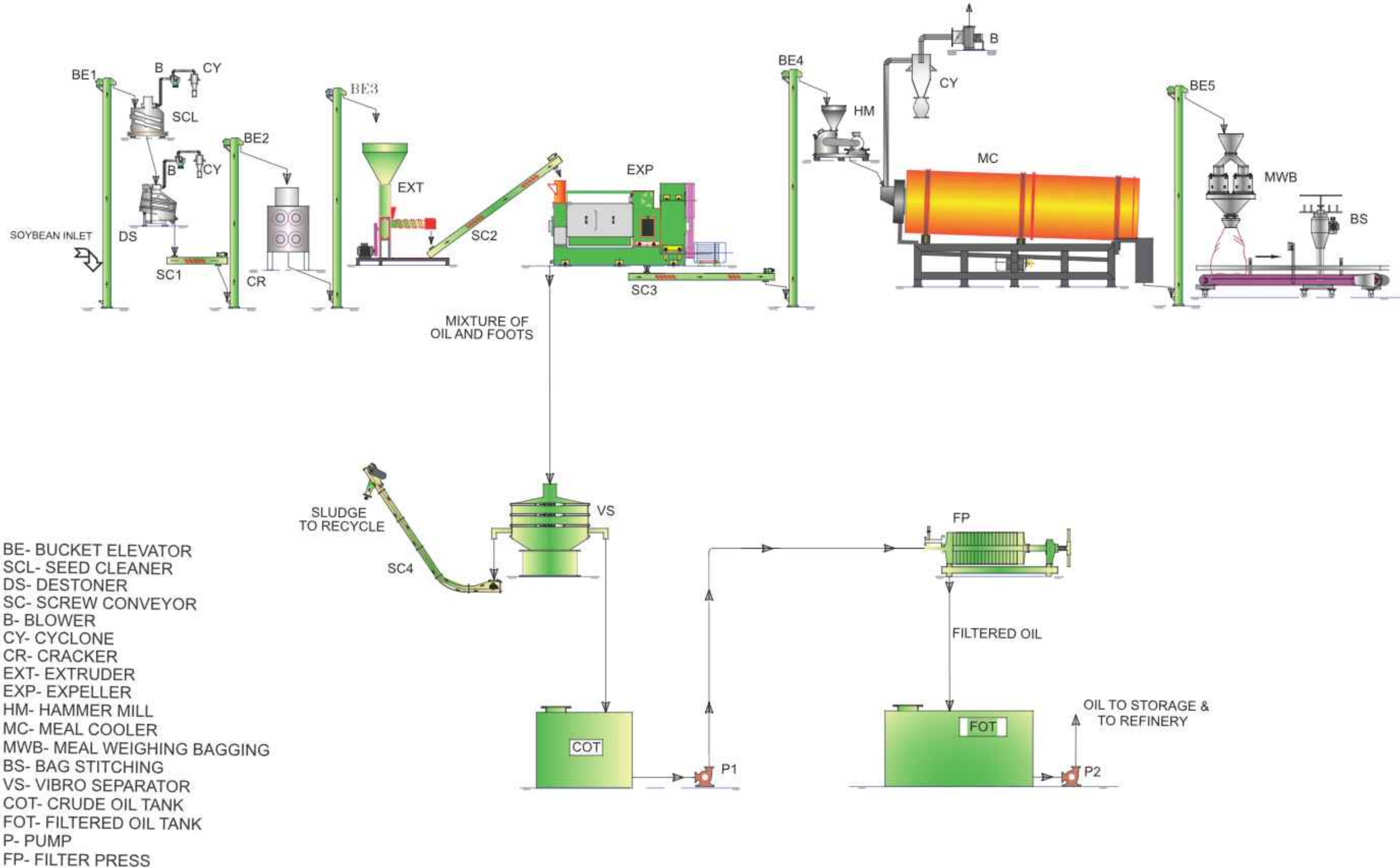
TYPICAL FLOW DIAGRAM FOR OIL EXTRACTION UNIT (DOUBLE PRESSING)



Suitable For :

- ♦ Sesame Seed
- ♦ Groundnut
- ♦ Mustard/Canola/Rapeseed
- ♦ Niger Seed
- ♦ Sunflower Seed
- ♦ Copra
- ♦ Shea Kernel
- ♦ Safflower Seed
- ♦ Jatropa Seed
- ♦ Castor Seed
- ♦ Cotton Seed (Single Press)
- ♦ CNSL (Single Press)

TYPICAL FLOW DIAGRAM FOR SOYBEAN PROCESSING





SEED CLEANER
Capacity : 1 TPH - 10 TPH



DESTONER
Capacity : 1 TPH - 10 TPH



GROUNDNUT DECORTICATOR
Capacity : 1 TPH - 5 TPH



JATROPHA DECORTICATOR
Capacity : 1 TPH - 5 TPH



DRYER
Capacity : 500 Kg./Hr. - 5 TPH



NEUTRALIZER
Capacity : 1 Tonne - 10 Tonne per batch



PALM NUT CRACKER
Capacity : 1 TPH - 5 TPH



HAMMER MILL
Capacity : 500 Kg./Hr. - 5TPH



COPRA CUTTER
Capacity : 500 Kg./Hr. - 5TPH



SOYA CRACKER
Capacity : 1 TPH - 10 TPH



VIBRO SEPARATOR

MATERIAL HANDLING EQUIPMENTS



SCREW CONVEYOR



BUCKET ELEVATOR



MEAL COOLER
Capacity : 100 TPD



FOOTS SEPARATOR TANK



ELECTRICAL PANEL

INDUSTRIAL STEAM SOLUTIONS



HORIZONTAL TYPE BOILER
Capacity : 1 TPH - 25 TPH



THERMIC FLUID HEATER
Capacity : 1 Lac Kilo Calories to any Calories

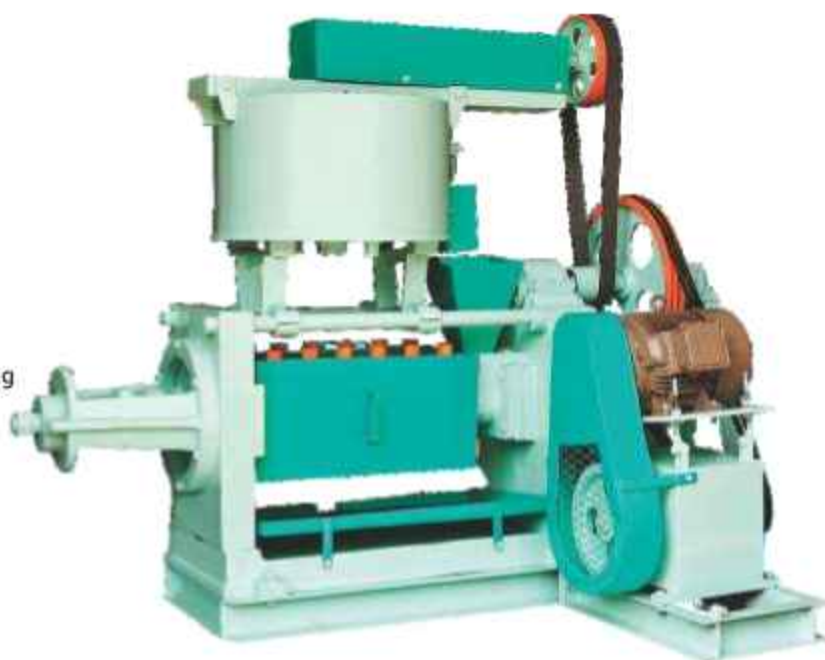


VERTICAL BOILER
Capacity : 50 Kg./Hr. - 950 Kg./Hr.

MODEL : GOYUM 10 & 20

Features :

- ♦ Cast Iron Bodies and Base.
- ♦ Single Reduction Gear Box of Cast Iron body with Mild Steel Spur Gears.
- ♦ Steel Fabricated Chamber with Three Sections.
- ♦ Chambers are Horizontally Fitted.
- ♦ Case Hardened Worm Assembly.
- ♦ Single Stage Feeding Drum With & Without Heating Arrangement (as required).
- ♦ Superior quality of Oil & Cakes.
- ♦ Low Maintenance.



Specifications :

MODEL	EXPELLER MOTOR	CAPACITY	CHAMBER SIZE	LENGTH	BREADTH	HEIGHT	WEIGHT
GOYUM 10	3 PH, 5 H.P., 1440 RPM	1 TON PER 24 HOURS	Ø 3.1/2" x 20" Long	1300 MM (4'3")	475 MM (1'7")	1075 MM (3'6")	600 Kgs
GOYUM 20	3 PH, 7.5 H.P., 1440 RPM	2-3 TON PER 24 HOURS	Ø 4" x 24" Long	2185 MM (7'2")	685 MM (2'3")	1422 MM (4'8")	950 Kgs

* Capacity differs with material density and quantity of oil in it.

MODEL : GOYUM 60



Features :

- ♦ Cast Iron Bodies.
- ♦ Double Reduction Gear Box of Cast Iron body with Mild Steel Helical Gears.
- ♦ Steel Fabricated Chamber with Three Sections.
- ♦ Chambers are Horizontally Fitted.
- ♦ Case Hardened Worm Assembly.
- ♦ Single Stage Cooker With Heating Arrangement.
- ♦ Superior quality of Oil & Cakes.
- ♦ Low Maintenance.

Specifications :

EXPELLER MOTOR	CAPACITY	CHAMBER SIZE	LENGTH	BREADTH	HEIGHT	WEIGHT
3 Phase, 20 H.P., 960 RPM	5 - 6 TON PER 24 HOURS	Ø 5" X 30" Long	2740 MM (8'12")	914 MM (2'11")	2130 MM (6'12")	1850 Kgs

* Capacity differs with material density and quantity of oil in it.

MODEL : VCO PRESS



This Oil Press is also suitable for cold pressing of oil seeds and nuts like Groundnut, Sesame, Mustard / Canola / Rape Seed, Sunflower, etc.

Features :

- ♦ The whole body is fabricated from stainless steel material.
- ♦ Chamber is of SS Casting.
- ♦ The Screw Press is directly coupled with Geared Motor.
- ♦ Cake thickness can be adjusted on the running machine.
- ♦ Best Quality of Oil and Cake.
- ♦ Low maintenance required.
- ♦ Less Space requirement.
- ♦ SS worm assembly.



Specifications :

EXPELLER MOTOR	CAPACITY	CHAMBER SIZE	LENGTH	BREADTH	HEIGHT	WEIGHT
3 Phase, 7.5 H.P., 1440 RPM	50 - 70 Kgs Per Hour	Ø 4" X 20" Long	1580mm (5'2")	460mm (1'6")	1300mm (4'3")	730 Kgs

* Capacity differs with material density and quantity of oil in it.

MODEL : GOYUM MK 3

Features :

- ◆ Cast Iron Body and Steel Fabricated Base.
- ◆ Double Reduction Gear Box of Cast Iron Body with Steel Spur Gears.
- ◆ Steel Fabricated Chamber with Three Sections.
- ◆ Chambers are Vertically Fitted.
- ◆ Chamber is Made from Mild Steel Plates. Size: $\varnothing 6" \times 33"$ Long.
- ◆ Case Hardened Worm Assembly and Cone Point.
- ◆ Main Worm Shaft can be Withdrawn Without Disturbing the Gear Box.
- ◆ Crammer Shaft Gives Extra Cramming of the Seed or Cake in the Feed Body.
- ◆ Kettle : 1 Stage with Steam Jackets of $\varnothing 48"$ for efficient Cooking of Seed. Pipe Fitting Contains all the Required accessories.
- ◆ The Machine needs to be stopped for adjusting the Cake Thickness.
- ◆ Superior quality of Oil & Cakes.
- ◆ Low Maintenance.



Specifications :

EXPELLER MOTOR	CAPACITY	LENGTH	BREADTH	HEIGHT	WEIGHT
3 Phase, 30 H.P., 1440 RPM	8 - 10 TPD*	2600 MM (8'6")	1250 MM (4'1")	2650 MM (8'8")	4200 Kgs

* Capacity differs with material density and quantity of oil in it.

MODEL : GOYUM MK 4

Features :

- ◆ Cast Iron Body and Steel Fabricated Base.
- ◆ Double Reduction Gear Box of Cast Iron Body with Mild Steel Fabricated Spur Gears.
- ◆ Steel Fabricated Chamber with Four Sections.
- ◆ Chambers are Vertically Fitted.
- ◆ Chamber is made from Mild Steel Plates in 3 different Sizes: $\varnothing 6-1/2" \times 36"$ Long, $\varnothing 7" \times 44"$ Long, $\varnothing 6-1/2" \times 0 7-1/2" \times 45"$ Long.
- ◆ Case Hardened Worm Assembly and Cone Point.
- ◆ Main Worm Shaft can be Withdrawn Without Disturbing the Gear Box.
- ◆ Crammer Shaft Gives Extra Cramming of the Seed or Cake in the Feed Body.
- ◆ Kettle : 3 Stages with Steam Jackets for efficient cooking of Seed. Pipe Fitting contains all the Required Accessories.
- ◆ The Machine has to be stopped for adjusting the Cake Thickness.
- ◆ Superior quality of Oil & Cakes.
- ◆ Low Maintenance.



Specifications :

EXPELLER MOTOR	KETTLE MOTOR	CAPACITY	LENGTH	BREADTH	HEIGHT	WEIGHT
3 Phase, 50 H.P., 1440 RPM	3 Phase, 5 H.P., 1440 RPM	15 TPD*	2650 MM (8'8")	1370 MM (4'6")	2745 MM (9')	4500 Kgs

*Capacity differs with material density & quality of oil seeds / nuts ** Size of machine can be changed as per chamber size

MODEL : GOYUM 150

Features :

- ♦ Steel Fabricated Body and Base.
- ♦ Double Reduction Gear Box of Mild Steel body with Cast Steel Helical Gears.
- ♦ Cast Steel Chamber with Four Sections.
- ♦ Chambers are Vertically Fitted.
- ♦ Chamber is made of Cast Steel Size : Ø 7.5" X Ø 6.5" X 45" Long.
- ♦ Hard Faced Worm Assembly, Discharge Ring and Compression Ring.
- ♦ Main Worm Shaft can be withdrawn without Disturbing the Gear Box.
- ♦ Crammer Shaft Gives Extra Cramming of the Seed or Cake in the Feed Body.
- ♦ Kettle : 3 or 4 stage kettle with Steam Jackets of Ø 48" for efficient cooking of Seed. Pipe Fitting Contains Safety Valve, Steam Spray Pipe, Pressure Gauge, Steam Valves & Steam Traps.
- ♦ Cake Thickness can be Adjusted on Running Machine.
- ♦ Superior Quality of Oil & Cake with less Residual Oil.
- ♦ Low Maintenance.



Specifications :

EXPELLER MOTOR	KETTLE MOTOR	CAPACITY	LENGTH	BREADTH	HEIGHT	WEIGHT
3 Phase, 40 / 50 H.P., 1440 RPM	3 Phase, 7.5 H.P., 1440 RPM	15 - 17 TPD*	2600 MM (8'6")	1400 MM (4'7")	371 MM (1'3")	4800 Kgs.

* Capacity differs with material density and quantity of oil in it.



MODEL : GOYUM MK 5C

Features :

- ♦ Cast Iron Body and Steel Fabricated Base.
- ♦ Double Reduction Gear Box of Cast Iron Body with Mild Steel Fabricated Gears.
- ♦ Steel Fabricated Chamber with Four Sections.
- ♦ Chambers are Horizontally Fitted.
- ♦ Chamber is made from Mild Steel Plates. Size: Ø 7" X 44" Long
- ♦ Case Hardened Worm Assembly and Cone Point.
- ♦ Main Worm Shaft can be withdrawn without Disturbing the Gear Box.
- ♦ Kettle : 3 or 4 Stages with Steam Jackets of Ø 48" for efficient cooking of Seed. Pipe Fitting contains all the required accessories.
- ♦ The Machine has to be stopped for adjusting the Cake Thickness.
- ♦ Superior quality of Oil & Cakes.
- ♦ Low Maintenance.

Specifications :

EXPELLER MOTOR	KETTLE MOTOR	CAPACITY	LENGTH	BREADTH	HEIGHT	WEIGHT
3 Phase, 50 H.P., 1440 RPM	3 Phase, 5 H.P., 1440 RPM	20 TPD*	3550 MM (11'8")	1300 MM (4'3")	3600 MM (11'10")	5700 Kgs.

* Capacity differs with material density and quantity of oil in it. ** Size of Machine can be changed as per chamber size

MODEL : GOYUM 240



This Oil Expeller comes with Round Kettle/Cooker for Export Market

Features :

- ◆ This model has been designed in a simple and symmetrical shape.
- ◆ Mild Steel Fabricated Base with Cast Iron Bodies.
- ◆ Double Reduction Gear Box with Cast Steel Helical Gears and Special Steel Pinion Shafts.
- ◆ Chambers are Vertically Fitted.
- ◆ This Expeller has Two Chambers made of Cast Steel Feed Size : Ø 9" x 24" Long, Discharge Size : Ø 7" x 36" Long
- ◆ Hard faced Worm Assembly.
- ◆ Main Worm Shaft can be withdrawn without disturbing the Gear Box.
- ◆ Long Kettle provided with Safety Valve and Pressure Gauge. Round Kettle along with all required accessories. can also be provided as per requirement.
- ◆ Cake Thickness can be Adjusted after stopping the Machine.
- ◆ Gear Box is aligned with the bodies on a single fabricated base.
- ◆ Superior quality of Oil & Cake.
- ◆ Low Maintenance.

Specifications :

EXPELLER MOTOR	KETTLE MOTOR	CAPACITY	LENGTH	BREADTH	HEIGHT	WEIGHT
3 Phase, 75 H.P., 960 RPM	3 Phase, 5 H.P., 1440 RPM	20 - 25 TPD*	3090 MM (10'2")	1250 MM (4'1")	2320 MM (7'7") LONG KETTLE	6500 Kgs

* Capacity differs with material density and quantity of oil in it.

MODEL : GOYUM 600

ALL STEEL CONSTRUCTION



Features:

- ♦ This model has been designed in a simple and symmetrical shape.
- ♦ Mild Steel Fabricated Bodies and Base.
- ♦ Triple Reduction Gear Box with Cast Steel Helical Gears and Special Steel Pinion Shafts.
- ♦ Chambers are Vertically Fitted.
- ♦ This Expeller has Two Chambers made of Cast Steel.
Feed Size : \varnothing 9" x 36" Long, Discharge Size : \varnothing 8" x 36" Long.
- ♦ Hard Faced Worm Assembly, Discharge Ring and Sliding Ring.
- ♦ Main Worm Shaft can be withdrawn without disturbing the Gear Box. The Shaft is Water Cooled.
- ♦ Crammer Shaft for Extra Cramming of the Seed or Cake is fitted on the Feed Body and is driven by 3 H.P. Geared Motor.
- ♦ Kettle : 4 Stages with Steam Jackets of \varnothing 60" for efficient cooking of Seed. Pipe fitting contains Safety Valve, Steam Spray Pipe, Pressure Gauge, Steam Valves & Steam Traps.
- ♦ Cake Thickness can be Adjusted on Running Machine.
- ♦ Gear Box is aligned with the body on a single fabricated base.
- ♦ Superior quality of Oil & Cake.
- ♦ Low Maintenance.

Specifications :

ITEM	EXPELLER MOTOR	KETTLE MOTOR	CAPACITY	LENGTH	BREADTH	HEIGHT	WEIGHT
EXPELLER	3 Phase, 100 H.P., 1440 RPM	3 Phase, 20 H.P., 1440 RPM	50 TPD* in Pre-Pressing 30 TPD* in Single & Final Crushing	4210 MM (13'10")	1600 MM (5'3")	4970 mm (16'4")	11500 Kgs
KETTLE	SPECIAL FEATURE			1680 mm (5'6")	1680 mm (5'6")	3100 mm (10'2")	3300 Kgs
	Kettle is installed on the Machine. Exhaust Fan is also provided to extract excess steam or moisture from cooking chambers						

* Capacity differs with material density and quantity of oil in it.



COOKER 600

Features :

- ♦ Kettle : 4 Stages with Steam Jackets of \varnothing 60" for efficient cooking of Seed. Pipe fitting contains Safety Valve, Steam Spray Pipe, Pressure Gauge, Steam Valves & Steam Traps.
- ♦ Exhaust Fan is also provided to extract excess steam or moisture from cooking chambers.
- ♦ Kettle is supported separately on a fabricated structure.
- ♦ Proper & Evenly Cooking of the Seed for maximum extraction of the Oil.
- ♦ Low Power Consumption.



MODEL : GOYUM 1500



Features :

- ♦ This model has been designed in a simple and symmetrical shape.
- ♦ Base and Body is Fabricated from Tested Mild Steel.
- ♦ Triple Reduction Gear Box of Cast Steel Helical Gears and Special Steel Pinion Shafts.
- ♦ Chambers are Vertically Hinged.
- ♦ This Expeller has Three Chambers made of Cast Steel. Feed Size : Ø 12" x 36" Long, Middle Size : Ø 11" x 36" Long, Discharge Size : Ø 10" x 36" Long.
- ♦ Hard Faced Worm Assembly, Discharge Ring and Sliding Ring.
- ♦ Main Worm Shaft can be withdrawn without disturbing the Gear Box. The Shaft is Water Cooled.
- ♦ Crammer Shaft for Extra Cramming of the Seed or Cake is fitted on the Feed Body and is driven by 3 H.P. Geared Motor.
- ♦ Chamber Lifting system is manual.
- ♦ Kettle : 5 Stages with Steam Jackets of Ø 66" for efficient cooking of Seed. Pipe fitting contains Safety Valve, Steam Spray Pipe, Pressure Gauge.
- ♦ Steam Valves & Steam Traps.
- ♦ Cake Thickness can be Adjusted on Running Machine.
- ♦ Gear Box is aligned with the body on a single fabricated base.
- ♦ Superior quality of Oil & Cake.
- ♦ Low Maintenance.

Specifications :

EXPELLER MOTOR	KETTLE MOTOR	CAPACITY	LENGTH	BREADTH	HEIGHT	WEIGHT
3 Phase, 170 H.P., 1440 RPM	3 Phase, 25 H.P., 1440 RPM	110-125 TPD* in Pre-Pressing 45-55 TPD in Single & Final Crushing	5500 MM (18')	1360 MM (4'6")	2660 MM (8'9")	15 Tons

* Capacity differs with material density and quantity of oil in it.

MODEL : COOKER 1500



Features :

- ♦ Kettle : 5 Stages with Steam Jackets of \varnothing 66" for efficient cooking of Seed. Pipe fitting contains Safety Valve, Steam Spray Pipe, Pressure Gauge Steam Valves & Steam Traps.
- ♦ Doors of Openings are provided in each Section for Cleaning and Fitting of Agitators.
- ♦ Indicators are Fitted to Indicate the Level of the Seed or Meal in all the Sections.
- ♦ Worm & Worm Wheel Reduction Gearbox of Vertical Type is fitted on the Kettle.
- ♦ Kettle is supported separately on a fabricated structure.
- ♦ Proper & Evenly Cooking of the Seed for maximum Extraction of the Oil.
- ♦ Low Power Consumption.



Specifications : Kettle

SPECIAL FEATURE	LENGTH	BREADTH	HEIGHT	WEIGHT
Kettle is supported separately on a fabricated structure Exhaust Fan is also provided to extract excess steam or moisture from cooking chambers	1780 MM (5'10")	1780 MM (5'10")	3840 MM (12'7")	6 Tons

Specifications : Structure

SPECIAL FEATURE	LENGTH	BREADTH	HEIGHT	WEIGHT
The Structure includes all the material required to install the kettle	3330 MM (10'11")	3330 MM (10'11")	2100 MM (6'11")	1.5 Tons

MODEL : GOYUM 2400



Features :

- ♦ This model has been designed in a simple and symmetrical shape.
- ♦ Base and Body is Fabricated from Tested Mild Steel.
- ♦ Triple Reduction Gear Box with Cast Steel Helical Gears and Pinion Shafts of Special Steel.
- ♦ Chambers are Vertically Hinged.
- ♦ This Expeller has Two Chambers made of Cast Steel. Feed Side : Ø 16" x 50" Long, Discharge Side : Ø 16" x 50" Long.
- ♦ Hard Faced Worm Assembly, Discharge Ring.
- ♦ Main Worm Shaft can be withdrawn without disturbing the Gear Box.
- ♦ Chamber Lifting system is motorised.
- ♦ Kettle : 8 Stages with Steam Jackets of Ø 78" for efficient cooking of Seed. Pipe fitting contains Safety Valve, Steam Spray Pipe, Pressure Gauge.
- ♦ Steam Valves & Steam Traps.
- ♦ Cake Thickness Adjustment is done manually after stopping Machine.
- ♦ Gear Box is aligned with the body on a single fabricated base.
- ♦ Superior quality of Oil & Cake.
- ♦ Low Maintenance.

Specifications :

EXPELLER MOTOR	KETTLE MOTOR	CAPACITY	LENGTH	BREADTH	HEIGHT	WEIGHT
3 Phase, 335 H.P., 1440 RPM	3 Phase, 50 H.P., 1440 RPM	250 TPD* in Pre-Pressing	5280 MM (17'4")	2000 MM (6'7")	2260 mm (7'5")	27 Ton

* Capacity differs with material density and quantity of oil in it.

MODEL : COOKER 2400



Features :

- ◆ Kettle : 8 Stages with Steam Jackets of Ø 78" for efficient cooking of Seed. Pipe fitting contains Safety Valve, Steam Spray Pipe, Pressure Gauge Steam Valves & Steam Traps.
- ◆ Doors of Openings are provided in each Section for Cleaning and Fitting of Agitators.
- ◆ Indicators are Fitted to Indicate the Level of the Seed or Meal in all the Sections.
- ◆ Kettle is supported separately on a fabricated structure.
- ◆ Kettle Pedestal is fitted with Kettle Driving Gearbox and Motor.
- ◆ Proper & Even Cooking of the Seed for maximum Extraction of the Oil.



Specifications : Kettle

SPECIAL FEATURE	LENGTH	BREADTH	HEIGHT	WEIGHT
Kettle is supported separately on a fabricated structure. Exhaust Fan is also provided to extract excess steam or moisture from cooking chambers.	2000 MM (6'6")	2000 MM (6'6")	5540 mm (18'2")	17 Ton

Specifications : Kettle Pedestal

SPECIAL FEATURE	LENGTH	BREADTH	HEIGHT	WEIGHT
The Kettle Pedestal is fitted with Kettle driving Gearbox and Motor	2200 MM (7'3")	2200 MM (7'3")	1750 mm (5'7")	2.5 Ton



GOYUM

PALM KERNEL OIL EXPELLER

MODEL : GOYUM 15, 27 & 33
PALM KERNEL OIL EXPELLER



Features :

- ♦ Worm Assembly is made of Forged Steel. Stainless Steel Worm Assembly is optional.
- ♦ Main Shaft is EN19 Grade.
- ♦ Feed Hopper is made from Cast Steel.
- ♦ Body Cage is fabricated from MS Plate.
- ♦ World Class FAG & SKF Bearing is used.
- ♦ Fenner / Equivalent V Belt is used.
- ♦ Gear Box consist of Premium / SEW make Triple Reduction Helical Gearbox.
- ♦ Gear Couplings.



Specifications :

MODEL	EXPELLER MOTOR	CAPACITY 1st PRESSING	CAPACITY 2nd PRESSING	LENGTH	BREADTH	HEIGHT	WEIGHT
GOYUM 15	60 / 75 H.P. 960 RPM	15 - 17 TPD	11 - 13 TPD	3200mm (10'5")	1417mm (4'65")	1423mm (4'67")	5600 Kgs
GOYUM 27	75 H.P. 960 RPM	20 - 22 TPD	15 - 16 TPD	3261mm (10'7")	1423mm (4'67")	1423mm (4'67")	5850 Kgs
GOYUM 33	100 H.P. 960 / 1440 RPM	30 - 33 TPD	22 - 25 TPD	3353mm (11')	1423mm (4'67")	1423mm (4'67")	9700 Kgs

Oil % in Cake : ♦ 12-14% Oil present in Cake after 1st Pressing. ♦ Less than 7% Oil present in Cake after 2nd Pressing.

Note: Moisture Content in Palm Kernel must be less than 7%, impurities level not more than 6%.

MODEL : GOYUM 150

SOYABEAN OIL EXPELLER



Features :

- ♦ Steel Fabricated Base and Bodies.
- ♦ Double Reduction Gearbox with Helical Gears of Cast Steel.
- ♦ Cast Steel Chamber.
- ♦ Hard Faced Worm Assembly, Discharge Ring and Compression Ring.
- ♦ Cake Thickness can be Adjusted on Running Machine.
- ♦ Main Worm Shaft can be withdrawn without Disturbing the Gearbox.
- ♦ Crammer Shaft gives extra cramming of the seed or cake in the feed body.
- ♦ Superior Quality of Oil & Cake with less Residual Oil.
- ♦ Low Maintenance.

Specifications :

EXPELLER MOTOR	CAPACITY	CHAMBER SIZE	LENGTH	BREADTH	HEIGHT	WEIGHT
3 Phase, 40 H.P., 1440 RPM	15- 20 TPD	Ø 6 1/2" X 7 1/2" X 45" Long	2682mm (8'8")	1433mm (4' 7")	1524mm (5')	4200 Kgs

*Capacity differs with material density & quality of oil seeds/nuts

SOYABEAN EXTRUDER

Features :

- ♦ Alloy Steel Screw.
- ♦ Steel Fabricated Base & Bodies.
- ♦ Fitted with FAG German Bearings.
- ♦ Rigid Compact Design.
- ♦ Low Maintenance.

Advantages :

- ♦ Releases of intra-cellular oil and natural tocopherols.
- ♦ Increases by-pass protein level.
- ♦ Saves over 30% of energy during soybeans processing prior to oil extraction.



Specifications :

POWER-MAIN DRIVE MOTOR	POWER-FEEDER DRIVE MOTOR	DRIVE	CAPACITY
120 HP	TOP FEEDER - 1 HP, SIDE FEEDER - 3 HP	SINGLE RIBBED NONSLIP BELT	20 TPD

★ Equipment comes standard with over the top volumetric feeder. Optional side feeder or pre-conditioner also available

FILTER PRESS PLATE TYPE



Features :

- ♦ Plates of the filter press are tested for casting defects before machining.
- ♦ Grinding process is done on the faces of filter plates to avoid leakages at high pressure.
- ♦ Flat bars provided at the sides are designed to stand extra pressure.
- ♦ Accessories provided with filter press are petcocks, oil through, one rod and a spanner (for filter cloth nuts).
- ♦ Plunger pump is supplied along with safety valve, air vessel, pressure gauge, pulley, belts & motor (optional).



Duplex Pump



Single Piston Pump



Gear Pump

Filter Press (Plate & Frame Type)



Hydraulic Attachment



Leaf Filter



Polish Filter

Specifications :

PLATE TYPE FILTER PRESSES						
Size	Weight of Filter Press (Kgs.)	Filtration Area (Sq. Mtrs.)	Capacity (Liters / Day)	H.P.	No. of Pistons	Size of Plunger Pump
36" X 36" X 36 Plates	8000	30	40,000	7.5	Double	60 mm
30" X 30" X 30 Plates	5500	18	25,000	7.5	Single	80 mm
24" X 24" X 30 Plates	3000	11	12,500	5	Single	60 mm
24" X 24" X 24 Plates	2500	9	10,000	3	Single	60 mm
18" X 18" X 18 Plates	1100	4	5000	2	Single	40 mm
14" X 14" X 14 Plates	650	2	3500	1	Single	30 mm
12" X 12" X 12 Plates	380	1.5	2500	1	Single	30 mm
FRAME TYPE FILTER PRESSES						
36" X 36" X 36 Plates X 35 Frames	9600	30	48,000	10	-	PCH Pump
30" X 30" X 30 Plates X 29 Frames	5400	18	30,000	7.5	-	PCH Pump
24" X 24" X 24 Plates X 23 Frames	2950	10	12,500	5	-	PCH Pump



We can also manufacture as per customer's requirements / specifications / drawings



101 : Cast Steel Chamber 102 : Steel Fabricated Chamber 103 : Main Gear 104 : Intermediate Gear 105 : Main V-Belt Pulley 106 : Lining Bar
 107 : Cage Bar Holder 108 : Main Shaft Pinion 109 : Driving Pinion Shaft 110 : Hopper 111 : Spacer Box 112 : (a) Gear Box Pinion,
 (b) Gear Box Bevel 113 : (a) Kettle Bevel Pinion (b) Kettle Bevel Gear 114 : Main V- Belt Pulley 115 : Cage Bar 116 : Side Bar 117 : Centre Bar
 118 : Worms 119 : Spacing Collars 120,121 : Cone Point 122 :Gudgeon 123 : Sleeve with Nut 124 : (a) Sleeve Nut (b) Sleeve 125 : Knife Bar
 126 : Cone Point 127 : Chamber Tie Rod 128 : Discharge Ring 129 : Cone Collar 130 : Main Worm Shaft 131 : Driving Side Shaft
 132 : Shaft Pinion 133 : Sliding Ring 134 : Collar Pulley 135 : (a) Pinion 19 Teeth (b) : Pinion 15 Teeth

We can also manufacture as per customer's requirements / specifications / drawings



SPARE PARTS FOR SOYABEAN EXTRUDER



Code 101 : Main Shaft Code 102 : Feed Barrel
Code 103 : Barrels Code 104 : Die Plate
Code 105 : Nozzle Code 106 : Front Bolt
Code 107 : Front Bolt Cap Code 108 : Feed Worm
Code 109 : Pressing Worm Code 110 : Steam Lock
Code 111 : Ring Code 112 : Barrel Lock
Code 113 : Worm Keys



Afghanistan



Australia



Azerbaijan



Bulgaria



Burkina Faso



Burundi



Cameroon



Chad



Colombia



D. R. Congo



Ethiopia



Ghana



India



Iran



Ivory Coast



Kiribati



Malawi



Mali



Mexico



Mozambique



Nepal



Nigeria



Papua New Guinea



Republic of Benin



Senegal



Sierra Leone



Soloman Islands



Sudan



Tanzania



Uganda



Zambia



Zimbabwe



The company is in position to provide any kind of technical services from studies up to plant start-up. The following services can be provided:

- ♦ Research & Laboratory analysis, process development.
- ♦ Process & product testing on pilot plants.
- ♦ Custom tailored products formulation.
- ♦ Project feasibility studies.
- ♦ Process and detail engineering 3D design.
- ♦ Equipment fabrication and procurement.
- ♦ Supervision to plant installation and start up after sales service.
- ♦ Operator's training.
- ♦ Troubleshooting.
- ♦ Plant performance (product quality, energy consumption, plant operation reliability) evaluation and optimization.
- ♦ Evaluation of plant equipment operating conditions for planned maintenance (mechanical, electrical, instrumentation & control).
- ♦ Customer's personnel training.
- ♦ Advisory Services on new technologies, new equipment available on the market improvements of plant operation safety.
- ♦ Study and proposal for plant revamping and capacity increase.





GOYUM

NOTES



Copyright Warning : All contents published in this catalogue are Copyright Protected. Any Reproduction or Manipulation of Photographs or Design is impermissible and violates our Registered Trademark Rights. By doing so Defaulters / Company may face Strict Legal Action and Penalty provision upto 1 Million Dollars.

OUR PRESENCE



GOYUM GROUP
 • EXTRACTION • REFINING • RECYCLING

Contact Us:

Goyum Screw Press

Plot No. 2581, Industrial Area-A,
 Ludhiana - 141 003 (Punjab) INDIA

Email Us:

jain@oilmillmachinery.com
 sales@oilmillmachinery.com
 sales@goyumgroup.com

Visit Us:

www.goyumgroup.com
 www.oilexpeller.com



Get in touch:

+91 98140 33180 (Mr. Vinod Jain - Chairman & Managing Director)
 +91 99157 43183 (Mr. Amit Aggarwal - President)



FOLLOW US



goyum group