



selectTECH

Complete Food Plant Solutions, from the Rooftop to the Factory Floor

Since 1991, Evapco SelectTech Incorporated (ESTI) has helped customers achieve more efficiency and increase performance throughout their food processing systems. ESTI has earned a reputation for innovative, cost-effective solutions, complete integration, and responsive service.

As a systems integrator, ESTI specializes in design-build installation, plant facility/utility systems, process systems, material handling, and production line automation. ESTI's comprehensive capabilities include:

Support Services

- Upgrade / Retrofit of Existing Control Systems
- Information Technology Support
- Complete System Design & Build
- New PLC Platforms
- Post Project Support

Facility Controls

- Air-Water-Gas-Steam Systems
- Sanitary Air Handling Systems
- Dehumidification Systems
- Ammonia Refrigeration
- Water/Waste Water

Material Handling

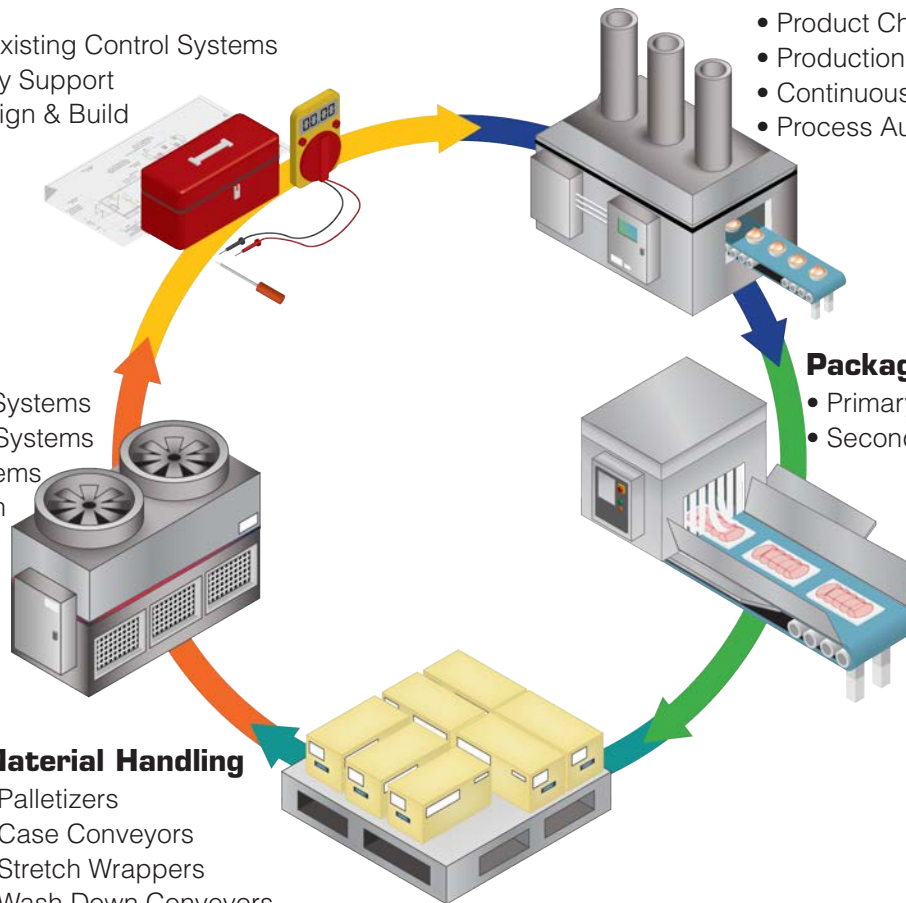
- Palletizers
- Case Conveyors
- Stretch Wrappers
- Wash Down Conveyors
- Check-Weigh / Scale System

Process Integration

- Information Technology Integration
- Product Chill and Freeze Systems
- Production Line Integration
- Continuous Cook Systems
- Process Automation

Packaging

- Primary Packaging (RTE)
- Secondary Packaging





The Evapco SelectTech Approach

ESTI offers a coordinated, holistic design approach to factory floor process automation and production line integration. Years of industry experience allow ESTI to handle any level of project complexity. By encompassing all disciplines of a project, ESTI yields superior results on projects ranging from complete line integrations to single equipment installations and programming. This thorough methodology creates a cost-effective and reliable system even under the most challenging circumstances. ESTI's detailed approach includes:

Design Phase

- Site Visit & Project Evaluation
- Scope Development
- Production Line Layout
- Mechanical Design
- Electrical Design
- Production Process Equipment Design

Installation Phase

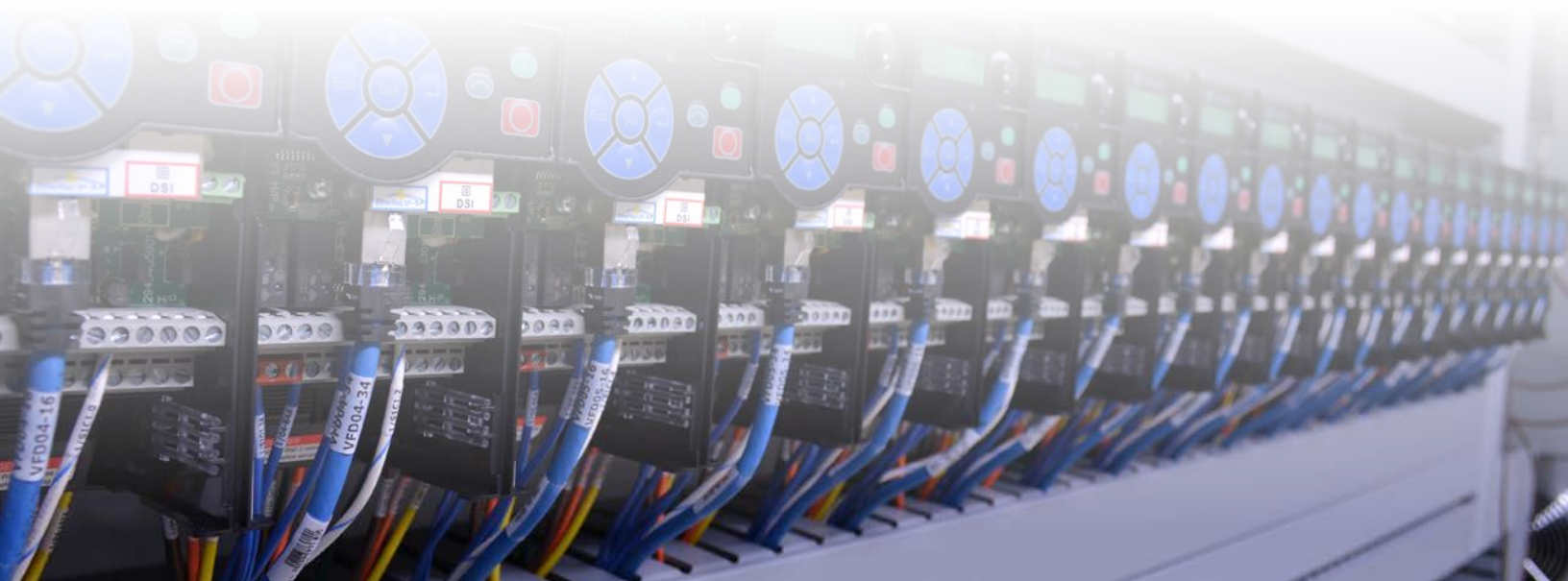
- Equipment Installation
- Electrical Installation
- Mechanical Installation

Build Phase

- Project Management
- Procurement
- Equipment Fabrication
- Control Panel Assembly & Testing

Commissioning Phase

- System Start-Up
- System Tuning
- Follow-Up Services





For a successful solution, a proven process is needed

In addition to a complete range of services, ESTI brings 30+ years of knowledge and experience to every project. As a project partner, ESTI's high standards for project execution include:



Extensive Inventory Kept in Stock

A detailed process

- ESTI's comprehensive project process includes pre-project preparation work to maintain critical timelines to complete tie-ins and commissioning of the project on time.
- ESTI understands the value of keeping operations on schedule.
- ESTI's plans meet key milestones and minimize operational disruptions.
- Project ownership is passed onto the customer, and ESTI makes every effort to reduce the need for after start-up support.
- ESTI will provide all programs, schematics, documentation, and part numbers to promote a smooth post-project transition allowing customers to buy replacement components directly from manufacturers.

Depth of knowledge

- Utilizing extensive experience, ESTI's team understands the complexities of a wide variety of plant facilities, utilities, and operational processes.
- Over 30 years of systems expertise allows ESTI to offer individualized, yet simple solutions that take a holistic view of the complete system.



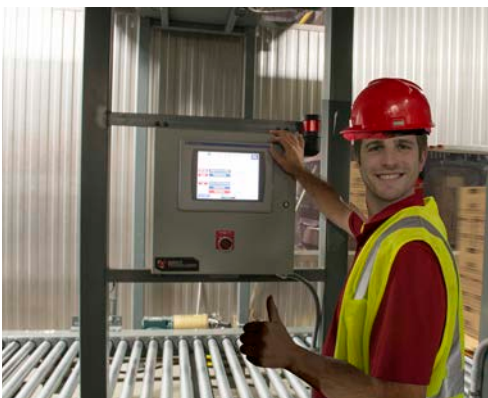
Full Power Testing Before Shipping

Value-focused

- ESTI will offer a cost-effective solution that meets project specifications with minimal change orders.
- ESTI's experienced team will provide accurate project costs as well as making suggestions to improve efficiencies beyond original scope requirements.
- ESTI reviews approved and inventoried components to ensure parts used are from the customer's approved components/instrumentation list whenever possible.

Full support

- ESTI takes a "partner for life" approach to business relationships. ESTI offers support after the project and continuous improvement suggestions.
- To assure the project continues to meet on-going industry challenges, ESTI incorporates the latest technologies available.
- The ESTI team will train key systems and plant personnel, as well as deliver customized documentation and manuals at the conclusion of every completed project.



On-Site Installation and Troubleshooting



Real Solutions

Evapco SelectTech Incorporated (ESTI) has decades of experience and understands the demanding requirements faced by the food processing industry. ESTI is committed to providing the best solutions in an ever-changing industry. The solution could be a completely new production line or processing system, or an upgrade or retrofit of an existing operation, system or PLC. ESTI's turnkey approach guarantees a high standard of quality and superior results from project start to finish.

Steps to Success

- On-site Facility assessment
- Determine customer's needs and specifications
- Develop Scope - Determining the right process and components necessary for successful project completion
- Compliance with current customer standards and constraints
- Non-Proprietary software and hardware

Results

- Reduce manual product handling
- Reduce required labor costs
- Reduce waste and capitalize on shared synergies
- Enhanced safety
- Implement user-friendly graphical user interface and data acquisition

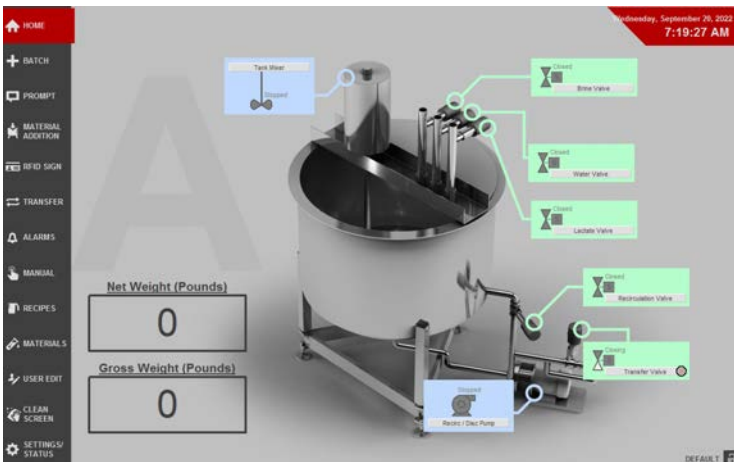


Dipotassium Phosphate Skid

Automation for Batch Processing or Continuous Production Line

Automation can make batching and continuous flow systems more effective. ESTI's Industry-Driven Automation Control Systems Provide:

- Increased production rate
- Scalability
- Data Collection
- Recipe Management
- Downtime Tracking
- Batch Recording
- Batch Tracing
- Material Tracking
- Real-Time Analytics
- Integration with Existing Systems



Batch Control Overview



Batch Recipe Editing

Meat - Dairy - Bakery - Snacks - Beverage - Prepared Foods

8093 Graphic Drive Belmont, MI 49306 1.844.785.9506 (p) 616.866.6770 (f)

evapcoselect.com