

FOOD GRADE FLOOR DRAIN FEATURES AND BENEFITS

Drains come standard in T316 stainless steel. T316 is more chemical resistant, sanitary, and matches up with most push fit piping systems. T316 is a significant added charge for all other manufacturers.

Rubber cap has screed ledge to accurately screed concrete for 1/4" thick resinous floor systems while also keeping concrete out of the drain.

Cap provides a keyway for resinous flooring systems to keep them from delaminating next to the drains

All grates have a domed top to stop standing water and reduce the chances of a slippery surface.

Our standard drain tops have finger holes for lifting, are stronger (all are forklift rated), and have more open area.

Drain baskets are heavier gauge to prevent damage

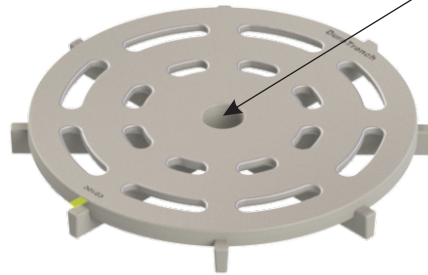
Drain basket has slightly larger holes than most other drain baskets on the market to reduce blinding of the holes

Drain covers will not jump out when tabs are turned under locking flanges. Covers can be locked in place with set screws.

Circular rims do not cause stress concentrations and cracking in surrounding concrete or resinous floor systems.

Reverse bevel on drain edge captures resinous flooring with mechanical key that keeps it from lifting.

Anchors ensure that the drain is secured in the concrete and that the drain can be securely leveled during the concrete placement.



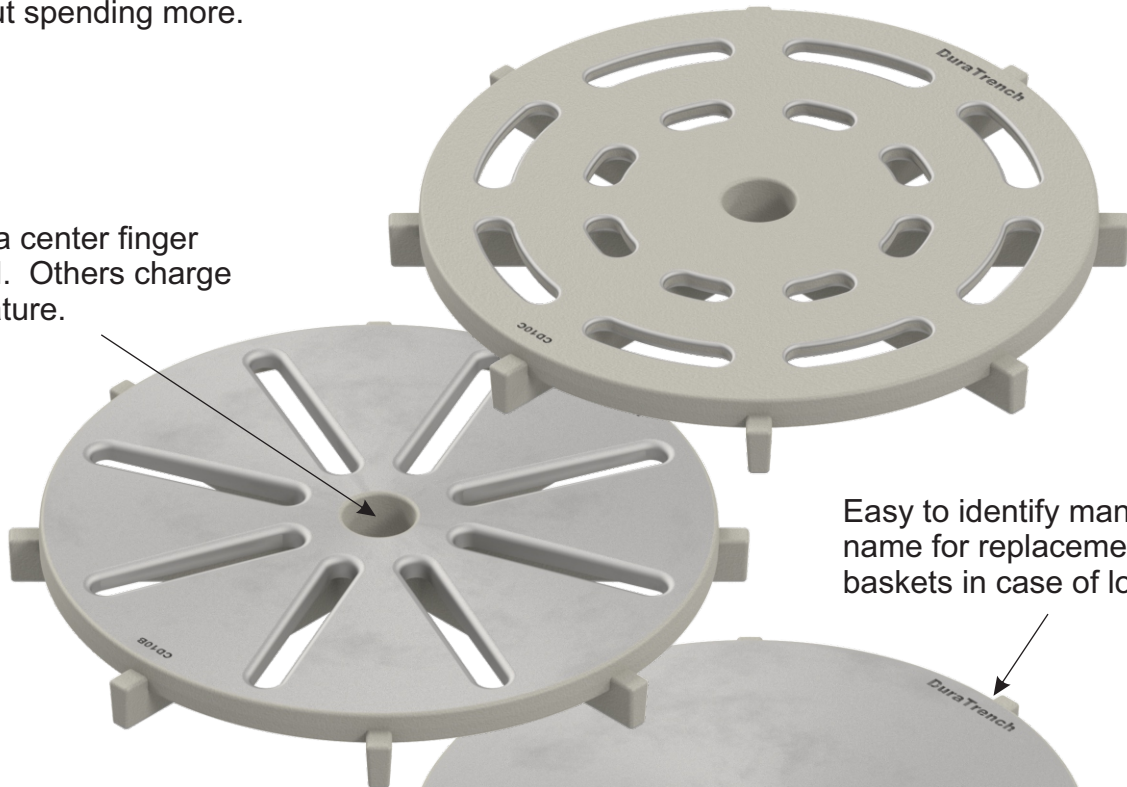
Dura Trench
manufactured by Eric'sons

FOOD GRADE FLOOR DRAIN GRATE OPTIONS

Slotted grates no longer cost more than solid grates! Get the flow rate you need without spending more.

All grates are T316 for the ultimate chemical resistance to CIP and process chemicals.

All grates have a center finger hole for removal. Others charge extra for this feature.

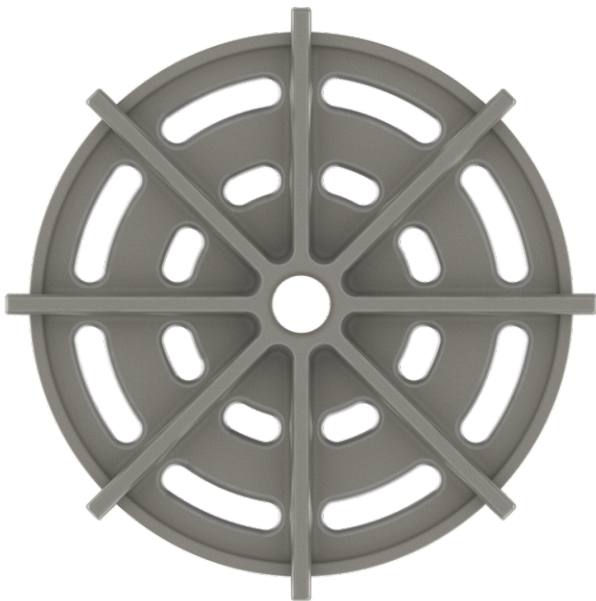


Easy to identify manufacturer name for replacement grates or baskets in case of loss or theft.

All grates simply turn to lock in place.



All edges are rounded for easy handling and sanitation.



No porous welds on grates. Only smooth cast features.

Bottom of grates have load bars that increase strength. All grate styles are forklift rated.

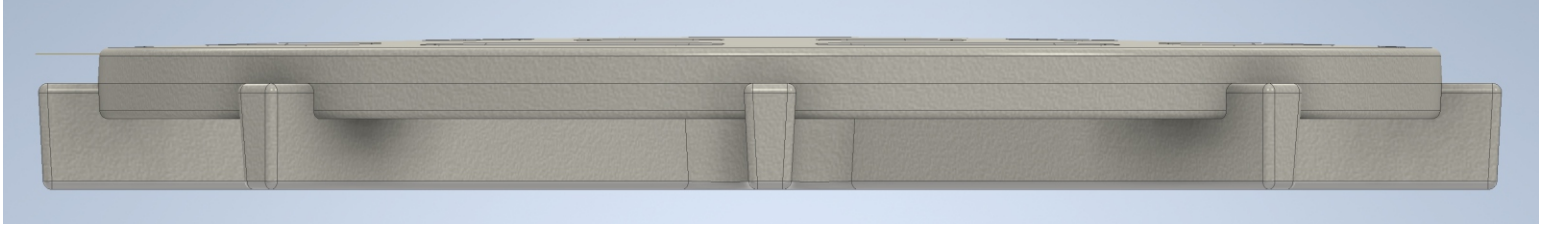
DuraTrench
manufactured by Eric'sons

FOOD GRADE FLOOR DRAINS

Sales Buzz

1. No standing water!

- A. Grate tops and rim of drain has a slope that goes to the drain so that it is not able to have standing water when installed level.



- B. Reduces slipping hazards that can happen on wider square drain tops.
- C. Grates with more open areas drain water faster and provide better coefficient of friction numbers making grates dry and safe faster.
- D. Anchor legs ensure drains remain level during the concrete placement so that you don't end up with water pooling on or next to the drain due to movement during the concrete placement.

2. Drain designed with resinous flooring in mind.

- A. Rim of drain has a reverse taper that captures flooring system mechanically not allowing it to delaminate at the drain
- B. Round top does not cause stress concentrations that could lead to cracking of the flooring system or surrounding concrete.
- C. Rubber cover

3. Industrial Duty

- A. Drain body is considerably thicker than many competitors (such as Blucher, Josam, Zurn, etc.). This translates to more service life especially under forklift traffic.
- B. Drain baskets 2X thicker than most competitor baskets so they can take the abuse of a production facility.
- C. Independently anchored into surrounding concrete to ensure longevity and not transfer loads on piping systems.

4. Locking lids

- A. Lids can be locked in areas where pipe blockage from debris is a concern and baskets must remain in place.
- B. Lid locks can have a special key to ensure only authorized personnel can remove.
- C. Bolts will not break off like other locks because they take no load/force from traffic.

**FOOD GRADE FLOOR DRAIN
BOTTOM LINE**

BETTER DRAIN WITH BETTER FEATURES

MANUFACTURED IN HOUSE

PRICE COMPETITIVE

IN STOCK SOON!

