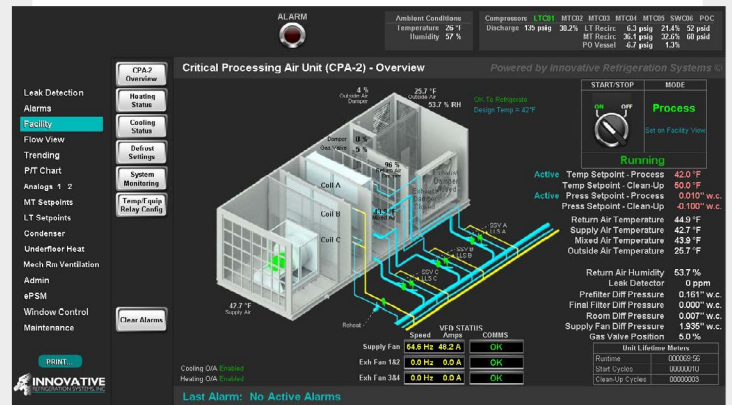
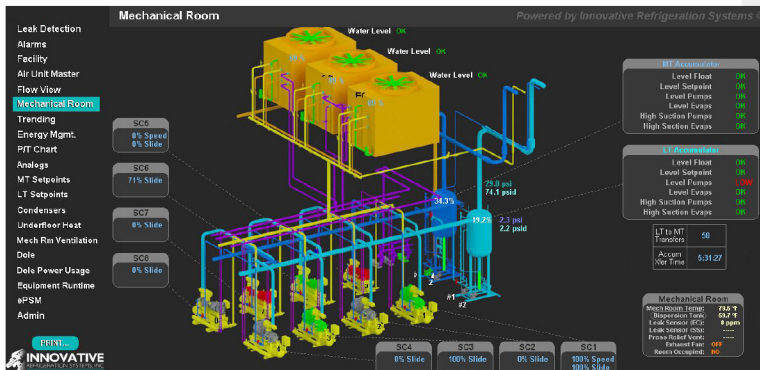


# INDUSTRIAL REFRIGERATION CONTROLS SYSTEMS

At Innovative, we understand that every industrial facility has its unique set of challenges. That's why we've designed our control cabinets to be customized and adaptable to fit your specific needs. Our cabinets are built with the latest technology and provide remote access capabilities for quick adjustments and maintenance.

## SOFTWARE FEATURES

- ◆ Temperature monitoring and alarming – user definable high and low alarm limits for text and email alerts.
- ◆ Defrost control – run time based for energy efficiency with user selectable groups for operational flexibility.
- ◆ Energy management for time of day and peak demand limiting.
- ◆ Evaporative condenser staging and wet bulb pressure control for maximum system efficiency.



- ◆ Compressor staging – integrated capacity and VFD speed control to automatically adjust compression to match refrigeration demand.
- ◆ Refrigerant pump monitoring and cavitation prevention logic for pump protection.
- ◆ Historical data with multiple customizable trending views for troubleshooting and system monitoring.
- ◆ Custom features available to meet individual system and customer requirements.

## PANEL FEATURES

- ⚙️ All of our control panels are UL-508A listed in both the US and Canada, are Hi-Pot tested, function pre-tested and rigorously quality controlled to simplify start-up and lower field costs.
- 📄 Control system documentation is delivered for each project and is also made resident on the HMI for a paperless experience that can be accessed onsite or remotely.
- 🔌 Interfaces for most screw compressors, and numerous other devices using ethernet, modbus, OPC, bluetooth, and DeviceNet.
- 🔧 Systems are created using non-proprietary hardware and commercially available software so owners can make their own additions.
- 💬 Multiple panels can be designed as required to match power wiring requirements, such as MCC panels or remote equipment.
- 🔌 Ability to retrofit electrical panels into existing systems, or design completely new ones for new projects.



[www.r717.net](http://www.r717.net) | [sales@r717.net](mailto:sales@r717.net)  
(540) 941-1999

**DESIGN. BUILD. SUCCESS.**