

美鑫隆包装（中山）有限公司
MeiXinLong Packing (Zhongshan) Co.,Ltd

**Professionalism, Efficiency,
Rigor, Innovation**





美鑫隆包装（中山）有限公司
MeiXinLong Packing (Zhongshan) Co.,Ltd

Company Introduction

MXL Packing is a leading tin box manufacturer based in Huangpu Town, Zhongshan City, Guangdong Province, China. With a professional and efficient team, rigorous management, and advanced equipment, we are dedicated to the development and design of tin boxes, striving to provide creative packaging and brand empowerment for our clients, offering customized and diversified production services. Our commitment is to continually innovate and enhance the added value of products for our customers.

After years of continuous exploration, practice, and innovation, MXL Packing has transformed the traditional manual production mode into a unique and sophisticated fully automated production model. Our workshop adopts a dust-free environment, incorporating high-precision automatic tinplate cutting machines, as well as fully automated robotic arms. The entire manufacturing process is clean, safe, highly precise, and of high quality, ensuring efficient services for our customers.

Conveying Product Value through Packaging



Direct Tin Packaging Factory



Advanced Automatic Production Equipment

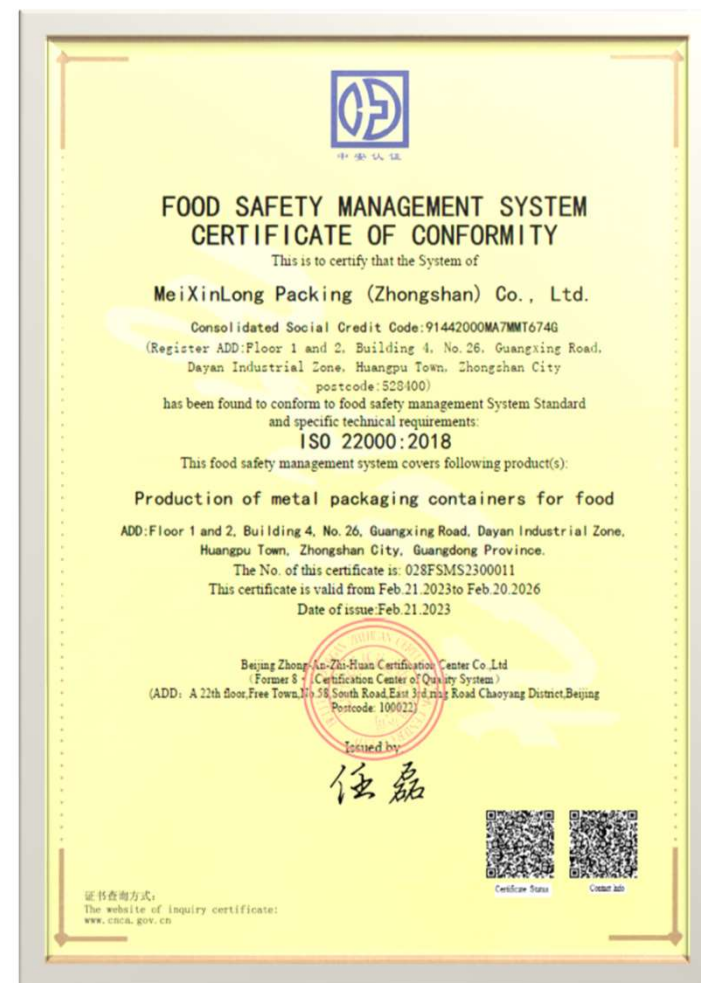


美鑫隆包装（中山）有限公司
MeiXinLong Packing (Zhongshan) Co., Ltd

Reflecting Product Quality through Packaging

ISO 22000:2018 FOOD SAFETY MANAGEMENT SYSTEM

MXL Packing is certified under the Food Safety Management System, with all raw materials accompanied by MSDS. We regularly sample our tin boxes and submit them for national food contact material testing to ensure our tins meet the required standards for Direct Food Contact.





美鑫隆包装（中山）有限公司
MeiXinLong Packing (Zhongshan) Co.,Ltd

Building Product Confidence through Packaging

Sedex-Pillar 4-7.0



Sedex Members Ethical Trade Audit Report

Version 7

We are steadfastly committed to establishing ethical and responsible supply chain standards, dedicated to the transparency, sustainability, and social responsibility of our supply chain.

Our commitment to customers and partners: We not only prioritize high-quality products but also emphasize ethical and sustainable practices throughout the supply chain.



Audit and site details

Audit details

Sedex company reference	ZC5000012813	Auditor company name	BUREAU VERITAS CPS - ASIA
Date of audit	2024-10-18	Audit conducted by	Sedex member
Audit pillars	Labour Standards Health and safety Environment 4-Pillar Business ethics		

Site details

Sedex site reference	Z51000013882	Site name	MeiXinLong Packing(Zhongshan) Company Limited
Business name	MeiXinLong Packing(Zhongshan) Company Limited	Site address	528400 广东省中山市黄圃镇大雁工业路广兴路26号瑞德新楼之一、二楼 Floor 1 and 2, Building 4, No. 26, Guangxing Road, Dayan Industrial Zone, Huangpu Town, Zhongshan City, Guangdong Province, 中山市, CN
Site phone	13928690460	Site email	trouble3313@163.com

Audit company:
BUREAU VERITAS CPS - ASIA

Audit reference:
ZAA600094640

Start Date:
2024-10-18

End Date:
2024-10-18



美鑫隆包装（中山）有限公司
MeiXinLong Packing (Zhongshan) Co.,Ltd

Welcome To MeiXinLong Packing(Zhongshan)CO.,Ltd

◆ OUR SERVICES



Innovative Packaging Design

Bridge the gap between innovation and manufacturing, and explore new markets together with you. **Design is not just about beauty but also about conveying the unique story of each brand!**



Mold & Technology

Mold masters ,each with over 20 years of industry experience, ensure the quality of molds and the production of high-quality tin boxes. **With a core focus on high quality and advanced technology, we consistently meet the ever-evolving demands for innovative tin packaging, satisfying our customers needs.**



Collaborative Partnership

Deeply cultivating and understanding industry trends and material dynamics to ensure that our tin boxes not only meet customer demands but also remain competitive. **Customer satisfaction, employee contentment, partner contentment, and societal fulfillment — together, we create the future!**

**R&D&Design
Team**

**Elite
Management**

**Technical
Strength**

**Quality
Management**

**Collaboration
System**



Professional, Efficient, Rigorous

Our company has a professional and efficient management team with rigorous management practices. **Focused on customer needs, we provide safe and reliable services, continually creating maximum value for our clients!**



Quality Philosophy

Output is efficiency, quality is reputation. We pursue efficiency, but even more so, a good reputation. **Building a quality-assured tin box factory to provide customers with safer and more reliable tin boxes!**



美鑫隆包装（中山）有限公司
MeiXinLong Packing (Zhongshan) Co.,Ltd

Welcome To MeiXinLong Packing(Zhongshan)CO.,Ltd

OUR ADVANTAGES



ISO 22000:2018+SEDEX P4-ENSURING FOOD SAFETY AND SOCIAL ETHICS



OVER 20 FULLY AUTOMATIC HIGH-SPEED TIN MAKING AND TINPLATE CUTTING LINES

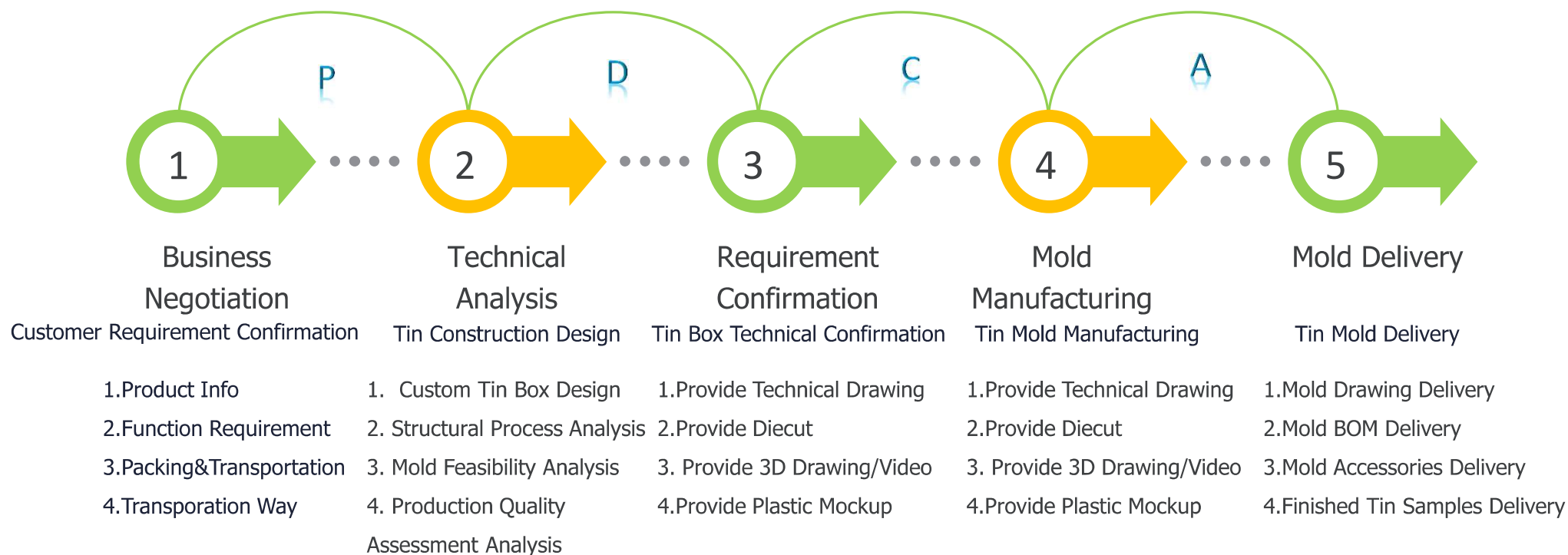


TIN PRODUCTION IS CARRIED OUT IN DUST-FREE WORKSHOP

Catering to creative packaging, brand empowerment, graphic design, 3D rendering displays, sales, and customized production, MXL Packing is driven by a professional, efficient team, rigorous management, and state-of-the-art equipment. Our tin production takes place in a cleanroom environment, supported by high-precision, fully automated tinplate cutting and punching lines, featuring automated robotic arms. This ensures our tin production in a clean, safe, high-precision, high-quality environment, resulting in swift and efficient on-time order deliveries. With a daily output of over 500,000 tin boxes, our annual capacity reaches 150 million tins.



Product Development Process



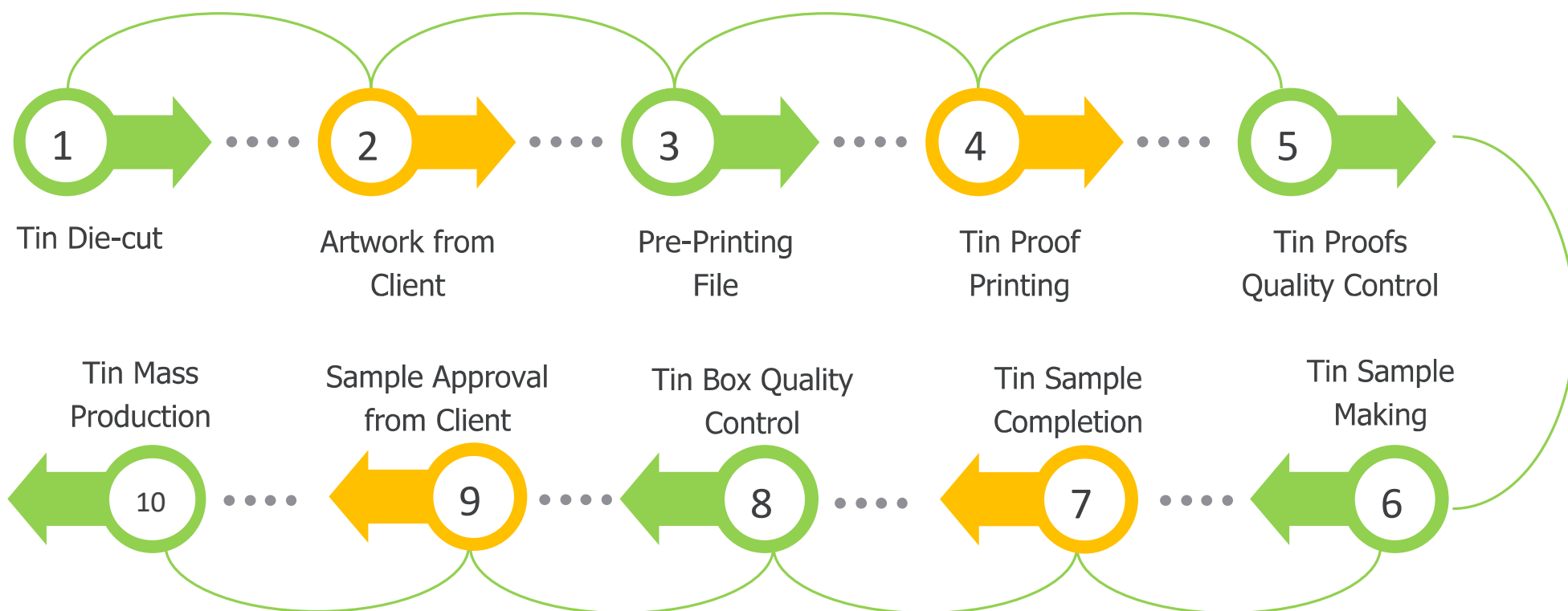


美鑫隆包装（中山）有限公司

MeiXinLong Packing (Zhongshan) Co.,Ltd

Welcome To MeiXinLong Packing(Zhongshan)CO.,Ltd

Pre-Production Tin Samples





美鑫隆包装（中山）有限公司
MeiXinLong Packing (Zhongshan) Co.,Ltd

Welcome To MeiXinLong Packing(Zhongshan)CO.,Ltd



Tinplate-Raw Material

Tinplate (ETP): Tin-plated from thin cold-rolled steel sheets

Thicknes: 0.15~0.5mm;Width: 700~1050mm

The length can be cut according to the layout of different box shapes.

Temper:

Single cold rolling: T1、 T2、 T2.5、 T3、 T4、 T5.

Double cold rolling: DR8、 DR9、 DR10.

Tin coating: 1.1~5.6(g/m²)

Surface: bright, rough, silver, matte



Tins that come into direct contact with the food inside typically use the electrolytic tinplate with a temper hardness of T2.5 and a tin coating weight of 2.8/2.8. All tin boxes comply with standards such as FDA, EN71, REACH, and analytical reports for the raw material-tinplate can be provided.



美鑫隆包装（中山）有限公司
MeiXinLong Packing (Zhongshan) Co.,Ltd

Welcome To MeiXinLong Packing(Zhongshan)CO.,Ltd

Ink&Coating:Toyo Ink-Food Grade



Toyo Ink, established in 1988, is primarily engaged in the research, development, production, and sales of metal printing inks, coatings, and adhesives for lamination. It is a benchmark representative enterprise invested by Japan's Toyo Ink SC Corporation. The inks and coatings can meet the requirements for low pollution, non-toxicity, and high-temperature cooking for food applications. Regular submission of testing reports for ink and coating is ensured.



Test Report

No. CANEC2008456701

Page 1 of 6

JIANGMEN TOYO INK CO.,LTD.
NO.32-33 LONGWAN WEST ROAD,JIANGMEN CITY,GUANGDONG PROVINCE
529000, CHINA

The following sample(s) was/were submitted and identified on behalf of the clients as : TOYO mixed coating

SGS Job No. : CP20-026469 - GZ



美鑫隆包装（中山）有限公司
MeiXinLong Packing (Zhongshan) Co.,Ltd

Welcome To MeiXinLong Packing(Zhongshan)CO.,Ltd

Tinplate Printing



**FUJI Duo /4/6 Color
Tinplate Printing Machine**

The primary advantages of Fuji PRIMEX-P453 printing machine from Japan include stable ink performance, high registration accuracy, and superior print quality.

Maximum Printing Area: 1135x945mm; Printing Tinplate Thickness: 0.12~0.4mm; Printing Production Speed: 100 sheets/minute - Maximum Capacity.



Our printing experts conduct a detailed analysis and breakdown of the client's design drafts, examining the printing processes involved and performing on-site color calibration. After the completion of tinplate printing and ensuring that the quality inspection meets the standards, the printed tinplate is then accepted into the warehouse and proceeds to the cutting process.





美鑫隆包装（中山）有限公司
MeiXinLong Packing (Zhongshan) Co.,Ltd

Welcome To MeiXinLong Packing(Zhongshan)CO.,Ltd



All personnel entering the dust-free workshop must wear dust-free suits, dust-free caps, dust-free shoes, earplugs, and masks, and undergo cleaning and disinfection procedures.



美鑫隆包装（中山）有限公司
MeiXinLong Packing (Zhongshan) Co.,Ltd

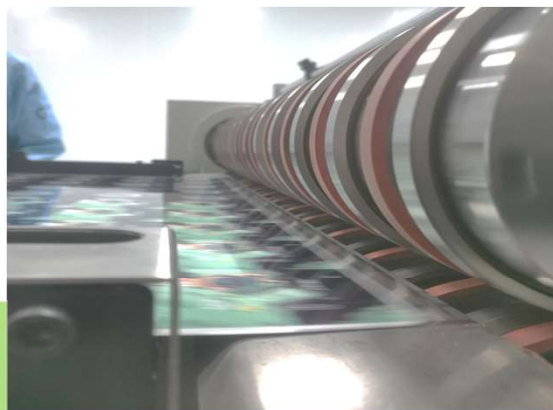
Welcome To MeiXinLong Packing(Zhongshan)CO.,Ltd

Printed Tinplate Cutting and Slicing



*Commence Tinplate
Cutting Confirmation*

Cutting Process Monitor



*Cutting Completed and
Package Initiated*



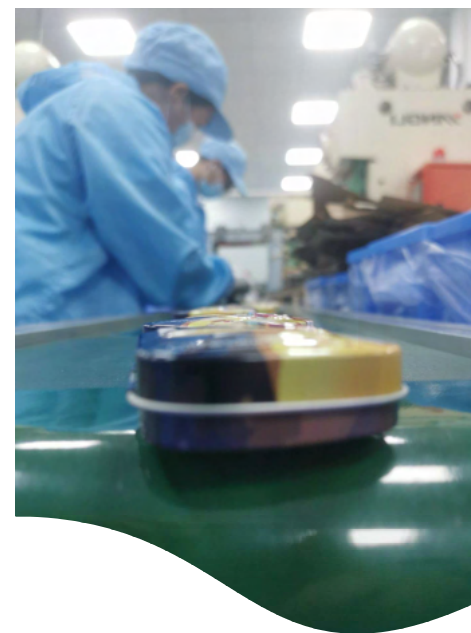
Cutting Details Display





美鑫隆包装（中山）有限公司
MeiXinLong Packing (Zhongshan) Co.,Ltd

Welcome To MeiXinLong Packing(Zhongshan)CO.,Ltd



Utilizing high-precision pneumatic punching machines and fully automated robotic operations to ensure the accuracy and quality of tin boxes. The entire production process of tin box manufacturing, including tinplate unpacking, cutting, stamping, and packaging, is carried out within a clean workshop.



美鑫隆包装（中山）有限公司
MeiXinLong Packing (Zhongshan) Co.,Ltd

Welcome To MeiXinLong Packing(Zhongshan)CO.,Ltd



Production Management Board、Technical Drawings、Quality Standards

- Production/Engineering/Quality Department Personnel Structure
- Training Material Notice Board --- Quality Promotion Bulletin Board
- Job Responsibilities Notice Board --- Work Instruction Manual --- Production Planning Board



美鑫隆包装（中山）有限公司
MeiXinLong Packing (Zhongshan) Co.,Ltd

Welcome To MeiXinLong Packing(Zhongshan)CO.,Ltd



Production Management Board

--- Equipment Maintenance Records

--- On-Duty First Inspection Checklist

--- First Piece Sample

--- Product Information

--- Tin Box Technical Drawing

--- Safety Operating Procedures



美鑫隆包装（中山）有限公司
MeiXinLong Packing (Zhongshan) Co.,Ltd

Welcome To MeiXinLong Packing(Zhongshan)CO.,Ltd



Tin Making Process

The packaging utilizes sealed turnover boxes to ensure that after our tin boxes leave the dust-free workshop, they are delivered to customers without secondary contamination.





美鑫隆包装（中山）有限公司
MeiXinLong Packing (Zhongshan) Co.,Ltd

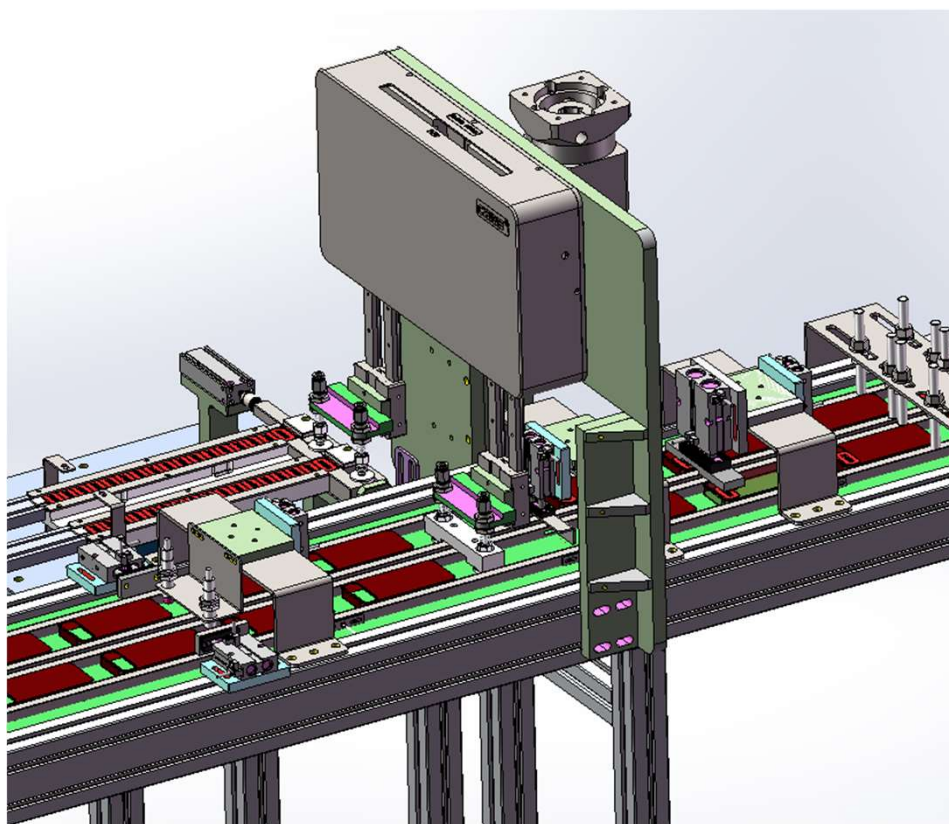
Welcome To MeiXinLong Packing(Zhongshan)CO.,Ltd



Plastic Insert-Acc Automatic Assembly Mechanism Design

Non-standard Assembly
Mechanism Design --- Enhancing
Equipment Capacity and
Optimizing Labor Costs

Progress everyday, Keep Improving





美鑫隆包装（中山）有限公司

MeiXinLong Packing (Zhongshan) Co.,Ltd

Welcome To MeiXinLong Packing(Zhongshan)CO.,Ltd

Tin Shape Display

These tin box designs are developed exclusively for our key clients, who hold their brand and design patents.





美鑫隆包装（中山）有限公司
MeiXinLong Packing (Zhongshan) Co.,Ltd

Welcome To MeiXinLong Packing(Zhongshan)CO.,Ltd

Tin Shape Display

These tin box designs are developed exclusively for our key clients, who hold their brand and design patents.



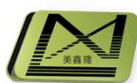


美鑫隆包装（中山）有限公司
MeiXinLong Packing (Zhongshan) Co.,Ltd

Welcome To MeiXinLong Packing(Zhongshan)CO.,Ltd

Tin Shape Display

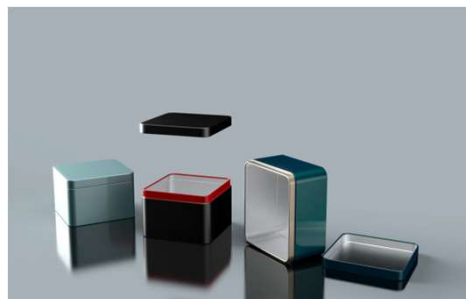
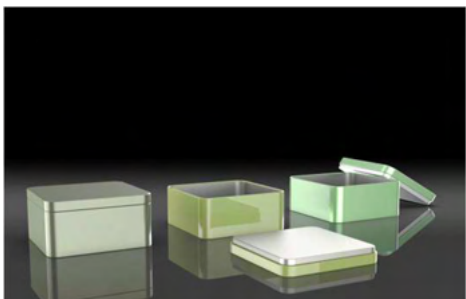
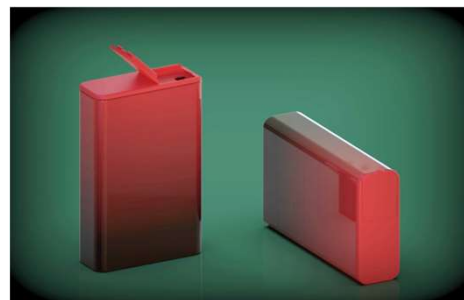




美鑫隆包装（中山）有限公司
MeiXinLong Packing (Zhongshan) Co.,Ltd

Welcome To MeiXinLong Packing(Zhongshan)CO.,Ltd

Tin Shape Display





美鑫隆包装（中山）有限公司
MeiXinLong Packing (Zhongshan) Co.,Ltd

Welcome To MeiXinLong Packing(Zhongshan)CO.,Ltd





美鑫隆包装（中山）有限公司

MeiXinLong Packing (Zhongshan) Co.,Ltd

Welcome To MeiXinLong Packing(Zhongshan)CO.,Ltd

感谢您的观看

Thank you for your watching

TIN
BOX

美鑫隆包装（中山）有限公司

MeiXinLong Packing(Zhongshan)Co.,Ltd

Contact: Steven Hao

Tel: +86 134 1698 2617

E-mail: sales@mxltinbox.com

Website: <https://www.mxltinbox.com>

Add: No.26, Guangxing Road, Dayan Industrial Zone,
Huangpu Town, Zhongshan City, Guangdong Province

