



# SANAE THAI

*Sanae means so charm, attractive, appeal, or a kind of characteristics that naturally invite to love, to crazy in, or fascination . So, we are very proud in being the representative of Thai culture when refering to Thai products (such as Thai food, Thai Silk, Thai arts or ancient temple)*



DR.NIRAMONTONTHISIRIANUSORN  
PRESIDENT (CEO)

## ❀ Group of innofresh company ❀

Company Brand : Sanae Thai (แสนไทย)  
Company Name : Inno Fresh International Co.,Ltd  
Established : 2004 (20 Years)  
Company Groups : Sanae Thai products co.,Ltd  
Established by : 2019  
Established by : Dr. Niramontonthisirianusorn  
Factory Locates : Lampang Province (at North of Thailand)

Inno Fresh International co.,Ltd is the registered company and listed under the law of Thailand which has been established since 2001 by Dr. Niramontonthisirianusorn, the President (CEO) who has over 30 years experience in International Business. Our core business is "Seafood cocktail sauce and Sweet chili sauce for Shrimp Ring packer. Our Cocktail products are produced from the best factory in which produces the products complying to the CODEX regulation and the factory already certified BRC- HACCP – HACCP HALAL. completely. With the matter of fact, we can product Seafood cocktail sauce with high quality completely.

Since 2004 we have been exporting seafood cocktail sauce to USA for first market channel under the group of my company name \*Well-Grows Enterprise co., and in 2006 we can drive our sale value go through the market in world wide perfectly.As the result of the organization have been monitoring and operation by our CEO., Dr. Niramontonthisirianusorn, the President of the Group of company .We are very proud of our successful in exporting the high quality of Seafood cocktail sauce and sweet chili sauce for Shrimp ring packer in worldwide. We would like to say that we are the Legend of cocktail sauce.

In 2014 until the present, we have expand our marketing team drive to Vietnam in order to supply our all ranges of sauce products, especially Sweet chili sauce and Seafood cocktail sauce to Vietnam packer \*Shrimp Ring packer\* . And we have been very welcome for Vietnam shirmp packer due to our Strongest Exclusive Agent in Vietnam.

\* Sotratch\* as the Exclusive Distributor in Vietnam And Mr. Nguyen Si Vinh Cuong, Director of Sotratch corp, as the Chief of Agent office of our company groups, who will be response for Sales and Marketing of our company as the wholesaler for all range of sauce to repack with the shrimp ring at Vietnam for re-export directly to EUROPE, CANADA, FRANCE, AND USA thoroughly.

At the present we can expand the market go through the forefront leader of food products in worldwide accordingly. Our key market channels are CASH&CARRY – Hyper Market – Food& CATERING MARKET – RETAIL MARKET and restaurant – wholesaler and importer in many countries with OEM BRAND. Our mainly market are mostly in Europe, America, France, Dubai, Australia, New Zealand, Germany and etc.



### Our Vision

To be the leader of manufacturer and Exporter of Cocktail sauce & Sweet Chili sauce and Thai food products to world wide market.

### Our Mission

Produce Quality food product applying to Food safety standard in according with FDA and CODEX Regulation.

### Our Value and Strategy

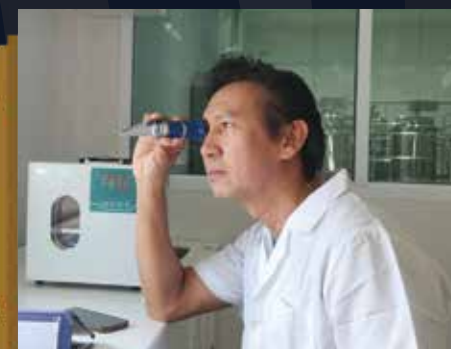
We operate our company in accordance with the management strategy of the key words F-R-E-S-H



SANAE THAI  
INNO FRESH

## Our Reserach and Development

We are specialize in seafood cocktail sauce and sweet chili sauce. With over 30 years of our CEO working experinece we can develop all product complying to cusotmer requirement. The most key succes of our company is Our stronger of marketing teams and the specialist of our RD teams whose can customize the products and develop all products recipe according to the customer requirement as well as our marketing teams to settle the requirements between our customer and factory in order to approach the product in good positioning and specific recipe.



## Our Quality Assurance & Quality System

Our products quality complying to the export regulation and food safety standard and the quality systems control also complying to CODEX Regulation (already certified BRC - HACCP - GMP-HALAL) Moreover, twe are also comply to SAMETA Policy according with the USA consering about Code of Conduct regulation.







## AWARD

### AEC 2018 and ASEAN AWARD FY2022

*Sanae Thai Honey and Dipping Sauce*  
น้ำผึ้งและเครื่องปรุงรส ตราเส้นไหมไทย

DR.NIRAMON TONTHISIRIANUSORN  
PRESIDENT (CEO)



OF THE YEAR 2022  
BEST CEO AWARD

รางวัลนักธุรกิจยอดเยี่ยมระดับอาเซียน ประจำปี 2565



OF THE YEAR 2022  
ASEAN BIZ AWARDS

รางวัลผลิตภัณฑ์ยอดเยี่ยมระดับอาเซียน ประจำปี 2565



OF THE YEAR 2018  
BEST PRODUCT

รางวัลอุตสาหกรรมยอดเยี่ยมระดับอาเซียน ประจำปี 2561



ICON BRAND ASEAN 2022  
องค์กรธุรกิจที่มีผลงานยอดเยี่ยม  
สุดยอดธุรกิจและผลิตภัณฑ์แห่งปี



BEST PRODUCT  
OF THE YEAR 2022

รางวัลคุณภาพผลิตภัณฑ์ไทย  
ยอดเยี่ยมแห่งปี 2565



ASEAN BIZ AWARDS 2022

รางวัลนักธุรกิจยอดเยี่ยม  
ระดับอาเซียน 2565



**Sanae means Charm**  
SANAETHAI MEANS THAI CHARM

(More meaning of Sanae are charm, attractive, appeal, make someone to love or crazy in.)

Sanae and Charm means characteristics that naturally invite love and fascination. No need to embellish. Thai charm refers to Thai characteristics that are charming and attract attention.

Sanae and Charm means to fall in love and like. Thainess has many aspects that indicate identity. specific identity different from other peoples. When you see it, you know immediately that this is Thailand.

#### And that why is "Sanae Thai means Thai charm"

1.Thai charm, culture (Culture) refers to prosperity in human life. Goodness that occurs in various forms such as language, customs, beliefs, traditions, and religion, etc.

Art and culture is one thing that shows its value and shows its uniqueness. of each nation and has a form that reflects prospered in each era of that nation.

Culture and arts and culture are The way of life of individuals in society who have chosen, accumulated, and improved to suit the environment. Use it as a guideline for social coexistence. Culture and arts and culture have developed, changed, improved, created to thrive by inheriting the cultural heritage of the past to the present.

2.Thai charm: In terms of tourism, Thailand is a country with a variety of resources. And it is quite a land that is fertile in every aspect. which has resources such as soil, forests, rivers, minerals, causing many natural perfections. Many places include mountains, seas, rivers, forests, and rare wildlife. Therefore, it is another charm that attracts tourists to be fascinated and admired to travel in Thailand.

3. Thai Food is fantastic and charming , the most popular of thai food in which can make all people around the world want to try when they come to Thailand..For exaple, Tum Yum Kung, Pad Thai, Pad Krapaow.

That is the reason Sanae Thai has an opportunity to be a participate of Thai Dacing to disclose our country to make more due as Thai ambassador leader to present our thai culture to other country .( eg : France,Germany,Italy,Denmark,Australia,Spain,Greece ,Norway,United Arab Emirates India , China , Japan , Taiwan , Malaysia, Hong Kong , Laos, Singapore etc.







❀ **Our Motto** ❀

**Loyalty**  
**Honesty**  
**Humble**

**Our Value**  
**And Strategic**  
**“ F-R-E-S-H ”**



**Goods quality**  
**Good service**  
**Good price**  
*Are our*  
*“key success of business factor”*







# Dipping Sauce



200 ml



| NO | CODE  | PRODUCT NAME         | PACKING/CTN     | G/W CTN  | Dimension               |
|----|-------|----------------------|-----------------|----------|-------------------------|
| 1  | SN001 | SWEET CHILI SAUCE    | 200 ML X 24BTLS | 8.00 KGS | 21.20 x 31.20 x 17.70cm |
| 2  | SN005 | SRIRACHA CHILI SAUCE | 200 ML X 24BTLS | 8.00 KGS | 21.20 x 31.20 x 17.70cm |
| 3  | SN009 | SPRING ROLL SAUCE    | 200 ML X 24BTLS | 8.00 KGS | 21.20 x 31.20 x 17.70cm |
| 4  | SN075 | THAI SEAFOOD         | 200 ML X 24BTLS | 8.00 KGS | 21.20 x 31.20 x 17.70cm |

300 ml

| NO | CODE  | PRODUCT NAME         | PACKING/CTN     | G/W CTN   | Dimension               |
|----|-------|----------------------|-----------------|-----------|-------------------------|
| 1  | SN002 | SWEET CHILI SAUCE    | 300 ML X 24BTLS | 13.96 KGS | 26.70 x 39.40 x 19.70cm |
| 2  | SN006 | SRIRACHA CHILI SAUCE | 300 ML X 24BTLS | 13.96 KGS | 26.70 x 39.40 x 19.70cm |
| 3  | SN010 | SPRING ROLL SAUCE    | 300 ML X 24BTLS | 13.96 KGS | 26.70 x 39.40 x 19.70cm |
| 4  | SN076 | THAI SEAFOOD         | 300 ML X 24BTLS | 13.96 KGS | 26.70 x 39.40 x 19.70cm |



700 ml



| NO | CODE  | PRODUCT NAME         | PACKING/CTN      | G/W CTN   | Dimension               |
|----|-------|----------------------|------------------|-----------|-------------------------|
| 1  | SN003 | SWEET CHILI SAUCE    | 700 ML X 12 BTLS | 15.56 KGS | 24.40 x 32.00 x 30.20cm |
| 2  | SN007 | SRIRACHA CHILI SAUCE | 700 ML X 12 BTLS | 15.56 KGS | 24.40 x 32.00 x 30.20cm |
| 3  | SN011 | SPRING ROLL SAUCE    | 700 ML X 12 BTLS | 15.56 KGS | 24.40 x 32.00 x 30.20cm |
| 4  | SN077 | THAI SEAFOOD         | 700 ML X 12 BTLS | 15.56 KGS | 24.40 x 32.00 x 30.20cm |

5 Liters

✂ HOROCA SIZE ✂

Net weight : 5 Liter  
Gross weight : 6.50 Kg.  
Per of CTN : 2 gallon  
Dimension : 28 x 20 x 31.4 cm  
Cap load 20 FCL: 1,260 CTNS

✂ AVAILABLE ✂



Sweet Chili Sauce

✂  
Code : SN004  
✂



Sriracha Chili Sauce

✂  
Code : SN008  
✂



Spring Roll Sauce

✂  
Code : SN012  
✂



Thai Seafood

✂  
Code : SN078  
✂



# Cooking Sauce



200 ml

| NO | CODE  | PRODUCT NAME      | PACKING/CTN     | G/W CTN  | Dimension               |
|----|-------|-------------------|-----------------|----------|-------------------------|
| 1  | SN030 | OYSTER SAUCE      | 200 ML X 24BTLS | 8.00 KGS | 21.20 x 31.20 x 17.70cm |
| 2  | SN034 | TERIYAKI SAUCE    | 200 ML X 24BTLS | 8.00 KGS | 21.20 x 31.20 x 17.70cm |
| 3  | SN018 | PAD THAI SAUCE    | 200 ML X 24BTLS | 8.00 KGS | 21.20 x 31.20 x 17.70cm |
| 4  | SN022 | PAD KRAPAOW SAUCE | 200 ML X 24BTLS | 8.00 KGS | 21.20 x 31.20 x 17.70cm |



300 ml



| NO | CODE  | PRODUCT NAME      | PACKING/CTN     | G/W CTN   | Dimension               |
|----|-------|-------------------|-----------------|-----------|-------------------------|
| 1  | SN031 | OYSTER SAUCE      | 300 ML X 24BTLS | 13.96 KGS | 26.70 x 39.40 x 19.70cm |
| 2  | SN035 | TERIYAKI SAUCE    | 300 ML X 24BTLS | 13.96 KGS | 26.70 x 39.40 x 19.70cm |
| 3  | SN019 | PAD THAI SAUCE    | 300 ML X 24BTLS | 13.96 KGS | 26.70 x 39.40 x 19.70cm |
| 4  | SN023 | PAD KRAPAOW SAUCE | 300 ML X 24BTLS | 13.96 KGS | 26.70 x 39.40 x 19.70cm |

700 ml

| NO | CODE  | PRODUCT NAME      | PACKING/CTN      | G/W CTN   | Dimension               |
|----|-------|-------------------|------------------|-----------|-------------------------|
| 1  | SN032 | OYSTER SAUCE      | 700 ML X 12 BTLS | 15.56 KGS | 24.40 x 32.00 x 30.20cm |
| 2  | SN036 | TERIYAKI SAUCE    | 700 ML X 12 BTLS | 15.56 KGS | 24.40 x 32.00 x 30.20cm |
| 3  | SN020 | PAD THAI SAUCE    | 700 ML X 12 BTLS | 15.56 KGS | 24.40 x 32.00 x 30.20cm |
| 4  | SN024 | PAD KRAPAOW SAUCE | 700 ML X 12 BTLS | 15.56 KGS | 24.40 x 32.00 x 30.20cm |



5 Liters

✂ HOROCA SIZE ✂

Net weight : 5 Liter  
Gross weight : 6.50 Kg.  
Per of CTN : 2 gallon  
Dimension : 28 x 20 x 31.4 cm  
Cap load 20 FCL: 1,260 CTNS

✂ AVAILABLE ✂



Oyster Sauce

✂  
Code : SN033  
✂



Teriyaki Sauce

✂  
Code : SN037  
✂



Pad Thai Sauce

✂  
Code : SN021  
✂



Pad Krapaow Sauce

✂  
Code : SN0025  
✂

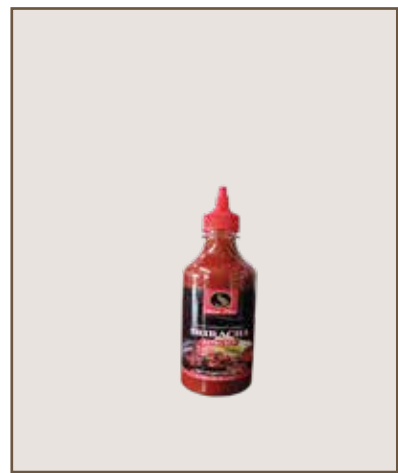


Sriracha Mayo Chili Sauce



Sriracha Chili Sauce

200 ML.



PACKING DETAIL

200 ml x 12 / carton  
Dimension 16.80 x 21.80 x 18.70cm

440 ML.



PACKING DETAIL

440 ml x 12 / carton  
Dimension 20.50 x 27.20 x 22.40cm

740 ML

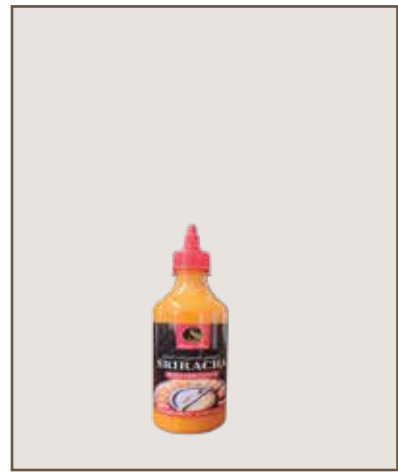


PACKING DETAIL

740 ml x 12 / carton  
Dimension 25.80 x 34.20 x 26.70cm

Sriracha Mayo Chili Sauce

200 ML.



PACKING DETAIL

200 ml x 12 / carton  
Dimension 16.80 x 21.80 x 18.70cm

440 ML.



PACKING DETAIL

440 ml x 12 / carton  
Dimension 20.50 x 27.20 x 22.40cm

740 ML



PACKING DETAIL

740 ml x 12 / carton  
Dimension 25.80 x 34.20 x 26.70cm

Sriracha Chili Sauce







## Mayonnaise Based



## Seafood Cocktail sauce

Black Cup No. 003-3



Sweet chili sauce

Code : SV1382-03  
N/W : 70 g  
G/W : 79 g  
Qty/CTN : 60 cups  
Dimension : 23.5 x 31.0 x 20.8 cm  
Capacity load : 1530 ctns x 20 FCL

Black Cup No. 003-3



Garlic Sauce

Code : SD1236  
N/W : 70 g  
G/W : 79 g  
Qty/CTN : 60 cups  
Dimension : 23.5 x 31.0 x 20.8 cm  
Capacity load : 1530 ctns x 20 FCL

Black Twin Cup No. 032/442



Code : SD0014-12+SV1382-03  
N/W : 35 g + 35 g  
G/W : 75 g  
Qty/CTN : 36 cups  
Dimension : 32.0 x 24.5 x 10.5 cm  
Capacity load : 2940 ctns x 20 FCL

Black Cup No. 003-2



Garlic sauce

Code : SD1236  
N/W : 70 g  
G/W : 79 g  
Qty/CTN : 60 cups  
Dimension : 23.5 x 31.0 x 20.8 cm  
Capacity load : 1530 ctns x 20 FCL

Clear Cup No. 003-2



Garlic sauce

Code : SD1236  
N/W : 70 g  
G/W : 79 g  
Qty/CTN : 60 cups  
Dimension : 23.5 x 31.0 x 20.8 cm  
Capacity load : 1530 ctns x 20 FCL

Clear Cup No. 0161



Code : SV0017  
N/W : 60z  
G/W : 121.4g  
Qty/CTN : 36 cups  
Dimension : 37.5 x 28.5 x 14.2 cm  
Capacity load : 1530 ctns x 20 FCL

Marry rose sauce + Sweet chili sauce



Cup No.032/442

Black Cup No. 003-2



N/W : 70g  
Qty/CTN : 60 cups  
Dimension : 23.5 x 31.0 x 20.8 cm  
Capacity load : 1530 ctns x 20 FCL

Clear Cup No. 003-2



N/W : 70g  
Qty/CTN : 60 cups  
Dimension : 23.5 x 31.0 x 20.8 cm  
Capacity load : 1530 ctns x 20 FCL

Clear Cup No. 003-3/020



N/W : 70 g  
Qty/CTN : 60 cups  
Dimension : 23.5 x 31.0 x 20.8 cm  
Capacity load : 1530 ctns x 20 FCL

Black Cup No. 003-3



N/W : 70 g  
Qty/CTN : 60 cups  
Dimension : 23.5 x 31.0 x 20.8 cm  
Capacity load : 1530 ctns x 20 FCL

Clear Cup No. 040/0160



N/W : 40z  
Qty/CTN : 36 cups  
Dimension : 32.0 x 24.0 x 13.5 cm  
Capacity load : 2,400 ctns x 20 FCL

Clear Cup No. 0162



N/W : 80z  
Qty/CTN : 36 cups  
Dimension : 44 x 33 x 14.3 cm  
Capacity load : 1,200 ctns x 20 FCL

Clear Cup No. 080-1/0169



N/W : 80z  
Qty/CTN : 36 cups  
Dimension : 37.5 x 28.5 x 19.7 cm  
Capacity load : 1,000 ctns x 20 FCL

Cear Cup No. 082



N/W : 80z  
Qty/CTN : 36 cups  
Dimension : 44.0 x 33.0 x 14.3 cm  
Capacity load : 1,200 ctns x 20 FCL

Clear Cup No. 043/003



Cocktail sauce  
Code : SV0017-23  
N/W : 113.4g  
G/W : 121.4g  
Qty/CTN : 36 cups  
Dimension : 29.0 x 21.8 x 15.5cm  
Capacity load : 2016 ctns x 20 FCL



Cocktail sauce  
Code : SV2024-11  
N/W : 113.4g  
G/W : 121.4g  
Qty/CTN : 36 cups  
Dimension : 29.0 x 21.8 x 15.5cm  
Capacity load : 2,016 ctns x 20 FCL



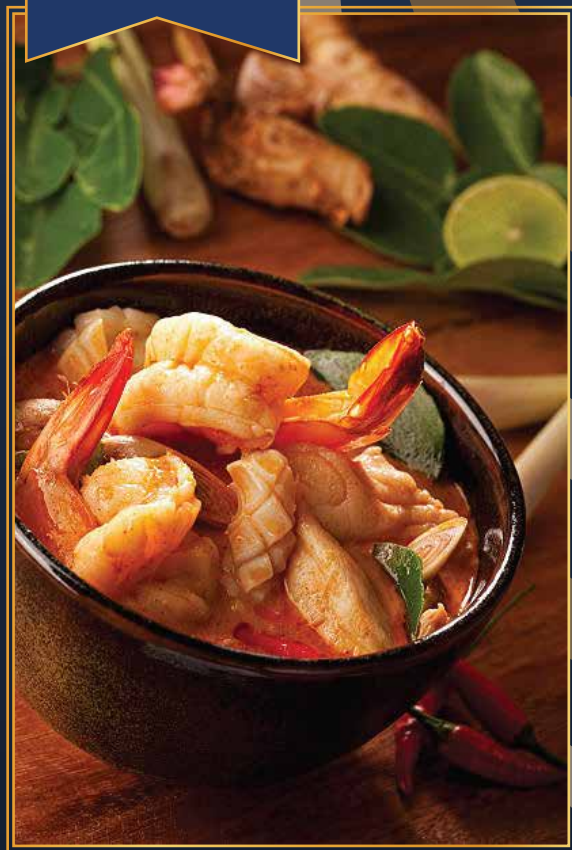
Cocktail sauce  
Code : SV3864-04  
N/W : 113.4g  
G/W : 121.4g  
Qty/CTN : 36 cups  
Dimension : 29.0 x 21.8 x 15.5cm  
Capacity load : 2,016 ctns x 20 FCL







SANAE THAI



## Tom yum Sauce

## Tom Yum Set

Tom Yum Set  
leg, lemongrass, kaffir lime leaves, chilli



300 ML.



### PACKING DETAIL

300 ml x 24 / carton  
Dimension 26.70 x 39.40 x 19.70cm

700 ML.



### PACKING DETAIL

700 ml x 12 / carton  
Dimension 24.40 x 32.00 x 30.20cm

5 Liter



### PACKING DETAIL

5 Liter x 2 / carton  
Dimension 28.00 x 20.00 x 31.40 cm



SANAE THAI

## Tamarind Concentrate



## Tom yum Kung Tamarind Concentrate

### Ingredients Tom Yum Kung Soup

- 1.Prawn shrimp 8-10 pcs
- 2.Tamarind concentrate (sanae Thai) 2 oz
- 3.Tom yum set (sanae Thai) 1 set
- 4.Tom yum sauce
- 5.Onion,Shallot,Mushroom as a perper quantity you want.
- 6.water 240ml

### How to make Tom Yum Kung Soup

- 1.Preparing a pot for boiling water.
- 2.put 250ml water into a pot and boil until it became heat.
- 3.Put Tom yum sauce (4oz) into the hot port.
- 4.put tom yum set (1set) into the hot port.
- 5.Boiling it until the water high heating.
- 6.put shrimp and follow with Onion,Shallot,Mushroom you prefer.
- 7.stir it until they mixed and stop the oven.
- 8.ready to serve in 2 bouls of 400 ml.

435 ML.



### PACKING DETAIL

435 ml x 24 / carton  
Dimension 26.70 x 39.40 x 19.70cm

300 ML.



### PACKING DETAIL

300 ml x 24 / carton  
Dimension 26.70 x 39.40 x 19.70cm

5 Liter



### PACKING DETAIL

5 Liter x 2 / carton  
Dimension 28.00 x 20.00 x 31.40 cm

## Pad KraPaow Sauce



## Pad KraPaow With Rice

### Ingredients

- 1.red pepper
- 2.garlic
- 3.Basil sauce (Pad Krapaow sauce)
- 4.basil leaves
- 5.meat

### How to cook Beef Holy Basil (Pad Krapaow)

- 1.Stir-fry chili with garlic until fragrant.
- 2.add meat
- 3.Add stir-fried basil sauce and basil leaves
- 4.Stir together.

300 ML.



### PACKING DETAIL

300 ml x 24 / carton  
Dimension 26.70 x 39.40 x 19.70cm

700 ML.



### PACKING DETAIL

700 ml x 12 / carton  
Dimension 24.40 x 32.00 x 30.20cm

5 Liter



### PACKING DETAIL

5 Liter x 2 / carton  
Dimension 28.00 x 20.00 x 31.40 cm

## Pad Thai Sauce



300 ML.



### PACKING DETAIL

300 ml x 24 / carton  
Dimension 26.70 x 39.40 x 19.70cm

700 ML.



### PACKING DETAIL

700 ml x 12 / carton  
Dimension 24.40 x 32.00 x 30.20cm

5 Liter



### PACKING DETAIL

5 Liter x 2 / carton  
Dimension 28.00 x 20.00 x 31.40 cm

### Ingredients

1. Rice noodles 200g
2. Stir fry sauce 85g
3. shrimp 250g
4. Handful of bean sprouts 1
5. Cashew nuts 4g
6. Egg 1
7. spring onions 1 g
8. Chili powder 3g
9. Lime 1

### How to cook Pad Thai

1. Boil the Thai rice noodles in hot water for 5 minutes (or soak in tepid water for 30 min.) While waiting for your noodles to finish boiling, go ahead and slice the chicken. Strain the noodles, and coat with a little bit of oil.
2. In a wok or frying pan on a medium heat, add 2 tbsp. of oil and saute the chicken. When the chicken is almost cooked through, push it to one side of the wok, and fry the egg in the empty space. Once the egg is cooked, stir it in with the chicken.
3. Now, add your Thai rice noodles, Phad Thai sauce, dried spring onions and cashew nuts.
4. Continue to stir-fry for another 2 minutes and fold in half a handful of bean sprouts right before you turn off the heat. Place on a serving dish and garnish with chili powder on the side(with precaution as very spicy), as well as the remaining bean sprouts and a lime wedge.





น้ำผึ้งรสผลไม้ไทย  
Sanae Thai Honey



| NO | CODE  | PRODUCT NAME                    | PACKING/CTN    | G/W (CTN) | Dimension                |
|----|-------|---------------------------------|----------------|-----------|--------------------------|
| 1  | SN052 | HONEY LONGAN FLAVOR             | 500 G X 24BTLS | 13.29 KGS | 22.50x 32.00 x 24.50 cm. |
| 2  | SN090 | HONEY LIME FLAVOR               | 500 G X 24BTLS | 13.29 KGS | 22.50x 32.00 x 24.50 cm. |
| 3  | SN049 | HONEY NATURAL FLAVOR (PREMIUM ) | 500 G X 24BTLS | 13.29 KGS | 22.50x 32.00 x 24.50 cm. |
| 4  | SN046 | HONEY NATURAL FLAVOR            | 500 G X 24BTLS | 13.29 KGS | 22.50x 32.00 x 24.50 cm. |







Pure Heaven  
Basil Seed Drink



Note

---

---

---

---

---

---

---

---



Basil Seed Drink  
Kiwi Fruit Flavored



Basil Seed Drink  
Fruit Cocktail Flavored



Basil Seed Drink  
Orange Fruit Flavored



Basil Seed Drink  
Pineapple Fruit Flavored



Basil Seed Drink  
Pomegranate Fruit Flavored



Basil Seed Drink  
Red Grape Fruit Flavored



Basil Seed Drink  
White Grape Fruit Flavored



Basil Seed Drink  
Lychee Fruit Flavored



Basil Seed Drink  
Strawberry Fruit Flavored

| NO | CODE | PRODUCT NAME     | PACKING/CTN    | G/W (CTN) | Dimension             |
|----|------|------------------|----------------|-----------|-----------------------|
| 1  |      | BASIL SEED DRINK | 290 G X 24BTLS | 10.00kg   | 28.8 x 43.4 x 19.2 cm |



Note

---

---

---

---

---

---

---

---





SANAE THAI  
INNO FRESH

*The Original Thai Taste*



**INNOFRESH INTERNATIONAL CO.,LTD**

บริษัท อินโนเฟรช อินเตอร์เนชั่นแนล จำกัด

Office: PS TOWER (Paisart Building ) 4<sup>th</sup> floor, Rm#48 , Rangsit Nakornayok Road  
A.Tanyaburi Pratumthanee 12130, Thailand Tel/Line ID/ Whatapp: +66 902891987  
Email : nirammon\_innofresh@hotmail.com

**SANAE THAI PRODUCTS CO.,LTD**

บริษัท เสน่ห์ไทย โปรดักส์ จำกัด

Factory: 441 Moo 11, T.Chumpu,A.Muang Lampang 52000,Thailand  
Tel/Line ID/ Whatsapp: +66 922579887  
Email : nina\_sanaethai@hotmail.com Email : nirammon@sanaethai.co.th



sanae thai



ID: 0902891987



ID: 0902891987



innofresh1968@hotmail.com

[www.innofreshinternational.com/www.sanaethai.co.th](http://www.innofreshinternational.com/www.sanaethai.co.th)