


# Our Products

100%  
Plant-Based

 **Red lentils**  
(Whole, Football, Split)



 **Green lentils**  
(Lairds, Richleas, Estons, Yellow Split)



 **Kabuli chickpeas**



 **Green peas**  
(Whole, Green Split)



 **Yellow peas**  
(Whole, Yellow Split)



 **Dunn peas**



 **Maple peas**



 **Beans**



 **Specialty seeds**  
(Flaxseeds, Canary)



 **Durum**



# Why Choose Us



Strong Value Chain:  
**Farm to Fork**



**Global Presence** and  
**Market Intelligence**



**Food Safety** and  
End-to-end **Traceability**

# ETG

etgworld.com/pulses



 [export.canada@etgworld.com](mailto:export.canada@etgworld.com)

# ETG

# Global Leader in Pulses



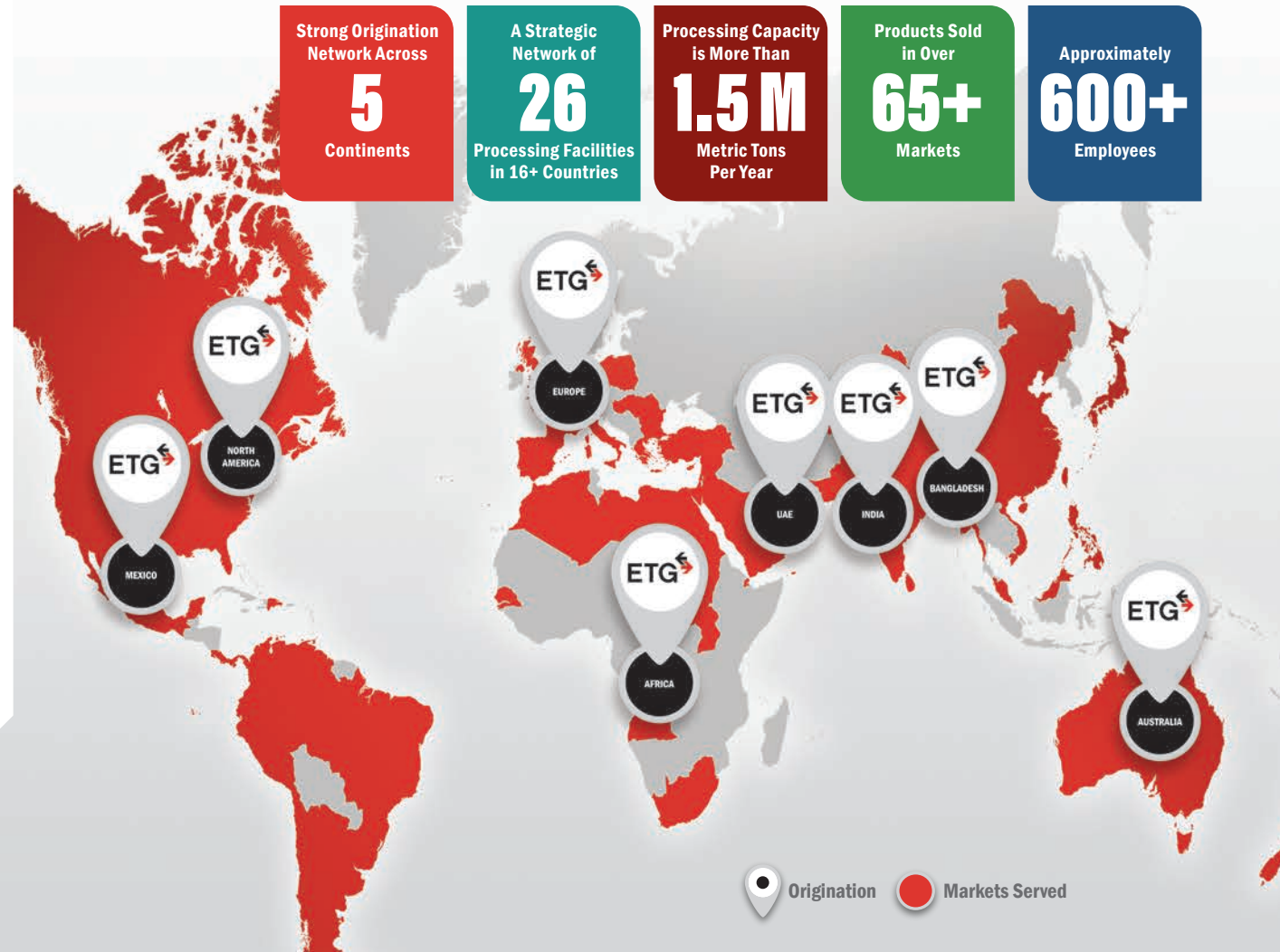
Africa | Americas | Asia | Australia | Europe

# About Us

- ✓ Leading **Processor** and **Supply Chain** Manager of Sustainable **Plant-Based** Food Products and Ingredients.
- ✓ Direct Presence Across **16+ Countries** and an Annual Processing Capacity of **1.5+ Million Metric Tons**.
- ✓ Large **Origination** Network Spanning **5 Continents**.
- ✓ A Network of **26** State-of-the-Art **Processing** Facilities in All Major Growing Regions and Consumption Regions Including **North America, India, U.A.E., Australia, Bangladesh** and **Africa**.
- ✓ **11 Processing** Facilities in **Canada** for Grain Origination.
- ✓ Exporting to **65+ countries**.
- ✓ **ISO 22000, GFSI** Food Safety Certifications.



# Our Global Footprint



Farm  
(Procure Raw  
Materials)

Quality  
Control



Food  
Manufacturing  
& Processing

Quality  
Control



Packaging

Quality  
Control



Distribution

Quality  
Control



Shipping

Quality  
Control



Food Retailers  
& Grocers