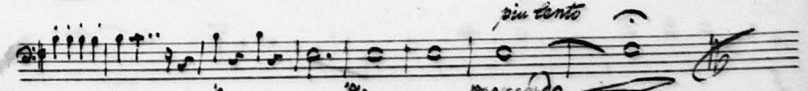
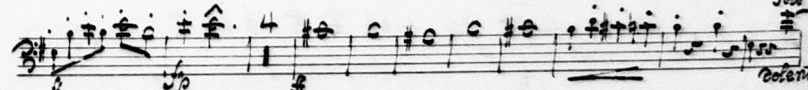
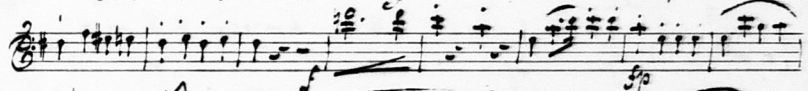
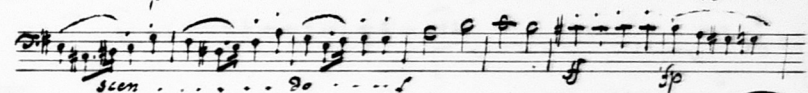
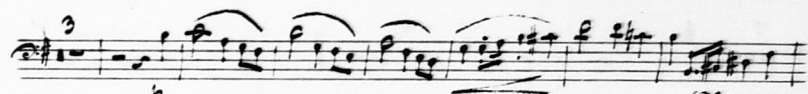
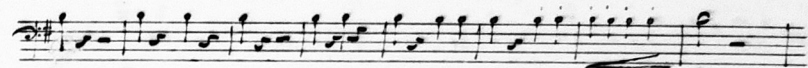
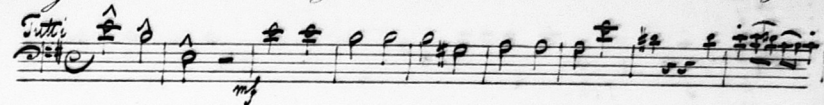


*Allegro non tanto* Fagotto 1<sup>mo</sup> Concert per Jean Ruckgaber.



Vagottu 1<sup>mo</sup>

*Solo*

4

16.

7

p

Fermato cantabile 8

19

Solo dolce

legato p

6

tutti sp

24

p

15

7

piano

2

2

2



Sagitta 1<sup>mo</sup>

Musical staff with treble clef, key signature of two sharps, and a 4-measure rest.

Musical staff with treble clef, key signature of two sharps, and dynamic markings including *Terzato*, *cominci*, and *cantabile*.

Musical staff with treble clef, key signature of two sharps, and dynamic markings including *p* and *mf*.

Musical staff with treble clef, key signature of two sharps, and dynamic markings including *con fuoco* and *Dolce*.

Musical staff with treble clef, key signature of two sharps, and dynamic markings including *mf* and *dolce*.

Musical staff with treble clef, key signature of two sharps, and dynamic markings including *p*.

Musical staff with treble clef, key signature of two sharps, and dynamic markings including *p*.

Musical staff with treble clef, key signature of two sharps, and dynamic markings including *mf* and *rit.*

Musical staff with treble clef, key signature of two sharps, and dynamic markings including *mf* and *rit.*

*Andante*

Musical staff with treble clef, key signature of two sharps, and dynamic markings including *p* and *Dolce*.

Musical staff with treble clef, key signature of two sharps, and dynamic markings including *p*.

Sagitta 1<sup>mo</sup>

*Tr. Solo*

Musical staff with treble clef, key signature of two sharps, and dynamic markings including *p* and *mf*.

Musical staff with treble clef, key signature of two sharps, and dynamic markings including *p* and *mf*.

Musical staff with treble clef, key signature of two sharps, and dynamic markings including *p* and *mf*.

Musical staff with treble clef, key signature of two sharps, and dynamic markings including *p* and *mf*.

Musical staff with treble clef, key signature of two sharps, and dynamic markings including *p* and *mf*.

Musical staff with treble clef, key signature of two sharps, and dynamic markings including *p* and *mf*.

Musical staff with treble clef, key signature of two sharps, and dynamic markings including *p* and *mf*.

Musical staff with treble clef, key signature of two sharps, and dynamic markings including *p* and *mf*.

Musical staff with treble clef, key signature of two sharps, and dynamic markings including *p* and *mf*.

Musical staff with treble clef, key signature of two sharps, and dynamic markings including *p* and *mf*.

Musical staff with treble clef, key signature of two sharps, and dynamic markings including *p* and *mf*.

Musical staff with treble clef, key signature of two sharps, and dynamic markings including *p* and *mf*.

Viagata, 1<sup>mo</sup>

Handwritten musical score for 'Viagata, 1mo'. The score consists of six staves of music. The first staff begins with a treble clef and a key signature of one sharp (F#). The second staff includes the instruction 'Lento tempo' and a dynamic marking 'p'. The third staff has a 'Solo' marking. The fourth staff includes 'delicato' and 'allargando'. The fifth staff has a dynamic marking 'mf' and 'cresc.'. The sixth staff continues the melodic line.

Five empty musical staves on the left page, positioned below the first six staves.

9. F Solo Trombe 2<sup>da</sup>

Handwritten musical score for Trombe 2da. It features two staves of music. The first staff is marked '9. F Solo' and 'Tutti'. The second staff includes 'piu lento' and 'ppp morendo'. The music is in a 3/8 time signature.

Trombe in Gb

Handwritten musical score for Trombe in Gb. It consists of four staves of music. The first staff is marked 'Andante' and '9. F Solo'. The second staff has a dynamic marking 'mf'. The third staff includes 'Lento Tempo'. The fourth staff has a dynamic marking 'mf' and 'allargando'. The music is in a 9/8 time signature.

Five empty musical staves on the right page, positioned below the first four staves.