



Replichrome II: Slide Review



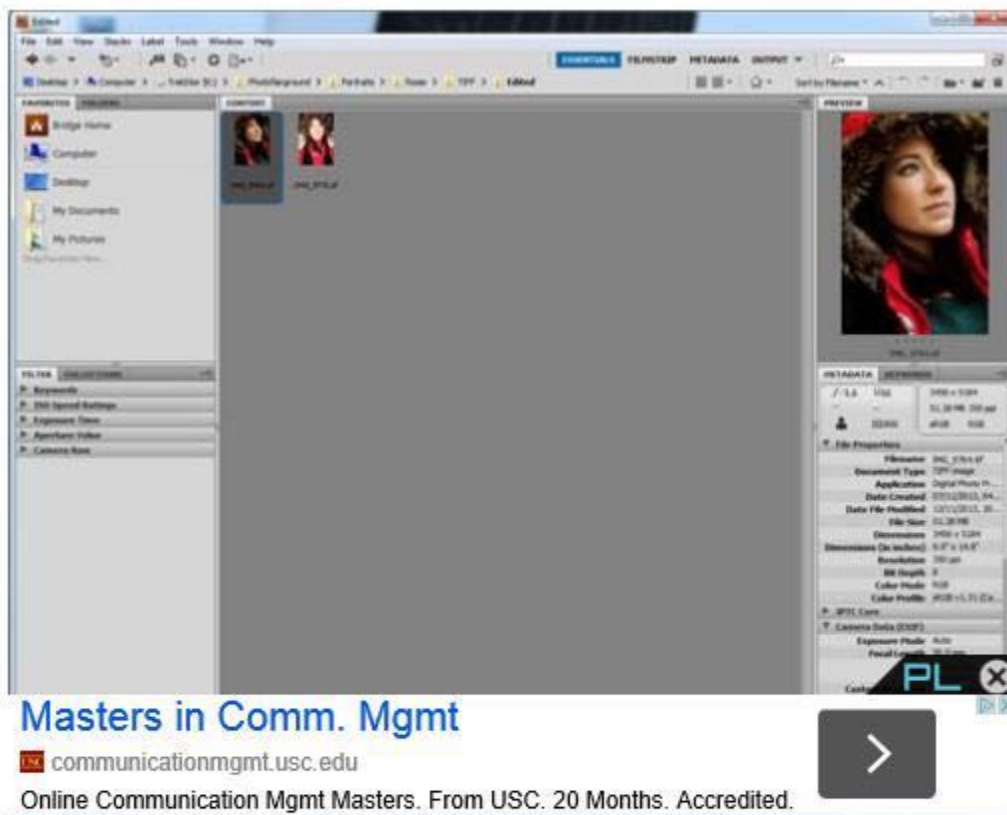
Totally Rad are back with a [new](#) plug-in for Lightroom and Camera Raw. Replichrome II: Slide uses multiple discontinued slide films with various processors to create hundreds of different effects. In this full test, we'll see if it can live up to the reputation of its predecessor. Priced at \$99, Replichrome II: Slide is available for download from the [Totally Rad](#) website.

Installation and Use

There are a few tick boxes to read through, such as the terms and conditions and giving the nod to having certain aspects installed. Disregarding reading through all those, installation takes less than three minutes.

You can use Replichrome II: Slide with either Lightroom or Adobe Camera Raw. We chose Camera Raw for Replichrome II:

Slide as we've already tested Replichrome I: Icon in Lightroom. To use Replichrome II: Slide, we had to open Adobe Bridge and choose the image we wanted to adjust.



Adobe Bridge

Once you've chosen the image you want to use in Replichrome II: Slide, you can find the list of preset filters in Develop Settings, which is in the Edit tab. Just like Replichrome II: Icon, there are hundreds of filters using various film stock at different speeds and scanned in on different scanners.

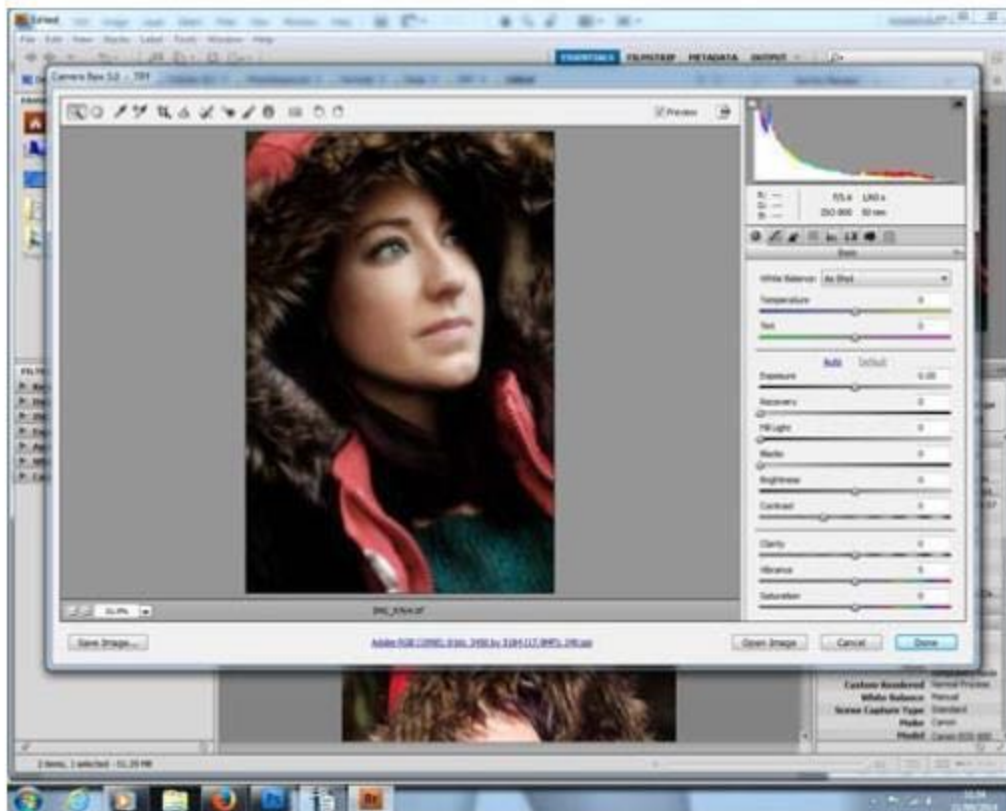
Interestingly, Fuji Frontier scanners have been replaced with Epson scanners, but Noritsu are still present.

There are 6 Fuji slide films that have been used, 7 Kodak, 5 Agfa and even a Scotch Chrome 100 film. The variations of these film include scanning in on two different scanners as well as amending the exposure compensation to give different results.



Camera Raw

There are also a number of presets that you can apply to the pictures such as grain, colour, contrast, sharpening, tones, vignettes and curves. They have optional strengths and each variance is denoted with a + or - symbol. The more of the symbols appear next to each option, the stronger the application.



Opening in Camera Raw

Once you've selected the image you want to add the filter to, go to the preset list and have a look through the list. This can be quite a tedious role until you work out your favourites. You can't use the centre wheel of a mouse, but there are small arrows at the top and bottom for you to click and hold while the lists drags up and down slowly. After selecting the filter, open the image in Camera Raw and save the image. Simply pressing open or done won't save any changes made in Bridge.

Performance

Replichrome II: Slide works just as well as Replichrome I: Icon, so there's no complaints with performance. It does work differently in Camera Raw to Lightroom, though. There's no splitting of the filters into sections and while we tested it, there was no particular way to see that the filter was being applied. That's not too much of a problem until you want to simply try some of the effects out and they look quite similar.

The advantage is that if you don't currently use Lightroom, but have Photoshop, you don't have to buy anything else because it works in Adobe Bridge. It just seems to be a lot more basic.

Examples



Agfa 1000RS



Fuji Astia 100F



Fuji Provia 100 Noritsu



Kodak Panther 400x



Scotch Chrome 100 Noritsu




Scotch Chrome 100 Noritsu

Conclusion

If you're a fan of Replichrome II: Slide and have the previous version on your computer, the presets will load into Camera Raw at the same time as Replichrome I: Icon. This can cause a little confusion if you're not altogether familiar with what films were slide and what weren't. After all, they're not all suffixed with "chrome".

Still, when you sit back and look at it, you have a large selection of filters that have been lovingly recreated by the hard work of the people at Totally Rad. Again, they've not just covered what a film looks like, but also how a scanner will affect the colours of the slide.

We mentioned that Agfa was missing from the line-up in Replichrome I: Icon and it's been included in the [new](#)  version which is a nice touch. They've also managed to include a couple of rolls of Scotch film, but interestingly absent is Sensia 200. Arguably the most popular of slide films from Fuji.

For the price, Replichrome II: Slide is a great little plug-in for those photographs that need a warmer touch that only film can provide. A lot of time and effort has gone into recreating the right balance of colour and tone. If you like using film emulation software or you're interested in giving your pictures a vintage look, then take a look at some of the examples here as well as on the Totally Rad website. If they look like the kind of thing you want to recreate, then this could be the program for you.