

CINCINNATI[®]

VOLLEYBALL

Volleyball Match Notes

VOLLEYBALL CONTACT: ALEX LANGE

alex.lange@uc.edu

513.556.5145

gobearcats.com

2015 SCHEDULE (21-10, 13-7 AMERICAN)

Queen City Classic

FRI. AUG. 28 EASTERN MICHIGAN L, 0-3

SAT. AUG. 29 NORTHERN KENTUCKY W, 3-0

SAT. AUG. 29 XAVIER W, 3-1

Cleveland State Classic

Fri. Sept. 4 vs. Binghamton W, 3-0

Sat. Sept. 5 vs. Central Michigan W, 3-0

Sat. Sept. 5 at Cleveland State W, 3-1

Butler All-American Classic

Fri. Sept. 11 vs. Northern Iowa L, 1-3

Sat. Sept. 12 vs. UIC W, 3-1

Sat. Sept. 12 at Butler W, 3-1

THURS. SEPT. 17 LOUISVILLE L, 1-3

SAT. SEPT. 19 SIUE W, 3-0

WED. SEPT. 23 MEMPHIS* L, 2-3

FRI. SEPT. 25 EAST CAROLINA* W, 3-1

Fri. Oct. 2 at UConn* L, 2-3

Sun. Oct. 4 at Temple* L, 1-3

FRI. OCT. 9 UCF* W, 3-1

SUN. OCT. 11 USF* W, 3-1

Fri. Oct. 16 at Tulane* W, 3-0

Sun. Oct. 18 at Houston* W, 3-0

Fri. Oct. 23 at SMU* L, 0-3

Sun. Oct. 25 at Tulsa* W, 3-2

FRI. OCT. 30 TEMPLE* W, 3-1

SUN. NOV. 1 UCONN* L, 2-3

FRI. NOV. 6 TULSA* W, 3-2

SUN. NOV. 9 SMU* L, 0-3

Wed. Nov. 11 at Memphis* L, 1-3

Sun. Nov. 15 at East Carolina* W, 3-0

Fri. Nov. 20 at USF* W, 3-1

Sun. Nov. 22 at UCF* W, 3-0

WED. NOV. 25 HOUSTON* W, 3-1

FRI. NOV. 27 TULANE* W, 3-0

*-American game; Home games in **BOLD CAPS**, played at Fifth Third Arena; All times Eastern and subject to change.

UPCOMING MATCHES



CINCINNATI BEARCATS

2015 Record: 21-10, 13-7 American

Ranking: -

Last Match: W, 3-0

vs. Tulane, 11/22/15

Head Coach: Molly Alvey

Career Record: 113-107 (7th)

Record at UC: 51-77 (4th)

2015 STATISTICAL LEADERS

Kills Jordan Thompson
3.92/set

Assists Jade Tingelhoff
8.48/set

Digs Abby Williams
4.37/set

Blocks Lise Alaiwan
1.45/set



American Final Standings

Team..... Conf..... Over.

SMU 17-3 27-5

Temple 15-5 24-8

Cincinnati ... 13-7 21-10

Memphis 10-10 19-14

UConn 10-10 16-15

Tulsa 10-10 15-17

Houston 9-11 19-13

UCF 9-11 15-17

USF 8-12 11-21

East Carolina .. 5-15 12-18

Tulane 4-16 10-22

WEEKLY WATCH

2015 University of Cincinnati Volleyball Roster

No.	Name	Ht.	Pos.	Cl.	Hometown/High School/Last School
2	Abby Williams	5-9	DS	Fr.	Loveland, Ohio/Ursuline Academy
3	Maya Muldrow	6-1	MB	So.	Raleigh, N.C./Wakefield
4	Morgan Allred	5-8	OH	Sr.	Carrollton, Texas/Hebron
5	Taylor Balen	6-1	OH	Fr.	Manhattan Beach, Calif./Mira Costa
6	Parker Shepherd	5-10	S	So.	McKinney, Texas/McKinney Boyd
8	Emma Roberson	6-1	RS	Sr.	Brooks, Ky./duPont Manual/Evansville
9	Jade Tingelhoff	6-0	S	Fr.	Lakeville, Minn./Lakeville South
11	Lindsey Dinkelacker	5-11	OH	Jr.	Cincinnati, Ohio/Mother of Mercy/St. Louis
12	Carly Nolan	6-0	OH	Fr.	Crystal Lake, Ill./Crystal Lake South
13	Ciara Hill	5-10	OH	Jr.	Bolingbrook, Ill./Bolingbrook
14	Amelia Wegman	6-1	OH	Sr.	Aurora, Ill./Rosary
17	Alison Kimmel	6-2	MB	RS-Jr.	Plainfield, Ill./Plainfield North
19	Cortnee Bowser	6-4	MB	So.	Kent, Ohio/Theodore Roosevelt
21	Lise Alaiwan	6-2	MB	Jr.	Villeneuve Loubet, France/Lyce Aguste Renoir/Kedge Business School
23	Jordan Thompson	6-4	RS/OH	Fr.	Edina, Minn./Edina

No.	Name	Ht.	Pos.	Cl.	Hometown/High School/Last School
21	Lise Alaiwan	6-2	MB	Jr.	Villeneuve Loubet, France/Lyce Aguste Renoir/Kedge Business School
4	Morgan Allred	5-8	OH	Sr.	Carrollton, Texas/Hebron
5	Taylor Balen	6-1	OH	Fr.	Manhattan Beach, Calif./Mira Costa
19	Cortnee Bowser	6-4	MB	So.	Kent, Ohio/Theodore Roosevelt
11	Lindsey Dinkelacker	5-11	OH	Jr.	Cincinnati, Ohio/Mother of Mercy/St. Louis
13	Ciara Hill	5-10	OH	Jr.	Bolingbrook, Ill./Bolingbrook
17	Alison Kimmel	6-2	MB	RS-Jr.	Plainfield, Ill./Plainfield North
3	Maya Muldrow	6-1	MB	So.	Raleigh, N.C./Wakefield
12	Carly Nolan	6-0	OH	Fr.	Crystal Lake, Ill./Crystal Lake South
8	Emma Roberson	6-1	RS	Sr.	Brooks, Ky./duPont Manual/Evansville
6	Parker Shepherd	5-10	S	So.	McKinney, Texas/McKinney Boyd
23	Jordan Thompson	6-4	RS/OH	Fr.	Edina, Minn./Edina
9	Jade Tingelhoff	6-0	S	Fr.	Lakeville, Minn./Lakeville South
14	Amelia Wegman	6-1	OH	Sr.	Aurora, Ill./Rosary
2	Abby Williams	5-9	DS	Fr.	Loveland, Ohio/Ursuline Academy

Molly Alvey – Head Coach

Phillip White – Assistant Coach

Kayla Jeter – Assistant Coach

Hannah Quinlan – Student Manager

Sam Springer – Student Manager

Pronunciations

Lise Aaliwan | LEEZ ah-lay-WAHN

Taylor Balen | BAY-lin

Lindsey Dinkelacker | DINK-el-lock-er

Ciara Hill | key-AR-uh

Alison Kimmel | KIM-mi

Maya Muldrow | MY-uh

Emma Roberson | ROB-er-son

NOTES

// DOUBLE TROUBLE

The Bearcats are the only team in the American Athletic Conference to finish with two players among the top-10 in kills per set. Freshmen Jordan Thompson (3.92 kills/set) and Carly Nolan (3.18 kills/set) rank fourth and seventh, respectively, in the league.

// ELITE EMMA

Senior Emma Roberson was named First Team CoSIDA Academic All-District 5 on Nov. 5, recognizing her combined performance athletically and academically. She has a 4.0 GPA as a communications major. Roberson will now move on to the CoSIDA Academic All-America ballot where honorees will be selected later this month.

// YOUNG GUNS A BLAZIN'

The freshman class, which was ranked as the No. 26 class in the nation by Prep Volleyball in the preseason, definitely lived up to its hype this season. Four freshmen, Carly Nolan, Jordan Thompson, Jade Tingelhoff and Abby Williams, played in all 117 sets for the Bearcats this season, contributing greatly to the winning record. All completed the year among the top-10 in all-time freshman rankings in various categories.

All-Time Freshman Records

Digs

- 3. Abby Williams - 511
- 9. Carly Nolan - 318
- 10. Jade Tingelhoff - 309

Assists

- 5. Jade Tingelhoff - 992

Kills

- 2. Jordan Thompson - 459
- 8. Carly Nolan - 372

// OUTSTANDING ALAIWAN

Junior Lise Alaiwan picked up the league's final Defensive Player of the Week title on Nov. 30 after recording 2.14 blocks per set in a pair of victories over Houston and Tulane to close out the season.

// THOMPSON'S TRIO

Freshman Jordan Thompson earned her third American Athletic Conference Offensive Player of the Week award on Nov. 23 after recording 5.43 kills per set in two wins over USF and UCF. She also hit at a .326 attacking percentage and added 1.43 digs per set and 0.71 blocks per set. It was the eighth weekly honor for Thompson this season after raking in three POW awards and being named to the honor roll on five occasions.

// THOMPSON TRIUMPHS

Thompson was named The American Offensive Player of the Week for the second time on Oct. 26 after the Bearcats went 1-1 the weekend prior. She hit a career-high 27 kills in a five-set victory at Tulsa and had 4.88 kills per set in the two matches. It is the first time a UC player has earned more than one player of the week honor since Caylin Mahoney won three BIG EAST Freshman of the Week awards in 2011.

// THOMPSON BREAKS THROUGH

After spending three weeks on The American honor roll, Thompson was named the league's Offensive Player of the Week on Monday, Oct. 12. She recorded 4.62 kills per set in two victories for UC over UCF and USF and tied three career high marks against the Knights with 24 kills, 10 digs and three blocks.

// SATURDAY SUPREME

Cincinnati finished non-conference play with a perfect 7-0 record on Saturdays. In tournament action, the Bearcats picked up wins over NKU, Xavier, Central Michigan, Cleveland State, UIC and Butler and swept SIUE on Sept. 19 to close out Saturday play for the season. It is the first perfect Saturday record for Cincinnati since going 12-0 in 1988.

// SHE'S GOT CLASS

Emma Roberson received some good news on Sept. 9 when she was recognized as one of 30 candidates for the Senior Class Award. The award is designed to honor senior student-athletes who have notable achievements in four areas of excellence: community, classroom, character and competition.

// CHASING CHAMPIONSHIPS

Twice this season the Bearcats went on the road to claim a tournament championship. The first came at the Cleveland State Classic on Sept. 4 and 5 when the Bearcats swept Binghamton and Central Michigan before beating CSU in four sets. Cortnee Bowser was named the MVP while Maya Muldrow, Carly Nolan and Abby Williams were named to the All-Tournament team. The following weekend, UC took on Northern Iowa, UIC and Butler at the Butler All-American Classic in Indianapolis. The Bearcats lost to UNI to open the weekend but responded with four-set wins over UIC and Butler. Emma Roberson was the MVP while Ciara Hill and Jordan Thompson were on the All-Tournament team.

// FRESHMEN PHENOMS

The Bearcats boast the 26th best freshman class in the nation as they enter the 2015 season. Taylor Balen, Victoria Harris, Carly Nolan, Jordan Thompson, Jade Tingelhoff and Abby Williams were named a top-30 class by Prep Volleyball in May, representing the top-ranked class in the American Athletic Conference. They are the first from UC to be recognized since the 2010 class was named to Prep Volleyball's honorable mention list.

RANKINGS - TEAM

(as of 11/30/15)

AMERICAN ATHLETIC CONFERENCE

Hitting Percentage

3rd228

Assists

4th 12.39/set

Kills

4th 13.56/set

Blocks

3rd 2.22/set

Service Aces

5th 1.21/set

Digs

4th 16.33/set

NCAA (top-60)

Digs Per Set

54th 16.33/set

Team Attacks Per Set

53rd 36.88

Team Digs

56th 1,911

RANKINGS - INDIVIDUAL

(as of 11/30/15)

AMERICAN ATHLETIC CONFERENCE (top-10)

Kills

4th - Jordan Thompson 3.92/set

7th - Carly Nolan 3.18/set

Assists

6th - Jade Tingelhoff 8.48/set

Blocks

9th - Maya Muldrow 0.92/set

Digs

8th - Abby Williams 4.37/set

Points

3rd - Jordan Thompson 4.21/set

7th - Carly Nolan 3.58/set

NCAA (top-100)

Kills/Set

58th - Jordan Thompson 3.92

Points

68th - Jordan Thompson 492.5

Points/Set

85th - Jordan Thompson 4.21

Total Attacks

92nd - Jordan Thompson 1,157

Total Digs

85th - Abby Williams 510

Total Kills

49th - Jordan Thompson 459

BEARCATS 2015 SEASON HIGHS

INDIVIDUAL MATCH HIGHS

ATTACK PERCENT (K-E-TA) minimum 10 kills

.560 (14-0-25) Cortnee Bowser, vs. Cleveland State, 9/5/14
 .552 (18-2-29) Carly Nolan, vs. Tulane, 10/16/15
 .520 (15-2-25) Jordan Thompson, vs. Xavier, 8/29/15

KILLS (K-E-TA)

27 (27-7-70) Jordan Thompson, vs. Tulsa, 10/25/15
 24 (24-4-45) Jordan Thompson, vs. SIUE, 9/19/15
 24 (24-3-47) Jordan Thompson, vs. East Carolina, 9/25/15
 24 (24-2-55) Jordan Thompson, vs. USF, 10/11/15
 24 (24-8-55) Jordan Thompson, vs. USF, 11/20/15

TOTAL ATTEMPTS (K-E-TA)

70 (27-7-70) Jordan Thompson, vs. Tulsa, 10/25/15
 55 (24-2-55) Jordan Thompson, vs. USF, 10/11/15
 55 (24-8-55) Jordan Thompson, vs. USF, 11/20/15

ASSISTS

51 Jade Tingelhoff, vs. Tulsa, 10/25/15
 50 Jade Tingelhoff, vs. UCF, 10/9/15
 49 Jade Tingelhoff, vs. Temple, 10/30/15

DIGS

25 Abby Williams, vs. Tulsa, 10/25/15
 23 Abby Williams, vs. UCF, 10/9/15
 23 Abby Williams, vs. UNI, 9/11/15

BLOCKS (BS-BA)

9 (3-6) Lise Alaiwan, vs. Houston, 11/25/15
 8 (0-8) Maya Muldrow, vs. Cleveland State, 9/5/15
 8 (2-6) Lise Alaiwan, vs. UConn, 11/1/15
 7 (3-4) Maya Muldrow, vs. Memphis, 9/23/15
 7 (1-6) Lisa Alaiwan, vs. USF, 11/20/15

ACES

5 Parker Shepherd, vs. Butler, 9/12/15
 4 Amelia Wegman, vs. Temple, 10/30/15
 4 Abby Williams, vs. UConn, 11/1/15

TEAM MATCH HIGHS

ATTACK PERCENT (K-E-TA)461 (47-6-89), vs. Tulane, 10/16/15
 KILLS (K-E-TA) 64 (64-26-166), vs. UCF, 10/9/15
 TOTAL ATTEMPTS (K-E-TA) 187 (60-30-187), vs. Memphis, 9/23/15
 ASSISTS 62, vs. UIC, 9/12/15
 DIGS 83, vs. Memphis, 9/23/15
 ACES 11, vs. Binghamton, 9/4/15
 BLOCKS 13.5, vs. Cleveland State, 9/5/15

2015 DOUBLE-DOUBLES

Carly Nolan (12)

14 K, 10 D vs. Xavier, 8/29/15
 10 K, 10 D vs. UIC, 9/12/15
 18 D, 15 K vs. Memphis, 9/23/15
 16 K, 11 D vs. UCF, 10/9/15
 16 K, 14 D vs. USF, 10/11/15
 17 D, 15 K vs. Tulsa, 10/25/15
 20 K, 14 D vs. Temple, 10/30/15
 16 K, 13 D vs. UConn, 11/1/15
 21 K, 13 D vs. Tulsa, 11/6/15
 13 D, 11 K vs. Memphis, 11/11/15
 18 D, 10 K vs. USF, 11/20/15
 15 K, 10 D vs. Houston, 11/25/15

Parker Shepherd (3)

28 A, 11 D vs. Xavier, 8/29/15
 20 A, 12 D vs. Butler, 9/12/15
 19 A, 10 D vs. SIUE, 9/19/15

Jordan Thompson (2)

12 K, 10 D vs. Memphis, 9/23/15
 24 K, 10 D vs. USF, 10/11/15

Jade Tingelhoff (16)

18 A, 12 D vs. Eastern Michigan, 8/28/15
 16 A, 11 D vs. NKU, 8/29/15
 20 A, 13 D vs. Central Michigan, 9/5/15
 30 A, 12 D vs. Butler, 9/12/15
 22 A, 10 D vs. Memphis, 9/23/15
 24 A, 12 D vs. Temple, 10/4/15
 24 A, 10 D vs. USF, 10/11/15
 35 A, 13 D vs. Tulane, 10/16/15
 51 A, 12 D vs. Tulsa, 10/25/15
 49 A, 12 D vs. Temple, 11/30/15
 47 A, 15 D vs. UConn, 11/1/15
 25 A, 12 D vs. SMU, 11/8/15
 43 A, 12 D vs. ECU, 11/15/15
 42 A, 13 D vs. USF, 11/20/15
 38 A, 13 D vs. UCF, 11/22/15
 45 A, 15 D vs. Houston, 11/25/15

2015 UC AWARDS

First Team CoSIDA Academic All-District
 Emma Roberson

Senior CLASS Award Top-30 Candidate
 Emma Roberson

American Postseason Awards

Jordan Thompson - Freshman of the Year
 Jordan Thompson - unanimous First Team
 Carly Nolan - First Team

American Preseason All-Conference
 Emma Roberson - unanimous

American Player of the Week

Jordan Thompson - Offensive - Oct. 12
 Jordan Thompson - Offensive - Oct. 26
 Jordan Thompson - Offensive - Nov. 23

American Honor Roll

Jordan Thompson - Aug. 31
 Cortnee Bowser - Sept. 7
 Emma Roberson - Sept. 14
 Jordan Thompson - Sept. 21
 Jordan Thompson - Sept. 28
 Jade Tingelhoff - Oct. 19
 Jordan Thompson - Nov. 2
 Jordan Thompson - Nov. 16

MVP

Cortnee Bowser - Cleveland State Classic
 Emma Roberson - Butler All-American Classic

All-Tournament Team

Cortnee Bowser - Cleveland State Classic
 Maya Muldrow - Cleveland State Classic
 Carly Nolan - Cleveland State Classic
 Abby Williams - Cleveland State Classic
 Emma Roberson - Butler All-American Classic
 Ciara Hill - Butler All-American Classic
 Jordan Thompson - Butler All-American Classic

UC'S RECORD WHEN...

THE LAST TIME

	Overall	The American
Home	10-5	7-3
Away	8-4	6-4
Neutral	3-1	0-0
vs. Ranked Opponent	0-0	0-0
Three-Set Matches	9-3	5-2
Four-Set Matches	10-4	6-2
Five-Set Matches	2-3	2-3
UC hits .250 or better	13-1	6-1
UC hits below .250	8-9	7-6
Opponent hits .250 or better	1-3	0-2
Opponent hits below .250	20-7	13-5
UC has higher attacking percentage	19-1	11-1
UC has lower attacking percentage	2-9	2-6
Teams have same attacking percentage	0-0	0-0
recording more kills	17-1	10-1
recording fewer kills	2-8	2-6
recording the same number of kills	2-1	1-0
at least 3 players record 10 or more kills	10-3	6-3
at least 3 players hit .300 or better (minimum of 10 attempts)	7-1	4-1
UC hits 30 or more kills	21-10	13-7
UC allows 30 or more kills	17-10	11-7
UC hits 50 or more kills	12-4	9-4
UC allows 50 or more kills	6-7	5-5
recording more aces	15-4	8-4
recording fewer aces	4-5	3-2
recording the same number of aces	2-1	2-1
recording more digs	15-5	9-5
recording fewer digs	4-3	3-1
recording the same number of digs	2-2	1-1
recording more blocks	15-1	9-1
recording fewer blocks	5-8	3-5
recording the same number of blocks	1-1	1-1
winning Set 1	20-1	12-1
losing Set 1	1-9	1-7
winning Set 2	12-2	8-1
losing Set 2	9-8	5-6
winning Set 3	20-5	12-5
losing Set 3	1-5	1-2
winning Set 4	10-2	6-2
losing Set 4	2-5	2-3
winning Set 5	2-0	2-0
losing Set 5	0-3	0-3
playing in August	2-1	0-0
playing in September	7-3	1-1
playing in October	6-3	6-3
playing in November	6-3	6-3
playing on Sunday	5-3	5-3
playing on Monday	0-0	0-0
playing on Tuesday	0-0	0-0
playing on Wednesday	1-2	1-2
playing on Thursday	0-1	0-0
playing on Friday	8-4	7-2
playing on Saturday	7-0	0-0
wearing black jerseys	11-8	3-5
wearing white jerseys	6-1	6-1
wearing pink jerseys	4-1	4-1

The last time a Bearcat...

had 30 or more kills:	Jordanne Scott, 30 vs. Connecticut, (11/16/12)
had 25 or more kills:	Jordan Thompson, 27 vs. Tulsa, (10/25/15)
had 20 or more kills:	Jordan Thompson 24 vs. USF, (11/20/15)
had 60 or more attempts:	Carly Nolan, 60 vs. Tulsa, (11/6/15)
had 50 or more attempts:	Jordan Thompson, 54 vs. Houston, (11/25/15)
had an attack % of above .700 (minimum of 20 attacks):	Shauntel Miller, .760 vs. New Hampshire, (9/9/00)
had an attack % of above .600 (minimum of 20 attacks):	Emily Hayden, .647 vs. Syracuse, (10/21/12)
had an attack % of above .500 (minimum of 20 attacks):	Carly Nolan, .525 vs. Tulane, (10/16/15)
had 60 or more assists:	Rachel Rohlf, 60 vs. Notre Dame (9/21/12)
had 50 or more assists:	Jade Tingelhoff, 51 vs. Tulsa, (10/25/15)
had 30 or more digs:	Jamie Netisingha, 30 vs. Rutgers, (9/12/14)
had 25 or more digs:	Abby Williams, 25 vs. Tulsa, (10/25/15)
had 20 or more digs:	Abby Williams, 20 vs. East Carolina, (11/15/15)
had 10 or more blocks:	Breanna Barksdale, 10, vs. Memphis, (9/29/13)
had a 20/20 performance:	Jordanne Scott (20 K, 22 D), vs. Notre Dame, (11/9/12)

The last time Cincinnati...

beat a ranked opponent:	No. 16 Kentucky (3-2), (9/7/10)
beat a ranked opponent at home:	No. 16 Kentucky (3-2), (9/7/10)
beat a ranked opponent on the road:	N/A
beat a ranked opponent on a neutral site:	No. 16 St. Louis (3-0), (9/12/09)
held an opponent below 10 points in a set (25-point set):	9 at UCF, Set 2, (11/22/15)
scored fewer than 10 points in a set (25-point set):	9 at USF, (11/26/14)
held an opponent under a .100 hitting percentage:	.071 vs. Tulane, (11/27/15)
won five consecutive matches:	5, (11/15/15-11/27/15) (Active Streak)
won 10 consecutive matches:	12, (10/18/11-11/20/11)
won 10 consecutive sets:	12, (11/12/10-11/20/10)
had 20 kills in a set:	20 vs. East Carolina, Set 3, (11/23/14)
had 15 kills in a set:	15 vs. Tulane, Set 1, (11/27/15)
had 70 kills in a match:	71 vs. USF, (10/13/13)
had 60 kills in a match:	63 vs. Tulsa, (11/6/15)
had 250 or more attacks in a match:	253 vs. Southern Mississippi, (11/20/98)
had 200 or more attacks in a match:	209 vs. USF, (9/30/12)
had 150 or more attacks in a match:	153 vs. Tulane, (11/27/15)
had an attacking % or above .450:	.461 vs. Tulane, (10/16/15)
had an attacking % of above .400:	.461 vs. Tulane, (10/16/15)
had an attacking % of above .350:	.461 vs. Tulane, (10/16/15)
had 100 digs in a match:	111 vs. Louisiana Lafayette, (9/16/00)
had 70 digs in a match:	77 vs. USF (11/20/15)
had 15 service aces in a match:	16 vs. Wyoming, (9/4/08)
had 10 service aces in a match:	11 vs. Binghamton, (9/4/15)
had 20 total blocks in a match:	22.0 vs. Bradley, (9/2/06)
had 15 total blocks in a match:	15.0 vs. UCF, (11/17/13)
had 10 total blocks in a match:	10.0 vs. Tulane, (11/27/15)

PLAYER NOTES

**2 Abby Williams**

5-9 | Defensive Specialist

Freshman

Loveland, Ohio

Season Stats (Total, Avg. per Set)
Kills: N/A **Assists:** 70, 0.60 **Aces:** 28, 0.24 **Digs:** 511, 4.37 **Blocks:** N/A
CAREER HIGHS
Kills: N/A
Assists: 5, three times
Aces: 4, vs. UConn, 11/1/15
Digs: 25, vs. Tulsa, 10/25/15
Blocks: N/A
**3 Maya Muldrow**

6-1 | Middle Blocker

Sophomore

Raleigh, N.C.

Season Stats (Total, Avg. per Set)
Kills: 99, 1.06 **Assists:** N/A **Aces:** N/A **Digs:** 14, 0.15 **Blocks:** 86, 0.92
CAREER HIGHS
Kills: 9, vs. vs. UConn, 10/2/15; vs. Memphis, 11/11/15
Assists: 1, vs. UIC, 9/12/15
Aces: N/A
Digs: 3, vs. SMU, 10/23/15
Blocks: 8, at Tulane, 9/28/14; vs. Cleveland State, 9/5/15
**4 Morgan Allred**

5-8 | Outside Hitter

Senior

Carrollton, Texas

Season Stats (Total, Avg. per Set)
Kills: 67, 1.91 **Assists:** 4, 0.11 **Aces:** N/A **Digs:** 36, 1.03 **Blocks:** 15, 0.43
CAREER HIGHS
Kills: 22, at UConn, 10/25/13; at Rhode Island, 9/12/14
Assists: 4, vs. UConn, 10/31/14
Aces: 2, seven times
Digs: 17, at East Carolina, 10/24/14
Blocks: 6, Memphis, 9/29/13
**5 Taylor Balen**

6-1 | Outside Hitter

Freshman

Manhattan Beach, Calif.

Season Stats (Total, Avg. per Set)
Kills: N/A **Assists:** N/A **Aces:** N/A **Digs:** N/A **Blocks:** N/A
CAREER HIGHS
Kills: N/A
Assists: N/A
Aces: N/A
Digs: N/A
Blocks: N/A
**6 Parker Shepherd**

5-10 | Setter

Sophomore

McKinney, Texas

Season Stats (Total, Avg. per Set)
Kills: 2, 0.02 **Assists:** 300, 3.19 **Aces:** 20, 0.21 **Digs:** 149, 1.59 **Blocks:** N/A
CAREER HIGHS
Kills: 1, vs. Houston, 10/18/15, vs. Houston, 11/25/15
Assists: 28, vs. Xavier, 8/29/15
Aces: 5, vs. Butler, 9/12/15
Digs: 12, vs. Butler, 9/12/15
Blocks: N/A
**8 Emma Roberson**

6-1 | Right Side Hitter

Senior

Brooks, Ky.

Season Stats (Total, Avg. per Set)
Kills: 195, 2.64 **Assists:** 4, 0.05 **Aces:** N/A **Digs:** 36, 0.49 **Blocks:** 33, 0.45
CAREER HIGHS
Kills: 27, at East Carolina, 10/24/14
Assists: 1, vs. EMU, 8/28/15; vs. Binghamton, 9/4/15
Aces: N/A
Digs: 10, vs. UConn, 10/31/14
Blocks: 4, six times
**9 Jade Tingelhoff**

6-0 | Setter

Freshman

Lakeville, Minn

Season Stats (Total, Avg. per Set)
Kills: 29, 0.25 **Assists:** 992, 8.48 **Aces:** 11, 0.09 **Digs:** 309, 2.64 **Blocks:** 27, 0.23
CAREER HIGHS
Kills: 3, vs. UCF, 10/9/15; vs. UConn, 11/1/15
Assists: 51, vs. Tulsa, 10/23/15
Aces: 2, vs. Cleveland State, 9/5/15
Digs: 16, vs. USF, 10/11/15
Blocks: 4, vs. UCF, 10/9/15
**11 Lindsey Dinkelacker**

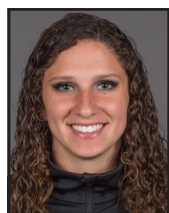
5-11 | Defensive Specialist

Junior

Cincinnati, Ohio

Season Stats (Total, Avg. per Set)
Kills: 2, 0.02 **Assists:** 29, 0.25 **Aces:** 26, 0.22 **Digs:** 248, 2.12 **Blocks:** 1, 0.01
CAREER HIGHS
Kills: 10, at SMU, 11/9/15
Assists: 3, four times
Aces: 3, vs. Binghamton, 9/4/15
Digs: 14, four times
Blocks: 2, at Tulsa, 11/7/14

PLAYER NOTES

**12 Carly Nolan**

6-0 | Outside Hitter

Freshman

Crystal Lake, Ill.

Season Stats (Total, Avg. per Set)**Kills:** 372, 3.18**Assists:** 18, 0.15**Aces:** 22, 0.19**Digs:** 318, 2.75**Blocks:** 45, 0.38**CAREER HIGHS**

Kills: 21, vs. Tulsa, 11/6/15
 Assists: 3, vs. Houston, 10/18/15
 Aces: 2, four times
 Digs: 19, vs. UNI, 9/11/15
 Blocks: 5, vs. NKU, 8/29/15

**13 Ciara Hill**

5-10 | Outside Hitter

Junior

Bolingbrook, Ill.

Season Stats (Total, Avg. per Set)**Kills:** 131, 1.82**Assists:** 3, 0.04**Aces:** N/A**Digs:** 29, 0.40**Blocks:** 45, 0.62**CAREER HIGHS**

Kills: 22, vs. TSU, 9/29/14
 Assists: 2, three times
 Aces: 2, three times
 Digs: 14, at Rhode Island, 9/12/14
 Blocks: 6, at UCF, 11/17/13

**14 Amelia Wegman**

6-1 | Outside Hitter

Senior

Aurora, Ill.

Season Stats (Total, Avg. per Set)**Kills:** 10, 0.37**Assists:** 4, 0.15**Aces:** 7, 0.26**Digs:** 36, 1.33**Blocks:** 3, 0.11**CAREER HIGHS**

Kills: 19, vs. NKU, 9/14/13
 Assists: 4, at UCF, 11/17/13
 Aces: 4, vs. Temple, 10/30/15
 Digs: 15, vs. NKU, 9/14/13
 Blocks: 4, vs. Morehead St., 8/31/13

**17 Alison Kimmel**

6-2 | Middle Blocker

RS-Junior

Plainfield, Ill.

Season Stats (Total, Avg. per Set)**Kills:** 30, 0.46**Assists:** 4, 0.06**Aces:** 12, 0.18**Digs:** 37, 0.57**Blocks:** 26, 0.40**CAREER HIGHS**

Kills: 7, vs. SMU, 11/8/13
 Assists: 2, vs. NKU, 8/29/15
 Aces: 3, vs. Binghamton, 9/4/15; vs. Memphis 11/11/15
 Digs: 7, vs. UIC, 9/12/15
 Blocks: 6, vs. Duquesne, 8/29/14; vs. Binghamton, 9/4/15

**19 Cortnee Bowser**

6-4 | Middle Blocker

Sophomore

Kent, Ohio

Season Stats (Total, Avg. per Set)**Kills:** 124, 1.72**Assists:** 12, 0.17**Aces:** 9, 0.12**Digs:** 42, 0.58**Blocks:** 54, 0.75**CAREER HIGHS**

Kills: 18, at Tulsa, 11/7/14
 Assists: 3, vs. Cleveland State, 9/5/15
 Aces: 2, vs. Tulane, 10/16/15
 Digs: 5, vs. Xavier, 8/29/15
 Blocks: 9, vs. Tulane, 11/14/14

**21 Lise Alaiwan**

6-2 | Middle Blocker

Junior

Villeneuve Loubet, France

Season Stats (Total, Avg. per Set)**Kills:** 67, 1.31**Assists:** 1, 0.02**Aces:** 4, 0.08**Digs:** 36, 0.71**Blocks:** 74, 1.45**CAREER HIGHS**

Kills: 11, vs. UCF, 10/9/15
 Assists: 1, vs. UCF, 10/9/15
 Aces: 2, vs. UConn, 11/1/15
 Digs: 6, vs. UConn, 11/1/15
 Blocks: 9, vs. Houston, 11/25/15

**23 Jordan Thompson**

6-4 | Right Side Hitter/Outside Hitter

Freshman

Edina, Minn.

Season Stats (Total, Avg. per Set)**Kills:** 459, 3.92**Assists:** 9, 0.08**Aces:** 2, 0.02**Digs:** 110, 0.94**Blocks:** 57, 0.49**CAREER HIGHS**

Kills: 27, vs. Tulsa, 10/25/15
 Assists: 1, nine times
 Aces: 1, vs. Houston, 11/25/15; vs. Tulane, 11/27/15
 Digs: 10, vs. Memphis, 9/23/15; vs. USF, 10/11/15
 Blocks: 4, at Temple, 10/4/15

TEAM STATS

The Automated ScoreBook
Cincinnati Combined Team Statistics (as of Nov 27, 2015)
All matches

RECORD:	OVERALL	HOME	AWAY	NEUTRAL
ALL GAMES	21-10	10-5	8-4	3-1
CONFERENCE	13-7	7-3	6-4	0-0
NON-CONFERENCE	8-3	3-2	2-0	3-1

#	Player	sp	Attack					Set		Serve			Dig			Blocking					bhe	points
			k	k/s	e	ta	pct	a	a/s	sa	se	sa/s	re	dig	dig/s	bs	ba	total	blk/s	be		
17	KIMMEL, Alison	65	30	0.46	9	64	.328	4	0.06	12	14	0.18	0	37	0.57	2	24	26	0.40	1	2	56.0
23	THOMPSON, Jordan	117	459	3.92	131	1157	.283	9	0.08	2	4	0.02	9	110	0.94	6	51	57	0.49	7	0	492.5
21	ALAIWAN, Lise	51	67	1.31	23	156	.282	1	0.02	4	7	0.08	0	36	0.71	11	63	74	1.45	9	0	113.5
3	MULDROW, Maya	93	99	1.06	32	248	.270	0	0.00	0	0	0.00	0	14	0.15	8	78	86	0.92	3	0	146.0
19	BOWSER, Cortnee	72	124	1.72	44	310	.258	12	0.17	9	19	0.12	0	42	0.58	14	40	54	0.75	8	0	167.0
8	ROBERSON, Emma	74	195	2.64	83	534	.210	4	0.05	0	0	0.00	0	36	0.49	1	32	33	0.45	7	1	212.0
12	NOLAN, Carly	117	372	3.18	152	1050	.210	18	0.15	22	58	0.19	29	318	2.72	5	40	45	0.38	1	0	419.0
13	HILL, Ciara	73	131	1.79	69	384	.161	3	0.04	0	0	0.00	1	29	0.40	4	41	45	0.62	6	2	155.5
4	ALLRED, Morgan	35	67	1.91	35	214	.150	4	0.11	0	2	0.00	6	36	1.03	1	14	15	0.43	2	0	75.0
14	WEGMAN, Amelia	27	10	0.37	6	29	.138	4	0.15	7	5	0.26	0	36	1.33	0	3	3	0.11	1	2	18.5
9	TINGELHOFF, Jade	117	29	0.25	15	120	.117	992	8.48	11	18	0.09	0	309	2.64	1	26	27	0.23	5	15	54.0
11	DINKELACKER, Lindse	117	2	0.02	2	20	.000	29	0.25	26	49	0.22	13	248	2.12	0	1	1	0.01	0	4	28.5
6	SHEPHERD, Parker	94	2	0.02	2	12	.000	300	3.19	20	40	0.21	0	149	1.59	0	0	0	0.00	1	16	22.0
2	WILLIAMS, Abby	117	0	0.00	2	17	-.118	70	0.60	28	21	0.24	32	511	4.37	0	0	0	0.00	0	1	28.0
	TEAM	-	-	-	-	-	-	-	-	-	-	-	10	-	-	-	-	-	-	-	-	-
	CINCINNATI	117	1587	13.56	605	4315	.228	1450	12.39	141	237	1.21	100	1911	16.33	53	413	259.5	2.22	51	43	1987.5
	Opponents	117	1465	12.52	651	4317	.189	1376	11.76	100	222	0.85	141	1851	15.82	49	404	251.0	2.15	48	45	1816.0

Team Statistics	CIN	OPP	Date	Opponent	Score	Score by set	Att.
ATTACK			Aug 28	EASTERN MICHIGAN	L 0-3	23-25,21-25,23-25	373
Kills	1587	1465	Aug 29	NORTHERN KENTUCKY	w 3-0	26-24,25-23,25-22	491
Errors	605	651	Aug 29	XAVIER	w 3-1	25-19,17-25,25-18,25-18	627
Total Attacks	4315	4317	Sep 04	vs Binghamton	w 3-0	25-14,25-22,25-16	96
Attack Pct	.228	.189	Sep 05	vs Central Michigan	w 3-0	25-23,25-19,25-23	84
Kills/Set	13.6	12.5	Sep 05	at Cleveland State	w 3-1	25-15,17-25,25-16,26-24	309
SET			Sep 11	vs Northern Iowa	L 1-3	25-16,22-25,20-25,17-25	0
Assists	1450	1376	Sep 12	vs UIC	w 3-1	25-23,23-25,25-22,25-21	0
Assists/Set	12.4	11.8	Sep 12	at Butler	w 3-1	25-16,23-25,25-14,25-15	463
SERVE			Sep 17	LOUISVILLE	L 1-3	20-25,30-28,11-25,15-25	731
Aces	141	100	Sep 19	SIUE	w 3-0	25-12,25-19,25-18	436
Errors	237	222	*Sep 23	MEMPHIS	L 2-3	21-25,23-25,25-23,25-21,13-15	481
Aces/Set	1.2	0.9	*Sep 25	EAST CAROLINA	w 3-1	25-22,22-25,25-10,25-17	638
SERVE RECEPTIONS			*Oct 02	at UConn	L 2-3	21-25,25-22,25-13,18-25,12-15	315
Errors	100	141	*Oct 04	at Temple University	L 1-3	23-25,19-25,25-23,16-25	513
Errors/Set	0.9	1.2	*Oct 09	UCF	w 3-1	22-25,25-22,25-11,25-23	447
DEFENSE			*Oct 11	USF	w 3-1	26-24,25-16,22-25,25-23	371
Digs	1911	1851	*Oct 16	at Tulane Green Wave	w 3-0	25-18,25-10,25-20	145
Digs/Set	16.3	15.8	*Oct 18	at Houston	w 3-0	25-19,27-25,26-24	365
BLOCKING			*Oct 23	at SMU	L 0-3	18-25,25-27,18-25	318
Block Solo	53	49	*Oct 25	at Tulsa	w 3-2	25-20,25-21,17-25,20-25,18-16	208
Block Assist	413	404	*Oct 30	TEMPLE UNIVERSITY	w 3-1	25-21,23-25,25-23,25-15	459
Total Blocks	259.5	251.0	*Nov 01	UConn	L 2-3	20-25,22-25,25-19,25-16,11-15	578
Blocks/Set	2.2	2.1	*Nov 06	TULSA	w 3-2	28-26,18-25,25-23,19-25,15-9	536
Block Errors	51	48	*Nov 08	SMU	L 0-3	23-25,18-25,23-25	521
Ball handling errors	43	45	*Nov 11	at MEMPHIS	L 1-3	17-25,12-25,25-17,23-25	461
ATTENDANCE			*Nov 15	at East Carolina	w 3-0	25-18,25-22,25-18	331
Total	7538	4167	*Nov 20	at USF	w 3-1	25-22,19-25,25-22,25-22	332
Dates/Avg Per Date	15/503	12/347	*Nov 22	at UCF	w 3-0	25-22,25-9,26-24	407
Neutral site #/Avg	4/45		*Nov 25	HOUSTON	w 3-1	25-20,20-25,25-17,25-21	425
Current win streak	5	-	*Nov 27	TULANE GREEN WAVE	w 3-0	25-19,25-19,25-13	424
Home win streak	2	-					

Record in 3-set matches: 9-3

Record in 4-set matches: 10-4

Record in 5-set matches: 2-3