

The

COMPLIANCE CORNER

Official newsletter of the UC Compliance office.

February
2010

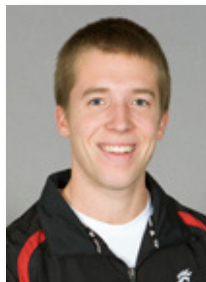
Meet the Team

Each month, the Compliance Corner will feature a different member of our staff to help everyone get to know us a little better. Last month we featured our graduate assistant, Jill Stephens, this month we bring you one of our student assistants, Brian Berling:

Brian is a Cincinnati native who graduated from Elder High School in 2006. After high school, he came to UC where he has been a member of both cross country and track & field for 4 years, being inducted into the Legion of Excellence last year.

A true student-athlete, Brian has been very successful academically as well—maintaining a 3.94 GPA while majoring in Secondary education with a focus on Social Studies. Brian hopes his undergraduate experiences will lead him to teaching high school history for a career. He has worked in compliance since his freshman year, and has broken his own records for delivering files around campus many times, literally “running” his errands.

While he is certainly humble about his achievements, Brian would certainly admit he had a good role model: His older sister, Karen, also worked in the compliance office while running for both UC cross country and track & field, and like Brian, was inducted into the Legion of Excellence.



Recruiting Dates

Baseball2/1/10 - 2/28/10 *Quiet Period***Men's Basketball**2/1/10 - 2/28/10 *Evaluation Period***Women's Basketball**2/1/10 - 2/28/10 *Evaluation Period***Football**2/1 - 2/4/10 *Dead Period*2/5 - 2/28/10 *Quiet Period***Lacrosse**2/1/10 - 2/28/10 *Contact Period***Soccer**2/1 - 2/4/10 *Dead Period*2/5 - 2/28/10 *Quiet Period***Track and Cross Country**2/1 - 2/4/10 *Dead Period*

2/5 - 2/28/10

*Contact & Evaluation Period***Volleyball**2/1/10 - 2/28/10 *Contact Period***All Other Sports**

2/1/10 - 2/28/10

Contact and Evaluation Period

The Monthly Quiz

Each month the Compliance Corner will hold a short quiz testing knowledge in both compliance and worldly matters. The winning quizzes will be entered into a drawing for a giftcard. Last month's answers can be found on page 4. All answers should be e-mailed to Caitlin at Caitlin.Stoffer@uc.edu

1. A Bearcat signed his NLI with UC on Feb. 3 2010. On Feb. 3, what can the coaches do?:

A. text him B. call him C. email him D. all of the above E. B and C

2. What does Brian Berling hope to do after graduation?:

A. Film School B. Teach high school C. become a professor D. work in compliance

3. Which of the following apparel items must adhere to the logo restrictions (e.g., 2 1/4 square inches in area, single manufacturer's normal label) associated with uniforms?

A. socks B. hats/visors C. t-shirts D. all of the above

4. A head coach would like to delegate the job of tracking stats during practices to the director of operations. Is it permissible for a non-coaching staff member to perform that task?:

A. No. B. only during weekdays C. Yes. D. Only while riding a unicycle and juggling.



Infractions Panel Penalizes Georgia Southern

The NCAA Division I Committee on Infractions has penalized Georgia Southern University for major violations involving the school's men's basketball program. The case centers on unethical conduct by members of the men's basketball staff stemming from academic fraud and the provision of false and misleading information. The committee also found that the university failed to monitor its men's basketball program.

Penalties in this case include two years of probation, scholarship reductions, recruiting restrictions and a vacation of records. A former assistant coach received a five-year show-cause order and a former director of basketball operations received a two-year show-cause for his involvement. The show-cause penalties limit these individuals' recruiting and other duties at their present and any future employing institutions.

During the 2007-08 academic year and 2008 summer and fall academic terms, the former assistant coach provided substantial portions of course work, and in some instances completed course work, for two men's basketball student-athletes. This assistance included providing answers; participating in required online chats for one of the student-athletes; and providing papers, essays, and tests for both student-athletes.

In addition, the former assistant coach directed the former director of men's basketball operations to be responsible for one of these student-athletes' required course work. This impermissible assistance included submitting substantial portions of course work, including writing papers, essays and short-answers and completing tests. The former director of operations recalled writing two or three papers, eight to 10 pages long, and spending many hours in the library researching topics.

The committee also found the former assistant coach knowingly furnished the NCAA with false and misleading information about his involvement in and knowledge of the academic-fraud allegations when questioned by the university and NCAA enforcement staff on two separate occasions.

The committee found the university failed to monitor its men's basketball program. The committee noted several factors for this finding, including that it assigned the former assistant coach with oversight responsibility of academics for the men's basketball program. The committee stated in its report, "This responsibility went beyond normal boundaries for a coach and included unfettered access to the men's basketball student-athletes' online academic accounts and contact with professors." Among other factors, the committee found the evidence reflected that the university's compliance program resources were limited, resulting in a lack of time and personnel to monitor the former assistant coach. The penalties, some of which were self-imposed by the institution and adopted by the committee, include:

- Public reprimand and censure.
- Two years of probation (January 20, 2010, to January 19, 2012).
- Five-year show-cause order for the former assistant coach (January 20, 2010, to January 19, 2015).
- Two-year show-cause order for the former director of basketball operations (January 20, 2010, to January 19, 2012).
- Reduction of basketball scholarships by one for the 2009-10, 2010-11 and 2011-12 academic years.
- During the 2009-10 academic year, the number of official recruiting visits for men's basketball shall be reduced by four from the maximum of 12 (self-imposed by the university).
- Vacation of all wins in which the two academically ineligible student-athletes competed during the 2007-08 and 2008-09 men's basketball seasons (self-imposed by the university).

Around the Country

Associated Press

MADISON, Wis. -- Wisconsin paid a \$5,000 fine to the NCAA for allowing a women's hockey player to compete even though she was academically ineligible.

The university discovered the player was ineligible for the fall 2007 semester during an audit last year and reported the infraction to the NCAA. The university did not release the name of the athlete, who played in 20 games that semester.

The school's College of Engineering said the athlete had earned 52 hours and satisfied an NCAA requirement of completing 40 percent of her degree. She had actually completed 51 hours.

The university blamed "an administrative human error" for the mistake.

Super Bowl Betting Reminder!

Dear NCAA student-athletes, coaches and administrators:

With the Super Bowl this weekend, we wanted to take this time to remind all students-athletes, coaches and administrators of the NCAA's policy on gambling.

- **The NCAA membership has adopted specific rules prohibiting athletics department staff members and student-athletes from engaging in gambling activities as they relate to intercollegiate or professional sporting events.**
- **NCAA member colleges and universities have defined sports wagering as putting something at risk, such as an entry fee, with the opportunity to win something in return. Because of this, student-athletes, coaches and administrators may not participate in competitions where there is both a required fee and an opportunity to win a prize.**

If you have any questions regarding this material, please do not hesitate to contact the agent, gambling and amateurism activities staff at 317-917-6222.

Compliance on Facebook!

Our office has created a facebook page to try and keep current student-athletes, former student-athletes, athletic department staff/coaches, boosters and fans up to date on compliance-related issues. Our goal is to make it something that is informative but speaks to everyone on real things that are happening in a language that is easily understandable.

We are asking that you become a fan of the page and strongly encourage others to also become a fan. The primary goal is to utilize the social-networking craze as an education tool and reminder page.

You can view the page here:

<http://www.facebook.com/pages/Cincinnati-OH/Cincinnati-Athletics-Compliance/257385781960?ref=ts>

NLI Signing Dates

Sport	Initial Signing Date	Final Signing Date
Football (Regular Period)	February 3, 2010	April 1, 2010
Soccer, Track and Field, Cross Country	February 3, 2010	August 1, 2010
Basketball (Regular Period)	April 14, 2010	May 19, 2010
All Other Sports (Regular Period)	April 14, 2010	August 1, 2010



Bearcat Spirit!

Look out for your fellow Bearcats in their big matchups of the month:

SWIM- BE championships, Pittsburgh PA. February 17-20th.

MBB- vs. Syracuse. February 7th @ 2 pm.

WBB- vs. Villanova. February 20th @ 2 pm.

TRK- Big East indoor championships. NYC. February 20-21st.

TEN- vs. West Virginia. February 28th @ noon.

This month's compliance education session...

will be held on **February 10th @ 10 AM** in the Athletic Director's conference room. It will cover extra benefits and awards. In January Deborah covered academic eligibility rules concerning student athletes.

The Compliance Staff

Maggie McKinley

Assistant Director of Athletics for Compliance

Caitlin Stoffer

Assistant Director of Compliance

Deborah Gray

Assistant Director of Compliance

The Compliance Staff publishes the Compliance Corner monthly. All comments or questions should be directed to Caitlin at 556-4835 or Caitlin.Stoffer@uc.edu

Last Month's Quiz Answers and Winners

Due to only receiving three responses for last month's quiz, Michael Hewitt, Bill Schnier, and Leslie Wenert will all be receiving giftcards. Here are the answers and their corresponding bylaw:

1. C. Bylaw 14.4.1 - *Progress-Toward-Degree Requirements*.
2. B. Bylaw 15.2.3 - *Books. A member institution may provide a student-athlete financial aid that covers the actual cost of required course related books.*
3. A.
4. E. Bylaw 13.02.4.4 - *Recruiting Periods*.
5. D. Bylaw 13.10.9 and NLI Provisions. - *Media Releases Regarding Signing*.