

# THE UNIVERSITY OF NEW MEXICO SOFTBALL



2019 SOFTBALL NOTES | WEEK 7

@UNMLoboSB

www.GoLOBOS.com

#GoLOBOS

Allison Weiss, Assistant Director of Athletic Communications - Softball Contact | Email: allisonweiss@unm.edu | Cell: (661) 313-5402

## 2019 SCHEDULE

OVERALL: 8-18 • MW: 1-2 • H: 0-0 • A: 2-8 • N: 6-10

Date	Opponent	Time/Score
<i>NM State Invitational</i>		
2/8	UTEP	W, 15-6
2/9	Creighton	W, 8-0 (5)
2/9	at NMSU	L, 9-8
2/14	at #9 Arizona	Cancelled (Rain)
<i>Hillenbrand Invitational</i>		
2/15	#7 Alabama	L, 1-0
2/15	RV CSUF	L, 6-2
2/16	at #9 Arizona	L, 15-1 (5)
2/16	UIC	W, 13-5 (6)
2/17	South Florida	L, 2-1 (8)
2/20	at Hawaii	L, 2-1
<i>Hawaii Invitational</i>		
2/21	DePaul	L, 9-5
2/22	Canisius	W, 10-0 (5)
2/22	at Hawaii	L, 2-3
2/23	at Hawaii	W, 3-2
2/23	DePaul	L, 4-2
<i>Judi Garman Classic</i>		
2/28	#3 Florida	L, 1-0 (8)
3/1	LMU	L, 4-2
3/1	#7 Tennessee	L, 15-1 (5)
3/3	UConn	L, 2-1
3/3	at CSUF	L, 19-1 (5)
<i>LMU Tournament</i>		
3/8	Oregon State	W, 6-5
3/8	Western Carolina	W, 10-0 (5)
3/9	Oregon State	L, 5-3
3/10	LMU	L, 6-2
3/15	at San Diego State *	W, 3-1
3/16	at San Diego State *	L, 9-8
3/17	at San Diego State *	L, 4-3
3/22	Colorado State *	6 p.m.
3/23	Colorado State *	4 p.m.
3/24	Colorado State *	12 p.m.
3/26	North Dakota	11 a.m.
3/26	North Dakota	1:30 p.m.
3/29	Nevada *	6 p.m.
3/30	Nevada *	4 p.m.
3/31	Nevada *	12 p.m.
4/2	at New Mexico State	4 p.m.
4/2	at New Mexico State	6 p.m.
4/5	at Utah State *	4 p.m.
4/6	at Utah State *	4 p.m.
4/7	at Utah State *	12 p.m.
4/9	UTEP	3 p.m.
4/18	Boise State *	6 p.m.
4/19	Boise State *	4 p.m.
4/20	Boise State *	12 p.m.
4/23	New Mexico State	5:30 p.m.
4/26	at Fresno State *	7 p.m.
4/27	at Fresno State *	4 p.m.
4/28	at Fresno State *	1 p.m.
5/3	San José State *	6 p.m.
5/4	San José State *	4 p.m.
5/5	San José State *	12 p.m.
5/9	at UNLV *	7 p.m.
5/10	at UNLV *	5 p.m.
5/11	at UNLV *	1 p.m.

**Bold** denotes home games  
 \* denotes Mountain West game  
*italics* denote tournament  
 All times listed are Mountain Time  
 Game times are subject to change

## UNM vs CSU



**NEW MEXICO**  
Lobos

Record ..... 8-18, 1-2 MW  
 Conference ..... Mountain West  
 Head Coach ..... Paula Congleton  
 Record at UNM ..... 22-57 (Second Season)  
 Career Record ..... 55-134 (Fourth Season)



**COLORADO STATE**  
Rams

Record ..... 20-4, 3-0 MW  
 Conference ..... Mountain West  
 Head Coach ..... Jen Fisher  
 Record at Colorado State ..... 218-208 (Ninth Season)  
 Career Record ..... 343-244 (12th Season)

### ABOUT THE MATCHUP

- The Lobos open their home schedule this weekend with a three-game series against the Rams.
- Last season, the Lobos won the first game in the series 5-3 in 10 innings before dropping the next two.
- In the three-game series, Monica Salas went 4-for-9, hitting .444 with on-base percentage of .500.
- Cameryn O'Grady had a team-high two RBI in the series, with a slugging percentage of .429, a 2-for-7 outing at the plate and a team-high four walks. O'Grady had a team-high .545 on-base percentage
- UNM was outscored 23-9 in last year's series and was out-hit 30-23.
- This season, the Rams hold the advantage in runs, hits, doubles, home runs, on-base percentage, slugging percentage, batting average, ERA and fielding percentage.
- The Lobos lead in walks, batters struck out and runners caught stealing.

## Media Information

**Location:**..... Lobo Softball Field  
**Dimensions:**..... 220'-225'-220'

**Date/Time:**  
 Friday, March 22 - 6 p.m.  
 Saturday, March 23 - 4 p.m.  
 Sunday, March 24 - noon

**Live Video:**..... Mountain West Network  
**Live Stats:**..... <https://golobos.com/schedule.aspx?path=softball>  
**Social Media:** ..... @UNMLoboSB

Notes last updated: March 21, 2019

## Series History

### VS. COLORADO STATE

Last win: 4/7/18 (5-3 /10)  
 Last loss: 4/8/18 (12-4 / 5)  
 Last home win: 4/2/17 (8-6)  
 Last home loss: 3/31/17 (12-2/ 6)  
 Last season sweep: 2016  
 Last season swept: 2013  
 Last five games: 3-2  
 Last 10 games: 7-3  
 Last shutout win: 5/10/01 (2-0)  
 Last shutout loss: 4/7/18 (8-0/ 6)  
 Longest win streak: 10 (5/18/99-4/7/01)  
 Longest losing streak: 16 (5/10/02-4/1/06)  
 Trend: L2

## NEWS and NOTES

### HOME OPENERS

- In the last 15 years, the Lobos are 15-0 in home openers.
- In 2018, UNM beat St. Mary's 5-2 as part of the Lobo Classic.
- The last time the Lobos won a series to open their conference home schedule was in 2017, taking two of three games over Colorado State (lost the first game before winning the next two).

### LAST TIME OUT

- In two of the three games, the Lobos were the first to score and in both times, UNM scored in the first inning.
- The Lobos won the conference opener against SDSU with a 3-1 victory, with all three runs scored in the first inning. Lauren Wilmert tallied the first hit of the Friday night game, a two-run single up the middle that scored two runs. Monica Salas snuck the ball just inside the third-base line to score Cameryn O'Grady from second for the 3-0 Lobo lead.
- In Saturday's game, UNM took an 8-5 lead into the bottom of the sixth before the Aztecs scored four in the bottom of the frame to take a 9-8 lead, which would hold as the final score. O'Grady was perfect at the plate, going 3-for-3 with two singles and a two-run home run, while adding a walk in her fourth plate appearance. The junior accounted for four RBI in the game, tying a career high that the shortstop set earlier this season against Creighton. O'Grady provided the spark in the top of the third with a two-run shot over the right field wall on the 10th-pitch of her at-bat that cut the Lobo deficit to one at 5-4 and gave UNM its second lead of the game at 7-5 on a two-run single back up the middle in the fourth.
- In the series finale, Wilmert hit a two-run home run in the top of the seventh with no one out to make it a

## GENERAL INFORMATION

Name of School.....	University of New Mexico
City/Zip.....	Albuquerque, N.M. 87106
Founded.....	1889 by Territorial Legislature
Enrollment.....	25,015
Nickname.....	Lobos
School Colors.....	Cherry & Silver
Conference.....	Mountain West
Affiliation.....	NCAA Division I
President.....	Dr. Garnett Stokes
Athletic Director.....	Eddie Nuñez

## PROGRAM HISTORY

First Year of Softball.....	1978
All-Time Record.....	990-1093-3
Mountain West Record.....	121-271-1
NCAA Tournament Appearances.....	3
1980 (AIAW), 1981 (AIAW) and 1983 (NCAA)	
Last NCAA Postseason Opponent.....	Cal State Fullerton
Last NCAA Postseason Result.....	CSUF won series 2-1
Conference Championships.....	3
1980 (Intermountain), 1981 (Intermountain) and 1983 (High Country)	

## TEAM INFORMATION

2018 Overall Record.....	14-39
2018 MW Record.....	7-17 (T-8th)
Letterwinners Returning/Lost.....	10/9
Pitchers Returning/Lost.....	0/4
Starters Returning/Lost.....	8/1
Newcomers.....	9

## SOFTBALL STAFF

Head Coach.....	Dr. Paula Congleton (New Mexico, 1984)
Year at UNM..... Second season	
Record at UNM (Pct.)..... 22-57 (.278)	
MW Record at UNM (Pct.)..... 7-17 (.292)	
Career Record (Years)..... 55-134 (4 years)	
Assistant Coach.....	Tyler Heil (San José State, 2009)
Year at UNM..... Second season	
Assistant Coach.....	Breanna Macha (Arizona State, 2018)
Year at UNM..... First season	
Strength Coach.....	Jeremy Golden
Academic Advisor.....	Andrea Pierson
Head Athletic Trainer.....	Bob Waller
Athletic Trainer.....	Madison Foust

## COMMUNICATIONS

Softball Contact/Asst. Director of Comm.....	Allison Weiss
Email.....	allisonweiss@unm.edu
Cell Phone (Preferred).....	(661) 313-5402
Communications Office.....	(505) 925-5520

## DIGITAL MEDIA

Athletics Website.....	GoLobos.com
Main University Web Site.....	unm.edu
Conference Website.....	TheMW.com
Twitter.....	@UNMLoboSB
Instagram.....	@UNMLoboSB
Facebook.....	@NewMexicoLoboSoftball

## FACILITIES

Venue.....	Lobo Field
Dimensions.....	205-225-205
Capacity.....	1,500

one-run game, however, the rally fell short as the Lobos lost 4-3. The Lobos scored their first run of the game on a triple by Bailey Klitzke to right field following a leadoff triple by Andrea Howard.

- Kennedy Ferguson went 13.0 innings in the circle and struck out six while not issuing a single walk.
- Klitzke led the team in batting average (.571) with four hits on seven at-bats, in slugging percentage (.857) and in on-base percentage (.667). Wilmert had a team-high nine total bases, five RBI and six hits.

### DO NOT COUNT THEM OUT

- UNM started off the LMU Tournament with an epic come-from-behind victory over Oregon State, scoring six runs in the final two innings to win 6-5. The Lobos scored five runs in the bottom of the seventh, walking off on a hit by Lauren Wilmert to score D'Andra DeFlora from third. Andrea Howard hit a two-run home run to cut the deficit to two after Daryn Haslam led off with a single to right field. Kasey Halleen singled up the middle to keep the momentum going and Sydney Townes doubled to center to advance Halleen to third. DeFlora singled to score Townes and Halleen to tie the game, moving all the way to third, leading to Wilmert's game-winning single.

### MIXING IT UP

- The Lobos have used 22 different lineups to date, only having duplicated their lineup four times. UNM used the same lineup in the Arizona and Alabama game, the same lineup in the Cal State Fullerton and UTEP game, the same lineup against Hawai'i on Feb. 22 and DePaul on Feb. 23 and the same lineup against Tennessee and UConn.
- UNM has had five different players in the leadoff spot in the lineup.
- Cameryn O'Grady moved into the leadoff hitter spot in the game against Canisius and played six games at the No. 1 spot in the batting order. Andrea Howard led off the lineup in 10 games and moved down to the No. 2 spot for 11 games and the seventh spot in five games. Bailey Klitzke hit in the leadoff spot in three games, D'Andra DeFlora led off in six games and Sydney Townes hit first in one. Maggie Buckholz has batted second in two games, DeFlora in 12 games and Aleyah Wilbon hit second versus Cal State Fullerton.
- Four Lobos (Cameryn O'Grady, D'Andra DeFlora, Andrea Howard and Lauren Wilmert) have started all 26 games this season, while Monica Salas has started in all but one.
- UNM started four freshmen against New Mexico State, with Kennedy Ferguson, Daryn Haslam, MacKenzie Peterson and Leslie Romero each getting their first collegiate starts.
- Freshman Emma Steltzer made her Lobo debut in the circle in the last game of the Judi Garman Classic versus Cal State Fullerton, retiring both batters she faced.

### HOLDING THEIR OWN

- In the Lobos' first game of the Judi Garman Classic, UNM went to extra innings with the No. 3 Florida Gators, holding the Gators scoreless for seven innings.
- It was the second time in the last 13 days that UNM held a top-10, and a SEC, team scoreless through at least six innings.
- Kennedy Ferguson threw a complete game with 109 pitches, 66 of them going for strikes. The freshman right-hander held her own in the matchup, allowing just five hits and one walk, while striking out five batters. It is the third game this season that Ferguson has allowed just one walk, but the first time that she did so while pitching a complete game.
- The five hits posted by Florida was the second-fewest hits in a game for the Gators this year, only second to Arizona who limited the Gators to four on Feb. 9, but the Wildcats also gave up three runs in the game.
- In addition, it is just the second time this season that the Gators have been held to one run in a game, with the other instance being in Wednesday night's game versus No. 2 UCLA in which the Gators lost 7-1. Entering the Judi Garman Classic, and prior to its loss to UCLA, Florida was outscoring its opponents 127-18.
- The Lobos held No.7 Alabama scoreless for six innings, allowing only six hits total in the game.
- Entering the Hillenbrand Invitational, the Crimson Tide was third in the NCAA in scoring, averaging 10.60 runs, and had averaged 10.2 hits a game and 2.60 doubles a game (tied for 10th in the NCAA). Alabama hit .261 in the game, below the .378 batting average that the team entered with, which was 16th in the nation. Spencer kept Alabama's leading hitter Kaylee Tow, who ranked eighth in the NCAA in batting average and seventh in on-base percentage, without a hit.
- UNM is the only team to hold Alabama to just one run in the 10 games the Crimson Tide have played so far this year.
- In two games, the Lobos have shutout their opponents and twice have gone six innings without giving up a run. UNM shutout Creighton on Feb. 9 and shutout Canisius on Feb. 22, while going six scoreless innings against Alabama on Feb. 15 and again on Feb. 17 versus South Florida.

### EVEN INNING MAGIC

- To date, UNM is outscoring its opponents 58-45 in the even innings, including a 25-12 advantage in the fourth inning.
- Against Western Carolina, UNM scored seven runs in the fourth inning on three hits and two walks. Back-to-back walks by Magie Buckholz and Monica Salas to lead off the inning and a single by Daryn Haslam loaded the bases. Kasey Halleen singled through the right side to score two followed by an error by the pitcher that allowed Haslam to score. D'Andra DeFlora reached on a hit-by-pitch to load the bases and Lauren Wilmert hit a two-out grand slam to make it 10-0.
- In the first two games of the season, the second inning belonged to the Lobos, with UNM scoring five runs against UTEP and against Creighton.
- In the season opener versus the Miners, the Lobos scored five runs on two hits and drew five walks, leading to three runs on consecutive walks alone.
- Against the Bluejays, the Lobos scored five runs on three hits, a single by Monica Salas, a double by D'Andra DeFlora that scored three after Andrea Howard was intentionally walked to load the bases and a two-run home run by Cameryn O'Grady.

### HOT STARTS

- The Lobos have scored first in 14 games this season.
- UNM has scored in the first inning 10 times, with a season-high four runs scored in the first inning on Feb. 16 against Illinois-Chicago and again on Feb. 22 against Canisius.
- Against WCU on March 8, the Lobos scored three runs in the first inning on a walk by Andrea Howard, back-to-back doubles by Lauren Wilmert and Maggie Buckholz and a single by Monica Salas that scored

Buckholz.

- Five of UNM's wins this season have come via run-rule (15-6 vs. UTEP, 8-0 vs. Creighton, 13-5 vs. Illinois-Chicago, 10-0 vs. Canisius, 10-0 vs. WCU).
- D'Andra DeFlora and Cameryn O'Grady started the season on a nine-game hitting streak.

## **NEWCOMERS NO MORE**

- Freshman Daryn Haslam led the Lobos at the Hawai'i Invitational with a slugging percentage of .846 and on-base percentage of .467, while hitting the first two home runs of her collegiate career. Three of her RBI on the weekend came with two outs.
- Fellow freshman Maggie Buckholz hit a three-run home run that proved to be the difference in UNM's 3-2 win over host Hawai'i to advance the Lobos to the championship game. On the weekend, Buckholz had a team-high six RBI and drew three walks.
- The freshmen have accounted for 25 hits, 16 runs scored and 23 RBI on the season, while hitting five of the team's 18 home runs.
- Maggie Buckholz is tied for first on the Lobos in walks (17), tied for second in RBI (17), is one of four players with a triple and is third in on-base percentage (.423). Daryn Haslam is tied for second on the team in home runs (3) and is fourth in batting average (.270) and third in slugging percentage (.514). Buckholz leads the team with seven, two-out RBI
- Pitcher Kiana Spencer has pitched six complete games this season and tallied a season-high six strikeouts in her appearance against Hawai'i on Feb. 23. The LHP has recorded two shutouts, both coming in run-rule games (vs. Creighton, vs. Canisius).
- In her first start with the Lobos, Spencer threw a complete game shutout, limiting the BIG EAST preseason favorite Creighton to just three hits in five innings of work. The junior didn't allow any extra-base hits in the 24 batters she faced. She threw 91 pitches in the outing, 42 of them going for strikes.
- Spencer also earned the start against Alabama, pitching another complete game, going 7.0 innings and allowing just one run and six hits, only one of which went for extra bases, and allowing just three walks on 29 batters faced.
- Freshman Kennedy Ferguson has pitched in a team-high 19 games with 11 starts and eight complete games, holding a team-best ERA of 3.25 and 84.0 innings pitched. Ferguson has struck out 51 batters and walked 29 and has recorded at least one strikeout in 16 games, but at least one in appearances that she's pitched more than one inning. Ferguson earned her first collegiate win in a two-hit shutout over Western Carolina on March 8, striking out three and not issuing a walk.
- Ferguson has not allowed a walk in the last four games, 13.1 innings, and has allowed just one in the last five games (25.1 innings).

## **WALK IT OUT**

- UNM leads the MW in walks drawn through the first six weekends with 109, 11 more than the second-highest team (SJSU).
- In the season opener against UTEP, UNM drew 16 walks alone for a season high.
- Against the Miners, eight different players drew a walk, with Andrea Howard reaching base four times via a walk. Cameryn O'Grady and Lauren Wilmert each drew three walks, Maggie Buckholz two and Monica Salas, Taylor Jones, Kasey Halleen and Daryn Haslam each had one.
- Versus Cal State Fullerton on Feb. 15, the Lobos nearly reached double digits with nine walks.
- Maggie Buckholz leads the team with 17 walks, followed by Cameryn O'Grady with 14 and Andrea Howard with 13.

## **LET'S GIVE THEM SOMETHING TO TALK ABOUT**

- After six weekends of competition for the MW teams, the Lobos lead the conference in two categories, are second in one and fourth in one.
- The Lobos are first in the conference in walks (109) and tied for first in caught stealing by (8). UNM is tied for second in home runs (18), tied for fourth in triples (6).
- As a team, UNM has at least one player listed in the top 10 in the conference in seven hitting categories, five pitching categories and four fielding categories.
- To date, Cameryn O'Grady is in the top-10 statistically in the MW in three categories offensively. The junior is in the top 10 in on-base percentage, doubles and walks. Lauren Wilmert is third in caught stealing by, fifth in fielding chances and tied for sixth in home runs and Kennedy Ferguson is tied for fifth in batters struck out and second in innings pitched. D'Andra DeFlora ranks in the top 10 in runs scored and hit-by-pitches, Bailey Klitzke is ranked in batting average, on-base percentage and sacrifice flies, Maggie Buckholz in walks, and Andrea Howard in walks and fielding percentage.
- In Mountain West play, Bailey Klitzke is second in the conference in batting average with .571 and tied for first in on-base percentage with .667.
- Kennedy Ferguson is fifth in conference ERA in MW games with 2.69 and is the only pitcher in the top 17 that has not allowed a walk.

## **NATIONALLY KNOWN**

- Bailey Klitzke and Lauren Wilmert are tied for 56th in the NCAA in sacrifice flies with two and Maggie Buckholz is tied for 52nd in the country in walks (0.71). Klitzke is 92nd in batting average, D'Andra DeFlora is 128th in hit by pitch per game (0.19), Klitzke (116th, .492) and Cameryn O'Grady (148th, .484) are ranked in on-base percentage and Andrea Howard and O'Grady are tied for 82nd in walks (.65).

## **IT'S ALL O'GRADY**

- Junior shortstop Cameryn O'Grady leads the team in slugging percentage (.600), hits (27), hits per game (1.04), total bases (45), total plate appearances (93), doubles (7) and is tied for the team high in walks (17). The California native is second in batting average (.360), on-base percentage (.492), runs scored (18) and tied for second in RBI (17).
- With two outs, O'Grady is 6-for-14, the second-highest success rate on the team, with four RBI coming with two outs. When it comes to success advancing runners during an at-bat, O'Grady is second on the team at 28-for-50 (.560). O'Grady is also 10-for-18 (.556) as the leadoff batter in an inning which leads the team.
- O'Grady was nearly unstoppable in the first three games of the season, going 7-for-9 at the plate (.778 batting average), registering one double, a triple and two home runs as well as a team-high seven RBI. O'Grady tallied 16 total bases, drew three walks and posted a slugging percentage of 1.778 and an on-base percentage of .833.
- The junior was 2-for-2 as the leadoff hitter in an inning, 4-for-5 with runners in scoring position and 2-for-2 batting with two outs, in which she recorded two of her seven runs-batted-in. During her at-bats, O'Grady was 6-for-8 in successfully advancing runners and 5-for-7 in getting a hit with runners on base.
- O'Grady was a perfect 3-for-3 against Creighton, finishing just a double shy of hitting for the cycle.
- In the LMU Tournament, O'Grady was a team-best .500 in batting with runners on (4-for-8), 2-for-2 as the leadoff hitter in an inning, 3-for-6 with runners in scoring position and 1-for-2 with runners on third and less than two outs as well as with two outs. The shortstop was 4-for-9 with success in advancing runners.
- Last season, O'Grady led the Lobos in triples (four), doubles (12), walks (32), on-base percentage (.444) and runs scored (31) last season. She was second on the team with 43 hits, 75 total bases and 26 RBIs, and third in batting average (.301) and slugging percentage (.524).
- O'Grady hit just four home runs last season, which the junior reached half that in the first three games this season.

## **3-2, WHAT YOU GOING TO DO?**

- Lauren Wilmert leads the team in RBI (20), home runs (4) and at-bats (77), is second in total bases (37), is tied for second in hits (20), is third in doubles (5), and tied for third in runs scored (14), hitting in the cleanup spot in all 26 games. The junior is also tied for the team high in sacrifice flies.
- Playing 16 games behind the plate, Wilmert has thrown out five runners attempting to steal, bringing her career total to 10.
- Wilmert recorded a career-high three hits against SDSU on March 17, while also recording her sixth home run of her career and tied a career-high six total bases.

## **NOT JUST A PITCHER**

- Bailey Klitzke got the ball to start the season against UTEP, but has played in 20 games either in the circle or as the DP, starting in 18.
- Klitzke leads the team in batting average (.417) and on-base percentage (.492), is tied for second in hits (20) and is second in slugging percentage (.563).
- At the Judi Garman Classic, Klitzke was 2-for-2 with runners in scoring position, with two outs and with runners on third and less than two outs in the inning. The junior was 3-for-5 in success in advancing runners and 2-for-5 as the leadoff hitter in an inning. She also had a team-high four hits and three RBI in the five-game tournament, hitting .364 with a slugging percentage of .455 and on-base percentage of .467.
- At the plate on the season, Klitzke is a team-best 3-for-4 with bases loaded. She is 5-for-7 with a runner on third with less than 2 outs, 7-for-13 with runners in scoring position, 9-for-16 with 2 outs in the inning and five of her RBI on the season came with two outs. Klitzke is 17-for-26 in successfully advancing runners in her at-bat.
- However, in the circle, the LHP earned her first win of the season in her first appearance in a Lobo uniform, pitching 5.0 innings and giving up five hits and five earned runs. Klitzke struck out eight batters and finished the weekend with nine total in 6.0 innings pitched. She threw for 146 pitches, 120 of which came in the



first game against UTEP.

- Klitzke matched her strikeout count against Illinois-Chicago and pitched her first complete game with 6.0 innings pitched to move to 2-1 on the season.

## **LET'S SEE HOW FAR WE'VE COME**

- In just her second year at UNM, the Lobos have seen improvement in several categories from year one to year two under head coach Paula Congleton.
- Comparing where the Lobos were a year ago heading into MW competition to this year's team heading into MW play, the Lobos have performed better offensively, in the circle and in the field.
- Even though UNM has played two less games in 2019 than in 2018 prior to conference starting, the Lobos have scored 11 more runs (97-86) and walks (96-85), had three more doubles, two more home runs, improved their slugging percentage (.385-.366) and on-base percentage (.355-.343).
- The pitchers have combined for a better team ERA, lowering the average by 1.93 (6.70-4.77), has 18 more strikeouts (93-75) and allowed 60 fewer runs (181-121). Opponent batting average is also lower (.297-.338) as is the number of hits (171-233), doubles, triples and home runs allowed.
- Behind the plate, the catchers are having more success as well, throwing out seven runners to date, compared to just two at this point last year. Runners are just 18-25 this year (.720) compared to 26-28 in 2018 (.929). In the field, the Lobos have a fielding percentage of .952 this year to .939 last year.
- Coincidentally, the Lobos have had 221 total bases and a .240 batting average in both years.

## **PLEASE ALLOW ME TO INTRODUCE MYSELF**

- The 2019 UNM Lobos will have a different look than last season as there are nine newcomers on the roster.
- In the offseason, the Lobos added seven freshmen (Maggie Buckholz, Kennedy Ferguson, Daryn Haslam, Skylar Jenkins, MacKenzie Peterson, Leslie Romero and Emma Steltzer) as well as two transfer left-handed pitchers in Bailey Klitzke (junior, Wichita State) and Kiana Spencer (junior, Yavapai College).
- UNM debuted an entirely new pitching staff, including a new pitching coach. Joining the above mentioned addition of Klitzke and Spencer will be Ferguson, a right-hander from Camas, Wash. Overseeing the group will be Breanna Macha, who joins the Lobos after pitching at Arizona State from 2015-18.

## **PUTTING THE PIECES OF THE PUZZLE TOGETHER**

- The roster underwent a major renovation after 2018 with the departure of nine letterwinners, which included all four pitchers on the roster.
- The Lobos also have 10 underclassmen on the roster, with a team-high seven freshmen who will experience their first glimpse of collegiate softball this season.
- Of the nine, the Lobos lost a key piece of their offense due to graduation in Chelsea Johnson. The infielder, who served as the DP her senior season, led the team in batting average (.342), at bats (155), hits (53), homeruns (10), RBIs (40), total bases (92) and slugging percentage (.594). Johnson started 51 of the 53 games, but played in 52.
- In the circle, the Lobos will have to find their ace after losing Jensen Main, who pitched almost half of the innings (162.2 of 326 innings) during the season and set the UNM single-season record for batters faced with 848.
- Luckily, the Lobos retain eight mainstays in the lineup, including now-sophomore Andrea Howard who was selected Second Team All-Mountain West in her rookie season.

## **LONG TIME GONE**

- The Lobos began the season with five non-conference tournaments on the road, spanning from Las Cruces to Tucson, Ariz., to Honolulu, Hawaii to two trips to Southern California, followed by a conference series at San Diego State.
- UNM's home opener on March 22 against MW opponent Colorado State is the latest home opener in at least 15 years.
- In the first six weeks of the season, the Lobos will have traveled over 10,900 miles roundtrip (5451 miles each way) and played 26 games before their first pitch at Lobo Softball Field.

## **TO BE THE BEST...**

- The non-conference schedule will test the Lobos from the first weekend, as the Cherry and Silver face 10 teams that made the 2018 NCAA Tournament, four that advanced to the Super Regionals and one team (Florida) that competed in the Women's College World Series.
- Four of the teams on UNM's schedule (Florida, Tennessee, Arizona, Alabama) ranked in the top 10 in the USA Today/ NCA Coaches preseason rankings and four additional teams were receiving votes. Florida was the highest ranked at fifth, with Tennessee seventh, Arizona eighth and Alabama tied for ninth.
- In the ESPN.com / USA Softball Collegiate Top 25 Preseason Poll, four teams on the Lobos' schedule were ranked with four more receiving votes. Florida was the highest-ranked opponent at No. 5 followed by Arizona at six, Tennessee at eight and Alabama at 11. Receiving votes were Oregon State, Cal State Fullerton, South Florida and Fresno State.

## **STARTING OFF STRONG**

- UNM is now 26-16 in season openers, including 4-1 in the last five years after Friday's win versus UTEP.
- The nine-run differential was the largest margin of victory for UNM in a season opener since 2011, when the Lobos defeated Utah Valley 10-2.
- Against UTEP, the leadoff hitter reached base six times.
- UNM didn't give up its first run until the fourth inning in the game against UTEP and starting pitcher Bailey Klitzke didn't give up a hit until the bottom of the fourth.
- D'Andra DeFlora and Cameryn O'Grady registered at least one hit in the first nine games of the season.

## **SCOUTING COLORADO STATE**

- The Rams enter the weekend at the top of the Mountain West standings with a 3-0 conference record and a 20-4 overall record after sweeping Fresno State to open conference last weekend. They have won their last 11 games dating back to a 16-0, five inning game against Idaho State on Feb. 28.
- CSU doesn't share any common opponent to date with UNM, but the Rams have played two ranked teams, defeating then-No. 16 Oklahoma State 2-1 and losing to then-No. 2 UCLA 3-0. They are 2-1 against Pac-12 schools, beating Utah 6-1 and Stanford 5-0, and have beaten Nebraska (12-9) and Syracuse (8-6) and 8-0 (5), but lost to Iowa State (6-5).
- Colorado State has won eight games this year via run-rule and have shut out its opponent nine times. Conversely, CSU has been shutout just once to UCLA (3-0).
- The Rams are outscoring their opponents 174-55 and outhitting them 207-114. Against Fresno State last weekend, CSU outscored the Bulldogs 31-13 and outhit them 28-21.
- Last season, Colorado State went 27-23 overall and 10-14 in the MW and advanced to the second round of the NISC.
- Colorado State returns 11 letterwinners from 2018, including eight starters and have nine newcomers.
- Amber Nelson leads the Rams with a .400 batting average, a .743 slugging percentage, 12 walks and 52 total bases, and is tied for home runs with five. Danni Klein leads in runs scored with 31 and Ashley Michelena leads with 32 hits and three triples on the season. Corina Gamboa has a team-high 28 RBI and nine doubles.
- As a team, CSU is 13-of-14 in stolen bases with six players perfect in stolen bases attempted. Danni Klein is 3-for-3, Ashley Michelena is 3-for-3, Jordan Acosta is 2-for-2, and Isabella Navarro, Tara Shadowen and Haley Donaldson are all 1-for-1. Opponents are 10-for-13 in attempted steals.
- Colorado State pitchers have an ERA of 2.07 as a staff, allowing 114 hits on the season and 55 runs (45 earned). As a unit, they have struck out 93 batters while walking 58. Opponents are hitting .206 against the SDSU pitchers. Of the 114 hits, 22 were doubles, four triples and eight home runs.
- CSU has used three pitchers this season, with Bridgette Hutton pitching a team-high 67.1 innings. Hutton has an 8-2 record on the year with 13 appearances and 10 starts, pitching six complete games and three shutouts. In the circle, the senior has given up 49 hits, 31 runs (24 earned), 37 strikeouts and 36 walks. Jessica Jarecki has pitched 60.2 innings, compiling an 8-1 record after making 12 appearances and 11 starts with eight complete games and four shutouts. With an ERA of 1.85, Jarecki has allowed 47 hits, 18 runs (16 earned), 44 strikeouts and 17 walks. Taylor Gilmore has pitched just 24.0 innings in eight appearances and three starts, with a 4-1 record. The redshirt-freshman has thrown two complete games, two shutouts and one save on the season. Gilmore has been charged with 18 hits, six runs (five earned), 12 strikeouts and five walks. She has allowed just four doubles but no doubles or home runs.
- The Rams rank first in the NCAA in doubles per game (2.33), 10th in slugging percentage (.586), 11th in scoring (7.25), 15th in batting average (.331), 19th in on-base percentage (.411) and 26th in home runs per game (1.21). Danni Klein ranks sixth in runs per game (1.29) and 15th in sacrifice hits per game (0.29). Ashley Michelena is 26th in triples, 44th in triples per game (0.13) and 48th in runs per game (1.04). Corina Gamboa (1.17) and Amber Nelson (1.08) are 31st and 49th in RBI per game, respectively.

## STAT COMPARISON

		UNM ENTERING MW PLAY	
UNM	CSU	2018	2019
BA	.242	.240	.240
R	111	.366	.385
H	160	.343	.355
2B	28	86	97
3B	6	145	158
HR	18	24	27
RBI	104	5	4
BB	109	14	16
SO	201	221	221
ERA	4.69	81	90
SO	104	85	96
BB	101	179	177
H	195	6.70	4.77
R	135	75	93
ER	106	88	93
DP	3	9	7
FLD%	.952	.939	.952

## MOUNTAIN WEST INFORMATION

### PRESEASON MOUNTAIN WEST POLL

Rk.	Team (1st-Place Votes)	Points
1.	Boise State (8)	64
2.	Fresno State (1)	57
3.	San José State	50
4.	UNLV	35
5.	San Diego State	31
6.	Nevada	29
7.	Colorado State	26
8.	Utah State	21
9.	New Mexico	11

## MOUNTAIN WEST PLAYERS OF THE WEEK

2019 MW Softball Player of the Week  
 Feb. 12 – Lauren Tycksen, Jr., CF, UNLV  
 Feb. 19 – Jessica McKay, Jr., OF, Boise State  
 Feb. 26 – Ashley Ruiz, Jr., 1B, Colorado State  
 March 5 – Lauren Buchanan, Sr., C, Colorado State  
 March 12 – Amber Nelson, Sr., C, Colorado State  
 March 19 – Corina Gamboa, Jr., 3B, Colorado State

2019 MW Softball Pitcher of the Week  
 Feb. 12 – Hailey Dolcini, So., RHP, Fresno State  
 Feb. 19 – Gianna Mancha, So., RHP, Boise State  
 Feb. 26 – Jessica Jarecki, Jr., RHP, Colorado State  
 March 5 – Danielle Lung, Fr., RHP, Fresno State  
 March 12 – Jenny Bressler, Fr., RHP, UNLV  
 March 19 – Jenny Bressler, Fr., RHP, UNLV

## ESPN.COM/USA SOFTBALL COLLEGIATE TOP 25

WEEK 6 • MARCH 19

Rk.	Team (1st Votes)	Pts.	Rec	Prev.
1.	UCLA (20)	25-1	500	1
2.	Oklahoma	25-2	471	2
3.	Alabama	31-0	451	4
4.	Florida State	27-3	445	3
5.	Tennessee	22-4	419	5
6.	LSU	23-6	379	8
7.	Florida	24-5	357	7
8.	Washington	22-6	352	6
9.	Louisiana	23-3	321	11
10.	Arizona	21-7	314	12
11.	Texas	25-6	288	13
12.	Texas Tech	27-2	287	10
13.	Auburn	26-4	260	16
14.	Kentucky	20-7	235	18
15.	Georgia	25-6	222	9
16.	Arizona State	22-8	157	19
17.	Oklahoma State	20-7	134	14
18.	Arkansas	21-7	127	17
19.	Minnesota	19-8	109	21
20.	Indiana	25-6	102	15
21.	James Madison	15-5	101	23
22.	Wisconsin	21-3	93	22
23.	Ole Miss	21-7	75	RV
24.	Virginia Tech	21-4	72	25
25.	Michigan	15-10	61	24

Dropped Out: South Carolina (20)

New to Poll: Ole Miss (RV)

Others receiving votes: South Carolina (60), Northwestern (41), Illinois (22), Boise State (11), Stanford (10), Houston (8), Oregon State (8), USC Upstate (6), Missouri (1), Notre Dame (1), South Florida (1)

## USA TODAY/ NFCA COACHES TOP 25 POLL

WEEK 6 • MARCH 19

Rk.	Team (1st Votes)	Pts.	Rec	Prev.
1	UCLA (31)	25-1	799	1
2	Oklahoma	25-2	760	2
3	Florida State (1)	27-3	717	3
4	Alabama	31-0	703	4
5	Tennessee	22-4	662	6
6	Florida	24-5	621	7
7	Washington	22-6	612	5
8	LSU	23-6	546	9
9	Louisiana	23-3	521	10
10	Texas	25-6	506	11
11	Arizona	21-7	459	12
12	Georgia	25-6	417	8
13	Kentucky	20-7	393	15
14	Texas Tech	27-2	383	13
15	Arkansas	21-7	368	14
16	South Carolina	21-7	307	16
17	Auburn	26-4	289	20
18	Arizona State	22-8	257	17
19	James Madison	15-5	173	22
20	Minnesota	19-8	170	21
21	Oklahoma State	20-7	154	18
22	Indiana	25-6	137	19
23	Wisconsin	21-3	130	23
24	Ole Miss	21-7	89	
25	Michigan	15-10	54	25

New to Poll: No. 24 Ole Miss

Dropped Out: No. 24 Boise State

Receiving Votes: Virginia Tech (42), Northwestern (37), Illinois (21), Boise State (15), Stanford (13), Notre Dame (10), UNLV (9), Colorado State (6), Oregon State (6), Baylor (5), Mississippi State (5), Louisiana Tech (2), Missouri (1), USC Upstate (1).

## BY THE NUMBERS

Statistic	All Games	MW	MW Games
Batting Average:	.242	9th	.256 T-8th
Slugging Percentage:	.385	8th	.384 7th
On Base Percentage:	.356	8th	.366 T-5th
Runs Scored:	111	8th	14 T-3rd
Hits:	160	9th	22 6th
RBI:	104	7th	14 3rd
HRs:	18	T-2nd	2 T-4th
Total Bases:	254	7th	33 5th
Walks:	109	1st	13 2nd
ERA:	4.69	8th	4.05 3rd
Opp. Batting Avg.:	.298	9th	.304 T-5th
Batters Struck Out:	104	6th	11 T-3rd
Hits Allowed:	195	7th	24 T-5th
Runs Allowed:	135	8th	14 T-5th
Earned Runs Allowed:	106	7th	11 3rd
Walks Allowed:	101	T-8th	8 T-3rd
Home Runs Allowed:	31	9th	2 T-3rd
Fielding Percentage:	.952	9th	.953 4th
Putouts:	475	6th	57 T-4th
Fielding Double Plays:	3	T-8th	N/A N/A
Caught Stealing By:	8	T-1st	1 T-2nd

## MOUNTAIN WEST STANDINGS

School	Conf.	Conf. %	Overall	Overall %	Streak
Colorado State	3-0	1.000	20-4	0.833	W11
UNLV	2-1	0.667	21-6	0.778	W1
Nevada	2-1	0.667	15-9	0.625	W2
San Diego State	2-1	0.667	14-13	0.519	W2
Boise State	1-2	0.333	21-4	0.840	W2
Utah State	1-2	0.333	10-13	0.435	W1
New Mexico	1-2	0.333	8-18	0.308	L2
San José State	0-0	0.000	18-8	0.692	W8
Fresno State	0-3	0.000	15-9	0.625	W1

# THE 2019 NEW MEXICO LOBOS

## NUMERICAL ROSTER

#	NAME	POS	HT	YR	B/T	HOMETOWN (PREVIOUS SCHOOL)
00	Andrea Howard	OF	5-6	So.	L/L	Albuquerque, N.M. (La Cueva HS)
2	Maggie Buckholz	UT	5-7	Fr.	L/R	Silverton, Ore. (Silverton HS)
3	Taylor Jones	IF	5-7	So.	R/R	Albuquerque, N.M. (La Cueva HS)
4	D'Andra DeFlora	OF	5-2	Sr.	R/R	Fresno, Texas (L.V. Hightower HS)
5	Sydney Broderick	C	5-4	So.	R/R	Mesa, Ariz. (Desert Ridge HS)
7	MacKenzie Peterson	OF	5-9	Fr.	R/R	Gilbert, Ariz. (Phoenix College)
8	Bailey Klitzke	P/1B	5-8	Jr.	L/L	Apache Junction, Ariz. (Wichita State)
9	Kasey Halleen	IF	5-6	Sr.	R/R	Torrance, Calif. (Palos Verdes HS)
10	Cameryn O'Grady	SS	5-6	Jr.	L/R	Orange, Calif. (El Modena HS)
12	Daryn Haslam	IF	5-4	Fr.	R/R	Cedar Park, Texas (Vista Ridge HS)
13	Kennedy Ferguson	P	5-6	Fr.	R/R	Camas, Wash. (Camas HS)
16	Leslie Romero	OF	5-4	Fr.	R/R	Gonzales, Calif. (Salinas HS)
22	Monica Salas	IF	5-3	Sr.	R/R	Goleta, Calif. (Santa Barbara CC)
23	Emma Steltzer	OF	5-6	Fr.	R/R	Manchester, Mo. (Parkway South HS)
24	Skylar Jenkins	OF	5-5	Fr.	R/R	Lawrenceville, Ga. (Buford HS)
32	Lauren Wilmert	C/1B	5-10	Jr.	R/R	Albuquerque, N.M. (Volcano Vista HS)
44	Aleyah Wilbon	OF	5-2	Sr.	L/R	Fontana, Calif. (Mt. San Antonio College)
66	Sydney Townes	OF	5-6	Sr.	L/R	Lompoc, Calif. (Cabrillo HS)
99	Kiana Spencer	P	5-6	Jr.	L/L	Gallup, N.M. (Yavapai College)

## ALPHABETICAL ROSTER

#	NAME	POS	HT	YR	B/T	HOMETOWN (PREVIOUS SCHOOL)
5	Sydney Broderick	C	5-4	So.	R/R	Mesa, Ariz. (Desert Ridge HS)
2	Maggie Buckholz	UT	5-7	Fr.	L/R	Silverton, Ore. (Silverton HS)
4	D'Andra DeFlora	OF	5-2	Sr.	R/R	Fresno, Texas (L.V. Hightower HS)
13	Kennedy Ferguson	P	5-6	Fr.	R/R	Camas, Wash. (Camas HS)
9	Kasey Halleen	IF	5-6	Sr.	R/R	Torrance, Calif. (Palos Verdes HS)
12	Daryn Haslam	IF	5-4	Fr.	R/R	Cedar Park, Texas (Vista Ridge HS)
00	Andrea Howard	OF	5-6	So.	L/L	Albuquerque, N.M. (La Cueva HS)
24	Skylar Jenkins	OF	5-5	Fr.	R/R	Lawrenceville, Ga. (Buford HS)
3	Taylor Jones	IF	5-7	So.	R/R	Albuquerque, N.M. (La Cueva HS)
8	Bailey Klitzke	P/1B	5-8	Jr.	L/L	Apache Junction, Ariz. (Wichita State)
10	Cameryn O'Grady	SS	5-6	Jr.	L/R	Orange, Calif. (El Modena HS)
7	MacKenzie Peterson	OF	5-9	Fr.	R/R	Gilbert, Ariz. (Phoenix College)
16	Leslie Romero	OF	5-4	Fr.	R/R	Gonzales, Calif. (Salinas HS)
22	Monica Salas	IF	5-3	Sr.	R/R	Goleta, Calif. (Santa Barbara CC)
99	Kiana Spencer	P	5-6	Jr.	L/L	Gallup, N.M. (Yavapai College)
23	Emma Steltzer	OF	5-6	Fr.	R/R	Manchester, Mo. (Parkway South HS)
66	Sydney Townes	OF	5-6	Sr.	L/R	Lompoc, Calif. (Cabrillo HS)
44	Aleyah Wilbon	OF	5-3	Sr.	L/R	Fontana, Calif. (Mt. San Antonio College)
32	Lauren Wilmert	C/1B	5-10	Jr.	R/R	Albuquerque, N.M. (Volcano Vista HS)

## RETURNERS (10) - 2018 SEASON STATS

No.	Name	Pos.	Cl.	Avg.	GP-GS	AB	R	H	2B	3B	HR	RBI	SLG%	FLD%
00	Andrea Howard	UT	Fr.	.313	51-50	131	20	41	6	1	7	18	.534	.987
3	Taylor Jones	IF	Fr.	.216	24-11	37	6	8	3	0	1	4	.378	.875
4	D'Andra DeFlora	OF	Jr.	.214	53-53	145	22	31	3	0	7	21	.379	.969
5	Sydney Briderick	C	So.	.230	42-36	87	6	20	2	0	0	5	.253	.956
9	Kasey Halleen	IF	Jr.	.189	49-49	127	13	24	5	0	0	10	.228	.920
10	Cameryn O'Grady	SS	So.	.301	53-52	143	31	43	12	4	4	26	.524	.924
22	Monica Salas	IF	Jr.	.238	45-35	101	9	24	3	0	2	15	.327	.919
32	Lauren Wilmert	C	So.	.180	32-20	61	5	11	1	0	1	11	.246	.961
44	Aleyah Wilbon	OF	Jr.	.222	38-25	63	13	14	1	0	0	2	.238	.964
66	Sydney Townes	OF	Jr.	.186	45-44	102	16	19	2	1	0	4	.225	.938

## KEY PLAYERS LOST (3) - 2018 SEASON STATS

No.	Name	Pos.	Avg.	GP-GS	AB	R	H	2B	3B	HR	RBI	SLG%	FLD%
34	Chelsea Johnson	IF	.342	52-51	155	22	53	7	1	10	40	.594	.000
6	Sam Oliver	OF	.191	36-22	47	9	9	1	0	0	2	.213	.953
8	Kristyn Whitley	IF	.188	28-21	48	3	9	3	0	0	4	.250	.941

## PITCHERS LOST (4) - 2018 SEASON STATS

No.	Name	Cl.	ERA	W-L	APP	GS	CG	SHO	SV	IP	SO	BF
16	Jensen Main	So.	4.73	8-20	37	29	13	0/0	0	162.2	74	848
23	Krissy Fortner	Sr.	6.05	3-9	27	7	2	0/0	2	78.2	44	395
24	Alexis Ruel	Fr.	9.60	2-7	19	13	5	0/0	0	62.0	14	361
35	Marissa Bethke	R-Jr.	11.12	1-3	12	4	1	0/0	0	22.2	9	123

## NEWCOMERS (9)

No.	Name	Cl.
2	Maggie Buckholz	Fr.
7	MacKenzie Peterson	Fr.
8	Bailey Klitzke	Jr.
12	Daryn Haslam	Fr.
13	Kennedy Ferguson	Fr.
16	Leslie Romero	Fr.
23	Emma Steltzer	Fr.

## PRONUNCIATION GUIDE

00	ANDREA Howard	on-DRAY-uh
4	D'ANDRA DEFLORA	dee-ON-druh Duh-FLOOR-uh
9	Kasey HALLEEN	Huh-Lean
22	Monica SALAS	SAHL-us
44	ALEYAH WILBON	uh-LEE-uh Will-BAHN
66	Sydney TOWNES	TOWNS
	Paula CONGLETON	CONGLE-ton
	Tyler HEIL	HIGHL

## BY ELIGIBILITY

### Seniors (5)

4	D'Andra DeFlora	OF
9	Kasey Halleen	IF
22	Monica Salas	IF
44	Aleyah Wilbon	OF
66	Sydney Townes	OF

### Juniors (4)

8	Bailey Klitzke	P/1B
10	Cameryn O'Grady	SS
99	Kiana Spencer	P
32	Lauren Wilmert	C/1B

### Sophomores (3)

00	Andrea Howard	OF
3	Taylor Jones	IF
5	Sydney Broderick	C

### Freshmen (7)

2	Maggie Buckholz	UT
13	Kennedy Ferguson	P
12	Daryn Haslam	IF
24	Skylar Jenkins	OF
7	MacKenzie Peterson	OF
16	Leslie Romero	OF
23	Emma Steltzer	OF

## HOME STATE

### Arizona (3)

5	Sydney Broderick	C
8	Bailey Klitzke	P
7	MacKenzie Peterson	OF

### California (6)

9	Kasey Halleen	IF
10	Cameryn O'Grady	SS
16	Leslie Romero	OF
22	Monica Salas	IF
44	Aleyah Wilbon	OF
66	Sydney Townes	OF

### Georgia (1)

24	Skylar Jenkins	OF
----	----------------	----

### Missouri (1)

23	Emma Steltzer	OF
----	---------------	----

### New Mexico (4)

00	Andrea Howard	OF
3	Taylor Jones	IF
99	Kiana Spencer	P
32	Lauren Wilmert	C/1B

### Oregon (1)

2	Maggie Buckholz	UT
---	-----------------	----

### Texas (2)

4	D'Andra DeFlora	OF
12	Daryn Haslam	IF

### Washington (1)

13	Kennedy Ferguson	P
----	------------------	---



# Paula Congleton

5th Head Coach in UNM Program History  
Record at UNM: 22-57

**NOTEWORTHY :**

- Named the fifth head coach in program history on June 20, 2017
- Enters her second season at her alma mater
- Earned her 300th career victory on April 17, 2014
- Earned her 350th career victory on April 22, 2017
- Earned her 400th career victory on May 4, 2018
- Earned her first win at UNM against St. Mary's on Feb. 9, 2018 (4-1)

## **MORE NOTES ON COACH CONGLETON**

- Spent 19 seasons at Santa Barbara City College with the Vaqueros molding the program into one of the elite programs in the WSC
- Three-time WSC Gold Division Coach of the Year
- 2011 Southern Cal Coaching Staff of the Year
- 2011 NFCA National Coaching Staff of the Year
- Led the Vaqueros to four Southern Cal Regional appearances and one trip to the Southern Cal Super Regional
- Guided the Vaqueros to their greatest success of the program, winning a Southern Cal Regional series and advancing to the Super Regional for the first time ever in 2016
- Led the 2016 SBCC squad to the second-most games in program history (30-14)
- The 2016 team finished third WSC Gold Division
- In 2011, led the Vaqueros to a program-record 31 wins (31-7 overall), leading the team to a WSC title and the Southern Cal Regional
- Four-time Scholar Athlete first baseman for the Lobos (3.89 GPA)
- Three-time All-American at New Mexico
- Received her Doctorate in educational administration in 2009
- Served as a full-time professor at SBCC teaching health, weight training and kinesiology
- Served as Associate Athletic Director and Coordinator of the Academic Achievement Zone for student-athletes at SBCC

## **COACHING EXPERIENCE**

**Head Coach:**

2017-Present - New Mexico (22-57)  
1998-2017 - Santa Barbara City Coll. (Calif.) (354-322)  
1996-1998 - Cal. State University Eastbay (33-77)

**Graduate Assistant:**

1986-1988 - New Mexico

Overall NCAA DI record (Second Season): 22-57  
Overall NCAA record (Fourth Season): 54-132  
Overall record (23 years): 409-456 (.473)

## **ALMA MATER**

New Mexico (1984)

## **TWITTER**

Follow @CoachCongleton





# 2019 NEW MEXICO OVERALL STATISTICS

Record: 8-18 Home: 0-0 Away: 2-8 Neutral: 6-10 MW: 1-2

Player	avg	gp-gs	ab	r	h	2b	3b	hr	rbi	tb	slg%	bb	hp	so	gdp	ob%	sf	sh	sb-att	po	a	e	fld%
8 KLITZKE, Bailey	.417	20-18	48	4	20	3	2	0	12	27	.563	9	0	4	1	.492	2	0	2-2	1	3	0	1.000
10 O'GRADY, Cameryn	.360	26-26	75	18	27	7	1	3	17	45	.600	17	1	14	0	.484	0	0	0-0	28	33	9	.871
44 WILBON, Aleyah	.300	18-2	10	5	3	0	0	0	0	3	.300	1	0	5	0	.364	0	0	0-1	1	0	0	1.000
12 HASLAM, Daryn	.270	18-11	37	5	10	0	0	3	6	19	.514	5	0	12	0	.357	0	0	0-0	11	19	3	.909
32 WILMERT, Lauren	.260	26-26	77	14	20	5	0	4	20	37	.481	7	1	18	1	.322	2	0	0-0	129	13	6	.959
4 DeFLORA, D'Andra	.257	26-26	74	21	19	3	0	1	8	25	.338	8	5	27	1	.368	0	0	0-0	33	1	0	1.000
2 BUCKHOLZ, Maggie	.226	24-22	53	9	12	1	1	2	17	21	.396	17	1	26	0	.423	0	0	0-1	23	0	1	.958
22 SALAS, Monica	.214	25-25	70	9	15	1	0	3	12	25	.357	7	0	21	4	.286	0	0	0-0	15	24	5	.886
0 HOWARD, Andrea	.203	26-26	69	14	14	6	2	2	8	30	.435	17	1	23	0	.368	0	1	1-1	58	3	0	1.000
9 HALLEEN, Kasey	.188	16-14	32	3	6	1	0	0	2	7	.219	3	0	11	0	.257	0	0	0-0	23	19	2	.955
3 JONES, Taylor	.171	21-14	41	3	7	0	0	0	2	7	.171	6	0	16	0	.277	0	0	0-0	60	15	2	.974
7 PETERSON, MacKenzie	.158	13-6	19	2	3	0	0	0	0	3	.158	5	1	4	0	.360	0	0	0-0	45	1	1	.979
66 TOWNES, Sydney	.130	18-7	23	3	3	1	0	0	0	4	.174	5	0	9	0	.286	0	0	1-1	11	0	1	.917
5 BRODERICK, Sydney	.042	13-10	24	1	1	0	0	0	0	1	.042	1	0	10	1	.080	0	0	0-0	33	9	0	1.000
16 ROMERO, Leslie	.000	5-1	6	0	0	0	0	0	0	0	.000	0	0	1	0	.000	0	0	0-0	2	0	0	1.000
23 STELTZER, Emma	.000	3-0	2	0	0	0	0	0	0	0	.000	1	0	0	0	.333	0	0	0-0	0	0	0	.000
13 FERGUSON, Kennedy	.000	4-4	0	0	0	0	0	0	0	0	.000	0	0	0	0	.000	0	0	0-0	2	16	1	.947
99 SPENCER, Kiana	.000	1-1	0	0	0	0	0	0	0	0	.000	0	0	0	0	.000	0	0	0-0	0	7	1	.875
Totals	.242	26	660	111	160	28	6	18	104	254	.385	109	10	201	8	.356	4	1	4-6	475	163	32	.952
Opponents	.298	26	655	135	195	28	4	31	125	324	.495	101	14	104	0	.401	4	15	20-28	507	132	25	.962

LOB - Team (168), Opp (181). DPs turned - Team (3), Opp (10). IBB - Team (2), HOWARD 1, O'GRADY 1.

## (All games Sorted by Earned run avg)

Player	era	w-l	app	gs	cg	sho	sv	ip	h	r	er	bb	so	2b	3b	hr	b/avg	wp	hp	bk	sfa	sha
23 STELTZER, Emma	0.00	0-0	1	0	0	0/0	0	0.2	0	0	0	0	0	0	0	0	.000	0	0	0	0	0
13 FERGUSON, Kennedy	3.25	2-9	19	11	8	1/0	0	84.0	105	59	39	29	51	10	1	14	.299	4	5	0	3	8
99 SPENCER, Kiana	4.94	4-7	15	11	6	2/0	0	56.2	67	45	40	40	31	13	1	13	.293	2	6	0	1	6
8 KLITZKE, Bailey	11.12	2-2	9	4	1	0/0	0	17.0	23	31	27	32	22	5	2	4	.315	10	3	0	0	1
Totals	4.69	8-18	26	26	15	3/0	0	158.1	195	135	106	101	104	28	4	31	.298	16	14	0	4	15
Opponents	4.14	18-8	26	26	4	2/2	4	169.0	160	111	100	109	201	28	6	18	.242	15	10	0	4	1

PB - Team (8), BRODERICK 4, WILMERT 4, Opp (7). SBA/ATT - WILMERT (13-18), FERGUSON (9-14), BRODERICK (7-10), KLITZKE (6-8), SPENCER (5-6).



# 2019 NEW MEXICO MOUNTAIN WEST STATISTICS

Record: 1-2 Home: 0-0 Away: 1-2 MW: 1-2

Player	avg	gp-gs	ab	r	h	2b	3b	hr	rbi	tb	slg%	bb	hp	so	gdp	ob%	sf	sh	sb-att	po	a	e	fld%
7 PETERSON, MacKenzie	1.000	1-0	1	0	1	0	0	0	0	1	1.000	0	0	0	0	1.000	0	0	0-0	1	0	0	1.000
8 KLITZKE, Bailey	.571	3-2	7	0	4	0	1	0	2	6	.857	2	0	0	0	.667	0	0	0-0	0	0	0	.000
32 WILMERT, Lauren	.500	3-3	12	2	6	0	0	1	5	9	.750	0	0	1	0	.500	0	0	0-0	13	1	0	1.000
10 O'GRADY, Cameryn	.333	3-3	9	4	3	0	0	1	4	6	.667	3	0	3	0	.500	0	0	0-0	2	7	1	.900
3 JONES, Taylor	.273	3-3	11	0	3	0	0	0	1	3	.273	0	0	4	0	.273	0	0	0-0	15	3	1	.947
0 HOWARD, Andrea	.250	3-3	8	3	2	1	1	0	1	5	.625	4	0	2	0	.500	0	0	0-0	9	0	0	1.000
9 HALLEEN, Kasey	.250	2-1	4	0	1	0	0	0	0	1	.250	0	0	1	0	.250	0	0	0-0	3	3	0	1.000
22 SALAS, Monica	.111	3-3	9	0	1	0	0	0	1	1	.111	0	0	3	1	.111	0	0	0-0	0	2	1	.667
4 DeFLORA, D'Andra	.111	3-3	9	4	1	0	0	0	0	1	.111	1	2	4	0	.333	0	0	0-0	0	0	0	.000
66 TOWNES, Sydney	.000	3-3	6	1	0	0	0	0	0	0	.000	3	0	1	0	.333	0	0	0-0	9	0	0	1.000
12 HASLAM, Daryn	.000	2-1	4	0	0	0	0	0	0	0	.000	0	0	1	0	.000	0	0	0-0	0	2	1	.667
2 BUCKHOLZ, Maggie	.000	2-1	3	0	0	0	0	0	0	0	.000	0	0	3	0	.000	0	0	0-0	0	0	0	.000
5 BRODERICK, Sydney	.000	1-1	3	0	0	0	0	0	0	0	.000	0	0	1	0	.000	0	0	0-0	5	1	0	1.000
99 SPENCER, Kiana	.000	1-1	0	0	0	0	0	0	0	0	.000	0	0	0	0	.000	0	0	0-0	0	1	0	1.000
13 FERGUSON, Kennedy	.000	0-0	0	0	0	0	0	0	0	0	.000	0	0	0	0	.000	0	0	0-0	0	5	0	1.000
Totals	.256	3	86	14	22	1	2	2	14	33	.384	13	2	24	1	.366	0	0	0-0	57	25	4	.953
Opponents	.304	3	79	14	24	5	0	2	12	35	.443	8	2	11	0	.378	1	2	2-3	63	19	3	.965

LOB - Team (24), Opp (21). DPs turned - Team (0), Opp (1).

### (MW games only Sorted by Earned run avg)

Player	era	w-l	app	gs	cg	sho	sv	ip	h	r	er	bb	so	2b	3b	hr	b/avg	wp	hp	bk	sfa	sha
8 KLITZKE, Bailey	0.00	0-0	1	1	0	0/0	0	0.1	0	0	0	1	0	0	0	0	.000	0	1	0	0	0
13 FERGUSON, Kennedy	2.69	1-1	3	1	1	0/0	0	13.0	17	6	5	0	6	3	0	1	.321	2	0	0	1	2
99 SPENCER, Kiana	7.41	0-1	2	1	0	0/0	0	5.2	7	8	6	7	5	2	0	1	.280	1	1	0	0	0
Totals	4.05	1-2	3	3	1	0/0	0	19.0	24	14	11	8	11	5	0	2	.304	3	2	0	1	2
Opponents	4.33	2-1	3	3	0	0/0	1	21.0	22	14	13	13	24	1	2	2	.256	0	2	0	0	0

PB - Team (1), BRODERICK 1. SBA/ATT - FERGUSON (1-2), BRODERICK (2-2), WILMERT (0-1), SPENCER (1-1).

# 2019 NEW MEXICO GAME-BY-GAME STATISTICS

Date	Opponent	ab	r	h	rbi	2b	3b	hr	tb	bb	ibb	sb	cs	hbp	sac	sf	gdp	k	po	a	e	lob	avg
Feb 08	vs UTEP	26	15	9	15	0	0	1	12	16	0	0	1	2	0	0	2	7	21	8	0	8	.346
Feb 09	vs Creighton	20	8	9	8	1	1	1	15	4	1	0	0	0	0	0	1	8	15	2	0	4	.391
Feb 09	at New Mexico State	29	8	10	7	3	0	2	19	3	0	0	0	0	0	2	0	8	18	3	2	5	.373
Feb 15	vs Alabama	24	0	4	0	1	0	0	5	2	0	0	0	1	0	0	0	4	21	10	0	6	.323
Feb 15	vs Cal State Fullerton	26	2	5	2	2	0	0	7	9	0	0	0	0	0	0	0	10	18	7	3	12	.296
Feb 16	at Arizona	22	1	4	0	0	0	0	4	1	0	0	0	0	0	0	0	7	12	3	2	7	.279
Feb 16	vs Illinois-Chicago	27	13	11	11	2	1	1	18	8	0	0	0	0	0	0	0	2	18	9	2	5	.299
Feb 17	vs South Florida	28	1	4	1	1	0	0	5	4	0	0	0	0	0	0	0	12	22	15	2	8	.277
Feb 20	at Hawaii	25	1	3	1	0	0	0	3	1	0	0	0	1	0	0	1	9	18	3	1	5	.260
Feb 21	vs DePaul	25	5	5	5	0	0	3	14	4	0	0	0	0	0	0	1	8	21	7	2	3	.254
Feb 22	vs Canisius	26	10	11	9	1	1	2	20	5	0	1	0	0	0	0	0	2	15	6	0	6	.270
Feb 22	at Hawaii	27	2	7	2	2	0	1	12	2	0	0	0	0	0	0	1	4	18	6	3	6	.269
Feb 23	at Hawaii	22	3	3	3	2	0	1	8	3	0	0	1	0	1	0	0	4	21	2	0	2	.260
Feb 23	vs DePaul	26	2	4	1	2	0	0	6	5	0	0	0	0	0	0	0	5	18	7	1	8	.252
Feb 28	vs Florida	27	0	4	0	1	0	0	5	2	1	0	0	0	0	0	1	16	21	7	0	6	.245
Mar 01	vs Loyola Marymount	26	2	5	2	1	0	0	6	3	0	1	0	1	0	0	0	10	21	3	0	7	.241
Mar 01	vs Tennessee	19	1	4	1	0	0	1	7	2	0	0	0	0	0	0	0	9	15	4	1	5	.240
Mar 03	vs UCONN	26	1	6	1	1	0	0	7	4	0	0	0	0	0	1	0	9	18	6	0	9	.239
Mar 03	at Cal State Fullerton	16	1	1	1	0	0	1	4	2	0	0	0	0	0	0	0	7	12	5	2	2	.233
Mar 08	vs Oregon State	29	6	10	6	2	0	1	15	2	0	0	0	0	0	0	0	12	21	9	1	6	.240
Mar 08	vs Western Carolina	21	10	7	9	2	0	1	12	4	0	1	0	1	0	0	0	2	15	1	3	1	.244
Mar 09	vs Oregon State	29	3	6	3	2	1	0	10	6	0	0	0	1	0	0	0	11	21	6	2	12	.242
Mar 10	at Loyola Marymount	28	2	6	2	1	0	0	7	4	0	1	0	1	0	1	0	11	18	9	1	11	.240
*Mar 15	at San Diego State	26	3	6	3	0	0	0	6	5	0	0	0	1	0	0	0	14	21	13	1	8	.240
*Mar 16	at San Diego State	29	8	8	8	1	0	1	12	5	0	0	0	1	0	0	1	7	18	6	2	6	.242
*Mar 17	at San Diego State	31	3	8	3	0	2	1	15	3	0	0	0	0	0	0	0	3	18	6	1	10	.242
Totals		660	111	160	104	28	6	18	254	109	2	4	2	10	1	4	8	201	475	163	32	168	.242

# 2019 NEW MEXICO GAME-BY-GAME STATISTICS

Date	Opponent	ip	h	r	er	bb	so	2b	3b	hr	wp	bk	hbp	dp	ibb	score	w-l	sv	era
Feb 08	vs UTEP	7.0	7	6	6	7	10	2	0	2	2	0	1	0	0	15-6	1-0	0	6.00
Feb 09	vs Creighton	5.0	3	0	0	5	2	0	0	0	0	0	1	0	0	8-0	2-0	0	3.50
Feb 09	at New Mexico State	6.0	7	9	7	4	6	1	0	4	3	0	2	0	0	8-9	2-1	0	5.06
Feb 15	vs Alabama	7.0	6	1	1	3	0	1	0	0	0	0	0	0	0	0-1	2-2	0	3.92
Feb 15	vs Cal State Fullerton	6.0	9	6	4	2	3	1	0	2	1	0	1	0	0	2-6	2-3	0	4.06
Feb 16	at Arizona	4.0	14	15	14	5	1	3	0	5	0	0	1	0	0	1-15	2-4	0	6.40
Feb 16	vs Illinois-Chicago	6.0	7	5	4	5	8	1	2	0	2	0	1	0	0	13-5	3-4	0	6.15
Feb 17	vs South Florida	7.1	6	2	0	2	6	0	0	0	0	0	0	1	0	1-2	3-5	0	5.21
Feb 20	at Hawaii	6.0	5	2	1	0	4	1	0	1	0	0	1	0	0	1-2	3-6	0	4.77
Feb 21	vs DePaul	7.0	12	9	7	9	3	1	0	1	2	0	1	0	0	5-9	3-7	0	5.02
Feb 22	vs Canisius	5.0	4	0	0	1	4	0	0	0	0	0	1	0	0	10-0	4-7	0	4.64
Feb 22	at Hawaii	6.0	4	3	2	2	3	1	0	0	0	0	1	0	0	2-3	4-8	0	4.45
Feb 23	at Hawaii	7.0	4	2	2	4	6	0	0	1	0	0	0	0	0	3-2	5-8	0	4.24
Feb 23	vs DePaul	6.0	8	4	4	3	3	3	0	1	0	0	0	1	0	2-4	5-9	0	4.27
Feb 28	vs Florida	7.0	5	1	0	1	5	1	0	0	0	0	0	0	0	0-1	5-10	0	3.94
Mar 01	vs Loyola Marymount	7.0	7	4	4	8	7	0	1	0	0	0	0	0	0	2-4	5-11	0	3.95
Mar 01	vs Tennessee	5.0	18	15	11	9	1	2	0	4	0	0	0	0	0	1-15	5-12	0	4.50
Mar 03	vs UCONN	6.0	8	2	2	1	6	0	0	1	0	0	0	0	0	1-2	5-13	0	4.38
Mar 03	at Cal State Fullerton	4.0	13	19	14	10	2	1	0	5	1	0	0	0	0	1-19	5-14	0	5.08
Mar 08	vs Oregon State	7.0	9	5	3	4	2	3	1	0	0	0	0	0	0	6-5	6-14	0	4.96
Mar 08	vs Western Carolina	5.0	2	0	0	0	3	0	0	0	0	0	0	1	0	10-0	7-14	0	4.77
Mar 09	vs Oregon State	7.0	8	5	3	1	3	0	0	1	1	0	0	0	0	3-5	7-15	0	4.67
Mar 10	at Loyola Marymount	6.0	5	6	6	7	5	1	0	1	1	0	1	0	0	2-6	7-16	0	4.77
*Mar 15	at San Diego State	7.0	7	1	0	0	1	1	0	0	0	0	0	0	0	3-1	8-16	0	4.54
*Mar 16	at San Diego State	6.0	10	9	7	4	5	2	0	2	2	0	1	0	0	8-9	8-17	0	4.69
*Mar 17	at San Diego State	6.0	7	4	4	4	5	2	0	0	1	0	1	0	0	3-4	8-18	0	4.69
Totals		158.1	195	135	106	101	104	28	4	31	16	0	14	3	0	111-135	8-18	0	4.69

# 2019 NEW MEXICO RECORD AND INNING BREAKDOWN

Score by innings	1	2	3	4	5	6	7	8	Total
NEW MEXICO	24	15	10	25	6	18	13	0	111
Opponents	25	11	34	12	24	22	5	2	135

## Record when ...

Overall	8-18	After 4 leading	6-4
Conference	1-2	..... trailing	2-9
Non-Conference	7-16	..... tied	0-5
Home games	0-0	After 5 leading	4-2
Away games	2-8	..... trailing	1-8
Neutral site	6-10	..... tied	0-5
Day games	6-12	After 6 leading	3-1
Night games	2-6	..... trailing	1-12
vs Left starter	0-1	..... tied	0-2
vs Right starter	8-17		
1-Run games	2-9	Hit 0 home runs	1-11
2-Run games	1-3	... 1 home run	6-5
5+Run games	5-3	... 2+ home runs	1-2
Extra innings	0-2		
Shutouts	3-2	Opponent 0 home runs	6-6
		..... 1 home run	1-6
		..... 2+ HRs	1-6
Scoring 0-2 runs	0-13		
..... 3-5 runs	2-3	Made 0 errors	4-4
..... 6-9 runs	2-2	... 1 error	2-5
..... 10+ runs	4-0	... 2+ errors	2-9
Opponent 0-2 runs	5-5		
..... 3-5 runs	2-5	Opp. made 0 errors	2-9
..... 6-9 runs	1-5	..... 1 error	4-4
..... 10+ runs	0-3	..... 2+ errors	2-5
Scored in 1st inning	5-5	Out-hit opponent	6-4
Opp. scored in 1st	2-9	Out-hit by opponent	2-14
Scores first	6-8	Hits are tied	0-0
Opp. scores first	2-10		

## Record when team scores:

Runs	0	1	2	3	4	5	6	7	8	9	10+
W-L	0-2	0-6	0-5	2-2	0-0	0-1	1-0	0-0	1-2	0-0	4-0

## Record when opponent scores:

Runs	0	1	2	3	4	5	6	7	8	9	10+
W-L	3-0	1-2	1-3	0-1	0-3	2-1	1-2	0-0	0-0	0-3	0-3

## Record when leading after:

Inn.	1	2	3	4	5	6
W-L	5-1	7-2	6-3	6-4	4-2	3-1

## Record when trailing after:

Inn.	1	2	3	4	5	6
W-L	0-8	1-9	2-11	2-9	1-8	1-12

## Record when tied after:

Inn.	1	2	3	4	5	6
W-L	3-9	0-7	0-4	0-5	0-5	0-2

Current losing streak: 2  
 Longest winning streak: 2  
 Longest losing streak: 6

Home attendance : 0 ( 0 dates avg = 0 )  
 Away attendance : 14057 ( 26 dates avg = 540 )  
 Total attendance: 14057 ( 26 dates avg = 540 )



# 2019 NEW MEXICO SITUATIONAL BREAKDOWN

Player	vs left			vs right			w/runners			w/bases empty			w/bases loaded			as leadoff			fly	gnd	fly/
	h	ab	avg	h	ab	avg	h	ab	avg	h	ab	avg	h	ab	avg	rch	ops	pct	out	out	gnd
5 BRODERICK, Sydney	0	2	.000	1	22	.045	0	13	.000	1	11	.091	0	0	---	1	3	.333	7	5	1.4
2 BUCKHOLZ, Maggie	3	6	.500	9	47	.191	10	29	.345	2	24	.083	2	4	.500	6	13	.462	7	7	1.0
4 DeFLORA, D'Andra	1	4	.250	18	70	.257	8	29	.276	11	45	.244	1	2	.500	11	22	.500	14	12	1.2
9 HALLEEN, Kasey	0	0	---	6	32	.188	4	17	.235	2	15	.133	1	1	1.000	1	8	.125	7	6	1.2
12 HASLAM, Daryn	2	3	.667	8	34	.235	5	21	.238	5	16	.313	0	1	.000	4	11	.364	7	7	1.0
0 HOWARD, Andrea	1	5	.200	13	64	.203	7	34	.206	7	35	.200	0	6	.000	10	24	.417	29	4	7.2
3 JONES, Taylor	2	3	.667	5	38	.132	5	18	.278	2	23	.087	0	2	.000	4	14	.286	12	5	2.4
8 KLITZKE, Bailey	0	3	.000	20	45	.444	9	20	.450	11	28	.393	3	4	.750	4	13	.308	16	10	1.6
10 O'GRADY, Cameryn	1	5	.200	26	70	.371	18	45	.400	9	30	.300	0	5	.000	10	18	.556	23	9	2.6
7 PETERSON, MacKenZ	0	3	.000	3	16	.188	0	11	.000	3	8	.375	0	1	.000	2	5	.400	4	7	0.6
16 ROMERO, Leslie	0	1	.000	0	5	.000	0	1	.000	0	5	.000	0	0	---	0	0	---	1	4	0.2
22 SALAS, Monica	3	4	.750	12	66	.182	8	38	.211	7	32	.219	1	3	.333	3	17	.176	12	22	0.5
23 STELTZER, Emma	0	1	.000	0	1	.000	0	0	---	0	2	.000	0	0	---	0	1	.000	1	1	1.0
66 TOWNES, Sydney	0	1	.000	3	22	.136	1	10	.100	2	13	.154	0	0	---	2	8	.250	6	4	1.5
44 WILBON, Aleyah	0	1	.000	3	9	.333	0	5	.000	3	5	.600	0	1	.000	1	2	.500	0	1	0.0
32 WILMERT, Lauren	2	5	.400	18	72	.250	14	55	.255	6	22	.273	2	5	.400	3	10	.300	26	13	2.0
Totals	15	47	.319	145	613	.237	89	346	.257	71	314	.226	10	35	.286	62	169	.367	172	117	1.5
Opponents	90	302	.298	105	353	.297	102	358	.285	93	297	.313	8	31	.258	73	158	.462	196	155	1.3

Player	pinch hitting			w/runners in scoring pos			w/runner on 3rd and LT 2 out			with 2 outs			success adv runners			2- rnrns			rch	rch	kl
	h	ab	avg	h	ab	avg	rbi	ops	pct	h	ab	avg	adv	ops	pct	rbi	w/out	lob	err	fc	kl
5 BRODERICK, Sydney	0	3	.000	0	6	.000	0	2	.000	0	11	.000	1	14	.071	0	0	6	1	0	5
2 BUCKHOLZ, Maggie	0	1	.000	8	23	.348	4	7	.571	5	20	.250	18	36	.500	7	0	12	1	1	13
4 DeFLORA, D'Andra	0	0	---	6	17	.353	2	4	.500	2	23	.087	16	35	.457	3	3	14	3	0	2
9 HALLEEN, Kasey	0	0	---	1	6	.167	1	1	1.000	0	10	.000	6	18	.333	0	0	9	2	1	4
12 HASLAM, Daryn	0	5	.000	4	16	.250	0	0	---	4	14	.286	10	23	.435	5	2	14	1	1	2
0 HOWARD, Andrea	0	0	---	3	18	.167	0	4	.000	5	23	.217	10	36	.278	3	3	26	0	0	11
3 JONES, Taylor	1	3	.333	2	10	.200	0	3	.000	3	13	.231	9	20	.450	2	1	10	1	0	7
8 KLITZKE, Bailey	1	2	.500	7	13	.538	5	7	.714	9	16	.563	17	26	.654	5	4	7	0	2	2
10 O'GRADY, Cameryn	0	0	---	9	22	.409	4	9	.444	6	14	.429	28	50	.560	4	4	3	2	4	2
7 PETERSON, MacKenZ	1	4	.250	0	10	.000	0	4	.000	1	4	.250	4	12	.333	0	2	2	1	1	2
16 ROMERO, Leslie	0	1	.000	0	0	---	0	0	---	0	4	.000	0	1	.000	0	0	0	0	0	1
22 SALAS, Monica	0	0	---	7	27	.259	2	3	.667	3	20	.150	15	41	.366	4	5	24	0	4	7
23 STELTZER, Emma	0	1	.000	0	0	---	0	0	---	0	0	---	0	0	---	0	0	0	0	0	0
66 TOWNES, Sydney	0	3	.000	0	5	.000	0	0	---	1	5	.200	7	13	.538	0	1	2	1	2	3
44 WILBON, Aleyah	2	4	.500	0	2	.000	0	1	.000	1	4	.250	2	6	.333	0	1	3	1	0	1
32 WILMERT, Lauren	0	0	---	7	33	.212	7	14	.500	5	26	.192	29	63	.460	5	8	27	2	2	4
Totals	5	27	.185	54	208	.260	25	59	.424	45	207	.217	172	394	.437	38	34	168	16	18	66
Opponents	8	24	.333	62	227	.273	30	53	.566	62	221	.281	206	415	.496	46	63	181	22	15	26

Success Advancing Runners = percentage of times the batter advanced at least one runner during a plate appearance  
 #Rnrns Adv w/Out = TOTAL number of runners advanced when the player made an out



# 00 ANDREA HOWARD

OF • 5-6 • 50.

ALBUQUERQUE, N.M. • LA CUEVA HS

## SINGLE-GAME HIGHS

Hits: 3, 2x, Last at Nevada, 3-24-18  
 Doubles: 1, 11x, Last at LMU, 3-10-19  
 Triples: 1, 3x, Last at San Diego State, 3-17-19  
 Home runs: 1, 9x, Last vs. Oregon State, 3-8-19  
 Total bases: 7, at Nevada, 3-24-18  
 RBI: 4, at Nevada, 3-24-18  
 Runs scored: 3, 3x, Last vs UTEP, 2-8-19  
 Walks: 4, UTEP, 2-8-19  
 Hit by pitch: 1, 2x, Last vs. Alabama, 2-15-19

Struck out: 3, 3x, Last vs. Florida, 2-28-19  
 Sac flies: 1, 2x, at Colorado State, 4-8-18  
 Sac bunts: 1, 3x, Last at Hawai'i, 2-23-19  
 At bats: 5, at Colorado State, 4-7-18  
 Stolen bases: 1, 4x, Last vs. WCU, 3-8-19  
 Putouts: 13, at UTEP, 4-16-18  
 Assists: 1, 8x, Last vs. Oregon State, 3-8-19

Named All-Mountain West Second Team in 2018

## CAREER STATS (AT UNM)

Year	avg	gp-gs	ab	r	h	2b	3b	hr	rbi	tb	slg%	bb	hbp	so	gdp	ob%	sf	sh	sb-att	po	a	e	fld%
2018	.313	51-50	131	20	41	6	1	7	18	70	.534	23	1	39	1	.414	2	2	3-4	296	5	4	.987
2019	.203	26-26	69	14	14	6	2	2	8	30	.435	17	1	23	0	.368	0	1	1-1	58	3	0	1.000
TOTAL	.275	77-76	200	34	55	12	3	9	26	100	.500	40	2	62	1	.398	2	3	4-5	354	8	4	.989

## 2019 GAME-BY-GAME

Date	Opponent	Pos	AB	R	H	RBI	2B	3B	HR	BB	SB	CS	HBP	SAC	SF	GDP	K	PO	A	E	Avg
Feb 08	vs UTEP	*of	1	3	0	0	0	0	0	4	0	0	0	0	0	0	1	1	0	0	.000
Feb 09	vs Creighton	*of	2	2	1	0	0	0	0	1	0	0	0	0	0	0	0	4	0	0	.333
Feb 09	at New Mexico State	*of	4	2	2	3	1	0	1	0	0	0	0	0	0	0	2	5	0	0	.429
Feb 15	vs Alabama	*of	2	0	0	0	0	0	0	0	0	0	1	0	0	0	0	1	1	0	.333
Feb 15	vs Cal State Fullerton	*of	4	0	0	0	0	0	0	0	0	0	0	0	0	0	1	1	0	0	.231
Feb 16	at Arizona	*of	1	0	0	0	0	0	0	1	0	0	0	0	0	0	1	2	0	0	.214
Feb 16	vs Illinois-Chicago	*of	4	1	2	1	1	0	0	0	0	0	0	0	0	0	1	0	0	0	.278
Feb 17	vs South Florida	*of	3	0	0	0	0	0	0	1	0	0	0	0	0	0	1	1	0	0	.238
Feb 20	at Hawaii	*of	3	0	0	0	0	0	0	0	0	0	0	0	0	0	2	3	0	0	.208
Feb 21	vs DePaul	*of	3	0	0	0	0	0	0	1	0	0	0	0	0	0	0	4	0	0	.185
Feb 22	vs Canisius	*of	4	0	0	0	0	0	0	0	0	0	0	0	0	0	0	1	0	0	.161
Feb 22	at Hawaii	*of	4	0	2	0	1	0	0	0	0	0	0	0	0	0	0	4	0	0	.200
Feb 23	at Hawaii	*of	2	0	0	0	0	0	0	0	0	0	0	1	0	0	0	6	0	0	.189
Feb 23	vs DePaul	*of	3	0	0	0	0	0	0	0	0	0	0	0	0	0	1	0	0	0	.175
Feb 28	vs Florida	*of	3	0	0	0	0	0	0	0	0	0	0	0	0	0	3	0	0	0	.163
Mar 01	vs Loyola Marymount	*of	3	0	1	0	0	0	0	0	0	0	0	0	0	0	1	4	0	0	.174
Mar 01	vs Tennessee	*of	1	0	0	0	0	0	0	1	0	0	0	0	0	0	1	2	1	0	.170
Mar 03	vs UCONN	*of	3	0	0	0	0	0	0	0	0	0	0	0	0	0	2	2	0	0	.160
Mar 03	at Cal State Fullerton	*of	1	0	0	0	0	0	0	0	0	0	0	0	0	0	0	2	0	0	.157
Mar 08	vs Oregon State	*of	3	1	1	2	0	0	1	0	0	0	0	0	0	0	2	1	1	0	.167
Mar 08	vs Western Carolina	*of	1	1	0	0	0	0	0	2	1	0	0	0	0	0	0	1	0	0	.164
Mar 09	vs Oregon State	*of	3	1	2	1	1	1	0	1	0	0	0	0	0	0	1	2	0	0	.190
Mar 10	at Loyola Marymount	*of	3	0	1	0	1	0	0	1	0	0	0	0	0	0	1	2	0	0	.197
Mar 15	at San Diego State	*of	1	1	0	0	0	0	0	3	0	0	0	0	0	0	1	4	0	0	.194
Mar 16	at San Diego State	*of	3	1	1	1	1	0	0	1	0	0	0	0	0	0	1	3	0	0	.200
Mar 17	at San Diego State	*of	4	1	1	0	0	1	0	0	0	0	0	0	0	0	0	2	0	0	.203
Totals			26gs	69	14	14	8	6	2	2	17	1	0	1	1	0	23	58	3	0	.203

On base pct. .368 • Slugging pct. .435



**2 MAGGIE BUCKHOLZ** *UT • 5-7 • FR.*  
*SILVERTON, ORE. • SILVERTON HS*

**SINGLE-GAME HIGHS**

Hits: 3, Illinois-Chicago, 2-16-19  
 Doubles: 1, Western Carolina, 3-8-19  
 Triples: 1, Illinois-Chicago, 2-16-19  
 Home runs: 1, 2x, Last at Hawai'i, 2-23-19  
 Total bases: 8, Illinois-Chicago, 2-16-19  
 Runs scored: 2, 2x, Last vs. WCU, 3-8-19  
 RBI: 7, Illinois-Chicago, 2-16-19  
 Walks: 3, Cal State Fullerton, 2-15-19  
 Hit by pitch: 1, at LMU, 3-10-19

Struck out: 3, UConn, 3-3-19  
 Sac bunts:  
 At bats: 4, Illinois-Chicago, 2-16-19  
 Caught Stealing: 1, UTEP, 2-8-19  
 Putouts: 4, 2x, Last vs. Florida, 2-28-19  
 Assists: 1, Alabama, 2-15-19

**CAREER STATS (AT UNM)**

Year	avg	gp-gs	ab	r	h	2b	3b	hr	rbi	tb	slg%	bb	hbp	so	gdp	ob%	sf	sh	sb-att	po	a	e	fld%
2019	.226	24-22	53	9	12	1	1	2	17	21	.396	17	1	26	0	.423	0	0	0-1	23	0	1	.958
TOTAL	.226	24-22	53	9	12	1	1	2	17	21	.396	17	1	26	0	.423	0	0	0-1	23	0	1	.958

**2019 GAME-BY-GAME**

Date	Opponent	Pos	AB	R	H	RBI	2B	3B	HR	BB	SB	CS	HBP	SAC	SF	GDP	K	PO	A	E	Avg
Feb 08	vs UTEP	*of	3	1	1	3	0	0	0	2	0	1	0	0	0	0	0	1	0	0	.333
Feb 09	vs Creighton	*of	2	0	0	0	0	0	0	0	0	0	0	0	0	0	1	1	0	0	.200
Feb 09	at New Mexico State	ph	0	1	0	0	0	0	0	1	0	0	0	0	0	0	0	0	0	0	.200
Feb 15	vs Alabama	*of	2	0	0	0	0	0	0	1	0	0	0	0	0	0	2	2	0	0	.143
Feb 15	vs Cal State Fullerton	*of	1	0	0	0	0	0	0	3	0	0	0	0	0	0	1	4	0	0	.125
Feb 16	at Arizona	*of	2	0	0	0	0	0	0	0	0	0	0	0	0	0	1	1	0	0	.100
Feb 16	vs Illinois-Chicago	*dh	4	2	3	7	0	1	1	0	0	0	0	0	0	0	0	0	0	0	.286
Feb 17	vs South Florida	*dh	2	0	1	0	0	0	0	1	0	0	0	0	0	0	1	0	0	0	.312
Feb 20	at Hawaii	*of	3	0	0	0	0	0	0	0	0	0	0	0	0	0	2	1	0	1	.263
Feb 21	vs DePaul	*dh	2	1	0	0	0	0	0	1	0	0	0	0	0	0	1	0	0	0	.238
Feb 22	vs Canisius	*of	2	0	2	2	0	0	0	1	0	0	0	0	0	0	0	1	0	0	.304
Feb 22	at Hawaii	*of	3	0	1	1	0	0	0	0	0	0	0	0	0	0	0	0	0	0	.308
Feb 23	at Hawaii	*of	3	1	1	3	0	0	1	0	0	0	0	0	0	0	0	1	0	0	.310
Feb 23	vs DePaul	*of	2	0	0	0	0	0	0	1	0	0	0	0	0	0	1	0	0	0	.290
Feb 28	vs Florida	*of	3	0	1	0	0	0	0	0	0	0	0	0	0	0	2	4	0	0	.294
Mar 01	vs Loyola Marymount	*of	2	1	1	0	0	0	0	2	0	0	0	0	0	0	1	2	0	0	.306
Mar 01	vs Tennessee	*of	3	0	0	0	0	0	0	0	0	0	0	0	0	0	2	2	0	0	.282
Mar 03	vs UCONN	*of	3	0	0	0	0	0	0	1	0	0	0	0	0	0	3	1	0	0	.262
Mar 08	vs Oregon State	*dh	2	0	0	0	0	0	0	1	0	0	0	0	0	0	1	0	0	0	.250
Mar 08	vs Western Carolina	*of	2	2	1	1	1	0	0	1	0	0	0	0	0	0	0	1	0	0	.261
Mar 09	vs Oregon State	*of	2	0	0	0	0	0	0	0	0	0	0	0	0	0	2	1	0	0	.250
Mar 10	at Loyola Marymount	*dh	2	0	0	0	0	0	0	1	0	0	1	0	0	0	2	0	0	0	.240
Mar 15	at San Diego State	*dh	2	0	0	0	0	0	0	0	0	0	0	0	0	0	2	0	0	0	.231
Mar 16	at San Diego State	ph	1	0	0	0	0	0	0	0	0	0	0	0	0	0	1	0	0	0	.226
Totals		22gs	53	9	12	17	1	1	2	17	0	1	1	0	0	0	26	23	0	1	.226

On base pct. .423 • Slugging pct. .396



# 3 TAYLOR JONES

IF • 5-7 • 50.

ALBUQUERQUE, N.M. • LA CUEVA HS

## SINGLE-GAME HIGHS

Hits: 2, 2x, Last at San Diego State, 3-15-19  
 Doubles: 1, 3x, Last at Boise State, 5-12-18  
 Home runs: 1, at Boise State, 5-12-18  
 Total bases: 6, at Boise State, 5-12-18  
 RBI: 3, Howard, 3-10-18  
 Runs scored: 2, at Boise State, 5-12-18  
 Walks: 1, 6x, Last vs. DePaul, 2-23-19  
 Struck out: 2, 9x, Last at SDSU, 3-17-19  
 Sac flies: 1, Howard, 3-10-18

Sac bunts: 1, 2x, Last at Nevada, 3-24-18  
 At bats: 4, 3x, Last at San Diego State, 3-17-19  
 Stolen bases: 1, Howard, 3-10-18  
 Putouts: 11, San Diego State, 3-15-19  
 Assists: 5, South Florida, 2-17-19

## CAREER STATS (AT UNM)

Year	avg	gp-gs	ab	r	h	2b	3b	hr	rbi	tb	slg%	bb	hbp	so	gdp	ob%	sf	sh	sb-att	po	a	e	fld%
2018	.216	24-11	37	6	8	3	0	1	4	14	.378	0	0	13	0	.211	1	2	1-1	8	6	2	.875
2019	.171	21-14	41	3	7	0	0	0	2	7	.171	6	0	16	0	.277	0	0	0-0	60	15	2	.974
TOTAL	.192	45-25	78	9	15	3	0	1	6	21	.269	6	0	29	0	.247	1	2	1-1	68	21	4	.957

## 2019 GAME-BY-GAME

Date	Opponent	Pos	AB	R	H	RBI	2B	3B	HR	BB	SB	CS	HBP	SAC	SF	GDP	K	PO	A	E	Avg
Feb 08	vs UTEP	*1b	4	0	0	0	0	0	0	1	0	0	0	0	0	0	2	6	0	0	.000
Feb 09	vs Creighton	*2b	2	0	0	0	0	0	0	0	0	0	0	0	0	0	2	2	1	0	.000
Feb 15	vs Alabama	ph	1	0	0	0	0	0	0	0	0	0	0	0	0	0	0	0	0	0	.000
Feb 15	vs Cal State Fullerton	*1b	2	0	0	0	0	0	0	1	0	0	0	0	0	0	1	5	0	1	.000
Feb 16	at Arizona	ss	1	0	1	0	0	0	0	0	0	0	0	0	0	0	0	0	0	0	.100
Feb 16	vs Illinois-Chicago	*2b	3	1	1	1	0	0	0	1	0	0	0	0	0	0	0	1	3	0	.154
Feb 17	vs South Florida	*2b	2	0	0	0	0	0	0	1	0	0	0	0	0	0	2	3	5	0	.133
Feb 20	at Hawaii	ph	1	0	0	0	0	0	0	0	0	0	0	0	0	0	0	0	0	0	.125
Feb 21	vs DePaul	ph	0	0	0	0	0	0	0	1	0	0	0	0	0	0	0	0	0	0	.125
Feb 22	vs Canisius	*1b	2	0	0	0	0	0	0	0	0	0	0	0	0	0	0	4	0	0	.111
Feb 22	at Hawaii	pr	0	0	0	0	0	0	0	0	0	0	0	0	0	0	0	0	0	0	.111
Feb 23	vs DePaul	ph	0	0	0	0	0	0	0	1	0	0	0	0	0	0	0	0	0	0	.111
Feb 28	vs Florida	*1b	2	0	0	0	0	0	0	0	0	0	0	0	0	0	2	8	0	0	.100
Mar 01	vs Loyola Marymount	*1b	2	0	0	0	0	0	0	0	0	0	0	0	0	0	1	2	0	0	.091
Mar 03	at Cal State Fullerton	*1b/ss	2	0	0	0	0	0	0	0	0	0	0	0	0	0	1	2	2	0	.083
Mar 08	vs Oregon State	*1b	3	1	1	0	0	0	0	0	0	0	0	0	0	0	1	9	1	0	.111
Mar 08	vs Western Carolina	*1b	2	1	0	0	0	0	0	0	0	0	0	0	0	0	0	3	0	0	.103
Mar 10	at Loyola Marymount	1b/ph	1	0	1	0	0	0	0	0	0	0	0	0	0	0	0	0	0	0	.133
Mar 15	at San Diego State	*1b	3	0	2	0	0	0	0	0	0	0	0	0	0	0	1	11	1	0	.182
Mar 16	at San Diego State	*2b	4	0	1	1	0	0	0	0	0	0	0	0	0	0	1	1	2	1	.189
Mar 17	at San Diego State	*1b/2b	4	0	0	0	0	0	0	0	0	0	0	0	0	0	2	3	0	0	.171
Totals			14gs	41	3	7	2	0	0	6	0	0	0	0	0	0	16	60	15	2	.171

On base pct. .277 • Slugging pct. .171





# 4 D'ANDRA DeFLORA

OF • 5-1 • SR.

FRESNO, TEXAS • L.V. HIGHTOWER HS

## SINGLE-GAME HIGHS

Hits: 4, Howard, 3-10-18  
 Doubles: 2, 2x, Last vs Northern Colo., 3-4-17  
 Triples: 1, vs Stephen F. Austin, 2-17-17  
 Home runs: 2, at Utah State, 4-22-17  
 Total bases: 8, at Utah State, 4-22-17  
 RBI: 5, at Utah State, 4-22-17  
 Runs scored: 3, 4x, Last at SDSU, 3-16-19  
 Walks: 3, vs George Washington, 2-23-18  
 Hit by pitch: 3, NMSU, 3-21-18

Struck out: 3, 2x, Last at Colorado State, 4-7-18  
 Sac flies: 1, at UTEP, 3-15-16  
 Sac bunts: 1, 16x, Last vs Fresno State, 3-29-18  
 At bats: 5, 4x, Last at Colorado State, 4-7-18  
 Stolen bases: 3, Santa Clara, 3-11-17  
 Caught stealing: 1, 5x, Last vs. Bowling Green, 3-3-18  
 Putouts: 5, 4x, Last vs. DePaul, 2-23-19  
 Assists: 2, Nevada, 4-8-17

## CAREER STATS (AT UNM)

Year	avg	gp-gs	ab	r	h	2b	3b	hr	rbi	tb	slg%	bb	hbp	so	gdp	ob%	sf	sh	sb-att	po	a	e	fld%
2016	.224	30-25	76	10	17	2	0	0	4	19	.250	4	2	10	0	.277	1	3	1-1	17	1	2	.900
2017	.247	49-49	146	29	36	9	1	5	23	62	.425	7	6	16	0	.308	0	9	6-7	85	13	3	.970
2018	.214	53-53	145	22	31	3	0	7	21	55	.379	11	9	41	3	.309	0	4	2-6	88	7	3	.969
2019	.257	26-26	74	21	19	3	0	1	8	25	.338	8	5	27	1	.368	0	0	0-0	33	1	0	1.000
TOTAL	.234	158-153	441	82	103	17	1	13	56	161	.365	30	22	94	4	.314	1	16	9-14	223	22	8	.968

## 2019 GAME-BY-GAME

Date	Opponent	Pos	AB	R	H	RBI	2B	3B	HR	BB	SB	CS	HBP	SAC	SF	GDP	K	PO	A	E	Avg
Feb 08	vs UTEP	*of	3	2	1	0	0	0	0	0	0	0	0	0	0	0	0	0	0	0	.333
Feb 09	vs Creighton	*of	2	2	1	3	1	0	0	1	0	0	0	0	0	0	1	1	0	0	.400
Feb 09	at New Mexico State	*of	4	2	3	1	1	0	0	0	0	0	0	0	0	0	0	2	0	0	.556
Feb 15	vs Alabama	*of	3	0	1	0	0	0	0	0	0	0	0	0	0	0	2	1	0	0	.500
Feb 15	vs Cal State Fullerton	*of	3	1	1	0	0	0	0	1	0	0	0	0	0	0	1	0	1	0	.467
Feb 16	at Arizona	*of	2	0	1	0	0	0	0	0	0	0	0	0	0	0	1	0	0	0	.471
Feb 16	vs Illinois-Chicago	*of	3	1	1	0	0	0	0	1	0	0	0	0	0	0	0	0	0	0	.450
Feb 17	vs South Florida	*of	3	1	1	0	0	0	0	1	0	0	0	0	0	0	1	0	0	0	.435
Feb 20	at Hawaii	*of	2	1	1	0	0	0	0	0	0	0	1	0	0	0	1	5	0	0	.440
Feb 21	vs DePaul	*of	4	0	0	0	0	0	0	0	0	0	0	0	0	1	2	2	0	0	.379
Feb 22	vs Canisius	*of	2	3	1	0	0	0	0	1	0	0	0	0	0	0	0	2	0	0	.387
Feb 22	at Hawaii	*of	3	0	0	0	0	0	0	0	0	0	0	0	0	0	1	2	0	0	.353
Feb 23	at Hawaii	*of	3	0	0	0	0	0	0	0	0	0	0	0	0	0	1	0	0	0	.324
Feb 23	vs DePaul	*of	4	0	1	0	1	0	0	0	0	0	0	0	0	0	2	4	0	0	.317
Feb 28	vs Florida	*of	3	0	0	0	0	0	0	0	0	0	0	0	0	0	2	1	0	0	.295
Mar 01	vs Loyola Marymount	*of	4	0	1	0	0	0	0	0	0	0	0	0	0	0	2	2	0	0	.320
Mar 01	vs Tennessee	*of	2	1	2	1	0	0	1	0	0	0	0	0	0	0	0	3	0	0	.392
Mar 03	vs UCONN	*of	2	0	0	0	0	0	0	1	0	0	0	0	0	0	0	0	0	0	.308
Mar 03	at Cal State Fullerton	*of	1	0	0	0	0	0	0	0	0	0	0	0	0	0	1	1	0	0	.302
Mar 08	vs Oregon State	*of	4	1	2	3	0	0	0	0	0	0	0	0	0	0	1	4	0	0	.316
Mar 08	vs Western Carolina	*of	2	1	0	0	0	0	0	0	0	0	1	0	0	0	0	1	0	0	.305
Mar 09	vs Oregon State	*of	3	1	0	0	0	0	0	1	0	0	0	0	0	0	1	2	0	0	.290
Mar 10	at Loyola Marymount	*of	3	0	0	0	0	0	0	0	0	0	0	0	0	0	3	0	0	0	.277
Mar 15	at San Diego State	*of	3	1	1	0	0	0	0	0	0	0	1	0	0	0	2	0	0	0	.279
Mar 16	at San Diego State	*of	2	3	0	0	0	0	0	1	0	0	1	0	0	0	1	0	0	0	.271
Mar 17	at San Diego State	*of	4	0	0	0	0	0	0	0	0	0	0	0	0	0	1	0	0	0	.257
Totals		26gs	74	21	19	8	3	0	1	8	0	0	5	0	0	1	27	33	1	0	.257

On base pct. .368 • Slugging pct. .338



# 5 SYDNEY BRODERICK

**C • 5-4 • SO.**

**MESA, ARIZ. • DESERT RIDGE HS**

## SINGLE-GAME HIGHS

Hits: 3, St. Mary's, 3-10-18  
 Doubles: 1, 2x, Last vs. Fresno State, 3-29-18  
 Total bases: 4, St. Mary's, 3-10-18  
 RBI: 2, Howard, 3-10-18  
 Runs scored: 1, 7x, Last vs. DePaul, 2-21-19  
 Walks: 1, 7x, Last vs. DePaul, 2-21-19  
 Hit by pitch: 1, vs Oregon, 2-11-18  
 Struck out: 3, at Colorado State, 4-8-18  
 Sac flies: 1, at Nevada, 3-24-18

Sac bunts: 1, 2x, Last vs UTSA, 3-2-18  
 At bats: 4, 3x, Last at Colorado State, 4-7-18  
 Putouts: 10, at Colorado State, 4-7-18  
 Assists: 3, at UTEP, 4-16-18  
 Runners CS: 2, Utah State, 4-21-18

## CAREER STATS (AT UNM)

Year	avg	gp-gs	ab	r	h	2b	3b	hr	rbi	tb	slg%	bb	hbp	so	gdp	ob%	sf	sh	sb-att	po	a	e	fld%
2018	.230	42-36	87	6	20	2	0	0	5	22	.253	6	1	12	2	.284	1	2	0-0	118	12	6	.956
2019	.042	13-10	24	1	1	0	0	0	0	1	.042	1	0	10	1	.080	0	0	0-0	33	9	0	1.000
TOTAL	.189	55-46	111	7	21	2	0	0	5	23	.207	7	1	22	3	.242	1	2	0-0	151	21	6	.966

## 2019 GAME-BY-GAME

Date	Opponent	Pos	AB	R	H	RBI	2B	3B	HR	BB	SB	CS	HBP	SAC	SF	GDP	K	PO	A	E	Avg
Feb 08	vs UTEP	ph	1	0	0	0	0	0	0	0	0	0	0	0	0	1	0	0	0	0	.000
Feb 09	vs Creighton	*c	2	0	0	0	0	0	0	0	0	0	0	0	0	0	2	2	0	0	.000
Feb 15	vs Alabama	*c	3	0	0	0	0	0	0	0	0	0	0	0	0	0	0	1	0	0	.000
Feb 16	at Arizona	*c	2	0	0	0	0	0	0	0	0	0	0	0	0	0	2	1	1	0	.000
Feb 17	vs South Florida	*c	2	0	0	0	0	0	0	0	0	0	0	0	0	0	1	5	2	0	.000
Feb 20	at Hawaii	*c	2	0	0	0	0	0	0	0	0	0	0	0	0	0	0	3	1	0	.000
Feb 21	vs DePaul	*c	1	1	0	0	0	0	0	1	0	0	0	0	0	0	1	3	1	0	.000
Feb 22	vs Canisius	ph	1	0	0	0	0	0	0	0	0	0	0	0	0	0	0	0	0	0	.000
Feb 23	at Hawaii	*c	2	0	0	0	0	0	0	0	0	0	0	0	0	0	1	7	0	0	.000
Mar 01	vs Loyola Marymount	ph	1	0	0	0	0	0	0	0	0	0	0	0	0	0	1	0	0	0	.000
Mar 01	vs Tennessee	*c	2	0	0	0	0	0	0	0	0	0	0	0	0	0	1	1	1	0	.000
Mar 03	vs UCONN	*c	2	0	1	0	0	0	0	0	0	0	0	0	0	0	0	5	2	0	.048
Mar 16	at San Diego State	*c	3	0	0	0	0	0	0	0	0	0	0	0	0	0	1	5	1	0	.042
Totals		10gs	24	1	1	0	0	0	0	1	0	0	0	0	0	1	10	33	9	0	.042

On base pct. .080 • Slugging pct. .042



**7 MacKENZIE PETERSON**

**OF • 5-9 • FR.**  
**GILBERT, ARIZ. • PHOENIX COLLEGE**

**SINGLE-GAME HIGHS**

Hits: 1, 3x, Last at SDSU, 3-17-19  
 Doubles:  
 Total bases: 1, 3x, Last at SDSU, 3-17-19  
 RBI:  
 Runs scored: 1, 2x, Last vs. Oregon St., 3-9-19  
 Walks: 2, 2x, Last vs. Oregon St., 3-9-19  
 Hit by Pitch: 1, Oregon St., 3-9-19  
 Struck out: 1, 4x, Last vs. Oregon St., 3-9-19  
 Sac bunts:

At bats: 4, Illinois-Chicago, 2-16-19  
 Stolen bases:  
 Caught stealing:  
 Putouts: 10, Oregon State, 3-9-19  
 Assists: 1, Illinois-Chicago, 2-16-19

**CAREER STATS (AT UNM)**

Year	avg	gp-gs	ab	r	h	2b	3b	hr	rbi	tb	slg%	bb	hbp	so	gdp	ob%	sf	sh	sb-att	po	a	e	fld%
2019	.158	13-6	19	2	3	0	0	0	0	3	.158	5	1	4	0	.360	0	0	0-0	45	1	1	.979
TOTAL	.158	13-6	19	2	3	0	0	0	0	3	.158	5	1	4	0	.360	0	0	0-0	45	1	1	.979

**2019 GAME-BY-GAME**

Date	Opponent	Pos	AB	R	H	RBI	2B	3B	HR	BB	SB	CS	HBP	SAC	SF	GDP	K	PO	A	E	Avg
Feb 09	at New Mexico State	*1b	3	0	1	0	0	0	0	0	0	0	0	0	0	0	0	2	0	0	.333
Feb 16	at Arizona	1b	1	0	0	0	0	0	0	0	0	0	0	0	0	0	0	1	0	0	.250
Feb 16	vs Illinois-Chicago	*1b	4	0	1	0	0	0	0	0	0	0	0	0	0	0	0	7	1	1	.250
Feb 17	vs South Florida	ph/1b	1	0	0	0	0	0	0	0	0	0	0	0	0	0	0	1	0	0	.222
Feb 22	vs Canisius	ph/1b	1	0	0	0	0	0	0	0	0	0	0	0	0	0	0	2	0	0	.200
Feb 22	at Hawaii	*1b	2	0	0	0	0	0	0	1	0	0	0	0	0	0	0	6	0	0	.167
Feb 23	vs DePaul	*1b	1	1	0	0	0	0	0	2	0	0	0	0	0	0	0	6	0	0	.154
Feb 28	vs Florida	ph	1	0	0	0	0	0	0	0	0	0	0	0	0	0	0	1	0	0	.143
Mar 03	at Cal State Fullerton	1b	1	0	0	0	0	0	0	0	0	0	0	0	0	0	0	1	1	0	.133
Mar 08	vs Western Carolina	1b	0	0	0	0	0	0	0	0	0	0	0	0	0	0	0	3	0	0	.133
Mar 09	vs Oregon State	*1b	1	1	0	0	0	0	0	2	0	0	1	0	0	0	1	10	0	0	.125
Mar 10	at Loyola Marymount	*1b	2	0	0	0	0	0	0	0	0	0	0	0	0	0	0	6	0	0	.111
Mar 17	at San Diego State	ph/1b	1	0	1	0	0	0	0	0	0	0	0	0	0	0	0	1	0	0	.158
Totals		6gs	19	2	3	0	0	0	0	5	0	0	1	0	0	0	4	45	1	1	.158

On base pct. .360 • Slugging pct. .158



# 8 BAILEY KLITZKE

P/1B • 5-8 • JR.  
APACHE JUNCTION, ARIZ. • WICHITA ST.

## SINGLE-GAME HIGHS

Hits: 4, UTEP, 2-8-19  
Doubles: 1, 3x, Last vs. LMU, 3-1-19  
Triples: 1, 2x, Last at SDSU, 3-17-19  
Total bases: 4, 3x, Last at SDSU, 3-17-19  
RBI: 4, UTEP, 2-8-19  
Runs scored: 2, Canisius, 2-22-19  
Walks: 1, 9x, Last at SDSU, 3-17-19  
Struck out: 1, 4x, Last at Hawai'i, 2-22-19  
Sac bunts: 1, at Texas, 2-23-18 (at WSU)  
Sac fly: 1, 2x, Last vs. UConn, 3-3-19

At bats: 5, UTEP, 2-8-19  
Stolen bases: 1, 2x, Last vs. UConn, 3-3-19  
Innings pitched: 6.0, Illinois-Chicago, 2-16-19  
Walks allowed: 7, 2x, Last at CSUF, 3-3-19  
Strikeouts: 8, 2x, Last vs. Illinois-Chicago, 2-16-19  
Batters faced: 32, Illinois-Chicago, 2-16-19  
Putouts: 1, 2x, Last at Arizona, 2-16-19  
Assists: 3, at Okla. St., 3-27-18 (at WSU)  
Runners CS: 1, 6x, Last at NMSU, 2-9-19  
Fewest hits allowed (3.0 IP min.): 5, UTEP, 2-8-19

## CAREER STATS (AT UNM)

Year	avg	qp-gs	ab	r	h	2b	3b	hr	rbi	tb	slq%	bb	hbp	so	gdp	ob%	sf	sh	sb-att	po	a	e	fld%
2019	.417	20-18	48	4	20	3	2	0	12	27	.563	9	0	4	1	.492	2	0	2-2	1	3	0	1.000
TOTAL	.417	20-18	48	4	20	3	2	0	12	27	.563	9	0	4	1	.492	2	0	2-2	1	3	0	1.000

Year	era	w-l	app	gs	cq	sho	sv	ip	h	r	er	bb	so	2b	3b	hr	bf	bavg	wp	hbp	bk	sfa	sha
2019	11.12	2-2	9	4	1	0/0	0	17.0	23	31	27	32	22	5	2	4	109	.315	10	3	0	0	1
TOTAL	11.12	2-2	9	4	1	0/0	0	17.0	23	31	27	32	22	5	2	4	109	.315	10	3	0	0	1

## 2019 GAME-BY-GAME

Date	Opponent	Pos	AB	R	H	RBI	2B	3B	HR	BB	SB	CS	HBP	SAC	SF	GDP	K	PO	A	E	Avg	
Feb 08	vs UTEP	*p/dh	5	0	4	4	0	0	0	0	0	0	0	0	0	0	0	0	1	0	.800	
Feb 09	vs Creighton	*dh	1	1	1	0	0	0	0	1	0	0	0	0	0	0	0	0	0	0	.833	
Feb 09	at New Mexico State	*dh/p	2	0	0	1	0	0	0	1	0	0	0	0	1	0	0	0	0	0	.625	
Feb 15	vs Alabama	*dh	3	0	1	0	0	0	0	0	0	0	0	0	0	0	0	0	0	0	.545	
Feb 15	vs Cal State Fullerton	*p/dh	3	0	1	0	1	0	0	1	0	0	0	0	0	0	1	0	0	0	.500	
Feb 16	at Arizona	*dh/p	2	0	0	0	0	0	0	0	0	0	0	0	0	0	1	1	0	0	.438	
Feb 16	vs Illinois-Chicago	*p	0	0	0	0	0	0	0	0	0	0	0	0	0	0	0	0	2	0	.438	
Feb 17	vs South Florida	ph	1	0	0	0	0	0	0	0	0	0	0	0	0	0	0	0	0	0	.412	
Feb 20	at Hawaii	*dh	3	0	1	0	0	0	0	0	0	0	0	0	0	0	0	0	0	0	.400	
Feb 22	vs Canisius	*dh	2	2	2	2	0	1	0	0	1	0	0	0	0	0	0	0	0	0	.455	
Feb 22	at Hawaii	*dh	3	0	0	0	0	0	0	0	0	0	0	0	0	0	1	0	0	0	.400	
Feb 23	at Hawaii	*dh	2	1	1	0	1	0	0	1	0	0	0	0	0	0	0	0	0	0	.407	
Feb 23	vs DePaul	*dh	3	0	1	0	0	0	0	0	0	0	0	0	0	0	0	0	0	0	.400	
Feb 28	vs Florida	*dh	3	0	2	0	0	0	0	0	0	0	0	0	0	1	0	0	0	0	.424	
Mar 01	vs Loyola Marymount	*dh/p	3	0	1	2	1	0	0	1	0	0	0	0	0	0	0	0	0	0	.417	
Mar 01	vs Tennessee	*dh	2	0	0	0	0	0	0	1	0	0	0	0	0	0	1	0	0	0	.395	
Mar 03	vs UCONN	*dh	2	0	1	1	0	0	0	1	0	0	0	0	1	0	0	0	0	0	.400	
Mar 03	at Cal State Fullerton	*dh/p	1	0	0	0	0	0	0	1	0	0	0	0	0	0	0	0	0	0	.390	
Mar 15	at San Diego State	ph	1	0	1	0	0	0	0	0	0	0	0	0	0	0	0	0	0	0	.405	
Mar 16	at San Diego State	*dh	3	0	1	1	0	0	0	1	0	0	0	0	0	0	0	0	0	0	.400	
Mar 17	at San Diego State	*p/dh	3	0	2	1	0	1	0	1	0	0	0	0	0	0	0	0	0	0	.417	
Totals			19gs		48	4	20	12	3	2	0	9	2	0	0	2	1	4	1	3	0	.417

On base pct. .492 • Slugging pct. .562

#8 KLITZKE, Bailey - 9 appearances (All games)

Date	Opponent	GS	IP	H	R	ER	BB	SO	2B	3B	HR	WP	BK	HBP	IBB	Score	W-L	Sv	ERA	NP
Feb 08	vs UTEP	*	5.0	5	5	5	7	8	2	0	1	2	0	0	0	15-6	1-0	0	7.00	120
Feb 09	at New Mexico State	*	1.0	3	4	2	2	1	1	0	1	3	0	0	0	8-9	1-1	0	8.17	26
Feb 15	vs Cal State Fullerton	*	0.0	1	2	2	1	0	0	0	1	1	0	0	0	2-6	1-1	0	10.50	12
Feb 16	at Arizona	*	2.0	3	2	1	1	1	1	0	1	0	0	0	0	1-15	1-1	0	8.75	29
Feb 16	vs Illinois-Chicago	*	6.0	7	5	4	5	8	1	2	0	2	0	1	0	13-5	2-1	0	7.00	131
Feb 21	vs DePaul	*	0.2	2	4	4	2	1	0	0	0	1	0	0	0	5-9	2-1	0	8.59	24
Mar 01	vs Loyola Marymount	*	1.2	1	3	3	6	2	0	0	0	0	0	0	0	2-4	2-2	0	9.00	54
Mar 03	at Cal State Fullerton	*	0.1	1	6	6	7	1	0	0	0	1	0	0	0	1-19	2-2	0	11.34	41
Mar 17	at San Diego State	*	0.1	0	0	0	1	0	0	0	0	0	0	1	0	3-4	2-2	0	11.12	14
Totals			4	17.0	23	31	27	32	22	5	2	4	10	0	3	50-77	2-2	0	11.12	-





# 9 KASEY HALLEEN

**IF • 5-6 • SR.**  
**TORRANCE, CALIF. • PALOS VERDES HS**

## SINGLE-GAME HIGHS

Hits: 2, 3x, Last vs. UConn, 3-3-19  
 Doubles: 1, 7x, Last vs. UConn, 3-3-19  
 Total bases: 3, 2x, Last vs. UConn, 3-3-19  
 RBI: 2, 4x, Last vs. WCU, 3-8-19  
 Runs scored: 1, 22x, Last vs. WCU, 3-8-19  
 Walks: 1, 18x, Last at Cal State Fullerton, 3-3-19  
 Hit by pitch: 1, 2x, Last at Fresno State, 3-29-18  
 Struck out: 2, 11x, Last vs. Oregon State, 3-9-19  
 Sac flies: 1, 2x, Last at Nevada, 3-24-18

Sac bunts: 1, 3x, Last vs DePaul, 3-19-16  
 At bats: 5, at Colorado State, 4-7-18  
 Stolen bases: 1, George Washington, 2-23-18  
 Putouts: 14, at UC Davis, 2-28-16  
 Assists: 8, Boise State, 5-11-17

## CAREER STATS (AT UNM)

Year	avg	gp-gs	ab	r	h	2b	3b	hr	rbi	tb	slg%	bb	hbp	so	gdp	ob%	sf	sh	sb-att	po	a	e	fld%
2016	.171	24-13	41	4	7	0	0	0	3	7	.171	4	0	13	0	.244	0	1	0-0	71	14	3	.966
2017	.136	22-19	44	3	6	1	0	0	0	7	.159	1	0	7	0	.156	0	2	0-0	40	48	6	.936
2018	.189	49-49	127	13	24	5	0	0	10	29	.228	10	2	32	0	.255	2	0	1-1	75	87	14	.920
2019	.188	16-14	32	3	6	1	0	0	2	7	.219	3	0	11	0	.257	0	0	0-0	23	19	2	.955
<b>TOTAL</b>	<b>.176</b>	<b>111-95</b>	<b>244</b>	<b>23</b>	<b>43</b>	<b>7</b>	<b>0</b>	<b>0</b>	<b>15</b>	<b>50</b>	<b>.205</b>	<b>18</b>	<b>2</b>	<b>63</b>	<b>0</b>	<b>.237</b>	<b>2</b>	<b>3</b>	<b>1-1</b>	<b>209</b>	<b>168</b>	<b>25</b>	<b>.938</b>

## 2019 GAME-BY-GAME

Date	Opponent	Pos	AB	R	H	RBI	2B	3B	HR	BB	SB	CS	HBP	SAC	SF	GDP	K	PO	A	E	Avg
Feb 08	vs UTEP	*2b	1	1	0	0	0	0	0	1	0	0	0	0	0	0	0	1	0	0	.000
Feb 09	at New Mexico State	2b	1	0	0	0	0	0	0	0	0	0	0	0	0	0	1	0	0	0	.000
Feb 15	vs Alabama	*2b	2	0	0	0	0	0	0	0	0	0	0	0	0	0	0	3	2	0	.000
Feb 15	vs Cal State Fullerton	*2b	2	0	1	0	0	0	0	1	0	0	0	0	0	0	1	3	2	0	.167
Feb 16	at Arizona	*2b	1	0	0	0	0	0	0	0	0	0	0	0	0	0	1	0	0	0	.143
Feb 20	at Hawaii	*2b	2	0	0	0	0	0	0	0	0	0	0	0	0	0	1	0	1	0	.111
Feb 28	vs Florida	*2b	3	0	0	0	0	0	0	0	0	0	0	0	0	0	1	0	3	0	.083
Mar 01	vs Loyola Marymount	*2b	2	0	0	0	0	0	0	0	0	0	0	0	0	0	0	2	1	0	.071
Mar 01	vs Tennessee	*2b	2	0	0	0	0	0	0	0	0	0	0	0	0	0	1	0	1	0	.062
Mar 03	vs UCONN	*2b	3	0	2	0	1	0	0	0	0	0	0	0	0	0	0	4	1	0	.158
Mar 03	at Cal State Fullerton	*2b	1	0	0	0	0	0	0	1	0	0	0	0	0	0	0	4	3	0	.150
Mar 08	vs Oregon State	*2b	3	1	1	0	0	0	0	0	0	0	0	0	0	0	1	1	1	0	.174
Mar 08	vs Western Carolina	*2b	2	1	1	2	0	0	0	0	0	0	0	0	0	0	1	1	0	1	.200
Mar 09	vs Oregon State	*2b	3	0	0	0	0	0	0	0	0	0	0	0	0	0	2	1	1	1	.179
Mar 15	at San Diego State	2b	2	0	0	0	0	0	0	0	0	0	0	0	0	0	1	1	2	0	.167
Mar 17	at San Diego State	*2b	2	0	1	0	0	0	0	0	0	0	0	0	0	0	0	2	1	0	.188
<b>Totals</b>			<b>14gs</b>	<b>32</b>	<b>3</b>	<b>6</b>	<b>2</b>	<b>1</b>	<b>0</b>	<b>3</b>	<b>0</b>	<b>0</b>	<b>0</b>	<b>0</b>	<b>0</b>	<b>0</b>	<b>11</b>	<b>23</b>	<b>19</b>	<b>2</b>	<b>.188</b>

On base pct. .257 • Slugging pct. .219



# 10 CAMERYN O'GRADY

55 • 5-6 • JR.  
ORANGE, CALIF. • EL MODENA HS

## SINGLE-GAME HIGHS

Hits: 4, at Texas Tech, 3-2-18  
 Doubles: 2, UTSA, 3-2-18  
 Triples: 1, 5x, Last vs. Creighton, 2-9-19  
 Home runs: 1, 7x, Last at SDSU, 3-16-19  
 Total bases: 8, Creighton, 2-9-19  
 RBI: 4, 2x, Last at SDSU, 3-16-19  
 Runs scored: 4, at Texas Tech, 3-2-18  
 Walks: 3, 3x, Last vs UTEP, 2-8-19  
 Hit by pitch: 1, 6x, Last vs. LMU, 3-1-19

Struck out: 3, 6x, Last at SDSU, 3-15-19  
 Sac bunts: 1, 3x, Last Utah State, 4-22-18  
 At bats: 5, 2x, Last at Nevada, 3-24-18  
 Stolen bases: 2, vs George Washington, 2-23-18  
 Putouts: 5, 4x, Last at Boise State, 5-12-18  
 Assists: 8, at San Jose State, 4-27-18

## CAREER STATS (AT UNM)

Year	avg	gp-gs	ab	r	h	2b	3b	hr	rbi	tb	slg%	bb	hbp	so	gdp	ob%	sf	sh	sb-att	po	a	e	fld%
2017	.109	26-19	46	1	5	0	0	0	3	5	.109	3	0	12	0	.163	0	0	0-0	38	39	10	.885
2018	.301	53-52	143	31	43	12	4	4	26	75	.524	32	5	50	0	.444	0	3	4-4	101	118	18	.924
2019	.360	26-26	75	18	27	7	1	3	17	45	.600	17	1	14	0	.484	0	0	0-0	28	33	9	.871
<b>TOTAL</b>	<b>.284</b>	<b>105-97</b>	<b>264</b>	<b>50</b>	<b>75</b>	<b>19</b>	<b>5</b>	<b>7</b>	<b>46</b>	<b>125</b>	<b>.473</b>	<b>52</b>	<b>6</b>	<b>76</b>	<b>0</b>	<b>.413</b>	<b>0</b>	<b>3</b>	<b>4-4</b>	<b>167</b>	<b>190</b>	<b>37</b>	<b>.906</b>

## 2019 GAME-BY-GAME

Date	Opponent	Pos	AB	R	H	RBI	2B	3B	HR	BB	SB	CS	HBP	SAC	SF	GDP	K	PO	A	E	Avg
Feb 08	vs UTEP	*ss	2	3	1	2	0	0	0	3	0	0	0	0	0	0	1	1	2	0	.500
Feb 09	vs Creighton	*ss	3	2	3	4	0	1	1	0	0	0	0	0	0	0	0	2	1	0	.800
Feb 09	at New Mexico State	*ss	4	1	3	1	1	0	1	0	0	0	0	0	0	0	1	1	1	1	.778
Feb 15	vs Alabama	*ss	3	0	1	0	0	0	0	0	0	0	0	0	0	0	0	2	3	0	.667
Feb 15	vs Cal State Fullerton	*ss	2	1	1	0	0	0	0	2	0	0	0	0	0	0	0	1	1	1	.643
Feb 16	at Arizona	*ss	2	0	1	0	0	0	0	0	0	0	0	0	0	0	0	1	2	0	.625
Feb 16	vs Illinois-Chicago	*ss	3	3	1	2	1	0	0	1	0	0	0	0	0	0	0	1	2	0	.579
Feb 17	vs South Florida	*ss	4	0	1	1	1	0	0	0	0	0	0	0	0	0	1	0	2	1	.522
Feb 20	at Hawaii	*ss	2	0	1	0	0	0	0	1	0	0	0	0	0	0	0	1	2	0	.520
Feb 21	vs DePaul	*ss	3	0	0	0	0	0	0	0	0	0	0	0	0	0	0	2	2	0	.464
Feb 22	vs Canisius	*ss	4	1	1	0	0	0	0	0	0	0	0	0	0	0	1	0	1	0	.438
Feb 22	at Hawaii	*ss	4	0	0	0	0	0	0	0	0	0	0	0	0	0	1	0	0	1	.389
Feb 23	at Hawaii	*ss	2	0	0	0	0	0	0	1	0	0	0	0	0	0	0	1	0	0	.368
Feb 23	vs DePaul	*ss	3	1	2	1	1	0	0	1	0	0	0	0	0	0	0	1	2	0	.390
Feb 28	vs Florida	*ss	3	0	1	0	1	0	0	1	0	0	0	0	0	0	0	2	2	0	.386
Mar 01	vs Loyola Marymount	*ss	3	0	0	0	0	0	0	0	0	0	0	1	0	0	2	1	0	0	.362
Mar 01	vs Tennessee	*ss	3	0	2	0	0	0	0	0	0	0	0	0	0	0	0	2	0	1	.380
Mar 03	vs UCONN	*ss	3	0	0	0	0	0	0	1	0	0	0	0	0	0	1	0	1	0	.358
Mar 03	at Cal State Fullerton	*ss	1	0	0	0	0	0	0	0	0	0	0	0	0	0	0	0	0	1	.352
Mar 08	vs Oregon State	*ss	3	0	2	0	1	0	0	1	0	0	0	0	0	0	0	0	2	0	.368
Mar 08	vs Western Carolina	*ss	3	0	1	0	0	0	0	0	0	0	0	0	0	0	1	1	0	1	.367
Mar 09	vs Oregon State	*ss	4	0	2	2	1	0	0	0	0	0	0	0	0	0	0	3	1	0	.375
Mar 10	at Loyola Marymount	*ss	2	2	0	0	0	0	0	2	0	0	0	0	0	0	1	2	1	1	.364
Mar 15	at San Diego State	*ss	3	1	0	0	0	0	0	1	0	0	0	0	0	0	3	1	4	0	.348
Mar 16	at San Diego State	*ss	3	2	3	4	0	0	1	1	0	0	0	0	0	0	0	0	0	1	.375
Mar 17	at San Diego State	*ss	3	1	0	0	0	0	0	1	0	0	0	0	0	0	0	1	3	0	.360
<b>Totals</b>			<b>26gs</b>	<b>75</b>	<b>18</b>	<b>27</b>	<b>17</b>	<b>7</b>	<b>1</b>	<b>3</b>	<b>17</b>	<b>0</b>	<b>0</b>	<b>1</b>	<b>0</b>	<b>0</b>	<b>14</b>	<b>28</b>	<b>33</b>	<b>9</b>	<b>.360</b>

On base pct. .484 • Slugging pct. .600



# 12 DARYN HASLAM

IF • 5-4 • FR.

CEDAR PARK, TEXAS • VISTA RIDGE HS

### SINGLE-GAME HIGHS

Hits: 2, 2x, Last at LMU, 3-10-19  
 Doubles:  
 Triples:  
 Home runs: 1, 3x, Last at CSUF, 3-3-19  
 Total bases: 5, DePaul, 2-21-19  
 RBI: 3, DePaul, 2-21-19  
 Runs scored: 1, 5x, Last vs. WCU, 3-8-19  
 Walks: 2, Oregon State, 3-9-19  
 Hit by pitch:

Struck out: 2, 2x, Last vs. Oregon St., 3-8-19  
 Sac flies:  
 Sac bunts:  
 At bats: 4, LMU, 3-10-19  
 Stolen bases:  
 Caught stealing:  
 Putouts: 5, DePaul, 2-23-19  
 Assists: 5, LMU, 3-10-19

### CAREER STATS (AT UNM)

Year	avg	gp-gs	ab	r	h	2b	3b	hr	rbi	tb	slg%	bb	hbp	so	qdp	ob%	sf	sh	sb-att	po	a	e	fld%
2019	.270	18-11	37	5	10	0	0	3	6	19	.514	5	0	12	0	.357	0	0	0-0	11	19	3	.909
TOTAL	.270	18-11	37	5	10	0	0	3	6	19	.514	5	0	12	0	.357	0	0	0-0	11	19	3	.909

### 2019 GAME-BY-GAME

Date	Opponent	Pos	AB	R	H	RBI	2B	3B	HR	BB	SB	CS	HBP	SAC	SF	GDP	K	PO	A	E	Avg
Feb 08	vs UTEP	ph/2b	1	1	0	0	0	0	0	1	0	0	0	0	0	0	1	0	1	0	.000
Feb 09	at New Mexico State	*2b	2	0	0	0	0	0	0	0	0	0	0	0	0	0	1	1	0	0	.000
Feb 15	vs Cal State Fullerton	ph	1	0	0	0	0	0	0	0	0	0	0	0	0	0	0	0	0	0	.000
Feb 16	at Arizona	3b	1	0	0	0	0	0	0	0	0	0	0	0	0	0	0	0	0	0	.000
Feb 21	vs DePaul	*2b	3	1	2	3	0	0	1	0	0	0	0	0	0	0	0	1	1	1	.250
Feb 22	vs Canisius	*2b	2	0	2	0	0	0	0	1	0	0	0	0	0	0	0	1	2	0	.400
Feb 22	at Hawaii	*2b	2	1	1	1	0	0	1	1	0	0	0	0	0	0	1	2	3	0	.417
Feb 23	at Hawaii	*2b	3	0	0	0	0	0	0	0	0	0	0	0	0	0	2	1	1	0	.333
Feb 23	vs DePaul	*2b	3	0	0	0	0	0	0	0	0	0	0	0	0	0	0	5	2	0	.278
Feb 28	vs Florida	ph	1	0	0	0	0	0	0	0	0	0	0	0	0	0	1	0	0	0	.263
Mar 01	vs Loyola Marymount	ph/3b	2	0	0	0	0	0	0	0	0	0	0	0	0	0	1	0	1	0	.238
Mar 03	at Cal State Fullerton	3b	1	1	1	1	0	0	1	0	0	0	0	0	0	0	0	0	0	0	.273
Mar 08	vs Oregon State	*3b	3	0	1	0	0	0	0	0	0	0	0	0	0	0	2	0	1	1	.280
Mar 08	vs Western Carolina	*dh	2	1	1	0	0	0	0	0	0	0	0	0	0	0	0	0	0	0	.296
Mar 09	vs Oregon State	*dh	2	0	0	0	0	0	0	2	0	0	0	0	0	0	1	0	0	0	.276
Mar 10	at Loyola Marymount	*2b	4	0	2	1	0	0	0	0	0	0	0	0	0	0	1	0	5	0	.303
Mar 15	at San Diego State	*2b	2	0	0	0	0	0	0	0	0	0	0	0	0	0	1	0	2	1	.286
Mar 17	at San Diego State	ph/3b	2	0	0	0	0	0	0	0	0	0	0	0	0	0	0	0	0	0	.270
Totals		11gs	37	5	10	6	0	0	3	5	0	0	0	0	0	0	12	11	19	3	.270

On base pct. .357 • Slugging pct. .514



# 13 KENNEDY FERGUSON

P • 5-6 • FR.  
CAMAS, WASH. • CAMAS HS

## SINGLE-GAME HIGHS

Innings pitched: 7.1, South Florida, 2-17-19  
Walks allowed: 7, Tennessee, 3-1-19  
Strikeouts: 6, 2x, Last vs. UConn, 3-3-19  
Batters faced: 32, DePaul, 2-21-19  
Assists: 3, South Florida, 2-17-19  
Runners CS: 1, 4x, Last vs. UConn, 3-3-19  
Putouts: 1, Hawai'i, 2-22-19  
Fewest hits allowed (3.0 IP min.): 2, Western Carolina, 3-9-19  
Fewest BB allowed (3.0 IP min.): 0, 3x, Last at SDSU, 3-16-19

## CAREER STATS (AT UNM)

Year	avg	gp-gs	ab	r	h	2b	3b	hr	rbi	tb	slg%	bb	hbp	so	qdp	ob%	sf	sh	sb-att	po	a	e	fld%
2019	.000	4-4	0	0	0	0	0	0	0	0	.000	0	0	0	0	.000	0	0	0-0	2	16	1	.947
TOTAL	.000	4-4	0	0	0	0	0	0	0	0	.000	0	0	0	0	.000	0	0	0-0	2	16	1	.947

Year	era	w-l	app	gs	cq	sho	sv	ip	h	r	er	bb	so	2b	3b	hr	bf	bavq	wp	hbp	bk	sfa	sha
2019	3.25	2-9	19	11	8	1/0	0	84.0	105	59	39	29	51	10	1	14	396	.299	4	5	0	3	8
TOTAL	3.25	2-9	19	11	8	1/0	0	84.0	105	59	39	29	51	10	1	14	396	.299	4	5	0	3	8

## 2019 GAME-BY-GAME

Date	Opponent	GS	IP	H	R	ER	BB	SO	2B	3B	HR	WP	BK	HBP	IBB	Score	W-L	Sv	ERA	NP
Feb 08	vs UTEP		2.0	2	1	1	0	2	0	0	1	0	0	0	0	15-6	0-0	0	3.50	31
Feb 09	at New Mexico State	*	4.0	3	4	4	2	3	0	0	2	0	0	2	0	8-9	0-0	0	5.83	80
Feb 15	vs Cal State Fullerton		5.1	8	4	2	1	3	1	0	1	0	0	1	0	2-6	0-1	0	4.32	96
Feb 16	at Arizona		0.2	5	6	6	1	0	0	0	2	0	0	1	0	1-15	0-1	0	7.58	29
Feb 17	vs South Florida	*	7.1	6	2	0	2	6	0	0	0	0	0	0	0	1-2	0-2	0	4.71	98
Feb 21	vs DePaul	*	5.2	10	5	3	5	2	1	0	1	1	0	0	0	5-9	0-3	0	4.48	125
Feb 22	at Hawaii	*	6.0	4	3	2	2	3	1	0	0	0	0	1	0	2-3	0-4	0	4.06	91
Feb 23	vs DePaul	*	6.0	8	4	4	3	3	3	0	1	0	0	0	0	2-4	0-5	0	4.16	104
Feb 28	vs Florida	*	7.0	5	1	0	1	5	1	0	0	0	0	0	0	0-1	0-6	0	3.50	109
Mar 01	vs Loyola Marymount	*	5.1	6	1	1	2	5	0	1	0	0	0	0	0	2-4	0-6	0	3.26	87
Mar 01	vs Tennessee		3.0	10	10	6	7	1	0	0	2	0	0	0	0	1-15	0-6	0	3.88	105
Mar 03	vs UCONN	*	6.0	8	2	2	1	6	0	0	1	0	0	0	0	1-2	0-7	0	3.72	104
Mar 03	at Cal State Fullerton		0.1	3	5	0	1	0	0	0	1	0	0	0	0	1-19	0-7	0	3.70	38
Mar 08	vs Western Carolina	*	5.0	2	0	0	0	3	0	0	0	0	0	0	0	10-0	1-7	0	3.41	67
Mar 09	vs Oregon State	*	7.0	8	5	3	1	3	0	0	1	1	0	0	0	3-5	1-8	0	3.37	103
Mar 10	at Loyola Marymount		0.1	0	0	0	0	0	0	0	0	0	0	0	0	2-6	1-8	0	3.35	2
Mar 15	at San Diego State	*	7.0	7	1	0	0	1	1	0	0	0	0	0	0	3-1	2-8	0	3.05	100
Mar 16	at San Diego State		4.0	8	4	4	0	3	1	0	1	1	0	0	0	8-9	2-9	0	3.24	67
Mar 17	at San Diego State		2.0	2	1	1	0	2	1	0	0	1	0	0	0	3-4	2-9	0	3.25	27
Totals		11	84.0	105	59	39	29	51	10	1	14	4	0	5	0	70-120	2-9	0	3.25	-



# 16 LESLIE ROMERO

OF • 5-4 • FR.

GONZALES, CALIF. • SALINAS HS

## SINGLE-GAME HIGHS

Hits:  
 Doubles:  
 Home runs:  
 Total bases:  
 RBI:  
 Runs scored:  
 Walks:  
 Struck out: 1, CSUF, 3-3-19  
 Sac bunts:

Sac flies:  
 At bats: 2, at New Mexico State, 2-9-19  
 Stolen bases:  
 Putouts: 1, 2x, Last at Arizona, 2-16-19  
 Assists:

## CAREER STATS (AT UNM)

Year	avg	gp-gs	ab	r	h	2b	3b	hr	rbi	tb	slg%	bb	hbp	so	gdp	ob%	sf	sh	sb-att	po	a	e	fld%
2019	.000	5-1	6	0	0	0	0	0	0	0	.000	0	0	1	0	.000	0	0	0-0	2	0	0	1.000
TOTAL	.000	5-1	6	0	0	0	0	0	0	0	.000	0	0	1	0	.000	0	0	0-0	2	0	0	1.000

## 2019 GAME-BY-GAME

Date	Opponent	Pos	AB	R	H	RBI	2B	3B	HR	BB	SB	CS	HBP	SAC	SF	GDP	K	PO	A	E	Avg
Feb 09	at New Mexico State	*of	2	0	0	0	0	0	0	0	0	0	0	0	0	0	0	1	0	0	.000
Feb 16	at Arizona	of	1	0	0	0	0	0	0	0	0	0	0	0	0	0	0	1	0	0	.000
Feb 20	at Hawaii	ph	1	0	0	0	0	0	0	0	0	0	0	0	0	0	0	0	0	0	.000
Mar 03	at Cal State Fullerton	of	1	0	0	0	0	0	0	0	0	0	0	0	0	0	1	0	0	0	.000
Mar 08	vs Western Carolina	2b	1	0	0	0	0	0	0	0	0	0	0	0	0	0	0	0	0	0	.000
Totals		1gs	6	0	0	0	0	0	0	0	0	0	0	0	0	0	1	2	0	0	.000

On base pct. .000 • Slugging pct. .000





# 22 MONICA SALAS

**IF • 5-3 • SR.**

**GOLETA, CALIF. • SANTA BARBARA CITY COLL.**

## SINGLE-GAME HIGHS

Hits: 3, Howard, 3-10-18  
 Doubles: 1, 4x, Last vs Cal State Fullerton, 2-15-19  
 Home runs: 1, 5x, Last vs. Canisius, 2-22-19  
 Total bases: 5, 2x, Last vs. UTEP, 2-8-19  
 RBI: 4, UTEP, 2-8-19  
 Runs scored: 2, 4x, Last vs. Canisius, 2-22-19  
 Walks: 3, Illinois-Chicago, 2-16-19

Struck out: 2, 19x, Last at San Diego St., 3-15-19  
 Sac flies: 1, at Nevada, 3-25-18  
 At bats: 4, 14x, Last at San Diego State, 3-16-19  
 Stolen bases: 2, Howard, 3-10-18  
 Putouts: 5, St. Mary's, 3-9-18  
 Assists: 5, at UTEP, 4-16-18

## CAREER STATS (AT UNM)

Year	avg	gp-gs	ab	r	h	2b	3b	hr	rbi	tb	slg%	bb	hbp	so	gdp	ob%	sf	sh	sb-att	po	a	e	fld%
2018	.238	45-35	101	9	24	3	0	2	15	33	.327	6	0	34	2	.278	1	0	2-2	35	44	7	.919
2019	.214	25-25	70	9	15	1	0	3	12	25	.357	7	0	21	4	.286	0	0	0-0	15	24	5	.886
TOTAL	.228	70-60	171	18	39	4	0	5	27	58	.339	13	0	55	6	.281	1	0	2-2	50	68	12	.908

## 2019 GAME-BY-GAME

Date	Opponent	Pos	AB	R	H	RBI	2B	3B	HR	BB	SB	CS	HBP	SAC	SF	GDP	K	PO	A	E	Avg
Feb 08	vs UTEP	*3b	4	1	2	4	0	0	1	1	0	0	0	0	0	1	1	1	2	0	.500
Feb 09	vs Creighton	*3b	3	1	2	0	0	0	0	0	0	0	0	0	0	1	0	1	0	0	.571
Feb 09	at New Mexico State	*3b	4	1	1	0	0	0	0	0	0	0	0	0	0	0	1	0	1	0	.455
Feb 15	vs Alabama	*3b	3	0	0	0	0	0	0	0	0	0	0	0	0	0	0	4	2	0	.357
Feb 15	vs Cal State Fullerton	*3b	4	0	1	2	1	0	0	0	0	0	0	0	0	0	2	1	1	1	.333
Feb 16	at Arizona	*3b	2	0	1	0	0	0	0	0	0	0	0	0	0	0	0	0	0	1	.350
Feb 16	vs Illinois-Chicago	*3b	1	2	0	0	0	0	3	0	0	0	0	0	0	0	0	0	1	1	.333
Feb 17	vs South Florida	*3b	4	0	1	0	0	0	0	0	0	0	0	0	0	0	2	2	2	0	.320
Feb 20	at Hawaii	*3b	3	0	0	1	0	0	0	0	0	0	0	0	0	0	2	0	1	0	.286
Feb 21	vs DePaul	*3b	3	1	1	1	0	0	1	0	0	0	0	0	0	0	1	1	2	0	.290
Feb 22	vs Canisius	*3b	2	2	1	2	0	0	1	1	0	0	0	0	0	0	0	0	3	0	.303
Feb 22	at Hawaii	*3b	3	0	1	0	0	0	0	0	0	0	0	0	0	1	0	0	2	1	.306
Feb 23	at Hawaii	*3b	2	0	0	0	0	0	1	0	0	0	0	0	0	0	0	2	0	0	.289
Feb 23	vs DePaul	*3b	3	0	0	0	0	0	0	0	0	0	0	0	0	0	0	0	0	0	.268
Feb 28	vs Florida	*3b	3	0	0	0	0	0	0	0	0	0	0	0	0	0	2	0	1	0	.250
Mar 01	vs Loyola Marymount	*3b	1	0	0	0	0	0	0	0	0	0	0	0	0	0	1	0	0	0	.244
Mar 01	vs Tennessee	*3b	2	0	0	0	0	0	0	0	0	0	0	0	0	0	2	1	1	0	.234
Mar 03	vs UCONN	*3b	3	0	1	0	0	0	0	0	0	0	0	0	0	0	1	1	2	0	.240
Mar 03	at Cal State Fullerton	*3b	1	0	0	0	0	0	0	0	0	0	0	0	0	0	0	0	0	0	.235
Mar 08	vs Western Carolina	*3b	2	1	1	1	0	0	1	0	0	0	0	0	0	0	0	0	0	0	.245
Mar 09	vs Oregon State	*3b	4	0	0	0	0	0	0	0	0	0	0	0	0	0	2	0	0	0	.228
Mar 10	at Loyola Marymount	*3b	4	0	1	0	0	0	0	0	0	0	0	0	0	0	1	1	1	0	.230
Mar 15	at San Diego State	*3b	3	0	1	1	0	0	0	0	0	0	0	0	0	0	2	0	1	0	.234
Mar 16	at San Diego State	*3b	4	0	0	0	0	0	0	0	0	0	0	0	0	1	1	0	1	0	.221
Mar 17	at San Diego State	*3b	2	0	0	0	0	0	0	0	0	0	0	0	0	0	0	0	0	1	.214
Totals		25gs	70	9	15	12	1	0	3	7	0	0	0	0	0	4	21	15	24	5	.214

On base pct. .286 • Slugging pct. .357



**23 EMMA STELTZER** OF • 5-6 • FR.  
MANCHESTER, MO. • PARKWAY SOUTH HS

**SINGLE-GAME HIGHS**

Hits:  
Doubles:  
Home runs:  
Total bases:  
RBI:  
Runs scored:  
Walks: 1, Canisius, 2-22-19  
Struck out:  
Sac bunts:

Sac flies:  
At bats: 1, 2x, Last vs. WCU, 3-8-19  
Stolen bases:  
Putouts:  
Assists:  
Innings Pitched: 0.2, CSUF, 3-3-19  
Batters Faced: 2, CSUF, 3-3-19

**CAREER STATS (AT UNM)**

Year	avg	qp-qs	ab	r	h	2b	3b	hr	rbi	tb	slg%	bb	hbp	so	qdp	ob%	sf	sh	sb-att	po	a	e	fld%
2019	.000	3-0	2	0	0	0	0	0	0	0	.000	1	0	0	0	.333	0	0	0-0	0	0	0	.000
TOTAL	.000	3-0	2	0	0	0	0	0	0	0	.000	1	0	0	0	.333	0	0	0-0	0	0	0	.000

Year	era	w-l	app	qs	cq	sho	sv	ip	h	r	er	bb	so	2b	3b	hr	bf	bavq	wp	hbp	bk	sfa	sha
2019	0.00	0-0	1	0	0	0/0	0	0.2	0	0	0	0	0	0	0	0	2	.000	0	0	0	0	0
TOTAL	0.00	0-0	1	0	0	0/0	0	0.2	0	0	0	0	0	0	0	0	2	.000	0	0	0	0	0

**2019 GAME-BY-GAME**

Date	Opponent	Pos	AB	R	H	RBI	2B	3B	HR	BB	SB	CS	HBP	SAC	SF	GDP	K	PO	A	E	Av	
Feb 16	at Arizona	ph	1	0	0	0	0	0	0	0	0	0	0	0	0	0	0	0	0	0	0	.00
Feb 22	vs Canisius	ph	0	0	0	0	0	0	0	1	0	0	0	0	0	0	0	0	0	0	0	.00
Mar 08	vs Western Carolina	dh	1	0	0	0	0	0	0	0	0	0	0	0	0	0	0	0	0	0	0	.00
Totals		Ogs	2	0	0	0	0	0	0	1	0	0	0	0	0	0	0	0	0	0	0	.00

On base pct. .333 • Slugging pct. .000

#23 STELTZER, Emma - 1 appearance (All games)

Date	Opponent	GS	IP	H	R	ER	BB	SO	2B	3B	HR	WP	BK	HBP	IBB	Score	W-L	Sv	ERA	N
Mar 03	at Cal State Fullerton		0.2	0	0	0	0	0	0	0	0	0	0	0	0	1-19	0-0	0	0.00	
Totals		0	0.2	0	0	0	0	0	0	0	0	0	0	0	0	1-19	0-0	0	0.00	



# **24 SKYLAR JENKINS**

**OF • 5-5 • FR.**

**LAWRENCEVILLE, GA. • BUFORD HS**

## **SINGLE-GAME HIGHS**

Hits:  
Doubles:  
Home runs:  
Total bases:  
RBI:  
Runs scored:  
Walks:  
Struck out:  
Sac bunts:

Sac flies:  
At bats:  
Stolen bases:  
Putouts:  
Assists:

## **CAREER STATS (AT UNM)**

## **2019 GAME-BY-GAME**



**32 LAUREN WILMERT** C/1B • 5-10 • JR.  
ALBUQUERQUE, N.M. • VOLCANO VISTA HS

**SINGLE-GAME HIGHS**

Hits: 3, San Diego State, 3-17-19  
 Doubles: 1, 9x, Last vs. WCU, 3-8-19  
 Home runs: 1, 6x, Last at SDSU, 3-17-19  
 Total bases: 6, 2x, Last at SDSU, 3-17-19  
 RBI: 5, 2x, Last vs. WCU, 3-8-19  
 Runs scored: 3, UTEP, 2-8-19  
 Walks: 3, UTEP, 2-8-19  
 Hit by pitch: 1, 2x, Last vs. UTEP, 2-8-19  
 Struck out: 3, George Washington, 2-23-18

Sac flies: 1, 3x, Last at LMU, 3-10-19  
 Sac bunts: 1, 3x, Last vs. Utah State, 4-22-18  
 At bats: 4, 14x, Last at SDSU, 3-17-19  
 Stolen bases: 1, vs Western Michigan, 2-11-17  
 Putouts: 11, South Florida, 2-17-19  
 Assists: 2, 6x, Last vs. Oregon St., 3-9-19  
 Runners CS: 1, 10x, Last at SDSU, 3-15-19

**CAREER STATS (AT UNM)**

Year	avg	gp-gs	ab	r	h	2b	3b	hr	rbi	tb	slg%	bb	hbp	so	gdp	ob%	sf	sh	sb-att	po	a	e	fld%
2017	.242	34-23	62	5	15	3	0	1	6	21	.339	6	0	15	1	.304	1	2	1-1	67	6	3	.961
2018	.180	32-20	61	5	11	1	0	1	11	15	.246	7	1	23	0	.275	0	1	0-0	87	11	4	.961
2019	.260	26-26	77	14	20	5	0	4	20	37	.481	7	1	18	1	.322	2	0	0-0	129	13	6	.959
TOTAL	.230	92-69	200	24	46	9	0	6	37	73	.365	20	2	56	2	.302	3	3	1-1	283	30	13	.960

**2019 GAME-BY-GAME**

Date	Opponent	Pos	AB	R	H	RBI	2B	3B	HR	BB	SB	CS	HBP	SAC	SF	GDP	K	PO	A	E	Avg
Feb 08	vs UTEP	*c	0	3	0	2	0	0	0	3	0	0	1	0	0	0	0	10	2	0	.000
Feb 09	vs Creighton	*1b	2	0	1	1	0	0	0	1	0	0	0	0	0	0	1	2	0	0	.500
Feb 09	at New Mexico State	*c	3	0	0	1	0	0	0	0	0	0	0	0	1	0	2	6	1	1	.200
Feb 15	vs Alabama	*1b	2	0	1	0	1	0	0	1	0	0	0	0	0	0	0	7	0	0	.286
Feb 15	vs Cal State Fullerton	*c	4	0	0	0	0	0	0	0	0	0	0	0	0	0	2	3	1	0	.182
Feb 16	at Arizona	*1b	2	0	0	0	0	0	0	0	0	0	0	0	0	0	0	4	0	1	.154
Feb 16	vs Illinois-Chicago	*c	4	1	2	0	0	0	0	0	0	0	0	0	0	0	1	9	0	0	.235
Feb 17	vs South Florida	*1b	3	0	0	0	0	0	0	0	0	0	0	0	0	0	0	11	1	1	.200
Feb 20	at Hawaii	*1b	3	0	0	0	0	0	0	0	0	0	0	0	0	1	0	4	0	0	.174
Feb 21	vs DePaul	*1b	3	1	1	1	0	0	1	0	0	0	0	0	0	0	2	7	0	1	.192
Feb 22	vs Canisius	*c	3	2	2	3	1	0	1	0	0	0	0	0	0	0	0	4	0	0	.241
Feb 22	at Hawaii	*c	3	1	2	0	1	0	0	0	0	0	0	0	0	0	0	3	0	1	.281
Feb 23	at Hawaii	*1b	3	1	1	0	1	0	0	0	0	0	0	0	0	0	0	3	0	0	.286
Feb 23	vs DePaul	*c	4	0	0	0	0	0	0	0	0	0	0	0	0	0	1	2	2	1	.256
Feb 28	vs Florida	*c	2	0	0	0	0	0	0	1	0	0	0	0	0	0	2	6	0	0	.244
Mar 01	vs Loyola Marymount	*c	2	1	0	0	0	0	0	1	0	0	0	0	0	0	0	8	1	0	.233
Mar 01	vs Tennessee	*1b	2	0	0	0	0	0	0	0	0	0	0	0	0	0	1	4	0	0	.222
Mar 03	vs UCONN	*1b	4	0	0	0	0	0	0	0	0	0	0	0	0	0	2	5	0	0	.204
Mar 03	at Cal State Fullerton	*c	2	0	0	0	0	0	0	0	0	0	0	0	0	0	0	2	0	0	.196
Mar 08	vs Oregon State	*c	4	0	1	1	0	0	0	0	0	0	0	0	0	0	2	5	1	0	.200
Mar 08	vs Western Carolina	*c	3	2	2	5	1	0	1	0	0	0	0	0	0	0	0	3	0	0	.224
Mar 09	vs Oregon State	*c	4	0	1	0	0	0	0	0	0	0	0	0	0	0	0	2	2	0	.226
Mar 10	at Loyola Marymount	*c	3	0	0	1	0	0	0	0	0	0	0	0	1	0	1	6	1	0	.215
Mar 15	at San Diego State	*c	4	0	1	2	0	0	0	0	0	0	0	0	0	0	0	1	1	0	.217
Mar 16	at San Diego State	*1b	4	1	2	1	0	0	0	0	0	0	0	0	0	0	1	6	0	0	.233
Mar 17	at San Diego State	*c	4	1	3	2	0	0	1	0	0	0	0	0	0	0	0	6	0	0	.260
Totals			26gs	77	14	20	20	5	0	4	7	0	1	0	2	1	18	129	13	6	.260

On base pct. .322 • Slugging pct. .481



# 44 ALEYAH WILBON

**OF • 5-3 • SR.**

**FONTANA, CALIF. • SUMMIT HS**

## SINGLE-GAME HIGHS

Hits: 2, Utah State, 4-20-18  
 Doubles: 1, Howard, 3-10-18  
 Total bases: 2, 2x, Last vs. Utah State, 4-20-18  
 RBI: 1, 2x, Last at Nevada, 3-25-18  
 Runs scored: 2, 2x, Last vs. Utah State, 4-21-18  
 Walks: 3, Sac. State, 3-11-18  
 Hit by pitch: 1, vs St. Mary's, 2-9-18  
 Struck out: 2, 7x, Last at CSUF, 3-3-19  
 At bats: 4, 2x, Last at Arizona, 4-25-18

Stolen bases: 1, 5x, Last vs. Utah State, 4-21-18  
 Caught stealing: 1, 4x, Last at Hawai'i, 2-23-19  
 Putouts: 3, Utah State, 4-22-18  
 Assists: 1, at New Mexico State, 4-3-18

## CAREER STATS (AT UNM)

Year	avg	gp-gs	ab	r	h	2b	3b	hr	rbi	tb	slg%	bb	hbp	so	gdp	ob%	sf	sh	sb-att	po	a	e	fld%
2018	.222	38-25	63	13	14	1	0	0	2	15	.238	16	1	24	0	.388	0	2	5-8	26	1	1	.964
2019	.300	18-2	10	5	3	0	0	0	0	3	.300	1	0	5	0	.364	0	0	0-1	1	0	0	1.000
<b>TOTAL</b>	<b>.233</b>	<b>56-27</b>	<b>73</b>	<b>18</b>	<b>17</b>	<b>1</b>	<b>0</b>	<b>0</b>	<b>2</b>	<b>18</b>	<b>.247</b>	<b>17</b>	<b>1</b>	<b>29</b>	<b>0</b>	<b>.385</b>	<b>0</b>	<b>2</b>	<b>5-9</b>	<b>27</b>	<b>1</b>	<b>1</b>	<b>.966</b>

## 2019 GAME-BY-GAME

Date	Opponent	Pos	AB	R	H	RBI	2B	3B	HR	BB	SB	CS	HBP	SAC	SF	GDP	K	PO	A	E	Avg
Feb 09	at New Mexico State	of	0	1	0	0	0	0	0	1	0	0	0	0	0	0	0	0	0	0	.000
Feb 15	vs Alabama	pr	0	0	0	0	0	0	0	0	0	0	0	0	0	0	0	0	0	0	.000
Feb 15	vs Cal State Fullerton	pr	0	0	0	0	0	0	0	0	0	0	0	0	0	0	0	0	0	0	.000
Feb 16	at Arizona	of	1	1	0	0	0	0	0	0	0	0	0	0	0	0	0	0	0	0	.000
Feb 16	vs Illinois-Chicago	pr	0	1	0	0	0	0	0	0	0	0	0	0	0	0	0	0	0	0	.000
Feb 20	at Hawaii	pr	0	0	0	0	0	0	0	0	0	0	0	0	0	0	0	0	0	0	.000
Feb 21	vs DePaul	*of	3	0	1	0	0	0	0	0	0	0	0	0	0	0	1	1	0	0	.250
Feb 22	at Hawaii	pr	0	0	0	0	0	0	0	0	0	0	0	0	0	0	0	0	0	0	.250
Feb 23	at Hawaii	pr	0	0	0	0	0	0	0	0	0	1	0	0	0	0	0	0	0	0	.250
Feb 23	vs DePaul	pr	0	0	0	0	0	0	0	0	0	0	0	0	0	0	0	0	0	0	.250
Feb 28	vs Florida	pr	0	0	0	0	0	0	0	0	0	0	0	0	0	0	0	0	0	0	.250
Mar 01	vs Loyola Marymount	ph	1	0	1	0	0	0	0	0	0	0	0	0	0	0	0	0	0	0	.400
Mar 03	vs UCONN	ph	1	1	1	0	0	0	0	0	0	0	0	0	0	0	0	0	0	0	.500
Mar 03	at Cal State Fullerton	*of	2	0	0	0	0	0	0	0	0	0	0	0	0	0	2	0	0	0	.375
Mar 08	vs Oregon State	pr	0	1	0	0	0	0	0	0	0	0	0	0	0	0	0	0	0	0	.375
Mar 08	vs Western Carolina	of	0	0	0	0	0	0	0	0	0	0	0	0	0	0	0	0	0	0	.375
Mar 09	vs Oregon State	ph	1	0	0	0	0	0	0	0	0	0	0	0	0	0	1	0	0	0	.333
Mar 10	at Loyola Marymount	ph	1	0	0	0	0	0	0	0	0	0	0	0	0	0	1	0	0	0	.300
<b>Totals</b>		<b>2gs</b>	<b>10</b>	<b>5</b>	<b>3</b>	<b>0</b>	<b>0</b>	<b>0</b>	<b>0</b>	<b>1</b>	<b>0</b>	<b>1</b>	<b>0</b>	<b>0</b>	<b>0</b>	<b>0</b>	<b>5</b>	<b>1</b>	<b>0</b>	<b>0</b>	<b>.300</b>

On base pct. .364 • Slugging pct. .300





**66 SYDNEY TOWNES** *OF • 5-6 • SR.*  
*LOMPOC, CALIF. • SANTA BARBARA CITY COLL.*

**SINGLE-GAME HIGHS**

Hits: 2, 4x, Last vs. UNLV, 3-26-18  
 Doubles: 1, 3x, Last vs. Oregon St., 3-8-19  
 Triples: 1, George Washington, 2-25-18  
 Total bases: 4, George Washington, 2-25-18  
 RBI: 1, 4x, Last vs. New Mexico State, 3-21-18  
 Runs scored: 2, 3x, Last vs. Utah State, 4-21-18  
 Walks: 2, 4x, Last vs. Illinois-Chicago, 2-16-19  
 Hit by pitch: 1, 4x, Last vs. Utah State, 4-21-18  
 Struck out: 2, 11x, Last vs. Oregon St., 3-8-19

Sac bunts: 1, 2x, Last at San Jose St., 4-29-18  
 At bats: 5, at Nevada, 3-24-18  
 Stolen bases: 1, 7x, Last at LMU, 3-10-19  
 Putouts: 5, UNLV, 3-18-18  
 Assists: 1, 2x, Last vs. UNLV, 3-18-18

**CAREER STATS (AT UNM)**

Year	avg	gp-gs	ab	r	h	2b	3b	hr	rbi	tb	slg%	bb	hbp	so	gdp	ob%	sf	sh	sb-att	po	a	e	fld%
2018	.186	45-44	102	16	19	2	1	0	4	23	.225	23	4	40	0	.357	0	2	6-6	59	2	4	.938
2019	.130	18-7	23	3	3	1	0	0	0	4	.174	5	0	9	0	.286	0	0	1-1	11	0	1	.917
TOTAL	.176	63-51	125	19	22	3	1	0	4	27	.216	28	4	49	0	.344	0	2	7-7	70	2	5	.935

**2019 GAME-BY-GAME**

Date	Opponent	Pos	AB	R	H	RBI	2B	3B	HR	BB	SB	CS	HBP	SAC	SF	GDP	K	PO	A	E	Avg
Feb 08	vs UTEP	ph/of	1	0	0	0	0	0	0	0	0	0	0	0	0	0	1	0	0	0	.000
Feb 09	vs Creighton	ph/of	1	0	0	0	0	0	0	0	0	0	0	0	0	0	1	0	0	0	.000
Feb 09	at New Mexico State	pr	0	0	0	0	0	0	0	0	0	0	0	0	0	0	0	0	0	0	.000
Feb 16	at Arizona	of	0	0	0	0	0	0	0	0	0	0	0	0	0	0	0	0	0	0	.000
Feb 16	vs Illinois-Chicago	*of	1	1	0	0	0	0	0	2	0	0	0	0	0	0	0	0	0	0	.000
Feb 17	vs South Florida	*of	3	0	0	0	0	0	0	0	0	0	0	0	0	0	2	0	0	0	.000
Feb 22	vs Canisius	ph	1	0	0	0	0	0	0	0	0	0	0	0	0	0	1	0	0	0	.000
Feb 22	at Hawaii	pr	0	0	0	0	0	0	0	0	0	0	0	0	0	0	0	0	0	0	.000
Feb 28	vs Florida	pr	0	0	0	0	0	0	0	0	0	0	0	0	0	0	0	0	0	0	.000
Mar 01	vs Loyola Marymount	of	0	0	0	0	0	0	0	0	0	0	0	0	0	0	0	0	0	0	.000
Mar 03	vs UCONN	pr	0	0	0	0	0	0	0	0	0	0	0	0	0	0	0	0	0	0	.000
Mar 03	at Cal State Fullerton	of	1	0	0	0	0	0	0	0	0	0	0	0	0	0	1	0	0	0	.000
Mar 08	vs Oregon State	*of	4	1	1	0	1	0	0	0	0	0	0	0	0	0	2	1	0	0	.083
Mar 09	vs Oregon State	of	2	0	1	0	0	0	0	0	0	0	0	0	0	0	0	0	0	1	.143
Mar 10	at Loyola Marymount	*of	3	0	1	0	0	0	0	1	0	0	0	0	0	0	0	1	0	0	.176
Mar 15	at San Diego State	*of	2	0	0	0	0	0	0	1	0	0	0	0	0	0	1	3	0	0	.158
Mar 16	at San Diego State	*of	2	1	0	0	0	0	0	1	0	0	0	0	0	0	0	3	0	0	.143
Mar 17	at San Diego State	*of	2	0	0	0	0	0	0	1	0	0	0	0	0	0	0	3	0	0	.130
Totals		7gs	23	3	3	0	1	0	0	5	1	0	0	0	0	0	9	11	0	1	.130

On base pct. .286 • Slugging pct. .174



# 99 KIANA SPENCER

**P • 5-6 • JR.**  
**GALLUP, N.M. • YAVAPAI COLLEGE**

## SINGLE-GAME HIGHS

Innings pitched: 7.0, 3x, Last vs. Oregon St., 3-8-19  
 Walks allowed: 7, LMU, 3-10-19  
 Strikeouts: 6, Hawai'i, 2-23-19  
 Batters faced: 32, Oregon State, 3-8-19  
 Field chances: 2, 2x, Last vs. Oregon St., 3-8-19  
 Assists: 2, 2x, Last vs. Oregon St., 3-8-19  
 Runners CS: 1, Tennessee, 3-1-19  
 Fewest hits allowed (Min. 3.0 IP): 3, Creighton, 2-9-19  
 Fewest walks allowed (Min. 3.0 IP): 3, Alabama, 2-15-19

## CAREER STATS (AT UNM)

Year	avg	qp-gs	ab	r	h	2b	3b	hr	rbi	tb	slg%	bb	hbp	so	qdp	ob%	sf	sh	sb-att	po	a	e	fld%
2019	.000	1-1	0	0	0	0	0	0	0	0	.000	0	0	0	0	.000	0	0	0-0	0	7	1	.875
TOTAL	.000	1-1	0	0	0	0	0	0	0	0	.000	0	0	0	0	.000	0	0	0-0	0	7	1	.875

Year	era	w-l	app	qs	cq	sho	sv	ip	h	r	er	bb	so	2b	3b	hr	bf	bavq	wp	hbp	bk	sfa	sha
2019	4.94	4-7	15	11	6	2/0	0	56.2	67	45	40	40	31	13	1	13	282	293	2	6	0	1	6

## 2019 GAME-BY-GAME

Date	Opponent	Pos	AB	R	H	RBI	2B	3B	HR	BB	SB	CS	HBP	SAC	SF	GDP	K	PO	A	E	Avg	
Feb 15	vs Alabama	*p	0	0	0	0	0	0	0	0	0	0	0	0	0	0	0	0	2	0	0	.000
Feb 23	at Hawaii	*p	0	0	0	0	0	0	0	0	0	0	0	0	0	0	0	0	1	0	0	.000
Mar 03	at Cal State Fullerton	*p	0	0	0	0	0	0	0	0	0	0	0	0	0	0	0	0	0	0	1	.000
Mar 08	vs Oregon State	*p	0	0	0	0	0	0	0	0	0	0	0	0	0	0	0	0	2	0	0	.000
Mar 10	at Loyola Marymount	*p	0	0	0	0	0	0	0	0	0	0	0	0	0	0	0	0	1	0	0	.000
Mar 17	at San Diego State	*dh/p	0	0	0	0	0	0	0	0	0	0	0	0	0	0	0	0	1	0	0	.000
Totals		6gs	0	0	0	0	0	0	0	0	0	0	0	0	0	0	0	0	7	1	0	.000

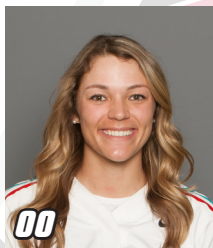
On base pct. .000 • Slugging pct. .000

#99 SPENCER, Kiana - 15 appearances (All games)

Date	Opponent	GS	IP	H	R	ER	BB	SO	2B	3B	HR	WP	BK	HBP	IBB	Score	W-L	Sv	ERA	NP
Feb 09	vs Creighton	*	5.0	3	0	0	5	2	0	0	0	0	0	1	0	8-0	1-0	0	0.00	91
Feb 09	at New Mexico State		1.0	1	1	1	0	2	0	0	1	0	0	0	0	8-9	1-0	0	1.17	21
Feb 15	vs Alabama	*	7.0	6	1	1	3	0	1	0	0	0	0	0	0	0-1	1-1	0	1.08	102
Feb 15	vs Cal State Fullerton		0.2	0	0	0	0	0	0	0	0	0	0	0	0	2-6	1-1	0	1.02	5
Feb 16	at Arizona	*	1.1	6	7	7	3	0	2	0	2	0	0	0	0	1-15	1-2	0	4.20	50
Feb 20	at Hawaii	*	6.0	5	2	1	0	4	1	0	1	0	0	1	0	1-2	1-3	0	3.33	88
Feb 21	vs DePaul		0.2	0	0	0	2	0	0	0	0	0	0	1	0	5-9	1-3	0	3.23	24
Feb 22	vs Canisius	*	5.0	4	0	0	1	4	0	0	0	0	0	1	0	10-0	2-3	0	2.62	81
Feb 23	at Hawaii	*	7.0	4	2	2	4	6	0	0	1	0	0	0	0	3-2	3-3	0	2.50	107
Mar 01	vs Tennessee	*	2.0	8	5	5	2	0	2	0	2	0	0	0	0	1-15	3-4	0	3.34	48
Mar 03	at Cal State Fullerton	*	2.2	9	8	8	2	1	1	0	4	0	0	0	0	1-19	3-5	0	4.57	63
Mar 08	vs Oregon State	*	7.0	9	5	3	4	2	3	1	0	0	0	0	0	6-5	4-5	0	4.32	123
Mar 10	at Loyola Marymount	*	5.2	5	6	6	7	5	1	0	1	1	0	1	0	2-6	4-6	0	4.67	132
Mar 16	at San Diego State	*	2.0	2	5	3	4	2	1	0	1	1	0	1	0	8-9	4-6	0	4.89	64
Mar 17	at San Diego State		3.2	5	3	3	3	3	1	0	0	0	0	0	0	3-4	4-7	0	4.94	83
Totals		11	56.2	67	45	40	40	31	13	1	13	2	0	6	0	59-102	4-7	0	4.94	-

# THE 2019 LOBO SOFTBALL RADIO/TV ROSTER

## PLAYERS



**00**  
Andrea Howard  
OF | 5-6 | So.  
Albuquerque, N.M.



**2**  
Maggie Buckholz  
UT | 5-7 | Fr.  
Silverton, Ore.



**3**  
Taylor Jones  
IF | 5-7 | So.  
Albuquerque, N.M.



**4**  
D'Andra DeFlora  
OF | 5-2 | Sr.  
Fresno, Texas



**5**  
Sydney Broderick  
C | 5-4 | So.  
Mesa, Ariz.



**7**  
MacKenzie Peterson  
OF | 5-9 | Fr.  
Gilbert, Ariz.



**8**  
Bailey Klitzke  
P/1B | 5-8 | Jr.  
Apache Junction, Ariz.



**9**  
Kasey Halleen  
IF | 5-6 | Sr.  
Torrance, Calif.



**10**  
Cameryn O'Grady  
SS | 5-6 | So.  
Orange, Calif.



**12**  
Daryn Haslam  
IF | 5-4 | Fr.  
Cedar Park, Texas



**13**  
Kennedy Ferguson  
P | 5-6 | Fr.  
Camas, Wash.



**16**  
Leslie Romero  
OF | 5-4 | Fr.  
Gonzales, Calif.



**22**  
Monica Salas  
IF | 5-3 | Jr.  
Goleta, Calif.



**23**  
Emma Steltzer  
OF | 5-6 | Fr.  
Manchester, Mo.



**24**  
Skylar Jenkins  
OF | 5-5 | Fr.  
Lawrenceville, Ga.



**32**  
Lauren Wilmert  
C/1B | 5-10 | Jr.  
Albuquerque, N.M.



**44**  
Aleyah Wilbon  
OF | 5-2 | Sr.  
Fontana, Calif.



**66**  
Sydney Townes  
OF | 5-6 | Sr.  
Lompoc, Calif.



**99**  
Kiana Spencer  
P | 5-6 | Jr.  
Gallup, N.M.

## STAFF



**Paula Congleton**  
Head Coach



**Tyler Heil**  
Assistant Coach



**Breanna Macha**  
Assistant Coach



**Madison Foust**  
Athletic Trainer



**Jeremy Golden**  
Strength and Cond.