

2018-19 NEW MEXICO WOMEN'S BASKETBALL

GAME NOTES

DANIEL GALLEGOS | ASSISTANT DIRECTOR OF ATHLETIC COMMUNICATIONS | DMGALLEGOS@UNM.EDU | CELL: 501-442-2930

» Eight NCAA Tournament Appearances | 1998, 2002, 2003, 2004, 2005, 2006, 2007, 2008 «
 » Five Mountain West Tournament Championships | 2003, 2004, 2005, 2007, 2008 «

2017-18 | SCHEDULE AND RESULTS (FINAL)

OVERALL RECORD: 25-11
MW RECORD:..... 10-8
HOME RECORD:..... 19-3
ROAD RECORD: 5-7
NEUTRAL RECORD: 1-1
STREAK: LI

Date	Opponent	Time
10/30	Lubbock Christian (Exh.)	W, 62-55
11/4	Eastern New Mexico (Exh.)	2 p.m.
11/9	%Texas State	7 p.m.
11/11	%TBA (Quarterfinals)	2 p.m.
11/13-15	%TBA (Semifinals)	TBA
11/16-17	%TBA (Consolation Round)	TBA
11/18	%TBA (Championship)	TBA
11/24	at Houston	1 p.m.
11/28	Oklahoma	7 p.m.
12/1	New Mexico State	2 p.m.
12/5	UTEP	7 p.m.
12/8	at Northern Arizona	2 p.m.
12/15	at New Mexico State	2 p.m.
12/19	+Sacramento State	7 p.m.
12/20	+Hampton or SFA	7 p.m.
12/29	at Long Beach State	3 p.m.
1/2	*Air Force	7 p.m.
1/5	*at Nevada	3 p.m.
1/9	*at UNLV	7 p.m.
1/12	*Colorado State	2 p.m.
1/16	*San Diego State	7 p.m.
1/19	*at Wyoming	2 p.m.
1/23	*UNLV	7 p.m.
1/26	*at Utah State	2 p.m.
2/2	*Fresno State	2 p.m.
2/6	*at San Diego State	Noon
2/9	*Nevada	1 p.m.
2/13	*at San Jose State	8 p.m.
2/16	*at Fresno State	3 p.m.
2/20	*Utah State	7 p.m.
2/27	*San Jose State	7 p.m.
3/2	*at Colorado State	2 p.m.
3/4	*at Boise State	7 p.m.
3/7	*Wyoming	7 p.m.

Mountain West Tournament

3/10	First Round	3/5:30/8 pm
3/11	Quarterfinals	1/3:30/7/9:30 pm
3/12	Semifinals	7/9:30 pm
3/13	Championship	8 pm

* - Mountain West game % - Preseason WNIT
 ^ - Lobo Invitational

Bold - home game at Dreamstyle Arena (15,411)

Game dates & times are Mountain time and subject to change

THE SLATE



NEW MEXICO LOBOS

Record (MW)
 25-11 (10-8 MW) *-2017-18 Final

Head CoachMike Bradbury
 Alma Mater, Yr.....Chattanooga, 93
 Record at UNM.....40-26 (3rd year)
 Career Record218-143 (12th year)

Game Information

Game Number:Exhibition 2
 Dates:11/4
 Location:Albuquerque, N.M.
 Venue:Dreamstyle Arena - The Pit

Series History (Not Including Exh.)

Overall:6-2
 At Home / On Road:6-2 / N/A
 Current Streak:W5
 First Meeting:2/16/75
 Last Meeting:11/22/11

Broadcast Information

Radio:KNML-AM (610)
 Play-By-Play:Josh Suchon
 Analyst:Nikki Lobato
 Live Stream:Mountain West Network
 Live Stats:GoLobos.com



Eastern N.M. Greyhounds

Record (LSC)
 16-12 (12-8 LSC) *-2017-18 Final

Head CoachJosh Prock
 Alma Mater, Yr.....Oklahoma, 01
 Record at ENMU60-79 (6th year)
 Career Record168-110 (11th year)

TIPPING OFF

The University of New Mexico women's basketball team is set to take part in their second and final exhibition game in preparation for their 2018-19 season-opener against Texas State on Friday, November 9. That game will be played at Dreamstyle Arena - The Pit in Albuquerque as part of the preseason WNIT Tournament.

The final tuneup for the Lobos will be against NCAA Division II-member Eastern New Mexico. This will be the third-straight season that the Lobos and Greyhounds will play each other in an exhibition game and the seventh time since 2007-08.

Under Bradbury, the Lobos are 5-0 in exhibition games with two of those wins coming against Eastern New Mexico.

In their first exhibition game this season, the Lobos took on DII power Lubbock Christian. In what was a very competitive game, the Lobos eventually built a double-digit lead heading into halftime and then were able to hold off a strong comeback effort by LCU in the fourth quarter.

A pair of Lobos scored in double figures in that exhibition with senior Jaisa Nunn leading the way with 17 points. Nunn also added nine rebounds. Redshirt junior Aisia Robertson followed in points with 15 in her first game action after sitting last season as a transfer. Sophomore Jaedyn De La Cerda and freshman Shai McGruder were sparks off the bench with 17 combined points.





UNIVERSITY OF NEW MEXICO 2018-19 WOMEN'S BASKETBALL



UNIVERSITY OF NEW MEXICO

Location.....Albuquerque, N.M.
Founded.....1889 by Territorial Legislature
Enrollment.....25,015
Nickname.....Lobos
Colors.....Cherry (PMS 200) & Silver (PMS Cool Gray 6)
Conference.....Mountain West Conference
National Affiliation.....NCAA Division I
President.....Dr. Garnett Stokes
Director of Athletics.....Eddie Nuñez
Senior Associate A.D.....Brad Hutchins
Assoc. A.D./SWA.....Janice Ruggiero
Faculty Representative.....Amy Neel

FACILITY INFORMATION

Facility.....Dreamstyle Arena - The Pit
Capacity.....15,411
Age.....Built in 1966 (Renovated in 2009-10)
All-Time Home Record.....405-205 (.664)

PROGRAM HISTORY

First Season.....1974-75
Overall Record.....634-534 (.543) in 40 seasons
Overall MW Record.....174-126 (.580) in 19 seasons
Postseason Tournament Appearances.....16
NCAA Tournament Appearances.....8
Last NCAA Postseason Appearance.....2017-18 (WNIT)
Last NCAA Postseason Opponent.....TCU
Last NCAA Postseason Result.....L, 72-81
MW Regular Season Championships.....2
.....(2003-04 & 2004-05)
MW Tournament Championships.....5
.....(2002-03, 2003-04, 2004-05, 2006-07, 2007-08)

TEAM INFORMATION

2017-18 Overall Record.....25-11
2017-18 Mountain West Record.....10-8
2017-18 Mountain West Season Finish.....6th
2017-18 MW Tournament Finish.....Quarterfinals
Letterwinners Returning | Lost.....7 | 7
Starters Returning | Lost.....1 | 4

COACHING STAFF

Head Coach.....Mike Bradbury (Chattanooga, 1993)
Record at UNM (Years).....40-26 (3rd Season)
Career Record (Years).....218-143 (12th Season)
Head Coach Phone.....505-925-5770
Women's Basketball Fax.....505-925-5779
Head Coach E-Mail.....mbradbury@unm.edu

Assistant Coach.....Valerie King (3rd Season)
Alma Mater.....Cincinnati, 2004
Assistant Coach.....Bill Ferrara (2nd Season)
Alma Mater.....Florida, 2003
Assistant Coach.....Symone Denham (1st Season)
Alma Mater.....Wright State, 2016

Director of Operations.....Vera Jo Bustos (5th Season)
Video Coordinator.....Cheyne Dorsey (1st Season)
Athletic Trainer.....Andrea Quintana
Strength Coach.....Jeremy Golden (1st Season)
Academic Adviser.....Brian Ferguson

MISCELLANEOUS INFORMATION

2017-18 Total Attendance Average.....106, 026
2017-18 Average Attendance.....4,819
2017-18 NCAA Attendance Rank.....18th
2017-18 Mountain West Attendance Rank.....1st

MULTIMEDIA INFORMATION

Athletics Website.....www.GoLobos.com
Main University Web Site.....www.unm.edu
Conference Web Site.....www.TheMW.com
Facebook.....www.facebook.com/NewMexicoLobos
Twitter.....@UNMLobos

MEDIA RELATIONS

Women's Basketball Contact.....Daniel Gallegos
Cell Phone (Preferred).....501-442-2930
Email.....dmgallegos@unm.edu
Address:.....

Department of Athletics
Colleen J. Maloof Administration Building
MSC04 2680
1 University of New Mexico
Albuquerque, NM 87131-0001







UNIVERSITY OF NEW MEXICO 2018-19 WOMEN'S BASKETBALL



THE WEEK AHEAD

SUNDAY	MONDAY	TUESDAY	WEDNESDAY	THURSDAY	FRIDAY	SATURDAY
 4 vs. Eastern N.M. (Exh.) Dreamstyle Arena - The Pit Albuquerque, N.M.	5	6	7	8	 9 vs. Texas State 7 p.m. Dreamstyle Arena - The Pit Albuquerque, N.M.	10

MW STANDINGS

2018-19 Standings (In Predicted Order of Finish)

Team	GAC	Pct.	Overall	Pct.	Streak
Boise State	0-0	.000	0-0	.000	---
UNLV	0-0	.000	0-0	.000	---
Fresno State	0-0	.000	0-0	.000	---
Wyoming	0-0	.000	0-0	.000	---
NEW MEXICO	0-0	.000	0-0	.000	---
Colorado State	0-0	.000	0-0	.000	---
Nevada	0-0	.000	0-0	.000	---
Utah State	0-0	.000	0-0	.000	---
San Diego State	0-0	.000	0-0	.000	---
Air Force	0-0	.000	0-0	.000	---
San Jose State	0-0	.000	0-0	.000	---

The Conference Slate

Sunday, November 4

EASTERN NEW MEXICO AT NEW MEXICO (EXHIBITION) | 2 P.M. (MT)

Tuesday, November 6

Utah State at Washington State | 8 p.m. (MT)
 Fresno State at Northern Arizona | 11:30 a.m. (MT)
 Eastern New Mexico at Colorado State (Exhibition) | 7 p.m. (MT)
 Western State at Air Force (Exhibition) | 7:15 p.m. (MT)
 San Francisco State at San Jose State (Exhibition) | 7 p.m. (PT)

Wednesday, November 7

Utah at Nevada | 6:30 p.m. (MT)
 Chadron State at Wyoming (Exhibition) | 6:30 p.m. (MT)

Thursday, November 8

Cal State Northridge at Boise State | 5 p.m. (MT)

Friday, November 9

Northern New Mexico at Utah State (Exhibition) | 2 p.m. (MT)
 Hawai'i at San Diego State | 11 a.m. (PT)
 George Mason at Air Force | Noon (MT)
 Wright State at UNLV | 6 p.m. (MT)
TEXAS STATE AT NEW MEXICO | 7 P.M. (MT)
 Wyoming at Saint Mary's | 6:30 p.m. (PT)
 San Jose State at San Francisco | 7 p.m. (MT)



HOW NM STACKS UP IN THE MW

Team Rankings (2017-18 FINAL)

Category	Stat	Rank
Scoring Offense	80.4/gm	1st
Scoring Defense	70.7/gm	10th
Scoring Margin	+9.7	1st
Free Throw %	.755 (522-of-691)	2nd
Field Goal %	.426 (1,026-of-2,420)	2nd
Field Goal % Def.	.409 (954-of-2,332)	6th
3PT Field Goal %	.342 (319-of-932)	5th
3PT Field Goals Made	319 (8.9/gm)	1st
3PT Field Goal % Def.	.334 (253-of-758)	9th
Rebounding (Team)	1,433 (39.8/gm)	2nd
Rebounding (Opp.)	1,472 (40.9/gm)	10th
Rebounding Margin	-1.1	6th
Blocked Shots	112 (3.1/gm)	6th
Assists	589 (16.4/gm)	1st
Steals	291 (8.1/gm)	2nd
Turnover Margin	+4.2	1st
Assist/Turnover Ratio	1.3	1st
Offensive Rebounds	425 (11.8/gm)	5th
Defensive Rebounding	1,008 (28.0/gm)	2nd

Individual Rankings (2017-18 FINAL)

Category	Player	Stat	Rank
Scoring	Jaisa Nunn	595 (17.0 ppg)	2nd
Rebounding	Jaisa Nunn	358 (10.2 rpg)	1st
Field Goal %	Jaisa Nunn	.637 (221-of-347)	1st
Assists	Cherise Beynon	243 (6.8 apg)	1st
Free Throw %	Jaisa Nunn	.809 (152-of-188)	5th
Steals	Cherise Beynon	85 (2.4)	2nd
3PT FG %	Tesha Buck	.377 (104-of-276)	11th
3PT FG Made	Tesha Buck	104 (2.9 mpg)	2nd
Blocked Shots	Antonia Anderson	34 (1.1 bpg)	3rd
AST/TO Ratio	Cherise Beynon	1.7 (243/146)	2nd
Off. Rebounds	Jaisa Nunn	177 (5.1 rpg)	1st
Def. Rebounds	Jaisa Nunn	181 (5.2 rpg)	5th
Minutes Played	Tesha Buck	1,204 (33.4 mpg)	7th

2018-19 MW PLAYERS OF THE WEEK

Week 1	Week 7	Week 13
Week 2	Week 8	Week 14
Week 3	Week 9	Week 15
Week 4	Week 10	
Week 5	Week 11	
Week 6	Week 12	



UNIVERSITY OF NEW MEXICO

2018-19 WOMEN'S BASKETBALL



LAST TIME IT HAPPENED (UNM)

As A Team

Scored 100 Points:	100 - vs. Boise St. (1-3-18)
Scored 90 Points:	93 - vs. Rice (3-20-18)
Scored Fewer Than 50 Points:	42 - at UNLV (1-11-17)
Scored Fewer Than 40 Points:	38 - at Colorado St. (1-3-15)
Won by 40 Points:	107-66 - vs. Northern N.M. (11-15-17)
Won By 30 Points:	84-54 - vs. San Jose St. (3-5-18)
Lost By 30 Points:	L, 97-59 - at No. 18 DePaul (11-16-14)
Lost By 40 Points:	L, 105-63 - at Oklahoma (12-16-17)
Shot 60% or Better:	61.2% - Pacific (11-9-01)
Shot Less Than 30%:	28.6% (18-63) - Colorado St. (2-28-18)
Shot 60% 3FG or Better:	68.2% (15-22) - at NMSU (12-2-17)
Shot Less Than 20% 3FG:	17.4 (4-23) - Colorado St. (2-28-18)
Made 15 3-Pointers:	15 - vs. Utah St. (1-31-18)
Shot 90% on FTs (10 or more):	94.4% (17-18) - vs. Fresno St. (1-13-18)
Shot Less Than 40% On FTs:	14.3% (1-7) - at UTEP (11-30-17)
Had 50 Rebounds:	59 - vs. San Jose St. (3-5-18)
Had 20 Offensive Rebounds:	20 - at Fresno St. (3-2-18)
Had 25 Assists:	25 - vs. SJSU (2-3-18)
Had 20 Turnovers:	20 - vs. Lamar (12-20-17)
Had Less Than 10 Turnovers:	7 - vs. Wyoming (3-6-18)
Had 10 Steals:	15 - vs. TCU (3-22-18)
Had 10 Blocks:	11 - vs. New Mexico St. (11-15-16)
Had Two 20-Point Scorers: vs. TCU (3-22-18)
.....	Tesha Buck (24) and Cherise Beynon (20)
Had Three 20-Point Scorers: at Fresno St. (3-2-18)
.....	Tesha Buck (30), Jaisha Nunn (22) and Cherise Beynon (22)
Had 6 Double-Digit Scorers:Never
Had 5 Double-Digit Scorers: at Utah St. (2-14-18)
Had No Double-Digit Scorers:Northern Arizona (12-31-14)
Had Two 10+ Rebounders: vs. San Jose St. (3-5-18)
.....	Jaisha Nunn (11) and Cherise Beynon (10)
Scored 50 Points In 1st Half:	54 - vs. Lamar (12-20-17)
Scored 50 Points In 2nd Half:	52 - vs. Rice (3-20-18)
Scored 60 Points in a 2nd Half:	63 - vs. Illinois (11-26-17)
Scored 20 Or Fewer Points In 1st Half:	17 - at Colorado St. (2-22-17)
Scored 20 Or Fewer Points In 2nd Half:	19 - at Marquette (12-21-16)
Lowest Pts Scored in Quarter:	2 - vs. Tulsa (11-25-16)
Failed To Make a 3FG: at UNLV (1-11-17)
Defeated a Ranked Team:	W, 88-87 vs. No. 16 Marquette (11-13-17)
Lost To a Ranked Team:	L, 49-48 vs. No. 25 CSU (2-24-16)
Won an OT Game:	W, 93-89 at Fresno St. (3-2-18)
Lost an OT Game:	L, 80-86 vs. Boise St. (2-12-14)
Won a 2OT Game:	W, 64-54 vs. California (11-20-10)
Lost a 2OT Game:	L, 69-65 vs. Fresno St. (1-2-16)

As An Individual

Had a Triple-Double:	Cherise Beynon (22 pts, 13 rebs, 11 assists)
..... at Fresno St. (3-2-18)
Had a Double-Double (Pts/Reb): C. Beynon (20 pts, 10 reb); J. Nunn (14 pts, 11 reb)
..... vs. TCU (3-22-18)
Had a Double-Double (Pts/Asst):	Cherise Beynon (20 pts & 10 asts)
..... vs. Fresno St. (1-13-18)
Had a Double-Double (Reb/Asst): vs. Fairleigh Dickinson (11-12-16)
.....	Cherise Beynon (13 reb, 10 asts)
Scored 20+ Pts with 10+ Rebs:	Cherise Beynon (20 pts, 10 reb)
..... vs. TCU (3-22-18)
Scored 30 Points:	Cherise Beynon (33) vs. Saint Mary's (3-15-18)
Scored 40 Points:	Cherise Beynon (41) at SDSU (1-20-18)
Scored 30 Points (MW Only): Tesha Buck (30)
..... at Fresno St. (3-2-18)
Scored 40 points (MW Only):	Cherise Beynon (41)
..... at San Diego St. (1-20-18)
Had 20 Rebounds:	Richelle van der Keijl (20) vs. New Mexico St. (11-15-16)
Had 15 Rebounds:	Jaisha Nunn (17) vs. Lamar (12-20-17)
Had 15 Assists:	Cherise Beynon (15) vs. Boise St. (1-6-18)
Had 5 Steals:	Jaisha Nunn (5) vs. TCU (3-22-18)
Had 5 Blocks:	Antonia Anderson (5) vs. Colorado St. (2-28-18)

LOBOS PICKED 5TH IN PRESEASON MW POLL

The Mountain West recently released its annual preseason predicted order of finish ahead of the 2018-19 women's basketball season and UNM was picked fifth behind preseason favorite Boise State, UNLV, Fresno State and Wyoming. The Lobos were just eight points back of Wyoming as UNM garnered 150 points in the rankings.

NUNN NAMED PRESEASON ALL-MW

Senior center Jaisha Nunn continues to solicit a lot of preseason attention and deservedly so based off of her stellar junior season. The most-recent accolade to come Nunn's way is inclusion on the 2018-19 Preseason All-Mountain West Team.

UNM AND UCONN

In their first exhibition game of the season against NCAA Division II perennial power Lubbock Christian, the University of New Mexico did something to LCU that only one of the Division I women's basketball team has done; that's beat the Lady Chaps in an exhibition. Prior to the Lobos' 62-55 win over Lubbock Christian, LCU was 4-1 all-time in exhibition games versus DI opponents with the lone loss coming at the hands of UCONN in 2015.

NUNN LIKE HER

JAISHA NUNN set herself apart from many of her counterparts last season as the rising senior was the lone player in the Mountain West to average a double (points/rebounds). In her junior campaign, Nunn was the team's leading scorer and ranked second in the MW with 17.0 ppg while also topping the team and league in rebounds at 10.2. Already a 1,000-point career scorer, Nunn is within striking distance of becoming a 1,000-rebounder as well. The most rebounds in a career is 982 held by Carol Moreland. Nunn is already in the Top-10 all time at UNM, ranking 10th with 654.

NUNN NAMED TO LISA LESLIE WATCH LIST

Prior to the 2018-19 season tipoff, UNM senior **JAISHA NUNN** been named to the preseason watch list for the 2019 Lisa Leslie Award. Entering its second year and named after the three-time All-American and 1994 National Player of the Year, the Lisa Leslie Award recognizes the top centers in women's NCAA Division I college basketball and is a part of the larger Naismith Starting 5, honoring the best players at each position.

Nunn is among 20 to be on the initial watch list, and is one of two from the Mountain West.



UNIVERSITY OF NEW MEXICO

2018-19 WOMEN'S BASKETBALL



LOOKING TO BUILD OFF LAST SEASON

Last season was a breakout year for the University of New Mexico women's basketball team under the direction of second-year head coach **MIKE BRADBURY** as the 2017-18 Lobos went 25-11. It was the only the second time in the last nine years that a UNM women's basketball team won at least 20 games and the 25 wins tied for the second-most wins in a season in program history.

BY THE NUMBERS

Here is what is returning and missing for the 2018-19 Lobos.

	Returning	Lost	% Returning
Points.....	1,001	1,892	.346
Rebounds.....	543	742	.379
Assists.....	52	537	.088
Blocks.....	68	44	.607
Steals.....	66	225	.227
3-Pointers.....	49	270	.154
Free Throws.....	218	304	.418

0 - 90+

Last season, the Lobos averaged 80.4 points per game to lead the Mountain West and rank 16th in DI. Prior to last year, the women's basketball program at UNM had registered 37 games of scoring 90 or more points. In 2017-18 alone, the Lobos achieved that scoring feat 10 times and on three occasions went over the century mark.

DIALING LONG DISTANCE

The Lobos' high-powered offense was spurred on last season by the 3-point shot. In that regard, UNM attempted the eighth-most 3-pointers in the country with 932 tries from long range. The Lobos also buried them rather often as they made 319 to rank 11th in DI.

YOUNG TALENT ABOUND

Only one starter from the 2017-18 team returns this season for the Lobos, leaving a significant amount of playing time. While the Lobos do return seven letterwinners from last year, they also hauled in a highly-touted recruiting class that was ranked as high as No. 19 by ESPNW. Among that class, the Lobos inked four prospects that were rated at least 3-Star by ESPNW. The highest ranked among that incoming freshman class was **JAYLA EVERETT**. The St. Louis native was ranked the No. 27 guard and 94th overall in the 2018 class.

Outside of Everett, the Lobos will benefit from the services of fellow incoming freshmen **QUINCY NOBLE**, **BRE'ASISAJAH MATHEWS**, **AHLISE HURST** and **SHAIQUEL MCGRUDER**.

LAST TIME IT HAPPENED (OPP)

As A Team

Scored 100 Points:	105 - at Oklahoma (12-16-17)
Scored 90 Points:	91 - at Boise State (2-7-18)
Scored Less Than 50 Points:	48 - vs. Colorado State (2-28-18)
Scored Less Than 40 Points:	35 - at UTEP (11-30-17)
Shot 50% Or Better:	50.8% (32-63) - vs. TCU (3-22-18)
Shot Less Than 30%:	26.8% (19-71) - vs. San Jose State (3-5-18)
Shot 50% 3FG Or Better:	50.0% (10-20) - vs. Wyoming (2-21-18)
Shot Less Than 20% 3FG:	11.1% (1-9) - vs. Utah State (1-31-18)
Made 15 3-Pointers:	15 - at Oklahoma (12-16-17)
Shot 90% On FTs (10 or more):	90% (18-20) - at Boise State (2-7-18)
Shot Less Than 50% On FTs:	40.0% (3-10) - vs. San Diego State (12-31-16)
Had 50 Rebounds:	55 - vs. Nevada (12-30-17)
Had 20 Offensive Rebounds:	22 - vs. Lamar (12-20-17)
Had 25 Assists:	28 - at SDSU (1-20-18)
Had 30 Turnovers:	30 - vs. Northern New Mexico (11-15-17)
Had Less Than 10 Turnovers:	9 - vs. Wyoming (3-8-18)
Had 10 Steals:	12 - vs. TCU (3-22-18)
Had 10 Blocks:	10 - vs. Utah State (2-10-16)
Had Two 20-Point Scorers:	at Boise State (2-7-18)
	Marta Hermida (26), Riley Lupfer (20)
Had 6 Double-Digit Scorers:	Baylor (1-4-95)
Had 5 Double-Digit Scorers:	vs. Navy (12-10-17)
Had No Double-Digit Scorers:	Boise State (2-25-15)
Had Two 10+ Rebounders:	Saint Mary's (3-15-18)
	Sydney Raggio (12), Megan McKay (10), Stella Beck (10)
Scored 50+ Points In 1st Half:	56 - at Oklahoma (12-16-17)
Scored 50+ Points In 2nd Half:	50 - Saint Mary's (3-15-18)
Scored 20 Or Less Points In 1st Half:	18 - vs. Utah State (1-31-18)
Scored 20 Or Less In 2nd Half:	17 - vs. Nevada (3-4-16)
Failed To Make a 3FG:	0-1 by San Diego State (2-18-15)

As An Individual

Had a Double-Double (Pts/Reb):	Erica Ogwumike (31 pts, 10 reb)
	vs. Rice (3-20-18)
Had a Double-Double (Pts/Asst):	Mindy Bonham (17 pts & 10 assts)
	BYU (3-1-11)
Had 20+ Points & 10+ Rebounds:	Erica Ogwumike (31 pts, 10 reb)
	vs. Rice (3-20-18)
Scored 30 Points:	Erica Ogwumike (31) - vs. Rice (3-20-18)
Scored 30 Points (MW Only):	Candice White (32) - at Fresno State (3-2-18)
Had 20 Rebounds:	Kaylee Johnson (22) - No. 1 Stanford (11-24-14)
Had 15 Rebounds:	Annie Brady (16) - Colorado State (2-28-18)
Had 10 Assists:	Geena Gomez (11) - at SDSU (1-20-18)
Had 5 Steals:	McKynzie Fort (5) - vs. San Diego State (2-6-16)
Had 5 Blocks:	AJ Cephas (5) - at Nevada (1-7-17)



UNIVERSITY OF NEW MEXICO

2018-19 WOMEN'S BASKETBALL



LOBOS RECORD WHEN...

	Overall	In MW
Overall	25-11	10-8
At home	19-3	7-2
On the road	5-7	3-6
At neutral sites	1-1	0-0
After a win	19-7	6-4
After a loss	6-4	4-4
In overtime	1-1	1-1
vs. ranked opponents	1-0	0-0
Games decided by 1-4 points	4-4	2-3
Games decided by 5-9 points	4-4	2-3
Games decided by 10-19 points	5-2	2-2
Games decided by 20+ points	12-1	4-0
Leading after Q1	18-7	7-5
Trailing after Q1	6-3	2-2
Tied after Q1	1-1	0-1
Leading at half	21-5	7-3
Trailing at half	3-6	2-5
Tied at half	1-0	1-0
Leading after Q3	24-2	9-2
Trailing after Q3	1-9	1-6
Tied after Q3	0-0	0-0
Shooting 50% or better	5-0	1-0
Shooting between 40-49.9%	14-4	6-3
Shooting less than 40%	6-7	3-5
Opponent shoots 50% or better	3-3	2-2
Opponent shoots b/w 40-49.9%	5-6	1-4
Opponent shoots b/w 30-39.9%	14-2	7-2
Opponent shoots less than 30%	3-0	0-0
UNM higher FG%	19-1	7-1
Opponent higher FG%	6-10	3-7
FG% Tied	0-0	0-0
UNM outrebounds	13-2	6-2
Opponent outrebounds	12-9	4-6
Rebounds tied	0-0	0-0
UNM more made free throws	17-7	7-5
Opponent more made free throws	4-4	1-3
Made free throws tied	4-0	2-0
UNM 3FG% higher	17-2	4-0
Opponent 3FG% higher	8-9	6-8
3FG% tied	0-0	0-0
UNM has more fouls	4-5	2-4
Opponent has more fouls	18-6	6-4
Fouls are tied	3-0	2-0
UNM more turnovers	5-4	2-3
Opponent more turnovers	19-7	8-5
Turnovers tied	1-0	0-0
Scoring less than 50 points	0-0	0-0
Scoring 50-59 points	3-1	2-1
Scoring 60-69 points	0-5	0-3
Scoring 70-79 points	3-2	2-1
Scoring 80-89 points	9-3	3-3
Scoring 90-99 points	7-0	2-0
Scoring 100+ points	3-0	1-0
Allowing 40 points or less	2-0	1-0
Allowing 41-49 points	2-0	2-0
Allowing 50-59 points	5-0	2-0
Allowing 60-69 points	6-4	2-3
Allowing 70-79 points	4-2	1-2
Allowing 80-89 points	5-1	1-0
Allowing 90+ points	1-4	0-3
In November	8-0	0-0
In December	6-1	2-0
In January	3-5	3-5
In February	4-3	4-3
In March	4-2	1-0

IMPACT TRANSFERS

In looking to replace the starters from last year, the Lobos also turned to transfers and added three DI transfers over the summer. New to the program are **NIKE MCCLURE** (Washington State), **NAJALA HOWELL** (UTEP), and **BRIDE KENNEDY-HOPOATE** (Iowa State). That trio joins Kansas-transfer **AISIA ROBERTSON**, who will be eligible to play this season after sitting out last season. Only McClure will be eligible to play this season as a graduate transfer while Kennedy-Hopoate and Howell will sit this season as Robertson did last year.

THERE'S NO PLACE LIKE HOME

Dreamstyle Arena - The Pit is nationally recognized as one of the top basketball venues for college basketball. Need proof?! How about Sports Illustrated ranking it as one of the Top-20 sporting venues, of any sport, in the world for the 20th century!

Yes, The Pit is truly a special place, and it has created an unparalleled environment for the New Mexico women's basketball program over the years. The Lobos have led the Mountain West in attendance every year of the conference's existence since the 1999-00 season. Additionally, during that same span, the program has ranked in the Top-20 nationally in attendance in each of those years.

Wanna talk records?! The UNM women's basketball team is an impressive 405-205 at home all-time, a winning percentage of .664 heading into the 2018-19 season.

STUDENT-ATHLETE SPIRIT

Academic excellence has become the norm for the New Mexico women's basketball. The Lobos are regularly taking home Mountain West Academic all-conference and Scholar-Athlete awards, but they shine in national academic rankings as well. For seven of the last 10 seasons, and nine of the last 13 seasons, UNM has finished in the WBCA's Academic Top 25 rankings.

This past season, outgoing senior **CHERISE BEYNON** earned the highest individual academic honor as she was the CoSIDA Academic All-America® of the Year for DI Women's Basketball.

LOBOS FROM NEAR AND FAR

The Lobo women's basketball roster has a mixture of athletes from near and far on its 2018-19 roster. The Lobos have players from eight different states and two by way of the international route. The Lobos feature players from California, Florida, Indiana, Missouri, New Mexico, Ohio, Texas and Washington. Additionally, the Lobos have a pair of players from "Down Under" in Australia.



UNIVERSITY OF NEW MEXICO 2018-19 WOMEN'S BASKETBALL



UNM STARTING LINEUPS (GAME)

Game	G	G	G	G/F	F
11/9 Texas St.					
11/24 at Houston					
11/28 Oklahoma					
12/1 NMSU					
12/5 UTEP					
12/8 at NAU					
12/15 at NMSU					
12/19 Sacramento St.					
12/20 Hampton or SFA					
12/29 at Long Beach St.					
1/2 Air Force					
1/5 at Nevada					
1/9 at UNLV					
1/12 Colorado St.					
1/16 San Diego St.					
1/19 at Wyoming					
1/23 UNLV					
1/26 at Utah St.					
2/2 Fresno St.					
2/6 at San Diego St.					
2/9 Nevada					
2/13 at San Jose St.					
2/16 at Fresno St.					
2/20 Utah St.					
2/27 San Jose St.					
3/2 at Colorado St.					
3/4 at Boise St.					
3/7 Wyoming					

UNM STARTING LINEUPS (RECORD)



UNIVERSITY OF NEW MEXICO

2018-19 WOMEN'S BASKETBALL



WBCA TOP-25 (2018-19 PRE)

#	School (1st-place votes)	Rec.	LW
1.	Notre Dame (30)	(35-3)	1
2.	Connecticut (2)	(36-1)	3
3.	Oregon	(33-5)	5
4.	Louisville	(36-3)	4
5.	Baylor	(33-2)	9
6.	Mississippi State	(37-2)	2
7.	Stanford	(24-11)	13
8.	Texas	(28-7)	10
9.	Oregon State	(26-8)	8
10.	Maryland	(26-8)	18
11.	South Carolina	(29-7)	6
12.	Tennessee	(25-8)	17
13.	Georgia	(26-7)	19
14.	Missouri	(24-8)	22
15.	DePaul	(27-8)	23
16.	North Carolina State	(26-9)	16
17.	Iowa	(24-8)	NR
18.	Syracuse	(22-9)	NR
19.	Marquette	(24-10)	NR
20.	Duke	(24-9)	12
21.	South Florida	(26-8)	24
21.	Texas A&M	(26-10)	11
23.	UCLA	(27-8)	7
24.	Miami (Fla.)	(22-11)	NR
25.	West Virginia	(25-12)	NR

Others receiving votes: Arizona State; Michigan; Florida State; California; Central Michigan; LSU; Kansas; Florida Gulf Coast; Minnesota; Washington; Drake; North Carolina; Illinois; Quinnipiac; Villanova; Wisconsin-Green Bay; Jacksonville; Ohio State; Arkansas-Little Rock; Duquesne; Florida; Kentucky; Buffalo; Gonzaga; Michigan State; Alabama State; Boise State; Houston; Idaho; Princeton; Central Florida; Southern California



AP TOP-25 (2018-19 PRE)

#	School (1st-place votes)	Rec.	Pts.
1	Notre Dame (31)	0-0	775
2	UConn	0-0	728
3	Oregon	0-0	712
4	Baylor	0-0	679
5	Louisville	0-0	664
6	Mississippi State	0-0	563
7	Stanford	0-0	559
8	Oregon State	0-0	517
9	Maryland	0-0	500
10	South Carolina	0-0	479
11	Tennessee	0-0	448
11	Texas	0-0	448
13	Iowa	0-0	383
14	Georgia	0-0	374
15	DePaul	0-0	306
16	Missouri	0-0	294
17	NC State	0-0	288
18	Syracuse	0-0	238
19	Marquette	0-0	231
20	Texas A&M	0-0	149
21	Duke	0-0	131
22	South Florida	0-0	123
23	Arizona St	0-0	122
24	California	0-0	103
25	Miami	0-0	84

Others receiving votes: Minnesota 38, West Virginia 35, UCLA 29, Central Michigan 24, Nebraska 13, Florida St. 12, Michigan 9, **Boise St. 4**, Buffalo 3, Virginia Tech 2, Belmont 2, Virginia 2, TCU 1, Drake 1, Green Bay 1, Duquesne 1.





UNIVERSITY OF NEW MEXICO

2018-19 WOMEN'S BASKETBALL



PRONUNCIATION GUIDE

2	BRE'ASIAJAH Matthews.....	Bre-Asia
3	AHLISE Hurst.....	AH-lease
12	BRIDE Kennedy-HOPOATE... Bride-EE (Hop-o-ate)	
13	SHAIQUEL McGruder.....	Shy-kell
14	NAJALA Howell.....	Nah-Juh-La
23	JAEDYN De La Cerda.....	JAY-dun
44	JAISA Nunn.....	JAY-suh

BY ELIGIBILITY

Seniors (4)

11	Emily Lines.....	G
21	Nike McClure.....	F
24	Erica Moore.....	C
44	Jaisa Nunn.....	C

Juniors (3)

12	Bride Kennedy-Hopoate.....	F
14	Najala Howell.....	G
15	Aisia Robertson.....	G

Sophomores (3)

23	Jaedyn De La Cerda.....	G
32	Antonia Anderson.....	G/F
35	Madi Washington.....	PG

Freshmen (5)

1	Quincy Noble.....	G
2	Bre'Asiah Mathews.....	F
3	Ahlise Hurst.....	G/F
4	Jayla Everett.....	G
13	Shaiquel McGruder.....	F

HOME STATE

California (1)

15	Aisia Robertson.....	G
----	----------------------	---

Florida (1)

11	Emily Lines.....	G
----	------------------	---

Indiana (1)

24	Erica Moore.....	C
----	------------------	---

Missouri (1)

4	Jayla Everett.....	G
---	--------------------	---

New Mexico (1)

23	Jaedyn De La Cerda.....	G
----	-------------------------	---

Ohio (1)

13	Shaiquel McGruder.....	F
----	------------------------	---

Texas (5)

1	Quincy Noble.....	G
2	Bre'Asiah Mathews.....	F
14	Najala Howell.....	G
32	Antonia Anderson.....	G/F
35	Madi Washington.....	G

Washington (2)

21	Nike McClure.....	F
44	Jaisa Nunn.....	C

INTERNATIONAL

3	Ahlise Hurst (Australia).....	G/F
12	Bride Kennedy-Hopoate (Australia).....	F

NUMERICAL ROSTER

#	NAME	POS	HT	YR	EXP.	HOMETOWN (LAST SCHOOL/TEAM)
1	Quincy Noble	G	5-10	Fr.		McKinney, Texas (McKinney HS)
2	Bre'Asiah Mathews	F	6-0	Fr.		Garland, Texas (Lakeview Centennial HS)
3	Ahlise Hurst	G/F	5-9	Fr.		Bendigo, Australia (Bendigo Senior-Secondary)
4	Jayla Everett	G	5-10	Fr.		St. Louis, Mo. (Kirkwood HS)
11	Emily Lines	G	6-1	Sr.		Naples, Fla. (First Baptist Academy)
12	Bride Kennedy-Hopoate	F	6-4	RsJr.		Brisbane, Australia (Iowa State)
13	Shaiquel McGruder	F	6-0	Fr.		Trotwood, Ohio (Trotwood-Madison HS)
14	Najala Howell	G	5-10	RsJr.		DeSoto, Texas (UTEP)
15	Aisia Robertson	G	5-8	RsJr.		San Francisco, Calif. (Kansas)
21	Nike McClure	F	6-3	Sr.		Tenino, Wash. (Washington State)
23	Jaedyn De La Cerda	G	5-6	So.		Roswell, N.M. (Roswell HS)
24	Erica Moore	C	6-2	R-Sr.		Fishers, Ind. (Purdue)
32	Antonia Anderson	G/F	6-2	So.		Cibolo, Texas (Byron P. Steele II HS)
35	Madi Washington	PG	5-9	So.		Red Oak, Texas (Red Oak HS)
44	Jaisa Nunn	C	6-3	Sr.		Kirkland, Wash. (Juanita HS)

COACHING STAFF

Head Coach	Mike Bradbury (Third Season, UT-Chattanooga, 1993)
Assistant Coach	Valerie King (Third Season, Cincinnati, 2004)
Assistant Coach	Bill Ferrara (Second Season, Florida, 2003)
Assistant Coach	Symone Denham (First Season, Wright State, 2016)
Director of Operations	Vera Jo Bustos (Fifth Season, Adams State, 2011)
Video Coordinator	Cheyne Dorsey (First Season, New Mexico, 2016)
Athletic Trainer	Andrea Quintana
Athletic Performance	Jeremy Golden
Athletic Communications	Daniel Gallegos

STARTERS RETURNING (1)

No.	Name	Pos.	Cls.	Pts.	Reb.	Ast.	FG%	FT%
44	Jaisa Nunn	C	Sr.	17.0	10.2	15	.637	.809

OTHER LETTERWINNERS RETURNING (5)

No.	Name	Pos.	Cls.	Pts.	Reb.	Ast.	FG%	FT%
11	Emily Lines	G	Sr.	1.8	1.1	3	.429	.857
23	Jaedyn De La Cerda	G	So.	1.8	0.5	2	.400	.833
24	Erica Moore	C	RsSr.	0.8	0.4	--	.600	1.000
32	Antonia Anderson	F	So.	4.1	3.0	5	.571	.600
35	Madi Washington	G	So.	6.4	1.8	27	.381	.789

STARTERS LOST (4)

No.	Name	Pos.	Cls.	Pts.	Reb.	Ast.	FG%	FT%
0	Cherise Beynon	G	Sr.	16.9	5.9	243	.388	.760
2	Tesha Buck	G	Sr.	14.6	4.6	117	.424	.833
3	N'Dea Flye	PG	Fr.	6.1	3.8	84	.291	.564
4	Alex Lapeyrolerie	G	RsSr.	10.8	4.4	28	.363	.889

OTHER LETTERWINNERS LOST (3)

No.	Name	Pos.	Cls.
10	Jasmine Smith	G	Fr.
22	Mykiel Burleson	G	So.
25	Laneah Bryan	G	Sr.

NEWCOMERS (8)

No.	Name	Pos.	Exp.
1	Quincy Noble	G	HS
2	Bre'Asiah Mathews	F	HS
3	Ahlise Hurst	G/F	HS
4	Jayla Everett	G	HS
12	Bride Kennedy-Hopoate	F	TR
13	Shaiquel McGruder	F	HS
14	Najala Howell	G	TR
21	Nike McClure	F	TR



UNIVERSITY OF NEW MEXICO

2018-19 WOMEN'S BASKETBALL



MIKE BRADBURY | @COACHBRADBURY

RECORD AT UNM: 40-26 (3RD SEASON)

CAREER RECORD: 218-143 (12TH SEASON)

NOTEWORTHY :

- Named the sixth head coach in program history on March 31, 2016
- Led UNM to 25 wins in 2017-18; tied for second-most wins in program history
- Spent six years at Wright State (2010-16) and went 128-73 for the Raiders
- Most single-season wins in Wright State history (26)
- Five 20-win seasons at Wright State with five postseason appearances

MIKE BRADBURY enters his third season as head coach for The University of New Mexico women's basketball team. In his previous two seasons at the helm, Bradbury has guided the Lobos to a 40-26 overall record. Over half of that win total occurred last season as Bradbury's 2017-18 squad went 25-11.

At UNM, Bradbury has coached five All-Mountain West performers with Cherise Beynon, Jaisa Nunn, and Richelle van der Keijl making the All-Mountain West Team. Additional Mountain West plaudits earned under Bradbury have seen Beynon be named to the All-Defensive Team, Mykiel Burleson selected to the All-Freshman Team and van der Keijl and Tesha Buck named the Mountain West Newcomer of the Year in consecutive seasons.

This past season, year two under Bradbury, saw the Lobos have a breakout season, especially offensively as they ended the 2017-18 season averaging 80.4 points per game while also posting an impressive +9.7 scoring margin. Both marks led the Mountain West and the point-per-game total was 16th-best in NCAA DI last season.

A significant reason for the jump in offensive production was the fact that the Lobos were one of the most potent three-point shooting threats in the country. For the season, the Lobos attempted the eighth-most overall trifectas in DI hoisting 932 long distance shots. Successful 34% of the time, the Lobos made the 11th most 3's burying 319.

Prior to coming to Albuquerque, Bradbury built a successful

nine year run as a Division-I head coach with stops at Morehead State (Morehead, Ky.) and Wright State (Dayton, Ohio). Most recently with the Raiders, Bradbury led his squad to five 20-win seasons, including each of his final three seasons. During that time, Wright State has amassed a 75-28 record, the best amongst the 13 Division I programs in the state of Ohio.

Overall at Wright State, Bradbury had five winning seasons, all of which were 20-win seasons, in six years - a feat made all the more remarkable as Wright State had just one winning season in the previous 22 before his arrival. In the previous 37 seasons of women's basketball at Wright State, the Raider program had tallied 20 wins just once before Bradbury led the team to 20 wins in five of his six seasons.

His most prominent three-year run at Wright State started in 2013-14, when the Raiders won a school-record 26 games on the way to a 26-9 season and the program's first-ever appearance in the NCAA Tournament. That season saw the Raiders finish second in the Horizon League and win its first Horizon League Tournament. It also featured the program's first road win at perennial league power Wisconsin-Green Bay. Kim Demmings was named the Horizon League Player of the Year and Tournament MVP, and it marked the first time in school history the program had a pair of first team All-Conference selections.

He followed up that by earning Horizon League Coach of the Year in 2014-15 after a 25-9 season that saw his squad lose its Horizon League Preseason Player of the Year less than two





UNIVERSITY OF NEW MEXICO

2018-19 WOMEN'S BASKETBALL



minutes into the season opener. The Raiders just missed a second straight NCAA Tournament appearance, falling in overtime in the conference championship game. The team did make its first appearance in the Women's NIT as the league's automatic qualifier, and in 2015-16, the team made it back-to-back WNIT appearances after a 24-11 season, earning the program's first at-large bid.

Those three seasons are the three winningest seasons in the history of Wright State women's basketball.

In his first two seasons at Wright State, he led the team to a 20-13 campaign and a 21-13 mark and berths in the Women's Basketball Invitational, the first NCAA Division I postseason berths for the program. Overall, Bradbury has coached three Horizon League Players of the Year (all in his last three seasons), six first-team All-Horizon League players, three second-team members and four All-Freshman team members.

Prior to his time at Wright State, Bradbury was the head coach at Morehead State where he led the Division I program to a 50-44 mark in three seasons, including a watershed 22-11 season, which was the second-most wins in Morehead State history and the most wins by the Eagles in the previous 38 years.

At Morehead State he coached one Ohio Valley Conference Player of the Year, along with one first-team All-OVC pick (two seasons) and three second-team All-OVC picks.

Bradbury also spent time as an assistant coach at Xavier (2002-06), Cincinnati (1996-02), VCU (1995-96), East Tennessee State (1994-95) and Chattanooga (1991-94). In his 27 seasons as an assistant and as a head coach, Bradbury has had 25 winning seasons.

THE BRADBURY FILE

EDUCATION

UT-Chattanooga - B.S. Recreation (1993)

COACHING EXPERIENCE

1991-93	Student Assistant	Chattanooga
1993-94	Assistant Coach	Chattanooga
1994-95	Assistant Coach	East Tennessee
1995-96	Assistant Coach	VCU
1996-02	Assistant Coach	Cincinnati
2002-07	Assistant Coach	Xavier
2007-10	Head Coach	Morehead State
2010-16	Head Coach	Wright State
2016-pres.	Head Coach	New Mexico

CAREER HEAD COACHING YEAR-BY-YEAR

2007-08	11-19 (9-11)	Morehead State
2008-09	17-14 (11-7)	Morehead State
2009-10	22-11 (14-4)	Morehead State
2010-11	20-13 (11-7)	Wright State
2011-12	21-13 (12-6)	Wright State
2012-13	12-18 (6-10)	Wright State
2013-14	26-9 (12-4)	Wright State
2014-15	25-9 (12-4)	Wright State
2015-16	24-11 (12-6)	Wright State
2016-17	15-15 (10-8)	New Mexico
2017-18	25-11 (10-8)	New Mexico
Total	218-143 (137-75)	

HEAD COACHING RECORD

2007-10	Morehead State	50-44 (.532)
2010-16	Wright State	128-73 (.637)
2016-pres.	New Mexico	40-26 (.606)
11 years		218-143 (.604)



UNIVERSITY OF NEW MEXICO

2018-19 WOMEN'S BASKETBALL



QUINCY NOBLE
G | 5-10 | FR.
MCKINNEY, TEXAS



BRE'ASIAJAH MATHEWS
F | 6-0 | FR.
GARLAND, TEXAS



AHLISE HURST
G | 5-9 | FR.
BENDINGO, AUSTRALIA



JAYLA EVERETT
G | 5-10 | FR.
SAINT LOUIS, MO.



EMILY LINES
G | 6-1 | SR.
NAPLES, FLA.



BRIDE KENNEDY-HOPOATE
F | 6-4 | RSJR.
BRISBANE, AUSTRALIA



SHAIQUEL MCGRUDER
F | 6-0 | FR.
TROTWOOD, OHIO



NAJALA HOWELL
G | 5-10 | RSJR.
DE SOTO, TEXAS



AISIA ROBERTSON
G | 5-8 | RSJR.
SAN FRANCISCO, CALIF.



NIKE MCCLURE
F | 6-3 | SR.
TENINO, WASH.



JAEDYN DE LA CERDA
G | 5-6 | SO.
ROSWELL, N.M.



ERICA MOORE
C | 6-2 | R-SR.
FISHERS, IND.



ANTONIA ANDERSON
G/F | 6-2 | SO.
CIBOLO, TEXAS



MADI WASHINGTON
PG | 5-9 | SO.
RED OAK, TEXAS



JAISIA NUNN
C | 6-3 | SR.
KIRKLAND, WASH.

COACHING STAFF



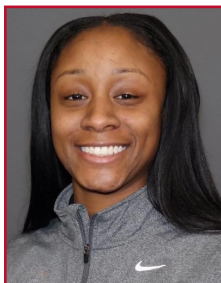
MIKE BRADBURY
HEAD COACH
THIRD SEASON



VALERIE KING
ASSISTANT COACH
THIRD SEASON



BILL FERRARA
ASSISTANT COACH
SECOND SEASON



SYMONE DENHAM
ASSISTANT COACH
FIRST SEASON



VERA JO BUSTOS
DIR. OF OPERATIONS
FIFTH SEASON



CHEYNE DORSEY
VIDEO COORDINATOR
FIRST SEASON



UNIVERSITY OF NEW MEXICO

2018-19 WOMEN'S BASKETBALL



#1

QUINCY NOBLE

G | 5-10 | FR | McKinney, Texas (McKinney HS)



PPG	FG %	3PT %	FT %	RPG	APG	SPG	BPG	MPG
***	***	***	***	***	***	***	***	***

NOBLE'S CAREER STATS AT UNM

YEAR	GP-GS	MIN/AVG	FG-FGA	PCT.	3FG-FGA	PCT.	FT-FTA	PCT.	REB/AVG	AST.	TO	BLK	STL	PTS	PTS AVG
2018-19															
TOTALS															

HIGH SCHOOL/CLUB: Played at McKinney High School in McKinney, Texas under head coach Debbie Harris ... helped McKinney to Bi-District

Championships in 2014-15 and 2017-18 ... was named academic all-district three times ... 6-6A district co-offensive player of the year as a senior ... ranked as the #28 guard in the 2018 class by ESPNW ... averaged 17.4 points per game, 1.8 assists per game, 5.5 rebounds per game and 2.6 steals per game in high school ... also played club basketball for the Texas Elite.

PERSONAL: Born on September 7, 1999 ... daughter of Cary and Erica Noble ... has one brother, Miles Noble (14) ... hobbies include shopping and hanging out with family ... favorite athlete is Klay Thompson of the Golden State Warriors ... favorite food is pizza ... lists favorite movie as The Princess and the Frog ... majoring in Communications and Marketing at UNM.

Noble's Top Performances

Points	Season
	Career
FGM	Season
	Career
FGA	Season
	Career
3PT FGM	Season
	Career
3PT FGA	Season
	Career
FTM	Season
	Career
FTA	Season
	Career
Rebounds	Season
	Career
Assists	Season
	Career
Blocks	Season
	Career
Steals	Season
	Career
Turnovers	Season
	Career
Min. Played	Season
	Career

GAME-BY-GAME STATISTICS

Opponent	Date	GS	Min	FG-A	3FG-A	FT-A	Reb	PF	A	TO	B	S	PTS
Texas St.	11/9												
at Houston	11/24												
Oklahoma	11/28												
NMSU	12/1												
UTEP	12/5												
at NAU	12/8												
at NMSU	12/15												
Sacramento St.	12/19												
at Long Beach St.	12/29												
Air Force	1/2												
at Nevada	1/5												
at UNLV	1/9												
Colorado St.	1/12												
San Diego St.	1/16												
at Wyoming	1/19												
UNLV	1/23												
at Utah St.	1/26												
Fresno St.	2/2												
at San Diego St.	2/6												
Nevada	2/9												
at San Jose St.	2/13												
at Fresno St.	2/16												
Utah St.	2/20												
San Jose St.	2/27												
at Colorado St.	3/2												
at Boise St.	3/4												
Wyoming	3/7												

NOTEWORTHY





UNIVERSITY OF NEW MEXICO

2018-19 WOMEN'S BASKETBALL



#2

BRE'ASIAJAH MATHEWS

F | 6-0 | FR | Garland, Texas (Lakeview Centennial HS)



PPG	FG %	3PT %	FT %	RPG	APG	SPG	BPG	MPG
***	***	***	***	***	***	***	***	***

MATHEWS' CAREER STATS AT UNM

YEAR	GP-GS	MIN/AVG	FG-FGA	PCT.	3FG-FGA	PCT.	FT-FTA	PCT.	REB/AVG	AST.	TO	BLK	STL	PTS	PTS AVG
2018-19															
TOTALS															

HIGH SCHOOL/CLUB: Played at Lakeview Centennial High School in Garland, Texas ... three-star recruit rated as the #14 wing player in the

2018 class by ESPNW ... averaged 18.4 points, 9.6 rebounds and 2.9 steals per game at Lakeview Centennial HS as a junior ... a three-time All-District First Team recipient, winning District MVP honors as a junior ... also competed on the Adidas AAU circuit with Urban Heroes Elite.

PERSONAL: Born on August 12, 2000 ... daughter of Quita Deckard and Kendrick Jackson ... has one brother, Brodis Matthews (19) ... majoring in Kinesiology - Athletic Training at UNM.

Mathews' Top Performances

Points	Season
	Career
FGM	Season
	Career
FGA	Season
	Career
3PT FGM	Season
	Career
3PT FGA	Season
	Career
FTM	Season
	Career
FTA	Season
	Career
Rebounds	Season
	Career
Assists	Season
	Career
Blocks	Season
	Career
Steals	Season
	Career
Turnovers	Season
	Career
Min. Played	Season
	Career

GAME-BY-GAME STATISTICS

Opponent	Date	GS	Min	FG-A	3FG-A	FT-A	Reb	PF	A	TO	B	S	PTS
Texas St.	11/9												
at Houston	11/24												
Oklahoma	11/28												
NMSU	12/1												
UTEP	12/5												
at NAU	12/8												
at NMSU	12/15												
Sacramento St.	12/19												
at Long Beach St.	12/29												
Air Force	1/2												
at Nevada	1/5												
at UNLV	1/9												
Colorado St.	1/12												
San Diego St.	1/16												
at Wyoming	1/19												
UNLV	1/23												
at Utah St.	1/26												
Fresno St.	2/2												
at San Diego St.	2/6												
Nevada	2/9												
at San Jose St.	2/13												
at Fresno St.	2/16												
Utah St.	2/20												
San Jose St.	2/27												
at Colorado St.	3/2												
at Boise St.	3/4												
Wyoming	3/7												

NOTEWORTHY





UNIVERSITY OF NEW MEXICO

2018-19 WOMEN'S BASKETBALL



#3

AHLISE HURST

G | 5-9 | FR | Bendigo, Australia (Bendigo Senior-Secondary)



PPG	FG %	3PT %	FT %	RPG	APG	SPG	BPG	MPG
***	***	***	***	***	***	***	***	***

HURST'S CAREER STATS AT UNM

YEAR	GP-GS	MIN/AVG	FG-FGA	PCT.	3FG-FGA	PCT.	FT-FTA	PCT.	REB/AVG	AST.	TO	BLK	STL	PTS	PTS AVG
2018-19															
TOTALS															

HIGH SCHOOL/CLUB: Attended Bendigo Senior Secondary College in Bendigo, Australia ... has international playing experience playing with Vic

Country and the Bendigo Braves ... helped Vic Country to an Australian national championship and helped the Bendigo Braves to a South East Australian Basketball League (SEABL) championship as well in 2018 ... also played for the Bendigo Spirit of the WNBL.

PERSONAL: Born on January 6, 2000 in Brisbane, Australia ... daughter of Joe Hurst and Tania Dwyer ... has two siblings, Jasmine Hurst (25) and Tremayne Hurst (20) ... hobbies include sleeping and watching movies ... favorite athlete is Kyrie Irving of the Boston Celtics ... favorite food are tacos ... favorite movie is White Chicks ... father Joe Hurst played in the NBL in Australia.

Hurst's Top Performances

Points	Season
	Career
FGM	Season
	Career
FGA	Season
	Career
3PT FGM	Season
	Career
3PT FGA	Season
	Career
FTM	Season
	Career
FTA	Season
	Career
Rebounds	Season
	Career
Assists	Season
	Career
Blocks	Season
	Career
Steals	Season
	Career
Turnovers	Season
	Career
Min. Played	Season
	Career

GAME-BY-GAME STATISTICS

Opponent	Date	GS	Min	FG-A	3FG-A	FT-A	Reb	PF	A	TO	B	S	PTS
Texas St.	11/9												
at Houston	11/24												
Oklahoma	11/28												
NMSU	12/1												
UTEP	12/5												
at NAU	12/8												
at NMSU	12/15												
Sacramento St.	12/19												
at Long Beach St.	12/29												
Air Force	1/2												
at Nevada	1/5												
at UNLV	1/9												
Colorado St.	1/12												
San Diego St.	1/16												
at Wyoming	1/19												
UNLV	1/23												
at Utah St.	1/26												
Fresno St.	2/2												
at San Diego St.	2/6												
Nevada	2/9												
at San Jose St.	2/13												
at Fresno St.	2/16												
Utah St.	2/20												
San Jose St.	2/27												
at Colorado St.	3/2												
at Boise St.	3/4												
Wyoming	3/7												

NOTEWORTHY





UNIVERSITY OF NEW MEXICO

2018-19 WOMEN'S BASKETBALL



#4

JAYLA EVERETT

G | 5-10 | FR | St. Louis, Mo. (Kirkwood HS)



PPG	FG %	3PT %	FT %	RPG	APG	SPG	BPG	MPG
***	***	***	***	***	***	***	***	***

EVERETT'S CAREER STATS AT UNM

YEAR	GP-GS	MIN/AVG	FG-FGA	PCT.	3FG-FGA	PCT.	FT-FTA	PCT.	REB/AVG	AST.	TO	BLK	STL	PTS	PTS AVG
2018-19															
TOTALS															

HIGH SCHOOL/CLUB: Played at Kirkwood High School in St. Louis, Mo. for head coach Monica Tritz ... four-star recruit ranked 27th guard and

94th overall player in the 2018 class by ESPNW ... helped lead her team to state championships in consecutive years as a junior and senior ... averaged 16.9 points, 4.0 rebounds, 3.8 assists and 2.2 steals per game as a senior ... named All-Metro First Team as a senior and second team as a junior ... twice named Missouri Basketball Coaches Association (MCBA) 5A All-State and tabbed as Player of the Year as a senior ... also played for Phenom EYBL.

PERSONAL: Born on September 19, 1999 ... daughter of Dionne Randle and William Everett ... has two siblings, Tionna (22) and Jordyn (13) ... favorite food is seafood ... favorite movie is Taken.

Everett's Top Performances

Points	Season
	Career
FGM	Season
	Career
FGA	Season
	Career
3PT FGM	Season
	Career
3PT FGA	Season
	Career
FTM	Season
	Career
FTA	Season
	Career
Rebounds	Season
	Career
Assists	Season
	Career
Blocks	Season
	Career
Steals	Season
	Career
Turnovers	Season
	Career
Min. Played	Season
	Career

GAME-BY-GAME STATISTICS

Opponent	Date	GS	Min	FG-A	3FG-A	FT-A	Reb	PF	A	TO	B	S	PTS
Texas St.	11/9												
at Houston	11/24												
Oklahoma	11/28												
NMSU	12/1												
UTEP	12/5												
at NAU	12/8												
at NMSU	12/15												
Sacramento St.	12/19												
at Long Beach St.	12/29												
Air Force	1/2												
at Nevada	1/5												
at UNLV	1/9												
Colorado St.	1/12												
San Diego St.	1/16												
at Wyoming	1/19												
UNLV	1/23												
at Utah St.	1/26												
Fresno St.	2/2												
at San Diego St.	2/6												
Nevada	2/9												
at San Jose St.	2/13												
at Fresno St.	2/16												
Utah St.	2/20												
San Jose St.	2/27												
at Colorado St.	3/2												
at Boise St.	3/4												
Wyoming	3/7												

NOTEWORTHY

»
»
»
»
»





UNIVERSITY OF NEW MEXICO

2018-19 WOMEN'S BASKETBALL



#11

EMILY LINES

G | 6-1 | SR | Naples, Fla. (First Baptist Academy)



PPG	FG %	3PT %	FT %	RPG	APG	SPG	BPG	MPG
1.8	.429	.357	.857	1.1	0.2	0.1	0.1	4.6

LINES' CAREER STATS AT UNM

YEAR	GP-GS	MIN/AVG	FG-FGA	PCT.	3FG-FGA	PCT.	FT-FTA	PCT.	REB/AVG	AST.	TO	BLK	STL	PTS	PTS AVG
2015-16	24-0	141/5.9	19-44	.432	9-21	.429	9-19	.474	23/1.0	10	9	1	1	56	2.3
2016-17	9-0	71/7.9	8-19	.421	7-16	.438	3-6	.500	11/1.2	4	5	1	1	26	2.9
2017-18	16-0	74/4.6	9-21	.429	5-14	.357	6-7	.857	18/1.1	3	3	1	1	29	1.8
2018-19															
TOTALS	49-0	286/5.8	36-84	.429	21-51	.412	18-32	.563	52/1.1	17	17	3	3	111	2.3

JUNIOR (2017-18): Appeared in 16 games off the bench as a junior ... shot .429 (9-of-21) overall from the field and .357 (5-of-14) from long range ... missed just free throw in seven attempts ... scored a season-high 10 points in the season-opener against Northern New Mexico (11/15/17) ... scored six points on 2-of-2 shooting from 3-point range against Texas Tech (12/6/17) ... 2017-18 Academic All-Mountain West ... 2017-18 Mountain West Scholar-Athlete.

SOPHOMORE (2016-17): Appeared in nine games in her second season with the Lobos, missing the second half of the season to injury ... scored 10 points and grabbed four rebounds in the season opener against Fairleigh Dickinson on Nov. 12 ... finished the season 7-for-16 from the three-point line ... recorded 71 minutes of playing time ... 2016-17 Academic All-Mountain West selection ... 2016-17 Mountain West Scholar-Athlete.

FRESHMAN (2015-16): A sharp shooter that appeared in 24 games in her first season with the Lobos ... led the team in three point percentage at 42.9% ... went 3-for-3 from the three point line against New Mexico State (11-17-15) ... scored 15 points against Boise State (1-30-16) ... finished the season averaging 2.3 points and one rebound per game ... 2016 Academic All-Mountain West Selection ... 2016 Mountain West Scholar-Athlete.

HIGH SCHOOL: A three-time Florida Association of Basketball Coaches All-State selection and two-time Class 2A Florida Miss Basketball finalist ... Has amassed more than 2,000 points and 1,000 rebounds during her high school career ... BlueStar Basketball Report ranks her as the No. 203 prospect in the nation and the No. 25 guard in her class ... Broke the Collier County record for points ... Averaged 18.5 points, 11.2 rebounds and 4.2 blocks per game as a junior for the Lions and coach Jennifer Lines - Emily's mother ... Was a second-team 3A All-State performer, scoring a season-high 32 points and grabbed 13 rebounds in First Baptist Academy's District 12-3A District semifinal game against

Neumann High School ... Also had a 19-point, 21-rebound effort in the Lions' win over Charlotte High School ... Averaged 17.5 points and 7.9 rebounds as a sophomore for the District 10-2A champion team, and she had a career-high 33 points and 16 rebounds in the Lions' 66-51 victory over Sarasota Christian in the first round of the 2013 2A Florida State Championships ... Won the 3-point shooting competition at the prestigious Naples Holiday Tournament ... During freshman season in 2012, averaged 16.8 points, 8.6 rebounds and 3.1 blocks per game for the 23-6 Lions ... The Lions advanced to the second round of the 2A state championships ... A three-sport star for First Baptist Academy, also participating in volleyball and track and field ... Was the District 18 Volleyball Player of the Year as a freshman for the Lions in 2011 ... Also a member of the Tampa Thunder Elite AAU club team and went to state for track and field.

PERSONAL: Born on March 11, 1997 in Naples, Fla. ... Parents are Jennifer and Rick Lines ... mother is a teach at First Baptist Academy and her high school coach ... Jennifer is a member of the Northwood (Mich.) University Hall of Fame ... also was an All-America at NAIA Northwood (Mich.) University in 1990-91; Northwood won the NAIA District 23 championship that year ... Rick stays involved through his participation as a high school referee ... has one sister named Amanda...finished her high school career of being valedictorian ... interested in Education or Health Sciences degree.

Lines' Top Performances

Points	*Season 10 vs. Northern N.M. (11/15/17) Career
FGM	*Season 3 vs. Northern N.M. (11/15/17) Career
FGA	*Season 4 vs. Northern N.M. (11/15/17) Career
3PT FGM	*Season 2 - done twice Career
3PT FGA	*Season 3 - done twice Career
FTM	*Season 2 - done twice Career
FTA	*Season 3 vs. Northern N.M. (11/15/17) Career
Rebounds	*Season 5 at Oklahoma (12/16/17) Career
Assists	*Season 2 vs. Northern N.M. (11/15/17) Career
Blocks	*Season 1 vs. San Jose State (3/5/18) Career
Steals	*Season 1 vs. Lamar (12/20/17) Career
Turnovers	*Season 1 - done twice Career
Min. Played	*Season 18 vs. Northern N.M. Career

GAME-BY-GAME STATISTICS

Opponent	Date	GS	Min	FG-A	3FG-A	FT-A	Reb	PF	A	TO	B	S	PTS
Texas St.	11/9												
at Houston	11/24												
Oklahoma	11/28												
NMSU	12/1												
UTEP	12/5												
at NAU	12/8												
at NMSU	12/15												
Sacramento St.	12/19												
at Long Beach St.	12/29												
Air Force	1/2												
at Nevada	1/5												
at UNLV	1/9												
Colorado St.	1/12												
San Diego St.	1/16												
at Wyoming	1/19												
UNLV	1/23												
at Utah St.	1/26												
Fresno St.	2/2												
at San Diego St.	2/6												
Nevada	2/9												
at San Jose St.	2/13												
at Fresno St.	2/16												
Utah St.	2/20												
San Jose St.	2/27												
at Colorado St.	3/2												
at Boise St.	3/4												
Wyoming	3/7												

NOTEWORTHY

>>
>>
>>
>>
>>





UNIVERSITY OF NEW MEXICO

2018-19 WOMEN'S BASKETBALL



#12

BRIDE KENNEDY-HOPOATE

F | 6-4 | RsJR | Brisbane, Australia (Iowa State)



PPG	FG %	3PT %	FT %	RPG	APG	SPG	BPG	MPG
***	***	***	***	***	***	***	***	***

KENNEDY-HOPOATE'S CAREER STATS AT UNM

YEAR	GP-GS	MIN/AVG	FG-FGA	PCT.	3FG-FGA	PCT.	FT-FTA	PCT.	REB/AVG	AST.	TO	BLK	STL	PTS	PTS AVG
2018-19															
TOTALS															

RS JUNIOR (2018-19): Transferring from Iowa State ... will have to sit out due to NCAA transfer rules.

PREP: Originally from Brisbane, Australia ... won a silver medal competing for Queensland South in 2011 ... won gold in the Oceania Championships as a member of Australia's U17 team ... selected to Australia's U17 World Championships team, placing fifth after beating Canada ... competed for the Northern District Spartans club team in Brisbane ... also an accomplished track and field athlete, competing as a sprinter and thrower.

PERSONAL: Born on January 29, 1997 ... daughter of Emma Kennedy... has two siblings, Rose and Tukufonua.

JUNIOR (2017-18 at Iowa State): Appeared in 21 games on the Cyclones on the year, starting in 10 games ... averaged 6.7 points and 4.2 rebounds on the year ... scored in double figures in five games on the season ... scored 15 points off 4-of-8 shooting against UC Riverside ... tallied 15 points and grabbed six rebounds in Iowa State's overtime win in the Big 12 opener against Kansas ... netted a career-high 17 points against Kansas State, going 7-of-8 from the floor.

JUNIOR COLLEGE: Competed at Northwest Florida State as a freshman and Hutchinson Community College as a sophomore ... averaged 11.9 points and a team-high 5.9 rebounds per game at Hutchinson ... shot over 47% from the field in both years in junior college ... named a NJCAA third-team All-American during the 2016-17 season ... rated the No. 1 JUCO prospect from All Star Girls Report

K-H's Top Performances

Points	Season
	Career
FGM	Season
	Career
FGA	Season
	Career
3PT FGM	Season
	Career
3PT FGA	Season
	Career
FTM	Season
	Career
FTA	Season
	Career
Rebounds	Season
	Career
Assists	Season
	Career
Blocks	Season
	Career
Steals	Season
	Career
Turnovers	Season
	Career
Min. Played	Season
	Career

GAME-BY-GAME STATISTICS

Opponent	Date	GS	Min	FG-A	3FG-A	FT-A	Reb	PF	A	TO	B	S	PTS
Texas St.	11/9												
at Houston	11/24												
Oklahoma	11/28												
NMSU	12/1												
UTEP	12/5												
at NAU	12/8												
at NMSU	12/15												
Sacramento St.	12/19												
at Long Beach St.	12/29												
Air Force	1/2												
at Nevada	1/5												
at UNLV	1/9												
Colorado St.	1/12												
San Diego St.	1/16												
at Wyoming	1/19												
UNLV	1/23												
at Utah St.	1/26												
Fresno St.	2/2												
at San Diego St.	2/6												
Nevada	2/9												
at San Jose St.	2/13												
at Fresno St.	2/16												
Utah St.	2/20												
San Jose St.	2/27												
at Colorado St.	3/2												
at Boise St.	3/4												
Wyoming	3/7												

NOTEWORTHY

»
»
»
»
»





UNIVERSITY OF NEW MEXICO

2018-19 WOMEN'S BASKETBALL



#13

SHAIQUEL MCGRUDER

F | 6-0 | FR | Trotwood, Ohio (Trotwood-Madison HS)



PPG	FG %	3PT %	FT %	RPG	APG	SPG	BPG	MPG
***	***	***	***	***	***	***	***	***

MCGRUDER'S CAREER STATS AT UNM

YEAR	GP-GS	MIN	AVG	FG-FGA	PCT.	3FG-FGA	PCT.	FT-FTA	PCT.	REB	AST.	TO	BLK	STL	PTS	PTS AVG
2018-19																
TOTALS																

HIGH SCHOOL/CLUB: Finished her high school career at Trotwood-Madison High School in Trotwood, Ohio and previously played at Wayne

PERSONAL: Born on October 13, 1999 ... Daughter of Quiana ... goes by Shai (shy) ... lists drawing as a hobby ... favorite food is Chicken Alfredo ... favorite movie is Lovely Bones ... majoring in Family Service at UNM.

Memorial HS ... three-star recruit ranked as the #19 forward in the 2018 class by ESPNW ... averaged 25.8 points and 9.4 rebounds per game for Trotwood-Madison HS as a senior ... led Wayne to two-consecutive Greater Western Ohio Conference (GWOC) titles as a sophomore and junior and also led Trotwood-Madison to a GWOC title as a senior ... was named GWOC East Division Player of the Year and All-Ohio Second Team as a junior and GWOC South Division Player of the Year and All-Ohio First Team as a senior ... played for Sports City U program out of Ohio.

McGruder's Top Performances

Points	Season
	Career
FGM	Season
	Career
FGA	Season
	Career
3PT FGM	Season
	Career
3PT FGA	Season
	Career
FTM	Season
	Career
FTA	Season
	Career
Rebounds	Season
	Career
Assists	Season
	Career
Blocks	Season
	Career
Steals	Season
	Career
Turnovers	Season
	Career
Min. Played	Season
	Career

GAME-BY-GAME STATISTICS

Opponent	Date	GS	Min	FG-A	3FG-A	FT-A	Reb	PF	A	TO	B	S	PTS
Texas St.	11/9												
at Houston	11/24												
Oklahoma	11/28												
NMSU	12/1												
UTEP	12/5												
at NAU	12/8												
at NMSU	12/15												
Sacramento St.	12/19												
at Long Beach St.	12/29												
Air Force	1/2												
at Nevada	1/5												
at UNLV	1/9												
Colorado St.	1/12												
San Diego St.	1/16												
at Wyoming	1/19												
UNLV	1/23												
at Utah St.	1/26												
Fresno St.	2/2												
at San Diego St.	2/6												
Nevada	2/9												
at San Jose St.	2/13												
at Fresno St.	2/16												
Utah St.	2/20												
San Jose St.	2/27												
at Colorado St.	3/2												
at Boise St.	3/4												
Wyoming	3/7												

NOTEWORTHY





UNIVERSITY OF NEW MEXICO

2018-19 WOMEN'S BASKETBALL



#14

NAJALA HOWELL

G | 5-10 | RsJR | DeSoto, Texas (UTEP)



PPG*	FG %*	3PT %*	FT %*	RPG*	APG*	SPG*	BPG*	MPG*
11.9	.393	.359	.824	6.3	2.0	0.6	0.1	31.7

HOWELL'S CAREER STATS AT UNM

YEAR	GP-GS	MIN/AVG	FG-FGA	PCT.	3FG-FGA	PCT.	FT-FTA	PCT.	REB/AVG	AST.	TO	BLK	STL	PTS	PTS AVG
2018-19															
TOTALS															

* - Stats from 2017-18 at UTEP

RS JUNIOR (2018-19): Transferred to UNM ... will have to sit out the season due to NCAA transfer rules.

JUNIOR (2017-18 at UTEP): Started all 31 games and led the Miners in 3-point percentage (.359) ... ranked second on the team in scoring (11.9 ppg), rebounding (6.3 rpg), free throws made (103), free throws attempted (125), free-throw percentage (.824), 3-pointers made (37) and 3-pointers attempted (103) ... also rated third on the squad in assists (2.0 apg) ... reached double figures in scoring in 21 contests, including four 20-point efforts ... tied a career-high 23 points at UTSA (2/4/18) ... pulled down a career-high 16 rebounds while also scoring 11 points vs. FIU (3/1/18) ... also notched double-doubles four other times.

SOPHOMORE (2016-17 at UTEP): UTEP's third-leading scorer, tallying 7.9 points per outing ... started five times while playing in all 31 games ... shot 40.1 percent from the field (85-of-212), 35.2 percent from beyond the arc (19-of-54) and 72.4 percent from the charity stripe (55-of-76) ... also averaged 3.5 rpg, 1.2 apg and 0.8 spg ... scored in double figures 13 times, including a seven-game streak at midseason and in four of the last five games of the season ... season-high 20 points came in the league opener versus UTSA (1/1/17) ... picked up her first career double-double against Western New Mexico (11/17/16) with 10 points and 12 rebounds.

FRESHMAN (2015-16 at UTEP): Appeared in 24 games as a reserve guard, averaging 7.5 minutes/contest ... recorded at least three rebounds in eight games while pitching in five points or more three times.

HIGH SCHOOL: Named the MVP at the Texas Girls Coaches' Association All-Star game in the summer of 2015 ... posted a double-double (26 points, 10 rebounds) while adding five steals and four assists to secure the honor at the prestigious event ... two-time (2014 and 2015) First-Team All-State honoree by the Texas Association of Basketball Coaches ... also voted twice to the Class 5A All-Region I girls basketball team and the 7-5 A All-District first team ... three-year varsity letter winner, including starting as a junior and senior ... served as captain her final two years ... averaged 18.2 points, 6.3 rebounds, 2.4 steals and 1.1 assists in 2014-15 ... contributed 17 points, 5.7 rebounds, 2.5 steals and 1.5 assists per game during her junior year ... rated as a four-star recruit by Prospect Nation ... considered to be a standout performer at the Check Me Out SoCal showcase in March 2014.

PERSONAL: Born on November 29, 1996 ... Parents are Gregory and Kimberley Howell ... has three siblings, Shauna (35), Krystal (33), and Brittney (28) ... hobbies include: reading, drawing, and going to the movies ... favorite athletes are Kobe Bryant and Dirk Nowitzki ... favorite food is Italian ... favorite movie is Love and Basketball and has watched it over 300 times ... intended major is Computer Science.

Howell's Top Performances

Points	Season
	Career
FGM	Season
	Career
FGA	Season
	Career
3PT FGM	Season
	Career
3PT FGA	Season
	Career
FTM	Season
	Career
FTA	Season
	Career
Rebounds	Season
	Career
Assists	Season
	Career
Blocks	Season
	Career
Steals	Season
	Career
Turnovers	Season
	Career
Min. Played	Season
	Career

GAME-BY-GAME STATISTICS

Opponent	Date	GS	Min	FG-A	3FG-A	FT-A	Reb	PF	A	TO	B	S	PTS
Texas St.	11/9												
at Houston	11/24												
Oklahoma	11/28												
NMSU	12/1												
UTEP	12/5												
at NAU	12/8												
at NMSU	12/15												
Sacramento St.	12/19												
at Long Beach St.	12/29												
Air Force	1/2												
at Nevada	1/5												
at UNLV	1/9												
Colorado St.	1/12												
San Diego St.	1/16												
at Wyoming	1/19												
UNLV	1/23												
at Utah St.	1/26												
Fresno St.	2/2												
at San Diego St.	2/6												
Nevada	2/9												
at San Jose St.	2/13												
at Fresno St.	2/16												
Utah St.	2/20												
San Jose St.	2/27												
at Colorado St.	3/2												
at Boise St.	3/4												
Wyoming	3/7												

NOTEWORTHY





UNIVERSITY OF NEW MEXICO

2018-19 WOMEN'S BASKETBALL



#15

AISIA ROBERTSON

G | 5-8 | RsJR | San Francisco, Calif. (Kansas)



PPG*	FG %*	3PT %*	FT %*	RPG*	APG*	SPG*	BPG*	MPG*
4.4	.287	.194	.558	3.7	0.7	0.9	0.1	15.1

ROBERTSON'S CAREER STATS AT UNM

YEAR	GP-GS	MIN/AVG	FG-FGA	PCT.	3FG-FGA	PCT.	FT-FTA	PCT.	REB/AVG	AST.	TO	BLK	STL	PTS	PTS AVG
2017-18															
2018-19															
TOTALS															

* - Stats from 2016-17 at Kansas

JUNIOR (2017-18): Transferred to UNM from Kansas ... sat out the season due to NCAA transfer rules ... was selected to compete in the 2018 USA Basketball 3x3 Open National Championships along with teammates Antonia Anderson, Jaisa Nunn and Madi Washington.

SOPHOMORE (2016-17 at Kansas): Appeared in all 30 games and made two starts ... averaged 15.2 minutes per game ... scored 131 points, averaging 4.4 points per game ... grabbed a total of 101 boards, averaging 3.4 rebounds per game... recorded 27 steals, 21 assists and two blocks ... shot 28.7 percent from the field and 53.7 percent from the free throw line ... grabbed a season-high nine rebounds against SMU (11/16), tying her career high ... recorded a career-high 14 points against Oklahoma State (2/8) ... registered a season-best three steals four times ... dished out a season-high four assists at Memphis (11/20).

FRESHMAN (2015-16 at Kansas): Started 22 games, including the last 11 contests and saw action in every game of the season ... averaged 4.8 points and 4.0 rebounds per game ... shot 30.4 percent from the field ... pulled down the second-most rebounds (123) and swiped the second-most steals (41) among freshmen on the team ... tallied three steals on four occasions ... notched double-digit scoring efforts in four different games ... grabbed a career-high seven boards on three different occasions ... swatted 13 blocks on the year, most of any Jayhawk guard ... posted a career-best

14 points against Texas Tech (2/27) on 54.5 percent shooting ... played a career-high 35 minutes against Texas (3/5), and finished the night with 10 points on 4-of-8 shooting.

HIGH SCHOOL: Awarded two letters during her high school basketball career playing for head coach Malik McCord at Bishop O'Dowd (Oakland, California) ... three-time East Bay Athletic League champion ... won a Division III state title as well as an open division state title and two North Coast Section Championships ... named to the all-league second team twice in her career ... ranked 18th for her position and No. 85 overall by Prospect-Nation, and 24th for her position and 84th overall by Collegiate Girls Basketball Report ... earned a 2015 McDonald's All-America nomination.

PERSONAL: Daughter of Paul Robertson ... Born in San Francisco, California ... Has one sister, Paris... undecided on a major ... post-school ambition is to play in the WNBA.

Robertson's Top Performances

Points	Season
	Career
FGM	Season
	Career
FGA	Season
	Career
3PT FGM	Season
	Career
3PT FGA	Season
	Career
FTM	Season
	Career
FTA	Season
	Career
Rebounds	Season
	Career
Assists	Season
	Career
Blocks	Season
	Career
Steals	Season
	Career
Turnovers	Season
	Career
Min. Played	Season
	Career

GAME-BY-GAME STATISTICS

Opponent	Date	GS	Min	FG-A	3FG-A	FT-A	Reb	PF	A	TO	B	S	PTS
Texas St.	11/9												
at Houston	11/24												
Oklahoma	11/28												
NMSU	12/1												
UTEP	12/5												
at NAU	12/8												
at NMSU	12/15												
Sacramento St.	12/19												
at Long Beach St.	12/29												
Air Force	1/2												
at Nevada	1/5												
at UNLV	1/9												
Colorado St.	1/12												
San Diego St.	1/16												
at Wyoming	1/19												
UNLV	1/23												
at Utah St.	1/26												
Fresno St.	2/2												
at San Diego St.	2/6												
Nevada	2/9												
at San Jose St.	2/13												
at Fresno St.	2/16												
Utah St.	2/20												
San Jose St.	2/27												
at Colorado St.	3/2												
at Boise St.	3/4												
Wyoming	3/7												

NOTEWORTHY





UNIVERSITY OF NEW MEXICO

2018-19 WOMEN'S BASKETBALL



#21

NIKE McCLURE

F | 6-3 | SR | Tenino, Wash. (Washington State)



PPG*	FG %*	3PT %*	FT %*	RPG*	APG*	SPG*	BPG*	MPG*
5.4	.391	.000	.500	5.6	1.1	1.0	2.3	22.4

McCLURE'S CAREER STATS AT UNM

YEAR	GP-GS	MIN	AVG	FG-FGA	PCT.	3FG-FGA	PCT.	FT-FTA	PCT.	REB	AST.	TO	BLK	STL	PTS	PTS AVG
2018-19																
TOTALS																

* - Stats from 2017-18 at Washington State

RS-SENIOR (2018-19): Transferring from Washington State ... eligible to play for the Lobos as a graduate transfer.

RS-JUNIOR (2017-18 at Washington State): Appeared in 28 games, starting in seven, averaged 5.4 points per game ... scored a career-high 18 points vs. Washington ... recorded the second-most defensive rebounds on the team (104) ... posted career highs in points scored in a season (150), minutes played in a game (40) vs. Washington and rebounds (16) vs. Washington ... ranked 20th in the PAC-12 for rebounds ... recorded a team-high 63 blocks for the season; second in single-season WSU history behind her own record of 68 in a single-season ... recorded second-career double-double against Washington with 16 points and 16 rebounds.

RS-SOPHOMORE (2016-17 at Washington State): One of eight Cougs to play in a record 36 games while earning 13 starts ... set a single-season program record with 68 blocks ... posted the two-best single-game block performances in Cougar history with seven against Arizona (Feb. 12) and a record 12 against Colorado (Feb. 25) ... the 12 blocks tied the Pac-12's 29-year old record for rejections in a conference game ... led the way to a new single-season team record for blocks with 152 while averaging a record 4.2 bpg ... recorded her first career double-double against Colorado (Feb. 25) with 12 rebounds to go with her 12 blocks, just the second-ever non-point double-double in program history ... set a program record with 115 offensive rebounds ... finished fifth in the Pac-12 with 3.2 offensive rebounds per game ... averaged 5.8 rpg, 15th in the Pac-12 ... scored 4.1 ppg while averaging 19.4 minutes per contest ... selected to play in the 2017 USA Basketball 3x3 National Tournament alongside of Caia Hailey, Kayla Washington, and Alexys Swedlund as a part of Washington State's collegiate team sent to Colorado Springs, Colo. (April 8-9).

RS-FRESHMAN (2015-16 at Washington State): Played in 27 games and started three games ... led the Cougars with 25 blocks as part of WSU frontline that set a single-season school record with 120 total blocks ... averaged 1.7 ppg and 2.0 rpg ... pulled in a season-high five rebounds on four different occasions ... recorded four blocks in win at Boise State (Dec. 3), tied for second-most in freshman history ... also grabbed 17 steals and dished out six assists ... shot .420 (21-of-50) from the floor.

FRESHMAN (2014-15 at Washington State): Redshirted

HIGH SCHOOL: Attended Tenino High School as a freshman and sophomore ... as a freshman, named All-Conference honorable mention after averaging 14 ppg and 12 rpg ... also ran track, placed fifth in the state in 800m and sixth in state in the high jump ... as a sophomore, named to the All-Conference first team ... played final two seasons at W.F. West High School ... as a junior, earned a spot on the Adidas All-America Team ... as a senior, helped WFWHS to a 2A State Title ... named 2A Player of Year by the Associated Press, All-Class All-Star by The Seattle Times, and Evergreen Conference MVP ... averaged 12.2 ppg and 10.5 rpg ... rated three stars and the No. 22 forward prospect in the country by ESPN.com.

PERSONAL: Born on March 9, 1996 ... named after Nike, winged goddess of victory ... parents are Gregory and Juqita McClure ... has one brother, Allan (20) ... graduated from Washington State University with a degree in social sciences (communications and sports management) ... pursuing a TESOL Graduate Certificate at UNM ... hobbies include watching Netflix and taking naps ... favorite athlete is Ray Lewis ... favorite food is lasagna ... favorite movie is Waterworld.

McClure's Top Performances

Points	Season
	Career
FGM	Season
	Career
FGA	Season
	Career
3PT FGM	Season
	Career
3PT FGA	Season
	Career
FTM	Season
	Career
FTA	Season
	Career
Rebounds	Season
	Career
Assists	Season
	Career
Blocks	Season
	Career
Steals	Season
	Career
Turnovers	Season
	Career
Min. Played	Season
	Career

GAME-BY-GAME STATISTICS

Opponent	Date	GS	Min	FG-A	3FG-A	FT-A	Reb	PF	A	TO	B	S	PTS
Texas St.	11/9												
at Houston	11/24												
Oklahoma	11/28												
NMSU	12/1												
UTEP	12/5												
at NAU	12/8												
at NMSU	12/15												
Sacramento St.	12/19												
at Long Beach St.	12/29												
Air Force	1/2												
at Nevada	1/5												
at UNLV	1/9												
Colorado St.	1/12												
San Diego St.	1/16												
at Wyoming	1/19												
UNLV	1/23												
at Utah St.	1/26												
Fresno St.	2/2												
at San Diego St.	2/6												
Nevada	2/9												
at San Jose St.	2/13												
at Fresno St.	2/16												
Utah St.	2/20												
San Jose St.	2/27												
at Colorado St.	3/2												
at Boise St.	3/4												
Wyoming	3/7												

NOTEWORTHY

»
»
»
»
»
»





UNIVERSITY OF NEW MEXICO

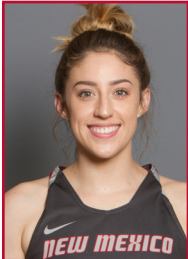
2018-19 WOMEN'S BASKETBALL



#23

JAEDYN De La CERDA

G | 5-6 | SO | Roswell, N.M. (Roswell HS)



PPG	FG %	3PT %	FT %	RPG	APG	SPG	BPG	MPG
1.8	.400	.200	.833	0.5	0.2	0.4	0.1	2.7

DE LA CERDA'S CAREER STATS AT UNM

YEAR	GP-GS	MIN/AVG	FG-FGA	PCT.	3FG-FGA	PCT.	FT-FTA	PCT.	REB/AVG	AST.	TO	BLK	STL	PTS	PTS AVG
2017-18	13-0	35/2.7	8-20	.400	2-10	.200	5-6	.833	7/0.5	2	4	1	5	23	1.8
2018-19															
TOTALS	13-0	35/2.7	8-20	.400	2-10	.200	5-6	.833	7/0.5	2	4	1	5	23	1.8

FRESHMAN (2017-18):

Appeared in 13 games off the bench for the Lobos as a freshman ... scored a season-high seven points in the season-opener against Northern New Mexico (11/15/17) ... also registered three rebounds, a block, and two assists in that game - all are single-game career bests.

PERSONAL: Born Sept. 6 in Roswell, N.M. to Tara and Willie De La Cerda ... Has two siblings Deyton and Addycen ... majoring in occupational therapy ... hobbies include hanging out with friends and family ... favorite athlete is Russell Westbrook ... favorite food is spaghetti and fries ... favorite movie is Glory Road.

HIGH SCHOOL/CLUB: Played basketball for Roswell High School in Roswell, N.M., where she was a four-year varsity basketball and volleyball standout ... 2016-17 New Mexico Gatorade Player of the Year ... was a 2016 All-State honoree and Adidas All-American ... led her team to the 2016 New Mexico 5A State Championship in 2015-16 where she scored 34 points, grabbed 10 rebounds and dished out six assists ... three-time district MVP ... was ranked #221 by ESPNW ... averaged 16.9 points, 3.0 assists and 2.8 steals in her senior season ... also named district MVP in volleyball and lettered in track ... competed for New Mexico-Colorado Elite.

De La Cerda's Top Performances

Points	*Season 7 vs. Northern N.M. (11/15/17) Career
FGM	*Season 2 - done twice Career
FGA	*Season 8 vs. Northern N.M. (11/15/17) Career
3PT FGM	*Season 1 - done twice Career
3PT FGA	*Season 4 vs. Northern N.M. (11/15/17) Career
FTM	*Season 2 - done twice Career
FTA	*Season 3 vs. Northern N.M. (11/15/17) Career
Rebounds	*Season 3 vs. Northern N.M. (11/15/17) Career
Assists	*Season 1 done twice Career
Blocks	*Season 1 vs. Northern N.M. (11/15/17) Career
Steals	*Season 2 vs. Northern N.M. (11/15/17) Career
Turnovers	*Season 2 vs. Northern N.M. (11/15/17) Career
Min. Played	*Season 11 vs. Northern N.M. (11/15/17) Career

GAME-BY-GAME STATISTICS

Opponent	Date	GS	Min	FG-A	3FG-A	FT-A	Reb	PF	A	TO	B	S	PTS
Texas St.	11/9												
at Houston	11/24												
Oklahoma	11/28												
NMSU	12/1												
UTEP	12/5												
at NAU	12/8												
at NMSU	12/15												
Sacramento St.	12/19												
at Long Beach St.	12/29												
Air Force	1/2												
at Nevada	1/5												
at UNLV	1/9												
Colorado St.	1/12												
San Diego St.	1/16												
at Wyoming	1/19												
UNLV	1/23												
at Utah St.	1/26												
Fresno St.	2/2												
at San Diego St.	2/6												
Nevada	2/9												
at San Jose St.	2/13												
at Fresno St.	2/16												
Utah St.	2/20												
San Jose St.	2/27												
at Colorado St.	3/2												
at Boise St.	3/4												
Wyoming	3/7												

NOTEWORTHY





UNIVERSITY OF NEW MEXICO

2018-19 WOMEN'S BASKETBALL



#24

ERICA MOORE

C | 6-2 | SR | Fishers, Ind. (Purdue)



PPG	FG %	3PT %	FT %	RPG	APG	SPG	BPG	MPG
0.8	.600	---	1.000	0.4	---	0.1	0.4	3.3

MOORE'S CAREER STATS AT UNM

YEAR	GP-GS	MIN/AVG	FG-FGA	PCT.	3FG-FGA	PCT.	FT-FTA	PCT.	REB/AVG	AST.	TO	BLK	STL	PTS	PTS AVG
2017-18	9-0	30/3.3	3-5	.600	---	---	1-1	1.000	4/0.4	---	1	4	1	7	0.8
2018-19	9-0	30/3.3	3-5	.600	---	---	1-1	1.000	4/0.4	---	1	4	1	7	0.8
TOTALS	9-0	30/3.3	3-5	.600	---	---	1-1	1.000	4/0.4	---	1	4	1	7	0.8

RS JUNIOR (2017-18): Played in nine games off the bench in her first season with the Lobos ... scored a season-high

five points on 2-of-2 shooting from the floor and 1-of-1 from the free throw line against Air Force (12/28/17) ... pulled down a season-high three rebounds in the season-opener against Northern New Mexico.

JUNIOR (2016-17): Transferred to New Mexico from Purdue ... Did not play in the 2016-17 season due to NCAA eligibility rules.

SOPHOMORE (2015-15 at Purdue): Played in five games ... was 2-of-5 (.400) overall from the floor and 3-of-4 (.750) from the free throw line ... had four rebounds an assist and a block.

FRESHMAN (2014-15 at Purdue): Appeared in 12 games at Purdue, playing 3.8 minutes per game ... averaged 1.1 points and 0.6 rebounds ... shot 41.7 percent from the field (5-12) ... scored her first collegiate field goal vs. UC Irvine (Dec. 19) ... played a career-most 12 minutes at Rutgers (Feb. 14), finishing with a career-high five points and two rebounds ...

put up four points in nine minutes at Michigan (Feb. 24), making both her attempts from the field.

HIGH SCHOOL: Four-year varsity letter-winner at Mount Vernon-Fortville High School ... high school coach is Julie Shelton ... played in the Indiana All-Star game as a senior and junior ... missed the majority of her senior year due to injury ... led her team to the 2013 Indiana Class 3A State title as a junior, averaging 17.8 points and 8.3 rebounds per game ... finished as the state runners-up in 2012 as a sophomore... Ranked 78 overall by All-Star Girls Report ... USA Today American Family Insurance All-USA Indiana honorable mention ... named 2013 Hancock County Player of the Year ... three-time all-conference honoree.

PERSONAL: Born Feb. 12, 1995 ... full name is Erica V. Moore ... daughter of Eric and Vanessa Moore ... has three brothers: Eric Jr., Bryce and Brandon ... father Eric played professional football for New York Giants ... Lists Love & Basketball as her favorite movie, Candace Parker as her favorite athlete and chicken as her favorite food ... intends to major in communications.

Moore's Top Performances

Points	*Season 5 at Air Force (12/28/17)
Career	Same
FGM	*Season 2 at Air Force (12/28/17)
Career	Same
FGA	*Season 2 - done twice
Career	Same
3PT FGM	*Season None
Career	Same
3PT FGA	*Season None
Career	Same
FTM	*Season 1 at Air Force (12/28/17)
Career	Same
FTA	*Season 1 at Air Force (12/28/17)
Career	Same
Rebounds	*Season 3 vs. Northern N.M. (11/15/17)
Career	Same
Assists	*Season None
Career	Same
Blocks	*Season 2 - done twice
Career	Same
Steals	*Season 1 at Air Force (12/28/17)
Career	Same
Turnovers	*Season 1 vs. Lamar (12/20/17)
Career	Same
Min. Played	*Season 11 vs. Northern N.M. (11/15/17)
Career	Same

GAME-BY-GAME STATISTICS

Opponent	Date	GS	Min	FG-A	3FG-A	FT-A	Reb	PF	A	TO	B	S	PTS
Texas St.	11/9												
at Houston	11/24												
Oklahoma	11/28												
NMSU	12/1												
UTEP	12/5												
at NAU	12/8												
at NMSU	12/15												
Sacramento St.	12/19												
at Long Beach St.	12/29												
Air Force	1/2												
at Nevada	1/5												
at UNLV	1/9												
Colorado St.	1/12												
San Diego St.	1/16												
at Wyoming	1/19												
UNLV	1/23												
at Utah St.	1/26												
Fresno St.	2/2												
at San Diego St.	2/6												
Nevada	2/9												
at San Jose St.	2/13												
at Fresno St.	2/16												
Utah St.	2/20												
San Jose St.	2/27												
at Colorado St.	3/2												
at Boise St.	3/4												
Wyoming	3/7												

NOTEWORTHY





UNIVERSITY OF NEW MEXICO

2018-19 WOMEN'S BASKETBALL



#32

ANTONIA ANDERSON

G/F | 6-2 | SO | Cibolo, Texas (Byron P. Steele HS)



PPG	FG %	3PT %	FT %	RPG	APG	SPG	BPG	MPG
4.1	.571	.200	.600	3.0	0.2	0.4	1.1	13.0

ANDERSON'S CAREER STATS AT UNM

YEAR	GP-GS	MIN/AVG	FG-FGA	PCT.	3FG-FGA	PCT.	FT-FTA	PCT.	REB/AVG	AST.	TO	BLK	STL	PTS	PTS AVG
2017-18	32-1	417/13.0	52-91	.571	2-10	.200	24-40	.600	96/3.0	5	17	34	13	130	4.1
2018-19															
TOTALS	32-1	417/13.0	52-91	.571	2-10	.200	24-40	.600	96/3.0	5	17	34	13	130	4.1

FRESHMAN (2017-18): Appeared in 32 games and made one start as a freshman for the Lobos ... averaged 4.1 points

per game and 3.0 rebounds ... shot .571 (52-of-91) overall from the floor and converted 60% of free throw attempts (24-of-40) ... led the team and ranked third in the Mountain West in blocked shots with 34 ... scored a season-high 13 points on a perfect 5-of-5 shooting from the floor and 3-of-4 from the free throw line against Boise State ... registered five or more rebounds in eight games and hauled in a season-high seven rebounds on three occasions (12/10 vs. Navy, 12/28 at Air Force, 2/14 at Utah State) ... was selected to compete in the 2018 USA Basketball 3x3 Open National Championships along with teammates Jaisa Nunn, Aisia Robertson and Madi Washington.

HIGH SCHOOL/CLUB: Played basketball at Byron P. Steele II High School in Cibolo, Texas where she was a four-year starter ... was ranked #187 by ESPNW and averaged 15 points, 6.0 rebounds and 4.0 steals per game in her senior season ... notched a career-high 31 points in Steele's playoff game versus Lee ... was also named back-to-back Defensive Player of the Year ... earned All-State, All-District, All-Area and All-Region honors throughout her career ... was also a two-year varsity track participant ... earned Academic All-State honors ... also played for S.A. Finest.

PERSONAL: Born on July 23 to Jennifer and Robert ... has two siblings RJ (8) and Ross (5) ... favorite athlete is Skylar Diggins ... favorite food is pasta ... favorite movie is Love and Basketball.

Anderson's Top Performances

Points	*Season 13 vs. Boise State (1/3/18)
Career	Same
FGM	*Season 5 vs. Boise State (1/3/18)
Career	Same
FGA	*Season 6 - done twice
Career	Same
3PT FGM	*Season 1 - done twice
Career	Same
3PT FGA	*Season 2 vs. Wyoming (3/6/18)
Career	Same
FTM	*Season 5 at Air Force (12/28/17)
Career	Same
FTA	*Season 6 vs. Saint Mary's (3/15/18)
Career	Same
Rebounds	*Season 7 - done three times
Career	Same
Assists	*Season 1 - done five times
Career	Same
Blocks	*Season 5 vs. Colorado State (2/27/18)
Career	Same
Steals	*Season 2 - done four times
Career	Same
Turnovers	*Season 3 at San Jose State (1/6/18)
Career	Same
Min. Played	*Season 21 at Oklahoma (12/16/17)
Career	Same

GAME-BY-GAME STATISTICS

Opponent	Date	GS	Min	FG-A	3FG-A	FT-A	Reb	PF	A	TO	B	S	PTS
Texas St.	11/9												
at Houston	11/24												
Oklahoma	11/28												
NMSU	12/1												
UTEP	12/5												
at NAU	12/8												
at NMSU	12/15												
Sacramento St.	12/19												
at Long Beach St.	12/29												
Air Force	1/2												
at Nevada	1/5												
at UNLV	1/9												
Colorado St.	1/12												
San Diego St.	1/16												
at Wyoming	1/19												
UNLV	1/23												
at Utah St.	1/26												
Fresno St.	2/2												
at San Diego St.	2/6												
Nevada	2/9												
at San Jose St.	2/13												
at Fresno St.	2/16												
Utah St.	2/20												
San Jose St.	2/27												
at Colorado St.	3/2												
at Boise St.	3/4												
Wyoming	3/7												

NOTEWORTHY





UNIVERSITY OF NEW MEXICO

2018-19 WOMEN'S BASKETBALL



#35

MADI WASHINGTON

PG | 5-9 | SO | Red Oak, Texas (Red Oak HS)



PPG	FG %	3PT %	FT %	RPG	APG	SPG	BPG	MPG
6.4	.381	.368	.789	1.8	0.8	0.3	0.1	17.8

WASHINGTON'S CAREER STATS AT UNM

YEAR	GP-GS	MIN/AVG	FG-FGA	PCT.	3FG-FGA	PCT.	FT-FTA	PCT.	REB/AVG	AST.	TO	BLK	STL	PTS	PTS AVG
2017-18	34-0	604/17.8	74-194	.381	39-106	.368	30-38	.789	60/1.8	27	27	2	10	217	6.4
2018-19															
TOTALS	34-0	604/17.8	74-194	.381	39-106	.368	30-38	.789	60/1.8	27	27	2	10	217	6.4

FRESHMAN (2017-18): Key reserve as a freshman playing in 34 games ... fifth-leading scorer on the team at 6.4

points per game ... shot .381 (74-of-194) overall from the floor and .368 (39-of-106) from 3-point range ... was also a 79% free throw shooter making 30-of-38 ... totaled 60 rebounds for an average of 1.8 per game ... scored in double figures nine times and scored 20 or more points twice ... registered a season-high 27 points in the season-opener against Northern New Mexico (11/15/17) ... also in that game, set season-bests in overall field goals made and 3-pointers made as well ... 2017-18 Academic All-Mountain West ... was selected to compete in the 2018 USA Basketball 3x3 Open National Championships along with teammates Antonia Anderson, Jaisa Nunn and Aisia Robertson.

HIGH SCHOOL/CLUB: Played basketball at Red Oak High School in Red Oak, Texas, where she was named All-District in 2014-15 and 2015-16 ... was ranked #211 by ESPNW ... was the 2013-14 Offensive Player of the Year ... averaged 18 points, 5.0 assists, 4.0 rebounds and 3.0 steals per game in her senior season ... was named Offensive Player of the Year as a freshman ... National Honor Society participant ... also played for DFW Elite and UTLB Elite.

PERSONAL: Born on June 30 to Kimberly and Lyn Washington ... has one brother, Christian (21) ... hobbies include shopping and hanging out with friends ... favorite athlete is Kevin Durant ... favorite food is shrimp and macaroni ... favorite movies include Set it Off and Madea movies ... Fun Fact: she is a lefty.

Washington's Top Performances

Points	*Season 27 vs. Northern N.M. (11/15/17)
Career	Same
FGM	*Season 7 vs. Northern N.M. (11/15/17)
Career	Same
FGA	*Season 15 vs. Northern N.M. (11/15/17)
Career	Same
3PT FGM	*Season 5 - done twice
Career	Same
3PT FGA	*Season 9 vs. Utah State (1/31/18)
Career	Same
FTM	*Season 8 vs. Northern N.M. (11/15/17)
Career	Same
FTA	*Season 8 vs. Northern N.M. (11/15/17)
Career	Same
Rebounds	*Season 7 vs. Nevada (12/30/17)
Career	Same
Assists	*Season 4 vs. Rice (3/20/18)
Career	Same
Blocks	*Season 1 - done twice
Career	Same
Steals	*Season 1 - done 10 times
Career	Same
Turnovers	*Season 3 - done twice
Career	Same
Min. Played	*Season 34 vs. Colorado St. (2/27/18)
Career	Same

GAME-BY-GAME STATISTICS

Opponent	Date	GS	Min	FG-A	3FG-A	FT-A	Reb	PF	A	TO	B	S	PTS
Texas St.	11/9												
at Houston	11/24												
Oklahoma	11/28												
NMSU	12/1												
UTEP	12/5												
at NAU	12/8												
at NMSU	12/15												
Sacramento St.	12/19												
at Long Beach St.	12/29												
Air Force	1/2												
at Nevada	1/5												
at UNLV	1/9												
Colorado St.	1/12												
San Diego St.	1/16												
at Wyoming	1/19												
UNLV	1/23												
at Utah St.	1/26												
Fresno St.	2/2												
at San Diego St.	2/6												
Nevada	2/9												
at San Jose St.	2/13												
at Fresno St.	2/16												
Utah St.	2/20												
San Jose St.	2/27												
at Colorado St.	3/2												
at Boise St.	3/4												
Wyoming	3/7												

NOTEWORTHY

»
»
»
»
»
»





UNIVERSITY OF NEW MEXICO

2018-19 WOMEN'S BASKETBALL



#44

JAISA NUNN

C | 6-3 | SR | Kirkland, Wash. (Juanita HS)



PPG	FG %	3PT %	FT %	RPG	APG	SPG	BPG	MPG
17.0	.637	1.000	.809	10.2	0.4	1.0	0.7	28.1

NUNN'S CAREER STATS AT UNM

YEAR	GP-GS	MIN/AVG	FG-FGA	PCT.	3FG-FGA	PCT.	FT-FTA	PCT.	REB/AVG	AST.	TO	BLK	STL	PTS	PTS AVG
2015-16	30-11	5:44/18.1	93-172	54.1	---	---	29-50	58.0	148/4.9	27	30	10	13	215	7.2
2016-17	21-2	4:30/20.5	87-183	47.5	6-28	21.4	38-63	60.3	148/7.0	16	31	5	11	219	10.4
2017-18	35-35	9:84/28.1	221-347	63.7	1-1	1.000	152-188	80.9	358/10.2	15	38	26	36	595	17.0
2018-19	TOTALS	86-48	1958/22.8	401-702	57.1	7-29	241	219-301	728	654/7.6	58	99	41	1,028	12.0

JUNIOR (2017-18): 2017-18 All-Mountain West selection in response to a breakout junior season ... played and started in 35 of UNM's 36 games ... was the team's leading scorer and ranked second in the Mountain West to average a double-double in 2017-18 ... her best overall game came in game two of the season against then No. 16-ranked Marquette (11/13/17) as she scored a career-high 39 points (was a single-game record) on a near-perfect 14-of-15 shooting overall from the floor and 11-of-12 effort from the charity stripe ... Nunn also hauled in 13 rebounds in the game to notch a monster double-double ... converted an and-one opportunity with the Lobos trailing by two with three seconds left to lift UNM to the upset ... had two other 30-point double-doubles: at San Jose State (1/6/18) - 31 points, 10 rebounds; vs. San Jose State (2/3/18) - 30 points, 11 rebounds ... became the 22nd player in UNM Women's Basketball history to score over 1,000 career points ... achieved that feat in a 93-73 win over Rice in the WNIT (3/20/18) ... Nunn is one of 16 players at UNM to have over 1,000 career points and over 500 career rebounds ... Nunn established a new program single-season record for Field Goal Percentage as she shot an impressively efficient 63.7% (221-of-347) overall from the floor ... registered new program records within conference play for Points Scored (330), Field Goals Made (121), Field Goal Percentage (62.1%), and Free Throws Made (87) ... was selected to compete in the 2018 USA Basketball 3x3 Open National Championships along with teammates Antonia Anderson, Aisia Robertson and Madi Washington.

SOPHOMORE (2016-17): Played a major role for the Lobos before her season was cut short due to injury on Jan. 29 against Northern New Mexico ... appeared in 21 games with two starts ... made her first collegiate start on Jan. 18 against Boise State where she scored 14 points ... scored a career high 22 points in the Lobos' 78-67 win over Utah State

on Jan. 4 ... recorded a double-double with 10 points and 10 rebounds against Tulsa on Nov. 25 ... scored in double figures in 11 of her 21 appearances.

FRESHMAN (2015-16): Proved to be a force in the paint in her first season for the Lobos ... averaged 7.2 points and 4.9 rebounds per game ... scored a career-high 15 points in the last game of the season against Weber State (3-16-16) ... scored in double-figures 12 times ... led the team in field goal percentage at 54.1% ... grabbed 148 rebounds in her 30 appearances for the Lobos ... grabbed nine rebounds on four occasions ... MW All-Freshman Team selection ... 2016 Academic All-Mountain West Selection.

HIGH SCHOOL: A three-time first-team 3A All-KingCo selection (2012-13 and '13-14), she averaged 12.0 points, 8.8 rebounds and 2.6 blocks per game as a junior for the Rebels and coach Sam W. Lee ... The highest-rated recruit in the Mountain West, as rated by Collegiate Girls Basketball Report (No. 206 in the nation) and All-Star Girls Report (No. 219 overall) ... ESPNW lists her as the No. 17 center prospect in the nation and a three-star recruit with a 90 rating ... During her junior season, scored a season-high 23 points against Liberty and had 15 points and a career-high 17 rebounds against Mercer Island during her junior season ... The Rebels went 19-4 overall and 13-1 in winning the KingCo district championship ... During her sophomore season in 2012-13, she averaged 10.9 points and 7.3 rebounds ... Had 14 points and 15 rebounds in a December win over Bellevue High School ... Juanita went 17-9 overall and 11-3 in district play ... Played for the Northwest Blazers Orange AAU Team ... Her team completed in the Peach State Basketball Summer Invitation, and she was a key figure for the Northwest Blazers, who won four championships at the July event in one of the toughest tournaments, according to prospectsnation.com ... ESPNW's analysis of Nunn said, "Strong, physical low-post performer with soft touch in mid-post game; power frame in the key defends, rebounds and outlets."

PERSONAL: Born on July 19, 1997 in Kirkland, Wash. ... Parents are Kristin and Greg ... Favorite movie is "Space Jam," starring Michael Jordan ... Maintained a 3.9 grade-point average in high school and is majoring in communication.

Nunn's Top Performances

Points	*Season 39 vs. Marquette (11/13/17) Career
FGM	*Season 14 vs. Marquette (11/13/17) Career
FGA	*Season 17 at Boise State (2/7/18) Career
3PT FGM	*Season 1 vs. Wyoming (2/21/18) Career
3PT FGA	*Season 1 vs. Wyoming (2/21/18) Career
FTM	*Season 11 - done twice Career
FTA	*Season 12 - done twice Career
Rebounds	*Season 18 vs. UC Irvine (11/25/17) Career
Assists	*Season 4 vs. Illinois (11/26/17) Career
Blocks	*Season 4 vs. Lamar (12/20/17) Career
Steals	*Season 3 - done twice Career
Turnovers	*Season 3 - done three times Career
Min. Played	*Season 38 - done three times Career

GAME-BY-GAME STATISTICS

Opponent	Date	GS	Min	FG-A	3FG-A	FT-A	Reb	PF	A	TO	B	S	PTS
Texas St.	11/9												
at Houston	11/24												
Oklahoma	11/28												
NMSU	12/1												
UTEP	12/5												
at NAU	12/8												
at NMSU	12/15												
Sacramento St.	12/19												
at Long Beach St.	12/29												
Air Force	1/2												
at Nevada	1/5												
at UNLV	1/9												
Colorado St.	1/12												
San Diego St.	1/16												
at Wyoming	1/19												
UNLV	1/23												
at Utah St.	1/26												
Fresno St.	2/2												
at San Diego St.	2/6												
Nevada	2/9												
at San Jose St.	2/13												
at Fresno St.	2/16												
Utah St.	2/20												
San Jose St.	2/27												
at Colorado St.	3/2												
at Boise St.	3/4												
Wyoming	3/7												

NOTEWORTHY

»
»
»
»
»





UNIVERSITY OF NEW MEXICO

2018-19 WOMEN'S BASKETBALL



2017-18 New Mexico Women's Basketball

New Mexico Combined Team Statistics (as of Mar 22, 2018)

All games



Overall record: 25-11 Conf: 10-8 Home: 19-3 Away: 5-7 Neutral: 1-1

##	Player	gp-gs	Total				3-Point		F-Throw		Rebounds				pf	dq	a	to	blk	stl	pts	avg
			min	avg	fg-fga	fg%	3fg-fga	3fg%	ft-fa	ft%	off	def	tot	avg								
44	NUNN, Jaisa	35-35	984	28.1	221-347	.637	1-1	1.000	152-188	.809	177	181	358	10.2	82	3	15	38	26	36	595	17.0
00	BEYNON, Cherise	36-36	1193	33.1	221-569	.388	54-180	.300	111-146	.760	41	170	211	5.9	97	2	243	146	12	85	607	16.9
02	BUCK, Tesha	36-36	1204	33.4	183-432	.424	104-276	.377	55-66	.833	4	160	164	4.6	79	0	117	71	14	62	525	14.6
04	LAPEYROLERIE, Alex	27-27	776	28.7	94-259	.363	64-176	.364	40-45	.889	12	106	118	4.4	48	0	28	17	6	24	292	10.8
35	WASHINGTON, Madi	34-0	604	17.8	74-194	.381	39-106	.368	30-38	.789	14	46	60	1.8	29	0	27	27	2	10	217	6.4
03	FLYE, N'Dea	35-32	904	25.8	75-258	.291	19-76	.250	44-78	.564	51	83	134	3.8	83	1	84	57	5	23	213	6.1
32	ANDERSON, Antonia	32-1	417	13.0	52-91	.571	2-10	.200	24-40	.600	31	65	96	3.0	50	0	5	17	34	13	130	4.1
25	BRYAN, Laneah	32-11	518	16.2	39-102	.382	22-57	.386	24-29	.828	6	35	41	1.3	29	0	43	19	5	17	124	3.9
10	SMITH, Jasmine	30-2	393	13.1	39-91	.429	3-13	.231	11-25	.440	12	35	47	1.6	31	0	12	20	1	9	92	3.1
22	BURLESON, Mykiel	19-0	144	7.6	8-31	.258	4-13	.308	19-22	.864	6	21	27	1.4	9	0	10	14	1	5	39	2.1
11	LINES, Emily	16-0	74	4.6	9-21	.429	5-14	.357	6-7	.857	2	16	18	1.1	3	0	3	3	1	1	29	1.8
23	DE LA CERDA, Jaedyn	13-0	35	2.7	8-20	.400	2-10	.200	5-6	.833	2	5	7	0.5	3	0	2	4	1	5	23	1.8
24	MOORE, Erica	9-0	30	3.3	3-5	.600	0-0	.000	1-1	1.000	1	3	4	0.4	4	0	0	1	4	1	7	0.8
Team											66	82	148		1		9					
Total.....		36	7276		1026-2420	.424	319-932	.342	522-691	.755	425	1008	1433	39.8	548	6	589	443	112	291	2893	80.4
Opponents.....		36	7275		954-2332	.409	253-758	.334	383-540	.709	436	1036	1472	40.9	654	-	527	593	132	206	2544	70.7

TEAM STATISTICS	NM	OPP
SCORING	2893	2544
Points per game	80.4	70.7
Scoring margin	+9.7	-
FIELD GOALS-ATT	1026-2420	954-2332
Field goal pct	.424	.409
3 POINT FG-ATT	319-932	253-758
3-point FG pct	.342	.334
3-pt FG made per game	8.9	7.0
FREE THROWS-ATT	522-691	383-540
Free throw pct	.755	.709
F-Throws made per game	14.5	10.6
REBOUNDS	1433	1472
Rebounds per game	39.8	40.9
Rebounding margin	-1.1	-
ASSISTS	589	527
Assists per game	16.4	14.6
TURNOVERS	443	593
Turnovers per game	12.3	16.5
Turnover margin	+4.2	-
Assist/turnover ratio	1.3	0.9
STEALS	291	206
Steals per game	8.1	5.7
BLOCKS	112	132
Blocks per game	3.1	3.7
ATTENDANCE	106026	20978
Home games-Avg/Game	22-4819	12-1423
Neutral site-Avg/Game	-	2-1952

Score by Periods	1st	2nd	3rd	4th	OT	Totals
New Mexico	699	680	704	780	30	2893
Opponents	598	552	694	678	22	2544

Date	Opponent	Score	Att.
11/10/17	WESTERN MICHIGAN	w 88-76	4145
11/13/17	MARQUETTE	w 88-87	4169
11/15/17	NORTHERN NEW MEXICO	w 107-66	4314
11/18/17	NEW MEXICO STATE	w 86-75	5082
11/24/17	WICHITA STATE	w 76-62	4560
11/25/17	UC IRVINE	w 83-61	4425
11/26/17	ILLINOIS	w 97-68	4663
11/30/17	at UTEP	w 59-35	1350
12/02/17	at New Mexico State	w 101-93	763
12/06/17	TEXAS TECH	w 90-56	5663
12/10/17	NAVY	Wot 94-87	6763
12/16/17	at Oklahoma	L 63-105	4508
12/20/17	LAMAR	w 90-58	5081
12/28/17	at Air Force	w 88-59	312
12/30/17	NEVADA	w 72-68	6342
01/03/18	BOISE STATE	w 100-83	5367
01/06/18	at San Jose State	L 86-95	836
01/10/18	at Wyoming	L 55-66	2434
01/13/18	FRESNO STATE	w 88-75	5881
01/17/18	UNLV	L 66-68	5786
01/20/18	at San Diego State	L 89-97	886
01/27/18	at Colorado State	Lot 71-74	1624
01/31/18	UTAH STATE	w 80-47	4472
02/03/18	SAN JOSE STATE	w 92-62	5403
02/07/18	at Boise State	L 85-91	610
02/10/18	AIR FORCE	w 57-49	5369
02/14/18	at Utah State	w 74-50	286
02/21/18	WYOMING	L 62-63	4785
02/24/18	at UNLV	L 62-74	1065
02/27/18	COLORADO STATE	w 54-48	5088
03/02/18	at Fresno State	Wot 93-89	2401
03/05/18	vs San Jose State	w 84-54	1542
03/06/18	vs Wyoming	L 66-69	2361
03/15/18	SAINT MARY'S	w 82-80	1428
03/20/18	RICE	w 93-73	3302
03/22/18	TCU	L 72-81	3938

* = Mountain West game

1 = Lobo Classic Holiday Tournament (Albuquerque, N.M.)

2 = Mountain West Tournament (Las Vegas, Nev.)

3 = WNIT



UNIVERSITY OF NEW MEXICO

2018-19 WOMEN'S BASKETBALL



2017-18 New Mexico Women's Basketball New Mexico Season Schedule/Results & Leaders (as of Mar 22, 2018) All games



RECORD:	OVERALL	HOME	AWAY	NEUTRAL
ALL GAMES	25-11	19-3	5-7	1-1
CONFERENCE	10-8	7-2	3-6	0-0
NON-CONFERENCE	15-3	12-1	2-1	1-1

Date	Opponent	Score	Att.	High Points	High Rebounds
11/10/17	WESTERN MICHIGAN	W 88-76	4145	(24)BEYNON, Cherise	(11)LAPEYROLERIE, Alex
11/13/17	MARQUETTE	W 88-87	4169	(39)NUNN, Jaisa	(13)NUNN, Jaisa
11/15/17	NORTHERN NEW MEXICO	W 107-66	4314	(27)WASHINGTON, Madi	(7)BURLESON, Mykiel
11/18/17	NEW MEXICO STATE	W 86-75	5082	(27)BEYNON, Cherise	(13)NUNN, Jaisa
11/24/17	1WICHITA STATE	W 76-62	4560	(23)BEYNON, Cherise	(10)NUNN, Jaisa
11/25/17	1UC IRVINE	W 83-61	4425	(21)WASHINGTON, Madi	(18)NUNN, Jaisa
11/26/17	1ILLINOIS	W 97-68	4663	(21)BUCK, Tesha	(9)NUNN, Jaisa
11/30/17	at UTEP	W 59-35	1350	(19)BUCK, Tesha	(6)NUNN, Jaisa
					(6)ANDERSON, Antonia
12/02/17	at New Mexico State	W 101-93	763	(30)BEYNON, Cherise	(13)NUNN, Jaisa
12/06/17	TEXAS TECH	W 90-56	5663	(21)BEYNON, Cherise	(10)NUNN, Jaisa
12/10/17	NAVY	Wot 94-87	6763	(20)BEYNON, Cherise	(12)NUNN, Jaisa
12/16/17	at Oklahoma	63-105 L	4508	(18)LAPEYROLERIE, Alex	(7)LAPEYROLERIE, Alex
12/20/17	LAMAR	W 90-58	5081	(40)BUCK, Tesha	(17)NUNN, Jaisa
12/28/17	*at Air Force	W 88-59	312	(18)NUNN, Jaisa	(9)NUNN, Jaisa
12/30/17	*NEVADA	W 72-68	6342	(18)NUNN, Jaisa	(7)NUNN, Jaisa
					(7)BUCK, Tesha
					(7)WASHINGTON, Madi
01/03/18	*BOISE STATE	W 100-83	5367	(23)LAPEYROLERIE, Alex	(8)BUCK, Tesha
01/06/18	*at San Jose State	86-95 L	836	(31)NUNN, Jaisa	(10)NUNN, Jaisa
01/10/18	*at Wyoming	55-66 L	2434	(28)BEYNON, Cherise	(9)NUNN, Jaisa
01/13/18	*FRESNO STATE	W 88-75	5881	(20)BEYNON, Cherise	(10)NUNN, Jaisa
				(20)NUNN, Jaisa	
01/17/18	*UNLV	66-68 L	5786	(19)LAPEYROLERIE, Alex	(13)NUNN, Jaisa
01/20/18	*at San Diego State	89-97 L	886	(41)BEYNON, Cherise	(8)LAPEYROLERIE, Alex
01/27/18	*at Colorado State	71-74 Lot	1624	(30)BEYNON, Cherise	(13)BEYNON, Cherise
01/31/18	*UTAH STATE	W 80-47	4472	(20)NUNN, Jaisa	(12)NUNN, Jaisa
02/03/18	*SAN JOSE STATE	W 92-62	5403	(30)NUNN, Jaisa	(11)NUNN, Jaisa
02/07/18	*at Boise State	85-91 L	610	(25)NUNN, Jaisa	(10)NUNN, Jaisa
				(25)BUCK, Tesha	
02/10/18	*AIR FORCE	W 57-49	5369	(25)NUNN, Jaisa	(8)NUNN, Jaisa
02/14/18	*at Utah State	W 74-50	286	(13)BUCK, Tesha	(8)BEYNON, Cherise
				(13)BRYAN, Laneah	(8)FLYE, N'Dea
					(8)NUNN, Jaisa
02/21/18	*WYOMING	62-63 L	4785	(19)NUNN, Jaisa	(9)NUNN, Jaisa
02/24/18	*at UNLV	62-74 L	1065	(17)NUNN, Jaisa	(12)NUNN, Jaisa
02/27/18	*COLORADO STATE	W 54-48	5088	(20)BEYNON, Cherise	(14)NUNN, Jaisa
03/02/18	*at Fresno State	Wot 93-89	2401	(30)BUCK, Tesha	(13)BEYNON, Cherise
03/05/18	2vs San Jose State	W 84-54	1542	(19)NUNN, Jaisa	(11)BEYNON, Cherise
03/06/18	2vs Wyoming	66-69 L	2361	(20)NUNN, Jaisa	(14)NUNN, Jaisa
03/15/18	3SAINT MARY'S	W 82-80	1428	(33)BEYNON, Cherise	(9)NUNN, Jaisa
03/20/18	3RICE	W 93-73	3302	(28)NUNN, Jaisa	(8)NUNN, Jaisa
03/22/18	3TCU	72-81 L	3938	(24)BUCK, Tesha	(11)NUNN, Jaisa

* = Mountain West game

1 = Lobo Classic Holiday Tournament (Albuquerque, N.M.)

2 = Mountain West Tournament (Las Vegas, Nev.)

3 = WNIT

Attendance Summary	Games	Attend	Avg/Game
Home	22	106026	4819
Away	12	17075	1423
Neutral	2	3903	1952
Total	36	127004	3528



UNIVERSITY OF NEW MEXICO

2018-19 WOMEN'S BASKETBALL



2017-18 New Mexico Women's Basketball
New Mexico Season Box Score (as of Mar 22, 2018)
All games



RECORD:	OVERALL	HOME	AWAY	NEUTRAL
ALL GAMES	25-11	19-3	5-7	1-1
CONFERENCE	10-8	7-2	3-6	0-0
NON-CONFERENCE	15-3	12-1	2-1	1-1

##	Player	gp-gs	min	avg	Total		3-Point		F-Throw		Rebounds				pf	dq	a	to	blk	stl	pts	avg
					fg-fga	fg%	3fg-fga	3fg%	ft-fa	ft%	off	def	tot	avg								
44	NUNN, Jaisa	35-35	984	28.1	221-347	.637	1-1	1.000	152-188	.809	177	181	358	10.2	82	3	15	38	26	36	595	17.0
00	BEYNON, Cherise	36-36	1193	33.1	221-569	.388	54-180	.300	111-146	.760	41	170	211	5.9	97	2	243	146	12	85	607	16.9
02	BUCK, Tesha	36-36	1204	33.4	183-432	.424	104-276	.377	55-66	.833	4	160	164	4.6	79	0	117	71	14	62	525	14.6
04	LAPEYROLERIE, Alex	27-27	776	28.7	94-259	.363	64-176	.364	40-45	.889	12	106	118	4.4	48	0	28	17	6	24	292	10.8
35	WASHINGTON, Madi	34-0	604	17.8	74-194	.381	39-106	.368	30-38	.789	14	46	60	1.8	29	0	27	27	2	10	217	6.4
03	FLYE, N'Dea	35-32	904	25.8	75-258	.291	19-76	.250	44-78	.564	51	83	134	3.8	83	1	84	57	5	23	213	6.1
32	ANDERSON, Antonia	32-1	417	13.0	52-91	.571	2-10	.200	24-40	.600	31	65	96	3.0	50	0	5	17	34	13	130	4.1
25	BRYAN, Laneah	32-11	518	16.2	39-102	.382	22-57	.386	24-29	.828	6	35	41	1.3	29	0	43	19	5	17	124	3.9
10	SMITH, Jasmine	30-2	393	13.1	39-91	.429	3-13	.231	11-25	.440	12	35	47	1.6	31	0	12	20	1	9	92	3.1
22	BURLESON, Mykiel	19-0	144	7.6	8-31	.258	4-13	.308	19-22	.864	6	21	27	1.4	9	0	10	14	1	5	39	2.1
11	LINES, Emily	16-0	74	4.6	9-21	.429	5-14	.357	6-7	.857	2	16	18	1.1	3	0	3	3	1	1	29	1.8
23	DE LA CERDA, Jaedyn	13-0	35	2.7	8-20	.400	2-10	.200	5-6	.833	2	5	7	0.5	3	0	2	4	1	5	23	1.8
24	MOORE, Erica	9-0	30	3.3	3-5	.600	0-0	.000	1-1	1.000	1	3	4	0.4	4	0	0	1	4	1	7	0.8
Team											66	82	148		1		9					
Total.....		36	7276		1026-2420	.424	319-932	.342	522-691	.755	425	1008	1433	39.8	548	6	589	443	112	291	2893	80.4
Opponents.....		36	7275		954-2332	.409	253-758	.334	383-540	.709	436	1036	1472	40.9	654	-	527	593	132	206	2544	70.7

Score by Periods	1st	2nd	3rd	4th	OT	Totals
New Mexico	699	680	704	780	30	2893
Opponents	598	552	694	678	22	2544



UNIVERSITY OF NEW MEXICO

2018-19 WOMEN'S BASKETBALL



2017-18 New Mexico Women's Basketball
New Mexico Overall Team Statistics (as of Mar 22, 2018)
All games



TEAM STATISTICS	NM	OPP
SCORING	2893	2544
Points per game	80.4	70.7
Scoring margin	+9.7	-
FIELD GOALS-ATT	1026-2420	954-2332
Field goal pct	.424	.409
3 POINT FG-ATT	319-932	253-758
3-point FG pct	.342	.334
3-pt FG made per game	8.9	7.0
FREE THROWS-ATT	522-691	383-540
Free throw pct	.755	.709
F-Throws made per game	14.5	10.6
REBOUNDS	1433	1472
Rebounds per game	39.8	40.9
Rebounding margin	-1.1	-
ASSISTS	589	527
Assists per game	16.4	14.6
TURNOVERS	443	593
Turnovers per game	12.3	16.5
Turnover margin	+4.2	-
Assist/turnover ratio	1.3	0.9
STEALS	291	206
Steals per game	8.1	5.7
BLOCKS	112	132
Blocks per game	3.1	3.7
WINNING STREAK	0	-
Home win streak	0	-
ATTENDANCE	106026	20978
Home games-Avg/Game	22-4819	12-1423
Neutral site-Avg/Game	-	2-1952

Score by Periods	1st	2nd	3rd	4th	OT	Totals
New Mexico	699	680	704	780	30	2893
Opponents	598	552	694	678	22	2544



UNIVERSITY OF NEW MEXICO

2018-19 WOMEN'S BASKETBALL



2017-18 New Mexico Women's Basketball
New Mexico Team Game-by-Game (as of Mar 22, 2018)
All games



TEAM STATISTICS

Opponent	Date	Score		Total		3-Pointers		Free throws		Rebounds				pf	a	t/o	blk	stl	pts	avg
				fg-fga	pct	3fg-fga	pct	ft-fga	pct	off	def	tot	avg							
WESTERN MICHIGAN	11/10/17	88-76	W	29-64	.453	9-23	.391	21-29	.724	13	33	46	46.0	19	19	13	2	3	88	88.0
MARQUETTE	11/13/17	88-87	W	34-67	.507	2-10	.200	18-23	.783	8	30	38	42.0	9	15	13	2	6	88	88.0
NORTHERN NEW MEXIC	11/15/17	107-66	W	36-85	.424	11-28	.393	24-35	.686	20	31	51	45.0	14	17	8	8	18	107	94.3
NEW MEXICO STATE	11/18/17	86-75	W	26-74	.351	10-30	.333	24-34	.706	12	33	45	45.0	15	15	6	1	12	86	92.2
WICHITA STATE	11/24/17	76-62	W	29-66	.439	12-34	.353	6-13	.462	12	28	40	44.0	9	22	9	3	5	76	89.0
UC IRVINE	11/25/17	83-61	W	25-59	.424	8-21	.381	25-30	.833	13	38	51	45.2	16	16	22	4	10	83	88.0
ILLINOIS	11/26/17	97-68	W	34-70	.486	18-33	.545	11-16	.688	12	24	36	43.9	14	27	8	2	13	97	89.3
at UTEP	11/30/17	59-35	W	23-58	.397	12-36	.333	1-7	.143	9	22	31	42.2	24	16	12	2	14	59	85.5
at New Mexico State	12/02/17	101-93	W	37-74	.500	15-22	.682	12-18	.667	14	25	39	41.9	11	9	11	3	3	101	87.2
TEXAS TECH	12/06/17	90-56	W	33-76	.434	6-20	.300	18-21	.857	14	29	43	42.0	9	14	7	2	12	90	87.5
NAVY	12/10/17	94-87	Wot	37-79	.468	6-16	.375	14-17	.824	15	30	45	42.3	13	16	13	1	10	94	88.1
at Oklahoma	12/16/17	63-105	L	17-62	.274	11-33	.333	18-20	.900	6	26	32	41.4	17	13	23	3	8	63	86.0
LAMAR	12/20/17	90-58	W	35-66	.530	15-40	.375	5-6	.833	8	41	49	42.0	11	26	20	7	9	90	86.3
at Air Force	12/28/17	88-59	W	31-66	.470	6-21	.286	20-24	.833	12	29	41	41.9	18	10	12	2	8	88	86.4
NEVADA	12/30/17	72-68	W	25-73	.342	10-29	.345	12-19	.632	13	31	44	42.1	18	16	10	0	5	72	85.5
BOISE STATE	01/03/18	100-83	W	34-65	.523	10-26	.385	22-24	.917	12	24	36	41.7	17	25	12	5	13	100	86.4
at San Jose State	01/06/18	86-95	L	32-73	.438	10-33	.303	12-24	.500	10	32	42	41.7	18	25	15	3	6	86	86.4
at Wyoming	01/10/18	55-66	L	23-65	.354	3-16	.188	6-10	.600	10	27	37	41.4	18	6	11	1	6	55	84.6
FRESNO STATE	01/13/18	88-75	W	31-70	.443	9-23	.391	17-18	.944	12	31	43	41.5	12	19	15	2	3	88	84.8
UNLV	01/17/18	66-68	L	21-57	.368	10-33	.303	14-16	.875	8	27	35	41.2	18	17	15	2	6	66	83.8
at San Diego State	01/20/18	89-97	L	33-74	.446	9-27	.333	14-17	.824	7	26	33	40.8	21	14	4	3	5	89	84.1
at Colorado State	01/27/18	71-74	Lot	25-75	.333	6-25	.240	15-18	.833	15	33	48	41.1	14	9	12	2	3	71	83.5
UTAH STATE	01/31/18	80-47	W	30-61	.492	15-33	.455	5-5	1.000	12	24	36	40.9	7	24	14	5	9	80	83.3
SAN JOSE STATE	02/03/18	92-62	W	34-69	.493	12-31	.387	12-19	.632	11	33	44	41.0	16	25	6	3	4	92	83.7
at Boise State	02/07/18	85-91	L	29-69	.420	8-21	.381	19-22	.864	15	18	33	40.7	17	16	13	3	5	85	83.8
AIR FORCE	02/10/18	57-49	W	18-56	.321	2-13	.154	19-24	.792	11	27	38	40.6	13	11	14	4	8	57	82.7
at Utah State	02/14/18	74-50	W	30-63	.476	8-20	.400	6-7	.857	14	30	44	40.7	10	15	17	4	12	74	82.4
WYOMING	02/21/18	62-63	L	19-50	.380	5-17	.294	19-24	.792	5	26	31	40.4	21	10	11	3	4	62	81.7
at UNLV	02/24/18	62-74	L	23-58	.397	7-28	.250	9-18	.500	10	22	32	40.1	14	13	19	1	2	62	81.0
COLORADO STATE	02/27/18	54-48	W	18-63	.286	4-23	.174	14-16	.875	15	26	41	40.1	14	4	11	7	6	54	80.1
at Fresno State	03/02/18	93-89	Wot	36-85	.424	8-40	.200	13-16	.813	20	24	44	40.3	14	24	6	1	5	93	80.5
vs San Jose State	03/05/18	84-54	W	32-78	.410	7-28	.250	13-15	.867	18	41	59	40.8	10	18	14	7	14	84	80.6
vs Wyoming	03/06/18	66-69	L	22-62	.355	10-25	.400	12-17	.706	11	24	35	40.7	20	14	7	7	4	66	80.2
SAINT MARY'S	03/15/18	82-80	W	28-73	.384	11-34	.324	15-21	.714	11	19	30	40.4	25	15	10	1	10	82	80.2
RICE	03/20/18	93-73	W	34-60	.567	7-19	.368	18-21	.857	10	21	31	40.1	17	23	12	3	15	93	80.6
TCU	03/22/18	72-81	L	23-55	.418	7-21	.333	19-27	.704	7	23	30	39.8	15	11	18	3	15	72	80.4
New Mexico		2893		1026-2420	.424	319-932	.342	522-691	.755	425	1008	1433	39.8	548	589	443	112	291	2893	80.4
Opponents		2544		954-2332	.409	253-758	.334	383-540	.709	436	1036	1472	40.9	654	527	593	132	206	2544	70.7

Games played: 36
Points/game: 80.4
FG Pct: 42.4
3FG Pct: 34.2
FT Pct: 75.5

Rebounds/game: 39.8
Assists/game: 16.4
Turnovers/game: 12.3
Assist/turnover ratio: 1.3
Steals/game: 8.1
Blocks/game: 3.1



UNIVERSITY OF NEW MEXICO

2018-19 WOMEN'S BASKETBALL



2017-18 New Mexico Women's Basketball New Mexico Opponent Game-by-Game (as of Mar 22, 2018) All games



OPPONENT STATISTICS

Opponent	Date	Score		Total		3-Pointers		Free throws		Rebounds				pf	a	t/o	blk	stl	pts	avg
				fg-fga	pct	3fg-fga	pct	ft-fa	pct	off	def	tot	avg							
WESTERN MICHIGAN	11/10/17	88-76	W	25-64	.391	5-19	.263	21-26	.808	9	24	33	33.0	27	15	9	3	8	76	76.0
MARQUETTE	11/13/17	88-87	W	34-79	.430	13-34	.382	6-7	.857	15	26	41	37.0	21	24	13	4	8	87	81.5
NORTHERN NEW MEXIC	11/15/17	107-66	W	24-64	.375	9-28	.321	9-16	.563	13	34	47	40.3	25	17	30	5	2	66	76.3
NEW MEXICO STATE	11/18/17	86-75	W	26-70	.371	12-31	.387	11-15	.733	12	40	52	43.2	27	13	17	8	3	75	76.0
WICHITA STATE	11/24/17	76-62	W	26-67	.388	4-19	.211	6-9	.667	14	28	42	43.0	11	17	12	2	6	62	73.2
UC IRVINE	11/25/17	83-61	W	22-67	.328	7-24	.292	10-13	.769	7	24	31	41.0	26	13	18	5	9	61	71.2
ILLINOIS	11/26/17	97-68	W	27-67	.403	8-22	.364	6-6	1.000	15	26	41	41.0	17	15	23	3	3	68	70.7
at UTEP	11/30/17	59-35	W	11-44	.250	2-12	.167	11-16	.688	15	29	44	41.4	12	7	25	2	2	35	66.2
at New Mexico State	12/02/17	101-93	W	38-72	.528	11-25	.440	6-10	.600	12	25	37	40.9	17	15	14	7	4	93	69.2
TEXAS TECH	12/06/17	90-56	W	25-66	.379	3-20	.150	3-6	.500	13	31	44	41.2	20	12	20	4	2	56	67.9
NAVY	12/10/17	94-87	Wot	30-78	.385	16-49	.327	11-14	.786	19	28	47	41.7	19	21	16	6	7	87	69.6
at Oklahoma	12/16/17	63-105	L	40-85	.471	15-38	.395	10-13	.769	20	40	60	43.2	21	27	16	4	10	105	72.6
LAMAR	12/20/17	90-58	W	23-81	.284	4-18	.222	8-14	.571	22	24	46	43.5	13	10	15	2	13	58	71.5
at Air Force	12/28/17	88-59	W	23-58	.397	5-16	.313	8-14	.571	9	24	33	42.7	23	13	20	4	3	59	70.6
NEVADA	12/30/17	72-68	W	26-67	.388	4-20	.200	12-22	.545	16	39	55	43.5	18	13	17	3	5	68	70.4
BOISE STATE	01/03/18	100-83	W	32-64	.500	12-25	.480	7-13	.538	12	21	33	42.9	18	15	18	2	7	83	71.2
at San Jose State	01/06/18	86-95	L	34-74	.459	12-25	.480	15-23	.652	9	37	46	43.1	20	25	13	4	8	95	72.6
at Wyoming	01/10/18	55-66	L	24-55	.436	7-20	.350	11-16	.688	7	35	42	43.0	12	14	14	3	6	66	72.2
FRESNO STATE	01/13/18	88-75	W	33-73	.452	4-20	.200	5-6	.833	9	28	37	42.7	18	14	12	5	6	75	72.4
UNLV	01/17/18	66-68	L	24-62	.387	8-25	.320	12-18	.667	13	28	41	42.6	17	15	14	3	8	68	72.2
at San Diego State	01/20/18	89-97	L	37-72	.514	12-28	.429	11-14	.786	11	34	45	42.7	19	28	12	0	3	97	73.3
at Colorado State	01/27/18	71-74	Lot	30-70	.429	9-24	.375	5-9	.556	6	35	41	42.6	18	11	13	4	3	74	73.4
UTAH STATE	01/31/18	80-47	W	20-58	.345	1-9	.111	6-7	.857	15	19	34	42.3	11	9	19	5	2	47	72.2
SAN JOSE STATE	02/03/18	92-62	W	21-57	.368	8-18	.444	12-18	.667	6	29	35	42.0	14	11	15	2	3	62	71.8
at Boise State	02/07/18	85-91	L	33-62	.532	7-15	.467	18-20	.900	10	22	32	41.6	23	19	14	6	5	91	72.6
AIR FORCE	02/10/18	57-49	W	20-51	.392	2-7	.286	7-10	.700	6	31	37	41.4	23	10	21	4	9	49	71.7
at Utah State	02/14/18	74-50	W	20-62	.323	5-15	.333	5-6	.833	11	19	30	41.0	8	9	15	4	13	50	70.9
WYOMING	02/21/18	62-63	L	20-53	.377	10-20	.500	13-22	.591	12	25	37	40.8	18	15	12	1	4	63	70.6
at UNLV	02/24/18	62-74	L	26-57	.456	3-11	.273	19-25	.760	11	27	38	40.7	18	10	16	1	9	74	70.7
COLORADO STATE	02/27/18	54-48	W	18-55	.327	4-14	.286	8-9	.889	10	32	42	40.8	14	6	17	6	3	48	69.9
at Fresno State	03/02/18	93-89	Wot	35-68	.515	7-19	.368	12-17	.706	10	30	40	40.7	17	23	14	4	3	89	70.5
vs San Jose State	03/05/18	84-54	W	19-71	.268	4-19	.211	12-15	.800	13	28	41	40.8	13	10	15	7	8	54	70.0
vs Wyoming	03/06/18	66-69	L	22-53	.415	3-13	.231	22-27	.815	9	30	39	40.7	16	12	9	2	4	69	70.0
SAINT MARY'S	03/15/18	82-80	W	27-61	.443	4-18	.222	22-33	.667	19	36	55	41.1	23	11	24	3	2	80	70.3
RICE	03/20/18	93-73	W	27-62	.435	9-25	.360	10-13	.769	15	17	32	40.9	17	12	22	1	3	73	70.4
TCU	03/22/18	72-81	L	32-63	.508	4-13	.308	13-18	.722	11	31	42	40.9	20	16	19	3	12	81	70.7
Opponents		2544		954-2332	.409	253-758	.334	383-540	.709	436	1036	1472	40.9	654	527	593	132	206	2544	70.7
New Mexico		2893		1026-2420	.424	319-932	.342	522-691	.755	425	1008	1433	39.8	548	589	443	112	291	2893	80.4

Games played: 36
Points/game: 70.7
FG Pct: 40.9
3FG Pct: 33.4
FT Pct: 70.9

Rebounds/game: 40.9
Assists/game: 14.6
Turnovers/game: 16.5
Assist/turnover ratio: 0.9
Steals/game: 5.7
Blocks/game: 3.7



UNIVERSITY OF NEW MEXICO

2018-19 WOMEN'S BASKETBALL



2017-18 New Mexico Women's Basketball New Mexico Team Game-by-Game Comparison (as of Mar 22, 2018) All games



Opponent	1st	2nd	Score	Mar	Total FG	FG Pct	3-Pointers	3FG Pct	Free Throws	FT Pct	Rebounds	
WESTERN MICHIGAN	45/36	43/40	88-76	+12	29-64/25-64	.453/.391	9-23/5-19	.391/.263	21-29/21-26	.724/.808	46/33 +13	1
MARQUETTE	42/46	46/41	88-87	+1	34-67/34-79	.507/.430	2-10/13-34	.200/.382	18-23/6-7	.783/.857	38/41 (3)	
NORTHERN NEW MEXICO	50/26	57/40	107-66	+41	36-85/24-64	.424/.375	11-28/9-28	.393/.321	24-35/9-16	.686/.563	51/47 +4	1
NEW MEXICO STATE	35/24	51/51	86-75	+11	26-74/26-70	.351/.371	10-30/12-31	.333/.387	24-34/11-15	.706/.733	45/52 (7)	
WICHITA STATE	40/31	36/31	76-62	+14	29-66/26-67	.439/.388	12-34/4-19	.353/.211	6-13/6-9	.462/.667	40/42 (2)	2
UC IRVINE	41/33	42/28	83-61	+22	25-59/22-67	.424/.328	8-21/7-24	.381/.292	25-30/10-13	.833/.769	51/31 +20	
ILLINOIS	34/29	63/39	97-68	+29	34-70/27-67	.486/.403	18-33/8-22	.545/.364	11-16/6-6	.688/1000	36/41 (5)	2
UTEP	34/22	25/13	59-35	+24	23-58/11-44	.397/.250	12-36/2-12	.333/.167	1-7/11-16	.143/.688	31/44 (13)	
New Mexico State	52/48	49/45	101-93	+8	37-74/38-72	.500/.528	15-22/11-25	.682/.440	12-18/6-10	.667/.600	39/37 +2	
TEXAS TECH	37/27	53/29	90-56	+34	33-76/25-66	.434/.379	6-20/3-20	.300/.150	18-21/3-6	.857/.500	43/44 (1)	
NAVY	45/42	37/40	94-87	+7	37-79/30-78	.468/.385	6-16/16-49	.375/.327	14-17/11-14	.824/.786	45/47 (2)	1
Oklahoma	25/56	38/49	63-105	(42)	17-62/40-85	.274/.471	11-33/15-38	.333/.395	18-20/10-13	.900/.769	32/60 (28)	
LAMAR	54/29	36/29	90-58	+32	35-66/23-81	.530/.284	15-40/4-18	.375/.222	5-6/8-14	.833/.571	49/46 +3	2
Air Force	37/26	51/33	88-59	+29	31-66/23-58	.470/.397	6-21/5-16	.286/.313	20-24/8-14	.833/.571	41/33 +8	
NEVADA	27/31	45/37	72-68	+4	25-73/26-67	.342/.388	10-29/4-20	.345/.200	12-19/12-22	.632/.545	44/55 (11)	1
BOISE STATE	44/38	56/45	100-83	+17	34-65/32-64	.523/.500	10-26/12-25	.385/.480	22-24/7-13	.917/.538	36/33 +3	
San Jose State	49/42	37/53	86-95	(9)	32-73/34-74	.438/.459	10-33/12-25	.303/.480	12-24/15-23	.500/.652	42/46 (4)	2
Wyoming	24/30	31/36	55-66	(11)	23-65/24-55	.354/.436	3-16/7-20	.188/.350	6-10/11-16	.600/.688	37/42 (5)	
FRESNO STATE	46/35	42/40	88-75	+13	31-70/33-73	.443/.452	9-23/4-20	.391/.200	17-18/5-6	.944/.833	43/37 +6	1
UNLV	40/32	26/36	66-68	(2)	21-57/24-62	.368/.387	10-33/8-25	.303/.320	14-16/12-18	.875/.667	35/41 (6)	
San Diego State	44/48	45/49	89-97	(8)	33-74/37-72	.446/.514	9-27/12-28	.333/.429	14-17/11-14	.824/.786	33/45 (12)	1
Colorado State	33/29	34/38	71-74	(3)	25-75/30-70	.333/.429	6-25/9-24	.240/.375	15-18/5-9	.833/.556	48/41 +7	
UTAH STATE	42/18	38/29	80-47	+33	30-61/20-58	.492/.345	15-33/1-9	.455/.111	5-5/6-7	1000/.857	36/34 +2	
SAN JOSE STATE	41/21	51/41	92-62	+30	34-69/21-57	.493/.368	12-31/8-18	.387/.444	12-19/12-18	.632/.667	44/35 +9	
Boise State	40/41	45/50	85-91	(6)	29-69/33-62	.420/.532	8-21/7-15	.381/.467	19-22/18-20	.864/.900	33/32 +1	1
AIR FORCE	25/25	32/24	57-49	+8	18-56/20-51	.321/.392	2-13/2-7	.154/.286	19-24/7-10	.792/.700	38/37 +1	
Utah State	33/19	41/31	74-50	+24	30-63/20-62	.476/.323	8-20/5-15	.400/.333	6-7/5-6	.857/.833	44/30 +14	
WYOMING	24/25	38/38	62-63	(1)	19-50/20-53	.380/.377	5-17/10-20	.294/.500	19-24/13-22	.792/.591	31/37 (6)	
UNLV	31/36	31/38	62-74	(12)	23-58/26-57	.397/.456	7-28/3-11	.250/.273	9-18/19-25	.500/.760	32/38 (6)	1
COLORADO STATE	26/25	28/23	54-48	+6	18-63/18-55	.286/.327	4-23/4-14	.174/.286	14-16/8-9	.875/.889	41/42 (1)	
Fresno State	38/48	41/31	93-89	+4	36-85/35-68	.424/.515	8-40/7-19	.200/.368	13-16/12-17	.813/.706	44/40 +4	2
San Jose State	47/26	37/28	84-54	+30	32-78/19-71	.410/.268	7-28/4-19	.250/.211	13-15/12-15	.867/.800	59/41 +18	
Wyoming	33/18	33/51	66-69	(3)	22-62/22-53	.355/.415	10-25/3-13	.400/.231	12-17/22-27	.706/.815	35/39 (4)	1
SAINT MARY'S	40/30	42/50	82-80	+2	28-73/27-61	.384/.443	11-34/4-18	.324/.222	15-21/22-33	.714/.667	30/55 (25)	
RICE	41/25	52/48	93-73	+20	34-60/27-62	.567/.435	7-19/9-25	.368/.360	18-21/10-13	.857/.769	31/32 (1)	2
TCU	40/33	32/48	72-81	(9)	23-55/32-63	.418/.508	7-21/4-13	.333/.308	19-27/13-18	.704/.722	30/42 (12)	

Note: Game totals are displayed in the format TEAM/OPPONENT for each category



UNIVERSITY OF NEW MEXICO

2018-19 WOMEN'S BASKETBALL



2017-18 New Mexico Women's Basketball
New Mexico Points-Rebounds-Assists (as of Mar 22, 2018)
All games



Opponent	Date	Score		00	02	03	04	10	11	22
				BEYNON,CHE	BUCK,TESHA	FLYE,N'DEA	LAPEYROLER	SMITH,JASM	LINES,EMIL	BURLESON,M
WESTERN MICHIGAN	11/10/17	88-76	w	24-8-9	22-2-5	9-9-3	8-11-0	0-0-0	DNP	0-0-0
MARQUETTE	11/13/17	88-87	w	13-2-7	7-3-2	8-5-3	0-4-0	17-5-0	DNP	0-0-2
NORTHERN NEW MEXICO	11/15/17	107-66	w	11-1-5	5-0-2	9-4-2	6-3-1	4-3-0	10-3-2	6-7-1
NEW MEXICO STATE	11/18/17	86-75	w	27-7-9	17-6-2	DNP	17-5-0	DNP	DNP	0-1-1
WICHITA STATE	11/24/17	76-62	w	23-7-5	14-4-8	0-2-3	15-3-3	0-2-1	DNP	0-1-1
UC IRVINE	11/25/17	83-61	w	5-6-8	17-4-6	5-5-0	11-3-0	5-1-0	0-0-0	0-2-0
ILLINOIS	11/26/17	97-68	w	12-4-8	21-5-3	12-4-5	20-3-2	2-2-1	3-0-0	0-0-0
at UTEP	11/30/17	59-35	w	11-1-1	19-3-0	3-2-6	3-4-3	2-0-0	DNP	DNP
at New Mexico State	12/02/17	101-93	w	30-9-5	14-1-0	25-5-0	10-4-0	0-0-0	DNP	DNP
TEXAS TECH	12/06/17	90-56	w	21-7-6	20-7-1	5-3-2	8-3-0	7-0-2	6-0-0	0-1-0
NAVY	12/10/17	94-87	w	20-2-5	18-3-5	12-4-3	15-10-0	8-0-3	DNP	DNP
at Oklahoma	12/16/17	63-105	L	5-4-6	9-1-0	8-5-1	18-7-1	2-2-1	0-5-0	14-0-1
LAMAR	12/20/17	90-58	w	11-2-14	40-7-3	8-6-5	15-2-4	2-3-0	4-4-0	DNP
at Air Force	12/28/17	88-59	w	7-4-4	0-6-1	6-2-2	16-0-0	4-2-0	2-3-0	4-2-1
NEVADA	12/30/17	72-68	w	8-4-9	16-7-5	0-4-2	14-6-0	0-1-0	0-0-0	DNP
BOISE STATE	01/03/18	100-83	w	18-4-15	15-8-5	2-3-2	23-1-1	4-1-0	0-0-0	DNP
at San Jose State	01/06/18	86-95	L	9-9-12	17-7-4	0-2-3	13-6-1	6-1-2	DNP	0-0-0
at Wyoming	01/10/18	55-66	L	28-2-2	0-6-2	10-4-2	0-5-0	2-1-0	DNP	DNP
FRESNO STATE	01/13/18	88-75	w	20-7-10	18-5-5	12-6-2	14-5-1	0-2-0	DNP	0-0-0
UNLV	01/17/18	66-68	L	12-7-8	10-3-3	0-0-0	19-7-1	8-2-2	DNP	0-2-1
at San Diego State	01/20/18	89-97	L	41-5-8	7-7-2	3-3-1	13-8-2	4-1-0	DNP	4-4-0
at Colorado State	01/27/18	71-74	L	30-13-1	9-5-3	12-5-1	5-4-2	DNP	DNP	0-1-1
UTAH STATE	01/31/18	80-47	w	4-2-12	15-3-3	4-4-3	11-3-2	DNP	0-1-0	DNP
SAN JOSE STATE	02/03/18	92-62	w	10-4-7	9-9-6	4-2-4	15-8-4	DNP	2-0-0	7-3-1
at Boise State	02/07/18	85-91	L	24-5-6	25-6-6	4-3-2	3-1-0	DNP	DNP	2-2-0
AIR FORCE	02/10/18	57-49	w	15-7-5	6-3-4	2-5-0	0-2-0	0-5-0	DNP	DNP
at Utah State	02/14/18	74-50	w	2-8-6	13-7-3	9-8-2	DNP	4-2-0	0-0-0	DNP
WYOMING	02/21/18	62-63	L	13-4-4	11-3-1	8-7-4	DNP	0-2-0	DNP	DNP
at UNLV	02/24/18	62-74	L	14-8-5	16-4-3	3-1-2	DNP	7-4-0	DNP	DNP
COLORADO STATE	02/27/18	54-48	w	20-5-2	7-7-0	6-8-2	0-0-0	0-0-0	DNP	DNP
at Fresno State	03/02/18	93-89	w	22-13-11	30-5-6	3-3-2	DNP	0-1-0	0-1-0	DNP
vs San Jose State	03/05/18	84-54	w	14-11-7	18-5-4	4-1-2	DNP	4-4-0	2-1-0	2-1-0
vs Wyoming	03/06/18	66-69	L	10-6-7	8-6-2	8-2-4	DNP	0-0-0	DNP	DNP
SAINT MARY'S	03/15/18	82-80	w	33-8-5	10-4-6	8-3-0	DNP	DNP	0-0-0	DNP
RICE	03/20/18	93-73	w	20-5-4	18-0-4	0-2-6	DNP	0-0-0	0-0-1	0-0-0
TCU	03/22/18	72-81	L	20-10-5	24-2-2	1-2-3	DNP	0-0-0	DNP	DNP



UNIVERSITY OF NEW MEXICO

2018-19 WOMEN'S BASKETBALL



2017-18 New Mexico Women's Basketball
New Mexico Points-Rebounds-Assists (as of Mar 22, 2018)
All games



Opponent	Date	Score		23	24	25	32	35	44
				DE LA CERD	MOORE,ERIC	BRYAN,LANE	ANDERSON,A	WASHINGTON	NUNN,JAISA
WESTERN MICHIGAN	11/10/17	88-76	w	DNP	DNP	3-2-2	4-5-0	DNP	18-6-0
MARQUETTE	11/13/17	88-87	w	DNP	DNP	0-0-0	4-1-1	DNP	39-13-0
NORTHERN NEW MEXICO	11/15/17	107-66	w	7-3-0	0-3-0	13-2-3	7-6-0	27-3-0	2-6-1
NEW MEXICO STATE	11/18/17	86-75	w	DNP	DNP	5-4-3	5-6-0	3-1-0	12-13-0
WICHITA STATE	11/24/17	76-62	w	0-0-0	DNP	2-2-1	7-6-0	2-1-0	13-10-0
UC IRVINE	11/25/17	83-61	w	0-0-0	DNP	2-0-2	0-0-0	21-3-0	17-18-0
ILLINOIS	11/26/17	97-68	w	2-0-0	0-0-0	3-0-1	8-2-0	3-1-3	11-9-4
at UTEP	11/30/17	59-35	w	DNP	DNP	3-3-2	9-6-1	5-2-2	4-6-1
at New Mexico State	12/02/17	101-93	w	DNP	DNP	0-1-0	2-3-0	7-1-3	13-13-1
TEXAS TECH	12/06/17	90-56	w	DNP	DNP	0-0-2	4-3-0	4-0-1	15-10-0
NAVY	12/10/17	94-87	w	DNP	DNP	3-0-0	2-7-0	0-0-0	16-12-0
at Oklahoma	12/16/17	63-105	L	0-0-0	0-0-0	4-0-2	3-4-1	0-1-0	DNP
LAMAR	12/20/17	90-58	w	DNP	0-0-0	0-1-0	2-4-0	0-1-0	8-17-0
at Air Force	12/28/17	88-59	w	2-0-0	5-1-0	2-0-1	9-7-0	13-2-1	18-9-0
NEVADA	12/30/17	72-68	w	DNP	DNP	DNP	2-2-0	14-7-0	18-7-0
BOISE STATE	01/03/18	100-83	w	DNP	DNP	0-0-0	13-2-0	6-4-1	19-7-1
at San Jose State	01/06/18	86-95	L	DNP	DNP	0-0-1	5-4-0	5-1-0	31-10-2
at Wyoming	01/10/18	55-66	L	DNP	DNP	0-1-0	2-2-0	9-2-0	4-9-0
FRESNO STATE	01/13/18	88-75	w	DNP	DNP	DNP	0-1-0	4-3-1	20-10-0
UNLV	01/17/18	66-68	L	DNP	DNP	DNP	0-0-0	2-0-0	15-13-2
at San Diego State	01/20/18	89-97	L	DNP	2-0-0	DNP	5-0-0	0-0-0	10-2-1
at Colorado State	01/27/18	71-74	L	DNP	DNP	2-0-0	DNP	0-4-0	13-12-1
UTAH STATE	01/31/18	80-47	w	3-1-1	0-0-0	8-2-2	DNP	15-3-1	20-12-0
SAN JOSE STATE	02/03/18	92-62	w	2-2-0	DNP	11-0-1	DNP	2-1-2	30-11-0
at Boise State	02/07/18	85-91	L	DNP	0-0-0	2-0-2	DNP	0-0-0	25-10-0
AIR FORCE	02/10/18	57-49	w	DNP	DNP	9-1-2	0-2-0	0-0-0	25-8-0
at Utah State	02/14/18	74-50	w	0-0-0	DNP	13-1-2	10-7-0	11-1-2	12-8-0
WYOMING	02/21/18	62-63	L	DNP	DNP	7-1-1	2-2-0	2-0-0	19-9-0
at UNLV	02/24/18	62-74	L	DNP	DNP	5-0-3	0-0-0	0-0-0	17-12-0
COLORADO STATE	02/27/18	54-48	w	DNP	DNP	0-0-0	0-2-0	9-3-0	12-14-0
at Fresno State	03/02/18	93-89	w	DNP	DNP	3-2-3	2-3-1	11-1-1	22-11-0
vs San Jose State	03/05/18	84-54	w	5-1-1	0-0-0	7-10-3	6-3-0	3-5-1	19-9-0
vs Wyoming	03/06/18	66-69	L	DNP	DNP	3-1-0	5-2-0	12-3-1	20-14-0
SAINT MARY'S	03/15/18	82-80	w	0-0-0	DNP	3-1-1	4-2-0	8-0-2	16-9-1
RICE	03/20/18	93-73	w	2-0-0	DNP	6-5-3	8-2-1	11-5-4	28-8-0
TCU	03/22/18	72-81	L	0-0-0	DNP	5-1-0	0-0-0	8-1-1	14-11-0