

# THE UNIVERSITY OF NEW MEXICO SOFTBALL



2019 SOFTBALL NOTES | WEEK 14

@UNMLoboSB

www.GoLOBOS.com

#GoLOBOS

Allison Weiss, Assistant Director of Athletic Communications - Softball Contact | Email: allisonweiss@unm.edu | Cell: (661) 313-5402

## 2019 SCHEDULE

OVERALL: 12-38 • MW: 3-18 • H: 3-13 • A: 3-15 • N: 6-10

Date	Opponent	Time/Score
<i>NM State Invitational</i>		
2/8	UTEP	W, 15-6
2/9	Creighton	W, 8-0 (5)
2/9	at NMSU	L, 9-8
2/14	at #9 Arizona	Cancelled (Rain)
<i>Hillenbrand Invitational</i>		
2/15	#7 Alabama	L, 1-0
2/15	RV CSUF	L, 6-2
2/16	at #9 Arizona	L, 15-1 (5)
2/16	UC	W, 13-5 (6)
2/17	South Florida	L, 2-1 (8)
2/20	at Hawaii	L, 2-1
<i>Hawaii Invitational</i>		
2/21	DePaul	L, 9-5
2/22	Canisius	W, 10-0 (5)
2/22	at Hawaii	L, 2-3
2/23	at Hawaii	W, 3-2
2/23	DePaul	L, 4-2
<i>Judi Garman Classic</i>		
2/28	#3 Florida	L, 1-0 (8)
3/1	LMU	L, 4-2
3/1	#7 Tennessee	L, 15-1 (5)
3/3	UConn	L, 2-1
3/3	at CSUF	L, 19-1 (5)
<i>LMU Tournament</i>		
3/8	Oregon State	W, 6-5
3/8	Western Carolina	W, 10-0 (5)
3/9	Oregon State	L, 5-3
3/10	LMU	L, 6-2
3/15	at San Diego State *	W, 3-1
3/16	at San Diego State *	L, 9-8
3/17	at San Diego State *	L, 4-3
3/22	Colorado State *	L, 9-7
3/23	Colorado State *	L, 9-1 (5)
3/24	Colorado State *	L, 16-3 (5)
3/26	North Dakota	W, 7-6
3/26	North Dakota	W, 7-3
3/29	Nevada *	L, 7-1
3/30	Nevada *	L, 11-6
3/31	Nevada *	L, 21-1 (5)
4/2	at New Mexico State	L, 8-0 (6)
4/2	at New Mexico State	L, 11-3 (5)
4/5	at Utah State *	L, 7-6
4/6	at Utah State *	W, 6-3
4/7	at Utah State *	L, 8-0 (5)
4/9	UTEP	L, 7-1
4/18	RV Boise State *	W, 7-4
4/19	RV Boise State *	L, 17-5 (5)
4/20	RV Boise State *	L, 22-10
4/23	New Mexico State	L, 10-0 (5)
4/26	at Fresno State *	L, 9-1 (5)
4/27	at Fresno State *	L, 5-1
4/28	at Fresno State *	L, 4-0
5/3	San José State *	L, 10-4
5/4	San José State *	L, 11-0 (5)
5/5	San José State *	L, 10-0 (6)
5/9	at UNLV *	7 p.m.
5/10	at UNLV *	5 p.m.
5/11	at UNLV *	1 p.m.

**Bold** denotes home games  
 \*denotes Mountain West game  
*italics* denote tournament  
 All times listed are Mountain Time  
 Game times are subject to change

## UNM AT UNLV



**NEW MEXICO**  
Lobos

Record ..... 12-38, 3-18 MW  
 Conference ..... Mountain West  
 Head Coach ..... Paula Congleton  
 Record at UNM ..... 26-77 (Second Season)  
 Career Record ..... 59-154 (Fourth Season)



**UNLV**  
Rebels

Record ..... 33-14, 11-9 MW  
 Conference ..... Mountain West  
 Head Coach ..... Kristie Fox  
 Record at Fresno State ..... 66-34 (Second Season)  
 Career Record ..... 200-171 (Seventh Season)

### ABOUT THE MATCHUP

- Last season, UNM went 1-2 versus UNLV and was outscored 17-6.
- Sydney Townes led the Lobos in the series with three hits, while Andrea Howard and Monica Salas each registered two hits. Townes had a team-high .429 batting average and Howard had a team-high 1.000 slugging percentage.
- Howard hit one home run and walked three times for an on-base percentage of .625.
- UNM holds the advantage in walks (174-140) while both teams are close in home runs (34-33), in favor of UNLV.

## Media Information

**Location:**..... Eller Media Stadium  
**Dimensions:** ..... 200'-220'-200'

**Date/Time:**  
 Thursday, May 9 ..... 7 p.m. MT  
 Friday, May 10 ..... 5 p.m. MT  
 Saturday, May 11 ..... 1 p.m. MT

**Live Stats:** ..... <https://golobos.com/schedule.aspx?path=softball>  
**Social Media:** ..... @UNMLoboSB

Notes last updated: May 7, 2019

## Series History

### VS. UNLV

Overall: 30-49  
 Last win: 3/16/18 (5-2)  
 Last loss: 3/18/18 (9-1/5)  
 Last road win: 3/26/17 (5-4)  
 Last road loss: 3/25/17 (4-2)  
 Last season sweep: 2000  
 Last season swept: 2016  
 Last five games: 2-3  
 Last 10 games: 4-6  
 Last shutout win: 4/13/13 (10-0 / 5)  
 Last shutout loss: 3/17/18 (6-0)  
 Longest win streak: 8 (4/24/99-4/14/02)  
 Longest losing streak: 13 (4/29/07-4/9/11)  
 Trend: L2

## NEWS and NOTES

### LAST TIME OUT

- UNM lost all three games to San José State in the last home series of the season.
- Cameryn O'Grady led the Lobos with three hits and four total bases in the series with one double, her 16th double of the season.
- O'Grady and D'Andra DeFlora reached base in two out of the three games while Kasey Halleen had two RBI in Friday's game to lead the team. MacKenzie Peterson accounted for the final RBI of the weekend.
- DeFlora drew the only walk on the weekend for UNM.

### MIXING IT UP

- The Lobos have used 35 different lineups to date, only having duplicated their lineup eight times.
- UNM used the same lineup in the Arizona and Alabama game, the same lineup in the Cal State Fullerton and UTEP game, the same lineup against Hawai'i on Feb. 22 and DePaul on Feb. 23 and the same lineup against Tennessee and UConn. The Lobos used the same lineup in the second game at SDSU and the second game vs. CSU, the same lineup in the first and third games against Nevada and the second game against North Dakota and the second game against Nevada. Recently, UNM used the same lineup in both games at NMSU, in all three games at USU, versus UTEP, the first two games with Boise State and Tuesday's game vs. NMSU.
- The Lobos used three different lineups in the series at Fresno State and against SJSU, with Aleyah Wilbon moving in to the leadoff spot in the last five games.
- UNM has had six different players in the leadoff spot in the lineup.
- Cameryn O'Grady moved into the leadoff hitter spot in the game against Canisius and played six games at the No. 1 spot in the batting order. Andrea Howard led off the lineup in 10 games and moved down to the No. 2 spot for 14

## GENERAL INFORMATION

Name of School.....	University of New Mexico
City/Zip.....	Albuquerque, N.M. 87106
Founded.....	1889 by Territorial Legislature
Enrollment.....	25,015
Nickname.....	Lobos
School Colors.....	Cherry & Silver
Conference.....	Mountain West
Affiliation.....	NCAA Division I
President.....	Dr. Garnett Stokes
Athletic Director.....	Eddie Nuñez

## PROGRAM HISTORY

First Year of Softball.....	1978
All-Time Record.....	994-1113-3
Mountain West Record.....	123-288-1
NCAA Tournament Appearances.....	3
1980 (AIAW), 1981 (AIAW) and 1983 (NCAA)	
Last NCAA Postseason Opponent.....	Cal State Fullerton
Last NCAA Postseason Result.....	CSUF won series 2-1
Conference Championships.....	3
1980 (Intermountain), 1981 (Intermountain) and 1983 (High Country)	

## TEAM INFORMATION

2018 Overall Record.....	14-39
2018 MW Record.....	7-17 (T-8th)
Letterwinners Returning/Lost.....	10/9
Pitchers Returning/Lost.....	0/4
Starters Returning/Lost.....	8/1
Newcomers.....	9

## SOFTBALL STAFF

Head Coach.....	Dr. Paula Congleton (New Mexico, 1984)
Year at UNM..... Second season	
Record at UNM (Pct.).....	26-77 (.252)
MW Record at UNM (Pct.).....	10-35 (.222)
Career Record (Years).....	59-154 (4 years)
Assistant Coach.....	Tyler Heil (San José State, 2009)
Year at UNM..... Second season	
Assistant Coach.....	Breanna Macha (Arizona State, 2018)
Year at UNM..... First season	
Strength Coach.....	Jeremy Golden
Academic Advisor.....	Andrea Pierson
Head Athletic Trainer.....	Bob Waller
Athletic Trainer.....	Madison Foust

## COMMUNICATIONS

Softball Contact/Asst. Director of Comm.....	Allison Weiss
Email.....	allisonweiss@unm.edu
Cell Phone (Preferred).....	(661) 313-5402
Communications Office.....	(505) 925-5520

## DIGITAL MEDIA

Athletics Website.....	GoLobos.com
Main University Web Site.....	unm.edu
Conference Website.....	TheMW.com
Twitter.....	@UNMLoboSB
Instagram.....	@UNMLoboSB
Facebook.....	@NewMexicoLoboSoftball

## FACILITIES

Venue.....	Lobo Field
Dimensions.....	205-225-205
Capacity.....	1,500

games, the third spot for 16, the six-spot once and the seventh spot in five games. Bailey Klitzke hit in the leadoff spot in three games, D'Andra DeFlora has led off in 25 games, Aleyah Wilbon in five and Sydney Townes hit first in one. Maggie Buckholz has batted second in two games, DeFlora in 13 games and Wilbon has hit second in 16. Taylor Jones hit second in the first game versus North Dakota and Townes hit second in the last game against BSU and the three games against JSU.

- Two Lobos (Cameryn O'Grady and D'Andra DeFlora) have started all 50 games this season, while Andrea Howard has started in all but one and Lauren Wilmert and Monica Salas have started in all but three.
- UNM started four freshmen against New Mexico State on Feb. 9, with Kennedy Ferguson, Daryn Haslam, Mackenzie Peterson and Leslie Romero each getting their first collegiate starts.
- Freshman Emma Steltzer made her Lobo debut in the circle in the last game of the Judi Garman Classic versus Cal State Fullerton, retiring both batters she faced.

### DON'T COURT THEM OUT

- Trailing 5-0 in Saturday's game against Boise State, the Lobos scored six runs in the third to take their first lead of the game. D'Andra DeFlora got the Lobos on the board with a double down the left field line that scored Taylor Jones from first, taking third on a throw home and scored after the ball got away from the Broncos. An O'Grady double to left center scored Sydney Townes and Andrea Howard and a Salas double to center scored O'Grady and Klitzke to give UNM the 6-5 lead.
- When BSU regained the lead in the fifth, the Lobos again rallied to re-take the lead, with DeFlora hitting a three-run home run to put UNM back ahead 10-9.
- After leading 3-2 going in to the top of the seventh in the first game against the Fighting Hawks on March 26, the Lobos gave up four runs to fall behind 6-3 with three outs to work with. UND brought in pitcher Emily Rosas in the bottom half of the inning, who walked the first three batters to load the bases. UND brought back in starting pitcher Nikki Pica, who walked Lauren Wilmert to make it 6-4. With bases loaded, Bailey Klitzke hit a shot to right center that went all the way to the wall, allowing all three runners on base to score for the walk-off win.
- On March 22 against Colorado State, UNM trailed 6-2 going into the bottom of the fifth, but scored five runs on five hits to tie and take a 7-6 lead. Bailey Klitzke hit a sacrifice fly with bases loaded to score the first run and Monica Salas hit a home run to center to tie the game at six. Two batters later, Taylor Jones hit her first home run of the season, a solo shot that hit off the top of the scoreboard in left to give the Lobos a 7-6 advantage.
- UNM started off the LMU Tournament with an epic come-from-behind victory over Oregon State, scoring six runs in the final two innings to win 6-5. The Lobos scored five runs in the bottom of the seventh, walking off on a hit by Lauren Wilmert to score D'Andra DeFlora from third. Andrea Howard hit a two-run home run to cut the deficit to two after Daryn Haslam led off with a single to right field. Kasey Halleen singled up the middle to keep the momentum going and Sydney Townes doubled to center to advance Halleen to third. DeFlora singled to score Townes and Halleen to tie the game, moving all the way to third, leading to Wilmert's game-winning single.

### HOLDING THEIR OWN

- In the Lobos' first game of the Judi Garman Classic, UNM went to extra innings with the No. 3 Florida Gators, holding the Gators scoreless for seven innings.
- It was the second time in the last 13 days that UNM held a top-10, and a SEC, team scoreless through at least six innings.
- Kennedy Ferguson threw a complete game with 109 pitches, 66 of them going for strikes. The freshman right-hander held her own in the matchup, allowing just five hits and one walk, while striking out five batters. It is the third game this season that Ferguson has allowed just one walk, but the first time that she did so while pitching a complete game.
- The five hits posted by Florida was the second-fewest hits in a game for the Gators this year, only second to Arizona who limited the Gators to four on Feb. 9, but the Wildcats also gave up three runs in the game.
- In addition, it is just the second time this season that the Gators have been held to one run in a game, with the other instance being in Wednesday night's game versus No. 2 UCLA in which the Gators lost 7-1. Entering the Judi Garman Classic, and prior to its loss to UCLA, Florida was outscoring its opponents 127-18.
- The Lobos held No.7 Alabama scoreless for six innings, allowing only six hits total in the game.
- Entering the Hillenbrand Invitational, the Crimson Tide was third in the NCAA in scoring, averaging 10.60 runs, and had averaged 10.2 hits a game and 2.60 doubles a game (tied for 10th in the NCAA). Alabama hit .261 in the game, below the .378 batting average that the team entered with, which was 16th in the nation. Spencer kept Alabama's leading hitter Kaylee Tow, who ranked eighth in the NCAA in batting average and seventh in on-base percentage, without a hit.
- UNM is the only team to hold Alabama to just one run in the 10 games the Crimson Tide have played so far this year.
- In three games, the Lobos have shutout their opponents and three times have gone six innings without giving up a run. UNM shutout Creighton on Feb. 9, Canisius on Feb. 22 and Western Carolina on March 8, while going six scoreless innings against Alabama on Feb. 15, again on Feb. 17 versus South Florida and Feb. 28 against Florida.

### SCHOLAR-ATHLETE AWARDS

- At the UNM Scholar-Athlete Awards on April 22, D'Andra DeFlora was presented with the Loren Dils Lobo Courage Award, an award that recognizes a student-athlete who has overcome adversity with courage, unyielding perseverance and a positive spirit.
- Andrea Howard was named to the 2019 UNM All-Academic Team made up of the top academic performers on each team.
- The Lobos had 12 student-athletes named scholar-athletes: Cameryn O'Grady, Skylar Jenkins, Daryn Haslam, Monica Salas, D'Andra DeFlora, Andrea Howard, Kasey Halleen, Sydney Townes, Sydney Broderick, Aleyah Wilbon and Lauren Wilmert.

### HOT STARTS

- The Lobos have scored first in 19 games this season.
- UNM has scored in the first inning 16 times, with a season-high four runs scored in the first inning on Feb. 16 against Illinois-Chicago and again on Feb. 22 against Canisius.
- In both games against North Dakota on March 26, in Saturday's game against Nevada and in Friday's game against Boise State, UNM scored three runs in the first inning.
- Five of UNM's wins this season have come via run-rule (15-6 vs. UTEP, 8-0 vs. Creighton, 13-5 vs. Illinois-Chicago, 10-0 vs. Canisius, 10-0 vs. WCU).
- D'Andra DeFlora and Cameryn O'Grady started the season on a nine-game hitting streak.

## NEWCOMERS NO MORE

- The freshmen have accounted for 30 hits, 17 runs scored and 26 RBI on the season, while hitting five home runs.
- Maggie Buckholz is second in on-base percentage (.400), third in walks (17), fifth in RBI (17), is one of five players with at least a triple. Daryn Haslam is tied for fourth on the team in home runs (3) and is fifth in slugging percentage (.382).
- Pitcher Kiana Spencer has pitched in 31 games this season with a team-high 21 starts, throwing nine complete games this season and tallied a season-high seven strikeouts in her appearance against North Dakota on March 26. The LHP has recorded two shutouts, both coming in run-rule games (vs. Creighton, vs. Canisius).
- Freshman Kennedy Ferguson has pitched in 32 games with 20 starts and nine complete games, holding a team-best ERA of 4.91 and 122.2 innings pitched. Ferguson has struck out 71 batters and walked 54 and has recorded at least one strikeout in 23 games. Ferguson earned her first collegiate win in a two-hit shutout over Western Carolina on March 8, striking out three and not issuing a walk. The RHP had a season-best 11 strikeouts against North Dakota on March 26, the first Lobo pitcher to record double-digit strikeouts this season and the second-most recorded since Lauren Soles tallied 14 against Siena on March 24, 2013.
- Freshman Daryn Haslam led the Lobos at the Hawai'i Invitational with a slugging percentage of .846 and on-base percentage of .467, while hitting the first two home runs of her collegiate career. Three of her RBI on the weekend came with two outs.
- Fellow freshman Maggie Buckholz hit a three-run home run that proved to be the difference in UNM's 3-2 win over host Hawai'i to advance the Lobos to the championship game. On the weekend, Buckholz had a team-high six RBI and drew three walks. Against UIC, Buckholz had seven RBI on a 3-for-4 outing, including a triple and a grand slam, her first collegiate home run. It was the first time that UNM had a player with seven RBI in a game since May 8, 2015, when Lisa Rodrigues achieved the feat against San Jose State.
- In her first start with the Lobos, Spencer threw a complete game shutout, limiting the BIG EAST preseason favorite Creighton to just three hits in five innings of work. The junior didn't allow any extra-base hits in the 24 batters she faced. She threw 91 pitches in the outing, 42 of them going for strikes.
- Spencer also earned the start against Alabama, pitching another complete game, going 7.0 innings and allowing just one run and six hits, only one of which went for extra bases, and allowing just three walks on 29 batters faced.

## WALK IT OUT

- UNM is second in the MW in walks drawn to date with 174, one behind San Jose State.
- In the season opener against UTEP, UNM drew 16 walks alone for a season high.
- Against the Miners, eight different players drew a walk, with Andrea Howard reaching base four times via a walk. Cameryn O'Grady and Lauren Wilmert each drew three walks, Maggie Buckholz two and Monica Salas, Taylor Jones, Kasey Halleen and Daryn Haslam each had one.
- Versus Cal State Fullerton on Feb. 15 and North Dakota on March 26, the Lobos nearly reached double digits with nine walks in each game.
- Cameryn O'Grady leads the team with 30 walks, followed by Andrea Howard (24) and Maggie Buckholz (17).

## IT'S ALL O'GRADY

- Junior shortstop Cameryn O'Grady leads the team in slugging percentage (.624), batting average (.353), on-base percentage (.482), hits (47), runs scored (32), total bases (79), walks (30) and doubles (16). The California native is second in home runs (6) and hit-by-pitches (3) and tied for second in RBI (26).
- With two outs, O'Grady is 13-for-39, with six RBI coming with two outs. When it comes to success advancing runners during an at-bat, O'Grady is second on the team at 44-for-86 (.512). O'Grady is also 18-for-33 (.545) as the leadoff batter in an inning.
- O'Grady was nearly unstoppable in the first three games of the season, going 7-for-9 at the plate (.778 batting average), registering one double, a triple and two home runs as well as a team-high seven RBI. O'Grady tallied 16 total bases, drew three walks and posted a slugging percentage of 1.778 and an on-base percentage of .833.
- The junior was 2-for-2 as the leadoff hitter in an inning, 4-for-5 with runners in scoring position and 2-for-2 batting with two outs, in which she recorded two of her seven runs-batted-in. During her at-bats, O'Grady was 6-for-8 in successfully advancing runners and 5-for-7 in getting a hit with runners on base.
- O'Grady was a perfect 3-for-3 against Creighton, finishing just a double shy of hitting for the cycle.
- In the LMU Tournament, O'Grady was a team-best .500 in batting with runners on (4-for-8), 2-for-2 as the leadoff hitter in an inning, 3-for-6 with runners in scoring position and 1-for-2 with runners on third and less than two outs as well as with two outs. The shortstop was 4-for-9 with success in advancing runners.
- Last season, O'Grady led the Lobos in triples (four), doubles (12), walks (32), on-base percentage (.444) and runs scored (31) last season. She was second on the team with 43 hits, 75 total bases and 26 RBIs, and third in batting average (.301) and slugging percentage (.524).
- O'Grady hit just four home runs last season, which the junior reached half that in the first three games this season and matched the total with a home run against North Dakota on March 26. She surpassed that number against Nevada on March 31.
- The junior has surpassed her totals in total bases, hits and doubles and has matched her totals in RBI.
- O'Grady is ranked in the top 10 of the Mountain West in slugging percentage (sixth), on-base percentage (second), doubles (third), and walks (third).
- The shortstop is 52nd in the NCAA in doubles per game, 80th in on-base percentage and 88th in walks.

## 3-2, WHAT YOU GOING TO DO?

- Lauren Wilmert leads the team in RBI (35), and home runs (7) and is second in total bases (67), slugging percentage (.500) and tied for second in doubles (9) and in hits (35). The catcher/ first baseman is fourth in runs scored (23), while hitting in the cleanup spot in 31 games and the five spot in 16 games starting against North Dakota. Since moving to the five-spot, Wilmert is 11-for-41 with three doubles, a triple and three home runs with four walks and 15 RBI for a batting average of .268, a slugging percentage of .610 and an on-base percentage of .326. The junior is also tied for the team lead in sacrifice flies and hit her first career triple against North Dakota on March 26.
- Wilmert has a team-high 15 RBI with two outs and is 13-for-42 when hitting with two outs. She is also 3-for-9 with bases loaded and 9-for-19 when there is a runner on third with less than two outs.
- Playing 23 games behind the plate, Wilmert has thrown out seven runners attempting to steal, bringing her career total to 12. She threw out a career-high two in Friday's game at Fresno State.
- Wilmert has hit two grand slams this season, once against Western Carolina on March 8 and on April 6 at Utah State, which came with two outs in the third inning and gave UNM a 4-2 lead.
- Wilmert recorded a career-high three hits against SDSU on March 17, while also recording her sixth home run of her career and tied a career-high six total bases.
- The junior ranks in the top 10 of the Mountain West in putouts (eighth), chances (seventh) and caught stealing by (fourth).

## WHAT ABOUT WILBON?

- In the 19 starts since Aleyah Wilbon became a permanent player in the Lobo lineup, the outfielder has tallied 18 hits on 55 at-bats for a hitting- and slugging-percentage of .327 and an on-base percentage of .351 while being 1-for-1 in steals.
- The senior has recorded the first hit for UNM in five games including all three games against Utah State.
- Wilbon has three times recorded three hits in a game, once going 3-for-3 and twice going 3-for-4, which were career highs for the outfielder. She has tallied at least one hit in 10 of the 19 games.
- In those 19 games, Wilbon went 7-for-16 with runners on base, 5-for-9 with runners in scoring position and 5-for-14 with 2 outs in the inning. The California native was 12-for-18 in success advancing runners. Wilbon led the team in hits (18) and second in batting average (.327).
- In the series at Utah State, Wilbon led the team in batting average (.545), hits (6), and third in on-base percentage (.583) and total bases (6).
- Batting second in the second North Dakota game and the Nevada series, Aleyah Wilbon went 7-for-10 at the plate with a .700 batting average, slugging percentage and on-base percentage to lead the team in batting average and on-base percentage. Wilbon recorded one RBI and successfully stolen one base as well. The outfielder was 3-for-3 with runners on base and 4-for-7 with bases empty, and 2-for-2 with runners in scoring position as well as with two outs. Wilbon was also 4-for-4 with success in advancing runners.
- Wilbon is second on the team in batting average (.323) and fourth in on-base percentage (.353).

## NOT JUST A PITCHER

- Bailey Klitzke got the ball to start the season against UTEP, but has played in 43 games either in the circle or as the DP, starting in 41.
- Klitzke leads the Lobos in triples (3) and tied for first in sac flies (3) and stolen bases (2), while also tied for second in hits (35), third on the team in batting average (.315),

slugging percentage (.477) total bases (53) and on-base percentage (.378), fourth in doubles (6) and tied for second in RBI (26).

- At the plate on the season, Klitzke is a team-best 4-for-6 with bases loaded. She is 7-for-11 with a runner on third with less than 2 outs, 14-for-36 with runners in scoring position, 15-for-43 with two outs in the inning and 11 of her RBI on the season came with two outs- the second-highest total on the team. Klitzke is 31-for-59 in successfully advancing runners in her at-bat.
- The junior hit a triple with bases loaded in the bottom of the seventh against North Dakota on March 26 in the first game of the doubleheader to give the Lobos a walk-off 7-6 victory.
- In the series at Utah State, the junior hit her first career home run.
- At the Judi Garman Classic, Klitzke was 2-for-2 with runners in scoring position, with two outs and with runners on third and less than two outs in the inning. The junior was 3-for-5 in success in advancing runners and 2-for-5 as the leadoff hitter in an inning. She also had a team-high four hits and three RBI in the five-game tournament, hitting .364 with a slugging percentage of .455 and on-base percentage of .467.
- However, in the circle, the LHP earned her first win of the season in her first appearance in a Lobo uniform, pitching 5.0 innings and giving up five hits and five earned runs. Klitzke struck out eight batters and finished the weekend with nine total in 6.0 innings pitched. She threw for 146 pitches, 120 of which came in the first game against UTEP.
- Klitzke matched her strikeout count against Illinois-Chicago and pitched her first complete game with 6.0 innings pitched to move to 2-1 on the season.

## LET'S SEE HOW FAR WE'VE COME

- In just her second year at UNM, the Lobos have seen improvement in several categories from year one to year two under head coach Paula Congleton.
- Comparing where the Lobos were a year ago heading into MW competition to this year's team heading into MW play, the Lobos have performed better offensively, in the circle and in the field.
- Even though UNM has played two less games in 2019 than in 2018 prior to conference starting, the Lobos have scored 11 more runs (97-86) and walks (96-85), had three more doubles, two more home runs, improved their slugging percentage (.385-.366) and on-base percentage (.355-.343).
- The pitchers have combined for a better team ERA, lowering the average by 1.93 (6.70-4.77), has 18 more strikeouts (93-75) and allowed 60 fewer runs (181-121). Opponent batting average is also lower (.297-.338) as is the number of hits (171-233), doubles, triples and home runs allowed.
- Behind the plate, the catchers are having more success as well, throwing out seven runners to date, compared to just two at this point last year. Runners are just 18-25 this year (.720) compared to 26-28 in 2018 (.929). In the field, the Lobos have a fielding percentage of .952 this year to .939 last year.
- Coincidentally, the Lobos have had 221 total bases and a .240 batting average in both years.

## PLEASE ALLOW ME TO INTRODUCE MYSELF

- The 2019 UNM Lobos will have a different look than last season as there are nine newcomers on the roster.
- In the offseason, the Lobos added seven freshmen (Maggie Buckholz, Kennedy Ferguson, Daryn Haslam, Skylar Jenkins, MacKenzie Peterson, Leslie Romero and Emma Steltzer) as well as two transfer left-handed pitchers in Bailey Klitzke (junior, Wichita State) and Kiana Spencer (junior, Yavapai College).
- UNM debuted an entirely new pitching staff, including a new pitching coach. Joining the above mentioned addition of Klitzke and Spencer will be Ferguson, a right-hander from Camas, Wash. Overseeing the group will be Breanna Macha, who joins the Lobos after pitching at Arizona State from 2015-18.

## PUTTING THE PIECES OF THE PUZZLE TOGETHER

- The roster underwent a major renovation after 2018 with the departure of nine letterwinners, which included all four pitchers on the roster.
- The Lobos also have 10 underclassmen on the roster, with a team-high seven freshmen who will experience their first glimpse of collegiate softball this season.
- Of the nine, the Lobos lost a key piece of their offense due to graduation in Chelsea Johnson. The infielder, who served as the DP her senior season, led the team in batting average (.342), at bats (155), hits (53), homeruns (10), RBIs (40), total bases (92) and slugging percentage (.594). Johnson started 51 of the 53 games, but played in 52.
- In the circle, the Lobos will have to find their ace after losing Jensen Main, who pitched almost half of the innings (162.2 of 326 innings) during the season and set the UNM single-season record for batters faced with 848.
- Luckily, the Lobos retain eight mainstays in the lineup, including now-sophomore Andrea Howard who was selected Second Team All-Mountain West in her rookie season.

## LONG TIME GONE

- The Lobos began the season with five non-conference tournaments on the road, spanning from Las Cruces to Tucson, Ariz., to Honolulu, Hawaii to two trips to Southern California, followed by a conference series at San Diego State.
- UNM's home opener on March 22 against MW opponent Colorado State is the latest home opener in at least 15 years.
- In the first six weeks of the season, the Lobos will have traveled over 10,900 miles roundtrip (5451 miles each way) and played 26 games before their first pitch at Lobo Softball Field.

## TO BE THE BEST...

- The non-conference schedule will test the Lobos from the first weekend, as the Cherry and Silver face 10 teams that made the 2018 NCAA Tournament, four that advanced to the Super Regionals and one team (Florida) that competed in the Women's College World Series.
- Four of the teams on UNM's schedule ( Florida, Tennessee, Arizona, Alabama) ranked in the top 10 in the USA Today/ NFCA Coaches preseason rankings and four additional teams were receiving votes. Florida was the highest ranked at fifth, with Tennessee seventh, Arizona eighth and Alabama tied for ninth.
- In the ESPN.com / USA Softball Collegiate Top 25 Preseason Poll, four teams on the Lobos' schedule were ranked with four more receiving votes. Florida was the highest-ranked opponent at No. 5 followed by Arizona at six, Tennessee at eight and Alabama at 11. Receiving votes were Oregon State, Cal State Fullerton, South Florida and Fresno State.

## STARTING OFF STRONG

- UNM is now 26-16 in season openers, including 4-1 in the last five years after Friday's win versus UTEP.
- The nine-run differential was the largest margin of victory for UNM in a season opener since 2011, when the Lobos defeated Utah Valley 10-2.
- Against UTEP, the leadoff hitter reached base six times.
- UNM didn't give up its first run until the fourth inning in the game against UTEP and starting pitcher Bailey Klitzke didn't give up a hit until the bottom of the fourth.
- D'Andra DeFlora and Cameryn O'Grady registered at least one hit in the first nine games of the season.

## SCOUTING UNLV

- UNLV is 17-6 at home, 4-1 in its last five games and 6-4 in its last 10.
- The Rebels have two non-conference opponents with UNM: North Dakota and UTEP. UNLV won 5-2 over UTEP and 10-1 over North Dakota in five.
- The Rebels are outscoring opponents 245-130 and outhitting 407-330. They are 55-61 in steal attempts while opponents are 18-26.
- Lauren Tycksen leads the Rebels in hits (63), triples (4), runs (44), and batting average (.399); Mia Trejo leads in home runs (8), RBI (41) and walks (32). Justine Federe leads in total bases (91), slugging percentage (.591), sacrifice flies (4) and doubles (13).
- The pitching staff has a collective ERA of 2.52 with the Rebels using four pitchers. Of the 330 hits allowed, 52 were doubles, 3 triples and 17 home runs. They have 235 strikeouts to 98 walks. Of the 130 runs allowed, 116 have been earned.
- Jenny Bressler has appeared in a team-high 34 games with 27 starts and has thrown 14 complete games and six shutouts to go 21-5 on the season with one save. Bressler has an ERA of 2.21 and has allowed 166 hits, 61 runs (54 earned) and 55 walks with 137 strikeouts in 170.2 innings. Breana Burke has appeared in 24 games with 10 starts and has pitched six complete games, one shutout and had one save while going 7-6. In the 94.2 innings pitched, Burke has given up 91 hits, 31 runs (27 earned), walking 25 and striking out 53. Burke has a team-best 2.00 ERA. Charlie Masterson has a 4.15 ERA in 55.2 innings of work, going 5-3 after appearing in 15 games and starting 10. Masterson has allowed 71 hits, 36 runs (33 earned), walked 16 and struck out 45. Paxton Schurer has made just one appearance on the season and given up two hits and two runs in 1.2 innings.
- The Rebels are eighth in the NCAA in double plays per game (.53), sixth in fielding percentage (.979), 32nd in shutouts (12), 20th in batting average (.315), 46th in on-base percentage (.384), 45th in strikeout-to-walk ratio (2.40), 57th in slugging percentage (.459) and 58th in triples per game (.23). The pitching staff has the 44th-best ERA.
- Bressler is 24th in wins, Trejo is 49th in walks and Tycksen is 55th in runs per game (.94), 65th in hits, 68th in triples and 48th in stolen bases. Miranda Bueno is 49th in toughest to strike out (21.7).



**STAT COMPARISON**

		UNM ENTERING MW PLAY	
UNM	UNLV	2018	2019
BA	.236	.315	.240
R	188	245	.385
H	287	407	.343
2B	55	61	86
3B	8	11	145
HR	33	34	24
RBI	175	226	5
BB	174	140	14
SO	374	154	16
ERA	6.84	2.52	221
SO	188	235	221
BB	204	98	81
H	432	330	85
R	363	130	90
ER	269	116	96
DP	5	25	179
FLD%	.944	.979	6.70

**MOUNTAIN WEST INFORMATION**

**PRESEASON MOUNTAIN WEST POLL**

Rk.	Team (1st-Place Votes)	Points
1.	Boise State (8)	64
2.	Fresno State (1)	57
3.	San José State	50
4.	UNLV	35
5.	San Diego State	31
6.	Nevada	29
7.	Colorado State	26
8.	Utah State	21
9.	New Mexico	11

**MOUNTAIN WEST PLAYERS OF THE WEEK**

2019 MW Softball Player of the Week  
 Feb. 12 – Lauren Tycksen, Jr., CF, UNLV  
 Feb. 19 – Jessica McKay, Jr., OF, Boise State  
 Feb. 26 – Ashley Ruiz, Jr., 1B, Colorado State  
 March 5 – Lauren Buchanan, Sr., C, Colorado State  
 March 12 – Amber Nelson, Sr., C, Colorado State  
 March 19 – Corina Gamboa, Jr., 3B, Colorado State  
 March 26 – Rebekah Cervantes, Sr., INF, Boise State  
 April 2 – Mia Trejo, So., 1B, UNLV  
 April 9 – Hayleigh Galvan, Jr., DP, Fresno State  
 April 16 – Amber Nelson, Sr., C, Colorado State  
 April 23 – Schuyler Broussard, Jr., 3B, Fresno State  
 April 30 – Bradie Fillmore, Jr., INF, Boise State  
 May 7 – Rayohna Sagapolu, So., INF, San José State

2019 MW Softball Pitcher of the Week  
 Feb. 12 – Hailey Dolcini, So., RHP, Fresno State  
 Feb. 19 – Gianna Mancha, So., RHP, Boise State  
 Feb. 26 – Jessica Jarecki, Jr., RHP, Colorado State  
 March 5 – Danielle Lung, Fr., RHP, Fresno State  
 March 12 – Jenny Bressler, Fr., RHP, UNLV  
 March 19 – Jenny Bressler, Fr., RHP, UNLV  
 March 26 – Jessica Jarecki, Jr., RHP, Colorado State  
 April 2 – Hailey Dolcini, So., RHP, Fresno State  
 April 9 – Danielle Lung, Fr., RHP, Fresno State  
 April 16 – Hailey Dolcini, So., RHP, Fresno State  
 April 23 – Jessica Jarecki, Jr., RHP, Colorado State  
 April 30 – Hailey Dolcini, So., RHP, Fresno State  
 May 7 – Marissa Moreno, Jr., RHP, San Diego State

**ESPN.COM/USA SOFTBALL COLLEGIATE TOP 25**

WEEK 13 • MAY 7

Rk.	Team (1st Votes)	Rec	Pts.	Prev.
1.	Oklahoma (17)	48-2	497	1
2.	UCLA (2)	45-3	474	2
3.	Washington (1)	42-7	463	3
4.	Alabama	50-6	440	5
5.	Florida State	48-8	410	6
6.	Arizona	40-11	397	4
7.	Minnesota	39-11	368	8
8.	Louisiana	47-4	340	10
9.	Texas	41-12	331	11
10.	LSU	40-15	327	7
11.	Florida	40-15	278	9
12.	Tennessee	39-13	265	12
13.	Michigan	40-11	246	16
14.	Oklahoma State	37-14	232	13
15.	James Madison	44-7	228	17
16.	Northwestern	42-9	213	14
17.	Georgia	39-16	186	19
18.	Texas Tech	38-13	160	20
19.	Ole Miss	36-16	142	15
20.	Virginia Tech	45-8	110	T22
T21.	Arkansas	38-17	98	24
T21.	Kentucky	32-21	98	18
23.	South Carolina	36-16	52	21
24.	Auburn	35-18	26	T22
25.	Drake	40-14	25	RV

Dropped Out: South Florida (25)  
 New to Poll: Drake (RV)  
 Others receiving votes: **South Florida (17)**, Stanford (16), Ohio State (15), Tulsa (14), Mississippi State (13), Wisconsin (10), Missouri (6), Arizona State (3), North Carolina (3), **UNLV (3)**, **Boise State (2)**  
**Bold** denotes 2019 opponent

**USA TODAY/ NFCA COACHES TOP 25 POLL**

WEEK 13 • MAY 7

Rk.	Team (1st Votes)	Pts.	Rec	Prev.
1	Oklahoma (32)	800	48-2	1
2	Washington	745	42-7	3
3	UCLA	741	45-3	2
4	<b>Alabama</b>	<b>712</b>	<b>50-6</b>	<b>4</b>
5	Florida State	666	48-8	5
6	<b>Arizona</b>	<b>610</b>	<b>41-10</b>	<b>6</b>
7	Louisiana	584	47-4	8
8	Texas	558	41-12	10
9	<b>Florida</b>	<b>506</b>	<b>40-15</b>	<b>7</b>
10	LSU	496	40-15	9
11	<b>Tennessee</b>	<b>483</b>	<b>39-13</b>	<b>11</b>
12	Minnesota	444	39-11	13
13	Georgia	408	39-16	14
14	Oklahoma State	401	37-14	12
15	Texas Tech	339	37-12	17
16	James Madison	311	44-7	18
17	Ole Miss	292	36-16	15
18	Northwestern	227	42-9	19
19	Arkansas	220	38-17	20
20	South Carolina	218	36-16	16
21	Michigan	201	37-11	22
22	Virginia Tech	135	45-8	24
23	Kentucky	122	32-21	21
24	Auburn	55	35-18	23
25	Drake	42	40-14	RV

New to Poll: No. 25 Drake  
 Dropped Out: No. 25 Colorado State  
 Receiving Votes: **Boise State (17)**, **Colorado State (17)**, Wisconsin (16), Ohio State (12), Stanford (5), North Carolina (4), **UNLV (4)**, Mississippi State (3), Tulsa (3), Missouri (2), USC Upstate (1).  
**Bold** denotes 2019 opponent

**BY THE NUMBERS**

Statistic	All Games	MW	MW Games	9th
Batting Average:	.236	9th	.244	9th
Slugging Percentage:	.376	8th	.382	8th
On Base Percentage:	.340	8th	.337	9th
Runs Scored:	188	8th	73	8th
Hits:	287	9th	125	9th
RBI:	175	8th	68	8th
HRs:	33	7th	15	7th
Total Bases:	457	8th	196	9th
Walks:	174	2nd	64	4th
ERA:	6.84	9th	9.18	9th
Opp. Batting Avg.:	.327	9th	.358	9th
Batters Struck Out:	188	7th	65	8th
Hits Allowed:	432	9th	210	9th
Runs Allowed:	363	9th	197	9th
Earned Runs Allowed:	293	9th	164	9th
Walks Allowed:	204	9th	90	9th
Home Runs Allowed:	81	9th	43	9th
Fielding Percentage:	.944	9th	.933	9th
Putouts:	899	7th	375	8th
Fielding Double Plays:	6	9th	3	9th
<b>Caught Stealing By:</b>	<b>13</b>	<b>1st</b>	<b>5</b>	<b>2nd</b>

**MOUNTAIN WEST STANDINGS**

School	Conf.	Conf. %	Overall	Overall %	Streak
Colorado State	18-6	0.750	38-10	0.792	W1
San José State	15-6	0.714	35-15	0.700	W8
Boise State	12-9	0.571	34-11	0.756	W1
UNLV	11-9	0.550	33-14	0.702	W1
Fresno State	11-10	0.524	33-18	0.647	L3
San Diego State	11-10	0.524	24-24	0.500	W3
Nevada	10-11	0.476	26-23	0.531	L1
Utah State	4-16	0.200	15-28	0.349	W2
New Mexico	3-18	0.143	12-38	0.240	L9

# THE 2019 NEW MEXICO LOBOS

## NUMERICAL ROSTER

#	NAME	POS	HT	YR	B/T	HOMETOWN (PREVIOUS SCHOOL)
00	Andrea Howard	OF	5-6	So.	L/L	Albuquerque, N.M. (La Cueva HS)
2	Maggie Buckholz	UT	5-7	Fr.	L/R	Silverton, Ore. (Silverton HS)
3	Taylor Jones	IF	5-7	So.	R/R	Albuquerque, N.M. (La Cueva HS)
4	D'Andra DeFlora	OF	5-2	Sr.	R/R	Fresno, Texas (L.V. Hightower HS)
5	Sydney Broderick	C	5-4	So.	R/R	Mesa, Ariz. (Desert Ridge HS)
7	MacKenzie Peterson	OF	5-9	Fr.	R/R	Gilbert, Ariz. (Phoenix College)
8	Bailey Klitzke	P/1B	5-8	Jr.	L/L	Apache Junction, Ariz. (Wichita State)
9	Kasey Halleen	IF	5-6	Sr.	R/R	Torrance, Calif. (Palos Verdes HS)
10	Cameryn O'Grady	SS	5-6	Jr.	L/R	Orange, Calif. (El Modena HS)
12	Daryn Haslam	IF	5-4	Fr.	R/R	Cedar Park, Texas (Vista Ridge HS)
13	Kennedy Ferguson	P	5-6	Fr.	R/R	Camas, Wash. (Camas HS)
16	Leslie Romero	OF	5-4	Fr.	R/R	Gonzales, Calif. (Salinas HS)
22	Monica Salas	IF	5-3	Sr.	R/R	Goleta, Calif. (Santa Barbara CC)
23	Emma Steltzer	P	5-6	Fr.	R/R	Manchester, Mo. (Parkway South HS)
24	Skylar Jenkins	OF	5-5	Fr.	R/R	Lawrenceville, Ga. (Buford HS)
32	Lauren Wilmert	C/1B	5-10	Jr.	R/R	Albuquerque, N.M. (Volcano Vista HS)
44	Aleyah Wilbon	OF	5-2	Sr.	L/R	Fontana, Calif. (Mt. San Antonio College)
66	Sydney Townes	OF	5-6	Sr.	L/R	Lompoc, Calif. (Cabrillo HS)
99	Kiana Spencer	P	5-6	Jr.	L/L	Gallup, N.M. (Yavapai College)

## ALPHABETICAL ROSTER

#	NAME	POS	HT	YR	B/T	HOMETOWN (PREVIOUS SCHOOL)
5	Sydney Broderick	C	5-4	So.	R/R	Mesa, Ariz. (Desert Ridge HS)
2	Maggie Buckholz	UT	5-7	Fr.	L/R	Silverton, Ore. (Silverton HS)
4	D'Andra DeFlora	OF	5-2	Sr.	R/R	Fresno, Texas (L.V. Hightower HS)
13	Kennedy Ferguson	P	5-6	Fr.	R/R	Camas, Wash. (Camas HS)
9	Kasey Halleen	IF	5-6	Sr.	R/R	Torrance, Calif. (Palos Verdes HS)
12	Daryn Haslam	IF	5-4	Fr.	R/R	Cedar Park, Texas (Vista Ridge HS)
00	Andrea Howard	OF	5-6	So.	L/L	Albuquerque, N.M. (La Cueva HS)
24	Skylar Jenkins	OF	5-5	Fr.	R/R	Lawrenceville, Ga. (Buford HS)
3	Taylor Jones	IF	5-7	So.	R/R	Albuquerque, N.M. (La Cueva HS)
8	Bailey Klitzke	P/1B	5-8	Jr.	L/L	Apache Junction, Ariz. (Wichita State)
10	Cameryn O'Grady	SS	5-6	Jr.	L/R	Orange, Calif. (El Modena HS)
7	MacKenzie Peterson	OF	5-9	Fr.	R/R	Gilbert, Ariz. (Phoenix College)
16	Leslie Romero	OF	5-4	Fr.	R/R	Gonzales, Calif. (Salinas HS)
22	Monica Salas	IF	5-3	Sr.	R/R	Goleta, Calif. (Santa Barbara CC)
99	Kiana Spencer	P	5-6	Jr.	L/L	Gallup, N.M. (Yavapai College)
23	Emma Steltzer	P	5-6	Fr.	R/R	Manchester, Mo. (Parkway South HS)
66	Sydney Townes	OF	5-6	Sr.	L/R	Lompoc, Calif. (Cabrillo HS)
44	Aleyah Wilbon	OF	5-3	Sr.	L/R	Fontana, Calif. (Mt. San Antonio College)
32	Lauren Wilmert	C/1B	5-10	Jr.	R/R	Albuquerque, N.M. (Volcano Vista HS)

## RETURNERS (10) - 2018 SEASON STATS

No.	Name	Pos.	Cl.	Avg.	GP-GS	AB	R	H	2B	3B	HR	RBI	SLG%	FLD%
00	Andrea Howard	UT	Fr.	.313	51-50	131	20	41	6	1	7	18	.534	.987
3	Taylor Jones	IF	Fr.	.216	24-11	37	6	8	3	0	1	4	.378	.875
4	D'Andra DeFlora	OF	Jr.	.214	53-53	145	22	31	3	0	7	21	.379	.969
5	Sydney Briderick	C	So.	.230	42-36	87	6	20	2	0	0	5	.253	.956
9	Kasey Halleen	IF	Jr.	.189	49-49	127	13	24	5	0	0	10	.228	.920
10	Cameryn O'Grady	SS	So.	.301	53-52	143	31	43	12	4	4	26	.524	.924
22	Monica Salas	IF	Jr.	.238	45-35	101	9	24	3	0	2	15	.327	.919
32	Lauren Wilmert	C	So.	.180	32-20	61	5	11	1	0	1	11	.246	.961
44	Aleyah Wilbon	OF	Jr.	.222	38-25	63	13	14	1	0	0	2	.238	.964
66	Sydney Townes	OF	Jr.	.186	45-44	102	16	19	2	1	0	4	.225	.938

## KEY PLAYERS LOST (3) - 2018 SEASON STATS

No.	Name	Pos.	Avg.	GP-GS	AB	R	H	2B	3B	HR	RBI	SLG%	FLD%
34	Chelsea Johnson	IF	.342	52-51	155	22	53	7	1	10	40	.594	.000
6	Sam Oliver	OF	.191	36-22	47	9	9	1	0	0	2	.213	.953
8	Kristyn Whitley	IF	.188	28-21	48	3	9	3	0	0	4	.250	.941

## PITCHERS LOST (4) - 2018 SEASON STATS

No.	Name	Cl.	ERA	W-L	APP	GS	CG	SHO	SV	IP	SO	BF
16	Jensen Main	So.	4.73	8-20	37	29	13	0/0	0	162.2	74	848
23	Krissy Fortner	Sr.	6.05	3-9	27	7	2	0/0	2	78.2	44	395
24	Alexis Ruel	Fr.	9.60	2-7	19	13	5	0/0	0	62.0	14	361
35	Marissa Bethke	R-Jr.	11.12	1-3	12	4	1	0/0	0	22.2	9	123

## NEWCOMERS (9)

No.	Name	Cl.
2	Maggie Buckholz	Fr.
7	MacKenzie Peterson	Fr.
8	Bailey Klitzke	Jr.
12	Daryn Haslam	Fr.
13	Kennedy Ferguson	Fr.
16	Leslie Romero	Fr.
23	Emma Steltzer	Fr.

## PRONUNCIATION GUIDE

00	ANDREA Howard	on-DRAY-uh
4	D'ANDRA DEFLOA	dee-ON-druh Duh-FLOOR-uh
9	Kasey HALLEEN	Huh-Lean
22	Monica SALAS	SAHL-us
44	ALEYAH WILBON	uh-LEE-uh Will-BAHN
66	Sydney TOWNES	TOWNS
	Paula CONGLETON	CONGLE-ton
	Tyler HEIL	HIGHL
	Breanna MACHA	Ma-HA

## BY ELIGIBILITY

### Seniors (5)

4	D'Andra DeFlora	OF
9	Kasey Halleen	IF
22	Monica Salas	IF
44	Aleyah Wilbon	OF
66	Sydney Townes	OF

### Juniors (4)

8	Bailey Klitzke	P/1B
10	Cameryn O'Grady	SS
99	Kiana Spencer	P
32	Lauren Wilmert	C/1B

### Sophomores (3)

00	Andrea Howard	OF
3	Taylor Jones	IF
5	Sydney Broderick	C

### Freshmen (7)

2	Maggie Buckholz	UT
13	Kennedy Ferguson	P
12	Daryn Haslam	IF
24	Skylar Jenkins	OF
7	MacKenzie Peterson	OF
16	Leslie Romero	OF
23	Emma Steltzer	OF

## HOME STATE

### Arizona (3)

5	Sydney Broderick	C
8	Bailey Klitzke	P
7	MacKenzie Peterson	OF

### California (6)

9	Kasey Halleen	IF
10	Cameryn O'Grady	SS
16	Leslie Romero	OF
22	Monica Salas	IF
44	Aleyah Wilbon	OF
66	Sydney Townes	OF

### Georgia (1)

24	Skylar Jenkins	OF
----	----------------	----

### Missouri (1)

23	Emma Steltzer	OF
----	---------------	----

### New Mexico (4)

00	Andrea Howard	OF
3	Taylor Jones	IF
99	Kiana Spencer	P
32	Lauren Wilmert	C/1B

### Oregon (1)

2	Maggie Buckholz	UT
---	-----------------	----

### Texas (2)

4	D'Andra DeFlora	OF
12	Daryn Haslam	IF

### Washington (1)

13	Kennedy Ferguson	P
----	------------------	---



# Paula Congleton

5th Head Coach in UNM Program History  
Record at UNM: 26-77

## **NOTEWORTHY :**

- Named the fifth head coach in program history on June 20, 2017
- Enters her second season at her alma mater
- Earned her 300th career victory on April 17, 2014
- Earned her 350th career victory on April 22, 2017
- Earned her 400th career victory on May 4, 2018
- Earned her first win at UNM against St. Mary's on Feb. 9, 2018 (4-1)

## **MORE NOTES ON COACH CONGLETON**

- Spent 19 seasons at Santa Barbara City College with the Vaqueros molding the program into one of the elite programs in the WSC
- Three-time WSC Gold Division Coach of the Year
- 2011 Southern Cal Coaching Staff of the Year
- 2011 NFCA National Coaching Staff of the Year
- Led the Vaqueros to four Southern Cal Regional appearances and one trip to the Southern Cal Super Regional
- Guided the Vaqueros to their greatest success of the program, winning a Southern Cal Regional series and advancing to the Super Regional for the first time ever in 2016
- Led the 2016 SBCC squad to the second-most games in program history (30-14)
- The 2016 team finished third WSC Gold Division
- In 2011, led the Vaqueros to a program-record 31 wins (31-7 overall), leading the team to a WSC title and the Southern Cal Regional
- Four-time Scholar Athlete first baseman for the Lobos (3.89 GPA)
- Academic All-American at New Mexico (1981), two-time honorable mention (1980, 1982)
- Received her Doctorate in educational administration in 2009
- Served as a full-time professor at SBCC teaching health, weight training and kinesiology
- Served as Associate Athletic Director and Coordinator of the Academic Achievement Zone for student-athletes at SBCC

## **COACHING EXPERIENCE**

### **Head Coach:**

2017-Present - New Mexico (26-77)  
1998-2017 - Santa Barbara City Coll. (Calif.) (354-322)  
1996-1998 - Cal. State University Eastbay (33-77)

### **Graduate Assistant:**

1986-1988 - New Mexico

Overall NCAA DI record (Second Season): 26-77  
Overall NCAA record (Fourth Season): 59-154  
Overall record (23 years): 413-476 (.465)

## **ALMA MATER**

New Mexico (1984)

## **TWITTER**

Follow @CoachCongleton



# 2019 NEW MEXICO OVERALL STATISTICS

Record: 12-38 Home: 3-13 Away: 3-15 Neutral: 6-10 MW: 3-18

Player	avg	gp-gs	ab	r	h	2b	3b	hr	rbi	tb	slg%	bb	hp	so	gdp	ob%	sf	sh	sb-att	po	a	e	fld%
10 O'GRADY, Cameryn	.353	50-50	133	32	47	16	1	6	26	83	.624	30	3	27	0	.482	0	0	0-0	58	81	15	.903
44 WILBON, Aleyah	.323	40-21	65	13	21	0	0	0	3	21	.323	3	0	16	1	.353	0	1	1-2	26	0	1	.963
8 KLITZKE, Bailey	.315	43-41	111	11	35	6	3	2	26	53	.477	13	0	13	1	.378	3	0	2-2	1	8	0	1.000
32 WILMERT, Lauren	.261	47-47	134	23	35	9	1	7	35	67	.500	12	1	40	2	.320	3	0	0-0	235	16	10	.962
4 DeFLORA, D'Andra	.236	50-50	140	29	33	5	0	3	15	47	.336	15	10	55	1	.352	0	0	2-3	77	2	2	.975
22 SALAS, Monica	.235	47-47	119	15	28	4	0	5	18	47	.395	15	1	40	5	.326	0	0	2-2	29	54	9	.902
12 HASLAM, Daryn	.218	27-16	55	6	12	0	0	3	7	21	.382	5	0	20	1	.283	0	0	0-0	18	23	4	.911
2 BUCKHOLZ, Maggie	.211	28-22	57	9	12	1	1	2	17	21	.368	17	1	29	0	.400	0	0	0-1	23	0	1	.958
0 HOWARD, Andrea	.192	46-46	125	25	24	9	2	3	15	46	.368	24	1	44	1	.327	0	1	1-1	97	4	4	.962
7 PETERSON, MacKenzie	.188	20-12	32	2	6	0	0	0	2	6	.188	6	1	5	0	.333	0	0	0-0	71	1	5	.935
66 TOWNES, Sydney	.186	30-15	43	5	8	1	0	0	0	9	.209	9	0	17	0	.327	0	0	1-1	25	0	3	.893
9 HALLEEN, Kasey	.173	26-23	52	4	9	1	0	0	4	10	.192	3	1	15	2	.228	1	1	0-0	35	33	4	.944
3 JONES, Taylor	.138	39-32	80	9	11	1	0	1	4	15	.188	11	1	35	0	.250	0	0	0-0	110	37	5	.967
5 BRODERICK, Sydney	.107	30-27	56	5	6	2	0	1	3	11	.196	10	0	15	1	.242	0	1	1-1	90	17	6	.947
16 ROMERO, Leslie	.000	9-1	10	0	0	0	0	0	0	0	.000	0	0	3	0	.000	0	0	0-0	2	0	0	1.000
23 STELTZER, Emma	.000	3-0	2	0	0	0	0	0	0	0	.000	1	0	0	0	.333	0	0	0-0	0	1	0	1.000
99 SPENCER, Kiana	.000	1-1	0	0	0	0	0	0	0	0	.000	0	0	0	0	.000	0	0	0-0	0	11	2	.846
13 FERGUSON, Kennedy	.000	4-4	0	0	0	0	0	0	0	0	.000	0	0	0	0	.000	0	0	0-0	2	21	1	.958
Totals	.236	50	1214	188	287	55	8	33	175	457	.376	174	20	374	15	.340	7	4	10-13	899	309	72	.944
Opponents	.327	50	1320	363	432	80	12	81	334	779	.590	204	29	188	2	.425	10	24	47-60	942	240	42	.966

LOB - Team (291), Opp (328). DPs turned - Team (6), Opp (18). CI - Team (1), BRODERICK 1. IBB - Team (2), O'GRADY 1, HOWARD 1.

## (All games Sorted by Earned run avg)

Player	era	w-l	app	gs	cg	sho	sv	ip	h	r	er	bb	so	2b	3b	hr	b/avg	wp	hp	bk	sfa	sha
13 FERGUSON, Kennedy	4.91	4-14	32	20	9	1/0	0	122.2	170	122	86	54	71	24	1	28	.319	7	6	0	5	11
99 SPENCER, Kiana	6.87	6-16	31	21	9	2/0	1	110.0	157	124	108	73	63	36	5	27	.330	8	16	0	4	10
23 STELTZER, Emma	10.04	0-0	7	0	0	0/0	0	7.2	13	12	11	6	0	2	0	4	.361	0	2	0	0	0
8 KLITZKE, Bailey	10.19	2-8	26	9	2	0/0	1	56.1	85	97	82	67	53	17	6	20	.329	22	5	0	1	3
9 HALLEEN, Kasey	10.50	0-0	2	0	0	0/0	0	2.0	3	3	3	2	1	0	0	1	.333	0	0	0	0	0
44 WILBON, Aleyah	28.00	0-0	1	0	0	0/0	0	1.0	4	5	4	2	0	1	0	1	.500	1	0	0	0	0
Totals	6.84	12-38	50	50	20	3/0	2	299.2	432	363	293	204	188	80	12	81	.327	38	29	0	10	24
Opponents	3.68	38-12	50	50	18	8/2	5	314.0	287	188	165	174	374	55	8	33	.236	22	20	0	7	4

PB - Team (15), BRODERICK 10, WILMERT 5, Opp (10). SBA/ATT - BRODERICK (28-34), WILMERT (19-26), FERGUSON (16-22), KLITZKE (15-19), SPENCER (14-17), STELTZER (2-2).



# 2019 NEW MEXICO MOUNTAIN WEST STATISTICS

Record: 3-18 Home: 1-11 Away: 2-7 MW: 3-18

Player	avg	gp-gs	ab	r	h	2b	3b	hr	rbi	tb	slg%	bb	hp	so	gdp	ob%	sf	sh	sb-att	po	a	e	fld%
44 WILBON, Aleyah	.341	16-14	41	5	14	0	0	0	2	14	.341	2	0	7	1	.372	0	1	0-0	18	0	1	.947
10 O'GRADY, Cameryn	.340	21-21	53	13	18	6	0	3	11	33	.623	14	2	14	0	.493	0	0	0-0	26	40	6	.917
32 WILMERT, Lauren	.339	18-18	56	8	19	3	0	4	17	34	.607	2	0	17	1	.356	1	0	0-0	84	4	4	.957
8 KLITZKE, Bailey	.296	20-19	54	7	16	3	1	2	11	27	.500	6	0	5	0	.361	1	0	0-0	0	3	0	1.000
7 PETERSON, MacKenzie	.273	7-5	11	0	3	0	0	0	2	3	.273	1	0	1	0	.333	0	0	0-0	27	0	4	.871
4 DeFLORA, D'Andra	.250	21-21	60	11	15	2	0	2	7	23	.383	6	5	21	0	.366	0	0	1-2	35	1	2	.947
22 SALAS, Monica	.245	20-20	49	6	12	2	0	2	7	20	.408	6	1	18	2	.339	0	0	1-1	13	27	4	.909
0 HOWARD, Andrea	.204	17-17	49	11	10	3	1	1	5	18	.367	9	0	15	1	.328	0	0	0-0	39	0	2	.951
9 HALLEEN, Kasey	.200	10-8	20	1	4	0	0	0	2	4	.200	0	1	4	2	.227	1	0	0-0	12	14	1	.963
66 TOWNES, Sydney	.192	14-11	26	3	5	0	0	0	0	5	.192	7	0	9	0	.364	0	0	0-0	23	0	2	.920
3 JONES, Taylor	.171	16-16	41	5	7	1	0	1	3	11	.268	3	1	16	0	.244	0	0	0-0	51	22	4	.948
5 BRODERICK, Sydney	.080	13-13	25	2	2	2	0	0	1	4	.160	8	0	5	0	.303	0	1	1-1	42	8	5	.909
12 HASLAM, Daryn	.000	10-5	19	1	0	0	0	0	0	0	.000	0	0	8	1	.000	0	0	0-0	5	6	2	.846
2 BUCKHOLZ, Maggie	.000	5-1	6	0	0	0	0	0	0	0	.000	0	0	5	0	.000	0	0	0-0	0	0	0	.000
16 ROMERO, Leslie	.000	3-0	3	0	0	0	0	0	0	0	.000	0	0	2	0	.000	0	0	0-0	0	0	0	.000
23 STELTZER, Emma	.000	0-0	0	0	0	0	0	0	0	0	.000	0	0	0	0	.000	0	0	0-0	0	1	0	1.000
99 SPENCER, Kiana	.000	1-1	0	0	0	0	0	0	0	0	.000	0	0	0	0	.000	0	0	0-0	0	4	0	1.000
13 FERGUSON, Kennedy	.000	0-0	0	0	0	0	0	0	0	0	.000	0	0	0	0	.000	0	0	0-0	0	8	0	1.000
Totals	.244	21	513	73	125	22	2	15	68	196	.382	64	10	147	8	.337	3	2	3-4	375	138	37	.933
Opponents	.358	21	586	197	210	47	7	43	183	400	.683	90	15	65	2	.451	7	8	17-22	393	101	19	.963

LOB - Team (126), Opp (135). DPs turned - Team (3), Opp (9). CI - Team (1), BRODERICK 1.

### (MW games only Sorted by Earned run avg)

Player	era	w-l	app	gs	cg	sho	sv	ip	h	r	er	bb	so	2b	3b	hr	b/avg	wp	hp	bk	sfa	sha
13 FERGUSON, Kennedy	7.00	2-5	14	8	1	0/0	0	41.0	65	53	41	18	13	13	0	13	.353	4	1	0	3	4
8 KLITZKE, Bailey	9.74	0-5	15	5	1	0/0	1	36.2	58	60	51	32	28	12	4	13	.337	12	3	0	1	2
99 SPENCER, Kiana	10.22	1-8	14	8	1	0/0	1	37.2	67	64	55	30	23	19	3	11	.372	5	9	0	3	2
9 HALLEEN, Kasey	10.50	0-0	2	0	0	0/0	0	2.0	3	3	3	2	1	0	0	1	.333	0	0	0	0	0
23 STELTZER, Emma	11.55	0-0	5	0	0	0/0	0	6.2	13	12	11	6	0	2	0	4	.394	0	2	0	0	0
44 WILBON, Aleyah	28.00	0-0	1	0	0	0/0	0	1.0	4	5	4	2	0	1	0	1	.500	1	0	0	0	0
Totals	9.18	3-18	21	21	3	0/0	2	125.0	210	197	164	90	65	47	7	43	.358	22	15	0	7	8
Opponents	3.37	18-3	21	21	9	4/0	2	131.0	125	73	63	64	147	22	2	15	.244	7	10	0	3	2

PB - Team (5), BRODERICK 4, WILMERT 1, Opp (3). SBA/ATT - BRODERICK (12-14), KLITZKE (6-8), WILMERT (5-8), FERGUSON (5-7), SPENCER (4-5), STELTZER (2-2).

# 2019 NEW MEXICO GAME-BY-GAME STATISTICS

Date	Opponent	ab	r	h	rbi	2b	3b	hr	tb	bb	ibb	sb	cs	hbp	sac	sf	gdp	k	po	a	e	lob	avg
Feb 08	vs UTEP	26	15	9	15	0	0	1	12	16	0	0	1	2	0	0	2	7	21	8	0	8	.346
Feb 09	vs Creighton	20	8	9	8	1	1	1	15	4	1	0	0	0	0	0	1	8	15	2	0	4	.391
Feb 09	at New Mexico State	29	8	10	7	3	0	2	19	3	0	0	0	0	0	2	0	8	18	3	2	5	.373
Feb 15	vs Alabama	24	0	4	0	1	0	0	5	2	0	0	0	1	0	0	0	4	21	10	0	6	.323
Feb 15	vs Cal State Fullerton	26	2	5	2	2	0	0	7	9	0	0	0	0	0	0	0	10	18	7	3	12	.296
Feb 16	at Arizona	22	1	4	0	0	0	0	4	1	0	0	0	0	0	0	0	7	12	3	2	7	.279
Feb 16	vs Illinois-Chicago	27	13	11	11	2	1	1	18	8	0	0	0	0	0	0	0	2	18	9	2	5	.299
Feb 17	vs South Florida	28	1	4	1	1	0	0	5	4	0	0	0	0	0	0	0	12	22	15	2	8	.277
Feb 20	at Hawaii	25	1	3	1	0	0	0	3	1	0	0	0	1	0	0	1	9	18	3	1	5	.260
Feb 21	vs DePaul	25	5	5	5	0	0	3	14	4	0	0	0	0	0	0	1	8	21	7	2	3	.254
Feb 22	vs Canisius	26	10	11	9	1	1	2	20	5	0	1	0	0	0	0	0	2	15	6	0	6	.270
Feb 22	at Hawaii	27	2	7	2	2	0	1	12	2	0	0	0	0	0	0	1	4	18	6	3	6	.269
Feb 23	at Hawaii	22	3	3	3	2	0	1	8	3	0	0	1	0	1	0	0	4	21	2	0	2	.260
Feb 23	vs DePaul	26	2	4	1	2	0	0	6	5	0	0	0	0	0	0	0	5	18	7	1	8	.252
Feb 28	vs Florida	27	0	4	0	1	0	0	5	2	1	0	0	0	0	0	1	16	21	7	0	6	.245
Mar 01	vs Loyola Marymount	26	2	5	2	1	0	0	6	3	0	1	0	1	0	0	0	10	21	3	0	7	.241
Mar 01	vs Tennessee	19	1	4	1	0	0	1	7	2	0	0	0	0	0	0	0	9	15	4	1	5	.240
Mar 03	vs UCONN	26	1	6	1	1	0	0	7	4	0	0	0	0	0	1	0	9	18	6	0	9	.239
Mar 03	at Cal State Fullerton	16	1	1	1	0	0	1	4	2	0	0	0	0	0	0	0	7	12	5	2	2	.233
Mar 08	vs Oregon State	29	6	10	6	2	0	1	15	2	0	0	0	0	0	0	0	12	21	9	1	6	.240
Mar 08	vs Western Carolina	21	10	7	9	2	0	1	12	4	0	1	0	1	0	0	0	2	15	1	3	1	.244
Mar 09	vs Oregon State	29	3	6	3	2	1	0	10	6	0	0	0	1	0	0	0	11	21	6	2	12	.242
Mar 10	at Loyola Marymount	28	2	6	2	1	0	0	7	4	0	1	0	1	0	1	0	11	18	9	1	11	.240
*Mar 15	at San Diego State	26	3	6	3	0	0	0	6	5	0	0	0	1	0	0	0	14	21	13	1	8	.240
*Mar 16	at San Diego State	29	8	8	8	1	0	1	12	5	0	0	0	1	0	0	1	7	18	6	2	6	.242
*Mar 17	at San Diego State	31	3	8	3	0	2	1	15	3	0	0	0	0	0	0	0	3	18	6	1	10	.242
*Mar 22	COLORADO STATE	29	7	9	7	2	0	2	17	5	0	0	0	0	0	1	1	8	21	8	3	7	.245
*Mar 23	COLORADO STATE	19	1	3	1	2	0	0	5	4	0	0	0	0	0	0	0	7	15	6	0	7	.243
*Mar 24	COLORADO STATE	22	3	7	3	2	0	0	9	1	0	0	0	0	0	0	0	7	15	4	3	5	.245
Mar 26	NORTH DAKOTA	24	7	6	7	1	2	0	11	9	0	1	0	0	0	0	0	4	21	6	1	8	.245
Mar 26	NORTH DAKOTA	26	7	10	7	2	0	1	15	1	0	2	0	1	1	0	0	6	21	4	1	4	.250
*Mar 29	NEVADA	22	1	2	1	1	0	0	3	2	0	0	0	0	1	0	0	7	21	8	1	3	.246
*Mar 30	NEVADA	29	6	9	6	0	0	2	15	2	0	0	0	0	0	0	1	15	21	7	2	4	.248
*Mar 31	NEVADA	17	1	1	1	0	0	1	4	2	0	0	0	0	0	0	0	7	15	10	4	3	.244
Apr 02	at New Mexico State	19	0	1	0	1	0	0	2	1	0	0	0	1	0	0	0	13	16	2	3	3	.240
Apr 02	at New Mexico State	20	3	4	2	1	0	1	8	0	0	0	0	0	0	0	0	4	12	7	1	2	.239
*Apr 05	at Utah State	30	6	9	4	1	0	1	13	5	0	1	0	0	0	0	0	7	18	7	2	8	.241
*Apr 06	at Utah State	30	6	9	6	4	0	1	16	6	0	0	0	3	0	0	1	10	21	6	0	12	.243
*Apr 07	at Utah State	20	0	4	0	1	0	0	5	1	0	0	0	0	0	0	0	4	12	4	2	6	.242
Apr 09	UTEP	22	1	2	1	1	0	0	3	2	0	0	0	0	0	0	0	12	21	10	0	2	.239
*Apr 18	BOISE STATE	27	7	9	6	0	0	3	18	3	0	2	0	1	0	0	0	9	21	4	0	6	.241
*Apr 19	BOISE STATE	22	5	8	5	2	0	2	16	3	0	0	1	0	0	0	0	2	15	6	5	5	.244
*Apr 20	BOISE STATE	28	10	9	9	4	0	1	16	6	0	0	0	2	1	1	1	9	21	6	2	7	.246
Apr 23	NEW MEXICO STATE	16	0	1	0	0	0	0	1	1	0	0	0	0	0	0	0	11	15	4	1	2	.243
*Apr 26	at Fresno State	16	1	2	1	0	0	0	2	2	0	0	0	0	0	0	0	9	12	8	0	2	.241
*Apr 27	at Fresno State	25	1	5	1	0	0	0	5	5	0	0	0	2	0	0	0	6	18	7	2	10	.240
*Apr 28	at Fresno State	25	0	4	0	1	0	0	5	3	0	0	0	0	0	0	0	9	18	6	0	7	.239
*May 03	SAN JOSE STATE	27	4	6	3	1	0	0	7	0	0	0	0	0	0	1	0	4	21	8	5	3	.238
*May 04	SAN JOSE STATE	17	0	3	0	0	0	0	3	1	0	0	0	0	0	0	2	0	15	5	1	3	.237
*May 05	SAN JOSE STATE	22	0	4	0	0	0	0	4	0	0	0	0	0	0	0	1	3	18	3	1	4	.236
Totals		1214	188	287	175	55	8	33	457	174	2	10	3	20	4	7	15	374	899	309	72	291	.236

# 2019 NEW MEXICO GAME-BY-GAME STATISTICS

Date	Opponent	ip	h	r	er	bb	so	2b	3b	hr	wp	bk	hbp	dp	ibb	score	w-l	sv	era
Feb 08	vs UTEP	7.0	7	6	6	7	10	2	0	2	2	0	1	0	0	15-6	1-0	0	6.00
Feb 09	vs Creighton	5.0	3	0	0	5	2	0	0	0	0	0	1	0	0	8-0	2-0	0	3.50
Feb 09	at New Mexico State	6.0	7	9	7	4	6	1	0	4	3	0	2	0	0	8-9	2-1	0	5.06
Feb 15	vs Alabama	7.0	6	1	1	3	0	1	0	0	0	0	0	0	0	0-1	2-2	0	3.92
Feb 15	vs Cal State Fullerton	6.0	9	6	4	2	3	1	0	2	1	0	1	0	0	2-6	2-3	0	4.06
Feb 16	at Arizona	4.0	14	15	14	5	1	3	0	5	0	0	1	0	0	1-15	2-4	0	6.40
Feb 16	vs Illinois-Chicago	6.0	7	5	4	5	8	1	2	0	2	0	1	0	0	13-5	3-4	0	6.15
Feb 17	vs South Florida	7.1	6	2	0	2	6	0	0	0	0	0	0	1	0	1-2	3-5	0	5.21
Feb 20	at Hawaii	6.0	5	2	1	0	4	1	0	1	0	0	1	0	0	1-2	3-6	0	4.77
Feb 21	vs DePaul	7.0	12	9	7	9	3	1	0	1	2	0	1	0	0	5-9	3-7	0	5.02
Feb 22	vs Canisius	5.0	4	0	0	1	4	0	0	0	0	0	1	0	0	10-0	4-7	0	4.64
Feb 22	at Hawaii	6.0	4	3	2	2	3	1	0	0	0	0	1	0	0	2-3	4-8	0	4.45
Feb 23	at Hawaii	7.0	4	2	2	4	6	0	0	1	0	0	0	0	0	3-2	5-8	0	4.24
Feb 23	vs DePaul	6.0	8	4	4	3	3	3	0	1	0	0	0	1	0	2-4	5-9	0	4.27
Feb 28	vs Florida	7.0	5	1	0	1	5	1	0	0	0	0	0	0	0	0-1	5-10	0	3.94
Mar 01	vs Loyola Marymount	7.0	7	4	4	8	7	0	1	0	0	0	0	0	0	2-4	5-11	0	3.95
Mar 01	vs Tennessee	5.0	18	15	11	9	1	2	0	4	0	0	0	0	0	1-15	5-12	0	4.50
Mar 03	vs UCONN	6.0	8	2	2	1	6	0	0	1	0	0	0	0	0	1-2	5-13	0	4.38
Mar 03	at Cal State Fullerton	4.0	13	19	14	10	2	1	0	5	1	0	0	0	0	1-19	5-14	0	5.08
Mar 08	vs Oregon State	7.0	9	5	3	4	2	3	1	0	0	0	0	0	0	6-5	6-14	0	4.96
Mar 08	vs Western Carolina	5.0	2	0	0	0	3	0	0	0	0	0	0	1	0	10-0	7-14	0	4.77
Mar 09	vs Oregon State	7.0	8	5	3	1	3	0	0	1	1	0	0	0	0	3-5	7-15	0	4.67
Mar 10	at Loyola Marymount	6.0	5	6	6	7	5	1	0	1	1	0	1	0	0	2-6	7-16	0	4.77
*Mar 15	at San Diego State	7.0	7	1	0	0	1	1	0	0	0	0	0	0	0	3-1	8-16	0	4.54
*Mar 16	at San Diego State	6.0	10	9	7	4	5	2	0	2	2	0	1	0	0	8-9	8-17	0	4.69
*Mar 17	at San Diego State	6.0	7	4	4	4	5	2	0	0	1	0	1	0	0	3-4	8-18	0	4.69
*Mar 22	COLORADO STATE	7.0	12	9	6	3	1	5	0	2	0	0	0	0	0	7-9	8-19	0	4.74
*Mar 23	COLORADO STATE	5.0	10	9	9	3	3	2	1	2	0	0	0	0	0	1-9	8-20	0	4.97
*Mar 24	COLORADO STATE	5.0	12	16	11	4	2	4	1	3	2	0	3	0	0	3-16	8-21	0	5.27
Mar 26	NORTH DAKOTA	7.0	8	6	2	5	11	1	0	0	0	0	0	0	0	7-6	9-21	0	5.14
Mar 26	NORTH DAKOTA	7.0	7	3	2	3	7	1	1	0	0	0	1	0	0	7-3	10-21	0	5.03
*Mar 29	NEVADA	7.0	11	7	6	2	6	3	0	0	0	0	2	1	0	1-7	10-22	0	5.06
*Mar 30	NEVADA	7.0	9	11	7	6	5	2	0	3	2	0	1	0	0	6-11	10-23	0	5.13
*Mar 31	NEVADA	5.0	16	21	18	10	3	3	0	5	1	0	0	0	0	1-21	10-24	0	5.61
Apr 02	at New Mexico State	5.1	8	8	5	5	6	2	0	1	1	0	1	0	0	0-8	10-25	0	5.63
Apr 02	at New Mexico State	4.0	10	11	10	4	2	3	0	3	1	0	0	0	0	3-11	10-26	0	5.85
*Apr 05	at Utah State	6.0	6	7	7	2	3	0	1	4	0	0	1	0	0	6-7	10-27	0	5.92
*Apr 06	at Utah State	7.0	7	3	3	5	2	3	0	1	1	0	0	0	0	6-3	11-27	1	5.83
*Apr 07	at Utah State	4.0	9	8	7	4	6	0	0	3	1	0	1	1	0	0-8	11-28	1	5.94
Apr 09	UTEP	7.0	10	7	7	0	0	3	0	1	0	0	0	0	0	1-7	11-29	1	5.97
*Apr 18	BOISE STATE	7.0	11	4	4	3	3	4	0	1	0	0	0	0	0	7-4	12-29	2	5.91
*Apr 19	BOISE STATE	5.0	14	17	14	1	1	1	1	3	2	0	1	0	0	5-17	12-30	2	6.18
*Apr 20	BOISE STATE	7.0	19	22	20	7	2	2	0	7	1	0	2	0	0	10-22	12-31	2	6.55
Apr 23	NEW MEXICO STATE	5.0	8	10	8	4	4	0	0	4	1	0	0	0	0	0-10	12-32	2	6.64
*Apr 26	at Fresno State	4.0	11	9	9	5	1	1	0	2	1	0	2	0	0	1-9	12-33	2	6.78
*Apr 27	at Fresno State	6.0	6	5	4	5	6	2	1	1	1	0	0	0	0	1-5	12-34	2	6.73
*Apr 28	at Fresno State	6.0	8	4	4	2	3	1	2	1	0	0	0	0	0	0-4	12-35	2	6.69
*May 03	SAN JOSE STATE	7.0	7	10	4	6	2	2	0	1	1	0	0	1	0	4-10	12-36	2	6.62
*May 04	SAN JOSE STATE	5.0	11	11	10	7	2	4	0	2	3	0	0	0	0	0-11	12-37	2	6.75
*May 05	SAN JOSE STATE	6.0	7	10	10	7	3	3	0	0	3	0	0	0	0	0-10	12-38	2	6.84
Totals		299.2	432	363	293	204	188	80	12	81	38	0	29	6	0	188-363	12-38	2	6.84

# 2019 NEW MEXICO RECORD AND INNING BREAKDOWN

Score by innings	1	2	3	4	5	6	7	8	Total
NEW MEXICO	38	26	28	35	21	18	22	0	188
Opponents	60	56	64	45	55	50	31	2	363

Record when ...		
Overall	12-38	After 4 leading 10-6
Conference	3-18	..... trailing 2-26
Non-Conference	9-20	..... tied 0-6
Home games	3-13	After 5 leading 8-5
Away games	3-15	..... trailing 1-16
Neutral site	6-10	..... tied 0-5
Day games	9-27	After 6 leading 7-2
Night games	3-11	..... trailing 1-20
vs Left starter	2-2	..... tied 0-2
vs Right starter	10-36	
1-Run games	3-10	Hit 0 home runs 2-24
2-Run games	1-4	... 1 home run 8-9
5+Run games	5-19	... 2+ home runs 2-5
Extra innings	0-2	
Shutouts	3-8	Opponent 0 home runs 8-8
		..... 1 home run 3-11
Scoring 0-2 runs	0-25	..... 2+ HRs 1-19
..... 3-5 runs	2-7	
..... 6-9 runs	6-5	Made 0 errors 6-8
..... 10+ runs	4-1	.... 1 error 4-10
		.... 2+ errors 2-20
Opponent 0-2 runs	5-5	
..... 3-5 runs	5-7	Opp. made 0 errors 4-19
..... 6-9 runs	2-13	..... 1 error 6-10
..... 10+ runs	0-13	..... 2+ errors 2-9
Scored in 1st inning	7-9	Out-hit opponent 8-5
Opp. scored in 1st	4-20	Out-hit by opponent 4-32
Scores first	8-11	Hits are tied 0-1
Opp. scores first	4-27	

## Record when team scores:

Runs	0	1	2	3	4	5	6	7	8	9	10+
W-L	0-8	0-12	0-5	2-4	0-1	0-2	2-2	3-1	1-2	0-0	4-1

## Record when opponent scores:

Runs	0	1	2	3	4	5	6	7	8	9	10+
W-L	3-0	1-2	1-3	2-1	1-4	2-2	2-2	0-3	0-2	0-6	0-13

## Record when leading after:

Inn.	1	2	3	4	5	6
W-L	7-3	9-5	10-6	10-6	8-5	7-2

## Record when trailing after:

Inn.	1	2	3	4	5	6
W-L	2-17	3-23	2-27	2-26	1-16	1-20

## Record when tied after:

Inn.	1	2	3	4	5	6
W-L	3-18	0-10	0-5	0-6	0-5	0-2

Current losing streak: 9  
 Longest winning streak: 2  
 Longest losing streak: 9

Home attendance : 7744 ( 16 dates avg = 484 )  
 Away attendance : 18761 ( 34 dates avg = 551 )  
 Total attendance: 26505 ( 50 dates avg = 530 )



# 2019 NEW MEXICO SITUATIONAL BREAKDOWN

Player	vs left			vs right			w/runners			w/bases empty			w/bases loaded			as leadoff			fly	gnd	fly/
	h	ab	avg	h	ab	avg	h	ab	avg	h	ab	avg	h	ab	avg	rch	ops	pct	out	out	gnd
5 BRODERICK, Sydney	0	6	.000	6	50	.120	2	29	.069	4	27	.148	0	0	---	6	13	.462	24	11	2.2
2 BUCKHOLZ, Maggie	3	7	.429	9	50	.180	10	31	.323	2	26	.077	2	4	.500	6	14	.429	8	7	1.1
4 DeFLORA, D'Andra	3	12	.250	30	128	.234	13	51	.255	20	89	.225	1	3	.333	22	51	.431	25	25	1.0
9 HALLEEN, Kasey	0	4	.000	9	48	.188	4	23	.174	5	29	.172	1	1	1.000	2	14	.143	14	13	1.1
12 HASLAM, Daryn	2	5	.400	10	50	.200	6	31	.194	6	24	.250	0	2	.000	4	13	.308	10	11	0.9
0 HOWARD, Andrea	2	9	.222	22	116	.190	13	67	.194	11	58	.190	0	8	.000	12	32	.375	44	13	3.4
3 JONES, Taylor	2	8	.250	9	72	.125	7	34	.206	4	46	.087	0	3	.000	7	26	.269	23	9	2.6
8 KLITZKE, Bailey	4	11	.364	31	100	.310	19	51	.373	16	60	.267	4	6	.667	8	24	.333	37	29	1.3
10 O'GRADY, Cameryn	4	13	.308	43	120	.358	25	74	.338	22	59	.373	0	6	.000	18	33	.545	44	12	3.7
7 PETERSON, MacKenZ	1	8	.125	5	24	.208	1	16	.063	5	16	.313	0	1	.000	5	11	.455	9	10	0.9
16 ROMERO, Leslie	0	1	.000	0	9	.000	0	4	.000	0	6	.000	0	0	---	0	0	---	2	5	0.4
22 SALAS, Monica	4	11	.364	24	108	.222	13	57	.228	15	62	.242	1	3	.333	10	32	.313	22	29	0.8
23 STELTZER, Emma	0	1	.000	0	1	.000	0	0	---	0	2	.000	0	0	---	0	1	.000	1	1	1.0
66 TOWNES, Sydney	1	4	.250	7	39	.179	2	15	.133	6	28	.214	0	2	.000	2	12	.167	10	7	1.4
44 WILBON, Aleyah	0	5	.000	21	60	.350	7	21	.333	14	44	.318	0	3	.000	3	16	.188	9	16	0.6
32 WILMERT, Lauren	5	11	.455	30	123	.244	24	88	.273	11	46	.239	3	9	.333	5	23	.217	41	17	2.4
Totals	31	116	.267	256	1098	.233	146	592	.247	141	622	.227	12	51	.235	110	315	.349	323	215	1.5
Opponents	242	734	.330	190	586	.324	243	738	.329	189	582	.325	22	61	.361	141	300	.470	380	303	1.3

Player	pinch hitting			w/runners in scoring pos			w/runner on 3rd and LT 2 out			with 2 outs			success adv runners			2- rnrns			rch	rch	kl
	h	ab	avg	h	ab	avg	rbi	ops	pct	h	ab	avg	adv	ops	pct	rbi	w/out	lob	err	fc	kl
5 BRODERICK, Sydney	0	3	.000	2	16	.125	1	5	.200	1	27	.037	7	33	.212	2	1	19	1	3	7
2 BUCKHOLZ, Maggie	0	5	.000	8	24	.333	4	7	.571	5	22	.227	18	38	.474	7	0	14	1	1	15
4 DeFLORA, D'Andra	0	0	---	8	31	.258	3	6	.500	2	38	.053	25	59	.424	3	3	26	3	3	9
9 HALLEEN, Kasey	0	0	---	1	7	.143	3	3	1.000	1	12	.083	10	26	.385	0	4	9	2	3	7
12 HASLAM, Daryn	0	9	.000	5	21	.238	0	0	---	6	23	.261	12	33	.364	6	2	21	2	1	6
0 HOWARD, Andrea	0	0	---	7	37	.189	0	6	.000	9	41	.220	22	73	.301	5	5	38	1	2	17
3 JONES, Taylor	1	3	.333	3	18	.167	0	6	.000	5	23	.217	16	38	.421	3	5	15	2	0	12
8 KLITZKE, Bailey	1	2	.500	14	36	.389	7	11	.636	15	43	.349	31	59	.525	11	10	28	0	4	4
10 O'GRADY, Cameryn	0	0	---	13	38	.342	4	9	.444	13	39	.333	44	86	.512	6	5	22	3	4	5
7 PETERSON, MacKenZ	1	5	.200	1	14	.071	1	5	.200	2	7	.286	7	17	.412	1	4	3	2	1	2
16 ROMERO, Leslie	0	3	.000	0	1	.000	0	0	---	0	6	.000	0	4	.000	0	0	2	0	0	2
22 SALAS, Monica	0	0	---	9	39	.231	3	7	.429	6	35	.171	23	62	.371	4	5	30	0	5	12
23 STELTZER, Emma	0	1	.000	0	0	---	0	0	---	0	0	---	0	0	---	0	0	0	0	0	0
66 TOWNES, Sydney	0	3	.000	0	8	.000	0	1	.000	4	12	.333	11	21	.524	0	1	7	1	2	4
44 WILBON, Aleyah	2	4	.500	5	11	.455	1	5	.200	6	18	.333	14	24	.583	1	5	5	4	0	8
32 WILMERT, Lauren	0	0	---	13	56	.232	9	19	.474	13	42	.310	45	100	.450	15	10	42	4	2	13
Totals	5	38	.132	89	357	.249	36	90	.400	88	388	.227	285	673	.423	64	60	291	26	31	123
Opponents	12	48	.250	169	507	.333	80	136	.588	140	444	.315	451	847	.532	125	115	328	46	39	43

Success Advancing Runners = percentage of times the batter advanced at least one runner during a plate appearance  
 #Rnrns Adv w/Out = TOTAL number of runners advanced when the player made an out

# 2019 NEW MEXICO MW RECORD AND INNING BREAKDOWN

Score by innings	1	2	3	4	5	6	7	Total
NEW MEXICO	13	6	21	12	14	1	6	73
Opponents	33	41	26	22	31	24	20	197

## Record when ...

Overall	3-18	After 4 leading	3-3
Conference	3-18	..... trailing	0-14
Non-Conference	0-0	..... tied	0-1
Home games	1-11	After 5 leading	3-4
Away games	2-7	..... trailing	0-7
Neutral site	0-0	..... tied	0-0
Day games	1-13	After 6 leading	3-1
Night games	2-5	..... trailing	0-9
vs Left starter	1-1	..... tied	0-0
vs Right starter	2-17		
1-Run games	0-3	Hit 0 home runs	1-10
2-Run games	1-1	... 1 home run	1-5
5+Run games	0-12	... 2+ home runs	1-3
Extra innings	0-0		
Shutouts	0-4	Opponent 0 home runs	1-3
		..... 1 home run	2-3
Scoring 0-2 runs	0-9	..... 2+ HRs	0-12
..... 3-5 runs	1-4		
..... 6-9 runs	2-4	Made 0 errors	2-3
..... 10+ runs	0-1	... 1 error	1-4
		... 2+ errors	0-11
Opponent 0-2 runs	1-0		
..... 3-5 runs	2-3	Opp. made 0 errors	1-7
..... 6-9 runs	0-7	..... 1 error	2-6
..... 10+ runs	0-8	..... 2+ errors	0-5
Scored in 1st inning	1-5	Out-hit opponent	1-2
Opp. scored in 1st	3-10	Out-hit by opponent	2-15
Scores first	1-3	Hits are tied	0-1
Opp. scores first	2-15		

## Record when team scores:

Runs	0	1	2	3	4	5	6	7	8	9	10+
W-L	0-4	0-5	0-0	1-2	0-1	0-1	1-2	1-1	0-1	0-0	0-1

## Record when opponent scores:

Runs	0	1	2	3	4	5	6	7	8	9	10+
W-L	0-0	1-0	0-0	1-0	1-2	0-1	0-0	0-2	0-1	0-4	0-8

## Record when leading after:

Inn.	1	2	3	4	5	6
W-L	1-2	1-2	3-3	3-3	3-4	3-1

## Record when trailing after:

Inn.	1	2	3	4	5	6
W-L	2-8	2-12	0-13	0-14	0-7	0-9

## Record when tied after:

Inn.	1	2	3	4	5	6
W-L	0-8	0-4	0-2	0-1	0-0	0-0

Current losing streak: 8  
 Longest winning streak: 1  
 Longest losing streak: 9

Home attendance : 6756 ( 12 dates avg = 563 )  
 Away attendance : 4389 ( 9 dates avg = 487 )  
 Total attendance: 11145 ( 21 dates avg = 530 )

# 2019 NEW MEXICO MW SITUATIONAL BREAKDOWN

Player	vs left			vs right			w/runners			w/bases empty			w/bases loaded			as leadoff			fly	gnd	fly/
	h	ab	avg	h	ab	avg	h	ab	avg	h	ab	avg	h	ab	avg	rch	ops	pct	out	out	gnd
5 BRODERICK, Sydney	0	4	.000	2	21	.095	1	12	.083	1	13	.077	0	0	---	4	8	.500	13	6	2.2
2 BUCKHOLZ, Maggie	0	0	---	0	6	.000	0	2	.000	0	4	.000	0	0	---	0	1	.000	1	0	99.9
4 DeFLORA, D'Andra	2	5	.400	13	55	.236	6	24	.250	9	36	.250	0	1	.000	13	25	.520	10	12	0.8
9 HALLEEN, Kasey	0	2	.000	4	18	.222	0	7	.000	4	13	.308	0	0	---	1	4	.250	7	4	1.8
12 HASLAM, Daryn	0	2	.000	0	17	.000	0	10	.000	0	9	.000	0	1	.000	0	3	.000	4	6	0.7
0 HOWARD, Andrea	1	2	.500	9	47	.191	5	34	.147	5	15	.333	0	2	.000	5	8	.625	16	7	2.3
3 JONES, Taylor	0	3	.000	7	38	.184	4	15	.267	3	26	.115	0	1	.000	2	14	.143	12	5	2.4
8 KLITZKE, Bailey	2	4	.500	14	50	.280	10	27	.370	6	27	.222	0	1	.000	4	10	.400	16	18	0.9
10 O'GRADY, Cameryn	2	5	.400	16	48	.333	8	32	.250	10	21	.476	0	2	.000	7	11	.636	19	1	19.0
7 PETERSON, MacKenz	0	2	.000	3	9	.333	1	4	.250	2	7	.286	0	0	---	3	5	.600	4	2	2.0
16 ROMERO, Leslie	0	0	---	0	3	.000	0	3	.000	0	0	---	0	0	---	0	0	---	1	0	99.9
22 SALAS, Monica	1	5	.200	11	44	.250	6	21	.286	6	28	.214	0	1	.000	5	13	.385	10	9	1.1
66 TOWNES, Sydney	1	3	.333	4	23	.174	1	8	.125	4	18	.222	0	2	.000	1	6	.167	6	6	1.0
44 WILBON, Aleyah	0	4	.000	14	37	.378	5	12	.417	9	29	.310	0	1	.000	2	13	.154	7	11	0.6
32 WILMERT, Lauren	1	4	.250	18	52	.346	13	38	.342	6	18	.333	2	6	.333	2	10	.200	18	2	9.0
Totals	10	45	.222	115	468	.246	60	249	.241	65	264	.246	2	18	.111	49	131	.374	144	89	1.6
Opponents	125	352	.355	85	234	.363	122	345	.354	88	241	.365	14	30	.467	65	125	.520	163	138	1.2

Player	pinch hitting			w/runners in scoring pos			w/runner on 3rd and LT 2 out			with 2 outs			success adv runners			2- rnrns			rch	rch	kl
	h	ab	avg	h	ab	avg	rbi	ops	pct	h	ab	avg	adv	ops	pct	rbi	w/out	lob	err	fc	
5 BRODERICK, Sydney	0	0	---	1	10	.100	1	3	.333	0	12	.000	5	15	.333	0	1	11	0	2	1
2 BUCKHOLZ, Maggie	0	4	.000	0	1	.000	0	0	---	0	5	.000	0	2	.000	0	0	3	0	0	3
4 DeFLORA, D'Andra	0	0	---	3	15	.200	1	2	.500	0	16	.000	9	25	.360	0	0	14	2	3	5
9 HALLEEN, Kasey	0	0	---	0	2	.000	2	2	1.000	1	4	.250	3	8	.375	0	3	2	1	1	4
12 HASLAM, Daryn	0	5	.000	0	5	.000	0	0	---	0	7	.000	1	10	.100	0	0	7	1	0	3
0 HOWARD, Andrea	0	0	---	2	19	.105	0	3	.000	3	12	.250	11	38	.289	0	3	11	1	2	6
3 JONES, Taylor	0	0	---	2	7	.286	0	3	.000	3	9	.333	9	17	.529	2	4	3	1	0	5
8 KLITZKE, Bailey	1	1	1.000	6	19	.316	2	3	.667	6	24	.250	15	31	.484	5	4	21	0	2	1
10 O'GRADY, Cameryn	0	0	---	4	17	.235	1	3	.333	6	21	.286	17	39	.436	2	1	17	1	0	4
7 PETERSON, MacKenz	1	2	.500	1	4	.250	1	1	1.000	1	3	.333	3	4	.750	1	2	1	1	0	0
16 ROMERO, Leslie	0	2	.000	0	1	.000	0	0	---	0	1	.000	0	3	.000	0	0	2	0	0	1
22 SALAS, Monica	0	0	---	3	15	.200	1	3	.333	2	14	.143	10	23	.435	0	0	10	0	2	5
66 TOWNES, Sydney	0	0	---	0	4	.000	0	1	.000	3	8	.375	7	13	.538	0	0	5	0	2	1
44 WILBON, Aleyah	0	0	---	3	6	.500	1	3	.333	3	9	.333	10	14	.714	1	4	1	3	0	4
32 WILMERT, Lauren	0	0	---	7	24	.292	2	6	.333	8	16	.500	16	40	.400	8	2	18	1	1	8
Totals	2	14	.143	32	149	.215	12	33	.364	36	161	.224	116	282	.411	19	24	126	12	15	51
Opponents	5	23	.217	92	251	.367	47	76	.618	64	191	.335	223	395	.565	63	56	135	22	24	17

Success Advancing Runners = percentage of times the batter advanced at least one runner during a plate appearance  
 #Rnrns Adv w/Out = TOTAL number of runners advanced when the player made an out



# 00 ANDREA HOWARD

OF • 5-6 • 50.

ALBUQUERQUE, N.M. • LA CUEVA HS

## SINGLE-GAME HIGHS

Hits: 3, 2x, Last at Nevada, 3-24-18  
 Doubles: 1, 15x, Last vs. Boise State, 4-20-19  
 Triples: 1, 3x, Last at San Diego State, 3-17-19  
 Home runs: 1, 10x, Last vs. Nevada, 3-30-19  
 Total bases: 7, at Nevada, 3-24-18  
 RBI: 4, at Nevada, 3-24-18  
 Runs scored: 3, 3x, Last vs UTEP, 2-8-19  
 Walks: 4, UTEP, 2-8-19  
 Hit by pitch: 1, 2x, Last vs. Alabama, 2-15-19

Struck out: 3, 4x, Last at NMSU, 4-2-19  
 Sac flies: 1, 2x, at Colorado State, 4-8-18  
 Sac bunts: 1, 3x, Last at Hawai'i, 2-23-19  
 At bats: 5, 2x, Last at Utah State, 4-6-19  
 Stolen bases: 1, 4x, Last vs. WCU, 3-8-19  
 Putouts: 13, at UTEP, 4-16-18  
 Assists: 1, 9x, Last vs. UTEP, 4-9-19

Named All-Mountain West Second Team in 2018

## CAREER STATS (AT UNM)

Year	avg	gp-gs	ab	r	h	2b	3b	hr	rbi	tb	slg%	bb	hbp	so	gdp	ob%	sf	sh	sb-att	po	a	e	fld%
2018	.313	51-50	131	20	41	6	1	7	18	70	.534	23	1	39	1	.414	2	2	3-4	296	5	4	.987
2019	.192	46-46	125	25	24	9	2	3	15	46	.368	24	1	44	1	.327	0	1	1-1	97	4	4	.962
TOTAL	.254	97-96	256	45	65	15	3	10	33	116	.453	47	2	83	2	.371	2	3	4-5	393	9	8	.980

## 2019 GAME-BY-GAME

Date	Opponent	Pos	AB	R	H	RBI	2B	3B	HR	BB	SB	CS	HBP	SAC	SF	GDP	K	PO	A	E	Avg	
Feb 08	vs UTEP	*of	1	3	0	0	0	0	0	4	0	0	0	0	0	0	1	1	0	0	.000	
Feb 09	vs Creighton	*of	2	2	1	0	0	0	0	1	0	0	0	0	0	0	0	4	0	0	.333	
Feb 09	at New Mexico State	*of	4	2	3	1	0	1	0	0	0	0	0	0	0	0	2	5	0	0	.429	
Feb 15	vs Alabama	*of	2	0	0	0	0	0	0	0	0	0	1	0	0	0	0	1	1	0	.333	
Feb 15	vs Cal State Fullerton	*of	4	0	0	0	0	0	0	0	0	0	0	0	0	0	1	1	0	0	.231	
Feb 16	at Arizona	*of	1	0	0	0	0	0	0	1	0	0	0	0	0	0	1	2	0	0	.214	
Feb 16	vs Illinois-Chicago	*of	4	1	2	1	1	0	0	0	0	0	0	0	0	0	1	0	0	0	.278	
Feb 17	vs South Florida	*of	3	0	0	0	0	0	0	1	0	0	0	0	0	0	0	1	1	0	.238	
Feb 20	at Hawaii	*of	3	0	0	0	0	0	0	0	0	0	0	0	0	0	2	3	0	0	.208	
Feb 21	vs DePaul	*of	3	0	0	0	0	0	0	1	0	0	0	0	0	0	0	4	0	0	.185	
Feb 22	vs Canisius	*of	4	0	0	0	0	0	0	0	0	0	0	0	0	0	0	1	0	0	.161	
Feb 22	at Hawaii	*of	4	0	2	0	1	0	0	0	0	0	0	0	0	0	0	4	0	0	.200	
Feb 23	at Hawaii	*of	2	0	0	0	0	0	0	0	0	0	0	1	0	0	0	6	0	0	.189	
Feb 23	vs DePaul	*of	3	0	0	0	0	0	0	0	0	0	0	0	0	0	1	0	0	0	.175	
Feb 28	vs Florida	*of	3	0	0	0	0	0	0	0	0	0	0	0	0	0	3	0	0	0	.163	
Mar 01	vs Loyola Marymount	*of	3	0	1	0	0	0	0	0	0	0	0	0	0	0	1	4	0	0	.174	
Mar 01	vs Tennessee	*of	1	0	0	0	0	0	0	1	0	0	0	0	0	0	1	2	1	0	.170	
Mar 03	vs UCONN	*of	3	0	0	0	0	0	0	0	0	0	0	0	0	0	2	2	0	0	.160	
Mar 03	at Cal State Fullerton	*of	1	0	0	0	0	0	0	0	0	0	0	0	0	0	0	2	0	0	.157	
Mar 08	vs Oregon State	*of	3	1	1	2	0	0	1	0	0	0	0	0	0	0	2	1	1	0	.167	
Mar 08	vs Western Carolina	*of	1	1	0	0	0	0	0	2	1	0	0	0	0	0	0	1	0	0	.164	
Mar 09	vs Oregon State	*of	3	1	2	1	1	1	0	1	0	0	0	0	0	0	1	2	0	0	.190	
Mar 10	at Loyola Marymount	*of	3	0	1	0	1	0	0	1	0	0	0	0	0	0	1	2	0	0	.197	
Mar 15	at San Diego State	*of	1	1	0	0	0	0	0	3	0	0	0	0	0	0	1	4	0	0	.194	
Mar 16	at San Diego State	*of	3	1	1	1	1	0	0	1	0	0	0	0	0	0	1	3	0	0	.200	
Mar 17	at San Diego State	*of	4	1	1	0	1	0	0	0	0	0	0	0	0	0	0	2	0	0	.203	
Mar 22	COLORADO STATE	*of	4	2	2	1	1	0	0	0	0	0	0	0	0	0	1	4	0	1	.219	
Mar 23	COLORADO STATE	*of	3	0	0	0	0	0	0	0	0	0	0	0	0	0	1	2	0	0	.211	
Mar 24	COLORADO STATE	*of	3	1	0	0	0	0	0	0	0	0	0	0	0	0	1	2	0	0	.203	
Mar 26	NORTH DAKOTA-1	*of	2	2	0	0	0	0	0	2	0	0	0	0	0	0	0	2	0	0	.198	
Mar 26	NORTH DAKOTA-2	*of	3	1	2	3	1	0	0	0	0	0	0	0	0	0	1	1	0	1	.214	
Mar 29	NEVADA	*of	3	0	0	0	0	0	0	0	0	0	0	0	0	0	1	2	0	0	.207	
Mar 30	NEVADA	*of	3	2	2	3	0	0	1	1	0	0	0	0	0	0	1	0	0	0	.222	
Mar 31	NEVADA	*of	2	0	0	0	0	0	0	0	0	0	0	0	0	0	0	1	0	0	.217	
Apr 02	at New Mexico State-1	*of	3	0	0	0	0	0	0	0	0	0	0	0	0	0	3	2	0	1	.211	
Apr 02	at New Mexico State-2	*of	2	0	0	0	0	0	0	0	0	0	0	0	0	0	1	2	0	0	.206	
Apr 05	at Utah State	*of	3	0	0	0	0	0	0	1	0	0	0	0	0	0	2	2	0	0	.200	
Apr 06	at Utah State	*of	5	0	1	0	0	0	0	0	0	0	0	0	0	1	1	3	0	0	.200	
Apr 07	at Utah State	*of	3	0	0	0	0	0	0	0	0	0	0	0	0	0	1	0	0	0	.194	
Apr 09	UTEP	*of	3	0	0	0	0	0	0	0	0	0	0	0	0	0	1	1	1	0	.189	
Apr 18	BOISE STATE	*of	4	0	1	0	0	0	0	0	0	0	0	0	0	0	1	6	0	0	.191	
Apr 19	BOISE STATE	*of	3	1	1	0	0	0	0	0	0	0	0	0	0	0	0	6	0	1	.195	
Apr 20	BOISE STATE	*of	2	2	1	0	1	0	0	2	0	0	0	0	0	0	0	0	0	0	.200	
Apr 23	NEW MEXICO STATE	*of	2	0	0	0	0	0	0	0	0	0	0	0	0	0	2	1	0	0	.197	
Apr 26	at Fresno State	*of	2	0	0	0	0	0	0	0	0	0	0	0	0	0	2	0	0	0	.194	
Apr 27	at Fresno State	*of	1	0	0	0	0	0	0	1	0	0	0	0	0	0	1	2	0	0	.192	
Totals			46gs	125	25	24	15	9	2	3	24	1	0	1	1	0	1	44	97	4	4	.192

On base pct. .327 • Slugging pct. .368





**2 MAGGIE BUCKHOLZ** *UT • 5-7 • FR.*  
*SILVERTON, ORE. • SILVERTON HS*

**SINGLE-GAME HIGHS**

Hits: 3, Illinois-Chicago, 2-16-19  
 Doubles: 1, Western Carolina, 3-8-19  
 Triples: 1, Illinois-Chicago, 2-16-19  
 Home runs: 1, 2x, Last at Hawai'i, 2-23-19  
 Total bases: 8, Illinois-Chicago, 2-16-19  
 Runs scored: 2, 2x, Last vs. WCU, 3-8-19  
 RBI: 7, Illinois-Chicago, 2-16-19  
 Walks: 3, Cal State Fullerton, 2-15-19  
 Hit by pitch: 1, at LMU, 3-10-19

Struck out: 3, UConn, 3-3-19  
 Sac bunts:  
 At bats: 4, Illinois-Chicago, 2-16-19  
 Caught Stealing: 1, UTEP, 2-8-19  
 Putouts: 4, 2x, Last vs. Florida, 2-28-19  
 Assists: 1, Alabama, 2-15-19

**CAREER STATS (AT UNM)**

Year	avg	gp-gs	ab	r	h	2b	3b	hr	rbi	tb	slg%	bb	hbp	so	gdp	ob%	sf	sh	sb-att	po	a	e	fld%
2019	.211	28-22	57	9	12	1	1	2	17	21	.368	17	1	29	0	.400	0	0	0-1	23	0	1	.958
TOTAL	.211	28-22	57	9	12	1	1	2	17	21	.368	17	1	29	0	.400	0	0	0-1	23	0	1	.958

**2019 GAME-BY-GAME**

Date	Opponent	Pos	AB	R	H	RBI	2B	3B	HR	BB	SB	CS	HBP	SAC	SF	GDP	K	PO	A	E	Avg
Feb 08	vs UTEP	*of	3	1	1	3	0	0	0	2	0	1	0	0	0	0	0	1	0	0	.333
Feb 09	vs Creighton	*of	2	0	0	0	0	0	0	0	0	0	0	0	0	0	1	1	0	0	.200
Feb 09	at New Mexico State	ph	0	1	0	0	0	0	0	1	0	0	0	0	0	0	0	0	0	0	.200
Feb 15	vs Alabama	*of	2	0	0	0	0	0	0	1	0	0	0	0	0	0	2	2	0	0	.143
Feb 15	vs Cal State Fullerton	*of	1	0	0	0	0	0	0	3	0	0	0	0	0	0	1	4	0	0	.125
Feb 16	at Arizona	*of	2	0	0	0	0	0	0	0	0	0	0	0	0	0	1	1	0	0	.100
Feb 16	vs Illinois-Chicago	*dh	4	2	3	7	0	1	1	0	0	0	0	0	0	0	0	0	0	0	.286
Feb 17	vs South Florida	*dh	2	0	1	0	0	0	0	1	0	0	0	0	0	0	1	0	0	0	.312
Feb 20	at Hawaii	*of	3	0	0	0	0	0	0	0	0	0	0	0	0	0	2	1	0	1	.263
Feb 21	vs DePaul	*dh	2	1	0	0	0	0	0	1	0	0	0	0	0	0	1	0	0	0	.238
Feb 22	vs Canisius	*of	2	0	2	2	0	0	0	1	0	0	0	0	0	0	0	1	0	0	.304
Feb 22	at Hawaii	*of	3	0	1	1	0	0	0	0	0	0	0	0	0	0	0	0	0	0	.308
Feb 23	at Hawaii	*of	3	1	1	3	0	0	1	0	0	0	0	0	0	0	0	1	0	0	.310
Feb 23	vs DePaul	*of	2	0	0	0	0	0	0	1	0	0	0	0	0	0	1	0	0	0	.290
Feb 28	vs Florida	*of	3	0	1	0	0	0	0	0	0	0	0	0	0	0	2	4	0	0	.294
Mar 01	vs Loyola Marymount	*of	2	1	1	0	0	0	0	2	0	0	0	0	0	0	1	2	0	0	.306
Mar 01	vs Tennessee	*of	3	0	0	0	0	0	0	0	0	0	0	0	0	0	2	2	0	0	.282
Mar 03	vs UCONN	*of	3	0	0	0	0	0	0	1	0	0	0	0	0	0	3	1	0	0	.262
Mar 08	vs Oregon State	*dh	2	0	0	0	0	0	0	1	0	0	0	0	0	0	1	0	0	0	.250
Mar 08	vs Western Carolina	*of	2	2	1	1	1	0	0	1	0	0	0	0	0	0	0	1	0	0	.261
Mar 09	vs Oregon State	*of	2	0	0	0	0	0	0	0	0	0	0	0	0	0	2	1	0	0	.250
Mar 10	at Loyola Marymount	*dh	2	0	0	0	0	0	0	1	0	0	1	0	0	0	2	0	0	0	.240
Mar 15	at San Diego State	*dh	2	0	0	0	0	0	0	0	0	0	0	0	0	0	2	0	0	0	.231
Mar 16	at San Diego State	ph	1	0	0	0	0	0	0	0	0	0	0	0	0	0	1	0	0	0	.226
Mar 26	NORTH DAKOTA-1	ph	1	0	0	0	0	0	0	0	0	0	0	0	0	0	1	0	0	0	.222
Mar 31	NEVADA	ph	1	0	0	0	0	0	0	0	0	0	0	0	0	0	0	0	0	0	.218
Apr 18	BOISE STATE	ph	1	0	0	0	0	0	0	0	0	0	0	0	0	0	1	0	0	0	.214
Apr 27	at Fresno State	ph	1	0	0	0	0	0	0	0	0	0	0	0	0	0	1	0	0	0	.211
Totals			22gs	57	9	12	17	1	1	2	17	0	1	1	0	0	29	23	0	1	.211

On base pct. .400 • Slugging pct. .368

IF • 5-7 • 50.

ALBUQUERQUE, N.M. • LA CUEVA HS



# 3 TAYLOR JONES

## SINGLE-GAME HIGHS

Hits: 2, 3x, Last vs. Colorado State, 3-22-19  
 Doubles: 1, 4x, Last vs. Boise State, 4-19-19  
 Home runs: 1, 2x, Last vs. CSU, 3-22-19  
 Total bases: 6, at Boise State, 5-12-18  
 RBI: 3, Howard, 3-10-18  
 Runs scored: 2, 2x, Last vs. Boise St., 4-20-19  
 Walks: 2, North Dakota, 3-26-19  
 Hit by pitch: 1, Boise State, 4-20-19  
 Struck out: 2, 13x, Last vs Boise State, 4-18-19

Sac flies: 1, Howard, 3-10-18  
 Sac bunts: 1, 2x, Last at Nevada, 3-24-18  
 At bats: 4, 5x, Last at Utah State, 4-6-19  
 Stolen bases: 1, Howard, 3-10-18  
 Putouts: 11, San Diego State, 3-15-19  
 Assists: 5, 2x, Last vs. Nevada, 3-29-19

## CAREER STATS (AT UNM)

Year	avg	gp-gs	ab	r	h	2b	3b	hr	rbi	tb	slg%	bb	hbp	so	gdp	ob%	sf	sh	sb-att	po	a	e	fld%
2018	.216	24-11	37	6	8	3	0	1	4	14	.378	0	0	13	0	.211	1	2	1-1	8	6	2	.875
2019	.138	39-32	80	9	11	1	0	1	4	15	.188	11	1	35	0	.250	0	0	0-0	110	37	5	.967
TOTAL	.162	63-43	117	15	19	4	0	2	8	29	.248	11	1	48	0	.238	1	2	1-1	118	43	7	.958

## 2019 GAME-BY-GAME

Date	Opponent	Pos	AB	R	H	RBI	2B	3B	HR	BB	SB	CS	HBP	SAC	SF	GDP	K	PO	A	E	Avg
Feb 08	vs UTEP	*1b	4	0	0	0	0	0	0	1	0	0	0	0	0	0	2	6	0	0	.000
Feb 09	vs Creighton	*2b	2	0	0	0	0	0	0	0	0	0	0	0	0	0	2	2	1	0	.000
Feb 15	vs Alabama	ph	1	0	0	0	0	0	0	0	0	0	0	0	0	0	0	0	0	0	.000
Feb 15	vs Cal State Fullerton	*1b	2	0	0	0	0	0	0	1	0	0	0	0	0	0	1	5	0	1	.000
Feb 16	at Arizona	ss	1	0	1	0	0	0	0	0	0	0	0	0	0	0	0	0	0	0	.100
Feb 16	vs Illinois-Chicago	*2b	3	1	1	1	0	0	0	1	0	0	0	0	0	0	0	1	3	0	.154
Feb 17	vs South Florida	*2b	2	0	0	0	0	0	0	1	0	0	0	0	0	0	2	3	5	0	.133
Feb 20	at Hawaii	ph	1	0	0	0	0	0	0	0	0	0	0	0	0	0	0	0	0	0	.125
Feb 21	vs DePaul	ph	0	0	0	0	0	0	0	1	0	0	0	0	0	0	0	0	0	0	.125
Feb 22	vs Canisius	*1b	2	0	0	0	0	0	0	0	0	0	0	0	0	0	0	4	0	0	.111
Feb 22	at Hawaii	pr	0	0	0	0	0	0	0	0	0	0	0	0	0	0	0	0	0	0	.111
Feb 23	vs DePaul	ph	0	0	0	0	0	0	0	1	0	0	0	0	0	0	0	0	0	0	.111
Feb 28	vs Florida	*1b	2	0	0	0	0	0	0	0	0	0	0	0	0	0	2	8	0	0	.100
Mar 01	vs Loyola Marymount	*1b	2	0	0	0	0	0	0	0	0	0	0	0	0	0	1	2	0	0	.091
Mar 03	at Cal State Fullerton	*1b/ss	2	0	0	0	0	0	0	0	0	0	0	0	0	0	1	2	2	0	.083
Mar 08	vs Oregon State	*1b	3	1	1	0	0	0	0	0	0	0	0	0	0	0	1	9	1	0	.111
Mar 08	vs Western Carolina	*1b	2	1	0	0	0	0	0	0	0	0	0	0	0	0	0	3	0	0	.103
Mar 10	at Loyola Marymount	1b/ph	1	0	1	0	0	0	0	0	0	0	0	0	0	0	0	0	0	0	.133
Mar 15	at San Diego State	*1b	3	0	2	0	0	0	0	0	0	0	0	0	0	0	1	11	1	0	.182
Mar 16	at San Diego State	*2b	4	0	1	1	0	0	0	0	0	0	0	0	0	0	1	1	2	1	.189
Mar 17	at San Diego State	*1b/2b	4	0	0	0	0	0	0	0	0	0	0	0	0	0	2	3	0	0	.171
Mar 22	COLORADO STATE	*1b	4	1	2	1	0	0	1	0	0	0	0	0	0	0	1	7	0	1	.200
Mar 23	COLORADO STATE	*2b	2	0	0	0	0	0	0	0	0	0	0	0	0	0	0	0	2	0	.191
Mar 26	NORTH DAKOTA-1	*1b	2	1	0	0	0	0	0	2	0	0	0	0	0	0	0	7	0	0	.184
Mar 29	NEVADA	*2b	2	0	0	0	0	0	0	0	0	0	0	0	0	0	2	1	5	0	.176
Mar 31	NEVADA	*2b	2	0	0	0	0	0	0	0	0	0	0	0	0	0	1	0	3	0	.170
Apr 02	at New Mexico State-1	*2b	2	0	0	0	0	0	0	0	0	0	0	0	0	0	2	1	0	0	.164
Apr 02	at New Mexico State-2	*2b	2	0	0	0	0	0	0	0	0	0	0	0	0	0	2	0	3	0	.158
Apr 05	at Utah State	*2b	3	1	1	1	0	0	0	0	0	0	0	0	0	0	1	2	3	1	.167
Apr 06	at Utah State	*2b	4	0	0	0	0	0	0	0	0	0	0	0	0	0	1	0	1	0	.156
Apr 07	at Utah State	*2b	2	0	0	0	0	0	0	0	0	0	0	0	0	0	0	1	1	0	.152
Apr 09	UTEP	*2b	2	0	0	0	0	0	0	0	0	0	0	0	0	0	2	2	0	0	.147
Apr 18	BOISE STATE	*2b	2	0	0	0	0	0	0	0	0	0	0	0	0	0	2	1	1	0	.143
Apr 19	BOISE STATE	*2b	2	0	1	0	1	0	0	0	0	0	0	0	0	0	1	4	2	0	.153
Apr 20	BOISE STATE	*2b	2	2	0	0	0	0	0	1	0	0	1	0	0	0	1	2	1	0	.149
Apr 23	NEW MEXICO STATE	*2b	1	0	0	0	0	0	0	0	0	0	0	0	0	0	1	4	0	0	.147
Apr 26	at Fresno State	*1b	1	1	0	0	0	0	0	1	0	0	0	0	0	0	1	5	0	0	.145
Apr 27	at Fresno State	*1b	2	0	0	0	0	0	0	1	0	0	0	0	0	0	0	6	0	1	.141
May 03	SAN JOSE STATE	*1b	2	0	0	0	0	0	0	0	0	0	0	0	0	0	1	7	0	0	.138
Totals			32gs	80	9	11	4	1	0	11	0	0	1	0	0	0	35	110	37	5	.138

On base pct. .250 • Slugging pct. .188



# 4 D'ANDRA DEFLORA

OF • 5-1 • SR.

FRESNO, TEXAS • L.V. HIGHTOWER HS

## SINGLE-GAME HIGHS

Hits: 4, Howard, 3-10-18  
 Doubles: 2, 2x, Last vs Northern Colo., 3-4-17  
 Triples: 1, vs Stephen F. Austin, 2-17-17  
 Home runs: 2, at Utah State, 4-22-17  
 Total bases: 8, at Utah State, 4-22-17  
 RBI: 5, at Utah State, 4-22-17  
 Runs scored: 3, 4x, Last at SDSU, 3-16-19  
 Walks: 3, George Washington, 2-23-18  
 Hit by pitch: 3, NMSU, 3-21-18

Struck out: 3, 5x, Last vs. Nevada, 3-30-19  
 Sac flies: 1, at UTEP, 3-15-16  
 Sac bunts: 1, 16x, Last vs Fresno State, 3-29-18  
 At bats: 5, 5x, Last vs. Boise State, 4-20-19  
 Stolen bases: 3, Santa Clara, 3-11-17  
 Caught stealing: 1, 6x, Last vs. Boise State, 4-20-19  
 Putouts: 5, 5x, Last vs. Colorado State, 3-24-19  
 Assists: 2, Nevada, 4-8-17

## CAREER STATS (AT UNM)

Year	avg	gp-gs	ab	r	h	2b	3b	hr	rbi	tb	slg%	bb	hbp	so	gdp	ob%	sf	sh	sb-att	po	a	e	fld%
2016	.224	30-25	76	10	17	2	0	0	4	19	.250	4	2	10	0	.277	1	3	1-1	17	1	2	.900
2017	.247	49-49	146	29	36	9	1	5	23	62	.425	7	6	16	0	.308	0	9	6-7	85	13	3	.970
2018	.214	53-53	145	22	31	3	0	7	21	55	.379	11	9	41	3	.309	0	4	2-6	88	7	3	.969
2019	.236	50-50	140	29	33	5	0	3	15	47	.336	15	10	55	1	.352	0	0	2-3	77	2	2	.975
TOTAL	.231	182-177	507	90	117	19	1	15	63	183	.361	37	27	122	4	.316	1	16	11-17	267	23	10	.967

## 2019 GAME-BY-GAME

Date	Opponent	Pos	AB	R	H	RBI	2B	3B	HR	BB	SB	CS	HBP	SAC	SF	GDP	K	PO	A	E	Avg
Feb 08	vs UTEP	*of	3	2	1	0	0	0	0	0	0	0	1	0	0	0	0	0	0	0	.333
Feb 09	vs Creighton	*of	2	2	1	3	1	0	0	1	0	0	0	0	0	0	1	1	0	0	.400
Feb 09	at New Mexico State	*of	4	2	3	1	1	0	0	0	0	0	0	0	0	0	0	2	2	0	.556
Feb 15	vs Alabama	*of	3	0	1	0	0	0	0	0	0	0	0	0	0	0	0	2	1	0	.500
Feb 15	vs Cal State Fullerton	*of	1	1	1	0	0	0	0	1	0	0	0	0	0	0	0	1	0	1	.467
Feb 16	at Arizona	*of	0	1	0	0	0	0	0	0	0	0	0	0	0	0	0	1	0	0	.471
Feb 16	vs Illinois-Chicago	*of	1	1	0	0	0	0	0	1	0	0	0	0	0	0	0	0	0	0	.450
Feb 17	vs South Florida	*of	3	1	1	0	0	0	0	1	0	0	0	0	0	0	0	1	0	0	.435
Feb 20	at Hawaii	*of	2	1	1	0	0	0	0	0	0	0	1	0	0	0	0	1	5	0	.440
Feb 21	vs DePaul	*of	4	0	0	0	0	0	0	0	0	0	0	0	0	0	1	2	2	0	.379
Feb 22	vs Canisius	*of	2	3	1	0	0	0	0	1	0	0	0	0	0	0	0	0	2	0	.387
Feb 22	at Hawaii	*of	3	0	0	0	0	0	0	0	0	0	0	0	0	0	0	1	2	0	.353
Feb 23	at Hawaii	*of	3	0	0	0	0	0	0	0	0	0	0	0	0	0	0	1	0	0	.324
Feb 23	vs DePaul	*of	4	0	1	0	1	0	0	0	0	0	0	0	0	0	2	4	0	0	.317
Feb 28	vs Florida	*of	3	0	0	0	0	0	0	0	0	0	0	0	0	0	0	2	1	0	.295
Mar 01	vs Loyola Marymount	*of	4	0	1	0	0	0	0	0	0	0	0	0	0	0	0	2	2	0	.292
Mar 01	vs Tennessee	*of	2	1	2	1	0	0	1	0	0	0	0	0	0	0	0	0	3	0	.320
Mar 03	vs UCONN	*of	0	0	0	0	0	0	0	1	0	0	0	0	0	0	0	0	0	0	.308
Mar 03	at Cal State Fullerton	*of	1	0	0	0	0	0	0	0	0	0	0	0	0	0	0	1	1	0	.302
Mar 08	vs Oregon State	*of	4	1	2	3	0	0	0	0	0	0	0	0	0	0	0	1	4	0	.316
Mar 08	vs Western Carolina	*of	2	1	0	0	0	0	0	0	0	0	1	0	0	0	0	0	1	0	.305
Mar 09	vs Oregon State	*of	1	0	0	0	0	0	0	1	0	0	0	0	0	0	0	1	2	0	.290
Mar 10	at Loyola Marymount	*of	0	1	0	0	0	0	0	0	0	0	0	0	0	0	3	0	0	0	.277
Mar 15	at San Diego State	*of	1	1	1	0	0	0	0	1	0	0	1	0	0	0	0	2	0	0	.279
Mar 16	at San Diego State	*of	2	3	0	0	0	0	0	1	0	0	1	0	0	0	0	1	0	0	.271
Mar 17	at San Diego State	*of	4	0	0	0	0	0	0	0	0	0	0	0	0	0	0	1	0	0	.257
Mar 22	COLORADO STATE	*of	2	1	0	0	0	0	0	2	0	0	0	0	0	0	0	2	2	0	.250
Mar 23	COLORADO STATE	*of	3	0	1	0	1	0	0	0	0	0	0	0	0	0	0	1	2	0	.253
Mar 24	COLORADO STATE	*of	3	0	2	0	0	0	0	0	0	0	0	0	0	0	0	0	5	0	.268
Mar 26	NORTH DAKOTA-1	*of	3	0	0	0	0	0	0	1	0	0	0	0	0	0	0	2	0	0	.259
Mar 26	NORTH DAKOTA-2	*of	3	1	0	0	0	0	0	0	1	0	1	0	0	0	0	3	4	0	.250
Mar 29	NEVADA	*of	2	0	0	0	0	0	0	1	0	0	0	0	0	0	0	0	1	0	.244
Mar 30	NEVADA	*of	4	1	1	0	0	0	0	0	0	0	0	0	0	0	3	3	0	0	.245
Mar 31	NEVADA	*of	2	0	0	0	0	0	0	0	0	0	0	0	0	0	0	0	2	0	.240
Apr 02	at New Mexico State-1	*of	2	0	0	0	0	0	0	0	0	0	1	0	0	0	0	2	0	0	.235
Apr 02	at New Mexico State-2	*of	3	0	0	0	0	0	0	0	0	0	0	0	0	0	0	0	0	0	.228
Apr 05	at Utah State	*of	4	0	0	0	0	0	0	0	0	0	0	0	0	0	0	1	0	0	.219
Apr 06	at Utah State	*of	3	1	1	0	0	0	0	0	0	0	2	0	0	0	0	2	4	0	.222
Apr 07	at Utah State	*of	3	0	0	0	0	0	0	0	0	0	0	0	0	0	0	0	0	0	.216
Apr 09	UTEP	*of	0	0	0	0	0	0	0	1	0	0	0	0	0	0	0	0	0	0	.212
Apr 18	BOISE STATE	*of	1	1	2	1	0	0	1	1	1	0	0	0	0	0	0	2	4	0	.216
Apr 19	BOISE STATE	*of	3	0	2	1	0	0	0	0	0	1	0	0	0	0	0	0	1	0	.227
Apr 20	BOISE STATE	*of	5	2	3	4	1	0	1	0	0	0	0	0	0	0	0	2	3	1	.242
Apr 23	NEW MEXICO STATE	*of	2	0	0	0	0	0	0	0	0	0	0	0	0	0	0	2	1	0	.238
Apr 26	at Fresno State	*of	2	0	1	0	0	0	0	0	0	0	0	0	0	0	0	1	0	0	.242
Apr 27	at Fresno State	*of	3	0	0	0	0	0	0	0	0	0	1	0	0	0	0	2	0	0	.237
Apr 28	at Fresno State	*of	3	0	0	0	0	0	0	0	0	0	0	0	0	0	0	2	2	0	.231
May 03	SAN JOSE STATE	*of	3	1	1	0	0	0	0	0	0	0	0	0	0	0	0	0	4	0	.234
May 04	SAN JOSE STATE	*of	1	0	1	0	0	0	0	1	0	0	0	0	0	0	0	0	2	0	.239
May 05	SAN JOSE STATE	*of	2	0	0	0	0	0	0	0	0	0	0	0	0	0	0	0	2	0	.236
Totals			50gs	140	29	33	15	5	0	3	15	2	1	10	0	0	1	55	77	2	.236

On base pct. .352 • Slugging pct. .336



# 5 SYDNEY BRODERICK

**C • 5-4 • SO.**

**MESA, ARIZ. • DESERT RIDGE HS**

## SINGLE-GAME HIGHS

Hits: 3, St. Mary's, 3-10-18  
 Doubles: 1, 4x, Last at Utah State, 4-6-19  
 Home Runs: 1, NMSU, 4-2-19  
 Total bases: 4, 2x, Last at NMSU, 4-2-19  
 RBI: 2, 2x, Last at NMSU, 4-2-19  
 Runs scored: 1, 11x, Last vs. Boise State, 4-19-19  
 Walks: 2, 2x, Last vs. Boise State, 4-18-19  
 Hit by pitch: 1, vs Oregon, 2-11-18  
 Struck out: 3, at Colorado State, 4-8-18

Sac flies: 1, at Nevada, 3-24-18  
 Sac bunts: 1, 3x, Last vs Boise State, 4-20-19  
 At bats: 4, 4x, Last at Utah State, 4-6-19  
 Stolen bases: 1, at Utah State, 4-5-19  
 Putouts: 10, at Colorado State, 4-7-18  
 Assists: 3, 2x, Last vs. Nevada, 3-30-19  
 Runners CS: 2, Utah State, 4-21-18

## CAREER STATS (AT UNM)

Year	avg	gp-gs	ab	r	h	2b	3b	hr	rbi	tb	slg%	bb	hbp	so	gdp	ob%	sf	sh	sb-att	po	a	e	fld%
2018	.230	42-36	87	6	20	2	0	0	5	22	.253	6	1	12	2	.284	1	2	0-0	118	12	6	.956
2019	.107	30-27	56	5	6	2	0	1	3	11	.196	10	0	15	1	.242	0	1	1-1	90	17	6	.947
TOTAL	.182	72-63	143	11	26	4	0	1	8	33	.231	16	1	27	3	.267	1	3	1-1	208	29	12	.952

## 2019 GAME-BY-GAME

Date	Opponent	Pos	AB	R	H	RBI	2B	3B	HR	BB	SB	CS	HBP	SAC	SF	GDP	K	PO	A	E	Avg
Feb 08	vs UTEP	ph	1	0	0	0	0	0	0	0	0	0	0	0	0	1	0	0	0	0	.000
Feb 09	vs Creighton	*c	2	0	0	0	0	0	0	0	0	0	0	0	0	0	2	2	0	0	.000
Feb 15	vs Alabama	*c	3	0	0	0	0	0	0	0	0	0	0	0	0	0	0	1	0	0	.000
Feb 16	at Arizona	*c	2	0	0	0	0	0	0	0	0	0	0	0	0	0	2	1	1	0	.000
Feb 17	vs South Florida	*c	2	0	0	0	0	0	0	0	0	0	0	0	0	0	1	5	2	0	.000
Feb 20	at Hawaii	*c	2	0	0	0	0	0	0	0	0	0	0	0	0	0	0	3	1	0	.000
Feb 21	vs DePaul	*c	1	1	0	0	0	0	0	1	0	0	0	0	0	0	1	3	1	0	.000
Feb 22	vs Canisius	ph	1	0	0	0	0	0	0	0	0	0	0	0	0	0	0	0	0	0	.000
Feb 23	at Hawaii	*c	2	0	0	0	0	0	0	0	0	0	0	0	0	0	1	7	0	0	.000
Mar 01	vs Loyola Marymount	ph	1	0	0	0	0	0	0	0	0	0	0	0	0	0	1	0	0	0	.000
Mar 01	vs Tennessee	*c	2	0	0	0	0	0	0	0	0	0	0	0	0	0	1	1	1	0	.000
Mar 03	vs UCONN	*c	2	0	1	0	0	0	0	0	0	0	0	0	0	0	0	5	2	0	.048
Mar 16	at San Diego State	*c	3	0	0	0	0	0	0	0	0	0	0	0	0	0	1	5	1	0	.042
Mar 23	COLORADO STATE	*c	2	0	1	0	1	0	0	0	0	0	0	0	0	0	0	3	0	0	.077
Mar 26	NORTH DAKOTA-2	*c	3	1	1	0	0	0	0	0	0	0	0	0	0	0	1	7	0	0	.103
Mar 30	NEVADA	*c	2	0	0	0	0	0	0	1	0	0	0	0	0	0	2	4	3	0	.097
Apr 02	at New Mexico State-1	*c	1	0	0	0	0	0	0	1	0	0	0	0	0	0	0	7	0	0	.094
Apr 02	at New Mexico State-2	*c	2	1	1	2	0	0	1	0	0	0	0	0	0	0	0	1	0	0	.118
Apr 05	at Utah State	*c	1	0	0	0	0	0	0	2	1	0	0	0	0	0	0	3	0	1	.114
Apr 06	at Utah State	*c	4	0	1	1	1	0	0	0	0	0	0	0	0	0	1	2	0	0	.128
Apr 07	at Utah State	*c	1	0	0	0	0	0	0	1	0	0	0	0	0	0	0	6	0	1	.125
Apr 09	UTEP	*c	2	0	0	0	0	0	0	0	0	0	0	0	0	0	0	2	1	0	.119
Apr 18	BOISE STATE	*c	1	1	0	0	0	0	0	2	0	0	0	0	0	0	0	4	1	0	.116
Apr 19	BOISE STATE	*c	1	1	0	0	0	0	0	1	0	0	0	0	0	0	0	1	1	0	.114
Apr 20	BOISE STATE	*c	2	0	0	0	0	0	0	1	0	0	0	1	0	0	1	3	0	1	.109
Apr 23	NEW MEXICO STATE	*c	2	0	1	0	0	0	0	0	0	0	0	0	0	0	0	3	0	1	.125
Apr 28	at Fresno State	*c	2	0	0	0	0	0	0	0	0	0	0	0	0	0	0	4	2	0	.120
May 03	SAN JOSE STATE	*c	2	0	0	0	0	0	0	0	0	0	0	0	0	0	0	2	0	1	.115
May 04	SAN JOSE STATE	*c	2	0	0	0	0	0	0	0	0	0	0	0	0	0	0	2	0	0	.111
May 05	SAN JOSE STATE	*c	2	0	0	0	0	0	0	0	0	0	0	0	0	0	0	3	0	1	.107
Totals		27gs	56	5	6	3	2	0	1	10	1	0	0	1	0	1	15	90	17	6	.107

On base pct. .242 • Slugging pct. .196





# 7 MacKENZIE PETERSON

OF • 5-9 • FR.  
GILBERT, ARIZ. • PHOENIX COLLEGE

## SINGLE-GAME HIGHS

Hits: 1, 6x, Last vs. San Jose St., 5-5-19  
 Doubles:  
 Total bases: 1, 5x, Last vs. North Dakota, 3-26-19  
 RBI: 1, 2x, Last vs. San Jose St., 5-3-19  
 Runs scored: 1, 2x, Last vs. Oregon St., 3-9-19  
 Walks: 2, 2x, Last vs. Oregon St., 3-9-19  
 Hit by Pitch: 1, Oregon St., 3-9-19  
 Struck out: 1, 5x, Last vs. Nevada, 3-29-19  
 Sac bunts:  
 At bats: 4, Illinois-Chicago, 2-16-19  
 Stolen bases:  
 Caught stealing:  
 Putouts: 10, Oregon State, 3-9-19  
 Assists: 1, Illinois-Chicago, 2-16-19

## CAREER STATS (AT UNM)

Year	avg	gp-gs	ab	r	h	2b	3b	hr	rbi	tb	slg%	bb	hbp	so	gdp	ob%	sf	sh	sb-att	po	a	e	fld%
2019	.188	20-12	32	2	6	0	0	0	2	6	.188	6	1	5	0	.333	0	0	0-0	71	1	5	.935
TOTAL	.188	20-12	32	2	6	0	0	0	2	6	.188	6	1	5	0	.333	0	0	0-0	71	1	5	.935

## 2019 GAME-BY-GAME

Date	Opponent	Pos	AB	R	H	RBI	2B	3B	HR	BB	SB	CS	HBP	SAC	SF	GDP	K	PO	A	E	Avg
Feb 09	at New Mexico State	*1b	3	0	1	0	0	0	0	0	0	0	0	0	0	0	0	2	0	0	.333
Feb 16	at Arizona	1b	1	0	0	0	0	0	0	0	0	0	0	0	0	0	0	1	0	0	.250
Feb 16	vs Illinois-Chicago	*1b	4	0	1	0	0	0	0	0	0	0	0	0	0	0	0	7	1	1	.250
Feb 17	vs South Florida	ph/1b	1	0	0	0	0	0	0	0	0	0	0	0	0	0	1	0	0	0	.222
Feb 22	vs Canisius	ph/1b	1	0	0	0	0	0	0	0	0	0	0	0	0	0	0	2	0	0	.200
Feb 22	at Hawaii	*1b	2	0	0	0	0	0	0	1	0	0	0	0	0	0	0	6	0	0	.167
Feb 23	vs DePaul	*1b	1	1	0	0	0	0	0	2	0	0	0	0	0	0	0	6	0	0	.154
Feb 28	vs Florida	ph	1	0	0	0	0	0	0	0	0	0	0	0	0	0	1	0	0	0	.143
Mar 03	at Cal State Fullerton	1b	1	0	0	0	0	0	0	0	0	0	0	0	0	0	1	1	0	0	.133
Mar 08	vs Western Carolina	1b	0	0	0	0	0	0	0	0	0	0	0	0	0	0	0	3	0	0	.133
Mar 09	vs Oregon State	*1b	1	1	0	0	0	0	0	2	0	0	1	0	0	0	1	10	0	0	.125
Mar 10	at Loyola Marymount	*1b	2	0	0	0	0	0	0	0	0	0	0	0	0	0	0	6	0	0	.111
Mar 17	at San Diego State	ph/1b	1	0	1	0	0	0	0	0	0	0	0	0	0	0	0	1	0	0	.158
Mar 24	COLORADO STATE	*1b	2	0	1	1	0	0	0	0	0	0	0	0	0	0	0	4	0	0	.190
Mar 26	NORTH DAKOTA-1	*of	3	0	1	0	0	0	0	0	0	0	0	0	0	0	0	0	0	0	.208
Mar 29	NEVADA	*1b	2	0	0	0	0	0	0	0	0	0	0	0	0	0	1	6	0	0	.192
Mar 31	NEVADA	*1b	1	0	0	0	0	0	0	1	0	0	0	0	0	0	0	5	0	3	.185
May 03	SAN JOSE STATE	ph	1	0	0	1	0	0	0	0	0	0	0	0	0	0	0	0	0	0	.179
May 04	SAN JOSE STATE	*1b	2	0	0	0	0	0	0	0	0	0	0	0	0	0	0	7	0	1	.167
May 05	SAN JOSE STATE	*1b	2	0	1	0	0	0	0	0	0	0	0	0	0	0	0	4	0	0	.188
Totals			12gs	32	2	6	2	0	0	6	0	0	1	0	0	0	5	71	1	5	.188

On base pct. .333 • Slugging pct. .188





# 9 KASEY HALLEEN

IF • 5-6 • SR.  
TORRANCE, CALIF. • PALOS VERDES HS

## SINGLE-GAME HIGHS

Hits: 2, 3x, Last vs. UConn, 3-3-19  
 Doubles: 1, 7x, Last vs. UConn, 3-3-19  
 Total bases: 3, 2x, Last vs. UConn, 3-3-19  
 RBI: 2, 5x, Last vs. San Jose St., 5-3-19  
 Runs scored: 1, 23x, Last vs. Fresno St., 4-27-19  
 Walks: 1, 18x, Last at Cal State Fullerton, 3-3-19  
 Hit by pitch: 1, 3x, Last at Fresno State, 4-27-19  
 Struck out: 2, 12x, Last vs. Nevada, 3-30-19  
 Sac flies: 1, 3x, Last vs. San Jose St., 5-3-19

Sac bunts: 1, 4x, Last vs. North Dakota, 3-26-19  
 At bats: 5, at Colorado State, 4-7-18  
 Stolen bases: 1, George Washington, 2-23-18  
 Putouts: 14, at UC Davis, 2-28-16  
 Assists: 8, Boise State, 5-11-17

## CAREER STATS (AT UNM)

Year	avg	gp-gs	ab	r	h	2b	3b	hr	rbi	tb	slg%	bb	hbp	so	gdp	ob%	sf	sh	sb-att	po	a	e	fld%
2016	.171	24-13	41	4	7	0	0	0	3	7	.171	4	0	13	0	.244	0	1	0-0	71	14	3	.966
2017	.136	22-19	44	3	6	1	0	0	0	7	.159	1	0	7	0	.156	0	2	0-0	40	48	6	.936
2018	.189	49-49	127	13	24	5	0	0	10	29	.228	10	2	32	0	.255	2	0	1-1	75	87	14	.920
2019	.173	26-23	52	4	9	1	0	0	4	10	.192	3	1	15	2	.228	1	1	0-0	35	33	4	.944
TOTAL	.174	121-104	264	24	46	7	0	0	17	53	.201	18	3	67	2	.233	3	4	1-1	221	182	27	.937

## 2019 GAME-BY-GAME

Date	Opponent	Pos	AB	R	H	RBI	2B	3B	HR	BB	SB	CS	HBP	SAC	SF	GDP	K	PO	A	E	Avg
Feb 08	vs UTEP	*2b	1	1	0	0	0	0	0	1	0	0	0	0	0	0	0	1	0	0	.000
Feb 09	at New Mexico State	2b	1	0	0	0	0	0	0	0	0	0	0	0	0	0	1	0	0	0	.000
Feb 15	vs Alabama	*2b	2	0	0	0	0	0	0	0	0	0	0	0	0	0	0	3	2	0	.000
Feb 15	vs Cal State Fullerton	*2b	2	0	1	0	0	0	0	1	0	0	0	0	0	0	1	3	2	0	.167
Feb 16	at Arizona	*2b	1	0	0	0	0	0	0	0	0	0	0	0	0	0	1	0	0	0	.143
Feb 20	at Hawaii	*2b	2	0	0	0	0	0	0	0	0	0	0	0	0	0	1	0	1	0	.111
Feb 28	vs Florida	*2b	3	0	0	0	0	0	0	0	0	0	0	0	0	0	1	0	3	0	.083
Mar 01	vs Loyola Marymount	*2b	2	0	0	0	0	0	0	0	0	0	0	0	0	0	0	2	1	0	.071
Mar 01	vs Tennessee	*2b	2	0	0	0	0	0	0	0	0	0	0	0	0	0	1	0	1	0	.062
Mar 03	vs UCONN	*2b	3	0	2	0	1	0	0	0	0	0	0	0	0	0	0	4	1	0	.158
Mar 03	at Cal State Fullerton	*2b	1	0	0	0	0	0	0	1	0	0	0	0	0	0	0	4	3	0	.150
Mar 08	vs Oregon State	*2b	3	1	1	0	0	0	0	0	0	0	0	0	0	0	1	1	1	0	.174
Mar 08	vs Western Carolina	*2b	2	1	1	2	0	0	0	0	0	0	0	0	0	0	0	1	1	0	.200
Mar 09	vs Oregon State	*2b	3	0	0	0	0	0	0	0	0	0	0	0	0	0	2	1	1	1	.179
Mar 15	at San Diego State	2b	2	0	0	0	0	0	0	0	0	0	0	0	0	0	1	1	2	0	.167
Mar 17	at San Diego State	*2b	2	0	1	0	0	0	0	0	0	0	0	0	0	0	0	2	1	0	.188
Mar 26	NORTH DAKOTA-1	*2b	2	0	0	0	0	0	0	0	0	0	0	0	0	0	1	1	1	1	.176
Mar 26	NORTH DAKOTA-2	*2b	2	0	0	0	0	0	0	0	0	0	0	1	0	0	0	2	2	0	.167
Mar 30	NEVADA	*2b	3	0	0	0	0	0	0	0	0	0	0	0	0	1	2	2	2	1	.154
Apr 05	at Utah State	pr	0	0	0	0	0	0	0	0	0	0	0	0	0	0	0	0	0	0	.154
Apr 26	at Fresno State	*2b	2	0	0	0	0	0	0	0	0	0	0	0	0	0	1	2	2	0	.146
Apr 27	at Fresno State	*2b	2	1	1	0	0	0	0	0	0	0	1	0	0	0	0	1	3	0	.163
Apr 28	at Fresno State	*2b	3	0	0	0	0	0	0	0	0	0	0	0	0	0	0	2	1	0	.152
May 03	SAN JOSE STATE	*2b	2	0	1	2	0	0	0	0	0	0	0	0	1	0	0	1	1	0	.167
May 04	SAN JOSE STATE	*2b	2	0	0	0	0	0	0	0	0	0	0	0	0	1	0	0	1	0	.160
May 05	SAN JOSE STATE	*2b	2	0	1	0	0	0	0	0	0	0	0	0	0	0	0	1	1	0	.173
Totals		23gs	52	4	9	4	1	0	0	3	0	0	1	1	1	2	15	35	33	4	.173

On base pct. .228 • Slugging pct. .192

### #9 HALLEEN, Kasey - 2 appearances (All games)

Date	Opponent	GS	IP	H	R	ER	BB	SO	2B	3B	HR	WP	BK	HBP	IBB	Score	W-L	Sv	ERA	NP
Mar 31	NEVADA		1.1	3	3	3	2	1	0	0	1	0	0	0	0	1-21	0-0	0	15.75	33
Apr 20	BOISE STATE		0.2	0	0	0	0	0	0	0	0	0	0	0	0	10-22	0-0	0	10.50	4
Totals		0	2.0	3	3	3	2	1	0	0	1	0	0	0	0	11-43	0-0	0	10.50	-



# 10 CAMERYN O'GRADY

55 • 5-6 • JR.  
ORANGE, CALIF. • EL MODENA HS

## SINGLE-GAME HIGHS

Hits: 4, at Texas Tech, 3-2-18  
 Doubles: 2, 2x, Last vs. CSU, 3-24-19  
 Triples: 1, 5x, Last vs. Creighton, 2-9-19  
 Home runs: 1, 10x, Last vs. Boise State, 4-18-19  
 Total bases: 8, Creighton, 2-9-19  
 RBI: 4, 2x, Last at SDSU, 3-16-19  
 Runs scored: 4, at Texas Tech, 3-2-18  
 Walks: 3, 3x, Last vs UTEP, 2-8-19  
 Hit by pitch: 1, 8x, Last vs. Boise State, 4-20-19

Struck out: 3, 6x, Last at SDSU, 3-15-19  
 Sac bunts: 1, 3x, Last Utah State, 4-22-18  
 At bats: 5, 2x, Last at Nevada, 3-24-18  
 Stolen bases: 2, vs George Washington, 2-23-18  
 Putouts: 5, 4x, Last at Boise State, 5-12-18  
 Assists: 8, at San Jose State, 4-27-18

## CAREER STATS (AT UNM)

Year	avg	gp-gs	ab	r	h	2b	3b	hr	rbi	tb	slg%	bb	hbp	so	qdp	ob%	sf	sh	sb-att	po	a	e	fld%
2017	.109	26-19	46	1	5	0	0	0	3	5	.109	3	0	12	0	.163	0	0	0-0	38	39	10	.885
2018	.301	53-52	143	31	43	12	4	4	26	75	.524	32	5	50	0	.444	0	3	4-4	101	118	18	.924
2019	.353	50-50	133	32	47	16	1	6	26	83	.624	30	3	27	0	.482	0	0	0-0	58	81	15	.903
TOTAL	.295	129-121	322	64	95	28	5	10	55	163	.506	65	8	89	0	.425	0	3	4-4	197	238	43	.910

## 2019 GAME-BY-GAME

Date	Opponent	Pos	AB	R	H	RBI	2B	3B	HR	BB	SB	CS	HBP	SAC	SF	GDP	K	PO	A	E	Avg
Feb 08	vs UTEP	*ss	2	3	1	2	0	0	0	3	0	0	0	0	0	0	1	1	2	0	.500
Feb 09	vs Creighton	*ss	3	2	3	4	0	1	1	0	0	0	0	0	0	0	0	2	1	0	.800
Feb 09	at New Mexico State	*ss	4	1	3	1	1	0	1	0	0	0	0	0	0	0	1	1	1	1	.778
Feb 15	vs Alabama	*ss	3	0	1	0	0	0	0	0	0	0	0	0	0	0	0	2	3	0	.667
Feb 15	vs Cal State Fullerton	*ss	2	1	1	0	0	0	0	2	0	0	0	0	0	0	0	1	1	1	.643
Feb 16	at Arizona	*ss	2	0	1	0	0	0	0	0	0	0	0	0	0	0	0	1	2	0	.625
Feb 16	vs Illinois-Chicago	*ss	3	3	1	2	1	0	0	1	0	0	0	0	0	0	0	1	2	0	.579
Feb 17	vs South Florida	*ss	4	0	1	1	1	0	0	0	0	0	0	0	0	0	1	0	2	1	.522
Feb 20	at Hawaii	*ss	2	0	1	0	0	0	0	1	0	0	0	0	0	0	1	2	0	0	.520
Feb 21	vs DePaul	*ss	3	0	0	0	0	0	0	0	0	0	0	0	0	0	0	2	2	0	.464
Feb 22	vs Canisius	*ss	4	1	1	0	0	0	0	0	0	0	0	0	0	0	1	0	1	0	.438
Feb 22	at Hawaii	*ss	4	0	0	0	0	0	0	0	0	0	0	0	0	0	1	0	0	1	.389
Feb 23	at Hawaii	*ss	2	0	0	0	0	0	0	1	0	0	0	0	0	0	0	1	0	0	.368
Feb 23	vs DePaul	*ss	3	1	2	1	1	0	0	1	0	0	0	0	0	0	0	1	2	0	.390
Feb 28	vs Florida	*ss	3	0	1	0	1	0	0	1	0	0	0	0	0	0	0	2	2	0	.386
Mar 01	vs Loyola Marymount	*ss	3	0	0	0	0	0	0	0	0	0	1	0	0	0	2	1	0	0	.362
Mar 01	vs Tennessee	*ss	3	0	2	0	0	0	0	0	0	0	0	0	0	0	0	2	0	1	.380
Mar 03	vs UCONN	*ss	3	0	0	0	0	0	0	1	0	0	0	0	0	0	1	0	1	0	.358
Mar 03	at Cal State Fullerton	*ss	1	0	0	0	0	0	0	0	0	0	0	0	0	0	0	0	0	1	.352
Mar 08	vs Oregon State	*ss	3	0	2	0	1	0	0	1	0	0	0	0	0	0	0	0	2	0	.368
Mar 08	vs Western Carolina	*ss	3	0	1	0	0	0	0	0	0	0	0	0	0	0	1	1	0	1	.367
Mar 09	vs Oregon State	*ss	4	0	2	2	1	0	0	0	0	0	0	0	0	0	0	3	1	0	.375
Mar 10	at Loyola Marymount	*ss	2	2	0	0	0	0	0	0	0	0	0	0	0	0	1	2	1	1	.364
Mar 15	at San Diego State	*ss	3	1	0	0	0	0	0	1	0	0	0	0	0	0	3	1	4	0	.348
Mar 16	at San Diego State	*ss	3	2	3	4	0	0	1	1	0	0	0	0	0	0	0	0	0	1	.375
Mar 17	at San Diego State	*ss	3	1	0	0	0	0	0	1	0	0	0	0	0	0	0	1	3	0	.360
Mar 22	COLORADO STATE	*ss	3	1	0	0	0	0	0	1	0	0	0	0	0	0	1	0	5	0	.346
Mar 23	COLORADO STATE	*ss	2	0	1	1	0	0	0	1	0	0	0	0	0	0	1	1	1	0	.350
Mar 24	COLORADO STATE	*ss	2	1	2	1	2	0	0	1	0	0	0	0	0	0	0	0	0	1	.366
Mar 26	NORTH DAKOTA-1	*ss	3	2	1	0	0	0	0	1	0	0	0	0	0	0	0	0	1	0	.365
Mar 26	NORTH DAKOTA-2	*ss	3	1	2	2	1	0	1	0	0	0	0	0	0	0	0	0	2	0	.375
Mar 29	NEVADA	*ss	2	1	0	0	0	0	0	1	0	0	0	0	0	0	0	4	1	0	.367
Mar 30	NEVADA	*ss	4	0	1	0	0	0	0	0	0	0	0	0	0	0	1	1	2	0	.362
Mar 31	NEVADA	*ss	2	1	1	1	0	0	1	0	0	0	0	0	0	0	1	1	3	1	.365
Apr 02	at New Mexico State-1	*ss	2	0	0	0	0	0	0	0	0	0	0	0	0	0	0	3	2	0	.357
Apr 02	at New Mexico State-2	*ss	2	1	1	0	1	0	0	0	0	0	0	0	0	0	0	0	2	1	.360
Apr 05	at Utah State	*ss	4	0	1	1	1	0	0	0	0	0	0	0	0	0	0	1	1	1	.356
Apr 06	at Utah State	*ss	2	1	0	0	0	0	0	2	0	0	0	0	0	0	1	0	3	0	.349
Apr 07	at Utah State	*ss	2	0	1	0	0	0	0	0	0	0	0	0	0	0	1	2	3	0	.352
Apr 09	UTEP	*ss	2	1	1	0	1	0	0	1	0	0	0	0	0	0	1	3	6	0	.355
Apr 18	BOISE STATE	*ss	3	2	2	1	0	0	1	0	0	1	0	0	0	0	1	1	1	0	.363
Apr 19	BOISE STATE	*ss	2	1	1	0	1	0	0	1	0	0	0	0	0	0	0	0	2	2	.365
Apr 20	BOISE STATE	*ss	3	1	1	2	1	0	0	0	0	1	0	0	0	0	1	1	1	0	.364
Apr 23	NEW MEXICO STATE	*ss	2	0	0	0	0	0	0	0	0	0	0	0	0	0	1	0	2	0	.358
Apr 26	at Fresno State	*ss	1	0	0	0	0	0	0	1	0	0	0	0	0	0	1	2	1	0	.355
Apr 27	at Fresno State	*ss	2	0	0	0	0	0	0	2	0	0	0	0	0	0	0	2	2	0	.350
Apr 28	at Fresno State	*ss	2	0	1	0	0	0	0	1	0	0	0	0	0	0	0	1	2	1	.352
May 03	SAN JOSE STATE	*ss	3	0	2	0	1	0	0	0	0	0	0	0	0	0	0	3	4	1	.359
May 04	SAN JOSE STATE	*ss	2	0	1	0	0	0	0	0	0	0	0	0	0	0	0	2	2	0	.362
May 05	SAN JOSE STATE	*ss	3	0	0	0	0	0	0	0	0	0	0	0	0	0	0	1	0	0	.353
Totals			50gs	133	32	47	26	16	1	6	30	0	0	3	0	0	27	58	81	15	.353

On base pct. .482 • Slugging pct. .624





# 12 DARYN HASLAM

IF • 5-4 • FR.

CEDAR PARK, TEXAS • VISTA RIDGE HS

## SINGLE-GAME HIGHS

Hits: 2, 4x, Last vs. North Dakota, 3-26-19  
 Doubles:  
 Triples:  
 Home runs: 1, 3x, Last at CSUF, 3-3-19  
 Total bases: 5, DePaul, 2-21-19  
 RBI: 3, DePaul, 2-21-19  
 Runs scored: 1, 5x, Last vs. WCU, 3-8-19  
 Walks: 2, Oregon State, 3-9-19  
 Hit by pitch:

Struck out: 3, Nevada, 3-30-19  
 Sac flies:  
 Sac bunts:  
 At bats: 4, 2x, Last vs. Colorado State, 3-22-19  
 Stolen bases:  
 Caught stealing:  
 Putouts: 5, DePaul, 2-23-19  
 Assists: 5, LMU, 3-10-19

## CAREER STATS (AT UNM)

Year	avg	gp-gs	ab	r	h	2b	3b	hr	rbi	tb	slg%	bb	hbp	so	gdp	ob%	sf	sh	sb-att	po	a	e	fld%
2019	.218	27-16	55	6	12	0	0	3	7	21	.382	5	0	20	1	.283	0	0	0-0	18	23	4	.911
TOTAL	.218	27-16	55	6	12	0	0	3	7	21	.382	5	0	20	1	.283	0	0	0-0	18	23	4	.911

## 2019 GAME-BY-GAME

Date	Opponent	Pos	AB	R	H	RBI	2B	3B	HR	BB	SB	CS	HBP	SAC	SF	GDP	K	PO	A	E	Avg
Feb 08	vs UTEP	ph/2b	1	1	0	0	0	0	0	1	0	0	0	0	0	0	1	0	1	0	.000
Feb 09	at New Mexico State	*2b	2	0	0	0	0	0	0	0	0	0	0	0	0	0	1	1	0	0	.000
Feb 15	vs Cal State Fullerton	ph	1	0	0	0	0	0	0	0	0	0	0	0	0	0	0	0	0	0	.000
Feb 16	at Arizona	3b	1	0	0	0	0	0	0	0	0	0	0	0	0	0	0	0	0	0	.000
Feb 21	vs DePaul	*2b	3	1	2	3	0	0	1	0	0	0	0	0	0	0	0	1	1	1	.250
Feb 22	vs Canisius	*2b	2	0	2	0	0	0	1	0	0	0	0	0	0	0	0	1	2	0	.400
Feb 22	at Hawaii	*2b	2	1	1	1	0	0	1	1	0	0	0	0	0	0	0	1	2	3	.417
Feb 23	at Hawaii	*2b	3	0	0	0	0	0	0	0	0	0	0	0	0	0	2	1	1	0	.333
Feb 23	vs DePaul	*2b	3	0	0	0	0	0	0	0	0	0	0	0	0	0	0	5	2	0	.278
Feb 28	vs Florida	ph	1	0	0	0	0	0	0	0	0	0	0	0	0	0	1	0	0	0	.263
Mar 01	vs Loyola Marymount	ph/3b	2	0	0	0	0	0	0	0	0	0	0	0	0	0	1	0	1	0	.238
Mar 03	at Cal State Fullerton	3b	1	1	1	1	0	0	1	0	0	0	0	0	0	0	0	0	0	0	.273
Mar 08	vs Oregon State	*3b	3	0	1	0	0	0	0	0	0	0	0	0	0	0	2	0	1	1	.280
Mar 08	vs Western Carolina	*dh	2	1	1	0	0	0	0	0	0	0	0	0	0	0	0	0	0	0	.296
Mar 09	vs Oregon State	*dh	2	0	0	0	0	0	0	2	0	0	0	0	0	0	1	0	0	0	.276
Mar 10	at Loyola Marymount	*2b	4	0	2	1	0	0	0	0	0	0	0	0	0	0	1	0	5	0	.303
Mar 15	at San Diego State	*2b	2	0	0	0	0	0	0	0	0	0	0	0	0	0	1	0	2	1	.286
Mar 17	at San Diego State	ph/3b	2	0	0	0	0	0	0	0	0	0	0	0	0	0	0	0	0	0	.270
Mar 22	COLORADO STATE	*2b	4	0	0	0	0	0	0	0	0	0	0	0	0	1	1	2	0	1	.244
Mar 24	COLORADO STATE	*2b	2	0	0	0	0	0	0	0	0	0	0	0	0	0	1	0	4	0	.233
Mar 26	NORTH DAKOTA-2	*3b	3	0	2	1	0	0	0	0	0	0	0	0	0	0	1	2	0	0	.261
Mar 29	NEVADA	ph	1	0	0	0	0	0	0	0	0	0	0	0	0	0	0	0	0	0	.255
Mar 30	NEVADA	*3b	3	0	0	0	0	0	0	0	0	0	0	0	0	0	3	3	0	0	.240
Apr 05	at Utah State	ph	1	0	0	0	0	0	0	0	0	0	0	0	0	0	1	0	0	0	.235
Apr 18	BOISE STATE	ph	1	0	0	0	0	0	0	0	0	0	0	0	0	0	1	0	0	0	.231
May 03	SAN JOSE STATE	ph	1	1	0	0	0	0	0	0	0	0	0	0	0	0	0	0	0	0	.226
May 04	SAN JOSE STATE	*dh	2	0	0	0	0	0	0	0	0	0	0	0	0	0	0	0	0	0	.218
Totals		16gs	55	6	12	7	0	0	3	5	0	0	0	0	0	1	20	18	23	4	.218

On base pct. .283 • Slugging pct. .382



# 13 KENNEDY FERGUSON

P • 5-6 • FR.  
CAMAS, WASH. • CAMAS HS

## SINGLE-GAME HIGHS

Innings pitched: 7.1, South Florida, 2-17-19  
 Walks allowed: 7, Tennessee, 3-1-19  
 Strikeouts: 11, North Dakota, 3-26-19  
 Batters faced: 35, North Dakota, 3-26-19  
 Assists: 3, South Florida, 2-17-19  
 Runners CS: 1, 6x, Last vs. Fresno St., 4-28-19  
 Putouts: 1, 2x, Last vs. Western Carolina, 3-8-19  
 Fewest hits allowed (3.0 IP min.): 2, Western Carolina, 3-9-19  
 Fewest BB allowed (3.0 IP min.): 0, 3x, Last at SDSU, 3-16-19

## CAREER STATS (AT UNM)

Year	avg	gp-gs	ab	r	h	2b	3b	hr	rbi	tb	slg%	bb	hbp	so	qdp	ob%	sf	sh	sb-att	po	a	e	fld%
2019	.000	4-4	0	0	0	0	0	0	0	0	.000	0	0	0	0	.000	0	0	0-0	2	21	1	.958
TOTAL	.000	4-4	0	0	0	0	0	0	0	0	.000	0	0	0	0	.000	0	0	0-0	2	21	1	.958

Year	era	w-l	app	gs	cq	sho	sv	ip	h	r	er	bb	so	2b	3b	hr	bf	bavg	wp	hbp	bk	sfa	sha
2019	4.91	4-14	32	20	9	1/0	0	122.2	170	122	86	54	71	24	1	28	610	.319	7	6	0	5	11
TOTAL	4.91	4-14	32	20	9	1/0	0	122.2	170	122	86	54	71	24	1	28	610	.319	7	6	0	5	11

## 2019 GAME-BY-GAME

Date	Opponent	GS	IP	H	R	ER	BB	SO	2B	3B	HR	WP	BK	HBP	IBB	Score	W-L	Sv	ERA	NP	
Feb 08	vs UTEP		2.0	2	1	1	0	2	0	0	1	0	0	0	0	15-6	0-0	0	3.50	31	
Feb 09	at New Mexico State	*	4.0	3	4	4	2	3	0	0	2	0	0	2	0	8-9	0-0	0	5.83	80	
Feb 15	vs Cal State Fullerton		5.1	8	4	2	1	3	1	0	1	0	0	1	0	2-6	0-1	0	4.32	96	
Feb 16	at Arizona		0.2	5	6	6	1	0	0	0	2	0	0	1	0	1-15	0-1	0	7.58	29	
Feb 17	vs South Florida	*	7.1	6	2	0	2	6	0	0	0	0	0	0	0	1-2	0-2	0	4.71	98	
Feb 21	vs DePaul	*	5.2	10	5	3	5	2	1	0	1	1	0	0	0	5-9	0-3	0	4.48	125	
Feb 22	at Hawaii	*	6.0	4	3	2	2	3	1	0	0	0	0	1	0	2-3	0-4	0	4.06	91	
Feb 23	vs DePaul	*	6.0	8	4	4	3	3	3	0	1	0	0	0	0	2-4	0-5	0	4.16	104	
Feb 28	vs Florida	*	7.0	5	1	0	1	5	1	0	0	0	0	0	0	0-1	0-6	0	3.50	109	
Mar 01	vs Loyola Marymount	*	5.1	6	1	1	2	5	0	1	0	0	0	0	0	2-4	0-6	0	3.26	87	
Mar 01	vs Tennessee		3.0	10	10	6	7	1	0	0	2	0	0	0	0	1-15	0-6	0	3.88	105	
Mar 03	vs UCONN	*	6.0	8	2	2	1	6	0	0	1	0	0	0	0	1-2	0-7	0	3.72	104	
Mar 03	at Cal State Fullerton		0.1	3	5	0	1	0	0	0	1	0	0	0	0	1-19	0-7	0	3.70	38	
Mar 08	vs Western Carolina	*	5.0	2	0	0	0	3	0	0	0	0	0	0	0	10-0	1-7	0	3.41	67	
Mar 09	vs Oregon State	*	7.0	8	5	3	1	3	0	0	1	1	0	0	0	3-5	1-8	0	3.37	103	
Mar 10	at Loyola Marymount		0.1	0	0	0	0	0	0	0	0	0	0	0	0	2-6	1-8	0	3.35	2	
Mar 15	at San Diego State	*	7.0	7	1	0	0	1	1	0	0	0	0	0	0	3-1	2-8	0	3.05	100	
Mar 16	at San Diego State		4.0	8	4	4	0	3	1	0	1	1	0	0	0	8-9	2-9	0	3.24	67	
Mar 17	at San Diego State		2.0	2	1	1	0	2	1	0	0	1	0	0	0	3-4	2-9	0	3.25	27	
Mar 22	COLORADO STATE	*	4.2	9	6	3	2	0	3	0	1	0	0	0	0	7-9	2-9	0	3.32	84	
Mar 23	COLORADO STATE		0.1	4	5	5	1	0	0	0	1	0	0	0	0	1-9	2-9	0	3.70	30	
Mar 26	NORTH DAKOTA-1	*	7.0	8	6	2	5	11	1	0	0	0	0	0	0	7-6	3-9	0	3.57	133	
Mar 30	NEVADA	*	2.2	4	4	4	2	1	0	0	3	0	0	1	0	6-11	3-9	0	3.76	59	
Mar 31	NEVADA	*	1.1	3	5	4	1	2	0	0	2	0	0	0	0	1-21	3-10	0	3.99	33	
Apr 02	at New Mexico State-2	*	3.2	9	10	9	2	2	3	0	2	1	0	0	0	3-11	3-11	0	4.46	97	
Apr 06	at Utah State	*	5.0	5	3	3	2	1	3	0	1	0	0	0	0	6-3	4-11	0	4.44	87	
Apr 07	at Utah State	*	0.0	3	6	5	2	0	0	0	1	0	0	0	0	0-8	4-12	0	4.77	25	
Apr 19	BOISE STATE	*	1.0	4	4	4	0	0	0	0	1	0	0	0	0	5-17	4-13	0	4.98	21	
Apr 20	BOISE STATE		0.1	2	2	2	1	0	0	0	1	0	0	0	0	10-22	4-13	0	5.09	14	
Apr 28	at Fresno State		2.2	2	0	0	0	0	0	0	0	0	0	0	0	0-4	4-13	0	4.97	33	
May 03	SAN JOSE STATE		7.0	7	7	1	3	2	2	0	1	0	0	0	0	4-10	4-13	0	4.74	105	
May 05	SAN JOSE STATE	*	3.0	5	5	5	4	1	2	0	0	2	0	0	0	0-10	4-14	0	4.91	72	
Totals			20	122.2	170	122	86	54	71	24	1	28	7	0	6	0	120-261	4-14	0	4.91	-



# 16 LESLIE ROMERO

**OF • 5-4 • FR.**  
**GONZALES, CALIF. • SALINAS HS**

## SINGLE-GAME HIGHS

Hits:  
 Doubles:  
 Home runs:  
 Total bases:  
 RBI:  
 Runs scored:  
 Walks:  
 Struck out: 1, 3x, Last at Fresno St., 4-28-19  
 Sac bunts:

Sac flies:  
 At bats: 2, at New Mexico State, 2-9-19  
 Stolen bases:  
 Putouts: 1, 2x, Last at Arizona, 2-16-19  
 Assists:

## CAREER STATS (AT UNM)

Year	avg	gp-gs	ab	r	h	2b	3b	hr	rbi	tb	slg%	bb	hbp	so	gdp	ob%	sf	sh	sb-att	po	a	e	fld%
2019	.000	9-1	10	0	0	0	0	0	0	0	.000	0	0	3	0	.000	0	0	0-0	2	0	0	1.000
TOTAL	.000	9-1	10	0	0	0	0	0	0	0	.000	0	0	3	0	.000	0	0	0-0	2	0	0	1.000

## 2019 GAME-BY-GAME

Date	Opponent	Pos	AB	R	H	RBI	2B	3B	HR	BB	SB	CS	HBP	SAC	SF	GDP	K	PO	A	E	Avg
Feb 09	at New Mexico State	*of	2	0	0	0	0	0	0	0	0	0	0	0	0	0	0	1	0	0	.000
Feb 16	at Arizona	of	1	0	0	0	0	0	0	0	0	0	0	0	0	0	0	1	0	0	.000
Feb 20	at Hawaii	ph	1	0	0	0	0	0	0	0	0	0	0	0	0	0	0	0	0	0	.000
Mar 03	at Cal State Fullerton	of	1	0	0	0	0	0	0	0	0	0	0	0	0	0	1	0	0	0	.000
Mar 08	vs Western Carolina	2b	1	0	0	0	0	0	0	0	0	0	0	0	0	0	0	0	0	0	.000
Mar 24	COLORADO STATE	ph/of	1	0	0	0	0	0	0	0	0	0	0	0	0	0	0	0	0	0	.000
Mar 26	NORTH DAKOTA-2	of	1	0	0	0	0	0	0	0	0	0	0	0	0	0	0	0	0	0	.000
Mar 31	NEVADA	of	1	0	0	0	0	0	0	0	0	0	0	0	0	0	1	0	0	0	.000
Apr 28	at Fresno State	ph	1	0	0	0	0	0	0	0	0	0	0	0	0	0	1	0	0	0	.000
Totals		1gs	10	0	0	0	0	0	0	0	0	0	0	0	0	0	3	2	0	0	.000

On base pct. .000 • Slugging pct. .000



# 22 MONICA SALAS

IF • 5-3 • SR.

GOLETA, CALIF. • SANTA BARBARA CITY COLL.

## SINGLE-GAME HIGHS

Hits: 3, Howard, 3-10-18  
 Doubles: 1, 7x, Last vs. Boise State, 4-20-19  
 Home runs: 1, 6x, Last vs. Boise State, 4-19-19  
 Total bases: 5, 2x, Last vs. UTEP, 2-8-19  
 RBI: 4, UTEP, 2-8-19  
 Runs scored: 2, 5x, Last vs. San Jose St., 5-3-19  
 Walks: 3, Illinois-Chicago, 2-16-19  
 Hit by pitch: 1, Utah State, 4-6-19  
 Struck out: 2, 24x, Last at Fresno St., 4-27-19

Sac flies: 1, at Nevada, 3-25-18  
 At bats: 4, 15x, Last vs. Boise State, 4-20-19  
 Stolen bases: 2, Howard, 3-10-18  
 Putouts: 5, St. Mary's, 3-9-18  
 Assists: 5, at UTEP, 4-16-18

## CAREER STATS (AT UNM)

Year	avg	gp-gs	ab	r	h	2b	3b	hr	rbi	tb	slg%	bb	hbp	so	gdp	ob%	sf	sh	sb-att	po	a	e	fld%
2018	.238	45-35	101	9	24	3	0	2	15	33	.327	6	0	34	2	.278	1	0	2-2	35	44	7	.919
2019	.235	47-47	119	15	28	4	0	5	18	47	.395	15	1	40	5	.326	0	0	2-2	29	54	9	.902
TOTAL	.236	92-82	220	24	52	7	0	7	33	80	.364	21	1	74	7	.305	1	0	4-4	64	98	16	.910

## 2019 GAME-BY-GAME

Date	Opponent	Pos	AB	R	H	RBI	2B	3B	HR	BB	SB	CS	HBP	SAC	SF	GDP	K	PO	A	E	Avg
Feb 08	vs UTEP	*3b	4	1	2	4	0	0	1	1	0	0	0	0	0	1	1	1	2	0	.500
Feb 09	vs Creighton	*3b	3	1	2	0	0	0	0	0	0	0	0	0	0	1	0	1	0	0	.571
Feb 09	at New Mexico State	*3b	4	1	1	0	0	0	0	0	0	0	0	0	0	0	1	0	1	0	.455
Feb 15	vs Alabama	*3b	3	0	0	0	0	0	0	0	0	0	0	0	0	0	0	4	2	0	.357
Feb 15	vs Cal State Fullerton	*3b	4	0	1	2	1	0	0	0	0	0	0	0	0	0	2	1	1	1	.333
Feb 16	at Arizona	*3b	2	0	1	0	0	0	0	0	0	0	0	0	0	0	0	0	0	1	.350
Feb 16	vs Illinois-Chicago	*3b	1	2	0	0	0	0	0	3	0	0	0	0	0	0	0	0	1	1	.333
Feb 17	vs South Florida	*3b	4	0	1	0	0	0	0	0	0	0	0	0	0	0	2	2	2	0	.320
Feb 20	at Hawaii	*3b	3	0	0	1	0	0	0	0	0	0	0	0	0	0	2	0	1	0	.286
Feb 21	vs DePaul	*3b	3	1	1	1	0	0	1	0	0	0	0	0	0	0	1	1	2	0	.290
Feb 22	vs Canisius	*3b	2	2	1	2	0	0	1	1	0	0	0	0	0	0	0	0	3	0	.303
Feb 22	at Hawaii	*3b	3	0	1	0	0	0	0	0	0	0	0	0	0	1	0	0	2	1	.306
Feb 23	at Hawaii	*3b	2	0	0	0	0	0	0	1	0	0	0	0	0	0	0	2	0	0	.289
Feb 23	vs DePaul	*3b	3	0	0	0	0	0	0	0	0	0	0	0	0	0	0	0	0	0	.268
Feb 28	vs Florida	*3b	3	0	0	0	0	0	0	0	0	0	0	0	0	0	2	0	1	0	.250
Mar 01	vs Loyola Marymount	*3b	1	0	0	0	0	0	0	0	0	0	0	0	0	0	1	0	0	0	.244
Mar 01	vs Tennessee	*3b	2	0	0	0	0	0	0	0	0	0	0	0	0	0	2	1	1	0	.234
Mar 03	vs UCONN	*3b	3	0	1	0	0	0	0	0	0	0	0	0	0	0	1	1	2	0	.240
Mar 03	at Cal State Fullerton	*3b	1	0	0	0	0	0	0	0	0	0	0	0	0	0	0	0	0	0	.235
Mar 08	vs Western Carolina	*3b	2	1	1	1	0	0	0	1	0	0	0	0	0	0	0	0	0	0	.245
Mar 09	vs Oregon State	*3b	4	0	0	0	0	0	0	0	0	0	0	0	0	0	2	0	0	0	.228
Mar 10	at Loyola Marymount	*3b	4	0	1	0	0	0	0	0	0	0	0	0	0	0	1	1	1	0	.230
Mar 15	at San Diego State	*3b	3	0	1	1	0	0	0	0	0	0	0	0	0	0	2	0	1	0	.234
Mar 16	at San Diego State	*3b	4	0	0	0	0	0	0	0	0	0	0	0	0	1	1	0	1	0	.221
Mar 17	at San Diego State	*3b	2	0	0	0	0	0	0	0	0	0	0	0	0	0	0	0	0	1	.214
Mar 22	COLORADO STATE	*3b	2	1	1	3	0	0	1	2	0	0	0	0	0	0	0	2	3	0	.222
Mar 23	COLORADO STATE	*3b	1	0	0	0	0	0	0	1	0	0	0	0	0	0	1	0	3	0	.219
Mar 24	COLORADO STATE	*3b	2	0	1	0	0	0	0	0	0	0	0	0	0	0	1	1	0	1	.227
Mar 26	NORTH DAKOTA-1	*3b	2	0	0	0	0	0	0	1	1	0	0	0	0	0	0	0	2	0	.221
Mar 29	NEVADA	*3b	2	0	0	0	0	0	0	0	0	0	0	0	0	0	2	1	1	1	.215
Mar 31	NEVADA	*3b	2	0	0	0	0	0	0	0	0	0	0	0	0	0	2	1	2	0	.210
Apr 02	at New Mexico State-1	*3b	2	0	1	0	1	0	0	0	0	0	0	0	0	0	0	1	0	1	.217
Apr 02	at New Mexico State-2	*3b	2	0	1	0	0	0	0	0	0	0	0	0	0	0	1	0	2	0	.224
Apr 05	at Utah State	*3b	3	1	2	0	0	0	0	1	0	0	0	0	0	0	0	2	1	0	.239
Apr 06	at Utah State	*3b	2	0	0	0	0	0	0	1	0	0	1	0	0	0	2	1	1	0	.233
Apr 07	at Utah State	*3b	2	0	1	0	1	0	0	0	0	0	0	0	0	0	0	0	0	0	.239
Apr 09	UTEP	*3b	2	0	0	0	0	0	0	0	0	0	0	0	0	0	2	0	0	0	.234
Apr 18	BOISE STATE	*3b	3	0	1	0	0	0	0	1	0	0	0	0	0	0	1	0	1	0	.237
Apr 19	BOISE STATE	*3b	3	1	1	1	0	0	1	0	0	0	0	0	0	0	0	1	1	0	.240
Apr 20	BOISE STATE	*3b	4	1	2	2	1	0	0	0	0	0	0	0	0	0	1	1	2	0	.250
Apr 23	NEW MEXICO STATE	*3b	1	0	0	0	0	0	0	1	0	0	0	0	0	0	1	0	1	0	.248
Apr 26	at Fresno State	*3b	2	0	0	0	0	0	0	0	0	0	0	0	0	0	1	0	2	0	.243
Apr 27	at Fresno State	*3b	3	0	0	0	0	0	0	0	0	0	0	0	0	0	2	0	2	0	.236
Apr 28	at Fresno State	*3b	2	0	0	0	0	0	0	1	0	0	0	0	0	0	1	1	1	0	.232
May 03	SAN JOSE STATE	*3b	3	2	2	0	0	0	0	0	0	0	0	0	0	0	0	0	3	1	.243
May 04	SAN JOSE STATE	*3b	2	0	0	0	0	0	0	0	0	0	0	0	0	1	0	1	0	0	.239
May 05	SAN JOSE STATE	*3b	2	0	0	0	0	0	0	0	0	0	0	0	0	0	1	1	2	0	.235
Totals			47gs	119	15	28	18	4	0	5	15	2	0	1	0	5	40	29	54	9	.235



**23 EMMA STELTZER** P • 5-6 • FR.  
MANCHESTER, MO. • PARKWAY SOUTH HS

**SINGLE-GAME HIGHS**

Hits:  
Doubles:  
Home runs:  
Total bases:  
RBI:  
Runs scored:  
Walks: 1, Canisius, 2-22-19  
Struck out:  
Sac bunts:

Sac flies:  
At bats: 1, 2x, Last vs. WCU, 3-8-19  
Stolen bases:  
Putouts:  
Assists:  
Innings Pitched: 3.0, Utah State, 4-5-19  
Walks Allowed: 2, 2x, Last vs. Boise State, 4-20-19  
Batters Faced: 14, Utah State, 4-5-19  
Assists: 1, Utah State, 4-5-19

**CAREER STATS (AT UNM)**

Year	avg	qp-qs	ab	r	h	2b	3b	hr	rbi	tb	slg%	bb	hbp	so	qdp	ob%	sf	sh	sb-att	po	a	e	fld%
2019	.000	3-0	2	0	0	0	0	0	0	0	.000	1	0	0	0	.333	0	0	0-0	0	1	0	1.000
TOTAL	.000	3-0	2	0	0	0	0	0	0	0	.000	1	0	0	0	.333	0	0	0-0	0	1	0	1.000

Year	era	w-l	app	qs	cq	sho	sv	ip	h	r	er	bb	so	2b	3b	hr	bf	bavq	wp	hbp	bk	sfa	sha
2019	10.04	0-0	7	0	0	0/0	0	7.2	13	12	11	6	0	2	0	4	44	.361	0	2	0	0	0
TOTAL	10.04	0-0	7	0	0	0/0	0	7.2	13	12	11	6	0	2	0	4	44	.361	0	2	0	0	0

**2019 GAME-BY-GAME**

Date	Opponent	Pos	AB	R	H	RBI	2B	3B	HR	BB	SB	CS	HBP	SAC	SF	GDP	K	PO	A	E	Avg	
Feb 16	at Arizona	ph	1	0	0	0	0	0	0	0	0	0	0	0	0	0	0	0	0	0	0	.000
Feb 22	vs Canisius	ph	0	0	0	0	0	0	0	1	0	0	0	0	0	0	0	0	0	0	0	.000
Mar 08	vs Western Carolina	dh	1	0	0	0	0	0	0	0	0	0	0	0	0	0	0	0	0	0	0	.000
Apr 05	at Utah State	p	0	0	0	0	0	0	0	0	0	0	0	0	0	0	0	0	1	0	0	.000
Totals		0gs	2	0	0	0	0	0	0	1	0	0	0	0	0	0	0	0	1	0	0	.000

On base pct. .333 • Slugging pct. .000

#23 STELTZER, Emma - 7 appearances (All games)

Date	Opponent	GS	IP	H	R	ER	BB	SO	2B	3B	HR	WP	BK	HBP	IBB	Score	W-L	Sv	ERA	NP
Mar 03	at Cal State Fullerton		0.2	0	0	0	0	0	0	0	0	0	0	0	0	1-19	0-0	0	0.00	8
Mar 24	COLORADO STATE		0.2	1	1	0	0	0	0	0	1	0	0	0	0	3-16	0-0	0	0.00	10
Mar 31	NEVADA		1.1	5	5	5	2	0	2	0	1	0	0	0	0	1-21	0-0	0	13.12	40
Apr 02	at New Mexico State-2		0.1	0	0	0	0	0	0	0	0	0	0	0	0	3-11	0-0	0	11.67	3
Apr 05	at Utah State		3.0	2	2	2	1	0	0	0	1	0	0	1	0	6-7	0-0	0	8.17	54
Apr 07	at Utah State		1.2	3	1	1	1	0	0	0	1	0	0	0	0	0-8	0-0	0	7.30	35
Apr 20	BOISE STATE		0.0	2	3	3	2	0	0	0	0	0	0	1	0	10-22	0-0	0	10.04	21
Totals		0	7.2	13	12	11	6	0	2	0	4	0	0	2	0	24-104	0-0	0	10.04	-





# **24 SKYLAR JENKINS**

**OF • 5-5 • FR.**

**LAWRENCEVILLE, GA. • BUFORD HS**

## **SINGLE-GAME HIGHS**

Hits:

Doubles:

Home runs:

Total bases:

RBI:

Runs scored:

Walks:

Struck out:

Sac bunts:

Sac flies:

At bats:

Stolen bases:

Putouts:

Assists:

## **CAREER STATS (AT UNM)**

## **2019 GAME-BY-GAME**



# 32 LAUREN WILMERT C/1B • 5-10 • JR. ALBUQUERQUE, N.M. • VOLCANO VISTA HS

## SINGLE-GAME HIGHS

Hits: 3, San Diego State, 3-17-19  
 Doubles: 1, 13x, Last at Utah State, 4-6-19  
 Triples: 1, North Dakota, 3-26-19  
 Home runs: 1, 9x, Last vs. Boise State, 4-19-19  
 Total bases: 6, 4x, Last at Utah State, 4-6-19  
 RBI: 5, 2x, Last vs. WCU, 3-8-19  
 Runs scored: 3, UTEP, 2-8-19  
 Walks: 3, UTEP, 2-8-19  
 Hit by pitch: 1, 2x, Last vs. UTEP, 2-8-19

Struck out: 3, George Washington, 2-23-18  
 Sac flies: 1, 4x, Last vs. Boise State, 4-20-19  
 Sac bunts: 1, 3x, Last vs. Utah State, 4-22-18  
 At bats: 4, 17x, Last at Fresno State, 4-27-19  
 Stolen bases: 1, vs Western Michigan, 2-11-17  
 Putouts: 11, 2x, Last vs. North Dakota, 3-26-19  
 Assists: 2, 6x, Last vs. Oregon St., 3-9-19  
 Runners CS: 2, Fresno State, 4-26-19

## CAREER STATS (AT UNM)

Year	avg	gp-gs	ab	r	h	2b	3b	hr	rbi	tb	slg%	bb	hbp	so	gdp	ob%	sf	sh	sb-att	po	a	e	fld%
2017	.242	34-23	62	5	15	3	0	1	6	21	.339	6	0	15	1	.304	1	2	1-1	67	6	3	.961
2018	.180	32-20	61	5	11	1	0	1	11	15	.246	7	1	23	0	.275	0	1	0-0	87	11	4	.961
2019	.261	47-47	134	23	35	9	1	7	35	67	.500	12	1	40	2	.320	3	0	0-0	235	16	10	.962
TOTAL	.237	113-90	257	33	61	13	1	9	52	103	.401	25	2	78	3	.306	4	3	1-1	389	33	17	.961

## 2019 GAME-BY-GAME

Date	Opponent	Pos	AB	R	H	RBI	2B	3B	HR	BB	SB	CS	HBP	SAC	SF	GDP	K	PO	A	E	Avg	
Feb 08	vs UTEP	*c	0	3	0	2	0	0	0	3	0	0	1	0	0	0	0	10	2	0	.000	
Feb 09	vs Creighton	*1b	2	0	1	1	0	0	0	1	0	0	0	0	0	0	1	2	0	0	.500	
Feb 09	at New Mexico State	*c	3	0	0	1	0	0	0	0	0	0	0	0	1	0	2	6	1	1	.200	
Feb 15	vs Alabama	*1b	2	0	1	0	1	0	0	1	0	0	0	0	0	0	0	7	0	0	.286	
Feb 15	vs Cal State Fullerton	*c	4	0	0	0	0	0	0	0	0	0	0	0	0	0	2	3	1	0	.182	
Feb 16	at Arizona	*1b	2	0	0	0	0	0	0	0	0	0	0	0	0	0	0	4	0	1	.154	
Feb 16	vs Illinois-Chicago	*c	4	1	2	0	0	0	0	0	0	0	0	0	0	0	1	9	0	0	.235	
Feb 17	vs South Florida	*1b	3	0	0	0	0	0	0	0	0	0	0	0	0	0	0	11	1	1	.200	
Feb 20	at Hawaii	*1b	3	0	0	0	0	0	0	0	0	0	0	0	0	0	1	4	0	0	.174	
Feb 21	vs DePaul	*1b	3	1	1	1	0	0	1	0	0	0	0	0	0	0	2	7	0	1	.192	
Feb 22	vs Canisius	*c	3	2	2	3	1	0	1	0	0	0	0	0	0	0	0	4	0	0	.241	
Feb 22	at Hawaii	*c	3	1	2	0	1	0	0	0	0	0	0	0	0	0	0	3	0	1	.281	
Feb 23	at Hawaii	*1b	3	1	1	0	1	0	0	0	0	0	0	0	0	0	0	3	0	0	.286	
Feb 23	vs DePaul	*c	4	0	0	0	0	0	0	0	0	0	0	0	0	0	1	2	2	1	.256	
Feb 28	vs Florida	*c	2	0	0	0	0	0	0	1	0	0	0	0	0	0	2	6	0	0	.244	
Mar 01	vs Loyola Marymount	*c	2	1	0	0	0	0	0	1	0	0	0	0	0	0	0	8	1	0	.233	
Mar 01	vs Tennessee	*1b	2	0	0	0	0	0	0	0	0	0	0	0	0	0	1	4	0	0	.222	
Mar 03	vs UCONN	*1b	4	0	0	0	0	0	0	0	0	0	0	0	0	0	2	5	0	0	.204	
Mar 03	at Cal State Fullerton	*c	2	0	0	0	0	0	0	0	0	0	0	0	0	0	0	2	0	0	.196	
Mar 08	vs Oregon State	*c	4	0	1	1	0	0	0	0	0	0	0	0	0	0	2	5	1	0	.200	
Mar 08	vs Western Carolina	*c	3	2	2	5	1	0	1	0	0	0	0	0	0	0	0	3	0	0	.224	
Mar 09	vs Oregon State	*c	4	0	1	0	0	0	0	0	0	0	0	0	0	0	0	2	2	0	.226	
Mar 10	at Loyola Marymount	*c	3	0	0	1	0	0	0	0	0	0	0	0	1	0	1	6	1	0	.215	
Mar 15	at San Diego State	*c	4	0	1	2	0	0	0	0	0	0	0	0	0	0	0	1	1	0	.217	
Mar 16	at San Diego State	*1b	4	1	2	1	0	0	0	0	0	0	0	0	0	0	1	6	0	0	.233	
Mar 17	at San Diego State	*c	4	1	3	2	0	0	1	0	0	0	0	0	0	0	0	6	0	0	.260	
Mar 22	COLORADO STATE	*c	4	1	2	0	1	0	0	0	0	0	0	0	0	0	2	1	0	0	.272	
Mar 23	COLORADO STATE	*1b	2	0	0	0	0	0	0	1	0	0	0	0	0	0	2	6	0	0	.265	
Mar 24	COLORADO STATE	*c	3	0	0	0	0	0	0	0	0	0	0	0	0	0	2	2	0	0	.256	
Mar 26	NORTH DAKOTA-1	*c	2	1	2	3	1	1	0	2	0	0	0	0	0	0	0	11	0	0	.273	
Mar 26	NORTH DAKOTA-2	*1b	2	1	0	0	0	0	0	1	0	0	0	0	0	0	0	3	0	0	.267	
Mar 29	NEVADA	*c	3	0	1	1	1	0	0	0	0	0	0	0	0	0	1	6	1	0	.269	
Mar 30	NEVADA	*1b	3	1	2	3	0	0	1	0	0	0	0	0	0	0	1	5	0	1	.281	
Mar 31	NEVADA	*c	2	0	0	0	0	0	0	0	0	0	0	0	0	0	1	4	0	0	.276	
Apr 02	at New Mexico State-1	*1b	2	0	0	0	0	0	0	0	0	0	0	0	0	0	2	2	0	0	.270	
Apr 02	at New Mexico State-2	*1b	2	1	0	0	0	0	0	0	0	0	0	0	0	0	0	7	0	0	.265	
Apr 05	at Utah State	*1b	4	1	1	0	0	0	0	0	0	0	0	0	0	0	0	7	0	0	.264	
Apr 06	at Utah State	*1b	3	1	2	4	1	0	1	1	0	0	0	0	0	0	1	8	0	0	.275	
Apr 07	at Utah State	*1b	2	0	0	0	0	0	0	0	0	0	0	0	0	0	1	3	0	1	.270	
Apr 09	UTEP	*1b	3	0	0	0	0	0	0	0	0	0	0	0	0	0	2	8	0	0	.263	
Apr 18	BOISE STATE	*1b	3	1	1	0	0	0	0	0	0	0	0	0	0	0	1	5	0	0	.265	
Apr 19	BOISE STATE	*1b	3	1	2	3	0	0	1	0	0	0	0	0	0	0	0	2	0	1	.275	
Apr 20	BOISE STATE	*1b	3	0	0	1	0	0	0	0	0	0	0	0	1	1	1	9	0	0	.268	
Apr 23	NEW MEXICO STATE	*1b	2	0	0	0	0	0	0	0	0	0	0	0	0	0	2	4	0	0	.264	
Apr 26	at Fresno State	*c	2	0	0	0	0	0	0	0	0	0	0	0	0	0	2	1	2	0	.260	
Apr 27	at Fresno State	*c	4	0	2	0	0	0	0	0	0	0	0	0	0	0	0	7	0	1	.267	
Apr 28	at Fresno State	*1b	3	0	0	0	0	0	0	0	0	0	0	0	0	0	1	5	0	0	.261	
Totals			47gs	134	23	35	35	9	1	7	12	0	0	1	0	3	2	40	235	16	10	.261

On base pct. .320 • Slugging pct. .500



# 44 ALEYAH WILBON

OF • 5-3 • SR.

FONTANA, CALIF. • SUMMIT HS

## SINGLE-GAME HIGHS

Hits: 3, 3x, Last at Utah State, 4-5-19  
 Doubles: 1, Howard, 3-10-18  
 Total bases: 3, 3x, Last at Utah State, 4-5-19  
 RBI: 1, 5x, Last at Fresno St., 4-27-19  
 Runs scored: 2, 4x, Last vs. Nevada, 3-30-19  
 Walks: 3, Sac. State, 3-11-18  
 Hit by pitch: 1, vs St. Mary's, 2-9-18  
 Sac Bunts: 1, 3x, Last vs. Nevada, 3-29-19  
 Struck out: 2, 9x, Last vs. UTEP, 4-9-19

At bats: 4, 7x, Last vs. San Jose St., 5-3-19  
 Stolen bases: 1, 6x, Last vs. North Dakota, 3-26-19  
 Caught stealing: 1, 4x, Last at Hawai'i, 2-23-19  
 Putouts: 3, 4x, Last vs. San Jose St., 5-5-19  
 Assists: 1, at New Mexico State, 4-3-18

## CAREER STATS (AT UNM)

Year	avg	gp-gs	ab	r	h	2b	3b	hr	rbi	tb	slg%	bb	hbp	so	gdp	ob%	sf	sh	sb-att	po	a	e	fld%
2018	.222	38-25	63	13	14	1	0	0	2	15	.238	16	1	24	0	.388	0	2	5-8	26	1	1	.964
2019	.323	40-21	65	13	21	0	0	0	3	21	.323	3	0	16	1	.353	0	1	1-2	26	0	1	.963
TOTAL	.273	78-46	128	26	35	1	0	0	5	36	.281	19	1	40	1	.372	0	3	6-10	52	1	2	.964

## 2019 GAME-BY-GAME

Date	Opponent	Pos	AB	R	H	RBI	2B	3B	HR	BB	SB	CS	HBP	SAC	SF	GDP	K	PO	A	E	Avg	
Feb 09	at New Mexico State	of	0	1	0	0	0	0	0	1	0	0	0	0	0	0	0	0	0	0	0	.000
Feb 15	vs Alabama	pr	0	0	0	0	0	0	0	0	0	0	0	0	0	0	0	0	0	0	0	.000
Feb 15	vs Cal State Fullerton	pr	0	0	0	0	0	0	0	0	0	0	0	0	0	0	0	0	0	0	0	.000
Feb 16	at Arizona	of	1	1	0	0	0	0	0	0	0	0	0	0	0	0	0	0	0	0	0	.000
Feb 16	vs Illinois-Chicago	pr	0	1	0	0	0	0	0	0	0	0	0	0	0	0	0	0	0	0	0	.000
Feb 20	at Hawaii	pr	0	0	0	0	0	0	0	0	0	0	0	0	0	0	0	0	0	0	0	.000
Feb 21	vs DePaul	*of	3	0	1	0	0	0	0	0	0	0	0	0	0	0	0	1	1	0	0	.250
Feb 22	at Hawaii	pr	0	0	0	0	0	0	0	0	0	0	0	0	0	0	0	0	0	0	0	.250
Feb 23	at Hawaii	pr	0	0	0	0	0	0	0	0	0	1	0	0	0	0	0	0	0	0	0	.250
Feb 23	vs DePaul	pr	0	0	0	0	0	0	0	0	0	0	0	0	0	0	0	0	0	0	0	.250
Feb 28	vs Florida	pr	0	0	0	0	0	0	0	0	0	0	0	0	0	0	0	0	0	0	0	.250
Mar 01	vs Loyola Marymount	ph	1	0	1	0	0	0	0	0	0	0	0	0	0	0	0	0	0	0	0	.400
Mar 03	vs UCONN	ph	1	1	1	0	0	0	0	0	0	0	0	0	0	0	0	0	0	0	0	.500
Mar 03	at Cal State Fullerton	*of	2	0	0	0	0	0	0	0	0	0	0	0	0	0	0	2	0	0	0	.375
Mar 08	vs Oregon State	pr	0	1	0	0	0	0	0	0	0	0	0	0	0	0	0	0	0	0	0	.375
Mar 08	vs Western Carolina	of	0	0	0	0	0	0	0	0	0	0	0	0	0	0	0	0	0	0	0	.375
Mar 09	vs Oregon State	ph	1	0	0	0	0	0	0	0	0	0	0	0	0	0	0	1	0	0	0	.333
Mar 10	at Loyola Marymount	ph	1	0	0	0	0	0	0	0	0	0	0	0	0	0	0	1	0	0	0	.300
Mar 22	COLORADO STATE	pr	0	0	0	0	0	0	0	0	0	0	0	0	0	0	0	0	0	0	0	.300
Mar 23	COLORADO STATE	pr	0	1	0	0	0	0	0	0	0	0	0	0	0	0	0	0	0	0	0	.300
Mar 26	NORTH DAKOTA-1	pr	0	1	0	0	0	0	0	0	0	0	0	0	0	0	0	0	0	0	0	.300
Mar 26	NORTH DAKOTA-2	*of	3	2	3	1	0	0	0	0	1	0	0	0	0	0	0	0	2	0	0	.462
Mar 29	NEVADA	*of	2	0	1	0	0	0	0	0	0	0	0	1	0	0	0	0	0	0	0	.467
Mar 30	NEVADA	*of	4	2	3	0	0	0	0	0	0	0	0	0	0	0	0	1	3	0	0	.526
Mar 31	NEVADA	*of/p	1	0	0	0	0	0	0	0	0	0	0	0	0	0	0	1	1	0	0	.500
Apr 02	at New Mexico State-1	*of	3	0	0	0	0	0	0	0	0	0	0	0	0	0	0	2	0	0	0	.435
Apr 02	at New Mexico State-2	*of	3	0	1	0	0	0	0	0	0	0	0	0	0	0	0	0	2	0	0	.423
Apr 05	at Utah State	*of	4	1	3	0	0	0	0	0	0	0	0	0	0	0	0	1	1	0	0	.467
Apr 06	at Utah State	*of	4	1	2	0	0	0	0	1	0	0	0	0	0	0	0	1	3	0	0	.471
Apr 07	at Utah State	*of	3	0	1	0	0	0	0	0	0	0	0	0	0	0	0	0	0	0	0	.459
Apr 09	UTEP	*of	3	0	0	0	0	0	0	0	0	0	0	0	0	0	0	2	1	0	0	.425
Apr 18	BOISE STATE	*of	3	0	0	0	0	0	0	0	0	0	0	0	0	0	0	0	2	0	0	.395
Apr 19	BOISE STATE	*of	2	0	0	0	0	0	0	0	0	0	0	0	0	0	0	1	0	0	1	.378
Apr 23	NEW MEXICO STATE	*of	2	0	0	0	0	0	0	0	0	0	0	0	0	0	0	0	2	0	0	.362
Apr 26	at Fresno State	*of	2	0	1	1	0	0	0	0	0	0	0	0	0	0	0	0	2	0	0	.367
Apr 27	at Fresno State	*of	4	0	2	1	0	0	0	0	0	0	0	0	0	0	0	0	0	0	0	.377
Apr 28	at Fresno State	*of	3	0	0	0	0	0	0	1	0	0	0	0	0	0	0	1	1	0	0	.357
May 03	SAN JOSE STATE	*of	4	0	0	0	0	0	0	0	0	0	0	0	0	0	0	1	1	0	0	.333
May 04	SAN JOSE STATE	*of	2	0	0	0	0	0	0	0	0	0	0	0	0	0	0	0	1	0	0	.323
May 05	SAN JOSE STATE	*of	3	0	1	0	0	0	0	0	0	0	0	0	0	0	1	0	3	0	0	.323
Totals			21gs	65	13	21	3	0	0	3	1	1	0	1	0	1	16	26	0	1		.323

On base pct. .353 • Slugging pct. .323

#44 WILBON, Aleyah - 1 appearance (All games)



**66 SYDNEY TOWNES** *OF • 5-6 • SR.*  
*LOMPOC, CALIF. • SANTA BARBARA CITY COLL.*

**SINGLE-GAME HIGHS**

Hits: 2, 5x, Last vs. Boise State, 4-20-19  
 Doubles: 1, 3x, Last vs. Oregon St., 3-8-19  
 Triples: 1, George Washington, 2-25-18  
 Total bases: 4, George Washington, 2-25-18  
 RBI: 1, 4x, Last vs. New Mexico State, 3-21-18  
 Runs scored: 2, 3x, Last vs. Utah State, 4-21-18  
 Walks: 2, 4x, Last vs. Illinois-Chicago, 2-16-19  
 Hit by pitch: 1, 4x, Last vs. Utah State, 4-21-18  
 Struck out: 2, 13x, Last vs. San Jose St., 5-5-19

Sac bunts: 1, 2x, Last at San Jose St., 4-29-18  
 At bats: 5, at Nevada, 3-24-18  
 Stolen bases: 1, 7x, Last at LMU, 3-10-19  
 Putouts: 5, UNLV, 3-18-18  
 Assists: 1, 2x, Last vs. UNLV, 3-18-18

**CAREER STATS (AT UNM)**

Year	avg	gp-gs	ab	r	h	2b	3b	hr	rbi	tb	slg%	bb	hbp	so	gdp	ob%	sf	sh	sb-att	po	a	e	fld%
2018	.186	45-44	102	16	19	2	1	0	4	23	.225	23	4	40	0	.357	0	2	6-6	59	2	4	.938
2019	.186	30-15	43	5	8	1	0	0	0	9	.209	9	0	17	0	.327	0	0	1-1	25	0	3	.893
TOTAL	.186	75-59	145	21	27	3	1	0	4	32	.221	32	4	57	0	.348	0	2	7-7	84	2	7	.925

**2019 GAME-BY-GAME**

Date	Opponent	Pos	AB	R	H	RBI	2B	3B	HR	BB	SB	CS	HBP	SAC	SF	GDP	K	PO	A	E	Avg
Feb 08	vs UTEP	ph/of	1	0	0	0	0	0	0	0	0	0	0	0	0	0	1	0	0	0	.000
Feb 09	vs Creighton	ph/of	1	0	0	0	0	0	0	0	0	0	0	0	0	0	1	0	0	0	.000
Feb 09	at New Mexico State	pr	0	0	0	0	0	0	0	0	0	0	0	0	0	0	0	0	0	0	.000
Feb 16	at Arizona	of	0	0	0	0	0	0	0	0	0	0	0	0	0	0	0	0	0	0	.000
Feb 16	vs Illinois-Chicago	*of	1	1	0	0	0	0	0	2	0	0	0	0	0	0	0	0	0	0	.000
Feb 17	vs South Florida	*of	3	0	0	0	0	0	0	0	0	0	0	0	0	0	2	0	0	0	.000
Feb 22	vs Canisius	ph	1	0	0	0	0	0	0	0	0	0	0	0	0	0	1	0	0	0	.000
Feb 22	at Hawaii	pr	0	0	0	0	0	0	0	0	0	0	0	0	0	0	0	0	0	0	.000
Feb 28	vs Florida	pr	0	0	0	0	0	0	0	0	0	0	0	0	0	0	0	0	0	0	.000
Mar 01	vs Loyola Marymount	of	0	0	0	0	0	0	0	0	0	0	0	0	0	0	0	0	0	0	.000
Mar 03	vs UCONN	pr	0	0	0	0	0	0	0	0	0	0	0	0	0	0	0	0	0	0	.000
Mar 03	at Cal State Fullerton	of	1	0	0	0	0	0	0	0	0	0	0	0	0	0	1	0	0	0	.000
Mar 08	vs Oregon State	*of	4	1	1	0	1	0	0	0	0	0	0	0	0	0	2	1	0	0	.083
Mar 09	vs Oregon State	of	2	0	1	0	0	0	0	0	0	0	0	0	0	0	0	0	0	1	.143
Mar 10	at Loyola Marymount	*of	3	0	1	0	0	0	0	1	0	0	0	0	0	0	0	1	0	0	.176
Mar 15	at San Diego State	*of	2	0	0	0	0	0	0	1	0	0	0	0	0	0	1	3	0	0	.158
Mar 16	at San Diego State	*of	2	1	0	0	0	0	0	1	0	0	0	0	0	0	0	3	0	0	.143
Mar 17	at San Diego State	*of	2	0	0	0	0	0	0	1	0	0	0	0	0	0	0	3	0	0	.130
Mar 22	COLORADO STATE	*of	3	0	1	0	0	0	0	0	0	0	0	0	0	0	0	3	0	0	.154
Mar 23	COLORADO STATE	*of	1	0	0	0	0	0	0	1	0	0	0	0	0	0	1	1	0	0	.148
Mar 24	COLORADO STATE	*of	1	0	0	0	0	0	0	0	0	0	0	0	0	0	1	1	0	0	.143
Mar 31	NEVADA	ph	0	0	0	0	0	0	0	1	0	0	0	0	0	0	0	0	0	0	.143
Apr 02	at New Mexico State-1	pr	0	0	0	0	0	0	0	0	0	0	0	0	0	0	0	0	0	0	.143
Apr 06	at Utah State	pr	0	1	0	0	0	0	0	0	0	0	0	0	0	0	0	0	0	0	.143
Apr 19	BOISE STATE	ph/of	0	0	0	0	0	0	0	1	0	0	0	0	0	0	0	0	0	0	.143
Apr 20	BOISE STATE	*of	4	1	2	0	0	0	0	1	0	0	0	0	0	0	1	2	0	1	.188
Apr 28	at Fresno State	*of	3	0	1	0	0	0	0	0	0	0	0	0	0	0	2	1	0	0	.200
May 03	SAN JOSE STATE	*of	3	0	0	0	0	0	0	0	0	0	0	0	0	0	1	3	0	1	.184
May 04	SAN JOSE STATE	*of	2	0	1	0	0	0	0	0	0	0	0	0	0	0	0	0	0	0	.200
May 05	SAN JOSE STATE	*of	3	0	0	0	0	0	0	0	0	0	0	0	0	0	2	3	0	0	.186
Totals			15gs	43	5	8	0	1	0	9	1	0	0	0	0	0	17	25	0	3	.186

On base pct. .327 • Slugging pct. .209



# 99 KIANA SPENCER

P • 5-6 • JR.  
GALLUP, N.M. • YAVAPAI COLLEGE

## SINGLE-GAME HIGHS

Innings pitched: 7.0, 5x, Last vs. Nevada, 3-29-19  
 Walks allowed: 7, LMU, 3-10-19  
 Strikeouts: 7, North Dakota, 3-26-19  
 Batters faced: 36, Nevada, 3-29-19  
 Field chances: 2, 2x, Last vs. Oregon St., 3-8-19  
 Assists: 2, 2x, Last vs. Oregon St., 3-8-19  
 Runners CS: 1, 3x, Last at Fresno St., 4-26-19  
 Fewest hits allowed (Min. 3.0 IP): 3, Creighton, 2-9-19  
 Fewest walks allowed (Min. 3.0 IP): 3, Alabama, 2-15-19

## CAREER STATS (AT UNM)

Year	avg	qp-gs	ab	r	h	2b	3b	hr	rbi	tb	slg%	bb	hbp	so	qdp	ob%	sf	sh	sb-att	po	a	e	fld%
2019	.000	1-1	0	0	0	0	0	0	0	0	.000	0	0	0	0	.000	0	0	0-0	0	11	2	.846
TOTAL	.000	1-1	0	0	0	0	0	0	0	0	.000	0	0	0	0	.000	0	0	0-0	0	11	2	.846

Year	era	w-l	app	qs	cq	sho	sv	ip	h	r	er	bb	so	2b	3b	hr	bf	bavq	wp	hbp	bk	sfa	sha
2019	6.87	6-16	31	21	9	2/0	1	110.0	157	124	108	73	63	36	5	27	579	.330	8	16	0	4	10

## 2019 GAME-BY-GAME

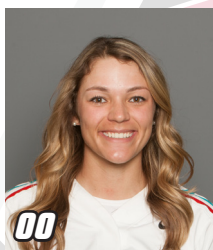
#99 SPENCER, Kiana - 31 appearances (All games)

Date	Opponent	GS	IP	H	R	ER	BB	SO	2B	3B	HR	WP	BK	HBP	IBB	Score	W-L	Sv	ERA	NP
Feb 09	vs Creighton	*	5.0	3	0	0	5	2	0	0	0	0	0	1	0	8-0	1-0	0	0.00	91
Feb 09	at New Mexico State		1.0	1	1	1	0	2	0	0	1	0	0	0	0	8-9	1-0	0	1.17	21
Feb 15	vs Alabama	*	7.0	6	1	1	3	0	1	0	0	0	0	0	0	0-1	1-1	0	1.08	102
Feb 15	vs Cal State Fullerton		0.2	0	0	0	0	0	0	0	0	0	0	0	0	2-6	1-1	0	1.02	5
Feb 16	at Arizona	*	1.1	6	7	7	3	0	2	0	2	0	0	0	0	1-15	1-2	0	4.20	50
Feb 20	at Hawaii	*	6.0	5	2	1	0	4	1	0	1	0	0	1	0	1-2	1-3	0	3.33	88
Feb 21	vs DePaul		0.2	0	0	0	2	0	0	0	0	0	0	1	0	5-9	1-3	0	3.23	24
Feb 22	vs Canisius	*	5.0	4	0	0	1	4	0	0	0	0	0	1	0	10-0	2-3	0	2.62	81
Feb 23	at Hawaii	*	7.0	4	2	2	4	6	0	0	1	0	0	0	0	3-2	3-3	0	2.50	107
Mar 01	vs Tennessee	*	2.0	8	5	5	2	0	2	0	2	0	0	0	0	1-15	3-4	0	3.34	48
Mar 03	at Cal State Fullerton	*	2.2	9	8	8	2	1	1	0	4	0	0	0	0	1-19	3-5	0	4.57	63
Mar 08	vs Oregon State	*	7.0	9	5	3	4	2	3	1	0	0	0	0	0	6-5	4-5	0	4.32	123
Mar 10	at Loyola Marymount	*	5.2	5	6	6	7	5	1	0	1	1	0	1	0	2-6	4-6	0	4.67	132
Mar 16	at San Diego State	*	2.0	2	5	3	4	2	1	0	1	1	0	1	0	8-9	4-6	0	4.89	64
Mar 17	at San Diego State		3.2	5	3	3	3	3	1	0	0	0	0	0	0	3-4	4-7	0	4.94	83
Mar 22	COLORADO STATE		2.1	3	3	3	1	1	2	0	1	0	0	0	0	7-9	4-8	0	5.10	24
Mar 23	COLORADO STATE	*	4.0	6	4	4	1	3	2	1	1	0	0	0	0	1-9	4-9	0	5.22	75
Mar 24	COLORADO STATE		4.0	7	11	7	4	2	3	1	1	2	0	3	0	3-16	4-9	0	5.64	100
Mar 26	NORTH DAKOTA-2	*	7.0	7	3	2	3	7	1	1	0	0	0	1	0	7-3	5-9	0	5.30	106
Mar 29	NEVADA	*	7.0	11	7	6	2	6	3	0	0	0	0	2	0	1-7	5-10	0	5.36	113
Mar 30	NEVADA		0.2	1	1	1	1	0	0	0	0	1	0	0	0	6-11	5-10	0	5.40	15
Apr 02	at New Mexico State-1	*	5.1	8	8	5	5	6	2	0	1	1	0	1	0	0-8	5-11	0	5.47	142
Apr 05	at Utah State	*	3.0	4	5	5	1	3	0	1	3	0	0	0	0	6-7	5-12	0	5.68	45
Apr 06	at Utah State		2.0	2	0	0	3	1	0	0	0	1	0	0	0	6-3	5-12	1	5.55	54
Apr 09	UTEP	*	6.0	10	7	7	0	0	3	0	1	0	0	0	0	1-7	5-13	1	5.71	57
Apr 18	BOISE STATE	*	3.0	7	3	3	0	1	2	0	1	0	0	0	0	7-4	6-13	1	5.75	49
Apr 19	BOISE STATE		0.1	3	6	5	0	0	1	0	0	0	0	1	0	5-17	6-13	1	6.08	10
Apr 20	BOISE STATE	*	0.2	2	3	3	3	0	1	0	0	0	0	0	0	10-22	6-14	1	6.25	28
Apr 23	NEW MEXICO STATE		3.0	5	5	5	2	1	0	0	2	1	0	0	0	0-10	6-14	1	6.40	61
Apr 26	at Fresno State	*	3.0	8	6	6	3	1	1	0	1	0	0	2	0	1-9	6-15	1	6.61	68
May 04	SAN JOSE STATE	*	2.0	6	7	6	4	0	2	0	2	0	0	0	0	0-11	6-16	1	6.87	58
Totals			21	110.0	157	124	108	73	63	36	5	27	8	0	16	0 120-255	6-16	1	6.87	-



# THE 2019 LOBO SOFTBALL RADIO/TV ROSTER

## PLAYERS



**00**  
Andrea Howard  
OF | 5-6 | So.  
Albuquerque, N.M.



**2**  
Maggie Buckholz  
UT | 5-7 | Fr.  
Silverton, Ore.



**3**  
Taylor Jones  
IF | 5-7 | So.  
Albuquerque, N.M.



**4**  
D'Andra DeFlora  
OF | 5-2 | Sr.  
Fresno, Texas



**5**  
Sydney Broderick  
C | 5-4 | So.  
Mesa, Ariz.



**7**  
MacKenzie Peterson  
OF | 5-9 | Fr.  
Gilbert, Ariz.



**8**  
Bailey Klitzke  
P/1B | 5-8 | Jr.  
Apache Junction, Ariz.



**9**  
Kasey Halleen  
IF | 5-6 | Sr.  
Torrance, Calif.



**10**  
Cameryn O'Grady  
SS | 5-6 | So.  
Orange, Calif.



**12**  
Daryn Haslam  
IF | 5-4 | Fr.  
Cedar Park, Texas



**13**  
Kennedy Ferguson  
P | 5-6 | Fr.  
Camas, Wash.



**16**  
Leslie Romero  
OF | 5-4 | Fr.  
Gonzales, Calif.



**22**  
Monica Salas  
IF | 5-3 | Jr.  
Goleta, Calif.



**23**  
Emma Steltzer  
P | 5-6 | Fr.  
Manchester, Mo.



**24**  
Skylar Jenkins  
OF | 5-5 | Fr.  
Lawrenceville, Ga.



**32**  
Lauren Wilmert  
C/1B | 5-10 | Jr.  
Albuquerque, N.M.



**44**  
Aleyah Wilbon  
OF | 5-2 | Sr.  
Fontana, Calif.



**66**  
Sydney Townes  
OF | 5-6 | Sr.  
Lompoc, Calif.



**99**  
Kiana Spencer  
P | 5-6 | Jr.  
Gallup, N.M.

## STAFF



**Paula Congleton**  
Head Coach



**Tyler Heil**  
Assistant Coach



**Breanna Macha**  
Assistant Coach



**Madison Foust**  
Athletic Trainer



**Jeremy Golden**  
Strength and Cond.