

# THE UNIVERSITY OF NEW MEXICO SOFTBALL



2019 SOFTBALL NOTES | WEEK 10

@UNMLoboSB

www.GoLOBOS.com

#GoLOBOS

Allison Weiss, Assistant Director of Athletic Communications - Softball Contact | Email: allisonweiss@unm.edu | Cell: (661) 313-5402

## 2019 SCHEDULE

OVERALL: 11-28 • MW: 2-10 • H: 2-6 • A: 3-12 • N: 6-10

Date	Opponent	Time/Score
<i>NM State Invitational</i>		
2/8	UTEP	W, 15-6
2/9	Creighton	W, 8-0 (5)
2/9	at NMSU	L, 9-8
2/14	at #9 Arizona	Cancelled (Rain)
<i>Hillenbrand Invitational</i>		
2/15	#7 Alabama	L, 1-0
2/15	RV CSUF	L, 6-2
2/16	at #9 Arizona	L, 15-1 (5)
2/16	UIC	W, 13-5 (6)
2/17	South Florida	L, 2-1 (8)
2/20	at Hawaii	L, 2-1
<i>Hawaii Invitational</i>		
2/21	DePaul	L, 9-5
2/22	Canisius	W, 10-0 (5)
2/22	at Hawaii	L, 2-3
2/23	at Hawaii	W, 3-2
2/23	DePaul	L, 4-2
<i>Judi Garman Classic</i>		
2/28	#3 Florida	L, 1-0 (8)
3/1	LMU	L, 4-2
3/1	#7 Tennessee	L, 15-1 (5)
3/3	UConn	L, 2-1
3/3	at CSUF	L, 19-1 (5)
<i>LMU Tournament</i>		
3/8	Oregon State	W, 6-5
3/8	Western Carolina	W, 10-0 (5)
3/9	Oregon State	L, 5-3
3/10	LMU	L, 6-2
3/15	at San Diego State *	W, 3-1
3/16	at San Diego State *	L, 9-8
3/17	at San Diego State *	L, 4-3
3/22	Colorado State *	L, 9-7
3/23	Colorado State *	L, 9-1 (5)
3/24	Colorado State *	L, 16-3 (5)
3/26	North Dakota	W, 7-6
3/26	North Dakota	W, 7-3
3/29	Nevada *	L, 7-1
3/30	Nevada *	L, 11-6
3/31	Nevada *	L, 21-1 (5)
4/2	at New Mexico State	L, 8-0 (6)
4/2	at New Mexico State	L, 11-3 (5)
4/5	at Utah State *	L, 7-6
4/6	at Utah State *	W, 6-3
4/7	at Utah State *	L, 8-0 (5)
4/9	UTEP	3 p.m.
4/18	Boise State *	6 p.m.
4/19	Boise State *	4 p.m.
4/20	Boise State *	12 p.m.
4/23	New Mexico State	5:30 p.m.
4/26	at Fresno State *	7 p.m.
4/27	at Fresno State *	4 p.m.
4/28	at Fresno State *	1 p.m.
5/3	San José State *	6 p.m.
5/4	San José State *	4 p.m.
5/5	San José State *	12 p.m.
5/9	at UNLV *	7 p.m.
5/10	at UNLV *	5 p.m.
5/11	at UNLV *	1 p.m.

**Bold** denotes home games  
 \*denotes Mountain West game  
*italics* denote tournament  
 All times listed are Mountain Time  
 Game times are subject to change

## UNM vs UTEP



### NEW MEXICO Lobos

Record ..... 11-28, 2-10 MW  
 Conference ..... Mountain West  
 Head Coach ..... Paula Congleton  
 Record at UNM ..... 25-67 (Second Season)  
 Career Record ..... 58-144 (Fourth Season)



### UTEP Miners

Record ..... 10-26, 4-8 C-USA  
 Conference ..... Conference USA  
 Head Coach ..... Tobin Echo-Hawk  
 Record at UTEP ..... 97-200 (Sixth Season)  
 Career Record ..... 243-327 (11th Season)

#### ABOUT THE MATCHUP

- Tuesday's meeting will be the second this year, with UNM winning the first game 15-6 to open the season.
- The Lobos scored the first 10 runs of the game before UTEP got on the board and had 6-of-7 leadoff hitters reach base. UNM also had a season-high 16 walks in the game.
- Bailey Klitzke led the Lobos at the plate with a 4-for-5 outing, all singles, with four RBI.
- Monica Salas went 2-for-4, also with four RBI in the game, including a three-run home run in the second.
- Andrea Howard drew a career-high four walks in the game.
- In the circle, Klitzke pitched 5.0 innings, allowing five hits and five runs, while striking out eight Miners. Kennedy Ferguson pitched the final 2.0 innings and allowed just one run on two hits, striking out two and not issuing a walk.
- Both teams enter Tuesday's game with similar stats in several categories. UNM holds a slight edge in runs (159-154), RBI (149-148), and doubles (46-42), but have a larger advantage in triples (8-4), walks (148-98), ERA (5.94-7.99), batters struck out (161-133) and fewer walks and runs allowed.
- UTEP has the edge in hits (260-234), batting average (.283-.242), home runs (36-27), double plays (22-5) and fielding percentage (.965-.945).

## Media Information

Location:..... Lobo Softball Field  
 Dimensions: ..... 220'-225'-220'

Date/Time:  
 Tuesday, April 9 ..... 3 p.m.

Live Video:..... Mountain West Network  
 Live Stats: ..... <https://golobos.com/schedule.aspx?path=softball>  
 Social Media: ..... @UNMLoboSB

Notes last updated: April 8, 2019

## Series History

### US. UTEP

Overall: 16-11  
 Last Five: 2-3  
 Last Meeting: 2/8/19 (W, 15-6)  
 Last Win: 2/8/19 (15-6)  
 Series Trend: W1

## NEWS and NOTES

### LAST TIME OUT

- UNM won one of three games at Utah State, with a one-run loss on Friday, a three-run win on Saturday and a loss to close out the series on Sunday.
- Aleyah Wilbon led the Lobos at the plate, hitting 6-for-11, a team-high .545 batting average, and tied her career high with three hits on Friday. The outfielder had another multi-hit game on Saturday with two hits and a walk, and reached base all three at-bats on Sunday with two coming on errors by the Aggie shortstop.
- Lauren Wilmert had a team-high four RBI on the weekend, which came on a grand slam in the third inning on Saturday that gave UNM a 4-2 lead.
- Bailey Klitzke hit her first career home run on Friday, a two-run home run in the fifth to make it a one-run game.
- Kiana Spencer and Kennedy Ferguson each pitched 5.0 innings on the weekend with Emma Steltzer throwing 4.2 innings and Bailey Klitzke pitching 2.1 innings.

### DON'T COUNT THEM OUT

- After leading 3-2 going in to the top of the seventh in last Tuesday's first game against the Fighting Hawks, the Lobos gave up four runs to fall behind 6-3 with three outs to work with. UND brought in pitcher Emily Rosas in the bottom half of the inning, who walked the first three batters to load the bases. UND brought back in starting pitcher Nikki Pica, who walked Lauren Wilmert to make it 6-4. With bases loaded, Bailey Klitzke hit a shot to right center that went all the way to the wall, allowing all three runners on base to score for the walk-off win.
- On March 22 against Colorado State, UNM trailed 6-2 going into the bottom of the fifth, but scored five runs on five hits to tie and take a 7-6 lead. Bailey Klitzke hit a sacrifice fly with bases loaded to score the first run and Monica Salas hit a home run to center to tie the game at six. Two batters later, Taylor Jones hit her first home run of the

## GENERAL INFORMATION

Name of School.....	University of New Mexico
City/Zip.....	Albuquerque, N.M. 87106
Founded.....	1889 by Territorial Legislature
Enrollment.....	25,015
Nickname.....	Lobos
School Colors.....	Cherry & Silver
Conference.....	Mountain West
Affiliation.....	NCAA Division I
President.....	Dr. Garnett Stokes
Athletic Director.....	Eddie Nuñez

## PROGRAM HISTORY

First Year of Softball.....	1978
All-Time Record.....	993-1103-3
Mountain West Record.....	122-279-1
NCAA Tournament Appearances.....	3
1980 (AIAW), 1981 (AIAW) and 1983 (NCAA)	
Last NCAA Postseason Opponent.....	Cal State Fullerton
Last NCAA Postseason Result.....	CSUF won series 2-1
Conference Championships.....	3
1980 (Intermountain), 1981 (Intermountain) and 1983 (High Country)	

## TEAM INFORMATION

2018 Overall Record.....	14-39
2018 MW Record.....	7-17 (T-8th)
Letterwinners Returning/Lost.....	10/9
Pitchers Returning/Lost.....	0/4
Starters Returning/Lost.....	8/1
Newcomers.....	9

## SOFTBALL STAFF

Head Coach.....	Dr. Paula Congleton (New Mexico, 1984)
Year at UNM..... Second season	
Record at UNM (Pct.).....	25-67 (.272)
MW Record at UNM (Pct.).....	9-27 (.250)
Career Record (Years).....	58-144 (4 years)
Assistant Coach.....	Tyler Heil (San José State, 2009)
Year at UNM..... Second season	
Assistant Coach.....	Breanna Macha (Arizona State, 2018)
Year at UNM..... First season	
Strength Coach.....	Jeremy Golden
Academic Advisor.....	Andrea Pierson
Head Athletic Trainer.....	Bob Waller
Athletic Trainer.....	Madison Foust

## COMMUNICATIONS

Softball Contact/Asst. Director of Comm.....	Allison Weiss
Email.....	allisonweiss@unm.edu
Cell Phone (Preferred).....	(661) 313-5402
Communications Office.....	(505) 925-5520

## DIGITAL MEDIA

Athletics Website.....	GoLobos.com
Main University Web Site.....	unm.edu
Conference Website.....	TheMW.com
Twitter.....	@UNMLoboSB
Instagram.....	@UNMLoboSB
Facebook.....	@NewMexicoLoboSoftball

## FACILITIES

Venue.....	Lobo Field
Dimensions.....	205-225-205
Capacity.....	1,500

season, a solo shot that hit off the top of the scoreboard in left to give the Lobos a 7-6 advantage.

- UNM started off the LMU Tournament with an epic come-from-behind victory over Oregon State, scoring six runs in the final two innings to win 6-5. The Lobos scored five runs in the bottom of the seventh, walking off on a hit by Lauren Wilmert to score D'Andra DeFlora from third. Andrea Howard hit a two-run home run to cut the deficit to two after Daryn Haslam led off with a single to right field. Kasey Halleen singled up the middle to keep the momentum going and Sydney Townes doubled to center to advance Halleen to third. DeFlora singled to score Townes and Halleen to tie the game, moving all the way to third, leading to Wilmert's game-winning single.

### MIXING IT UP

- The Lobos have used 29 different lineups to date, only having duplicated their lineup eight times. UNM used the same lineup in the Arizona and Alabama game, the same lineup in the Cal State Fullerton and UTEP game, the same lineup against Hawai'i on Feb. 22 and DePaul on Feb. 23 and the same lineup against Tennessee and UConn. The Lobos used the same lineup in the second game at SDSU and the second game vs. CSU, the same lineup in the first and third games against Nevada and the second game against North Dakota and the second game against Nevada. Recently, UNM used the same lineup in both games at NMSU and in all three games at USU.
- UNM has had five different players in the leadoff spot in the lineup.
- Cameryn O'Grady moved into the leadoff hitter spot in the game against Canisius and played six games at the No. 1 spot in the batting order. Andrea Howard led off the lineup in 10 games and moved down to the No. 2 spot for 14 games, the third spot for 10 and the seventh spot in five games. Bailey Klitzke hit in the leadoff spot in three games, D'Andra DeFlora has led off in 19 games and Sydney Townes hit first in one. Maggie Buckholz has batted second in two games, DeFlora in 12 games and Aleyah Wilbon has hit second in 11. Taylor Jones hit second in the first game versus North Dakota.
- Four Lobos (Cameryn O'Grady, D'Andra DeFlora, Andrea Howard and Lauren Wilmert) have started all 39 games this season, while Monica Salas has started in all but three.
- UNM started four freshmen against New Mexico State, with Kennedy Ferguson, Daryn Haslam, MacKenzie Peterson and Leslie Romero each getting their first collegiate starts.
- Freshman Emma Steltzer made her Lobo debut in the circle in the last game of the Judi Garman Classic versus Cal State Fullerton, retiring both batters she faced.

### HOLDING THEIR OWN

- In the Lobos' first game of the Judi Garman Classic, UNM went to extra innings with the No. 3 Florida Gators, holding the Gators scoreless for seven innings.
- It was the second time in the last 13 days that UNM held a top-10, and a SEC, team scoreless through at least six innings.
- Kennedy Ferguson threw a complete game with 109 pitches, 66 of them going for strikes. The freshman right-hander held her own in the matchup, allowing just five hits and one walk, while striking out five batters. It is the third game this season that Ferguson has allowed just one walk, but the first time that she did so while pitching a complete game.
- The five hits posted by Florida was the second-fewest hits in a game for the Gators this year, only second to Arizona who limited the Gators to four on Feb. 9, but the Wildcats also gave up three runs in the game.
- In addition, it is just the second time this season that the Gators have been held to one run in a game, with the other instance being in Wednesday night's game versus No. 2 UCLA in which the Gators lost 7-1. Entering the Judi Garman Classic, and prior to its loss to UCLA, Florida was outscoring its opponents 127-18.
- The Lobos held No.7 Alabama scoreless for six innings, allowing only six hits total in the game.
- Entering the Hillenbrand Invitational, the Crimson Tide was third in the NCAA in scoring, averaging 10.60 runs, and had averaged 10.2 hits a game and 2.60 doubles a game (tied for 10th in the NCAA). Alabama hit .261 in the game, below the .378 batting average that the team entered with, which was 16th in the nation. Spencer kept Alabama's leading hitter Kaylee Tow, who ranked eighth in the NCAA in batting average and seventh in on-base percentage, without a hit.
- UNM is the only team to hold Alabama to just one run in the 10 games the Crimson Tide have played so far this year.
- In two games, the Lobos have shutout their opponents and twice have gone six innings without giving up a run. UNM shutout Creighton on Feb. 9 and shutout Canisius on Feb. 22, while going six scoreless innings against Alabama on Feb. 15 and again on Feb. 17 versus South Florida.

### HOT STARTS

- The Lobos have scored first in 19 games this season.
- UNM has scored in the first inning 15 times, with a season-high four runs scored in the first inning on Feb. 16 against Illinois-Chicago and again on Feb. 22 against Canisius.
- In both games against North Dakota on March 26 and in Saturday's game against Nevada, UNM scored three runs in the first inning.
- Against WCU on March 8, the Lobos scored three runs in the first inning on a walk by Andrea Howard, back-to-back doubles by Lauren Wilmert and Maggie Buckholz and a single by Monica Salas that scored Buckholz.
- Five of UNM's wins this season have come via run-rule (15-6 vs. UTEP, 8-0 vs. Creighton, 13-5 vs. Illinois-Chicago, 10-0 vs. Canisius, 10-0 vs. WCU).
- D'Andra DeFlora and Cameryn O'Grady started the season on a nine-game hitting streak.

### NEWCOMERS NO MORE

- The freshmen have accounted for 29 hits, 16 runs scored and 25 RBI on the season, while hitting five home runs.
- Maggie Buckholz is third on the Lobos in walks (17), fourth in RBI (17), is one of five players with at least a triple and is third in on-base percentage (.411). Daryn Haslam is fourth on the team in home runs (3) and is fifth in slugging percentage (.412). Buckholz is tied for second the team lead in two-out RBI with seven.
- Pitcher Kiana Spencer has pitched nine complete games this season and tallied a season-high seven strikeouts in her appearance against North Dakota on March 26. The LHP has recorded two shutouts, both coming in run-rule games (vs. Creighton, vs. Canisius).
- Freshman Kennedy Ferguson has pitched in a team-high 27 games with 18 starts and nine complete games, holding a team-best ERA of 4.77 and 108.2 innings pitched. Ferguson has struck out 68 batters and walked 46 and has recorded at least one strikeout in 21 games. Ferguson earned her first collegiate win in a two-hit shutout over Western Carolina on March 8, striking out three and not issuing a walk. The RHP had a season-best 11 strikeouts against North Dakota on March 26, the first Lobo pitcher to record double-digit strikeouts this season and the second-most recorded since Lauren Soles tallied 14 against Siena on March 24, 2013.

- Freshman Daryn Haslam led the Lobos at the Hawai'i Invitational with a slugging percentage of .846 and on-base percentage of .467, while hitting the first two home runs of her collegiate career. Three of her RBI on the weekend came with two outs.
- Fellow freshman Maggie Buckholz hit a three-run home run that proved to be the difference in UNM's 3-2 win over host Hawai'i to advance the Lobos to the championship game. On the weekend, Buckholz had a team-high six RBI and drew three walks.
- In her first start with the Lobos, Spencer threw a complete game shutout, limiting the BIG EAST preseason favorite Creighton to just three hits in five innings of work. The junior didn't allow any extra-base hits in the 24 batters she faced. She threw 91 pitches in the outing, 42 of them going for strikes.
- Spencer also earned the start against Alabama, pitching another complete game, going 7.0 innings and allowing just one run and six hits, only one of which went for extra bases, and allowing just three walks on 29 batters faced.

## **WALK IT OUT**

- UNM leads the MW in walks drawn to date with 148, 17 more than the second-highest team (SJSU).
- In the season opener against UTEP, UNM drew 16 walks alone for a season high.
- Against the Miners, eight different players drew a walk, with Andrea Howard reaching base four times via a walk. Cameryn O'Grady and Lauren Wilmert each drew three walks, Maggie Buckholz two and Monica Salas, Taylor Jones, Kasey Halleen and Daryn Haslam each had one.
- Versus Cal State Fullerton on Feb. 15 and North Dakota on March 26, the Lobos nearly reached double digits with nine walks in each game.
- Cameryn O'Grady leads the team with 24 walks, followed by Andrea Howard (21) and Maggie Buckholz (17).

## **LET'S GIVE THEM SOMETHING TO TALK ABOUT**

- After nine weeks of competition for the MW teams, the Lobos lead the conference in one category, is second in two, third in one and fourth in three.
- The Lobos are first in the conference in walks (148), second in caught stealing by (9) and total plate appearances (1138), third in home runs (27), fourth in batters struck out (161), innings pitched (234.2) and putouts (704).
- As a team, UNM has at least one player listed in the top 10 in the conference in 10 hitting categories, six pitching categories and four fielding categories.
- To date, Cameryn O'Grady is in the top-10 statistically in the MW in five categories offensively. The junior is in the top 10 in on-base percentage, total bases, walks, doubles and total plate appearances. O'Grady is tied for second in the conference in walks and tied for third in doubles. O'Grady is fourth in total bases and tied for fourth in total plate appearances. Lauren Wilmert is tied for fifth in runs batted in, tied for fourth in caught stealing by, fifth in fielding chances and sixth in putouts as well as ranked in home runs and doubles. Kennedy Ferguson is ranked in batters struck out and second in innings pitched and games started, as well as leads the league in appearances. D'Andra DeFlora ranks second in hit-by-pitches and ranks in total plate appearances, Bailey Klitzke is ranked in triples, sacrifice flies and fielding percentage, and Andrea Howard in total plate appearances and walks. Aleyah Wilbon ranks in fielding percentage.
- In Mountain West play, UNM is second in walks (41), third in assists (85) and tied for first in caught stealing by (2).

## **NATIONALLY KNOWN**

- UNM is 89th in the NCAA in triples per game (0.21) and 105th in home runs per game (0.69).
- Bailey Klitzke is 51st in the NCAA in sacrifice flies with three and 88th in triples per game (0.09). D'Andra DeFlora is 71st in hit-by-pitch per game (0.23). O'Grady is 101st in doubles per game (0.31) and 94th in walks (0.62).

## **IT'S ALL O'GRADY**

- Junior shortstop Cameryn O'Grady leads the team in slugging percentage (.620), hits (38), runs scored (27), total bases (67), walks (24), total plate appearances (133) and doubles (12). The California native is second in batting average (.352), on-base percentage (.474), home runs (5) and RBI (23).
- With two outs, O'Grady is 9-for-27, with six RBI coming with two outs. When it comes to success advancing runners during an at-bat, O'Grady also is second on the team at 40-for-75 (.533). O'Grady is also 14-for-26 (.538) as the leadoff batter in an inning.
- O'Grady was nearly unstoppable in the first three games of the season, going 7-for-9 at the plate (.778 batting average), registering one double, a triple and two home runs as well as a team-high seven RBI. O'Grady tallied 16 total bases, drew three walks and posted a slugging percentage of 1.778 and an on-base percentage of .833.
- The junior was 2-for-2 as the leadoff hitter in an inning, 4-for-5 with runners in scoring position and 2-for-2 batting with two outs, in which she recorded two of her seven runs-batted-in. During her at-bats, O'Grady was 6-for-8 in successfully advancing runners and 5-for-7 in getting a hit with runners on base.
- O'Grady was a perfect 3-for-3 against Creighton, finishing just a double shy of hitting for the cycle.
- In the LMU Tournament, O'Grady was a team-best .500 in batting with runners on (4-for-8), 2-for-2 as the leadoff hitter in an inning, 3-for-6 with runners in scoring position and 1-for-2 with runners on third and less than two outs as well as with two outs. The shortstop was 4-for-9 with success in advancing runners.
- Last season, O'Grady led the Lobos in triples (four), doubles (12), walks (32), on-base percentage (.444) and runs scored (31) last season. She was second on the team with 43 hits, 75 total bases and 26 RBIs, and third in batting average (.301) and slugging percentage (.524).
- O'Grady hit just four home runs last season, which the junior reached half that in the first three games this season and matched the total with a home run against North Dakota on March 26. She surpassed that number against Nevada on March 31.

## **3-2, WHAT YOU GOING TO DO?**

- Lauren Wilmert leads the team in RBI (31), and home runs (6) and is second in total bases (59), slugging percentage (.532) and in hits (30) and doubles (9). The catcher/first baseman is fourth in runs scored (21), while hitting in the cleanup spot in 29 games before hitting in the five spot in the last 10 games starting against North Dakota. Since moving to the five-spot, Wilmert is 8-for-25 with three doubles, a triple and two home runs with four walks and 11 RBI for a batting average of .320, a slugging percentage of .760 and an on-base percentage of .414. The junior is also second in sacrifice flies and hit her first career triple against North Dakota on March 26.
- Wilmert has a team-high 12 RBI with two outs and is 10-for-34 when hitting with 2 outs. She is also 3-for-7 with bases loaded and 8-for-17 when there is a runner on third with less than 2 outs.
- Playing 21 games behind the plate, Wilmert has thrown out five runners attempting to steal, bringing her career total to 10.
- Wilmert has hit two grand slams this season, once against Western Carolina on March 8 and on April 6 at Utah State, which came with two outs in the third inning and gave UNM a 4-2 lead.
- Wilmert recorded a career-high three hits against SDSU on March 17, while also recording her sixth home run of her career and tied a career-high six total bases.

## **WHAT ABOUT WILBON?**

- In the nine starts that Aleyah Wilbon has hit second in the Lobo lineup, the outfielder has tallied 14 hits on 27 at-bats for a hitting- and slugging-percentage of .519 and an on-base percentage of .536 while being 1-for-1 in steals.
- Wilbon has registered a hit in the last four games and has three times recorded three hits in a game, once going 3-for-3 and twice going 3-for-4, which were career highs for the outfielder. She has tallied at least one hit in seven of the nine games.
- In the last nine games, Wilbon went 5-for-8 with runners on base, 3-for-5 with runners in scoring position and 3-for-7 with 2 outs in the inning. The California native was 8-for-10 in success advancing runners.
- In the series at Utah State, Wilbon led the team in batting average (.545), hits (6), and third in on-base percentage (.583) and total bases (6).
- Batting second in the second North Dakota game and the Nevada series, Aleyah Wilbon went 7-for-10 at the plate with a .700 batting average, slugging percentage and on-base percentage to lead the team in batting average and on-base percentage. Wilbon recorded one RBI and successfully stolen one base as well. The outfielder was 3-for-3 with runners on base and 4-for-7 with bases empty, and 2-for-2 with runners in scoring position as well as with two outs. Wilbon was also 4-for-4 with success in advancing runners.
- Wilbon leads the team in batting average (.459) and on-base percentage (.487) and is fourth in slugging percentage (.459) and fifth in runs scored (13). She also has a team-best 10-for-16 rate of successfully advancing runners and .500 percentage with bases empty (12-for-24).

## **HOT JUST A PITCHER**

- Bailey Klitzke got the ball to start the season against UTEP, but has played in 33 games either in the circle or as the DP, starting in 31.
- Klitzke leads the Lobos in triples (3), sac flies (3) and stolen bases (2), is third on the team in batting average (.337), slugging percentage (.506), RBI (22) and hits (28) and fourth in on-base percentage (.411), doubles (5) and tied for fourth in total bases (42).

- The junior hit a triple with bases loaded in the bottom of the seventh against North Dakota on March 26 in the first game of the doubleheader to give the Lobos a walk-off 7-6 victory.
- In the series at Utah State, the junior hit her first career home run.
- At the Judi Garman Classic, Klitzke was 2-for-2 with runners in scoring position, with two outs and with runners on third and less than two outs in the inning. The junior was 3-for-5 in success in advancing runners and 2-for-5 as the leadoff hitter in an inning. She also had a team-high four hits and three RBI in the five-game tournament, hitting .364 with a slugging percentage of .455 and on-base percentage of .467.
- At the plate on the season, Klitzke is a team-best 4-for-6 with bases loaded. She is 7-for-10 with a runner on third with less than 2 outs, 12-for-30 with runners in scoring position, 12-for-31 with 2 outs in the inning and seven of her RBI on the season came with two outs. Klitzke is 27-for-49 in successfully advancing runners in her at-bat, which is the second-highest success rate on the team.
- However, in the circle, the LHP earned her first win of the season in her first appearance in a Lobo uniform, pitching 5.0 innings and giving up five hits and five earned runs. Klitzke struck out eight batters and finished the weekend with nine total in 6.0 innings pitched. She threw for 146 pitches, 120 of which came in the first game against UTEP.
- Klitzke matched her strikeout count against Illinois-Chicago and pitched her first complete game with 6.0 innings pitched to move to 2-1 on the season.

## LET'S SEE HOW FAR WE'VE COME

- In just her second year at UNM, the Lobos have seen improvement in several categories from year one to year two under head coach Paula Congleton.
- Comparing where the Lobos were a year ago heading into MW competition to this year's team heading into MW play, the Lobos have performed better offensively, in the circle and in the field.
- Even though UNM has played two less games in 2019 than in 2018 prior to conference starting, the Lobos have scored 11 more runs (97-86) and walks (96-85), had three more doubles, two more home runs, improved their slugging percentage (.385-.366) and on-base percentage (.355-.343).
- The pitchers have combined for a better team ERA, lowering the average by 1.93 (6.70-4.77), has 18 more strikeouts (93-75) and allowed 60 fewer runs (181-121). Opponent batting average is also lower (.297-.338) as is the number of hits (171-233), doubles, triples and home runs allowed.
- Behind the plate, the catchers are having more success as well, throwing out seven runners to date, compared to just two at this point last year. Runners are just 18-25 this year (.720) compared to 26-28 in 2018 (.929). In the field, the Lobos have a fielding percentage of .952 this year to .939 last year.
- Coincidentally, the Lobos have had 221 total bases and a .240 batting average in both years.

## PLEASE ALLOW ME TO INTRODUCE MYSELF

- The 2019 UNM Lobos will have a different look than last season as there are nine newcomers on the roster.
- In the offseason, the Lobos added seven freshmen (Maggie Buckholz, Kennedy Ferguson, Daryn Haslam, Skylar Jenkins, MacKenzie Peterson, Leslie Romero and Emma Steltzer) as well as two transfer left-handed pitchers in Bailey Klitzke (junior, Wichita State) and Kiana Spencer (junior, Yavapai College).
- UNM debuted an entirely new pitching staff, including a new pitching coach. Joining the above mentioned addition of Klitzke and Spencer will be Ferguson, a right-hander from Camas, Wash. Overseeing the group will be Breanna Macha, who joins the Lobos after pitching at Arizona State from 2015-18.

## PUTTING THE PIECES OF THE PUZZLE TOGETHER

- The roster underwent a major renovation after 2018 with the departure of nine letterwinners, which included all four pitchers on the roster.
- The Lobos also have 10 underclassmen on the roster, with a team-high seven freshmen who will experience their first glimpse of collegiate softball this season.
- Of the nine, the Lobos lost a key piece of their offense due to graduation in Chelsea Johnson. The infielder, who served as the DP her senior season, led the team in batting average (.342), at bats (155), hits (53), homeruns (10), RBIs (40), total bases (92) and slugging percentage (.594). Johnson started 51 of the 53 games, but played in 52.
- In the circle, the Lobos will have to find their ace after losing Jensen Main, who pitched almost half of the innings (162.2 of 326 innings) during the season and set the UNM single-season record for batters faced with 848.
- Luckily, the Lobos retain eight mainstays in the lineup, including now-sophomore Andrea Howard who was selected Second Team All-Mountain West in her rookie season.

## LONG TIME GONE

- The Lobos began the season with five non-conference tournaments on the road, spanning from Las Cruces to Tucson, Ariz., to Honolulu, Hawaii to two trips to Southern California, followed by a conference series at San Diego State.
- UNM's home opener on March 22 against MW opponent Colorado State is the latest home opener in at least 15 years.
- In the first six weeks of the season, the Lobos will have traveled over 10,900 miles roundtrip (5451 miles each way) and played 26 games before their first pitch at Lobo Softball Field.

## TO BE THE BEST...

- The non-conference schedule will test the Lobos from the first weekend, as the Cherry and Silver face 10 teams that made the 2018 NCAA Tournament, four that advanced to the Super Regionals and one team (Florida) that competed in the Women's College World Series.
- Four of the teams on UNM's schedule (Florida, Tennessee, Arizona, Alabama) ranked in the top 10 in the USA Today/ NFCA Coaches preseason rankings and four additional teams were receiving votes. Florida was the highest ranked at fifth, with Tennessee seventh, Arizona eighth and Alabama tied for ninth.
- In the ESPN.com / USA Softball Collegiate Top 25 Preseason Poll, four teams on the Lobos' schedule were ranked with four more receiving votes. Florida was the highest-ranked opponent at No. 5 followed by Arizona at six, Tennessee at eight and Alabama at 11. Receiving votes were Oregon State, Cal State Fullerton, South Florida and Fresno State.

## STARTING OFF STRONG

- UNM is now 26-16 in season openers, including 4-1 in the last five years after Friday's win versus UTEP.
- The nine-run differential was the largest margin of victory for UNM in a season opener since 2011, when the Lobos defeated Utah Valley 10-2.
- Against UTEP, the leadoff hitter reached base six times.
- UNM didn't give up its first run until the fourth inning in the game against UTEP and starting pitcher Bailey Klitzke didn't give up a hit until the bottom of the fourth.
- D'Andra DeFlora and Cameryn O'Grady registered at least one hit in the first nine games of the season.

## SCOUTING UTEP

- UTEP is 10-26 and 4-8 in C-USA play entering Tuesday, and have lost its last three games. The Miners are 2-14 on the road.
- Utah State has played five common opponents with UNM in Arizona, NM State, UNLV, Hawai'i and Creighton. The Miners split with Creighton, went 1-2 versus NMSU, lost both games to Arizona, and lost to Hawai'i and UNLV.
- The Miners have been shutout three times, and have shutout opponents once. UTEP has played just one extra-inning game, a 6-5 loss to Seattle that went eight innings.
- Opponents are outscoring UTEP 273-154 and outpitching them 286-260.
- Kacey Duffield and Kasey Flores lead the team in hits with 37, with Flores leading in RBI (29), total bases (64) and runs (23) and Duffield leading in batting average (.385), slugging percentage (.656), on-base percentage (.496) and walks (20). Cortney Smith has a team-high 10 home runs, while Ariana Valles leads in doubles (8).
- As a team, UTEP is 15-for-19 on stolen base attempts, while opponents are 32-for-43.
- The pitching staff has a collective ERA of 7.99 with the Miners using five pitchers. Of the 286 hits allowed, 43 are doubles, seven triples and 31 home runs. They have 133 strikeouts to 242 walks. Of the 273 runs allowed, 242 have been earned.
- Julia Wright has appeared in 21 games with a team-high 18 starts, with nine complete games and one shutout in 92.1 innings of work. To date, Wright has an ERA of 6.82, allowing 127 hits, 104 runs (90 earned), 86 walks and struck out 52 and has a 6-12 record. Kira McKechnie is 3-10 on the season, making 20 appearances and 14 starts with seven complete games. In 72.2 innings of work, McKechnie has allowed 74 hits, 74 runs (66 earned) and 86 walks while striking out 53, and has an ERA of 6.36. Allie Johnson has a 14.22 ERA with 21.2 innings in the circle, appearing in 12 games, starting in two, and compiling a 1-1 record. Johnson has given up 36 hits, 48 runs (44 earned), and walked 39 while striking out 15. Nadya Orozco and Bryana Munoz have both appeared in eight games with one start each with Orozco compiling a 10.11 ERA and 0-1 record and Munoz a 15.27 ERA and 0-2 record. Orozco has pitched 18.0 innings and Munoz 7.1 innings. Orozco has allowed 33 hits, 31 runs (26 earned), 13 walks and tallied 10 strikeouts with Munoz allowing 16 hits, 16 runs (all earned), 18 walks and three strikeouts.
- The Miners are ranked fourth in double plays per game (0.61), 42nd in home runs per game (1.00), 63rd in slugging percentage (.455) and 82nd in fielding percentage (.965). Cortney Smith is 65th in home runs per game (0.28) and Pamala Baber is 54th in hit-by-pitches per game (0.26). Kacey Duffield is 76th in on-base percentage.

## STAT COMPARISON

		UNM ENTERING MW PLAY	
UNM	UTEP	2018	2019
BA	.242	.283	.240
R	159	154	.366
H	234	260	.343
2B	46	42	.86
3B	8	4	145
HR	27	36	24
RBI	149	148	5
BB	148	98	14
SO	300	206	221
ERA	5.94	7.99	81
SO	161	133	90
BB	157	242	85
H	320	286	179
R	254	273	6.70
ER	199	242	75
DP	5	22	93
FLD%	.945	.965	88

## MOUNTAIN WEST INFORMATION

### PRESEASON MOUNTAIN WEST POLL

Rk.	Team (1st-Place Votes)	Points
1.	Boise State (8)	64
2.	Fresno State (1)	57
3.	San José State	50
4.	UNLV	35
5.	San Diego State	31
6.	Nevada	29
7.	Colorado State	26
8.	Utah State	21
9.	New Mexico	11

## MOUNTAIN WEST PLAYERS OF THE WEEK

### 2019 MW Softball Player of the Week

- Feb. 12 – Lauren Tycksen, Jr., CF, UNLV
- Feb. 19 – Jessica McKay, Jr., OF, Boise State
- Feb. 26 – Ashley Ruiz, Jr., 1B, Colorado State
- March 5 – Lauren Buchanan, Sr., C, Colorado State
- March 12 – Amber Nelson, Sr., C, Colorado State
- March 19 – Corina Gamboa, Jr., 3B, Colorado State
- March 26 – Rebekah Cervantes, Sr., INF, Boise State
- April 2 – Mia Trejo, So., 1B, UNLV

### 2019 MW Softball Pitcher of the Week

- Feb. 12 – Hailey Dolcini, So., RHP, Fresno State
- Feb. 19 – Gianna Mancha, So., RHP, Boise State
- Feb. 26 – Jessica Jarecki, Jr., RHP, Colorado State
- March 5 – Danielle Lung, Fr., RHP, Fresno State
- March 12 – Jenny Bressler, Fr., RHP, UNLV
- March 19 – Jenny Bressler, Fr., RHP, UNLV
- March 26 – Jessica Jarecki, Jr., RHP, Colorado State
- April 2 – Hailey Dolcini, So., RHP, Fresno State

## ESPN.COM/USA SOFTBALL COLLEGIATE TOP 25

WEEK 8 • APRIL 2

Rk.	Team (1st Votes)	Rec	Pts.	Prev.
1.	UCLA (20)	32-1	500	1
2.	Oklahoma	32-2	476	2
3.	Florida State	35-3	457	3
4.	Alabama	36-2	415	4
5.	LSU	31-7	402	5
6.	Washington	29-6	397	8
7.	Tennessee	27-6	384	6
8.	Arizona	27-7	364	9
9.	Florida	29-8	316	7
10.	Louisiana	29-4	312	11
11.	Texas	31-8	287	10
12.	Minnesota	25-9	262	15
13.	Oklahoma State	26-10	261	16
14.	Auburn	30-7	210	12
15.	Texas Tech	29-6	189	14
16.	Georgia	28-10	172	18
17.	Ole Miss	24-9	164	22
18.	James Madison	23-6	148	21
19.	Arizona State	25-11	145	13
T20	Michigan	23-10	115	23
T20	Virginia Tech	30-5	115	19
22.	Arkansas	25-11	106	20
23.	Kentucky	22-13	80	17
24.	Stanford	25-5	52	24
25.	Northwestern	25-7	40	RV

Dropped Out: South Carolina (25)

New to Poll: Northwestern (RV)

Others receiving votes: Wisconsin (33), South Carolina (28), Missouri (16), Tulsa (15), UCF (11), Indiana (8), Ohio State (6), Colorado State (4), South Florida (4), Illinois (2), Florida Gulf Coast (1), UNLV (1), Western Kentucky (1)

## USA TODAY/ NFCA COACHES TOP 25 POLL

WEEK 8 • APRIL 1

Rk.	Team (1st Votes)	Pts.	Rec	Prev.
1	UCLA (32)	800	32-1	1
2	Oklahoma	763	32-2	2
3	Florida State	737	35-3	3
4	Alabama	693	36-2	4
5	Tennessee	660	27-6	5
6	Washington	650	29-6	7
7	LSU	575	31-7	8
8	Florida	565	29-8	6
9	Arizona	544	27-7	11
10	Louisiana	532	29-4	10
11	Texas	469	31-8	9
12	Georgia	416	28-10	12
13	Auburn	349	30-7	14
14	Arkansas	330	25-11	13
15	Texas Tech	321	29-6	15
16	Oklahoma State	282	26-10	21
17	South Carolina	276	25-10	16
18	Ole Miss	254	24-9	22
19	Minnesota	250	25-9	19
20	James Madison	216	23-6	20
21	Arizona State	174	25-11	17
22	Kentucky	152	22-13	18
23	Michigan	99	23-10	23
24	Virginia Tech	84	30-5	24
25	Wisconsin	76	27-5	25

Receiving Votes: Northwestern (29), Colorado State (28), Stanford (24), Missouri (15), Western Kentucky (13), Ohio State (6), Boise State (5), Indiana (5), Illinois (4), Tulsa (2), Liberty (1), UNLV (1).

## BY THE NUMBERS

Statistic	All Games	MW	MW Games
Batting Average:	.242	9th	.247 9th
Slugging Percentage:	.390	7th	.395 T-6th
On Base Percentage:	.350	8th	.345 9th
Runs Scored:	159	T-7th	45 6th
Hits:	234	9th	75 7th
RBI:	149	7th	43 6th
HRs:	27	3rd	9 T-5th
Total Bases:	377	8th	120 7th
Walks:	148	1st	41 2nd
ERA:	5.94	8th	8.26 9th
Opp. Batting Avg.:	.315	9th	.347 9th
Batters Struck Out:	161	4th	42 6th
Hits Allowed:	320	9th	116 9th
Runs Allowed:	254	9th	105 9th
Earned Runs Allowed:	199	9th	85 9th
Walks Allowed:	157	9th	47 9th
Home Runs Allowed:	58	9th	25 9th
Fielding Percentage:	.945	9th	.935 9th
Putouts:	704	4th	216 4th
Fielding Double Plays:	5	T-8th	2 8th
Caught Stealing By:	9	2nd	2 T-1st

## MOUNTAIN WEST STANDINGS

School	Conf.	Conf. %	Overall	Overall %	Streak
Colorado State	11-1	0.917	29-5	0.853	L1
San José State	6-3	0.667	26-12	0.684	W1
Nevada	6-3	0.667	21-14	0.600	L2
UNLV	7-4	0.636	26-9	0.743	L2
San Diego State	5-7	0.417	17-20	0.459	W2
Utah State	4-7	0.364	13-19	0.406	W1
Boise State	3-6	0.333	23-8	0.742	L3
Fresno State	3-6	0.333	24-12	0.667	W2
New Mexico	2-10	0.167	11-28	0.282	L1

# THE 2019 NEW MEXICO LOBOS

## NUMERICAL ROSTER

#	NAME	POS	HT	YR	B/T	HOMETOWN (PREVIOUS SCHOOL)
00	Andrea Howard	OF	5-6	So.	L/L	Albuquerque, N.M. (La Cueva HS)
2	Maggie Buckholz	UT	5-7	Fr.	L/R	Silverton, Ore. (Silverton HS)
3	Taylor Jones	IF	5-7	So.	R/R	Albuquerque, N.M. (La Cueva HS)
4	D'Andra DeFlora	OF	5-2	Sr.	R/R	Fresno, Texas (L.V. Hightower HS)
5	Sydney Broderick	C	5-4	So.	R/R	Mesa, Ariz. (Desert Ridge HS)
7	MacKenzie Peterson	OF	5-9	Fr.	R/R	Gilbert, Ariz. (Phoenix College)
8	Bailey Klitzke	P/1B	5-8	Jr.	L/L	Apache Junction, Ariz. (Wichita State)
9	Kasey Halleen	IF	5-6	Sr.	R/R	Torrance, Calif. (Palos Verdes HS)
10	Cameryn O'Grady	SS	5-6	Jr.	L/R	Orange, Calif. (El Modena HS)
12	Daryn Haslam	IF	5-4	Fr.	R/R	Cedar Park, Texas (Vista Ridge HS)
13	Kennedy Ferguson	P	5-6	Fr.	R/R	Camas, Wash. (Camas HS)
16	Leslie Romero	OF	5-4	Fr.	R/R	Gonzales, Calif. (Salinas HS)
22	Monica Salas	IF	5-3	Sr.	R/R	Goleta, Calif. (Santa Barbara CC)
23	Emma Steltzer	P	5-6	Fr.	R/R	Manchester, Mo. (Parkway South HS)
24	Skylar Jenkins	OF	5-5	Fr.	R/R	Lawrenceville, Ga. (Buford HS)
32	Lauren Wilmert	C/1B	5-10	Jr.	R/R	Albuquerque, N.M. (Volcano Vista HS)
44	Aleyah Wilbon	OF	5-2	Sr.	L/R	Fontana, Calif. (Mt. San Antonio College)
66	Sydney Townes	OF	5-6	Sr.	L/R	Lompoc, Calif. (Cabrillo HS)
99	Kiana Spencer	P	5-6	Jr.	L/L	Gallup, N.M. (Yavapai College)

## ALPHABETICAL ROSTER

#	NAME	POS	HT	YR	B/T	HOMETOWN (PREVIOUS SCHOOL)
5	Sydney Broderick	C	5-4	So.	R/R	Mesa, Ariz. (Desert Ridge HS)
2	Maggie Buckholz	UT	5-7	Fr.	L/R	Silverton, Ore. (Silverton HS)
4	D'Andra DeFlora	OF	5-2	Sr.	R/R	Fresno, Texas (L.V. Hightower HS)
13	Kennedy Ferguson	P	5-6	Fr.	R/R	Camas, Wash. (Camas HS)
9	Kasey Halleen	IF	5-6	Sr.	R/R	Torrance, Calif. (Palos Verdes HS)
12	Daryn Haslam	IF	5-4	Fr.	R/R	Cedar Park, Texas (Vista Ridge HS)
00	Andrea Howard	OF	5-6	So.	L/L	Albuquerque, N.M. (La Cueva HS)
24	Skylar Jenkins	OF	5-5	Fr.	R/R	Lawrenceville, Ga. (Buford HS)
3	Taylor Jones	IF	5-7	So.	R/R	Albuquerque, N.M. (La Cueva HS)
8	Bailey Klitzke	P/1B	5-8	Jr.	L/L	Apache Junction, Ariz. (Wichita State)
10	Cameryn O'Grady	SS	5-6	Jr.	L/R	Orange, Calif. (El Modena HS)
7	MacKenzie Peterson	OF	5-9	Fr.	R/R	Gilbert, Ariz. (Phoenix College)
16	Leslie Romero	OF	5-4	Fr.	R/R	Gonzales, Calif. (Salinas HS)
22	Monica Salas	IF	5-3	Sr.	R/R	Goleta, Calif. (Santa Barbara CC)
99	Kiana Spencer	P	5-6	Jr.	L/L	Gallup, N.M. (Yavapai College)
23	Emma Steltzer	P	5-6	Fr.	R/R	Manchester, Mo. (Parkway South HS)
66	Sydney Townes	OF	5-6	Sr.	L/R	Lompoc, Calif. (Cabrillo HS)
44	Aleyah Wilbon	OF	5-3	Sr.	L/R	Fontana, Calif. (Mt. San Antonio College)
32	Lauren Wilmert	C/1B	5-10	Jr.	R/R	Albuquerque, N.M. (Volcano Vista HS)

## RETURNERS (10) - 2018 SEASON STATS

No.	Name	Pos.	Cl.	Avg.	GP-GS	AB	R	H	2B	3B	HR	RBI	SLG%	FLD%
00	Andrea Howard	UT	Fr.	.313	51-50	131	20	41	6	1	7	18	.534	.987
3	Taylor Jones	IF	Fr.	.216	24-11	37	6	8	3	0	1	4	.378	.875
4	D'Andra DeFlora	OF	Jr.	.214	53-53	145	22	31	3	0	7	21	.379	.969
5	Sydney Briderick	C	So.	.230	42-36	87	6	20	2	0	0	5	.253	.956
9	Kasey Halleen	IF	Jr.	.189	49-49	127	13	24	5	0	0	10	.228	.920
10	Cameryn O'Grady	SS	So.	.301	53-52	143	31	43	12	4	4	26	.524	.924
22	Monica Salas	IF	Jr.	.238	45-35	101	9	24	3	0	2	15	.327	.919
32	Lauren Wilmert	C	So.	.180	32-20	61	5	11	1	0	1	11	.246	.961
44	Aleyah Wilbon	OF	Jr.	.222	38-25	63	13	14	1	0	0	2	.238	.964
66	Sydney Townes	OF	Jr.	.186	45-44	102	16	19	2	1	0	4	.225	.938

## KEY PLAYERS LOST (3) - 2018 SEASON STATS

No.	Name	Pos.	Avg.	GP-GS	AB	R	H	2B	3B	HR	RBI	SLG%	FLD%
34	Chelsea Johnson	IF	.342	52-51	155	22	53	7	1	10	40	.594	.000
6	Sam Oliver	OF	.191	36-22	47	9	9	1	0	0	2	.213	.953
8	Kristyn Whitley	IF	.188	28-21	48	3	9	3	0	0	4	.250	.941

## PITCHERS LOST (4) - 2018 SEASON STATS

No.	Name	Cl.	ERA	W-L	APP	GS	CG	SHO	SV	IP	SO	BF
16	Jensen Main	So.	4.73	8-20	37	29	13	0/0	0	162.2	74	848
23	Krissy Fortner	Sr.	6.05	3-9	27	7	2	0/0	2	78.2	44	395
24	Alexis Ruel	Fr.	9.60	2-7	19	13	5	0/0	0	62.0	14	361
35	Marissa Bethke	R-Jr.	11.12	1-3	12	4	1	0/0	0	22.2	9	123

## NEWCOMERS (9)

No.	Name	Cl.
2	Maggie Buckholz	Fr.
7	MacKenzie Peterson	Fr.
8	Bailey Klitzke	Jr.
12	Daryn Haslam	Fr.
13	Kennedy Ferguson	Fr.
16	Leslie Romero	Fr.
23	Emma Steltzer	Fr.

## PRONUNCIATION GUIDE

00	ANDREA Howard	on-DRAY-uh
4	D'ANDRA DEFLORA	dee-ON-druh Duh-FLOOR-uh
9	Kasey HALLEEN	Huh-Lean
22	Monica SALAS	SAHL-us
44	ALEYAH WILBON	uh-LEE-uh Will-BAHN
66	Sydney TOWNES	TOWNS
	Paula CONGLETON	CONGLE-ton
	Tyler HEIL	HIGHL

## BY ELIGIBILITY

### Seniors (5)

4	D'Andra DeFlora	OF
9	Kasey Halleen	IF
22	Monica Salas	IF
44	Aleyah Wilbon	OF
66	Sydney Townes	OF

### Juniors (4)

8	Bailey Klitzke	P/1B
10	Cameryn O'Grady	SS
99	Kiana Spencer	P
32	Lauren Wilmert	C/1B

### Sophomores (3)

00	Andrea Howard	OF
3	Taylor Jones	IF
5	Sydney Broderick	C

### Freshmen (7)

2	Maggie Buckholz	UT
13	Kennedy Ferguson	P
12	Daryn Haslam	IF
24	Skylar Jenkins	OF
7	MacKenzie Peterson	OF
16	Leslie Romero	OF
23	Emma Steltzer	OF

## HOME STATE

### Arizona (3)

5	Sydney Broderick	C
8	Bailey Klitzke	P
7	MacKenzie Peterson	OF

### California (6)

9	Kasey Halleen	IF
10	Cameryn O'Grady	SS
16	Leslie Romero	OF
22	Monica Salas	IF
44	Aleyah Wilbon	OF
66	Sydney Townes	OF

### Georgia (1)

24	Skylar Jenkins	OF
----	----------------	----

### Missouri (1)

23	Emma Steltzer	OF
----	---------------	----

### New Mexico (4)

00	Andrea Howard	OF
3	Taylor Jones	IF
99	Kiana Spencer	P
32	Lauren Wilmert	C/1B

### Oregon (1)

2	Maggie Buckholz	UT
---	-----------------	----

### Texas (2)

4	D'Andra DeFlora	OF
12	Daryn Haslam	IF

### Washington (1)

13	Kennedy Ferguson	P
----	------------------	---



# Paula Congleton

5th Head Coach in UNM Program History  
Record at UNM: 25-67

**NOTEWORTHY :**

- Named the fifth head coach in program history on June 20, 2017
- Enters her second season at her alma mater
- Earned her 300th career victory on April 17, 2014
- Earned her 350th career victory on April 22, 2017
- Earned her 400th career victory on May 4, 2018
- Earned her first win at UNM against St. Mary's on Feb. 9, 2018 (4-1)

## **MORE NOTES ON COACH CONGLETON**

- Spent 19 seasons at Santa Barbara City College with the Vaqueros molding the program into one of the elite programs in the WSC
- Three-time WSC Gold Division Coach of the Year
- 2011 Southern Cal Coaching Staff of the Year
- 2011 NFCA National Coaching Staff of the Year
- Led the Vaqueros to four Southern Cal Regional appearances and one trip to the Southern Cal Super Regional
- Guided the Vaqueros to their greatest success of the program, winning a Southern Cal Regional series and advancing to the Super Regional for the first time ever in 2016
- Led the 2016 SBCC squad to the second-most games in program history (30-14)
- The 2016 team finished third WSC Gold Division
- In 2011, led the Vaqueros to a program-record 31 wins (31-7 overall), leading the team to a WSC title and the Southern Cal Regional
- Four-time Scholar Athlete first baseman for the Lobos (3.89 GPA)
- Three-time All-American at New Mexico
- Received her Doctorate in educational administration in 2009
- Served as a full-time professor at SBCC teaching health, weight training and kinesiology
- Served as Associate Athletic Director and Coordinator of the Academic Achievement Zone for student-athletes at SBCC

## **COACHING EXPERIENCE**

**Head Coach:**

2017-Present - New Mexico (25-67)  
1998-2017 - Santa Barbara City Coll. (Calif.) (354-322)  
1996-1998 - Cal. State University Eastbay (33-77)

**Graduate Assistant:**

1986-1988 - New Mexico

Overall NCAA DI record (Second Season): 25-67  
Overall NCAA record (Fourth Season): 58-144  
Overall record (23 years): 412-466 (.469)

## **ALMA MATER**

New Mexico (1984)

## **TWITTER**

Follow @CoachCongleton



# 2019 NEW MEXICO OVERALL STATISTICS

Record: 11-28 Home: 2-6 Away: 3-12 Neutral: 6-10 MW: 2-10

Player	avg	gp-gs	ab	r	h	2b	3b	hr	rbi	tb	slg%	bb	hp	so	gdp	ob%	sf	sh	sb-att	po	a	e	fld%
44 WILBON, Aleyah	.459	30-11	37	13	17	0	0	0	1	17	.459	2	0	11	0	.487	0	1	1-2	13	0	0	1.000
10 O'GRADY, Cameryn	.352	39-39	108	27	38	12	1	5	23	67	.620	24	1	21	0	.474	0	0	0-0	41	59	12	.893
8 KLITZKE, Bailey	.337	33-31	83	8	28	5	3	1	22	42	.506	11	0	9	1	.402	3	0	2-2	1	3	0	1.000
32 WILMERT, Lauren	.270	39-39	111	21	30	9	1	6	31	59	.532	12	1	31	1	.341	2	0	0-0	194	14	8	.963
22 SALAS, Monica	.239	36-36	92	11	22	3	0	4	15	37	.402	13	1	30	4	.340	0	0	1-1	24	39	8	.887
12 HASLAM, Daryn	.235	24-15	51	5	12	0	0	3	7	21	.412	5	0	19	1	.304	0	0	0-0	18	23	4	.911
2 BUCKHOLZ, Maggie	.218	26-22	55	9	12	1	1	2	17	21	.382	17	1	27	0	.411	0	0	0-1	23	0	1	.958
4 DeFLORA, D'Andra	.216	39-39	111	25	24	4	0	1	8	31	.279	12	9	43	1	.341	0	0	1-1	56	1	1	.983
0 HOWARD, Andrea	.194	39-39	108	22	21	8	2	3	15	42	.389	21	1	37	1	.331	0	1	1-1	81	3	3	.966
7 PETERSON, MacKenzie	.185	17-10	27	2	5	0	0	0	1	5	.185	6	1	5	0	.353	0	0	0-0	60	1	4	.938
9 HALLEEN, Kasey	.154	20-17	39	3	6	1	0	0	2	7	.179	3	0	14	1	.214	0	1	0-0	28	24	4	.929
3 JONES, Taylor	.152	31-24	66	6	10	0	0	1	4	13	.197	8	0	26	0	.243	0	0	0-0	79	33	4	.966
66 TOWNES, Sydney	.143	24-10	28	4	4	1	0	0	0	5	.179	7	0	11	0	.314	0	0	1-1	16	0	1	.941
5 BRODERICK, Sydney	.125	21-18	40	3	5	2	0	1	3	10	.250	6	0	14	1	.239	0	0	1-1	66	12	2	.975
16 ROMERO, Leslie	.000	8-1	9	0	0	0	0	0	0	0	.000	0	0	2	0	.000	0	0	0-0	2	0	0	1.000
23 STELTZER, Emma	.000	3-0	2	0	0	0	0	0	0	0	.000	1	0	0	0	.333	0	0	0-0	0	1	0	1.000
99 SPENCER, Kiana	.000	1-1	0	0	0	0	0	0	0	0	.000	0	0	0	0	.000	0	0	0-0	0	8	2	.800
13 FERGUSON, Kennedy	.000	4-4	0	0	0	0	0	0	0	0	.000	0	0	0	0	.000	0	0	0-0	2	21	1	.958
Totals	.242	39	967	159	234	46	8	27	149	377	.390	148	15	300	11	.350	5	3	8-10	704	242	55	.945
Opponents	.315	39	1016	254	320	57	8	58	230	567	.558	157	24	161	1	.416	6	19	34-43	741	186	34	.965

LOB - Team (240), Opp (266). DPs turned - Team (5), Opp (13). IBB - Team (2), HOWARD 1, O'GRADY 1.

## (All games Sorted by Earned run avg)

Player	era	w-l	app	gs	cg	sho	sv	ip	h	r	er	bb	so	2b	3b	hr	b/avg	wp	hp	bk	sfa	sha
13 FERGUSON, Kennedy	4.77	4-12	27	18	9	1/0	0	108.2	150	104	74	46	68	20	1	25	.316	5	6	0	4	10
99 SPENCER, Kiana	5.55	5-12	24	16	9	2/0	1	92.0	116	87	73	61	60	26	5	20	.301	7	13	0	2	8
23 STELTZER, Emma	7.30	0-0	6	0	0	0/0	0	7.2	11	9	8	4	0	2	0	4	.324	0	1	0	0	0
8 KLITZKE, Bailey	11.08	2-4	15	5	1	0/0	0	24.0	36	46	38	42	32	8	2	7	.333	12	4	0	0	1
9 HALLEEN, Kasey	15.75	0-0	1	0	0	0/0	0	1.1	3	3	3	2	1	0	0	1	.429	0	0	0	0	0
44 WILBON, Aleyah	28.00	0-0	1	0	0	0/0	0	1.0	4	5	4	2	0	1	0	1	.500	1	0	0	0	0
Totals	5.94	11-28	39	39	19	3/0	1	234.2	320	254	199	157	161	57	8	58	.315	25	24	0	6	19
Opponents	4.05	28-11	39	39	12	4/2	5	247.0	234	159	143	148	300	46	8	27	.242	18	15	0	5	3

PB - Team (12), BRODERICK 7, WILMERT 5, Opp (8). SBA/ATT - WILMERT (19-24), FERGUSON (16-21), BRODERICK (15-19), SPENCER (10-11), KLITZKE (6-9), STELTZER (2-2).



# 2019 NEW MEXICO MOUNTAIN WEST STATISTICS

Record: 2-10 Home: 0-6 Away: 2-4 MW: 2-10

Player	avg	gp-gs	ab	r	h	2b	3b	hr	rbi	tb	slg%	bb	hp	so	gdp	ob%	sf	sh	sb-att	po	a	e	fld%
44 WILBON, Aleyah	.556	8-6	18	5	10	0	0	0	0	10	.556	1	0	4	0	.579	0	1	0-0	8	0	0	1.000
32 WILMERT, Lauren	.368	12-12	38	6	14	3	0	3	13	26	.684	2	0	12	0	.400	0	0	0-0	55	2	2	.966
7 PETERSON, MacKenzie	.333	4-3	6	0	2	0	0	0	1	2	.333	1	0	1	0	.429	0	0	0-0	16	0	3	.842
8 KLITZKE, Bailey	.323	12-11	31	4	10	2	1	1	8	17	.548	4	0	3	0	.389	1	0	0-0	0	0	0	.000
10 O'GRADY, Cameryn	.313	12-12	32	9	10	3	0	2	8	19	.594	9	0	10	0	.463	0	0	0-0	12	26	3	.927
22 SALAS, Monica	.240	11-11	25	2	6	1	0	1	4	10	.400	5	1	11	1	.387	0	0	0-0	8	13	3	.875
3 JONES, Taylor	.200	10-10	30	2	6	0	0	1	3	9	.300	0	0	10	0	.200	0	0	0-0	26	18	3	.936
0 HOWARD, Andrea	.189	12-12	37	8	7	2	1	1	5	14	.378	6	0	11	1	.302	0	0	0-0	25	0	1	.962
4 DeFLORA, D'Andra	.171	12-12	35	7	6	1	0	0	0	7	.200	4	4	13	0	.326	0	0	0-0	19	0	1	.950
5 BRODERICK, Sydney	.154	6-6	13	0	2	2	0	0	1	4	.308	4	0	4	0	.353	0	0	1-1	23	4	2	.931
9 HALLEEN, Kasey	.143	4-2	7	0	1	0	0	0	0	1	.143	0	0	3	1	.143	0	0	0-0	5	5	1	.909
66 TOWNES, Sydney	.091	8-6	11	2	1	0	0	0	0	1	.091	5	0	3	0	.375	0	0	0-0	14	0	0	1.000
12 HASLAM, Daryn	.000	7-4	15	0	0	0	0	0	0	0	.000	0	0	7	1	.000	0	0	0-0	5	6	2	.846
2 BUCKHOLZ, Maggie	.000	3-1	4	0	0	0	0	0	0	0	.000	0	0	3	0	.000	0	0	0-0	0	0	0	.000
16 ROMERO, Leslie	.000	2-0	2	0	0	0	0	0	0	0	.000	0	0	1	0	.000	0	0	0-0	0	0	0	.000
23 STELTZER, Emma	.000	0-0	0	0	0	0	0	0	0	0	.000	0	0	0	0	.000	0	0	0-0	0	1	0	1.000
13 FERGUSON, Kennedy	.000	0-0	0	0	0	0	0	0	0	0	.000	0	0	0	0	.000	0	0	0-0	0	8	0	1.000
99 SPENCER, Kiana	.000	1-1	0	0	0	0	0	0	0	0	.000	0	0	0	0	.000	0	0	0-0	0	2	0	1.000
Totals	.247	12	304	45	75	14	2	9	43	120	.395	41	5	96	4	.345	1	1	1-1	216	85	21	.935
Opponents	.347	12	334	105	116	27	3	25	95	224	.671	47	10	42	1	.439	3	4	10-12	228	55	11	.963

LOB - Team (79), Opp (77). DPs turned - Team (2), Opp (4).

### (MW games only Sorted by Earned run avg)

Player	era	w-l	app	gs	cg	sho	sv	ip	h	r	er	bb	so	2b	3b	hr	b/avg	wp	hp	bk	sfa	sha
13 FERGUSON, Kennedy	7.52	2-3	9	6	1	0/0	0	27.0	45	35	29	10	10	9	0	10	.360	2	1	0	2	3
99 SPENCER, Kiana	7.81	0-5	9	4	1	0/0	1	28.2	41	39	32	20	21	12	3	7	.320	5	6	0	1	1
23 STELTZER, Emma	8.40	0-0	4	0	0	0/0	0	6.2	11	9	8	4	0	2	0	4	.355	0	1	0	0	0
8 KLITZKE, Bailey	9.55	0-2	6	2	0	0/0	0	7.1	12	14	10	9	10	3	0	2	.343	2	2	0	0	0
9 HALLEEN, Kasey	15.75	0-0	1	0	0	0/0	0	1.1	3	3	3	2	1	0	0	1	.429	0	0	0	0	0
44 WILBON, Aleyah	28.00	0-0	1	0	0	0/0	0	1.0	4	5	4	2	0	1	0	1	.500	1	0	0	0	0
Totals	8.26	2-10	12	12	2	0/0	1	72.0	116	105	85	47	42	27	3	25	.347	10	10	0	3	4
Opponents	3.87	10-2	12	12	5	1/0	2	76.0	75	45	42	41	96	14	2	9	.247	3	5	0	1	1

PB - Team (3), BRODERICK 2, WILMERT 1, Opp (1). SBA/ATT - FERGUSON (5-6), WILMERT (5-6), BRODERICK (5-6), SPENCER (3-3), STELTZER (2-2), KLITZKE (0-1).

# 2019 NEW MEXICO GAME-BY-GAME STATISTICS

Date	Opponent	ab	r	h	rbi	2b	3b	hr	tb	bb	ibb	sb	cs	hbp	sac	sf	gdp	k	po	a	e	lob	avg
Feb 08	vs UTEP	26	15	9	15	0	0	1	12	16	0	0	1	2	0	0	2	7	21	8	0	8	.346
Feb 09	vs Creighton	20	8	9	8	1	1	1	15	4	1	0	0	0	0	0	1	8	15	2	0	4	.391
Feb 09	at New Mexico State	29	8	10	7	3	0	2	19	3	0	0	0	0	0	2	0	8	18	3	2	5	.373
Feb 15	vs Alabama	24	0	4	0	1	0	0	5	2	0	0	0	1	0	0	0	4	21	10	0	6	.323
Feb 15	vs Cal State Fullerton	26	2	5	2	2	0	0	7	9	0	0	0	0	0	0	0	10	18	7	3	12	.296
Feb 16	at Arizona	22	1	4	0	0	0	0	4	1	0	0	0	0	0	0	0	7	12	3	2	7	.279
Feb 16	vs Illinois-Chicago	27	13	11	11	2	1	1	18	8	0	0	0	0	0	0	0	2	18	9	2	5	.299
Feb 17	vs South Florida	28	1	4	1	1	0	0	5	4	0	0	0	0	0	0	0	12	22	15	2	8	.277
Feb 20	at Hawaii	25	1	3	1	0	0	0	3	1	0	0	0	1	0	0	1	9	18	3	1	5	.260
Feb 21	vs DePaul	25	5	5	5	0	0	3	14	4	0	0	0	0	0	0	1	8	21	7	2	3	.254
Feb 22	vs Canisius	26	10	11	9	1	1	2	20	5	0	1	0	0	0	0	0	2	15	6	0	6	.270
Feb 22	at Hawaii	27	2	7	2	2	0	1	12	2	0	0	0	0	0	0	1	4	18	6	3	6	.269
Feb 23	at Hawaii	22	3	3	3	2	0	1	8	3	0	0	1	0	1	0	0	4	21	2	0	2	.260
Feb 23	vs DePaul	26	2	4	1	2	0	0	6	5	0	0	0	0	0	0	0	5	18	7	1	8	.252
Feb 28	vs Florida	27	0	4	0	1	0	0	5	2	1	0	0	0	0	0	1	16	21	7	0	6	.245
Mar 01	vs Loyola Marymount	26	2	5	2	1	0	0	6	3	0	1	0	1	0	0	0	10	21	3	0	7	.241
Mar 01	vs Tennessee	19	1	4	1	0	0	1	7	2	0	0	0	0	0	0	0	9	15	4	1	5	.240
Mar 03	vs UCONN	26	1	6	1	1	0	0	7	4	0	0	0	0	0	1	0	9	18	6	0	9	.239
Mar 03	at Cal State Fullerton	16	1	1	1	0	0	1	4	2	0	0	0	0	0	0	0	7	12	5	2	2	.233
Mar 08	vs Oregon State	29	6	10	6	2	0	1	15	2	0	0	0	0	0	0	0	12	21	9	1	6	.240
Mar 08	vs Western Carolina	21	10	7	9	2	0	1	12	4	0	1	0	1	0	0	0	2	15	1	3	1	.244
Mar 09	vs Oregon State	29	3	6	3	2	1	0	10	6	0	0	0	1	0	0	0	11	21	6	2	12	.242
Mar 10	at Loyola Marymount	28	2	6	2	1	0	0	7	4	0	1	0	1	0	1	0	11	18	9	1	11	.240
*Mar 15	at San Diego State	26	3	6	3	0	0	0	6	5	0	0	0	1	0	0	0	14	21	13	1	8	.240
*Mar 16	at San Diego State	29	8	8	8	1	0	1	12	5	0	0	0	1	0	0	1	7	18	6	2	6	.242
*Mar 17	at San Diego State	31	3	8	3	0	2	1	15	3	0	0	0	0	0	0	0	3	18	6	1	10	.242
*Mar 22	COLORADO STATE	29	7	9	7	2	0	2	17	5	0	0	0	0	0	1	1	8	21	8	3	7	.245
*Mar 23	COLORADO STATE	19	1	3	1	2	0	0	5	4	0	0	0	0	0	0	0	7	15	6	0	7	.243
*Mar 24	COLORADO STATE	22	3	7	3	2	0	0	9	1	0	0	0	0	0	0	0	7	15	4	3	5	.245
Mar 26	NORTH DAKOTA	24	7	6	7	1	2	0	11	9	0	1	0	0	0	0	0	4	21	6	1	8	.245
Mar 26	NORTH DAKOTA	26	7	10	7	2	0	1	15	1	0	2	0	1	1	0	0	6	21	4	1	4	.250
*Mar 29	NEVADA	22	1	2	1	1	0	0	3	2	0	0	0	0	1	0	0	7	21	8	1	3	.246
*Mar 30	NEVADA	29	6	9	6	0	0	2	15	2	0	0	0	0	0	0	1	15	21	7	2	4	.248
*Mar 31	NEVADA	17	1	1	1	0	0	1	4	2	0	0	0	0	0	0	0	7	15	10	4	3	.244
Apr 02	at New Mexico State	19	0	1	0	1	0	0	2	1	0	0	0	1	0	0	0	13	16	2	3	3	.240
Apr 02	at New Mexico State	20	3	4	2	1	0	1	8	0	0	0	0	0	0	0	0	4	12	7	1	2	.239
*Apr 05	at Utah State	30	6	9	4	1	0	1	13	5	0	1	0	0	0	0	0	7	18	7	2	8	.241
*Apr 06	at Utah State	30	6	9	6	4	0	1	16	6	0	0	0	3	0	0	1	10	21	6	0	12	.243
*Apr 07	at Utah State	20	0	4	0	1	0	0	5	1	0	0	0	0	0	0	0	4	12	4	2	6	.242
Totals		967	159	234	149	46	8	27	377	148	2	8	2	15	3	5	11	300	704	242	55	240	.242

# 2019 NEW MEXICO GAME-BY-GAME STATISTICS

Date	Opponent	ip	h	r	er	bb	so	2b	3b	hr	wp	bk	hbp	dp	ibb	score	w-l	sv	era
Feb 08	vs UTEP	7.0	7	6	6	7	10	2	0	2	2	0	1	0	0	15-6	1-0	0	6.00
Feb 09	vs Creighton	5.0	3	0	0	5	2	0	0	0	0	0	1	0	0	8-0	2-0	0	3.50
Feb 09	at New Mexico State	6.0	7	9	7	4	6	1	0	4	3	0	2	0	0	8-9	2-1	0	5.06
Feb 15	vs Alabama	7.0	6	1	1	3	0	1	0	0	0	0	0	0	0	0-1	2-2	0	3.92
Feb 15	vs Cal State Fullerton	6.0	9	6	4	2	3	1	0	2	1	0	1	0	0	2-6	2-3	0	4.06
Feb 16	at Arizona	4.0	14	15	14	5	1	3	0	5	0	0	1	0	0	1-15	2-4	0	6.40
Feb 16	vs Illinois-Chicago	6.0	7	5	4	5	8	1	2	0	2	0	1	0	0	13-5	3-4	0	6.15
Feb 17	vs South Florida	7.1	6	2	0	2	6	0	0	0	0	0	0	1	0	1-2	3-5	0	5.21
Feb 20	at Hawaii	6.0	5	2	1	0	4	1	0	1	0	0	1	0	0	1-2	3-6	0	4.77
Feb 21	vs DePaul	7.0	12	9	7	9	3	1	0	1	2	0	1	0	0	5-9	3-7	0	5.02
Feb 22	vs Canisius	5.0	4	0	0	1	4	0	0	0	0	0	1	0	0	10-0	4-7	0	4.64
Feb 22	at Hawaii	6.0	4	3	2	2	3	1	0	0	0	0	1	0	0	2-3	4-8	0	4.45
Feb 23	at Hawaii	7.0	4	2	2	4	6	0	0	1	0	0	0	0	0	3-2	5-8	0	4.24
Feb 23	vs DePaul	6.0	8	4	4	3	3	3	0	1	0	0	0	1	0	2-4	5-9	0	4.27
Feb 28	vs Florida	7.0	5	1	0	1	5	1	0	0	0	0	0	0	0	0-1	5-10	0	3.94
Mar 01	vs Loyola Marymount	7.0	7	4	4	8	7	0	1	0	0	0	0	0	0	2-4	5-11	0	3.95
Mar 01	vs Tennessee	5.0	18	15	11	9	1	2	0	4	0	0	0	0	0	1-15	5-12	0	4.50
Mar 03	vs UCONN	6.0	8	2	2	1	6	0	0	1	0	0	0	0	0	1-2	5-13	0	4.38
Mar 03	at Cal State Fullerton	4.0	13	19	14	10	2	1	0	5	1	0	0	0	0	1-19	5-14	0	5.08
Mar 08	vs Oregon State	7.0	9	5	3	4	2	3	1	0	0	0	0	0	0	6-5	6-14	0	4.96
Mar 08	vs Western Carolina	5.0	2	0	0	0	3	0	0	0	0	0	0	1	0	10-0	7-14	0	4.77
Mar 09	vs Oregon State	7.0	8	5	3	1	3	0	0	1	1	0	0	0	0	3-5	7-15	0	4.67
Mar 10	at Loyola Marymount	6.0	5	6	6	7	5	1	0	1	1	0	1	0	0	2-6	7-16	0	4.77
*Mar 15	at San Diego State	7.0	7	1	0	0	1	1	0	0	0	0	0	0	0	3-1	8-16	0	4.54
*Mar 16	at San Diego State	6.0	10	9	7	4	5	2	0	2	2	0	1	0	0	8-9	8-17	0	4.69
*Mar 17	at San Diego State	6.0	7	4	4	4	5	2	0	0	1	0	1	0	0	3-4	8-18	0	4.69
*Mar 22	COLORADO STATE	7.0	12	9	6	3	1	5	0	2	0	0	0	0	0	7-9	8-19	0	4.74
*Mar 23	COLORADO STATE	5.0	10	9	9	3	3	2	1	2	0	0	0	0	0	1-9	8-20	0	4.97
*Mar 24	COLORADO STATE	5.0	12	16	11	4	2	4	1	3	2	0	3	0	0	3-16	8-21	0	5.27
Mar 26	NORTH DAKOTA	7.0	8	6	2	5	11	1	0	0	0	0	0	0	0	7-6	9-21	0	5.14
Mar 26	NORTH DAKOTA	7.0	7	3	2	3	7	1	1	0	0	0	1	0	0	7-3	10-21	0	5.03
*Mar 29	NEVADA	7.0	11	7	6	2	6	3	0	0	0	0	2	1	0	1-7	10-22	0	5.06
*Mar 30	NEVADA	7.0	9	11	7	6	5	2	0	3	2	0	1	0	0	6-11	10-23	0	5.13
*Mar 31	NEVADA	5.0	16	21	18	10	3	3	0	5	1	0	0	0	0	1-21	10-24	0	5.61
Apr 02	at New Mexico State	5.1	8	8	5	5	6	2	0	1	1	0	1	0	0	0-8	10-25	0	5.63
Apr 02	at New Mexico State	4.0	10	11	10	4	2	3	0	3	1	0	0	0	0	3-11	10-26	0	5.85
*Apr 05	at Utah State	6.0	6	7	7	2	3	0	1	4	0	0	1	0	0	6-7	10-27	0	5.92
*Apr 06	at Utah State	7.0	7	3	3	5	2	3	0	1	1	0	0	0	0	6-3	11-27	1	5.83
*Apr 07	at Utah State	4.0	9	8	7	4	6	0	0	3	1	0	1	1	0	0-8	11-28	1	5.94
Totals		234.2	320	254	199	157	161	57	8	58	25	0	24	5	0	159-254	11-28	1	5.94

# 2019 NEW MEXICO RECORD AND INNING BREAKDOWN

Score by innings	1	2	3	4	5	6	7	8	Total
NEW MEXICO	35	21	18	31	17	18	19	0	159
Opponents	39	31	53	33	44	29	23	2	254

Record when ...			
Overall		11-28	After 4 leading 9-5
Conference		2-10	..... trailing 2-17
Non-Conference		9-18	..... tied 0-6
Home games		2-6	After 5 leading 7-4
Away games		3-12	..... trailing 1-11
Neutral site		6-10	..... tied 0-5
Day games		9-20	After 6 leading 6-2
Night games		2-8	..... trailing 1-15
vs Left starter		1-1	..... tied 0-2
vs Right starter		10-27	
1-Run games		3-10	Hit 0 home runs 2-16
2-Run games		1-4	... 1 home run 8-8
5+Run games		5-11	... 2+ home runs 1-4
Extra innings		0-2	
Shutouts		3-4	Opponent 0 home runs 8-7
			..... 1 home run 2-7
			..... 2+ HRs 1-14
Scoring 0-2 runs		0-18	
..... 3-5 runs		2-5	
..... 6-9 runs		5-5	Made 0 errors 5-5
..... 10+ runs		4-0	... 1 error 4-7
			... 2+ errors 2-16
Opponent 0-2 runs		5-5	
..... 3-5 runs		4-5	Opp. made 0 errors 4-14
..... 6-9 runs		2-11	..... 1 error 5-7
..... 10+ runs		0-7	..... 2+ errors 2-7
Scored in 1st inning		7-8	Out-hit opponent 8-5
Opp. scored in 1st		3-13	Out-hit by opponent 3-22
Scores first		8-11	Hits are tied 0-1
Opp. scores first		3-17	

## Record when team scores:

Runs	0	1	2	3	4	5	6	7	8	9	10+
W-L	0-4	0-9	0-5	2-4	0-0	0-1	2-2	2-1	1-2	0-0	4-0

## Record when opponent scores:

Runs	0	1	2	3	4	5	6	7	8	9	10+
W-L	3-0	1-2	1-3	2-1	0-3	2-1	2-2	0-2	0-2	0-5	0-7

## Record when leading after:

Inn.	1	2	3	4	5	6
W-L	7-3	9-5	9-5	9-5	7-4	6-2

## Record when trailing after:

Inn.	1	2	3	4	5	6
W-L	1-10	2-14	2-18	2-17	1-11	1-15

## Record when tied after:

Inn.	1	2	3	4	5	6
W-L	3-15	0-9	0-5	0-6	0-5	0-2

Current losing streak: 1  
 Longest winning streak: 2  
 Longest losing streak: 6

Home attendance : 4006 ( 8 dates avg = 500 )  
 Away attendance : 15938 ( 31 dates avg = 514 )  
 Total attendance: 19944 ( 39 dates avg = 511 )

# 2019 NEW MEXICO SITUATIONAL BREAKDOWN

Player	vs left			vs right			w/runners			w/bases empty			w/bases loaded			as leadoff			fly	gnd	fly/
	h	ab	avg	h	ab	avg	h	ab	avg	h	ab	avg	h	ab	avg	rch	ops	pct	out	out	gnd
5 BRODERICK, Sydney	0	2	.000	5	38	.132	2	22	.091	3	18	.167	0	0	---	5	8	.625	13	7	1.9
2 BUCKHOLZ, Maggie	3	7	.429	9	48	.188	10	30	.333	2	25	.080	2	4	.500	6	13	.462	8	7	1.1
4 DeFLORA, D'Andra	1	7	.143	23	104	.221	8	38	.211	16	73	.219	1	2	.500	18	41	.439	21	21	1.0
9 HALLEEN, Kasey	0	2	.000	6	37	.162	4	19	.211	2	20	.100	1	1	1.000	1	10	.100	8	10	0.8
12 HASLAM, Daryn	2	3	.667	10	48	.208	6	28	.214	6	23	.261	0	2	.000	4	12	.333	9	10	0.9
0 HOWARD, Andrea	1	7	.143	20	101	.198	13	61	.213	8	47	.170	0	8	.000	11	28	.393	39	11	3.5
3 JONES, Taylor	2	5	.400	8	61	.131	6	27	.222	4	39	.103	0	2	.000	6	22	.273	21	8	2.6
8 KLITZKE, Bailey	2	7	.286	26	76	.342	16	41	.390	12	42	.286	4	6	.667	5	16	.313	28	21	1.3
10 O'GRADY, Cameryn	2	8	.250	36	100	.360	24	65	.369	14	43	.326	0	5	.000	14	26	.538	35	11	3.2
7 PETERSON, MacKenZ	1	6	.167	4	21	.190	1	13	.077	4	14	.286	0	1	.000	3	9	.333	8	8	1.0
16 ROMERO, Leslie	0	1	.000	0	8	.000	0	3	.000	0	6	.000	0	0	---	0	0	---	2	5	0.4
22 SALAS, Monica	3	6	.500	19	86	.221	10	45	.222	12	47	.255	1	3	.333	6	26	.231	16	24	0.7
23 STELTZER, Emma	0	1	.000	0	1	.000	0	0	---	0	2	.000	0	0	---	0	1	.000	1	1	1.0
66 TOWNES, Sydney	0	1	.000	4	27	.148	1	11	.091	3	17	.176	0	0	---	2	10	.200	7	5	1.4
44 WILBON, Aleyah	0	1	.000	17	36	.472	5	13	.385	12	24	.500	0	3	.000	3	7	.429	1	5	0.2
32 WILMERT, Lauren	4	7	.571	26	104	.250	19	73	.260	11	38	.289	3	7	.429	5	19	.263	32	16	2.0
Totals	21	71	.296	213	896	.238	125	489	.256	109	478	.228	12	44	.273	89	248	.359	249	170	1.5
Opponents	152	493	.308	168	523	.321	174	563	.309	146	453	.322	14	46	.304	108	235	.460	286	235	1.2

Player	pinch hitting			w/runners in scoring pos			w/runner on 3rd and LT 2 out			with 2 outs			success adv runners			2- rnrns			rch	rch	kl
	h	ab	avg	h	ab	avg	rbi	ops	pct	h	ab	avg	adv	ops	pct	rbi	w/out	lob	err	fc	kl
5 BRODERICK, Sydney	0	3	.000	2	12	.167	1	3	.333	1	20	.050	5	24	.208	2	0	15	1	1	7
2 BUCKHOLZ, Maggie	0	3	.000	8	23	.348	4	7	.571	5	21	.238	18	37	.486	7	0	12	1	1	14
4 DeFLORA, D'Andra	0	0	---	6	24	.250	2	4	.500	2	32	.063	19	46	.413	3	3	19	3	2	6
9 HALLEEN, Kasey	0	0	---	1	6	.167	1	1	1.000	0	11	.000	7	21	.333	0	1	9	2	2	6
12 HASLAM, Daryn	0	7	.000	5	20	.250	0	0	---	6	22	.273	11	30	.367	6	2	20	1	1	6
0 HOWARD, Andrea	0	0	---	7	32	.219	0	5	.000	7	35	.200	19	64	.297	5	5	37	1	2	16
3 JONES, Taylor	1	3	.333	3	15	.200	0	4	.000	5	21	.238	12	29	.414	3	3	13	1	0	10
8 KLITZKE, Bailey	1	2	.500	12	30	.400	7	10	.700	12	31	.387	27	49	.551	7	8	23	0	3	4
10 O'GRADY, Cameryn	0	0	---	12	32	.375	4	9	.444	9	27	.333	40	75	.533	6	4	14	3	4	2
7 PETERSON, MacKenZ	1	4	.250	1	11	.091	0	4	.000	2	6	.333	5	14	.357	1	2	2	1	1	2
16 ROMERO, Leslie	0	2	.000	0	1	.000	0	0	---	0	6	.000	0	3	.000	0	0	2	0	0	2
22 SALAS, Monica	0	0	---	8	32	.250	3	5	.600	6	27	.222	20	50	.400	4	5	26	0	5	9
23 STELTZER, Emma	0	1	.000	0	0	---	0	0	---	0	0	---	0	0	---	0	0	0	0	0	0
66 TOWNES, Sydney	0	3	.000	0	5	.000	0	0	---	2	7	.286	8	15	.533	0	1	3	1	2	3
44 WILBON, Aleyah	2	4	.500	3	7	.429	0	3	.000	4	11	.364	10	16	.625	0	2	3	4	0	3
32 WILMERT, Lauren	0	0	---	11	48	.229	8	17	.471	10	34	.294	38	84	.452	12	8	32	4	2	10
Totals	5	32	.156	79	298	.265	30	72	.417	71	311	.228	239	557	.429	56	44	240	23	26	100
Opponents	10	38	.263	112	376	.298	47	85	.553	107	346	.309	335	648	.517	94	87	266	37	25	33

Success Advancing Runners = percentage of times the batter advanced at least one runner during a plate appearance  
 #Rnrns Adv w/Out = TOTAL number of runners advanced when the player made an out

# 2019 NEW MEXICO MW RECORD AND INNING BREAKDOWN

Score by innings	1	2	3	4	5	6	7	Total
NEW MEXICO	10	1	11	8	10	1	4	45
Opponents	18	18	16	14	20	7	12	105

## Record when ...

Overall	2-10	After 4 leading	2-2
Conference	2-10	..... trailing	0-7
Non-Conference	0-0	..... tied	0-1
Home games	0-6	After 5 leading	2-3
Away games	2-4	..... trailing	0-3
Neutral site	0-0	..... tied	0-0
Day games	1-7	After 6 leading	2-1
Night games	1-3	..... trailing	0-5
vs Left starter	0-0	..... tied	0-0
vs Right starter	2-10		
1-Run games	0-3	Hit 0 home runs	1-4
2-Run games	1-1	... 1 home run	1-4
5+Run games	0-6	... 2+ home runs	0-2
Extra innings	0-0		
Shutouts	0-1	Opponent 0 home runs	1-2
		..... 1 home run	1-0
		..... 2+ HRs	0-8
Scoring 0-2 runs	0-4		
..... 3-5 runs	1-2	Made 0 errors	1-1
..... 6-9 runs	1-4	... 1 error	1-2
..... 10+ runs	0-0	... 2+ errors	0-7
Opponent 0-2 runs	1-0		
..... 3-5 runs	1-1	Opp. made 0 errors	1-4
..... 6-9 runs	0-6	..... 1 error	1-3
..... 10+ runs	0-3	..... 2+ errors	0-3
Scored in 1st inning	1-4		
Opp. scored in 1st	2-5	Out-hit opponent	1-2
Scores first	1-3	Out-hit by opponent	1-7
Opp. scores first	1-7	Hits are tied	0-1

## Record when team scores:

Runs	0	1	2	3	4	5	6	7	8	9	10+
W-L	0-1	0-3	0-0	1-2	0-0	0-0	1-2	0-1	0-1	0-0	0-0

## Record when opponent scores:

Runs	0	1	2	3	4	5	6	7	8	9	10+
W-L	0-0	1-0	0-0	1-0	0-1	0-0	0-0	0-2	0-1	0-3	0-3

## Record when leading after:

Inn.	1	2	3	4	5	6
W-L	1-2	1-2	2-2	2-2	2-3	2-1

## Record when trailing after:

Inn.	1	2	3	4	5	6
W-L	1-3	1-5	0-6	0-7	0-3	0-5

## Record when tied after:

Inn.	1	2	3	4	5	6
W-L	0-5	0-3	0-2	0-1	0-0	0-0

Current losing streak: 1  
 Longest winning streak: 1  
 Longest losing streak: 9

Home attendance : 3756 ( 6 dates avg = 626 )  
 Away attendance : 1566 ( 6 dates avg = 261 )  
 Total attendance: 5322 ( 12 dates avg = 443 )

# 2019 NEW MEXICO MW SITUATIONAL BREAKDOWN

Player	vs left			vs right			w/runners			w/bases empty			w/bases loaded			as leadoff			fly	gnd	fly/
	h	ab	avg	h	ab	avg	h	ab	avg	h	ab	avg	h	ab	avg	rch	ops	pct	out	out	gnd
5 BRODERICK, Sydney	0	0	---	2	13	.154	1	6	.167	1	7	.143	0	0	---	3	4	.750	4	3	1.3
2 BUCKHOLZ, Maggie	0	0	---	0	4	.000	0	1	.000	0	3	.000	0	0	---	0	0	---	1	0	99.9
4 DeFLORA, D'Andra	0	0	---	6	35	.171	1	12	.083	5	23	.217	0	0	---	9	17	.529	6	8	0.8
9 HALLEEN, Kasey	0	0	---	1	7	.143	0	3	.000	1	4	.250	0	0	---	0	0	---	1	1	1.0
12 HASLAM, Daryn	0	0	---	0	15	.000	0	7	.000	0	8	.000	0	1	.000	0	2	.000	3	5	0.6
0 HOWARD, Andrea	0	0	---	7	37	.189	5	28	.179	2	9	.222	0	2	.000	4	6	.667	11	7	1.6
3 JONES, Taylor	0	0	---	6	30	.200	3	9	.333	3	21	.143	0	0	---	1	11	.091	10	4	2.5
8 KLITZKE, Bailey	0	0	---	10	31	.323	8	19	.421	2	12	.167	0	1	.000	1	3	.333	8	11	0.7
10 O'GRADY, Cameryn	0	0	---	10	32	.313	7	23	.304	3	9	.333	0	1	.000	4	6	.667	10	1	10.0
7 PETERSON, MacKenz	0	0	---	2	6	.333	1	1	1.000	1	5	.200	0	0	---	1	3	.333	3	0	99.9
16 ROMERO, Leslie	0	0	---	0	2	.000	0	2	.000	0	0	---	0	0	---	0	0	---	1	0	99.9
22 SALAS, Monica	0	0	---	6	25	.240	3	10	.300	3	15	.200	0	1	.000	1	8	.125	4	4	1.0
66 TOWNES, Sydney	0	0	---	1	11	.091	0	4	.000	1	7	.143	0	0	---	1	4	.250	3	4	0.8
44 WILBON, Aleyah	0	0	---	10	18	.556	3	5	.600	7	13	.538	0	1	.000	2	5	.400	1	1	1.0
32 WILMERT, Lauren	0	0	---	14	38	.368	8	25	.320	6	13	.462	2	4	.500	2	7	.286	10	1	10.0
Totals	0	0	---	75	304	.247	40	155	.258	35	149	.235	2	11	.182	29	76	.382	76	50	1.5
Opponents	53	163	.325	63	171	.368	65	192	.339	51	142	.359	6	15	.400	35	72	.486	87	83	1.0

Player	pinch hitting			w/runners in scoring pos			w/runner on 3rd and LT 2 out			with 2 outs			success adv runners			2- rnrns		rch	rch	kl	
	h	ab	avg	h	ab	avg	rbi	ops	pct	h	ab	avg	adv	ops	pct	rbi	w/out	lob	err	fc	
5 BRODERICK, Sydney	0	0	---	1	6	.167	1	1	1.000	0	7	.000	3	7	.429	0	0	8	0	1	1
2 BUCKHOLZ, Maggie	0	2	.000	0	0	---	0	0	---	0	4	.000	0	1	.000	0	0	1	0	0	2
4 DeFLORA, D'Andra	0	0	---	1	8	.125	0	0	---	0	11	.000	3	13	.231	0	0	8	2	2	3
9 HALLEEN, Kasey	0	0	---	0	1	.000	0	0	---	0	3	.000	0	3	.000	0	0	2	1	0	3
12 HASLAM, Daryn	0	3	.000	0	4	.000	0	0	---	0	6	.000	0	7	.000	0	0	6	0	0	3
0 HOWARD, Andrea	0	0	---	2	14	.143	0	2	.000	1	8	.125	8	29	.276	0	3	10	1	2	5
3 JONES, Taylor	0	0	---	2	4	.500	0	1	.000	3	7	.429	5	9	.556	2	2	1	0	0	3
8 KLITZKE, Bailey	1	1	1.000	5	14	.357	2	2	1.000	4	14	.286	12	23	.522	2	3	16	0	2	1
10 O'GRADY, Cameryn	0	0	---	3	11	.273	1	3	.333	2	10	.200	13	28	.464	2	0	9	1	0	1
7 PETERSON, MacKenz	1	1	1.000	1	1	1.000	0	0	---	1	2	.500	1	1	1.000	1	0	0	0	0	0
16 ROMERO, Leslie	0	1	.000	0	1	.000	0	0	---	0	1	.000	0	2	.000	0	0	2	0	0	1
22 SALAS, Monica	0	0	---	2	8	.250	1	1	1.000	2	7	.286	7	12	.583	0	0	7	0	2	2
66 TOWNES, Sydney	0	0	---	0	1	.000	0	0	---	1	3	.333	4	7	.571	0	0	1	0	2	0
44 WILBON, Aleyah	0	0	---	1	2	.500	0	1	.000	1	4	.250	6	7	.857	0	1	0	3	0	1
32 WILMERT, Lauren	0	0	---	5	17	.294	1	4	.250	5	9	.556	10	26	.385	5	1	8	1	1	6
Totals	2	8	.250	23	92	.250	6	15	.400	20	96	.208	72	175	.411	12	10	79	9	12	32
Opponents	3	13	.231	46	136	.338	16	29	.552	41	114	.360	122	219	.557	45	31	77	13	11	8

Success Advancing Runners = percentage of times the batter advanced at least one runner during a plate appearance  
 #Rnrns Adv w/Out = TOTAL number of runners advanced when the player made an out



# 00 ANDREA HOWARD

OF • 5-6 • 50.

ALBUQUERQUE, N.M. • LA CUEVA HS

## SINGLE-GAME HIGHS

Hits: 3, 2x, Last at Nevada, 3-24-18  
 Doubles: 1, 14x, Last vs. North Dakota, 3-26-19  
 Triples: 1, 3x, Last at San Diego State, 3-17-19  
 Home runs: 1, 10x, Last vs. Nevada, 3-30-19  
 Total bases: 7, at Nevada, 3-24-18  
 RBI: 4, at Nevada, 3-24-18  
 Runs scored: 3, 3x, Last vs UTEP, 2-8-19  
 Walks: 4, UTEP, 2-8-19  
 Hit by pitch: 1, 2x, Last vs. Alabama, 2-15-19

Struck out: 3, 4x, Last at NMSU, 4-2-19  
 Sac flies: 1, 2x, at Colorado State, 4-8-18  
 Sac bunts: 1, 3x, Last at Hawai'i, 2-23-19  
 At bats: 5, 2x, Last at Utah State, 4-6-19  
 Stolen bases: 1, 4x, Last vs. WCU, 3-8-19  
 Putouts: 13, at UTEP, 4-16-18  
 Assists: 1, 8x, Last vs. Oregon State, 3-8-19

Named All-Mountain West Second Team in 2018

## CAREER STATS (AT UNM)

Year	avg	gp-gs	ab	r	h	2b	3b	hr	rbi	tb	slg%	bb	hbp	so	gdp	ob%	sf	sh	sb-att	po	a	e	fld%
2018	.313	51-50	131	20	41	6	1	7	18	70	.534	23	1	39	1	.414	2	2	3-4	296	5	4	.987
2019	.194	39-39	108	22	21	8	2	3	15	42	.389	21	1	37	1	.331	0	1	1-1	81	3	3	.966
TOTAL	.259	90-89	239	42	62	14	3	10	33	112	.469	44	2	76	2	.376	2	3	4-5	377	8	7	.982

## 2019 GAME-BY-GAME

Date	Opponent	Pos	AB	R	H	RBI	2B	3B	HR	BB	SB	CS	HBP	SAC	SF	GDP	K	PO	A	E	Avg	
Feb 08	vs UTEP	*of	1	3	0	0	0	0	0	4	0	0	0	0	0	0	1	1	0	0	.000	
Feb 09	vs Creighton	*of	2	2	1	0	0	0	0	1	0	0	0	0	0	0	0	4	0	0	.333	
Feb 09	at New Mexico State	*of	4	2	2	3	1	0	1	0	0	0	0	0	0	0	2	5	0	0	.429	
Feb 15	vs Alabama	*of	2	0	0	0	0	0	0	0	0	0	1	0	0	0	0	1	1	0	.333	
Feb 15	vs Cal State Fullerton	*of	4	0	0	0	0	0	0	0	0	0	0	0	0	0	1	1	0	0	.231	
Feb 16	at Arizona	*of	1	0	0	0	0	0	0	1	0	0	0	0	0	0	1	2	0	0	.214	
Feb 16	vs Illinois-Chicago	*of	4	1	2	1	1	0	0	0	0	0	0	0	0	0	1	0	0	0	.278	
Feb 17	vs South Florida	*of	3	0	0	0	0	0	0	1	0	0	0	0	0	0	1	1	0	0	.238	
Feb 20	at Hawaii	*of	3	0	0	0	0	0	0	0	0	0	0	0	0	0	2	3	0	0	.208	
Feb 21	vs DePaul	*of	3	0	0	0	0	0	0	1	0	0	0	0	0	0	0	4	0	0	.185	
Feb 22	vs Canisius	*of	4	0	0	0	0	0	0	0	0	0	0	0	0	0	0	1	0	0	.161	
Feb 22	at Hawaii	*of	4	0	2	0	1	0	0	0	0	0	0	0	0	0	0	4	0	0	.200	
Feb 23	at Hawaii	*of	2	0	0	0	0	0	0	0	0	0	0	1	0	0	0	6	0	0	.189	
Feb 23	vs DePaul	*of	3	0	0	0	0	0	0	0	0	0	0	0	0	0	1	0	0	0	.175	
Feb 28	vs Florida	*of	3	0	0	0	0	0	0	0	0	0	0	0	0	0	3	0	0	0	.163	
Mar 01	vs Loyola Marymount	*of	3	0	1	0	0	0	0	0	0	0	0	0	0	0	1	4	0	0	.174	
Mar 01	vs Tennessee	*of	1	0	0	0	0	0	0	1	0	0	0	0	0	0	1	2	1	0	.170	
Mar 03	vs UCONN	*of	3	0	0	0	0	0	0	0	0	0	0	0	0	0	2	2	0	0	.160	
Mar 03	at Cal State Fullerton	*of	1	0	0	0	0	0	0	0	0	0	0	0	0	0	0	2	0	0	.157	
Mar 08	vs Oregon State	*of	3	1	1	2	0	0	1	0	0	0	0	0	0	0	2	1	1	0	.167	
Mar 08	vs Western Carolina	*of	1	1	0	0	0	0	0	2	1	0	0	0	0	0	0	1	0	0	.164	
Mar 09	vs Oregon State	*of	3	1	2	1	1	1	0	1	0	0	0	0	0	0	1	2	0	0	.190	
Mar 10	at Loyola Marymount	*of	3	0	1	0	1	0	0	1	0	0	0	0	0	0	1	2	0	0	.197	
Mar 15	at San Diego State	*of	1	1	0	0	0	0	0	3	0	0	0	0	0	0	1	4	0	0	.194	
Mar 16	at San Diego State	*of	3	1	1	1	1	0	0	1	0	0	0	0	0	0	1	3	0	0	.200	
Mar 17	at San Diego State	*of	4	1	1	0	0	1	0	0	0	0	0	0	0	0	0	2	0	0	.203	
Mar 22	COLORADO STATE	*of	4	2	2	1	1	0	0	0	0	0	0	0	0	0	1	4	0	1	.219	
Mar 23	COLORADO STATE	*of	3	0	0	0	0	0	0	0	0	0	0	0	0	0	1	2	0	0	.211	
Mar 24	COLORADO STATE	*of	3	1	0	0	0	0	0	0	0	0	0	0	0	0	1	2	0	0	.203	
Mar 26	NORTH DAKOTA-1	*of	2	2	0	0	0	0	0	2	0	0	0	0	0	0	0	2	0	0	.198	
Mar 26	NORTH DAKOTA-2	*of	3	1	2	3	1	0	0	0	0	0	0	0	0	0	1	1	0	1	.214	
Mar 29	NEVADA	*of	3	0	0	0	0	0	0	0	0	0	0	0	0	0	1	2	0	0	.207	
Mar 30	NEVADA	*of	3	2	2	3	0	0	1	1	0	0	0	0	0	0	1	0	0	0	.222	
Mar 31	NEVADA	*of	2	0	0	0	0	0	0	0	0	0	0	0	0	0	0	1	0	0	.217	
Apr 02	at New Mexico State-1	*of	3	0	0	0	0	0	0	0	0	0	0	0	0	0	3	2	0	1	.211	
Apr 02	at New Mexico State-2	*of	2	0	0	0	0	0	0	0	0	0	0	0	0	0	1	2	0	0	.206	
Apr 05	at Utah State	*of	3	0	0	0	0	0	0	1	0	0	0	0	0	0	2	2	0	0	.200	
Apr 06	at Utah State	*of	5	0	1	0	0	0	0	0	0	0	0	0	0	1	1	3	0	0	.200	
Apr 07	at Utah State	*of	3	0	0	0	0	0	0	0	0	0	0	0	0	0	1	0	0	0	.194	
Totals			39gs	108	22	21	15	8	2	3	21	1	0	1	1	0	1	37	81	3	3	.194

On base pct. .331 • Slugging pct. .389





**2 MAGGIE BUCKHOLZ** *UT • 5-7 • FR.*  
*SILVERTON, ORE. • SILVERTON HS*

**SINGLE-GAME HIGHS**

Hits: 3, Illinois-Chicago, 2-16-19  
 Doubles: 1, Western Carolina, 3-8-19  
 Triples: 1, Illinois-Chicago, 2-16-19  
 Home runs: 1, 2x, Last at Hawai'i, 2-23-19  
 Total bases: 8, Illinois-Chicago, 2-16-19  
 Runs scored: 2, 2x, Last vs. WCU, 3-8-19  
 RBI: 7, Illinois-Chicago, 2-16-19  
 Walks: 3, Cal State Fullerton, 2-15-19  
 Hit by pitch: 1, at LMU, 3-10-19

Struck out: 3, UConn, 3-3-19  
 Sac bunts:  
 At bats: 4, Illinois-Chicago, 2-16-19  
 Caught Stealing: 1, UTEP, 2-8-19  
 Putouts: 4, 2x, Last vs. Florida, 2-28-19  
 Assists: 1, Alabama, 2-15-19

**CAREER STATS (AT UNM)**

Year	avg	gp-gs	ab	r	h	2b	3b	hr	rbi	tb	slg%	bb	hbp	so	gdp	ob%	sf	sh	sb-att	po	a	e	fld%
2019	.218	26-22	55	9	12	1	1	2	17	21	.382	17	1	27	0	.411	0	0	0-1	23	0	1	.958
TOTAL	.218	26-22	55	9	12	1	1	2	17	21	.382	17	1	27	0	.411	0	0	0-1	23	0	1	.958

**2019 GAME-BY-GAME**

Date	Opponent	Pos	AB	R	H	RBI	2B	3B	HR	BB	SB	CS	HBP	SAC	SF	GDP	K	PO	A	E	Avg
Feb 08	vs UTEP	*of	3	1	1	3	0	0	0	2	0	1	0	0	0	0	0	1	0	0	.333
Feb 09	vs Creighton	*of	2	0	0	0	0	0	0	0	0	0	0	0	0	0	1	1	0	0	.200
Feb 09	at New Mexico State	ph	0	1	0	0	0	0	0	1	0	0	0	0	0	0	0	0	0	0	.200
Feb 15	vs Alabama	*of	2	0	0	0	0	0	0	1	0	0	0	0	0	0	2	2	0	0	.143
Feb 15	vs Cal State Fullerton	*of	1	0	0	0	0	0	0	3	0	0	0	0	0	0	1	4	0	0	.125
Feb 16	at Arizona	*of	2	0	0	0	0	0	0	0	0	0	0	0	0	0	1	1	0	0	.100
Feb 16	vs Illinois-Chicago	*dh	4	2	3	7	0	1	1	0	0	0	0	0	0	0	0	0	0	0	.286
Feb 17	vs South Florida	*dh	2	0	1	0	0	0	0	1	0	0	0	0	0	0	1	0	0	0	.312
Feb 20	at Hawaii	*of	3	0	0	0	0	0	0	0	0	0	0	0	0	0	2	1	0	1	.263
Feb 21	vs DePaul	*dh	2	1	0	0	0	0	0	1	0	0	0	0	0	0	1	0	0	0	.238
Feb 22	vs Canisius	*of	2	0	2	2	0	0	0	1	0	0	0	0	0	0	0	1	0	0	.304
Feb 22	at Hawaii	*of	3	0	1	1	0	0	0	0	0	0	0	0	0	0	0	0	0	0	.308
Feb 23	at Hawaii	*of	3	1	1	3	0	0	1	0	0	0	0	0	0	0	0	1	0	0	.310
Feb 23	vs DePaul	*of	2	0	0	0	0	0	0	1	0	0	0	0	0	0	1	0	0	0	.290
Feb 28	vs Florida	*of	3	0	1	0	0	0	0	0	0	0	0	0	0	0	2	4	0	0	.294
Mar 01	vs Loyola Marymount	*of	2	1	1	0	0	0	0	2	0	0	0	0	0	0	1	2	0	0	.306
Mar 01	vs Tennessee	*of	3	0	0	0	0	0	0	0	0	0	0	0	0	0	2	2	0	0	.282
Mar 03	vs UCONN	*of	3	0	0	0	0	0	0	1	0	0	0	0	0	0	3	1	0	0	.262
Mar 08	vs Oregon State	*dh	2	0	0	0	0	0	0	1	0	0	0	0	0	0	1	0	0	0	.250
Mar 08	vs Western Carolina	*of	2	2	1	1	1	0	0	1	0	0	0	0	0	0	0	1	0	0	.261
Mar 09	vs Oregon State	*of	2	0	0	0	0	0	0	0	0	0	0	0	0	0	2	1	0	0	.250
Mar 10	at Loyola Marymount	*dh	2	0	0	0	0	0	0	1	0	0	1	0	0	0	2	0	0	0	.240
Mar 15	at San Diego State	*dh	2	0	0	0	0	0	0	0	0	0	0	0	0	0	2	0	0	0	.231
Mar 16	at San Diego State	ph	1	0	0	0	0	0	0	0	0	0	0	0	0	0	1	0	0	0	.226
Mar 26	NORTH DAKOTA-1	ph	1	0	0	0	0	0	0	0	0	0	0	0	0	0	1	0	0	0	.222
Mar 31	NEVADA	ph	1	0	0	0	0	0	0	0	0	0	0	0	0	0	0	0	0	0	.218
Totals			22gs	55	9	12	17	1	1	2	17	0	1	1	0	0	27	23	0	1	.218

On base pct. .411 • Slugging pct. .382

**IF • 5-7 • 50.**

**ALBUQUERQUE, N.M. • LA CUEVA HS**



# 3 TAYLOR JONES

## SINGLE-GAME HIGHS

Hits: 2, 3x, Last vs. Colorado State, 3-22-19  
 Doubles: 1, 3x, Last at Boise State, 5-12-18  
 Home runs: 1, 2x, Last vs. CSU, 3-22-19  
 Total bases: 6, at Boise State, 5-12-18  
 RBI: 3, Howard, 3-10-18  
 Runs scored: 2, at Boise State, 5-12-18  
 Walks: 2, North Dakota, 3-26-19  
 Struck out: 2, 11x, Last at NMSU, 4-2-19  
 Sac flies: 1, Howard, 3-10-18

Sac bunts: 1, 2x, Last at Nevada, 3-24-18  
 At bats: 4, 5x, Last at Utah State, 4-6-19  
 Stolen bases: 1, Howard, 3-10-18  
 Putouts: 11, San Diego State, 3-15-19  
 Assists: 5, 2x, Last vs. Nevada, 3-29-19

## CAREER STATS (AT UNM)

Year	avg	gp-gs	ab	r	h	2b	3b	hr	rbi	tb	slg%	bb	hbp	so	gdp	ob%	sf	sh	sb-att	po	a	e	fld%
2018	.216	24-11	37	6	8	3	0	1	4	14	.378	0	0	13	0	.211	1	2	1-1	8	6	2	.875
2019	.152	31-24	66	6	10	0	0	1	4	13	.197	8	0	26	0	.243	0	0	0-0	79	33	4	.966
TOTAL	.175	55-35	103	12	18	3	0	2	8	27	.262	8	0	39	0	.232	1	2	1-1	87	39	6	.955

## 2019 GAME-BY-GAME

Date	Opponent	Pos	AB	R	H	RBI	2B	3B	HR	BB	SB	CS	HBP	SAC	SF	GDP	K	PO	A	E	Avg	
Feb 08	vs UTEP	*1b	4	0	0	0	0	0	0	1	0	0	0	0	0	0	2	6	0	0	.000	
Feb 09	vs Creighton	*2b	2	0	0	0	0	0	0	0	0	0	0	0	0	0	2	2	1	0	.000	
Feb 15	vs Alabama	ph	1	0	0	0	0	0	0	0	0	0	0	0	0	0	0	0	0	0	.000	
Feb 15	vs Cal State Fullerton	*1b	2	0	0	0	0	0	0	1	0	0	0	0	0	0	1	5	0	1	.000	
Feb 16	at Arizona	ss	1	0	1	0	0	0	0	0	0	0	0	0	0	0	0	0	0	0	.100	
Feb 16	vs Illinois-Chicago	*2b	3	1	1	1	0	0	0	1	0	0	0	0	0	0	0	1	3	0	.154	
Feb 17	vs South Florida	*2b	2	0	0	0	0	0	0	1	0	0	0	0	0	0	2	3	5	0	.133	
Feb 20	at Hawaii	ph	1	0	0	0	0	0	0	0	0	0	0	0	0	0	0	0	0	0	.125	
Feb 21	vs DePaul	ph	0	0	0	0	0	0	0	1	0	0	0	0	0	0	0	0	0	0	.125	
Feb 22	vs Canisius	*1b	2	0	0	0	0	0	0	0	0	0	0	0	0	0	0	4	0	0	.111	
Feb 22	at Hawaii	pr	0	0	0	0	0	0	0	0	0	0	0	0	0	0	0	0	0	0	.111	
Feb 23	vs DePaul	ph	0	0	0	0	0	0	0	1	0	0	0	0	0	0	0	0	0	0	.111	
Feb 28	vs Florida	*1b	2	0	0	0	0	0	0	0	0	0	0	0	0	0	2	8	0	0	.100	
Mar 01	vs Loyola Marymount	*1b	2	0	0	0	0	0	0	0	0	0	0	0	0	0	1	2	0	0	.091	
Mar 03	at Cal State Fullerton	*1b/ss	2	0	0	0	0	0	0	0	0	0	0	0	0	0	1	2	2	0	.083	
Mar 08	vs Oregon State	*1b	3	1	1	0	0	0	0	0	0	0	0	0	0	0	0	1	9	1	0	.111
Mar 08	vs Western Carolina	*1b	2	1	0	0	0	0	0	0	0	0	0	0	0	0	0	3	0	0	.103	
Mar 10	at Loyola Marymount	1b/ph	1	0	1	0	0	0	0	0	0	0	0	0	0	0	0	0	0	0	.133	
Mar 15	at San Diego State	*1b	3	0	2	0	0	0	0	0	0	0	0	0	0	0	1	11	1	0	.182	
Mar 16	at San Diego State	*2b	4	0	1	1	0	0	0	0	0	0	0	0	0	0	1	1	2	1	.189	
Mar 17	at San Diego State	*1b/2b	4	0	0	0	0	0	0	0	0	0	0	0	0	0	2	3	0	0	.171	
Mar 22	COLORADO STATE	*1b	4	1	2	1	0	0	1	0	0	0	0	0	0	0	1	7	0	1	.200	
Mar 23	COLORADO STATE	*2b	2	0	0	0	0	0	0	0	0	0	0	0	0	0	0	0	2	0	.191	
Mar 26	NORTH DAKOTA-1	*1b	2	1	0	0	0	0	0	2	0	0	0	0	0	0	0	7	0	0	.184	
Mar 29	NEVADA	*2b	2	0	0	0	0	0	0	0	0	0	0	0	0	0	2	1	5	0	.176	
Mar 31	NEVADA	*2b	2	0	0	0	0	0	0	0	0	0	0	0	0	0	1	0	3	0	.170	
Apr 02	at New Mexico State-1	*2b	2	0	0	0	0	0	0	0	0	0	0	0	0	0	2	1	0	0	.164	
Apr 02	at New Mexico State-2	*2b	2	0	0	0	0	0	0	0	0	0	0	0	0	0	2	0	3	0	.158	
Apr 05	at Utah State	*2b	3	1	1	1	0	0	0	0	0	0	0	0	0	0	1	2	3	1	.167	
Apr 06	at Utah State	*2b	4	0	0	0	0	0	0	0	0	0	0	0	0	0	1	0	1	0	.156	
Apr 07	at Utah State	*2b	2	0	0	0	0	0	0	0	0	0	0	0	0	0	0	1	1	0	.152	
Totals		24gs	66	6	10	4	0	0	1	8	0	0	0	0	0	0	26	79	33	4	.152	

On base pct. .243 • Slugging pct. .197



# 4 D'ANDRA DeFLORA

OF • 5-1 • SR.

FRESNO, TEXAS • L.V. HIGHTOWER HS

## SINGLE-GAME HIGHS

Hits: 4, Howard, 3-10-18  
 Doubles: 2, 2x, Last vs Northern Colo., 3-4-17  
 Triples: 1, vs Stephen F. Austin, 2-17-17  
 Home runs: 2, at Utah State, 4-22-17  
 Total bases: 8, at Utah State, 4-22-17  
 RBI: 5, at Utah State, 4-22-17  
 Runs scored: 3, 4x, Last at SDSU, 3-16-19  
 Walks: 3, George Washington, 2-23-18  
 Hit by pitch: 3, NMSU, 3-21-18

Struck out: 3, 5x, Last vs. Nevada, 3-30-19  
 Sac flies: 1, at UTEP, 3-15-16  
 Sac bunts: 1, 16x, Last vs Fresno State, 3-29-18  
 At bats: 5, 4x, Last at Colorado State, 4-7-18  
 Stolen bases: 3, Santa Clara, 3-11-17  
 Caught stealing: 1, 5x, Last vs. Bowling Green, 3-3-18  
 Putouts: 5, 5x, Last vs. Colorado State, 3-24-19  
 Assists: 2, Nevada, 4-8-17

## CAREER STATS (AT UNM)

Year	avg	gp-gs	ab	r	h	2b	3b	hr	rbi	tb	slg%	bb	hbp	so	gdp	ob%	sf	sh	sb-att	po	a	e	fld%
2016	.224	30-25	76	10	17	2	0	0	4	19	.250	4	2	10	0	.277	1	3	1-1	17	1	2	.900
2017	.247	49-49	146	29	36	9	1	5	23	62	.425	7	6	16	0	.308	0	9	6-7	85	13	3	.970
2018	.214	53-53	145	22	31	3	0	7	21	55	.379	11	9	41	3	.309	0	4	2-6	88	7	3	.969
2019	.216	39-39	111	25	24	4	0	1	8	31	.279	12	9	43	1	.341	0	0	1-1	56	1	1	.983
TOTAL	.226	171-166	478	86	108	18	1	13	56	167	.349	34	26	110	4	.312	1	16	10-15	246	22	9	.968

## 2019 GAME-BY-GAME

Date	Opponent	Pos	AB	R	H	RBI	2B	3B	HR	BB	SB	CS	HBP	SAC	SF	GDP	K	PO	A	E	Avg	
Feb 08	vs UTEP	*of	3	2	1	0	0	0	0	0	0	0	0	0	0	0	0	0	0	0	0	.333
Feb 09	vs Creighton	*of	2	2	1	3	1	0	0	1	0	0	0	0	0	0	1	1	0	0	0	.400
Feb 09	at New Mexico State	*of	4	2	3	1	1	0	0	0	0	0	0	0	0	0	0	2	0	0	0	.556
Feb 15	vs Alabama	*of	3	0	1	0	0	0	0	0	0	0	0	0	0	0	2	1	0	0	0	.500
Feb 15	vs Cal State Fullerton	*of	3	1	1	0	0	0	0	1	0	0	0	0	0	0	1	0	1	0	0	.467
Feb 16	at Arizona	*of	2	0	1	0	0	0	0	0	0	0	0	0	0	0	1	0	0	0	0	.471
Feb 16	vs Illinois-Chicago	*of	3	1	1	0	0	0	0	1	0	0	0	0	0	0	0	0	0	0	0	.450
Feb 17	vs South Florida	*of	3	1	1	0	0	0	0	1	0	0	0	0	0	0	1	0	0	0	0	.435
Feb 20	at Hawaii	*of	2	1	1	0	0	0	0	0	0	0	1	0	0	0	0	1	5	0	0	.440
Feb 21	vs DePaul	*of	4	0	0	0	0	0	0	0	0	0	0	0	0	0	1	2	2	0	0	.379
Feb 22	vs Canisius	*of	2	3	1	0	0	0	0	1	0	0	0	0	0	0	0	2	0	0	0	.387
Feb 22	at Hawaii	*of	3	0	0	0	0	0	0	0	0	0	0	0	0	0	1	2	0	0	0	.353
Feb 23	at Hawaii	*of	3	0	0	0	0	0	0	0	0	0	0	0	0	0	1	0	0	0	0	.324
Feb 23	vs DePaul	*of	4	0	1	0	1	0	0	0	0	0	0	0	0	0	2	4	0	0	0	.317
Feb 28	vs Florida	*of	3	0	0	0	0	0	0	0	0	0	0	0	0	0	2	1	0	0	0	.295
Mar 01	vs Loyola Marymount	*of	4	0	1	0	0	0	0	0	0	0	0	0	0	0	2	2	0	0	0	.292
Mar 01	vs Tennessee	*of	2	1	2	1	0	0	1	0	0	0	0	0	0	0	0	3	0	0	0	.320
Mar 03	vs UCONN	*of	2	0	0	0	0	0	0	1	0	0	0	0	0	0	0	0	0	0	0	.308
Mar 03	at Cal State Fullerton	*of	1	0	0	0	0	0	0	0	0	0	0	0	0	0	1	1	0	0	0	.302
Mar 08	vs Oregon State	*of	4	1	2	3	0	0	0	0	0	0	0	0	0	0	1	4	0	0	0	.316
Mar 08	vs Western Carolina	*of	2	1	0	0	0	0	0	0	0	0	1	0	0	0	0	1	0	0	0	.305
Mar 09	vs Oregon State	*of	3	1	0	0	0	0	0	1	0	0	0	0	0	0	1	2	0	0	0	.290
Mar 10	at Loyola Marymount	*of	3	0	0	0	0	0	0	0	0	0	0	0	0	0	3	0	0	0	0	.277
Mar 15	at San Diego State	*of	3	1	1	0	0	0	0	0	0	0	1	0	0	0	2	0	0	0	0	.279
Mar 16	at San Diego State	*of	2	3	0	0	0	0	0	1	0	0	1	0	0	0	1	0	0	0	0	.271
Mar 17	at San Diego State	*of	4	0	0	0	0	0	0	0	0	0	0	0	0	0	1	0	0	0	0	.257
Mar 22	COLORADO STATE	*of	2	1	0	0	0	0	0	2	0	0	0	0	0	0	2	2	0	0	0	.250
Mar 23	COLORADO STATE	*of	3	0	1	0	1	0	0	0	0	0	0	0	0	0	1	2	0	0	0	.253
Mar 24	COLORADO STATE	*of	3	0	2	0	0	0	0	0	0	0	0	0	0	0	0	5	0	1	0	.268
Mar 26	NORTH DAKOTA-1	*of	3	0	0	0	0	0	0	1	0	0	0	0	0	0	2	0	0	0	0	.259
Mar 26	NORTH DAKOTA-2	*of	3	1	0	0	0	0	0	0	1	0	1	0	0	0	3	4	0	0	0	.250
Mar 29	NEVADA	*of	2	0	0	0	0	0	0	1	0	0	0	0	0	0	0	1	0	0	0	.244
Mar 30	NEVADA	*of	4	1	1	0	0	0	0	0	0	0	0	0	0	0	3	3	0	0	0	.245
Mar 31	NEVADA	*of	2	0	0	0	0	0	0	0	0	0	0	0	0	0	0	2	0	0	0	.240
Apr 02	at New Mexico State-1	*of	2	0	0	0	0	0	0	0	0	0	1	0	0	0	2	0	0	0	0	.235
Apr 02	at New Mexico State-2	*of	3	0	0	0	0	0	0	0	0	0	0	0	0	0	0	0	0	0	0	.228
Apr 05	at Utah State	*of	4	0	0	0	0	0	0	0	0	0	0	0	0	0	1	0	0	0	0	.219
Apr 06	at Utah State	*of	3	1	1	0	0	0	0	0	0	0	2	0	0	0	2	4	0	0	0	.222
Apr 07	at Utah State	*of	3	0	0	0	0	0	0	0	0	0	0	0	0	0	0	0	0	0	0	.216
Totals			39gs	111	25	24	8	4	0	1	12	1	0	9	0	0	1	43	56	1	1	.216

On base pct. .341 • Slugging pct. .279



# 5 SYDNEY BRODERICK

**C • 5-4 • SO.**

**MESA, ARIZ. • DESERT RIDGE HS**

## SINGLE-GAME HIGHS

Hits: 3, St. Mary's, 3-10-18  
 Doubles: 1, 4x, Last at Utah State, 4-6-19  
 Home Runs: 1, NMSU, 4-2-19  
 Total bases: 4, 2x, Last at NMSU, 4-2-19  
 RBI: 2, 2x, Last at NMSU, 4-2-19  
 Runs scored: 1, 9x, Last at NMSU, 4-2-19  
 Walks: 2, Utah State, 4-5-19  
 Hit by pitch: 1, vs Oregon, 2-11-18  
 Struck out: 3, at Colorado State, 4-8-18

Sac flies: 1, at Nevada, 3-24-18  
 Sac bunts: 1, 2x, Last vs UTSA, 3-2-18  
 At bats: 4, 4x, Last at Utah State, 4-6-19  
 Putouts: 10, at Colorado State, 4-7-18  
 Assists: 3, 2x, Last vs. Nevada, 3-30-19  
 Runners CS: 2, Utah State, 4-21-18

## CAREER STATS (AT UNM)

Year	avg	gp-gs	ab	r	h	2b	3b	hr	rbi	tb	slg%	bb	hbp	so	gdp	ob%	sf	sh	sb-att	po	a	e	fld%
2018	.230	42-36	87	6	20	2	0	0	5	22	.253	6	1	12	2	.284	1	2	0-0	118	12	6	.956
2019	.125	21-18	40	3	5	2	0	1	3	10	.250	6	0	14	1	.239	0	0	1-1	66	12	2	.975
<b>TOTAL</b>	<b>.197</b>	<b>63-54</b>	<b>127</b>	<b>9</b>	<b>25</b>	<b>4</b>	<b>0</b>	<b>1</b>	<b>8</b>	<b>32</b>	<b>.252</b>	<b>12</b>	<b>1</b>	<b>26</b>	<b>3</b>	<b>.270</b>	<b>1</b>	<b>2</b>	<b>1-1</b>	<b>184</b>	<b>24</b>	<b>8</b>	<b>.963</b>

## 2019 GAME-BY-GAME

Date	Opponent	Pos	AB	R	H	RBI	2B	3B	HR	BB	SB	CS	HBP	SAC	SF	GDP	K	PO	A	E	Avg
Feb 08	vs UTEP	ph	1	0	0	0	0	0	0	0	0	0	0	0	0	1	0	0	0	0	.000
Feb 09	vs Creighton	*c	2	0	0	0	0	0	0	0	0	0	0	0	0	0	2	2	0	0	.000
Feb 15	vs Alabama	*c	3	0	0	0	0	0	0	0	0	0	0	0	0	0	0	1	0	0	.000
Feb 16	at Arizona	*c	2	0	0	0	0	0	0	0	0	0	0	0	0	0	2	1	1	0	.000
Feb 17	vs South Florida	*c	2	0	0	0	0	0	0	0	0	0	0	0	0	0	1	5	2	0	.000
Feb 20	at Hawaii	*c	2	0	0	0	0	0	0	0	0	0	0	0	0	0	0	3	1	0	.000
Feb 21	vs DePaul	*c	1	1	0	0	0	0	0	1	0	0	0	0	0	0	1	3	1	0	.000
Feb 22	vs Canisius	ph	1	0	0	0	0	0	0	0	0	0	0	0	0	0	0	0	0	0	.000
Feb 23	at Hawaii	*c	2	0	0	0	0	0	0	0	0	0	0	0	0	0	1	7	0	0	.000
Mar 01	vs Loyola Marymount	ph	1	0	0	0	0	0	0	0	0	0	0	0	0	0	1	0	0	0	.000
Mar 01	vs Tennessee	*c	2	0	0	0	0	0	0	0	0	0	0	0	0	0	1	1	1	0	.000
Mar 03	vs UCONN	*c	2	0	1	0	0	0	0	0	0	0	0	0	0	0	0	5	2	0	.048
Mar 16	at San Diego State	*c	3	0	0	0	0	0	0	0	0	0	0	0	0	0	1	5	1	0	.042
Mar 23	COLORADO STATE	*c	2	0	1	0	1	0	0	0	0	0	0	0	0	0	0	3	0	0	.077
Mar 26	NORTH DAKOTA-2	*c	3	1	1	0	0	0	0	0	0	0	0	0	0	0	1	7	0	0	.103
Mar 30	NEVADA	*c	2	0	0	0	0	0	0	1	0	0	0	0	0	0	2	4	3	0	.097
Apr 02	at New Mexico State-1	*c	1	0	0	0	0	0	0	1	0	0	0	0	0	0	0	7	0	0	.094
Apr 02	at New Mexico State-2	*c	2	1	1	2	0	0	1	0	0	0	0	0	0	0	0	1	0	0	.118
Apr 05	at Utah State	*c	1	0	0	0	0	0	0	2	1	0	0	0	0	0	0	3	0	1	.114
Apr 06	at Utah State	*c	4	0	1	1	1	0	0	0	0	0	0	0	0	0	1	2	0	0	.128
Apr 07	at Utah State	*c	1	0	0	0	0	0	0	1	0	0	0	0	0	0	0	6	0	1	.125
<b>Totals</b>		<b>18gs</b>	<b>40</b>	<b>3</b>	<b>5</b>	<b>3</b>	<b>2</b>	<b>0</b>	<b>1</b>	<b>6</b>	<b>1</b>	<b>0</b>	<b>0</b>	<b>0</b>	<b>0</b>	<b>1</b>	<b>14</b>	<b>66</b>	<b>12</b>	<b>2</b>	<b>.125</b>

On base pct. .239 • Slugging pct. .250



**7 MacKENZIE PETERSON**

**OF • 5-9 • FR.**  
**GILBERT, ARIZ. • PHOENIX COLLEGE**

**SINGLE-GAME HIGHS**

Hits: 1, 5x, Last vs. North Dakota, 3-26-19  
 Doubles:  
 Total bases: 1, 5x, Last vs. North Dakota, 3-26-19  
 RBI: 1, Colorado State, 3-24-19  
 Runs scored: 1, 2x, Last vs. Oregon St., 3-9-19  
 Walks: 2, 2x, Last vs. Oregon St., 3-9-19  
 Hit by Pitch: 1, Oregon St., 3-9-19  
 Struck out: 1, 5x, Last vs. Nevada, 3-29-19  
 Sac bunts:

At bats: 4, Illinois-Chicago, 2-16-19  
 Stolen bases:  
 Caught stealing:  
 Putouts: 10, Oregon State, 3-9-19  
 Assists: 1, Illinois-Chicago, 2-16-19

**CAREER STATS (AT UNM)**

Year	avg	gp-gs	ab	r	h	2b	3b	hr	rbi	tb	slg%	bb	hbp	so	gdp	ob%	sf	sh	sb-att	po	a	e	fld%
2019	.185	17-10	27	2	5	0	0	0	1	5	.185	6	1	5	0	.353	0	0	0-0	60	1	4	.938
TOTAL	.185	17-10	27	2	5	0	0	0	1	5	.185	6	1	5	0	.353	0	0	0-0	60	1	4	.938

**2019 GAME-BY-GAME**

Date	Opponent	Pos	AB	R	H	RBI	2B	3B	HR	BB	SB	CS	HBP	SAC	SF	GDP	K	PO	A	E	Avg
Feb 09	at New Mexico State	*1b	3	0	1	0	0	0	0	0	0	0	0	0	0	0	0	2	0	0	.333
Feb 16	at Arizona	1b	1	0	0	0	0	0	0	0	0	0	0	0	0	0	0	1	0	0	.250
Feb 16	vs Illinois-Chicago	*1b	4	0	1	0	0	0	0	0	0	0	0	0	0	0	0	7	1	1	.250
Feb 17	vs South Florida	ph/1b	1	0	0	0	0	0	0	0	0	0	0	0	0	0	0	1	0	0	.222
Feb 22	vs Canisius	ph/1b	1	0	0	0	0	0	0	0	0	0	0	0	0	0	0	2	0	0	.200
Feb 22	at Hawaii	*1b	2	0	0	0	0	0	0	1	0	0	0	0	0	0	0	6	0	0	.167
Feb 23	vs DePaul	*1b	1	1	0	0	0	0	0	2	0	0	0	0	0	0	0	6	0	0	.154
Feb 28	vs Florida	ph	1	0	0	0	0	0	0	0	0	0	0	0	0	0	0	1	0	0	.143
Mar 03	at Cal State Fullerton	1b	1	0	0	0	0	0	0	0	0	0	0	0	0	0	0	1	1	0	.133
Mar 08	vs Western Carolina	1b	0	0	0	0	0	0	0	0	0	0	0	0	0	0	0	3	0	0	.133
Mar 09	vs Oregon State	*1b	1	1	0	0	0	0	0	2	0	0	1	0	0	0	1	10	0	0	.125
Mar 10	at Loyola Marymount	*1b	2	0	0	0	0	0	0	0	0	0	0	0	0	0	0	6	0	0	.111
Mar 17	at San Diego State	ph/1b	1	0	1	0	0	0	0	0	0	0	0	0	0	0	0	1	0	0	.158
Mar 24	COLORADO STATE	*1b	2	0	1	1	0	0	0	0	0	0	0	0	0	0	0	4	0	0	.190
Mar 26	NORTH DAKOTA-1	*of	3	0	1	0	0	0	0	0	0	0	0	0	0	0	0	0	0	0	.208
Mar 29	NEVADA	*1b	2	0	0	0	0	0	0	0	0	0	0	0	0	0	0	1	6	0	.192
Mar 31	NEVADA	*1b	1	0	0	0	0	0	0	1	0	0	0	0	0	0	0	5	0	3	.185
Totals		10gs	27	2	5	1	0	0	0	6	0	0	1	0	0	0	5	60	1	4	.185

On base pct. .353 • Slugging pct. .185



# 8 BAILEY KLITZKE

**P/1B • 5-8 • JR.**  
**APACHE JUNCTION, ARIZ. • WICHITA ST.**

## SINGLE-GAME HIGHS

Hits: 4, UTEP, 2-8-19  
 Doubles: 2, Utah State, 4-6-19  
 Triples: 1, 3x, Last vs. North Dakota, 3-26-19  
 Total bases: 4, 6x, Last at Utah State, 4-6-19  
 RBI: 4, 2x, North Dakota, 3-26-19  
 Runs scored: 2, 2x, Last at Utah State, 4-5-19  
 Walks: 1, 11x, Last at Utah State, 4-6-19  
 Struck out: 2, NMSU, 4-2-19  
 Sac bunts: 1, at Texas, 2-23-18 (at WSU)  
 Sac fly: 1, 3x, Last vs. CSU, 3-22-19

At bats: 5, UTEP, 2-8-19  
 Stolen bases: 1, 2x, Last vs. UConn, 3-3-19  
 Innings pitched: 6.0, Illinois-Chicago, 2-16-19  
 Walks allowed: 7, 2x, Last at CSUF, 3-3-19  
 Strikeouts: 8, 2x, Last vs. Illinois-Chicago, 2-16-19  
 Batters faced: 32, Illinois-Chicago, 2-16-19  
 Putouts: 1, 2x, Last at Arizona, 2-16-19  
 Assists: 3, at Okla. St., 3-27-18 (at WSU)  
 Runners CS: 1, 7x, Last vs. Nevada, 3-30-19  
 Fewest hits allowed (3.0 IP min.): 5, UTEP, 2-8-19

## CAREER STATS (AT UNM)

Year	avg	qp-gs	ab	r	h	2b	3b	hr	rbi	tb	slq%	bb	hbp	so	qdp	ob%	sf	sh	sb-att	po	a	e	fld%
2019	.337	33-31	83	8	28	5	3	1	22	42	.506	11	0	9	1	.402	3	0	2-2	1	3	0	1.000
TOTAL	.337	33-31	83	8	28	5	3	1	22	42	.506	11	0	9	1	.402	3	0	2-2	1	3	0	1.000

Year	era	w-l	app	gs	cq	sho	sv	ip	h	r	er	bb	so	2b	3b	hr	bf	bavq	wp	hbp	bk	sfa	sha
2019	11.08	2-4	15	5	1	0/0	0	24.0	36	46	38	42	32	8	2	7	155	.333	12	4	0	0	1
TOTAL	11.08	2-4	15	5	1	0/0	0	24.0	36	46	38	42	32	8	2	7	155	.333	12	4	0	0	1

## 2019 GAME-BY-GAME

Date	Opponent	Pos	AB	R	H	RBI	2B	3B	HR	BB	SB	CS	HBP	SAC	SF	GDP	K	PO	A	E	Avq
Feb 08	vs UTEP	*p/dh	5	0	4	4	0	0	0	0	0	0	0	0	0	0	0	0	1	0	.800
Feb 09	vs Creighton	*dh	1	1	1	0	0	0	0	1	0	0	0	0	0	0	0	0	0	0	.833
Feb 09	at New Mexico State	*dh/p	2	0	0	1	0	0	0	1	0	0	0	0	1	0	0	0	0	0	.625
Feb 15	vs Alabama	*dh	3	0	1	0	0	0	0	0	0	0	0	0	0	0	0	0	0	0	.545
Feb 15	vs Cal State Fullerton	*p/dh	3	0	1	0	1	0	0	1	0	0	0	0	0	0	0	1	0	0	.500
Feb 16	at Arizona	*dh/p	3	0	0	0	0	0	0	0	0	0	0	0	0	0	0	1	1	0	.438
Feb 16	vs Illinois-Chicago	*p	0	0	0	0	0	0	0	0	0	0	0	0	0	0	0	0	2	0	.438
Feb 17	vs South Florida	*ph	1	0	0	0	0	0	0	0	0	0	0	0	0	0	0	0	0	0	.412
Feb 20	at Hawaii	*dh	3	0	1	0	0	0	0	0	0	0	0	0	0	0	0	0	0	0	.400
Feb 22	vs Canisius	*dh	2	2	2	2	0	1	0	0	0	0	0	0	0	0	0	0	0	0	.455
Feb 22	at Hawaii	*dh	0	0	0	0	0	0	0	0	0	0	0	0	0	0	0	1	0	0	.400
Feb 23	at Hawaii	*dh	1	1	0	1	0	0	0	1	0	0	0	0	0	0	0	0	0	0	.407
Feb 23	vs DePaul	*dh	0	1	0	0	0	0	0	0	0	0	0	0	0	0	0	0	0	0	.400
Feb 28	vs Florida	*dh	0	2	0	0	0	0	0	0	0	0	0	0	1	0	0	0	0	0	.424
Mar 01	vs Loyola Marymount	*dh/p	0	1	2	1	0	0	0	1	0	0	0	0	0	0	0	0	0	0	.417
Mar 01	vs Tennessee	*dh	0	0	0	0	0	0	0	1	0	0	0	0	0	0	0	1	0	0	.395
Mar 03	vs UCONN	*dh	2	0	1	1	0	0	0	1	0	0	0	0	1	0	0	0	0	0	.400
Mar 03	at Cal State Fullerton	*dh/p	0	0	0	0	0	0	0	1	0	0	0	0	0	0	0	0	0	0	.390
Mar 15	at San Diego State	*ph	1	0	1	0	0	0	0	0	0	0	0	0	0	0	0	0	0	0	.405
Mar 16	at San Diego State	*dh	3	0	1	1	0	0	0	1	0	0	0	0	0	0	0	0	0	0	.400
Mar 17	at San Diego State	*p/dh	0	2	1	1	0	1	0	1	0	0	0	0	0	0	0	0	0	0	.417
Mar 22	COLORADO STATE	*dh	0	1	2	0	0	0	0	0	0	0	0	0	1	0	0	0	0	0	.412
Mar 23	COLORADO STATE	*dh	0	0	0	0	0	0	0	0	0	0	0	0	0	0	0	0	0	0	.389
Mar 24	COLORADO STATE	*p/dh	0	1	1	0	0	0	0	0	0	0	0	0	0	0	0	1	0	0	.386
Mar 26	NORTH DAKOTA-1	*dh	4	0	2	4	0	1	0	0	0	0	0	0	0	0	0	0	0	0	.393
Mar 26	NORTH DAKOTA-2	*dh	0	0	0	0	0	0	0	0	0	0	0	0	0	0	0	0	0	0	.375
Mar 29	NEVADA	*dh	0	0	0	0	0	0	0	0	0	0	0	0	0	0	0	0	0	0	.358
Mar 30	NEVADA	*dh/p	3	0	0	0	0	0	0	0	0	0	0	0	0	0	0	1	0	0	.343
Mar 31	NEVADA	*dh/p	1	0	0	0	0	0	0	0	0	0	0	0	0	0	0	0	0	0	.338
Apr 02	at New Mexico State-1	*dh	0	0	0	0	0	0	0	0	0	0	0	0	0	0	0	2	0	0	.329
Apr 02	at New Mexico State-2	*dh/p	2	0	0	0	0	0	0	0	0	0	0	0	0	0	0	0	0	0	.320
Apr 05	at Utah State	*dh	3	2	1	2	0	0	1	1	0	0	0	0	0	0	0	0	0	0	.321
Apr 06	at Utah State	*dh	3	1	2	1	2	0	0	1	0	0	0	0	0	0	0	0	0	0	.333
Apr 07	at Utah State	*dh/p	2	0	1	0	0	0	0	0	0	0	0	0	0	0	0	1	0	0	.337
Totals			32gs	83	8	28	22	5	3	1	11	2	0	0	3	1	9	1	3	0	.337

On base pct. .402 • Slugging pct. .506

### #8 KLITZKE, Bailey - 15 appearances (All games)

Date	Opponent	GS	IP	H	R	ER	BB	SO	2B	3B	HR	WP	BK	HBP	IBB	Score	W-L	Sv	ERA	NP
Feb 08	vs UTEP	*	5.0	5	5	5	7	8	2	0	1	2	0	1	0	15-6	1-0	0	7.00	120
Feb 09	at New Mexico State		1.0	3	4	2	2	1	1	0	1	3	0	0	0	8-9	1-1	0	8.17	26
Feb 15	vs Cal State Fullerton	*	0.0	1	2	2	1	0	0	0	1	1	0	0	0	2-6	1-1	0	10.50	12
Feb 16	at Arizona		2.0	3	2	1	1	1	1	0	1	0	0	0	0	1-15	1-1	0	8.75	29
Feb 16	vs Illinois-Chicago	*	6.0	7	5	4	5	8	1	2	0	2	0	1	0	13-5	2-1	0	7.00	131
Feb 21	vs DePaul		0.2	2	4	4	2	1	0	0	0	1	0	0	0	5-9	2-1	0	8.59	24
Mar 01	vs Loyola Marymount		1.2	1	3	3	6	2	0	0	0	0	0	0	0	2-4	2-2	0	9.00	54
Mar 03	at Cal State Fullerton		0.1	1	6	6	7	1	0	0	0	1	0	0	0	1-19	2-2	0	11.34	41
Mar 17	at San Diego State	*	0.1	0	0	0	1	0	0	0	0	0	0	1	0	3-4	2-2	0	11.12	14
Mar 23	COLORADO STATE		0.2	0	0	0	1	0	0	0	0	0	0	0	0	1-9	2-2	0	10.70	10
Mar 24	COLORADO STATE	*	0.1	4	4	4	0	0	1	0	1	0	0	0	0	3-16	2-3	0	12.06	16
Mar 30	NEVADA		3.2	4	6	3	3	4	2	0	0	1	0	0	0	6-11	2-4	0	10.98	82
Mar 31	NEVADA		0.0	1	3	2	3	0	0	0	0	0	0	0	0	1-21	2-4	0	11.63	14
Apr 02	at New Mexico State-2		0.0	1	1	1	2	0	0	0	1	0	0	0	0	3-11	2-4	0	11.95	10
Apr 07	at Utah State		2.1	3	1	1	1	6	0	0	1	1	0	1	0	0-8	2-4	0	11.08	52
Totals			5	24.0	36	46	38	42	32	8	2	7	12	0	4	64-153	2-4	0	11.08	-



# 9 KASEY HALLEEN

**IF • 5-6 • SR.**

**TORRANCE, CALIF. • PALOS VERDES HS**

## SINGLE-GAME HIGHS

Hits: 2, 3x, Last vs. UConn, 3-3-19  
 Doubles: 1, 7x, Last vs. UConn, 3-3-19  
 Total bases: 3, 2x, Last vs. UConn, 3-3-19  
 RBI: 2, 4x, Last vs. WCU, 3-8-19  
 Runs scored: 1, 22x, Last vs. WCU, 3-8-19  
 Walks: 1, 18x, Last at Cal State Fullerton, 3-3-19  
 Hit by pitch: 1, 2x, Last at Fresno State, 3-29-18  
 Struck out: 2, 12x, Last vs. Nevada, 3-30-19  
 Sac flies: 1, 2x, Last at Nevada, 3-24-18

Sac bunts: 1, 4x, Last vs. North Dakota, 3-26-19  
 At bats: 5, at Colorado State, 4-7-18  
 Stolen bases: 1, George Washington, 2-23-18  
 Putouts: 14, at UC Davis, 2-28-16  
 Assists: 8, Boise State, 5-11-17

## CAREER STATS (AT UNM)

Year	avg	gp-gs	ab	r	h	2b	3b	hr	rbi	tb	slg%	bb	hbp	so	gdp	ob%	sf	sh	sb-att	po	a	e	fld%
2016	.171	24-13	41	4	7	0	0	0	3	7	.171	4	0	13	0	.244	0	1	0-0	71	14	3	.966
2017	.136	22-19	44	3	6	1	0	0	0	7	.159	1	0	7	0	.156	0	2	0-0	40	48	6	.936
2018	.189	49-49	127	13	24	5	0	0	10	29	.228	10	2	32	0	.255	2	0	1-1	75	87	14	.920
2019	.154	20-17	39	3	6	1	0	0	2	7	.179	3	0	14	1	.214	0	1	0-0	28	24	4	.929
<b>TOTAL</b>	<b>.171</b>	<b>115-98</b>	<b>251</b>	<b>23</b>	<b>43</b>	<b>7</b>	<b>0</b>	<b>0</b>	<b>15</b>	<b>50</b>	<b>.199</b>	<b>18</b>	<b>2</b>	<b>66</b>	<b>1</b>	<b>.231</b>	<b>2</b>	<b>4</b>	<b>1-1</b>	<b>214</b>	<b>173</b>	<b>27</b>	<b>.935</b>

## 2019 GAME-BY-GAME

Date	Opponent	Pos	AB	R	H	RBI	2B	3B	HR	BB	SB	CS	HBP	SAC	SF	GDP	K	PO	A	E	Avg
Feb 08	vs UTEP	*2b	1	1	0	0	0	0	0	1	0	0	0	0	0	0	0	1	0	0	.000
Feb 09	at New Mexico State	2b	1	0	0	0	0	0	0	0	0	0	0	0	0	0	1	0	0	0	.000
Feb 15	vs Alabama	*2b	2	0	0	0	0	0	0	0	0	0	0	0	0	0	0	3	2	0	.000
Feb 15	vs Cal State Fullerton	*2b	2	0	1	0	0	0	0	1	0	0	0	0	0	0	1	3	2	0	.167
Feb 16	at Arizona	*2b	1	0	0	0	0	0	0	0	0	0	0	0	0	0	1	0	0	0	.143
Feb 20	at Hawaii	*2b	2	0	0	0	0	0	0	0	0	0	0	0	0	0	1	0	1	0	.111
Feb 28	vs Florida	*2b	3	0	0	0	0	0	0	0	0	0	0	0	0	0	1	0	3	0	.083
Mar 01	vs Loyola Marymount	*2b	2	0	0	0	0	0	0	0	0	0	0	0	0	0	0	2	1	0	.071
Mar 01	vs Tennessee	*2b	2	0	0	0	0	0	0	0	0	0	0	0	0	0	1	0	1	0	.062
Mar 03	vs UCONN	*2b	3	0	2	0	1	0	0	0	0	0	0	0	0	0	0	4	1	0	.158
Mar 03	at Cal State Fullerton	*2b	1	0	0	0	0	0	0	1	0	0	0	0	0	0	0	4	3	0	.150
Mar 08	vs Oregon State	*2b	3	1	1	0	0	0	0	0	0	0	0	0	0	0	1	1	1	0	.174
Mar 08	vs Western Carolina	*2b	2	1	1	2	0	0	0	0	0	0	0	0	0	0	1	1	0	1	.200
Mar 09	vs Oregon State	*2b	3	0	0	0	0	0	0	0	0	0	0	0	0	0	2	1	1	1	.179
Mar 15	at San Diego State	2b	2	0	0	0	0	0	0	0	0	0	0	0	0	0	1	1	2	0	.167
Mar 17	at San Diego State	*2b	2	0	1	0	0	0	0	0	0	0	0	0	0	0	0	2	1	0	.188
Mar 26	NORTH DAKOTA-1	*2b	2	0	0	0	0	0	0	0	0	0	0	0	0	0	1	1	1	1	.176
Mar 26	NORTH DAKOTA-2	*2b	2	0	0	0	0	0	0	0	0	0	0	1	0	0	0	2	2	0	.167
Mar 30	NEVADA	*2b	3	0	0	0	0	0	0	0	0	0	0	0	0	1	2	2	2	1	.154
Apr 05	at Utah State	pr	0	0	0	0	0	0	0	0	0	0	0	0	0	0	0	0	0	0	.154
<b>Totals</b>			<b>17gs</b>	<b>39</b>	<b>3</b>	<b>6</b>	<b>2</b>	<b>1</b>	<b>0</b>	<b>3</b>	<b>0</b>	<b>0</b>	<b>0</b>	<b>1</b>	<b>0</b>	<b>1</b>	<b>14</b>	<b>28</b>	<b>24</b>	<b>4</b>	<b>.154</b>

On base pct. .214 • Slugging pct. .179

#9 HALLEEN, Kasey - 1 appearance (All games)

Date	Opponent	GS	IP	H	R	ER	BB	SO	2B	3B	HR	WP	BK	HBP	IBB	Score	W-L	Sv	ERA	NP
Mar 31	NEVADA		1.1	3	3	3	2	1	0	0	1	0	0	0	0	1-21	0-0	0	15.75	33
<b>Totals</b>		<b>0</b>	<b>1.1</b>	<b>3</b>	<b>3</b>	<b>3</b>	<b>2</b>	<b>1</b>	<b>0</b>	<b>0</b>	<b>1</b>	<b>0</b>	<b>0</b>	<b>0</b>	<b>0</b>	<b>1-21</b>	<b>0-0</b>	<b>0</b>	<b>15.75</b>	<b>-</b>



# 10 CAMERYN O'GRADY

55 • 5-6 • JR.

ORANGE, CALIF. • EL MODENA HS

## SINGLE-GAME HIGHS

Hits: 4, at Texas Tech, 3-2-18  
 Doubles: 2, 2x, Last vs. CSU, 3-24-19  
 Triples: 1, 5x, Last vs. Creighton, 2-9-19  
 Home runs: 1, 9x, Last vs. Nevada, 3-31-19  
 Total bases: 8, Creighton, 2-9-19  
 RBI: 4, 2x, Last at SDSU, 3-16-19  
 Runs scored: 4, at Texas Tech, 3-2-18  
 Walks: 3, 3x, Last vs UTEP, 2-8-19  
 Hit by pitch: 1, 6x, Last vs. LMU, 3-1-19

Struck out: 3, 6x, Last at SDSU, 3-15-19  
 Sac bunts: 1, 3x, Last Utah State, 4-22-18  
 At bats: 5, 2x, Last at Nevada, 3-24-18  
 Stolen bases: 2, vs George Washington, 2-23-18  
 Putouts: 5, 4x, Last at Boise State, 5-12-18  
 Assists: 8, at San Jose State, 4-27-18

## CAREER STATS (AT UNM)

Year	avg	gp-gs	ab	r	h	2b	3b	hr	rbi	tb	slg%	bb	hbp	so	qdp	ob%	sf	sh	sb-att	po	a	e	fld%
2017	.109	26-19	46	1	5	0	0	0	3	5	.109	3	0	12	0	.163	0	0	0-0	38	39	10	.885
2018	.301	53-52	143	31	43	12	4	4	26	75	.524	32	5	50	0	.444	0	3	4-4	101	118	18	.924
2019	.352	39-39	108	27	38	12	1	5	23	67	.620	24	1	21	0	.474	0	0	0-0	41	59	12	.893
TOTAL	.290	118-110	297	59	86	24	5	9	52	147	.495	59	6	83	0	.417	0	3	4-4	180	216	40	.908

## 2019 GAME-BY-GAME

Date	Opponent	Pos	AB	R	H	RBI	2B	3B	HR	BB	SB	CS	HBP	SAC	SF	GDP	K	PO	A	E	Avg
Feb 08	vs UTEP	*ss	2	3	1	2	0	0	0	3	0	0	0	0	0	0	1	1	2	0	.500
Feb 09	vs Creighton	*ss	3	2	3	4	0	1	1	0	0	0	0	0	0	0	0	2	1	0	.800
Feb 09	at New Mexico State	*ss	4	1	3	1	1	0	1	0	0	0	0	0	0	0	1	1	1	1	.778
Feb 15	vs Alabama	*ss	3	0	1	0	0	0	0	0	0	0	0	0	0	0	0	2	3	0	.667
Feb 15	vs Cal State Fullerton	*ss	2	1	1	0	0	0	0	2	0	0	0	0	0	0	0	1	1	1	.643
Feb 16	at Arizona	*ss	2	0	1	0	0	0	0	0	0	0	0	0	0	0	0	1	2	0	.625
Feb 16	vs Illinois-Chicago	*ss	3	3	1	2	1	0	0	1	0	0	0	0	0	0	0	1	2	0	.579
Feb 17	vs South Florida	*ss	4	0	1	1	1	0	0	0	0	0	0	0	0	0	1	0	2	1	.522
Feb 20	at Hawaii	*ss	2	0	1	0	0	0	0	1	0	0	0	0	0	0	0	1	2	0	.520
Feb 21	vs DePaul	*ss	3	0	0	0	0	0	0	0	0	0	0	0	0	0	0	2	2	0	.464
Feb 22	vs Canisius	*ss	4	1	1	0	0	0	0	0	0	0	0	0	0	0	1	0	1	0	.438
Feb 22	at Hawaii	*ss	4	0	0	0	0	0	0	0	0	0	0	0	0	0	1	0	0	1	.389
Feb 23	at Hawaii	*ss	2	0	0	0	0	0	0	1	0	0	0	0	0	0	0	1	0	0	.368
Feb 23	vs DePaul	*ss	3	1	2	1	1	0	0	1	0	0	0	0	0	0	0	1	2	0	.390
Feb 28	vs Florida	*ss	3	0	1	0	1	0	0	1	0	0	0	0	0	0	0	2	2	0	.386
Mar 01	vs Loyola Marymount	*ss	3	0	0	0	0	0	0	0	0	0	1	0	0	0	2	1	0	0	.362
Mar 01	vs Tennessee	*ss	3	0	2	0	0	0	0	0	0	0	0	0	0	0	0	2	0	1	.380
Mar 03	vs UCONN	*ss	3	0	0	0	0	0	0	1	0	0	0	0	0	0	1	0	1	0	.358
Mar 03	at Cal State Fullerton	*ss	1	0	0	0	0	0	0	0	0	0	0	0	0	0	0	0	0	1	.352
Mar 08	vs Oregon State	*ss	3	0	2	0	1	0	0	1	0	0	0	0	0	0	0	0	2	0	.368
Mar 08	vs Western Carolina	*ss	3	0	1	0	0	0	0	0	0	0	0	0	0	0	1	1	0	1	.367
Mar 09	vs Oregon State	*ss	4	0	2	2	1	0	0	0	0	0	0	0	0	0	0	3	1	0	.375
Mar 10	at Loyola Marymount	*ss	2	2	0	0	0	0	0	2	0	0	0	0	0	0	1	2	1	1	.364
Mar 15	at San Diego State	*ss	3	1	0	0	0	0	0	1	0	0	0	0	0	0	3	1	4	0	.348
Mar 16	at San Diego State	*ss	3	2	3	4	0	0	1	1	0	0	0	0	0	0	0	0	0	1	.375
Mar 17	at San Diego State	*ss	3	1	0	0	0	0	0	1	0	0	0	0	0	0	0	1	3	0	.360
Mar 22	COLORADO STATE	*ss	3	1	0	0	0	0	0	1	0	0	0	0	0	0	1	0	5	0	.346
Mar 23	COLORADO STATE	*ss	2	0	1	1	0	0	0	1	0	0	0	0	0	0	1	1	1	0	.350
Mar 24	COLORADO STATE	*ss	2	1	2	1	2	0	0	1	0	0	0	0	0	0	0	0	0	1	.366
Mar 26	NORTH DAKOTA-1	*ss	3	2	1	0	0	0	0	1	0	0	0	0	0	0	0	0	1	0	.365
Mar 26	NORTH DAKOTA-2	*ss	3	1	2	2	1	0	1	0	0	0	0	0	0	0	0	0	2	0	.375
Mar 29	NEVADA	*ss	2	1	0	0	0	0	0	1	0	0	0	0	0	0	0	4	1	0	.367
Mar 30	NEVADA	*ss	4	0	1	0	0	0	0	0	0	0	0	0	0	0	1	1	2	0	.362
Mar 31	NEVADA	*ss	2	1	1	1	0	0	1	0	0	0	0	0	0	0	1	1	3	1	.365
Apr 02	at New Mexico State-1	*ss	2	0	0	0	0	0	0	0	0	0	0	0	0	0	0	3	2	0	.357
Apr 02	at New Mexico State-2	*ss	2	1	1	0	1	0	0	0	0	0	0	0	0	0	0	0	2	1	.360
Apr 05	at Utah State	*ss	4	0	1	1	1	0	0	0	0	0	0	0	0	0	1	1	1	0	.356
Apr 06	at Utah State	*ss	2	1	0	0	0	0	0	2	0	0	0	0	0	0	1	0	3	0	.349
Apr 07	at Utah State	*ss	2	0	1	0	0	0	0	0	0	0	0	0	0	0	1	2	3	0	.352
Totals			39gs	108	27	38	23	12	1	5	24	0	0	1	0	0	21	41	59	12	.352

On base pct. .474 • Slugging pct. .620





# 12 DARYN HASLAM

**IF • 5-4 • FR.**

**CEDAR PARK, TEXAS • VISTA RIDGE HS**

## SINGLE-GAME HIGHS

Hits: 2, 4x, Last vs. North Dakota, 3-26-19  
 Doubles:  
 Triples:  
 Home runs: 1, 3x, Last at CSUF, 3-3-19  
 Total bases: 5, DePaul, 2-21-19  
 RBI: 3, DePaul, 2-21-19  
 Runs scored: 1, 5x, Last vs. WCU, 3-8-19  
 Walks: 2, Oregon State, 3-9-19  
 Hit by pitch:

Struck out: 3, Nevada, 3-30-19  
 Sac flies:  
 Sac bunts:  
 At bats: 4, 2x, Last vs. Colorado State, 3-22-19  
 Stolen bases:  
 Caught stealing:  
 Putouts: 5, DePaul, 2-23-19  
 Assists: 5, LMU, 3-10-19

## CAREER STATS (AT UNM)

Year	avg	gp-gs	ab	r	h	2b	3b	hr	rbi	tb	slg%	bb	hbp	so	gdp	ob%	sf	sh	sb-att	po	a	e	fld%
2019	.235	24-15	51	5	12	0	0	3	7	21	.412	5	0	19	1	.304	0	0	0-0	18	23	4	.911
TOTAL	.235	24-15	51	5	12	0	0	3	7	21	.412	5	0	19	1	.304	0	0	0-0	18	23	4	.911

## 2019 GAME-BY-GAME

Date	Opponent	Pos	AB	R	H	RBI	2B	3B	HR	BB	SB	CS	HBP	SAC	SF	GDP	K	PO	A	E	Avg
Feb 08	vs UTEP	ph/2b	1	1	0	0	0	0	0	1	0	0	0	0	0	0	1	0	1	0	.000
Feb 09	at New Mexico State	*2b	2	0	0	0	0	0	0	0	0	0	0	0	0	0	1	1	0	0	.000
Feb 15	vs Cal State Fullerton	ph	1	0	0	0	0	0	0	0	0	0	0	0	0	0	0	0	0	0	.000
Feb 16	at Arizona	3b	1	0	0	0	0	0	0	0	0	0	0	0	0	0	0	0	0	0	.000
Feb 21	vs DePaul	*2b	3	1	2	3	0	0	1	0	0	0	0	0	0	0	0	1	1	1	.250
Feb 22	vs Canisius	*2b	2	0	2	0	0	0	1	0	0	0	0	0	0	0	0	1	2	0	.400
Feb 22	at Hawaii	*2b	2	1	1	1	0	0	1	1	0	0	0	0	0	0	1	2	3	0	.417
Feb 23	at Hawaii	*2b	3	0	0	0	0	0	0	0	0	0	0	0	0	0	2	1	1	0	.333
Feb 23	vs DePaul	*2b	3	0	0	0	0	0	0	0	0	0	0	0	0	0	0	5	2	0	.278
Feb 28	vs Florida	ph	1	0	0	0	0	0	0	0	0	0	0	0	0	0	1	0	0	0	.263
Mar 01	vs Loyola Marymount	ph/3b	2	0	0	0	0	0	0	0	0	0	0	0	0	0	1	0	1	0	.238
Mar 03	at Cal State Fullerton	3b	1	1	1	1	0	0	1	0	0	0	0	0	0	0	0	0	0	0	.273
Mar 08	vs Oregon State	*3b	3	0	1	0	0	0	0	0	0	0	0	0	0	0	2	0	1	1	.280
Mar 08	vs Western Carolina	*dh	2	1	1	0	0	0	0	0	0	0	0	0	0	0	0	0	0	0	.296
Mar 09	vs Oregon State	*dh	2	0	0	0	0	0	0	2	0	0	0	0	0	0	1	0	0	0	.276
Mar 10	at Loyola Marymount	*2b	4	0	2	1	0	0	0	0	0	0	0	0	0	0	1	0	5	0	.303
Mar 15	at San Diego State	*2b	2	0	0	0	0	0	0	0	0	0	0	0	0	0	1	0	2	1	.286
Mar 17	at San Diego State	ph/3b	2	0	0	0	0	0	0	0	0	0	0	0	0	0	0	0	0	0	.270
Mar 22	COLORADO STATE	*2b	4	0	0	0	0	0	0	0	0	0	0	0	0	1	1	2	0	1	.244
Mar 24	COLORADO STATE	*2b	2	0	0	0	0	0	0	0	0	0	0	0	0	0	1	0	4	0	.233
Mar 26	NORTH DAKOTA-2	*3b	3	0	2	1	0	0	0	0	0	0	0	0	0	0	1	2	0	0	.261
Mar 29	NEVADA	ph	1	0	0	0	0	0	0	0	0	0	0	0	0	0	0	0	0	0	.255
Mar 30	NEVADA	*3b	3	0	0	0	0	0	0	0	0	0	0	0	0	0	3	3	0	0	.240
Apr 05	at Utah State	ph	1	0	0	0	0	0	0	0	0	0	0	0	0	0	1	0	0	0	.235
Totals		15gs	51	5	12	7	0	0	3	5	0	0	0	0	0	1	19	18	23	4	.235

On base pct. .304 • Slugging pct. .412



# 13 KENNEDY FERGUSON

**P • 5-6 • FR.**  
**CAMAS, WASH. • CAMAS HS**

## SINGLE-GAME HIGHS

Innings pitched: 7.1, South Florida, 2-17-19  
 Walks allowed: 7, Tennessee, 3-1-19  
 Strikeouts: 11, North Dakota, 3-26-19  
 Batters faced: 35, North Dakota, 3-26-19  
 Assists: 3, South Florida, 2-17-19  
 Runners CS: 1, 5x, Last vs. Oregon St., 3-9-19  
 Putouts: 1, Hawai'i, 2-22-19  
 Fewest hits allowed (3.0 IP min.): 2, Western Carolina, 3-9-19  
 Fewest BB allowed (3.0 IP min.): 0, 3x, Last at SDSU, 3-16-19

## CAREER STATS (AT UNM)

Year	avg	gp-gs	ab	r	h	2b	3b	hr	rbi	tb	slg%	bb	hbp	so	qdp	ob%	sf	sh	sb-att	po	a	e	fld%
2019	.000	4-4	0	0	0	0	0	0	0	0	.000	0	0	0	0	.000	0	0	0-0	2	21	1	.958
TOTAL	.000	4-4	0	0	0	0	0	0	0	0	.000	0	0	0	0	.000	0	0	0-0	2	21	1	.958

Year	era	w-l	app	gs	cq	sho	sv	ip	h	r	er	bb	so	2b	3b	hr	bf	bavq	wp	hbp	bk	sfa	sha
2019	4.77	4-12	27	18	9	1/0	0	108.2	150	104	74	46	68	20	1	25	540	.316	5	6	0	4	10
TOTAL	4.77	4-12	27	18	9	1/0	0	108.2	150	104	74	46	68	20	1	25	540	.316	5	6	0	4	10

## 2019 GAME-BY-GAME

Date	Opponent	GS	IP	H	R	ER	BB	SO	2B	3B	HR	WP	BK	HBP	IBB	Score	W-L	Sv	ERA	NP
Feb 08	vs UTEP		2.0	2	1	1	0	2	0	0	1	0	0	0	0	15-6	0-0	0	3.50	31
Feb 09	at New Mexico State	*	4.0	3	4	4	2	3	0	0	2	0	0	2	0	8-9	0-0	0	5.83	80
Feb 15	vs Cal State Fullerton		5.1	8	4	2	1	3	1	0	1	0	0	1	0	2-6	0-1	0	4.32	96
Feb 16	at Arizona		0.2	5	6	6	1	0	0	0	2	0	0	1	0	1-15	0-1	0	7.58	29
Feb 17	vs South Florida	*	7.1	6	2	0	2	6	0	0	0	0	0	0	0	1-2	0-2	0	4.71	98
Feb 21	vs DePaul	*	5.2	10	5	3	5	2	1	0	1	1	0	0	0	5-9	0-3	0	4.48	125
Feb 22	at Hawaii	*	6.0	4	3	2	2	3	1	0	0	0	0	1	0	2-3	0-4	0	4.06	91
Feb 23	vs DePaul	*	6.0	8	4	4	3	3	3	0	1	0	0	0	0	2-4	0-5	0	4.16	104
Feb 28	vs Florida	*	7.0	5	1	0	1	5	1	0	0	0	0	0	0	0-1	0-6	0	3.50	109
Mar 01	vs Loyola Marymount	*	5.1	6	1	1	2	5	0	1	0	0	0	0	0	2-4	0-6	0	3.26	87
Mar 01	vs Tennessee		3.0	10	10	6	7	1	0	0	2	0	0	0	0	1-15	0-6	0	3.88	105
Mar 03	vs UCONN	*	6.0	8	2	2	1	6	0	0	1	0	0	0	0	1-2	0-7	0	3.72	104
Mar 03	at Cal State Fullerton		0.1	3	5	0	1	0	0	0	1	0	0	0	0	1-19	0-7	0	3.70	38
Mar 08	vs Western Carolina	*	5.0	2	0	0	0	3	0	0	0	0	0	0	0	10-0	1-7	0	3.41	67
Mar 09	vs Oregon State	*	7.0	8	5	3	1	3	0	0	1	1	0	0	0	3-5	1-8	0	3.37	103
Mar 10	at Loyola Marymount		0.1	0	0	0	0	0	0	0	0	0	0	0	0	2-6	1-8	0	3.35	2
Mar 15	at San Diego State	*	7.0	7	1	0	0	1	1	0	0	0	0	0	0	3-1	2-8	0	3.05	100
Mar 16	at San Diego State		4.0	8	4	4	0	3	1	0	1	1	0	0	0	8-9	2-9	0	3.24	67
Mar 17	at San Diego State		2.0	2	1	1	0	2	1	0	0	1	0	0	0	3-4	2-9	0	3.25	27
Mar 22	COLORADO STATE	*	4.2	9	6	3	2	0	3	0	1	0	0	0	0	7-9	2-9	0	3.32	84
Mar 23	COLORADO STATE		0.1	4	5	5	1	0	0	0	1	0	0	0	0	1-9	2-9	0	3.70	30
Mar 26	NORTH DAKOTA-1	*	7.0	8	6	2	5	11	1	0	0	0	0	0	0	7-6	3-9	0	3.57	133
Mar 30	NEVADA	*	2.2	4	4	4	2	1	0	0	3	0	0	1	0	6-11	3-9	0	3.76	59
Mar 31	NEVADA	*	1.1	3	5	4	1	2	0	0	2	0	0	0	0	1-21	3-10	0	3.99	33
Apr 02	at New Mexico State-2	*	3.2	9	10	9	2	2	3	0	2	1	0	0	0	3-11	3-11	0	4.46	97
Apr 06	at Utah State	*	5.0	5	3	3	2	1	3	0	1	0	0	0	0	6-3	4-11	0	4.44	87
Apr 07	at Utah State	*	0.0	3	6	5	2	0	0	0	1	0	0	0	0	0-8	4-12	0	4.77	25
Totals			18	108.2	150	104	74	46	68	20	1	25	5	0	6	0 101-198	4-12	0	4.77	-



# 16 LESLIE ROMERO

**OF • 5-4 • FR.**  
**GONZALES, CALIF. • SALINAS HS**

## SINGLE-GAME HIGHS

Hits:  
 Doubles:  
 Home runs:  
 Total bases:  
 RBI:  
 Runs scored:  
 Walks:  
 Struck out: 1, 2x, Last vs. Nevada, 3-31-19  
 Sac bunts:

Sac flies:  
 At bats: 2, at New Mexico State, 2-9-19  
 Stolen bases:  
 Putouts: 1, 2x, Last at Arizona, 2-16-19  
 Assists:

## CAREER STATS (AT UNM)

Year	avg	gp-gs	ab	r	h	2b	3b	hr	rbi	tb	slg%	bb	hbp	so	gdp	ob%	sf	sh	sb-att	po	a	e	fld%
2019	.000	8-1	9	0	0	0	0	0	0	0	.000	0	0	2	0	.000	0	0	0-0	2	0	0	1.000
TOTAL	.000	8-1	9	0	0	0	0	0	0	0	.000	0	0	2	0	.000	0	0	0-0	2	0	0	1.000

## 2019 GAME-BY-GAME

Date	Opponent	Pos	AB	R	H	RBI	2B	3B	HR	BB	SB	CS	HBP	SAC	SF	GDP	K	PO	A	E	Avg
Feb 09	at New Mexico State	*of	2	0	0	0	0	0	0	0	0	0	0	0	0	0	0	1	0	0	.000
Feb 16	at Arizona	of	1	0	0	0	0	0	0	0	0	0	0	0	0	0	0	1	0	0	.000
Feb 20	at Hawaii	ph	1	0	0	0	0	0	0	0	0	0	0	0	0	0	0	0	0	0	.000
Mar 03	at Cal State Fullerton	of	1	0	0	0	0	0	0	0	0	0	0	0	0	0	1	0	0	0	.000
Mar 08	vs Western Carolina	2b	1	0	0	0	0	0	0	0	0	0	0	0	0	0	0	0	0	0	.000
Mar 24	COLORADO STATE	ph/of	1	0	0	0	0	0	0	0	0	0	0	0	0	0	0	0	0	0	.000
Mar 26	NORTH DAKOTA-2	of	1	0	0	0	0	0	0	0	0	0	0	0	0	0	0	0	0	0	.000
Mar 31	NEVADA	of	1	0	0	0	0	0	0	0	0	0	0	0	0	0	1	0	0	0	.000
Totals		1gs	9	0	0	0	0	0	0	0	0	0	0	0	0	0	2	2	0	0	.000

On base pct. .000 • Slugging pct. .000



# 22 MONICA SALAS

**IF • 5-3 • SR.**

**GOLETA, CALIF. • SANTA BARBARA CITY COLL.**

## SINGLE-GAME HIGHS

Hits: 3, Howard, 3-10-18  
 Doubles: 1, 6x, Last at Utah State, 4-7-19  
 Home runs: 1, 6x, Last vs. CSU, 3-22-19  
 Total bases: 5, 2x, Last vs. UTEP, 2-8-19  
 RBI: 4, UTEP, 2-8-19  
 Runs scored: 2, 4x, Last vs. Canisius, 2-22-19  
 Walks: 3, Illinois-Chicago, 2-16-19  
 Hit by pitch: 1, Utah State, 4-6-19  
 Struck out: 2, 22x, Last at Utah State, 4-6-19

Sac flies: 1, at Nevada, 3-25-18  
 At bats: 4, 14x, Last at San Diego State, 3-16-19  
 Stolen bases: 2, Howard, 3-10-18  
 Putouts: 5, St. Mary's, 3-9-18  
 Assists: 5, at UTEP, 4-16-18

## CAREER STATS (AT UNM)

Year	avg	gp-gs	ab	r	h	2b	3b	hr	rbi	tb	slg%	bb	hbp	so	gdp	ob%	sf	sh	sb-att	po	a	e	fld%
2018	.238	45-35	101	9	24	3	0	2	15	33	.327	6	0	34	2	.278	1	0	2-2	35	44	7	.919
2019	.239	36-36	92	11	22	3	0	4	15	37	.402	13	1	30	4	.340	0	0	1-1	24	39	8	.887
TOTAL	.238	81-71	193	20	46	6	0	6	30	70	.363	19	1	64	6	.308	1	0	3-3	59	83	15	.904

## 2019 GAME-BY-GAME

Date	Opponent	Pos	AB	R	H	RBI	2B	3B	HR	BB	SB	CS	HBP	SAC	SF	GDP	K	PO	A	E	Avg
Feb 08	vs UTEP	*3b	4	1	2	4	0	0	1	1	0	0	0	0	0	1	1	1	2	0	.500
Feb 09	vs Creighton	*3b	3	1	2	0	0	0	0	0	0	0	0	0	0	1	0	1	0	0	.571
Feb 09	at New Mexico State	*3b	4	1	1	0	0	0	0	0	0	0	0	0	0	0	1	0	1	0	.455
Feb 15	vs Alabama	*3b	3	0	0	0	0	0	0	0	0	0	0	0	0	0	0	4	2	0	.357
Feb 15	vs Cal State Fullerton	*3b	4	0	1	2	1	0	0	0	0	0	0	0	0	0	2	1	1	1	.333
Feb 16	at Arizona	*3b	2	0	1	0	0	0	0	0	0	0	0	0	0	0	0	0	0	1	.350
Feb 16	vs Illinois-Chicago	*3b	1	2	0	0	0	0	0	3	0	0	0	0	0	0	0	0	1	1	.333
Feb 17	vs South Florida	*3b	4	0	1	0	0	0	0	0	0	0	0	0	0	0	2	2	2	0	.320
Feb 20	at Hawaii	*3b	3	0	0	1	0	0	0	0	0	0	0	0	0	0	2	0	1	0	.286
Feb 21	vs DePaul	*3b	3	1	1	1	0	0	1	0	0	0	0	0	0	0	1	1	2	0	.290
Feb 22	vs Canisius	*3b	2	2	1	2	0	0	1	1	0	0	0	0	0	0	0	0	3	0	.303
Feb 22	at Hawaii	*3b	3	0	1	0	0	0	0	0	0	0	0	0	0	1	0	0	2	1	.306
Feb 23	at Hawaii	*3b	2	0	0	0	0	0	0	1	0	0	0	0	0	0	0	2	0	0	.289
Feb 23	vs DePaul	*3b	3	0	0	0	0	0	0	0	0	0	0	0	0	0	0	0	0	0	.268
Feb 28	vs Florida	*3b	3	0	0	0	0	0	0	0	0	0	0	0	0	0	2	0	1	0	.250
Mar 01	vs Loyola Marymount	*3b	1	0	0	0	0	0	0	0	0	0	0	0	0	0	1	0	0	0	.244
Mar 01	vs Tennessee	*3b	2	0	0	0	0	0	0	0	0	0	0	0	0	0	2	1	1	0	.234
Mar 03	vs UCONN	*3b	3	0	1	0	0	0	0	0	0	0	0	0	0	0	1	1	2	0	.240
Mar 03	at Cal State Fullerton	*3b	1	0	0	0	0	0	0	0	0	0	0	0	0	0	0	0	0	0	.235
Mar 08	vs Western Carolina	*3b	2	1	1	1	0	0	0	1	0	0	0	0	0	0	0	0	0	0	.245
Mar 09	vs Oregon State	*3b	4	0	0	0	0	0	0	0	0	0	0	0	0	0	2	0	0	0	.228
Mar 10	at Loyola Marymount	*3b	4	0	1	0	0	0	0	0	0	0	0	0	0	0	1	1	1	0	.230
Mar 15	at San Diego State	*3b	3	0	1	1	0	0	0	0	0	0	0	0	0	0	2	0	1	0	.234
Mar 16	at San Diego State	*3b	4	0	0	0	0	0	0	0	0	0	0	0	0	1	1	0	1	0	.221
Mar 17	at San Diego State	*3b	2	0	0	0	0	0	0	0	0	0	0	0	0	0	0	0	0	1	.214
Mar 22	COLORADO STATE	*3b	2	1	1	3	0	0	1	2	0	0	0	0	0	0	0	2	3	0	.222
Mar 23	COLORADO STATE	*3b	1	0	0	0	0	0	0	1	0	0	0	0	0	0	1	0	3	0	.219
Mar 24	COLORADO STATE	*3b	2	0	1	0	0	0	0	0	0	0	0	0	0	0	1	1	0	1	.227
Mar 26	NORTH DAKOTA-1	*3b	2	0	0	0	0	0	0	1	1	0	0	0	0	0	0	0	2	0	.221
Mar 29	NEVADA	*3b	2	0	0	0	0	0	0	0	0	0	0	0	0	0	2	1	1	1	.215
Mar 31	NEVADA	*3b	2	0	0	0	0	0	0	0	0	0	0	0	0	0	2	1	2	0	.210
Apr 02	at New Mexico State-1	*3b	2	0	1	0	1	0	0	0	0	0	0	0	0	0	0	1	0	1	.217
Apr 02	at New Mexico State-2	*3b	2	0	1	0	0	0	0	0	0	0	0	0	0	0	1	0	2	0	.224
Apr 05	at Utah State	*3b	3	1	2	0	0	0	0	1	0	0	0	0	0	0	0	2	1	0	.239
Apr 06	at Utah State	*3b	2	0	0	0	0	0	0	1	0	0	1	0	0	0	2	1	1	0	.233
Apr 07	at Utah State	*3b	2	0	1	0	1	0	0	0	0	0	0	0	0	0	0	0	0	0	.239
Totals		36gs	92	11	22	15	3	0	4	13	1	0	1	0	0	4	30	24	39	8	.239

On base pct. .340 • Slugging pct. .402



**23 EMMA STELTZER** P • 5-6 • FR.  
MANCHESTER, MO. • PARKWAY SOUTH HS

**SINGLE-GAME HIGHS**

Hits:  
Doubles:  
Home runs:  
Total bases:  
RBI:  
Runs scored:  
Walks: 1, Canisius, 2-22-19  
Struck out:  
Sac bunts:

Sac flies:  
At bats: 1, 2x, Last vs. WCU, 3-8-19  
Stolen bases:  
Putouts:  
Assists:  
Innings Pitched: 3.0, Utah State, 4-5-19  
Walks Allowed: 2, Nevada, 3-31-19  
Batters Faced: 14, Utah State, 4-5-19  
Assists: 1, Utah State, 4-5-19

**CAREER STATS (AT UNM)**

Year	avg	qp-qs	ab	r	h	2b	3b	hr	rbi	tb	slg%	bb	hbp	so	qdp	ob%	sf	sh	sb-att	po	a	e	fld%
2019	.000	3-0	2	0	0	0	0	0	0	0	.000	1	0	0	0	.333	0	0	0-0	0	1	0	1.000
TOTAL	.000	3-0	2	0	0	0	0	0	0	0	.000	1	0	0	0	.333	0	0	0-0	0	1	0	1.000

Year	era	w-l	app	qs	cq	sho	sv	ip	h	r	er	bb	so	2b	3b	hr	bf	bavg	wp	hbp	bk	sfa	sha
2019	7.30	0-0	6	0	0	0/0	0	7.2	11	9	8	4	0	2	0	4	39	.324	0	1	0	0	0
TOTAL	7.30	0-0	6	0	0	0/0	0	7.2	11	9	8	4	0	2	0	4	39	.324	0	1	0	0	0

**2019 GAME-BY-GAME**

Date	Opponent	Pos	AB	R	H	RBI	2B	3B	HR	BB	SB	CS	HBP	SAC	SF	GDP	K	PO	A	E	Avg	
Feb 16	at Arizona	ph	1	0	0	0	0	0	0	0	0	0	0	0	0	0	0	0	0	0	0	.000
Feb 22	vs Canisius	ph	0	0	0	0	0	0	0	1	0	0	0	0	0	0	0	0	0	0	0	.000
Mar 08	vs Western Carolina	dh	1	0	0	0	0	0	0	0	0	0	0	0	0	0	0	0	0	0	0	.000
Apr 05	at Utah State	p	0	0	0	0	0	0	0	0	0	0	0	0	0	0	0	0	1	0	0	.000
Totals		Ogs	2	0	0	0	0	0	0	1	0	0	0	0	0	0	0	0	1	0	0	.000

On base pct. .333 • Slugging pct. .000

#23 STELTZER, Emma - 6 appearances (All games)

Date	Opponent	GS	IP	H	R	ER	BB	SO	2B	3B	HR	WP	BK	HBP	IBB	Score	W-L	Sv	ERA	NP
Mar 03	at Cal State Fullerton		0.2	0	0	0	0	0	0	0	0	0	0	0	0	1-19	0-0	0	0.00	8
Mar 24	COLORADO STATE		0.2	1	1	0	0	0	0	0	1	0	0	0	0	3-16	0-0	0	0.00	10
Mar 31	NEVADA		1.1	5	5	5	2	0	2	0	1	0	0	0	0	1-21	0-0	0	13.12	40
Apr 02	at New Mexico State-2		0.1	0	0	0	0	0	0	0	0	0	0	0	0	3-11	0-0	0	11.67	3
Apr 05	at Utah State		3.0	2	2	2	1	0	0	0	1	0	0	1	0	6-7	0-0	0	8.17	54
Apr 07	at Utah State		1.2	3	1	1	1	0	0	0	1	0	0	0	0	0-8	0-0	0	7.30	35
Totals		0	7.2	11	9	8	4	0	2	0	4	0	0	1	0	14-82	0-0	0	7.30	-



# **24 SKYLAR JENKINS**

**OF • 5-5 • FR.**

**LAWRENCEVILLE, GA. • BUFORD HS**

## **SINGLE-GAME HIGHS**

Hits:

Doubles:

Home runs:

Total bases:

RBI:

Runs scored:

Walks:

Struck out:

Sac bunts:

Sac flies:

At bats:

Stolen bases:

Putouts:

Assists:

## **CAREER STATS (AT UNM)**

## **2019 GAME-BY-GAME**



# 32 LAUREN WILMERT C/1B • 5-10 • JR. ALBUQUERQUE, N.M. • VOLCANO VISTA HS

## SINGLE-GAME HIGHS

Hits: 3, San Diego State, 3-17-19  
 Doubles: 1, 13x, Last at Utah State, 4-6-19  
 Triples: 1, North Dakota, 3-26-19  
 Home runs: 1, 8x, Last at Utah State, 4-6-19  
 Total bases: 6, 4x, Last at Utah State, 4-6-19  
 RBI: 5, 2x, Last vs. WCU, 3-8-19  
 Runs scored: 3, UTEP, 2-8-19  
 Walks: 3, UTEP, 2-8-19  
 Hit by pitch: 1, 2x, Last vs. UTEP, 2-8-19

Struck out: 3, George Washington, 2-23-18  
 Sac flies: 1, 3x, Last at LMU, 3-10-19  
 Sac bunts: 1, 3x, Last vs. Utah State, 4-22-18  
 At bats: 4, 16x, Last at Utah State, 4-5-19  
 Stolen bases: 1, vs Western Michigan, 2-11-17  
 Putouts: 11, 2x, Last vs. North Dakota, 3-26-19  
 Assists: 2, 6x, Last vs. Oregon St., 3-9-19  
 Runners CS: 1, 10x, Last at SDSU, 3-15-19

## CAREER STATS (AT UNM)

Year	avg	gp-gs	ab	r	h	2b	3b	hr	rbi	tb	slg%	bb	hbp	so	qdp	ob%	sf	sh	sb-att	po	a	e	fld%
2017	.242	34-23	62	5	15	3	0	1	6	21	.339	6	0	15	1	.304	1	2	1-1	67	6	3	.961
2018	.180	32-20	61	5	11	1	0	1	11	15	.246	7	1	23	0	.275	0	1	0-0	87	11	4	.961
2019	.270	39-39	111	21	30	9	1	6	31	59	.532	12	1	31	1	.341	2	0	0-0	194	14	8	.963
TOTAL	.239	105-82	234	31	56	13	1	8	48	95	.406	25	2	69	2	.314	3	3	1-1	348	31	15	.962

## 2019 GAME-BY-GAME

Date	Opponent	Pos	AB	R	H	RBI	2B	3B	HR	BB	SB	CS	HBP	SAC	SF	GDP	K	PO	A	E	Avg	
Feb 08	vs UTEP	*c	0	3	0	2	0	0	0	3	0	0	1	0	0	0	0	10	2	0	.000	
Feb 09	vs Creighton	*1b	2	0	1	1	0	0	0	1	0	0	0	0	0	0	1	2	0	0	.500	
Feb 09	at New Mexico State	*c	3	0	0	1	0	0	0	0	0	0	0	0	1	0	2	6	1	1	.200	
Feb 15	vs Alabama	*1b	2	0	1	0	1	0	0	1	0	0	0	0	0	0	0	7	0	0	.286	
Feb 15	vs Cal State Fullerton	*c	4	0	0	0	0	0	0	0	0	0	0	0	0	0	2	3	1	0	.182	
Feb 16	at Arizona	*1b	2	0	0	0	0	0	0	0	0	0	0	0	0	0	0	4	0	1	.154	
Feb 16	vs Illinois-Chicago	*c	4	1	2	0	0	0	0	0	0	0	0	0	0	0	1	9	0	0	.235	
Feb 17	vs South Florida	*1b	3	0	0	0	0	0	0	0	0	0	0	0	0	0	0	11	1	1	.200	
Feb 20	at Hawaii	*1b	3	0	0	0	0	0	0	0	0	0	0	0	0	1	0	4	0	0	.174	
Feb 21	vs DePaul	*1b	3	1	1	1	0	0	1	0	0	0	0	0	0	0	2	7	0	1	.192	
Feb 22	vs Canisius	*c	3	2	2	3	1	0	1	0	0	0	0	0	0	0	0	4	0	0	.241	
Feb 22	at Hawaii	*c	3	1	2	0	1	0	0	0	0	0	0	0	0	0	0	3	0	1	.281	
Feb 23	at Hawaii	*1b	3	1	1	0	1	0	0	0	0	0	0	0	0	0	0	3	0	0	.286	
Feb 23	vs DePaul	*c	4	0	0	0	0	0	0	0	0	0	0	0	0	0	1	2	2	1	.256	
Feb 28	vs Florida	*c	2	0	0	0	0	0	0	1	0	0	0	0	0	0	2	6	0	0	.244	
Mar 01	vs Loyola Marymount	*c	2	1	0	0	0	0	0	1	0	0	0	0	0	0	0	8	1	0	.233	
Mar 01	vs Tennessee	*1b	2	0	0	0	0	0	0	0	0	0	0	0	0	0	1	4	0	0	.222	
Mar 03	vs UCONN	*1b	4	0	0	0	0	0	0	0	0	0	0	0	0	0	2	5	0	0	.204	
Mar 03	at Cal State Fullerton	*c	2	0	0	0	0	0	0	0	0	0	0	0	0	0	0	2	0	0	.196	
Mar 08	vs Oregon State	*c	4	0	1	1	0	0	0	0	0	0	0	0	0	0	2	5	1	0	.200	
Mar 08	vs Western Carolina	*c	3	2	2	5	1	0	1	0	0	0	0	0	0	0	0	3	0	0	.224	
Mar 09	vs Oregon State	*c	4	0	1	0	0	0	0	0	0	0	0	0	0	0	0	2	2	0	.226	
Mar 10	at Loyola Marymount	*c	3	0	0	1	0	0	0	0	0	0	0	0	1	0	1	6	1	0	.215	
Mar 15	at San Diego State	*c	4	0	1	2	0	0	0	0	0	0	0	0	0	0	0	1	1	0	.217	
Mar 16	at San Diego State	*1b	4	1	2	1	0	0	0	0	0	0	0	0	0	0	1	6	0	0	.233	
Mar 17	at San Diego State	*c	4	1	3	2	0	0	1	0	0	0	0	0	0	0	0	6	0	0	.260	
Mar 22	COLORADO STATE	*c	4	1	2	0	1	0	0	0	0	0	0	0	0	0	2	1	0	0	.272	
Mar 23	COLORADO STATE	*1b	2	0	0	0	0	0	0	1	0	0	0	0	0	0	2	6	0	0	.265	
Mar 24	COLORADO STATE	*c	3	0	0	0	0	0	0	0	0	0	0	0	0	0	2	2	0	0	.256	
Mar 26	NORTH DAKOTA-1	*c	2	1	2	3	1	1	0	2	0	0	0	0	0	0	0	11	0	0	.273	
Mar 26	NORTH DAKOTA-2	*1b	2	1	0	0	0	0	0	1	0	0	0	0	0	0	0	3	0	0	.267	
Mar 29	NEVADA	*c	3	0	1	1	1	0	0	0	0	0	0	0	0	0	1	6	1	0	.269	
Mar 30	NEVADA	*1b	3	1	2	3	0	0	1	0	0	0	0	0	0	0	1	5	0	1	.281	
Mar 31	NEVADA	*c	2	0	0	0	0	0	0	0	0	0	0	0	0	0	1	4	0	0	.276	
Apr 02	at New Mexico State-1	*1b	2	0	0	0	0	0	0	0	0	0	0	0	0	0	2	2	0	0	.270	
Apr 02	at New Mexico State-2	*1b	2	1	0	0	0	0	0	0	0	0	0	0	0	0	0	7	0	0	.265	
Apr 05	at Utah State	*1b	4	1	1	0	0	0	0	0	0	0	0	0	0	0	0	7	0	0	.264	
Apr 06	at Utah State	*1b	3	1	2	4	1	0	1	1	0	0	0	0	0	0	1	8	0	0	.275	
Apr 07	at Utah State	*1b	2	0	0	0	0	0	0	0	0	0	0	0	0	0	1	3	0	1	.270	
Totals			39gs	111	21	30	31	9	1	6	12	0	0	1	0	2	1	31	194	14	8	.270

On base pct. .341 • Slugging pct. .532



# 44 ALEYAH WILBON

OF • 5-3 • SR.

FONTANA, CALIF. • SUMMIT HS

## SINGLE-GAME HIGHS

Hits: 3, 3x, Last at Utah State, 4-5-19  
 Doubles: 1, Howard, 3-10-18  
 Total bases: 3, 3x, Last at Utah State, 4-5-19  
 RBI: 1, 3x, Last vs. North Dakota, 3-26-19  
 Runs scored: 2, 4x, Last vs. Nevada, 3-30-19  
 Walks: 3, Sac. State, 3-11-18  
 Hit by pitch: 1, vs St. Mary's, 2-9-18  
 Sac Bunts: 1, 3x, Last vs. Nevada, 3-29-19  
 Struck out: 2, 8x, Last at NMSU, 4-2-19

At bats: 4, 5x, Last at Utah State, 4-6-19  
 Stolen bases: 1, 6x, Last vs. North Dakota, 3-26-19  
 Caught stealing: 1, 4x, Last at Hawai'i, 2-23-19  
 Putouts: 3, 3x, Last at Utah State, 4-6-19  
 Assists: 1, at New Mexico State, 4-3-18

## CAREER STATS (AT UNM)

Year	avg	gp-gs	ab	r	h	2b	3b	hr	rbi	tb	slg%	bb	hbp	so	gdp	ob%	sf	sh	sb-att	po	a	e	fld%
2018	.222	38-25	63	13	14	1	0	0	2	15	.238	16	1	24	0	.388	0	2	5-8	26	1	1	.964
2019	.459	30-11	37	13	17	0	0	0	1	17	.459	2	0	11	0	.487	0	1	1-2	13	0	0	1.000
TOTAL	.310	68-36	100	26	31	1	0	0	3	32	.320	18	1	35	0	.420	0	3	6-10	39	1	1	.976

## 2019 GAME-BY-GAME

Date	Opponent	Pos	AB	R	H	RBI	2B	3B	HR	BB	SB	CS	HBP	SAC	SF	GDP	K	PO	A	E	Avg	
Feb 09	at New Mexico State	of	0	1	0	0	0	0	0	1	0	0	0	0	0	0	0	0	0	0	0	.000
Feb 15	vs Alabama	pr	0	0	0	0	0	0	0	0	0	0	0	0	0	0	0	0	0	0	0	.000
Feb 15	vs Cal State Fullerton	pr	0	0	0	0	0	0	0	0	0	0	0	0	0	0	0	0	0	0	0	.000
Feb 16	at Arizona	of	1	1	0	0	0	0	0	0	0	0	0	0	0	0	0	0	0	0	0	.000
Feb 16	vs Illinois-Chicago	pr	0	1	0	0	0	0	0	0	0	0	0	0	0	0	0	0	0	0	0	.000
Feb 20	at Hawaii	pr	0	0	0	0	0	0	0	0	0	0	0	0	0	0	0	0	0	0	0	.000
Feb 21	vs DePaul	*of	3	0	1	0	0	0	0	0	0	0	0	0	0	0	0	1	1	0	0	.250
Feb 22	at Hawaii	pr	0	0	0	0	0	0	0	0	0	0	0	0	0	0	0	0	0	0	0	.250
Feb 23	at Hawaii	pr	0	0	0	0	0	0	0	0	0	1	0	0	0	0	0	0	0	0	0	.250
Feb 23	vs DePaul	pr	0	0	0	0	0	0	0	0	0	0	0	0	0	0	0	0	0	0	0	.250
Feb 28	vs Florida	pr	0	0	0	0	0	0	0	0	0	0	0	0	0	0	0	0	0	0	0	.250
Mar 01	vs Loyola Marymount	ph	1	0	1	0	0	0	0	0	0	0	0	0	0	0	0	0	0	0	0	.400
Mar 03	vs UCONN	ph	1	1	1	0	0	0	0	0	0	0	0	0	0	0	0	0	0	0	0	.500
Mar 03	at Cal State Fullerton	*of	2	0	0	0	0	0	0	0	0	0	0	0	0	0	0	2	0	0	0	.375
Mar 08	vs Oregon State	pr	0	1	0	0	0	0	0	0	0	0	0	0	0	0	0	0	0	0	0	.375
Mar 08	vs Western Carolina	of	0	0	0	0	0	0	0	0	0	0	0	0	0	0	0	0	0	0	0	.375
Mar 09	vs Oregon State	ph	1	0	0	0	0	0	0	0	0	0	0	0	0	0	0	1	0	0	0	.333
Mar 10	at Loyola Marymount	ph	1	0	0	0	0	0	0	0	0	0	0	0	0	0	0	1	0	0	0	.300
Mar 22	COLORADO STATE	pr	0	0	0	0	0	0	0	0	0	0	0	0	0	0	0	0	0	0	0	.300
Mar 23	COLORADO STATE	pr	0	1	0	0	0	0	0	0	0	0	0	0	0	0	0	0	0	0	0	.300
Mar 26	NORTH DAKOTA-1	pr	0	1	0	0	0	0	0	0	0	0	0	0	0	0	0	0	0	0	0	.300
Mar 26	NORTH DAKOTA-2	*of	3	2	3	1	0	0	0	0	1	0	0	0	0	0	0	0	2	0	0	.462
Mar 29	NEVADA	*of	2	0	1	0	0	0	0	0	0	0	0	1	0	0	0	0	0	0	0	.467
Mar 30	NEVADA	*of	4	2	3	0	0	0	0	0	0	0	0	0	0	0	0	1	3	0	0	.526
Mar 31	NEVADA	*of/p	1	0	0	0	0	0	0	0	0	0	0	0	0	0	0	1	1	0	0	.500
Apr 02	at New Mexico State-1	*of	3	0	0	0	0	0	0	0	0	0	0	0	0	0	0	2	0	0	0	.435
Apr 02	at New Mexico State-2	*of	3	0	1	0	0	0	0	0	0	0	0	0	0	0	0	0	2	0	0	.423
Apr 05	at Utah State	*of	4	1	3	0	0	0	0	0	0	0	0	0	0	0	0	1	1	0	0	.467
Apr 06	at Utah State	*of	4	1	2	0	0	0	0	1	0	0	0	0	0	0	0	1	3	0	0	.471
Apr 07	at Utah State	*of	3	0	1	0	0	0	0	0	0	0	0	0	0	0	0	0	0	0	0	.459
Totals			11gs	37	13	17	1	0	0	0	2	1	1	0	1	0	0	11	13	0	0	.459

On base pct. .487 • Slugging pct. .459

#44 WILBON, Aleyah - 1 appearance (All games)

Date	Opponent	GS	IP	H	R	ER	BB	SO	2B	3B	HR	WP	BK	HBP	IBB	Score	W-L	Sv	ERA	NP
Mar 31	NEVADA		1.0	4	5	4	2	0	1	0	1	1	0	0	0	1-21	0-0	0	28.00	26
Totals		0	1.0	4	5	4	2	0	1	0	1	1	0	0	0	1-21	0-0	0	28.00	-





**66 SYDNEY TOWNES** *OF • 5-6 • SR.*  
*LOMPOC, CALIF. • SANTA BARBARA CITY COLL.*

**SINGLE-GAME HIGHS**

Hits: 2, 4x, Last vs. UNLV, 3-26-18  
 Doubles: 1, 3x, Last vs. Oregon St., 3-8-19  
 Triples: 1, George Washington, 2-25-18  
 Total bases: 4, George Washington, 2-25-18  
 RBI: 1, 4x, Last vs. New Mexico State, 3-21-18  
 Runs scored: 2, 3x, Last vs. Utah State, 4-21-18  
 Walks: 2, 4x, Last vs. Illinois-Chicago, 2-16-19  
 Hit by pitch: 1, 4x, Last vs. Utah State, 4-21-18  
 Struck out: 2, 11x, Last vs. Oregon St., 3-8-19

Sac bunts: 1, 2x, Last at San Jose St., 4-29-18  
 At bats: 5, at Nevada, 3-24-18  
 Stolen bases: 1, 7x, Last at LMU, 3-10-19  
 Putouts: 5, UNLV, 3-18-18  
 Assists: 1, 2x, Last vs. UNLV, 3-18-18

**CAREER STATS (AT UNM)**

Year	avg	qp-gs	ab	r	h	2b	3b	hr	rbi	tb	slg%	bb	hbp	so	gdp	ob%	sf	sh	sb-att	po	a	e	fld%
2018	.186	45-44	102	16	19	2	1	0	4	23	.225	23	4	40	0	.357	0	2	6-6	59	2	4	.938
2019	.143	24-10	28	4	4	1	0	0	0	5	.179	7	0	11	0	.314	0	0	1-1	16	0	1	.941
TOTAL	.177	69-54	130	20	23	3	1	0	4	28	.215	30	4	51	0	.348	0	2	7-7	75	2	5	.939

**2019 GAME-BY-GAME**

Date	Opponent	Pos	AB	R	H	RBI	2B	3B	HR	BB	SB	CS	HBP	SAC	SF	GDP	K	PO	A	E	Avg
Feb 08	vs UTEP	ph/of	1	0	0	0	0	0	0	0	0	0	0	0	0	0	1	0	0	0	.000
Feb 09	vs Creighton	ph/of	1	0	0	0	0	0	0	0	0	0	0	0	0	0	1	0	0	0	.000
Feb 09	at New Mexico State	pr	0	0	0	0	0	0	0	0	0	0	0	0	0	0	0	0	0	0	.000
Feb 16	at Arizona	of	0	0	0	0	0	0	0	0	0	0	0	0	0	0	0	0	0	0	.000
Feb 16	vs Illinois-Chicago	*of	1	1	0	0	0	0	0	2	0	0	0	0	0	0	0	0	0	0	.000
Feb 17	vs South Florida	*of	3	0	0	0	0	0	0	0	0	0	0	0	0	0	2	0	0	0	.000
Feb 22	vs Canisius	ph	1	0	0	0	0	0	0	0	0	0	0	0	0	0	1	0	0	0	.000
Feb 22	at Hawaii	pr	0	0	0	0	0	0	0	0	0	0	0	0	0	0	0	0	0	0	.000
Feb 28	vs Florida	pr	0	0	0	0	0	0	0	0	0	0	0	0	0	0	0	0	0	0	.000
Mar 01	vs Loyola Marymount	of	0	0	0	0	0	0	0	0	0	0	0	0	0	0	0	0	0	0	.000
Mar 03	vs UCONN	pr	0	0	0	0	0	0	0	0	0	0	0	0	0	0	0	0	0	0	.000
Mar 03	at Cal State Fullerton	of	1	0	0	0	0	0	0	0	0	0	0	0	0	0	1	0	0	0	.000
Mar 08	vs Oregon State	*of	4	1	1	0	1	0	0	0	0	0	0	0	0	0	2	1	0	0	.083
Mar 09	vs Oregon State	of	2	0	1	0	0	0	0	0	0	0	0	0	0	0	0	0	0	1	.143
Mar 10	at Loyola Marymount	*of	3	0	1	0	0	0	0	1	0	0	0	0	0	0	0	1	0	0	.176
Mar 15	at San Diego State	*of	2	0	0	0	0	0	0	1	0	0	0	0	0	0	1	3	0	0	.158
Mar 16	at San Diego State	*of	2	1	0	0	0	0	0	1	0	0	0	0	0	0	0	3	0	0	.143
Mar 17	at San Diego State	*of	2	0	0	0	0	0	0	1	0	0	0	0	0	0	0	3	0	0	.130
Mar 22	COLORADO STATE	*of	3	0	1	0	0	0	0	0	0	0	0	0	0	0	0	3	0	0	.154
Mar 23	COLORADO STATE	*of	1	0	0	0	0	0	0	1	0	0	0	0	0	0	1	1	0	0	.148
Mar 24	COLORADO STATE	*of	1	0	0	0	0	0	0	0	0	0	0	0	0	0	1	1	0	0	.143
Mar 31	NEVADA	ph	0	0	0	0	0	0	0	1	0	0	0	0	0	0	0	0	0	0	.143
Apr 02	at New Mexico State-1	pr	0	0	0	0	0	0	0	0	0	0	0	0	0	0	0	0	0	0	.143
Apr 06	at Utah State	pr	0	1	0	0	0	0	0	0	0	0	0	0	0	0	0	0	0	0	.143
Totals		10gs	28	4	4	0	1	0	0	7	1	0	0	0	0	0	11	16	0	1	.143

On base pct. .314 • Slugging pct. .179



# 99 KIANA SPENCER

P • 5-6 • JR.  
GALLUP, N.M. • YAVAPAI COLLEGE

## SINGLE-GAME HIGHS

Innings pitched: 7.0, 5x, Last vs. Nevada, 3-29-19  
 Walks allowed: 7, LMU, 3-10-19  
 Strikeouts: 7, North Dakota, 3-26-19  
 Batters faced: 36, Nevada, 3-29-19  
 Field chances: 2, 2x, Last vs. Oregon St., 3-8-19  
 Assists: 2, 2x, Last vs. Oregon St., 3-8-19  
 Runners CS: 1, Tennessee, 3-1-19  
 Fewest hits allowed (Min. 3.0 IP): 3, Creighton, 2-9-19  
 Fewest walks allowed (Min. 3.0 IP): 3, Alabama, 2-15-19

## CAREER STATS (AT UNM)

Year	avg	qp-qs	ab	r	h	2b	3b	hr	rbi	tb	slg%	bb	hbp	so	qdp	ob%	sf	sh	sb-att	po	a	e	fld%
2019	.000	1-1	0	0	0	0	0	0	0	0	.000	0	0	0	0	.000	0	0	0-0	0	8	2	.800
TOTAL	.000	1-1	0	0	0	0	0	0	0	0	.000	0	0	0	0	.000	0	0	0-0	0	8	2	.800

Year	era	w-l	app	qs	cq	sho	sv	ip	h	r	er	bb	so	2b	3b	hr	bf	bavq	wp	hbp	bk	sfa	sha
2019	5.55	5-12	24	16	9	2/0	1	92.0	116	87	73	61	60	26	5	20	469	.301	7	13	0	2	8

## 2019 GAME-BY-GAME

Date	Opponent	Pos	AB	R	H	RBI	2B	3B	HR	BB	SB	CS	HBP	SAC	SF	GDP	K	PO	A	E	Avg
Feb 15	vs Alabama	*p	0	0	0	0	0	0	0	0	0	0	0	0	0	0	0	0	2	0	.000
Feb 23	at Hawaii	*p	0	0	0	0	0	0	0	0	0	0	0	0	0	0	0	0	1	0	.000
Mar 03	at Cal State Fullerton	*p	0	0	0	0	0	0	0	0	0	0	0	0	0	0	0	0	0	1	.000
Mar 08	vs Oregon State	*p	0	0	0	0	0	0	0	0	0	0	0	0	0	0	0	0	2	0	.000
Mar 10	at Loyola Marymount	*p	0	0	0	0	0	0	0	0	0	0	0	0	0	0	0	0	1	0	.000
Mar 17	at San Diego State	*dh/p	0	0	0	0	0	0	0	0	0	0	0	0	0	0	0	0	1	0	.000
Apr 02	at New Mexico State-1	*p	0	0	0	0	0	0	0	0	0	0	0	0	0	0	0	0	0	1	.000
Apr 05	at Utah State	*p	0	0	0	0	0	0	0	0	0	0	0	0	0	0	0	0	1	0	.000
Totals		8gs	0	0	0	0	0	0	0	0	0	0	0	0	0	0	0	0	8	2	.000

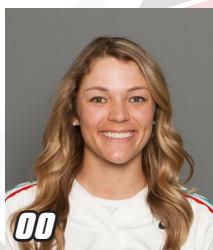
On base pct. .000 • Slugging pct. .000

#99 SPENCER, Kiana - 24 appearances (All games)

Date	Opponent	GS	IP	H	R	ER	BB	SO	2B	3B	HR	WP	BK	HBP	IBB	Score	W-L	Sv	ERA	NP
Feb 09	vs Creighton	*	5.0	3	0	0	5	2	0	0	0	0	0	1	0	8-0	1-0	0	0.00	91
Feb 09	at New Mexico State		1.0	1	1	1	0	2	0	0	1	0	0	0	0	8-9	1-0	0	1.17	21
Feb 15	vs Alabama	*	7.0	6	1	1	3	0	1	0	0	0	0	0	0	0-1	1-1	0	1.08	102
Feb 15	vs Cal State Fullerton		0.2	0	0	0	0	0	0	0	0	0	0	0	0	2-6	1-1	0	1.02	5
Feb 16	at Arizona	*	1.1	6	7	7	3	0	2	0	2	0	0	0	0	1-15	1-2	0	4.20	50
Feb 20	at Hawaii	*	6.0	5	2	1	0	4	1	0	1	0	0	1	0	1-2	1-3	0	3.33	88
Feb 21	vs DePaul		0.2	0	0	0	2	0	0	0	0	0	0	1	0	5-9	1-3	0	3.23	24
Feb 22	vs Canisius	*	5.0	4	0	0	1	4	0	0	0	0	0	1	0	10-0	2-3	0	2.62	81
Feb 23	at Hawaii	*	7.0	4	2	2	4	6	0	0	1	0	0	0	0	3-2	3-3	0	2.50	107
Mar 01	vs Tennessee	*	2.0	8	5	5	2	0	2	0	2	0	0	0	0	1-15	3-4	0	3.34	48
Mar 03	at Cal State Fullerton	*	2.2	9	8	8	2	1	1	0	4	0	0	0	0	1-19	3-5	0	4.57	63
Mar 08	vs Oregon State	*	7.0	9	5	3	4	2	3	1	0	0	0	0	0	6-5	4-5	0	4.32	123
Mar 10	at Loyola Marymount	*	5.2	5	6	6	7	5	1	0	1	1	0	1	0	2-6	4-6	0	4.67	132
Mar 16	at San Diego State	*	2.0	2	5	3	4	2	1	0	1	1	0	1	0	8-9	4-6	0	4.89	64
Mar 17	at San Diego State		3.2	5	3	3	3	3	1	0	0	0	0	0	0	3-4	4-7	0	4.94	83
Mar 22	COLORADO STATE		2.1	3	3	3	1	1	2	0	1	0	0	0	0	7-9	4-8	0	5.10	24
Mar 23	COLORADO STATE	*	4.0	6	4	4	1	3	2	1	1	0	0	0	0	1-9	4-9	0	5.22	75
Mar 24	COLORADO STATE		4.0	7	11	7	4	2	3	1	1	2	0	3	0	3-16	4-9	0	5.64	100
Mar 26	NORTH DAKOTA-2	*	7.0	7	3	2	3	7	1	1	0	0	0	1	0	7-3	5-9	0	5.30	106
Mar 29	NEVADA	*	7.0	11	7	6	2	6	3	0	0	0	0	2	0	1-7	5-10	0	5.36	113
Mar 30	NEVADA		0.2	1	1	1	1	0	0	0	0	1	0	0	0	6-11	5-10	0	5.40	15
Apr 02	at New Mexico State-1	*	5.1	8	8	5	5	6	2	0	1	1	0	1	0	0-8	5-11	0	5.47	142
Apr 05	at Utah State	*	3.0	4	5	5	1	3	0	1	3	0	0	0	0	6-7	5-12	0	5.68	45
Apr 06	at Utah State		2.0	2	0	0	3	1	0	0	0	1	0	0	0	6-3	5-12	1	5.55	54
Totals		16	92.0	116	87	73	61	60	26	5	20	7	0	13	0	96-175	5-12	1	5.55	-

# THE 2019 LOBO SOFTBALL RADIO/TV ROSTER

## PLAYERS



**00**  
Andrea Howard  
OF | 5-6 | So.  
Albuquerque, N.M.



**2**  
Maggie Buckholz  
UT | 5-7 | Fr.  
Silverton, Ore.



**3**  
Taylor Jones  
IF | 5-7 | So.  
Albuquerque, N.M.



**4**  
D'Andra DeFlora  
OF | 5-2 | Sr.  
Fresno, Texas



**5**  
Sydney Broderick  
C | 5-4 | So.  
Mesa, Ariz.



**7**  
MacKenzie Peterson  
OF | 5-9 | Fr.  
Gilbert, Ariz.



**8**  
Bailey Klitzke  
P/1B | 5-8 | Jr.  
Apache Junction, Ariz.



**9**  
Kasey Halleen  
IF | 5-6 | Sr.  
Torrance, Calif.



**10**  
Cameryn O'Grady  
SS | 5-6 | So.  
Orange, Calif.



**12**  
Daryn Haslam  
IF | 5-4 | Fr.  
Cedar Park, Texas



**13**  
Kennedy Ferguson  
P | 5-6 | Fr.  
Camas, Wash.



**16**  
Leslie Romero  
OF | 5-4 | Fr.  
Gonzales, Calif.



**22**  
Monica Salas  
IF | 5-3 | Jr.  
Goleta, Calif.



**23**  
Emma Steltzer  
P | 5-6 | Fr.  
Manchester, Mo.



**24**  
Skylar Jenkins  
OF | 5-5 | Fr.  
Lawrenceville, Ga.



**32**  
Lauren Wilmert  
C/1B | 5-10 | Jr.  
Albuquerque, N.M.



**44**  
Aleyah Wilbon  
OF | 5-2 | Sr.  
Fontana, Calif.



**66**  
Sydney Townes  
OF | 5-6 | Sr.  
Lompoc, Calif.



**99**  
Kiana Spencer  
P | 5-6 | Jr.  
Gallup, N.M.

## STAFF



**Paula Congleton**  
Head Coach



**Tyler Heil**  
Assistant Coach



**Breanna Macha**  
Assistant Coach



**Madison Foust**  
Athletic Trainer



**Jeremy Golden**  
Strength and Cond.