

# THE UNIVERSITY OF NEW MEXICO SOFTBALL



2020 SOFTBALL NOTES | WEEK 2

@UNMLoboSB

www.GoLOBOS.com

#GoLOBOS

Allison Weiss, Assistant Director of Athletic Communications - Softball Contact | Email: allisonweiss@unm.edu | Cell: (661) 313-5402

## 2020 SCHEDULE

OVERALL: 2-3 • MW: 0-0 • H: 0-0 • A: 1-1 • N: 1-2

Date	Opponent	Time/Score
<b>GCU Kickoff Tournament</b> <b>Phoenix, Ariz.</b>		
2/7	Weber State	L, 4-1
2/7	(RV) Stanford	L, 7-6
2/8	(RV) Stanford	W, 2-0
2/8	at Grand Canyon	W, 9-4
2/9	at Grand Canyon	L, 7-6
<b>Susan Craig Classic</b> <b>Albuquerque, N.M.</b>		
2/14	Northern Colorado	5:30 p.m.
2/15	Northern Colorado	3:30 p.m.
2/15	UCSB	6 p.m.
2/16	UCSB	12:30 p.m.
<b>Mary Nutter Classic</b> <b>Cathedral City, Calif.</b>		
2/20	UC Riverside	4:30 p.m.
2/20	USA Olympic Team	9 p.m.
2/21	Arizona State	7 p.m.
2/22	Missouri	10:30 a.m.
2/22	San Diego	1 p.m.
2/23	California	12:30 p.m.
<b>Lobo Classic</b> <b>Albuquerque, N.M.</b>		
2/28	La Salle	4:30 p.m.
2/28	Northern Colorado	7 p.m.
2/29	La Salle	3:30 p.m.
2/29	South Dakota	6 p.m.
3/1	South Dakota	1 p.m.
<b>Longhorn Invitational</b> <b>Austin, Texas</b>		
3/6	Texas Southern	10 a.m.
3/7	Texas Southern	11:30 a.m.
3/7	Liberty	2 p.m.
3/8	at Texas	8:30 a.m.
3/8	Liberty	11 a.m.
3/11	at New Mexico State	5:30 p.m.
3/13	at San José State *	7 p.m.
3/14	at San José State *	1 p.m.
3/15	at San José State *	1 p.m.
3/20	Utah State *	6 p.m.
3/21	Utah State *	4 p.m.
3/22	Utah State *	12 p.m.
3/27	BYU (in Tucson, Ariz.)	3:30 p.m.
3/28	at Arizona	12 p.m.
3/31	at UTEP	3 p.m.
4/3	at Colorado State*	6 p.m.
4/4	at Colorado State *	1 p.m.
4/5	at Colorado State *	12 p.m.
4/9	Fresno State *	6 p.m.
4/10	Fresno State *	6 p.m.
4/11	Fresno State *	12 p.m.
4/15	New Mexico State	5 p.m.
4/17	at Nevada*	5 p.m.
4/18	at Nevada *	2 p.m.
4/19	at Nevada *	1 p.m.
4/22	UTEP	2 p.m.
4/24	UNLV *	6 p.m.
4/25	UNLV *	4 p.m.
4/26	UNLV *	11 a.m.
4/29	at Texas Tech	3:30 p.m.
5/1	at Boise State *	4 p.m.
5/2	at Boise State *	4 p.m.
5/3	at Boise State *	12 p.m.
5/7	San Diego State *	6 p.m.
5/8	San Diego State*	6 p.m.
5/9	San Diego State *	12 p.m.

**Bold** denotes home games  
\*denotes Mountain West game  
All times listed are Mountain Time  
Game times are subject to change

## SUSAN CRAIG CLASSIC



### NEW MEXICO Lobos

2020 Record ..... 2-3, 0-0 Mountain West  
Head Coach ..... Paula Congleton  
Record at UNM ..... 28-83 (Third Season)  
Career Record (NCAA DI) ..... 61-160 (Fifth Season)



### NORTHERN COLORADO Bears

2020 Record ..... 1-4, 0-0 Big Sky  
Head Coach ..... Ben Garcia  
Record at Northern Colo. .... 15-43 (Second Season)  
Career Record ..... 184-92 (Sixth Season)



### UC SANTA BARBARA Gauchos

2020 Record ..... 1-4, 0-0 Big West  
Head Coach ..... Brie Galiciano  
Record at UCSB ..... 302-355 (13th Season)  
Career Record ..... Same

## Media Information

**Location:**..... Lobo Softball Field  
..... Albuquerque, N.M.

**Date/Time:**  
N. Colorado... Friday, Feb. 14 - 5:30 p.m.  
..... Saturday, Feb. 15 - 3:30 p.m.  
UCSB ..... Saturday, Feb. 15 - 6 p.m.  
..... Sunday, Feb. 16 - 12:30 p.m.

**Live Video:**..... MW Network  
**Live Stats:** ..... golobos.com/schedule.aspx?path=softball  
**Social Media:** ..... @UNMLoboSB

Notes last updated: Feb. 12, 2020

## Series History

### VS. NORTHERN COLORADO

Overall: 29-13  
Last Five: 4-1  
Last Meeting: 3/5/17 (W, 3-2)  
Last Win: Same  
Series Trend: W2

### VS. UC SANTA BARBARA

Overall: 3-3  
Last Five: 2-3  
Last Meeting: 2/8/15 (W, 6-3)  
Last Win: Same  
Series Trend: W1

## NEWS AND NOTES

### WEEK 1 RECAP

- The 2020 season started at the GCU Kickoff Tournament where the Lobos went 1-1 against (RV) Stanford, 1-1 against host Grand Canyon and 0-1 against Weber State. Two of the games were determined by one run, which both came in walk-off fashion.
- With UNM's win over Stanford, it is the sixth consecutive year that the Lobos have recorded a win over a Power 5 school.
- UNM started three freshmen all five games in Rachael Hathoot (third), Briana Martinez (left field) and Gavyn Shafer (one game at first, four at second), while freshman RHP Brianna Sanchez made four appearances in the circle, recording her first collegiate win in a complete-game shutout versus Stanford, 2-0.
- The Lobos hit a home run in four of the five games, with five different players hitting at least one. Andrea Howard led the team with three in five games, followed by Sydney Broderick with two. Bailey Klitzke, Martinez and Hathoot each had one, the first collegiate home runs for Hathoot and Martinez.
- UNM outscored its opponents 7-0 in the first inning, scoring in the first in all but one game. The Lobos were the first to score in all five games.
- Senior shortstop Cameryn O'Grady hit three doubles, with the last one marking the 100th hit of her career.
- Martinez led the Lobos in batting average (.385), on-base percentage (.579), walks (six) and stolen



## GENERAL INFORMATION

Name of School.....	University of New Mexico
City/Zip.....	Albuquerque, N.M. 87106
Founded.....	1889 by Territorial Legislature
Enrollment.....	25,015
Nickname.....	Lobos
School Colors.....	Cherry & Silver
Conference.....	Mountain West
Affiliation.....	NCAA Division I
President.....	Dr. Garnett Stokes
Athletic Director.....	Eddie Nuñez

## PROGRAM HISTORY

First Year of Softball.....	1978
All-Time Record.....	996-1119-3
Mountain West Record.....	123-290-1
NCAA Tournament Appearances.....	3
1980 (AIAW), 1981 (AIAW) and 1983 (NCAA)	
Last NCAA Postseason Opponent.....	Cal State Fullerton
Last NCAA Postseason Result.....	CSUF won series 2-1
Conference Championships.....	3
1980 (Intermountain), 1981 (Intermountain) and 1983 (High Country)	

## TEAM INFORMATION

2019 Overall Record.....	12-41
2019 MW Record.....	3-21 (9th)
Letterwinners Returning/Lost.....	11/8
Pitchers Returning/Lost.....	3/0
Starters Returning/Lost.....	6/3
Newcomers.....	11

## SOFTBALL STAFF

Head Coach.....	Dr. Paula Congleton (New Mexico, 1984)
Year at UNM.....	Third season
Record at UNM (Pct.).....	28-83 (.252)
MW Record at UNM (Pct.).....	10-38 (.208)
Career Record (Years).....	61-160 (4 years)
Assistant Coach.....	Tyler Heil (San José State, 2009)
Year at UNM.....	Third season
Assistant Coach.....	Breanna Macha Peterson (Arizona State, 2018)
Year at UNM.....	Second season
Strength Coach.....	Brett Nakashima
Academic Advisor.....	Andrea Pierson
Head Athletic Trainer.....	Bob Waller
Athletic Trainer.....	Madison Foust

## COMMUNICATIONS

Softball Contact/Asst. Director of Comm.....	Allison Weiss
Email.....	allisonweiss@unm.edu
Cell Phone (Preferred).....	(661) 313-5402
Communications Office.....	(505) 925-5520

## DIGITAL MEDIA

Athletics Website.....	GoLobos.com
Main University Web Site.....	unm.edu
Conference Website.....	TheMW.com
Twitter.....	@UNMLoboSB
Instagram.....	@UNMLoboSB
Facebook.....	@NewMexicoLoboSoftball

## FACILITIES

Venue.....	Lobo Softball Field
Dimensions.....	205-225-205
Capacity.....	1,500

bases, going 2-for-2.

- In Saturday's game against Grand Canyon, the Lobos hit four home runs, two of which came on the bat of Howard. It was the first time since April 22, 2017 that the Lobos had hit four in a game and the last time a player hit two home runs was D'Andra DeFlora in that same game.
- Four different Lobos recorded five hits for the team high, with Hathoot, Howard, Klitzke and Martinez.
- Howard led the team in total bases (15) and runs-batted-in (six).
- Two of the games (Friday vs. Stanford and Sunday vs. GCU) ended in 7-6 walk-offs.

### LOOKING AHEAD TO WEEK 2

- The Lobos (2-3) host the Northern Colorado Bears (1-4) and the UC Santa Barbara Gauchos (1-4) in a seven-game, three day tournament.
- Andrea Howard and Rachael Hathoot enter the weekend on a four-game hitting streak, while Briana Martinez, Hathoot and Howard have a five-game streak of safely reaching base. Klitzke has reached base safely in the last four game and has successfully recorded a hit in the last two games.

### PATIENCE AT THE PLATE

- UNM earned its way on base via a walk in 31 of the 130 (23.8%) at-bats in the first five games. In 34 at-bats (26.2%), the Lobos had full counts and of those, 16 resulted in walks. In addition to the 16 full count walks, six walks were of the four-pitch variety and nine were five-pitch walks.
- Against WSU in the first game, the Lobos had eight full counts with six of those resulting in walks.
- UNM is second in the NCAA in walks behind Youngstown St. (34).

### STICKING WITH WHAT WORKS

- The Lobos have utilized the same batting order in spots one through five in all five games. Rachael Hathoot has led off in all five games, followed by Cameryn O'Grady, Briana Martinez, Bailey Klitzke and Andrea Howard.
- Hathoot reached base in her first plate appearance in four games with a walk, a single back up the middle, a home run and a single through the left side, scoring in three of those games. When leading off in any inning, the freshman infielder is 5-for-8 (.625).
- Howard is 2-for-3 in situations in which there is a runner on third and less than two outs, including a RBI double in the last game against Grand Canyon which tied the game at six.

### GOING THE DISTANCE #2

- While the Lobos have more depth at the pitcher position than in recent years, the Lobos utilized just two in their two wins on Saturday.
- Freshman right-hander Brianna Sanchez pitched a complete 7.0 innings in her first collegiate start against (RV) Stanford, allowing just four hits and striking out one, while throwing 47 strikes on 86 total pitches for the shutout. The freshman found herself in trouble just once with a bases-loaded situation in the second, but for the most of the morning, the Lobo pitcher kept the Cardinal off of the base paths, retiring the order in the third and fourth. The four hits were scattered through four innings and each time the defense kept the runners stranded, with the Cardinal leaving a total of five runners on base in the game.
- In the next game against host GCU, senior left-hander Kiana Spencer finished with a final stat line of 7.0 innings of work, six hits, four runs (all earned), two strikeouts, four walks and 55 strikes on 93 pitches thrown. It was the 12th complete game for Spencer as a Lobo.

### LEADOFF LIFT OFF

- UNM has hit five home runs to lead off an inning, with three coming in the first game against Grand Canyon. Sydney Broderick hit a home run in the top of the seventh in the 7-6 loss to Stanford, Rachael Hathoot opened up the bottom of the first in the 2-0 win over Stanford with a home run, and Bailey Klitzke (bottom third), Broderick (bottom fifth) and Andrea Howard (bottom sixth) all hit home runs in the 9-4 win over Grand Canyon to start the inning. In the case of Klitzke's home run, Howard followed that up with a home run of her own, with both coming on the first pitch of the at-bats.
- Overall, in the five games, the Lobos had 14 leadoff hitters reach base, with the most coming in the first game against Stanford on Saturday at four.

### FRESHMEN STEP UP IN WEEK 1

- UNM had three freshmen start all five games in Briana Martinez, Rachael Hathoot and Gavyn Shafer at the GCU Kickoff Tournament, with four making an appearance overall, and were put in key roles in which they delivered.
- Martinez leads the team in several offensive categories including batting average, on-base percentage, walks, stolen bases and tied for the team high in hits, and is among the top five in several more categories. Martinez is fourth in slugging percentage, tied for second in RBI and runs scored and tied for third in home runs and total bases. The outfielder reached safely in all five games and has one multiple hit game and one multiple RBI game. She went 7-10 in advancing runners.
- Hathoot leads the team in runs scored, is tied for third in total bases, fourth on the team in batting average, fifth in slugging percentage and tied for the team high in hits.
- Shafer has spent time at both first and second, mostly at second, in her five starts and produced her first double play against Stanford in the 2-0 win. Her first RBI came on a sacrifice fly in the season opener against Weber State.
- Sanchez has made a team-high four appearances in the circle but also has a team-low ERA of 2.92. Opposing teams have the lowest batting average against the pitcher at .250 as well as the fewest hits (11) and she leads the pitching staff in strikeouts (four). The right-hander has thrown 12.1 innings, and also accounted for a double play to close out the 2-0 win against Stanford in which she caught a line drive and threw it to first for the final out.

### ROOM TO IMPROVE

- In the three games that the Lobos lost, there was one common theme: runners left on base.
- In the season opener against Weber State and the next game against Stanford, UNM left 11

runners stranded in each game. In the loss to GCU, UNM left 10 runners on base.

## **NATIONALLY RANKED**

- Through the first five games of the season, UNM is ranked among the top 20 in a couple of categories.
- The Lobos rank second in the NCAA in walks with 31 and 15th in the country in home runs per game with 1.60, and lead the Mountain West in both categories.
- Individually, Cameryn O'Grady ranks 12th in the NCAA in doubles (three), 28th in doubles per game (0.60) and 36th in walks per game (1.00). Andrea Howard is tied for seventh in home runs (three), 15th in home runs per game (0.60), tied for 13th in sacrifice flies (one), tied for 34th in total bases (15), and tied for 51st in slugging percentage (1.000). Gavyn Shafer is tied with Howard in sacrifice flies, Sydney Broderick is tied for 33rd in home runs (two), Briana Martinez is tied for 22nd in walks per game (1.20) and Brianna Sanchez is tied for eighth in shutouts (one).

## **PLEASE ALLOW ME TO INTRODUCE MYSELF**

- The 2020 UNM Lobos will have many new faces this season with 11 newcomers, comprising half the total team, eight of which are freshmen.
- In the offseason, the Lobos added freshmen Briana Martinez, Rachael Hathoot, Jayden Gandert, Jocelyn Ulrich, Sam Kortsen, Gavyn Shafer, Brianna Sanchez and Jennifer Hernandez. The Lobos also added transfers in Taryn Young (Arizona), Reyann Tuck (Towson) and Alexis Buddenhagen (Bethany College).

## **STAYING HOME**

- There are 10 New Mexico natives on the 2020 roster, seven of which are from Albuquerque.
- Included in the 10 is the 2019 New Mexico Gatorade Softball Player of the Year Briana Martinez from Rio Rancho High School.
- The 10 representing the "Land of Enchantment" are Lauren Wilmert (Albuquerque), Rachael Hathoot (Albuquerque), Andrea Howard (Albuquerque), Taylor Jones (Albuquerque), Alexis Buddenhagen (Albuquerque), Jennifer Hernandez (Albuquerque), Jocelyn Ulrich (Aztec), Kiana Spencer (Gallup) and Martinez (Albuquerque).
- This year's team has the most representatives from New Mexico in the last at least seven years, doubling the number of in-state players on the roster from 2017 and 2018. Previously, the most on a roster was seven in 2008.

## **PUTTING THE PIECES OF THE PUZZLE TOGETHER**

- For the second-straight year, the UNM roster underwent a major renovation with the departure of eight letterwinners and an addition of the aforementioned 11 newcomers.
- The Lobos also have 13 underclassmen on the roster, with a team-high eight freshmen and one redshirt freshman who will have an opportunity to see playing time this season.
- However, in the circle, the Lobos retained all three pitchers from 2019 and doubled their options with the addition of freshmen RHP Jayden Gandert and RHP Brianna Sanchez and junior LHP Alexis Buddenhagen.
- Kiana Spencer recorded the most starts (23) and complete games (11) for the Lobos in 2019, including pitching a complete game against then- No. 7 Alabama, allowing one run on six hits in a 1-0 loss. In addition, the LHP recorded at least one strikeout in 23 games.
- Kennedy Ferguson had a solid rookie campaign for UNM with a team-leading 4.98 ERA, starting in 21 games, making 33 appearances and completing nine games. The RHP appeared in the circle a team-high 125.0 innings. Highlights for her on the season included striking out 11 batters against North Dakota and pitching a complete game against then- No. 3 Florida, giving up one run in extra innings on five hits while striking out five.
- In addition, the Lobos return six mainstays in the lineup, including senior shortstop Cameryn O'Grady who started all 53 games last season, the only Lobo to do so. O'Grady led the team in batting average (.348), slugging percentage (.603), on-base percentage (.474), runs scored (32), hits (49), doubles (16), total bases (85) and walks (31). Another staple is senior Lauren Wilmert, who started in 47 games in 2019, 23 behind the plate and 24 at first. Wilmert threw out seven runners last season, was second in slugging percentage (.500) and total bases (67) and tied for second in hits (35) and doubles (9), and hit two grand slams on the season.

## **TOUGH TASK AHEAD**

- The 2020 schedule will test the Lobos as UNM will play 12 teams that reached the NCAA Tournament in 2019, with two teams reaching the Super Regional (Arizona and Texas) and one going all the way to the Women's College World Series (Arizona).
- Of the 29 teams that the Lobos will face, four teams compiled 40 or more wins in 2019 and 17 posted 30-plus wins last season. Combined, the teams recorded 878 wins last year and represent 13 different conferences. Of those, UNM will face seven schools from the Power 5, including four from the Pac-12, two from the Big 12 and one from the SEC.
- UNM is scheduled to play four teams that were ranked in the USA Today/ NFCA Coaches Preseason Poll and five teams receiving votes. Two of the teams on UNM's schedule (Arizona and Texas) ranked in the top six in the USA Today/ NFCA Coaches preseason rankings (with U of A receiving a first-place vote), as well as No. 18 Texas Tech and No. 22 Arizona State. Missouri, Boise State, Stanford, Fresno State and San José State were all receiving votes.
- In the ESPN.com / USA Softball Collegiate Top 25 Preseason Poll, four teams on the schedule were ranked with four more receiving votes. Arizona was the highest ranked at fifth followed by Texas sixth. Texas Tech ranked 19th and Arizona State 22nd. Receiving votes were Missouri, Stanford, Boise State and San Diego State.
- As an added bonus, the Lobos are scheduled to face the USA Olympic Team on Feb. 20 at the Mary Nutter Classic.

## **STARTING OFF STRONG**

- Following opening day's loss to Weber State, UNM is 26-17 in season openers, including 3-2 in the last five years.
- The last time the Lobos won their season opener was Feb. 8, 2019, a 15-6 win over UTEP.
- In the last 10 years, the best start on opening weekend for the Lobos has been 5-0, achieved in 2012, and a 3-0 start in 2011.

## **HOME COMFORT**

- Unlike last season in which the Lobos began the season with five non-conference tournaments on the road, UNM will host two tournaments at Lobo Softball Field in 2020.
- The Lobos play 24 of their 57 games at home starting with the Susan Craig Classic on Feb. 14.
- All in all, UNM will not travel more than one time zone away, with the farthest distance to travel being San Jose, Calif. (1044 miles) to open Mountain West play March 13-15.

## **ONE FINAL GO AROUND FOR O'GRADY**

- Cameryn O'Grady enters her final season in the Cherry and Silver with several milestones achieved.
- The shortstop currently has a streak of 102 games in the starting lineup dating back to Feb. 18, 2018, all at shortstop. In the last two years, the California native has started all but one game.
- In addition, O'Grady currently sits at 100 career hits, which she recorded against Grand Canyon on Feb. 8.
- Entering her fourth season, O'Grady has started 129 games, played in 137. She had her best season as a Lobo in 2019 with a hitting percentage of .348 with 49 hits, 16 doubles, six home runs, 85 total bases, and tied her season-best total of 26 RBI.
- In 2019, O'Grady had 11 multiple hit games, seven multiple RBI games and had a streak of nine games with a hit and 15 games reaching base safely. Last season, O'Grady recorded a hit in 35 games (66%).
- O'Grady hit in the three spot in 31 games, in the cleanup spot 16 games and led off for the Lobos six games last season.
- As the leadoff hitter, O'Grady was 18-for-33 (.545). With a runner on third and less than two outs, O'Grady was 4-for-9 (.444), was 13-for-38 (.342) with runners in scoring position and was .500 (45-for-90) in successfully advancing runners.
- O'Grady has already made the UNM record book in career walks with 66, which ranks ninth all-time. If she were to replicate her 2019 total of 31 walks, she would move up to third with 97. To date, she has five walks this season. The shortstop could also crack the top 10 in career doubles, which she currently has 28. If she were to match her 2019 total of 16, she would finish with 44 to rank fourth all-time. To date, O'Grady has three.



- Speaking of the record book, in 2019, O'Grady posted 16 doubles to rank tied for the fourth-most in a single season, her 31 walks tied for seventh in a single season and she had an on-base percentage of .474 to rank tied for the eighth-highest percentage in a single season in program history.

## **HOWARD: FROM ABO TO TOKYO**

- Junior Andrea Howard qualified with the Italian national team over the summer for the 2020 Olympics in Tokyo, a team that she has played with since 2017.
- On July 27, Italy defeated Great Britain 5-0 in the WBSC Europe/ Africa Qualifier championship game in Utrecht, Netherlands to clinch a bid to the 2020 Olympics.
- Howard would be just the second Lobo softball player to represent their country in the Olympics, joining Jackie Van Hooydonk who played in two Olympics for Canada (2000, 2004).

## **VERSATILE WILMERT**

- Senior Lauren Wilmert started in 52 straight games dating back to May 6, 2018, and started in all 47 games that she appeared in during the 2019 season before being sidelined with injury.
- Wilmert split time in 2019 almost equally between first and catcher, appearing at first in 24 games and at catcher in 23 games.
- Wilmert led the Lobos with 12 multiple hit games and nine multiple RBI games in 2019 and led the team with seven home runs, two of which were grand slams, and 35 RBI.
- The Albuquerque native hit in the cleanup spot a team-high 31 games and in the fifth spot in 16 games.
- Heading in to her final season, Wilmert sits at 61 hits, 52 RBI in 113 games played and 90 games started.
- Wilmert could finish her Lobo career in the record books in total putouts. She enters the season with 389 putouts, but if she duplicates her 2019 total of 235, could finish with 624 to rank her eighth all-time.

## **CLUTCH KLITZKE**

- This season, Klitzke has been tasked to hit in the cleanup spot thus far, which is working well as she is currently second on the team in batting average (.357) and on-base percentage (.500). She is also third in slugging percentage (.643) and tied for third in runs scored (three) and home runs (one). Klitzke is among the four Lobos tied for the team high in hits with five.
- In her first initial year at UNM, Bailey Klitzke proved to be a vital member in the lineup, whether in the circle or at the plate. The now-senior played in 46 games, starting in 44 as either the designated player or pitcher.
- The highlight at the plate for Klitzke came in the first game of the doubleheader against North Dakota, hitting a game-winning triple with bases loaded.
- Klitzke produced eight multiple hit games and seven multiple RBI games, hitting in the cleanup spot in five games, the fifth spot in eight, leadoff in three and sixth in 25 games.
- In the circle, Klitzke recorded at least one strikeout in 18 games, with a season-high eight strikeouts twice (UTEP, Feb. 8 and UIC, Feb. 16).

## **SCOUTING NORTHERN COLORADO**

- The Lobos are 29-13 overall against the Bears and enter the weekend having won their last two meetings against UNC.
- UNM and Northern Colorado have two common opponents this season in Weber State and Colorado State. The Bears will also be in the Lobo Classic in two weeks and will face common opponents in South Dakota and La Salle.
- Northern Colorado went 1-4 in its opening weekend with its lone win coming in a 6-5 victory over Memphis. They lost their last two games, with overall losses coming against Hawai'i (11-2 in five), Iowa State (11-0), Memphis (8-3) and Hawai'i (9-0 in five) at the Hawai'i Paradise Classic.
- The Bears concluded the 2019 season with a 14-39 record, 5-12 in conference. They were 5-16 on neutral fields and 5-16 as the away team.
- To date, UNC is hitting .186 with 11 runs, 21 hits, five doubles and one home run with a slugging percentage of .257. They have drawn seven walks and have struck out 13 times. In the circle, they are throwing a team ERA of 9.41, allowing 51 hits, 44 runs (39 earned), while walking 19 and striking out nine. Opponents are hitting .375 off of the staff.
- Mady Young leads the team in batting average (.375) and slugging percentage (.500) with three hits and four total bases on the season. Emma Brockmann is responsible for the lone home run and Reyna Caudillo has two doubles to lead the Bears. Seven different players have accounted for one walk and Lauren Strathearn has the only stolen base and attempt on the team.
- In the circle, the Bears have used five different pitchers with Maggie Thurston holding a 4.38 ERA to lead the rotation. Lainey Hanehan has made the most starts and appearances for the Bears with three starts and four appearances and has a record of 1-3 with an 11.16 ERA in 10.2 innings pitched. She has allowed a team-high 11 walks and struck out a team-high six, but has also given up 16 hits and 22 runs, both team highs.
- UNC returns six starters and has 13 newcomers and was picked to finish sixth in the Big Sky with 13 votes.

## **SCOUTING UC SANTA BARBARA**

- UNM has faced UCSB six times previously, holding an even 3-3 record with the Gauchos. The last meeting was Feb. 8, 2015, a 6-3 win for UNM.
- UNM and UCSB have six common opponents this season in UC Riverside, San Diego, San Jose State, Utah State, Fresno State and Boise State.
- The Gauchos are 1-4 this season with a 2-0 win over Santa Clara. Their losses are to Idaho State (4-3), California Baptist (7-2), Boise State (8-0) and Sacramento State (5-1). Last season, the Gauchos were 10-42, 4-17 in conference but return two from the All-Big West team in Sammy Fabian and Teah Thies (All-Freshman Team).
- UCSB returns 13 players, including six seniors, and has seven newcomers.
- Ally Nodohara leads the team with a .667 batting average (6-for-9), on-base percentage and slugging percentage with Fabian accounting for the only triple on the season as well as a team-high eight total bases. Four different players have hit a double. Fabian and Nodohara each have six hits to tie for the team high.
- The Gauchos have used four pitchers this season with three (Alyssa Molina, Lexi Campbell and Emily Schuttish) each making three appearances. Campbell (0-2) has started three games with Felisha Noriega (0-1) and Molina (1-1) starting one. Molina leads with 11.2 innings in the circle and has a 4.20 ERA. Schuttish leads with a 3.23 ERA in 8.2 innings of work. As a staff, the Gauchos have a team ERA of 4.69, allowing 34 hits, 24 runs and have walked 16 batters while striking out 21.
- UCSB was picked to finish eighth in the Big West Conference with 14 points.

**STAT COMPARISON**

	<b>UNM</b>	<b>UNC</b>	<b>UCSB</b>
BA	.223	.186	.242
R	24	11	8
H	29	21	30
2B	5	5	4
3B	0	0	1
HR	8	1	0
RBI	20	10	8
BB	31	7	9
SO	24	13	22
ERA	5.03	9.41	4.69
SO	10	9	21
BB	17	19	16
H	37	51	34
R	22	44	24
ER	19	39	21
DP	2	3	1
FLD%	.972	.968	.976

Hitting  
Pitching  
Fld.

**ESPN.COM/USA SOFTBALL COLLEGIATE TOP 25**

WEEK 1 • FEB. 11

Rk.	Team (1st Votes)	Pts.	Rec	Prev.
1.	Washington (10)	5-0	475	2
2.	UCLA (7)	6-0	463	4
3.	Oklahoma (2)	4-0	454	3
4.	Arizona	5-0	437	5
5.	Florida State (1)	5-0	432	8
6.	Texas	6-0	402	6
7.	LSU	5-0	353	T11
8.	Michigan	5-0	329	14
9.	Alabama	1-3	311	1
10.	Kentucky	4-0	293	16
11.	Florida	4-1	268	9
12.	Tennessee	2-1	257	T11
13.	Minnesota	3-2	255	7
14.	Louisiana	3-1	252	10
15.	Georgia	5-0	215	17
16.	Oklahoma State	2-2	198	13
17.	South Carolina	4-0	152	21
18.	Missouri	5-0	135	RV
19.	Texas Tech	5-0	132	19
20.	James Madison	0-0	111	18
21.	Oregon	5-0	103	24
22.	Arizona State	4-1	91	22
23.	Northwestern	2-3	83	15
24.	Arkansas	4-1	77	20
25.	North Carolina	3-2	58	RV

Others receiving votes: Wisconsin (51), Mississippi State (29), Illinois (18), Baylor (16), Fresno State (9), Ohio State (9), Virginia Tech (9), Auburn (8), Ole Miss (4), Stanford (4), Houston (3), Notre Dame (2), Boise State (1), Central Florida (1), Oregon State (1)

**USA TODAY/ NFCA COACHES TOP 25 POLL**

WEEK 1 • FEB. 11

Rk.	Team (1st Votes)	Pts.	Rec	Prev.
1	Washington (25)	5-0	791	1
2	Oklahoma (2)	4-0	746	3
3	UCLA (4)	6-0	734	4
4	Arizona	5-0	709	5
5	Florida State (1)	5-0	661	9
6	Texas	6-0	660	6
7	LSU	5-0	580	11
8	Florida	4-1	518	7
9	Alabama	1-3	497	2
10	Kentucky	4-0	470	15
11	Michigan	5-0	450	17
12	Tennessee	2-1	440	12
13	Louisiana	3-1	387	10
14	Minnesota	3-2	380	8
15	Georgia	5-0	282	16
16	Oklahoma State	2-2	323	13
17	Texas Tech	5-0	282	18
18	South Carolina	4-0	259	19
19	Missouri	5-0	243	RV
20	James Madison	0-0	177	20
21	Northwestern	2-3	138	14
21	Oregon	5-0	138	RV
23	Arizona State	4-1	134	22
24	Arkansas	4-1	71	24
25	North Carolina	3-2	64	RV

Others receiving votes: Wisconsin (46), Virginia Tech (35), Auburn (23), Mississippi State (18), Illinois (17), Notre Dame (13), Cal State Fullerton (11), Ohio State (9), Boise State (8), Stanford (5), Fresno State (4), Baylor (3), Tulsa (2), BYU (1)

**MOUNTAIN WEST INFORMATION**

**PRESEASON MOUNTAIN WEST POLL**

Rk.	Team (1st-Place Votes)	Points
1.	San José State (2)	53
2.	San Diego State (3)	50
3.	Colorado State (1)	45
3.	UNLV (1)	45
5.	Fresno State (1)	44
6.	Boise State (1)	41
7.	Nevada	23
8.	Utah State	15
9.	New Mexico	8

**MOUNTAIN WEST PLAYERS OF THE WEEK**

2020 MW Softball Player of the Week  
Feb. 11 – Alison Seng, Jr., INF, Boise State

2020 MW Softball Pitcher of the Week  
Feb. 11 – Kelsey Broadus, Sr., LHP, Boise State

**BY THE NUMBERS (2019 FINISH)**

Statistic	All Games	MW	MW Games
Batting Average:	.223	5th	--
Slugging Percentage:	.446	3rd	--
On Base Percentage:	.380	3rd	--
Runs Scored:	24	3rd	--
Hits:	29	4th	--
RBI:	20	3rd	--
<b>HRs:</b>	<b>8</b>	<b>1st</b>	--
Total Bases:	58	3rd	--
ERA:	3.91	7th	--
Opp. Batting Avg.:	.276	7th	--
Batters Struck Out:	10	9th	--
Hits Allowed:	37	7th	--
Runs Allowed:	22	7th	--
Earned Runs Allowed:	19	8th	--
Walks Allowed:	17	T-5th	--
Home Runs Allowed:	3	T-6th	--
Fielding Percentage:	.972	2nd	--
Putouts:	102	3rd	--
Fielding Double Plays:	2	5th	--
Caught Stealing By:	1	T-5th	--

**MOUNTAIN WEST STANDINGS**

School	Conf.	Conf. %	Overall	Overall %	Streak
Boise State	0-0	0.000	4-1	0.800	L1
Colorado State	0-0	0.000	4-1	0.800	W1
San Diego State	0-0	0.000	4-1	0.800	W3
Fresno State	0-0	0.000	3-2	0.600	L2
San José State	0-0	0.000	2-2	0.500	W2
New Mexico	0-0	0.000	2-3	0.400	L1
UNLV	0-0	0.000	2-3	0.400	W1
Utah State	0-0	0.000	1-4	0.200	L2
Nevada	0-0	0.000	0-5	0.000	L5



**NUMERICAL ROSTER**

#	NAME	POS	HT	YR	B/T	HOMETOWN (PREVIOUS SCHOOL)
00	Andrea Howard	OF	5-6	Jr.	L/L	Albuquerque, N.M. (La Cueva HS)
1	Briana Martinez	IF	5-3	Fr.	R/R	Albuquerque, N.M. (Rio Rancho HS)
3	Rachael Hathoot	IF	5-8	Fr.	R/R	Albuquerque, N.M. (La Cueva HS)
4	Taryn Young	OF	5-8	Jr.	R/R	Anaheim, Calif. (Arizona)
5	Sydney Broderick	C	5-4	Jr.	R/R	Mesa, Ariz. (Desert Ridge HS)
6	Jayden Gandert	P	5-7	Fr.	R/R	Rio Rancho, N.M. (Cleveland HS)
7	MacKenzie Peterson	OF	5-9	So.	R/R	Gilbert, Ariz. (Phoenix College)
8	Bailey Klitzke	P/1B	5-8	Sr.	L/L	Apache Junction, Ariz. (Wichita State)
9	Taylor Jones	IF	5-7	Jr.	R/R	Albuquerque, N.M. (La Cueva HS)
10	Cameryn O'Grady	SS	5-6	Sr.	L/R	Orange, Calif. (El Modena HS)
13	Kennedy Ferguson	P	5-6	So.	R/R	Camas, Wash. (Camas HS)
14	Jocelyn Ulrich	OF	5-7	Fr.	L/R	Aztec, N.M. (Aztec HS)
15	Sam Kortsen	IF	5-10	Fr.	R/R	Willcox, Ariz. (Thatcher HS)
16	Leslie Romero	OF	5-4	So.	R/R	Gonzales, Calif. (Salinas HS)
22	Gavyn Shafer	IF	5-10	Fr.	R/R	Hillsboro, Ore. (Century HS)
24	Skylar Jenkins	OF	5-5	R-Fr.	R/R	Lawrenceville, Ga. (Buford HS)
25	Brianna Sanchez	P	5-6	Fr.	R/R	West Covina, Calif. (Bishop Amat HS)
32	Lauren Wilmert	C/1B	5-10	Sr.	R/R	Albuquerque, N.M. (Volcano Vista HS)
44	Alexis Buddenhagen	P	5-4	Jr.	L/L	Albuquerque, N.M. (Bethany College)
66	Jennifer Hernandez	IF	5-2	Fr.	L/R	Albuquerque, N.M. (Atrisco Heritage Academy)
77	Reyan Tuck	IF	6-0	So.	R/R	Hillsboro, Ore. (Towson)
99	Kiana Spencer	P	5-6	Sr.	L/L	Gallup, N.M. (Yavapai College)

**ALPHABETICAL ROSTER**

#	NAME	POS	HT	YR	B/T	HOMETOWN (PREVIOUS SCHOOL)
5	Sydney Broderick	C	5-4	Jr.	R/R	Mesa, Ariz. (Desert Ridge HS)
44	Alexis Buddenhagen	P	5-4	Jr.	L/L	Albuquerque, N.M. (Bethany College)
13	Kennedy Ferguson	P	5-6	So.	R/R	Camas, Wash. (Camas HS)
6	Jayden Gandert	P	5-7	Fr.	R/R	Rio Rancho, N.M. (Cleveland HS)
3	Rachael Hathoot	IF	5-8	Fr.	R/R	Albuquerque, N.M. (La Cueva HS)
66	Jennifer Hernandez	IF	5-2	Fr.	L/R	Albuquerque, N.M. (Atrisco Heritage Academy)
00	Andrea Howard	OF	5-6	Jr.	L/L	Albuquerque, N.M. (La Cueva HS)
24	Skylar Jenkins	OF	5-5	R-Fr.	R/R	Lawrenceville, Ga. (Buford HS)
9	Taylor Jones	IF	5-7	Jr.	R/R	Albuquerque, N.M. (La Cueva HS)
8	Bailey Klitzke	P/1B	5-8	Sr.	L/L	Apache Junction, Ariz. (Wichita State)
15	Sam Kortsen	IF	5-10	Fr.	R/R	Thatcher, Ariz. (Thatcher HS)
1	Briana Martinez	IF	5-3	Fr.	R/R	Albuquerque, N.M. (Rio Rancho HS)
10	Cameryn O'Grady	SS	5-6	Sr.	L/R	Orange, Calif. (El Modena HS)
7	MacKenzie Peterson	OF	5-9	So.	R/R	Gilbert, Ariz. (Phoenix College)
16	Leslie Romero	OF	5-4	So.	R/R	Gonzales, Calif. (Salinas HS)
25	Brianna Sanchez	P	5-6	Fr.	R/R	West Covina, Calif. (Bishop Amat HS)
22	Gavyn Shafer	IF	5-10	Fr.	R/R	Hillsboro, Ore. (Century HS)
99	Kiana Spencer	P	5-6	Sr.	L/L	Gallup, N.M. (Yavapai College)
77	Reyan Tuck	IF	6-0	So.	R/R	Hillsboro, Ore. (Towson)
14	Jocelyn Ulrich	OF	5-7	Fr.	L/R	Aztec, N.M. (Aztec HS)
32	Lauren Wilmert	C/1B	5-10	Sr.	R/R	Albuquerque, N.M. (Volcano Vista HS)
4	Taryn Young	OF	5-8	Jr.	R/R	Anaheim, Calif. (Arizona)

**RETURNERS (11) - 2019 SEASON STATS**

No.	Name	Pos.	Cl.	Avg.	GP-GS	AB	R	H	2B	3B	HR	RBI	SLG%	FLD%
00	Andrea Howard	OF	So.	.192	46-46	125	25	24	9	2	3	15	.368	.962
5	Sydney Broderick	C	So.	.095	33-30	63	5	6	2	0	1	3	.175	.952
7	MacKenzie Peterson	OF	Fr.	.176	21-13	34	2	6	0	0	0	2	.176	.941
8	Bailey Klitzke	P/1B	Jr.	.297	49-45	118	11	35	6	3	2	26	.449	1.000
9	Taylor Jones	IF	So.	.138	42-35	87	10	12	1	0	2	5	.218	.963
10	Cameryn O'Grady	SS	Jr.	.348	53-53	141	32	49	16	1	6	26	.603	.894
16	Leslie Romero	OF	Fr.	.000	10-2	12	0	0	0	0	0	0	.000	1.000
32	Lauren Wilmert	C	Jr.	.261	47-47	134	23	35	9	1	7	35	.500	.962

**PITCHERS RETURNING (3) - 2019 SEASON STATS**

No.	Name	Cl.	ERA	W-L	APP	GS	CG	SHO	SV	IP	SO	BF
13	Kennedy Ferguson	Fr.	4.98	4-15	33	21	9	1/0	0	125.0	74	623
99	Kiana Spencer	Jr.	6.37	6-18	33	23	11	2/0	1	122.0	66	626
8	Bailey Klitzke	Jr.	9.97	2-8	27	9	2	0/0	1	59.2	56	350

**KEY PLAYERS LOST (3) - 2019 SEASON STATS**

No.	Name	Pos.	Avg.	GP-GS	AB	R	H	2B	3B	HR	RBI	SLG%	FLD%
44	Aleyah Wilbon	OF	.324	43-24	74	13	24	1	0	3	3	.338	.971
4	D'Andrea DeFlora	OF	.234	52-52	145	29	34	5	0	3	15	.331	.976
22	Monica Salas	IF	.234	49-49	124	15	29	4	0	5	18	.387	.907

**NEWCOMERS (11)**

No.	Name	Pos.	No.	Name	Pos.
1	Briana Martinez	IF	22	Gavyn Shafer	IF
3	Rachael Hathoot	IF	25	Brianna Sanchez	P
4	Taryn Young	OF	44	Alexis Buddenhagen	P
6	Jayden Gandert	P	66	Jennifer Hernandez	IF
14	Jocelyn Ulrich	OF	77	Reyan Tuck	IF
15	Sam Kortsen	IF			

**PRONUNCIATION GUIDE**

00	ANDREA Howard	on-DRAY-uh
3	Rachael HATHOOT	HAT-who-t
14	Jocelyn ULRICH	Uhl-rich
44	Alexis BUDDENHAGEN	BUD-den-HAY-ten
	Paula CONGLETON	CONGLE-ton
	Tyler HEIL	HIGHL

**CLASS**

**Seniors (4)**

8	Bailey Klitzke	P/1B
10	Cameryn O'Grady	SS
99	Kiana Spencer	P
32	Lauren Wilmert	C/1B

**Juniors (5)**

44	Alexis Buddenhagen	P
00	Andrea Howard	OF
9	Taylor Jones	IF
5	Sydney Broderick	C
4	Taryn Young	OF

**Sophomores (4)**

13	Kennedy Ferguson	P
7	MacKenzie Peterson	OF
16	Leslie Romero	OF
77	Reyan Tuck	IF

**Freshmen (9)**

6	Jayden Gandert	P
3	Rachael Hathoot	IF
66	Jennifer Hernandez	IF
24	Skylar Jenkins	OF
15	Sam Kortsen	IF
1	Briana Martinez	IF
25	Brianna Sanchez	P
22	Gavyn Shafer	IF
14	Jocelyn Ulrich	OF

**HOME STATE**

**Arizona (4)**

5	Sydney Broderick	C
8	Bailey Klitzke	P
15	Sam Kortsen	IF
7	MacKenzie Peterson	OF

**California (4)**

10	Cameryn O'Grady	SS
16	Leslie Romero	OF
25	Brianna Sanchez	P
4	Taryn Young	OF

**Georgia (1)**

24	Skylar Jenkins	OF
----	----------------	----

**New Mexico (10)**

44	Alexis Buddenhagen	P
6	Jayden Gandert	P
3	Rachael Hathoot	IF
66	Jennifer Hernandez	IF
00	Andrea Howard	OF
9	Taylor Jones	IF
1	Briana Martinez	IF
99	Kiana Spencer	P
14	Jocelyn Ulrich	OF
32	Lauren Wilmert	C/1B

**Oregon (2)**

22	Gavyn Shafer	IF
77	Reyan Tuck	IF

**Washington (1)**

13	Kennedy Ferguson	P
----	------------------	---

**POSITION**

<b>Outfield (6)</b>	<b>Catcher (2)</b>
<b>Infield (8)</b>	<b>Pitcher (6)</b>

# 2020 NEW MEXICO LOBOS RADIO/TV ROSTER



**00**  
Andrea Howard  
OF | 5-6 | Jr.  
Albuquerque, N.M.



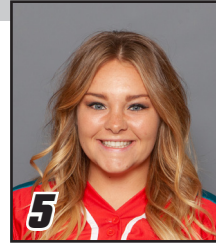
**1**  
Briana Martinez  
IF | 5-3 | Fr.  
Albuquerque, N.M.



**3**  
Rachael Hathoot  
IF | 5-8 | Fr.  
Albuquerque, N.M.



**4**  
Taryn Young  
OF | 5-8 | Jr.  
Anaheim, Calif.



**5**  
Sydney Broderick  
C | 5-4 | Jr.  
Mesa, Ariz.



**6**  
Jayden Gandert  
P | 5-7 | Fr.  
Rio Rancho, N.M.



**7**  
MacKenzie Peterson  
OF | 5-9 | So.  
Gilbert, Ariz.



**8**  
Bailey Klitzke  
P/1B | 5-8 | Sr.  
Apache Junction, Ariz.



**9**  
Taylor Jones  
IF | 5-7 | Jr.  
Albuquerque, N.M.



**10**  
Cameryn O'Grady  
SS | 5-6 | Sr.  
Orange, Calif.



**13**  
Kennedy Ferguson  
P | 5-6 | So.  
Camas, Wash.



**14**  
Jocelyn Ulrich  
OF | 5-7 | Fr.  
Aztec, N.M.



**15**  
Sam Kortsen  
IF | 5-10 | Fr.  
Thatcher, Ariz.



**16**  
Leslie Romero  
OF | 5-4 | So.  
Gonzales, Calif.



**22**  
Gavyn Shafer  
IF | 5-10 | Fr.  
Hillsboro, Ore.



**24**  
Skylar Jenkins  
OF | 5-5 | R-Fr.  
Lawrenceville, Ga.



**32**  
Lauren Wilmert  
C/1B | 5-10 | Sr.  
Albuquerque, N.M.



**44**  
Alexis Buddenhagen  
P | 5-4 | Jr.  
Albuquerque, N.M.



**66**  
Jennifer Hernandez  
IF | 5-2 | Fr.  
Albuquerque, N.M.



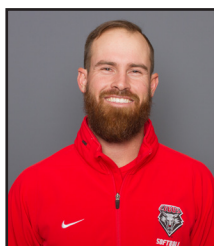
**77**  
Reyann Tuck  
IF | 6-0 | So.  
Hillsboro, Ore.



**99**  
Kiana Spencer  
P | 5-6 | Sr.  
Gallup, N.M.



**Paula Congleton**  
Head Coach



**Tyler Heil**  
Assistant Coach



**Breanna Macha Peterson**  
Assistant Coach



**Madison Foust**  
Athletic Trainer



**Brett Nakashima**  
Strength and Conditioning  
Coach





# Paula Congleton

5th Head Coach in UNM Program History  
Record at UNM: 28-83

**NOTEWORTHY :**

- Named the fifth head coach in program history on June 20, 2017
- Enters her third season at her alma mater
- Earned her 300th career victory on April 17, 2014
- Earned her 350th career victory on April 22, 2017
- Earned her 400th career victory on May 4, 2018
- Earned her first win at UNM against St. Mary's on Feb. 9, 2018 (4-1)

**MORE NOTES ON COACH CONGLETON**

- Spent 19 seasons at Santa Barbara City College with the Vaqueros molding the program into one of the elite programs in the WSC
- Three-time WSC Gold Division Coach of the Year
- 2011 Southern Cal Coaching Staff of the Year
- 2011 NFCA National Coaching Staff of the Year
- Led the Vaqueros to four Southern Cal Regional appearances and one trip to the Southern Cal Super Regional
- Guided the Vaqueros to their greatest success of the program, winning a Southern Cal Regional series and advancing to the Super Regional for the first time ever in 2016
- Led the 2016 SBCC squad to the second-most games in program history (30-14)
- The 2016 team finished third WSC Gold Division
- In 2011, led the Vaqueros to a program-record 31 wins (31-7 overall), leading the team to a WSC title and the Southern Cal Regional
- Four-time Scholar Athlete first baseman for the Lobos (3.89 GPA)
- Three-time All-American at New Mexico
- Received her Doctorate in educational administration in 2009
- Served as a full-time professor at SBCC teaching health, weight training and kinesiology
- Served as Associate Athletic Director and Coordinator of the Academic Achievement Zone for student-athletes at SBCC

**COACHING EXPERIENCE**

**Head Coach:**

2017-Present - New Mexico (28-83)  
1998-2017 - Santa Barbara City Coll. (Calif.) (354-322)  
1996-1998 - Cal. State University Eastbay (33-71)

**Graduate Assistant:**

1986-1988 - New Mexico

Overall NCAA DI record (Third Season): 28-83  
Overall NCAA record (Fourth Season): 47-110  
Overall record (23 years): 415-476 (.466)

**ALMA MATER**

New Mexico (1984)

**TWITTER**

Follow @CoachCongleton





# 2020 NEW MEXICO OVERALL STATISTICS

Record: 2-3 Home: 0-0 Away: 1-1 Neutral: 1-2 MW: 0-0

Player	avg	gp-gs	ab	r	h	2b	3b	hr	rbi	tb	slg%	bb	hp	so	gdp	ob%	sf	sh	sb-att	po	a	e	fld%	
1 MARTINEZ, Briana	.385	5-5	13	4	5	0	0	1	3	8	.615	6	0	1	0	.579	0	0	2-2	6	0	0	1.000	
8 KLITZKE, Bailey	.357	5-5	14	3	5	1	0	1	3	9	.643	4	0	3	0	.500	0	0	0-0	0	0	0	.000	
0 HOWARD, Andrea	.333	5-5	15	3	5	1	0	3	6	15	1.000	3	0	3	0	.421	1	0	0-0	17	0	0	1.000	
3 HATHOOT, Rachael	.278	5-5	18	5	5	0	0	1	1	8	.444	3	0	2	0	.381	0	0	0-0	6	4	1	.909	
5 BRODERICK, Sydney	.250	3-3	8	2	2	0	0	2	2	8	1.000	3	0	0	0	.455	0	0	0-0	6	1	1	.875	
10 O'GRADY, Cameryn	.214	5-5	14	3	3	3	0	0	2	6	.429	5	1	3	0	.450	0	0	0-0	8	14	1	.957	
4 YOUNG, Taryn	.200	4-4	10	2	2	0	0	0	0	2	.200	2	0	4	0	.333	0	0	0-0	6	0	0	1.000	
77 TUCK, Reyan	.100	4-3	10	1	1	0	0	0	0	1	.100	0	0	2	0	.100	0	0	0-0	18	0	0	1.000	
22 SHAFER, Gavyn	.000	5-5	12	1	0	0	0	0	1	0	.000	3	1	2	0	.235	1	1	0-0	12	11	0	1.000	
-----																								
32 WILMERT, Lauren	.250	3-2	4	0	1	0	0	0	2	1	.250	2	1	2	0	.571	0	0	0-0	11	1	0	1.000	
9 JONES, Taylor	.000	3-2	6	0	0	0	0	0	0	0	.000	0	0	1	0	.000	0	1	0-0	7	1	0	1.000	
16 ROMERO, Leslie	.000	3-1	4	0	0	0	0	0	0	0	.000	0	0	0	0	.000	0	0	0-0	1	0	0	1.000	
24 JENKINS, Skylar	.000	3-0	2	0	0	0	0	0	0	0	.000	0	0	1	0	.000	0	0	0-0	0	0	0	.000	
13 FERGUSON, Kennedy	.000	1-1	0	0	0	0	0	0	0	0	.000	0	0	0	0	.000	0	0	0-0	1	2	1	.750	
66 HERNANDEZ, Jennifer	.000	2-0	0	0	0	0	0	0	0	0	.000	0	0	0	0	.000	0	0	0-0	0	0	0	.000	
Totals	.223	5	130	24	29	5	0	8	20	58	.446	31	3	24	0	.380	2	2	2-2	102	39	4	.972	
Opponents	.276	5	134	22	37	3	3	3	21	55	.410	17	0	10	0	.353	2	1	3-4	99	27	9	.933	

LOB - Team (45), Opp (30). DPs turned - Team (2).

## (All games Sorted by Earned run avg)

Player	era	w-l	app	gs	cg	sho	sv	ip	h	r	er	bb	so	2b	3b	hr	b/avg	wp	hp	bk	sfa	sha
25 SANCHEZ, Brianna	2.92	1-2	4	1	1	1/0	0	12.1	11	5	4	6	4	1	0	1	.250	0	0	0	1	0
99 SPENCER, Kiana	5.68	1-0	2	2	1	0/0	0	12.2	14	8	8	6	3	1	2	0	.275	0	0	0	1	1
13 FERGUSON, Kennedy	6.23	0-1	2	2	0	0/0	0	8.2	12	8	6	3	3	1	1	2	.308	0	0	0	0	0
-----																						
8 KLITZKE, Bailey	27.00	0-0	1	0	0	0/0	0	0.1	0	1	1	2	0	0	0	0		1	0	0	0	0
Totals	5.03	2-3	5	5	2	1/0	0	34.0	37	22	19	17	10	3	3	3	.276	1	0	0	2	1
Opponents	4.64	2-2	5	5	1	0/0	1	33.0	29	24	17	31	24	5	0	8	.223	0	3	0	2	2

PB - Team (0), Opp (3). SBA/ATT - BRODERICK (3-3), SANCHEZ (2-2), SPENCER (1-1), WILMERT (0-1), KLITZKE (0-1).



# 2019 NEW MEXICO MOUNTAIN WEST STATISTICS

Record: 3-21 Home: 1-11 Away: 2-10 MW: 3-21

Player	avg	gp-gs	ab	r	h	2b	3b	hr	rbi	tb	slg%	bb	hp	so	gdp	ob%	sf	sh	sb-att	po	a	e	fld%
44 WILBON, Aleyah	.340	19-17	50	5	17	1	0	0	2	18	.360	2	0	9	1	.365	0	1	0-0	26	0	1	.963
32 WILMERT, Lauren	.339	18-18	56	8	19	3	0	4	17	34	.607	2	0	17	1	.356	1	0	0-0	84	4	4	.957
10 O'GRADY, Cameryn	.328	24-24	61	13	20	6	0	3	11	35	.574	15	2	15	0	.474	0	0	0-0	28	43	8	.899
8 KLITZKE, Bailey	.262	23-22	61	7	16	3	1	2	11	27	.443	7	0	6	0	.333	1	0	0-0	1	3	0	1.000
4 DeFLORA, D'Andra	.246	23-23	65	11	16	2	0	2	7	24	.369	6	5	22	0	.355	0	1	1-2	38	1	2	.951
22 SALAS, Monica	.241	22-22	54	6	13	2	0	2	7	21	.389	7	1	21	2	.339	0	0	1-1	16	29	4	.918
7 PETERSON, MacKenzie	.231	8-6	13	0	3	0	0	0	2	3	.231	1	0	2	0	.286	0	0	0-0	35	0	4	.897
0 HOWARD, Andrea	.204	17-17	49	11	10	3	1	1	5	18	.367	9	0	15	1	.328	0	0	0-0	39	0	2	.951
66 TOWNES, Sydney	.194	16-13	31	3	6	0	0	0	0	6	.194	8	0	12	0	.359	0	0	0-0	27	0	2	.931
3 JONES, Taylor	.167	19-19	48	6	8	1	0	2	4	15	.313	3	1	19	0	.231	0	0	0-0	59	23	5	.943
9 HALLEEN, Kasey	.154	12-10	26	1	4	0	0	0	2	4	.154	0	1	7	2	.179	1	0	0-0	15	16	1	.969
5 BRODERICK, Sydney	.063	16-16	32	2	2	2	0	0	1	4	.125	8	0	9	0	.250	0	1	1-1	53	10	5	.926
12 HASLAM, Daryn	.000	12-6	22	1	0	0	0	0	0	0	.000	0	0	10	1	.000	0	0	0-0	6	8	2	.875
2 BUCKHOLZ, Maggie	.000	6-2	7	0	0	0	0	0	0	0	.000	1	0	5	0	.125	0	0	0-0	1	0	1	.500
16 ROMERO, Leslie	.000	4-1	5	0	0	0	0	0	0	0	.000	0	0	4	0	.000	0	0	0-0	0	0	0	.000
13 FERGUSON, Kennedy	.000	0-0	0	0	0	0	0	0	0	0	.000	0	0	0	0	.000	0	0	0-0	0	8	0	1.000
23 STELTZER, Emma	.000	0-0	0	0	0	0	0	0	0	0	.000	0	0	0	0	.000	0	0	0-0	0	1	0	1.000
99 SPENCER, Kiana	.000	1-1	0	0	0	0	0	0	0	0	.000	0	0	0	0	.000	0	0	0-0	0	4	0	1.000
Totals	.231	24	580	74	134	23	2	16	69	209	.360	69	10	173	8	.322	3	3	3-4	428	150	41	.934
Opponents	.351	24	659	209	231	49	8	44	193	428	.649	91	16	74	2	.437	7	9	17-23	453	112	20	.966

LOB - Team (138), Opp (146). DPs turned - Team (3), Opp (10). CI - Team (1), BRODERICK 1.

### (MW games only Sorted by Earned run avg)

Player	era	w-l	app	gs	cg	sho	sv	ip	h	r	er	bb	so	2b	3b	hr	b/avg	wp	hp	bk	sfa	sha
13 FERGUSON, Kennedy	7.11	2-6	15	9	1	0/0	0	43.1	71	57	44	18	16	14	0	13	.360	4	1	0	3	4
99 SPENCER, Kiana	8.17	1-10	16	10	3	0/0	1	49.2	77	68	58	31	26	19	3	12	.341	5	9	0	3	2
8 KLITZKE, Bailey	9.45	0-5	16	5	1	0/0	1	40.0	63	64	54	32	31	13	5	13	.339	12	4	0	1	3
9 HALLEEN, Kasey	10.50	0-0	2	0	0	0/0	0	2.0	3	3	3	2	1	0	0	1	.333	0	0	0	0	0
23 STELTZER, Emma	11.55	0-0	5	0	0	0/0	0	6.2	13	12	11	6	0	2	0	4	.394	0	2	0	0	0
44 WILBON, Aleyah	28.00	0-0	1	0	0	0/0	0	1.0	4	5	4	2	0	1	0	1	.500	1	0	0	0	0
Totals	8.49	3-21	24	24	5	0/0	2	142.2	231	209	173	91	74	49	8	44	.351	22	16	0	7	9
Opponents	2.97	21-3	24	24	10	6/2	3	151.0	134	74	64	69	173	23	2	16	.231	7	10	0	3	3

PB - Team (6), BRODERICK 5, WILMERT 1, Opp (3). SBA/ATT - BRODERICK (12-15), KLITZKE (6-8), WILMERT (5-8), FERGUSON (5-7), SPENCER (4-6), STELTZER (2-2).

## 2020 NEW MEXICO GAME-BY-GAME STATISTICS

Date	Opponent	ab	r	h	rbi	2b	3b	hr	tb	bb	ibb	sb	cs	hbp	sac	sf	gdp	k	po	a	e	lob	avg
Feb 07	vs Weber State	23	1	2	1	1	0	0	3	9	0	0	0	0	0	1	0	6	21	11	0	11	.087
Feb 07	vs Stanford	29	6	7	6	1	0	1	11	8	0	0	0	1	0	0	0	7	20	9	1	11	.173
Feb 08	vs Stanford	21	2	3	2	0	0	2	9	3	0	0	0	0	0	0	0	2	21	6	0	4	.164
Feb 08	at Grand Canyon	27	9	8	6	2	0	4	22	6	0	1	0	2	0	1	0	5	21	10	0	9	.200
Feb 09	at Grand Canyon	30	6	9	5	1	0	1	13	5	0	1	0	0	2	0	0	4	19	3	3	10	.223
Totals		130	24	29	20	5	0	8	58	31	0	2	0	3	2	2	0	24	102	39	4	45	.223



# 2019 NEW MEXICO RECORD AND INNING BREAKDOWN

Score by innings	1	2	3	4	5	6	7	Total
New Mexico	7	4	5	1	3	3	1	24
Opponents	0	1	2	4	8	2	5	22

## Record when ...

Overall	2-3	After 6 leading	2-1
Conference	0-0	..... trailing	0-1
Non-Conference	2-3	..... tied	0-1
Home games	0-0	After 7 leading	0-0
Away games	1-1	..... trailing	0-0
Neutral site	1-2	..... tied	0-0
Day games	2-3	After 8 leading	0-0
Night games	0-0	..... trailing	0-0
vs Left starter	0-0	..... tied	0-0
vs Right starter	2-3		
1-Run games	0-2	Hit 0 home runs	0-1
2-Run games	1-0	... 1 home run	0-2
5+Run games	1-0	... 2+ home runs	2-0
Extra innings	0-0		
Shutouts	1-0	Opponent 0 home runs	2-1
		..... 1 home run	0-1
		..... 2+ HRs	0-1
Scoring 0-2 runs	1-1		
..... 3-5 runs	0-0		
..... 6-9 runs	1-2	Made 0 errors	2-1
..... 10+ runs	0-0	... 1 error	0-1
		... 2+ errors	0-1
Opponent 0-2 runs	1-0		
..... 3-5 runs	1-1	Opp. made 0 errors	1-0
..... 6-9 runs	0-2	..... 1 error	0-1
..... 10+ runs	0-0	..... 2+ errors	1-2
Scored in 1st inning	2-2	Out-hit opponent	1-1
Opp. scored in 1st	0-0	Out-hit by opponent	1-2
Scores first	2-3	Hits are tied	0-0
Opp. scores first	0-0		

## Record when team scores:

Runs	0	1	2	3	4	5	6	7	8	9	10+
W-L	0-0	0-1	1-0	0-0	0-0	0-0	0-2	0-0	0-0	1-0	0-0

## Record when opponent scores:

Runs	0	1	2	3	4	5	6	7	8	9	10+
W-L	1-0	0-0	0-0	0-0	1-1	0-0	0-0	0-2	0-0	0-0	0-0

## Record when leading after:

Inn.	1	2	3	4	5	6	7	8
W-L	2-2	2-2	2-3	2-2	2-1	2-1	0-0	0-0

## Record when trailing after:

Inn.	1	2	3	4	5	6	7	8
W-L	0-0	0-0	0-0	0-0	0-2	0-1	0-0	0-0

## Record when tied after:

Inn.	1	2	3	4	5	6	7	8
W-L	0-1	0-1	0-0	0-1	0-0	0-1	0-0	0-0

Current losing streak: 1  
 Longest winning streak: 2  
 Longest losing streak: 2

Home attendance : 0 ( 0 dates avg = 0 )  
 Away attendance : 1331 ( 5 dates avg = 266 )  
 Total attendance: 1331 ( 5 dates avg = 266 )



# 00 ANDREA HOWARD

OF • 5-6 • JR.

ALBUQUERQUE, N.M. • LA CUEVA HS

## SINGLE-GAME HIGHS

Hits: 3, 2x, Last at Nevada, 3-24-18  
 Doubles: 1, 15x, Last vs. Boise State, 4-20-19  
 Triples: 1, 3x, Last at San Diego State, 3-17-19  
 Home runs: 2, Grand Canyon, 2-8-20  
 Total bases: 8, Grand Canyon, 2-8-20  
 RBI: 4, at Nevada, 3-24-18  
 Runs scored: 3, 3x, Last vs UTEP, 2-8-19  
 Walks: 4, UTEP, 2-8-19  
 Hit by pitch: 1, 2x, Last vs. Alabama, 2-15-19

Struck out: 3, 4x, Last at NMSU, 4-2-19  
 Sac flies: 1, 3x, Last vs. Grand Canyon, 2-8-20  
 Sac bunts: 1, 3x, Last at Hawai'i, 2-23-19  
 At bats: 5, 2x, Last at Utah State, 4-6-19  
 Stolen bases: 1, 4x, Last vs. WCU, 3-8-19  
 Putouts: 13, at UTEP, 4-16-18  
 Assists: 1, 9x, Last vs. UTEP, 4-9-19  
 Named All-Mountain West Second Team in 2018  
 2019 Google Cloud Academic All-America®  
 Second Team

## CAREER STATS (AT UNM)

Year	avg	gp-gs	ab	r	h	2b	3b	hr	rbi	tb	slg%	bb	hbp	so	gdp	ob%	sf	sh	sb-att	po	a	e	fld%
2018	.313	51-50	131	20	41	6	1	7	18	70	.534	23	1	39	1	.414	2	2	3-4	296	5	4	.987
2019	.192	46-46	125	25	24	9	2	3	15	46	.368	24	1	44	1	.327	0	1	1-1	97	4	4	.962
2020	.333	5-5	15	3	5	1	0	3	6	15	1.000	3	0	3	0	.421	1	0	0-0	17	0	0	1.000
<b>TOTAL</b>	<b>.258</b>	<b>102-101</b>	<b>271</b>	<b>48</b>	<b>70</b>	<b>16</b>	<b>3</b>	<b>13</b>	<b>39</b>	<b>131</b>	<b>.483</b>	<b>50</b>	<b>2</b>	<b>86</b>	<b>2</b>	<b>.374</b>	<b>3</b>	<b>3</b>	<b>4-5</b>	<b>410</b>	<b>9</b>	<b>8</b>	<b>.981</b>

## 2020 GAME-BY-GAME

Date	Opponent	Pos	AB	R	H	RBI	2B	3B	HR	BB	SB	CS	HBP	SAC	SF	GDP	K	PO	A	E	Avg
Feb 07	vs Weber State	*of	3	0	0	0	0	0	0	1	0	0	0	0	0	0	2	0	0	0	.000
Feb 07	vs Stanford	*of	3	0	1	1	0	0	0	1	0	0	0	0	0	0	1	7	0	0	.167
Feb 08	vs Stanford	*of	2	1	1	1	0	0	1	1	0	0	0	0	0	0	0	3	0	0	.250
Feb 08	at Grand Canyon	*of	3	2	2	3	0	0	2	0	0	0	0	0	1	0	0	3	0	0	.364
Feb 09	at Grand Canyon	*of	4	0	1	1	1	0	0	0	0	0	0	0	0	0	0	4	0	0	.333
<b>Totals</b>		<b>5gs</b>	<b>15</b>	<b>3</b>	<b>5</b>	<b>6</b>	<b>1</b>	<b>0</b>	<b>3</b>	<b>3</b>	<b>0</b>	<b>0</b>	<b>0</b>	<b>0</b>	<b>1</b>	<b>0</b>	<b>3</b>	<b>17</b>	<b>0</b>	<b>0</b>	<b>.333</b>

On base pct. .421 • Slugging pct. 1.000





**1 BRIANA MARTINEZ** *IF • 5-3 • FR.*  
*ALBUQUERQUE, N.M. • RIO RANCHO HS*

**SINGLE-GAME HIGHS**

Hits: 3, Grand Canyon, 2-9-20  
 Doubles:  
 Triples:  
 Home runs: 1, Grand Canyon, 2-9-20  
 Total bases: 6, Grand Canyon, 2-9-20  
 RBI: 2, Grand Canyon, 2-9-20  
 Runs scored: 2, Grand Canyon, 2-9-20  
 Walks: 2, 2x, Last at Grand Canyon, 2-8-20  
 Hit by pitch:

Struck out: 1, Weber State, 2-7-20  
 Sac flies:  
 Sac bunts:  
 At bats: 3, 3x, Last at Grand Canyon, 2-9-20  
 Stolen bases: 1, 2x, Last at Grand Canyon, 2-9-20  
 Caught stealing:  
 Field chances: 3, Weber State, 2-7-20  
 Putouts: 3, Weber State, 2-7-20  
 Assists:

**CAREER STATS (AT UNM)**

Year	avg	gp-gs	ab	r	h	2b	3b	hr	rbi	tb	slg%	bb	hbp	so	gdp	ob%	sf	sh	sb-att	po	a	e	fld%
2020	.385	5-5	13	4	5	0	0	1	3	8	.615	6	0	1	0	.579	0	0	2-2	6	0	0	1.000
TOTAL	.385	5-5	13	4	5	0	0	1	3	8	.615	6	0	1	0	.579	0	0	2-2	6	0	0	1.000

**2020 GAME-BY-GAME**

Date	Opponent	Pos	AB	R	H	RBI	2B	3B	HR	BB	SB	CS	HBP	SAC	SF	GDP	K	PO	A	E	Avg
Feb 07	vs Weber State	*of	2	1	0	0	0	0	0	2	0	0	0	0	0	0	1	3	0	0	.000
Feb 07	vs Stanford	*of	3	0	1	1	0	0	0	1	0	0	0	0	0	0	0	0	0	0	.200
Feb 08	vs Stanford	*of	3	0	1	0	0	0	0	0	0	0	0	0	0	0	0	1	0	0	.250
Feb 08	at Grand Canyon	*of	2	1	0	0	0	0	0	2	1	0	0	0	0	0	0	1	0	0	.200
Feb 09	at Grand Canyon	*of	3	2	3	2	0	0	1	1	1	0	0	0	0	0	0	1	0	0	.385
Totals		5gs	13	4	5	3	0	0	1	6	2	0	0	0	0	0	1	6	0	0	.385

On base pct. .579 • Slugging pct. .615



**3 RACHAEL HATHOOT** IF • 5-8 • FR.  
ALBUQUERQUE, N.M. • LA CUEVA HS

**SINGLE-GAME HIGHS**

Hits: 2, at Grand Canyon, 2-9-20  
 Doubles:  
 Triples:  
 Home runs: 1, Stanford, 2-8-20  
 Total bases: 4, Stanford, 2-8-20  
 RBI: 1, Stanford, 2-8-20  
 Runs scored: 2, 2x, Last vs. GCU, 2-9-20  
 Walks: 2, Weber State, 2-7-20  
 Hit by pitch:

Struck out: 1, 2x, Last at GCU, 2-9-20  
 Sac flies:  
 Sac bunts:  
 At bats: 5, 2x, Last at GCU, 2-9-20  
 Stolen bases:  
 Caught stealing:  
 Field chances: 4, Weber State, 2-7-20  
 Putouts: 3, Weber State, 2-7-20  
 Assists: 2, at GCU, 2-8-20

**CAREER STATS (AT UNM)**

Year	avg	gp-gs	ab	r	h	2b	3b	hr	rbi	tb	slg%	bb	hbp	so	gdp	ob%	sf	sh	sb-att	po	a	e	fld%
2020	.278	5-5	18	5	5	0	0	1	1	8	.444	3	0	2	0	.381	0	0	0-0	6	4	1	.909
TOTAL	.278	5-5	18	5	5	0	0	1	1	8	.444	3	0	2	0	.381	0	0	0-0	6	4	1	.909

**2020 GAME-BY-GAME**

Date	Opponent	Pos	AB	R	H	RBI	2B	3B	HR	BB	SB	CS	HBP	SAC	SF	GDP	K	PO	A	E	Avg
Feb 07	vs Weber State	*3b	2	0	0	0	0	0	0	2	0	0	0	0	0	0	0	3	1	0	.000
Feb 07	vs Stanford	*3b	5	2	1	0	0	0	0	0	0	0	0	0	0	0	0	1	1	1	.143
Feb 08	vs Stanford	*3b	3	1	1	1	0	0	1	0	0	0	0	0	0	0	0	0	0	0	.200
Feb 08	at Grand Canyon	*3b	3	0	1	0	0	0	0	1	0	0	0	0	0	0	0	1	1	2	.231
Feb 09	at Grand Canyon	*3b	5	2	2	0	0	0	0	0	0	0	0	0	0	0	1	1	0	0	.278
Totals		5gs	18	5	5	1	0	0	1	3	0	0	0	0	0	0	2	6	4	1	.278

On base pct. .381 • Slugging pct. .444





# 4 TARYN YOUNG

**OF • 5-8 • JR.**  
**ANAHEIM, CALIF. • ARIZONA**

### SINGLE-GAME HIGHS

Hits: 1, 2x, Last vs. Stanford, 2-7-20  
 Doubles:  
 Triples:  
 Home runs:  
 Total bases: 1, 2x, Last vs. Stanford, 2-7-20  
 RBI:  
 Runs scored: 1, 5x, Last vs. GCU, 2-8-20  
 Walks: 1, 3x, Last vs. GCU, 2-8-20  
 Hit by pitch:

Struck out: 2, GCU, 2-8-20  
 Sac flies:  
 Sac bunts:  
 At bats: 3, 2x, Last vs. Stanford, 2-7-20  
 Stolen bases:  
 Caught stealing:  
 Field chances: 4, Stanford, 2-8-20  
 Putouts: 4, Stanford, 2-8-20  
 Assists:

### CAREER STATS (AT ARIZONA)

Year	avg	gp-gs	ab	r	h	2b	3b	hr	rbi	tb	slg%	bb	hbp	so	gdp	ob%	sf	sh	sb-att	po	a	e	fld%
2018	.000	4-0	0	3	0	0	0	0	0	0	.000	1	0	0	0	1.000	0	0	0-0	0	0	0	.000
2019	.000	5-0	1	0	0	0	0	0	0	0	.000	0	0	1	0	.000	0	0	0-0	3	0	0	1.000
TOTAL	.000	9-0	1	3	0	0	0	0	0	0	.000	1	0	1	0	.500	0	0	0-0	3	0	0	1.000

### CAREER STATS (AT UNM)

Year	avg	gp-gs	ab	r	h	2b	3b	hr	rbi	tb	slg%	bb	hbp	so	gdp	ob%	sf	sh	sb-att	po	a	e	fld%
2020	.200	4-4	10	2	2	0	0	0	0	2	.200	2	0	4	0	.333	0	0	0-0	6	0	0	1.000
TOTAL	.200	4-4	10	2	2	0	0	0	0	2	.200	2	0	4	0	.333	0	0	0-0	6	0	0	1.000

### 2020 GAME-BY-GAME

Date	Opponent	Pos	AB	R	H	RBI	2B	3B	HR	BB	SB	CS	HBP	SAC	SF	GDP	K	PO	A	E	Avg
Feb 07	vs Weber State	*of	3	0	1	0	0	0	0	0	0	0	0	0	0	0	1	0	0	0	.333
Feb 07	vs Stanford	*of	3	1	1	0	0	0	0	1	0	0	0	0	0	0	1	1	0	0	.333
Feb 08	vs Stanford	*of	2	0	0	0	0	0	0	0	0	0	0	0	0	0	0	4	0	0	.250
Feb 08	at Grand Canyon	*of	2	1	0	0	0	0	0	1	0	0	0	0	0	0	2	1	0	0	.200
Totals		4gs	10	2	2	0	0	0	0	2	0	0	0	0	0	0	4	6	0	0	.200

On base pct. .333 • Slugging pct. .200





# 5 SYDNEY BRODERICK

C • 5-4 • JR.

MESA, ARIZ. • DESERT RIDGE HS

## SINGLE-GAME HIGHS

Hits: 3, St. Mary's, 3-10-18  
 Doubles: 1, 4x, Last at Utah State, 4-6-19  
 Home Runs: 1, 3x, Last at GCU, 2-8-20  
 Total bases: 4, 4x, Last at GCU, 2-8-20  
 RBI: 2, 2x, Last at NMSU, 4-2-19  
 Runs scored: 1, 13x, Last at GCU, 2-8-20  
 Walks: 2, 3x, Last at GCU, 2-9-20  
 Hit by pitch: 1, vs Oregon, 2-11-18  
 Struck out: 3, at Colorado State, 4-8-18

Sac flies: 1, at Nevada, 3-24-18  
 Sac bunts: 1, 3x, Last vs Boise State, 4-20-19  
 At bats: 4, 4x, Last at Utah State, 4-6-19  
 Stolen bases: 1, at Utah State, 4-5-19  
 Putouts: 10, at Colorado State, 4-7-18  
 Assists: 3, 2x, Last vs. Nevada, 3-30-19  
 Runners CS: 2, Utah State, 4-21-18

## CAREER STATS (AT UNM)

Year	avg	gp-gs	ab	r	h	2b	3b	hr	rbi	tb	slg%	bb	hbp	so	qdp	ob%	sf	sh	sb-att	po	a	e	fld%
2018	.230	42-36	87	6	20	2	0	0	5	22	.253	6	1	12	2	.284	1	2	0-0	118	12	6	.956
2019	.095	33-30	63	5	6	2	0	1	3	11	.175	10	0	19	1	.219	0	1	1-1	101	19	6	.952
2020	.250	3-3	8	2	2	0	0	2	2	8	1.000	3	0	0	0	.455	0	0	0-0	6	1	1	.875
TOTAL	.177	78-69	158	13	28	4	0	3	10	41	.259	19	1	31	3	.268	1	3	1-1	225	32	13	.952

## 2019 GAME-BY-GAME

Date	Opponent	Pos	AB	R	H	RBI	2B	3B	HR	BB	SB	CS	HBP	SAC	SF	GDP	K	PO	A	E	Avg
Feb 07	vs Stanford	*c	3	1	1	1	0	0	1	0	0	0	0	0	0	0	0	2	0	0	.333
Feb 08	at Grand Canyon	*c	3	1	1	1	0	0	1	1	0	0	0	0	0	0	0	2	0	0	.333
Feb 09	at Grand Canyon	*c	2	0	0	0	0	0	0	2	0	0	0	0	0	0	0	2	1	1	.250
Totals		3gs	8	2	2	2	0	0	2	3	0	0	0	0	0	0	0	6	1	1	.250

On base pct. .455 • Slugging pct. 1.000





**6 JAYDEN GANDERT**

**P • 5-7 • FR.**  
**RIO RANCHO, N.M. • CLEVELAND HS**

**SINGLE-GAME HIGHS**

- Hits:
- Doubles:
- Triples:
- Home runs:
- Total bases:
- RBI:
- Runs scored:
- Walks:
- Hit by pitch:
- Struck out:
- Sac flies:
- Sac bunts:
- At bats:
- Stolen bases:
- Caught stealing:
- Field chances:
- Putouts:
- Assists:

**CAREER STATS (AT UNM)**

**2020 GAME-BY-GAME**



**7 MacKENZIE PETERSON**

**OF • 5-9 • 50.**  
**GILBERT, ARIZ. • PHOENIX COLLEGE**

**SINGLE-GAME HIGHS**

Hits: 1, 6x, Last vs. San Jose St., 5-5-19  
 Doubles:  
 Total bases: 1, 5x, Last vs. North Dakota, 3-26-19  
 RBI: 1, 2x, Last vs. San Jose St., 5-3-19  
 Runs scored: 1, 2x, Last vs. Oregon St., 3-9-19  
 Walks: 2, 2x, Last vs. Oregon St., 3-9-19  
 Hit by Pitch: 1, Oregon St., 3-9-19  
 Struck out: 1, 5x, Last vs. Nevada, 3-29-19  
 Sac bunts:  
 At bats: 4, Illinois-Chicago, 2-16-19  
 Stolen bases:  
 Caught stealing:  
 Putouts: 10, Oregon State, 3-9-19  
 Assists: 1, Illinois-Chicago, 2-16-19

**CAREER STATS (AT UNM)**

Year	avg	gp-gs	ab	r	h	2b	3b	hr	rbt	tb	slg%	bb	hbp	so	gdp	ob%	sf	sh	sb-att	po	a	e	fld%
2019	.176	21-13	34	2	6	0	0	0	2	6	.176	6	1	6	0	.317	0	0	0-0	79	1	5	.941
TOTAL	.176	21-13	34	2	6	0	0	0	2	6	.176	6	1	6	0	.317	0	0	0-0	79	1	5	.941

**2020 GAME-BY-GAME**





# 8 BAILEY KLITZKE

P/1B • 5-8 • SR.

APACHE JUNCTION, ARIZ. • WICHITA ST.

## SINGLE-GAME HIGHS

Hits: 4, UTEP, 2-8-19  
 Doubles: 2, Utah State, 4-6-19  
 Triples: 1, 3x, Last vs. North Dakota, 3-26-19  
 Home runs: 1, 3x, Last at GCU, 2-8-20  
 Total bases: 6, 2x, Last at GCU, 2-8-20  
 RBI: 4, 2x, North Dakota, 3-26-19  
 Runs scored: 2, 4x, Last at GCU, 2-9-20  
 Walks: 2, Stanford, 2-7-20  
 Struck out: 2, 2x, Last vs. NMSU, 4-23-19  
 Sac bunts: 1, at Texas, 2-23-18 (at WSU)  
 Sac fly: 1, 3x, Last vs. CSU, 3-22-19

At bats: 5, UTEP, 2-8-19  
 Stolen bases: 1, 2x, Last vs. UConn, 3-3-19  
 Innings pitched: 6.0, 2x, Last at Fresno St., 4-27-19  
 Walks allowed: 7, 3x, Last at CSUF, 3-3-19  
 Strikeouts: 8, 2x, Last vs. Illinois-Chicago, 2-16-19  
 Batters faced: 33, Boise State, 4-20-19  
 Putouts: 1, 2x, Last at Arizona, 2-16-19  
 Assists: 3, at Okla. St., 3-27-18 (at WSU)  
 Runners CS: 1, 9x, Last vs. Weber St., 2-7-20  
 Fewest hits allowed (3.0 IP min.): 5, UTEP, 2-8-19

## CAREER STATS (AT UNM)

Year	avg	gp-gs	ab	r	h	2b	3b	hr	rbi	tb	slg%	bb	hbp	so	gdp	ob%	sf	sh	sb-att	po	a	e	fld%
2019	.297	46-44	118	11	35	6	3	2	26	53	.449	14	0	14	1	.363	3	0	2-2	2	8	0	1.000
2020	.357	5-5	14	3	5	1	0	1	3	9	.643	4	0	3	0	.500	0	0	0-0	0	0	0	.000
TOTAL	.303	51-49	132	14	40	7	3	3	29	62	.470	18	0	17	1	.379	3	0	2-2	2	8	0	1.000

## 2019 GAME-BY-GAME

Date	Opponent	Pos	AB	R	H	RBI	2B	3B	HR	BB	SB	CS	HBP	SAC	SF	GDP	K	PO	A	E	Avg
Feb 07	vs Weber State	*dh/p	3	0	0	0	0	0	0	0	0	0	0	0	0	0	1	0	0	0	.000
Feb 07	vs Stanford	*dh	2	0	1	0	0	0	0	2	0	0	0	0	0	0	1	0	0	0	.200
Feb 08	vs Stanford	*dh	2	0	0	0	0	0	0	1	0	0	0	0	0	0	0	0	0	0	.143
Feb 08	at Grand Canyon	*dh	4	1	2	2	1	0	1	0	0	0	0	0	0	0	0	0	0	0	.273
Feb 09	at Grand Canyon	*dh	3	2	2	1	0	0	0	1	0	0	0	0	0	0	1	0	0	0	.357
Totals		5gs	14	3	5	3	1	0	1	4	0	0	0	0	0	0	3	0	0	0	.357

On base pct. .500 • Slugging pct. .643

#8 KLITZKE, Bailey - 1 appearance (All games)

Date	Opponent	GS	IP	H	R	ER	BB	SO	2B	3B	HR	WP	BK	HBP	IBB	Score	W-L	Sv	ERA	NP
Feb 07	vs Weber State		0.1	0	1	1	2	0	0	0	0	1	0	0	0	1-4	0-0	0	27.00	10
Totals		0	0.1	0	1	1	2	0	0	0	0	1	0	0	0	1-4	0-0	0	27.00	-



# 9 TAYLOR JONES

IF • 5-7 • JR.

ALBUQUERQUE, N.M. • LA CUEVA HS

## SINGLE-GAME HIGHS

Hits: 2, 3x, Last vs. Colorado State, 3-22-19  
 Doubles: 1, 4x, Last vs. Boise State, 4-19-19  
 Home runs: 1, 2x, Last vs. CSU, 3-22-19  
 Total bases: 6, at Boise State, 5-12-18  
 RBI: 3, Howard, 3-10-18  
 Runs scored: 2, 2x, Last vs. Boise St., 4-20-19  
 Walks: 2, North Dakota, 3-26-19  
 Hit by pitch: 1, Boise State, 4-20-19  
 Struck out: 2, 13x, Last vs Boise State, 4-18-19

Sac flies: 1, Howard, 3-10-18  
 Sac bunts: 1, 3x, Last at GCU, 2-9-20  
 At bats: 4, 5x, Last at Utah State, 4-6-19  
 Stolen bases: 1, Howard, 3-10-18  
 Putouts: 11, San Diego State, 3-15-19  
 Assists: 5, 2x, Last vs. Nevada, 3-29-19

## CAREER STATS (AT UNM)

Year	avg	gp-gs	ab	r	h	2b	3b	hr	rbi	tb	slg%	bb	hbp	so	gdp	ob%	sf	sh	sb-att	po	a	e	fld%
2018	.216	24-11	37	6	8	3	0	1	4	14	.378	0	0	13	0	.211	1	2	1-1	8	6	2	.875
2019	.138	42-35	87	10	12	1	0	2	5	19	.218	11	1	38	0	.242	0	0	0-0	118	38	6	.963
2020	.000	3-2	6	0	0	0	0	0	0	0	.000	0	0	1	0	.000	0	1	0-0	7	1	0	1.000
TOTAL	.154	69-48	130	16	20	4	0	3	9	33	.254	11	1	52	0	.224	1	3	1-1	133	45	8	.957

## 2020 GAME-BY-GAME

Date	Opponent	Pos	AB	R	H	RBI	2B	3B	HR	BB	SB	CS	HBP	SAC	SF	GDP	K	PO	A	E	Avg
Feb 07	vs Weber State	*2b	3	0	0	0	0	0	0	0	0	0	0	0	0	0	0	3	1	0	.000
Feb 08	at Grand Canyon	ph/of	1	0	0	0	0	0	0	0	0	0	0	0	0	0	1	0	0	0	.000
Feb 09	at Grand Canyon	*of	2	0	0	0	0	0	0	0	0	0	0	1	0	0	0	4	0	0	.000
Totals		2gs	6	0	0	0	0	0	0	0	0	0	0	1	0	0	1	7	1	0	.000

On base pct. .000 • Slugging pct. .000





# 10 CAMERYN O'GRADY

55 • 5-6 • SR.

ORANGE, CALIF. • EL MODENA HS

## SINGLE-GAME HIGHS

Hits: 4, at Texas Tech, 3-2-18  
 Doubles: 2, 2x, Last vs. CSU, 3-24-19  
 Triples: 1, 5x, Last vs. Creighton, 2-9-19  
 Home runs: 1, 10x, Last vs. Boise State, 4-18-19  
 Total bases: 8, Creighton, 2-9-19  
 RBI: 4, 2x, Last at SDSU, 3-16-19  
 Runs scored: 4, at Texas Tech, 3-2-18  
 Walks: 3, 3x, Last vs UTEP, 2-8-19  
 Hit by pitch: 1, 9x, Last at GCU, 2-8-20

Struck out: 3, 6x, Last at SDSU, 3-15-19  
 Sac bunts: 1, 3x, Last Utah State, 4-22-18  
 At bats: 5, 2x, Last at Nevada, 3-24-18  
 Stolen bases: 2, vs George Washington, 2-23-18  
 Putouts: 5, 4x, Last at Boise State, 5-12-18  
 Assists: 8, at San Jose State, 4-27-18

## CAREER STATS (AT UNM)

Year	avg	gp-gs	ab	r	h	2b	3b	hr	rbi	tb	slg%	bb	hbp	so	gdp	ob%	sf	sh	sb-att	po	a	e	fld%
2017	.109	26-19	46	1	5	0	0	0	3	5	.109	3	0	12	0	.163	0	0	0-0	38	39	10	.885
2018	.301	53-52	143	31	43	12	4	4	26	75	.524	32	5	50	0	.444	0	3	4-4	101	118	18	.924
2019	.348	53-53	141	32	49	16	1	6	26	85	.603	31	3	28	0	.474	0	0	0-0	60	84	17	.894
2020	.214	5-5	14	3	3	3	0	0	2	6	.429	5	1	3	0	.450	0	0	0-0	8	14	1	.957
TOTAL	.291	137-129	344	67	100	31	5	10	57	171	.497	71	9	93	0	.425	0	3	4-4	207	255	46	.909

## 2020 GAME-BY-GAME

Date	Opponent	Pos	AB	R	H	RBI	2B	3B	HR	BB	SB	CS	HBP	SAC	SF	GDP	K	PO	A	E	Avg
Feb 07	vs Weber State	*ss	2	0	1	0	1	0	0	2	0	0	0	0	0	0	0	2	4	0	.500
Feb 07	vs Stanford	*ss	4	2	1	2	1	0	0	1	0	0	0	0	0	0	1	0	5	0	.333
Feb 08	vs Stanford	*ss	2	0	0	0	0	0	0	1	0	0	0	0	0	0	1	3	1	0	.250
Feb 08	at Grand Canyon	*ss	2	1	1	0	1	0	0	1	0	0	1	0	0	0	0	1	3	0	.300
Feb 09	at Grand Canyon	*ss	4	0	0	0	0	0	0	0	0	0	0	0	0	0	1	2	1	1	.214
Totals		5gs	14	3	3	2	3	0	0	5	0	0	1	0	0	0	3	8	14	1	.214

On base pct. .450 • Slugging pct. .429



# 13 KENNEDY FERGUSON

**P • 5-6 • 50.**

**CAMAS. WASH. • CAMAS HS**

## SINGLE-GAME HIGHS

Innings pitched: 7.1, South Florida, 2-17-19

Walks allowed: 7, Tennessee, 3-1-19

Strikeouts: 11, North Dakota, 3-26-19

Batters faced: 35, North Dakota, 3-26-19

Assists: 3, South Florida, 2-17-19

Runners CS: 1, 6x, Last vs. Fresno St., 4-28-19

Putouts: 1, 3x, Last at GCU, 2-9-20

Fewest hits allowed (3.0 IP min.): 2, Western Carolina, 3-9-19

Fewest BB allowed (3.0 IP min.): 0, 3x, Last at SDSU, 3-16-19

## CAREER STATS (AT UNM)

Year	era	w-l	app	gs	cq	sho	sv	ip	h	r	er	bb	so	2b	3b	hr	bf	bavg	wp	hbp	bk	sfa	sha
2019	6.41	4-15	33	21	9	1/0	0	125.0	176	126	89	54	74	25	1	28	623	.322	7	6	0	5	11
2020	6.23	0-1	2	2	0	0/0	0	8.2	12	8	6	3	3	1	1	2	42	.308	0	0	0	0	0
TOTAL	6.40	4-16	35	23	9	1/0	0	133.2	188	134	95	57	77	26	2	30	665	.321	7	6	0	5	11

## 2020 GAME-BY-GAME

Date	Opponent	GS	IP	H	R	ER	BB	SO	2B	3B	HR	WP	BK	HBP	IBB	Score	W-L	Sv	ERA	NP
Feb 07	vs Weber State	*	4.1	6	3	3	1	2	0	1	1	0	0	0	0	1-4	0-1	0	6.23	82
Feb 09	at Grand Canyon	*	4.1	6	5	3	2	1	1	0	1	0	0	0	0	6-7	0-1	0	6.23	60
Totals		2	8.2	12	8	6	3	3	1	1	2	0	0	0	0	7-11	0-1	0	6.23	-





# 14 JOCELYN ULRICH

*OF • 5-7 • FR.  
AZTEC, N.M. • AZTEC HS*

## **SINGLE-GAME HIGHS**

Hits:  
Doubles:  
Triples:  
Home runs:  
Total bases:  
RBI:  
Runs scored:  
Walks:  
Hit by pitch:

Struck out:  
Sac flies:  
Sac bunts:  
At bats:  
Stolen bases:  
Caught stealing:  
Field chances:  
Putouts:  
Assists:

## **CAREER STATS (AT UNM)**

## **2020 GAME-BY-GAME**





**15 SAM KORTSEN**

**IF • 5-10 • FR.  
THATCHER, ARIZ. • THATCHER HS**

**SINGLE-GAME HIGHS**

Hits:  
Doubles:  
Triples:  
Home runs:  
Total bases:  
RBI:  
Runs scored:  
Walks:  
Hit by pitch:

Struck out:  
Sac flies:  
Sac bunts:  
At bats:  
Stolen bases:  
Caught stealing:  
Field chances:  
Putouts:  
Assists:

**CAREER STATS (AT UNM)**

**2020 GAME-BY-GAME**





# 16 LESLIE ROMERO

**OF • 5-4 • SO.**  
**GONZALES, CALIF. • SALINAS HS**

## SINGLE-GAME HIGHS

Hits:  
 Doubles:  
 Home runs:  
 Total bases:  
 RBI:  
 Runs scored:  
 Walks:  
 Struck out: 2, UNLV, 5-10-19  
 Sac bunts:

Sac flies:  
 At bats: 2, 3x, Last vs. Stanford, 2-8-20  
 Stolen bases:  
 Putouts: 1, 3x, Last vs. Stanford, 2-8-20  
 Assists:

## CAREER STATS (AT UNM)

Year	avg	gp-gs	ab	r	h	2b	3b	hr	rbi	tb	slg%	bb	hbp	so	gdp	ob%	sf	sh	sb-att	po	a	e	fld%
2019	.000	10-2	12	0	0	0	0	0	0	0	.000	0	0	5	0	.000	0	0	0-0	2	0	0	1.000
2020	.000	3-1	4	0	0	0	0	0	0	0	.000	0	0	0	0	.000	0	0	0-0	1	0	0	1.000
TOTAL	.000	13-3	16	0	0	0	0	0	0	0	.000	0	0	5	0	.000	0	0	0-0	3	0	0	1.000

## 2020 GAME-BY-GAME

Date	Opponent	Pos	AB	R	H	RBI	2B	3B	HR	BB	SB	CS	HBP	SAC	SF	GDP	K	PO	A	E	Avg	
Feb 07	vs Weber State	ph	1	0	0	0	0	0	0	0	0	0	0	0	0	0	0	0	0	0	0	.000
Feb 08	vs Stanford	*c	2	0	0	0	0	0	0	0	0	0	0	0	0	0	0	1	0	0	0	.000
Feb 09	at Grand Canyon	ph	1	0	0	0	0	0	0	0	0	0	0	0	0	0	0	0	0	0	0	.000
Totals		1gs	4	0	0	0	0	0	0	0	0	0	0	0	0	0	0	1	0	0	0	.000

On base pct. .000 • Slugging pct. .000



# 22 GAVYN SHAFER

**IF • 5-10 • FR.**  
**HILLSBORO, ORE. • CENTURY HS**

## SINGLE-GAME HIGHS

Hits:  
 Doubles:  
 Triples:  
 Home runs:  
 Total bases:  
 RBI: 1, Weber State, 2-7-20  
 Runs scored: 1, Grand Canyon, 2-8-20  
 Walks: 2, Stanford, 2-7-20  
 Hit by pitch: 1, Grand Canyon, 2-8-20

Struck out: 1, 2x, Last at Grand Canyon, 2-8-20  
 Sac flies: 1, Weber State, 2-7-20  
 Sac bunts: 1, at Grand Canyon, 2-9-20  
 At bats: 3, 2x, Last vs. Stanford, 2-8-20  
 Stolen bases:  
 Caught stealing:  
 Putouts: 7, Weber State, 2-7-20  
 Assists: 4, 2x, Last at Grand Canyon, 2-8-20

## CAREER STATS (AT UNM)

Year	avg	gp-gs	ab	r	h	2b	3b	hr	rbi	tb	slg%	bb	hbp	so	gdp	ob%	sf	sh	sb-att	po	a	e	fld%
2020	.000	5-5	12	1	0	0	0	0	1	0	.000	3	1	2	0	.235	1	1	0-0	12	11	0	1.000
TOTAL	.000	5-5	12	1	0	0	0	0	1	0	.000	3	1	2	0	.235	1	1	0-0	12	11	0	1.000

## 2020 GAME-BY-GAME

Date	Opponent	Pos	AB	R	H	RBI	2B	3B	HR	BB	SB	CS	HBP	SAC	SF	GDP	K	PO	A	E	Avg
Feb 07	vs Weber State	*1b	3	0	0	1	0	0	0	0	0	0	0	0	1	0	0	7	0	0	.000
Feb 07	vs Stanford	*2b	2	0	0	0	0	0	0	2	0	0	0	0	0	0	0	1	2	0	.000
Feb 08	vs Stanford	*2b	3	0	0	0	0	0	0	0	0	0	0	0	0	0	1	1	4	0	.000
Feb 08	at Grand Canyon	*2b	2	1	0	0	0	0	0	0	0	0	1	0	0	0	1	2	4	0	.000
Feb 09	at Grand Canyon	*2b	2	0	0	0	0	0	0	1	0	0	0	1	0	0	0	1	1	0	.000
Totals		5gs	12	1	0	1	0	0	0	3	0	0	1	1	1	0	2	12	11	0	.000

On base pct. .235 • Slugging pct. .000





# 24 SKYLAR JENKINS

OF • 5-5 • R-FR.

LAWRENCEVILLE, GA. • BUFORD HS

## SINGLE-GAME HIGHS

Hits:  
Doubles:  
Triples:  
Home runs:  
Total bases:  
RBI:  
Runs scored:  
Walks:  
Hit by pitch:

Struck out: 1, Weber State, 2-7-20  
Sac flies:  
Sac bunts:  
At bats: 1,2x, Last at GCU, 2-8-20  
Stolen bases:  
Caught stealing:  
Field chances:  
Putouts:  
Assists:

## CAREER STATS (AT UNM)

Year	avg	gp-gs	ab	r	h	2b	3b	hr	rbi	tb	slg%	bb	hbp	so	gdp	ob%	sf	sh	sb-att	po	a	e	fld%
2020	.000	3-0	2	0	0	0	0	0	0	0	.000	0	0	1	0	.000	0	0	0-0	0	0	0	.000
TOTAL	.000	3-0	2	0	0	0	0	0	0	0	.000	0	0	1	0	.000	0	0	0-0	0	0	0	.000

## 2020 GAME-BY-GAME

Date	Opponent	Pos	AB	R	H	RBI	2B	3B	HR	BB	SB	CS	HBP	SAC	SF	GDP	K	PO	A	E	Avg
Feb 07	vs Weber State	ph	1	0	0	0	0	0	0	0	0	0	0	0	0	0	1	0	0	0	.000
Feb 08	at Grand Canyon	ph	1	0	0	0	0	0	0	0	0	0	0	0	0	0	0	0	0	0	.000
Feb 09	at Grand Canyon	pr	0	0	0	0	0	0	0	0	0	0	0	0	0	0	0	0	0	0	.000
Totals		Ogs	2	0	0	0	0	0	0	0	0	0	0	0	0	0	1	0	0	0	.000

On base pct. .000 • Slugging pct. .000



**25 BRIANNA SANCHEZ** *P • 5-6 • FR.*  
 WEST COVINA, CALIF. • BISHOP AMAT HS

**SINGLE-GAME HIGHS**

Innings pitched: 7.0, Stanford, 2-8-20  
 Walks allowed: 3, Stanford, 2-8-20  
 Strikeouts: 1, 4x, Last at GCU, 2-9-20  
 Batters faced: 26, Stanford, 2-8-20  
 Putouts: 2, Stanford, 2-8-20  
 Assists: 2, Weber State, 2-7-20  
 Runners CS:  
 Fewest hits allowed (3.0 IP min.): 4, Stanford,  
 2-8-20

Fewest BB allowed (3.0 IP min.): 3, Stanford,  
 2-8-20

**CAREER STATS (AT UNM)**

Year	era	w-l	app	qs	cq	sho	sv	ip	h	r	er	bb	so	2b	3b	hr	bf	bavq	wp	hbp	bk	sfa	sha
2020	2.27	1-2	4	1	1	1/0	0	12.1	11	5	4	6	4	1	0	1	51	.250	0	0	0	1	0
TOTAL	2.27	1-2	4	1	1	1/0	0	12.1	11	5	4	6	4	1	0	1	51	.250	0	0	0	1	0

**2020 GAME-BY-GAME**

Date	Opponent	GS	IP	H	R	ER	BB	SO	2B	3B	HR	WP	BK	HBP	IBB	Score	W-L	Sv	ERA	NP
Feb 07	vs Weber State		2.1	3	0	0	0	1	0	0	0	0	0	0	0	1-4	0-0	0	0.00	31
Feb 07	vs Stanford		1.0	3	3	3	1	1	0	0	0	0	0	0	0	6-7	0-1	0	8.10	38
Feb 08	vs Stanford	*	7.0	4	0	0	3	1	1	0	0	0	0	0	0	2-0	1-1	0	2.61	86
Feb 09	at Grand Canyon		2.0	1	2	1	2	1	0	0	1	0	0	0	0	6-7	1-2	0	2.92	36
Totals		1	12.1	11	5	4	6	4	1	0	1	0	0	0	0	15-18	1-2	0	2.92	-





**32 LAUREN WILMERT** C/1B • 5-10 • SR.  
ALBUQUERQUE, N.M. • VOLCANO VISTA HS

**SINGLE-GAME HIGHS**

Hits: 3, San Diego State, 3-17-19  
 Doubles: 1, 13x, Last at Utah State, 4-6-19  
 Triples: 1, North Dakota, 3-26-19  
 Home runs: 1, 9x, Last vs. Boise State, 4-19-19  
 Total bases: 6, 4x, Last at Utah State, 4-6-19  
 RBI: 5, 2x, Last vs. WCU, 3-8-19  
 Runs scored: 3, UTEP, 2-8-19  
 Walks: 3, UTEP, 2-8-19  
 Hit by pitch: 1, 2x, Last vs. UTEP, 2-8-19

Struck out: 3, George Washington, 2-23-18  
 Sac flies: 1, 4x, Last vs. Boise State, 4-20-19  
 Sac bunts: 1, 3x, Last vs. Utah State, 4-22-18  
 At bats: 4, 17x, Last at Fresno State, 4-27-19  
 Stolen bases: 1, vs Western Michigan, 2-11-17  
 Putouts: 11, 2x, Last vs. North Dakota, 3-26-19  
 Assists: 2, 6x, Last vs. Oregon St., 3-9-19  
 Runners CS: 2, Fresno State, 4-26-19

**CAREER STATS (AT UNM)**

Year	avg	gp-gs	ab	r	h	2b	3b	hr	rbi	tb	slg%	bb	hbp	so	gdp	ob%	sf	sh	sb-alt	po	a	e	fld%
2017	.242	34-23	62	5	15	3	0	1	6	21	.339	6	0	15	1	.304	1	2	1-1	67	6	3	.961
2018	.180	32-20	61	5	11	1	0	1	11	15	.246	7	1	23	0	.275	0	1	0-0	87	11	4	.961
2019	.261	47-47	134	23	35	9	1	7	35	67	.500	12	1	40	2	.320	3	0	0-0	235	16	10	.962
2020	.250	3-2	4	0	1	0	0	0	2	1	.250	2	1	2	0	.571	0	0	0-0	11	1	0	1.000
<b>TOTAL</b>	<b>.238</b>	<b>116-92</b>	<b>261</b>	<b>33</b>	<b>62</b>	<b>13</b>	<b>1</b>	<b>9</b>	<b>54</b>	<b>104</b>	<b>.398</b>	<b>27</b>	<b>3</b>	<b>80</b>	<b>3</b>	<b>.312</b>	<b>4</b>	<b>3</b>	<b>1-1</b>	<b>400</b>	<b>34</b>	<b>17</b>	<b>.962</b>

**2020 GAME-BY-GAME**

Date	Opponent	Pos	AB	R	H	RBI	2B	3B	HR	BB	SB	CS	HBP	SAC	SF	GDP	K	PO	A	E	Avg
Feb 07	vs Weber State	*c	0	0	0	0	0	0	0	2	0	0	0	0	0	0	0	3	1	0	.000
Feb 07	vs Stanford	*1b	3	0	0	1	0	0	0	0	0	0	1	0	0	0	2	8	0	0	.000
Feb 09	at Grand Canyon	ph	1	0	1	1	0	0	0	0	0	0	0	0	0	0	0	0	0	0	.250
<b>Totals</b>		<b>2gs</b>	<b>4</b>	<b>0</b>	<b>1</b>	<b>2</b>	<b>0</b>	<b>0</b>	<b>0</b>	<b>2</b>	<b>0</b>	<b>0</b>	<b>1</b>	<b>0</b>	<b>0</b>	<b>0</b>	<b>2</b>	<b>11</b>	<b>1</b>	<b>0</b>	<b>.250</b>

On base pct. .571 • Slugging pct. .250



**44 ALEXIS BUDDENHAGEN** *P • 5-4 • JR.*  
*ALBUQUERQUE, N.M. • BETHANY COLLEGE*

***SINGLE-GAME HIGHS***

Innings pitched:  
Walks allowed:  
Strikeouts:  
Batters faced:  
Field chances:  
Assists:  
Runners CS:

***CAREER STATS (AT UNM)***

***2020 GAME-BY-GAME***





**66 JENNIFER HERNANDEZ**

**IF • 5-2 • FR.**

**ALBUQUERQUE, N.M. • ATRISCO HERITAGE ACADEMY**

**SINGLE-GAME HIGHS**

Hits:

Doubles:

Triples:

Home runs:

Total bases:

RBI:

Runs scored:

Walks:

Hit by pitch:

Struck out:

Sac flies:

Sac bunts:

At bats:

Stolen bases:

Caught stealing:

Field chances:

Putouts:

Assists:

**CAREER STATS (AT UNM)**

**2020 GAME-BY-GAME**





**77 REYAN TUCK**

**IF • 6-0 • 50.**  
**HILLSBORO, ORE. • TOWSON**

**SINGLE-GAME HIGHS**

Hits: 1, Grand Canyon, 2-8-20  
 Doubles:  
 Triples:  
 Home runs:  
 Total bases: 1, Grand Canyon, 2-8-20  
 RBI:  
 Runs scored: 1, Grand Canyon, 2-8-20  
 Walks:  
 Hit by pitch:

Struck out: 1, 2x, Last at GCU, 2-9-20  
 Sac flies:  
 Sac bunts:  
 At bats: 4, Grand Canyon, 2-8-20  
 Stolen bases:  
 Caught stealing:  
 Field chances:  
 Putouts: 9, Grand Canyon, 2-8-20  
 Assists:

**CAREER STATS (AT TOWSON)**

**CAREER STATS (AT UNM)**

Year	avg	gp-gs	ab	r	h	2b	3b	hr	rbi	tb	slg%	bb	hbp	so	gdp	ob%	sf	sh	sb-att	po	a	e	fld%
2020	.100	4-3	10	1	1	0	0	0	0	1	.100	0	0	2	0	.100	0	0	0-0	18	0	0	1.000
TOTAL	.100	4-3	10	1	1	0	0	0	0	1	.100	0	0	2	0	.100	0	0	0-0	18	0	0	1.000

**2020 GAME-BY-GAME**

Date	Opponent	Pos	AB	R	H	RBI	2B	3B	HR	BB	SB	CS	HBP	SAC	SF	GDP	K	PO	A	E	Avg
Feb 07	vs Stanford	ph	1	0	0	0	0	0	0	0	0	0	0	0	0	0	1	0	0	0	.000
Feb 08	vs Stanford	*1b	2	0	0	0	0	0	0	0	0	0	0	0	0	0	0	6	0	0	.000
Feb 08	at Grand Canyon	*1b	4	1	1	0	0	0	0	0	0	0	0	0	0	0	0	9	0	0	.143
Feb 09	at Grand Canyon	*1b	3	0	0	0	0	0	0	0	0	0	0	0	0	0	1	3	0	0	.100
Totals		3gs	10	1	1	0	0	0	0	0	0	0	0	0	0	0	2	18	0	0	.100

On base pct. .100 • Slugging pct. .100





# 99 KIANA SPENCER

**P • 5-6 • SR.**  
**GALLUP, N.M. • YAVAPAI COLLEGE**

## SINGLE-GAME HIGHS

Innings pitched: 7.0, 5x, Last vs. Nevada, 3-29-19 2-9-19  
 Walks allowed: 7, LMU, 3-10-19 Fewest walks allowed (Min. 3.0 IP): 0, at UNLV, 5-9-19  
 Strikeouts: 7, North Dakota, 3-26-19  
 Batters faced: 36, Nevada, 3-29-19  
 Field chances: 2, 3x, Last at GCU, 2-8-20  
 Assists: 2, 2x, Last vs. Oregon St., 3-8-19  
 Putouts: 1, Grand Canyon, 2-8-20  
 Runners CS: 1, 4x, Last at UNLV, 5-9-19  
 Fewest hits allowed (Min. 3.0 IP): 3, Creighton,

## CAREER STATS (AT UNM)

Year	era	w-l	app	qs	cq	sho	sv	ip	h	r	er	bb	so	2b	3b	hr	bf	bavg	wp	hbp	bk	sfa	sha
2019	6.37	6-18	33	23	11	2/0	1	122.0	167	128	111	74	66	36	5	28	626	.320	8	16	0	4	10
2020	4.42	1-0	2	2	1	0/0	0	12.2	14	8	8	6	3	1	2	0	59	.275	0	0	0	1	1
<b>TOTAL</b>	<b>6.19</b>	<b>7-18</b>	<b>35</b>	<b>25</b>	<b>12</b>	<b>2/0</b>	<b>1</b>	<b>134.2</b>	<b>181</b>	<b>136</b>	<b>119</b>	<b>80</b>	<b>69</b>	<b>37</b>	<b>7</b>	<b>28</b>	<b>685</b>	<b>.316</b>	<b>8</b>	<b>16</b>	<b>0</b>	<b>5</b>	<b>11</b>

## 2020 GAME-BY-GAME

Date	Opponent	GS	IP	H	R	ER	BB	SO	2B	3B	HR	WP	BK	HBP	IBB	Score	W-L	Sv	ERA	NP
Feb 07	vs Stanford	*	5.2	8	4	4	2	1	0	1	0	0	0	0	0	6-7	0-0	0	6.35	101
Feb 08	at Grand Canyon	*	7.0	6	4	4	4	2	1	1	0	0	0	0	0	9-4	1-0	0	5.68	93
<b>Totals</b>		<b>2</b>	<b>12.2</b>	<b>14</b>	<b>8</b>	<b>8</b>	<b>6</b>	<b>3</b>	<b>1</b>	<b>2</b>	<b>0</b>	<b>0</b>	<b>0</b>	<b>0</b>	<b>0</b>	<b>15-11</b>	<b>1-0</b>	<b>0</b>	<b>5.68</b>	<b>-</b>