

2018-19 NEW MEXICO WOMEN'S BASKETBALL

GAME NOTES

DANIEL GALLEGOS | ASSISTANT DIRECTOR OF ATHLETIC COMMUNICATIONS | DMGALLEGOS@UNM.EDU | CELL: 501-442-2930

» Eight NCAA Tournament Appearances | 1998, 2002, 2003, 2004, 2005, 2006, 2007, 2008 «
 » Five Mountain West Tournament Championships | 2003, 2004, 2005, 2007, 2008 «

2018-19 | SCHEDULE AND RESULTS

OVERALL RECORD: 4-1
MW RECORD: 0-0
HOME RECORD: 3-1
ROAD RECORD: 1-0
NEUTRAL RECORD: 0-0
STREAK: W3

Date	Opponent	Time
10/30	Lubbock Christian (Exh.)	W, 62-55
11/4	Eastern New Mexico (Exh.)	W, 91-43
11/9	%Texas State	W, 82-51
11/11	%Auburn	L, 76-79
11/18	%Hartford	W, 72-65
11/24	at Houston	W, 89-85 (2OT)
11/28	Oklahoma	W, 84-80
12/1	New Mexico State	2 p.m.
12/5	UTEP	7 p.m.
12/8	at Northern Arizona	2 p.m.
12/15	at New Mexico State	2 p.m.
12/19	+Sacramento State	7 p.m.
12/20	+Hampton or SFA	7 p.m.
12/29	at Long Beach State	3 p.m.
1/2	*Air Force	7 p.m.
1/5	*at Nevada	3 p.m.
1/9	*at UNLV	7 p.m.
1/12	*Colorado State	2 p.m.
1/16	*San Diego State	7 p.m.
1/19	*at Wyoming	2 p.m.
1/23	*UNLV	7 p.m.
1/26	*at Utah State	2 p.m.
2/2	*Fresno State	2 p.m.
2/6	*at San Diego State	Noon
2/9	*Nevada	1 p.m.
2/13	*at San Jose State	8 p.m.
2/16	*at Fresno State	3 p.m.
2/20	*Utah State	7 p.m.
2/27	*San Jose State	7 p.m.
3/2	*at Colorado State	2 p.m.
3/4	*at Boise State	7 p.m.
3/7	*Wyoming	7 p.m.

Mountain West Tournament

3/10	First Round	3/5:30/8 pm
3/11	Quarterfinals	1/3:30/7/9:30 pm
3/12	Semifinals	7/9:30 pm
3/13	Championship	8 pm

* - Mountain West game % - Preseason WNIT

^ - Lobo Invitational

Bold - home game at Dreamstyle Arena (15,411)

Game dates & times are Mountain time and subject to change

THE SLATE



NEW MEXICO
LOBOS

Record (MW)
 4-1 (0-0 MW)

Head Coach Mike Bradbury
 Alma Mater, Yr Chattanooga, 1993
 Record at UNM 44-27 (3rd year)
 Career Record 222-144 (12th year)

Game Information

Game Number: 6
 Dates: 12/1
 Location: Albuquerque, N.M.
 Venue: Dreamstyle Arena - The Pit

Series History

Overall: 50-26
 At Home: 27-12
 Current Streak: W2
 First Meeting: 2/15/75
 Last Meeting: 12/2/17

Broadcast Information

Radio: KNML-AM (610)
 Play-By-Play: Josh Suchon
 Analyst: Nikki Lobato
 Live Stream: Mountain West Network
 Live Stats: GoLobos.com



NM State
Aggies

Record (WAC)
 4-1 (0-0 WAC)

Head Coach Brooke Atkinson
 Alma Mater, Yr Wichita State, 2003
 Record at NMSU 22-14 (2nd year)
 Career Record Same



TIPPING OFF

The first edition of the 2018-19 Rio Grande Rivalry tips off inside Dreamstyle Arena - The Pit on Saturday afternoon and the University of New Mexico women's basketball team will enter the game riding high after a gritty 84-80 win this past Wednesday against Oklahoma.

In that game against Oklahoma, the Lobos dominated in the third quarter and opened up a 14-point lead heading into the final quarter. OU would mount a comeback effort and pulled to within a point late in the fourth quarter, but the Lobos did not relinquish the lead as the secured the big non-conference win and moved to 4-1 on the season.

New Mexico State will enter the game with a similar 4-1 overall

record after handling Northern New Mexico, 101-51, this past Monday.

A year ago, the Lobos claimed both meetings against the Aggies, winning 86-75 in Albuquerque and 101-93 in Las Cruces. Prior to that season sweep, NMSU had won four of five against UNM dating back to the 2014-15 season.

The game on Saturday statistically features a "something has gotta give" stat category as the Lobos are averaging 80.6 ppg as a team and the Aggies are limiting opponents to just 53.2 ppg offensively.

The Lobos have four players averaging double figures lead by **JAISA NUNN** at 19.0 ppg. The Aggies on the other end have three in double figures and are led by Brooke Salas.

Probable Starters (Based off of Previous Game)

#	Name	Pos.	Cls.	Ht.	PPG	RPG	APG	SPG	BPG
3	Ahlise Hurst	G	Fr.	5-9	12.4	2.0	0.6	0.8	0.4
4	Jayla Everett	G	Fr.	5-10	16.2	4.6	2.8	1.8	0.4
15	Aisia Robertson	G	RsJr.	5-8	13.8	7.0	11.2	3.0	0.6
21	Nike McClure	F	Sr.	6-3	4.2	8.4	1.6	1.0	4.0
44	Jaisa Nunn	C	Sr.	6-3	19.0	8.0	1.0	2.2	1.4

Off the Bench

#	Name	Pos.	Cls.	Ht.	PPG	RPG	APG	SPG	BPG
1	Quincy Noble	G	Fr.	5-10	1.5	0.3	---	0.3	0.5
2	Bre'Asiah Mathews	F	Fr.	6-0	1.0	2.0	---	0.5	0.5
11	Emily Lines	G	Sr.	6-1	---	---	---	---	---
13	Shaiquel McGruder	F	Fr.	6-0	1.8	3.5	---	1.0	0.5
23	Jaedyn De La Cerdia	G	So.	5-6	4.8	2.0	1.5	1.5	---
24	Erica Moore	C	RsSr.	6-2	---	---	---	1.0	---
32	Antonia Anderson	G/F	So.	6-2	5.2	4.4	0.6	0.8	0.6
35	Madi Washington	G	So.	5-9	3.0	0.6	0.4	0.6	---



UNIVERSITY OF NEW MEXICO

2018-19 WOMEN'S BASKETBALL



UNIVERSITY OF NEW MEXICO

Location.....Albuquerque, N.M.
 Founded.....1889 by Territorial Legislature
 Enrollment.....25,015
 Nickname.....Lobos
 Colors.....Cherry (PMS 200) & Silver (PMS Cool Gray 6)
 Conference.....Mountain West Conference
 National Affiliation.....NCAA Division I
 President.....Dr. Garnett Stokes
 Director of Athletics.....Eddie Nuñez
 Senior Associate A.D.....Brad Hutchins
 Assoc. A.D./SWA.....Janice Ruggiero
 Faculty Representative.....Amy Neel

FACILITY INFORMATION

Facility.....Dreamstyle Arena - The Pit
 Capacity.....15,411
 Age.....Built in 1966 (Renovated in 2009-10)
 All-Time Home Record.....408-206 (.664)

PROGRAM HISTORY

First Season.....1974-75
 Overall Record.....638-535 (.543) in 40 seasons
 Overall MW Record.....174-126 (.580) in 19 seasons
 Postseason Tournament Appearances.....16
 NCAA Tournament Appearances.....8
 Last NCAA Postseason Appearance.....2017-18 (WNIT)
 Last NCAA Postseason Opponent.....TCU
 Last NCAA Postseason Result.....L, 72-81
 MW Regular Season Championships.....2
(2003-04 & 2004-05)
 MW Tournament Championships.....5
(2002-03, 2003-04, 2004-05, 2006-07, 2007-08)

TEAM INFORMATION

2017-18 Overall Record.....25-11
 2017-18 Mountain West Record.....10-8
 2017-18 Mountain West Season Finish.....6th
 2017-18 MW Tournament Finish.....Quarterfinals
 Letterwinners Returning | Lost.....7 | 7
 Starters Returning | Lost.....1 | 4



COACHING STAFF

Head Coach.....Mike Bradbury (Chattanooga, 1993)
 Record at UNM (Years).....44-27 (3rd Season)
 Career Record (Years).....222-144 (12th Season)
 Head Coach Phone.....505-925-5770
 Women's Basketball Fax.....505-925-5779
 Head Coach E-Mail.....mbradbury@unm.edu

Assistant Coach.....Valerie King (3rd Season)
 Alma Mater.....Cincinnati, 2004
 Assistant Coach.....Bill Ferrara (2nd Season)
 Alma Mater.....Florida, 2003
 Assistant Coach.....Symone Denham (1st Season)
 Alma Mater.....Wright State, 2016

Director of Operations.....Vera Jo Bustos (5th Season)
 Video Coordinator.....Cheyne Dorsey (1st Season)
 Athletic Trainer.....Andrea Quintana
 Strength Coach.....Jeremy Golden (1st Season)
 Academic Adviser.....Brian Ferguson

MISCELLANEOUS INFORMATION

2017-18 Total Attendance Average.....106, 026
 2017-18 Average Attendance.....4,819
 2017-18 NCAA Attendance Rank.....18th
 2017-18 Mountain West Attendance Rank.....1st

MULTIMEDIA INFORMATION

Athletics Website.....www.GoLobos.com
 Main University Web Site.....www.unm.edu
 Conference Web Site.....www.TheMW.com
 Facebook.....www.facebook.com/NewMexicoLobos
 Twitter.....@UNMLobos

MEDIA RELATIONS

Women's Basketball Contact.....Daniel Gallegos
 Cell Phone (Preferred).....501-442-2930
 Email.....dmgallegos@unm.edu
 Address:.....



Department of Athletics
 Colleen J. Maloof Administration Building
 MSC04 2680
 1 University of New Mexico
 Albuquerque, NM 87131-0001



UNIVERSITY OF NEW MEXICO 2018-19 WOMEN'S BASKETBALL



THE WEEK AHEAD

SUNDAY	MONDAY	TUESDAY	WEDNESDAY	THURSDAY	FRIDAY	SATURDAY
25	26	27	28	29	30	1
			 vs. Oklahoma W, 84-80 Dreamstyle Arena - The Pit Albuquerque, N.M.			 vs. New Mexico St. 2 p.m. Dreamstyle Arena - The Pit Albuquerque, N.M.

MW STANDINGS

2018-19 Standings (as of 11-30-18)

Team	GAC	Pct.	Overall	Pct.	Streak
Boise State	0-0	0.000	5-1	0.833	W2
NEW MEXICO	0-0	0.000	4-1	0.800	W3
Wyoming	0-0	0.000	4-2	0.667	W1
Fresno State	0-0	0.000	3-2	0.600	L1
Air Force	0-0	0.000	4-3	0.571	W1
San Diego State	0-0	0.000	4-3	0.571	L2
Colorado State	0-0	0.000	2-3	0.400	L1
Utah State	0-0	0.000	2-5	0.286	L5
Nevada	0-0	0.000	1-4	0.200	L2
San Jose State	0-0	0.000	1-4	0.200	L1
UNLV	0-0	0.000	1-4	0.200	L1

The Conference State

Tuesday, November 27

Montana State at Wyoming | 6:30 p.m. (MT)

Wednesday, November 28

Northern Colorado at Air Force | 5 p.m. (MT)

Fresno State at USC | 5 p.m. (PT)

San Diego State at San Diego | 6 p.m. (PT)

Colorado State at Gonzaga | 6 p.m. (PT)

OKLAHOMA AT NEW MEXICO | 7 P.M. (MT)

Utah State at Portland | 8 p.m. (PT)

Thursday, November 29

Pacific at San Jose State | 7 p.m. (PT)

Saturday, December 1

UC Davis vs. Nevada | 11 a.m. (MT)

Boise State at Washington State | 1 p.m. (PT)

NEW MEXICO STATE AT NEW MEXICO | 2 P.M. (MT)

USC at UNLV | 5 p.m. (PT)

Sunday, December 2

North Florida at Colorado State | Noon (MT)

Arizona at San Diego State | 1 p.m. (PT)

Fresno State at Eastern Washington | 1 p.m. (PT)

Air Force at Minnesota | 3 p.m. (CT)

UC Irvine at San Jose State | 2 p.m. (PT)



HOW NM STACKS UP IN THE MW

Team Rankings (as of 11-30-18)

Category	Stat	Rank
Scoring Offense	80.6/gm	1st
Scoring Defense	71.8/gm	10th
Scoring Margin	+8.8	3rd
Free Throw %	.661 (74-of-112)	8th
Field Goal %	.413 (144-of-349)	5th
Field Goal % Def.	.380 (130-of-342)	4th
3PT Field Goal %	.311 (41-of-132)	8th
3PT Field Goals Made	.41 (8.2/gm)	4th
3PT Field Goal % Def.	.284 (33-of-116)	4th
Rebounding (Team)	.237 (47.4/gm)	1st
Rebounding (Opp.)	.205 (41.0/gm)	8th
Rebounding Margin	+6.4	1st
Blocked Shots	.42 (8.4/gm)	1st
Assists	.97 (19.4/gm)	1st
Steals	.64 (12.8/gm)	2nd
Turnover Margin	+0.8	6th
Assist/Turnover Ratio	0.9	4th
Offensive Rebounds	.87 (17.4/gm)	2nd
Defensive Rebounding	.150 (30.0/gm)	1st

Individual Rankings (as of 11-30-18)

Category	Player	Stat	Rank
Scoring	Jaisa Nunn	.95 (19.0 ppg)	1st
Rebounding	Nike McClure	.42 (8.4 rpg)	3rd
Field Goal %	Jaisa Nunn	.587 (37-of-63)	3rd
Assists	Aisia Robertson	.56 (11.2 apg)	1st
Free Throw %	Jayla Everett	.952 (20-of-21)	2nd
Steals	Aisia Robertson	.15 (3.0 spg)	T-1st
3PT FG %	Jayla Everett	.481 (13-of-27)	6th
3PT FG Made	Ahlise Hurst	.15 (3.0 mpg)	2nd
Blocked Shots	Nike McClure	.20 (4.0 bpg)	1st
AST/TO Ratio	Aisia Robertson	.56 AST/46 TO (1.2)	10th
Off. Rebounds	Jaisa Nunn	.19 (3.8 rpg)	2nd
Def. Rebounds	Aisia Robertson	.30 (6.0 rpg)	1st
Minutes Played	Aisia Robertson	.178 (35.6 mpg)	3rd

2018-19 MW PLAYERS OF THE WEEK

Week 1 11/12/18 Hailey Bassett-Meacham (Utah St.)	Week 7	Week 13
Week 2 11/19/18 JANIS NUNN (NEW MEXICO)	Week 8	Week 14
Week 3 ASIA ROBERTSON (NEW MEXICO)	Week 9	Week 15
Week 4	Week 10	
Week 5	Week 11	
Week 6	Week 12	



UNIVERSITY OF NEW MEXICO

2018-19 WOMEN'S BASKETBALL



LAST TIME IT HAPPENED (UNM)

As A Team

Scored 100 Points:	100 - vs. Boise St. (1-3-18)
Scored 90 Points:	93 - vs. Rice (3-20-18)
Scored Fewer Than 50 Points:	42 - at UNLV (1-11-17)
Scored Fewer Than 40 Points:	38 - at Colorado St. (1-3-15)
Won by 40 Points:	107-66 - vs. Northern N.M. (11-15-17)
Won By 30 Points:	82-51 - vs. Texas State (11-9-18)
Lost By 30 Points:	L, 97-59 - at No. 18 DePaul (11-16-14)
Lost By 40 Points:	L, 105-63 - at Oklahoma (12-16-17)
Shot 60% or Better:	61.2% - Pacific (11-9-01)
Shot Less Than 30%:	28.6% (18-63) - Colorado St. (2-28-18)
Shot 60% 3FG or Better:	68.2% (15-22) - at NMSU (12-2-17)
Shot Less Than 20% 3FG:	17.4 (4-23) - Colorado St. (2-28-18)
Made 15 3-Pointers:	15 - vs. Utah St. (1-31-18)
Shot 90% on FTs (10 or more):	94.4% (17-18) - vs. Fresno St. (1-13-18)
Shot Less Than 40% On FTs:	14.3% (1-7) - at UTEP (11-30-17)
Had 50 Rebounds:	58 - at Houston (11-24-18)
Had 20 Offensive Rebounds:	20 - vs. Oklahoma (11-28-18)
Had 25 Assists:	25 - vs. SJSU (2-3-18)
Had 20 Turnovers:	34 - at Houston (11-24-18)
Had Less Than 10 Turnovers:	7 - vs. Wyoming (3-6-18)
Had 10 Steals:	15 - vs. Oklahoma (11-28-18)
Had 10 Blocks:	14 - vs. Oklahoma (11-28-18)
Had Two 20-Point Scorers:	at Houston (11-24-18) Aisia Robertson (28) and Jaisha Nunn (21)
Had Three 20-Point Scorers:	at Fresno St. (3-2-18) Tessa Buck (30), Jaisha Nunn (22) and Cherise Beynon (22)
Had 6 Double-Digit Scorers:	Never
Had 5 Double-Digit Scorers:	at Utah St. (2-14-18)
Had No Double-Digit Scorers:	Northern Arizona (12-31-14)
Had Two 10+ Rebounders:	vs. Oklahoma (11-28-18) Jaisha Nunn (10) and Nike McClure (10)
Scored 50 Points In 1st Half:	54 - vs. Lamar (12-20-17)
Scored 50 Points In 2nd Half:	53 - vs. Texas State (11-9-18)
Scored 60 Points in a 2nd Half:	63 - vs. Illinois (11-26-17)
Scored 20 Or Fewer Points In 1st Half:	17 - at Colorado St. (2-22-17)
Scored 20 Or Fewer Points In 2nd Half:	19 - at Marquette (12-21-16)
Lowest Pts Scored in Quarter:	2 - vs. Tulsa (11-25-16)
Failed To Make a 3FG:	at UNLV (1-11-17)
Defeated a Ranked Team:	W, 88-87 vs. No. 16 Marquette (11-13-17)
Lost To a Ranked Team:	L, 49-48 vs. No. 25 CSU (2-24-16)
Won an OT Game:	W, 93-89 at Fresno St. (3-2-18)
Lost an OT Game:	L, 80-86 vs. Boise St. (2-12-14)
Won a 2OT Game:	W, 89-85 at Houston (11-24-18)
Lost a 2OT Game:	L, 69-65 vs. Fresno St. (1-2-16)

As An Individual

Had a Triple-Double:	Aisia Robertson (28 pts, 11 rebs, 11 assists) at Houston (11-24-18)
Had a Double-Double (Pts/Reb):	Jaisha Nunn (12 pts, 10 reb) vs. Oklahoma (11-28-18)
Had a Double-Double (Pts/Asst):	Aisia Robertson (10 pts & 12 asts) vs. Hartford (11-18-18)
Had a Double-Double (Reb/Asst):	vs. Fairleigh Dickinson (11-12-16) Cherise Beynon (13 reb, 10 asts)
Scored 20+ Pts with 10+ Rebs:	A. Robertson (28 pts, 11 reb) J. Nunn (21 pts, 12 reb) at Houston (11-24-18)
Scored 30 Points:	Ahlise Hurst (39) vs. Oklahoma (11-28-18)
Scored 40 Points:	Cherise Beynon (41) at SDSU (1-20-18)
Scored 30 Points (MW Only):	Tessa Buck (30) at Fresno St. (3-2-18)
Scored 40 points (MW Only):	Cherise Beynon (41) at San Diego St. (1-20-18)
Had 20 Rebounds:	Richelle van der Keijl (20) vs. New Mexico St. (11-15-16)
Had 15 Rebounds:	Jaisha Nunn (17) vs. Lamar (12-20-17)
Had 15 Assists:	Aisia Robertson (16) vs. Oklahoma (11-28-18)
Had 5 Steals:	Aisia Robertson (5) at Houston (11-24-18)
Had 5 Blocks:	Nike McClure (9) vs. Oklahoma (11-28-18)

HURST SETS FRESHMAN SCORING RECORD

In just her fifth collegiate game and making her second start as a Lobo, true freshman **AHLISE HURST** etched her name in the UNM women's basketball record books against Oklahoma as he set a new freshman record for points in a game with 39. The previous record was 35 points by **YVONNE MCKINNON** against Adams State in 1982.

Hurst, who had been averaging 5.8 ppg heading into the contest, heated up quickly as she surpassed her previous single-game high in scoring in just the first quarter as she had 12 points. For the game Hurst's 39 points came on 14-of-24 shooting overall and 9-of-17 from three-point range.

Her nine three's tied for the second-most makes from long distance in a game in school history.

ASSISTS BY AISIA

Through five games, redshirt junior **AISIA ROBERTSON** has been an assist machine. With 56 total assists currently, Robertson has not had fewer than eight dimes in a game, and against Oklahoma, Robertson set a new single-game record with 16 assists. Her assists per game are currently tops in NCAA DI while her total assists are ranked second.

BLOCK PARTY HOSTED BY MCCLURE

Length and athleticism were projected to be a newfound strength of the 2018-19 Lobos and thus far, senior transfer **NIKE MCCLURE** has exemplified that on the court and is blocking shots at a high clip. In the season-opener against Texas State, McClure blocked six shots on her own as the Lobos would end the night with a new school-record 16. In her most-recent game, McClure swatted nine shot attempts by Oklahoma to set a new single-game high for herself as a Lobo. McClure's 20 total blocked shots is currently fifth in DI, while her 4.0 blocks per game is first in the country.

3-X-1

In UNM's road game at Houston, redshirt junior point guard **AISIA ROBERTSON** did something only three other Lobo women's basketball players have done, and that's post a triple-double in a game. It was the seventh overall in program history and the first in the career of Robertson. Former players **CHERISE BEYNON** (3 times), **CAROL MORELAND** (twice) and **JEAN ROSTERMUNDT** account for the other six instances.

DOUBLE OT VICTORY

The win for the Lobos in double overtime against Houston was the first for the Lobos since 2010 when they beat Cal, 65-54, on November 20 of that year.



UNIVERSITY OF NEW MEXICO

2018-19 WOMEN'S BASKETBALL



DOUBLING DOWN

Senior center **JAJSA NUNN** and redshirt junior point guard **AISIA ROBERTSON** each recorded double-doubles in the Lobos game against Hartford. Nunn had the traditional point-rebound double-double with 32 points-11 rebounds. Robertson's double-double was the point-assist variety with 10 points and 12 assists.

MW PLAYER(S) OF THE WEEK

The Lobos have posted consecutive wins, and in each game have seen some great individual performances that have resulted in back-to-back Mountain West Player of the Week honors.

JAJSA NUNN was first to earn MW Player of the Week as she had a monster double-double in UNM's 72-65 win over Hartford. In that game, Nunn scored 32 points and hauled in 11 rebounds.

A week later, **AISIA ROBERTSON** matched that double-double and even added to it by posting a triple-double in the Lobos' 89-84 double OT win at Houston. In that game, Robertson scored 28 points and had 11 rebounds and 11 assists.

EVERETT'S EXCITING GAME

In just her second career college game, **JAYLA EVERETT** showcased a glimpse at what might be an exciting career as a Lobo. In the game against Auburn, Everett scored a game-high 25 points on 7-of-11 shooting overall from floor and a perfect 4-of-4 from the charity stripe. All but one of her field goal attempts in the game came from long range as she was 7-of-10 from deep and even started the game 5-of-5. The seven 3-pointers were the second-most in a game by a Lobo in program history.

BRADBURY VS. NMSU

Leading the Lobos for the third season entering the 2018-19 campaign, **MIKE BRADBURY** has squared off with in-state rival New Mexico State four times. In those games, Bradbury's Lobos are 3-1 against the Aggies. The lone loss came on the road in his first season at UNM.

DOMINANT DEBUT

The Lobos' 31-point margin of victory over Texas State (82-51) in the season-opener was the largest defeat UNM has placed on an opponent in a season-opener since the 2008-09 season when the Lobos beat Alcorn State by 56 points (94-38).

NUNN'S CLIMB UP THE ALL-TIME SCORING LIST

Senior center **JAJSA NUNN** became the 22nd player in school history to score 1,000-career points at the end of her junior season. She ended that year 19th on the all-time scoring list. In her senior season, Nunn has the chance to climb the ranks even higher. She is currently 13th with 1,123 points.

LAST TIME IT HAPPENED (OPP)

As A Team

Scored 100 Points:	105 - at Oklahoma (12-16-17)
Scored 90 Points:	91 - at Boise State (2-7-18)
Scored Less Than 50 Points:	48 - vs. Colorado State (2-28-18)
Scored Less Than 40 Points:	35 - at UTEP (11-30-17)
Shot 50% Or Better:	50.8% (32-63) - vs. TCU (3-22-18)
Shot Less Than 30%:	29.0% (18-62) - vs. Texas State (11-9-18)
Shot 50% 3FG Or Better:	50.0% (10-20) - vs. Wyoming (2-21-18)
Shot Less Than 20% 3FG:	11.1% (1-9) - vs. Utah State (1-31-18)
Made 15 3-Pointers:	15 - at Oklahoma (12-16-17)
Shot 90% On FTs (10 or more):	90% (18-20) - at Boise State (2-7-18)
Shot Less Than 50% On FTs:	40.0% (3-10) - vs. San Diego State (12-31-16)
Had 50 Rebounds:	50 - vs. Oklahoma (11-28-18)
Had 20 Offensive Rebounds:	22 - vs. Lamar (12-20-17)
Had 25 Assists:	28 - at SDSU (1-20-18)
Had 30 Turnovers:	30 - vs. Northern New Mexico (11-15-17)
Had Less Than 10 Turnovers:	9 - vs. Wyoming (3-8-18)
Had 10 Steals:	10 - vs. Oklahoma (11-28-18)
Had 10 Blocks:	10 - vs. Utah State (2-10-16)
Had Two 20-Point Scorers:	at Boise State (2-7-18) Marta Hermida (26), Riley Lupfer (20)
Had 6 Double-Digit Scorers:	Baylor (1-4-95)
Had 5 Double-Digit Scorers:	vs. Navy (12-10-17)
Had No Double-Digit Scorers:	Boise State (2-25-15)
Had Two 10+ Rebounders:	Saint Mary's (3-15-18) Sydney Raggio (12), Megan McKay (10), Stella Beck (10)
Scored 50+ Points In 1st Half:	56 - at Oklahoma (12-16-17)
Scored 50+ Points In 2nd Half:	50 - Saint Mary's (3-15-18)
Scored 20 Or Less Points In 1st Half:	18 - vs. Utah State (1-31-18)
Scored 20 Or Less In 2nd Half:	17 - vs. Nevada (3-4-16)
Failed To Make a 3FG:	0-1 by San Diego State (2-18-15)

As An Individual

Had a Double-Double (Pts/Reb):	Alyssa Okeone (12 pts, 19 reb) at Houston (11-24-18)
Had a Double-Double (Pts/Asst):	Mindy Bonham (17 pts & 10 assts) BYU (3-1-11)
Had a Double-Double (Pts/Steals):	Jasmyne Harris (28 pts & 10 steals) at Houston (11-28-18)
Had 20+ Points & 10+ Rebounds:	Erica Ogwumike (31 pts, 10 reb) vs. Rice (3-20-18)
Scored 30 Points:	Erica Ogwumike (31) - vs. Rice (3-20-18)
Scored 30 Points (MW Only):	Candice White (32) - at Fresno State (3-2-18)
Had 20 Rebounds:	Kaylee Johnson (22) - No. 1 Stanford (11-24-14)
Had 15 Rebounds:	Alyssa Okeone (19) - at Houston (11-24-18)
Had 10 Assists:	Geena Gomez (11) - at SDSU (1-20-18)
Had 5 Steals:	Jasmyne Harris (10) - at Houston (11-24-18)
Had 5 Blocks:	AJ Cephas (5) - at Nevada (1-7-17)



UNIVERSITY OF NEW MEXICO

2018-19 WOMEN'S BASKETBALL



LOBOS RECORD WHEN...

	Overall	In MW
Overall	4-1	0-0
At home	3-1	0-0
On the road	1-0	0-0
At neutral sites	0-0	0-0
After a win	0-0	0-0
After a loss	0-0	0-0
In overtime	1-0	0-0
vs. ranked opponents	0-0	0-0
Games decided by 1-4 points	1-1	0-0
Games decided by 5-9 points	2-0	0-0
Games decided by 10-19 points	0-0	0-0
Games decided by 20+ points	1-0	0-0
Leading after Q1	2-0	0-0
Trailing after Q1	2-1	0-0
Tied after Q1	0-0	0-0
Leading at half	3-0	0-0
Trailing at half	0-1	0-0
Tied at half	0-0	0-0
Leading after Q3	3-0	0-0
Trailing after Q3	1-1	0-0
Tied after Q3	0-0	0-0
Shooting 50% or better	0-0	0-0
Shooting between 40-49.9%	3-0	0-0
Shooting less than 40%	1-1	0-0
Opponent shoots 50% or better	0-0	0-0
Opponent shoots b/w 40-49.9%	2-1	0-0
Opponent shoots b/w 30-39.9%	1-0	0-0
Opponent shoots less than 30%	1-0	0-0
UNM higher FG%	3-0	0-0
Opponent higher FG%	1-1	0-0
FG% Tied	0-0	0-0
UNM outrebounds	3-0	0-0
Opponent outrebounds	1-1	0-0
Rebounds tied	0-0	0-0
UNM more made free throws	3-0	0-0
Opponent more made free throws	1-1	0-0
Made free throws tied	0-0	0-0
UNM 3FG% higher	1-0	0-0
Opponent 3FG% higher	3-1	0-0
3FG% tied	0-0	0-0
UNM has more fouls	2-0	0-0
Opponent has more fouls	2-0	0-0
Fouls are tied	0-1	0-0
UNM more turnovers	2-0	0-0
Opponent more turnovers	2-1	0-0
Turnovers tied	0-0	0-0
Scoring less than 50 points	0-0	0-0
Scoring 50-59 points	0-0	0-0
Scoring 60-69 points	0-0	0-0
Scoring 70-79 points	1-1	0-0
Scoring 80-89 points	3-0	0-0
Scoring 90-99 points	0-0	0-0
Scoring 100+ points	0-0	0-0
Allowing 40 points or less	0-0	0-0
Allowing 41-49 points	0-0	0-0
Allowing 50-59 points	1-0	0-0
Allowing 60-69 points	1-0	0-0
Allowing 70-79 points	0-1	0-0
Allowing 80-89 points	2-0	0-0
Allowing 90+ points	0-0	0-0
In November	4-1	0-0
In December	0-0	0-0
In January	0-0	0-0
In February	0-0	0-0
In March	0-0	0-0

LOBOS PICKED 5TH IN PRESEASON MW POLL

The Mountain West recently released its annual preseason predicted order of finish ahead of the 2018-19 women's basketball season and UNM was picked fifth behind preseason favorite Boise State, UNLV, Fresno State and Wyoming. The Lobos were just eight points back of Wyoming as UNM garnered 150 points in the rankings.

NUNN NAMED PRESEASON ALL-MW

Senior center **JAJSA NUNN** continues to solicit a lot of preseason attention and deservedly so based off of her stellar junior season. The most-recent accolade to come Nunn's way is inclusion on the 2018-19 Preseason All-Mountain West Team.

NUNN LIKE HER

JAJSA NUNN set herself apart from many of her counterparts last season as the rising senior was the lone player in the Mountain West to average a double (points/rebounds). In her junior campaign, Nunn was the team's leading scorer and ranked second in the MW with 17.0 ppg while also topping the team and league in rebounds at 10.2. Already a 1,000-point career scorer, Nunn is within striking distance of becoming a 1,000-rebounder as well. The most rebounds in a career is 982 held by Carol Moreland. Nunn is already in the Top-10 all time at UNM, ranking 10th with 654.

NUNN NAMED TO LISA LESLIE WATCH LIST

Prior to the 2018-19 season tipoff, UNM senior **JAJSA NUNN** been named to the preseason watch list for the 2019 Lisa Leslie Award. Entering its second year and named after the three-time All-American and 1994 National Player of the Year, the Lisa Leslie Award recognizes the top centers in women's NCAA Division I college basketball and is a part of the larger Naismith Starting 5, honoring the best players at each position.

Nunn is among 20 to be on the initial watch list, and is one of two from the Mountain West.

YOUNG TALENT ABOUND

Only one starter from the 2017-18 team returns this season for the Lobos, leaving a significant amount of playing time. While the Lobos do return seven letterwinners from last year, they also hauled in a highly-touted recruiting class that was ranked as high as No. 19 by ESPNW. Among that class, the Lobos inked four prospects that were rated at least 3-Star by ESPNW. The highest ranked among that incoming freshman class was **JAYLA EVERETT**. The St. Louis native was ranked the No. 27 guard and 94th overall in the 2018 class.

Outside of Everett, the Lobos will benefit from the services of fellow incoming freshmen **QUINCY NOBLE**, **BRE'ASISAJAH MATHEWS**, **AHLISE HURST** and **SHAIQUEL MCGRUDER**.



UNIVERSITY OF NEW MEXICO 2018-19 WOMEN'S BASKETBALL



IMPACT TRANSFERS

In looking to replace the starters from last year, the Lobos also turned to transfers and added three DI transfers over the summer. New to the program are **NIKE MCCLURE** (Washington State), **NAJALA HOWELL** (UTEP), and **BRIDE KENNEDY-HOPOATE** (Iowa State). That trio joins Kansas-transfer **AISIA ROBERTSON**, who will be eligible to play this season after sitting out last season. Only McClure will be eligible to play this season as a graduate transfer while Kennedy-Hopoate and Howell will sit this season as Robertson did last year.

THERE'S NO PLACE LIKE HOME

Dreamstyle Arena - The Pit is nationally recognized as one of the top basketball venues for college basketball. Need proof?! How about Sports Illustrated ranking it as one of the Top-20 sporting venues, of any sport, in the world for the 20th century!

Yes, The Pit is truly a special place, and it has created an unparalleled environment for the New Mexico women's basketball program over the years. The Lobos have led the Mountain West in attendance every year of the conference's existence since the 1999-00 season. Additionally, during that same span, the program has ranked in the Top-20 nationally in attendance in each of those years.

Wanna talk records?! The UNM women's basketball team is an impressive 405-205 at home all-time, a winning percentage of .664 heading into the 2018-19 season. This year, they are 2-1 at Dreamstyle Arena - The Pit.

LOBOS FROM NEAR AND FAR

The Lobo women's basketball roster has a mixture of athletes from near and far on its 2018-19 roster. The Lobos have players from eight different states and two by way of the international route. The Lobos feature players from California, Florida, Indiana, Missouri, New Mexico, Ohio, Texas and Washington. Additionally, the Lobos have a pair of players from "Down Under" in Australia.

UNM STARTING LINEUPS (GAME)

Game	G	G	G	F	C
11/9 Texas St.	Robertson	De La Cerda	Everett	McClure	Nunn
11/11 Auburn	Robertson	De La Cerda	Everett	McClure	Nunn
11/18 Hartford	Robertson	De La Cerda	Everett	McClure	Nunn
11/24 at Houston	Robertson	Hurst	Everett	McClure	Nunn
11/28 Oklahoma	Robertson	Hurst	Everett	McClure	Nunn
12/1 NMSU					
12/5 UTEP					
12/8 at NAU					
12/15 at NMSU					
12/19 Sacramento St.					
12/20 Hampton or SFA					
12/29 at Long Beach St.					
1/2 Air Force					
1/5 at Nevada					
1/9 at UNLV					
1/12 Colorado St.					
1/16 San Diego St.					
1/19 at Wyoming					
1/23 UNLV					
1/26 at Utah St.					
2/2 Fresno St.					
2/6 at San Diego St.					
2/9 Nevada					
2/13 at San Jose St.					
2/16 at Fresno St.					
2/20 Utah St.					
2/27 San Jose St.					
3/2 at Colorado St.					
3/4 at Boise St.					
3/7 Wyoming					

UNM STARTING LINEUPS (RECORD)

Robertson, De La Cerda, Everett, McClure, Nunn..... 2-1
Robertson, Hurst, Everett, McClure, Nunn.....2-0





UNIVERSITY OF NEW MEXICO

2018-19 WOMEN'S BASKETBALL



WBCA TOP-25 (AS OF 11/27/18)

#	School (1st-place votes)	Rec.	LW
1.	Notre Dame (32)	(6-0)	1
2.	Connecticut	(5-0)	2
3.	Oregon	(6-0)	3
4.	Louisville	(6-0)	4
5.	Baylor	(6-0)	5
6.	Mississippi State	(6-0)	6
7.	Stanford	(6-0)	7
8.	Maryland	(6-0)	10
9.	Oregon State	(5-1)	8
10.	Texas	(6-0)	9
11.	Tennessee	(5-0)	11
12.	Syracuse	(6-1)	15
13.	North Carolina State	(6-0)	13
14.	DePaul	(4-2)	16
15.	Iowa	(4-1)	14
16.	Texas A&M	(4-1)	20
17.	Marquette	(4-1)	19
18.	California	(6-0)	23
19.	South Carolina	(3-3)	12
20.	Miami (Fla.)	(6-1)	22
21.	West Virginia	(4-1)	20
22.	Iowa State	(5-0)	NR
23.	Arizona State	(3-2)	25
24.	Drake	(6-1)	NR
25.	Kentucky	(7-0)	NR

Dropped out: No. 17 South Florida (5-2), No. 18 Missouri (5-2), No. 24 Georgia (3-3).

Others receiving votes: Michigan (5-1) 69; South Florida (5-2) 62; Missouri (5-2) 59; Minnesota (5-0) 36; Florida State (6-1) 32; USC (6-0) 25; Northwestern (5-0) 13; Wisconsin-Green Bay (3-2) 11; Gonzaga (6-1) 10; Virginia Tech (7-0) 7; Kansas (5-0) 6; Oklahoma State (4-0) 5; Georgia (3-3) 3; Central Florida (5-1) 2; UAB (4-1) 1; Duke (3-3) 1; **NEW MEXICO (3-1) 1**; South Alabama (5-0) 1; Tulane (4-1) 1.



AP TOP-25 (AS OF 11/25/18)

#	School (1st-place votes)	Rec.	LW
1	Notre Dame (31)	6-0	1
2	Connecticut	5-0	2
3	Oregon	6-0	3
4	Baylor	6-0	4
5	Louisville	5-0	5
6	Mississippi State	6-0	6
7	Maryland	6-0	7
8	Stanford	6-0	8
9	Oregon State	5-1	9
10	Texas	6-0	10
11	Tennessee	5-0	11
12	Syracuse	6-1	14
13	North Carolina State	6-0	15
14	Iowa	4-1	12
15	California	6-0	18
16	DePaul	3-2	16
17	Texas A&M	4-1	20
18	South Carolina	3-3	13
19	Arizona State	3-2	19
20	Minnesota	5-0	23
21	Miami (FL)	6-1	24
22	Marquette	4-1	22
23	Iowa State	5-0	NR
24	Drake	6-1	NR
25	Kentucky	7-0	NR

Others receiving votes: Northwestern 59, Missouri 59, West Virginia 59, Georgia 18, South Florida 17, Virginia Tech 13, Michigan 10, Utah 6, North Carolina 5, USC 4, Florida State 3, **Boise State 2**, LSU 2

Dropped from rankings: South Florida 17, Missouri 21, West Virginia 25





UNIVERSITY OF NEW MEXICO

2018-19 WOMEN'S BASKETBALL



PRONUNCIATION GUIDE

2	BRE'ASIAJAH Matthews.....	Bre-Asia
3	AHLISE Hurst.....	AH-lease
12	BRIDE Kennedy-HOPOATE... Bride-EE (Hop-o-ate)	
13	SHAIQUEL McGruder.....	Shy-kell
14	NAJALA Howell.....	Nah-Juh-La
23	JAEDYN De La Cerda.....	JAY-dun
44	JAISA Nunn.....	JAY-suh

BY ELIGIBILITY

Seniors (4)

11	Emily Lines.....	G
21	Nike McClure.....	F
24	Erica Moore.....	C
44	Jaisa Nunn.....	C

Juniors (3)

12	Bride Kennedy-Hopoate.....	F
14	Najala Howell.....	G
15	Aisia Robertson.....	G

Sophomores (3)

23	Jaedyn De La Cerda.....	G
32	Antonia Anderson.....	G/F
35	Madi Washington.....	PG

Freshmen (5)

1	Quincy Noble.....	G
2	Bre'Asiah Mathews.....	F
3	Ahlise Hurst.....	G/F
4	Jayla Everett.....	G
13	Shaiquel McGruder.....	F

HOME STATE

California (1)

15	Aisia Robertson.....	G
----	----------------------	---

Florida (1)

11	Emily Lines.....	G
----	------------------	---

Indiana (1)

24	Erica Moore.....	C
----	------------------	---

Missouri (1)

4	Jayla Everett.....	G
---	--------------------	---

New Mexico (1)

23	Jaedyn De La Cerda.....	G
----	-------------------------	---

Ohio (1)

13	Shaiquel McGruder.....	F
----	------------------------	---

Texas (5)

1	Quincy Noble.....	G
2	Bre'Asiah Mathews.....	F
14	Najala Howell.....	G
32	Antonia Anderson.....	G/F
35	Madi Washington.....	G

Washington (2)

21	Nike McClure.....	F
44	Jaisa Nunn.....	C

INTERNATIONAL

3	Ahlise Hurst (Australia).....	G/F
12	Bride Kennedy-Hopoate (Australia).....	F

NUMERICAL ROSTER

#	NAME	POS	HT	YR	EXP.	HOMETOWN (LAST SCHOOL/TEAM)
1	Quincy Noble	G	5-10	Fr.		McKinney, Texas (McKinney HS)
2	Bre'Asiah Mathews	F	6-0	Fr.		Garland, Texas (Lakeview Centennial HS)
3	Ahlise Hurst	G/F	5-9	Fr.		Bendigo, Australia (Bendigo Senior-Secondary)
4	Jayla Everett	G	5-10	Fr.		St. Louis, Mo. (Kirkwood HS)
11	Emily Lines	G	6-1	Sr.		Naples, Fla. (First Baptist Academy)
12	Bride Kennedy-Hopoate	F	6-4	RsJr.		Brisbane, Australia (Iowa State)
13	Shaiquel McGruder	F	6-0	Fr.		Trotwood, Ohio (Trotwood-Madison HS)
14	Najala Howell	G	5-10	RsJr.		DeSoto, Texas (UTEP)
15	Aisia Robertson	G	5-8	RsJr.		San Francisco, Calif. (Kansas)
21	Nike McClure	F	6-3	Sr.		Tenino, Wash. (Washington State)
23	Jaedyn De La Cerda	G	5-6	So.		Roswell, N.M. (Roswell HS)
24	Erica Moore	C	6-2	R-Sr.		Fishers, Ind. (Purdue)
32	Antonia Anderson	G/F	6-2	So.		Cibolo, Texas (Byron P. Steele II HS)
35	Madi Washington	PG	5-9	So.		Red Oak, Texas (Red Oak HS)
44	Jaisa Nunn	C	6-3	Sr.		Kirkland, Wash. (Juanita HS)

COACHING STAFF

Head Coach

Mike Bradbury (Third Season, UT-Chattanooga, 1993)

Assistant Coach

Valerie King (Third Season, Cincinnati, 2004)

Assistant Coach

Bill Ferrara (Second Season, Florida, 2003)

Assistant Coach

Symone Denham (First Season, Wright State, 2016)

Director of Operations

Vera Jo Bustos (Fifth Season, Adams State, 2011)

Video Coordinator

Cheyne Dorsey (First Season, New Mexico, 2016)

Athletic Trainer

Andrea Quintana

Athletic Performance

Jeremy Golden

Athletic Communications

Daniel Gallegos

STARTERS RETURNING (1)

No.	Name	Pos.	Cls.	Pts.	Reb.	Ast.	FG%	FT%
44	Jaisa Nunn	C	Sr.	17.0	10.2	15	.637	.809

OTHER LETTERWINNERS RETURNING (5)

No.	Name	Pos.	Cls.	Pts.	Reb.	Ast.	FG%	FT%
11	Emily Lines	G	Sr.	1.8	1.1	3	.429	.857
23	Jaedyn De La Cerda	G	So.	1.8	0.5	2	.400	.833
24	Erica Moore	C	RsSr.	0.8	0.4	--	.600	1.000
32	Antonia Anderson	F	So.	4.1	3.0	5	.571	.600
35	Madi Washington	G	So.	6.4	1.8	27	.381	.789

STARTERS LOST (4)

No.	Name	Pos.	Cls.	Pts.	Reb.	Ast.	FG%	FT%
0	Cherise Beynon	G	Sr.	16.9	5.9	243	.388	.760
2	Tesha Buck	G	Sr.	14.6	4.6	117	.424	.833
3	N'Dea Flye	PG	Fr.	6.1	3.8	84	.291	.564
4	Alex Lapeyrolerie	G	RsSr.	10.8	4.4	28	.363	.889

OTHER LETTERWINNERS LOST (3)

No.	Name	Pos.	Cls.
10	Jasmine Smith	G	Fr.
22	Mykiel Burleson	G	So.
25	Laneah Bryan	G	Sr.

NEWCOMERS (8)

No.	Name	Pos.	Exp.
1	Quincy Noble	G	HS
2	Bre'Asiah Mathews	F	HS
3	Ahlise Hurst	G/F	HS
4	Jayla Everett	G	HS
12	Bride Kennedy-Hopoate	F	TR
13	Shaiquel McGruder	F	HS
14	Najala Howell	G	TR
21	Nike McClure	F	TR



UNIVERSITY OF NEW MEXICO

2018-19 WOMEN'S BASKETBALL



MIKE BRADBURY | @COACHBRADBURY

RECORD AT UNM: 44-27 (3RD SEASON)

CAREER RECORD: 222-144 (12TH SEASON)

NOTEWORTHY :

- Named the sixth head coach in program history on March 31, 2016
- Led UNM to 25 wins in 2017-18; tied for second-most wins in program history
- Spent six years at Wright State (2010-16) and went 128-73 for the Raiders
- Most single-season wins in Wright State history (26)
- Five 20-win seasons at Wright State with five postseason appearances

MIKE BRADBURY enters his third season as head coach for The University of New Mexico women's basketball team. In his previous two seasons at the helm, Bradbury has guided the Lobos to a 40-26 overall record. Over half of that win total occurred last season as Bradbury's 2017-18 squad went 25-11.

At UNM, Bradbury has coached five All-Mountain West performers with Cherise Beynon, Jaisa Nunn, and Richelle van der Keijl making the All-Mountain West Team. Additional Mountain West plaudits earned under Bradbury have seen Beynon be named to the All-Defensive Team, Mykiel Burleson selected to the All-Freshman Team and van der Keijl and Tesha Buck named the Mountain West Newcomer of the Year in consecutive seasons.

This past season, year two under Bradbury, saw the Lobos have a breakout season, especially offensively as they ended the 2017-18 season averaging 80.4 points per game while also posting an impressive +9.7 scoring margin. Both marks led the Mountain West and the point-per-game total was 16th-best in NCAA DI last season.

A significant reason for the jump in offensive production was the fact that the Lobos were one of the most potent three-point shooting threats in the country. For the season, the Lobos attempted the eighth-most overall trifectas in DI hoisting 932 long distance shots. Successful 34% of the time, the Lobos made the 11th most 3's burying 319.

Prior to coming to Albuquerque, Bradbury built a successful

nine year run as a Division-I head coach with stops at Morehead State (Morehead, Ky.) and Wright State (Dayton, Ohio). Most recently with the Raiders, Bradbury led his squad to five 20-win seasons, including each of his final three seasons. During that time, Wright State has amassed a 75-28 record, the best amongst the 13 Division I programs in the state of Ohio.

Overall at Wright State, Bradbury had five winning seasons, all of which were 20-win seasons, in six years - a feat made all the more remarkable as Wright State had just one winning season in the previous 22 before his arrival. In the previous 37 seasons of women's basketball at Wright State, the Raider program had tallied 20 wins just once before Bradbury led the team to 20 wins in five of his six seasons.

His most prominent three-year run at Wright State started in 2013-14, when the Raiders won a school-record 26 games on the way to a 26-9 season and the program's first-ever appearance in the NCAA Tournament. That season saw the Raiders finish second in the Horizon League and win its first Horizon League Tournament. It also featured the program's first road win at perennial league power Wisconsin-Green Bay. Kim Demmings was named the Horizon League Player of the Year and Tournament MVP, and it marked the first time in school history the program had a pair of first team All-Conference selections.

He followed up that by earning Horizon League Coach of the Year in 2014-15 after a 25-9 season that saw his squad lose its Horizon League Preseason Player of the Year less than two





UNIVERSITY OF NEW MEXICO

2018-19 WOMEN'S BASKETBALL



minutes into the season opener. The Raiders just missed a second straight NCAA Tournament appearance, falling in overtime in the conference championship game. The team did make its first appearance in the Women's NIT as the league's automatic qualifier, and in 2015-16, the team made it back-to-back WNIT appearances after a 24-11 season, earning the program's first at-large bid.

Those three seasons are the three winningest seasons in the history of Wright State women's basketball.

In his first two seasons at Wright State, he led the team to a 20-13 campaign and a 21-13 mark and berths in the Women's Basketball Invitational, the first NCAA Division I postseason berths for the program. Overall, Bradbury has coached three Horizon League Players of the Year (all in his last three seasons), six first-team All-Horizon League players, three second-team members and four All-Freshman team members.

Prior to his time at Wright State, Bradbury was the head coach at Morehead State where he led the Division I program to a 50-44 mark in three seasons, including a watershed 22-11 season, which was the second-most wins in Morehead State history and the most wins by the Eagles in the previous 38 years.

At Morehead State he coached one Ohio Valley Conference Player of the Year, along with one first-team All-OVC pick (two seasons) and three second-team All-OVC picks.

Bradbury also spent time as an assistant coach at Xavier (2002-06), Cincinnati (1996-02), VCU (1995-96), East Tennessee State (1994-95) and Chattanooga (1991-94). In his 27 seasons as an assistant and as a head coach, Bradbury has had 25 winning seasons.

THE BRADBURY FILE

EDUCATION

UT-Chattanooga - B.S. Recreation (1993)

COACHING EXPERIENCE

1991-93	Student Assistant	Chattanooga
1993-94	Assistant Coach	Chattanooga
1994-95	Assistant Coach	East Tennessee
1995-96	Assistant Coach	VCU
1996-02	Assistant Coach	Cincinnati
2002-07	Assistant Coach	Xavier
2007-10	Head Coach	Morehead State
2010-16	Head Coach	Wright State
2016-pres.	Head Coach	New Mexico

HEAD COACHING RECORD

2007-10	Morehead State	50-44 (.532)
2010-16	Wright State	128-73 (.637)
2016-pres.	New Mexico	44-27 (.620)
11 years		222-144 (.607)

CAREER HEAD COACHING YEAR-BY-YEAR

2007-08	11-19 (9-11)	Morehead State
2008-09	17-14 (11-7)	Morehead State
2009-10	22-11 (14-4)	Morehead State
2010-11	20-13 (11-7)	Wright State
2011-12	21-13 (12-6)	Wright State
2012-13	12-18 (6-10)	Wright State
2013-14	26-9 (12-4)	Wright State
2014-15	25-9 (12-4)	Wright State
2015-16	24-11 (12-6)	Wright State
2016-17	15-15 (10-8)	New Mexico
2017-18	25-11 (10-8)	New Mexico
2018-19	4-1 (0-0)	New Mexico
Total	222-144 (137-75)	



UNIVERSITY OF NEW MEXICO

2018-19 WOMEN'S BASKETBALL



QUINCY NOBLE
G | 5-10 | FR.
MCKINNEY, TEXAS



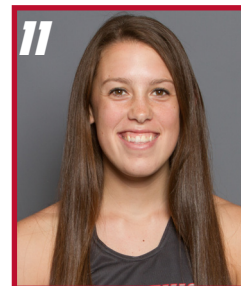
BRE'ASIAJAH MATHEWS
F | 6-0 | FR.
GARLAND, TEXAS



AHLISE HURST
G | 5-9 | FR.
BENDINGO, AUSTRALIA



JAYLA EVERETT
G | 5-10 | FR.
SAINT LOUIS, MO.



EMILY LINES
G | 6-1 | SR.
NAPLES, FLA.



BRIDE KENNEDY-HOPOATE
F | 6-4 | RSJR.
BRISBANE, AUSTRALIA



SHAIQUEL MCGRUDER
F | 6-0 | FR.
TROTWOOD, OHIO



NAJALA HOWELL
G | 5-10 | RSJR.
DE SOTO, TEXAS



AISIA ROBERTSON
G | 5-8 | RSJR.
SAN FRANCISCO, CALIF.



NIKE MCCLURE
F | 6-3 | SR.
TENINO, WASH.



JAEDYN DE LA CERDA
G | 5-6 | SO.
ROSWELL, N.M.



ERICA MOORE
C | 6-2 | R-SR.
FISHERS, IND.



ANTONIA ANDERSON
G/F | 6-2 | SO.
CIBOLO, TEXAS



MADI WASHINGTON
PG | 5-9 | SO.
RED OAK, TEXAS



JAISA NUNN
C | 6-3 | SR.
KIRKLAND, WASH.

COACHING STAFF



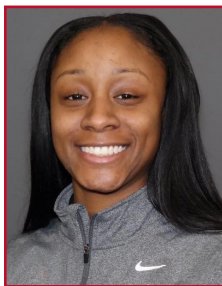
MIKE BRADBURY
HEAD COACH
THIRD SEASON



VALERIE KING
ASSISTANT COACH
THIRD SEASON



BILL FERRARA
ASSISTANT COACH
SECOND SEASON



SYMONE DENHAM
ASSISTANT COACH
FIRST SEASON



VERA JO BUSTOS
DIR. OF OPERATIONS
FIFTH SEASON



CHEYENNE DORSEY
VIDEO COORDINATOR
FIRST SEASON



UNIVERSITY OF NEW MEXICO

2018-19 WOMEN'S BASKETBALL



#1

QUINCY NOBLE

G | 5-10 | FR | McKinney, Texas (McKinney HS)



PPG	FG %	3PT %	FT %	RPG	APG	SPG	BPG	MPG
1.5	.167	.333	.750	0.3	...	0.3	0.5	7.3

NOTEWORTHY

- » Played at McKinney HS under head coach Debbie Harris
- » Helped McKinney to Bi-District Championship in 2014-15 and 2017-18
- » 6-6A District Co-Offensive Player of the Year as a senior
- » Ranked as #28 guard in the 2018 class by ESPNW
- » Averaged 17.4 ppg, 1.8 apg, 5.5 rpg, and 2.6 spg in HS

Noble's Top Performances

Points	Season	5 vs. Texas State (11/9/18)
	Career	Same
FGM	Season	1 vs. Texas State (11/9/18)
	Career	Same
FGA	Season	3 vs. Texas State (11/9/18)
	Career	Same
3PT FGM	Season	1 vs. Texas State (11/9/18)
	Career	Same
3PT FGA	Season	1 - done three times
	Career	Same
FTM	Season	2 vs. Texas State (11/9/18)
	Career	Same
FTA	Season	2 - done twice
	Career	Same
Rebounds	Season	1 vs. Texas State (11/9/18)
	Career	Same
Assists	Season	
	Career	
Blocks	Season	2 vs. Texas State (11/9/18)
	Career	Same
Steals	Season	1 vs. Oklahoma (11/28/18)
	Career	Same
Turnovers	Season	1 - done twice
	Career	Same
Min. Played	Season	12 at Houston (11/24/18)
	Career	Same

GAME-BY-GAME STATISTICS

Opponent	Date	gs	min	Total		3-Pointers		Free throws		Rebounds										
				fg-fga	pct	3fg-fga	pct	ft-fa	pct	off	def	tot	avg	pf	a	t/o	blk	stl	pts	avg
TEXAS ST.	11/09/18	6		1-3	.333	1-1	1.000	2-2	1.000	1	0	1	1.0	0	0	0	2	0	5	5.0
HARTFORD	11/18/18	7		0-1	.000	0-1	.000	0-0	.000	0	0	0	0.5	1	0	0	0	0	0	2.5
at Houston	11/24/18	12		0-1	.000	0-0	.000	1-2	.500	0	0	0	0.3	1	0	1	0	0	1	2.0
OKLAHOMA	11/28/18	4		0-1	.000	0-1	.000	0-0	.000	0	0	0	0.3	0	0	1	0	1	0	1.5
Totals		0	29	1-6	.167	1-3	.333	3-4	.750	1	0	1	0.3	2	0	2	2	1	6	1.5

NOBLE'S CAREER STATS AT UNM

			Total		3-Point		F-Throws		Rebounds											Scoring	
Season	gp-gs	min/avg	fg-fga	pct	fg-fga	pct	ft-fa	pct	off	def	tot	avg	pf	fo	ast	to	blk	stl	pts	avg	
2018-19	4-0	29/7.3	1-6	.167	1-3	.333	3-4	.750	1	0	1	0.3	2	0	0	2	2	1	6	1.5	
TOTAL	4-0	29/7.3	1-6	.167	1-3	.333	3-4	.750	1	0	1	0.3	2	0	0	2	2	1	6	1.5	



UNIVERSITY OF NEW MEXICO

2018-19 WOMEN'S BASKETBALL



#2

BRE'ASIAJAH MATHEWS

F | 6-0 | FR | Garland, Texas (Lakeview Centennial HS)



PPG	FG %	3PT %	FT %	RPG	APG	SPG	BPG	MPG
1.0	.500	.000	...	2.0	...	0.5	0.5	8.0

NOTEWORTHY

- » Played at Lakeview Centennial HS
- » 3-star recruit and rated as the #14 win player in the 2018 class by ESPNW
- » Averaged 18.4 ppg, 9.6 rpg, and 2.9 spg as a junior
- » 3-time All-District First Team honoree
- » District MVP as a junior

Mathews' Top Performances

Points	Season	2 vs. Hartford (11/18/18)
	Career	Same
FGM	Season	1 vs. Hartford (11/18/18)
	Career	Same
FGA	Season	2 vs. Hartford (11/18/18)
	Career	Same
3PT FGM	Season	
	Career	
3PT FGA	Season	1 vs. Hartford (11/18/18)
	Career	Same
FTM	Season	
	Career	
FTA	Season	
	Career	
Rebounds	Season	3 vs. Hartford (11/18/18)
	Career	Same
Assists	Season	
	Career	
Blocks	Season	1 vs. Texas State (11/9/18)
	Career	Same
Steals	Season	
	Career	
Turnovers	Season	1 vs. Hartford (11/18/18)
	Career	Same
Min. Played	Season	11 vs. Hartford (11/18/18)
	Career	Same

GAME-BY-GAME STATISTICS

Opponent	Date	gs	min	Total		3-Pointers		Free throws		Rebounds				pf	a	t/o	blk	stl	pts	avg
				fg-fga	pct	3fg-fga	pct	ft-fga	pct	off	def	tot	avg							
TEXAS ST.	11/09/18		5	0-0	.000	0-0	.000	0-0	.000	0	1	1	1.0	1	0	0	1	0	0	0.0
HARTFORD	11/18/18		11	1-2	.500	0-1	.000	0-0	.000	0	3	3	2.0	1	0	1	0	1	2	1.0
Totals		0	16	1-2	.500	0-1	.000	0-0	.000	0	4	4	2.0	2	0	1	1	1	2	1.0

MATHEWS' CAREER STATS AT UNM

Season	gp-gs	min/avg	Total		3-Point		F-Throws		Rebounds				pf	fo	ast	to	blk	stl	Scoring	
			fg-fga	pct	fg-fga	pct	ft-fga	pct	off	def	tot	avg							pts	avg
2018-19	2-0	16/8.0	1-2	.500	0-1	.000	0-0	.000	0	4	4	2.0	2	0	0	1	1	1	2	1.0
TOTAL	2-0	16/8.0	1-2	.500	0-1	.000	0-0	.000	0	4	4	2.0	2	0	0	1	1	1	2	1.0



UNIVERSITY OF NEW MEXICO

2018-19 WOMEN'S BASKETBALL



#3

AHLISE HURST

G | 5-9 | FR | Bendigo, Australia (Bendigo Senior-Secondary)



PPG	FG %	3PT %	FT %	RPG	APG	SPG	BPG	MPG
12.4	.415	.366	.500	2.0	0.6	0.8	0.4	26.0

NOTEWORTHY

- » Set freshman scoring record at UNM against Oklahoma with 39 points
- » Nine 3-pointers made in the game tied for second-most threes in a game at UNM
- » International playing experience with Vic Country and the Bendigo Braves
- » Helped Vic Country to an Australian national championship
- » Helped Bendigo Braves to a South East Australian Basketball League (SEABL) championship
- » Played as a development player for the Bendigo Spirit of the Australian Women's National Basketball League (WNBL)

Hurst's Top Performances

Points	Season	39 vs. Oklahoma (11/28/18)
	Career	Same
FGM	Season	14 vs. Oklahoma (11/28/18)
	Career	Same
FGA	Season	24 vs. Oklahoma (11/28/18)
	Career	Same
3PT FGM	Season	9 vs. Oklahoma (11/28/18)
	Career	Same
3PT FGA	Season	17 vs. Oklahoma (11/28/18)
	Career	Same
FTM	Season	2 vs. Oklahoma (11/28/18)
	Career	Same
FTA	Season	4 vs. Oklahoma (11/28/18)
	Career	Same
Rebounds	Season	6 at Houston (11/24/18)
	Career	Same
Assists	Season	2 vs. Texas State (11/9/18)
	Career	Same
Blocks	Season	1 - done twice
	Career	Same
Steals	Season	2 vs. Oklahoma (11/28/18)
	Career	Same
Turnovers	Season	2 at Houston (11/24/18)
	Career	Same
Min. Played	Season	43 vs. at Houston (11/24/18)
	Career	Same

GAME-BY-GAME STATISTICS

Opponent	Date	gs	min	Total		3-Pointers		Free throws		Rebounds				pf	a	t/o	blk	stl	pts	avg
				fg-fga	pct	3fg-fga	pct	ft-fga	pct	off	def	tot	avg							
TEXAS ST.	11/09/18	23		2-8	.250	2-8	.250	1-2	.500	0	1	1	1.0	4	2	0	1	1	7	7.0
AUBURN	11/11/18	6		1-5	.200	0-4	.000	0-0	.000	0	0	0	0.5	0	0	0	0	0	2	4.5
HARTFORD	11/18/18	22		1-5	.200	1-4	.250	0-0	.000	1	0	1	0.7	4	0	1	1	1	3	4.0
at Houston	11/24/18 *	43		4-11	.364	3-8	.375	0-0	.000	1	5	6	2.0	4	0	2	0	0	11	5.8
OKLAHOMA	11/28/18 *	36		14-24	.583	9-17	.529	2-4	.500	1	1	2	2.0	2	1	1	0	2	39	12.4
Totals		2	130	22-53	.415	15-41	.366	3-6	.500	3	7	10	2.0	14	3	4	2	4	62	12.4

HURST'S CAREER STATS AT UNM

Season	gp-gs	min/avg	Total		3-Point		F-Throws		Rebounds				pf	fo	ast	to	blk	stl	Scoring	
			fg-fga	pct	fg-fga	pct	ft-fga	pct	off	def	tot	avg							pts	avg
2018-19	5-2	130/26.0	22-53	.415	15-41	.366	3-6	.500	3	7	10	2.0	14	0	3	4	2	4	62	12.4
TOTAL	5-2	130/26.0	22-53	.415	15-41	.366	3-6	.500	3	7	10	2.0	14	0	3	4	2	4	62	12.4



UNIVERSITY OF NEW MEXICO

2018-19 WOMEN'S BASKETBALL



#4

JAYLA EVERETT

G | 5-10 | FR | St. Louis, Mo. (Kirkwood HS)



PPG	FG %	3PT %	FT %	RPG	APG	SPG	BPG	MPG
16.2	.421	.481	.952	4.6	2.8	1.8	0.4	34.2

NOTEWORTHY

- » Made 7 three-pointers against Auburn; second-most 3s in a game by a Lobo
- » Played at Kirkwood HS under head coach Monica Tritz
- » 4-star recruit ranked as the #27 guard and #94 overall player in the 2018 class by ESPNW
- » Helped lead HS team to consecutive state championships as a junior and a senior
- » Averaged 16.9 ppg, 4.0 rpg, 3.8 apg, and 2.2 spg as a senior
- » Twice named Missouri Basketball Coaches Association (MBCA) 5A All-State and tabbed as Player of the Year as a senior

Everett's Top Performances

Points	Season	25 vs. Auburn (11/11/18)
	Career	Same
FGM	Season	7 vs. Auburn (11/11/18)
	Career	Same
FGA	Season	14 at Houston (11/24/18)
	Career	Same
3PT FGM	Season	7 vs. Auburn (11/11/18)
	Career	Same
3PT FGA	Season	10 vs. Auburn (11/11/18)
	Career	Same
FTM	Season	6 vs. Hartford (11/18/18)
	Career	Same
FTA	Season	6 vs. Hartford (11/18/18)
	Career	Same
Rebounds	Season	8 at Houston (11/24/18)
	Career	Same
Assists	Season	4 - done twice
	Career	Same
Blocks	Season	1 - done twice
	Career	Same
Steals	Season	3 - done twice
	Career	Same
Turnovers	Season	5 at Houston (11/24/18)
	Career	Same
Min. Played	Season	45 at Houston (11/24/18)
	Career	Same

GAME-BY-GAME STATISTICS

Opponent	Date	gs	min	Total		3-Pointers		Free throws		Rebounds				pf	a	t/o	blk	stl	pts	avg
				fg-fga	pct	3fg-fga	pct	ft-fa	pct	off	def	tot	avg							
TEXAS ST.	11/09/18	*	29	3-10	.300	1-3	.333	4-4	1.000	2	1	3	3.0	2	2	4	1	1	11	11.0
AUBURN	11/11/18	*	38	7-11	.636	7-10	.700	4-4	1.000	3	3	6	4.5	3	2	3	0	0	25	18.0
HARTFORD	11/18/18	*	33	4-10	.400	1-5	.200	6-6	1.000	2	3	5	4.7	1	4	3	0	3	15	17.0
at Houston	11/24/18	*	45	5-14	.357	3-7	.429	4-4	1.000	1	7	8	5.5	3	2	5	0	2	17	17.0
OKLAHOMA	11/28/18	*	26	5-12	.417	1-2	.500	2-3	.667	0	1	1	4.6	1	4	1	1	3	13	16.2
Totals			5	171	24-57	.421	13-27	.481	20-21	.952	8	15	23	4.6	10	14	16	2	9	16.2

EVERETT'S CAREER STATS AT UNM

Season	gp-gs	min/avg	Total		3-Point		F-Throws		Rebounds											Scoring	
			fg-fga	pct	fg-fga	pct	ft-fa	pct	off	def	tot	avg	pf	fo	ast	to	blk	stl	pts	avg	
2018-19	5-5	171/34.2	24-57	.421	13-27	.481	20-21	.952	8	15	23	4.6	10	0	14	16	2	9	81	16.2	
TOTAL	5-5	171/34.2	24-57	.421	13-27	.481	20-21	.952	8	15	23	4.6	10	0	14	16	2	9	81	16.2	



UNIVERSITY OF NEW MEXICO

2018-19 WOMEN'S BASKETBALL



#11

EMILY LINES

G | 6-1 | SR | Naples, Fla. (First Baptist Academy)



PPG	FG %	3PT %	FT %	RPG	APG	SPG	BPG	MPG
***	***	***	***	***	***	***	***	***

NOTEWORTHY

- » 3-year letterwinner for the Lobos
- » Career 41% 3pt shooter (21-of-51)
- » 3-time Academic All-Mountain West and Mountain West Scholar-Athlete
- » In HS, 3-time Florida Association of Basketball Coaches All-State selection
- » Twice was a finalist for Class 2A Florida Miss Basketball
- » Scored over 2,000 career points and hauled in over 1,000 career rebounds in HS

Lines' Top Performances

Points	Season	15 vs. Boise State (1/30/16)
	Career	
FGM	Season	5 - done Twice
	Career	
FGA	Season	11 vs. Boise State (1/30/16)
	Career	
3PT FGM	Season	3 - done three times
	Career	
3PT FGA	Season	5 - done twice
	Career	
FTM	Season	4 vs. Boise State (1/30/16)
	Career	
FTA	Season	5 vs. Fresno State (1/2/16)
	Career	
Rebounds	Season	5 - done twice
	Career	
Assists	Season	4 at San Diego St. (3/1/16)
	Career	
Blocks	Season	1 - done three times
	Career	
Steals	Season	1 - done three times
	Career	
Turnovers	Season	2 - done twice
	Career	
Min. Played	Season	21 - done twice
	Career	

GAME-BY-GAME STATISTICS

LINES' CAREER STATS AT UNM

			Total		3-Point		F-Throws		Rebounds											Scoring	
Season	gp-gs	min/avg	fg-fga	pct	fg-fga	pct	ft-fita	pct	off	def	tot	avg	pf	fo	ast	to	blk	stl	pts	avg	
2015-16	24-0	141/5.9	19-44	.432	9-21	.429	9-19	.474	11	12	23	1.0	7	0	10	9	1	1	56	2.3	
2016-17	9-0	71/7.9	8-19	.421	7-16	.438	3-6	.500	1	10	11	1.2	3	0	4	5	1	1	26	2.9	
2017-18	16-0	74/4.6	9-21	.429	5-14	.357	6-7	.857	2	16	18	1.1	3	0	3	3	1	1	29	1.8	
TOTAL	49-0	286/5.8	36-84	.429	21-51	.412	18-32	.563	14	38	52	1.1	13	0	17	17	3	3	111	2.3	



UNIVERSITY OF NEW MEXICO

2018-19 WOMEN'S BASKETBALL



#12

BRIDE KENNEDY-HOPOATE

F | 6-4 | RsJR | Brisbane, Australia (Iowa State)



PPG	FG %	3PT %	FT %	RPG	APG	SPG	BPG	MPG
***	***	***	***	***	***	***	***	***

NOTEWORTHY

- » Transfer from Iowa State - must sit out 2018-19 season due to NCAA transfer rules
- » Played at two JUCOs prior to Iowa State and was ranked as the #1 JUCO prospect by All-Star Girls Report
- » Named a NJCAA All-America Third Team player in 2016-17
- » Appeared in 21 games at Iowa State and started 10
- » Averaged 6.7 ppg and 4.2 rpg at Iowa State - scored in double figures in five games

K-H's Top Performances

Points	Season
	Career
FGM	Season
	Career
FGA	Season
	Career
3PT FGM	Season
	Career
3PT FGA	Season
	Career
FTM	Season
	Career
FTA	Season
	Career
Rebounds	Season
	Career
Assists	Season
	Career
Blocks	Season
	Career
Steals	Season
	Career
Turnovers	Season
	Career
Min. Played	Season
	Career

GAME-BY-GAME STATISTICS

KENNEDY-HOPOATE'S CAREER STATS AT UNM



UNIVERSITY OF NEW MEXICO

2018-19 WOMEN'S BASKETBALL



#13

SHAIQUEL McGRUDER

F | 6-0 | FR | Trotwood, Ohio (Trotwood-Madison HS)



PPG	FG %	3PT %	FT %	RPG	APG	SPG	BPG	MPG
1.8	.500	---	.500	3.5	---	1.0	0.5	6.3

NOTEWORTHY

- » Finished her HS career at Trotwood-Madison HS after previously playing at Wayne Memorial HS
- » 3-star recruit and ranked as the #19 forward in the 2018 class by ESPNW
- » Averaged 25.8 ppg and 9.4 rpg as a senior
- » Led Wayne Memorial to consecutive Greater Western Ohio Conference (GWOC) titles as a sophomore and junior
- » Then lead Trotwood-Madison to GWOC title as a senior
- » Named GWOC East Division Player of the Year and All-Ohio First Team as a senior

McGruder's Top Performances

Points	Season	6 vs. Texas State (11/9/18)
	Career	Same
FGM	Season	3 vs. Texas State (11/9/18)
	Career	Same
FGA	Season	6 vs. Texas State (11/9/18)
	Career	Same
3PT FGM	Season	
	Career	
3PT FGA	Season	
	Career	
FTM	Season	1 vs. Hartford (11/18/18)
	Career	Same
FTA	Season	2 vs. Hartford (11/18/18)
	Career	Same
Rebounds	Season	13 vs. Texas State (11/9/18)
	Career	Same
Assists	Season	
	Career	
Blocks	Season	2 vs. Texas State (11/9/18)
	Career	Same
Steals	Season	4 vs. Texas State (11/9/18)
	Career	Same
Turnovers	Season	1 vs. Texas State (11/9/18)
	Career	Same
Min. Played	Season	16 vs. Texas State (11/9/18)
	Career	Same

GAME-BY-GAME STATISTICS

Opponent	Date	gs	min	Total		3-Pointers		Free throws		Rebounds				pf	a	t/o	blk	stl	pts	avg
				fg-fga	pct	3fg-fga	pct	ft-fa	pct	off	def	tot	avg							
TEXAS ST.	11/09/18	16		3-6	.500	0-0	.000	0-0	.000	5	8	13	13.0	0	0	1	2	4	6	6.0
AUBURN	11/11/18	4		0-0	.000	0-0	.000	0-0	.000	0	1	1	7.0	0	0	0	0	0	0	3.0
HARTFORD	11/18/18	1		0-0	.000	0-0	.000	1-2	.500	0	0	0	4.7	0	0	0	0	0	1	2.3
OKLAHOMA	11/28/18	2		0-0	.000	0-0	.000	0-0	.000	0	0	0	3.5	0	0	0	0	0	0	1.8
Totals		0	23	3-6	.500	0-0	.000	1-2	.500	5	9	14	3.5	0	0	1	2	4	7	1.8

McGRUDER'S CAREER STATS AT UNM

			Total		3-Point		F-Throws		Rebounds											Scoring	
Season	gp-gs	min/avg	fg-fga	pct	fg-fga	pct	ft-fga	pct	off	def	tot	avg	pf	fo	ast	to	blk	stl	pts	avg	
2018-19	4-0	23/5.8	3-6	.500	0-0	.000	1-2	.500	5	9	14	3.5	0	0	0	1	2	4	7	1.8	
TOTAL	4-0	23/5.8	3-6	.500	0-0	.000	1-2	.500	5	9	14	3.5	0	0	0	1	2	4	7	1.8	



UNIVERSITY OF NEW MEXICO

2018-19 WOMEN'S BASKETBALL



#14

NAJALA HOWELL

G | 5-10 | RsJR | DeSoto, Texas (UTEP)



PPG	FG %	3PT %	FT %	RPG	APG	SPG	BPG	MPG
***	***	***	***	***	***	***	***	***

NOTEWORTHY

- » Transferring from UTEP - must sit out 2018-19 season due to NCAA transfer rules
- » Started all 31 games last season for UTEP and led the team in 3PT% (.359)
- » Ranked second on team in scoring (11.9) and rebounding (6.3 rpg)
- » In HS was named the MVP of the Texas Girls Coaches Association All-Star Game in summer of 2015
- » Two-time Texas Association of Basketball Coaches All-State First Team

Howell's Top Performances

Points	Season
	Career
FGM	Season
	Career
FGA	Season
	Career
3PT FGM	Season
	Career
3PT FGA	Season
	Career
FTM	Season
	Career
FTA	Season
	Career
Rebounds	Season
	Career
Assists	Season
	Career
Blocks	Season
	Career
Steals	Season
	Career
Turnovers	Season
	Career
Min. Played	Season
	Career

GAME-BY-GAME STATISTICS

HOWELL'S CAREER STATS AT UNM



UNIVERSITY OF NEW MEXICO

2018-19 WOMEN'S BASKETBALL



#15

AISIA ROBERTSON

G | 5-8 | RsJR | San Francisco, Calif. (Kansas)



PPG	FG %	3PT %	FT %	RPG	APG	SPG	BPG	MPG
13.8	.325	.176	.452	7.0	11.2	3.0	0.6	35.4

NOTEWORTHY

- » Recorded first double-double as a Lobo vs. Hartford (10 pts - 12 assists)
- » Eligible to play after sitting out last season as a transfer from Kansas
- » Selected to play in the 2018 USA Basketball 3x3 Open National Championships with teammates Antonia Anderson, Jaisha Nunn and Madi Washington
- » Played in over 50 games in two seasons at Kansas
- » Ranked #18 guard and #85 overall player out of HS by ProspectNation
- » Received a McDonald's All-America Nomination in 2015

Robertson's Top Performances

Points	Season	28 at Houston (11/24/18)
	Career	Same
FGM	Season	10 at Houston (11/24/18)
	Career	Same
FGA	Season	25 at Houston (11/24/18)
	Career	Same
3PT FGM	Season	1 - done three times
	Career	Same
3PT FGA	Season	7 vs. Auburn (11/11/18)
	Career	Same
FTM	Season	7 at Houston (11/24/18)
	Career	Same
FTA	Season	10 at Houston (11/24/18)
	Career	Same
Rebounds	Season	11 at Houston (11/24/18)
	Career	Same
Assists	Season	16 vs. Oklahoma (11/28/18)
	Career	Same
Blocks	Season	2 vs. Texas State (11/9/18)
	Career	Same
Steals	Season	5 at Houston (11/24/18)
	Career	Same
Turnovers	Season	13 at Houston (11/24/18)
	Career	Same
Min. Played	Season	43 at Houston (11/24/18)
	Career	Same

GAME-BY-GAME STATISTICS

Opponent	Date	gs	min	Total		3-Pointers		Free throws		Rebounds				pf	a	t/o	blk	stl	pts	avg
				fg-fga	pct	3fg-fga	pct	ft-fga	pct	off	def	tot	avg							
TEXAS ST.	11/09/18	*	24	8-16	.500	1-2	.500	0-2	.000	3	5	8	8.0	2	9	10	2	3	17	17.0
AUBURN	11/11/18	*	40	3-18	.167	1-7	.143	2-6	.333	0	7	7	7.5	4	8	5	0	2	9	13.0
HARTFORD	11/18/18	*	35	4-8	.500	0-0	.000	2-7	.286	0	3	3	6.0	4	12	9	1	3	10	12.0
at Houston	11/24/18	*	43	10-25	.400	1-3	.333	7-10	.700	0	11	11	7.3	2	11	13	0	5	28	16.0
OKLAHOMA	11/28/18	*	36	1-13	.077	0-5	.000	3-6	.500	2	4	6	7.0	3	16	9	0	2	5	13.8
Totals		5	178	26-80	.325	3-17	.176	14-31	.452	5	30	35	7.0	15	56	46	3	15	69	13.8

ROBERTSON'S CAREER STATS AT UNM

			Total		3-Point		F-Throws		Rebounds											Scoring	
Season	gp-gs	min/avg	fg-fga	pct	fg-fga	pct	ft-fa	pct	off	def	tot	avg	pf	fo	ast	to	blk	stl	pts	avg	
2018-19	5-5	178/35.6	26-80	.325	3-17	.176	14-31	.452	5	30	35	7.0	15	0	56	46	3	15	69	13.8	
TOTAL	5-5	178/35.6	26-80	.325	3-17	.176	14-31	.452	5	30	35	7.0	15	0	56	46	3	15	69	13.8	



UNIVERSITY OF NEW MEXICO

2018-19 WOMEN'S BASKETBALL



#21

NIKE McCLURE

F | 6-3 | SR | Tenino, Wash. (Washington State)



PPG	FG %	3PT %	FT %	RPG	APG	SPG	BPG	MPG
4.2	.563	.000	.273	7.4	1.6	1.0	4.0	26.4

NOTEWORTHY

- » Her six blocks against Texas State helped the Lobos set a program record for blocks in a game with 16
- » Transferring to UNM from Washington State - eligible to play this season
- » Played in 91 career games at Washington State...averaged 3.8 ppg, 4.6 rpg, and 1.7 bpg
- » Set a WSU single-season record in blocks with 68 as a sophomore - has totaled 153 career blocks
- » Set a WSU single-game record for blocks with 12 against Colorado in 2017 - also tied the Pac-12 single-game mark

McClure's Top Performances

Points	Season	6 at Houston (11/24/18)
	Career	Same
FGM	Season	2 - done four times
	Career	Same
FGA	Season	4 - done twice
	Career	Same
3PT FGM	Season	
	Career	
3PT FGA	Season	1 - done twice
	Career	Same
FTM	Season	2 at Houston (11/24/18)
	Career	Same
FTA	Season	4 vs. Auburn (11/11/18)
	Career	Same
Rebounds	Season	11 vs. Hartford (11/18/18)
	Career	Same
Assists	Season	2 - done four times
	Career	Same
Blocks	Season	9 vs. Oklahoma (11/28/18)
	Career	Same
Steals	Season	2 at Houston (11/24/18)
	Career	Same
Turnovers	Season	5 at Houston (11/24/18)
	Career	Same
Min. Played	Season	38 at Houston (11/24/18)
	Career	Same

GAME-BY-GAME STATISTICS

Opponent	Date	gs	min	Total		3-Pointers		Free throws		Rebounds				pf	a	t/o	blk	stl	pts	avg
				fg-fga	pct	3fg-fga	pct	ft-fga	pct	off	def	tot	avg							
TEXAS ST.	11/09/18	*	20	2-4	.500	0-1	.000	0-0	.000	2	5	7	7.0	2	0	1	6	0	4	4.0
AUBURN	11/11/18	*	23	1-2	.500	0-0	.000	0-4	.000	1	6	7	7.0	2	2	2	1	1	2	3.0
HARTFORD	11/18/18	*	22	2-4	.500	0-0	.000	0-2	.000	8	3	11	8.3	2	2	0	1	1	4	3.3
at Houston	11/24/18	*	38	2-3	.667	0-0	.000	2-2	1.000	2	5	7	8.0	4	2	5	3	2	6	4.0
OKLAHOMA	11/28/18	*	30	2-3	.667	0-1	.000	1-3	.333	3	7	10	8.4	3	2	1	9	1	5	4.2
Totals		5	133	9-16	.563	0-2	.000	3-11	.273	16	26	42	8.4	13	8	9	20	5	21	4.2

McCLURE'S CAREER STATS AT UNM

Season	gp-gs	min/avg	Total		3-Point		F-Throws		Rebounds				pf	fo	ast	to	blk	stl	Scoring	
			fg-fga	pct	fg-fga	pct	ft-fa	pct	off	def	tot	avg							pts	avg
2018-19	5-5	133/26.6	9-16	.563	0-2	.000	3-11	.273	16	26	42	8.4	13	0	8	9	20	5	21	4.2
TOTAL	5-5	133/26.6	9-16	.563	0-2	.000	3-11	.273	16	26	42	8.4	13	0	8	9	20	5	21	4.2



UNIVERSITY OF NEW MEXICO

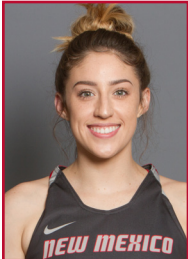
2018-19 WOMEN'S BASKETBALL



#23

JAEDYN DE LA CERDA

G | 5-6 | SO | Roswell, N.M. (Roswell HS)



PPG	FG %	3PT %	FT %	RPG	APG	SPG	BPG	MPG
4.8	.296	.296	1.000	2.0	1.5	1.5	---	16.0

NOTEWORTHY

- » Played in 13 games as a true freshman
- » In HS was named the 2016-17 New Mexico Gatorade Player of the Year in women's basketball
- » Led Roswell HS to the 2016 New Mexico 5A State Championship
- » Named as a 2016 All-State honoree as well as an Adidas All-American

De La Cerda's Top Performances

Points	Season	9 vs. Texas State (11/9/18)
	Career	Same
FGM	Season	4 vs. Texas State (11/9/18)
	Career	Same
FGA	Season	11 vs. Texas State (11/9/18)
	Career	Same
3PT FGM	Season	1 vs. Texas State (11/9/18)
	Career	1 - done three times
3PT FGA	Season	6 vs. Texas State (11/9/18)
	Career	Same
FTM	Season	2 vs. Auburn (11/11/18)
	Career	2 - done three times
FTA	Season	2 vs. Auburn (11/11/18)
	Career	3 vs. Northern N.M. (11/15/17)
Rebounds	Season	4 vs. Texas State (11/9/18)
	Career	Same
Assists	Season	2 - done twice
	Career	Same
Blocks	Season	
	Career	1 vs. Northern N.M. (11/15/17)
Steals	Season	2 - done three times
	Career	2 - done four times
Turnovers	Season	3 vs. Auburn (11/11/18)
	Career	Same
Min. Played	Season	27 vs. Texas State (11/9/18)
	Career	Same

GAME-BY-GAME STATISTICS

Opponent	Date	gs	min	Total		3-Pointers		Free throws		Rebounds				pf	a	t/o	blk	stl	pts	avg	
				fg-fga	pct	3fg-fga	pct	ft-fga	pct	off	def	tot	avg								
TEXAS ST.	11/09/18	*	27	4-11	.364	1-6	.167	0-0	.000	0	4	4	4.0	0	2	0	0	2	9	9.0	
AUBURN	11/11/18	*	10	1-5	.200	0-3	.000	2-2	1.000	0	1	1	2.5	3	2	3	0	2	4	6.5	
HARTFORD	11/18/18	*	11	0-2	.000	0-2	.000	0-0	.000	0	1	1	2.0	0	1	0	0	0	0	4.3	
OKLAHOMA	11/28/18		16	3-9	.333	0-4	.000	0-0	.000	1	1	2	2.0	1	1	0	0	2	6	4.8	
Totals			3	64	8-27	.296	1-15	.067	2-2	1.000	1	7	8	2.0	4	6	3	0	6	19	4.8

DE LA CERDA'S CAREER STATS AT UNM

			Total		3-Point		F-Throws		Rebounds											Scoring	
Season	gp-gs	min/avg	fg-fga	pct	fg-fga	pct	ft-fga	pct	off	def	tot	avg	pf	fo	ast	to	blk	stl	pts	avg	
2017-18	13-0	35/2.7	8-20	.400	2-10	.200	5-6	.833	2	5	7	0.5	3	0	2	4	1	5	23	1.8	
2018-19	4-3	64/16.0	8-27	.296	1-15	.067	2-2	1.000	1	7	8	2.0	4	0	6	3	0	6	19	4.8	
TOTAL	17-3	99/5.8	16-47	.340	3-25	.120	7-8	.875	3	12	15	0.9	7	0	8	7	1	11	42	2.5	



UNIVERSITY OF NEW MEXICO

2018-19 WOMEN'S BASKETBALL



#24

ERICA MOORE

C | 6-2 | SR | Fishers, Ind. (Purdue)



PPG	FG %	3PT %	FT %	RPG	APG	SPG	BPG	MPG
...	1.0	...	1.0

NOTEWORTHY

- » Played in nine games last season after transferring from Purdue
- » Played in 17 career games as a Boilermaker
- » In HS, played in the Indiana All-Star game as a junior and senior
- » Injured majority of her senior season, but led Mount Vernon-Fortville to the 2013 Indiana Class 3A State title
- » Ranked as the #78 overall prospect out of HS by All-Star Girls Report

Moore's Top Performances

Points	Season	5 at Air Force (12/28/17)
	Career	2 at Air Force (12/28/17)
FGM	Season	2 at Air Force (12/28/17)
	Career	2 - done twice
FGA	Season	2 - done twice
	Career	None
3PT FGM	Season	None
	Career	None
3PT FGA	Season	None
	Career	None
FTM	Season	1 at Air Force (12/28/17)
	Career	1 at Air Force (12/28/17)
FTA	Season	1 at Air Force (12/28/17)
	Career	1 at Air Force (12/28/17)
Rebounds	Season	3 vs. Northern N.M. (11/15/17)
	Career	3 vs. Northern N.M. (11/15/17)
Assists	Season	None
	Career	None
Blocks	Season	2 - done twice
	Career	2 - done twice
Steals	Season	1 vs. Texas State (11/9/18)
	Career	1 - done twice
Turnovers	Season	1 vs. Lamar (12/20/17)
	Career	1 vs. Lamar (12/20/17)
Min. Played	Season	1 vs. Texas State (11/9/18)
	Career	11 vs. Northern N.M. (11/15/17)

GAME-BY-GAME STATISTICS

Opponent	Date	gs	min	Total fg-fga	pct	3-Pointers 3fg-fga	pct	Free throws ft-fga	pct	Rebounds off	def	tot	avg	pf	a	t/o	blk	stl	pts	avg
TEXAS ST.	11/09/18	1	1	0-0	.000	0-0	.000	0-0	.000	0	0	0	0.0	1	0	0	0	1	0	0.0
Totals		0	1	0-0	.000	0-0	.000	0-0	.000	0	0	0	0.0	1	0	0	0	1	0	0.0

MOORE'S CAREER STATS AT UNM

Season	gp-gs	min/avg	Total fg-fga	pct	3-Point fg-fga	pct	F-Throws ft-fga	pct	Rebounds off	def	tot	avg	pf	fo	ast	to	blk	stl	pts	avg
2017-18	9-0	30/3.3	3-5	.600	0-0	.000	1-1	1.000	1	3	4	0.4	4	0	0	1	4	1	7	0.8
2018-19	1-0	1/1.0	0-0	.000	0-0	.000	0-0	.000	0	0	0	0.0	1	0	0	0	0	1	0	0.0
TOTAL	10-0	31/3.1	3-5	.600	0-0	.000	1-1	1.000	1	3	4	0.4	5	0	0	1	4	2	7	0.7



UNIVERSITY OF NEW MEXICO

2018-19 WOMEN'S BASKETBALL



#32

ANTONIA ANDERSON

G/F | 6-2 | SO | Cibolo, Texas (Byron P. Steele HS)



PPG	FG %	3PT %	FT %	RPG	APG	SPG	BPG	MPG
5.2	.444	.333	.889	4.4	0.6	0.8	0.6	17.4

NOTEWORTHY

- » Appeared in 32 games and made one start as a freshman for the Lobos
- » Led the team and ranked third in the Mountain West in blocked shots with 34
- » Selected to compete in the 2018 USA Basketball 3x3 Open National Championships along with teammates Jaisa Nunn, Aisia Robertson and Madi Washington
- » In HS was a four-year starter and named back-to-back Defensive Player of the Year
- » Additional HS accolades included: All-State, All-District, All-Area, and All-Region

Anderson's Top Performances

Points	Season	9 vs. Auburn (11/11/18)
	Career	13 vs. Boise State (1/3/18)
FGM	Season	2 - done three times
	Career	5 vs. Boise State (1/3/18)
FGA	Season	6 vs. Auburn (11/11/18)
	Career	6 - done three times
3PT FGM	Season	1 - done twice
	Career	1 - done four times
3PT FGA	Season	3 vs. Auburn (11/11/18)
	Career	Same
FTM	Season	4 vs. Auburn (11/11/18)
	Career	5 at Air Force (12/28/17)
FTA	Season	4 vs. Auburn (11/11/18)
	Career	6 vs. Saint Mary's (3/15/18)
Rebounds	Season	8 - done twice
	Career	Same
Assists	Season	2 vs. Auburn (11/11/18)
	Career	1 Same
Blocks	Season	2 vs. Oklahoma (11/28/18)
	Career	5 vs. Colorado State (2/27/18)
Steals	Season	3 vs. Oklahoma (11/28/18)
	Career	Same
Turnovers	Season	5 vs. Hartford (1/18/18)
	Career	Same
Min. Played	Season	24 vs. Oklahoma (11/28/18)
	Career	Same

GAME-BY-GAME STATISTICS

Opponent	Date	gs	min	Total		3-Pointers		Free throws		Rebounds				pf	a	t/o	blk	stl	pts	avg
				fg-fga	pct	3fg-fga	pct	ft-fga	pct	off	def	tot	avg							
TEXAS ST.	11/09/18	20	2-2	1.000	0-0	.000	2-3	.667	1	0	1	1.0	4	1	1	0	0	6	6.0	
AUBURN	11/11/18	18	2-6	.333	1-3	.333	4-4	1.000	4	4	8	4.5	2	2	3	1	1	9	7.5	
HARTFORD	11/18/18	12	1-2	.500	0-1	.000	0-0	.000	0	2	2	3.7	2	0	5	0	0	2	5.7	
at Houston	11/24/18	14	2-3	.667	1-1	1.000	0-0	.000	3	0	3	3.5	2	0	1	0	0	5	5.5	
OKLAHOMA	11/28/18	24	1-5	.200	0-1	.000	2-2	1.000	3	5	8	4.4	0	0	2	2	3	4	5.2	
Totals		0	88	8-18	.444	2-6	.333	8-9	.889	11	11	22	4.4	10	3	12	3	4	26	5.2

ANDERSON'S CAREER STATS AT UNM

Season	gp-gs	min/avg	Total		3-Point		F-Throws		Rebounds				Scoring							
			fg-fga	pct	fg-fga	pct	ft-fa	pct	off	def	tot	avg	pf	fo	ast	to	blk	stl	pts	avg
2017-18	32-1	417/13.0	52-91	.571	2-10	.200	24-40	.600	31	65	96	3.0	50	0	5	17	34	13	130	4.1
2018-19	5-0	88/17.6	8-18	.444	2-6	.333	8-9	.889	11	11	22	4.4	10	0	3	12	3	4	26	5.2
TOTAL	37-1	505/13.6	60-109	.550	4-16	.250	32-49	.653	42	76	118	3.2	60	0	8	29	37	17	156	4.2



UNIVERSITY OF NEW MEXICO

2018-19 WOMEN'S BASKETBALL



#35

MADI WASHINGTON

PG | 5-9 | SO | Red Oak, Texas (Red Oak HS)



PPG	FG %	3PT %	FT %	RPG	APG	SPG	BPG	MPG
3.0	.238	.294	...	0.6	0.4	0.6	...	12.2

NOTEWORTHY

- » Key reserve for the Lobos playing in 34 games as a true freshman
- » Team's fifth-leading scorer on the season
- » Scored in double figures nine times and had two 20+ point games as well
- » Selected to play in the 2018 USA Basketball 3xe Open National Championships along with teammates Antonia Anderson, Jaisa Nunn, and Aisia Robertson
- » In HS was named the Offensive Player of the Year as a freshman
- » Also named All-District in 2014-15 and 2015-16

Washington's Top Performances

Points	Season	9 vs. Auburn (11/11/18)
	Career	27 vs. Northern N.M. (11/15/17)
FGM	Season	3 vs. Auburn (11/11/18)
	Career	7 vs. Northern N.M. (11/15/17)
FGA	Season	10 vs. Auburn (11/11/18)
	Career	15 vs. Northern N.M. (11/15/17)
3PT FGM	Season	3 vs. Auburn (11/11/18)
	Career	5 - done twice
3PT FGA	Season	10 vs. Auburn (11/11/18)
	Career	Same
FTM	Season	
	Career	8 vs. Northern N.M. (11/15/17)
FTA	Season	
	Career	8 vs. Northern N.M. (11/15/17)
Rebounds	Season	1 - done three times
	Career	7 vs. Nevada (12/30/17)
Assists	Season	1 - done twice
	Career	4 vs. Rice (3/20/18)
Blocks	Season	
	Career	1 - done twice
Steals	Season	2 vs. Auburn (11/11/18)
	Career	Same
Turnovers	Season	1 - done three times
	Career	3 - done twice
Min. Played	Season	28 vs. Auburn (11/11/18)
	Career	34 vs. Colorado St. (2/27/18)

GAME-BY-GAME STATISTICS

Opponent	Date	gs	min	Total		3-Pointers		Free throws		Rebounds				pf	a	t/o	blk	stl	pts	avg
				fg-fga	pct	3fg-fga	pct	ft-fga	pct	off	def	tot	avg							
TEXAS ST.	11/09/18	10		1-4	.250	1-2	.500	0-0	.000	0	1	1	1.0	1	0	0	0	0	3	3.0
AUBURN	11/11/18	28		3-10	.300	3-10	.300	0-0	.000	0	0	0	0.5	2	1	0	0	2	9	6.0
HARTFORD	11/18/18	13		1-6	.167	1-5	.200	0-0	.000	0	1	1	0.7	2	1	1	0	1	3	5.0
at Houston	11/24/18	8		0-1	.000	0-0	.000	0-0	.000	0	1	1	0.8	0	0	1	0	0	0	3.8
OKLAHOMA	11/28/18	2		0-0	.000	0-0	.000	0-0	.000	0	0	0	0.6	0	0	1	0	0	0	3.0
Totals		0	61	5-21	.238	5-17	.294	0-0	.000	0	3	3	0.6	5	2	3	0	3	15	3.0

WASHINGTON'S CAREER STATS AT UNM

Season	gp-gs	min/avg	Total		3-Point		F-Throws		Rebounds				Scoring							
			fg-fga	pct	fg-fga	pct	ft-fga	pct	off	def	tot	avg	pf	fo	ast	to	blk	stl	pts	avg
2017-18	34-0	604/17.8	74-194	.381	39-106	.368	30-38	.789	14	46	60	1.8	29	0	27	27	2	10	217	6.4
2018-19	5-0	61/12.2	5-21	.238	5-17	.294	0-0	.000	0	3	3	0.6	5	0	2	3	0	3	15	3.0
TOTAL	39-0	665/17.1	79-215	.367	44-123	.358	30-38	.789	14	49	63	1.6	34	0	29	30	2	13	232	5.9



UNIVERSITY OF NEW MEXICO

2018-19 WOMEN'S BASKETBALL



#44

JAISA NUNN

C | 6-3 | SR | Kirkland, Wash. (Juanita HS)



PPG	FG %	3PT %	FT %	RPG	APG	SPG	BPG	MPG
19.0	.587	.333	.769	8.0	1.0	2.2	1.4	31.2

NOTEWORTHY

- » MW Player of the Week (11-19-18)
- » Registered 21st career double-double of her career against Hartford (32 pts - 11 reb)
- » One of 20 to be named to Lisa Leslie Award Watch List
- » 2018-19 Preseason All-MW
- » Only player in MW last season to average a double-double (17.0 pts, 10.2 reb)
- » Became the 22nd player in program history to score 1,000 career points
- » Currently No. 16 on the all-time scoring list with 1,058 pts.
- » Lone returning starter from last season

Nunn's Top Performances

Points	Season	32 vs. Hartford (11/18/18)
	Career	39 vs. Marquette (11/13/17)
FGM	Season	11 vs. Hartford (11/18/18)
	Career	14 vs. Marquette (11/13/17)
FGA	Season	18 vs. Hartford (11/18/18)
	Career	Same
3PT FGM	Season	1 vs. Hartford (11/18/18)
	Career	2 vs. Utah State (1/4/17)
3PT FGA	Season	1 - done three times
	Career	4 - done twice
FTM	Season	9 vs. Hartford (11/18/18)
	Career	11 - done twice
FTA	Season	12 vs. Hartford (11/18/18)
	Career	12 - done three times
Rebounds	Season	12 at Houston (11/24/18)
	Career	18 vs. UC Irvine (11/25/17)
Assists	Season	2 - done twice
	Career	4 vs. Illinois (11/26/17)
Blocks	Season	3 at Houston (11/24/18)
	Career	4 vs. Lamar (12/20/17)
Steals	Season	3 - done twice
	Career	5 vs. TCU (3/22/18)
Turnovers	Season	6 at Houston (11/24/18)
	Career	Same
Min. Played	Season	47 at Houston (11/24/18)
	Career	38 - done three times

GAME-BY-GAME STATISTICS

Opponent	Date	gs	min	Total		3-Pointers		Free throws		Rebounds				pf	a	t/o	blk	stl	pts	avg	
				fg-fga	pct	3fg-fga	pct	ft-fga	pct	off	def	tot	avg								
TEXAS ST.	11/09/18	*	18	5-7	.714	0-0	.000	4-6	.667	2	1	3	3.0	2	2	0	1	3	14	14.0	
AUBURN	11/11/18	*	33	6-6	1.000	0-0	.000	4-4	1.000	4	0	4	3.5	2	1	0	0	3	16	15.0	
HARTFORD	11/18/18	*	35	11-18	.611	1-1	1.000	9-12	.750	4	7	11	6.0	2	0	0	1	2	32	20.7	
at Houston	11/24/18	*	47	9-17	.529	0-1	.000	3-4	.750	5	7	12	7.5	3	2	6	3	2	21	20.8	
OKLAHOMA	11/28/18	*	24	6-15	.400	0-1	.000	0-0	.000	4	6	10	8.0	5	0	0	2	1	12	19.0	
Totals			5	157	37-63	.587	1-3	.333	20-26	.769	19	21	40	8.0	14	5	6	7	11	95	19.0

NUNN'S CAREER STATS AT UNM

Season	gp-gs	min/avg	Total		3-Point		F-Throws		Rebounds				Scoring							
			fg-fga	pct	fg-fga	pct	ft-fa	pct	off	def	tot	avg	pf	fo	ast	to	blk	stl	pts	avg
2015-16	30-11	544/18.1	93-172	.541	0-0	.000	29-50	.580	61	87	148	4.9	42	1	27	30	10	13	215	7.2
2016-17	21-2	430/20.5	87-183	.475	6-28	.214	38-63	.603	48	100	148	7.0	34	0	16	31	5	11	218	10.4
2017-18	35-35	984/28.1	221-347	.637	1-1	1.000	152-188	.809	177	181	358	10.2	82	3	15	38	26	36	595	17.0
2018-19	5-5	157/31.4	37-63	.587	1-3	.333	20-26	.769	19	21	40	8.0	14	1	5	6	7	11	95	19.0
TOTAL	91-53	2115/23.2	438-765	.573	8-32	.250	239-327	.731	305	389	694	7.6	172	5	63	105	48	71	1123	12.3



UNIVERSITY OF NEW MEXICO

2018-19 WOMEN'S BASKETBALL



2018-19 New Mexico Women's Basketball

New Mexico Combined Team Statistics (as of Nov 30, 2018)

All games



RECORD:	OVERALL	HOME	AWAY	NEUTRAL
ALL GAMES	4-1	3-1	1-0	0-0
CONFERENCE	0-0	0-0	0-0	0-0
NON-CONFERENCE	4-1	3-1	1-0	0-0

#	Player	gp-gs	min	avg	Total		3-Point		F-Throw		Rebounds				pf	dq	a	to	blk	stl	pts	avg
					fg-fga	fg%	3fg-fga	3fg%	ft-fa	ft%	off	def	tot	avg								
44	NUNN, Jaisa	5-5	157	31.4	37-63	.587	1-3	.333	20-26	.769	19	21	40	8.0	14	1	5	6	7	11	95	19.0
04	EVERETT, Jayla	5-5	171	34.2	24-57	.421	13-27	.481	20-21	.952	8	15	23	4.6	10	0	14	16	2	9	81	16.2
15	ROBERTSON, Aisia	5-5	178	35.6	26-80	.325	3-17	.176	14-31	.452	5	30	35	7.0	15	0	56	46	3	15	69	13.8
03	HURST, Ahlise	5-2	130	26.0	22-53	.415	15-41	.366	3-6	.500	3	7	10	2.0	14	0	3	4	2	4	62	12.4
32	ANDERSON, Antonia	5-0	88	17.6	8-18	.444	2-6	.333	8-9	.889	11	11	22	4.4	10	0	3	12	3	4	26	5.2
23	DE LA CERDA, Jaedyn	4-3	64	16.0	8-27	.296	1-15	.067	2-2	1.000	1	7	8	2.0	4	0	6	3	0	6	19	4.8
21	MCCLURE, Nike	5-5	133	26.6	9-16	.563	0-2	.000	3-11	.273	16	26	42	8.4	13	0	8	9	20	5	21	4.2
35	WASHINGTON, Madi	5-0	61	12.2	5-21	.238	5-17	.294	0-0	.000	0	3	3	0.6	5	0	2	3	0	3	15	3.0
13	MCGRUDER, Shaiquel	4-0	23	5.8	3-6	.500	0-0	.000	1-2	.500	5	9	14	3.5	0	0	0	1	2	4	7	1.8
01	NOBLE, Quincy	4-0	29	7.3	1-6	.167	1-3	.333	3-4	.750	1	0	1	0.3	2	0	0	2	2	1	6	1.5
02	MATHEWS, Bre'Asiaja	2-0	16	8.0	1-2	.500	0-1	.000	0-0	.000	0	4	4	2.0	2	0	0	1	1	1	2	1.0
24	MOORE, Erica	1-0	1	1.0	0-0	.000	0-0	.000	0-0	.000	0	0	0	0.0	1	0	0	0	0	1	0	0.0
Team											18	17	35									
Total.....		5	1051		144-349	.413	41-132	.311	74-112	.661	87	150	237	47.4	90	1	97	103	42	64	403	80.6
Opponents.....		5	1053		130-342	.380	33-116	.284	66-96	.688	75	130	205	41.0	96	-	58	107	15	63	359	71.8

TEAM STATISTICS	NM	OPP	Date	Opponent	Score	Att.
SCORING	403	359	11/09/18	TEXAS ST.	W 82-51	4585
Points per game	80.6	71.8	11/11/18	AUBURN	L 76-79	4419
Scoring margin	+8.8	-	11/18/18	HARTFORD	W 72-65	4330
FIELD GOALS-ATT	144-349	130-342	11/24/18	at Houston	W 89-84	802
Field goal pct	.413	.380	11/28/18	OKLAHOMA	W 84-80	5152
3 POINT FG-ATT	41-132	33-116	* - Conference game			
3-point FG pct	.311	.284				
3-pt FG made per game	8.2	6.6				
FREE THROWS-ATT	74-112	66-96				
Free throw pct	.661	.688				
F-Throws made per game	14.8	13.2				
REBOUNDS	237	205				
Rebounds per game	47.4	41.0				
Rebounding margin	+6.4	-				
ASSISTS	97	58				
Assists per game	19.4	11.6				
TURNOVERS	103	107				
Turnovers per game	20.6	21.4				
Turnover margin	+0.8	-				
Assist/turnover ratio	0.9	0.5				
STEALS	64	63				
Steals per game	12.8	12.6				
BLOCKS	42	15				
Blocks per game	8.4	3.0				
ATTENDANCE	18486	802				
Home games-Avg/Game	4-4622	1-802				
Neutral site-Avg/Game	-	0-0				

Score by Periods	1st	2nd	3rd	4th	OT	OT2	Totals
New Mexico	86	93	111	92	8	13	403
Opponents	91	76	75	101	8	8	359



UNIVERSITY OF NEW MEXICO

2018-19 WOMEN'S BASKETBALL



2018-19 New Mexico Women's Basketball
New Mexico Season Schedule/Results & Leaders (as of Nov 30, 2018)
All games



RECORD:	OVERALL	HOME	AWAY	NEUTRAL
ALL GAMES	4-1	3-1	1-0	0-0
CONFERENCE	0-0	0-0	0-0	0-0
NON-CONFERENCE	4-1	3-1	1-0	0-0

Date	Opponent		Score	Att.	High Points	High Rebounds
11/09/18	TEXAS ST.	W	82-51	4585	(17)ROBERTSON, Aisia	(13)MCGRUDER, Shaiquel
11/11/18	AUBURN	L	76-79	4419	(25)EVERETT, Jayla	(8)ANDERSON, Antonia
11/18/18	HARTFORD	W	72-65	4330	(32)NUNN, Jaisa	(11)MCCLURE, Nike
						(11)NUNN, Jaisa
11/24/18	at Houston	Wo2	89-84	802	(28)ROBERTSON, Aisia	(12)NUNN, Jaisa
11/28/18	OKLAHOMA	W	84-80	5152	(39)HURST, Ahlise	(10)NUNN, Jaisa
						(10)MCCLURE, Nike

* - Conference game

Attendance Summary	Games	Attend	Avg/Game
Home	4	18486	4622
Away	1	802	802
Neutral	0	0	0
Total	5	19288	3858



UNIVERSITY OF NEW MEXICO

2018-19 WOMEN'S BASKETBALL



2018-19 New Mexico Women's Basketball
New Mexico Season Box Score (as of Nov 30, 2018)
All games



RECORD:	OVERALL	HOME	AWAY	NEUTRAL
ALL GAMES	4-1	3-1	1-0	0-0
CONFERENCE	0-0	0-0	0-0	0-0
NON-CONFERENCE	4-1	3-1	1-0	0-0

##	Player	gp-gs	min	avg	Total		3-Point		F-Throw		Rebounds				pf	dq	a	to	blk	stl	pts	avg
					fg-fga	fg%	3fg-fga	3fg%	ft-fa	ft%	off	def	tot	avg								
44	NUNN, Jaisa	5-5	157	31.4	37-63	.587	1-3	.333	20-26	.769	19	21	40	8.0	14	1	5	6	7	11	95	19.0
04	EVERETT, Jayla	5-5	171	34.2	24-57	.421	13-27	.481	20-21	.952	8	15	23	4.6	10	0	14	16	2	9	81	16.2
15	ROBERTSON, Aisia	5-5	178	35.6	26-80	.325	3-17	.176	14-31	.452	5	30	35	7.0	15	0	56	46	3	15	69	13.8
03	HURST, Ahlise	5-2	130	26.0	22-53	.415	15-41	.366	3-6	.500	3	7	10	2.0	14	0	3	4	2	4	62	12.4
32	ANDERSON, Antonia	5-0	88	17.6	8-18	.444	2-6	.333	8-9	.889	11	11	22	4.4	10	0	3	12	3	4	26	5.2
23	DE LA CERDA, Jaedyn	4-3	64	16.0	8-27	.296	1-15	.067	2-2	1.000	1	7	8	2.0	4	0	6	3	0	6	19	4.8
21	MCCLURE, Nike	5-5	133	26.6	9-16	.563	0-2	.000	3-11	.273	16	26	42	8.4	13	0	8	9	20	5	21	4.2
35	WASHINGTON, Madi	5-0	61	12.2	5-21	.238	5-17	.294	0-0	.000	0	3	3	0.6	5	0	2	3	0	3	15	3.0
13	MCGRUDER, Shaiquel	4-0	23	5.8	3-6	.500	0-0	.000	1-2	.500	5	9	14	3.5	0	0	0	1	2	4	7	1.8
01	NOBLE, Quincy	4-0	29	7.3	1-6	.167	1-3	.333	3-4	.750	1	0	1	0.3	2	0	0	2	2	1	6	1.5
02	MATHEWS, Bre'Asiaja	2-0	16	8.0	1-2	.500	0-1	.000	0-0	.000	0	4	4	2.0	2	0	0	1	1	1	2	1.0
24	MOORE, Erica	1-0	1	1.0	0-0	.000	0-0	.000	0-0	.000	0	0	0	0.0	1	0	0	0	0	1	0	0.0
Team											18	17	35									
Total.....		5	1051		144-349	.413	41-132	.311	74-112	.661	87	150	237	47.4	90	1	97	103	42	64	403	80.6
Opponents.....		5	1053		130-342	.380	33-116	.284	66-96	.688	75	130	205	41.0	96	-	58	107	15	63	359	71.8

Score by Periods	1st	2nd	3rd	4th	OT	OT2	Totals
New Mexico	86	93	111	92	8	13	403
Opponents	91	76	75	101	8	8	359



UNIVERSITY OF NEW MEXICO

2018-19 WOMEN'S BASKETBALL



2018-19 New Mexico Women's Basketball
New Mexico Overall Team Statistics (as of Nov 30, 2018)
All games



TEAM STATISTICS	NM	OPP
SCORING	403	359
Points per game	80.6	71.8
Scoring margin	+8.8	-
FIELD GOALS-ATT	144-349	130-342
Field goal pct	.413	.380
3 POINT FG-ATT	41-132	33-116
3-point FG pct	.311	.284
3-pt FG made per game	8.2	6.6
FREE THROWS-ATT	74-112	66-96
Free throw pct	.661	.688
F-Throws made per game	14.8	13.2
REBOUNDS	237	205
Rebounds per game	47.4	41.0
Rebounding margin	+6.4	-
ASSISTS	97	58
Assists per game	19.4	11.6
TURNOVERS	103	107
Turnovers per game	20.6	21.4
Turnover margin	+0.8	-
Assist/turnover ratio	0.9	0.5
STEALS	64	63
Steals per game	12.8	12.6
BLOCKS	42	15
Blocks per game	8.4	3.0
WINNING STREAK	3	-
Home win streak	2	-
ATTENDANCE	18486	802
Home games-Avg/Game	4-4622	1-802
Neutral site-Avg/Game	-	0-0

Score by Periods	1st	2nd	3rd	4th	OT	OT2	Totals
New Mexico	86	93	111	92	8	13	403
Opponents	91	76	75	101	8	8	359



UNIVERSITY OF NEW MEXICO

2018-19 WOMEN'S BASKETBALL



2018-19 New Mexico Women's Basketball
New Mexico Team Game-by-Game Comparison (as of Nov 30, 2018)
All games



Opponent	1st	2nd	Score	Mar	Total FG	FG Pct	3-Pointers	3FG Pct	Free Throws	FT Pct	Rebounds	/
TEXAS ST.	29/27	53/24	82-51	+31	31-71/18-62	.437/.290	7-23/4-12	.304/.333	13-19/11-14	.684/.786	47/40	+7
AUBURN	33/36	43/43	76-79	(3)	24-63/28-68	.381/.412	12-37/4-17	.324/.235	16-24/19-25	.667/.760	39/45	(6)
HARTFORD	33/26	39/39	72-65	+7	25-58/24-59	.431/.407	4-20/6-21	.200/.286	18-29/11-16	.621/.688	45/27	+18
Houston	43/38	25/30	89-84	+5	32-75/31-84	.427/.369	8-20/9-44	.400/.205	17-22/13-19	.773/.684	58/43	+15
OKLAHOMA	41/40	43/40	84-80	+4	32-82/29-69	.390/.420	10-32/10-22	.313/.455	10-18/12-22	.556/.545	48/50	(2)

Note: Game totals are displayed in the format TEAM/OPPONENT for each category



UNIVERSITY OF NEW MEXICO

2018-19 WOMEN'S BASKETBALL



2018-19 New Mexico Women's Basketball
New Mexico Points-Rebounds-Assists (as of Nov 30, 2018)
All games



Opponent	Date	Score	01 NOBLE,QUIN	02 MATHEWS,BR	03 HURST,AHLI	04 EVERETT,JA	13 MCGRUDER,S	15 ROBERTSON,	21 MCCLURE,NI
TEXAS ST.	11/09/18	82-51 w	5-1-0	0-1-0	7-1-2	11-3-2	6-13-0	17-8-9	4-7-0
AUBURN	11/11/18	76-79 L	DNP	DNP	2-0-0	25-6-2	0-1-0	9-7-8	2-7-2
HARTFORD	11/18/18	72-65 w	0-0-0	2-3-0	3-1-0	15-5-4	1-0-0	10-3-12	4-11-2
at Houston	11/24/18	89-84 w	1-0-0	DNP	11-6-0	17-8-2	DNP	28-11-11	6-7-2
OKLAHOMA	11/28/18	84-80 w	0-0-0	DNP	39-2-1	13-1-4	0-0-0	5-6-16	5-10-2

Opponent	Date	Score	23 DE LA CERD	24 MOORE,ERIC	32 ANDERSON,A	35 WASHINGTON	44 NUNN,JAISA
TEXAS ST.	11/09/18	82-51 w	9-4-2	0-0-0	6-1-1	3-1-0	14-3-2
AUBURN	11/11/18	76-79 L	4-1-2	DNP	9-8-2	9-0-1	16-4-1
HARTFORD	11/18/18	72-65 w	0-1-1	DNP	2-2-0	3-1-1	32-11-0
at Houston	11/24/18	89-84 w	DNP	DNP	5-3-0	0-1-0	21-12-2
OKLAHOMA	11/28/18	84-80 w	6-2-1	DNP	4-8-0	0-0-0	12-10-0



UNIVERSITY OF NEW MEXICO

2018-19 WOMEN'S BASKETBALL



GAME 1 | NEW MEXICO 82 - TEXAS STATE 51

Nov. 9, 2018 | Albuquerque, N.M.



Official Basketball Box Score - Game Totals - Final Statistics

Texas St. vs New Mexico
11/09/18 7:00 pm at



Texas St. 51 • 0-1

#	Player	Total		3-Ptr		Rebounds		PF		TP		A TO Blk Stl		Min
		FG-FGA	FG-FGA	FT-FTA	Off Def Tot	PF	TP	A	TO	Blk	Stl			
13	Zandra Emmanuel	1-5	0-1	0-0	3 2 5	2	2	0	2	0	2	9		
22	Jazza Johns	3-9	0-0	0-0	1 2 3	2	6	0	2	0	0	20		
02	Toshua Leavitt	5-16	2-5	6-6	0 0 0	1	18	3	8	0	1	33		
24	Brooke Holle	2-12	1-4	0-0	2 4 6	2	5	2	3	0	2	30		
33	Bailey Holle	2-4	1-2	0-0	0 4 4	1	5	3	2	0	4	26		
00	Jayla Johnson	1-1	0-0	0-0	3 4 7	1	2	0	1	0	1	22		
01	Avionne Alexander	0-4	0-0	2-2	1 1 2	1	2	0	0	0	0	9		
03	Kennedy Taylor	1-5	0-0	0-0	0 1 1	3	2	0	1	0	0	7		
15	Ja'Kayla Bowie	2-2	0-0	2-2	0 1 1	0	6	0	2	0	0	17		
32	Da'Nasia Hood	0-0	0-0	0-0	0 1 1	0	0	0	1	0	0	18		
55	Jaeda Reed	1-4	0-0	1-4	1 0 1	1	3	0	1	0	0	9		
Team		1		5		4		9						
Totals		18-62	4-12	11-14	16 24 40	14	51	8	24	0	10	200		

1st - FG %: 7-16 43.8% 2nd: 4-16 25.0% 3rd: 4-15 26.7% 4th: 3-13 23.1% Game: 18-62 29.0% Deadball Rebounds 1
3FG %: 2-2 100.0% 1-4 25.0% 1-1 100.0% 4-12 33.3%
FT %: 6-0 0.0% 2-4 50.0% 4-4 100.0% 5-6 83.3% 11-14 78.6%

New Mexico 82 • 1-0

#	Player	Total		3-Ptr		Rebounds		PF		TP		A TO Blk Stl		Min
		FG-FGA	FG-FGA	FT-FTA	Off Def Tot	PF	TP	A	TO	Blk	Stl			
21	McCLURE, Nike	2-4	0-1	0-0	2 5 7	2	4	0	1	6	0	20		
44	NUNN, Jaisa	5-7	0-0	4-6	2 1 3	2	14	2	0	1	3	18		
04	EVERETT, Jayla	3-10	1-3	4-4	2 1 3	2	11	2	4	1	1	29		
15	ROBERTSON, Aisia	8-16	1-2	0-2	3 5 8	2	17	9	10	2	3	24		
23	DE LA CERDA, Jaedyn	4-11	1-6	0-0	0 4 4	0	9	2	0	0	2	27		
01	NOBLE, Quincy	1-3	1-1	2-2	1 0 1	0	5	0	0	2	0	6		
02	MATHEWS, Bre'Asiahjah	0-0	0-0	0-0	0 1 1	0	1	0	0	1	0	5		
03	HURST, Ahlise	2-8	2-8	1-2	0 1 1	4	7	2	0	1	1	18		
13	MCGRUDER, Shaiquel	3-6	0-0	0-0	5 8 13	0	6	0	1	2	4	16		
24	MOORE, Erica	0-0	0-0	0-0	0 0 0	1	0	0	0	0	1	1		
32	ANDERSON, Antonia	2-2	0-0	2-3	1 0 1	4	6	1	1	0	0	20		
35	WASHINGTON, Madi	1-4	1-2	0-0	0 1 1	1	3	0	0	0	0	10		
Team		3		1		4								
Totals		31-71	7-23	13-19	19 28 47	19	82	18	17	16	15	199		

1st - FG %: 6-16 37.5% 2nd: 6-20 30.0% 3rd: 11-15 73.3% 4th: 8-20 40.0% Game: 31-71 43.7% Deadball Rebounds 3,2
3FG %: 0-4 0.0% 3-9 33.3% 2-2 100.0% 7-23 30.4%
FT %: 2-2 100.0% 0-2 0.0% 9-13 69.2% 2-2 100.0% 13-19 68.4%

Officials: Technical fouls: Texas St.-None. New Mexico-None.

Attendance: 4585

2018-19 Women's Basketball. Round: 0. New Mexico vs Texas St.. Played at .

Score by periods	1st	2nd	3rd	4th	Total
Texas St.	16	11	12	12	51
New Mexico	14	15	33	20	82

Last FG - TXST 4th-04:26, NM 4th-01:05.

Largest lead - TXST by 4 1st-04:44, NM by 34 4th-01:05.

TXST led for 08:22. NM led for 27:43. Game was tied for 03:55.

Points In Off 2nd Fast
TXST Paint T/O Chance Break Bench
NM 48 29 15 45 27

Score tied - 4 times.
Lead changed - 4 times.

GAME 2 | AUBURN 79 - NEW MEXICO 76

Nov. 11, 2018 | Albuquerque, N.M.



Official Basketball Box Score - Game Totals - Final Statistics

Auburn vs New Mexico
11/11/18 2:00 pm at



Auburn 79 • 3-0

#	Player	Total		3-Ptr		Rebounds		PF		TP		A TO Blk Stl		Min
		FG-FGA	FG-FGA	FT-FTA	Off Def Tot	PF	TP	A	TO	Blk	Stl			
20	Unique Thompson	7-13	0-0	5-7	8 11 19	1	19	0	4	1	1	35		
00	Daisa Alexander	6-16	0-4	2-4	1 3 4	14	0	2	0	3	28			
05	Emari Jones	2-10	1-8	0-0	1 1 2	2	5	2	6	0	1	24		
23	Crystal Primm	3-7	0-0	4-4	2 4 6	2	10	1	1	0	1	32		
33	Janiah McKay	6-12	1-1	6-8	1 4 5	2	19	6	2	0	3	39		
01	Robyn Benton	1-4	0-0	0-0	0 1 1	2	2	1	1	0	1	18		
04	Abigail Jackson	1-1	0-0	0-0	0 0 0	3	2	0	0	0	0	4		
10	Kiyae White	0-1	0-0	0-0	0 1 0	1	0	0	0	0	0	1		
24	Erin Howard	2-4	2-3	2-2	0 1 1	2	8	1	1	1	1	20		
Team		3		6										
Totals		28-68	4-17	19-25	17 28 45	18	79	11	17	2	10	201		

1st - FG %: 6-21 28.6% 2nd: 4-13 30.8% 3rd: 9-18 50.0% 4th: 9-16 56.3% Game: 28-68 41.2% Deadball Rebounds 3,3
3FG %: 0-5 0.0% 1-4 25.0% 2-5 40.0% 1-3 33.3%
FT %: 8-12 66.7% 1-1 100.0% 3-4 75.0% 19-25 76.0%

New Mexico 76 • 1-1

#	Player	Total		3-Ptr		Rebounds		PF		TP		A TO Blk Stl		Min
		FG-FGA	FG-FGA	FT-FTA	Off Def Tot	PF	TP	A	TO	Blk	Stl			
21	McCLURE, Nike	1-2	0-0	0-4	1 6 7	2	2	2	2	1	1	23		
44	NUNN, Jaisa	6-6	0-0	4-4	4 0 4	2	16	1	0	0	3	33		
04	EVERETT, Jayla	7-11	7-10	4-4	3 6 3	25	2	3	0	0	0	38		
15	ROBERTSON, Aisia	3-18	1-7	2-6	0 7 7	4	9	8	5	0	2	40		
23	DE LA CERDA, Jaedyn	1-5	0-3	2-2	0 1 1	3	4	2	3	0	2	10		
03	HURST, Ahlise	1-5	0-4	0-0	0 0 0	2	0	0	0	0	0	6		
13	MCGRUDER, Shaiquel	0-0	0-0	0-0	0 1 1	0	0	0	0	0	0	4		
32	ANDERSON, Antonia	2-6	1-3	4-4	4 4 8	2	9	2	3	1	1	18		
35	WASHINGTON, Madi	3-10	3-10	0-0	0 0 0	2	9	1	0	0	2	28		
Team		1		4										
Totals		24-63	12-37	16-24	13 26 39	18	76	18	16	2	11	200		

1st - FG %: 7-18 38.9% 2nd: 4-13 30.8% 3rd: 6-14 42.9% 4th: 7-18 38.9% Game: 24-63 38.1% Deadball Rebounds 3
3FG %: 2-11 18.2% 3-7 42.9% 3-8 37.5% 4-11 36.4%
FT %: 0-6 0.0% 6-8 75.0% 2-2 100.0% 16-24 66.7%

Officials: Technical fouls: Auburn-None. New Mexico-None.

Attendance: 4419

2018-19 Women's Basketball. Round: 0. Auburn vs New Mexico. Played at .

Score by periods	1st	2nd	3rd	4th	Total
Auburn	20	16	21	22	79
New Mexico	16	17	23	20	76

Last FG - AU 4th-00:16, NM 4th-00:41.

Largest lead - AU by 8 2nd-08:50, NM by 4 2nd-01:14.

AU led for 22:08. NM led for 08:08. Game was tied for 09:44.

Score tied - 15 times.
Lead changed - 15 times.

GAME 3 | NEW MEXICO 72 - HARTFORD 65

Nov. 18, 2018 | Albuquerque, N.M.



Official Basketball Box Score - Game Totals - Final Statistics

Hartford vs New Mexico
11/18/18 2:00 pm at



Hartford 65 • 1-2

#	Player	Total		3-Ptr		Rebounds		PF		TP		A TO Blk Stl		Min
		FG-FGA	FG-FGA	FT-FTA	Off Def Tot	PF	TP	A	TO	Blk	Stl			
10	Ella Awobajo	1-4	0-1	0-0	3 3 6	3	2	2	1	1	2	32		
04	Jade Young	3-6	0-2	0-0	1 1 2	2	6	2	5	0	2	28		
05	Lindsey Abed	6-15	3-8	4-4	1 5 6	1	10	1	0	1	0	37		
13	Kelly Douglass	2-5	1-4	1-2	0 0 0	5	6	0	2	1	0	21		
32	Jabria Ingram	2-5	0-0	1-1	0 1 1	4	5	1	1	0	0	13		
02	Jordan McLemore	1-5	0-1	0-0	0 1 1	2	2	0	2	0	1	11		
03	Sierra DaCosta	8-14	1-3	5-9	0 5 5	2	22	3	0	4	34			
12	Jada Lucas	1-4	1-2	0-0	0 1 1	1	3	1	0	0	1	8		
03	Lawrence Moten	0-1	0-0	0-0	0 0 0	2	0	0	1	1	1	8		
02	Sierra Smith	0-0	0-0	0-0	0 1 1	0	0	0	1	0	0	8		
40	Brielle Wilborn	0-0	0-0	0-0	1 0 1	1	0	0	0	1	0	2		
Team		3		1		4								
Totals		24-59	6-21	11-16	9 18 27	24	65	9	17	4	11	202		

1st - FG %: 6-13 46.2% 2nd: 4-14 28.6% 3rd: 4-11 36.4% 4th: 10-21 47.6% Game: 24-59 40.7% Deadball Rebounds 3,1
3FG %: 2-3 66.7% 1-6 16.7% 0-5 0.0% 3-7 42.9% 6-21 28.6%
FT %: 3-4 75.0% 0-2 0.0% 5-8 62.5% 3-4 75.0% 11-16 68.8%

New Mexico 72 • 3-1

#	Player	Total		3-Ptr		Rebounds	
---	--------	-------	--	-------	--	----------	--



UNIVERSITY OF NEW MEXICO

2018-19 WOMEN'S BASKETBALL



GAME 5 | NEW MEXICO 84 - OKLAHOMA 80

Nov. 28, 2018 | Albuquerque, N.M.



Official Basketball Box Score -- Game Totals -- Final Statistics

Oklahoma vs New Mexico 11/28/18 7:00 pm at



Oklahoma 80 • 2-4

#	Player	Total		3-Ptr		Rebounds		PF	TP	A	TO	Blk	Stl	Min	
		FG	FGA	FG	FGA	FT	FTA								
03	Mandy Simpson	f	5-9	0-0	0-0	3	5	8	4	10	1	3	1	36	
00	Jessi Murcer	g	2-4	1-2	4-5	3	2	5	1	9	1	5	0	19	
14	Shaina Pellington	g	4-17	1-5	5-6	1	4	5	4	14	5	3	0	30	
25	Madi Williams	g	7-15	0-1	2-5	1	5	6	2	16	0	4	2	29	
30	Taylor Robertson	g	8-16	7-13	0-0	0	4	4	2	23	2	3	0	35	
12	Gileysa Penzo	g	0-1	0-0	0-0	0	3	3	0	3	3	0	3	8	
21	Nydia Lampkin	g	2-4	0-0	0-2	1	4	5	1	4	0	0	0	10	
24	Ijeoma Odimgbe	g	0-0	0-0	0-0	0	1	1	0	0	0	1	2	5	
32	Tatum Veitenheimer	g	1-3	1-1	1-4	1	2	3	2	4	6	3	0	28	
Team						7	3	10			1				
Totals			29-69	10-22	12-22	17	33	50	19	80	18	26	5	10	200
1st - FG %:		7-16	43.8%	2nd: 6-20	30.0%	3rd: 5-13	38.5%	4th: 11-20	55.0%	Game: 29-69	42.0%	Deadball			
3FG %:		3-5	60.0%	2-9	22.2%	2-4	50.0%	3-4	75.0%	10-22	45.5%	Rebounds			
FT %:		6-9	66.7%	3-6	50.0%	0-0	0.0%	3-7	42.9%	12-22	54.5%	5			

New Mexico 84 • 4-1

#	Player		Total	3-Ptr	Rebounds											
			FG	FGA	FG	FTA	Off	Def	TP	PF	TP	A	TO	Blk	Stl	Min
21	MCCLURE, Nike	r	2-3	0-1	1-3	3	7	10	3	5	2	1	9	1	30	
44	NUNN, Jaisa	c	6-15	0-1	0-0	4	6	10	5	12	0	0	2	1	24	
03	HURST, Ahlise	g	14-24	9-17	2-4	1	1	2	2	39	1	1	0	2	36	
04	EVERETT, Jayla	g	5-12	1-2	2-3	0	1	1	1	13	4	1	1	3	26	
15	ROBERTSON, Aisia	g	1-13	0-5	3-6	2	4	6	3	5	16	9	0	2	36	
01	NOBLE, Quincy	g	0-1	0-1	0-0	0	0	0	0	0	0	1	0	1	4	
13	MCGRUDER, Shaiquel	g	0-0	0-0	0-0	0	0	0	0	0	0	0	0	0	2	
23	DE LA CERDA, Jaedyn	g	3-9	0-4	0-0	1	1	2	1	6	1	0	0	2	16	
32	ANDERSON, Antonia	g	1-5	0-1	2-2	3	5	8	0	4	0	2	2	3	24	
35	WASHINGTON, Madi	g	0-0	0-0	0-0	0	0	0	0	0	0	1	0	0	2	
Team						6	3	9								
Totals			32-82	10-32	10-18	20	28	48	15	84	24	16	14	15	200	
1st - FG %: 7-17 41.2% 2nd: 9-18 50.0% 3rd: 9-23 39.1% 4th: 7-24 29.2% Game: 32-82 39.0% Deadball																
3FG %: 4-7 57.1% 4-9 44.4% 1-6 16.7% 1-10 10.0% 10-32 31.3% Rebounds																
FT %: 1-4 25.0% 0-0 0.0% 4-6 66.7% 5-8 62.5% 10-18 55.6% 5																

Officials: Kyle Bacon, Michol Murray, Chuck Gonzalez

Technical fouls: Oklahoma-None. New Mexico-TEAM.

Attendance: 5152

2018-19 Women's Basketball. Round: 0. New Mexico vs Oklahoma. Played at .

Score by periods	1st	2nd	3rd	4th	Total
Oklahoma	23	17	12	28	80
New Mexico	19	22	23	20	84

Points	In	Off	2nd	Fast	Bench
OU	36	16	9	37	8
NM	40	33	15	48	10

Last FG - OU 4th-00:10, NM 4th-00:41.

Largest lead - OU by 11 1st-06:46, NM by 16 3rd-03:17.

OU led for 18:39. NM led for 21:06. Game was tied for 00:15.

Score tied - 0 times.

Lead changed - 3 times.