

2018-19 NEW MEXICO WOMEN'S BASKETBALL

GAME NOTES

DANIEL GALLEGOS / ASSISTANT DIRECTOR OF ATHLETIC COMMUNICATIONS | DMGALLEGOS@UNM.EDU | CELL: 501-442-2930

» Eight NCAA Tournament Appearances | 1998, 2002, 2003, 2004, 2005, 2006, 2007, 2008 «
 » Five Mountain West Tournament Championships | 2003, 2004, 2005, 2007, 2008 «

2018-19 / SCHEDULE AND RESULTS

OVERALL RECORD: 1-1
MW RECORD: 0-0
HOME RECORD: 1-1
ROAD RECORD: 0-0
NEUTRAL RECORD: 0-0
STREAK: LI

Date	Opponent	Time
10/30	Lubbock Christian (Exh.)	W, 62-55
11/4	Eastern New Mexico (Exh.)	W, 91-43
11/9	%Texas State	W, 82-51
11/11	%Auburn (Quarterfinals)	L, 76-79
11/18	%Hartford (Consolation Round)	2 p.m.
11/24	at Houston	1 p.m.
11/28	Oklahoma	7 p.m.
12/1	New Mexico State	2 p.m.
12/5	UTEP	7 p.m.
12/8	at Northern Arizona	2 p.m.
12/15	at New Mexico State	2 p.m.
12/19	+Sacramento State	7 p.m.
12/20	+Hampton or SFA	7 p.m.
12/29	at Long Beach State	3 p.m.
1/2	*Air Force	7 p.m.
1/5	*at Nevada	3 p.m.
1/9	*at UNLV	7 p.m.
1/12	*Colorado State	2 p.m.
1/16	*San Diego State	7 p.m.
1/19	*at Wyoming	2 p.m.
1/23	*UNLV	7 p.m.
1/26	*at Utah State	2 p.m.
2/2	*Fresno State	2 p.m.
2/6	*at San Diego State	Noon
2/9	*Nevada	1 p.m.
2/13	*at San Jose State	8 p.m.
2/16	*at Fresno State	3 p.m.
2/20	*Utah State	7 p.m.
2/27	*San Jose State	7 p.m.
3/2	*at Colorado State	2 p.m.
3/4	*at Boise State	7 p.m.
3/7	*Wyoming	7 p.m.

Mountain West Tournament

3/10	First Round	3/5:30/8 pm
3/11	Quarterfinals	1/3:30/7/9:30 pm
3/12	Semifinals	7/9:30 pm
3/13	Championship	8 pm

* - Mountain West game % - Preseason WNIT

^ - Lobo Invitational

Bold - home game at Dreamstyle Arena (15,411)

Game dates & times are Mountain time and subject to change

THE SLATE



NEW MEXICO
LOBOS

Record (MW)
 1-0 (0-0 MW)

Head Coach Mike Bradbury
 Alma Mater, Yr Chattanooga, '93
 Record at UNM 41-27 (3rd year)
 Career Record 219-144 (12th year)

Game Information

Game Number: 3
 Dates: 11/18
 Location: Albuquerque, N.M.
 Venue: Dreamstyle Arena - The Pit

Series History

Overall: First Meeting
 At Home | At Neutral: N/A
 Current Streak: N/A
 First Meeting: 11/18/18
 Last Meeting: N/A

Broadcast Information

Radio: KNML-AM (610)
 Play-By-Play: Josh Suchon
 Analyst: Nikki Lobato
 Live Stream: Mountain West Network
 Live Stats: GoLobos.com



Hartford
Hawks

Record (AE)
 1-2 (0-0 AE)

Head Coach Kim McNeill
 Alma Mater, Yr Richmond, '00
 Record at Hartford 37-29 (3rd year)
 Career Record Same

TIPPING OFF

The University of New Mexico women's basketball team is looking to conclude their play in the Preseason WNIT on a positive note as they play host to the University of Hartford in the consolation round. In the opening game of the tournament, the Lobos were dominant and impressive in their 82-51 win over Texas State to set up a quarterfinal game at home against Auburn of the SEC. The game with the Tigers was about as good as it gets this early in the season as the lead changed hands 15 times and the score was tied on 16 different occasions. In the second half alone, the score was knotted nine times and the lead changed 10 times.

The last of those numerous lead changes went in favor of Auburn,

however, as the Tigers converted an and-one opportunity with under 30 seconds to go. The Lobos were able to get off a pair of good looks from three to tie the game at the buzzer, but neither would fall as Auburn escaped with a 79-76 win.

For the Lobos' opponent, their path to Albuquerque began with an 80-59 win over Morgan State in their WNIT opener. The Hawks then took to the road and lost to No. 24/25 Miami, 75-62 in the quarterfinals.

On the season, the Hawks are 1-2 and are averaging 61.0 points per game. They have two players averaging double figures with Sierra DaCosta leading the way at 16.0 ppg. Defensively, the Hawks are allowing an average of 64.3 ppg in their first three contests.

Probable Starters (Based off of Previous Game)

#	Name	Pos.	Cls.	Ht.	PPG	RPG	APG	SPG	BPG
4	Jayla Everett	G	Fr.	5-10	18.0	4.5	2.0	0.5	0.5
15	Aisia Robertson	G	RsJr.	5-8	13.0	7.5	8.5	2.5	1.0
21	Nike McClure	F	Sr.	6-3	3.0	7.0	1.0	0.5	3.5
23	Jaedyn De La Cerdia	G	So.	5-6	6.5	2.5	2.0	2.0	---
44	Jaisa Nunn	C	Sr.	6-3	15.0	3.5	1.5	3.0	0.5

Off the Bench

#	Name	Pos.	Cls.	Ht.	PPG	RPG	APG	SPG	BPG
1	Quincy Noble	G	Fr.	5-10	5.0	1.0	---	---	2.0
2	Bre'Asiah Mathews	F	Fr.	6-0	---	1.0	---	---	1.0
3	Ahlise Hurst	G	Fr.	5-9	4.5	0.5	1.0	0.5	0.5
11	Emily Lines	G	Sr.	6-1	---	---	---	---	---
13	Shaiquel McGruder	F	Fr.	6-0	3.0	7.0	---	2.0	1.0
24	Erica Moore	C	RsSr.	6-2	---	---	---	1.0	---
32	Antonia Anderson	G/F	So.	6-2	7.5	4.5	1.5	0.5	0.5
35	Madi Washington	G	So.	5-9	6.0	0.5	0.5	1.0	---



UNIVERSITY OF NEW MEXICO

2018-19 WOMEN'S BASKETBALL



UNIVERSITY OF NEW MEXICO

Location.....Albuquerque, N.M.
Founded.....1889 by Territorial Legislature
Enrollment.....25,015
Nickname.....Lobos
Colors.....Cherry (PMS 200) & Silver (PMS Cool Gray 6)
Conference.....Mountain West Conference
National Affiliation.....NCAA Division I
President.....Dr. Garnett Stokes
Director of Athletics.....Eddie Nuñez
Senior Associate A.D.....Brad Hutchins
Assoc. A.D./SWA.....Janice Ruggiero
Faculty Representative.....Amy Neel

FACILITY INFORMATION

Facility.....Dreamstyle Arena - The Pit
Capacity.....15,411
Age.....Built in 1966 (Renovated in 2009-10)
All-Time Home Record.....406-206 (.664)

PROGRAM HISTORY

First Season.....1974-75
Overall Record.....635-535 (.543) in 40 seasons
Overall MW Record.....174-126 (.580) in 19 seasons
Postseason Tournament Appearances.....16
NCAA Tournament Appearances.....8
Last NCAA Postseason Appearance.....2017-18 (WNIT)
Last NCAA Postseason Opponent.....TCU
Last NCAA Postseason Result.....L, 72-81
MW Regular Season Championships.....2
.....(2003-04 & 2004-05)
MW Tournament Championships.....5
.....(2002-03, 2003-04, 2004-05, 2006-07, 2007-08)

TEAM INFORMATION

2017-18 Overall Record.....25-11
2017-18 Mountain West Record.....10-8
2017-18 Mountain West Season Finish.....6th
2017-18 MW Tournament Finish.....Quarterfinals
Letterwinners Returning | Lost.....7 | 7
Starters Returning | Lost.....1 | 4



COACHING STAFF

Head Coach.....Mike Bradbury (Chattanooga, 1993)
Record at UNM (Years).....41-27 (3rd Season)
Career Record (Years).....219-144 (12th Season)
Head Coach Phone.....505-925-5770
Women's Basketball Fax.....505-925-5779
Head Coach E-Mail.....mbradbury@unm.edu

Assistant Coach.....Valerie King (3rd Season)
Alma Mater.....Cincinnati, 2004
Assistant Coach.....Bill Ferrara (2nd Season)
Alma Mater.....Florida, 2003
Assistant Coach.....Symone Denham (1st Season)
Alma Mater.....Wright State, 2016

Director of Operations.....Vera Jo Bustos (5th Season)
Video Coordinator.....Cheyne Dorsey (1st Season)
Athletic Trainer.....Andrea Quintana
Strength Coach.....Jeremy Golden (1st Season)
Academic Adviser.....Brian Ferguson

MISCELLANEOUS INFORMATION

2017-18 Total Attendance Average.....106, 026
2017-18 Average Attendance.....4,819
2017-18 NCAA Attendance Rank.....18th
2017-18 Mountain West Attendance Rank.....1st

MULTIMEDIA INFORMATION

Athletics Website.....www.GoLobos.com
Main University Web Site.....www.unm.edu
Conference Web Site.....www.TheMW.com
Facebook.....www.facebook.com/NewMexicoLobos
Twitter.....@UNMLobos

MEDIA RELATIONS

Women's Basketball Contact.....Daniel Gallegos
Cell Phone (Preferred).....501-442-2930
Email.....dmgallegos@unm.edu
Address:.....

Department of Athletics
Colleen J. Maloof Administration Building
MSC04 2680
1 University of New Mexico
Albuquerque, NM 87131-0001



UNIVERSITY OF NEW MEXICO

2018-19 WOMEN'S BASKETBALL



THE WEEK AHEAD

Sunday	Monday	Tuesday	Wednesday	Thursday	Friday	Saturday
H 18	12	13	14	15	16	17
vs. Hartford 2 p.m. Dreamstyle Arena - The Pit Albuquerque, N.M.						

MW STANDINGS

2018-19 Standings (as of 11-12-18)

Team	GAC	Pct.	Overall	Pct.	Streak
Boise State	0-0	.000	2-0	1.000	W2
Colorado State	0-0	.000	1-0	1.000	W1
San Diego State	0-0	.000	1-0	1.000	W1
Utah State	0-0	.000	2-0	1.000	W2
NEW MEXICO	0-0	.000	1-1	.500	L1
Wyoming	0-0	.000	1-1	.500	L1
Air Force	0-0	.000	1-2	.333	L2
Fresno State	0-0	.000	0-1	.000	L1
UNLV	0-0	.000	0-1	.000	L1
Nevada	0-0	.000	0-2	.000	L2
San Jose State	0-0	.000	0-3	.000	L3

The Conference Slate

Tuesday, November 13

San Diego State at Santa Clara | 3 p.m. (PT)

UNLV at UC Irvine | 5 p.m. (PT)

UC Colorado Springs at Wyoming | 6:30 p.m. (MT)

Wednesday, November 14

Oregon at Utah State | 7 p.m. (MT)

Cal Poly at Fresno State | 7 p.m. (PT)

Thursday, November 15

San Diego State at Cal State Fullerton | 7 p.m. (PT)

Colorado State at Colorado | 7 p.m. (MT)

Friday, November 16

Northwest Christian at Boise State | 5:30 p.m. (MT)

Fairleigh Dickenson at Air Force | 7 p.m. (MT)

Saturday, November 17

Gonzaga at UNLV | 3 p.m. (PT)

Sunday, November 18

Incarnate Word at San Diego State | 1 p.m. (PT)

HARTFORD AT NEW MEXICO | 2 P.M. (MT)

Nevada at Long Beach State | 4 p.m. (PT)



HOW NM STACKS UP IN THE MW

Team Rankings (as of 11-11-18)

Category	Stat	Rank
Scoring Offense	79.0/gm	4th
Scoring Defense	65.0/gm	T-6th
Scoring Margin	+14.0	5th
Free Throw %	.674 (29-of-43)	7th
Field Goal %	.410 (55-of-134)	5th
Field Goal % Def.	.354 (46-of-130)	4th
3PT Field Goal %	.317 (19-of-60)	6th
3PT Field Goals Made	.19 (9.5/gm)	T-2nd
3PT Field Goal % Def.	.276 (8-of-29)	5th
Rebounding (Team)	.86 (43.0/gm)	4th
Rebounding (Opp.)	.85 (42.5/gm)	8th
Rebounding Margin	+0.5	5th
Blocked Shots	.18 (9.0/gm)	1st
Assists	.36 (18.0/gm)	4th
Steals	.26 (13.0/gm)	T-3rd
Turnover Margin	+4.0	T-5th
Assist/Turnover Ratio	1.1	5th
Offensive Rebounds	.32 (16.0/gm)	T-2nd
Defensive Rebounding	.54 (27.0/gm)	4th

Individual Rankings (as of 11-11-18)

Category	Player	Stat	Rank
Scoring	Jayla Everett	36 (18.0 ppg)	T-4th
Rebounding	Aisia Robertson	15 (7.5 rpg)	7th
Field Goal %	Jaisa Nunn	.846 (11-of-13)	1st
Assists	Aisia Robertson	17 (8.5 apg)	1st
Free Throw %	Jayla Everett	1.000 (8-of-8)	T-1st
Steals	Aisia Robertson	5 (2.5 spg)	11th
3PT FG %	Jayla Everett	.615 (8-of-13)	T-6th
3PT FG Made	Jayla Everett	8 (4.0 mpg)	T-1st
Blocked Shots	Nike McClure	7 (3.5 bpg)	1st
AST/TO Ratio	Aisia Robertson	.17 AST/15 TO (1.1)	13th
Off. Rebounds	Jaisa Nunn	6 (3.0 rpg)	T-8th
Def. Rebounds	Aisia Robertson	12 (6.0 rpg)	T-3rd
Minutes Played	Jayla Everett	67 (33.5 mpg)	T-8th

2018-19 MW PLAYERS OF THE WEEK

Week 1 Hailey Bassett-Meacham (Utah St.)	Week 7	Week 13
Week 2	Week 8	Week 14
Week 3	Week 9	Week 15
Week 4	Week 10	
Week 5	Week 11	
Week 6	Week 12	



UNIVERSITY OF NEW MEXICO

2018-19 WOMEN'S BASKETBALL



LAST TIME IT HAPPENED (UNM)

As A Team

Scored 100 Points:	100 - vs. Boise St. (1-3-18)
Scored 90 Points:	93 - vs. Rice (3-20-18)
Scored Fewer Than 50 Points:	42 - at UNLV (1-11-17)
Scored Fewer Than 40 Points:	38 - at Colorado St. (1-3-15)
Won by 40 Points:	107-66 - vs. Northern N.M. (11-15-17)
Won By 30 Points:	82-51 - vs. Texas State (11-9-18)
Lost By 30 Points:	L, 97-59 - at No. 18 DePaul (11-16-14)
Lost By 40 Points:	L, 105-63 - at Oklahoma (12-16-17)
Shot 60% or Better:	61.2% - Pacific (11-9-01)
Shot Less Than 30%:	28.6% (18-63) - Colorado St. (2-28-18)
Shot 60% 3FG or Better:	68.2% (15-22) - at NMSU (12-2-17)
Shot Less Than 20% 3FG:	17.4 (4-23) - Colorado St. (2-28-18)
Made 15 3-Pointers:	15 - vs. Utah St. (1-31-18)
Shot 90% on FTs (10 or more):	94.4% (17-18) - vs. Fresno St. (1-13-18)
Shot Less Than 40% On FTs:	14.3% (1-7) - at UTEP (11-30-17)
Had 50 Rebounds:	59 - vs. San Jose St. (3-5-18)
Had 20 Offensive Rebounds:	20 - at Fresno St. (3-2-18)
Had 25 Assists:	25 - vs. SJSU (2-3-18)
Had 20 Turnovers:	20 - vs. Lamar (12-20-17)
Had Less Than 10 Turnovers:	7 - vs. Wyoming (3-6-18)
Had 10 Steals:	11 - vs. Auburn (11-11-18)
Had 10 Blocks:	16 - vs. Texas State (11-9-18)
Had Two 20-Point Scorers: vs. TCU (3-22-18)
.....	Tesha Buck (24) and Cherise Beynon (20)
Had Three 20-Point Scorers: at Fresno St. (3-2-18)
.....	Tesha Buck (30), Jaisa Nunn (22) and Cherise Beynon (22)
Had 6 Double-Digit Scorers:Never
Had 5 Double-Digit Scorers: at Utah St. (2-14-18)
Had No Double-Digit Scorers:Northern Arizona (12-31-14)
Had Two 10+ Rebounders: vs. San Jose St. (3-5-18)
.....	Jaisa Nunn (11) and Cherise Beynon (10)
Scored 50 Points In 1st Half:	54 - vs. Lamar (12-20-17)
Scored 50 Points In 2nd Half:	53 - vs. Texas State (11-9-18)
Scored 60 Points in a 2nd Half:	63 - vs. Illinois (11-26-17)
Scored 20 Or Fewer Points In 1st Half:	17 - at Colorado St. (2-22-17)
Scored 20 Or Fewer Points In 2nd Half:	19 - at Marquette (12-21-16)
Lowest Pts Scored in Quarter:	2 - vs. Tulsa (11-25-16)
Failed To Make a 3FG: at UNLV (1-11-17)
Defeated a Ranked Team:	W, 88-87 vs. No. 16 Marquette (11-13-17)
Lost To a Ranked Team:	L, 49-48 vs. No. 25 CSU (2-24-16)
Won an OT Game:	W, 93-89 at Fresno St. (3-2-18)
Lost an OT Game:	L, 80-86 vs. Boise St. (2-12-14)
Won a 2OT Game:	W, 64-54 vs. California (11-20-10)
Lost a 2OT Game:	L, 69-65 vs. Fresno St. (1-2-16)

As An Individual

Had a Triple-Double:	Cherise Beynon (22 pts, 13 rebs, 11 assists)
.....	at Fresno St. (3-2-18)
Had a Double-Double (Pts/Reb): C. Beynon (20 pts, 10 reb); J. Nunn (14 pts, 11 reb)
.....	vs. TCU (3-22-18)
Had a Double-Double (Pts/Asst):	Cherise Beynon (20 pts & 10 asts)
.....	vs. Fresno St. (1-13-18)
Had a Double-Double (Reb/Asst): vs. Fairleigh Dickinson (11-12-16)
.....	Cherise Beynon (13 reb, 10 asts)
Scored 20+ Pts with 10+ Rebs:	Cherise Beynon (20 pts, 10 reb)
.....	vs. TCU (3-22-18)
Scored 30 Points:	Cherise Beynon (33) vs. Saint Mary's (3-15-18)
Scored 40 Points:	Cherise Beynon (41) at SDSU (1-20-18)
Scored 30 Points (MW Only): Tesha Buck (30)
.....	at Fresno St. (3-2-18)
Scored 40 points (MW Only): Cherise Beynon (41)
.....	at San Diego St. (1-20-18)
Had 20 Rebounds:	Richelle van der Keijl (20) vs. New Mexico St. (11-15-16)
Had 15 Rebounds:	Jaisa Nunn (17) vs. Lamar (12-20-17)
Had 15 Assists:	Cherise Beynon (15) vs. Boise St. (1-6-18)
Had 5 Steals:	Jaisa Nunn (5) vs. TCU (3-22-18)
Had 5 Blocks:	Nike McClure (6) vs. Texas State (11-9-18)

EVERETT'S EXCITING GAME

In just her second career college game, Jayla Everett showcased a glimpse at what might be an exciting career as a Lobo. In the game against Auburn, Everett scored a game-high 25 points on 7-of-11 shooting overall from floor and a perfect 4-of-4 from the charity stripe. All but one of her field goal attempts in the game came from long range as she was 7-of-10 from deep and even started the game 5-of-5. The seven 3-pointers were the second-most in a game by a Lobo in program history.

BRADBURY AND SEASON-OPENERS

With the 82-51 win over Texas State on Friday, head coach Mike Bradbury improved to 3-0 in season-openers while at the University of New Mexico. In his first season, UNM beat Fairleigh Dickinson 83-56, and last year, the Lobos upended Western Michigan 88-76.

DOMINANT DEBUT

The Lobos' 31-point margin of victory over Texas State (82-51) in the season-opener was the largest defeat UNM has placed on an opponent in a season-opener since the 2008-09 season when the Lobos beat Alcorn State by 56 points (94-38).

AISIA ALL OVER THE MAP

Redshirt junior Aisia Robertson had quite the debut for the Lobos. In her first collegiate action in over a year, the San Francisco, Calif. native flirted with a triple-double. Robertson would lead the team in scoring with 17 points while also dishing out nine assists and hauling in eight rebounds.

BLOCK PARTY HOSTED BY MCCLURE

Length and athleticism were projected to be a newfound strength of the 2018-19 Lobos and in the season-opener both were evident and led by Nike McClure. A senior transfer, McClure blocked six shots on her own as the Lobos would end the night with a new school-record 16.

NUNN'S CLIMB UP THE ALL-TIME SCORING LIST

Senior center Jaisa Nunn became the 22nd player in school history to score 1,000-career points at the end of her junior season. She ended that year 19th on the all-time scoring list. In her senior season, Nunn has the chance to climb the ranks even higher. She is currently 16th with 1,058 points.



UNIVERSITY OF NEW MEXICO

2018-19 WOMEN'S BASKETBALL



LOBOS PICKED 5TH IN PRESEASON MW POLL

The Mountain West recently released its annual preseason predicted order of finish ahead of the 2018-19 women's basketball season and UNM was picked fifth behind preseason favorite Boise State, UNLV, Fresno State and Wyoming. The Lobos were just eight points back of Wyoming as UNM garnered 150 points in the rankings.

NUNN NAMED PRESEASON ALL-MW

Senior center **JAJSA NUNN** continues to solicit a lot of preseason attention and deservedly so based off of her stellar junior season. The most-recent accolade to come Nunn's way is inclusion on the 2018-19 Preseason All-Mountain West Team.

UNM AND UCONN

In their first exhibition game of the season against NCAA Division II perennial power Lubbock Christian, the University of New Mexico did something to LCU that only one of the Division I women's basketball team has done; that's beat the Lady Chaps in an exhibition. Prior to the Lobos' 62-55 win over Lubbock Christian, LCU was 4-1 all-time in exhibition games versus DI opponents with the lone loss coming at the hands of UCONN in 2015.

UNBLEMISHED IN EXHIBITION GAMES

The Lobos went 2-0 in their exhibition games ahead of the start of the 2018-19 season. The Lobos are now 6-0 under head coach **MIKE BRADBURY** in exhibition games.

SHAKING OFF FIRST GAME JITTERS

While none of the stats count during exhibition games, there was marked improvement from the first exhibition game to the second for several newcomers for the Lobos. In the exhibition opener against Lubbock Christian, true freshmen, **JAYLA EVERETT**, **AHLISE HURST**, **BRE'ASIAJAH MATHEWS**, and **QUINCY NOBLE** combined to score three (3) points on 1-of-23 shooting overall from the floor. In the second exhibition game, however, those same four combined to score 37 points on 14-of-21 shooting overall from the floor.

NUNN LIKE HER

JAJSA NUNN set herself apart from many of her counterparts last season as the rising senior was the lone player in the Mountain West to average a double (points/rebounds). In her junior campaign, Nunn was the team's leading scorer and ranked second in the MW with 17.0 ppg while also topping the team and league in rebounds at 10.2. Already a 1,000-point career scorer, Nunn is within striking distance of becoming a 1,000-rebounder as well. The most rebounds in a career is 982 held by Carol Moreland. Nunn is already in the Top-10 all time at UNM, ranking 10th with 654.

LAST TIME IT HAPPENED (OPP)

As A Team

Scored 100 Points:	105 - at Oklahoma (12-16-17)
Scored 90 Points:	91 - at Boise State (2-7-18)
Scored Less Than 50 Points:	48 - vs. Colorado State (2-28-18)
Scored Less Than 40 Points:	35 - at UTEP (11-30-17)
Shot 50% Or Better:	50.8% (32-63) - vs. TCU (3-22-18)
Shot Less Than 30%:	29.0% (18-62) - vs. Texas State (11-9-18)
Shot 50% 3FG Or Better:	50.0% (10-20) - vs. Wyoming (2-21-18)
Shot Less Than 20% 3FG:	11.1% (1-9) - vs. Utah State (1-31-18)
Made 15 3-Pointers:	15 - at Oklahoma (12-16-17)
Shot 90% On FTs (10 or more):	90% (18-20) - at Boise State (2-7-18)
Shot Less Than 50% On FTs:	40.0% (3-10) - vs. San Diego State (12-31-16)
Had 50 Rebounds:	55 - vs. Nevada (12-30-17)
Had 20 Offensive Rebounds:	22 - vs. Lamar (12-20-17)
Had 25 Assists:	28 - at SDSU (1-20-18)
Had 30 Turnovers:	30 - vs. Northern New Mexico (11-15-17)
Had Less Than 10 Turnovers:	9 - vs. Wyoming (3-8-18)
Had 10 Steals:	10 - vs. Auburn (11-11-18)
Had 10 Blocks:	10 - vs. Utah State (2-10-16)
Had Two 20-Point Scorers:	at Boise State (2-7-18) Marta Hermida (26), Riley Lupfer (20)
Had 6 Double-Digit Scorers:	Baylor (1-4-95)
Had 5 Double-Digit Scorers:	vs. Navy (12-10-17)
Had No Double-Digit Scorers:	Boise State (2-25-15)
Had Two 10+ Rebounders:	Saint Mary's (3-15-18) Sydney Raggio (12), Megan McKay (10), Stella Beck (10)
Scored 50+ Points In 1st Half:	56 - at Oklahoma (12-16-17)
Scored 50+ Points In 2nd Half:	50 - Saint Mary's (3-15-18)
Scored 20 Or Less Points In 1st Half:	18 - vs. Utah State (1-31-18)
Scored 20 Or Less In 2nd Half:	17 - vs. Nevada (3-4-16)
Failed To Make a 3FG:	0-1 by San Diego State (2-18-15)

As An Individual

Had a Double-Double (Pts/Reb):	Unique Thompson (19 pts, 19 reb) vs. Auburn (11-11-18)
Had a Double-Double (Pts/Asst):	Mindy Bonham (17 pts & 10 assts) BYU (3-1-11)
Had 20+ Points & 10+ Rebounds:	Erica Ogwumike (31 pts, 10 reb) vs. Rice (3-20-18)
Scored 30 Points:	Erica Ogwumike (31) - vs. Rice (3-20-18)
Scored 30 Points (MW Only):	Candice White (32) - at Fresno State (3-2-18)
Had 20 Rebounds:	Kaylee Johnson (22) - No. 1 Stanford (11-24-14)
Had 15 Rebounds:	Unique Thompson (19) - Auburn (11-11-18)
Had 10 Assists:	Geena Gomez (11) - at SDSU (1-20-18)
Had 5 Steals:	McKynzie Fort (5) - vs. San Diego State (2-6-16)
Had 5 Blocks:	AJ Cephas (5) - at Nevada (1-7-17)



UNIVERSITY OF NEW MEXICO

2018-19 WOMEN'S BASKETBALL



LOBOS RECORD WHEN...

	Overall	In MW
Overall	1-1	0-0
At home	1-1	0-0
On the road	0-0	0-0
At neutral sites	0-0	0-0
After a win	0-0	0-0
After a loss	0-0	0-0
In overtime	0-0	0-0
vs. ranked opponents	0-0	0-0
Games decided by 1-4 points	0-1	0-0
Games decided by 5-9 points	0-0	0-0
Games decided by 10-19 points	0-0	0-0
Games decided by 20+ points	1-0	0-0
Leading after Q1	0-0	0-0
Trailing after Q1	1-1	0-0
Tied after Q1	0-0	0-0
Leading at half	1-0	0-0
Trailing at half	0-1	0-0
Tied at half	0-0	0-0
Leading after Q3	1-0	0-0
Trailing after Q3	0-1	0-0
Tied after Q3	0-0	0-0
Shooting 50% or better	0-0	0-0
Shooting between 40-49.9%	1-0	0-0
Shooting less than 40%	0-1	0-0
Opponent shoots 50% or better	0-0	0-0
Opponent shoots b/w 40-49.9%	0-1	0-0
Opponent shoots b/w 30-39.9%	0-0	0-0
Opponent shoots less than 30%	1-0	0-0
UNM higher FG%	1-0	0-0
Opponent higher FG%	0-1	0-0
FG% Tied	0-0	0-0
UNM outrebounds	1-0	0-0
Opponent outrebounds	0-1	0-0
Rebounds tied	0-0	0-0
UNM more made free throws	1-0	0-0
Opponent more made free throws	0-1	0-0
Made free throws tied	0-0	0-0
UNM 3FG% higher	0-0	0-0
Opponent 3FG% higher	1-1	0-0
3FG% tied	0-0	0-0
UNM has more fouls	1-0	0-0
Opponent has more fouls	0-0	0-0
Fouls are tied	0-1	0-0
UNM more turnovers	0-0	0-0
Opponent more turnovers	1-1	0-0
Turnovers tied	0-0	0-0
Scoring less than 50 points	0-0	0-0
Scoring 50-59 points	0-0	0-0
Scoring 60-69 points	0-0	0-0
Scoring 70-79 points	0-1	0-0
Scoring 80-89 points	1-0	0-0
Scoring 90-99 points	0-0	0-0
Scoring 100+ points	0-0	0-0
Allowing 40 points or less	0-0	0-0
Allowing 41-49 points	0-0	0-0
Allowing 50-59 points	1-0	0-0
Allowing 60-69 points	0-0	0-0
Allowing 70-79 points	0-1	0-0
Allowing 80-89 points	0-0	0-0
Allowing 90+ points	0-0	0-0
In November	1-1	0-0
In December	0-0	0-0
In January	0-0	0-0
In February	0-0	0-0
In March	0-0	0-0

NUNN NAMED TO LISA LESLIE WATCH LIST

Prior to the 2018-19 season tipoff, UNM senior **JAJSA NUNN** been named to the preseason watch list for the 2019 Lisa Leslie Award. Entering its second year and named after the three-time All-American and 1994 National Player of the Year, the Lisa Leslie Award recognizes the top centers in women's NCAA Division I college basketball and is a part of the larger Naismith Starting 5, honoring the best players at each position.

Nunn is among 20 to be on the initial watch list, and is one of two from the Mountain West.

LOOKING TO BUILD OFF LAST SEASON

Last season was a breakout year for the University of New Mexico women's basketball team under the direction of second-year head coach **MIKE BRADBURY** as the 2017-18 Lobos went 25-11. It was the only the second time in the last nine years that a UNM women's basketball team won at least 20 games and the 25 wins tied for the second-most wins in a season in program history.

0 - 90+

Last season, the Lobos averaged 80.4 points per game to lead the Mountain West and rank 16th in DI. Prior to last year, the women's basketball program at UNM had registered 37 games of scoring 90 or more points. In 2017-18 alone, the Lobos achieved that scoring feat 10 times and one three occasions went over the century mark.

DIALING LONG DISTANCE

The Lobos' high-powered offense was spurred on last season by the 3-point shot. In that regard, UNM attempted the eighth-most 3-pointers in the country with 932 tries from long range. The Lobos also buried them rather often as they made 319 to rank 11th in DI.

YOUNG TALENT ABOUND

Only one starter from the 2017-18 team returns this season for the Lobos, leaving a significant amount of playing time. While the Lobos do return seven letterwinners from last year, they also hauled in a highly-touted recruiting class that was ranked as high as No. 19 by ESPNW. Among that class, the Lobos inked four prospects that were rated at least 3-Star by ESPNW. The highest ranked among that incoming freshman class was **JAYLA EVERETT**. The St. Louis native was ranked the No. 27 guard and 94th overall in the 2018 class.

Outside of Everett, the Lobos will benefit from the services of fellow incoming freshmen **QUINCY NOBLE**, **BRE'ASISAJAH MATHEWS**, **AHLISE HURST** and **SHAIQUEL MCGRUDER**.



UNIVERSITY OF NEW MEXICO 2018-19 WOMEN'S BASKETBALL



IMPACT TRANSFERS

In looking to replace the starters from last year, the Lobos also turned to transfers and added three DI transfers over the summer. New to the program are **NIKE MCCLURE** (Washington State), **NAJALA HOWELL** (UTEP), and **BRIDE KENNEDY-HOPOATE** (Iowa State). That trio joins Kansas-transfer **AISIA ROBERTSON**, who will be eligible to play this season after sitting out last season. Only McClure will be eligible to play this season as a graduate transfer while Kennedy-Hopoate and Howell will sit this season as Robertson did last year.

THERE'S NO PLACE LIKE HOME

Dreamstyle Arena - The Pit is nationally recognized as one of the top basketball venues for college basketball. Need proof?! How about Sports Illustrated ranking it as one of the Top-20 sporting venues, of any sport, in the world for the 20th century!

Yes, The Pit is truly a special place, and it has created an unparalleled environment for the New Mexico women's basketball program over the years. The Lobos have led the Mountain West in attendance every year of the conference's existence since the 1999-00 season. Additionally, during that same span, the program has ranked in the Top-20 nationally in attendance in each of those years.

Wanna talk records?! The UNM women's basketball team is an impressive 405-205 at home all-time, a winning percentage of .664 heading into the 2018-19 season. This year, they are 1-1 at Dreamstyle Arena - The Pit.

LOBOS FROM NEAR AND FAR

The Lobo women's basketball roster has a mixture of athletes from near and far on its 2018-19 roster. The Lobos have players from eight different states and two by way of the international route. The Lobos feature players from California, Florida, Indiana, Missouri, New Mexico, Ohio, Texas and Washington. Additionally, the Lobos have a pair of players from "Down Under" in Australia.

UNM STARTING LINEUPS (GAME)

Game	G	G	G	F	C
11/9 Texas St.	Robertson	De La Cerda	Everett	McClure	Nunn
11/11 Auburn	Robertson	De La Cerda	Everett	McClure	Nunn
11/18 Hartford					
11/24 at Houston					
11/28 Oklahoma					
12/1 NMSU					
12/5 UTEP					
12/8 at NAU					
12/15 at NMSU					
12/19 Sacramento St.					
12/20 Hampton or SFA					
12/29 at Long Beach St.					
1/2 Air Force					
1/5 at Nevada					
1/9 at UNLV					
1/12 Colorado St.					
1/16 San Diego St.					
1/19 at Wyoming					
1/23 UNLV					
1/26 at Utah St.					
2/2 Fresno St.					
2/6 at San Diego St.					
2/9 Nevada					
2/13 at San Jose St.					
2/16 at Fresno St.					
2/20 Utah St.					
2/27 San Jose St.					
3/2 at Colorado St.					
3/4 at Boise St.					
3/7 Wyoming					

UNM STARTING LINEUPS (RECORD)

Robertson, De La Cerda, Everett, McClure, Nunn..... 1-1





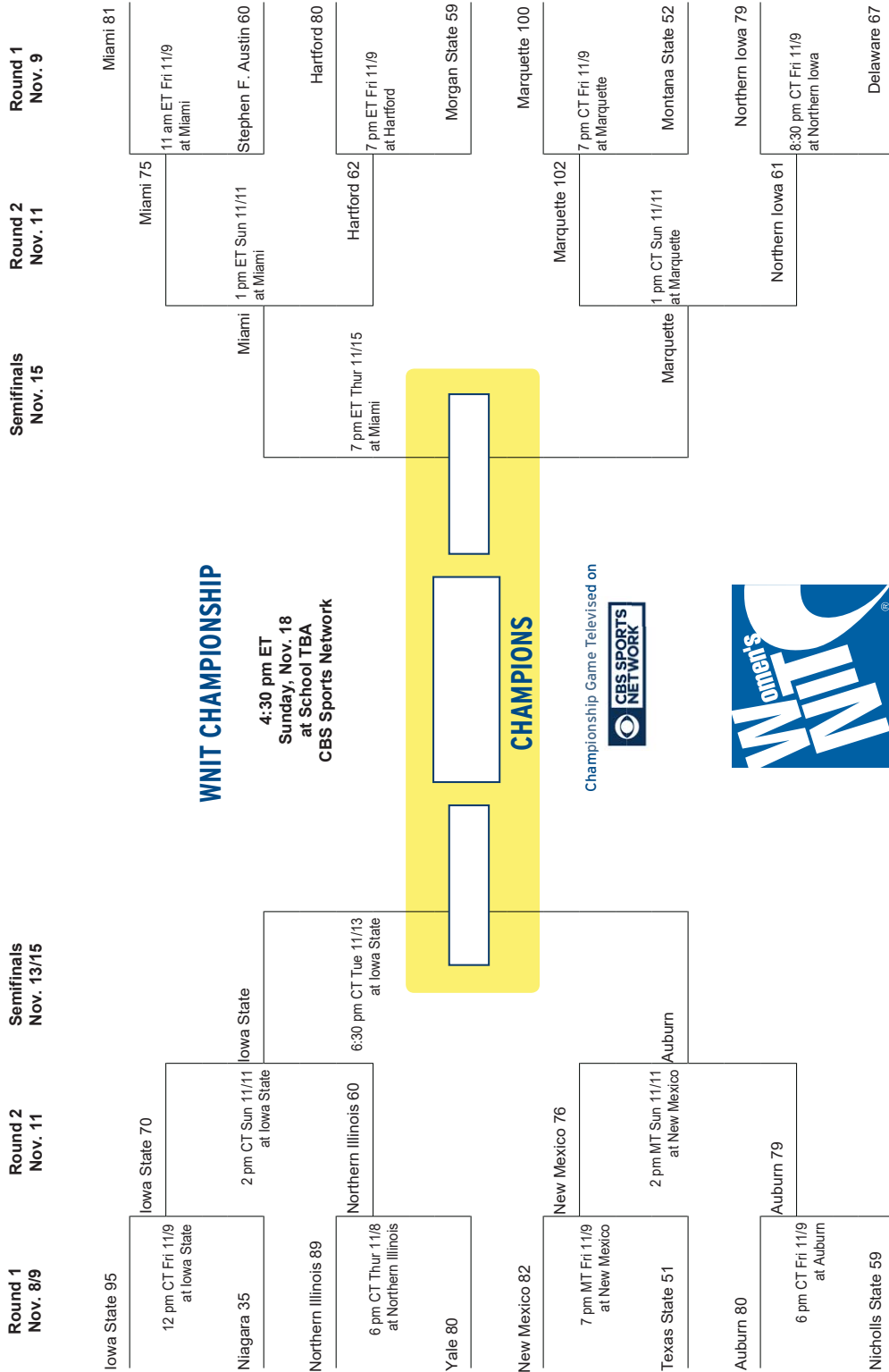
UNIVERSITY OF NEW MEXICO 2018-19 WOMEN'S BASKETBALL



Produced by **TRIPLE CROWN**

PRESEASON WNIT BRACKET

2018 Women's National
Invitation Tournament



All game times are according to host school's time zone.



UNIVERSITY OF NEW MEXICO 2018-19 WOMEN'S BASKETBALL



2018 Women's National Invitation Tournament



Produced by
TRIPLE CROWN
SPORTS

CONSOLATION ROUND 1 (Round 1 Losers)

November 16

CONSOLATION ROUND 2 November 17

CONSOLATION ROUND 2 November 17

Montana State (visitor)

GAME 1
4 pm CT Fri Nov. 16
at Texas State
Delaware (home)

(visitor)

At Texas State University

Game 1 loser vs. Game 2 loser
(4/6:30 pm) Sat Nov. 17 at Texas St

Game 1 winner vs. Game 2 winner
(4/6:30 pm) Sat Nov. 17 at Texas St

Nicholls State (visitor)

GAME 2
6:30 pm CT Fri Nov. 16
at Texas State
Texas State (home)

(home)

Northern Iowa

SITE A

2 pm CT Sun Nov. 18
at Northern Illinois

Northern Illinois

Niagara (visitor)

GAME 1
4 pm CT Fri Nov. 16
at Stephen F. Austin
Yale (home)

(visitor)

At Stephen F. Austin State Univ.

Game 1 loser vs. Game 2 loser
2 pm CT Sat Nov. 17 at SFA

Game 1 winner vs. Game 2 winner
4:30 pm CT Sat Nov. 17 at SFA

Morgan State (visitor)

GAME 2
6:30 pm CT Fri Nov. 16
at Stephen F. Austin
Stephen F. Austin (home)

(home)

Hartford

SITE B

2 pm MT Sun Nov. 18
at New Mexico

New Mexico



All game times are according to host school's time zone.



UNIVERSITY OF NEW MEXICO

2018-19 WOMEN'S BASKETBALL



WBCA TOP-25 (2018-19 PRE)

#	School (1st-place votes)	Rec.	LW
1.	Notre Dame (30)	(35-3)	1
2.	Connecticut (2)	(36-1)	3
3.	Oregon	(33-5)	5
4.	Louisville	(36-3)	4
5.	Baylor	(33-2)	9
6.	Mississippi State	(37-2)	2
7.	Stanford	(24-11)	13
8.	Texas	(28-7)	10
9.	Oregon State	(26-8)	8
10.	Maryland	(26-8)	18
11.	South Carolina	(29-7)	6
12.	Tennessee	(25-8)	17
13.	Georgia	(26-7)	19
14.	Missouri	(24-8)	22
15.	DePaul	(27-8)	23
16.	North Carolina State	(26-9)	16
17.	Iowa	(24-8)	NR
18.	Syracuse	(22-9)	NR
19.	Marquette	(24-10)	NR
20.	Duke	(24-9)	12
21.	South Florida	(26-8)	24
21.	Texas A&M	(26-10)	11
23.	UCLA	(27-8)	7
24.	Miami (Fla.)	(22-11)	NR
25.	West Virginia	(25-12)	NR

Others receiving votes: Arizona State; Michigan; Florida State; California; Central Michigan; LSU; Kansas; Florida Gulf Coast; Minnesota; Washington; Drake; North Carolina; Illinois; Quinnipiac; Villanova; Wisconsin-Green Bay; Jacksonville; Ohio State; Arkansas-Little Rock; Duquesne; Florida; Kentucky; Buffalo; Gonzaga; Michigan State; Alabama State; Boise State; Houston; Idaho; Princeton; Central Florida; Southern California



AP TOP-25 (AS OF 11/11/18)

#	School (1st-place votes)	Rec.	LW
1	Notre Dame (30)	1-0	1
2	UConn	1-0	2
3	Oregon (1)	2-0	3
4	Baylor	3-0	4
5	Louisville	2-0	5
6	Mississippi State	2-0	6
7	Stanford	2-0	7
8	Oregon State	1-0	8
9	Maryland	2-0	9
10	South Carolina	1-0	10
11	Texas	1-0	T-11
12	Tennessee	1-0	T-11
13	Iowa	2-0	13
14	Georgia	2-0	14
15	DePaul	1-0	15
16	Missouri	1-0	16
17	North Carolina State	2-0	17
18	Syracuse	1-1	18
19	Marquette	3-0	19
20	Texas A&M	2-0	20
21	South Florida	2-0	22
22	Arizona State	1-1	23
23	California	2-0	24
24	Miami	3-0	25
25	Minnesota	1-0	NR

Others receiving votes: West Virginia 32, Central Michigan 26, Northwestern 15, Duke 7, **Boise State 4**, TCU 4, Drake 3, Michigan 3, Florida State 2, Virginia Tech 2, Buffalo 1.





UNIVERSITY OF NEW MEXICO

2018-19 WOMEN'S BASKETBALL



PRONUNCIATION GUIDE

2	BRE'ASIAJAH Matthews.....	Bre-Asia
3	AHLISE Hurst.....	AH-lease
12	BRIDE Kennedy-HOPOATE... Bride-EE (Hop-o-ate)	
13	SHAIQUEL McGruder.....	Shy-kell
14	NAJALA Howell.....	Nah-Juh-La
23	JAEDYN De La Cerda.....	JAY-dun
44	JAISA Nunn.....	JAY-suh

BY ELIGIBILITY

Seniors (4)

11	Emily Lines.....	G
21	Nike McClure.....	F
24	Erica Moore.....	C
44	Jaisa Nunn.....	C

Juniors (3)

12	Bride Kennedy-Hopoate.....	F
14	Najala Howell.....	G
15	Aisia Robertson.....	G

Sophomores (3)

23	Jaedyn De La Cerda.....	G
32	Antonia Anderson.....	G/F
35	Madi Washington.....	PG

Freshmen (5)

1	Quincy Noble.....	G
2	Bre'Asiah Mathews.....	F
3	Ahlise Hurst.....	G/F
4	Jayla Everett.....	G
13	Shaiquel McGruder.....	F

HOME STATE

California (1)

15	Aisia Robertson.....	G
----	----------------------	---

Florida (1)

11	Emily Lines.....	G
----	------------------	---

Indiana (1)

24	Erica Moore.....	C
----	------------------	---

Missouri (1)

4	Jayla Everett.....	G
---	--------------------	---

New Mexico (1)

23	Jaedyn De La Cerda.....	G
----	-------------------------	---

Ohio (1)

13	Shaiquel McGruder.....	F
----	------------------------	---

Texas (5)

1	Quincy Noble.....	G
2	Bre'Asiah Mathews.....	F
14	Najala Howell.....	G
32	Antonia Anderson.....	G/F
35	Madi Washington.....	G

Washington (2)

21	Nike McClure.....	F
44	Jaisa Nunn.....	C

INTERNATIONAL

3	Ahlise Hurst (Australia).....	G/F
12	Bride Kennedy-Hopoate (Australia).....	F

NUMERICAL ROSTER

#	NAME	POS	HT	YR	EXP.	HOMETOWN (LAST SCHOOL/TEAM)
1	Quincy Noble	G	5-10	Fr.		McKinney, Texas (McKinney HS)
2	Bre'Asiah Mathews	F	6-0	Fr.		Garland, Texas (Lakeview Centennial HS)
3	Ahlise Hurst	G/F	5-9	Fr.		Bendigo, Australia (Bendigo Senior-Secondary)
4	Jayla Everett	G	5-10	Fr.		St. Louis, Mo. (Kirkwood HS)
11	Emily Lines	G	6-1	Sr.		Naples, Fla. (First Baptist Academy)
12	Bride Kennedy-Hopoate	F	6-4	RsJr.		Brisbane, Australia (Iowa State)
13	Shaiquel McGruder	F	6-0	Fr.		Trotwood, Ohio (Trotwood-Madison HS)
14	Najala Howell	G	5-10	RsJr.		DeSoto, Texas (UTEP)
15	Aisia Robertson	G	5-8	RsJr.		San Francisco, Calif. (Kansas)
21	Nike McClure	F	6-3	Sr.		Tenino, Wash. (Washington State)
23	Jaedyn De La Cerda	G	5-6	So.		Roswell, N.M. (Roswell HS)
24	Erica Moore	C	6-2	R-Sr.		Fishers, Ind. (Purdue)
32	Antonia Anderson	G/F	6-2	So.		Cibolo, Texas (Byron P. Steele II HS)
35	Madi Washington	PG	5-9	So.		Red Oak, Texas (Red Oak HS)
44	Jaisa Nunn	C	6-3	Sr.		Kirkland, Wash. (Juanita HS)

COACHING STAFF

Head Coach	Mike Bradbury (Third Season, UT-Chattanooga, 1993)
Assistant Coach	Valerie King (Third Season, Cincinnati, 2004)
Assistant Coach	Bill Ferrara (Second Season, Florida, 2003)
Assistant Coach	Symone Denham (First Season, Wright State, 2016)
Director of Operations	Vera Jo Bustos (Fifth Season, Adams State, 2011)
Video Coordinator	Cheyne Dorsey (First Season, New Mexico, 2016)
Athletic Trainer	Andrea Quintana
Athletic Performance	Jeremy Golden
Athletic Communications	Daniel Gallegos

STARTERS RETURNING (1)

No.	Name	Pos.	Cls.	Pts.	Reb.	Ast.	FG%	FT%
44	Jaisa Nunn	C	Sr.	17.0	10.2	15	.637	.809

OTHER LETTERWINNERS RETURNING (5)

No.	Name	Pos.	Cls.	Pts.	Reb.	Ast.	FG%	FT%
11	Emily Lines	G	Sr.	1.8	1.1	3	.429	.857
23	Jaedyn De La Cerda	G	So.	1.8	0.5	2	.400	.833
24	Erica Moore	C	RsSr.	0.8	0.4	--	.600	1.000
32	Antonia Anderson	F	So.	4.1	3.0	5	.571	.600
35	Madi Washington	G	So.	6.4	1.8	27	.381	.789

STARTERS LOST (4)

No.	Name	Pos.	Cls.	Pts.	Reb.	Ast.	FG%	FT%
0	Cherise Beynon	G	Sr.	16.9	5.9	243	.388	.760
2	Tesha Buck	G	Sr.	14.6	4.6	117	.424	.833
3	N'Dea Flye	PG	Fr.	6.1	3.8	84	.291	.564
4	Alex Lapeyrolerie	G	RsSr.	10.8	4.4	28	.363	.889

OTHER LETTERWINNERS LOST (3)

No.	Name	Pos.	Cls.
10	Jasmine Smith	G	Fr.
22	Mykiel Burleson	G	So.
25	Laneah Bryan	G	Sr.

NEWCOMERS (8)

No.	Name	Pos.	Exp.
1	Quincy Noble	G	HS
2	Bre'Asiah Mathews	F	HS
3	Ahlise Hurst	G/F	HS
4	Jayla Everett	G	HS
12	Bride Kennedy-Hopoate	F	TR
13	Shaiquel McGruder	F	HS
14	Najala Howell	G	TR
21	Nike McClure	F	TR



UNIVERSITY OF NEW MEXICO

2018-19 WOMEN'S BASKETBALL



MIKE BRADBURY | @COACHBRADBURY

RECORD AT UNM: 41-27 (3RD SEASON)

CAREER RECORD: 219-144 (12TH SEASON)

NOTEWORTHY :

- Named the sixth head coach in program history on March 31, 2016
- Led UNM to 25 wins in 2017-18; tied for second-most wins in program history
- Spent six years at Wright State (2010-16) and went 128-73 for the Raiders
- Most single-season wins in Wright State history (26)
- Five 20-win seasons at Wright State with five postseason appearances

MIKE BRADBURY enters his third season as head coach for The University of New Mexico women's basketball team. In his previous two seasons at the helm, Bradbury has guided the Lobos to a 40-26 overall record. Over half of that win total occurred last season as Bradbury's 2017-18 squad went 25-11.

At UNM, Bradbury has coached five All-Mountain West performers with Cherise Beynon, Jaisa Nunn, and Richelle van der Keijl making the All-Mountain West Team. Additional Mountain West plaudits earned under Bradbury have seen Beynon be named to the All-Defensive Team, Mykiel Burleson selected to the All-Freshman Team and van der Keijl and Tesha Buck named the Mountain West Newcomer of the Year in consecutive seasons.

This past season, year two under Bradbury, saw the Lobos have a breakout season, especially offensively as they ended the 2017-18 season averaging 80.4 points per game while also posting an impressive +9.7 scoring margin. Both marks led the Mountain West and the point-per-game total was 16th-best in NCAA DI last season.

A significant reason for the jump in offensive production was the fact that the Lobos were one of the most potent three-point shooting threats in the country. For the season, the Lobos attempted the eighth-most overall trifectas in DI hoisting 932 long distance shots. Successful 34% of the time, the Lobos made the 11th most 3's burying 319.

Prior to coming to Albuquerque, Bradbury built a successful

nine year run as a Division-I head coach with stops at Morehead State (Morehead, Ky.) and Wright State (Dayton, Ohio). Most recently with the Raiders, Bradbury led his squad to five 20-win seasons, including each of his final three seasons. During that time, Wright State has amassed a 75-28 record, the best amongst the 13 Division I programs in the state of Ohio.

Overall at Wright State, Bradbury had five winning seasons, all of which were 20-win seasons, in six years - a feat made all the more remarkable as Wright State had just one winning season in the previous 22 before his arrival. In the previous 37 seasons of women's basketball at Wright State, the Raider program had tallied 20 wins just once before Bradbury led the team to 20 wins in five of his six seasons.

His most prominent three-year run at Wright State started in 2013-14, when the Raiders won a school-record 26 games on the way to a 26-9 season and the program's first-ever appearance in the NCAA Tournament. That season saw the Raiders finish second in the Horizon League and win its first Horizon League Tournament. It also featured the program's first road win at perennial league power Wisconsin-Green Bay. Kim Demmings was named the Horizon League Player of the Year and Tournament MVP, and it marked the first time in school history the program had a pair of first team All-Conference selections.

He followed up that by earning Horizon League Coach of the Year in 2014-15 after a 25-9 season that saw his squad lose its Horizon League Preseason Player of the Year less than two





UNIVERSITY OF NEW MEXICO

2018-19 WOMEN'S BASKETBALL



minutes into the season opener. The Raiders just missed a second straight NCAA Tournament appearance, falling in overtime in the conference championship game. The team did make its first appearance in the Women's NIT as the league's automatic qualifier, and in 2015-16, the team made it back-to-back WNIT appearances after a 24-11 season, earning the program's first at-large bid.

Those three seasons are the three winningest seasons in the history of Wright State women's basketball.

In his first two seasons at Wright State, he led the team to a 20-13 campaign and a 21-13 mark and berths in the Women's Basketball Invitational, the first NCAA Division I postseason berths for the program. Overall, Bradbury has coached three Horizon League Players of the Year (all in his last three seasons), six first-team All-Horizon League players, three second-team members and four All-Freshman team members.

Prior to his time at Wright State, Bradbury was the head coach at Morehead State where he led the Division I program to a 50-44 mark in three seasons, including a watershed 22-11 season, which was the second-most wins in Morehead State history and the most wins by the Eagles in the previous 38 years.

At Morehead State he coached one Ohio Valley Conference Player of the Year, along with one first-team All-OVC pick (two seasons) and three second-team All-OVC picks.

Bradbury also spent time as an assistant coach at Xavier (2002-06), Cincinnati (1996-02), VCU (1995-96), East Tennessee State (1994-95) and Chattanooga (1991-94). In his 27 seasons as an assistant and as a head coach, Bradbury has had 25 winning seasons.

THE BRADBURY FILE

EDUCATION

UT-Chattanooga - B.S. Recreation (1993)

COACHING EXPERIENCE

1991-93	Student Assistant	Chattanooga
1993-94	Assistant Coach	Chattanooga
1994-95	Assistant Coach	East Tennessee
1995-96	Assistant Coach	VCU
1996-02	Assistant Coach	Cincinnati
2002-07	Assistant Coach	Xavier
2007-10	Head Coach	Morehead State
2010-16	Head Coach	Wright State
2016-pres.	Head Coach	New Mexico

HEAD COACHING RECORD

2007-10	Morehead State	50-44 (.532)
2010-16	Wright State	128-73 (.637)
2016-pres.	New Mexico	41-27 (.603)
11 years		219-144 (.6043)

CAREER HEAD COACHING YEAR-BY-YEAR

2007-08	11-19 (9-11)	Morehead State
2008-09	17-14 (11-7)	Morehead State
2009-10	22-11 (14-4)	Morehead State
2010-11	20-13 (11-7)	Wright State
2011-12	21-13 (12-6)	Wright State
2012-13	12-18 (6-10)	Wright State
2013-14	26-9 (12-4)	Wright State
2014-15	25-9 (12-4)	Wright State
2015-16	24-11 (12-6)	Wright State
2016-17	15-15 (10-8)	New Mexico
2017-18	25-11 (10-8)	New Mexico
2018-19	1-1 (0-0)	New Mexico
Total	219-144 (137-75)	



UNIVERSITY OF NEW MEXICO

2018-19 WOMEN'S BASKETBALL



QUINCY NOBLE
G | 5-10 | FR.
MCKINNEY, TEXAS



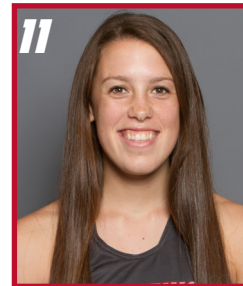
BRE'ASIAJAH MATHEWS
F | 6-0 | FR.
GARLAND, TEXAS



AHLISE HURST
G | 5-9 | FR.
BENDINGO, AUSTRALIA



JAYLA EVERETT
G | 5-10 | FR.
SAINT LOUIS, MO.



EMILY LINES
G | 6-1 | SR.
NAPLES, FLA.



BRIDE KENNEDY-HOPOCATE
F | 6-4 | RSJR.
BRISBANE, AUSTRALIA



SHAIQUEL MCGRUDER
F | 6-0 | FR.
TROTWOOD, OHIO



NAJALA HOWELL
G | 5-10 | RSJR.
DE SOTO, TEXAS



AISIA ROBERTSON
G | 5-8 | RSJR.
SAN FRANCISCO, CALIF.



NIKE MCCLURE
F | 6-3 | SR.
TENINO, WASH.



JAEDYN DE LA CERDA
G | 5-6 | SO.
ROSWELL, N.M.



ERICA MOORE
C | 6-2 | R-SR.
FISHERS, IND.



ANTONIA ANDERSON
G/F | 6-2 | SO.
CIBOLO, TEXAS



MADI WASHINGTON
PG | 5-9 | SO.
RED OAK, TEXAS



JAISA NUNN
C | 6-3 | SR.
KIRKLAND, WASH.

COACHING STAFF



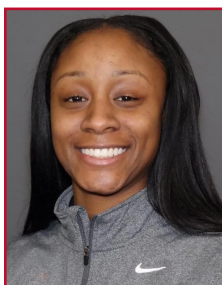
MIKE BRADBURY
HEAD COACH
THIRD SEASON



VALERIE KING
ASSISTANT COACH
THIRD SEASON



BILL FERRARA
ASSISTANT COACH
SECOND SEASON



SYMONE DENHAM
ASSISTANT COACH
FIRST SEASON



VERA JO BUSTOS
DIR. OF OPERATIONS
FIFTH SEASON



CHEYNE DORSEY
VIDEO COORDINATOR
FIRST SEASON



UNIVERSITY OF NEW MEXICO

2018-19 WOMEN'S BASKETBALL



#1

QUINCY NOBLE

G | 5-10 | FR | McKinney, Texas (McKinney HS)



PPG	FG %	3PT %	FT %	RPG	APG	SPG	BPG	MPG
5.0	.333	1.000	1.000	1.0	2.0	6.0

NOTEWORTHY

- » Played at McKinney HS under head coach Debbie Harris
- » Helped McKinney to Bi-District Championship in 2014-15 and 2017-18
- » 6-6A District Co-Offensive Player of the Year as a senior
- » Ranked as #28 guard in the 2018 class by ESPNW
- » Averaged 17.4 ppg, 1.8 apg, 5.5 rpg, and 2.6 spg in HS

Noble's Top Performances

Points	Season	5 vs. Texas State (11/9/18)
	Career	Same
FGM	Season	1 vs. Texas State (11/9/18)
	Career	Same
FGA	Season	3 vs. Texas State (11/9/18)
	Career	Same
3PT FGM	Season	1 vs. Texas State (11/9/18)
	Career	Same
3PT FGA	Season	1 vs. Texas State (11/9/18)
	Career	Same
FTM	Season	2 vs. Texas State (11/9/18)
	Career	Same
FTA	Season	2 vs. Texas State (11/9/18)
	Career	Same
Rebounds	Season	1 vs. Texas State (11/9/18)
	Career	Same
Assists	Season	
	Career	
Blocks	Season	2 vs. Texas State (11/9/18)
	Career	Same
Steals	Season	
	Career	
Turnovers	Season	
	Career	
Min. Played	Season	6 vs. Texas State (11/9/18)
	Career	Same

GAME-BY-GAME STATISTICS

Opponent	Date	gs min		Total		3-Pointers		Free throws		Rebounds										
				fg-fga	pct	3fg-fga	pct	ft-fa	pct	off	def	tot	avg	pf	a	t/o	blk	stl	pts	avg
TEXAS ST.	11/09/18		6	1-3	.333	1-1	1.000	2-2	1.000	1	0	1	1.0	0	0	0	2	0	5	5.0
Totals		0	6	1-3	.333	1-1	1.000	2-2	1.000	1	0	1	1.0	0	0	0	2	0	5	5.0

NOBLE'S CAREER STATS AT UNM

			Total		3-Point		F-Throws		Rebounds											Scoring	
Season	gp-gs	min/avg	fg-fga	pct	fg-fga	pct	ft-fa	pct	off	def	tot	avg	pf	fo	ast	to	blk	stl	pts	avg	
2018-19	1-0	6/6.0	1-3	.333	1-1	1.000	2-2	1.000	1	0	1	1.0	0	0	0	0	2	0	5	5.0	
TOTAL	1-0	6/6.0	1-3	.333	1-1	1.000	2-2	1.000	1	0	1	1.0	0	0	0	0	2	0	5	5.0	



UNIVERSITY OF NEW MEXICO

2018-19 WOMEN'S BASKETBALL



#2

BRE'ASIAJAH MATHEWS

F | 6-0 | FR | Garland, Texas (Lakeview Centennial HS)



PPG	FG %	3PT %	FT %	RPG	APG	SPG	BPG	MPG
...	1.0	1.0	5.0

NOTEWORTHY

- » Played at Lakeview Centennial HS
- » 3-star recruit and rated as the #14 win player in the 2018 class by ESPNW
- » Averaged 18.4 ppg, 9.6 rpg, and 2.9 spg as a junior
- » 3-time All-District First Team honoree
- » District MVP as a junior

Mathews' Top Performances

Points	Season	Career
FGM	Season	Career
FGA	Season	Career
3PT FGM	Season	Career
3PT FGA	Season	Career
FTM	Season	Career
FTA	Season	Career
Rebounds	Season	1 vs. Texas State (11/9/18) Same
Assists	Season	Career
Blocks	Season	1 vs. Texas State (11/9/18) Same
Steals	Season	Career
Turnovers	Season	Career
Min. Played	Season	5 vs. Texas State (11/9/18) Same

GAME-BY-GAME STATISTICS

Opponent	Date	gs min		Total		3-Pointers		Free throws		Rebounds							
				fg-fga	pct	3fg-fga	pct	ft-fta	pct	off	def	tot	avg	pf	a	t/o	blk
TEXAS ST.	11/09/18		5	0-0	.000	0-0	.000	0-0	.000	0	1	1	1.0	1	0	0	1
Totals		0	5	0-0	.000	0-0	.000	0-0	.000	0	1	1	1.0	1	0	0	1

MATHEWS' CAREER STATS AT UNM

			Total		3-Point		F-Throws		Rebounds											Scoring	
Season	gp-gs	min/avg	fg-fga	pct	fg-fga	pct	ft-fta	pct	off	def	tot	avg	pf	fo	ast	to	blk	stl	pts	avg	
2018-19	1-0	5/5.0	0-0	.000	0-0	.000	0-0	.000	0	1	1	1.0	1	0	0	0	1	0	0	0.0	
TOTAL	1-0	5/5.0	0-0	.000	0-0	.000	0-0	.000	0	1	1	1.0	1	0	0	0	1	0	0	0.0	



UNIVERSITY OF NEW MEXICO

2018-19 WOMEN'S BASKETBALL



#3

AHLISE HURST

G | 5-9 | FR | Bendigo, Australia (Bendigo Senior-Secondary)



PPG	FG %	3PT %	FT %	RPG	APG	SPG	BPG	MPG
4.5	.231	.167	.500	0.5	1.0	0.5	0.5	14.5

NOTEWORTHY

- » Played at Bendigo Senior-Secondary School in Bendigo, Australia
- » International playing experience with Vic Country and the Bendigo Braves
- » Helped Vic Country to an Australian national championship
- » Helped Bendigo Braves to a South East Australian Basketball League (SEABL) championship
- » Played as a development player for the Bendigo Spirit of the Australian Women's National Basketball League (WNBL)

Hurst's Top Performances

Points	Season	7 vs. Texas State (11/9/18)
	Career	Same
FGM	Season	2 vs. Texas State (11/9/18)
	Career	Same
FGA	Season	8 vs. Texas State (11/9/18)
	Career	Same
3PT FGM	Season	2 vs. Texas State (11/9/18)
	Career	Same
3PT FGA	Season	8 vs. Texas State (11/9/18)
	Career	Same
FTM	Season	1 vs. Texas State (11/9/18)
	Career	Same
FTA	Season	2 vs. Texas State (11/9/18)
	Career	Same
Rebounds	Season	1 vs. Texas State (11/9/18)
	Career	Same
Assists	Season	2 vs. Texas State (11/9/18)
	Career	Same
Blocks	Season	1 vs. Texas State (11/9/18)
	Career	Same
Steals	Season	1 vs. Texas State (11/9/18)
	Career	Same
Turnovers	Season	
	Career	
Min. Played	Season	23 vs. Texas State (11/9/18)
	Career	Same

GAME-BY-GAME STATISTICS

Opponent	Date	gs	min	Total		3-Pointers		Free throws		Rebounds				pf	a	t/o	blk	stl	pts	avg
				fg-fga	pct	3fg-fga	pct	ft-fa	pct	off	def	tot	avg							
TEXAS ST.	11/09/18	23		2-8	.250	2-8	.250	1-2	.500	0	1	1	1.0	4	2	0	1	1	7	7.0
AUBURN	11/11/18	6		1-5	.200	0-4	.000	0-0	.000	0	0	0	0.5	0	0	0	0	0	2	4.5
Totals		0	29	3-13	.231	2-12	.167	1-2	.500	0	1	1	0.5	4	2	0	1	1	9	4.5

HURST'S CAREER STATS AT UNM

Season	gp-gs	min/avg	Total		3-Point		F-Throws		Rebounds				pf	fo	ast	to	blk	stl	Scoring	
			fg-fga	pct	fg-fga	pct	ft-fa	pct	off	def	tot	avg							pts	avg
2018-19	2-0	29/14.5	3-13	.231	2-12	.167	1-2	.500	0	1	1	0.5	4	0	2	0	1	1	9	4.5
TOTAL	2-0	29/14.5	3-13	.231	2-12	.167	1-2	.500	0	1	1	0.5	4	0	2	0	1	1	9	4.5



UNIVERSITY OF NEW MEXICO

2018-19 WOMEN'S BASKETBALL



#4

JAYLA EVERETT

G | 5-10 | FR | St. Louis, Mo. (Kirkwood HS)



PPG	FG %	3PT %	FT %	RPG	APG	SPG	BPG	MPG
18.0	.476	.615	1.000	4.5	2.0	0.5	0.5	33.5

NOTEWORTHY

- » Made 7 three-pointers against Auburn; second-most 3s in a game by a Lobo
- » Played at Kirkwood HS under head coach Monica Tritz
- » 4-star recruit ranked as the #27 guard and #94 overall player in the 2018 class by ESPNW
- » Helped lead HS team to consecutive state championships as a junior and a senior
- » Averaged 16.9 ppg, 4.0 rpg, 3.8 apg, and 2.2 spg as a senior
- » Twice named Missouri Basketball Coaches Association (MBCA) 5A All-State and tabbed as Player of the Year as a senior

Everett's Top Performances

Points	Season	25 vs. Auburn (11/11/18)
	Career	Same
FGM	Season	7 vs. Auburn (11/11/18)
	Career	Same
FGA	Season	11 vs. Auburn (11/11/18)
	Career	Same
3PT FGM	Season	7 vs. Auburn (11/11/18)
	Career	Same
3PT FGA	Season	10 vs. Auburn (11/11/18)
	Career	Same
FTM	Season	4 - done twice
	Career	Same
FTA	Season	4 - done twice
	Career	Same
Rebounds	Season	6 vs. Auburn (11/11/18)
	Career	Same
Assists	Season	2 - done twice
	Career	Same
Blocks	Season	1 vs. Texas State (11/9/18)
	Career	Same
Steals	Season	1 vs. Texas State (11/9/18)
	Career	Same
Turnovers	Season	4 vs. Texas State (11/9/18)
	Career	Same
Min. Played	Season	38 vs. Auburn (11/11/18)
	Career	Same

GAME-BY-GAME STATISTICS

Opponent	Date	gs	min	Total		3-Pointers		Free throws		Rebounds				pf	a	t/o	blk	stl	pts	avg
				fg-fga	pct	3fg-fga	pct	ft-fa	pct	off	def	tot	avg							
TEXAS ST.	11/09/18	*	29	3-10	.300	1-3	.333	4-4	1.000	2	1	3	3.0	2	2	4	1	1	11	11.0
AUBURN	11/11/18	*	38	7-11	.636	7-10	.700	4-4	1.000	3	3	6	4.5	3	2	3	0	0	25	18.0
Totals			2	67	10-21	.476	8-13	.615	8-8	1.000	5	4	9	4.5	5	4	7	1	36	18.0

EVERETT'S CAREER STATS AT UNM

			Total		3-Point		F-Throws		Rebounds											Scoring	
Season	gp-gs	min/avg	fg-fga	pct	fg-fga	pct	ft-fa	pct	off	def	tot	avg	pf	fo	ast	to	blk	stl	pts	avg	
2018-19	2-2	67/33.5	10-21	.476	8-13	.615	8-8	1.000	5	4	9	4.5	5	0	4	7	1	1	36	18.0	
TOTAL	2-2	67/33.5	10-21	.476	8-13	.615	8-8	1.000	5	4	9	4.5	5	0	4	7	1	1	36	18.0	



UNIVERSITY OF NEW MEXICO

2018-19 WOMEN'S BASKETBALL



#11

EMILY LINES

G | 6-1 | SR | Naples, Fla. (First Baptist Academy)



PPG	FG %	3PT %	FT %	RPG	APG	SPG	BPG	MPG
***	***	***	***	***	***	***	***	***

NOTEWORTHY

- » 3-year letterwinner for the Lobos
- » Career 41% 3pt shooter (21-of-51)
- » 3-time Academic All-Mountain West and Mountain West Scholar-Athlete
- » In HS, 3-time Florida Association of Basketball Coaches All-State selection
- » Twice was a finalist for Class 2A Florida Miss Basketball
- » Scored over 2,000 career points and hauled in over 1,000 career rebounds in HS

Lines' Top Performances

Points	Season	15 vs. Boise State (1/30/16)
	Career	
FGM	Season	5 - done Twice
	Career	
FGA	Season	11 vs. Boise State (1/30/16)
	Career	
3PT FGM	Season	3 - done three times
	Career	
3PT FGA	Season	5 - done twice
	Career	
FTM	Season	4 vs. Boise State (1/30/16)
	Career	
FTA	Season	5 vs. Fresno State (1/2/16)
	Career	
Rebounds	Season	5 - done twice
	Career	
Assists	Season	4 at San Diego St. (3/1/16)
	Career	
Blocks	Season	1 - done three times
	Career	
Steals	Season	1 - done three times
	Career	
Turnovers	Season	2 - done twice
	Career	
Min. Played	Season	21 - done twice
	Career	

GAME-BY-GAME STATISTICS

LINES' CAREER STATS AT UNM

			Total		3-Point		F-Throws		Rebounds											Scoring	
Season	gp-gs	min/avg	fg-fga	pct	fg-fga	pct	ft-fga	pct	off	def	tot	avg	pf	fo	ast	to	blk	stl	pts	avg	
2015-16	24-0	141/5.9	19-44	.432	9-21	.429	9-19	.474	11	12	23	1.0	7	0	10	9	1	1	56	2.3	
2016-17	9-0	71/7.9	8-19	.421	7-16	.438	3-6	.500	1	10	11	1.2	3	0	4	5	1	1	26	2.9	
2017-18	16-0	74/4.6	9-21	.429	5-14	.357	6-7	.857	2	16	18	1.1	3	0	3	3	1	1	29	1.8	
TOTAL	49-0	286/5.8	36-84	.429	21-51	.412	18-32	.563	14	38	52	1.1	13	0	17	17	3	3	111	2.3	



UNIVERSITY OF NEW MEXICO 2018-19 WOMEN'S BASKETBALL



#12

BRIDE KENNEDY-HOPOATE

F | 6-4 | RsJR | Brisbane, Australia (Iowa State)



PPG	FG %	3PT %	FT %	RPG	APG	SPG	BPG	MPG
***	***	***	***	***	***	***	***	***

NOTEWORTHY

- » Transfer from Iowa State - must sit out 2018-19 season due to NCAA transfer rules
- » Played at two JUCOs prior to Iowa State and was ranked as the #1 JUCO prospect by All-Star Girls Report
- » Named a NJCAA All-America Third Team player in 2016-17
- » Appeared in 21 games at Iowa State and started 10
- » Averaged 6.7 ppg and 4.2 rpg at Iowa State - scored in double figures in five games

K-H's Top Performances

Points	Season
	Career
FGM	Season
	Career
FGA	Season
	Career
3PT FGM	Season
	Career
3PT FGA	Season
	Career
FTM	Season
	Career
FTA	Season
	Career
Rebounds	Season
	Career
Assists	Season
	Career
Blocks	Season
	Career
Steals	Season
	Career
Turnovers	Season
	Career
Min. Played	Season
	Career

GAME-BY-GAME STATISTICS

KENNEDY-HOPOATE'S CAREER STATS AT UNM



UNIVERSITY OF NEW MEXICO

2018-19 WOMEN'S BASKETBALL



#13

SHAIQUEL McGRUDER

F | 6-0 | FR | Trotwood, Ohio (Trotwood-Madison HS)



PPG	FG %	3PT %	FT %	RPG	APG	SPG	BPG	MPG
3.0	.500	7.0	...	2.0	1.0	11.0

NOTEWORTHY

- » Finished her HS career at Trotwood-Madison HS after previously playing at Wayne Memorial HS
- » 3-star recruit and ranked as the #19 forward in the 2018 class by ESPNW
- » Averaged 25.8 ppg and 9.4 rpg as a senior
- » Led Wayne Memorial to consecutive Greater Western Ohio Conference (GWOC) titles as a sophomore and junior
- » Then lead Trotwood-Madison to GWOC title as a senior
- » Named GWOC East Division Player of the Year and All-Ohio First Team as a senior

McGruder's Top Performances

Points	Season	6 vs. Texas State (11/9/18)
	Career	Same
FGM	Season	3 vs. Texas State (11/9/18)
	Career	Same
FGA	Season	6 vs. Texas State (11/9/18)
	Career	Same
3PT FGM	Season	
	Career	
3PT FGA	Season	
	Career	
FTM	Season	
	Career	
FTA	Season	
	Career	
Rebounds	Season	13 vs. Texas State (11/9/18)
	Career	Same
Assists	Season	
	Career	
Blocks	Season	2 vs. Texas State (11/9/18)
	Career	Same
Steals	Season	4 vs. Texas State (11/9/18)
	Career	Same
Turnovers	Season	1 vs. Texas State (11/9/18)
	Career	Same
Min. Played	Season	16 vs. Texas State (11/9/18)
	Career	Same

GAME-BY-GAME STATISTICS

Opponent	Date	gs	min	Total		3-Pointers		Free throws		Rebounds				pf	a	t/o	blk	stl	pts	avg
				fg-fga	pct	3fg-fga	pct	ft-fa	pct	off	def	tot	avg							
TEXAS ST.	11/09/18	16		3-6	.500	0-0	.000	0-0	.000	5	8	13	13.0	0	0	1	2	4	6	6.0
AUBURN	11/11/18	4		0-0	.000	0-0	.000	0-0	.000	0	1	1	7.0	0	0	0	0	0	0	3.0
Totals		0	20	3-6	.500	0-0	.000	0-0	.000	5	9	14	7.0	0	0	1	2	4	6	3.0

McGRUDER'S CAREER STATS AT UNM

			Total		3-Point		F-Throws		Rebounds											Scoring	
Season	gp-gs	min/avg	fg-fga	pct	fg-fga	pct	ft-fa	pct	off	def	tot	avg	pf	fo	ast	to	blk	stl	pts	avg	
2018-19	2-0	20/10.0	3-6	.500	0-0	.000	0-0	.000	5	9	14	7.0	0	0	0	1	2	4	6	3.0	
TOTAL	2-0	20/10.0	3-6	.500	0-0	.000	0-0	.000	5	9	14	7.0	0	0	0	1	2	4	6	3.0	



UNIVERSITY OF NEW MEXICO

2018-19 WOMEN'S BASKETBALL



#14

NAJALA HOWELL

G | 5-10 | RsJR | DeSoto, Texas (UTEP)



PPG	FG %	3PT %	FT %	RPG	APG	SPG	BPG	MPG
***	***	***	***	***	***	***	***	***

NOTEWORTHY

- » Transferring from UTEP - must sit out 2018-19 season due to NCAA transfer rules
- » Started all 31 games last season for UTEP and led the team in 3PT% (.359)
- » Ranked second on team in scoring (11.9) and rebounding (6.3 rpg)
- » In HS was named the MVP of the Texas Girls Coaches Association All-Star Game in summer of 2015
- » Two-time Texas Association of Basketball Coaches All-State First Team

Howell's Top Performances

Points	Season
	Career
FGM	Season
	Career
FGA	Season
	Career
3PT FGM	Season
	Career
3PT FGA	Season
	Career
FTM	Season
	Career
FTA	Season
	Career
Rebounds	Season
	Career
Assists	Season
	Career
Blocks	Season
	Career
Steals	Season
	Career
Turnovers	Season
	Career
Min. Played	Season
	Career

GAME-BY-GAME STATISTICS

HOWELL'S CAREER STATS AT UNM



UNIVERSITY OF NEW MEXICO

2018-19 WOMEN'S BASKETBALL



#15

AISIA ROBERTSON

G | 5-8 | RsJR | San Francisco, Calif. (Kansas)



PPG	FG %	3PT %	FT %	RPG	APG	SPG	BPG	MPG
13.0	.324	.222	.250	7.5	8.5	2.5	1.0	31.5

NOTEWORTHY

- » Eligible to play after sitting out last season as a transfer from Kansas
- » Selected to play in the 2018 USA Basketball 3x3 Open National Championships with teammates Antonia Anderson, Jaisha Nunn and Madi Washington
- » Played in over 50 games in two seasons at Kansas
- » Ranked #18 guard and #85 overall player out of HS by ProspectNation
- » Received a McDonald's All-America Nomination in 2015

Robertson's Top Performances

Points	Season	17 vs. Texas State (11/9/18)
	Career	Same
FGM	Season	8 vs. Texas State (11/9/18)
	Career	Same
FGA	Season	18 vs. Auburn (11/11/18)
	Career	Same
3PT FGM	Season	1 - done twice
	Career	Same
3PT FGA	Season	7 vs. Auburn (11/11/18)
	Career	Same
FTM	Season	2 vs. Auburn (11/11/18)
	Career	Same
FTA	Season	6 vs. Auburn (11/11/18)
	Career	Same
Rebounds	Season	8 vs. Texas State (11/9/18)
	Career	Same
Assists	Season	9 vs. Texas State (11/9/18)
	Career	Same
Blocks	Season	2 vs. Texas State (11/9/18)
	Career	Same
Steals	Season	3 vs. Texas State (11/9/18)
	Career	Same
Turnovers	Season	10 vs. Texas State (11/9/18)
	Career	Same
Min. Played	Season	40 vs. Auburn (11/11/18)
	Career	Same

GAME-BY-GAME STATISTICS

Opponent	Date	gs	min	Total		3-Pointers		Free throws		Rebounds				pf	a	t/o	blk	stl	pts	avg
				fg-fga	pct	3fg-fga	pct	ft-fga	pct	off	def	tot	avg							
TEXAS ST.	11/09/18	*	24	8-16	.500	1-2	.500	0-2	.000	3	5	8	8.0	2	9	10	2	3	17	17.0
AUBURN	11/11/18	*	40	3-18	.167	1-7	.143	2-6	.333	0	7	7	7.5	4	8	5	0	2	9	13.0
Totals		2	64	11-34	.324	2-9	.222	2-8	.250	3	12	15	7.5	6	17	15	2	5	26	13.0

ROBERTSON'S CAREER STATS AT UNM

Season	gp-gs	min/avg	Total		3-Point		F-Throws		Rebounds				Scoring							
			fg-fga	pct	fg-fga	pct	ft-fa	pct	off	def	tot	avg	pf	fo	ast	to	blk	stl	pts	avg
2018-19	2-2	64/32.0	11-34	.324	2-9	.222	2-8	.250	3	12	15	7.5	6	0	17	15	2	5	26	13.0
TOTAL	2-2	64/32.0	11-34	.324	2-9	.222	2-8	.250	3	12	15	7.5	6	0	17	15	2	5	26	13.0



UNIVERSITY OF NEW MEXICO

2018-19 WOMEN'S BASKETBALL



#21

NIKE McCLURE

F | 6-3 | SR | Tenino, Wash. (Washington State)



PPG	FG %	3PT %	FT %	RPG	APG	SPG	BPG	MPG
3.0	.500	.000	.000	7.0	1.0	0.5	3.5	21.5

NOTEWORTHY

- » Her six blocks against Texas State helped the Lobos set a program record for blocks in a game with 16
- » Transferring to UNM from Washington State - eligible to play this season
- » Played in 91 career games at Washington State...averaged 3.8 ppg, 4.6 rpg, and 1.7 bpg
- » Set a WSU single-season record in blocks with 68 as a sophomore - has totaled 153 career blocks
- » Set a WSU single-game record for blocks with 12 against Colorado in 2017 - also tied the Pac-12 single-game mark

McClure's Top Performances

Points	Season	4 vs. Texas State (11/9/18)
	Career	Same
FGM	Season	2 vs. Texas State (11/9/18)
	Career	Same
FGA	Season	4 vs. Texas State (11/9/18)
	Career	Same
3PT FGM	Season	
	Career	
3PT FGA	Season	1 vs. Texas State (11/9/18)
	Career	Same
FTM	Season	
	Career	
FTA	Season	4 vs. Auburn (11/11/18)
	Career	
Rebounds	Season	7 - done twice
	Career	Same
Assists	Season	2 vs. Auburn (11/11/18)
	Career	Same
Blocks	Season	6 vs. Texas State (11/9/18)
	Career	Same
Steals	Season	1 vs. Auburn (11/11/18)
	Career	Same
Turnovers	Season	2 vs. Auburn (11/11/18)
	Career	Same
Min. Played	Season	23 vs. Auburn (11/11/18)
	Career	Same

GAME-BY-GAME STATISTICS

Opponent	Date	gs	min	Total		3-Pointers		Free throws		Rebounds				pf	a	t/o	blk	stl	pts	avg
				fg-fga	pct	3fg-fga	pct	ft-fga	pct	off	def	tot	avg							
TEXAS ST.	11/09/18	*	20	2-4	.500	0-1	.000	0-0	.000	2	5	7	7.0	2	0	1	6	0	4	4.0
AUBURN	11/11/18	*	23	1-2	.500	0-0	.000	0-4	.000	1	6	7	7.0	2	2	2	1	1	2	3.0
Totals		2	43	3-6	.500	0-1	.000	0-4	.000	3	11	14	7.0	4	2	3	7	1	6	3.0

McCLURE'S CAREER STATS AT UNM

			Total		3-Point		F-Throws		Rebounds											Scoring	
Season	gp-gs	min/avg	fg-fga	pct	fg-fga	pct	ft-fa	pct	off	def	tot	avg	pf	fo	ast	to	blk	stl	pts	avg	
2018-19	2-2	43/21.5	3-6	.500	0-1	.000	0-4	.000	3	11	14	7.0	4	0	2	3	7	1	6	3.0	
TOTAL	2-2	43/21.5	3-6	.500	0-1	.000	0-4	.000	3	11	14	7.0	4	0	2	3	7	1	6	3.0	



UNIVERSITY OF NEW MEXICO

2018-19 WOMEN'S BASKETBALL



#23

JAEDYN DE LA CERDA

G | 5-6 | SO | Roswell, N.M. (Roswell HS)



PPG	FG %	3PT %	FT %	RPG	APG	SPG	BPG	MPG
6.5	.313	.111	1.000	2.5	2.0	2.0	...	18.5

NOTEWORTHY

- » Played in 13 games as a true freshman
- » In HS was named the 2016-17 New Mexico Gatorade Player of the Year in women's basketball
- » Led Roswell HS to the 2016 New Mexico 5A State Championship
- » Named as a 2016 All-State honoree as well as an Adidas All-American

De La Cerda's Top Performances

Points	Season	9 vs. Texas State (11/9/18)
	Career	Same
FGM	Season	4 vs. Texas State (11/9/18)
	Career	Same
FGA	Season	11 vs. Texas State (11/9/18)
	Career	Same
3PT FGM	Season	1 vs. Texas State (11/9/18)
	Career	1 - done three times
3PT FGA	Season	6 vs. Texas State (11/9/18)
	Career	Same
FTM	Season	2 vs. Auburn (11/11/18)
	Career	2 - done three times
FTA	Season	2 vs. Auburn (11/11/18)
	Career	3 vs. Northern N.M. (11/15/17)
Rebounds	Season	4 vs. Texas State (11/9/18)
	Career	Same
Assists	Season	2 - done twice
	Career	Same
Blocks	Season	
	Career	1 vs. Northern N.M. (11/15/17)
Steals	Season	2 - done twice
	Career	2 - done three times
Turnovers	Season	3 vs. Auburn (11/11/18)
	Career	Same
Min. Played	Season	27 vs. Texas State (11/9/18)
	Career	Same

GAME-BY-GAME STATISTICS

Opponent	Date	gs	min	Total		3-Pointers		Free throws		Rebounds				pf	a	t/o	blk	stl	pts	avg
				fg-fga	pct	3fg-fga	pct	ft-fa	pct	off	def	tot	avg							
TEXAS ST.	11/09/18	*	27	4-11	.364	1-6	.167	0-0	.000	0	4	4	4.0	0	2	0	0	2	9	9.0
AUBURN	11/11/18	*	10	1-5	.200	0-3	.000	2-2	1.000	0	1	1	2.5	3	2	3	0	2	4	6.5
Totals			2	5-16	.313	1-9	.111	2-2	1.000	0	5	5	2.5	3	4	3	0	4	13	6.5

DE LA CERDA'S CAREER STATS AT UNM

Season	gp-gs	min/avg	Total		3-Point		F-Throws		Rebounds				pf	fo	ast	to	blk	stl	Scoring	
			fg-fga	pct	fg-fga	pct	ft-fa	pct	off	def	tot	avg							pts	avg
2017-18	13-0	35/2.7	8-20	.400	2-10	.200	5-6	.833	2	5	7	0.5	3	0	2	4	1	5	23	1.8
2018-19	2-2	37/18.5	5-16	.313	1-9	.111	2-2	1.000	0	5	5	2.5	3	0	4	3	0	4	13	6.5
TOTAL	15-2	72/4.8	13-36	.361	3-19	.158	7-8	.875	2	10	12	0.8	6	0	6	7	1	9	36	2.4



UNIVERSITY OF NEW MEXICO

2018-19 WOMEN'S BASKETBALL



#24

ERICA MOORE

C | 6-2 | SR | Fishers, Ind. (Purdue)



PPG	FG %	3PT %	FT %	RPG	APG	SPG	BPG	MPG
...	1.0	...	1.0

NOTEWORTHY

- » Played in nine games last season after transferring from Purdue
- » Played in 17 career games as a Boilermaker
- » In HS, played in the Indiana All-Star game as a junior and senior
- » Injured majority of her senior season, but led Mount Vernon-Fortville to the 2013 Indiana Class 3A State title
- » Ranked as the #78 overall prospect out of HS by All-Star Girls Report

Moore's Top Performances

Points	Season	5 at Air Force (12/28/17)
	Career	
FGM	Season	2 at Air Force (12/28/17)
	Career	
FGA	Season	2 - done twice
	Career	
3PT FGM	Season	None
	Career	
3PT FGA	Season	None
	Career	
FTM	Season	1 at Air Force (12/28/17)
	Career	
FTA	Season	1 at Air Force (12/28/17)
	Career	
Rebounds	Season	3 vs. Northern N.M. (11/15/17)
	Career	
Assists	Season	None
	Career	
Blocks	Season	2 - done twice
	Career	
Steals	Season	1 vs. Texas State (11/9/18)
	Career	1 - done twice
Turnovers	Season	1 vs. Lamar (12/20/17)
	Career	
Min. Played	Season	1 vs. Texas State (11/9/18)
	Career	11 vs. Northern N.M. (11/15/17)

GAME-BY-GAME STATISTICS

Opponent	Date	gs	min	Total		3-Pointers		Free throws		Rebounds				pf	a	t/o	blk	stl	pts	avg
				fg-fga	pct	3fg-fga	pct	ft-fta	pct	off	def	tot	avg							
TEXAS ST.	11/09/18		1	0-0	.000	0-0	.000	0-0	.000	0	0	0	0.0	1	0	0	0	1	0	0.0
Totals		0	1	0-0	.000	0-0	.000	0-0	.000	0	0	0	0.0	1	0	0	0	1	0	0.0

MOORE'S CAREER STATS AT UNM

			Total		3-Point		F-Throws		Rebounds											Scoring	
Season	gp-gs	min/avg	fg-fga	pct	fg-fga	pct	ft-fta	pct	off	def	tot	avg	pf	fo	ast	to	blk	stl	pts	avg	
2017-18	9-0	30/3.3	3-5	.600	0-0	.000	1-1	1.000	1	3	4	0.4	4	0	0	1	4	1	7	0.8	
2018-19	1-0	1/1.0	0-0	.000	0-0	.000	0-0	.000	0	0	0	0.0	1	0	0	0	0	1	0	0.0	
TOTAL	10-0	31/3.1	3-5	.600	0-0	.000	1-1	1.000	1	3	4	0.4	5	0	0	1	4	2	7	0.7	



UNIVERSITY OF NEW MEXICO

2018-19 WOMEN'S BASKETBALL



#32

ANTONIA ANDERSON

G/F | 6-2 | SO | Cibolo, Texas (Byron P. Steele HS)



PPG	FG %	3PT %	FT %	RPG	APG	SPG	BPG	MPG
7.5	.500	.333	.857	4.5	1.5	0.5	0.5	18.5

NOTEWORTHY

- » Appeared in 32 games and made one start as a freshman for the Lobos
- » Led the team and ranked third in the Mountain West in blocked shots with 34
- » Selected to compete in the 2018 USA Basketball 3x3 Open National Championships along with teammates Jaisa Nunn, Aisia Robertson and Madi Washington
- » In HS was a four-year starter and named back-to-back Defensive Player of the Year
- » Additional HS accolades included: All-State, All-District, All-Area, and All-Region

Anderson's Top Performances

Points	Season	9 vs. Auburn (11/11/18)
	Career	13 vs. Boise State (1/3/18)
FGM	Season	2 vs. Auburn (11/11/18)
	Career	5 vs. Boise State (1/3/18)
FGA	Season	6 vs. Auburn (11/11/18)
	Career	6 - done three times
3PT FGM	Season	1 vs. Auburn (11/11/18)
	Career	1 - done three times
3PT FGA	Season	3 vs. Auburn (11/11/18)
	Career	Same
FTM	Season	4 vs. Auburn (11/11/18)
	Career	5 at Air Force (12/28/17)
FTA	Season	4 vs. Auburn (11/11/18)
	Career	6 vs. Saint Mary's (3/15/18)
Rebounds	Season	8 vs. Auburn (11/11/18)
	Career	Same
Assists	Season	2 vs. Auburn (11/11/18)
	Career	1 Same
Blocks	Season	1 vs. Auburn (11/11/18)
	Career	5 vs. Colorado State (2/27/18)
Steals	Season	1 vs. Auburn (11/11/18)
	Career	2 - done four times
Turnovers	Season	3 vs. Auburn (11/11/18)
	Career	Same
Min. Played	Season	20 vs. Texas State (11/9/18)
	Career	21 at Oklahoma (12/16/17)

GAME-BY-GAME STATISTICS

Opponent	Date	gs	min	Total		3-Pointers		Free throws		Rebounds				pf	a	t/o	blk	stl	pts	avg
				fg-fga	pct	3fg-fga	pct	ft-fa	pct	off	def	tot	avg							
TEXAS ST.	11/09/18	20		2-2	1.000	0-0	.000	2-3	.667	1	0	1	1.0	4	1	1	0	0	6	6.0
AUBURN	11/11/18	18		2-6	.333	1-3	.333	4-4	1.000	4	4	8	4.5	2	2	3	1	1	9	7.5
Totals		0	38	4-8	.500	1-3	.333	6-7	.857	5	4	9	4.5	6	3	4	1	1	15	7.5

ANDERSON'S CAREER STATS AT UNM

			Total		3-Point		F-Throws		Rebounds											Scoring	
Season	gp-gs	min/avg	fg-fga	pct	fg-fga	pct	ft-fa	pct	off	def	tot	avg	pf	fo	ast	to	blk	stl	pts	avg	
2017-18	32-1	417/13.0	52-91	.571	2-10	.200	24-40	.600	31	65	96	3.0	50	0	5	17	34	13	130	4.1	
2018-19	2-0	38/19.0	4-8	.500	1-3	.333	6-7	.857	5	4	9	4.5	6	0	3	4	1	1	15	7.5	
TOTAL	34-1	455/13.4	56-99	.566	3-13	.231	30-47	.638	36	69	105	3.1	56	0	8	21	35	14	145	4.3	



UNIVERSITY OF NEW MEXICO

2018-19 WOMEN'S BASKETBALL



#35

MADI WASHINGTON

PG | 5-9 | SO | Red Oak, Texas (Red Oak HS)



PPG	FG %	3PT %	FT %	RPG	APG	SPG	BPG	MPG
6.0	.286	.333	...	0.5	0.5	1.0	...	19.5

NOTEWORTHY

- » Key reserve for the Lobos playing in 34 games as a true freshman
- » Team's fifth-leading scorer on the season
- » Scored in double figures nine times and had two 20+ point games as well
- » Selected to play in the 2018 USA Basketball 3xe Open National Championships along with teammates Antonia Anderson, Jaisa Nunn, and Aisia Robertson
- » In HS was named the Offensive Player of the Year as a freshman
- » Also named All-District in 2014-15 and 2015-16

Washington's Top Performances

Points	Season	9 vs. Auburn (11/11/18)
	Career	27 vs. Northern N.M. (11/15/17)
FGM	Season	3 vs. Auburn (11/11/18)
	Career	7 vs. Northern N.M. (11/15/17)
FGA	Season	10 vs. Auburn (11/11/18)
	Career	15 vs. Northern N.M. (11/15/17)
3PT FGM	Season	3 vs. Auburn (11/11/18)
	Career	5 - done twice
3PT FGA	Season	10 vs. Auburn (11/11/18)
	Career	Same
FTM	Season	
	Career	8 vs. Northern N.M. (11/15/17)
FTA	Season	
	Career	8 vs. Northern N.M. (11/15/17)
Rebounds	Season	1 vs. Texas State (11/9/18)
	Career	7 vs. Nevada (12/30/17)
Assists	Season	1 vs. Auburn (11/11/18)
	Career	4 vs. Rice (3/20/18)
Blocks	Season	
	Career	1 - done twice
Steals	Season	2 vs. Auburn (11/11/18)
	Career	Same
Turnovers	Season	
	Career	3 - done twice
Min. Played	Season	28 vs. Auburn (11/11/18)
	Career	34 vs. Colorado St. (2/27/18)

GAME-BY-GAME STATISTICS

Opponent	Date	gs min		Total		3-Pointers		Free throws		Rebounds										
				fg-fga	pct	3fg-fga	pct	ft-fa	pct	off	def	tot	avg	pf	a	t/o	blk	stl	pts	avg
TEXAS ST.	11/09/18	10		1-4	.250	1-2	.500	0-0	.000	0	1	1	1.0	1	0	0	0	0	3	3.0
AUBURN	11/11/18	28		3-10	.300	3-10	.300	0-0	.000	0	0	0	0.5	2	1	0	0	2	9	6.0
Totals		0	38	4-14	.286	4-12	.333	0-0	.000	0	1	1	0.5	3	1	0	0	2	12	6.0

WASHINGTON'S CAREER STATS AT UNM

Season	gp-gs min/avg		Total		3-Point		F-Throws		Rebounds				Scoring							
			fg-fga	pct	fg-fga	pct	ft-fa	pct	off	def	tot	avg	pf	fo	ast	to	blk	stl	pts	avg
2017-18	34-0	604/17.8	74-194	.381	39-106	.368	30-38	.789	14	46	60	1.8	29	0	27	27	2	10	217	6.4
2018-19	2-0	38/19.0	4-14	.286	4-12	.333	0-0	.000	0	1	1	0.5	3	0	1	0	0	2	12	6.0
TOTAL	36-0	642/17.8	78-208	.375	43-118	.364	30-38	.789	14	47	61	1.7	32	0	28	27	2	12	229	6.4



UNIVERSITY OF NEW MEXICO

2018-19 WOMEN'S BASKETBALL



#44

JAISA NUNN

C | 6-3 | SR | Kirkland, Wash. (Juanita HS)



PPG	FG %	3PT %	FT %	RPG	APG	SPG	BPG	MPG
15.0	.846	---	.800	3.5	1.5	3.0	0.5	25.0

NOTEWORTHY

- » One of 20 to be named to Lisa Leslie Award Watch List
- » 2018-19 Preseason All-MW
- » Only player in MW last season to average a double-double (17.0 pts, 10.2 reb)
- » Became the 22nd player in program history to score 1,000 career points
- » Currently No. 16 on the all-time scoring list with 1,058 pts.
- » Lone returning starter from last season
- » Selected to play in the 2018 USA Basketball 3x3 Open National Championships with teammates Antonia Anderson, Aisia Robertson and Madi Washington

Nunn's Top Performances

Points	Season	16 vs. Auburn (11/11/18)
	Career	39 vs. Marquette (11/13/17)
FGM	Season	6 vs. Auburn (11/11/18)
	Career	14 vs. Marquette (11/13/17)
FGA	Season	7 vs. Texas State (11/9/18)
	Career	17 - done twice
3PT FGM	Season	
	Career	2 vs. Utah State (1/4/17)
3PT FGA	Season	
	Career	4 - done twice
FTM	Season	4 - done twice
	Career	11 - done twice
FTA	Season	6 vs. Texas State (11/9/18)
	Career	12 - done twice
Rebounds	Season	4 vs. Auburn (11/11/18)
	Career	18 vs. UC Irvine (11/25/17)
Assists	Season	2 vs. Texas State (11/9/18)
	Career	4 vs. Illinois (11/26/17)
Blocks	Season	1 vs. Texas State (11/9/18)
	Career	4 vs. Lamar (12/20/17)
Steals	Season	3 - done twice
	Career	5 vs. TCU (3/22/18)
Turnovers	Season	
	Career	4 vs. New Mexico St. (11/15/16)
Min. Played	Season	33 vs. Auburn (11/11/18)
	Career	38 - done three times

GAME-BY-GAME STATISTICS

Opponent	Date	gs	min	Total		3-Pointers		Free throws		Rebounds				pf	a	t/o	blk	stl	pts	avg	
				fg-fga	pct	3fg-fga	pct	ft-fga	pct	off	def	tot	avg								
TEXAS ST.	11/09/18	*	18	5-7	.714	0-0	.000	4-6	.667	2	1	3	3.0	2	2	0	1	3	14	14.0	
AUBURN	11/11/18	*	33	6-6	1.000	0-0	.000	4-4	1.000	4	0	4	3.5	2	1	0	0	3	16	15.0	
Totals			2	51	11-13	.846	0-0	.000	8-10	.800	6	1	7	3.5	4	3	0	1	6	30	15.0

NUNN'S CAREER STATS AT UNM

Season	gp-gs	min/avg	Total		3-Point		F-Throws		Rebounds				Scoring							
			fg-fga	pct	fg-fga	pct	ft-fa	pct	off	def	tot	avg	pf	fo	ast	to	blk	stl	pts	avg
2015-16	30-11	544/18.1	93-172	.541	0-0	.000	29-50	.580	61	87	148	4.9	42	1	27	30	10	13	215	7.2
2016-17	21-2	430/20.5	87-183	.475	6-28	.214	38-63	.603	48	100	148	7.0	34	0	16	31	5	11	218	10.4
2017-18	35-35	984/28.1	221-347	.637	1-1	1.000	152-188	.809	177	181	358	10.2	82	3	15	38	26	36	595	17.0
2018-19	2-2	51/25.5	11-13	.846	0-0	.000	8-10	.800	6	1	7	3.5	4	0	3	0	1	6	30	15.0
TOTAL	88-50	2009/22.8	412-715	.576	7-29	.241	227-311	.730	292	369	661	7.5	162	4	61	99	42	66	1058	12.0



UNIVERSITY OF NEW MEXICO

2018-19 WOMEN'S BASKETBALL



2018-19 New Mexico Women's Basketball

New Mexico Combined Team Statistics (as of Nov 12, 2018)

All games



RECORD:	OVERALL	HOME	AWAY	NEUTRAL
ALL GAMES	1-1	1-1	0-0	0-0
CONFERENCE	0-0	0-0	0-0	0-0
NON-CONFERENCE	1-1	1-1	0-0	0-0

##	Player	gp-gs	min	avg	Total		3-Point		F-Throw		Rebounds				pf	dq	a	to	blk	stl	pts	avg
					fg-fga	fg%	3fg-fga	3fg%	ft-fa	ft%	off	def	tot	avg								
04	EVERETT, Jayla	2-2	67	33.5	10-21	.476	8-13	.615	8-8	1.000	5	4	9	4.5	5	0	4	7	1	1	36	18.0
44	NUNN, Jaisa	2-2	51	25.5	11-13	.846	0-0	.000	8-10	.800	6	1	7	3.5	4	0	3	0	1	6	30	15.0
15	ROBERTSON, Aisia	2-2	64	32.0	11-34	.324	2-9	.222	2-8	.250	3	12	15	7.5	6	0	17	15	2	5	26	13.0
32	ANDERSON, Antonia	2-0	38	19.0	4-8	.500	1-3	.333	6-7	.857	5	4	9	4.5	6	0	3	4	1	1	15	7.5
23	DE LA CERDA, Jaedyn	2-2	37	18.5	5-16	.313	1-9	.111	2-2	1.000	0	5	5	2.5	3	0	4	3	0	4	13	6.5
35	WASHINGTON, Madi	2-0	38	19.0	4-14	.286	4-12	.333	0-0	.000	0	1	1	0.5	3	0	1	0	0	2	12	6.0
01	NOBLE, Quincy	1-0	6	6.0	1-3	.333	1-1	1.000	2-2	1.000	1	0	1	1.0	0	0	0	0	2	0	5	5.0
03	HURST, Ahlise	2-0	29	14.5	3-13	.231	2-12	.167	1-2	.500	0	1	1	0.5	4	0	2	0	1	1	9	4.5
13	MCGRUDER, Shaiquel	2-0	20	10.0	3-6	.500	0-0	.000	0-0	.000	5	9	14	7.0	0	0	0	1	2	4	6	3.0
21	MCCLURE, Nike	2-2	43	21.5	3-6	.500	0-1	.000	0-4	.000	3	11	14	7.0	4	0	2	3	7	1	6	3.0
02	MATHEWS, Bre'Asiaja	1-0	5	5.0	0-0	.000	0-0	.000	0-0	.000	0	1	1	1.0	1	0	0	0	1	0	0	0.0
24	MOORE, Erica	1-0	1	1.0	0-0	.000	0-0	.000	0-0	.000	0	0	0	0.0	1	0	0	0	0	1	0	0.0
Team											4	5	9									
Total.....		2	399		55-134	.410	19-60	.317	29-43	.674	32	54	86	43.0	37	0	36	33	18	26	158	79.0
Opponents.....		2	401		46-130	.354	8-29	.276	30-39	.769	33	52	85	42.5	32	-	19	41	2	20	130	65.0

TEAM STATISTICS	NM	OPP
SCORING	158	130
Points per game	79.0	65.0
Scoring margin	+14.0	-
FIELD GOALS-ATT	55-134	46-130
Field goal pct	.410	.354
3 POINT FG-ATT	19-60	8-29
3-point FG pct	.317	.276
3-pt FG made per game	9.5	4.0
FREE THROWS-ATT	29-43	30-39
Free throw pct	.674	.769
F-Throws made per game	14.5	15.0
REBOUNDS	86	85
Rebounds per game	43.0	42.5
Rebounding margin	+0.5	-
ASSISTS	36	19
Assists per game	18.0	9.5
TURNOVERS	33	41
Turnovers per game	16.5	20.5
Turnover margin	+4.0	-
Assist/turnover ratio	1.1	0.5
STEALS	26	20
Steals per game	13.0	10.0
BLOCKS	18	2
Blocks per game	9.0	1.0
ATTENDANCE	9004	0
Home games-Avg/Game	2-4502	0-0
Neutral site-Avg/Game	-	0-0

Date	Opponent		Score	Att.
11/09/18	TEXAS ST.	W	82-51	4585
11/11/18	AUBURN	L	76-79	4419

* - Conference game

Score by Periods	1st	2nd	3rd	4th	Totals
New Mexico	30	32	56	40	158
Opponents	36	27	33	34	130



UNIVERSITY OF NEW MEXICO

2018-19 WOMEN'S BASKETBALL



2018-19 New Mexico Women's Basketball
New Mexico Season Schedule/Results & Leaders (as of Nov 12, 2018)
All games



RECORD:	OVERALL	HOME	AWAY	NEUTRAL
ALL GAMES	1-1	1-1	0-0	0-0
CONFERENCE	0-0	0-0	0-0	0-0
NON-CONFERENCE	1-1	1-1	0-0	0-0

Date	Opponent	Score	Att.	High Points	High Rebounds
11/09/18	TEXAS ST.	W 82-51	4585	(17)ROBERTSON, Aisia	(13)MCGRUDER, Shaiquel
11/11/18	AUBURN	76-79 L	4419	(25)EVERETT, Jayla	(8)ANDERSON, Antonia

* - Conference game

Attendance Summary	Games	Attend	Avg/Game
Home	2	9004	4502
Away	0	0	0
Neutral	0	0	0
Total	2	9004	4502



UNIVERSITY OF NEW MEXICO

2018-19 WOMEN'S BASKETBALL



2018-19 New Mexico Women's Basketball
New Mexico Season Box Score (as of Nov 12, 2018)
All games



RECORD:	OVERALL	HOME	AWAY	NEUTRAL
ALL GAMES	1-1	1-1	0-0	0-0
CONFERENCE	0-0	0-0	0-0	0-0
NON-CONFERENCE	1-1	1-1	0-0	0-0

#	Player	gp-gs	min	avg	Total		3-Point		F-Throw		Rebounds				pf	dq	a	to	blk	stl	pts	avg
					fg-fga	fg%	3fg-fga	3fg%	ft-fa	ft%	off	def	tot	avg								
04	EVERETT, Jayla	2-2	67	33.5	10-21	.476	8-13	.615	8-8	1.000	5	4	9	4.5	5	0	4	7	1	1	36	18.0
44	NUNN, Jaisa	2-2	51	25.5	11-13	.846	0-0	.000	8-10	.800	6	1	7	3.5	4	0	3	0	1	6	30	15.0
15	ROBERTSON, Aisia	2-2	64	32.0	11-34	.324	2-9	.222	2-8	.250	3	12	15	7.5	6	0	17	15	2	5	26	13.0
32	ANDERSON, Antonia	2-0	38	19.0	4-8	.500	1-3	.333	6-7	.857	5	4	9	4.5	6	0	3	4	1	1	15	7.5
23	DE LA CERDA, Jaedyn	2-2	37	18.5	5-16	.313	1-9	.111	2-2	1.000	0	5	5	2.5	3	0	4	3	0	4	13	6.5
35	WASHINGTON, Madi	2-0	38	19.0	4-14	.286	4-12	.333	0-0	.000	0	1	1	0.5	3	0	1	0	0	2	12	6.0
01	NOBLE, Quincy	1-0	6	6.0	1-3	.333	1-1	1.000	2-2	1.000	1	0	1	1.0	0	0	0	0	2	0	5	5.0
03	HURST, Ahlise	2-0	29	14.5	3-13	.231	2-12	.167	1-2	.500	0	1	1	0.5	4	0	2	0	1	1	9	4.5
13	MCGRUDER, Shaiquel	2-0	20	10.0	3-6	.500	0-0	.000	0-0	.000	5	9	14	7.0	0	0	0	1	2	4	6	3.0
21	MCCLURE, Nike	2-2	43	21.5	3-6	.500	0-1	.000	0-4	.000	3	11	14	7.0	4	0	2	3	7	1	6	3.0
02	MATHEWS, Bre'Asiaja	1-0	5	5.0	0-0	.000	0-0	.000	0-0	.000	0	1	1	1.0	1	0	0	0	1	0	0	0.0
24	MOORE, Erica	1-0	1	1.0	0-0	.000	0-0	.000	0-0	.000	0	0	0	0.0	1	0	0	0	0	1	0	0.0
Team											4	5	9									
Total.....		2	399		55-134	.410	19-60	.317	29-43	.674	32	54	86	43.0	37	0	36	33	18	26	158	79.0
Opponents.....		2	401		46-130	.354	8-29	.276	30-39	.769	33	52	85	42.5	32	-	19	41	2	20	130	65.0

Score by Periods	1st	2nd	3rd	4th	Totals
New Mexico	30	32	56	40	158
Opponents	36	27	33	34	130



UNIVERSITY OF NEW MEXICO

2018-19 WOMEN'S BASKETBALL



2018-19 New Mexico Women's Basketball
New Mexico Overall Team Statistics (as of Nov 12, 2018)
All games



TEAM STATISTICS	NM	OPP
SCORING	158	130
Points per game	79.0	65.0
Scoring margin	+14.0	-
FIELD GOALS-ATT	55-134	46-130
Field goal pct	.410	.354
3 POINT FG-ATT	19-60	8-29
3-point FG pct	.317	.276
3-pt FG made per game	9.5	4.0
FREE THROWS-ATT	29-43	30-39
Free throw pct	.674	.769
F-Throws made per game	14.5	15.0
REBOUNDS	86	85
Rebounds per game	43.0	42.5
Rebounding margin	+0.5	-
ASSISTS	36	19
Assists per game	18.0	9.5
TURNOVERS	33	41
Turnovers per game	16.5	20.5
Turnover margin	+4.0	-
Assist/turnover ratio	1.1	0.5
STEALS	26	20
Steals per game	13.0	10.0
BLOCKS	18	2
Blocks per game	9.0	1.0
WINNING STREAK	0	-
Home win streak	0	-
ATTENDANCE	9004	0
Home games-Avg/Game	2-4502	0-0
Neutral site-Avg/Game	-	0-0

Score by Periods	1st	2nd	3rd	4th	Totals
New Mexico	30	32	56	40	158
Opponents	36	27	33	34	130



UNIVERSITY OF NEW MEXICO

2018-19 WOMEN'S BASKETBALL



2018-19 New Mexico Women's Basketball
New Mexico Team Game-by-Game Comparison (as of Nov 12, 2018)
All games



Opponent	1st	2nd	Score	Mar	Total FG	FG Pct	3-Pointers	3FG Pct	Free Throws	FT Pct	Rebounds	/
TEXAS ST.	29/27	53/24	82-51	+31	31-71/18-62	.437/.290	7-23/4-12	.304/.333	13-19/11-14	.684/.786	47/40	+7
AUBURN	33/36	43/43	76-79	(3)	24-63/28-68	.381/.412	12-37/4-17	.324/.235	16-24/19-25	.667/.760	39/45	(6)

Note: Game totals are displayed in the format TEAM/OPPONENT for each category



UNIVERSITY OF NEW MEXICO

2018-19 WOMEN'S BASKETBALL



2018-19 New Mexico Women's Basketball
New Mexico Points-Rebounds-Assists (as of Nov 12, 2018)
All games



Opponent	Date	Score		01 NOBLE,QUIN	02 MATHEWS,BR	03 HURST,AHLI	04 EVERETT,JA	13 MCGRUDER,S	15 ROBERTSON,	21 MCCLURE,NI
TEXAS ST.	11/09/18	82-51	w	5-1-0	0-1-0	7-1-2	11-3-2	6-13-0	17-8-9	4-7-0
AUBURN	11/11/18	76-79	L	DNP	DNP	2-0-0	25-6-2	0-1-0	9-7-8	2-7-2

Opponent	Date	Score		23 DE LA CERD	24 MOORE,ERIC	32 ANDERSON,A	35 WASHINGTON	44 NUNN,JAISA
TEXAS ST.	11/09/18	82-51	w	9-4-2	0-0-0	6-1-1	3-1-0	14-3-2
AUBURN	11/11/18	76-79	L	4-1-2	DNP	9-8-2	9-0-1	16-4-1



UNIVERSITY OF NEW MEXICO

2018-19 WOMEN'S BASKETBALL



GAME 1 | NEW MEXICO 82 - TEXAS STATE 51

Nov. 9, 2018 | Albuquerque, N.M.

GAME 2 | AUBURN 79 - NEW MEXICO 76

Nov. 11, 2018 | Albuquerque, N.M.



Official Basketball Box Score - Game Totals - Final Statistics

Texas St. vs New Mexico 11/09/18 7:00 pm at



Texas St. 51 • 0-1

#	Player	Total		3-Ptr		Rebounds		PF		TP		A TO Blk Stl		Min
		FG	FGA	FT	FTA	Off	Def	PF	TP	A	TO	Blk	Stl	
13	Zandra Emmanuel	1-5	0-1	0-0	3	2	5	2	2	0	2	0	2	9
22	Jazza Johns	3-9	0-0	0-0	1	2	3	2	6	0	2	0	0	20
02	Toshua Leavitt	5-16	2-5	6-6	0	0	0	1	18	3	8	0	1	33
24	Brooke Holle	2-12	1-4	0-0	2	4	6	2	5	2	3	0	2	30
33	Bailey Holle	2-4	1-2	0-0	0	4	4	1	5	3	2	0	4	26
00	Jayla Johnson	1-1	0-0	0-0	3	4	7	2	0	1	0	1	0	22
01	Avionne Alexander	0-4	0-0	2-2	1	1	2	1	2	0	0	0	0	9
03	Kennedy Taylor	1-5	0-0	0-0	0	1	1	3	2	0	1	0	0	7
15	Ja'Kayla Bowie	2-2	0-0	2-2	0	1	1	0	6	0	2	0	0	17
32	Da'Nasia Hood	0-0	0-0	0-0	0	1	1	0	0	0	1	0	0	18
55	Jaeda Reed	1-4	0-0	1-4	1	0	1	3	0	1	0	0	0	9
Team					5	4	9							
Totals		18-62	4-12	11-14	16	24	40	14	51	8	24	0	10	200
1st - FG %: 7-16 43.8% 2nd: 4-16 25.0% 3rd: 4-15 26.7% 4th: 3-13 23.1% Game: 18-62 29.0% Deadball Rebounds: 1														
3FG %: 2-2 100.0% 1-4 25.0% 0-5 0.0% 1-1 100.0% 4-12 33.3%														
FT %: 6-6 100.0% 2-4 50.0% 4-4 100.0% 5-6 83.3% 11-14 78.6%														

New Mexico 82 • 1-0

#	Player	Total		3-Ptr		Rebounds		PF		TP		A TO Blk Stl		Min
		FG	FGA	FT	FTA	Off	Def	PF	TP	A	TO	Blk	Stl	
21	MCCLURE, Nike	2-4	0-1	0-0	2	5	7	2	4	0	1	6	0	20
44	NUNN, Jaisa	5-7	0-0	4-6	2	1	3	2	14	2	0	1	3	18
04	EVERETT, Jayla	3-10	1-3	4-4	2	1	3	2	11	2	4	1	1	29
15	ROBERTSON, Aisia	8-16	1-2	0-2	3	5	8	2	17	9	10	2	3	24
23	DE LA CERDA, Jaedyn	4-11	1-6	0-0	0	4	4	0	9	2	0	0	2	27
01	NOBLE, Quincy	1-3	1-1	2-2	1	0	1	0	5	0	0	2	0	6
02	MATHEWS, Bre'Asiajah	0-0	0-0	0-0	0	1	1	0	0	0	0	1	0	5
03	HURST, Ahlise	2-8	2-8	1-2	0	1	4	7	2	0	1	1	1	23
13	MCGRUDER, Shaiquel	3-6	0-0	0-0	5	8	13	0	6	0	1	2	4	16
24	MOORE, Erica	0-0	0-0	0-0	0	0	0	1	0	0	0	0	1	1
32	ANDERSON, Antonia	2-2	0-0	2-3	1	0	1	4	6	1	1	0	0	20
35	WASHINGTON, Madi	1-4	1-2	0-0	0	1	1	1	3	0	0	0	0	10
Team					3	1	4							
Totals		31-71	7-23	13-19	19	28	47	19	82	18	17	16	15	199
1st - FG %: 6-16 37.5% 2nd: 6-20 30.0% 3rd: 11-15 73.3% 4th: 8-20 40.0% Game: 31-71 43.7% Deadball Rebounds: 3,2														
3FG %: 0-4 0.0% 3-9 33.3% 2-2 100.0% 2-8 25.0% 7-23 30.4%														
FT %: 2-2 100.0% 0-2 0.0% 9-13 69.2% 2-2 100.0% 13-19 68.4%														

Officials:

Technical fouls: Texas St.-None. New Mexico-None.

Attendance: 4585

2018-19 Women's Basketball. Round: 0. New Mexico vs Texas St.. Played at .

Score by periods	1st	2nd	3rd	4th	Total
Texas St.	16	11	12	12	51
New Mexico	14	15	33	20	82

Last FG - TXST 4th-04:26, NM 4th-01:05.
Largest lead - TXST by 4 1st-04:44, NM by 34 4th-01:05.
TXST led for 08:22. NM led for 27:43. Game was tied for 03:55.

Points	In	Off	2nd	Fast	Bench
TXST	22	12	8	12	15
NM	48	29	16	45	27

Score tied - 4 times.
Lead changed - 4 times.



Official Basketball Box Score - Game Totals - Final Statistics

Auburn vs New Mexico 11/11/18 2:00 pm at



Auburn 79 • 3-0

#	Player	Total		3-Ptr		Rebounds		PF		TP		A TO Blk Stl		Min
		FG	FGA	FT	FTA	Off	Def	PF	TP	A	TO	Blk	Stl	
20	Unique Thompson	7-13	0-0	5-7	8	11	19	1	19	0	4	1	1	35
00	Daisa Alexander	6-16	0-4	2-4	1	3	4	4	14	0	2	0	3	28
05	Emari Jones	2-10	1-8	0-0	1	1	2	2	5	2	6	0	1	24
23	Crystal Primm	3-7	0-0	4-4	2	4	6	2	10	1	1	0	1	32
33	Jannah McKay	6-12	1-1	6-8	1	4	5	2	19	6	2	0	3	39
01	Robyn Benton	1-4	0-1	0-0	0	1	1	2	2	1	1	0	1	18
04	Abigail Jackson	1-1	0-0	0-0	0	0	0	3	2	0	0	0	0	4
10	Kiyae' White	0-1	0-0	0-0	0	1	0	1	0	0	0	0	0	1
24	Erin Howard	2-4	2-3	2-2	0	1	1	2	8	1	1	1	0	20
Team					3	3	6							
Totals		28-68	4-17	19-25	17	28	45	18	79	11	17	2	10	201
1st - FG %: 6-21 28.6% 2nd: 4-13 30.8% 3rd: 9-18 50.0% 4th: 9-16 56.3% Game: 28-68 41.2% Deadball Rebounds: 3,3														
3FG %: 0-5 0.0% 1-4 25.0% 2-5 40.0% 1-3 33.3% 4-17 23.5%														
FT %: 8-12 66.7% 7-8 87.5% 1-1 100.0% 3-4 75.0%														

New Mexico 76 • 1-1

#	Player	Total		3-Ptr		Rebounds		PF		TP		A TO Blk Stl		Min
		FG	FGA	FT	FTA	Off	Def	PF	TP	A	TO	Blk	Stl	
21	MCCLURE, Nike	1-2	0-0	0-4	1	6	7	2	2	2	2	1	1	23
44	NUNN, Jaisa	6-6	0-0	4-4	4	0	4	2	16	1	0	0	3	33
04	EVERETT, Jayla	7-11	7-10	4-4	3	3	6	3	25	2	3	0	0	38
15	ROBERTSON, Aisia	3-18	1-7	2-6	0	7	7	4	9	8	5	0	2	40-
23	DE LA CERDA, Jaedyn	1-5	0-3	2-2	0	1	1	3	4	2	3	0	2	10
03	HURST, Ahlise	1-5	0-4	0-0	0	0	0	0	2	0	0	0	0	6
13	MCGRUDER, Shaiquel	0-0	0-0	0-0	0	1	1	0	0	0	0	0	0	4
32	ANDERSON, Antonia	2-6	1-3	4-4	4	4	8	2	9	2	3	1	1	18
35	WASHINGTON, Madi	3-10	3-10	0-0	0	0	0	2	9	1	0	0	2	28
Team					1	4	5							
Totals		24-63	12-37	16-24	13	26	39	18	76	18	16	2	11	200
1st - FG %: 7-18 38.9% 2nd: 4-13 30.8% 3rd: 6-14 42.9% 4th: 7-18 38.9% Game: 24-63 38.1% Deadball Rebounds: 3														
3FG %: 2-11 18.2% 3-7 42.9% 3-8 37.5% 4-11 36.4%														
FT %: 0-6 0.0% 6-8 75.0% 2-2 100.0%														

Officials:

Technical fouls: Auburn-None. New Mexico-None.

Attendance: 4419

2018-19 Women's Basketball. Round: 0. Auburn vs New Mexico. Played at .

Score by periods	1st	2nd	3rd	4th	Total
Auburn	20	16	21	22	79
New Mexico	16	17	23	20	76

Points	In	Off	2nd	Fast	Bench
AU	40	16	18	11	12
NM	24	14	11	26	20

Last FG - AU 4th-00:16, NM 4th-00:41.

Largest lead - AU by 8 2nd-08:50, NM by 4 2nd-01:14.

AU led for 22:08. NM led for 08:08. Game was tied for 09:44.

Score tied - 16 times.
Lead changed - 15 times.