

THE UNIVERSITY OF NEW MEXICO SOFTBALL



2020 SOFTBALL NOTES | WEEK 4

@UNMLoboSB

www.GoLOBOS.com

#GoLOBOS

Allison Weiss, Assistant Director of Athletic Communications - Softball Contact | Email: allisonweiss@unm.edu | Cell: (661) 313-5402

2020 SCHEDULE

OVERALL: 6-8 • MW: 0-0 • H: 3-1 • A: 1-1 • N: 2-6

Date	Opponent	Time/Score
VCU Kickoff Tournament Phoenix, Ariz.		
2/7	Weber State	L, 4-1
2/7	(RV) Stanford	L, 7-6
2/8	(RV) Stanford	W, 2-0
2/8	at Grand Canyon	W, 9-4
2/9	at Grand Canyon	L, 7-6
Susan Craig Classic Albuquerque, N.M.		
2/14	Northern Colorado	W, 12-3 (5)
2/15	Northern Colorado	W, 8-3
2/15	UCSB	W, 9-1 (5)
2/16	UCSB	L, 7-2
Mary Nutter Collegiate Classic Cathedral City, Calif.		
2/20	UC Riverside	W, 6-3
2/20	USA Olympic Team	9 p.m.
2/21	16/16 Arizona State	L, 15-0 (5)
2/22	18/19 Missouri	L, 5-0
2/22	San Diego	L, 6-5
2/23	California	L, 5-3
Lobo Classic Albuquerque, N.M.		
2/28	La Salle	4:30 p.m.
2/28	Northern Colorado	7 p.m.
2/29	La Salle	3:30 p.m.
2/29	South Dakota	6 p.m.
3/1	South Dakota	1 p.m.
Longhorn Invitational Austin, Texas		
3/6	Texas Southern	10 a.m.
3/7	Texas Southern	11:30 a.m.
3/7	Liberty	2 p.m.
3/8	at Texas	8:30 a.m.
3/8	Liberty	11 a.m.
3/11	at New Mexico State	5:30 p.m.
3/13	at San José State *	7 p.m.
3/14	at San José State *	1 p.m.
3/15	at San José State *	1 p.m.
3/20	Utah State *	6 p.m.
3/21	Utah State *	4 p.m.
3/22	Utah State *	12 p.m.
3/27	BYU (in Tucson, Ariz.)	3:30 p.m.
3/28	at Arizona	12 p.m.
3/31	at UTEP	3 p.m.
4/3	at Colorado State*	6 p.m.
4/4	at Colorado State*	1 p.m.
4/5	at Colorado State*	12 p.m.
4/9	Fresno State *	6 p.m.
4/10	Fresno State *	6 p.m.
4/11	Fresno State *	12 p.m.
4/15	New Mexico State	5 p.m.
4/17	at Nevada*	5 p.m.
4/18	at Nevada *	2 p.m.
4/19	at Nevada *	1 p.m.
4/22	UTEP	2 p.m.
4/24	UNLV *	6 p.m.
4/25	UNLV *	4 p.m.
4/26	UNLV *	11 a.m.
4/29	at Texas Tech	3:30 p.m.
5/1	at Boise State *	4 p.m.
5/2	at Boise State *	4 p.m.
5/3	at Boise State *	12 p.m.
5/7	San Diego State *	6 p.m.
5/8	San Diego State*	6 p.m.
5/9	San Diego State *	12 p.m.

Bold denotes home games
*denotes Mountain West game
All times listed are Mountain Time
Game times are subject to change

LOBO CLASSIC



NEW MEXICO Lobos

Record 6-8, 0-0 Mountain West
Head Coach Paula Congleton
Record at UNM 32-88 (Third Season)
Career Record (NCAA DI) 65-165 (Fifth Season)



LA SALLE Explorers

Record 0-4, 0-0 Atlantic 10
Head Coach Brooke Darrefff
Record at UCR 24-71 (Third Season)
Career Record 40-79 (Fourth Season)



NORTHERN COLORADO Bears

Record 3-12, 0-0 Big Sky
Head Coach Ben Garcia
Record at ASU 17-51 (Second Season)
Career Record 186-100 (Sixth Season)



SOUTH DAKOTA Coyotes

Record 8-8, 0-0 Summit League
Head Coach Robert Wagner
Record at USD 80-106 (Fourth Season)
Career Record 112-132 (Fifth Season)

Media Information

Location:..... Lobo Softball Field
..... Albuquerque, N.M.

Date/Time:
N. Colorado..... Friday, Feb. 28 - 7 p.m.
La Salle..... Friday, Feb. 28 - 4:30 p.m.
..... Saturday, Feb. 29 - 3:30 p.m.
S. Dakota..... Saturday, Feb. 29 - 6 p.m.
..... Sunday, March 1 - 1 p.m.

Live Video:..... MW Network
Live Stats:..... golobos.com/schedule.aspx?path=softball

Social Media: @UNMLoboSB

Notes last updated: Feb. 26, 2020

Series History

VS. LA SALLE

Overall: 0-0
Last Five: 0-0
Last Meeting: N/A
Last Win: N/A
Series Trend: N/A

VS. NORTHERN COLORADO

Overall: 31-13
Last Five: 4-1
Last Meeting: 2/15/20 (W, 8-3)
Last Win: 2/15/20 (8-3)
Series Trend: W4

VS. SOUTH DAKOTA

Overall: 1-1
Last Five: 1-1
Last Meeting: 2/17/18 (L, 5-2)
Last Win: 2/26/16 (3-2)
Series Trend: L1

NEWS and NOTES

WEEK 3 RECAP

- The Lobos competed in the Mary Nutter Collegiate Classic, defeating UC Riverside in the first game before falling to No. 16/16 Arizona State, No. 18/19 Missouri, San Diego and California.
- UNM was led at the plate by Taryn Young, who went 5-for-11 (.455) with three of the five hits going for home runs. Against Cal on Sunday, Young accounted for both Lobo hits and all three Lobo runs. The outfielder also led in slugging percentage (1.273) and on-base percentage (.538).
- Andrea Howard and Young each recorded five RBI for the team high, each having two multiple RBI games and Young having two multiple hit games.
- Briana Martinez and Cameryn O'Grady each tallied four walks on the weekend to lead in the category and Martinez was a perfect 2-for-2 in stolen base attempts.
- In the circle, Bailey Klitzke led the pitching staff with 13.0 innings of work, allowing just nine hits and nine runs (six earned) while striking out 10 hitters, and carried an ERA of 4.15 with four appearances and one start.
- O'Grady was 3-for-5 with runners on base and Rachael Hathoot was 2-for-3 with runners on. O'Grady was 2-for-4 with runners in scoring position. Young went 3-for-4 as the leadoff hitter and Reyann Tuck went 2-for-3 as the leadoff hitter.
- In the field, the Lobos turned four double plays at the Mary Nutter, with two coming in the game against UC Riverside.

LOOKING AHEAD TO WEEK 4

- UNM hosts La Salle, Northern Colorado and South Dakota in the Lobo Classic with a total of 10 games being played in three days. The Lobos will play Northern Colorado once and South Dakota



GENERAL INFORMATION

Name of School.....	University of New Mexico
City/Zip.....	Albuquerque, N.M. 87106
Founded.....	1889 by Territorial Legislature
Enrollment.....	25,015
Nickname.....	Lobos
School Colors.....	Cherry & Silver
Conference.....	Mountain West
Affiliation.....	NCAA Division I
President.....	Dr. Garnett Stokes
Athletic Director.....	Eddie Nuñez

PROGRAM HISTORY

First Year of Softball.....	1978
All-Time Record.....	1000-1124-3
Mountain West Record.....	123-290-1
NCAA Tournament Appearances.....	3
1980 (AIAW), 1981 (AIAW) and 1983 (NCAA)	
Last NCAA Postseason Opponent.....	Cal State Fullerton
Last NCAA Postseason Result.....	CSUF won series 2-1
Conference Championships.....	3
1980 (Intermountain), 1981 (Intermountain) and 1983 (High Country)	

TEAM INFORMATION

2019 Overall Record.....	12-41
2019 MW Record.....	3-21 (9th)
Letterwinners Returning/Lost.....	11/8
Pitchers Returning/Lost.....	3/0
Starters Returning/Lost.....	6/3
Newcomers.....	11

SOFTBALL STAFF

Head Coach.....	Dr. Paula Congleton (New Mexico, 1984)
Year at UNM..... Third season	
Record at UNM (Pct.).....	32-88 (.267)
MW Record at UNM (Pct.).....	10-38 (.208)
Career Record (Years).....	65-165 (4 years)
Assistant Coach.....	Tyler Heil (San José State, 2009)
Year at UNM..... Third season	
Assistant Coach.....	Breanna Macha Peterson (Arizona State, 2018)
Year at UNM..... Second season	
Strength Coach.....	Brett Nakashima
Academic Advisor.....	Andrea Pierson
Head Athletic Trainer.....	Bob Waller
Athletic Trainer.....	Madison Foust

COMMUNICATIONS

Softball Contact/Asst. Director of Comm.....	Allison Weiss
Email.....	allisonweiss@unm.edu
Cell Phone (Preferred).....	(661) 313-5402
Communications Office.....	(505) 925-5520

DIGITAL MEDIA

Athletics Website.....	GoLobos.com
Main University Web Site.....	unm.edu
Conference Website.....	TheMW.com
Twitter.....	@UNMLoboSB
Instagram.....	@UNMLoboSB
Facebook.....	@NewMexicoLoboSoftball

FACILITIES

Venue.....	Lobo Softball Field
Dimensions.....	205-225-205
Capacity.....	1,500

and La Salle twice.

- Briana Martinez enters the weekend with a 14-game streak of safely reaching base. Cameryn O’Grady has reached base safely in the last three games, and Andrea Howard and Taryn Young have reached base safely in the last two.
- UNM played Northern Colorado earlier this season at the Susan Craig Classic, winning both games by a combined score of 20-6 (12-3 in five and 8-3). In the two games, Briana Martinez led with an .833 batting average, going 5-for-6 with a double and a home run, and three RBI. Howard registered five RBI against the Bears. In the circle, Kennedy Ferguson and Kiana Spencer have each recorded wins against UNC with Ferguson carrying a 1.80 ERA.

PATIENCE AT THE PLATE

- UNM earned its way on base via a walk in 66 of the 335 at-bats to date. In 62 at-bats, the Lobos had full counts and of those, 36 resulted in walks (66.7%). In addition to the 36 full count walks, 12 walks were of the four-pitch variety and 18 were five-pitch walks.
- Against WSU in the first game, the Lobos had eight full counts with six of those resulting in walks.
- UNM is tied for ninth in the nation in walks with LSU.
- Briana Martinez leads the Lobos in walks with 14. In Saturday’s game against Northern Colorado, the freshman drew a walk following a 10-pitch at-bat after falling behind 0-2 (KKBBFFFB).
- In the third inning against Northern Colorado on Feb. 15, Martinez hit a home run following a 3-2 count.
- In Sunday’s game against Cal, Howard walked on a 12-pitch at-bat after falling behind 0-2 (KFFBFBFFFB) in the sixth inning.
- In the fifth inning, Taryn Young hit a home run on a full count after fouling off two pitches.

STICKING WITH WHAT WORKS

- Although the Lobos haven’t turned in the same starting lineup through the first 14 games, the Lobos have utilized the same batting order in the first four spots in the last eight games. Rachael Hathoot has led off followed by Cameryn O’Grady, and Briana Martinez in the third spot in all 14 games with Taryn Young batting ninth in 12 games. Andrea Howard has hit fourth in the last eight games.
- Martinez, Hathoot, O’Grady and Howard lead the Lobos in 14 statistical categories with O’Grady, Howard and Martinez represented the most. O’Grady leads the team in hits with 14 with Hathoot, Howard and Martinez each having 11. Howard leads with 16 RBI followed by 10 from O’Grady and six from Martinez. Howard (.718) and O’Grady (.684) are the top two in slugging percentage, O’Grady (.368) and Martinez (.344) are the top two in batting average and Martinez (.553) and O’Grady (.529) are the top two in on-base percentage.
- With two outs, Howard has delivered seven RBI and Hathoot and O’Grady each posted two apiece. Young has been responsible for five RBI with two outs in the inning.
- Hathoot reached base in her first plate appearance in six games with a walk, a single back up the middle, a home run, a single through the left side, a single to right and a hit-by-pitch, scoring in four of those games. When leading off in any inning, the freshman infielder is 8-for-20.
- Howard is 4-for-5 in situations in which there is a runner on third and less than two outs, including a RBI double in the last game against Grand Canyon which tied the game at six. Bailey Klitzke is 4-for-4 in the same situation. O’Grady is 16-for-22 in advancing runners, Martinez is 14-for-24 and Howard is 15-for-32.

GOING THE DISTANCE #4

- While the Lobos have more depth at the pitcher position than in recent years, the Lobos utilized just two in their two wins on Saturday, Feb. 8.
- Freshman right-hander Brianna Sanchez pitched a complete 7.0 innings in her first collegiate start against (RV) Stanford, allowing just four hits and striking out one, while throwing 47 strikes on 86 total pitches for the shutout. The freshman found herself in trouble just once with a bases-loaded situation in the second, but for the most of the morning, the Lobo pitcher kept the Cardinal off of the base paths, retiring the order in the third and fourth. The four hits were scattered through four innings and each time the defense kept the runners stranded, with the Cardinal leaving a total of five runners on base in the game.
- In the next game against host GCU, senior left-hander Kiana Spencer finished with a final stat line of 7.0 innings of work, six hits, four runs (all earned), two strikeouts, four walks and 55 strikes on 93 pitches thrown. It was the 12th complete game for Spencer as a Lobo.
- In the Susan Craig Classic, Spencer pitched two more complete games, with both resulting in run-rule wins for the Lobos. On Friday night against Northern Colorado, the left-hander finished with a stat line of 5.0 innings of work, two walks and 67 pitches thrown with 40 of them called strikes. In Saturday’s game against UCSB, Spencer posted 5.0 innings of work, allowing just one run on five hits, while striking out two batters and walking three. Of the 76 pitches thrown, 44 went for strikes.

LEADOFF LIFT OFF

- UNM has hit five home runs to lead off an inning, with three coming in the first game against Grand Canyon. Sydney Broderick hit a home run in the top of the seventh in the 7-6 loss to Stanford, Rachael Hathoot opened up the bottom of the first in the 2-0 win over Stanford with a home run, and Bailey Klitzke (bottom third), Broderick (bottom fifth) and Andrea Howard (bottom sixth) all hit home runs in the 9-4 win over Grand Canyon to start the inning. In the case of Klitzke’s home run, Howard followed that up with a home run of her own, with both coming on the first pitch of the at-bats.
- Overall, in the five games of opening weekend, the Lobos had 14 leadoff hitters reach base, with the most coming in the first game against Stanford on Saturday at four.
- On the season, the Lobos have had 32 hitters reach base on 88 chances, a .364 percentage.

FRESHMEN STEP UP IN WEEKS 1, 2 AND 3

- UNM had three freshmen start all five games in Briana Martinez, Rachael Hathoot and Gavyn Shafer at the GCU Kickoff Tournament, with four making an appearance overall, and were put in

key roles in which they delivered. To date, Hathoot and Martinez have started all 14 games.

- Martinez leads the team in several offensive categories including on-base percentage, walks, stolen bases and is second in hits, runs scored and batting average, as well as is among the top five in several more categories. Martinez is third in total bases, fourth in slugging percentage and tied for third in RBI. The outfielder reached safely in all 14 games and has three multiple hit games and two multiple RBI games. She went 14-for-24 in advancing runners.
- Hathoot is fourth in runs scored, tied for second in hits, fourth in total bases, fifth in walks. She is the only Lobo to have recorded a triple to date this season.
- Shafer has spent time at both first and second, mostly at second, in her 13 starts and produced her first double play against Stanford in the 2-0 win. The infielder has 24 assists on the season, the second most on the team in the category, has 23 putouts (fifth on the team) and has been involved in three double plays. Her first RBI came on a sacrifice fly in the season opener against Weber State.
- Sanchez has made a team-high nine appearances in the circle but also has a team-low ERA of 4.71. Opposing teams have a batting average against the pitcher at .286 as well as the fewest hits. The right-hander has thrown 21.0 innings, and also accounted for a double play to close out the 2-0 win against Stanford in which she caught a line drive and threw it to first for the final out. In the win against UC Riverside, Sanchez threw a scoreless 2.2 innings in relief, allowing just two hits while walking two and striking out one. Of the 39 pitches she threw, 25 went for strikes.

THANK YOU, T.Y.

- Junior outfielder Taryn Young has had an impressive Mary Nutter Collegiate Classic, recording five of her seven hits this season in California. If the five hits, three of them went for home runs, giving the Lobo five RBI in the tournament. Against San Diego, the California native reached base twice via walks.
- In the final game of the Mary Nutter, Young accounted for both Lobo hits and all three Lobo runs, hitting a solo home run in the fifth to tie the game and a two-run home run in the seventh with two outs.
- Young is second on the team in home runs, fifth in batting average and total bases, third in slugging percentage, tied for fourth in on-base percentage, and tied for second in runs scored.

ROOM TO IMPROVE

- In the four games that the Lobos lost prior to the Mary Nutter, there was one common theme: runners left on base.
- In the season opener against Weber State and the next game against Stanford, UNM left 11 runners stranded in each game. In the loss to GCU, UNM left 10 runners on base and in the last game against UCSB, the Lobos left eight runners on base.
- However, in the last four losses for UNM, the bats have become cold with the Lobos registering one hit against Missouri, two against Cal and three against Arizona State.
- The Lobos had their chance in the game against Cal in the fourth inning to get on the board and potentially take a lead, loading the bases with no outs, but the Lobos grounded into a double play and fouled out to left to leave two runners on base.

NATIONALLY RANKED

- Through the first 14 games of the season, UNM is ranked among the top 30 in a couple of categories.
- The Lobos rank ninth in the NCAA in walks with 66, 15th in double plays per game at 0.57 and 27th in the country in home runs per game with 1.14, and lead the Mountain West in double plays per game and home runs per game.
- Individually, Cameryn O'Grady ranks second in the NCAA in doubles (nine), just one behind the NCAA leader, ninth in doubles per game (0.64) and 51st in walks per game (.79). Andrea Howard is 27th in home runs (five), 41st in home runs per game (0.36), and 12th in sacrifice flies (two). Briana Martinez is eighth in walks per game (1.00) and 57th in on-base percentage (.553).
- The Lobos lead the Mountain West in home runs with 16, is third in walks (66) and fourth in slugging percentage (.439).

FIRST TIME FOR EVERYTHING

- Redshirt-freshman Skylar Jenkins made her first start in Sunday's game against UCSB, coming off of her first collegiate hit and home run the day before. Entering as a pinch hitter for the Lobos in the sixth inning against Northern Colorado, Jenkins recorded her first collegiate hit with a two-run home run to right field.
- Freshman Gavyn Shafer registered her first collegiate hit in the first game against UNC on Feb. 14 in the second inning, also tallying her first RBI.
- Sophomore Leslie Romero's first collegiate hit also was memorable as it resulted in a RBI in the Feb. 15 game against UCSB. Romero hit a double in the fourth inning to give UNM a 4-1 lead after hitting a sacrifice fly in the first inning to allow Andrea Howard to tag from third.
- Pitcher Alexis Buddenhagen recorded her first strikeout as a Lobo against Arizona State in the fourth inning on a 3-2 pitch.

PLEASE ALLOW ME TO INTRODUCE MYSELF

- The 2020 UNM Lobos will have many new faces this season with 11 newcomers, comprising half the total team, eight of which are freshmen.
- In the offseason, the Lobos added freshmen Briana Martinez, Rachael Hathoot, Jayden Gandert, Jocelyn Ulrich, Sam Kortsen, Gavyn Shafer, Brianna Sanchez and Jennifer Hernandez. The Lobos also added transfers in Taryn Young (Arizona), Reyan Tuck (Towson) and Alexis Buddenhagen (Bethany College).

STAYING HOME

- There are 10 New Mexico natives on the 2020 roster, seven of which are from Albuquerque.
- Included in the 10 is the 2019 New Mexico Gatorade Softball Player of the Year Briana Martinez from Rio Rancho High School.
- The 10 representing the "Land of Enchantment" are Lauren Wilmert (Albuquerque), Rachael Hathoot (Albuquerque), Andrea Howard (Albuquerque), Taylor Jones (Albuquerque), Alexis Buddenhagen (Albuquerque), Jennifer Hernandez (Albuquerque), Jocelyn Ulrich (Aztec), Kiana Spencer (Gallup) and Martinez (Albuquerque).
- This year's team has the most representatives from New Mexico in the last at least seven years, doubling the number of in-state players on the roster from 2017 and 2018. Previously, the most on a roster was seven in 2008.

PUTTING THE PIECES OF THE PUZZLE TOGETHER

- For the second-straight year, the UNM roster underwent a major renovation with the departure of eight letterwinners and an addition of the aforementioned 11 newcomers.
- The Lobos also have 13 underclassmen on the roster, with a team-high eight freshmen and one redshirt freshman who will have an opportunity to see playing time this season.
- However, in the circle, the Lobos retained all three pitchers from 2019 and doubled their options with the addition of freshmen RHP Jayden Gandert and RHP Brianna Sanchez and junior LHP Alexis Buddenhagen.
- Kiana Spencer recorded the most starts (23) and complete games (11) for the Lobos in 2019, including pitching a complete game against then- No. 7 Alabama, allowing one run on six hits in a 1-0 loss. In addition, the LHP recorded at least one strikeout in 23 games.
- Kennedy Ferguson had a solid rookie campaign for UNM with a team-leading 4.98 ERA, starting in 21 games, making 33 appearances and completing nine games. The RHP appeared in the circle a team-high 125.0 innings. Highlights for her on the season included striking out 11 batters against North Dakota and pitching a complete game against then- No. 3 Florida, giving up one run in extra innings on five hits while striking out five.
- In addition, the Lobos return six mainstays in the lineup, including senior shortstop Cameryn O'Grady who started all 53 games last season, the only Lobo to do so. O'Grady led the team in batting average (.348), slugging percentage (.603), on-base percentage (.474), runs scored (32), hits (49), doubles (16), total bases (85) and walks (31). Another staple is senior Lauren Wilmert, who started in 47 games in 2019, 23 behind the plate and 24 at first. Wilmert threw out seven runners last season, was second in slugging percentage (.500) and total bases (67) and tied for second in hits (35) and doubles (9), and hit two grand slams on the season.



TOUGH TASK AHEAD

- The 2020 schedule will test the Lobos as UNM will play 12 teams that reached the NCAA Tournament in 2019, with two teams reaching the Super Regional (Arizona and Texas) and one going all the way to the Women's College World Series (Arizona).
- Of the 29 teams that the Lobos will face, four teams compiled 40 or more wins in 2019 and 17 posted 30-plus wins last season. Combined, the teams recorded 878 wins last year and represent 13 different conferences. Of those, UNM will face seven schools from the Power 5, including four from the Pac-12, two from the Big 12 and one from the SEC.
- UNM is scheduled to play four teams that were ranked in the USA Today/ NFCA Coaches Preseason Poll and five teams receiving votes. Two of the teams on UNM's schedule (Arizona and Texas) ranked in the top six in the USA Today/ NFCA Coaches preseason rankings (with U of A receiving a first-place vote), as well as No. 18 Texas Tech and No. 22 Arizona State. Missouri, Boise State, Stanford, Fresno State and San José State were all receiving votes.
- In the ESPN.com / USA Softball Collegiate Top 25 Preseason Poll, four teams on the schedule were ranked with four more receiving votes. Arizona was the highest ranked at fifth followed by Texas sixth. Texas Tech ranked 19th and Arizona State 22nd. Receiving votes were Missouri, Stanford, Boise State and San Diego State.
- As an added bonus, the Lobos are scheduled to face the USA Olympic Team on Feb. 20 at the Mary Nutter Classic.

STARTING OFF STRONG

- Following opening day's loss to Weber State, UNM is 26-17 in season openers, including 3-2 in the last five years.
- The last time the Lobos won their season opener was Feb. 8, 2019, a 15-6 win over UTEP.
- In the last 10 years, the best start on opening weekend for the Lobos has been 5-0, achieved in 2012, and a 3-0 start in 2011.

HOME COMFORT

- Unlike last season in which the Lobos began the season with five non-conference tournaments on the road, UNM will host two tournaments at Lobo Softball Field in 2020.
- The Lobos play 24 of their 57 games at home starting with the Susan Craig Classic on Feb. 14.
- All in all, UNM will not travel more than one time zone away, with the farthest distance to travel being San Jose, Calif. (1044 miles) to open Mountain West play March 13-15.

ONE FINAL GO AROUND FOR O'GRADY

- Cameryn O'Grady enters her final season in the Cherry and Silver with several milestones achieved.
- The shortstop currently has a streak of 111 games in the starting lineup dating back to Feb. 18, 2018, all at shortstop. In the last two years, the California native has started all but one game.
- This season, the senior shortstop leads the team in batting average (.368), hits (14) and doubles and is second in slugging percentage (.684), on-base percentage (.529), RBI (10), total bases (26) and walks (11).
- In addition, O'Grady currently sits at 111 career hits, recording her 100th hit against Grand Canyon on Feb. 8.
- Entering her fourth season, O'Grady has started 138 games, played in 146. She had her best season as a Lobo in 2019 with a hitting percentage of .348 with 49 hits, 16 doubles, six home runs, 85 total bases, and tied her season-best total of 26 RBI.
- In 2019, O'Grady had 11 multiple hit games, seven multiple RBI games and had a streak of nine games with a hit and 15 games reaching base safely. Last season, O'Grady recorded a hit in 35 games (66%).
- O'Grady hit in the three spot in 31 games, in the cleanup spot 16 games and led off for the Lobos six games last season.
- As the leadoff hitter, O'Grady was 18-for-33 (.545). With a runner on third and less than two outs, O'Grady was 4-for-9 (.444), was 13-for-38 (.342) with runners in scoring position and was .500 (45-for-90) in successfully advancing runners.
- O'Grady has already made the UNM record book in career walks with 66, which ranks ninth all-time. If she were to replicate her 2019 total of 31 walks, she would move up to third with 97. To date, she has 11 walks this season. The shortstop could also crack the top 10 in career doubles, which she currently has 28. If she were to match her 2019 total of 16, she would finish with 44 to rank fourth all-time. To date, O'Grady has nine.
- Speaking of the record book, in 2019, O'Grady posted 16 doubles to rank tied for the fourth-most in a single season, her 31 walks tied for seventh in a single season and she had an on-base percentage of .474 to rank tied for the eighth-highest percentage in a single season in program history.

HOWARD: FROM ABO TO TOKYO

- Junior Andrea Howard qualified with the Italian national team over the summer for the 2020 Olympics in Tokyo, a team that she has played with since 2017.
- On July 27, Italy defeated Great Britain 5-0 in the WBSC Europe/ Africa Qualifier championship game in Utrecht, Netherlands to clinch a bid to the 2020 Olympics.
- In what may be a preview for the Summer Games, Howard hit a home run in UNM's exhibition game against Team USA at the Mary Nutter Collegiate Classic against pitcher Ally Carda to score the Lobos' only run.
- Howard will be just the second Lobo softball player to represent their country in the Olympics, joining Jackie Van Hooydonk who played in two Olympics for Canada (2000, 2004).

CLUTCH KLITZKE

- This season, Klitzke has been tasked to hit in the cleanup spot in six games, three times in the fifth spot and twice in the sixth spot thus far.
- So far, Klitzke is fifth on the team in slugging percentage, third in on-base percentage and walks and tied for third in RBI. Klitzke is 4-for-4 in situations in which there is a runner on third and less than two outs, 2-for-4 as the leadoff batter and 12-for-25 in successfully advancing runners.
- At the Mary Nutter Collegiate Classic, Klitzke made four appearances and one start, pitching 13.0 innings. On Saturday, Feb. 22, Klitzke pitched a scoreless combined 6.2 innings, striking out eight batters and allowing just four hits and one walk. She also started the game against Team USA, striking out four hitters and recorded a double at the plate.
- In her first initial year at UNM, Bailey Klitzke proved to be a vital member in the lineup, whether in the circle or at the plate. The now-senior played in 46 games, starting in 44 as either the designated player or pitcher.
- The highlight at the plate for Klitzke came in the first game of the doubleheader against North Dakota, hitting a game-winning triple with bases loaded.
- Klitzke produced eight multiple hit games and seven multiple RBI games, hitting in the cleanup spot in five games, the fifth spot in eight, leadoff in three and sixth in 25 games.
- In the circle, Klitzke recorded at least one strikeout in 18 games in 2019, with a season-high eight strikeouts twice (UTEP, Feb. 8 and UIC, Feb. 16).

SCOUTING LA SALLE

- The Lobos have never played La Salle previously.
- Outside of the Lobo Classic opponents, the Lobos and Explorers share no common opponents.
- The Explorers enter the tournament having just played four games this season at the Wings Etc. Classic, losing to Maine (4-2), Tennessee Tech (16-6, five), USC Upstate (2-0) and Virginia (10-2, five). Last season, La Salle went 12-33, 5-17 in conference, and was 4-15 in away games.
- To date, La Salle is hitting .155 with 10 runs, 13 hits, 10 walks and 22 strikeouts. Opponents are hitting .320 with 32 runs on 33 hits, seven walks and 14 strikeouts.
- Lex Ortman leads the Explorers with four hits, while Ashley Mendenhall leads with three doubles and six total bases. Casey Walker has the lone home run on the season for La Salle as well as a team-high three RBI.
- In the circle, the Explorers have used three different pitchers with Kelly Toomey making a team-high four appearances and has started two games with one complete game. Toomey carries a 3.42 ERA on 11 hits, nine runs (seven earned), four walks and 12 strikeouts in 14.1 innings. Jenna Khant-

zian has made three appearances with two starts, throwing 6.1 innings with 17 hits, 12 runs (11 earned), two walks and two strikeouts and has an ERA of 12.16. Lauren Begg has made just one appearance, throwing 0.2 innings with five hits, 11 runs (three earned) and one walk.

- La Salle was picked to finish ninth in the Atlantic 10 with 20 votes.

SCOUTING NORTHERN COLORADO

- The Lobos are 31-13 overall against the Bears and enter the weekend having won their last four meetings against UNC.
- UNM defeated UNC in both its games earlier this season at the Susan Craig Classic with a 12-3 game in five innings and an 8-3 game.
- Since playing the Lobos the weekend of Feb. 14, the Bears went 1-4 at the Cardinal Classic, beating St. John's 8-7 before losing to Lamar 5-2 and 4-1 and losing to St. John's 3-2 and 12-5.
- To date, the Bears are hitting .274 with 50 runs, 109 hits, 21 walks and 32 strikeouts. They have an on-base percentage of .314 and a slugging percentage of .352, while opponents have an on-base percentage of .435 and a slugging percentage of .567.
- Alyssa Wenzel leads the team with 16 hits, while Mady Young leads with a slugging percentage of .488, an on-base percentage of .386, six doubles and is tied with Emma Brockmann with three walks. Brockmann leads the Bears with 21 total bases and 13 RBI, and is tied with Paola Villegas with one home run.
- In the circle, the Bears have used seven different pitchers with Lainey Hanehan leading with five starts and making eight appearances, with one complete game. Hanehan has pitched a team-high 31.1 innings, allowing 56 hits, 47 runs (31 earned), 16 walks and striking out 13. Maggie Thurston has made three starts and six appearances with 22.1 innings in the circle, giving up 40 hits, 22 runs (20 earned), eight walks and striking out four.
- UNC returns six starters and has 13 newcomers and was picked to finish sixth in the Big Sky with 13 votes.

SCOUTING SOUTH DAKOTA

- The Lobos are 1-1 against the Coyotes, with a 3-2 win on Feb. 26, 2016 and a 5-2 loss on Feb. 17, 2018.
- UNM and South Dakota have four common opponents outside of the Lobo Classic in Arizona, Boise State, Arizona State and Grand Canyon.
- The Coyotes enter the tournament having won their last three games.
- To date, USD is hitting .290 with 125 hits, 76 runs, with 54 walks and 77 strikeouts. USD has a slugging percentage of .371 and an on-base percentage of .376.
- Jordyn Pender leads the team with a batting average of .432, a slugging percentage of .614 and has an on-base percentage of .500. Pender is tied to Lauren Eamiguel tie for the team high in hits with 19 and Pender and Aleesia Sainz are tied for the team high in home runs with one. Pender, Sainz and Eamiguel have tallied the only triples for the team this season. Eamiguel is tied with Dylan Underwood for doubles with four, and Courtney Wilson leads the team with nine walks.
- In the circle, the Coyotes have used five pitchers, with Sarah Lisko making a team-high 11 appearances, has started six games and thrown four complete games. Lisko has a team-best ERA of 2.64 with a team-high 45.0 innings pitched, allowing 44 hits, 25 runs (17 earned), eight walks and 19 strikeouts. Alexis Devers has made 10 appearances and six starts with one complete game and has an ERA of 4.06. Devers has thrown 29.1 innings, with 33 hits, 20 runs (17 earned), striking out 21 and walking 17. Holly Fletcher has made four starts and nine appearances, with 19.1 innings in the circle. She has allowed 35 hits, 28 runs (25 earned), eight walks and 13 strikeouts. As a staff, the pitching staff has an ERA of 4.71 with five complete games and one shutout, allowing 128 hits, 86 runs, 43 walks and striking out 56 hitters.
- Eamiguel was recently named the Summit League Athlete of the Week after hitting .714 (10-for-14) at the Madeira Beach Invitational with four multi-hit games and totaled six RBIs with four runs scored.
- South Dakota was picked to finish second in the Summit League and outfielder Camille Fowler and pitcher Alexis Devers were named players to watch by the conference. The Coyotes have six returning starters.



STAT COMPARISON

	UNM	LS	UNC	USD
BA	.239	.155	.274	.290
R	69	10	50	76
H	80	13	109	125
2B	17	3	25	23
3B	1	1	0	3
HR	16	1	2	2
RBI	62	6	44	67
BB	66	10	21	54
SO	70	22	32	77
ERA	6.03	6.89	7.35	4.71
SO	27	14	33	56
BB	40	7	44	43
H	104	33	162	128
R	70	32	118	86
ER	59	21	98	70
DP	8	3	11	10
FLD%	.969	.888	.967	.936

Hitting

Pitching
Fld.

MOUNTAIN WEST INFORMATION

PRESEASON MOUNTAIN WEST POLL

Rk.	Team (1st-Place Votes)	Points
1.	San José State (2)	53
2.	San Diego State (3)	50
3.	Colorado State (1)	45
3.	UNLV (1)	45
5.	Fresno State (1)	44
6.	Boise State (1)	41
7.	Nevada	23
8.	Utah State	15
9.	New Mexico	8

MOUNTAIN WEST PLAYERS OF THE WEEK

2020 MW Softball Player of the Week

- Feb. 11 – Alison Seng, Jr., INF, Boise State
- Feb. 18 – Alesia Denby, Fr., INF, Fresno State
- Feb. 25 – Justine Federe, Sr., INF, UNLV

2020 MW Softball Pitcher of the Week

- Feb. 11 – Kelsey Broadus, Sr., LHP, Boise State
- Feb. 18 – Kapri Toone, So., RHP, Utah State
- Feb. 25 – Shannon Haddad, Fr., RHP, San José State

ESPN.COM/USA SOFTBALL COLLEGIATE TOP 25

WEEK 3 • FEB. 25

Rk.	Team (1st Votes)	Pts.	Rec	Prev.
1.	UCLA (20)	15-0	500	1
2.	Washington	15-1	476	2
3.	Texas	15-1	445	4
4.	LSU	13-1	424	7
5.	Oklahoma	11-3	401	3
6.	Florida	16-2	399	9
7.	Arizona	12-3	375	5
8.	Florida State	7-4	318	8
9.	Louisiana-Lafayette	11-3	316	10
10.	Oregon	14-0	300	17
11.	Michigan	10-3	292	6
12.	Alabama	9-5	281	13
13.	Kentucky	12-3	262	11
14.	Oklahoma State	8-5	221	14
15.	Georgia	14-3	209	18
16.	Arizona State	12-4	175	16
17.	South Carolina	10-3	173	22
18.	Minnesota	8-6	154	15
19.	Baylor	13-2	100	RV
20.	Virginia Tech	12-3	95	25
21.	Arkansas	12-2	80	23
22.	Tennessee	7-6	76	12
23.	Missouri	12-5	71	19
24.	Texas Tech	10-5	60	20
25.	James Madison	6-3	52	21

Others receiving votes: Mississippi State (49), UCF (44), Duke (29), Utah (28), North Texas (25), Wisconsin (20), Fresno State (14), South Florida (14), Stanford (10), Northwestern (2), Houston (1), Notre Dame (1), Oregon State (1) San Diego State (1)

USA TODAY/ NFCA COACHES TOP 25 POLL

WEEK 3 • FEB. 25

Rk.	Team (1st Votes)	Pts.	Rec	Prev.
1	UCLA (31)	799	15-0	1
2	Washington (1)	765	15-1	2
3	Texas	689	15-1	4
4	LSU	672	13-1	6
5	Oklahoma	668	11-3	3
6	Florida	667	16-2	7
7	Arizona	592	12-3	5
8	Alabama	520	9-5	10
9	Florida State	509	7-4	9
10	Louisiana	491	11-3	11
10	Oregon	491	14-0	15
12	Kentucky	418	12-3	13
13	Michigan	392	10-3	8
14	Georgia	350	14-3	19
15	Oklahoma State	338	8-5	14
16	South Carolina	252	10-3	22
17	Arizona State	222	12-5	16
18	Minnesota	208	8-6	17
19	Virginia Tech	189	12-3	24
20	Tennessee	158	7-6	12
21	Missouri	151	12-5	18
22	Arkansas	150	12-2	23
23	Baylor	141	13-2	RV
24	James Madison	123	6-3	21
25	Texas Tech	122	10-5	20

Others receiving votes: UCF (96), Fresno State (39), Mississippi State (38), North Texas (34), Duke (25), Utah (22), Houston (15), Oregon State (13), Wisconsin (10), Stanford (8), Northwestern (6), Notre Dame (6), San Jose State (4), Tulsa (3), BYU (2), North Carolina (2).

BY THE NUMBERS

Statistic	All Games	MW	MW Games
Batting Average:	.239	9th	--
Slugging Percentage:	.439	4th	--
On Base Percentage:	.370	5th	--
Runs Scored:	69	7th	--
Hits:	80	9th	--
RBIs:	62	7th	--
HRs:	16	1st	--
Total Bases:	147	7th	--
ERA:	4.69	9th	--
Opp. Batting Avg.:	.304	9th	--
Batters Struck Out:	27	9th	--
Hits Allowed:	104	7th	--
Runs Allowed:	70	8th	--
Earned Runs Allowed:	59	9th	--
Walks Allowed:	40	T-6th	--
Home Runs Allowed:	15	8th	--
Fielding Percentage:	.969	4th	--
Putouts:	264	9th	--
Fielding Double Plays:	8	3rd	--
Caught Stealing By:	5	T-3rd	--

MOUNTAIN WEST STANDINGS

School	Conf.	Conf. %	Overall	Overall %	Streak
San José State	0-0	0.000	14-2	0.875	W14
Fresno State	0-0	0.000	13-3	0.813	W5
UNLV	0-0	0.000	12-4	0.750	W5
San Diego State	0-0	0.000	11-6	0.647	L1
Boise State	0-0	0.000	9-6	0.600	L1
Colorado State	0-0	0.000	8-6	0.571	W3
Utah State	0-0	0.000	7-7	0.500	L2
New Mexico	0-0	0.000	6-8	0.429	L4
Nevada	0-0	0.000	4-10	0.286	W1

NUMERICAL ROSTER

#	NAME	POS	HT	YR	B/T	HOMETOWN (PREVIOUS SCHOOL)
00	Andrea Howard	OF	5-6	Jr.	L/L	Albuquerque, N.M. (La Cueva HS)
1	Briana Martinez	UT	5-3	Fr.	R/R	Albuquerque, N.M. (Rio Rancho HS)
3	Rachael Hathoot	IF	5-8	Fr.	R/R	Albuquerque, N.M. (La Cueva HS)
4	Taryn Young	OF	5-8	Jr.	R/R	Anaheim, Calif. (Arizona)
5	Sydney Broderick	C	5-4	Jr.	R/R	Mesa, Ariz. (Desert Ridge HS)
6	Jayden Gandert	P	5-7	Fr.	R/R	Rio Rancho, N.M. (Cleveland HS)
7	MacKenzie Peterson	OF	5-9	So.	R/R	Gilbert, Ariz. (Phoenix College)
8	Bailey Klitzke	P/1B	5-8	Sr.	L/L	Apache Junction, Ariz. (Wichita State)
9	Taylor Jones	IF	5-7	Jr.	R/R	Albuquerque, N.M. (La Cueva HS)
10	Cameryn O'Grady	SS	5-6	Sr.	L/R	Orange, Calif. (El Modena HS)
13	Kennedy Ferguson	P	5-6	So.	R/R	Camas, Wash. (Camas HS)
14	Jocelyn Ulrich	OF	5-7	Fr.	L/R	Aztec, N.M. (Aztec HS)
15	Sam Kortsen	IF	5-10	Fr.	R/R	Willcox, Ariz. (Thatcher HS)
16	Leslie Romero	OF	5-4	So.	R/R	Gonzales, Calif. (Salinas HS)
22	Gavyn Shafer	IF	5-10	Fr.	R/R	Hillsboro, Ore. (Century HS)
24	Skylar Jenkins	OF	5-5	R-Fr.	R/R	Lawrenceville, Ga. (Buford HS)
25	Brianna Sanchez	P	5-6	Fr.	R/R	West Covina, Calif. (Bishop Amat HS)
32	Lauren Wilmert	C/1B	5-10	Sr.	R/R	Albuquerque, N.M. (Volcano Vista HS)
44	Alexis Buddenhagen	P	5-4	Jr.	L/L	Albuquerque, N.M. (Bethany College)
66	Jennifer Hernandez	IF	5-2	Fr.	L/R	Albuquerque, N.M. (Atrisco Heritage Academy)
77	Reyan Tuck	IF	6-0	So.	R/R	Hillsboro, Ore. (Towson)
99	Kiana Spencer	P	5-6	Sr.	L/L	Gallup, N.M. (Yavapai College)

ALPHABETICAL ROSTER

#	NAME	POS	HT	YR	B/T	HOMETOWN (PREVIOUS SCHOOL)
5	Sydney Broderick	C	5-4	Jr.	R/R	Mesa, Ariz. (Desert Ridge HS)
44	Alexis Buddenhagen	P	5-4	Jr.	L/L	Albuquerque, N.M. (Bethany College)
13	Kennedy Ferguson	P	5-6	So.	R/R	Camas, Wash. (Camas HS)
6	Jayden Gandert	P	5-7	Fr.	R/R	Rio Rancho, N.M. (Cleveland HS)
3	Rachael Hathoot	IF	5-8	Fr.	R/R	Albuquerque, N.M. (La Cueva HS)
66	Jennifer Hernandez	IF	5-2	Fr.	L/R	Albuquerque, N.M. (Atrisco Heritage Academy)
00	Andrea Howard	OF	5-6	Jr.	L/L	Albuquerque, N.M. (La Cueva HS)
24	Skylar Jenkins	OF	5-5	R-Fr.	R/R	Lawrenceville, Ga. (Buford HS)
9	Taylor Jones	IF	5-7	Jr.	R/R	Albuquerque, N.M. (La Cueva HS)
8	Bailey Klitzke	P/1B	5-8	Sr.	L/L	Apache Junction, Ariz. (Wichita State)
15	Sam Kortsen	IF	5-10	Fr.	R/R	Thatcher, Ariz. (Thatcher HS)
1	Briana Martinez	UT	5-3	Fr.	R/R	Albuquerque, N.M. (Rio Rancho HS)
10	Cameryn O'Grady	SS	5-6	Sr.	L/R	Orange, Calif. (El Modena HS)
7	MacKenzie Peterson	OF	5-9	So.	R/R	Gilbert, Ariz. (Phoenix College)
16	Leslie Romero	OF	5-4	So.	R/R	Gonzales, Calif. (Salinas HS)
25	Brianna Sanchez	P	5-6	Fr.	R/R	West Covina, Calif. (Bishop Amat HS)
22	Gavyn Shafer	IF	5-10	Fr.	R/R	Hillsboro, Ore. (Century HS)
99	Kiana Spencer	P	5-6	Sr.	L/L	Gallup, N.M. (Yavapai College)
77	Reyan Tuck	IF	6-0	So.	R/R	Hillsboro, Ore. (Towson)
14	Jocelyn Ulrich	OF	5-7	Fr.	L/R	Aztec, N.M. (Aztec HS)
32	Lauren Wilmert	C/1B	5-10	Sr.	R/R	Albuquerque, N.M. (Volcano Vista HS)
4	Taryn Young	OF	5-8	Jr.	R/R	Anaheim, Calif. (Arizona)

RETURNERS (11) - 2019 SEASON STATS

No.	Name	Pos.	Cl.	Avg.	GP-GS	AB	R	H	2B	3B	HR	RBI	SLG%	FLD%
00	Andrea Howard	OF	So.	.192	46-46	125	25	24	9	2	3	15	.368	.962
5	Sydney Broderick	C	So.	.095	33-30	63	5	6	2	0	1	3	.175	.952
7	MacKenzie Peterson	OF	Fr.	.176	21-13	34	2	6	0	0	0	2	.176	.941
8	Bailey Klitzke	P/1B	Jr.	.297	49-45	118	11	35	6	3	2	26	.449	1.000
9	Taylor Jones	IF	So.	.138	42-35	87	10	12	1	0	2	5	.218	.963
10	Cameryn O'Grady	SS	Jr.	.348	53-53	141	32	49	16	1	6	26	.603	.894
16	Leslie Romero	OF	Fr.	.000	10-2	12	0	0	0	0	0	0	.000	1.000
32	Lauren Wilmert	C	Jr.	.261	47-47	134	23	35	9	1	7	35	.500	.962

PITCHERS RETURNING (3) - 2019 SEASON STATS

No.	Name	Cl.	ERA	W-L	APP	GS	CG	SHO	SV	IP	SO	BF
13	Kennedy Ferguson	Fr.	4.98	4-15	33	21	9	1/0	0	125.0	74	623
99	Kiana Spencer	Jr.	6.37	6-18	33	23	11	2/0	1	122.0	66	626
8	Bailey Klitzke	Jr.	9.97	2-8	27	9	2	0/0	1	59.2	56	350

KEY PLAYERS LOST (3) - 2019 SEASON STATS

No.	Name	Pos.	Avg.	GP-GS	AB	R	H	2B	3B	HR	RBI	SLG%	FLD%
44	Aleyah Wilbon	OF	.324	43-24	74	13	24	1	0	3	3	.338	.971
4	D'Andra DeFlora	OF	.234	52-52	145	29	34	5	0	3	15	.331	.976
22	Monica Salas	IF	.234	49-49	124	15	29	4	0	5	18	.387	.907

NEWCOMERS (11)

No.	Name	Pos.	No.	Name	Pos.
1	Briana Martinez	UT	22	Gavyn Shafer	IF
3	Rachael Hathoot	IF	25	Brianna Sanchez	P
4	Taryn Young	OF	44	Alexis Buddenhagen	P
6	Jayden Gandert	P	66	Jennifer Hernandez	IF
14	Jocelyn Ulrich	OF	77	Reyan Tuck	IF
15	Sam Kortsen	IF			

PRONUNCIATION GUIDE

00	ANDREA Howard	on-DRAY-uh
3	Rachael HATHOOT	HAT-who-t
14	Jocelyn ULRICH	Uhl-rich
44	Alexis BUDDENHAGEN	BUD-den-HAY-ten
	Paula CONGLETON	CONGLE-ton
	Tyler HEIL	HIGHL

CLASS

Seniors (4)

8	Bailey Klitzke	P/1B
10	Cameryn O'Grady	SS
99	Kiana Spencer	P
32	Lauren Wilmert	C/1B

Juniors (5)

44	Alexis Buddenhagen	P
00	Andrea Howard	OF
9	Taylor Jones	IF
5	Sydney Broderick	C
4	Taryn Young	OF

Sophomores (4)

13	Kennedy Ferguson	P
7	MacKenzie Peterson	OF
16	Leslie Romero	OF
77	Reyan Tuck	IF

Freshmen (9)

6	Jayden Gandert	P
3	Rachael Hathoot	IF
66	Jennifer Hernandez	IF
24	Skylar Jenkins	OF
15	Sam Kortsen	IF
1	Briana Martinez	IF
25	Brianna Sanchez	P
22	Gavyn Shafer	IF
14	Jocelyn Ulrich	OF

HOME STATE

Arizona (4)

5	Sydney Broderick	C
8	Bailey Klitzke	P
15	Sam Kortsen	IF
7	MacKenzie Peterson	OF

California (4)

10	Cameryn O'Grady	SS
16	Leslie Romero	OF
25	Brianna Sanchez	P
4	Taryn Young	OF

Georgia (1)

24	Skylar Jenkins	OF
----	----------------	----

New Mexico (10)

44	Alexis Buddenhagen	P
6	Jayden Gandert	P
3	Rachael Hathoot	IF
66	Jennifer Hernandez	IF
00	Andrea Howard	OF
9	Taylor Jones	IF
1	Briana Martinez	IF
99	Kiana Spencer	P
14	Jocelyn Ulrich	OF
32	Lauren Wilmert	C/1B

Oregon (2)

22	Gavyn Shafer	IF
77	Reyan Tuck	IF

Washington (1)

13	Kennedy Ferguson	P
----	------------------	---

POSITION

Outfield (6)	Catcher (2)	Utility (1)
Infield (7)	Pitcher (6)	



2020 NEW MEXICO LOBOS RADIO/TV ROSTER



00
Andrea Howard
OF | 5-6 | Jr.
Albuquerque, N.M.



1
Briana Martinez
UT | 5-3 | Fr.
Albuquerque, N.M.



3
Rachael Hathoot
IF | 5-8 | Fr.
Albuquerque, N.M.



4
Taryn Young
OF | 5-8 | Jr.
Anaheim, Calif.



5
Sydney Broderick
C | 5-4 | Jr.
Mesa, Ariz.



6
Jayden Gandert
P | 5-7 | Fr.
Rio Rancho, N.M.



7
MacKenzie Peterson
OF | 5-9 | So.
Gilbert, Ariz.



8
Bailey Klitzke
P/1B | 5-8 | Sr.
Apache Junction, Ariz.



9
Taylor Jones
IF | 5-7 | Jr.
Albuquerque, N.M.



10
Cameryn O'Grady
SS | 5-6 | Sr.
Orange, Calif.



13
Kennedy Ferguson
P | 5-6 | So.
Camas, Wash.



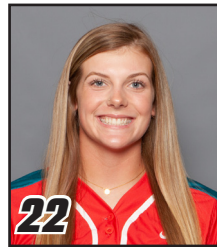
14
Jocelyn Ulrich
OF | 5-7 | Fr.
Aztec, N.M.



15
Sam Kortsen
IF | 5-10 | Fr.
Thatcher, Ariz.



16
Leslie Romero
OF | 5-4 | So.
Gonzales, Calif.



22
Gavyn Shafer
IF | 5-10 | Fr.
Hillsboro, Ore.



24
Skylar Jenkins
OF | 5-5 | R-Fr.
Lawrenceville, Ga.



32
Lauren Wilmert
C/1B | 5-10 | Sr.
Albuquerque, N.M.



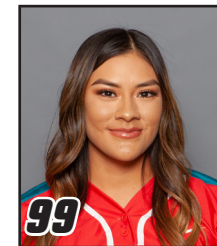
44
Alexis Buddenhagen
P | 5-4 | Jr.
Albuquerque, N.M.



66
Jennifer Hernandez
IF | 5-2 | Fr.
Albuquerque, N.M.



77
Reyan Tuck
IF | 6-0 | So.
Hillsboro, Ore.



99
Kiana Spencer
P | 5-6 | Sr.
Gallup, N.M.



Paula Congleton
Head Coach



Tyler Heil
Assistant Coach



Breanna
Macha Peterson
Assistant Coach



Madison Foust
Athletic Trainer



Brett Nakashima
Strength and Conditioning
Coach



Paula Congleton

5th Head Coach in UNM Program History
Record at UNM: 32-88

NOTEWORTHY :

- Named the fifth head coach in program history on June 20, 2017
- Enters her third season at her alma mater
- Earned her 300th career victory on April 17, 2014
- Earned her 350th career victory on April 22, 2017
- Earned her 400th career victory on May 4, 2018
- Earned her first win at UNM against St. Mary's on Feb. 9, 2018 (4-1)

MORE NOTES ON COACH CONGLETON

- Spent 19 seasons at Santa Barbara City College with the Vaqueros molding the program into one of the elite programs in the WSC
- Three-time WSC Gold Division Coach of the Year
- 2011 Southern Cal Coaching Staff of the Year
- 2011 NFCA National Coaching Staff of the Year
- Led the Vaqueros to four Southern Cal Regional appearances and one trip to the Southern Cal Super Regional
- Guided the Vaqueros to their greatest success of the program, winning a Southern Cal Regional series and advancing to the Super Regional for the first time ever in 2016
- Led the 2016 SBCC squad to the second-most games in program history (30-14)
- The 2016 team finished third WSC Gold Division
- In 2011, led the Vaqueros to a program-record 31 wins (31-7 overall), leading the team to a WSC title and the Southern Cal Regional
- Four-time Scholar Athlete first baseman for the Lobos (3.89 GPA)
- Three-time All-American at New Mexico
- Received her Doctorate in educational administration in 2009
- Served as a full-time professor at SBCC teaching health, weight training and kinesiology
- Served as Associate Athletic Director and Coordinator of the Academic Achievement Zone for student-athletes at SBCC

COACHING EXPERIENCE

Head Coach:

- 2017-Present - New Mexico (32-88)
- 1998-2017 - Santa Barbara City Coll. (Calif.) (354-322)
- 1996-1998 - Cal. State University Eastbay (33-71)

Graduate Assistant:

- 1986-1988 - New Mexico

Overall NCAA DI record (Third Season): 32-88
Overall NCAA record (Fourth Season): 47-110
Overall record (23 years): 419-481 (.466)

ALMA MATER

New Mexico (1984)

TWITTER

Follow @CoachCongleton



2020 NEW MEXICO OVERALL STATISTICS

Record: 6-8 Home: 3-1 Away: 1-1 Neutral: 2-6 MW: 0-0

Player	avg	gp-gs	ab	r	h	2b	3b	hr	rbi	tb	slg%	bb	hp	so	gdp	ob%	sf	sh	sb-att	po	a	e	fld%	
10 O'GRADY, Cameryn	.368	14-14	38	11	14	9	0	1	10	26	.684	11	2	6	0	.529	0	0	0-0	27	25	1	.981	
1 MARTINEZ, Briana	.344	14-14	32	10	11	1	0	2	6	18	.563	14	1	6	0	.553	0	0	4-4	9	0	0	1.000	
77 TUCK, Reyan	.308	11-9	26	1	8	1	0	0	2	9	.346	1	0	3	0	.321	1	0	1-1	45	1	0	1.000	
0 HOWARD, Andrea	.282	14-14	39	8	11	2	0	5	16	28	.718	7	0	8	0	.375	2	0	1-1	36	2	1	.974	
4 YOUNG, Taryn	.259	12-12	27	10	7	0	0	3	5	16	.593	5	0	12	0	.375	0	0	0-0	17	0	0	1.000	
8 KLITZKE, Bailey	.259	11-11	27	6	7	2	0	1	6	12	.444	9	0	10	0	.444	0	0	1-1	1	3	0	1.000	
3 HATHOOT, Rachael	.244	14-14	45	9	11	1	1	1	5	17	.378	6	1	4	0	.346	0	1	0-0	22	21	2	.956	
32 WILMERT, Lauren	.174	10-9	23	2	4	0	0	0	2	4	.174	4	1	6	0	.321	0	0	0-0	41	3	0	1.000	
22 SHAFER, Gavyn	.033	14-13	30	2	1	0	0	0	2	1	.033	5	2	4	0	.211	1	1	0-0	23	24	1	.979	

16 ROMERO, Leslie	.200	8-5	15	3	3	1	0	0	3	4	.267	0	0	2	0	.188	1	0	0-0	12	1	0	1.000	
5 BRODERICK, Sydney	.133	7-6	15	2	2	0	0	2	3	8	.533	3	0	3	0	.263	1	0	0-0	13	3	2	.889	
24 JENKINS, Skylar	.111	7-2	9	2	1	0	0	1	2	4	.444	1	0	4	0	.200	0	0	0-0	2	0	0	1.000	
9 JONES, Taylor	.000	5-3	9	0	0	0	0	0	0	0	.000	0	0	2	0	.000	0	1	0-0	10	4	0	1.000	
25 SANCHEZ, Brianna	.000	1-1	0	0	0	0	0	0	0	0	.000	0	0	0	0	.000	0	0	0-0	3	6	0	1.000	
13 FERGUSON, Kennedy	.000	1-1	0	0	0	0	0	0	0	0	.000	0	0	0	0	.000	0	0	0-0	1	5	1	.857	
66 HERNANDEZ, Jennifer	.000	5-0	0	3	0	0	0	0	0	0	.000	0	0	0	0	.000	0	0	0-0	0	0	0	.000	
Totals	.239	14	335	69	80	17	1	16	62	147	.439	66	7	70	0	.370	6	3	7-7	264	106	12	.969	
Opponents	.304	14	342	70	104	13	3	15	66	168	.491	40	8	27	1	.383	7	11	4-9	259	64	18	.947	

LOB - Team (89), Opp (74). DPs turned - Team (8), Opp (2).

(All games Sorted by Earned run avg)

Player	era	w-l	app	gs	cg	sho	sv	ip	h	r	er	bb	so	2b	3b	hr	b/avg	wp	hp	bk	sfa	sha		
25 SANCHEZ, Brianna	4.71	1-3	9	3	1	1/0	1	21.0	22	12	11	11	5	3	0	2	.286	0	1	0	1	1		
99 SPENCER, Kiana	5.52	4-1	7	6	3	0/0	0	31.0	38	23	19	13	6	6	2	4	.304	1	4	0	2	4		
13 FERGUSON, Kennedy	7.56	1-3	5	4	0	0/0	0	16.2	26	16	14	3	5	3	1	4	.371	0	0	0	2	3		

8 KLITZKE, Bailey	4.72	0-1	5	1	0	0/0	0	13.1	9	10	7	9	10	0	0	2	.196	5	1	0	1	1		
44 BUDDENHAGEN, Alexis	12.00	0-0	2	0	0	0/0	0	6.0	9	9	8	4	1	1	0	3	.375	0	2	0	1	2		
Totals	6.03	6-8	14	14	4	1/0	1	88.0	104	70	59	40	27	13	3	15	.304	6	8	0	7	11		
Opponents	5.63	7-6	14	14	4	2/1	1	86.1	80	69	54	66	70	17	1	16	.239	3	7	0	6	3		

PB - Team (2), ROMERO 1, BRODERICK 1, Opp (5). SBA/ATT - BRODERICK (3-5), WILMERT (1-4), SANCHEZ (3-3), SPENCER (1-2), KLITZKE (0-2), BUDDENHAGEN (0-1), FERGUSON (0-1).

2019 NEW MEXICO MOUNTAIN WEST STATISTICS

Record: 3-21 Home: 1-11 Away: 2-10 MW: 3-21

Player	avg	gp-gs	ab	r	h	2b	3b	hr	rbi	tb	slg%	bb	hp	so	gdp	ob%	sf	sh	sb-att	po	a	e	fld%
44 WILBON, Aleyah	.340	19-17	50	5	17	1	0	0	2	18	.360	2	0	9	1	.365	0	1	0-0	26	0	1	.963
32 WILMERT, Lauren	.339	18-18	56	8	19	3	0	4	17	34	.607	2	0	17	1	.356	1	0	0-0	84	4	4	.957
10 O'GRADY, Cameryn	.328	24-24	61	13	20	6	0	3	11	35	.574	15	2	15	0	.474	0	0	0-0	28	43	8	.899
8 KLITZKE, Bailey	.262	23-22	61	7	16	3	1	2	11	27	.443	7	0	6	0	.333	1	0	0-0	1	3	0	1.000
4 DeFLORA, D'Andra	.246	23-23	65	11	16	2	0	2	7	24	.369	6	5	22	0	.355	0	1	1-2	38	1	2	.951
22 SALAS, Monica	.241	22-22	54	6	13	2	0	2	7	21	.389	7	1	21	2	.339	0	0	1-1	16	29	4	.918
7 PETERSON, MacKenzie	.231	8-6	13	0	3	0	0	0	2	3	.231	1	0	2	0	.286	0	0	0-0	35	0	4	.897
0 HOWARD, Andrea	.204	17-17	49	11	10	3	1	1	5	18	.367	9	0	15	1	.328	0	0	0-0	39	0	2	.951
66 TOWNES, Sydney	.194	16-13	31	3	6	0	0	0	0	6	.194	8	0	12	0	.359	0	0	0-0	27	0	2	.931
3 JONES, Taylor	.167	19-19	48	6	8	1	0	2	4	15	.313	3	1	19	0	.231	0	0	0-0	59	23	5	.943
9 HALLEEN, Kasey	.154	12-10	26	1	4	0	0	0	2	4	.154	0	1	7	2	.179	1	0	0-0	15	16	1	.969
5 BRODERICK, Sydney	.063	16-16	32	2	2	2	0	0	1	4	.125	8	0	9	0	.250	0	1	1-1	53	10	5	.926
12 HASLAM, Daryn	.000	12-6	22	1	0	0	0	0	0	0	.000	0	0	10	1	.000	0	0	0-0	6	8	2	.875
2 BUCKHOLZ, Maggie	.000	6-2	7	0	0	0	0	0	0	0	.000	1	0	5	0	.125	0	0	0-0	1	0	1	.500
16 ROMERO, Leslie	.000	4-1	5	0	0	0	0	0	0	0	.000	0	0	4	0	.000	0	0	0-0	0	0	0	.000
13 FERGUSON, Kennedy	.000	0-0	0	0	0	0	0	0	0	0	.000	0	0	0	0	.000	0	0	0-0	0	8	0	1.000
23 STELTZER, Emma	.000	0-0	0	0	0	0	0	0	0	0	.000	0	0	0	0	.000	0	0	0-0	0	1	0	1.000
99 SPENCER, Kiana	.000	1-1	0	0	0	0	0	0	0	0	.000	0	0	0	0	.000	0	0	0-0	0	4	0	1.000
Totals	.231	24	580	74	134	23	2	16	69	209	.360	69	10	173	8	.322	3	3	3-4	428	150	41	.934
Opponents	.351	24	659	209	231	49	8	44	193	428	.649	91	16	74	2	.437	7	9	17-23	453	112	20	.966

LOB - Team (138), Opp (146). DPs turned - Team (3), Opp (10). CI - Team (1), BRODERICK 1.

(MW games only Sorted by Earned run avg)

Player	era	w-l	app	gs	cg	sho	sv	ip	h	r	er	bb	so	2b	3b	hr	b/avg	wp	hp	bk	sfa	sha
13 FERGUSON, Kennedy	7.11	2-6	15	9	1	0/0	0	43.1	71	57	44	18	16	14	0	13	.360	4	1	0	3	4
99 SPENCER, Kiana	8.17	1-10	16	10	3	0/0	1	49.2	77	68	58	31	26	19	3	12	.341	5	9	0	3	2
8 KLITZKE, Bailey	9.45	0-5	16	5	1	0/0	1	40.0	63	64	54	32	31	13	5	13	.339	12	4	0	1	3
9 HALLEEN, Kasey	10.50	0-0	2	0	0	0/0	0	2.0	3	3	3	2	1	0	0	1	.333	0	0	0	0	0
23 STELTZER, Emma	11.55	0-0	5	0	0	0/0	0	6.2	13	12	11	6	0	2	0	4	.394	0	2	0	0	0
44 WILBON, Aleyah	28.00	0-0	1	0	0	0/0	0	1.0	4	5	4	2	0	1	0	1	.500	1	0	0	0	0
Totals	8.49	3-21	24	24	5	0/0	2	142.2	231	209	173	91	74	49	8	44	.351	22	16	0	7	9
Opponents	2.97	21-3	24	24	10	6/2	3	151.0	134	74	64	69	173	23	2	16	.231	7	10	0	3	3

PB - Team (6), BRODERICK 5, WILMERT 1, Opp (3). SBA/ATT - BRODERICK (12-15), KLITZKE (6-8), WILMERT (5-8), FERGUSON (5-7), SPENCER (4-6), STELTZER (2-2).



2020 NEW MEXICO GAME-BY-GAME STATISTICS

Date	Opponent	ab	r	h	rbi	2b	3b	hr	tb	bb	ibb	sb	cs	hbp	sac	sf	gdp	k	po	a	e	lob	avg
Feb 07	vs Weber State	23	1	2	1	1	0	0	3	9	0	0	0	0	0	1	0	6	21	11	0	11	.087
Feb 07	vs Stanford	29	6	7	6	1	0	1	11	8	0	0	0	1	0	0	0	7	20	9	1	11	.173
Feb 08	vs Stanford	21	2	3	2	0	0	2	9	3	0	0	0	0	0	0	0	2	21	6	0	4	.164
Feb 08	at Grand Canyon	27	9	8	6	2	0	4	22	6	0	1	0	2	0	1	0	5	21	10	0	9	.200
Feb 09	at Grand Canyon	30	6	9	5	1	0	1	13	5	0	1	0	0	2	0	0	4	19	3	3	10	.223
Feb 14	NORTHERN COLORAD	24	12	13	12	3	0	1	19	6	0	1	0	0	0	2	0	3	15	4	1	7	.273
Feb 15	NORTHERN COLORAD	27	8	9	5	3	0	2	18	3	0	1	0	0	0	0	0	0	21	12	0	4	.282
Feb 15	UCSB	18	9	7	9	2	1	1	14	5	0	1	0	0	0	1	0	2	15	6	1	3	.291
Feb 16	UCSB	25	2	5	2	1	0	0	6	6	0	0	0	1	0	0	0	4	21	7	1	9	.281
Feb 20	vs UC Riverside	23	6	5	6	2	0	2	13	4	0	1	0	2	0	0	0	7	21	11	1	5	.275
Feb 21	vs Arizona State	18	0	3	0	0	0	0	3	0	0	0	0	0	0	0	0	10	15	5	1	3	.268
Feb 22	vs Missouri	22	0	1	0	0	0	0	1	3	0	0	0	0	0	0	0	9	18	7	0	4	.251
Feb 22	vs San Diego	25	5	6	5	1	0	0	7	4	0	0	0	0	1	1	0	5	18	10	1	5	.250
Feb 23	vs California	23	3	2	3	0	0	2	8	4	0	1	0	1	0	0	0	6	18	5	2	4	.239
Totals		335	69	80	62	17	1	16	147	66	0	7	0	7	3	6	0	70	264	106	12	89	.239

2020 NEW MEXICO RECORD AND INNING BREAKDOWN

Score by innings	1	2	3	4	5	6	7	Total
New Mexico	11	5	15	14	11	9	4	69
Opponents	16	8	9	11	15	3	8	70

Record when ...

Overall	6-8	After 6 leading	4-1
Conference	0-0 trailing	0-5
Non-Conference	6-8 tied	0-1
Home games	3-1	After 7 leading	0-0
Away games	1-1 trailing	0-0
Neutral site	2-6 tied	0-0
Day games	4-7	After 8 leading	0-0
Night games	2-1 trailing	0-0
vs Left starter	1-0 tied	0-0
vs Right starter	5-8		
1-Run games	0-3	Hit 0 home runs	0-5
2-Run games	1-1	... 1 home run	2-2
5+Run games	4-3	... 2+ home runs	4-1
Extra innings	0-0		
Shutouts	1-2	Opponent 0 home runs	4-1
	 1 home run	2-4
	 2+ HRs	0-3
Scoring 0-2 runs	1-4		
..... 3-5 runs	0-2		
..... 6-9 runs	4-2	Made 0 errors	3-2
..... 10+ runs	1-0	... 1 error	3-4
		... 2+ errors	0-2
Opponent 0-2 runs	2-0		
..... 3-5 runs	4-3	Opp. made 0 errors	1-2
..... 6-9 runs	0-4 1 error	3-3
..... 10+ runs	0-1 2+ errors	2-3
Scored in 1st inning	3-3	Out-hit opponent	3-1
Opp. scored in 1st	1-5	Out-hit by opponent	3-7
Scores first	4-4	Hits are tied	0-0
Opp. scores first	2-4		

Record when team scores:

Runs	0	1	2	3	4	5	6	7	8	9	10+
W-L	0-2	0-1	1-1	0-1	0-0	0-1	1-2	0-0	1-0	2-0	1-0

Record when opponent scores:

Runs	0	1	2	3	4	5	6	7	8	9	10+
W-L	1-0	1-0	0-0	3-0	1-1	0-2	0-1	0-3	0-0	0-0	0-1

Record when leading after:

Inn.	1	2	3	4	5	6	7	8
W-L	3-2	3-2	5-3	5-2	4-1	4-1	0-0	0-0

Record when trailing after:

Inn.	1	2	3	4	5	6	7	8
W-L	1-4	1-4	0-4	0-5	0-6	0-5	0-0	0-0

Record when tied after:

Inn.	1	2	3	4	5	6	7	8
W-L	2-2	2-2	1-1	1-1	0-0	0-1	0-0	0-0

Current losing streak: 4
 Longest winning streak: 3
 Longest losing streak: 4

Home attendance : 2010 (4 dates avg = 502)
 Away attendance : 1531 (10 dates avg = 153)
 Total attendance: 3541 (14 dates avg = 252)



2020 NEW MEXICO SITUATIONAL BREAKDOWN

Player	vs left			vs right			w/runners			w/bases empty			w/bases loaded			as leadoff			fly	gnd	fly/
	h	ab	avg	h	ab	avg	h	ab	avg	h	ab	avg	h	ab	avg	rch	ops	pct	out	out	gnd
5 BRODERICK, Sydney	0	2	.000	2	13	.154	0	8	.000	2	7	.286	0	2	.000	2	4	.500	8	1	8.0
3 HATHOOT, Rachael	0	4	.000	11	41	.268	3	13	.231	8	32	.250	0	0	---	8	20	.400	18	10	1.8
0 HOWARD, Andrea	0	1	.000	11	38	.289	7	27	.259	4	12	.333	1	3	.333	2	4	.500	13	6	2.2
24 JENKINS, Skylar	0	0	---	1	9	.111	1	3	.333	0	6	.000	0	0	---	0	4	.000	3	1	3.0
9 JONES, Taylor	0	0	---	0	9	.000	0	8	.000	0	1	.000	0	2	.000	0	1	.000	6	2	3.0
8 KLITZKE, Bailey	1	2	.500	6	25	.240	6	20	.300	1	7	.143	0	2	.000	2	4	.500	6	3	2.0
1 MARTINEZ, Briana	2	3	.667	9	29	.310	6	19	.316	5	13	.385	0	1	.000	1	5	.200	9	6	1.5
10 O'GRADY, Cameryn	2	2	1.000	12	36	.333	9	17	.529	5	21	.238	0	1	.000	4	10	.400	13	4	3.2
16 ROMERO, Leslie	0	1	.000	3	14	.214	1	3	.333	2	12	.167	0	0	---	1	2	.500	7	2	3.5
22 SHAFER, Gavyn	1	3	.333	0	27	.000	1	13	.077	0	17	.000	0	2	.000	0	5	.000	14	11	1.3
77 TUCK, Reyann	2	2	1.000	6	24	.250	4	11	.364	4	15	.267	0	1	.000	4	9	.444	10	6	1.7
32 WILMERT, Lauren	1	3	.333	3	20	.150	2	9	.222	2	14	.143	0	3	.000	3	9	.333	9	4	2.2
4 YOUNG, Taryn	1	3	.333	6	24	.250	3	9	.333	4	18	.222	0	1	.000	5	11	.455	6	2	3.0
Totals	10	26	.385	70	309	.227	43	160	.269	37	175	.211	1	18	.056	32	88	.364	122	58	2.1
Opponents	56	195	.287	48	147	.327	54	176	.307	50	166	.301	2	6	.333	36	89	.404	123	96	1.3

Player	pinch hitting			w/runners in scoring pos			w/runner on 3rd and LT 2 out			with 2 outs			success adv runners			2-	rnr	rnr	rch	rch	kl
	h	ab	avg	h	ab	avg	rbi	ops	pct	h	ab	avg	adv	ops	pct	rbi	w/out	lob	err	fc	kl
5 BRODERICK, Sydney	0	0	---	0	4	.000	1	1	1.000	0	5	.000	3	9	.333	0	1	7	2	0	1
3 HATHOOT, Rachael	0	0	---	1	5	.200	1	1	1.000	2	15	.133	9	16	.563	2	1	7	3	0	2
0 HOWARD, Andrea	0	0	---	6	19	.316	4	5	.800	5	19	.263	15	32	.469	7	1	15	2	2	4
24 JENKINS, Skylar	1	3	.333	1	3	.333	0	0	---	0	1	.000	2	3	.667	0	1	0	0	0	1
9 JONES, Taylor	0	2	.000	0	6	.000	0	0	---	0	4	.000	1	9	.111	0	2	9	0	0	0
8 KLITZKE, Bailey	0	0	---	4	13	.308	4	4	1.000	0	8	.000	12	25	.480	0	0	16	0	1	2
1 MARTINEZ, Briana	0	0	---	4	14	.286	1	4	.250	2	5	.400	14	24	.583	0	3	3	0	2	1
10 O'GRADY, Cameryn	0	0	---	4	9	.444	2	4	.500	3	9	.333	16	22	.727	2	1	4	1	0	2
16 ROMERO, Leslie	0	3	.000	0	1	.000	2	2	1.000	0	3	.000	3	4	.750	0	2	0	2	0	0
22 SHAFER, Gavyn	0	1	.000	1	8	.125	1	2	.500	0	14	.000	9	18	.500	0	3	10	2	3	1
77 TUCK, Reyann	1	2	.500	2	5	.400	2	3	.667	1	6	.167	5	12	.417	0	1	4	0	0	0
32 WILMERT, Lauren	1	1	1.000	2	7	.286	0	3	.000	1	9	.111	4	11	.364	2	0	6	0	0	2
4 YOUNG, Taryn	0	0	---	1	4	.250	0	2	.000	5	9	.556	4	10	.400	5	0	4	0	0	5
Totals	3	12	.250	26	98	.265	18	31	.581	19	107	.178	97	195	.497	18	16	89	12	8	21
Opponents	5	13	.385	29	86	.337	15	22	.682	38	115	.330	99	206	.481	31	32	74	9	12	6

Success Advancing Runners = percentage of times the batter advanced at least one runner during a plate appearance
 #Rnr Adv w/Out = TOTAL number of runners advanced when the player made an out



00 ANDREA HOWARD

OF • 5-6 • JR.

ALBUQUERQUE, N.M. • LA CUEVA HS

SINGLE-GAME HIGHS

Hits: 3, 2x, Last at Nevada, 3-24-18
 Doubles: 1, 17x, Last vs. San Diego, 2-22-20
 Triples: 1, 3x, Last at San Diego State, 3-17-19
 Home runs: 2, Grand Canyon, 2-8-20
 Total bases: 8, Grand Canyon, 2-8-20
 RBI: 5, Northern Colorado, 2-14-20
 Runs scored: 3, 3x, Last vs UTEP, 2-8-19
 Walks: 4, UTEP, 2-8-19
 Hit by pitch: 1, 2x, Last vs. Alabama, 2-15-19

Struck out: 3, 4x, Last at NMSU, 4-2-19
 Sac flies: 1, 4x, Last vs. Northern Colo., 2-14-20
 Sac bunts: 1, 3x, Last at Hawai'i, 2-23-19
 At bats: 5, 2x, Last at Utah State, 4-6-19
 Stolen bases: 1, 5x, Last vs. UCSB, 2-15-20
 Putouts: 13, at UTEP, 4-16-18
 Assists: 1, 11x, Last vs. UCSB, 2-15-20
 Named All-Mountain West Second Team in 2018
 2019 Google Cloud Academic All-America®
 Second Team

CAREER STATS (AT UNM)

Year	avg	gp-gs	ab	r	h	2b	3b	hr	rbi	tb	slg%	bb	hbp	so	gdp	ob%	sf	sh	sb-att	po	a	e	fld%
2018	.313	51-50	131	20	41	6	1	7	18	70	.534	23	1	39	1	.414	2	2	3-4	296	5	4	.987
2019	.192	46-46	125	25	24	9	2	3	15	46	.368	24	1	44	1	.327	0	1	1-1	97	4	4	.962
2020	.282	14-14	39	8	11	2	0	5	16	28	.718	7	0	8	0	.375	2	0	1-1	36	2	1	.974
TOTAL	.258	111-110	295	53	76	17	3	15	49	144	.488	54	2	91	2	.372	4	3	5-6	429	11	9	.980

2020 GAME-BY-GAME

Date	Opponent	Pos	AB	R	H	RBI	2B	3B	HR	BB	SB	CS	HBP	SAC	SF	GDP	K	PO	A	E	Avg
Feb 07	vs Weber State	*of	3	0	0	0	0	0	0	1	0	0	0	0	0	0	2	0	0	0	.000
Feb 07	vs Stanford	*of	3	0	1	1	0	0	0	1	0	0	0	0	0	0	1	7	0	0	.167
Feb 08	vs Stanford	*of	2	1	1	1	0	0	1	1	0	0	0	0	0	0	0	3	0	0	.250
Feb 08	at Grand Canyon	*of	3	2	2	3	0	0	2	0	0	0	0	0	1	0	0	3	0	0	.364
Feb 09	at Grand Canyon	*of	4	0	1	1	1	0	0	0	0	0	0	0	0	0	0	4	0	0	.333
Feb 14	NORTHERN COLORA	*of	3	2	2	5	0	0	1	0	0	0	0	0	1	0	0	2	0	0	.389
Feb 15	NORTHERN COLORA	*of	3	1	1	0	0	0	0	0	0	0	0	0	0	0	0	2	1	0	.381
Feb 15	UCSB	*of	3	1	0	0	0	0	0	0	1	0	0	0	0	0	0	1	4	1	.333
Feb 16	UCSB	*of	3	0	0	0	0	0	0	1	0	0	0	0	0	0	1	2	0	0	.296
Feb 20	vs UC Riverside	*of	3	1	1	2	0	0	1	0	0	0	0	0	0	0	0	1	0	1	.300
Feb 21	vs Arizona State	*of	2	0	1	0	0	0	0	0	0	0	0	0	0	0	1	1	0	0	.312
Feb 22	vs Missouri	*of	3	0	0	0	0	0	0	0	0	0	0	0	0	0	2	3	0	0	.286
Feb 22	vs San Diego	*of	3	0	1	3	1	0	0	1	0	0	0	0	0	0	0	0	0	0	.289
Feb 23	vs California	*of	1	0	0	0	0	0	0	2	0	0	0	0	0	0	0	4	0	0	.282
Totals		14gs	39	8	11	16	2	0	5	7	1	0	0	0	2	0	8	36	2	1	.282

On base pct. .375 • Slugging pct. .718





1 BRIANA MARTINEZ *UT • 5-3 • FR.*
ALBUQUERQUE, N.M. • RIO RANCHO HS

SINGLE-GAME HIGHS

Hits: 3, 2x, Last vs. Northern Colo., 2-14-20
 Doubles: 1, Northern Colorado, 2-14-20
 Triples:
 Home runs: 1, 2x, Last vs. UNC, 2-15-20
 Total bases: 6, Grand Canyon, 2-9-20
 RBI: 2, 2x, Last vs. UNC, 2-15-20
 Runs scored: 3, Northern Colorado, 2-14-20
 Walks: 2, 2x, Last at Grand Canyon, 2-8-20
 Hit by pitch: 1, California, 2-23-20

Struck out: 2, 2x, Last vs. Missouri, 2-22-20
 Sac flies:
 Sac bunts:
 At bats: 3, 6x, Last vs. UCSB, 2-16-20
 Stolen bases: 1, 4x, Last vs. California, 2-23-20
 Caught stealing:
 Field chances: 3, Weber State, 2-7-20
 Putouts: 3, Weber State, 2-7-20
 Assists:

CAREER STATS (AT UNM)

Year	avg	gp-gs	ab	r	h	2b	3b	hr	rbi	tb	slg%	bb	hbp	so	gdp	ob%	sf	sh	sb-att	po	a	e	fld%
2020	.344	14-14	32	10	11	1	0	2	6	18	.563	14	1	6	0	.553	0	0	4-4	9	0	0	1.000
TOTAL	.344	14-14	32	10	11	1	0	2	6	18	.563	14	1	6	0	.553	0	0	4-4	9	0	0	1.000

2020 GAME-BY-GAME

Date	Opponent	Pos	AB	R	H	RBI	2B	3B	HR	BB	SB	CS	HBP	SAC	SF	GDP	K	PO	A	E	Avg
Feb 07	vs Weber State	*of	2	1	0	0	0	0	0	2	0	0	0	0	0	0	1	3	0	0	.000
Feb 07	vs Stanford	*of	3	0	1	1	0	0	0	1	0	0	0	0	0	0	0	0	0	0	.200
Feb 08	vs Stanford	*of	3	0	1	0	0	0	0	0	0	0	0	0	0	0	0	1	0	0	.250
Feb 08	at Grand Canyon	*of	2	1	0	0	0	0	0	2	1	0	0	0	0	0	0	1	0	0	.200
Feb 09	at Grand Canyon	*of	3	2	3	2	0	0	1	1	1	0	0	0	0	0	0	1	0	0	.385
Feb 14	NORTHERN COLORA	*of	3	3	3	1	1	0	0	1	0	0	0	0	0	0	0	0	0	0	.500
Feb 15	NORTHERN COLORA	*of	3	2	2	2	0	0	1	1	0	0	0	0	0	0	0	0	0	0	.526
Feb 15	UCSB	*of	2	0	0	0	0	0	0	1	0	0	0	0	0	0	0	1	0	0	.476
Feb 16	UCSB	*of	3	0	0	0	0	0	0	1	0	0	0	0	0	0	0	1	0	0	.417
Feb 20	vs UC Riverside	*of	2	0	0	0	0	0	0	1	1	0	0	0	0	0	0	2	0	0	.385
Feb 21	vs Arizona State	*of	2	0	1	0	0	0	0	0	0	0	0	0	0	0	0	1	0	0	.393
Feb 22	vs Missouri	*of	2	0	0	0	0	0	0	1	0	0	0	0	0	0	2	0	0	0	.367
Feb 22	vs San Diego	*of	1	1	0	0	0	0	0	1	0	0	0	0	0	0	1	0	0	0	.355
Feb 23	vs California	*of	1	0	0	0	0	0	0	1	1	0	1	0	0	0	0	0	0	0	.344
Totals		14gs	32	10	11	6	1	0	2	14	4	0	1	0	0	0	6	9	0	0	.344

On base pct. .553 • Slugging pct. .562



3 RACHAEL HATHOOT IF • 5-8 • FR.
ALBUQUERQUE, N.M. • LA CUEVA HS

SINGLE-GAME HIGHS

Hits: 2, 2x, Last vs. UCSB, 2-15-20
 Doubles: 1, UC Riverside, 2-20-20
 Triples: 1, UCSB, 2-15-20
 Home runs: 1, Stanford, 2-8-20
 Total bases: 4, 2x, Last vs. UCSB, 2-15-20
 RBI: 2, UCSB, 2-15-20
 Runs scored: 2, 3x, Last vs. UCSB, 2-15-20
 Walks: 2, Weber State, 2-7-20
 Hit by pitch: 1, UC Riverside, 2-20-20

Struck out: 1, 4x, Last vs. Cal, 2-23-20
 Sac flies:
 Sac bunts: 1, San Diego, 2-22-20
 At bats: 5, 2x, Last at GCU, 2-9-20
 Stolen bases:
 Caught stealing:
 Field chances: 8, UC Riverside, 2-20-20
 Putouts: 4, 2x, Last vs. UCSB, 2-16-20
 Assists: 5, UC Riverside, 2-20-20

CAREER STATS (AT UNM)

Year	avg	gp-gs	ab	r	h	2b	3b	hr	rbi	tb	slg%	bb	hbp	so	gdp	ob%	sf	sh	sb-att	po	a	e	fld%
2020	.244	14-14	45	9	11	1	1	1	5	17	.378	6	1	4	0	.346	0	1	0-0	22	21	2	.956
TOTAL	.244	14-14	45	9	11	1	1	1	5	17	.378	6	1	4	0	.346	0	1	0-0	22	21	2	.956

2020 GAME-BY-GAME

Date	Opponent	Pos	AB	R	H	RBI	2B	3B	HR	BB	SB	CS	HBP	SAC	SF	GDP	K	PO	A	E	Avg
Feb 07	vs Weber State	*3b	2	0	0	0	0	0	0	2	0	0	0	0	0	0	0	3	1	0	.000
Feb 07	vs Stanford	*3b	5	2	1	0	0	0	0	0	0	0	0	0	0	0	0	1	1	1	.143
Feb 08	vs Stanford	*3b	3	1	1	1	0	0	1	0	0	0	0	0	0	0	0	0	0	0	.200
Feb 08	at Grand Canyon	*3b	3	0	1	0	0	0	0	1	0	0	0	0	0	0	0	1	1	2	.231
Feb 09	at Grand Canyon	*3b	5	2	2	0	0	0	0	0	0	0	0	0	0	0	0	1	1	0	.278
Feb 14	NORTHERN COLORA	*3b	3	0	0	1	0	0	0	1	0	0	0	0	0	0	0	4	3	0	.238
Feb 15	NORTHERN COLORA	*3b	4	1	1	0	0	0	0	0	0	0	0	0	0	0	0	0	1	0	.240
Feb 15	UCSB	*3b	3	2	2	2	0	1	0	0	0	0	0	0	0	0	0	3	0	0	.286
Feb 16	UCSB	*3b	3	0	1	0	0	0	0	1	0	0	0	0	0	0	0	4	2	0	.290
Feb 20	vs UC Riverside	*3b	2	1	1	1	1	0	0	1	0	0	1	0	0	0	0	3	5	0	.303
Feb 21	vs Arizona State	*3b	2	0	0	0	0	0	0	0	0	0	0	0	0	0	0	1	1	1	.286
Feb 22	vs Missouri	*3b	3	0	0	0	0	0	0	0	0	0	0	0	0	0	0	0	2	0	.263
Feb 22	vs San Diego	*3b	3	0	1	0	0	0	0	0	0	0	0	1	0	0	0	0	3	0	.268
Feb 23	vs California	*3b	4	0	0	0	0	0	0	0	0	0	0	0	0	0	1	1	0	1	.244
Totals		14gs	45	9	11	5	1	1	1	6	0	0	1	1	0	0	4	22	21	2	.244

On base pct. .346 • Slugging pct. .378





4 TARYN YOUNG

OF • 5-8 • JR.
ANAHEIM, CALIF. • ARIZONA

SINGLE-GAME HIGHS

Hits: 2, 2x, Last vs. California, 2-23-20
 Doubles:
 Triples:
 Home runs: 2, California, 2-23-20
 Total bases: 8, California, 2-23-20
 RBI: 3, California, 2-23-20
 Runs scored: 3, San Diego, 2-22-20
 Walks: 2, San Diego, 2-22-20
 Hit by pitch:

Struck out: 2, 3x, Last vs. Arizona State, 2-21-20
 Sac flies:
 Sac bunts:
 At bats: 3, 5x, Last vs. California, 2-23-20
 Stolen bases:
 Caught stealing:
 Field chances: 4, Stanford, 2-8-20
 Putouts: 4, Stanford, 2-8-20
 Assists:

CAREER STATS (AT ARIZONA)

Year	avg	gp-gs	ab	r	h	2b	3b	hr	rbi	tb	slg%	bb	hbp	so	gdp	ob%	sf	sh	sb-att	po	a	e	fld%
2020	.125	7-7	16	3	2	0	0	0	0	2	.125	3	0	7	0	.263	0	0	0-0	10	0	0	1.000
TOTAL	.125	7-7	16	3	2	0	0	0	0	2	.125	3	0	7	0	.263	0	0	0-0	10	0	0	1.000

CAREER STATS (AT UNM)

Year	avg	gp-gs	ab	r	h	2b	3b	hr	rbi	tb	slg%	bb	hbp	so	gdp	ob%	sf	sh	sb-att	po	a	e	fld%
2020	.259	12-12	27	10	7	0	0	3	5	16	.593	5	0	12	0	.375	0	0	0-0	17	0	0	1.000
TOTAL	.259	12-12	27	10	7	0	0	3	5	16	.593	5	0	12	0	.375	0	0	0-0	17	0	0	1.000

2020 GAME-BY-GAME

Date	Opponent	Pos	AB	R	H	RBI	2B	3B	HR	BB	SB	CS	HBP	SAC	SF	GDP	K	PO	A	E	Avg
Feb 07	vs Weber State	*of	3	0	1	0	0	0	0	0	0	0	0	0	0	0	1	0	0	0	.333
Feb 07	vs Stanford	*of	3	1	1	0	0	0	0	1	0	0	0	0	0	0	1	1	0	0	.333
Feb 08	vs Stanford	*of	2	0	0	0	0	0	0	0	0	0	0	0	0	0	0	4	0	0	.250
Feb 08	at Grand Canyon	*of	2	1	0	0	0	0	0	1	0	0	0	0	0	0	2	1	0	0	.200
Feb 14	NORTHERN COLORA	*of	2	1	0	0	0	0	0	1	0	0	0	0	0	0	2	2	0	0	.167
Feb 15	NORTHERN COLORA	*of	3	0	0	0	0	0	0	0	0	0	0	0	0	0	0	2	0	0	.133
Feb 15	UCSB	*of	1	0	0	0	0	0	0	0	0	0	0	0	0	0	1	0	0	0	.125
Feb 20	vs UC Riverside	*of	3	2	2	2	0	0	1	0	0	0	0	0	0	0	1	2	0	0	.211
Feb 21	vs Arizona State	*of	2	0	0	0	0	0	0	0	0	0	0	0	0	0	2	0	0	0	.190
Feb 22	vs Missouri	*of	2	0	0	0	0	0	0	0	0	0	0	0	0	0	1	1	0	0	.174
Feb 22	vs San Diego	*of	1	3	1	0	0	0	2	0	0	0	0	0	0	0	0	1	0	0	.208
Feb 23	vs California	*of	3	2	2	3	0	0	2	0	0	0	0	0	0	0	1	3	0	0	.259
Totals		12gs	27	10	7	5	0	0	3	5	0	0	0	0	0	0	12	17	0	0	.259



5 SYDNEY BRODERICK

C • 5-4 • JR.

MESA, ARIZ. • DESERT RIDGE HS

SINGLE-GAME HIGHS

Hits: 3, St. Mary's, 3-10-18
 Doubles: 1, 4x, Last at Utah State, 4-6-19
 Home Runs: 1, 3x, Last at GCU, 2-8-20
 Total bases: 4, 4x, Last at GCU, 2-8-20
 RBI: 2, 2x, Last at NMSU, 4-2-19
 Runs scored: 1, 13x, Last at GCU, 2-8-20
 Walks: 2, 3x, Last at GCU, 2-9-20
 Hit by pitch: 1, vs Oregon, 2-11-18
 Struck out: 3, at Colorado State, 4-8-18

Sac flies: 1, 2x, Last vs. San Diego, 2-22-20
 Sac bunts: 1, 3x, Last vs Boise State, 4-20-19
 At bats: 4, 4x, Last at Utah State, 4-6-19
 Stolen bases: 1, at Utah State, 4-5-19
 Putouts: 10, at Colorado State, 4-7-18
 Assists: 3, 2x, Last vs. Nevada, 3-30-19
 Runners CS: 2, Utah State, 4-21-18

CAREER STATS (AT UNM)

Year	avg	gp-gs	ab	r	h	2b	3b	hr	rbi	tb	slg%	bb	hbp	so	qdp	ob%	sf	sh	sb-att	po	a	e	fld%
2018	.230	42-36	87	6	20	2	0	0	5	22	.253	6	1	12	2	.284	1	2	0-0	118	12	6	.956
2019	.095	33-30	63	5	6	2	0	1	3	11	.175	10	0	19	1	.219	0	1	1-1	101	19	6	.952
2020	.133	7-6	15	2	2	0	0	2	3	8	.533	3	0	3	0	.263	1	0	0-0	13	3	2	.889
TOTAL	.170	82-72	165	13	28	4	0	3	11	41	.248	19	1	34	3	.257	2	3	1-1	232	34	14	.950

2019 GAME-BY-GAME

Date	Opponent	Pos	AB	R	H	RBI	2B	3B	HR	BB	SB	CS	HBP	SAC	SF	GDP	K	PO	A	E	Avg
Feb 07	vs Stanford	*c	3	1	1	1	0	0	1	0	0	0	0	0	0	0	0	2	0	0	.333
Feb 08	at Grand Canyon	*c	3	1	1	1	0	0	1	1	0	0	0	0	0	0	0	2	0	0	.333
Feb 09	at Grand Canyon	*c	2	0	0	0	0	0	0	2	0	0	0	0	0	0	0	2	1	1	.250
Feb 15	NORTHERN COLORA	*c	2	0	0	0	0	0	0	0	0	0	0	0	0	0	0	3	1	0	.200
Feb 21	vs Arizona State	*c	2	0	0	0	0	0	0	0	0	0	0	0	0	0	2	3	1	1	.167
Feb 22	vs San Diego	ph	0	0	0	1	0	0	0	0	0	0	0	0	1	0	0	0	0	0	.167
Feb 23	vs California	*c	3	0	0	0	0	0	0	0	0	0	0	0	0	0	1	1	0	0	.133
Totals		6gs	15	2	2	3	0	0	2	3	0	0	0	0	1	0	3	13	3	2	.133

On base pct. .263 • Slugging pct. .533





6 JAYDEN GANDERT

P • 5-7 • FR.
RIO RANCHO, N.M. • CLEVELAND HS

SINGLE-GAME HIGHS

Hits:
Doubles:
Triples:
Home runs:
Total bases:
RBI:
Runs scored:
Walks:
Hit by pitch:

Struck out:
Sac flies:
Sac bunts:
At bats:
Stolen bases:
Caught stealing:
Field chances:
Putouts:
Assists:

CAREER STATS (AT UNM)

2020 GAME-BY-GAME



7 MacKENZIE PETERSON

OF • 5-9 • 50.
GILBERT, ARIZ. • PHOENIX COLLEGE

SINGLE-GAME HIGHS

Hits: 1, 6x, Last vs. San Jose St., 5-5-19
 Doubles:
 Total bases: 1, 5x, Last vs. North Dakota, 3-26-19
 RBI: 1, 2x, Last vs. San Jose St., 5-3-19
 Runs scored: 1, 2x, Last vs. Oregon St., 3-9-19
 Walks: 2, 2x, Last vs. Oregon St., 3-9-19
 Hit by Pitch: 1, Oregon St., 3-9-19
 Struck out: 1, 5x, Last vs. Nevada, 3-29-19
 Sac bunts:
 At bats: 4, Illinois-Chicago, 2-16-19
 Stolen bases:
 Caught stealing:
 Putouts: 10, Oregon State, 3-9-19
 Assists: 1, Illinois-Chicago, 2-16-19

CAREER STATS (AT UNM)

Year	avg	gp-gs	ab	r	h	2b	3b	hr	rbt	tb	slg%	bb	hbp	so	gdp	ob%	sf	sh	sb-att	po	a	e	fld%
2019	.176	21-13	34	2	6	0	0	0	2	6	.176	6	1	6	0	.317	0	0	0-0	79	1	5	.941
TOTAL	.176	21-13	34	2	6	0	0	0	2	6	.176	6	1	6	0	.317	0	0	0-0	79	1	5	.941

2020 GAME-BY-GAME





8 BAILEY KLITZKE

P/1B • 5-8 • 5R.

APACHE JUNCTION, ARIZ. • WICHITA ST.

SINGLE-GAME HIGHS

Hits: 4, UTEP, 2-8-19
 Doubles: 2, Utah State, 4-6-19
 Triples: 1, 3x, Last vs. North Dakota, 3-26-19
 Home runs: 1, 3x, Last at GCU, 2-8-20
 Total bases: 6, 2x, Last at GCU, 2-8-20
 RBI: 4, 2x, North Dakota, 3-26-19
 Runs scored: 2, 5x, Last at UNC, 2-14-20
 Walks: 2, 2x, Last vs. UCSB, 2-15-20
 Struck out: 2, 4x, Last vs. Missouri, 2-22-20
 Sac bunts: 1, at Texas, 2-23-18 (at WSU)
 Sac fly: 1, 3x, Last vs. CSU, 3-22-19

At bats: 5, UTEP, 2-8-19
 Stolen bases: 1, 3x, Last vs. UNC, 2-14-20
 Innings pitched: 6.0, 2x, Last at Fresno St., 4-27-19
 Walks allowed: 7, 3x, Last at CSUF, 3-3-19
 Strikeouts: 8, 2x, Last vs. Illinois-Chicago, 2-16-19
 Batters faced: 33, Boise State, 4-20-19
 Putouts: 1, 3x, Last at Arizona State, 2-21-20
 Assists: 3, at Okla. St., 3-27-18 (at WSU)
 Runners CS: 1, 10x, Last vs. Missouri, 2-22-20
 Fewest hits allowed (3.0 IP min.): 1, Cal, 2-23-20

CAREER STATS (AT UNM)

Year	avg	gp-gs	ab	r	h	2b	3b	hr	rbi	tb	slg%	bb	hbp	so	gdp	ob%	sf	sh	sb-att	po	a	e	fld%
2019	.297	46-44	118	11	35	6	3	2	26	53	.449	14	0	14	1	.363	3	0	2-2	2	8	0	1.000
2020	.259	11-11	27	6	7	2	0	1	6	12	.444	9	0	10	0	.444	0	0	1-1	1	3	0	1.000
TOTAL	.290	57-55	145	17	42	8	3	3	32	65	.448	23	0	24	1	.380	3	0	3-3	3	11	0	1.000

2019 GAME-BY-GAME

Date	Opponent	Pos	AB	R	H	RBI	2B	3B	HR	BB	SB	CS	HBP	SAC	SF	GDP	K	PO	A	E	Avg	
Feb 07	vs Weber State	*dh/p	3	0	0	0	0	0	0	0	0	0	0	0	0	0	0	0	0	0	0	.000
Feb 07	vs Stanford	*dh	2	0	1	0	0	0	0	2	0	0	0	0	0	0	1	0	0	0	0	.200
Feb 08	vs Stanford	*dh	2	0	0	0	0	0	0	1	0	0	0	0	0	0	0	0	0	0	0	.143
Feb 08	at Grand Canyon	*dh	4	1	2	2	1	0	1	0	0	0	0	0	0	0	0	0	0	0	0	.273
Feb 09	at Grand Canyon	*dh	3	2	2	1	0	0	0	1	0	0	0	0	0	0	1	0	0	0	0	.357
Feb 14	NORTHERN COLORA	*dh	3	2	1	1	1	0	0	1	1	0	0	0	0	0	1	0	0	0	0	.353
Feb 15	UCSB	*dh	1	1	1	2	0	0	0	2	0	0	0	0	0	0	0	0	0	0	0	.389
Feb 16	UCSB	*dh	2	0	0	0	0	0	0	1	0	0	0	0	0	0	1	0	0	0	0	.350
Feb 20	vs UC Riverside	*dh	2	0	0	0	0	0	0	1	0	0	0	0	0	0	1	0	0	0	0	.318
Feb 21	vs Arizona State	*dh/p	2	0	0	0	0	0	0	0	0	0	0	0	0	0	2	1	1	0	0	.292
Feb 22	vs Missouri	*dh/p	3	0	0	0	0	0	0	0	0	0	0	0	0	0	2	0	1	0	0	.259
Feb 22	vs San Diego	p	0	0	0	0	0	0	0	0	0	0	0	0	0	0	0	0	1	0	0	.259
Totals		11gs	27	6	7	6	2	0	1	9	1	0	0	0	0	0	10	1	3	0	0	.259

On base pct. .444 • Slugging pct. .444

#8 KLITZKE, Bailey - 5 appearances (All games)

Date	Opponent	GS	IP	H	R	ER	BB	SO	2B	3B	HR	WP	BK	HBP	IBB	Score	W-L	Sv	ERA	NP
Feb 07	vs Weber State		0.1	0	1	1	2	0	0	0	0	1	0	0	0	1-4	0-0	0	27.00	10
Feb 21	vs Arizona State		2.1	4	6	6	3	1	0	0	2	4	0	1	0	0-15	0-0	0	23.62	57
Feb 22	vs Missouri		4.0	2	0	0	1	4	0	0	0	0	0	0	0	0-5	0-0	0	9.45	56
Feb 22	vs San Diego		2.2	2	0	0	0	4	0	0	0	0	0	0	0	5-6	0-0	0	6.75	35
Feb 23	vs California	*	4.0	1	3	0	3	1	0	0	0	0	0	0	0	3-5	0-1	0	4.72	61
Totals		1	13.1	9	10	7	9	10	0	0	2	5	0	1	0	9-35	0-1	0	4.72	-



9 TAYLOR JONES

IF • 5-7 • JR.

ALBUQUERQUE, N.M. • LA CUEVA HS

SINGLE-GAME HIGHS

Hits: 2, 3x, Last vs. Colorado State, 3-22-19
 Doubles: 1, 4x, Last vs. Boise State, 4-19-19
 Home runs: 1, 2x, Last vs. CSU, 3-22-19
 Total bases: 6, at Boise State, 5-12-18
 RBI: 3, Howard, 3-10-18
 Runs scored: 2, 2x, Last vs. Boise St., 4-20-19
 Walks: 2, North Dakota, 3-26-19
 Hit by pitch: 1, Boise State, 4-20-19
 Struck out: 2, 13x, Last vs Boise State, 4-18-19

Sac flies: 1, Howard, 3-10-18
 Sac bunts: 1, 3x, Last at GCU, 2-9-20
 At bats: 4, 5x, Last at Utah State, 4-6-19
 Stolen bases: 1, Howard, 3-10-18
 Putouts: 11, San Diego State, 3-15-19
 Assists: 5, 2x, Last vs. Nevada, 3-29-19

CAREER STATS (AT UNM)

Year	avg	gp-gs	ab	r	h	2b	3b	hr	rbi	tb	slg%	bb	hbp	so	gdp	ob%	sf	sh	sb-att	po	a	e	fld%
2018	.216	24-11	37	6	8	3	0	1	4	14	.378	0	0	13	0	.211	1	2	1-1	8	6	2	.875
2019	.138	42-35	87	10	12	1	0	2	5	19	.218	11	1	38	0	.242	0	0	0-0	118	38	6	.963
2020	.000	5-3	9	0	0	0	0	0	0	0	.000	0	0	2	0	.000	0	1	0-0	10	4	0	1.000
TOTAL	.150	71-49	133	16	20	4	0	3	9	33	.248	11	1	53	0	.219	1	3	1-1	136	48	8	.958

2020 GAME-BY-GAME

Date	Opponent	Pos	AB	R	H	RBI	2B	3B	HR	BB	SB	CS	HBP	SAC	SF	GDP	K	PO	A	E	Avg
Feb 07	vs Weber State	*2b	3	0	0	0	0	0	0	0	0	0	0	0	0	0	0	3	1	0	.000
Feb 08	at Grand Canyon	ph/of	1	0	0	0	0	0	0	0	0	0	0	0	0	0	1	0	0	0	.000
Feb 09	at Grand Canyon	*of	2	0	0	0	0	0	0	0	0	0	0	1	0	0	0	4	0	0	.000
Feb 16	UCSB	*2b	2	0	0	0	0	0	0	0	0	0	0	0	0	0	1	3	3	0	.000
Feb 22	vs San Diego	ph/of	1	0	0	0	0	0	0	0	0	0	0	0	0	0	0	0	0	0	.000
Totals		3gs	9	0	0	0	0	0	0	0	0	0	0	1	0	0	2	10	4	0	.000

On base pct. .000 • Slugging pct. .000





10 CAMERYN O'GRADY

55 • 5-6 • SR.

ORANGE, CALIF. • EL MODENA HS

SINGLE-GAME HIGHS

Hits: 4, at Texas Tech, 3-2-18
 Doubles: 2, 3x, Last vs. UNC, 2-15-20
 Triples: 1, 5x, Last vs. Creighton, 2-9-19
 Home runs: 1, 11x, Last vs. UCSB, 2-15-20
 Total bases: 8, Creighton, 2-9-19
 RBI: 4, 2x, Last at SDSU, 3-16-19
 Runs scored: 4, at Texas Tech, 3-2-18
 Walks: 3, 3x, Last vs UTEP, 2-8-19
 Hit by pitch: 1, 10x, Last vs. UCSB, 2-16-20

Struck out: 3, 6x, Last at SDSU, 3-15-19
 Sac bunts: 1, 3x, Last Utah State, 4-22-18
 At bats: 5, 2x, Last at Nevada, 3-24-18
 Stolen bases: 2, vs George Washington, 2-23-18
 Putouts: 5, 5x, Last vs. UNC, 2-15-20
 Assists: 8, at San Jose State, 4-27-18

CAREER STATS (AT UNM)

Year	avg	qp-gs	ab	r	h	2b	3b	hr	rbi	tb	slg%	bb	hbp	so	qdp	ob%	sf	sh	sb-att	po	a	e	fld%
2017	.109	26-19	46	1	5	0	0	0	3	5	.109	3	0	12	0	.163	0	0	0-0	38	39	10	.885
2018	.301	53-52	143	31	43	12	4	4	26	75	.524	32	5	50	0	.444	0	3	4-4	101	118	18	.924
2019	.348	53-53	141	32	49	16	1	6	26	85	.603	31	3	28	0	.474	0	0	0-0	60	84	17	.894
2020	.368	14-14	38	11	14	9	0	1	10	26	.684	11	2	6	0	.529	0	0	0-0	27	25	1	.981
TOTAL	.302	146-138	368	75	111	37	5	11	65	191	.519	77	10	96	0	.435	0	3	4-4	226	266	46	.914

2020 GAME-BY-GAME

Date	Opponent	Pos	AB	R	H	RBI	2B	3B	HR	BB	SB	CS	HBP	SAC	SF	GDP	K	PO	A	E	Avg
Feb 07	vs Weber State	*ss	2	0	1	0	1	0	0	2	0	0	0	0	0	0	0	2	4	0	.500
Feb 07	vs Stanford	*ss	4	2	1	2	1	0	0	1	0	0	0	0	0	0	1	0	5	0	.333
Feb 08	vs Stanford	*ss	2	0	0	0	0	0	0	1	0	0	0	0	0	0	1	3	1	0	.250
Feb 08	at Grand Canyon	*ss	2	1	1	0	1	0	0	1	0	0	1	0	0	0	0	1	3	0	.300
Feb 09	at Grand Canyon	*ss	4	0	0	0	0	0	0	0	0	0	0	0	0	0	1	2	1	1	.214
Feb 14	NORTHERN COLORA	*ss	3	2	2	1	1	0	0	1	0	0	0	0	0	0	0	1	0	0	.294
Feb 15	NORTHERN COLORA	*ss	4	2	3	1	2	0	0	0	0	0	0	0	0	0	0	5	4	0	.381
Feb 15	UCSB	*ss	3	2	2	3	1	0	1	0	0	0	0	0	0	0	0	1	3	0	.417
Feb 16	UCSB	*ss	2	0	1	1	1	0	0	1	0	0	1	0	0	0	0	1	0	0	.423
Feb 20	vs UC Riverside	*ss	3	1	1	1	1	0	0	1	0	0	0	0	0	0	0	4	1	0	.414
Feb 21	vs Arizona State	*ss	2	0	0	0	0	0	0	0	0	0	0	0	0	0	1	3	0	0	.387
Feb 22	vs Missouri	*ss	1	0	0	0	0	0	0	2	0	0	0	0	0	0	1	3	1	0	.375
Feb 22	vs San Diego	*ss	4	1	2	1	0	0	0	0	0	0	0	0	0	0	0	0	0	0	.389
Feb 23	vs California	*ss	2	0	0	0	0	0	0	1	0	0	0	0	0	0	1	1	2	0	.368
Totals			14gs	38	11	14	10	9	0	1	11	0	0	2	0	0	6	27	25	1	.368

On base pct. .529 • Slugging pct. .684



13 KENNEDY FERGUSON

P • 5-6 • 50.

CAMAS. WASH. • CAMAS HS

SINGLE-GAME HIGHS

Innings pitched: 7.1, South Florida, 2-17-19

Walks allowed: 7, Tennessee, 3-1-19

Strikeouts: 11, North Dakota, 3-26-19

Batters faced: 35, North Dakota, 3-26-19

Assists: 3, South Florida, 2-17-19

Runners CS: 1, 7x, Last vs. UNC, 2-15-20

Putouts: 1, 3x, Last at GCU, 2-9-20

Fewest hits allowed (3.0 IP min.): 2, Western Carolina, 3-9-19

Fewest BB allowed (3.0 IP min.): 0, 4x, Last vs. UNC, 2-15-20

CAREER STATS (AT UNM)

Year	era	w-l	app	gs	cq	sho	sv	ip	h	r	er	bb	so	2b	3b	hr	bf	bavg	wp	hbp	bk	sfa	sha
2019	6.41	4-15	33	21	9	1/0	0	125.0	176	126	89	54	74	25	1	28	623	.322	7	6	0	5	11
2020	7.56	1-3	5	4	0	0/0	0	16.2	26	16	14	3	5	3	1	4	78	.371	0	0	0	2	3
TOTAL	6.54	5-18	38	25	9	1/0	0	141.2	202	142	103	57	79	28	2	32	701	.328	7	6	0	7	14

2020 GAME-BY-GAME

Date	Opponent	GS	IP	H	R	ER	BB	SO	2B	3B	HR	WP	BK	HBP	IBB	Score	W-L	Sv	ERA	NP
Feb 07	vs Weber State	*	4.1	6	3	3	1	2	0	1	1	0	0	0	0	1-4	0-1	0	6.23	82
Feb 09	at Grand Canyon	*	4.1	6	5	3	2	1	1	0	1	0	0	0	0	6-7	0-1	0	6.23	60
Feb 15	NORTHERN COLORA	*	5.0	6	1	1	0	2	0	0	0	0	0	0	0	8-3	1-1	0	4.61	59
Feb 16	UCSB	*	2.2	4	3	3	0	0	1	0	1	0	0	0	0	2-7	1-2	0	5.51	38
Feb 21	vs Arizona State	*	0.1	4	4	4	0	0	1	0	1	0	0	0	0	0-15	1-3	0	7.56	15
Totals		4	16.2	26	16	14	3	5	3	1	4	0	0	0	0	17-36	1-3	0	7.56	-





14 JOCELYN ULRICH

*OF • 5-7 • FR.
AZTEC, N.M. • AZTEC HS*

SINGLE-GAME HIGHS

Hits:
Doubles:
Triples:
Home runs:
Total bases:
RBI:
Runs scored:
Walks:
Hit by pitch:

Struck out:
Sac flies:
Sac bunts:
At bats:
Stolen bases:
Caught stealing:
Field chances:
Putouts:
Assists:

CAREER STATS (AT UNM)

2020 GAME-BY-GAME



15 SAM KORTSEN

**IF • 5-10 • FR.
THATCHER, ARIZ. • THATCHER HS**

SINGLE-GAME HIGHS

Hits:
Doubles:
Triples:
Home runs:
Total bases:
RBI:
Runs scored:
Walks:
Hit by pitch:

Struck out:
Sac flies:
Sac bunts:
At bats:
Stolen bases:
Caught stealing:
Field chances:
Putouts:
Assists:

CAREER STATS (AT UNM)

2020 GAME-BY-GAME





16 LESLIE ROMERO

OF • 5-4 • SO.

GONZALES, CALIF. • SALINAS HS

SINGLE-GAME HIGHS

Hits: 2, UCSB, 2-16-20
 Doubles: 1, UCSB, 2-15-20
 Home runs:
 Total bases: 2, 2x, Last vs. UCSB, 2-16-20
 RBI: 2, UCSB, 2-15-20
 Runs scored: 1, 3x, Last vs. Cal, 2-23-20
 Walks:
 Struck out: 2, UNLV, 5-10-19
 Sac bunts:

Sac flies: 1, UCSB, 2-15-20
 At bats: 3, 3x, Last vs. San Diego, 2-22-20
 Stolen bases:
 Putouts: 6, San Diego, 2-22-20
 Assists: 1, San Diego, 2-22-20

CAREER STATS (AT UNM)

Year	avg	gp-gs	ab	r	h	2b	3b	hr	rbi	tb	slg%	bb	hbp	so	gdp	ob%	sf	sh	sb-att	po	a	e	fld%
2019	.000	10-2	12	0	0	0	0	0	0	0	.000	0	0	5	0	.000	0	0	0-0	2	0	0	1.000
2020	.200	8-5	15	3	3	1	0	0	3	4	.267	0	0	2	0	.188	1	0	0-0	12	1	0	1.000
TOTAL	.111	18-7	27	3	3	1	0	0	3	4	.148	0	0	7	0	.107	1	0	0-0	14	1	0	1.000

2020 GAME-BY-GAME

Date	Opponent	Pos	AB	R	H	RBI	2B	3B	HR	BB	SB	CS	HBP	SAC	SF	GDP	K	PO	A	E	Avg	
Feb 07	vs Weber State	ph	1	0	0	0	0	0	0	0	0	0	0	0	0	0	0	0	0	0	0	.000
Feb 08	vs Stanford	*c	2	0	0	0	0	0	0	0	0	0	0	0	0	0	0	1	0	0	0	.000
Feb 09	at Grand Canyon	ph	1	0	0	0	0	0	0	0	0	0	0	0	0	0	0	0	0	0	0	.000
Feb 15	UCSB	*c	1	1	1	2	1	0	0	0	0	0	0	0	1	0	0	2	0	0	0	.200
Feb 16	UCSB	*c	3	1	2	1	0	0	0	0	0	0	0	0	0	0	0	0	0	0	0	.375
Feb 20	vs UC Riverside	*c	3	0	0	0	0	0	0	0	0	0	0	0	0	0	1	3	0	0	0	.273
Feb 22	vs San Diego	*c	3	0	0	0	0	0	0	0	0	0	0	0	0	0	1	6	1	0	0	.214
Feb 23	vs California	ph	1	1	0	0	0	0	0	0	0	0	0	0	0	0	0	0	0	0	0	.200
Totals		5gs	15	3	3	3	1	0	0	0	0	0	0	0	1	0	2	12	1	0	0	.200

On base pct. .188 • Slugging pct. .267



22 GAVYN SHAFER

IF • 5-10 • FR.
HILLSBORO, ORE. • CENTURY HS

SINGLE-GAME HIGHS

Hits: 1, Northern Colorado, 2-14-20
 Doubles:
 Triples:
 Home runs:
 Total bases: 1, Northern Colorado, 2-14-20
 RBI: 1, 2x, Last vs. UNC, 2-14-20
 Runs scored: 1, 2x, Last vs. UCR, 2-20-20
 Walks: 2, Stanford, 2-7-20
 Hit by pitch: 1, 2x, Last vs. UCR, 2-20-20

Struck out: 1, 4x, Last vs. Cal, 2-23-20
 Sac flies: 1, Weber State, 2-7-20
 Sac bunts: 1, at Grand Canyon, 2-9-20
 At bats: 3, 3x, Last vs. San Diego, 2-22-20
 Stolen bases:
 Caught stealing:
 Putouts: 7, Weber State, 2-7-20
 Assists: 4, 3x, Last vs. UCR, 2-20-20

CAREER STATS (AT UNM)

Year	avg	gp-gs	ab	r	h	2b	3b	hr	rbi	tb	slg%	bb	hbp	so	gdp	ob%	sf	sh	sb-att	po	a	e	fld%
2020	.033	14-13	30	2	1	0	0	0	2	1	.033	5	2	4	0	.211	1	1	0-0	23	24	1	.979
TOTAL	.033	14-13	30	2	1	0	0	0	2	1	.033	5	2	4	0	.211	1	1	0-0	23	24	1	.979

2020 GAME-BY-GAME

Date	Opponent	Pos	AB	R	H	RBI	2B	3B	HR	BB	SB	CS	HBP	SAC	SF	GDP	K	PO	A	E	Avg
Feb 07	vs Weber State	*1b	3	0	0	1	0	0	0	0	0	0	0	0	1	0	0	7	0	0	.000
Feb 07	vs Stanford	*2b	2	0	0	0	0	0	0	2	0	0	0	0	0	0	0	1	2	0	.000
Feb 08	vs Stanford	*2b	3	0	0	0	0	0	0	0	0	0	0	0	0	0	1	1	4	0	.000
Feb 08	at Grand Canyon	*2b	2	1	0	0	0	0	0	0	0	0	1	0	0	0	1	2	4	0	.000
Feb 09	at Grand Canyon	*2b	2	0	0	0	0	0	0	1	0	0	0	1	0	0	0	1	1	0	.000
Feb 14	NORTHERN COLORA	*2b	2	0	1	1	0	0	0	1	0	0	0	0	0	0	0	1	0	0	.071
Feb 15	NORTHERN COLORA	*2b	2	0	0	0	0	0	0	1	0	0	0	0	0	0	0	2	1	0	.062
Feb 15	UCSB	*2b	2	0	0	0	0	0	0	0	0	0	0	0	0	0	0	1	1	1	.056
Feb 16	UCSB	ph	1	0	0	0	0	0	0	0	0	0	0	0	0	0	0	0	0	0	.053
Feb 20	vs UC Riverside	*2b	2	1	0	0	0	0	0	0	0	0	1	0	0	0	1	0	4	0	.048
Feb 21	vs Arizona State	*2b	2	0	0	0	0	0	0	0	0	0	0	0	0	0	0	2	2	0	.043
Feb 22	vs Missouri	*2b	2	0	0	0	0	0	0	0	0	0	0	0	0	0	0	2	2	0	.040
Feb 22	vs San Diego	*2b	3	0	0	0	0	0	0	0	0	0	0	0	0	0	0	1	1	0	.036
Feb 23	vs California	*2b	2	0	0	0	0	0	0	0	0	0	0	0	0	0	1	2	2	0	.033
Totals			13gs	30	2	1	2	0	0	5	0	0	2	1	1	0	4	23	24	1	.033

On base pct. .211 • Slugging pct. .033





24 SKYLAR JENKINS

OF • 5-5 • R-FR.
LAWRENCEVILLE, GA. • BUFORD HS

SINGLE-GAME HIGHS

Hits: 1, Northern Colorado, 2-15-20
Doubles:
Triples:
Home runs: 1, Northern Colorado, 2-15-20
Total bases: 4, Northern Colorado, 2-15-20
RBI: 2, Northern Colorado, 2-15-20
Runs scored: 1, 2x, Last vs. UCSB, 2-15-20
Walks: 1, UCSB, 2-15-20
Hit by pitch:

Struck out: 3, San Diego, 2-22-20
Sac flies:
Sac bunts:
At bats: 3, 2x, Last vs. San Diego, 2-22-20
Stolen bases:
Caught stealing:
Field chances: 2, UCSB, 2-16-20
Putouts: 2, UCSB, 2-16-20
Assists:

CAREER STATS (AT UNM)

Year	avg	gp-gs	ab	r	h	2b	3b	hr	rbi	tb	slg%	bb	hbp	so	gdp	ob%	sf	sh	sb-att	po	a	e	fld%
2020	.111	7-2	9	2	1	0	0	1	2	4	.444	1	0	4	0	.200	0	0	0-0	2	0	0	1.000
TOTAL	.111	7-2	9	2	1	0	0	1	2	4	.444	1	0	4	0	.200	0	0	0-0	2	0	0	1.000

2020 GAME-BY-GAME

Date	Opponent	Pos	AB	R	H	RBI	2B	3B	HR	BB	SB	CS	HBP	SAC	SF	GDP	K	PO	A	E	Avg
Feb 07	vs Weber State	ph	1	0	0	0	0	0	0	0	0	0	0	0	0	0	1	0	0	0	.000
Feb 08	at Grand Canyon	ph	1	0	0	0	0	0	0	0	0	0	0	0	0	0	0	0	0	0	.000
Feb 09	at Grand Canyon	pr	0	0	0	0	0	0	0	0	0	0	0	0	0	0	0	0	0	0	.000
Feb 15	NORTHERN COLORA	ph	1	1	1	2	0	0	1	0	0	0	0	0	0	0	0	0	0	0	.333
Feb 15	UCSB	ph/of	0	1	0	0	0	0	0	1	0	0	0	0	0	0	0	0	0	0	.333
Feb 16	UCSB	*of	3	0	0	0	0	0	0	0	0	0	0	0	0	0	0	2	0	0	.167
Feb 22	vs San Diego	*dh	3	0	0	0	0	0	0	0	0	0	0	0	0	0	3	0	0	0	.111
Totals		2gs	9	2	1	2	0	0	1	1	0	0	0	0	0	0	4	2	0	0	.111

On base pct. .200 • Slugging pct. .444



25 BRIANNA SANCHEZ P • 5-6 • FR.
WEST COVINA, CALIF. • BISHOP AMAT HS

SINGLE-GAME HIGHS

Innings pitched: 7.0, Stanford, 2-8-20
 Walks allowed: 3, 2x, Last vs. Missouri, 2-22-20
 Strikeouts: 1, 5x, Last vs. UCR, 2-20-20
 Batters faced: 26, Stanford, 2-8-20
 Putouts: 2, Stanford, 2-8-20
 Assists: 2, Weber State, 2-7-20
 Runners CS:
 Fewest hits allowed (3.0 IP min.): 4, Stanford,
 2-8-20

Fewest BB allowed (3.0 IP min.): 3, Stanford,
 2-8-20

CAREER STATS (AT UNM)

Year	era	w-l	app	gs	cq	sho	sv	ip	h	r	er	bb	so	2b	3b	hr	bf	bavq	wp	hbp	bk	sfa	sha
2020	4.71	1-3	9	3	1	1/0	1	21.0	22	12	11	11	5	3	0	2	91	.286	0	1	0	1	1
TOTAL	4.71	1-3	9	3	1	1/0	1	21.0	22	12	11	11	5	3	0	2	91	.286	0	1	0	1	1

2020 GAME-BY-GAME

#25 SANCHEZ, Brianna - 9 appearances (All games)

Date	Opponent	GS	IP	H	R	ER	BB	SO	2B	3B	HR	WP	BK	HBP	IBB	Score	W-L	Sv	ERA	NP
Feb 07	vs Weber State		2.1	3	0	0	0	1	0	0	0	0	0	0	0	1-4	0-0	0	0.00	31
Feb 07	vs Stanford		1.0	3	3	3	1	1	0	0	0	0	0	0	0	6-7	0-1	0	8.10	38
Feb 08	vs Stanford	*	7.0	4	0	0	3	1	1	0	0	0	0	0	0	2-0	1-1	0	2.61	86
Feb 09	at Grand Canyon		2.0	1	2	1	2	1	0	0	1	0	0	0	0	6-7	1-2	0	2.92	36
Feb 15	NORTHERN COLORA	*	2.0	5	2	2	0	0	1	0	0	0	0	0	0	8-3	1-2	0	3.77	19
Feb 16	UCSB		0.2	0	0	0	0	0	0	0	0	0	0	0	0	2-7	1-2	0	3.60	5
Feb 20	vs UC Riverside		2.2	2	0	0	2	1	0	0	0	0	0	0	0	6-3	1-2	1	3.06	39
Feb 22	vs Missouri	*	2.0	4	5	5	3	0	1	0	1	0	0	1	0	0-5	1-3	1	5.03	52
Feb 23	vs California		1.1	0	0	0	0	0	0	0	0	0	0	0	0	3-5	1-3	1	4.71	11
Totals		3	21.0	22	12	11	11	5	3	0	2	0	0	1	0	34-41	1-3	1	4.71	-





32 LAUREN WILMERT C/1B • 5-10 • SR.
ALBUQUERQUE, N.M. • VOLCANO VISTA HS

SINGLE-GAME HIGHS

Hits: 3, San Diego State, 3-17-19
 Doubles: 1, 13x, Last at Utah State, 4-6-19
 Triples: 1, North Dakota, 3-26-19
 Home runs: 1, 9x, Last vs. Boise State, 4-19-19
 Total bases: 6, 4x, Last at Utah State, 4-6-19
 RBI: 5, 2x, Last vs. WCU, 3-8-19
 Runs scored: 3, UTEP, 2-8-19
 Walks: 3, UTEP, 2-8-19
 Hit by pitch: 1, 3x, Last vs. Stanford, 2-7-20

Struck out: 3, George Washington, 2-23-18
 Sac flies: 1, 4x, Last vs. Boise State, 4-20-19
 Sac bunts: 1, 3x, Last vs. Utah State, 4-22-18
 At bats: 4, 17x, Last at Fresno State, 4-27-19
 Stolen bases: 1, vs Western Michigan, 2-11-17
 Putouts: 11, 2x, Last vs. North Dakota, 3-26-19
 Assists: 2, 7x, Last at Fresno St., 4-26-19
 Runners CS: 2, Fresno State, 4-26-19

CAREER STATS (AT UNM)

Year	avg	gp-gs	ab	r	h	2b	3b	hr	rbi	tb	slg%	bb	hbp	so	gdp	ob%	sf	sh	sb-att	po	a	e	fld%
2017	.242	34-23	62	5	15	3	0	1	6	21	.339	6	0	15	1	.304	1	2	1-1	67	6	3	.961
2018	.180	32-20	61	5	11	1	0	1	11	15	.246	7	1	23	0	.275	0	1	0-0	87	11	4	.961
2019	.261	47-47	134	23	35	9	1	7	35	67	.500	12	1	40	2	.320	3	0	0-0	235	16	10	.962
2020	.174	10-9	23	2	4	0	0	0	2	4	.174	4	1	6	0	.321	0	0	0-0	41	3	0	1.000
TOTAL	.232	123-99	280	35	65	13	1	9	54	107	.382	29	3	84	3	.307	4	3	1-1	430	36	17	.965

2020 GAME-BY-GAME

Date	Opponent	Pos	AB	R	H	RBI	2B	3B	HR	BB	SB	CS	HBP	SAC	SF	GDP	K	PO	A	E	Avg
Feb 07	vs Weber State	*c	0	0	0	0	0	0	0	2	0	0	0	0	0	0	0	3	1	0	.000
Feb 07	vs Stanford	*1b	3	0	0	1	0	0	0	0	0	0	0	1	0	0	0	2	8	0	.000
Feb 09	at Grand Canyon	ph	1	0	1	1	0	0	0	0	0	0	0	0	0	0	0	0	0	0	.250
Feb 14	NORTHERN COLORA	*c	3	1	2	0	0	0	0	0	0	0	0	0	0	0	0	1	1	0	.429
Feb 15	NORTHERN COLORA	*dh	3	0	0	0	0	0	0	0	0	0	0	0	0	0	0	0	0	0	.300
Feb 15	UCSB	*1b	2	1	1	0	0	0	0	1	0	0	0	0	0	0	0	3	0	0	.333
Feb 16	UCSB	*1b	2	0	0	0	0	0	0	1	0	0	0	0	0	0	1	8	0	0	.286
Feb 20	vs UC Riverside	*1b	3	0	0	0	0	0	0	0	0	0	0	0	0	0	1	7	0	0	.235
Feb 22	vs Missouri	*c	3	0	0	0	0	0	0	0	0	0	0	0	0	0	1	5	1	0	.200
Feb 23	vs California	*1b	3	0	0	0	0	0	0	0	0	0	0	0	0	0	1	6	0	0	.174
Totals		9gs	23	2	4	2	0	0	0	4	0	0	1	0	0	0	6	41	3	0	.174

On base pct. .321 • Slugging pct. .174



44 ALEXIS BUDDENHAGEN *P • 5-4 • JR.*
 ALBUQUERQUE, N.M. • BETHANY COLLEGE

SINGLE-GAME HIGHS

Innings pitched: 3.2, UCSB, 2-16-20
 Walks allowed: 4, Arizona State, 2-21-20
 Strikeouts: 1, Arizona State, 2-21-20
 Batters faced: 19, UCSB, 2-16-20
 Field chances: 2, UCSB, 2-16-20
 Assists: 1, UCSB, 2-16-20
 Runners CS: 1, Arizona State, 2-21-20
 Fewest hits allowed (3.0 IP min.): 6, UCSB, 2-16-20

Fewest BB allowed (3.0 IP min.): 0, UCSB, 2-16-20

CAREER STATS (AT UNM)

Year	era	w-l	app	gs	cq	sho	sv	ip	h	r	er	bb	so	2b	3b	hr	bf	bavg	wp	hbp	bk	sfa	sha
2020	12.00	0-0	2	0	0	0/0	0	6.0	9	9	8	4	1	1	0	3	33	.375	0	2	0	1	2
TOTAL	12.00	0-0	2	0	0	0/0	0	6.0	9	9	8	4	1	1	0	3	33	.375	0	2	0	1	2

2020 GAME-BY-GAME

Date	Opponent	GS	IP	H	R	ER	BB	SO	2B	3B	HR	WP	BK	HBP	IBB	Score	W-L	Sv	ERA	NP
Feb 16	UCSB		3.2	6	4	3	0	0	1	0	1	0	0	1	0	2-7	0-0	0	7.36	48
Feb 21	vs Arizona State		2.1	3	5	5	4	1	0	0	2	0	0	1	0	0-15	0-0	0	12.00	55
Totals		0	6.0	9	9	8	4	1	1	0	3	0	0	2	0	2-22	0-0	0	12.00	-





66 JENNIFER HERNANDEZ *IF • 5-2 • FR.*
 ALBUQUERQUE, N.M. • ATRISCO HERITAGE ACADEMY

SINGLE-GAME HIGHS

Hits:
 Doubles:
 Triples:
 Home runs:
 Total bases:
 RBI:
 Runs scored: 1, 3x, Last vs. UCSB, 2-16-20
 Walks:
 Hit by pitch:

Struck out:
 Sac flies:
 Sac bunts:
 At bats:
 Stolen bases:
 Caught stealing:
 Field chances:
 Putouts:
 Assists:

CAREER STATS (AT UNM)

Year	avg	gp-gs	ab	r	h	2b	3b	hr	rbi	tb	slg%	bb	hbp	so	gdp	ob%	sf	sh	sb-att	po	a	e	fld%
2020	.000	5-0	0	3	0	0	0	0	0	0	.000	0	0	0	0	.000	0	0	0-0	0	0	0	.000
TOTAL	.000	5-0	0	3	0	0	0	0	0	0	.000	0	0	0	0	.000	0	0	0-0	0	0	0	.000

2020 GAME-BY-GAME

Date	Opponent	Pos	AB	R	H	RBI	2B	3B	HR	BB	SB	CS	HBP	SAC	SF	GDP	K	PO	A	E	Avg	
Feb 08	at Grand Canyon	pr	0	0	0	0	0	0	0	0	0	0	0	0	0	0	0	0	0	0	0	.000
Feb 09	at Grand Canyon	pr	0	0	0	0	0	0	0	0	0	0	0	0	0	0	0	0	0	0	0	.000
Feb 14	NORTHERN COLORA	pr	0	1	0	0	0	0	0	0	0	0	0	0	0	0	0	0	0	0	0	.000
Feb 15	NORTHERN COLORA	pr	0	1	0	0	0	0	0	0	0	0	0	0	0	0	0	0	0	0	0	.000
Feb 16	UCSB	pr	0	1	0	0	0	0	0	0	0	0	0	0	0	0	0	0	0	0	0	.000
Totals		Ogs	0	3	0	0	0	0	0	0	0	0	0	0	0	0	0	0	0	0	0	.000

On base pct. .000 • Slugging pct. .000



77 REYAN TUCK

IF • 6-0 • 50.
HILLSBORO, ORE. • TOWSON

SINGLE-GAME HIGHS

Hits: 2, Northern Colorado, 2-14-20
 Doubles: 1, Northern Colorado, 2-14-20
 Triples:
 Home runs:
 Total bases: 2, 2x, Last vs. UNC, 2-15-20
 RBI: 2, Northern Colorado, 2-14-20
 Runs scored: 1, Grand Canyon, 2-8-20
 Walks: 1, Northern Colorado, 2-15-20
 Hit by pitch:

Struck out: 1, 3x, Last vs. Arizona State, 2-21-20
 Sac flies: 1, Northern Colorado, 2-14-20
 Sac bunts:
 At bats: 4, Grand Canyon, 2-8-20
 Stolen bases: 1, Northern Colorado, 2-15-20
 Caught stealing:
 Field chances: 10, San Diego, 2-22-20
 Putouts: 10, San Diego, 2-22-20
 Assists: 1, Northern Colorado, 2-15-20

CAREER STATS (AT TOWSON)

CAREER STATS (AT UNM)

Year	avg	gp-gs	ab	r	h	2b	3b	hr	rbi	tb	slg%	bb	hbp	so	gdp	ob%	sf	sh	sb-att	po	a	e	fld%
2020	.308	11-9	26	1	8	1	0	0	2	9	.346	1	0	3	0	.321	1	0	1-1	45	1	0	1.000
TOTAL	.308	11-9	26	1	8	1	0	0	2	9	.346	1	0	3	0	.321	1	0	1-1	45	1	0	1.000

2020 GAME-BY-GAME

Date	Opponent	Pos	AB	R	H	RBI	2B	3B	HR	BB	SB	CS	HBP	SAC	SF	GDP	K	PO	A	E	Avg
Feb 07	vs Stanford	ph	1	0	0	0	0	0	0	0	0	0	0	0	0	0	1	0	0	0	.000
Feb 08	vs Stanford	*1b	2	0	0	0	0	0	0	0	0	0	0	0	0	0	0	6	0	0	.000
Feb 08	at Grand Canyon	*1b	4	1	1	0	0	0	0	0	0	0	0	0	0	0	0	9	0	0	.143
Feb 09	at Grand Canyon	*1b	3	0	0	0	0	0	0	0	0	0	0	0	0	0	1	3	0	0	.100
Feb 14	NORTHERN COLORA	*1b	2	0	2	2	0	0	0	0	0	0	0	0	1	0	0	3	0	0	.250
Feb 15	NORTHERN COLORA	*1b	2	0	1	0	1	0	0	1	1	0	0	0	0	0	0	7	1	0	.286
Feb 16	UCSB	ph	1	0	1	0	0	0	0	0	0	0	0	0	0	0	0	0	0	0	.333
Feb 21	vs Arizona State	*1b	2	0	1	0	0	0	0	0	0	0	0	0	0	0	1	3	0	0	.353
Feb 22	vs Missouri	*1b	3	0	1	0	0	0	0	0	0	0	0	0	0	0	0	4	0	0	.350
Feb 22	vs San Diego	*1b	3	0	1	0	0	0	0	0	0	0	0	0	0	0	0	10	0	0	.348
Feb 23	vs California	*dh	3	0	0	0	0	0	0	0	0	0	0	0	0	0	0	0	0	0	.308
Totals		9gs	26	1	8	2	1	0	0	1	1	0	0	0	1	0	3	45	1	0	.308

On base pct. .321 • Slugging pct. .346





99 KIANA SPENCER

P • 5-6 • SR.
GALLUP, N.M. • YAVAPAI COLLEGE

SINGLE-GAME HIGHS

Innings pitched: 7.0, 6x, Last vs. GCU, 2-8-20
 Walks allowed: 7, LMU, 3-10-19
 Strikeouts: 7, North Dakota, 3-26-19
 Batters faced: 36, Nevada, 3-29-19
 Assists: 4, San Diego, 2-22-20
 Putouts: 1, 2x, Last vs. UNC, 2-14-20
 Runners CS: 1, 5x, Last vs. UNC, 2-14-20
 Fewest hits allowed (Min. 3.0 IP): 3, Creighton, 2-9-19

Fewest walks allowed (Min. 3.0 IP): 0, 2x, Last vs. San Diego, 2-22-20

CAREER STATS (AT UNM)

Year	era	w-l	app	qs	cq	sho	sv	ip	h	r	er	bb	so	2b	3b	hr	bf	bavg	wp	hbp	bk	sfa	sha
2019	8.19	6-18	33	23	11	2/0	1	122.0	167	128	111	74	66	36	5	28	626	.320	8	16	0	4	10
2020	5.52	4-1	7	6	3	0/0	0	31.0	38	23	19	13	6	6	2	4	148	.304	1	4	0	2	4
TOTAL	7.65	10-19	40	29	14	2/0	1	153.0	205	151	130	87	72	42	7	32	774	.317	9	20	0	6	14

2020 GAME-BY-GAME

Date	Opponent	GS	IP	H	R	ER	BB	SO	2B	3B	HR	WP	BK	HBP	IBB	Score	W-L	Sv	ERA	NP
Feb 07	vs Stanford	*	5.2	8	4	4	2	1	0	1	0	0	0	0	0	6-7	0-0	0	6.35	101
Feb 08	at Grand Canyon	*	7.0	6	4	4	4	2	1	1	0	0	0	0	0	9-4	1-0	0	5.68	93
Feb 14	NORTHERN COLORA	*	5.0	5	3	3	2	0	2	0	1	0	0	0	0	12-3	2-0	0	5.60	67
Feb 15	UCSB	*	5.0	5	1	1	3	2	0	0	1	0	0	0	0	9-1	3-0	0	4.76	76
Feb 20	vs UC Riverside	*	4.1	5	3	3	2	1	1	0	0	0	0	4	0	6-3	4-0	0	5.00	93
Feb 22	vs San Diego	*	3.1	7	6	4	0	0	2	0	1	1	0	0	0	5-6	4-1	0	5.64	43
Feb 23	vs California	*	0.2	2	2	0	0	0	0	0	1	0	0	0	0	3-5	4-1	0	5.52	7
Totals		6	31.0	38	23	19	13	6	6	2	4	1	0	4	0	50-29	4-1	0	5.52	-