

# 2018-19 NEW MEXICO WOMEN'S BASKETBALL

## GAME NOTES

DANIEL GALLEGOS / ASSISTANT DIRECTOR OF ATHLETIC COMMUNICATIONS | DMGALLEGOS@UNM.EDU | CELL: 501-442-2930

» Eight NCAA Tournament Appearances | 1998, 2002, 2003, 2004, 2005, 2006, 2007, 2008 «  
 » Five Mountain West Tournament Championships | 2003, 2004, 2005, 2007, 2008 «

### 2018-19 / SCHEDULE AND RESULTS

**OVERALL RECORD:** ..... 1-0  
**MW RECORD:** ..... 0-0  
**HOME RECORD:** ..... 1-0  
**ROAD RECORD:** ..... 0-0  
**NEUTRAL RECORD:** ..... 0-0  
**STREAK:** ..... W1

Date	Opponent	Time
10/30	Lubbock Christian (Exh.)	W, 62-55
11/4	Eastern New Mexico (Exh.)	W, 91-43
11/9	%Texas State	W, 82-51
11/11	%Auburn (Quarterfinals)	2 p.m.
11/13-15	%TBA (Semifinals)	TBA
11/16-17	%TBA (Consolation Round)	TBA
11/18	%TBA (Championship)	TBA
11/24	at Houston	1 p.m.
11/28	Oklahoma	7 p.m.
12/1	New Mexico State	2 p.m.
12/5	UTEP	7 p.m.
12/8	at Northern Arizona	2 p.m.
12/15	at New Mexico State	2 p.m.
12/19	+Sacramento State	7 p.m.
12/20	+Hampton or SFA	7 p.m.
12/29	at Long Beach State	3 p.m.
1/2	*Air Force	7 p.m.
1/5	*at Nevada	3 p.m.
1/9	*at UNLV	7 p.m.
1/12	*Colorado State	2 p.m.
1/16	*San Diego State	7 p.m.
1/19	*at Wyoming	2 p.m.
1/23	*UNLV	7 p.m.
1/26	*at Utah State	2 p.m.
2/2	*Fresno State	2 p.m.
2/6	*at San Diego State	Noon
2/9	*Nevada	1 p.m.
2/13	*at San Jose State	8 p.m.
2/16	*at Fresno State	3 p.m.
2/20	*Utah State	7 p.m.
2/27	*San Jose State	7 p.m.
3/2	*at Colorado State	2 p.m.
3/4	*at Boise State	7 p.m.
3/7	*Wyoming	7 p.m.

#### Mountain West Tournament

3/10	First Round	3/5:30/8 pm
3/11	Quarterfinals	1/3:30/7/9:30 pm
3/12	Semifinals	7/9:30 pm
3/13	Championship	8 pm

\* - Mountain West game      % - Preseason WNIT  
 ^ - Lobo Invitational

**Bold** - home game at Dreamstyle Arena (15,411)

Game dates & times are Mountain time and subject to change

### THE SLATE



**NEW MEXICO**  
**LOBOS**

Record (MW)  
 1-0 (0-0 MW)

Head Coach ..... Mike Bradbury  
 Alma Mater, Yr ..... Chattanooga, '93  
 Record at UNM ..... 41-26 (3rd year)  
 Career Record ..... 219-143 (12th year)

#### Game Information

Game Number: ..... 2  
 Dates: ..... 11/11  
 Location: ..... Albuquerque, N.M.  
 Venue: ..... Dreamstyle Arena - The Pit

#### Series History

Overall: ..... 0-1  
 At Home | At Neutral: ..... 0-0 | 0-1  
 Current Streak: ..... L1  
 First Meeting: ..... 1/3/86  
 Last Meeting: ..... 1/3/86

#### Broadcast Information

Radio: ..... KNML-AM (610)  
 Play-By-Play: ..... Josh Suchon  
 Analyst: ..... Nikki Lobato  
 Live Stream: ..... Mountain West Network  
 Live Stats: ..... GoLobos.com



**Auburn**  
**Tigers**

Record (SEC)  
 2-0 (0-0 SEC)

Head Coach ..... Terri Williams-Flournoy  
 Alma Mater, Yr ..... Penn State, '91  
 Record at AU ..... 104-91 (7th year)  
 Career Record ..... 247-195 (15th year)



### TIPPING OFF

The long-awaited official beginning to the 2018-19 season for the University of New Mexico women's basketball team has come and gone as the Lobos opened their season on Friday night. For Lobo fans, the wait was more than worth it as the Lobos treated the fans at Dreamstyle Arena to an impressive 82-51 win over Texas State in the opening round of the Preseason WNIT. As a result of that win over Texas State, the Lobos have advanced to the quarterfinal round of the WNIT and will host Auburn University of the Power 5 SEC on Sunday afternoon at 2 p.m.

In their win against Texas State, UNM showcased a relentless defensive effort that saw the Lobos total 16 blocks - a new program

single-game record, force 24 turnovers and hold the Bobcats under 30% shooting from the floor. Senior transfer **NIKE MCCLURE** was the catalyst of the blocking output as she registered six denials on her own. The Lobos also got a standout performance from redshirt junior **AISIA ROBERTSON** as she neared a triple-double with 17 points, eight rebounds, and nine assists. Returning senior starter **JAISSA NUNN** was efficient once more scoring 14 points on 5-of-7 shooting.

Auburn comes to Dreamstyle Arena - The Pit having won their first two games of the season. Offensively, the Tigers are averaging 88.5 points per game and boast an average scoring margin of +35.0.

#### Probable Starters (Based off of Previous Game)

#	Name	Pos.	Cls.	Ht.	PPG	RPG	APG	SPG	BPG
4	Jayla Everett	G	Fr.	5-10	11.0	3.0	2.0	1.0	1.0
15	Aisia Robertson	G	RsJr.	5-8	17.0	8.0	9.0	3.0	2.0
21	Nike McClure	F	Sr.	6-3	4.0	7.0	---	---	6.0
23	Jaedyn De La Cerdá	G	So.	5-6	9.0	4.0	2.0	2.0	---
44	Jaisa Nunn	C	Sr.	6-3	14.0	3.0	2.0	3.0	1.0

#### Off the Bench

#	Name	Pos.	Cls.	Ht.	PPG	RPG	APG	SPG	BPG
1	Quincy Noble	G	Fr.	5-10	5.0	1.0	---	---	2.0
2	Bre'Asiah Mathews	F	Fr.	6-0	---	1.0	---	---	1.0
3	Ahlise Hurst	G	Fr.	5-9	7.0	1.0	2.0	1.0	1.0
11	Emily Lines	G	Sr.	6-1	---	---	---	---	---
13	Shaiquel McGruder	F	Fr.	6-0	6.0	13.0	---	4.0	2.0
24	Erica Moore	C	RsSr.	6-2	---	---	---	1.0	---
32	Antonia Anderson	G/F	So.	6-2	6.0	1.0	1.0	---	---
35	Madi Washington	G	So.	5-9	3.0	1.0	---	---	---



# UNIVERSITY OF NEW MEXICO

## 2018-19 WOMEN'S BASKETBALL



### UNIVERSITY OF NEW MEXICO

Location.....Albuquerque, N.M.  
 Founded.....1889 by Territorial Legislature  
 Enrollment.....25,015  
 Nickname.....Lobos  
 Colors.....Cherry (PMS 200) & Silver (PMS Cool Gray 6)  
 Conference.....Mountain West Conference  
 National Affiliation.....NCAA Division I  
 President.....Dr. Garnett Stokes  
 Director of Athletics.....Eddie Nuñez  
 Senior Associate A.D.....Brad Hutchins  
 Assoc. A.D./SWA.....Janice Ruggiero  
 Faculty Representative.....Amy Neel

### FACILITY INFORMATION

Facility.....Dreamstyle Arena - The Pit  
 Capacity.....15,411  
 Age.....Built in 1966 (Renovated in 2009-10)  
 All-Time Home Record.....406-205 (.664)

### PROGRAM HISTORY

First Season.....1974-75  
 Overall Record.....635-534 (.543) in 40 seasons  
 Overall MW Record.....174-126 (.580) in 19 seasons  
 Postseason Tournament Appearances.....16  
 NCAA Tournament Appearances.....8  
 Last NCAA Postseason Appearance.....2017-18 (WNIT)  
 Last NCAA Postseason Opponent.....TCU  
 Last NCAA Postseason Result.....L, 72-81  
 MW Regular Season Championships.....2  
 .....(2003-04 & 2004-05)  
 MW Tournament Championships.....5  
 .....(2002-03, 2003-04, 2004-05, 2006-07, 2007-08)

### TEAM INFORMATION

2017-18 Overall Record.....25-11  
 2017-18 Mountain West Record.....10-8  
 2017-18 Mountain West Season Finish.....6th  
 2017-18 MW Tournament Finish.....Quarterfinals  
 Letterwinners Returning | Lost.....7 | 7  
 Starters Returning | Lost.....1 | 4



### COACHING STAFF

Head Coach.....Mike Bradbury (Chattanooga, 1993)  
 Record at UNM (Years).....41-26 (3rd Season)  
 Career Record (Years).....219-143 (12th Season)  
 Head Coach Phone.....505-925-5770  
 Women's Basketball Fax.....505-925-5779  
 Head Coach E-Mail.....mbradbury@unm.edu

Assistant Coach.....Valerie King (3rd Season)  
 Alma Mater.....Cincinnati, 2004  
 Assistant Coach.....Bill Ferrara (2nd Season)  
 Alma Mater.....Florida, 2003  
 Assistant Coach.....Symone Denham (1st Season)  
 Alma Mater.....Wright State, 2016

Director of Operations.....Vera Jo Bustos (5th Season)  
 Video Coordinator.....Cheyne Dorsey (1st Season)  
 Athletic Trainer.....Andrea Quintana  
 Strength Coach.....Jeremy Golden (1st Season)  
 Academic Adviser.....Brian Ferguson

### MISCELLANEOUS INFORMATION

2017-18 Total Attendance Average.....106, 026  
 2017-18 Average Attendance.....4,819  
 2017-18 NCAA Attendance Rank.....18th  
 2017-18 Mountain West Attendance Rank.....1st

### MULTIMEDIA INFORMATION

Athletics Website.....www.GoLobos.com  
 Main University Web Site.....www.unm.edu  
 Conference Web Site.....www.TheMW.com  
 Facebook.....www.facebook.com/NewMexicoLobos  
 Twitter.....@UNMLobos

### MEDIA RELATIONS

Women's Basketball Contact.....Daniel Gallegos  
 Cell Phone (Preferred).....501-442-2930  
 Email.....dmgallegos@unm.edu  
 Address:.....

Department of Athletics  
 Colleen J. Maloof Administration Building  
 MSC04 2680  
 1 University of New Mexico  
 Albuquerque, NM 87131-0001





# UNIVERSITY OF NEW MEXICO

## 2018-19 WOMEN'S BASKETBALL



### THE WEEK AHEAD

SUNDAY	MONDAY	TUESDAY	WEDNESDAY	THURSDAY	FRIDAY	SATURDAY
 <b>11</b> vs. Auburn   2 p.m. Dreamstyle Arena - The Pit Albuquerque, N.M.	<b>12</b>	<b>13</b>	<b>14</b>	<b>15</b>	 <b>9</b> vs. Texas State   W, 82-51 Dreamstyle Arena - The Pit Albuquerque, N.M.	<b>10</b>

### MW STANDINGS

#### 2018-19 Standings (as of 11-9-18)

Team	GAC	Pct.	Overall	Pct.	Streak
Boise State	0-0	0.000	1-0	1.000	W1
Colorado State	0-0	0.000	1-0	1.000	W1
<b>NEW MEXICO</b>	<b>0-0</b>	<b>0.000</b>	<b>1-0</b>	<b>1.000</b>	<b>W1</b>
San Diego State	0-0	0.000	1-0	1.000	W1
Utah State	0-0	0.000	2-0	1.000	W2
Air Force	0-0	0.000	1-1	0.500	L1
Wyoming	0-0	0.000	1-1	0.500	L1
Fresno State	0-0	0.000	0-1	0.000	L1
Nevada	0-0	0.000	0-1	0.000	L1
UNLV	0-0	0.000	0-1	0.000	L1
San Jose State	0-0	0.000	0-2	0.000	L2

#### The Conference Slate

##### Sunday, November 11

Air Force at Denver | 1 p.m. (MT)

**AUBURN AT NEW MEXICO | 2 P.M. (MT)**

San Jose State at Portland State | 2 p.m. (PT)

##### Tuesday, November 13

San Diego State at Santa Clara | 3 p.m. (PT)

UNLV at UC Irvine | 5 p.m. (PT)

UC Colorado Springs at Wyoming | 6:30 p.m. (MT)

##### Wednesday, November 14

Oregon at Utah State | 7 p.m. (MT)

Cal Poly at Fresno State | 7 p.m. (PT)

##### Thursday, November 15

San Diego State at Cal State Fullerton | 7 p.m. (PT)

Colorado State at Colorado | 7 p.m. (MT)

##### Friday, November 16

Northwest Christian at Boise State | 5:30 p.m. (MT)

Fairleigh Dickenson at Air Force | 7 p.m. (MT)

##### Saturday, November 17

Gonzaga at UNLV | 3 p.m. (PT)



### HOW NM STACKS UP IN THE MW

#### Team Rankings (as of 11-9-18)

Category	Stat	Rank
Scoring Offense	82.0/gm	2nd
Scoring Defense	51.0/gm	3rd
Scoring Margin	+31.0	2nd
Free Throw %	.684 (13-of-19)	7th
Field Goal %	.437 (31-of-71)	4th
Field Goal % Def.	.290 (18-of-62)	2nd
3PT Field Goal %	.304 (7-of-23)	7th
3PT Field Goals Made	.7 (7.0/gm)	T-5th
3PT Field Goal % Def.	.333 (4-of-12)	8th
Rebounding (Team)	.47 (47.0/gm)	1st
Rebounding (Opp.)	.40 (40.0/gm)	8th
Rebounding Margin	+7.0	2nd
Blocked Shots	.16 (16.0/gm)	1st
Assists	.18 (18.0/gm)	4th
Steals	.15 (15.0/gm)	2nd
Turnover Margin	+7.0	4th
Assist/Turnover Ratio	1.1	5th
Offensive Rebounds	.19 (19.0/gm)	2nd
Defensive Rebounding	.28 (28.0/gm)	2nd

#### Individual Rankings (as of 11-9-18)

Category	Player	Stat	Rank
Scoring	Aisia Robertson	.17 (17.0 ppg)	T-6th
Rebounding	Shai McGruder	.13 (13.0 rpg)	1st
Field Goal %	Jaisa Nunn	.714 (5-of-7)	4th
Assists	Aisia Robertson	.9 (9.0 apg)	1st
Free Throw %	Jayla Everett	1.000 (4-of-4)	T-1st
Steals	Shaiquel McGruder	.4 (4.0 spg)	T-2nd
3PT FG %	Quincy Noble	1.000 (1-of-1)	T-1st
3PT FG Made	Ahlise Hurst	.2 (2.0 mpg)	T-9th
Blocked Shots	Nike McClure	.6 (6.0 bpg)	1st
AST/TO Ratio			
Off. Rebounds	Shaiquel McGruder	.5 (5.0 rpg)	T-3rd
Def. Rebounds	Shaiquel McGruder	.8 (8.0 rpg)	1st
Minutes Played	Jayla Everett	.29 (29.0 mpg)	T-18th

### 2018-19 MW PLAYERS OF THE WEEK

Week 1	Week 7	Week 13
Week 2	Week 8	Week 14
Week 3	Week 9	Week 15
Week 4	Week 10	
Week 5	Week 11	
Week 6	Week 12	



# UNIVERSITY OF NEW MEXICO

## 2018-19 WOMEN'S BASKETBALL



### LAST TIME IT HAPPENED (UNM)

#### As A Team

Scored 100 Points:	100 - vs. Boise St. (1-3-18)
Scored 90 Points:	93 - vs. Rice (3-20-18)
Scored Fewer Than 50 Points:	42 - at UNLV (1-11-17)
Scored Fewer Than 40 Points:	38 - at Colorado St. (1-3-15)
Won by 40 Points:	107-66 - vs. Northern N.M. (11-15-17)
Won By 30 Points:	82-51 - vs. Texas State (11-9-18)
Lost By 30 Points:	L, 97-59 - at No. 18 DePaul (11-16-14)
Lost By 40 Points:	L, 105-63 - at Oklahoma (12-16-17)
Shot 60% or Better:	61.2% - Pacific (11-9-01)
Shot Less Than 30%:	28.6% (18-63) - Colorado St. (2-28-18)
Shot 60% 3FG or Better:	68.2% (15-22) - at NMSU (12-2-17)
Shot Less Than 20% 3FG:	17.4 (4-23) - Colorado St. (2-28-18)
Made 15 3-Pointers:	15 - vs. Utah St. (1-31-18)
Shot 90% on FTs (10 or more):	94.4% (17-18) - vs. Fresno St. (1-13-18)
Shot Less Than 40% On FTs:	14.3% (1-7) - at UTEP (11-30-17)
Had 50 Rebounds:	59 - vs. San Jose St. (3-5-18)
Had 20 Offensive Rebounds:	20 - at Fresno St. (3-2-18)
Had 25 Assists:	25 - vs. SJSU (2-3-18)
Had 20 Turnovers:	20 - vs. Lamar (12-20-17)
Had Less Than 10 Turnovers:	7 - vs. Wyoming (3-6-18)
Had 10 Steals:	15 - vs. Texas State (11-9-18)
Had 10 Blocks:	16 - vs. Texas State (11-9-18)
Had Two 20-Point Scorers:	vs. TCU (3-22-18) Tessa Buck (24) and Cherise Beynon (20)
Had Three 20-Point Scorers:	at Fresno St. (3-2-18) Tessa Buck (30), Jaisa Nunn (22) and Cherise Beynon (22)
Had 6 Double-Digit Scorers:	Never
Had 5 Double-Digit Scorers:	at Utah St. (2-14-18)
Had No Double-Digit Scorers:	Northern Arizona (12-31-14)
Had Two 10+ Rebounders:	vs. San Jose St. (3-5-18) Jaisa Nunn (11) and Cherise Beynon (10)
Scored 50 Points In 1st Half:	54 - vs. Lamar (12-20-17)
Scored 50 Points In 2nd Half:	53 - vs. Texas State (11-9-18)
Scored 60 Points in a 2nd Half:	63 - vs. Illinois (11-26-17)
Scored 20 Or Fewer Points In 1st Half:	17 - at Colorado St. (2-22-17)
Scored 20 Or Fewer Points In 2nd Half:	19 - at Marquette (12-21-16)
Lowest Pts Scored in Quarter:	2 - vs. Tulsa (11-25-16)
Failed To Make a 3FG:	at UNLV (1-11-17)
Defeated a Ranked Team:	W, 88-87 vs. No. 16 Marquette (11-13-17)
Lost To a Ranked Team:	L, 49-48 vs. No. 25 CSU (2-24-16)
Won an OT Game:	W, 93-89 at Fresno St. (3-2-18)
Lost an OT Game:	L, 80-86 vs. Boise St. (2-12-14)
Won a 2OT Game:	W, 64-54 vs. California (11-20-10)
Lost a 2OT Game:	L, 69-65 vs. Fresno St. (1-2-16)

#### As An Individual

Had a Triple-Double:	Cherise Beynon (22 pts, 13 rebs, 11 assists) at Fresno St. (3-2-18)
Had a Double-Double (Pts/Reb):	.... C. Beynon (20 pts, 10 reb); J. Nunn (14 pts, 11 reb) vs. TCU (3-22-18)
Had a Double-Double (Pts/Asst):	Cherise Beynon (20 pts & 10 asts) vs. Fresno St. (1-13-18)
Had a Double-Double (Reb/Asst):	vs. Fairleigh Dickinson (11-12-16) Cherise Beynon (13 reb, 10 asts)
Scored 20+ Pts with 10+ Rebs:	Cherise Beynon (20 pts, 10 reb) vs. TCU (3-22-18)
Scored 30 Points:	Cherise Beynon (33) vs. Saint Mary's (3-15-18)
Scored 40 Points:	Cherise Beynon (41) at SDSU (1-20-18)
Scored 30 Points (MW Only):	Tessa Buck (30) at Fresno St. (3-2-18)
Scored 40 points (MW Only):	Cherise Beynon (41) at San Diego St. (1-20-18)
Had 20 Rebounds:	Richelle van der Keijl (20) vs. New Mexico St. (11-15-16)
Had 15 Rebounds:	Jaisa Nunn (17) vs. Lamar (12-20-17)
Had 15 Assists:	Cherise Beynon (15) vs. Boise St. (1-6-18)
Had 5 Steals:	Jaisa Nunn (5) vs. TCU (3-22-18)
Had 5 Blocks:	Nike McClure (6) vs. Texas State (11-9-18)

### BRADBURY AND SEASON-OPENERS

With the 82-51 win over Texas State on Friday, head coach Mike Bradbury improved to 3-0 in season-openers while at the University of New Mexico. In his first season, UNM beat Fairleigh Dickinson 83-56, and last year, the Lobos upended Western Michigan 88-76.

### DOMINANT DEBUT

The Lobos' 31-point margin of victory over Texas State (82-51) in the season-opener was the largest defeat UNM has placed on an opponent in a season-opener since the 2008-09 season when the Lobos beat Alcorn State by 56 points (94-38).

### AISIA ALL OVER THE MAP

Redshirt junior Aisia Robertson had quite the debut for the Lobos. In her first collegiate action in over a year, the San Francisco, Calif. native flirted with a triple-double. Robertson would lead the team in scoring with 17 points while also dishing out nine assists and hauling in eight rebounds.

### BLOCK PARTY HOSTED BY MCCLURE

Length and athleticism were projected to be a newfound strength of the 2018-19 Lobos and in the season-opener both were evident and led by Nike McClure. A senior transfer, McClure blocked six shots on her own as the Lobos would end the night with a new school-record 16.

### NUNN'S CLIMB UP THE ALL-TIME SCORING LIST

Senior center Jaisa Nunn became the 22nd player in school history to score 1,000-career points at the end of her junior season. She ended that year 19th on the all-time scoring list. In her senior season, Nunn has the chance to climb the ranks even higher. She is currently 18th with 1,042 points.

### LOBOS PICKED 5TH IN PRESEASON MW POLL

The Mountain West recently released its annual preseason predicted order of finish ahead of the 2018-19 women's basketball season and UNM was picked fifth behind preseason favorite Boise State, UNLV, Fresno State and Wyoming. The Lobos were just eight points back of Wyoming as UNM garnered 150 points in the rankings.

### NUNN NAMED PRESEASON ALL-MW

Senior center **Jaisa Nunn** continues to solicit a lot of preseason attention and deservedly so based off of her stellar junior season. The most-recent accolade to come Nunn's way is inclusion on the 2018-19 Preseason All-Mountain West Team.





# UNIVERSITY OF NEW MEXICO

## 2018-19 WOMEN'S BASKETBALL



### UNM AND UCONN

In their first exhibition game of the season against NCAA Division II perennial power Lubbock Christian, the University of New Mexico did something to LCU that only one of the Division I women's basketball team has done; that's beat the Lady Chaps in an exhibition. Prior to the Lobos' 62-55 win over Lubbock Christian, LCU was 4-1 all-time in exhibition games versus DI opponents with the lone loss coming at the hands of UCONN in 2015.

### UNBLEMISHED IN EXHIBITION GAMES

The Lobos went 2-0 in their exhibition games ahead of the start of the 2018-19 season. The Lobos are now 6-0 under head coach **MIKE BRADBURY** in exhibition games.

### SHAKING OFF FIRST GAME JITTERS

While none of the stats count during exhibition games, there was marked improvement from the first exhibition game to the second for several newcomers for the Lobos. In the exhibition opener against Lubbock Christian, true freshmen, **JAYLA EVERETT**, **AHLISE HURST**, **BRE'ASIAJAH MATHEWS**, and **QUINCY NOBLE** combined to score three (3) points on 1-of-23 shooting overall from the floor. In the second exhibition game, however, those same four combined to score 37 points on 14-of-21 shooting overall from the floor.

### NUNN LIKE HER

**JAISA NUNN** set herself apart from many of her counterparts last season as the rising senior was the lone player in the Mountain West to average a double (points/rebounds). In her junior campaign, Nunn was the team's leading scorer and ranked second in the MW with 17.0 ppg while also topping the team and league in rebounds at 10.2. Already a 1,000-point career scorer, Nunn is within striking distance of becoming a 1,000-rebounder as well. The most rebounds in a career is 982 held by Carol Moreland. Nunn is already in the Top-10 all time at UNM, ranking 10th with 654.

### NUNN NAMED TO LISA LESLIE WATCH LIST

Prior to the 2018-19 season tipoff, UNM senior **JAISA NUNN** been named to the preseason watch list for the 2019 Lisa Leslie Award. Entering its second year and named after the three-time All-American and 1994 National Player of the Year, the Lisa Leslie Award recognizes the top centers in women's NCAA Division I college basketball and is a part of the larger Naismith Starting 5, honoring the best players at each position.

Nunn is among 20 to be on the initial watch list, and is one of two from the Mountain West.

### LAST TIME IT HAPPENED (OPP)

#### As A Team

Scored 100 Points:	105 - at Oklahoma (12-16-17)
Scored 90 Points:	91 - at Boise State (2-7-18)
Scored Less Than 50 Points:	48 - vs. Colorado State (2-28-18)
Scored Less Than 40 Points:	35 - at UTEP (11-30-17)
Shot 50% Or Better:	50.8% (32-63) - vs. TCU (3-22-18)
Shot Less Than 30%:	29.0% (18-62) - vs. Texas State (11-9-18)
Shot 50% 3FG Or Better:	50.0% (10-20) - vs. Wyoming (2-21-18)
Shot Less Than 20% 3FG:	11.1% (1-9) - vs. Utah State (1-31-18)
Made 15 3-Pointers:	15 - at Oklahoma (12-16-17)
Shot 90% On FTs (10 or more):	90% (18-20) - at Boise State (2-7-18)
Shot Less Than 50% On FTs:	40.0% (3-10) - vs. San Diego State (12-31-16)
Had 50 Rebounds:	55 - vs. Nevada (12-30-17)
Had 20 Offensive Rebounds:	22 - vs. Lamar (12-20-17)
Had 25 Assists:	28 - at SDSU (1-20-18)
Had 30 Turnovers:	30 - vs. Northern New Mexico (11-15-17)
Had Less Than 10 Turnovers:	9 - vs. Wyoming (3-8-18)
Had 10 Steals:	10 - vs. Texas State (11-9-18)
Had 10 Blocks:	10 - vs. Utah State (2-10-16)
Had Two 20-Point Scorers:	at Boise State (2-7-18) Marta Hermida (26), Riley Lupfer (20)
Had 6 Double-Digit Scorers:	Baylor (1-4-95)
Had 5 Double-Digit Scorers:	vs. Navy (12-10-17)
Had No Double-Digit Scorers:	Boise State (2-25-15)
Had Two 10+ Rebounders:	Saint Mary's (3-15-18) Sydney Raggio (12), Megan McKay (10), Stella Beck (10)
Scored 50+ Points In 1st Half:	56 - at Oklahoma (12-16-17)
Scored 50+ Points In 2nd Half:	50 - Saint Mary's (3-15-18)
Scored 20 Or Less Points In 1st Half:	18 - vs. Utah State (1-31-18)
Scored 20 Or Less In 2nd Half:	17 - vs. Nevada (3-4-16)
Failed To Make a 3FG:	0-1 by San Diego State (2-18-15)

#### As An Individual

Had a Double-Double (Pts/Reb):	Erica Ogumike (31 pts, 10 reb) vs. Rice (3-20-18)
Had a Double-Double (Pts/Asst):	Mindy Bonham (17 pts & 10 assts) BYU (3-1-11)
Had 20+ Points & 10+ Rebounds:	Erica Ogumike (31 pts, 10 reb) vs. Rice (3-20-18)
Scored 30 Points:	Erica Ogumike (31) - vs. Rice (3-20-18)
Scored 30 Points (MW Only):	Candice White (32) - at Fresno State (3-2-18)
Had 20 Rebounds:	Kaylee Johnson (22) - No. 1 Stanford (11-24-14)
Had 15 Rebounds:	Annie Brady (16) - Colorado State (2-28-18)
Had 10 Assists:	Geena Gomez (11) - at SDSU (1-20-18)
Had 5 Steals:	McKynzie Fort (5) - vs. San Diego State (2-6-16)
Had 5 Blocks:	AJ Cephas (5) - at Nevada (1-7-17)



# UNIVERSITY OF NEW MEXICO

## 2018-19 WOMEN'S BASKETBALL



### LOBOS RECORD WHEN...

	Overall	In MW
Overall .....	1-0	0-0
At home .....	1-0	0-0
On the road .....	0-0	0-0
At neutral sites .....	0-0	0-0
After a win .....	0-0	0-0
After a loss .....	0-0	0-0
In overtime .....	0-0	0-0
vs. ranked opponents .....	0-0	0-0
Games decided by 1-4 points .....	0-0	0-0
Games decided by 5-9 points .....	0-0	0-0
Games decided by 10-19 points .....	0-0	0-0
Games decided by 20+ points .....	1-0	0-0
Leading after Q1 .....	0-0	0-0
Trailing after Q1 .....	1-0	0-0
Tied after Q1 .....	0-0	0-0
Leading at half .....	1-0	0-0
Trailing at half .....	0-0	0-0
Tied at half .....	0-0	0-0
Leading after Q3 .....	1-0	0-0
Trailing after Q3 .....	0-0	0-0
Tied after Q3 .....	0-0	0-0
Shooting 50% or better .....	0-0	0-0
Shooting between 40-49.9% .....	1-0	0-0
Shooting less than 40% .....	0-0	0-0
Opponent shoots 50% or better .....	0-0	0-0
Opponent shoots b/w 40-49.9% .....	0-0	0-0
Opponent shoots b/w 30-39.9% .....	0-0	0-0
Opponent shoots less than 30% .....	1-0	0-0
UNM higher FG% .....	1-0	0-0
Opponent higher FG% .....	0-0	0-0
FG% Tied .....	0-0	0-0
UNM outrebounds .....	1-0	0-0
Opponent outrebounds .....	0-0	0-0
Rebounds tied .....	0-0	0-0
UNM more made free throws .....	1-0	0-0
Opponent more made free throws .....	0-0	0-0
Made free throws tied .....	0-0	0-0
UNM 3FG% higher .....	0-0	0-0
Opponent 3FG% higher .....	1-0	0-0
3FG% tied .....	0-0	0-0
UNM has more fouls .....	1-0	0-0
Opponent has more fouls .....	0-0	0-0
Fouls are tied .....	0-0	0-0
UNM more turnovers .....	0-0	0-0
Opponent more turnovers .....	1-0	0-0
Turnovers tied .....	0-0	0-0
Scoring less than 50 points .....	0-0	0-0
Scoring 50-59 points .....	0-0	0-0
Scoring 60-69 points .....	0-0	0-0
Scoring 70-79 points .....	0-0	0-0
Scoring 80-89 points .....	1-0	0-0
Scoring 90-99 points .....	0-0	0-0
Scoring 100+ points .....	0-0	0-0
Allowing 40 points or less .....	0-0	0-0
Allowing 41-49 points .....	0-0	0-0
Allowing 50-59 points .....	1-0	0-0
Allowing 60-69 points .....	0-0	0-0
Allowing 70-79 points .....	0-0	0-0
Allowing 80-89 points .....	0-0	0-0
Allowing 90+ points .....	0-0	0-0
In November .....	1-0	0-0
In December .....	0-0	0-0
In January .....	0-0	0-0
In February .....	0-0	0-0
In March .....	0-0	0-0

### LOOKING TO BUILD OFF LAST SEASON

Last season was a breakout year for the University of New Mexico women's basketball team under the direction of second-year head coach **MIKE BRADBURY** as the 2017-18 Lobos went 25-11. It was the only the second time in the last nine years that a UNM women's basketball team won at least 20 games and the 25 wins tied for the second-most wins in a season in program history.

### BY THE NUMBERS

Here is what is returning and missing for the 2018-19 Lobos.

	Returning	Lost	% Returning
Points .....	1,001	1,892	.346
Rebounds .....	543	742	.379
Assists .....	52	537	.088
Blocks .....	68	44	.607
Steals .....	66	225	.227
3-Pointers .....	49	270	.154
Free Throws .....	218	304	.418

### 0 - 90+

Last season, the Lobos averaged 80.4 points per game to lead the Mountain West and rank 16th in DI. Prior to last year, the women's basketball program at UNM had registered 37 games of scoring 90 or more points. In 2017-18 alone, the Lobos achieved that scoring feat 10 times and one three occasions went over the century mark.

### DIALING LONG DISTANCE

The Lobos' high-powered offense was spurred on last season by the 3-point shot. In that regard, UNM attempted the eighth-most 3-pointers in the country with 932 tries from long range. The Lobos also buried them rather often as they made 319 to rank 11th in DI.

### YOUNG TALENT AROUND

Only one starter from the 2017-18 team returns this season for the Lobos, leaving a significant amount of playing time. While the Lobos do return seven letterwinners from last year, they also hauled in a highly-touted recruiting class that was ranked as high as No. 19 by ESPNW. Among that class, the Lobos inked four prospects that were rated at least 3-Star by ESPNW. The highest ranked among that incoming freshman class was **JAYLA EVERETT**. The St. Louis native was ranked the No. 27 guard and 94th overall in the 2018 class.

Outside of Everett, the Lobos will benefit from the services of fellow incoming freshmen **QUINCY NOBLE**, **BRE'ASISAJAH MATHEWS**, **AHLISE HURST** and **SHAIQUEL MCGRUDER**.



# UNIVERSITY OF NEW MEXICO 2018-19 WOMEN'S BASKETBALL



## IMPACT TRANSFERS

In looking to replace the starters from last year, the Lobos also turned to transfers and added three DI transfers over the summer. New to the program are **NIKE MCCLURE** (Washington State), **NAJALA HOWELL** (UTEP), and **BRIDE KENNEDY-HOPOATE** (Iowa State). That trio joins Kansas-transfer **AISIA ROBERTSON**, who will be eligible to play this season after sitting out last season. Only McClure will be eligible to play this season as a graduate transfer while Kennedy-Hopoate and Howell will sit this season as Robertson did last year.

## THERE'S NO PLACE LIKE HOME

Dreamstyle Arena - The Pit is nationally recognized as one of the top basketball venues for college basketball. Need proof?! How about Sports Illustrated ranking it as one of the Top-20 sporting venues, of any sport, in the world for the 20th century!

Yes, The Pit is truly a special place, and it has created an unparalleled environment for the New Mexico women's basketball program over the years. The Lobos have led the Mountain West in attendance every year of the conference's existence since the 1999-00 season. Additionally, during that same span, the program has ranked in the Top-20 nationally in attendance in each of those years.

Wanna talk records?! The UNM women's basketball team is an impressive 405-205 at home all-time, a winning percentage of .664 heading into the 2018-19 season.

## STUDENT-ATHLETE SPIRIT

Academic excellence has become the norm for the New Mexico women's basketball. The Lobos are regularly taking home Mountain West Academic all-conference and Scholar-Athlete awards, but they shine in national academic rankings as well. For seven of the last 10 seasons, and nine of the last 13 seasons, UNM has finished in the WBCA's Academic Top 25 rankings.

This past season, outgoing senior **CHERISE BEYNON** earned the highest individual academic honor as she was the CoSIDA Academic All-America® of the Year for DI Women's Basketball.

## LOBOS FROM NEAR AND FAR

The Lobo women's basketball roster has a mixture of athletes from near and far on its 2018-19 roster. The Lobos have players from eight different states and two by way of the international route. The Lobos feature players from California, Florida, Indiana, Missouri, New Mexico, Ohio, Texas and Washington. Additionally, the Lobos have a pair of players from "Down Under" in Australia.

## UNM STARTING LINEUPS (GAME)

Game	G	G	G	G/F	F
11/9 Texas St.	Robertson	De La Cerda	Everett	McClure	Nunn
11/24 at Houston					
11/28 Oklahoma					
12/1 NMSU					
12/5 UTEP					
12/8 at NAU					
12/15 at NMSU					
12/19 Sacramento St.					
12/20 Hampton or SFA					
12/29 at Long Beach St.					
1/2 Air Force					
1/5 at Nevada					
1/9 at UNLV					
1/12 Colorado St.					
1/16 San Diego St.					
1/19 at Wyoming					
1/23 UNLV					
1/26 at Utah St.					
2/2 Fresno St.					
2/6 at San Diego St.					
2/9 Nevada					
2/13 at San Jose St.					
2/16 at Fresno St.					
2/20 Utah St.					
2/27 San Jose St.					
3/2 at Colorado St.					
3/4 at Boise St.					
3/7 Wyoming					

## UNM STARTING LINEUPS (RECORD)

Robertson, De La Cerda, Everett, McClure, Nunn.....1-0





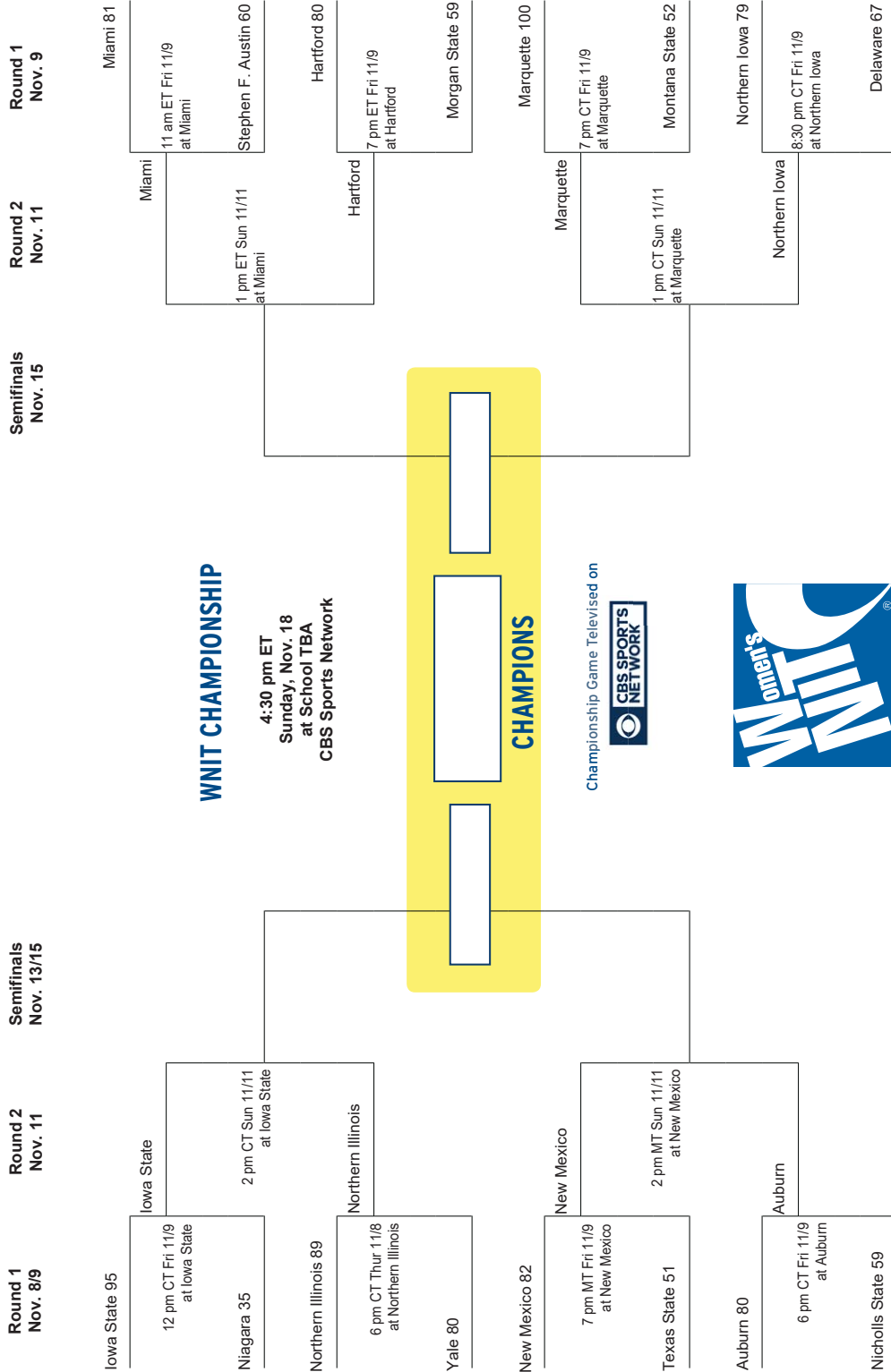
# UNIVERSITY OF NEW MEXICO 2018-19 WOMEN'S BASKETBALL



Produced by **TRIPLE CROWN**

## PRESEASON WNIT BRACKET

2018 Women's National  
Invitation Tournament







# UNIVERSITY OF NEW MEXICO

## 2018-19 WOMEN'S BASKETBALL



### WBCA TOP-25 (2018-19 PRE)

#	School (1st-place votes)	Rec.	LW
1.	Notre Dame (30)	(35-3)	1
2.	Connecticut (2)	(36-1)	3
3.	Oregon	(33-5)	5
4.	Louisville	(36-3)	4
5.	Baylor	(33-2)	9
6.	Mississippi State	(37-2)	2
7.	Stanford	(24-11)	13
8.	Texas	(28-7)	10
9.	Oregon State	(26-8)	8
10.	Maryland	(26-8)	18
11.	South Carolina	(29-7)	6
12.	Tennessee	(25-8)	17
13.	Georgia	(26-7)	19
14.	Missouri	(24-8)	22
15.	DePaul	(27-8)	23
16.	North Carolina State	(26-9)	16
17.	Iowa	(24-8)	NR
18.	Syracuse	(22-9)	NR
19.	Marquette	(24-10)	NR
20.	Duke	(24-9)	12
21.	South Florida	(26-8)	24
21.	Texas A&M	(26-10)	11
23.	UCLA	(27-8)	7
24.	Miami (Fla.)	(22-11)	NR
25.	West Virginia	(25-12)	NR

**Others receiving votes:** Arizona State; Michigan; Florida State; California; Central Michigan; LSU; Kansas; Florida Gulf Coast; Minnesota; Washington; Drake; North Carolina; Illinois; Quinnipiac; Villanova; Wisconsin-Green Bay; Jacksonville; Ohio State; Arkansas-Little Rock; Duquesne; Florida; Kentucky; Buffalo; Gonzaga; Michigan State; Alabama State; Boise State; Houston; Idaho; Princeton; Central Florida; Southern California



### AP TOP-25 (2018-19 PRE)

#	School (1st-place votes)	Rec.	Pts.
1	Notre Dame (31)	0-0	775
2	UConn	0-0	728
3	Oregon	0-0	712
4	Baylor	0-0	679
5	Louisville	0-0	664
6	Mississippi State	0-0	563
7	Stanford	0-0	559
8	Oregon State	0-0	517
9	Maryland	0-0	500
10	South Carolina	0-0	479
11	Tennessee	0-0	448
11	Texas	0-0	448
13	Iowa	0-0	383
14	Georgia	0-0	374
15	DePaul	0-0	306
16	Missouri	0-0	294
17	NC State	0-0	288
18	Syracuse	0-0	238
19	Marquette	0-0	231
20	Texas A&M	0-0	149
21	Duke	0-0	131
22	South Florida	0-0	123
23	Arizona St	0-0	122
24	California	0-0	103
25	Miami	0-0	84

**Others receiving votes:** Minnesota 38, West Virginia 35, UCLA 29, Central Michigan 24, Nebraska 13, Florida St. 12, Michigan 9, **Boise St. 4**, Buffalo 3, Virginia Tech 2, Belmont 2, Virginia 2, TCU 1, Drake 1, Green Bay 1, Duquesne 1.





# UNIVERSITY OF NEW MEXICO

## 2018-19 WOMEN'S BASKETBALL



### PRONUNCIATION GUIDE

2	BRE'ASIAJAH Matthews.....	Bre-Asia
3	AHLISE Hurst.....	AH-lease
12	BRIDE Kennedy-HOPOATE... Bride-EE (Hop-o-ate)	
13	SHAIQUEL McGruder.....	Shy-kell
14	NAJALA Howell.....	Nah-Juh-La
23	JAEDYN De La Cerda.....	JAY-dun
44	JAISA Nunn.....	JAY-suh

### BY ELIGIBILITY

#### Seniors (4)

11	Emily Lines.....	G
21	Nike McClure.....	F
24	Erica Moore.....	C
44	Jaisa Nunn.....	C

#### Juniors (3)

12	Bride Kennedy-Hopoate.....	F
14	Najala Howell.....	G
15	Aisia Robertson.....	G

#### Sophomores (3)

23	Jaedyn De La Cerda.....	G
32	Antonia Anderson.....	G/F
35	Madi Washington.....	PG

#### Freshmen (5)

1	Quincy Noble.....	G
2	Bre'Asiah Mathews.....	F
3	Ahlise Hurst.....	G/F
4	Jayla Everett.....	G
13	Shaiquel McGruder.....	F

### HOME STATE

#### California (1)

15	Aisia Robertson.....	G
----	----------------------	---

#### Florida (1)

11	Emily Lines.....	G
----	------------------	---

#### Indiana (1)

24	Erica Moore.....	C
----	------------------	---

#### Missouri (1)

4	Jayla Everett.....	G
---	--------------------	---

#### New Mexico (1)

23	Jaedyn De La Cerda.....	G
----	-------------------------	---

#### Ohio (1)

13	Shaiquel McGruder.....	F
----	------------------------	---

#### Texas (5)

1	Quincy Noble.....	G
2	Bre'Asiah Mathews.....	F
14	Najala Howell.....	G
32	Antonia Anderson.....	G/F
35	Madi Washington.....	G

#### Washington (2)

21	Nike McClure.....	F
44	Jaisa Nunn.....	C

### INTERNATIONAL

3	Ahlise Hurst (Australia).....	G/F
12	Bride Kennedy-Hopoate (Australia).....	F

### NUMERICAL ROSTER

#	NAME	POS	HT	YR	EXP.	HOMETOWN (LAST SCHOOL/TEAM)
1	Quincy Noble	G	5-10	Fr.		McKinney, Texas (McKinney HS)
2	Bre'Asiah Mathews	F	6-0	Fr.		Garland, Texas (Lakeview Centennial HS)
3	Ahlise Hurst	G/F	5-9	Fr.		Bendigo, Australia (Bendigo Senior-Secondary)
4	Jayla Everett	G	5-10	Fr.		St. Louis, Mo. (Kirkwood HS)
11	Emily Lines	G	6-1	Sr.		Naples, Fla. (First Baptist Academy)
12	Bride Kennedy-Hopoate	F	6-4	RsJr.		Brisbane, Australia (Iowa State)
13	Shaiquel McGruder	F	6-0	Fr.		Trotwood, Ohio (Trotwood-Madison HS)
14	Najala Howell	G	5-10	RsJr.		DeSoto, Texas (UTEP)
15	Aisia Robertson	G	5-8	RsJr.		San Francisco, Calif. (Kansas)
21	Nike McClure	F	6-3	Sr.		Tenino, Wash. (Washington State)
23	Jaedyn De La Cerda	G	5-6	So.		Roswell, N.M. (Roswell HS)
24	Erica Moore	C	6-2	R-Sr.		Fishers, Ind. (Purdue)
32	Antonia Anderson	G/F	6-2	So.		Cibolo, Texas (Byron P. Steele II HS)
35	Madi Washington	PG	5-9	So.		Red Oak, Texas (Red Oak HS)
44	Jaisa Nunn	C	6-3	Sr.		Kirkland, Wash. (Juanita HS)

### COACHING STAFF

<b>Head Coach</b>	Mike Bradbury (Third Season, UT-Chattanooga, 1993)
<b>Assistant Coach</b>	Valerie King (Third Season, Cincinnati, 2004)
<b>Assistant Coach</b>	Bill Ferrara (Second Season, Florida, 2003)
<b>Assistant Coach</b>	Symone Denham (First Season, Wright State, 2016)
<b>Director of Operations</b>	Vera Jo Bustos (Fifth Season, Adams State, 2011)
<b>Video Coordinator</b>	Cheyne Dorsey (First Season, New Mexico, 2016)
<b>Athletic Trainer</b>	Andrea Quintana
<b>Athletic Performance</b>	Jeremy Golden
<b>Athletic Communications</b>	Daniel Gallegos

### STARTERS RETURNING (1)

No.	Name	Pos.	Cls.	Pts.	Reb.	Ast.	FG%	FT%
44	Jaisa Nunn	C	Sr.	17.0	10.2	15	.637	.809

### OTHER LETTERWINNERS RETURNING (5)

No.	Name	Pos.	Cls.	Pts.	Reb.	Ast.	FG%	FT%
11	Emily Lines	G	Sr.	1.8	1.1	3	.429	.857
23	Jaedyn De La Cerda	G	So.	1.8	0.5	2	.400	.833
24	Erica Moore	C	RsSr.	0.8	0.4	--	.600	1.000
32	Antonia Anderson	F	So.	4.1	3.0	5	.571	.600
35	Madi Washington	G	So.	6.4	1.8	27	.381	.789

### STARTERS LOST (4)

No.	Name	Pos.	Cls.	Pts.	Reb.	Ast.	FG%	FT%
0	Cherise Beynon	G	Sr.	16.9	5.9	243	.388	.760
2	Tesha Buck	G	Sr.	14.6	4.6	117	.424	.833
3	N'Dea Flye	PG	Fr.	6.1	3.8	84	.291	.564
4	Alex Lapeyrolerie	G	RsSr.	10.8	4.4	28	.363	.889

### OTHER LETTERWINNERS LOST (3)

No.	Name	Pos.	Cls.
10	Jasmine Smith	G	Fr.
22	Mykiel Burleson	G	So.
25	Laneah Bryan	G	Sr.

### NEWCOMERS (8)

No.	Name	Pos.	Exp.
1	Quincy Noble	G	HS
2	Bre'Asiah Mathews	F	HS
3	Ahlise Hurst	G/F	HS
4	Jayla Everett	G	HS
12	Bride Kennedy-Hopoate	F	TR
13	Shaiquel McGruder	F	HS
14	Najala Howell	G	TR
21	Nike McClure	F	TR



# UNIVERSITY OF NEW MEXICO

## 2018-19 WOMEN'S BASKETBALL



**MIKE BRADBURY | @COACHBRADBURY**

**RECORD AT UNM: 41-26 (3RD SEASON)**

**CAREER RECORD: 219-143 (12TH SEASON)**

### **NOTEWORTHY :**

- Named the sixth head coach in program history on March 31, 2016
- Led UNM to 25 wins in 2017-18; tied for second-most wins in program history
- Spent six years at Wright State (2010-16) and went 128-73 for the Raiders
- Most single-season wins in Wright State history (26)
- Five 20-win seasons at Wright State with five postseason appearances

**MIKE BRADBURY** enters his third season as head coach for The University of New Mexico women's basketball team. In his previous two seasons at the helm, Bradbury has guided the Lobos to a 40-26 overall record. Over half of that win total occurred last season as Bradbury's 2017-18 squad went 25-11.

At UNM, Bradbury has coached five All-Mountain West performers with Cherise Beynon, Jaisa Nunn, and Richelle van der Keijl making the All-Mountain West Team. Additional Mountain West plaudits earned under Bradbury have seen Beynon be named to the All-Defensive Team, Mykiel Burleson selected to the All-Freshman Team and van der Keijl and Tesha Buck named the Mountain West Newcomer of the Year in consecutive seasons.

This past season, year two under Bradbury, saw the Lobos have a breakout season, especially offensively as they ended the 2017-18 season averaging 80.4 points per game while also posting an impressive +9.7 scoring margin. Both marks led the Mountain West and the point-per-game total was 16th-best in NCAA DI last season.

A significant reason for the jump in offensive production was the fact that the Lobos were one of the most potent three-point shooting threats in the country. For the season, the Lobos attempted the eighth-most overall trifectas in DI hoisting 932 long distance shots. Successful 34% of the time, the Lobos made the 11th most 3's burying 319.

Prior to coming to Albuquerque, Bradbury built a successful

nine year run as a Division-I head coach with stops at Morehead State (Morehead, Ky.) and Wright State (Dayton, Ohio). Most recently with the Raiders, Bradbury led his squad to five 20-win seasons, including each of his final three seasons. During that time, Wright State has amassed a 75-28 record, the best amongst the 13 Division I programs in the state of Ohio.

Overall at Wright State, Bradbury had five winning seasons, all of which were 20-win seasons, in six years - a feat made all the more remarkable as Wright State had just one winning season in the previous 22 before his arrival. In the previous 37 seasons of women's basketball at Wright State, the Raider program had tallied 20 wins just once before Bradbury led the team to 20 wins in five of his six seasons.

His most prominent three-year run at Wright State started in 2013-14, when the Raiders won a school-record 26 games on the way to a 26-9 season and the program's first-ever appearance in the NCAA Tournament. That season saw the Raiders finish second in the Horizon League and win its first Horizon League Tournament. It also featured the program's first road win at perennial league power Wisconsin-Green Bay. Kim Demmings was named the Horizon League Player of the Year and Tournament MVP, and it marked the first time in school history the program had a pair of first team All-Conference selections.

He followed up that by earning Horizon League Coach of the Year in 2014-15 after a 25-9 season that saw his squad lose its Horizon League Preseason Player of the Year less than two





# UNIVERSITY OF NEW MEXICO

## 2018-19 WOMEN'S BASKETBALL



minutes into the season opener. The Raiders just missed a second straight NCAA Tournament appearance, falling in overtime in the conference championship game. The team did make its first appearance in the Women's NIT as the league's automatic qualifier, and in 2015-16, the team made it back-to-back WNIT appearances after a 24-11 season, earning the program's first at-large bid.

Those three seasons are the three winningest seasons in the history of Wright State women's basketball.

In his first two seasons at Wright State, he led the team to a 20-13 campaign and a 21-13 mark and berths in the Women's Basketball Invitational, the first NCAA Division I postseason berths for the program. Overall, Bradbury has coached three Horizon League Players of the Year (all in his last three seasons), six first-team All-Horizon League players, three second-team members and four All-Freshman team members.

Prior to his time at Wright State, Bradbury was the head coach at Morehead State where he led the Division I program to a 50-44 mark in three seasons, including a watershed 22-11 season, which was the second-most wins in Morehead State history and the most wins by the Eagles in the previous 38 years.

At Morehead State he coached one Ohio Valley Conference Player of the Year, along with one first-team All-OVC pick (two seasons) and three second-team All-OVC picks.

Bradbury also spent time as an assistant coach at Xavier (2002-06), Cincinnati (1996-02), VCU (1995-96), East Tennessee State (1994-95) and Chattanooga (1991-94). In his 27 seasons as an assistant and as a head coach, Bradbury has had 25 winning seasons.

## THE BRADBURY FILE

### EDUCATION

UT-Chattanooga - B.S. Recreation (1993)

### COACHING EXPERIENCE

1991-93	Student Assistant	Chattanooga
1993-94	Assistant Coach	Chattanooga
1994-95	Assistant Coach	East Tennessee
1995-96	Assistant Coach	VCU
1996-02	Assistant Coach	Cincinnati
2002-07	Assistant Coach	Xavier
2007-10	Head Coach	Morehead State
2010-16	Head Coach	Wright State
2016-pres.	Head Coach	New Mexico

### HEAD COACHING RECORD

2007-10	Morehead State	50-44 (.532)
2010-16	Wright State	128-73 (.637)
2016-pres.	New Mexico	41-26 (.606)
11 years		219-143 (.604)

### CAREER HEAD COACHING YEAR-BY-YEAR

2007-08	11-19 (9-11)	Morehead State
2008-09	17-14 (11-7)	Morehead State
2009-10	22-11 (14-4)	Morehead State
2010-11	20-13 (11-7)	Wright State
2011-12	21-13 (12-6)	Wright State
2012-13	12-18 (6-10)	Wright State
2013-14	26-9 (12-4)	Wright State
2014-15	25-9 (12-4)	Wright State
2015-16	24-11 (12-6)	Wright State
2016-17	15-15 (10-8)	New Mexico
2017-18	25-11 (10-8)	New Mexico
2018-19	1-0 (0-0)	New Mexico
<b>Total</b>	<b>219-143 (137-75)</b>	





# UNIVERSITY OF NEW MEXICO

## 2018-19 WOMEN'S BASKETBALL



**QUINCY NOBLE**  
G | 5-10 | FR.  
MCKINNEY, TEXAS



**BRE'ASIAJAH MATHEWS**  
F | 6-0 | FR.  
GARLAND, TEXAS



**AHLISE HURST**  
G | 5-9 | FR.  
BENDINGO, AUSTRALIA



**JAYLA EVERETT**  
G | 5-10 | FR.  
SAINT LOUIS, MO.



**EMILY LINES**  
G | 6-1 | SR.  
NAPLES, FLA.



**BRIDE KENNEDY-HOPOATE**  
F | 6-4 | RSJR.  
BRISBANE, AUSTRALIA



**SHAIQUEL MCGRUDER**  
F | 6-0 | FR.  
TROTWOOD, OHIO



**NAJALA HOWELL**  
G | 5-10 | RSJR.  
DE SOTO, TEXAS



**AISIA ROBERTSON**  
G | 5-8 | RSJR.  
SAN FRANCISCO, CALIF.



**NIKE MCCLURE**  
F | 6-3 | SR.  
TENINO, WASH.



**JAEDYN DE LA CERDA**  
G | 5-6 | SO.  
ROSWELL, N.M.



**ERICA MOORE**  
C | 6-2 | R-SR.  
FISHERS, IND.



**ANTONIA ANDERSON**  
G/F | 6-2 | SO.  
CIBOLO, TEXAS



**MADI WASHINGTON**  
PG | 5-9 | SO.  
RED OAK, TEXAS



**JAISSA NUNN**  
C | 6-3 | SR.  
KIRKLAND, WASH.

### COACHING STAFF



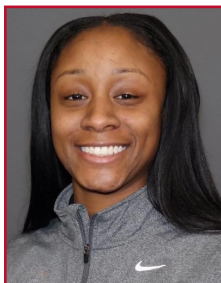
**MIKE BRADBURY**  
HEAD COACH  
THIRD SEASON



**VALERIE KING**  
ASSISTANT COACH  
THIRD SEASON



**BILL FERRARA**  
ASSISTANT COACH  
SECOND SEASON



**SYMONE DENHAM**  
ASSISTANT COACH  
FIRST SEASON



**VERA JO BUSTOS**  
DIR. OF OPERATIONS  
FIFTH SEASON



**CHEYENNE DORSEY**  
VIDEO COORDINATOR  
FIRST SEASON



# UNIVERSITY OF NEW MEXICO

## 2018-19 WOMEN'S BASKETBALL



# #1

## QUINCY NOBLE

G | 5-10 | FR | McKinney, Texas (McKinney HS)



PPG	FG %	3PT %	FT %	RPG	APG	SPG	BPG	MPG
5.0	.333	1.000	1.000	1.0	...	...	2.0	6.0

## NOTEWORTHY

- » Played at McKinney HS under head coach Debbie Harris
- » Helped McKinney to Bi-District Championship in 2014-15 and 2017-18
- » 6-6A District Co-Offensive Player of the Year as a senior
- » Ranked as #28 guard in the 2018 class by ESPNW
- » Averaged 17.4 ppg, 1.8 apg, 5.5 rpg, and 2.6 spg in HS

## Noble's Top Performances

<b>Points</b>	Season	5 vs. Texas State (11/9/18)
	Career	Same
<b>FGM</b>	Season	1 vs. Texas State (11/9/18)
	Career	Same
<b>FGA</b>	Season	3 vs. Texas State (11/9/18)
	Career	Same
<b>3PT FGM</b>	Season	1 vs. Texas State (11/9/18)
	Career	Same
<b>3PT FGA</b>	Season	1 vs. Texas State (11/9/18)
	Career	Same
<b>FTM</b>	Season	2 vs. Texas State (11/9/18)
	Career	Same
<b>FTA</b>	Season	2 vs. Texas State (11/9/18)
	Career	Same
<b>Rebounds</b>	Season	1 vs. Texas State (11/9/18)
	Career	Same
<b>Assists</b>	Season	
	Career	
<b>Blocks</b>	Season	2 vs. Texas State (11/9/18)
	Career	Same
<b>Steals</b>	Season	
	Career	
<b>Turnovers</b>	Season	
	Career	
<b>Min. Played</b>	Season	6 vs. Texas State (11/9/18)
	Career	Same

## GAME-BY-GAME STATISTICS

Opponent	Date	GS	Min	FG-A	3FG-A	FT-A	Reb	PF	A	TO	B	S	PTS
Texas St.	11/9		6	1-3	1-1	2-2	1	--	--	--	2	0	5
Auburn	11/11												
at Houston	11/24												
Oklahoma	11/28												
NMSU	12/1												
UTEP	12/5												
at NAU	12/8												
at NMSU	12/15												
Sacramento St.	12/19												
at Long Beach St.	12/29												
Air Force	1/2												
at Nevada	1/5												
at UNLV	1/9												
Colorado St.	1/12												
San Diego St.	1/16												
at Wyoming	1/19												
UNLV	1/23												
at Utah St.	1/26												
Fresno St.	2/2												
at San Diego St.	2/6												
Nevada	2/9												
at San Jose St.	2/13												
at Fresno St.	2/16												
Utah St.	2/20												
San Jose St.	2/27												
at Colorado St.	3/2												
at Boise St.	3/4												
Wyoming	3/7												

## NOBLE'S CAREER STATS AT UNM

			Total		3-Point		F-Throws		Rebounds											Scoring	
Season	gp-gs	min/avg	fg-fga	pct	fg-fga	pct	ft-flt	pct	off	def	tot	avg	pf	fo	ast	to	blk	stl	pts	avg	
2018-19	1-0	6/6.0	1-3	.333	1-1	1.000	2-2	1.000	1	0	1	1.0	0	0	0	0	2	0	5	5.0	
TOTAL	1-0	6/6.0	1-3	.333	1-1	1.000	2-2	1.000	1	0	1	1.0	0	0	0	0	2	0	5	5.0	



# UNIVERSITY OF NEW MEXICO

## 2018-19 WOMEN'S BASKETBALL



# #2

## BRE'ASIAJAH MATHEWS

F | 6-0 | FR | Garland, Texas (Lakeview Centennial HS)



PPG	FG %	3PT %	FT %	RPG	APG	SPG	BPG	MPG
...	...	...	...	1.0	...	...	1.0	5.0

### NOTEWORTHY

- » Played at Lakeview Centennial HS
- » 3-star recruit and rated as the #14 win player in the 2018 class by ESPNW
- » Averaged 18.4 ppg, 9.6 rpg, and 2.9 spg as a junior
- » 3-time All-District First Team honoree
- » District MVP as a junior

### Mathews' Top Performances

Points	Season	
	Career	
FGM	Season	
	Career	
FGA	Season	
	Career	
3PT FGM	Season	
	Career	
3PT FGA	Season	
	Career	
FTM	Season	
	Career	
FTA	Season	
	Career	
Rebounds	Season	1 vs. Texas State (11/9/18)
	Career	Same
Assists	Season	
	Career	
Blocks	Season	1 vs. Texas State (11/9/18)
	Career	Same
Steals	Season	
	Career	
Turnovers	Season	
	Career	
Min. Played	Season	5 vs. Texas State (11/9/18)
	Career	Same

### GAME-BY-GAME STATISTICS

Opponent	Date	GS	Min	FG-A	3FG-A	FT-A	Reb	PF	A	TO	B	S	PTS
Texas St.	11/9		5	0-0	0-0	0-0	1	1	--	--	1	--	0
Auburn	11/11												
at Houston	11/24												
Oklahoma	11/28												
NMSU	12/1												
UTEP	12/5												
at NAU	12/8												
at NMSU	12/15												
Sacramento St.	12/19												
at Long Beach St.	12/29												
Air Force	1/2												
at Nevada	1/5												
at UNLV	1/9												
Colorado St.	1/12												
San Diego St.	1/16												
at Wyoming	1/19												
UNLV	1/23												
at Utah St.	1/26												
Fresno St.	2/2												
at San Diego St.	2/6												
Nevada	2/9												
at San Jose St.	2/13												
at Fresno St.	2/16												
Utah St.	2/20												
San Jose St.	2/27												
at Colorado St.	3/2												
at Boise St.	3/4												
Wyoming	3/7												

### MATHEWS' CAREER STATS AT UNM

			Total		3-Point		F-Throws		Rebounds											Scoring	
Season	gp-gs	min/avg	fg-fga	pct	fg-fga	pct	ft-fta	pct	off	def	tot	avg	pf	fo	ast	to	blk	stl	pts	avg	
2018-19	1-0	5/5.0	0-0	.000	0-0	.000	0-0	.000	0	1	1	1.0	1	0	0	0	1	0	0	0.0	
TOTAL	1-0	5/5.0	0-0	.000	0-0	.000	0-0	.000	0	1	1	1.0	1	0	0	0	1	0	0	0.0	



# UNIVERSITY OF NEW MEXICO

## 2018-19 WOMEN'S BASKETBALL



# #3

## AHLISE HURST

G | 5-9 | FR | Bendigo, Australia (Bendigo Senior-Secondary)



PPG	FG %	3PT %	FT %	RPG	APG	SPG	BPG	MPG
7.0	.250	.250	.500	1.0	2.0	1.0	1.0	23.0

## NOTEWORTHY

- » Played at Bendigo Senior-Secondary School in Bendigo, Australia
- » International playing experience with Vic Country and the Bendigo Braves
- » Helped Vic Country to an Australian national championship
- » Helped Bendigo Braves to a South East Australian Basketball League (SEABL) championship
- » Played as a development player for the Bendigo Spirit of the Australian Women's National Basketball League (WNBL)

## Hurst's Top Performances

Points	Season	7 vs. Texas State (11/9/18)
	Career	Same
FGM	Season	2 vs. Texas State (11/9/18)
	Career	Same
FGA	Season	8 vs. Texas State (11/9/18)
	Career	Same
3PT FGM	Season	2 vs. Texas State (11/9/18)
	Career	Same
3PT FGA	Season	8 vs. Texas State (11/9/18)
	Career	Same
FTM	Season	1 vs. Texas State (11/9/18)
	Career	Same
FTA	Season	2 vs. Texas State (11/9/18)
	Career	Same
Rebounds	Season	1 vs. Texas State (11/9/18)
	Career	Same
Assists	Season	2 vs. Texas State (11/9/18)
	Career	Same
Blocks	Season	1 vs. Texas State (11/9/18)
	Career	Same
Steals	Season	1 vs. Texas State (11/9/18)
	Career	Same
Turnovers	Season	
	Career	
Min. Played	Season	23 vs. Texas State (11/9/18)
	Career	Same

## GAME-BY-GAME STATISTICS

Opponent	Date	GS	Min	FG-A	3FG-A	FT-A	Reb	PF	A	TO	B	S	PTS
Texas St.	11/9		23	2-8	2-8	1-2	1	4	2	--	1	1	7
Auburn	11/11												
at Houston	11/24												
Oklahoma	11/28												
NMSU	12/1												
UTEP	12/5												
at NAU	12/8												
at NMSU	12/15												
Sacramento St.	12/19												
at Long Beach St.	12/29												
Air Force	1/2												
at Nevada	1/5												
at UNLV	1/9												
Colorado St.	1/12												
San Diego St.	1/16												
at Wyoming	1/19												
UNLV	1/23												
at Utah St.	1/26												
Fresno St.	2/2												
at San Diego St.	2/6												
Nevada	2/9												
at San Jose St.	2/13												
at Fresno St.	2/16												
Utah St.	2/20												
San Jose St.	2/27												
at Colorado St.	3/2												
at Boise St.	3/4												
Wyoming	3/7												

## HURST'S CAREER STATS AT UNM

			Total		3-Point		F-Throws		Rebounds											Scoring	
Season	gp-gs	min/avg	fg-fga	pct	fg-fga	pct	ft-fa	pct	off	def	tot	avg	pf	fo	ast	to	blk	stl	pts	avg	
2018-19	1-0	23/23.0	2-8	.250	2-8	.250	1-2	.500	0	1	1	1.0	4	0	2	0	1	1	7	7.0	
TOTAL	1-0	23/23.0	2-8	.250	2-8	.250	1-2	.500	0	1	1	1.0	4	0	2	0	1	1	7	7.0	





# UNIVERSITY OF NEW MEXICO

## 2018-19 WOMEN'S BASKETBALL



# #4

## JAYLA EVERETT

G | 5-10 | FR | St. Louis, Mo. (Kirkwood HS)



PPG	FG %	3PT %	FT %	RPG	APG	SPG	BPG	MPG
11.0	.300	.333	1.000	3.0	2.0	1.0	1.0	29.0

## NOTEWORTHY

- » Played at Kirkwood HS under head coach Monica Tritz
- » 4-star recruit ranked as the #27 guard and #94 overall player in the 2018 class by ESPNW
- » Helped lead HS team to consecutive state championships as a junior and a senior
- » Averaged 16.9 ppg, 4.0 rpg, 3.8 apg, and 2.2 spg as a senior
- » Twice named Missouri Basketball Coaches Association (MBCA) 5A All-State and tabbed as Player of the Year as a senior

## Everett's Top Performances

<b>Points</b>	Season	11 vs. Texas State (11/9/18)
	Career	Same
<b>FGM</b>	Season	3 vs. Texas State (11/9/18)
	Career	Same
<b>FGA</b>	Season	10 vs. Texas State (11/9/18)
	Career	Same
<b>3PT FGM</b>	Season	1 vs. Texas State (11/9/18)
	Career	Same
<b>3PT FGA</b>	Season	3 vs. Texas State (11/9/18)
	Career	Same
<b>FTM</b>	Season	4 vs. Texas State (11/9/18)
	Career	Same
<b>FTA</b>	Season	4 vs. Texas State (11/9/18)
	Career	Same
<b>Rebounds</b>	Season	3 vs. Texas State (11/9/18)
	Career	Same
<b>Assists</b>	Season	2 vs. Texas State (11/9/18)
	Career	Same
<b>Blocks</b>	Season	1 vs. Texas State (11/9/18)
	Career	Same
<b>Steals</b>	Season	1 vs. Texas State (11/9/18)
	Career	Same
<b>Turnovers</b>	Season	4 vs. Texas State (11/9/18)
	Career	Same
<b>Min. Played</b>	Season	29 vs. Texas State (11/9/18)
	Career	Same

## GAME-BY-GAME STATISTICS

Opponent	Date	GS	Min	FG-A	3FG-A	FT-A	Reb	PF	A	TO	B	S	PTS
Texas St.	11/9	*	29	3-10	1-3	4-4	3	2	2	4	1	1	11
Auburn	11/11												
at Houston	11/24												
Oklahoma	11/28												
NMSU	12/1												
UTEP	12/5												
at NAU	12/8												
at NMSU	12/15												
Sacramento St.	12/19												
at Long Beach St.	12/29												
Air Force	1/2												
at Nevada	1/5												
at UNLV	1/9												
Colorado St.	1/12												
San Diego St.	1/16												
at Wyoming	1/19												
UNLV	1/23												
at Utah St.	1/26												
Fresno St.	2/2												
at San Diego St.	2/6												
Nevada	2/9												
at San Jose St.	2/13												
at Fresno St.	2/16												
Utah St.	2/20												
San Jose St.	2/27												
at Colorado St.	3/2												
at Boise St.	3/4												
Wyoming	3/7												

## EVERETT'S CAREER STATS AT UNM

			Total		3-Point		F-Throws		Rebounds											Scoring	
Season	gp-gs	min/avg	fg-fga	pct	fg-fga	pct	ft-fa	pct	off	def	tot	avg	pf	fo	ast	to	blk	stl	pts	avg	
2018-19	1-1	29/29.0	3-10	.300	1-3	.333	4-4	1.000	2	1	3	3.0	2	0	2	4	1	1	11	11.0	
TOTAL	1-1	29/29.0	3-10	.300	1-3	.333	4-4	1.000	2	1	3	3.0	2	0	2	4	1	1	11	11.0	



# UNIVERSITY OF NEW MEXICO

## 2018-19 WOMEN'S BASKETBALL



# #11

## EMILY LINES

G | 6-1 | SR | Naples, Fla. (First Baptist Academy)



PPG	FG %	3PT %	FT %	RPG	APG	SPG	BPG	MPG
---	---	---	---	---	---	---	---	---

## NOTEWORTHY

- » 3-year letterwinner for the Lobos
- » Career 41% 3pt shooter (21-of-51)
- » 3-time Academic All-Mountain West and Mountain West Scholar-Athlete
- » In HS, 3-time Florida Association of Basketball Coaches All-State selection
- » Twice was a finalist for Class 2A Florida Miss Basketball
- » Scored over 2,000 career points and hauled in over 1,000 career rebounds in HS

## Lines' Top Performances

<b>Points</b>	Season	15 vs. Boise State (1/30/16)
	Career	
<b>FGM</b>	Season	5 - done Twice
	Career	
<b>FGA</b>	Season	11 vs. Boise State (1/30/16)
	Career	
<b>3PT FGM</b>	Season	3 - done three times
	Career	
<b>3PT FGA</b>	Season	5 - done twice
	Career	
<b>FTM</b>	Season	4 vs. Boise State (1/30/16)
	Career	
<b>FTA</b>	Season	5 vs. Fresno State (1/2/16)
	Career	
<b>Rebounds</b>	Season	5 - done twice
	Career	
<b>Assists</b>	Season	4 at San Diego St. (3/1/16)
	Career	
<b>Blocks</b>	Season	1 - done three times
	Career	
<b>Steals</b>	Season	1 - done three times
	Career	
<b>Turnovers</b>	Season	2 - done twice
	Career	
<b>Min. Played</b>	Season	21 - done twice
	Career	

## GAME-BY-GAME STATISTICS

Opponent	Date	GS	Min	FG-A	3FG-A	FT-A	Reb	PF	A	TO	B	S	PTS
Texas St.	11/9	--	--	---	---	---	--	--	--	--	--	--	--
Auburn	11/11												
at Houston	11/24												
Oklahoma	11/28												
NMSU	12/1												
UTEP	12/5												
at NAU	12/8												
at NMSU	12/15												
Sacramento St.	12/19												
at Long Beach St.	12/29												
Air Force	1/2												
at Nevada	1/5												
at UNLV	1/9												
Colorado St.	1/12												
San Diego St.	1/16												
at Wyoming	1/19												
UNLV	1/23												
at Utah St.	1/26												
Fresno St.	2/2												
at San Diego St.	2/6												
Nevada	2/9												
at San Jose St.	2/13												
at Fresno St.	2/16												
Utah St.	2/20												
San Jose St.	2/27												
at Colorado St.	3/2												
at Boise St.	3/4												
Wyoming	3/7												

## LINES' CAREER STATS AT UNM

			Total		3-Point		F-Throws		Rebounds											Scoring	
Season	gp-gs	min/avg	fg-fga	pct	fg-fga	pct	ft-fita	pct	off	def	tot	avg	pf	fo	ast	to	blk	stl	pts	avg	
2015-16	24-0	141/5.9	19-44	.432	9-21	.429	9-19	.474	11	12	23	1.0	7	0	10	9	1	1	56	2.3	
2016-17	9-0	71/7.9	8-19	.421	7-16	.438	3-6	.500	1	10	11	1.2	3	0	4	5	1	1	26	2.9	
2017-18	16-0	74/4.6	9-21	.429	5-14	.357	6-7	.857	2	16	18	1.1	3	0	3	3	1	1	29	1.8	
TOTAL	49-0	286/5.8	36-84	.429	21-51	.412	18-32	.563	14	38	52	1.1	13	0	17	17	3	3	111	2.3	



# UNIVERSITY OF NEW MEXICO

## 2018-19 WOMEN'S BASKETBALL



# #12

## BRIDE KENNEDY-HOPOATE

F | 6-4 | RsJR | Brisbane, Australia (Iowa State)



PPG	FG %	3PT %	FT %	RPG	APG	SPG	BPG	MPG
---	---	---	---	---	---	---	---	---

### NOTEWORTHY

- » Transfer from Iowa State - must sit out 2018-19 season due to NCAA transfer rules
- » Played at two JUCOs prior to Iowa State and was ranked as the #1 JUCO prospect by All-Star Girls Report
- » Named a NJCAA All-America Third Team player in 2016-17
- » Appeared in 21 games at Iowa State and started 10
- » Averaged 6.7 ppg and 4.2 rpg at Iowa State - scored in double figures in five games

### K-H's Top Performances

Points	Season
	Career
FGM	Season
	Career
FGA	Season
	Career
3PT FGM	Season
	Career
3PT FGA	Season
	Career
FTM	Season
	Career
FTA	Season
	Career
Rebounds	Season
	Career
Assists	Season
	Career
Blocks	Season
	Career
Steals	Season
	Career
Turnovers	Season
	Career
Min. Played	Season
	Career

### GAME-BY-GAME STATISTICS

Opponent	Date	GS	Min	FG-A	3FG-A	FT-A	Reb	PF	A	TO	B	S	PTS
Texas St.	11/9	--	--	---	---	---	--	--	--	--	--	--	--
Auburn	11/11												
at Houston	11/24												
Oklahoma	11/28												
NMSU	12/1												
UTEP	12/5												
at NAU	12/8												
at NMSU	12/15												
Sacramento St.	12/19												
at Long Beach St.	12/29												
Air Force	1/2												
at Nevada	1/5												
at UNLV	1/9												
Colorado St.	1/12												
San Diego St.	1/16												
at Wyoming	1/19												
UNLV	1/23												
at Utah St.	1/26												
Fresno St.	2/2												
at San Diego St.	2/6												
Nevada	2/9												
at San Jose St.	2/13												
at Fresno St.	2/16												
Utah St.	2/20												
San Jose St.	2/27												
at Colorado St.	3/2												
at Boise St.	3/4												
Wyoming	3/7												

### KENNEDY-HOPOATE'S CAREER STATS AT UNM



# UNIVERSITY OF NEW MEXICO

## 2018-19 WOMEN'S BASKETBALL



# #13

## SHAIQUEL McGRUDER

F | 6-0 | FR | Trotwood, Ohio (Trotwood-Madison HS)



PPG	FG %	3PT %	FT %	RPG	APG	SPG	BPG	MPG
6.0	.500	---	---	13.0	---	4.0	2.0	17.0

### NOTEWORTHY

- » Finished her HS career at Trotwood-Madison HS after previously playing at Wayne Memorial HS
- » 3-star recruit and ranked as the #19 forward in the 2018 class by ESPNW
- » Averaged 25.8 ppg and 9.4 rpg as a senior
- » Led Wayne Memorial to consecutive Greater Western Ohio Conference (GWOC) titles as a sophomore and junior
- » Then lead Trotwood-Madison to GWOC title as a senior
- » Named GWOC East Division Player of the Year and All-Ohio First Team as a senior

### McGruder's Top Performances

<b>Points</b>	Season	6 vs. Texas State (11/9/18)
	Career	Same
<b>FGM</b>	Season	3 vs. Texas State (11/9/18)
	Career	Same
<b>FGA</b>	Season	6 vs. Texas State (11/9/18)
	Career	Same
<b>3PT FGM</b>	Season	
	Career	
<b>3PT FGA</b>	Season	
	Career	
<b>FTM</b>	Season	
	Career	
<b>FTA</b>	Season	
	Career	
<b>Rebounds</b>	Season	13 vs. Texas State (11/9/18)
	Career	Same
<b>Assists</b>	Season	
	Career	
<b>Blocks</b>	Season	2 vs. Texas State (11/9/18)
	Career	Same
<b>Steals</b>	Season	4 vs. Texas State (11/9/18)
	Career	Same
<b>Turnovers</b>	Season	1 vs. Texas State (11/9/18)
	Career	Same
<b>Min. Played</b>	Season	16 vs. Texas State (11/9/18)
	Career	Same

### GAME-BY-GAME STATISTICS

Opponent	Date	GS	Min	FG-A	3FG-A	FT-A	Reb	PF	A	TO	B	S	PTS
Texas St.	11/9		17	3-6	---	---	13	--	--	1	2	4	6
Auburn	11/11												
at Houston	11/24												
Oklahoma	11/28												
NMSU	12/1												
UTEP	12/5												
at NAU	12/8												
at NMSU	12/15												
Sacramento St.	12/19												
at Long Beach St.	12/29												
Air Force	1/2												
at Nevada	1/5												
at UNLV	1/9												
Colorado St.	1/12												
San Diego St.	1/16												
at Wyoming	1/19												
UNLV	1/23												
at Utah St.	1/26												
Fresno St.	2/2												
at San Diego St.	2/6												
Nevada	2/9												
at San Jose St.	2/13												
at Fresno St.	2/16												
Utah St.	2/20												
San Jose St.	2/27												
at Colorado St.	3/2												
at Boise St.	3/4												
Wyoming	3/7												

### McGRUDER'S CAREER STATS AT UNM

			Total		3-Point		F-Throws		Rebounds											Scoring	
Season	gp-gs	min/avg	fg-fga	pct	fg-fga	pct	ft-fga	pct	off	def	tot	avg	pf	fo	ast	to	blk	stl	pts	avg	
2018-19	1-0	16/16.0	3-6	.500	0-0	.000	0-0	.000	5	8	13	13.0	0	0	0	1	2	4	6	6.0	
TOTAL	1-0	16/16.0	3-6	.500	0-0	.000	0-0	.000	5	8	13	13.0	0	0	0	1	2	4	6	6.0	





# UNIVERSITY OF NEW MEXICO

## 2018-19 WOMEN'S BASKETBALL



# #14

## NAJALA HOWELL

G | 5-10 | RsJR | DeSoto, Texas (UTEP)



PPG	FG %	3PT %	FT %	RPG	APG	SPG	BPG	MPG
---	---	---	---	---	---	---	---	---

### NOTEWORTHY

- » Transferring from UTEP - must sit out 2018-19 season due to NCAA transfer rules
- » Started all 31 games last season for UTEP and led the team in 3PT% (.359)
- » Ranked second on team in scoring (11.9) and rebounding (6.3 rpg)
- » In HS was named the MVP of the Texas Girls Coaches Association All-Star Game in summer of 2015
- » Two-time Texas Association of Basketball Coaches All-State First Team

### Howell's Top Performances

Points	Season
	Career
FGM	Season
	Career
FGA	Season
	Career
3PT FGM	Season
	Career
3PT FGA	Season
	Career
FTM	Season
	Career
FTA	Season
	Career
Rebounds	Season
	Career
Assists	Season
	Career
Blocks	Season
	Career
Steals	Season
	Career
Turnovers	Season
	Career
Min. Played	Season
	Career

### GAME-BY-GAME STATISTICS

Opponent	Date	GS	Min	FG-A	3FG-A	FT-A	Reb	PF	A	TO	B	S	PTS
Texas St.	11/9--	--	---	---	---	--	--	--	--	--	--	--	
Auburn	11/11												
at Houston	11/24												
Oklahoma	11/28												
NMSU	12/1												
UTEP	12/5												
at NAU	12/8												
at NMSU	12/15												
Sacramento St.	12/19												
at Long Beach St.	12/29												
Air Force	1/2												
at Nevada	1/5												
at UNLV	1/9												
Colorado St.	1/12												
San Diego St.	1/16												
at Wyoming	1/19												
UNLV	1/23												
at Utah St.	1/26												
Fresno St.	2/2												
at San Diego St.	2/6												
Nevada	2/9												
at San Jose St.	2/13												
at Fresno St.	2/16												
Utah St.	2/20												
San Jose St.	2/27												
at Colorado St.	3/2												
at Boise St.	3/4												
Wyoming	3/7												

### HOWELL'S CAREER STATS AT UNM



# UNIVERSITY OF NEW MEXICO

## 2018-19 WOMEN'S BASKETBALL



# #15

## AISIA ROBERTSON

G | 5-8 | RsJR | San Francisco, Calif. (Kansas)



PPG	FG %	3PT %	FT %	RPG	APG	SPG	BPG	MPG
17.0	.500	.500	.000	8.0	9.0	3.0	2.0	17.0

## NOTEWORTHY

- » Eligible to play after sitting out last season as a transfer from Kansas
- » Selected to play in the 2018 USA Basketball 3x3 Open National Championships with teammates Antonia Anderson, Jaia Nunn and Madi Washington
- » Played in over 50 games in two seasons at Kansas
- » Ranked #18 guard and #85 overall player out of HS by ProspectNation
- » Received a McDonald's All-America Nomination in 2015

## Robertson's Top Performances

Points	Season	17 vs. Texas State (11/9/18)
	Career	Same
FGM	Season	8 vs. Texas State (11/9/18)
	Career	Same
FGA	Season	16 vs. Texas State (11/9/18)
	Career	Same
3PT FGM	Season	1 vs. Texas State (11/9/18)
	Career	Same
3PT FGA	Season	2 vs. Texas State (11/9/18)
	Career	Same
FTM	Season	
	Career	
FTA	Season	2 vs. Texas State (11/9/18)
	Career	Same
Rebounds	Season	8 vs. Texas State (11/9/18)
	Career	Same
Assists	Season	9 vs. Texas State (11/9/18)
	Career	Same
Blocks	Season	2 vs. Texas State (11/9/18)
	Career	Same
Steals	Season	3 vs. Texas State (11/9/18)
	Career	Same
Turnovers	Season	10 vs. Texas State (11/9/18)
	Career	Same
Min. Played	Season	24 vs. Texas State (11/9/18)
	Career	Same

## GAME-BY-GAME STATISTICS

Opponent	Date	GS	Min	FG-A	3FG-A	FT-A	Reb	PF	A	TO	B	S	PTS
Texas St.	11/9	*	24	8-16	1-2	0-2	8	2	9	10	2	3	17
Auburn	11/11												
at Houston	11/24												
Oklahoma	11/28												
NMSU	12/1												
UTEP	12/5												
at NAU	12/8												
at NMSU	12/15												
Sacramento St.	12/19												
at Long Beach St.	12/29												
Air Force	1/2												
at Nevada	1/5												
at UNLV	1/9												
Colorado St.	1/12												
San Diego St.	1/16												
at Wyoming	1/19												
UNLV	1/23												
at Utah St.	1/26												
Fresno St.	2/2												
at San Diego St.	2/6												
Nevada	2/9												
at San Jose St.	2/13												
at Fresno St.	2/16												
Utah St.	2/20												
San Jose St.	2/27												
at Colorado St.	3/2												
at Boise St.	3/4												
Wyoming	3/7												

## ROBERTSON'S CAREER STATS AT UNM

			Total		3-Point		F-Throws		Rebounds											Scoring	
Season	gp-gs	min/avg	fg-fga	pct	fg-fga	pct	ft-fita	pct	off	def	tot	avg	pf	fo	ast	to	blk	stl	pts	avg	
2018-19	1-1	24/24.0	8-16	.500	1-2	.500	0-2	.000	3	5	8	8.0	2	0	9	10	2	3	17	17.0	
TOTAL	1-1	24/24.0	8-16	.500	1-2	.500	0-2	.000	3	5	8	8.0	2	0	9	10	2	3	17	17.0	



# UNIVERSITY OF NEW MEXICO

## 2018-19 WOMEN'S BASKETBALL



# #21

## NIKE McCLURE

F | 6-3 | SR | Tenino, Wash. (Washington State)



PPG	FG %	3PT %	FT %	RPG	APG	SPG	BPG	MPG
4.0	.500	.000	...	7.0	...	...	6.0	20.0

## NOTEWORTHY

- » Transferring to UNM from Washington State - eligible to play this season
- » Played in 91 career games at Washington State...averaged 3.8 ppg, 4.6 rpg, and 1.7 bpg
- » Set a WSU single-season record in blocks with 68 as a sophomore - has totaled 153 career blocks
- » Set a WSU single-game record for blocks with 12 against Colorado in 2017 - also tied the Pac-12 single-game mark

## McClure's Top Performances

<b>Points</b>	Season	4 vs. Texas State (11/9/18)
	Career	Same
<b>FGM</b>	Season	2 vs. Texas State (11/9/18)
	Career	Same
<b>FGA</b>	Season	4 vs. Texas State (11/9/18)
	Career	Same
<b>3PT FGM</b>	Season	
	Career	
<b>3PT FGA</b>	Season	1 vs. Texas State (11/9/18)
	Career	Same
<b>FTM</b>	Season	
	Career	
<b>FTA</b>	Season	
	Career	
<b>Rebounds</b>	Season	7 vs. Texas State (11/9/18)
	Career	Same
<b>Assists</b>	Season	
	Career	
<b>Blocks</b>	Season	6 vs. Texas State (11/9/18)
	Career	Same
<b>Steals</b>	Season	
	Career	
<b>Turnovers</b>	Season	1 vs. Texas State (11/9/18)
	Career	Same
<b>Min. Played</b>	Season	20 vs. Texas State (11/9/18)
	Career	Same

## GAME-BY-GAME STATISTICS

Opponent	Date	GS	Min	FG-A	3FG-A	FT-A	Reb	PF	A	TO	B	S	PTS
Texas St.	11/9	*	20	2-4	0-1	---	7	2	--	1	6	--	4
Auburn	11/11												
at Houston	11/24												
Oklahoma	11/28												
NMSU	12/1												
UTEP	12/5												
at NAU	12/8												
at NMSU	12/15												
Sacramento St.	12/19												
at Long Beach St.	12/29												
Air Force	1/2												
at Nevada	1/5												
at UNLV	1/9												
Colorado St.	1/12												
San Diego St.	1/16												
at Wyoming	1/19												
UNLV	1/23												
at Utah St.	1/26												
Fresno St.	2/2												
at San Diego St.	2/6												
Nevada	2/9												
at San Jose St.	2/13												
at Fresno St.	2/16												
Utah St.	2/20												
San Jose St.	2/27												
at Colorado St.	3/2												
at Boise St.	3/4												
Wyoming	3/7												

## McCLURE'S CAREER STATS AT UNM

			Total		3-Point		F-Throws		Rebounds											Scoring	
Season	gp-gs	min/avg	fg-fga	pct	fg-fga	pct	ft-fa	pct	off	def	tot	avg	pf	fo	ast	to	blk	stl	pts	avg	
2018-19	1-1	20/20.0	2-4	.500	0-1	.000	0-0	.000	2	5	7	7.0	2	0	0	1	6	0	4	4.0	
TOTAL	1-1	20/20.0	2-4	.500	0-1	.000	0-0	.000	2	5	7	7.0	2	0	0	1	6	0	4	4.0	



# UNIVERSITY OF NEW MEXICO

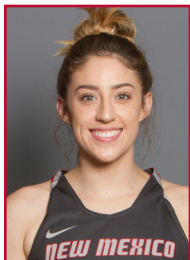
## 2018-19 WOMEN'S BASKETBALL



# #23

## JAEDYN DE LA CERDA

G | 5-6 | SO | Roswell, N.M. (Roswell HS)



PPG	FG %	3PT %	FT %	RPG	APG	SPG	BPG	MPG
9.0	.364	.167	...	4.0	2.0	2.0	...	27.0

## NOTEWORTHY

- » Played in 13 games as a true freshman
- » In HS was named the 2016-17 New Mexico Gatorade Player of the Year in women's basketball
- » Led Roswell HS to the 2016 New Mexico 5A State Championship
- » Named as a 2016 All-State honoree as well as an Adidas All-American

## De La Cerda's Top Performances

<b>Points</b>	Season	9 vs. Texas State (11/9/18)
	Career	Same
<b>FGM</b>	Season	4 vs. Texas State (11/9/18)
	Career	Same
<b>FGA</b>	Season	11 vs. Texas State (11/9/18)
	Career	Same
<b>3PT FGM</b>	Season	1 vs. Texas State (11/9/18)
	Career	1 - done three times
<b>3PT FGA</b>	Season	6 vs. Texas State (11/9/18)
	Career	Same
<b>FTM</b>	Season	
	Career	2 - done twice
<b>FTA</b>	Season	
	Career	3 vs. Northern N.M. (11/15/17)
<b>Rebounds</b>	Season	4 vs. Texas State (11/9/18)
	Career	Same
<b>Assists</b>	Season	2 vs. Texas State (11/9/18)
	Career	Same
<b>Blocks</b>	Season	
	Career	1 vs. Northern N.M. (11/15/17)
<b>Steals</b>	Season	2 vs. Texas State (11/9/18)
	Career	2 - done twice
<b>Turnovers</b>	Season	
	Career	2 vs. Northern N.M. (11/15/17)
<b>Min. Played</b>	Season	27 vs. Texas State (11/9/18)
	Career	Same

## GAME-BY-GAME STATISTICS

Opponent	Date	GS	Min	FG-A	3FG-A	FT-A	Reb	PF	A	TO	B	S	PTS
Texas St.	11/9	*	27	4-11	1-6	---	4	--	2	--	--	2	9
Auburn	11/11												
at Houston	11/24												
Oklahoma	11/28												
NMSU	12/1												
UTEP	12/5												
at NAU	12/8												
at NMSU	12/15												
Sacramento St.	12/19												
at Long Beach St.	12/29												
Air Force	1/2												
at Nevada	1/5												
at UNLV	1/9												
Colorado St.	1/12												
San Diego St.	1/16												
at Wyoming	1/19												
UNLV	1/23												
at Utah St.	1/26												
Fresno St.	2/2												
at San Diego St.	2/6												
Nevada	2/9												
at San Jose St.	2/13												
at Fresno St.	2/16												
Utah St.	2/20												
San Jose St.	2/27												
at Colorado St.	3/2												
at Boise St.	3/4												
Wyoming	3/7												

## DE LA CERDA'S CAREER STATS AT UNM

Season	gp-gs	min/avg	Total		3-Point		F-Throws		Rebounds				Scoring							
			fg-fga	pct	fg-fga	pct	ft-fa	pct	off	def	tot	avg	pf	fo	ast	to	blk	stl	pts	avg
2017-18	13-0	35/2.7	8-20	.400	2-10	.200	5-6	.833	2	5	7	0.5	3	0	2	4	1	5	23	1.8
2018-19	1-1	27/27.0	4-11	.364	1-6	.167	0-0	.000	0	4	4	4.0	0	0	2	0	0	2	9	9.0
TOTAL	14-1	62/4.4	12-31	.387	3-16	.188	5-6	.833	2	9	11	0.8	3	0	4	4	1	7	32	2.3





# UNIVERSITY OF NEW MEXICO

## 2018-19 WOMEN'S BASKETBALL



# #24

## ERICA MOORE

C | 6-2 | SR | Fishers, Ind. (Purdue)



PPG	FG %	3PT %	FT %	RPG	APG	SPG	BPG	MPG
...	...	...	...	...	...	1.0	...	1.0

### NOTEWORTHY

- » Played in nine games last season after transferring from Purdue
- » Played in 17 career games as a Boilermaker
- » In HS, played in the Indiana All-Star game as a junior and senior
- » Injured majority of her senior season, but led Mount Vernon-Fortville to the 2013 Indiana Class 3A State title
- » Ranked as the #78 overall prospect out of HS by All-Star Girls Report

### Moore's Top Performances

<b>Points</b>	Season	5 at Air Force (12/28/17)
	Career	
<b>FGM</b>	Season	2 at Air Force (12/28/17)
	Career	
<b>FGA</b>	Season	2 - done twice
	Career	
<b>3PT FGM</b>	Season	None
	Career	
<b>3PT FGA</b>	Season	None
	Career	
<b>FTM</b>	Season	1 at Air Force (12/28/17)
	Career	
<b>FTA</b>	Season	1 at Air Force (12/28/17)
	Career	
<b>Rebounds</b>	Season	3 vs. Northern N.M. (11/15/17)
	Career	
<b>Assists</b>	Season	None
	Career	
<b>Blocks</b>	Season	2 - done twice
	Career	
<b>Steals</b>	Season	1 vs. Texas State (11/9/18)
	Career	1 - done twice
<b>Turnovers</b>	Season	1 vs. Lamar (12/20/17)
	Career	
<b>Min. Played</b>	Season	1 vs. Texas State (11/9/18)
	Career	11 vs. Northern N.M. (11/15/17)

### GAME-BY-GAME STATISTICS

Opponent	Date	GS	Min	FG-A	3FG-A	FT-A	Reb	PF	A	TO	B	S	PTS
Texas St.	11/9		1	---	---	---	---	1	--	--	--	1	--
Auburn	11/11												
at Houston	11/24												
Oklahoma	11/28												
NMSU	12/1												
UTEP	12/5												
at NAU	12/8												
at NMSU	12/15												
Sacramento St.	12/19												
at Long Beach St.	12/29												
Air Force	1/2												
at Nevada	1/5												
at UNLV	1/9												
Colorado St.	1/12												
San Diego St.	1/16												
at Wyoming	1/19												
UNLV	1/23												
at Utah St.	1/26												
Fresno St.	2/2												
at San Diego St.	2/6												
Nevada	2/9												
at San Jose St.	2/13												
at Fresno St.	2/16												
Utah St.	2/20												
San Jose St.	2/27												
at Colorado St.	3/2												
at Boise St.	3/4												
Wyoming	3/7												

### MOORE'S CAREER STATS AT UNM

Season			Total		3-Point		F-Throws		Rebounds										Scoring	
	gp-gs	min/avg	fg-fga	pct	fg-fga	pct	ft-fga	pct	off	def	tot	avg	pf	fo	ast	to	blk	stl	pts	avg
2017-18	9-0	30/3.3	3-5	.600	0-0	.000	1-1	1.000	1	3	4	0.4	4	0	0	1	4	1	7	0.8
2018-19	1-0	1/1.0	0-0	.000	0-0	.000	0-0	.000	0	0	0	0.0	1	0	0	0	0	1	0	0.0
TOTAL	10-0	31/3.1	3-5	.600	0-0	.000	1-1	1.000	1	3	4	0.4	5	0	0	1	4	2	7	0.7



# UNIVERSITY OF NEW MEXICO

## 2018-19 WOMEN'S BASKETBALL



# #32

## ANTONIA ANDERSON

G/F | 6-2 | SO | Cibolo, Texas (Byron P. Steele HS)



PPG	FG %	3PT %	FT %	RPG	APG	SPG	BPG	MPG
6.0	1.000	---	.667	1.0	1.0	---	---	19.0

### NOTEWORTHY

- » Appeared in 32 games and made one start as a freshman for the Lobos
- » Led the team and ranked third in the Mountain West in blocked shots with 34
- » Selected to compete in the 2018 USA Basketball 3x3 Open National Championships along with teammates Jaisa Nunn, Aisia Robertson and Madi Washington
- » In HS was a four-year starter and named back-to-back Defensive Player of the Year
- » Additional HS accolades included: All-State, All-District, All-Area, and All-Region

### Anderson's Top Performances

Points	Season	6 vs. Texas State (11/9/18)
	Career	13 vs. Boise State (1/3/18)
FGM	Season	2 vs. Texas State (11/9/18)
	Career	5 vs. Boise State (1/3/18)
FGA	Season	2 vs. Texas State (11/9/18)
	Career	6 - done twice
3PT FGM	Season	
	Career	1 - done twice
3PT FGA	Season	
	Career	2 vs. Wyoming (3/6/18)
FTM	Season	2 vs. Texas State (11/9/18)
	Career	5 at Air Force (12/28/17)
FTA	Season	3 vs. Texas State (11/9/18)
	Career	6 vs. Saint Mary's (3/15/18)
Rebounds	Season	1 vs. Texas State (11/9/18)
	Career	7 - done three times
Assists	Season	1 vs. Texas State (11/9/18)
	Career	1 - done six times
Blocks	Season	
	Career	5 vs. Colorado State (2/27/18)
Steals	Season	
	Career	2 - done four times
Turnovers	Season	1 vs. Texas State (11/9/18)
	Career	3 at San Jose State (1/6/18)
Min. Played	Season	20 vs. Texas State (11/9/18)
	Career	21 at Oklahoma (12/16/17)

### GAME-BY-GAME STATISTICS

Opponent	Date	GS	Min	FG-A	3FG-A	FT-A	Reb	PF	A	TO	B	S	PTS
Texas St.	11/9		19	2-2	---	2-3	1	4	1	1	--	--	6
Auburn	11/11												
at Houston	11/24												
Oklahoma	11/28												
NMSU	12/1												
UTEP	12/5												
at NAU	12/8												
at NMSU	12/15												
Sacramento St.	12/19												
at Long Beach St.	12/29												
Air Force	1/2												
at Nevada	1/5												
at UNLV	1/9												
Colorado St.	1/12												
San Diego St.	1/16												
at Wyoming	1/19												
UNLV	1/23												
at Utah St.	1/26												
Fresno St.	2/2												
at San Diego St.	2/6												
Nevada	2/9												
at San Jose St.	2/13												
at Fresno St.	2/16												
Utah St.	2/20												
San Jose St.	2/27												
at Colorado St.	3/2												
at Boise St.	3/4												
Wyoming	3/7												

### ANDERSON'S CAREER STATS AT UNM

			Total		3-Point		F-Throws		Rebounds											Scoring	
Season	gp-gs	min/avg	fg-fga	pct	fg-fga	pct	ft-fla	pct	off	def	tot	avg	pf	fo	ast	to	blk	stl	pts	avg	
2017-18	32-1	417/13.0	52-91	.571	2-10	.200	24-40	.600	31	65	96	3.0	50	0	5	17	34	13	130	4.1	
2018-19	1-0	20/20.0	2-2	1.000	0-0	.000	2-3	.667	1	0	1	1.0	4	0	1	1	0	0	6	6.0	
TOTAL	33-1	437/13.2	54-93	.581	2-10	.200	26-43	.605	32	65	97	2.9	54	0	6	18	34	13	136	4.1	



# UNIVERSITY OF NEW MEXICO

## 2018-19 WOMEN'S BASKETBALL



# #35

## MADI WASHINGTON

PG | 5-9 | SO | Red Oak, Texas (Red Oak HS)



PPG	FG %	3PT %	FT %	RPG	APG	SPG	BPG	MPG
3.0	.250	.500	...	1.0	...	...	...	10.0

### NOTEWORTHY

- » Key reserve for the Lobos playing in 34 games as a true freshman
- » Team's fifth-leading scorer on the season
- » Scored in double figures nine times and had two 20+ point games as well
- » Selected to play in the 2018 USA Basketball 3xe Open National Championships along with teammates Antonia Anderson, Jaisa Nunn, and Aisia Robertson
- » In HS was named the Offensive Player of the Year as a freshman
- » Also named All-District in 2014-15 and 2015-16

### Washington's Top Performances

Points	Season	3 vs. Texas State (11/9/18)
	Career	27 vs. Northern N.M. (11/15/17)
FGM	Season	1 vs. Texas State (11/9/18)
	Career	7 vs. Northern N.M. (11/15/17)
FGA	Season	4 vs. Texas State (11/9/18)
	Career	15 vs. Northern N.M. (11/15/17)
3PT FGM	Season	1 vs. Texas State (11/9/18)
	Career	5 - done twice
3PT FGA	Season	4 vs. Texas State (11/9/18)
	Career	9 vs. Utah State (1/31/18)
FTM	Season	
	Career	8 vs. Northern N.M. (11/15/17)
FTA	Season	
	Career	8 vs. Northern N.M. (11/15/17)
Rebounds	Season	1 vs. Texas State (11/9/18)
	Career	7 vs. Nevada (12/30/17)
Assists	Season	
	Career	4 vs. Rice (3/20/18)
Blocks	Season	
	Career	1 - done twice
Steals	Season	
	Career	1 - done 10 times
Turnovers	Season	
	Career	3 - done twice
Min. Played	Season	10 vs. Texas State (11/9/18)
	Career	34 vs. Colorado St. (2/27/18)

### GAME-BY-GAME STATISTICS

Opponent	Date	GS	Min	FG-A	3FG-A	FT-A	Reb	PF	A	TO	B	S	PTS
Texas St.	11/9		10	1-4	1-2	---	1	1	--	--	--	--	3
Auburn	11/11												
at Houston	11/24												
Oklahoma	11/28												
NMSU	12/1												
UTEP	12/5												
at NAU	12/8												
at NMSU	12/15												
Sacramento St.	12/19												
at Long Beach St.	12/29												
Air Force	1/2												
at Nevada	1/5												
at UNLV	1/9												
Colorado St.	1/12												
San Diego St.	1/16												
at Wyoming	1/19												
UNLV	1/23												
at Utah St.	1/26												
Fresno St.	2/2												
at San Diego St.	2/6												
Nevada	2/9												
at San Jose St.	2/13												
at Fresno St.	2/16												
Utah St.	2/20												
San Jose St.	2/27												
at Colorado St.	3/2												
at Boise St.	3/4												
Wyoming	3/7												

### WASHINGTON'S CAREER STATS AT UNM

			Total		3-Point		F-Throws		Rebounds										Scoring	
Season	gp-gs	min/avg	fg-fga	pct	fg-fga	pct	ft-fa	pct	off	def	tot	avg	pf	fo	ast	to	blk	stl	pts	avg
2017-18	34-0	604/17.8	74-194	.381	39-106	.368	30-38	.789	14	46	60	1.8	29	0	27	27	2	10	217	6.4
2018-19	1-0	10/10.0	1-4	.250	1-2	.500	0-0	.000	0	1	1	1.0	1	0	0	0	0	0	3	3.0
TOTAL	35-0	614/17.5	75-198	.379	40-108	.370	30-38	.789	14	47	61	1.7	30	0	27	27	2	10	220	6.3



# UNIVERSITY OF NEW MEXICO

## 2018-19 WOMEN'S BASKETBALL



# #44

## JAISA NUNN

C | 6-3 | SR | Kirkland, Wash. (Juanita HS)



PPG	FG %	3PT %	FT %	RPG	APG	SPG	BPG	MPG
14.0	.714	---	.667	3.0	2.0	3.0	1.0	18.0

### NOTEWORTHY

- » One of 20 to be named to Lisa Leslie Award Watch List
- » 2018-19 Preseason All-MW
- » Only player in MW last season to average a double-double (17.0 pts, 10.2 reb)
- » Became the 22nd player in program history to score 1,000 career points
- » Lone returning starter from last season
- » Selected to play in the 2018 USA Basketball 3x3 Open National Championships with teammates Antonia Anderson, Aisia Robertson and Madi Washington

### Nunn's Top Performances

Points	Season	14 vs. Texas State (11/9/18)
	Career	39 vs. Marquette (11/13/17)
FGM	Season	5 vs. Texas State (11/9/18)
	Career	14 vs. Marquette (11/13/17)
FGA	Season	7 vs. Texas State (11/9/18)
	Career	17 - done twice
3PT FGM	Season	
	Career	2 vs. Utah State (1/4/17)
3PT FGA	Season	
	Career	4 - done twice
FTM	Season	4 vs. Texas State (11/9/18)
	Career	11 - done twice
FTA	Season	6 vs. Texas State (11/9/18)
	Career	12 - done twice
Rebounds	Season	3 vs. Texas State (11/9/18)
	Career	18 vs. UC Irvine (11/25/17)
Assists	Season	2 vs. Texas State (11/9/18)
	Career	4 vs. Illinois (11/26/17)
Blocks	Season	1 vs. Texas State (11/9/18)
	Career	4 vs. Lamar (12/20/17)
Steals	Season	3 vs. Texas State (11/9/18)
	Career	5 vs. TCU (3/22/18)
Turnovers	Season	
	Career	4 vs. New Mexico St. (11/15/16)
Min. Played	Season	18 vs. Texas State (11/9/18)
	Career	38 - done three times

### GAME-BY-GAME STATISTICS

Opponent	Date	GS	Min	FG-A	3FG-A	FT-A	Reb	PF	A	TO	B	S	PTS
Texas St.	11/9	*	18	5-7	---	4-6	3	2	2	--	1	3	14
Auburn	11/11												
at Houston	11/24												
Oklahoma	11/28												
NMSU	12/1												
UTEP	12/5												
at NAU	12/8												
at NMSU	12/15												
Sacramento St.	12/19												
at Long Beach St.	12/29												
Air Force	1/2												
at Nevada	1/5												
at UNLV	1/9												
Colorado St.	1/12												
San Diego St.	1/16												
at Wyoming	1/19												
UNLV	1/23												
at Utah St.	1/26												
Fresno St.	2/2												
at San Diego St.	2/6												
Nevada	2/9												
at San Jose St.	2/13												
at Fresno St.	2/16												
Utah St.	2/20												
San Jose St.	2/27												
at Colorado St.	3/2												
at Boise St.	3/4												
Wyoming	3/7												

### NUNN'S CAREER STATS AT UNM

			Total		3-Point		F-Throws		Rebounds											Scoring	
Season	gp-gs	min/avg	fg-fga	pct	fg-fga	pct	ft-fga	pct	off	def	tot	avg	pf	fo	ast	to	blk	stl	pts	avg	
2015-16	30-11	544/18.1	93-172	.541	0-0	.000	29-50	.580	61	87	148	4.9	42	1	27	30	10	13	215	7.2	
2016-17	21-2	430/20.5	87-183	.475	6-28	.214	38-63	.603	48	100	148	7.0	34	0	16	31	5	11	218	10.4	
2017-18	35-35	984/28.1	221-347	.637	1-1	1.000	152-188	.809	177	181	358	10.2	82	3	15	38	26	36	595	17.0	
2018-19	1-1	18/18.0	5-7	.714	0-0	.000	4-6	.667	2	1	3	3.0	2	0	2	0	1	3	14	14.0	
TOTAL	87-49	1976/22.7	406-709	.573	7-29	.241	223-307	.726	288	369	657	7.6	160	4	60	99	42	63	1042	12.0	





# UNIVERSITY OF NEW MEXICO

## 2018-19 WOMEN'S BASKETBALL



### 2018-19 New Mexico Women's Basketball

New Mexico Combined Team Statistics (as of Nov 09, 2018)

#### All games



RECORD:	OVERALL	HOME	AWAY	NEUTRAL
ALL GAMES	1-0	1-0	0-0	0-0
CONFERENCE	0-0	0-0	0-0	0-0
NON-CONFERENCE	1-0	1-0	0-0	0-0

##	Player	gp-gs	min	avg	Total		3-Point		F-Throw		Rebounds				pf	dq	a	to	blk	stl	pts	avg
					fg-fga	fg%	3fg-fga	3fg%	ft-fa	ft%	off	def	tot	avg								
15	ROBERTSON, Aisia	1-1	24	24.0	8-16	.500	1-2	.500	0-2	.000	3	5	8	8.0	2	0	9	10	2	3	17	17.0
44	NUNN, Jaisa	1-1	18	18.0	5-7	.714	0-0	.000	4-6	.667	2	1	3	3.0	2	0	2	0	1	3	14	14.0
04	EVERETT, Jayla	1-1	29	29.0	3-10	.300	1-3	.333	4-4	1.000	2	1	3	3.0	2	0	2	4	1	1	11	11.0
23	DE LA CERDA, Jaedyn	1-1	27	27.0	4-11	.364	1-6	.167	0-0	.000	0	4	4	4.0	0	0	2	0	0	2	9	9.0
03	HURST, Ahlise	1-0	23	23.0	2-8	.250	2-8	.250	1-2	.500	0	1	1	1.0	4	0	2	0	1	1	7	7.0
13	MCGRUDER, Shaiquel	1-0	16	16.0	3-6	.500	0-0	.000	0-0	.000	5	8	13	13.0	0	0	0	1	2	4	6	6.0
32	ANDERSON, Antonia	1-0	20	20.0	2-2	1.000	0-0	.000	2-3	.667	1	0	1	1.0	4	0	1	1	0	0	6	6.0
01	NOBLE, Quincy	1-0	6	6.0	1-3	.333	1-1	1.000	2-2	1.000	1	0	1	1.0	0	0	0	0	2	0	5	5.0
21	MCCLURE, Nike	1-1	20	20.0	2-4	.500	0-1	.000	0-0	.000	2	5	7	7.0	2	0	0	1	6	0	4	4.0
35	WASHINGTON, Madi	1-0	10	10.0	1-4	.250	1-2	.500	0-0	.000	0	1	1	1.0	1	0	0	0	0	0	3	3.0
24	MOORE, Erica	1-0	1	1.0	0-0	.000	0-0	.000	0-0	.000	0	0	0	0.0	1	0	0	0	0	1	0	0.0
02	MATHEWS, Bre'Asiaja	1-0	5	5.0	0-0	.000	0-0	.000	0-0	.000	0	1	1	1.0	1	0	0	0	1	0	0	0.0
Team											3	1	4									
Total.....		1	199		31-71	.437	7-23	.304	13-19	.684	19	28	47	47.0	19	0	18	17	16	15	82	82.0
Opponents.....		1	200		18-62	.290	4-12	.333	11-14	.786	16	24	40	40.0	14	-	8	24	0	10	51	51.0

TEAM STATISTICS	NM	OPP
SCORING	82	51
Points per game	82.0	51.0
Scoring margin	+31.0	-
FIELD GOALS-ATT	31-71	18-62
Field goal pct	.437	.290
3 POINT FG-ATT	7-23	4-12
3-point FG pct	.304	.333
3-pt FG made per game	7.0	4.0
FREE THROWS-ATT	13-19	11-14
Free throw pct	.684	.786
F-Throws made per game	13.0	11.0
REBOUNDS	47	40
Rebounds per game	47.0	40.0
Rebounding margin	+7.0	-
ASSISTS	18	8
Assists per game	18.0	8.0
TURNOVERS	17	24
Turnovers per game	17.0	24.0
Turnover margin	+7.0	-
Assist/turnover ratio	1.1	0.3
STEALS	15	10
Steals per game	15.0	10.0
BLOCKS	16	0
Blocks per game	16.0	0.0
ATTENDANCE	4585	0
Home games-Avg/Game	1-4585	0-0
Neutral site-Avg/Game	-	0-0

Date	Opponent	Score	Att.
11/09/18	TEXAS ST.	w 82-51	4585

\* - Conference game

Score by Periods	1st	2nd	3rd	4th	Totals
New Mexico	14	15	33	20	82
Opponents	16	11	12	12	51



# UNIVERSITY OF NEW MEXICO

## 2018-19 WOMEN'S BASKETBALL



2018-19 New Mexico Women's Basketball  
New Mexico Season Schedule/Results & Leaders (as of Nov 09, 2018)  
All games



RECORD:	OVERALL	HOME	AWAY	NEUTRAL
ALL GAMES	1-0	1-0	0-0	0-0
CONFERENCE	0-0	0-0	0-0	0-0
NON-CONFERENCE	1-0	1-0	0-0	0-0

Date	Opponent	Score	Att. High Points	High Rebounds
11/09/18	TEXAS ST.	w 82-51	4585 (17)ROBERTSON, Aisia	(13)MCGRUDER, Shaiquel

\* - Conference game

Attendance Summary	Games	Attend	Avg/Game
Home	1	4585	4585
Away	0	0	0
Neutral	0	0	0
Total	1	4585	4585



# UNIVERSITY OF NEW MEXICO

## 2018-19 WOMEN'S BASKETBALL



2018-19 New Mexico Women's Basketball  
New Mexico Season Box Score (as of Nov 09, 2018)  
All games



RECORD:	OVERALL	HOME	AWAY	NEUTRAL
ALL GAMES	1-0	1-0	0-0	0-0
CONFERENCE	0-0	0-0	0-0	0-0
NON-CONFERENCE	1-0	1-0	0-0	0-0

##	Player	gp-gs	min	avg	Total		3-Point		F-Throw		Rebounds				pf	dq	a	to	blk	stl	pts	avg
					fg-fga	fg%	3fg-fga	3fg%	ft-fa	ft%	off	def	tot	avg								
15	ROBERTSON, Aisia	1-1	24	24.0	8-16	.500	1-2	.500	0-2	.000	3	5	8	8.0	2	0	9	10	2	3	17	17.0
44	NUNN, Jaisa	1-1	18	18.0	5-7	.714	0-0	.000	4-6	.667	2	1	3	3.0	2	0	2	0	1	3	14	14.0
04	EVERETT, Jayla	1-1	29	29.0	3-10	.300	1-3	.333	4-4	1.000	2	1	3	3.0	2	0	2	4	1	1	11	11.0
23	DE LA CERDA, Jaedyn	1-1	27	27.0	4-11	.364	1-6	.167	0-0	.000	0	4	4	4.0	0	0	2	0	0	2	9	9.0
03	HURST, Ahlise	1-0	23	23.0	2-8	.250	2-8	.250	1-2	.500	0	1	1	1.0	4	0	2	0	1	1	7	7.0
13	MCGRUDER, Shaiquel	1-0	16	16.0	3-6	.500	0-0	.000	0-0	.000	5	8	13	13.0	0	0	0	1	2	4	6	6.0
32	ANDERSON, Antonia	1-0	20	20.0	2-2	1.000	0-0	.000	2-3	.667	1	0	1	1.0	4	0	1	1	0	0	6	6.0
01	NOBLE, Quincy	1-0	6	6.0	1-3	.333	1-1	1.000	2-2	1.000	1	0	1	1.0	0	0	0	0	2	0	5	5.0
21	MCCLURE, Nike	1-1	20	20.0	2-4	.500	0-1	.000	0-0	.000	2	5	7	7.0	2	0	0	1	6	0	4	4.0
35	WASHINGTON, Madi	1-0	10	10.0	1-4	.250	1-2	.500	0-0	.000	0	1	1	1.0	1	0	0	0	0	0	3	3.0
02	MATHEWS, Bre'Asijaja	1-0	5	5.0	0-0	.000	0-0	.000	0-0	.000	0	1	1	1.0	1	0	0	0	1	0	0	0.0
24	MOORE, Erica	1-0	1	1.0	0-0	.000	0-0	.000	0-0	.000	0	0	0	0.0	1	0	0	0	0	1	0	0.0
Team											3	1	4									
Total.....		1	199		31-71	.437	7-23	.304	13-19	.684	19	28	47	47.0	19	0	18	17	16	15	82	82.0
Opponents.....		1	200		18-62	.290	4-12	.333	11-14	.786	16	24	40	40.0	14	-	8	24	0	10	51	51.0

Score by Periods	1st	2nd	3rd	4th	Totals
New Mexico	14	15	33	20	82
Opponents	16	11	12	12	51



# UNIVERSITY OF NEW MEXICO

## 2018-19 WOMEN'S BASKETBALL



2018-19 New Mexico Women's Basketball  
New Mexico Overall Team Statistics (as of Nov 09, 2018)  
All games



TEAM STATISTICS	NM	OPP
SCORING	82	51
Points per game	82.0	51.0
Scoring margin	+31.0	-
FIELD GOALS-ATT	31-71	18-62
Field goal pct	.437	.290
3 POINT FG-ATT	7-23	4-12
3-point FG pct	.304	.333
3-pt FG made per game	7.0	4.0
FREE THROWS-ATT	13-19	11-14
Free throw pct	.684	.786
F-Throws made per game	13.0	11.0
REBOUNDS	47	40
Rebounds per game	47.0	40.0
Rebounding margin	+7.0	-
ASSISTS	18	8
Assists per game	18.0	8.0
TURNOVERS	17	24
Turnovers per game	17.0	24.0
Turnover margin	+7.0	-
Assist/turnover ratio	1.1	0.3
STEALS	15	10
Steals per game	15.0	10.0
BLOCKS	16	0
Blocks per game	16.0	0.0
WINNING STREAK	1	-
Home win streak	1	-
ATTENDANCE	4585	0
Home games-Avg/Game	1-4585	0-0
Neutral site-Avg/Game	-	0-0

Score by Periods	1st	2nd	3rd	4th	Totals
New Mexico	14	15	33	20	82
Opponents	16	11	12	12	51





# UNIVERSITY OF NEW MEXICO 2018-19 WOMEN'S BASKETBALL



2018-19 New Mexico Women's Basketball  
New Mexico Team Game-by-Game Comparison (as of Nov 09, 2018)  
All games



Opponent	1st	2nd	Score	Mar	Total FG	FG Pct	3-Pointers	3FG Pct	Free Throws	FT Pct	Rebounds
TEXAS ST.	29/27	53/24	82-51	+31	31-71/18-62	.437/.290	7-23/4-12	.304/.333	13-19/11-14	.684/.786	47/40 +7

Note: Game totals are displayed in the format TEAM/OPPONENT for each category



# UNIVERSITY OF NEW MEXICO

## 2018-19 WOMEN'S BASKETBALL



2018-19 New Mexico Women's Basketball  
New Mexico Points-Rebounds-Assists (as of Nov 09, 2018)  
All games



Opponent	Date	Score	01 NOBLE,QUIN	02 MATHEWS,BR	03 HURST,AHLI	04 EVERETT,JA	13 MCGRUDER,S	15 ROBERTSON,	21 MCCLURE,NI
TEXAS ST.	11/09/18	82-51 w	5-1-0	0-1-0	7-1-2	11-3-2	6-13-0	17-8-9	4-7-0

Opponent	Date	Score	23 DE LA CERD	24 MOORE,ERIC	32 ANDERSON,A	35 WASHINGTON	44 NUNN,JAISA
TEXAS ST.	11/09/18	82-51 w	9-4-2	0-0-0	6-1-1	3-1-0	14-3-2



# UNIVERSITY OF NEW MEXICO

## 2018-19 WOMEN'S BASKETBALL



### GAME 1 | NEW MEXICO 82 - TEXAS STATE 51

Nov. 9, 2018 | Albuquerque, N.M.



Official Basketball Box Score - Game Totals - Final Statistics

**Texas St. vs New Mexico**  
**11/09/18 7:00 pm at**



#### Texas St. 51 • 0-1

#	Player	Total		3-Ptr		Rebounds				PF	TP	A	TO	Blk	Stl	Min
		FG	FGA	FG	FGA	FT	FTA	Off	Def							
13	Zandra Emmanuel	f	1-5	0-1	0-0	0	3	2	5	2	2	0	2	0	2	9
22	Jazza Johns		3-9	0-0	0-0	1	2	3	2	6	0	2	0	0	20	20
02	Toshua Leavitt	g	5-16	2-5	6-6	0	0	0	1	18	3	8	0	1	1	33
24	Brooke Holle	g	2-12	1-4	0-0	2	4	6	2	5	2	3	0	2	30	30
23	Bailey Holle	g	2-4	1-2	0-0	0	4	4	1	5	3	2	0	4	26	26
00	Jayla Johnson		1-1	0-0	0-0	3	4	7	1	2	0	1	0	1	22	22
01	Avionne Alexander		0-4	0-0	2-2	1	2	1	2	1	0	0	0	0	9	9
03	Kennedy Taylor		1-5	0-0	0-0	0	1	1	3	2	0	1	0	0	7	7
15	Ja'Kayla Bowie		2-2	0-0	2-2	0	1	1	0	6	0	2	0	0	17	17
32	Da'Nasia Hood		0-0	0-0	0-0	0	1	1	0	0	0	1	0	0	18	18
55	Jaeda Reed		1-4	0-0	1-4	1	0	1	1	3	0	1	0	0	9	9
Team							5		4		9		1			
Totals			18-62	4-12	11-14	16	24	40	14	51	8	24	0	10	200	200
1st: FG%: 7-16 43.8% 1st 4-16 25.0% 3rd: 4-15 26.7% 4th: 3-15 20.0% Game: 18-62 29.0% Rebounds																
3FG%: 2-2 100.0% 2nd 1-4 25.0% 4-5 80.0% 1-1 100.0% 4-12 33.3% Deadballs																
2nd: 0-2 0.0% 3rd 0-2 0.0% 4-4 100.0% 1-1 100.0%																

1st - FG %: 7-16 43.8% 2nd: 4-16 25.0% 3rd: 4-15 26.7% 4th: 3-13 23.0% Game: 18-62 29.0% Deadball  
3FG %: 2-2 100.0% 1-4 25.0% 0-3 0.0% 1-1 100.0% 4-12 33.3% Rebounds  
FT %: 0-0 0.0% 2-4 50.0% 4-4 100.0% 5-6 83.3% 11-14 78.6% 1

#### New Mexico 82 • 1-0

#	Player	FG	Total	3-Ptr	FGA	FGA	FT	FTA	Rebounds	Off	Def	PF	TP	A	TO	Blk	Stl	Min
21	McCLURE, Nike	f	2-4	0-1	0-0	2	5	7	2	4	0	1	6	0	1	6	0	20
44	NUNN, Jaisa	c	5-7	0-0	4-6	2	1	3	2	14	2	0	1	3	18			18
04	EVERETT, Jayla	g	3-10	1-3	4-4	2	1	3	2	11	2	4	1	1	29			29
15	ROBERTSON, Aisia	g	8-16	1-2	0-2	3	5	8	2	17	9	10	2	3	24			24
23	DE LA CERDA, Jaedyn	g	4-11	1-6	0-0	0	4	4	0	9	2	0	0	2	27			27
01	NOBLE, Quincy	g	1-3	1-1	2-2	1	0	1	0	5	0	0	2	0	6			6
02	MATHEWS, Bre'Asiajah	g	0-0	0-0	0-0	0	1	1	0	0	0	0	1	0	5			5
03	HURST, Ahlise	g	2-8	2-8	1-2	0	1	1	4	7	2	0	1	1	23			23
13	MCCRUDER, Shaiquel	g	3-6	0-0	0-0	5	8	13	0	6	0	1	2	4	16			16
24	MOORE, Erica	g	0-0	0-0	0-0	0	0	0	1	0	0	0	0	1	1			1
32	ANDERSON, Antonia	g	2-2	0-0	2-3	1	0	1	4	6	1	1	0	0	20			20
35	WASHINGTON, Madi	g	1-4	1-2	0-0	0	1	1	1	3	0	0	0	0	10			10
	Team								3	1	4							
Totals			31-71	7-23	13-19	19	28	47	19	82	18	17	16	15	199			
1st: FG%: 6-16 37.5% 2nd: 6-20 30% 3rd: 11-15 73.3% 4th: 8-20 40% Game: 31-71 43.7% Rebounds																		
3FG: 0-4 0.0% 3rd: 3-9 33.3% 2-2 100% 2-8 25.0% 7-23 30.4% Deadballs																		
FT: 100.0% 0-2 0.0% 8-13 61.5% 0-0 0.0% 1-1 100.0% 0-0 0.0%																		

1st - FG %: 6-16 37.5% 2nd: 6-20 30.0% 3rd: 11-15 73.3% 4th: 8-20 40.0% Game: 31-71 43.7% Deadball  
3FG %: 0-4 0.0% 3-9 33.3% 2-2 100.0% 2-8 25.0% 7-23 30.4% Rebounds  
FT %: 2-2 100.0% 0-2 0.0% 9-13 69.2% 2-2 100.0% 13-19 68.4% 3,2

#### Officials:

Technical fouls: Texas St.-None. New Mexico-None.

Attendance: 4585

2018-19 Women's Basketball. Round: 0. New Mexico vs Texas St.. Played at .

Score by periods					Points	Paint	T/O	2nd	Fast	Bench
1st	2nd	3rd	4th	Total						
Texas St.	16	11	12	12	51	22	12	8	12	15
New Mexico	14	15	33	20	82	48	29	16	45	27

Last FG - TXST 4th-04:26, NM 4th-01:05.

Largest lead - TXST by 4 1st-04:44, NM by 34 4th-01:05.

TXST led for 08:22. NM led for 27:43. Game was tied for 03:55.