

# THE UNIVERSITY OF NEW MEXICO SOFTBALL



2019 SOFTBALL NOTES | WEEK 8

@UNMLoboSB

www.GoLOBOS.com

#GoLOBOS

Allison Weiss, Assistant Director of Athletic Communications - Softball Contact | Email: allisonweiss@unm.edu | Cell: (661) 313-5402

## 2019 SCHEDULE

OVERALL: 8-21 • MW: 1-5 • H: 0-3 • A: 2-8 • N: 6-10

Date	Opponent	Time/Score
<i>NM State Invitational</i>		
2/8	UTEP	W, 15-6
2/9	Creighton	W, 8-0 (5)
2/9	at NMSU	L, 9-8
2/14	at #9 Arizona	Cancelled (Rain)
<i>Hillenbrand Invitational</i>		
2/15	#7 Alabama	L, 1-0
2/15	RV CSUF	L, 6-2
2/16	at #9 Arizona	L, 15-1 (5)
2/16	UIC	W, 13-5 (6)
2/17	South Florida	L, 2-1 (8)
2/20	at Hawaii	L, 2-1
<i>Hawaii Invitational</i>		
2/21	DePaul	L, 9-5
2/22	Canisius	W, 10-0 (5)
2/22	at Hawaii	L, 2-3
2/23	at Hawaii	W, 3-2
2/23	DePaul	L, 4-2
<i>Judi Garman Classic</i>		
2/28	#3 Florida	L, 1-0 (8)
3/1	LMU	L, 4-2
3/1	#7 Tennessee	L, 15-1 (5)
3/3	UConn	L, 2-1
3/3	at CSUF	L, 19-1 (5)
<i>LMU Tournament</i>		
3/8	Oregon State	W, 6-5
3/8	Western Carolina	W, 10-0 (5)
3/9	Oregon State	L, 5-3
3/10	LMU	L, 6-2
3/15	at San Diego State *	W, 3-1
3/16	at San Diego State *	L, 9-8
3/17	at San Diego State *	L, 4-3
3/22	Colorado State *	L, 9-7
3/23	Colorado State *	L, 9-1 (5)
3/24	Colorado State *	L, 16-3 (5)
3/26	North Dakota	11 a.m.
3/26	North Dakota	1:30 p.m.
3/29	Nevada *	6 p.m.
3/30	Nevada *	4 p.m.
3/31	Nevada *	12 p.m.
4/2	at New Mexico State	4 p.m.
4/2	at New Mexico State	6 p.m.
4/5	at Utah State *	4 p.m.
4/6	at Utah State *	4 p.m.
4/7	at Utah State *	12 p.m.
4/9	UTEP	3 p.m.
4/18	Boise State *	6 p.m.
4/19	Boise State *	4 p.m.
4/20	Boise State *	12 p.m.
4/23	New Mexico State	5:30 p.m.
4/26	at Fresno State *	7 p.m.
4/27	at Fresno State *	4 p.m.
4/28	at Fresno State *	1 p.m.
5/3	San José State *	6 p.m.
5/4	San José State *	4 p.m.
5/5	San José State *	12 p.m.
5/9	at UNLV *	7 p.m.
5/10	at UNLV *	5 p.m.
5/11	at UNLV *	1 p.m.

**Bold** denotes home games  
 \*denotes Mountain West game  
*italics* denote tournament  
 All times listed are Mountain Time  
 Game times are subject to change

## UNM vs NORTH DAKOTA



**NEW MEXICO**  
Lobos

Record ..... 8-21, 1-5 MW  
 Conference ..... Mountain West  
 Head Coach ..... Paula Congleton  
 Record at UNM ..... 22-60 (Second Season)  
 Career Record ..... 55-137 (Fourth Season)



**NORTH DAKOTA**  
Fighting Hawks

Record ..... 15-20, 0-0 Summit  
 Conference ..... Summit League  
 Head Coach ..... Jordan Stevens  
 Record at North Dakota ..... 93-161 (Fifth Season)  
 Career Record ..... 256-265-1 (10th Season)

### ABOUT THE MATCHUP

- The teams have faced each other just two times prior, with UNM winning both games. The Lobos won in five, 8-0, on March 2, 2012 and 13-8 the next day.
- UND has the advantage in hits (234-179), runs (129-122) and has more doubles (37-34), triples (9-6) and total bases (325-285) on the season.
- UNM has the advantage in walks drawn (119-75), on-base percentage (.356-.320) and slugging percentage (.390-.347).
- The Lobos and Fighting Hawks have each recorded 115 RBI
- Both pitching staffs have given up 169 runs on the season, with 132 earned for UNM compared to 135 for UND.

### Media Information

**Location:**..... Lobo Softball Field  
**Dimensions:**..... 220'-225'-220'

**Date/Time:**  
 Tuesday, March 26..... 11 a.m.  
 Tuesday, March 26..... 1:30 p.m.

**Live Video:**..... Mountain West Network  
**Live Stats:**..... <https://golobos.com/schedule.aspx?path=softball>  
**Social Media:** ..... @UNMLoboSB

Notes last updated: March 25, 2019

### Series History

#### VS. NORTH DAKOTA

Last win: 3/3/12 (13-8)  
 Last loss: N/A  
 Last home win: 3/3/12 (13-8)  
 Last home loss: N/A  
 Last season sweep: 2012  
 Last five games: 2-0  
 Last shutout win: 3/2/12 (8-0/5)  
 Last shutout loss: N/A  
 Trend: W2

## NEWS and NOTES

### LAST TIME OUT

- The Lobos opened their home schedule with a three-game series with Colorado State and lost all three games.
- UNM played close on Friday night, coming back from a 6-2 deficit to take a 7-6 lead after a five-run, five-hit, fifth inning which included two home runs.
- Cameryn O'Grady went 3-for-7 at the plate for a .429 batting average with two doubles and two RBI on five total bases. D'Andra DeFlora also tallied three hits on the weekend with one double. Bailey Klitzke and Monica Salas had three RBI to lead the Lobos in the category.
- Taylor Jones hit her first home run of the season and Sydney Broderick hit her first double in the season, on Friday and Sunday, respectively.
- Kiana Spencer pitched a team-high 10 innings in the series and recorded all six strikeouts that UNM had against CSU.

### DON'T COUNT THEM OUT

- In Friday's game against Colorado State, UNM trailed 6-2 going into the bottom of the fifth, but scored five runs on five hits to tie and take a 7-6 lead. Bailey Klitzke hit a sacrifice fly with bases loaded to score the first run and Monica Salas hit a home run to center to tie the game at six. Two batters later, Taylor Jones hit her first home run of the season, a solo shot that hit off the top of the scoreboard in left to give the Lobos a 7-6 advantage.
- UNM started off the LMU Tournament with an epic come-from-behind victory over Oregon State, scoring six runs in the final two innings to win 6-5. The Lobos scored five runs in the bottom of the

## GENERAL INFORMATION

Name of School.....	University of New Mexico
City/Zip.....	Albuquerque, N.M. 87106
Founded.....	1889 by Territorial Legislature
Enrollment.....	25,015
Nickname.....	Lobos
School Colors.....	Cherry & Silver
Conference.....	Mountain West
Affiliation.....	NCAA Division I
President.....	Dr. Garnett Stokes
Athletic Director.....	Eddie Nuñez

## PROGRAM HISTORY

First Year of Softball.....	1978
All-Time Record.....	990-1096-3
Mountain West Record.....	121-274-1
NCAA Tournament Appearances.....	3
1980 (AIAW), 1981 (AIAW) and 1983 (NCAA)	
Last NCAA Postseason Opponent.....	Cal State Fullerton
Last NCAA Postseason Result.....	CSUF won series 2-1
Conference Championships.....	3
1980 (Intermountain), 1981 (Intermountain) and 1983 (High Country)	

## TEAM INFORMATION

2018 Overall Record.....	14-39
2018 MW Record.....	7-17 (T-8th)
Letterwinners Returning/Lost.....	10/9
Pitchers Returning/Lost.....	0/4
Starters Returning/Lost.....	8/1
Newcomers.....	9

## SOFTBALL STAFF

Head Coach.....	Dr. Paula Congleton (New Mexico, 1984)
Year at UNM..... Second season	
Record at UNM (Pct.)..... 22-60 (.268)	
MW Record at UNM (Pct.)..... 7-20 (.286)	
Career Record (Years)..... 55-134 (4 years)	
Assistant Coach.....	Tyler Heil (San José State, 2009)
Year at UNM..... Second season	
Assistant Coach.....	Breanna Macha (Arizona State, 2018)
Year at UNM..... First season	
Strength Coach.....	Jeremy Golden
Academic Advisor.....	Andrea Pierson
Head Athletic Trainer.....	Bob Waller
Athletic Trainer.....	Madison Foust

## COMMUNICATIONS

Softball Contact/Asst. Director of Comm.....	Allison Weiss
Email.....	allisonweiss@unm.edu
Cell Phone (Preferred).....	(661) 313-5402
Communications Office.....	(505) 925-5520

## DIGITAL MEDIA

Athletics Website.....	GoLobos.com
Main University Web Site.....	unm.edu
Conference Website.....	TheMW.com
Twitter.....	@UNMLoboSB
Instagram.....	@UNMLoboSB
Facebook.....	@NewMexicoLoboSoftball

## FACILITIES

Venue.....	Lobo Field
Dimensions.....	205-225-205
Capacity.....	1,500

seventh, walking off on a hit by Lauren Wilmert to score D'Andra DeFlora from third. Andrea Howard hit a two-run home run to cut the deficit to two after Daryn Haslam led off with a single to right field. Kasey Halleen singled up the middle to keep the momentum going and Sydney Townes doubled to center to advance Halleen to third. DeFlora singled to score Townes and Halleen to tie the game, moving all the way to third, leading to Wilmert's game-winning single.

### MIXING IT UP

- The Lobos have used 24 different lineups to date, only having duplicated their lineup five times. UNM used the same lineup in the Arizona and Alabama game, the same lineup in the Cal State Fullerton and UTEP game, the same lineup against Hawai'i on Feb. 22 and DePaul on Feb. 23 and the same lineup against Tennessee and UConn. Recently, the Lobos used the same lineup in the second game at SDSU and the second game vs. CSU.
- UNM has had five different players in the leadoff spot in the lineup.
- Cameryn O'Grady moved into the leadoff hitter spot in the game against Canisius and played six games at the No. 1 spot in the batting order. Andrea Howard led off the lineup in 10 games and moved down to the No. 2 spot for 14 games and the seventh spot in five games. Bailey Klitzke hit in the leadoff spot in three games, D'Andra DeFlora led off in nine games and Sydney Townes hit first in one. Maggie Buckholz has batted second in two games, DeFlora in 12 games and Aleyah Wilbon hit second versus Cal State Fullerton.
- Four Lobos (Cameryn O'Grady, D'Andra DeFlora, Andrea Howard and Lauren Wilmert) have started all 29 games this season, while Monica Salas has started in all but one.
- UNM started four freshmen against New Mexico State, with Kennedy Ferguson, Daryn Haslam, MacKenzie Peterson and Leslie Romero each getting their first collegiate starts.
- Freshman Emma Steltzer made her Lobo debut in the circle in the last game of the Judi Garman Classic versus Cal State Fullerton, retiring both batters she faced.

### HOLDING THEIR OWN

- In the Lobos' first game of the Judi Garman Classic, UNM went to extra innings with the No. 3 Florida Gators, holding the Gators scoreless for seven innings.
- It was the second time in the last 13 days that UNM held a top-10, and a SEC, team scoreless through at least six innings.
- Kennedy Ferguson threw a complete game with 109 pitches, 66 of them going for strikes. The freshman right-hander held her own in the matchup, allowing just five hits and one walk, while striking out five batters. It is the third game this season that Ferguson has allowed just one walk, but the first time that she did so while pitching a complete game.
- The five hits posted by Florida was the second-fewest hits in a game for the Gators this year, only second to Arizona who limited the Gators to four on Feb. 9, but the Wildcats also gave up three runs in the game.
- In addition, it is just the second time this season that the Gators have been held to one run in a game, with the other instance being in Wednesday night's game versus No. 2 UCLA in which the Gators lost 7-1. Entering the Judi Garman Classic, and prior to its loss to UCLA, Florida was outscoring its opponents 127-18.
- The Lobos held No.7 Alabama scoreless for six innings, allowing only six hits total in the game.
- Entering the Hillenbrand Invitational, the Crimson Tide was third in the NCAA in scoring, averaging 10.60 runs, and had averaged 10.2 hits a game and 2.60 doubles a game (tied for 10th in the NCAA). Alabama hit .261 in the game, below the .378 batting average that the team entered with, which was 16th in the nation. Spencer kept Alabama's leading hitter Kaylee Tow, who ranked eighth in the NCAA in batting average and seventh in on-base percentage, without a hit.
- UNM is the only team to hold Alabama to just one run in the 10 games the Crimson Tide have played so far this year.
- In two games, the Lobos have shutout their opponents and twice have gone six innings without giving up a run. UNM shutout Creighton on Feb. 9 and shutout Canisius on Feb. 22, while going six scoreless innings against Alabama on Feb. 15 and again on Feb. 17 versus South Florida.

### FOURTH INNING MAGIC

- To date, UNM is outscoring its opponents 27-19 in the fourth inning.
- Against Western Carolina, UNM scored seven runs in the fourth inning on three hits and two walks. Back-to-back walks by Magie Buckholz and Monica Salas to lead off the inning and a single by Daryn Haslam loaded the bases. Kasey Halleen singled through the right side to score two followed by an error by the pitcher that allowed Haslam to score. D'Andra DeFlora reached on a hit-by-pitch to load the bases and Lauren Wilmert hit a two-out grand slam to make it 10-0.
- In the first two games of the season, the second inning belonged to the Lobos, with UNM scoring five runs against UTEP and against Creighton.
- In the season opener versus the Miners, the Lobos scored five runs on two hits and drew five walks, leading to three runs on consecutive walks alone.
- Against the Bluejays, the Lobos scored five runs on three hits, a single by Monica Salas, a double by D'Andra DeFlora that scored three after Andrea Howard was intentionally walked to load the bases and a two-run home run by Cameryn O'Grady.

### HOT STARTS

- The Lobos have scored first in 15 games this season.
- UNM has scored in the first inning 11 times, with a season-high four runs scored in the first inning on Feb. 16 against Illinois-Chicago and again on Feb. 22 against Canisius.
- Against WCU on March 8, the Lobos scored three runs in the first inning on a walk by Andrea Howard, back-to-back doubles by Lauren Wilmert and Maggie Buckholz and a single by Monica Salas that scored Buckholz.
- Five of UNM's wins this season have come via run-rule (15-6 vs. UTEP, 8-0 vs. Creighton, 13-5 vs. Illinois-Chicago, 10-0 vs. Canisius, 10-0 vs. WCU).
- D'Andra DeFlora and Cameryn O'Grady started the season on a nine-game hitting streak.

### NEWCOMERS NO MORE

- Freshman Daryn Haslam led the Lobos at the Hawai'i Invitational with a slugging percentage of

- .846 and on-base percentage of .467, while hitting the first two home runs of her collegiate career. Three of her RBI on the weekend came with two outs.
- Fellow freshman Maggie Buckholz hit a three-run home run that proved to be the difference in UNM's 3-2 win over host Hawai'i to advance the Lobos to the championship game. On the weekend, Buckholz had a team-high six RBI and drew three walks.
- The freshmen have accounted for 26 hits, 16 runs scored and 24 RBI on the season, while hitting five of the team's 20 home runs.
- Maggie Buckholz is tied for second on the Lobos in walks (17), third in RBI (17), is one of four players with at least a triple and is third in on-base percentage (.423). Daryn Haslam is tied for second on the team in home runs (3) and is fourth in batting average (.270) and third in slugging percentage (.514). Buckholz leads the team with seven, two-out RBI
- Pitcher Kiana Spencer has pitched six complete games this season and tallied a season-high six strikeouts in her appearance against Hawai'i on Feb. 23. The LHP has recorded two shutouts, both coming in run-rule games (vs. Creighton, vs. Canisius).
- In her first start with the Lobos, Spencer threw a complete game shutout, limiting the BIG EAST preseason favorite Creighton to just three hits in five innings of work. The junior didn't allow any extra-base hits in the 24 batters she faced. She threw 91 pitches in the outing, 42 of them going for strikes.
- Spencer also earned the start against Alabama, pitching another complete game, going 7.0 innings and allowing just one run and six hits, only one of which went for extra bases, and allowing just three walks on 29 batters faced.
- Freshman Kennedy Ferguson has pitched in a team-high 21 games with 12 starts and eight complete games, holding a team-best ERA of 3.70 and 89.0 innings pitched. Ferguson has struck out 51 batters and walked 32 and has recorded at least one strikeout in 16 games. Ferguson earned her first collegiate win in a two-hit shutout over Western Carolina on March 8, striking out three and not issuing a walk.

## **WALK IT OUT**

- UNM leads the MW in walks drawn through the first seven weekends with 119, 10 more than the second-highest team (SJSU).
- In the season opener against UTEP, UNM drew 16 walks alone for a season high.
- Against the Miners, eight different players drew a walk, with Andrea Howard reaching base four times via a walk. Cameryn O'Grady and Lauren Wilmert each drew three walks, Maggie Buckholz two and Monica Salas, Taylor Jones, Kasey Halleen and Daryn Haslam each had one.
- Versus Cal State Fullerton on Feb. 15, the Lobos nearly reached double digits with nine walks.
- Cameryn O'Grady leads the Lobos with 20 walks, with Maggie Buckholz and Andrea Howard tied for second with 17.

## **LET'S GIVE THEM SOMETHING TO TALK ABOUT**

- After seven weekends of competition for the MW teams, the Lobos lead the conference in two categories and are third in one.
- The Lobos are first in the conference in walks (119) and tied for first in caught stealing by (8) and is third in home runs (20).
- As a team, UNM has at least one player listed in the top 10 in the conference in six hitting categories, five pitching categories and four fielding categories.
- To date, Cameryn O'Grady is in the top-10 statistically in the MW in three categories offensively. The junior is in the top 10 in on-base percentage, doubles and is tied for first in walks. Lauren Wilmert is tied for fourth in caught stealing by, sixth in fielding chances and Kennedy Ferguson is ranked in batters struck out and second in innings pitched. D'Andra DeFlora ranks in the top 10 in hit-by-pitches, Bailey Klitzke is ranked in batting average and tied for first in sacrifice flies, and Maggie Buckholz and Andrea Howard in walks.
- In Mountain West play, UNM ranks third in total bases (64) and fourth in on-base percentage (.363), hits (41), runs scored (25), RBI (25) and home runs (4). UNM is second in walks (23), total plate appearances (182) and at-bats (156).
- O'Grady is ranked in the top 10 in conference play in on-base percentage (.545) and walks (6) and Wilmert is tied for fourth in hits (8).
- Kiana Spencer is ranked in batters struck out (fifth, 11) and Kennedy Ferguson is ranked in fewest walks allowed (t-fifth, 3).

## **NATIONALLY KNOWN**

- Bailey Klitzke is 22nd in the NCAA in sacrifice flies with three and Maggie Buckholz is 47th in the country in walks (0.71). O'Grady is 94th in on-base percentage (.495) and 52nd in walks (.69).

## **IT'S ALL O'GRADY**

- Junior shortstop Cameryn O'Grady leads the team in slugging percentage (.610), on-base percentage (.495), hits (30), total bases (50), walks (20), total plate appearances (93) and doubles (9). The California native is second in batting average (.366), runs scored (20) and RBI (19).
- With two outs, O'Grady is 7-for-16, the highest success rate on the team, with five RBI coming with two outs. When it comes to success advancing runners during an at-bat, O'Grady also leads the team at 33-for-57 (.579). O'Grady is also 11-for-19 (.579) as the leadoff batter in an inning which leads the team.
- O'Grady was nearly unstoppable in the first three games of the season, going 7-for-9 at the plate (.778 batting average), registering one double, a triple and two home runs as well as a team-high seven RBI. O'Grady tallied 16 total bases, drew three walks and posted a slugging percentage of 1.778 and an on-base percentage of .833.
- The junior was 2-for-2 as the leadoff hitter in an inning, 4-for-5 with runners in scoring position and 2-for-2 batting with two outs, in which she recorded two of her seven runs-batted-in. During her at-bats, O'Grady was 6-for-8 in successfully advancing runners and 5-for-7 in getting a hit with runners on base.
- O'Grady was a perfect 3-for-3 against Creighton, finishing just a double shy of hitting for the cycle.
- In the LMU Tournament, O'Grady was a team-best .500 in batting with runners on (4-for-8), 2-for-2 as the leadoff hitter in an inning, 3-for-6 with runners in scoring position and 1-for-2 with runners on third and less than two outs as well as with two outs. The shortstop was 4-for-9 with success in advancing runners.
- Last season, O'Grady led the Lobos in triples (four), doubles (12), walks (32), on-base percentage (.444) and runs scored (31) last season. She was second on the team with 43 hits, 75 total bases and 26 RBIs, and third in batting average (.301) and slugging percentage (.524).
- O'Grady hit just four home runs last season, which the junior reached half that in the first three games this season.

## **3-2, WHAT YOU GOING TO DO?**

- Lauren Wilmert leads the team in RBI (20), is tied in home runs (4) and is second in total bases (40). The catcher/ first baseman is tied for second in hits (22), is third in doubles (6), and fourth in runs scored (15), while hitting in the cleanup spot in all 29 games. The junior is also second in sacrifice flies.
- Playing 18 games behind the plate, Wilmert has thrown out five runners attempting to steal, bringing her career total to 10.
- Wilmert recorded a career-high three hits against SDSU on March 17, while also recording her sixth home run of her career and tied a career-high six total bases.

## **NOT JUST A PITCHER**

- Bailey Klitzke got the ball to start the season against UTEP, but has played in 20 games either in the circle or as the DP, starting in 18.
- Klitzke leads the team in batting average (.386) and is second in on-base percentage (.449) and slugging percentage (.509), is tied for second in hits (22).
- At the Judi Garman Classic, Klitzke was 2-for-2 with runners in scoring position, with two outs and with runners on third and less than two outs in the inning. The junior was 3-for-5 in success in advancing runners and 2-for-5 as the leadoff hitter in an inning. She also had a team-high four hits and three RBI in the five-game tournament, hitting .364 with a slugging percentage of .455 and on-base percentage of .467.
- At the plate on the season, Klitzke is a team-best 3-for-5 with bases loaded. She is 6-for-8 with a runner on third with less than 2 outs, 9-for-21 with runners in scoring position, 10-for-23 with 2 outs in the inning and six of her RBI on the season came with two outs. Klitzke is 20-for-35 in successfully advancing runners in her at-bat, which is the second-highest success rate on the team.
- However, in the circle, the LHP earned her first win of the season in her first appearance in a Lobo uniform, pitching 5.0 innings and giving up five hits and five earned runs. Klitzke struck out eight batters and finished the weekend with nine total in 6.0 innings pitched. She threw for 146 pitches, 120 of

which came in the first game against UTEP.

- Klitzke matched her strikeout count against Illinois-Chicago and pitched her first complete game with 6.0 innings pitched to move to 2-1 on the season.

## **LET'S SEE HOW FAR WE'VE COME**

- In just her second year at UNM, the Lobos have seen improvement in several categories from year one to year two under head coach Paula Congleton.
- Comparing where the Lobos were a year ago heading into MW competition to this year's team heading into MW play, the Lobos have performed better offensively, in the circle and in the field.
- Even though UNM has played two less games in 2019 than in 2018 prior to conference starting, the Lobos have scored 11 more runs (97-86) and walks (96-85), had three more doubles, two more home runs, improved their slugging percentage (.385-.366) and on-base percentage (.355-.343).
- The pitchers have combined for a better team ERA, lowering the average by 1.93 (6.70-4.77), has 18 more strikeouts (93-75) and allowed 60 fewer runs (181-121). Opponent batting average is also lower (.297-.338) as is the number of hits (171-233), doubles, triples and home runs allowed.
- Behind the plate, the catchers are having more success as well, throwing out seven runners to date, compared to just two at this point last year. Runners are just 18-25 this year (.720) compared to 26-28 in 2018 (.929). In the field, the Lobos have a fielding percentage of .952 this year to .939 last year.
- Coincidentally, the Lobos have had 221 total bases and a .240 batting average in both years.

## **PLEASE ALLOW ME TO INTRODUCE MYSELF**

- The 2019 UNM Lobos will have a different look than last season as there are nine newcomers on the roster.
- In the offseason, the Lobos added seven freshmen (Maggie Buckholz, Kennedy Ferguson, Daryn Haslam, Skylar Jenkins, MacKenzie Peterson, Leslie Romero and Emma Steltzer) as well as two transfer left-handed pitchers in Bailey Klitzke (junior, Wichita State) and Kiana Spencer (junior, Yavapai College).
- UNM debuted an entirely new pitching staff, including a new pitching coach. Joining the above mentioned addition of Klitzke and Spencer will be Ferguson, a right-hander from Camas, Wash. Overseeing the group will be Breanna Macha, who joins the Lobos after pitching at Arizona State from 2015-18.

## **PUTTING THE PIECES OF THE PUZZLE TOGETHER**

- The roster underwent a major renovation after 2018 with the departure of nine letterwinners, which included all four pitchers on the roster.
- The Lobos also have 10 underclassmen on the roster, with a team-high seven freshmen who will experience their first glimpse of collegiate softball this season.
- Of the nine, the Lobos lost a key piece of their offense due to graduation in Chelsea Johnson. The infielder, who served as the DP her senior season, led the team in batting average (.342), at bats (155), hits (53), homeruns (10), RBIs (40), total bases (92) and slugging percentage (.594). Johnson started 51 of the 53 games, but played in 52.
- In the circle, the Lobos will have to find their ace after losing Jensen Main, who pitched almost half of the innings (162.2 of 326 innings) during the season and set the UNM single-season record for batters faced with 848.
- Luckily, the Lobos retain eight mainstays in the lineup, including now-sophomore Andrea Howard who was selected Second Team All-Mountain West in her rookie season.

## **LONG TIME GONE**

- The Lobos began the season with five non-conference tournaments on the road, spanning from Las Cruces to Tucson, Ariz., to Honolulu, Hawaii to two trips to Southern California, followed by a conference series at San Diego State.
- UNM's home opener on March 22 against MW opponent Colorado State is the latest home opener in at least 15 years.
- In the first six weeks of the season, the Lobos will have traveled over 10,900 miles roundtrip (5451 miles each way) and played 26 games before their first pitch at Lobo Softball Field.

## **TO BE THE BEST...**

- The non-conference schedule will test the Lobos from the first weekend, as the Cherry and Silver face 10 teams that made the 2018 NCAA Tournament, four that advanced to the Super Regionals and one team (Florida) that competed in the Women's College World Series.
- Four of the teams on UNM's schedule ( Florida, Tennessee, Arizona, Alabama) ranked in the top 10 in the USA Today/ NFCA Coaches preseason rankings and four additional teams were receiving votes. Florida was the highest ranked at fifth, with Tennessee seventh, Arizona eighth and Alabama tied for ninth.
- In the ESPN.com / USA Softball Collegiate Top 25 Preseason Poll, four teams on the Lobos' schedule were ranked with four more receiving votes. Florida was the highest-ranked opponent at No. 5 followed by Arizona at six, Tennessee at eight and Alabama at 11. Receiving votes were Oregon State, Cal State Fullerton, South Florida and Fresno State.

## **STARTING OFF STRONG**

- UNM is now 26-16 in season openers, including 4-1 in the last five years after Friday's win versus UTEP.
- The nine-run differential was the largest margin of victory for UNM in a season opener since 2011, when the Lobos defeated Utah Valley 10-2.
- Against UTEP, the leadoff hitter reached base six times.
- UNM didn't give up its first run until the fourth inning in the game against UTEP and starting pitcher Bailey Klitzke didn't give up a hit until the bottom of the fourth.
- D'Andra DeFlora and Cameryn O'Grady registered at least one hit in the first nine games of the season.

## **SCOUTING NORTH DAKOTA**

- The Fighting Hawks enter Tuesday's series 15-20 overall and lost their last three, all against New Mexico State. They are 5-11 on the road.
- UND has played only one common opponent to date with UNM in NMSU, in which the Aggies won all three games (3-0, 8-0 (5), 5-2). However, UND has played two MW teams in Fresno State (L, 5-3) and UNLV (L, 10-1(5)).
- North Dakota has been shutout nine times this year and has not shutout an opponent. UND has been run-ruled three times, gone to extra innings three times (2-1) and has run-ruled a team once.
- The Fighting Hawks are being outscoring their opponents 169-129 and outhit 279-234.
- Last season, North Dakota went 26-27 and 10-8 in conference play as a member of the Big Sky. UND is now a member of the Summit League.
- North Dakota was picked to finish sixth in the preseason poll with 11 votes, bringing back a total of six starters.
- Angel Love leads the team with 34 hits, 10 doubles and 50 total bases. Marina Marzolino has a team-high 18 RBI, Victoria Minor leads in walks (12) and is tied with Deja Miller with three triples. Dani Romero leads in home runs (4), while Kayleen Schneider has a team-high .329 batting average and Jocelyn Kirk has a team-best .463 slugging percentage.
- As a team, UND is 24-for-30 on attempted steals with Love 8-for-9 and Marzolino 3-for-3. Opponent are 53-for-67.
- North Dakota pitchers have an ERA of 4.18 as a staff, allowing 279 hits on the season and 169 runs (135 earned). As a unit, they have struck out 134 batters while walking 108. Opponents are hitting .301 against the pitchers. Of the 279 hits, 40 were doubles, nine were triples and 15 were home runs.
- ND has used four pitchers this season, with Jannay Jones pitching a team-high 85.1 innings. Jones has a 7-7 record on 18 appearances and 15 starts, while pitching nine complete games and recording two saves. In the circle, the freshman has given up 87 hits, 45 runs (29 earned), 51 strikeouts and 29 walks. Nikki Pica has pitched 82.1 innings in 19 games and with 13 starts, pitching two complete games and tallying a 3-8 record. The junior has allowed 109 hits, 70 runs (58 earned) and 40 walks and has struck out 48 batters. Emily Rosas has gone 50.1 innings in the circle, making 20 appearances and seven starts with one complete game, and has a 5-5 record on the season. The freshman has given up 63 hits, 34 runs (28 earned) and 25 walks while striking out 32. Angeline Riley has pitched just 8.1 innings this season in four games, with 20 hits, 20 runs, 14 walks and three strikeouts.
- The Fighting Hawks rank first in the Summit League in double plays per game (.54) and are 15th in the NCAA. They are also 57th in the country in triples per game with 0.26. Jannay Jones is 34th in saves.

**STAT COMPARISON**

UNM		ND	UNM ENTERING MW PLAY		
			2018	2019	
BA	.245	.250	.240	.240	
R	122	129	.366	.385	
H	179	234	.343	.355	
2B	34	37	86	97	
3B	6	9	145	158	
HR	20	12	24	27	
RBI	115	115	5	4	
BB	119	75	14	16	
SO	223	200	221	221	
ERA	5.27	4.18	81	90	
SO	110	134	85	96	
BB	111	108	179	177	
H	229	279	6.70	4.77	
R	169	169	75	93	
ER	132	135	88	93	
DP	3	39	233	171	
FLD%	.949	.957	181	121	
			147	95	
			B/AVG	.338	.297
			2B	37	23
			3B	7	4
			HR	35	29
			FLD%	.939	.952
			CSB	2	7
			SBA%	.929 (26-28)	.720 (18-25)
			W/L%	.240	.318
			REC.	6-19	7-16

**MOUNTAIN WEST INFORMATION**

**PRESEASON MOUNTAIN WEST POLL**

Rk.	Team (1st-Place Votes)	Points
1.	Boise State (8)	64
2.	Fresno State (1)	57
3.	San José State	50
4.	UNLV	35
5.	San Diego State	31
6.	Nevada	29
7.	Colorado State	26
8.	Utah State	21
9.	New Mexico	11

**MOUNTAIN WEST PLAYERS OF THE WEEK**

2019 MW Softball Player of the Week  
 Feb. 12 – Lauren Tycksen, Jr., CF, UNLV  
 Feb. 19 – Jessica McKay, Jr., OF, Boise State  
 Feb. 26 – Ashley Ruiz, Jr., 1B, Colorado State  
 March 5 – Lauren Buchanan, Sr., C, Colorado State  
 March 12 – Amber Nelson, Sr., C, Colorado State  
 March 19 – Corina Gamboa, Jr., 3B, Colorado State

2019 MW Softball Pitcher of the Week  
 Feb. 12 – Hailey Dolcini, So., RHP, Fresno State  
 Feb. 19 – Gianna Mancha, So., RHP, Boise State  
 Feb. 26 – Jessica Jarecki, Jr., RHP, Colorado State  
 March 5 – Danielle Lung, Fr., RHP, Fresno State  
 March 12 – Jenny Bressler, Fr., RHP, UNLV  
 March 19 – Jenny Bressler, Fr., RHP, UNLV

**ESPN.COM/USA SOFTBALL COLLEGIATE TOP 25**

WEEK 6 • MARCH 19

Rk.	Team (1st Votes)	Pts.	Rec	Prev.
1.	UCLA (20)	25-1	500	1
2.	Oklahoma	25-2	471	2
3.	Alabama	31-0	451	4
4.	Florida State	27-3	445	3
5.	Tennessee	22-4	419	5
6.	LSU	23-6	379	8
7.	Florida	24-5	357	7
8.	Washington	22-6	352	6
9.	Louisiana	23-3	321	11
10.	Arizona	21-7	314	12
11.	Texas	25-6	288	13
12.	Texas Tech	27-2	287	10
13.	Auburn	26-4	260	16
14.	Kentucky	20-7	235	18
15.	Georgia	25-6	222	9
16.	Arizona State	22-8	157	19
17.	Oklahoma State	20-7	134	14
18.	Arkansas	21-7	127	17
19.	Minnesota	19-8	109	21
20.	Indiana	25-6	102	15
21.	James Madison	15-5	101	23
22.	Wisconsin	21-3	93	22
23.	Ole Miss	21-7	75	RV
24.	Virginia Tech	21-4	72	25
25.	Michigan	15-10	61	24

Dropped Out: South Carolina (20)  
 New to Poll: Ole Miss (RV)  
 Others receiving votes: South Carolina (60), Northwestern (41), Illinois (22), Boise State (11), Stanford (10), Houston (8), Oregon State (8), USC Upstate (6), Missouri (1), Notre Dame (1), South Florida (1)

**USA TODAY/ NFCA COACHES TOP 25 POLL**

WEEK 6 • MARCH 19

Rk.	Team (1st Votes)	Pts.	Rec	Prev.
1	UCLA (31)	25-1	799	1
2	Oklahoma	25-2	760	2
3	Florida State (1)	27-3	717	3
4	Alabama	31-0	703	4
5	Tennessee	22-4	662	6
6	Florida	24-5	621	7
7	Washington	22-6	612	5
8	LSU	23-6	546	9
9	Louisiana	23-3	521	10
10	Texas	25-6	506	11
11	Arizona	21-7	459	12
12	Georgia	25-6	417	8
13	Kentucky	20-7	393	15
14	Texas Tech	27-2	383	13
15	Arkansas	21-7	368	14
16	South Carolina	21-7	307	16
17	Auburn	26-4	289	20
18	Arizona State	22-8	257	17
19	James Madison	15-5	173	22
20	Minnesota	19-8	170	21
21	Oklahoma State	20-7	154	18
22	Indiana	25-6	137	19
23	Wisconsin	21-3	130	23
24	Ole Miss	21-7	89	
25	Michigan	15-10	54	25

New to Poll: No. 24 Ole Miss  
 Dropped Out: No. 24 Boise State  
 Receiving Votes: Virginia Tech (42), Northwestern (37), Illinois (21), Boise State (15), Stanford (13), Notre Dame (10), UNLV (9), Colorado State (6), Oregon State (6), Baylor (5), Mississippi State (5), Louisiana Tech (2), Missouri (1), USC Upstate (1).

**BY THE NUMBERS**

Statistic	All Games	MW	MW Games	6th
Batting Average:	.245	9th	.263	6th
Slugging Percentage:	.390	8th	.410	7th
On Base Percentage:	.356	8th	.363	4th
Runs Scored:	122	8th	25	4th
Hits:	179	9th	41	T-4th
RBI:	115	7th	25	4th
HRs:	20	3rd	4	T-4th
Total Bases:	285	7th	64	3rd
<b>Walks:</b>	<b>119</b>	<b>1st</b>	23	2nd
ERA:	5.27	8th	7.19	9th
Opp. Batting Avg.:	.309	9th	.349	9th
Batters Struck Out:	110	8th	17	T-5th
Hits Allowed:	229	7th	58	9th
Runs Allowed:	169	9th	48	9th
Earned Runs Allowed:	132	T-8th	37	9th
Walks Allowed:	111	9th	18	6th
Home Runs Allowed:	38	9th	9	8th
Fielding Percentage:	.949	9th	.938	8th
Putouts:	526	T-6th	108	T-4th
Fielding Double Plays:	3	T-8th	N/A	N/A
<b>Caught Stealing By:</b>	<b>8</b>	<b>T-1st</b>	1	T-3rd

**MOUNTAIN WEST STANDINGS**

School	Conf.	Conf. %	Overall	Overall %	Streak
Colorado State	6-0	1.000	23-4	0.852	W14
Nevada	2-1	0.667	17-12	0.586	L3
UNLV	3-2	0.600	22-7	0.759	L1
Boise State	3-3	0.500	23-5	0.821	W1
San Diego State	3-3	0.500	15-16	0.484	L1
Utah State	2-3	0.400	11-14	0.440	W1
New Mexico	1-5	0.167	8-21	0.276	L5
San José State	0-0	0.000	20-9	0.690	W10
Fresno State	0-3	0.000	16-11	0.593	W1

# THE 2019 NEW MEXICO LOBOS

## NUMERICAL ROSTER

#	NAME	POS	HT	YR	B/T	HOMETOWN (PREVIOUS SCHOOL)
00	Andrea Howard	OF	5-6	So.	L/L	Albuquerque, N.M. (La Cueva HS)
2	Maggie Buckholz	UT	5-7	Fr.	L/R	Silverton, Ore. (Silverton HS)
3	Taylor Jones	IF	5-7	So.	R/R	Albuquerque, N.M. (La Cueva HS)
4	D'Andra DeFlora	OF	5-2	Sr.	R/R	Fresno, Texas (L.V. Hightower HS)
5	Sydney Broderick	C	5-4	So.	R/R	Mesa, Ariz. (Desert Ridge HS)
7	MacKenzie Peterson	OF	5-9	Fr.	R/R	Gilbert, Ariz. (Phoenix College)
8	Bailey Klitzke	P/1B	5-8	Jr.	L/L	Apache Junction, Ariz. (Wichita State)
9	Kasey Halleen	IF	5-6	Sr.	R/R	Torrance, Calif. (Palos Verdes HS)
10	Cameryn O'Grady	SS	5-6	Jr.	L/R	Orange, Calif. (El Modena HS)
12	Daryn Haslam	IF	5-4	Fr.	R/R	Cedar Park, Texas (Vista Ridge HS)
13	Kennedy Ferguson	P	5-6	Fr.	R/R	Camas, Wash. (Camas HS)
16	Leslie Romero	OF	5-4	Fr.	R/R	Gonzales, Calif. (Salinas HS)
22	Monica Salas	IF	5-3	Sr.	R/R	Goleta, Calif. (Santa Barbara CC)
23	Emma Steltzer	OF	5-6	Fr.	R/R	Manchester, Mo. (Parkway South HS)
24	Skylar Jenkins	OF	5-5	Fr.	R/R	Lawrenceville, Ga. (Buford HS)
32	Lauren Wilmert	C/1B	5-10	Jr.	R/R	Albuquerque, N.M. (Volcano Vista HS)
44	Aleyah Wilbon	OF	5-2	Sr.	L/R	Fontana, Calif. (Mt. San Antonio College)
66	Sydney Townes	OF	5-6	Sr.	L/R	Lompoc, Calif. (Cabrillo HS)
99	Kiana Spencer	P	5-6	Jr.	L/L	Gallup, N.M. (Yavapai College)

## ALPHABETICAL ROSTER

#	NAME	POS	HT	YR	B/T	HOMETOWN (PREVIOUS SCHOOL)
5	Sydney Broderick	C	5-4	So.	R/R	Mesa, Ariz. (Desert Ridge HS)
2	Maggie Buckholz	UT	5-7	Fr.	L/R	Silverton, Ore. (Silverton HS)
4	D'Andra DeFlora	OF	5-2	Sr.	R/R	Fresno, Texas (L.V. Hightower HS)
13	Kennedy Ferguson	P	5-6	Fr.	R/R	Camas, Wash. (Camas HS)
9	Kasey Halleen	IF	5-6	Sr.	R/R	Torrance, Calif. (Palos Verdes HS)
12	Daryn Haslam	IF	5-4	Fr.	R/R	Cedar Park, Texas (Vista Ridge HS)
00	Andrea Howard	OF	5-6	So.	L/L	Albuquerque, N.M. (La Cueva HS)
24	Skylar Jenkins	OF	5-5	Fr.	R/R	Lawrenceville, Ga. (Buford HS)
3	Taylor Jones	IF	5-7	So.	R/R	Albuquerque, N.M. (La Cueva HS)
8	Bailey Klitzke	P/1B	5-8	Jr.	L/L	Apache Junction, Ariz. (Wichita State)
10	Cameryn O'Grady	SS	5-6	Jr.	L/R	Orange, Calif. (El Modena HS)
7	MacKenzie Peterson	OF	5-9	Fr.	R/R	Gilbert, Ariz. (Phoenix College)
16	Leslie Romero	OF	5-4	Fr.	R/R	Gonzales, Calif. (Salinas HS)
22	Monica Salas	IF	5-3	Sr.	R/R	Goleta, Calif. (Santa Barbara CC)
99	Kiana Spencer	P	5-6	Jr.	L/L	Gallup, N.M. (Yavapai College)
23	Emma Steltzer	OF	5-6	Fr.	R/R	Manchester, Mo. (Parkway South HS)
66	Sydney Townes	OF	5-6	Sr.	L/R	Lompoc, Calif. (Cabrillo HS)
44	Aleyah Wilbon	OF	5-3	Sr.	L/R	Fontana, Calif. (Mt. San Antonio College)
32	Lauren Wilmert	C/1B	5-10	Jr.	R/R	Albuquerque, N.M. (Volcano Vista HS)

## RETURNERS (10) - 2018 SEASON STATS

No.	Name	Pos.	Cl.	Avg.	GP-GS	AB	R	H	2B	3B	HR	RBI	SLG%	FLD%
00	Andrea Howard	UT	Fr.	.313	51-50	131	20	41	6	1	7	18	.534	.987
3	Taylor Jones	IF	Fr.	.216	24-11	37	6	8	3	0	1	4	.378	.875
4	D'Andra DeFlora	OF	Jr.	.214	53-53	145	22	31	3	0	7	21	.379	.969
5	Sydney Briderick	C	So.	.230	42-36	87	6	20	2	0	0	5	.253	.956
9	Kasey Halleen	IF	Jr.	.189	49-49	127	13	24	5	0	0	10	.228	.920
10	Cameryn O'Grady	SS	So.	.301	53-52	143	31	43	12	4	4	26	.524	.924
22	Monica Salas	IF	Jr.	.238	45-35	101	9	24	3	0	2	15	.327	.919
32	Lauren Wilmert	C	So.	.180	32-20	61	5	11	1	0	1	11	.246	.961
44	Aleyah Wilbon	OF	Jr.	.222	38-25	63	13	14	1	0	0	2	.238	.964
66	Sydney Townes	OF	Jr.	.186	45-44	102	16	19	2	1	0	4	.225	.938

## KEY PLAYERS LOST (3) - 2018 SEASON STATS

No.	Name	Pos.	Avg.	GP-GS	AB	R	H	2B	3B	HR	RBI	SLG%	FLD%
34	Chelsea Johnson	IF	.342	52-51	155	22	53	7	1	10	40	.594	.000
6	Sam Oliver	OF	.191	36-22	47	9	9	1	0	0	2	.213	.953
8	Kristyn Whitley	IF	.188	28-21	48	3	9	3	0	0	4	.250	.941

## PITCHERS LOST (4) - 2018 SEASON STATS

No.	Name	Cl.	ERA	W-L	APP	GS	CG	SHO	SV	IP	SO	BF
16	Jensen Main	So.	4.73	8-20	37	29	13	0/0	0	162.2	74	848
23	Krissy Fortner	Sr.	6.05	3-9	27	7	2	0/0	2	78.2	44	395
24	Alexis Ruel	Fr.	9.60	2-7	19	13	5	0/0	0	62.0	14	361
35	Marissa Bethke	R-Jr.	11.12	1-3	12	4	1	0/0	0	22.2	9	123

## NEWCOMERS (9)

No.	Name	Cl.
2	Maggie Buckholz	Fr.
7	MacKenzie Peterson	Fr.
8	Bailey Klitzke	Jr.
12	Daryn Haslam	Fr.
13	Kennedy Ferguson	Fr.
16	Leslie Romero	Fr.
23	Emma Steltzer	Fr.

## PRONUNCIATION GUIDE

00	ANDREA Howard	on-DRAY-uh
4	D'ANDRA DEFLORA	dee-ON-druh Duh-FLOOR-uh
9	Kasey HALLEEN	Huh-Lean
22	Monica SALAS	SAHL-us
44	ALEYAH WILBON	uh-LEE-uh Will-BAHN
66	Sydney TOWNES	TOWNS
	Paula CONGLETON	CONGLE-ton
	Tyler HEIL	HIGHL

## BY ELIGIBILITY

### Seniors (5)

4	D'Andra DeFlora	OF
9	Kasey Halleen	IF
22	Monica Salas	IF
44	Aleyah Wilbon	OF
66	Sydney Townes	OF

### Juniors (4)

8	Bailey Klitzke	P/1B
10	Cameryn O'Grady	SS
99	Kiana Spencer	P
32	Lauren Wilmert	C/1B

### Sophomores (3)

00	Andrea Howard	OF
3	Taylor Jones	IF
5	Sydney Broderick	C

### Freshmen (7)

2	Maggie Buckholz	UT
13	Kennedy Ferguson	P
12	Daryn Haslam	IF
24	Skylar Jenkins	OF
7	MacKenzie Peterson	OF
16	Leslie Romero	OF
23	Emma Steltzer	OF

## HOME STATE

### Arizona (3)

5	Sydney Broderick	C
8	Bailey Klitzke	P
7	MacKenzie Peterson	OF

### California (6)

9	Kasey Halleen	IF
10	Cameryn O'Grady	SS
16	Leslie Romero	OF
22	Monica Salas	IF
44	Aleyah Wilbon	OF
66	Sydney Townes	OF

### Georgia (1)

24	Skylar Jenkins	OF
----	----------------	----

### Missouri (1)

23	Emma Steltzer	OF
----	---------------	----

### New Mexico (4)

00	Andrea Howard	OF
3	Taylor Jones	IF
99	Kiana Spencer	P
32	Lauren Wilmert	C/1B

### Oregon (1)

2	Maggie Buckholz	UT
---	-----------------	----

### Texas (2)

4	D'Andra DeFlora	OF
12	Daryn Haslam	IF

### Washington (1)

13	Kennedy Ferguson	P
----	------------------	---



# Paula Congleton

5th Head Coach in UNM Program History  
Record at UNM: 22-60

**NOTEWORTHY :**

- Named the fifth head coach in program history on June 20, 2017
- Enters her second season at her alma mater
- Earned her 300th career victory on April 17, 2014
- Earned her 350th career victory on April 22, 2017
- Earned her 400th career victory on May 4, 2018
- Earned her first win at UNM against St. Mary's on Feb. 9, 2018 (4-1)

## **MORE NOTES ON COACH CONGLETON**

- Spent 19 seasons at Santa Barbara City College with the Vaqueros molding the program into one of the elite programs in the WSC
- Three-time WSC Gold Division Coach of the Year
- 2011 Southern Cal Coaching Staff of the Year
- 2011 NFCA National Coaching Staff of the Year
- Led the Vaqueros to four Southern Cal Regional appearances and one trip to the Southern Cal Super Regional
- Guided the Vaqueros to their greatest success of the program, winning a Southern Cal Regional series and advancing to the Super Regional for the first time ever in 2016
- Led the 2016 SBCC squad to the second-most games in program history (30-14)
- The 2016 team finished third WSC Gold Division
- In 2011, led the Vaqueros to a program-record 31 wins (31-7 overall), leading the team to a WSC title and the Southern Cal Regional
- Four-time Scholar Athlete first baseman for the Lobos (3.89 GPA)
- Three-time All-American at New Mexico
- Received her Doctorate in educational administration in 2009
- Served as a full-time professor at SBCC teaching health, weight training and kinesiology
- Served as Associate Athletic Director and Coordinator of the Academic Achievement Zone for student-athletes at SBCC

## **COACHING EXPERIENCE**

**Head Coach:**

2017-Present - New Mexico (22-60)  
1998-2017 - Santa Barbara City Coll. (Calif.) (354-322)  
1996-1998 - Cal. State University Eastbay (33-77)

**Graduate Assistant:**

1986-1988 - New Mexico

Overall NCAA DI record (Second Season): 22-60  
Overall NCAA record (Fourth Season): 54-132  
Overall record (23 years): 409-459 (.471)

## **ALMA MATER**

New Mexico (1984)

## **TWITTER**

Follow @CoachCongleton



# 2019 NEW MEXICO OVERALL STATISTICS

Record: 8-21 Home: 0-3 Away: 2-8 Neutral: 6-10 MW: 1-5

Player	avg	gp-gs	ab	r	h	2b	3b	hr	rbi	tb	slg%	bb	hp	so	gdp	ob%	sf	sh	sb-att	po	a	e	fld%
8 KLITZKE, Bailey	.386	23-21	57	5	22	3	2	0	15	29	.509	9	0	5	1	.449	3	0	2-2	1	3	0	1.000
10 O'GRADY, Cameryn	.366	29-29	82	20	30	9	1	3	19	50	.610	20	1	16	0	.495	0	0	0-0	29	39	10	.872
44 WILBON, Aleyah	.300	20-2	10	6	3	0	0	0	0	3	.300	1	0	5	0	.364	0	0	0-1	1	0	0	1.000
4 DeFLORA, D'Andra	.268	29-29	82	22	22	4	0	1	8	29	.354	10	5	30	1	.381	0	0	0-0	42	1	1	.977
32 WILMERT, Lauren	.256	29-29	86	15	22	6	0	4	20	40	.465	8	1	24	1	.320	2	0	0-0	138	13	6	.962
12 HASLAM, Daryn	.233	20-13	43	5	10	0	0	3	6	19	.442	5	0	14	1	.313	0	0	0-0	13	23	4	.900
22 SALAS, Monica	.227	28-28	75	10	17	1	0	4	15	30	.400	10	0	23	4	.318	0	0	0-0	18	30	6	.889
2 BUCKHOLZ, Maggie	.226	24-22	53	9	12	1	1	2	17	21	.396	17	1	26	0	.423	0	0	0-1	23	0	1	.958
0 HOWARD, Andrea	.203	29-29	79	17	16	7	2	2	9	33	.418	17	1	26	0	.351	0	1	1-1	66	3	1	.986
3 JONES, Taylor	.191	23-16	47	4	9	0	0	1	3	12	.255	6	0	17	0	.283	0	0	0-0	67	17	3	.966
7 PETERSON, MacKenzie	.190	14-7	21	2	4	0	0	0	1	4	.190	5	1	4	0	.370	0	0	0-0	49	1	1	.980
9 HALLEEN, Kasey	.188	16-14	32	3	6	1	0	0	2	7	.219	3	0	11	0	.257	0	0	0-0	23	19	2	.955
66 TOWNES, Sydney	.143	21-10	28	3	4	1	0	0	0	5	.179	6	0	11	0	.294	0	0	1-1	16	0	1	.941
5 BRODERICK, Sydney	.077	14-11	26	1	2	1	0	0	0	3	.115	1	0	10	1	.111	0	0	0-0	36	9	0	1.000
16 ROMERO, Leslie	.000	6-1	7	0	0	0	0	0	0	0	.000	0	0	1	0	.000	0	0	0-0	2	0	0	1.000
23 STELTZER, Emma	.000	3-0	2	0	0	0	0	0	0	0	.000	1	0	0	0	.333	0	0	0-0	0	0	0	.000
99 SPENCER, Kiana	.000	1-1	0	0	0	0	0	0	0	0	.000	0	0	0	0	.000	0	0	0-0	0	7	1	.875
13 FERGUSON, Kennedy	.000	4-4	0	0	0	0	0	0	0	0	.000	0	0	0	0	.000	0	0	0-0	2	16	1	.947
Totals	.245	29	730	122	179	34	6	20	115	285	.390	119	10	223	9	.356	5	1	4-6	526	181	38	.949
Opponents	.309	29	742	169	229	39	6	38	156	394	.531	111	17	110	0	.408	6	15	24-32	558	143	29	.960

LOB - Team (187), Opp (198). DPs turned - Team (3), Opp (11). IBB - Team (2), HOWARD 1, O'GRADY 1.

## (All games Sorted by Earned run avg)

Player	era	w-l	app	gs	cg	sho	sv	ip	h	r	er	bb	so	2b	3b	hr	b/avg	wp	hp	bk	sfa	sha
23 STELTZER, Emma	0.00	0-0	2	0	0	0/0	0	1.1	1	1	0	0	0	0	0	1	.200	0	0	0	0	0
13 FERGUSON, Kennedy	3.70	2-9	21	12	8	1/0	0	89.0	118	70	47	32	51	13	1	16	.311	4	5	0	4	8
99 SPENCER, Kiana	5.64	4-9	18	12	6	2/0	0	67.0	83	63	54	46	37	20	3	16	.300	4	9	0	2	6
8 KLITZKE, Bailey	12.06	2-3	11	5	1	0/0	0	18.0	27	35	31	33	22	6	2	5	.338	10	3	0	0	1
Totals	5.27	8-21	29	29	15	3/0	0	175.1	229	169	132	111	110	39	6	38	.309	18	17	0	6	15
Opponents	4.14	21-8	29	29	6	2/2	4	186.0	179	122	110	119	223	34	6	20	.245	15	10	0	5	1

PB - Team (8), BRODERICK 4, WILMERT 4, Opp (7). SBA/ATT - WILMERT (16-21), FERGUSON (12-17), BRODERICK (8-11), KLITZKE (6-8), SPENCER (6-7).



# 2019 NEW MEXICO MOUNTAIN WEST STATISTICS

Record: 1-5 Home: 0-3 Away: 1-2 MW: 1-5

Player	avg	gp-gs	ab	r	h	2b	3b	hr	rbi	tb	slg%	bb	hp	so	gdp	ob%	sf	sh	sb-att	po	a	e	fld%
7 PETERSON, MacKenzie	.667	2-1	3	0	2	0	0	0	1	2	.667	0	0	0	0	.667	0	0	0-0	5	0	0	1.000
32 WILMERT, Lauren	.381	6-6	21	3	8	1	0	1	5	12	.571	1	0	7	0	.409	0	0	0-0	22	1	0	1.000
10 O'GRADY, Cameryn	.375	6-6	16	6	6	2	0	1	6	11	.688	6	0	5	0	.545	0	0	0-0	3	13	2	.889
8 KLITZKE, Bailey	.375	6-5	16	1	6	0	1	0	5	8	.500	2	0	1	0	.421	1	0	0-0	0	0	0	.000
3 JONES, Taylor	.294	5-5	17	1	5	0	0	1	2	8	.471	0	0	5	0	.294	0	0	0-0	22	5	2	.931
9 HALLEEN, Kasey	.250	2-1	4	0	1	0	0	0	0	1	.250	0	0	1	0	.250	0	0	0-0	3	3	0	1.000
4 DeFLORA, D'Andra	.235	6-6	17	5	4	1	0	0	0	5	.294	3	2	7	0	.409	0	0	0-0	9	0	1	.900
0 HOWARD, Andrea	.222	6-6	18	6	4	2	1	0	2	8	.444	4	0	5	0	.364	0	0	0-0	17	0	1	.944
22 SALAS, Monica	.214	6-6	14	1	3	0	0	1	4	6	.429	3	0	5	1	.353	0	0	0-0	3	8	2	.846
5 BRODERICK, Sydney	.200	2-2	5	0	1	1	0	0	0	2	.400	0	0	1	0	.200	0	0	0-0	8	1	0	1.000
66 TOWNES, Sydney	.091	6-6	11	1	1	0	0	0	0	1	.091	4	0	3	0	.333	0	0	0-0	14	0	0	1.000
12 HASLAM, Daryn	.000	4-3	10	0	0	0	0	0	0	0	.000	0	0	3	1	.000	0	0	0-0	2	6	2	.800
2 BUCKHOLZ, Maggie	.000	2-1	3	0	0	0	0	0	0	0	.000	0	0	3	0	.000	0	0	0-0	0	0	0	.000
16 ROMERO, Leslie	.000	1-0	1	0	0	0	0	0	0	0	.000	0	0	0	0	.000	0	0	0-0	0	0	0	.000
13 FERGUSON, Kennedy	.000	0-0	0	0	0	0	0	0	0	0	.000	0	0	0	0	.000	0	0	0-0	0	5	0	1.000
44 WILBON, Aleyah	.000	2-0	0	1	0	0	0	0	0	0	.000	0	0	0	0	.000	0	0	0-0	0	0	0	.000
23 STELTZER, Emma	.000	0-0	0	0	0	0	0	0	0	0	.000	0	0	0	0	.000	0	0	0-0	0	0	0	.000
99 SPENCER, Kiana	.000	1-1	0	0	0	0	0	0	0	0	.000	0	0	0	0	.000	0	0	0-0	0	1	0	1.000
Totals	.263	6	156	25	41	7	2	4	25	64	.410	23	2	46	2	.363	1	0	0-0	108	43	10	.938
Opponents	.349	6	166	48	58	16	2	9	43	105	.633	18	5	17	0	.422	3	2	6-7	114	30	7	.954

LOB - Team (43), Opp (38). DPs turned - Team (0), Opp (2).

## (MW games only Sorted by Earned run avg)

Player	era	w-l	app	gs	cg	sho	sv	ip	h	r	er	bb	so	2b	3b	hr	b/avg	wp	hp	bk	sfa	sha
23 STELTZER, Emma	0.00	0-0	1	0	0	0/0	0	0.2	1	1	0	0	0	0	0	1	.333	0	0	0	0	0
13 FERGUSON, Kennedy	5.06	1-1	5	2	1	0/0	0	18.0	30	17	13	3	6	6	0	3	.366	2	0	0	2	2
99 SPENCER, Kiana	8.75	0-3	5	2	0	0/0	0	16.0	23	26	20	13	11	9	2	4	.315	3	4	0	1	0
8 KLITZKE, Bailey	21.00	0-1	3	2	0	0/0	0	1.1	4	4	4	2	0	1	0	1	.500	0	1	0	0	0
Totals	7.19	1-5	6	6	1	0/0	0	36.0	58	48	37	18	17	16	2	9	.349	5	5	0	3	2
Opponents	4.24	5-1	6	6	2	0/0	1	38.0	41	25	23	23	46	7	2	4	.263	0	2	0	1	0

PB - Team (1), BRODERICK 1. SBA/ATT - FERGUSON (4-5), WILMERT (3-4), BRODERICK (3-3), SPENCER (2-2).

# 2019 NEW MEXICO GAME-BY-GAME STATISTICS

Date	Opponent	ab	r	h	rbi	2b	3b	hr	tb	bb	ibb	sb	cs	hbp	sac	sf	gdp	k	po	a	e	lob	avg
Feb 08	vs UTEP	26	15	9	15	0	0	1	12	16	0	0	1	2	0	0	2	7	21	8	0	8	.346
Feb 09	vs Creighton	20	8	9	8	1	1	1	15	4	1	0	0	0	0	0	1	8	15	2	0	4	.391
Feb 09	at New Mexico State	29	8	10	7	3	0	2	19	3	0	0	0	0	0	2	0	8	18	3	2	5	.373
Feb 15	vs Alabama	24	0	4	0	1	0	0	5	2	0	0	0	1	0	0	0	4	21	10	0	6	.323
Feb 15	vs Cal State Fullerton	26	2	5	2	2	0	0	7	9	0	0	0	0	0	0	0	10	18	7	3	12	.296
Feb 16	at Arizona	22	1	4	0	0	0	0	4	1	0	0	0	0	0	0	0	7	12	3	2	7	.279
Feb 16	vs Illinois-Chicago	27	13	11	11	2	1	1	18	8	0	0	0	0	0	0	0	2	18	9	2	5	.299
Feb 17	vs South Florida	28	1	4	1	1	0	0	5	4	0	0	0	0	0	0	0	12	22	15	2	8	.277
Feb 20	at Hawaii	25	1	3	1	0	0	0	3	1	0	0	0	1	0	0	1	9	18	3	1	5	.260
Feb 21	vs DePaul	25	5	5	5	0	0	3	14	4	0	0	0	0	0	0	1	8	21	7	2	3	.254
Feb 22	vs Canisius	26	10	11	9	1	1	2	20	5	0	1	0	0	0	0	0	2	15	6	0	6	.270
Feb 22	at Hawaii	27	2	7	2	2	0	1	12	2	0	0	0	0	0	0	1	4	18	6	3	6	.269
Feb 23	at Hawaii	22	3	3	3	2	0	1	8	3	0	0	1	0	1	0	0	4	21	2	0	2	.260
Feb 23	vs DePaul	26	2	4	1	2	0	0	6	5	0	0	0	0	0	0	0	5	18	7	1	8	.252
Feb 28	vs Florida	27	0	4	0	1	0	0	5	2	1	0	0	0	0	0	1	16	21	7	0	6	.245
Mar 01	vs Loyola Marymount	26	2	5	2	1	0	0	6	3	0	1	0	1	0	0	0	10	21	3	0	7	.241
Mar 01	vs Tennessee	19	1	4	1	0	0	1	7	2	0	0	0	0	0	0	0	9	15	4	1	5	.240
Mar 03	vs UCONN	26	1	6	1	1	0	0	7	4	0	0	0	0	0	1	0	9	18	6	0	9	.239
Mar 03	at Cal State Fullerton	16	1	1	1	0	0	1	4	2	0	0	0	0	0	0	0	7	12	5	2	2	.233
Mar 08	vs Oregon State	29	6	10	6	2	0	1	15	2	0	0	0	0	0	0	0	12	21	9	1	6	.240
Mar 08	vs Western Carolina	21	10	7	9	2	0	1	12	4	0	1	0	1	0	0	0	2	15	1	3	1	.244
Mar 09	vs Oregon State	29	3	6	3	2	1	0	10	6	0	0	0	1	0	0	0	11	21	6	2	12	.242
Mar 10	at Loyola Marymount	28	2	6	2	1	0	0	7	4	0	1	0	1	0	1	0	11	18	9	1	11	.240
*Mar 15	at San Diego State	26	3	6	3	0	0	0	6	5	0	0	0	1	0	0	0	14	21	13	1	8	.240
*Mar 16	at San Diego State	29	8	8	8	1	0	1	12	5	0	0	0	1	0	0	1	7	18	6	2	6	.242
*Mar 17	at San Diego State	31	3	8	3	0	2	1	15	3	0	0	0	0	0	0	0	3	18	6	1	10	.242
*Mar 22	COLORADO STATE	29	7	9	7	2	0	2	17	5	0	0	0	0	0	1	1	8	21	8	3	7	.245
*Mar 23	COLORADO STATE	19	1	3	1	2	0	0	5	4	0	0	0	0	0	0	0	7	15	6	0	7	.243
*Mar 24	COLORADO STATE	22	3	7	3	2	0	0	9	1	0	0	0	0	0	0	0	7	15	4	3	5	.245
Totals		730	122	179	115	34	6	20	285	119	2	4	2	10	1	5	9	223	526	181	38	187	.245

# 2019 NEW MEXICO GAME-BY-GAME STATISTICS

Date	Opponent	ip	h	r	er	bb	so	2b	3b	hr	wp	bk	hbp	dp	ibb	score	w-l	sv	era
Feb 08	vs UTEP	7.0	7	6	6	7	10	2	0	2	2	0	1	0	0	15-6	1-0	0	6.00
Feb 09	vs Creighton	5.0	3	0	0	5	2	0	0	0	0	0	1	0	0	8-0	2-0	0	3.50
Feb 09	at New Mexico State	6.0	7	9	7	4	6	1	0	4	3	0	2	0	0	8-9	2-1	0	5.06
Feb 15	vs Alabama	7.0	6	1	1	3	0	1	0	0	0	0	0	0	0	0-1	2-2	0	3.92
Feb 15	vs Cal State Fullerton	6.0	9	6	4	2	3	1	0	2	1	0	1	0	0	2-6	2-3	0	4.06
Feb 16	at Arizona	4.0	14	15	14	5	1	3	0	5	0	0	1	0	0	1-15	2-4	0	6.40
Feb 16	vs Illinois-Chicago	6.0	7	5	4	5	8	1	2	0	2	0	1	0	0	13-5	3-4	0	6.15
Feb 17	vs South Florida	7.1	6	2	0	2	6	0	0	0	0	0	0	1	0	1-2	3-5	0	5.21
Feb 20	at Hawaii	6.0	5	2	1	0	4	1	0	1	0	0	1	0	0	1-2	3-6	0	4.77
Feb 21	vs DePaul	7.0	12	9	7	9	3	1	0	1	2	0	1	0	0	5-9	3-7	0	5.02
Feb 22	vs Canisius	5.0	4	0	0	1	4	0	0	0	0	0	1	0	0	10-0	4-7	0	4.64
Feb 22	at Hawaii	6.0	4	3	2	2	3	1	0	0	0	0	1	0	0	2-3	4-8	0	4.45
Feb 23	at Hawaii	7.0	4	2	2	4	6	0	0	1	0	0	0	0	0	3-2	5-8	0	4.24
Feb 23	vs DePaul	6.0	8	4	4	3	3	3	0	1	0	0	0	1	0	2-4	5-9	0	4.27
Feb 28	vs Florida	7.0	5	1	0	1	5	1	0	0	0	0	0	0	0	0-1	5-10	0	3.94
Mar 01	vs Loyola Marymount	7.0	7	4	4	8	7	0	1	0	0	0	0	0	0	2-4	5-11	0	3.95
Mar 01	vs Tennessee	5.0	18	15	11	9	1	2	0	4	0	0	0	0	0	1-15	5-12	0	4.50
Mar 03	vs UCONN	6.0	8	2	2	1	6	0	0	1	0	0	0	0	0	1-2	5-13	0	4.38
Mar 03	at Cal State Fullerton	4.0	13	19	14	10	2	1	0	5	1	0	0	0	0	1-19	5-14	0	5.08
Mar 08	vs Oregon State	7.0	9	5	3	4	2	3	1	0	0	0	0	0	0	6-5	6-14	0	4.96
Mar 08	vs Western Carolina	5.0	2	0	0	0	3	0	0	0	0	0	0	1	0	10-0	7-14	0	4.77
Mar 09	vs Oregon State	7.0	8	5	3	1	3	0	0	1	1	0	0	0	0	3-5	7-15	0	4.67
Mar 10	at Loyola Marymount	6.0	5	6	6	7	5	1	0	1	1	0	1	0	0	2-6	7-16	0	4.77
*Mar 15	at San Diego State	7.0	7	1	0	0	1	1	0	0	0	0	0	0	0	3-1	8-16	0	4.54
*Mar 16	at San Diego State	6.0	10	9	7	4	5	2	0	2	2	0	1	0	0	8-9	8-17	0	4.69
*Mar 17	at San Diego State	6.0	7	4	4	4	5	2	0	0	1	0	1	0	0	3-4	8-18	0	4.69
*Mar 22	COLORADO STATE	7.0	12	9	6	3	1	5	0	2	0	0	0	0	0	7-9	8-19	0	4.74
*Mar 23	COLORADO STATE	5.0	10	9	9	3	3	2	1	2	0	0	0	0	0	1-9	8-20	0	4.97
*Mar 24	COLORADO STATE	5.0	12	16	11	4	2	4	1	3	2	0	3	0	0	3-16	8-21	0	5.27
Totals		175.1	229	169	132	111	110	39	6	38	18	0	17	3	0	122-169	8-21	0	5.27

# 2019 NEW MEXICO RECORD AND INNING BREAKDOWN

Score by innings	1	2	3	4	5	6	7	8	Total
NEW MEXICO	25	15	11	27	13	18	13	0	122
Opponents	30	14	36	19	38	24	6	2	169

## Record when ...

Overall	8-21	After 4 leading	6-4
Conference	1-5	..... trailing	2-12
Non-Conference	7-16	..... tied	0-5
Home games	0-3	After 5 leading	4-3
Away games	2-8	..... trailing	1-8
Neutral site	6-10	..... tied	0-5
Day games	6-14	After 6 leading	3-1
Night games	2-7	..... trailing	1-13
vs Left starter	0-1	..... tied	0-2
vs Right starter	8-20		
1-Run games	2-9	Hit 0 home runs	1-13
2-Run games	1-4	... 1 home run	6-5
5+Run games	5-5	... 2+ home runs	1-3
Extra innings	0-2		
Shutouts	3-2	Opponent 0 home runs	6-6
		..... 1 home run	1-6
		..... 2+ HRs	1-9
Scoring 0-2 runs	0-14		
..... 3-5 runs	2-4	Made 0 errors	4-5
..... 6-9 runs	2-3	... 1 error	2-5
..... 10+ runs	4-0	... 2+ errors	2-11
Opponent 0-2 runs	5-5		
..... 3-5 runs	2-5	Opp. made 0 errors	2-10
..... 6-9 runs	1-7	..... 1 error	4-5
..... 10+ runs	0-4	..... 2+ errors	2-6
Scored in 1st inning	5-6	Out-hit opponent	6-4
Opp. scored in 1st	2-10	Out-hit by opponent	2-17
Scores first	6-9	Hits are tied	0-0
Opp. scores first	2-12		

## Record when team scores:

Runs	0	1	2	3	4	5	6	7	8	9	10+
W-L	0-2	0-7	0-5	2-3	0-0	0-1	1-0	0-1	1-2	0-0	4-0

## Record when opponent scores:

Runs	0	1	2	3	4	5	6	7	8	9	10+
W-L	3-0	1-2	1-3	0-1	0-3	2-1	1-2	0-0	0-0	0-5	0-4

## Record when leading after:

Inn.	1	2	3	4	5	6
W-L	5-2	7-3	6-4	6-4	4-3	3-1

## Record when trailing after:

Inn.	1	2	3	4	5	6
W-L	0-9	1-10	2-12	2-12	1-8	1-13

## Record when tied after:

Inn.	1	2	3	4	5	6
W-L	3-10	0-8	0-5	0-5	0-5	0-2

Current losing streak: 5  
 Longest winning streak: 2  
 Longest losing streak: 6

Home attendance : 2183 ( 3 dates avg = 727 )  
 Away attendance : 14057 ( 26 dates avg = 540 )  
 Total attendance: 16240 ( 29 dates avg = 560 )

# 2019 NEW MEXICO SITUATIONAL BREAKDOWN

Player	vs left			vs right			w/runners			w/bases empty			w/bases loaded			as leadoff			fly	gnd	fly/
	h	ab	avg	h	ab	avg	h	ab	avg	h	ab	avg	h	ab	avg	rch	ops	pct	out	out	gnd
5 BRODERICK, Sydney	0	2	.000	2	24	.083	0	13	.000	2	13	.154	0	0	---	2	4	.500	8	5	1.6
2 BUCKHOLZ, Maggie	3	6	.500	9	47	.191	10	29	.345	2	24	.083	2	4	.500	6	13	.462	7	7	1.0
4 DeFLORA, D'Andra	1	4	.250	21	78	.269	8	31	.258	14	51	.275	1	2	.500	15	27	.556	15	13	1.2
9 HALLEEN, Kasey	0	0	---	6	32	.188	4	17	.235	2	15	.133	1	1	1.000	1	8	.125	7	6	1.2
12 HASLAM, Daryn	2	3	.667	8	40	.200	5	24	.208	5	19	.263	0	2	.000	4	11	.364	8	10	0.8
0 HOWARD, Andrea	1	5	.200	15	74	.203	8	40	.200	8	39	.205	0	6	.000	11	26	.423	31	6	5.2
3 JONES, Taylor	2	3	.667	7	44	.159	5	19	.263	4	28	.143	0	2	.000	4	15	.267	14	6	2.3
8 KLITZKE, Bailey	0	3	.000	22	54	.407	11	28	.393	11	29	.379	3	5	.600	4	13	.308	20	13	1.5
10 O'GRADY, Cameryn	1	5	.200	29	77	.377	20	50	.400	10	32	.313	0	5	.000	11	19	.579	24	9	2.7
7 PETERSON, MacKenZ	0	3	.000	4	18	.222	1	12	.083	3	9	.333	0	1	.000	2	5	.400	5	7	0.7
16 ROMERO, Leslie	0	1	.000	0	6	.000	0	2	.000	0	5	.000	0	0	---	0	0	---	2	4	0.5
22 SALAS, Monica	3	4	.750	14	71	.197	10	40	.250	7	35	.200	1	3	.333	4	21	.190	13	22	0.6
23 STELTZER, Emma	0	1	.000	0	1	.000	0	0	---	0	2	.000	0	0	---	0	1	.000	1	1	1.0
66 TOWNES, Sydney	0	1	.000	4	27	.148	1	11	.091	3	17	.176	0	0	---	2	10	.200	7	5	1.4
44 WILBON, Aleyah	0	1	.000	3	9	.333	0	5	.000	3	5	.600	0	1	.000	1	2	.500	0	1	0.0
32 WILMERT, Lauren	2	5	.400	20	81	.247	15	62	.242	7	24	.292	2	5	.400	3	11	.273	27	13	2.1
Totals	15	47	.319	164	683	.240	98	383	.256	81	347	.233	10	37	.270	70	186	.376	189	128	1.5
Opponents	110	357	.308	119	385	.309	123	412	.299	106	330	.321	9	33	.273	82	175	.469	224	172	1.3

Player	pinch hitting			w/runners in scoring pos			w/runner on 3rd and LT 2 out			with 2 outs			success adv runners			2- rnrns		rch	rch	kl	
	h	ab	avg	h	ab	avg	rbi	ops	pct	h	ab	avg	adv	ops	pct	rbi	w/out	lob	err	fc	kl
5 BRODERICK, Sydney	0	3	.000	0	6	.000	0	2	.000	0	12	.000	1	14	.071	0	0	6	1	0	5
2 BUCKHOLZ, Maggie	0	1	.000	8	23	.348	4	7	.571	5	20	.250	18	36	.500	7	0	12	1	1	13
4 DeFLORA, D'Andra	0	0	---	6	18	.333	2	4	.500	2	25	.080	17	37	.459	3	3	15	3	1	4
9 HALLEEN, Kasey	0	0	---	1	6	.167	1	1	1.000	0	10	.000	6	18	.333	0	0	9	2	1	4
12 HASLAM, Daryn	0	5	.000	4	18	.222	0	0	---	4	15	.267	10	26	.385	5	2	17	1	1	3
0 HOWARD, Andrea	0	0	---	4	21	.190	0	5	.000	5	24	.208	11	42	.262	3	3	26	1	2	13
3 JONES, Taylor	1	3	.333	2	10	.200	0	3	.000	5	17	.294	9	21	.429	3	1	11	1	0	8
8 KLITZKE, Bailey	1	2	.500	9	21	.429	6	8	.750	10	23	.435	20	35	.571	6	7	17	0	2	3
10 O'GRADY, Cameryn	0	0	---	10	25	.400	4	9	.444	7	16	.438	33	57	.579	5	4	4	3	4	2
7 PETERSON, MacKenZ	1	4	.250	1	11	.091	0	4	.000	2	6	.333	5	13	.385	1	2	2	1	1	2
16 ROMERO, Leslie	0	2	.000	0	1	.000	0	0	---	0	5	.000	0	2	.000	0	0	2	0	0	1
22 SALAS, Monica	0	0	---	8	28	.286	3	4	.750	3	20	.150	18	44	.409	4	5	24	0	4	8
23 STELTZER, Emma	0	1	.000	0	0	---	0	0	---	0	0	---	0	0	---	0	0	0	0	0	0
66 TOWNES, Sydney	0	3	.000	0	5	.000	0	0	---	2	7	.286	7	14	.500	0	1	3	1	2	3
44 WILBON, Aleyah	2	4	.500	0	2	.000	0	1	.000	1	4	.250	2	6	.333	0	1	3	1	0	1
32 WILMERT, Lauren	0	0	---	8	40	.200	7	15	.467	6	27	.222	31	71	.437	5	8	27	2	2	8
Totals	5	28	.179	61	235	.260	27	63	.429	52	231	.225	188	436	.431	42	37	187	18	21	78
Opponents	8	26	.308	76	269	.283	37	64	.578	71	247	.287	240	474	.506	56	72	198	26	15	28

Success Advancing Runners = percentage of times the batter advanced at least one runner during a plate appearance  
 #Rnrns Adv w/Out = TOTAL number of runners advanced when the player made an out



# 00 ANDREA HOWARD

OF • 5-6 • 50.

ALBUQUERQUE, N.M. • LA CUEVA HS

## SINGLE-GAME HIGHS

Hits: 3, 2x, Last at Nevada, 3-24-18  
 Doubles: 1, 13x, Last vs. CSU, 3-22-19  
 Triples: 1, 3x, Last at San Diego State, 3-17-19  
 Home runs: 1, 9x, Last vs. Oregon State, 3-8-19  
 Total bases: 7, at Nevada, 3-24-18  
 RBI: 4, at Nevada, 3-24-18  
 Runs scored: 3, 3x, Last vs UTEP, 2-8-19  
 Walks: 4, UTEP, 2-8-19  
 Hit by pitch: 1, 2x, Last vs. Alabama, 2-15-19

Struck out: 3, 3x, Last vs. Florida, 2-28-19  
 Sac flies: 1, 2x, at Colorado State, 4-8-18  
 Sac bunts: 1, 3x, Last at Hawai'i, 2-23-19  
 At bats: 5, at Colorado State, 4-7-18  
 Stolen bases: 1, 4x, Last vs. WCU, 3-8-19  
 Putouts: 13, at UTEP, 4-16-18  
 Assists: 1, 8x, Last vs. Oregon State, 3-8-19

Named All-Mountain West Second Team in 2018

## CAREER STATS (AT UNM)

Year	avg	gp-gs	ab	r	h	2b	3b	hr	rbi	tb	slg%	bb	hbp	so	gdp	ob%	sf	sh	sb-att	po	a	e	fld%
2018	.313	51-50	131	20	41	6	1	7	18	70	.534	23	1	39	1	.414	2	2	3-4	296	5	4	.987
2019	.203	29-29	79	17	16	7	2	2	9	33	.418	17	1	26	0	.351	0	1	1-1	66	3	1	.986
TOTAL	.271	80-79	210	37	57	13	3	9	27	103	.490	40	2	65	1	.390	2	3	4-5	362	8	5	.987

## 2019 GAME-BY-GAME

Date	Opponent	Pos	AB	R	H	RBI	2B	3B	HR	BB	SB	CS	HBP	SAC	SF	GDP	K	PO	A	E	Avg
Feb 08	vs UTEP	*of	1	3	0	0	0	0	0	4	0	0	0	0	0	0	1	1	0	0	.000
Feb 09	vs Creighton	*of	2	2	1	0	0	0	0	1	0	0	0	0	0	0	0	4	0	0	.333
Feb 09	at New Mexico State	*of	4	2	2	3	1	0	1	0	0	0	0	0	0	0	2	5	0	0	.429
Feb 15	vs Alabama	*of	2	0	0	0	0	0	0	0	0	0	1	0	0	0	0	1	1	0	.333
Feb 15	vs Cal State Fullerton	*of	4	0	0	0	0	0	0	0	0	0	0	0	0	0	1	1	0	0	.231
Feb 16	at Arizona	*of	1	0	0	0	0	0	0	1	0	0	0	0	0	0	1	2	0	0	.214
Feb 16	vs Illinois-Chicago	*of	4	1	2	1	1	0	0	0	0	0	0	0	0	0	1	0	0	0	.278
Feb 17	vs South Florida	*of	3	0	0	0	0	0	0	1	0	0	0	0	0	0	1	1	0	0	.238
Feb 20	at Hawaii	*of	3	0	0	0	0	0	0	0	0	0	0	0	0	0	2	3	0	0	.208
Feb 21	vs DePaul	*of	3	0	0	0	0	0	0	1	0	0	0	0	0	0	0	4	0	0	.185
Feb 22	vs Canisius	*of	4	0	0	0	0	0	0	0	0	0	0	0	0	0	0	1	0	0	.161
Feb 22	at Hawaii	*of	4	0	2	0	1	0	0	0	0	0	0	0	0	0	0	4	0	0	.200
Feb 23	at Hawaii	*of	2	0	0	0	0	0	0	0	0	0	0	1	0	0	0	6	0	0	.189
Feb 23	vs DePaul	*of	3	0	0	0	0	0	0	0	0	0	0	0	0	0	1	0	0	0	.175
Feb 28	vs Florida	*of	3	0	0	0	0	0	0	0	0	0	0	0	0	0	3	0	0	0	.163
Mar 01	vs Loyola Marymount	*of	3	0	1	0	0	0	0	0	0	0	0	0	0	0	1	4	0	0	.174
Mar 01	vs Tennessee	*of	1	0	0	0	0	0	0	1	0	0	0	0	0	0	1	2	1	0	.170
Mar 03	vs UCONN	*of	3	0	0	0	0	0	0	0	0	0	0	0	0	0	2	2	0	0	.160
Mar 03	at Cal State Fullerton	*of	1	0	0	0	0	0	0	0	0	0	0	0	0	0	0	2	0	0	.157
Mar 08	vs Oregon State	*of	3	1	1	2	0	0	1	0	0	0	0	0	0	0	2	1	1	0	.167
Mar 08	vs Western Carolina	*of	1	1	0	0	0	0	0	2	1	0	0	0	0	0	0	1	0	0	.164
Mar 09	vs Oregon State	*of	3	1	2	1	1	1	0	1	0	0	0	0	0	0	1	2	0	0	.190
Mar 10	at Loyola Marymount	*of	3	0	1	0	1	0	0	1	0	0	0	0	0	0	1	2	0	0	.197
Mar 15	at San Diego State	*of	1	1	0	0	0	0	0	3	0	0	0	0	0	0	1	4	0	0	.194
Mar 16	at San Diego State	*of	3	1	1	1	1	0	0	1	0	0	0	0	0	0	1	3	0	0	.200
Mar 17	at San Diego State	*of	4	1	1	0	0	1	0	0	0	0	0	0	0	0	0	2	0	0	.203
Mar 22	COLORADO STATE	*of	4	2	2	1	1	0	0	0	0	0	0	0	0	0	1	4	0	1	.219
Mar 23	COLORADO STATE	*of	3	0	0	0	0	0	0	0	0	0	0	0	0	0	1	2	0	0	.211
Mar 24	COLORADO STATE	*of	3	1	0	0	0	0	0	0	0	0	0	0	0	0	1	2	0	0	.203
Totals			29gs	79	17	16	9	7	2	2	17	1	0	1	1	0	26	66	3	1	.203

On base pct. .351 • Slugging pct. .418



**2 MAGGIE BUCKHOLZ** *UT • 5-7 • FR.*  
*SILVERTON, ORE. • SILVERTON HS*

**SINGLE-GAME HIGHS**

Hits: 3, Illinois-Chicago, 2-16-19  
 Doubles: 1, Western Carolina, 3-8-19  
 Triples: 1, Illinois-Chicago, 2-16-19  
 Home runs: 1, 2x, Last at Hawai'i, 2-23-19  
 Total bases: 8, Illinois-Chicago, 2-16-19  
 Runs scored: 2, 2x, Last vs. WCU, 3-8-19  
 RBI: 7, Illinois-Chicago, 2-16-19  
 Walks: 3, Cal State Fullerton, 2-15-19  
 Hit by pitch: 1, at LMU, 3-10-19

Struck out: 3, UConn, 3-3-19  
 Sac bunts:  
 At bats: 4, Illinois-Chicago, 2-16-19  
 Caught Stealing: 1, UTEP, 2-8-19  
 Putouts: 4, 2x, Last vs. Florida, 2-28-19  
 Assists: 1, Alabama, 2-15-19

**CAREER STATS (AT UNM)**

Year	avg	gp-gs	ab	r	h	2b	3b	hr	rbi	tb	slg%	bb	hbp	so	gdp	ob%	sf	sh	sb-att	po	a	e	fld%
2019	.226	24-22	53	9	12	1	1	2	17	21	.396	17	1	26	0	.423	0	0	0-1	23	0	1	.958
TOTAL	.226	24-22	53	9	12	1	1	2	17	21	.396	17	1	26	0	.423	0	0	0-1	23	0	1	.958

**2019 GAME-BY-GAME**

Date	Opponent	Pos	AB	R	H	RBI	2B	3B	HR	BB	SB	CS	HBP	SAC	SF	GDP	K	PO	A	E	Avg
Feb 08	vs UTEP	*of	3	1	1	3	0	0	0	2	0	1	0	0	0	0	0	1	0	0	.333
Feb 09	vs Creighton	*of	2	0	0	0	0	0	0	0	0	0	0	0	0	0	1	1	0	0	.200
Feb 09	at New Mexico State	ph	0	1	0	0	0	0	0	1	0	0	0	0	0	0	0	0	0	0	.200
Feb 15	vs Alabama	*of	2	0	0	0	0	0	0	1	0	0	0	0	0	0	2	2	0	0	.143
Feb 15	vs Cal State Fullerton	*of	1	0	0	0	0	0	0	3	0	0	0	0	0	0	1	4	0	0	.125
Feb 16	at Arizona	*of	2	0	0	0	0	0	0	0	0	0	0	0	0	0	1	1	0	0	.100
Feb 16	vs Illinois-Chicago	*dh	4	2	3	7	0	1	1	0	0	0	0	0	0	0	0	0	0	0	.286
Feb 17	vs South Florida	*dh	2	0	1	0	0	0	0	1	0	0	0	0	0	0	1	0	0	0	.312
Feb 20	at Hawaii	*of	3	0	0	0	0	0	0	0	0	0	0	0	0	0	2	1	0	1	.263
Feb 21	vs DePaul	*dh	2	1	0	0	0	0	0	1	0	0	0	0	0	0	1	0	0	0	.238
Feb 22	vs Canisius	*of	2	0	2	2	0	0	0	1	0	0	0	0	0	0	0	1	0	0	.304
Feb 22	at Hawaii	*of	3	0	1	1	0	0	0	0	0	0	0	0	0	0	0	0	0	0	.308
Feb 23	at Hawaii	*of	3	1	1	3	0	0	1	0	0	0	0	0	0	0	0	1	0	0	.310
Feb 23	vs DePaul	*of	2	0	0	0	0	0	0	1	0	0	0	0	0	0	1	0	0	0	.290
Feb 28	vs Florida	*of	3	0	1	0	0	0	0	0	0	0	0	0	0	0	2	4	0	0	.294
Mar 01	vs Loyola Marymount	*of	2	1	1	0	0	0	0	2	0	0	0	0	0	0	1	2	0	0	.306
Mar 01	vs Tennessee	*of	3	0	0	0	0	0	0	0	0	0	0	0	0	0	2	2	0	0	.282
Mar 03	vs UCONN	*of	3	0	0	0	0	0	0	1	0	0	0	0	0	0	3	1	0	0	.262
Mar 08	vs Oregon State	*dh	2	0	0	0	0	0	0	1	0	0	0	0	0	0	1	0	0	0	.250
Mar 08	vs Western Carolina	*of	2	2	1	1	1	0	0	1	0	0	0	0	0	0	0	1	0	0	.261
Mar 09	vs Oregon State	*of	2	0	0	0	0	0	0	0	0	0	0	0	0	0	2	1	0	0	.250
Mar 10	at Loyola Marymount	*dh	2	0	0	0	0	0	0	1	0	0	1	0	0	0	2	0	0	0	.240
Mar 15	at San Diego State	*dh	2	0	0	0	0	0	0	0	0	0	0	0	0	0	2	0	0	0	.231
Mar 16	at San Diego State	ph	1	0	0	0	0	0	0	0	0	0	0	0	0	0	1	0	0	0	.226
Totals		22gs	53	9	12	17	1	1	2	17	0	1	1	0	0	0	26	23	0	1	.226

On base pct. .423 • Slugging pct. .396



# 3 TAYLOR JONES

IF • 5-7 • 50.

ALBUQUERQUE, N.M. • LA CUEVA HS

## SINGLE-GAME HIGHS

Hits: 2, 3x, Last vs. Colorado State, 3-22-19  
 Doubles: 1, 3x, Last at Boise State, 5-12-18  
 Home runs: 1, 2x, Last vs. CSU, 3-22-19  
 Total bases: 6, at Boise State, 5-12-18  
 RBI: 3, Howard, 3-10-18  
 Runs scored: 2, at Boise State, 5-12-18  
 Walks: 1, 6x, Last vs. DePaul, 2-23-19  
 Struck out: 2, 9x, Last at SDSU, 3-17-19  
 Sac flies: 1, Howard, 3-10-18

Sac bunts: 1, 2x, Last at Nevada, 3-24-18  
 At bats: 4, 4x, Last vs. Colorado State, 3-22-19  
 Stolen bases: 1, Howard, 3-10-18  
 Putouts: 11, San Diego State, 3-15-19  
 Assists: 5, South Florida, 2-17-19

## CAREER STATS (AT UNM)

Year	avg	gp-gs	ab	r	h	2b	3b	hr	rbi	tb	slg%	bb	hbp	so	gdp	ob%	sf	sh	sb-att	po	a	e	fld%
2018	.216	24-11	37	6	8	3	0	1	4	14	.378	0	0	13	0	.211	1	2	1-1	8	6	2	.875
2019	.191	23-16	47	4	9	0	0	1	3	12	.255	6	0	17	0	.283	0	0	0-0	67	17	3	.966
TOTAL	.202	47-27	84	10	17	3	0	2	7	26	.310	6	0	30	0	.253	1	2	1-1	75	23	5	.951

## 2019 GAME-BY-GAME

Date	Opponent	Pos	AB	R	H	RBI	2B	3B	HR	BB	SB	CS	HBP	SAC	SF	GDP	K	PO	A	E	Avg
Feb 08	vs UTEP	*1b	4	0	0	0	0	0	0	1	0	0	0	0	0	0	2	6	0	0	.000
Feb 09	vs Creighton	*2b	2	0	0	0	0	0	0	0	0	0	0	0	0	0	2	2	1	0	.000
Feb 15	vs Alabama	ph	1	0	0	0	0	0	0	0	0	0	0	0	0	0	0	0	0	0	.000
Feb 15	vs Cal State Fullerton	*1b	2	0	0	0	0	0	0	1	0	0	0	0	0	0	1	5	0	1	.000
Feb 16	at Arizona	ss	1	0	1	0	0	0	0	0	0	0	0	0	0	0	0	0	0	0	.100
Feb 16	vs Illinois-Chicago	*2b	3	1	1	1	0	0	0	1	0	0	0	0	0	0	0	1	3	0	.154
Feb 17	vs South Florida	*2b	2	0	0	0	0	0	0	1	0	0	0	0	0	0	2	3	5	0	.133
Feb 20	at Hawaii	ph	1	0	0	0	0	0	0	0	0	0	0	0	0	0	0	0	0	0	.125
Feb 21	vs DePaul	ph	0	0	0	0	0	0	0	1	0	0	0	0	0	0	0	0	0	0	.125
Feb 22	vs Canisius	*1b	2	0	0	0	0	0	0	0	0	0	0	0	0	0	0	4	0	0	.111
Feb 22	at Hawaii	pr	0	0	0	0	0	0	0	0	0	0	0	0	0	0	0	0	0	0	.111
Feb 23	vs DePaul	ph	0	0	0	0	0	0	0	1	0	0	0	0	0	0	0	0	0	0	.111
Feb 28	vs Florida	*1b	2	0	0	0	0	0	0	0	0	0	0	0	0	0	2	8	0	0	.100
Mar 01	vs Loyola Marymount	*1b	2	0	0	0	0	0	0	0	0	0	0	0	0	0	1	2	0	0	.091
Mar 03	at Cal State Fullerton	*1b/ss	2	0	0	0	0	0	0	0	0	0	0	0	0	0	1	2	2	0	.083
Mar 08	vs Oregon State	*1b	3	1	1	0	0	0	0	0	0	0	0	0	0	0	1	9	1	0	.111
Mar 08	vs Western Carolina	*1b	2	1	0	0	0	0	0	0	0	0	0	0	0	0	0	3	0	0	.103
Mar 10	at Loyola Marymount	1b/ph	1	0	1	0	0	0	0	0	0	0	0	0	0	0	0	0	0	0	.133
Mar 15	at San Diego State	*1b	3	0	2	0	0	0	0	0	0	0	0	0	0	0	1	11	1	0	.182
Mar 16	at San Diego State	*2b	4	0	1	1	0	0	0	0	0	0	0	0	0	0	1	1	2	1	.189
Mar 17	at San Diego State	*1b/2b	4	0	0	0	0	0	0	0	0	0	0	0	0	0	2	3	0	0	.171
Mar 22	COLORADO STATE	*1b	4	1	2	1	0	0	1	0	0	0	0	0	0	0	1	7	0	1	.200
Mar 23	COLORADO STATE	*2b	2	0	0	0	0	0	0	0	0	0	0	0	0	0	0	0	2	0	.191
Totals		16gs	47	4	9	3	0	0	1	6	0	0	0	0	0	0	17	67	17	3	.191

On base pct. .283 • Slugging pct. .255





# 4 D'ANDRA DeFLORA

OF • 5-1 • SR.

FRESNO, TEXAS • L.V. HIGHTOWER HS

## SINGLE-GAME HIGHS

Hits: 4, Howard, 3-10-18  
 Doubles: 2, 2x, Last vs Northern Colo., 3-4-17  
 Triples: 1, vs Stephen F. Austin, 2-17-17  
 Home runs: 2, at Utah State, 4-22-17  
 Total bases: 8, at Utah State, 4-22-17  
 RBI: 5, at Utah State, 4-22-17  
 Runs scored: 3, 4x, Last at SDSU, 3-16-19  
 Walks: 3, vs George Washington, 2-23-18  
 Hit by pitch: 3, NMSU, 3-21-18

Struck out: 3, 2x, Last at Colorado State, 4-7-18  
 Sac flies: 1, at UTEP, 3-15-16  
 Sac bunts: 1, 16x, Last vs Fresno State, 3-29-18  
 At bats: 5, 4x, Last at Colorado State, 4-7-18  
 Stolen bases: 3, Santa Clara, 3-11-17  
 Caught stealing: 1, 5x, Last vs. Bowling Green, 3-3-18  
 Putouts: 5, 5x, Last vs. Colorado State, 3-24-19  
 Assists: 2, Nevada, 4-8-17

## CAREER STATS (AT UNM)

Year	avg	gp-gs	ab	r	h	2b	3b	hr	rbi	tb	slg%	bb	hbp	so	gdp	ob%	sf	sh	sb-att	po	a	e	fld%
2016	.224	30-25	76	10	17	2	0	0	4	19	.250	4	2	10	0	.277	1	3	1-1	17	1	2	.900
2017	.247	49-49	146	29	36	9	1	5	23	62	.425	7	6	16	0	.308	0	9	6-7	85	13	3	.970
2018	.214	53-53	145	22	31	3	0	7	21	55	.379	11	9	41	3	.309	0	4	2-6	88	7	3	.969
2019	.268	29-29	82	22	22	4	0	1	8	29	.354	10	5	30	1	.381	0	0	0-0	42	1	1	.977
TOTAL	.236	161-156	449	83	106	18	1	13	56	165	.367	32	22	97	4	.317	1	16	9-14	232	22	9	.966

## 2019 GAME-BY-GAME

Date	Opponent	Pos	AB	R	H	RBI	2B	3B	HR	BB	SB	CS	HBP	SAC	SF	GDP	K	PO	A	E	Avg
Feb 08	vs UTEP	*of	3	2	1	0	0	0	0	0	0	0	1	0	0	0	0	0	0	0	.333
Feb 09	vs Creighton	*of	2	2	1	3	1	0	0	1	0	0	0	0	0	0	1	1	0	0	.400
Feb 09	at New Mexico State	*of	4	2	3	1	1	0	0	0	0	0	0	0	0	0	0	2	0	0	.556
Feb 15	vs Alabama	*of	3	0	1	0	0	0	0	0	0	0	0	0	0	0	2	1	0	0	.500
Feb 15	vs Cal State Fullerton	*of	3	1	1	0	0	0	0	1	0	0	0	0	0	0	1	0	1	0	.467
Feb 16	at Arizona	*of	2	0	1	0	0	0	0	0	0	0	0	0	0	0	1	0	0	0	.471
Feb 16	vs Illinois-Chicago	*of	3	1	1	0	0	0	0	1	0	0	0	0	0	0	0	0	0	0	.450
Feb 17	vs South Florida	*of	3	1	1	0	0	0	0	1	0	0	0	0	0	0	1	0	0	0	.435
Feb 20	at Hawaii	*of	2	1	1	0	0	0	0	0	0	0	1	0	0	0	1	5	0	0	.440
Feb 21	vs DePaul	*of	4	0	0	0	0	0	0	0	0	0	0	0	0	0	1	2	2	0	.379
Feb 22	vs Canisius	*of	2	3	1	0	0	0	0	1	0	0	0	0	0	0	0	2	0	0	.387
Feb 22	at Hawaii	*of	3	0	0	0	0	0	0	0	0	0	0	0	0	0	1	2	0	0	.353
Feb 23	at Hawaii	*of	3	0	0	0	0	0	0	0	0	0	0	0	0	0	1	0	0	0	.324
Feb 23	vs DePaul	*of	4	0	1	0	1	0	0	0	0	0	0	0	0	0	2	4	0	0	.317
Feb 28	vs Florida	*of	3	0	0	0	0	0	0	0	0	0	0	0	0	0	2	1	0	0	.295
Mar 01	vs Loyola Marymount	*of	4	0	1	0	0	0	0	0	0	0	0	0	0	0	2	2	0	0	.292
Mar 01	vs Tennessee	*of	2	1	2	1	0	0	1	0	0	0	0	0	0	0	0	3	0	0	.320
Mar 03	vs UCONN	*of	2	0	0	0	0	0	0	1	0	0	0	0	0	0	0	0	0	0	.308
Mar 03	at Cal State Fullerton	*of	1	0	0	0	0	0	0	0	0	0	0	0	0	0	1	1	0	0	.302
Mar 08	vs Oregon State	*of	4	1	2	3	0	0	0	0	0	0	0	0	0	0	1	4	0	0	.316
Mar 08	vs Western Carolina	*of	2	1	0	0	0	0	0	0	0	0	1	0	0	0	0	1	0	0	.305
Mar 09	vs Oregon State	*of	3	1	0	0	0	0	0	1	0	0	0	0	0	0	1	2	0	0	.290
Mar 10	at Loyola Marymount	*of	3	0	0	0	0	0	0	0	0	0	0	0	0	0	3	0	0	0	.277
Mar 15	at San Diego State	*of	3	1	1	0	0	0	0	0	0	0	1	0	0	0	2	0	0	0	.279
Mar 16	at San Diego State	*of	2	3	0	0	0	0	0	1	0	0	1	0	0	0	1	0	0	0	.271
Mar 17	at San Diego State	*of	4	0	0	0	0	0	0	0	0	0	0	0	0	0	1	0	0	0	.257
Mar 22	COLORADO STATE	*of	2	1	0	0	0	0	0	2	0	0	0	0	0	0	2	2	0	0	.250
Mar 23	COLORADO STATE	*of	3	0	1	0	1	0	0	0	0	0	0	0	0	0	1	2	0	0	.253
Mar 24	COLORADO STATE	*of	3	0	2	0	0	0	0	0	0	0	0	0	0	0	0	5	0	1	.268
Totals			29gs	82	22	22	8	4	0	1	10	0	5	0	0	0	30	42	1	1	.268

On base pct. .381 • Slugging pct. .354



# 5 SYDNEY BRODERICK

**C • 5-4 • SO.**

**MESA, ARIZ. • DESERT RIDGE HS**

## SINGLE-GAME HIGHS

Hits: 3, St. Mary's, 3-10-18  
 Doubles: 1, 3x, Last vs. Colorado State, 3-23-19  
 Total bases: 4, St. Mary's, 3-10-18  
 RBI: 2, Howard, 3-10-18  
 Runs scored: 1, 7x, Last vs. DePaul, 2-21-19  
 Walks: 1, 7x, Last vs. DePaul, 2-21-19  
 Hit by pitch: 1, vs Oregon, 2-11-18  
 Struck out: 3, at Colorado State, 4-8-18  
 Sac flies: 1, at Nevada, 3-24-18

Sac bunts: 1, 2x, Last vs UTSA, 3-2-18  
 At bats: 4, 3x, Last at Colorado State, 4-7-18  
 Putouts: 10, at Colorado State, 4-7-18  
 Assists: 3, at UTEP, 4-16-18  
 Runners CS: 2, Utah State, 4-21-18

## CAREER STATS (AT UNM)

Year	avg	gp-gs	ab	r	h	2b	3b	hr	rbi	tb	slg%	bb	hbp	so	gdp	ob%	sf	sh	sb-att	po	a	e	fld%
2018	.230	42-36	87	6	20	2	0	0	5	22	.253	6	1	12	2	.284	1	2	0-0	118	12	6	.956
2019	.077	14-11	26	1	2	1	0	0	0	3	.115	1	0	10	1	.111	0	0	0-0	36	9	0	1.000
TOTAL	.195	56-47	113	7	22	3	0	0	5	25	.221	7	1	22	3	.246	1	2	0-0	154	21	6	.967

## 2019 GAME-BY-GAME

Date	Opponent	Pos	AB	R	H	RBI	2B	3B	HR	BB	SB	CS	HBP	SAC	SF	GDP	K	PO	A	E	Avg
Feb 08	vs UTEP	ph	1	0	0	0	0	0	0	0	0	0	0	0	0	1	0	0	0	0	.000
Feb 09	vs Creighton	*c	2	0	0	0	0	0	0	0	0	0	0	0	0	0	2	2	0	0	.000
Feb 15	vs Alabama	*c	3	0	0	0	0	0	0	0	0	0	0	0	0	0	0	1	0	0	.000
Feb 16	at Arizona	*c	2	0	0	0	0	0	0	0	0	0	0	0	0	0	2	1	1	0	.000
Feb 17	vs South Florida	*c	2	0	0	0	0	0	0	0	0	0	0	0	0	0	1	5	2	0	.000
Feb 20	at Hawaii	*c	2	0	0	0	0	0	0	0	0	0	0	0	0	0	0	3	1	0	.000
Feb 21	vs DePaul	*c	1	1	0	0	0	0	0	1	0	0	0	0	0	0	1	3	1	0	.000
Feb 22	vs Canisius	ph	1	0	0	0	0	0	0	0	0	0	0	0	0	0	0	0	0	0	.000
Feb 23	at Hawaii	*c	2	0	0	0	0	0	0	0	0	0	0	0	0	0	1	7	0	0	.000
Mar 01	vs Loyola Marymount	ph	1	0	0	0	0	0	0	0	0	0	0	0	0	0	1	0	0	0	.000
Mar 01	vs Tennessee	*c	2	0	0	0	0	0	0	0	0	0	0	0	0	0	1	1	1	0	.000
Mar 03	vs UCONN	*c	2	0	1	0	0	0	0	0	0	0	0	0	0	0	0	5	2	0	.048
Mar 16	at San Diego State	*c	3	0	0	0	0	0	0	0	0	0	0	0	0	0	1	5	1	0	.042
Mar 23	COLORADO STATE	*c	2	0	1	0	1	0	0	0	0	0	0	0	0	0	0	3	0	0	.077
Totals		11gs	26	1	2	0	1	0	0	1	0	0	0	0	0	1	10	36	9	0	.077

On base pct. .111 • Slugging pct. .115



**7 MacKENZIE PETERSON**

**OF • 5-9 • FR.**  
**GILBERT, ARIZ. • PHOENIX COLLEGE**

**SINGLE-GAME HIGHS**

Hits: 1, 4x, Last vs. CSU, 3-24-19  
 Doubles:  
 Total bases: 1, 4x, Last vs. CSU, 3-24-19  
 RBI: 1, Colorado State, 3-24-19  
 Runs scored: 1, 2x, Last vs. Oregon St., 3-9-19  
 Walks: 2, 2x, Last vs. Oregon St., 3-9-19  
 Hit by Pitch: 1, Oregon St., 3-9-19  
 Struck out: 1, 4x, Last vs. Oregon St., 3-9-19  
 Sac bunts:

At bats: 4, Illinois-Chicago, 2-16-19  
 Stolen bases:  
 Caught stealing:  
 Putouts: 10, Oregon State, 3-9-19  
 Assists: 1, Illinois-Chicago, 2-16-19

**CAREER STATS (AT UNM)**

Year	avg	gp-gs	ab	r	h	2b	3b	hr	rbi	tb	slg%	bb	hbp	so	gdp	ob%	sf	sh	sb-att	po	a	e	fld%
2019	.190	14-7	21	2	4	0	0	0	1	4	.190	5	1	4	0	.370	0	0	0-0	49	1	1	.980
TOTAL	.190	14-7	21	2	4	0	0	0	1	4	.190	5	1	4	0	.370	0	0	0-0	49	1	1	.980

**2019 GAME-BY-GAME**

Date	Opponent	Pos	AB	R	H	RBI	2B	3B	HR	BB	SB	CS	HBP	SAC	SF	GDP	K	PO	A	E	Avg
Feb 09	at New Mexico State	*1b	3	0	1	0	0	0	0	0	0	0	0	0	0	0	0	2	0	0	.333
Feb 16	at Arizona	1b	1	0	0	0	0	0	0	0	0	0	0	0	0	0	0	1	0	0	.250
Feb 16	vs Illinois-Chicago	*1b	4	0	1	0	0	0	0	0	0	0	0	0	0	0	0	7	1	1	.250
Feb 17	vs South Florida	ph/1b	1	0	0	0	0	0	0	0	0	0	0	0	0	0	0	1	0	0	.222
Feb 22	vs Canisius	ph/1b	1	0	0	0	0	0	0	0	0	0	0	0	0	0	0	2	0	0	.200
Feb 22	at Hawaii	*1b	2	0	0	0	0	0	0	1	0	0	0	0	0	0	0	6	0	0	.167
Feb 23	vs DePaul	*1b	1	1	0	0	0	0	0	2	0	0	0	0	0	0	0	6	0	0	.154
Feb 28	vs Florida	ph	1	0	0	0	0	0	0	0	0	0	0	0	0	0	0	1	0	0	.143
Mar 03	at Cal State Fullerton	1b	1	0	0	0	0	0	0	0	0	0	0	0	0	0	0	1	1	0	.133
Mar 08	vs Western Carolina	1b	0	0	0	0	0	0	0	0	0	0	0	0	0	0	0	3	0	0	.133
Mar 09	vs Oregon State	*1b	1	1	0	0	0	0	0	2	0	0	1	0	0	0	1	10	0	0	.125
Mar 10	at Loyola Marymount	*1b	2	0	0	0	0	0	0	0	0	0	0	0	0	0	0	6	0	0	.111
Mar 17	at San Diego State	ph/1b	1	0	1	0	0	0	0	0	0	0	0	0	0	0	0	1	0	0	.158
Mar 24	COLORADO STATE	*1b	2	0	1	1	0	0	0	0	0	0	0	0	0	0	0	4	0	0	.190
Totals		7gs	21	2	4	1	0	0	0	5	0	0	1	0	0	0	4	49	1	1	.190

On base pct. .370 • Slugging pct. .190



# 8 BAILEY KLITZKE

**P/1B • 5-8 • JR.**  
**APACHE JUNCTION, ARIZ. • WICHITA ST.**

## SINGLE-GAME HIGHS

Hits: 4, UTEP, 2-8-19  
 Doubles: 1, 3x, Last vs. LMU, 3-1-19  
 Triples: 1, 2x, Last at SDSU, 3-17-19  
 Total bases: 4, 3x, Last at SDSU, 3-17-19  
 RBI: 4, UTEP, 2-8-19  
 Runs scored: 2, Canisius, 2-22-19  
 Walks: 1, 9x, Last at SDSU, 3-17-19  
 Struck out: 1, 4x, Last at Hawai'i, 2-22-19  
 Sac bunts: 1, at Texas, 2-23-18 (at WSU)  
 Sac fly: 1, 3x, Last vs. CSU, 3-22-19

At bats: 5, UTEP, 2-8-19  
 Stolen bases: 1, 2x, Last vs. UConn, 3-3-19  
 Innings pitched: 6.0, Illinois-Chicago, 2-16-19  
 Walks allowed: 7, 2x, Last at CSUF, 3-3-19  
 Strikeouts: 8, 2x, Last vs. Illinois-Chicago, 2-16-19  
 Batters faced: 32, Illinois-Chicago, 2-16-19  
 Putouts: 1, 2x, Last at Arizona, 2-16-19  
 Assists: 3, at Okla. St., 3-27-18 (at WSU)  
 Runners CS: 1, 6x, Last at NMSU, 2-9-19  
 Fewest hits allowed (3.0 IP min.): 5, UTEP, 2-8-19

## CAREER STATS (AT UNM)

Year	avg	qp-gs	ab	r	h	2b	3b	hr	rbi	tb	slq%	bb	hbp	so	qdp	ob%	sf	sh	sb-att	po	a	e	fld%
2019	.386	23-21	57	5	22	3	2	0	15	29	.509	9	0	5	1	.449	3	0	2-2	1	3	0	1.000
TOTAL	.386	23-21	57	5	22	3	2	0	15	29	.509	9	0	5	1	.449	3	0	2-2	1	3	0	1.000

Year	era	w-l	app	gs	cq	sho	sv	ip	h	r	er	bb	so	2b	3b	hr	bf	bavg	wp	hbp	bk	sfa	sha
2019	12.06	2-3	11	5	1	0/0	0	18.0	27	35	31	33	22	6	2	5	117	.338	10	3	0	0	1
TOTAL	12.06	2-3	11	5	1	0/0	0	18.0	27	35	31	33	22	6	2	5	117	.338	10	3	0	0	1

## 2019 GAME-BY-GAME

Date	Opponent	Pos	AB	R	H	RBI	2B	3B	HR	BB	SB	CS	HBP	SAC	SF	GDP	K	PO	A	E	Avg
Feb 08	vs UTEP	*p/dh	5	0	4	4	0	0	0	0	0	0	0	0	0	0	0	0	1	0	.800
Feb 09	vs Creighton	*dh	1	1	1	0	0	0	0	1	0	0	0	0	0	0	0	0	0	0	.833
Feb 09	at New Mexico State	*dh/p	2	0	0	1	0	0	0	1	0	0	0	0	1	0	0	0	0	0	.625
Feb 15	vs Alabama	*dh	3	0	1	0	0	0	0	0	0	0	0	0	0	0	0	0	0	0	.545
Feb 15	vs Cal State Fullerton	*p/dh	3	0	1	0	1	0	0	1	0	0	0	0	0	0	1	0	0	0	.500
Feb 16	at Arizona	*dh/p	2	0	0	0	0	0	0	0	0	0	0	0	0	0	1	1	0	0	.438
Feb 16	vs Illinois-Chicago	*p	0	0	0	0	0	0	0	0	0	0	0	0	0	0	0	0	2	0	.438
Feb 17	vs South Florida	ph	1	0	0	0	0	0	0	0	0	0	0	0	0	0	0	0	0	0	.412
Feb 20	at Hawaii	*dh	3	0	1	0	0	0	0	0	0	0	0	0	0	0	0	0	0	0	.400
Feb 22	vs Canisius	*dh	2	2	2	2	0	1	0	0	1	0	0	0	0	0	0	0	0	0	.455
Feb 22	at Hawaii	*dh	3	0	0	0	0	0	0	0	0	0	0	0	0	0	1	0	0	0	.400
Feb 23	at Hawaii	*dh	2	1	1	0	1	0	0	1	0	0	0	0	0	0	0	0	0	0	.407
Feb 23	vs DePaul	*dh	3	0	1	0	0	0	0	0	0	0	0	0	0	0	0	0	0	0	.400
Feb 28	vs Florida	*dh	3	0	2	0	0	0	0	0	0	0	0	0	0	1	0	0	0	0	.424
Mar 01	vs Loyola Marymount	*dh/p	3	0	1	2	1	0	0	0	1	0	0	0	0	0	0	0	0	0	.417
Mar 01	vs Tennessee	*dh	2	0	0	0	0	0	0	1	0	0	0	0	0	0	1	0	0	0	.395
Mar 03	vs UCONN	*dh	2	0	1	1	0	0	0	1	0	0	0	0	1	0	0	0	0	0	.400
Mar 03	at Cal State Fullerton	*dh/p	1	0	0	0	0	0	0	1	0	0	0	0	0	0	0	0	0	0	.390
Mar 15	at San Diego State	ph	1	0	1	0	0	0	0	0	0	0	0	0	0	0	0	0	0	0	.405
Mar 16	at San Diego State	*dh	3	0	1	1	0	0	0	1	0	0	0	0	0	0	0	0	0	0	.400
Mar 17	at San Diego State	*p/dh	3	0	2	1	0	1	0	1	0	0	0	0	0	0	0	0	0	0	.417
Mar 22	COLORADO STATE	*dh	3	0	1	2	0	0	0	0	0	0	0	0	1	0	0	0	0	0	.412
Mar 23	COLORADO STATE	*dh/p	3	0	0	0	0	0	0	0	0	0	0	0	0	0	0	0	0	0	.389
Mar 24	COLORADO STATE	*p/dh	3	1	1	1	0	0	0	0	0	0	0	0	0	0	1	0	0	0	.386
Totals			22gs	57	5	22	15	3	2	0	9	2	0	0	3	1	5	1	3	0	.386

On base pct. .449 • Slugging pct. .509

### #8 KLITZKE, Bailey - 11 appearances (All games)

Date	Opponent	GS	IP	H	R	ER	BB	SO	2B	3B	HR	WP	BK	HBP	IBB	Score	W-L	Sv	ERA	NP
Feb 08	vs UTEP	*	5.0	5	5	5	7	8	2	0	1	2	0	1	0	15-6	1-0	0	7.00	120
Feb 09	at New Mexico State		1.0	3	4	2	2	1	1	0	1	3	0	0	0	8-9	1-1	0	8.17	26
Feb 15	vs Cal State Fullerton	*	0.0	1	2	2	1	0	0	0	1	1	0	0	0	2-6	1-1	0	10.50	12
Feb 16	at Arizona		2.0	3	2	1	1	1	1	0	1	0	0	0	0	1-15	1-1	0	8.75	29
Feb 16	vs Illinois-Chicago	*	6.0	7	5	4	5	8	1	2	0	2	0	1	0	13-5	2-1	0	7.00	131
Feb 21	vs DePaul		0.2	2	4	4	2	1	0	0	0	1	0	0	0	5-9	2-1	0	8.59	24
Mar 01	vs Loyola Marymount		1.2	1	3	3	6	2	0	0	0	0	0	0	0	2-4	2-2	0	9.00	54
Mar 03	at Cal State Fullerton		0.1	1	6	6	7	1	0	0	0	1	0	0	0	1-19	2-2	0	11.34	41
Mar 17	at San Diego State	*	0.1	0	0	0	1	0	0	0	0	0	0	1	0	3-4	2-2	0	11.12	14
Mar 23	COLORADO STATE		0.2	0	0	0	1	0	0	0	0	0	0	0	0	1-9	2-2	0	10.70	10
Mar 24	COLORADO STATE	*	0.1	4	4	4	0	0	1	0	1	0	0	0	0	3-16	2-3	0	12.06	16
Totals			5	18.0	27	35	31	33	22	6	2	5	10	0	3	0 54-102	2-3	0	12.06	-



# 9 KASEY HALLEEN

**IF • 5-6 • SR.**  
**TORRANCE, CALIF. • PALOS VERDES HS**

### SINGLE-GAME HIGHS

Hits: 2, 3x, Last vs. UConn, 3-3-19  
 Doubles: 1, 7x, Last vs. UConn, 3-3-19  
 Total bases: 3, 2x, Last vs. UConn, 3-3-19  
 RBI: 2, 4x, Last vs. WCU, 3-8-19  
 Runs scored: 1, 22x, Last vs. WCU, 3-8-19  
 Walks: 1, 18x, Last at Cal State Fullerton, 3-3-19  
 Hit by pitch: 1, 2x, Last at Fresno State, 3-29-18  
 Struck out: 2, 11x, Last vs. Oregon State, 3-9-19  
 Sac flies: 1, 2x, Last at Nevada, 3-24-18

Sac bunts: 1, 3x, Last vs DePaul, 3-19-16  
 At bats: 5, at Colorado State, 4-7-18  
 Stolen bases: 1, George Washington, 2-23-18  
 Putouts: 14, at UC Davis, 2-28-16  
 Assists: 8, Boise State, 5-11-17

### CAREER STATS (AT UNM)

Year	avg	gp-gs	ab	r	h	2b	3b	hr	rbi	tb	slg%	bb	hbp	so	gdp	ob%	sf	sh	sb-att	po	a	e	fld%
2016	.171	24-13	41	4	7	0	0	0	3	7	.171	4	0	13	0	.244	0	1	0-0	71	14	3	.966
2017	.136	22-19	44	3	6	1	0	0	0	7	.159	1	0	7	0	.156	0	2	0-0	40	48	6	.936
2018	.189	49-49	127	13	24	5	0	0	10	29	.228	10	2	32	0	.255	2	0	1-1	75	87	14	.920
2019	.188	16-14	32	3	6	1	0	0	2	7	.219	3	0	11	0	.257	0	0	0-0	23	19	2	.955
<b>TOTAL</b>	<b>.176</b>	<b>111-95</b>	<b>244</b>	<b>23</b>	<b>43</b>	<b>7</b>	<b>0</b>	<b>0</b>	<b>15</b>	<b>50</b>	<b>.205</b>	<b>18</b>	<b>2</b>	<b>63</b>	<b>0</b>	<b>.237</b>	<b>2</b>	<b>3</b>	<b>1-1</b>	<b>209</b>	<b>168</b>	<b>25</b>	<b>.938</b>

### 2019 GAME-BY-GAME

Date	Opponent	Pos	AB	R	H	RBI	2B	3B	HR	BB	SB	CS	HBP	SAC	SF	GDP	K	PO	A	E	Avg
Feb 08	vs UTEP	*2b	1	1	0	0	0	0	0	1	0	0	0	0	0	0	0	1	0	0	.000
Feb 09	at New Mexico State	2b	1	0	0	0	0	0	0	0	0	0	0	0	0	0	1	0	0	0	.000
Feb 15	vs Alabama	*2b	2	0	0	0	0	0	0	0	0	0	0	0	0	0	0	3	2	0	.000
Feb 15	vs Cal State Fullerton	*2b	2	0	1	0	0	0	0	1	0	0	0	0	0	0	1	3	2	0	.167
Feb 16	at Arizona	*2b	1	0	0	0	0	0	0	0	0	0	0	0	0	0	1	0	0	0	.143
Feb 20	at Hawaii	*2b	2	0	0	0	0	0	0	0	0	0	0	0	0	0	1	0	1	0	.111
Feb 28	vs Florida	*2b	3	0	0	0	0	0	0	0	0	0	0	0	0	0	1	0	3	0	.083
Mar 01	vs Loyola Marymount	*2b	2	0	0	0	0	0	0	0	0	0	0	0	0	0	0	2	1	0	.071
Mar 01	vs Tennessee	*2b	2	0	0	0	0	0	0	0	0	0	0	0	0	0	1	0	1	0	.062
Mar 03	vs UCONN	*2b	3	0	2	0	1	0	0	0	0	0	0	0	0	0	0	4	1	0	.158
Mar 03	at Cal State Fullerton	*2b	1	0	0	0	0	0	0	1	0	0	0	0	0	0	0	4	3	0	.150
Mar 08	vs Oregon State	*2b	3	1	1	0	0	0	0	0	0	0	0	0	0	0	1	1	1	0	.174
Mar 08	vs Western Carolina	*2b	2	1	1	2	0	0	0	0	0	0	0	0	0	0	1	1	0	1	.200
Mar 09	vs Oregon State	*2b	3	0	0	0	0	0	0	0	0	0	0	0	0	0	2	1	1	1	.179
Mar 15	at San Diego State	2b	2	0	0	0	0	0	0	0	0	0	0	0	0	0	1	1	2	0	.167
Mar 17	at San Diego State	*2b	2	0	1	0	0	0	0	0	0	0	0	0	0	0	0	2	1	0	.188
<b>Totals</b>			<b>14gs</b>	<b>32</b>	<b>3</b>	<b>6</b>	<b>2</b>	<b>1</b>	<b>0</b>	<b>3</b>	<b>0</b>	<b>0</b>	<b>0</b>	<b>0</b>	<b>0</b>	<b>0</b>	<b>11</b>	<b>23</b>	<b>19</b>	<b>2</b>	<b>.188</b>

On base pct. .257 • Slugging pct. .219



# 10 CAMERYN O'GRADY

55 • 5-6 • JR.  
ORANGE, CALIF. • EL MODENA HS

## SINGLE-GAME HIGHS

Hits: 4, at Texas Tech, 3-2-18  
 Doubles: 2, 2x, Last vs. CSU, 3-24-19  
 Triples: 1, 5x, Last vs. Creighton, 2-9-19  
 Home runs: 1, 7x, Last at SDSU, 3-16-19  
 Total bases: 8, Creighton, 2-9-19  
 RBI: 4, 2x, Last at SDSU, 3-16-19  
 Runs scored: 4, at Texas Tech, 3-2-18  
 Walks: 3, 3x, Last vs UTEP, 2-8-19  
 Hit by pitch: 1, 6x, Last vs. LMU, 3-1-19

Struck out: 3, 6x, Last at SDSU, 3-15-19  
 Sac bunts: 1, 3x, Last Utah State, 4-22-18  
 At bats: 5, 2x, Last at Nevada, 3-24-18  
 Stolen bases: 2, vs George Washington, 2-23-18  
 Putouts: 5, 4x, Last at Boise State, 5-12-18  
 Assists: 8, at San Jose State, 4-27-18

## CAREER STATS (AT UNM)

Year	avg	gp-gs	ab	r	h	2b	3b	hr	rbi	tb	slg%	bb	hbp	so	gdp	ob%	sf	sh	sb-att	po	a	e	fld%
2017	.109	26-19	46	1	5	0	0	0	3	5	.109	3	0	12	0	.163	0	0	0-0	38	39	10	.885
2018	.301	53-52	143	31	43	12	4	4	26	75	.524	32	5	50	0	.444	0	3	4-4	101	118	18	.924
2019	.366	29-29	82	20	30	9	1	3	19	50	.610	20	1	16	0	.495	0	0	0-0	29	39	10	.872
<b>TOTAL</b>	<b>.288</b>	<b>108-100</b>	<b>271</b>	<b>52</b>	<b>78</b>	<b>21</b>	<b>5</b>	<b>7</b>	<b>48</b>	<b>130</b>	<b>.480</b>	<b>55</b>	<b>6</b>	<b>78</b>	<b>0</b>	<b>.419</b>	<b>0</b>	<b>3</b>	<b>4-4</b>	<b>168</b>	<b>196</b>	<b>38</b>	<b>.905</b>

## 2019 GAME-BY-GAME

Date	Opponent	Pos	AB	R	H	RBI	2B	3B	HR	BB	SB	CS	HBP	SAC	SF	GDP	K	PO	A	E	Avg
Feb 08	vs UTEP	*ss	2	3	1	2	0	0	0	3	0	0	0	0	0	0	1	1	2	0	.500
Feb 09	vs Creighton	*ss	3	2	3	4	0	1	1	0	0	0	0	0	0	0	0	2	1	0	.800
Feb 09	at New Mexico State	*ss	4	1	3	1	1	0	1	0	0	0	0	0	0	0	1	1	1	1	.778
Feb 15	vs Alabama	*ss	3	0	1	0	0	0	0	0	0	0	0	0	0	0	0	2	3	0	.667
Feb 15	vs Cal State Fullerton	*ss	2	1	1	0	0	0	0	2	0	0	0	0	0	0	0	1	1	1	.643
Feb 16	at Arizona	*ss	2	0	1	0	0	0	0	0	0	0	0	0	0	0	0	1	2	0	.625
Feb 16	vs Illinois-Chicago	*ss	3	3	1	2	1	0	0	1	0	0	0	0	0	0	0	1	2	0	.579
Feb 17	vs South Florida	*ss	4	0	1	1	1	0	0	0	0	0	0	0	0	0	1	0	2	1	.522
Feb 20	at Hawaii	*ss	2	0	1	0	0	0	0	1	0	0	0	0	0	0	0	1	2	0	.520
Feb 21	vs DePaul	*ss	3	0	0	0	0	0	0	0	0	0	0	0	0	0	0	2	2	0	.464
Feb 22	vs Canisius	*ss	4	1	1	0	0	0	0	0	0	0	0	0	0	0	1	0	1	0	.438
Feb 22	at Hawaii	*ss	4	0	0	0	0	0	0	0	0	0	0	0	0	0	1	0	0	1	.389
Feb 23	at Hawaii	*ss	2	0	0	0	0	0	0	1	0	0	0	0	0	0	0	1	0	0	.368
Feb 23	vs DePaul	*ss	3	1	2	1	1	0	0	1	0	0	0	0	0	0	0	1	2	0	.390
Feb 28	vs Florida	*ss	3	0	1	0	1	0	0	1	0	0	0	0	0	0	0	2	2	0	.386
Mar 01	vs Loyola Marymount	*ss	3	0	0	0	0	0	0	0	0	0	0	1	0	0	2	1	0	0	.362
Mar 01	vs Tennessee	*ss	3	0	2	0	0	0	0	0	0	0	0	0	0	0	0	2	0	1	.380
Mar 03	vs UCONN	*ss	3	0	0	0	0	0	0	1	0	0	0	0	0	0	1	0	1	0	.358
Mar 03	at Cal State Fullerton	*ss	1	0	0	0	0	0	0	0	0	0	0	0	0	0	0	0	0	1	.352
Mar 08	vs Oregon State	*ss	3	0	2	0	1	0	0	1	0	0	0	0	0	0	0	0	2	0	.368
Mar 08	vs Western Carolina	*ss	3	0	1	0	0	0	0	0	0	0	0	0	0	0	1	1	0	1	.367
Mar 09	vs Oregon State	*ss	4	0	2	2	1	0	0	0	0	0	0	0	0	0	0	3	1	0	.375
Mar 10	at Loyola Marymount	*ss	2	2	0	0	0	0	0	2	0	0	0	0	0	0	1	2	1	1	.364
Mar 15	at San Diego State	*ss	3	1	0	0	0	0	0	1	0	0	0	0	0	0	3	1	4	0	.348
Mar 16	at San Diego State	*ss	3	2	3	4	0	0	1	1	0	0	0	0	0	0	0	0	0	1	.375
Mar 17	at San Diego State	*ss	3	1	0	0	0	0	0	1	0	0	0	0	0	0	0	1	3	0	.360
Mar 22	COLORADO STATE	*ss	3	1	0	0	0	0	0	1	0	0	0	0	0	0	1	0	5	0	.346
Mar 23	COLORADO STATE	*ss	2	0	1	1	0	0	0	1	0	0	0	0	0	0	1	1	1	0	.350
Mar 24	COLORADO STATE	*ss	2	1	2	1	2	0	0	1	0	0	0	0	0	0	0	0	0	1	.366
<b>Totals</b>			<b>29gs</b>		<b>82</b>	<b>20</b>	<b>30</b>	<b>19</b>	<b>9</b>	<b>1</b>	<b>3</b>	<b>20</b>	<b>0</b>	<b>0</b>	<b>1</b>	<b>0</b>	<b>16</b>	<b>29</b>	<b>39</b>	<b>10</b>	<b>.366</b>

On base pct. .495 • Slugging pct. .610



# 12 DARYN HASLAM

IF • 5-4 • FR.

CEDAR PARK, TEXAS • VISTA RIDGE HS

## SINGLE-GAME HIGHS

Hits: 2, 2x, Last at LMU, 3-10-19  
 Doubles:  
 Triples:  
 Home runs: 1, 3x, Last at CSUF, 3-3-19  
 Total bases: 5, DePaul, 2-21-19  
 RBI: 3, DePaul, 2-21-19  
 Runs scored: 1, 5x, Last vs. WCU, 3-8-19  
 Walks: 2, Oregon State, 3-9-19  
 Hit by pitch:

Struck out: 2, 2x, Last vs. Oregon St., 3-8-19  
 Sac flies:  
 Sac bunts:  
 At bats: 4, 2x, Last vs. Colorado State, 3-22-19  
 Stolen bases:  
 Caught stealing:  
 Putouts: 5, DePaul, 2-23-19  
 Assists: 5, LMU, 3-10-19

## CAREER STATS (AT UNM)

Year	avg	gp-gs	ab	r	h	2b	3b	hr	rbi	tb	slg%	bb	hbp	so	gdp	ob%	sf	sh	sb-att	po	a	e	fld%
2019	.233	20-13	43	5	10	0	0	3	6	19	.442	5	0	14	1	.313	0	0	0-0	13	23	4	.900
TOTAL	.233	20-13	43	5	10	0	0	3	6	19	.442	5	0	14	1	.313	0	0	0-0	13	23	4	.900

## 2019 GAME-BY-GAME

Date	Opponent	Pos	AB	R	H	RBI	2B	3B	HR	BB	SB	CS	HBP	SAC	SF	GDP	K	PO	A	E	Avg
Feb 08	vs UTEP	ph/2b	1	1	0	0	0	0	0	1	0	0	0	0	0	0	1	0	1	0	.000
Feb 09	at New Mexico State	*2b	2	0	0	0	0	0	0	0	0	0	0	0	0	0	1	1	0	0	.000
Feb 15	vs Cal State Fullerton	ph	1	0	0	0	0	0	0	0	0	0	0	0	0	0	0	0	0	0	.000
Feb 16	at Arizona	3b	1	0	0	0	0	0	0	0	0	0	0	0	0	0	0	0	0	0	.000
Feb 21	vs DePaul	*2b	3	1	2	3	0	0	1	0	0	0	0	0	0	0	0	1	1	1	.250
Feb 22	vs Canisius	*2b	2	0	2	0	0	0	0	1	0	0	0	0	0	0	0	1	2	0	.400
Feb 22	at Hawaii	*2b	2	1	1	1	0	0	1	1	0	0	0	0	0	0	1	2	3	0	.417
Feb 23	at Hawaii	*2b	3	0	0	0	0	0	0	0	0	0	0	0	0	0	2	1	1	0	.333
Feb 23	vs DePaul	*2b	3	0	0	0	0	0	0	0	0	0	0	0	0	0	0	5	2	0	.278
Feb 28	vs Florida	ph	1	0	0	0	0	0	0	0	0	0	0	0	0	0	1	0	0	0	.263
Mar 01	vs Loyola Marymount	ph/3b	2	0	0	0	0	0	0	0	0	0	0	0	0	0	1	0	1	0	.238
Mar 03	at Cal State Fullerton	3b	1	1	1	1	0	0	1	0	0	0	0	0	0	0	0	0	0	0	.273
Mar 08	vs Oregon State	*3b	3	0	1	0	0	0	0	0	0	0	0	0	0	0	2	0	1	1	.280
Mar 08	vs Western Carolina	*dh	2	1	1	0	0	0	0	0	0	0	0	0	0	0	0	0	0	0	.296
Mar 09	vs Oregon State	*dh	2	0	0	0	0	0	0	2	0	0	0	0	0	0	1	0	0	0	.276
Mar 10	at Loyola Marymount	*2b	4	0	2	1	0	0	0	0	0	0	0	0	0	0	1	0	5	0	.303
Mar 15	at San Diego State	*2b	2	0	0	0	0	0	0	0	0	0	0	0	0	0	1	0	2	1	.286
Mar 17	at San Diego State	ph/3b	2	0	0	0	0	0	0	0	0	0	0	0	0	0	0	0	0	0	.270
Mar 22	COLORADO STATE	*2b	4	0	0	0	0	0	0	0	0	0	0	0	0	1	1	2	0	1	.244
Mar 24	COLORADO STATE	*2b	2	0	0	0	0	0	0	0	0	0	0	0	0	0	1	0	4	0	.233
Totals		13gs	43	5	10	6	0	0	3	5	0	0	0	0	0	1	14	13	23	4	.233

On base pct. .312 • Slugging pct. .442



# 13 KENNEDY FERGUSON

P • 5-6 • FR.  
CAMAS, WASH. • CAMAS HS

## SINGLE-GAME HIGHS

Innings pitched: 7.1, South Florida, 2-17-19  
 Walks allowed: 7, Tennessee, 3-1-19  
 Strikeouts: 6, 2x, Last vs. UConn, 3-3-19  
 Batters faced: 32, DePaul, 2-21-19  
 Assists: 3, South Florida, 2-17-19  
 Runners CS: 1, 5x, Last vs. Oregon St., 3-9-19  
 Putouts: 1, Hawai'i, 2-22-19  
 Fewest hits allowed (3.0 IP min.): 2, Western Carolina, 3-9-19  
 Fewest BB allowed (3.0 IP min.): 0, 3x, Last at SDSU, 3-16-19

## CAREER STATS (AT UNM)

Year	avg	gp-gs	ab	r	h	2b	3b	hr	rbi	tb	slg%	bb	hbp	so	qdp	ob%	sf	sh	sb-att	po	a	e	fld%
2019	.000	4-4	0	0	0	0	0	0	0	0	.000	0	0	0	0	.000	0	0	0-0	2	16	1	.947
TOTAL	.000	4-4	0	0	0	0	0	0	0	0	.000	0	0	0	0	.000	0	0	0-0	2	16	1	.947

Year	era	w-l	app	gs	cq	sho	sv	ip	h	r	er	bb	so	2b	3b	hr	bf	bavq	wp	hbp	bk	sfa	sha
2019	3.70	2-9	21	12	8	1/0	0	89.0	118	70	47	32	51	13	1	16	429	.311	4	5	0	4	8
TOTAL	3.70	2-9	21	12	8	1/0	0	89.0	118	70	47	32	51	13	1	16	429	.311	4	5	0	4	8

## 2019 GAME-BY-GAME

Date	Opponent	GS	IP	H	R	ER	BB	SO	2B	3B	HR	WP	BK	HBP	IBB	Score	W-L	Sv	ERA	NP
Feb 08	vs UTEP		2.0	2	1	1	0	2	0	0	1	0	0	0	0	15-6	0-0	0	3.50	31
Feb 09	at New Mexico State	*	4.0	3	4	4	2	3	0	0	2	0	0	2	0	8-9	0-0	0	5.83	80
Feb 15	vs Cal State Fullerton		5.1	8	4	2	1	3	1	0	1	0	0	1	0	2-6	0-1	0	4.32	96
Feb 16	at Arizona		0.2	5	6	6	1	0	0	0	2	0	0	1	0	1-15	0-1	0	7.58	29
Feb 17	vs South Florida	*	7.1	6	2	0	2	6	0	0	0	0	0	0	0	1-2	0-2	0	4.71	98
Feb 21	vs DePaul	*	5.2	10	5	3	5	2	1	0	1	1	0	0	0	5-9	0-3	0	4.48	125
Feb 22	at Hawaii	*	6.0	4	3	2	2	3	1	0	0	0	0	1	0	2-3	0-4	0	4.06	91
Feb 23	vs DePaul	*	6.0	8	4	4	3	3	3	0	1	0	0	0	0	2-4	0-5	0	4.16	104
Feb 28	vs Florida	*	7.0	5	1	0	1	5	1	0	0	0	0	0	0	0-1	0-6	0	3.50	109
Mar 01	vs Loyola Marymount	*	5.1	6	1	1	2	5	0	1	0	0	0	0	0	2-4	0-6	0	3.26	87
Mar 01	vs Tennessee		3.0	10	10	6	7	1	0	0	2	0	0	0	0	1-15	0-6	0	3.88	105
Mar 03	vs UCONN	*	6.0	8	2	2	1	6	0	0	1	0	0	0	0	1-2	0-7	0	3.72	104
Mar 03	at Cal State Fullerton		0.1	3	5	0	1	0	0	0	1	0	0	0	0	1-19	0-7	0	3.70	38
Mar 08	vs Western Carolina	*	5.0	2	0	0	0	3	0	0	0	0	0	0	0	10-0	1-7	0	3.41	67
Mar 09	vs Oregon State	*	7.0	8	5	3	1	3	0	0	1	1	0	0	0	3-5	1-8	0	3.37	103
Mar 10	at Loyola Marymount		0.1	0	0	0	0	0	0	0	0	0	0	0	0	2-6	1-8	0	3.35	2
Mar 15	at San Diego State	*	7.0	7	1	0	0	1	1	0	0	0	0	0	0	3-1	2-8	0	3.05	100
Mar 16	at San Diego State		4.0	8	4	4	0	3	1	0	1	1	0	0	0	8-9	2-9	0	3.24	67
Mar 17	at San Diego State		2.0	2	1	1	0	2	1	0	0	1	0	0	0	3-4	2-9	0	3.25	27
Mar 22	COLORADO STATE	*	4.2	9	6	3	2	0	3	0	1	0	0	0	0	7-9	2-9	0	3.32	84
Mar 23	COLORADO STATE		0.1	4	5	5	1	0	0	0	1	0	0	0	0	1-9	2-9	0	3.70	30
Totals		12	89.0	118	70	47	32	51	13	1	16	4	0	5	0	78-138	2-9	0	3.70	-





# 16 LESLIE ROMERO

**OF • 5-4 • FR.**  
**GONZALES, CALIF. • SALINAS HS**

## SINGLE-GAME HIGHS

Hits:  
 Doubles:  
 Home runs:  
 Total bases:  
 RBI:  
 Runs scored:  
 Walks:  
 Struck out: 1, CSUF, 3-3-19  
 Sac bunts:

Sac flies:  
 At bats: 2, at New Mexico State, 2-9-19  
 Stolen bases:  
 Putouts: 1, 2x, Last at Arizona, 2-16-19  
 Assists:

## CAREER STATS (AT UNM)

Year	avg	gp-gs	ab	r	h	2b	3b	hr	rbi	tb	slg%	bb	hbp	so	gdp	ob%	sf	sh	sb-att	po	a	e	fld%
2019	.000	6-1	7	0	0	0	0	0	0	0	.000	0	0	1	0	.000	0	0	0-0	2	0	0	1.000
TOTAL	.000	6-1	7	0	0	0	0	0	0	0	.000	0	0	1	0	.000	0	0	0-0	2	0	0	1.000

## 2019 GAME-BY-GAME

Date	Opponent	Pos	AB	R	H	RBI	2B	3B	HR	BB	SB	CS	HBP	SAC	SF	GDP	K	PO	A	E	Avg
Feb 09	at New Mexico State	*of	2	0	0	0	0	0	0	0	0	0	0	0	0	0	0	1	0	0	.000
Feb 16	at Arizona	of	1	0	0	0	0	0	0	0	0	0	0	0	0	0	0	1	0	0	.000
Feb 20	at Hawaii	ph	1	0	0	0	0	0	0	0	0	0	0	0	0	0	0	0	0	0	.000
Mar 03	at Cal State Fullerton	of	1	0	0	0	0	0	0	0	0	0	0	0	0	0	1	0	0	0	.000
Mar 08	vs Western Carolina	2b	1	0	0	0	0	0	0	0	0	0	0	0	0	0	0	0	0	0	.000
Mar 24	COLORADO STATE	ph/of	1	0	0	0	0	0	0	0	0	0	0	0	0	0	0	0	0	0	.000
Totals		1gs	7	0	0	0	0	0	0	0	0	0	0	0	0	0	1	2	0	0	.000

On base pct. .000 • Slugging pct. .000



# 22 MONICA SALAS

**IF • 5-3 • SR.**

**GOLETA, CALIF. • SANTA BARBARA CITY COLL.**

## SINGLE-GAME HIGHS

Hits: 3, Howard, 3-10-18  
 Doubles: 1, 4x, Last vs Cal State Fullerton, 2-15-19  
 Home runs: 1, 6x, Last vs. CSU, 3-22-19  
 Total bases: 5, 2x, Last vs. UTEP, 2-8-19  
 RBI: 4, UTEP, 2-8-19  
 Runs scored: 2, 4x, Last vs. Canisius, 2-22-19  
 Walks: 3, Illinois-Chicago, 2-16-19

Struck out: 2, 19x, Last at San Diego St., 3-15-19  
 Sac flies: 1, at Nevada, 3-25-18  
 At bats: 4, 14x, Last at San Diego State, 3-16-19  
 Stolen bases: 2, Howard, 3-10-18  
 Putouts: 5, St. Mary's, 3-9-18  
 Assists: 5, at UTEP, 4-16-18

## CAREER STATS (AT UNM)

Year	avg	gp-gs	ab	r	h	2b	3b	hr	rbi	tb	slg%	bb	hbp	so	gdp	ob%	sf	sh	sb-att	po	a	e	fld%
2018	.238	45-35	101	9	24	3	0	2	15	33	.327	6	0	34	2	.278	1	0	2-2	35	44	7	.919
2019	.227	28-28	75	10	17	1	0	4	15	30	.400	10	0	23	4	.318	0	0	0-0	18	30	6	.889
TOTAL	.233	73-63	176	19	41	4	0	6	30	63	.358	16	0	57	6	.295	1	0	2-2	53	74	13	.907

## 2019 GAME-BY-GAME

Date	Opponent	Pos	AB	R	H	RBI	2B	3B	HR	BB	SB	CS	HBP	SAC	SF	GDP	K	PO	A	E	Avg
Feb 08	vs UTEP	*3b	4	1	2	4	0	0	1	1	0	0	0	0	0	1	1	1	2	0	.500
Feb 09	vs Creighton	*3b	3	1	2	0	0	0	0	0	0	0	0	0	0	1	0	1	0	0	.571
Feb 09	at New Mexico State	*3b	4	1	1	0	0	0	0	0	0	0	0	0	0	0	1	0	1	0	.455
Feb 15	vs Alabama	*3b	3	0	0	0	0	0	0	0	0	0	0	0	0	0	0	4	2	0	.357
Feb 15	vs Cal State Fullerton	*3b	4	0	1	2	1	0	0	0	0	0	0	0	0	0	2	1	1	1	.333
Feb 16	at Arizona	*3b	2	0	1	0	0	0	0	0	0	0	0	0	0	0	0	0	0	1	.350
Feb 16	vs Illinois-Chicago	*3b	1	2	0	0	0	0	0	3	0	0	0	0	0	0	0	0	1	1	.333
Feb 17	vs South Florida	*3b	4	0	1	0	0	0	0	0	0	0	0	0	0	0	2	2	2	0	.320
Feb 20	at Hawaii	*3b	3	0	0	1	0	0	0	0	0	0	0	0	0	0	2	0	1	0	.286
Feb 21	vs DePaul	*3b	3	1	1	1	0	0	1	0	0	0	0	0	0	0	1	1	2	0	.290
Feb 22	vs Canisius	*3b	2	2	1	2	0	0	1	1	0	0	0	0	0	0	0	0	3	0	.303
Feb 22	at Hawaii	*3b	3	0	1	0	0	0	0	0	0	0	0	0	0	1	0	0	2	1	.306
Feb 23	at Hawaii	*3b	2	0	0	0	0	0	0	1	0	0	0	0	0	0	0	2	0	0	.289
Feb 23	vs DePaul	*3b	3	0	0	0	0	0	0	0	0	0	0	0	0	0	0	0	0	0	.268
Feb 28	vs Florida	*3b	3	0	0	0	0	0	0	0	0	0	0	0	0	0	2	0	1	0	.250
Mar 01	vs Loyola Marymount	*3b	1	0	0	0	0	0	0	0	0	0	0	0	0	0	1	0	0	0	.244
Mar 01	vs Tennessee	*3b	2	0	0	0	0	0	0	0	0	0	0	0	0	0	2	1	1	0	.234
Mar 03	vs UCONN	*3b	3	0	1	0	0	0	0	0	0	0	0	0	0	0	1	1	2	0	.240
Mar 03	at Cal State Fullerton	*3b	1	0	0	0	0	0	0	0	0	0	0	0	0	0	0	0	0	0	.235
Mar 08	vs Western Carolina	*3b	2	1	1	1	0	0	0	1	0	0	0	0	0	0	0	0	0	0	.245
Mar 09	vs Oregon State	*3b	4	0	0	0	0	0	0	0	0	0	0	0	0	0	2	0	0	0	.228
Mar 10	at Loyola Marymount	*3b	4	0	1	0	0	0	0	0	0	0	0	0	0	0	1	1	1	0	.230
Mar 15	at San Diego State	*3b	3	0	1	1	0	0	0	0	0	0	0	0	0	0	2	0	1	0	.234
Mar 16	at San Diego State	*3b	4	0	0	0	0	0	0	0	0	0	0	0	0	1	1	0	1	0	.221
Mar 17	at San Diego State	*3b	2	0	0	0	0	0	0	0	0	0	0	0	0	0	0	0	0	1	.214
Mar 22	COLORADO STATE	*3b	2	1	1	3	0	0	1	2	0	0	0	0	0	0	0	2	3	0	.222
Mar 23	COLORADO STATE	*3b	1	0	0	0	0	0	0	1	0	0	0	0	0	0	1	0	3	0	.219
Mar 24	COLORADO STATE	*3b	2	0	1	0	0	0	0	0	0	0	0	0	0	0	1	1	0	1	.227
Totals			28gs	75	10	17	15	1	0	4	10	0	0	0	0	4	23	18	30	6	.227

On base pct. .318 • Slugging pct. .400



**23 EMMA STELTZER** *OF • 5-6 • FR.*  
*MANCHESTER, MO. • PARKWAY SOUTH HS*

**SINGLE-GAME HIGHS**

Hits:  
 Doubles:  
 Home runs:  
 Total bases:  
 RBI:  
 Runs scored:  
 Walks: 1, Canisius, 2-22-19  
 Struck out:  
 Sac bunts:

Sac flies:  
 At bats: 1, 2x, Last vs. WCU, 3-8-19  
 Stolen bases:  
 Putouts:  
 Assists:  
 Innings Pitched: 0.2, 2x, Last vs. CSU, 3-24-19  
 Batters Faced: 3, Colorado State, 3-24-19

**CAREER STATS (AT UNM)**

Year	avg	qp-qs	ab	r	h	2b	3b	hr	rbi	tb	slg%	bb	hbp	so	qdp	ob%	sf	sh	sb-att	po	a	e	fld%
2019	.000	3-0	2	0	0	0	0	0	0	0	.000	1	0	0	0	.333	0	0	0-0	0	0	0	.000
TOTAL	.000	3-0	2	0	0	0	0	0	0	0	.000	1	0	0	0	.333	0	0	0-0	0	0	0	.000

Year	era	w-l	app	qs	cq	sho	sv	ip	h	r	er	bb	so	2b	3b	hr	bf	bavq	wp	hbp	bk	sfa	sha
2019	0.00	0-0	2	0	0	0/0	0	1.1	1	1	0	0	0	0	0	1	5	.200	0	0	0	0	0
TOTAL	0.00	0-0	2	0	0	0/0	0	1.1	1	1	0	0	0	0	0	1	5	.200	0	0	0	0	0

**2019 GAME-BY-GAME**

Date	Opponent	Pos	AB	R	H	RBI	2B	3B	HR	BB	SB	CS	HBP	SAC	SF	GDP	K	PO	A	E	Av	
Feb 16	at Arizona	ph	1	0	0	0	0	0	0	0	0	0	0	0	0	0	0	0	0	0	0	.00
Feb 22	vs Canisius	ph	0	0	0	0	0	0	0	1	0	0	0	0	0	0	0	0	0	0	0	.00
Mar 08	vs Western Carolina	dh	1	0	0	0	0	0	0	0	0	0	0	0	0	0	0	0	0	0	0	.00
Totals		Ogs	2	0	0	0	0	0	0	1	0	0	0	0	0	0	0	0	0	0	0	.00

On base pct. .333 • Slugging pct. .000

#23 STELTZER, Emma - 2 appearances (All games)

Date	Opponent	GS	IP	H	R	ER	BB	SO	2B	3B	HR	WP	BK	HBP	IBB	Score	W-L	Sv	ERA	N
Mar 03	at Cal State Fullerton		0.2	0	0	0	0	0	0	0	0	0	0	0	0	1-19	0-0	0	0.00	
Mar 24	COLORADO STATE		0.2	1	1	0	0	0	0	0	1	0	0	0	0	3-16	0-0	0	0.00	1
Totals		0	1.1	1	1	0	0	0	0	0	1	0	0	0	0	4-35	0-0	0	0.00	



# **24 SKYLAR JENKINS**

**OF • 5-5 • FR.**

**LAWRENCEVILLE, GA. • BUFORD HS**

## **SINGLE-GAME HIGHS**

Hits:

Doubles:

Home runs:

Total bases:

RBI:

Runs scored:

Walks:

Struck out:

Sac bunts:

Sac flies:

At bats:

Stolen bases:

Putouts:

Assists:

## **CAREER STATS (AT UNM)**

## **2019 GAME-BY-GAME**



**32 LAUREN WILMERT** C/1B • 5-10 • JR.  
ALBUQUERQUE, N.M. • VOLCANO VISTA HS

**SINGLE-GAME HIGHS**

Hits: 3, San Diego State, 3-17-19  
 Doubles: 1, 10x, Last vs. CSU, 3-22-19  
 Home runs: 1, 6x, Last at SDSU, 3-17-19  
 Total bases: 6, 3x, Last at SDSU, 3-17-19  
 RBI: 5, 2x, Last vs. WCU, 3-8-19  
 Runs scored: 3, UTEP, 2-8-19  
 Walks: 3, UTEP, 2-8-19  
 Hit by pitch: 1, 2x, Last vs. UTEP, 2-8-19  
 Struck out: 3, George Washington, 2-23-18

Sac flies: 1, 3x, Last at LMU, 3-10-19  
 Sac bunts: 1, 3x, Last vs. Utah State, 4-22-18  
 At bats: 4, 15x, Last at CSU, 3-22-19  
 Stolen bases: 1, vs Western Michigan, 2-11-17  
 Putouts: 11, South Florida, 2-17-19  
 Assists: 2, 6x, Last vs. Oregon St., 3-9-19  
 Runners CS: 1, 10x, Last at SDSU, 3-15-19

**CAREER STATS (AT UNM)**

Year	avg	gp-gs	ab	r	h	2b	3b	hr	rbi	tb	slg%	bb	hbp	so	gdp	ob%	sf	sh	sb-att	po	a	e	fld%
2017	.242	34-23	62	5	15	3	0	1	6	21	.339	6	0	15	1	.304	1	2	1-1	67	6	3	.961
2018	.180	32-20	61	5	11	1	0	1	11	15	.246	7	1	23	0	.275	0	1	0-0	87	11	4	.961
2019	.256	29-29	86	15	22	6	0	4	20	40	.465	8	1	24	1	.320	2	0	0-0	138	13	6	.962
TOTAL	.230	95-72	209	25	48	10	0	6	37	76	.364	21	2	62	2	.302	3	3	1-1	292	30	13	.961

**2019 GAME-BY-GAME**

Date	Opponent	Pos	AB	R	H	RBI	2B	3B	HR	BB	SB	CS	HBP	SAC	SF	GDP	K	PO	A	E	Avg	
Feb 08	vs UTEP	*c	0	3	0	2	0	0	0	3	0	0	1	0	0	0	0	10	2	0	.000	
Feb 09	vs Creighton	*1b	2	0	1	1	0	0	0	1	0	0	0	0	0	0	1	2	0	0	.500	
Feb 09	at New Mexico State	*c	3	0	0	1	0	0	0	0	0	0	0	0	1	0	2	6	1	1	.200	
Feb 15	vs Alabama	*1b	2	0	1	0	1	0	0	1	0	0	0	0	0	0	0	7	0	0	.286	
Feb 15	vs Cal State Fullerton	*c	4	0	0	0	0	0	0	0	0	0	0	0	0	0	2	3	1	0	.182	
Feb 16	at Arizona	*1b	2	0	0	0	0	0	0	0	0	0	0	0	0	0	0	4	0	1	.154	
Feb 16	vs Illinois-Chicago	*c	4	1	2	0	0	0	0	0	0	0	0	0	0	0	1	9	0	0	.235	
Feb 17	vs South Florida	*1b	3	0	0	0	0	0	0	0	0	0	0	0	0	0	0	11	1	1	.200	
Feb 20	at Hawaii	*1b	3	0	0	0	0	0	0	0	0	0	0	0	0	1	0	4	0	0	.174	
Feb 21	vs DePaul	*1b	3	1	1	1	0	0	1	0	0	0	0	0	0	0	2	7	0	1	.192	
Feb 22	vs Canisius	*c	3	2	2	3	1	0	1	0	0	0	0	0	0	0	0	4	0	0	.241	
Feb 22	at Hawaii	*c	3	1	2	0	1	0	0	0	0	0	0	0	0	0	0	3	0	1	.281	
Feb 23	at Hawaii	*1b	3	1	1	0	1	0	0	0	0	0	0	0	0	0	0	3	0	0	.286	
Feb 23	vs DePaul	*c	4	0	0	0	0	0	0	0	0	0	0	0	0	0	1	2	2	1	.256	
Feb 28	vs Florida	*c	2	0	0	0	0	0	0	1	0	0	0	0	0	0	2	6	0	0	.244	
Mar 01	vs Loyola Marymount	*c	2	1	0	0	0	0	0	1	0	0	0	0	0	0	0	8	1	0	.233	
Mar 01	vs Tennessee	*1b	2	0	0	0	0	0	0	0	0	0	0	0	0	0	1	4	0	0	.222	
Mar 03	vs UCONN	*1b	4	0	0	0	0	0	0	0	0	0	0	0	0	0	2	5	0	0	.204	
Mar 03	at Cal State Fullerton	*c	2	0	0	0	0	0	0	0	0	0	0	0	0	0	0	2	0	0	.196	
Mar 08	vs Oregon State	*c	4	0	1	1	0	0	0	0	0	0	0	0	0	0	2	5	1	0	.200	
Mar 08	vs Western Carolina	*c	3	2	2	5	1	0	1	0	0	0	0	0	0	0	0	3	0	0	.224	
Mar 09	vs Oregon State	*c	4	0	1	0	0	0	0	0	0	0	0	0	0	0	0	2	2	0	.226	
Mar 10	at Loyola Marymount	*c	3	0	0	1	0	0	0	0	0	0	0	0	1	0	1	6	1	0	.215	
Mar 15	at San Diego State	*c	4	0	1	2	0	0	0	0	0	0	0	0	0	0	0	1	1	0	.217	
Mar 16	at San Diego State	*1b	4	1	2	1	0	0	0	0	0	0	0	0	0	0	1	6	0	0	.233	
Mar 17	at San Diego State	*c	4	1	3	2	0	0	1	0	0	0	0	0	0	0	0	6	0	0	.260	
Mar 22	COLORADO STATE	*c	4	1	2	0	1	0	0	0	0	0	0	0	0	0	2	1	0	0	.272	
Mar 23	COLORADO STATE	*1b	2	0	0	0	0	0	0	1	0	0	0	0	0	0	2	6	0	0	.265	
Mar 24	COLORADO STATE	*c	3	0	0	0	0	0	0	0	0	0	0	0	0	0	2	2	0	0	.256	
Totals			29gs	86	15	22	20	6	0	4	8	0	0	1	0	2	1	24	138	13	6	.256

On base pct. .320 • Slugging pct. .465



# 44 ALEYAH WILBON

OF • 5-3 • SR.

FONTANA, CALIF. • SUMMIT HS

### SINGLE-GAME HIGHS

Hits: 2, Utah State, 4-20-18  
 Doubles: 1, Howard, 3-10-18  
 Total bases: 2, 2x, Last vs. Utah State, 4-20-18  
 RBI: 1, 2x, Last at Nevada, 3-25-18  
 Runs scored: 2, 2x, Last vs. Utah State, 4-21-18  
 Walks: 3, Sac. State, 3-11-18  
 Hit by pitch: 1, vs St. Mary's, 2-9-18  
 Struck out: 2, 7x, Last at CSUF, 3-3-19  
 At bats: 4, 2x, Last at Arizona, 4-25-18

Stolen bases: 1, 5x, Last vs. Utah State, 4-21-18  
 Caught stealing: 1, 4x, Last at Hawai'i, 2-23-19  
 Putouts: 3, Utah State, 4-22-18  
 Assists: 1, at New Mexico State, 4-3-18

### CAREER STATS (AT UNM)

Year	avg	gp-gs	ab	r	h	2b	3b	hr	rbi	tb	slg%	bb	hbp	so	gdp	ob%	sf	sh	sb-att	po	a	e	fld%
2018	.222	38-25	63	13	14	1	0	0	2	15	.238	16	1	24	0	.388	0	2	5-8	26	1	1	.964
2019	.300	20-2	10	6	3	0	0	0	0	3	.300	1	0	5	0	.364	0	0	0-1	1	0	0	1.000
TOTAL	.233	58-27	73	19	17	1	0	0	2	18	.247	17	1	29	0	.385	0	2	5-9	27	1	1	.966

### 2019 GAME-BY-GAME

Date	Opponent	Pos	AB	R	H	RBI	2B	3B	HR	BB	SB	CS	HBP	SAC	SF	GDP	K	PO	A	E	Avg
Feb 09	at New Mexico State	of	0	1	0	0	0	0	0	1	0	0	0	0	0	0	0	0	0	0	.000
Feb 15	vs Alabama	pr	0	0	0	0	0	0	0	0	0	0	0	0	0	0	0	0	0	0	.000
Feb 15	vs Cal State Fullerton	pr	0	0	0	0	0	0	0	0	0	0	0	0	0	0	0	0	0	0	.000
Feb 16	at Arizona	of	1	1	0	0	0	0	0	0	0	0	0	0	0	0	0	0	0	0	.000
Feb 16	vs Illinois-Chicago	pr	0	1	0	0	0	0	0	0	0	0	0	0	0	0	0	0	0	0	.000
Feb 20	at Hawaii	pr	0	0	0	0	0	0	0	0	0	0	0	0	0	0	0	0	0	0	.000
Feb 21	vs DePaul	*of	3	0	1	0	0	0	0	0	0	0	0	0	0	0	1	1	0	0	.250
Feb 22	at Hawaii	pr	0	0	0	0	0	0	0	0	0	0	0	0	0	0	0	0	0	0	.250
Feb 23	at Hawaii	pr	0	0	0	0	0	0	0	0	0	1	0	0	0	0	0	0	0	0	.250
Feb 23	vs DePaul	pr	0	0	0	0	0	0	0	0	0	0	0	0	0	0	0	0	0	0	.250
Feb 28	vs Florida	pr	0	0	0	0	0	0	0	0	0	0	0	0	0	0	0	0	0	0	.250
Mar 01	vs Loyola Marymount	ph	1	0	1	0	0	0	0	0	0	0	0	0	0	0	0	0	0	0	.400
Mar 03	vs UCONN	ph	1	1	1	0	0	0	0	0	0	0	0	0	0	0	0	0	0	0	.500
Mar 03	at Cal State Fullerton	*of	2	0	0	0	0	0	0	0	0	0	0	0	0	0	2	0	0	0	.375
Mar 08	vs Oregon State	pr	0	1	0	0	0	0	0	0	0	0	0	0	0	0	0	0	0	0	.375
Mar 08	vs Western Carolina	of	0	0	0	0	0	0	0	0	0	0	0	0	0	0	0	0	0	0	.375
Mar 09	vs Oregon State	ph	1	0	0	0	0	0	0	0	0	0	0	0	0	0	1	0	0	0	.333
Mar 10	at Loyola Marymount	ph	1	0	0	0	0	0	0	0	0	0	0	0	0	0	1	0	0	0	.300
Mar 22	COLORADO STATE	pr	0	0	0	0	0	0	0	0	0	0	0	0	0	0	0	0	0	0	.300
Mar 23	COLORADO STATE	pr	0	1	0	0	0	0	0	0	0	0	0	0	0	0	0	0	0	0	.300
Totals		2gs	10	6	3	0	0	0	0	1	0	1	0	0	0	0	5	1	0	0	.300

On base pct. .364 • Slugging pct. .300



**66 SYDNEY TOWNES** *OF • 5-6 • SR.*  
*LOMPOC, CALIF. • SANTA BARBARA CITY COLL.*

**SINGLE-GAME HIGHS**

Hits: 2, 4x, Last vs. UNLV, 3-26-18  
 Doubles: 1, 3x, Last vs. Oregon St., 3-8-19  
 Triples: 1, George Washington, 2-25-18  
 Total bases: 4, George Washington, 2-25-18  
 RBI: 1, 4x, Last vs. New Mexico State, 3-21-18  
 Runs scored: 2, 3x, Last vs. Utah State, 4-21-18  
 Walks: 2, 4x, Last vs. Illinois-Chicago, 2-16-19  
 Hit by pitch: 1, 4x, Last vs. Utah State, 4-21-18  
 Struck out: 2, 11x, Last vs. Oregon St., 3-8-19

Sac bunts: 1, 2x, Last at San Jose St., 4-29-18  
 At bats: 5, at Nevada, 3-24-18  
 Stolen bases: 1, 7x, Last at LMU, 3-10-19  
 Putouts: 5, UNLV, 3-18-18  
 Assists: 1, 2x, Last vs. UNLV, 3-18-18

**CAREER STATS (AT UNM)**

Year	avg	gp-gs	ab	r	h	2b	3b	hr	rbi	tb	slg%	bb	hbp	so	gdp	ob%	sf	sh	sb-att	po	a	e	fld%
2018	.186	45-44	102	16	19	2	1	0	4	23	.225	23	4	40	0	.357	0	2	6-6	59	2	4	.938
2019	.143	21-10	28	3	4	1	0	0	0	5	.179	6	0	11	0	.294	0	0	1-1	16	0	1	.941
<b>TOTAL</b>	<b>.177</b>	<b>66-54</b>	<b>130</b>	<b>19</b>	<b>23</b>	<b>3</b>	<b>1</b>	<b>0</b>	<b>4</b>	<b>28</b>	<b>.215</b>	<b>29</b>	<b>4</b>	<b>51</b>	<b>0</b>	<b>.344</b>	<b>0</b>	<b>2</b>	<b>7-7</b>	<b>75</b>	<b>2</b>	<b>5</b>	<b>.939</b>

**2019 GAME-BY-GAME**

Date	Opponent	Pos	AB	R	H	RBI	2B	3B	HR	BB	SB	CS	HBP	SAC	SF	GDP	K	PO	A	E	Avg
Feb 08	vs UTEP	ph/of	1	0	0	0	0	0	0	0	0	0	0	0	0	0	1	0	0	0	.000
Feb 09	vs Creighton	ph/of	1	0	0	0	0	0	0	0	0	0	0	0	0	0	1	0	0	0	.000
Feb 09	at New Mexico State	pr	0	0	0	0	0	0	0	0	0	0	0	0	0	0	0	0	0	0	.000
Feb 16	at Arizona	of	0	0	0	0	0	0	0	0	0	0	0	0	0	0	0	0	0	0	.000
Feb 16	vs Illinois-Chicago	*of	1	1	0	0	0	0	0	2	0	0	0	0	0	0	0	0	0	0	.000
Feb 17	vs South Florida	*of	3	0	0	0	0	0	0	0	0	0	0	0	0	0	2	0	0	0	.000
Feb 22	vs Canisius	ph	1	0	0	0	0	0	0	0	0	0	0	0	0	0	1	0	0	0	.000
Feb 22	at Hawaii	pr	0	0	0	0	0	0	0	0	0	0	0	0	0	0	0	0	0	0	.000
Feb 28	vs Florida	pr	0	0	0	0	0	0	0	0	0	0	0	0	0	0	0	0	0	0	.000
Mar 01	vs Loyola Marymount	of	0	0	0	0	0	0	0	0	0	0	0	0	0	0	0	0	0	0	.000
Mar 03	vs UCONN	pr	0	0	0	0	0	0	0	0	0	0	0	0	0	0	0	0	0	0	.000
Mar 03	at Cal State Fullerton	of	1	0	0	0	0	0	0	0	0	0	0	0	0	0	1	0	0	0	.000
Mar 08	vs Oregon State	*of	4	1	1	0	1	0	0	0	0	0	0	0	0	0	2	1	0	0	.083
Mar 09	vs Oregon State	of	2	0	1	0	0	0	0	0	0	0	0	0	0	0	0	0	0	1	.143
Mar 10	at Loyola Marymount	*of	3	0	1	0	0	0	0	1	0	0	0	0	0	0	0	1	0	0	.176
Mar 15	at San Diego State	*of	2	0	0	0	0	0	0	1	0	0	0	0	0	0	1	3	0	0	.158
Mar 16	at San Diego State	*of	2	1	0	0	0	0	0	1	0	0	0	0	0	0	0	3	0	0	.143
Mar 17	at San Diego State	*of	2	0	0	0	0	0	0	1	0	0	0	0	0	0	0	3	0	0	.130
Mar 22	COLORADO STATE	*of	3	0	1	0	0	0	0	0	0	0	0	0	0	0	0	3	0	0	.154
Mar 23	COLORADO STATE	*of	1	0	0	0	0	0	0	1	0	0	0	0	0	0	1	1	0	0	.148
Mar 24	COLORADO STATE	*of	1	0	0	0	0	0	0	0	0	0	0	0	0	0	1	1	0	0	.143
<b>Totals</b>			<b>10gs</b>	<b>28</b>	<b>3</b>	<b>4</b>	<b>0</b>	<b>1</b>	<b>0</b>	<b>6</b>	<b>1</b>	<b>0</b>	<b>0</b>	<b>0</b>	<b>0</b>	<b>0</b>	<b>11</b>	<b>16</b>	<b>0</b>	<b>1</b>	<b>.143</b>

On base pct. .294 • Slugging pct. .179



# 99 KIANA SPENCER

**P • 5-6 • JR.**  
**GALLUP, N.M. • YAVAPAI COLLEGE**

### SINGLE-GAME HIGHS

Innings pitched: 7.0, 3x, Last vs. Oregon St., 3-8-19  
 Walks allowed: 7, LMU, 3-10-19  
 Strikeouts: 6, Hawai'i, 2-23-19  
 Batters faced: 32, Oregon State, 3-8-19  
 Field chances: 2, 2x, Last vs. Oregon St., 3-8-19  
 Assists: 2, 2x, Last vs. Oregon St., 3-8-19  
 Runners CS: 1, Tennessee, 3-1-19  
 Fewest hits allowed (Min. 3.0 IP): 3, Creighton, 2-9-19  
 Fewest walks allowed (Min. 3.0 IP): 3, Alabama, 2-15-19

### CAREER STATS (AT UNM)

Year	avg	qp-qs	ab	r	h	2b	3b	hr	rbi	tb	slg%	bb	hbp	so	qdp	ob%	sf	sh	sb-att	po	a	e	fld%
2019	.000	1-1	0	0	0	0	0	0	0	0	.000	0	0	0	0	.000	0	0	0-0	0	7	1	.875
TOTAL	.000	1-1	0	0	0	0	0	0	0	0	.000	0	0	0	0	.000	0	0	0-0	0	7	1	.875

Year	era	w-l	app	qs	cq	sho	sv	ip	h	r	er	bb	so	2b	3b	hr	bf	bavq	wp	hbp	bk	sfa	sha
2019	5.64	4-9	18	12	6	2/0	0	67.0	83	63	54	46	37	20	3	16	340	.300	4	9	0	2	6

### 2019 GAME-BY-GAME

Date	Opponent	Pos	AB	R	H	RBI	2B	3B	HR	BB	SB	CS	HBP	SAC	SF	GDP	K	PO	A	E	Avg	
Feb 15	vs Alabama	*p	0	0	0	0	0	0	0	0	0	0	0	0	0	0	0	0	2	0	0	.000
Feb 23	at Hawaii	*p	0	0	0	0	0	0	0	0	0	0	0	0	0	0	0	0	1	0	0	.000
Mar 03	at Cal State Fullerton	*p	0	0	0	0	0	0	0	0	0	0	0	0	0	0	0	0	0	0	1	.000
Mar 08	vs Oregon State	*p	0	0	0	0	0	0	0	0	0	0	0	0	0	0	0	0	2	0	0	.000
Mar 10	at Loyola Marymount	*p	0	0	0	0	0	0	0	0	0	0	0	0	0	0	0	0	1	0	0	.000
Mar 17	at San Diego State	*dh/p	0	0	0	0	0	0	0	0	0	0	0	0	0	0	0	0	1	0	0	.000
Totals		6gs	0	0	0	0	0	0	0	0	0	0	0	0	0	0	0	0	7	1	0	.000

On base pct. .000 • Slugging pct. .000

#99 SPENCER, Kiana - 18 appearances (All games)

Date	Opponent	GS	IP	H	R	ER	BB	SO	2B	3B	HR	WP	BK	HBP	IBB	Score	W-L	Sv	ERA	NP
Feb 09	vs Creighton	*	5.0	3	0	0	5	2	0	0	0	0	0	1	0	8-0	1-0	0	0.00	91
Feb 09	at New Mexico State		1.0	1	1	1	0	2	0	0	1	0	0	0	0	8-9	1-0	0	1.17	21
Feb 15	vs Alabama	*	7.0	6	1	1	3	0	1	0	0	0	0	0	0	0-1	1-1	0	1.08	102
Feb 15	vs Cal State Fullerton		0.2	0	0	0	0	0	0	0	0	0	0	0	0	2-6	1-1	0	1.02	5
Feb 16	at Arizona	*	1.1	6	7	7	3	0	2	0	2	0	0	0	0	1-15	1-2	0	4.20	50
Feb 20	at Hawaii	*	6.0	5	2	1	0	4	1	0	1	0	0	1	0	1-2	1-3	0	3.33	88
Feb 21	vs DePaul		0.2	0	0	0	2	0	0	0	0	0	0	1	0	5-9	1-3	0	3.23	24
Feb 22	vs Canisius	*	5.0	4	0	0	1	4	0	0	0	0	0	1	0	10-0	2-3	0	2.62	81
Feb 23	at Hawaii	*	7.0	4	2	2	4	6	0	0	1	0	0	0	0	3-2	3-3	0	2.50	107
Mar 01	vs Tennessee	*	2.0	8	5	5	2	0	2	0	2	0	0	0	0	1-15	3-4	0	3.34	48
Mar 03	at Cal State Fullerton	*	2.2	9	8	8	2	1	1	0	4	0	0	0	0	1-19	3-5	0	4.57	63
Mar 08	vs Oregon State	*	7.0	9	5	3	4	2	3	1	0	0	0	0	0	6-5	4-5	0	4.32	123
Mar 10	at Loyola Marymount	*	5.2	5	6	6	7	5	1	0	1	1	0	1	0	2-6	4-6	0	4.67	132
Mar 16	at San Diego State	*	2.0	2	5	3	4	2	1	0	1	1	0	1	0	8-9	4-6	0	4.89	64
Mar 17	at San Diego State		3.2	5	3	3	3	3	1	0	0	0	0	0	0	3-4	4-7	0	4.94	83
Mar 22	COLORADO STATE		2.1	3	3	3	1	1	2	0	1	0	0	0	0	7-9	4-8	0	5.10	24
Mar 23	COLORADO STATE	*	4.0	6	4	4	1	3	2	1	1	0	0	0	0	1-9	4-9	0	5.22	75
Mar 24	COLORADO STATE		4.0	7	11	7	4	2	3	1	1	2	0	3	0	3-16	4-9	0	5.64	100
Totals		12	67.0	83	63	54	46	37	20	3	16	4	0	9	0	70-136	4-9	0	5.64	-



# THE 2019 LOBO SOFTBALL RADIO/TV ROSTER

## PLAYERS



**00**  
Andrea Howard  
OF | 5-6 | So.  
Albuquerque, N.M.



**2**  
Maggie Buckholz  
UT | 5-7 | Fr.  
Silverton, Ore.



**3**  
Taylor Jones  
IF | 5-7 | So.  
Albuquerque, N.M.



**4**  
D'Andra DeFlora  
OF | 5-2 | Sr.  
Fresno, Texas



**5**  
Sydney Broderick  
C | 5-4 | So.  
Mesa, Ariz.



**7**  
MacKenzie Peterson  
OF | 5-9 | Fr.  
Gilbert, Ariz.



**8**  
Bailey Klitzke  
P/1B | 5-8 | Jr.  
Apache Junction, Ariz.



**9**  
Kasey Halleen  
IF | 5-6 | Sr.  
Torrance, Calif.



**10**  
Cameryn O'Grady  
SS | 5-6 | So.  
Orange, Calif.



**12**  
Daryn Haslam  
IF | 5-4 | Fr.  
Cedar Park, Texas



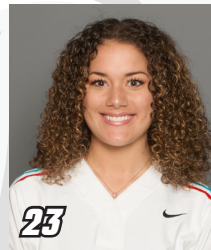
**13**  
Kennedy Ferguson  
P | 5-6 | Fr.  
Camas, Wash.



**16**  
Leslie Romero  
OF | 5-4 | Fr.  
Gonzales, Calif.



**22**  
Monica Salas  
IF | 5-3 | Jr.  
Goleta, Calif.



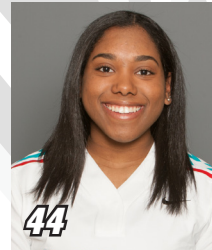
**23**  
Emma Steltzer  
OF | 5-6 | Fr.  
Manchester, Mo.



**24**  
Skylar Jenkins  
OF | 5-5 | Fr.  
Lawrenceville, Ga.



**32**  
Lauren Wilmert  
C/1B | 5-10 | Jr.  
Albuquerque, N.M.



**44**  
Aleyah Wilbon  
OF | 5-2 | Sr.  
Fontana, Calif.



**66**  
Sydney Townes  
OF | 5-6 | Sr.  
Lompoc, Calif.



**99**  
Kiana Spencer  
P | 5-6 | Jr.  
Gallup, N.M.

## STAFF



**Paula Congleton**  
Head Coach



**Tyler Heil**  
Assistant Coach



**Breanna Macha**  
Assistant Coach



**Madison Foust**  
Athletic Trainer



**Jeremy Golden**  
Strength and Cond.