

2021-22 NEW MEXICO WOMEN'S BASKETBALL

GAME NOTES

» Eight NCAA Tournament Appearances | 1998, 2002, 2003, 2004, 2005, 2006, 2007, 2008 «
 » Five Mountain West Tournament Championships | 2003, 2004, 2005, 2007, 2008 «

2021-22 | Schedule and Results

OVERALL RECORD:.....3-1
MW RECORD:.....0-0
HOME RECORD:3-0
ROAD RECORD:0-1
NEUTRAL RECORD:.....0-0
STREAK:.....L1

Date	Opponent	Time/Result
10/31	Western Colorado (Exh.)	W, 94-53
11/4	Eastern New Mexico (Exh.)	W, 88-72
11/9	Lamar	W, 71-54
11/12	Northern New Mexico	W, 96-40
11/16	Prairie View A&M	W, 88-71
11/20	Houston	L, 89-60
11/23	Houston Baptist	7 p.m.
11/26	Stephen F. Austin%	5:30 p.m.
11/27	Louisiana Monroe%	5:30 p.m.
11/28	Texas Tech%	3 p.m.
11/30	Grambling State	7 p.m.
12/3	New Mexico State	7 p.m.
12/5	New Mexico State	2 p.m.
12/12	Arizona	1 p.m.
12/19	UTEP	6 p.m.
12/28	San José State*	2 p.m.
12/31	Boise State*	2 p.m.
1/3	UNLV*	7 p.m.
1/6	Utah State*	6 p.m.
1/9	San Diego State*	2 p.m.
1/13	Wyoming*	6:30 p.m.
1/15	Colorado State*	1 p.m.
1/22	Fresno State*	2 p.m.
1/27	UNLV*	7 p.m.
1/29	San Diego State*	1 p.m.
2/2	Colorado State*	7 p.m.
2/5	Wyoming*	2 p.m.
2/9	Air Force*	7 p.m.
2/12	Nevada*	3 p.m.
2/16	Utah State*	7 p.m.
2/19	Boise State*	1 p.m.
2/23	Fresno State*	7 p.m.
2/25	San José State	12 p.m.
3/6-3/9	MW Tournament	TBA

BOLD: Home %:Van Chancellor Classic *: Mountain West
 All times are Mountain Time

THE MATCHUP



New Mexico Lobos

Record
3-1, 0-0 MW

Head CoachMike Bradbury
 Alma Mater, Yr.....Chattanooga, 1993
 Record at UNM.....97-56 (6th year)
 Career Record.....275-173 (15th year)

Game Information

Game Number: Game 5
 Date: Tuesday, Nov. 23 at 7 p.m.
 Location: Albuquerque, N.M.
 The Pit

Series History

Overall:UNM leads 3-0
 Current Streak:W3
 Last Meeting:11/13/15 (W, 65-57)

Broadcast Information

Radio:610 AM KNML
 Live Stream:MW Network
 Live Stats:GoLobos.com/wbbstats



Houston Baptist Huskies

Record
3-1, 0-0 SLC

Head CoachDonna Finnie
 Alma MaterHeriot Watt University
 Record at UH.....88-142 (9th year)
 Career RecordSame

TIPPING OFF

The Lobos have Houston on the mind this week, set to face Houston Baptist on Tuesday before travelling back to Houston (specifically Katy) for the Van Chancellor Classic set to begin on Friday.

First things first is a Tuesday meeting with the Huskies, with the Lobos looking to get back on track after dropping their first game of the season on Saturday at Houston. LaTora Duff led the Lobos in scoring with 16 points on 7-for-11 shooting, with Jaedyn De La Cerda finishing with 14 points (with four three-pointers) and LaTascya Duff the third Lobo in double figures with 11. Getting the starting nod, Paula Reus had a solid all-around performance with seven points, seven assists, five rebounds and two steals. Turnovers were the difference in the game, with Houston pressuring the Lobos into 34 turnovers, while UNM caused 18 and could only manufacture nine points off turnovers.

The Lobos have four players averaging 10-plus points per game, led by Shaiquel McGruder with 14.3, followed by LaTora Duff and De La Cerda with 12.5 each and Antonia Anderson at 12.0. Anderson and McGruder lead the team in rebounds at 23 and 20, respectively, for 5.8 and 5.0 rebounds per game. LaTora has 28

assists on the season to nine turnovers, a 3.11 ratio and is averaging 7.0 assists per game.

On the other side of the court, Houston Baptist enters with an identical record, losing its first game of the season to TCU (78-48) before winning its next three (St. Thomas (TX), Texas Wesleyan and Hartford). The Huskies are averaging 67.0 points a game while holding opponents to 56.3 points a game.

The Huskies have two players averaging double figures in scoring, led by Timia Jefferson with 15.7 and joined by Julija Vujakovic, who has 11.0. N'Denasija Collins has controlled the boards with 7.3 rebounds per game and Collins and Kennedy Wilson share the team lead in assists with nine each. Vujakovic has accounted for a team-best eight steals and is second on the team in blocks with three. Amy Cotton leads with four blocks.

HBU has three players who have started all four games in Vujakovic, Enya Maguire and Abbey Sutherland, with Collins starting three, Jefferson starting two and Marilyn Nzoivu starting two. Twelve Huskies have seen playing time so far this season.

Probable Starters

#	Name	Pos.	Cls.	Ht.	PPG	RPG	APG	SPG	BPG
4	LaTascya Duff	G	Sr.	5-7	5.7	0.7	0.7	0.7	0.0
5	LaTora Duff	G	Sr.	5-7	12.5	4.0	7.0	0.8	1.3
13	Shaiquel McGruder	F	Sr.	6-0	14.3	5.0	0.3	2.0	0.0
23	Jaedyn De La Cerda	G	Sr.	5-7	12.5	4.3	2.8	1.3	0.0
32	Antonia Anderson	F	Sr.	6-2	12.0	5.8	1.5	1.5	1.5

Off the Bench

#	Name	Pos.	Cls.	Ht.	PPG	RPG	APG	SPG	BPG
1	Rebeka Renczes	PG	Fr.	5-7	0.0	2.0	3.0	1.0	0.0
10	Kath van Bennekom	G	So.	5-9	3.5	2.3	0.5	0.5	0.0
11	Zeyno Seren	F	Fr.	6-1	2.3	2.7	0.7	0.3	0.0
12	Aniyah Augmon	G	Fr.	5-8	3.8	4.3	1.0	2.0	0.0
21	Mackenzie Curtis	G	Fr.	5-9	6.0	1.5	1.0	0.0	0.0
30	Paula Reus	F	Fr.	6-1	4.0	4.5	4.0	1.0	0.0
33	Vianè Cumber	G	Fr.	5-10	6.5	3.0	0.5	0.8	0.0
34	Nevaeh Parkinson	F/C	So.	6-3	3.7	3.7	0.7	0.7	0.0



THE UNIVERSITY OF NEW MEXICO 2021-22 WOMEN'S BASKETBALL



THE UNIVERSITY OF NEW MEXICO

Location.....Albuquerque, N.M.
 Founded.....1889 by Territorial Legislature
 Enrollment.....22,225
 Nickname.....Lobos
 Colors.....Cherry (PMS 200) & Silver (PMS Cool Gray 6)
 Conference.....Mountain West Conference
 National Affiliation.....NCAA Division I
 President.....Dr. Garnett Stokes
 Director of Athletics.....Eddie Nuñez
 Deputy A.D. for External Affairs.....David Williams
 Deputy A.D. for Internal Affairs/SWA.....Janice Ruggiero
 Faculty Representative.....Karen Gaudreault, Ph.D

FACILITY INFORMATION

Facility.....The Pit
 Capacity.....15,411
 Age.....Built in 1966 (Renovated in 2009-10)
 All-Time Home Record.....434-216 (.668)

PROGRAM HISTORY

First Season.....1974-75
 Overall Record.....696-562 (.553) in 42 seasons
 Overall MW Record.....205-145 (.586) in 21 seasons
 Postseason Tournament Appearances.....18
 NCAA Tournament Appearances.....8
 Last NCAA Postseason Appearance.....2020-21 (WNIT)
 Last NCAA Postseason Opponent.....California Baptist
 Last NCAA Postseason Result.....L, 90-85
 MW Regular Season Championships.....3
 (2003-04, 2004-05, 2020-21)
 MW Tournament Championships.....5
 (2002-03, 2003-04, 2004-05, 2006-07, 2007-08)

TEAM INFORMATION

2020-21 Overall Record.....15-5
 2020-21 Mountain West Record.....11-3
 2020-21 Mountain West Season Finish.....1st
 2020-21 MW Tournament Finish.....Semifinal
 Letterwinners Returning | Lost.....7 | 5
 Starters Returning | Lost.....4 | 1

COACHING STAFF

Head Coach.....Mike Bradbury (Chattanooga, 1993)
 Record at UNM (Years).....97-56 (6th season)
 Career Record (Years).....275-173 (15th season)
 Head Coach Phone.....505-925-5770
 Women's Basketball Fax.....505-925-5779

Assistant Coach.....Valerie King (6th season)
 Alma Mater.....Cincinnati, 2004
 Assistant Coach.....Kabrina Merriweather (1st season)
 Alma Mater.....Georgia Southwestern State, 2015
 Assistant Coach.....Symone Denham (4th season)
 Alma Mater.....Wright State, 2016

Spec. Asst. to H.C.....Ryan Freeman (1st season)
 Dir. of Player Development.....Nike McClure (1st season)
 Athletic Trainer.....Lexi Smith (1st season)
 Strength Coach.....Brett Nakashima (3rd season)
 Academic Adviser.....Joe DeBonis

MISCELLANEOUS INFORMATION

2019-20 Total Attendance.....82,854
 2019-20 Average Attendance.....4,874
 2019-20 NCAA Attendance Rank.....15th
 2019-20 Mountain West Attendance Rank.....1st

MULTIMEDIA INFORMATION

Athletics Website.....www.GoLobos.com
 Main University Web Site.....www.unm.edu
 Conference Web Site.....www.TheMW.com
 Facebook.....www.facebook.com/NewMexicoLobos
 Twitter.....@UNMLobos

MEDIA RELATIONS

Women's Basketball Contact.....Allison Weiss
 Cell Phone (Preferred).....661-313-5402
 Email.....allisonweiss@unm.edu
 Address:.....

The University of New Mexico Athletics
 1414 University Drive
 Albuquerque, N.M. 87106

- » Three Mountain West Regular-Season Championships
- » Five Mountain West Tournament Championships
- » Seven NCAA Tournament Appearances Since 2001-02
- » Mountain West Attendance Leader 21 Seasons in a Row
- » WBCA Academic Top 25 Eight Times Since 2004-05



@UNMLoboWBB



NEW MEXICO WOMEN'S BASKETBALL



THE UNIVERSITY OF NEW MEXICO

2021-22 WOMEN'S BASKETBALL



Balanced Attack

Much like their M.O. last season, the Lobos had balanced scoring in their first three games of the season with four double-digit scorers before having three finish in double figures at Houston.

Four Lobos are currently averaging 10-plus points per game in Shaiquel McGruder (14.3), Antonia Anderson (12.0), Jaedyn De La Cerda (12.5) and LaTora Duff (12.5).

McGruder, De La Cerda and LaTora Duff have reached double figures in three of the four games this season.

In addition, a different Lobo has led the scoring in all four games: Anderson (16, Lamar), Vianè Cumber (17, Northern New Mexico), McGruder (30, Prairie View), LaTora Duff (16, Houston).

Also of note, New Mexico has scored the first points of the game and the third quarter in every game that they have played in this season. UNM is outscoring its opponents 315-254, with the largest point total in the first quarter (86 points) and largest margin in the second quarter (79-54).

UNM finished with four scorers in double figures in the season opener against Lamar, led by Anderson's game-high 16 points, followed by De La Cerda and McGruder at 15 each and LaTora Duff with 10. Duff was one assist shy of a double-double, tying her then-career high with nine assists, and nearly matching Lamar's team total in assists as the Cardinals had 10 in the game. McGruder was a perfect 7-for-7 from the field, one of two Lobos to go perfect from the floor.

As a team, the Lobos had balanced scoring, scoring 18 points in three of the four quarters and 17 points in the first.

Freshman Mackenzie Curtis and senior McGruder each had 12 points in the win over Northern New Mexico to join Cumber's game-high 17. Nevaeh Parkinson recorded her first collegiate double-double with 11 points and a game-high 11 rebounds, grabbing five offensive boards and six defensive, while also credited for two steals and an assist.

In the game against Prairie View A&M, McGruder led all scorers with 30 points, followed by Anderson's 19 points- with the senior finishing one rebound shy of a double-double - LaTora Duff's career-high 17 points and De La Cerda's 13 points, with nine of those points coming from behind the arc.

Put the 3 in 3-2

Antonia Anderson has made one three-pointer in each game this season and has a six-game streak of making one dating back to last season.

Three-Point Improvement

Her super senior counterpart, Jaedyn De La Cerda, has improved her three-pointers in each game this season, starting with one three-pointer against Lamar, increasing it to two against Northern New Mexico, three against Prairie View and four against Houston.

Like Anderson, De La Cerda's three-point streak dates back to last season and is at seven games currently.

Other streaks on the Lobos: LaTascya Duff at six games with a three-pointer.

Shai Time

Shaiquel McGruder took over in Tuesday's game against Prairie View A&M, setting several career highs. The senior forward finished with a career-high 30 points on a career-high 13-for-18 shooting, while adding seven rebounds and four steals to her stat sheet.

The scoring started early for McGruder, with the Lobo winning the tip and immediately making a layup 14 seconds in.

McGruder already reached double digits in the first quarter with 10 points and accounted for three of UNM's five steals.

The senior forward is seventh in the NCAA in field-goal percentage (.694), which leads the MW, and is second in the conference in field-goals made (25).

How May I Assist You?

It didn't take long for LaTora Duff to get back to form, accounting for 28 assists in the first four games. The point guard tied her career high with nine assists against Lamar, with seven assists coming in the fourth quarter, and added five assists in the second game against Northern New Mexico.

She then bested that performance in the next game with a career-high 12 assists, while also setting career highs in points (17), rebounds (eight) and blocks (four).

The Lobo facilitator is averaging 7.0 assists per game, to go along with 12.5 points per game, 4.0 rebounds per game and 1.3 blocks per game.

Duff is eighth in the NCAA in assists per game and 11th in overall assists. She leads the MW in assists and is second in assists per game.

Connect For Two

Of Duff's career-high 12 assists in the game against the Panthers, she connected with McGruder on eight of them.

An Added Surprise

With 4:00 remaining in the second quarter of the game against Northern New Mexico, LaTascya Duff checked in at the scorer's table and into the game for the first time this season, after being cleared to play earlier in the week. It was thought that Duff would be out through the non-conference portion of the schedule at the beginning of the year, but head coach Mike Bradbury confirmed pregame that Duff was ahead of schedule and available to play.

To make it even better, and a welcomed sight, LaTora Duff delivered a perfect pass to LaTascya on the wing, who drained a three-pointer in her first and only attempt of the game.

Duff has started two games this season and has made at least one three-pointer a game this season.

Milestone Watch

Super seniors Antonia Anderson and Jaedyn De La Cerda are closing in on 1000-point milestones. De La Cerda is 57 points away and Anderson is 125 away. Should Anderson reach the milestone, she will be the 17th player in program history to have 1,000 points, 500 rebounds.

In addition, Anderson has played in 119 games at UNM, with the record 134 games set by Angela Hartill (2005-09).

Learn As You Grow

While the Lobos return stability in four starters from a year ago, the makeup of the roster is extreme, comprised of five seniors, two sophomores and six freshmen.

All six that have played so far have found the stat sheet in some capacity, with three also getting the starting nod in Paula Reus, Zeyno Seren and Vianè Cumber.

Aniyah Augmon and Cumber have gotten the most minutes to date with over 67 and 62 minutes, respectively, with Augmon standing out against Lamar and Cumber against Northern New Mexico. Reus started at Houston and had a balanced seven points, seven assists, five rebounds and two steals and has played 40 minutes in two games with one start.

In her first official collegiate game, Mackenzie Curtis went 3-for-7 from three and added three free throws to reach double digits, while recording an assist and three rebounds.

Seren tallied seven points on 3-for-5 shooting against Northern New Mexico, has grabbed eight rebounds this season and added two assists and a steal.

Rebeka Renczes is still looking for her first point as a Lobo, but has contributed two rebounds, three assists and a steal in one game.

She's Just a Freshman

It took all of one week of collegiate play for Vianè Cumber to earn her first



THE UNIVERSITY OF NEW MEXICO

2021-22 WOMEN'S BASKETBALL



award, as the guard earned the inaugural MW Freshman of the Week on Monday, Nov. 15.

The distinction comes after Cumber led all scorers with 17 points on 7-for-10 shooting and 3-for-5 from three-point range in her first collegiate start on Friday. The guard also was credited with an assist and two steals.

Cumber took over midway through the first quarter, accounting for eight straight Lobo points, making three consecutive shots on back-to-back threes and a layup as UNM built its lead in the first quarter, going a perfect 3-for-3 and 2-for-2 from three while also having a steal and an assist against Northern New Mexico. In the third quarter, Cumber went 2-for-3 with a fast-break layup and created the steal that led to a fast-break layup on the next possession.

The Albuquerque native added a layup and a final three in the fourth quarter while grabbing four defensive rebounds.

Her first collegiate basket occurred in the second quarter against Lamar on a jumper that extended the Lobo lead to seven and collected three rebounds. On the week, Cumber averaged 9.5 points, 4.0 rebounds and 1.5 steals per game.

Quarter Lockdown

While the season is still young, the Lobos have held an opponent to single digits in a quarter three times already.

In the game against Northern New Mexico, UNM held the Lady Eagles to seven points in both the second and fourth quarters, while holding them under 15 points in each quarter.

The Lobos held Northern New Mexico to 18.2% in the fourth quarter on 2-11 shooting and 23.1% in the second quarter on 3-13 shooting.

As a whole, NNMC shot just 27.6% in the game with 16 made baskets on 58 attempts and 17.4% from three with four makes on 23 attempts.

Against Lamar, the Lobos shut the Cardinals down defensively in the third quarter, allowing just nine points in the quarter for the 53-37 (16 points) lead.

UNM held Lamar to 2-of-11 shooting from the floor (18.2%) and 1-of-7 (14.3%) from three.

On the offensive end, UNM shot 53.8% from the field in the third quarter to the Cardinals' 18.2%, with Jaedyn De La Cerda accounting for 14 of UNM's 18 points in the quarter.

Further, the Lobos held the Panthers scoreless for the first 2:16 of the game, the first Lamar points came at 7:15 remaining in first and the Lobos held the Lady Eagles the final 5:06 of the first quarter without a point.

AA Battery

It didn't take long for freshman Aniyah Augmon to bring energy to the Lobos, providing an immediate spark and has found ways to make an impact on each game this season.

When the Cardinals answered with an 8-0 run of their own to tie the game, it was freshman Aniyah Augmon who stepped up to provide the spark off of the bench with a personal 5-0 run that entailed a fast-break layup, a steal and a three-pointer.

Augmon had a full stat sheet with eight points (3-for-3 shooting), six rebounds (tying the team high) and three steals (a team high) in her first collegiate game and nearly matched it in her second game as a Lobo.

The energy and contributions continued into game two, as the California native registered four rebounds, three assists, a steal and six points in the win over Northern New Mexico, going 2-for-3 from the floor and 2-for-2 from the free-throw line.

In the game against Prairie View, while the freshman was held to just one point, she found other ways to help the Lobos, with six rebounds and three

steals.

Among the MW, Augmon is tied for sixth in steals per game and in the top 20 in rebounds per game.

Managing Expectations

After winning the Mountain West regular season in 2020-21 for the first time since 2004-05, the Lobos were picked to finish second in the preseason MW poll with 251 points and seven first-place votes.

It is the second time in head coach Mike Bradbury's tenure that the Lobos have been picked to finish second, with the last time occurring in 2019-20 when the Lobos earned three first-place votes and 280 points.

New Mexico finished above UNLV with the Rebels at 232 points and three first-place votes, and fourth-place Colorado State with the Rams earning 207 points and one first-place vote.

State and Colorado State with one each, San Diego State with two, UNLV at three, UNM with seven and Fresno State the preseason favorite with 13 first-place votes and 269 points.

In addition, senior Antonia Anderson was selected to the MW preseason all-conference team, one of five players to earn the distinction. For Anderson, the Cibolo, Texas native is coming off of a campaign in which she averaged 12.1 points per game, 6.2 rebounds per game, 1.9 assists per game, 1.0 steals per game and 1.0 blocks per game and scored 10-plus points in 13 games with a career-high 29 points in the victory over UNLV on Jan. 17. Anderson led the team in rebounds and rebounds per game, was second in made field goals and blocked shots and third in total points.

In MW contests, she averaged 12.6 points per game and a team-high 6.6 rebounds per game, as well as led the conference in field-goal percentage with 49 percent. Further, Anderson was eighth in blocks per game at 1.07 and ranked in the top 15 in scoring, rebounding, field-goal percentage, blocked shots and defensive rebounds, resulting in her first all-conference honor in being named to the Mountain West all-conference team.

Pride of New Mexico

The Lobos have two New Mexico natives on the 2021-22 roster with freshman Vianè Cumber and senior Jaedyn De La Cerda. In addition to being from New Mexico, the duo has something else in common: New Mexico Gatorade Player of the Year distinctions.

Cumber was named the 2019-20 and 2021-21 New Mexico Gatorade Girls Basketball Player of the Year after averaging 26.5 points, 9.3 rebounds, 2.2 assists and 1.5 steals her senior season and 22.4 points, 10.6 rebounds, 2.5 assists and 3.3 steals as a junior at Sandia High School in Albuquerque. Out of Roswell, N.M., and Roswell High School, De La Cerda earned the 2016-17 New Mexico Gatorade Player of the Year.

Know Your Opponent

Houston Baptist enters Tuesday's game with a 3-1 record, having won its last three games after a season-opening loss to TCU (78-48).

The Huskies have two players averaging double figures in scoring, led by Timia Jefferson with 15.7 and joined by Julija Vujakovic, who has 11.0. N'Denasija Collins leads in rebounds at 7.3 rebounds per game and Collins and Kennedy Wilson share the team lead in assists with nine each. Vujakovic has accounted for a team-best eight steals and is second on the team in blocks with three. Amy Cotton leads with four blocks.

HBU has three players who have started all four games in Vujakovic, Enya Maguire and Abbey Sutherland, with Collins starting three, Jefferson starting two and Marilyn Nzoiwu starting two. Twelve Huskies have seen playing time so far this season.

The Huskies were voted second in the Southland Conference preseason poll, receiving one first-place vote. Timia Jefferson was also named to the 2021-22 Southland first team All-Conference team and Kennedy Wilson was named to the Southland second-team All-Conference. HBU finished 11-11 last season.



THE UNIVERSITY OF NEW MEXICO

2021-22 WOMEN'S BASKETBALL



LAST TIME IT HAPPENED (UNM)

As A Team

Scored 100 Points:	120 - at Arkansas-Pine Bluff (12-17-20)
Scored 90 Points:	96 - Northern New Mexico (11-12-21)
Scored Fewer Than 50 Points:	42 - at UNLV (1-11-17)
Scored Fewer Than 40 Points:	38 - at Colorado St. (1-3-15)
Won by 50 Points:	+56 (W, 96-40) - Northern New Mexico (11-12-21)
Won by 40 Points:	+48 (W, 92-44) - vs. Northern NM (12-10-19)
Won By 30 Points:	+32 (W, 97-65) - at Utah State (3-1-21)
Lost By 30 Points:	-37 (L, 47-84) - at (RV) Arizona St. (12-14-19)
Lost By 40 Points:	-42 (L, 63-105) - at Oklahoma (12-16-17)
Shot 60% or Better:	61.2% - Pacific (11-9-01)
Shot Less Than 30%:	26.7% (16-60) - vs. UNLV (1-18-20)
Shot 60% 3FG or Better:	68.2% (15-22) - at NMSU (12-2-17)
Shot Less Than 20% 3FG:	13.7% (4-29) - vs. Nevada (3-1-20)
Made 15 3-Pointers:	15 - at Utah State (2-28-21)
Shot 90% on FTs (10 or more):	94.12% (16-17) - vs. Nevada (3-1-20)
Shot Less Than 40% On FTs:	14.3% (1-7) - at UTEP (11-30-17)
Had 50 Rebounds:	54 - Northern New Mexico (11-12-21)
Had 20 Offensive Rebounds:	21 - Northern New Mexico (11-12-21)
Had 25 Assists:	27 - at Arkansas-Pine Bluff (12-17-20)
Had 20 Turnovers:	34 - at Houston (11/20/21)
Had Less Than 10 Turnovers:	6 - California Baptist (3-19-21)
Had 10 Steals:	11 - Prairie View A&M (11-16-21)
Had 10 Blocks:	10 - vs. UNLV (1-18-20)
Had Two 20-Point Scorers:	California Baptist (3-19-21)
Had Three 20-Point Scorers:	LaTascya Duff (20) and Jaedyn De La Cerdia (28) vs. San Jose St. (2-27-19)
Had 6 Double-Digit Scorers:	Tesha Buck (30), Jaisa Nunn (22) and Cherise Beynon (22) at Arkansas-Pine Bluff (12-17-20)
Had 5 Double-Digit Scorers:	vs. Colorado State (3-4-21)
Had No Double-Digit Scorers:	vs. (RV) Arizona St. (12-14-19)
Had Two 10+ Rebounders:	vs. Nevada (3-1-20)
Scored 50 Points In 1st Half:	Shaiquel McGruder (17) and Antonia Anderson (10) 50 - Prairie View A&M (11-16-21)
Scored 50 Points In 2nd Half:	50 - Northern New Mexico (11-12-21)
Scored 60 Points in a 2nd Half:	63 - vs. New Mexico St. (12-16-19)
Scored 20 Or Fewer Points In 1st Half:	17 - at Colorado St. (2-22-17)
Scored 20 Or Fewer Points In 2nd Half:	17 - at UNLV (1-15-21)
Lowest Pts Scored in Quarter:	2 - vs. Tulsa (11-25-16)
Failed To Make a 3FG:	at (RV) Arizona St. (12-14-19)
Defeated a Ranked Team:	W, 88-87 vs. No. 16 Marquette (11-13-17)
Lost To a Ranked Team:	L, 60-73 vs. No. 23 West Virginia (11-29-19)
Won an OT Game:	W, 74-71 at Wyoming (2-8-20)
Won an OT Game:	L, 78-86 at Nevada (2-19-20)
Won a 2OT Game:	W, 89-85 at Houston (11-24-18)
Lost a 2OT Game:	L, 69-65 vs. Fresno St. (1-2-16)

As An Individual

Had a Triple-Double:	Aisia Robertson (28 pts, 11 rebs, 11 assists) at Houston (11-24-18)
Had a Double-Double (Pts/Reb):	Nevaeh Parkinson (11 pts, 11 reb) vs. Northern New Mexico (11-12-21)
Had a Double-Double (Pts/Asst):	LaTora Duff (17 pts & 12 asts) Prairie View A&M (11-16-21)
Had a Double-Double (Reb/Asst):	vs. Fairleigh Dickinson (11-12-16)
Scored 20+ Pts with 10+ Rebs:	Cherise Beynon (13 reb, 10 asts) Jordan Hosey (25 pts, 13 reb) at Fresno St. (1-8-20)
Scored 30 Points:	Shaiquel McGruder (30 pts), Prairie View A&M (11-16-21)
Scored 40 Points:	Cherise Beynon (41) at SDSU (1-20-18)
Scored 30 Points (MW Only):	LaTascya Duff (31) at Air Force (2-23-21)
Scored 40 points (MW Only):	Cherise Beynon (41) at San Diego St. (1-20-18)
Had 20+ Rebounds:	Richelle van der Keijl (20) vs. New Mexico St. (11-15-16)
Had 15+ Rebounds:	Shaiquel McGruder (15) vs. Colorado State (3-5-21)
Had 15+ Assists:	Aisia Robertson (16) vs. Oklahoma (11-28-18)
Had 5+ Steals:	Autumn Watts (5) vs. California Baptist (3-19-21)
Had 5+ Blocks:	Shaiquel McGruder (5) at Sam Houston State (12-6-20)

LAST TIME IT HAPPENED (OPP)

As A Team

Scored 100 Points:	105 - at Oklahoma (12-16-17)
Scored 90 Points:	90 - vs. California Baptist (3-19-21)
Scored Less Than 50 Points:	48 - at San Diego St. (2-5-21)
Scored Less Than 40 Points:	40 - Northern New Mexico (11-12-21)
Shot 50% Or Better:	50.0% (35-70) - at Houston (11/20/21)
Shot Less Than 30%:	27.6 % (16-58) - Northern New Mexico (11-12-21)
Shot 50% 3FG Or Better:	53.3 (8-15) - vs. San Diego St. (2-12-20)
Shot Less Than 20% 3FG:	17.4% (4-23) - Northern New Mexico (11-12-21)
Made 15 3-Pointers:	15 - at San José St. (1-22-20)
Shot 90% On FTs (10 or more):	90.0% (9-10) at Air Force (2-24-21)
Shot Less Than 50% On FTs:	47.8% (11-23) - Lamar (11/9/21)
Had 50 Rebounds:	53 - Prairie View A&M (11-16-21)
Had 20 Offensive Rebounds:	24 - Prairie View A&M (11-16-21)
Had 25 Assists:	26 - at Houston (11/20/21)
Had 20 Turnovers:	23 - Northern New Mexico (11-12-21)
Had 30 Turnovers:	30 - vs. Northern NM (11-15-17)
Had Less Than 10 Turnovers:	8 - vs. Colorado State (3-5-21)
Had 10 Steals:	18 - at Houston (11/20/21)
Had 10 Blocks:	10 - vs. Utah St. (2-10-16)
Had Two 20-Point Scorers:	California Baptist (3-19-21)
Had 6 Double-Digit Scorers:	Britney Thomas (22) and Caitlyn Harper (25) Baylor (1-4-95)
Had 5 Double-Digit Scorers:	vs. Boise St. (2-22-20)
Had No Double-Digit Scorers:	Stephen F. Austin (12-20-18)
Had Two 10+ Rebounders:	vs. Air Force. (2-24-20)
Scored 50+ Points In 1st Half:	Emily Conroe (13), Kaelin Immel (10) 54 - at San José St. (1-22-20)
Scored 50+ Points In 2nd Half:	51 - at Houston (11/20/21)
Scored 20 Or Less Points In 1st Half:	20 - vs. Colorado State (3-4-21)
Scored 20 Or Less In 2nd Half:	19 - Northern New Mexico (11-12-21)
Scored Less Than 10 Points in Quarter:	7 - Northern New Mexico (11-12-21)
Failed To Make a 3FG:	0-1 by San Diego State (2-18-15)

As An Individual

Had a Double-Double (Pts/Reb):	Gerlyn Smith (16 pts, 10 reb) Prairie View A&M (11-16-21)
Had a Double-Double (Pts/Asst):	Ane Olaeta (11 pts, 14 assists) California Baptist (3-19-21)
Had a Double-Double (Pts/Steals):	Jasmyne Harris (28 pts & 10 steals) at Houston (11-28-18)
Had 20+ Points & 10+ Rebounds:	Jessica Chatman (21 pts, 11 reb) Utah State (3-1-21)
Scored 30 Points:	Shlya Latone (33) - at Utah State (3-1-21)
Scored 30 Points (MW Only):	Shlya Latone (33) - at Utah State (3-1-21)
Had 20+ Rebounds:	Kaylee Johnson (22) - No. 1 Stanford (11-24-14)
Had 15+ Rebounds:	Tyra Whitehead (16) - at San José St. (1-22-20)
Had 10+ Assists:	Ane Olaeta (14) - California Baptist (3-19-21)
Had 5+ Steals:	Tatyana Hill (5) - at Houston (11/20/21)
Had 5+ Blocks:	Mallory McGwire (5) - vs. Boise St. (2-22-20)



THE UNIVERSITY OF NEW MEXICO

2021-22 WOMEN'S BASKETBALL



LOBOS RECORD WHEN...

	Overall	In MW
Overall	3-1	0-0
At home	3-0	0-0
On the road	0-1	0-0
At neutral sites	0-0	0-0
After a win	2-1	0-0
After a loss	0-0	0-0
In overtime	0-0	0-0
vs. ranked opponents	0-0	0-0
Games decided by 1-4 points	0-0	0-0
Games decided by 5-9 points	0-0	0-0
Games decided by 10-19 points	2-0	0-0
Games decided by 20+ points	1-1	0-0
Leading after Q1	3-0	0-0
Trailing after Q1	0-1	0-0
Tied after Q1	0-0	0-0
Leading at half	3-0	0-0
Trailing at half	0-1	0-0
Tied at half	0-0	0-0
Leading after Q3	3-0	0-0
Trailing after Q3	0-1	0-0
Tied after Q3	0-0	0-0
Shooting 50% or better	1-0	0-0
Shooting between 40-49.9%	2-1	0-0
Shooting less than 40%	0-0	0-0
Opponent shoots 50% or better	0-1	0-0
Opponent shoots b/w 40-49.9%	0-0	0-0
Opponent shoots b/w 30-39.9%	2-0	0-0
Opponent shoots less than 30%	1-0	0-0
UNM higher FG%	3-0	0-0
Opponent higher FG%	0-1	0-0
FG% Tied	0-0	0-0
UNM outrebounds	2-1	0-0
Opponent outrebounds	1-0	0-0
Rebounds tied	0-0	0-0
UNM more made free throws	3-1	0-0
Opponent more made free throws	0-0	0-0
Made free throws tied	0-0	0-0
UNM 3FG% higher	1-0	0-0
Opponent 3FG% higher	2-1	0-0
3FG% tied	0-0	0-0
UNM has more fouls	1-1	0-0
Opponent has more fouls	2-0	0-0
Fouls are tied	0-0	0-0
UNM more turnovers	0-1	0-0
Opponent more turnovers	3-0	0-0
Turnovers tied	0-0	0-0
Scoring less than 50 points	0-0	0-0
Scoring 50-59 points	0-0	0-0
Scoring 60-69 points	0-1	0-0
Scoring 70-79 points	1-0	0-0
Scoring 80-89 points	1-0	0-0
Scoring 90-99 points	1-0	0-0
Scoring 100+ points	0-0	0-0
Allowing 40 points or less	1-0	0-0
Allowing 41-49 points	0-0	0-0
Allowing 50-59 points	1-0	0-0
Allowing 60-69 points	0-0	0-0
Allowing 70-79 points	1-0	0-0
Allowing 80-89 points	0-1	0-0
Allowing 90+ points	0-0	0-0
In November	3-1	0-0
In December	0-0	0-0
In January	0-0	0-0
In February	0-0	0-0
In March	0-0	0-0

MOUNTAIN WEST STATISTICS

TEAM

	All	Conference Only
Scoring	2nd (78.8)	
Assists per Game	1st (18.3)	
3-Pt FG Made	3rd (8.8)	
Scoring Margin	2nd (+15.3)	
Assist/Turnover Ratio	5th (0.9)	
FG %	2nd (.467)	
Steals per Game	3rd (10.8)	
3-PT FG %	5th (.350)	
Free throw %	7th (.712)	
Rebounding Margin	2nd (+5.8)	
Scoring Defense	5th (63.5)	
FG % Defense	4th (.360)	

INDIVIDUAL

	All	Conference Only
Scoring		
Shaiquell McGruder	10th (14.3)	
Jaedyn De La Cerda	15th (12.5)	
LaTora Duff	15th (12.5)	
Antonia Anderson	19th (12.0)	
Rebounding		
Antonia Anderson	14th (5.8)	
Field Goal %		
Shaiquell McGruder	1st (.694)	
Assists		
LaTora Duff	2nd (7.0)	
Jaedyn De La Cerda	15th (2.8)	
Steals		
Shaiquell McGruder	7th (2.0)	
Aniyah Augmon	7th (2.0)	
Blocked Shots		
Antonia Anderson	3rd (1.5)	
LaTora Duff	5th (1.3)	
Assist/Turnover Ratio		
LaTora Duff	2nd (3.1)	
3-Point FG Made		
Jaedyn De La Cerda	5th (2.5)	
LaTora Duff	13th (1.8)	
3-Point FG %		
Jaedyn De La Cerda	5th (.357)	

NCAA STATISTICS

TEAM

3-pt. FG per Game	35th
3-pt. FG Made	38th
Assists per Game	39th
Assists	42nd
FG %	46th
Scoring Offense	47th
Rebounds per Game	53rd

INDIVIDUAL

Assists per Game	
LaTora Duff	8th (7.0)
Assists	
LaTora Duff	11th (28)
FG %	
Shaiquell McGruder	7th (69.4)

2021-22 MW Players of the Week

WEEK 1 (11/15/21)

PLAYER: Desi-Rae Young, C, UNLV

FRESHMAN: Viané Cumber, G, UNM

WEEK 2 (11/22/21)

PLAYER: McKenna Hofschild, G, CSU

FRESHMAN: Audrey Roden, G, Nev.



THE UNIVERSITY OF NEW MEXICO

2021-22 WOMEN'S BASKETBALL



SERIES HISTORY

HOUSTON BAPTIST (3-0)

H: 3-0; A: 0-0; N: 0-0

12/18/11	W	65-38	H
11/18/12	W	63-46	H
11/13/15	W	65-57	H

STAT COMPARISON

HBU		UNM
67.0	Points Per Game	78.8
38.9	FG%	46.7
31.8	3FG%	35.0
68.4	FT%	71.2
5.3	Made 3-pt PG	8.8
39.8	Rebounds PG	43.0
22.0	Turnovers PG	20.0
12.8	Assists PG	18.3
4.0	Blocks PG	2.8
12.5	Steals PG	10.8
56.3	Scoring Defense	63.5
31.9	FG% Defense	36.0
21.3	3FG% Defense	34.4
-4.2	Rebound Margin	+5.8

TEAM LEADERS

Timia Jefferson (15.7)	POINTS	Shaiquel McGruder (14.3)
N'Denasija Collins (4.8)	REBOUNDS	Antonia Anderson (5.8)
Kennedy Wilson (3.0)	ASSISTS	LaTora Duff (7.0)
Julija Vujakovic (2.0)	STEALS	McGruder/Augmon (2.0)
Amy Cotton (1.0)	BLOCKS	Antonia Anderson (1.5)

UNM STARTING LINEUPS

Game	G	G	G	F	F
Lamar	Tora Duff	De La Cerda	Seren	Anderson	McGruder
Northern N.M.	Tora Duff	De La Cerda	Cumber	Anderson	McGruder
Prairie View	Tora Duff	De La Cerda	Tay Duff	Anderson	McGruder
Houston	Tora Duff	Tay Duff	Augmon	van Bennekom	Reus

UNM STARTING LINEUPS (RECORD)

Seren, LaTora Duff, De La Cerda, Anderson, McGruder1-0
Cumber, LaTora Duff, De La Cerda, Anderson, McGruder1-0
Tay Duff, Tora Duff, De La Cerda, Anderson, McGruder1-0
Tay Duff, Tora Duff, Augmon, van Bennekom, Reus0-1

DOUBLE-DOUBLE TRACKER

Nevaeh Parkinson 11 pts, 11 reb.	Northern N.M.
LaTora Duff 17 pts, 12 assts.....	Prairie View

CAREER DOUBLE-DOUBLES

	2021-22	Career
Antonia Anderson0.....	3
Jaedyn De La Cerda0.....	1
Shaiquel McGruder0.....	1
Nevaeh Parkinson1.....	1
LaTora Duff1.....	1

20-POINT TRACKER

Shaiquel McGruder 30 pts	Prairie View
-------------------	--------------------	--------------

MOUNTAIN WEST STANDINGS

Team (AP/Coaches)	CONFERENCE						OVERALL							
	W	L	Pct.	Home	Away	Neutral	W	L	Pct.	Home	Away	Neutral	Last 10	Strk
Colorado State	0	0	.000	0	0-0	0-0	5	0	1.000	4-0	1-0	0-0	6-4	W5
New Mexico	0	0	.000	0	0-0	0-0	3	1	.750	3-0	0-1	0-0	7-3	L1
San Diego State	0	0	.000	0	0-0	0-0	3	1	.750	2-0	1-1	0-0	5-5	W1
UNLV	0	0	.000	0	0-0	0-0	3	1	.750	2-0	1-1	0-0	8-2	W1
Fresno State	0	0	.000	0	0-0	0-0	2	1	.667	1-0	1-1	0-0	5-5	W1
Air Force	0	0	.000	0	0-0	0-0	2	2	.500	2-1	0-1	0-0	4-6	W1
Utah State	0	0	.000	0	0-0	0-0	2	2	.500	2-1	0-1	0-0	2-8	L2
San José State	0	0	.000	0	0-0	0-0	2	3	.400	1-1	1-2	0-0	4-5	W1
Boise State	0	0	.000	0	0-0	0-0	1	2	.333	1-1	0-1	0-0	5-5	L1
Nevada	0	0	.000	0	0-0	0-0	1	2	.333	1-1	0-1	0-0	6-4	W1
Wyoming	0	0	.000	0	0-0	0-0	1	2	.333	1-1	0-1	0-0	7-3	L2



THE UNIVERSITY OF NEW MEXICO

2021-22 WOMEN'S BASKETBALL



NUMERICAL

#	NAME	POS	HT	YR	B/T	HOMETOWN (PREVIOUS SCHOOL)
1	Rebeka Renczes	PG	5-7	Fr.		Szekszard, Hungary/ Garay Janos Secondary School
4	LaTascya Duff	G	5-7	Sr.		Samson, Ala. / Shelton State CC
5	LaTora Duff	G	5-7	Sr.		Samson, Ala. / Shelton State CC
10	Kath van Bennekomp	G	5-9	So.		Gorinchem, The Netherlands / Lyceum Oudehoven
11	Zeyno Şeren	G	5-10	Fr.		Ankara, Turkey/ TED Ankara College Private High School
12	Aniyah Augmon	G	5-8	Fr.		San José, Calif./ Woodside Priory School
13	Shaiquell McGruder	F	6-0	Sr.		Trotwood, Ohio / Trotwood-Madison HS
21	Mackenzie Curtis	G	5-9	Fr.		Lakeside, Calif. / El Capitan HS
23	Jaedyn De La Cerda	G	5-6	Sr.		Roswell, N.M. / Roswell HS
30	Paula Reus	F	6-1	Fr.		Palma de Mallorca, Spain/ IES Joaquim Blume
32	Antonia Anderson	G/F	6-2	Sr.		Cibolo, Texas / Byron P. Steele II HS
33	Vianè Cumber	G	5-10	Fr.		Albuquerque, N.M. / Sandia HS
34	Nevaeh Parkinson	F/C	6-3	So.		Dallas, Texas / John Paul II HS

ALPHABETICAL

#	NAME	POS	HT	YR	B/T	HOMETOWN (PREVIOUS SCHOOL)
32	Antonia Anderson	G/F	6-2	Sr.		Cibolo, Texas / Byron P. Steele II HS
12	Aniyah Augmon	G	5-8	Fr.		San José, Calif./ Woodside Priory School
33	Vianè Cumber	G	5-10	Fr.		Albuquerque, N.M. / Sandia HS
21	Mackenzie Curtis	G	5-9	Fr.		Lakeside, Calif. / El Capitan HS
23	Jaedyn De La Cerda	G	5-6	Sr.		Roswell, N.M. / Roswell HS
4	LaTascya Duff	G	5-7	Sr.		Samson, Ala. / Shelton State CC
5	LaTora Duff	G	5-7	Sr.		Samson, Ala. / Shelton State CC
11	Zeyno Şeren	G	5-10	Fr.		Ankara, Turkey/ TED Ankara College Private High School
13	Shaiquell McGruder	F	6-0	Sr.		Trotwood, Ohio / Trotwood-Madison HS
34	Nevaeh Parkinson	F/C	6-3	So.		Dallas, Texas / John Paul II HS
1	Rebeka Renczes	PG	5-7	Fr.		Szekszard, Hungary/ Garay Janos Secondary School
30	Paula Reus	F	6-1	Fr.		Palma de Mallorca, Spain/ IES Joaquim Blume
10	Kath van Bennekomp	G	5-9	So.		Gorinchem, The Netherlands / Lyceum Oudehoven

PRONUNCIATION GUIDE

1	Rebeka RENCZES	WREN-sesh
4	LATASCYA Duff	La-TAY-see-uh
10	Kath VAN BENNEKOM	van-ben-e-kom
11	ZEYNO SEREN	ZAY-no (like say no) SHA-wren
13	SHAIQUEL McGruder	Shy-kwell
23	JAEDYN De La Cerda	JAY-den
30	Paula REUS	Rey-OOSE
34	NEVAEH Parkinson	Nuh-VAY-uh

BY ELIGIBILITY

Seniors (5)

4	LaTascya Duff	G
5	LaTora Duff	G
13	Shaiquell McGruder	F
23	Jaedyn De La Cerda	G
32	Antonia Anderson	G/F

Sophomores (2)

15	Kath van Bennekomp	G
34	Nevaeh Parkinson	F/C

Freshmen (6)

1	Rebeka Renczes	PG
11	Zeyno Seren	G
12	Aniyah Augmon	G
21	Mackenzie Curtis	G
30	Paula Reus	F
33	Vianè Cumber	G

HOME STATE

Alabama (2)

4	LaTascya Duff	G
5	LaTora Duff	G

California (2)

12	Aniyah Augmon	G
21	Mackenzie Curtis	G

New Mexico (2)

23	Jaedyn De La Cerda	G
33	Vianè Cumber	G

Ohio (1)

13	Shaiquell McGruder	F
----	--------------------	-------	---

Texas (2)

32	Antonia Anderson	G/F
34	Nevaeh Parkinson	F/C

INTERNATIONAL

1	Rebeka Renczes (Hungary)	PG
10	Kath van Bennekomp (The Netherlands)	G
11	Zeyno Seren (Turkey)	G
30	Paula Reus (Spain)	F

STARTERS RETURNING (4)

No.	Name	Pos.	Cls.	Pts.	Reb.	Ast.	FG%	3FG%
5	LaTora Duff	G	Sr.	8.0	3.4	78	.445	.333
13	Shaiquell McGruder	F	Sr.	9.1	6.0	15	.606	.368
23	Jaedyn De La Cerda	G	Sr.	15.0	5.2	47	.437	.323
32	Antonia Anderson	F	Sr.	12.1	6.2	37	.490	.328

OTHER LETTERWINNERS RETURNING (3)

No.	Name	Pos.	Cls.	Pts.	Reb.	Ast.	FG%	3FG%
4	LaTascya Duff	G	Sr.	14.9	3.0	39	.445	.400
10	Kath van Bennekomp	G	So.	1.6	1.8	4	.250	.167
34	Nevaeh Parkinson	F/C	So.	0.6	0.8	0	.222	.200

STARTERS LOST (1)

No.	Name	Pos.	Class	Pts.	Ast.	FG%	3-FG%	FT%
3	Ahlise Hurst	G/F	Jr.	12.4	49	.376	.338	.771

OTHER LETTERWINNERS LOST (5)

No.	Name	Pos.	Class
1	Corina Carter	PG	So.
3	Ahlise Hurst	G/F	Jr.
10	Celine Dupont	F/C	R-Fr.
14	Azaria Robinson	F	So.
24	Autumn Watts	F	So.

NEWCOMERS (6)

No.	Name	Pos.	Class
1	Rebeka Renczes	PG	Fr.
11	Zeyno Seren	G	Fr.
12	Aniyah Augmon	G	Fr.
21	Mackenzie Curtis	G	Fr.
30	Paula Reus	F	Fr.
33	Vianè Cumber	G	Fr.



THE UNIVERSITY OF NEW MEXICO

2021-22 WOMEN'S BASKETBALL



MIKE BRADBURY

RECORD AT UNM: 97-56 (6TH SEASON)
CAREER RECORD: 275-173 (15TH SEASON)

NOTEWORTHY :

- Named the sixth head coach in program history on March 31, 2016
- Led UNM to 25 wins in 2017-18; tied for second-most wins in program history
- Spent six years at Wright State (2010-16) and went 128-73 for the Raiders
- Most single-season wins in Wright State history (26)
- Five 20-win seasons at Wright State with five postseason appearances

Mike Bradbury enters his sixth season as head coach for The University of New Mexico women's basketball team. In his previous five seasons at the helm, Bradbury has guided the Lobos to a 94-55 (.631) overall record. Twice in his tenure, in 2017-18 and 2018-19, the Lobos eclipsed the 20-win mark and totaled 49 victories over that time. The consecutive 20-plus win seasons under Bradbury are the first for the program since the 2007-08 – 2008-09 seasons.

In his most recent season at the helm of the Lobos, Bradbury led the Lobos to a Mountain West regular season championship, the first outright in program history and the first regular season title since the 2004-05 season. In addition, the Lobos were selected for the WNIT for the third time in four years.

The Lobos produced one of the most prolific offenses not only in the conference, but in the country, finishing among the top 25 in several categories. Among them, UNM finished fourth in the NCAA in made three-pointers per game (10.2), sixth in assist-turnover ratio (1.40), ninth in scoring offense (81.2 points per game), 14th in fewest turnovers per game (12.0) and assists per game (16.8) and 22nd in scoring margin (12.7). The Lobos led the Mountain West in scoring offense, scoring margin, assists per game, turnover margin, assist-turnover ratio and made three-pointers as well as second in field-goal percentage and steals per game.

UNM set a program record in scoring with 120 points against Arkansas-Pine Bluff on Dec. 17, 2020 and in the process, made 17 three-pointers, falling just one short of tying the program record. Further, the Lobos registered 90-plus points in five games and 80-plus points in 11 of the 20 games on the season.

Four Lobos finished the 2020-21 season averaging double figures in points per game with six players finishing in double figures in scoring in two games (the only times it has been accomplished in program history), five players in five games and four in seven games.

As a result of UNM's successful season, five players were named to the All-Mountain West Team with LaTascya Duff also earning the superlative of Sixth Person of the Year. Duff was just the second Lobo to win the sixth person award. Making the all-conference team for the first time were Duff, Jaedyn De La Cerda and Antonia Anderson, as well as Shaiquel McGruder earning all-defensive and Ahlise Hurst earning the honorable mention distinction.

In his third year at the helm, Bradbury continued to put his mark on the program while also continuing to bring Lobo women's basketball back to national prominence. Overall, Bradbury's 2018-19 team went 24-7 and earned a bid to the WNIT for a second-straight season. It marked the first time since the 2008-09 – 2009-10 seasons that the program made consecutive trips to the postseason.

After dropping a one-possession game to Auburn in the preseason WNIT, the 2018-19 Lobos ripped off 11-straight wins to tie the program record and were on the cusp of cracking the national top-25 rankings as well by receiving votes from the WBCA during that stretch. Bradbury would also receive an individual plaudit from the WBCA last season as he was named as one of 13 finalists for the 2019 United States Marine Corps/WBCA National Coach of the Year Award. Impressively, Bradbury was the only coach from a non-Power 5 conference to be a finalist.

In his time at UNM, Bradbury has coached 13 All-Mountain West performers with Cherise Beynon, Jayla Everett, Jaia Nunn, Aisia Robertson and Richelle van der Keijl joining De La Cerda, Duff, McGruder, Hurst and Anderson in making the All-Mountain West Team. Tesha Buck, Mykiel Burleson and Nike McClure have also earned MW recognition with Buck being the 2017-18 Newcomer of the Year, Burleson being named to the All-Freshman team in 2016-17 and McClure landing on the All-Defensive team in 2018-19.

In terms of major individual awards, Bradbury has coached the league's

Newcomer of the Year each of his first three seasons in charge of the Lobos with van der Keijl earning the award in 2016-17, Buck in 2017-18 and Robertson in 2018-19. Additionally, Bradbury has coached the MW Player of the Year in Nunn (2018-19) and the Freshman of the Year in Everett (2018-19) as well as Sixth Person of the Year in Duff (2020-21).

Further, a Lobo has been named Mountain West Player of the Week 11 times during his tenure.

In year two under Bradbury the Lobos had a breakout season, especially offensively as they ended the 2017-18 season averaging 80.4 points per game while also posting an impressive +9.7 scoring margin. Both marks led the Mountain West and the point-per-game total was 16th-best in NCAA DI last season.

A significant reason for the jump in offensive production was the fact that the Lobos were one of the most potent three-point shooting threats in the country. For the season, the Lobos attempted the eighth-most overall trifectas in DI hoisting 932 long distance shots. Successful 34% of the time, the Lobos made the 11th most 3's burying 319.

Prior to coming to Albuquerque, Bradbury built a





THE UNIVERSITY OF NEW MEXICO

2021-22 WOMEN'S BASKETBALL



successful nine year run as a Division-I head coach with stops at Morehead State (Morehead, Ky.) and Wright State (Dayton, Ohio). Most recently with the Raiders, Bradbury led his squad to five 20-win seasons, including each of his final three seasons. During that time, Wright State has amassed a 75-28 record, the best amongst the 13 Division I programs in the state of Ohio.

Overall at Wright State, Bradbury had five winning seasons, all of which were 20-plus win seasons, in six years- a feat made all the more remarkable as Wright State had just one winning season in the previous 22 before his arrival. In the previous 37 seasons of women's basketball at Wright State, the Raider program had tallied 20 wins just once before Bradbury led the team to 20 wins in five of his six seasons.

His most prominent three-year run at Wright State started in 2013-14, when the Raiders won a school-record 26 games on the way to a 26-9 season and the program's first-ever appearance in the NCAA Tournament. That season saw the Raiders finish second in the Horizon League and win its first Horizon League Tournament. It also featured the program's first road win at perennial league power Wisconsin-Green Bay. Kim Demmings was named the Horizon League Player of the Year and Tournament MVP, and it marked the first time in school history the program had a pair of first team All-Conference selections.

He followed up that by earning Horizon League Coach of the Year in 2014-15 after a 25-9 season that saw his squad lose its Horizon League Preseason Player of the Year less than two minutes into the season opener. The Raiders just missed a second straight NCAA Tournament appearance, falling in overtime in the conference championship game. The team did make its first appearance in the Women's NIT as the league's automatic qualifier, and in 2015-16, the team made

it back-to-back WNIT appearances after a 24-11 season, earning the program's first at-large bid.

Those three seasons are the three winningest seasons in the history of Wright State women's basketball.

In his first two seasons at Wright State, he led the team to a 20-13 campaign and a 21-13 mark and berths in the Women's Basketball Invitational, the first NCAA Division I postseason berths for the program. Overall, Bradbury has coached three Horizon League Players of the Year (all in his last three seasons), six first-team All-Horizon League players, three second-team members and four All-Freshman team members.

Prior to his time at Wright State, Bradbury was the head coach at Morehead State where he led the Division I program to a 50-44 mark in three seasons, including a watershed 22-11 season, which was the second-most wins in Morehead State history and the most wins by the Eagles in the previous 38 years. At Morehead State he coached one Ohio Valley Conference Player of the Year, along with one first-team All-OVC pick (two seasons) and three second-team All-OVC picks.

Bradbury also spent time as an assistant coach at Xavier (2002-06), Cincinnati (1996-02), VCU (1995-96), East Tennessee State (1994-95) and Chattanooga (1991-94). In his 29 seasons as an assistant and as a head coach, Bradbury has had 27 winning seasons.

THE BRADBURY FILE

EDUCATION

UT-Chattanooga - B.S. Recreation (1993)

COACHING EXPERIENCE

1991-93	Student Assistant	Chattanooga
1993-94	Assistant Coach	Chattanooga
1994-95	Assistant Coach	East Tennessee
1995-96	Assistant Coach	VCU
1996-02	Assistant Coach	Cincinnati
2002-07	Assistant Coach	Xavier
2007-10	Head Coach	Morehead State
2010-16	Head Coach	Wright State
2016-pres.	Head Coach	New Mexico

HEAD COACHING RECORD

2007-10	Morehead State	50-44 (.532)
2010-16	Wright State	128-73 (.637)
2016-pres.	New Mexico	97-56 (.634)
15 years		275-173 (.614)

CAREER HEAD COACHING YEAR-BY-YEAR

2007-08	11-19 (9-11)	Morehead State
2008-09	17-14 (11-7)	Morehead State
2009-10	22-11 (14-4)	Morehead State
2010-11	20-13 (11-7)	Wright State
2011-12	21-13 (12-6)	Wright State
2012-13	12-18 (6-10)	Wright State
2013-14	26-9 (12-4)	Wright State
2014-15	25-9 (12-4)	Wright State
2015-16	24-11 (12-6)	Wright State
2016-17	15-15 (10-8)	New Mexico
2017-18	25-11 (10-8)	New Mexico
2018-19	24-7 (14-4)	New Mexico
2019-20	15-17 (6-12)	New Mexico
2020-21	15-5 (11-3)	New Mexico
2021-22	3-1 (0-0)	New Mexico
Total	275-173 (150-94)	



THE UNIVERSITY OF NEW MEXICO

2021-22 WOMEN'S BASKETBALL



1
Rebeka Renczes
PG | 5-7 | FR.
Szekszard, Hungary



4
LaTascya Duff
G | 5-7 | SR.
Samson, Ala.



5
LaTora Duff
G | 5-7 | SR.
Samson, Ala.



10
Kath van Bennekom
G | 5-9 | SO.
Gorinchem, The Netherlands



11
Zeyno Şeren
G | 5-10 | FR.
Ankara, Turkey



12
Aniyah Augmon
G | 5-8 | FR.
San José, Calif.



13
Shaiquel McGruder
F | 6-0 | SR.
Trotwood, Ohio



21
Mackenzie Curtis
G | 5-9 | FR.
Lakeside, Calif.



23
Jaedyn De La Cerda
G | 5-7 | SR.
Roswell, N.M.



30
Paula Reus
F | 6-1 | FR.
Palma de Mallorca,
Spain



32
Antonia Anderson
G/F | 6-2 | SR.
Cibolo, Texas



33
Vianè Cumber
G | 5-10 | FR.
Albuquerque, N.M.



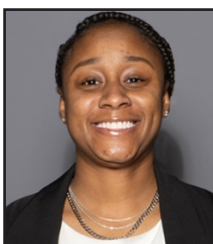
34
Nevaeh Parkinson
F/C | 6-3 | SO.
Dallas, Texas



Mike Bradbury
Head Coach



Valerie King
Assistant Coach



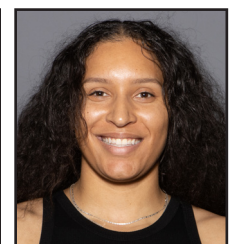
Symone Denham
Assistant Coach



Kabrina Merriweather
Assistant Coach



Ryan Freeman
Special Assistant to the
Head Coach



Nike McClure
Director of Player
Development



THE UNIVERSITY OF NEW MEXICO

2021-22 WOMEN'S BASKETBALL



#1

REBEKA RENCZES

PG | 5-7 | FR | Szekszard, Hungary (Garay Janos Secondary)



PPG	FG %	3PT %	FT %	RPG	APG	SPG	BPG	MPG
0.0	.000	.000	.000	2.0	3.0	1.0	0.0	17.9

NOTEWORTHY

- » Averaged 22.1 points, 9.0 assists and 6.3 steals during the 2019 season
- » Averaged 17.3 points, 6.1 assists and 2.9 steals during the 2021 season
- » Played on the U16 Hungary National Team and competed in the 2019 FIBA U16 Women's European Championship
- » Averaged 6.0 points, 2.9 assists, 2.3 rebounds, 1.1 steals while averaging 21.5 minutes with the national team

Renczes' Top Performances

Points	Season	
	Career	
FGM	Season	
	Career	
FGA	Season	3 vs Northern N.M. (11/12/21)
	Career	Same
3PT FGM	Season	
	Career	
3PT FGA	Season	2 vs Northern N.M. (11/12/21)
	Career	Same
FTM	Season	
	Career	
FTA	Season	
	Career	
Rebounds	Season	2 vs Northern N.M. (11/12/21)
	Career	Same
Assists	Season	3 vs Northern N.M. (11/12/21)
	Career	Same
Blocks	Season	
	Career	
Steals	Season	1 vs Northern N.M. (11/12/21)
	Career	Same
Turnovers	Season	3 vs Northern N.M. (11/12/21)
	Career	Same
Min. Played	Season	18 vs Northern N.M. (11/12/21)
	Career	Same

GAME-BY-GAME STATISTICS

Opponent	Date	GS	MIN	Total		3-Pointers		Free throws		Rebounds				PF	A	TO	BLK	STL	PTS	AVG
				FG-FGA	PCT	3FG-3FGA	PCT	FT-FTA	PCT	OFF	DEF	TOT	AVG							
Northern N.M.	11/12/2021		17:56	0-3	.000	0-2	.000	0-0	.000	0	2	2	2.0	1	3	3	0	1	0	0.0
Totals		0	17:56	0-3	.000	0-2	.000	0-0	.000	0	2	2	2.0	1	3	3	0	1	0	0.0

CAREER STATISTICS

				Field Goals		3-Point		F-Throws		Rebounds									Scoring	
SEASON	TEAM	GP-GS	MIN/AVG	FG-FGA	FG%	3FG-3FGA	3FG%	FT-FTA	FT%	OFF	DEF	TOT	AVG	PF-FO	A	TO	BLK	STL	PTS	AVG
2021-22	UNM	1-0	18/17.9	0-3	.000	0-2	.000	0-0	.000	0	2	2	2.0	1-0	3	3	0	1	0	0.0
TOTAL		1-0	18/17.9	0-3	.000	0-2	.000	0-0	.000	0	2	2	2.0	1-0	3	3	0	1	0	0.0



THE UNIVERSITY OF NEW MEXICO

2021-22 WOMEN'S BASKETBALL



#4

LaTASYA DUFF

G | 5-7 | SR | Samson, Ala. (Shelton State CC)



PPG	FG %	3PT %	FT %	RPG	APG	SPG	BPG	MPG
5.7	.455	.400	1.000	0.7	0.7	0.7	0.0	18.7

NOTEWORTHY

- » Named Mountain West Sixth Person of the Year
- » MW All-Conference Team
- » Named Mountain West Preseason Newcomer of the Year
- » Named Mountain West Player of the Week twice (Dec. 21 and March 2)
- » Second on the team in points, ppg, field-goal attempts, free-throw percentage
- » Led the Lobos in 3-point field-goal percentage, 3-point field-goal attempts and made 3-pointers, and free throws made

Duff's Top Performances

Points	Season	11 at Houston (11/20/21)
	Career	31 at Air Force (2/23/21)
FGM	Season	3 at Houston (11/20/21)
	Career	11 at Air Force (2/23/21)
FGA	Season	7 at Houston (11/20/21)
	Career	20 at Air Force (2/23/21)
3PT FGM	Season	2 at Houston (11/20/21)
	Career	6 - done four times
3PT FGA	Season	6 at Houston (11/20/21)
	Career	12 - done twice
FTM	Season	3 at Houston (11/20/21)
	Career	8 - done twice
FTA	Season	3 at Houston (11/20/21)
	Career	10 at SHSU (12/6/20)
Rebounds	Season	2 at Houston (11/20/21)
	Career	7 - done twice
Assists	Season	1 - done twice
	Career	6 at Midwestern St. (12/4/20)
Blocks	Season	
	Career	2 vs. Colorado State (3/5/21)
Steals	Season	1 - done twice
	Career	5 at Air Force (2/23/21)
Turnovers	Season	0 - done twice
	Career	0 - done six times
Min. Played	Season	34 at Houston (11/20/21)
	Career	38 at Air Force (2/23/21)

GAME-BY-GAME STATISTICS

Opponent	Date	GS	MIN	Total		3-Pointers		Free throws		Rebounds				PF	A	TO	BLK	STL	PTS	AVG
				FG-FGA	PCT	3FG-3FGA	PCT	FT-FTA	PCT	OFF	DEF	TOT	AVG							
Northern N.M.	11/12/2021		04:00	1-1	1.000	1-1	1.000	0-0	.000	0	0	0	0.0	0	0	0	0	0	3	3.0
Prairie View	11/16/2021	*	18:32	1-3	.333	1-3	.333	0-0	.000	0	0	0	0.0	0	1	0	0	1	3	3.0
at Houston	11/20/2021	*	33:41	3-7	.429	2-6	.333	3-3	1.000	0	2	2	0.7	2	1	3	0	1	11	5.7
Totals			2 56:13	5-11	.455	4-10	.400	3-3	1.000	0	2	2	0.7	2	2	3	0	2	17	5.7

CAREER STATISTICS (AT UNM)

SEASON	TEAM	GP-GS	MIN/AVG	Field Goals		3-Point		F-Throws		Rebounds				Scoring						
				FG-FGA	FG%	3FG-3FGA	3FG%	FT-FTA	FT%	OFF	DEF	TOT	AVG	PF-FO	A	TO	BLK	STL	PTS	AVG
2020-21	UNM	20-4	495/24.8	93-209	.445	52-130	.400	59-72	.819	13	47	60	3.0	37-0	39	22	4	17	297	14.9
2021-22	UNM	3-2	56/18.7	5-11	.455	4-10	.400	3-3	1.000	0	2	2	0.7	2-0	2	3	0	2	17	5.7
TOTAL		23-6	551/24.0	98-220	.445	56-140	.400	62-75	.827	13	49	62	2.7	39-0	41	25	4	19	314	13.7



THE UNIVERSITY OF NEW MEXICO

2021-22 WOMEN'S BASKETBALL



#5

LaTORA DUFF

G | 5-7 | SR | Samson, Ala. (Shelton State CC)



PPG	FG %	3PT %	FT %	RPG	APG	SPG	BPG	MPG
12.5	.415	.350	.750	4.0	7.0	0.8	1.3	30.1

NOTEWORTHY

- » Started in all 20 games for the Lobos last season
- » Led the Lobos in assists and third in steals
- » Top 5 in free throws made, rebounds, 3-pointers made and attempted

Duff's Top Performances

Points	Season	17 vs Prairie View (11/16/21)
	Career	Same
FGM	Season	7 at Houston (11/20/21)
	Career	Same
FGA	Season	13 vs Prairie View (11/16/21)
	Career	Same
3PT FGM	Season	3 vs Prairie View (11/16/21)
	Career	3 - done five times
3PT FGA	Season	9 vs Lamar (11/9/21)
	Career	Same
FTM	Season	4 vs Prairie View (11/16/21)
	Career	6 at Midwestern St.(12/4/20)
FTA	Season	6 vs Prairie View (11/16/21)
	Career	9 at Midwestern St.(12/4/20)
Rebounds	Season	8 vs Prairie View (11/16/21)
	Career	Same
Assists	Season	12 vs Prairie View (11/16/21)
	Career	Same
Blocks	Season	4 vs Prairie View (11/16/21)
	Career	Same
Steals	Season	3 at Houston (11/20/21)
	Career	4 at Midwestern St.(12/4/20)
Turnovers	Season	0 - done twice
	Career	0 - done seven times
Min. Played	Season	37 vs Prairie View (11/16/21)
	Career	37 - done twice

GAME-BY-GAME STATISTICS

Opponent	Date	GS	MIN	Total		3-Pointers		Free throws		Rebounds				PF	A	TO	BLK	STL	PTS	AVG	
				FG-FGA	PCT	3FG-3FGA	PCT	FT-FTA	PCT	OFF	DEF	TOT	AVG								
Lamar University	11/09/2021	*	34:32	3-11	.273	2-9	.222	2-2	1.000	0	3	3	3.0	3	9	1	1	0	10	10.0	
Northern N.M.	11/12/2021	*	17:39	2-6	.333	0-0	.000	3-4	.750	0	2	2	2.5	0	5	0	0	0	7	8.5	
Prairie View	11/16/2021	*	37:20	5-13	.385	3-6	.500	4-6	.667	2	6	8	4.3	2	12	0	4	0	17	11.3	
at Houston	11/20/2021	*	31:00	7-11	.636	2-5	.400	0-0	.000	0	3	3	4.0	0	2	8	0	3	16	12.5	
Totals			4	120:31	17-41	.415	7-20	.350	9-12	.750	2	14	16	4.0	5	28	9	5	3	50	12.5

CAREER STATISTICS (AT UNM)

SEASON	TEAM	GP-GS	MIN/AVG	Field Goals		3-Point		F-Throws		Rebounds				Scoring						
				FG-FGA	FG%	3FG-3FGA	3FG%	FT-FTA	FT%	OFF	DEF	TOT	AVG	PF-FO	A	TO	BLK	STL	PTS	AVG
2020-21	UNM	20-20	542/27.1	61-137	.445	22-66	.333	16-24	.667	6	62	68	3.4	27-0	78	39	3	25	160	8.0
2021-22	UNM	4-4	121/30.1	17-41	.415	7-20	.350	9-12	.750	2	14	16	4.0	5-0	28	9	5	3	50	12.5
TOTAL		24-24	662/27.6	78-178	.438	29-86	.337	25-36	.694	8	76	84	3.5	32-0	106	48	8	28	210	8.8



THE UNIVERSITY OF NEW MEXICO

2021-22 WOMEN'S BASKETBALL



#10

KATH VAN BENNEKOM

G | 5-9 | SO | Gorinchem, The Netherlands



PPG	FG %	3PT %	FT %	RPG	APG	SPG	BPG	MPG
3.5	.625	.000	.667	2.3	0.5	0.5	0.0	14.2

NOTEWORTHY

- » Competed for Lyceum Oudehoven and also for the club team Binneland where she helped her team to the U16 Championship in 2016
- » Led her U20 team to the semi-finals and the Final Four in 2017, 2018, 2019 and 2020
- » Helped her team to the U20 Cup Finals twice (2017, 2020).

van Bennekom's Top Performances

Points	Season	7 vs Northern N.M. (11/12/21)
	Career	9 at Midwestern St.(12/4/20)
FGM	Season	2 - done twice
	Career	Same
FGA	Season	3 - done twice
	Career	5 at Midwestern St.(12/4/20)
3PT FGM	Season	
	Career	1 - done twice
3PT FGA	Season	1 at Houston (11/20/21)
	Career	4 at Midwestern St.(12/4/20)
FTM	Season	3 vs Northern N.M. (11/12/21)
	Career	6 at Midwestern St.(12/4/20)
FTA	Season	4 vs Northern N.M. (11/12/21)
	Career	8 at Midwestern St.(12/4/20)
Rebounds	Season	4 vs Northern N.M. (11/12/21)
	Career	7 at San Diego St. (2/5/21)
Assists	Season	1 - done twice
	Career	1 - done six times
Blocks	Season	
	Career	
Steals	Season	1 - done twice
	Career	2 at Utah State (2/28/21)
Turnovers	Season	0 - done twice
	Career	0 - done 14 times
Min. Played	Season	20 vs Lamar (11/9/21)
	Career	Same

GAME-BY-GAME STATISTICS

Opponent	Date	GS	MIN	Total		3-Pointers		Free throws		Rebounds				PF	A	TO	BLK	STL	PTS	AVG
				FG-FGA	PCT	3FG-3FGA	PCT	FT-FTA	PCT	OFF	DEF	TOT	AVG							
Lamar University	11/09/2021		19:53	2-3	.667	0-0	.000	0-0	.000	3	0	3	3.0	4	0	3	0	0	4	4.0
Northern N.M.	11/12/2021		12:45	2-2	1.000	0-0	.000	3-4	.750	3	1	4	3.5	1	1	0	0	1	7	5.5
Prairie View	11/16/2021		06:04	0-0	.000	0-0	.000	1-2	.500	0	0	0	2.3	1	0	1	0	1	1	4.0
at Houston	11/20/2021	*	18:04	1-3	.333	0-1	.000	0-0	.000	0	2	2	2.3	1	1	0	0	0	2	3.5
Totals		1	56:46	5-8	.625	0-1	.000	4-6	.667	6	3	9	2.3	7	2	4	0	2	14	3.5

CAREER STATISTICS

SEASON	TEAM	GP-GS	MIN/AVG	Field Goals		3-Point		F-Throws		Rebounds				Scoring						
				FG-FGA	FG%	3FG-3FGA	3FG%	FT-FTA	FT%	OFF	DEF	TOT	AVG	PF-FO	A	TO	BLK	STL	PTS	AVG
2020-21	UNM	16-0	118/7.4	5-20	.250	2-12	.167	13-20	.650	10	19	29	1.8	13-0	4	4	0	2	25	1.6
2021-22	UNM	4-1	57/14.2	5-8	.625	0-1	.000	4-6	.667	6	3	9	2.3	7-0	2	4	0	2	14	3.5
TOTAL		20-1	174/8.7	10-28	.357	2-13	.154	17-26	.654	16	22	38	1.9	20-0	6	8	0	4	39	2.0



THE UNIVERSITY OF NEW MEXICO

2021-22 WOMEN'S BASKETBALL



#11

ZEYNO SEREN

G | 5-10 | FR | Ankara, Turkey (TED Ankara College Private HS)



PPG	FG %	3PT %	FT %	RPG	APG	SPG	BPG	MPG
2.3	.600	.000	.333	2.7	0.7	0.3	0.0	10.4

NOTEWORTHY

- » Averaged 16.2 points, 5.1 assists, 7.0 rebounds and 3.0 steals
- » Competed for Turkey at the U16 European Championship in 2019 and the Baku Youth Olympics
- » Played for BOTAS Sports Club

Seren's Top Performances

Points	Season	6 vs Northern N.M. (11/12/21)
	Career	Same
FGM	Season	3 vs Northern N.M. (11/12/21)
	Career	Same
FGA	Season	4 vs Northern N.M. (11/12/21)
	Career	Same
3PT FGM	Season	
	Career	
3PT FGA	Season	1 vs Lamar (11/9/21)
	Career	Same
FTM	Season	1 vs Lamar (11/9/21)
	Career	Same
FTA	Season	2 vs Lamar (11/9/21)
	Career	Same
Rebounds	Season	4 - done twice
	Career	Same
Assists	Season	1 - done twice
	Career	Same
Blocks	Season	
	Career	
Steals	Season	1 vs Northern N.M. (11/12/21)
	Career	Same
Turnovers	Season	0 - done twice
	Career	Same
Min. Played	Season	17 vs Northern N.M. (11/12/21)
	Career	Same

GAME-BY-GAME STATISTICS

Opponent	Date	GS	MIN	Total		3-Pointers		Free throws		Rebounds										
				FG-FGA	PCT	3FG-3FGA	PCT	FT-FTA	PCT	OFF	DEF	TOT	AVG	PF	A	TO	BLK	STL	PTS	AVG
Lamar University	11/09/2021	*	13:51	0-1	.000	0-1	.000	1-2	.500	0	4	4	4.0	1	1	0	0	0	1	1.0
Northern N.M.	11/12/2021		16:36	3-4	.750	0-0	.000	0-1	.000	1	3	4	4.0	2	1	0	0	1	6	3.5
at Houston	11/20/2021		00:50	0-0	.000	0-0	.000	0-0	.000	0	0	0	2.7	0	0	0	0	0	0	2.3
Totals		1	31:16	3-5	.600	0-1	.000	1-3	.333	1	7	8	2.7	3	2	0	0	1	7	2.3

CAREER STATISTICS

SEASON	TEAM	GP-GS	MIN/AVG	Field Goals		3-Point		F-Throws		Rebounds				Scoring						
				FG-FGA	FG%	3FG-3FGA	3FG%	FT-FTA	FT%	OFF	DEF	TOT	AVG	PF-FO	A	TO	BLK	STL	PTS	AVG
2021-22	UNM	3-1	31/10.4	3-5	.600	0-1	.000	1-3	.333	1	7	8	2.7	3-0	2	0	0	1	7	2.3
TOTAL		3-1	31/10.4	3-5	.600	0-1	.000	1-3	.333	1	7	8	2.7	3-0	2	0	0	1	7	2.3



THE UNIVERSITY OF NEW MEXICO

2021-22 WOMEN'S BASKETBALL



#12

ANIYAH AUGMON

G | 5-8 | FR | San José, Calif. (Woodside Priory School)



PPG	FG %	3PT %	FT %	RPG	APG	SPG	BPG	MPG
3.8	.714	.500	.800	4.3	1.0	2.0	0.0	16.8

NOTEWORTHY

- » Averaged 14.0 points, 7.0 rebounds, 4.0 assists and 3.0 steals throughout her high school career
- » Helped lead her teams to three CCS Championships (2017, 2018, 2019)
- » First team all-league in 2019, honorable mention in 2018 and second team all-league in 2017
- » Attended the Adidas All-American Camp
- » Competed for Peninsula Basketball Club where she averaged 15.0 points, 7.0 rebounds, 4.0 assists and 3.0 steals.

Augmon's Top Performances

Points	Season	8 vs Lamar (11/9/21)
	Career	Same
FGM	Season	3 vs Lamar (11/9/21)
	Career	Same
FGA	Season	3 - done twice
	Career	Same
3PT FGM	Season	1 vs Lamar (11/9/21)
	Career	Same
3PT FGA	Season	1 - done twice
	Career	Same
FTM	Season	2 vs Northern N.M. (11/12/21)
	Career	Same
FTA	Season	2 - done twice
	Career	Same
Rebounds	Season	6 - done twice
	Career	Same
Assists	Season	3 vs Northern N.M. (11/12/21)
	Career	Same
Blocks	Season	
	Career	
Steals	Season	3 - done twice
	Career	Same
Turnovers	Season	1 vs Prairie View (11/16/21)
	Career	Same
Min. Played	Season	23 vs Lamar (11/9/21)
	Career	Same

GAME-BY-GAME STATISTICS

Opponent	Date	GS	MIN	Total		3-Pointers		Free throws		Rebounds										
				FG-FGA	PCT	3FG-3FGA	PCT	FT-FTA	PCT	OFF	DEF	TOT	AVG	PF	A	TO	BLK	STL	PTS	AVG
Lamar University	11/09/2021		23:03	3-3	1.000	1-1	1.000	1-1	1.000	0	6	6	6.0	2	0	2	0	3	8	8.0
Northern N.M.	11/12/2021		16:24	2-3	.667	0-1	.000	2-2	1.000	0	4	4	5.0	2	3	3	0	1	6	7.0
Prairie View	11/16/2021		18:11	0-0	.000	0-0	.000	1-2	.500	0	6	6	5.3	3	1	1	0	3	1	5.0
at Houston	11/20/2021	*	09:34	0-1	.000	0-0	.000	0-0	.000	0	1	1	4.3	2	0	3	0	1	0	3.8
Totals		1	67:12	5-7	.714	1-2	.500	4-5	.800	0	17	17	4.3	9	4	9	0	8	15	3.8

CAREER STATISTICS

				Field Goals		3-Point		F-Throws		Rebounds				Scoring						
SEASON	TEAM	GP-GS	MIN/AVG	FG-FGA	FG%	3FG-3FGA	3FG%	FT-FTA	FT%	OFF	DEF	TOT	AVG	PF-FO	A	TO	BLK	STL	PTS	AVG
2021-22	UNM	4-1	67/16.8	5-7	.714	1-2	.500	4-5	.800	0	17	17	4.3	9-0	4	9	0	8	15	3.8
TOTAL		4-1	67/16.8	5-7	.714	1-2	.500	4-5	.800	0	17	17	4.3	9-0	4	9	0	8	15	3.8



THE UNIVERSITY OF NEW MEXICO

2021-22 WOMEN'S BASKETBALL



#13

SHAIQUEL McGRUDER

F | 6-0 | SR | Trotwood, Ohio (Trotwood-Madison HS)



PPG	FG %	3PT %	FT %	RPG	APG	SPG	BPG	MPG
14.3	.694	.500	.750	5.0	0.3	2.0	0.0	20.9

NOTEWORTHY

- » Named to MW All-Defensive Team
- » Started all 20 games as a junior
- » Two games with 10-plus rebounds as a junior, one double-double against Sam Houston State (13 rebounds, 17 points)
- » Four games with multiple blocks last season, including 5 blocks against Sam Houston State
- » 10 games with multiple steals with a season-high 4 against Fresno State
- » Nine games with 10-plus points
- » Led the team in blocked shots with 23 and was 6th in the MW in blocked shots per game

McGruder's Top Performances

Points	Season	30 vs Prairie View (11/16/21)
	Career	Same
FGM	Season	13 vs Prairie View (11/16/21)
	Career	Same
FGA	Season	18 vs Prairie View (11/16/21)
	Career	Same
3PT FGM	Season	1 vs Lamar (11/9/21)
	Career	2 at SHSU (12/6/20)
3PT FGA	Season	1 - done twice
	Career	4 vs. Colorado St. (3/5/21)
FTM	Season	4 vs Prairie View (11/16/21)
	Career	Same
FTA	Season	4 - done twice
	Career	4 - done four times
Rebounds	Season	7 vs. Prairie View (11/16/21)
	Career	17 vs. Nevada (3/1/20)
Assists	Season	1 at Houston (11/20/21)
	Career	4 vs. Fresno State (1/28/21)
Blocks	Season	Same
	Career	5 at SHSU (12/6/20)
Steals	Season	4 vs. Prairie View (11/16/21)
	Career	8 vs. West Virginia (11/29/19)
Turnovers	Season	0 vs Northern N.M. (11/12/21)
	Career	0 - done 40 times
Min. Played	Season	29 vs. Prairie View (11/16/21)
	Career	34 at SHSU (12/6/20)

GAME-BY-GAME STATISTICS

Opponent	Date	GS	MIN	Total		3-Pointers		Free throws		Rebounds				PF	A	TO	BLK	STL	PTS	AVG
				FG-FGA	PCT	3FG-3FGA	PCT	FT-FTA	PCT	OFF	DEF	TOT	AVG							
Lamar University	11/09/2021	*	22:09	7-7	1.000	1-1	1.000	0-0	.000	2	3	5	5.0	4	0	3	0	1	15	15.0
Northern N.M.	11/12/2021	*	20:08	5-10	.500	0-0	.000	2-4	.500	4	0	4	4.5	1	0	0	0	3	12	13.5
Prairie View	11/16/2021	*	28:48	13-18	.722	0-0	.000	4-4	1.000	2	5	7	5.3	0	0	2	0	4	30	19.0
at Houston	11/20/2021		12:22	0-1	.000	0-1	.000	0-0	.000	1	3	4	5.0	3	1	1	0	0	0	14.3
Totals			3 83:27	25-36	.694	1-2	.500	6-8	.750	9	11	20	5.0	8	1	6	0	8	57	14.3

CAREER STATISTICS

2021-22 UNM Season Statistics																						
SEASON	TEAM	GP-GS	MIN/AVG	Field Goals		3-Point		F-Throws		Rebounds				PF-FO					Scoring			
				FG-FGA	FG%	3FG-3FGA	3FG%	FT-FTA	FT%	OFF	DEF	TOT	AVG	A	TO	BLK	STL	PTS	AVG			
2018-19	UNM	26-0	212/8.1	33-58	.569	0-0	.000	7-18	.389	32	39	71	2.7	17-0	3	7	14	24	73	2.8		
2019-20	UNM	31-8	558/18.0	97-163	.595	1-10	.100	20-27	.741	66	108	174	5.6	44-0	8	29	26	38	215	6.9		
2020-21	UNM	20-20	471/23.6	80-132	.606	7-19	.368	15-22	.682	42	77	119	6.0	40-0	15	30	23	30	182	9.1		
2021-22	UNM	4-3	83/20.9	25-36	.694	1-2	.500	6-8	.750	9	11	20	5.0	8-0	1	6	0	8	57	14.3		
TOTAL		81-31	1324/16.4	235-389	.604	9-31	.290	48-75	.640	149	235	384	4.7	109-0	27	72	63	100	527	6.5		



THE UNIVERSITY OF NEW MEXICO

2021-22 WOMEN'S BASKETBALL



#21

MACKENZIE CURTIS

G | 5-9 | FR | Lakeside, Calif. (El Capitan HS)



PPG	FG %	3PT %	FT %	RPG	APG	SPG	BPG	MPG
6.0	.300	.429	.750	1.5	1.0	0.0	0.0	10.0

NOTEWORTHY

- » Averaged 22.2 points, 9.5 rebounds, 3.3 assists, 3.5 steals and 1.0 blocks per game
- » Four-time team MVP, three-time league MVP, four-time San Diego Union Tribune Scholar-Athlete
- » Named First-Team All-CIF in 2020 and Second Team All-CIF in 2019
- » No. 1 scorer in San Diego for two years and No. 3 in California for scoring in the class of 2021

Curtis' Top Performances

Points	Season	12 vs Northern N.M. (11/12/21)
	Career	Same
FGM	Season	3 vs Northern N.M. (11/12/21)
	Career	Same
FGA	Season	10 vs Northern N.M. (11/12/21)
	Career	Same
3PT FGM	Season	3 vs Northern N.M. (11/12/21)
	Career	Same
3PT FGA	Season	7 vs Northern N.M. (11/12/21)
	Career	Same
FTM	Season	3 vs Northern N.M. (11/12/21)
	Career	Same
FTA	Season	4 vs Northern N.M. (11/12/21)
	Career	Same
Rebounds	Season	3 vs Northern N.M. (11/12/21)
	Career	Same
Assists	Season	2 vs Northern N.M. (11/12/21)
	Career	Same
Blocks	Season	
	Career	
Steals	Season	
	Career	
Turnovers	Season	1 at Houston (11/20/21)
	Career	Same
Min. Played	Season	19 vs Northern N.M. (11/12/21)
	Career	Same

GAME-BY-GAME STATISTICS

Opponent	Date	GS	MIN	Total		3-Pointers		Free throws		Rebounds				PF	A	TO	BLK	STL	PTS	AVG
				FG-FGA	PCT	3FG-3FGA	PCT	FT-FTA	PCT	OFF	DEF	TOT	AVG							
Northern N.M.	11/12/2021		19:06	3-10	.300	3-7	.429	3-4	.750	1	2	3	3.0	0	2	2	0	0	12	12.0
at Houston	11/20/2021		00:56	0-0	.000	0-0	.000	0-0	.000	0	0	0	1.5	0	0	1	0	0	0	6.0
Totals		0	20:02	3-10	.300	3-7	.429	3-4	.750	1	2	3	1.5	0	2	3	0	0	12	6.0

CAREER STATISTICS

				Field Goals		3-Point		F-Throws		Rebounds									Scoring	
SEASON	TEAM	GP-GS	MIN/AVG	FG-FGA	FG%	3FG-3FGA	3FG%	FT-FTA	FT%	OFF	DEF	TOT	AVG	PF-FO	A	TO	BLK	STL	PTS	AVG
2021-22	UNM	2-0	20/10.0	3-10	.300	3-7	.429	3-4	.750	1	2	3	1.5	0-0	2	3	0	0	12	6.0
TOTAL		2-0	20/10.0	3-10	.300	3-7	.429	3-4	.750	1	2	3	1.5	0-0	2	3	0	0	12	6.0



THE UNIVERSITY OF NEW MEXICO

2021-22 WOMEN'S BASKETBALL



#23

JAEDYN DE LA CERDA

G | 5-7 | SR | Roswell, N.M. (Roswell HS)



PPG	FG %	3PT %	FT %	RPG	APG	SPG	BPG	MPG
12.5	.321	.357	.667	4.3	2.8	1.3	0.0	31.1

NOTEWORTHY

- » Named to 2020-21 MW All-Conference Team and MW All-Tournament Team
- » Fifth in the MW in points per game and in field-goal percentage (.437), but led the conference in free-throw percentage
- » Scored in double figures 17 times including six games in which she scored 20 points or more last season
- » Recorded her first double-double with 13 points and 11 rebounds at Arkansas-Pine Bluff, finishing with a career high in rebounds
- » A scoring catalyst off the bench, set a program record for points off the bench as she scored 31 points vs. San José State (2/27/19)
- » In HS, was named the 2016-17 New Mexico Gatorade Player of the Year in women's basketball
- » Led Roswell HS to the 2016 New Mexico 5A State Championship
- » Named as a 2016 All-State honoree as well as an Adidas All-American
- » 57 points away from 1,000 career points

De La Cerda's Top Performances

Points	Season	15 vs Lamar (11/9/21)
	Career	31 vs. San Jose State (2/27/19)
FGM	Season	5 - done twice
	Career	12 vs. San Jose State (2/27/19)
FGA	Season	19 vs Lamar (11/9/21)
	Career	26 vs. Cal. Baptist (3/19/21)
3PT FGM	Season	4 at Houston (11/20/21)
	Career	7 vs. San Jose State (2/27/19)
3PT FGA	Season	9 at Houston (11/20/21)
	Career	13 - done twice
FTM	Season	4 vs Lamar (11/9/21)
	Career	14 at SHSU (12/6/20)
FTA	Season	5 vs Lamar (11/9/21)
	Career	15 at SHSU (12/6/20)
Rebounds	Season	7 vs. Prairie View (11/16/21)
	Career	11 at Arkansas-PB (12/17/20)
Assists	Season	4 vs Northern N.M. (11/12/21)
	Career	8 vs. NM State (11/17/19)
Blocks	Season	
	Career	1 - done seven times
Steals	Season	3 vs Northern N.M. (11/12/21)
	Career	4 - done twice
Turnovers	Season	2 - done twice
	Career	0 - done 35 times
Min. Played	Season	39 vs Lamar (11/9/21)
	Career	44 vs. San Diego St. (3/11/19)

GAME-BY-GAME STATISTICS

Opponent	Date	GS	MIN	Total		3-Pointers		Free throws		Rebounds				PF	A	TO	BLK	STL	PTS	AVG
				FG-FGA	PCT	3FG-3FGA	PCT	FT-FTA	PCT	OFF	DEF	TOT	AVG							
Lamar University	11/09/2021	*	38:38	5-19	.263	1-8	.125	4-5	.800	2	4	6	6.0	2	2	2	0	1	15	15.0
Northern N.M.	11/12/2021	*	18:29	3-6	.500	2-4	.500	0-0	.000	0	2	2	4.0	0	4	2	0	3	8	11.5
Prairie View	11/16/2021	*	36:31	4-14	.286	3-7	.429	2-4	.500	2	5	7	5.0	2	3	5	0	1	13	12.0
at Houston	11/20/2021		30:55	5-14	.357	4-9	.444	0-0	.000	0	2	2	4.3	2	2	8	0	0	14	12.5
Totals			3 124:33	17-53	.321	10-28	.357	6-9	.667	4	13	17	4.3	6	11	17	0	5	50	12.5

CAREER STATISTICS

SEASON	TEAM	GP-GS	MIN/AVG	Field Goals		3-Point		F-Throws		Rebounds				Scoring						
				FG-FGA	FG%	3FG-3FGA	3FG%	FT-FTA	FT%	OFF	DEF	TOT	AVG	PF-FO	A	TO	BLK	STL	PTS	AVG
2017-18	UNM	13-0	35/2.7	8-20	.400	2-10	.200	5-6	.833	2	5	7	0.5	3-0	2	4	1	5	23	1.8
2018-19	UNM	30-5	557/18.6	82-221	.371	40-135	.296	25-32	.781	12	75	87	2.9	25-0	44	30	1	30	229	7.6
2019-20	UNM	31-14	814/26.3	121-325	.372	47-144	.326	52-64	.813	28	59	87	2.8	57-1	60	37	1	42	341	11.0
2020-21	UNM	20-20	562/28.1	107-245	.437	32-99	.323	54-63	.857	34	70	104	5.2	36-0	47	36	4	18	300	15.0
2021-22	UNM	4-3	125/31.1	17-53	.321	10-28	.357	6-9	.667	4	13	17	4.3	6-0	11	17	0	5	50	12.5
TOTAL		98-42	2092/21.3	335-864	.388	131-416	.315	142-174	.816	80	222	302	3.1	127-1	164	124	7	100	943	9.6



THE UNIVERSITY OF NEW MEXICO

2021-22 WOMEN'S BASKETBALL



#30

PAULA REUS

F | 6-1 | FR | Palma de Mallorca, Spain (IES Joaquim Blume)



PPG	FG %	3PT %	FT %	RPG	APG	SPG	BPG	MPG
4.0	.200	.250	.750	4.5	4.0	1.0	0.0	20.0

NOTEWORTHY

Will start out the season wearing #3 at home, #30 on the road.

- » Played on the U16 Spanish national team at the U16 FIBA 2019 European Championship, finishing third
- » Averaged 11.7 minutes, 3.5 points, 2.8 rebounds, 0.8 assists and 0.7 steals per game
- » Played for Barça CBS LF2, winning the regular season championship, and qualified for the finals

Reus' Top Performances

Points	Season	7 at Houston (11/20/21)
	Career	Same
FGM	Season	2 at Houston (11/20/21)
	Career	Same
FGA	Season	6 at Houston (11/20/21)
	Career	Same
3PT FGM	Season	1 at Houston (11/20/21)
	Career	Same
3PT FGA	Season	2 - done twice
	Career	Same
FTM	Season	2 at Houston (11/20/21)
	Career	Same
FTA	Season	2 - done twice
	Career	Same
Rebounds	Season	5 at Houston (11/20/21)
	Career	Same
Assists	Season	7 at Houston (11/20/21)
	Career	Same
Blocks	Season	
	Career	
Steals	Season	2 at Houston (11/20/21)
	Career	Same
Turnovers	Season	2 vs Prairie View (11/16/21)
	Career	Same
Min. Played	Season	27 at Houston (11/20/21)
	Career	Same

GAME-BY-GAME STATISTICS

Opponent	Date	GS	MIN	Total		3-Pointers		Free throws		Rebounds										
				FG-FGA	PCT	3FG-3FGA	PCT	FT-FTA	PCT	OFF	DEF	TOT	AVG	PF	A	TO	BLK	STL	PTS	AVG
Prairie View	11/16/2021		13:21	0-4	.000	0-2	.000	1-2	.500	0	4	4	4.0	1	1	2	0	0	1	1.0
at Houston	11/20/2021	*	26:41	2-6	.333	1-2	.500	2-2	1.000	2	3	5	4.5	2	7	4	0	2	7	4.0
Totals		1	40:02	2-10	.200	1-4	.250	3-4	.750	2	7	9	4.5	3	8	6	0	2	8	4.0

CAREER STATISTICS

				Field Goals		3-Point		F-Throws		Rebounds									Scoring	
SEASON	TEAM	GP-GS	MIN/AVG	FG-FGA	FG%	3FG-3FGA	3FG%	FT-FTA	FT%	OFF	DEF	TOT	AVG	PF-FO	A	TO	BLK	STL	PTS	AVG
2021-22	UNM	2-1	40/20.0	2-10	.200	1-4	.250	3-4	.750	2	7	9	4.5	3-0	8	6	0	2	8	4.0
TOTAL		2-1	40/20.0	2-10	.200	1-4	.250	3-4	.750	2	7	9	4.5	3-0	8	6	0	2	8	4.0



THE UNIVERSITY OF NEW MEXICO

2021-22 WOMEN'S BASKETBALL



#32

ANTONIA ANDERSON

G/F | 6-2 | SR | Cibolo, Texas (Byron P. Steele HS)



PPG	FG %	3PT %	FT %	RPG	APG	SPG	BPG	MPG
12.0	.529	.364	.615	5.8	1.5	1.5	1.5	24.9

NOTEWORTHY

- » Named to 2021-22 Preseason All-Conference Team
- » Named to 2020-21 MW All-Conference Team
- » Scored 10-plus points in 13 games with a career-high 29 points in the win over UNLV on Jan. 17 after making a career-high 12 baskets.
- » Led the team in rebounds (123) and rebounds per game last season
- » Recorded two double-doubles with 14 points and 10 rebounds at Air Force and 10 points and 11 rebounds against Colorado State (tied a career high)
- » Eighth in the MW in blocks per game at 1.07 and ranked in the top 15 in scoring, rebounding, field-goal percentage, blocked shots and defensive rebounds

- » 125 points away from 1,000 career points

Anderson's Top Performances

Points	Season	19 vs Prairie View (11/16/21)
	Career	29 at UNLV (1/17/21)
FGM	Season	8 vs Prairie View (11/16/21)
	Career	12 at UNLV (1/17/21)
FGA	Season	14 vs Prairie View (11/16/21)
	Career	19 vs. Fresno (3/9/21)
3PT FGM	Season	1 - done four times
	Career	4 at UNLV (1/17/21)
3PT FGA	Season	3 - done three times
	Career	11 vs Colorado State (3/4/21)
FTM	Season	5 vs Lamar (11/9/21)
	Career	5 - done three times
FTA	Season	5 vs Lamar (11/9/21)
	Career	6 - done three times
Rebounds	Season	9 vs Prairie View (11/16/21)
	Career	11 - done three times
Assists	Season	2 - done twice
	Career	5 - done twice
Blocks	Season	3 vs Prairie View (11/16/21)
	Career	6 vs. UC Riverside (11/5/19)
Steals	Season	2 - done twice
	Career	4 vs. Fresno St. (2/1/20)
Turnovers	Season	2 vs Lamar (11/9/21)
	Career	0 - done 40 times
Min. Played	Season	32 vs Prairie View (11/16/21)
	Career	38 at San José St. (1/22/20)

GAME-BY-GAME STATISTICS

Opponent	Date	GS	MIN	Total		3-Pointers		Free throws		Rebounds				PF	A	TO	BLK	STL	PTS	AVG
				FG-FGA	PCT	3FG-3FGA	PCT	FT-FTA	PCT	OFF	DEF	TOT	AVG							
Lamar University	11/09/2021	*	28:29	5-9	.556	1-3	.333	5-5	1.000	2	3	5	5.0	3	1	2	1	2	16	16.0
Northern N.M.	11/12/2021	*	17:24	3-7	.429	1-3	.333	0-2	.000	1	5	6	5.5	1	2	3	1	1	7	11.5
Prairie View	11/16/2021	*	31:47	8-14	.571	1-3	.333	2-4	.500	4	5	9	6.7	2	2	3	3	1	19	14.0
at Houston	11/20/2021		22:03	2-4	.500	1-2	.500	1-2	.500	2	1	3	5.8	3	1	4	1	2	6	12.0
Totals			3 99:43	18-34	.529	4-11	.364	8-13	.615	9	14	23	5.8	9	6	12	6	6	48	12.0

CAREER STATISTICS

				Field Goals		3-Point		F-Throws		Rebounds										Scoring	
SEASON	TEAM	GP-GS	MIN/AVG	FG-FGA	FG%	3FG-3FGA	3FG%	FT-FTA	FT%	OFF	DEF	TOT	AVG	PF-FO	A	TO	BLK	STL	PTS	AVG	
2017-18	UNM	32-1	417/13.0	52-91	.571	2-10	.200	24-40	.600	31	65	96	3.0	50-0	5	17	34	13	130	4.1	
2018-19	UNM	31-0	555/17.9	65-141	.461	10-33	.303	34-46	.739	45	72	117	3.8	64-2	19	36	27	24	174	5.6	
2019-20	UNM	32-31	865/27.0	112-268	.418	29-92	.315	28-39	.718	35	136	171	5.3	91-5	54	64	43	39	281	8.8	
2020-21	UNM	20-20	486/24.3	98-200	.490	22-67	.328	24-41	.585	26	97	123	6.2	62-6	37	37	19	19	242	12.1	
2021-22	UNM	4-3	100/24.9	18-34	.529	4-11	.364	8-13	.615	9	14	23	5.8	9-0	6	12	6	6	48	12.0	
TOTAL		119-55	2423/20.4	345-734	.470	67-213	.315	118-179	.659	146	384	530	4.5	276-13	121	166	129	101	875	7.4	



THE UNIVERSITY OF NEW MEXICO

2021-22 WOMEN'S BASKETBALL



#33

VIANE CUMBER

G | 5-10 | FR | Albuquerque, N.M. (Sandia HS)



PPG	FG %	3PT %	FT %	RPG	APG	SPG	BPG	MPG
6.5	.556	.364	1.000	3.0	0.5	0.8	0.0	15.6

NOTEWORTHY

- » MW Freshman of the Week (11/15/21)
- » 2019-20 and 2021-21 New Mexico Gatorade Girls Basketball Player of the Year
- » Twice named MaxPreps New Mexico High School Girls Basketball Player of the Year
- » Named the best high school basketball player in New Mexico by MaxPreps
- » Averaged 26.5 points, 9.3 rebounds, 2.2 assists and 1.5 steals her senior season and 22.4 points, 10.6 rebounds, 2.5 assists and 3.3 steals as a junior
- » Led her team to a pair of district championships in 2018 and 2019

Cumber's Top Performances

Points	Season	17 vs Northern N.M. (11/12/21)
	Career	Same
FGM	Season	7 vs Northern N.M. (11/12/21)
	Career	Same
FGA	Season	10 vs Northern N.M. (11/12/21)
	Career	Same
3PT FGM	Season	3 vs Northern N.M. (11/12/21)
	Career	Same
3PT FGA	Season	5 vs Northern N.M. (11/12/21)
	Career	Same
FTM	Season	2 at Houston (11/20/21)
	Career	Same
FTA	Season	2 at Houston (11/20/21)
	Career	Same
Rebounds	Season	4 - done twice
	Career	Same
Assists	Season	1 - done twice
	Career	Same
Blocks	Season	
	Career	
Steals	Season	2 vs Northern N.M. (11/12/21)
	Career	Same
Turnovers	Season	1 - done three times
	Career	Same
Min. Played	Season	25 vs Northern N.M. (11/12/21)
	Career	Same

GAME-BY-GAME STATISTICS

Opponent	Date	GS	MIN	Total FG-FGA	PCT	3-Pointers 3FG-3FGA	PCT	Free throws FT-FTA	PCT	Rebounds OFF DEF TOT AVG	PF	A	TO	BLK	STL	PTS	AVG
Lamar University	11/09/2021		15:26	1-4	.250	0-3	.000	0-0	.000	0 4 4 4.0	1	0	1	0	1	2	2.0
Northern N.M.	11/12/2021	*	24:32	7-10	.700	3-5	.600	0-0	.000	0 4 4 4.0	0	1	1	0	2	17	9.5
Prairie View	11/16/2021		09:26	1-2	.500	1-2	.500	0-0	.000	0 2 2 3.3	0	0	2	0	0	3	7.3
at Houston	11/20/2021		13:04	1-2	.500	0-1	.000	2-2	1.000	1 1 2 3.0	0	1	1	0	0	4	6.5
Totals		1	62:28	10-18	.556	4-11	.364	2-2	1.000	1 11 12 3.0	1	2	5	0	3	26	6.5

CAREER STATISTICS

SEASON	TEAM	GP-GS	MIN/AVG	Field Goals FG-FGA FG%	3-Point 3FG-3FGA 3FG%	F-Throws FT-FTA FT%	Rebounds OFF DEF TOT AVG	Scoring PF-FO A TO BLK STL PTS AVG
2021-22	UNM	4-1	62/15.6	10-18 .556	4-11 .364	2-2 1.000	1 11 12 3.0	1-0 2 5 0 3 26 6.5
TOTAL		4-1	62/15.6	10-18 .556	4-11 .364	2-2 1.000	1 11 12 3.0	1-0 2 5 0 3 26 6.5



THE UNIVERSITY OF NEW MEXICO

2021-22 WOMEN'S BASKETBALL



#34

NEVAEH PARKINSON

F/C | 6-3 | SO | Dallas, Texas (John Paul II HS)



PPG	FG %	3PT %	FT %	RPG	APG	SPG	BPG	MPG
3.7	.500	.000	.750	3.7	0.7	0.7	0.0	6.6

NOTEWORTHY

- » Played for Parish Episcopal School in Texas where she helped her team to the state championship in the 2017-18 season
- » Two-time First Team All-District and two-time First Team All-State honoree
- » Averaged 18.3 points, 10.1 rebounds and 1.4 blocks per game

Parkinson's Top Performances

Points	Season	11 vs Northern N.M. (11/12/21)
Career	Same	
FGM	Season	4 vs Northern N.M. (11/12/21)
Career	Same	
FGA	Season	8 vs Northern N.M. (11/12/21)
Career	Same	
3PT FGM	Season	
Career	1 at Arkansas-PB (12/17/20)	
3PT FGA	Season	1 vs Northern N.M. (11/12/21)
Career	1 - done four times	
FTM	Season	3 vs Northern N.M. (11/12/21)
Career	Same	
FTA	Season	4 vs Northern N.M. (11/12/21)
Career	Same	
Rebounds	Season	11 vs Northern N.M. (11/12/21)
Career	Same	
Assists	Season	1 - done twice
Career	Same	
Blocks	Season	
Career	1 at Arkansas-PB (12/17/20)	
Steals	Season	2 vs Northern N.M. (11/12/21)
Career	Same	
Turnovers	Season	0 - vs Lamar (11/9/21)
Career	0 - done eight times	
Min. Played	Season	15 vs Northern N.M. (11/12/21)
Career	Same	

GAME-BY-GAME STATISTICS

Opponent	Date	GS	MIN	Total		3-Pointers		Free throws		Rebounds				PF	A	TO	BLK	STL	PTS	AVG
				FG-FGA	PCT	3FG-3FGA	PCT	FT-FTA	PCT	OFF	DEF	TOT	AVG							
Lamar University	11/09/2021		04:00	0-0	.000	0-0	.000	0-0	.000	0	0	0	0.0	0	1	0	0	0	0	0.0
Northern N.M.	11/12/2021		15:01	4-8	.500	0-1	.000	3-4	.750	5	6	11	5.5	1	1	1	0	2	11	5.5
at Houston	11/20/2021		00:50	0-0	.000	0-0	.000	0-0	.000	0	0	0	3.7	0	0	0	0	0	0	3.7
Totals		0	19:51	4-8	.500	0-1	.000	3-4	.750	5	6	11	3.7	1	2	1	0	2	11	3.7

CAREER STATISTICS

SEASON	TEAM	GP-GS	MIN/AVG	Field Goals		3-Point		F-Throws		Rebounds				Scoring						
				FG-FGA	FG%	3FG-3FGA	3FG%	FT-FTA	FT%	OFF	DEF	TOT	AVG	PF-FO	A	TO	BLK	STL	PTS	AVG
2020-21	UNM	8-0	21/2.7	2-9	.222	1-5	.200	0-2	.000	0	6	6	0.8	4-0	0	1	1	0	5	0.6
2021-22	UNM	3-0	20/6.6	4-8	.500	0-1	.000	3-4	.750	5	6	11	3.7	1-0	2	1	0	2	11	3.7
TOTAL		11-0	41/3.7	6-17	.353	1-6	.167	3-6	.500	5	12	17	1.5	5-0	2	2	1	2	16	1.5



THE UNIVERSITY OF NEW MEXICO

2021-22 WOMEN'S BASKETBALL



NEW MEXICO STATISTICS

Game Records

Record	Overall	Home	Away	Neutral
ALL GAMES	3-1	3-0	0-1	0-0
CONFERENCE	0-0	0-0	0-0	0-0
NON-CONFERENCE	3-1	3-0	0-1	0-0

Score by Periods

Team	1st	2nd	3rd	4th	OT	TOT
New Mexico	86	79	74	76	0	315
Opponents	62	54	73	65	0	254

Team Box Score

No.	Player				Total		3-Point		F-Throw		Rebounds											
		GP-GS	MIN	AVG	FG-FGA	FG%	3FG-3FGA	3FG%	FT-FTA	FT%	OFF	DEF	TOT	AVG	PF	DQ	A	TO	BLK	STL	PTS	AVG
13	MCCRUDER, Shaiquel	4-3	83:27	20.9	25-36	.694	1-2	.500	6-8	.750	9	11	20	5.0	8	0	1	6	0	8	57	14.3
23	DE LA CERDA, Jaedyn	4-3	124:33	31.1	17-53	.321	10-28	.357	6-9	.667	4	13	17	4.3	6	0	11	17	0	5	50	12.5
5	DUFF, LaTora	4-4	120:31	30.1	17-41	.415	7-20	.350	9-12	.750	2	14	16	4.0	5	0	28	9	5	3	50	12.5
32	ANDERSON, Antonia	4-3	99:43	24.9	18-34	.529	4-11	.364	8-13	.615	9	14	23	5.8	9	0	6	12	6	6	48	12.0
33	CUMBER, Vianè	4-1	62:28	15.6	10-18	.556	4-11	.364	2-2	1.000	1	11	12	3.0	1	0	2	5	0	3	26	6.5
21	CURTIS, Mackenzie	2-0	20:02	10.0	3-10	.300	3-7	.429	3-4	.750	1	2	3	1.5	0	0	2	3	0	0	12	6.0
4	DUFF, LaTascya	3-2	56:13	18.7	5-11	.455	4-10	.400	3-3	1.000	0	2	2	0.7	2	0	2	3	0	2	17	5.7
30	REUS, Paula	2-1	40:02	20.0	2-10	.200	1-4	.250	3-4	.750	2	7	9	4.5	3	0	8	6	0	2	8	4.0
12	AUGMON, Aniyah	4-1	67:12	16.8	5-7	.714	1-2	.500	4-5	.800	0	17	17	4.3	9	0	4	9	0	8	15	3.8
34	PARKINSON, Nevaeh	3-0	19:51	6.6	4-8	.500	0-1	.000	3-4	.750	5	6	11	3.7	1	0	2	1	0	2	11	3.7
10	VAN BENNEKOM, Kath	4-1	56:46	14.2	5-8	.625	0-1	.000	4-6	.667	6	3	9	2.3	7	0	2	4	0	2	14	3.5
11	SEREN, Zeyno	3-1	31:16	10.4	3-5	.600	0-1	.000	1-3	.333	1	7	8	2.7	3	0	2	0	0	1	7	2.3
1	RENCZES, Rebeka	1-0	17:56	17.9	0-3	.000	0-2	.000	0-0	.000	0	2	2	2.0	1	0	3	3	0	1	0	0.0
Team											11	12	23					2				
Total		4	800		114-244	.467	35-100	.350	52-73	.712	51	121	172	43.0	55	0	73	80	11	43	315	78.8
Opponents		4	800		95-264	.360	32-93	.344	32-52	.615	60	89	149	37.3	67	0	61	75	15	45	254	63.5

Team Statistics

	UNM	OPP
Scoring	315	254
Points per game	78.8	63.5
Scoring margin	+15.3	-
Field goals-att	114-244	95-264
Field goal pct	.467	.360
3 point fg-att	35-100	32-93
3-point FG pct	.350	.344
3-pt FG made per game	8.8	8.0
Free throws-att	52-73	32-52
Free throw pct	.712	.615
F-Throws made per game	13.0	8.0
Rebounds	172	149
Rebounds per game	43.0	37.3
Rebounding margin	+5.8	-
Assists	73	61
Assists per game	18.3	15.3
Turnovers	80	75
Turnovers per game	20.0	18.8
Turnover margin	-1.3	-
Assist/turnover ratio	0.9	0.8
Steals	43	45
Steals per game	10.8	11.3
Blocks	11	15
Blocks per game	2.8	3.8
Winning streak	0	-
Home win streak	3	-
Attendance	12050	346
Home games-Avg/Game	3-4017	1-346
Neutral site-Avg/Game	-	0-0

Team Results

Date	Opponent		Score	Att.
11/09/2021	Lamar University	W	71-54	3800
11/12/2021	Northern N.M.	W	96-40	4000
11/16/2021	Prairie View	W	88-71	4250
11/20/2021	at Houston	L	60-89	346



THE UNIVERSITY OF NEW MEXICO

2021-22 WOMEN'S BASKETBALL



HOUSTON BAPTIST STATISTICS

#	Player	GP-GS	MIN	AVG	FG		3PT		FT		Rebounds				PF	DQ	A	TO	BLK	STL	PTS	AVG
					FG-FGA	FG%	3FG-FGA	3FG%	FT-FTA	FT%	OFF	DEF	TOT	AVG								
10	Jefferson, Timia	3-2	74	24.7	15-35	.429	1-6	.167	16-17	.941	3	2	5	1.7	6	0	2	8	0	6	47	15.7
15	Vujakovic, Julija	4-4	92	23.0	18-39	.462	7-17	.412	1-2	.500	1	10	11	2.8	6	0	6	9	3	8	44	11.0
00	Maguire, Enya	4-4	97	24.3	14-37	.378	5-18	.278	0-0	.000	2	12	14	3.5	7	0	8	14	0	6	33	8.3
14	Collins, N'Denasija	4-3	90	22.5	11-25	.440	0-2	.000	11-14	.786	10	19	29	7.3	4	0	9	10	0	6	33	8.3
05	Wilson, Kennedy	3-0	55	18.3	8-13	.615	2-4	.500	7-9	.778	2	6	8	2.7	6	0	9	3	0	4	25	8.3
13	Mapusua, Lauryn	4-1	73	18.3	8-22	.364	3-8	.375	13-27	.481	5	6	11	2.8	8	0	2	12	0	7	32	8.0
25	Sutherland, Abbey	4-4	97	24.3	6-20	.300	2-4	.500	2-3	.667	4	14	18	4.5	6	0	3	2	2	4	16	4.0
23	Pierce, Naomi	4-0	60	15.0	4-11	.364	1-3	.333	6-9	.667	4	9	13	3.3	7	0	1	6	2	1	15	3.8
33	Nzoiwu, Marilyn	4-2	50	12.5	3-13	.231	0-0	.000	1-1	1.000	1	7	8	2.0	9	0	4	8	3	1	7	1.8
12	Cotton, Amy	4-0	38	9.5	2-12	.167	0-2	.000	2-5	.400	2	11	13	3.3	5	0	4	4	4	4	6	1.5
40	Matadi, Elizabeth	4-0	33	8.3	1-3	.333	0-1	.000	4-6	.667	0	7	7	1.8	6	0	1	2	2	0	6	1.5
11	Hilford, Felicity	4-0	41	10.3	1-4	.250	0-1	.000	2-2	1.000	1	3	4	1.0	2	0	2	6	0	3	4	1.0
Total		4	800	200.0	91-234	.389	21-66	.318	65-95	.684	39	120	159	39.8	72	0	51	88	16	50	268	67.00
Opponents			800	200.0	80-251	.319	19-89	.213	46-76	.605	60	116	176	44.0	83	3	38	99	5	43	225	56.25

Team Statistics	HBU	OPP
SCORING	268	225
Points Per Game	67.0	56.3
Scoring Margin	10.7	-
FIELD GOALS-ATT	91-234	80-251
Field Goal Pct	.389	.319
3 POINT FG-ATT	21-66	19-89
3PT FG Pct	.318	.213
3PT Made Per Game	5.3	4.8
FREE THROWS-ATT	65-95	46-76
FT Pct	.684	.605
FT Made Per Game	16.3	11.5
REBOUNDS	159	176
Rebounds Per Game	39.8	44.0
Rebounds Margin	-4.2	-
ASSISTS	51	38
Assists Per Game	12.8	9.5
TURNOVERS	88	99
Turnovers Per Game	22.0	24.8
Turnovers Margin	2.8	-
Assist/Turnover Ratio	0.6	0.4
STEALS	50	43
Steals Per Game	12.5	10.8
BLOCKS	16	5
Blocks Per Game	4.0	1.3
ATTENDANCE	380	1,310
Dates/Avg Per Date	3-127	1-1,310
Neutral Site #/Avg	-	0-0

Conf	Date	Opponent	W/L	Score	Att.
	11/09/21	at TCU	L	48-78	1,310
	11/14/21	ST. THOMAS (TX)	W	70-48	140
	11/16/21	TEXAS WESLEYAN	W	69-43	100
	11/18/21	HARTFORD	W	81-56	140

* = Conference game

Score by Periods	1st	2nd	3rd	4th	Total
Houston Baptist	72	68	78	50	268
Opponents	54	56	60	55	225



THE UNIVERSITY OF NEW MEXICO 2021-22 WOMEN'S BASKETBALL



NEW MEXICO GAME-BY-GAME

				Total		3-Pointers		Free throws		Rebounds										
Opponent	Date	Score		FG-FGA	PCT	3FG-3FGA	PCT	FT-FTA	PCT	OFF	DEF	TOT	AVG	PF	A	TO	BLK	STL	PTS	AVG
Lamar University	11/09/2021	71-54	W	26-57	.456	6-26	.231	13-15	.867	9	29	38	38.0	20	14	15	2	8	71	71.0
Northern N.M.	11/12/2021	96-40	W	35-70	.500	10-24	.417	16-25	.640	21	33	54	46.0	9	23	15	1	15	96	83.5
Prairie View	11/16/2021	88-71	W	32-68	.471	9-23	.391	15-24	.625	11	36	47	46.3	11	20	16	7	11	88	85.0
at Houston	11/20/2021	60-89	L	21-49	.429	10-27	.370	8-9	.889	10	23	33	43.0	15	16	34	1	9	60	78.8
Total		315		114-244	.467	35-100	.350	52-73	.712	51	121	172	43.0	55	73	80	11	43	315	78.8
Opponents		254		95-264	.360	32-93	.344	32-52	.615	60	89	149	37.3	67	61	75	15	45	254	63.5



THE UNIVERSITY OF NEW MEXICO 2021-22 WOMEN'S BASKETBALL



NEW MEXICO GAME-BY-GAME LEADERS

Opponent	Date	Score	Points	Rebounds	Assists	Steals	Blocked shots
LAMAR	11/09/21	71-54	16-Antonia Anderson	6-Aniyah Augmon Jaedyn De La Cerdá	9-LaTora Duff	3-Aniyah Augmon	1-Antonia Anderson LaTora Duff
NORTHERN N.M.	11/12/21	96-40	17-Viane Cumber	11-Nevaeh Parkinson	5-LaTora Duff	3-Shaiquel McGruder Jaedyn De La Cerdá	1-Antonia Anderson
PRAIRIE VIEW at Houston	11/16/21 11/20/21	88-71 60-89	30-Shaiquel McGruder 16-LaTora Duff	9-Antonia Anderson 5-Paula Reus	12-LaTora Duff 7-Paula Reus	4-Shaiquel McGruder 3-LaTora Duff	4-LaTora Duff 1-Antonia Anderson



THE UNIVERSITY OF NEW MEXICO

2021-22 WOMEN'S BASKETBALL



NEW MEXICO GAME-BY-GAME POINTS-REBOUNDS-ASSISTS

Opponent	Date	Score		1	4	5	10	11	12	13	21	23	30	32
				RENCZES,RE	DUFF,LATAS	DUFF,LATOR	VAN BENNEK	SEREN,ZEYN	AUGMON,ANI	MCGRUDER,S	CURTIS,MAC	DE LA CERD	REUS,PAULA	ANDERSON,A
Lamar University	11/09/2021	71-54	W	DNP	DNP	10-3-9	4-3-0	1-4-1	8-6-0	15-5-0	DNP	15-6-2	DNP	16-5-1
Northern N.M.	11/12/2021	96-40	W	0-2-3	3-0-0	7-2-5	7-4-1	6-4-1	6-4-3	12-4-0	12-3-2	8-2-4	DNP	7-6-2
Prairie View	11/16/2021	88-71	W	DNP	3-0-1	17-8-12	1-0-0	DNP	1-6-1	30-7-0	DNP	13-7-3	1-4-1	19-9-2
at Houston	11/20/2021	60-89	L	DNP	11-2-1	16-3-2	2-2-1	0-0-0	0-1-0	0-4-1	0-0-0	14-2-2	7-5-7	6-3-1
Opponent	Date	Score		33	34									
				CUMBER,VIA	PARKINSON,									
Lamar University	11/09/2021	71-54	W	2-4-0	0-0-1									
Northern N.M.	11/12/2021	96-40	W	17-4-1	11-11-1									
Prairie View	11/16/2021	88-71	W	3-2-0	DNP									
at Houston	11/20/2021	60-89	L	4-2-1	0-0-0									



THE UNIVERSITY OF NEW MEXICO

2021-22 WOMEN'S BASKETBALL



NEW MEXICO GAME HIGHS

POINTS	96	Northern N.M. (11/12/2021)
	88	Prairie View (11/16/2021)
	71	Lamar University (11/09/2021)
	60	at Houston (11/20/2021)
FIELD GOALS MADE	35	Northern N.M. (11/12/2021)
	32	Prairie View (11/16/2021)
FIELD GOAL ATTEMPTS	70	Northern N.M. (11/12/2021)
	68	Prairie View (11/16/2021)
FIELD GOAL PERCENTAGE	.500 (35-70)	Northern N.M. (11/12/2021)
	.471 (32-68)	Prairie View (11/16/2021)
3 PT FG MADE	10	at Houston (11/20/2021)
	10	Northern N.M. (11/12/2021)
3 PT FG ATTEMPTS	27	at Houston (11/20/2021)
	26	Lamar University (11/09/2021)
3 PT FG PERCENTAGE	.417 (10-24)	Northern N.M. (11/12/2021)
	.391 (9-23)	Prairie View (11/16/2021)
FREE THROWS MADE	16	Northern N.M. (11/12/2021)
	15	Prairie View (11/16/2021)
FREE THROW ATTEMPTS	25	Northern N.M. (11/12/2021)
	24	Prairie View (11/16/2021)
FREE THROW PERCENTAGE	.889 (8-9)	at Houston (11/20/2021)
	.867 (13-15)	Lamar University (11/09/2021)
REBOUNDS	54	Northern N.M. (11/12/2021)
	47	Prairie View (11/16/2021)
ASSISTS	23	Northern N.M. (11/12/2021)
	20	Prairie View (11/16/2021)
STEALS	15	Northern N.M. (11/12/2021)
	11	Prairie View (11/16/2021)
BLOCKED SHOTS	7	Prairie View (11/16/2021)
	2	Lamar University (11/09/2021)
TURNOVERS	34	at Houston (11/20/2021)
	16	Prairie View (11/16/2021)
FOULS	20	Lamar University (11/09/2021)
	15	at Houston (11/20/2021)



THE UNIVERSITY OF NEW MEXICO

2021-22 WOMEN'S BASKETBALL



NEW MEXICO INDIVIDUAL GAME HIGHS

POINTS	30	Shaiquel McGruder vs Prairie View (11/16/2021)
	19	Antonia Anderson vs Prairie View (11/16/2021)
	17	LaTora Duff vs Prairie View (11/16/2021)
	17	Vianè Cumber vs Northern N.M. (11/12/2021)
	16	LaTora Duff at Houston (11/20/2021)
	16	Antonia Anderson vs Lamar University (11/09/2021)
FIELD GOALS MADE	13	Shaiquel McGruder vs Prairie View (11/16/2021)
	8	Antonia Anderson vs Prairie View (11/16/2021)
FIELD GOAL ATTEMPTS	19	Jaedyn De La Cerda vs Lamar University (11/09/2021)
	18	Shaiquel McGruder vs Prairie View (11/16/2021)
FIELD GOAL PERCENTAGE (min 5 made)	1.000 (7-7)	Shaiquel McGruder vs Lamar University (11/09/2021)
	.722 (13-18)	Shaiquel McGruder vs Prairie View (11/16/2021)
3 PT FG MADE	4	Jaedyn De La Cerda at Houston (11/20/2021)
	3	Jaedyn De La Cerda vs Prairie View (11/16/2021)
	3	LaTora Duff vs Prairie View (11/16/2021)
	3	Mackenzie Curtis vs Northern N.M. (11/12/2021)
	3	Vianè Cumber vs Northern N.M. (11/12/2021)
3 PT FG ATTEMPTS	9	Jaedyn De La Cerda at Houston (11/20/2021)
	9	LaTora Duff vs Lamar University (11/09/2021)
3 PT FG PERCENTAGE (min 2 made)	.600 (3-5)	Vianè Cumber vs Northern N.M. (11/12/2021)
	.500 (3-6)	LaTora Duff vs Prairie View (11/16/2021)
	.500 (2-4)	Jaedyn De La Cerda vs Northern N.M. (11/12/2021)
FREE THROWS MADE	5	Antonia Anderson vs Lamar University (11/09/2021)
	4	Shaiquel McGruder vs Prairie View (11/16/2021)
	4	LaTora Duff vs Prairie View (11/16/2021)
	4	Jaedyn De La Cerda vs Lamar University (11/09/2021)
FREE THROW ATTEMPTS	6	LaTora Duff vs Prairie View (11/16/2021)
	5	Antonia Anderson vs Lamar University (11/09/2021)
	5	Jaedyn De La Cerda vs Lamar University (11/09/2021)
FREE THROW PERCENTAGE (min 3 made)	1.000 (5-5)	Antonia Anderson vs Lamar University (11/09/2021)
	1.000 (4-4)	Shaiquel McGruder vs Prairie View (11/16/2021)
	1.000 (3-3)	LaTascya Duff at Houston (11/20/2021)
REBOUNDS	11	Nevaeh Parkinson vs Northern N.M. (11/12/2021)
	9	Antonia Anderson vs Prairie View (11/16/2021)
ASSISTS	12	LaTora Duff vs Prairie View (11/16/2021)
	9	LaTora Duff vs Lamar University (11/09/2021)
STEALS	4	Shaiquel McGruder vs Prairie View (11/16/2021)
	3	LaTora Duff at Houston (11/20/2021)
	3	Aniyah Augmon vs Prairie View (11/16/2021)
	3	Shaiquel McGruder vs Northern N.M. (11/12/2021)
	3	Jaedyn De La Cerda vs Northern N.M. (11/12/2021)
	3	Aniyah Augmon vs Lamar University (11/09/2021)
BLOCKED SHOTS	4	LaTora Duff vs Prairie View (11/16/2021)
	3	Antonia Anderson vs Prairie View (11/16/2021)
TURNOVERS	8	Jaedyn De La Cerda at Houston (11/20/2021)
	8	LaTora Duff at Houston (11/20/2021)
FOULS	4	Kath van Bennekom vs Lamar University (11/09/2021)
	4	Shaiquel McGruder vs Lamar University (11/09/2021)



THE UNIVERSITY OF NEW MEXICO

2021-22 WOMEN'S BASKETBALL



NEW MEXICO LEADERBOARD

Points

##	Player	G	Pts	Pts/G
13	McGruder, Shaiquel	4	57	14.3
23	De La Cerda, Jaedyn	4	50	12.5
5	Duff, LaTora	4	50	12.5
32	Anderson, Antonia	4	48	12.0
33	Cumber, Vianè	4	26	6.5
4	Duff, LaTascya	3	17	5.7
12	Augmon, Aniyah	4	15	3.8
10	van Bennekom, Kath	4	14	3.5
21	Curtis, Mackenzie	2	12	6.0
34	Parkinson, Nevaeh	3	11	3.7
30	Reus, Paula	2	8	4.0
11	Seren, Zeyno	3	7	2.3

Scoring Average

##	Player	G	Pts	Pts/G
13	McGruder, Shaiquel	4	57	14.3
23	De La Cerda, Jaedyn	4	50	12.5
5	Duff, LaTora	4	50	12.5
32	Anderson, Antonia	4	48	12.0
33	Cumber, Vianè	4	26	6.5
21	Curtis, Mackenzie	2	12	6.0
4	Duff, LaTascya	3	17	5.7
30	Reus, Paula	2	8	4.0
12	Augmon, Aniyah	4	15	3.8
34	Parkinson, Nevaeh	3	11	3.7
10	van Bennekom, Kath	4	14	3.5
11	Seren, Zeyno	3	7	2.3

Field Goal Percentage

##	Player	FG	Att	Pct
12	Augmon, Aniyah	5	7	.714
13	McGruder, Shaiquel	25	36	.694
10	van Bennekom, Kath	5	8	.625
11	Seren, Zeyno	3	5	.600
33	Cumber, Vianè	10	18	.556
32	Anderson, Antonia	18	34	.529
34	Parkinson, Nevaeh	4	8	.500
4	Duff, LaTascya	5	11	.455
5	Duff, LaTora	17	41	.415
23	De La Cerda, Jaedyn	17	53	.321
21	Curtis, Mackenzie	3	10	.300
30	Reus, Paula	2	10	.200

Field Goal Attempts

##	Player	G	Att	Att/G
23	De La Cerda, Jaedyn	4	53	13.3
5	Duff, LaTora	4	41	10.3
13	McGruder, Shaiquel	4	36	9.0
32	Anderson, Antonia	4	34	8.5
33	Cumber, Vianè	4	18	4.5

Field Goals Made

##	Player	G	Made	Made/G
13	McGruder, Shaiquel	4	25	6.3
32	Anderson, Antonia	4	18	4.5
23	De La Cerda, Jaedyn	4	17	4.3
5	Duff, LaTora	4	17	4.3
33	Cumber, Vianè	4	10	2.5

3-Point FG Percentage

##	Player	3FG	Att	Pct
12	Augmon, Aniyah	1	2	.500
13	McGruder, Shaiquel	1	2	.500
21	Curtis, Mackenzie	3	7	.429
4	Duff, LaTascya	4	10	.400
32	Anderson, Antonia	4	11	.364
33	Cumber, Vianè	4	11	.364
23	De La Cerda, Jaedyn	10	28	.357
5	Duff, LaTora	7	20	.350
30	Reus, Paula	1	4	.250

3-Point FG Attempts

##	Player	G	Att	Att/G
23	De La Cerda, Jaedyn	4	28	7.0
5	Duff, LaTora	4	20	5.0
32	Anderson, Antonia	4	11	2.8
33	Cumber, Vianè	4	11	2.8
4	Duff, LaTascya	3	10	3.3

3-Point FG Made

##	Player	G	Made	Made/G
23	De La Cerda, Jaedyn	4	10	2.5
5	Duff, LaTora	4	7	1.8
32	Anderson, Antonia	4	4	1.0
33	Cumber, Vianè	4	4	1.0
4	Duff, LaTascya	3	4	1.3



THE UNIVERSITY OF NEW MEXICO

2021-22 WOMEN'S BASKETBALL



NEW MEXICO LEADERBOARD

Free Throw Percentage

##	Player	Made	Att	Pct
4	Duff, LaTascya	3	3	1.000
33	Cumber, Vianè	2	2	1.000
12	Augmon, Aniyah	4	5	.800
13	McGruder, Shaiquel	6	8	.750
5	Duff, LaTora	9	12	.750
21	Curtis, Mackenzie	3	4	.750
30	Reus, Paula	3	4	.750
34	Parkinson, Nevaeh	3	4	.750
23	De La Cerda, Jaedyn	6	9	.667
10	van Bennekom, Kath	4	6	.667
32	Anderson, Antonia	8	13	.615
11	Seren, Zeyno	1	3	.333

Rebounds

##	Player	G	Reb	Reb/G
32	Anderson, Antonia	4	23	5.8
13	McGruder, Shaiquel	4	20	5.0
23	De La Cerda, Jaedyn	4	17	4.3
12	Augmon, Aniyah	4	17	4.3
5	Duff, LaTora	4	16	4.0

Rebounds Average

##	Player	G	Reb	Reb/G
32	Anderson, Antonia	4	23	5.8
13	McGruder, Shaiquel	4	20	5.0
30	Reus, Paula	2	9	4.5
23	De La Cerda, Jaedyn	4	17	4.3
12	Augmon, Aniyah	4	17	4.3

Offensive Rebounds

##	Player	G	OReb	OReb/G
13	McGruder, Shaiquel	4	9	2.3
32	Anderson, Antonia	4	9	2.3
10	van Bennekom, Kath	4	6	1.5
34	Parkinson, Nevaeh	3	5	1.7
23	De La Cerda, Jaedyn	4	4	1.0

Defensive Rebounds

##	Player	G	DReb	DReb/G
12	Augmon, Aniyah	4	17	4.3
5	Duff, LaTora	4	14	3.5
32	Anderson, Antonia	4	14	3.5
23	De La Cerda, Jaedyn	4	13	3.3
13	McGruder, Shaiquel	4	11	2.8

Free Throw Attempts

##	Player	G	Att	Att/G
32	Anderson, Antonia	4	13	3.3
5	Duff, LaTora	4	12	3.0
23	De La Cerda, Jaedyn	4	9	2.3
13	McGruder, Shaiquel	4	8	2.0
10	van Bennekom, Kath	4	6	1.5

Free Throws Made

##	Player	G	Made	Made/G
5	Duff, LaTora	4	9	2.3
32	Anderson, Antonia	4	8	2.0
13	McGruder, Shaiquel	4	6	1.5
23	De La Cerda, Jaedyn	4	6	1.5
12	Augmon, Aniyah	4	4	1.0

Assists

##	Player	G	Ast	Ast/G
5	Duff, LaTora	4	28	7.0
23	De La Cerda, Jaedyn	4	11	2.8
30	Reus, Paula	2	8	4.0
32	Anderson, Antonia	4	6	1.5
12	Augmon, Aniyah	4	4	1.0

Steals

##	Player	G	Stl	Stl/G
13	McGruder, Shaiquel	4	8	2.0
12	Augmon, Aniyah	4	8	2.0
32	Anderson, Antonia	4	6	1.5
23	De La Cerda, Jaedyn	4	5	1.3
5	Duff, LaTora	4	3	0.8

Blocked Shots

##	Player	G	Blk	Blk/G
32	Anderson, Antonia	4	6	1.5
5	Duff, LaTora	4	5	1.3

Minutes

##	Player	G	Min	Min/G
23	De La Cerda, Jaedyn	4	125	31:08
5	Duff, LaTora	4	121	30:08
32	Anderson, Antonia	4	100	24:56
13	McGruder, Shaiquel	4	83	20:52
12	Augmon, Aniyah	4	67	16:48

