

2021-22 NEW MEXICO WOMEN'S BASKETBALL

GAME NOTES

» Eight NCAA Tournament Appearances | 1998, 2002, 2003, 2004, 2005, 2006, 2007, 2008 «
 » Five Mountain West Tournament Championships | 2003, 2004, 2005, 2007, 2008 «

2021-22 | Schedule and Results

OVERALL RECORD:.....	5-3
MW RECORD:.....	0-0
HOME RECORD:.....	4-0
ROAD RECORD:.....	0-1
NEUTRAL RECORD:.....	1-2
STREAK:.....	L1

Date	Opponent	Time/Result
10/31	Western Colorado (Exh.)	W, 94-53
11/4	Eastern New Mexico (Exh.)	W, 88-72
11/9	Lamar	W, 71-54
11/12	Northern New Mexico	W, 96-40
11/16	Prairie View A&M	W, 88-71
11/20	Houston	L, 89-60
11/23	Houston Baptist	W, 76-58
11/26	Stephen F. Austin%	L, 71-66
11/27	Louisiana Monroe%	W, 66-45
11/28	Texas Tech%	L, 82-75
11/30	Grambling State	7 p.m.
12/3	New Mexico State	7 p.m.
12/5	New Mexico State	2 p.m.
12/12	Arizona	1 p.m.
12/19	UTEP	6 p.m.
12/28	San José State*	2 p.m.
12/31	Boise State*	2 p.m.
1/3	UNLV*	7 p.m.
1/6	Utah State*	6 p.m.
1/9	San Diego State*	2 p.m.
1/13	Wyoming*	6:30 p.m.
1/15	Colorado State*	1 p.m.
1/22	Fresno State*	2 p.m.
1/27	UNLV*	7 p.m.
1/29	San Diego State*	1 p.m.
2/2	Colorado State*	7 p.m.
2/5	Wyoming*	2 p.m.
2/9	Air Force*	7 p.m.
2/12	Nevada*	3 p.m.
2/16	Utah State*	7 p.m.
2/19	Boise State*	1 p.m.
2/23	Fresno State*	7 p.m.
2/25	San José State	12 p.m.
3/6-3/9	MW Tournament	TBA

BOLD: Home %:Van Chancellor Classic * : Mountain West
 All times are Mountain Time

THE MATCHUP



New Mexico Lobos

Record
5-3, 0-0 MW

Head Coach.....Mike Bradbury
 Alma Mater, Yr.....Chattanooga, 1993
 Record at UNM.....99-58 (6th year)
 Career Record.....277-175 (15th year)

Game Information

Game Number: Game 9
 Date: Tuesday, Nov. 30 at 7 p.m.
 Location: Albuquerque, N.M.
 The Pit

Series History

Overall:.....First meeting
 Current Streak:.....First meeting
 Last Meeting:.....First meeting

Broadcast Information

Radio:.....610 AM KNML
 Live Stream:.....MW Network
 Live Stats:.....GoLobos.com/wbbstats



Grambling State Lady Tigers

Record
2-4, 0-0 SWAC

Head Coach.....Freddie Murray
 Alma Mater.....Jackson St.
 Record at GSU.....71-83 (6th year)
 Career Record.....Same

TIPPING OFF

After three games in three days, the stretch for Lobo women's basketball continues with four games in five days and the first of three games this week when UNM hosts Grambling State on Tuesday night.

The Lobos are coming off of a 1-2 weekend at the Van Chancellor Classic with losses by a margin of five and seven points. UNM attempted a fourth-quarter comeback against Stephen F. Austin, scoring 32 points led by Jaedyn De La Cerda, LaTascya Duff and LaTora Duff. LaTora and De La Cerda scored 13 and 11 points, respectively, and De La Cerda a perfect 4-for-4 from the floor and 3-for-3 from three-point range. LaTascya's eight points accounted for the remaining Lobo points. UNM got it within a two-point game with 19 seconds left and had a chance to tie the game late, but the tying three was off target.

UNM hung close to Texas Tech through the first 10 minutes, staying within two through the first quarter, and got the game back within four points in the fourth quarter. LaTascya Duff returned to form with 21 points on 5-for-7 shooting that included five three-pointers, and Shaquell McGruder had her third 20-plus point performance of the season with 20 points.

As mentioned, Tuesday's game will be the first of three games on the week, with the Lobos hosting New Mexico State on Friday to begin the rivalry series, with the teams facing off again in Las Cruces on Sunday. In total, the Lobos will have played six games in 10 games when the Aggies and Lobos play on Sunday.

On the other end of the court, Grambling State enters having recently lost to UNLV on Sunday, and has played the likes of Florida (L, 70-55), Florida State (L, 76-53), UMKC (L, 78-55), Northwestern State (W, 68-60), Louisiana-Monroe (W, 69-61) and UNLV (L, 89-49) this season. After winning their first two games, the Lady Tigers have lost their last four.

The leader for the Lady Tigers is Alexis Holt, with the graduate student leading in scoring, rebounds and assists and tied for the team high in steals.

Probable Starters

#	Name	Pos.	Cls.	Ht.	PPG	RPG	APG	SPG	BPG
4	LaTascya Duff	G	Sr.	5-7	10.1	2.3	1.0	0.7	0.1
5	LaTora Duff	G	Sr.	5-7	11.6	3.3	5.9	1.6	0.8
13	Shaquell McGruder	F	Sr.	6-0	13.4	5.9	0.3	1.6	0.9
23	Jaedyn De La Cerda	G	Sr.	5-7	14.1	3.6	3.5	1.1	0.0
32	Antonia Anderson	F	Sr.	6-2	10.1	5.6	1.4	1.5	1.8

Off the Bench

#	Name	Pos.	Cls.	Ht.	PPG	RPG	APG	SPG	BPG
1	Rebeka Renczes	PG	Fr.	5-7	2.3	0.7	1.7	0.3	0.0
10	Kath van Bennekom	G	So.	5-9	2.0	2.0	0.3	0.3	0.0
11	Zeyno Seren	F	Fr.	6-1	1.8	2.2	0.8	0.4	0.0
12	Aniyah Augmon	G	Fr.	5-8	2.0	2.6	0.8	1.3	0.0
21	Mackenzie Curtis	G	Fr.	5-9	3.5	1.0	0.5	0.0	0.0
30	Paula Reus	F	Fr.	6-1	2.3	2.8	2.2	0.8	0.5
33	Vianè Cumber	G	Fr.	5-10	5.5	2.4	0.4	0.5	0.0
34	Neveah Parkinson	F/C	So.	6-3	3.0	2.4	0.6	0.4	0.4



THE UNIVERSITY OF NEW MEXICO 2021-22 WOMEN'S BASKETBALL



THE UNIVERSITY OF NEW MEXICO

Location.....Albuquerque, N.M.
 Founded.....1889 by Territorial Legislature
 Enrollment.....22,225
 Nickname.....Lobos
 Colors.....Cherry (PMS 200) & Silver (PMS Cool Gray 6)
 Conference.....Mountain West Conference
 National Affiliation.....NCAA Division I
 President.....Dr. Garnett Stokes
 Director of Athletics.....Eddie Nuñez
 Deputy A.D. for External Affairs.....David Williams
 Deputy A.D. for Internal Affairs/SWA.....Janice Ruggiero
 Faculty Representative.....Karen Gaudreault, Ph.D

FACILITY INFORMATION

Facility.....The Pit
 Capacity.....15,411
 Age.....Built in 1966 (Renovated in 2009-10)
 All-Time Home Record.....435-216 (.668)

PROGRAM HISTORY

First Season.....1974-75
 Overall Record.....698-564 (.553) in 42 seasons
 Overall MW Record.....205-145 (.586) in 21 seasons
 Postseason Tournament Appearances.....18
 NCAA Tournament Appearances.....8
 Last NCAA Postseason Appearance.....2020-21 (WNIT)
 Last NCAA Postseason Opponent.....California Baptist
 Last NCAA Postseason Result.....L, 90-85
 MW Regular Season Championships.....3
(2003-04, 2004-05, 2020-21)
 MW Tournament Championships.....5
(2002-03, 2003-04, 2004-05, 2006-07, 2007-08)

TEAM INFORMATION

2020-21 Overall Record.....15-5
 2020-21 Mountain West Record.....11-3
 2020-21 Mountain West Season Finish.....1st
 2020-21 MW Tournament Finish.....Semifinal
 Letterwinners Returning | Lost.....7 | 5
 Starters Returning | Lost.....4 | 1

COACHING STAFF

Head Coach.....Mike Bradbury (Chattanooga, 1993)
 Record at UNM (Years).....99-58 (6th season)
 Career Record (Years).....277-175 (15th season)
 Head Coach Phone.....505-925-5770
 Women's Basketball Fax.....505-925-5779

Assistant Coach.....Valerie King (6th season)
 Alma Mater.....Cincinnati, 2004
 Assistant Coach.....Kabrina Merriweather (1st season)
 Alma Mater.....Georgia Southwestern State, 2015
 Assistant Coach.....Symone Denham (4th season)
 Alma Mater.....Wright State, 2016

Spec. Asst. to H.C.....Ryan Freeman (1st season)
 Dir. of Player Development.....Nike McClure (1st season)
 Athletic Trainer.....Lexi Smith (1st season)
 Strength Coach.....Brett Nakashima (3rd season)
 Academic Adviser.....Joe DeBonis

MISCELLANEOUS INFORMATION

2019-20 Total Attendance.....82,854
 2019-20 Average Attendance.....4,874
 2019-20 NCAA Attendance Rank.....15th
 2019-20 Mountain West Attendance Rank.....1st

MULTIMEDIA INFORMATION

Athletics Website.....www.GoLobos.com
 Main University Web Site.....www.unm.edu
 Conference Web Site.....www.TheMW.com
 Facebook.....www.facebook.com/NewMexicoLobos
 Twitter.....@UNMLobos

MEDIA RELATIONS

Women's Basketball Contact.....Allison Weiss
 Cell Phone (Preferred).....661-313-5402
 Email.....allisonweiss@unm.edu
 Address:.....

The University of New Mexico Athletics
 1414 University Drive
 Albuquerque, N.M. 87106

- » Three Mountain West Regular-Season Championships
- » Five Mountain West Tournament Championships
- » Seven NCAA Tournament Appearances Since 2001-02
- » Mountain West Attendance Leader 21 Seasons in a Row
- » WBCA Academic Top 25 Eight Times Since 2004-05



@UNMLoboWBB



NEW MEXICO WOMEN'S BASKETBALL



THE UNIVERSITY OF NEW MEXICO

2021-22 WOMEN'S BASKETBALL



Balanced Attack

Much like their M.O. last season, the Lobos had balanced scoring in their first three games of the season with four double-digit scorers before having three finish in double figures at Houston. They returned to form in the last game against Houston Baptist. In the eight games this season, the Lobos have had four double-digit scorers in five games and three in the other three.

Five Lobos are currently averaging 10-plus points per game in Jaedyn De La Cerda (14.1), Shaiquel McGruder (13.4), LaTora Duff (11.6), LaTascya Duff (10.1) and Antonia Anderson (10.1).

De La Cerda has reached double figures in all but one game (only game was Northern New Mexico), and in each of the last six games.

In addition, the Lobos have had six different leading scorers in the eight games this season: Anderson (16, Lamar), Vianè Cumber (17, Northern New Mexico), McGruder (30, Prairie View and 20, Houston Baptist), LaTora Duff (16, Houston), De La Cerda (18, Stephen F. Austin and 15, Louisiana-Monroe) and LaTascya Duff (21, Texas Tech).

UNM is outscoring its opponents 598-510 with the largest margin in the first quarter (163-115, 48 points).

Put the 3 in 3-2 and 2-3

Antonia Anderson has made one three-pointer in each game this season and has a 10-game streak of making one dating back to last season. Sunday's game against Texas Tech was the first time Anderson has made multiple three-pointers since making two against Colorado State on March 5, 2021.

Her super senior counterpart, Jaedyn De La Cerda, improved her three-pointers in each of the first four games this season, starting with one three-pointer against Lamar, increasing it to two against Northern New Mexico, three against Prairie View and four against Houston. Like Anderson, De La Cerda's three-point streak dates back to last season and is at 11 games currently.

De La Cerda leads the Lobos in made three-pointers with 19 (2.4 a game) and is fourth in the MW.

Three-Point Streaks

Other streaks on the Lobos: LaTascya Duff at 10 games with a three-pointer and LaTora Duff has made a three in the last six games.

Shai Time

Shaiquel McGruder has had three games so far this season with 20-plus points, including a 30-point performance against Prairie View A&M. Against the Panthers, the senior forward set several career highs, finishing with a career-high 30 points on a career-high 13-for-18 shooting, while adding seven rebounds and four steals to her stat sheet.

The scoring started early for McGruder, with the Lobo winning the tip and immediately making a layup 14 seconds in.

McGruder already reached double digits in the first quarter with 10 points and accounted for three of UNM's five steals.

The Ohio native leads the MW in field-goal percentage at .662, is 10th in scoring (13.4 ppg) and rebounds (5.9 rpg) and eighth in blocked shots (0.9 per game).

How May I Assist You?

It didn't take long for LaTora Duff to get back to form, accounting for nine assists in two games this season and 12 assists in a game. The point guard tied her career high with nine assists against Lamar in the season opener, with seven assists coming in the fourth quarter, and then bested that performance against Prairie View A&M with a career-high 12 assists, while also setting career highs in points (17), rebounds (eight) and blocks (four) for her first double-double as a Lobo.

The Lobo facilitator is averaging 5.9 assists per game, to go along with 11.6 points per game, 3.3 rebounds per game, 1.6 steals per game and 0.8 blocks per game. Duff has scored in double figures in five of the eight games.

Connect For Two

Of Duff's career-high 12 assists in the game against the Panthers, she connected with McGruder on eight of them.

An Added Surprise

With 4:00 remaining in the second quarter of the game against Northern New Mexico, LaTascya Duff checked in at the scorer's table and into the game for the first time this season, after being cleared to play earlier in the week. It was thought that Duff would be out through the non-conference portion of the schedule at the beginning of the year, but head coach Mike Bradbury confirmed pregame that Duff was ahead of schedule and available to play.

To make it even better, and a welcomed sight, LaTora Duff delivered a perfect pass to LaTascya on the wing, who drained a three-pointer in her first and only attempt of the game.

Duff has started six games this season and has made at least one three-pointer a game this season, increasing her three-point totals in the last four games (two made against HBU, three made against SFA, four made against ULM, five made against TTU).

The senior guard was back to form with 21 points on 5-for-7 shooting that included five three-pointers against Texas Tech and has scored in double figures in each of the last three games and four of the last five.

Duff leads the MW in three-point FG percentage at .450 with 18 made three-pointers and in three-pointers made per game with 2.57.

Milestone Achieved

Jaedyn De La Cerda became the 23rd Lobo to reach the 1000-point milestone in the fourth quarter against Texas Tech. She currently has 1006 points in her illustrious career.

The New Mexico native is not the only Lobo with milestones within reach this season. Antonia Anderson is 92 points away from 1000 points. Should Anderson reach the milestone, she will be the 17th player in program history to have 1,000 points, 500 rebounds.

In addition, Anderson has played in 123 games at UNM, with the record 134 games set by Angela Hartill (2005-09).

She's Just a Freshman

It took all of one week of collegiate play for Vianè Cumber to earn her first award, as the guard earned the inaugural MW Freshman of the Week on Monday, Nov. 15.

The distinction comes after Cumber led all scorers with 17 points on 7-for-10 shooting and 3-for-5 from three-point range in her first collegiate start on Friday. The guard also was credited with an assist and two steals.

Cumber took over midway through the first quarter, accounting for eight straight Lobo points, making three consecutive shots on back-to-back threes and a layup as UNM built its lead in the first quarter, going a perfect 3-for-3 and 2-for-2 from three while also having a steal and an assist against Northern New Mexico. In the third quarter, Cumber went 2-for-3 with a fast-break layup and created the steal that led to a fast-break layup on the next possession.

The Albuquerque native added a layup and a final three in the fourth quarter while grabbing four defensive rebounds.

Her first collegiate basket occurred in the second quarter against Lamar on a jumper that extended the Lobo lead to seven and collected three rebounds. On the week, Cumber averaged 9.5 points, 4.0 rebounds and 1.5 steals per game.

Quarter Lockdown

While the season is still young, the Lobos have held an opponent to single digits in a quarter six times already.

Against Louisiana-Monroe, the Lobos held the Warhawks to single digits in the first two quarters with nine in the first quarter and eight in the second



THE UNIVERSITY OF NEW MEXICO 2021-22 WOMEN'S BASKETBALL



quarter. It was the second time in the week that the Lobos have held their opponent below 20 points in the first half, holding Houston Baptist to 16 in the first 20 minutes.

The Lobos had an impressive defensive display, holding the Huskies to just two points in the opening quarter and without a basket for almost the first eight minutes of the game (2:01).

In the game against Northern New Mexico, UNM held the Lady Eagles to seven points in both the second and fourth quarters, while holding them under 15 points in each quarter.

The Lobos held Northern New Mexico to 18.2% in the fourth quarter on 2-11 shooting and 23.1% in the second quarter on 3-13 shooting.

As a whole, NNMC shot just 27.6% in the game with 16 made baskets on 58 attempts and 17.4% from three with four makes on 23 attempts.

Against Lamar, the Lobos shut the Cardinals down defensively in the third quarter, allowing just nine points in the quarter for the 53-37 (16 points) lead.

UNM held Lamar to 2-of-11 shooting from the floor (18.2%) and 1-of-7 (14.3%) from three.

On the offensive end, UNM shot 53.8% from the field in the third quarter to the Cardinals' 18.2%, with Jaedyn De La Cerda accounting for 14 of UNM's 18 points in the quarter.

Further, the Lobos held the Panthers scoreless for the first 2:16 of the game, the first Lamar points came at 7:15 remaining in first and the Lobos held the Lady Eagles the final 5:06 of the first quarter without a point.

AA Battery

It didn't take long for freshman Aniyah Augmon to bring energy to the Lobos, providing an immediate spark and has found ways to make an impact on each game this season.

Augmon has recorded at least one steal and rebound in six games this season.

When the Cardinals answered with an 8-0 run of their own to tie the game, it was freshman Aniyah Augmon who stepped up to provide the spark off of the bench with a personal 5-0 run that entailed a fast-break layup, a steal and a three-pointer.

Augmon had a full stat sheet with eight points (3-for-3 shooting), six rebounds (tying the team high) and three steals (a team high) in her first collegiate game and nearly matched it in her second game as a Lobo.

The energy and contributions continued into game two, as the California native registered four rebounds, three assists, a steal and six points in the win over Northern New Mexico, going 2-for-3 from the floor and 2-for-2 from the free-throw line.

In the game against Prairie View, while the freshman was held to just one point, she found other ways to help the Lobos, with six rebounds and three steals.

Managing Expectations

After winning the Mountain West regular season in 2020-21 for the first time since 2004-05, the Lobos were picked to finish second in the preseason MW poll with 251 points and seven first-place votes.

It is the second time in head coach Mike Bradbury's tenure that the Lobos have been picked to finish second, with the last time occurring in 2019-20 when the Lobos earned three first-place votes and 280 points.

New Mexico finished above UNLV with the Rebels at 232 points and three first-place votes, and fourth-place Colorado State with the Rams earning 207 points and one first-place vote.

State and Colorado State with one each, San Diego State with two, UNLV at

three, UNM with seven and Fresno State the preseason favorite with 13 first-place votes and 269 points.

In addition, senior Antonia Anderson was selected to the MW preseason all-conference team, one of five players to earn the distinction. For Anderson, the Cibolo, Texas native is coming off of a campaign in which she averaged 12.1 points per game, 6.2 rebounds per game, 1.9 assists per game, 1.0 steals per game and 1.0 blocks per game and scored 10-plus points in 13 games with a career-high 29 points in the victory over UNLV on Jan. 17. Anderson led the team in rebounds and rebounds per game, was second in made field goals and blocked shots and third in total points.

In MW contests, she averaged 12.6 points per game and a team-high 6.6 rebounds per game, as well as led the conference in field-goal percentage with 49 percent. Further, Anderson was eighth in blocks per game at 1.07 and ranked in the top 15 in scoring, rebounding, field-goal percentage, blocked shots and defensive rebounds, resulting in her first all-conference honor in being named to the Mountain West all-conference team.

Pride of New Mexico

The Lobos have two New Mexico natives on the 2021-22 roster with freshman Vianè Cumber and senior Jaedyn De La Cerda. In addition to being from New Mexico, the duo has something else in common: New Mexico Gatorade Player of the Year distinctions.

Cumber was named the 2019-20 and 2021-21 New Mexico Gatorade Girls Basketball Player of the Year after averaging 26.5 points, 9.3 rebounds, 2.2 assists and 1.5 steals her senior season and 22.4 points, 10.6 rebounds, 2.5 assists and 3.3 steals as a junior at Sandia High School in Albuquerque. Out of Roswell, N.M. and Roswell High School, De La Cerda earned the 2016-17 New Mexico Gatorade Player of the Year.

Know Your Opponent

Grambling State enters the game at 2-4, and has lost the last four games. GSU is 0-3 on the road this season.

The Lady Tigers play three common opponents with the Lobos in Louisiana-Monroe (won 69-61), UNLV (lost 89-49 on Sunday) and Prairie View A&M. In their last game against UNLV, the Lady Tigers had two players in double figures in Alexis Holt (17 points, six rebounds, three assists and two steals) and Justice Coleman (14 points, three rebounds, one assist).

Holt leads Grambling State in points (14.8), assists (2.8) and tied for the team lead in steals (1.8) and rebounds (4.3) per game. She also leads in free-throws made (24) and attempted (28), shooting .857 from the line. Holt is tied with Coleman for made three-pointers with nine on the season, making 1.5 per game.

In their six games this season, four Lady Tigers have started all six games in Holt, Coleman, Ciera Ellington and Ashanti Lavergne, with Colbi Maples starting in five games and Phylicia Allen starting in one.



THE UNIVERSITY OF NEW MEXICO

2021-22 WOMEN'S BASKETBALL



LAST TIME IT HAPPENED (UNM)

As A Team

Scored 100 Points: 120 - at Arkansas-Pine Bluff (12-17-20)
Scored 90 Points: 96 - Northern New Mexico (11-12-21)
Scored Fewer Than 50 Points: 42 - at UNLV (1-11-17)
Scored Fewer Than 40 Points: 38 - at Colorado St. (1-13-15)
Won by 50 Points: +56 (W, 96-40) - Northern New Mexico (11-12-21)
Won by 40 Points: +48 (W, 92-44) - vs. Northern NM (12-10-19)
Won By 30 Points: +32 (W, 97-65) - at Utah State (3-1-21)
Lost By 30 Points: -37 (L, 47-84) - at (RV) Arizona St. (12-14-19)
Lost By 40 Points: -42 (L, 63-105) - at Oklahoma (12-16-17)
Shot 60% or Better: 61.2% - Pacific (11-9-01)
Shot Less Than 30%: 26.7% (16-60) - vs. UNLV (1-18-20)
Shot 60% 3FG or Better: 68.2% (15-22) - at NMSU (12-2-17)
Shot Less Than 20% 3FG: 13.79 (4-29) - vs. Nevada (3-1-20)
Made 15 3-Pointers: 15 - at Utah State (2-28-21)
Shot 90% on FTs (10 or more): 93.3% (14-15) - vs. Texas Tech (11-28-21)
Shot Less Than 40% On FTs: 14.3% (1-7) - at UTEP (11-30-17)
Had 50 Rebounds: 54 - Northern New Mexico (11-12-21)
Had 20 Offensive Rebounds: 21 - Northern New Mexico (11-12-21)
Had 25 Assists: 27 - at Arkansas-Pine Bluff (12-17-20)
Had 20 Turnovers: 28 - vs. Stephen F. Austin (11-26-21)
Had Less Than 10 Turnovers: 9 - vs. Houston Baptist (11-23-21)
Had 10 Steals: 15 - vs. Houston Baptist (11-23-21)
Had 10 Blocks: 11 - vs. Houston Baptist (11-23-21)
Had Two 20-Point Scorers: Texas Tech (11-28-21)
Had Three 20-Point Scorers: LaTascya Duff (21) and Shaiquel McGruder (20)
 vs. San Jose St. (2-27-19)
 Tessa Buck (30), Jaisa Nunn (22) and Cherise Beynon (22)
Had 6 Double-Digit Scorers: at Arkansas-Pine Bluff (12-17-20)
Had 5 Double-Digit Scorers: vs. Colorado State (3-4-21)
Had No Double-Digit Scorers: vs. (RV) Arizona St. (12-14-19)
Had Two 10+ Rebounders: vs. Nevada (3-1-20)
 Shaiquel McGruder (17) and Antonia Anderson (10)
Scored 50 Points In 1st Half: 50 - Prairie View A&M (11-16-21)
Scored 50 Points In 2nd Half: 50 - Northern New Mexico (11-12-21)
Scored 60 Points in a 2nd Half: 63 - vs. New Mexico St. (12-16-19)
Scored 20 Or Fewer Points In 1st Half: 17 - at Colorado St. (2-22-17)
Scored 20 Or Fewer Points In 2nd Half: 17 - at UNLV (1-15-21)
Lowest Pts Scored in Quarter: 2 - vs. Tulsa (11-25-16)
Failed To Make a 3FG: at (RV) Arizona St. (12-14-19)
Defeated a Ranked Team: W, 88-87 vs. No. 16 Marquette (11-13-17)
Lost To a Ranked Team: L, 60-73 vs. No. 23 West Virginia (11-29-19)
Won an OT Game: W, 74-71 at Wyoming (2-8-20)
Lost an OT Game: L, 78-86 at Nevada (2-19-20)
Won a 2OT Game: W, 89-85 at Houston (11-24-18)
Lost a 2OT Game: L, 69-65 vs. Fresno St. (1-2-16)

As An Individual

Had a Triple-Double: Aisia Robertson (28 pts, 11 rebs, 11 assists)
 at Houston (11-24-18)
Had a Double-Double (Pts/Reb): Shaiquel McGruder (20 pts, 10 reb)
 vs. Houston Baptist (11-23-21)
Had a Double-Double (Pts/Asst): LaTora Duff (17 pts & 12 asts)
 Prairie View A&M (11-16-21)
Had a Double-Double (Reb/Asst): vs. Fairleigh Dickinson (11-12-16)
 Cherise Beynon (13 reb, 10 asts)
Scored 20+ Pts with 10+ Rebs: Shaiquel McGruder (20 pts, 10 reb)
 vs. Houston Baptist (11-23-21)
Scored 30 Points: Shaiquel McGruder (30 pts), Prairie View A&M (11-16-21)
Scored 40 Points: Cherise Beynon (41) at SDSU (1-20-18)
Scored 30 Points (MW Only): LaTascya Duff (31)
 at Air Force (2-23-21)
Scored 40 points (MW Only): Cherise Beynon (41)
 at San Diego St. (1-20-18)
Had 20+ Rebounds: Richelle van der Keijl (20) vs. New Mexico St. (11-15-16)
Had 15+ Rebounds: Shaiquel McGruder (15) vs. Colorado State (3-5-21)
Had 15+ Assists: Aisia Robertson (16) vs. Oklahoma (11-28-18)
Had 5+ Steals: Autumn Watts (5) vs. California Baptist (3-19-21)
Had 5+ Blocks: Antonia Anderson (5) vs. Houston Baptist (11-23-21)

LAST TIME IT HAPPENED (OPP)

As A Team

Scored 100 Points: 105 - at Oklahoma (12-16-17)
Scored 90 Points: 90 - California Baptist (3-19-21)
Scored Less Than 50 Points: 45 - Louisiana-Monroe (11-27-21)
Scored Less Than 40 Points: 40 - Northern New Mexico (11-12-21)
Shot 50% Or Better: 56.4% (31-55) - vs. Texas Tech (11-28-21)
Shot Less Than 30%: 27.6 % (16-58) - Northern New Mexico (11-12-21)
Shot 50% 3FG Or Better: 50.0% (7-14) - Texas Tech (11-28-21)
Shot Less Than 20% 3FG: 17.4% (4-23) - Northern New Mexico (11-12-21)
Made 15 3-Pointers: 15 - at San José St. (1-22-20)
Shot 90% On FTs (10 or more): 92.9% (13-14) vs. Houston Baptist (11-23-21)
Shot Less Than 50% On FTs: 47.8% (11-23) - Lamar (11/9/21)
Had 50 Rebounds: 53 - Prairie View A&M (11-16-21)
Had 20 Offensive Rebounds: 24 - Prairie View A&M (11-16-21)
Had 25 Assists: 26 - at Houston (11/20/21)
Had 20 Turnovers: 20 - Stephen F. Austin (11-26-21)
Had 30 Turnovers: 30 - vs. Northern NM (11-15-17)
Had Less Than 10 Turnovers: 8 - vs. Colorado State (3-5-21)
Had 10 Steals: 18 - at Houston (11/20/21)
Had 10 Blocks: 10 - vs. Utah St. (2-10-16)
Had Two 20-Point Scorers: California Baptist (3-19-21)
 Britney Thomas (22) and Caitlyn Harper (25)
Had 6 Double-Digit Scorers: Baylor (1-4-95)
Had 5 Double-Digit Scorers: vs. Texas Tech (11-28-21)
Had No Double-Digit Scorers: vs. Louisiana-Monroe (11-27-21)
Had Two 10+ Rebounders: vs. Air Force. (2-24-20)
 Emily Conroe (13), Kaelin Immel (10)
Scored 50+ Points In 1st Half: 54 - at San José St. (1-22-20)
Scored 50+ Points In 2nd Half: 51 - at Houston (11/20/21)
Scored 20 Or Less Points In 1st Half: 17 - vs. Louisiana-Monroe (11-27-21)
Scored 20 Or Less In 2nd Half: 19 - Northern New Mexico (11-12-21)
Scored Less Than 10 Points in Quarter: 8 - vs. Louisiana-Monroe (11-27-21)
Failed To Make a 3FG: 0-1 by San Diego State (2-18-15)

As An Individual

Had a Double-Double (Pts/Reb): Marilyn Nzoiwu (13 pts, 13 reb)
 Houston Baptist (11-23-21)
Had a Double-Double (Pts/Asst): Ane Olaeta (11 pts, 14 assists)
 California Baptist (3-19-21)
Had a Double-Double (Pts/Steals): Jasmyne Harris (28 pts & 10 steals)
 at Houston (11-28-18)
Had 20+ Points & 10+ Rebounds: Jessica Chatman (21 pts, 11 reb)
 Utah State (3-1-21)
Scored 30 Points: Shlya Latone (33) - at Utah State (3-1-21)
Scored 30 Points (MW Only): Shlya Latone (33) - at Utah State (3-1-21)
Had 20+ Rebounds: Kaylee Johnson (22) - No. 1 Stanford (11-24-14)
Had 15+ Rebounds: Tyra Whitehead (16) - at San José St. (1-22-20)
Had 10+ Assists: Ane Olaeta (14) - California Baptist (3-19-21)
Had 5+ Steals: Tatyana Hill (5) - at Houston (11/20/21)
Had 5+ Blocks: Mallory McGwire (5) - vs. Boise St. (2-22-20)



THE UNIVERSITY OF NEW MEXICO

2021-22 WOMEN'S BASKETBALL



LOBOS RECORD WHEN...

	Overall	In MW
Overall	5-3	0-0
At home	4-0	0-0
On the road	0-1	0-0
At neutral sites	1-2	0-0
After a win	2-3	0-0
After a loss	2-0	0-0
In overtime	0-0	0-0
vs. ranked opponents	0-0	0-0
Games decided by 1-4 points	0-0	0-0
Games decided by 5-9 points	0-2	0-0
Games decided by 10-19 points	3-0	0-0
Games decided by 20+ points	2-1	0-0
Leading after Q1	5-0	0-0
Trailing after Q1	0-3	0-0
Tied after Q1	0-0	0-0
Leading at half	5-0	0-0
Trailing at half	0-3	0-0
Tied at half	0-0	0-0
Leading after Q3	5-0	0-0
Trailing after Q3	0-3	0-0
Tied after Q3	0-0	0-0
Shooting 50% or better	1-0	0-0
Shooting between 40-49.9%	3-3	0-0
Shooting less than 40%	1-0	0-0
Opponent shoots 50% or better	0-2	0-0
Opponent shoots b/w 40-49.9%	0-1	0-0
Opponent shoots b/w 30-39.9%	4-0	0-0
Opponent shoots less than 30%	1-0	0-0
UNM higher FG%	5-0	0-0
Opponent higher FG%	0-3	0-0
FG% Tied	0-0	0-0
UNM outrebounds	2-2	0-0
Opponent outrebounds	3-1	0-0
Rebounds tied	0-0	0-0
UNM more made free throws	4-2	0-0
Opponent more made free throws	1-1	0-0
Made free throws tied	0-0	0-0
UNM 3FG% higher	2-1	0-0
Opponent 3FG% higher	3-2	0-0
3FG% tied	0-0	0-0
UNM has more fouls	3-3	0-0
Opponent has more fouls	2-0	0-0
Fouls are tied	0-0	0-0
UNM more turnovers	0-2	0-0
Opponent more turnovers	5-1	0-0
Turnovers tied	0-0	0-0
Scoring less than 50 points	0-0	0-0
Scoring 50-59 points	0-0	0-0
Scoring 60-69 points	1-2	0-0
Scoring 70-79 points	2-1	0-0
Scoring 80-89 points	1-0	0-0
Scoring 90-99 points	1-0	0-0
Scoring 100+ points	0-0	0-0
Allowing 40 points or less	1-0	0-0
Allowing 41-49 points	1-0	0-0
Allowing 50-59 points	2-0	0-0
Allowing 60-69 points	0-0	0-0
Allowing 70-79 points	1-1	0-0
Allowing 80-89 points	0-2	0-0
Allowing 90+ points	0-0	0-0
In November	5-3	0-0
In December	0-0	0-0
In January	0-0	0-0
In February	0-0	0-0
In March	0-0	0-0

MOUNTAIN WEST STATISTICS

TEAM	All	Conference Only
Scoring	2nd (74.8)	
Assists per Game	1st (16.7)	
3-Pt FG Made	1st (9.3)	
Scoring Margin	3rd (+11.0)	
Assist/Turnover Ratio	6th (0.95)	
FG %	2nd (.449)	
Steals per Game	3rd (9.8)	
3-PT FG %	4th (.354)	
Free throw %	5th (.772)	
Blocks per Game	2nd (4.1)	
Scoring Defense	6th (63.8)	
FG % Defense	4th (.380)	

INDIVIDUAL	All	Conference Only
Scoring		
Jaedyn De La Cerda	9th (14.1)	
Shaiquel McGruder	10th (13.4)	
LaTora Duff	15th (11.7)	
Rebounding		
Shaiquel McGruder	10th (5.9)	
Antonia Anderson	12th (5.6)	
Field Goal %		
Shaiquel McGruder	1st (.662)	
Jaedyn De La Cerda	10th (.374)	
Assists		
LaTora Duff	2nd (5.9)	
Jaedyn De La Cerda	8th (3.5)	
Blocked Shots		
Antonia Anderson	2nd (1.8)	
Shaiquel McGruder	8th (0.9)	
LaTora Duff	13th (0.8)	
Assist/Turnover Ratio		
LaTora Duff	5th (2.2)	
3-Point FG Made		
LaTascya Duff	1st (2.6)	
Jaedyn De La Cerda	4th (2.4)	
LaTora Duff	14th (1.5)	
3-Point FG %		
LaTascya Duff	1st (.450)	

NCAA STATISTICS

TEAM	
3-pt. FG per Game	34th
3-pt. FG Made	29th
Assists per Game	45th
Assists	33rd
Steals	30th
Steals per Game	38th
FG %	47th
Scoring Offense	51st
INDIVIDUAL	
Assists per Game	
LaTora Duff	17th
Assists	
LaTora Duff	13th
FG %	
Shaiquel McGruder	9th

2021-22 MW Players of the Week

WEEK 1 (11/15/21)
 PLAYER: Desi-Rae Young, C, UNLV
FRESHMAN: Viané Cumber, G, UNM
WEEK 2 (11/22/21)
 PLAYER: McKenna Hofschild, G, CSU
 FRESHMAN: Audrey Roden, G, Nev.
WEEK 3 (11/29/21)
 PLAYER: McKinley Bradshaw, G, UW
 FRESHMAN: Allyson Fertig, C, UW



THE UNIVERSITY OF NEW MEXICO

2021-22 WOMEN'S BASKETBALL



SERIES HISTORY

GRAMBLING STATE FIRST MEETING

GSU	STAT COMPARISON	UNM
58.2	Points Per Game	74.8
37.1	FG%	44.9
30.4	3FG%	35.4
67.4	FT%	77.2
5.8	Made 3-pt PG	9.3
32.5	Rebounds PG	37.6
20.3	Turnovers PG	17.5
10.8	Assists PG	16.6
2.2	Blocks PG	4.1
10.2	Steals PG	9.8
72.3	Scoring Defense	63.8
43.3	FG% Defense	38.0
33.9	3FG% Defense	33.8
-8.7	Rebound Margin	-0.8

TEAM LEADERS

Alexus Holt (14.8)	POINTS	Jaedyn De La Cerda (14.1)
Holt/ Team (4.3)	REBOUNDS	Shaiquel McGruder (5.9)
Alexus Holt (2.8)	ASSISTS	LaTora Duff (5.9)
Holt/ Leah Morrow (1.8)	STEALS	McGruder/Tora Duff (1.6)
Jasmine Forte (0.5)	BLOCKS	Antonia Anderson (1.8)

UNM STARTING LINEUPS

Game	G	G	G	F	F
Lamar	Tora Duff	De La Cerda	Seren	Anderson	McGruder
Northern N.M.	Tora Duff	De La Cerda	Cumber	Anderson	McGruder
Prairie View	Tora Duff	De La Cerda	Tay Duff	Anderson	McGruder
Houston	Tora Duff	Tay Duff	Augmon	van Bennekom	Reus
Houston Baptist	Tora Duff	De La Cerda	Tay Duff	Anderson	McGruder
Stephen F. Austin	Tora Duff	De La Cerda	Tay Duff	Anderson	McGruder
Louisiana-Monroe	Tora Duff	De La Cerda	Tay Duff	Anderson	McGruder
Texas Tech	Tora Duff	De La Cerda	Tay Duff	Anderson	McGruder

UNM STARTING LINEUPS (RECORD)

Seren, LaTora Duff, De La Cerda, Anderson, McGruder1-0
 Cumber, LaTora Duff, De La Cerda, Anderson, McGruder1-0
 Tay Duff, Tora Duff, De La Cerda, Anderson, McGruder.....3-2
 Tay Duff, Tora Duff, Augmon, van Bennekom, Reus.....0-1

DOUBLE-DOUBLE TRACKER

Nevaeh Parkinson..... 11 pts, 11 reb. Northern N.M.
 LaTora Duff 17 pts, 12 assts..... Prairie View
 Shaiquel McGruder..... 20 pts, 10 reb Houston Baptist

CAREER DOUBLE-DOUBLES

	2021-22	Career
Antonia Anderson.....	0	3
Jaedyn De La Cerda	0	1
Shaiquel McGruder	1	2
Nevaeh Parkinson.....	1	1
LaTora Duff	1	1

20-POINT TRACKER

Shaiquel McGruder 30 ptsPrairie View
 Shaiquel McGruder 20 ptsHouston Baptist
 LaTascya Duff..... 21 ptsTexas Tech
 Shaiquel McGruder 20 ptsTexas Tech

MOUNTAIN WEST STANDINGS

Team (AP/Coaches)	CONFERENCE						OVERALL							
	W	L	Pct.	Home	Away	Neutral	W	L	Pct.	Home	Away	Neutral	Last 10	Strk
Colorado State	0	0	.000	0	0-0	0-0	5	1	.833	4-1	1-0	0-0	5-5	L1
UNLV	0	0	.000	0	0-0	0-0	4	2	.667	3-1	1-1	0-0	7-3	W1
New Mexico	0	0	.000	0	0-0	0-0	5	3	.625	4-0	0-1	1-2	5-5	L1
San Diego State	0	0	.000	0	0-0	0-0	4	3	.571	3-0	1-1	0-2	5-5	L2
Air Force	0	0	.000	0	0-0	0-0	3	3	.500	2-1	1-2	0-0	4-6	W1
Nevada	0	0	.000	0	0-0	0-0	3	3	.500	3-2	0-1	0-0	6-4	W2
San José State	0	0	.000	0	0-0	0-0	3	3	.500	2-1	1-2	0-0	5-5	W2
Utah State	0	0	.000	0	0-0	0-0	3	3	.500	2-1	1-2	0-0	3-7	W1
Wyoming	0	0	.000	0	0-0	0-0	3	3	.500	2-1	1-1	0-1	6-4	W1
Fresno State	0	0	.000	0	0-0	0-0	2	4	.333	1-1	1-2	0-1	4-6	L3
Boise State	0	0	.000	0	0-0	0-0	1	4	.200	1-1	0-1	0-2	4-6	L3



THE UNIVERSITY OF NEW MEXICO

2021-22 WOMEN'S BASKETBALL



NUMERICAL

#	NAME	POS	HT	YR	B/T	HOMETOWN (PREVIOUS SCHOOL)
1	Rebeka Renczes	PG	5-7	Fr.	Szekszard, Hungary/	Garay Janos Secondary School
4	LaTascya Duff	G	5-7	Sr.	Samson, Ala. /	Shelton State CC
5	LaTora Duff	G	5-7	Sr.	Samson, Ala. /	Shelton State CC
10	Kath van Bennekom	G	5-9	So.	Gorinchem, The Netherlands /	Lyceum Oudehoven
11	Zeyno Şeren	G	5-10	Fr.	Ankara, Turkey/	TED Ankara College Private High School
12	Aniyah Augmon	G	5-8	Fr.	San José, Calif./	Woodside Priory School
13	Shaiquel McGruder	F	6-0	Sr.	Trotwood, Ohio /	Trotwood-Madison HS
21	Mackenzie Curtis	G	5-9	Fr.	Lakeside, Calif. /	El Capitan HS
23	Jaedyn De La Cerda	G	5-6	Sr.	Roswell, N.M. /	Roswell HS
30	Paula Reus	F	6-1	Fr.	Palma de Mallorca, Spain/	IES Joaquim Blume
32	Antonia Anderson	G/F	6-2	Sr.	Cibolo, Texas /	Byron P. Steele II HS
33	Vianè Cumber	G	5-10	Fr.	Albuquerque, N.M. /	Sandia HS
34	Nevaeh Parkinson	F/C	6-3	So.	Dallas, Texas /	John Paul II HS

ALPHABETICAL

#	NAME	POS	HT	YR	B/T	HOMETOWN (PREVIOUS SCHOOL)
32	Antonia Anderson	G/F	6-2	Sr.	Cibolo, Texas /	Byron P. Steele II HS
12	Aniyah Augmon	G	5-8	Fr.	San José, Calif. /	Woodside Priory School
33	Vianè Cumber	G	5-10	Fr.	Albuquerque, N.M. /	Sandia HS
21	Mackenzie Curtis	G	5-9	Fr.	Lakeside, Calif. /	El Capitan HS
23	Jaedyn De La Cerda	G	5-6	Sr.	Roswell, N.M. /	Roswell HS
4	LaTascya Duff	G	5-7	Sr.	Samson, Ala. /	Shelton State CC
5	LaTora Duff	G	5-7	Sr.	Samson, Ala. /	Shelton State CC
11	Zeyno Şeren	G	5-10	Fr.	Ankara, Turkey/	TED Ankara College Private High School
13	Shaiquel McGruder	F	6-0	Sr.	Trotwood, Ohio /	Trotwood-Madison HS
34	Nevaeh Parkinson	F/C	6-3	So.	Dallas, Texas /	John Paul II HS
1	Rebeka Renczes	PG	5-7	Fr.	Szekszard, Hungary/	Garay Janos Secondary School
30	Paula Reus	F	6-1	Fr.	Palma de Mallorca, Spain/	IES Joaquim Blume
10	Kath van Bennekom	G	5-9	So.	Gorinchem, The Netherlands /	Lyceum Oudehoven

STARTERS RETURNING (4)

No.	Name	Pos.	Cls.	Pts.	Reb.	Ast.	FG%	3FG%
5	LaTora Duff	G	Sr.	8.0	3.4	78	.445	.333
13	Shaiquel McGruder	F	Sr.	9.1	6.0	15	.606	.368
23	Jaedyn De La Cerda	G	Sr.	15.0	5.2	47	.437	.323
32	Antonia Anderson	F	Sr.	12.1	6.2	37	.490	.328

OTHER LETTERWINNERS RETURNING (3)

No.	Name	Pos.	Cls.	Pts.	Reb.	Ast.	FG%	3FG%
4	LaTascya Duff	G	Sr.	14.9	3.0	39	.445	.400
10	Kath van Bennekom	G	So.	1.6	1.8	4	.250	.167
34	Nevaeh Parkinson	F/C	So.	0.6	0.8	0	.222	.200

STARTERS LOST (1)

No.	Name	Pos.	Class	Pts.	Ast.	FG%	3-FG%	FT%
3	Ahlise Hurst	G/F	Jr.	12.4	49	.376	.338	.771

OTHER LETTERWINNERS LOST (5)

No.	Name	Pos.	Class
1	Corina Carter	PG	So.
3	Ahlise Hurst	G/F	Jr.
10	Celine Dupont	F/C	R-Fr.
14	Azaria Robinson	F	So.
24	Autumn Watts	F	So.

NEWCOMERS (6)

No.	Name	Pos.	Class
1	Rebeka Renczes	PG	Fr.
11	Zeyno Seren	G	Fr.
12	Aniyah Augmon	G	Fr.
21	Mackenzie Curtis	G	Fr.
30	Paula Reus	F	Fr.
33	Vianè Cumber	G	Fr.

PRONUNCIATION GUIDE

1	Rebeka RENCZES	WREN-sesh
4	LATASCYA Duff	La-TAY-see-uh
10	Kath VAN BENNEKOM	van-ben-e-kom
11	ZEYNO SEREN	ZAY-no (like say no) SHA-wren
13	SHAIQUEL McGruder	Shy-kwell
23	JAEDYN De La Cerda	JAY-den
30	Paula REUS	Rey-OOSE
34	NEVAEH Parkinson	Nuh-VAY-uh

BY ELIGIBILITY

Seniors (5)

4	LaTascya Duff	G
5	LaTora Duff	G
13	Shaiquel McGruder	F
23	Jaedyn De La Cerda	G
32	Antonia Anderson	G/F

Sophomores (2)

15	Kath van Bennekom	G
34	Nevaeh Parkinson	F/C

Freshmen (6)

1	Rebeka Renczes	PG
11	Zeyno Seren	G
12	Aniyah Augmon	G
21	Mackenzie Curtis	G
30	Paula Reus	F
33	Vianè Cumber	G

HOME STATE

Alabama (2)

4	LaTascya Duff	G
5	LaTora Duff	G

California (2)

12	Aniyah Augmon	G
21	Mackenzie Curtis	G

New Mexico (2)

23	Jaedyn De La Cerda	G
33	Vianè Cumber	G

Ohio (1)

13	Shaiquel McGruder	F
----	-------------------	---

Texas (2)

32	Antonia Anderson	G/F
34	Nevaeh Parkinson	F/C

INTERNATIONAL

1	Rebeka Renczes (Hungary)	PG
10	Kath van Bennekom (The Netherlands)	G
11	Zeyno Seren (Turkey)	G
30	Paula Reus (Spain)	F



THE UNIVERSITY OF NEW MEXICO

2021-22 WOMEN'S BASKETBALL



MIKE BRADBURY

RECORD AT UNM: 97-56 (6TH SEASON)

CAREER RECORD: 275-173 (15TH SEASON)

NOTEWORTHY :

- Named the sixth head coach in program history on March 31, 2016
- Led UNM to 25 wins in 2017-18; tied for second-most wins in program history
- Spent six years at Wright State (2010-16) and went 128-73 for the Raiders
- Most single-season wins in Wright State history (26)
- Five 20-win seasons at Wright State with five postseason appearances

Mike Bradbury enters his sixth season as head coach for The University of New Mexico women's basketball team. In his previous five seasons at the helm, Bradbury has guided the Lobos to a 94-55 (.631) overall record. Twice in his tenure, in 2017-18 and 2018-19, the Lobos eclipsed the 20-win mark and totaled 49 victories over that time. The consecutive 20-plus win seasons under Bradbury are the first for the program since the 2007-08 – 2008-09 seasons.

In his most recent season at the helm of the Lobos, Bradbury led the Lobos to a Mountain West regular season championship, the first outright in program history and the first regular season title since the 2004-05 season. In addition, the Lobos were selected for the WNIT for the third time in four years.

The Lobos produced one of the most prolific offenses not only in the conference, but in the country, finishing among the top 25 in several categories. Among them, UNM finished fourth in the NCAA in made three-pointers per game (10.2), sixth in assist-turnover ratio (1.40), ninth in scoring offense (81.2 points per game), 14th in fewest turnovers per game (12.0) and assists per game (16.8) and 22nd in scoring margin (12.7). The Lobos led the Mountain West in scoring offense, scoring margin, assists per game, turnover margin, assist-turnover ratio and made three-pointers as well as second in field-goal percentage and steals per game.

UNM set a program record in scoring with 120 points against Arkansas-Pine Bluff on Dec. 17, 2020 and in the process, made 17 three-pointers, falling just one short of tying the program record. Further, the Lobos registered 90-plus points in five games and 80-plus points in 11 of the 20 games on the season.

Four Lobos finished the 2020-21 season averaging double figures in points per game with six players finishing in double figures in scoring in two games (the only times it has been accomplished in program history), five players in five games and four in seven games.

As a result of UNM's successful season, five players were named to the All-Mountain West Team with LaTascya Duff also earning the superlative of Sixth Person of the Year. Duff was just the second Lobo to win the sixth person award. Making the all-conference team for the first time were Duff, Jaedyn De La Cerda and Antonia Anderson, as well as Shaiquel McGruder earning all-defensive and Ahlise Hurst earning the honorable mention distinction.

In his third year at the helm, Bradbury continued to put his mark on the program while also continuing to bring Lobo women's basketball back to national prominence. Overall, Bradbury's 2018-19 team went 24-7 and earned a bid to the WNIT for a second-straight season. It marked the first time since the 2008-09 – 2009-10 seasons that the program made consecutive trips to the postseason.

After dropping a one-possession game to Auburn in the preseason WNIT, the 2018-19 Lobos ripped off 11-straight wins to tie the program record and were on the cusp of cracking the national top-25 rankings as well by receiving votes from the WBCA during that stretch. Bradbury would also receive an individual plaudit from the WBCA last season as he was named as one of 13 finalists for the 2019 United States Marine Corps/WBCA National Coach of the Year Award. Impressively, Bradbury was the only coach from a non-Power 5 conference to be a finalist.

In his time at UNM, Bradbury has coached 13 All-Mountain West performers with Cherise Beynon, Jayla Everett, Jaisa Nunn, Aisia Robertson and Richelle van der Keijl joining De La Cerda, Duff, McGruder, Hurst and Anderson in making the All-Mountain West Team. Tesha Buck, Mykiel Burleson and Nike McClure have also earned MW recognition with Buck being the 2017-18 Newcomer of the Year, Burleson being named to the All-Freshman team in 2016-17 and McClure landing on the All-Defensive team in 2018-19.

In terms of major individual awards, Bradbury has coached the league's Newcomer of the Year each of his first three seasons in charge of the Lobos with van der Keijl earning the award in 2016-17, Buck in 2017-18 and Robertson in 2018-19. Additionally, Bradbury has coached the MW Player of the Year in Nunn (2018-19) and the Freshman of the Year in Everett (2018-19) as well as Sixth Person of the Year in Duff (2020-21).

Further, a Lobo has been named Mountain West Player of the Week 11 times during his tenure.

In year two under Bradbury the Lobos had a breakout season, especially offensively as they ended the 2017-18 season averaging 80.4 points per game while also posting an impressive +9.7 scoring margin. Both marks led the Mountain West and the point-per-game total was 16th-best in NCAA DI last season.

A significant reason for the jump in offensive production was the fact that the Lobos were one of the most potent three-point shooting threats in the country. For the season, the Lobos attempted the eighth-most overall trifectas in DI hoisting 932 long distance shots. Successful 34% of the time, the Lobos made the 11th most 3's burying 319.

Prior to coming to Albuquerque, Bradbury built a





THE UNIVERSITY OF NEW MEXICO 2021-22 WOMEN'S BASKETBALL



successful nine year run as a Division-I head coach with stops at Morehead State (Morehead, Ky.) and Wright State (Dayton, Ohio). Most recently with the Raiders, Bradbury led his squad to five 20-win seasons, including each of his final three seasons. During that time, Wright State has amassed a 75-28 record, the best amongst the 13 Division I programs in the state of Ohio.

Overall at Wright State, Bradbury had five winning seasons, all of which were 20-plus win seasons, in six years- a feat made all the more remarkable as Wright State had just one winning season in the previous 22 before his arrival. In the previous 37 seasons of women's basketball at Wright State, the Raider program had tallied 20 wins just once before Bradbury led the team to 20 wins in five of his six seasons.

His most prominent three-year run at Wright State started in 2013-14, when the Raiders won a school-record 26 games on the way to a 26-9 season and the program's first-ever appearance in the NCAA Tournament. That season saw the Raiders finish second in the Horizon League and win its first Horizon League Tournament. It also featured the program's first road win at perennial league power Wisconsin-Green Bay. Kim Demmings was named the Horizon League Player of the Year and Tournament MVP, and it marked the first time in school history the program had a pair of first team All-Conference selections.

He followed up that by earning Horizon League Coach of the Year in 2014-15 after a 25-9 season that saw his squad lose its Horizon League Preseason Player of the Year less than two minutes into the season opener. The Raiders just missed a second straight NCAA Tournament appearance, falling in overtime in the conference championship game. The team did make its first appearance in the Women's NIT as the league's automatic qualifier, and in 2015-16, the team made

it back-to-back WNIT appearances after a 24-11 season, earning the program's first at-large bid.

Those three seasons are the three winningest seasons in the history of Wright State women's basketball.

In his first two seasons at Wright State, he led the team to a 20-13 campaign and a 21-13 mark and berths in the Women's Basketball Invitational, the first NCAA Division I postseason berths for the program. Overall, Bradbury has coached three Horizon League Players of the Year (all in his last three seasons), six first-team All-Horizon League players, three second-team members and four All-Freshman team members.

Prior to his time at Wright State, Bradbury was the head coach at Morehead State where he led the Division I program to a 50-44 mark in three seasons, including a watershed 22-11 season, which was the second-most wins in Morehead State history and the most wins by the Eagles in the previous 38 years. At Morehead State he coached one Ohio Valley Conference Player of the Year, along with one first-team All-OVC pick (two seasons) and three second-team All-OVC picks.

Bradbury also spent time as an assistant coach at Xavier (2002-06), Cincinnati (1996-02), VCU (1995-96), East Tennessee State (1994-95) and Chattanooga (1991-94). In his 29 seasons as an assistant and as a head coach, Bradbury has had 27 winning seasons.

THE BRADBURY FILE

EDUCATION

UT-Chattanooga - B.S. Recreation (1993)

COACHING EXPERIENCE

1991-93	Student Assistant	Chattanooga
1993-94	Assistant Coach	Chattanooga
1994-95	Assistant Coach	East Tennessee
1995-96	Assistant Coach	VCU
1996-02	Assistant Coach	Cincinnati
2002-07	Assistant Coach	Xavier
2007-10	Head Coach	Morehead State
2010-16	Head Coach	Wright State
2016-pres.	Head Coach	New Mexico

HEAD COACHING RECORD

2007-10	Morehead State	50-44 (.532)
2010-16	Wright State	128-73 (.637)
2016-pres.	New Mexico	99-58 (.631)
15 years		277-175 (.613)

CAREER HEAD COACHING YEAR-BY-YEAR

2007-08	11-19 (9-11)	Morehead State
2008-09	17-14 (11-7)	Morehead State
2009-10	22-11 (14-4)	Morehead State
2010-11	20-13 (11-7)	Wright State
2011-12	21-13 (12-6)	Wright State
2012-13	12-18 (6-10)	Wright State
2013-14	26-9 (12-4)	Wright State
2014-15	25-9 (12-4)	Wright State
2015-16	24-11 (12-6)	Wright State
2016-17	15-15 (10-8)	New Mexico
2017-18	25-11 (10-8)	New Mexico
2018-19	24-7 (14-4)	New Mexico
2019-20	15-17 (6-12)	New Mexico
2020-21	15-5 (11-3)	New Mexico
2021-22	5-3 (0-0)	New Mexico
Total	277-175 (150-94)	



THE UNIVERSITY OF NEW MEXICO

2021-22 WOMEN'S BASKETBALL



1
Rebeka Renczes
PG | 5-7 | FR.
Szekszard, Hungary



4
LaTascya Duff
G | 5-7 | SR.
Samson, Ala.



5
LaTora Duff
G | 5-7 | SR.
Samson, Ala.



10
Kath van Bennekom
G | 5-9 | SO.
Gorinchem, The Netherlands



11
Zeyno Şeren
G | 5-10 | FR.
Ankara, Turkey



12
Aniyah Augmon
G | 5-8 | FR.
San José, Calif.



13
Shaiquel McGruder
F | 6-0 | SR.
Trotwood, Ohio



21
Mackenzie Curtis
G | 5-9 | FR.
Lakeside, Calif.



23
Jaedyn De La Cerda
G | 5-7 | SR.
Roswell, N.M.



30
Paula Reus
F | 6-1 | FR.
Palma de Mallorca, Spain



32
Antonia Anderson
G/F | 6-2 | SR.
Cibolo, Texas



33
Vianè Cumber
G | 5-10 | FR.
Albuquerque, N.M.



34
Nevaeh Parkinson
F/C | 6-3 | SO.
Dallas, Texas



Mike Bradbury
Head Coach



Valerie King
Assistant Coach



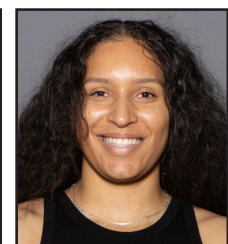
Symone Denham
Assistant Coach



Kabrina Merriweather
Assistant Coach



Ryan Freeman
Special Assistant to the
Head Coach



Nike McClure
Director of Player
Development



THE UNIVERSITY OF NEW MEXICO 2021-22 WOMEN'S BASKETBALL



#1

REBEKA RENCZES

PG | 5-7 | FR | Szekszard, Hungary (Garay Janos Secondary)



PPG	FG %	3PT %	FT %	RPG	APG	SPG	BPG	MPG
2.3	.400	.500	.000	0.7	1.7	0.3	0.0	9.3

NOTEWORTHY

- » Averaged 22.1 points, 9.0 assists and 6.3 steals during the 2019 season
- » Averaged 17.3 points, 6.1 assists and 2.9 steals during the 2021 season
- » Played on the U16 Hungary National Team and competed in the 2019 FIBA U16 Women's European Championship
- » Averaged 6.0 points, 2.9 assists, 2.3 rebounds, 1.1 steals while averaging 21.5 minutes with the national team

Renczes' Top Performances

Points	Season	6 vs. Houston Bapt. (11/23/21)
	Career	Same
FGM	Season	2 vs. Houston Bapt. (11/23/21)
	Career	Same
FGA	Season	3 vs. Northern N.M. (11/12/21)
	Career	Same
3PT FGM	Season	2 vs. Houston Bapt. (11/23/21)
	Career	Same
3PT FGA	Season	2 - done twice
	Career	Same
FTM	Season	1 vs. ULM (11/27/21)
	Career	Same
FTA	Season	2 vs. ULM (11/27/21)
	Career	Same
Rebounds	Season	2 vs. Northern N.M. (11/12/21)
	Career	Same
Assists	Season	3 vs. Northern N.M. (11/12/21)
	Career	Same
Blocks	Season	
	Career	
Steals	Season	1 vs. Northern N.M. (11/12/21)
	Career	Same
Turnovers	Season	0 vs. Houston Bapt. (11/23/21)
	Career	Same
Min. Played	Season	18 vs. Northern N.M. (11/12/21)
	Career	Same

GAME-BY-GAME STATISTICS

Opponent	Date	GS	MIN	Total		3-Pointers		Free throws		Rebounds				PF	A	TO	BLK	STL	PTS	AVG
				FG-FGA	PCT	3FG-3FGA	PCT	FT-FTA	PCT	OFF	DEF	TOT	AVG							
Northern N.M.	11/12/2021		17:56	0-3	.000	0-2	.000	0-0	.000	0	2	2	2.0	1	3	3	0	1	0	0.0
Houston Baptist	11/23/2021		04:15	2-2	1.000	2-2	1.000	0-0	.000	0	0	0	1.0	1	1	0	0	0	6	3.0
vs La.-Monroe	11/27/2021		05:38	0-0	.000	0-0	.000	1-2	.500	0	0	0	0.7	0	1	1	0	0	1	2.3
Totals		0	27:49	2-5	.400	2-4	.500	1-2	.500	0	2	2	0.7	2	5	4	0	1	7	2.3

CAREER STATISTICS

SEASON	TEAM	GP-GS	MIN/AVG	Field Goals		3-Point		F-Throws		Rebounds				PF-FO	A	TO	BLK	STL	Scoring	
				FG-FGA	FG%	3FG-3FGA	3FG%	FT-FTA	FT%	OFF	DEF	TOT	AVG						PTS	AVG
2021-22	UNM	3-0	28/9.3	2-5	.400	2-4	.500	1-2	.500	0	2	2	0.7	2-0	5	4	0	1	7	2.3
TOTAL		3-0	28/9.3	2-5	.400	2-4	.500	1-2	.500	0	2	2	0.7	2-0	5	4	0	1	7	2.3



THE UNIVERSITY OF NEW MEXICO 2021-22 WOMEN'S BASKETBALL



#4

LaTASCYA DUFF

G | 5-7 | SR | Samson, Ala. (Shelton State CC)



PPG	FG %	3PT %	FT %	RPG	APG	SPG	BPG	MPG
10.1	.431	.450	.900	2.3	1.0	0.7	0.1	25.6

NOTEWORTHY

- » Named Mountain West Sixth Person of the Year
- » MW All-Conference Team
- » Named Mountain West Preseason Newcomer of the Year
- » Named Mountain West Player of the Week twice (Dec. 21 and March 2)
- » Second on the team in points, ppg, field-goal attempts, free-throw percentage
- » Led the Lobos in 3-point field-goal percentage, 3-point field-goal attempts and made 3-pointers, and free throws made

Duff's Top Performances

Points	Season	21 vs Texas Tech (11/28/21)
	Career	31 at Air Force (2/23/21)
FGM	Season	6 vs Texas Tech (11/28/21)
	Career	11 at Air Force (2/23/21)
FGA	Season	13 vs SFA (11/26/21)
	Career	20 at Air Force (2/23/21)
3PT FGM	Season	5 vs Texas Tech (11/28/21)
	Career	6 - done four times
3PT FGA	Season	9 - done twice
	Career	12 - done twice
FTM	Season	4 vs Texas Tech (11/28/21)
	Career	8 - done twice
FTA	Season	4 vs Texas Tech (11/28/21)
	Career	10 at SHSU (12/6/20)
Rebounds	Season	5 vs Houston Bapt. (11/23/21)
	Career	7 - done twice
Assists	Season	2 vs Texas Tech (11/28/21)
	Career	6 at Midwestern St. (12/4/20)
Blocks	Season	1 vs ULM (11/27/21)
	Career	2 vs. Colorado State (3/5/21)
Steals	Season	1 - done five times
	Career	5 at Air Force (2/23/21)
Turnovers	Season	0 - done four times
	Career	0 - done eight times
Min. Played	Season	39 vs Texas Tech (11/28/21)
	Career	Same

GAME-BY-GAME STATISTICS

Opponent	Date	GS	MIN	Total		3-Pointers		Free throws		Rebounds				PF	A	TO	BLK	STL	PTS	AVG	
				FG-FGA	PCT	3FG-3FGA	PCT	FT-FTA	PCT	OFF	DEF	TOT	AVG								
Northern N.M.	11/12/2021		04:00	1-1	1.000	1-1	1.000	0-0	.000	0	0	0	0.0	0	0	0	0	0	3	3.0	
Prairie View	11/16/2021	*	18:32	1-3	.333	1-3	.333	0-0	.000	0	0	0	0.0	0	1	0	0	1	3	3.0	
at Houston	11/20/2021	*	33:41	3-7	.429	2-6	.333	3-3	1.000	0	2	2	0.7	2	1	3	0	1	11	5.7	
Houston Baptist	11/23/2021	*	28:26	2-7	.286	2-4	.500	0-0	.000	0	5	5	1.8	1	1	0	0	1	6	5.8	
vs SFA	11/26/2021	*	31:22	5-13	.385	3-9	.333	2-3	.667	1	2	3	2.0	2	1	3	0	0	15	7.6	
vs La.-Monroe	11/27/2021	*	23:34	4-9	.444	4-8	.500	0-0	.000	1	1	2	2.0	0	1	0	1	1	12	8.3	
vs Texas Tech	11/28/2021	*	39:34	6-11	.545	5-9	.556	4-4	1.000	0	4	4	2.3	1	2	3	0	1	21	10.1	
Totals			6	179:09	22-51	.431	18-40	.450	9-10	.900	2	14	16	2.3	6	7	9	1	5	71	10.1

CAREER STATISTICS (AT UNM)

SEASON	TEAM	GP-GS	MIN/AVG	Field Goals		3-Point		F-Throws		Rebounds				Scoring						
				FG-FGA	FG%	3FG-3FGA	3FG%	FT-FTA	FT%	OFF	DEF	TOT	AVG	PF-FO	A	TO	BLK	STL	PTS	AVG
2020-21	UNM	20-4	495/24.8	93-209	.445	52-130	.400	59-72	.819	13	47	60	3.0	37-0	39	22	4	17	297	14.9
2021-22	UNM	7-6	179/25.6	22-51	.431	18-40	.450	9-10	.900	2	14	16	2.3	6-0	7	9	1	5	71	10.1
TOTAL		27-10	674/25.0	115-260	.442	70-170	.412	68-82	.829	15	61	76	2.8	43-0	46	31	5	22	368	13.6



THE UNIVERSITY OF NEW MEXICO 2021-22 WOMEN'S BASKETBALL



#5

LaTORA DUFF

G | 5-7 | SR | Samson, Ala. (Shelton State CC)



PPG	FG %	3PT %	FT %	RPG	APG	SPG	BPG	MPG
11.6	.425	.343	.826	3.3	5.9	1.6	0.8	30.7

NOTEWORTHY

- » Started in all 20 games for the Lobos last season
- » Led the Lobos in assists and third in steals
- » Top 5 in free throws made, rebounds, 3-pointers made and attempted

Duff's Top Performances

Points	Season	17 - done twice
	Career	Same
FGM	Season	7 at Houston (11/20/21)
	Career	Same
FGA	Season	13 vs Prairie View (11/16/21)
	Career	Same
3PT FGM	Season	3 vs Prairie View (11/16/21)
	Career	3 - done five times
3PT FGA	Season	9 vs Lamar (11/9/21)
	Career	Same
FTM	Season	8 vs SFA (11/26/21)
	Career	Same
FTA	Season	9 vs SFA (11/26/21)
	Career	9 - done twice
Rebounds	Season	8 vs Prairie View (11/16/21)
	Career	Same
Assists	Season	12 vs Prairie View (11/16/21)
	Career	Same
Blocks	Season	4 vs Prairie View (11/16/21)
	Career	Same
Steals	Season	4 vs Houston Bapt. (11/23/21)
	Career	4 - done twice
Turnovers	Season	0 - done twice
	Career	0 - done seven times
Min. Played	Season	37 - done twice
	Career	37 - done three times

GAME-BY-GAME STATISTICS

Opponent	Date	GS	MIN	Total		3-Pointers		Free throws		Rebounds				PF	A	TO	BLK	STL	PTS	AVG	
				FG-FGA	PCT	3FG-3FGA	PCT	FT-FTA	PCT	OFF	DEF	TOT	AVG								
Lamar University	11/09/2021	*	34:32	3-11	.273	2-9	.222	2-2	1.000	0	3	3	3.0	3	9	1	1	0	10	10.0	
Northern N.M.	11/12/2021	*	17:39	2-6	.333	0-0	.000	3-4	.750	0	2	2	2.5	0	5	0	0	0	7	8.5	
Prairie View	11/16/2021	*	37:20	5-13	.385	3-6	.500	4-6	.667	2	6	8	4.3	2	12	0	4	0	17	11.3	
at Houston	11/20/2021	*	31:00	7-11	.636	2-5	.400	0-0	.000	0	3	3	4.0	0	2	8	0	3	16	12.5	
Houston Baptist	11/23/2021	*	29:24	4-8	.500	1-4	.250	2-2	1.000	0	2	2	3.6	1	4	1	1	4	11	12.2	
vs SFA	11/26/2021	*	35:38	4-10	.400	1-4	.250	8-9	.889	1	4	5	3.8	3	2	7	0	3	17	13.0	
vs La.-Monroe	11/27/2021	*	22:17	3-7	.429	2-4	.500	0-0	.000	0	2	2	3.6	2	4	1	0	1	8	12.3	
vs Texas Tech	11/28/2021	*	37:25	3-7	.429	1-3	.333	0-0	.000	0	1	1	3.3	1	9	3	0	2	7	11.6	
Totals			8	245:15	31-73	.425	12-35	.343	19-23	.826	3	23	26	3.3	12	47	21	6	13	93	11.6

CAREER STATISTICS (AT UNM)

SEASON	TEAM	GP-GS	MIN/AVG	Field Goals		3-Point		F-Throws		Rebounds				Scoring						
				FG-FGA	FG%	3FG-3FGA	3FG%	FT-FTA	FT%	OFF	DEF	TOT	AVG	PF-FO	A	TO	BLK	STL	PTS	AVG
2020-21	UNM	20-20	542/27.1	61-137	.445	22-66	.333	16-24	.667	6	62	68	3.4	27-0	78	39	3	25	160	8.0
2021-22	UNM	8-8	245/30.7	31-73	.425	12-35	.343	19-23	.826	3	23	26	3.3	12-0	47	21	6	13	93	11.6
TOTAL		28-28	787/28.1	92-210	.438	34-101	.337	35-47	.745	9	85	94	3.4	39-0	125	60	9	38	253	9.0



THE UNIVERSITY OF NEW MEXICO 2021-22 WOMEN'S BASKETBALL



#10

KATH VAN BENNEKOM

G | 5-9 | SO | Gorinchem, The Netherlands



PPG	FG %	3PT %	FT %	RPG	APG	SPG	BPG	MPG
2.0	.556	.000	.667	2.0	0.3	0.3	0.0	11.8

NOTEWORTHY

- » Competed for Lyceum Oudehoven and also for the club team Binneland where she helped her team to the U16 Championship in 2016
- » Led her U20 team to the semi-finals and the Final Four in 2017, 2018, 2019 and 2020
- » Helped her team to the U20 Cup Finals twice (2017, 2020).

van Bennekom's Top Performances

Points	Season	7 vs Northern N.M. (11/12/21)
	Career	9 at Midwestern St.(12/4/20)
FGM	Season	2 - done twice
	Career	Same
FGA	Season	3 - done twice
	Career	5 at Midwestern St.(12/4/20)
3PT FGM	Season	
	Career	1 - done twice
3PT FGA	Season	1 at Houston (11/20/21)
	Career	4 at Midwestern St.(12/4/20)
FTM	Season	3 vs Northern N.M. (11/12/21)
	Career	6 at Midwestern St.(12/4/20)
FTA	Season	4 vs Northern N.M. (11/12/21)
	Career	8 at Midwestern St.(12/4/20)
Rebounds	Season	4 vs Northern N.M. (11/12/21)
	Career	7 at San Diego St. (2/5/21)
Assists	Season	1 - done twice
	Career	1 - done six times
Blocks	Season	
	Career	
Steals	Season	1 - done twice
	Career	2 at Utah State (2/28/21)
Turnovers	Season	0 - done three times
	Career	0 - done 15 times
Min. Played	Season	20 vs Lamar (11/9/21)
	Career	Same

GAME-BY-GAME STATISTICS

Opponent	Date	GS	MIN	Total		3-Pointers		Free throws		Rebounds				PF	A	TO	BLK	STL	PTS	AVG
				FG-FGA	PCT	3FG-3FGA	PCT	FT-FTA	PCT	OFF	DEF	TOT	AVG							
Lamar University	11/09/2021		19:53	2-3	.667	0-0	.000	0-0	.000	3	0	3	3.0	4	0	3	0	0	4	4.0
Northern N.M.	11/12/2021		12:45	2-2	1.000	0-0	.000	3-4	.750	3	1	4	3.5	1	1	0	0	1	7	5.5
Prairie View	11/16/2021		06:04	0-0	.000	0-0	.000	1-2	.500	0	0	0	2.3	1	0	1	0	1	1	4.0
at Houston	11/20/2021	*	18:04	1-3	.333	0-1	.000	0-0	.000	0	2	2	2.3	1	1	0	0	0	2	3.5
Houston Baptist	11/23/2021		07:31	0-0	.000	0-0	.000	0-0	.000	0	1	1	2.0	0	0	1	0	0	0	2.8
vs SFA	11/26/2021		13:28	0-0	.000	0-0	.000	0-0	.000	0	3	3	2.2	2	0	1	0	0	0	2.3
vs La.-Monroe	11/27/2021		05:03	0-1	.000	0-0	.000	0-0	.000	0	1	1	2.0	0	0	0	0	0	0	2.0
Totals		1	82:48	5-9	.556	0-1	.000	4-6	.667	6	8	14	2.0	9	2	6	0	2	14	2.0

CAREER STATISTICS

SEASON	TEAM	GP-GS	MIN/AVG	Field Goals		3-Point		F-Throws		Rebounds				Scoring						
				FG-FGA	FG%	3FG-3FGA	3FG%	FT-FTA	FT%	OFF	DEF	TOT	AVG	PF-FO	A	TO	BLK	STL	PTS	AVG
2020-21	UNM	16-0	118/7.4	5-20	.250	2-12	.167	13-20	.650	10	19	29	1.8	13-0	4	4	0	2	25	1.6
2021-22	UNM	7-1	83/11.8	5-9	.556	0-1	.000	4-6	.667	6	8	14	2.0	9-0	2	6	0	2	14	2.0
TOTAL		23-1	200/8.7	10-29	.345	2-13	.154	17-26	.654	16	27	43	1.9	22-0	6	10	0	4	39	1.7



THE UNIVERSITY OF NEW MEXICO 2021-22 WOMEN'S BASKETBALL



#11

ZEYNO SEREN

G | 5-10 | FR | Ankara, Turkey (TED Ankara College Private HS)



PPG	FG %	3PT %	FT %	RPG	APG	SPG	BPG	MPG
1.8	.333	.000	.600	2.2	0.8	0.4	0.0	10.0

NOTEWORTHY

- » Averaged 16.2 points, 5.1 assists, 7.0 rebounds and 3.0 steals
- » Competed for Turkey at the U16 European Championship in 2019 and the Baku Youth Olympics
- » Played for BOTAS Sports Club

Seren's Top Performances

Points	Season	6 vs Northern N.M. (11/12/21)
	Career	Same
FGM	Season	3 vs Northern N.M. (11/12/21)
	Career	Same
FGA	Season	4 - done twice
	Career	Same
3PT FGM	Season	
	Career	
3PT FGA	Season	1 - done twice
	Career	Same
FTM	Season	2 vs ULM (11/27/21)
	Career	Same
FTA	Season	2 - done twice
	Career	Same
Rebounds	Season	4 - done twice
	Career	Same
Assists	Season	2 vs ULM (11/27/21)
	Career	Same
Blocks	Season	
	Career	
Steals	Season	1 - done twice
	Career	Same
Turnovers	Season	0 - done four times
	Career	Same
Min. Played	Season	17 vs Northern N.M. (11/12/21)
	Career	Same

GAME-BY-GAME STATISTICS

Opponent	Date	GS	MIN	Total		3-Pointers		Free throws		Rebounds				PF	A	TO	BLK	STL	PTS	AVG
				FG-FGA	PCT	3FG-3FGA	PCT	FT-FTA	PCT	OFF	DEF	TOT	AVG							
Lamar University	11/09/2021	*	13:51	0-1	.000	0-1	.000	1-2	.500	0	4	4	4.0	1	1	0	0	0	1	1.0
Northern N.M.	11/12/2021		16:36	3-4	.750	0-0	.000	0-1	.000	1	3	4	4.0	2	1	0	0	1	6	3.5
at Houston	11/20/2021		00:50	0-0	.000	0-0	.000	0-0	.000	0	0	0	2.7	0	0	0	0	0	0	2.3
Houston Baptist	11/23/2021		05:36	0-0	.000	0-0	.000	0-0	.000	0	0	0	2.0	0	0	1	0	0	0	1.8
vs La.-Monroe	11/27/2021		13:14	0-4	.000	0-1	.000	2-2	1.000	0	3	3	2.2	0	2	0	0	1	2	1.8
Totals		1	50:06	3-9	.333	0-2	.000	3-5	.600	1	10	11	2.2	3	4	1	0	2	9	1.8

CAREER STATISTICS

SEASON	TEAM	GP-GS	MIN/AVG	Field Goals		3-Point		F-Throws		Rebounds				Scoring						
				FG-FGA	FG%	3FG-3FGA	3FG%	FT-FTA	FT%	OFF	DEF	TOT	AVG	PF-FO	A	TO	BLK	STL	PTS	AVG
2021-22	UNM	5-1	50/10.0	3-9	.333	0-2	.000	3-5	.600	1	10	11	2.2	3-0	4	1	0	2	9	1.8
TOTAL		5-1	50/10.0	3-9	.333	0-2	.000	3-5	.600	1	10	11	2.2	3-0	4	1	0	2	9	1.8



THE UNIVERSITY OF NEW MEXICO 2021-22 WOMEN'S BASKETBALL



#12

ANIYAH AUGMON

G | 5-8 | FR | San José, Calif. (Woodside Priory School)



PPG	FG %	3PT %	FT %	RPG	APG	SPG	BPG	MPG
2.0	.556	.500	.714	2.6	0.8	1.3	0.0	12.8

NOTEWORTHY

- » Averaged 14.0 points, 7.0 rebounds, 4.0 assists and 3.0 steals throughout her high school career
- » Helped lead her teams to three CCS Championships (2017, 2018, 2019)
- » First team all-league in 2019, honorable mention in 2018 and second team all-league in 2017
- » Attended the Adidas All-American Camp
- » Competed for Peninsula Basketball Club where she averaged 15.0 points, 7.0 rebounds, 4.0 assists and 3.0 steals.

Augmon's Top Performances

Points	Season	8 vs Lamar (11/9/21)
	Career	Same
FGM	Season	3 vs Lamar (11/9/21)
	Career	Same
FGA	Season	3 - done twice
	Career	Same
3PT FGM	Season	1 vs Lamar (11/9/21)
	Career	Same
3PT FGA	Season	1 - done twice
	Career	Same
FTM	Season	2 vs Northern N.M. (11/12/21)
	Career	Same
FTA	Season	2 - done three times
	Career	Same
Rebounds	Season	6 - done twice
	Career	Same
Assists	Season	3 vs Northern N.M. (11/12/21)
	Career	Same
Blocks	Season	
	Career	
Steals	Season	3 - done twice
	Career	Same
Turnovers	Season	0 - done twice
	Career	Same
Min. Played	Season	23 vs Lamar (11/9/21)
	Career	Same

GAME-BY-GAME STATISTICS

Opponent	Date	GS	MIN	Total		3-Pointers		Free throws		Rebounds				PF	A	TO	BLK	STL	PTS	AVG
				FG-FGA	PCT	3FG-3FGA	PCT	FT-FTA	PCT	OFF	DEF	TOT	AVG							
Lamar University	11/09/2021		23:03	3-3	1.000	1-1	1.000	1-1	1.000	0	6	6	6.0	2	0	2	0	3	8	8.0
Northern N.M.	11/12/2021		16:24	2-3	.667	0-1	.000	2-2	1.000	0	4	4	5.0	2	3	3	0	1	6	7.0
Prairie View	11/16/2021		18:11	0-0	.000	0-0	.000	1-2	.500	0	6	6	5.3	3	1	1	0	3	1	5.0
at Houston	11/20/2021	*	09:34	0-1	.000	0-0	.000	0-0	.000	0	1	1	4.3	2	0	3	0	1	0	3.8
Houston Baptist	11/23/2021		16:26	0-1	.000	0-0	.000	0-0	.000	0	2	2	3.8	2	1	1	0	1	0	3.0
vs SFA	11/26/2021		05:06	0-0	.000	0-0	.000	0-0	.000	0	0	0	3.2	0	0	0	0	0	0	2.5
vs La.-Monroe	11/27/2021		10:56	0-1	.000	0-0	.000	1-2	.500	1	1	2	3.0	2	1	3	0	1	1	2.3
vs Texas Tech	11/28/2021		03:01	0-0	.000	0-0	.000	0-0	.000	0	0	0	2.6	3	0	0	0	0	0	2.0
Totals		1	102:41	5-9	.556	1-2	.500	5-7	.714	1	20	21	2.6	16	6	13	0	10	16	2.0

CAREER STATISTICS

SEASON	TEAM	GP-GS	MIN/AVG	Field Goals		3-Point		F-Throws		Rebounds				Scoring						
				FG-FGA	FG%	3FG-3FGA	3FG%	FT-FTA	FT%	OFF	DEF	TOT	AVG	PF	FO	A	TO	BLK	STL	PTS
2021-22	UNM	8-1	103/12.8	5-9	.556	1-2	.500	5-7	.714	1	20	21	2.6	16-0	6	13	0	10	16	2.0
TOTAL		8-1	103/12.8	5-9	.556	1-2	.500	5-7	.714	1	20	21	2.6	16-0	6	13	0	10	16	2.0



THE UNIVERSITY OF NEW MEXICO 2021-22 WOMEN'S BASKETBALL



#13

SHAIQUEL McGRUDER

F | 6-0 | SR | Trotwood, Ohio (Trotwood-Madison HS)



PPG	FG %	3PT %	FT %	RPG	APG	SPG	BPG	MPG
13.4	.662	.250	.857	5.9	0.3	1.6	0.9	21.9

NOTEWORTHY

- » Named to MW All-Defensive Team
- » Started all 20 games as a junior
- » Two games with 10-plus rebounds as a junior, one double-double against Sam Houston State (13 rebounds, 17 points)
- » Four games with multiple blocks last season, including 5 blocks against Sam Houston State
- » 10 games with multiple steals with a season-high 4 against Fresno State
- » Nine games with 10-plus points
- » Led the team in blocked shots with 23 and was 6th in the MW in blocked shots per game

McGruder's Top Performances

Points	Season	30 vs Prairie View (11/16/21)
	Career	Same
FGM	Season	13 vs Prairie View (11/16/21)
	Career	Same
FGA	Season	18 vs Prairie View (11/16/21)
	Career	Same
3PT FGM	Season	1 vs Lamar (11/9/21)
	Career	2 at SHSU (12/6/20)
3PT FGA	Season	1 - done four times
	Career	4 vs. Colorado St. (3/5/21)
FTM	Season	4 - done twice
	Career	Same
FTA	Season	4 - done three times
	Career	4 - done five times
Rebounds	Season	11 vs. ULM (11/27/21)
	Career	17 vs. Nevada (3/1/20)
Assists	Season	1 - done twice
	Career	4 vs. Fresno State (1/28/21)
Blocks	Season	3 vs. Texas Tech (11/28/21)
	Career	5 at SHSU (12/6/20)
Steals	Season	4 vs. Prairie View (11/16/21)
	Career	8 vs. West Virginia (11/29/19)
Turnovers	Season	0 - done twice
	Career	0 - done 41 times
Min. Played	Season	35 vs. Texas Tech (11/28/21)
	Career	34 at SHSU (12/6/20)

GAME-BY-GAME STATISTICS

Opponent	Date	GS	MIN	Total		3-Pointers		Free throws		Rebounds				PF	A	TO	BLK	STL	PTS	AVG	
				FG-FGA	PCT	3FG-3FGA	PCT	FT-FTA	PCT	OFF	DEF	TOT	AVG								
Lamar University	11/09/2021	*	22:09	7-7	1.000	1-1	1.000	0-0	.000	2	3	5	5.0	4	0	3	0	1	15	15.0	
Northern N.M.	11/12/2021	*	20:08	5-10	.500	0-0	.000	2-4	.500	4	0	4	4.5	1	0	0	0	3	12	13.5	
Prairie View	11/16/2021	*	28:48	13-18	.722	0-0	.000	4-4	1.000	2	5	7	5.3	0	0	2	0	4	30	19.0	
at Houston	11/20/2021	*	12:22	0-1	.000	0-1	.000	0-0	.000	1	3	4	5.0	3	1	1	0	0	0	14.3	
Houston Baptist	11/23/2021	*	23:00	9-13	.692	0-1	.000	2-2	1.000	5	5	10	6.0	1	0	2	2	2	20	15.4	
vs SFA	11/26/2021	*	07:50	1-2	.500	0-0	.000	0-0	.000	0	1	1	5.2	3	0	4	1	0	2	13.2	
vs La.-Monroe	11/27/2021	*	25:25	4-7	.571	0-0	.000	0-0	.000	2	9	11	6.0	2	0	0	1	3	8	12.4	
vs Texas Tech	11/28/2021	*	35:12	8-13	.615	0-1	.000	4-4	1.000	4	1	5	5.9	3	1	1	3	0	20	13.4	
Totals			7	174:54	47-71	.662	1-4	.250	12-14	.857	20	27	47	5.9	17	2	13	7	13	107	13.4

CAREER STATISTICS

SEASON	TEAM	GP-GS	MIN/AVG	Field Goals		3-Point		F-Throws		Rebounds				Scoring						
				FG-FGA	FG%	3FG-3FGA	3FG%	FT-FTA	FT%	OFF	DEF	TOT	AVG	PF-FO	A	TO	BLK	STL	PTS	AVG
2018-19	UNM	26-0	212/8.1	33-58	.569	0-0	.000	7-18	.389	32	39	71	2.7	17-0	3	7	14	24	73	2.8
2019-20	UNM	31-8	558/18.0	97-163	.595	1-10	.100	20-27	.741	66	108	174	5.6	44-0	8	29	26	38	215	6.9
2020-21	UNM	20-20	471/23.6	80-132	.606	7-19	.368	15-22	.682	42	77	119	6.0	40-0	15	30	23	30	182	9.1
2021-22	UNM	8-7	175/21.9	47-71	.662	1-4	.250	12-14	.857	20	27	47	5.9	17-0	2	13	7	13	107	13.4
TOTAL		85-35	1416/16.7	257-424	.606	9-33	.273	54-81	.667	160	251	411	4.8	118-0	28	79	70	105	577	6.8



THE UNIVERSITY OF NEW MEXICO 2021-22 WOMEN'S BASKETBALL



#21

MACKENZIE CURTIS

G | 5-9 | FR | Lakeside, Calif. (El Capitan HS)



PPG	FG %	3PT %	FT %	RPG	APG	SPG	BPG	MPG
3.5	.250	.250	.750	1.0	0.5	0.0	0.0	9.0

NOTEWORTHY

- » Averaged 22.2 points, 9.5 rebounds, 3.3 assists, 3.5 steals and 1.0 blocks per game
- » Four-time team MVP, three-time league MVP, four-time San Diego Union Tribune Scholar-Athlete
- » Named First-Team All-CIF in 2020 and Second Team All-CIF in 2019
- » No. 1 scorer in San Diego for two years and No. 3 in California for scoring in the class of 2021

Curtis' Top Performances

Points	Season	12 vs Northern N.M. (11/12/21)
	Career	Same
FGM	Season	3 vs Northern N.M. (11/12/21)
	Career	Same
FGA	Season	10 vs Northern N.M. (11/12/21)
	Career	Same
3PT FGM	Season	3 vs Northern N.M. (11/12/21)
	Career	Same
3PT FGA	Season	7 vs Northern N.M. (11/12/21)
	Career	Same
FTM	Season	3 vs Northern N.M. (11/12/21)
	Career	Same
FTA	Season	4 vs Northern N.M. (11/12/21)
	Career	Same
Rebounds	Season	3 vs Northern N.M. (11/12/21)
	Career	Same
Assists	Season	2 vs Northern N.M. (11/12/21)
	Career	Same
Blocks	Season	
	Career	
Steals	Season	
	Career	
Turnovers	Season	0 vs ULM (11/27/21)
	Career	Same
Min. Played	Season	19 vs Northern N.M. (11/12/21)
	Career	Same

GAME-BY-GAME STATISTICS

Opponent	Date	GS	MIN	Total		3-Pointers		Free throws		Rebounds				PF	A	TO	BLK	STL	PTS	AVG
				FG-FGA	PCT	3FG-3FGA	PCT	FT-FTA	PCT	OFF	DEF	TOT	AVG							
Northern N.M.	11/12/2021		19:06	3-10	.300	3-7	.429	3-4	.750	1	2	3	3.0	0	2	2	0	0	12	12.0
at Houston	11/20/2021		00:56	0-0	.000	0-0	.000	0-0	.000	0	0	0	1.5	0	0	1	0	0	0	6.0
Houston Baptist	11/23/2021		05:55	0-2	.000	0-2	.000	0-0	.000	0	0	0	1.0	1	0	1	0	0	0	4.0
vs La.-Monroe	11/27/2021		10:00	1-4	.250	0-3	.000	0-0	.000	0	1	1	1.0	2	0	0	0	0	2	3.5
Totals		0	35:57	4-16	.250	3-12	.250	3-4	.750	1	3	4	1.0	3	2	4	0	0	14	3.5

CAREER STATISTICS

SEASON	TEAM	GP-GS	MIN/AVG	Field Goals		3-Point		F-Throws		Rebounds				Scoring						
				FG-FGA	FG%	3FG-3FGA	3FG%	FT-FTA	FT%	OFF	DEF	TOT	AVG	PF-FO	A	TO	BLK	STL	PTS	AVG
2021-22	UNM	4-0	36/9.0	4-16	.250	3-12	.250	3-4	.750	1	3	4	1.0	3-0	2	4	0	0	14	3.5
TOTAL		4-0	36/9.0	4-16	.250	3-12	.250	3-4	.750	1	3	4	1.0	3-0	2	4	0	0	14	3.5



THE UNIVERSITY OF NEW MEXICO

2021-22 WOMEN'S BASKETBALL



#23

JAEDYN DE LA CERDA

G | 5-7 | SR | Roswell, N.M. (Roswell HS)



PPG	FG %	3PT %	FT %	RPG	APG	SPG	BPG	MPG
14.1	.374	.373	.778	3.6	3.5	1.1	0.0	30.6

NOTEWORTHY

- » Named to 2020-21 MW All-Conference Team and MW All-Tournament Team
 - » Fifth in the MW in points per game and in field-goal percentage (.437), but led the conference in free-throw percentage
 - » Scored in double figures 17 times including six games in which she scored 20 points or more last season
 - » Recorded her first double-double with 13 points and 11 rebounds at Arkansas-Pine Bluff, finishing with a career high in rebounds
 - » A scoring catalyst off the bench, set a program record for points off the bench as she scored 31 points vs. San José State (2/27/19)
 - » In HS, was named the 2016-17 New Mexico Gatorade Player of the Year in women's basketball
 - » Led Roswell HS to the 2016 New Mexico 5A State Championship
 - » Named as a 2016 All-State honoree as well as an Adidas All-American
- » Reached 1000-career points on Nov. 28 against Texas Tech, becoming 23rd Lobo to reach the milestone.

De La Cerda's Top Performances

Points	Season	18 vs. SFA (11/26/21)
	Career	31 vs. San Jose State (2/27/19)
FGM	Season	7 - done twice
	Career	12 vs. San Jose State (2/27/19)
FGA	Season	19 vs Lamar (11/9/21)
	Career	26 vs. Cal. Baptist (3/19/21)
3PT FGM	Season	4 - done twice
	Career	7 vs. San Jose State (2/27/19)
3PT FGA	Season	9 at Houston (11/20/21)
	Career	13 - done twice
FTM	Season	4 - done twice
	Career	14 at SHSU (12/6/20)
FTA	Season	5 - done twice
	Career	15 at SHSU (12/6/20)
Rebounds	Season	7 vs. Prairie View (11/16/21)
	Career	11 at Arkansas-PB (12/17/20)
Assists	Season	7 vs. Texas Tech (11/28/21)
	Career	8 vs. NM State (11/17/19)
Blocks	Season	1 - done seven times
	Career	1 - done seven times
Steals	Season	3 vs. Northern N.M. (11/12/21)
	Career	4 - done twice
Turnovers	Season	1 - done twice
	Career	0 - done 35 times
Min. Played	Season	39 vs. Lamar (11/9/21)
	Career	44 vs. San Diego St. (3/11/19)

GAME-BY-GAME STATISTICS

Opponent	Date	GS	MIN	Total		3-Pointers		Free throws		Rebounds				PF	A	TO	BLK	STL	PTS	AVG	
				FG-FGA	PCT	3FG-3FGA	PCT	FT-FTA	PCT	OFF	DEF	TOT	AVG								
Lamar University	11/09/2021	*	38:38	5-19	.263	1-8	.125	4-5	.800	2	4	6	6.0	2	2	2	0	1	15	15.0	
Northern N.M.	11/12/2021	*	18:29	3-6	.500	2-4	.500	0-0	.000	0	2	2	4.0	0	4	2	0	3	8	11.5	
Prairie View	11/16/2021	*	36:31	4-14	.286	3-7	.429	2-4	.500	2	5	7	5.0	2	3	5	0	1	13	12.0	
at Houston	11/20/2021	*	30:55	5-14	.357	4-9	.444	0-0	.000	0	2	2	4.3	2	2	8	0	0	14	12.5	
Houston Baptist	11/23/2021	*	25:17	7-16	.438	1-5	.200	2-2	1.000	0	3	3	4.0	2	4	1	0	1	17	13.4	
vs SFA	11/26/2021	*	33:44	7-11	.636	4-6	.667	0-0	.000	1	1	2	3.7	4	1	4	0	2	18	14.2	
vs La.-Monroe	11/27/2021	*	24:01	5-12	.417	3-8	.375	2-2	1.000	1	4	5	3.9	1	5	2	0	1	15	14.3	
vs Texas Tech	11/28/2021	*	37:00	4-15	.267	1-4	.250	4-5	.800	0	2	2	3.6	3	7	1	0	0	13	14.1	
Totals			7	244:34	40-107	.374	19-51	.373	14-18	.778	6	23	29	3.6	16	28	25	0	9	113	14.1

CAREER STATISTICS

SEASON	TEAM	GP-GS	MIN/AVG	Field Goals		3-Point		F-Throws		Rebounds				PF-FO	A	TO	BLK	STL	Scoring	
				FG-FGA	FG%	3FG-3FGA	3FG%	FT-FTA	FT%	OFF	DEF	TOT	AVG						PTS	AVG
2017-18	UNM	13-0	35/2.7	8-20	.400	2-10	.200	5-6	.833	2	5	7	0.5	3-0	2	4	1	5	23	1.8
2018-19	UNM	30-5	557/18.6	82-221	.371	40-135	.296	25-32	.781	12	75	87	2.9	25-0	44	30	1	30	229	7.6
2019-20	UNM	31-14	814/26.3	121-325	.372	47-144	.326	52-64	.813	28	59	87	2.8	57-1	60	37	1	42	341	11.0
2020-21	UNM	20-20	562/28.1	107-245	.437	32-99	.323	54-63	.857	34	70	104	5.2	36-0	47	36	4	18	300	15.0
2021-22	UNM	8-7	245/30.6	40-107	.374	19-51	.373	14-18	.778	6	23	29	3.6	16-0	28	25	0	9	113	14.1
TOTAL		102-46	2212/21.7	358-918	.390	140-439	.319	150-183	.820	82	232	314	3.1	137-1	181	132	7	104	1006	9.9



THE UNIVERSITY OF NEW MEXICO

2021-22 WOMEN'S BASKETBALL



#30

PAULA REUS

F | 6-1 | FR | Palma de Mallorca, Spain (IES Joaquim Blume)



PPG	FG %	3PT %	FT %	RPG	APG	SPG	BPG	MPG
2.3	.200	.083	.750	2.8	2.2	0.8	0.5	16.9

NOTEWORTHY

Will wear #3 at home, #30 on the road.

» Played on the U16 Spanish national team at the U16 FIBA 2019 European Championship, finishing third

» Averaged 11.7 minutes, 3.5 points, 2.8 rebounds, 0.8 assists and 0.7 steals per game

» Played for Barça CBS LF2, winning the regular season championship, and qualified for the finals

Reus' Top Performances

Points	Season	7 at Houston (11/20/21)
	Career	Same
FGM	Season	2 - done twice
	Career	Same
FGA	Season	6 at Houston (11/20/21)
	Career	Same
3PT FGM	Season	1 at Houston (11/20/21)
	Career	Same
3PT FGA	Season	3 vs. Houston Bapt. (11/23/21)
	Career	Same
FTM	Season	2 at Houston (11/20/21)
	Career	Same
FTA	Season	2 - done twice
	Career	Same
Rebounds	Season	5 at Houston (11/20/21)
	Career	Same
Assists	Season	7 at Houston (11/20/21)
	Career	Same
Blocks	Season	2 vs. Houston Bapt. (11/23/21)
	Career	Same
Steals	Season	3 vs. Houston Bapt. (11/23/21)
	Career	Same
Turnovers	Season	0 - done twice
	Career	Same
Min. Played	Season	27 at Houston (11/20/21)
	Career	Same

GAME-BY-GAME STATISTICS

Opponent	Date	GS	MIN	Total		3-Pointers		Free throws		Rebounds				Scoring							
				FG-FGA	PCT	3FG-3FGA	PCT	FT-FTA	PCT	OFF	DEF	TOT	AVG	PF	A	TO	BLK	STL	PTS	AVG	
Prairie View	11/16/2021		13:21	0-4	.000	0-2	.000	1-2	.500	0	4	4	4.0	1	1	2	0	0	1	1.0	
at Houston	11/20/2021	*	26:41	2-6	.333	1-2	.500	2-2	1.000	2	3	5	4.5	2	7	4	0	2	7	4.0	
Houston Baptist	11/23/2021		14:22	0-5	.000	0-3	.000	0-0	.000	0	2	2	3.7	0	1	0	2	3	0	2.7	
vs SFA	11/26/2021		23:37	2-4	.500	0-1	.000	0-0	.000	0	3	3	3.5	4	2	4	0	0	4	3.0	
vs La.-Monroe	11/27/2021		09:60	1-4	.250	0-2	.000	0-0	.000	1	0	1	3.0	0	1	0	1	0	2	2.8	
vs Texas Tech	11/28/2021		13:25	0-2	.000	0-2	.000	0-0	.000	1	1	2	2.8	2	1	1	0	0	0	2.3	
Totals			1	101:26	5-25	.200	1-12	.083	3-4	.750	4	13	17	2.8	9	13	11	3	5	14	2.3

CAREER STATISTICS

SEASON	TEAM	GP-GS	MIN/AVG	Field Goals		3-Point		F-Throws		Rebounds				Scoring						
				FG-FGA	FG%	3FG-3FGA	3FG%	FT-FTA	FT%	OFF	DEF	TOT	AVG	PF-FO	A	TO	BLK	STL	PTS	AVG
2021-22	UNM	6-1	101/16.9	5-25	.200	1-12	.083	3-4	.750	4	13	17	2.8	9-0	13	11	3	5	14	2.3
TOTAL		6-1	101/16.9	5-25	.200	1-12	.083	3-4	.750	4	13	17	2.8	9-0	13	11	3	5	14	2.3



THE UNIVERSITY OF NEW MEXICO

2021-22 WOMEN'S BASKETBALL



#32

ANTONIA ANDERSON

G/F | 6-2 | SR | Cibolo, Texas (Byron P. Steele HS)



PPG	FG %	3PT %	FT %	RPG	APG	SPG	BPG	MPG
10.1	.484	.391	.667	5.6	1.4	1.5	1.8	26.0

NOTEWORTHY

- » Named to 2021-22 Preseason All-Conference Team
- » Named to 2020-21 MW All-Conference Team
- » Scored 10-plus points in 13 games with a career-high 29 points in the win over UNLV on Jan. 17 after making a career-high 12 baskets.
- » Led the team in rebounds (123) and rebounds per game last season
- » Recorded two double-doubles with 14 points and 10 rebounds at Air Force and 10 points and 11 rebounds against Colorado State (tied a career high)
- » Eighth in the MW in blocks per game at 1.07 and ranked in the top 15 in scoring, rebounding, field-goal percentage, blocked shots and defensive rebounds

» 92 points away from 1,000-career points

Anderson's Top Performances

Points	Season	19 vs Prairie View (11/16/21)
	Career	29 at UNLV (1/17/21)
FGM	Season	8 vs Prairie View (11/16/21)
	Career	12 at UNLV (1/17/21)
FGA	Season	14 vs Prairie View (11/16/21)
	Career	19 vs. Fresno (3/9/21)
3PT FGM	Season	2 vs. Texas Tech (11/28/21)
	Career	4 at UNLV (1/17/21)
3PT FGA	Season	3 - done seven times
	Career	11 vs Colorado State (3/4/21)
FTM	Season	5 vs Lamar (11/9/21)
	Career	5 - done three times
FTA	Season	5 vs Lamar (11/9/21)
	Career	6 - done three times
Rebounds	Season	9 - done twice
	Career	11 - done three times
Assists	Season	5 vs. SFA (11/26/21)
	Career	5 - done three times
Blocks	Season	5 vs. Houston Bapt. (11/23/21)
	Career	6 vs. UC Riverside (11/5/19)
Steals	Season	3 vs. Houston Bapt. (11/23/21)
	Career	4 vs. Fresno St. (2/1/20)
Turnovers	Season	0 vs. Houston Bapt. (11/23/21)
	Career	0 - done 41 times
Min. Played	Season	35 vs. SFA (11/26/21)
	Career	38 at San José St. (1/22/20)

GAME-BY-GAME STATISTICS

Opponent	Date	GS	MIN	Total		3-Pointers		Free throws		Rebounds				PF	A	TO	BLK	STL	PTS	AVG
				FG-FGA	PCT	3FG-3FGA	PCT	FT-FTA	PCT	OFF	DEF	TOT	AVG							
Lamar University	11/09/2021	*	28:29	5-9	.556	1-3	.333	5-5	1.000	2	3	5	5.0	3	1	2	1	2	16	16.0
Northern N.M.	11/12/2021	*	17:24	3-7	.429	1-3	.333	0-2	.000	1	5	6	5.5	1	2	3	1	1	7	11.5
Prairie View	11/16/2021	*	31:47	8-14	.571	1-3	.333	2-4	.500	4	5	9	6.7	2	2	3	3	1	19	14.0
at Houston	11/20/2021		22:03	2-4	.500	1-2	.500	1-2	.500	2	1	3	5.8	3	1	4	1	2	6	12.0
Houston Baptist	11/23/2021	*	22:06	5-7	.714	1-3	.333	0-0	.000	1	2	3	5.2	2	0	0	5	3	11	11.8
vs SFA	11/26/2021	*	35:05	2-10	.200	1-3	.333	0-0	.000	3	5	8	5.7	4	5	4	2	2	5	10.7
vs La.-Monroe	11/27/2021	*	20:00	1-6	.167	1-3	.333	0-0	.000	1	8	9	6.1	1	0	1	0	0	3	9.6
vs Texas Tech	11/28/2021	*	31:23	5-7	.714	2-3	.667	2-2	1.000	0	2	2	5.6	1	0	2	1	1	14	10.1
Totals			7	208:17	.484	9-23	.391	10-15	.667	14	31	45	5.6	17	11	19	14	12	81	10.1

CAREER STATISTICS

SEASON	TEAM	GP-GS	MIN/AVG	Field Goals		3-Point		F-Throws		Rebounds				Scoring						
				FG-FGA	FG%	3FG-3FGA	3FG%	FT-FTA	FT%	OFF	DEF	TOT	AVG	PF-FO	A	TO	BLK	STL	PTS	AVG
2017-18	UNM	32-1	417/13.0	52-91	.571	2-10	.200	24-40	.600	31	65	96	3.0	50-0	5	17	34	13	130	4.1
2018-19	UNM	31-0	555/17.9	65-141	.461	10-33	.303	34-46	.739	45	72	117	3.8	64-2	19	36	27	24	174	5.6
2019-20	UNM	32-31	865/27.0	112-268	.418	29-92	.315	28-39	.718	35	136	171	5.3	91-5	54	64	43	39	281	8.8
2020-21	UNM	20-20	486/24.3	98-200	.490	22-67	.328	24-41	.585	26	97	123	6.2	62-6	37	37	19	19	242	12.1
2021-22	UNM	8-7	208/26.0	31-64	.484	9-23	.391	10-15	.667	14	31	45	5.6	17-0	11	19	14	12	81	10.1
TOTAL		123-59	2531/20.6	358-764	.469	72-225	.320	120-181	.663	151	401	552	4.5	284-13	126	173	137	107	908	7.4



THE UNIVERSITY OF NEW MEXICO 2021-22 WOMEN'S BASKETBALL



#33

VIANÈ CUMBER

G | 5-10 | FR | Albuquerque, N.M. (Sandia HS)



PPG	FG %	3PT %	FT %	RPG	APG	SPG	BPG	MPG
5.5	.500	.381	1.000	2.4	0.4	0.5	0.0	13.6

NOTEWORTHY

- » MW Freshman of the Week (11/15/21)
- » 2019-20 and 2021-21 New Mexico Gatorade Girls Basketball Player of the Year
- » Twice named MaxPreps New Mexico High School Girls Basketball Player of the Year
- » Named the best high school basketball player in New Mexico by MaxPreps
- » Averaged 26.5 points, 9.3 rebounds, 2.2 assists and 1.5 steals her senior season and 22.4 points, 10.6 rebounds, 2.5 assists and 3.3 steals as a junior
- » Led her team to a pair of district championships in 2018 and 2019

Cumber's Top Performances

Points	Season	17 vs Northern N.M. (11/12/21)
	Career	Same
FGM	Season	7 vs Northern N.M. (11/12/21)
	Career	Same
FGA	Season	10 vs Northern N.M. (11/12/21)
	Career	Same
3PT FGM	Season	3 vs Northern N.M. (11/12/21)
	Career	Same
3PT FGA	Season	5 vs Northern N.M. (11/12/21)
	Career	Same
FTM	Season	2 at Houston (11/20/21)
	Career	Same
FTA	Season	2 at Houston (11/20/21)
	Career	Same
Rebounds	Season	4 - done twice
	Career	Same
Assists	Season	1 - done three times
	Career	Same
Blocks	Season	
	Career	
Steals	Season	2 vs Northern N.M. (11/12/21)
	Career	Same
Turnovers	Season	0 - done twice
	Career	Same
Min. Played	Season	25 vs Northern N.M. (11/12/21)
	Career	Same

GAME-BY-GAME STATISTICS

Opponent	Date	GS	MIN	Total		3-Pointers		Free throws		Rebounds				PF	A	TO	BLK	STL	PTS	AVG
				FG-FGA	PCT	3FG-3FGA	PCT	FT-FTA	PCT	OFF	DEF	TOT	AVG							
Lamar University	11/09/2021		15:26	1-4	.250	0-3	.000	0-0	.000	0	4	4	4.0	1	0	1	0	1	2	2.0
Northern N.M.	11/12/2021	*	24:32	7-10	.700	3-5	.600	0-0	.000	0	4	4	4.0	0	1	1	0	2	17	9.5
Prairie View	11/16/2021		09:26	1-2	.500	1-2	.500	0-0	.000	0	2	2	3.3	0	0	2	0	0	3	7.3
at Houston	11/20/2021		13:04	1-2	.500	0-1	.000	2-2	1.000	1	1	2	3.0	0	1	1	0	0	4	6.5
Houston Baptist	11/23/2021		09:01	1-5	.200	1-5	.200	0-0	.000	0	4	4	3.2	0	0	1	0	0	3	5.8
vs SFA	11/26/2021		14:10	2-4	.500	1-1	1.000	0-0	.000	1	2	3	3.2	0	1	0	0	0	5	5.7
vs La.-Monroe	11/27/2021		20:14	4-7	.571	2-4	.500	0-0	.000	0	0	0	2.7	1	0	2	0	1	10	6.3
vs Texas Tech	11/28/2021		03:00	0-0	.000	0-0	.000	0-0	.000	0	0	0	2.4	0	0	0	0	0	0	5.5
Totals		1	108:53	17-34	.500	8-21	.381	2-2	1.000	2	17	19	2.4	2	3	8	0	4	44	5.5

CAREER STATISTICS

SEASON	TEAM	GP-GS	MIN/AVG	Field Goals		3-Point		F-Throws		Rebounds				Scoring						
				FG-FGA	FG%	3FG-3FGA	3FG%	FT-FTA	FT%	OFF	DEF	TOT	AVG	PF-FO	A	TO	BLK	STL	PTS	AVG
2021-22	UNM	8-1	109/13.6	17-34	.500	8-21	.381	2-2	1.000	2	17	19	2.4	2-0	3	8	0	4	44	5.5
TOTAL		8-1	109/13.6	17-34	.500	8-21	.381	2-2	1.000	2	17	19	2.4	2-0	3	8	0	4	44	5.5



THE UNIVERSITY OF NEW MEXICO 2021-22 WOMEN'S BASKETBALL



#34

NEVAEH PARKINSON

F/C | 6-3 | SO | Dallas, Texas (John Paul II HS)



PPG	FG %	3PT %	FT %	RPG	APG	SPG	BPG	MPG
3.0	.500	.000	.750	2.4	0.6	0.4	0.4	7.6

NOTEWORTHY

- » Played for Parish Episcopal School in Texas where she helped her team to the state championship in the 2017-18 season
- » Two-time First Team All-District and two-time First Team All-State honoree
- » Averaged 18.3 points, 10.1 rebounds and 1.4 blocks per game

Parkinson's Top Performances

Points	Season	11 vs Northern N.M. (11/12/21)
	Career	Same
FGM	Season	4 vs Northern N.M. (11/12/21)
	Career	Same
FGA	Season	8 vs Northern N.M. (11/12/21)
	Career	Same
3PT FGM	Season	
	Career	1 at Arkansas-PB (12/17/20)
3PT FGA	Season	1 - done twice
	Career	1 - done five times
FTM	Season	3 vs Northern N.M. (11/12/21)
	Career	Same
FTA	Season	4 vs Northern N.M. (11/12/21)
	Career	Same
Rebounds	Season	11 vs Northern N.M. (11/12/21)
	Career	Same
Assists	Season	1 - done three times
	Career	Same
Blocks	Season	1 - done twice
	Career	1 - done three times
Steals	Season	2 vs Northern N.M. (11/12/21)
	Career	Same
Turnovers	Season	0 - done three times
	Career	0 - done nine times
Min. Played	Season	15 vs Northern N.M. (11/12/21)
	Career	Same

GAME-BY-GAME STATISTICS

Opponent	Date	GS	MIN	Total		3-Pointers		Free throws		Rebounds				PF	A	TO	BLK	STL	PTS	AVG
				FG-FGA	PCT	3FG-3FGA	PCT	FT-FTA	PCT	OFF	DEF	TOT	AVG							
Lamar University	11/09/2021		04:00	0-0	.000	0-0	.000	0-0	.000	0	0	0	0.0	0	1	0	0	0	0	0.0
Northern N.M.	11/12/2021		15:01	4-8	.500	0-1	.000	3-4	.750	5	6	11	5.5	1	1	1	0	2	11	5.5
at Houston	11/20/2021		00:50	0-0	.000	0-0	.000	0-0	.000	0	0	0	3.7	0	0	0	0	0	3.7	
Houston Baptist	11/23/2021		08:41	1-3	.333	0-1	.000	0-0	.000	0	0	0	2.8	1	1	0	1	0	2	3.3
vs La.-Monroe	11/27/2021		09:38	1-1	1.000	0-0	.000	0-0	.000	1	0	1	2.4	1	0	1	1	0	2	3.0
Totals		0	38:09	6-12	.500	0-2	.000	3-4	.750	6	6	12	2.4	3	3	2	2	2	15	3.0

CAREER STATISTICS

SEASON	TEAM	GP-GS	MIN/AVG	Field Goals		3-Point		F-Throws		Rebounds				Scoring						
				FG-FGA	FG%	3FG-3FGA	3FG%	FT-FTA	FT%	OFF	DEF	TOT	AVG	PF	FO	A	TO	BLK	STL	PTS
2020-21	UNM	8-0	21/2.7	2-9	.222	1-5	.200	0-2	.000	0	6	6	0.8	4-0	0	1	1	0	5	0.6
2021-22	UNM	5-0	38/7.6	6-12	.500	0-2	.000	3-4	.750	6	6	12	2.4	3-0	3	2	2	2	15	3.0
TOTAL		13-0	59/4.6	8-21	.381	1-7	.143	3-6	.500	6	12	18	1.4	7-0	3	3	3	2	20	1.5



THE UNIVERSITY OF NEW MEXICO 2021-22 WOMEN'S BASKETBALL



NEW MEXICO STATISTICS

Game Records

Record	Overall	Home	Away	Neutral
ALL GAMES	5-3	4-0	0-1	1-2
CONFERENCE	0-0	0-0	0-0	0-0
NON-CONFERENCE	5-3	4-0	0-1	1-2

Score by Periods

Team	1st	2nd	3rd	4th	OT	TOT
New Mexico	163	142	131	162	0	598
Opponents	115	110	156	129	0	510

Team Box Score

No.	Player				Total		3-Point		F-Throw		Rebounds											
		GP-GS	MIN	AVG	FG-FGA	FG%	3FG-3FGA	3FG%	FT-FTA	FT%	OFF	DEF	TOT	AVG	PF	DQ	A	TO	BLK	STL	PTS	AVG
23	DE LA CERDA, Jaedyn	8-7	244:34	30.6	40-107	.374	19-51	.373	14-18	.778	6	23	29	3.6	16	0	28	25	0	9	113	14.1
13	MCGRUDER, Shaiquel	8-7	174:54	21.9	47-71	.662	1-4	.250	12-14	.857	20	27	47	5.9	17	0	2	13	7	13	107	13.4
5	DUFF, LaTora	8-8	245:15	30.7	31-73	.425	12-35	.343	19-23	.826	3	23	26	3.3	12	0	47	21	6	13	93	11.6
4	DUFF, LaTascya	7-6	179:09	25.6	22-51	.431	18-40	.450	9-10	.900	2	14	16	2.3	6	0	7	9	1	5	71	10.1
32	ANDERSON, Antonia	8-7	208:17	26.0	31-64	.484	9-23	.391	10-15	.667	14	31	45	5.6	17	0	11	19	14	12	81	10.1
33	CUMBER, Vianè	8-1	108:53	13.6	17-34	.500	8-21	.381	2-2	1.000	2	17	19	2.4	2	0	3	8	0	4	44	5.5
21	CURTIS, Mackenzie	4-0	35:57	9.0	4-16	.250	3-12	.250	3-4	.750	1	3	4	1.0	3	0	2	4	0	0	14	3.5
34	PARKINSON, Nevaeh	5-0	38:09	7.6	6-12	.500	0-2	.000	3-4	.750	6	6	12	2.4	3	0	3	2	2	2	15	3.0
1	RENCZES, Rebeka	3-0	27:49	9.3	2-5	.400	2-4	.500	1-2	.500	0	2	2	0.7	2	0	5	4	0	1	7	2.3
30	REUS, Paula	6-1	101:26	16.9	5-25	.200	1-12	.083	3-4	.750	4	13	17	2.8	9	0	13	11	3	5	14	2.3
10	VAN BENNEKOM, Kath	7-1	82:48	11.8	5-9	.556	0-1	.000	4-6	.667	6	8	14	2.0	9	0	2	6	0	2	14	2.0
12	AUGMON, Aniyah	8-1	102:41	12.8	5-9	.556	1-2	.500	5-7	.714	1	20	21	2.6	16	0	6	13	0	10	16	2.0
11	SEREN, Zeyno	5-1	50:06	10.0	3-9	.333	0-2	.000	3-5	.600	1	10	11	2.2	3	0	4	1	0	2	9	1.8
Team											15	23	38				4					
Total		8	1600		218-485	.449	74-209	.354	88-114	.772	81	220	301	37.6	115	0	133	140	33	78	598	74.8
Opponents		8	1600		191-503	.380	49-145	.338	79-115	.687	109	198	307	38.4	112	0	110	145	22	68	510	63.8

Team Statistics

	UNM	OPP
Scoring	598	510
Points per game	74.8	63.8
Scoring margin	+11.0	-
Field goals-att	218-485	191-503
Field goal pct	.449	.380
3 point fg-att	74-209	49-145
3-point FG pct	.354	.338
3-pt FG made per game	9.3	6.1
Free throws-att	88-114	79-115
Free throw pct	.772	.687
F-Throws made per game	11.0	9.9
Rebounds	301	307
Rebounds per game	37.6	38.4
Rebounding margin	-0.8	-
Assists	133	110
Assists per game	16.6	13.8
Turnovers	140	145
Turnovers per game	17.5	18.1
Turnover margin	+0.6	-
Assist/turnover ratio	1.0	0.8
Steals	78	68
Steals per game	9.8	8.5
Blocks	33	22
Blocks per game	4.1	2.8
Winning streak	0	-
Home win streak	4	-
Attendance	16284	346
Home games-Avg/Game	4-4071	1-346
Neutral site-Avg/Game	-	3-0

Team Results

Date	Opponent		Score	Att.
11/09/2021	Lamar University	W	71-54	3800
11/12/2021	Northern N.M.	W	96-40	4000
11/16/2021	Prairie View	W	88-71	4250
11/20/2021	at Houston	L	60-89	346
11/23/2021	Houston Baptist	W	76-58	4234
11/26/2021	vs SFA	L	66-71	0
11/27/2021	vs La.-Monroe	W	66-45	0
11/28/2021	vs Texas Tech	L	75-82	0



THE UNIVERSITY OF NEW MEXICO 2021-22 WOMEN'S BASKETBALL



GRAMBLING STATE STATISTICS

Overall Record: 2-4 Conf: 0-0 Home: 2-0 Away: 0-3 Neutral: 0-1

#	Player	GP-GS	MIN	AVG	FG		3PT		FT		Rebounds				PF	DQ	A	TO	BLK	STL	PTS	AVG
					FG-FGA	FG%	3FG-FGA	3FG%	FT-FTA	FT%	OFF	DEF	TOT	AVG								
00	Holt, Alexus	6-6	195	32.5	28-73	.384	9-29	.310	24-28	.857	11	15	26	4.3	9	0	17	13	0	11	89	14.8
12	Coleman, Justice	6-6	174	29.0	20-47	.426	9-18	.500	7-9	.778	5	15	20	3.3	15	0	9	19	2	5	56	9.3
11	Maples, Colbi	6-5	140	23.3	14-46	.304	2-12	.167	11-16	.688	4	15	19	3.2	12	0	15	18	1	10	41	6.8
03	Ellington, Ciera	6-6	110	18.3	13-28	.464	4-11	.364	4-6	.667	0	10	10	1.7	8	0	5	11	2	5	34	5.7
13	Chairs, Kaci	3-0	44	14.7	4-17	.235	3-10	.300	1-2	.500	1	0	1	0.3	1	0	0	5	0	4	12	4.0
21	McLaurin, Jurnee	6-0	60	10.0	7-16	.438	4-11	.364	5-6	.833	0	4	4	0.7	8	0	0	6	0	2	23	3.8
10	Morrow, Leah	6-0	109	18.2	9-25	.360	0-5	.000	4-7	.571	8	7	15	2.5	10	0	3	16	0	11	22	3.7
15	Totten, Trasity	6-0	83	13.8	8-28	.286	3-15	.200	1-2	.500	4	10	14	2.3	5	0	3	6	0	1	20	3.3
01	Forte, Jasmine	6-0	60	10.0	7-19	.368	0-0	.000	0-0	.000	6	10	16	2.7	18	0	3	5	3	4	14	2.3
02	Tell, Marissa	3-0	12	4.0	2-5	.400	1-2	.500	2-2	1.000	0	1	1	0.3	1	0	0	0	1	2	7	2.3
34	Lavergne, Ashanti	6-6	90	15.0	6-13	.462	0-1	.000	1-7	.143	3	16	19	3.2	15	0	3	1	2	1	13	2.2
04	Alexander, DeAndre'a	3-0	15	5.0	2-2	1.000	0-0	.000	0-0	.000	0	2	2	0.7	3	0	1	1	1	2	4	1.3
23	Wilkins, Mary	3-0	11	3.7	1-3	.333	0-0	.000	1-2	.500	1	0	1	0.3	2	0	1	1	1	1	3	1.0
05	Allen, Phylicia	4-1	42	10.5	1-5	.200	0-0	.000	1-2	.500	2	5	7	1.8	5	0	2	5	0	1	3	0.8
20	Christian, Cierra	5-0	19	3.8	2-7	.286	0-1	.000	0-0	.000	3	5	8	1.6	0	0	1	1	0	1	4	0.8
22	Eniafe, Victoria	4-0	15	3.8	0-2	.000	0-0	.000	2-6	.333	1	2	3	0.8	6	0	1	3	0	0	2	0.5
25	Johnson, Donalyn	4-0	21	5.3	1-1	1.000	0-0	.000	0-0	.000	1	2	3	0.8	3	0	1	7	0	0	2	0.5
Total		6	1200	200.0	125-337	.371	35-115	.304	64-95	.674	66	129	195	32.5	121	0	65	122	13	61	349	58.17
Opponents			1200	200.0	151-349	.433	37-109	.339	95-133	.714	89	158	247	41.2	93	1	85	117	23	57	434	72.33

Team Statistics	GRAM	OPP	Conf	Date	Opponent	W/L	Score	Att.
SCORING	349	434		11/09/21	LOUISIANA-MONROE	W	69-61	1,309
Points Per Game	58.2	72.3		11/17/21	NORTHWESTERN STATE	W	68-60	1,019
Scoring Margin	-14.1	-		11/19/21	at Florida	L	55-70	759
FIELD GOALS-ATT	125-337	151-349		11/21/21	at Florida St.	L	53-76	2,010
Field Goal Pct	.371	.433		11/27/21	vs Kansas City	L	55-78	499
3 POINT FG-ATT	35-115	37-109		11/28/21	at UNLV	L	49-89	0
3PT FG Pct	.304	.339						
3PT Made Per Game	5.8	6.2						
FREE THROWS-ATT	64-95	95-133						
FT Pct	.674	.714						
FT Made Per Game	10.7	15.8						
REBOUNDS	195	247						
Rebounds Per Game	32.5	41.2						
Rebounds Margin	-8.7	-						
ASSISTS	65	85						
Assists Per Game	10.8	14.2						
TURNOVERS	122	117						
Turnovers Per Game	20.3	19.5						
Turnovers Margin	-0.8	-						
Assist/Turnover Ratio	0.5	0.7						
STEALS	61	57						
Steals Per Game	10.2	9.5						
BLOCKS	13	23						
Blocks Per Game	2.2	3.8						
ATTENDANCE	2,328	2,769						
Dates/Avg Per Date	2-1,164	3-923						
Neutral Site #/Avg	-	1-499						

* = Conference game

Score by Periods	1st	2nd	3rd	4th	Total
Grambling State	93	85	65	106	349
Opponents	108	94	121	111	434



THE UNIVERSITY OF NEW MEXICO 2021-22 WOMEN'S BASKETBALL



NEW MEXICO GAME-BY-GAME

Opponent	Date	Score	Total		3-Pointers		Free throws		Rebounds				Other Stats						
			FG-FGA	PCT	3FG-3FGA	PCT	FT-FTA	PCT	OFF	DEF	TOT	AVG	PF	A	TO	BLK	STL	PTS	AVG
Lamar University	11/09/2021	71-54 W	26-57	.456	6-26	.231	13-15	.867	9	29	38	38.0	20	14	15	2	8	71	71.0
Northern N.M.	11/12/2021	96-40 W	35-70	.500	10-24	.417	16-25	.640	21	33	54	46.0	9	23	15	1	15	96	83.5
Prairie View	11/16/2021	88-71 W	32-68	.471	9-23	.391	15-24	.625	11	36	47	46.3	11	20	16	7	11	88	85.0
at Houston	11/20/2021	60-89 L	21-49	.429	10-27	.370	8-9	.889	10	23	33	43.0	15	16	34	1	9	60	78.8
Houston Baptist	11/23/2021	76-58 W	31-69	.449	8-30	.267	6-6	1.000	7	30	37	41.8	12	13	9	11	15	76	78.2
vs SFA	11/26/2021	66-71 L	23-54	.426	10-24	.417	10-12	.833	9	25	34	40.5	22	12	28	3	7	66	76.2
vs La.-Monroe	11/27/2021	66-45 W	24-63	.381	12-33	.364	6-8	.750	8	31	39	40.3	12	15	11	4	9	66	74.7
vs Texas Tech	11/28/2021	75-82 L	26-55	.473	9-22	.409	14-15	.933	6	13	19	37.6	14	20	12	4	4	75	74.8
Total		598	218-485	.449	74-209	.354	88-114	.772	81	220	301	37.6	115	133	140	33	78	598	74.8
Opponents		510	191-503	.380	49-145	.338	79-115	.687	109	198	307	38.4	112	110	145	22	68	510	63.8



THE UNIVERSITY OF NEW MEXICO 2021-22 WOMEN'S BASKETBALL



NEW MEXICO GAME-BY-GAME LEADERS

Opponent	Date	Score	Points	Rebounds	Assists	Steals	Blocked shots
LAMAR	11/09/21	71-54	16-Antonia Anderson	6-Aniyah Augmon Jaedyn De La Cerda	9-LaTora Duff	3-Aniyah Augmon	1-Antonia Anderson LaTora Duff
NORTHERN N.M.	11/12/21	96-40	17-Viane Cumber	11-Nevaeh Parkinson	5-LaTora Duff	3-Shaiquel McGruder Jaedyn De La Cerda	1-Antonia Anderson
PRAIRIE VIEW at Houston	11/16/21 11/20/21	88-71 60-89	30-Shaiquel McGruder 16-LaTora Duff	9-Antonia Anderson 5-Paula Reus	12-LaTora Duff 7-Paula Reus	4-Shaiquel McGruder 3-LaTora Duff	4-LaTora Duff 1-Antonia Anderson
HOUSTON BAPTIST	11/23/21	76-58	20-Shaiquel McGruder	10-Shaiquel McGruder	4-Jaedyn De La Cerda LaTora Duff	4-LaTora Duff	5-Antonia Anderson
vs SFA	11/26/21	66-71	18-Jaedyn De La Cerda	8-Antonia Anderson	5-Antonia Anderson	3-LaTora Duff	2-Antonia Anderson
vs La.-Monroe	11/27/21	66-45	15-Jaedyn De La Cerda	11-Shaiquel McGruder	5-Jaedyn De La Cerda	3-Shaiquel McGruder	1-LaTascya Duff Paula Reus Nevaeh Parkinson Shaiquel McGruder
vs Texas Tech	11/28/21	75-82	21-LaTascya Duff	5-Shaiquel McGruder	9-LaTora Duff	2-LaTora Duff	3-Shaiquel McGruder



THE UNIVERSITY OF NEW MEXICO 2021-22 WOMEN'S BASKETBALL



NEW MEXICO GAME-BY-GAME POINTS-REBOUNDS-ASSISTS

Opponent	Date	Score	1	4	5	10	11	12	13	21	23	30	32		
			RENCZES,RE	DUFF,LATAS	DUFF,LATOR	VAN BENNEK	SEREN,ZEYN	AUGMON,ANI	MCGRUDER,S	CURTIS,MAC	DE LA CERD	REUS,PAULA	ANDERSON,A		
Lamar University	11/09/2021	71-54	W	DNP	DNP	10-3-9	4-3-0	1-4-1	8-6-0	15-5-0	DNP	15-6-2	DNP	16-5-1	
Northern N.M.	11/12/2021	96-40	W	0-2-3	3-0-0	7-2-5	7-4-1	6-4-1	6-4-3	12-4-0	12-3-2	8-2-4	DNP	7-6-2	
Prairie View	11/16/2021	88-71	W	DNP	3-0-1	17-8-12	1-0-0	DNP	1-6-1	30-7-0	DNP	13-7-3	1-4-1	19-9-2	
at Houston	11/20/2021	60-89	L	DNP	11-2-1	16-3-2	2-2-1	0-0-0	0-1-0	0-4-1	0-0-0	14-2-2	7-5-7	6-3-1	
Houston Baptist	11/23/2021	76-58	W	6-0-1	6-5-1	11-2-4	0-1-0	0-0-0	0-2-1	20-10-0	0-0-0	17-3-4	0-2-1	11-3-0	
vs SFA	11/26/2021	66-71	L	DNP	15-3-1	17-5-2	0-3-0	DNP	0-0-0	2-1-0	DNP	18-2-1	4-3-2	5-8-5	
vs La.-Monroe	11/27/2021	66-45	W	1-0-1	12-2-1	8-2-4	0-1-0	2-3-2	1-2-1	8-11-0	2-1-0	15-5-5	2-1-1	3-9-0	
vs Texas Tech	11/28/2021	75-82	L	DNP	21-4-2	7-1-9	DNP	DNP	0-0-0	20-5-1	DNP	13-2-7	0-2-1	14-2-0	
Opponent	Date	Score	33	34											
			CUMBER,VIA	PARKINSON,											
Lamar University	11/09/2021	71-54	W	2-4-0	0-0-1										
Northern N.M.	11/12/2021	96-40	W	17-4-1	11-11-1										
Prairie View	11/16/2021	88-71	W	3-2-0	DNP										
at Houston	11/20/2021	60-89	L	4-2-1	0-0-0										
Houston Baptist	11/23/2021	76-58	W	3-4-0	2-0-1										
vs SFA	11/26/2021	66-71	L	5-3-1	DNP										
vs La.-Monroe	11/27/2021	66-45	W	10-0-0	2-1-0										
vs Texas Tech	11/28/2021	75-82	L	0-0-0	DNP										



THE UNIVERSITY OF NEW MEXICO

2021-22 WOMEN'S BASKETBALL



NEW MEXICO GAME HIGHS

POINTS	96	Northern N.M. (11/12/2021)
	88	Prairie View (11/16/2021)
	76	Houston Baptist (11/23/2021)
	75	vs Texas Tech (N) (11/28/2021)
	71	Lamar University (11/09/2021)
FIELD GOALS MADE	35	Northern N.M. (11/12/2021)
	32	Prairie View (11/16/2021)
FIELD GOAL ATTEMPTS	70	Northern N.M. (11/12/2021)
	69	Houston Baptist (11/23/2021)
FIELD GOAL PERCENTAGE	.500 (35-70)	Northern N.M. (11/12/2021)
	.473 (26-55)	vs Texas Tech (N) (11/28/2021)
3 PT FG MADE	12	vs La.-Monroe (N) (11/27/2021)
	10	vs SFA (N) (11/26/2021)
	10	at Houston (11/20/2021)
	10	Northern N.M. (11/12/2021)
3 PT FG ATTEMPTS	33	vs La.-Monroe (N) (11/27/2021)
	30	Houston Baptist (11/23/2021)
3 PT FG PERCENTAGE	.417 (10-24)	vs SFA (N) (11/26/2021)
	.417 (10-24)	Northern N.M. (11/12/2021)
FREE THROWS MADE	16	Northern N.M. (11/12/2021)
	15	Prairie View (11/16/2021)
FREE THROW ATTEMPTS	25	Northern N.M. (11/12/2021)
	24	Prairie View (11/16/2021)
FREE THROW PERCENTAGE	1.000 (6-6)	Houston Baptist (11/23/2021)
	.933 (14-15)	vs Texas Tech (N) (11/28/2021)
REBOUNDS	54	Northern N.M. (11/12/2021)
	47	Prairie View (11/16/2021)
ASSISTS	23	Northern N.M. (11/12/2021)
	20	vs Texas Tech (N) (11/28/2021)
	20	Prairie View (11/16/2021)
STEALS	15	Houston Baptist (11/23/2021)
	15	Northern N.M. (11/12/2021)
BLOCKED SHOTS	11	Houston Baptist (11/23/2021)
	7	Prairie View (11/16/2021)
TURNOVERS	34	at Houston (11/20/2021)
	28	vs SFA (N) (11/26/2021)
FOULS	23	vs SFA (N) (11/26/2021)
	20	Lamar University (11/09/2021)



THE UNIVERSITY OF NEW MEXICO

2021-22 WOMEN'S BASKETBALL



NEW MEXICO INDIVIDUAL GAME HIGHS

POINTS	30		Shaiquel McGruder vs Prairie View (11/16/2021)
	21		LaTascya Duff vs Texas Tech (N) (11/28/2021)
	20		Shaiquel McGruder vs Texas Tech (N) (11/28/2021)
	20		Shaiquel McGruder vs Houston Baptist (11/23/2021)
	19		Antonia Anderson vs Prairie View (11/16/2021)
FIELD GOALS MADE	13		Shaiquel McGruder vs Prairie View (11/16/2021)
	9		Shaiquel McGruder vs Houston Baptist (11/23/2021)
FIELD GOAL ATTEMPTS	19		Jaedyn De La Cerda vs Lamar University (11/09/2021)
	18		Shaiquel McGruder vs Prairie View (11/16/2021)
FIELD GOAL PERCENTAGE (min 5 made)	1.000	(7-7)	Shaiquel McGruder vs Lamar University (11/09/2021)
	.722	(13-18)	Shaiquel McGruder vs Prairie View (11/16/2021)
3 PT FG MADE	5		LaTascya Duff vs Texas Tech (N) (11/28/2021)
	4		LaTascya Duff vs La.-Monroe (N) (11/27/2021)
	4		Jaedyn De La Cerda vs SFA (N) (11/26/2021)
	4		Jaedyn De La Cerda at Houston (11/20/2021)
3 PT FG ATTEMPTS	9		LaTascya Duff vs Texas Tech (N) (11/28/2021)
	9		LaTascya Duff vs SFA (N) (11/26/2021)
	9		Jaedyn De La Cerda at Houston (11/20/2021)
	9		LaTora Duff vs Lamar University (11/09/2021)
3 PT FG PERCENTAGE (min 2 made)	1.000	(2-2)	Rebeka Renczes vs Houston Baptist (11/23/2021)
	.667	(4-6)	Jaedyn De La Cerda vs SFA (N) (11/26/2021)
	.667	(2-3)	Antonia Anderson vs Texas Tech (N) (11/28/2021)
FREE THROWS MADE	8		LaTora Duff vs SFA (N) (11/26/2021)
	5		Antonia Anderson vs Lamar University (11/09/2021)
FREE THROW ATTEMPTS	9		LaTora Duff vs SFA (N) (11/26/2021)
	6		LaTora Duff vs Prairie View (11/16/2021)
FREE THROW PERCENTAGE (min 3 made)	1.000	(5-5)	Antonia Anderson vs Lamar University (11/09/2021)
	1.000	(4-4)	Shaiquel McGruder vs Texas Tech (N) (11/28/2021)
	1.000	(4-4)	LaTascya Duff vs Texas Tech (N) (11/28/2021)
	1.000	(4-4)	Shaiquel McGruder vs Prairie View (11/16/2021)
	1.000	(3-3)	LaTascya Duff at Houston (11/20/2021)
REBOUNDS	11		Shaiquel McGruder vs La.-Monroe (N) (11/27/2021)
	11		Nevaeh Parkinson vs Northern N.M. (11/12/2021)
ASSISTS	12		LaTora Duff vs Prairie View (11/16/2021)
	9		LaTora Duff vs Texas Tech (N) (11/28/2021)
	9		LaTora Duff vs Lamar University (11/09/2021)
STEALS	4		LaTora Duff vs Houston Baptist (11/23/2021)
	4		Shaiquel McGruder vs Prairie View (11/16/2021)
BLOCKED SHOTS	5		Antonia Anderson vs Houston Baptist (11/23/2021)
	4		LaTora Duff vs Prairie View (11/16/2021)
TURNOVERS	8		Jaedyn De La Cerda at Houston (11/20/2021)
	8		LaTora Duff at Houston (11/20/2021)
FOULS	4		Jaedyn De La Cerda vs SFA (N) (11/26/2021)
	4		Antonia Anderson vs SFA (N) (11/26/2021)
	4		Paula Reus vs SFA (N) (11/26/2021)
	4		Shaiquel McGruder vs Lamar University (11/09/2021)
	4		Kath van Bennekom vs Lamar University (11/09/2021)



THE UNIVERSITY OF NEW MEXICO

2021-22 WOMEN'S BASKETBALL



NEW MEXICO LEADERBOARD

Points

##	Player	G	Pts	Pts/G
23	De La Cerda, Jaedyn	8	113	14.1
13	McGruder, Shaiquel	8	107	13.4
5	Duff, LaTora	8	93	11.6
32	Anderson, Antonia	8	81	10.1
4	Duff, LaTascya	7	71	10.1
33	Cumber, Vianè	8	44	5.5
12	Augmon, Aniyah	8	16	2.0
34	Parkinson, Nevaeh	5	15	3.0
21	Curtis, Mackenzie	4	14	3.5
30	Reus, Paula	6	14	2.3
10	van Bennekom, Kath	7	14	2.0
11	Seren, Zeyno	5	9	1.8
1	Renczes, Rebeka	3	7	2.3

Scoring Average

##	Player	G	Pts	Pts/G
23	De La Cerda, Jaedyn	8	113	14.1
13	McGruder, Shaiquel	8	107	13.4
5	Duff, LaTora	8	93	11.6
4	Duff, LaTascya	7	71	10.1
32	Anderson, Antonia	8	81	10.1
33	Cumber, Vianè	8	44	5.5
21	Curtis, Mackenzie	4	14	3.5
34	Parkinson, Nevaeh	5	15	3.0
1	Renczes, Rebeka	3	7	2.3
30	Reus, Paula	6	14	2.3
10	van Bennekom, Kath	7	14	2.0
12	Augmon, Aniyah	8	16	2.0
11	Seren, Zeyno	5	9	1.8

Field Goal Percentage

##	Player	FG	Att	Pct
13	McGruder, Shaiquel	47	71	.662
10	van Bennekom, Kath	5	9	.556
12	Augmon, Aniyah	5	9	.556
33	Cumber, Vianè	17	34	.500
34	Parkinson, Nevaeh	6	12	.500
32	Anderson, Antonia	31	64	.484
4	Duff, LaTascya	22	51	.431
5	Duff, LaTora	31	73	.425
1	Renczes, Rebeka	2	5	.400
23	De La Cerda, Jaedyn	40	107	.374
11	Seren, Zeyno	3	9	.333
21	Curtis, Mackenzie	4	16	.250
30	Reus, Paula	5	25	.200

Field Goal Attempts

##	Player	G	Att	Att/G
23	De La Cerda, Jaedyn	8	107	13.4
5	Duff, LaTora	8	73	9.1
13	McGruder, Shaiquel	8	71	8.9
32	Anderson, Antonia	8	64	8.0
4	Duff, LaTascya	7	51	7.3

Field Goals Made

##	Player	G	Made	Made/G
13	McGruder, Shaiquel	8	47	5.9
23	De La Cerda, Jaedyn	8	40	5.0
5	Duff, LaTora	8	31	3.9
32	Anderson, Antonia	8	31	3.9
4	Duff, LaTascya	7	22	3.1



THE UNIVERSITY OF NEW MEXICO

2021-22 WOMEN'S BASKETBALL



NEW MEXICO LEADERBOARD

3-Point FG Percentage

##	Player	3FG	Att	Pct
1	Renczes, Rebeka	2	4	.500
12	Augmon, Aniyah	1	2	.500
4	Duff, LaTascya	18	40	.450
32	Anderson, Antonia	9	23	.391
33	Cumber, Vianè	8	21	.381
23	De La Cerda, Jaedyn	19	51	.373
5	Duff, LaTora	12	35	.343
13	McGruder, Shaiquel	1	4	.250
21	Curtis, Mackenzie	3	12	.250
30	Reus, Paula	1	12	.083

Free Throw Percentage

##	Player	Made	Att	Pct
33	Cumber, Vianè	2	2	1.000
4	Duff, LaTascya	9	10	.900
13	McGruder, Shaiquel	12	14	.857
5	Duff, LaTora	19	23	.826
23	De La Cerda, Jaedyn	14	18	.778
21	Curtis, Mackenzie	3	4	.750
34	Parkinson, Nevaeh	3	4	.750
30	Reus, Paula	3	4	.750
12	Augmon, Aniyah	5	7	.714
32	Anderson, Antonia	10	15	.667
10	van Bennekomp, Kath	4	6	.667
11	Seren, Zeyno	3	5	.600
1	Renczes, Rebeka	1	2	.500

Rebounds

##	Player	G	Reb	Reb/G
13	McGruder, Shaiquel	8	47	5.9
32	Anderson, Antonia	8	45	5.6
23	De La Cerda, Jaedyn	8	29	3.6
5	Duff, LaTora	8	26	3.3
12	Augmon, Aniyah	8	21	2.6

Rebounds Average

##	Player	G	Reb	Reb/G
13	McGruder, Shaiquel	8	47	5.9
32	Anderson, Antonia	8	45	5.6
23	De La Cerda, Jaedyn	8	29	3.6
5	Duff, LaTora	8	26	3.3
30	Reus, Paula	6	17	2.8

3-Point FG Attempts

##	Player	G	Att	Att/G
23	De La Cerda, Jaedyn	8	51	6.4
4	Duff, LaTascya	7	40	5.7
5	Duff, LaTora	8	35	4.4
32	Anderson, Antonia	8	23	2.9
33	Cumber, Vianè	8	21	2.6

3-Point FG Made

##	Player	G	Made	Made/G
23	De La Cerda, Jaedyn	8	19	2.4
4	Duff, LaTascya	7	18	2.6
5	Duff, LaTora	8	12	1.5
32	Anderson, Antonia	8	9	1.1
33	Cumber, Vianè	8	8	1.0

Free Throw Attempts

##	Player	G	Att	Att/G
5	Duff, LaTora	8	23	2.9
23	De La Cerda, Jaedyn	8	18	2.3
32	Anderson, Antonia	8	15	1.9
13	McGruder, Shaiquel	8	14	1.8
4	Duff, LaTascya	7	10	1.4

Free Throws Made

##	Player	G	Made	Made/G
5	Duff, LaTora	8	19	2.4
23	De La Cerda, Jaedyn	8	14	1.8
13	McGruder, Shaiquel	8	12	1.5
32	Anderson, Antonia	8	10	1.3
4	Duff, LaTascya	7	9	1.3

Assists

##	Player	G	Ast	Ast/G
5	Duff, LaTora	8	47	5.9
23	De La Cerda, Jaedyn	8	28	3.5
30	Reus, Paula	6	13	2.2
32	Anderson, Antonia	8	11	1.4
4	Duff, LaTascya	7	7	1.0

Steals

##	Player	G	Stl	Stl/G
13	McGruder, Shaiquel	8	13	1.6
5	Duff, LaTora	8	13	1.6
32	Anderson, Antonia	8	12	1.5
12	Augmon, Aniyah	8	10	1.3
23	De La Cerda, Jaedyn	8	9	1.1



THE UNIVERSITY OF NEW MEXICO 2021-22 WOMEN'S BASKETBALL



Game 1 | New Mexico vs. Lamar Nov. 9, 2021 | Albuquerque, N.M.

Game 2 | New Mexico vs. Northern N.M. Nov. 12, 2021 | Albuquerque, N.M.

Official Basketball Box Score - Final
Lamar University at New Mexico
11/09/21 The Pit, Albuquerque
2021-22 Women's Basketball
Game Time: 7:00 PM
Game Duration: 1:43
Attendance: 3,800
Officials: Peter Contreras, Jerry Gasky, Denise Lopez

NO. Name	Min	FG			3P			FT			Rebounds		Fouls		TP	AS	TO	ST	Blocks		+/-	
		M	A	M/A	M	A	M/A	O	DR	OR	DR	OR	PF	FF					BS	BA		
41 Akasha Davis	26:25	5	6	0-0	2	4	3	7	12	0	3	1	0	0	0	0	0	0	0	0	0	-8
0 Kayla Mitchell	27:57	2	8	0-1	0	0	0	0	4	2	3	2	0	1	0	0	0	0	0	0	0	-9
3 Sabria Dean	33:04	4	9	2-5	4	7	1	2	3	2	1	0	0	0	0	0	0	0	0	0	0	-14
10 Malay McQueen	28:44	5	11	3-7	0	0	1	2	3	1	1	1	1	1	1	0	0	0	0	0	0	-17
21 Anyssa Gibbs	33:08	1	6	1-6	0	0	2	9	11	4	1	1	3	3	4	1	1	0	0	0	0	-13
2 Angel Hastings	26:44	0	4	0-4	0	0	0	2	3	0	0	2	3	3	0	0	0	0	0	0	0	-11
12 Micaela Wilson	09:32	1	3	1-2	0	0	1	0	1	0	1	0	1	0	0	0	0	0	0	0	0	-7
22 NJ Weems	10:55	0	0	0-0	0	0	0	1	0	0	0	1	0	0	0	0	0	0	0	0	0	-6
1 Hope Lemelle	03:31	0	0	0-0	2	2	0	0	0	0	0	1	2	0	0	0	0	0	0	0	0	0
Totals		18	52	7-25	11	23	11	24	35	16	20	54	10	16	7	2	2	1	0	0	0	-17

Technical Fouls: NONE

Official Basketball Box Score - Final
Northern N.M. at New Mexico
11/12/21 The Pit, Albuquerque
2021-22 Women's Basketball
Game Time: 7:00 PM
Game Duration: 1:52
Attendance: 4,000
Officials: Michael Price, Arta Ojaga, Cheryl Blue

NO. Name	Min	FG			3P			FT			Rebounds		Fouls		TP	AS	TO	ST	Blocks		+/-	
		M	A	M/A	M	A	M/A	O	DR	OR	DR	OR	PF	FF					BS	BA		
0 Jaedyn Fontenette	25:25	2	7	1-3	0	0	3	2	3	5	0	1	0	0	0	0	0	0	0	0	0	-30
3 Miranda Salazar	25:18	1	4	0-1	1	2	5	7	1	2	3	1	2	1	1	1	0	0	0	0	0	-40
4 Kristan Davis	21:36	3	3	3-0	0	0	0	1	0	1	0	0	0	0	0	0	0	0	0	0	0	-33
22 Chris'alee Patterson	28:33	5	19	1-5	0	0	1	2	1	1	1	1	0	0	0	0	0	0	0	0	0	-42
24 Rebecca Sorensen	27:39	1	3	0-0	0	0	4	2	6	3	0	2	1	2	0	0	0	0	0	0	0	-42
23 Haayn Jordan	12:57	1	3	0-0	0	1	1	1	0	3	0	3	0	1	0	0	0	0	0	0	0	-17
11 Rachel Williams	17:56	1	8	0-4	0	0	1	2	2	0	1	2	0	0	0	0	0	0	0	0	0	-26
2 Kyla Williams	15:41	1	5	1-4	2	2	0	1	1	2	2	5	1	0	0	0	0	0	0	0	0	-18
33 See'airah Evans-Collins	00:40	0	1	0-0	0	0	0	0	0	0	0	0	0	0	0	0	0	0	0	0	0	-2
1 Ethena Silva	16:43	1	3	1-0	1	1	3	1	3	0	1	2	0	0	0	0	0	0	0	0	0	-20
10 LaLique Sharpe	07:32	0	2	0-2	0	0	0	0	0	0	0	0	0	0	0	0	0	0	0	0	0	-10
Totals		16	58	4-23	4	6	11	18	29	17	9	40	7	23	11	6	1	0	0	0	0	-56

Technical Fouls: NONE

Record: 1-0

NO. Name	Min	FG			3P			FT			Rebounds		Fouls		TP	AS	TO	ST	Blocks		+/-	
		M	A	M/A	M	A	M/A	O	DR	OR	DR	OR	PF	FF					BS	BA		
13 Shaquell McGruder	22:09	7	7	1-1	0	0	2	3	5	4	2	15	0	3	1	0	0	0	0	0	0	7
32 Antonia Anderson	28:29	5	9	1-3	5	5	2	3	5	3	4	16	1	2	1	0	0	0	0	0	0	14
5 LaTora Duff	34:32	3	11	2-9	2	2	0	3	3	3	10	9	1	2	1	0	0	0	0	0	0	15
11 Jaedyn Seren	13:50	0	1	0-1	0	0	4	4	1	1	1	0	0	0	0	0	0	0	0	0	0	-1
23 Jaedyn De La Cerda	38:38	5	19	1-8	4	4	2	6	2	4	15	2	1	2	0	0	0	0	0	0	0	18
12 Anyah Augmon	23:03	3	3	1-1	1	1	0	6	6	2	2	8	0	2	3	0	0	0	0	0	0	16
10 Kath van Bennekom	19:53	2	3	0-0	0	0	3	4	0	4	0	3	0	0	0	0	0	0	0	0	0	8
33 Viané Cumber	15:26	1	4	0-3	0	0	4	4	1	0	2	0	1	1	0	0	0	0	0	0	0	1
34 Nevaeh Parkinson	04:00	0	0	0-0	0	0	0	0	0	0	0	0	0	0	0	0	0	0	0	0	0	5
Totals		26	57	6-26	13	15	9	29	38	20	16	71	14	15	8	2	2	1	0	0	0	71

Technical Fouls: NONE

Record: 2-0

NO. Name	Min	FG			3P			FT			Rebounds		Fouls		TP	AS	TO	ST	Blocks		+/-	
		M	A	M/A	M	A	M/A	O	DR	OR	DR	OR	PF	FF					BS	BA		
13 Shaquell McGruder	20:08	5	10	0-0	2	4	0	4	1	3	12	0	0	0	0	0	0	0	0	0	0	22
32 Antonia Anderson	17:24	3	7	1-3	0	2	1	5	6	1	7	2	3	1	1	1	0	0	0	0	0	17
5 LaTora Duff	17:39	2	6	0-0	3	4	0	2	2	0	2	7	5	0	0	0	0	0	0	0	0	23
23 Jaedyn De La Cerda	38:29	3	6	2-4	0	0	2	2	0	0	8	4	2	3	0	0	0	0	0	0	0	27
33 Viané Cumber	24:32	7	10	3-5	0	0	4	4	0	1	17	1	2	0	0	0	0	0	0	0	0	35
10 Kath van Bennekom	12:45	2	2	0-0	3	4	1	4	1	2	7	1	0	1	0	0	0	0	0	0	0	24
12 Anyah Augmon	16:24	2	3	0-1	2	2	0	4	4	2	6	3	1	0	0	0	0	0	0	0	0	26
11 Zeyno Seren	15:36	3	4	0-0	0	1	3	4	2	6	1	0	1	0	0	0	0	0	0	0	0	26
1 Rebeke Renczas	17:56	0	3	0-2	0	0	2	2	1	2	0	3	1	0	0	0	0	0	0	0	0	23
21 Mackenzie Curtis	19:06	3	10	3-7	3	4	1	2	3	0	12	2	2	0	0	0	0	0	0	0	0	30
34 Nevaeh Parkinson	15:01	4	8	0-1	3	4	5	6	11	2	11	1	1	2	0	0	0	0	0	0	0	23
4 LaTascya Duff	04:00	1	1	1-1	0	0	0	0	0	0	0	0	0	0	0	0	0	0	0	0	0	4
Totals		35	70	10-24	16	25	21	33	54	17	96	23	15	15	1	6	56	0	0	0	0	166

Technical Fouls: NONE

Biggest lead	LAMU		Points from Turnovers	UNM		Period by Period Scoring			
	0 (1 st 10:00)	17 (4 th 2:25)		14	20	1st	2nd	3rd	4th
Best Scoring Run	8 (1 st 5:51)		9 (3 rd 3:38)		Paint		20		38
Lead Changes	0		2		Second Chance		7		9
Times Tied	2		4		Fast Breaks		4		27
Time with Lead	00:00		37:45		Bench		8		14

Biggest lead	NNM		Points from Turnovers	UNM		Period by Period Scoring			
	2 (1 st 8:43)	56 (4 th 0:25)		12	33	1st	2nd	3rd	4th
Best Scoring Run	8 (1 st 5:43)		13 (4 th 0:25)		Paint		16		50
Lead Changes	4		7		Second Chance		7		24
Times Tied	2		4		Fast Breaks		2		21
Time with Lead	00:19		37:42		Bench		13		45

Game 3 | New Mexico vs. Prairie View A&M Nov. 16, 2021 | Albuquerque, N.M.

Game 4 | New Mexico at Houston Nov. 20, 2021 | Houston, Texas

Official Basketball Box Score - Final
Prairie View at New Mexico
11/16/21 The Pit, Albuquerque
2021-22 Women's Basketball
Game Time: 7:00 PM
Game Duration: 1:42
Attendance: 4,250
Officials: Hoytwa Seales, Randy Campbell, Maj Forsberg

NO. Name	Min	FG			3P			FT			Rebounds		Fouls		TP	AS	TO	ST	Blocks		+/-	
		M	A	M/A	M	A	M/A	O	DR	OR	DR	OR	PF	FF					BS	BA		
14 Kennedy Heard	22:00	2	7	0-1	2	2	1	3	2	6	3	1	2	0	0	0	0	0	0	0	0	-5
21 Gerylin Smith	28:32	7	17	0-1	2	3	6	4	10	2	3	16	1	2	2	0	0	0	0	0	0	-10
23 Kendrick Paul	25:29	2	10	1-2	2	2	0	7	4	1	7	3	1	1	0	0	0	0	0	0	0	-10
4 Kirdis Clark	27:50	1	13	1-5	0	0	4	2	6	3	2	3	2	2	3	0	0	0	0	0	0	-5
11 Diana Rosenthal	32:39	6	13	4-7	2	4	1	4	5	3	2	18	5	1	2	1	1	0	0	0	0	-6
31 Jessica Soders	24:11	2	4	1-																		



THE UNIVERSITY OF NEW MEXICO 2021-22 WOMEN'S BASKETBALL



Game 5 | New Mexico vs. Houston Baptist Nov. 23, 2021 | Albuquerque, N.M.



Official Basketball Box Score - Final
Houston Baptist at New Mexico
11/23/21 The Ft. Albuquerque
2021-22 Women's Basketball

Game Time: 7:00 PM
Game Duration: 2:12
Attendance: 4,234

Officials:

Houston Baptist - 58

Record: 3-2

NO. Name	Min	FG			3P			FT			Rebounds		Fouls		TP	AS	TO	ST	Blocks		+/-
		M/A	M/A	M/A	M/A	M/A	M/A	OR	DR	OR	DR	PF	FD	BS					BA		
14 N'Denasija Collins	F	24:01	3-9	0-2	3-3	1	4	5	1	3	9	0	2	1	0	3	1	0	3	-13	
25 Abbey Sutherland	C	22:33	2-3	1-1	0-0	1	2	3	1	0	5	1	2	0	1	0	1	0	-15		
0 Enya Maguire	G	14:40	2-8	2-6	0-0	0	1	1	0	0	6	0	2	0	0	1	0	-8			
10 Timia Jefferson	G	31:23	5-16	0-4	5-5	0	5	5	2	3	15	4	4	0	0	3	0	-13			
15 Julija Vujakovic	F	15:22	1-4	0-2	0-0	0	2	2	0	1	2	0	2	1	0	0	0	-16			
5 Kanesey Wilson	F	17:25	1-6	1-1	0-0	1	1	2	1	0	3	0	3	0	0	3	-11				
13 Lauryn Mapusa	G	09:33	0-3	0-1	0-0	0	1	1	0	0	0	2	0	0	0	0	-14				
33 Marilyn Nzioku	F	25:58	5-8	1-1	2-2	5	8	13	0	3	13	1	1	0	1	1	0	-11			
23 Naomi Pierce	10:17	0-1	0-0	1-2	0	1	1	1	1	1	0	0	0	0	0	0	1	7			
12 Amy Cotton	10:35	0-3	0-0	0-0	0	1	1	0	0	0	0	1	0	0	0	0	0	3			
11 Felicity Hillford	11:47	1-1	0-0	2-2	0	1	1	0	1	4	0	0	1	0	0	0	0	5			
40 Elizabeth Metadi	06:26	0-1	0-0	0-0	0	0	0	0	0	0	0	1	0	0	0	0	0	-4			
Team											6	4	10								
Totals			20-63	5-18	13-14	14	31	45	6	12	58	6	19	4	2	11	-18				

Shooting By Period

1st FG%	1-4	7.1%
3PT%	0-3	0.0%
FT%	0-0	0%
2nd FG%	5-16	31.3%
3PT%	1-7	14.3%
FT%	3-3	100%
3rd FG%	8-18	44.4%
3PT%	3-7	42.9%
FT%	5-5	100%
4th FG%	6-15	40.0%
3PT%	1-1	100%
FT%	5-6	83.3%
GM FG%	20-63	31.7%
3PT%	5-18	27.8%
FT%	13-14	92.9%

Dead Ball Rebounds: 0.0

New Mexico - 76

Record: 4-1

Technical Fouls: NONE

NO. Name	Min	FG			3P			FT			Rebounds		Fouls		TP	AS	TO	ST	Blocks		+/-
		M/A	M/A	M/A	M/A	M/A	M/A	OR	DR	OR	DR	PF	FD	BS					BA		
13 Shaquell McGruder	F	23:00	9-13	0-1	2-2	5	5	10	1	1	20	0	2	2	2	2	2	2	2	2	22
32 Antonia Anderson	F	22:06	5-7	1-3	0-0	1	2	3	2	0	11	0	0	3	5	0	0	0	0	16	
4 LaTascya Duff	G	28:26	2-7	2-4	0-0	0	5	5	1	0	6	1	0	1	0	0	0	0	22		
5 LaTora Duff	G	29:24	4-8	1-2	2-2	0	2	2	1	1	11	4	1	4	1	0	1	0	15		
23 Jaedyn De La Cerda	G	25:17	7-16	1-5	2-2	0	3	3	2	3	17	4	1	1	0	0	0	33			
3 Paula Reus	14:22	0-5	0-3	0-0	0	2	2	0	0	0	1	0	3	2	0	0	0	8			
12 Anyiah Augmon	15:25	0-1	0-0	0-0	0	2	2	0	0	1	1	1	1	0	1	0	0	3			
21 Mackenzie Curtis	05:55	0-2	0-2	0-0	0	0	0	1	0	0	0	1	0	0	0	0	0	-6			
33 Viané Cumber	09:01	1-5	1-0	0-0	4	4	0	0	0	3	0	1	0	0	0	0	0	-7			
10 Kath van Bennekom	07:31	0-0	0-0	0-0	1	1	0	0	0	0	0	1	0	0	0	0	0	-1			
11 Zeyno Sereen	05:36	0-4	0-0	0-0	0	0	0	0	0	0	0	1	0	0	0	0	0	-8			
34 Nevaeh Parkinson	08:41	1-3	0-1	0-0	0	0	0	1	0	2	1	0	0	1	0	0	0	-3			
1 Rebeka Renczes	04:15	2-2	2-2	0-0	0	0	0	1	1	6	1	0	0	0	0	0	0	-6			
Team											1	4	5								
Totals			31-69	8-30	6-6	7	30	37	6	12	76	13	9	15	11	2	1	18			

Shooting By Period

1st FG%	8-19	42.1%
3PT%	1-7	14.3%
FT%	9-10	100%
2nd FG%	6-17	35.3%
3PT%	2-7	28.6%
FT%	0-0	0%
3rd FG%	8-18	44.4%
3PT%	1-8	12.5%
FT%	0-0	0%
4th FG%	6-15	40.0%
3PT%	4-5	80.0%
FT%	0-0	0%
GM FG%	31-69	44.9%
3PT%	8-30	26.7%
FT%	9-10	100%

Dead Ball Rebounds: 0.0

Biggest lead	HBU		UNM	
	0 (1st 10:00)	29 (2nd 0:46)	7 (3rd 8:25)	16 (1st 2:31)
Best Scoring Run	7	3	16	16
Lead Changes	0	0	0	0
Times Tied	0	0	0	0
Time with Lead	00:00	39:11		

Points from Turnovers	HBU		UNM	
	10	17	10	17
Paint	26	46	26	46
Second Chance	20	4	20	4
Fast Breaks	9	18	9	18
Bench	21	11	23	16

Period by Period Scoring	HBU				UNM					
	1st	2nd	3rd	4th	TOT	1st	2nd	3rd	4th	TOT
1st	2	14	24	18	58	23	20	17	16	76

Game 6 | New Mexico vs. Stephen F. Austin Nov. 26, 2021 | Katy, Texas



Official Basketball Box Score - Final
Stephen F Austin at New Mexico
11/26/21 Leonard E. Merrell Center, Katy
2021-22 Women's Basketball

Game Time: 6:30 PM
Game Duration: 1:55

Officials: Brian Garland, Symbril Tuttle, LaShonda Kidd

Stephen F Austin - 71

Record: 5-1

NO. Name	Min	FG			3P			FT			Rebounds		Fouls		TP	AS	TO	ST	Blocks		+/-
		M/A	M/A	M/A	M/A	M/A	M/A	OR	DR	OR	DR	PF	FD	BS					BA		
11 Avery Brittingham	F	30:27	5-10	0-0	3-5	1	5	6	2	4	13	2	4	2	0	0	0	0	-3		
21 Layana Johnson	F	34:28	9-14	0-0	8-11	1	4	5	0	8	26	1	3	1	0	0	1	11			
10 Brianna Mitchell	G	36:20	4-9	1-3	5-8	1	1	2	4	14	2	0	0	0	0	10	0	10			
13 Stephanie Visscher	G	25:06	3-8	2-3	0-0	0	2	2	4	0	8	1	6	5	1	2	6	6			
22 Zya Nugent	G	30:27	1-4	0-2	2-2	0	8	8	3	4	4	6	3	0	0	0	7				
5 Tasharian Robinson	21:57	2-5	0-2	0-0	0	1	3	0	4	1	0	1	0	0	0	0	0	0			
2 Tyler McCliment-Call	03:41	0-1	0-1	0-0	0	0	0	0	0	0	0	0	0	0	0	0	0	5			
20 Angel Scott	05:15	0-0	0-0	0-0	0	0	0	0	0	1	0	0	0	0	0	0	0	-2			
33 Asiyah Johnson	08:38	1-2	0-1	0-0	0	0	0	0	0	1	2	0	0	0	0	0	0	0			
24 Destini Lombard	03:41	0-2	0-1	0-0	0	1	0	1	0	0	0	0	0	0	0	0	0	-4			
Team											5	1	6								
Totals			25-55	3-13	18-26	9	22	31	18	21	71	13	20	9	2	3	5				

Shooting By Period

1st FG%	6-16	37.5%
3PT%	0-0	0.0%
FT%	3-4	75%
2nd FG%	4-13	30.8%
3PT%	0-7	0.0%
FT%	4-6	66.7%
3rd FG%	11-17	64.7%
3PT%	3-5	60.0%
FT%	1-2	50%
4th FG%	4-9	44.4%
3PT%	0-1	0.0%
FT%	10-14	71.4%
GM FG%	25-55	45.5%
3PT%	3-13	23.1%
FT%	18-26	69.2%

Dead Ball Rebounds: 4.0

New Mexico - 66

Record: 4-2

Technical Fouls:McGruder 1st0;29Bench 2nd4;05

NO. Name	Min	FG			3P			FT			Rebounds		Fouls		TP	AS	TO	ST	Blocks		+/-
		M/A	M/A	M/A	M/A	M/A	M/A	OR	DR	OR	DR	PF	FD	BS					BA		
13 Shaquell McGruder	F	07:51	1-2	0-0	0-0	0	1	1	3	0	2	0	4	0	1	0	0	0	-6		
32 Antonia Anderson	F	35:05	2-10	1-3	0-0	3	5	8	4	3	5	5	4	2	0	0	0	0	-5		
4 LaTascya Duff	G	31:22	5-13	3-9	2-3	1	2	3	2	15	1	3	0	0	0	1	0	-10			
23 Jaedyn De La Cerda	G	35:38	4-10	1-4	8-9	1	4	5	3	6	17	2	3	0	0	0	0	5			
14 Paula Reus	G	33:44	7-11	4-6	0-0	1	2	4	4	18	1	4	2	0	0	0	0	1			
12 Anyiah Augmon	23:37	2-4	0-1	0-0	0	3	3	4	0	4	2	4	0	0	0	0	0	-13			
33 Viané Cumber	05:06	0-0	0-0	0-0	0	0	0	0	0	0	0	0	0	0	0	0	0	-7			
10 Kath van Bennekom	14:10	2-4	1-1	0-0	1	2	3	0	0	5	1	0	0	0	0	0	0	2			
Team											2	4	6								
Totals			23-54	10-24	10-12	9	25	34	23	18	66	12	28	7	3	2	5				

Shooting By Period

1st FG%	4-12	33.3%
3PT%	0-3	0.0%
FT%	0-0	0%
2nd FG%	5-12	41.7%
3PT%	3-5	60.0%
FT%	4-5	80%
3rd FG%	3-12	25.0%
3PT%	2-6	33.3%
FT%	1-2	50%
4th FG%	11-18	61.1%
3PT%	5-10	50.0%
FT%	5-5	100%
GM FG%	23-54	42.6%
3PT%	10-24	41.7%
FT%	10-12	83.3%

Dead Ball Rebounds: 2.0

Biggest lead	SFA		UNM	
	20 (4th 8:23)	2 (2nd 4:32)	17 (3rd 5:45)	14 (4th 5:40)
Best Scoring Run	17	3	14	14
Lead Changes	4	4	6	6
Times Tied	5	5	4	5
Time with Lead	32:22	01:27	6	9

Points from Turnovers	SFA		UNM	
	21	31	38	22
Paint	21	31	38	22
Second Chance	6	6	6	6
Fast Breaks	4	5	4	5
Bench	6	9	6	9