

2021-22 NEW MEXICO WOMEN'S BASKETBALL

GAME NOTES

» Eight NCAA Tournament Appearances | 1998, 2002, 2003, 2004, 2005, 2006, 2007, 2008 «
 » Five Mountain West Tournament Championships | 2003, 2004, 2005, 2007, 2008 «

2021-22 | Schedule and Results

OVERALL RECORD:	3-0
MW RECORD:	0-0
HOME RECORD:	3-0
ROAD RECORD:	0-0
NEUTRAL RECORD:	0-0
STREAK:	W3

Date	Opponent	Time/Result
10/31	Western Colorado (Exh.)	W, 94-53
11/4	Eastern New Mexico (Exh.)	W, 88-72
11/9	Lamar	W, 71-54
11/12	Northern New Mexico	W, 96-40
11/16	Prairie View A&M	W, 88-71
11/20	Houston	3 p.m.
11/23	Houston Baptist	7 p.m.
11/26	Stephen F. Austin%	5:30 p.m.
11/27	Louisiana Monroe%	5:30 p.m.
11/28	Texas Tech%	3 p.m.
11/30	Grambling State	7 p.m.
12/3	New Mexico State	7 p.m.
12/5	New Mexico State	2 p.m.
12/12	Arizona	1 p.m.
12/19	UTEP	6 p.m.
12/28	San José State*	2 p.m.
12/31	Boise State*	2 p.m.
1/3	UNLV*	7 p.m.
1/6	Utah State*	6 p.m.
1/9	San Diego State*	2 p.m.
1/13	Wyoming*	6:30 p.m.
1/15	Colorado State*	1 p.m.
1/22	Fresno State*	2 p.m.
1/27	UNLV*	7 p.m.
1/29	San Diego State*	1 p.m.
2/2	Colorado State*	7 p.m.
2/5	Wyoming*	2 p.m.
2/9	Air Force*	7 p.m.
2/12	Nevada*	3 p.m.
2/16	Utah State*	7 p.m.
2/19	Boise State*	1 p.m.
2/23	Fresno State*	7 p.m.
2/25	San José State	12 p.m.
3/6-3/9	MW Tournament	TBA

BOLD: Home %: Van Chancellor Classic *: Mountain West
 All times are Mountain Time

THE MATCHUP



New Mexico Lobos

Record
 3-0, 0-0 MW

Head CoachMike Bradbury
 Alma Mater, Yr.....Chattanooga, 1993
 Record at UNM.....97-55 (6th year)
 Career Record.....275-172 (15th year)

Game Information

Game Number: Game 4
 Date: Saturday, Nov. 20 at 4 p.m. (CT)
 Location: Houston, Texas
 Fertitta Center

Series History

Overall:UNM leads 5-3
 Current Streak:W2
 Last Meeting:11/12/19 (W, 86-67)

Broadcast Information

Radio:610 AM KNML
 Play-By-Play:J.J. Buck
 Live Stream:ESPN+
 Live Stats:GoLobos.com/wbbstats



Houston Cougars

Record
 1-2, 0-0 AAC

Head CoachRonald Hughey
 Alma MaterLimestone
 Record at UH.....89-124 (8th year)
 Career RecordSame

TIPPING OFF

The Lobos face their first road test of the season on Saturday against the Houston Cougars.

Both teams enter the game having played during the midweek, with the Lobos defeating Prairie View A&M at home on Tuesday and Houston dropping a close game in overtime to UT Arlington 69-66 on the road on Wednesday. Saturday's game will be just the second home game of the season for Houston, having won its season opener against Howard.

The Lobos have found several key contributors in Antonia Anderson, Shaiquel McGruder, and Vianè Cumber, with each leading the scoring in a game this season. The scoring has also been balanced for the Lobos, with four finishing in double figures in each of the three games. LaTora Duff has been fantastic at the point this season with 26 assists, with one double-double and nearly having another in the season opener.

McGruder leads the team in both points and steals, while Anderson leads the team in rebounds and is tied for the team high in blocked shots.

On the national level, Duff leads the NCAA in assist/turnover ratio, is fifth in total assists and

sixth in assists per game, with McGruder 13th in field-goal percentage and 18th in field-goals made.

In the MW, UNM leads the conference in scoring offense, scoring margin, field-goal percentage, field-goal percentage defense, rebounding margin and assists per game. They are second in steals per game and three-pointers made per game.

On the other side of the court, Laila Blair and Tatyana Hill lead the Cougars with 29 points and 9.7 points per game, with Hill leading with 33 rebounds and 11.0 rebounds per game. Blair leads the team with six assists, but also has a team-high 15 turnovers, and seven steals. Kamryn Jones has a team-high four blocks.

The Cougars have used the same starting lineup all three games with Hill, Bria Patterson, Dymond Gladney, Britney Onyeje and Julia Blackshell-Fair.

Probable Starters (Based on last game)

#	Name	Pos.	Cls.	Ht.	PPG	RPG	APG	SPG	BPG
4	LaTascya Duff	G	Sr.	5-7	3.0	0.0	0.5	0.5	0.0
5	LaTora Duff	G	Sr.	5-7	11.3	4.3	8.7	0.0	1.7
13	Shaiquel McGruder	F	Sr.	6-0	19.0	5.3	0.0	2.7	0.0
23	Jaedyn De La Cerda	G	Sr.	5-7	12.0	5.0	3.0	1.7	0.0
32	Antonia Anderson	F	Sr.	6-2	14.0	6.7	1.7	1.3	1.7

Off the Bench

#	Name	Pos.	Cls.	Ht.	PPG	RPG	APG	SPG	BPG
1	Rebeka Renczes	PG	Fr.	5-7	0.0	2.0	3.0	1.0	0.0
10	Kath van Bennekom	G	So.	5-9	4.0	2.3	0.3	0.7	0.0
11	Zeyno Seren	F	Fr.	6-1	3.5	4.0	1.0	0.5	0.0
12	Aniyah Augmon	G	Fr.	5-8	5.0	5.3	1.3	2.3	0.0
21	Mackenzie Curtis	G	Fr.	5-9	12.0	3.0	2.0	0.0	0.0
30	Paula Reus	F	Fr.	6-1	1.0	4.0	1.0	0.0	0.0
33	Vianè Cumber	G	Fr.	5-10	7.3	3.3	0.3	1.0	0.0
34	Nevaeh Parkinson	F/C	So.	6-3	5.5	5.5	1.0	1.0	0.0



THE UNIVERSITY OF NEW MEXICO 2021-22 WOMEN'S BASKETBALL



THE UNIVERSITY OF NEW MEXICO

Location.....Albuquerque, N.M.
 Founded.....1889 by Territorial Legislature
 Enrollment.....22,225
 Nickname.....Lobos
 Colors.....Cherry (PMS 200) & Silver (PMS Cool Gray 6)
 Conference.....Mountain West Conference
 National Affiliation.....NCAA Division I
 President.....Dr. Garnett Stokes
 Director of Athletics.....Eddie Nuñez
 Deputy A.D. for External Affairs.....David Williams
 Deputy A.D. for Internal Affairs/SWA.....Janice Ruggiero
 Faculty Representative.....Karen Gaudreault, Ph.D

FACILITY INFORMATION

Facility.....The Pit
 Capacity.....15,411
 Age.....Built in 1966 (Renovated in 2009-10)
 All-Time Home Record.....434-216 (.668)

PROGRAM HISTORY

First Season.....1974-75
 Overall Record.....696-561 (.554) in 42 seasons
 Overall MW Record.....205-145 (.586) in 21 seasons
 Postseason Tournament Appearances.....18
 NCAA Tournament Appearances.....8
 Last NCAA Postseason Appearance.....2020-21 (WNIT)
 Last NCAA Postseason Opponent.....California Baptist
 Last NCAA Postseason Result.....L, 90-85
 MW Regular Season Championships.....3
(2003-04, 2004-05, 2020-21)
 MW Tournament Championships.....5
(2002-03, 2003-04, 2004-05, 2006-07, 2007-08)

TEAM INFORMATION

2020-21 Overall Record.....15-5
 2020-21 Mountain West Record.....11-3
 2020-21 Mountain West Season Finish.....1st
 2020-21 MW Tournament Finish.....Semifinal
 Letterwinners Returning | Lost.....7 | 5
 Starters Returning | Lost.....4 | 1

COACHING STAFF

Head Coach.....Mike Bradbury (Chattanooga, 1993)
 Record at UNM (Years).....97-55 (6th season)
 Career Record (Years).....275-172 (15th season)
 Head Coach Phone.....505-925-5770
 Women's Basketball Fax.....505-925-5779

Assistant Coach.....Valerie King (6th season)
 Alma Mater.....Cincinnati, 2004
 Assistant Coach.....Kabrina Merriweather (1st season)
 Alma Mater.....Georgia Southwestern State, 2015
 Assistant Coach.....Symone Denham (4th season)
 Alma Mater.....Wright State, 2016

Spec. Asst. to H.C.....Ryan Freeman (1st season)
 Dir. of Player Development.....Nike McClure (1st season)
 Athletic Trainer.....Lexi Smith (1st season)
 Strength Coach.....Brett Nakashima (3rd season)
 Academic Adviser.....Joe DeBonis

MISCELLANEOUS INFORMATION

2019-20 Total Attendance.....82,854
 2019-20 Average Attendance.....4,874
 2019-20 NCAA Attendance Rank.....15th
 2019-20 Mountain West Attendance Rank.....1st

MULTIMEDIA INFORMATION

Athletics Website.....www.GoLobos.com
 Main University Web Site.....www.unm.edu
 Conference Web Site.....www.TheMW.com
 Facebook.....www.facebook.com/NewMexicoLobos
 Twitter.....@UNMLobos

MEDIA RELATIONS

Women's Basketball Contact.....Allison Weiss
 Cell Phone (Preferred).....661-313-5402
 Email.....allisonweiss@unm.edu
 Address:.....

The University of New Mexico Athletics
 1414 University Drive
 Albuquerque, N.M. 87106

- » Three Mountain West Regular-Season Championships
- » Five Mountain West Tournament Championships
- » Seven NCAA Tournament Appearances Since 2001-02
- » Mountain West Attendance Leader 21 Seasons in a Row
- » WBCA Academic Top 25 Eight Times Since 2004-05



@UNMLoboWBB



NEW MEXICO WOMEN'S BASKETBALL



THE UNIVERSITY OF NEW MEXICO

2021-22 WOMEN'S BASKETBALL



Balanced Attack

Much like their M.O. last season, the Lobos had balanced scoring in their first three games of the season with four double-digit scorers in each game.

UNM finished with four scorers in double figures in the season opener against Lamar, led by Antonia Anderson's game-high 16 points, followed by Jaedyn De La Cerda and Shaiquel McGruder at 15 each and LaTora Duff with 10. Duff was one assist shy of a double-double, tying her then-career high with nine assists, and nearly matching Lamar's team total in assists as the Cardinals had 10 in the game. McGruder was a perfect 7-for-7 from the field, one of two Lobos to go perfect from the floor.

As a team, the Lobos had balanced scoring, scoring 18 points in three of the four quarters and 17 points in the first.

Freshman Mackenzie Curtis and senior Shaiquel McGruder each had 12 points in the win over Northern New Mexico to join Vianè Cumber's game-high 17. Nevaeh Parkinson recorded her first collegiate double-double with 11 points and a game-high 11 rebounds, grabbing five offensive boards and six defensive, while also credited for two steals and an assist.

In the last game, Shaiquel McGruder led all scorers with 30 points, followed by Antonia Anderson's 19 points- with the senior finishing one rebound shy of a double-double - LaTora Duff's career-high 17 points and Jaedyn De La Cerda's 13 points, with nine of those points coming from behind the arc.

Five Lobos are currently averaging 10-plus points per game in McGruder (19.0), Anderson (14.0), De La Cerda (12.0), Curtis (12.0), and Duff (11.3).

In the three games, McGruder is the only Lobo who has reached double figures in all three.

Also of note, New Mexico has scored the first points of the game and the third quarter in every game that they have played in this season. UNM is outscoring its opponents 255-165, with the largest point total and margin in the first quarter (70-43).

Shai Time

Shaiquel McGruder took over in Tuesday's game against Prairie View A&M, setting several career highs. The senior forward finished with a career-high 30 points on a career-high 13-for-18 shooting, while adding seven rebounds and four steals to her stat sheet.

The scoring started early for McGruder, with the Lobo winning the tip and immediately making a layup 14 seconds in.

McGruder already reached double digits in the first quarter with 10 points and accounted for three of UNM's five steals.

How May I Assist You?

It didn't take long for LaTora Duff to get back to form, accounting for 26 assists in the first three games. The point guard tied her career high with nine assists against Lamar, with seven assists coming in the fourth quarter, and added five assists in the second game against Northern New Mexico.

She then bested that performance in the next game with a career-high 12 assists, while also setting career highs in points (17), rebounds (eight) and blocks (four).

The Lobo facilitator is averaging 8.7 assists per game, with just 1 turnover in 90 minutes of court time for a 26.0 assists to turnover ratio, to go along with 11.3 points per game, 4.3 rebounds per game and 1.7 blocks per game.

Her assist/turnover ratio of 26.0 leads the nation, and is fifth in total assists and sixth in the country in assists per game. She leads the MW in all three statistics.

Connect For Two

Of Duff's 12 assists in the game against the Panthers, she connected with McGruder on eight of them.

An Added Surprise

With 4:00 remaining in the second quarter of the game against Northern New Mexico, LaTascya Duff checked in at the scorer's table and into the game for the first time this season, after being cleared to play earlier in the week. It was thought that Duff would be out through the non-conference portion of the schedule at the beginning of the year, but head coach Mike Bradbury confirmed pregame that Duff was ahead of schedule and available to play.

To make it even better, and a welcomed sight, LaTora Duff delivered a perfect pass to LaTascya on the wing, who drained a three-pointer in her first and only attempt of the game.

Record Watch

Super seniors Antonia Anderson and Jaedyn De La Cerda are closing in on 1000-point milestones. De La Cerda is 71 points away and Anderson is 131 away. Should Anderson reach the milestone, she will be the 17th player in program history to have 1,000 points, 500 rebounds.

In addition, Anderson has played in 118 games at UNM, with the record 134 games set by Angela Hartill (2005-09).

Learn As You Grow

While the Lobos return stability in four starters from a year ago, the makeup of the roster is extreme, comprised of five seniors, two sophomores and six freshmen who got a brief introduction to the college game in week one.

All six that have played so far have found the stat sheet in some capacity, with two also getting the starting nod in Zeyno Seren and Vianè Cumber.

Aniyah Augmon and Cumber have gotten the most minutes to date with over 57 and 49 minutes, respectively, with Augmon standing out against Lamar and Cumber against Northern New Mexico.

In her first official collegiate game, Mackenzie Curtis went 3-for-7 from three and added three free throws to reach double digits, while recording an assist and three rebounds.

Seren tallied seven points on 3-for-5 shooting against Northern New Mexico, has grabbed eight rebounds this season and added two assists and a steal.

Rebeka Renczes is still looking for her first point as a Lobo, but has contributed two rebounds, three assists and a steal in one game.

She's Just a Freshman

It took all of one week of collegiate play for Vianè Cumber to earn her first award, as the guard earned the inaugural MW Freshman of the Week on Monday, Nov. 15.

The distinction comes after Cumber led all scorers with 17 points on 7-for-10 shooting and 3-for-5 from three-point range in her first collegiate start on Friday. The guard also was credited with an assist and two steals.

Cumber took over midway through the first quarter, accounting for eight straight Lobo points, making three consecutive shots on back-to-back threes and a layup as UNM built its lead in the first quarter, going a perfect 3-for-3 and 2-for-2 from three while also having a steal and an assist against Northern New Mexico. In the third quarter, Cumber went 2-for-3 with a fast-break layup and created the steal that led to a fast-break layup on the next possession.

The Albuquerque native added a layup and a final three in the fourth quarter while grabbing four defensive rebounds.

Her first collegiate basket occurred in the second quarter against Lamar on a jumper that extended the Lobo lead to seven and collected three rebounds. On the week, Cumber averaged 9.5 points, 4.0 rebounds and 1.5 steals per game.

Quarter Lockdown

While the season is still young, the Lobos have held an opponent to single digits in a quarter three times already.



THE UNIVERSITY OF NEW MEXICO

2021-22 WOMEN'S BASKETBALL



In Friday's game against Northern New Mexico, UNM held the Lady Eagles to seven points in both the second and fourth quarters, while holding them under 15 points in each quarter.

The Lobos held Northern New Mexico to 18.2% in the fourth quarter on 2-11 shooting and 23.1% in the second quarter on 3-13 shooting.

As a whole, NNMC shot just 27.6% in the game with 16 made baskets on 58 attempts and 17.4% from three with four makes on 23 attempts.

Against Lamar, the Lobos shut the Cardinals down defensively in the third quarter, allowing just nine points in the quarter for the 53-37 (16 points) lead.

UNM held Lamar to 2-of-11 shooting from the floor (18.2%) and 1-of-7 (14.3%) from three.

On the offensive end, UNM shot 53.8% from the field in the third quarter to the Cardinals' 18.2%, with Jaedyn De La Cerda accounting for 14 of UNM's 18 points in the quarter.

Further, the Lobos held the Panthers scoreless for the first 2:16 of the game, the first Lamar points came at 7:15 remaining in first and the Lobos held the Lady Eagles the final 5:06 of the first quarter without a point.

AA Battery

When the Cardinals answered with an 8-0 run of their own to tie the game, it was freshman Aniyah Augmon who stepped up to provide the spark off of the bench with a personal 5-0 run that entailed a fast-break layup, a steal and a three-pointer.

Augmon had a full stat sheet with eight points (3-for-3 shooting), six rebounds (tying the team high) and three steals (a team high) in her first collegiate game and nearly matched it in her second game as a Lobo.

The energy and contributions continued into game two, as the California native registered four rebounds, three assists, a steal and six points in the win over Northern New Mexico, going 2-for-3 from the floor and 2-for-2 from the free-throw line.

In the last game against Prairie View, while the freshman was held to just one point, she found other ways to help the Lobos, with six rebounds and three steals.

Augmon is averaging 5.0 points per game, 2.3 steals per game and 1.3 assists per game in 19.2 minutes per game, and is shooting 83.3% from the floor, which leads the team.

Among the MW, Augmon is tied for sixth in steals per game and in the top 20 in rebounds per game.

Perfect Start

Two Lobos shot perfect from the field in the first game against Lamar: Shaiquel McGruder (7-for-7, 15 points) and Aniyah Augmon (3-for-3, 8 points).

In addition, New Mexico has now started 2-0 on the season in all six seasons under head coach Mike Bradbury, while also undefeated in regular season openers under Coach Bradbury (now 6-0) and has won nine consecutive home openers.

This is the Lobos' fifth consecutive 3-0 start to their season.

Managing Expectations

After winning the Mountain West regular season in 2020-21 for the first time since 2004-05, the Lobos were picked to finish second in the preseason MW poll with 251 points and seven first-place votes.

It is the second time in head coach Mike Bradbury's tenure that the Lobos have been picked to finish second, with the last time occurring in 2019-20 when the Lobos earned three first-place votes and 280 points.

New Mexico finished above UNLV with the Rebels at 232 points and three

first-place votes, and fourth-place Colorado State with the Rams earning 207 points and one first-place vote.

State and Colorado State with one each, San Diego State with two, UNLV at three, UNM with seven and Fresno State the preseason favorite with 13 first-place votes and 269 points.

In addition, senior Antonia Anderson was selected to the MW preseason all-conference team, one of five players to earn the distinction. For Anderson, the Cibola, Texas native is coming off of a campaign in which she averaged 12.1 points per game, 6.2 rebounds per game, 1.9 assists per game, 1.0 steals per game and 1.0 blocks per game and scored 10-plus points in 13 games with a career-high 29 points in the victory over UNLV on Jan. 17. Anderson led the team in rebounds and rebounds per game, was second in made field goals and blocked shots and third in total points.

In MW contests, she averaged 12.6 points per game and a team-high 6.6 rebounds per game, as well as led the conference in field-goal percentage with 49 percent. Further, Anderson was eighth in blocks per game at 1.07 and ranked in the top 15 in scoring, rebounding, field-goal percentage, blocked shots and defensive rebounds, resulting in her first all-conference honor in being named to the Mountain West all-conference team.

Pride of New Mexico

The Lobos have two New Mexico natives on the 2021-22 roster with freshman Vianè Cumber and senior Jaedyn De La Cerda. In addition to being from New Mexico, the duo has something else in common: New Mexico Gatorade Player of the Year distinctions.

Cumber was named the 2019-20 and 2021-21 New Mexico Gatorade Girls Basketball Player of the Year after averaging 26.5 points, 9.3 rebounds, 2.2 assists and 1.5 steals her senior season and 22.4 points, 10.6 rebounds, 2.5 assists and 3.3 steals as a junior at Sandia High School in Albuquerque. Out of Roswell, N.M. and Roswell High School, De La Cerda earned the 2016-17 New Mexico Gatorade Player of the Year.

Know Your Opponent

Houston enters the game having lost its last two games after winning its season opener against Howard (80-48). Against Stephen F. Austin (a team the Lobos will play next week), the Cougars lost 73-52 and the Cougars lost their last game on Wednesday in overtime, 69-66.

Laila Blair and Tatyana Hill lead the team with 29 points and 9.7 points per game, with Hill leading with 33 rebounds and 11.0 rebounds per game. Blair leads the team with six assists, but also has a team-high 15 turnovers, and seven steals. Kamryn Jones has a team-high four blocks.

The Cougars have used the same starting lineup all three games with Hill, Bria Patterson, Dymond Gladney, Britney Onyeje and Julia Blackshell-Fair.

As a team, the Cougars are scoring 66.0 points per game, while their opponents are scoring 63.3 points per game and are outshooting Houston 38.4% to 37.2%. Houston is making 14 free-throws a game, shooting 70.0% (42-60). Although, opponents are going to the free-throw line just as frequently, attempting 61 free throws.

Houston was picked to finish third in the American Conference Preseason Poll behind South Florida and UCF, with Laila Blair selected to the Preseason All-Conference Second Team.



THE UNIVERSITY OF NEW MEXICO

2021-22 WOMEN'S BASKETBALL



LAST TIME IT HAPPENED (UNM)

As A Team

Scored 100 Points:	120 - at Arkansas-Pine Bluff (12-17-20)
Scored 90 Points:	96 - Northern New Mexico (11-12-21)
Scored Fewer Than 50 Points:	42 - at UNLV (1-11-17)
Scored Fewer Than 40 Points:	38 - at Colorado St. (1-3-15)
Won by 50 Points:	+56 (W, 96-40) - Northern New Mexico (11-12-21)
Won by 40 Points:	+48 (W, 92-44) - vs. Northern NM (12-10-19)
Won By 30 Points:	+32 (W, 97-65) - at Utah State (3-1-21)
Lost By 30 Points:	-37 (L, 47-84) - at (RV) Arizona St. (12-14-19)
Lost By 40 Points:	-42 (L, 63-105) - at Oklahoma (12-16-17)
Shot 60% or Better:	61.2% - Pacific (11-9-01)
Shot Less Than 30%:	26.7% (16-60) - vs. UNLV (1-18-20)
Shot 60% 3FG or Better:	68.2% (15-22) - at NMSU (12-2-17)
Shot Less Than 20% 3FG:	13.79 (4-29) - vs. Nevada (3-1-20)
Made 15 3-Pointers:	15 - at Utah State (2-28-21)
Shot 90% on FTs (10 or more):	94.12% (16-17) - vs. Nevada (3-1-20)
Shot Less Than 40% On FTs:	14.3% (1-7) - at UTEP (11-30-17)
Had 50 Rebounds:	54 - Northern New Mexico (11-12-21)
Had 20 Offensive Rebounds:	21 - Northern New Mexico (11-12-21)
Had 25 Assists:	27 - at Arkansas-Pine Bluff (12-17-20)
Had 20 Turnovers:	21 - at Sam Houston State (12-6-20)
Had Less Than 10 Turnovers:	6 - California Baptist (3-19-21)
Had 10 Steals:	11 - Prairie View A&M (11-16-21)
Had 10 Blocks:	10 - vs. UNLV (1-18-20)
Had Two 20-Point Scorers:	California Baptist (3-19-21)
Had Three 20-Point Scorers:	LaTascya Duff (20) and Jaedyn De La Cerdá (28) vs. San Jose St. (2-27-19)
Had 6 Double-Digit Scorers:	Tesha Buck (30), Jaisa Nunn (22) and Cherise Beynon (22) at Arkansas-Pine Bluff (12-17-20)
Had 5 Double-Digit Scorers:	vs. Colorado State (3-4-21)
Had No Double-Digit Scorers:	vs. (RV) Arizona St. (12-14-19)
Had Two 10+ Rebounders:	vs. Nevada (3-1-20)
Scored 50 Points In 1st Half:	Shaiquel McGruder (17) and Antonia Anderson (10) 50 - Prairie View A&M (11-16-21)
Scored 50 Points In 2nd Half:	50 - Northern New Mexico (11-12-21)
Scored 60 Points in a 2nd Half:	63 - vs. New Mexico St. (12-16-19)
Scored 20 Or Fewer Points In 1st Half:	17 - at Colorado St. (2-22-17)
Scored 20 Or Fewer Points In 2nd Half:	17 - at UNLV (1-15-21)
Lowest Pts Scored in Quarter:	2 - vs. Tulsa (11-25-16)
Failed To Make a 3FG:	at (RV) Arizona St. (12-14-19)
Defeated a Ranked Team:	W, 88-87 vs. No. 16 Marquette (11-13-17)
Lost To a Ranked Team:	L, 60-73 vs. No. 23 West Virginia (11-29-19)
Won an OT Game:	W, 74-71 at Wyoming (2-8-20)
Won an OT Game:	L, 78-86 at Nevada (2-19-20)
Won a 2OT Game:	W, 89-85 at Houston (11-24-18)
Lost a 2OT Game:	L, 69-65 vs. Fresno St. (1-2-16)

As An Individual

Had a Triple-Double:	Aisia Robertson (28 pts, 11 rebs, 11 assists) at Houston (11-24-18)
Had a Double-Double (Pts/Reb):	Nevaeh Parkinson (11 pts, 11 reb) vs. Northern New Mexico (11-12-21)
Had a Double-Double (Pts/Asst):	LaTora Duff (17 pts & 12 asts) Prairie View A&M (11-16-21)
Had a Double-Double (Reb/Asst):	vs. Fairleigh Dickinson (11-12-16)
Scored 20+ Pts with 10+ Rebs:	Cherise Beynon (13 reb, 10 asts) Jordan Hosey (25 pts, 13 reb) at Fresno St. (1-8-20)
Scored 30 Points:	Shaiquel McGruder (30 pts), Prairie View A&M (11-16-21)
Scored 40 Points:	Cherise Beynon (41) at SDSU (1-20-18)
Scored 30 Points (MW Only):	LaTascya Duff (31) at Air Force (2-23-21)
Scored 40 points (MW Only):	Cherise Beynon (41) at San Diego St. (1-20-18)
Had 20+ Rebounds:	Richelle van der Keijl (20) vs. New Mexico St. (11-15-16)
Had 15+ Rebounds:	Shaiquel McGruder (15) vs. Colorado State (3-5-21)
Had 15+ Assists:	Aisia Robertson (16) vs. Oklahoma (11-28-18)
Had 5+ Steals:	Autumn Watts (5) vs. California Baptist (3-19-21)
Had 5+ Blocks:	Shaiquel McGruder (5) at Sam Houston State (12-6-20)

LAST TIME IT HAPPENED (OPP)

As A Team

Scored 100 Points:	105 - at Oklahoma (12-16-17)
Scored 90 Points:	90 - vs. California Baptist (3-19-21)
Scored Less Than 50 Points:	48 - at San Diego St. (2-5-21)
Scored Less Than 40 Points:	40 - Northern New Mexico (11-12-21)
Shot 50% Or Better:	53.7% (36-67) - vs. California Baptist (3-19-21)
Shot Less Than 30%:	27.6 % (16-58) - Northern New Mexico (11-12-21)
Shot 50% 3FG Or Better:	53.3 (8-15) - vs. San Diego St. (2-12-20)
Shot Less Than 20% 3FG:	17.4% (4-23) - Northern New Mexico (11-12-21)
Made 15 3-Pointers:	15 - at San José St. (1-22-20)
Shot 90% On FTs (10 or more):	90.0% (9-10) at Air Force (2-24-21)
Shot Less Than 50% On FTs:	47.8% (11-23) - Lamar (11/9/21)
Had 50 Rebounds:	53 - Prairie View A&M (11-16-21)
Had 20 Offensive Rebounds:	24 - Prairie View A&M (11-16-21)
Had 25 Assists:	30 - California Baptist (3-19-21)
Had 20 Turnovers:	23 - Northern New Mexico (11-12-21)
Had 30 Turnovers:	30 - vs. Northern NM (11-15-17)
Had Less Than 10 Turnovers:	8 - vs. Colorado State (3-5-21)
Had 10 Steals:	11 - Northern New Mexico (11-12-21)
Had 10 Blocks:	10 - vs. Utah St. (2-10-16)
Had Two 20-Point Scorers:	California Baptist (3-19-21)
Had 6 Double-Digit Scorers:	Britney Thomas (22) and Caitlyn Harper (25) Baylor (1-4-95)
Had 5 Double-Digit Scorers:	vs. Boise St. (2-22-20)
Had No Double-Digit Scorers:	Stephen F. Austin (12-20-18)
Had Two 10+ Rebounders:	vs. Air Force. (2-24-20)
Scored 50+ Points In 1st Half:	Emily Conroe (13), Kaelin Immel (10) 54 - at San José St. (1-22-20)
Scored 50+ Points In 2nd Half:	52 - California Baptist (3-19-21)
Scored 20 Or Less Points In 1st Half:	20 - vs. Colorado State (3-4-21)
Scored 20 Or Less In 2nd Half:	19 - Northern New Mexico (11-12-21)
Scored Less Than 10 Points in Quarter:	7 - Northern New Mexico (11-12-21)
Failed To Make a 3FG:	0-1 by San Diego State (2-18-15)

As An Individual

Had a Double-Double (Pts/Reb):	Gerlyn Smith (16 pts, 10 reb) Prairie View A&M (11-16-21)
Had a Double-Double (Pts/Asst):	Ane Olaeta (11 pts, 14 assists) California Baptist (3-19-21)
Had a Double-Double (Pts/Steals):	Jasmyne Harris (28 pts & 10 steals) at Houston (11-28-18)
Had 20+ Points & 10+ Rebounds:	Jessica Chatman (21 pts, 11 reb) Utah State (3-1-21)
Scored 30 Points:	Shlyla Latone (33) - at Utah State (3-1-21)
Scored 30 Points (MW Only):	Shlyla Latone (33) - at Utah State (3-1-21)
Had 20+ Rebounds:	Kaylee Johnson (22) - No. 1 Stanford (11-24-14)
Had 15+ Rebounds:	Tyra Whitehead (16) - at San José St. (1-22-20)
Had 10+ Assists:	Ane Olaeta (14) - California Baptist (3-19-21)
Had 5+ Steals:	Haley Cavinder (5) - vs. Fresno St. (2-1-20)
Had 5+ Blocks:	Mallory McGwire (5) - vs. Boise St. (2-22-20)



THE UNIVERSITY OF NEW MEXICO

2021-22 WOMEN'S BASKETBALL



LOBOS RECORD WHEN...

	Overall	In MW
Overall	3-0	0-0
At home	3-0	0-0
On the road	0-0	0-0
At neutral sites	0-0	0-0
After a win	2-0	0-0
After a loss	0-0	0-0
In overtime	0-0	0-0
vs. ranked opponents	0-0	0-0
Games decided by 1-4 points	0-0	0-0
Games decided by 5-9 points	0-0	0-0
Games decided by 10-19 points	2-0	0-0
Games decided by 20+ points	1-0	0-0
Leading after Q1	3-0	0-0
Trailing after Q1	0-0	0-0
Tied after Q1	0-0	0-0
Leading at half	3-0	0-0
Trailing at half	0-0	0-0
Tied at half	0-0	0-0
Leading after Q3	3-0	0-0
Trailing after Q3	0-0	0-0
Tied after Q3	0-0	0-0
Shooting 50% or better	1-0	0-0
Shooting between 40-49.9%	2-0	0-0
Shooting less than 40%	0-0	0-0
Opponent shoots 50% or better	0-0	0-0
Opponent shoots b/w 40-49.9%	0-0	0-0
Opponent shoots b/w 30-39.9%	2-0	0-0
Opponent shoots less than 30%	1-0	0-0
UNM higher FG%	3-0	0-0
Opponent higher FG%	0-0	0-0
FG% Tied	0-0	0-0
UNM outrebounds	2-0	0-0
Opponent outrebounds	1-0	0-0
Rebounds tied	0-0	0-0
UNM more made free throws	3-0	0-0
Opponent more made free throws	0-0	0-0
Made free throws tied	0-0	0-0
UNM 3FG% higher	1-0	0-0
Opponent 3FG% higher	2-0	0-0
3FG% tied	0-0	0-0
UNM has more fouls	1-0	0-0
Opponent has more fouls	2-0	0-0
Fouls are tied	0-0	0-0
UNM more turnovers	0-0	0-0
Opponent more turnovers	3-0	0-0
Turnovers tied	0-0	0-0
Scoring less than 50 points	0-0	0-0
Scoring 50-59 points	0-0	0-0
Scoring 60-69 points	0-0	0-0
Scoring 70-79 points	1-0	0-0
Scoring 80-89 points	1-0	0-0
Scoring 90-99 points	1-0	0-0
Scoring 100+ points	0-0	0-0
Allowing 40 points or less	1-0	0-0
Allowing 41-49 points	0-0	0-0
Allowing 50-59 points	1-0	0-0
Allowing 60-69 points	0-0	0-0
Allowing 70-79 points	1-0	0-0
Allowing 80-89 points	0-0	0-0
Allowing 90+ points	0-0	0-0
In November	3-0	0-0
In December	0-0	0-0
In January	0-0	0-0
In February	0-0	0-0
In March	0-0	0-0

MOUNTAIN WEST STATISTICS

TEAM

	All	Conference Only
Scoring	1st (85.0)	
Turnover Margin	3rd (+3.67)	
Assists per Game	1st (19.0)	
3-Pt FG Made	2nd (8.33)	
Scoring Margin	1st (+30.0)	
Assist/Turnover Ratio	3rd (1.24)	
FG %	1st (.477)	
Steals per Game	2nd (11.33)	
3-PT FG %	5th (.342)	
Free throw %	7th (.688)	
Rebounding Margin	1st (+7.33)	
Scoring Defense	3rd (55.0)	
FG % Defense	1st (.309)	

INDIVIDUAL

	All	Conference Only
Scoring	1st (19.0)	
Shaiquel McGruder	9th (14.0)	
Antonia Anderson	13th (12.0)	
Jaedyn De La Cerdá		
Rebounding		
Antonia Anderson	9th (6.7)	
Aniyah Augmon	17th (5.3)	
Shaiquel McGruder	17th (5.3)	
Field Goal %		
Shaiquel McGruder	1st (.714)	
Antonia Anderson	3rd (.533)	
Assists		
LaTora Duff	1st (8.7)	
Jaedyn De La Cerdá	11th (3.0)	
Steals		
Shaiquel McGruder	3rd (2.7)	
Aniyah Augmon	6th (2.3)	
Jaedyn De La Cerdá	15th (1.7)	
Blocked Shots		
Antonia Anderson	3rd (1.7)	
LaTora Duff	3rd (1.7)	
Assist/Turnover Ratio		
LaTora Duff	1st (14.0)	
Jaedyn De La Cerdá	12th (1.5)	
3-Point FG Made		
Jaedyn De La Cerdá	6th (2.0)	
LaTora Duff	13th (1.7)	

NCAA STATISTICS

TEAM

Def. Rebounds per Game	23rd
Assists	31st
Scoring Offense	33rd
Assists per Game	37th
FG % Defense	38th
Scoring Margin	39th
3-pt. FG Made	42nd
Rebounds per Game	42nd
FG %	48th

INDIVIDUAL

Assist/Turnover Ratio	
LaTora Duff	1st (26.0)
Assists	
LaTora Duff	5th (26)
Assists per Game	
LaTora Duff	6th (8.7)
FG %	
Shaiquel McGruder	13th (71.4)
FG Made	
Shaiquel McGruder	18th (25)

2021-22 MW Players of the Week

WEEK 1 (11/15/21)

PLAYER: Desi-Rae Young, C, UNLV
FRESHMAN: Viané Cumber, G, UNM



THE UNIVERSITY OF NEW MEXICO

2021-22 WOMEN'S BASKETBALL



SERIES HISTORY

HOUSTON (5-3)			
H: 4-0; A: 1-2; N: 0-1			
12/5/81	L	85-68	N
12/19/98	W	77-61	H
11/29/99	L	72-51	A
3/15/01	W	72-49	H
1/2/12	W	70-54	H
11/30/12	L	77-62	A
11/24/18	W (2OT)	89-84	A
11/12/19	W	86-67	H

STAT COMPARISON

UH		UNM
66.0	Points Per Game	85.0
37.2	FG%	47.7
26.7	3FG%	34.2
70.0	FT%	68.8
5.3	Made 3-pt PG	8.3
44.7	Rebounds PG	46.3
23.0	Turnovers PG	15.3
10.0	Assists PG	19.0
3.7	Blocks PG	3.3
9.3	Steals PG	11.3
63.3	Scoring Defense	55.0
38.4	FG% Defense	30.9
20.4	3FG% Defense	29.4
+6.3	Rebound Margin	+7.3

Blair/ Hill (9.7)
Tatyana Hill (11.0)
Laila Blair (2.0)
Laila Blair (2.3)
Kamryn Jones (1.3)

TEAM LEADERS

POINTS	Shaquell McGruder (19.0)
REBOUNDS	Antonia Anderson (6.7)
ASSISTS	LaTora Duff (8.7)
STEALS	Shaquell McGruder (2.7)
BLOCKS	Anderson/To. Duff (1.7)

UNM STARTING LINEUPS

Game	G	G	G	F	F
Lamar	Tora Duff	De La Cerda	Seren	Anderson	McGruder
Northern N.M.	Tora Duff	De La Cerda	Cumber	Anderson	McGruder
Prairie View	Tora Duff	De La Cerda	Tay Duff	Anderson	McGruder

UNM STARTING LINEUPS (RECORD)

Seren, LaTora Duff, De La Cerda, Anderson, McGruder1-0
Cumber, LaTora Duff, De La Cerda, Anderson, McGruder1-0
Tay Duff, Tora Duff, De La Cerda, Anderson, McGruder.....1-0

DOUBLE-DOUBLE TRACKER

Nevaeh Parkinson..... 11 pts, 11 reb. Northern N.M.
LaTora Duff 17 pts, 12 assts..... Prairie View

CAREER DOUBLE-DOUBLES

	2021-22	Career
Antonia Anderson.....	0	3
Jaedyn De La Cerda	0	1
Shaquell McGruder	0	1
Nevaeh Parkinson.....	1	1
LaTora Duff	1	1

20-POINT TRACKER

Shaquell McGruder 30 ptsPrairie View

MOUNTAIN WEST STANDINGS

	CONFERENCE						OVERALL							
Team (AP/Coaches)	W	L	Pct.	Home	Away	Neutral	W	L	Pct.	Home	Away	Neutral	Last 10	Strk
Colorado State	0	0	.000	0	0-0	0-0	3	0	1.000	3-0	0-0	0-0	6-4	W3
New Mexico	0	0	.000	0	0-0	0-0	3	0	1.000	3-0	0-0	0-0	8-2	W3
Fresno State	0	0	.000	0	0-0	0-0	2	1	.667	1-0	1-1	0-0	5-5	W1
San Diego State	0	0	.000	0	0-0	0-0	2	1	.667	1-0	1-1	0-0	6-4	L1
UNLV	0	0	.000	0	0-0	0-0	2	1	.667	1-0	1-1	0-0	7-3	L1
Utah State	0	0	.000	0	0-0	0-0	2	1	.667	2-0	0-1	0-0	2-8	L1
Boise State	0	0	.000	0	0-0	0-0	1	1	.500	1-1	0-0	0-0	6-4	W1
Wyoming	0	0	.000	0	0-0	0-0	1	1	.500	1-1	0-0	0-0	7-3	L1
Air Force	0	0	.000	0	0-0	0-0	1	2	.333	1-1	0-1	0-0	4-6	L2
San José State	0	0	.000	0	0-0	0-0	1	3	.250	0-1	1-2	0-0	3-5	L1
Nevada	0	0	.000	0	0-0	0-0	0	2	.000	0-1	0-1	0-0	6-4	L3



THE UNIVERSITY OF NEW MEXICO

2021-22 WOMEN'S BASKETBALL



NUMERICAL

#	NAME	POS	HT	YR	B/T	HOMETOWN (PREVIOUS SCHOOL)
1	Rebeka Renczes	PG	5-7	Fr.		Szekszard, Hungary/ Garay Janos Secondary School
4	LaTascya Duff	G	5-7	Sr.		Samson, Ala. / Shelton State CC
5	LaTora Duff	G	5-7	Sr.		Samson, Ala. / Shelton State CC
10	Kath van Bennekomp	G	5-9	So.		Gorinchem, The Netherlands / Lyceum Oudehoven
11	Zeyno Şeren	G	5-10	Fr.		Ankara, Turkey/ TED Ankara College Private High School
12	Aniyah Augmon	G	5-8	Fr.		San José, Calif./ Woodside Priory School
13	Shaiquell McGruder	F	6-0	Sr.		Trotwood, Ohio / Trotwood-Madison HS
21	Mackenzie Curtis	G	5-9	Fr.		Lakeside, Calif. / El Capitan HS
23	Jaedyn De La Cerda	G	5-6	Sr.		Roswell, N.M. / Roswell HS
30	Paula Reus	F	6-1	Fr.		Palma de Mallorca, Spain/ IES Joaquim Blume
32	Antonia Anderson	G/F	6-2	Sr.		Cibolo, Texas / Byron P. Steele II HS
33	Vianè Cumber	G	5-10	Fr.		Albuquerque, N.M. / Sandia HS
34	Nevaeh Parkinson	F/C	6-3	So.		Dallas, Texas / John Paul II HS

ALPHABETICAL

#	NAME	POS	HT	YR	B/T	HOMETOWN (PREVIOUS SCHOOL)
32	Antonia Anderson	G/F	6-2	Sr.		Cibolo, Texas / Byron P. Steele II HS
12	Aniyah Augmon	G	5-8	Fr.		San José, Calif./ Woodside Priory School
33	Vianè Cumber	G	5-10	Fr.		Albuquerque, N.M. / Sandia HS
21	Mackenzie Curtis	G	5-9	Fr.		Lakeside, Calif. / El Capitan HS
23	Jaedyn De La Cerda	G	5-6	Sr.		Roswell, N.M. / Roswell HS
4	LaTascya Duff	G	5-7	Sr.		Samson, Ala. / Shelton State CC
5	LaTora Duff	G	5-7	Sr.		Samson, Ala. / Shelton State CC
11	Zeyno Şeren	G	5-10	Fr.		Ankara, Turkey/ TED Ankara College Private High School
13	Shaiquell McGruder	F	6-0	Sr.		Trotwood, Ohio / Trotwood-Madison HS
34	Nevaeh Parkinson	F/C	6-3	So.		Dallas, Texas / John Paul II HS
1	Rebeka Renczes	PG	5-7	Fr.		Szekszard, Hungary/ Garay Janos Secondary School
30	Paula Reus	F	6-1	Fr.		Palma de Mallorca, Spain/ IES Joaquim Blume
10	Kath van Bennekomp	G	5-9	So.		Gorinchem, The Netherlands / Lyceum Oudehoven

PRONUNCIATION GUIDE

1	Rebeka RENCZES	WREN-sesh
4	LATASCYA Duff	La-TAY-see-uh
10	Kath VAN BENNEKOM	van-ben-e-kom
11	ZEYNO SEREN	ZAY-no (like say no) SHA-wren
13	SHAIQUEL McGruder	Shy-kwell
23	JAEDYN De La Cerda	JAY-den
30	Paula REUS	Rey-OOSE
34	NEVAEH Parkinson	Nuh-VAY-uh

BY ELIGIBILITY

Seniors (5)

4	LaTascya Duff	G
5	LaTora Duff	G
13	Shaiquell McGruder	F
23	Jaedyn De La Cerda	G
32	Antonia Anderson	G/F

Sophomores (2)

15	Kath van Bennekomp	G
34	Nevaeh Parkinson	F/C

Freshmen (6)

1	Rebeka Renczes	PG
11	Zeyno Seren	G
12	Aniyah Augmon	G
21	Mackenzie Curtis	G
30	Paula Reus	F
33	Vianè Cumber	G

HOME STATE

Alabama (2)

4	LaTascya Duff	G
5	LaTora Duff	G

California (2)

12	Aniyah Augmon	G
21	Mackenzie Curtis	G

New Mexico (2)

23	Jaedyn De La Cerda	G
33	Vianè Cumber	G

Ohio (1)

13	Shaiquell McGruder	F
----	--------------------	---

Texas (2)

32	Antonia Anderson	G/F
34	Nevaeh Parkinson	F/C

INTERNATIONAL

1	Rebeka Renczes (Hungary)	PG
10	Kath van Bennekomp (The Netherlands)	G
11	Zeyno Seren (Turkey)	G
30	Paula Reus (Spain)	F

STARTERS RETURNING (4)

No.	Name	Pos.	Cls.	Pts.	Reb.	Ast.	FG%	3FG%
5	LaTora Duff	G	Sr.	8.0	3.4	78	.445	.333
13	Shaiquell McGruder	F	Sr.	9.1	6.0	15	.606	.368
23	Jaedyn De La Cerda	G	Sr.	15.0	5.2	47	.437	.323
32	Antonia Anderson	F	Sr.	12.1	6.2	37	.490	.328

OTHER LETTERWINNERS RETURNING (3)

No.	Name	Pos.	Cls.	Pts.	Reb.	Ast.	FG%	3FG%
4	LaTascya Duff	G	Sr.	14.9	3.0	39	.445	.400
10	Kath van Bennekomp	G	So.	1.6	1.8	4	.250	.167
34	Nevaeh Parkinson	F/C	So.	0.6	0.8	0	.222	.200

STARTERS LOST (1)

No.	Name	Pos.	Class	Pts.	Ast.	FG%	3-FG%	FT%
3	Ahlise Hurst	G/F	Jr.	12.4	49	.376	.338	.771

OTHER LETTERWINNERS LOST (5)

No.	Name	Pos.	Class
1	Corina Carter	PG	So.
3	Ahlise Hurst	G/F	Jr.
10	Celine Dupont	F/C	R-Fr.
14	Azaria Robinson	F	So.
24	Autumn Watts	F	So.

NEWCOMERS (6)

No.	Name	Pos.	Class
1	Rebeka Renczes	PG	Fr.
11	Zeyno Seren	G	Fr.
12	Aniyah Augmon	G	Fr.
21	Mackenzie Curtis	G	Fr.
30	Paula Reus	F	Fr.
33	Vianè Cumber	G	Fr.



THE UNIVERSITY OF NEW MEXICO

2021-22 WOMEN'S BASKETBALL



MIKE BRADBURY

RECORD AT UNM: 97-55 (6TH SEASON)
CAREER RECORD: 275-172 (15TH SEASON)

NOTEWORTHY :

- Named the sixth head coach in program history on March 31, 2016
- Led UNM to 25 wins in 2017-18; tied for second-most wins in program history
- Spent six years at Wright State (2010-16) and went 128-73 for the Raiders
- Most single-season wins in Wright State history (26)
- Five 20-win seasons at Wright State with five postseason appearances

Mike Bradbury enters his sixth season as head coach for The University of New Mexico women's basketball team. In his previous five seasons at the helm, Bradbury has guided the Lobos to a 94-55 (.631) overall record. Twice in his tenure, in 2017-18 and 2018-19, the Lobos eclipsed the 20-win mark and totaled 49 victories over that time. The consecutive 20-plus win seasons under Bradbury are the first for the program since the 2007-08 – 2008-09 seasons.

In his most recent season at the helm of the Lobos, Bradbury led the Lobos to a Mountain West regular season championship, the first outright in program history and the first regular season title since the 2004-05 season. In addition, the Lobos were selected for the WNIT for the third time in four years.

The Lobos produced one of the most prolific offenses not only in the conference, but in the country, finishing among the top 25 in several categories. Among them, UNM finished fourth in the NCAA in made three-pointers per game (10.2), sixth in assist-turnover ratio (1.40), ninth in scoring offense (81.2 points per game), 14th in fewest turnovers per game (12.0) and assists per game (16.8) and 22nd in scoring margin (12.7). The Lobos led the Mountain West in scoring offense, scoring margin, assists per game, turnover margin, assist-turnover ratio and made three-pointers as well as second in field-goal percentage and steals per game.

UNM set a program record in scoring with 120 points against Arkansas-Pine Bluff on Dec. 17, 2020 and in the process, made 17 three-pointers, falling just one short of tying the program record. Further, the Lobos registered 90-plus points in five games and 80-plus points in 11 of the 20 games on the season.

Four Lobos finished the 2020-21 season averaging double figures in points per game with six players finishing in double figures in scoring in two games (the only times it has been accomplished in program history), five players in five games and four in seven games.

As a result of UNM's successful season, five players were named to the All-Mountain West Team with LaTascya Duff also earning the superlative of Sixth Person of the Year. Duff was just the second Lobo to win the sixth person award. Making the all-conference team for the first time were Duff, Jaedyn De La Cerda and Antonia Anderson, as well as Shaiquel McGruder earning all-defensive and Ahlise Hurst earning the honorable mention distinction.

In his third year at the helm, Bradbury continued to put his mark on the program while also continuing to bring Lobo women's basketball back to national prominence. Overall, Bradbury's 2018-19 team went 24-7 and earned a bid to the WNIT for a second-straight season. It marked the first time since the 2008-09 – 2009-10 seasons that the program made consecutive trips to the postseason.

After dropping a one-possession game to Auburn in the preseason WNIT, the 2018-19 Lobos ripped off 11-straight wins to tie the program record and were on the cusp of cracking the national top-25 rankings as well by receiving votes from the WBCA during that stretch. Bradbury would also receive an individual plaudit from the WBCA last season as he was named as one of 13 finalists for the 2019 United States Marine Corps/WBCA National Coach of the Year Award. Impressively, Bradbury was the only coach from a non-Power 5 conference to be a finalist.

In his time at UNM, Bradbury has coached 13 All-Mountain West performers with Cherise Beynon, Jayla Everett, Jaia Nunn, Aisia Robertson and Richelle van der Keijl joining De La Cerda, Duff, McGruder, Hurst and Anderson in making the All-Mountain West Team. Tesha Buck, Mykiel Burleson and Nike McClure have also earned MW recognition with Buck being the 2017-18 Newcomer of the Year, Burleson being named to the All-Freshman team in 2016-17 and McClure landing on the All-Defensive team in 2018-19.

In terms of major individual awards, Bradbury has coached the league's

Newcomer of the Year each of his first three seasons in charge of the Lobos with van der Keijl earning the award in 2016-17, Buck in 2017-18 and Robertson in 2018-19. Additionally, Bradbury has coached the MW Player of the Year in Nunn (2018-19) and the Freshman of the Year in Everett (2018-19) as well as Sixth Person of the Year in Duff (2020-21).

Further, a Lobo has been named Mountain West Player of the Week 11 times during his tenure.

In year two under Bradbury the Lobos had a breakout season, especially offensively as they ended the 2017-18 season averaging 80.4 points per game while also posting an impressive +9.7 scoring margin. Both marks led the Mountain West and the point-per-game total was 16th-best in NCAA DI last season.

A significant reason for the jump in offensive production was the fact that the Lobos were one of the most potent three-point shooting threats in the country. For the season, the Lobos attempted the eighth-most overall trifectas in DI hoisting 932 long distance shots. Successful 34% of the time, the Lobos made the 11th most 3's burying 319.

Prior to coming to Albuquerque, Bradbury built a





THE UNIVERSITY OF NEW MEXICO

2021-22 WOMEN'S BASKETBALL



successful nine year run as a Division-I head coach with stops at Morehead State (Morehead, Ky.) and Wright State (Dayton, Ohio). Most recently with the Raiders, Bradbury led his squad to five 20-win seasons, including each of his final three seasons. During that time, Wright State has amassed a 75-28 record, the best amongst the 13 Division I programs in the state of Ohio.

Overall at Wright State, Bradbury had five winning seasons, all of which were 20-plus win seasons, in six years- a feat made all the more remarkable as Wright State had just one winning season in the previous 22 before his arrival. In the previous 37 seasons of women's basketball at Wright State, the Raider program had tallied 20 wins just once before Bradbury led the team to 20 wins in five of his six seasons.

His most prominent three-year run at Wright State started in 2013-14, when the Raiders won a school-record 26 games on the way to a 26-9 season and the program's first-ever appearance in the NCAA Tournament. That season saw the Raiders finish second in the Horizon League and win its first Horizon League Tournament. It also featured the program's first road win at perennial league power Wisconsin-Green Bay. Kim Demmings was named the Horizon League Player of the Year and Tournament MVP, and it marked the first time in school history the program had a pair of first team All-Conference selections.

He followed up that by earning Horizon League Coach of the Year in 2014-15 after a 25-9 season that saw his squad lose its Horizon League Preseason Player of the Year less than two minutes into the season opener. The Raiders just missed a second straight NCAA Tournament appearance, falling in overtime in the conference championship game. The team did make its first appearance in the Women's NIT as the league's automatic qualifier, and in 2015-16, the team made

it back-to-back WNIT appearances after a 24-11 season, earning the program's first at-large bid.

Those three seasons are the three winningest seasons in the history of Wright State women's basketball.

In his first two seasons at Wright State, he led the team to a 20-13 campaign and a 21-13 mark and berths in the Women's Basketball Invitational, the first NCAA Division I postseason berths for the program. Overall, Bradbury has coached three Horizon League Players of the Year (all in his last three seasons), six first-team All-Horizon League players, three second-team members and four All-Freshman team members.

Prior to his time at Wright State, Bradbury was the head coach at Morehead State where he led the Division I program to a 50-44 mark in three seasons, including a watershed 22-11 season, which was the second-most wins in Morehead State history and the most wins by the Eagles in the previous 38 years. At Morehead State he coached one Ohio Valley Conference Player of the Year, along with one first-team All-OVC pick (two seasons) and three second-team All-OVC picks.

Bradbury also spent time as an assistant coach at Xavier (2002-06), Cincinnati (1996-02), VCU (1995-96), East Tennessee State (1994-95) and Chattanooga (1991-94). In his 29 seasons as an assistant and as a head coach, Bradbury has had 27 winning seasons.

THE BRADBURY FILE

EDUCATION

UT-Chattanooga - B.S. Recreation (1993)

COACHING EXPERIENCE

1991-93	Student Assistant	Chattanooga
1993-94	Assistant Coach	Chattanooga
1994-95	Assistant Coach	East Tennessee
1995-96	Assistant Coach	VCU
1996-02	Assistant Coach	Cincinnati
2002-07	Assistant Coach	Xavier
2007-10	Head Coach	Morehead State
2010-16	Head Coach	Wright State
2016-pres.	Head Coach	New Mexico

HEAD COACHING RECORD

2007-10	Morehead State	50-44 (.532)
2010-16	Wright State	128-73 (.637)
2016-pres.	New Mexico	97-55 (.638)
15 years		275-172 (.615)

CAREER HEAD COACHING YEAR-BY-YEAR

2007-08	11-19 (9-11)	Morehead State
2008-09	17-14 (11-7)	Morehead State
2009-10	22-11 (14-4)	Morehead State
2010-11	20-13 (11-7)	Wright State
2011-12	21-13 (12-6)	Wright State
2012-13	12-18 (6-10)	Wright State
2013-14	26-9 (12-4)	Wright State
2014-15	25-9 (12-4)	Wright State
2015-16	24-11 (12-6)	Wright State
2016-17	15-15 (10-8)	New Mexico
2017-18	25-11 (10-8)	New Mexico
2018-19	24-7 (14-4)	New Mexico
2019-20	15-17 (6-12)	New Mexico
2020-21	15-5 (11-3)	New Mexico
2021-22	3-0 (0-0)	New Mexico
Total	275-172 (150-94)	



THE UNIVERSITY OF NEW MEXICO

2021-22 WOMEN'S BASKETBALL



1
Rebeka Renczes
PG | 5-7 | FR.
Szekszard, Hungary



4
LaTascya Duff
G | 5-7 | SR.
Samson, Ala.



5
LaTora Duff
G | 5-7 | SR.
Samson, Ala.



10
Kath van Bennekom
G | 5-9 | SO.
Gorinchem, The Netherlands



11
Zeyno Şeren
G | 5-10 | FR.
Ankara, Turkey



12
Aniyah Augmon
G | 5-8 | FR.
San José, Calif.



13
Shaiquel McGruder
F | 6-0 | SR.
Trotwood, Ohio



21
Mackenzie Curtis
G | 5-9 | FR.
Lakeside, Calif.



23
Jaedyn De La Cerda
G | 5-7 | SR.
Roswell, N.M.



30
Paula Reus
F | 6-1 | FR.
Palma de Mallorca,
Spain



32
Antonia Anderson
G/F | 6-2 | SR.
Cibolo, Texas



33
Vianè Cumber
G | 5-10 | FR.
Albuquerque, N.M.



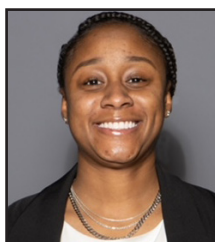
34
Nevaeh Parkinson
F/C | 6-3 | SO.
Dallas, Texas



Mike Bradbury
Head Coach



Valerie King
Assistant Coach



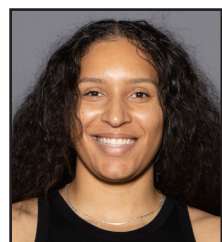
Symone Denham
Assistant Coach



Kabrina Merriweather
Assistant Coach



Ryan Freeman
Special Assistant to the
Head Coach



Nike McClure
Director of Player
Development



THE UNIVERSITY OF NEW MEXICO

2021-22 WOMEN'S BASKETBALL



#1

REBEKA RENCZES

PG | 5-7 | FR | Szekszard, Hungary (Garay Janos Secondary)



PPG	FG %	3PT %	FT %	RPG	APG	SPG	BPG	MPG
0.0	.000	.000	.000	2.0	3.0	1.0	0.0	17.9

NOTEWORTHY

- » Averaged 22.1 points, 9.0 assists and 6.3 steals during the 2019 season
- » Averaged 17.3 points, 6.1 assists and 2.9 steals during the 2021 season
- » Played on the U16 Hungary National Team and competed in the 2019 FIBA U16 Women's European Championship
- » Averaged 6.0 points, 2.9 assists, 2.3 rebounds, 1.1 steals while averaging 21.5 minutes with the national team

Renczes' Top Performances

Points	Season	
	Career	
FGM	Season	
	Career	
FGA	Season	3 vs Northern N.M. (11/12/21)
	Career	Same
3PT FGM	Season	
	Career	
3PT FGA	Season	2 vs Northern N.M. (11/12/21)
	Career	Same
FTM	Season	
	Career	
FTA	Season	
	Career	
Rebounds	Season	2 vs Northern N.M. (11/12/21)
	Career	Same
Assists	Season	3 vs Northern N.M. (11/12/21)
	Career	Same
Blocks	Season	
	Career	
Steals	Season	1 vs Northern N.M. (11/12/21)
	Career	Same
Turnovers	Season	3 vs Northern N.M. (11/12/21)
	Career	Same
Min. Played	Season	18 vs Northern N.M. (11/12/21)
	Career	Same

GAME-BY-GAME STATISTICS

Opponent	Date	GS	MIN	Total		3-Pointers		Free throws		Rebounds				PF	A	TO	BLK	STL	PTS	AVG
				FG-FGA	PCT	3FG-3FGA	PCT	FT-FTA	PCT	OFF	DEF	TOT	AVG							
Northern N.M.	11/12/2021		17:56	0-3	.000	0-2	.000	0-0	.000	0	2	2	2.0	1	3	3	0	1	0	0.0
Totals		0	17:56	0-3	.000	0-2	.000	0-0	.000	0	2	2	2.0	1	3	3	0	1	0	0.0

CAREER STATISTICS

SEASON	TEAM	GP-GS	MIN/AVG	Field Goals		3-Point		F-Throws		Rebounds				Scoring						
				FG-FGA	FG%	3FG-3FGA	3FG%	FT-FTA	FT%	OFF	DEF	TOT	AVG	PF-FO	A	TO	BLK	STL	PTS	AVG
2021-22	UNM	1-0	18/17.9	0-3	.000	0-2	.000	0-0	.000	0	2	2	2.0	1-0	3	3	0	1	0	0.0
TOTAL		1-0	18/17.9	0-3	.000	0-2	.000	0-0	.000	0	2	2	2.0	1-0	3	3	0	1	0	0.0



THE UNIVERSITY OF NEW MEXICO

2021-22 WOMEN'S BASKETBALL



#4

LaTASYA DUFF

G | 5-7 | SR | Samson, Ala. (Shelton State CC)



PPG	FG %	3PT %	FT %	RPG	APG	SPG	BPG	MPG
3.0	.500	.500	.000	0.0	0.5	0.5	0.0	11.3

NOTEWORTHY

- » Named Mountain West Sixth Person of the Year
- » MW All-Conference Team
- » Named Mountain West Preseason Newcomer of the Year
- » Named Mountain West Player of the Week twice (Dec. 21 and March 2)
- » Second on the team in points, ppg, field-goal attempts, free-throw percentage
- » Led the Lobos in 3-point field-goal percentage, 3-point field-goal attempts and made 3-pointers, and free throws made

Duff's Top Performances

Points	Season	3 - done twice
	Career	31 at Air Force (2/23/21)
FGM	Season	1 - done twice
	Career	11 at Air Force (2/23/21)
FGA	Season	3 vs Prairie View (11/16/21)
	Career	20 at Air Force (2/23/21)
3PT FGM	Season	1 - done twice
	Career	6 - done four times
3PT FGA	Season	3 vs Prairie View (11/16/21)
	Career	12 - done twice
FTM	Season	
	Career	8 - done twice
FTA	Season	
	Career	10 at SHSU (12/6/20)
Rebounds	Season	
	Career	7 - done twice
Assists	Season	1 vs Prairie View (11/16/21)
	Career	6 at Midwestern St. (12/4/20)
Blocks	Season	
	Career	2 vs. Colorado State (3/5/21)
Steals	Season	1 vs Prairie View (11/16/21)
	Career	5 at Air Force (2/23/21)
Turnovers	Season	0 - done twice
	Career	0 - done six times
Min. Played	Season	19 vs Prairie View (11/16/21)
	Career	38 at Air Force (2/23/21)

GAME-BY-GAME STATISTICS

Opponent	Date	GS	MIN	Total		3-Pointers		Free throws		Rebounds				PF	A	TO	BLK	STL	PTS	AVG
				FG-FGA	PCT	3FG-3FGA	PCT	FT-FTA	PCT	OFF	DEF	TOT	AVG							
Northern N.M.	11/12/2021		04:00	1-1	1.000	1-1	1.000	0-0	.000	0	0	0	0.0	0	0	0	0	0	3	3.0
Prairie View	11/16/2021	*	18:32	1-3	.333	1-3	.333	0-0	.000	0	0	0	0.0	0	1	0	0	1	3	3.0
Totals			1	2-4	.500	2-4	.500	0-0	.000	0	0	0	0.0	0	1	0	0	1	6	3.0

CAREER STATISTICS (AT UNM)

SEASON	TEAM	GP-GS	MIN/AVG	Field Goals		3-Point		F-Throws		Rebounds				Scoring						
				FG-FGA	FG%	3FG-3FGA	3FG%	FT-FTA	FT%	OFF	DEF	TOT	AVG	PF-FO	A	TO	BLK	STL	PTS	AVG
2020-21	UNM	20-4	495/24.8	93-209	.445	52-130	.400	59-72	.819	13	47	60	3.0	37-0	39	22	4	17	297	14.9
2021-22	UNM	2-1	23/11.3	2-4	.500	2-4	.500	0-0	.000	0	0	0	0.0	0-0	1	0	0	1	6	3.0
TOTAL		22-5	518/23.5	95-213	.446	54-134	.403	59-72	.819	13	47	60	2.7	37-0	40	22	4	18	303	13.8



THE UNIVERSITY OF NEW MEXICO

2021-22 WOMEN'S BASKETBALL



#5

LaTORA DUFF

G | 5-7 | SR | Samson, Ala. (Shelton State CC)



PPG	FG %	3PT %	FT %	RPG	APG	SPG	BPG	MPG
11.3	.333	.333	.750	4.3	8.7	0.0	1.7	29.8

NOTEWORTHY

- » Started in all 20 games for the Lobos last season
- » Led the Lobos in assists and third in steals
- » Top 5 in free throws made, rebounds, 3-pointers made and attempted

Duff's Top Performances

Points	Season	17 vs Prairie View (11/16/21)
	Career	Same
FGM	Season	5 vs Prairie View (11/16/21)
	Career	6 at UNLV (1/17/21)
FGA	Season	13 vs Prairie View (11/16/21)
	Career	Same
3PT FGM	Season	3 vs Prairie View (11/16/21)
	Career	3 - done five times
3PT FGA	Season	9 vs Lamar (11/9/21)
	Career	Same
FTM	Season	4 vs Prairie View (11/16/21)
	Career	6 at Midwestern St.(12/4/20)
FTA	Season	6 vs Prairie View (11/16/21)
	Career	9 at Midwestern St.(12/4/20)
Rebounds	Season	8 vs Prairie View (11/16/21)
	Career	Same
Assists	Season	12 vs Prairie View (11/16/21)
	Career	Same
Blocks	Season	4 vs Prairie View (11/16/21)
	Career	Same
Steals	Season	
	Career	4 at Midwestern St.(12/4/20)
Turnovers	Season	0 - done twice
	Career	0 - done seven times
Min. Played	Season	37 vs Prairie View (11/16/21)
	Career	37 - done twice

GAME-BY-GAME STATISTICS

Opponent	Date	GS	MIN	Total		3-Pointers		Free throws		Rebounds				PF	A	TO	BLK	STL	PTS	AVG
				FG-FGA	PCT	3FG-3FGA	PCT	FT-FTA	PCT	OFF	DEF	TOT	AVG							
Lamar University	11/09/2021	*	34:32	3-11	.273	2-9	.222	2-2	1.000	0	3	3	3.0	3	9	1	1	0	10	10.0
Northern N.M.	11/12/2021	*	17:39	2-6	.333	0-0	.000	3-4	.750	0	2	2	2.5	0	5	0	0	0	7	8.5
Prairie View	11/16/2021	*	37:20	5-13	.385	3-6	.500	4-6	.667	2	6	8	4.3	2	12	0	4	0	17	11.3
Totals			3 89:31	10-30	.333	5-15	.333	9-12	.750	2	11	13	4.3	5	26	1	5	0	34	11.3

CAREER STATISTICS (AT UNM)

				Field Goals		3-Point		F-Throws		Rebounds										Scoring	
SEASON	TEAM	GP-GS	MIN/AVG	FG-FGA	FG%	3FG-3FGA	3FG%	FT-FTA	FT%	OFF	DEF	TOT	AVG	PF-FO	A	TO	BLK	STL	PTS	AVG	
2020-21	UNM	20-20	542/27.1	61-137	.445	22-66	.333	16-24	.667	6	62	68	3.4	27-0	78	39	3	25	160	8.0	
2021-22	UNM	3-3	90/29.8	10-30	.333	5-15	.333	9-12	.750	2	11	13	4.3	5-0	26	1	5	0	34	11.3	
TOTAL		23-23	631/27.4	71-167	.425	27-81	.333	25-36	.694	8	73	81	3.5	32-0	104	40	8	25	194	8.4	



THE UNIVERSITY OF NEW MEXICO

2021-22 WOMEN'S BASKETBALL



#10

KATH VAN BENNEKOM

G | 5-9 | SO | Gorinchem, The Netherlands



PPG	FG %	3PT %	FT %	RPG	APG	SPG	BPG	MPG
4.0	.800	.000	.667	2.3	0.3	0.7	0.0	12.9

NOTEWORTHY

- » Competed for Lyceum Oudehoven and also for the club team Binneland where she helped her team to the U16 Championship in 2016
- » Led her U20 team to the semi-finals and the Final Four in 2017, 2018, 2019 and 2020
- » Helped her team to the U20 Cup Finals twice (2017, 2020).

van Bennekom's Top Performances

Points	Season	7 vs Northern N.M. (11/12/21)
	Career	9 at Midwestern St.(12/4/20)
FGM	Season	2 - done twice
	Career	Same
FGA	Season	3 vs Lamar (11/9/21)
	Career	5 at Midwestern St.(12/4/20)
3PT FGM	Season	
	Career	1 - done twice
3PT FGA	Season	
	Career	4 at Midwestern St.(12/4/20)
FTM	Season	3 vs Northern N.M. (11/12/21)
	Career	6 at Midwestern St.(12/4/20)
FTA	Season	4 vs Northern N.M. (11/12/21)
	Career	8 at Midwestern St.(12/4/20)
Rebounds	Season	4 vs Northern N.M. (11/12/21)
	Career	7 at San Diego St. (2/5/21)
Assists	Season	1 vs Northern N.M. (11/12/21)
	Career	1 - done five times
Blocks	Season	
	Career	
Steals	Season	1 - done twice
	Career	2 at Utah State (2/28/21)
Turnovers	Season	0 vs Northern N.M. (11/12/21)
	Career	0 - done 13 times
Min. Played	Season	20 vs Lamar (11/9/21)
	Career	Same

GAME-BY-GAME STATISTICS

Opponent	Date	GS	MIN	Total		3-Pointers		Free throws		Rebounds				PF	A	TO	BLK	STL	PTS	AVG
				FG-FGA	PCT	3FG-3FGA	PCT	FT-FTA	PCT	OFF	DEF	TOT	AVG							
Lamar University	11/09/2021		19:53	2-3	.667	0-0	.000	0-0	.000	3	0	3	3.0	4	0	3	0	0	4	4.0
Northern N.M.	11/12/2021		12:45	2-2	1.000	0-0	.000	3-4	.750	3	1	4	3.5	1	1	0	0	1	7	5.5
Prairie View	11/16/2021		06:04	0-0	.000	0-0	.000	1-2	.500	0	0	0	2.3	1	0	1	0	1	1	4.0
Totals		0	38:42	4-5	.800	0-0	.000	4-6	.667	6	1	7	2.3	6	1	4	0	2	12	4.0

CAREER STATISTICS

SEASON	TEAM	GP-GS	MIN/AVG	Field Goals		3-Point		F-Throws		Rebounds				Scoring						
				FG-FGA	FG%	3FG-3FGA	3FG%	FT-FTA	FT%	OFF	DEF	TOT	AVG	PF-FO	A	TO	BLK	STL	PTS	AVG
2020-21	UNM	16-0	118/7.4	5-20	.250	2-12	.167	13-20	.650	10	19	29	1.8	13-0	4	4	0	2	25	1.6
2021-22	UNM	3-0	39/12.9	4-5	.800	0-0	.000	4-6	.667	6	1	7	2.3	6-0	1	4	0	2	12	4.0
TOTAL		19-0	156/8.2	9-25	.360	2-12	.167	17-26	.654	16	20	36	1.9	19-0	5	8	0	4	37	1.9



THE UNIVERSITY OF NEW MEXICO

2021-22 WOMEN'S BASKETBALL



#11

ZEYNO SEREN

G | 5-10 | FR | Ankara, Turkey (TED Ankara College Private HS)



PPG	FG %	3PT %	FT %	RPG	APG	SPG	BPG	MPG
3.5	.600	.000	.333	4.0	1.0	0.5	0.0	15.2

NOTEWORTHY

- » Averaged 16.2 points, 5.1 assists, 7.0 rebounds and 3.0 steals
- » Competed for Turkey at the U16 European Championship in 2019 and the Baku Youth Olympics
- » Played for BOTAS Sports Club

Seren's Top Performances

Points	Season	6 vs Northern N.M. (11/12/21)
	Career	Same
FGM	Season	3 vs Northern N.M. (11/12/21)
	Career	Same
FGA	Season	4 vs Northern N.M. (11/12/21)
	Career	Same
3PT FGM	Season	
	Career	
3PT FGA	Season	1 vs Lamar (11/9/21)
	Career	Same
FTM	Season	1 vs Lamar (11/9/21)
	Career	Same
FTA	Season	2 vs Lamar (11/9/21)
	Career	Same
Rebounds	Season	4 - done twice
	Career	Same
Assists	Season	1 - done twice
	Career	Same
Blocks	Season	
	Career	
Steals	Season	1 vs Northern N.M. (11/12/21)
	Career	Same
Turnovers	Season	0 - done twice
	Career	Same
Min. Played	Season	17 vs Northern N.M. (11/12/21)
	Career	Same

GAME-BY-GAME STATISTICS

Opponent	Date	GS	MIN	Total		3-Pointers		Free throws		Rebounds				PF	A	TO	BLK	STL	PTS	AVG
				FG-FGA	PCT	3FG-3FGA	PCT	FT-FTA	PCT	OFF	DEF	TOT	AVG							
Lamar University	11/09/2021	*	13:51	0-1	.000	0-1	.000	1-2	.500	0	4	4	4.0	1	1	0	0	0	1	1.0
Northern N.M.	11/12/2021		16:36	3-4	.750	0-0	.000	0-1	.000	1	3	4	4.0	2	1	0	0	1	6	3.5
Totals		1	30:27	3-5	.600	0-1	.000	1-3	.333	1	7	8	4.0	3	2	0	0	1	7	3.5

CAREER STATISTICS

SEASON	TEAM	GP-GS	MIN/AVG	Field Goals		3-Point		F-Throws		Rebounds				Scoring						
				FG-FGA	FG%	3FG-3FGA	3FG%	FT-FTA	FT%	OFF	DEF	TOT	AVG	PF-FO	A	TO	BLK	STL	PTS	AVG
2021-22	UNM	2-1	30/15.2	3-5	.600	0-1	.000	1-3	.333	1	7	8	4.0	3-0	2	0	0	1	7	3.5
TOTAL		2-1	30/15.2	3-5	.600	0-1	.000	1-3	.333	1	7	8	4.0	3-0	2	0	0	1	7	3.5



THE UNIVERSITY OF NEW MEXICO

2021-22 WOMEN'S BASKETBALL



#12

ANIYAH AUGMON

G | 5-8 | FR | San José, Calif. (Woodside Priory School)



PPG	FG %	3PT %	FT %	RPG	APG	SPG	BPG	MPG
5.0	.833	.500	.800	5.3	1.3	2.3	0.0	19.2

NOTEWORTHY

- » Averaged 14.0 points, 7.0 rebounds, 4.0 assists and 3.0 steals throughout her high school career
- » Helped lead her teams to three CCS Championships (2017, 2018, 2019)
- » First team all-league in 2019, honorable mention in 2018 and second team all-league in 2017
- » Attended the Adidas All-American Camp
- » Competed for Peninsula Basketball Club where she averaged 15.0 points, 7.0 rebounds, 4.0 assists and 3.0 steals.

Augmon's Top Performances

Points	Season	8 vs Lamar (11/9/21)
	Career	Same
FGM	Season	3 vs Lamar (11/9/21)
	Career	Same
FGA	Season	3 - done twice
	Career	Same
3PT FGM	Season	1 vs Lamar (11/9/21)
	Career	Same
3PT FGA	Season	1 - done twice
	Career	Same
FTM	Season	2 vs Northern N.M. (11/12/21)
	Career	Same
FTA	Season	2 - done twice
	Career	Same
Rebounds	Season	6 - done twice
	Career	Same
Assists	Season	3 vs Northern N.M. (11/12/21)
	Career	Same
Blocks	Season	
	Career	
Steals	Season	3 - done twice
	Career	Same
Turnovers	Season	1 vs Prairie View (11/16/21)
	Career	Same
Min. Played	Season	23 vs Lamar (11/9/21)
	Career	Same

GAME-BY-GAME STATISTICS

Opponent	Date	GS	MIN	Total		3-Pointers		Free throws		Rebounds										
				FG-FGA	PCT	3FG-3FGA	PCT	FT-FTA	PCT	OFF	DEF	TOT	AVG	PF	A	TO	BLK	STL	PTS	AVG
Lamar University	11/09/2021		23:03	3-3	1.000	1-1	1.000	1-1	1.000	0	6	6	6.0	2	0	2	0	3	8	8.0
Northern N.M.	11/12/2021		16:24	2-3	.667	0-1	.000	2-2	1.000	0	4	4	5.0	2	3	3	0	1	6	7.0
Prairie View	11/16/2021		18:11	0-0	.000	0-0	.000	1-2	.500	0	6	6	5.3	3	1	1	0	3	1	5.0
Totals		0	57:38	5-6	.833	1-2	.500	4-5	.800	0	16	16	5.3	7	4	6	0	7	15	5.0

CAREER STATISTICS

				Field Goals		3-Point		F-Throws		Rebounds				Scoring						
SEASON	TEAM	GP-GS	MIN/AVG	FG-FGA	FG%	3FG-3FGA	3FG%	FT-FTA	FT%	OFF	DEF	TOT	AVG	PF-FO	A	TO	BLK	STL	PTS	AVG
2021-22	UNM	3-0	58/19.2	5-6	.833	1-2	.500	4-5	.800	0	16	16	5.3	7-0	4	6	0	7	15	5.0
TOTAL		3-0	58/19.2	5-6	.833	1-2	.500	4-5	.800	0	16	16	5.3	7-0	4	6	0	7	15	5.0



THE UNIVERSITY OF NEW MEXICO

2021-22 WOMEN'S BASKETBALL



#13

SHAIQUEL McGRUDER

F | 6-0 | SR | Trotwood, Ohio (Trotwood-Madison HS)



PPG	FG %	3PT %	FT %	RPG	APG	SPG	BPG	MPG
19.0	.714	1.00	.750	5.3	0.0	2.7	0.0	23.7

NOTEWORTHY

- » Named to MW All-Defensive Team
- » Started all 20 games as a junior
- » Two games with 10-plus rebounds as a junior, one double-double against Sam Houston State (13 rebounds, 17 points)
- » Four games with multiple blocks last season, including 5 blocks against Sam Houston State
- » 10 games with multiple steals with a season-high 4 against Fresno State
- » Nine games with 10-plus points
- » Led the team in blocked shots with 23 and was 6th in the MW in blocked shots per game

McGruder's Top Performances

Points	Season	30 vs Prairie View (11/16/21)
	Career	Same
FGM	Season	13 vs Prairie View (11/16/21)
	Career	Same
FGA	Season	18 vs Prairie View (11/16/21)
	Career	Same
3PT FGM	Season	1 vs Lamar (11/9/21)
	Career	2 at SHSU (12/6/20)
3PT FGA	Season	1 vs Lamar (11/9/21)
	Career	4 vs. Colorado St. (3/5/21)
FTM	Season	4 vs Prairie View (11/16/21)
	Career	Same
FTA	Season	4 - done twice
	Career	4 - done four times
Rebounds	Season	7 vs. Prairie View (11/16/21)
	Career	17 vs. Nevada (3/1/20)
Assists	Season	
	Career	4 vs. Fresno State (1/28/21)
Blocks	Season	
	Career	5 at SHSU (12/6/20)
Steals	Season	4 vs. Prairie View (11/16/21)
	Career	8 vs. West Virginia (11/29/19)
Turnovers	Season	0 vs. Northern N.M. (11/12/21)
	Career	0 - done 40 times
Min. Played	Season	29 vs. Prairie View (11/16/21)
	Career	34 at SHSU (12/6/20)

GAME-BY-GAME STATISTICS

Opponent	Date	GS	MIN	Total		3-Pointers		Free throws		Rebounds				PF	A	TO	BLK	STL	PTS	AVG	
				FG-FGA	PCT	3FG-3FGA	PCT	FT-FTA	PCT	OFF	DEF	TOT	AVG								
Lamar University	11/09/2021	*	22:09	7-7	1.000	1-1	1.000	0-0	.000	2	3	5	5.0	4	0	3	0	1	15	15.0	
Northern N.M.	11/12/2021	*	20:08	5-10	.500	0-0	.000	2-4	.500	4	0	4	4.5	1	0	0	0	3	12	13.5	
Prairie View	11/16/2021	*	28:48	13-18	.722	0-0	.000	4-4	1.000	2	5	7	5.3	0	0	2	0	4	30	19.0	
Totals			3	71:05	25-35	.714	1-1	1.000	6-8	.750	8	8	16	5.3	5	0	5	0	8	57	19.0

CAREER STATISTICS

SEASON	TEAM	GP-GS	MIN/AVG	Field Goals		3-Point		F-Throws		Rebounds				Scoring						
				FG-FGA	FG%	3FG-3FGA	3FG%	FT-FTA	FT%	OFF	DEF	TOT	AVG	PF-FO	A	TO	BLK	STL	PTS	AVG
2018-19	UNM	26-0	212/8.1	33-58	.569	0-0	.000	7-18	.389	32	39	71	2.7	17-0	3	7	14	24	73	2.8
2019-20	UNM	31-8	558/18.0	97-163	.595	1-10	.100	20-27	.741	66	108	174	5.6	44-0	8	29	26	38	215	6.9
2020-21	UNM	20-20	471/23.6	80-132	.606	7-19	.368	15-22	.682	42	77	119	6.0	40-0	15	30	23	30	182	9.1
2021-22	UNM	3-3	71/23.7	25-35	.714	1-1	1.000	6-8	.750	8	8	16	5.3	5-0	0	5	0	8	57	19.0
TOTAL		80-31	1312/16.4	235-388	.606	9-30	.300	48-75	.640	148	232	380	4.8	106-0	26	71	63	100	527	6.6



THE UNIVERSITY OF NEW MEXICO

2021-22 WOMEN'S BASKETBALL



#21

MACKENZIE CURTIS

G | 5-9 | FR | Lakeside, Calif. (El Capitan HS)



PPG	FG %	3PT %	FT %	RPG	APG	SPG	BPG	MPG
12.0	.300	.429	.750	3.0	2.0	0.0	0.0	19.1

NOTEWORTHY

- » Averaged 22.2 points, 9.5 rebounds, 3.3 assists, 3.5 steals and 1.0 blocks per game
- » Four-time team MVP, three-time league MVP, four-time San Diego Union Tribune Scholar-Athlete
- » Named First-Team All-CIF in 2020 and Second Team All-CIF in 2019
- » No. 1 scorer in San Diego for two years and No. 3 in California for scoring in the class of 2021

Curtis' Top Performances

Points	Season	12 vs Northern N.M. (11/12/21)
	Career	Same
FGM	Season	3 vs Northern N.M. (11/12/21)
	Career	Same
FGA	Season	10 vs Northern N.M. (11/12/21)
	Career	Same
3PT FGM	Season	3 vs Northern N.M. (11/12/21)
	Career	Same
3PT FGA	Season	7 vs Northern N.M. (11/12/21)
	Career	Same
FTM	Season	3 vs Northern N.M. (11/12/21)
	Career	Same
FTA	Season	4 vs Northern N.M. (11/12/21)
	Career	Same
Rebounds	Season	3 vs Northern N.M. (11/12/21)
	Career	Same
Assists	Season	2 vs Northern N.M. (11/12/21)
	Career	Same
Blocks	Season	
	Career	
Steals	Season	
	Career	
Turnovers	Season	2 vs Northern N.M. (11/12/21)
	Career	Same
Min. Played	Season	19 vs Northern N.M. (11/12/21)
	Career	Same

GAME-BY-GAME STATISTICS

Opponent	Date	GS	MIN	Total		3-Pointers		Free throws		Rebounds				PF	A	TO	BLK	STL	PTS	AVG
				FG-FGA	PCT	3FG-3FGA	PCT	FT-FTA	PCT	OFF	DEF	TOT	AVG							
Northern N.M.	11/12/2021		19:06	3-10	.300	3-7	.429	3-4	.750	1	2	3	3.0	0	2	2	0	0	12	12.0
Totals		0	19:06	3-10	.300	3-7	.429	3-4	.750	1	2	3	3.0	0	2	2	0	0	12	12.0

CAREER STATISTICS

SEASON	TEAM	GP-GS	MIN/AVG	Field Goals		3-Point		F-Throws		Rebounds				Scoring						
				FG-FGA	FG%	3FG-3FGA	3FG%	FT-FTA	FT%	OFF	DEF	TOT	AVG	PF-FO	A	TO	BLK	STL	PTS	AVG
2021-22	UNM	1-0	19/19.1	3-10	.300	3-7	.429	3-4	.750	1	2	3	3.0	0-0	2	2	0	0	12	12.0
TOTAL		1-0	19/19.1	3-10	.300	3-7	.429	3-4	.750	1	2	3	3.0	0-0	2	2	0	0	12	12.0



THE UNIVERSITY OF NEW MEXICO

2021-22 WOMEN'S BASKETBALL



#23

JAEDYN DE LA CERDA

G | 5-7 | SR | Roswell, N.M. (Roswell HS)



PPG	FG %	3PT %	FT %	RPG	APG	SPG	BPG	MPG
12.0	.308	.316	.667	5.0	3.0	1.7	0.0	31.2

NOTEWORTHY

- » Named to 2020-21 MW All-Conference Team and MW All-Tournament Team
- » Fifth in the MW in points per game and in field-goal percentage (.437), but led the conference in free-throw percentage
- » Scored in double figures 17 times including six games in which she scored 20 points or more last season
- » Recorded her first double-double with 13 points and 11 rebounds at Arkansas-Pine Bluff, finishing with a career high in rebounds
- » A scoring catalyst off the bench, set a program record for points off the bench as she scored 31 points vs. San José State (2/27/19)
- » In HS, was named the 2016-17 New Mexico Gatorade Player of the Year in women's basketball
- » Led Roswell HS to the 2016 New Mexico 5A State Championship
- » Named as a 2016 All-State honoree as well as an Adidas All-American
- » 84 points away from 1,000 career points

De La Cerda's Top Performances

Points	Season	15 vs Lamar (11/9/21)
	Career	31 vs. San Jose State (2/27/19)
FGM	Season	5 vs Lamar (11/9/21)
	Career	12 vs. San Jose State (2/27/19)
FGA	Season	19 vs Lamar (11/9/21)
	Career	26 vs. Cal. Baptist (3/19/21)
3PT FGM	Season	3 vs Prairie View (11/16/21)
	Career	7 vs. San Jose State (2/27/19)
3PT FGA	Season	8 vs Lamar (11/9/21)
	Career	13 - done twice
FTM	Season	4 vs Lamar (11/9/21)
	Career	14 at SHSU (12/6/20)
FTA	Season	5 vs Lamar (11/9/21)
	Career	15 at SHSU (12/6/20)
Rebounds	Season	7 vs Prairie View (11/16/21)
	Career	11 at Arkansas-PB (12/17/20)
Assists	Season	4 vs Northern N.M. (11/12/21)
	Career	8 vs. NM State (11/17/19)
Blocks	Season	1 - done seven times
	Career	1 - done seven times
Steals	Season	3 vs Northern N.M. (11/12/21)
	Career	4 - done twice
Turnovers	Season	2 - done twice
	Career	0 - done 35 times
Min. Played	Season	39 vs Lamar (11/9/21)
	Career	44 vs. San Diego St. (3/11/19)

GAME-BY-GAME STATISTICS

Opponent	Date	GS	MIN	Total		3-Pointers		Free throws		Rebounds				PF	A	TO	BLK	STL	PTS	AVG
				FG-FGA	PCT	3FG-3FGA	PCT	FT-FTA	PCT	OFF	DEF	TOT	AVG							
Lamar University	11/09/2021	*	38:38	5-19	.263	1-8	.125	4-5	.800	2	4	6	6.0	2	2	2	0	1	15	15.0
Northern N.M.	11/12/2021	*	18:29	3-6	.500	2-4	.500	0-0	.000	0	2	2	4.0	0	4	2	0	3	8	11.5
Prairie View	11/16/2021	*	36:31	4-14	.286	3-7	.429	2-4	.500	2	5	7	5.0	2	3	5	0	1	13	12.0
Totals			3 93:38	12-39	.308	6-19	.316	6-9	.667	4	11	15	5.0	4	9	9	0	5	36	12.0

CAREER STATISTICS

				Field Goals		3-Point		F-Throws		Rebounds									Scoring	
SEASON	TEAM	GP-GS	MIN/AVG	FG-FGA	FG%	3FG-3FGA	3FG%	FT-FTA	FT%	OFF	DEF	TOT	AVG	PF-FO	A	TO	BLK	STL	PTS	AVG
2017-18	UNM	13-0	35/2.7	8-20	.400	2-10	.200	5-6	.833	2	5	7	0.5	3-0	2	4	1	5	23	1.8
2018-19	UNM	30-5	557/18.6	82-221	.371	40-135	.296	25-32	.781	12	75	87	2.9	25-0	44	30	1	30	229	7.6
2019-20	UNM	31-14	814/26.3	121-325	.372	47-144	.326	52-64	.813	28	59	87	2.8	57-1	60	37	1	42	341	11.0
2020-21	UNM	20-20	562/28.1	107-245	.437	32-99	.323	54-63	.857	34	70	104	5.2	36-0	47	36	4	18	300	15.0
2021-22	UNM	3-3	94/31.2	12-39	.308	6-19	.316	6-9	.667	4	11	15	5.0	4-0	9	9	0	5	36	12.0
TOTAL		97-42	2061/21.2	330-850	.388	127-407	.312	142-174	.816	80	220	300	3.1	125-1	162	116	7	100	929	9.6



THE UNIVERSITY OF NEW MEXICO

2021-22 WOMEN'S BASKETBALL



#30

PAULA REUS

F | 6-1 | FR | Palma de Mallorca, Spain (IES Joaquim Blume)



PPG	FG %	3PT %	FT %	RPG	APG	SPG	BPG	MPG
1.0	.000	.000	.500	4.0	1.0	0.0	0.0	13.4

NOTEWORTHY

Will start out the season wearing #3 at home, #30 on the road.

» Played on the U16 Spanish national team at the U16 FIBA 2019 European Championship, finishing third

» Averaged 11.7 minutes, 3.5 points, 2.8 rebounds, 0.8 assists and 0.7 steals per game

» Played for Barça CBS LF2, winning the regular season championship, and qualified for the finals

Reus' Top Performances

Points	Season	1 vs Prairie View (11/16/21)
	Career	Same
FGM	Season	
	Career	
FGA	Season	4 vs Prairie View (11/16/21)
	Career	Same
3PT FGM	Season	
	Career	
3PT FGA	Season	2 vs Prairie View (11/16/21)
	Career	Same
FTM	Season	1 vs Prairie View (11/16/21)
	Career	Same
FTA	Season	2 vs Prairie View (11/16/21)
	Career	Same
Rebounds	Season	4 vs Prairie View (11/16/21)
	Career	Same
Assists	Season	1 vs Prairie View (11/16/21)
	Career	Same
Blocks	Season	
	Career	
Steals	Season	
	Career	
Turnovers	Season	2 vs Prairie View (11/16/21)
	Career	Same
Min. Played	Season	13 vs Prairie View (11/16/21)
	Career	Same

GAME-BY-GAME STATISTICS

Opponent	Date	GS	MIN	Total		3-Pointers		Free throws		Rebounds											
				FG-FGA	PCT	3FG-3FGA	PCT	FT-FTA	PCT	OFF	DEF	TOT	AVG	PF	A	TO	BLK	STL	PTS	AVG	
Prairie View	11/16/2021		13:21	0-4	.000	0-2	.000	1-2	.500	0	4	4	4.0	1	1	2	0	0	1	1.0	
Totals		0	13:21	0-4	.000	0-2	.000	1-2	.500	0	4	4	4.0	1	1	2	0	0	1	1.0	

CAREER STATISTICS

				Field Goals		3-Point		F-Throws		Rebounds									Scoring	
SEASON	TEAM	GP-GS	MIN/AVG	FG-FGA	FG%	3FG-3FGA	3FG%	FT-FTA	FT%	OFF	DEF	TOT	AVG	PF-FO	A	TO	BLK	STL	PTS	AVG
2021-22	UNM	1-0	13/13.4	0-4	.000	0-2	.000	1-2	.500	0	4	4	4.0	1-0	1	2	0	0	1	1.0
TOTAL		1-0	13/13.4	0-4	.000	0-2	.000	1-2	.500	0	4	4	4.0	1-0	1	2	0	0	1	1.0



THE UNIVERSITY OF NEW MEXICO

2021-22 WOMEN'S BASKETBALL



#32

ANTONIA ANDERSON

G/F | 6-2 | SR | Cibolo, Texas (Byron P. Steele HS)



PPG	FG %	3PT %	FT %	RPG	APG	SPG	BPG	MPG
14.0	.533	.333	.636	6.7	1.7	1.3	1.7	25.9

NOTEWORTHY

- » Named to 2021-22 Preseason All-Conference Team
- » Named to 2020-21 MW All-Conference Team
- » Scored 10-plus points in 13 games with a career-high 29 points in the win over UNLV on Jan. 17 after making a career-high 12 baskets.
- » Led the team in rebounds (123) and rebounds per game last season
- » Recorded two double-doubles with 14 points and 10 rebounds at Air Force and 10 points and 11 rebounds against Colorado State (tied a career high)
- » Eighth in the MW in blocks per game at 1.07 and ranked in the top 15 in scoring, rebounding, field-goal percentage, blocked shots and defensive rebounds

- » 150 points away from 1,000 career points

Anderson's Top Performances

Points	Season	19 vs Prairie View (11/16/21)
	Career	29 at UNLV (1/17/21)
FGM	Season	8 vs Prairie View (11/16/21)
	Career	12 at UNLV (1/17/21)
FGA	Season	14 vs Prairie View (11/16/21)
	Career	19 vs. Fresno (3/9/21)
3PT FGM	Season	1 - done three times
	Career	4 at UNLV (1/17/21)
3PT FGA	Season	3 - done three times
	Career	11 vs Colorado State (3/4/21)
FTM	Season	5 vs Lamar (11/9/21)
	Career	5 - done three times
FTA	Season	5 vs Lamar (11/9/21)
	Career	6 - done three times
Rebounds	Season	9 vs Prairie View (11/16/21)
	Career	11 - done three times
Assists	Season	2 - done twice
	Career	5 - done twice
Blocks	Season	3 vs Prairie View (11/16/21)
	Career	6 vs. UC Riverside (11/5/19)
Steals	Season	2 vs Lamar (11/9/21)
	Career	4 vs. Fresno St. (2/1/20)
Turnovers	Season	2 vs Lamar (11/9/21)
	Career	0 - done 40 times
Min. Played	Season	32 vs Prairie View (11/16/21)
	Career	38 at San José St. (1/22/20)

GAME-BY-GAME STATISTICS

Opponent	Date	GS	MIN	Total		3-Pointers		Free throws		Rebounds				PF	A	TO	BLK	STL	PTS	AVG
				FG-FGA	PCT	3FG-3FGA	PCT	FT-FTA	PCT	OFF	DEF	TOT	AVG							
Lamar University	11/09/2021	*	28:29	5-9	.556	1-3	.333	5-5	1.000	2	3	5	5.0	3	1	2	1	2	16	16.0
Northern N.M.	11/12/2021	*	17:24	3-7	.429	1-3	.333	0-2	.000	1	5	6	5.5	1	2	3	1	1	7	11.5
Prairie View	11/16/2021	*	31:47	8-14	.571	1-3	.333	2-4	.500	4	5	9	6.7	2	2	3	3	1	19	14.0
Totals		3	77:40	16-30	.533	3-9	.333	7-11	.636	7	13	20	6.7	6	5	8	5	4	42	14.0

CAREER STATISTICS

SEASON	TEAM	GP-GS	MIN/AVG	Field Goals		3-Point		F-Throws		Rebounds				Scoring						
				FG-FGA	FG%	3FG-3FGA	3FG%	FT-FTA	FT%	OFF	DEF	TOT	AVG	PF-FO	A	TO	BLK	STL	PTS	AVG
2017-18	UNM	32-1	417/13.0	52-91	.571	2-10	.200	24-40	.600	31	65	96	3.0	50-0	5	17	34	13	130	4.1
2018-19	UNM	31-0	555/17.9	65-141	.461	10-33	.303	34-46	.739	45	72	117	3.8	64-2	19	36	27	24	174	5.6
2019-20	UNM	32-31	865/27.0	112-268	.418	29-92	.315	28-39	.718	35	136	171	5.3	91-5	54	64	43	39	281	8.8
2020-21	UNM	20-20	486/24.3	98-200	.490	22-67	.328	24-41	.585	26	97	123	6.2	62-6	37	37	19	19	242	12.1
2021-22	UNM	3-3	78/25.9	16-30	.533	3-9	.333	7-11	.636	7	13	20	6.7	6-0	5	8	5	4	42	14.0
TOTAL		118-55	2400/20.3	343-730	.470	66-211	.313	117-177	.661	144	383	527	4.5	273-13	120	162	128	99	869	7.4



THE UNIVERSITY OF NEW MEXICO

2021-22 WOMEN'S BASKETBALL



#33

VIANE CUMBER

G | 5-10 | FR | Albuquerque, N.M. (Sandia HS)



PPG	FG %	3PT %	FT %	RPG	APG	SPG	BPG	MPG
7.3	.563	.400	.000	3.3	0.3	1.0	0.0	16.5

NOTEWORTHY

- » MW Freshman of the Week (11/15/21)
- » 2019-20 and 2021-21 New Mexico Gatorade Girls Basketball Player of the Year
- » Twice named MaxPreps New Mexico High School Girls Basketball Player of the Year
- » Named the best high school basketball player in New Mexico by MaxPreps
- » Averaged 26.5 points, 9.3 rebounds, 2.2 assists and 1.5 steals her senior season and 22.4 points, 10.6 rebounds, 2.5 assists and 3.3 steals as a junior
- » Led her team to a pair of district championships in 2018 and 2019

Cumber's Top Performances

Points	Season	17 vs Northern N.M. (11/12/21)
	Career	Same
FGM	Season	7 vs Northern N.M. (11/12/21)
	Career	Same
FGA	Season	10 vs Northern N.M. (11/12/21)
	Career	Same
3PT FGM	Season	3 vs Northern N.M. (11/12/21)
	Career	Same
3PT FGA	Season	5 vs Northern N.M. (11/12/21)
	Career	Same
FTM	Season	
	Career	
FTA	Season	
	Career	
Rebounds	Season	4 - done twice
	Career	Same
Assists	Season	1 vs Northern N.M. (11/12/21)
	Career	Same
Blocks	Season	
	Career	
Steals	Season	2 vs Northern N.M. (11/12/21)
	Career	Same
Turnovers	Season	1 - done twice
	Career	Same
Min. Played	Season	25 vs Northern N.M. (11/12/21)
	Career	Same

GAME-BY-GAME STATISTICS

Opponent	Date	GS	MIN	Total		3-Pointers		Free throws		Rebounds				PF	A	TO	BLK	STL	PTS	AVG
				FG-FGA	PCT	3FG-3FGA	PCT	FT-FTA	PCT	OFF	DEF	TOT	AVG							
Lamar University	11/09/2021		15:26	1-4	.250	0-3	.000	0-0	.000	0	4	4	4.0	1	0	1	0	1	2	2.0
Northern N.M.	11/12/2021	*	24:32	7-10	.700	3-5	.600	0-0	.000	0	4	4	4.0	0	1	1	0	2	17	9.5
Prairie View	11/16/2021		09:26	1-2	.500	1-2	.500	0-0	.000	0	2	2	3.3	0	0	2	0	0	3	7.3
Totals		1	49:24	9-16	.563	4-10	.400	0-0	.000	0	10	10	3.3	1	1	4	0	3	22	7.3

CAREER STATISTICS

				Field Goals		3-Point		F-Throws		Rebounds				Scoring						
SEASON	TEAM	GP-GS	MIN/AVG	FG-FGA	FG%	3FG-3FGA	3FG%	FT-FTA	FT%	OFF	DEF	TOT	AVG	PF-FO	A	TO	BLK	STL	PTS	AVG
2021-22	UNM	3-1	49/16.5	9-16	.563	4-10	.400	0-0	.000	0	10	10	3.3	1-0	1	4	0	3	22	7.3
TOTAL		3-1	49/16.5	9-16	.563	4-10	.400	0-0	.000	0	10	10	3.3	1-0	1	4	0	3	22	7.3



THE UNIVERSITY OF NEW MEXICO

2021-22 WOMEN'S BASKETBALL



#34

NEVAEH PARKINSON

F/C | 6-3 | SO | Dallas, Texas (John Paul II HS)



PPG	FG %	3PT %	FT %	RPG	APG	SPG	BPG	MPG
5.5	.500	.000	.750	5.5	1.0	1.0	0.0	9.5

NOTEWORTHY

- » Played for Parish Episcopal School in Texas where she helped her team to the state championship in the 2017-18 season
- » Two-time First Team All-District and two-time First Team All-State honoree
- » Averaged 18.3 points, 10.1 rebounds and 1.4 blocks per game

Parkinson's Top Performances

Points	Season	11 vs Northern N.M. (11/12/21)
Career	Same	
FGM	Season	4 vs Northern N.M. (11/12/21)
Career	Same	
FGA	Season	8 vs Northern N.M. (11/12/21)
Career	Same	
3PT FGM	Season	
Career	1 at Arkansas-PB (12/17/20)	
3PT FGA	Season	1 vs Northern N.M. (11/12/21)
Career	1 - done four times	
FTM	Season	3 vs Northern N.M. (11/12/21)
Career	Same	
FTA	Season	4 vs Northern N.M. (11/12/21)
Career	Same	
Rebounds	Season	11 vs Northern N.M. (11/12/21)
Career	Same	
Assists	Season	1 - done twice
Career	Same	
Blocks	Season	
Career	1 at Arkansas-PB (12/17/20)	
Steals	Season	2 vs Northern N.M. (11/12/21)
Career	Same	
Turnovers	Season	0 - vs Lamar (11/9/21)
Career	0 - done eight times	
Min. Played	Season	15 vs Northern N.M. (11/12/21)
Career	Same	

GAME-BY-GAME STATISTICS

Opponent	Date	GS	MIN	Total		3-Pointers		Free throws		Rebounds				PF	A	TO	BLK	STL	PTS	AVG
				FG-FGA	PCT	3FG-3FGA	PCT	FT-FTA	PCT	OFF	DEF	TOT	AVG							
Lamar University	11/09/2021		04:00	0-0	.000	0-0	.000	0-0	.000	0	0	0	0.0	0	1	0	0	0	0	0.0
Northern N.M.	11/12/2021		15:01	4-8	.500	0-1	.000	3-4	.750	5	6	11	5.5	1	1	1	0	2	11	5.5
Totals		0	19:01	4-8	.500	0-1	.000	3-4	.750	5	6	11	5.5	1	2	1	0	2	11	5.5

CAREER STATISTICS

SEASON	TEAM	GP-GS	MIN/AVG	Field Goals		3-Point		F-Throws		Rebounds				Scoring						
				FG-FGA	FG%	3FG-3FGA	3FG%	FT-FTA	FT%	OFF	DEF	TOT	AVG	PF-FO	A	TO	BLK	STL	PTS	AVG
2020-21	UNM	8-0	21/2.7	2-9	.222	1-5	.200	0-2	.000	0	6	6	0.8	4-0	0	1	1	0	5	0.6
2021-22	UNM	2-0	19/9.5	4-8	.500	0-1	.000	3-4	.750	5	6	11	5.5	1-0	2	1	0	2	11	5.5
TOTAL		10-0	40/4.0	6-17	.353	1-6	.167	3-6	.500	5	12	17	1.7	5-0	2	2	1	2	16	1.6



THE UNIVERSITY OF NEW MEXICO

2021-22 WOMEN'S BASKETBALL



NEW MEXICO STATISTICS

Game Records

Record	Overall	Home	Away	Neutral
ALL GAMES	3-0	3-0	0-0	0-0
CONFERENCE	0-0	0-0	0-0	0-0
NON-CONFERENCE	3-0	3-0	0-0	0-0

Score by Periods

Team	1st	2nd	3rd	4th	OT	TOT
New Mexico	70	61	62	62	0	255
Opponents	43	35	45	42	0	165

Team Box Score

No.	Player				Total		3-Point		F-Throw		Rebounds													
		GP-GS	MIN	AVG	FG-FGA	FG%	3FG-3FGA	3FG%	FT-FTA	FT%	OFF	DEF	TOT	AVG	PF	DQ	A	TO	BLK	STL	PTS	AVG		
13	MCGRUDER, Shaiquel	3-3	71:05	23.7	25-35	.714	1-1	1.000	6-8	.750	8	8	16	5.3	5	0	0	5	0	8	57	19.0		
32	ANDERSON, Antonia	3-3	77:40	25.9	16-30	.533	3-9	.333	7-11	.636	7	13	20	6.7	6	0	5	8	5	4	42	14.0		
23	DE LA CERDA, Jaedyn	3-3	93:38	31.2	12-39	.308	6-19	.316	6-9	.667	4	11	15	5.0	4	0	9	9	0	5	36	12.0		
21	CURTIS, Mackenzie	1-0	19:06	19.1	3-10	.300	3-7	.429	3-4	.750	1	2	3	3.0	0	0	2	2	0	0	12	12.0		
5	DUFF, LaTora	3-3	89:31	29.8	10-30	.333	5-15	.333	9-12	.750	2	11	13	4.3	5	0	26	1	5	0	34	11.3		
33	CUMBER, Vianè	3-1	49:24	16.5	9-16	.563	4-10	.400	0-0	.000	0	10	10	3.3	1	0	1	4	0	3	22	7.3		
34	PARKINSON, Nevaeh	2-0	19:01	9.5	4-8	.500	0-1	.000	3-4	.750	5	6	11	5.5	1	0	2	1	0	2	11	5.5		
12	AUGMON, Aniyah	3-0	57:38	19.2	5-6	.833	1-2	.500	4-5	.800	0	16	16	5.3	7	0	4	6	0	7	15	5.0		
10	VAN BENNEKOM, Kath	3-0	38:42	12.9	4-5	.800	0-0	.000	4-6	.667	6	1	7	2.3	6	0	1	4	0	2	12	4.0		
11	SEREN, Zeyno	2-1	30:27	15.2	3-5	.600	0-1	.000	1-3	.333	1	7	8	4.0	3	0	2	0	0	1	7	3.5		
4	DUFF, LaTascya	2-1	22:32	11.3	2-4	.500	2-4	.500	0-0	.000	0	0	0	0.0	0	0	1	0	0	1	6	3.0		
30	REUS, Paula	1-0	13:21	13.4	0-4	.000	0-2	.000	1-2	.500	0	4	4	4.0	1	0	1	2	0	0	1	1.0		
1	RENCZES, Rebeka	1-0	17:56	17.9	0-3	.000	0-2	.000	0-0	.000	0	2	2	2.0	1	0	3	3	0	1	0	0.0		
Team											7	7	14					1						
Total		3	600		93-195	.477	25-73	.342	44-64	.688	41	98	139	46.3	40	0	57	46	10	34	255	85.0		
Opponents		3	600		60-194	.309	20-68	.294	25-42	.595	46	71	117	39.0	53	0	35	57	10	27	165	55.0		

Team Statistics

	UNM	OPP
Scoring	255	165
Points per game	85.0	55.0
Scoring margin	+30.0	-
Field goals-att	93-195	60-194
Field goal pct	.477	.309
3 point fg-att	25-73	20-68
3-point FG pct	.342	.294
3-pt FG made per game	8.3	6.7
Free throws-att	44-64	25-42
Free throw pct	.688	.595
F-Throws made per game	14.7	8.3
Rebounds	139	117
Rebounds per game	46.3	39.0
Rebounding margin	+7.3	-
Assists	57	35
Assists per game	19.0	11.7
Turnovers	46	57
Turnovers per game	15.3	19.0
Turnover margin	+3.7	-
Assist/turnover ratio	1.2	0.6
Steals	34	27
Steals per game	11.3	9.0
Blocks	10	10
Blocks per game	3.3	3.3
Winning streak	3	-
Home win streak	3	-
Attendance	12050	0
Home games-Avg/Game	3-4017	0-0
Neutral site-Avg/Game	-	0-0

Team Results

Date	Opponent		Score	Att.
11/09/2021	Lamar University	W	71-54	3800
11/12/2021	Northern N.M.	W	96-40	4000
11/16/2021	Prairie View	W	88-71	4250



THE UNIVERSITY OF NEW MEXICO

2021-22 WOMEN'S BASKETBALL



HOUSTON STATISTICS

Game Records

Record	Overall	Home	Away	Neutral
ALL GAMES	1-2	1-0	0-2	0-0
CONFERENCE	0-0	0-0	0-0	0-0
NON-CONFERENCE	1-2	1-0	0-2	0-0

Score by Periods

Team	1st	2nd	3rd	4th	OT	TOT
Houston	45	61	43	44	5	198
Opponents	45	32	52	53	8	190

Team Box Score

No.	Player				Total		3-Point		F-Throw		Rebounds													
		GP-GS	MIN	AVG	FG-FGA	FG%	3FG-3FGA	3FG%	FT-FTA	FT%	OFF	DEF	TOT	AVG	PF	DQ	A	TO	BLK	STL	PTS	AVG		
14	BLAIR, Laila	3-0	70:02	23.3	9-26	.346	3-11	.273	8-10	.800	2	14	16	5.3	7	0	6	15	0	7	29	9.7		
30	HILL, Tatyana	3-3	84:36	28.2	12-28	.429	0-0	.000	5-7	.714	13	20	33	11.0	7	0	2	5	3	4	29	9.7		
1	PATTERSON, Bria	3-3	82:43	27.6	9-24	.375	1-7	.143	9-12	.750	6	6	12	4.0	9	0	3	4	0	4	28	9.3		
44	LEWIS, Jazmaine	1-0	07:28	7.5	3-3	1.000	0-0	.000	2-5	.400	3	1	4	4.0	0	0	0	1	0	0	8	8.0		
5	GLADNEY, Dymond	3-3	80:29	26.8	7-24	.292	4-16	.250	4-4	1.000	2	5	7	2.3	4	0	3	6	0	2	22	7.3		
2	YOUNG, Tiara	3-0	58:35	19.5	9-22	.409	0-2	.000	4-6	.667	2	5	7	2.3	4	0	5	9	1	1	22	7.3		
10	ONYEJE, Britney	3-3	80:00	26.7	7-19	.368	5-14	.357	0-2	.000	2	3	5	1.7	5	0	3	5	0	3	19	6.3		
23	BLACKSHELL-FAIR, Julia	3-3	42:40	14.2	6-14	.429	0-0	.000	4-6	.667	7	4	11	3.7	4	0	4	5	0	3	16	5.3		
0	SIDNEY, Eryka	3-0	20:16	6.8	4-8	.500	2-4	.500	2-3	.667	0	3	3	1.0	2	0	0	6	0	1	12	4.0		
34	JONES, Kamryn	3-0	30:43	10.2	2-6	.333	0-0	.000	2-2	1.000	2	3	5	1.7	3	0	0	6	4	1	6	2.0		
21	BROWN, Kendall	2-0	07:34	3.8	1-3	.333	1-3	.333	0-0	.000	0	0	0	0.0	0	0	0	0	0	0	3	1.5		
45	DIAGNE, Fatou	3-0	32:42	10.9	1-4	.250	0-0	.000	1-1	1.000	3	6	9	3.0	5	0	1	1	2	1	3	1.0		
11	THOMPSON, Ash'a	2-0	13:10	6.6	0-3	.000	0-1	.000	1-2	.500	0	0	0	0.0	2	0	0	0	0	0	1	0.5		
4	PURVIS, Tae'lor	2-0	07:34	3.8	0-2	.000	0-1	.000	0-0	.000	2	0	2	1.0	0	0	1	2	0	0	0	0.0		
32	NARD, Tamara	1-0	06:28	6.5	0-2	.000	0-1	.000	0-0	.000	0	3	3	3.0	2	0	2	0	1	1	0	0.0		
Team											6	11	17					4						
Total		3	625		70-188	.372	16-60	.267	42-60	.700	50	84	134	44.7	54	0	30	69	11	28	198	66.0		
Opponents		3	626		71-185	.384	11-54	.204	37-61	.607	39	76	115	38.3	56	0	45	59	14	40	190	63.3		

Team Statistics

	UH	OPP
Scoring	198	190
Points per game	66.0	63.3
Scoring margin	+2.7	-
Field goals-att	70-188	71-185
Field goal pct	.372	.384
3 point fg-att	16-60	11-54
3-point FG pct	.267	.204
3-pt FG made per game	5.3	3.7
Free throws-att	42-60	37-61
Free throw pct	.700	.607
F-Throws made per game	14.0	12.3
Rebounds	134	115
Rebounds per game	44.7	38.3
Rebounding margin	+6.3	-
Assists	30	45
Assists per game	10.0	15.0
Turnovers	69	59
Turnovers per game	23.0	19.7
Turnover margin	-3.3	-
Assist/turnover ratio	0.4	0.8
Steals	28	40
Steals per game	9.3	13.3
Blocks	11	14
Blocks per game	3.7	4.7
Winning streak	0	-
Home win streak	1	-
Attendance	164	2179
Home games-Avg/Game	1-164	2-1090
Neutral site-Avg/Game	-	0-0

Team Results

Date	Opponent		Score	Att.
11/09/2021	Howard	W	80-48	164
11/12/2021	at SFA	L	52-73	1294
11/17/2021	at UT Arlington	Lot	66-69	885



THE UNIVERSITY OF NEW MEXICO 2021-22 WOMEN'S BASKETBALL



NEW MEXICO GAME-BY-GAME

				Total		3-Pointers		Free throws		Rebounds										
Opponent	Date	Score		FG-FGA	PCT	3FG-3FGA	PCT	FT-FTA	PCT	OFF	DEF	TOT	AVG	PF	A	TO	BLK	STL	PTS	AVG
Lamar University	11/09/2021	71-54	W	26-57	.456	6-26	.231	13-15	.867	9	29	38	38.0	20	14	15	2	8	71	71.0
Northern N.M.	11/12/2021	96-40	W	35-70	.500	10-24	.417	16-25	.640	21	33	54	46.0	9	23	15	1	15	96	83.5
Prairie View	11/16/2021	88-71	W	32-68	.471	9-23	.391	15-24	.625	11	36	47	46.3	11	20	16	7	11	88	85.0
Total		255		93-195	.477	25-73	.342	44-64	.688	41	98	139	46.3	40	57	46	10	34	255	85.0
Opponents		165		60-194	.309	20-68	.294	25-42	.595	46	71	117	39.0	53	35	57	10	27	165	55.0



THE UNIVERSITY OF NEW MEXICO 2021-22 WOMEN'S BASKETBALL



NEW MEXICO GAME-BY-GAME LEADERS

Opponent	Date	Score	Points	Rebounds	Assists	Steals	Blocked shots
LAMAR	11/09/21	71-54	16-Antonia Anderson	6-Aniyah Augmon Jaedyn De La Cerdá	9-LaTora Duff	3-Aniyah Augmon	1-Antonia Anderson LaTora Duff
NORTHERN N.M.	11/12/21	96-40	17-Viane Cumber	11-Nevaeh Parkinson	5-LaTora Duff	3-Shaiquel McGruder Jaedyn De La Cerdá	1-Antonia Anderson
PRAIRIE VIEW	11/16/21	88-71	30-Shaiquel McGruder	9-Antonia Anderson	12-LaTora Duff	4-Shaiquel McGruder	4-LaTora Duff



THE UNIVERSITY OF NEW MEXICO

2021-22 WOMEN'S BASKETBALL



NEW MEXICO GAME-BY-GAME POINTS-REBOUNDS-ASSISTS

Opponent	Date	Score		1	4	5	10	11	12	13	21	23	30	32
				RENCZES,RE	DUFF,LATAS	DUFF,LATOR	VAN BENNEK	SEREN,ZEYN	AUGMON,ANI	MCGRUDER,S	CURTIS,MAC	DE LA CERD	REUS,PAULA	ANDERSON,A
Lamar University	11/09/2021	71-54	W	DNP	DNP	10-3-9	4-3-0	1-4-1	8-6-0	15-5-0	DNP	15-6-2	DNP	16-5-1
Northern N.M.	11/12/2021	96-40	W	0-2-3	3-0-0	7-2-5	7-4-1	6-4-1	6-4-3	12-4-0	12-3-2	8-2-4	DNP	7-6-2
Prairie View	11/16/2021	88-71	W	DNP	3-0-1	17-8-12	1-0-0	DNP	1-6-1	30-7-0	DNP	13-7-3	1-4-1	19-9-2
Opponent	Date	Score		33	34									
				CUMBER,VIA	PARKINSON,									
Lamar University	11/09/2021	71-54	W	2-4-0	0-0-1									
Northern N.M.	11/12/2021	96-40	W	17-4-1	11-11-1									
Prairie View	11/16/2021	88-71	W	3-2-0	DNP									



THE UNIVERSITY OF NEW MEXICO

2021-22 WOMEN'S BASKETBALL



NEW MEXICO GAME HIGHS

POINTS	96	Northern N.M. (11/12/2021)
	88	Prairie View (11/16/2021)
	71	Lamar University (11/09/2021)
FIELD GOALS MADE	35	Northern N.M. (11/12/2021)
	32	Prairie View (11/16/2021)
FIELD GOAL ATTEMPTS	70	Northern N.M. (11/12/2021)
	68	Prairie View (11/16/2021)
FIELD GOAL PERCENTAGE	.500 (35-70)	Northern N.M. (11/12/2021)
	.471 (32-68)	Prairie View (11/16/2021)
3 PT FG MADE	10	Northern N.M. (11/12/2021)
	9	Prairie View (11/16/2021)
3 PT FG ATTEMPTS	26	Lamar University (11/09/2021)
	24	Northern N.M. (11/12/2021)
3 PT FG PERCENTAGE	.417 (10-24)	Northern N.M. (11/12/2021)
	.391 (9-23)	Prairie View (11/16/2021)
FREE THROWS MADE	16	Northern N.M. (11/12/2021)
	15	Prairie View (11/16/2021)
FREE THROW ATTEMPTS	25	Northern N.M. (11/12/2021)
	24	Prairie View (11/16/2021)
FREE THROW PERCENTAGE	.867 (13-15)	Lamar University (11/09/2021)
	.640 (16-25)	Northern N.M. (11/12/2021)
REBOUNDS	54	Northern N.M. (11/12/2021)
	47	Prairie View (11/16/2021)
ASSISTS	23	Northern N.M. (11/12/2021)
	20	Prairie View (11/16/2021)
STEALS	15	Northern N.M. (11/12/2021)
	11	Prairie View (11/16/2021)
BLOCKED SHOTS	7	Prairie View (11/16/2021)
	2	Lamar University (11/09/2021)
TURNOVERS	16	Prairie View (11/16/2021)
	15	Northern N.M. (11/12/2021)
	15	Lamar University (11/09/2021)
FOULS	20	Lamar University (11/09/2021)
	11	Prairie View (11/16/2021)



THE UNIVERSITY OF NEW MEXICO

2021-22 WOMEN'S BASKETBALL



NEW MEXICO INDIVIDUAL GAME HIGHS

POINTS	30		Shaiquel McGruder vs Prairie View (11/16/2021)
	19		Antonia Anderson vs Prairie View (11/16/2021)
	17		LaTora Duff vs Prairie View (11/16/2021)
	17		Vianè Cumber vs Northern N.M. (11/12/2021)
	16		Antonia Anderson vs Lamar University (11/09/2021)
FIELD GOALS MADE	13		Shaiquel McGruder vs Prairie View (11/16/2021)
	8		Antonia Anderson vs Prairie View (11/16/2021)
FIELD GOAL ATTEMPTS	19		Jaedyn De La Cerda vs Lamar University (11/09/2021)
	18		Shaiquel McGruder vs Prairie View (11/16/2021)
FIELD GOAL PERCENTAGE (min 5 made)	1.000	(7-7)	Shaiquel McGruder vs Lamar University (11/09/2021)
	.722	(13-18)	Shaiquel McGruder vs Prairie View (11/16/2021)
3 PT FG MADE	3		Jaedyn De La Cerda vs Prairie View (11/16/2021)
	3		LaTora Duff vs Prairie View (11/16/2021)
	3		Mackenzie Curtis vs Northern N.M. (11/12/2021)
	3		Vianè Cumber vs Northern N.M. (11/12/2021)
3 PT FG ATTEMPTS	9		LaTora Duff vs Lamar University (11/09/2021)
	8		Jaedyn De La Cerda vs Lamar University (11/09/2021)
3 PT FG PERCENTAGE (min 2 made)	.600	(3-5)	Vianè Cumber vs Northern N.M. (11/12/2021)
	.500	(3-6)	LaTora Duff vs Prairie View (11/16/2021)
	.500	(2-4)	Jaedyn De La Cerda vs Northern N.M. (11/12/2021)
FREE THROWS MADE	5		Antonia Anderson vs Lamar University (11/09/2021)
	4		LaTora Duff vs Prairie View (11/16/2021)
	4		Shaiquel McGruder vs Prairie View (11/16/2021)
	4		Jaedyn De La Cerda vs Lamar University (11/09/2021)
FREE THROW ATTEMPTS	6		LaTora Duff vs Prairie View (11/16/2021)
	5		Antonia Anderson vs Lamar University (11/09/2021)
	5		Jaedyn De La Cerda vs Lamar University (11/09/2021)
FREE THROW PERCENTAGE (min 3 made)	1.000	(5-5)	Antonia Anderson vs Lamar University (11/09/2021)
	1.000	(4-4)	Shaiquel McGruder vs Prairie View (11/16/2021)
REBOUNDS	11		Nevaeh Parkinson vs Northern N.M. (11/12/2021)
	9		Antonia Anderson vs Prairie View (11/16/2021)
ASSISTS	12		LaTora Duff vs Prairie View (11/16/2021)
	9		LaTora Duff vs Lamar University (11/09/2021)
STEALS	4		Shaiquel McGruder vs Prairie View (11/16/2021)
	3		Aniyah Augmon vs Prairie View (11/16/2021)
	3		Shaiquel McGruder vs Northern N.M. (11/12/2021)
	3		Jaedyn De La Cerda vs Northern N.M. (11/12/2021)
	3		Aniyah Augmon vs Lamar University (11/09/2021)
BLOCKED SHOTS	4		LaTora Duff vs Prairie View (11/16/2021)
	3		Antonia Anderson vs Prairie View (11/16/2021)
TURNOVERS	5		Jaedyn De La Cerda vs Prairie View (11/16/2021)
	3		Antonia Anderson vs Prairie View (11/16/2021)
	3		Rebeka Renczes vs Northern N.M. (11/12/2021)
	3		Aniyah Augmon vs Northern N.M. (11/12/2021)
	3		Antonia Anderson vs Northern N.M. (11/12/2021)
	3		Kath van Bennekom vs Lamar University (11/09/2021)
	3		Shaiquel McGruder vs Lamar University (11/09/2021)
FOULS	4		Kath van Bennekom vs Lamar University (11/09/2021)
	4		Shaiquel McGruder vs Lamar University (11/09/2021)

