

2021-22 NEW MEXICO WOMEN'S BASKETBALL

GAME NOTES

» Eight NCAA Tournament Appearances | 1998, 2002, 2003, 2004, 2005, 2006, 2007, 2008 «
 » Five Mountain West Tournament Championships | 2003, 2004, 2005, 2007, 2008 «

2021-22 | Schedule and Results

OVERALL RECORD:.....	15-4
MW RECORD:.....	6-0
HOME RECORD:.....	9-0
ROAD RECORD:.....	5-2
NEUTRAL RECORD:.....	1-2
STREAK:.....	W7

Date	Opponent	Time/Result
10/31	Western Colorado (Exh.)	W, 94-53
11/4	Eastern New Mexico (Exh.)	W, 88-72
11/9	Lamar	W, 71-54
11/12	Northern New Mexico	W, 96-40
11/16	Prairie View A&M	W, 88-71
11/20	Houston	L, 89-60
11/23	Houston Baptist	W, 76-58
11/26	Stephen F. Austin%	L, 71-66
11/27	Louisiana Monroe%	W, 66-45
11/28	Texas Tech%	L, 82-75
11/30	Grambling State	W, 86-50
12/3	New Mexico State	W, 77-58
12/5	New Mexico State	W, 73-66
12/12	#6 Arizona	L, 77-60
12/19	UTEP	W, 78-66
12/31	Boise State*	W, 72-68
1/3	UNLV*	W, 71-68
1/6	Utah State*	W, 98-83
1/9	San Diego State*	W, 75-72
1/13	Wyoming*	W, 85-76
1/15	Colorado State*	W, 85-74
1/22	Fresno State*	2 p.m.
1/24	San José State*	5:30 p.m.
1/27	UNLV*	7 p.m.
1/29	San Diego State*	1 p.m.
2/2	Colorado State*	7 p.m.
2/5	Wyoming*	2 p.m.
2/9	Air Force*	7 p.m.
2/12	Nevada*	3 p.m.
2/16	Utah State*	7 p.m.
2/19	Boise State*	1 p.m.
2/23	Fresno State*	7 p.m.
2/25	San José State*	12 p.m.
3/6-3/9	MW Tournament	TBA

BOLD: Home %:Van Chancellor Classic * : Mountain West
 All times are Mountain Time

THE MATCHUP



New Mexico Lobos

Record
15-4, 6-0 MW

Head Coach.....Mike Bradbury
 Alma Mater.....Chattanooga
 Record at UNM.....109-59 (6th year)
 Career Record.....287-176 (15th year)

Game Information

Game Number: 20
 Date: Jan. 22 at 2 p.m.
 Location: Albuquerque, N.M.
 The Pit

Series History

Overall:.....Tied 15-15
 Current Streak:.....L2
 Last Meeting:.....3/9/21 (L, 77-72)

Broadcast Information

Radio:.....610 AM KNML
 Live Stream:.....Mountain West Network
 Live Stats:.....GoLobos.com/wbbstats



Fresno State Bulldogs

Record
7-9, 3-2 MW

Head Coach.....Jaime White
 Alma Mater.....Southern Utah
 Record at FS.....148-92 (8th year)
 Career Record.....265-220 (16th year)

TIPPING OFF

The Lobos went 2-0 on the road last week at Wyoming and Colorado State to remain perfect in the MW at 6-0. It is the first time in program history that the Lobos have started 6-0 in the MW and the first time in program history starting 6-0 in any conference.

Antonia Anderson averaged 21.0 ppg, 7.0 rpg and 1.0 spg, making 10 three-pointers and shooting 41.7% from distance. Shaiquel McGruder averaged 20.0 ppg, 10.0 rpg, 3.0 blocks per game and 1.0 spg. Anderson scored a career-high 30 points on eight three-pointers at CSU and McGruder posted her fifth 20-plus point performance of the season with 26 points, including a career-high three, three-pointers at Wyoming.

Paula Reus had her best game of the season with 17 points and nine rebounds against CSU with a season-high four, three-pointers, and finished with 14.5 ppg and 7.0 rpg on the week.

In Saturday's game, UNM made 19 three-pointers against the Rams, which would have broken the program record if not for the 21 made against Utah State back on Jan. 6.

Over the last four games, the Lobos have made 62 three-pointers, an average of 15.5 per game, and have made a total of 76 in conference play (six games). The closest MW team has 53 made threes, also in six games.

Five Lobos are averaging double figures in con-

ference play, with Jaedyn De La Cerda at 16.8 ppg, McGruder at 16.5 ppg, LaTascya Duff at 13.7 ppg, Anderson at 13.2 and LaTora Duff at 10.3. Reus has 8.5 ppg and is averaging 5.5 rebounds per game.

On the season, the same five are averaging double figures, but McGruder leads, followed by De La Cerda, LaTora, LaTascya and Anderson.

In comparison, Fresno State has played five conference games and two players in double figures in Haley (19.1 ppg) and Hanna (14.3 ppg) Cavinder. Haley leads in assists and rebounds as well, while Hanna leads in steals for the Bulldogs.

At 3-2 in the conference, the Bulldogs have wins over San José State (twice) and San Diego State, with a loss to UNLV and Air Force.

QUICK HITS BY THE NUMBERS

- » 4, 20-plus point games for Tay Duff
- » 5 double-doubles for Shaiquel McGruder
- » 5 Lobos in double-digit ppg, 5 in conference play
- » 5, 20-plus point games for Shaiquel McGruder
- » 7 different leading scorers in the 19 games
- » 9th in NCAA in 3-point FG % (38.6)
- » 9 statistical categories that UNM leads MW in
- » 9-0 record at home this season
- » 10 double-doubles on the team
- » 10.4 made three-pointers per game (4th in NCAA)
- » 13 games in double figures for Tora and McGruder
- » 15 games in double figures for De La Cerda, including last 7 games
- » 21-straight games with a 3-pointer for Tay Duff
- » 135 career games for Anderson (program record)
- » 197 made three-pointers (2nd in NCAA)

Probable Starters

#	Name	Pos.	Cls.	Ht.	PPG	RPG	APG	SPG	BPG
4	LaTascya Duff	G	Sr.	5-7	12.2	3.0	1.6	0.5	0.2
5	LaTora Duff	G	Sr.	5-7	12.5	3.9	5.9	1.5	0.5
13	Shaiquel McGruder	F	Sr.	6-0	14.7	7.3	0.6	1.7	1.5
23	Jaedyn De La Cerda	G	Sr.	5-7	13.5	4.0	3.1	1.1	0.1
32	Antonia Anderson	F	Sr.	6-2	10.9	6.1	1.8	1.5	1.5

Off the Bench

#	Name	Pos.	Cls.	Ht.	PPG	RPG	APG	SPG	BPG
1	Rebeka Renczes	PG	Fr.	5-7	1.8	0.4	1.2	0.2	0.0
10	Kath van Bennekom	G	So.	5-9	1.3	1.3	0.2	0.2	0.0
11	Zeyno Seren	F	Fr.	6-1	1.9	1.9	0.6	0.4	0.0
12	Aniyah Augmon	G	Fr.	5-8	1.2	1.8	0.7	0.8	0.0
21	Mackenzie Curtis	G	Fr.	5-9	1.6	0.7	0.4	0.1	0.0
30	Paula Reus	F	Fr.	6-1	6.2	3.6	2.2	0.9	0.6
33	Vianè Cumber	G	Fr.	5-10	3.5	1.6	0.3	0.3	0.1
34	Nevaeh Parkinson	F/C	So.	6-3	2.7	2.9	0.4	0.3	0.6



NEW MEXICO 2021-22 WOMEN'S BASKETBALL

THE UNIVERSITY OF NEW MEXICO

Location.....Albuquerque, N.M.
 Founded.....1889 by Territorial Legislature
 Enrollment.....22,225
 Nickname.....Lobos
 Colors.....Cherry (PMS 200) & Silver (PMS Cool Gray 6)
 Conference.....Mountain West Conference
 National Affiliation.....NCAA Division I
 President.....Dr. Garnett Stokes
 Director of Athletics.....Eddie Nuñez
 Deputy A.D. for External Affairs.....David Williams
 Deputy A.D. for Internal Affairs/SWA.....Janice Ruggiero
 Faculty Representative.....Karen Gaudreault, Ph.D

FACILITY INFORMATION

Facility.....The Pit
 Capacity.....15,411
 Age.....Built in 1966 (Renovated in 2009-10)
 All-Time Home Record.....440-216 (.671)

PROGRAM HISTORY

First Season.....1974-75
 Overall Record.....708-565 (.556) in 42 seasons
 Overall MW Record.....211-145 (.593) in 21 seasons
 Postseason Tournament Appearances.....18
 NCAA Tournament Appearances.....8
 Last NCAA Postseason Appearance.....2020-21 (WNIT)
 Last NCAA Postseason Opponent.....California Baptist
 Last NCAA Postseason Result.....L, 90-85
 MW Regular Season Championships.....3
(2003-04, 2004-05, 2020-21)
 MW Tournament Championships.....5
(2002-03, 2003-04, 2004-05, 2006-07, 2007-08)

TEAM INFORMATION

2020-21 Overall Record.....15-5
 2020-21 Mountain West Record.....11-3
 2020-21 Mountain West Season Finish.....1st
 2020-21 MW Tournament Finish.....Semifinal
 Letterwinners Returning | Lost.....7 | 5
 Starters Returning | Lost.....4 | 1

- » Three Mountain West Regular-Season Championships
- » Five Mountain West Tournament Championships
- » Seven NCAA Tournament Appearances Since 2001-02
- » Mountain West Attendance Leader 21 Seasons in a Row
- » WBCA Academic Top 25 Eight Times Since 2004-05

COACHING STAFF

Head Coach.....Mike Bradbury (Chattanooga, 1993)
 Record at UNM (Years).....109-59 (6th season)
 Career Record (Years).....287-176 (15th season)
 Head Coach Phone.....505-925-5770
 Women's Basketball Fax.....505-925-5779

Assistant Coach.....Valerie King (6th season)
 Alma Mater.....Cincinnati, 2004
 Assistant Coach.....Kabrina Merriweather (1st season)
 Alma Mater.....Georgia Southwestern State, 2015
 Assistant Coach.....Symone Denham (4th season)
 Alma Mater.....Wright State, 2016

Spec. Asst. to H.C.....Ryan Freeman (1st season)
 Dir. of Player Development.....Nike McClure (1st season)
 Athletic Trainer.....Lexi Smith (1st season)
 Strength Coach.....Brett Nakashima (3rd season)
 Academic Adviser.....Joe DeBonis

MISCELLANEOUS INFORMATION

2019-20 Total Attendance.....82,854
 2019-20 Average Attendance.....4,874
 2019-20 NCAA Attendance Rank.....15th
 2019-20 Mountain West Attendance Rank.....1st

MULTIMEDIA INFORMATION

Athletics Website.....www.GoLobos.com
 Main University Web Site.....www.unm.edu
 Conference Web Site.....www.TheMW.com
 Facebook.....www.facebook.com/NewMexicoLobos
 Twitter.....@UNMLobos

MEDIA RELATIONS

Women's Basketball Contact.....Allison Weiss
 Cell Phone (Preferred).....661-313-5402
 Email.....allisonweiss@unm.edu

INTERVIEW REQUESTS

All interviews with UNM student-athletes and coaches should be coordinated through the athletics communications office. Interviews may be arranged by contacting Allison Weiss in the athletics communications office (allisonweiss@unm.edu). All interview requests should be made at least 24 hours in advance.

The University of New Mexico Athletics
 1414 University Drive
 Albuquerque, N.M. 87106



@UNMLoboWBB



NEW MEXICO WOMEN'S BASKETBALL

**BALANCED ATTACK**

Much like their M.O. last season, the Lobos have had balanced scoring this season with five Lobos currently averaging 10-plus points per game in Shaquiel McGruder (14.7), Jaedyn De La Cerda (13.5), LaTascya Duff (12.5) LaTascya Duff (12.2) and Antonia Anderson (10.9).

De La Cerda has reached double figures in 15 games, including the last seven games, LaTora and McGruder have each reached double figures in 13 games, LaTascya and Anderson in 10, and Paula Reus in three games.

Further, LaTascya has tallied four, 20-plus point games with McGruder five, 20-plus point games including one, 30-point game. De La Cerda also has a 20-point performance, with 27 points at Utah State. At Colorado State, Anderson achieved the 30-point feat with a career-high 30 points on a career-high eight three-pointers.

UNM had all five starters finish with double figures in the win against San Diego State on Jan. 9, led by McGruder and De La Cerda with 17 apiece. LaTora had 14 points, Anderson 12 and LaTascya 11. It was the first time all season that the Lobos had five players finish in double figures.

In addition, the Lobos have had seven different leading scorers in the 19 games this season: Anderson (16, Lamar; 30, Colorado State), Vianè Cumber (17, Northern New Mexico), McGruder (30, Prairie View; 20, Houston Baptist; 22, Grambling State; 19, Boise State; 17, UNLV; 17, San Diego State; 26, at Wyoming), LaTora Duff (16, Houston and 24, at New Mexico State), De La Cerda (18, Stephen F. Austin; 15, Louisiana-Monroe; 27, Utah State; 17, San Diego State), LaTascya Duff (21, Texas Tech; 22, New Mexico State and 20, UTEP) and Reus (15, Arizona).

UNM is outscoring its opponents 1458-1268 with the largest margin in the first quarter (374-286, 88 points). The greatest point output is in the fourth quarter with 388 points, an average of 20.4 points per game in the quarter. In addition, the Lobos are outscoring their opponents in every quarter but the third quarter.

When it comes to MW games, the trend continues with De La Cerda leading with 16.8 points per game, McGruder at 16.5, LaTascya at 13.7 ppg, Anderson at 13.2 and LaTora at 10.3.

The Lobos are outscoring their MW opponents 486-441, with the largest point production in the fourth quarter (127) and largest point margin at 19 in the fourth.

TOP OF THE MOUNTAIN

The Lobos lead the Mountain West in six statistical categories and nine stats overall and are second in one category.

UNM leads in three-point field-goals made per game (10.4) with a conference-best 197 on the season, assists per game (16.8) with a conference-best 319, blocked shots per game (4.4) with a conference-best 84, three-point field-goal percentage (.386), field-goal percentage (.457) and in scoring (76.7 ppg). New Mexico is second in scoring margin (+10.0), as well as third in steals per game (8.6).

On an individual level, the Lobos lead in seven statistical categories. LaTascya Duff leads in three-point field-goal percentage (.481), made three-pointers (52) and three-pointers made per game (2.9). Shaquiel McGruder leads in field-goal percentage (.607) and in made field goals (125) and Antonia Anderson and McGruder leads with 1.5 blocks per game and 28 blocks.

Jaedyn De La Cerda is second in three-pointers per game at 2.3 and with 44 threes.

In just conference games, New Mexico leads in scoring offense (81.0), three-pointers made per game (12.7), made three-pointers (76), three-point percentage (.404), assists (106), assists per game (17.7), blocked shots (30) and blocked shots per game (5.0).

In just MW games, LaTascya leads with a .583 shooting percentage from three. LaTascya and De La Cerda are 1-2 in made three-pointers per game in MW games at 3.5 (LaTascya) and 3.4 (De La Cerda) per game and De La Cerda is second in three-point field-goal percentage with .500. McGruder leads in blocks (13) and blocks per game (2.2).

Further, McGruder is still the only MW player who is in the top-10 in scoring, rebounding, steals and blocks on the season.

SHOWING RANGE

As a team, the Lobos are making 10.4 three-pointers per game and have reached double figures in 10 games while making nine in four games. UNM made a season- and program-high 21 three-pointers at Utah State on Jan. 6 and shot a season-best 54.2% from three against New Mexico State on Dec. 3. In the last game, at CSU, UNM made 19 three-pointers, the second-most in program history behind the 21 done three games earlier.

Nationally, the Lobos are second in the NCAA in made threes and attempts, fourth in three-pointers per game and 10th in percentage.

LaTascya Duff and De La Cerda are the top-two leaders in three-pointers this season, with Duff making a team-high 52 and De La Cerda making 44. Duff is shooting 48.1% from behind the arc and De La Cerda is at 40.4%. In the game at Utah State, Duff and De La Cerda each made seven three-pointers, with Duff 7-for-10 and De La Cerda 7-for-11 in the game.

LaTora Duff has made five threes in two games, going 5-for-7 (71.4%) in the first game against New Mexico State and 5-for-8 in the second game against

the Aggies. In the three games the week of Nov. 30-Dec. 5, LaTora made 12 three-pointers, shooting 63.2% from three-point range. She currently is third with 39 made threes, shooting 38.2%.

LaTascya was a perfect 4-for-4 in the MW opener at Boise State, her 10th game with multiple three-pointers.

Compared to other MW teams, UNM has three players in the top-seven of three-pointers made per game, led by LaTascya (first) with De La Cerda (second) and LaTora (seventh). As a team, UNM leads the Mountain West in made three-pointers per game with Colorado State second at 8.3 per game, as well as in three-point field-goal percentage at 38.8 percent, with Fresno State second at 36.8 percent. UNM has also taken a conference-high 511 three-pointers, with the second-highest 368 by Utah State. UNM has made 197 three-pointers this season, 65 more than the second highest team total (Colorado State).

In conference games, UNM is making 12.7 per game with 76 makes. The next closest team has made 53. Duff is making 58.3% of her three-pointers and De La Cerda 50.0%, ranking 1-2 in the conference.

SHAI TIME

Shaquiel McGruder is having a solid all-around season, and as previously mentioned, is still the only MW player who is in the top-10 in scoring, rebounding, steals and blocks on the season.

Shaquiel McGruder has had five games this season with 20-plus points, including a 30-point performance against Prairie View A&M. Against the Panthers, the senior forward set several career highs, finishing with a career-high 30 points on a career-high 13-for-18 shooting, while adding seven rebounds and four steals to her stat sheet.

When it comes to steals, the senior has recorded multiple steals in 12 games with a season-high four steals against Prairie View. McGruder has recorded at least one steal in 14 games, including nine of the last 11.

After not tallying a block in the first four games, McGruder has had at least one block in 13 games, including a season-best five blocks against UTEP, four games with three blocks and three games with two blocks. McGruder has recorded a block in the last eight games.

McGruder has recorded five double-doubles this season (20 points, 10 rebounds against Houston Baptist; 22 points, 11 rebounds against Grambling State; 18 points and 14 rebounds against UTEP; 17 points and a season-best 15 rebounds against UNLV; 14 points and 13 rebounds at Colorado State). The senior has grabbed 10-plus rebounds in six games.

In addition, she leads the team in scoring (279), points per game (14.7), field-goal percentage (.607), made field goals (125), steals (33) and steals per game (1.7), rebounds (139) and rebounds per game (7.3).

In conference games, McGruder is averaging 16.5 ppg, 9.0 rpg, 2.2 bpg and 1.3 spg.

Nationally, McGruder is 10th in field-goal percentage and ninth in field-goals made.

She received conference recognition on Monday, Dec. 20 with the MW naming her Player of the Week, her first career weekly conference honor.

Beyond just filing the scoring column, McGruder was a force all over the court, recording her third double-double of the season with 18 points, a game-and season-high 14 rebounds (seven offensive), a game-high five blocks (tying her career high), three steals and two assists.

Of McGruder's 18 points, 12 came off of fast-break layups with the Lobos scoring as a team 21 fast-break points in the game. In the final two quarters, McGruder tallied a near double-double with 10 points, nine rebounds (six offensive), three blocks, two assists and a steal. Entering the game leading the Mountain West in field-goal percentage, McGruder kept ahold of her position, going 9-for-14 (64.3 percent) from the floor.

TORA DUFF TOUGH

There isn't much that can stop LaTora Duff this season. After breaking her nose on Dec. 3 against New Mexico State, Duff has been playing with a mask and hasn't skipped a beat in production or playing time.

The Lobo facilitator is averaging 5.9 assists per game, to go along with 12.5 points per game, 3.9 rebounds per game, 1.5 steals per game and 0.5 blocks per game while playing a team-high 32.4 minutes per game.

Duff has started every game the last two seasons for the Lobos and is third in points (237), made three-pointers (39), steals (28) and made field goals (79) and fourth in rebounds (74).

Duff has scored in double figures in 13 of the 18 games and has scored in double figures in eight of the last 10 games that included a career-high 24 points after playing all 40 minutes at New Mexico State. Against the Aggies, Duff set career highs in made field-goals (eight) and in both games against the Aggies made five three-pointers (career highs).

Duff has two double-doubles this season - 17 points, 12 assists against Prairie View and 13 points, 14 assists at Utah State- and came close to triple-doubles in both games with eight rebounds both times. Twice this season, Duff has led the team in rebounds (seven at Boise State, eight at Utah State).

The senior has also made at least one three-pointer in every game but two

this season and had a streak of 11 games with a three that was snapped at Boise State. Twice this season, Duff has made five three-pointers in a game and 12 times has made multiple three-pointers in a game.

Duff has made 15 of 16 free throws in conference, going a perfect 7-for-7 against UNLV and 2-for-2 at Boise State and at Utah State. On the season, she's 40-for-48, taking and making the most free throws on the team.

In conference games, Duff is averaging 7.0 assists per game, second in the MW.

Nationally, Duff is third in assists (106) and 15th in assists per game, and 37th with 37 made three-pointers.

In the conference opener at Boise State, Duff had a balanced seven assists, seven rebounds and eight points, while hitting two clutch free throws late in the game to seal the 72-68 win. She also hit the game winner against UNLV, a three-pointer with 5.4 seconds left to break the tie. At Utah State, Duff had a career-high 14 assists.

Through 19 games, Duff has already surpassed her number of assists, made threes, made field goals, total points, rebounds, steals and blocks from last season.

TRIPLE THREAT TAY

There is no one better in the MW and very few better in the country when it comes to three-pointers than LaTascya Duff.

Duff has started 17 games this season and has made at least one three-pointer a game this season, and has a team high streak of 21 games with a three, the third-longest streak in program history.

She has made multiple three-pointers in 15 games this season. The senior has also finished with double-digit points in 10 games with 20-plus points in four games this season.

Against Boise State, Duff was a perfect 4-for-4 from behind the arc, keeping the Lobos in the game with the Broncos with three, three-pointers that kept the Lobos within one at the half. She also had a career-best seven at Utah State and made five against Texas Tech and UTEP.

Duff leads the MW in three-pointers made (52), made per game (2.89) and in three-point field-goal percentage (48.1).

Nationally, she is 2nd in three-point field-goal percentage, 5th in three-pointers made and 18th in three-pointers per game.

In conference games, Duff is averaging 13.7 ppg and shooting a conference-best 58.3% from three with 21 three-pointers.

Duff has had four games with 20-plus points, returning to form with 21 points on 5-for-7 shooting that included five three-pointers against Texas Tech and improved on that performance with 22 against New Mexico State on Dec. 3. In the game at Utah State, Duff was 7-for-10 from three-point range and 8-for-13 (.615) from the floor for a season-high 24 points.

In addition, the senior had a career-high eight rebounds against Arizona.

JAEDYN DLC FOR THREE

The name is De La Cerda, Jaedyn De La Cerda. And she's lethal from three.

The New Mexico native led the way during the UNLV-Utah State-San Diego State week of games with 19.7 points per game, shooting .560 from three-point range with 14 three-pointers. De La Cerda hit a season-high seven three-pointers at Utah State.

She picked up where she left off at Wyoming with 19 points against the Cowgirls after shooting 7-for-12 from the floor with two three-pointers.

De La Cerda is averaging 13.5 points on the season with 44 three-pointers and .404 percent from behind the arc. She has scored in double figures in the last seven games and 15 times overall this season.

In conference play, she is averaging 16.8 points per game, ranking fourth among all scorers and is second in three-point field-goal percentage with a .500 success rate.

On the season, she is second in the conference in three-pointers made and made per game, 11th in scoring and 14th in assists.

On the team, she is second in scoring (256 points), in made field-goals (94) and three-pointers, as well as in assists (59), third in rebounds (76) and fourth in steals (20).

Nationally, she is 22nd in three-point field-goals made and 49th in three-point percentage.

In her career, De La Cerda has 165 made three-pointers, placing her fifth, and has scored 1,149 points.

COMEBACK KIDS

Three times this season the Lobos have trailed going into the fourth quarter and have rallied to win.

Two of those instances came in conference games, with the Lobos outscoring the Broncos 18-13 in the fourth quarter and held the Broncos scoreless for the final 2:58 for the 72-68 win. New Mexico scored the first four points of

the fourth to take a 58-55 lead before Boise State tied the game and pulled ahead 60-58 on free throws. Jaedyn De La Cerda tied the game with a layup and proceeded to hit back-to-back three-pointers for her own personal 8-0 run for the 68-64 Lobo lead. The Broncos responded to tie the game at 68 with 2:58 to play, but the Lobo defense held tough throughout the remainder of the contest and the Lobo offense converted at the free-throw line, scoring four points at the line for the difference in the game. After De La Cerda and Paula Reus both split a pair of free-throws to keep it a one-possession game, crucial rebounds by Reus and De La Cerda kept the Broncos one-and-done. LaTora knocked down a pair of free throws with 23 seconds remaining and an Anderson steal in the waning seconds secured the road victory.

Against UNLV, New Mexico came alive in the fourth quarter, outscoring the Lady Rebels 27-18, shooting 56.3 percent from the floor and 66.7 from three, its best percentages in a quarter in both categories, and was 5-for-5 from the line. In a game that had seven ties and four lead changes, UNM got the upper hand on its last possession in a tied 68-68 game with 5.4 seconds left as LaTora Duff hit a three-pointer from the top of the arc that hit nothing but net. UNLV had one final opportunity but missed its three-pointer and Duff fittingly grabbed the defensive board as the final buzzer sounded. UNM led for just 4:06 of the game.

Trailing by 14 points at the beginning of the fourth quarter at New Mexico State, a LaTascya Duff three-pointer (her first made three-pointer of the game) cut the gap down to 10 and started an eventual 15-2 run to tie the game at 63 with 3:55 remaining and a Shaiquel McGruder layup completed the comeback, putting the Lobos in front 65-64. UNM closed on a 10-2 run and ultimately outscored NMSU 28-10 in the fourth quarter in the 73-66 victory.

UNM is outscoring opponents 388-320 (+68) in the fourth quarter.

HEATING UP IN LOGAN

The Lobo women's basketball team put on a three-point clinic on Thursday night against Utah State, setting a program record with 21 made three-pointers in a 98-83 victory.

The previous record was 18, made against Illinois in 2017, which the Lobos already surpassed in the third quarter.

In addition, the 21 three-pointers also broke the MW record of 20, that was achieved three times previously- by Colorado State in 2016, Wyoming in 2010 and BYU in 2001. Of those, only one was against a MW school, Wyoming against Air Force in 2010.

LaTascya Duff and Jaedyn De La Cerda hit seven three-pointers each with De La Cerda finishing with a game-high 27 points and Duff with 24 points. LaTora Duff made three, three-pointers, finishing with 13 points, Antonia Anderson made two three-pointers and Viané Cumber and Kath van Bennekom each made a three. De La Cerda's seven tied her career high, while LaTascya's set a career high, besting the six that she made last year against Utah State. It also extended her three-point streak to 18 games and was her fourth game this season with 20-plus points.

Anderson made it officially the record with a three-pointer with 36 remaining in the third quarter, with the Lobos making seven three-pointers in the first, six in the second and six in the third quarter, shooting 66.7 percent in the second quarter and 60 percent from three in the third quarter.

LaTora also tallied a double-double with a career-high 14 assists to go with her 13 points for her second double-double of the season coming close to a triple-double with a team-high eight rebounds, and Anderson tied her season high with five blocks, the second time this season that the senior has blocked five shots in a game. It was also the third-straight game against the Aggies that the Lobos have neared the 100-point mark, scoring 93 points, 97 points and now 98 points in the last three meetings. In those three games, the Lobos made 15, 16 and 21 three-pointers.

BLOCK PARTY HOSTED BY AT AND SHAI

Antonia Anderson and Shaiquel McGruder lead not just the team but the MW, with 28 blocks, and average 1.47 per game. Anderson has twice recorded five blocks- against Houston Baptist and at Utah State- and has recorded a block in all but five games with seven games with multiple blocks.

There have been three games this season that a Lobo has recorded five blocks in a game, with Anderson blocking five against Houston Baptist and Utah State and McGruder against UTEP.

In conference games, McGruder leads with 13 blocks (2.17 per game) with Anderson at eight.

In addition, McGruder has had eight games with multiple blocks and 13 games with at least one block.

Anderson has 151 career blocks, ranking her 3rd all-time in program history and is seven from 2nd.

As a team, the Lobos lead the conference with 84 on the season and in blocks per game with 4.4 as well as in conference games (30, 5.0 per game).

PAULA PEAKING

Freshman Paula Reus quickly found her footing, and has emerged as a prolific passer and key piece to the Lobo offense.

The freshman is averaging 6.2 points per game with 105 points in 17 games, and is third in assists (37, 2.2 per game) and in blocks with 10. She is averaging 19.6 minutes per game and has seen her minutes expand as of late.

Twice this season, Reus has dished out six assists with a season-high seven at Houston. Additionally, three times this season the freshman has finished in double figures, including the last two games. At Wyoming, the Spaniard shot 5-for-8 with a perfect 2-for-2 from three-point range for 12 points, and



followed that with a season-high 17 points, nine rebounds and four made threes at Colorado State.

In the game against UNLV, Reus had a balanced seven points, seven rebounds (a season high) and two blocks. Twice in the last three games, Reus has grabbed seven rebounds, which is currently her season high.

Getting the starting nod against then-No. 6 Arizona, Reus had her best scoring outing of the season, leading the Lobos with 15 points and an efficient 7-for-8 shooting in the game, making her first seven shots. She showcased her versatility, hitting mid-range jumpers and a three-pointer, while showing she can drive to the basket with either hand or create her own shot.

In her first official start for UNM against Houston, Reus distributed a season-high seven assists to go with seven points, two steals and five rebounds and had her best scoring output against New Mexico State on Dec. 3 with nine points on 3-for-4 shooting.

In the second game against the Aggies, Reus was called upon to play all 10 minutes of the fourth quarter and held her own against the NMSU post players, finishing with six assists, six points, six rebounds, two blocks and a steal in 28 minutes.

MILESTONE ACHIEVED

Jaedyn De La Cerda became the 23rd Lobo to reach the 1000-point milestone in the fourth quarter against Texas Tech on Nov. 28. She currently has 1030 points in her illustrious career.

The New Mexico native is not the only Lobo with milestones reached this season. Antonia Anderson recorded her 1000th-career point in the second quarter at Wyoming on a three-pointer, becoming the 17th player in program history to have 1,000 points, 500 rebounds and the 24th player to reach 1000 points in their career.

In addition, Anderson has played in 134 games at UNM, and will break the program record of 134 games set by Angela Hartill (2005-09) on Saturday.

Head Coach Mike Bradbury also achieved a milestone this season, winning his 100th game at UNM against Grambling State on Nov. 30. Bradbury became just the second coach in program history to reach 100, joining only Don Flanagan.

QUARTER LOCKDOWN

The Lobos have held an opponent to single digits in a quarter seven times, with the latest in the first quarter of Friday's game against New Mexico State.

Against Louisiana-Monroe, the Lobos held the Warhawks to single digits in the first two quarters with nine in the first quarter and eight in the second quarter. It was the second time in the week that the Lobos held their opponent below 20 points in the first half, holding Houston Baptist to 16 in the first 20 minutes.

The Lobos had an impressive defensive display, holding the Huskies to just two points in the opening quarter and without a basket for almost the first eight minutes of the game (2:01).

In the game against Northern New Mexico, UNM held the Lady Eagles to seven points in both the second and fourth quarters, while holding them under 15 points in each quarter.

UNM also held Grambling State to below 15 points in each quarter, with 11 in both the first and second and 14 in both the third and fourth.

The Lobos held Northern New Mexico to 18.2% in the fourth quarter on 2-11 shooting and 23.1% in the second quarter on 3-13 shooting.

As a whole, NNMC shot just 27.6% in the game with 16 made baskets on 58 attempts and 17.4% from three with four makes on 23 attempts.

Against Lamar, the Lobos shut the Cardinals down defensively in the third quarter, allowing just nine points in the quarter for the 53-37 (16 points) lead.

UNM held Lamar to 2-of-11 shooting from the floor (18.2%) and 1-of-7 (14.3%) from three.

On the offensive end, UNM shot 53.8% from the field in the third quarter to the Cardinals' 18.2%, with Jaedyn De La Cerda accounting for 14 of UNM's 18 points in the quarter.

Further, the Lobos held the Panthers scoreless for the first 2:16 of the game, the first Lamar points came at 7:15 remaining in first and the Lobos held the Lady Eagles the final 5:06 of the first quarter without a point.

SHE'S JUST A FRESHMAN

It took all of one week of collegiate play for Vianè Cumber to earn her first award, as the guard earned the inaugural MW Freshman of the Week on Monday, Nov. 15.

The distinction came after Cumber led all scorers with 17 points on 7-for-10 shooting and 3-for-5 from three-point range in her first collegiate start on Friday. The guard also was credited with an assist and two steals.

Cumber took over midway through the first quarter, accounting for eight straight Lobo points, making three consecutive shots on back-to-back threes and a layup as UNM built its lead in the first quarter, going a perfect 3-for-3 and 2-for-2 from three while also having a steal and an assist against Northern New Mexico. In the third quarter, Cumber went 2-for-3 with a fast-

break layup and created the steal that led to a fast-break layup on the next possession.

The Albuquerque native added a layup and a final three in the fourth quarter while grabbing four defensive rebounds.

Her first collegiate basket occurred in the second quarter against Lamar on a jumper that extended the Lobo lead to seven and collected three rebounds.

On the week, Cumber averaged 9.5 points, 4.0 rebounds and 1.5 steals per game.

MANAGING EXPECTATIONS

After winning the Mountain West regular season in 2020-21 for the first time since 2004-05, the Lobos were picked to finish second in the preseason MW poll with 251 points and seven first-place votes.

It is the second time in head coach Mike Bradbury's tenure that the Lobos have been picked to finish second, with the last time occurring in 2019-20 when the Lobos earned three first-place votes and 280 points.

New Mexico finished above UNLV with the Rebels at 232 points and three first-place votes, and fourth-place Colorado State with the Rams earning 207 points and one first-place vote.

State and Colorado State with one each, San Diego State with two, UNLV at three, UNM with seven and Fresno State the preseason favorite with 13 first-place votes and 269 points.

In addition, senior Antonia Anderson was selected to the MW preseason all-conference team, one of five players to earn the distinction. For Anderson, the Cibola, Texas native is coming off of a campaign in which she averaged 12.1 points per game, 6.2 rebounds per game, 1.9 assists per game, 1.0 steals per game and 1.0 blocks per game and scored 10-plus points in 13 games with a career-high 29 points in the victory over UNLV on Jan. 17. Anderson led the team in rebounds and rebounds per game, was second in made field goals and blocked shots and third in total points.

In MW contests, she averaged 12.6 points per game and a team-high 6.6 rebounds per game, as well as led the conference in field-goal percentage with 49 percent. Further, Anderson was eighth in blocks per game at 1.07 and ranked in the top 15 in scoring, rebounding, field-goal percentage, blocked shots and defensive rebounds, resulting in her first all-conference honor in being named to the Mountain West all-conference team.

PRIDE OF NEW MEXICO

The Lobos have two New Mexico natives on the 2021-22 roster with freshman Vianè Cumber and senior Jaedyn De La Cerda. In addition to being from New Mexico, the duo has something else in common: New Mexico Gatorade Player of the Year distinctions.

Cumber was named the 2019-20 and 2021-22 New Mexico Gatorade Girls Basketball Player of the Year after averaging 26.5 points, 9.3 rebounds, 2.2 assists and 1.5 steals her senior season and 22.4 points, 10.6 rebounds, 2.5 assists and 3.3 steals as a junior at Sandia High School in Albuquerque. Out of Roswell, N.M. and Roswell High School, De La Cerda earned the 2016-17 New Mexico Gatorade Player of the Year.

KNOW YOUR OPPONENT

Fresno State enters the game 7-9 on the season and 3-2 in the MW after a 66-57 loss at Air Force on Wednesday night. Haley Cavinder was the leading scorer with 24 points, with Wytalla Motta the only other double-digit scorer with 10 points. Cavinder also led with 13 rebounds with Motta finishing with 10 for double-doubles.

Cavinder leads the MW in scoring and rebounding on the season and in just conference games.

The Bulldogs have two players in double figures in Haley (18.7 ppg) and Hanna (14.7 ppg) Cavinder. Haley leads in assists (84) and rebounds (144, 9.6 per game) as well, while Hanna leads in steals (26) for the Bulldogs.

As a team, Fresno State is second in three-point percentage in conference games with .388 and third in field-goal percentage (.436). The Bulldogs are fourth in scoring offense at 71.6 ppg in MW games.

The Bulldogs were picked as the preseason favorite with 13 first-place votes and 269 points.

LAST TIME IT HAPPENED (UNM)

As A Team

Scored 100 Points:	120 - at Arkansas-Pine Bluff (12-17-20)
Scored 90 Points:	98 - at Utah State (1-6-22)
Scored Fewer Than 50 Points:	42 - at UNLV (1-11-17)
Scored Fewer Than 40 Points:	38 - at Colorado St. (1-3-15)
Won by 50 Points:	+56 (W, 96-40) - Northern New Mexico (11-12-21)
Won by 40 Points:	+48 (W, 92-44) - vs. Northern NM (12-10-19)
Won By 30 Points:	+32 (W, 97-65) - at Utah State (3-1-21)
Lost By 30 Points:	-37 (L, 47-84) - at (RV) Arizona St. (12-14-19)
Lost By 40 Points:	-42 (L, 63-105) - at Oklahoma (12-16-17)
Shot 60% or Better:	61.2% - Pacific (11-9-01)
Shot Less Than 30%:	26.7% (16-60) - vs. UNLV (1-18-20)
Shot 60% 3FG or Better:	68.2% (15-22) - at NMSU (12-2-17)
Shot Less Than 20% 3FG:	13.79 (4-29) - vs. Nevada (3-1-20)
Made 15 3-Pointers:	19 - at Colorado State (1-15-22)
Shot 90% on FTs (10 or more):	93.3% (14-15) - vs. Texas Tech (11-28-21)
Shot Less Than 40% On FTs:	14.3% (1-7) - at UTEP (11-30-17)
Had 50 Rebounds:	54 - Northern New Mexico (11-12-21)
Had 20 Offensive Rebounds:	21 - Northern New Mexico (11-12-21)
Had 25 Assists:	25 - at Utah State (1-6-22)
Had 20 Turnovers:	21 - vs. New Mexico State (12-3-21)
Had Less Than 10 Turnovers:	6 - at Colorado State (1-15-22)
Had 10 Steals:	13 - at Boise State (12-31-21)
Had 10 Blocks:	11 - vs. Houston Baptist (11-23-21)
Had Two 20-Point Scorers:	at Utah State (1-6-22) LaTascya Duff (24) and Jaedyn De La Cerda (27)
Had Three 20-Point Scorers:	vs. San Jose St. (2-27-19) Tasha Buck (30), Jaisa Nunn (22) and Cherise Beynon (22)
Had 6 Double-Digit Scorers:	at Arkansas-Pine Bluff (12-17-20)
Had 5 Double-Digit Scorers:	vs. San Diego State (1-9-22)
Had No Double-Digit Scorers:	vs. (RV) Arizona St. (12-14-19)
Had Two 10+ Rebounders:	vs. Nevada (3-1-20) Shaiquel McGruder (17) and Antonia Anderson (10)
Scored 50 Points In 1st Half:	55 - at Utah State (1-6-22)
Scored 50 Points In 2nd Half:	50 - Northern New Mexico (11-12-21)
Scored 60 Points in a 2nd Half:	63 - vs. New Mexico St. (12-16-19)
Scored 20 Or Fewer Points In 1st Half:	17 - at Colorado St. (2-22-17)
Scored 20 Or Fewer Points In 2nd Half:	17 - at UNLV (1-15-21)
Lowest Pts Scored in Quarter:	2 - vs. Tulsa (11-25-16)
Failed To Make a 3FG:	at (RV) Arizona St. (12-14-19)
Defeated a Ranked Team:	W, 88-87 vs. No. 16 Marquette (11-13-17)
Lost to a Ranked Team:	L, 77-60 at No. 6 Arizona (12-12-21)
Won an OT Game:	W, 74-71 at Wyoming (2-8-20)
Lost an OT Game:	L, 86-78 at Nevada (2-19-20)
Won a 2OT Game:	W, 89-85 at Houston (11-24-18)
Lost a 2OT Game:	L, 69-65 vs. Fresno St. (1-2-16)

As An Individual

Had a Triple-Double:	Aisia Robertson (28 pts, 11 rebs, 11 assists) at Houston (11-24-18)
Had a Double-Double (Pts/Reb):	Shaiquel McGruder (14 pts, 13 reb) at Colorado State (1-15-22)
Had a Double-Double (Pts/Asst):	LaTora Duff (13 pts & 14 asts) at Utah State (1-6-22)
Had a Double-Double (Reb/Asst):	vs. Fairleigh Dickinson (11-12-16) Cherise Beynon (13 reb, 10 asts)
Scored 20+ Pts with 10+ Rebs:	Shaiquel McGruder (20 pts, 10 reb) vs. Houston Baptist (11-23-21)
Scored 30 Points:	Antonia Anderson (30 pts), at Colorado State (1-15-22)
Scored 40 Points:	Cherise Beynon (41) at SDSU (1-20-18)
Scored 30 Points (MW Only):	Antonia Anderson (30) at Colorado State (1-15-22)
Scored 40 points (MW Only):	Cherise Beynon (41) at San Diego St. (1-20-18)
Had 20+ Rebounds:	Richelle van der Keijl (20) vs. New Mexico St. (11-15-16)
Had 15+ Rebounds:	Shaiquel McGruder (15) vs. UNLV (1-3-22)
Had 15+ Assists:	Aisia Robertson (16) vs. Oklahoma (11-28-18)
Had 5+ Steals:	Antonia Anderson (5) at Boise State (12-31-21)
Had 5+ Blocks:	Antonia Anderson (5) at Utah State (1-6-22)

LAST TIME IT HAPPENED (OPP)

As A Team

Scored 100 Points:	105 - at Oklahoma (12-16-17)
Scored 90 Points:	90 - California Baptist (3-19-21)
Scored Less Than 50 Points:	45 - Louisiana-Monroe (11-27-21)
Scored Less Than 40 Points:	40 - Northern New Mexico (11-12-21)
Shot 50% Or Better:	56.4% (31-55) - vs. Texas Tech (11-28-21)
Shot Less Than 30%:	27.6 % (16-58) - Northern New Mexico (11-12-21)
Shot 50% 3FG Or Better:	50.0% (7-14) - Texas Tech (11-28-21)
Shot Less Than 20% 3FG:	11.1% (1-9) - New Mexico State (12-3-21)
Made 15 3-Pointers:	15 - at San José St. (1-22-20)
Shot 90% On FTs (10 or more):	92.9% (13-14) vs. Houston Baptist (11-23-21)
Shot Less Than 50% On FTs:	33.3% (4-12) - San Diego State (1-9-22)
Had 50 Rebounds:	53 - vs San Diego State (1-9-22)
Had 20 Offensive Rebounds:	24 - vs San Diego State (1-9-22)
Had 25 Assists:	26 - at Houston (11-20-21)
Had 20 Turnovers:	21 - at Utah State (1-6-22)
Had 30 Turnovers:	30 - vs. Northern NM (11-15-17)
Had Less Than 10 Turnovers:	4 - at Colorado State (1-15-22)
Had 10 Steals:	10 - at Utah State (1-6-22)
Had 10 Blocks:	10 - vs. Utah St. (2-10-16)
Had Two 20-Point Scorers:	California Baptist (3-19-21) Britney Thomas (22) and Caitlyn Harper (25)
Had 6 Double-Digit Scorers:	Baylor (1-4-95)
Had 5 Double-Digit Scorers:	Arizona (12-12-21)
Had No Double-Digit Scorers:	vs. Louisiana-Monroe (11-27-21)
Had Two 10+ Rebounders:	at Boise State (12-31-21) Rachel Bowers (10), Trista Hull (10)
Scored 50+ Points In 1st Half:	54 - at San José St. (1-22-20)
Scored 50+ Points In 2nd Half:	51 - at Houston (11-20-21)
Scored 20 Or Less Points In 1st Half:	17 - vs. Louisiana-Monroe (11-27-21)
Scored 20 Or Less In 2nd Half:	19 - Northern New Mexico (11-12-21)
Scored Less Than 10 Points in Quarter:	8 - New Mexico State (12-3-21)
Failed To Make a 3FG:	0-1 by San Diego State (2-18-15)

As An Individual

Had a Double-Double (Pts/Reb):	Kim Villalobos (17 pts, 10 reb) San Diego State (1-9-22)
Had a Double-Double (Pts/Asst):	McKenna Hofschild (19 pts, 10 assists) Colorado State (1-15-22)
Had a Double-Double (Pts/Steals):	Jasmyne Harris (28 pts & 10 steals) at Houston (11-28-18)
Had 20+ Points & 10+ Rebounds:	Bigue Sarr (28 pts, 12 reb) New Mexico State (12-5-21)
Scored 30 Points:	Shlya Latone (33) - at Utah State (3-1-21)
Scored 30 Points (MW Only):	Shlya Latone (33) - at Utah State (3-1-21)
Had 20+ Rebounds:	Kaylee Johnson (22) - No. 1 Stanford (11-24-14)
Had 15+ Rebounds:	Desi-Rae Young (16) - UNLV (1-3-22)
Had 10+ Assists:	McKenna Hofschild (10) - Colorado State (1-15-22)
Had 5+ Steals:	Tommi Olson (5) - at Wyoming (11-13-22)
Had 5+ Blocks:	Mallory McGwire (5) - vs. Boise St. (2-22-20)



MOUNTAIN WEST STATISTICS

LOBOS RECORD WHEN...

Table with 3 columns: Overall, In MW, and various game statistics like Overall (15-4), In MW (6-0), Shooting 50% or better (4-0), etc.

TEAM

Table comparing team statistics for All and Conference Only, including Assists per Game (1st 16.8), 3-Pt FG Made (1st 10.4), FG % (1st .457), etc.

INDIVIDUAL

Table comparing individual player statistics for All and Conference Only, including Scoring (Shaquell McGruder 5th 14.7), Rebounding (Shaquell McGruder 7th 7.3), Field Goal % (Shaquell McGruder 1st .607), etc.

NCAA STATISTICS

TEAM

Table of team NCAA statistics including 3-pt. FG Made (2nd), 3-pt. FG Attempted (2nd), Assists (7th), etc.

INDIVIDUAL

Table of individual player NCAA statistics including Assists (LaTora Duff 3rd), Assists per Game (LaTora Duff 15th), FG % (Shaquell McGruder 10th), etc.

2021-22 MW Players of the Week

- WEEK 1 (11/15/21) PLAYER: Desi-Rae Young, C, UNLV FRESHMAN: Viané Cumber, G, UNM
WEEK 2 (11/22/21) PLAYER: McKenna Hofschild, G, CSU FRESHMAN: Audrey Roden, G, Nev.
WEEK 3 (11/29/21) PLAYER: McKinley Bradshaw, G, UW FRESHMAN: Allyson Fertig, C, UW
WEEK 4 (12/6/21) PLAYER: Karly Murphy, F, CSU FRESHMAN: Audrey Roden, G, Nev.
WEEK 5 (12/13/21) PLAYER: McKenna Hofschild, G, CSU FRESHMAN: Tamia Stricklin, F, FS
WEEK 6 (12/20/21) PLAYER: Shaquell McGruder, F, UNM FRESHMAN: Audrey Roden, G, Nev.
WEEK 7 (12/27/21) PLAYER: Desi-Rae Young, C, UNLV FRESHMAN: Trista Hull, F, BSU
WEEK 8 (1/3/22) PLAYER: McKenna Hofschild, G, CSU FRESHMAN: Allyson Fertig, C, UW
WEEK 9 (1/10/22) PLAYER: Jaedyn De La Cerda, G, UNM FRESHMAN: Asia Avinger, G, SDSU
WEEK 10 (1/17/22) PLAYER: Haley Cavinder, G, FS FRESHMAN: Asia Avinger, G, SDSU

SERIES HISTORY

FS	STAT COMPARISON	UNM
69.7	Points Per Game	76.7
41.3	FG%	45.7
36.8	3FG%	38.6
77.3	FT%	72.2
7.6	Made 3-pt PG	10.4
35.8	Rebounds PG	37.6
11.9	Turnovers PG	15.3
13.2	Assists PG	16.8
2.3	Blocks PG	4.4
7.2	Steals PG	8.6
67.3	Scoring Defense	66.7
41.1	FG% Defense	38.6
32.4	3FG% Defense	31.4
-2.9	Rebound Margin	-2.4

TEAM LEADERS

Haley Cavinder (19.1)	POINTS	Shaiquel McGruder (14.7)
Haley Cavinder (9.8)	REBOUNDS	Shaiquel McGruder (7.3)
Haley Cavinder (5.5)	ASSISTS	LaTora Duff (5.9)
Hanna Cavinder (1.8)	STEALS	Shaiquel McGruder (1.7)
Amiee Book (0.5)	BLOCKS	McGruder/Anderson (1.5)

FRESNO STATE (15-15)

H: 9-4; A: 3-9; N: 3-2

LAST 20 MEETINGS

2/13/99	W	71-59	A
1/12/13	L	69-65	A
2/13/13	L	51-50	H
1/18/14	L	75-73	H
12/31/14	L	71-65	A
2/28/15	W	63-60	H
3/11/15	W	64-53	N
1/2/16	L (2OT)	69-65	H
2/27/16	L	51-43	A
12/29/16	W	80-54	A
2/18/16	W	66-57	H
1/13/18	W	88-75	H
3/2/18	W	93-89	A
2/2/19	W	82-73	H
2/16/19	L	70-77	A
1/8/20	L (OT)	81-84	A
2/1/20	L	78-84	H
1/28/21	W	82-80	N
1/30/21	L	91-69	N
3/9/21	L	77-72	N

UNM WHEN HOME/AWAY/NEUTRAL

STAT	HOME (9)	AWAY (7)	NEUTRAL (3)
PPG	79.8	76.1	69.0
Opp PPG	59.7	76.1	66.0
FG %	.470	.454	.424
3FG%	.365	.405	.392
3 FG MPG	9.0	12.1	10.3
FT%	.697	.709	.857
Opp FG%	.350	.414	.432
Opp 3FG%	.269	.351	.353
RPG	41.4	35.6	30.7
Opp RPG	39.6	41.6	37.7
APG	16.9	17.1	15.7
SPG	9.8	8.0	6.7
TOV	14.1	16.1	17.0

MOUNTAIN WEST STANDINGS

Team (AP/Coaches)	CONFERENCE						OVERALL							
	W	L	Pct.	Home	Away	Neutral	W	L	Pct.	Home	Away	Neutral	Last 10	Strk
New Mexico	6	0	1.000	2-0	4-0	0-0	15	4	.789	9-0	5-2	1-2	9-1	W7
Nevada	4	0	1.000	3-0	1-0	0-0	12	4	.750	8-2	3-2	1-0	9-1	W4
UNLV	6	1	.857	3-0	3-1	0-0	14	4	.778	8-1	6-3	0-0	8-2	W4
Fresno State	3	2	.600	2-1	1-1	0-0	7	9	.438	4-3	3-5	0-1	5-5	L1
Colorado State	3	3	.500	2-2	1-1	0-0	12	4	.750	8-2	2-2	2-0	7-3	W1
Air Force	3	3	.500	1-1	2-2	0-0	9	8	.529	5-3	4-5	0-0	5-5	W1
San Diego State	3	4	.429	3-1	0-3	0-0	9	9	.500	7-3	2-4	0-2	5-5	L1
Wyoming	2	3	.400	1-1	1-2	0-0	6	8	.429	4-2	2-5	0-1	4-6	L1
Boise State	2	4	.333	2-1	0-3	0-0	6	11	.353	5-3	1-6	0-2	4-6	W1
San José State	0	5	.000	0-3	0-2	0-0	3	13	.188	2-5	1-7	0-1	0-10	L10
Utah State	0	7	.000	0-3	0-4	0-0	5	12	.294	4-4	1-8	0-0	1-9	L9

UNM STARTING LINEUPS (GAME)

Game	G	G	G	F	F
Lamar	Tora Duff	De La Cerda	Seren	Anderson	McGruder
Northern N.M.	Tora Duff	De La Cerda	Cumber	Anderson	McGruder
Prairie View	Tora Duff	De La Cerda	Tay Duff	Anderson	McGruder
Houston	Tora Duff	Tay Duff	Augmon	van Bennekom	Reus
Houston Baptist	Tora Duff	De La Cerda	Tay Duff	Anderson	McGruder
Stephen F. Austin	Tora Duff	De La Cerda	Tay Duff	Anderson	McGruder
Louisiana-Monroe	Tora Duff	De La Cerda	Tay Duff	Anderson	McGruder
Texas Tech	Tora Duff	De La Cerda	Tay Duff	Anderson	McGruder
Grambling State	Tora Duff	De La Cerda	Tay Duff	Anderson	McGruder
New Mexico State	Tora Duff	De La Cerda	Tay Duff	Anderson	McGruder
New Mexico State	Tora Duff	De La Cerda	Tay Duff	Anderson	McGruder
Arizona	Tora Duff	De La Cerda	Tay Duff	Anderson	Reus
UTEP	Tora Duff	De La Cerda	Tay Duff	Anderson	McGruder
Boise State	Tora Duff	De La Cerda	Tay Duff	Anderson	McGruder
UNLV	Tora Duff	De La Cerda	Tay Duff	Anderson	McGruder
Utah State	Tora Duff	De La Cerda	Tay Duff	Anderson	McGruder
San Diego State	Tora Duff	De La Cerda	Tay Duff	Anderson	McGruder
Wyoming	Tora Duff	De La Cerda	Tay Duff	Anderson	McGruder
Colorado State	Tora Duff	De La Cerda	Tay Duff	Anderson	McGruder
Fresno State					
San José State					
UNLV					
San Diego State					
Colorado State					
Wyoming					
Air Force					
Nevada					
Utah State					
Boise State					
Fresno State					
San José State					

UNM STARTING LINEUPS (RECORD)

Tay Duff, Tora Duff, De La Cerda, Anderson, McGruder	13-2
Seren, LaTora Duff, De La Cerda, Anderson, McGruder	1-0
Cumber, LaTora Duff, De La Cerda, Anderson, McGruder	1-0
Tay Duff, Tora Duff, De La Cerda, Anderson, Reus	0-1
Tay Duff, Tora Duff, Augmon, van Bennekom, Reus	0-1

DOUBLE-DOUBLE TRACKER

Nevaeh Parkinson	11 pts, 11 reb.	Northern N.M.
LaTora Duff	17 pts, 12 assts	Prairie View
Shaiquel McGruder	20 pts, 10 reb.	Houston Baptist
Shaiquel McGruder	22 pts, 11 reb.	Grambling State
Antonia Anderson	16 pts, 12 reb.	New Mexico State
Shaiquel McGruder	18 pts, 14 reb.	UTEP
Shaiquel McGruder	17 pts, 15 reb.	UNLV
LaTora Duff	13 pts, 14 assts	Utah State
Antonia Anderson	12 pts, 10 reb.	San Diego State
Shaiquel McGruder	14 pts, 13 reb.	Colorado State

CAREER DOUBLE-DOUBLES

	2021-22	Career
Antonia Anderson	2	5
Jaedyn De La Cerda	0	1
Shaiquel McGruder	5	6
Nevaeh Parkinson	1	1
LaTora Duff	2	2

20-POINT TRACKER

Shaiquel McGruder	30 pts	Prairie View
Shaiquel McGruder	20 pts	Houston Baptist
LaTascya Duff	21 pts	Texas Tech
Shaiquel McGruder	20 pts	Texas Tech
Shaiquel McGruder	22 pts	Grambling State
LaTascya Duff	22 pts	New Mexico State
LaTora Duff	24 pts	New Mexico State
LaTascya Duff	20 pts	UTEP
LaTascya Duff	24 pts	Utah State
Jaedyn De La Cerda	27 pts	Utah State
Shaiquel McGruder	26 pts	Wyoming
Antonia Anderson	30 pts	Colorado State

**NUMERICAL**

#	NAME	POS	HT	YR	B/T	HOMETOWN (PREVIOUS SCHOOL)
1	Rebeka Renczes	PG	5-7	Fr.	Szekszard, Hungary/	Garay Janos Secondary School
4	LaTascya Duff	G	5-7	Sr.	Samson, Ala. /	Shelton State CC
5	LaTora Duff	G	5-7	Sr.	Samson, Ala. /	Shelton State CC
10	Kath van Bennekom	G	5-9	So.	Gorinchem, The Netherlands /	Lyceum Oudehoven
11	Zeyno Şeren	G	5-10	Fr.	Ankara, Turkey/	TED Ankara College Private High School
12	Aniyah Augmon	G	5-8	Fr.	San José, Calif./	Woodside Priory School
13	Shaiquel McGruder	F	6-0	Sr.	Trotwood, Ohio /	Trotwood-Madison HS
21	Mackenzie Curtis	G	5-9	Fr.	Lakeside, Calif. /	El Capitan HS
23	Jaedyn De La Cerda	G	5-6	Sr.	Roswell, N.M. /	Roswell HS
30	Paula Reus	F	6-1	Fr.	Palma de Mallorca, Spain/	IES Joaquim Blume
32	Antonia Anderson	G/F	6-2	Sr.	Cibolo, Texas /	Byron P. Steele II HS
33	Vianè Cumber	G	5-10	Fr.	Albuquerque, N.M./	Sandia HS
34	Nevaeh Parkinson	F/C	6-3	So.	Dallas, Texas /	John Paul II HS

ALPHABETICAL

#	NAME	POS	HT	YR	B/T	HOMETOWN (PREVIOUS SCHOOL)
32	Antonia Anderson	G/F	6-2	Sr.	Cibolo, Texas /	Byron P. Steele II HS
12	Aniyah Augmon	G	5-8	Fr.	San José, Calif./	Woodside Priory School
33	Vianè Cumber	G	5-10	Fr.	Albuquerque, N.M./	Sandia HS
21	Mackenzie Curtis	G	5-9	Fr.	Lakeside, Calif. /	El Capitan HS
23	Jaedyn De La Cerda	G	5-6	Sr.	Roswell, N.M. /	Roswell HS
4	LaTascya Duff	G	5-7	Sr.	Samson, Ala. /	Shelton State CC
5	LaTora Duff	G	5-7	Sr.	Samson, Ala. /	Shelton State CC
11	Zeyno Şeren	G	5-10	Fr.	Ankara, Turkey/	TED Ankara College Private High School
13	Shaiquel McGruder	F	6-0	Sr.	Trotwood, Ohio /	Trotwood-Madison HS
34	Nevaeh Parkinson	F/C	6-3	So.	Dallas, Texas /	John Paul II HS
1	Rebeka Renczes	PG	5-7	Fr.	Szekszard, Hungary/	Garay Janos Secondary School
30	Paula Reus	F	6-1	Fr.	Palma de Mallorca, Spain/	IES Joaquim Blume
10	Kath van Bennekom	G	5-9	So.	Gorinchem, The Netherlands /	Lyceum Oudehoven

STARTERS RETURNING (4)

No.	Name	Pos.	Cls.	Pts.	Reb.	Ast.	FG%	3FG%
5	LaTora Duff	G	Sr.	8.0	3.4	78	.445	.333
13	Shaiquel McGruder	F	Sr.	9.1	6.0	15	.606	.368
23	Jaedyn De La Cerda	G	Sr.	15.0	5.2	47	.437	.323
32	Antonia Anderson	F	Sr.	12.1	6.2	37	.490	.328

OTHER LETTERWINNERS RETURNING (3)

No.	Name	Pos.	Cls.	Pts.	Reb.	Ast.	FG%	3FG%
4	LaTascya Duff	G	Sr.	14.9	3.0	39	.445	.400
10	Kath van Bennekom	G	So.	1.6	1.8	4	.250	.167
34	Nevaeh Parkinson	F/C	So.	0.6	0.8	0	.222	.200

STARTERS LOST (1)

No.	Name	Pos.	Class	Pts.	Ast.	FG%	3-FG%	FT%
3	Ahlise Hurst	G/F	Jr.	12.4	49	.376	.338	.771

OTHER LETTERWINNERS LOST (5)

No.	Name	Pos.	Class
1	Corina Carter	PG	So.
3	Ahlise Hurst	G/F	Jr.
10	Celine Dupont	F/C	R-Fr.
14	Azaria Robinson	F	So.
24	Autumn Watts	F	So.

NEWCOMERS (6)

No.	Name	Pos.	Class
1	Rebeka Renczes	PG	Fr.
11	Zeyno Seren	G	Fr.
12	Aniyah Augmon	G	Fr.
21	Mackenzie Curtis	G	Fr.
30	Paula Reus	F	Fr.
33	Vianè Cumber	G	Fr.

PRONUNCIATION GUIDE

1	Rebeka RENCZES	WREN-sesh
4	LATASCYA Duff	La-TAY-see-uh
10	Kath VAN BENNEKOM	van-ben-e-kom
11	ZEYNO SEREN	ZAY-no (like say no) SHA-wren
13	SHAIQUEL McGruder	Shy-kwell
23	JAEDYN De La Cerda	JAY-den
30	Paula REUS	Rey-OOSE
33	VIANÉ Cumber	VEE-uh-NAY
34	NEVAEH Parkinson	Nuh-VAY-uh

BY ELIGIBILITY**Seniors (5)**

4	LaTascya Duff	G
5	LaTora Duff	G
13	Shaiquel McGruder	F
23	Jaedyn De La Cerda	G
32	Antonia Anderson	G/F

Sophomores (2)

15	Kath van Bennekom	G
34	Nevaeh Parkinson	F/C

Freshmen (6)

1	Rebeka Renczes	PG
11	Zeyno Seren	G
12	Aniyah Augmon	G
21	Mackenzie Curtis	G
30	Paula Reus	F
33	Vianè Cumber	G

HOME STATE**Alabama (2)**

4	LaTascya Duff	G
5	LaTora Duff	G

California (2)

12	Aniyah Augmon	G
21	Mackenzie Curtis	G

New Mexico (2)

23	Jaedyn De La Cerda	G
33	Vianè Cumber	G

Ohio (1)

13	Shaiquel McGruder	F
----	-------------------	---

Texas (2)

32	Antonia Anderson	G/F
34	Nevaeh Parkinson	F/C

INTERNATIONAL

1	Rebeka Renczes (Hungary)	PG
10	Kath van Bennekom (The Netherlands)	G
11	Zeyno Seren (Turkey)	G
30	Paula Reus (Spain)	F



MIKE BRADBURY

RECORD AT UNM: 109-59 (6TH SEASON)
CAREER RECORD: 287-176 (15TH SEASON)

NOTEWORTHY :

- Named the sixth head coach in program history on March 31, 2016
- Led UNM to 25 wins in 2017-18; tied for second-most wins in program history
- Earned his 100th win at UNM on Nov. 30, only the second coach in program history to reach 100.
- Most single-season wins in Wright State history (26)

Mike Bradbury enters his sixth season as head coach for The University of New Mexico women's basketball team. In his previous five seasons at the helm, Bradbury has guided the Lobos to a 94-55 (.631) overall record. Twice in his tenure, in 2017-18 and 2018-19, the Lobos eclipsed the 20-win mark and totaled 49 victories over that time. The consecutive 20-plus win seasons under Bradbury are the first for the program since the 2007-08 – 2008-09 seasons.

In his most recent season at the helm of the Lobos, Bradbury led the Lobos to a Mountain West regular season championship, the first outright in program history and the first regular season title since the 2004-05 season. In addition, the Lobos were selected for the WNIT for the third time in four years.

The Lobos produced one of the most prolific offenses not only in the conference, but in the country, finishing among the top 25 in several categories. Among them, UNM finished fourth in the NCAA in made three-pointers per game (10.2), sixth in assist-turnover ratio (1.40), ninth in scoring offense (81.2 points per game), 14th in fewest turnovers per game (12.0) and assists per game (16.8) and 22nd in scoring margin (12.7). The Lobos led the Mountain West in scoring offense, scoring margin, assists per game, turnover margin, assist-turnover ratio and made three-pointers as well as second in field-goal percentage and steals per game.

UNM set a program record in scoring with 120 points against Arkansas-Pine Bluff on Dec. 17, 2020 and in the process, made 17 three-pointers, falling just one short of tying the program record. Further, the Lobos registered 90-plus points in five games and 80-plus points in 11 of the 20 games on the season.

Four Lobos finished the 2020-21 season averaging double figures in points per game with six players finishing in double figures in scoring in two games (the only times it has been accomplished in program history), five players in five games and four in seven games.

As a result of UNM's successful season, five players were named to the All-Mountain West Team with LaTascya Duff also earning the superlative of Sixth Person of the Year. Duff was just the second Lobo to win the sixth person award. Making the all-conference team for the first time were Duff, Jaedyn De La Cerda and Antonia Anderson, as well as Shaiquel McGruder earning all-defensive and Ahlise Hurst earning the honorable mention distinction.

In his third year at the helm, Bradbury continued to put his mark on the program while also continuing to bring Lobo women's basketball back to national prominence. Overall, Bradbury's 2018-19 team went 24-7 and earned a bid to the WNIT for a second-straight season. It marked the first time since the 2008-09 – 2009-10 seasons that the program made consecutive trips to the postseason.

After dropping a one-possession game to Auburn in the preseason WNIT, the 2018-19 Lobos ripped off 11-straight wins to tie the program record and were on the cusp of cracking the national top-25 rankings as well by receiving votes from the WBCA during that stretch. Bradbury would also receive an individual plaudit from the WBCA last season as he was named as one of 13 finalists for the 2019 United States Marine Corps/WBCA National Coach of the Year Award. Impressively, Bradbury was the only coach from a non-Power 5 conference to be a finalist.

In his time at UNM, Bradbury has coached 13 All-Mountain West performers with Cherise Beynon, Jayla Everett, Jaisa Nunn, Aisia Robertson and Richelle van der Keijl joining De La Cerda, Duff, McGruder, Hurst and Anderson in making the All-Mountain West Team. Tesha Buck, Mykiel Burleson and Nike McClure have also earned MW recognition with Buck being the 2017-18 Newcomer of the Year, Burleson being named to the All-Freshman team in 2016-17 and McClure landing on the All-Defensive team in 2018-19.

In terms of major individual awards, Bradbury has coached the league's Newcomer of the Year each of his first three seasons in charge of the Lobos with van der Keijl earning the award in 2016-17, Buck in 2017-18 and Robertson in 2018-19. Additionally, Bradbury has coached the MW Player of the Year in Nunn (2018-19) and the Freshman of the Year in Everett (2018-19) as well as Sixth Person of the Year in Duff (2020-21).

Further, a Lobo has been named Mountain West Player of the Week 11 times during his tenure.

In year two under Bradbury the Lobos had a breakout season, especially offensively as they ended the 2017-18 season averaging 80.4 points per game while also posting an impressive +9.7 scoring margin. Both marks led the Mountain West and the point-per-game total was 16th-best in NCAA DI last season.

A significant reason for the jump in offensive production was the fact that the Lobos were one of the most potent three-point shooting threats in the country. For the season, the Lobos attempted the eighth-most overall trifectas in DI hoisting 932 long distance shots. Successful 34% of the time, the Lobos made the 11th most 3's burying 319.

Prior to coming to Albuquerque, Bradbury built a





successful nine year run as a Division-I head coach with stops at Morehead State (Morehead, Ky.) and Wright State (Dayton, Ohio). Most recently with the Raiders, Bradbury led his squad to five 20-win seasons, including each of his final three seasons. During that time, Wright State has amassed a 75-28 record, the best amongst the 13 Division I programs in the state of Ohio.

Overall at Wright State, Bradbury had five winning seasons, all of which were 20-plus win seasons, in six years- a feat made all the more remarkable as Wright State had just one winning season in the previous 22 before his arrival. In the previous 37 seasons of women's basketball at Wright State, the Raider program had tallied 20 wins just once before Bradbury led the team to 20 wins in five of his six seasons.

His most prominent three-year run at Wright State started in 2013-14, when the Raiders won a school-record 26 games on the way to a 26-9 season and the program's first-ever appearance in the NCAA Tournament. That season saw the Raiders finish second in the Horizon League and win its first Horizon League Tournament. It also featured the program's first road win at perennial league power Wisconsin-Green Bay. Kim Demmings was named the Horizon League Player of the Year and Tournament MVP, and it marked the first time in school history the program had a pair of first team All-Conference selections.

He followed up that by earning Horizon League Coach of the Year in 2014-15 after a 25-9 season that saw his squad lose its Horizon League Preseason Player of the Year less than two minutes into the season opener. The Raiders just missed a second straight NCAA Tournament appearance, falling in overtime in the conference championship game. The team did make its first appearance in the Women's NIT as the league's automatic qualifier, and in 2015-16, the team made

it back-to-back WNIT appearances after a 24-11 season, earning the program's first at-large bid.

Those three seasons are the three winningest seasons in the history of Wright State women's basketball.

In his first two seasons at Wright State, he led the team to a 20-13 campaign and a 21-13 mark and berths in the Women's Basketball Invitational, the first NCAA Division I postseason berths for the program. Overall, Bradbury has coached three Horizon League Players of the Year (all in his last three seasons), six first-team All-Horizon League players, three second-team members and four All-Freshman team members.

Prior to his time at Wright State, Bradbury was the head coach at Morehead State where he led the Division I program to a 50-44 mark in three seasons, including a watershed 22-11 season, which was the second-most wins in Morehead State history and the most wins by the Eagles in the previous 38 years. At Morehead State he coached one Ohio Valley Conference Player of the Year, along with one first-team All-OVC pick (two seasons) and three second-team All-OVC picks.

Bradbury also spent time as an assistant coach at Xavier (2002-06), Cincinnati (1996-02), VCU (1995-96), East Tennessee State (1994-95) and Chattanooga (1991-94). In his 29 seasons as an assistant and as a head coach, Bradbury has had 27 winning seasons.

THE BRADBURY FILE

EDUCATION

UT-Chattanooga - B.S. Recreation (1993)

COACHING EXPERIENCE

1991-93	Student Assistant	Chattanooga
1993-94	Assistant Coach	Chattanooga
1994-95	Assistant Coach	East Tennessee
1995-96	Assistant Coach	VCU
1996-02	Assistant Coach	Cincinnati
2002-07	Assistant Coach	Xavier
2007-10	Head Coach	Morehead State
2010-16	Head Coach	Wright State
2016-pres.	Head Coach	New Mexico

HEAD COACHING RECORD

2007-10	Morehead State	50-44 (.532)
2010-16	Wright State	128-73 (.637)
2016-pres.	New Mexico	109-59 (.649)
15 years		287-176 (.620)

CAREER HEAD COACHING YEAR-BY-YEAR

2007-08	11-19 (9-11)	Morehead State
2008-09	17-14 (11-7)	Morehead State
2009-10	22-11 (14-4)	Morehead State
2010-11	20-13 (11-7)	Wright State
2011-12	21-13 (12-6)	Wright State
2012-13	12-18 (6-10)	Wright State
2013-14	26-9 (12-4)	Wright State
2014-15	25-9 (12-4)	Wright State
2015-16	24-11 (12-6)	Wright State
2016-17	15-15 (10-8)	New Mexico
2017-18	25-11 (10-8)	New Mexico
2018-19	24-7 (14-4)	New Mexico
2019-20	15-17 (6-12)	New Mexico
2020-21	15-5 (11-3)	New Mexico
2021-22	15-4 (6-0)	New Mexico
Total	287-176 (156-94)	



1
Rebeka Renczes
PG | 5-7 | FR.
Szekszard, Hungary



4
LaTascya Duff
G | 5-7 | SR.
Samson, Ala.



5
LaTora Duff
G | 5-7 | SR.
Samson, Ala.



10
Kath van Bennekom
G | 5-9 | SO.
Gorinchem, The Netherlands



11
Zeyno Şeren
G | 5-10 | FR.
Ankara, Turkey



12
Aniyah Augmon
G | 5-8 | FR.
San José, Calif.



13
Shaiquel McGruder
F | 6-0 | SR.
Trotwood, Ohio



21
Mackenzie Curtis
G | 5-9 | FR.
Lakeside, Calif.



23
Jaedyn De La Cerda
G | 5-7 | SR.
Roswell, N.M.



30
Paula Reus
F | 6-1 | FR.
Palma de Mallorca,
Spain



32
Antonia Anderson
G/F | 6-2 | SR.
Cibolo, Texas



33
Vianè Cumber
G | 5-10 | FR.
Albuquerque, N.M.



34
Nevaeh Parkinson
F/C | 6-3 | SO.
Dallas, Texas



Mike Bradbury
Head Coach



Valerie King
Assistant Coach



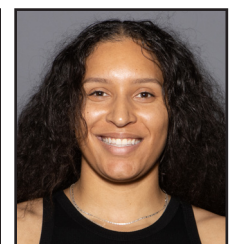
Symone Denham
Assistant Coach



Kabrina Merriweather
Assistant Coach



Ryan Freeman
Special Assistant to the
Head Coach



Nike McClure
Director of Player
Development



#1

REBEKA RENCZES

PG | 5-7 | FR | Szekszard, Hungary (Garay Janos Secondary)



PPG	FG %	3PT %	FT %	RPG	APG	SPG	BPG	MPG
1.8	.250	.400	.500	0.4	1.2	0.2	0.0	8.9

NOTEWORTHY

- » Averaged 22.1 points, 9.0 assists and 6.3 steals during the 2019 season
- » Averaged 17.3 points, 6.1 assists and 2.9 steals during the 2021 season
- » Played on the U16 Hungary National Team and competed in the 2019 FIBA U16 Women's European Championship
- » Averaged 6.0 points, 2.9 assists, 2.3 rebounds, 1.1 steals while averaging 21.5 minutes with the national team

Renczes' Top Performances

Points	Season	6 vs. Houston Bapt. (11/23/21)
	Career	Same
FGM	Season	2 vs. Houston Bapt. (11/23/21)
	Career	Same
FGA	Season	3 vs. Northern N.M. (11/12/21)
	Career	Same
3PT FGM	Season	2 vs. Houston Bapt. (11/23/21)
	Career	Same
3PT FGA	Season	2 - done twice
	Career	Same
FTM	Season	1 - done three times
	Career	Same
FTA	Season	2 - done three times
	Career	Same
Rebounds	Season	2 vs. Northern N.M. (11/12/21)
	Career	Same
Assists	Season	3 vs. Northern N.M. (11/12/21)
	Career	Same
Blocks	Season	
	Career	
Steals	Season	1 vs. Northern N.M. (11/12/21)
	Career	Same
Turnovers	Season	0 vs. Houston Bapt. (11/23/21)
	Career	Same
Min. Played	Season	18 vs. Northern N.M. (11/12/21)
	Career	Same

GAME-BY-GAME STATISTICS

Opponent	Date	GS	MIN	Total		3-Pointers		Free throws		Rebounds				PF		A		TO	BLK	STL	PTS	AVG
				FG-FGA	PCT	3FG-3FGA	PCT	FT-FTA	PCT	OFF	DEF	TOT	AVG	PF	A							
Northern N.M.	11/12/2021		17:56	0-3	.000	0-2	.000	0-0	.000	0	2	2	2.0	1	3	3	0	1	0	0	0.0	
Houston Baptist	11/23/2021		04:15	2-2	1.000	2-2	1.000	0-0	.000	0	0	0	1.0	1	1	0	0	0	0	6	3.0	
vs La.-Monroe	11/27/2021		05:38	0-0	.000	0-0	.000	1-2	.500	0	0	0	0.7	0	1	1	0	0	1	2.3		
Grambling	11/30/2021		10:00	0-2	.000	0-0	.000	1-2	.500	0	0	0	0.5	0	1	1	0	0	1	2.0		
at Utah St.	01/06/2022		06:34	0-1	.000	0-1	.000	1-2	.500	0	0	0	0.4	1	0	1	0	0	1	1.8		
Totals		0	44:23	2-8	.250	2-5	.400	3-6	.500	0	2	2	0.4	3	6	6	0	1	9	1.8		

CAREER STATISTICS

SEASON	TEAM	GP-GS	MIN/AVG	Field Goals		3-Point		F-Throws		Rebounds				Scoring						
				FG-FGA	FG%	3FG-3FGA	3FG%	FT-FTA	FT%	OFF	DEF	TOT	AVG	PF	FO	A	TO	BLK	STL	PTS
2021-22	UNM	5-0	44/8.9	2-8	.250	2-5	.400	3-6	.500	0	2	2	0.4	3-0	6	6	0	1	9	1.8
TOTAL		5-0	44/8.9	2-8	.250	2-5	.400	3-6	.500	0	2	2	0.4	3-0	6	6	0	1	9	1.8

#4

LaTASYA DUFF

G | 5-7 | SR | Samson, Ala. (Shelton State CC)



PPG	FG %	3PT %	FT %	RPG	APG	SPG	BPG	MPG
12.2	.469	.481	.806	3.0	1.6	0.5	0.2	31.2

NOTEWORTHY

- » 10 double-digit point games this season, including 5 of last 7 games, four 20-plus point games
- » Leads the MW in overall three-pointers made per game, three-pointers made and in three-point field-goal percentage
- » Leads the MW in three-point percentage, three-pointers made per game and three-pointers made in MW games
- » Made at least one three-pointer in every game this season, has 21-game streak
- » Averaging 13.7 ppg, shooting 58.3% from three-point range in conference play with 21 made threes.
- » 5th in the NCAA in three-pointers made, 2nd in three-point field-goal percentage and 18th in three-pointers per game
- » Named Mountain West Sixth Person of the Year in 2020-21
- » MW All-Conference Team
- » Named Mountain West Preseason Newcomer of the Year
- » Named Mountain West Player of the Week twice (Dec. 21 and March 2)
- » Second on the team in points, ppg, field-goal attempts, free-throw percentage last season
- » Led the Lobos in 3-point field-goal percentage, 3-point field-goal attempts and made 3-pointers, and free throws made last season

Duff's Top Performances

Points	Season	24 at Utah State (1/6/22)
	Career	31 at Air Force (2/23/21)
FGM	Season	8 - done twice
	Career	11 at Air Force (2/23/21)
FGA	Season	17 vs New Mexico St. (12/3/21)
	Career	20 at Air Force (2/23/21)
3PT FGM	Season	7 at Utah State (1/6/22)
	Career	Same
3PT FGA	Season	10 at Utah State (1/6/22)
	Career	12 - done twice
FTM	Season	5 vs San Diego State (1/9/22)
	Career	8 - done twice
FTA	Season	7 vs San Diego State (1/9/22)
	Career	10 at SHSU (12/6/20)
Rebounds	Season	8 at #6 Arizona (12/12/21)
	Career	Same
Assists	Season	4 - done twice
	Career	6 at Midwestern St. (12/4/20)
Blocks	Season	1 - done three times
	Career	2 vs. Colorado State (3/5/21)
Steals	Season	2 at Boise State (12/31/21)
	Career	5 at Air Force (2/23/21)
Turnovers	Season	0 - done six times
	Career	0 - done 10 times
Min. Played	Season	40 vs San Diego St. (1/9/22)
	Career	Same

GAME-BY-GAME STATISTICS

Opponent	Date	GS	MIN	Total		3-Pointers		Free throws		Rebounds				PF	A	TO	BLK	STL	PTS	AVG
				FG-FGA	PCT	3FG-3FGA	PCT	FT-FTA	PCT	OFF	DEF	TOT	AVG							
Northern N.M.	11/12/2021		04:00	1-1	1.000	1-1	1.000	0-0	.000	0	0	0	0.0	0	0	0	0	0	3	3.0
Prairie View	11/16/2021	*	18:32	1-3	.333	1-3	.333	0-0	.000	0	0	0	0.0	0	1	0	0	1	3	3.0
at Houston	11/20/2021	*	33:41	3-7	.429	2-6	.333	3-3	1.000	0	2	2	0.7	2	1	3	0	1	11	5.7
Houston Baptist	11/23/2021	*	28:26	2-7	.286	2-4	.500	0-0	.000	0	5	5	1.8	1	1	0	0	1	6	5.8
vs SFA	11/26/2021	*	31:22	5-13	.385	3-9	.333	2-3	.667	1	2	3	2.0	2	1	3	0	0	15	7.6
vs La.-Monroe	11/27/2021	*	23:34	4-9	.444	4-8	.500	0-0	.000	1	1	2	2.0	0	1	0	1	1	12	8.3
vs Texas Tech	11/28/2021	*	39:34	6-11	.545	5-9	.556	4-4	1.000	0	4	4	2.3	1	2	3	0	1	21	10.1
Grambling	11/30/2021	*	22:23	3-8	.375	1-5	.200	0-0	.000	0	3	3	2.4	2	4	1	0	1	7	9.8
New Mexico St.	12/03/2021	*	37:45	8-17	.471	3-8	.375	3-5	.600	0	6	6	2.8	3	2	7	1	0	22	11.1
at New Mexico St.	12/05/2021	*	35:50	3-6	.500	2-5	.400	1-2	.500	0	3	3	2.8	2	1	3	0	0	9	10.9
at Arizona	12/12/2021	*	34:57	2-5	.400	2-5	.400	2-2	1.000	0	8	8	3.3	1	0	3	0	0	8	10.6
UTEP	12/19/2021	*	39:06	6-10	.600	5-9	.556	3-4	.750	1	5	6	3.5	0	1	2	1	1	20	11.4
at Boise St.	12/31/2021	*	36:32	5-8	.625	4-4	1.000	2-2	1.000	0	2	2	3.4	1	2	0	0	2	16	11.8
UNLV	01/03/2022	*	38:29	4-10	.400	3-7	.429	3-3	1.000	0	1	1	3.2	0	1	2	0	0	14	11.9
at Utah St.	01/06/2022	*	30:24	8-13	.615	7-10	.700	1-1	1.000	0	3	3	3.2	0	4	0	0	0	24	12.7
San Diego St.	01/09/2022	*	40:00	2-6	.333	2-5	.400	5-7	.714	0	3	3	3.2	1	2	1	0	0	11	12.6
at Wyoming	01/13/2022	*	34:42	3-5	.600	3-4	.750	0-0	.000	0	1	1	3.1	2	2	2	0	0	9	12.4
at Colorado St.	01/15/2022	*	32:09	3-8	.375	2-6	.333	0-0	.000	0	2	2	3.0	3	2	1	0	0	8	12.2
Totals		17	561:28	69-147	.469	52-108	.481	29-36	.806	3	51	54	3.0	21	28	31	3	9	219	12.2

CAREER STATISTICS (AT UNM)

SEASON	TEAM	GP-GS	MIN/AVG	Field Goals		3-Point		F-Throws		Rebounds				Scoring						
				FG-FGA	FG%	3FG-3FGA	3FG%	FT-FTA	FT%	OFF	DEF	TOT	AVG	PF-FO	A	TO	BLK	STL	PTS	AVG
2020-21	UNM	20-4	495/24.8	93-209	.445	52-130	.400	59-72	.819	13	47	60	3.0	37-0	39	22	4	17	297	14.9
2021-22	UNM	18-17	561/31.2	69-147	.469	52-108	.481	29-36	.806	3	51	54	3.0	21-0	28	31	3	9	219	12.2
TOTAL		38-21	1057/27.8	162-356	.455	104-238	.437	88-108	.815	16	98	114	3.0	58-0	67	53	7	26	516	13.6



#5

LaTORA DUFF

G | 5-7 | SR | Samson, Ala. (Shelton State CC)



PPG	FG %	3PT %	FT %	RPG	APG	SPG	BPG	MPG
12.5	.429	.382	.833	3.9	5.9	1.5	0.5	32.4

NOTEWORTHY

- » Scored in double figures in 8 of last 11 games, 13 times this season
- » Made at least 1 three-pointer in every game but 2, including in last 5 games
- » Hit game-winning three against UNLV with 5.4 seconds left
- » Two games with 10-plus assists, including career-high 14 at Utah State
- » Averaging 10.3 ppg, 7.0 apg, 1.3 spg, 5.3 rpg, 35.8 minutes per game in MW games
- » Second in the MW in assists per game in conference games with 42, 7.0 per game
- » Leads the MW in overall assists with 113 and 2nd in assists per game (5.95)
- » 15-for-16 (93.8) at the free-throw line in conference play
- » Third in the NCAA in assists and 15th in assists per game.
- » Started in all 20 games for the Lobos last season, all 19 games this season

Duff's Top Performances

Points	Season	24 at New Mexico St. (12/5/21)
	Career	Same
FGM	Season	8 at New Mexico St. (12/5/21)
	Career	Same
FGA	Season	15 at #6 Arizona (12/12/21)
	Career	Same
3PT FGM	Season	5 - done twice
	Career	Same
3PT FGA	Season	10 at #6 Arizona (12/12/21)
	Career	Same
FTM	Season	8 vs SFA (11/26/21)
	Career	Same
FTA	Season	9 vs SFA (11/26/21)
	Career	9 - done twice
Rebounds	Season	8 - done three times
	Career	Same
Assists	Season	14 at Utah State (1/6/22)
	Career	Same
Blocks	Season	4 vs Prairie View (11/16/21)
	Career	Same
Steals	Season	4 vs Houston Bapt. (11/23/21)
	Career	4 - done twice
Turnovers	Season	0 - done four times
	Career	0 - done nine times
Min. Played	Season	40 at New Mexico St. (12/5/21)
	Career	Same

GAME-BY-GAME STATISTICS

Opponent	Date	GS	MIN	Total		3-Pointers		Free throws		Rebounds				PF	A	TO	BLK	STL	PTS	AVG
				FG-FGA	PCT	3FG-3FGA	PCT	FT-FTA	PCT	OFF	DEF	TOT	AVG							
Lamar University	11/09/2021	*	34:32	3-11	.273	2-9	.222	2-2	1.000	0	3	3	3.0	3	9	1	1	0	10	10.0
Northern N.M.	11/12/2021	*	17:39	2-6	.333	0-0	.000	3-4	.750	0	2	2	2.5	0	5	0	0	0	7	8.5
Prairie View	11/16/2021	*	37:20	5-13	.385	3-6	.500	4-6	.667	2	6	8	4.3	2	12	0	4	0	17	11.3
at Houston	11/20/2021	*	31:00	7-11	.636	2-5	.400	0-0	.000	0	3	3	4.0	0	2	8	0	3	16	12.5
Houston Baptist	11/23/2021	*	29:24	4-8	.500	1-4	.250	2-2	1.000	0	2	2	3.6	1	4	1	1	4	11	12.2
vs SFA	11/26/2021	*	35:38	4-10	.400	1-4	.250	8-9	.889	1	4	5	3.8	3	2	7	0	3	17	13.0
vs La.-Monroe	11/27/2021	*	22:17	3-7	.429	2-4	.500	0-0	.000	0	2	2	3.6	2	4	1	0	1	8	12.3
vs Texas Tech	11/28/2021	*	37:25	3-7	.429	1-3	.333	0-0	.000	0	1	1	3.3	1	9	3	0	2	7	11.6
Grambling	11/30/2021	*	24:13	4-6	.667	2-4	.500	0-0	.000	0	3	3	3.2	1	6	0	0	2	10	11.4
New Mexico St.	12/03/2021	*	15:12	6-10	.600	5-7	.714	0-0	.000	2	0	2	3.1	0	3	0	0	1	17	12.0
at New Mexico St.	12/05/2021	*	40:00	8-13	.615	5-8	.625	3-4	.750	0	4	4	3.2	1	5	3	0	2	24	13.1
at Arizona	12/12/2021	*	39:06	4-15	.267	3-10	.300	3-5	.600	1	2	3	3.2	3	4	4	0	1	14	13.2
UTEP	12/19/2021	*	36:24	7-13	.538	3-8	.375	0-0	.000	2	2	4	3.2	4	6	9	0	1	17	13.5
at Boise St.	12/31/2021	*	38:36	3-12	.250	0-5	.000	2-2	1.000	0	7	7	3.5	0	7	2	0	1	8	13.1
UNLV	01/03/2022	*	37:35	3-9	.333	1-4	.250	7-7	1.000	0	4	4	3.5	2	4	2	2	2	14	13.1
at Utah St.	01/06/2022	*	27:49	4-6	.667	3-5	.600	2-2	1.000	0	8	8	3.8	2	14	6	0	2	13	13.1
San Diego St.	01/09/2022	*	38:18	4-14	.286	2-9	.222	4-5	.800	0	3	3	3.8	2	5	1	1	1	14	13.2
at Wyoming	01/13/2022	*	36:06	3-7	.429	1-3	.333	0-0	.000	0	2	2	3.7	1	5	2	0	1	7	12.8
at Colorado St.	01/15/2022	*	36:10	2-6	.333	2-4	.500	0-0	.000	2	6	8	3.9	3	7	1	0	1	6	12.5
Totals			19	614:43	.429	39-102	.382	40-48	.833	10	64	74	3.9	31	113	51	9	28	237	12.5

CAREER STATISTICS (AT UNM)

SEASON	TEAM	GP-GS	MIN/AVG	Field Goals		3-Point		F-Throws		Rebounds				PF-FO		A	TO	BLK	STL	Scoring	
				FG-FGA	FG%	3FG-3FGA	3FG%	FT-FTA	FT%	OFF	DEF	TOT	AVG	PTS	AVG						
2020-21	UNM	20-20	542/27.1	61-137	.445	22-66	.333	16-24	.667	6	62	68	3.4	27-0	78	39	3	25	160	8.0	
2021-22	UNM	19-19	615/32.4	79-184	.429	39-102	.382	40-48	.833	10	64	74	3.9	31-0	113	51	9	28	237	12.5	
TOTAL		39-39	1156/29.7	140-321	.436	61-168	.363	56-72	.778	16	126	142	3.6	58-0	191	90	12	53	397	10.2	

#10

KATH VAN BENNEKOM

G | 5-9 | SO | Gorinchem, The Netherlands



PPG	FG %	3PT %	FT %	RPG	APG	SPG	BPG	MPG
1.3	.467	.333	.625	1.3	0.2	0.2	0.0	8.0

NOTEWORTHY

- » Competed for Lyceum Oudehoven and also for the club team Binneland where she helped her team to the U16 Championship in 2016
- » Led her U20 team to the semi-finals and the Final Four in 2017, 2018, 2019 and 2020
- » Helped her team to the U20 Cup Finals twice (2017, 2020).

van Bennekom's Top Performances

Points	Season	7 vs Northern N.M. (11/12/21)
	Career	9 at Midwestern St.(12/4/20)
FGM	Season	2 - done twice
	Career	Same
FGA	Season	3 - done three times
	Career	5 at Midwestern St.(12/4/20)
3PT FGM	Season	1 at Utah State (1/6/22)
	Career	1 - done three times
3PT FGA	Season	1 - done three times
	Career	4 at Midwestern St.(12/4/20)
FTM	Season	3 vs Northern N.M. (11/12/21)
	Career	6 at Midwestern St.(12/4/20)
FTA	Season	4 vs Northern N.M. (11/12/21)
	Career	8 at Midwestern St.(12/4/20)
Rebounds	Season	4 vs Northern N.M. (11/12/21)
	Career	7 at San Diego St. (2/5/21)
Assists	Season	1 - done three times
	Career	1 - done seven times
Blocks	Season	
	Career	
Steals	Season	1 - done three times
	Career	2 at Utah State (2/28/21)
Turnovers	Season	0 - done five times
	Career	0 - done 17 times
Min. Played	Season	20 vs Lamar (11/9/21)
	Career	Same

GAME-BY-GAME STATISTICS

Opponent	Date	GS	MIN	Total		3-Pointers		Free throws		Rebounds				PF	A	TO	BLK	STL	PTS	AVG
				FG-FGA	PCT	3FG-3FGA	PCT	FT-FTA	PCT	OFF	DEF	TOT	AVG							
Lamar University	11/09/2021		19:53	2-3	.667	0-0	.000	0-0	.000	3	0	3	3.0	4	0	3	0	0	4	4.0
Northern N.M.	11/12/2021		12:45	2-2	1.000	0-0	.000	3-4	.750	3	1	4	3.5	1	1	0	0	1	7	5.5
Prairie View	11/16/2021		06:04	0-0	.000	0-0	.000	1-2	.500	0	0	0	2.3	1	0	1	0	1	1	4.0
at Houston	11/20/2021	*	18:04	1-3	.333	0-1	.000	0-0	.000	0	2	2	2.3	1	1	0	0	0	2	3.5
Houston Baptist	11/23/2021		07:31	0-0	.000	0-0	.000	0-0	.000	0	1	1	2.0	0	0	1	0	0	0	2.8
vs SFA	11/26/2021		13:28	0-0	.000	0-0	.000	0-0	.000	0	3	3	2.2	2	0	1	0	0	0	2.3
vs La.-Monroe	11/27/2021		05:03	0-1	.000	0-0	.000	0-0	.000	0	1	1	2.0	0	0	0	0	0	0	2.0
Grambling	11/30/2021		10:24	1-2	.500	0-0	.000	0-0	.000	1	1	2	2.0	0	1	0	0	0	2	2.0
New Mexico St.	12/03/2021		09:13	0-1	.000	0-1	.000	0-0	.000	0	0	0	1.8	1	0	0	0	0	0	1.8
at Arizona	12/12/2021		00:26	0-0	.000	0-0	.000	0-0	.000	0	0	0	1.6	0	0	0	0	0	0	1.6
UTEP	12/19/2021		00:15	0-0	.000	0-0	.000	0-0	.000	0	0	0	1.5	0	0	0	0	0	0	1.5
at Boise St.	12/31/2021		01:03	0-0	.000	0-0	.000	0-0	.000	0	0	0	1.3	0	0	0	0	0	0	1.3
UNLV	01/03/2022		01:25	0-0	.000	0-0	.000	0-0	.000	0	0	0	1.2	0	0	0	0	0	0	1.2
at Utah St.	01/06/2022		10:00	1-3	.333	1-1	1.000	1-2	.500	1	2	3	1.4	3	0	0	0	1	4	1.4
San Diego St.	01/09/2022		04:30	0-0	.000	0-0	.000	0-0	.000	0	0	0	1.3	1	0	0	0	0	0	1.3
Totals		1	120:04	7-15	.467	1-3	.333	5-8	.625	8	11	19	1.3	14	3	6	0	3	20	1.3

CAREER STATISTICS

SEASON	TEAM	GP-GS	MIN/AVG	Field Goals		3-Point		F-Throws		Rebounds				Scoring						
				FG-FGA	FG%	3FG-3FGA	3FG%	FT-FTA	FT%	OFF	DEF	TOT	AVG	PF-FO	A	TO	BLK	STL	PTS	AVG
2020-21	UNM	16-0	118/7.4	5-20	.250	2-12	.167	13-20	.650	10	19	29	1.8	13-0	4	4	0	2	25	1.6
2021-22	UNM	15-1	120/8.0	7-15	.467	1-3	.333	5-8	.625	8	11	19	1.3	14-0	3	6	0	3	20	1.3
TOTAL		31-1	238/7.7	12-35	.343	3-15	.200	18-28	.643	18	30	48	1.5	27-0	7	10	0	5	45	1.5



#11

ZEYNO SEREN

G | 5-10 | FR | Ankara, Turkey (TED Ankara College Private HS)



PPG	FG %	3PT %	FT %	RPG	APG	SPG	BPG	MPG
1.9	.273	.000	.636	1.9	0.6	0.4	0.0	9.4

NOTEWORTHY

- » Averaged 16.2 points, 5.1 assists, 7.0 rebounds and 3.0 steals
- » Competed for Turkey at the U16 European Championship in 2019 and the Baku Youth Olympics
- » Played for BOTAS Sports Club

Seren's Top Performances

Points	Season	6 vs Northern N.M. (11/12/21)
	Career	Same
FGM	Season	3 vs Northern N.M. (11/12/21)
	Career	Same
FGA	Season	4 - done twice
	Career	Same
3PT FGM	Season	
	Career	
3PT FGA	Season	1 - done twice
	Career	Same
FTM	Season	2 - done three times
	Career	Same
FTA	Season	4 vs Grambling (11/30/21)
	Career	Same
Rebounds	Season	4 - done twice
	Career	Same
Assists	Season	2 vs ULM (11/27/21)
	Career	Same
Blocks	Season	
	Career	
Steals	Season	1 - done three times
	Career	Same
Turnovers	Season	0 - done five times
	Career	Same
Min. Played	Season	17 vs Northern N.M. (11/12/21)
	Career	Same

GAME-BY-GAME STATISTICS

Opponent	Date	GS	MIN	Total		3-Pointers		Free throws		Rebounds				PF	A	TO	BLK	STL	PTS	AVG
				FG-FGA	PCT	3FG-3FGA	PCT	FT-FTA	PCT	OFF	DEF	TOT	AVG							
Lamar University	11/09/2021	*	13:51	0-1	.000	0-1	.000	1-2	.500	0	4	4	4.0	1	1	0	0	0	1	1.0
Northern N.M.	11/12/2021		16:36	3-4	.750	0-0	.000	0-1	.000	1	3	4	4.0	2	1	0	0	1	6	3.5
at Houston	11/20/2021		00:50	0-0	.000	0-0	.000	0-0	.000	0	0	0	2.7	0	0	0	0	0	2.3	
Houston Baptist	11/23/2021		05:36	0-0	.000	0-0	.000	0-0	.000	0	0	0	2.0	0	0	1	0	0	1.8	
vs La.-Monroe	11/27/2021		13:14	0-4	.000	0-1	.000	2-2	1.000	0	3	3	2.2	0	2	0	0	1	2	1.8
Grambling	11/30/2021		10:50	0-1	.000	0-0	.000	2-4	.500	1	1	2	2.2	0	0	0	0	2	1.8	
at Utah St.	01/06/2022		05:01	0-1	.000	0-0	.000	2-2	1.000	0	0	0	1.9	1	0	1	0	1	2	1.9
Totals		1	65:57	3-11	.273	0-2	.000	7-11	.636	2	11	13	1.9	4	4	2	0	3	13	1.9

CAREER STATISTICS

SEASON	TEAM	GP-GS	MIN/AVG	Field Goals		3-Point		F-Throws		Rebounds				Scoring						
				FG-FGA	FG%	3FG-3FGA	3FG%	FT-FTA	FT%	OFF	DEF	TOT	AVG	PF-FO	A	TO	BLK	STL	PTS	AVG
2021-22	UNM	7-1	66/9.4	3-11	.273	0-2	.000	7-11	.636	2	11	13	1.9	4-0	4	2	0	3	13	1.9
TOTAL		7-1	66/9.4	3-11	.273	0-2	.000	7-11	.636	2	11	13	1.9	4-0	4	2	0	3	13	1.9

#12

ANIYAH AUGMON

G | 5-8 | FR | San José, Calif. (Woodside Priory School)



PPG	FG %	3PT %	FT %	RPG	APG	SPG	BPG	MPG
1.2	.462	.250	.600	1.8	0.7	0.8	0.0	8.8

NOTEWORTHY

- » Recorded at least 1 steal in 9 games, 3x with 3 steals
- » At least 1 rebound in 12 games, 2x with 6 rebounds
- » Played in all 18 games with 1 start (at Houston)
- » Averaged 14.0 points, 7.0 rebounds, 4.0 assists and 3.0 steals throughout her high school career
- » Helped lead her teams to three CCS Championships (2017, 2018, 2019)
- » First team all-league in 2019, honorable mention in 2018 and second team all-league in 2017
- » Attended the Adidas All-American Camp
- » Competed for Peninsula Basketball Club where she averaged 15.0 points, 7.0 rebounds, 4.0 assists and 3.0 steals.

Augmon's Top Performances

Points	Season	8 vs Lamar (11/9/21)
	Career	Same
FGM	Season	3 vs Lamar (11/9/21)
	Career	Same
FGA	Season	3 - done twice
	Career	Same
3PT FGM	Season	1 vs Lamar (11/9/21)
	Career	Same
3PT FGA	Season	1 - done four times
	Career	Same
FTM	Season	3 vs New Mexico St. (12/3/21)
	Career	Same
FTA	Season	4 - done twice
	Career	Same
Rebounds	Season	6 - done twice
	Career	Same
Assists	Season	3 - done twice
	Career	Same
Blocks	Season	
	Career	
Steals	Season	3 - done three times
	Career	Same
Turnovers	Season	0 - done six times
	Career	Same
Min. Played	Season	23 vs Lamar (11/9/21)
	Career	Same

GAME-BY-GAME STATISTICS

Opponent	Date	GS	MIN	Total		3-Pointers		Free throws		Rebounds				PF	A	TO	BLK	STL	PTS	AVG
				FG-FGA	PCT	3FG-3FGA	PCT	FT-FTA	PCT	OFF	DEF	TOT	AVG							
Lamar University	11/09/2021		23:03	3-3	1.000	1-1	1.000	1-1	1.000	0	6	6	6.0	2	0	2	0	3	8	8.0
Northern N.M.	11/12/2021		16:24	2-3	.667	0-1	.000	2-2	1.000	0	4	4	5.0	2	3	3	0	1	6	7.0
Prairie View	11/16/2021		18:11	0-0	.000	0-0	.000	1-2	.500	0	6	6	5.3	3	1	1	0	3	1	5.0
at Houston	11/20/2021	*	09:34	0-1	.000	0-0	.000	0-0	.000	0	1	1	4.3	2	0	3	0	1	0	3.8
Houston Baptist	11/23/2021		16:26	0-1	.000	0-0	.000	0-0	.000	0	2	2	3.8	2	1	1	0	1	0	3.0
vs SFA	11/26/2021		05:06	0-0	.000	0-0	.000	0-0	.000	0	0	0	3.2	0	0	0	0	0	0	2.5
vs La.-Monroe	11/27/2021		10:56	0-1	.000	0-0	.000	1-2	.500	1	1	2	3.0	2	1	3	0	1	1	2.3
vs Texas Tech	11/28/2021		03:01	0-0	.000	0-0	.000	0-0	.000	0	0	0	2.6	3	0	0	0	0	0	2.0
Grambling	11/30/2021		09:08	1-1	1.000	0-0	.000	1-4	.250	3	1	4	2.8	3	3	1	0	1	3	2.1
New Mexico St.	12/03/2021		15:52	0-0	.000	0-0	.000	3-4	.750	1	1	2	2.7	0	1	2	0	3	3	2.2
at New Mexico St.	12/05/2021		03:23	0-0	.000	0-0	.000	0-0	.000	0	1	1	2.5	0	0	1	0	0	0	2.0
at Arizona	12/12/2021		08:03	0-0	.000	0-0	.000	0-0	.000	0	1	1	2.4	0	0	0	0	1	0	1.8
UTEP	12/19/2021		04:45	0-1	.000	0-0	.000	0-0	.000	0	0	0	2.2	0	0	0	0	0	0	1.7
at Boise St.	12/31/2021		02:19	0-0	.000	0-0	.000	0-0	.000	0	0	0	2.1	1	0	0	0	0	0	1.6
UNLV	01/03/2022		02:25	0-1	.000	0-1	.000	0-0	.000	1	0	1	2.0	0	1	0	0	0	0	1.5
at Utah St.	01/06/2022		02:46	0-0	.000	0-0	.000	0-0	.000	0	0	0	1.9	1	0	2	0	0	0	1.4
San Diego St.	01/09/2022		04:37	0-1	.000	0-1	.000	0-0	.000	0	1	1	1.8	0	1	1	0	0	0	1.3
at Wyoming	01/13/2022		01:48	0-0	.000	0-0	.000	0-0	.000	1	0	1	1.8	1	0	1	0	0	0	1.2
Totals		1	157:47	6-13	.462	1-4	.250	9-15	.600	7	25	32	1.8	22	12	21	0	15	22	1.2

CAREER STATISTICS

SEASON	TEAM	GP-GS	MIN/AVG	Field Goals		3-Point		F-Throws		Rebounds				Scoring						
				FG-FGA	FG%	3FG-3FGA	3FG%	FT-FTA	FT%	OFF	DEF	TOT	AVG	PF-FO	A	TO	BLK	STL	PTS	AVG
2021-22	UNM	18-1	158/8.8	6-13	.462	1-4	.250	9-15	.600	7	25	32	1.8	22-0	12	21	0	15	22	1.2
TOTAL		18-1	158/8.8	6-13	.462	1-4	.250	9-15	.600	7	25	32	1.8	22-0	12	21	0	15	22	1.2



#13

SHAIQUEL McGRUDER

F | 6-0 | SR | Trotwood, Ohio (Trotwood-Madison HS)



Summary statistics table with columns: PPG, FG %, 3PT %, FT %, RPG, APG, SPG, BPG, MPG

NOTEWORTHY

- » MW Player of the Week Dec. 20
» Five games with 20-plus points, one game with 30 points
» 13 games in double figures, including 6 of last 7 games
» Six games with 10-or-more rebounds, five double-doubles this season (Houston Baptist, Grambling, UTEP, UNLV, Colorado State)
» Multiple steals in 12 games, multiple blocks in eight games this season with season-high 5 blocks vs. UTEP
» Recorded at least one block in the last eight games
» Leads the MW in FG % in overall games and 2nd in MW games, 10th in the NCAA; 11th in NCAA in field goals made (125)
» Fifth in points per game, seventh in rebounds per game and ninth in steals per game in the MW, tied with Anderson for first in blocks per game. First in blocks, third in rebounding, fifth in scoring in just MW games. Leads the MW in blocks/ blocks per game in MW games (13/2.2)
» Averaging 16.5 ppg, 9.0 rpg, 2.2 bpg, 1.3 spg, 31.3 minutes per game, shooting 56.0% in MW games
» Leads the team in points, steals and rebounds, tied for team high in blocks
» Named to MW All-Defensive Team last season
» Started all 20 games as a junior, 17 games this season
» Two games with 10-plus rebounds as a junior, one double-double against Sam Houston State (13 rebounds, 17 points)
» Four games with multiple blocks last season, including 5 blocks against Sam Houston State
» 10 games with multiple steals with a season-high 4 against Fresno State last season
» Nine games with 10-plus points last season

McGruder's Top Performances

Table of top performances for McGruder, including Points, FGM, FGA, 3PT FGM, 3PT FGA, FTM, FTA, Rebounds, Assists, Blocks, Steals, Turnovers, and Min. Played.

GAME-BY-GAME STATISTICS

Game-by-game statistics table with columns: Opponent, Date, GS, MIN, Total FG-FGA, PCT, 3-Pointers 3FG-3FGA, PCT, Free throws FT-FTA, PCT, Rebounds OFF DEF TOT AVG, PF, A, TO, BLK, STL, PTS, AVG

CAREER STATISTICS

Career statistics table with columns: SEASON, TEAM, GP-GS, MIN/AVG, Field Goals FG-FGA, FG%, 3-Point 3FG-3FGA, 3FG%, F-Throws FT-FTA, FT%, Rebounds OFF DEF TOT AVG, PF-FO, A, TO, BLK, STL, Scoring PTS, AVG

#21

MACKENZIE CURTIS

G | 5-9 | FR | Lakeside, Calif. (El Capitan HS)



PPG	FG %	3PT %	FT %	RPG	APG	SPG	BPG	MPG
1.6	.200	.222	.833	0.7	0.4	0.1	0.0	7.2

NOTEWORTHY

- » Finished in double figures in first college appearance
- » Averaged 22.2 points, 9.5 rebounds, 3.3 assists, 3.5 steals and 1.0 blocks per game
- » Four-time team MVP, three-time league MVP, four-time San Diego Union Tribune Scholar-Athlete
- » Named First-Team All-CIF in 2020 and Second Team All-CIF in 2019
- » No. 1 scorer in San Diego for two years and No. 3 in California for scoring in the class of 2021

Curtis' Top Performances

Points	Season	12 vs Northern N.M. (11/12/21)
	Career	Same
FGM	Season	3 vs Northern N.M. (11/12/21)
	Career	Same
FGA	Season	10 vs Northern N.M. (11/12/21)
	Career	Same
3PT FGM	Season	3 vs Northern N.M. (11/12/21)
	Career	Same
3PT FGA	Season	7 vs Northern N.M. (11/12/21)
	Career	Same
FTM	Season	3 vs Northern N.M. (11/12/21)
	Career	Same
FTA	Season	4 vs Northern N.M. (11/12/21)
	Career	Same
Rebounds	Season	3 - done twice
	Career	Same
Assists	Season	2 vs Northern N.M. (11/12/21)
	Career	Same
Blocks	Season	
	Career	
Steals	Season	1 at Utah State (1/6/22)
	Career	Same
Turnovers	Season	0 - done eight times
	Career	Same
Min. Played	Season	19 vs Northern N.M. (11/12/21)
	Career	Same

GAME-BY-GAME STATISTICS

Opponent	Date	GS	MIN	Total		3-Pointers		Free throws		Rebounds				PF	A	TO	BLK	STL	PTS	AVG
				FG-FGA	PCT	3FG-3FGA	PCT	FT-FTA	PCT	OFF	DEF	TOT	AVG							
Northern N.M.	11/12/2021		19:06	3-10	.300	3-7	.429	3-4	.750	1	2	3	3.0	0	2	2	0	0	12	12.0
at Houston	11/20/2021		00:56	0-0	.000	0-0	.000	0-0	.000	0	0	0	1.5	0	0	1	0	0	6.0	6.0
Houston Baptist	11/23/2021		05:55	0-2	.000	0-2	.000	0-0	.000	0	0	0	1.0	1	0	1	0	0	4.0	4.0
vs La.-Monroe	11/27/2021		10:00	1-4	.250	0-3	.000	0-0	.000	0	1	1	1.0	2	0	0	0	2	3.5	3.5
Grambling	11/30/2021		08:08	1-3	.333	1-2	.500	0-0	.000	0	0	0	0.8	2	1	1	0	3	3.4	3.4
New Mexico St.	12/03/2021		00:33	0-0	.000	0-0	.000	0-0	.000	0	0	0	0.7	0	0	0	0	0	2.8	2.8
UTEP	12/19/2021		14:24	0-1	.000	0-1	.000	0-0	.000	0	3	3	1.0	1	0	0	0	0	2.4	2.4
at Boise St.	12/31/2021		04:17	0-1	.000	0-0	.000	0-0	.000	0	0	0	0.9	0	0	0	0	0	2.1	2.1
UNLV	01/03/2022		01:60	0-0	.000	0-0	.000	0-0	.000	0	0	0	0.8	0	0	0	0	0	1.9	1.9
at Utah St.	01/06/2022		07:26	0-2	.000	0-1	.000	2-2	1.000	0	0	0	0.7	0	0	0	1	2	1.9	1.9
at Wyoming	01/13/2022		02:10	0-1	.000	0-1	.000	0-0	.000	0	0	0	0.6	2	1	0	0	0	1.7	1.7
at Colorado St.	01/15/2022		11:50	0-1	.000	0-1	.000	0-0	.000	0	1	1	0.7	2	1	0	0	0	1.6	1.6
Totals		0	86:44	5-25	.200	4-18	.222	5-6	.833	1	7	8	0.7	10	5	5	0	1	19	1.6

CAREER STATISTICS

SEASON	TEAM	GP-GS	MIN/AVG	Field Goals		3-Point		F-Throws		Rebounds				Scoring						
				FG-FGA	FG%	3FG-3FGA	3FG%	FT-FTA	FT%	OFF	DEF	TOT	AVG	PF-FO	A	TO	BLK	STL	PTS	AVG
2021-22	UNM	12-0	87/7.2	5-25	.200	4-18	.222	5-6	.833	1	7	8	0.7	10-0	5	5	0	1	19	1.6
TOTAL		12-0	87/7.2	5-25	.200	4-18	.222	5-6	.833	1	7	8	0.7	10-0	5	5	0	1	19	1.6



#23

JAEDYN DE LA CERDA

G | 5-7 | SR | Roswell, N.M. (Roswell HS)



Summary statistics table with columns: PPG, FG %, 3PT %, FT %, RPG, APG, SPG, BPG, MPG. Values: 13.5, .410, .404, .742, 4.0, 3.1, 1.1, 0.1, 32.1

NOTEWORTHY

- Mountain West Player of the Week Jan. 10, 2022
Scored in double figures in 15 games, including last seven games
Made a three-pointer in all but one game this season, including season-high 7 at Utah St.
Third in 3-pointers made per game in MW games (19, 3.2 per game), 2nd in three-point FG percentage in MW games (50.0%), 4th in scoring in MW games
Averaging 16.8 ppg, 4.0 rpg, 4.2 apg, 36.8 minutes per game in MW games
Second on the team in points, field-goals made, three-pointers made and assists
Named to 2020-21 MW All-Conference Team and MW All-Tournament Team
Fifth in the MW in points per game and in field-goal percentage (.437) last season, but led the conference in free-throw percentage
Scored in double figures 17 times including six games in which she scored 20 points or more last season
Recorded her first double-double with 13 points and 11 rebounds at Arkansas-Pine Bluff, finishing with a career high in rebounds
Set a program record for points off the bench, scoring 31 points vs. San José State (2/27/19)
In HS, was named the 2016-17 New Mexico Gatorade Player of the Year in women's basketball
Reached 1000-career points on Nov. 28 against Texas Tech, becoming 23rd Lobo to reach the milestone
6th all-time in career free-throw percentage, 6th all-time in career 3-pointers made (1 from 5th)

De La Cerda's Top Performances

Table with 2 columns: Category (Points, FGM, FGA, 3PT FGM, 3PT FGA, FTM, FTA, Rebounds, Assists, Blocks, Steals, Turnovers, Min. Played) and Performance (Season, Career) with specific game details.

GAME-BY-GAME STATISTICS

Large table with columns: Opponent, Date, GS, MIN, Total (FG-FGA, PCT), 3-Pointers (3FG-3FGA, PCT), Free throws (FT-FTA, PCT), Rebounds (OFF, DEF, TOT, AVG), PF, A, TO, BLK, STL, PTS, AVG. Includes a Totals row.

CAREER STATISTICS

Table with columns: SEASON, TEAM, GP-GS, MIN/AVG, Field Goals (FG-FGA, FG%), 3-Point (3FG-3FGA, 3FG%), F-Throws (FT-FTA, FT%), Rebounds (OFF, DEF, TOT, AVG), PF-FO, A, TO, BLK, STL, Scoring (PTS, AVG). Includes a Totals row.

#30

PAULA REUS

F | 6-1 | FR | Palma de Mallorca, Spain (IES Joaquim Blume)



PPG	FG %	3PT %	FT %	RPG	APG	SPG	BPG	MPG
5.5	.402	.304	.786	3.3	2.1	0.9	0.6	19.2

NOTEWORTHY

Will wear #3 at home, #30 on the road.

- » Started two games this season
- » Led the Lobos in assists in 2 games, tied for team high in 1 game
- » Averaging 8.5 ppg, 5.5 rpg, 0.3 spg, 0.7 bpg in conference games
- » Team-high 15 points at No. 6 Arizona, making her first seven shots of the game
- » Three games this season scoring double figures, including last two
- » At least 1 steal in nine games, 1 block in seven games. Multiple steals in 3 games, multiple blocks in 3 games
- » Led the Lobos in scoring in 1 game, in steals in 1 game, rebounds in 1 game, tied for team high in blocks in 3 games

- » Played on the U16 Spanish national team at the U16 FIBA 2019 European Championship, finishing third
- » Averaged 11.7 minutes, 3.5 points, 2.8 rebounds, 0.8 assists and 0.7 steals per game
- » Played for Barça CBS LF2, winning the regular season championship, and qualified for the finals

Reus' Top Performances

Points	Season	17 at Colorado State (1/15/22)
	Career	Same
FGM	Season	7 at #6 Arizona (12/12/21)
	Career	Same
FGA	Season	14 at Colorado State (1/15/22)
	Career	Same
3PT FGM	Season	4 at Colorado State (1/15/22)
	Career	Same
3PT FGA	Season	10 at Colorado State (1/15/22)
	Career	Same
FTM	Season	2 - done four times
	Career	Same
FTA	Season	2 - done eight times
	Career	Same
Rebounds	Season	9 at Colorado State (1/15/22)
	Career	Same
Assists	Season	7 at Houston (11/20/21)
	Career	Same
Blocks	Season	2 - done three times
	Career	Same
Steals	Season	4 vs. UTEP (12/19/21)
	Career	Same
Turnovers	Season	0 - done seven times
	Career	Same
Min. Played	Season	29 at #6 Arizona (12/12/21)
	Career	Same

GAME-BY-GAME STATISTICS

Opponent	Date	GS	MIN	Total		3-Pointers		Free throws		Rebounds				PF	A	TO	BLK	STL	PTS	AVG
				FG-FGA	PCT	3FG-3FGA	PCT	FT-FTA	PCT	OFF	DEF	TOT	AVG							
Prairie View	11/16/2021		13:21	0-4	.000	0-2	.000	1-2	.500	0	4	4	4.0	1	1	2	0	0	1	1.0
at Houston	11/20/2021	*	26:41	2-6	.333	1-2	.500	2-2	1.000	2	3	5	4.5	2	7	4	0	2	7	4.0
Houston Baptist	11/23/2021		14:22	0-5	.000	0-3	.000	0-0	.000	0	2	2	3.7	0	1	0	2	3	0	2.7
vs SFA	11/26/2021		23:37	2-4	.500	0-1	.000	0-0	.000	0	3	3	3.5	4	2	4	0	0	4	3.0
vs La.-Monroe	11/27/2021		09:60	1-4	.250	0-2	.000	0-0	.000	1	0	1	3.0	0	1	0	1	0	2	2.8
vs Texas Tech	11/28/2021		13:25	0-2	.000	0-2	.000	0-0	.000	1	1	2	2.8	2	1	1	0	0	0	2.3
Grambling	11/30/2021		16:06	3-7	.429	0-0	.000	0-0	.000	1	3	4	3.0	3	4	0	0	1	6	2.9
New Mexico St.	12/03/2021		13:40	3-4	.750	1-1	1.000	2-2	1.000	0	1	1	2.8	2	2	0	0	1	9	3.6
at New Mexico St.	12/05/2021		27:45	2-5	.400	0-0	.000	2-2	1.000	2	4	6	3.1	3	6	1	2	1	6	3.9
at Arizona	12/12/2021	*	29:35	7-8	.875	1-1	1.000	0-0	.000	0	0	0	2.8	1	1	3	1	1	15	5.0
UTEP	12/19/2021		17:18	2-3	.667	0-0	.000	0-0	.000	0	1	1	2.6	2	6	2	0	4	4	4.9
at Boise St.	12/31/2021		24:48	4-9	.444	0-1	.000	1-2	.500	1	1	2	2.6	3	1	0	1	1	9	5.3
UNLV	01/03/2022		27:26	3-8	.375	1-2	.500	0-0	.000	1	6	7	2.9	2	0	0	2	0	7	5.4
at Utah St.	01/06/2022		15:32	0-3	.000	0-1	.000	2-2	1.000	1	2	3	2.9	2	1	2	0	1	2	5.1
San Diego St.	01/09/2022		16:42	1-7	.143	1-3	.333	1-2	.500	2	5	7	3.2	0	0	2	1	0	4	5.1
at Wyoming	01/13/2022		16:56	5-8	.625	2-2	1.000	0-0	.000	1	4	5	3.3	3	0	1	0	0	12	5.5
at Colorado St.	01/15/2022		25:52	6-14	.429	4-10	.400	1-2	.500	1	8	9	3.6	1	3	0	0	0	17	6.2
Totals		2	333:05	41-101	.406	11-33	.333	12-16	.750	14	48	62	3.6	31	37	22	10	15	105	6.2

CAREER STATISTICS

SEASON	TEAM	GP-GS	MIN/AVG	Field Goals		3-Point		F-Throws		Rebounds				Scoring						
				FG-FGA	FG%	3FG-3FGA	3FG%	FT-FTA	FT%	OFF	DEF	TOT	AVG	PF	FO	A	TO	BLK	STL	PTS
2021-22	UNM	17-2	333/19.6	41-101	.406	11-33	.333	12-16	.750	14	48	62	3.6	31-0	37	22	10	15	105	6.2
TOTAL		17-2	333/19.6	41-101	.406	11-33	.333	12-16	.750	14	48	62	3.6	31-0	37	22	10	15	105	6.2



#32

ANTONIA ANDERSON

G/F | 6-2 | SR | Cibolo, Texas (Byron P. Steele HS)



Table with 9 columns: PPG, FG %, 3PT %, FT %, RPG, APG, SPG, BPG, MPG. Values: 10.9, .467, .397, .649, 6.1, 1.8, 1.5, 1.5, 26.3

NOTEWORTHY

- » Named to 2021-22 Preseason All-Conference Team
» Perfect from the free-throw line in 3 games (5-5 vs. Lamar, 2-2 vs. Texas Tech and 6-6 at Arizona)
» Set career highs in points, three-pointers, rebounds, steals and free-throws made this season
» 10 games in double figures, including last four games
» Two games with 5 blocks, seven games with multiple blocks, 13 games with at least 1 block
» Tied with McGruder in blocks and blocks per game in MW
» Averaging 13.2 ppg, 6.2 rpg, 2.3 apg, 1.5 spg, 1.3 bpg in MW games
» Two double-doubles this season (16 points, 12 rebounds) at New Mexico State and 12 points, 10 rebounds against San Diego State; 5 career double-doubles
» Eight three-pointers at CSU tied for third-most made threes in a game by a player in program history, and 20 attempted three-pointers set the program record
» Eight three-pointers at CSU tied the program record for most made three-pointers by a player in a conference game
» Named to 2020-21 MW All-Conference Team
» Scored 10-plus points in 13 games with a career-high 29 points in the win over UNLV on Jan. 17 after making a career-high 12 baskets last season
» Led the team in rebounds (123) and rebounds per game last season
» Recorded two double-doubles with 14 points and 10 rebounds at Air Force and 10 points and 11 rebounds against Colorado State (tied a career high)
» Eighth in the MW in blocks per game at 1.07 and ranked in the top 15 in scoring, rebounding, field-goal percentage, blocked shots and defensive rebounds last season
» Scored 1,000-career points at Wyoming on Jan. 13
» 3rd all-time in career blocks, 7 from 2nd
» Will break the program record of most games played by a Lobo on Saturday

Anderson's Top Performances

Table with 2 columns: Stat, Performance. Rows include Points (30 at Colorado State), FGM (11 at Colorado State), FGA (26 at Colorado State), 3PT FGM (8 at Colorado State), 3PT FGA (20 at Colorado State), FTM (6 at #6 Arizona), FTA (6 at #6 Arizona), Rebounds (12 at New Mexico St.), Assists (5 - done three times), Blocks (5 - done twice), Steals (5 at Boise State), Turnovers (0 - done twice), Min. Played (37 at New Mexico St.).

GAME-BY-GAME STATISTICS

Large table with columns: Opponent, Date, GS, MIN, Total (FG-FGA, PCT), 3-Pointers (3FG-3FGA, PCT), Free throws (FT-FTA, PCT), Rebounds (OFF, DEF, TOT, AVG), PF, A, TO, BLK, STL, PTS, AVG. Includes a Totals row at the bottom.

CAREER STATISTICS

Table with columns: SEASON, TEAM, GP-GS, MIN/AVG, Field Goals (FG-FGA, FG%), 3-Point (3FG-3FGA, 3FG%), F-Throws (FT-FTA, FT%), Rebounds (OFF, DEF, TOT, AVG), PF-FO, A, TO, BLK, STL, Scoring (PTS, AVG). Includes a TOTAL row at the bottom.

#33

VIANÈ CUMBER

G | 5-10 | FR | Albuquerque, N.M. (Sandia HS)



PPG	FG %	3PT %	FT %	RPG	APG	SPG	BPG	MPG
3.5	.392	.297	1.000	1.6	0.3	0.4	0.1	10.9

NOTEWORTHY

- » MW Freshman of the Week (11/15/21)
- » Scored in double figures in two games
- » First career start against Northern New Mexico
- » 2019-20 and 2021-21 New Mexico Gatorade Girls Basketball Player of the Year
- » Twice named MaxPreps New Mexico High School Girls Basketball Player of the Year
- » Named the best high school basketball player in New Mexico by MaxPreps
- » Averaged 26.5 points, 9.3 rebounds, 2.2 assists and 1.5 steals her senior season and 22.4 points, 10.6 rebounds, 2.5 assists and 3.3 steals as a junior
- » Led her team to a pair of district championships in 2018 and 2019

Cumber's Top Performances

Points	Season	17 vs Northern N.M. (11/12/21)
	Career	Same
FGM	Season	7 vs Northern N.M. (11/12/21)
	Career	Same
FGA	Season	10 vs Northern N.M. (11/12/21)
	Career	Same
3PT FGM	Season	3 vs Northern N.M. (11/12/21)
	Career	Same
3PT FGA	Season	6 at Utah State (1/6/22)
	Career	Same
FTM	Season	2 at Houston (11/20/21)
	Career	Same
FTA	Season	2 at Houston (11/20/21)
	Career	Same
Rebounds	Season	4 - done twice
	Career	Same
Assists	Season	1 - done four times
	Career	Same
Blocks	Season	1 vs New Mexico St. (12/3/21)
	Career	Same
Steals	Season	2 vs Northern N.M. (11/12/21)
	Career	Same
Turnovers	Season	0 - done four times
	Career	Same
Min. Played	Season	25 vs Northern N.M. (11/12/21)
	Career	Same

GAME-BY-GAME STATISTICS

Opponent	Date	GS	MIN	Total		3-Pointers		Free throws		Rebounds				PF	A	TO	BLK	STL	PTS	AVG
				FG-FGA	PCT	3FG-3FGA	PCT	FT-FTA	PCT	OFF	DEF	TOT	AVG							
Lamar University	11/09/2021		15:26	1-4	.250	0-3	.000	0-0	.000	0	4	4	4.0	1	0	1	0	1	2	2.0
Northern N.M.	11/12/2021	*	24:32	7-10	.700	3-5	.600	0-0	.000	0	4	4	4.0	0	1	1	0	2	17	9.5
Prairie View	11/16/2021		09:26	1-2	.500	1-2	.500	0-0	.000	0	2	2	3.3	0	0	2	0	0	3	7.3
at Houston	11/20/2021		13:04	1-2	.500	0-1	.000	2-2	1.000	1	1	2	3.0	0	1	1	0	0	4	6.5
Houston Baptist	11/23/2021		09:01	1-5	.200	1-5	.200	0-0	.000	0	4	4	3.2	0	0	1	0	0	3	5.8
vs SFA	11/26/2021		14:10	2-4	.500	1-1	1.000	0-0	.000	1	2	3	3.2	0	1	0	0	0	5	5.7
vs La.-Monroe	11/27/2021		20:14	4-7	.571	2-4	.500	0-0	.000	0	0	0	2.7	1	0	2	0	1	10	6.3
vs Texas Tech	11/28/2021		03:00	0-0	.000	0-0	.000	0-0	.000	0	0	0	2.4	0	0	0	0	0	0	5.5
Grambling	11/30/2021		14:12	2-4	.500	2-4	.500	0-0	.000	0	1	1	2.2	1	0	0	0	0	6	5.6
New Mexico St.	12/03/2021		15:04	0-2	.000	0-1	.000	0-0	.000	0	1	1	2.1	0	1	1	1	1	0	5.0
at New Mexico St.	12/05/2021		05:02	0-2	.000	0-2	.000	0-0	.000	0	0	0	1.9	0	0	0	0	0	0	4.5
at Arizona	12/12/2021		00:54	0-0	.000	0-0	.000	0-0	.000	0	0	0	1.8	0	0	0	0	0	0	4.2
at Boise St.	12/31/2021		03:28	0-1	.000	0-1	.000	0-0	.000	1	0	1	1.7	0	0	0	0	0	0	3.8
at Utah St.	01/06/2022		08:11	1-6	.167	1-6	.167	0-0	.000	0	0	0	1.6	0	0	0	0	0	3	3.8
at Wyoming	01/13/2022		07:31	0-2	.000	0-2	.000	0-0	.000	0	2	2	1.6	1	0	1	0	0	0	3.5
Totals		1	163:15	20-51	.392	11-37	.297	2-2	1.000	3	21	24	1.6	4	4	10	1	5	53	3.5

CAREER STATISTICS

SEASON	TEAM	GP-GS	MIN/AVG	Field Goals		3-Point		F-Throws		Rebounds				Scoring						
				FG-FGA	FG%	3FG-3FGA	3FG%	FT-FTA	FT%	OFF	DEF	TOT	AVG	PF-FO	A	TO	BLK	STL	PTS	AVG
2021-22	UNM	15-1	163/10.9	20-51	.392	11-37	.297	2-2	1.000	3	21	24	1.6	4-0	4	10	1	5	53	3.5
TOTAL		15-1	163/10.9	20-51	.392	11-37	.297	2-2	1.000	3	21	24	1.6	4-0	4	10	1	5	53	3.5



#34

NEVAEH PARKINSON

F/C | 6-3 | SO | Dallas, Texas (John Paul II HS)



PPG	FG %	3PT %	FT %	RPG	APG	SPG	BPG	MPG
2.7	.467	.000	.625	2.9	0.4	0.3	0.6	7.1

NOTEWORTHY

- » First career double-double against Northern New Mexico (11 points, 11 rebounds)
- » Played for Parish Episcopal School in Texas where she helped her team to the state championship in the 2017-18 season
- » Two-time First Team All-District and two-time First Team All-State honoree
- » Averaged 18.3 points, 10.1 rebounds and 1.4 blocks per game

Parkinson's Top Performances

Points	Season	11 vs Northern N.M. (11/12/21)
	Career	Same
FGM	Season	4 vs Northern N.M. (11/12/21)
	Career	Same
FGA	Season	8 vs Northern N.M. (11/12/21)
	Career	Same
3PT FGM	Season	
	Career	1 at Arkansas-PB (12/17/20)
3PT FGA	Season	1 - done four times
	Career	1 - done seven times
FTM	Season	3 vs Northern N.M. (11/12/21)
	Career	Same
FTA	Season	4 - done twice
	Career	Same
Rebounds	Season	11 vs Northern N.M. (11/12/21)
	Career	Same
Assists	Season	1 - done three times
	Career	Same
Blocks	Season	1 - done four times
	Career	1 - done five times
Steals	Season	2 vs Northern N.M. (11/12/21)
	Career	Same
Turnovers	Season	0 - done four times
	Career	0 - done 10 times
Min. Played	Season	15 vs Northern N.M. (11/12/21)
	Career	Same

GAME-BY-GAME STATISTICS

Opponent	Date	GS	MIN	Total		3-Pointers		Free throws		Rebounds				PF	A	TO	BLK	STL	PTS	AVG
				FG-FGA	PCT	3FG-3FGA	PCT	FT-FTA	PCT	OFF	DEF	TOT	AVG							
Lamar University	11/09/2021		04:00	0-0	.000	0-0	.000	0-0	.000	0	0	0	0.0	0	1	0	0	0	0	0.0
Northern N.M.	11/12/2021		15:01	4-8	.500	0-1	.000	3-4	.750	5	6	11	5.5	1	1	0	0	2	11	5.5
at Houston	11/20/2021		00:50	0-0	.000	0-0	.000	0-0	.000	0	0	0	3.7	0	0	0	0	0	0	3.7
Houston Baptist	11/23/2021		08:41	1-3	.333	0-1	.000	0-0	.000	0	0	0	2.8	1	1	0	1	0	2	3.3
vs La.-Monroe	11/27/2021		09:38	1-1	1.000	0-0	.000	0-0	.000	1	0	1	2.4	1	0	1	1	0	2	3.0
Grambling	11/30/2021		07:41	1-2	.500	0-1	.000	2-4	.500	1	5	6	3.0	1	0	1	1	0	4	3.2
at Utah St.	01/06/2022		04:01	0-1	.000	0-1	.000	0-0	.000	0	2	2	2.9	1	0	0	1	0	0	2.7
Totals			0 49:51	7-15	.467	0-4	.000	5-8	.625	7	13	20	2.9	5	3	3	4	2	19	2.7

CAREER STATISTICS

SEASON	TEAM	GP-GS	MIN	Field Goals		3-Point		F-Throws		Rebounds				Scoring						
				FG-FGA	FG%	3FG-3FGA	3FG%	FT-FTA	FT%	OFF	DEF	TOT	AVG	PF-FO	A	TO	BLK	STL	PTS	AVG
2020-21	UNM	8-0	21/2.7	2-9	.222	1-5	.200	0-2	.000	0	6	6	0.8	4-0	0	1	1	0	5	0.6
2021-22	UNM	7-0	50/7.1	7-15	.467	0-4	.000	5-8	.625	7	13	20	2.9	5-0	3	3	4	2	19	2.7
TOTAL		15-0	71/4.7	9-24	.375	1-9	.111	5-10	.500	7	19	26	1.7	9-0	3	4	5	2	24	1.6

NEW MEXICO STATISTICS

Game Records

Record	Overall	Home	Away	Neutral
ALL GAMES	15-4	9-0	5-2	1-2
CONFERENCE	6-0	2-0	4-0	0-0
NON-CONFERENCE	9-4	7-0	1-2	1-2

Score by Periods

Team	1st	2nd	3rd	4th	OT	TOT
New Mexico	374	361	335	388	0	1458
Opponents	286	293	369	320	0	1268

Team Box Score

No.	Player	Total			3-Point		F-Throw		Rebounds				Other									
		GP-GS	MIN	AVG	FG-FGA	FG%	3FG-3FGA	3FG%	FT-FTA	FT%	OFF	DEF	TOT	AVG	PF	DQ	A	TO	BLK	STL	PTS	AVG
13	MCGRUDER, Shaiquel	19-17	493:47	26.0	125-206	.607	7-23	.304	22-33	.667	59	80	139	7.3	41	0	11	35	28	33	279	14.7
23	DE LA CERDA, Jaedyn	19-18	609:04	32.1	94-229	.410	44-109	.404	24-33	.727	10	66	76	4.0	35	0	59	53	1	20	256	13.5
5	DUFF, LaTora	19-19	614:43	32.4	79-184	.429	39-102	.382	40-48	.833	10	64	74	3.9	31	0	113	51	9	28	237	12.5
4	DUFF, LaTascya	18-17	561:28	31.2	69-147	.469	52-108	.481	29-36	.806	3	51	54	3.0	21	0	28	31	3	9	219	12.2
32	ANDERSON, Antonia	19-18	499:50	26.3	79-169	.467	25-63	.397	24-37	.649	32	83	115	6.1	43	0	34	39	28	29	207	10.9
30	REUS, Paula	17-2	333:05	19.6	41-101	.406	11-33	.333	12-16	.750	14	48	62	3.6	31	0	37	22	10	15	105	6.2
33	CUMBER, Vianè	15-1	163:15	10.9	20-51	.392	11-37	.297	2-2	1.000	3	21	24	1.6	4	0	4	10	1	5	53	3.5
34	PARKINSON, Nevaeh	7-0	49:51	7.1	7-15	.467	0-4	.000	5-8	.625	7	13	20	2.9	5	0	3	3	4	2	19	2.7
11	SEREN, Zeyno	7-1	65:57	9.4	3-11	.273	0-2	.000	7-11	.636	2	11	13	1.9	4	0	4	2	0	3	13	1.9
1	RENCZES, Rebeka	5-0	44:23	8.9	2-8	.250	2-5	.400	3-6	.500	0	2	2	0.4	3	0	6	6	0	1	9	1.8
21	CURTIS, Mackenzie	12-0	86:44	7.2	5-25	.200	4-18	.222	5-6	.833	1	7	8	0.7	10	0	5	5	0	1	19	1.6
10	VAN BENNEKOM, Kath	15-1	120:04	8.0	7-15	.467	1-3	.333	5-8	.625	8	11	19	1.3	14	0	3	6	0	3	20	1.3
12	AUGMON, Aniyah	18-1	157:47	8.8	6-13	.462	1-4	.250	9-15	.600	7	25	32	1.8	22	0	12	21	0	15	22	1.2
Team											26	50	76					7				
Total		19	3800		537-1174	.457	197-511	.386	187-259	.722	182	532	714	37.6	264	0	319	291	84	164	1458	76.7
Opponents		19	3800		483-1252	.386	126-401	.314	176-260	.677	268	492	760	40.0	258	0	270	300	42	151	1268	66.7

Team Statistics

	UNM	OPP
Scoring	1458	1268
Points per game	76.7	66.7
Scoring margin	+10.0	-
Field goals-att	537-1174	483-1252
Field goal pct	.457	.386
3 point fg-att	197-511	126-401
3-point FG pct	.386	.314
3-pt FG made per game	10.4	6.6
Free throws-att	187-259	176-260
Free throw pct	.722	.677
F-Throws made per game	9.8	9.3
Rebounds	714	760
Rebounds per game	37.6	40.0
Rebounding margin	-2.4	-
Assists	319	270
Assists per game	16.8	14.2
Turnovers	291	300
Turnovers per game	15.3	15.8
Turnover margin	+0.5	-
Assist/turnover ratio	1.1	0.9
Steals	164	151
Steals per game	8.6	7.9
Blocks	84	42
Blocks per game	4.4	2.2
Winning streak	7	-
Home win streak	9	-
Attendance	38437	14622
Home games-Avg/Game	9-4271	7-2089
Neutral site-Avg/Game	-	3-0

Team Results

Date	Opponent		Score	Att.
11/09/2021	Lamar University	W	71-54	3800
11/12/2021	Northern N.M.	W	96-40	4000
11/16/2021	Prairie View	W	88-71	4250
11/20/2021	at Houston	L	60-89	346
11/23/2021	Houston Baptist	W	76-58	4234
11/26/2021	vs SFA	L	66-71	0
11/27/2021	vs La.-Monroe	W	66-45	0
11/28/2021	vs Texas Tech	L	75-82	0
11/30/2021	Grambling	W	86-50	4134
12/03/2021	New Mexico St.	W	77-58	5123
12/05/2021	at New Mexico St.	W	73-66	754
12/12/2021	at Arizona	L	60-77	8884
12/19/2021	UTEP	W	78-66	4458
12/31/2021	at Boise St.	W	72-68	603
01/03/2022	UNLV	W	71-68	4202
01/06/2022	at Utah St.	W	98-83	318
01/09/2022	San Diego St.	W	75-72	4236
01/13/2022	at Wyoming	W	85-76	2551
01/15/2022	at Colorado St.	W	85-74	1166



NEW MEXICO CONFERENCE STATISTICS

Game Records

Record	Overall	Home	Away	Neutral
ALL GAMES	6-0	2-0	4-0	0-0
CONFERENCE	6-0	2-0	4-0	0-0
NON-CONFERENCE	0-0	0-0	0-0	0-0

Score by Periods

Team	1st	2nd	3rd	4th	OT	TOT
New Mexico	121	117	121	127	0	486
Opponents	103	106	124	108	0	441

Team Box Score

No.	Player	GP-GS		MIN		AVG		Total		3-Point		F-Throw		Rebounds				PF		DQ		A		TO		BLK		STL		PTS		AVG	
		GP	GS	MIN	AVG	FG	FGA	FG%	3FG	3FGA	3FG%	FT	FTA	FT%	OFF	DEF	TOT	AVG	PF	DQ	A	TO	BLK	STL	PTS	AVG							
23	DE LA CERDA, Jaedyn	6-6		220:47	36.8	37-75	.493	19-38	.500	8-11	.727	3	21	24	4.0	12	0	25	14	1	5	101	16.8										
13	MCGRUDER, Shaiquel	6-6		187:31	31.3	42-75	.560	5-16	.313	10-16	.625	22	32	54	9.0	13	0	3	9	13	8	99	16.5										
4	DUFF, LaTascya	6-6		212:16	35.4	25-50	.500	21-36	.583	11-13	.846	0	12	12	2.0	7	0	13	6	0	2	82	13.7										
32	ANDERSON, Antonia	6-6		144:15	24.0	32-71	.451	12-32	.375	3-6	.500	5	32	37	6.2	15	0	14	9	8	9	79	13.2										
5	DUFF, LaTora	6-6		214:34	35.8	19-54	.352	9-30	.300	15-16	.938	2	30	32	5.3	10	0	42	14	3	8	62	10.3										
30	REUS, Paula	6-0		127:15	21.2	19-49	.388	8-19	.421	5-8	.625	7	26	33	5.5	11	0	5	5	4	2	51	8.5										
11	SEREN, Zeyno	1-0		05:01	5.0	0-1	.000	0-0	.000	2-2	1.000	0	0	0	0.0	1	0	0	1	0	1	2	2.0										
33	CUMBER, Vianè	3-0		19:10	6.4	1-9	.111	1-9	.111	0-0	.000	1	2	3	1.0	1	0	0	1	0	0	3	1.0										
10	VAN BENNEKOM, Kath	4-0		16:58	4.2	1-3	.333	1-1	1.000	1-2	.500	1	2	3	0.8	4	0	0	0	0	1	4	1.0										
1	RENCZES, Rebeka	1-0		06:34	6.6	0-1	.000	0-1	.000	1-2	.500	0	0	0	0.0	1	0	0	1	0	0	1	1.0										
21	CURTIS, Mackenzie	5-0		27:43	5.5	0-5	.000	0-3	.000	2-2	1.000	0	1	1	0.2	4	0	2	0	0	1	2	0.4										
12	AUGMON, Aniyah	5-0		13:55	2.8	0-2	.000	0-2	.000	0-0	.000	2	1	3	0.6	3	0	2	4	0	0	0	0.0										
34	PARKINSON, Nevaeh	1-0		04:01	4.0	0-1	.000	0-1	.000	0-0	.000	0	2	2	2.0	1	0	0	0	1	0	0	0.0										
Team													2	13	15																		
Total		6	1200			176-396	.444	76-188	.404	58-78	.744	45	174	219	36.5	83	0	106	65	30	37	486	81.0										
Opponents		6	1200			170-429	.396	46-150	.307	55-81	.679	93	188	281	46.8	72	0	96	79	9	37	441	73.5										

Team Statistics

	UNM	OPP
Scoring	486	441
Points per game	81.0	73.5
Scoring margin	+7.5	-
Field goals-att	176-396	170-429
Field goal pct	.444	.396
3 point fg-att	76-188	46-150
3-point FG pct	.404	.307
3-pt FG made per game	12.7	7.7
Free throws-att	58-78	55-81
Free throw pct	.744	.679
F-Throws made per game	9.7	9.2
Rebounds	219	281
Rebounds per game	36.5	46.8
Rebounding margin	-10.3	-
Assists	106	96
Assists per game	17.7	16.0
Turnovers	65	79
Turnovers per game	10.8	13.2
Turnover margin	+2.3	-
Assist/turnover ratio	1.6	1.2
Steals	37	37
Steals per game	6.2	6.2
Blocks	30	9
Blocks per game	5.0	1.5
Winning streak	6	-
Home win streak	2	-
Attendance	8438	4638
Home games-Avg/Game	2-4219	4-1160
Neutral site-Avg/Game	-	0-0

Team Results

Date	Opponent	Score	Att.
12/31/2021	at Boise St.	W 72-68	603
01/03/2022	UNLV	W 71-68	4202
01/06/2022	at Utah St.	W 98-83	318
01/09/2022	San Diego St.	W 75-72	4236
01/13/2022	at Wyoming	W 85-76	2551
01/15/2022	at Colorado St.	W 85-74	1166

***NEW MEXICO GAME-BY-GAME LEADERS***

Opponent	Date	Score	Points	Rebounds	Assists	Steals	Blocked shots
LAMAR	11/09/21	71-54	16-Antonia Anderson	6-Aniyah Augmon Jaedyn De La Cerda	9-LaTora Duff	3-Aniyah Augmon	1-Antonia Anderson LaTora Duff
NORTHERN N.M.	11/12/21	96-40	17-Viane Cumber	11-Nevaeh Parkinson	5-LaTora Duff	3-Shaiquel McGruder Jaedyn De La Cerda	1-Antonia Anderson
PRAIRIE VIEW at Houston	11/16/21 11/20/21	88-71 60-89	30-Shaiquel McGruder 16-LaTora Duff	9-Antonia Anderson 5-Paula Reus	12-LaTora Duff 7-Paula Reus	4-Shaiquel McGruder 3-LaTora Duff	4-LaTora Duff 1-Antonia Anderson
HOUSTON BAPTIST	11/23/21	76-58	20-Shaiquel McGruder	10-Shaiquel McGruder	4-Jaedyn De La Cerda LaTora Duff	4-LaTora Duff	5-Antonia Anderson
vs SFA	11/26/21	66-71	18-Jaedyn De La Cerda	8-Antonia Anderson	5-Antonia Anderson	3-LaTora Duff	2-Antonia Anderson
vs La.-Monroe	11/27/21	66-45	15-Jaedyn De La Cerda	11-Shaiquel McGruder	5-Jaedyn De La Cerda	3-Shaiquel McGruder	1-LaTascya Duff Paula Reus Nevaeh Parkinson Shaiquel McGruder
vs Texas Tech	11/28/21	75-82	21-LaTascya Duff	5-Shaiquel McGruder	9-LaTora Duff	2-LaTora Duff	3-Shaiquel McGruder
GRAMBLING	11/30/21	86-50	22-Shaiquel McGruder	10-Shaiquel McGruder	6-LaTora Duff	3-Shaiquel McGruder	2-Antonia Anderson
NEW MEXICO ST.	12/03/21	77-58	22-LaTascya Duff	8-Jaedyn De La Cerda	4-Jaedyn De La Cerda Shaiquel McGruder	3-Shaiquel McGruder Aniyah Augmon	2-Shaiquel McGruder
at New Mexico St.	12/05/21	73-66	24-LaTora Duff	12-Antonia Anderson	6-Paula Reus	3-Antonia Anderson	2-Paula Reus Antonia Anderson
at Arizona	12/12/21	60-77	15-Paula Reus	9-Antonia Anderson	5-Antonia Anderson	2-Jaedyn De La Cerda Shaiquel McGruder	1-Paula Reus Shaiquel McGruder
UTEP	12/19/21	78-66	20-LaTascya Duff	14-Shaiquel McGruder	6-Paula Reus LaTora Duff	4-Paula Reus	5-Shaiquel McGruder
at Boise St.	12/31/21	72-68	19-Shaiquel McGruder	7-LaTora Duff	7-LaTora Duff	5-Antonia Anderson	3-Shaiquel McGruder
UNLV	01/03/22	71-68	17-Shaiquel McGruder	15-Shaiquel McGruder	4-Jaedyn De La Cerda LaTora Duff	2-LaTora Duff	2-Paula Reus LaTora Duff
at Utah St.	01/06/22	98-83	27-Jaedyn De La Cerda	8-LaTora Duff	14-LaTora Duff	2-LaTora Duff Shaiquel McGruder	5-Antonia Anderson
SAN DIEGO ST.	01/09/22	75-72	17-Shaiquel McGruder Jaedyn De La Cerda	10-Antonia Anderson	5-LaTora Duff Jaedyn De La Cerda	2-Shaiquel McGruder	2-Antonia Anderson Shaiquel McGruder
at Wyoming	01/13/22	85-76	26-Shaiquel McGruder	9-Antonia Anderson	5-LaTora Duff Antonia Anderson	2-Antonia Anderson Shaiquel McGruder Jaedyn De La Cerda	3-Shaiquel McGruder
at Colorado St.	01/15/22	85-74	30-Antonia Anderson	13-Shaiquel McGruder	7-Jaedyn De La Cerda LaTora Duff	1-Jaedyn De La Cerda LaTora Duff	3-Shaiquel McGruder



NEW MEXICO 2021-22 WOMEN'S BASKETBALL

NEW MEXICO GAME-BY-GAME POINTS-REBOUNDS-ASSISTS

Opponent	Date	Score	W	1	4	5	10	11	12	13	21	23	30	32
				RENCZES,RE	DUFF,LATAS	DUFF,LATOR	VAN BENNEK	SEREN,ZEYN	AUGMON,ANI	MCGRUDER,S	CURTIS,MAC	DE LA CERD	REUS,PAULA	ANDERSON,A
Lamar University	11/09/2021	71-54	W	DNP	DNP	10-3-9	4-3-0	1-4-1	8-6-0	15-5-0	DNP	15-6-2	DNP	16-5-1
Northern N.M.	11/12/2021	96-40	W	0-2-3	3-0-0	7-2-5	7-4-1	6-4-1	6-4-3	12-4-0	12-3-2	8-2-4	DNP	7-6-2
Prairie View	11/16/2021	88-71	W	DNP	3-0-1	17-8-12	1-0-0	DNP	1-6-1	30-7-0	DNP	13-7-3	1-4-1	19-9-2
at Houston	11/20/2021	60-89	L	DNP	11-2-1	16-3-2	2-2-1	0-0-0	0-1-0	0-4-1	0-0-0	14-2-2	7-5-7	6-3-1
Houston Baptist	11/23/2021	76-58	W	6-0-1	6-5-1	11-2-4	0-1-0	0-0-0	0-2-1	20-10-0	0-0-0	17-3-4	0-2-1	11-3-0
vs SFA	11/26/2021	66-71	L	DNP	15-3-1	17-5-2	0-3-0	DNP	0-0-0	2-1-0	DNP	18-2-1	4-3-2	5-8-5
vs La.-Monroe	11/27/2021	66-45	W	1-0-1	12-2-1	8-2-4	0-1-0	2-3-2	1-2-1	8-11-0	2-1-0	15-5-5	2-1-1	3-9-0
vs Texas Tech	11/28/2021	75-82	L	DNP	21-4-2	7-1-9	DNP	DNP	0-0-0	20-5-1	DNP	13-2-7	0-2-1	14-2-0
Grambling	11/30/2021	86-50	W	1-0-1	7-3-4	10-3-6	2-2-1	2-2-0	3-4-3	22-10-0	3-0-1	8-3-1	6-4-4	12-5-1
New Mexico St.	12/03/2021	77-58	W	DNP	22-6-2	17-2-3	0-0-0	DNP	3-2-1	8-7-4	0-0-0	15-8-4	9-1-2	3-2-1
at New Mexico St.	12/05/2021	73-66	W	DNP	9-3-1	24-4-5	DNP	DNP	0-1-0	17-6-0	DNP	1-4-0	6-6-6	16-12-2
at Arizona	12/12/2021	60-77	L	DNP	8-8-0	14-3-4	0-0-0	DNP	0-1-0	8-1-0	DNP	7-5-1	15-0-1	8-9-5
UTEP	12/19/2021	78-66	W	DNP	20-6-1	17-4-6	0-0-0	DNP	0-0-0	18-14-2	0-3-0	11-3-0	4-1-6	8-5-0
at Boise St.	12/31/2021	72-68	W	DNP	16-2-2	8-7-7	0-0-0	DNP	0-0-0	19-4-0	0-0-0	13-4-2	9-2-1	7-2-4
UNLV	01/03/2022	71-68	W	DNP	14-1-1	14-4-4	0-0-0	DNP	0-1-1	17-15-2	0-0-0	15-5-4	7-7-0	4-4-0
at Utah St.	01/06/2022	98-83	W	1-0-0	24-3-4	13-8-14	4-3-0	2-0-0	0-0-0	6-6-0	2-0-0	27-5-5	2-3-1	14-7-1
San Diego St.	01/09/2022	75-72	W	DNP	11-3-2	14-3-5	0-0-0	DNP	0-1-1	17-9-0	DNP	17-2-5	4-7-0	12-10-2
at Wyoming	01/13/2022	85-76	W	DNP	9-1-2	7-2-5	DNP	DNP	0-1-0	26-7-0	0-0-1	19-3-2	12-5-0	12-9-5
at Colorado St.	01/15/2022	85-74	W	DNP	8-2-2	6-8-7	DNP	DNP	DNP	14-13-1	0-1-1	10-5-7	17-9-3	30-5-2

Opponent	Date	Score	W	33	34
				CUMBER,VIA	PARKINSON,
Lamar University	11/09/2021	71-54	W	2-4-0	0-0-1
Northern N.M.	11/12/2021	96-40	W	17-4-1	11-11-1
Prairie View	11/16/2021	88-71	W	3-2-0	DNP
at Houston	11/20/2021	60-89	L	4-2-1	0-0-0
Houston Baptist	11/23/2021	76-58	W	3-4-0	2-0-1
vs SFA	11/26/2021	66-71	L	5-3-1	DNP
vs La.-Monroe	11/27/2021	66-45	W	10-0-0	2-1-0
vs Texas Tech	11/28/2021	75-82	L	0-0-0	DNP
Grambling	11/30/2021	86-50	W	6-1-0	4-6-0
New Mexico St.	12/03/2021	77-58	W	0-1-1	DNP
at New Mexico St.	12/05/2021	73-66	W	0-0-0	DNP
at Arizona	12/12/2021	60-77	L	0-0-0	DNP
UTEP	12/19/2021	78-66	W	DNP	DNP
at Boise St.	12/31/2021	72-68	W	0-1-0	DNP
UNLV	01/03/2022	71-68	W	DNP	DNP
at Utah St.	01/06/2022	98-83	W	3-0-0	0-2-0
San Diego St.	01/09/2022	75-72	W	DNP	DNP
at Wyoming	01/13/2022	85-76	W	0-2-0	DNP
at Colorado St.	01/15/2022	85-74	W	DNP	DNP



NEW MEXICO GAME HIGHS

POINTS	98	at Utah St. (01/06/2022)
	96	Northern N.M. (11/12/2021)
	88	Prairie View (11/16/2021)
	86	Grambling (11/30/2021)
	85	at Colorado St. (01/15/2022)
	85	at Wyoming (01/13/2022)
FIELD GOALS MADE	35	Grambling (11/30/2021)
	35	Northern N.M. (11/12/2021)
FIELD GOAL ATTEMPTS	78	at Colorado St. (01/15/2022)
	73	at Utah St. (01/06/2022)
FIELD GOAL PERCENTAGE	.576 (34-59)	at Wyoming (01/13/2022)
	.533 (32-60)	UTEP (12/19/2021)
3 PT FG MADE	21	at Utah St. (01/06/2022)
	19	at Colorado St. (01/15/2022)
3 PT FG ATTEMPTS	52	at Colorado St. (01/15/2022)
	42	at Utah St. (01/06/2022)
3 PT FG PERCENTAGE	.542 (13-24)	New Mexico St. (12/03/2021)
	.520 (13-25)	at Wyoming (01/13/2022)
FREE THROWS MADE	16	San Diego St. (01/09/2022)
	16	Northern N.M. (11/12/2021)
FREE THROW ATTEMPTS	25	Northern N.M. (11/12/2021)
	24	Prairie View (11/16/2021)
FREE THROW PERCENTAGE	1.000 (6-6)	Houston Baptist (11/23/2021)
	.933 (14-15)	vs Texas Tech (N) (11/28/2021)
REBOUNDS	54	Northern N.M. (11/12/2021)
	48	at Colorado St. (01/15/2022)
	48	Grambling (11/30/2021)
ASSISTS	25	at Utah St. (01/06/2022)
	23	at Colorado St. (01/15/2022)
	23	Northern N.M. (11/12/2021)
STEALS	15	Houston Baptist (11/23/2021)
	15	Northern N.M. (11/12/2021)
BLOCKED SHOTS	11	Houston Baptist (11/23/2021)
	8	at Utah St. (01/06/2022)
TURNOVERS	34	at Houston (11/20/2021)
	28	vs SFA (N) (11/26/2021)
FOULS	23	vs SFA (N) (11/26/2021)
	20	Lamar University (11/09/2021)

NEW MEXICO INDIVIDUAL GAME HIGHS

POINTS	30		Antonia Anderson at Colorado St. (01/15/2022)
	30		Shaiquel McGruder vs Prairie View (11/16/2021)
	27		Jaedyn De La Cerda at Utah St. (01/06/2022)
	26		Shaiquel McGruder at Wyoming (01/13/2022)
	24		LaTascya Duff at Utah St. (01/06/2022)
	24		LaTora Duff at New Mexico St. (12/05/2021)
FIELD GOALS MADE	13		Shaiquel McGruder vs Prairie View (11/16/2021)
	11		Antonia Anderson at Colorado St. (01/15/2022)
	11		Shaiquel McGruder at Wyoming (01/13/2022)
	11		Shaiquel McGruder vs Grambling (11/30/2021)
FIELD GOAL ATTEMPTS	26		Antonia Anderson at Colorado St. (01/15/2022)
	19		Jaedyn De La Cerda vs Lamar University (11/09/2021)
FIELD GOAL PERCENTAGE (min 5 made)	1.000	(7-7)	Shaiquel McGruder vs Lamar University (11/09/2021)
	.875	(7-8)	Paula Reus at Arizona (12/12/2021)
3 PT FG MADE	8		Antonia Anderson at Colorado St. (01/15/2022)
	7		LaTascya Duff at Utah St. (01/06/2022)
	7		Jaedyn De La Cerda at Utah St. (01/06/2022)
3 PT FG ATTEMPTS	20		Antonia Anderson at Colorado St. (01/15/2022)
	11		Jaedyn De La Cerda at Utah St. (01/06/2022)
3 PT FG PERCENTAGE (min 2 made)	1.000	(4-4)	LaTascya Duff at Boise St. (12/31/2021)
	1.000	(2-2)	Paula Reus at Wyoming (01/13/2022)
	1.000	(2-2)	Rebeka Renczes vs Houston Baptist (11/23/2021)
FREE THROWS MADE	8		LaTora Duff vs SFA (N) (11/26/2021)
	7		LaTora Duff vs UNLV (01/03/2022)
FREE THROW ATTEMPTS	9		LaTora Duff vs SFA (N) (11/26/2021)
	7		LaTascya Duff vs San Diego St. (01/09/2022)
	7		LaTora Duff vs UNLV (01/03/2022)
FREE THROW PERCENTAGE (min 3 made)	1.000	(7-7)	LaTora Duff vs UNLV (01/03/2022)
	1.000	(6-6)	Antonia Anderson at Arizona (12/12/2021)
	1.000	(5-5)	Antonia Anderson vs Lamar University (11/09/2021)
	1.000	(4-4)	Shaiquel McGruder vs Texas Tech (N) (11/28/2021)
	1.000	(4-4)	LaTascya Duff vs Texas Tech (N) (11/28/2021)
	1.000	(4-4)	Shaiquel McGruder vs Prairie View (11/16/2021)
	1.000	(3-3)	Shaiquel McGruder vs UNLV (01/03/2022)
	1.000	(3-3)	LaTascya Duff vs UNLV (01/03/2022)
1.000	(3-3)	LaTascya Duff at Houston (11/20/2021)	
REBOUNDS	15		Shaiquel McGruder vs UNLV (01/03/2022)
	14		Shaiquel McGruder vs UTEP (12/19/2021)
ASSISTS	14		LaTora Duff at Utah St. (01/06/2022)
	12		LaTora Duff vs Prairie View (11/16/2021)
STEALS	5		Antonia Anderson at Boise St. (12/31/2021)
	4		Paula Reus vs UTEP (12/19/2021)
	4		LaTora Duff vs Houston Baptist (11/23/2021)
	4		Shaiquel McGruder vs Prairie View (11/16/2021)
BLOCKED SHOTS	5		Antonia Anderson at Utah St. (01/06/2022)
	5		Shaiquel McGruder vs UTEP (12/19/2021)
	5		Antonia Anderson vs Houston Baptist (11/23/2021)
TURNOVERS	9		LaTora Duff vs UTEP (12/19/2021)
	8		Jaedyn De La Cerda at Houston (11/20/2021)
	8		LaTora Duff at Houston (11/20/2021)



NEW MEXICO LEADERBOARD

Points

##	Player	G	Pts	Pts/G
13	McGruder, Shaiquel	19	279	14.7
23	De La Cerda, Jaedyn	19	256	13.5
5	Duff, LaTora	19	237	12.5
4	Duff, LaTascya	18	219	12.2
32	Anderson, Antonia	19	207	10.9
30	Reus, Paula	17	105	6.2
33	Cumber, Vianè	15	53	3.5
12	Augmon, Aniyah	18	22	1.2
10	van Bennekom, Kath	15	20	1.3
34	Parkinson, Nevaeh	7	19	2.7
21	Curtis, Mackenzie	12	19	1.6
11	Seren, Zeyno	7	13	1.9
1	Renczes, Rebeka	5	9	1.8

Field Goal Percentage

##	Player	FG	Att	Pct
13	McGruder, Shaiquel	125	206	.607
4	Duff, LaTascya	69	147	.469
32	Anderson, Antonia	79	169	.467
34	Parkinson, Nevaeh	7	15	.467
10	van Bennekom, Kath	7	15	.467
12	Augmon, Aniyah	6	13	.462
5	Duff, LaTora	79	184	.429
23	De La Cerda, Jaedyn	94	229	.410
30	Reus, Paula	41	101	.406
33	Cumber, Vianè	20	51	.392
11	Seren, Zeyno	3	11	.273
1	Renczes, Rebeka	2	8	.250
21	Curtis, Mackenzie	5	25	.200

Scoring Average

##	Player	G	Pts	Pts/G
13	McGruder, Shaiquel	19	279	14.7
23	De La Cerda, Jaedyn	19	256	13.5
5	Duff, LaTora	19	237	12.5
4	Duff, LaTascya	18	219	12.2
32	Anderson, Antonia	19	207	10.9
30	Reus, Paula	17	105	6.2
33	Cumber, Vianè	15	53	3.5
34	Parkinson, Nevaeh	7	19	2.7
11	Seren, Zeyno	7	13	1.9
1	Renczes, Rebeka	5	9	1.8
21	Curtis, Mackenzie	12	19	1.6
10	van Bennekom, Kath	15	20	1.3
12	Augmon, Aniyah	18	22	1.2

Field Goal Attempts

##	Player	G	Att	Att/G
23	De La Cerda, Jaedyn	19	229	12.1
13	McGruder, Shaiquel	19	206	10.8
5	Duff, LaTora	19	184	9.7
32	Anderson, Antonia	19	169	8.9
4	Duff, LaTascya	18	147	8.2

Field Goals Made

##	Player	G	Made	Made/G
13	McGruder, Shaiquel	19	125	6.6
23	De La Cerda, Jaedyn	19	94	4.9
5	Duff, LaTora	19	79	4.2
32	Anderson, Antonia	19	79	4.2
4	Duff, LaTascya	18	69	3.8

NEW MEXICO LEADERBOARD

3-Point FG Percentage

##	Player	3FG	Att	Pct
4	Duff, LaTascya	52	108	.481
23	De La Cerda, Jaedyn	44	109	.404
1	Renczes, Rebeka	2	5	.400
32	Anderson, Antonia	25	63	.397
5	Duff, LaTora	39	102	.382
30	Reus, Paula	11	33	.333
10	van Bennekom, Kath	1	3	.333
13	McGruder, Shaiquel	7	23	.304
33	Cumber, Vianè	11	37	.297
12	Augmon, Aniyah	1	4	.250
21	Curtis, Mackenzie	4	18	.222

Free Throw Percentage

##	Player	Made	Att	Pct
33	Cumber, Vianè	2	2	1.000
5	Duff, LaTora	40	48	.833
21	Curtis, Mackenzie	5	6	.833
4	Duff, LaTascya	29	36	.806
30	Reus, Paula	12	16	.750
23	De La Cerda, Jaedyn	24	33	.727
13	McGruder, Shaiquel	22	33	.667
32	Anderson, Antonia	24	37	.649
11	Seren, Zeyno	7	11	.636
34	Parkinson, Nevaeh	5	8	.625
10	van Bennekom, Kath	5	8	.625
12	Augmon, Aniyah	9	15	.600
1	Renczes, Rebeka	3	6	.500

Rebounds

##	Player	G	Reb	Reb/G
13	McGruder, Shaiquel	19	139	7.3
32	Anderson, Antonia	19	115	6.1
23	De La Cerda, Jaedyn	19	76	4.0
5	Duff, LaTora	19	74	3.9
30	Reus, Paula	17	62	3.6

Rebounds Average

##	Player	G	Reb	Reb/G
13	McGruder, Shaiquel	19	139	7.3
32	Anderson, Antonia	19	115	6.1
23	De La Cerda, Jaedyn	19	76	4.0
5	Duff, LaTora	19	74	3.9
30	Reus, Paula	17	62	3.6

3-Point FG Attempts

##	Player	G	Att	Att/G
23	De La Cerda, Jaedyn	19	109	5.7
4	Duff, LaTascya	18	108	6.0
5	Duff, LaTora	19	102	5.4
32	Anderson, Antonia	19	63	3.3
33	Cumber, Vianè	15	37	2.5

3-Point FG Made

##	Player	G	Made	Made/G
4	Duff, LaTascya	18	52	2.9
23	De La Cerda, Jaedyn	19	44	2.3
5	Duff, LaTora	19	39	2.1
32	Anderson, Antonia	19	25	1.3
30	Reus, Paula	17	11	0.6

Free Throw Attempts

##	Player	G	Att	Att/G
5	Duff, LaTora	19	48	2.5
32	Anderson, Antonia	19	37	1.9
4	Duff, LaTascya	18	36	2.0
13	McGruder, Shaiquel	19	33	1.7
23	De La Cerda, Jaedyn	19	33	1.7

Free Throws Made

##	Player	G	Made	Made/G
5	Duff, LaTora	19	40	2.1
4	Duff, LaTascya	18	29	1.6
23	De La Cerda, Jaedyn	19	24	1.3
32	Anderson, Antonia	19	24	1.3
13	McGruder, Shaiquel	19	22	1.2

Assists

##	Player	G	Ast	Ast/G
5	Duff, LaTora	19	113	5.9
23	De La Cerda, Jaedyn	19	59	3.1
30	Reus, Paula	17	37	2.2
32	Anderson, Antonia	19	34	1.8
4	Duff, LaTascya	18	28	1.6

Steals

##	Player	G	Stl	Stl/G
13	McGruder, Shaiquel	19	33	1.7
32	Anderson, Antonia	19	29	1.5
5	Duff, LaTora	19	28	1.5
23	De La Cerda, Jaedyn	19	20	1.1
30	Reus, Paula	17	15	0.9

GAME 20: NEW MEXICO vs FRESNO STATE

Game 1 | New Mexico vs. Lamar

Nov. 9, 2021 | Albuquerque, N.M.

Game 2 | New Mexico vs. Northern N.M.

Nov. 12, 2021 | Albuquerque, N.M.



Official Basketball Box Score - Final
Lamar University at New Mexico
11/09/21 The Pit, Albuquerque
2021-22 Women's Basketball
Game Time: 7:00 PM
Game Duration: 1:43
Attendance: 3,800
Officials: Peter Contreras, Jerry Ousley, Denise Lopez

Lamar University - 54		Record: 0-1											Shooting By Period			
NO. Name	Min	FG	3P	FT	Rebounds	Fouls	TP	AS	TO	ST	Blocks	BS	BA	±	1st FG%	2nd FG%
		M/A	M/A	M/A	OR DR TOT	PF					BS	BA				
41 Akasha Davis	G 26:25	5-6	0-0	2-8	2 1 3 3 7	12	0	3	1	0	0	0	0	-8	3PT%	4-9 44.4%
0 Kayla Mitchell	G 27:57	2-8	0-1	0-0	2 4 6 1 0	14	2	3	2	0	1	0	-9	FT%	1-4 25%	
3 Sabrina Dean	G 33:04	4-9	2-5	4-7	1 2 3 2 6	14	2	1	0	0	0	0	-17	2nd FG%	4-14 28.6%	
10 Malay McQueen	G 28:44	5-11	3-7	0-0	1 2 3 1 1	13	0	2	2	0	0	0	-14	3PT%	1-5 20.0%	
21 Anyssa Gibbs	G 33:08	1-6	1-6	0-0	2 9 11 4 1	3	3	4	1	1	0	0	13	FT%	4-6 66.7%	
2 Angel Hastings	26:44	0-9	0-4	3-4	0 0 0 2 2	3	3	0	0	0	0	0	-11	3rd FG%	2-11 18.2%	
12 Micaela Wilson	28:32	1-3	1-2	0-2	1 0 1 0 1	3	0	0	1	1	0	0	-7	FT%	1-7 14.3%	
22 NJ Weems	10:55	0-0	0-0	0-0	1 2 3 2 1	0	0	3	0	0	0	0	-6	4th FG%	1-4 25.0%	
1 Hope Lemelle	03:31	0-0	0-0	2-2	0 0 0 1 1	2	0	0	0	0	0	0	0	0	FT%	2-5 40%
Totals		18-52	7-25	11-23	11 24 35 16 20	54	10	16	7	2	2	1	-17		GM FG%	18-52 34.6%

Technical Fouls: NONE
Dead Ball Rebounds: 6.0



Official Basketball Box Score - Final
Northern N.M. at New Mexico
11/12/21 The Pit, Albuquerque
2021-22 Women's Basketball
Game Time: 7:00 PM
Game Duration: 1:52
Attendance: 4,000
Officials: Michael Price, Arisa Ortega, Cheryl Blue

Northern N.M. - 40		Record: 3-2											Shooting By Period			
NO. Name	Min	FG	3P	FT	Rebounds	Fouls	TP	AS	TO	ST	Blocks	BS	BA	±	1st FG%	2nd FG%
		M/A	M/A	M/A	OR DR TOT	PF					BS	BA				
0 Jaidyn Fontenette	G 25:25	2-7	1-3	0-0	0 3 3 2 3	5	2	5	0	0	1	0	-30	3PT%	0-4 0.0%	
3 Miranda Salazar	G 25:18	1-4	0-1	1-2	2 5 7 1 2	3	1	2	1	1	0	0	-40	FT%	2-2 100%	
4 Kristen Davis	G 21:36	3-3	0-0	0-0	1 0 1 1 0	6	0	1	1	2	0	0	-33	2nd FG%	3-13 23.1%	
22 Christa'alee Patterson	G 28:33	5-19	1-5	0-0	1 1 2 1 1	11	0	6	3	1	0	0	-42	3PT%	0-6 0.0%	
24 Rebecca Sorensen	G 27:39	1-3	0-0	0-4	2 6 3 0 2	2	1	2	0	1	0	0	-42	FT%	1-2 50%	
23 Haavyn Jordan	G 12:57	1-3	1-3	0-0	1 1 1 1 0	3	0	3	0	1	0	0	-17	3rd FG%	5-19 26.3%	
11 Rachel Williams	G 17:56	1-8	0-4	0-0	1 1 2 2 0	2	1	1	2	0	0	0	-26	FT%	2-7 28.6%	
2 Kyria Williams	15:41	1-5	1-4	2-2	0 1 1 2 2	5	1	1	0	0	0	0	-18	2nd FG%	1-11 9.1%	
33 See'airrah Evans-Collins	00:40	0-1	0-0	0-0	0 0 0 1 0	0	0	0	0	0	0	0	-2	4th FG%	0-0 0%	
1 Ethena Silva	16:43	1-3	0-1	1-2	0 1 1 3 1	3	0	1	2	0	0	0	-10	3PT%	2-6 33.3%	
10 La'lique Sharpe	07:32	0-2	0-2	0-0	0 0 0 0 0	0	1	2	1	0	0	0	-20	FT%	2-5 40%	
Totals		16-58	4-23	4-6	11 18 29 17 9	40	7	23	11	6	1	0	-56		GM FG%	16-58 27.6%

Technical Fouls: NONE
Dead Ball Rebounds: 0.0

Official Basketball Box Score - Final
New Mexico - 71
Record: 1-0

NO. Name	Min	FG	3P	FT	Rebounds	Fouls	TP	AS	TO	ST	Blocks	BS	BA	±	1st FG%	2nd FG%
		M/A	M/A	M/A	OR DR TOT	PF					BS	BA				
13 Shaiquell McGruder	F 22:09	7-7	1-1	0-0	2 3 5 4 2	15	0	3	1	0	0	0	7	1st FG%	6-14 42.9%	
32 Antonia Anderson	F 28:29	5-9	1-3	5-5	2 3 5 3 4	16	1	2	2	1	1	1	14	3PT%	2-8 25.0%	
5 LaTora Duff	G 34:32	3-11	2-9	2-2	0 3 3 3 3	10	1	2	1	0	1	0	15	FT%	3-3 100%	
11 Zeyno Seren	G 13:50	0-1	0-1	1-2	0 4 4 1 1	1	1	1	0	0	0	0	1	2nd FG%	5-15 33.3%	
23 Jacylyn De La Cerda	G 38:38	5-19	1-8	4-5	2 4 6 2 4	15	2	1	0	1	1	1	18	3PT%	1-6 16.7%	
12 Anyah Augmon	G 23:03	3-3	1-1	1-1	0 6 6 2 2	8	0	2	3	0	0	0	16	FT%	7-9 77.8%	
10 Kath van Bennekom	19:53	2-3	0-0	0-0	3 0 3 4 0	4	0	3	0	0	0	0	8	3rd FG%	7-13 53.8%	
33 Vianê Cumber	15:26	1-4	0-3	0-0	0 0 4 1 0	2	0	1	1	0	0	0	1	3PT%	1-4 25.0%	
34 Nevaeh Parkinson	04:00	0-0	0-0	0-0	0 0 0 0 0	0	1	0	0	0	0	0	5	FT%	2-8 25.0%	
Team					0 2 2			0	1						GM FG%	26-57 45.6%

Technical Fouls: NONE
Dead Ball Rebounds: 0.0

Official Basketball Box Score - Final
New Mexico - 96
Record: 2-0

NO. Name	Min	FG	3P	FT	Rebounds	Fouls	TP	AS	TO	ST	Blocks	BS	BA	±	1st FG%	2nd FG%
		M/A	M/A	M/A	OR DR TOT	PF					BS	BA				
13 Shaquell McGruder	F 20:08	5-10	0-0	2-4	4 0 4 1 3	12	0	3	0	0	0	0	22	1st FG%	9-15 60.0%	
32 Antonia Anderson	F 17:24	3-7	1-3	0-2	1 5 6 1 1	7	2	3	1	1	1	1	17	3PT%	4-5 80.0%	
5 LaTora Duff	G 17:39	2-6	0-0	3-4	0 2 2 0 2	7	5	0	0	1	0	0	23	FT%	3-4 75%	
23 Jacylyn De La Cerda	G 18:29	3-6	2-4	0-0	0 2 2 0 0	8	4	2	3	0	0	0	27	2nd FG%	8-21 38.1%	
33 Vianê Cumber	G 24:32	7-10	3-5	0-0	0 4 4 0 1	17	1	1	2	0	0	0	35	3PT%	1-8 12.5%	
10 Kath van Bennekom	12:45	2-2	0-0	3-4	3 1 4 1 0	7	1	0	1	0	0	0	24	FT%	4-8 50%	
12 Anyah Augmon	16:24	2-3	0-1	2-2	0 4 4 2 2	6	3	3	1	0	0	0	26	3rd FG%	9-17 52.9%	
11 Zeyno Seren	15:36	3-4	0-0	0-1	1 3 4 2 1	6	1	0	1	0	1	0	26	FT%	2-5 40.0%	
1 Rebelea Rencquez	17:56	0-3	0-2	0-0	2 2 1 2 0	3	3	1	0	0	0	0	23	4th FG%	9-17 52.9%	
21 Mackenzie Curtis	19:06	3-10	3-7	3-4	1 3 4 2 3	12	2	2	2	0	0	1	30	3PT%	3-6 50.0%	
34 Nevaeh Parkinson	15:01	4-8	0-1	3-4	5 6 11 2	11	2	1	1	2	0	0	23	FT%	3-4 75%	
4 LaTascya Duff	04:00	1-1	1-1	0-0	0 0 0 0 0	0	0	0	0	0	0	0	4	GM FG%	35-70 50.0%	
Team					6 2 8			0	0						3PT%	10-24 41.7%

Technical Fouls: NONE
Dead Ball Rebounds: 5.0

	LAMU	UNM			
Biggest lead	0 (1 st 10:00)	17 (4 th 2:25)			
Best Scoring Run	8 (1 st 5:51)	9 (3 rd 3:38)			
Lead Changes	0	0			
Times Tied	2	0			
Time with Lead	00:00	37:45			
Points from					
Turnovers	14	20			
Paint	20	38			
Second Chance	7	9			
Fast Breaks	4	27			
Bench	8	14			
Period by Period Scoring					
	1st	2nd	3rd	4th	TOT
LAMU	15	13	9	17	54
UNM	17	18	18	18	71

	NM	UNM			
Biggest lead	2 (1 st 5:43)	56 (4 th 0:25)			
Best Scoring Run	6 (1 st 5:43)	13 (4 th 0:25)			
Lead Changes	4	0			
Times Tied	2	2			
Time with Lead	00:19	37:42			
Points from					
Turnovers	12	35			
Paint	16	50			
Second Chance	7	24			
Fast Breaks	2	21			
Bench	13	45			
Period by Period Scoring					
	1st	2nd	3rd	4th	TOT
NM	14	7	12	7	40
UNM	25	21	26	24	96

Game 3 | New Mexico vs. Prairie View A&M

Nov. 16, 2021 | Albuquerque, N.M.

Game 4 | New Mexico at Houston

Nov. 20, 2021 | Houston, Texas



Official Basketball Box Score - Final
Prairie View at New Mexico
11/16/21 The Pit, Albuquerque
2021-22 Women's Basketball
Game Time: 7:00 PM
Game Duration: 1:42
Attendance: 4,250
Officials: Hoyiwa Seales, Randy Campbell, Maj Forsberg

Prairie View - 71		Record: 1-2											Shooting By Period			
NO. Name	Min	FG	3P	FT	Rebounds	Fouls	TP	AS	TO	ST	Blocks	BS	BA	±	1st FG%	2nd FG%
		M/A	M/A	M/A	OR DR TOT	PF					BS	BA				
14 Kennedi Heard	F 22:00	2-7	0-1	2-2	2 1 3 3 2	6	3	1	2	0	1	0	-5	1st FG%	7-19 36.8%	
21 Gerlynn Smith	F 28:32	7-17	0-1	2-3	6 4 10 2 3	16	1	2	2	0	1	1	-10	3PT%	0-4 0.0%	
23 Kennedy Paul	F 25:29	2-10	1-2	2-2	0 7 7 4 1	7	3	1	1	0	0	0	-2	2nd FG%	5-21 23.8%	
4 Kirdis Clark	G 27:50	1-13	1-5	0-0	4 2 6 3 2	3	2	3	2	3	0	0	-5	3PT%	0-3 0.0%	
11 Diana Rosenthal	G 32:39	6-13	4-7	2-4	1 4 5 3 2	18	5	1	2	1	1	0	-6	FT%	5-7 71.4%	
31 Jessica Soders	24:11	2-4	1-1	0-0	2 3 5 1 0	5	1	2	0	1	0	0	-19	3rd FG%	8-22 36.4%	
1 Barbara Benson	15:50	4-10	2-3	2-2	5 0 5 2 1	12	0	1	0	0	0	0	-14	FT%	6-9 66.7%	
15 Mariah Johnson	03:41	0-1	0-0	0-0	0 0 0 0 0	0	0	2	0	0	0	0	-8	4th FG%	2-2 100%	
12 Tierra Simon	05:02	0-2	0-0	0-0	0 0 0 2 0	0	0	1	0	0	0	0	2	3PT%	2-7 28.6%	
20 Jalyiah Harper	03:43	1-1	0-0	0-0	1 0 1 0 0	2	1	3	0	0	0	0	-7	FT%	3-4 75%	
32 Britnyah Garner	09:14	1-6	0-0	0-2	1 3 0 0 0	2	2	0	0	0	0	0	-10	GM FG%	26-84 31.0%	
22 Janae Charles	01:49	0-0	0-0	0-0	0 0 0 0 0	0	0	0	0	0						

Game 5 | New Mexico vs. Houston Baptist

Nov. 23, 2021 | Albuquerque, N.M.



Official Basketball Box Score - Final
Houston Baptist at New Mexico
11/23/21 The Pit, Albuquerque
2021-22 Women's Basketball

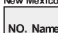
Game Time: 7:00 PM
Game Duration: 2:12
Attendance: 4,234

Officials:

NO.	Name	Min	FG	3P	FT	Rebounds	Fouls	TP	AS	TO	ST	Blocks	+/-					
			M	A	M	OR	DR					BS	BA					
14	N'Denasija Collins	F 24:01	3-9	0-2	3-3	1	4	5	1	3	9	0	2	1	0	3	-13	
25	Abbey Sutherland	C 22:33	2-3	1-1	0-0	1	2	3	1	0	5	1	2	0	1	0	-15	
0	Enya Maguire	G 14:40	2-8	2-6	0-0	1	1	1	0	0	6	0	2	0	0	0	-8	
10	Timia Jefferson	G 31:23	5-16	0-4	5-5	0	5	5	2	3	15	4	4	0	0	3	-13	
15	Julija Vujakovic	G 15:22	1-4	0-2	0-0	2	2	2	1	1	2	0	2	1	0	0	-16	
5	Karnesha Wilson	G 17:26	1-6	1-1	0-0	1	1	2	1	0	3	0	3	0	0	3	-11	
13	Lauryn Mapiusua	09:33	0-3	0-1	0-0	2	1	1	0	0	0	2	0	0	0	0	-14	
33	Marilyn Nzioku	25:58	5-8	1-1	2-2	5	8	13	3	3	13	1	1	1	0	0	-11	
23	Naomi Pierce	10:17	0-1	0-0	1-2	0	1	1	1	1	1	0	0	0	0	0	1	7
12	Amy Cotton	10:35	0-3	0-0	0-0	1	1	1	0	0	0	1	0	0	0	0	3	
11	Felicity Hillford	11:47	1-1	0-0	2-2	0	1	1	0	1	4	0	0	1	0	0	5	
40	Elizabeth Metadi	06:26	0-1	0-0	0-0	0	0	0	0	0	0	0	0	0	0	0	-4	
Team			6	4	10													
Totals			20	63	13-34	13-14	14	31	45	6	12	58	6	19	4	2	11	-18

1st FG%	0-14	7.1%
3PT%	0-3	0.0%
FT%	0-0	0%
2nd FG%	5-16	31.3%
3PT%	1-7	14.3%
FT%	3-3	100%
3rd FG%	8-18	44.4%
3PT%	5-7	42.9%
FT%	5-5	100%
4th FG%	6-15	40.0%
3PT%	1-1	100%
FT%	5-6	83.3%
GM FG%	20-63	31.7%
3PT%	5-18	27.8%
FT%	13-14	92.9%

Technical Fouls: NONE



Official Basketball Box Score - Final
New Mexico at Houston Baptist
11/23/21 The Pit, Albuquerque
2021-22 Women's Basketball

Game Time: 7:00 PM
Game Duration: 2:12
Attendance: 4,234

Officials:

NO.	Name	Min	FG	3P	FT	Rebounds	Fouls	TP	AS	TO	ST	Blocks	+/-					
			M	A	M	OR	DR					BS	BA					
13	Shaquell McGruder	F 23:00	9-13	0-1	2-2	5	5	10	1	20	0	2	2	1	0	2	22	
32	Antonia Anderson	F 22:06	5-7	1-3	0-0	1	2	3	2	0	11	0	0	3	5	0	16	
4	LaTascya Duff	G 28:26	2-7	2-4	0-0	0	5	5	1	0	6	1	0	1	0	0	22	
5	LaTora Duff	G 29:24	4-8	1-4	2-2	2	2	1	1	11	4	1	4	1	0	0	15	
23	Jaeydn De La Cerda	G 25:17	7-16	1-5	2-2	0	3	3	2	3	17	4	1	1	0	0	33	
3	Paula Reus	14:22	0-5	0-0	0-0	2	2	0	0	0	1	0	3	1	2	0	0	
12	Aniyah Augmon	15:25	0-1	0-0	0-0	2	2	2	0	0	1	1	1	0	1	0	3	
21	Mackenzie Curtis	05:35	0-2	0-2	0-0	0	0	1	0	0	0	0	0	0	0	0	-8	
33	Vianê Cumber	09:01	1-5	0-0	4	4	0	0	0	0	3	1	0	0	0	0	-7	
10	Kath van Bennekom	07:31	0-0	0-0	0-0	1	1	0	0	0	0	0	0	0	0	0	-1	
11	Zeyno Soren	05:36	0-0	0-0	0-0	0	0	0	0	0	0	0	1	0	0	0	-8	
34	Neveah Parkinson	08:41	-1-3	-0-1	0-0	0	0	0	1	0	2	1	0	0	0	0	-3	
1	Rebeka Renczes	04:15	2-2	2-2	0-0	0	0	0	1	1	6	1	0	0	0	0	-6	
Team			1	4	5													
Totals			31	69	8-30	6-6	7	30	37	12	6	76	13	9	15	11	2	18

1st FG%	8-19	42.1%
3PT%	1-7	14.3%
FT%	6-6	100%
2nd FG%	9-17	52.9%
3PT%	2-7	28.6%
FT%	0-0	0%
3rd FG%	8-19	42.1%
3PT%	1-8	12.5%
FT%	0-0	0%
4th FG%	6-15	40.0%
3PT%	4-0	50.0%
FT%	0-0	0%
GM FG%	31-69	44.9%
3PT%	8-30	26.7%
FT%	6-6	100%

Technical Fouls: NONE

	HBU	UNM
Biggest lead	0 (1 st 10:00)	29 (2 nd 0:46)
Best Scoring Run	7 (3 rd 8:25)	16 (1 st 2:31)
Lead Changes	0	
Times Tied	0	
Time with Lead	00:00	39:11

	Points from	HBU	UNM	Turnovers	10	17
Paint	26	46				
Second Chance	20	4				
Fast Breaks	9	18				
Bench	21	11				

Game 6 | New Mexico vs. Stephen F. Austin

Nov. 26, 2021 | Katy, Texas



Official Basketball Box Score - Final
Stephen F. Austin at New Mexico
11/26/21 Leonard E. Merrell Center, Katy
2021-22 Women's Basketball

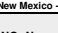
Game Time: 6:30 PM
Game Duration: 1:55

Officials: Brian Garland, Symrbi Tuttle, LaShonda Kidd

NO.	Name	Min	FG	3P	FT	Rebounds	Fouls	TP	AS	TO	ST	Blocks	+/-				
			M	A	M	OR	DR					BS	BA				
11	Avery Brittingham	F 30:27	5-10	0-0	3-5	1	5	6	2	4	13	2	4	2	0	0	-3
21	Aiyana Johnson	F 34:28	9-14	0-0	8-11	1	4	5	0	8	26	1	3	1	0	1	11
10	BriAnna Mitchell	G 36:20	4-9	1-3	5-8	1	1	2	4	4	14	2	2	0	0	0	10
13	Stephanie Visscher	G 25:06	3-8	2-3	0-0	2	2	3	0	4	8	1	6	5	1	2	6
22	Zya Nugent	G 30:27	1-4	0-2	2-2	0	8	3	4	4	6	3	0	0	0	0	7
5	Tasharian Robinson	21:57	2-5	0-2	0-0	0	1	1	3	0	4	1	0	1	0	0	0
2	Tyler McCliment-Call	03:41	0-1	0-0	0-0	0	0	0	0	1	0	0	0	0	0	0	5
20	Angel Scott	05:15	0-0	0-0	0-0	0	0	0	0	1	0	0	0	0	0	0	-2
33	Aaliyah Johnson	08:38	1-2	0-1	0-0	0	0	0	0	0	1	0	0	0	0	1	0
24	Destini Lombard	03:41	0-2	0-1	0-0	1	0	1	0	0	0	0	0	0	0	0	-4
Team			5	1	6												
Totals			25	55	3-13	18-26	9	22	31	18	21	13	20	9	2	3	5

1st FG%	6-16	37.5%
3PT%	0-0	0.0%
FT%	3-4	75%
2nd FG%	4-13	30.8%
3PT%	0-7	0.0%
FT%	4-6	66.7%
3rd FG%	11-17	64.7%
3PT%	3-5	60.0%
FT%	1-2	50%
4th FG%	4-9	44.4%
3PT%	0-1	0.0%
FT%	10-14	71.4%
GM FG%	25-55	45.5%
3PT%	3-13	23.1%
FT%	18-26	69.2%

Technical Fouls: NONE



Official Basketball Box Score - Final
New Mexico at Stephen F. Austin
11/26/21 Leonard E. Merrell Center, Katy
2021-22 Women's Basketball

Game Time: 6:30 PM
Game Duration: 1:47

Officials: Chaney Muech, Demoyia Williams, Sarah Fleming

NO.	Name	Min	FG	3P	FT	Rebounds	Fouls	TP	AS	TO	ST	Blocks	+/-					
			M	A	M	OR	DR					BS	BA					
13	Shaquell McGruder	F 07:51	1-2	0-0	0-0	0	1	1	3	0	2	0	4	0	1	0	-6	
32	Antonia Anderson	F 35:05	2-10	1-3	0-0	3	5	8	4	3	5	4	2	2	0	0	-5	
4	LaTascya Duff	G 31:22	5-13	3-9	2-3	1	2	3	2	2	15	1	3	0	0	1	-10	
5	LaTora Duff	G 35:38	4-10	1-4	8-9	1	4	5	3	6	17	2	7	3	0	1	-5	
23	Jaeydn De La Cerda	G 33:44	7-11	4-6	0-0	1	2	4	4	19	1	4	2	0	0	0	5	
14	Paula Reus	23:37	2-4	0-1	0-0	0	3	4	0	4	4	2	4	0	0	0	-13	
12	Aniyah Augmon	05:06	0-0	0-0	0-0	0	0	0	0	0	1	0	0	0	0	0	-7	
33	Vianê Cumber	14:10	2-4	1-1	0-0	1	2	3	0	0	5	1	0	0	0	0	-2	
10	Kath van Bennekom	13:27	0-0	0-0	0-0	0	3	3	2	2	0	0	1	0	0	0	14	
Team			2	4	6													
Totals			23	54	10-24	10-12	9	25	34	23	18	66	12	28	7	3	2	-5

1st FG%	4-12	33.3%
3PT%	0-3	0.0%
FT%	0-0	0%
2nd FG%	5-12	41.7%
3PT%	3-5	60.0%
FT%	4-5	80%
3rd FG%	3-12	25.0%
3PT%	2-6	33.3%
FT%	1-2	50%
4th FG%	11-18	61.1%
3PT%	5-10	50.0%
FT%	5-5	100%
GM FG%	23-54	42.6%
3PT%	10-24	41.7%
FT%	10-12	83.3%

Technical Fouls: McGruder 1st; 2nd Bench

	SFA	UNM
Biggest lead	20 (4 th 8:23)	2 (2 nd 4:32)
Best Scoring Run	17 (3 rd 5:45)	14 (4 th 5:40)
Lead Changes	4	4
Times Tied	5	1
Time with Lead	32:22	01:27

	Points from	SFA	UNM	Turnovers	21	31
Paint	38	22				
Second Chance	6	6				
Fast Breaks	4	5				
Bench	6	9				

Game 7 | New Mexico vs. Louisiana-Monroe

Nov. 27, 2021 | Katy, Texas



Official Basketball Box Score - Final
New Mexico at La-Monroe
11/27/21 Leonard E. Merrell Center, Katy
2021-22 Women's Basketball

Game Time: 6:30 PM
Game Duration: 1:26

Officials: Chaney Muech, Britton Sherry, Jaclyn Watson

NO.	Name	Min	FG	3P	FT	Rebounds	Fouls	TP	AS	TO	ST	Blocks	+/-				
			M	A	M	OR	DR					BS	BA				
4	Shaquell McGruder	F 25:25	4-7	0-0	0-0	2	9	11	2	1	8	0	0	3	1	0	14
32	Antonia Anderson																



GAME 20: NEW MEXICO vs FRESNO STATE

Game 9 | New Mexico vs. Grambling State

Nov. 30, 2021 | Albuquerque, N.M.

Game 10 | New Mexico vs. NM State

Dec. 3, 2021 | Albuquerque, N.M.



Official Basketball Box Score - Final
Grambling at New Mexico
11/30/21 The Pit, Albuquerque
2021-22 Women's Basketball

Game Time: 7:00 PM
Game Duration: 1:36
Attendance: 4,154

Officials: Lisa Jones, Julie Krommenhoek, Abecia Murray

Table with columns: NO., Name, Min, FG, MA, 3P, FT, Rebounds, Fouls, TP, AS, TO, ST, Blocks, +/-

Shooting By Period table with columns: 1st, 2nd, 3rd, 4th, GM, FT, FG

Technical Fouls: NONE

Technical Fouls: NONE

Table with columns: NO., Name, Min, FG, MA, 3P, FT, Rebounds, Fouls, TP, AS, TO, ST, Blocks, +/-

Shooting By Period table with columns: 1st, 2nd, 3rd, 4th, GM, FT, FG

Technical Fouls: NONE

Technical Fouls: NONE

Summary table with columns: GSU, UNM, Points from Turnovers, Paint, Second Chance, Fast Breaks, Bench



Official Basketball Box Score - Final
New Mexico St. at New Mexico
12/03/21 The Pit, Albuquerque
2021-22 Women's Basketball

Game Time: 7:00 PM
Game Duration: 1:39
Attendance: 5,123

Officials: Brenda Partida, Chuck Gonzalez, Roy Gulbrayan

Table with columns: NO., Name, Min, FG, MA, 3P, FT, Rebounds, Fouls, TP, AS, TO, ST, Blocks, +/-

Shooting By Period table with columns: 1st, 2nd, 3rd, 4th, GM, FT, FG

Technical Fouls: NONE

Technical Fouls: NONE

Table with columns: NO., Name, Min, FG, MA, 3P, FT, Rebounds, Fouls, TP, AS, TO, ST, Blocks, +/-

Shooting By Period table with columns: 1st, 2nd, 3rd, 4th, GM, FT, FG

Technical Fouls: NONE

Technical Fouls: NONE

Summary table with columns: NMSU, UNM, Points from Turnovers, Paint, Second Chance, Fast Breaks, Bench

Technical Fouls: NONE

Summary table with columns: NMSU, UNM, Points from Turnovers, Paint, Second Chance, Fast Breaks, Bench

Game 11 | New Mexico at NM State

Dec. 5, 2021 | Las Cruces, N.M.

Game 12 | New Mexico at #6 Arizona

Dec. 12, 2021 | Tucson, Ariz.



Official Basketball Box Score - Final
New Mexico at New Mexico St.
12/05/21 Pan American Center, Las Cruces
NM State vs. New Mexico

Game Time: 2:00 PM
Game Duration: 1:51
Attendance: 754

Officials: Michael Murry, Teresa Turner, Corey Lang

Table with columns: NO., Name, Min, FG, MA, 3P, FT, Rebounds, Fouls, TP, AS, TO, ST, Blocks, +/-

Shooting By Period table with columns: 1st, 2nd, 3rd, 4th, GM, FT, FG

Technical Fouls: NONE

Technical Fouls: NONE

Table with columns: NO., Name, Min, FG, MA, 3P, FT, Rebounds, Fouls, TP, AS, TO, ST, Blocks, +/-

Shooting By Period table with columns: 1st, 2nd, 3rd, 4th, GM, FT, FG

Technical Fouls: NONE

Technical Fouls: NONE

Summary table with columns: UNM, NMSU, Points from Turnovers, Paint, Second Chance, Fast Breaks, Bench



Official Basketball Box Score - Final
New Mexico at Arizona
12/12/21 McKale Center, Tucson
2021-22 Women's Basketball

Game Time: 1:00 PM
Game Duration: 1:38
Attendance: 6,884

Officials: Robert Scofield, Karen Lasak, Rochelle Bennett

Table with columns: NO., Name, Min, FG, MA, 3P, FT, Rebounds, Fouls, TP, AS, TO, ST, Blocks, +/-

Shooting By Period table with columns: 1st, 2nd, 3rd, 4th, GM, FT, FG

Technical Fouls: NONE

Technical Fouls: NONE

Table with columns: NO., Name, Min, FG, MA, 3P, FT, Rebounds, Fouls, TP, AS, TO, ST, Blocks, +/-

Shooting By Period table with columns: 1st, 2nd, 3rd, 4th, GM, FT, FG

Technical Fouls: NONE

Technical Fouls: NONE

Summary table with columns: LOBOS, CATS, Points from Turnovers, Paint, Second Chance, Fast Breaks, Bench

LOBOS NEW MEXICO 2021-22 WOMEN'S BASKETBALL

Game 13 | New Mexico vs. UTEP Dec. 19, 2021 | Albuquerque, N.M.

NCAA Official Basketball Box Score - Final
New Mexico at New Mexico
121921 The Pit, Albuquerque
2021-22 Women's Basketball
Officials: Melissa Barlow, Chuck Gonzalez, Benny Lusa
Game Time: 6:00 PM
Game Duration: 1:41
Attendance: 4,458

NO. Name	Min	FG			3P			FT			Rebounds		Fouls		TP	AS	TO	ST	Blocks			+/-
		M-A	M-A	M-A	M-A	M-A	M-A	OR	DR	TOT	PF	FD	BS	BA					BL			
2 Teal Battle	F	22:52	4-7	0-0	2-5	2	1	3	4	4	10	3	2	1	0	1	1	1	0	1	1	1
21 Elina Anke	F	30:25	5-10	0-1	1-2	5	4	9	2	1	11	4	3	3	0	1	18	1	0	0	1	-18
0 Mahri Petree	G	34:06	2-10	2-8	0-0	0	1	1	1	0	6	2	1	2	0	0	-6	0	0	0	0	-6
3 Kaitia Gallegos	G	37:17	8-21	5-9	4-4	1	6	7	1	5	25	4	6	4	0	0	-5	0	0	0	0	-5
15 Avery Crouse	G	25:16	1-5	1-3	0-0	2	1	3	1	1	13	0	2	0	1	0	20	0	1	0	0	10
22 Erin Wilson	G	17:39	2-4	0-0	0-0	0	2	2	0	0	4	0	1	0	0	0	1	0	1	1	2	1
5 Brenda Fontana	19:23	3-9	1-3	0-0	2	5	2	2	2	2	7	2	0	1	0	4	-2	0	0	0	0	-2
12 Grace Alvarez	05:42	0-0	0-0	0-0	0	1	1	0	1	0	0	0	0	0	0	0	0	0	0	0	0	0
40 Adhel Tac	03:38	0-0	0-0	0-0	1	1	2	1	0	0	0	1	0	0	0	0	0	0	0	0	0	10
20 Dagne Apsite	03:42	0-0	0-0	0-0	1	1	2	1	0	0	0	1	0	0	0	0	0	0	0	0	0	-5
Team											2	0	2									
Totals		25:66	9:24	7:11	16	20	36	14	15	66	15	17	12	1	7	12						

NO. Name	Min	FG			3P			FT			Rebounds		Fouls		TP	AS	TO	ST	Blocks			+/-
		M-A	M-A	M-A	M-A	M-A	M-A	OR	DR	TOT	PF	FD	BS	BA					BL			
13 Shaiquell McGruder	F	34:14	9-14	0-0	0-0	7	7	14	3	2	18	2	4	3	5	0	7	0	1	0	1	8
32 Antonia Anderson	F	28:11	3-8	-1-2	1-4	1	4	5	3	4	8	0	0	0	3	1	0	8	0	0	0	8
4 LaTascya Duff	G	39:06	6-10	5-9	3-4	1	5	6	0	5	20	1	2	1	1	0	10	1	1	0	0	11
5 LaTara Duff	G	36:23	7-13	3-8	0-0	2	2	4	4	1	17	6	9	1	0	0	11	0	0	0	0	11
23 Jaedyn De La Cerda	G	25:20	5-10	1-3	0-0	0	3	3	0	0	11	0	2	0	0	0	8	0	0	0	0	8
12 Aniyah Augmon	04:46	0-1	0-0	0-0	0	0	0	0	0	0	0	0	0	0	0	0	-2	0	0	0	0	-2
3 Paula Reus	17:19	2-3	0-0	0-0	0	1	1	2	4	6	2	4	0	1	9	0	0	0	0	0	0	2
21 Mackenzie Curtis	14:25	0-1	0-1	0-0	0	3	3	1	0	0	0	0	0	0	0	0	2	0	0	0	0	2
10 Kath van Bennekom	00:16	0-0	0-0	0-0	0	0	0	0	0	0	0	0	0	0	0	0	0	0	0	0	0	0
Team											2	0	2									
Totals		32:60	10:23	4:8	11	27	38	16	14	78	15	19	12	7	1	12						

Points from	Turnovers	Paint	Second Chance	Fast Breaks	Bench	Period by Period Scoring				
						1st	2nd	3rd	4th	
UTEP	15	30	40	16	8	14	11	20	21	66
UNM	15	15	16	8	11	19	19	18	22	78

Game 14 | New Mexico at Boise State Dec. 31, 2021 | Boise, Idaho

NCAA Official Basketball Box Score - Final
New Mexico at Boise State
123121 ExtraMe Arena, Boise
2021-22 Women's Basketball
Officials: Randy Campbell, Tyler Trimble, Laura Rahe
Game Time: 2:00 PM
Game Duration: 1:40
Attendance: 603

NO. Name	Min	FG			3P			FT			Rebounds		Fouls		TP	AS	TO	ST	Blocks			+/-
		M-A	M-A	M-A	M-A	M-A	M-A	OR	DR	TOT	PF	FD	BS	BA					BL			
13 Shaiquell McGruder	F	33:37	9-13	0-0	1-4	2	2	4	2	3	19	0	2	2	3	0	9	0	0	0	0	9
32 Antonia Anderson	F	20:32	3-7	0-3	1-2	1	1	2	4	2	7	4	1	5	0	1	12	1	0	0	0	12
4 LaTascya Duff	G	36:32	5-8	4-4	2-2	0	2	2	1	1	16	2	0	0	0	6	0	0	0	0	0	6
5 LaTara Duff	G	38:36	3-12	0-5	2-2	0	7	7	0	2	8	7	2	1	0	2	6	0	0	0	0	6
23 Jaedyn De La Cerda	G	34:48	5-12	2-5	1-2	0	4	4	3	2	13	2	1	2	0	0	10	0	0	0	0	10
30 Paula Reus	G	24:48	4-9	0-1	0-0	1	2	3	0	9	1	0	1	1	0	-11	0	0	0	0	0	-11
12 Aniyah Augmon	02:19	0-0	0-0	0-0	0	0	0	0	0	0	0	0	0	0	0	0	0	0	0	0	0	0
33 Viané Cumber	03:28	0-1	0-1	0-0	0	1	0	1	0	0	0	0	0	0	0	0	-2	0	0	0	0	-2
21 Mackenzie Curtis	04:17	0-1	0-0	0-0	0	0	0	0	0	0	0	0	0	0	0	0	0	0	0	0	0	0
10 Kath van Bennekom	01:03	0-0	0-0	0-0	0	0	0	0	0	0	0	0	0	0	0	0	0	0	0	0	0	0
Team											0	1	1									
Totals		29:63	6:19	8:14	5	18	23	14	12	72	16	6	13	4	3	4						

NO. Name	Min	FG			3P			FT			Rebounds		Fouls		TP	AS	TO	ST	Blocks			+/-
		M-A	M-A	M-A	M-A	M-A	M-A	OR	DR	TOT	PF	FD	BS	BA					BL			
23 Elodie Lalotte	F	16:12	2-5	0-0	1-2	0	2	2	1	5	1	1	1	0	1	0	-5	0	0	0	0	-5
33 Abby Muse	F	18:45	1-3	0-0	2-4	3	3	6	1	2	4	0	2	0	1	1	-4	0	0	0	0	-4
12 Mary Kay Naro	G	37:53	5-10	1-4	1-1	2	4	6	1	4	12	4	6	0	1	0	-2	0	0	0	0	-2
15 Annika Ostlie	G	33:48	4-12	3-11	0-0	0	4	4	3	1	11	4	6	0	0	0	-9	0	0	0	0	-9
15 Dominique Leonidas	G	36:48	8-16	0-3	5-5	1	3	4	3	4	21	5	5	0	0	1	-5	0	0	0	0	-5
25 Rachel Bowers	25:09	5-8	-1-1	0-0	3	7	10	1	0	11	2	0	1	1	1	4	0	0	0	0	0	4
22 Trista Hull	21:15	1-4	0-1	2-2	2	4	6	2	1	4	4	0	0	0	1	0	0	0	0	0	0	0
24 Jaydia Clark	08:21	0-2	0-2	0-0	1	2	0	0	0	0	1	0	0	0	0	0	3	0	0	0	0	3
21 Sydney McQuistort	01:51	0-1	0-0	0-0	0	0	0	0	0	1	0	0	0	0	0	0	-2	0	0	0	0	-2
Team											4	2	6									
Totals		26:61	5:22	11:14	16	34	50	12	14	68	17	21	2	3	4	4						

Points from	Turnovers	Paint	Second Chance	Fast Breaks	Bench	Period by Period Scoring				
						1st	2nd	3rd	4th	
UNM	6	25	6	17	16	19	17	19	18	72
BSU	12	18	17	18	15	19	17	19	13	68

Game 15 | New Mexico vs UNLV Jan. 3, 2022 | Albuquerque, N.M.

NCAA Official Basketball Box Score - Final
UNLV at New Mexico
01/03/22 The Pit, Albuquerque
2021-22 Women's Basketball
Officials: Lisa Jones, Tiffany Bird, Kyle Bacon
Game Time: 7:00 PM
Game Duration: 1:40
Attendance: 4,202

NO. Name	Min	FG			3P			FT			Rebounds		Fouls		TP	AS	TO	ST	Blocks			+/-
		M-A	M-A	M-A	M-A	M-A	M-A	OR	DR	TOT	PF	FD	BS	BA					BL			
20 Khayla Rooks	F	25:49	4-8	2-5	0-0	1	5	6	2	1	10	2	1	0	1	0	1	0	0	0	0	1
23 Desi-Rae Young	F	32:26	5-17	0-0	2-2	3	13	16	3	3	12	5	2	1	0	1	-7	0	0	0	0	-7
11 Justice Ethridge	G	24:46	2-9	0-5	0-0	1	0	1	0	0	4	2	1	0	1	1	-1	0	0	0	0	-1
12 Alyssa Durazo-Frescas	G	34:26	3-9	2-6	1-2	3	4	7	1	3	9	0	0	0	0	0	-6	0	0	0	0	-6
24 Essence Booker	G	35:48	5-11	0-1	1-2	0	1	1	2	2	11	3	3	3	0	0	-3	0	0	0	0	-3
1 Nneka Obiazor	20:41	8-18	0-0	1-2	5	3	8	4	1	17	0	1	2	0	2	4	0	0	0	0	0	4
3 Kiara Jackson	19:35	2-2	1-1	0-0	0	2	2	1	0	5	0	1	0	0	0	-2	0	0	0	0	0	-2
2 Kenadee Winfrey	05:25	0-0	0-0	0-0	0	1	1	0	0	0	1	1	0	0	0	0	0	0	0	0	0	0
44 Alyssa Brown	01:04	0-0	0-0	0-0	0	0	0	0	0	0	0	0	0	0	0	0	-3	0	0	0	0	-3
Team											1	2	3									
Totals		29:74	5:18	5:8	14	31	45	16	10	68	13	10	6	2	5	-3						

NO. Name	Min	FG			3P			FT			Rebounds		Fouls		TP	AS	TO	ST	Blocks			+/-
		M-A	M-A	M-A	M-A	M-A	M-A	OR	DR	TOT	PF	FD	BS	BA					BL			
13 Shaiquell McGruder	F	35:40	7-14	0-3	3-3	7	8	15	1	4	17	2	2	0	1	0	6	0	0	0	0	6
32 Antonia Anderson	F	15:29	2-8	0-1	0-2	1	3	4	2	4	2	0	1	0	0	1	-9	0	0	0	0	-9
4 LaTascya Duff	G	38:29	4-10	3-7	3-3	0	1	1	0	1	14	1	2	0	0	1	7	0	0	0	0	7
5 LaTara Duff	G	37:35	3-9	1-4	7-7	0	4	4	2	4	14	4	2	2	0	-2	0	0	0	0	0	-2
23 Jaedyn De La Cerda	G	39:31	5-14	3-7	2-2	0	5	3	1	15	4	4	0	0	0	3	0	0	0	0	0	3
3 Paula Reus	27:26	3-8	1-2	0-0	1	6	7	2	3	7	0	0	0	0	2	0	9	0	0	0	0	9</

GAME 20: NEW MEXICO vs FRESNO STATE

Game 17 | New Mexico vs. SDSU
Jan. 9, 2022 | Albuquerque, N.M.

Game 18 | New Mexico at Wyoming
Jan. 13, 2022 | Laramie, Wyo.

Official Basketball Box Score - Final
San Diego St. at New Mexico
01/09/22 The Pit, Albuquerque
2021-22 Women's Basketball

Official Basketball Box Score - Final
New Mexico at Wyoming
01/13/22 Arena Auditorium, Laramie, Wyo.
2021-22 Women's Basketball

San Diego St. - 72 Record: 7-8 (1-3)

NO. Name	Min	FG			3P			FT			Rebounds		Fouls		TP	AS	TO	ST	Blocks		+/-
		M-A	M-A	M-A	M-A	M-A	OR	DR	TOT	PF	FD	BS	BA								
3 Mallory Adams	34:30	8-19	5-13	0-0	4	5	9	0	0	0	21	0	1	0	0	0	0	5			
11 Kamaria Gipson	C 08:39	1-3	0-0	1-4	5	0	5	3	3	3	0	1	1	0	1	0	-12				
1 Asia Avinger	G 34:26	4-14	0-3	2-4	1	6	7	4	6	10	9	2	0	0	1	8					
2 Sophia Ramos	G 36:44	3-13	0-7	0-0	1	6	7	2	0	6	3	2	3	0	0	-7					
12 Mercedes Staples	G 36:28	4-7	2-4	0-0	0	2	2	2	1	10	1	0	1	0	0	-6					
23 Kim Villalobos	21:25	8-15	0-0	1-4	5	6	11	3	3	17	0	3	1	0	3	-8					
0 Khylee-Jade Pepe	F 08:20	1-4	0-0	2-2	4	1	5	2	1	2	0	0	0	0	1	10					
10 Isabela Hernandez	16:45	1-3	1-3	0-0	0	0	0	1	0	3	0	0	0	0	-7						
13 Meghan Fiso	02:43	0-1	0-0	0-0	0	0	0	1	0	0	0	1	0	0	2						
Team					4	3	7			0	1										
Totals		30-79	8-30	4-12	24	29	53	18	14	72	13	11	6	0	6	-3					

Shooting By Period
1st FG% 6-20 30.0%
3PT% 1-7 14.3%
FT% 1-4 25%
2nd FG% 7-16 43.8%
3PT% 3-6 50.0%
FT% 0-0 0%

Technical Fouls: NONE
Dead Ball Rebounds: 4, 0

New Mexico - 85 Record: 14-4 (5-0)

NO. Name	Min	FG			3P			FT			Rebounds		Fouls		TP	AS	TO	ST	Blocks		+/-
		M-A	M-A	M-A	M-A	M-A	OR	DR	TOT	PF	FD	BS	BA								
13 Shaiquel McGruder	F 32:25	11-14	3-4	1-1	3	4	7	2	2	26	0	3	2	3	0	3					
32 Antonia Anderson	F 30:39	5-10	2-4	0-0	1	8	9	3	12	5	2	2	1	0	10						
4 LaTascya Duff	G 34:42	3-5	3-4	0-0	0	1	1	2	1	9	2	2	0	0	4						
5 LaTora Duff	G 36:06	3-7	1-3	0-0	0	2	2	1	1	7	5	2	1	0	8						
23 Jaedyn De La Cerda	G 37:43	7-12	2-5	3-4	0	3	3	1	2	19	2	3	2	0	1	6					
30 Paula Reus	16:56	5-8	2-2	0-0	1	4	5	3	0	12	0	1	0	0	5						
33 Viané Cumber	G 07:31	0-2	0-2	0-0	1	2	2	1	0	0	1	0	0	0	0	5					
12 Aniyah Augmon	01:48	0-0	0-0	0-0	1	0	1	1	1	0	1	0	0	0	-2						
21 Mackenzie Curtis	02:10	0-1	0-1	0-0	0	0	0	2	0	0	0	0	0	0	6						
Team					0	0	0			0	0										
Totals		34-59	13-25	4-5	6	24	30	16	8	85	15	15	7	4	1	9					

Shooting By Period
1st FG% 11-15 73.3%
3PT% 4-6 66.7%
FT% 0-0 0%
2nd FG% 8-17 47.1%
3PT% 3-6 50.0%
FT% 1-2 50%
3rd FG% 7-12 58.3%
3PT% 3-7 42.9%
FT% 2-2 100%
4th FG% 8-15 53.3%
3PT% 3-6 50.0%
FT% 1-1 100%
GM FG% 34-59 57.6%
3PT% 13-25 52.0%
FT% 4-5 80.0%
Dead Ball Rebounds: 0, 0

Technical Fouls: NONE

New Mexico - 75 Record: 13-4 (4-0)

NO. Name	Min	FG			3P			FT			Rebounds		Fouls		TP	AS	TO	ST	Blocks		+/-
		M-A	M-A	M-A	M-A	M-A	OR	DR	TOT	PF	FD	BS	BA								
13 Shaiquel McGruder	F 35:22	7-11	0-0	3-4	5	4	9	4	4	17	0	2	2	2	0	1					
32 Antonia Anderson	F 23:26	5-8	0-0	2-2	1	9	10	3	3	12	2	3	1	2	0	7					
4 LaTascya Duff	G 40:00	2-6	2-5	5-7	0	3	3	1	3	11	2	1	0	0	0	3					
5 LaTora Duff	G 38:18	4-14	2-9	4-5	0	3	3	2	4	14	5	1	1	1	0	0					
23 Jaedyn De La Cerda	G 37:05	6-12	4-7	1-1	2	2	2	3	17	5	1	0	0	0	1						
3 Paula Reus	16:42	1-7	1-3	1-2	2	5	7	0	2	4	0	2	0	1	0	-1					
12 Aniyah Augmon	04:37	0-1	0-1	0-0	0	1	1	0	0	0	1	1	0	0	5						
10 Kath van Bennekom	04:30	0-0	0-0	0-0	0	0	0	1	0	0	0	0	0	0	1						
Team					0	2	2			0	0										
Totals		25-59	9-25	16-21	8	29	37	14	18	75	15	11	4	6	0	3					

Shooting By Period
1st FG% 6-19 31.6%
3PT% 2-10 20.0%
FT% 3-6 50%
2nd FG% 3-13 23.1%
3PT% 2-7 28.6%
FT% 4-5 80%
3rd FG% 4-14 28.6%
3PT% 2-4 50.0%
FT% 3-3 100%
4th FG% 8-13 61.5%
3PT% 3-4 75.0%
FT% 6-7 85.7%
GM FG% 25-59 42.4%
3PT% 9-25 36.0%
FT% 16-21 76.2%
Dead Ball Rebounds: 2, 0

Technical Fouls: NONE

Wyoming - 76 Record: 5-7 (1-2)

NO. Name	Min	FG			3P			FT			Rebounds		Fouls		TP	AS	TO	ST	Blocks		+/-
		M-A	M-A	M-A	M-A	M-A	OR	DR	TOT	PF	FD	BS	BA								
45 Allyson Fertig	C 09:29	1-4	0-0	0-0	2	3	5	0	1	2	1	2	0	0	2	-9					
11 Alba Sanchez Ramos	G 30:48	1-6	1-2	0-0	1	4	5	0	1	3	4	1	0	0	-11						
4 LaTascya Duff	G 40:00	2-6	2-5	5-7	0	3	3	1	3	11	2	1	0	0	0	3					
12 Quinn Weidemann	G 34:19	1-7	1-5	2-2	0	4	4	3	2	5	3	2	1	0	-10						
24 Tommi Olson	G 34:12	2-3	1-2	0-0	3	3	6	0	2	5	3	0	5	0	-3						
4 Grace Ellis	19:57	5-10	1-3	3-3	3	0	3	2	3	14	0	2	0	0	4						
10 Paula Salazar	06:17	2-3	0-1	0-2	1	1	2	0	1	4	1	1	0	0	2						
30 Ola Ustowska	25:30	5-9	4-7	0-1	0	2	2	0	1	14	0	1	0	0	5						
2 Emily Mellera	09:28	1-3	0-1	0-0	0	0	0	1	0	2	1	1	0	0	0						
5 Tess Barnes	03:58	0-1	0-1	0-0	1	0	1	0	0	2	0	0	0	0	-2						
Team					3	1	4			0	1										
Totals		28-67	11-30	9-14	16	20	36	9	16	76	15	12	8	1	4	-9					

Shooting By Period
1st FG% 7-16 43.8%
3PT% 3-7 42.9%
FT% 0-2 0%
2nd FG% 6-15 40.0%
3PT% 1-6 16.7%
FT% 2-3 66.7%
3rd FG% 7-15 46.7%
3PT% 4-9 44.4%
FT% 4-6 66.7%
4th FG% 8-21 38.1%
3PT% 3-8 37.5%
FT% 3-3 100%
GM FG% 28-67 41.8%
3PT% 11-30 36.7%
FT% 9-14 64.3%
Dead Ball Rebounds: 4, 0

Technical Fouls: Coach 2nd, 3rd

	SDSU	UNM
Biggest lead	7 (3 rd 9:06)	14 (4 th 5:33)
Best Scoring Run	9 (3 rd 9:06)	9 (3 rd 5:06)
Lead Changes	11	
Times Tied	8	
Time with Lead	10:39	24:31

Points from	SDSU	UNM
Turnovers	10	6
Paint	28	30
Second Chance	18	1
Fast Breaks	7	31
Bench	22	4

Period	Scoring			
	1st	2nd	3rd	4th
TOT	14	17	20	21
SDSU	14	17	20	21
UNM	17	12	21	25

	UNM	WYO
Biggest lead	18 (2 nd 2:01)	0 (1 st 10:00)
Best Scoring Run	8 (2 nd 6:27)	6 (3 rd 5:00)
Lead Changes	0	
Times Tied	3	2
Time with Lead	39:26	00:00

Points from	UNM	WYO
Turnovers	14	13
Paint	38	34
Second Chance	7	15
Fast Breaks	3	2
Bench	12	34

Period	Scoring			
	1st	2nd	3rd	4th
TOT	26	20	19	20
UNM	26	20	19	20
WYO	17	15	22	22

Game 19 | New Mexico at Colorado State
Jan. 15, 2022 | Fort Collins, Colo.

Official Basketball Box Score - Final
New Mexico at Colorado St.
01/15/22 Moby Arena, Fort Collins
2021-22 Women's Basketball

Official Basketball Box Score - Final
New Mexico at Colorado St.
01/15/22 Moby Arena, Fort Collins
2021-22 Women's Basketball

New Mexico - 85 Record: 15-4 (6-0)

NO. Name	Min	FG			3P			FT			Rebounds		Fouls		TP	AS	TO	ST	Blocks		+/-
		M-A	M-A	M-A	M-A	M-A	OR	DR	TOT	PF	FD	BS	BA								
13 Shaiquel McGruder	F 27:46	6-14	2-8	0-0	4	9	13	2	2	14	1	0	0	3	0	21					
32 Antonia Anderson	F 26:22	11-26	8-20	0-0	1	4	5	1	0	30	2	1	0	0	-2						
4 LaTascya Duff	G 32:09	3-8	2-6	0-0	0	2	2	3	0	8	2	1	0	0	9						
5 LaTora Duff	G 36:10	2-6	2-4	0-0	2	6	8	3	2	6	7										