

# 2021-22 NEW MEXICO WOMEN'S BASKETBALL

## GAME NOTES

» Eight NCAA Tournament Appearances | 1998, 2002, 2003, 2004, 2005, 2006, 2007, 2008 «  
 » Five Mountain West Tournament Championships | 2003, 2004, 2005, 2007, 2008 «

### 2021-22 | Schedule and Results

OVERALL RECORD:.....	11-4
MW RECORD:.....	0-0
HOME RECORD:.....	8-0
ROAD RECORD:.....	2-2
NEUTRAL RECORD:.....	1-2
STREAK:.....	W3

Date	Opponent	Time/Result
10/31	Western Colorado (Exh.)	W, 94-53
11/4	Eastern New Mexico (Exh.)	W, 88-72
11/9	Lamar	W, 71-54
11/12	Northern New Mexico	W, 96-40
11/16	Prairie View A&M	W, 88-71
11/20	Houston	L, 89-60
11/23	Houston Baptist	W, 76-58
11/26	Stephen F. Austin%	L, 71-66
11/27	Louisiana Monroe%	W, 66-45
11/28	Texas Tech%	L, 82-75
11/30	Grambling State	W, 86-50
12/3	New Mexico State	W, 77-58
12/5	New Mexico State	W, 73-66
12/12	#6 Arizona	L, 77-60
12/19	UTEP	W, 78-66
12/28	San José State*	Postponed
12/31	Boise State*	W, 72-68
1/3	UNLV*	W, 71-68
1/6	Utah State*	6 p.m.
1/9	San Diego State*	2 p.m.
1/13	Wyoming*	6:30 p.m.
1/15	Colorado State*	1 p.m.
1/22	Fresno State*	2 p.m.
1/27	UNLV*	7 p.m.
1/29	San Diego State*	1 p.m.
2/2	Colorado State*	7 p.m.
2/5	Wyoming*	2 p.m.
2/9	Air Force*	7 p.m.
2/12	Nevada*	3 p.m.
2/16	Utah State*	7 p.m.
2/19	Boise State*	1 p.m.
2/23	Fresno State*	7 p.m.
2/25	San José State*	12 p.m.
3/6-3/9	MW Tournament	TBA

**BOLD:** Home %:Van Chancellor Classic \* : Mountain West  
 All times are Mountain Time

### THE MATCHUP



## New Mexico Lobos

Record  
11-4, 2-0 MW

Head Coach.....Mike Bradbury  
 Alma Mater.....Chattanooga  
 Record at UNM.....105-59 (6th year)  
 Career Record.....283-176 (15th year)

#### Game Information

Game Number: 16  
 Date: Jan. 6 at 6 p.m.  
 Location: Logan, Utah  
 The Dee Glen Smith Spectrum

#### Series History

Overall:.....UNM leads 22-6  
 Current Streak:.....W10  
 Last Meeting:.....3/1/21 (W, 97-65)

#### Broadcast Information

Radio:.....610 AM KNML  
 Live Stream:.....Mountain West Network  
 Live Stats:.....GoLobos.com/wbbstats



## Utah State Aggies

Record  
5-7, 0-2 MW

Head Coach.....Kayla Ard  
 Alma Mater.....Southeastern La.  
 Record at USU.....9-27 (2nd year)  
 Career Record.....16-31 (3rd year)

### TIPPING OFF

Monday night's game against UNLV lived up to the hype with New Mexico prevailing 71-68 after LaTora Duff's game-winning three-pointer with 5.4 seconds remaining.

Duff finished with 14 points, with her lone three coming on the game-winning shot, and a perfect 7-for-7 from the free-throw line to go with four rebounds, four assists, two steals and two blocks.

The senior point guard was one of four Lobos to finish in double figures, with Shaiquel McGruder leading with 17 points and a season-high 15 rebounds for her fourth double-double on the season, of which nine of her points came in the fourth quarter after 4-for-4 shooting from the floor. It was the second-straight game that McGruder produced the team high in points. McGruder was also perfect from the free-throw line, going 3-for-3 and also had two assists and a block. LaTascya Duff also was perfect from the line at 3-for-3 and finished with 14 points, making three, three-pointers. Jaedyn De La Cerda was the fourth Lobo to finish in double figures with 15 points. As a team, the Lobos finished 15-for-17 at the free-throw line with four players perfect.

New Mexico came alive in the fourth quarter, outscoring the Lady Rebels 27-18, shooting 56.3 percent from the floor and 66.7 from three, its best percentages in a quarter in both categories, and was 5-for-5 from the line.

Through the first two conference games, the Lobos have held both of their opponents to 68 points while scoring 72 and 71 points and are shooting 41.7 percent from the floor and 31.8 percent from three-point range. UNM is also averaging 14.0 assists per game, 7.5 steals per game, 8.5 turnovers per game and 4.5 blocks per game.

McGruder is averaging 18.0 points per game (ppg) and 9.5 rebounds per game, followed by LaTascya at 15.0 ppg and a 63.6 percentage from behind the arc. De La Cerda is averaging 14.0 ppg and LaTora is averaging 11.0 ppg and 5.5 assists per game and rebounds per game. Paula Reus has elevated her game in conference play with 8.0 ppg, 4.5 rebounds per game and 1.5 blocks per game.

As a team, UNM leads the conference in blocks per game in MW games with 4.5, with McGruder accounting for four blocks, Reus for three and LaTora for two.

UNM enters Thursday's game with a 10-game winning streak against Utah State, with the Lobos winning 93-55 and 97-65 last season in Logan. LaTascya went 6-for-9 from three and 9-for-12 from the floor, for 28 points in the first game and made six three-pointers in the second game, leading the Lobos with 25 points last season. UNM is 10-2 all-time in Logan.

#### QUICK HITS BY THE NUMBERS

- » 3, 20-plus point games for Tay Duff
- » 4 double-doubles for Shaiquel McGruder
- » 4, 20-plus point games for Shaiquel McGruder
- » 4 Lobos in double-digit ppg
- » 5 statistical categories that UNM leads MW in
- » 7 double-doubles on the team
- » 7 different leading scorers in the 15 games
- » 9.0 made three-pointers per game (18th in NCAA)
- » 10 games in double figures for Shaiquel McGruder
- » 11 games in double figures for Tora Duff, De La Cerda
- » 17-straight games with a 3-pointer for Tay Duff
- » 19th in NCAA in 3-point FG % (36.8)
- » 34 pts to 1000-career pts for Antonia Anderson
- » 135 made three-pointers (5th in NCAA)

### Probable Starters

#	Name	Pos.	Cls.	Ht.	PPG	RPG	APG	SPG	BPG
4	LaTascya Duff	G	Sr.	5-7	11.9	3.2	1.3	0.6	0.2
5	LaTora Duff	G	Sr.	5-7	13.1	3.5	5.5	1.5	0.5
13	Shaiquel McGruder	F	Sr.	6-0	14.4	6.9	0.7	1.8	1.3
23	Jaedyn De La Cerda	G	Sr.	5-7	12.2	4.1	2.7	1.1	0.0
32	Antonia Anderson	F	Sr.	6-2	9.3	5.6	1.6	1.7	1.3

### Off the Bench

#	Name	Pos.	Cls.	Ht.	PPG	RPG	APG	SPG	BPG
1	Rebeka Renczes	PG	Fr.	5-7	2.0	0.5	1.5	0.3	0.0
10	Kath van Bennekom	G	So.	5-9	1.2	1.2	0.2	0.2	0.0
11	Zeyno Seren	F	Fr.	6-1	1.8	2.2	0.7	0.3	0.0
12	Aniyah Augmon	G	Fr.	5-8	1.5	2.0	0.7	1.0	0.0
21	Mackenzie Curtis	G	Fr.	5-9	1.9	0.8	0.3	0.0	0.0
30	Paula Reus	F	Fr.	6-1	5.4	2.9	2.5	1.1	0.7
33	Vianè Cumber	G	Fr.	5-10	3.8	1.7	0.3	0.4	0.1
34	Nevaeh Parkinson	F/C	So.	6-3	3.2	3.0	0.5	0.3	0.5



# NEW MEXICO 2021-22 WOMEN'S BASKETBALL

## THE UNIVERSITY OF NEW MEXICO

Location.....Albuquerque, N.M.  
 Founded.....1889 by Territorial Legislature  
 Enrollment.....22,225  
 Nickname.....Lobos  
 Colors.....Cherry (PMS 200) & Silver (PMS Cool Gray 6)  
 Conference.....Mountain West Conference  
 National Affiliation.....NCAA Division I  
 President.....Dr. Garnett Stokes  
 Director of Athletics.....Eddie Nuñez  
 Deputy A.D. for External Affairs.....David Williams  
 Deputy A.D. for Internal Affairs/SWA.....Janice Ruggiero  
 Faculty Representative.....Karen Gaudreault, Ph.D

## FACILITY INFORMATION

Facility.....The Pit  
 Capacity.....15,411  
 Age.....Built in 1966 (Renovated in 2009-10)  
 All-Time Home Record.....439-216 (.670)

## PROGRAM HISTORY

First Season.....1974-75  
 Overall Record.....704-565 (.555) in 42 seasons  
 Overall MW Record.....207-145 (.588) in 21 seasons  
 Postseason Tournament Appearances.....18  
 NCAA Tournament Appearances.....8  
 Last NCAA Postseason Appearance.....2020-21 (WNIT)  
 Last NCAA Postseason Opponent.....California Baptist  
 Last NCAA Postseason Result.....L, 90-85  
 MW Regular Season Championships.....3  
 .....(2003-04, 2004-05, 2020-21)  
 MW Tournament Championships.....5  
 .....(2002-03, 2003-04, 2004-05, 2006-07, 2007-08)

## TEAM INFORMATION

2020-21 Overall Record.....15-5  
 2020-21 Mountain West Record.....11-3  
 2020-21 Mountain West Season Finish.....1st  
 2020-21 MW Tournament Finish.....Semifinal  
 Letterwinners Returning | Lost.....7 | 5  
 Starters Returning | Lost.....4 | 1

- » Three Mountain West Regular-Season Championships
- » Five Mountain West Tournament Championships
- » Seven NCAA Tournament Appearances Since 2001-02
- » Mountain West Attendance Leader 21 Seasons in a Row
- » WBCA Academic Top 25 Eight Times Since 2004-05

## COACHING STAFF

Head Coach.....Mike Bradbury (Chattanooga, 1993)  
 Record at UNM (Years).....105-59 (6th season)  
 Career Record (Years).....283-176 (15th season)  
 Head Coach Phone.....505-925-5770  
 Women's Basketball Fax.....505-925-5779

Assistant Coach.....Valerie King (6th season)  
 Alma Mater.....Cincinnati, 2004  
 Assistant Coach.....Kabrina Merriweather (1st season)  
 Alma Mater.....Georgia Southwestern State, 2015  
 Assistant Coach.....Symone Denham (4th season)  
 Alma Mater.....Wright State, 2016

Spec. Asst. to H.C.....Ryan Freeman (1st season)  
 Dir. of Player Development.....Nike McClure (1st season)  
 Athletic Trainer.....Lexi Smith (1st season)  
 Strength Coach.....Brett Nakashima (3rd season)  
 Academic Adviser.....Joe DeBonis

## MISCELLANEOUS INFORMATION

2019-20 Total Attendance.....82,854  
 2019-20 Average Attendance.....4,874  
 2019-20 NCAA Attendance Rank.....15th  
 2019-20 Mountain West Attendance Rank.....1st

## MULTIMEDIA INFORMATION

Athletics Website.....www.GoLobos.com  
 Main University Web Site.....www.unm.edu  
 Conference Web Site.....www.TheMW.com  
 Facebook.....www.facebook.com/NewMexicoLobos  
 Twitter.....@UNMLobos

## MEDIA RELATIONS

Women's Basketball Contact.....Allison Weiss  
 Cell Phone (Preferred).....661-313-5402  
 Email.....allisonweiss@unm.edu

### INTERVIEW REQUESTS

All interviews with UNM student-athletes and coaches should be coordinated through the athletics communications office. Interviews may be arranged by contacting Allison Weiss in the athletics communications office (allisonweiss@unm.edu). All interview requests should be made at least 24 hours in advance.

The University of New Mexico Athletics  
 1414 University Drive  
 Albuquerque, N.M. 87106



### **BALANCED ATTACK**

Much like their M.O. last season, the Lobos have had balanced scoring this season with four Lobos currently averaging 10-plus points per game in Shaiquel McGruder (14.4), LaTora Duff (13.1), Jaedyn De La Cerda (12.2) and LaTascya Duff (11.9).

LaTora and De La Cerda have reached double figures in 11 games, McGruder has reached double figures in 10 games, Antonia Anderson in six, LaTascya in eight and Paula Reus in one game (against Arizona).

Further, LaTascya has tallied three, 20-plus point games with McGruder four, 20-plus point games including one, 30-point game.

In addition, the Lobos have had seven different leading scorers in the 15 games this season: Anderson (16, Lamar), Vianè Cumber (17, Northern New Mexico), McGruder (30, Prairie View; 20, Houston Baptist; 22, Grambling State; 19, Boise State; 17, UNLV), LaTora Duff (16, Houston and 24, at New Mexico State), De La Cerda (18, Stephen F. Austin and 15, Louisiana-Monroe), LaTascya Duff (21, Texas Tech; 22, New Mexico State and 20, UTEP) and Reus (15, Arizona).

UNM is outscoring its opponents 1115-963 with the largest margin in the first quarter (284-218, 66 points). The greatest point output is in the fourth quarter with 306 points, an average of 20.4 points per game in the quarter. In addition, the Lobos are outscoring their opponents in every quarter but the third quarter.

### **TOP OF THE MOUNTAIN**

The Lobos lead the Mountain West in five statistical categories and are second in two categories.

UNM leads in three-point field-goals made per game (9.0) with a conference-best 135 on the season, assists per game (16.1) with a conference-best 241, blocked shots per game (4.2) with a conference-best 63, three-point field-goal percentage (.368), and field-goal percentage (.457). New Mexico is second in scoring (74.3), just .10 behind UNLV, and scoring margin (+10.13), as well as third in steals per game (9.5). UNM is also third in field-goal percentage defense at .384.

On an individual level, the Lobos lead in four statistical categories. LaTascya Duff leads in three-point field-goal percentage (.458) and three-pointers made per game (2.7) with a conference-high 38. Shaiquel McGruder leads in field-goal percentage at .627 and Antonia Anderson leads with 1.33 blocks per game and 20 blocks.

Further, McGruder is the only MW player who is in the top-10 in scoring, rebounding, steals and blocks.

### **SHOWING RANGE**

As a team, the Lobos are making 9.0 three-pointers per game and have reached double figures in six games while making nine in three games. UNM made a season-high 13 three-pointers and shot a season-best 54.2% from three against New Mexico State on Dec. 3.

LaTora and LaTascya Duff are the top-two leaders in three-pointers this season, with LaTascya making a team-high 38 and LaTora making 31, with the duo averaging 2.7 (LaTascya) and 2.1 (LaTora) per game. LaTora is shooting 38.3% from behind the arc (31-for-81) and LaTascya at 45.8% (38-for-83). LaTascya leads the MW in three-point percentage and made three-pointers per game

LaTora has made five threes in two games, going 5-for-7 (71.4%) in the first game against New Mexico State and 5-for-8 in the second game against the Aggies. In the three games the week of Nov. 30-Dec. 5, LaTora made 12 three-pointers, shooting 63.2% from three-point range.

LaTascya was a perfect 4-for-4 in the MW opener at Boise State, her 10th game with multiple three-pointers in a game.

Jaedyn De La Cerda is closely behind with 30 made three-pointers, making 2.0 per game. The Lobos have five players with double-digit made threes to date (Vianè Cumber, 10 made, 35.7% and Antonia Anderson, 13 made, 41.9%).

Compared to other MW teams, UNM has three players in the top-seven of three-pointers made per game, led by LaTascya (first) with LaTora (fifth) and De La Cerda (seventh). As a team, UNM leads the Mountain West in made three-pointers per game with Colorado State second at 7.6 per game, as well as in three-point field-goal percentage at 36.8 percent, with Fresno State second at 36.4 percent. UNM has also taken a conference-high 367 three-pointers, with the second-highest 324 by Nevada (shooting 29.9 percent and making 6.5 per game).

Nationally, the Lobos are fifth in the NCAA in made threes with 135, 10th in attempts, 19th in percentage and 18th in three-pointers per game.

### **SHAI TIME**

Shaiquel McGruder has had four games this season with 20-plus points, including a 30-point performance against Prairie View A&M. Against the Panthers, the senior forward set several career highs, finishing with a career-high 30 points on a career-high 13-for-18 shooting, while adding seven rebounds and four steals to her stat sheet.

When it comes to steals, the senior has recorded multiple steals in nine games with a season-high four steals against Prairie View. McGruder has recorded at least one steal in 11 games, including six of the last seven.

After not tallying a block in the first four games, McGruder has had at least one block in nine games, including a season-best five blocks against UTEP, two games with three blocks and two games with two blocks. McGruder has recorded a block in the last four games.

McGruder has recorded four double-doubles this season (20 points, 10 rebounds against Houston Baptist; 22 points, 11 rebounds against Grambling State; 18 points and 14 rebounds against UTEP; 17 points and a season-best 15 rebounds against UNLV). The senior has grabbed 10-plus rebounds in five games.

In addition, she leads the team in scoring (216), points per game (14.4), field-goal percentage (.627), made field goals (99), steals (27) and steals per game (1.8), rebounds

(104) and rebounds per game (6.9), and is second in blocks (19).

The Ohio native leads the MW in field-goal percentage, is seventh in scoring (14.4 ppg) and eighth in rebounds (6.9 rpg). She is also third in blocked shots (1.3 per game) and 10th in steals (1.8 per game). Through the two conference games, McGruder is averaging 18.0 ppg, 9.5 rpg, 2.0 bpg and 1.0 spg.

Nationally, McGruder is 10th in field-goal percentage and ninth in field-goals made.

She received conference recognition on Monday, Dec. 20 with the MW naming her Player of the Week, her first career weekly conference honor.

Beyond just filling the scoring column, McGruder was a force all over the court, recording her third double-double of the season with 18 points, a game-and season-high 14 rebounds (seven offensive), a game-high five blocks (tying her career high), three steals and two assists.

Of McGruder's 18 points, 12 came off of fast-break layups with the Lobos scoring as a team 21 fast-break points in the game. In the final two quarters, McGruder tallied a near double-double with 10 points, nine rebounds (six offensive), three blocks, two assists and a steal. Entering the game leading the Mountain West in field-goal percentage, McGruder kept ahold of her position, going 9-for-14 (64.3 percent) from the floor.

### **TORA DUFF TOUGH**

There isn't much that can stop LaTora Duff this season. After breaking her nose on Dec. 3 against New Mexico State, Duff has been playing with a mask and hasn't skipped a beat in production or playing time.

The Lobo facilitator is averaging 5.5 assists per game, to go along with 13.1 points per game, 3.5 rebounds per game, 1.5 steals per game and 0.5 blocks per game while playing a team-high 31.8 minutes per game. Duff has started every game the last two seasons for the Lobos and is second in points and made three-pointers, third in steals and made field goals and fourth in rebounds.

Duff has scored in double figures in 11 of the 15 games and has scored in double figures in six of the last seven games that included a career-high 24 points after playing all 40 minutes at New Mexico State. Against the Aggies, Duff set career highs in made field-goals (eight) and in both games against the Aggies made five three-pointers (career highs).

The senior has also made at least one three-pointer in every game but two this season and had a streak of 11 games with a three that was snapped at Boise State. Twice this season, Duff has made five three-pointers in a game and nine times has made multiple three-pointers in a game.

Nationally, Duff is sixth in assists (82) and 29th in assists per game, 41st with 31 made three-pointers, and 59th in three-pointers attempted (81).

In the conference opener at Boise State, Duff had a balanced seven assists, seven rebounds and eight points, while hitting two clutch free throws late in the game to seal the 72-68 win.

It didn't take long for LaTora Duff to get back to form, accounting for nine assists in two games this season and 12 assists in a game. The point guard tied her career high with nine assists against Lamar in the season opener, with seven assists coming in the fourth quarter, and then bested that performance against Prairie View A&M with a career-high 12 assists, while also setting career highs in points (then-17), rebounds (eight) and blocks (four) for her first double-double as a Lobo.

Through 15 games, Duff has already surpassed her number of assists, made threes, made field goals and total points from last season.

### **TRIPLE THREAT TAY**

There is no one better in the MW when it comes to three-pointers than LaTascya Duff.

Duff has started 13 games this season and has made at least one three-pointer a game this season, with five made against Texas Tech and UTEP, and has a team high streak of 17 games with a three. She has made multiple three-pointers in 11 games this season.

The senior has finished with double-digit points in eight games with 20-plus points in three games this season.

Against Boise State, Duff was a perfect 4-for-4 from behind the arc, keeping the Lobos in the game with the Broncos with three, three-pointers that kept the Lobos within one at the half.

Duff leads the MW in three-pointers made per game with 2.7 and in three-point field-goal percentage (45.8). Nationally, she is 12th in three-pointers made (38), 17th in three-point field-goal percentage and 35th in three-pointers per game.

The senior guard was back to form with 21 points on 5-for-7 shooting that included five three-pointers against Texas Tech and improved on that performance with 22 against New Mexico State on Dec. 3.

In addition, the senior had a career-high eight rebounds against Arizona.

### **COMEBACK KIDS**

Three times this season the Lobos have trailed going into the fourth quarter and have rallied to win.

Two of those instances came in conference games, with the Lobos outscoring the Broncos 18-13 in the fourth quarter and held the Broncos scoreless for the final 2:58 for the 72-68 win. New Mexico scored the first four points of the fourth to take a 58-55 lead before Boise State tied the game and pulled ahead 60-58 on free throws. Jaedyn De La Cerda tied the game with a layup and proceeded to hit back-to-back three-pointers for her own personal 8-0 run for the 68-64 Lobo lead. The Broncos responded to tie the game at 68 with 2:58 to play, but the Lobo defense held tough throughout the remainder of the contest and the Lobo offense converted at the free-throw line, scoring four points at the line for the difference in the game. After De La Cerda and Paula Reus both split a pair of free-throws to keep it a one-possession game, crucial rebounds by Reus and De La Cerda kept the Broncos one-

and-done. LaTora knocked down a pair of free throws with 23 seconds remaining and an Anderson steal in the waning seconds secured the road victory.

Against UNLV, New Mexico came alive in the fourth quarter, outscoring the Lady Rebels 27-18, shooting 56.3 percent from the floor and 66.7 from three, its best percentages in a quarter in both categories, and was 5-for-5 from the line. In a game that had seven ties and four lead changes, UNM got the upper hand on its last possession in a tied 68-68 game with 5.4 seconds left as LaTora Duff hit a three-pointer from the top of the arc that hit nothing but net. UNLV had one final opportunity but missed its three-pointer and Duff fittingly grabbed the defensive board as the final buzzer sounded. UNM led for just 4:06 of the game.

Trailing by 14 points at the beginning of the fourth quarter at New Mexico State, a LaTascya Duff three-pointer (her first made three-pointer of the game) cut the gap down to 10 and started an eventual 15-2 run to tie the game at 63 with 3:55 remaining and a Shaiquel McGruder layup completed the comeback, putting the Lobos in front 65-64. UNM closed on a 10-2 run and ultimately outscored NMSU 28-10 in the fourth quarter in the 73-66 victory.

UNM is outscoring opponents 306-243 (+63) in the fourth quarter.

## BLOCK PARTY HOSTED BY AT AND SHAI

Antonia Anderson leads not only the team, but the MW in blocks per game, with 20 blocks on the season and 1.33 per game. The super senior had a season-high five blocks against Houston Baptist and has recorded a block in all but three games with five games with multiple blocks.

There have been two games this season that a Lobo has recorded five blocks in a game, with Anderson blocking five against Houston Baptist and McGruder against UTEP.

McGruder is third in the conference in blocks per game at 1.27 and has 19 on the season. In addition, McGruder has had five games with multiple blocks and nine games with at least one block.

Anderson has 143 career blocks, ranking her 5th all-time in program history and is one block away from 4th and six from 3rd.

As a team, the Lobos lead the conference with 63 on the season and in blocks per game with 4.2.

## PAULA PEAKING

Freshman Paula Reus has quickly found her footing, and has emerged as a prolific passer and key piece to the Lobo offense as of late.

The freshman is averaging 5.4 points per game with 70 points in 13 games (sixth on the team), is third in assists (3.3, 2.5 per game) and in blocks with nine. She is averaging 19.9 minutes per game. Twice in the last five games, Reus has dished out six assists. In the last game against UNLV, Reus had a balanced seven points, seven rebounds and two blocks.

Getting the starting nod against then-No. 6 Arizona, Reus had her best scoring outing of the season, leading the Lobos with a season-high 15 points and an efficient 7-for-8 shooting in the game, making her first seven shots. She showcased her versatility, hitting mid-range jumpers and a three-pointer, while showing she can drive to the basket with either hand or create her own shot.

In her first official start for UNM against Houston, Reus distributed a season-high seven assists to go with seven points, two steals and five rebounds and had her best scoring output against New Mexico State on Dec. 3 with nine points on 3-for-4 shooting.

In the second game against the Aggies, Reus was called upon to play all 10 minutes of the fourth quarter and held her own against the NMSU post players, finishing with six assists, six points, six rebounds, two blocks and a steal in 28 minutes.

## MILESTONE ACHIEVED

Jaedyn De La Cerda became the 23rd Lobo to reach the 1000-point milestone in the fourth quarter against Texas Tech on Nov. 28. She currently has 1030 points in her illustrious career.

The New Mexico native is not the only Lobo with milestones within reach this season. Antonia Anderson is 34 points away from 1000 points. Should Anderson reach the milestone, she will be the 17th player in program history to have 1,000 points, 500 rebounds.

In addition, Anderson has played in 130 games at UNM, with the record 134 games set by Angela Hartill (2005-09).

Head Coach Mike Bradbury also achieved a milestone this season, winning his 100th game at UNM against Grambling State on Nov. 30. Bradbury became just the second coach in program history to reach 100, joining only Don Flanagan.

## QUARTER LOCKDOWN

The Lobos have held an opponent to single digits in a quarter seven times, with the latest in the first quarter of Friday's game against New Mexico State.

Against Louisiana-Monroe, the Lobos held the Warhawks to single digits in the first two quarters with nine in the first quarter and eight in the second quarter. It was the second time in the week that the Lobos held their opponent below 20 points in the first half, holding Houston Baptist to 16 in the first 20 minutes.

The Lobos had an impressive defensive display, holding the Huskies to just two points in the opening quarter and without a basket for almost the first eight minutes of the game (2:01).

In the game against Northern New Mexico, UNM held the Lady Eagles to seven points in both the second and fourth quarters, while holding them under 15 points in each quarter.

UNM also held Grambling State to below 15 points in each quarter, with 11 in both the first and second and 14 in both the third and fourth.

The Lobos held Northern New Mexico to 18.2% in the fourth quarter on 2-11 shooting and 23.1% in the second quarter on 3-13 shooting.

As a whole, NNMC shot just 27.6% in the game with 16 made baskets on 58 attempts and

17.4% from three with four makes on 23 attempts.

Against Lamar, the Lobos shut the Cardinals down defensively in the third quarter, allowing just nine points in the quarter for the 53-37 (16 points) lead.

UNM held Lamar to 2-of-11 shooting from the floor (18.2%) and 1-of-7 (14.3%) from three.

On the offensive end, UNM shot 53.8% from the field in the third quarter to the Cardinals' 18.2%, with Jaedyn De La Cerda accounting for 14 of UNM's 18 points in the quarter.

Further, the Lobos held the Panthers scoreless for the first 2:16 of the game, the first Lamar points came at 7:15 remaining in first and the Lobos held the Lady Eagles the final 5:06 of the first quarter without a point.

## SHE'S JUST A FRESHMAN

It took all of one week of collegiate play for Vianè Cumber to earn her first award, as the guard earned the inaugural MW Freshman of the Week on Monday, Nov. 15.

The distinction came after Cumber led all scorers with 17 points on 7-for-10 shooting and 3-for-5 from three-point range in her first collegiate start on Friday. The guard also was credited with an assist and two steals.

Cumber took over midway through the first quarter, accounting for eight straight Lobo points, making three consecutive shots on back-to-back threes and a layup as UNM built its lead in the first quarter, going a perfect 3-for-3 and 2-for-2 from three while also having a steal and an assist against Northern New Mexico. In the third quarter, Cumber went 2-for-3 with a fast-break layup and created the steal that led to a fast-break layup on the next possession. The Albuquerque native added a layup and a final three in the fourth quarter while grabbing four defensive rebounds.

Her first collegiate basket occurred in the second quarter against Lamar on a jumper that extended the Lobo lead to seven and collected three rebounds.

On the week, Cumber averaged 9.5 points, 4.0 rebounds and 1.5 steals per game.

## MANAGING EXPECTATIONS

After winning the Mountain West regular season in 2020-21 for the first time since 2004-05, the Lobos were picked to finish second in the preseason MW poll with 251 points and seven first-place votes.

It is the second time in head coach Mike Bradbury's tenure that the Lobos have been picked to finish second, with the last time occurring in 2019-20 when the Lobos earned three first-place votes and 280 points.

New Mexico finished above UNLV with the Rebels at 232 points and three first-place votes, and fourth-place Colorado State with the Rams earning 207 points and one first-place vote.

State and Colorado State with one each, San Diego State with two, UNLV at three, UNM with seven and Fresno State the preseason favorite with 13 first-place votes and 269 points.

In addition, senior Antonia Anderson was selected to the MW preseason all-conference team, one of five players to earn the distinction. For Anderson, the Cibola, Texas native is coming off of a campaign in which she averaged 12.1 points per game, 6.2 rebounds per game, 1.9 assists per game, 1.0 steals per game and 1.0 blocks per game and scored 10-plus points in 13 games with a career-high 29 points in the victory over UNLV on Jan. 17. Anderson led the team in rebounds and rebounds per game, was second in made field goals and blocked shots and third in total points.

In MW contests, she averaged 12.6 points per game and a team-high 6.6 rebounds per game, as well as led the conference in field-goal percentage with 49 percent. Further, Anderson was eighth in blocks per game at 1.07 and ranked in the top 15 in scoring, rebounding, field-goal percentage, blocked shots and defensive rebounds, resulting in her first all-conference honor in being named to the Mountain West all-conference team.

## PRIDE OF NEW MEXICO

The Lobos have two New Mexico natives on the 2021-22 roster with freshman Vianè Cumber and senior Jaedyn De La Cerda. In addition to being from New Mexico, the duo has something else in common: New Mexico Gatorade Player of the Year distinctions.

Cumber was named the 2019-20 and 2021-21 New Mexico Gatorade Girls Basketball Player of the Year after averaging 26.5 points, 9.3 rebounds, 2.2 assists and 1.5 steals her senior season and 22.4 points, 10.6 rebounds, 2.5 assists and 3.3 steals as a junior at Sandia High School in Albuquerque. Out of Roswell, N.M. and Roswell High School, De La Cerda earned the 2016-17 New Mexico Gatorade Player of the Year.

## KNOW YOUR OPPONENT

Utah State enters the game 5-7 overall, 0-2 in the MW with conference losses to Air Force (65-52) and Nevada (65-54). USU's wins on the year are against Arkansas State (66-65), Dixie State (81-64), Southeastern Louisiana (73-71), Cal State Fullerton (85-75) and Westminster College (83-78).

The Aggies are led by newcomers Kaylin Randhawa, who leads in points (174, 15.8 ppg) and steals (20, 1.8 per game), Adryana Quezada, who leads with 83 rebounds (7.5 per game), and E'Lease Stafford, who leads with eight blocks (0.7 per game). Faith Brantley has 23 assists (2.9 per game) to lead the team and has 23 assists to 18 turnovers (1.28 ratio). Randhawa leads at the free-throw line, making 47 of 54 attempts (.870).

Randhawa is third in the MW in overall points per game and free-throw percentage with Quezada fifth in rebounds per game.

On the season, USU is 11th in scoring defense (76.5) with opponents shooting 43.6% from the floor (10th) and 33.1% from three-point range (8th). In just MW games, Utah State is averaging 53 points and allowing 65 points, but is third in defensive field-goal percentage (37.8) and second in defensive three-point field-goal percentage (24.4) with opponents making 10 threes on 41 attempts. The Aggies are averaging 39 rebounds per game.

The Aggies have lost their last four games and are 4-2 at home.

## LAST TIME IT HAPPENED (UNM)

### As A Team

<b>Scored 100 Points:</b>	120 - at Arkansas-Pine Bluff (12-17-20)
<b>Scored 90 Points:</b>	96 - Northern New Mexico (11-12-21)
<b>Scored Fewer Than 50 Points:</b>	42 - at UNLV (1-11-17)
<b>Scored Fewer Than 40 Points:</b>	38 - at Colorado St. (1-3-15)
<b>Won by 50 Points:</b>	+56 (W, 96-40) - Northern New Mexico (11-12-21)
<b>Won by 40 Points:</b>	+48 (W, 92-44) - vs. Northern NM (12-10-19)
<b>Won By 30 Points:</b>	+32 (W, 97-65) - at Utah State (3-1-21)
<b>Lost By 30 Points:</b>	-37 (L, 47-84) - at (RV) Arizona St. (12-14-19)
<b>Lost By 40 Points:</b>	-42 (L, 63-105) - at Oklahoma (12-16-17)
<b>Shot 60% or Better:</b>	61.2% - Pacific (11-9-01)
<b>Shot Less Than 30%:</b>	26.7% (16-60) - vs. UNLV (1-18-20)
<b>Shot 60% 3FG or Better:</b>	68.2% (15-22) - at NMSU (12-2-17)
<b>Shot Less Than 20% 3FG:</b>	13.79 (4-29) - vs. Nevada (3-1-20)
<b>Made 15 3-Pointers:</b>	15 - at Utah State (2-28-21)
<b>Shot 90% on FTs (10 or more):</b>	93.3% (14-15) - vs. Texas Tech (11-28-21)
<b>Shot Less Than 40% On FTs:</b>	14.3% (1-7) - at UTEP (11-30-17)
<b>Had 50 Rebounds:</b>	54 - Northern New Mexico (11-12-21)
<b>Had 20 Offensive Rebounds:</b>	21 - Northern New Mexico (11-12-21)
<b>Had 25 Assists:</b>	27 - at Arkansas-Pine Bluff (12-17-20)
<b>Had 20 Turnovers:</b>	21 - vs. New Mexico State (12-3-21)
<b>Had Less Than 10 Turnovers:</b>	6 - at Boise State (12-31-21)
<b>Had 10 Steals:</b>	13 - at Boise State (12-31-21)
<b>Had 10 Blocks:</b>	11 - vs. Houston Baptist (11-23-21)
<b>Had Two 20-Point Scorers:</b>	Texas Tech (11-28-21) LaTascya Duff (21) and Shaiquel McGruder (20)
<b>Had Three 20-Point Scorers:</b>	vs. San Jose St. (2-27-19) Tasha Buck (30), Jaisa Nunn (22) and Cherise Beynon (22)
<b>Had 6 Double-Digit Scorers:</b>	at Arkansas-Pine Bluff (12-17-20)
<b>Had 5 Double-Digit Scorers:</b>	vs. Colorado State (3-4-21)
<b>Had No Double-Digit Scorers:</b>	vs. (RV) Arizona St. (12-14-19)
<b>Had Two 10+ Rebounders:</b>	vs. Nevada (3-1-20) Shaiquel McGruder (17) and Antonia Anderson (10)
<b>Scored 50 Points In 1st Half:</b>	50 - Prairie View A&M (11-16-21)
<b>Scored 50 Points In 2nd Half:</b>	50 - Northern New Mexico (11-12-21)
<b>Scored 60 Points in a 2nd Half:</b>	63 - vs. New Mexico St. (12-16-19)
<b>Scored 20 Or Fewer Points In 1st Half:</b>	17 - at Colorado St. (2-22-17)
<b>Scored 20 Or Fewer Points In 2nd Half:</b>	17 - at UNLV (1-15-21)
<b>Lowest Pts Scored in Quarter:</b>	2 - vs. Tulsa (11-25-16)
<b>Failed To Make a 3FG:</b>	at (RV) Arizona St. (12-14-19)
<b>Defeated a Ranked Team:</b>	W, 88-87 vs. No. 16 Marquette (11-13-17)
<b>Lost To a Ranked Team:</b>	L, 77-60 at No. 6 Arizona (12-12-21)
<b>Won an OT Game:</b>	W, 74-71 at Wyoming (2-8-20)
<b>Lost an OT Game:</b>	L, 86-78 at Nevada (2-19-20)
<b>Won a 2OT Game:</b>	W, 89-85 at Houston (11-24-18)
<b>Lost a 2OT Game:</b>	L, 69-65 vs. Fresno St. (1-2-16)

### As An Individual

<b>Had a Triple-Double:</b>	Aisia Robertson (28 pts, 11 rebs, 11 assists) at Houston (11-24-18)
<b>Had a Double-Double (Pts/Reb):</b>	Shaiquel McGruder (17 pts, 15 reb) vs. UNLV (1-3-22)
<b>Had a Double-Double (Pts/Asst):</b>	LaTora Duff (17 pts & 12 asts) Prairie View A&M (11-16-21)
<b>Had a Double-Double (Reb/Asst):</b>	vs. Fairleigh Dickinson (11-12-16) Cherise Beynon (13 reb, 10 asts)
<b>Scored 20+ Pts with 10+ Rebs:</b>	Shaiquel McGruder (20 pts, 10 reb) vs. Houston Baptist (11-23-21)
<b>Scored 30 Points:</b>	Shaiquel McGruder (30 pts), Prairie View A&M (11-16-21)
<b>Scored 40 Points:</b>	Cherise Beynon (41) at SDSU (1-20-18)
<b>Scored 30 Points (MW Only):</b>	LaTascya Duff (31) at Air Force (2-23-21)
<b>Scored 40 points (MW Only):</b>	Cherise Beynon (41) at San Diego St. (1-20-18)
<b>Had 20+ Rebounds:</b>	Richelle van der Keijl (20) vs. New Mexico St. (11-15-16)
<b>Had 15+ Rebounds:</b>	Shaiquel McGruder (15) vs. UNLV (1-3-22)
<b>Had 15+ Assists:</b>	Aisia Robertson (16) vs. Oklahoma (11-28-18)
<b>Had 5+ Steals:</b>	Antonia Anderson (5) at Boise State (12-31-21)
<b>Had 5+ Blocks:</b>	Shaiquel McGruder (5) vs. UTEP (12-19-21)

## LAST TIME IT HAPPENED (OPP)

### As A Team

<b>Scored 100 Points:</b>	105 - at Oklahoma (12-16-17)
<b>Scored 90 Points:</b>	90 - California Baptist (3-19-21)
<b>Scored Less Than 50 Points:</b>	45 - Louisiana-Monroe (11-27-21)
<b>Scored Less Than 40 Points:</b>	40 - Northern New Mexico (11-12-21)
<b>Shot 50% Or Better:</b>	56.4% (31-55) - vs. Texas Tech (11-28-21)
<b>Shot Less Than 30%:</b>	27.6 % (16-58) - Northern New Mexico (11-12-21)
<b>Shot 50% 3FG Or Better:</b>	50.0% (7-14) - Texas Tech (11-28-21)
<b>Shot Less Than 20% 3FG:</b>	11.1% (1-9) - New Mexico State (12-3-21)
<b>Made 15 3-Pointers:</b>	15 - at San José St. (1-22-20)
<b>Shot 90% On FTs (10 or more):</b>	92.9% (13-14) vs. Houston Baptist (11-23-21)
<b>Shot Less Than 50% On FTs:</b>	47.8% (11-23) - Lamar (11/9/21)
<b>Had 50 Rebounds:</b>	50 - at Boise State (12-31-21)
<b>Had 20 Offensive Rebounds:</b>	24 - Prairie View A&M (11-16-21)
<b>Had 25 Assists:</b>	26 - at Houston (11/20/21)
<b>Had 20 Turnovers:</b>	21 - at Boise State (12-31-21)
<b>Had 30 Turnovers:</b>	30 - vs. Northern NM (11-15-17)
<b>Had Less Than 10 Turnovers:</b>	8 - vs. Colorado State (3-5-21)
<b>Had 10 Steals:</b>	12 - UTEP (12-19-21)
<b>Had 10 Blocks:</b>	10 - vs. Utah St. (2-10-16)
<b>Had Two 20-Point Scorers:</b>	California Baptist (3-19-21) Britney Thomas (22) and Caitlyn Harper (25)
<b>Had 6 Double-Digit Scorers:</b>	Baylor (1-4-95)
<b>Had 5 Double-Digit Scorers:</b>	Arizona (12-12-21)
<b>Had No Double-Digit Scorers:</b>	vs. Louisiana-Monroe (11-27-21)
<b>Had Two 10+ Rebounders:</b>	at Boise State (12-31-21) Rachel Bowers (10), Trista Hull (10)
<b>Scored 50+ Points In 1st Half:</b>	54 - at San José St. (1-22-20)
<b>Scored 50+ Points In 2nd Half:</b>	51 - at Houston (11/20/21)
<b>Scored 20 Or Less Points In 1st Half:</b>	17 - vs. Louisiana-Monroe (11-27-21)
<b>Scored 20 Or Less In 2nd Half:</b>	19 - Northern New Mexico (11-12-21)
<b>Scored Less Than 10 Points in Quarter:</b>	8 - New Mexico State (12-3-21)
<b>Failed To Make a 3FG:</b>	0-1 by San Diego State (2-18-15)

### As An Individual

<b>Had a Double-Double (Pts/Reb):</b>	Desi-Rae Young (12 pts, 16 reb) UNLV (1-3-22)
<b>Had a Double-Double (Pts/Asst):</b>	Ane Olaeta (11 pts, 14 assists) California Baptist (3-19-21)
<b>Had a Double-Double (Pts/Steals):</b>	Jasmyne Harris (28 pts & 10 steals) at Houston (11-28-18)
<b>Had 20+ Points &amp; 10+ Rebounds:</b>	Bigue Sarr (28 pts, 12 reb) New Mexico State (12-5-21)
<b>Scored 30 Points:</b>	Shlya Latone (33) - at Utah State (3-1-21)
<b>Scored 30 Points (MW Only):</b>	Shlya Latone (33) - at Utah State (3-1-21)
<b>Had 20+ Rebounds:</b>	Kaylee Johnson (22) - No. 1 Stanford (11-24-14)
<b>Had 15+ Rebounds:</b>	Desi-Rae Young (16) - UNLV (1-3-22)
<b>Had 10+ Assists:</b>	Ane Olaeta (14) - California Baptist (3-19-21)
<b>Had 5+ Steals:</b>	Tatyana Hill (5) - at Houston (11/20/21)
<b>Had 5+ Blocks:</b>	Mallory McGwire (5) - vs. Boise St. (2-22-20)



# NEW MEXICO 2021-22 WOMEN'S BASKETBALL

## LOBOS RECORD WHEN...

	Overall	In MW
Overall	11-4	2-0
At home	8-0	1-0
On the road	2-2	1-0
At neutral sites	1-2	0-0
After a win	6-4	1-0
After a loss	4-0	0-0
In overtime	0-0	0-0
vs. ranked opponents	0-1	0-0
Games decided by 1-4 points	2-0	2-0
Games decided by 5-9 points	1-2	0-0
Games decided by 10-19 points	5-1	0-0
Games decided by 20+ points	3-1	0-0
Leading after Q1	8-0	0-0
Trailing after Q1	3-3	2-0
Tied after Q1	0-1	0-0
Leading at half	8-0	0-0
Trailing at half	3-4	2-0
Tied at half	0-0	0-0
Leading after Q3	8-0	0-0
Trailing after Q3	3-4	2-0
Tied after Q3	0-0	0-0
Shooting 50% or better	3-0	0-0
Shooting between 40-49.9%	6-3	1-0
Shooting less than 40%	2-1	1-0
Opponent shoots 50% or better	0-2	0-0
Opponent shoots b/w 40-49.9%	1-1	1-0
Opponent shoots b/w 30-39.9%	9-1	1-0
Opponent shoots less than 30%	1-0	0-0
UNM higher FG%	10-0	1-0
Opponent higher FG%	1-4	1-0
FG% Tied	0-0	0-0
UNM outrebounds	5-2	0-0
Opponent outrebounds	6-2	2-0
Rebounds tied	0-0	0-0
UNM more made free throws	7-3	1-0
Opponent more made free throws	4-1	1-0
Made free throws tied	0-0	0-0
UNM 3FG% higher	8-1	2-0
Opponent 3FG% higher	3-3	0-0
3FG% tied	0-0	0-0
UNM has more fouls	5-4	1-0
Opponent has more fouls	6-0	1-0
Fouls are tied	0-0	0-0
UNM more turnovers	4-3	1-0
Opponent more turnovers	7-1	1-0
Turnovers tied	0-0	0-0
Scoring less than 50 points	0-0	0-0
Scoring 50-59 points	0-0	0-0
Scoring 60-69 points	1-3	0-0
Scoring 70-79 points	7-1	2-0
Scoring 80-89 points	2-0	0-0
Scoring 90-99 points	1-0	0-0
Scoring 100+ points	0-0	0-0
Allowing 40 points or less	1-0	0-0
Allowing 41-49 points	1-0	0-0
Allowing 50-59 points	4-0	0-0
Allowing 60-69 points	4-0	2-0
Allowing 70-79 points	1-2	0-0
Allowing 80-89 points	0-2	0-0
Allowing 90+ points	0-0	0-0
In November	6-3	0-0
In December	4-1	1-0
In January	1-0	1-0
In February	0-0	0-0
In March	0-0	0-0

## MOUNTAIN WEST STATISTICS

TEAM	All	Conference Only
<b>Assists per Game</b>	<b>1st (16.1)</b>	<b>1st (16.0)</b>
<b>3-Pt FG Made</b>	<b>1st (9.0)</b>	6th (6.0)
<b>FG %</b>	<b>1st (.457)</b>	3rd (.460)
<b>3-PT FG %</b>	<b>1st (.368)</b>	6th (.316)
<b>Blocks per Game</b>	<b>1st (4.2)</b>	<b>1st (4.0)</b>
Scoring	2nd (74.3)	4th (72.0)
Scoring Margin	2nd (+10.1)	3rd (+4.0)
Steals per Game	3rd (9.5)	<b>1st (13.0)</b>
FG % Defense	3rd (.384)	6th (.426)
3-Pt FG % Defense	6th (.309)	3rd (.227)
Assist/Turnover Ratio	6th (0.99)	<b>1st (2.7)</b>
Rebounding Margin	7th (-1.07)	11th (-27.0)
Scoring Defense	7th (64.2)	7th (68.0)
Free throw %	7th (.717)	10th (.571)
<b>INDIVIDUAL</b>	<b>All</b>	<b>Conference Only</b>
<b>SCORING</b>		
Shaiquel McGruder	7th (14.4)	5th (18.0)
LaTora Duff	11th (13.1)	--
Jaedyn De La Cerda	13th (12.2)	9th (14.0)
LaTascya Duff	16th (11.9)	7th (15.0)
<b>REBOUNDING</b>		
Shaiquel McGruder	8th (6.9)	6th (9.5)
Antonia Anderson	15th (5.6)	--
LaTora Duff	--	20th (5.5)
<b>FIELD GOAL %</b>		
<b>Shaiquel McGruder</b>	<b>1st (.627)</b>	3rd (.593)
Jaedyn De La Cerda	--	15th (.385)
<b>ASSISTS</b>		
LaTora Duff	2nd (5.5)	2nd (5.5)
Jaedyn De La Cerda	--	13th (3.0)
<b>BLOCKED SHOTS</b>		
<b>Antonia Anderson</b>	<b>1st (1.33)</b>	--
Shaiquel McGruder	3rd (1.27)	<b>1st (2.0)</b>
Paula Reus	--	3rd (1.5)
LaTora Duff	--	8th (1.0)
<b>ASSIST/TURNOVER RATIO</b>		
LaTora Duff	5th (2.0)	6th (2.8)
Jaedyn De La Cerda	--	13th (1.2)
<b>3-POINT FG MADE</b>		
<b>LaTascya Duff</b>	<b>1st (2.7)</b>	<b>1st (3.5)</b>
LaTora Duff	5th (2.1)	--
Jaedyn De La Cerda	7th (2.0)	6th (2.5)
<b>3-POINT FG %</b>		
<b>LaTascya Duff</b>	<b>1st (.458)</b>	<b>1st (.636)</b>
<b>STEALS</b>		
Shaiquel McGruder	10th (1.8)	7th (2.0)
Antonia Anderson	12th (1.7)	4th (2.5)
LaTora Duff	--	11th (1.5)

## NCAA STATISTICS

TEAM	
3-pt. FG Made	5th
Assists	8th
3-pt. FG Attempted	10th
3-pt. FG per Game	18th
3-pt. FG Percentage	19th
Blocked Shots	24th
Steals	25th
FG %	31st
Rebounds	32nd
Assists per Game	49th
Scoring Offense	54th
<b>INDIVIDUAL</b>	
<b>Assists per Game</b>	
LaTora Duff	29th
<b>Assists</b>	
LaTora Duff	6th
<b>FG %</b>	
Shaiquel McGruder	10th
<b>FG Made</b>	
Shaiquel McGruder	9th
<b>3-pt. FG Made</b>	
LaTascya Duff	12th
LaTora Duff	41st
Jaedyn De La Cerda	53rd
<b>3-pt. FG %</b>	
LaTascya Duff	17th
<b>3-pt. FG per Game</b>	
LaTascya Duff	35th
<b>Blocked Shots</b>	
Antonia Anderson	64th
Shaiquel McGruder	70th
<b>Minutes Played</b>	
LaTora Duff	16th
Jaedyn De La Cerda	27th

## 2021-22 MW Players of the Week

### WEEK 1 (11/15/21)

PLAYER: Desi-Rae Young, C, UNLV  
**FRESHMAN: Viané Cumber, G, UNM**

### WEEK 2 (11/22/21)

PLAYER: McKenna Hofschild, G, CSU  
**FRESHMAN: Audrey Roden, G, Nev.**

### WEEK 3 (11/29/21)

PLAYER: McKinley Bradshaw, G, UW  
**FRESHMAN: Allyson Fertig, C, UW**

### WEEK 4 (12/6/21)

PLAYER: Karly Murphy, F, CSU  
**FRESHMAN: Audrey Roden, G, Nev.**

### WEEK 5 (12/13/21)

PLAYER: McKenna Hofschild, G, CSU  
**FRESHMAN: Tamia Stricklin, F, FS**

### WEEK 6 (12/20/21)

PLAYER: Shaiquel McGruder, F, UNM  
**FRESHMAN: Audrey Roden, G, Nev.**

### WEEK 7 (12/27/21)

PLAYER: Desi-Rae Young, C, UNLV  
**FRESHMAN: Trista Hull, F, BSU**

### WEEK 8 (1/2/22)

PLAYER: McKenna Hofschild, G, CSU  
**FRESHMAN: Allyson Fertig, C, UW**

**SERIES HISTORY**

STAT COMPARISON		
USU		UNM
68.2	Points Per Game	74.3
37.3	FG%	<b>45.7</b>
30.3	3FG%	<b>36.8</b>
<b>73.6</b>	FT%	71.7
7.0	Made 3-pt PG	<b>9.0</b>
<b>37.9</b>	Rebounds PG	37.2
17.3	Turnovers PG	<b>16.2</b>
11.3	Assists PG	<b>16.1</b>
2.4	Blocks PG	<b>4.2</b>
8.6	Steals PG	<b>9.5</b>
76.5	Scoring Defense	<b>64.2</b>
43.6	FG% Defense	<b>38.4</b>
33.1	3FG% Defense	<b>30.9</b>
-5.2	Rebound Margin	<b>-1.1</b>

**TEAM LEADERS**

Kaylin Randhawa (15.8)	<b>POINTS</b>	Shaiquel McGruder (14.4)
Adryana Quezada (7.5)	<b>REBOUNDS</b>	Shaiquel McGruder (6.9)
Faith Brantley (2.9)	<b>ASSISTS</b>	LaTora Duff (5.5)
Kaylin Randhawa (1.8)	<b>STEALS</b>	Shaiquel McGruder (1.8)
Stafford/ Hawthorne (0.7)	<b>BLOCKS</b>	Anderson/ McGruder (1.3)

**UTAH STATE (22-6)**

H: 10-2; A: 12-3; N: 0-1

2/8/75	L	62-46	H
1/29/76	L	73-53	A
1/20/77	W	101-98(2OT)	A
2/28/77	W	90-86	H
1/27/78	W	68-64	H
2/3/79	W	86-69	A
1/31/85	W	70-49	H
3/2/85	W	79-77	A
1/28/86	W	62-45	A
2/15/86	W	72-45	H
1/29/87	W	62-55	H
2/21/87	W	65-54	A
1/29/14	L	75-69	H
2/26/14	L	67-65	A
3/10/14	L	69-66	N
1/10/15	W	60-59	H
2/7/15	W	56-51	A
1/9/16	L	72-59	A
2/10/16	W	73-70	H
1/4/17	W	78-67	H
1/25/17	W	68-58	A
1/31/18	W	80-47	H
2/14/18	W	74-50	A
1/26/19	W	68-64	A
2/20/19	W	74-56	H
2/27/20	W	54-52	A
2/28/21	W	93-55	A
3/1/21	W	97-65	A

**UNM when Home/Away/Neutral**

Stat	Home (8)	Away (4)	Neutral (3)
PPG	80.4	66.3	69.0
Opp PPG	58.1	75.0	66.0
FG %	.476	.441	.424
3FG%	.365	.352	.392
FT%	.685	.698	.857
Opp FG%	.345	.429	.432
Opp 3FG%	.270	.352	.353
RPG	42.0	32.5	30.7
Opp RPG	37.9	39.5	37.7
APG	17.1	14.3	15.7
SPG	10.5	9.5	6.7
TOV	14.5	19.0	17.0

**MOUNTAIN WEST STANDINGS**

Team (AP/Coaches)	CONFERENCE						OVERALL							
	W	L	Pct.	Home	Away	Neutral	W	L	Pct.	Home	Away	Neutral	Last 10	Strk
Nevada	3	0	1.000	2-0	1-0	0-0	11	4	.733	7-2	3-2	1-0	9-1	W3
New Mexico	2	0	1.000	1-0	1-0	0-0	11	4	.733	8-0	2-2	1-2	7-3	W3
UNLV	2	1	.667	1-0	1-1	0-0	10	4	.714	6-1	4-3	0-0	7-3	L1
Colorado State	1	1	.500	1-0	0-1	0-0	10	2	.833	7-1	1-1	2-0	8-2	L1
Air Force	1	1	.500	0-0	1-1	0-0	7	6	.538	4-2	3-4	0-0	6-4	W1
Wyoming	1	1	.500	0-0	1-1	0-0	5	6	.455	3-1	2-4	0-1	4-6	L1
Fresno State	1	1	.500	1-1	0-0	0-0	5	8	.385	3-3	2-4	0-1	3-7	W1
San Diego State	1	2	.333	1-1	0-1	0-0	7	7	.500	5-3	2-2	0-2	4-6	W1
San José State	0	1	.000	0-1	0-0	0-0	3	9	.250	2-4	1-5	0-0	2-8	L6
Utah State	0	2	.000	0-1	0-1	0-0	5	7	.417	4-2	1-5	0-0	3-7	L4
Boise State	0	2	.000	0-1	0-1	0-0	4	9	.308	3-3	1-4	0-2	3-7	L2

**UNM STARTING LINEUPS (GAME)**

Game	G	G	G	F	F
Lamar	Tora Duff	De La Cerda	Seren	Anderson	McGruder
Northern N.M.	Tora Duff	De La Cerda	Cumber	Anderson	McGruder
Prairie View	Tora Duff	De La Cerda	Tay Duff	Anderson	McGruder
Houston	Tora Duff	Tay Duff	Augmon	van Bennekom	Reus
Houston Baptist	Tora Duff	De La Cerda	Tay Duff	Anderson	McGruder
Stephen F. Austin	Tora Duff	De La Cerda	Tay Duff	Anderson	McGruder
Louisiana-Monroe	Tora Duff	De La Cerda	Tay Duff	Anderson	McGruder
Texas Tech	Tora Duff	De La Cerda	Tay Duff	Anderson	McGruder
Grambling State	Tora Duff	De La Cerda	Tay Duff	Anderson	McGruder
New Mexico State	Tora Duff	De La Cerda	Tay Duff	Anderson	McGruder
New Mexico State	Tora Duff	De La Cerda	Tay Duff	Anderson	McGruder
Arizona	Tora Duff	De La Cerda	Tay Duff	Anderson	Reus
UTEP	Tora Duff	De La Cerda	Tay Duff	Anderson	McGruder
San José State	POSTPONED				
Boise State	Tora Duff	De La Cerda	Tay Duff	Anderson	McGruder
UNLV	Tora Duff	De La Cerda	Tay Duff	Anderson	McGruder
Utah State					
San Diego State					
Wyoming					
Colorado State					
Fresno State					
UNLV					
San Diego State					
Colorado State					
Wyoming					
Air Force					
Nevada					
Utah State					
Boise State					
Fresno State					
San José State					

**UNM STARTING LINEUPS (RECORD)**

Seren, LaTora Duff, De La Cerda, Anderson, McGruder	1-0
Cumber, LaTora Duff, De La Cerda, Anderson, McGruder	1-0
Tay Duff, Tora Duff, De La Cerda, Anderson, McGruder	9-2
Tay Duff, Tora Duff, De La Cerda, Anderson, Reus	0-1
Tay Duff, Tora Duff, Augmon, van Bennekom, Reus	0-1

**DOUBLE-DOUBLE TRACKER**

Nevaeh Parkinson	11 pts, 11 reb.	Northern N.M.
LaTora Duff	17 pts, 12 assts	Prairie View
Shaiquel McGruder	20 pts, 10 reb	Houston Baptist
Shaiquel McGruder	22 pts, 11 reb	Grambling State
Antonia Anderson	16 pts, 12 reb	New Mexico State
Shaiquel McGruder	18 pts, 14 reb	UTEP
Shaiquel McGruder	17 pts, 15 reb	UNLV

**CAREER DOUBLE-DOUBLES**

	2021-22	Career
Antonia Anderson	1	4
Jaedyn De La Cerda	0	1
Shaiquel McGruder	4	5
Nevaeh Parkinson	1	1
LaTora Duff	1	1

**20-POINT TRACKER**

Shaiquel McGruder	30 pts	Prairie View
Shaiquel McGruder	20 pts	Houston Baptist
LaTascya Duff	21 pts	Texas Tech
Shaiquel McGruder	20 pts	Texas Tech
Shaiquel McGruder	22 pts	Grambling State
LaTascya Duff	22 pts	New Mexico State
LaTora Duff	24 pts	New Mexico State
LaTascya Duff	20 pts	UTEP

### NUMERICAL

#	NAME	POS	HT	YR	B/T	HOMETOWN (PREVIOUS SCHOOL)
1	Rebeka Renczes	PG	5-7	Fr.	Szekszard, Hungary/	Garay Janos Secondary School
4	LaTascya Duff	G	5-7	Sr.	Samson, Ala. /	Shelton State CC
5	LaTora Duff	G	5-7	Sr.	Samson, Ala. /	Shelton State CC
10	Kath van Bennekom	G	5-9	So.	Gorinchem, The Netherlands /	Lyceum Oudehoven
11	Zeyno Şeren	G	5-10	Fr.	Ankara, Turkey/	TED Ankara College Private High School
12	Aniyah Augmon	G	5-8	Fr.	San José, Calif./	Woodside Priory School
13	Shaiquell McGruder	F	6-0	Sr.	Trotwood, Ohio /	Trotwood-Madison HS
21	Mackenzie Curtis	G	5-9	Fr.	Lakeside, Calif. /	El Capitan HS
23	Jaedyn De La Cerda	G	5-6	Sr.	Roswell, N.M. /	Roswell HS
30	Paula Reus	F	6-1	Fr.	Palma de Mallorca, Spain/	IES Joaquim Blume
32	Antonia Anderson	G/F	6-2	Sr.	Cibolo, Texas /	Byron P. Steele II HS
33	Vianè Cumber	G	5-10	Fr.	Albuquerque, N.M./	Sandia HS
34	Nevaeh Parkinson	F/C	6-3	So.	Dallas, Texas /	John Paul II HS

### ALPHABETICAL

#	NAME	POS	HT	YR	B/T	HOMETOWN (PREVIOUS SCHOOL)
32	Antonia Anderson	G/F	6-2	Sr.	Cibolo, Texas /	Byron P. Steele II HS
12	Aniyah Augmon	G	5-8	Fr.	San José, Calif./	Woodside Priory School
33	Vianè Cumber	G	5-10	Fr.	Albuquerque, N.M./	Sandia HS
21	Mackenzie Curtis	G	5-9	Fr.	Lakeside, Calif. /	El Capitan HS
23	Jaedyn De La Cerda	G	5-6	Sr.	Roswell, N.M. /	Roswell HS
4	LaTascya Duff	G	5-7	Sr.	Samson, Ala. /	Shelton State CC
5	LaTora Duff	G	5-7	Sr.	Samson, Ala. /	Shelton State CC
11	Zeyno Şeren	G	5-10	Fr.	Ankara, Turkey/	TED Ankara College Private High School
13	Shaiquell McGruder	F	6-0	Sr.	Trotwood, Ohio /	Trotwood-Madison HS
34	Nevaeh Parkinson	F/C	6-3	So.	Dallas, Texas /	John Paul II HS
1	Rebeka Renczes	PG	5-7	Fr.	Szekszard, Hungary/	Garay Janos Secondary School
30	Paula Reus	F	6-1	Fr.	Palma de Mallorca, Spain/	IES Joaquim Blume
10	Kath van Bennekom	G	5-9	So.	Gorinchem, The Netherlands /	Lyceum Oudehoven

### STARTERS RETURNING (4)

No.	Name	Pos.	Cls.	Pts.	Reb.	Ast.	FG%	3FG%
5	LaTora Duff	G	Sr.	8.0	3.4	78	.445	.333
13	Shaiquell McGruder	F	Sr.	9.1	6.0	15	.606	.368
23	Jaedyn De La Cerda	G	Sr.	15.0	5.2	47	.437	.323
32	Antonia Anderson	F	Sr.	12.1	6.2	37	.490	.328

### OTHER LETTERWINNERS RETURNING (3)

No.	Name	Pos.	Cls.	Pts.	Reb.	Ast.	FG%	3FG%
4	LaTascya Duff	G	Sr.	14.9	3.0	39	.445	.400
10	Kath van Bennekom	G	So.	1.6	1.8	4	.250	.167
34	Nevaeh Parkinson	F/C	So.	0.6	0.8	0	.222	.200

### STARTERS LOST (1)

No.	Name	Pos.	Class	Pts.	Ast.	FG%	3-FG%	FT%
3	Ahlise Hurst	G/F	Jr.	12.4	49	.376	.338	.771

### OTHER LETTERWINNERS LOST (5)

No.	Name	Pos.	Class
1	Corina Carter	PG	So.
3	Ahlise Hurst	G/F	Jr.
10	Celine Dupont	F/C	R-Fr.
14	Azaria Robinson	F	So.
24	Autumn Watts	F	So.

### NEWCOMERS (6)

No.	Name	Pos.	Class
1	Rebeka Renczes	PG	Fr.
11	Zeyno Seren	G	Fr.
12	Aniyah Augmon	G	Fr.
21	Mackenzie Curtis	G	Fr.
30	Paula Reus	F	Fr.
33	Vianè Cumber	G	Fr.

### PRONUNCIATION GUIDE

1	Rebeka RENCZES	WREN-sesh
4	LATASCYA Duff	La-TAY-see-uh
10	Kath VAN BENNEKOM	van-ben-e-kom
11	ZEYNO SEREN	ZAY-no (like say no) SHA-wren
13	SHAIQUEL McGruder	Shy-kwell
23	JAEDYN De La Cerda	JAY-den
30	Paula REUS	Rey-OOSE
33	VIANÈ Cumber	VEE-uh-NAY
34	NEVAEH Parkinson	Nuh-VAY-uh

### BY ELIGIBILITY

#### Seniors (5)

4	LaTascya Duff	G
5	LaTora Duff	G
13	Shaiquell McGruder	F
23	Jaedyn De La Cerda	G
32	Antonia Anderson	G/F

#### Sophomores (2)

15	Kath van Bennekom	G
34	Nevaeh Parkinson	F/C

#### Freshmen (6)

1	Rebeka Renczes	PG
11	Zeyno Seren	G
12	Aniyah Augmon	G
21	Mackenzie Curtis	G
30	Paula Reus	F
33	Vianè Cumber	G

### HOME STATE

#### Alabama (2)

4	LaTascya Duff	G
5	LaTora Duff	G

#### California (2)

12	Aniyah Augmon	G
21	Mackenzie Curtis	G

#### New Mexico (2)

23	Jaedyn De La Cerda	G
33	Vianè Cumber	G

#### Ohio (1)

13	Shaiquell McGruder	F
----	--------------------	---

#### Texas (2)

32	Antonia Anderson	G/F
34	Nevaeh Parkinson	F/C

### INTERNATIONAL

1	Rebeka Renczes (Hungary)	PG
10	Kath van Bennekom (The Netherlands)	G
11	Zeyno Seren (Turkey)	G
30	Paula Reus (Spain)	F





**MIKE BRADBURY**  
**RECORD AT UNM: 105-59 (6TH SEASON)**  
**CAREER RECORD: 283-176 (15TH SEASON)**

**NOTEWORTHY :**

- Named the sixth head coach in program history on March 31, 2016
- Led UNM to 25 wins in 2017-18; tied for second-most wins in program history
- Earned his 100th win at UNM on Nov. 30, only the second coach in program history to reach 100.
- Most single-season wins in Wright State history (26)

Mike Bradbury enters his sixth season as head coach for The University of New Mexico women's basketball team. In his previous five seasons at the helm, Bradbury has guided the Lobos to a 94-55 (.631) overall record. Twice in his tenure, in 2017-18 and 2018-19, the Lobos eclipsed the 20-win mark and totaled 49 victories over that time. The consecutive 20-plus win seasons under Bradbury are the first for the program since the 2007-08 – 2008-09 seasons.

In his most recent season at the helm of the Lobos, Bradbury led the Lobos to a Mountain West regular season championship, the first outright in program history and the first regular season title since the 2004-05 season. In addition, the Lobos were selected for the WNIT for the third time in four years.

The Lobos produced one of the most prolific offenses not only in the conference, but in the country, finishing among the top 25 in several categories. Among them, UNM finished fourth in the NCAA in made three-pointers per game (10.2), sixth in assist-turnover ratio (1.40), ninth in scoring offense (81.2 points per game), 14th in fewest turnovers per game (12.0) and assists per game (16.8) and 22nd in scoring margin (12.7). The Lobos led the Mountain West in scoring offense, scoring margin, assists per game, turnover margin, assist-turnover ratio and made three-pointers as well as second in field-goal percentage and steals per game.

UNM set a program record in scoring with 120 points against Arkansas-Pine Bluff on Dec. 17, 2020 and in the process, made 17 three-pointers, falling just one short of tying the program record. Further, the Lobos registered 90-plus points in five games and 80-plus points in 11 of the 20 games on the season.

Four Lobos finished the 2020-21 season averaging double figures in points per game with six players finishing in double figures in scoring in two games (the only times it has been accomplished in program history), five players in five games and four in seven games.

As a result of UNM's successful season, five players were named to the All-Mountain West Team with LaTascya Duff also earning the superlative of Sixth Person of the Year. Duff was just the second Lobo to win the sixth person award. Making the all-conference team for the first time were Duff, Jaedyn De La Cerda and Antonia Anderson, as well as Shaiquel McGruder earning all-defensive and Ahlise Hurst earning the honorable mention distinction.

In his third year at the helm, Bradbury continued to put his mark on the program while also continuing to bring Lobo women's basketball back to national prominence. Overall, Bradbury's 2018-19 team went 24-7 and earned a bid to the WNIT for a second-straight season. It marked the first time since the 2008-09 – 2009-10 seasons that the program made consecutive trips to the postseason.

After dropping a one-possession game to Auburn in the preseason WNIT, the 2018-19 Lobos ripped off 11-straight wins to tie the program record and were on the cusp of cracking the national top-25 rankings as well by receiving votes from the WBCA during that stretch. Bradbury would also receive an individual plaudit from the WBCA last season as he was named as one of 13 finalists for the 2019 United States Marine Corps/WBCA National Coach of the Year Award. Impressively, Bradbury was the only coach from a non-Power 5 conference to be a finalist.

In his time at UNM, Bradbury has coached 13 All-Mountain West performers with Cherise Beynon, Jayla Everett, Jaisa Nunn, Aisia Robertson and Richelle van der Keijl joining De La Cerda, Duff, McGruder, Hurst and Anderson in making the All-Mountain West Team. Tesha Buck, Mykiel Burleson and Nike McClure have also earned MW recognition with Buck being the 2017-18 Newcomer of the Year, Burleson being named to the All-Freshman team in 2016-17 and McClure landing on the All-Defensive team in 2018-19.

In terms of major individual awards, Bradbury has coached the league's Newcomer of the Year each of his first three seasons in charge of the Lobos with van der Keijl earning the award in 2016-17, Buck in 2017-18 and Robertson in 2018-19. Additionally, Bradbury has coached the MW Player of the Year in Nunn (2018-19) and the Freshman of the Year in Everett (2018-19) as well as Sixth Person of the Year in Duff (2020-21).

Further, a Lobo has been named Mountain West Player of the Week 11 times during his tenure.

In year two under Bradbury the Lobos had a breakout season, especially offensively as they ended the 2017-18 season averaging 80.4 points per game while also posting an impressive +9.7 scoring margin. Both marks led the Mountain West and the point-per-game total was 16th-best in NCAA DI last season.

A significant reason for the jump in offensive production was the fact that the Lobos were one of the most potent three-point shooting threats in the country. For the season, the Lobos attempted the eighth-most overall trifectas in DI hoisting 932 long distance shots. Successful 34% of the time, the Lobos made the 11th most 3's burying 319.

Prior to coming to Albuquerque, Bradbury built a



successful nine year run as a Division-I head coach with stops at Morehead State (Morehead, Ky.) and Wright State (Dayton, Ohio). Most recently with the Raiders, Bradbury led his squad to five 20-win seasons, including each of his final three seasons. During that time, Wright State has amassed a 75-28 record, the best amongst the 13 Division I programs in the state of Ohio.

Overall at Wright State, Bradbury had five winning seasons, all of which were 20-plus win seasons, in six years- a feat made all the more remarkable as Wright State had just one winning season in the previous 22 before his arrival. In the previous 37 seasons of women's basketball at Wright State, the Raider program had tallied 20 wins just once before Bradbury led the team to 20 wins in five of his six seasons.

His most prominent three-year run at Wright State started in 2013-14, when the Raiders won a school-record 26 games on the way to a 26-9 season and the program's first-ever appearance in the NCAA Tournament. That season saw the Raiders finish second in the Horizon League and win its first Horizon League Tournament. It also featured the program's first road win at perennial league power Wisconsin-Green Bay. Kim Demmings was named the Horizon League Player of the Year and Tournament MVP, and it marked the first time in school history the program had a pair of first team All-Conference selections.

He followed up that by earning Horizon League Coach of the Year in 2014-15 after a 25-9 season that saw his squad lose its Horizon League Preseason Player of the Year less than two minutes into the season opener. The Raiders just missed a second straight NCAA Tournament appearance, falling in overtime in the conference championship game. The team did make its first appearance in the Women's NIT as the league's automatic qualifier, and in 2015-16, the team made

it back-to-back WNIT appearances after a 24-11 season, earning the program's first at-large bid.

Those three seasons are the three winningest seasons in the history of Wright State women's basketball.

In his first two seasons at Wright State, he led the team to a 20-13 campaign and a 21-13 mark and berths in the Women's Basketball Invitational, the first NCAA Division I postseason berths for the program. Overall, Bradbury has coached three Horizon League Players of the Year (all in his last three seasons), six first-team All-Horizon League players, three second-team members and four All-Freshman team members.

Prior to his time at Wright State, Bradbury was the head coach at Morehead State where he led the Division I program to a 50-44 mark in three seasons, including a watershed 22-11 season, which was the second-most wins in Morehead State history and the most wins by the Eagles in the previous 38 years. At Morehead State he coached one Ohio Valley Conference Player of the Year, along with one first-team All-OVC pick (two seasons) and three second-team All-OVC picks.

Bradbury also spent time as an assistant coach at Xavier (2002-06), Cincinnati (1996-02), VCU (1995-96), East Tennessee State (1994-95) and Chattanooga (1991-94). In his 29 seasons as an assistant and as a head coach, Bradbury has had 27 winning seasons.

## THE BRADBURY FILE

### EDUCATION

UT-Chattanooga - B.S. Recreation (1993)

### COACHING EXPERIENCE

1991-93	Student Assistant	Chattanooga
1993-94	Assistant Coach	Chattanooga
1994-95	Assistant Coach	East Tennessee
1995-96	Assistant Coach	VCU
1996-02	Assistant Coach	Cincinnati
2002-07	Assistant Coach	Xavier
2007-10	Head Coach	Morehead State
2010-16	Head Coach	Wright State
2016-pres.	Head Coach	New Mexico

### HEAD COACHING RECORD

2007-10	Morehead State	50-44 (.532)
2010-16	Wright State	128-73 (.637)
2016-pres.	New Mexico	105-59 (.640)
15 years		283-176 (.617)

### CAREER HEAD COACHING YEAR-BY-YEAR

2007-08	11-19 (9-11)	Morehead State
2008-09	17-14 (11-7)	Morehead State
2009-10	22-11 (14-4)	Morehead State
2010-11	20-13 (11-7)	Wright State
2011-12	21-13 (12-6)	Wright State
2012-13	12-18 (6-10)	Wright State
2013-14	26-9 (12-4)	Wright State
2014-15	25-9 (12-4)	Wright State
2015-16	24-11 (12-6)	Wright State
2016-17	15-15 (10-8)	New Mexico
2017-18	25-11 (10-8)	New Mexico
2018-19	24-7 (14-4)	New Mexico
2019-20	15-17 (6-12)	New Mexico
2020-21	15-5 (11-3)	New Mexico
2021-22	11-4 (2-0)	New Mexico
<b>Total</b>	<b>283-176 (152-94)</b>	



**1**  
**Rebeka Renczes**  
 PG | 5-7 | FR.  
 Szekszard, Hungary



**4**  
**LaTascya Duff**  
 G | 5-7 | SR.  
 Samson, Ala.



**5**  
**LaTora Duff**  
 G | 5-7 | SR.  
 Samson, Ala.



**10**  
**Kath van Bennekom**  
 G | 5-9 | SO.  
 Gorinchem, The Netherlands



**11**  
**Zeyno Şeren**  
 G | 5-10 | FR.  
 Ankara, Turkey



**12**  
**Aniyah Augmon**  
 G | 5-8 | FR.  
 San José, Calif.



**13**  
**Shaiquel McGruder**  
 F | 6-0 | SR.  
 Trotwood, Ohio



**21**  
**Mackenzie Curtis**  
 G | 5-9 | FR.  
 Lakeside, Calif.



**23**  
**Jaedyn De La Cerda**  
 G | 5-7 | SR.  
 Roswell, N.M.



**30**  
**Paula Reus**  
 F | 6-1 | FR.  
 Palma de Mallorca, Spain



**32**  
**Antonia Anderson**  
 G/F | 6-2 | SR.  
 Cibolo, Texas



**33**  
**Vianè Cumber**  
 G | 5-10 | FR.  
 Albuquerque, N.M.



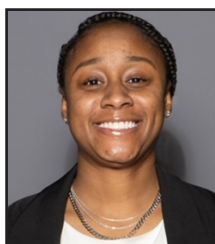
**34**  
**Nevaeh Parkinson**  
 F/C | 6-3 | SO.  
 Dallas, Texas



**Mike Bradbury**  
 Head Coach



**Valerie King**  
 Assistant Coach



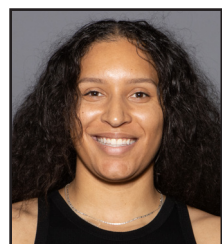
**Symone Denham**  
 Assistant Coach



**Kabrina Merriweather**  
 Assistant Coach



**Ryan Freeman**  
 Special Assistant to the  
 Head Coach



**Nike McClure**  
 Director of Player  
 Development

# #1

## REBEKA RENCZES

PG | 5-7 | FR | Szekszard, Hungary (Garay Janos Secondary)



PPG	FG %	3PT %	FT %	RPG	APG	SPG	BPG	MPG
2.0	.286	.500	.500	0.5	1.5	0.3	0.0	9.5

### NOTEWORTHY

- » Averaged 22.1 points, 9.0 assists and 6.3 steals during the 2019 season
- » Averaged 17.3 points, 6.1 assists and 2.9 steals during the 2021 season
- » Played on the U16 Hungary National Team and competed in the 2019 FIBA U16 Women's European Championship
- » Averaged 6.0 points, 2.9 assists, 2.3 rebounds, 1.1 steals while averaging 21.5 minutes with the national team

### Renczes' Top Performances

<b>Points</b>	Season	6 vs. Houston Bapt. (11/23/21)
	Career	Same
<b>FGM</b>	Season	2 vs. Houston Bapt. (11/23/21)
	Career	Same
<b>FGA</b>	Season	3 vs. Northern N.M. (11/12/21)
	Career	Same
<b>3PT FGM</b>	Season	2 vs. Houston Bapt. (11/23/21)
	Career	Same
<b>3PT FGA</b>	Season	2 - done twice
	Career	Same
<b>FTM</b>	Season	1 - done twice
	Career	Same
<b>FTA</b>	Season	2 - done twice
	Career	Same
<b>Rebounds</b>	Season	2 vs. Northern N.M. (11/12/21)
	Career	Same
<b>Assists</b>	Season	3 vs. Northern N.M. (11/12/21)
	Career	Same
<b>Blocks</b>	Season	
	Career	
<b>Steals</b>	Season	1 vs. Northern N.M. (11/12/21)
	Career	Same
<b>Turnovers</b>	Season	0 vs. Houston Bapt. (11/23/21)
	Career	Same
<b>Min. Played</b>	Season	18 vs. Northern N.M. (11/12/21)
	Career	Same

## GAME-BY-GAME STATISTICS

Opponent	Date	GS	MIN	Total		3-Pointers		Free throws		Rebounds				PF	A	TO	BLK	STL	PTS	AVG
				FG-FGA	PCT	3FG-3FGA	PCT	FT-FTA	PCT	OFF	DEF	TOT	AVG							
Northern N.M.	11/12/2021		17:56	0-3	.000	0-2	.000	0-0	.000	0	2	2	2.0	1	3	3	0	1	0	0.0
Houston Baptist	11/23/2021		04:15	2-2	1.000	2-2	1.000	0-0	.000	0	0	0	1.0	1	1	0	0	0	6	3.0
vs La.-Monroe	11/27/2021		05:38	0-0	.000	0-0	.000	1-2	.500	0	0	0	0.7	0	1	1	0	0	1	2.3
Grambling	11/30/2021		10:00	0-2	.000	0-0	.000	1-2	.500	0	0	0	0.5	0	1	1	0	0	1	2.0
<b>Totals</b>		<b>0</b>	<b>37:49</b>	<b>2-7</b>	<b>.286</b>	<b>2-4</b>	<b>.500</b>	<b>2-4</b>	<b>.500</b>	<b>0</b>	<b>2</b>	<b>2</b>	<b>0.5</b>	<b>2</b>	<b>6</b>	<b>5</b>	<b>0</b>	<b>1</b>	<b>8</b>	<b>2.0</b>

## CAREER STATISTICS

SEASON	TEAM	GP-GS	MIN/AVG	Field Goals		3-Point		F-Throws		Rebounds				Scoring						
				FG-FGA	FG%	3FG-3FGA	3FG%	FT-FTA	FT%	OFF	DEF	TOT	AVG	PF	FO	A	TO	BLK	STL	PTS
2021-22	UNM	4-0	38/9.5	2-7	.286	2-4	.500	2-4	.500	0	2	2	0.5	2-0	6	5	0	1	8	2.0
<b>TOTAL</b>		<b>4-0</b>	<b>38/9.5</b>	<b>2-7</b>	<b>.286</b>	<b>2-4</b>	<b>.500</b>	<b>2-4</b>	<b>.500</b>	<b>0</b>	<b>2</b>	<b>2</b>	<b>0.5</b>	<b>2-0</b>	<b>6</b>	<b>5</b>	<b>0</b>	<b>1</b>	<b>8</b>	<b>2.0</b>

**#4**

**LaTASYA DUFF**

G | 5-7 | SR | Samson, Ala. (Shelton State CC)



PPG	FG %	3PT %	FT %	RPG	APG	SPG	BPG	MPG
11.9	.461	.458	.821	3.2	1.3	0.6	0.2	30.3

**NOTEWORTHY**

- » Eight double-digit point games this season, three 20-plus point games
- » Leads the MW in overall three-pointers made per game (2.7), three-pointers made (38) and in three-point field-goal percentage
- » Made at least one three-pointer in every game this season, has 17 game streak
- » Averaging 15.0 ppg, 1.0 spg, shooting 63.6% from three-point range in conference play
- » 12th in the NCAA in three-pointers made, 17th in three-point field-goal percentage, 35th in three-pointers per game
- » 17th in the MW in ppg, 7th in MW games only. 1st in 3-point FG percentage (.636) and 3-point FG made (3.5) in MW play and overall season
- » Named Mountain West Sixth Person of the Year in 2020-21
- » MW All-Conference Team
- » Named Mountain West Preseason Newcomer of the Year
- » Named Mountain West Player of the Week twice (Dec. 21 and March 2)
- » Second on the team in points, ppg, field-goal attempts, free-throw percentage last season
- » Led the Lobos in 3-point field-goal percentage, 3-point field-goal attempts and made 3-pointers, and free throws made last season

**Duff's Top Performances**

<b>Points</b>	Season	22 vs New Mexico St. (12/3/21)
	Career	31 at Air Force (2/23/21)
<b>FGM</b>	Season	8 vs New Mexico St. (12/3/21)
	Career	11 at Air Force (2/23/21)
<b>FGA</b>	Season	17 vs New Mexico St. (12/3/21)
	Career	20 at Air Force (2/23/21)
<b>3PT FGM</b>	Season	5 - done twice
	Career	6 - done four times
<b>3PT FGA</b>	Season	9 - done three times
	Career	12 - done twice
<b>FTM</b>	Season	4 vs Texas Tech (11/28/21)
	Career	8 - done twice
<b>FTA</b>	Season	5 vs New Mexico St. (12/3/21)
	Career	10 at SHSU (12/6/20)
<b>Rebounds</b>	Season	8 at #6 Arizona (12/12/21)
	Career	Same
<b>Assists</b>	Season	4 vs Grambling (11/30/21)
	Career	6 at Midwestern St. (12/4/20)
<b>Blocks</b>	Season	1 - done three times
	Career	2 vs. Colorado State (3/5/21)
<b>Steals</b>	Season	2 at Boise State (12/31/21)
	Career	5 at Air Force (2/23/21)
<b>Turnovers</b>	Season	0 - done five times
	Career	0 - done nine times
<b>Min. Played</b>	Season	39 vs Texas Tech (11/28/21)
	Career	Same

**GAME-BY-GAME STATISTICS**

Opponent	Date	GS	MIN	Total		3-Pointers		Free throws		Rebounds				PF	A	TO	BLK	STL	PTS	AVG
				FG-FGA	PCT	3FG-3FGA	PCT	FT-FTA	PCT	OFF	DEF	TOT	AVG							
Northern N.M.	11/12/2021		04:00	1-1	1.000	1-1	1.000	0-0	.000	0	0	0	0.0	0	0	0	0	0	3	3.0
Prairie View	11/16/2021	*	18:32	1-3	.333	1-3	.333	0-0	.000	0	0	0	0.0	0	1	0	0	1	3	3.0
at Houston	11/20/2021	*	33:41	3-7	.429	2-6	.333	3-3	1.000	0	2	2	0.7	2	1	3	0	1	11	5.7
Houston Baptist	11/23/2021	*	28:26	2-7	.286	2-4	.500	0-0	.000	0	5	5	1.8	1	1	0	0	1	6	5.8
vs SFA	11/26/2021	*	31:22	5-13	.385	3-9	.333	2-3	.667	1	2	3	2.0	2	1	3	0	0	15	7.6
vs La.-Monroe	11/27/2021	*	23:34	4-9	.444	4-8	.500	0-0	.000	1	1	2	2.0	0	1	0	1	1	12	8.3
vs Texas Tech	11/28/2021	*	39:34	6-11	.545	5-9	.556	4-4	1.000	0	4	4	2.3	1	2	3	0	1	21	10.1
Grambling	11/30/2021	*	22:23	3-8	.375	1-5	.200	0-0	.000	0	3	3	2.4	2	4	1	0	1	7	9.8
New Mexico St.	12/03/2021	*	37:45	8-17	.471	3-8	.375	3-5	.600	0	6	6	2.8	3	2	7	1	0	22	11.1
at New Mexico St.	12/05/2021	*	35:50	3-6	.500	2-5	.400	1-2	.500	0	3	3	2.8	2	1	3	0	0	9	10.9
at Arizona	12/12/2021	*	34:57	2-5	.400	2-5	.400	2-2	1.000	0	8	8	3.3	1	0	3	0	0	8	10.6
UTEP	12/19/2021	*	39:06	6-10	.600	5-9	.556	3-4	.750	1	5	6	3.5	0	1	2	1	1	20	11.4
at Boise St.	12/31/2021	*	36:32	5-8	.625	4-4	1.000	2-2	1.000	0	2	2	3.4	1	2	0	0	2	16	11.8
UNLV	01/03/2022	*	38:29	4-10	.400	3-7	.429	3-3	1.000	0	1	1	3.2	0	1	2	0	0	14	11.9
<b>Totals</b>			<b>13</b>	<b>424:12</b>	<b>.461</b>	<b>38-83</b>	<b>.458</b>	<b>23-28</b>	<b>.821</b>	<b>3</b>	<b>42</b>	<b>45</b>	<b>3.2</b>	<b>15</b>	<b>18</b>	<b>27</b>	<b>3</b>	<b>9</b>	<b>167</b>	<b>11.9</b>

**CAREER STATISTICS (AT UNM)**

SEASON	TEAM	GP-GS	MIN/AVG	Field Goals		3-Point		F-Throws		Rebounds				Scoring						
				FG-FGA	FG%	3FG-3FGA	3FG%	FT-FTA	FT%	OFF	DEF	TOT	AVG	PF-FO	A	TO	BLK	STL	PTS	AVG
2020-21	UNM	20-4	495/24.8	93-209	.445	52-130	.400	59-72	.819	13	47	60	3.0	37-0	39	22	4	17	297	14.9
2021-22	UNM	14-13	424/30.3	53-115	.461	38-83	.458	23-28	.821	3	42	45	3.2	15-0	18	27	3	9	167	11.9
<b>TOTAL</b>		<b>34-17</b>	<b>919/27.0</b>	<b>146-324</b>	<b>.451</b>	<b>90-213</b>	<b>.423</b>	<b>82-100</b>	<b>.820</b>	<b>16</b>	<b>89</b>	<b>105</b>	<b>3.1</b>	<b>52-0</b>	<b>57</b>	<b>49</b>	<b>7</b>	<b>26</b>	<b>464</b>	<b>13.6</b>

## #5

### LaTORA DUFF

G | 5-7 | SR | Samson, Ala. (Shelton State CC)



PPG	FG %	3PT %	FT %	RPG	APG	SPG	BPG	MPG
13.1	.437	.383	.829	3.5	5.5	1.5	0.5	31.8

## NOTEWORTHY

- » Scored in double figures in 6 of last 7 games, 11 times this season
- » Made at least 1 three-pointer in every game but 2
- » Hit game-winning three against UNLV with 5.4 seconds left
- » Averaging 11.0 ppg, 5.5 apg, 1.5 spg and 1.0 bpg in conference play
- » Leads the MW in assists per game, leads in overall with 78
- » Fifth in the MW in assist/turnover ratio at 2.0
- » Fifth in the MW in 3-pt FG made at 2.1 per game, third in overall threes with 31
- » 11th in the MW in points per game
- » Sixth in the NCAA in assists and 29th in assists per game. 16th in minutes played, 41 in 3-point FG made
- » Second on the team in scoring
- » Started in all 20 games for the Lobos last season, all 15 games this season

### Duff's Top Performances

<b>Points</b>	Season	24 at New Mexico St. (12/5/21)
	Career	Same
<b>FGM</b>	Season	8 at New Mexico St. (12/5/21)
	Career	Same
<b>FGA</b>	Season	15 at #6 Arizona (12/12/21)
	Career	Same
<b>3PT FGM</b>	Season	5 - done twice
	Career	Same
<b>3PT FGA</b>	Season	10 at #6 Arizona (12/12/21)
	Career	Same
<b>FTM</b>	Season	8 vs SFA (11/26/21)
	Career	Same
<b>FTA</b>	Season	9 vs SFA (11/26/21)
	Career	9 - done twice
<b>Rebounds</b>	Season	8 vs Prairie View (11/16/21)
	Career	Same
<b>Assists</b>	Season	12 vs Prairie View (11/16/21)
	Career	Same
<b>Blocks</b>	Season	4 vs Prairie View (11/16/21)
	Career	Same
<b>Steals</b>	Season	4 vs Houston Bapt. (11/23/21)
	Career	4 - done twice
<b>Turnovers</b>	Season	0 - done four times
	Career	0 - done nine times
<b>Min. Played</b>	Season	40 at New Mexico St. (12/5/21)
	Career	Same

## GAME-BY-GAME STATISTICS

Opponent	Date	GS	MIN	Total		3-Pointers		Free throws		Rebounds				PF	A	TO	BLK	STL	PTS	AVG	
				FG-FGA	PCT	3FG-3FGA	PCT	FT-FTA	PCT	OFF	DEF	TOT	AVG								
Lamar University	11/09/2021	*	34:32	3-11	.273	2-9	.222	2-2	1.000	0	3	3	3.0	3	9	1	1	0	10	10.0	
Northern N.M.	11/12/2021	*	17:39	2-6	.333	0-0	.000	3-4	.750	0	2	2	2.5	0	5	0	0	0	7	8.5	
Prairie View	11/16/2021	*	37:20	5-13	.385	3-6	.500	4-6	.667	2	6	8	4.3	2	12	0	4	0	17	11.3	
at Houston	11/20/2021	*	31:00	7-11	.636	2-5	.400	0-0	.000	0	3	3	4.0	0	2	8	0	3	16	12.5	
Houston Baptist	11/23/2021	*	29:24	4-8	.500	1-4	.250	2-2	1.000	0	2	2	3.6	1	4	1	1	4	11	12.2	
vs SFA	11/26/2021	*	35:38	4-10	.400	1-4	.250	8-9	.889	1	4	5	3.8	3	2	7	0	3	17	13.0	
vs La.-Monroe	11/27/2021	*	22:17	3-7	.429	2-4	.500	0-0	.000	0	2	2	3.6	2	4	1	0	1	8	12.3	
vs Texas Tech	11/28/2021	*	37:25	3-7	.429	1-3	.333	0-0	.000	0	1	1	3.3	1	9	3	0	2	7	11.6	
Grambling	11/30/2021	*	24:13	4-6	.667	2-4	.500	0-0	.000	0	3	3	3.2	1	6	0	0	2	10	11.4	
New Mexico St.	12/03/2021	*	15:12	6-10	.600	5-7	.714	0-0	.000	2	0	2	3.1	0	3	0	0	1	17	12.0	
at New Mexico St.	12/05/2021	*	40:00	8-13	.615	5-8	.625	3-4	.750	0	4	4	3.2	1	5	3	0	2	24	13.1	
at Arizona	12/12/2021	*	39:06	4-15	.267	3-10	.300	3-5	.600	1	2	3	3.2	3	4	0	1	14	13.2		
UTEP	12/19/2021	*	36:24	7-13	.538	3-8	.375	0-0	.000	2	2	4	3.2	4	6	9	0	1	17	13.5	
at Boise St.	12/31/2021	*	38:36	3-12	.250	0-5	.000	2-2	1.000	0	7	7	3.5	0	7	2	0	1	8	13.1	
UNLV	01/03/2022	*	37:35	3-9	.333	1-4	.250	7-7	1.000	0	4	4	3.5	2	4	2	2	2	14	13.1	
<b>Totals</b>			<b>15</b>	<b>476:21</b>	<b>66-151</b>	<b>.437</b>	<b>31-81</b>	<b>.383</b>	<b>34-41</b>	<b>.829</b>	<b>8</b>	<b>45</b>	<b>53</b>	<b>3.5</b>	<b>23</b>	<b>82</b>	<b>41</b>	<b>8</b>	<b>23</b>	<b>197</b>	<b>13.1</b>

## CAREER STATISTICS (AT UNM)

SEASON	TEAM	GP-GS	MIN/AVG	Field Goals		3-Point		F-Throws		Rebounds				Scoring						
				FG-FGA	FG%	3FG-3FGA	3FG%	FT-FTA	FT%	OFF	DEF	TOT	AVG	PF-FO	A	TO	BLK	STL	PTS	AVG
2020-21	UNM	20-20	542/27.1	61-137	.445	22-66	.333	16-24	.667	6	62	68	3.4	27-0	78	39	3	25	160	8.0
2021-22	UNM	15-15	476/31.8	66-151	.437	31-81	.383	34-41	.829	8	45	53	3.5	23-0	82	41	8	23	197	13.1
<b>TOTAL</b>		<b>35-35</b>	<b>1018/29.1</b>	<b>127-288</b>	<b>.441</b>	<b>53-147</b>	<b>.361</b>	<b>50-65</b>	<b>.769</b>	<b>14</b>	<b>107</b>	<b>121</b>	<b>3.5</b>	<b>50-0</b>	<b>160</b>	<b>80</b>	<b>11</b>	<b>48</b>	<b>357</b>	<b>10.2</b>

**#10**

**KATH VAN BENNEKOM**

G | 5-9 | SO | Gorinchem, The Netherlands



PPG	FG %	3PT %	FT %	RPG	APG	SPG	BPG	MPG
1.2	.500	.000	.667	1.2	0.2	0.2	0.0	8.1

**NOTEWORTHY**

- » Competed for Lyceum Oudehoven and also for the club team Binneland where she helped her team to the U16 Championship in 2016
- » Led her U20 team to the semi-finals and the Final Four in 2017, 2018, 2019 and 2020
- » Helped her team to the U20 Cup Finals twice (2017, 2020).

**van Bennekom's Top Performances**

<b>Points</b>	Season	7 vs Northern N.M. (11/12/21)
	Career	9 at Midwestern St.(12/4/20)
<b>FGM</b>	Season	2 - done twice
	Career	Same
<b>FGA</b>	Season	3 - done twice
	Career	5 at Midwestern St.(12/4/20)
<b>3PT FGM</b>	Season	
	Career	1 - done twice
<b>3PT FGA</b>	Season	1 - done twice
	Career	4 at Midwestern St.(12/4/20)
<b>FTM</b>	Season	3 vs Northern N.M. (11/12/21)
	Career	6 at Midwestern St.(12/4/20)
<b>FTA</b>	Season	4 vs Northern N.M. (11/12/21)
	Career	8 at Midwestern St.(12/4/20)
<b>Rebounds</b>	Season	4 vs Northern N.M. (11/12/21)
	Career	7 at San Diego St. (2/5/21)
<b>Assists</b>	Season	1 - done three times
	Career	1 - done seven times
<b>Blocks</b>	Season	
	Career	
<b>Steals</b>	Season	1 - done twice
	Career	2 at Utah State (2/28/21)
<b>Turnovers</b>	Season	0 - done four times
	Career	0 - done 16 times
<b>Min. Played</b>	Season	20 vs Lamar (11/9/21)
	Career	Same

**GAME-BY-GAME STATISTICS**

Opponent	Date	GS	MIN	Total		3-Pointers		Free throws		Rebounds				PF	A	TO	BLK	STL	PTS	AVG
				FG-FGA	PCT	3FG-3FGA	PCT	FT-FTA	PCT	OFF	DEF	TOT	AVG							
Lamar University	11/09/2021		19:53	2-3	.667	0-0	.000	0-0	.000	3	0	3	3.0	4	0	3	0	0	4	4.0
Northern N.M.	11/12/2021		12:45	2-2	1.000	0-0	.000	3-4	.750	3	1	4	3.5	1	1	0	0	1	7	5.5
Prairie View	11/16/2021		06:04	0-0	.000	0-0	.000	1-2	.500	0	0	0	2.3	1	0	1	0	1	1	4.0
at Houston	11/20/2021	*	18:04	1-3	.333	0-1	.000	0-0	.000	0	2	2	2.3	1	1	0	0	0	2	3.5
Houston Baptist	11/23/2021		07:31	0-0	.000	0-0	.000	0-0	.000	0	1	1	2.0	0	0	1	0	0	0	2.8
vs SFA	11/26/2021		13:28	0-0	.000	0-0	.000	0-0	.000	0	3	3	2.2	2	0	1	0	0	0	2.3
vs La.-Monroe	11/27/2021		05:03	0-1	.000	0-0	.000	0-0	.000	0	1	1	2.0	0	0	0	0	0	0	2.0
Grambling	11/30/2021		10:24	1-2	.500	0-0	.000	0-0	.000	1	1	2	2.0	0	1	0	0	0	2	2.0
New Mexico St.	12/03/2021		09:13	0-1	.000	0-1	.000	0-0	.000	0	0	0	1.8	1	0	0	0	0	0	1.8
at Arizona	12/12/2021		00:26	0-0	.000	0-0	.000	0-0	.000	0	0	0	1.6	0	0	0	0	0	0	1.6
UTEP	12/19/2021		00:15	0-0	.000	0-0	.000	0-0	.000	0	0	0	1.5	0	0	0	0	0	0	1.5
at Boise St.	12/31/2021		01:03	0-0	.000	0-0	.000	0-0	.000	0	0	0	1.3	0	0	0	0	0	0	1.3
UNLV	01/03/2022		01:25	0-0	.000	0-0	.000	0-0	.000	0	0	0	1.2	0	0	0	0	0	0	1.2
<b>Totals</b>		<b>1</b>	<b>105:34</b>	<b>6-12</b>	<b>.500</b>	<b>0-2</b>	<b>.000</b>	<b>4-6</b>	<b>.667</b>	<b>7</b>	<b>9</b>	<b>16</b>	<b>1.2</b>	<b>10</b>	<b>3</b>	<b>6</b>	<b>0</b>	<b>2</b>	<b>16</b>	<b>1.2</b>

**CAREER STATISTICS**

SEASON	TEAM	GP-GS	MIN/AVG	Field Goals		3-Point		F-Throws		Rebounds				Scoring						
				FG-FGA	FG%	3FG-3FGA	3FG%	FT-FTA	FT%	OFF	DEF	TOT	AVG	PF-FO	A	TO	BLK	STL	PTS	AVG
2020-21	UNM	16-0	118/7.4	5-20	.250	2-12	.167	13-20	.650	10	19	29	1.8	13-0	4	4	0	2	25	1.6
2021-22	UNM	13-1	106/8.1	6-12	.500	0-2	.000	4-6	.667	7	9	16	1.2	10-0	3	6	0	2	16	1.2
<b>TOTAL</b>		<b>29-1</b>	<b>223/7.7</b>	<b>11-32</b>	<b>.344</b>	<b>2-14</b>	<b>.143</b>	<b>17-26</b>	<b>.654</b>	<b>17</b>	<b>28</b>	<b>45</b>	<b>1.6</b>	<b>23-0</b>	<b>7</b>	<b>10</b>	<b>0</b>	<b>4</b>	<b>41</b>	<b>1.4</b>



## #11

### ZEYNO SEREN

G | 5-10 | FR | Ankara, Turkey (TED Ankara College Private HS)

PPG	FG %	3PT %	FT %	RPG	APG	SPG	BPG	MPG
1.8	.300	.000	.556	2.2	0.7	0.3	0.0	10.2

### NOTEWORTHY

- » Averaged 16.2 points, 5.1 assists, 7.0 rebounds and 3.0 steals
- » Competed for Turkey at the U16 European Championship in 2019 and the Baku Youth Olympics
- » Played for BOTAS Sports Club

### Seren's Top Performances

<b>Points</b>	Season	6 vs Northern N.M. (11/12/21)
	Career	Same
<b>FGM</b>	Season	3 vs Northern N.M. (11/12/21)
	Career	Same
<b>FGA</b>	Season	4 - done twice
	Career	Same
<b>3PT FGM</b>	Season	
	Career	
<b>3PT FGA</b>	Season	1 - done twice
	Career	Same
<b>FTM</b>	Season	2 - done twice
	Career	Same
<b>FTA</b>	Season	4 vs Grambling (11/30/21)
	Career	Same
<b>Rebounds</b>	Season	4 - done twice
	Career	Same
<b>Assists</b>	Season	2 vs ULM (11/27/21)
	Career	Same
<b>Blocks</b>	Season	
	Career	
<b>Steals</b>	Season	1 - done twice
	Career	Same
<b>Turnovers</b>	Season	0 - done five times
	Career	Same
<b>Min. Played</b>	Season	17 vs Northern N.M. (11/12/21)
	Career	Same

## GAME-BY-GAME STATISTICS

Opponent	Date	GS	MIN	Total		3-Pointers		Free throws		Rebounds				Scoring						
				FG-FGA	PCT	3FG-3FGA	PCT	FT-FTA	PCT	OFF	DEF	TOT	AVG	PF	A	TO	BLK	STL	PTS	AVG
Lamar University	11/09/2021	*	13:51	0-1	.000	0-1	.000	1-2	.500	0	4	4	4.0	1	1	0	0	0	1	1.0
Northern N.M.	11/12/2021		16:36	3-4	.750	0-0	.000	0-1	.000	1	3	4	4.0	2	1	0	0	1	6	3.5
at Houston	11/20/2021		00:50	0-0	.000	0-0	.000	0-0	.000	0	0	0	2.7	0	0	0	0	0	0	2.3
Houston Baptist	11/23/2021		05:36	0-0	.000	0-0	.000	0-0	.000	0	0	0	2.0	0	0	1	0	0	0	1.8
vs La.-Monroe	11/27/2021		13:14	0-4	.000	0-1	.000	2-2	1.000	0	3	3	2.2	0	2	0	0	1	2	1.8
Grambling	11/30/2021		10:50	0-1	.000	0-0	.000	2-4	.500	1	1	2	2.2	0	0	0	0	0	2	1.8
<b>Totals</b>		<b>1</b>	<b>60:56</b>	<b>3-10</b>	<b>.300</b>	<b>0-2</b>	<b>.000</b>	<b>5-9</b>	<b>.556</b>	<b>2</b>	<b>11</b>	<b>13</b>	<b>2.2</b>	<b>3</b>	<b>4</b>	<b>1</b>	<b>0</b>	<b>2</b>	<b>11</b>	<b>1.8</b>

## CAREER STATISTICS

SEASON	TEAM	GP-GS	MIN/AVG	Field Goals		3-Point		F-Throws		Rebounds				Scoring						
				FG-FGA	FG%	3FG-3FGA	3FG%	FT-FTA	FT%	OFF	DEF	TOT	AVG	PF-FO	A	TO	BLK	STL	PTS	AVG
2021-22	UNM	6-1	61/10.2	3-10	.300	0-2	.000	5-9	.556	2	11	13	2.2	3-0	4	1	0	2	11	1.8
<b>TOTAL</b>		<b>6-1</b>	<b>61/10.2</b>	<b>3-10</b>	<b>.300</b>	<b>0-2</b>	<b>.000</b>	<b>5-9</b>	<b>.556</b>	<b>2</b>	<b>11</b>	<b>13</b>	<b>2.2</b>	<b>3-0</b>	<b>4</b>	<b>1</b>	<b>0</b>	<b>2</b>	<b>11</b>	<b>1.8</b>





#12

**ANIYAH AUGMON**

G | 5-8 | FR | San José, Calif. (Woodside Priory School)

PPG	FG %	3PT %	FT %	RPG	APG	SPG	BPG	MPG
1.5	.500	.333	.600	2.0	0.7	1.0	0.0	9.9

**NOTEWORTHY**

- » Recorded at least 1 steal in 9 games, 3x with 3 steals
- » At least 1 rebound in 11 games, 2x with 6 rebounds
- » Played in all 13 games with 1 start (at Houston)
- » Averaged 14.0 points, 7.0 rebounds, 4.0 assists and 3.0 steals throughout her high school career
- » Helped lead her teams to three CCS Championships (2017, 2018, 2019)
- » First team all-league in 2019, honorable mention in 2018 and second team all-league in 2017
- » Attended the Adidas All-American Camp
- » Competed for Peninsula Basketball Club where she averaged 15.0 points, 7.0 rebounds, 4.0 assists and 3.0 steals.

**Augmon's Top Performances**

<b>Points</b>	Season	8 vs Lamar (11/9/21)
	Career	Same
<b>FGM</b>	Season	3 vs Lamar (11/9/21)
	Career	Same
<b>FGA</b>	Season	3 - done twice
	Career	Same
<b>3PT FGM</b>	Season	1 vs Lamar (11/9/21)
	Career	Same
<b>3PT FGA</b>	Season	1 - done twice
	Career	Same
<b>FTM</b>	Season	3 vs New Mexico St. (12/3/21)
	Career	Same
<b>FTA</b>	Season	4 - done twice
	Career	Same
<b>Rebounds</b>	Season	6 - done twice
	Career	Same
<b>Assists</b>	Season	3 - done twice
	Career	Same
<b>Blocks</b>	Season	
	Career	
<b>Steals</b>	Season	3 - done three times
	Career	Same
<b>Turnovers</b>	Season	0 - done twice
	Career	Same
<b>Min. Played</b>	Season	23 vs Lamar (11/9/21)
	Career	Same

**GAME-BY-GAME STATISTICS**

Opponent	Date	GS	MIN	Total		3-Pointers		Free throws		Rebounds				PF	A	TO	BLK	STL	PTS	AVG
				FG-FGA	PCT	3FG-3FGA	PCT	FT-FTA	PCT	OFF	DEF	TOT	AVG							
Lamar University	11/09/2021		23:03	3-3	1.000	1-1	1.000	1-1	1.000	0	6	6	6.0	2	0	2	0	3	8	8.0
Northern N.M.	11/12/2021		16:24	2-3	.667	0-1	.000	2-2	1.000	0	4	4	5.0	2	3	3	0	1	6	7.0
Prairie View	11/16/2021		18:11	0-0	.000	0-0	.000	1-2	.500	0	6	6	5.3	3	1	1	0	3	1	5.0
at Houston	11/20/2021	*	09:34	0-1	.000	0-0	.000	0-0	.000	0	1	1	4.3	2	0	3	0	1	0	3.8
Houston Baptist	11/23/2021		16:26	0-1	.000	0-0	.000	0-0	.000	0	2	2	3.8	2	1	1	0	1	0	3.0
vs SFA	11/26/2021		05:06	0-0	.000	0-0	.000	0-0	.000	0	0	0	3.2	0	0	0	0	0	0	2.5
vs La.-Monroe	11/27/2021		10:56	0-1	.000	0-0	.000	1-2	.500	1	1	2	3.0	2	1	3	0	1	1	2.3
vs Texas Tech	11/28/2021		03:01	0-0	.000	0-0	.000	0-0	.000	0	0	0	2.6	3	0	0	0	0	0	2.0
Grambling	11/30/2021		09:08	1-1	1.000	0-0	.000	1-4	.250	3	1	4	2.8	3	3	1	0	1	3	2.1
New Mexico St.	12/03/2021		15:52	0-0	.000	0-0	.000	3-4	.750	1	1	2	2.7	0	1	2	0	3	3	2.2
at New Mexico St.	12/05/2021		03:23	0-0	.000	0-0	.000	0-0	.000	0	1	1	2.5	0	0	1	0	0	0	2.0
at Arizona	12/12/2021		08:03	0-0	.000	0-0	.000	0-0	.000	0	1	1	2.4	0	0	0	0	1	0	1.8
UTEP	12/19/2021		04:45	0-1	.000	0-0	.000	0-0	.000	0	0	0	2.2	0	0	0	0	0	0	1.7
at Boise St.	12/31/2021		02:19	0-0	.000	0-0	.000	0-0	.000	0	0	0	2.1	1	0	0	0	0	0	1.6
UNLV	01/03/2022		02:25	0-1	.000	0-1	.000	0-0	.000	1	0	1	2.0	0	1	0	0	0	0	1.5
<b>Totals</b>		<b>1</b>	<b>148:36</b>	<b>6-12</b>	<b>.500</b>	<b>1-3</b>	<b>.333</b>	<b>9-15</b>	<b>.600</b>	<b>6</b>	<b>24</b>	<b>30</b>	<b>2.0</b>	<b>20</b>	<b>11</b>	<b>17</b>	<b>0</b>	<b>15</b>	<b>22</b>	<b>1.5</b>

**CAREER STATISTICS**

SEASON	TEAM	GP-GS	MIN/AVG	Field Goals		3-Point		F-Throws		Rebounds				Scoring						
				FG-FGA	FG%	3FG-3FGA	3FG%	FT-FTA	FT%	OFF	DEF	TOT	AVG	PF-FO	A	TO	BLK	STL	PTS	AVG
2021-22	UNM	15-1	149/9.9	6-12	.500	1-3	.333	9-15	.600	6	24	30	2.0	20-0	11	17	0	15	22	1.5
<b>TOTAL</b>		<b>15-1</b>	<b>149/9.9</b>	<b>6-12</b>	<b>.500</b>	<b>1-3</b>	<b>.333</b>	<b>9-15</b>	<b>.600</b>	<b>6</b>	<b>24</b>	<b>30</b>	<b>2.0</b>	<b>20-0</b>	<b>11</b>	<b>17</b>	<b>0</b>	<b>15</b>	<b>22</b>	<b>1.5</b>

## #13

### SHAIQUEL McGRUDER

F | 6-0 | SR | Trotwood, Ohio (Trotwood-Madison HS)



PPG	FG %	3PT %	FT %	RPG	APG	SPG	BPG	MPG
14.4	.627	.200	.667	6.9	0.7	1.8	1.3	25.0

## NOTEWORTHY

- » MW Player of the Week Dec. 20
- » Four games with 20-plus points, one game with 30 points
- » 10 games in double figures, including last 3 games and last 4 out of 5 games
- » Five games with 10-or-more rebounds, four double-doubles this season (Houston Baptist, Grambling, UTEP, UNLV), two in last three games
- » Multiple steals in nine games, multiple blocks in five games this season wth season-high 5 blocks vs. UTEP
- » Leads the MW in FG %, 10th in the NCAA, 9th in NCAA in field goals made (99)
- » Seventh in points per game, 10th in steals per game in the MW, third in blocks per game, eighth in rebounds per game
- » Averaging 18.0 ppg (5th), 9.5 rpg (6th), 2.0 spg (1st), shooting 59.3% in MW games
- » Leads the team in points, steals and rebounds, second in blocks
- » Named to MW All-Defensive Team last season
- » Started all 20 games as a junior, 10 games this season
- » Two games with 10-plus rebounds as a junior, one double-double against Sam Houston State (13 rebounds, 17 points)
- » Four games with multiple blocks last season, including 5 blocks against Sam Houston State
- » 10 games with multiple steals with a season-high 4 against Fresno State last season
- » Nine games with 10-plus points last season

### McGruder's Top Performances

<b>Points</b>	Season	30 vs Prairie View (11/16/21)
	Career	Same
<b>FGM</b>	Season	13 vs Prairie View (11/16/21)
	Career	Same
<b>FGA</b>	Season	18 vs Prairie View (11/16/21)
	Career	Same
<b>3PT FGM</b>	Season	1 - done twice
	Career	2 at SHSU (12/6/20)
<b>3PT FGA</b>	Season	3 - done twice
	Career	4 vs. Colorado St. (3/5/21)
<b>FTM</b>	Season	4 - done twice
	Career	Same
<b>FTA</b>	Season	4 - done three times
	Career	4 - done five times
<b>Rebounds</b>	Season	15 vs UNLV (1/3/22)
	Career	17 vs. Nevada (3/1/20)
<b>Assists</b>	Season	4 vs. New Mexico St. (12/3/21)
	Career	4 - done twice
<b>Blocks</b>	Season	5 vs. UTEP (12/19/21)
	Career	5 - done twice
<b>Steals</b>	Season	4 vs. Prairie View (11/16/21)
	Career	8 vs. West Virginia (11/29/19)
<b>Turnovers</b>	Season	0 - done twice
	Career	0 - done 41 times
<b>Min. Played</b>	Season	35 - done twice
	Career	Same

## GAME-BY-GAME STATISTICS

Opponent	Date	GS	MIN	Total		3-Pointers		Free throws		Rebounds				PF	A	TO	BLK	STL	PTS	AVG	
				FG-FGA	PCT	3FG-3FGA	PCT	FT-FTA	PCT	OFF	DEF	TOT	AVG								
Lamar University	11/09/2021	*	22:09	7-7	1.000	1-1	1.000	0-0	.000	2	3	5	5.0	4	0	3	0	1	15	15.0	
Northern N.M.	11/12/2021	*	20:08	5-10	.500	0-0	.000	2-4	.500	4	0	4	4.5	1	0	0	0	3	12	13.5	
Prairie View	11/16/2021	*	28:48	13-18	.722	0-0	.000	4-4	1.000	2	5	7	5.3	0	0	2	0	4	30	19.0	
at Houston	11/20/2021	*	12:22	0-1	.000	0-1	.000	0-0	.000	1	3	4	5.0	3	1	1	0	0	0	14.3	
Houston Baptist	11/23/2021	*	23:00	9-13	.692	0-1	.000	2-2	1.000	5	5	10	6.0	1	0	2	2	2	20	15.4	
vs SFA	11/26/2021	*	07:50	1-2	.500	0-0	.000	0-0	.000	0	1	1	5.2	3	0	4	1	0	2	13.2	
vs La.-Monroe	11/27/2021	*	25:25	4-7	.571	0-0	.000	0-0	.000	2	9	11	6.0	2	0	0	1	3	8	12.4	
vs Texas Tech	11/28/2021	*	35:12	8-13	.615	0-1	.000	4-4	1.000	4	1	5	5.9	3	1	1	3	0	20	13.4	
Grambling	11/30/2021	*	21:54	11-17	.647	0-0	.000	0-1	.000	4	6	10	6.3	0	0	2	0	3	22	14.3	
New Mexico St.	12/03/2021	*	31:22	4-9	.444	0-0	.000	0-0	.000	3	4	7	6.4	3	4	2	2	3	8	13.7	
at New Mexico St.	12/05/2021	*	27:28	8-12	.667	1-3	.333	0-2	.000	2	4	6	6.4	2	0	3	0	1	17	14.0	
at Arizona	12/12/2021	*	16:23	4-8	.500	0-0	.000	0-0	.000	1	0	1	5.9	3	0	2	1	2	8	13.5	
UTEP	12/19/2021	*	34:15	9-14	.643	0-0	.000	0-0	.000	7	7	14	6.5	3	2	4	5	3	18	13.8	
at Boise St.	12/31/2021	*	33:37	9-13	.692	0-0	.000	1-4	.250	2	2	4	6.4	2	0	2	3	2	19	14.2	
UNLV	01/03/2022	*	35:40	7-14	.500	0-3	.000	3-3	1.000	7	8	15	6.9	1	2	2	1	0	17	14.4	
<b>Totals</b>			<b>13</b>	<b>375:33</b>	<b>99-158</b>	<b>.627</b>	<b>2-10</b>	<b>.200</b>	<b>16-24</b>	<b>.667</b>	<b>46</b>	<b>58</b>	<b>104</b>	<b>6.9</b>	<b>31</b>	<b>10</b>	<b>30</b>	<b>19</b>	<b>27</b>	<b>216</b>	<b>14.4</b>

## CAREER STATISTICS

SEASON	TEAM	GP-GS	MIN/AVG	Field Goals		3-Point		F-Throws		Rebounds				Scoring						
				FG-FGA	FG%	3FG-3FGA	3FG%	FT-FTA	FT%	OFF	DEF	TOT	AVG	PF-FO	A	TO	BLK	STL	PTS	AVG
2018-19	UNM	26-0	212/8.1	33-58	.569	0-0	.000	7-18	.389	32	39	71	2.7	17-0	3	7	14	24	73	2.8
2019-20	UNM	31-8	558/18.0	97-163	.595	1-10	.100	20-27	.741	66	108	174	5.6	44-0	8	29	26	38	215	6.9
2020-21	UNM	20-20	471/23.6	80-132	.606	7-19	.368	15-22	.682	42	77	119	6.0	40-0	15	30	23	30	182	9.1
2021-22	UNM	15-13	376/25.0	99-158	.627	2-10	.200	16-24	.667	46	58	104	6.9	31-0	10	30	19	27	216	14.4
<b>TOTAL</b>		<b>92-41</b>	<b>1617/17.6</b>	<b>309-511</b>	<b>.605</b>	<b>10-39</b>	<b>.256</b>	<b>58-91</b>	<b>.637</b>	<b>186</b>	<b>282</b>	<b>468</b>	<b>5.1</b>	<b>132-0</b>	<b>36</b>	<b>96</b>	<b>82</b>	<b>119</b>	<b>686</b>	<b>7.5</b>



**#21**

**MACKENZIE CURTIS**

G | 5-9 | FR | Lakeside, Calif. (El Capitan HS)

PPG	FG %	3PT %	FT %	RPG	APG	SPG	BPG	MPG
1.9	.238	.267	.750	0.8	0.3	0.0	0.0	7.3

**NOTEWORTHY**

- » Finished in double figures in first college appearance
- » Averaged 22.2 points, 9.5 rebounds, 3.3 assists, 3.5 steals and 1.0 blocks per game
- » Four-time team MVP, three-time league MVP, four-time San Diego Union Tribune Scholar-Athlete
- » Named First-Team All-CIF in 2020 and Second Team All-CIF in 2019
- » No. 1 scorer in San Diego for two years and No. 3 in California for scoring in the class of 2021

**Curtis' Top Performances**

<b>Points</b>	Season	12 vs Northern N.M. (11/12/21)
	Career	Same
<b>FGM</b>	Season	3 vs Northern N.M. (11/12/21)
	Career	Same
<b>FGA</b>	Season	10 vs Northern N.M. (11/12/21)
	Career	Same
<b>3PT FGM</b>	Season	3 vs Northern N.M. (11/12/21)
	Career	Same
<b>3PT FGA</b>	Season	7 vs Northern N.M. (11/12/21)
	Career	Same
<b>FTM</b>	Season	3 vs Northern N.M. (11/12/21)
	Career	Same
<b>FTA</b>	Season	4 vs Northern N.M. (11/12/21)
	Career	Same
<b>Rebounds</b>	Season	3 - done twice
	Career	Same
<b>Assists</b>	Season	2 vs Northern N.M. (11/12/21)
	Career	Same
<b>Blocks</b>	Season	
	Career	
<b>Steals</b>	Season	
	Career	
<b>Turnovers</b>	Season	0 vs. ULM (11/27/21)
	Career	Same
<b>Min. Played</b>	Season	19 vs Northern N.M. (11/12/21)
	Career	Same

**GAME-BY-GAME STATISTICS**

Opponent	Date	GS	MIN	Total		3-Pointers		Free throws		Rebounds				PF	A	TO	BLK	STL	PTS	AVG
				FG-FGA	PCT	3FG-3FGA	PCT	FT-FTA	PCT	OFF	DEF	TOT	AVG							
Northern N.M.	11/12/2021		19:06	3-10	.300	3-7	.429	3-4	.750	1	2	3	3.0	0	2	2	0	0	12	12.0
at Houston	11/20/2021		00:56	0-0	.000	0-0	.000	0-0	.000	0	0	0	1.5	0	0	1	0	0	0	6.0
Houston Baptist	11/23/2021		05:55	0-2	.000	0-2	.000	0-0	.000	0	0	0	1.0	1	0	1	0	0	4.0	
vs La.-Monroe	11/27/2021		10:00	1-4	.250	0-3	.000	0-0	.000	0	1	1	1.0	2	0	0	0	2	3.5	
Grambling	11/30/2021		08:08	1-3	.333	1-2	.500	0-0	.000	0	0	0	0.8	2	1	1	0	0	3.4	
New Mexico St.	12/03/2021		00:33	0-0	.000	0-0	.000	0-0	.000	0	0	0	0.7	0	0	0	0	0	2.8	
UTEP	12/19/2021		14:24	0-1	.000	0-1	.000	0-0	.000	0	3	3	1.0	1	0	0	0	0	2.4	
at Boise St.	12/31/2021		04:17	0-1	.000	0-0	.000	0-0	.000	0	0	0	0.9	0	0	0	0	0	2.1	
UNLV	01/03/2022		01:60	0-0	.000	0-0	.000	0-0	.000	0	0	0	0.8	0	0	0	0	0	1.9	
<b>Totals</b>		<b>0</b>	<b>65:18</b>	<b>5-21</b>	<b>.238</b>	<b>4-15</b>	<b>.267</b>	<b>3-4</b>	<b>.750</b>	<b>1</b>	<b>6</b>	<b>7</b>	<b>0.8</b>	<b>6</b>	<b>3</b>	<b>5</b>	<b>0</b>	<b>0</b>	<b>17</b>	<b>1.9</b>

**CAREER STATISTICS**

SEASON	TEAM	GP-GS	MIN/AVG	Field Goals		3-Point		F-Throws		Rebounds				Scoring						
				FG-FGA	FG%	3FG-3FGA	3FG%	FT-FTA	FT%	OFF	DEF	TOT	AVG	PF-FO	A	TO	BLK	STL	PTS	AVG
2021-22	UNM	9-0	65/7.3	5-21	.238	4-15	.267	3-4	.750	1	6	7	0.8	6-0	3	5	0	0	17	1.9
<b>TOTAL</b>		<b>9-0</b>	<b>65/7.3</b>	<b>5-21</b>	<b>.238</b>	<b>4-15</b>	<b>.267</b>	<b>3-4</b>	<b>.750</b>	<b>1</b>	<b>6</b>	<b>7</b>	<b>0.8</b>	<b>6-0</b>	<b>3</b>	<b>5</b>	<b>0</b>	<b>0</b>	<b>17</b>	<b>1.9</b>

## #23

### JAEDYN DE LA CERDA

G | 5-7 | SR | Roswell, N.M. (Roswell HS)



PPG	FG %	3PT %	FT %	RPG	APG	SPG	BPG	MPG
12.2	.372	.361	.731	4.1	2.7	1.1	0.0	30.8

### NOTEWORTHY

- » Scored in double figures in 11 games, including last three games
- » Made a three-pointer in all but one game this season
- » Seventh in the MW in made 3-pointers per game (2.0), 13th in ppg, 9th in ppg in MW games
- » Averaging 14.0 ppg, 4.5 rpg, 1.0 spg, 3.0 apg in conference play, shooting 41.7% from three
- » Named to 2020-21 MW All-Conference Team and MW All-Tournament Team
- » Fifth in the MW in points per game and in field-goal percentage (.437) last season, but led the conference in free-throw percentage
- » Scored in double figures 17 times including six games in which she scored 20 points or more last season
- » Recorded her first double-double with 13 points and 11 rebounds at Arkansas-Pine Bluff, finishing with a career high in rebounds
- » Set a program record for points off the bench, scoring 31 points vs. San José State (2/27/19)
- » In HS, was named the 2016-17 New Mexico Gatorade Player of the Year in women's basketball
- » Reached 1000-career points on Nov. 28 against Texas Tech, becoming 23rd Lobo to reach the milestone.
- » 6th all-time in career free-throw percentage, 6th all-time in career 3-pointers made

### De La Cerda's Top Performances

<b>Points</b>	Season	18 vs. SFA (11/26/21)
	Career	31 vs. San Jose State (2/27/19)
<b>FGM</b>	Season	7 - done twice
	Career	12 vs. San Jose State (2/27/19)
<b>FGA</b>	Season	19 vs Lamar (11/9/21)
	Career	26 vs. Cal. Baptist (3/19/21)
<b>3PT FGM</b>	Season	4 - done twice
	Career	7 vs. San Jose State (2/27/19)
<b>3PT FGA</b>	Season	9 at Houston (11/20/21)
	Career	13 - done twice
<b>FTM</b>	Season	4 - done twice
	Career	14 at SHSU (12/6/20)
<b>FTA</b>	Season	5 - done twice
	Career	15 at SHSU (12/6/20)
<b>Rebounds</b>	Season	8 vs New Mexico St. (12/3/21)
	Career	11 at Arkansas-PB (12/17/20)
<b>Assists</b>	Season	7 vs. Texas Tech (11/28/21)
	Career	8 vs. NM State (11/17/19)
<b>Blocks</b>	Season	
	Career	1 - done seven times
<b>Steals</b>	Season	3 vs Northern N.M. (11/12/21)
	Career	4 - done twice
<b>Turnovers</b>	Season	1 - done four times
	Career	0 - done 35 times
<b>Min. Played</b>	Season	39 vs UNLV (1/3/22)
	Career	44 vs. San Diego St. (3/11/19)

## GAME-BY-GAME STATISTICS

Opponent	Date	GS	MIN	Total		3-Pointers		Free throws		Rebounds				PF	A	TO	BLK	STL	PTS	AVG
				FG-FGA	PCT	3FG-3FGA	PCT	FT-FTA	PCT	OFF	DEF	TOT	AVG							
Lamar University	11/09/2021	*	38:38	5-19	.263	1-8	.125	4-5	.800	2	4	6	6.0	2	2	2	0	1	15	15.0
Northern N.M.	11/12/2021	*	18:29	3-6	.500	2-4	.500	0-0	.000	0	2	2	4.0	0	4	2	0	3	8	11.5
Prairie View	11/16/2021	*	36:31	4-14	.286	3-7	.429	2-4	.500	2	5	7	5.0	2	3	5	0	1	13	12.0
at Houston	11/20/2021		30:55	5-14	.357	4-9	.444	0-0	.000	0	2	2	4.3	2	2	8	0	0	14	12.5
Houston Baptist	11/23/2021	*	25:17	7-16	.438	1-5	.200	2-2	1.000	0	3	3	4.0	2	4	1	0	1	17	13.4
vs SFA	11/26/2021	*	33:44	7-11	.636	4-6	.667	0-0	.000	1	1	2	3.7	4	1	4	0	2	18	14.2
vs La.-Monroe	11/27/2021	*	24:01	5-12	.417	3-8	.375	2-2	1.000	1	4	5	3.9	1	5	2	0	1	15	14.3
vs Texas Tech	11/28/2021	*	37:00	4-15	.267	1-4	.250	4-5	.800	0	2	2	3.6	3	7	1	0	0	13	14.1
Grambling	11/30/2021	*	22:58	3-7	.429	1-5	.200	1-2	.500	0	3	3	3.6	0	1	1	0	1	8	13.4
New Mexico St.	12/03/2021	*	35:34	6-12	.500	3-5	.600	0-0	.000	0	8	8	4.0	1	4	4	0	1	15	13.6
at New Mexico St.	12/05/2021	*	22:50	0-7	.000	0-3	.000	1-2	.500	1	3	4	4.0	1	0	5	0	2	1	12.5
at Arizona	12/12/2021	*	37:00	3-11	.273	1-4	.250	0-0	.000	0	5	5	4.1	2	1	2	0	2	7	12.0
UTEP	12/19/2021	*	25:20	5-10	.500	1-3	.333	0-0	.000	0	3	3	4.0	3	0	2	0	0	11	11.9
at Boise St.	12/31/2021	*	34:48	5-12	.417	2-5	.400	1-2	.500	0	4	4	4.0	3	2	1	0	2	13	12.0
UNLV	01/03/2022	*	39:31	5-14	.357	3-7	.429	2-2	1.000	0	5	5	4.1	3	4	4	0	0	15	12.2
<b>Totals</b>			<b>14 462:36</b>	<b>67-180</b>	<b>.372</b>	<b>30-83</b>	<b>.361</b>	<b>19-26</b>	<b>.731</b>	<b>7</b>	<b>54</b>	<b>61</b>	<b>4.1</b>	<b>29</b>	<b>40</b>	<b>44</b>	<b>0</b>	<b>17</b>	<b>183</b>	<b>12.2</b>

## CAREER STATISTICS

SEASON	TEAM	GP-GS	MIN/AVG	Field Goals		3-Point		F-Throws		Rebounds				Scoring						
				FG-FGA	FG%	3FG-3FGA	3FG%	FT-FTA	FT%	OFF	DEF	TOT	AVG	PF-FO	A	TO	BLK	STL	PTS	AVG
2017-18	UNM	13-0	35/2.7	8-20	.400	2-10	.200	5-6	.833	2	5	7	0.5	3-0	2	4	1	5	23	1.8
2018-19	UNM	30-5	557/18.6	82-221	.371	40-135	.296	25-32	.781	12	75	87	2.9	25-0	44	30	1	30	229	7.6
2019-20	UNM	31-14	814/26.3	121-325	.372	47-144	.326	52-64	.813	28	59	87	2.8	57-1	60	37	1	42	341	11.0
2020-21	UNM	20-20	562/28.1	107-245	.437	32-99	.323	54-63	.857	34	70	104	5.2	36-0	47	36	4	18	300	15.0
2021-22	UNM	15-14	463/30.8	67-180	.372	30-83	.361	19-26	.731	7	54	61	4.1	29-0	40	44	0	17	183	12.2
<b>TOTAL</b>		<b>109-53</b>	<b>2430/22.3</b>	<b>385-991</b>	<b>.388</b>	<b>151-471</b>	<b>.321</b>	<b>155-191</b>	<b>.812</b>	<b>83</b>	<b>263</b>	<b>346</b>	<b>3.2</b>	<b>150-1</b>	<b>193</b>	<b>151</b>	<b>7</b>	<b>112</b>	<b>1076</b>	<b>9.9</b>

**#30**

**PAULA REUS**

F | 6-1 | FR | Palma de Mallorca, Spain (IES Joaquim Blume)



PPG	FG %	3PT %	FT %	RPG	APG	SPG	BPG	MPG
5.4	.420	.235	.800	2.9	2.5	1.1	0.7	19.9

**NOTEWORTHY**

Will wear #3 at home, #30 on the road.

- » Started two games this season
- » Led the Lobos in assists in 2 games, tied for team high in 1 game
- » 3rd in the MW in blocked shots per game (1.5) in MW games
- » Season-best and team-high 15 points at No. 6 Arizona, making her first seven shots of the game
- » At least 1 steal in eight games, 1 block in six games. Multiple steals in 3 games, multiple blocks in 3 games
- » Led the Lobos in scoring in 1 game, in steals in 1 game, rebounds in 1 game, tied for team high in blocks in 3 games
- » Played on the U16 Spanish national team at the U16 FIBA 2019 European Championship, finishing third
- » Averaged 11.7 minutes, 3.5 points, 2.8 rebounds, 0.8 assists and 0.7 steals per game
- » Played for Barça CBS LF2, winning the regular season championship, and qualified for the finals

**Reus' Top Performances**

<b>Points</b>	Season	15 at #6 Arizona (12/12/21)
	Career	Same
<b>FGM</b>	Season	7 at #6 Arizona (12/12/21)
	Career	Same
<b>FGA</b>	Season	9 at Boise State (12/31/21)
	Career	Same
<b>3PT FGM</b>	Season	1 - done four times
	Career	Same
<b>3PT FGA</b>	Season	3 vs. Houston Bapt. (11/23/21)
	Career	Same
<b>FTM</b>	Season	2 - done three times
	Career	Same
<b>FTA</b>	Season	2 - done five times
	Career	Same
<b>Rebounds</b>	Season	6 at New Mexico St. (12/5/21)
	Career	Same
<b>Assists</b>	Season	7 at Houston (11/20/21)
	Career	Same
<b>Blocks</b>	Season	2 - done three times
	Career	Same
<b>Steals</b>	Season	4 vs. UTEP (12/19/21)
	Career	Same
<b>Turnovers</b>	Season	0 - done six times
	Career	Same
<b>Min. Played</b>	Season	29 at #6 Arizona (12/12/21)
	Career	Same

**GAME-BY-GAME STATISTICS**

Opponent	Date	GS	MIN	Total		3-Pointers		Free throws		Rebounds				PF	A	TO	BLK	STL	PTS	AVG
				FG-FGA	PCT	3FG-3FGA	PCT	FT-FTA	PCT	OFF	DEF	TOT	AVG							
Prairie View	11/16/2021		13:21	0-4	.000	0-2	.000	1-2	.500	0	4	4	4.0	1	1	2	0	0	1	1.0
at Houston	11/20/2021	*	26:41	2-6	.333	1-2	.500	2-2	1.000	2	3	5	4.5	2	7	4	0	2	7	4.0
Houston Baptist	11/23/2021		14:22	0-5	.000	0-3	.000	0-0	.000	0	2	2	3.7	0	1	0	2	3	0	2.7
vs SFA	11/26/2021		23:37	2-4	.500	0-1	.000	0-0	.000	0	3	3	3.5	4	2	4	0	0	4	3.0
vs La.-Monroe	11/27/2021		09:60	1-4	.250	0-2	.000	0-0	.000	1	0	1	3.0	0	1	0	1	0	2	2.8
vs Texas Tech	11/28/2021		13:25	0-2	.000	0-2	.000	0-0	.000	1	1	2	2.8	2	1	1	0	0	0	2.3
Grambling	11/30/2021		16:06	3-7	.429	0-0	.000	0-0	.000	1	3	4	3.0	3	4	0	0	1	6	2.9
New Mexico St.	12/03/2021		13:40	3-4	.750	1-1	1.000	2-2	1.000	0	1	1	2.8	2	2	0	0	1	9	3.6
at New Mexico St.	12/05/2021		27:45	2-5	.400	0-0	.000	2-2	1.000	2	4	6	3.1	3	6	1	2	1	6	3.9
at Arizona	12/12/2021	*	29:35	7-8	.875	1-1	1.000	0-0	.000	0	0	0	2.8	1	1	3	1	1	15	5.0
UTEP	12/19/2021		17:18	2-3	.667	0-0	.000	0-0	.000	0	1	1	2.6	2	6	2	0	4	4	4.9
at Boise St.	12/31/2021		24:48	4-9	.444	0-1	.000	1-2	.500	1	1	2	2.6	3	1	0	1	1	9	5.3
UNLV	01/03/2022		27:26	3-8	.375	1-2	.500	0-0	.000	1	6	7	2.9	2	0	0	2	0	7	5.4
<b>Totals</b>		<b>2</b>	<b>258:04</b>	<b>29-69</b>	<b>.420</b>	<b>4-17</b>	<b>.235</b>	<b>8-10</b>	<b>.800</b>	<b>9</b>	<b>29</b>	<b>38</b>	<b>2.9</b>	<b>25</b>	<b>33</b>	<b>17</b>	<b>9</b>	<b>14</b>	<b>70</b>	<b>5.4</b>

**CAREER STATISTICS**

SEASON	TEAM	GP-GS	MIN/AVG	Field Goals		3-Point		F-Throws		Rebounds				Scoring						
				FG-FGA	FG%	3FG-3FGA	3FG%	FT-FTA	FT%	OFF	DEF	TOT	AVG	PF-FO	A	TO	BLK	STL	PTS	AVG
2021-22	UNM	13-2	258/19.9	29-69	.420	4-17	.235	8-10	.800	9	29	38	2.9	25-0	33	17	9	14	70	5.4
<b>TOTAL</b>		<b>13-2</b>	<b>258/19.9</b>	<b>29-69</b>	<b>.420</b>	<b>4-17</b>	<b>.235</b>	<b>8-10</b>	<b>.800</b>	<b>9</b>	<b>29</b>	<b>38</b>	<b>2.9</b>	<b>25-0</b>	<b>33</b>	<b>17</b>	<b>9</b>	<b>14</b>	<b>70</b>	<b>5.4</b>

# #32

## ANTONIA ANDERSON

G/F | 6-2 | SR | Cibolo, Texas (Byron P. Steele HS)



PPG	FG %	3PT %	FT %	RPG	APG	SPG	BPG	MPG
9.3	.460	.371	.629	5.6	1.6	1.7	1.3	26.1

### NOTEWORTHY

- » Named to 2021-22 Preseason All-Conference Team
- » Perfect from the free-throw line in 3 games (5-5 vs. Lamar, 2-2 vs. Texas Tech and 6-6 at Arizona)
- » Set career highs in rebounds, steals and free-throws made this season
- » Six games in double figures
- » Leads the MW in blocks and blocks per game, 12th in steals per game, 15th in rebounds per game
- » One double-double this season (16 points, 12 rebounds) at New Mexico State; 4 career double-doubles
- » Named to 2020-21 MW All-Conference Team
- » Scored 10-plus points in 13 games with a career-high 29 points in the win over UNLV on Jan. 17 after making a career-high 12 baskets last season
- » Led the team in rebounds (123) and rebounds per game last season
- » Recorded two double-doubles with 14 points and 10 rebounds at Air Force and 10 points and 11 rebounds against Colorado State (tied a career high)
- » Eighth in the MW in blocks per game at 1.07 and ranked in the top 15 in scoring, rebounding, field-goal percentage, blocked shots and defensive rebounds last season
- » 34 points away from 1,000-career points
- » 5th all-time in career blocks, 1 away from 4th, 6 from 3rd
- » 5 games away from program record of most games played

### Anderson's Top Performances

<b>Points</b>	Season	19 vs. Prairie View (11/16/21)
	Career	29 at UNLV (1/17/21)
<b>FGM</b>	Season	8 vs. Prairie View (11/16/21)
	Career	12 at UNLV (1/17/21)
<b>FGA</b>	Season	14 vs. Prairie View (11/16/21)
	Career	19 vs. Fresno (3/9/21)
<b>3PT FGM</b>	Season	2 vs. Texas Tech (11/28/21)
	Career	4 at UNLV (1/17/21)
<b>3PT FGA</b>	Season	3 - done eight times
	Career	11 vs. Colorado State (3/4/21)
<b>FTM</b>	Season	6 at #6 Arizona (12/12/21)
	Career	Same
<b>FTA</b>	Season	6 at #6 Arizona (12/12/21)
	Career	6 - done four times
<b>Rebounds</b>	Season	12 at New Mexico St. (12/5/21)
	Career	Same
<b>Assists</b>	Season	5 - done twice
	Career	5 - done four times
<b>Blocks</b>	Season	5 vs. Houston Bapt. (11/23/21)
	Career	6 vs. UC Riverside (11/5/19)
<b>Steals</b>	Season	5 at Boise State (12/31/21)
	Career	Same
<b>Turnovers</b>	Season	0 - done twice
	Career	0 - done 42 times
<b>Min. Played</b>	Season	37 at New Mexico St. (12/5/21)
	Career	38 at San José St. (1/22/20)

## GAME-BY-GAME STATISTICS

Opponent	Date	GS	MIN	Total		3-Pointers		Free throws		Rebounds				PF	A	TO	BLK	STL	PTS	AVG
				FG-FGA	PCT	3FG-3FGA	PCT	FT-FTA	PCT	OFF	DEF	TOT	AVG							
Lamar University	11/09/2021	*	28:29	5-9	.556	1-3	.333	5-5	1.000	2	3	5	5.0	3	1	2	1	2	16	16.0
Northern N.M.	11/12/2021	*	17:24	3-7	.429	1-3	.333	0-2	.000	1	5	6	5.5	1	2	3	1	1	7	11.5
Prairie View	11/16/2021	*	31:47	8-14	.571	1-3	.333	2-4	.500	4	5	9	6.7	2	2	3	3	1	19	14.0
at Houston	11/20/2021	*	22:03	2-4	.500	1-2	.500	1-2	.500	2	1	3	5.8	3	1	4	1	2	6	12.0
Houston Baptist	11/23/2021	*	22:06	5-7	.714	1-3	.333	0-0	.000	1	2	3	5.2	2	0	0	5	3	11	11.8
vs SFA	11/26/2021	*	35:05	2-10	.200	1-3	.333	0-0	.000	3	5	8	5.7	4	5	4	2	2	5	10.7
vs La.-Monroe	11/27/2021	*	20:00	1-6	.167	1-3	.333	0-0	.000	1	8	9	6.1	1	0	1	0	0	3	9.6
vs Texas Tech	11/28/2021	*	31:23	5-7	.714	2-3	.667	2-2	1.000	0	2	2	5.6	1	0	2	1	1	14	10.1
Grambling	11/30/2021	*	22:03	5-6	.833	1-1	1.000	1-1	1.000	2	3	5	5.6	1	1	2	2	2	12	10.3
New Mexico St.	12/03/2021	*	25:45	1-2	.500	1-1	1.000	0-0	.000	0	2	2	5.2	3	1	5	1	0	3	9.6
at New Mexico St.	12/05/2021	*	37:42	6-10	.600	1-2	.500	3-5	.600	8	4	12	5.8	3	2	2	2	3	16	10.2
at Arizona	12/12/2021	*	33:36	1-8	.125	0-2	.000	6-6	1.000	2	7	9	6.1	1	5	2	0	0	8	10.0
UTEP	12/19/2021	*	28:12	3-8	.375	1-2	.500	1-4	.250	1	4	5	6.0	3	0	0	1	3	8	9.8
at Boise St.	12/31/2021	*	20:32	3-7	.429	0-3	.000	1-2	.500	1	1	2	5.7	4	4	1	0	5	7	9.6
UNLV	01/03/2022	*	15:29	2-8	.250	0-1	.000	0-2	.000	1	3	4	5.6	3	0	1	0	0	4	9.3
<b>Totals</b>			<b>14</b>	<b>391:37</b>	<b>.460</b>	<b>13-35</b>	<b>.371</b>	<b>22-35</b>	<b>.629</b>	<b>29</b>	<b>55</b>	<b>84</b>	<b>5.6</b>	<b>35</b>	<b>24</b>	<b>32</b>	<b>20</b>	<b>25</b>	<b>139</b>	<b>9.3</b>

## CAREER STATISTICS

SEASON	TEAM	GP-GS	MIN/AVG	Field Goals		3-Point		F-Throws		Rebounds				Scoring						
				FG-FGA	FG%	3FG-3FGA	3FG%	FT-FTA	FT%	OFF	DEF	TOT	AVG	PF-FO	A	TO	BLK	STL	PTS	AVG
2017-18	UNM	32-1	417/13.0	52-91	.571	2-10	.200	24-40	.600	31	65	96	3.0	50-0	5	17	34	13	130	4.1
2018-19	UNM	31-0	555/17.9	65-141	.461	10-33	.303	34-46	.739	45	72	117	3.8	64-2	19	36	27	24	174	5.6
2019-20	UNM	32-31	865/27.0	112-268	.418	29-92	.315	28-39	.718	35	136	171	5.3	91-5	54	64	43	39	281	8.8
2020-21	UNM	20-20	486/24.3	98-200	.490	22-67	.328	24-41	.585	26	97	123	6.2	62-6	37	37	19	19	242	12.1
2021-22	UNM	15-14	392/26.1	52-113	.460	13-35	.371	22-35	.629	29	55	84	5.6	35-0	24	32	20	25	139	9.3
<b>TOTAL</b>		<b>130-66</b>	<b>2714/20.9</b>	<b>379-813</b>	<b>.466</b>	<b>76-237</b>	<b>.321</b>	<b>132-201</b>	<b>.657</b>	<b>166</b>	<b>425</b>	<b>591</b>	<b>4.5</b>	<b>302-13</b>	<b>139</b>	<b>186</b>	<b>143</b>	<b>120</b>	<b>966</b>	<b>7.4</b>

**#33**

**VIANÈ CUMBER**

G | 5-10 | FR | Albuquerque, N.M. (Sandia HS)



PPG	FG %	3PT %	FT %	RPG	APG	SPG	BPG	MPG
3.8	.442	.345	1.000	1.7	0.3	0.4	0.1	11.4

**NOTEWORTHY**

- » MW Freshman of the Week (11/15/21)
- » Scored in double figures in two games
- » First career start against Northern New Mexico
- » 2019-20 and 2021-21 New Mexico Gatorade Girls Basketball Player of the Year
- » Twice named MaxPreps New Mexico High School Girls Basketball Player of the Year
- » Named the best high school basketball player in New Mexico by MaxPreps
- » Averaged 26.5 points, 9.3 rebounds, 2.2 assists and 1.5 steals her senior season and 22.4 points, 10.6 rebounds, 2.5 assists and 3.3 steals as a junior
- » Led her team to a pair of district championships in 2018 and 2019

**Cumber's Top Performances**

<b>Points</b>	Season	17 vs Northern N.M. (11/12/21)
	Career	Same
<b>FGM</b>	Season	7 vs Northern N.M. (11/12/21)
	Career	Same
<b>FGA</b>	Season	10 vs Northern N.M. (11/12/21)
	Career	Same
<b>3PT FGM</b>	Season	3 vs Northern N.M. (11/12/21)
	Career	Same
<b>3PT FGA</b>	Season	5 vs Northern N.M. (11/12/21)
	Career	Same
<b>FTM</b>	Season	2 at Houston (11/20/21)
	Career	Same
<b>FTA</b>	Season	2 at Houston (11/20/21)
	Career	Same
<b>Rebounds</b>	Season	4 - done twice
	Career	Same
<b>Assists</b>	Season	1 - done four times
	Career	Same
<b>Blocks</b>	Season	1 vs New Mexico St. (12/3/21)
	Career	Same
<b>Steals</b>	Season	2 vs Northern N.M. (11/12/21)
	Career	Same
<b>Turnovers</b>	Season	0 - done four times
	Career	Same
<b>Min. Played</b>	Season	25 vs Northern N.M. (11/12/21)
	Career	Same

**GAME-BY-GAME STATISTICS**

Opponent	Date	GS	MIN	Total		3-Pointers		Free throws		Rebounds				PF	A	TO	BLK	STL	PTS	AVG
				FG-FGA	PCT	3FG-3FGA	PCT	FT-FTA	PCT	OFF	DEF	TOT	AVG							
Lamar University	11/09/2021		15:26	1-4	.250	0-3	.000	0-0	.000	0	4	4	4.0	1	0	1	0	1	2	2.0
Northern N.M.	11/12/2021	*	24:32	7-10	.700	3-5	.600	0-0	.000	0	4	4	4.0	0	1	1	0	2	17	9.5
Prairie View	11/16/2021		09:26	1-2	.500	1-2	.500	0-0	.000	0	2	2	3.3	0	0	2	0	0	3	7.3
at Houston	11/20/2021		13:04	1-2	.500	0-1	.000	2-2	1.000	1	1	2	3.0	0	1	1	0	0	4	6.5
Houston Baptist	11/23/2021		09:01	1-5	.200	1-5	.200	0-0	.000	0	4	4	3.2	0	0	1	0	0	3	5.8
vs SFA	11/26/2021		14:10	2-4	.500	1-1	1.000	0-0	.000	1	2	3	3.2	0	1	0	0	0	5	5.7
vs La.-Monroe	11/27/2021		20:14	4-7	.571	2-4	.500	0-0	.000	0	0	0	2.7	1	0	2	0	1	10	6.3
vs Texas Tech	11/28/2021		03:00	0-0	.000	0-0	.000	0-0	.000	0	0	0	2.4	0	0	0	0	0	0	5.5
Grambling	11/30/2021		14:12	2-4	.500	2-4	.500	0-0	.000	0	1	1	2.2	1	0	0	0	0	6	5.6
New Mexico St.	12/03/2021		15:04	0-2	.000	0-1	.000	0-0	.000	0	1	1	2.1	0	1	1	1	1	0	5.0
at New Mexico St.	12/05/2021		05:02	0-2	.000	0-2	.000	0-0	.000	0	0	0	1.9	0	0	0	0	0	0	4.5
at Arizona	12/12/2021		00:54	0-0	.000	0-0	.000	0-0	.000	0	0	0	1.8	0	0	0	0	0	0	4.2
at Boise St.	12/31/2021		03:28	0-1	.000	0-1	.000	0-0	.000	1	0	1	1.7	0	0	0	0	0	0	3.8
<b>Totals</b>		<b>1</b>	<b>147:33</b>	<b>19-43</b>	<b>.442</b>	<b>10-29</b>	<b>.345</b>	<b>2-2</b>	<b>1.000</b>	<b>3</b>	<b>19</b>	<b>22</b>	<b>1.7</b>	<b>3</b>	<b>4</b>	<b>9</b>	<b>1</b>	<b>5</b>	<b>50</b>	<b>3.8</b>

**CAREER STATISTICS**

SEASON	TEAM	GP-GS	MIN/AVG	Field Goals		3-Point		F-Throws		Rebounds				Scoring						
				FG-FGA	FG%	3FG-3FGA	3FG%	FT-FTA	FT%	OFF	DEF	TOT	AVG	PF	FO	A	TO	BLK	STL	PTS
2021-22	UNM	13-1	148/11.4	19-43	.442	10-29	.345	2-2	1.000	3	19	22	1.7	3-0	4	9	1	5	50	3.8
<b>TOTAL</b>		<b>13-1</b>	<b>148/11.4</b>	<b>19-43</b>	<b>.442</b>	<b>10-29</b>	<b>.345</b>	<b>2-2</b>	<b>1.000</b>	<b>3</b>	<b>19</b>	<b>22</b>	<b>1.7</b>	<b>3-0</b>	<b>4</b>	<b>9</b>	<b>1</b>	<b>5</b>	<b>50</b>	<b>3.8</b>

## #34

### NEVAEH PARKINSON

F/C | 6-3 | SO | Dallas, Texas (John Paul II HS)



PPG	FG %	3PT %	FT %	RPG	APG	SPG	BPG	MPG
3.2	.500	.000	.625	3.0	0.5	0.3	0.5	7.6

## NOTEWORTHY

- » First career double-double against Northern New Mexico (11 points, 11 rebounds)
- » Played for Parish Episcopal School in Texas where she helped her team to the state championship in the 2017-18 season
- » Two-time First Team All-District and two-time First Team All-State honoree
- » Averaged 18.3 points, 10.1 rebounds and 1.4 blocks per game

## Parkinson's Top Performances

<b>Points</b>	Season	11 vs Northern N.M. (11/12/21)
	Career	Same
<b>FGM</b>	Season	4 vs Northern N.M. (11/12/21)
	Career	Same
<b>FGA</b>	Season	8 vs Northern N.M. (11/12/21)
	Career	Same
<b>3PT FGM</b>	Season	
	Career	1 at Arkansas-PB (12/17/20)
<b>3PT FGA</b>	Season	1 - done three times
	Career	1 - done six times
<b>FTM</b>	Season	3 vs Northern N.M. (11/12/21)
	Career	Same
<b>FTA</b>	Season	4 - done twice
	Career	Same
<b>Rebounds</b>	Season	11 vs Northern N.M. (11/12/21)
	Career	Same
<b>Assists</b>	Season	1 - done three times
	Career	Same
<b>Blocks</b>	Season	1 - done three times
	Career	1 - done four times
<b>Steals</b>	Season	2 vs Northern N.M. (11/12/21)
	Career	Same
<b>Turnovers</b>	Season	0 - done three times
	Career	0 - done nine times
<b>Min. Played</b>	Season	15 vs Northern N.M. (11/12/21)
	Career	Same

## GAME-BY-GAME STATISTICS

Opponent	Date	GS	MIN	Total		3-Pointers		Free throws		Rebounds				PF	A	TO	BLK	STL	PTS	AVG
				FG-FGA	PCT	3FG-3FGA	PCT	FT-FTA	PCT	OFF	DEF	TOT	AVG							
Lamar University	11/09/2021		04:00	0-0	.000	0-0	.000	0-0	.000	0	0	0	0.0	0	1	0	0	0	0	0.0
Northern N.M.	11/12/2021		15:01	4-8	.500	0-1	.000	3-4	.750	5	6	11	5.5	1	1	1	0	2	11	5.5
at Houston	11/20/2021		00:50	0-0	.000	0-0	.000	0-0	.000	0	0	0	3.7	0	0	0	0	0	0	3.7
Houston Baptist	11/23/2021		08:41	1-3	.333	0-1	.000	0-0	.000	0	0	0	2.8	1	1	0	1	0	2	3.3
vs La.-Monroe	11/27/2021		09:38	1-1	1.000	0-0	.000	0-0	.000	1	0	1	2.4	1	0	1	1	0	2	3.0
Grambling	11/30/2021		07:41	1-2	.500	0-1	.000	2-4	.500	1	5	6	3.0	1	0	1	1	0	4	3.2
<b>Totals</b>		<b>0</b>	<b>45:50</b>	<b>7-14</b>	<b>.500</b>	<b>0-3</b>	<b>.000</b>	<b>5-8</b>	<b>.625</b>	<b>7</b>	<b>11</b>	<b>18</b>	<b>3.0</b>	<b>4</b>	<b>3</b>	<b>3</b>	<b>3</b>	<b>2</b>	<b>19</b>	<b>3.2</b>

## CAREER STATISTICS

SEASON	TEAM	GP-GS	MIN/AVG	Field Goals		3-Point		F-Throws		Rebounds				Scoring						
				FG-FGA	FG%	3FG-3FGA	3FG%	FT-FTA	FT%	OFF	DEF	TOT	AVG	PF	FO	A	TO	BLK	STL	PTS
2020-21	UNM	8-0	21/2.7	2-9	.222	1-5	.200	0-2	.000	0	6	6	0.8	4-0	0	1	1	0	5	0.6
2021-22	UNM	6-0	46/7.6	7-14	.500	0-3	.000	5-8	.625	7	11	18	3.0	4-0	3	3	3	2	19	3.2
<b>TOTAL</b>		<b>14-0</b>	<b>67/4.8</b>	<b>9-23</b>	<b>.391</b>	<b>1-8</b>	<b>.125</b>	<b>5-10</b>	<b>.500</b>	<b>7</b>	<b>17</b>	<b>24</b>	<b>1.7</b>	<b>8-0</b>	<b>3</b>	<b>4</b>	<b>4</b>	<b>2</b>	<b>24</b>	<b>1.7</b>



# NEW MEXICO STATISTICS

**Game Records**

Record	Overall	Home	Away	Neutral
ALL GAMES	11-4	8-0	2-2	1-2
CONFERENCE	2-0	1-0	1-0	0-0
NON-CONFERENCE	9-4	7-0	1-2	1-2

**Score by Periods**

Team	1st	2nd	3rd	4th	OT	TOT
New Mexico	284	278	247	306	0	1115
Opponents	218	221	281	243	0	963

**Team Box Score**

No.	Player	GP-GS	MIN	AVG	Total			3-Point			F-Throw		Rebounds				PF	DQ	A	TO	BLK	STL	PTS	AVG
					FG-FGA	FG%	3FG-3FGA	3FG%	FT-FTA	FT%	OFF	DEF	TOT	AVG										
13	MCCRUDER, Shaiquel	15-13	375:33	25.0	99-158	.627	2-10	.200	16-24	.667	46	58	104	6.9	31	0	10	30	19	27	216	14.4		
5	DUFF, LaTora	15-15	476:21	31.8	66-151	.437	31-81	.383	34-41	.829	8	45	53	3.5	23	0	82	41	8	23	197	13.1		
23	DE LA CERDA, Jaedyn	15-14	462:36	30.8	67-180	.372	30-83	.361	19-26	.731	7	54	61	4.1	29	0	40	44	0	17	183	12.2		
4	DUFF, LaTascya	14-13	424:12	30.3	53-115	.461	38-83	.458	23-28	.821	3	42	45	3.2	15	0	18	27	3	9	167	11.9		
32	ANDERSON, Antonia	15-14	391:37	26.1	52-113	.460	13-35	.371	22-35	.629	29	55	84	5.6	35	0	24	32	20	25	139	9.3		
30	REUS, Paula	13-2	258:04	19.9	29-69	.420	4-17	.235	8-10	.800	9	29	38	2.9	25	0	33	17	9	14	70	5.4		
33	CUMBER, Vianè	13-1	147:33	11.4	19-43	.442	10-29	.345	2-2	1.000	3	19	22	1.7	3	0	4	9	1	5	50	3.8		
34	PARKINSON, Nevaeh	6-0	45:50	7.6	7-14	.500	0-3	.000	5-8	.625	7	11	18	3.0	4	0	3	3	3	2	19	3.2		
1	RENCZES, Rebeka	4-0	37:49	9.5	2-7	.286	2-4	.500	2-4	.500	0	2	2	0.5	2	0	6	5	0	1	8	2.0		
21	CURTIS, Mackenzie	9-0	65:18	7.3	5-21	.238	4-15	.267	3-4	.750	1	6	7	0.8	6	0	3	5	0	0	17	1.9		
11	SEREN, Zeyno	6-1	60:56	10.2	3-10	.300	0-2	.000	5-9	.556	2	11	13	2.2	3	0	4	1	0	2	11	1.8		
12	AUGMON, Aniyah	15-1	148:36	9.9	6-12	.500	1-3	.333	9-15	.600	6	24	30	2.0	20	0	11	17	0	15	22	1.5		
10	VAN BENNEKOM, Kath	13-1	105:34	8.1	6-12	.500	0-2	.000	4-6	.667	7	9	16	1.2	10	0	3	6	0	2	16	1.2		
Team											24	41	65					6						
<b>Total</b>		<b>15</b>	<b>3000</b>		<b>414-905</b>	<b>.457</b>	<b>135-367</b>	<b>.368</b>	<b>152-212</b>	<b>.717</b>	<b>152</b>	<b>406</b>	<b>558</b>	<b>37.2</b>	<b>206</b>	<b>0</b>	<b>241</b>	<b>243</b>	<b>63</b>	<b>142</b>	<b>1115</b>	<b>74.3</b>		
<b>Opponents</b>		<b>15</b>	<b>3000</b>		<b>368-958</b>	<b>.384</b>	<b>90-291</b>	<b>.309</b>	<b>137-201</b>	<b>.682</b>	<b>205</b>	<b>369</b>	<b>574</b>	<b>38.3</b>	<b>214</b>	<b>0</b>	<b>204</b>	<b>252</b>	<b>38</b>	<b>122</b>	<b>963</b>	<b>64.2</b>		

**Team Statistics**

	UNM	OPP
<b>Scoring</b>	<b>1115</b>	<b>963</b>
Points per game	74.3	64.2
Scoring margin	+10.1	-
<b>Field goals-att</b>	<b>414-905</b>	<b>368-958</b>
Field goal pct	.457	.384
<b>3 point fg-att</b>	<b>135-367</b>	<b>90-291</b>
3-point FG pct	.368	.309
3-pt FG made per game	9.0	6.0
<b>Free throws-att</b>	<b>152-212</b>	<b>137-201</b>
Free throw pct	.717	.682
F-Throws made per game	10.1	9.1
<b>Rebounds</b>	<b>558</b>	<b>574</b>
Rebounds per game	37.2	38.3
Rebounding margin	-1.1	-
<b>Assists</b>	<b>241</b>	<b>204</b>
Assists per game	16.1	13.6
<b>Turnovers</b>	<b>243</b>	<b>252</b>
Turnovers per game	16.2	16.8
Turnover margin	+0.6	-
Assist/turnover ratio	1.0	0.8
<b>Steals</b>	<b>142</b>	<b>122</b>
Steals per game	9.5	8.1
<b>Blocks</b>	<b>63</b>	<b>38</b>
Blocks per game	4.2	2.5
<b>Winning streak</b>	<b>3</b>	<b>-</b>
Home win streak	8	-
<b>Attendance</b>	<b>34201</b>	<b>10587</b>
Home games-Avg/Game	8-4275	4-2647
Neutral site-Avg/Game	-	3-0

**Team Results**

Date	Opponent		Score	Att.
11/09/2021	Lamar University	W	71-54	3800
11/12/2021	Northern N.M.	W	96-40	4000
11/16/2021	Prairie View	W	88-71	4250
11/20/2021	at Houston	L	60-89	346
11/23/2021	Houston Baptist	W	76-58	4234
11/26/2021	vs SFA	L	66-71	0
11/27/2021	vs La.-Monroe	W	66-45	0
11/28/2021	vs Texas Tech	L	75-82	0
11/30/2021	Grambling	W	86-50	4134
12/03/2021	New Mexico St.	W	77-58	5123
12/05/2021	at New Mexico St.	W	73-66	754
12/12/2021	at Arizona	L	60-77	8884
12/19/2021	UTEP	W	78-66	4458
12/31/2021	at Boise St.	W	72-68	603
01/03/2022	UNLV	W	71-68	4202

## NEW MEXICO CONFERENCE STATISTICS

### Game Records

Record	Overall	Home	Away	Neutral
ALL GAMES	2-0	1-0	1-0	0-0
CONFERENCE	2-0	1-0	1-0	0-0
NON-CONFERENCE	0-0	0-0	0-0	0-0

### Score by Periods

Team	1st	2nd	3rd	4th	OT	TOT
New Mexico	31	34	33	45	0	143
Opponents	35	34	36	31	0	136

### Team Box Score

No.	Player	Total					3-Point		F-Throw		Rebounds											
		GP-GS	MIN	AVG	FG-FGA	FG%	3FG-3FGA	3FG%	FT-FTA	FT%	OFF	DEF	TOT	AVG	PF	DQ	A	TO	BLK	STL	PTS	AVG
13	MCGRUDER, Shaiquel	2-2	69:17	34.6	16-27	.593	0-3	.000	4-7	.571	9	10	19	9.5	3	0	2	4	4	2	36	18.0
4	DUFF, LaTascya	2-2	75:01	37.5	9-18	.500	7-11	.636	5-5	1.000	0	3	3	1.5	1	0	3	2	0	2	30	15.0
23	DE LA CERDA, Jaedyn	2-2	74:19	37.2	10-26	.385	5-12	.417	3-4	.750	0	9	9	4.5	6	0	6	5	0	2	28	14.0
5	DUFF, LaTora	2-2	76:11	38.1	6-21	.286	1-9	.111	9-9	1.000	0	11	11	5.5	2	0	11	4	2	3	22	11.0
30	REUS, Paula	2-0	52:14	26.1	7-17	.412	1-3	.333	1-2	.500	2	7	9	4.5	5	0	1	0	3	1	16	8.0
32	ANDERSON, Antonia	2-2	36:01	18.0	5-15	.333	0-4	.000	1-4	.250	2	4	6	3.0	7	0	4	2	0	5	11	5.5
10	VAN BENNEKOM, Kath	2-0	02:28	1.2	0-0	.000	0-0	.000	0-0	.000	0	0	0	0.0	0	0	0	0	0	0	0	0.0
21	CURTIS, Mackenzie	2-0	06:17	3.1	0-1	.000	0-0	.000	0-0	.000	0	0	0	0.0	0	0	0	0	0	0	0	0.0
33	CUMBER, Vianè	1-0	03:28	3.5	0-1	.000	0-1	.000	0-0	.000	1	0	1	1.0	0	0	0	0	0	0	0	0.0
12	AUGMON, Aniyah	2-0	04:44	2.4	0-1	.000	0-1	.000	0-0	.000	1	0	1	0.5	1	0	1	0	0	0	0	0.0
Team												4	4									
<b>Total</b>		<b>2</b>	<b>400</b>		<b>53-127</b>	<b>.417</b>	<b>14-44</b>	<b>.318</b>	<b>23-31</b>	<b>.742</b>	<b>15</b>	<b>48</b>	<b>63</b>	<b>31.5</b>	<b>25</b>	<b>0</b>	<b>28</b>	<b>17</b>	<b>9</b>	<b>15</b>	<b>143</b>	<b>71.5</b>
<b>Opponents</b>		<b>2</b>	<b>400</b>		<b>55-135</b>	<b>.407</b>	<b>10-40</b>	<b>.250</b>	<b>16-22</b>	<b>.727</b>	<b>30</b>	<b>65</b>	<b>95</b>	<b>47.5</b>	<b>28</b>	<b>0</b>	<b>30</b>	<b>31</b>	<b>5</b>	<b>8</b>	<b>136</b>	<b>68.0</b>

### Team Statistics

	UNM	OPP
<b>Scoring</b>	<b>143</b>	<b>136</b>
Points per game	71.5	68.0
Scoring margin	+3.5	-
<b>Field goals-att</b>	<b>53-127</b>	<b>55-135</b>
Field goal pct	.417	.407
<b>3 point fg-att</b>	<b>14-44</b>	<b>10-40</b>
3-point FG pct	.318	.250
3-pt FG made per game	7.0	5.0
<b>Free throws-att</b>	<b>23-31</b>	<b>16-22</b>
Free throw pct	.742	.727
F-Throws made per game	11.5	8.0
<b>Rebounds</b>	<b>63</b>	<b>95</b>
Rebounds per game	31.5	47.5
Rebounding margin	-16.0	-
<b>Assists</b>	<b>28</b>	<b>30</b>
Assists per game	14.0	15.0
<b>Turnovers</b>	<b>17</b>	<b>31</b>
Turnovers per game	8.5	15.5
Turnover margin	+7.0	-
Assist/turnover ratio	1.6	1.0
<b>Steals</b>	<b>15</b>	<b>8</b>
Steals per game	7.5	4.0
<b>Blocks</b>	<b>9</b>	<b>5</b>
Blocks per game	4.5	2.5
<b>Winning streak</b>	<b>2</b>	<b>-</b>
Home win streak	1	-
<b>Attendance</b>	<b>4202</b>	<b>603</b>
Home games-Avg/Game	1-4202	1-603
Neutral site-Avg/Game	-	0-0

### Team Results

Date	Opponent	Score	Att.
12/31/2021	at Boise St.	W 72-68	603
01/03/2022	UNLV	W 71-68	4202

# UTAH STATE STATISTICS

**Overall Record:** 5-7 **Conf:** 0-2 **Home:** 4-2 **Away:** 1-5 **Neutral:** 0-0

#	Player	GP-GS	MIN	AVG	FG		3PT		FT		Rebounds				PF	DQ	A	TO	BLK	STL	PTS	AVG
					FG-FGA	FG%	3FG-FGA	3FG%	FT-FTA	FT%	OFF	DEF	TOT	AVG								
21	Randhawa, Kaylin	11-11	341	31.0	53-133	.398	21-63	.333	47-54	.870	7	35	42	3.8	26	1	17	33	2	20	174	15.8
32	Quezada, Adryana	11-7	277	25.2	45-95	.474	4-8	.500	16-20	.800	34	49	83	7.5	20	0	19	22	7	11	110	10.0
04	Stafford, E'Lease	12-9	293	24.4	40-94	.426	11-35	.314	14-17	.824	18	38	56	4.7	26	1	15	18	8	12	105	8.8
23	Latone, Shyla	9-5	159	17.7	26-81	.321	18-57	.316	9-12	.750	3	13	16	1.8	15	1	6	16	1	12	79	8.8
03	Hawthorne, Laci	10-9	224	22.4	35-80	.438	0-4	.000	17-33	.515	23	29	52	5.2	27	0	8	23	7	4	87	8.7
15	Wikstrom, Olivia	12-4	254	21.2	25-79	.316	14-40	.350	20-28	.714	14	36	50	4.2	16	0	14	17	2	18	84	7.0
14	Mensah, Manna	12-10	252	21.0	24-75	.320	3-16	.188	15-25	.600	10	16	26	2.2	9	1	12	24	0	3	66	5.5
00	Brantley, Faith	8-3	186	23.3	13-38	.342	7-18	.389	8-9	.889	0	13	13	1.6	14	0	23	18	0	8	41	5.1
10	Harris, Emmie	10-2	181	18.1	10-49	.204	4-22	.182	14-17	.824	7	17	24	2.4	12	0	11	14	0	9	38	3.8
01	Kamakawiwo'ole, Kamalu	3-0	23	7.7	3-4	.750	0-0	.000	2-5	.400	1	4	5	1.7	8	0	1	5	1	0	8	2.7
02	Mendazona, Meagan	6-0	88	14.7	5-17	.294	0-2	.000	0-0	.000	7	4	11	1.8	5	0	8	7	0	4	10	1.7
05	Falslev, Kinley	10-0	62	6.2	4-15	.267	2-12	.167	0-0	.000	0	2	2	0.2	12	2	0	5	0	1	10	1.0
42	Franson, Taylor	9-0	60	6.7	3-7	.429	0-0	.000	0-0	.000	5	6	11	1.2	12	1	2	4	1	1	6	0.7
<b>Total</b>		<b>12</b>	<b>2400</b>	<b>200.0</b>	<b>286-767</b>	<b>.373</b>	<b>84-277</b>	<b>.303</b>	<b>162-220</b>	<b>.736</b>	<b>160</b>	<b>295</b>	<b>455</b>	<b>37.9</b>	<b>202</b>	<b>7</b>	<b>136</b>	<b>208</b>	<b>29</b>	<b>103</b>	<b>818</b>	<b>68.17</b>
<b>Opponents</b>			<b>2400</b>	<b>200.0</b>	<b>347-795</b>	<b>.436</b>	<b>91-275</b>	<b>.331</b>	<b>133-184</b>	<b>.723</b>	<b>171</b>	<b>346</b>	<b>517</b>	<b>43.1</b>	<b>213</b>	<b>2</b>	<b>226</b>	<b>198</b>	<b>53</b>	<b>102</b>	<b>918</b>	<b>76.50</b>

Team Statistics	USU	OPP
SCORING	818	918
Points Per Game	68.2	76.5
Scoring Margin	-8.3	-
FIELD GOALS-ATT	286-767	347-795
Field Goal Pct	.373	.436
3 POINT FG-ATT	84-277	91-275
3PT FG Pct	.303	.331
3PT Made Per Game	7.0	7.6
FREE THROWS-ATT	162-220	133-184
FT Pct	.736	.723
FT Made Per Game	13.5	11.1
REBOUNDS	455	517
Rebounds Per Game	37.9	43.1
Rebounds Margin	-5.2	-
ASSISTS	136	226
Assists Per Game	11.3	18.8
TURNOVERS	208	198
Turnovers Per Game	17.3	16.5
Turnovers Margin	-0.8	-
Assist/Turnover Ratio	0.7	1.1
STEALS	103	102
Steals Per Game	8.6	8.5
BLOCKS	29	53
Blocks Per Game	2.4	4.4
ATTENDANCE	5,119	6,506
Dates/Avg Per Date	6-853	6-1,084
Neutral Site #/Avg	-	0-0

Conf	Date	Opponent	W/L	Score	Att.
	11/09/21	WESTMINSTER (UT)	W	83-78	580
	11/13/21	CAL ST. FULLERTON	W	85-75	502
	11/16/21	at California	L	49-81	1,364
	11/19/21	LOYOLA MARYMOUNT	L	66-69	518
	11/23/21	at BYU	L	74-101	756
	11/27/21	at Southeastern La.	W	73-71	400
	12/01/21	DIXIE ST.	W	81-64	2,737
	12/08/21	ARKANSAS ST.	W	66-65	348
	12/11/21	at Ball St.	L	55-81	1,045
*	12/20/21	at Montana	L	80-103	2,262
*	12/31/21	AIR FORCE	L	52-65	434
*	01/03/22	at Nevada	L	54-65	679

\* = Conference game

Score by Periods	1st	2nd	3rd	4th	Total
Utah St.	181	187	221	229	818
Opponents	231	252	227	208	918

## UTAH STATE CONFERENCE STATISTICS

Conf: 0-2 Home: 0-1 Away: 0-1 Neutral: 0-0

#	Player	GP-GS	MIN	AVG	FG		3PT		FT		Rebounds				PF	DQ	A	TO	BLK	STL	PTS	AVG
					FG-FGA	FG%	3FG-FGA	3FG%	FT-FTA	FT%	OFF	DEF	TOT	AVG								
21	Randhawa, Kaylin	1-1	33	33.0	5-14	.357	1-7	.143	1-1	1.000	0	7	7	7.0	2	0	1	5	1	0	12	12.0
04	Stafford, E'Lease	2-2	70	35.0	9-20	.450	1-4	.250	3-4	.750	7	11	18	9.0	4	0	1	4	1	0	22	11.0
23	Latone, Shyla	2-2	63	31.5	7-20	.350	3-11	.273	3-3	1.000	1	6	7	3.5	3	0	5	9	1	3	20	10.0
32	Quezada, Adryana	1-1	33	33.0	4-9	.444	1-1	1.000	0-0	.000	3	4	7	7.0	1	0	3	2	1	3	9	9.0
03	Hawthorne, Laci	2-2	55	27.5	5-13	.385	0-0	.000	7-10	.700	4	10	14	7.0	6	0	1	5	2	2	17	8.5
14	Mensah, Manna	2-2	61	30.5	5-17	.294	1-2	.500	6-9	.667	2	4	6	3.0	1	0	0	8	0	1	17	8.5
15	Wikstrom, Olivia	2-0	40	20.0	3-14	.214	0-6	.000	0-0	.000	2	2	4	2.0	1	0	3	4	0	4	6	3.0
05	Falslev, Kinley	2-0	16	8.0	1-3	.333	1-3	.333	0-0	.000	0	1	1	0.5	1	0	0	0	0	1	3	1.5
42	Franson, Taylor	2-0	25	12.5	0-3	.000	0-0	.000	0-0	.000	2	4	6	3.0	3	0	1	2	0	1	0	0.0
01	Kamakawiwo'ole, Kamalu	1-0	4	4.0	0-0	.000	0-0	.000	0-0	.000	0	0	0	0.0	3	0	0	2	0	0	0	0.0
<b>Total</b>		<b>2</b>	<b>400</b>	<b>200.0</b>	<b>39-113</b>	<b>.345</b>	<b>8-34</b>	<b>.235</b>	<b>20-27</b>	<b>.741</b>	<b>24</b>	<b>54</b>	<b>78</b>	<b>39.0</b>	<b>25</b>	<b>0</b>	<b>15</b>	<b>42</b>	<b>6</b>	<b>15</b>	<b>106</b>	<b>53.00</b>
<b>Opponents</b>			<b>400</b>	<b>200.0</b>	<b>54-143</b>	<b>.378</b>	<b>10-41</b>	<b>.244</b>	<b>12-18</b>	<b>.667</b>	<b>37</b>	<b>54</b>	<b>91</b>	<b>45.5</b>	<b>30</b>	<b>0</b>	<b>33</b>	<b>25</b>	<b>4</b>	<b>22</b>	<b>130</b>	<b>65.00</b>

Team Statistics	USU	OPP
SCORING	106	130
Points Per Game	53.0	65.0
Scoring Margin	-12.0	-
FIELD GOALS-ATT	39-113	54-143
Field Goal Pct	.345	.378
3 POINT FG-ATT	8-34	10-41
3PT FG Pct	.235	.244
3PT Made Per Game	4.0	5.0
FREE THROWS-ATT	20-27	12-18
FT Pct	.741	.667
FT Made Per Game	10.0	6.0
REBOUNDS	78	91
Rebounds Per Game	39.0	45.5
Rebounds Margin	-6.5	-
ASSISTS	15	33
Assists Per Game	7.5	16.5
TURNOVERS	42	25
Turnovers Per Game	21.0	12.5
Turnovers Margin	-8.5	-
Assist/Turnover Ratio	0.4	1.3
STEALS	15	22
Steals Per Game	7.5	11.0
BLOCKS	6	4
Blocks Per Game	3.0	2.0
ATTENDANCE	434	679
Dates-Avg Per Date	1-434	1-679
Neutral Site #-Avg	-	0-0

Date	Opponent	W/L	Score	Att.
12/31/21	AIR FORCE	L	52-65	434
01/03/22	at Nevada	L	54-65	679

Score by Periods	1st	2nd	3rd	4th	Total
Utah St.	29	24	24	29	106
Opponents	29	40	31	30	130

## NEW MEXICO GAME-BY-GAME

Opponent	Date	Score	Total		3-Pointers		Free throws		Rebounds				PF	A	TO	BLK	STL	PTS	AVG
			FG-FGA	PCT	3FG-3FGA	PCT	FT-FTA	PCT	OFF	DEF	TOT	AVG							
Lamar University	11/09/2021	71-54 W	26-57	.456	6-26	.231	13-15	.867	9	29	38	38.0	20	14	15	2	8	71	71.0
Northern N.M.	11/12/2021	96-40 W	35-70	.500	10-24	.417	16-25	.640	21	33	54	46.0	9	23	15	1	15	96	83.5
Prairie View	11/16/2021	88-71 W	32-68	.471	9-23	.391	15-24	.625	11	36	47	46.3	11	20	16	7	11	88	85.0
at Houston	11/20/2021	60-89 L	21-49	.429	10-27	.370	8-9	.889	10	23	33	43.0	15	16	34	1	9	60	78.8
Houston Baptist	11/23/2021	76-58 W	31-69	.449	8-30	.267	6-6	1.000	7	30	37	41.8	12	13	9	11	15	76	78.2
vs SFA	11/26/2021	66-71 L	23-54	.426	10-24	.417	10-12	.833	9	25	34	40.5	22	12	28	3	7	66	76.2
vs La.-Monroe	11/27/2021	66-45 W	24-63	.381	12-33	.364	6-8	.750	8	31	39	40.3	12	15	11	4	9	66	74.7
vs Texas Tech	11/28/2021	75-82 L	26-55	.473	9-22	.409	14-15	.933	6	13	19	37.6	14	20	12	4	4	75	74.8
Grambling	11/30/2021	86-50 W	35-66	.530	8-22	.364	8-18	.444	15	33	48	38.8	14	22	10	3	11	86	76.0
New Mexico St.	12/03/2021	77-58 W	28-57	.491	13-24	.542	8-11	.727	9	25	34	38.3	13	18	21	5	10	77	76.1
at New Mexico St.	12/05/2021	73-66 W	27-55	.491	9-23	.391	10-17	.588	13	28	41	38.5	12	14	19	4	9	73	75.8
at Arizona	12/12/2021	60-77 L	21-55	.382	7-22	.318	11-13	.846	8	25	33	38.1	11	11	17	2	7	60	74.5
UTEP	12/19/2021	78-66 W	32-60	.533	10-23	.435	4-8	.500	11	27	38	38.1	16	15	19	7	12	78	74.8
at Boise St.	12/31/2021	72-68 W	29-63	.460	6-19	.316	8-14	.571	5	18	23	37.0	14	16	6	4	13	72	74.6
UNLV	01/03/2022	71-68 W	24-64	.375	8-25	.320	15-17	.882	10	30	40	37.2	11	12	11	5	2	71	74.3
<b>Total</b>		<b>1115</b>	<b>414-905</b>	<b>.457</b>	<b>135-367</b>	<b>.368</b>	<b>152-212</b>	<b>.717</b>	<b>152</b>	<b>406</b>	<b>558</b>	<b>37.2</b>	<b>206</b>	<b>241</b>	<b>243</b>	<b>63</b>	<b>142</b>	<b>1115</b>	<b>74.3</b>
Opponents		963	368-958	.384	90-291	.309	137-201	.682	205	369	574	38.3	214	204	252	38	122	963	64.2

## OPPONENT GAME-BY-GAME

Opponent	Date	Score	Total		3-Pointers		Free throws		Rebounds				PF	A	TO	BLK	STL	PTS	AVG
			FG-FGA	PCT	3FG-3FGA	PCT	FT-FTA	PCT	OFF	DEF	TOT	AVG							
Lamar University	11/09/2021	71-54 W	18-52	.346	7-25	.280	11-23	.478	11	24	35	35.0	16	10	16	2	7	54	54.0
Northern N.M.	11/12/2021	96-40 W	16-58	.276	4-23	.174	4-6	.667	11	18	29	32.0	17	7	23	6	11	40	47.0
Prairie View	11/16/2021	88-71 W	26-84	.310	9-20	.450	10-13	.769	24	29	53	39.0	20	18	18	2	9	71	55.0
at Houston	11/20/2021	60-89 L	35-70	.500	12-25	.480	7-10	.700	14	18	32	37.3	14	26	18	5	18	89	63.5
Houston Baptist	11/23/2021	76-58 W	20-63	.317	5-18	.278	13-14	.929	14	31	45	38.8	6	6	19	2	4	58	62.4
vs SFA	11/26/2021	66-71 L	25-55	.455	3-13	.231	18-26	.692	9	22	31	37.5	18	13	20	2	9	71	63.8
vs La.-Monroe	11/27/2021	66-45 W	20-66	.303	2-7	.286	3-4	.750	15	32	47	38.9	10	9	16	1	5	45	61.1
vs Texas Tech	11/28/2021	75-82 L	31-55	.564	7-14	.500	13-19	.684	11	24	35	38.4	11	21	15	2	5	82	63.8
Grambling	11/30/2021	86-50 W	19-55	.345	1-15	.067	11-16	.688	5	19	24	36.8	16	9	14	3	4	50	62.2
New Mexico St.	12/03/2021	77-58 W	25-64	.391	1-9	.111	7-11	.636	14	22	36	36.7	18	8	19	1	11	58	61.8
at New Mexico St.	12/05/2021	73-66 W	26-67	.388	7-22	.318	7-9	.778	15	19	34	36.5	18	13	16	0	8	66	62.2
at Arizona	12/12/2021	60-77 L	27-68	.397	13-36	.361	10-17	.588	16	26	42	36.9	8	19	10	6	11	77	63.4
UTEP	12/19/2021	78-66 W	25-66	.379	9-24	.375	7-11	.636	16	20	36	36.8	14	15	17	1	12	66	63.6
at Boise St.	12/31/2021	72-68 W	26-61	.426	5-22	.227	11-14	.786	16	34	50	37.8	12	17	21	3	2	68	63.9
UNLV	01/03/2022	71-68 W	29-74	.392	5-18	.278	5-8	.625	14	31	45	38.3	16	13	10	2	6	68	64.2
<b>Total</b>		<b>963</b>	<b>368-958</b>	<b>.384</b>	<b>90-291</b>	<b>.309</b>	<b>137-201</b>	<b>.682</b>	<b>205</b>	<b>369</b>	<b>574</b>	<b>38.3</b>	<b>214</b>	<b>204</b>	<b>252</b>	<b>38</b>	<b>122</b>	<b>963</b>	<b>64.2</b>
New Mexico		1115	414-905	.457	135-367	.368	152-212	.717	152	406	558	37.2	206	241	243	63	142	1115	74.3

**NEW MEXICO GAME-BY-GAME LEADERS**

Opponent	Date	Score	Points	Rebounds	Assists	Steals	Blocked shots
LAMAR	11/09/21	71-54	16-Antonia Anderson	6-Aniyah Augmon Jaedyn De La Cerda	9-LaTora Duff	3-Aniyah Augmon	1-Antonia Anderson LaTora Duff
NORTHERN N.M.	11/12/21	96-40	17-Viane Cumber	11-Nevaeh Parkinson	5-LaTora Duff	3-Shaiquel McGruder Jaedyn De La Cerda	1-Antonia Anderson
PRAIRIE VIEW	11/16/21	88-71	30-Shaiquel McGruder	9-Antonia Anderson	12-LaTora Duff	4-Shaiquel McGruder	4-LaTora Duff
at Houston	11/20/21	60-89	16-LaTora Duff	5-Paula Reus	7-Paula Reus	3-LaTora Duff	1-Antonia Anderson
HOUSTON BAPTIST	11/23/21	76-58	20-Shaiquel McGruder	10-Shaiquel McGruder	4-Jaedyn De La Cerda LaTora Duff	4-LaTora Duff	5-Antonia Anderson
vs SFA	11/26/21	66-71	18-Jaedyn De La Cerda	8-Antonia Anderson	5-Antonia Anderson	3-LaTora Duff	2-Antonia Anderson
vs La.-Monroe	11/27/21	66-45	15-Jaedyn De La Cerda	11-Shaiquel McGruder	5-Jaedyn De La Cerda	3-Shaiquel McGruder	1-LaTascya Duff Paula Reus Nevaeh Parkinson Shaiquel McGruder
vs Texas Tech	11/28/21	75-82	21-LaTascya Duff	5-Shaiquel McGruder	9-LaTora Duff	2-LaTora Duff	3-Shaiquel McGruder
GRAMBLING	11/30/21	86-50	22-Shaiquel McGruder	10-Shaiquel McGruder	6-LaTora Duff	3-Shaiquel McGruder	2-Antonia Anderson
NEW MEXICO ST.	12/03/21	77-58	22-LaTascya Duff	8-Jaedyn De La Cerda	4-Jaedyn De La Cerda Shaiquel McGruder	3-Shaiquel McGruder Aniyah Augmon	2-Shaiquel McGruder
at New Mexico St.	12/05/21	73-66	24-LaTora Duff	12-Antonia Anderson	6-Paula Reus	3-Antonia Anderson	2-Paula Reus Antonia Anderson
at Arizona	12/12/21	60-77	15-Paula Reus	9-Antonia Anderson	5-Antonia Anderson	2-Jaedyn De La Cerda Shaiquel McGruder	1-Paula Reus Shaiquel McGruder
UTEP	12/19/21	78-66	20-LaTascya Duff	14-Shaiquel McGruder	6-Paula Reus LaTora Duff	4-Paula Reus	5-Shaiquel McGruder
at Boise St.	12/31/21	72-68	19-Shaiquel McGruder	7-LaTora Duff	7-LaTora Duff	5-Antonia Anderson	3-Shaiquel McGruder
UNLV	01/03/22	71-68	17-Shaiquel McGruder	15-Shaiquel McGruder	4-Jaedyn De La Cerda LaTora Duff	2-LaTora Duff	2-Paula Reus LaTora Duff

## NEW MEXICO GAME-BY-GAME POINTS-REBOUNDS-ASSISTS

Opponent	Date	Score		1	4	5	10	11	12	13	21	23	30	32
				RENCZES,RE	DUFF,LATAS	DUFF,LATOR	VAN BENNEK	SEREN,ZEYN	AUGMON,ANI	MCGRUDER,S	CURTIS,MAC	DE LA CERD	REUS,PAULA	ANDERSON,A
Lamar University	11/09/2021	71-54	W	DNP	DNP	10-3-9	4-3-0	1-4-1	8-6-0	15-5-0	DNP	15-6-2	DNP	16-5-1
Northern N.M.	11/12/2021	96-40	W	0-2-3	3-0-0	7-2-5	7-4-1	6-4-1	6-4-3	12-4-0	12-3-2	8-2-4	DNP	7-6-2
Prairie View	11/16/2021	88-71	W	DNP	3-0-1	17-8-12	1-0-0	DNP	1-6-1	30-7-0	DNP	13-7-3	1-4-1	19-9-2
at Houston	11/20/2021	60-89	L	DNP	11-2-1	16-3-2	2-2-1	0-0-0	0-1-0	0-4-1	0-0-0	14-2-2	7-5-7	6-3-1
Houston Baptist	11/23/2021	76-58	W	6-0-1	6-5-1	11-2-4	0-1-0	0-0-0	0-2-1	20-10-0	0-0-0	17-3-4	0-2-1	11-3-0
vs SFA	11/26/2021	66-71	L	DNP	15-3-1	17-5-2	0-3-0	DNP	0-0-0	2-1-0	DNP	18-2-1	4-3-2	5-8-5
vs La.-Monroe	11/27/2021	66-45	W	1-0-1	12-2-1	8-2-4	0-1-0	2-3-2	1-2-1	8-11-0	2-1-0	15-5-5	2-1-1	3-9-0
vs Texas Tech	11/28/2021	75-82	L	DNP	21-4-2	7-1-9	DNP	DNP	0-0-0	20-5-1	DNP	13-2-7	0-2-1	14-2-0
Grambling	11/30/2021	86-50	W	1-0-1	7-3-4	10-3-6	2-2-1	2-2-0	3-4-3	22-10-0	3-0-1	8-3-1	6-4-4	12-5-1
New Mexico St.	12/03/2021	77-58	W	DNP	22-6-2	17-2-3	0-0-0	DNP	3-2-1	8-7-4	0-0-0	15-8-4	9-1-2	3-2-1
at New Mexico St.	12/05/2021	73-66	W	DNP	9-3-1	24-4-5	DNP	DNP	0-1-0	17-6-0	DNP	1-4-0	6-6-6	16-12-2
at Arizona	12/12/2021	60-77	L	DNP	8-8-0	14-3-4	0-0-0	DNP	0-1-0	8-1-0	DNP	7-5-1	15-0-1	8-9-5
UTEP	12/19/2021	78-66	W	DNP	20-6-1	17-4-6	0-0-0	DNP	0-0-0	18-14-2	0-3-0	11-3-0	4-1-6	8-5-0
at Boise St.	12/31/2021	72-68	W	DNP	16-2-2	8-7-7	0-0-0	DNP	0-0-0	19-4-0	0-0-0	13-4-2	9-2-1	7-2-4
UNLV	01/03/2022	71-68	W	DNP	14-1-1	14-4-4	0-0-0	DNP	0-1-1	17-15-2	0-0-0	15-5-4	7-7-0	4-4-0

Opponent	Date	Score		33	34
				CUMBER,VIA	PARKINSON,
Lamar University	11/09/2021	71-54	W	2-4-0	0-0-1
Northern N.M.	11/12/2021	96-40	W	17-4-1	11-11-1
Prairie View	11/16/2021	88-71	W	3-2-0	DNP
at Houston	11/20/2021	60-89	L	4-2-1	0-0-0
Houston Baptist	11/23/2021	76-58	W	3-4-0	2-0-1
vs SFA	11/26/2021	66-71	L	5-3-1	DNP
vs La.-Monroe	11/27/2021	66-45	W	10-0-0	2-1-0
vs Texas Tech	11/28/2021	75-82	L	0-0-0	DNP
Grambling	11/30/2021	86-50	W	6-1-0	4-6-0
New Mexico St.	12/03/2021	77-58	W	0-1-1	DNP
at New Mexico St.	12/05/2021	73-66	W	0-0-0	DNP
at Arizona	12/12/2021	60-77	L	0-0-0	DNP
UTEP	12/19/2021	78-66	W	DNP	DNP
at Boise St.	12/31/2021	72-68	W	0-1-0	DNP
UNLV	01/03/2022	71-68	W	DNP	DNP

**NEW MEXICO GAME HIGHS**

<b>POINTS</b>	96	Northern N.M. (11/12/2021)
	88	Prairie View (11/16/2021)
	86	Grambling (11/30/2021)
	78	UTEP (12/19/2021)
	77	New Mexico St. (12/03/2021)
<b>FIELD GOALS MADE</b>	35	Grambling (11/30/2021)
	35	Northern N.M. (11/12/2021)
<b>FIELD GOAL ATTEMPTS</b>	70	Northern N.M. (11/12/2021)
	69	Houston Baptist (11/23/2021)
<b>FIELD GOAL PERCENTAGE</b>	.533 (32-60)	UTEP (12/19/2021)
	.530 (35-66)	Grambling (11/30/2021)
<b>3 PT FG MADE</b>	13	New Mexico St. (12/03/2021)
	12	vs La.-Monroe (N) (11/27/2021)
<b>3 PT FG ATTEMPTS</b>	33	vs La.-Monroe (N) (11/27/2021)
	30	Houston Baptist (11/23/2021)
<b>3 PT FG PERCENTAGE</b>	.542 (13-24)	New Mexico St. (12/03/2021)
	.435 (10-23)	UTEP (12/19/2021)
<b>FREE THROWS MADE</b>	16	Northern N.M. (11/12/2021)
	15	UNLV (01/03/2022)
	15	Prairie View (11/16/2021)
<b>FREE THROW ATTEMPTS</b>	25	Northern N.M. (11/12/2021)
	24	Prairie View (11/16/2021)
<b>FREE THROW PERCENTAGE</b>	1.000 (6-6)	Houston Baptist (11/23/2021)
	.933 (14-15)	vs Texas Tech (N) (11/28/2021)
<b>REBOUNDS</b>	54	Northern N.M. (11/12/2021)
	48	Grambling (11/30/2021)
<b>ASSISTS</b>	23	Northern N.M. (11/12/2021)
	22	Grambling (11/30/2021)
<b>STEALS</b>	15	Houston Baptist (11/23/2021)
	15	Northern N.M. (11/12/2021)
<b>BLOCKED SHOTS</b>	11	Houston Baptist (11/23/2021)
	7	UTEP (12/19/2021)
	7	Prairie View (11/16/2021)
<b>TURNOVERS</b>	34	at Houston (11/20/2021)
	28	vs SFA (N) (11/26/2021)
<b>FOULS</b>	23	vs SFA (N) (11/26/2021)
	20	Lamar University (11/09/2021)



## NEW MEXICO INDIVIDUAL GAME HIGHS

<b>POINTS</b>	30		Shaiquel McGruder vs Prairie View (11/16/2021)
	24		LaTora Duff at New Mexico St. (12/05/2021)
	22		LaTascya Duff vs New Mexico St. (12/03/2021)
	22		Shaiquel McGruder vs Grambling (11/30/2021)
	21		LaTascya Duff vs Texas Tech (N) (11/28/2021)
<b>FIELD GOALS MADE</b>	13		Shaiquel McGruder vs Prairie View (11/16/2021)
	11		Shaiquel McGruder vs Grambling (11/30/2021)
<b>FIELD GOAL ATTEMPTS</b>	19		Jaedyn De La Cerda vs Lamar University (11/09/2021)
	18		Shaiquel McGruder vs Prairie View (11/16/2021)
<b>FIELD GOAL PERCENTAGE (min 5 made)</b>	1.000	(7-7)	Shaiquel McGruder vs Lamar University (11/09/2021)
	.875	(7-8)	Paula Reus at Arizona (12/12/2021)
<b>3 PT FG MADE</b>	5		LaTascya Duff vs UTEP (12/19/2021)
	5		LaTora Duff at New Mexico St. (12/05/2021)
	5		LaTora Duff vs New Mexico St. (12/03/2021)
	5		LaTascya Duff vs Texas Tech (N) (11/28/2021)
<b>3 PT FG ATTEMPTS</b>	10		LaTora Duff at Arizona (12/12/2021)
	9		LaTascya Duff vs UTEP (12/19/2021)
	9		LaTascya Duff vs Texas Tech (N) (11/28/2021)
	9		LaTascya Duff vs SFA (N) (11/26/2021)
	9		Jaedyn De La Cerda at Houston (11/20/2021)
	9		LaTora Duff vs Lamar University (11/09/2021)
<b>3 PT FG PERCENTAGE (min 2 made)</b>	1.000	(4-4)	LaTascya Duff at Boise St. (12/31/2021)
	1.000	(2-2)	Rebeka Renczes vs Houston Baptist (11/23/2021)
<b>FREE THROWS MADE</b>	8		LaTora Duff vs SFA (N) (11/26/2021)
	7		LaTora Duff vs UNLV (01/03/2022)
<b>FREE THROW ATTEMPTS</b>	9		LaTora Duff vs SFA (N) (11/26/2021)
	7		LaTora Duff vs UNLV (01/03/2022)
<b>FREE THROW PERCENTAGE (min 3 made)</b>	1.000	(7-7)	LaTora Duff vs UNLV (01/03/2022)
	1.000	(6-6)	Antonia Anderson at Arizona (12/12/2021)
	1.000	(5-5)	Antonia Anderson vs Lamar University (11/09/2021)
	1.000	(4-4)	Shaiquel McGruder vs Texas Tech (N) (11/28/2021)
	1.000	(4-4)	LaTascya Duff vs Texas Tech (N) (11/28/2021)
	1.000	(4-4)	Shaiquel McGruder vs Prairie View (11/16/2021)
	1.000	(3-3)	Shaiquel McGruder vs UNLV (01/03/2022)
	1.000	(3-3)	LaTascya Duff vs UNLV (01/03/2022)
1.000	(3-3)	LaTascya Duff at Houston (11/20/2021)	
<b>REBOUNDS</b>	15		Shaiquel McGruder vs UNLV (01/03/2022)
	14		Shaiquel McGruder vs UTEP (12/19/2021)
<b>ASSISTS</b>	12		LaTora Duff vs Prairie View (11/16/2021)
	9		LaTora Duff vs Texas Tech (N) (11/28/2021)
	9		LaTora Duff vs Lamar University (11/09/2021)
<b>STEALS</b>	5		Antonia Anderson at Boise St. (12/31/2021)
	4		Paula Reus vs UTEP (12/19/2021)
	4		LaTora Duff vs Houston Baptist (11/23/2021)
	4		Shaiquel McGruder vs Prairie View (11/16/2021)
<b>BLOCKED SHOTS</b>	5		Shaiquel McGruder vs UTEP (12/19/2021)
	5		Antonia Anderson vs Houston Baptist (11/23/2021)
<b>TURNOVERS</b>	9		LaTora Duff vs UTEP (12/19/2021)
	8		Jaedyn De La Cerda at Houston (11/20/2021)
	8		LaTora Duff at Houston (11/20/2021)

## NEW MEXICO LEADERBOARD

### Points

##	Player	G	Pts	Pts/G
13	McGruder, Shaiquel	15	216	14.4
5	Duff, LaTora	15	197	13.1
23	De La Cerda, Jaedyn	15	183	12.2
4	Duff, LaTascya	14	167	11.9
32	Anderson, Antonia	15	139	9.3
30	Reus, Paula	13	70	5.4
33	Cumber, Vianè	13	50	3.8
12	Augmon, Aniyah	15	22	1.5
34	Parkinson, Nevaeh	6	19	3.2
21	Curtis, Mackenzie	9	17	1.9
10	van Bennekom, Kath	13	16	1.2
11	Seren, Zeyno	6	11	1.8
1	Renczes, Rebeka	4	8	2.0

### Scoring Average

##	Player	G	Pts	Pts/G
13	McGruder, Shaiquel	15	216	14.4
5	Duff, LaTora	15	197	13.1
23	De La Cerda, Jaedyn	15	183	12.2
4	Duff, LaTascya	14	167	11.9
32	Anderson, Antonia	15	139	9.3
30	Reus, Paula	13	70	5.4
33	Cumber, Vianè	13	50	3.8
34	Parkinson, Nevaeh	6	19	3.2
1	Renczes, Rebeka	4	8	2.0
21	Curtis, Mackenzie	9	17	1.9
11	Seren, Zeyno	6	11	1.8
12	Augmon, Aniyah	15	22	1.5
10	van Bennekom, Kath	13	16	1.2

### Field Goal Percentage

##	Player	FG	Att	Pct
13	McGruder, Shaiquel	99	158	.627
34	Parkinson, Nevaeh	7	14	.500
12	Augmon, Aniyah	6	12	.500
10	van Bennekom, Kath	6	12	.500
4	Duff, LaTascya	53	115	.461
32	Anderson, Antonia	52	113	.460
33	Cumber, Vianè	19	43	.442
5	Duff, LaTora	66	151	.437
30	Reus, Paula	29	69	.420
23	De La Cerda, Jaedyn	67	180	.372
11	Seren, Zeyno	3	10	.300
1	Renczes, Rebeka	2	7	.286
21	Curtis, Mackenzie	5	21	.238

### Field Goal Attempts

##	Player	G	Att	Att/G
23	De La Cerda, Jaedyn	15	180	12.0
13	McGruder, Shaiquel	15	158	10.5
5	Duff, LaTora	15	151	10.1
4	Duff, LaTascya	14	115	8.2
32	Anderson, Antonia	15	113	7.5

### Field Goals Made

##	Player	G	Made	Made/G
13	McGruder, Shaiquel	15	99	6.6
23	De La Cerda, Jaedyn	15	67	4.5
5	Duff, LaTora	15	66	4.4
4	Duff, LaTascya	14	53	3.8
32	Anderson, Antonia	15	52	3.5

## NEW MEXICO LEADERBOARD

### 3-Point FG Percentage

##	Player	3FG	Att	Pct
1	Renczes, Rebeka	2	4	.500
4	Duff, LaTascya	38	83	.458
5	Duff, LaTora	31	81	.383
32	Anderson, Antonia	13	35	.371
23	De La Cerda, Jaedyn	30	83	.361
33	Cumber, Vianè	10	29	.345
12	Augmon, Aniyah	1	3	.333
21	Curtis, Mackenzie	4	15	.267
30	Reus, Paula	4	17	.235
13	McGruder, Shaiquel	2	10	.200

### Free Throw Percentage

##	Player	Made	Att	Pct
33	Cumber, Vianè	2	2	1.000
5	Duff, LaTora	34	41	.829
4	Duff, LaTascya	23	28	.821
30	Reus, Paula	8	10	.800
21	Curtis, Mackenzie	3	4	.750
23	De La Cerda, Jaedyn	19	26	.731
13	McGruder, Shaiquel	16	24	.667
10	van Bennekom, Kath	4	6	.667
32	Anderson, Antonia	22	35	.629
34	Parkinson, Nevaeh	5	8	.625
12	Augmon, Aniyah	9	15	.600
11	Seren, Zeyno	5	9	.556
1	Renczes, Rebeka	2	4	.500

### Rebounds

##	Player	G	Reb	Reb/G
13	McGruder, Shaiquel	15	104	6.9
32	Anderson, Antonia	15	84	5.6
23	De La Cerda, Jaedyn	15	61	4.1
5	Duff, LaTora	15	53	3.5
4	Duff, LaTascya	14	45	3.2

### Rebounds Average

##	Player	G	Reb	Reb/G
13	McGruder, Shaiquel	15	104	6.9
32	Anderson, Antonia	15	84	5.6
23	De La Cerda, Jaedyn	15	61	4.1
5	Duff, LaTora	15	53	3.5
4	Duff, LaTascya	14	45	3.2

### 3-Point FG Attempts

##	Player	G	Att	Att/G
23	De La Cerda, Jaedyn	15	83	5.5
4	Duff, LaTascya	14	83	5.9
5	Duff, LaTora	15	81	5.4
32	Anderson, Antonia	15	35	2.3
33	Cumber, Vianè	13	29	2.2

### 3-Point FG Made

##	Player	G	Made	Made/G
4	Duff, LaTascya	14	38	2.7
5	Duff, LaTora	15	31	2.1
23	De La Cerda, Jaedyn	15	30	2.0
32	Anderson, Antonia	15	13	0.9
33	Cumber, Vianè	13	10	0.8

### Free Throw Attempts

##	Player	G	Att	Att/G
5	Duff, LaTora	15	41	2.7
32	Anderson, Antonia	15	35	2.3
4	Duff, LaTascya	14	28	2.0
23	De La Cerda, Jaedyn	15	26	1.7
13	McGruder, Shaiquel	15	24	1.6

### Free Throws Made

##	Player	G	Made	Made/G
5	Duff, LaTora	15	34	2.3
4	Duff, LaTascya	14	23	1.6
32	Anderson, Antonia	15	22	1.5
23	De La Cerda, Jaedyn	15	19	1.3
13	McGruder, Shaiquel	15	16	1.1

### Assists

##	Player	G	Ast	Ast/G
5	Duff, LaTora	15	82	5.5
23	De La Cerda, Jaedyn	15	40	2.7
30	Reus, Paula	13	33	2.5
32	Anderson, Antonia	15	24	1.6
4	Duff, LaTascya	14	18	1.3

### Steals

##	Player	G	Stl	Stl/G
13	McGruder, Shaiquel	15	27	1.8
32	Anderson, Antonia	15	25	1.7
5	Duff, LaTora	15	23	1.5
23	De La Cerda, Jaedyn	15	17	1.1
12	Augmon, Aniyah	15	15	1.0







Game 13 | New Mexico vs. UTEP
Dec. 19, 2021 | Albuquerque, N.M.

Game 14 | New Mexico at Boise State
Dec. 31, 2021 | Boise, Idaho



Official Basketball Box Score - Final
UTEP at New Mexico
12/19/21 The Pit, Albuquerque
2021-22 Women's Basketball

Game Time: 6:00 PM
Game Duration: 1:41
Attendance: 4,458

Officials: Melissa Barlow, Chuck Gonzalez, Benny Lura

Table with columns: NO., Name, Min, FG, 3P, FT, Rebounds, Fouls, TP, AS, TO, ST, Blocks, +/-

Shooting By Period table showing FG%, 3PT%, FT%, GM FG% across periods 1st to 4th.

Table with columns: NO., Name, Min, FG, 3P, FT, Rebounds, Fouls, TP, AS, TO, ST, Blocks, +/-

Shooting By Period table showing FG%, 3PT%, FT%, GM FG% across periods 1st to 4th.

Summary table with columns: UTEP, UNM, Points from Turnovers, Paint, Second Chance, Fast Breaks, Bench



Official Basketball Box Score - Final
New Mexico at Boise St.
12/31/21 ExtraMe Arena, Boise
2021-22 Women's Basketball

Game Time: 2:00 PM
Game Duration: 1:40
Attendance: 603

Officials: Randy Campbell, Tyler Trimble, Laura Rahe

Table with columns: NO., Name, Min, FG, 3P, FT, Rebounds, Fouls, TP, AS, TO, ST, Blocks, +/-

Shooting By Period table showing FG%, 3PT%, FT%, GM FG% across periods 1st to 4th.

Table with columns: NO., Name, Min, FG, 3P, FT, Rebounds, Fouls, TP, AS, TO, ST, Blocks, +/-

Shooting By Period table showing FG%, 3PT%, FT%, GM FG% across periods 1st to 4th.

Summary table with columns: UNM, BSU, Points from Turnovers, Paint, Second Chance, Fast Breaks, Bench

Game 15 | New Mexico vs UNLV
Jan. 3, 2022 | Albuquerque, N.M.



Official Basketball Box Score - Final
UNLV at New Mexico
01/03/22 The Pit, Albuquerque
2021-22 Women's Basketball

Game Time: 7:00 PM
Game Duration: 1:50
Attendance: 4,202

Officials: Lisa Jones, Tiffany Bird, Kyle Bacon

Table with columns: NO., Name, Min, FG, 3P, FT, Rebounds, Fouls, TP, AS, TO, ST, Blocks, +/-

Shooting By Period table showing FG%, 3PT%, FT%, GM FG% across periods 1st to 4th.

Table with columns: NO., Name, Min, FG, 3P, FT, Rebounds, Fouls, TP, AS, TO, ST, Blocks, +/-

Shooting By Period table showing FG%, 3PT%, FT%, GM FG% across periods 1st to 4th.

Summary table with columns: UNLV, UNM, Points from Turnovers, Paint, Second Chance, Fast Breaks, Bench