

THE UNIVERSITY OF NEW MEXICO SOFTBALL



2022 SOFTBALL NOTES | WEEK 5

@UNMLoboSB

www.GoLobos.com

#GoLobos

Allison Weiss, Assistant Director of Athletic Communications - Softball Contact | Email: allisonweiss@unm.edu | Cell: (661) 313-5402

2022 SCHEDULE

OVERALL: 15-5 • MW: 0-0 • H: 4-2 • A: 4-1 • N: 7-2

Date	Opponent	Time/Score
Candrea Classic Tucson, Ariz.		
2/11	Oregon State	W, 3-2
2/12	Southern Utah	W, 8-0 (6)
2/13	#2 Alabama	L, 8-3
2/13	at #9 Arizona	L, 1-0
Lamar Invitational Beaumont, Texas		
2/18	Ohio	W, 3-2
2/18	at Lamar	W, 2-1
2/19	at Lamar	W, 6-4 (12)
2/19	Creighton	L, 5-2
2/20	Ohio	W, 9-1 (5)
Lobo Classic Albuquerque, N.M.		
2/24	UTEP	W, 5-4
2/25	North Dakota State	W, 6-4
2/26	Buffalo	W, 6-2
2/27	Tarleton	W, 8-0 (5)
South Coast Invitational Santa Barbara, Calif.		
3/3	at UCSB	W, 3-1
3/3	at UCSB	W, 11-7
3/4	Wagner	W, 5-2
3/4	Santa Clara	W, 7-6
3/5	Santa Clara	W, 3-0
3/8	New Mexico State	L, 12-8
3/8	New Mexico State	L, 8-5
Dixie State Tournament St. George, Utah		
3/11	Southern Utah	12:30 p.m.
3/11	at Dixie State	5:30 p.m.
3/12	Wisconsin	10 a.m.
3/12	Maine	3 p.m.
3/13	Wisconsin	10 a.m.
3/18	at San José State *	7 p.m.
3/19	at San José State *	4 p.m.
3/20	at San José State *	1 p.m.
3/22	at New Mexico State	4 p.m.
3/25	Utah State *	6 p.m.
3/26	Utah State *	4 p.m.
3/27	Utah State *	12 p.m.
3/31	at BYU	5 p.m.
3/31	at BYU	7 p.m.
4/1	at BYU	1 p.m.
4/8	at Colorado State *	4 p.m.
4/9	at Colorado State *	1 p.m.
4/10	at Colorado State *	12 p.m.
4/14	Fresno State *	6 p.m.
4/15	Fresno State *	4 p.m.
4/16	Fresno State *	11 a.m.
4/22	at Nevada *	4 p.m.
4/23	at Nevada *	2 p.m.
4/24	at Nevada *	1 p.m.
4/29	UNLV *	6 p.m.
4/30	UNLV *	4 p.m.
5/1	UNLV *	12 p.m.
5/6	at Boise State *	4 p.m.
5/7	at Boise State *	4 p.m.
5/8	at Boise State *	12 p.m.
5/12	San Diego State *	6 p.m.
5/13	San Diego State *	4 p.m.
5/14	San Diego State *	12 p.m.

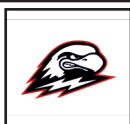
Bold denotes home games
 *denotes Mountain West game
 All times listed are Mountain Time
 Game times are subject to change

DIXIE STATE TOURNAMENT



NEW MEXICO Lobos

Record 15-5, Mountain West
 Head Coach Paula Congleton
 Record at UNM 62-136 (Fifth Season)
 Career Record (NCAA DI) 95-213 (Seventh Season)



SOUTHERN UTAH Thunderbirds

Record 1-14, Big Sky
 Head Coach Don Don Williams
 Record at SUU 26-58 (Third Season)
 Career Record Same



DIXIE STATE Trailblazers

Record 6-12, WAC
 Head Coach Randy Simkins
 Record at DSU 459-174 (13th Season)
 Career Record Same



WISCONSIN Badgers

Record 8-6, Big Ten
 Head Coach Yvette Healy
 Record at UW 340-222-1 (12th Season)
 Career Record 471-394-2 (18th Season)



MAINE Black Bears

Record 1-8, America East
 Head Coach Jordan Fitzpatrick
 Record at Maine 1-8 (First Season)
 Career Record Same

Media Information

Location:..... St. George, Utah
Date/Time:
 SUU Friday, March 11 - 12:30 p.m.
 DSU Friday, March 11 - 5:30 p.m.
 UW Saturday, March 12 - 10 a.m.
 UM Saturday, March 12 - 3:30 p.m.
 UW Sunday, March 13 - 10 a.m.
 *All times in MT

Live Video:..... golobos.com/sbwatch
Live Stats:..... golobos.com/sbstats
Social Media: @UNMLoboSB

Notes last updated: March 10, 2022

Series History

VS. SOUTHERN UTAH

Overall: 27-3
 Last Five: 4-1
 Last Meeting: 2/12/22 (W, 8-0 (6))
 Last Win: Same
 Series Trend: W1

VS. DIXIE STATE

Overall: First meeting
 Last Five: First meeting
 Last Meeting: First meeting
 Last Win: First meeting
 Series Trend: First meeting

VS. WISCONSIN

Overall: 1-2
 Last Five: 1-2
 Last Meeting: 3/15/15 (W, 3-1)
 Last Win: Same
 Series Trend: W1

VS. MAINE

Overall: First meeting
 Last Five: First meeting
 Last Meeting: First meeting
 Last Win: First meeting
 Series Trend: First meeting

BREAK OPEN THE RECORD BOOK

- The Lobos are off to their best start since 2012, when UNM started 9-0 and went 18-2 through its first 20 games.
- This season, the Lobos went on a 10-game win streak, the fourth-longest win streak in program history.

ON RECORD WATCH

- Andrea Howard has nine home runs this season, bringing her career total to 38 home runs. Her 38 home runs are second all-time in program history and is one away from tying the program record and two from breaking the record set by Stefanie Carramusa (2010-12).
- The senior outfielder has hit a home run in eight games this season, including a game with two home runs and a home run in the last two games.

PITCH PERFECT

- To date in the 2022 season, the Lobos had two pitchers throw double-digit strikeouts three times and twice



NEWS AND NOTES

GENERAL INFORMATION

Name of School.....	University of New Mexico
City/Zip.....	Albuquerque, N.M. 87106
Founded.....	1889 by Territorial Legislature
Enrollment.....	25,015
Nickname.....	Lobos
School Colors.....	Cherry & Silver
Conference.....	Mountain West
Affiliation.....	NCAA Division I
President	Dr. Garnett Stokes
Athletic Director.....	Eddie Nuñez

PROGRAM HISTORY

First Year of Softball.....	1978
All-Time Record.....	1030-1172-3
Mountain West Record.....	132-305-1
NCAA Tournament Appearances.....	3
1980 (AIAW), 1981 (AIAW) and 1983 (NCAA)	
Last NCAA Postseason Opponent.....	Cal State Fullerton
Last NCAA Postseason Result.....	CSUF won series 2-1
Conference Championships.....	3
1980 (Intermountain), 1981 (Intermountain) and 1983 (High Country)	

TEAM INFORMATION

2021 Overall Record.....	10-36
2019 MW Record.....	9-15 (7th)
Letterwinners Returning/Lost.....	13/6
Pitchers Returning/Lost.....	3/2
Starters Returning/Lost.....	6/3
Newcomers.....	10

SOFTBALL STAFF

Head Coach.....	Dr. Paula Congleton (New Mexico, 1984)
Year at UNM.....	Fifth season
Record at UNM (Pct.).....	62-136 (.313)
MW Record at UNM (Pct.).....	19-53 (.247)
Career Record (Years).....	90-211 (6 years)
Assistant Coach.....	Kristen Hawkins (Virginia, 2013)
Year at UNM.....	First Season
Assistant Coach....Brandon Maurer (Cal State Fullerton, 2015 & 18)	
Year at UNM.....	Second season
Volunteer Assistant Coach....	Mike Forsythe
Year at UNM.....	First season
Strength Coach.....	Joaquin Chavez
Academic Advisor.....	Madison Steinbrock
Head Athletic Trainer.....	Bob Waller
Athletic Trainer.....	Kellyanne Gangaware

COMMUNICATIONS

Softball Contact/Asst. Director of Comm.....	Allison Weiss
Email.....	allisonweiss@unm.edu
Cell Phone (Preferred).....	(661) 313-5402
Communications Office.....	(505) 925-5520

DIGITAL MEDIA

Athletics Website.....	GoLobos.com
Main University Web Site.....	unm.edu
Conference Website.....	TheMW.com
Twitter.....	@UNMLoboSB
Instagram.....	@UNMLoboSB
Facebook.....	@UNMLoboSB

FACILITIES

Venue.....	Lobo Softball Field
Dimensions.....	205-225-205
Capacity.....	1,500

thrown a near no-hitter.

- Making her first appearance in the circle for New Mexico, Amber Linton threw 10 strikeouts against Pac-12 school Oregon State. Of the 10 strikeouts, half came in the final nine outs, with three in the seventh as the Lobos held a one-run lead.
- Holding on to a 3-2 lead in the seventh, two Beaver batters reached base, but Linton closed with three strikeouts to close the door for the Lobo win.
- Emma Guindon recorded a career-high 11 strikeouts and allowed just one hit with no walks in the 8-0, six-inning win over Southern Utah on Feb. 12. With a 3-0 lead, Guindon was efficient in the circle, retiring the side on three strikeouts (two looking) in the fourth and recorded three more strikeouts in the fifth. Guindon struck out her seventh batter in-a-row to start the sixth for her final strikeout of the game.
- Against SUU, of Guindon's 83 pitches, 58 went for strikes, and of Linton's 137 pitches on Friday, 89 went for strikes
- The last time a Lobo pitcher recorded double-digit strikeouts was in 2019, with the two double-digit strikeouts only the fourth time in the last nine years that a Lobo has struck out 10 or more batters. However, in that timespan, the Lobos have never had two pitchers record 10 or more strikeouts in a game in the same year.
- At the Cardinal Classic, Guindon appeared in three games with a start and threw 12.1 innings, finishing with a 0.57 ERA. The RHP struck out 12, walked just two and allowed one run.
- Linton appeared in four games with two starts, and a complete game, and went 3-0 with a save as well. The sophomore threw a team-high 14.2 innings, striking out 13 with six walks, didn't allow a single extra-base hit and finished with a 0.95 ERA.
- As a staff, the Lobos finished with a 1.70 ERA at the Cardinal Classic, striking out 28 while walking 11.
- Guindon has a 7-1 record with 1.20 ERA with eight starts and 13 appearances, throwing three complete games, two shutouts and two one-hitters.
- Guindon and Linton have thrown the most innings on the team with 58.1 and 58.0, respectively, with Guindon striking out 52 and Linton 60. Guindon has walked just eight batters while Linton has walked 21.
- On the season, Linton carries a 2.80 ERA with nine starts, 13 appearances, three complete games, and three saves. Linton also has a 6-2 record.
- As a pitching unit, the Lobos have combined for a 2.35 ERA, with 121 strikeouts to 36 walks, and has allowed 122 hits, 70 runs (46 earned). The Lobos are third in the MW in ERA, second in opposing batting average (.228), fourth in strikeouts and hits allowed, third in walks allowed and leads in home runs allowed.
- Guindon ranks 29th in the NCAA in ERA, and has the best ERA in the conference.

HOME RUN HOWARD RETURNS

- After leading the Lobos with 12 home runs last season, Andrea Howard picked right back up from where she left off, hitting nine home runs this season. She has hit a home run in eight games, including a home run in the last two games.
- In the Feb. 26 game against Buffalo, Howard hit two solo home runs, her fourth time hitting two home runs in a game in her career.
- She added two in the Cardinal Classic, including a clutch two-run home run to tie the game at the top of the sixth against Lamar, allowing the Lobos to extend the game to extra innings. The Lobos went on to win 6-4 in 12 innings.
- Howard ranks 23rd in the NCAA in home runs and RBI, 21st in RBI per game and 31st in home runs per game.
- Besides leading in home runs, Howard leads the Lobos in batting average (.381), slugging percentage (.873), on-base percentage (.461), RBI (18), hits (24), runs scored (18) and total bases (55). She is also tied for the team high in doubles with four and second in walks (11).
- The Lobo outfielder also leads the team with nine multiple-RBI games, with five games of two RBI and four games with three RBI.

STRIKING FIRST

- The Lobos have scored 16 runs in the first inning, outscoring opponents 16-5, and 17 runs in the second inning, outscoring opponents 17-7 in the frame.
- UNM is 8-1 when scoring in the first inning and 11-3 when scoring first in a game.
- In the game against North Dakota State, the Lobos scored five runs in the first inning, and against Tarleton, the Lobos plated five runs on five hits in the second inning to break open the game after scoring two runs in the first.
- The Lobos are also 7-1 when scoring 6-9 runs in a game, scoring nine runs against Ohio and eight runs twice (against Southern Utah and Tarleton).
- Other trends: UNM is 11-0 when the Lobos outthit their opponent, 6-1 when they don't make an error and 10-1 when holding an opponent between 0-2 runs.

KEEP ON KEEPING ON

- Eight different Lobos enter the Dixie State Tournament with on-base streaks larger than one game, led by eight games for Peyton Robinson and Ashley Archuleta. Taryn Young has a seven-game streak, Briana Martinez has six, Leslie Romero has five, Janae Cameron has three and Reyann Tuck and Andrea Howard each have a two-game on-base streak.
- Peyton Robinson has an eight-game hitting streak, followed by five for Young, Romero and Archuleta and a two-game streak for Howard.

NO INTRO LEVEL HERE

- The Lobos added 10 newcomers in the offseason, with several called upon from game one that have become key players.
- New Mexico added two transfer pitchers in Amber Linton (Indiana) and Samantha Fohrman (Georgian Court), with Linton proving early on to be a game-changer in the circle, and three freshmen infielders that started opening day in Emma Bramson, Ashley Archuleta and Olivia Birkinshaw.
- UNM also added Janae Cameron behind the plate to provide veteran depth at the catcher position with Sydney Broderick.
- In the opening weekend, Archuleta started all four games at second, Bramson started all four games at

NEWS AND NOTES

third and Birkinshaw started two games, once as the designated player and once at first. Birkinshaw recorded her first collegiate hit against then-No. 9 Arizona, a double, and Archuleta recorded three hits on the weekend with her first against Oregon State. Archuleta also recorded a team-high three RBI in the win against Southern Utah, and Bramson's first hit came against No. 2 Alabama, which also produced her first RBI. In her first appearance with the Lobos, Cameron hit a two-run home run in the win over Southern Utah.

- Bramson hit her first collegiate home run against UTEP on Feb. 24, a solo home run to the stands in left.
- Archuleta has started all 20 games with Bramson starting 18. Bramson is second on the team in slugging percentage (.638), RBI (16), home runs (five) and total bases (37), while third in batting average (.328), on-base percentage (.385) and doubles (three) and is tied with Archuleta for second in hits (19). Archuleta is second in on-base percentage (.408), third in walks (10) and total bases (25), fifth in batting average (.297) and is tied for the team lead in doubles with four.

TAKE NOTICE OF BRAMSON

- Although she's just a freshman, Emma Bramson has been on a tear at the plate this season, among the leaders for the Lobos.
- At the South Coast Invitational, the infielder led the team with a 1.150 slugging percentage, eight hits, four home runs, nine RBI, three doubles and 23 total bases. The Valencia, Calif., native had five RBI in the second win over UCSB on Friday with a grand slam that made it 10-3 and a solo home run that made it 4-0. She also hit a home run in the 5th inning of the first win against UCSB that made it 3-0 Lobos. On the weekend, she had three multiple-hit games, four games with at least one RBI, including two RBI in the Lobos' win against Santa Clara on Saturday with a home run and a double, accounting for two of UNM's three runs.
- Nine of Bramson's RBI on the season have occurred with two outs, and the freshman is 4-for-5 with runners on third and less than two outs and 2-for-4 with bases loaded. She is also 5-for-7 as the leadoff hitter and 19-for-35 in successfully advancing runners.

THE HONOR IS ALL OURS

- The Lobos have won three MW weekly conference awards so far this season: one for pitcher, one for player and one for freshman.
- Amber Linton became the first Lobo to win MW Pitcher of the Week since Tess McPherson won back on Feb. 14, 2017.
- Linton earned the award following a dominating outing at the Lobo Classic in which the Lobo finished with a 0.98 ERA while making three appearances, two starts, throwing one complete game and earned a win and a save.
- Linton threw a team-high 14.1 innings and struck out 20, walking just four batters, and didn't allow a single extra-base hit in the 11 hits given up.
- After a 4-1 week at the Cardinal Classic, Emma Bramson and Andrea Howard have been named the Mountain West Freshman and Player of the Week, respectively, as announced by the conference on Tuesday.
- It is the second time that Howard has been selected for the player of the week honor and the first for the freshman Bramson.
- Howard had a sensational weekend at the plate, with a .471 batting average, a .941 slugging percentage, a .500 on-base percentage, finishing with eight hits, two doubles, two home runs, 16 total bases and eight RBI. Howard led the team in batting average, slugging percentage, on-base percentage, runs scored (five), hits, RBI, doubles, home runs and total bases.
- The Albuquerque native had multiple hits in three of the games, and went 3-for-4 in the extra-inning win over Lamar while also intentionally walked twice. Howard recorded three RBI in the 6-4, 12-inning win against the host Cardinals, had three RBI in the 9-1 (five innings) win over Ohio on Sunday and two RBI in the 4-2 win over Ohio on Friday.
- It wasn't just her efficiency at the plate that made Howard dangerous, it was also when she delivered her hits. Trailing 2-0 in the sixth in the second game against Lamar, Howard tied the game with a two-run home run which ultimately allowed the Lobos to go to extra innings. The outfielder was intentionally walked in the eighth and 10th inning and when she was pitched to in the 12th, hit a single up the middle that scored a run to make it 5-3 Lobos. UNM went on to win 6-4.
- Bramson was nearly as clutch, recording six hits and four RBI, while hitting .353 and having a .368 on-base percentage. The Valencia, Calif., native was 7-for-11 in advancing runners and had a hit in four of the games with two games with two hits.
- The infielder drove in the first run of the game in Friday's game against Lamar on a single up the middle, and in Saturday's game against Lamar, hit a sacrifice fly in the 11th inning to score a run, which proved crucial after Lamar scored in the bottom of the 11th.
- Against Ohio on Sunday, Bramson battled to draw a walk to start the second inning, working a full count on a nine-pitch at-bat where the freshman fouled off three-straight pitches and was behind 1-2 in the count. She eventually came around to score for the first run of the game to tie the game. In the next inning, the freshman single to right field to score Howard for the second run and in the fifth inning, Bramson ended the game with a single through the right side of the infield to score the nine run of the game and pushed the Lobos into run-rule territory, effectively ending the game.
- On the weekend, Bramson was second on the team in hits and RBI, tied for second in total bases, third in batting average, and fourth in on-base percentage.

SETTING THE TONE IN WEEK 1

- During the opening weekend, the Lobos had four gritty performances against four quality teams, two of which were ranked in the top 10 in the country. The Lobos won their first two games in different fashions, the first a one-run game against a Power 5 school in Oregon State, and a run-rule win over Southern Utah with the offense outlasting the Thunderbirds 7-1. The Lobos fell 8-3 to No. 2 Alabama and took No. 9 Arizona to the brink in a 1-0 final.
- The three runs scored by UNM were the most runs scored against the Crimson Tide in the Candrea Classic and was just the second team to score a run against Alabama (Oregon State scored one). In addition, UNM had six hits in the game, the most hits allowed by Alabama on the weekend.
- In the circle, Emma Guindon threw another stellar game with a complete game against the Wildcats, allowing just one run and striking out two, while Ashlyn Roberts threw 5.0 innings of relief to start the day against Alabama, striking out two as well. Samantha Fohrman made her Lobo debut against the Crimson Tide, throwing 1.0 inning and allowing one run on one hit.
- Against Alabama, the Lobos got on the board in the top of the sixth on a solo home run to left by Taryn Young. Young also had a single in the third for UNM's first hit of the game. Trailing 8-1 in the top of the seventh, the Lobos continued to battle, scoring two runs. Peyton Robinson led off the inning with a single through the right side followed by a single by Andrea Howard. Leslie Romero advanced both runners on her at-bat and Emma Bramson brought the first run in on a single through the right side. A sacrifice fly to center by Briana Martinez allowed Howard to tag for the second run and for the final runs of the game.
- Reyan Tuck currently has a three-game streak of reaching base and a three-game hitting streak following the Candrea Classic, with Ashley Archuleta, Janae Cameron and Olivia Birkinshaw having a one-game hit streak entering the Cardinal Classic.
- Leslie Romero led with four hits on the weekend and a .400 batting average, with Birkinshaw having a team-high .667 on-base percentage and Cameron having a team-best 1.333 slugging percentage following a two-run home run against SUU.
- The Lobos recorded three doubles and three home runs, scoring 14 runs on 20 hits. Nine players recorded at least one hit through the four games with six having multiple hits at the classic.

UNTIL THE JOB IS DONE

- The Lobo softball team played in the third-longest game in program history on Saturday afternoon, going 12 innings before defeating host Lamar 6-4. It was the second-straight game against the Cardinals for the Lobos, with UNM winning 2-1 in the first meeting.
- It wasn't until the sixth that the Lobos broke through. Pinch hitting for New Mexico to start the sixth, Olivia Birkinshaw hit a triple to left field, and on the first pitch of the next at-bat, Andrea Howard tied the game with a home run to center for her second home run of the season. Lamar threatened to break the tie at the bottom of the inning with two runners in scoring position, but Emma Guindon (who entered in the fourth inning) recorded the third out on a swinging strikeout.
- Another run wasn't scored until the 11th inning, when after Tuck was placed on second to start the inning and moved to third on a wild pitch, Bramson hit a sacrifice fly to center that allowed Tuck to score. However, Lamar matched the run in the bottom of the 11th on a single up the middle to score its runner that was placed on second.
- The Lobos finally put the game away in the 12th with a sacrifice bunt by Broderick moving Janae Cameron over to third and a sacrifice fly to center by Young bringing Cameron in. Birkinshaw and Howard kept the inning going with consecutive singles to the outfield, with Birkinshaw scoring on Howard's hit. Romero brought in the third run of the inning on a double to center that scored Howard.
- Leading 6-3, Lamar added one final run on a grounder to second that moved the runner on second over and a wild pitch that scored the run. The Cardinals did have the tying run at the plate following a walk but a grounder to Ashley Archuleta at second ended the game.



NEWS AND NOTES

- The Lobos used three pitchers in the game, with Samantha Fohrman going 3.0 innings before Guindon entered in the fourth and pitched 6.1 innings, with Amber Linton entering in the 10th to pitch the remaining 2.2 innings. Linton improved to 3-1 on the year with the decision.
- UNM struck out 10 batters with Guindon responsible for seven, Linton three and Fohrman one.

EMBRACE THE CHALLENGE

- New Mexico has a history of playing top teams in the non-conference season. Last season, the non-conference portion of the schedule was heavily loaded with Power 5 programs, including two Pac-12 schools and four Big 12 schools, and with two teams in the top four of the preseason ESPN.com/USA Softball Collegiate Top 25 poll and four in the top 10, as well as two in the top four of the 2021 USA Today / NFCA Division I Top 25 Poll and three in the top six.
- This season, the Lobos opened the season against two top-10 teams in No. 2/2 Alabama and No. 9/11 Arizona, two teams that competed in the Women's College World Series last season.
- UNM will face three NCAA Tournament participants from a year ago in Arizona, Alabama and BYU and four Power 5 schools (Oregon State, Arizona, Alabama and Wisconsin) in the non-conference portion of the schedule, and has renewed the in-state rivalry series with New Mexico State with three games planned between the Lobos and Aggies.
- In the latest polls, UNM has faced three opponents ranked in the top 25 in the USA Softball poll with a win over No. 24 Oregon State, and will face a Wisconsin team that is receiving votes in the USA Today/ NFCA Coaches poll.

SOMETHING TO PROVE

- UNM was picked seventh in the Mountain West preseason poll.
- Last season, New Mexico won a Mountain West series for the first time since May 2018 (when UNM took two out of three against San Diego State) with a series win against Boise State. In addition, it was the first series win over Boise State since 2016.
- The Lobos ended the season winning four of their final five games and three of their final four series, including two of their final three series.

WELCOME BACK

- Three seniors decided to use their extra year of eligibility. Outfielders Andrea Howard and Taryn Young, as well as catcher Sydney Broderick, returns to the Lobos for one more year and add some stability to the outfield and behind the plate.
- Howard led the Lobos last season in batting average (.336), slugging percentage (.728), hits (42), RBI (33), home runs (12), total bases (91) and walks (21). The Lobo was also second in on-base percentage (.427) and tied for the team lead in triples (two). Further, the Albuquerque native led the Mountain West in home runs, was tied for first in slugging percentage and total bases, tied for second in walks and tied for third in RBI. In just MW games, led the conference in home runs (eight), was second in slugging percentage (.809), third in total bases (55) and tied for third in walks (12). She finished the season on a six-game streak of reaching base.
- In addition, the Lobos return Emma Guindon, Ashlyn Roberts and Brianna Sanchez in the circle, Peyton Robinson and Diamond Sandoval in the outfield and Briana Martinez and Rachael Hathoot in the infield. With the graduation of Cameryn O'Grady, Martinez has moved to shortstop.

SCOUTING SOUTHERN UTAH

- This will be the second meeting of the season between the Lobos and the Thunderbirds, with the Lobos winning the first game at the Candrea Classic 8-0 in five innings. Since then, SUU has gone 1-10 and is 1-14 on the season. Their win came against Army (5-1).
- The Thunderbirds also played MW team SDSU, losing 11-0 (five innings), and had another common opponent in Oregon State, losing 19-0 (five innings).
- Southern Utah is led at the plate by Dream Weaver, who has a .200 batting average, and Jayne Sepulveda, who has eight hits, 13 total bases and a .302 slugging percentage. Reilly Williams and Sepulveda have the two home runs on the team and Williams is tied with Makall Whetten with a team-high three RBI.
- In the circle, SUU has used three pitchers, led by Keimon Winston who has appeared in 14 games with 12 starts and has thrown one complete game. The freshman has a 9.96 ERA and has struck out 19, walked 18, and allowed 85 hits and 59 runs (52 earned). Grace Owen has pitched in 26.0 innings with 13 appearances, three starts and a start. The junior has an 11.42 ERA with 32 walks and 18 strikeouts, 46 runs (33 earned) and 45 hits.
- SUU is 1-11 in neutral games.

SCOUTING DIXIE STATE

- Dixie State enters the weekend 6-12 overall, winning its last game against UC Davis on Sunday (6-5), but has gone 1-4 in the last five games.
- The Trailblazers have played three MW opponents so far in Colorado State (L, 12-0 in five), Utah State (won 9-5 and 5-4, lost 8-2) and Nevada (won 8-0 in five).
- DSU is hitting .287 on the season, led at the plate by Lauren Almeida at .409 with 18 hits (tied for the team high) and four doubles (tied for the team high), while also leading with 14 RBI. Marisa Rubio also has 18 hits, hitting .327, while Shea Clements leads the team with four home runs, a .577 slugging percentage and 30 total bases and has 17 hits. Clements and Kasey Crawford are 5-for-5 and 3-for-3, respectively, in stolen bases, with the team 16-for-19.
- The Trailblazers have used five pitchers, led by RHP Kate Dolinski, who has made six starts and appeared in seven games with two complete games and 27.1 innings. Dolinski has allowed 34 hits, 22 runs (16 earned) and 12 walks, striking out 19 and has a 4.10 ERA. Attlyn Johnston has thrown a team-high 31.0 innings with eight appearances and two starts, and has allowed 46 hits, 27 runs (22 earned) and 13 walks while striking out a team-high 34. Tyler Denhart has a team-best 4.06 ERA and has a save and two complete games in her five appearances and three starts. Denhart has walked six and struck out 20, pitching in 20.2 innings. As a staff, Dixie State has a 6.18 ERA and has allowed 153 hits, 109 runs (90 earned) with 94 strikeouts and 45 walks.
- Dixie State is 5-3 at home.

SCOUTING WISCONSIN

- Wisconsin is 8-6 on the season and has won its last two games. The Badgers have played seven ranked teams this season, winning against then-No. 15/12 Clemson 2-1 in eight innings and then-No. 24 UCF 9-1 in five innings. They lost to then-No. 3 UCLA (5-1), then-No. 11 Missouri (8-1), then-No. 19 Kentucky (5-2) and then-No. 13 Virginia Tech (5-4). The Badgers also have a win against RV Notre Dame (2-1).
- The Badgers played Colorado State in their last tournament, beating the Rams 7-3.
- Ally Miklesh leads Wisconsin at the plate with a .367 batting average and .500 on-base percentage and is one of three players with a home run. Kayla Konwent has a team-high 13 hits and has a home run as well. Jolie Fish has a team-high 10 RBI, Skylar Sirdashney leads with two triples and Ellie Hubbard leads with four doubles.
- In the circle, UW has used five pitchers, led by Ava Justman who has started 10 games and thrown a complete game. Justman has pitched in 33.0 innings, allowing 39 hits, 27 runs (21 earned), 24 strikeouts and eight walks, and carries a 4.45 ERA. Tessa Magnanimo has a 1.21 ERA with 17.1 innings in the circle and seven appearances, striking out 10 and walking one, allowing just 11 hits and three runs (all earned). As a team, Wisconsin has a 3.09 ERA, striking out 65 and walking 16.

SCOUTING MAINE

- Maine has played just nine games this season, going 1-8 with a win over Georgia Southern (14-4). The Black Bears have also faced North Dakota State twice, losing 8-2 and 12-2. Their other opponents include Tennessee-Martin, George Washington, Liberty and Charleston Southern.
- The Black Bears will also share common opponents with the Lobos in Utah State and BYU.
- Keely Clark leads the team with a .444 batting average and a .444 on-base percentage. Kelby Drews and Kya Enos each have nine hits, with Enos leading with three doubles, three triples, nine RBI and 21 total bases and each having one home run. Gabby Papushka leads with two home runs and has five RBI.
- Maine has used three pitchers, led by 19.1 innings by Gabbie Siciliano with seven appearances, three starts and a complete game. She has a 3.26 ERA with 20 hits, 12 runs (nine earned), two strikeouts and six walks. Emily Reid has also made three starts with seven appearances, and has pitched 16.2 innings with 31 hits, 24 runs (20 earned). As a team, the Black Bears have a 7.00 ERA, allowing 94 hits, 75 runs (54 earned), 24 strikeouts and 28 walks.

NEWS AND NOTES

STAT COMPARISON

	SVU	UW	UM	DSU
BA	.149	.217	.270	.287
R	17	57	31	67
H	47	75	61	128
2B	14	17	10	21
3B	1	2	4	0
HR	2	3	4	6
RBI	15	47	30	59
BB	26	55	12	46
SO	131	104	46	93
ERA	11.43	3.09	7.00	6.18
SO	47	65	24	94
BB	69	16	28	45
H	155	93	94	153
R	135	51	75	109
ER	105	42	54	90
DP	1	15	11	14
FLD%	.922	.954	.907	.946

Hitting
Pitching
Fld.

MOUNTAIN WEST INFORMATION

PRESEASON MOUNTAIN WEST POLL

Rk.	Team (1st-Place Votes)	Points
1.	UNLV (5)	57
	San Diego State (3)	57
3.	Fresno State (1)	43
	Boise State	43
5.	Nevada	42
6.	Colorado State	35
7.	New Mexico	17
8.	San José State	15
	Utah State	15

MOUNTAIN WEST PLAYERS OF THE WEEK

2022 MW Softball Player of the Week

Feb. 15: Janyssa Martin, OF, UNLV

FEB. 22: ANDREA HOWARD, OF, UNM

March 1: Ashley York, OF, CSU

March 8: Lexi Orozco, INF, USU

2022 MW Softball Pitcher of the Week

Feb. 15: Maggie Balint, SDSU

Feb. 22: Maggie Balint, SDSU

MARCH 1: AMBER LINTON, P, UNM

March 8: Maggie Balint, SDSU

2022 MW Softball Freshman of the Week

Feb. 15: Isabella Espinoza, INF, SDSU

FEB. 22: EMMA BRAMSON, INF., UNM

March 1: Dee Dee Hernandez, LHP, SDSU

March 8: Sofia Morales, OF, UNLV

ESPN.COM/USA SOFTBALL COLLEGIATE TOP 25

WEEK 3 • MARCH 1

Rk.	Team (1st Votes)	Pts.	Rec	Prev.
1.	Oklahoma (22)	15-0	620	1
2.	Alabama (2)	20-0	599	2
3.	Florida State	19-1	563	3
4.	Florida	21-1	544	4
5.	UCLA (1)	17-3	536	5
6.	Virginia Tech	14-3	509	6
7.	Washington	15-5	427	7
8.	Missouri	16-4	416	8
9.	Duke	16-3	395	12
10.	Oklahoma State	12-5	372	10
11.	Arkansas	14-4	347	11
12.	Kentucky	16-2	346	13
13.	Northwestern	15-4	328	14
14.	Oregon	16-3	305	15
15.	Clemson	12-6	299	9
16.	Arizona	15-4	252	16
17.	Michigan	13-6	210	19
18.	Tennessee	15-6	209	17
19.	Georgia	19-2	204	18
20.	Auburn	21-1	178	20
21.	LSU	17-6	124	T21
22.	South Florida	17-3	94	24
23.	Arizona State	13-5	77	23
24.	Oregon State	17-3	44	RV
25.	Louisiana	12-4	37	T21

Others receiving votes: UCF (30), Charlotte (20), Stanford (11), Texas (10), Notre Dame (6), **San Diego State (4)**, Southern Miss (3), Troy (2), USC Upstate (2), **Boise State (1)**, Texas A&M (1).

Bold: 2022 opponents

USA TODAY/ NFCA COACHES TOP 25 POLL

WEEK 4 • MARCH 8

Rk.	Team (1st Votes)	Pts.	Rec	Prev.
1	Oklahoma (32)	800	15-0	1
2	Alabama	768	20-0	2
3	Florida State	721	19-1	3
4	Florida	696	21-1	4
5	UCLA	680	17-3	5
6	Virginia Tech	628	14-3	6
7	Washington	575	15-5	7
8	Arizona	530	15-4	9
9	Kentucky	511	16-2	10
10	Oklahoma State	503	12-5	8
11	Oregon	470	16-3	12
12	Arkansas	445	14-4	11
13	Duke	417	16-3	13
14	Missouri	392	16-4	15
15	Georgia	343	19-2	16
16	Northwestern	331	15-4	17
17	Clemson	282	12-6	14
18	Tennessee	268	15-6	18
19	Michigan	255	13-6	19
20	Auburn	233	21-1	20
21	LSU	146	17-6	22
22	Louisiana	101	12-4	21
23	Arizona State	94	13-5	23
24	Notre Dame	50	16-4	25
25	Charlotte	42	18-3	RV

Others receiving votes: UCF (38), USF (36), Stanford (25), Liberty (7), Texas (7), **Boise State (2)**, **Oregon State (2)**, USC Upstate (1), **Wisconsin (1)**.

Bold: 2022 opponents

BY THE NUMBERS

Statistic	All Games	MW	MW Games
Batting Average:	.286	7th	--
Slugging Percentage:	.444	5th	--
On Base Percentage:	.361	6th	--
Runs Scored:	104	T-4th	--
Hits:	152	5th	--
RBIs:	97	4th	--
HRs:	19	3rd	--
Total Bases:	240	4th	--
ERA:	2.35	3rd	--
Opp. Batting Avg.:	.228	2nd	--
Batters Struck Out:	121	4th	--
Hits Allowed:	122	4th	--
Runs Allowed:	70	T-4th	--
Earned Runs Allowed:	46	3rd	--
Walks Allowed:	36	3rd	--
Home Runs Allowed:	3	1st	--
Fielding Percentage:	.958	6th	--
Putouts:	411	2nd	--
Fielding Double Plays:	5	T-6th	--
Caught Stealing By:	1	T-7th	--

MOUNTAIN WEST STANDINGS

SCHOOL	CONF	CPCT.	OVERALL	PCT.	STREAK
Boise State	0-0	.000	16-4	.800	L2
UNLV	0-0	.000	15-4	.789	W1
New Mexico	0-0	.000	15-5	.750	L2
San José State	0-0	.000	12-7	.632	W2
San Diego State	0-0	.000	13-9	.591	L1
Utah State	0-0	.000	8-10	.444	W1
Colorado State	0-0	.000	6-11	.353	L2
Nevada	0-0	.000	4-16	.200	L1
Fresno State	0-0	.000	3-15	.167	L1





Andrea Howard
OF | 5-6 | SR.
Albuquerque, N.M.



Briana Martinez
UT | 5-3 | JR.
Albuquerque, N.M.



Savana Martinez
C | 5-3 | R-FR.
Albuquerque, N.M.



Rachael Hathoot
INF | 5-8 | JR.
Albuquerque, N.M.



Taryn Young
OF | 5-8 | SR.
Anaheim, Calif.



Sydney Broderick
C | 5-4 | SR.
Mesa, Ariz.



Alexis Vigil
INF | 5-0 | SR.
Los Lunas, N.M.



Ashley Archuleta
INF | 5-4 | FR.
Rio Rancho, N.M.



McKenna Kostyszyn
P | 5-7 | FR.
Frisco, Texas



Savannah Braun
INF | 5-10 | SO.
Tualatin, Ore.



Leslie Romero
C | 5-6 | JR.
Gonzales, Calif.



Amber Linton
P | 6-0 | SO.
Franklin, Ind.



Emma Bramson
INF | 5-7 | FR.
Valencia, Calif.



Peyton Robinson
OF | 5-6 | SR.
Saginaw, Texas



Diamond Sandoval
OF | 5-3 | SO.
Norwalk, Calif.



Brianna Sanchez
P | 5-6 | JR.
West Covina, Calif.



Olivia Birkinshaw
UT | 5-10 | FR.
Santa Margarita, Calif.



Samantha Fohrman
P | 5-7 | JR.
Cottage Grove, Minn.



Emma Guindon
P | 5-9 | SR.
Tomball, Texas



Loran Walker
C / INF | 5-6 | FR.
Meridian, Idaho



Lauren Garcia
INF | 5-11 | FR.
El Paso, Texas



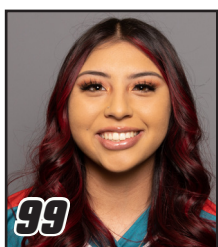
Janae Cameron
C | 5-9 | SR.
Windsor, Colo.



Ashlyn Roberts
P | 5-8 | SO.
Sammamish, Wash.



Reyan Tuck
1B | 6-0 | SR.
Hillsboro, Ore.



Aysiah Gonzalez
C | 5-7 | FR.
La Puente, Calif.



Paula Congleton
Head Coach



Kristen Hawkins
Assistant Coach



Brandon Maurer
Assistant Coach



Mike Forsythe
Volunteer Ast.



Kellyann Gangaware
Athletic Trainer

NUMERICAL ROSTER

#	NAME	POS	HT	YR	B/T	HOMETOWN (PREVIOUS SCHOOL)
00	Andrea Howard	OF	5-6	Sr.	L/L	Albuquerque, N.M. (La Cueva HS)
1	Briana Martinez	UT	5-3	Jr.	R/R	Albuquerque, N.M. (Rio Rancho HS)
2	Savana Martinez	C	5-3	RS-Fr.	R/R	Albuquerque, N.M. (Rio Rancho HS)
3	Rachael Hathoot	INF	5-8	Jr.	R/R	Albuquerque, N.M. (La Cueva HS)
4	Taryn Young	OF	5-8	Sr.	R/R	Anaheim, Calif. (Arizona)
5	Sydney Broderick	C	5-4	Sr.	R/R	Mesa, Ariz. (Desert Ridge HS)
6	Alexis Vigil	INF	5-0	Sr.	R/R	Los Lunas, N.M. (College of Southern Nevada)
7	Ashley Archuleta	INF	5-4	Fr.	L/R	Rio Rancho, N.M. (Cleveland HS)
10	McKenna Kostyszyn	P	5-7	Fr.	R/R	Frisco, Texas (Frisco Independence HS)
12	Savannah Braun	INF	5-10	So.	R/R	Tualatin, Ore. (Tualatin HS)
16	Leslie Romero	C	5-4	Jr.	R/R	Gonzales, Calif. (Salinas HS)
17	Amber Linton	P	6-0	So.	R/R	Franklin, Ind. (Indiana)
20	Emma Bramson	INF	5-7	Fr.	R/R	Valencia, Calif. (Valencia HS)
21	Peyton Robinson	OF	5-6	Sr.	L/R	Saginaw, Texas (Southern Nazarene)
24	Diamond Sandoval	OF	5-3	So.	R/R	Norwalk, Calif. (St. Paul HS)
25	Brianna Sanchez	P	5-6	Jr.	R/R	West Covina, Calif. (Bishop Amat HS)
27	Olivia Birkinshaw	UT	5-10	Fr.	R/R	Santa Margarita, Calif. (Mission Viejo HS)
28	Samantha Fohrman	P	5-7	Jr.	R/R	Cottage Grove, Minn. (Georgian Court)
34	Emma Guindon	P	5-9	Sr.	R/R	Tomball, Texas (Monterey Peninsula College)
42	Loran Walker	C/INF	5-6	Fr.	R/R	Meridian, Idaho (Rocky Mountain HS)
44	Lauren Garcia	INF	5-11	Fr.	R/R	El Paso, Texas (Montwood HS)
55	Janae Cameron	C	5-9	Sr.	R/R	Windsor, Colo. (Nebraska Omaha)
66	Ashlyn Roberts	P	5-8	So.	L/L	Sammamish, Wash. (Eastlake HS)
77	Reyan Tuck	1B	6-0	Sr.	R/R	Hillsboro, Ore. (Towson)
99	Aysiah Gonzalez	C	5-7	Fr.	R/R	La Puente, Calif. (Bishop Amat HS)

RETURNERS (10) - 2021 SEASON STATS

No.	Name	Pos.	Cl.	Avg.	GP-GS	AB	R	H	2B	3B	HR	RBI	SLG%	FLD%
00	Andrea Howard	OF	Sr.	.336	46-46	125	25	42	9	2	12	33	.728	.977
1	Briana Martinez	UT	So.	.186	43-43	102	8	19	5	1	1	10	.284	.960
3	Rachael Hathoot	INF	So.	.241	46-46	133	18	32	10	0	4	20	.406	.941
4	Taryn Young	OF	Sr.	.138	42-42	94	9	13	4	0	2	8	.245	.938
21	Peyton Robinson	OF	Jr.	.250	46-45	124	19	31	3	0	0	3	.274	.978

PITCHERS RETURNING (3) - 2021 SEASON STATS

No.	Name	Cl.	ERA	W-L	APP	GS	CG	SHO	SV	IP	SO	BF
25	Brianna Sanchez	So.	21.0	0-1	8	1	0	0/0	0	7.0	4	52
34	Emma Guindon	Jr.	5.00	6-21	30	27	12	0/1	0	141.1	46	718
66	Ashlyn Roberts	Fr.	5.25	2-2	24	8	1	0/1	1	56.0	24	277

KEY PLAYERS LOST (3) - 2021 SEASON STATS

No.	Name	Pos.	Cl.	Avg.	GP-GS	AB	R	H	2B	3B	HR	RBI	SLG%	FLD%
10	Cameryn O'Grady	SS	Sr.	.318	46-46	129	34	41	11	2	9	28	.643	.901
22	Izabella Owen	INF	Jr.	.261	40-40	115	7	30	3	0	1	11	.313	.892
32	Lauren Wilmert	C	Sr.	.125	36-31	80	6	10	1	0	1	5	.175	.947

PITCHERS LOST (1) - 2020 SEASON STATS

No.	Name	Cl.	ERA	W-L	APP	GS	CG	SHO	SV	IP	SO	BF
99	Kiana Spencer	Sr.	8.22	2-8	19	6	1	0/0	0	53.2	21	305

NEWCOMERS (10)

No.	Name	Pos.	No.	Name	Pos.
7	Ashley Archuleta	INF	28	Samantha Fohrman	P
10	McKenna Kostyszyn	P	42	Loran Walker	C/INF
17	Amber Linton	P	44	Lauren Garcia	INF
20	Emma Bramson	INF	55	Janae Cameron	C
27	Olivia Birkinshaw	UT	99	Aysiah Gonzalez	C

PRONUNCIATION GUIDE

00	ANDREA Howard	On-dray-uh
3	RACHAEL HATHOOT	Ray-chel Hat-hoot
4	TARYN Young	Tair-in
6	Alexis VIGIL	Vee-hill
10	McKenna KOSTYSZYN	Co-sti-shin
12	Savannah BRAUN	Bron
25	BRIANNA Sanchez	Bree-on-uh
34	Emma GUINDON	Ginden
77	REYAN Tuck	Ree-anne
99	AYSIAH Gonzales	Asia
HC	Paula CONGLETON	Cong-le-ton
AC	Brandon MAURER	Rhymes with "power"
AT	Kellyann GANGAWARE	Gang-uh-wear

CLASS

Seniors (8) (*Super Senior)

5	Sydney Broderick*	C
55	Janae Cameron	C
34	Emma Guindon	P
00	Andrea Howard*	OF
21	Peyton Robinson	OF
77	Reyan Tuck	IF
6	Alexis Vigil	INF
4	Taryn Young*	OF

Juniors (5)

28	Samantha Fohrman	P
3	Rachael Hathoot	INF
1	Briana Martinez	INF
16	Leslie Romero	C
25	Brianna Sanchez	P

Sophomores (4)

12	Savannah Braun	INF
17	Amber Linton	P
66	Ashlyn Roberts	P
20	Diamond Sandoval	OF

Freshmen (8)

7	Ashley Archuleta	INF
27	Olivia Birkinshaw	UT
20	Emma Bramson	INF
44	Lauren Garcia	INF
99	Aysiah Gonzalez	C
10	McKenna Kostyszyn	P
2	Savana Martinez (R-Fr.)	C
42	Loran Walker	C/INF

HOME STATE

Arizona (1)

5	Sydney Broderick	C
---	------------------	---

California (7)

27	Olivia Birkinshaw	UT
20	Emma Bramson	INF
99	Aysiah Gonzalez	C
16	Leslie Romero	OF
25	Brianna Sanchez	P
20	Diamond Sandoval	OF
4	Taryn Young	OF

Colorado (1)

55	Janae Cameron	C
----	---------------	---

Idaho (1)

42	Loran Walker	C/INF
----	--------------	-------

Indiana (1)

17	Amber Linton	P
----	--------------	---

New Mexico (6)

7	Ashley Archuleta	INF
3	Rachael Hathoot	INF
00	Andrea Howard	OF
1	Briana Martinez	UT
2	Savana Martinez	C
6	Alexis Vigil	INF

Minnesota (1)

28	Samantha Fohrman	P
----	------------------	---

Oregon (2)

12	Savannah Braun	INF
77	Reyan Tuck	1B

Texas (4)

44	Lauren Garcia	INF
34	Emma Guindon	P
10	McKenna Kostyszyn	P
21	Peyton Robinson	OF
66	Ashlyn Roberts	P

POSITION

Outfield (4)	Catcher (5)	1B (1)
Infield (6)	Pitcher (6)	UT (2)
C/INF (1)		





Paula Congleton

5th Head Coach in UNM Program History
Record at UNM: 62-136

NOTEWORTHY :

- Named the fifth head coach in program history on June 20, 2017
- Enters her fourth season at her alma mater
- Earned her 300th career victory on April 17, 2014
- Earned her 350th career victory on April 22, 2017
- Earned her 400th career victory on May 4, 2018
- Earned her first win at UNM against St. Mary's on Feb. 9, 2018 (4-1)

MORE NOTES ON COACH CONGLETON

- Spent 19 seasons at Santa Barbara City College with the Vaqueros molding the program into one of the elite programs in the WSC
- Three-time WSC Gold Division Coach of the Year
- 2011 Southern Cal Coaching Staff of the Year
- 2011 NFCA National Coaching Staff of the Year
- Led the Vaqueros to four Southern Cal Regional appearances and one trip to the Southern Cal Super Regional
- Guided the Vaqueros to their greatest success of the program, winning a Southern Cal Regional series and advancing to the Super Regional for the first time ever in 2016
- Led the 2016 SBCC squad to the second-most games in program history (30-14)
- The 2016 team finished third WSC Gold Division
- In 2011, led the Vaqueros to a program-record 31 wins (31-7 overall), leading the team to a WSC title and the Southern Cal Regional
- Four-time Scholar Athlete first baseman for the Lobos (3.89 GPA)
- Three-time All-American at New Mexico
- Received her Doctorate in educational administration in 2009
- Served as a full-time professor at SBCC teaching health, weight training and kinesiology
- Served as Associate Athletic Director and Coordinator of the Academic Achievement Zone for student-athletes at SBCC

COACHING EXPERIENCE

Head Coach:

2017-Present - New Mexico (62-136)
1998-2017 - Santa Barbara City Coll. (Calif.) (354-322)
1996-1998 - Cal. State University East Bay (33-77)

Graduate Assistant:

1986-1988 - New Mexico

Overall NCAA DI record (Fifth Season): 62-136

Overall NCAA record (Sixth Season): 95-213

ALMA MATER

New Mexico (1984)

TWITTER

Follow @CoachCongleton



2022 NEW MEXICO OVERALL STATISTICS

Record: 15-5 Home: 4-2 Away: 4-1 Neutral: 7-2 Conference: 0-0

Player	avg	gp-gs	ab	r	h	2b	3b	hr	rbi	tb	slg%	bb	hp	so	gdp	ob%	sf	sh	sb-att	po	a	e	fld%
0 HOWARD, Andrea	.381	20-20	63	18	24	4	0	9	27	55	.873	11	0	5	0	.461	2	0	1-2	24	0	0	1.000
21 ROBINSON, Peyton	.333	20-20	54	13	18	1	0	0	4	19	.352	4	0	4	0	.379	0	5	5-5	17	0	0	1.000
20 BRAMSON, Emma	.328	18-18	58	14	19	3	0	5	16	37	.638	6	0	3	0	.385	1	0	0-0	12	23	2	.946
16 ROMERO, Leslie	.327	19-17	55	8	18	2	0	1	11	23	.418	2	0	6	0	.333	3	0	1-1	60	1	0	1.000
7 ARCHULETA, Ashle	.297	20-20	64	11	19	4	1	0	8	25	.391	10	2	11	0	.408	0	0	0-0	35	34	5	.932
77 TUCK, Reyan	.283	19-19	53	4	15	3	0	0	8	18	.340	3	0	10	0	.310	2	1	0-0	133	3	1	.993
4 YOUNG, Taryn	.226	20-20	62	14	14	2	1	2	9	24	.387	9	1	15	0	.329	1	0	1-1	37	3	0	1.000
27 BIRKINSHAW, Oli	.160	11-8	25	3	4	2	1	0	0	8	.320	1	4	13	0	.300	0	1	1-1	5	1	0	1.000
1 MARTINEZ, Briana	.149	20-20	47	9	7	1	0	1	5	11	.234	16	0	15	0	.359	1	3	0-1	22	47	9	.885
12 BRAUN, Savannah	1.000	1-0	1	0	1	0	0	0	1	1	1.000	0	0	0	0	1.000	0	0	0-0	0	0	0	.000
5 BRODERICK, Sydne	.385	7-5	13	1	5	0	0	0	1	5	.385	1	0	3	0	.429	0	1	0-0	23	3	1	.963
6 VIGIL, Alexis	.286	8-3	7	4	2	0	0	0	1	2	.286	3	0	2	0	.500	0	0	0-0	4	8	4	.750
24 SANDOVAL, Diamo	.250	11-1	8	2	2	1	0	0	2	3	.375	0	0	3	0	.250	0	0	0-0	0	0	0	.000
55 CAMERON, Janae	.176	7-5	17	3	3	1	0	1	4	7	.412	3	0	8	0	.300	0	0	0-0	28	1	2	.935
99 GONZALEZ, Aysiah	.100	6-3	10	0	1	1	0	0	0	2	.200	0	0	3	0	.100	0	0	0-0	6	4	1	.909
2 MARTINEZ, Savana	.000	4-1	3	0	0	0	0	0	0	0	.000	0	0	1	0	.000	0	0	0-0	2	0	0	1.000
10 KOSTYSZYN, McK	.000	2-0	0	0	0	0	0	0	0	0	.000	0	0	0	0	.000	0	0	0-0	0	0	0	.000
34 GUINDON, Emma	.000	13-8	0	0	0	0	0	0	0	0	.000	0	0	0	0	.000	0	0	0-0	2	11	0	1.000
28 FOHRMAN, Samant	.000	3-2	0	0	0	0	0	0	0	0	.000	0	0	0	0	.000	0	0	0-0	0	3	0	1.000
25 SANCHEZ, Brianna	.000	5-0	0	0	0	0	0	0	0	0	.000	0	0	0	0	.000	0	0	0-0	0	0	0	.000
17 LINTON, Amber	.000	13-9	0	0	0	0	0	0	0	0	.000	0	0	0	0	.000	0	0	0-0	0	9	0	1.000
66 ROBERTS, Ashlyn	.000	5-1	0	0	0	0	0	0	0	0	.000	0	0	0	0	.000	0	0	0-0	1	3	0	1.000
Totals	.281	20	540	104	152	25	3	19	97	240	.444	69	7	102	0	.364	10	11	9-11	411	154	25	.958
Opponents	.228	20	534	70	122	25	1	3	61	158	.296	36	19	121	2	.299	2	8	17-18	393	119	33	.939

LOB - Team (143), Opp (121). DPs turned - Team (5), Opp (3). IBB - Team (3), HOWARD 3.

(All games Sorted by Earned run avg)

Player	era	w-l	app	gs	cg	sho	sv	ip	h	r	er	bb	so	2b	3b	hr	b/avg	wp	hp	bk	sfa	sha
10 KOSTYSZYN, McK	0.00	0-0	2	0	0	0/0	0	3.0	2	0	0	0	1	0	0	0	.167	0	0	0	0	0
34 GUINDON, Emma	1.20	7-1	13	8	3	2/1	1	58.1	44	18	10	8	52	8	0	0	.202	2	4	0	0	6
28 FOHRMAN, Samant	1.56	1-0	3	2	0	0/0	0	9.0	10	5	2	0	2	4	0	0	.270	0	1	0	0	0
17 LINTON, Amber	2.80	6-2	13	9	3	0/0	3	50.0	49	31	20	21	60	7	0	2	.241	4	10	0	0	1
66 ROBERTS, Ashlyn	4.80	1-1	5	1	0	0/0	0	11.2	14	10	8	3	2	4	1	1	.304	0	4	0	2	1
25 SANCHEZ, Brianna	8.40	0-1	5	0	0	0/1	0	5.0	3	6	6	4	4	2	0	0	.167	5	0	0	0	0
Totals	2.35	15-5	20	20	6	3/1	4	137.0	122	70	46	36	121	25	1	3	.228	11	19	0	2	8
Opponents	4.60	5-15	20	20	6	1/0	1	131.0	152	104	86	69	102	25	3	19	.281	13	7	0	10	11

PB - Team (2), ROMERO 2, Opp (3). SBA/ATT - LINTON (10-10), ROMERO (9-9), BRODERICK (4-5), GUINDON (4-4), CAMERON (4-4), FOHRMAN (1-2), ROBERTS (1-1), SANCHEZ (1-1).



2022 NEW MEXICO GAME-BY-GAME STATISTICS

Batting (All games)

Date	Opponent	ab	r	h	rbi	2b	3b	hr	tb	bb	ibb	sb	cs	hbp	sac	sf	qdp	k	po	a	e	lob	avg
Feb 11	vs Oregon State	23	3	5	3	1	0	0	6	1	0	0	0	2	0	0	0	7	21	8	0	5	.217
Feb 12	vs Southern Utah	27	8	7	7	1	0	2	14	4	0	0	0	0	0	0	0	5	18	1	1	8	.240
Feb 13	vs Alabama	25	3	6	3	0	0	1	9	0	0	0	0	0	0	1	0	7	18	3	2	2	.240
Feb 13	at Arizona	23	0	2	0	1	0	0	3	2	0	0	0	0	0	0	0	4	18	7	0	4	.204
Feb. 18 2	vs Ohio	26	4	10	4	3	0	0	13	1	0	0	0	0	0	1	0	1	21	5	1	6	.242
Feb 18	at Lamar	30	2	8	2	1	0	0	9	0	0	2	1	0	0	0	0	6	21	12	1	7	.247
Feb 19	at Lamar	40	6	9	6	1	1	1	15	5	2	0	0	0	3	2	0	12	36	16	1	11	.242
Feb 19	vs Creighton	23	2	3	2	0	0	1	6	4	0	0	0	0	0	1	0	5	18	8	2	5	.230
Feb 20	vs Ohio	27	9	11	7	1	0	1	15	2	0	3	0	1	2	0	0	3	15	6	0	9	.250
Feb 24	UTEP	23	5	7	5	0	0	2	13	6	0	0	1	3	1	1	0	8	21	7	2	10	.255
Feb 25	NDSU	28	6	9	5	0	0	0	9	4	0	0	0	0	0	1	0	6	21	11	1	9	.261
Feb 26	BUFFALO	26	6	9	5	1	0	2	16	0	0	0	0	0	1	0	0	4	21	5	0	3	.268
Feb 27	TARLETON	20	8	9	8	0	0	0	9	4	0	1	0	0	1	0	0	2	15	3	0	5	.279
Mar 03	at UC Santa Barbar	26	3	5	3	1	0	2	12	5	0	0	0	0	1	0	0	8	21	4	1	8	.272
Mar 03	at UC Santa Barbar	27	11	8	11	0	0	3	17	14	1	1	0	0	1	2	0	4	21	12	2	12	.274
Mar 04	vs Wagner College	29	5	9	5	4	0	0	13	3	0	0	0	0	0	0	0	2	21	11	0	9	.277
Mar 04	vs Santa Clara	32	7	10	7	3	1	0	15	2	0	0	0	0	0	1	0	2	21	7	1	7	.279
Mar 05	vs Santa Clara	26	3	8	3	2	0	1	13	1	0	1	0	0	0	0	0	2	21	9	0	6	.281
Mar 08	NEW MEXICO STA	30	8	8	6	3	1	1	16	9	0	1	0	0	0	0	0	6	21	8	7	10	.280
Mar 08	NEW MEXICO STA	29	5	9	5	2	0	2	17	2	0	0	0	1	1	0	0	8	21	11	3	7	.281
Totals		540	104	152	97	25	3	19	240	69	3	9	2	7	11	10	0	102	411	154	25	143	.281

Pitching (All games)

Date	Opponent	ip	h	r	er	bb	so	2b	3b	hr	wp	bk	hbp	dp	ibb	score	w-l	sv	era
Feb 11	vs Oregon State	7.0	6	2	2	1	10	0	0	1	0	0	2	0	0	3-2	1-0	0	2.00
Feb 12	vs Southern Utah	6.0	1	0	0	1	11	0	0	0	0	0	2	0	0	8-0	2-0	0	1.08
Feb 13	vs Alabama	6.0	7	8	7	3	2	2	1	0	0	0	3	0	0	3-8	2-1	0	3.32
Feb 13	at Arizona	6.0	5	1	1	1	2	1	0	0	1	0	0	0	0	0-1	2-2	0	2.80
Feb. 18 2	vs Ohio	7.0	6	2	2	3	7	2	0	0	1	0	0	0	0	4-2	3-2	1	2.62
Feb 18	at Lamar	7.0	4	1	1	0	5	0	0	0	0	0	2	0	0	2-1	4-2	1	2.33
Feb 19	at Lamar	12.0	9	4	0	3	11	3	0	0	1	0	0	0	0	6-4	5-2	1	1.78
Feb 19	vs Creighton	6.0	7	5	4	2	1	2	0	0	2	0	0	1	0	2-5	5-3	1	2.09
Feb 20	vs Ohio	5.0	2	1	1	3	4	0	0	0	0	0	0	0	0	9-1	6-3	1	2.03
Feb 24	UTEP	7.0	8	4	0	4	11	0	0	0	1	0	0	0	0	5-4	7-3	1	1.83
Feb 25	NDSU	7.0	7	4	3	2	2	3	0	0	0	0	0	1	0	6-4	8-3	2	1.93
Feb 26	BUFFALO	7.0	4	2	2	1	9	0	0	0	1	0	2	0	0	6-2	9-3	2	1.94
Feb 27	TARLETON	5.0	1	0	0	0	7	0	0	0	0	0	0	0	0	8-0	10-3	2	1.83
Mar 03	at UC Santa Barbar	7.0	4	1	1	1	6	0	0	0	0	0	1	0	0	3-1	11-3	3	1.77
Mar 03	at UC Santa Barbar	7.0	14	7	4	2	5	3	0	0	1	0	2	2	0	11-7	12-3	3	1.92
Mar 04	vs Wagner College	7.0	6	2	2	0	6	1	0	0	0	0	0	0	0	5-2	13-3	4	1.93
Mar 04	vs Santa Clara	7.0	8	6	5	3	6	3	0	1	1	0	1	0	0	7-6	14-3	4	2.11
Mar 05	vs Santa Clara	7.0	3	0	0	1	2	0	0	0	0	0	2	0	0	3-0	15-3	4	1.99
Mar 08	NEW MEXICO STA	7.0	9	12	6	1	6	3	0	1	2	0	2	1	0	8-12	15-4	4	2.21
Mar 08	NEW MEXICO STA	7.0	11	8	5	4	8	2	0	0	0	0	0	0	0	5-8	15-5	4	2.35
Totals		137.0	122	70	46	36	121	25	1	3	11	0	19	5	0	104-70	15-5	4	2.35

2022 NEW MEXICO RECORD AND INNING BREAKDOWN

Score by innings	1	2	3	4	5	6	7	8	9	EX	Total
New Mexico	16	17	19	10	13	16	9	0	0	4	104
Opponents	5	7	4	16	11	10	15	0	0	2	70

Record when ...			
Overall	15-5	After 4 leading	13-1
Conference	0-0 trailing	2-4
Non-Conference	15-5 tied	0-0
Home games	4-2	After 5 leading	11-1
Away games	4-1 trailing	2-4
Neutral site	7-2 tied	0-0
Day games	12-4	After 6 leading	11-0
Night games	3-1 trailing	0-4
vs Left starter	1-0 tied	1-1
vs Right starter	14-5		
1-Run games	4-1	Hit 0 home runs	7-1
2-Run games	4-0	... 1 home run	3-3
5+Run games	3-1	... 2+ home runs	5-1
Extra innings	1-0		
Shutouts	3-1	Opponent 0 home runs	13-4
	 1 home run	2-1
Scoring 0-2 runs	1-2 2+ HRs	0-0
..... 3-5 runs	6-2		
..... 6-9 runs	7-1	Made 0 errors	6-1
..... 10+ runs	1-0 1 error	7-0
	 2+ errors	2-4
Opponent 0-2 runs	10-1		
..... 3-5 runs	3-1	Opp. made 0 errors	4-2
..... 6-9 runs	2-2 1 error	3-2
..... 10+ runs	0-1 2+ errors	8-1
Scored in 1st inning	8-1	Out-hit opponent	11-0
Opp. scored in 1st	1-1	Out-hit by opponent	3-5
Scores first	11-3	Hits are tied	1-0
Opp. scores first	4-2		

Record when team scores:

Runs	0	1	2	3	4	5	6	7	8	9	10+
W-L	0-1	0-0	1-1	3-1	1-0	2-1	3-0	1-0	2-1	1-0	1-0

Record when opponent scores:

Runs	0	1	2	3	4	5	6	7	8	9	10+
W-L	3-0	3-1	4-0	0-0	3-0	0-1	1-0	1-0	0-2	0-0	0-1

Record when leading after:

Inn.	1	2	3	4	5	6
W-L	8-1	10-2	12-2	13-1	11-1	11-0

Record when trailing after:

Inn.	1	2	3	4	5	6
W-L	1-1	3-1	2-3	2-4	2-4	0-4

Record when tied after:

Inn.	1	2	3	4	5	6
W-L	6-3	2-2	1-0	0-0	0-0	1-1

Current losing streak: 2

Longest winning streak: 10

Longest losing streak: 2

Home attendance : 2506 (5 dates avg = 501)

Away attendance : 3297 (14 dates avg = 235)

Total attendance: 5803 (19 dates avg = 305)



2021 NEW MEXICO SITUATIONAL BREAKDOWN

Player	vs left			vs right			w/runners			w/bases empty			w/bases loaded			as leadoff			fly	gnd	fly/
	h	ab	avg	h	ab	avg	h	ab	avg	h	ab	avg	h	ab	avg	rch	op	pct	out	out	gnd
7 ARCHULETA, As	2	4	.500	17	60	.283	8	28	.286	11	36	.306	1	5	.200	9	28	.321	10	22	0.5
27 BIRKINSHAW, Ol	0	0	.000	4	25	.160	0	13	.000	4	12	.333	0	1	.000	3	8	.375	5	3	1.7
20 BRAMSON, Emm	0	3	.000	19	55	.345	10	31	.323	9	27	.333	2	4	.500	5	7	.714	22	13	1.7
12 BRAUN, Savann	1	1	1.000	0	0	.000	1	1	1.000	0	0	.000	1	1	1.000	0	0	.000	0	0	0.0
5 BRODERICK, Syd	1	1	1.000	4	12	.333	2	4	.500	3	9	.333	1	1	1.000	2	4	.500	4	2	2.0
55 CAMERON, Jana	0	1	.000	3	16	.188	3	11	.273	0	6	.000	0	0	.000	0	3	.000	3	2	1.5
99 GONZALEZ, Aysi	0	0	.000	1	10	.100	0	4	.000	1	6	.167	0	0	.000	1	3	.333	4	1	4.0
0 HOWARD, Andre	0	3	.000	24	60	.400	15	39	.385	9	24	.375	0	1	.000	5	10	.500	28	6	4.7
1 MARTINEZ, Brian	1	3	.333	6	44	.136	3	18	.167	4	29	.138	1	2	.500	4	15	.267	15	10	1.5
2 MARTINEZ, Sava	0	0	.000	0	3	.000	0	1	.000	0	2	.000	0	0	.000	0	0	.000	1	1	1.0
21 ROBINSON, Peyt	0	3	.000	18	51	.353	6	21	.286	12	33	.364	1	2	.500	4	13	.308	13	21	0.6
16 ROMERO, Leslie	2	3	.667	16	52	.308	11	30	.367	7	25	.280	2	2	1.000	4	12	.333	17	17	1.0
24 SANDOVAL, Dia	0	0	.000	2	8	.250	1	4	.250	1	4	.250	0	0	.000	0	1	.000	3	0	99.9
77 TUCK, Reyan	0	2	.000	15	51	.294	8	29	.276	7	24	.292	0	2	.000	0	8	.000	15	13	1.2
6 VIGIL, Alexis	2	2	1.000	0	5	.000	1	4	.250	1	3	.333	0	0	.000	1	2	.500	3	0	99.9
4 YOUNG, Taryn	0	3	.000	14	59	.237	6	31	.194	8	31	.258	0	3	.000	4	17	.235	21	8	2.6
Totals	9	29	.310	143	51	.280	75	26	.279	77	27	.284	9	24	.375	42	13	.321	164	119	1.4
Opponents	14	46	.304	108	48	.221	72	27	.267	50	26	.189	4	9	.444	46	14	.326	132	148	0.9

Player	pinch hitting			w/runners in scoring pos			w/runner on 3r and LT 2 out			with 2 outs			success adv runners			2- rnrns			rch	rch	kl
	h	ab	avg	h	ab	avg	rbi	op	pct	h	ab	avg	adv	op	pct	rbi	w/o	lob	err	fc	kl
7 ARCHULETA, As	0	0	.000	5	20	.250	2	4	.500	8	19	.421	19	34	.559	6	1	16	2	4	8
27 BIRKINSHAW, Ol	2	3	.667	0	5	.000	0	0	.000	2	12	.167	4	15	.267	0	2	13	1	1	6
20 BRAMSON, Emm	0	0	.000	8	22	.364	4	5	.800	10	26	.385	19	35	.543	9	4	17	1	3	1
12 BRAUN, Savann	1	1	1.000	1	1	1.000	1	1	1.000	0	0	.000	1	1	1.000	0	0	0	0	0	0
5 BRODERICK, Syd	0	1	.000	1	2	.500	1	1	1.000	2	4	.500	3	5	.600	0	1	1	0	0	2
55 CAMERON, Jana	0	4	.000	2	6	.333	1	2	.500	2	8	.250	5	13	.385	3	0	4	1	0	2
99 GONZALEZ, Aysi	0	3	.000	0	3	.000	0	0	.000	0	4	.000	1	4	.250	0	0	4	0	1	0
0 HOWARD, Andre	0	0	.000	9	20	.450	4	4	1.000	11	29	.379	24	43	.558	10	7	16	2	1	3
1 MARTINEZ, Brian	0	0	.000	3	12	.250	2	3	.667	2	13	.154	16	30	.533	3	5	11	4	1	5
2 MARTINEZ, Sava	0	0	.000	0	0	.000	0	0	.000	0	2	.000	0	1	.000	0	0	1	0	0	0
21 ROBINSON, Peyt	1	1	1.000	5	17	.294	1	5	.200	3	13	.231	15	27	.556	2	6	6	3	2	0
16 ROMERO, Leslie	0	1	.000	8	20	.400	4	6	.667	8	19	.421	19	33	.576	6	12	12	1	2	3
24 SANDOVAL, Dia	1	5	.200	1	1	1.000	1	1	1.000	1	3	.333	1	4	.250	0	0	0	0	0	0
77 TUCK, Reyan	0	0	.000	5	15	.333	4	5	.800	8	23	.348	18	33	.545	2	5	16	1	4	4
6 VIGIL, Alexis	0	0	.000	1	3	.333	1	1	1.000	1	2	.500	2	5	.400	0	0	1	0	0	0
4 YOUNG, Taryn	0	0	.000	3	20	.150	2	4	.500	5	22	.227	14	35	.400	5	1	15	4	3	2
Totals	5	19	.263	52	16	.311	28	42	.667	63	19	.317	161	31	.506	46	44	143	20	22	36
Opponents	5	26	.192	48	16	.287	13	24	.542	42	18	.232	127	29	.429	27	39	121	17	20	41

Success Advancing Runners = percentage of times the batter advanced at least one runner during a plate appearance
 #Rnrs Adv w/Out = TOTAL number of runners advanced when the player made an out

2022 NEW MEXICO LEADERS

Batting avg

1. 0 HOWARD, Andrea	.381
2. 21 ROBINSON, Peyton	.333
3. 20 BRAMSON, Emma	.328
4. 16 ROMERO, Leslie	.327
5. 7 ARCHULETA, Ashley	.297

Runs scored

1. 0 HOWARD, Andrea	18
2. 4 YOUNG, Taryn	14
20 BRAMSON, Emma	14
4. 21 ROBINSON, Peyton	13
5. 7 ARCHULETA, Ashley	11

Doubles

1. 7 ARCHULETA, Ashley	4
0 HOWARD, Andrea	4
3. 20 BRAMSON, Emma	3
77 TUCK, Reyann	3
5. 3 tied at.....	2

Total bases

1. 0 HOWARD, Andrea	55
2. 20 BRAMSON, Emma	37
3. 7 ARCHULETA, Ashley	25
4. 4 YOUNG, Taryn	24
5. 16 ROMERO, Leslie	23

Sac bunts

1. 21 ROBINSON, Peyton	5
2. 1 MARTINEZ, Briana	3
3. 77 TUCK, Reyann	1
5 BRODERICK, Sydney	1
27 BIRKINSHAW, Olivia	1

Caught stealing

1. 1 MARTINEZ, Briana	1
0 HOWARD, Andrea	1

Strikeouts

1. 1 MARTINEZ, Briana	15
4 YOUNG, Taryn	15
3. 27 BIRKINSHAW, Olivia	13
4. 7 ARCHULETA, Ashley	11
5. 77 TUCK, Reyann	10

At bats

1. 7 ARCHULETA, Ashley	64
2. 0 HOWARD, Andrea	63
3. 4 YOUNG, Taryn	62
4. 20 BRAMSON, Emma	58
5. 16 ROMERO, Leslie	55

Games as sub

1. 24 SANDOVAL, Diamond	10
2. 34 GUINDON, Emma	5
25 SANCHEZ, Brianna	5
6 VIGIL, Alexis	5

Fielding pct

1. 16 ROMERO, Leslie	1.000
4 YOUNG, Taryn	1.000
0 HOWARD, Andrea	1.000
21 ROBINSON, Peyton	1.000
34 GUINDON, Emma	1.000

Assists

1. 1 MARTINEZ, Briana	47
2. 7 ARCHULETA, Ashley	34
3. 20 BRAMSON, Emma	23
4. 34 GUINDON, Emma	11
5. 17 LINTON, Amber	9

Stolen bases against

1. 17 LINTON, Amber	10
2. 16 ROMERO, Leslie	9
3. 55 CAMERON, Janae	4
34 GUINDON, Emma	4
5 BRODERICK, Sydney	4

Passed balls

1. 16 ROMERO, Leslie	2
----------------------	---

Slugging pct

1. 0 HOWARD, Andrea	.873
2. 20 BRAMSON, Emma	.638
3. 16 ROMERO, Leslie	.418
4. 7 ARCHULETA, Ashley	.391
5. 4 YOUNG, Taryn	.387

Hits

1. 0 HOWARD, Andrea	24
2. 7 ARCHULETA, Ashley	19
20 BRAMSON, Emma	19
4. 16 ROMERO, Leslie	18
21 ROBINSON, Peyton	18

Triples

1. 7 ARCHULETA, Ashley	1
4 YOUNG, Taryn	1
27 BIRKINSHAW, Olivia	1

Walks

1. 1 MARTINEZ, Briana	16
2. 0 HOWARD, Andrea	11
3. 7 ARCHULETA, Ashley	10
4. 4 YOUNG, Taryn	9
5. 20 BRAMSON, Emma	6

Sac flies

1. 16 ROMERO, Leslie	3
2. 0 HOWARD, Andrea	2
77 TUCK, Reyann	2
4. 3 tied at.....	1

Steal attempts

1. 21 ROBINSON, Peyton	5
2. 0 HOWARD, Andrea	2
3. 4 tied at.....	1

Grounded into DP

Games played

1. 7 ARCHULETA, Ashley	20
0 HOWARD, Andrea	20
4 YOUNG, Taryn	20
21 ROBINSON, Peyton	20
1 MARTINEZ, Briana	20

Chances

1. 77 TUCK, Reyann	137
2. 1 MARTINEZ, Briana	78
3. 7 ARCHULETA, Ashley	74
4. 16 ROMERO, Leslie	61
5. 4 YOUNG, Taryn	40

Errors

1. 1 MARTINEZ, Briana	9
2. 7 ARCHULETA, Ashley	5
3. 6 VIGIL, Alexis	4
4. 55 CAMERON, Janae	2
20 BRAMSON, Emma	2

Caught stealing by

1. 5 BRODERICK, Sydney	1
28 FOHRMAN, Samantha	1

Catchers interference

On base pct

1. 0 HOWARD, Andrea	.461
2. 7 ARCHULETA, Ashley	.408
3. 20 BRAMSON, Emma	.385
4. 21 ROBINSON, Peyton	.379
5. 1 MARTINEZ, Briana	.359

Runs batted in

1. 0 HOWARD, Andrea	27
2. 20 BRAMSON, Emma	16
3. 16 ROMERO, Leslie	11
4. 4 YOUNG, Taryn	9
5. 2 tied at.....	8

Home runs

1. 0 HOWARD, Andrea	9
2. 20 BRAMSON, Emma	5
3. 4 YOUNG, Taryn	2
4. 3 tied at.....	1

Hit by pitch

1. 27 BIRKINSHAW, Olivia	4
2. 7 ARCHULETA, Ashley	2
3. 4 YOUNG, Taryn	1

Stolen bases

1. 21 ROBINSON, Peyton	5
2. 27 BIRKINSHAW, Olivia	1
4 YOUNG, Taryn	1
16 ROMERO, Leslie	1
0 HOWARD, Andrea	1

Stolen base pct

1. 4 YOUNG, Taryn	1.000
16 ROMERO, Leslie	1.000
21 ROBINSON, Peyton	1.000
27 BIRKINSHAW, Olivia	1.000
5. 0 HOWARD, Andrea	.500

Total plate appearances

1. 0 HOWARD, Andrea	76
7 ARCHULETA, Ashley	76
3. 4 YOUNG, Taryn	73
4. 1 MARTINEZ, Briana	67
5. 20 BRAMSON, Emma	65

Game starts

1. 0 HOWARD, Andrea	20
7 ARCHULETA, Ashley	20
4 YOUNG, Taryn	20
21 ROBINSON, Peyton	20
1 MARTINEZ, Briana	20

Putouts

1. 77 TUCK, Reyann	133
2. 16 ROMERO, Leslie	60
3. 4 YOUNG, Taryn	37
4. 7 ARCHULETA, Ashley	35
5. 55 CAMERON, Janae	28

Fielding double plays

1. 77 TUCK, Reyann	4
2. 7 ARCHULETA, Ashley	3
3. 1 MARTINEZ, Briana	2
4. 6 VIGIL, Alexis	1

Steal attempts against

1. 17 LINTON, Amber	10
2. 16 ROMERO, Leslie	9
3. 5 BRODERICK, Sydney	5
34 GUINDON, Emma	4
55 CAMERON, Janae	4



2022 NEW MEXICO LEADERS

Earned run avg

1. 10 KOSTYSZYN, McKenna	0.00
2. 34 GUINDON, Emma	1.20
3. 28 FOHRMAN, Samantha	1.56
4. 17 LINTON, Amber	2.80
5. 66 ROBERTS, Ashlyn	4.80

Wins

1. 34 GUINDON, Emma	7
2. 17 LINTON, Amber	6
3. 28 FOHRMAN, Samantha	1
66 ROBERTS, Ashlyn	1

Innings pitched

1. 34 GUINDON, Emma	58.1
2. 17 LINTON, Amber	50.0
3. 66 ROBERTS, Ashlyn	11.2
4. 28 FOHRMAN, Samantha	9.0
5. 25 SANCHEZ, Brianna	5.0

Games started

1. 17 LINTON, Amber	9
2. 34 GUINDON, Emma	8
3. 28 FOHRMAN, Samantha	2
4. 66 ROBERTS, Ashlyn	1

Wild pitches

1. 25 SANCHEZ, Brianna	5
2. 17 LINTON, Amber	4
3. 34 GUINDON, Emma	2

Intentional BB allowed

Sac bunts allowed

1. 34 GUINDON, Emma	6
2. 66 ROBERTS, Ashlyn	1
17 LINTON, Amber	1

Runs allowed

1. 10 KOSTYSZYN, McKenna	0
2. 28 FOHRMAN, Samantha	5
3. 25 SANCHEZ, Brianna	6
4. 66 ROBERTS, Ashlyn	10
5. 34 GUINDON, Emma	18

Doubles allowed

1. 10 KOSTYSZYN, McKenna	0
2. 25 SANCHEZ, Brianna	2
3. 66 ROBERTS, Ashlyn	4
28 FOHRMAN, Samantha	4
5. 17 LINTON, Amber	7

Opposing bat avg

1. 25 SANCHEZ, Brianna	.167
10 KOSTYSZYN, McKenna	.167
3. 34 GUINDON, Emma	.202
4. 17 LINTON, Amber	.241
5. 28 FOHRMAN, Samantha	.270

Losses

1. 17 LINTON, Amber	2
2. 25 SANCHEZ, Brianna	1
66 ROBERTS, Ashlyn	1
34 GUINDON, Emma	1

Batters struck out

1. 17 LINTON, Amber	60
2. 34 GUINDON, Emma	52
3. 25 SANCHEZ, Brianna	4
4. 28 FOHRMAN, Samantha	2
66 ROBERTS, Ashlyn	2

Games finished

1. 17 LINTON, Amber	4
34 GUINDON, Emma	4
3. 25 SANCHEZ, Brianna	2
10 KOSTYSZYN, McKenna	2
5. 2 tied at.....	1

Balks

Runners picked off

Sac flies allowed

1. 66 ROBERTS, Ashlyn	2
-----------------------	---

Earned runs allowed

1. 10 KOSTYSZYN, McKenna	0
2. 28 FOHRMAN, Samantha	2
3. 25 SANCHEZ, Brianna	6
4. 66 ROBERTS, Ashlyn	8
5. 34 GUINDON, Emma	10

Triples allowed

1. 10 KOSTYSZYN, McKenna	0
25 SANCHEZ, Brianna	0
34 GUINDON, Emma	0
28 FOHRMAN, Samantha	0
17 LINTON, Amber	0

Won-loss pct

1. 28 FOHRMAN, Samantha	1.000
2. 34 GUINDON, Emma	.875
3. 17 LINTON, Amber	.750
4. 66 ROBERTS, Ashlyn	.500
5. 25 SANCHEZ, Brianna	.000

Saves

1. 17 LINTON, Amber	3
2. 34 GUINDON, Emma	1

Appearances

1. 34 GUINDON, Emma	13
17 LINTON, Amber	13
3. 25 SANCHEZ, Brianna	5
66 ROBERTS, Ashlyn	5
5. 28 FOHRMAN, Samantha	3

Games in relief

1. 34 GUINDON, Emma	5
25 SANCHEZ, Brianna	5
3. 17 LINTON, Amber	4
66 ROBERTS, Ashlyn	4
5. 10 KOSTYSZYN, McKenna	2

Hit batters

1. 17 LINTON, Amber	10
2. 66 ROBERTS, Ashlyn	4
34 GUINDON, Emma	4
4. 28 FOHRMAN, Samantha	1

Batters SO out looking

1. 17 LINTON, Amber	24
2. 34 GUINDON, Emma	16
3. 25 SANCHEZ, Brianna	1

Hits allowed

1. 10 KOSTYSZYN, McKenna	2
2. 25 SANCHEZ, Brianna	3
3. 28 FOHRMAN, Samantha	10
4. 66 ROBERTS, Ashlyn	14
5. 34 GUINDON, Emma	44

Walks allowed

1. 10 KOSTYSZYN, McKenna	0
28 FOHRMAN, Samantha	0
3. 66 ROBERTS, Ashlyn	3
4. 25 SANCHEZ, Brianna	4
5. 34 GUINDON, Emma	8

Home runs allowed

1. 10 KOSTYSZYN, McKenna	0
25 SANCHEZ, Brianna	0
34 GUINDON, Emma	0
28 FOHRMAN, Samantha	0
5. 66 ROBERTS, Ashlyn	1



00 ANDREA HOWARD

OF • 5-6 • SR.

ALBUQUERQUE, N.M. • LA CUEVA HS

SINGLE-GAME HIGHS

Hits: 3, 6x, Last vs. Buffalo, 2-26-22
 Doubles: 1, 31x, Last vs. Santa Clara, 3-4-22
 Triples: 1, 5x, Last at Texas, 5-1-21
 Home runs: 2, 4x, Last vs. Buffalo, 2-26-22
 Total bases: 9, Buffalo, 2-26-22
 RBI: 5, Northern Colorado, 2-14-20
 Runs scored: 3, 7x, Last vs. Buffalo, 2-26-21
 Walks: 4, UTEP, 2-8-19
 Hit by pitch: 1, 4x, Last at Texas, 3-20-21
 Struck out: 3, 5x, Last at Fresno St., 4-2-21

Sac flies: 2, San Diego State, 5-1-21
 Sac bunts: 1, 3x, Last at Hawai'i, 2-23-19
 At bats: 5, 3x, Last vs. NM State, 3-8-22
 Stolen bases: 1, 9x, Last vs. Lamar, 2-18-22
 Putouts: 13, at UTEP, 4-16-18
 Assists: 1, 15x, Last vs. San José State, 5-8-21
 Named All-Mountain West Second Team in 2018
 2019 Google Cloud Academic All-America® Second Team
 2021 CoSIDA First Team All-American
 Mountain West Player of the Week (Feb. 22)

CAREER STATS (AT UNM)

Year	avg	gp-gs	ab	r	h	2b	3b	hr	rbi	bb	so	sb-att
2018	.313	51-50	131	20	41	6	1	7	18	23	39	3-4
2019	.192	46-46	125	25	24	9	2	3	15	24	44	1-1
2020	.306	26-26	72	16	22	4	0	7	24	12	11	2-2
2021	.336	46-46	125	25	42	9	2	12	33	21	21	2-4
2022	.381	20-20	63	18	24	4	0	9	27	11	5	1-2
TOTAL	.297	189-188	516	104	153	32	5	38	117	91	120	9-13

2022 GAME-BY-GAME

Date	Opponent	Pos	AB	R	H	RBI	2B	3B	HR	BB	SB	CS	HBP	SAC	SF	GDP	K	PO	A	E	Avg
Feb 11	vs Oregon State	*of	3	0	1	1	0	0	0	0	0	0	0	0	0	0	2	1	0	0	.333
Feb 12	vs Southern Utah	*of	3	2	1	1	0	0	1	1	0	0	0	0	0	0	0	0	0	0	.333
Feb 13	vs Alabama	*of	3	1	1	0	0	0	0	0	0	0	0	0	0	0	0	6	0	0	.333
Feb 13	at Arizona	*of	3	0	0	0	0	0	0	0	0	0	0	0	0	0	0	1	0	0	.250
Feb. 18	vs Ohio	*of	2	0	1	2	1	0	0	0	0	0	0	0	1	0	0	0	0	0	.286
Feb 18	at Lamar	*of	4	1	2	0	0	0	0	0	1	0	0	0	0	0	0	0	0	0	.333
Feb 19	at Lamar	*of	4	2	3	3	0	0	1	2	0	0	0	0	0	0	0	1	0	0	.409
Feb 19	vs Creighton	*of	3	0	0	0	0	0	0	0	0	0	0	0	0	0	2	1	0	0	.360
Feb 20	vs Ohio	*of	4	2	2	3	1	0	1	0	0	0	0	0	0	0	0	1	0	0	.379
Feb 24	UTEP	*of	2	0	0	0	0	0	0	2	0	1	0	0	0	0	0	0	0	0	.355
Feb 25	NDSU	*of	3	0	1	1	0	0	0	0	0	0	0	0	1	0	0	2	0	0	.353
Feb 26	BUFFALO	*of	3	3	3	2	0	0	2	0	0	0	0	0	0	0	0	2	0	0	.405
Feb 27	TARLETON	*of	3	0	2	3	0	0	0	0	0	0	0	0	0	0	0	0	0	0	.425
Mar 03	at UC Santa Barba	*of	3	1	1	2	0	0	1	1	0	0	0	0	0	0	0	2	0	0	.419
Mar 03	at UC Santa Barba	*of	2	2	1	2	0	0	1	3	0	0	0	0	0	0	0	2	0	0	.422
Mar 04	vs Wagner College	*of	3	1	2	2	1	0	0	1	0	0	0	0	0	0	0	0	0	0	.438
Mar 04	vs Santa Clara	*of	4	0	1	1	1	0	0	0	0	0	0	0	0	0	0	2	0	0	.423
Mar 05	vs Santa Clara	*of	3	0	0	0	0	0	0	0	0	0	0	0	0	0	0	0	0	0	.400
Mar 08	NEW MEXICO ST	*of	5	1	1	3	0	0	1	0	0	0	0	0	0	0	1	3	0	0	.383
Mar 08	NEW MEXICO ST	*of	3	2	1	1	0	0	1	1	0	0	0	0	0	0	0	0	0	0	.381
Totals		20gs	63	18	24	27	4	0	9	11	1	1	0	0	2	0	5	24	0	0	.381

On base pct. .461 • Slugging pct. .873



THE 2022 LOBOS



1 BRIANA MARTINEZ

UT • 5-3 • JR.

ALBUQUERQUE, N.M. • RIO RANCHO HS

SINGLE-GAME HIGHS

Hits: 3, 2x, Last vs. Northern Colo., 2-14-20
Doubles: 2, Northern Colorado, 3-1-20
Triples: 1, Nevada, 4-10-21
Home runs: 1, 4x, Last vs. Creighton, 2-19-22
Total bases: 6, Grand Canyon, 2-9-20
RBI: 2, 6x, Last vs. Colorado St., 3-28-21
Runs scored: 3, Northern Colorado, 2-14-20
Walks: 4, UCSB, 3-3-22
Hit by pitch: 1, 4x, Last vs. Colorado St., 3-28-21

Struck out: 3, Seattle, 2-21-21
Sac flies: 1, Alabama, 2-13-22
Sac bunts: 1, 5x, Last at UCSB, 3-3-22
At bats: 4, 5x, Last vs. North Dakota St., 2-25-22
Stolen bases: 1, 10x, Last vs. San José State, 5-9-21
Caught stealing: 1, Lamar, 2-18-22
Putouts: 6, Oklahoma State, 3-6-21
Assists: 5, 2x, Last vs. Wagner, 3-4-22

CAREER STATS (AT UNM)

Year	avg	gp-gs	ab	r	h	2b	3b	hr	rbi	bb	so	sb-att
2020	.286	26-26	70	13	20	5	0	2	14	20	15	5-5
2021	.186	43-43	102	8	19	5	1	1	10	13	39	5-5
2022	.149	20-20	47	9	7	1	0	1	5	16	15	0-1
TOTAL	.210	89-89	219	30	46	11	1	4	29	49	69	10-11

2022 GAME-BY-GAME

Date	Opponent	Pos	AB	R	H	RBI	2B	3B	HR	BB	SB	CS	HBP	SAC	SF	GDP	K	PO	A	E	Avg
Feb 11	vs Oregon State	*ss	2	0	0	0	0	0	0	1	0	0	0	0	0	0	1	0	4	0	.000
Feb 12	vs Southern Utah	*ss	3	0	0	0	0	0	0	0	0	0	0	0	0	0	0	2	0	0	.000
Feb 13	vs Alabama	*ss	2	0	0	1	0	0	0	0	0	0	0	0	1	0	1	1	1	1	.000
Feb 13	at Arizona	*ss	3	0	0	0	0	0	0	0	0	0	0	0	0	0	1	1	3	0	.000
Feb. 18	vs Ohio	*ss	2	0	0	0	0	0	0	1	0	0	0	0	0	0	0	2	1	0	.000
Feb 18	at Lamar	*ss	3	1	0	0	0	0	0	0	0	1	0	0	0	0	0	1	4	1	.000
Feb 19	at Lamar	*ss	3	0	0	0	0	0	0	1	0	0	0	0	0	0	2	2	3	1	.000
Feb 19	vs Creighton	*ss	2	1	1	1	0	0	1	1	0	0	0	0	0	0	1	2	1	1	.050
Feb 20	vs Ohio	*ss	2	1	1	1	0	0	0	0	0	0	0	1	0	0	0	0	2	0	.091
Feb 24	UTEP	*ss	2	0	0	0	0	0	0	2	0	0	0	0	0	0	1	1	3	2	.083
Feb 25	NDSU	*ss	4	1	1	1	0	0	0	0	0	0	0	0	0	0	1	2	3	0	.107
Feb 26	BUFFALO	*ss	2	0	0	0	0	0	0	0	0	0	0	1	0	0	1	1	2	0	.100
Feb 27	TARLETON	*ss	2	1	1	0	0	0	0	1	0	0	0	0	0	0	0	1	1	0	.125
Mar 03	at UC Santa Barba	*ss	3	0	0	0	0	0	0	0	0	0	0	0	0	0	1	1	1	0	.114
Mar 03	at UC Santa Barba	*ss	0	0	0	1	0	0	0	4	0	0	0	1	0	0	0	1	3	1	.114
Mar 04	vs Wagner College	*ss	2	0	0	0	0	0	0	1	0	0	0	0	0	0	1	1	5	0	.108
Mar 04	vs Santa Clara	*ss	3	2	2	0	1	0	0	1	0	0	0	0	0	0	0	0	2	1	.150
Mar 05	vs Santa Clara	*ss	2	0	0	0	0	0	0	1	0	0	0	0	0	0	1	3	2	0	.143
Mar 08	NEW MEXICO ST	*3b	2	1	0	0	0	0	0	2	0	0	0	0	0	0	1	0	2	0	.136
Mar 08	NEW MEXICO ST	*ss	3	1	1	0	0	0	0	0	0	0	0	0	0	0	2	0	4	1	.149
Totals		20gs	47	9	7	5	1	0	1	16	0	1	0	3	1	0	15	22	47	9	.149

On base pct. .359 • Slugging pct. .234

THE 2022 LOBOS



2 SAVANA MARTINEZ *C • 5-3 • R-FR.* ALBUQUERQUE, N.M. • RIO RANCHO HS

SINGLE-GAME HIGHS

Hits:
Doubles:
Triples:
Home runs:
Total bases:
RBI:
Runs scored:
Walks:
Hit by pitch:

Struck out: 1, Arizona, 2-13-22
Sac flies:
Sac bunts:
At bats: 2, Arizona, 2-13-22
Stolen bases:
Caught stealing:
Putouts: 2, Arizona, 2-13-22
Assists:

CAREER STATS (AT UNM)

Year	avg	gp-gs	ab	r	h	2b	3b	hr	rbi	bb	so	sb-att
2022	.000	4-1	3	0	0	0	0	0	0	0	1	0-0
TOTAL	.000	4-1	3	0	0	0	0	0	0	0	1	0-0

2022 GAME-BY-GAME

Date	Opponent	Pos	AB	R	H	RBI	2B	3B	HR	BB	SB	CS	HBP	SAC	SF	GDP	K	PO	A	E	Avg
Feb 13	at Arizona	*c	2	0	0	0	0	0	0	0	0	0	0	0	0	0	1	2	0	0	.000
Feb 19	at Lamar	pr	0	0	0	0	0	0	0	0	0	0	0	0	0	0	0	0	0	0	.000
Feb 26	BUFFALO	pr	0	0	0	0	0	0	0	0	0	0	0	0	0	0	0	0	0	0	.000
Mar 05	vs Santa Clara	c	1	0	0	0	0	0	0	0	0	0	0	0	0	0	0	0	0	0	.000
Totals		1gs	3	0	0	0	0	0	0	0	0	0	0	0	0	0	1	2	0	0	.000

On base pct. .000 • Slugging pct. .000





3 RACHAEL HATHOOT

INF • 5-8 • JR.

ALBUQUERQUE, N.M. • LA CUEVA HS

SINGLE-GAME HIGHS

Hits: 2, 13x, Last at Utah State, 5-15-21
 Doubles: 2, 2x, Last vs. San José State, 5-8-21
 Triples: 1, 2x, Last vs. South Dakota, 2-29-20
 Home runs: 1, 5x, Last at Utah State, 5-14-21
 Total bases: 5, 2x, Last at Utah State, 5-14-21
 RBI: 3, San José State, 5-8-21
 Runs scored: 2, 8x, Last vs. San José State, 5-8-21
 Walks: 2, Weber State, 2-7-20
 Hit by pitch: 1, 5x, Last at UNLV, 4-18-21

Struck out: 3, San Diego State, 5-1-21
 Sac flies:
 Sac bunts: 1, 4x, Last at San Diego State, 5-1-21
 At bats: 5, 2x, Last at GCU, 2-9-20
 Stolen bases: 2, Texas, 3-20-21
 Caught stealing: 1, 4x, Last vs. San José State, 5-8-21
 Putouts: 7, Colorado State, 3-27-21
 Assists: 5, UC Riverside, 2-20-20

CAREER STATS (AT UNM)

Year	avg	gp-gs	ab	r	h	2b	3b	hr	rbi	tb	slg%	bb	hbp	so	gdp	ob%	sf	sh	sb-att	po	a	e	fld%
2020	.250	26-26	84	19	21	6	2	1	12	34	.405	7	3	8	0	.330	0	2	0-1	38	47	6	.934
2021	.241	46-46	133	18	32	10	0	4	20	54	.406	9	2	25	0	.299	0	2	9-12	96	79	11	.941
TOTAL	.244	72-72	217	37	53	16	2	5	32	88	.406	16	5	33	0	.311	0	4	9-13	134	126	17	.939

2022 GAME-BY-GAME

THE 2022 LOBOS



4 TARYN YOUNG

OF • 5-8 • SR.

ANAHEIM, CALIF. • ARIZONA

SINGLE-GAME HIGHS

Hits: 3, Nevada, 4-10-21
 Doubles: 1, 5x, Last vs. Buffalo, 2-26-22
 Triples:
 Home runs: 2, California, 2-23-20
 Total bases: 8, California, 2-23-20
 RBI: 3, 2x, Last vs. NMSU, 3-8-22
 Runs scored: 3, San Diego, 2-22-20
 Walks: 3, UCSB, 3-3-22
 Hit by pitch: 1, 5x, Last vs. UTEP, 2-24-22

Struck out: 3, 4x, Last at Lamar, 2-19-22
 Sac flies: 1, 2x, Last at Lamar, 2-19-22
 Sac bunts: 1, Texas Tech, 3-12-21
 At bats: 5, Lamar, 2-19-22
 Stolen bases: 1, UCSB, 3-3-22
 Caught stealing: 1, 2x, Last at Texas Tech, 3-12-21
 Putouts: 5, Arizona, 2-13-22
 Assists: 1, 5x, Last vs. NMSU, 3-8-22

CAREER STATS (AT ARIZONA)

Year	avg	gp-gs	ab	r	h	2b	3b	hr	rbi	tb	slg%	bb	hbp	so	gdp	ob%	sf	sh	sb-att	po	a	e	fld%
2018	.000	4-0	0	3	0	0	0	0	0	0	.000	1	0	0	0	1.000	0	0	0-0	0	0	0	.000
2019	.000	5-0	1	0	0	0	0	0	0	0	.000	0	0	1	0	.000	0	0	0-0	3	0	0	1.000
TOTAL	.000	9-0	1	3	0	0	0	0	0	0	.000	1	0	1	0	.500	0	0	0-0	3	0	0	1.000

CAREER STATS (AT UNM)

Year	avg	gp-gs	ab	r	h	2b	3b	hr	rbi	bb	so	sb-att
2020	.259	24-24	54	17	14	0	0	4	9	13	18	0-1
2021	.138	42-42	94	9	13	4	0	2	8	11	38	1-2
2022	.226	20-20	62	14	14	2	1	2	9	9	15	1-1
TOTAL	.195	86-86	210	40	41	6	1	8	26	33	71	2-4

2022 GAME-BY-GAME

Date	Opponent	Pos	AB	R	H	RBI	2B	3B	HR	BB	SB	CS	HBP	SAC	SF	GDP	K	PO	A	E	Avg
Feb 11	vs Oregon State	*of	3	0	0	0	0	0	0	0	0	0	0	0	0	0	1	1	0	0	.000
Feb 12	vs Southern Utah	*of	2	1	0	0	0	0	0	1	0	0	0	0	0	0	0	1	1	0	.000
Feb 13	vs Alabama	*of	3	1	2	1	0	0	1	0	0	0	0	0	0	0	1	3	0	0	.250
Feb 13	at Arizona	*of	3	0	0	0	0	0	0	0	0	0	0	0	0	0	1	5	0	0	.182
Feb. 18	vs Ohio	*of	3	2	2	1	0	0	0	0	0	0	0	0	0	0	0	3	0	0	.286
Feb 18	at Lamar	*of	4	0	0	0	0	0	0	0	0	0	0	0	0	0	1	0	0	0	.222
Feb 19	at Lamar	*of	5	0	1	1	0	0	0	0	0	0	0	0	1	0	3	2	0	0	.217
Feb 19	vs Creighton	*of	1	0	0	0	0	0	0	2	0	0	0	0	0	0	0	3	0	0	.208
Feb 20	vs Ohio	*of	4	1	1	0	0	0	0	0	0	0	0	0	0	0	0	1	0	0	.214
Feb 24	UTEP	*of	2	1	1	0	0	0	0	0	0	1	0	0	0	0	1	2	0	0	.233
Feb 25	NDSU	*of	3	1	0	1	0	0	0	1	0	0	0	0	0	0	1	1	0	0	.212
Feb 26	BUFFALO	*of	3	1	2	1	1	0	0	0	0	0	0	0	0	0	0	2	0	0	.250
Feb 27	TARLETON	*of	3	0	0	0	0	0	0	0	0	0	0	0	0	0	1	0	0	0	.231
Mar 03	at UC Santa Barba	*of	2	0	0	0	0	0	0	0	0	0	0	0	0	0	1	3	0	0	.220
Mar 03	at UC Santa Barba	*of	2	2	0	0	0	0	0	3	1	0	0	0	0	0	0	0	1	0	.209
Mar 04	vs Wagner College	*of	4	0	1	1	0	0	0	0	0	0	0	0	0	0	0	2	0	0	.213
Mar 04	vs Santa Clara	*of	4	1	1	0	0	1	0	0	0	0	0	0	0	0	1	2	0	0	.216
Mar 05	vs Santa Clara	*of	3	1	1	0	1	0	0	0	0	0	0	0	0	0	0	3	0	0	.222
Mar 08	NEW MEXICO ST	*of	4	1	1	0	0	0	0	0	0	0	0	0	0	0	1	1	0	0	.224
Mar 08	NEW MEXICO ST	*of	4	1	1	3	0	0	1	0	0	0	0	0	0	0	2	2	1	0	.226
Totals			20gs	62	14	14	9	2	1	2	9	1	0	1	0	1	15	37	3	0	.226

On base pct. .329 • Slugging pct. .387





5 SYDNEY BRODERICK

C • 5-4 • SR.

MESA, ARIZ. • DESERT RIDGE HS

SINGLE-GAME HIGHS

Hits: 3, St. Mary's, 3-10-18
 Doubles: 1, 4x, Last at Utah State, 4-6-19
 Home Runs: 1, 3x, Last at GCU, 2-8-20
 Total bases: 4, 4x, Last at GCU, 2-8-20
 RBI: 2, 2x, Last at NMSU, 4-2-19
 Runs scored: 1, 15x, Last vs. Tarleton, 2-27-22
 Walks: 2, 3x, Last at GCU, 2-9-20
 Hit by pitch: 1, 2x, Last at ASU, 2-26-21
 Struck out: 3, at Colorado State, 4-8-18

Sac flies: 1, 2x, Last vs. San Diego, 2-22-20
 Sac bunts: 1, 4x, Last at Lamar, 2-19-22
 At bats: 4, 5x, Last vs. N. Colorado, 2-28-20
 Stolen bases: 1, at Utah State, 4-5-19
 Putouts: 10, at Colorado State, 4-7-18
 Assists: 3, 2x, Last vs. Nevada, 3-30-19
 Runners CS: 2, Utah State, 4-21-18

CAREER STATS (AT UNM)

Year	avg	gp-gs	ab	r	h	2b	3b	hr	rbi	bb	so	sb-att
2018	.230	42-36	87	6	20	2	0	0	5	6	12	0-0
2019	.095	33-30	63	5	6	2	0	1	3	10	19	1-1
2020	.138	12-10	29	3	4	0	0	2	3	4	6	0-0
2021	.085	23-22	47	0	4	0	0	0	0	4	15	0-0
2022	.385	7-5	13	1	5	0	0	0	1	1	3	0-0
TOTAL	.163	117-103	239	15	39	4	0	3	12	25	55	1-1

2022 GAME-BY-GAME

Date	Opponent	Pos	AB	R	H	RBI	2B	3B	HR	BB	SB	CS	HBP	SAC	SF	GDP	K	PO	A	E	Avg
Feb 13	vs Alabama	*c	2	0	0	0	0	0	0	0	0	0	0	0	0	0	1	2	1	1	.000
Feb. 18	vs Ohio	c	0	0	0	0	0	0	0	0	0	0	0	0	0	0	0	4	0	0	.000
Feb 19	at Lamar	*c	3	0	1	0	0	0	0	1	0	0	0	1	0	0	1	9	2	0	.200
Feb 27	TARLETON	*dh	2	1	2	1	0	0	0	0	0	0	0	0	0	0	0	0	0	0	.429
Mar 03	at UC Santa Barba	*c	3	0	1	0	0	0	0	0	0	0	0	0	0	0	1	6	0	0	.400
Mar 05	vs Santa Clara	*c	2	0	1	0	0	0	0	0	0	0	0	0	0	0	0	2	0	0	.417
Mar 08	NEW MEXICO ST	ph	1	0	0	0	0	0	0	0	0	0	0	0	0	0	0	0	0	0	.385
Totals		5gs	13	1	5	1	0	0	0	1	0	0	0	1	0	0	3	23	3	1	.385

On base pct. .429 • Slugging pct. .385

THE 2022 LOBOS



6 ALEXIS VIGIL

INF • 5-0 • SR.

LOS LUNAS, N.M. • COLLEGE OF SOUTHERN NEVADA

SINGLE-GAME HIGHS

Hits: 2, North Dakota State, 2-25-22
 Doubles:
 Triples:
 Home runs:
 Total bases: 1, Utah State, 5-15-21
 RBI: 1, 2x, Last vs. North Dakota St., 2-25-22
 Runs scored: 1, 3x, Last vs. UTEP, 2-24-22
 Walks: 2, NMSU, 3-8-22
 Hit by pitch:

Struck out: 2, 3x, Last at Utah State, 5-14-21
 Sac flies: 1, San José State, 5-9-21
 Sac bunts:
 At bats: 3, 3x, Last vs. North Dakota St., 2-25-22
 Stolen bases:
 Caught stealing:
 Putouts: 3, NMSU, 3-8-22
 Assists: 6, North Dakota St., 2-25-22

CAREER STATS (AT UNM)

Year	avg	gp-gs	ab	r	h	2b	3b	hr	rbi	bb	so	sb-att
2021	.045	14-7	22	2	1	0	0	0	1	1	11	0-0
2022	.286	8-3	7	4	2	0	0	0	1	3	2	0-0
TOTAL	.103	22-10	29	6	3	0	0	0	2	4	13	0-0

2022 GAME-BY-GAME

Date	Opponent	Pos	AB	R	H	RBI	2B	3B	HR	BB	SB	CS	HBP	SAC	SF	GDP	K	PO	A	E	Avg
Feb 12	vs Southern Utah	pr	0	1	0	0	0	0	0	0	0	0	0	0	0	0	0	0	0	0	.000
Feb 13	vs Alabama	pr	0	0	0	0	0	0	0	0	0	0	0	0	0	0	0	0	0	0	.000
Feb 19	at Lamar	pr	0	0	0	0	0	0	0	0	0	0	0	0	0	0	0	0	0	0	.000
Feb 24	UTEP	ph	0	1	0	0	0	0	0	1	0	0	0	0	0	0	0	0	0	0	.000
Feb 25	NDSU	*2b	3	0	2	1	0	0	0	0	0	0	0	0	0	0	1	1	6	1	.667
Feb 26	BUFFALO	*dh	2	0	0	0	0	0	0	0	0	0	0	0	0	0	0	0	0	0	.400
Mar 04	vs Santa Clara	pr	0	1	0	0	0	0	0	0	0	0	0	0	0	0	0	0	0	0	.400
Mar 08	NEW MEXICO ST	*2b	2	1	0	0	0	0	0	2	0	0	0	0	0	0	1	3	2	3	.286
Totals		3gs	7	4	2	1	0	0	0	3	0	0	0	0	0	0	2	4	8	4	.286

On base pct. .500 • Slugging pct. .286





7 ASHLEY ARCHULETA

INF • 5-4 • FR.
RIO RANCHO, N.M. • CLEVELAND HS

SINGLE-GAME HIGHS

Hits: 3, 2x, Last vs. NMSU, 3-8-22
Doubles: 2, NMSU, 3-8-22
Triples: 1, NMSU, 3-8-22
Home runs:
Total bases: 7, NMSU, 3-8-22
RBI: 3, Southern Utah, 2-12-22
Runs scored: 2, 2x, Last vs. Tarleton, 2-27-22
Walks: 2, UCSB, 3-3-22
Hit by pitch: 2, UTEP, 2-24-22

Struck out: 2, 2x, Last vs. NMSU, 3-8-22
Sac flies:
Sac bunts:
At bats: 4, 7x, Last vs. NMSU, 3-8-22
Stolen bases:
Caught stealing:
Putouts: 4, 3x, Last vs. Santa Clara, 3-5-22
Assists: 6, at Lamar, 2-19-22

CAREER STATS (AT UNM)

Year	avg	gp-gs	ab	r	h	2b	3b	hr	rbi	bb	so	sb-att
2022	.297	20-20	64	11	19	4	1	0	8	10	11	0-0
TOTAL	.297	20-20	64	11	19	4	1	0	8	10	11	0-0

2022 GAME-BY-GAME

Date	Opponent	Pos	AB	R	H	RBI	2B	3B	HR	BB	SB	CS	HBP	SAC	SF	GDP	K	PO	A	E	Avg
Feb 11	vs Oregon State	*2b	3	0	1	0	0	0	0	0	0	0	0	0	0	0	1	1	0	0	.333
Feb 12	vs Southern Utah	*2b	3	0	1	3	0	0	0	1	0	0	0	0	0	0	1	1	0	0	.333
Feb 13	vs Alabama	*2b	3	0	0	0	0	0	0	0	0	0	0	0	0	0	2	1	0	0	.222
Feb 13	at Arizona	*2b	3	0	1	0	0	0	0	0	0	0	0	0	0	0	0	4	0	0	.250
Feb. 18	vs Ohio	*2b	4	1	1	0	0	0	0	0	0	0	0	0	0	0	0	1	0	0	.250
Feb 18	at Lamar	*2b	4	0	1	0	1	0	0	0	0	0	0	0	0	0	1	3	4	0	.250
Feb 19	at Lamar	*2b	4	0	1	1	1	0	0	1	0	0	0	0	0	0	1	3	6	0	.250
Feb 19	vs Creighton	*2b	4	0	0	0	0	0	0	0	0	0	0	0	0	0	0	4	3	0	.214
Feb 20	vs Ohio	*2b	3	1	2	0	0	0	0	1	0	0	0	0	0	0	1	1	2	0	.258
Feb 24	UTEP	*2b	2	0	0	0	0	0	0	0	0	0	2	0	0	0	0	2	2	0	.242
Feb 25	NDSU	*dh	4	2	3	0	0	0	0	0	0	0	0	0	0	0	0	0	0	0	.297
Feb 26	BUFFALO	*2b	3	0	0	0	0	0	0	0	0	0	0	0	0	0	0	1	2	0	.275
Feb 27	TARLETON	*2b	2	2	0	0	0	0	0	1	0	0	0	0	0	0	0	2	1	0	.262
Mar 03	at UC Santa Barba	*2b	2	1	0	0	0	0	0	1	0	0	0	0	0	0	1	1	1	0	.250
Mar 03	at UC Santa Barba	*2b	3	1	0	0	0	0	0	2	0	0	0	0	0	0	0	2	3	1	.234
Mar 04	vs Wagner College	*2b	3	1	1	0	0	0	0	1	0	0	0	0	0	0	0	1	2	0	.240
Mar 04	vs Santa Clara	*2b	4	1	1	2	0	0	0	0	0	0	0	0	0	0	1	2	2	0	.241
Mar 05	vs Santa Clara	*2b	3	0	2	1	0	0	0	0	0	0	0	0	0	0	0	4	2	0	.263
Mar 08	NEW MEXICO ST	*ss	4	1	3	1	2	1	0	1	0	0	0	0	0	0	0	0	2	3	.295
Mar 08	NEW MEXICO ST	*2b	3	0	1	0	0	0	0	1	0	0	0	0	0	0	2	1	2	1	.297
Totals			20gs	64	11	19	8	4	1	0	10	0	2	0	0	0	11	35	34	5	.297

On base pct. .408 • Slugging pct. .391



10 MCKENNA KOSTYSZYN

P • 5-7 • FR.

FRISCO, TEXAS • FRISCO INDEPENDENCE HS

SINGLE-GAME HIGHS

Innings pitched: 2.0, NMSU, 3-8-22
 Walks allowed:
 Strikeouts: 1, Creighton, 2-19-22
 Batters faced: 8, NMSU, 3-8-22
 Putouts:
 Assists:
 Runners CS:

Fewest hits allowed (3.0 IP min.):
 Fewest BB allowed (3.0 IP min.):

CAREER STATS (AT UNM)

Year	era	w-l	app	gs	cg	sho	sv	ip	h	r	er	bb	so
2022	0.00	0-0	2	0	0	0/0	0	3.0	2	0	0	0	1
TOTAL	0.00	0-0	2	0	0	0/0	0	3.0	2	0	0	0	1

2022 GAME-BY-GAME

Date	Opponent	GS	IP	H	R	ER	BB	SO	2B	3B	HR	WP	BK	HBP	IBB	Score	W-L	Sv	ERA	NP
Feb 19	vs Creighton		1.0	1	0	0	0	1	0	0	0	0	0	0	0	2-5	0-0	0	0.00	15
Mar 08	NEW MEXICO ST		2.0	1	0	0	0	0	0	0	0	0	0	0	0	5-8	0-0	0	0.00	20
Totals		0	3.0	2	0	0	0	1	0	0	0	0	0	0	0	7-13	0-0	0	0.00	-





12 SAVANNAH BRAUN

INF • 5-10 • 50.
TUALATIN, ORE. • TUALATIN HS

SINGLE-GAME HIGHS

Hits: 1, 3x, Last vs Tarleton, 2-27-22
Doubles:
Triples:
Home runs:
Total bases: 1, 3x, Last vs Tarleton, 2-27-22
RBI: 1, Tarleton, 2-27-22
Runs scored:
Walks: 1, Oklahoma, 2-27-21
Hit by pitch:

Struck out: 1, Fresno State, 4-3-21
Sac flies:
Sac bunts:
At bats: 2, Utah State, 5-15-21
Stolen bases:
Caught stealing:
Field chances:
Putouts:
Assists:

CAREER STATS (AT UNM)

Year	avg	gp-gs	ab	r	h	2b	3b	hr	rbi	bb	so	sb-att
2021	.500	4-1	4	0	2	0	0	0	0	2	2	0-0
2022	1.000	1-0	1	0	1	0	0	0	1	0	0	0-0
TOTAL	.600	5-1	5	0	3	0	0	0	1	2	2	0-0

2022 GAME-BY-GAME

Date	Opponent	Pos	AB	R	H	RBI	2B	3B	HR	BB	SB	CS	HBP	SAC	SF	GDP	K	PO	A	E	Avg
Feb 27	TARLETON	ph	1	0	1	1	0	0	0	0	0	0	0	0	0	0	0	0	0	0	1.000
Totals		ogs	1	0	1	1	0	0	0	0	0	0	0	0	0	0	0	0	0	0	1.000

On base pct. 1.000 • Slugging pct. 1.000

THE 2022 LOBOS



16 LESLIE ROMERO

C • 5-4 • JR.

GONZALES, CALIF. • SALINAS HS

SINGLE-GAME HIGHS

Hits: 2, 9x, Last vs. NMSU, 3-8-22
 Doubles: 1, 5x, Last vs. NMSU, 3-8-22
 Home runs: 1, UTEP, 2-24-22
 Total bases: 5, UTEP, 2-24-22
 RBI: 3, UTEP, 2-24-22
 Runs scored: 2, UCSB, 3-3-22
 Walks: 1, 3x, Last vs. NMSU, 3-8-22
 Struck out: 2, 2x, Last vs. Texas Southern, 3-6-20
 Sac bunts: 1, S. Dakota, 2-29-20

Sac flies: 1, 4x, Last vs. Santa Clara, 3-4-22
 At bats: 4, 7x, Last vs. NMSU, 3-8-22
 Stolen bases: 1, Ohio, 2-20-22
 Putouts: 10, 2x, Last vs UTEP, 2-24-22
 Assists: 1, UTEP, 2-24-22

CAREER STATS (AT UNM)

Year	avg	gp-gs	ab	r	h	2b	3b	hr	rbi	bb	so	sb-att
2019	.000	10-2	12	0	0	0	0	0	0	0	5	0-0
2020	.219	15-12	32	4	7	2	0	0	3	1	4	0-0
2022	.327	19-17	55	8	18	2	0	1	11	2	6	1-1
TOTAL	.253	44-31	99	12	25	4	0	1	14	3	15	1-1

2022 GAME-BY-GAME

Date	Opponent	Pos	AB	R	H	RBI	2B	3B	HR	BB	SB	CS	HBP	SAC	SF	GDP	K	PO	A	E	Avg
Feb 11	vs Oregon State	*c	2	0	2	1	1	0	0	0	0	0	0	0	0	0	0	10	0	0	1.000
Feb 12	vs Southern Utah	*dh	3	0	2	1	0	0	0	0	0	0	0	0	0	0	1	0	0	0	.800
Feb 13	vs Alabama	*dh	3	0	0	0	0	0	0	0	0	0	0	0	0	0	0	0	0	0	.500
Feb 13	at Arizona	*dh	2	0	0	0	0	0	0	1	0	0	0	0	0	0	0	0	0	0	.400
Feb. 18	vs Ohio	*dh	3	0	0	0	0	0	0	0	0	0	0	0	0	0	0	0	0	0	.308
Feb 18	at Lamar	*c	3	0	1	1	0	0	0	0	0	0	0	0	0	0	0	5	0	0	.312
Feb 19	at Lamar	ph	1	0	0	0	0	0	0	0	0	0	0	0	0	0	0	0	0	0	.294
Feb 19	vs Creighton	*c	2	0	0	1	0	0	0	0	0	0	0	0	1	0	0	1	0	0	.263
Feb 20	vs Ohio	*c	3	1	1	0	0	0	0	0	1	0	0	0	0	0	1	3	0	0	.273
Feb 24	UTEP	*c	4	1	2	3	0	0	1	0	0	0	0	0	0	0	1	10	1	0	.308
Feb 25	NDSU	*c	4	1	2	0	0	0	0	0	0	0	0	0	0	0	1	2	0	0	.333
Feb 26	BUFFALO	*c	3	0	0	0	0	0	0	0	0	0	0	0	0	0	0	9	0	0	.303
Feb 27	TARLETON	pr	0	0	0	0	0	0	0	0	0	0	0	0	0	0	0	0	0	0	.303
Mar 03	at UC Santa Barba	*dh	4	0	0	0	0	0	0	0	0	0	0	0	0	0	1	0	0	0	.270
Mar 03	at UC Santa Barba	*c	4	2	2	1	0	0	0	0	0	0	0	0	1	0	1	5	0	0	.293
Mar 04	vs Wagner College	*dh	4	1	2	1	0	0	0	0	0	0	0	0	0	0	0	0	0	0	.311
Mar 04	vs Santa Clara	*c	3	0	1	1	0	0	0	0	0	0	0	0	1	0	0	6	0	0	.312
Mar 08	NEW MEXICO ST	*dh	3	1	1	0	1	0	0	1	0	0	0	0	0	0	0	0	0	0	.314
Mar 08	NEW MEXICO ST	*c	4	1	2	1	0	0	0	0	0	0	0	0	0	0	0	9	0	0	.327
Totals			17gs	55	8	18	11	2	0	1	2	1	0	0	3	0	6	60	1	0	.327

On base pct. .333 • Slugging pct. .418



THE 2022 LOBOS



17 AMBER LINTON

P • 6-0 • 50.

FRANKLIN, IND. • INDIANA

SINGLE-GAME HIGHS

Innings pitched: 7.0, 3x, Last vs Buffalo, 2-26-22

Walks allowed: 4, NMSU, 3-8-22

Strikeouts: 11, UTEP, 2-24-22

Batters faced: 32, UTEP, 2-24-22

Putouts: 1, 3x, Last at Iowa, 4-2-21

Assists: 2, 5x, Last vs. UCSB, 3-3-22

Runners CS:

Fewest hits allowed (3.0 IP min.): 1, Minnesota, 2-28-21

Fewest BB allowed (3.0 IP min.): 0, 2x, Last at Lamar, 2-18-22

Mountain West Pitcher of the Week (March 1)

CAREER STATS (AT INDIANA)

Year	era	w-l	app	gs	cq	sho	sv	ip	h	r	er	bb	so	2b	3b	hr	bf	bavg	wp	hbp	bk	sfa	sha
2021	4.87	5-2	19	4	0	0/0	0	44.1	51	33	24	24	21	12	2	2	214	.283	1	5	0	1	3
TOTAL	4.87	5-2	19	4	0	0/0	0	44.1	51	33	24	24	21	12	2	2	214	.283	1	5	0	1	3

CAREER STATS (AT UNM)

Year	era	w-l	app	gs	cq	sho	sv	ip	h	r	er	bb	so
2022	2.80	6-2	13	9	3	0/0	3	50.0	49	31	20	21	60
TOTAL	2.80	6-2	13	9	3	0/0	3	50.0	49	31	20	21	60

2022 GAME-BY-GAME

Date	Opponent	GS	IP	H	R	ER	BB	SO	2B	3B	HR	WP	BK	HBP	IBB	Score	W-L	Sv	ERA	NP
Feb 11	vs Oregon State	*	7.0	6	2	2	1	10	0	0	1	0	0	2	0	3-2	1-0	0	2.00	137
Feb 13	vs Alabama	*	0.0	2	4	4	2	0	1	0	0	0	0	0	0	3-8	1-1	0	6.00	31
Feb. 18	vs Ohio	*	1.0	1	0	0	1	1	0	0	0	0	0	0	0	4-2	1-1	1	5.25	17
Feb 18	at Lamar	*	7.0	4	1	1	0	5	0	0	0	0	0	2	0	2-1	2-1	1	3.27	104
Feb 19	at Lamar	*	2.2	1	2	0	2	3	0	0	0	1	0	0	0	6-4	3-1	1	2.77	53
Feb 20	vs Ohio	*	4.0	2	1	1	3	4	0	0	0	0	0	0	0	9-1	4-1	1	2.58	73
Feb 24	UTEP	*	6.2	7	4	0	3	11	0	0	0	1	0	0	0	5-4	4-1	1	1.98	121
Feb 25	NDSU	*	0.2	0	0	0	0	0	0	0	0	0	0	0	0	6-4	4-1	2	1.93	10
Feb 26	BUFFALO	*	7.0	4	2	2	1	9	0	0	0	1	0	2	0	6-2	5-1	2	1.94	86
Mar 03	at UC Santa Barba	*	0.2	1	0	0	0	1	0	0	0	0	0	1	0	3-1	5-1	3	1.91	13
Mar 03	at UC Santa Barba	*	3.2	5	3	2	1	4	2	0	0	1	0	2	0	11-7	5-1	3	2.08	75
Mar 04	vs Santa Clara	*	4.2	6	4	3	3	4	2	0	1	0	0	1	0	7-6	6-1	3	2.33	96
Mar 08	NEW MEXICO ST	*	5.0	10	8	5	4	8	2	0	0	0	0	0	0	5-8	6-2	3	2.80	124
Totals		9	50.0	49	31	20	21	60	7	0	2	4	0	10	0	70-50	6-2	3	2.80	-

THE 2022 LOBOS



20 EMMA BRAMSON INF • 5-7 • FR. VALENCIA, CALIF. • VALENCIA HS

SINGLE-GAME HIGHS

Hits: 3, UCSB, 3-3-22
Doubles: 1, 3x, Last vs. Santa Clara, 3-5-22
Triples:
Home runs: 2, UCSB, 3-3-22
Total bases: 9, UCSB, 3-3-22
RBI: 5, UCSB, 3-3-22
Runs scored: 2, 2x, Last vs. UCSB, 3-3-22
Walks: 2, NDSU, 2-25-22
Hit by pitch:

Struck out: 1, 3x, Last vs Wagner, 3-4-22
Sac flies: 1, Lamar, 2-19-22
Sac bunts:
At bats: 5, 2x, Last at UCSB, 3-3-22
Stolen bases:
Caught stealing:
Putouts: 2, 3x, Last at UCSB, 3-3-22
Assists: 3, 2x, Last vs Ohio, 2-18-22

Mountain West Freshman of the Week (Feb. 22)

CAREER STATS (AT UNM)

Year	avg	gp-gs	ab	r	h	2b	3b	hr	rbi	bb	so	sb-att
2022	.328	18-18	58	14	19	3	0	5	16	6	3	0-0
TOTAL	.328	18-18	58	14	19	3	0	5	16	6	3	0-0

2022 GAME-BY-GAME

Date	Opponent	Pos	AB	R	H	RBI	2B	3B	HR	BB	SB	CS	HBP	SAC	SF	GDP	K	PO	A	E	Avg
Feb 11	vs Oregon State	*3b	3	1	0	0	0	0	0	0	0	0	0	0	0	0	0	2	2	0	.000
Feb 12	vs Southern Utah	*3b	2	1	0	0	0	0	0	1	0	0	0	0	0	0	0	1	0	0	.000
Feb 13	vs Alabama	*3b	3	0	1	1	0	0	0	0	0	0	0	0	0	0	0	1	0	0	.125
Feb 13	at Arizona	*3b	3	0	0	0	0	0	0	0	0	0	0	0	0	0	0	0	3	0	.091
Feb. 18	vs Ohio	*3b	3	0	2	0	0	0	0	0	0	0	0	0	0	0	0	0	3	0	.214
Feb 18	at Lamar	*3b	3	0	1	1	0	0	0	0	0	0	0	0	0	0	1	2	2	0	.235
Feb 19	at Lamar	*3b	5	0	0	1	0	0	0	0	0	0	0	0	1	0	0	1	1	0	.182
Feb 19	vs Creighton	*3b	3	1	1	0	0	0	0	0	0	0	0	0	0	0	0	0	1	1	.200
Feb 20	vs Ohio	*3b	3	1	2	2	0	0	0	1	0	0	0	0	0	0	0	1	1	0	.250
Feb 24	UTEP	*3b	3	1	2	1	0	0	1	1	0	0	0	0	0	0	0	0	1	0	.290
Feb 25	NDSU	*3b	2	1	0	0	0	0	0	2	0	0	0	0	0	0	0	0	1	0	.273
Feb 26	BUFFALO	*3b	3	2	2	0	0	0	0	0	0	0	0	0	0	0	1	0	1	0	.306
Feb 27	TARLETON	*3b	2	1	0	1	0	0	0	1	0	0	0	0	0	0	0	0	1	0	.289
Mar 03	at UC Santa Barba	*3b	4	1	2	1	1	0	1	0	0	0	0	0	0	0	0	2	1	1	.310
Mar 03	at UC Santa Barba	*3b	5	2	3	5	0	0	2	0	0	0	0	0	0	0	0	1	0	0	.340
Mar 04	vs Wagner College	*3b	4	1	1	1	1	0	0	0	0	0	0	0	0	0	1	1	1	0	.333
Mar 04	vs Santa Clara	*3b	4	0	0	0	0	0	0	0	0	0	0	0	0	0	0	1	1	0	.309
Mar 05	vs Santa Clara	*3b	3	1	2	2	1	0	1	0	0	0	0	0	0	0	0	0	2	0	.328
Totals			18gs	58	14	19	16	3	0	5	6	0	0	0	1	0	3	12	23	2	.328

On base pct. .385 • Slugging pct. .638



THE 2022 LOBOS



21 PEYTON ROBINSON

OF • 5-6 • SR.

SAGINAW, TEXAS • SOUTHERN NAZARENE

SINGLE-GAME HIGHS

Hits: 3, 4x, Last vs. Nevada, 4-10-21
 Doubles: 1, 9x, Last vs. Wagner, 3-4-22
 Triples: 1, 2x, Last vs. Hawaii-Hilo, 2-14-20
 Home runs:
 Total bases: 4, 2x, Last vs. Nevada, 4-10-21
 RBI: 3, East Central, 2-21-20
 Runs scored: 2, 4x, Last vs. Boise St., 4-25-21
 Walks: 2, Chadron St., 2-9-20
 Hit by pitch:

Struck out: 3, 2x, Last vs. Boise St., 4-24-21
 Sac flies: 1, 2x, Last at Oklahoma State, 3-6-21
 Sac bunts: 1, 23x, Last vs. NMSU, 3-8-22
 At bats: 6, Henderson State, 3-6-20
 Stolen bases: 2, 5x, Last vs. Henderson St., 3-6-20
 Caught stealing: 1, 5x, Last at UNLV, 4-17-21
 Putouts: 6, Southern Utah, 2-21-21
 Assists: 1, 6x, Last at San Diego State, 5-1-21

CAREER STATS (AT UNM)

Year	avg	gp-gs	ab	r	h	2b	3b	hr	rbi	bb	so	sb-att
2021	.250	46-45	124	19	31	3	0	0	3	9	21	4-5
2022	.333	20-20	54	13	18	1	0	0	4	4	4	5-5
TOTAL	.275	66-65	178	32	49	4	0	0	7	13	25	9-10

2022 GAME-BY-GAME

Date	Opponent	Pos	AB	R	H	RBI	2B	3B	HR	BB	SB	CS	HBP	SAC	SF	GDP	K	PO	A	E	Avg
Feb 11	vs Oregon State	*of	3	1	0	0	0	0	0	0	0	0	0	0	0	0	0	0	0	0	.000
Feb 12	vs Southern Utah	*of	4	1	1	0	0	0	0	0	0	0	0	0	0	0	1	0	0	0	.143
Feb 13	vs Alabama	*of	3	1	1	0	0	0	0	0	0	0	0	0	0	0	0	2	0	0	.200
Feb 13	at Arizona	*of	2	0	0	0	0	0	0	0	0	0	0	0	0	0	0	0	0	0	.167
Feb. 18	vs Ohio	*of/pr	2	1	1	0	0	0	0	0	0	0	0	0	0	0	0	2	0	0	.214
Feb 18	at Lamar	*of	3	0	2	0	0	0	0	0	1	0	0	0	0	0	0	0	0	0	.294
Feb 19	at Lamar	*of/ph	4	1	1	0	0	0	0	0	0	0	0	1	0	0	0	2	0	0	.286
Feb 19	vs Creighton	*of	2	0	0	0	0	0	0	1	0	0	0	0	0	0	0	1	0	0	.261
Feb 20	vs Ohio	*of	3	1	1	0	0	0	0	0	1	0	0	0	0	0	0	2	0	0	.269
Feb 24	UTEP	*of	2	0	1	0	0	0	0	0	0	0	0	1	0	0	1	1	0	0	.286
Feb 25	NDSU	*of	2	0	0	0	0	0	0	0	0	0	0	0	0	0	1	1	0	0	.267
Feb 26	BUFFALO	*of	2	0	0	0	0	0	0	0	0	0	0	0	0	0	0	0	0	0	.250
Feb 27	TARLETON	*of	2	2	2	2	0	0	0	0	1	0	0	1	0	0	0	2	0	0	.294
Mar 03	at UC Santa Barba	*of	1	0	1	0	0	0	0	1	0	0	0	1	0	0	0	0	0	0	.314
Mar 03	at UC Santa Barba	*of	3	2	1	0	0	0	0	1	0	0	0	0	0	0	0	2	0	0	.316
Mar 04	vs Wagner College	*of	3	0	1	0	1	0	0	0	0	0	0	0	0	0	0	0	0	0	.317
Mar 04	vs Santa Clara	*of	3	0	1	0	0	0	0	0	0	0	0	0	0	0	0	0	0	0	.318
Mar 05	vs Santa Clara	*of	3	1	1	0	0	0	0	0	1	0	0	0	0	0	0	1	0	0	.319
Mar 08	NEW MEXICO ST	*of	4	2	2	2	0	0	0	1	1	0	0	0	0	0	1	1	0	0	.333
Mar 08	NEW MEXICO ST	*of	3	0	1	0	0	0	0	0	0	0	0	1	0	0	0	0	0	0	.333
Totals		20qs	54	13	18	4	1	0	0	4	5	0	0	5	0	0	4	17	0	0	.333

On base pct. .379 • Slugging pct. .352

THE 2022 LOBOS



24 DIAMOND SANDOVAL

OF • 5-3 • 50.

NORWALK, CALIF. • ST. PAUL HS

SINGLE-GAME HIGHS

Hits: 1, 4x, Last vs. Santa Clara, 3-5-22
 Doubles: 1, Santa Clara, 3-4-22
 Triples:
 Home runs:
 Total bases: 2, Santa Clara, 3-4-22
 RBI: 2, Santa Clara, 3-4-22
 Runs scored: 1, 4x, Last vs. Santa Clara, 3-4-22
 Walks: 1, 3x, Last vs. Nevada, 4-10-21
 Hit by pitch:

Struck out: 2, Nevada, 4-10-21
 Sac flies:
 Sac bunts:
 At bats: 3, 3x, Last vs. Santa Clara, 3-5-22
 Stolen bases:
 Caught stealing:
 Putouts:
 Assists:

CAREER STATS (AT UNM)

Year	avg	gp-gs	ab	r	h	2b	3b	hr	rbi	bb	so	sb-att
2021	.125	14-2	16	3	2	0	0	0	1	3	5	0-0
2022	.250	11-1	8	2	2	1	0	0	2	0	3	0-0
TOTAL	.167	25-3	24	5	4	1	0	0	3	3	8	0-0

2022 GAME-BY-GAME

Date	Opponent	Pos	AB	R	H	RBI	2B	3B	HR	BB	SB	CS	HBP	SAC	SF	GDP	K	PO	A	E	Avg
Feb 11	vs Oregon State	pr	0	0	0	0	0	0	0	0	0	0	0	0	0	0	0	0	0	0	.000
Feb 19	at Lamar	ph	1	0	0	0	0	0	0	0	0	0	0	0	0	0	0	0	0	0	.000
Feb 19	vs Creighton	ph/d	1	0	0	0	0	0	0	0	0	0	0	0	0	0	1	0	0	0	.000
Feb 25	NDSU	pr	0	0	0	0	0	0	0	0	0	0	0	0	0	0	0	0	0	0	.000
Feb 26	BUFFALO	ph/d	1	0	0	0	0	0	0	0	0	0	0	0	0	0	1	0	0	0	.000
Mar 03	at UC Santa Barba	pr	0	0	0	0	0	0	0	0	0	0	0	0	0	0	0	0	0	0	.000
Mar 04	vs Wagner College	pr	0	1	0	0	0	0	0	0	0	0	0	0	0	0	0	0	0	0	.000
Mar 04	vs Santa Clara	ph	1	1	1	2	1	0	0	0	0	0	0	0	0	0	0	0	0	0	.250
Mar 05	vs Santa Clara	*dh	3	0	1	0	0	0	0	0	0	0	0	0	0	0	1	0	0	0	.286
Mar 08	NEW MEXICO ST	ph	1	0	0	0	0	0	0	0	0	0	0	0	0	0	0	0	0	0	.250
Mar 08	NEW MEXICO ST	pr	0	0	0	0	0	0	0	0	0	0	0	0	0	0	0	0	0	0	.250
Totals		1gs	8	2	2	2	1	0	0	0	0	0	0	0	0	0	3	0	0	0	.250

On base pct. .250 • Slugging pct. .375





25 BRIANNA SANCHEZ P • 5-6 • JR. WEST COVINA, CALIF. • BISHOP AMAT HS

SINGLE-GAME HIGHS

Innings pitched: 7.0, Stanford, 2-8-20
 Walks allowed: 3, 7x, Last at Fresno St., 4-3-21
 Strikeouts: 2, Santa Clara, 3-4-22
 Batters faced: 26, 2x, Last vs. N. Colorado, 3-1-20
 Putouts: 2, Stanford, 2-8-20
 Assists: 2, 2x, Last vs. La Salle, 2-29-20
 Runners CS:
 Fewest hits allowed (3.0 IP min.): 4, Stanford, 2-8-20
 Fewest BB allowed (3.0 IP min.): 3, Stanford, 2-8-20

CAREER STATS (AT UNM)

Year	era	w-l	app	gs	cq	sho	sv	ip	h	r	er	bb	so
2020	4.50	1-4	16	5	1	1/0	1	32.2	47	26	21	23	7
2021	21.00	0-1	8	1	0	0/0	0	7.0	19	22	21	9	4
2022	8.40	0-1	5	0	0	0/1	0	5.0	3	6	6	4	4
TOTAL	7.52	1-6	29	6	1	1/1	1	44.2	69	54	48	36	15

2022 GAME-BY-GAME

Date	Opponent	GS	IP	H	R	ER	BB	SO	2B	3B	HR	WP	BK	HBP	IBB	Score	W-L	Sv	ERA	NP
Feb 12	vs Southern Utah		0.0	0	0	0	1	0	0	0	0	0	0	0	0	8-0	0-0	0	0.00	6
Feb. 18	vs Ohio		1.0	0	1	1	1	1	0	0	0	1	0	0	0	4-2	0-0	0	7.00	19
Feb 19	vs Creighton		1.0	1	2	2	1	0	1	0	0	2	0	0	0	2-5	0-0	0	10.50	26
Mar 04	vs Santa Clara		2.1	2	2	2	0	2	1	0	0	1	0	0	0	7-6	0-0	0	8.08	36
Mar 08	NEW MEXICO ST		0.2	0	1	1	1	1	0	0	0	1	0	0	0	8-12	0-1	0	8.40	14
Totals		0	5.0	3	6	6	4	4	2	0	0	5	0	0	0	29-25	0-1	0	8.40	-

THE 2022 LOBOS



27 OLIVIA BIRKINSHAW

UT • 5-10 • FR.

SANTA MARGARITA, CALIF. • MISSION VIEJO HS

SINGLE-GAME HIGHS

Hits: 1, 4x, Last vs. NMSU, 3-8-22
 Doubles: 1, at Arizona, 2-13-22
 Triples: 1, Lamar, 2-19-22
 Home runs:
 Total bases: 3, Lamar, 2-19-22
 RBI:
 Runs scored: 1, 3x, Last vs. Ohio, 2-20-22
 Walks: 1, at Arizona, 2-13-22
 Hit by pitch: 2, Oregon State, 2-11-22

Struck out: 3, 2x, Last at UCSB, 3-3-22
 Sac flies:
 Sac bunts: 1, 2x, Last vs Ohio, 2-20-22
 At bats: 5, UCSB, 3-3-22
 Stolen bases: 1, Ohio, 2-20-22
 Caught stealing:
 Putouts: 4, Arizona, 2-13-22
 Assists: 1, Creighton, 2-19-22

CAREER STATS (AT UNM)

Year	avg	gp-gs	ab	r	h	2b	3b	hr	rbi	bb	so	sb-att
2022	.160	11-8	25	3	4	2	1	0	0	1	13	1-1
TOTAL	.160	11-8	25	3	4	2	1	0	0	1	13	1-1

2022 GAME-BY-GAME

Date	Opponent	Pos	AB	R	H	RBI	2B	3B	HR	BB	SB	CS	HBP	SAC	SF	GDP	K	PO	A	E	Avg
Feb 11	vs Oregon State	*dh	1	1	0	0	0	0	0	0	0	0	0	2	0	0	0	0	0	0	.000
Feb 13	at Arizona	*1b	2	0	1	0	1	0	0	1	0	0	0	0	0	0	1	4	0	0	.333
Feb. 18	vs Ohio	ph	1	0	1	0	0	0	0	0	0	0	0	0	0	0	0	0	0	0	.500
Feb 18	at Lamar	*dh	3	0	0	0	0	0	0	0	0	0	0	0	0	0	2	0	0	0	.286
Feb 19	at Lamar	ph	1	1	1	0	0	1	0	0	0	0	0	0	0	0	0	0	0	0	.375
Feb 19	vs Creighton	*dh/1	3	0	0	0	0	0	0	0	0	0	0	0	0	0	1	1	1	0	.273
Feb 20	vs Ohio	*dh	2	1	0	0	0	0	0	0	1	0	1	1	0	0	1	0	0	0	.231
Feb 24	UTEP	*dh	3	0	0	0	0	0	0	0	0	0	0	0	0	0	3	0	0	0	.188
Mar 03	at UC Santa Barba	ph	1	0	0	0	0	0	0	0	0	0	0	0	0	0	1	0	0	0	.176
Mar 03	at UC Santa Barba	*dh	5	0	0	0	0	0	0	0	0	0	0	0	0	0	3	0	0	0	.136
Mar 08	NEW MEXICO ST	*dh	3	0	1	0	1	0	0	0	0	0	1	0	0	0	1	0	0	0	.160
Totals		8gs	25	3	4	0	2	1	0	1	1	0	4	1	0	0	13	5	1	0	.160

On base pct. .300 • Slugging pct. .320



THE 2022 LOBOS



28 SAMANTHA FOHRMAN

P • 5-7 • JR.

COTTAGE GROVE, MINN. • GEORGIAN COURT

SINGLE-GAME HIGHS

Innings pitched: 5.0, Wagner, 3-4-22
 Walks allowed:
 Strikeouts: 1, 2x, Last vs. Wagner, 3-4-22
 Batters faced: 14, Lamar, 2-19-22
 Putouts:
 Assists: 2, Wagner, 3-4-22
 Runners CS:1, Alabama, 2-13-22

Fewest hits allowed (3.0 IP min.): 4, Wagner, 3-4-22
 Fewest BB allowed (3.0 IP min.): 0, 2x, Last vs. Wagner, 3-4-22

CAREER STATS (AT UNM)

Year	era	w-l	app	gs	cg	sho	sv	ip	h	r	er	bb	so
2022	1.56	1-0	3	2	0	0/0	0	9.0	10	5	2	0	2
TOTAL	1.56	1-0	3	2	0	0/0	0	9.0	10	5	2	0	2

2022 GAME-BY-GAME

Date	Opponent	GS	IP	H	R	ER	BB	SO	2B	3B	HR	WP	BK	HBP	IBB	Score	W-L	Sv	ERA	NP
Feb 13	vs Alabama		1.0	1	1	0	0	0	0	0	0	0	0	1	0	3-8	0-0	0	0.00	21
Feb 19	at Lamar	*	3.0	5	2	0	0	1	3	0	0	0	0	0	0	6-4	0-0	0	0.00	51
Mar 04	vs Wagner College	*	5.0	4	2	2	0	1	1	0	0	0	0	0	0	5-2	1-0	0	1.56	59
Totals		2	9.0	10	5	2	0	2	4	0	0	0	0	1	0	14-14	1-0	0	1.56	-



34 EMMA GUINDON

P • 5-9 • JR.

TOMBALL, TEXAS • MONTEREY PENINSULA COLLEGE

SINGLE-GAME HIGHS

Innings pitched: 8.0, Prairie View, 4-16-19

Walks allowed: 6, 2x, Last at Northwestern St., 2-23-19

Strikeouts: 11, Southern Utah, 2-12-22

Batters faced: 35, 2x, Last at Utah State, 5-14-21

Putouts: 2, 2x, Last at Prairie View, 4-16-19

Assists: 5, Fresno State, 4-2-21

Runners CS: 1, 5x, Last at UNLV, 4-17-21

Fewest hits allowed (3.0 IP min.): 0, Incarnate Word, 4-18-19

Fewest BB allowed (3.0 IP min.): 0, 7x, Last vs NMSU, 3-8-22

CAREER STATS (AT UNM)

Year	era	w-l	app	gs	cq	sho	sv	ip	h	r	er	bb	so
2021	5.00	6-21	30	27	12	0/1	0	141.1	207	133	101	53	46
2022	1.20	7-1	13	8	3	2/1	1	58.1	44	18	10	8	52
TOTAL	3.89	13-22	43	35	15	2/2	1	199.2	251	151	111	61	98

2022 GAME-BY-GAME

Date	Opponent	GS	IP	H	R	ER	BB	SO	2B	3B	HR	WP	BK	HBP	IBB	Score	W-L	Sv	ERA	NP
Feb 12	vs Southern Utah	*	6.0	1	0	0	0	11	0	0	0	0	0	2	0	8-0	1-0	0	0.00	83
Feb 13	at Arizona	*	6.0	5	1	1	1	2	1	0	0	1	0	0	0	0-1	1-1	0	0.58	87
Feb. 18	vs Ohio	*	5.0	5	1	1	1	5	2	0	0	0	0	0	0	4-2	2-1	0	0.82	39
Feb 19	at Lamar		6.1	3	0	0	1	7	0	0	0	0	0	0	0	6-4	2-1	0	0.60	83
Feb 20	vs Ohio		1.0	0	0	0	0	0	0	0	0	0	0	0	0	9-1	2-1	0	0.58	10
Feb 24	UTEP		0.1	1	0	0	1	0	0	0	0	0	0	0	0	5-4	3-1	0	0.57	14
Feb 25	NDSU	*	5.1	4	3	2	2	2	1	0	0	0	0	0	0	6-4	4-1	0	0.93	85
Feb 27	TARLETON	*	5.0	1	0	0	0	7	0	0	0	0	0	0	0	8-0	5-1	0	0.80	77
Mar 03	at UC Santa Barba	*	6.1	3	1	1	1	5	0	0	0	0	0	0	0	3-1	6-1	0	0.85	85
Mar 03	at UC Santa Barba		2.0	8	4	2	0	1	1	0	0	0	0	0	0	11-7	6-1	0	1.13	36
Mar 04	vs Wagner College		2.0	2	0	0	0	5	0	0	0	0	0	0	0	5-2	6-1	1	1.08	39
Mar 05	vs Santa Clara	*	7.0	3	0	0	1	2	0	0	0	0	0	2	0	3-0	7-1	1	0.94	89
Mar 08	NEW MEXICO ST	*	6.0	8	8	3	0	5	3	0	0	1	0	0	0	8-12	7-1	1	1.20	80
Totals		8	58.1	44	18	10	8	52	8	0	0	2	0	4	0	76-38	7-1	1	1.20	



THE 2022 LOBOS



42 LORAN WALKER

C/INF • 5-6 • FR.

MERIDIAN, IDAHO • ROCKY MOUNTAIN HS

SINGLE-GAME HIGHS

CAREER STATS (AT UNM)

2022 GAME-BY-GAME

THE 2022 LOBOS



44 LAUREN GARCIA

INF • 5-11 • FR.
EL PASO, TEXAS • MONTWOOD HS

SINGLE-GAME HIGHS

Out this season with an injury

CAREER STATS (AT UNM)

2022 GAME-BY-GAME



THE 2022 LOBOS



55 JANAЕ CAMERON

C • 5-9 • SR.

WINDSOR, COLO. • NEBRASKA OMAHA

SINGLE-GAME HIGHS

Hits: 4, North Dakota, 3-31-19

Doubles: 2, 2x, Last vs. Northern Iowa, 3-6-20

Triples:

Home runs: 1, 4x, Last vs. Southern Utah, 2-12-22

Total bases: 4, Last vs. Southern Utah, 2-12-22

RBI: 4, North Dakota, 3-31-19

Runs scored: 2, 4x, Last vs. New Mexico, 3-7-21

Walks: 2, 2x, Last at Purdue Ft. Wayne, 4-13-19

Hit by pitch: 1, 2x, Last vs. Northern Iowa, 3-6-20

Struck out: 3, Lamar, 2-19-22

Sac flies: 1, 2x, Last at Georgia, 2-15-19

Sac bunts: 1, 6x, Last at UMKC, 5-1-21

At bats: 5, North Dakota, 3-31-19

Stolen bases:

Caught stealing:

Putouts: 13, North Dakota, 3-27-21

Assists: 3, 4x, Last vs. South Dakota St., 3-22-19

CAREER STATS (AT UNM)

Year	avg	gp-gs	ab	r	h	2b	3b	hr	rbi	bb	so	sb-att
2022	.176	7-5	17	3	3	1	0	1	4	3	8	0-0
TOTAL	.176	7-5	17	3	3	1	0	1	4	3	8	0-0

2022 GAME-BY-GAME

Date	Opponent	Pos	AB	R	H	RBI	2B	3B	HR	BB	SB	CS	HBP	SAC	SF	GDP	K	PO	A	E	Avg
Feb 12	vs Southern Utah	*c	3	1	1	2	0	0	1	0	0	0	0	0	0	0	1	12	0	0	.333
Feb. 18	vs Ohio	*c	3	0	1	1	1	0	0	0	0	0	0	0	0	0	1	3	0	1	.333
Feb 19	at Lamar	ph	3	1	0	0	0	0	0	0	0	0	0	0	0	0	3	0	0	0	.222
Feb 26	BUFFALO	ph	1	0	0	0	0	0	0	0	0	0	0	0	0	0	1	0	0	0	.200
Feb 27	TARLETON	*c	1	1	0	0	0	0	0	1	0	0	0	0	0	0	1	7	0	0	.182
Mar 04	vs Santa Clara	*dh	3	0	1	1	0	0	0	1	0	0	0	0	0	0	0	0	0	0	.214
Mar 08	NEW MEXICO ST	*c	3	0	0	0	0	0	0	1	0	0	0	0	0	0	1	6	1	1	.176
Totals		5gs	17	3	3	4	1	0	1	3	0	0	0	0	0	0	8	28	1	2	.176

On base pct. .300 • Slugging pct. .412



66 ASHLYN ROBERTS

P • 5-8 • FR.

SAMMAMISH, WASH. • EASTLAKE HS

SINGLE-GAME HIGHS

Innings pitched: 7.0, Utah State, 5-14-21

Walks allowed: 2, 4x, Last at San Diego St., 5-1-21

Strikeouts: 4, Southern Utah, 2-21-21

Batters faced: 31, Utah State, 5-14-21

Putouts: 1, 3x, Last vs Alabama, 2-13-22

Assists: 2, Creighton, 2-19-22

Runners CS: 2, Creighton, 2-19-22

Fewest hits allowed (3.0 IP min.): 3, 3x, Last vs.

Boise St., 4-25-21

Fewest BB allowed (3.0 IP min.): 1, 8x, Last vs

Creighton, 2-19-22

CAREER STATS (AT UNM)

Year	era	w-l	app	gs	cq	sho	sv	ip	h	r	er	bb	so
2021	5.25	2-2	24	8	1	0/1	1	56.0	84	48	42	20	24
2022	4.80	1-1	5	1	0	0/0	0	11.2	14	10	8	3	2
TOTAL	5.17	3-3	29	9	1	0/1	1	67.2	98	58	50	23	26

2022 GAME-BY-GAME

Date	Opponent	GS	IP	H	R	ER	BB	SO	2B	3B	HR	WP	BK	HBP	IBB	Score	W-L	Sv	ERA	NP
Feb 13	vs Alabama		5.0	4	3	3	1	2	1	1	0	0	0	0	2	3-8	0-0	0	4.20	73
Feb 19	vs Creighton	*	4.0	5	3	2	1	0	1	0	0	0	0	0	0	2-5	0-1	0	3.89	73
Feb 25	NDSU		1.0	3	1	1	0	0	2	0	0	0	0	0	0	6-4	0-1	0	4.20	22
Mar 03	at UC Santa Barba		1.1	1	0	0	1	0	0	0	0	0	0	0	0	11-7	1-1	0	3.71	17
Mar 08	NEW MEXICO ST		0.1	1	3	2	0	0	0	0	1	0	0	2	0	8-12	1-1	0	4.80	15
Totals		1	11.2	14	10	8	3	2	4	1	1	0	0	4	0	30-36	1-1	0	4.80	-





77 REYAN TUCK

IF • 6-0 • SR.
HILLSBORO, ORE. • TOWSON

SINGLE-GAME HIGHS

Hits: 2, 4x, Last vs. Buffalo, 2-26-22
Doubles: 1, 9x, Last vs NMSU, 3-8-22
Triples:
Home runs:
Total bases: 3, Boise State, 4-24-21
RBI: 2, 4x, Last at UCSB, 3-3-22
Runs scored: 1, 8x, Last vs Santa Clara, 3-4-22
Walks: 1, 8x, Last vs. NMSU, 3-8-22
Hit by pitch: 1, 4x, Last at San Jose St., 5-8-21

Struck out: 2, 6x, Last at UCSB, 3-3-22
Sac flies: 1, 6x, Last at UCSB, 3-3-22
Sac bunts: 1, 2x, Last at Lamar, 2-19-22
At bats: 4, 2x, Last at Lamar, 2-19-22
Stolen bases: 1, Northern Colorado, 2-15-20
Caught stealing:
Putouts: 15, Lamar, 2-19-22
Assists: 2, San Jose State, 5-8-21

CAREER STATS (AT UNM)

Year	avg	gp-gs	ab	r	h	2b	3b	hr	rbi	bb	so	sb-att
2020	.211	16-14	38	1	8	1	0	0	4	1	5	1-1
2021	.212	34-34	85	5	18	7	0	0	7	4	17	0-0
2022	.283	19-19	53	4	15	3	0	0	8	3	10	0-0
TOTAL	.233	69-67	176	10	41	11	0	0	19	8	32	1-1

2022 GAME-BY-GAME

Date	Opponent	Pos	AB	R	H	RBI	2B	3B	HR	BB	SB	CS	HBP	SAC	SF	GDP	K	PO	A	E	Avg
Feb 11	vs Oregon State	*1b	3	0	1	1	0	0	0	0	0	0	0	0	0	0	2	6	0	0	.333
Feb 12	vs Southern Utah	*1b	3	1	1	0	1	0	0	0	0	0	0	0	0	0	1	1	0	1	.333
Feb 13	vs Alabama	*1b	3	0	1	0	0	0	0	0	0	0	0	0	0	0	2	2	0	0	.333
Feb. 18	vs Ohio	*1b	3	0	1	0	1	0	0	0	0	0	0	0	0	0	0	6	0	0	.333
Feb 18	at Lamar	*1b	2	0	1	0	0	0	0	0	0	0	0	0	0	0	1	10	0	0	.357
Feb 19	at Lamar	*1b	4	1	1	0	0	0	0	0	0	0	0	1	0	0	0	15	1	0	.333
Feb 19	vs Creighton	*1b	2	0	1	0	0	0	0	0	0	0	0	0	0	0	0	5	0	0	.350
Feb 20	vs Ohio	*1b	3	0	1	1	0	0	0	0	0	0	0	0	0	0	0	6	1	0	.348
Feb 24	UTEP	*1b	3	1	1	1	0	0	0	0	0	0	0	0	1	0	1	5	0	0	.346
Feb 25	NDSU	*1b	2	0	0	1	0	0	0	1	0	0	0	0	0	0	0	12	0	0	.321
Feb 26	BUFFALO	*1b	3	0	2	2	0	0	0	0	0	0	0	0	0	0	0	6	0	0	.355
Feb 27	TARLETON	*1b	2	0	1	0	0	0	0	0	0	0	0	0	0	0	0	3	0	0	.364
Mar 03	at UC Santa Barba	*1b	3	0	0	0	0	0	0	0	0	0	0	0	0	0	2	6	0	0	.333
Mar 03	at UC Santa Barba	*1b	3	0	1	2	0	0	0	1	0	0	0	0	1	0	0	8	1	0	.333
Mar 04	vs Wagner College	*1b	3	0	0	0	0	0	0	0	0	0	0	0	0	0	0	11	0	0	.310
Mar 04	vs Santa Clara	*1b	3	1	1	0	0	0	0	0	0	0	0	0	0	0	0	8	0	0	.311
Mar 05	vs Santa Clara	*1b	3	0	0	0	0	0	0	0	0	0	0	0	0	0	0	8	0	0	.292
Mar 08	NEW MEXICO ST	*1b	2	0	0	0	0	0	0	1	0	0	0	0	0	0	0	7	0	0	.280
Mar 08	NEW MEXICO ST	*1b	3	0	1	0	1	0	0	0	0	0	0	0	0	0	1	8	0	0	.283
Totals			19gs	53	4	15	8	3	0	3	0	0	0	1	2	0	10	133	3	1	.283

On base pct. .310 • Slugging pct. .340

THE 2022 LOBOS



99 AYSIAH GONZALEZ

C • 5-7 • FR.

LA PUENTE, CALIF. • BISHOP AMAT HS

SINGLE-GAME HIGHS

Hits: 1, Wagner, 3-4-22
Doubles: 1, Wagner, 3-4-22
Triples:
Home runs:
Total bases: 2, Wagner, 3-4-22
RBI:
Runs scored:
Walks:
Hit by pitch:

Struck out: 2, Lamar, 2-19-22
Sac flies:
Sac bunts:
At bats: 3, Wagner, 3-4-22
Stolen bases:
Caught stealing:
Putouts: 5, Wagner, 3-4-22
Assists: 3, NMSU, 3-8-22

CAREER STATS (AT UNM)

Year	avg	gp-gs	ab	r	h	2b	3b	hr	rbi	bb	so	sb-att
2022	.100	6-3	10	0	1	1	0	0	0	0	3	0-0
TOTAL	.100	6-3	10	0	1	1	0	0	0	0	3	0-0

2022 GAME-BY-GAME

Date	Opponent	Pos	AB	R	H	RBI	2B	3B	HR	BB	SB	CS	HBP	SAC	SF	GDP	K	PO	A	E	Avg
Feb 12	vs Southern Utah	ph	1	0	0	0	0	0	0	0	0	0	0	0	0	0	0	0	0	0	.000
Feb 18	at Lamar	ph	1	0	0	0	0	0	0	0	0	0	0	0	0	0	0	0	0	0	.000
Feb 19	at Lamar	*dh	2	0	0	0	0	0	0	0	0	0	0	0	0	0	2	0	0	0	.000
Feb 25	NDSU	ph	1	0	0	0	0	0	0	0	0	0	0	0	0	0	1	0	0	0	.000
Mar 04	vs Wagner College	*c	3	0	1	0	1	0	0	0	0	0	0	0	0	0	0	5	1	0	.125
Mar 08	NEW MEXICO ST	*3b	2	0	0	0	0	0	0	0	0	0	0	0	0	0	0	1	3	1	.100
Totals		3gs	10	0	1	0	1	0	0	0	0	0	0	0	0	0	3	6	4	1	.100

