

DECEMBER 1, 1967

OREGON VS. NEW MEXICO

67-68
MC ARTHUR COURT

FINAL BOX SCORE

NEW MEXICO	FG-FGA	FT-FTA	REB	PF	TP
F- Howard Grimes	1-4	2-2	7	4	4
F- Gregg Howard	7-10	3-7	12	3	17
G- Ron Sanford	4-15	0-0	4	4*	8
G- Ron Nelson	9-15	1-1	1	1	16
G- Ron Beckler	1-5	8-11	9	1	18
F- Steve Shropshire	1-2	2-4	4	3	4
F- Dave Culver	0-0	0-0	2	0	0
F- Leonard Lopez	1-4	0-2	3	3	2
Team					
TOTALS	24-55 <i>436</i>	16-27 <i>593</i>	46	19*	64

* Technical foul

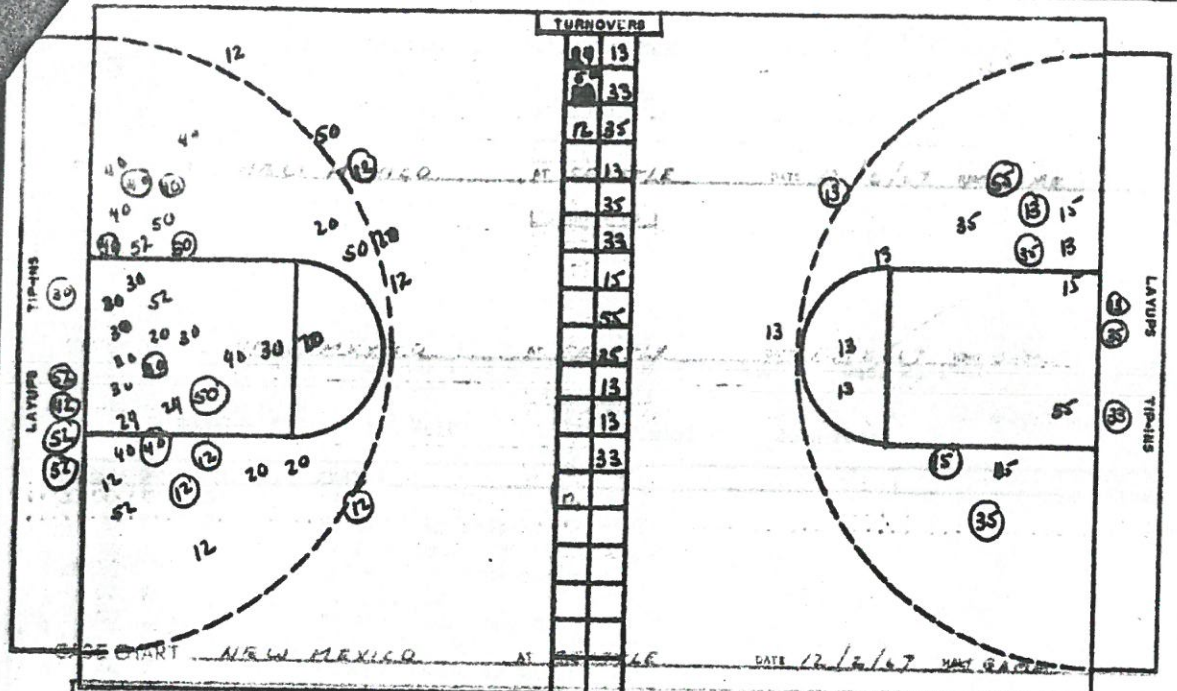
OREGON	FG-FGA	FT-FTA	REB	PF	TP
F- John Pinkstaff	2-10	3-7	7	4	7
F- Ken Smith	8-17	6-6	10	4	22
G- Glenn Campbell	0-0	2-2	9	0	2
G- Billy Gaskins	3-10	1-2	5	2	1
G- Rick Abrahamson	4-12	0-0	9	1	8
F- Bob Craven	2-5	1-2	5	1	5
F- Jim Henry	2-6	1-1	5	1	5
G- Mike Nicksis	2-5	0-0	4	1	5
Team					
TOTALS	23-65 <i>354</i>	14-20 <i>700</i>	44	20	60

	1	2	TOTAL
NEW MEXICO	28	36	64
OREGON	28	32	60

OFFICIALS: Bert Burr and Jack Johnson ATTENDANCE: 6,600

SHOOTING	FIRST HALF			SECOND HALF			FINAL		
	FG-FGA	PCT.	REB	FG-FGA	PCT.	REB	FG-FGA	PCT.	REB
NEW MEXICO	12-28	.429	22	12-27	.444	24	24-55	.436	46
OREGON	8-31	.258	23	15-34	.441	21	23-65	.354	44

CHANGE OF LEAD:	TIES:	LOSS OF BALL	1ST	2ND	TOTAL
6	11	NEW MEXICO	7	1	8
		OREGON	8	5	13



SEATTLE								NM									
NO	NAME	PG	FGA	FT	FTA	RB	P	TP	NO	NAME	PG	FGA	FT	FTA	RB	P	TP
52	WILKENS	6	11	-	-	4	3	12	55	GRIMES	4	7	3	3	6	3	11
40	WILST	7	18	3	3	9	3	17	35	HOWARD	5	12	3	7	15	4	13
42	GERDNER	1	3	-	-	4	3	2	15	SANFORD	2	6	6	7	3	1	10
12	LITTLE	7	17	-	1	5	3	14	33	BECKER	6	10	6	6	7	-	18
20	LOONEY	1	12	2	2	-	2	4	13	NELSON	6	18	3	5	5	2	15
50	GAGOUR	3	7	1	1	4	2	7	11	CULVER	-	-	1	2	2	2	1
14	PIERCE	-	1	-	-	-	1	-									
30	BRENNEMAN	2	8	1	3	11	4	5									
24	O'BRIEN	-	2	2	2	2	1	2									
TOTALS		27	79	9	12	39	22	63	TOTALS		23	53	22	30	38	12	68

PERCENTS 34.2 75.0 7 TEAM REBOUNDS (NOT IN TOTAL)

PERCENTS 43.4 73.3 9 TEAM REBOUNDS (NOT IN TOTAL)

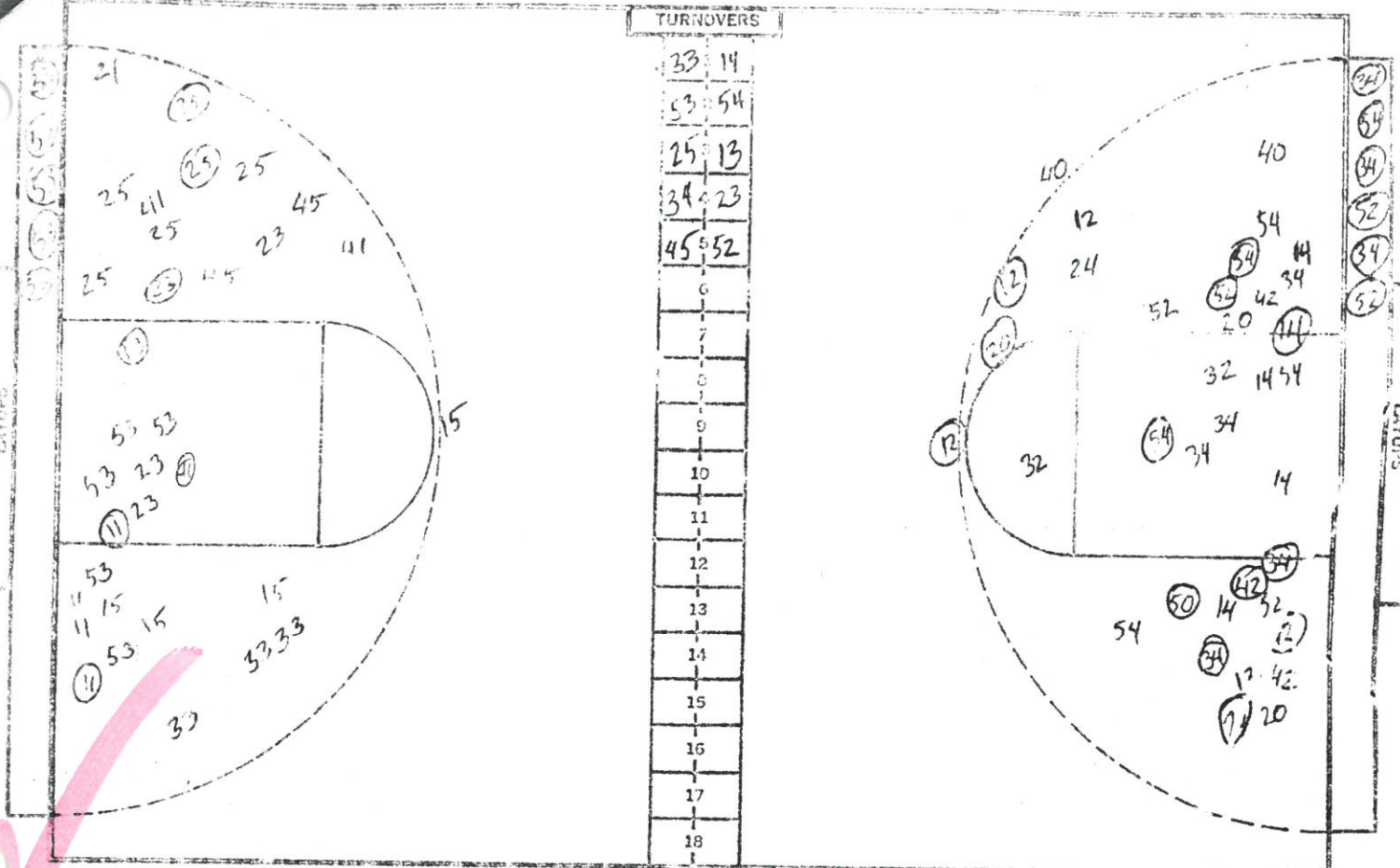
SCORE BY PERIODS

NM	34	34		68
SU	26	37		63

OFFICIALS RUSSELLINE & HALE

ATTENDANCE 6223





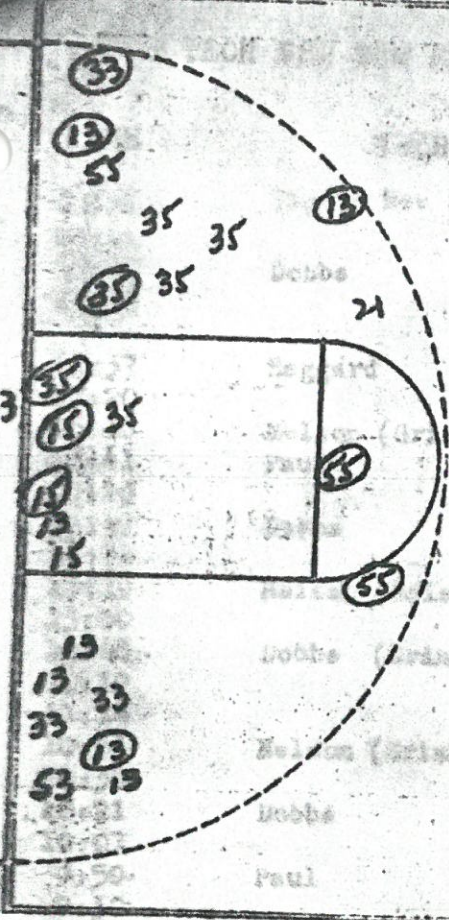
NO.	WAVES	FG	FGA	FT	FTA	RB	P	TP
13	WHITEHOUSE	1	2	0	0	1	2	2
15	MOZEE	0	5	0	0	3	1	0
25	GRANT	5	19	2	5	9	2	12
33	FLOWERS	4	11	2	4	3	1	10
53	EBEY	6	17	7	9	7	4	19
11	CARR	3	5	0	0	4	1	6
21	CALHOUN	0	1	0	0	0	0	0
23	JOHNSON	2	5	0	0	3	2	4
45	HANTRIM	0	1	0	0	0	0	0
41	DINNEL	2	5	1	1	2	0	5
TOTALS		23	71	12	19	33	13	58

NO.	LOBOS	FG	FGA	FT	FTA	RB	P	TP
12	NELSON	6	12	1	1	2	3	13
14	SANFORD	5	13	1	3	13	3	11
32	BECKER	2	6	0	0	6	1	4
34	HOWARD	8	14	8	8	9	0	24
54	GRIMES	8	11	0	1	11	3	16
10	CULVER	0	0	0	0	3	1	0
20	SHROPSHIRE	3	7	2	2	6	3	8
24	GRIFFITH	0	1	0	1	1	0	0
40	MAES	0	2	0	0	1	0	0
42	SCHAAFESMA	2	4	0	0	2	0	4
50	JONES	1	1	0	0	0	0	2
52	LOPEZ	5	8	1	1	2	0	11
TOTALS		40	81	13	17	56	14	93

PERCENTS 32.4 63.7 5 TEAM REBOUNDS (NOT IN TOTAL)

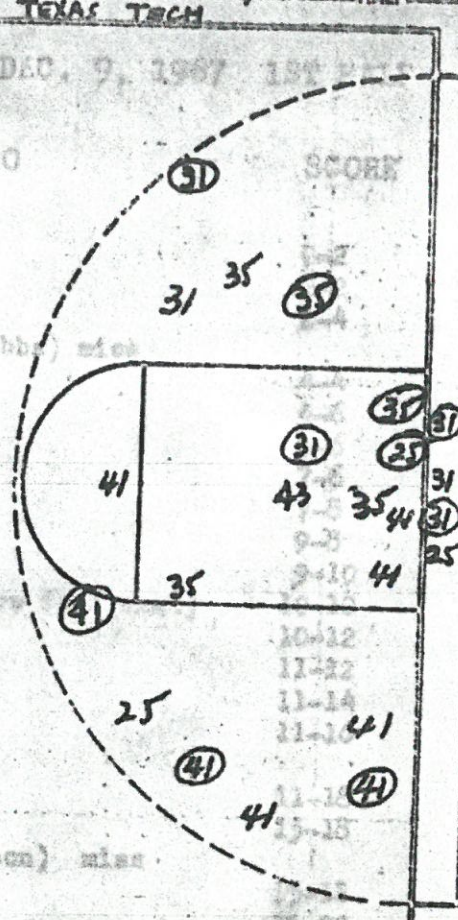
PERCENTS 49.4 76.5 6 TEAM REBOUNDS (NOT IN TOTAL)

SCORE BY HALVES: NM - P
47 - 24
OFFICIALS: VARNELL - OLOSON



TURNOVERS

63-23
35-23
23-25
63-35
13-23
35-25
25?
21 0
35 0
35 10
35 11
12
88
16
15
13
27
13



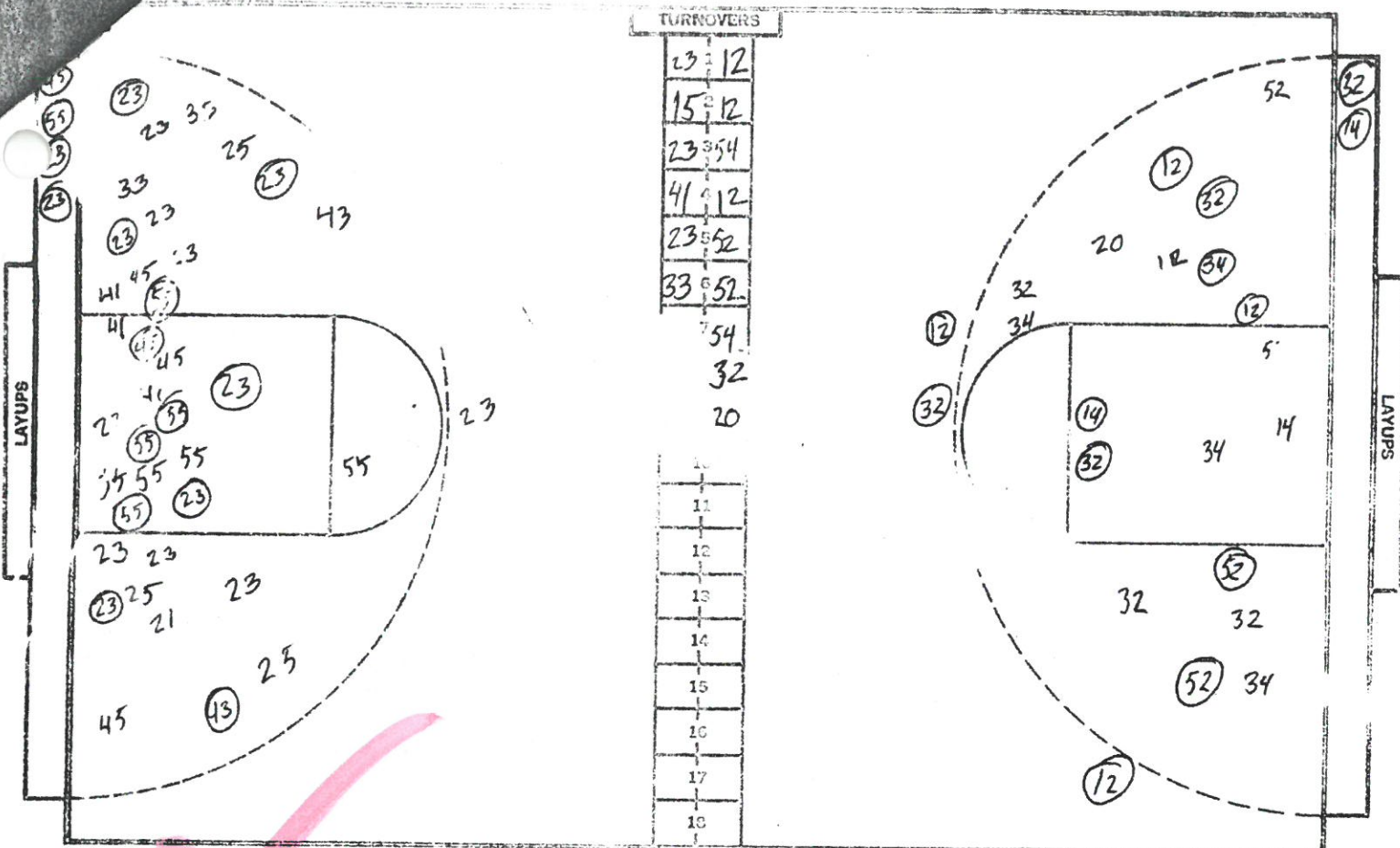
NO.	TEXAS TECH	FG	FCA	FT	FTA	REB	P	PTS
41	DOBBS	6	14	2	2	5	2	14
31	NELSON	5	7	3	5	2	4	13
35	PAUL	5	13	7	8	12	2	17
23	HARDIN	0	1	0	2	2	1	0
25	HAGGARD	4	8	1	1	1	0	9
43	SCHNEIDER	1	2	1	1	0	2	3
21	SHERROD	1	2	0	0	2	2	2
TOTALS		22	47	14	19	24	14	58

NO.	NEW MEXICO	FG	FCA	FT	FTA	REB	P	PTS
15	SANFORD	8	11	3	6	9	4	19
55	GRIMES	2	4	0	1	0	4	4
35	HOWARD	7	14	2	4	10	3	16
13	NELSON	6	14	2	3	1	3	14
33	BECKER	3	7	1	3	13	1	7
53	LOPEZ	0	2	0	0	0	0	0
21	SHROPSHIRE	0	2	0	0	4	2	0
TOTALS		26	54	8	17	37	17	60

PERCENTS 46.8% 73.7% 4 TEAM REBOUNDS (NOT IN TOTAL)

PERCENTS 48.1% 47.1% 2 TEAM REBOUNDS (NOT IN TOTAL)

SCORE BY HALVES:
OFFICIALS: BOB STEVENS (R) - R. KORTE
ATTENDANCE: 8,250



NO.	BUFFALO	FG	FGA	FT	FTA	RB	P	TP
23	MITCHELL	9	17	4	5	6	4	22
33	SPECK	3	7	2	3	1	4	8
41	RHINE	0	4	3	6	2	4	3
45	HILL	8	16	3	3	12	5	19
55	SAVAGE	7	16	5	6	15	4	19
15	NOWLIN	2	3	0	0	2	1	4
21	COLE	0	2	1	2	2	5	1
25	FRANKLIN	0	3	0	0		2	0
35	BACON	0	0	0	0		1	0
43	HORTON	1	2	0	0		0	2
51	ROWLES							
TOTALS		30	70	18	25	40	30	78

PERCENTS 42.9 72 5 TEAM REBOUNDS (NOT IN TOTAL)

NO.	LOBOS	FG	FGA	FT	FTA	RB	P	TP
72	NELSON	9	16	6	7	5	5	24
14	SANFORD	5	7	2	6	7	4	12
32	BECKER	9	15	5	6	4	2	23
34	HOWARD	3	8	3	3	6	4	9
54	GRIMES	2	5	9	12	11	3	13
52	LOPES	2	3	6	7	0	0	10
20	SHOPSHIRE	0	1	2	3	3	3	2
10	CULVER							
24	GRIFFITH	0	0	0	0	1	0	0
40	MAES							
42	SCHAFFSMA							
50	JONES	0	0	1	2		0	1
TOTALS		30	55	34	46	37	21	94

PERCENTS 54.5 73.9 2 TEAM REBOUNDS (NOT IN TOTAL)

SCORE BY HALVES: 52-38

OFFICIALS:

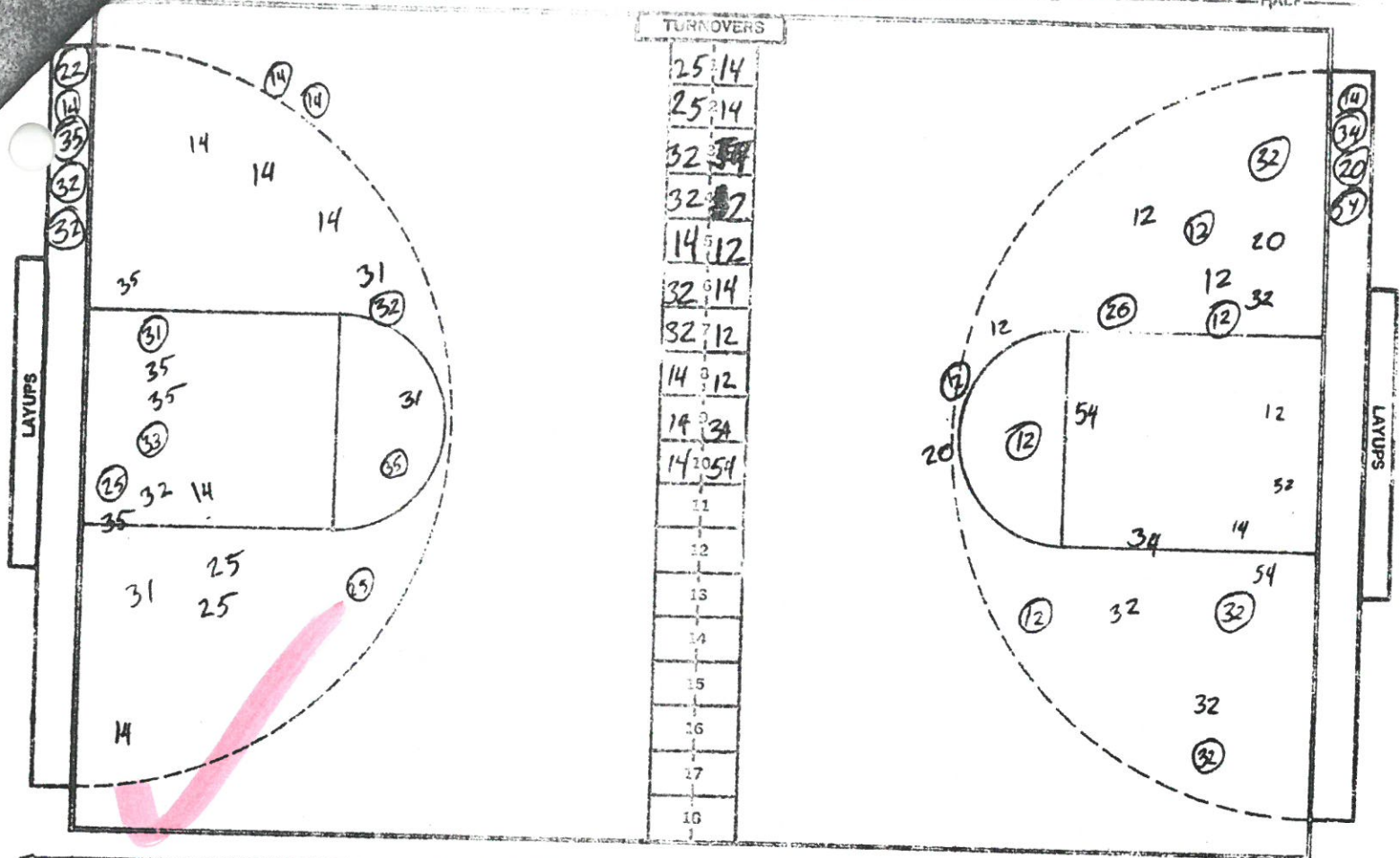
ATTENDANCE: 7,225

HOME

Hawaii

New Mexico

DATE 12-16-67 HALF 2ND



NO.	NAME	FG	FGA	FT	FTA	RB	P	TP
14	SMITH	8	17	4	5	2	3	20
31	ASH	1	5	2	2	2	4	4
32	HARMON	5	10	0	1	0	3	10
33	CALDWELL	3	5	0	1	3	4	6
35	HALM	6	14	3	5	8	3	15
22	RITTE	1	1	0	0	3	2	2
23	O'NEIL	3	5	1	1	3	1	7
24	KLASSOVITY							
25	REYNOLDS	4	7	3	5	5	4	11
34	WINDELL							
43	BENSLEY							
TOTALS		31	64	13	20	26	24	75

NO.	NAME	FG	FGA	FT	FTA	RB	P	TP
	Nelson	11	18	8	9	8	3	30
	Sanford	5	10	5	7	11	1	15
	Becker	5	10	2	5	3	4	12
	Howard	5	7	8	9	8	4	18
	Grimes	1	5	1	3	9	2	3
	Culver							
	Shropshire	3	7	0	2	5	2	6
	Griffith							
	Maes							
	Schaaafame							
	Jones							
	Lopez	0	1	0	0	0	0	0
TOTALS		30	58	24	35	44	16	84

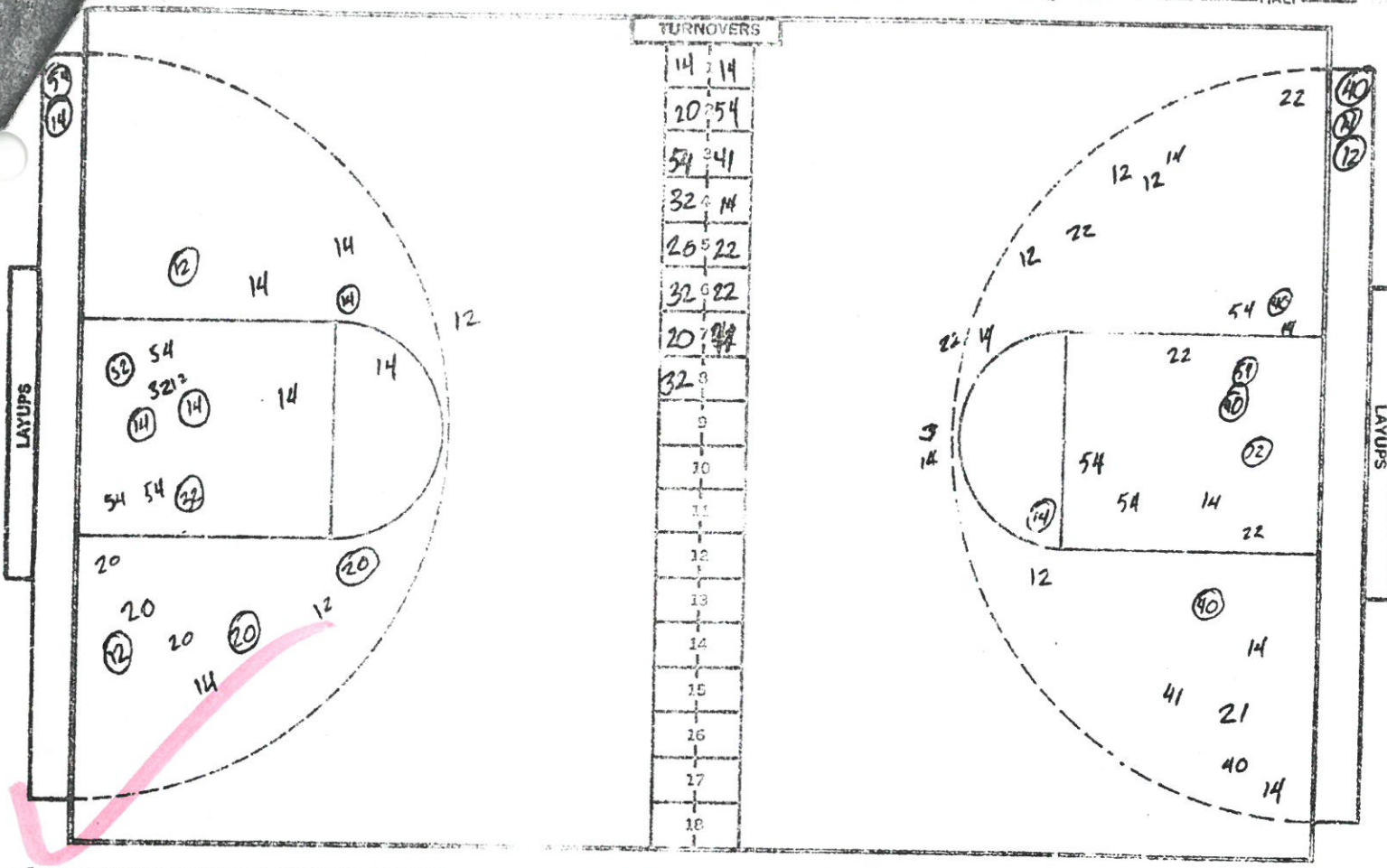
PERCENTS 43.4 65 4 TEAM REBOUNDS (NOT IN TOTAL)

PERCENTS 51.7 68.6 5 TEAM REBOUNDS (NOT IN TOTAL)

SCORE BY HALVES: 43-39

OFFICIALS: COMBS + OTERO

ATTENDANCE: 8,100



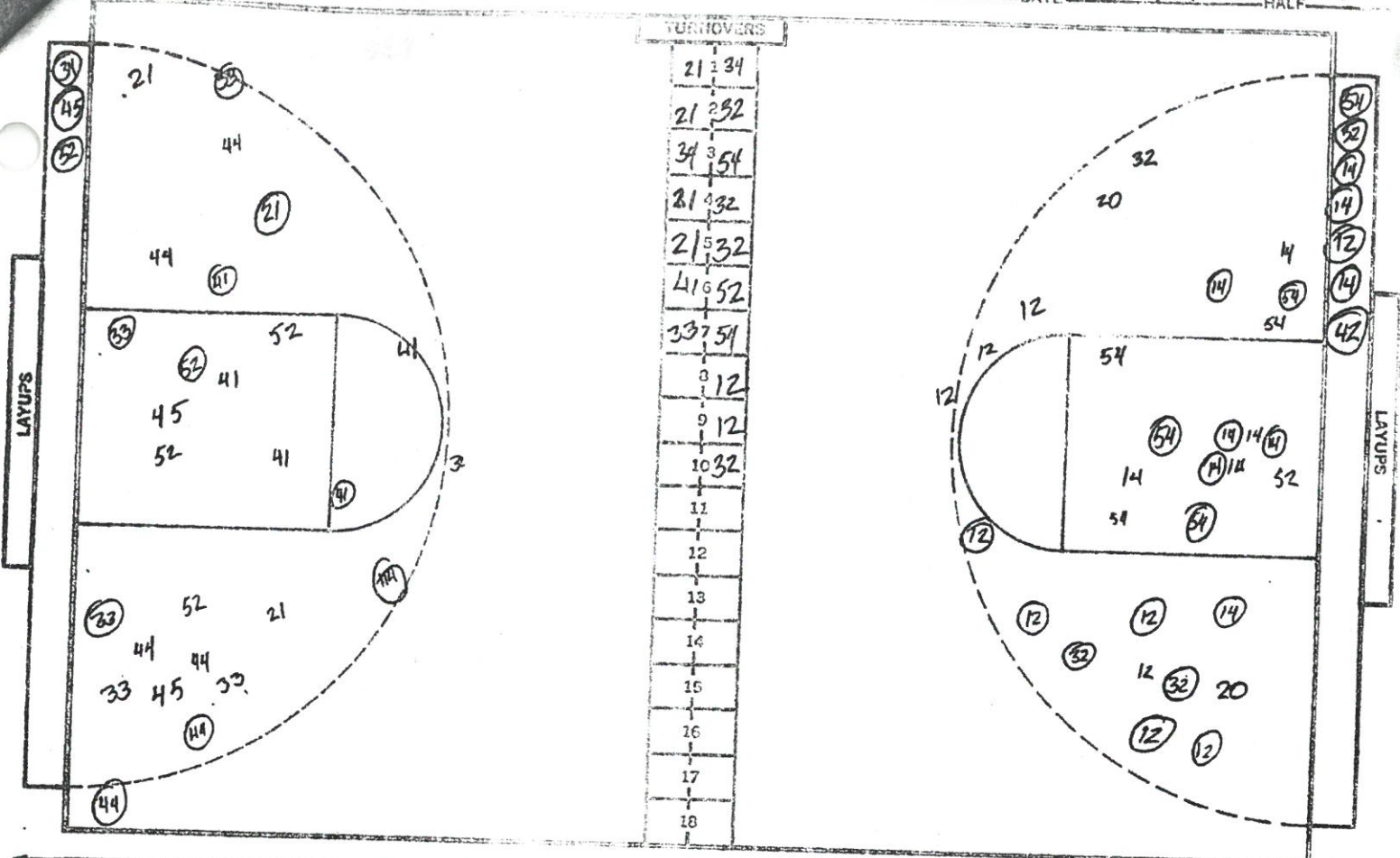
NO.	UNIVERSITY N.M.	FG	FGA	FT	FTA	P	TP
12	NELSON	7	21	2	2	6	2 16
14	SANFORD	9	16	11	15	17	4 29
20	SAROPSHIRE	2	6	1	2	6	4 5
32	BECKER	5	9	5	7	5	3 15
54	GRIMES	1	8	2	4	8	5 4
10	CULVER	0	0	2	2	2	2 2
24	GRIFFITH						
40	SCHAAFSMA						
42	SCHAAFSMA						
50	JONES						
52	LOPES	2	3	2	2	1	0 6
TOTALS		26	63	25	34	45	20 77
PERCENTS		41.3		73.5	3		

NO.	LOYOLA	FG	FGA	FT	FTA	RB	P	TP
14	ADELMAN	10	20	6	6	6	5	26
22	SEBER	2	13	0	2	8	5	4
40	ZEMBELL	8	11	9	11	12	3	25
41	SCHANHAAR	0	3	4	4	4	2	4
54	DEYDEN	2	5	0	0	3	3	4
12	RAGSDALE	2	8	0	0	0	4	4
30	MILLER							
31	CURRAN	4	6	1	2	4	4	9
44	HALBUR							
52	LEBUSKAS							
TOTALS		28	66	20	25	37	26	76
PERCENTS		42.4		80	4			

TEAM REBOUNDS (NOT IN TOTAL)

TEAM REBOUNDS (NOT IN TOTAL)

L - UNM
 SCORE BY HALVES: 41 - 37
 OFFICIALS: SERECINO + KORTE
 ATTENDANCE: 6,523



NO.	BLUEJAYS	FG	FGA	FT	FTA	REB	P	TP
21	KETTERER	2	6	3	4	0	0	7
33	PORTMAN	14	24	1	3	1/2	2	29
41	MICHAEL	2	7	4	4	5	4	8
44	ILCISIN	4	11	2	3	1	3	10
52	JANSA	2	7	0	0	8	2	4
45	BABCOCK	1	3	3	6	3	3	5
22	BALEN							
23	MOORE	1	2	0	1	0	0	2
24	WALTER							
25	BOVA							
32	PACE							
34	DILED	1	1	0	0	0	1	2
TOTALS		27	61	13	21	33	15	67

PERCENTS 44.3 61.9 4 TEAM REBOUNDS (NOT IN TOTAL)

NO.	LOBOS	FG	FGA	FT	FTA	RB	P	TP
12	NELSON	9	18	4	5	4	4	22
14	SANFORD	9	14	2	2	8	4	20
20	SHROPSHIRE	1	5	1	2	8	1	3
32	BECKER	2	5	1	1	4	2	5
34	HOWARD	3	7	1	5	7	1	7
54	GRIMES	8	13	1	2	7	3	17
10	CULVER	0	0	0	0	0	0	0
24	GRIFFITH	0	0	0	0	0	0	0
40	MAES	0	0	0	0	0	0	0
42	SCHAFFSMA	1	1	0	0	0	0	2
50	JONES	0	0	0	0	0	0	0
52	LOPEZ	3	6	0	0	3	1	6
TOTALS		36	69	10	17	41	16	82

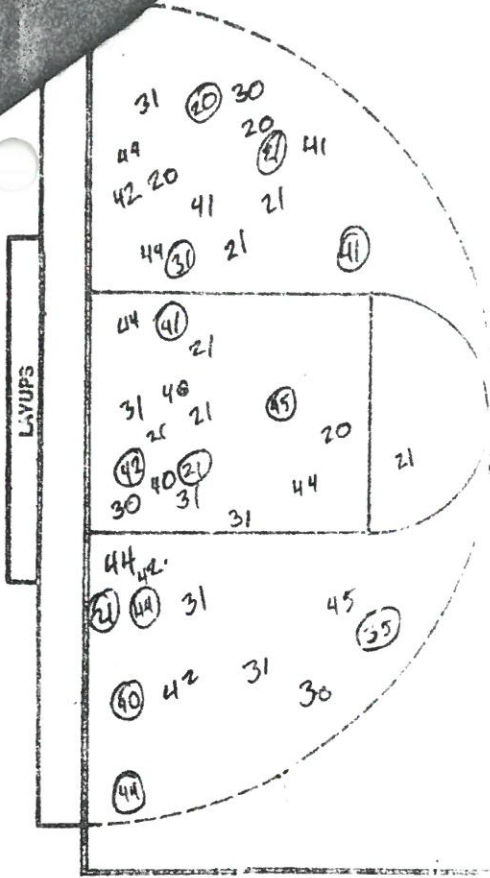
PERCENTS 52.2 58.8 4 TEAM REBOUNDS (NOT IN TOTAL)

C - NM
 SCORE BY HALVES: 32-34
 OFFICIALS: BETSWORTH-STEVENSON
 ATTENDANCE: 9,164

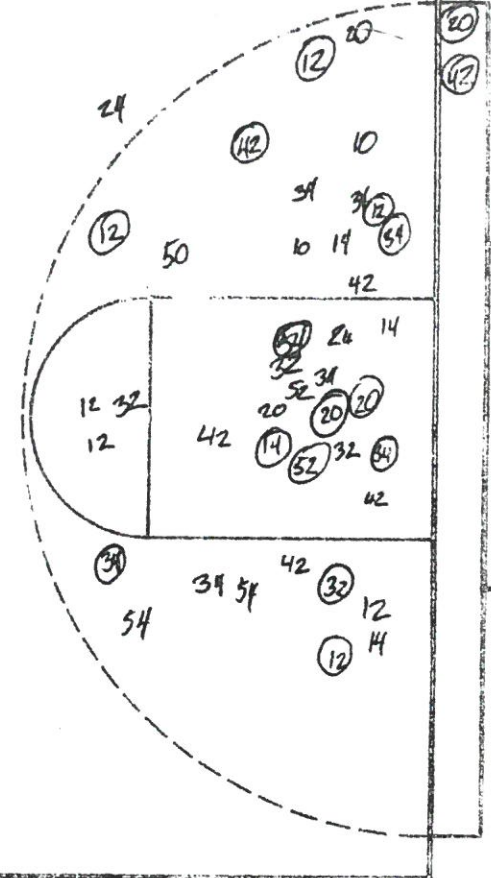
San Jose State

UNM

12/27/67



20	14
44	14
31	20
35	12
42	12
54	
7	54
8	10
9	42
10	
11	
12	
13	
14	
15	
16	
17	
18	



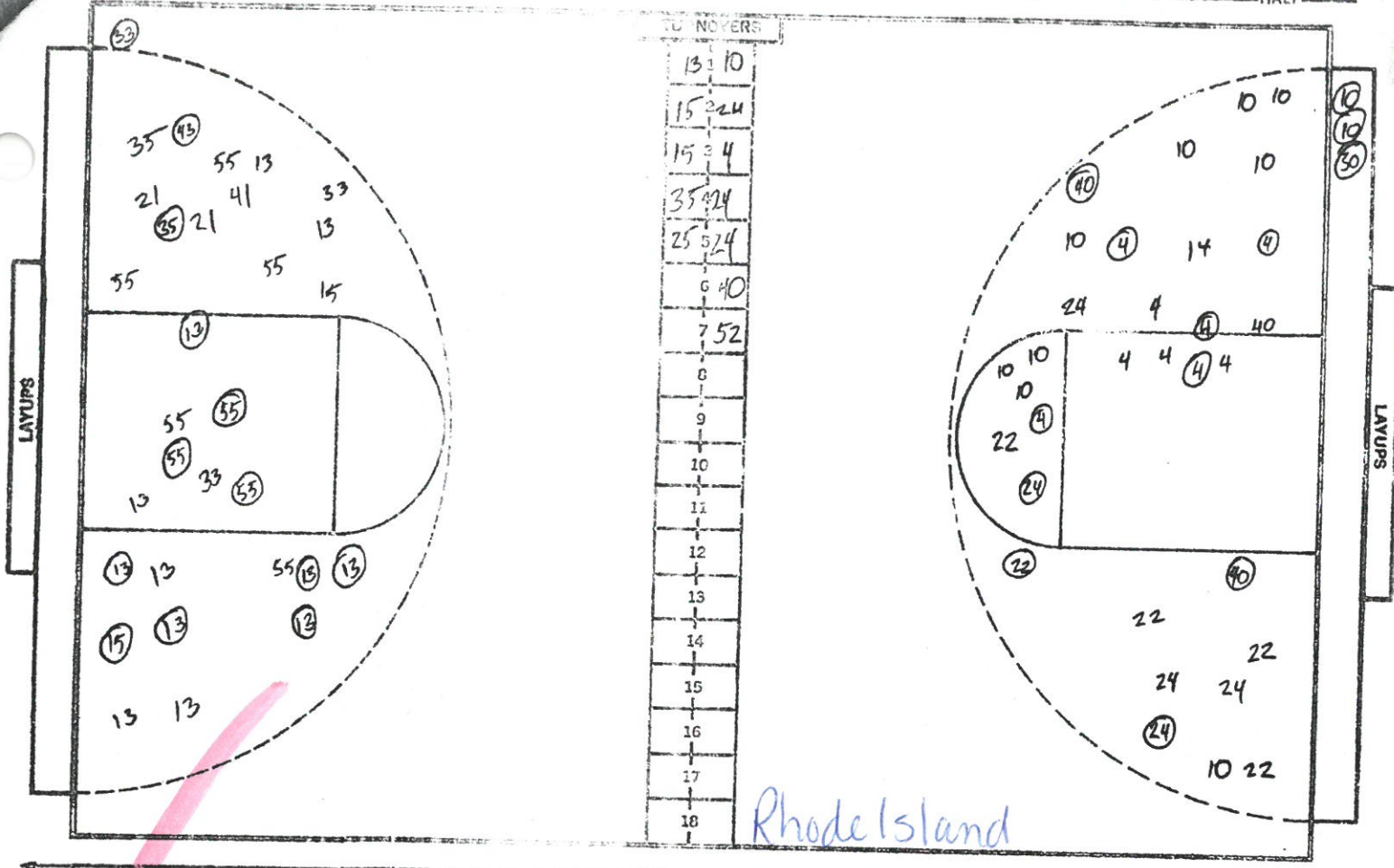
NO.	SPIRTANS	PG	FGA	FT	FTA	RB	P	TP
20	M. KEAN	2	11	0	1	0	1	4
21	TOLMAN	5	13	8	11	3	2	18
42	MCCONNELL	1	10	1	3	6	2	3
44	DIETRICK	7	17	5	6	14	1	19
15	MEYER	2	7	6	1	2	3	4
23	SOUTH							
30	WOODFIN	0	6	1	2	2	3	1
31	VERSEY	2	9	3	4	15	3	7
32	DURAND							
33	DE SHONG	0	0	1	2	2	0	1
35	MALKIN	1	1	0	0	1	0	2
40	SCOTT	3	5	1	1	3	5	7
41	GROVES	3	5	3	4	2	2	9
TOTALS		26	84	23	35	50	15	75

NO.	LOBOS	FG	FGA	FT	FTA	RB	P	TP
12	NELSON	9	19	4	5	3	0	22
14	SANFORD	3	11	2	6	11	3	8
32	BECKER	2	6	1	1	8	4	5
34	HOWARD	4	10	9	12	17	2	17
54	GRIMES	3	6	7	12	6	4	13
10	CULVER	1	3	2	2	3	3	4
20	SHROPSHIRE	6	10	0	0	8	2	12
24	GRIFFITH	1	4	3	4	2	3	5
40	MAES	0	0	0	0	0	0	0
42	SCHRAFSMA	2	6	0	0	2	2	4
50	JONES	0	1	1	2	1	0	1
52	LOPEZ	1	2	0	0	4	1	2
TOTALS		32	78	29	44	65	24	93

PERCENTS 31.0 65.7 77.0 TEAM REBOUNDS (NOT IN TOTAL)

PERCENTS 41.0 65.9 9.0 TEAM REBOUNDS (NOT IN TOTAL)

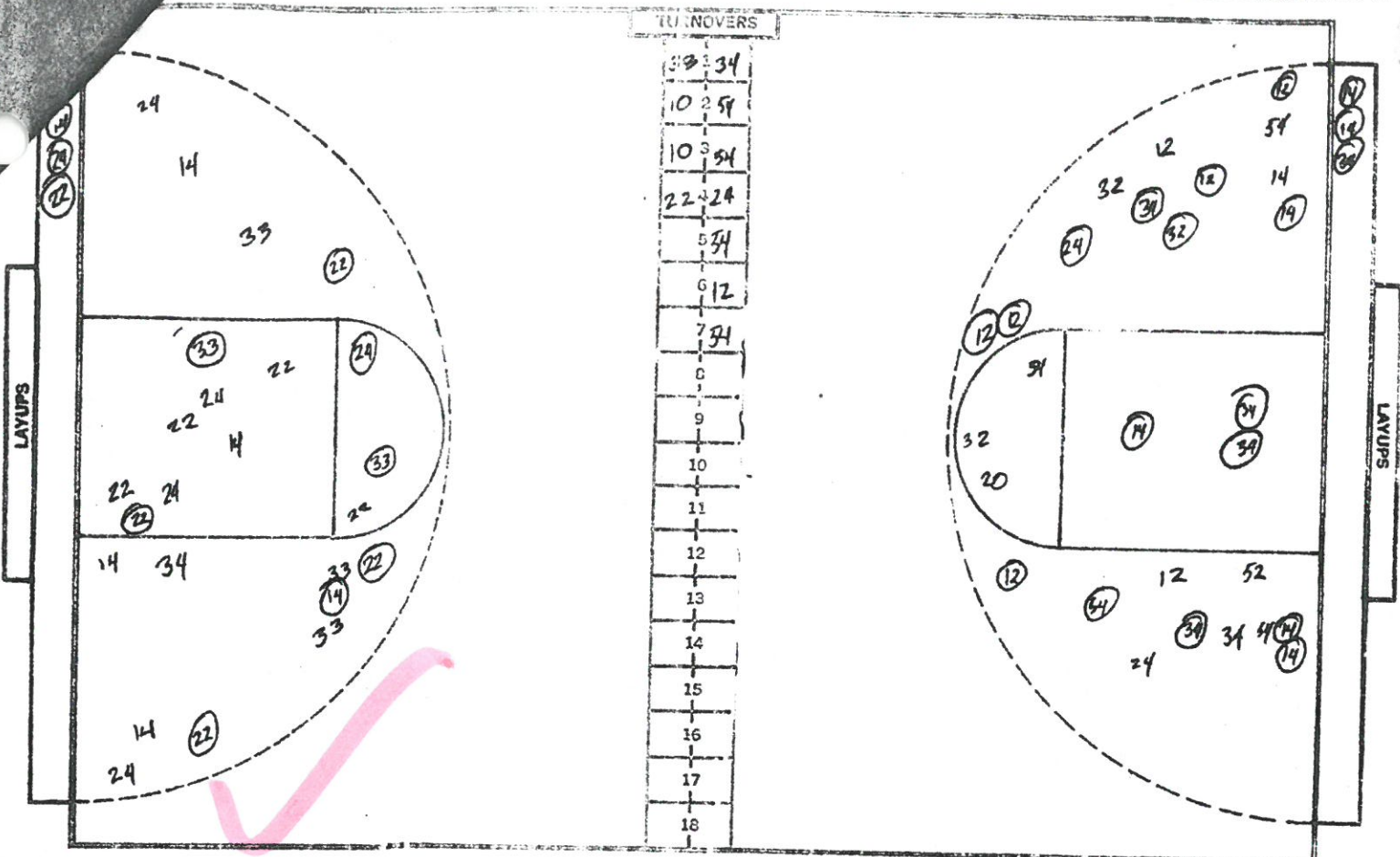
SCORE BY HALVES:
 OFFICIALS:
 ATTENDANCE: 9,779



NO.	LOBOS	FG	FGA	FT	FTA	RB	P	TP
13	NELSON	9	22	2	2	4	0	20
15	SANFORD	6	11	6	6	11	3	18
33	BECKER	2	6	2	2	7	3	6
35	HOWARD	4	10	0	0	14	2	8
55	GRIMES	3	15	7	9	10	0	19
11	CULVER	0	0	0	0	1	1	0
21	SHROPSHIRE	0	4	0	0	4	1	0
25	GRIFFITH	0	1	0	0	0	1	0
41	MAES	0	1	0	0	0	0	0
43	SCHAAF SM	1	1	0	0	0	0	2
51	JONES	0	0	0	0	2	0	0
53	LOPEZ	0	0	2	3	0	1	2
TOTALS		28	71	19	23	52	12	75
PERCENTS		39.4		82.6		3		TEAM REBOUNDS (NOT IN TOTAL)

NO.	RAMS	FG	FGA	FT	FTA	RB	P	TP
4	STEPHENSON	7	16	6	8	15	2	20
10	JOHNSON	5	21	1	1	6	2	11
24	FULTZ	7	16	0	1	4	3	14
32	KNIGHT	0	0	0	2	0	1	0
40	SCHANNE	4	6	0	0	0	1	8
14	MINTSCHENKO	0	1	0	0	0	1	0
22	ZARANKA	1	7	1	1	4	4	3
30	JENKINS	1	1	0	0	0	0	2
42	CASTALDI							
50	MOODY							
52	KOPITKO	0	0	4	4	3	2	4
TOTALS		25	68	12	17	32	16	62
PERCENTS		36.8		70.6		8		TEAM REBOUNDS (NOT IN TOTAL)

SCORE BY HALVES: ²⁵ 26-^{UNN} 35
 OFFICIALS: IRV BROWN + RAY AALE
 ATTENDANCE: 9870



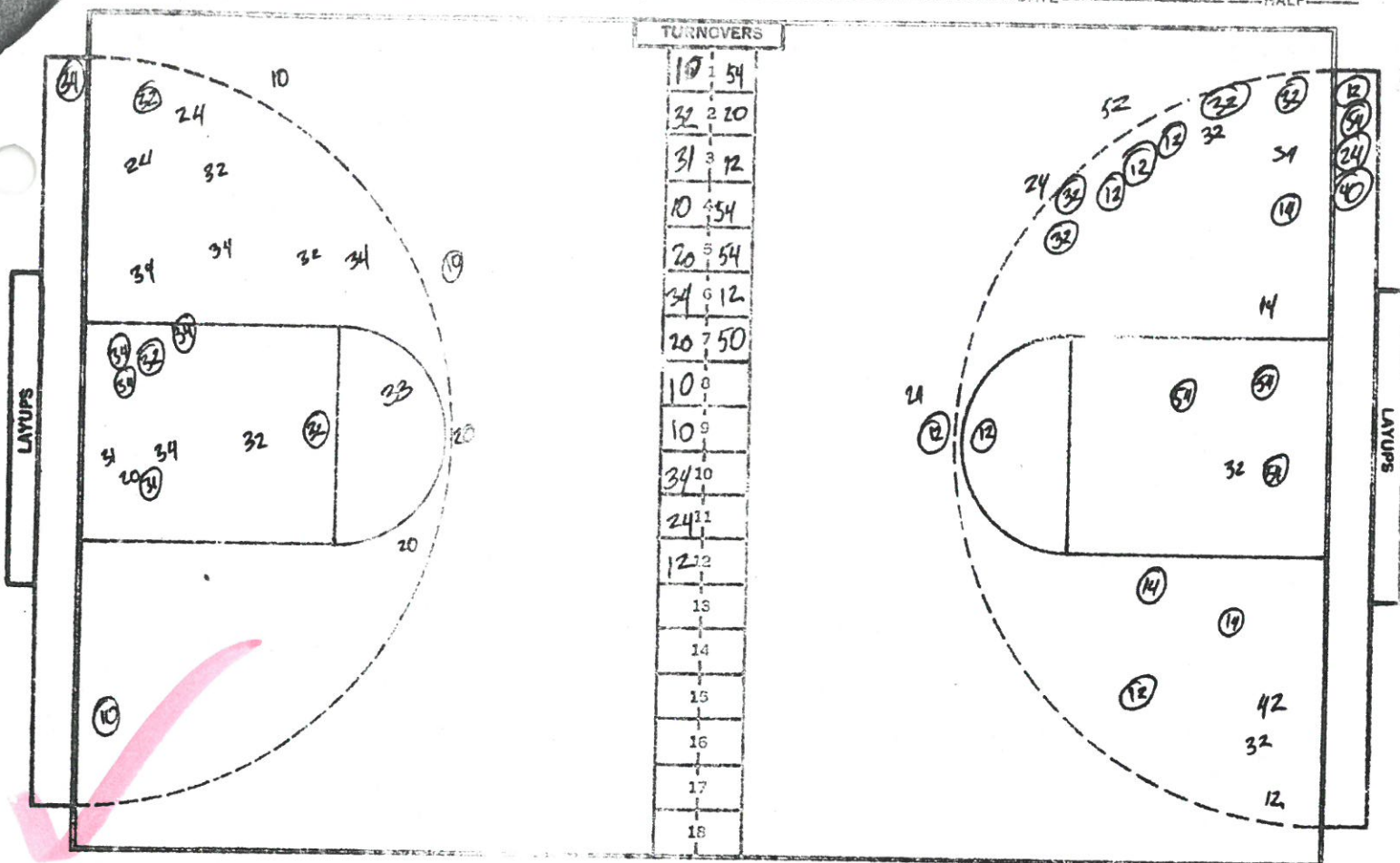
NO.	Denver	FG	FGA	FT	FTA	RB	P	TP
10	Callahan	2	2	5	6	8	4	9
22	Kearney	11	19	1	3	3	1	23
24	Brewer	7	7	1	5	1	1	7
33	Hollines	1	21	2	3	4	2	21
40	Clare	0	3	2	3	7	5	2
14	Jones	4	10	3	3	6	2	11
30	Johnson	0	0	0	0	0	1	0
37	Strohmam							
34	White	0	0	0	0	0	1	0
42	Funk							
TOTALS		31	62	14	23	29	17	76

NO.	New Mexico	FG	FGA	FT	FTA	RB	P	TP
12	Nelson	7	17	5	7	4	2	19
14	Sanford	11	20	5	6	6	4	27
32	Becker	4	7	0	0	5	2	8
34	Howard	8	12	5	6	8	4	21
54	Grimes	2	6	4	4	10	3	8
10	Culver	0	0	0	0	1	0	0
20	Shropshire	0	2	2	2	3	2	2
24	Griffith	1	4	0	0	0	1	2
40	Maes		D	N	P			
42	Schaafsma		D	N	P			
50	Jones		D	N	P			
52	Lopez	0	1	0	0	0	1	0
TOTALS		33	69	21	25	37	19	87

PERCENTS 50.0 60.9 7 TEAM REBOUNDS (NOT IN TOTAL)

PERCENTS 47.8 84.0 7 TEAM REBOUNDS (NOT IN TOTAL)

SCORE BY HALVES:
 OFFICIALS:
 ATTENDANCE: 8,163



NO.	USAPA	FG	FGA	FT	FTA	RB	P	TP
10	Spear	3	6	4	5	2	3	10
20	Wisecorn	6	10	2	4	2	4	14
24	Bean	0	2	1	2	1	1	1
31	Klindt	4	7	0	1	7	5	8
34	Parsons	7	13	4	6	4	2	18
34	Russ	0	0	0	0	0	1	0
45	Kelley	0	1	2	2	0	2	2
21	Cooper	0	0	0	0	0	1	
32	Thiesse	3	7	1	2	4	3	7
33	Holland	0	1	0	0	0	0	0
45	Halvonic	0	1	0	0	1	3	0
TOTALS		23	48	14	25	21	25	60

PERCENTS 47.9 63.6 2 TEAM REBOUNDS (NOT IN TOTAL)

NO.	Low Harbor	FG	FGA	FT	FTA	RB	P	TP
1	Melton	10	13	6	8	1	1	26
2	Swford	5	8	3	5	9	4	13
3	Becker	6	15	6	7	8	2	18
4	Edward	1	8	1	1	12	4	3
5	Grimes	4	5	3	4	2	3	11
6	Culver	2	2	0	0	3	2	4
7	Shropshire	1	3	2	2	4	4	4
8	Griffith	2	5	1	1	0	1	5
9	Maes	1	1	2	3	0	0	4
10	Scheafsma	0	1	0	0	1	0	0
11	Jonac	0	0	0	0	1	0	0
12	Top-z	0	1	0	0	0	0	0
TOTALS		32	62	24	31	41	21	88

PERCENTS 51.6 77.4 6 TEAM REBOUNDS (NOT IN TOTAL)

SCORE BY HALVES: 42-37
 OFFICIALS: HAGERTY & BARLOW
 ATTENDANCE: 8,972

OFFICIAL BASKETBALL BOX

CROWD 5,555-

SCORE BY PERIODS

DATE January 5, 1968

U. of N.M.

37

71

OFFICIALS Bob Carter - Bob Hart

NMSU

27

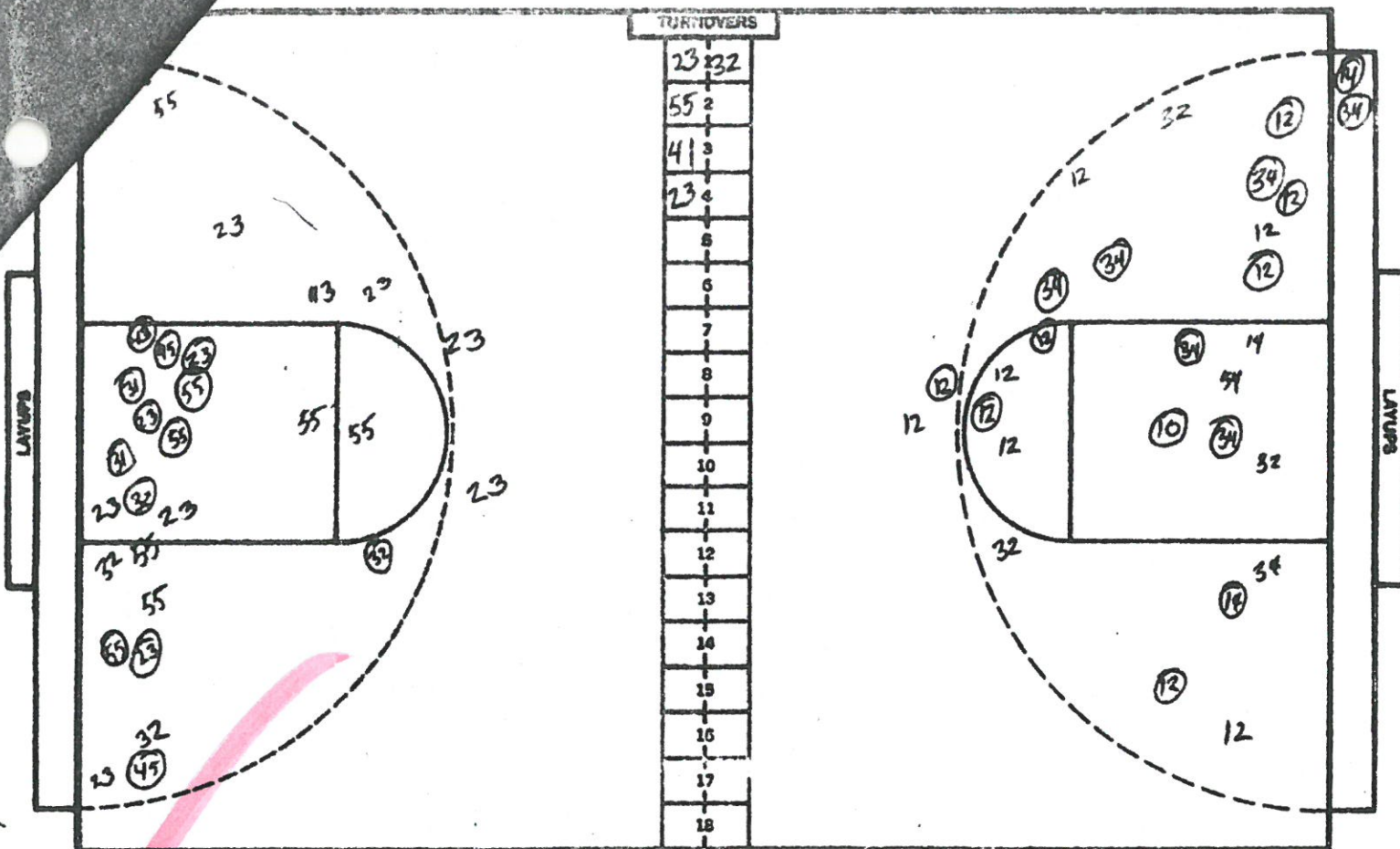
64

U. of New Mexico	FIELD GOALS		FREE THROWS		RE-BOUNDS	ASST'S	PER. FOULS	TOTAL POINTS	TURN-OVERS	MINS. PLAYED
	MADE	ATT'D.	MADE	ATT'D.						
Ron Nelson	3	8	11	12	5	2	4	17		
Ron Sanford	DNP									
Ron Becker	3	4	5	5	6	1	4	11		
Greg Howard	7	10	6	12	9	0	4	20		
Howard Grimes	2	10	3	5	8	3	3	7		
Robert Fullerton	—				—	—				
Keith Griffith	1	1	0	0	—	0	1	2		
Steve Shropshire	1	3	2	3	3		4	4		
Dave Oliver	3	3	0	0	6	1	5	6		
George Maas	—				—					
Terry Schaafsma	1	2	0	0	1	0	4	2		
Larry Jones	—				—		1			
Leonard Lopez	—		2	3	—		0	2		
TOTALS	21	41	29	40	38	7	30	71	28	
Team Rebounds (Not Included in Above Totals)					13					

PERCENTAGES: Field Goals 51.9% Free Throws 72.5% No. Shots Missed

N.M.S.U.	FIELD GOALS		FREE THROWS		RE-BOUNDS	ASST'S	PER. FOULS	TOTAL POINTS	TURN-OVERS	MINS. PLAYED
	MADE	ATT'D.	MADE	ATT'D.						
Paul Landis	1	5	6	8	1	2	5	8		
Rob Evans	1	8	2	2	1	1	5	4		
Ernie Turner	2	6	0	1	4	2	5	4		
Sam Lacey	7	17	7	9	9	1	3	21		
John Burgess	4	19	4	5	8	0	2	12		
Richard Collins	3	7	2	6	4	0	5	8		
Jimmy Collins	2	7	1	4	7	3	2	5		
Charley Criss	DNP									
Wes Morehead	0	1	0	0	1	0	1	0		
Tom Las	DNP									
Larry Mason	1	1	0	0	0	0	0	2		
Lee Leonard	0	1	0	1	1	0	1	0		
Mitch Seals	DNP									
Robert Telles	DNP									
TOTALS	21	72	22	36	34	9	29	64	14	
Team Rebounds (Not Included in Above Totals)					10					

PERCENTAGES: Field Goals 29.1% Free Throws 61.1% No. Shots Missed



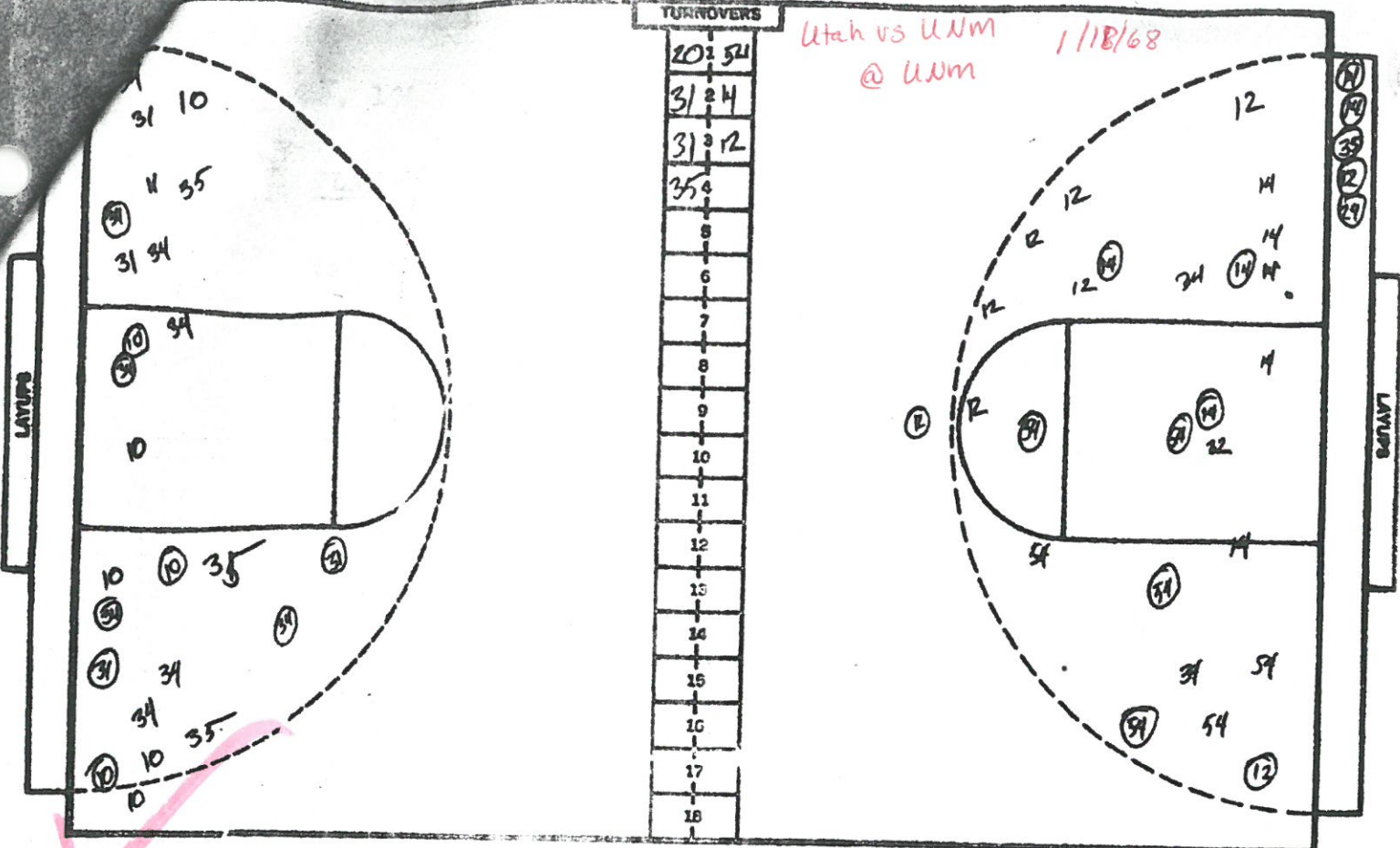
NO.	COW BOYS	FG	FGA	FT	FTA	RB	P	TP
23	HALL	5	17	7	11	4	4	17
32	EBERLE	5	8	3	4	2	4	13
43	VON KROSIGK	1	4	5	8	5	3	7
45	DOPDS	2	3	0	1	0	2	4
55	ASHLEY	8	17	0	2	12	3	16
13	WILSON	0	0	0	0	0	4	0
25	LAZZERI							
31	POPOVICH	4	5	0	0	3	0	8
35	JOHNSON							
41	NELSON	0	0	0	0	0	1	0
TOTALS		25	54	15	26	26	21	65

PERCENTS 46.3 57.7 8 TEAM REBOUNDS (NOT IN TOTAL)

NO.	LOBOS	FG	FGA	FT	FTA	RB	P	TP
10	CULVER	3	4	2	2	1	2	8
12	NELSON	11	22	8	9	7	4	30
14	SANFORD	4	8	5	6	9	4	13
32	BECKER	1	4	3	3	3	2	5
34	HOWARD	6	10	2	3	7	3	14
54	GRIMES	1	8	5	8	11	3	7
20	SHROPSHIRE	1	2	0	0	1	2	2
24	GRIFFITH	0	0	2	2	0	0	2
40	MAES							
42	SCHAFFESMA							
50	JONES							
52	LOPEZ	0	0	0	0	0	0	0
TOTALS		27	58	27	33	39	20	71

PERCENTS 46.6 81.8 4 TEAM REBOUNDS (NOT IN TOTAL)

SCORE BY HALVES: N.M 33 - WYO 33
 OFFICIALS: OLIVER MAYFIELD + JOHN EVANS
 ATTENDANCE: 15,151



NO.	RETSKINS	FG	FGA	FT	FTA	RB	P	TP
10	JACKSON	10	20	3	7	10	3	25
20	MACKAY	0	1	0	0	0	1	0
30	ENGLISH	2	6	1	1	5	2	5
31	OCKIL	3	10	3	7	6	4	9
34	SIMON	8	17	2	2	4	4	18
11	MARTIN	0	1	0	0	0	1	0
14	TAYLOR							
24	LYNDURES							
32	JENSON							
35	CUNNINGHAM	1	8	1	2	10	0	3
14	TAMMNER	0	1	0	0	1	0	
15	ROBINSON	3	4	0	1	3	3	6
TOTALS		28	68	10	14	40	19	66

PERCENTS 41.2 71.4 3 TEAM REBOUNDS (NOT IN TOTAL)

NO.	LOBOS	FG	FGA	FT	FTA	RB	P	TP
12	NELSON	6	18	3	4	4	1	15
14	SANFORD	6	14	2	5	11	2	14
32	BECKER	3	5	4	5	4	3	10
34	HOWARD	5	8	3	7	7	4	13
40	GRIMES	7	11	0	1	10	2	14
20	SHROPSHIRE	0	1	0	0	0	0	0
24	GRIFFITH	1	1	0	0	2	1	2
40	MAES							
42	SCHAAFSMA							
50	JONES							
52	LOPEZ	0	1	2	2	0	0	2
10	CULVER	1	2	0	0	0	0	2
TOTALS		29	61	14	24	38	13	72

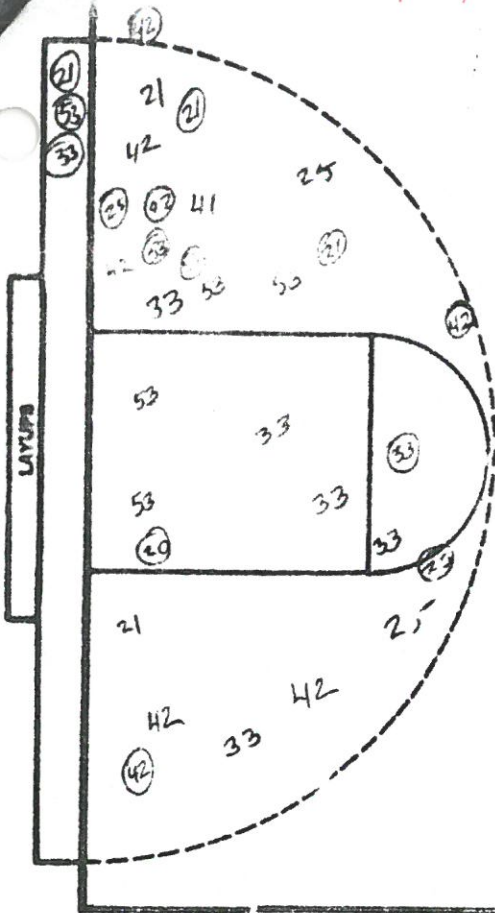
PERCENTS 47.5 58.3 5 TEAM REBOUNDS (NOT IN TOTAL)

SCORE BY HALVES: U - NM
37 - 35
OFFICIALS: IRV. BROWN + PAT HAGARTY
ATTENDANCE: 14,855

1/20/68

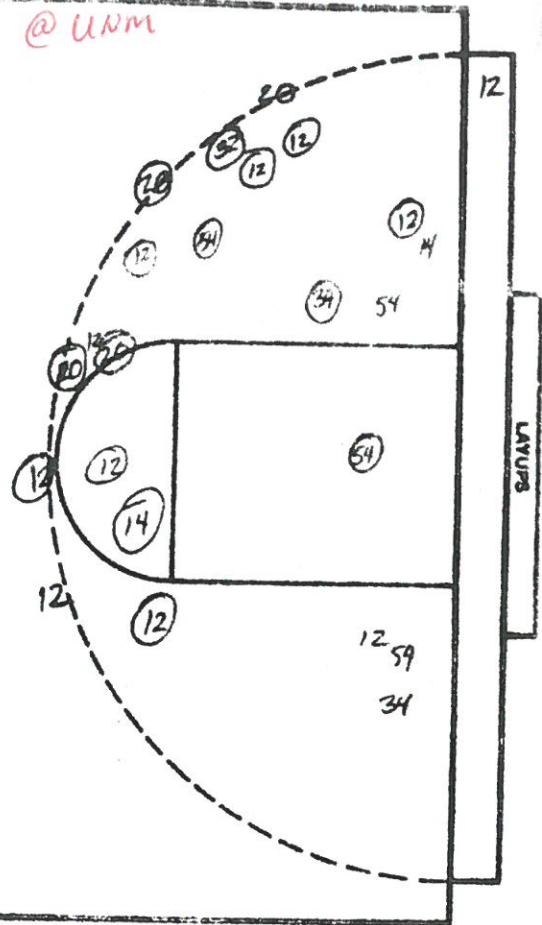
BYU vs UNM

@ UNM



TURNOVERS

32	OF
232	OF
33	24
53	4 12
8	
6	
7	
0	
3	
11	
11	
12	
13	
14	
15	
16	
17	
18	



NO.	COUGARS	FG	FGA	FT	FTA	RB	P	TP
21	SCHOUTEN	8	11	6	10	3	2	22
23	DRESSER	1	2	0	0	1	3	2
25	HOWARD	1	3	0	0	1	2	2
33	LIIMO	7	15	0	1	6	2	14
42	LYTHGOE	8	14	0	0	4	2	16
53	EAKINS	3	13	5	10	6	4	11
22	PARSONS	1	1	0	0	1	0	2
31	SCHNIEDER	0	0	0	0	0	0	0
40	BARRON	DNP						
41	DAVIS	0	1	0	0	0	1	0
44	FISHER	DNP						
54	WARNER	0	3	0	0	1	2	0
TOTALS		29	67	11	21	23	18	69

NO.	LOBOS	FG	FGA	FT	FTA	RB	P	TP
12	NILSON	11	18	3	4	6	0	25
14	SAIFORD	2	8	4	6	8	3	8
32	BECKER	4	4	0	1	0	4	8
34	HOWARD	6	11	2	4	8	3	14
54	GRIMES	8	13	3	3	5	2	19
10	CULVER	0	0	0	0	0	0	0
20	SHROPshire	3	4	0	0	5	2	6
24	GRIFFITH	0	0	0	0	0	1	0
40	MAES	0	0	0	0	0	0	0
42	SCHAFFESMA	2	0	2	2	0	0	2
50	JONES	2	0	0	0	0	1	0
52	LOPEZ	0	0	2	2	0	0	2
TOTALS		45	58	16	22	32	16	84

PERCENTS 48.3 52.4 9 TEAM REBOUNDS (NOT IN TOTAL)

PERCENTS 58.6 72.7 7 TEAM REBOUNDS (NOT IN TOTAL)

UNM 39
BYU 34

SCORE BY HALVES:

OFFICIALS: R. WARRICK + E. BRONNAX

ATTENDANCE: 14,858

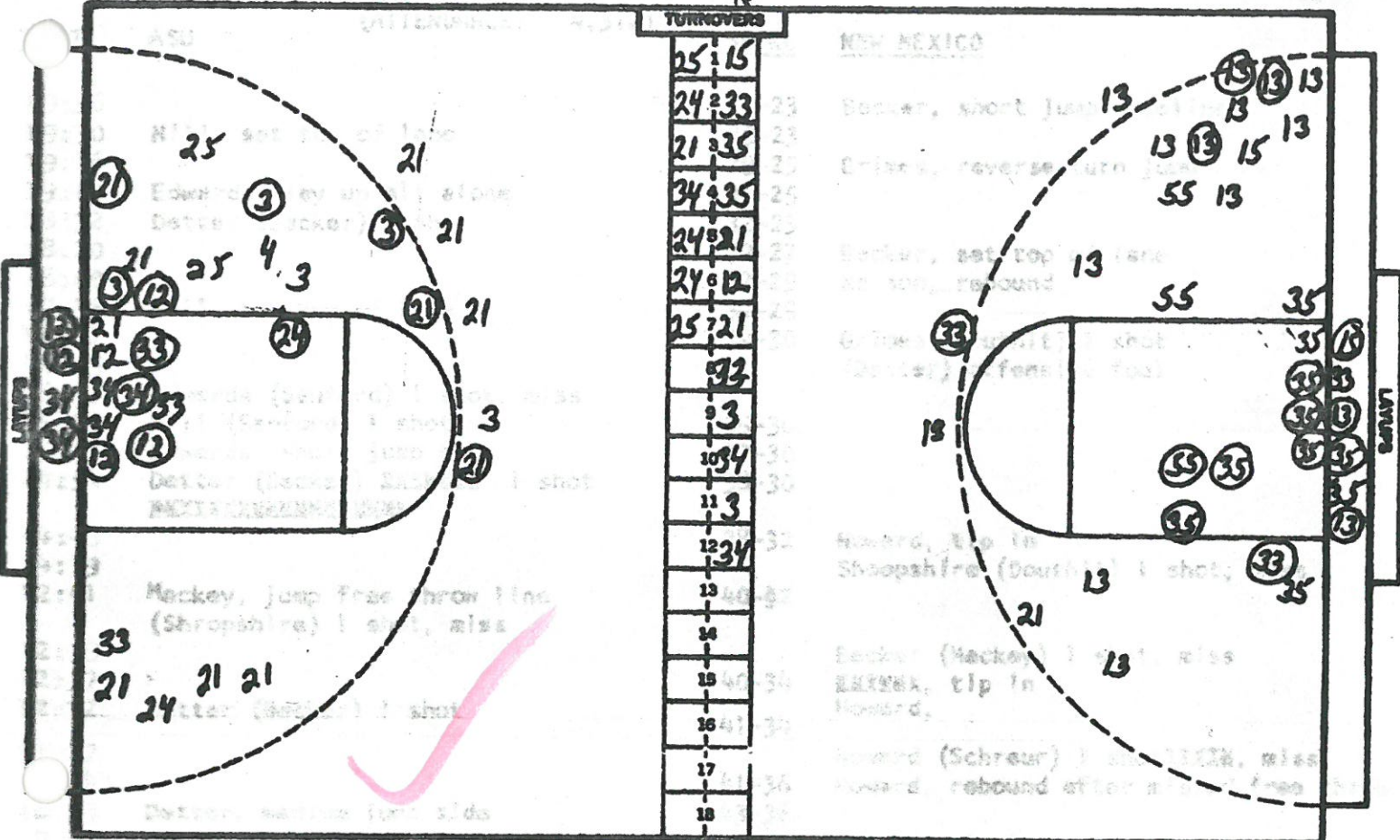
CAGE CHART

ASU VS NEW MEXICO

TEMPE, ARIZONA

2/1/68

SECOND



MIN.	NO.	ASU	FG	FGA	FT	FTA	RB	P	TP
33	34	Schreur	5	8	1	6	12	4	11
33	12	Edwards	5	6	0	3	7	3	10
38	3	Detter	4	11	4	5	5	5	12
39	21	Hill	5	19	2	4	11	5	12
12	24	Hackey	2	3	2	3	1	3	6
27	25	Douthit	2	6	2	2	4	5	6
7	31	Johnson	1	2	0	0	1	1	2
2	4	Arnote	0	1	0	0	0	1	0
	22	Harris			D	N	P		
7	33	Floyd	1	3	1	2	5	0	3
1	32	Tutt	0	0	0	0	1	0	0
1	23	Leinheeler	0	0	0	0	0	1	0
TOTALS			25	59	12	25	47	28	62

PERCENTS .424 .480 10 TEAM REBOUNDS (NOT IN TOTAL)

NO.	NEW MEXICO	FG	FGA	FT	FTA	RB	P	TP	MIN.
13	Nelson	7	23	8	10	7	3	22	40
35	Howard	8	14	0	1	6	3	16	37
15	Stanford	2	8	2	7	8	4	6	28
33	Becker	5	7	2	3	3	5	12	26
55	Grimes	1	3	1	2	4	1	3	20
21	Shropshire	0	2	0	1	1	4	0	24
11	Culver	0	1	2	2	1	0	2	10
25	Griffith	0	0	6	6	2	1	6	14
41	Maes			D	N	P			
43	Schaafsma			D	N	P			
51	Jones			D	N	P			
53	Lopez	0	0	1	2	0	0	1	1
TOTALS		23	58	22	34	32	21	68	

PERCENTS .397 .676 7 TEAM REBOUNDS (NOT IN TOTAL)

ARIZONA HOME

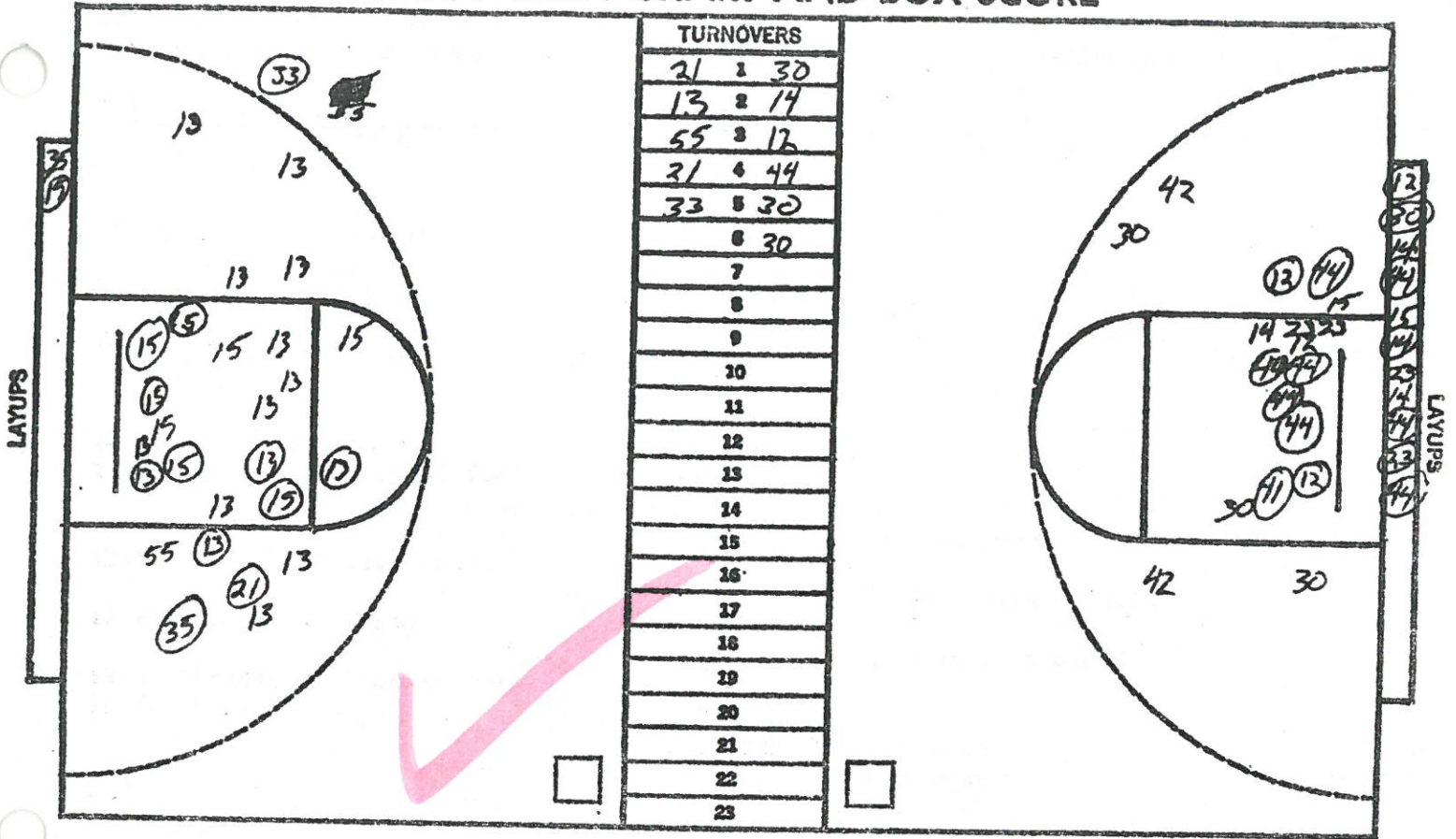
NEW MEXICO VISITORS

AT TUCSON

3/3/68 DATE

1-0-0-0 HALF

2-IN-1-SHOT CHART AND BOX SCORE

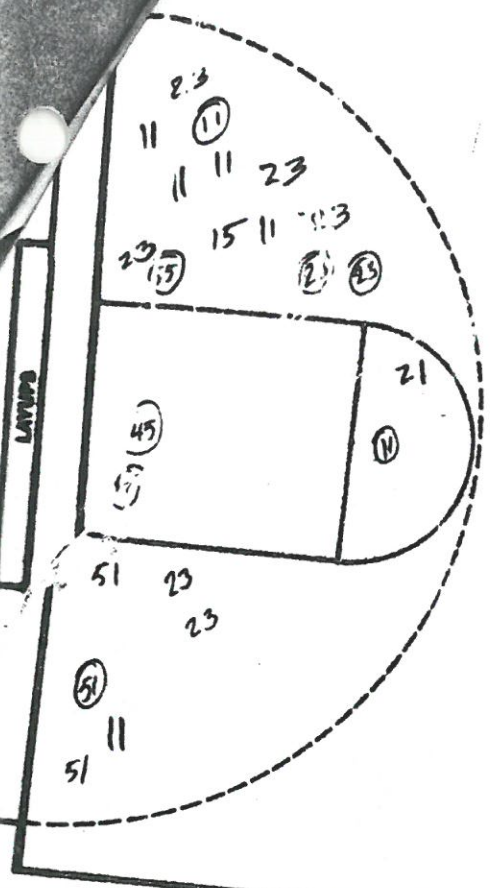


TEAM NEW MEXICO												
NO	PLAYER	PGM	FGA	FTM	FTA	REB	PF	TP	AST	MP		
35	HOWARD	9	13	2	3	11	3	10				
55	ERIMES	2	7	2	2	5	3	6				
15	SANFORD	9	15	2	3	12	1	20				
13	NELSON	8	24	6	6	5	4	22				
33	BECKER	1	2	4	4	3	3	6				
35	GRIFFITH	1	1	0	0	0	0	2				
21	SHROPSHIRE	1	1	0	0	2	3	2				
11	CULLER	0	0	0	0	0	0	0				
TOTALS		26	63	16	18	38	17					
PERCENTAGES						2	TEAM REBOUNDS					

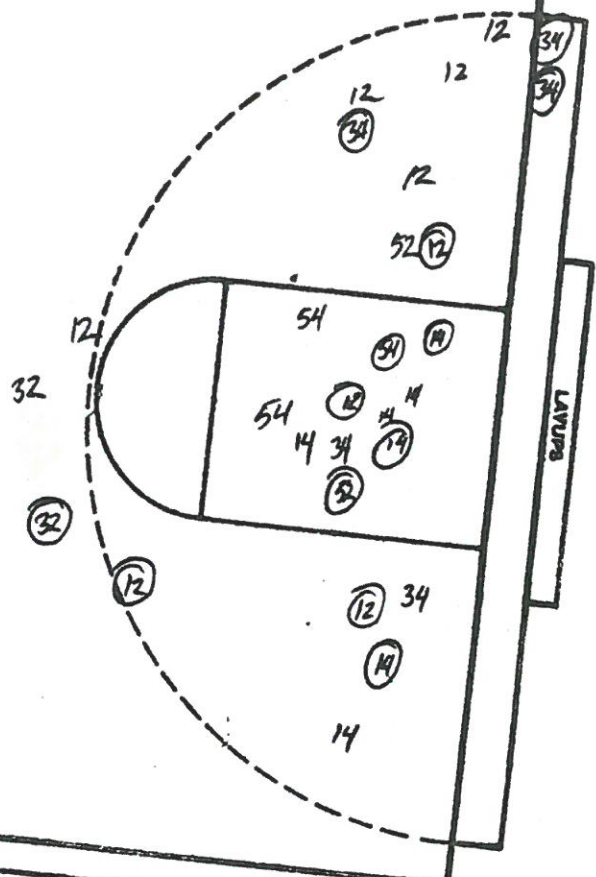
TEAM ARIZONA												
NO	PLAYER	PGM	FGA	FTM	FTA	REB	PF	TP	AST	MP		
12	STAMPS	6	11	2	3	2	4	14				
14	DAVIS	2	9	3	7	7	3	7				
15	POOT	3	8	2	2	5	0	8				
30	FOSTER	2	8	0	0	5	3	4				
44	KORBICK	11	13	2	2	9	3	24				
42	HARBOUR	1	7	2	2	8	4	4				
41	HANSEN	2	2	2	3	1	0	6				
23	LINDSTROM	1	7	0	2	2	0	2				
TOTALS		28	61	13	21	37	17	69				
PERCENTAGES		45.9	61.9	3	TEAM REBOUNDS							

SCORE BY PERIODS	1	2	3	4	OT-1	2	3	TOTAL	VISITORS HOME
	31	68						68	
37	69						69		

OFFICIALS: WEIGHT/HUNT
 ATTENDANCE: 4373 TURNAWAY



MIN	PTS	REB	ASS	STC	BLK	TOV
23	54					
35	34					
23	14					
23	34					
55	52					
21	52					
23	7					
0						
9						
10						
11						
12						
13						
14						
15						
16						
17						
18						



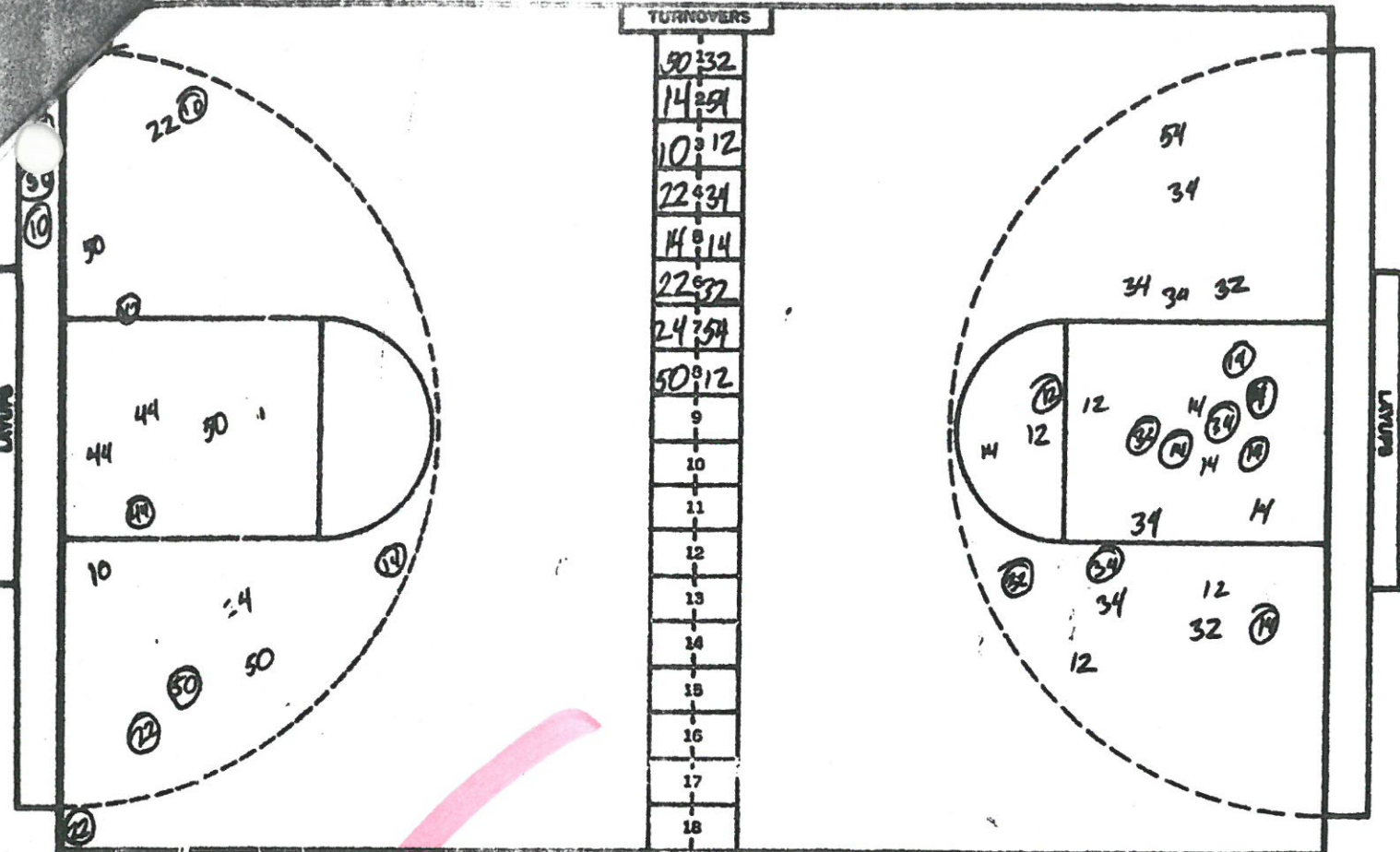
NO.	NAME	FG	FGA	FT	FTA	RB	P	TP
11	EVANS	7	14	5	6	7	4	9
21	LANDIS	1	4	1	1	0	1	3
23	COLLINS, J	7	15	7	8	3	4	21
51	COLLINS, R	3	7	1	1	4	4	7
55	LACEY	4	8	2	3	7	4	10
5	MURPHY	0	2	1	1	0	2	1
5	SEALS							
3	LEONARD							
7	BURGESS	3	6	2	5	3	3	8
	MASON 43							
	MOREHEAD 45	1	2	0	0	1	1	2
	LAS 53							
TOTALS		26	58	19	25	23	7	31
PERCENTS		44.8	76	7				

NO.	NAME	FG	FGA	FT	FTA	RB	P	TP
12	NELSON	8	17	0	1	4	4	16
14	SANFORD	6	13	11	14	10	4	23
32	BECKER	3	6	5	5	3	2	11
34	HOWARD	5	10	8	10	13	3	18
54	GRIMES	1	4	0	0	4	4	2
10	CULVER							
20	SHROPSHIRE	0	1	0	0	1	2	0
24	GRIFFITH	0	0	0	0	0	2	0
40	MAES							
42	SCHAAFSMA							
50	JONES							
52	LOPEZ	1	2	0	1	0	0	2
TOTALS		24	53	24	31	35	21	72
PERCENTS		45.3	77.4	7				

UNM NMS
BY HALVES: 39-41
S: RUDY MARICH & OLIVER MAYFIELD
NCE: 15, 237

TEAM REBOUNDS (NOT IN TOTAL)

TEAM REBOUNDS (NOT IN TOTAL)



NO.	MINERS	FG	FGA	FT	FTA	RB	P	TP
10	CAGER	6	13	3	3	5	3	15
22	WHITE	4	10	1	1	3	3	9
24	WORSLEY	2	7	1	2	2	4	5
44	HARRIS	4	11	0	1	8	3	8
50	SWITZER	3	11	3	5	6	4	9
12	HARPER							
14	ARCHIBALD	4	4	3	4	2	4	11
32	RUDD							
42	CROWELL							
54	Mac DONALD	0	0	1	1	0	0	1
TOTALS		23	56	12	17	26	21	58

PERCENTS

41.1 70.6 8

TEAM REBOUNDS (NOT IN TOTAL)

NO.	LOBOS	FG	FGA	FT	FTA	RB	P	TP
12	NELSON	3	11	3	3	5	1	9
14	SANFORD	8	13	2	4	12	5	18
32	BECKER	3	10	6	9	4	1	12
34	HOWARD	6	12	6	8	7	3	18
54	GRIMES	0	1	1	2	2	2	1
10	CULVER							
20	SHROPSHAIRE	1	2	0	0	1	2	2
24	GRIFFITH	0	0	2	2	1	0	2
40	MAES							
42	SCHAARFSMA							
50	JONES							
52	LOPEZ	0	0	2	2	0	0	2
TOTALS		21	49	22	30	32	14	64

PERCENTS

42.9 73.3 8

TEAM REBOUNDS (NOT IN TOTAL)

UNM - UTEP
 SCORE BY HALVES: 28-27
 OFFICIALS: IRV. BROWN + WAYNE COTTEL
 ATTENDANCE: 12,236

BRIGHAM YOUNG vs UNIVERSITY OF NEW MEXICO

February 16, 1968

****FINAL STATISTICS****

BRIGHAM YOUNG "COUGARS"

player	pos	fgm-fga	ftm-fta	rebds	pf	pts
Liimo	f	4-14	5-8	10	3	13
Lythgoe	f	9-16	4-4	8	5	22
Eakins	c	6-11	4-5	11	4	16
Schouten	g	3-8	1-2	0	3	7
Howard	g	3-9	1-3	3	1	7
Barren	f	0-1	0-0	1	1	0
Warner	c	0-2	0-1	2	1	0
Parsons	g	1-1	0-0	0	2	2
Dresser	g	0-0	0-0	0	2	0
Davis	f	0-0	0-0	1	0	0

FG: 42%
FT: 65%

team

TOTALS 26-62 *.419* 15-23 *.652* 43 22 67

UNIVERSITY OF NEW MEXICO "LOBOS"

player	pos	fgm-fga	ftm-fta	rebds	pf	pts
Grimes	f	1-9	0-2	4	0	2
Howard	f	10-18	5-5	10	4	25
Sanford	c	6-9	2-2	13	5	14
Nelson	g	8-14	5-8	4	4	21
Becker	g	4-8	4-5	4	2	12
Shropshire	f	0-3	0-0	1	1	0
Griffith	g	0-0	2-4	0	1	2
Lopez	g	0-0	0-1	0	0	0

FG: 48%
FT: 67%

team

TOTALS 29-61 *.475* 18-27 *.667* 42 17 76

Score by Quarter:

	1	2	3	4	final
BYU	21	20	13	13	67
UNM	20	21	16	19	76

Score tied 1 times at: 19, 34, 37, 39, 41

Lost Possessions (turnovers)

BYU 16 UNM 13

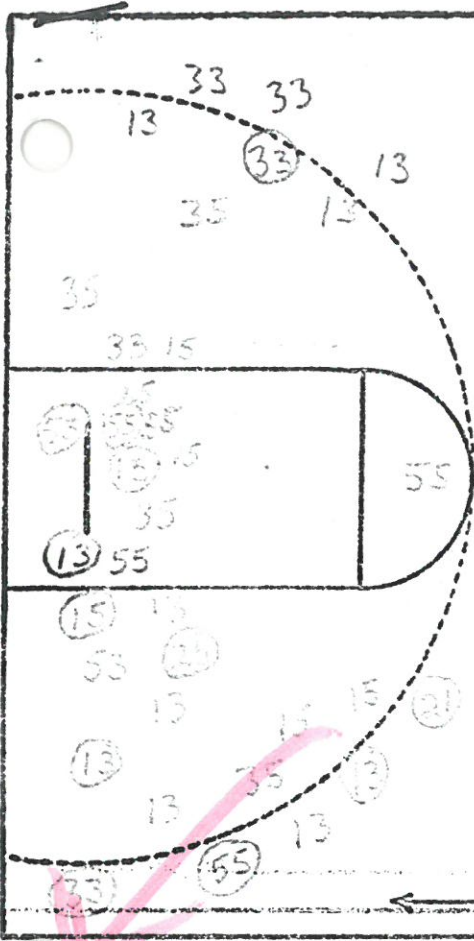
Attendance: 10,568

Lead changed hands 6 times

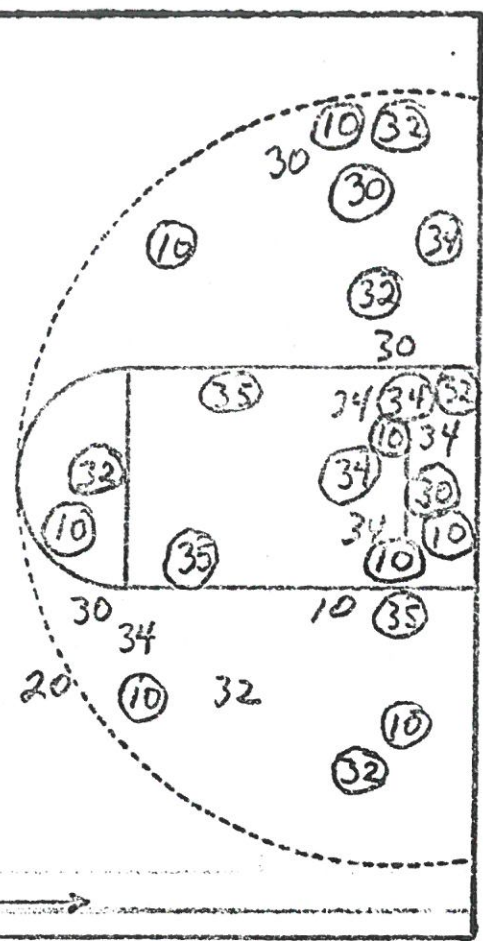
Where Played Salt Lake City

Date 2/17/68

Half 2nd



21	1	20
33	2	35
55	3	10
33	4	32
35	5	32
33	6	34
	7	35
	8	10
	9	
	10	
	11	
	12	
	13	
	14	
	15	
	16	
	17	
	18	
	19	



No	Name	Fld Gls			Fr Thrs			RB	PF	TP
		M	A	%	M	A	%			
13	Nelson	4	19		3	3		3	5	11
15	Santoro	7	17		1	3		14	2	15
33	Becker	3	8		1	3		5	2	7
35	Howard	3	7		5	7		4	3	11
55	Armas	6	11		4	7		7	3	16
31	Shroveshire	1	2		0	0		3	1	2
25	Gullim	1	2		0	0		0	0	2
11	Colver	0	0		0	0		0	0	0
55	Lopez	0	1		0	0		1	0	0
	Team							7		
Grand Totals		25	67		14	23		44	16	64

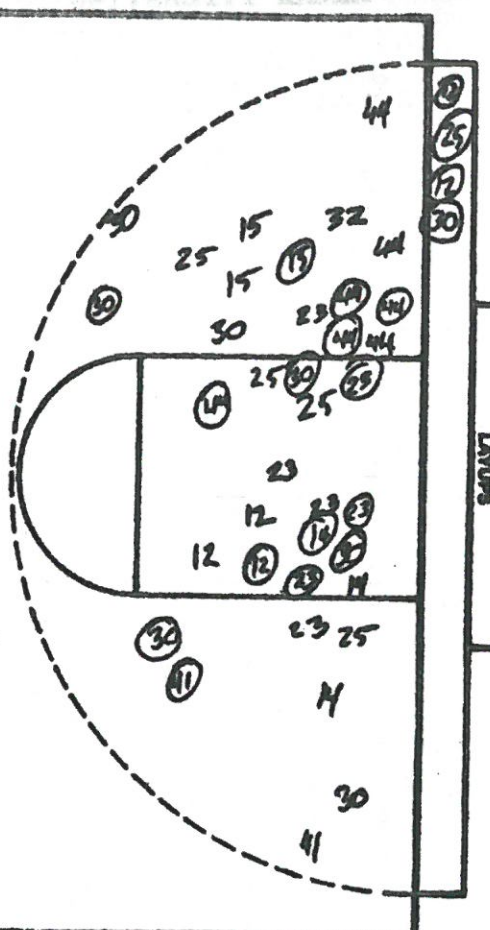
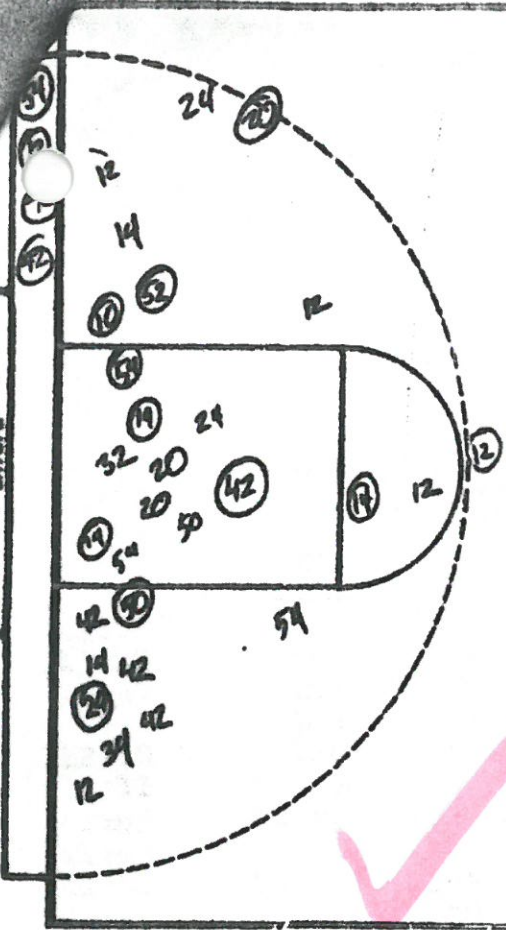
No	Name	Fld Gls			Fr Thrs			RB	PF	TP
		M	A	%	M	A	%			
20	Mackay	0	4		0	1		0	4	5
32	Denson	6	10		1	1		11	4	13
31	Ockel	3	9		3	3		14	1	9
10	Jackson	9	15		2	5		3	2	20
34	Simon	6	15		5	6		5	3	17
30	English	2	9		0	1		0	4	1
35	Cunningham	4	6		0	1		0	6	0
11	Martin	0	0		0	0		0	0	0
	Team							3		
Grand Totals		30	69		11	18		51	16	71

PERCENTAGES

FG 37.3 FT 60.9 Att'n: 4661 FG 44.1 FT 61.1

TURNOVERS

12:41
34:24
39:12
40:21
52:23
52:23
52:25
52:25
52:8
9
10
11
12
13
14
15
16
17
18



NO.	LOBOS	FG	FGA	FT	FTA	RB	P	TP
10	CULVER	3	3	3	3	4	5	9
12	NELSON	3	11	5	6	3	3	11
14	SANFORD	14	20	6	7	12	1	34
32	BECHER	2	7	3	4	4	2	7
54	GRIMES	6	9	2	2	4	2	14
20	SHIPLESHIRE	1	3	2	2	2	0	4
24	GRIFFITH	1	5	2	5	3	2	4
34	HOWARD	2	5	5	7	8	1	9
40	MAES	0	0	0	0	0	0	0
42	SCHAFFSMA	3	6	0	0	0	1	6
50	JONES	1	2	0	0	0	2	2
59	LOPEZ	1	2	0	0	3	2	2
TOTALS		37	73	28	36	43	21	102

PERCENTS 50.7 60.9 77.8 TEAM REBOUNDS (NOT IN TOTAL)

NO.	WILDCATS	FG	FGA	FT	FTA	RB	P	TP
12	STAMPS	3	8	1	1	4	1	7
14	DAVIS	4	9	1	2	3	3	9
25	HARBOUR	4	12	4	5	5	4	12
30	FOSTER	6	11	6	7	9	3	18
44	KORDIK	4	8	1	1	2	4	9
15	ROOT	2	6	0	0	5	2	4
21	WELTON	0	0	0	0	1	1	0
23	LINDSTROM	3	5	1	2	2	3	7
32	BARNER	0	1	0	0	2	1	0
40	WILSON	0	0	0	0	1	0	0
41	HANSEN	2	4	4	5	1	3	8
TOTALS		28	64	18	23	30	25	74

PERCENTS 43.8 78.3 78.3 TEAM REBOUNDS (NOT IN TOTAL)

SCORE BY HALVES:

OFFENSE:

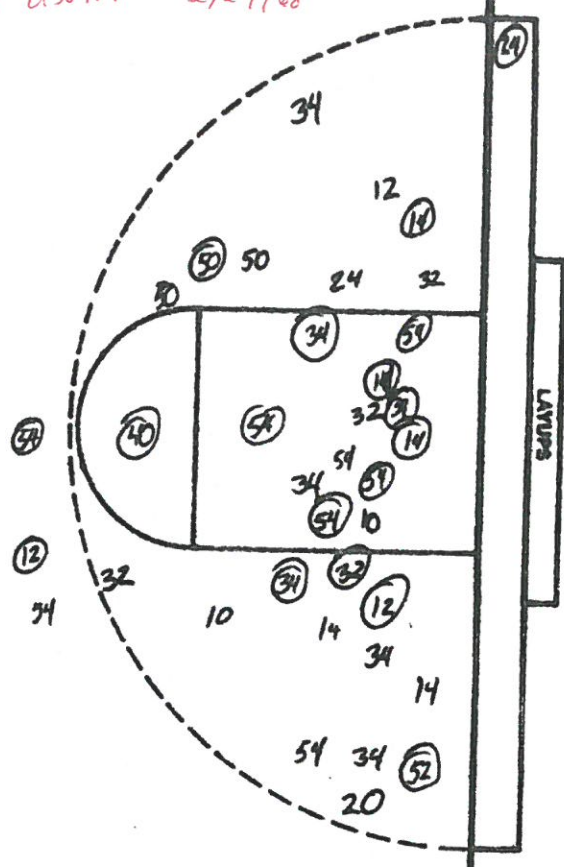
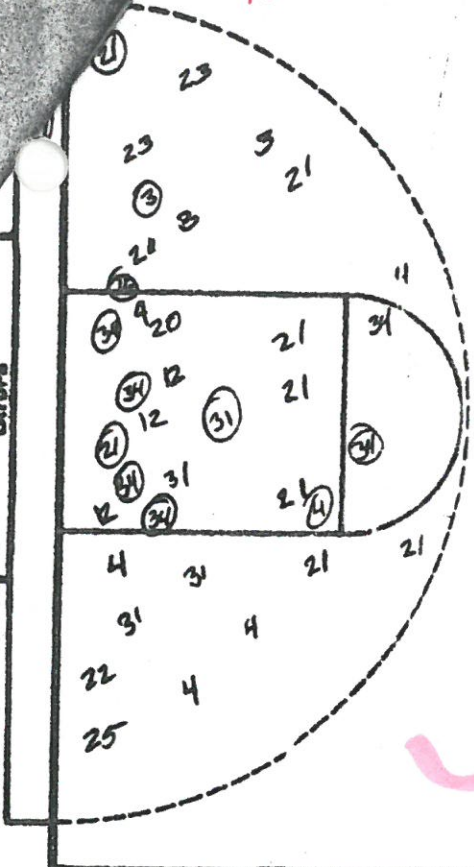
ATTENDANCE: 14,875

Arizona St. vs UNM

at UNM 2/24/68

TURNOVERS

25	54
4	314
34	314
25	420
12	519
21	654
22	710
OF	21
8	20
9	24
10	20
11	42
12	
13	
14	
15	
16	
17	
18	



NO.	SUN DEVILS	FG	FGA	FT	FTA	RB	P	TP
31	Johnson	2	7	1	2	5	3	5
25	Douthitt	1	5	0	0	1	5	2
24	Mackey	1	3	0	0	5	2	2
3	Detter	2	5	5	6	0	3	9
21	Hill	7	17	2	4	0	2	16
4	Innote	5	13	3	3	2	3	13
12	Edwards	1	5	2	3	8	2	4
21	Harris	0	5	5	7	6	1	5
23	Leinheiser	0	3	0	0	1	0	0
34	Schreier	10	13	7	7	12	4	27
TOTALS		29	76	25	32	40	25	83

NO.	LOBOS	FG	FGA	FT	FTA	RB	P	TP
12	NELSON	7	13	3	3	5	4	17
14	SANFORD	8	16	2	5	8	3	18
32	BECKER	4	11	5	5	6	4	13
34	HOWARD	4	11	4	6	12	2	12
54	GRIMES	10	16	6	9	13	5	26
10	CULVER	0	3	3	4	7	4	3
20	SHROPSHIRE	0	1	0	0	4	0	0
24	GRIFFITH	3	4	4	4	1	0	10
40	MAES	1	2	0	0	0	0	2
42	SCHAFFSMA	0	0	0	0	0	1	0
50	JONES	1	2	0	0	0	0	2
52	LOPEZ	1	1	0	0	0	0	2
TOTALS		39	80	27	36	56	23	105

PERCENTS ~~38.2~~ 78.1 4 TEAM REBOUNDS (NOT IN TOTAL)

PERCENTS 48.8 75 4 TEAM REBOUNDS (NOT IN TOTAL)

SCORE BY HALVES: 52-35

OFFICIAL F:

ATTENDANCE: 14,915

OFFICIAL BASKETBALL BOX

SCORE BY PERIODS

CROWD

9,253

DATE March 1, 1968

OFFICIALS Korte - Hale

	1	2	3	4	EP	SP	Q
NEW MEXICO		33		42			75
WYOMING		42		20			62

NEW MEXICO		FIELD GOALS		FREE THROWS		RE-BOUNDS	ASS'TS	PER. FOULS	TOTAL POINTS	TURN-OVERS	MINS. PLAYED
		MADE	ATT'D.	MADE	ATT'D.						
Bill Grimes, Howard	f	2	5	3	3	8		4	7 7		
Howard, Greg	f	1	5	3	6	11		4	5 5		
Sanford, Ron	c	3	4	0	1	3		4	6 5		
Nelson, Ron	g	11	25	7	8	6		2	29		
Becker, Ron	g	8	10	1	1	7		3	17		
Culver, Dave		0	0	2	2	6		1	2		
Shropshire, Steve		3	3	0	0	1		0	6		
Schaafsma, Terry		0	1	0	0	0		0	0		
Lopez, Leonard		1	1	0	0	0		0	2		
Griffith, Keith		0	0	1	2	0		0	1 1		
TOTALS		29	54	17	23	42		19	75	20	
Team Rebounds (Not Included in Above Totals)						1					

PERCENTAGES: Field Goals .537 Free Throws .739 No. Shots Missed 31

WYOMING		FIELD GOALS		FREE THROWS		RE-BOUNDS	ASS'TS	PER. FOULS	TOTAL POINTS	TURN-OVERS	MINS. PLAYED
		MADE	ATT'D.	MADE	ATT'D.						
Dodds, Stan	f	4	14	2	5	13		1	10		
Pognovich, Steve	f	5	10	0	1	8		3	10		
Ashley, Carl	c	6	13	8	12	17		1	20		
Hall, Harry	g	6	24	2	3	16		4	14		
Eberle, Mike	g	1	8	1	1	2		4	3		
Wilson, Bob		1	5	1	2	3		5	3		
VonKrosiok, Gary		0	2	0	0	0		1	0		
Nelson, Cliff		1	2	0	0	1		0	2		
TOTALS		24	78	14	24	50		19	62	11	
Team Rebounds (Not Included in Above Totals)						2					

PERCENTAGES: Field Goals .308 Free Throws .583 No. Shots Missed 64

OFFICIAL BASKETBALL BOX

CROWD 2800
 DATE MARCH 2, 1968
 OFFICIALS Rex Olsen and Glen Barlow

SCORE BY PERIODS
 1 2 3 4 EP EP 6

DENVER	1	2	3	4	EP	EP	6
NEW MEXICO		37		33			70
		34		34			68

UNIV. OF DENVER	FIELD GOALS		FREE THROWS		RE-BOUNDS	ASS'TS	PER. FOULS	TOTAL POINTS	TURN-OVERS	MINS. PLAYED
	MADE	ATT'D.	MADE	ATT'D.						
Harry Hollines	9	23	6	7	4		1	24		
Horace Kearney	7	19	4	5	8		1	18		
Brian Clare	7	7	2	3	10		5	16		
Moses Brewer	1	6	3	5	11		3	5		
Rick Callahan	1	3	1	1	4		5	3		
Al White	2	6	0	0	9		3	4		
Jerry Johnson	0	0	0	0	0		0	0		
Ken Jones										
Doug Funk										
John Bokan										
Keith Strohman										
Dave Cribari										
TOTALS	27	66	16	21	46		18	70		
Team Rebounds (Not Included in Above Totals)					7					

PERCENTAGES: Field Goals **40.9** Free Throws **76.1** No. Shots Missed **44**

UNIV. OF NEW MEXICO	FIELD GOALS		FREE THROWS		RE-BOUNDS	ASS'TS	PER. FOULS	TOTAL POINTS	TURN-OVERS	MINS. PLAYED
	MADE	ATT'D.	MADE	ATT'D.						
Ron Nelson	7	19	1	3	1		2	15		
Ron Sanford	4	8	3	5	5		2	11		
Greg Howard	7	22	7	8	22		2	21		
Ron Becker	3	9	5	6	7		4	11		
Howard Grimes	2	3	0	0	3		4	4		
Steve Shropshire	0	3	0	0	4		1	0		
Leonard Lopez	1	2	0	0	0		1	2		
Terry Schaafsma										
Keith Griffith										
Dave Culver	2	5	0	1	6		3	4		
Larry Jones										
TOTALS	36	71	16	23	38		19	68		
Team Rebounds (Not Included in Above Totals)					5					

PERCENTAGES: Field Goals **26.6** Free Throws **69.5** No. Shots Missed **43**

