

NO.	LOBOS	FG	FGA	FT	FTA	RD	P	TP
24	HOOVER	2	2	0	2	4	0	4
30	MORGAN	4	8	2	2	4	4	10
34	MONROE	4	12	1	3	9	3	9
40	JUDGE	3	10	1	2	2	3	7
44	DANIELS	9	16	1	1	12	4	19
10	NELSON	1	3	0	0	2	1	2
14	SANFORD	4	6	3	3	4	5	11
12	LUND							
20	SHROPSHIRE							
22	GRIMES							
TOTALS		26 57	8	13	37	20	62	

PERCENTS 46 54 2 TEAM REBOUNDS (NOT IN TOTAL)

39

NO.	ACC	FG	FGA	FT	FTA	RB	P	TP
13	ADAMS	2	5	0	0	2	3	4
15	GODFREY	5	11	2	2	1	4	12
31	NICHOLAS	0	6	0	1	3	3	0
35	WRAY, D	9	12	1	3	3	4	19
45	STEWART	4	5	10	12	7	4	18
11	BALCH							
21	HERTTENBERGER							
23	WRAY, R	0	1					0
33	BURK							
41	NORMAN							
TOTALS		20	40	13	18	16	18	53

PERCENTS 50 72 5 TEAM REBOUNDS (NOT IN TOTAL)

21

SCORE BY HALVES: 25-27,
 OFFICIALS: MELOTERO - RUDY MARICH
 ATTENDANCE: 12,020

Santa Clara @ UNM

12/4/66

TURNOVERS

33	1	34
31	2	30
3	14	
4		
5		
6		
7		
8		
9		
10		
11		
12		
13		
14		
15		
16		
17		
18		

SANTACIARA

UNM

LAYUPS

LAYUPS

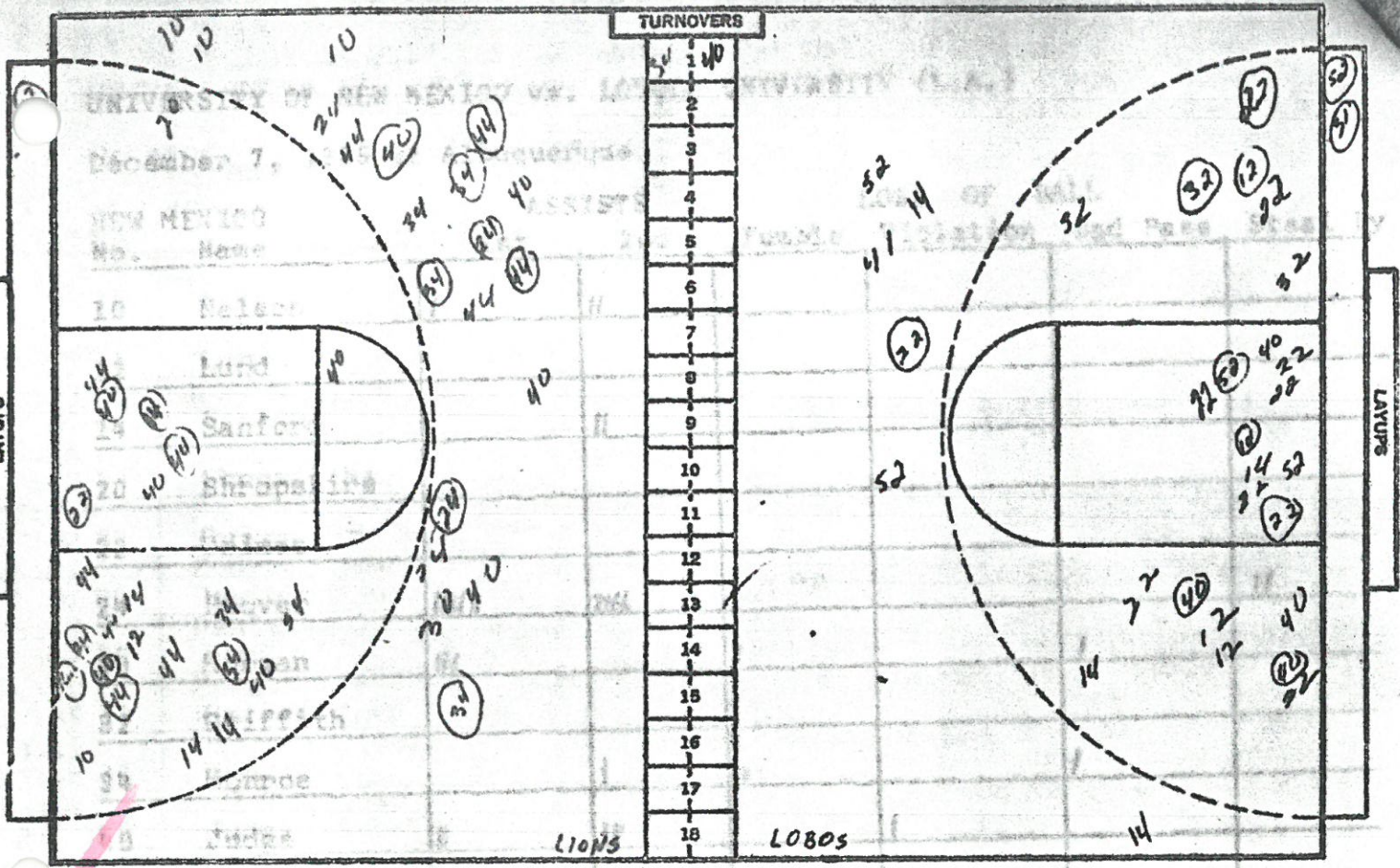
NO.	UNM	FG	FGA	FT	FTA	REB	P	TP
24	HOOVER	2	6	1	2	1	1	5
30	MORGAN	5	9	1	1	10	3	11
34	MONROE	8	22	0	0	13	3	16
40	JUDGE	7	15	2	3	1	4	16
44	DANIELS	5	12	7	6	12	4	14
14	SANFORD	1	2			1		2
24	SHROPSHIRE							0
22	GRIMES							0
10	NELSON	3	7	0	0	3	1	6
52	LOPEZ	1	1			1		2
TOTALS		32	74	8	12	42	16	72

PERCENTS .432 .686 6 TEAM REBOUNDS (NOT IN TOTAL)

NO.		FG	FGA	FT	FTA	REB	P	TP
25	GERVASONI	11	16	2	3	5	0	24
33	HEARNEY	5	14	7	7	1	3	17
44	BASSETTI	1	3	0	0	2	1	2
53	OGDEN	2	4	0	0	2	2	4
54	DUNLAP	2	6	0	0	2	1	4
14	PORTER	1	3	1	1	3	1	3
15	STEIDLMEYER					0		0
21	POULLIOT	?				1	2	0
24	DONAHUE					1	1	0
31	LANE	0	1	0	0	1	1	0
32	DOOLING	0	3				1	0
TOTALS		22	50	10	10	18	13	54

PERCENTS .44 100 2 TEAM REBOUNDS (NOT IN TOTAL)

SCORE BY HALVES: 29-29
 OFFICIALS: COMBS + CARDAY
 ATTENDANCE: 11,455



NO.	NEW MEXICO	FG	FGA	FT	FTA	RB	P	TP
24	HOVER	4	9	0	0	1	2	8
30	MORGAN	1	4	3	4	11	1	5
31	MORRIS	8	17	2	2	11	5	18
40	JUDGE	4	11	0	0	6	4	8
44	DANIELS	9	23	4	4	21	3	22
10	NEILSON	2	10	0	0	5	3	4
14	STANFORD	4	6	0	0	4	3	8
20	SHROPSHIRE	0	1	0	0	2	1	0
22	GRIMES	1	1	0	0	0	1	2
12	Lund	1	2	0	0	0	0	2
TOTALS		34	84	9	10	61	23	77

NO.	LOYOLA	FG	FGA	FT	FTA	RB	P	TP
12	RAGSDALE	1	3	0	0	1	1	2
14	ADEL MAN	4	14	6	7	4	3	14
22	SEBECK	5	18	5	6	8	3	15
30	NEWLIN							
31	CHERRAN	1	2	0	1	1		2
32	BOYLE	2	3	2	2			6
40	ZEMBAL	2	6	2	2	1	3	6
41	SCHANDAR	1	5	2	2	2		4
42	SAXON							
52	PETERSON	3	11	4	5	4	3	10
TOTALS		19	62	21	25	21	13	59

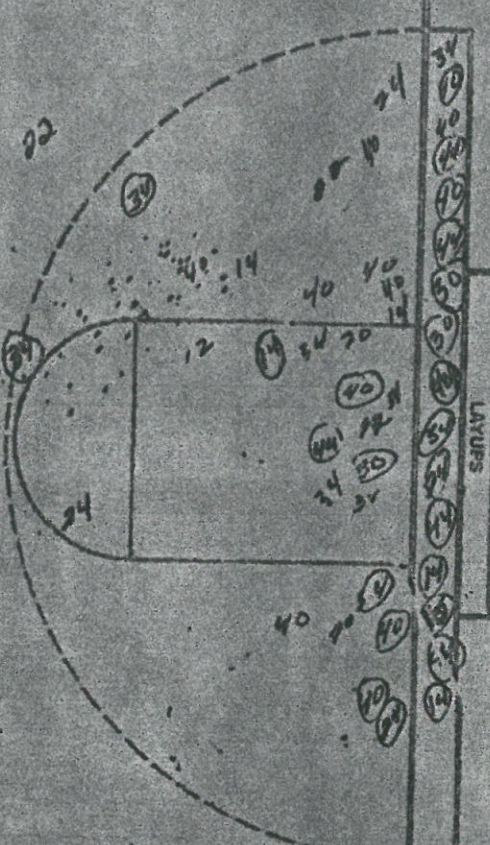
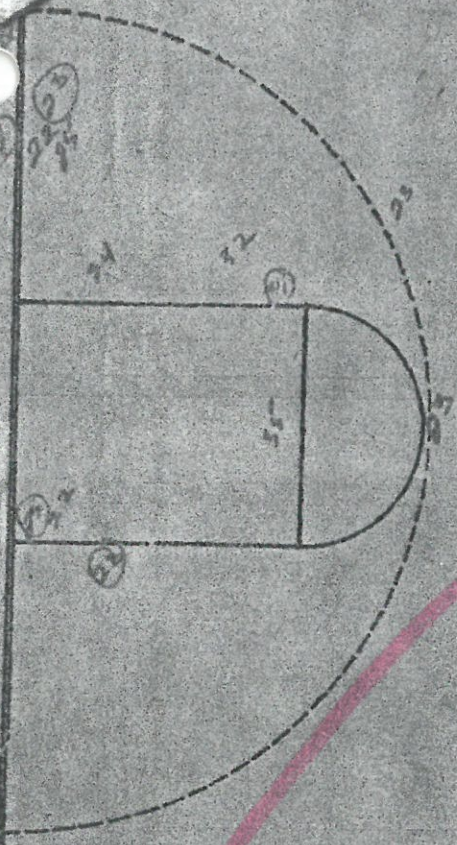
PERCENTS 41.5 90 6 TEAM REBOUNDS (NOT IN TOTAL)

PERCENTS 30.6 84 10 TEAM REBOUNDS (NOT IN TOTAL)

SCORE BY HALVES: 39-26
 OFFICIALS: Varner, Betowick
 ATTENDANCE: 0 < 71

TURNOVERS

04	40
25	44
24	39
24	4
27	5
25	6
7	
8	
9	
10	
11	
12	
13	
14	
15	
16	
17	
18	



NO.	Texas Tech	FG	FGA	FT	FTA	RB	P	TP
23	Teer	5	9	6	6	2	2	16
24	Fellerton	3	4	0	0	0	0	6
25	Haggard	4	8	6	6	1	4	14
27	Olsen	2	4	0	0	6	5	4
41	Dobbs	1	5	0	0	1	5	2
35	Bent	2	4	2	3	3	5	6
22	Lewis	0	2	0	0	0	0	0
31	Nelson	0	0	2	2	1	0	2
33	Bonnie	0	0	5	6	2	0	5
21	Wiggins	2	4	0	0	1	0	4
TOTALS:		19	40	21	23	17	21	59

PERCENTS 47.5 9/13 8 TEAM REBOUNDS (NOT IN TOTAL)

NO.	New Mexico	FG	FGA	FT	FTA	RB	P	TP
24	Hoover	7	5	1	2	2	3	5
30	Morgan	4	8	0	0	3	4	8
34	Monroe	5	14	0	1	8	5	10
40	Judae	9	15	1	1	5	3	19
44	Doniels	11	16	3	7	9	2	25
12	O. gree	1	2	0	0	1	2	2
M	Sanford	4	6	3	3	3	1	11
20	Shropshire	0	2	0	0	1	1	0
22	Grimes	0	3	0	0	1	2	0
32	Luad	0	0	0	0	0	0	0
TOTALS:		36	71	8	14	33	23	80

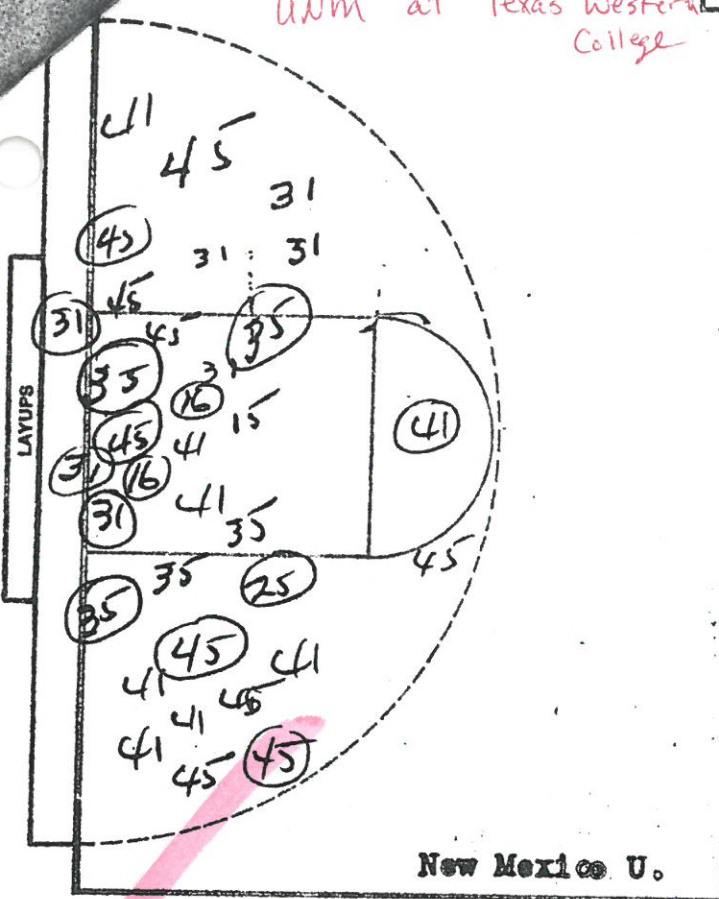
PERCENTS .507 .571 6 TEAM REBOUNDS (NOT IN TOTAL)

SCORE BY HALVES: 33-28
 OFFICIALS: Barton Jeter
 ATTENDANCE: 18-19

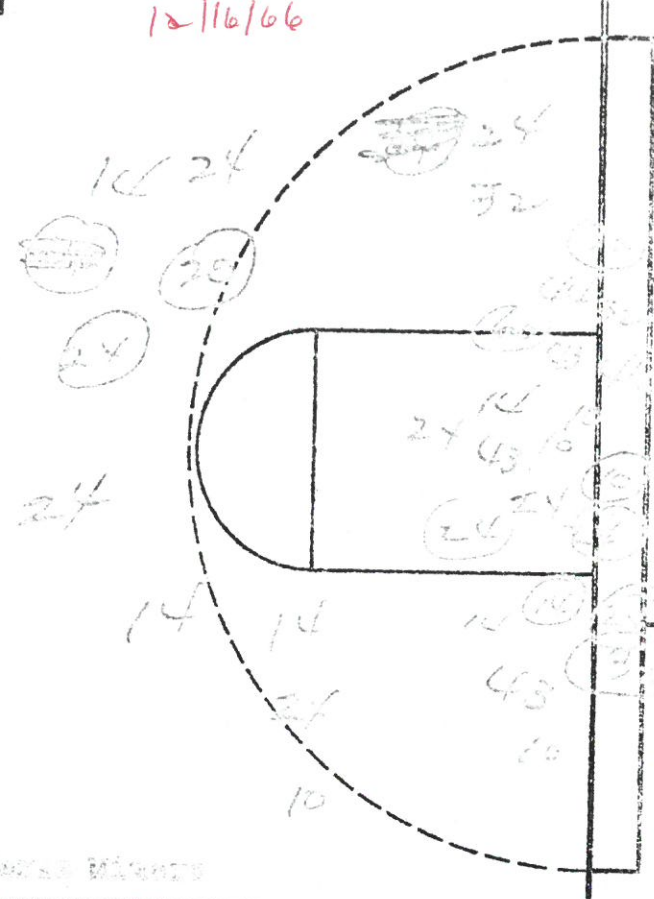
UNM at Texas Western College

TURNOVERS

12/16/66



41
45
25
31 10
41 44
35 6 10
47
8
9
10
11
12
13
14
15
16
17
18



New Mexico U.

Texas Western

NO.	New Mexico	FG	FGA	FT	FTA	RD	P	TP
11	Nelson	DNP						
33	Lund	DNP						
15	Sanford	2	3	0	0	2	0	4
21	Shropshire	DNP						
23	Grimes							
25	Hoover	3	4	6	7	3	1	12
31	Morgan	4	6	0	1	4	5	8
35	Monroe	5	7	2	3	7	4	12
41	Judge	5	15	5	7	3	4	15
43	Fisher	0	0	0	0	0	5	0
45	Daniels	8	20	4	7	9	2	20
55	Burwitz	DNP						
13	Dupree	0	0	0	0	0	0	0
TOTALS		27	55	17	25	28	19	71

PERCENTS .491 .680 4 TEAM REBOUNDS (NOT IN TOTAL)

NO.	Texas-Miners	FG	FGA	FT	FTA	RD	P	TP
16	Cager	2	5	4	4	2	2	8
12	Harper	DNP						
14	Hill	2	11	0	0	3	3	7
20	John	1	1	0	0	0	0	2
22	Palacio	1	3	0	0	0	0	2
24	Worsley	6	15	0	0	0	4	12
30	Railey	DNP						
32	Shed	4	6	0	1	4	5	8
34	Echols	DNP						
46	Myers	0	0	0	0	0	0	0
42	Crowell	0	0	0	0	0	0	0
43	Lattin	3	6	11	19	5	11	
44	Harris	4	6	1	2	6	4	9
TOTALS		23	45	16	18	21	23	62

PERCENTS .511 .889 4 TEAM REBOUNDS (NOT IN TOTAL)

SCORE BY HALVES:
OFFICIALS:
ATTENDANCE:

OFFICIAL NCAA BASKETBALL BOX SCORE

VISITORS (Last Name, First)

Date Dec 17, 66 Site Las Cruces

No.	U of New Mexico	Pos	Total FG		3-point		FT	FTA	Rebounds			PF	TP
			FG	FGA	FG	FGA			Off	Def	Tot		
25	Hoover	f	2	7			1	1			2	3	5
41	Judge	f	1	8			2	2			5	2	4
4	Daniels	c	6	15			11	12			16	4	23
31	Morgan	g	2	3			2	2			5	5	6
35	Monroe	g	7	17			2	3			11	3	16
13	Dupree		1	1			0	0			0	3	2
15	Sanford		1	5			1	5			4	2	3
43	Fisher		1	2			1	1			0	1	2
TEAM REBOUNDS (included in Totals)													
TOTALS			21	58			20	26			43	23	61

A	TO	BLK	S	MIN

TOTAL FG %: 1st Half _____ 2nd Half _____ Game 36.2
 3-Pt. FG %: 1st Half _____ 2nd Half _____ Game _____
 FT %: 1st Half _____ 2nd Half _____ Game 76.9

Deadball _____
 Rebounds _____

HOME (Last Name, First)

No.	VMSU	Pos	Total FG		3-point		FT	FTA	Rebounds			PF	TP
			FG	FGA	FG	FGA			Off	Def	Tot		
10	Evans	f	5	9			1	5			2	3	11
20	Landis	f	1	4			4	4			1	0	6
40	Turner	c	7	19			9	9			11	1	23
42	Gambill	g	5	6			5	7			9	3	17
44	Morehead	g	0	0			0	1			2	5	0
50	Collins		2	4			1	1			5	5	5
14	Ford		0	0			0	0			0	1	0
TEAM REBOUNDS (included in Totals)													
TOTALS			21	42			21	27			34	18	62

A	TO	BLK	S	MIN

TOTAL FG %: 1st Half _____ 2nd Half _____ Game 50
 3-Pt. FG %: 1st Half _____ 2nd Half _____ Game _____
 FT %: 1st Half _____ 2nd Half _____ Game 77.8

Deadball _____
 Rebounds _____

OFFICIALS: _____

Technical Fouls: _____

Attendance 3100

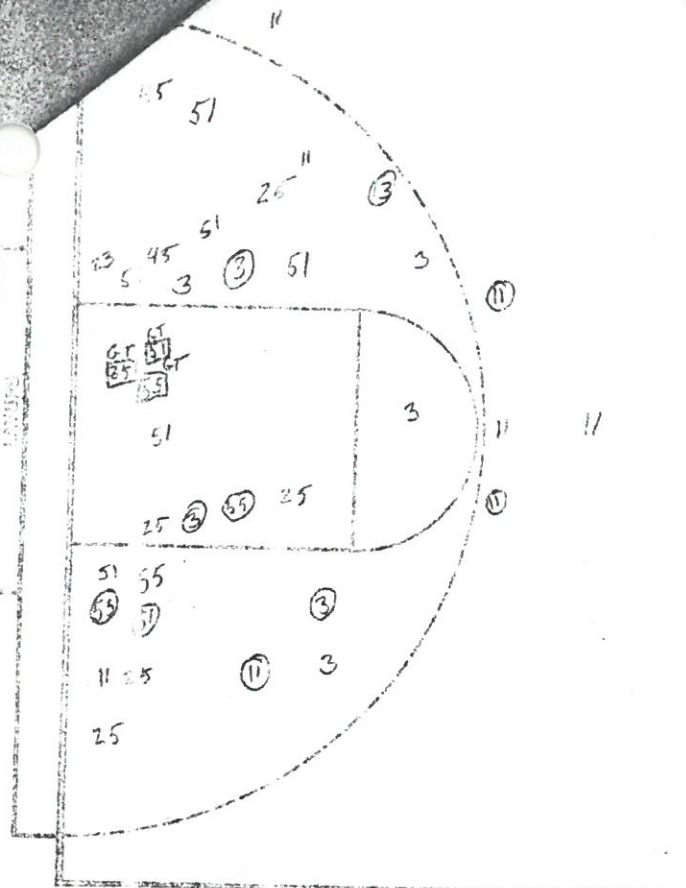
SCORE BY PERIODS	1st H.	2nd H.	OT	OT	FINAL
UNM	29	21	11		61
NMSU	23	27	12		62

TURNOVERS

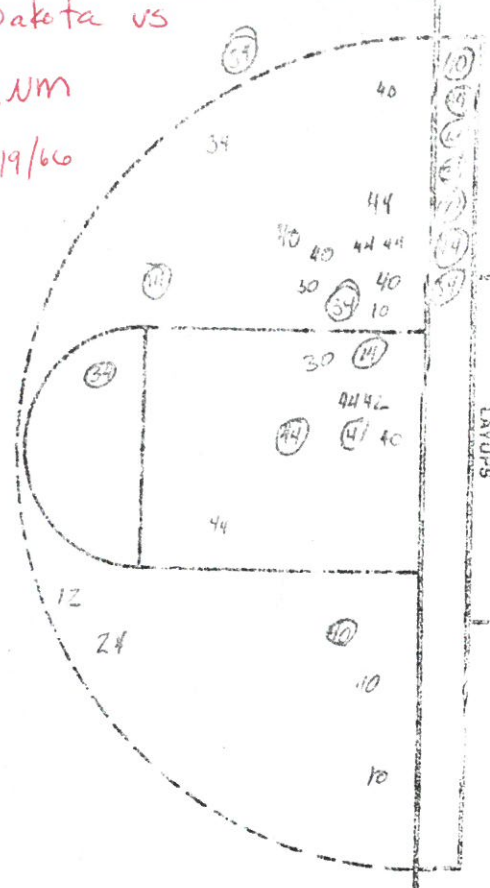
North Dakota vs

UNM

12/19/66



1	30
2	12
3	
4	
5	
6	
7	
8	
9	
10	
11	
12	
13	
14	
15	
16	
17	
18	



NO.	North Dakota	FG	FGA	FT	FTA	RE	P	TP
3	Bates	6	14	6	10	3	1	18
11	Schultz	5	15	1	2	3	0	11
13	Harrington	1	2	0	0		1	2
21	Keel							
23	Jenkins	1	3	1	1		4	3
25	Tweedie	0	5	0	0	3	2	0
31	Brubisish			0	1	1		0
33	Jackson	3	5	1	2	6	5	7
41	Stolt	0	2	0	0	1	1	0
43	Burton					1	3	0
45	Fraus	1	4	1	2	3	0	3
51	Hestor	5	18	2	3	6	1	12
55	Godfread	4	8	0	0	6	5	8
TOTALS		26	81	12	21	35	23	64

NO.	New Mexico	FG	FGA	FT	FTA	RE	P	TP
10	Nelson	1	12	2	2	1	2	4
12	Dupree	0	1	0	1	1	2	0
14	Sanford	2	3	8	11	5	1	12
20	Shropshire	1	2	0	1	4	0	2
22	Grimes	0	0	0	0	0	0	0
24	Hoover	2	5	0	1		0	4
30	Morgan	3	10	2	2	11	2	8
32	Lund	0	1		2	0	0	0
34	Monroe	8	9	0	0	6	5	16
40	Judge	4	15	4	6		4	12
42	Fisher	0	1	0	0	2	0	0
44	Daniels	10	18	6	11	12	0	26
54	Burwitz	0	3	0	0	0	0	0
TOTALS		31	69	22	34	48	16	84

PERCENTS .366 .571 12 TEAM REBOUNDS (NOT IN TOTAL)

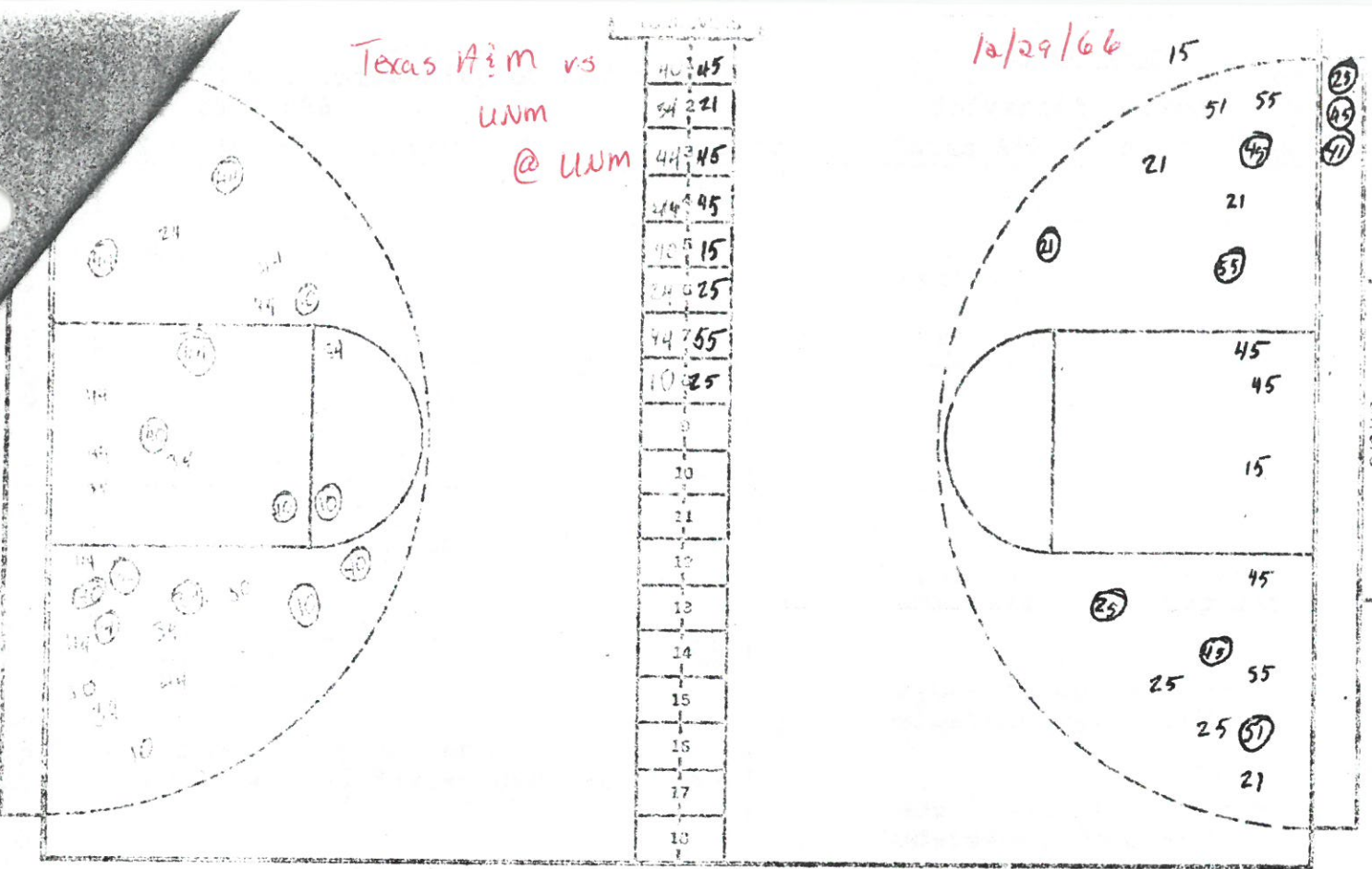
PERCENTS .449 .647 9 TEAM REBOUNDS (NOT IN TOTAL)

SCORE BY HALVES: 40-30
 OFFICIALS: BROADNAX-WELCH
 ATTENDANCE: 9,812

Box Score Missing – New Mexico vs. Creighton (Dec. 21, 1966)

Texas A&M vs
UNM
@ UNM

12/29/66 15



NO.	UNM	FG	FGA	FT	FTA	RR	P	TP
10	Nelson	3	4	2	2		2	2
11	Dupree							
14	Sanford	1	1	0	0	1	1	2
20	Shropshire							
22	Grimes							
24	Hoover	0	1			1	1	0
30	Morgan	2	4	1	2	3	2	5
32	Lund							
31	Emree	1	7	0	2	7	2	2
40	Shice	3	3	3	4	1		9
42	Fisher							
44	Daniels	7	15	3	4	8	3	17
TOTALS		17	35	9	14	21	11	43

PERCENTS

48.6 64.3 3

TEAM REBOUNDS
(NOT IN TOTAL)

NO.	Texas A&M	FG	FGA	FT	FTA	RR	P	TP
13	Rector							
15	Payne	0	2			1	3	0
21	Underwood	1	4			1	1	2
25	Benefield	2	4	2	2	1	1	6
31	Burgess							
35	G. Ditto							
41	Barnett	1	1	2	2	2	1	4
45	Peret	3	6	6	6	4	1	12
51	Trippet	1	2			1	1	2
53	Myatt							
55	L. Ditto	1	3	0	1	2	3	2
TOTALS		9	22	10	11	12	11	28

PERCENTS

40.9 90.9 1

TEAM REBOUNDS
(NOT IN TOTAL)

SCORE BY HALVES:

OFFICIALS:

Barlow & Murdock

ATTENDANCE:

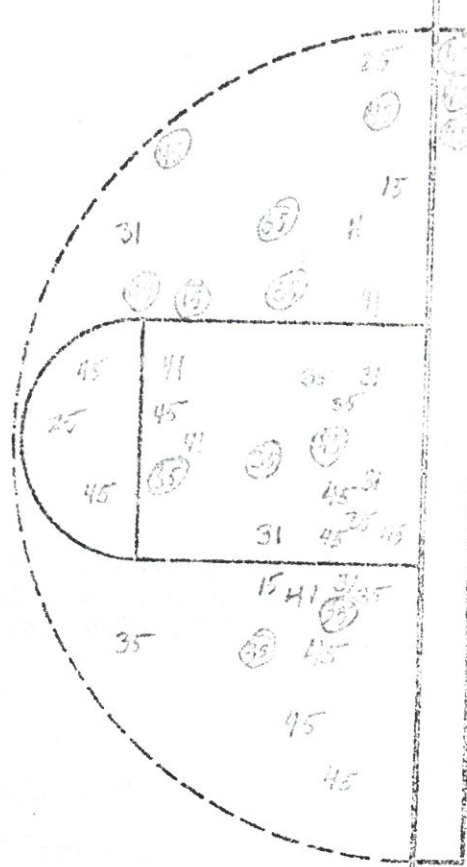
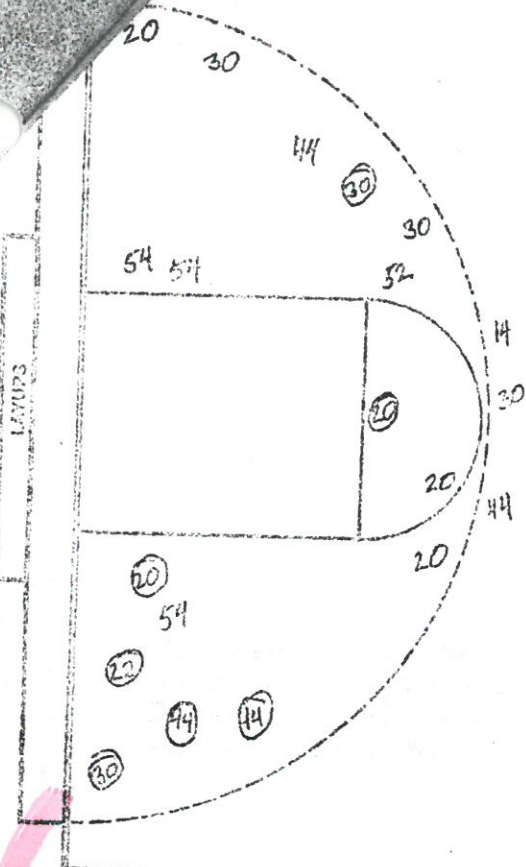
Missed Field - 0

Dropped Hands - 0

187 JAN 30

TURNOVERS

52:41
54:21
54:25
47:45
30:5
44:6
44:7
30:8
9
10
11
12
13
14
15
15
17
18



NO.	CSU	FG	FGA	FT	FTA	REB	P	TF
10	Nowicki							
12	Montel							
14	Good	1	3	0	1	2	2	2
20	L. Kerr	3	7	1	2	2		7
22	Fines	1	1	0	0	1	2	2
30	F. Kerr	4	11	4	4	5		12
34	Hass							
42	Davis	0	0	0	0	0	1	0
44	Shegogg	5	9	2	5	6	3	12
50	Rule	1	3	3	4	5	2	5
52	Bustion	1	4	2	2	4	2	4
54	Schlueter	1	4	3	4	11	4	5
TOTALS		17	42	15	22	36	16	49

PERCENTS 40.5 / 8.2 / 9 TEAM REBOUNDS (NOT IN TOTAL)

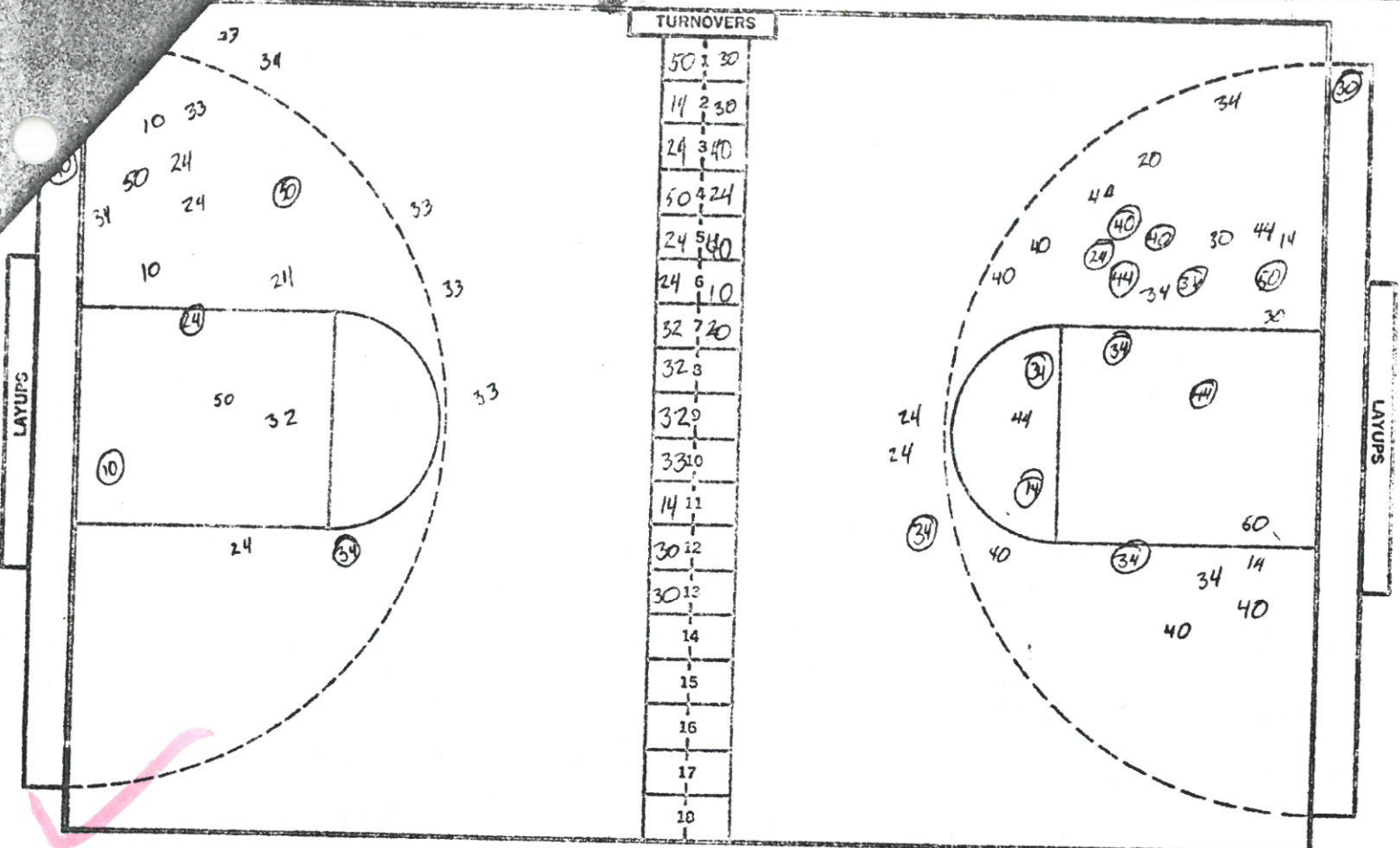
NO.	INDY	FG	FGA	FT	FTA	REB	P	TF
11	NELSON	0	2	0	0	4	3	7
13	Dupree	0	0	0	0	0	0	0
15	Sanford	3	10	1	2	2		7
21	Shropshire							
23	Grimes							
25	Wagner	1	4	0	0	1	3	2
31	Reagan	0	0	0	2	12	4	0
33	Lund							
35	Nelson	10	22	2	2	10	2	22
41	Endre	2	8	0	0	2	4	4
43	Fisher							
45	Daniels	12	28	5	8	10	4	29
TOTALS		28	82	8	14	42	20	61

PERCENTS 34.1 / 57.1 / 5 TEAM REBOUNDS (NOT IN TOTAL)

SCORE BY HALVES:

OFFICIALS:

ATTENDANCE: 19,831



NO.	Denver	FG	FGA	FT	FTA	RD	P	TP
10	Callahan	3	6	0	0	4	3	6
14	Grover	1	1	0	0	3	1	2
34	Strohman	1	3	0	0	0	0	2
24	Roderick	4	12	1	2	6	3	9
30	Robinson							
32	Boxberger	0	1	0	0	1	0	0
33	Hollines	6	17	3	4	1	2	15
40	Clare	1	3	3	4	6	4	5
42	White							
44	Ducar							
50	Beck	2	4	0	0	8	4	4
TOTALS		18	47	7	10	29	17	43

PERCENTS 38.3 70 5 TEAM REBOUNDS (NOT IN TOTAL)

NO.	New Mexico	FG	FGA	FT	FTA	RD	P	TP
10	Nelson	3	7	1	2	0	2	7
12	Dupree	0	0	0	0	0	0	0
14	Sanford	1	5	0	0	1	2	2
20	Shropshire	0	1	0	0	1	0	0
22	Grimes	0	0	0	0	2	0	0
24	Hoover	3	8	0	0	2	2	6
30	Morgan	2	7	1	2	8	2	5
32	Lund	0	0	1	2		0	1
34	Monroe	9	13	0	1	13	3	18
40	Judge	3	12	2	5	3	2	8
42	Fisher	0	0	0	0	0	0	0
44	Daniels	4	12	8	10	9	3	16
50	JONES	1	2	0	0	0	1	0
52	LOPES	0	0	0	0	0	0	0
54	BURWITZ	0	0	0	0	0	0	0
TOTALS		26	67	13	22	41	17	65

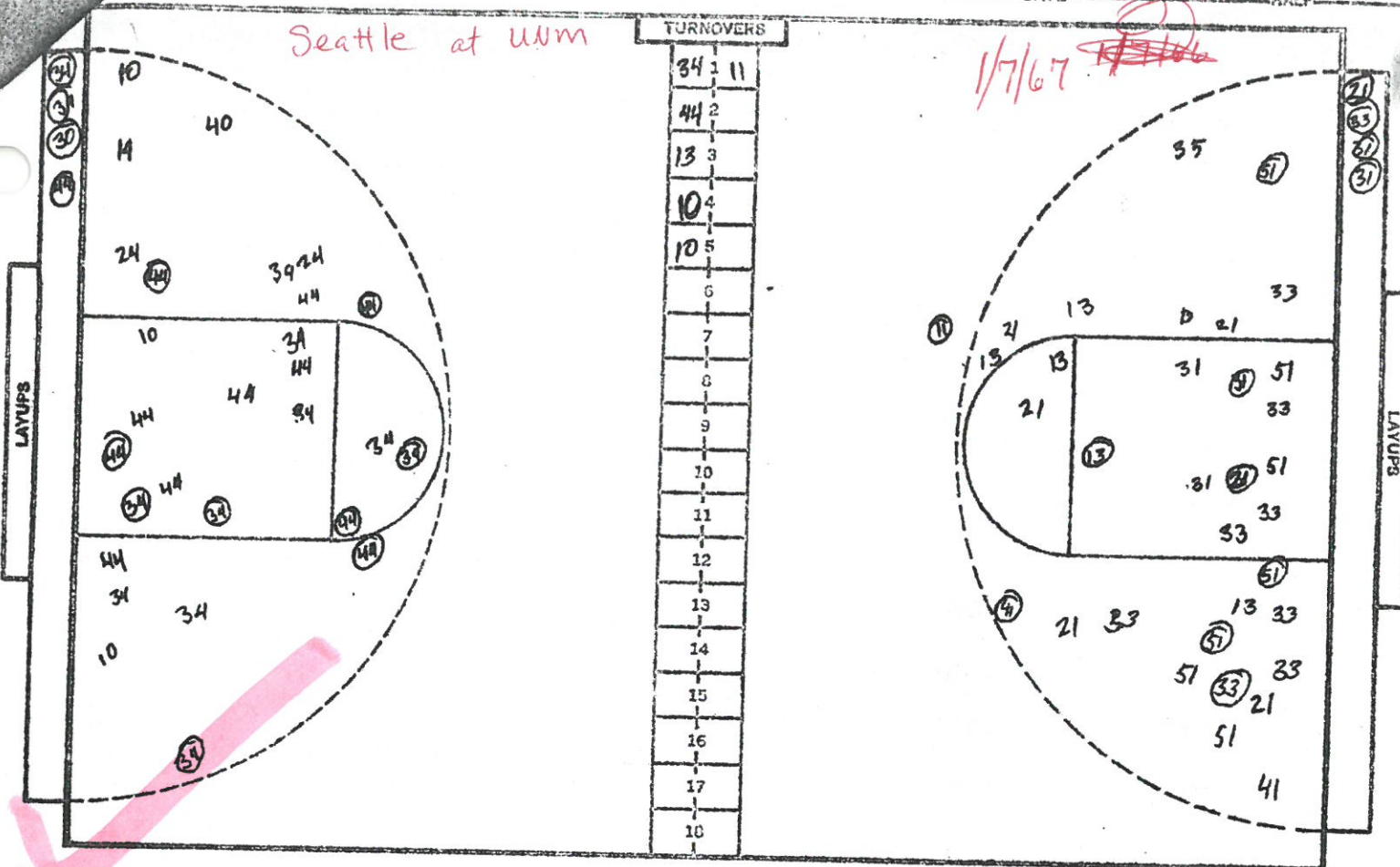
PERCENTS 38.8 59.1 7 TEAM REBOUNDS (NOT IN TOTAL)

SCORE BY HALVES: 24-26
 OFFICIALS: MEL OTERO + JACK COMBS
 ATTENDANCE: 8,300

Seattle at UUM

TURNOVERS

1/7/67



NO.	U N M	FG	FGA	FT	FTA	RB	P	TP
24	HOOVER	0	4	2	4	0	1	2
30	MORGAN	1	2	6	11	12	4	8
34	MONROE	10	23	1	3	16	3	21
40	JUDGE	4	10	0	0	1	2	8
44	DANIELS	11	19	7	9	16	4	29
10	NELSON	1	5	3	4	3	1	5
12	DUPREE	0	0	0	1	0	0	0
14	SANFORD	3	7	1	2	9	1	7
20	SHROPSHIRE							
TOTALS		30	70	20	38	57	16	80

PERCENTS 57.1 62.5 7 TEAM REBOUNDS (NOT IN TOTAL)

NO.	SEATTLE	FG	FGA	FT	FTA	RB	P	TP
13	LOONEY	5	13	1	1	2	2	11
21	LOTT	3	14	2	4	4	1	8
31	STRONG	4	11	3	8	12	5	10
33	WORKMAN, T	5	16	2	8	7	5	12
53	WILKINS	0	4	0	0	3	2	2
35	KRIEGER	0	0	0	0	0	0	0
51	LACOUR	6	10	0	1	5	1	12
11	ACRES	1	1	0	0	0	1	2
25	O'BRIEN							
41	BEIL	1	3	0	0	1	2	2
45	WORKMAN, J	0	0	0	0	0	1	0
TOTALS		26	72	8	26	35	22	60

PERCENTS 36.1 50 5 TEAM REBOUNDS (NOT IN TOTAL)

SCORE BY HALVES: 30-26
 OFFICIALS: BAUGH, FILBERTI
 ATTENDANCE: 14,936

OFFICIAL BASKETBALL BOX

CROWD 4392

DATE January 13, 1967

OFFICIALS Murdock-Cottle

SCORE BY PERIODS

	1	2	3	4	EP	EP	8
NEW MEXICO	38	38					76
WYOMING	39	47					86

NEW MEXICO	FIELD GOALS		FREE THROWS		RE-BOUNDS	ASS'TS	PER. FOULS	TOTAL POINTS	TURN-OVERS	MINS. PLAYED
	MADE	ATT'D.	MADE	ATT'D.						
MORGAN, F	2	4	0	0	4		4	4		
MORRIS, F	4	12	4	4	7		5	12		
DANIELS, C	7	19	4	6	11		5	18		
HOOVER, G	0	0	1	2	2		5	1		
JUDGE, G	6	19	4	4	5		4	16		
SANFORD	10	17	1	2	18		4	21		
NELSON	1	6	0	0	1		5	2		
LOPEZ	0	0	0	0	0		2	0		
SHROPSHIRE	1	1	0	0	0		0	2		
GRIMES	0	0	0	0	0		0	0		
TOTALS	31	78	14	18	48		34	76	15	
Team Rebounds (Not Included in Above Totals)					3					

PERCENTAGES: Field Goals .397 Free Throws .778 No. Shots Missed 51

WYOMING	FIELD GOALS		FREE THROWS		RE-BOUNDS	ASS'TS	PER. FOULS	TOTAL POINTS	TURN-OVERS	MINS. PLAYED
	MADE	ATT'D.	MADE	ATT'D.						
HALL, F	8	15	7	10	12		3	23		
VONKROSIGK, F	0	3	3	7	12		4	3		
COLLINS, C	4	10	6	10	13		4	14		
EBERLE, G	9	22	2	2	5		3	20		
WILSON, G	7	12	10	11	1		2	24		
JOHNSON	1	2	0	0	2		2	2		
NELSON	0	2	0	0	0		0	0		
TOTALS	29	66	28	40	45		18	86	10	
Team Rebounds (Not Included in Above Totals)					5					

PERCENTAGES: Field Goals .439 Free Throws .700 No. Shots Missed 49

OFFICIAL BASKETBALL BOX

SCORE BY PERIODS
1 2 3 4 EP EP G

CROWD 3200 estimated
DATE Saturday, January 14, 1967

U of Denver	41	30	71
New Mexico	35	31	66

TEAM	FIELD GOALS			FREE THROWS			RE-BOUNDS	PER. FOULS	TOTAL POINTS
	MADE	ATT.	PER-CENT	MADE	ATT.	PER-CENT			
University of Denver									
George Roderick	2	5		4	5		4	2	8
Byron Beck	2	4		6	7		7	4	10
Brian Clare	2	6		1	2		7	4	5
Rick Callahan	1	1		0	2		2	4	2
Harry Hollines	11	21		6	8		6	2	28
Gerry Grover	8	12		2	3		3	1	18
Mike Boxberger									
Ken Robinson									
Chuck Ducar									
Keith Strohman									
TOTALS	26	49	53.8	19	27	70.3	29	17	71
Team Rebounds (Not included in Above Totals)							5		

TEAM	FIELD GOALS			FREE THROWS			RE-BOUNDS	PER. FOULS	TOTAL POINTS
	MADE	ATT.	PER-CENT	MADE	ATT.	PER-CENT			
Univ. of New Mexico									
Bill Morgan	0	2		0	0		5	5	0
Ben Monroe	10	24		3	4		10	3	23
Mel Daniels	8	16		5	7		7	1	21
Don Hoover	0	1		0	0		0	0	0
Frank Judge	3	6		0	0		1	1	6
Ron Nelson	6	15		0	0		8	5	12
Ray Dupree									
Ron Sanford	1	5		2	2		7	5	4
Steve Shropshire	0	0		0	0		0	0	0
Howie Grimes									
Scott Lund									
Ken Fisher									
Ed Burwitz									
Leonard Lopez	0	1		0	0		0	1	0
TOTALS	28	70	40.0	10	13	71.5	38	25	66
Team Rebounds (Not included in Above Totals)							4		

OFFICIALS: Vern Betsworth and Glen Barlow.

Home Team U. of UTAH

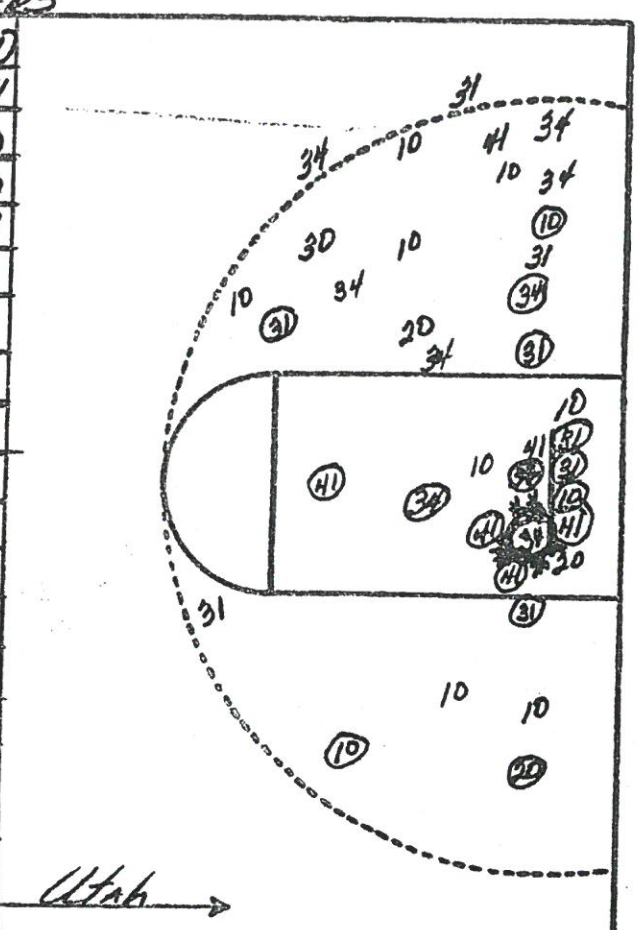
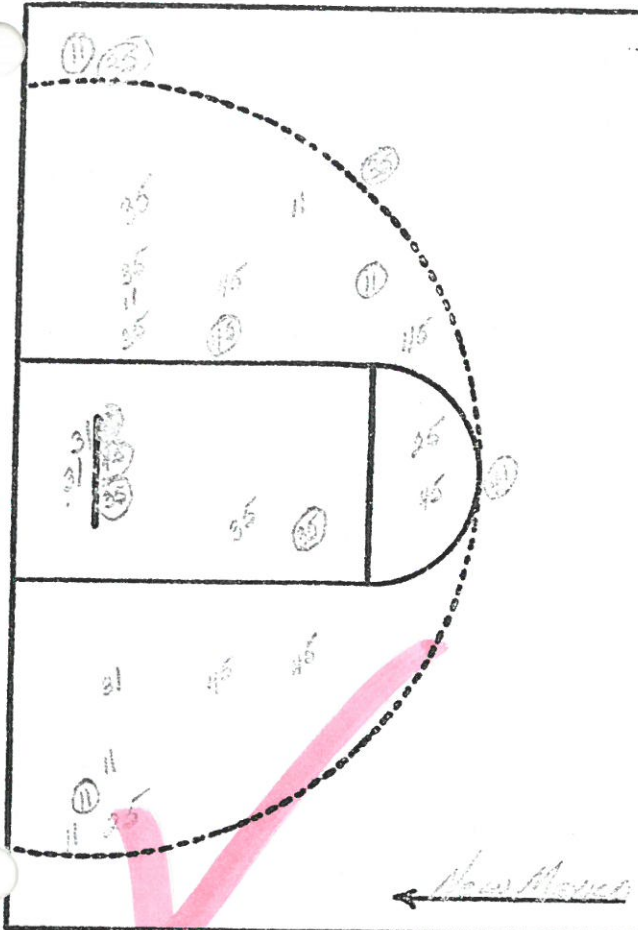
vs NEW MEXICO UNIVERSITY

Where Played Salt Lake City

Date 1-20-67 Half _____

PLAYERS

1	20
2	41
3	10
4	10
5	41
6	
7	
8	
9	
10	
11	
12	
13	
14	
15	
16	
17	
18	
19	



Team _____

No	Name	Fld Gls			Fr Thrs			RB	PF	TP
		M	A	%	M	A	%			
31	McGinn	0	4	00	2	10	20	5	2	2
35	McNeece	7	17	41	7	7	100	13	9	21
45	Daniels	10	21	48	8	13	61	15	2	28
41	Judge	3	12	25	0	1	00	9	4	6
40	Hooker	0	2	00	1	2	50	1	2	1
15	Sanford	0	1	00	0	0	00	0	0	0
11	Nelson	3	8	37	0	0	00	5	0	6
TEAM								5		
Grand Totals		23	65		18	25		45	13	61

Team _____

No	Name	Fld Gls			Fr Thrs			RB	PF	TP
		M	A	%	M	A	%			
31	Ockel	7	14	50	2	8	25	13	4	16
20	Malkay	4	12	33	0	0	00	6	4	8
41	Menyard	7	13	54	0	0	00	10	4	14
10	Lackson	7	20	35	0	0	00	11	4	14
34	Simon	5	13	38	0	0	00	3	3	10
30	English	2	6	33	0	1	00	6	1	4
5	Ftynre	0	1	00	0	0	00	0	1	0
TEAM								3		
Grand Totals		32	79		2	3		52	21	66

PERCENTAGES
ATT 5440

FG 35.4% FT 72.7%

32
FG 40.5% FT 66%

**BRIGHAM YOUNG VS. NEW MEXICO
FINAL STATISTICS
January 21, 1967**

BRIGHAM YOUNG "COUGARS"

player, pos	fgm	fga	ftm-fta	rebds	pf	pts
roberts, f	3	4	1-1	4	4	7
liimo, f	8	12	6-7	14	4	22
eakins, c	10	14	1-1	10	5	21
hill, g	2	6	1-2	1	3	5
james, g	3	11	5-7	2	2	11
raymond, c	4	4	3-5	4	3	11
lythgoe, f	5	6	0-1	0	0	10
house, f	1	1	0-2	1	0	2
dresser, g	0	0	0-0	1	2	0
parsons, g	0	1	0-0	0	1	0
team				10		
TOTALS	36	59 <i>.610</i>	17-26 <i>.654</i>	47	24	89
FG% 61	FT 65%					

NEW MEXICO "LOBOS"

player, pos	fgm	fga	ftm-fta	rebds	pf	pts
morgan, f	3	7	0-0	4	3	6
monroe, f	6	19	0-1	6	4	12
daniels, c	4	13	5-7	12	5	13
hoover, g	4	15	0-1	3	3	8
judge, g	10	24	6-10	5	3	26
sanford, c	3	6	0-1	9	2	6
nelson, g	2	2	0-0	0	0	2
shropshire, f	0	1	0-0	1	0	0
sisher, f	0	0	0-0	3	2	0
team				9		
TOTALS	31	69 <i>.449</i>	11-20 <i>.550</i>	52	24	73
FG% 33	FT% 55					

Score by quarters:

	1	2	3	4	final
BYU	22	22	17	28	89
NM	6	24	14	29	73

Score tied 0 times at:

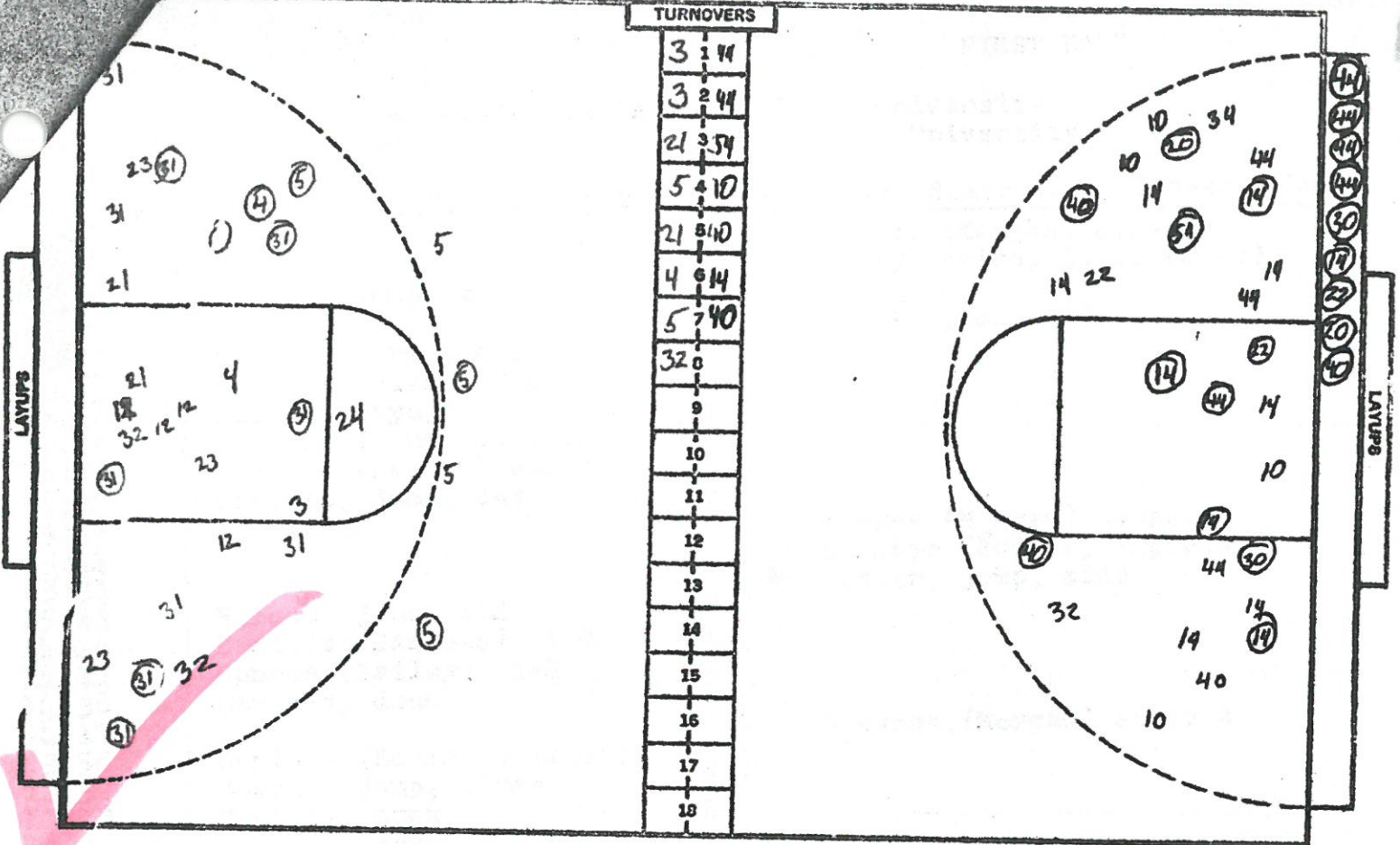
Lead changed hands 0 times

Lost possessions (turnovers):

Attendance: 11,304
TV --- 2,850

BYU 17 NM 11

14,154



NO.	ASU	FG	FGA	FT	FTA	RD	P	TP
* 3	Detter	1	8	0	0	1	1	2
4	Palmer	2	9	0	0	0	0	4
5	McCann	4	6	0	0	1	0	8
* 12	Edwards	1	6	1	4	11	4	3
21	Brantley	2	5	0	1	2	4	4
22	Harris	0	2	0	0	1	1	0
* 23	Bailey	3	10	3	4	4	3	9
* 24	Massey	0	2	0	0	2	1	0
25	Ryan	0	1	0	0	0	0	0
* 31	Lindner	7	15	0	0	5	0	14
32	Tutt	1	4	2	2	1		4
TOTALS		21	62	6	11	28	14	48

NO.	NM	FG	FGA	FT	FTA	RD	P	TP
* 10	Nelson	5	13	0	0	3	0	10
14	Sanford	5	12	0	0	3	0	10
20	Shrapshire	2	2	0	0	2	1	4
22	Grimes	5	6	0	0	2	4	10
* 24	Hoover	3	5	0	0	0	4	6
* 30	Morgan	2	2	0	0	5	4	4
32	Lund	0	1	0	0	1	0	0
* 34	Monroe	4	11	2	4	9	1	10
40	Judge	4	7	2	2	1	2	10
42	Fisher	0	0	0	1	0	2	0
* 44	Daniels	9	14	4	6	12	1	22
50	Jones							
52	Lopez							
54	Brewitz	1	1	0	0	1	0	2
TOTALS		40	74	8	13	39	19	88

PERCENTS

33.9 54.5 9

TEAM REBOUNDS (NOT IN TOTAL)

PERCENTS

54.1 61.5 9

TEAM REBOUNDS (NOT IN TOTAL)

* = STARTERS

SCORE BY HALVES: 46-20

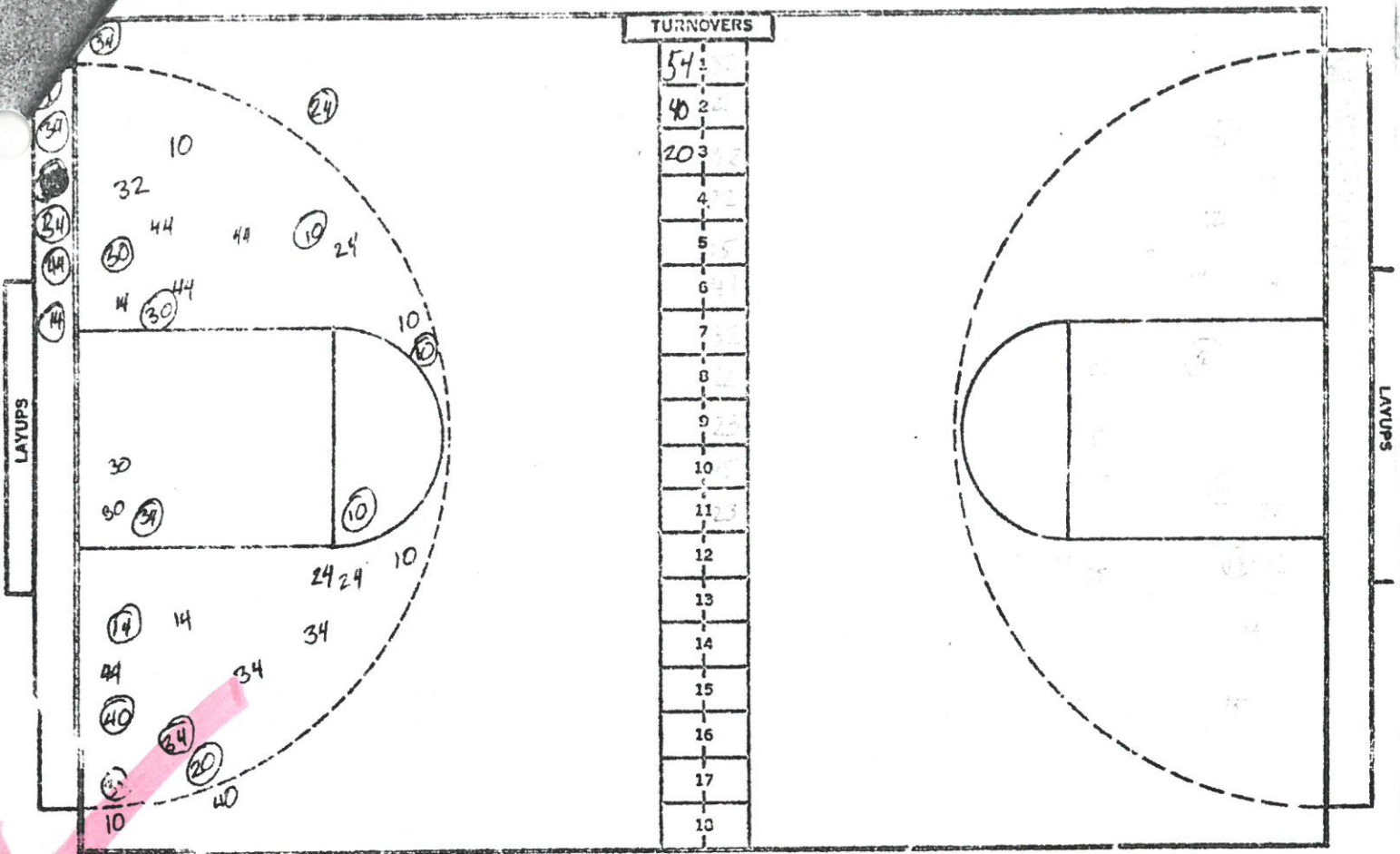
OFFICIALS: BROWN + BAUGH

ATTENDANCE: 8,031

Time Tied: 2

Changed Hands: 2

Play-by-play: Kall...



NO.	U. N. M.	FG	FGA	FT	FTA	RD	P	TP
10	NELSON	8	14	0	0	6	3	16
22	GRIMES	2	2	2	2	2	2	6
24	HOOVER	1	7	0	1	1	2	2
34	MONROE	8	11	0	1	10	3	16
44	DANIELS	4	13	4	5	6	4	12
14	SANFORD	4	8	0	3	4	2	8
20	SHROPSHIRE	1	1	0	0	0	1	2
30	MORGAN	4	10	5	7	9	3	13
32	LUND	0	1	0	0	0	3	0
40	JUDGE	1	2	2	2	0	1	4
42	FISHER	0	0	2	2	2	0	2
54	BURWITZ	0	0	0	0	2	0	0
50	JONES	0	0	0	0	1	0	0
TOTALS		33	69	15	23	43	24	81

PERCENTS 47.8 65.2 7 TEAM REBOUNDS (NOT IN TOTAL)

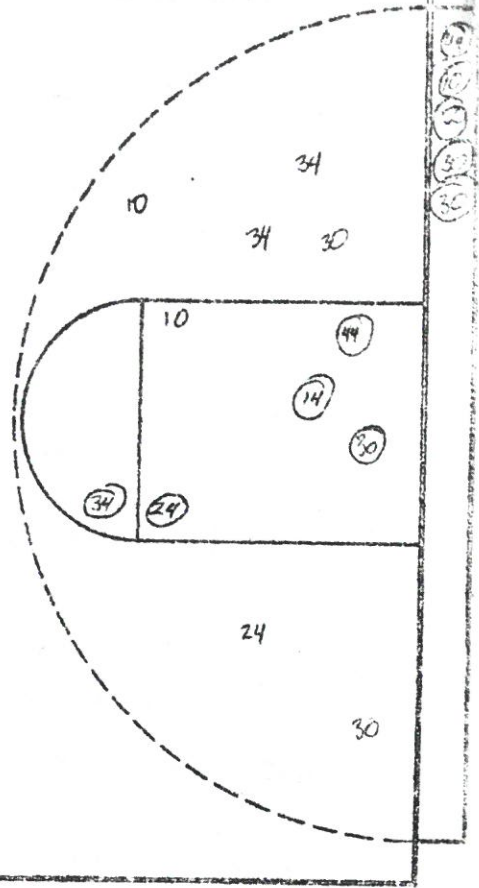
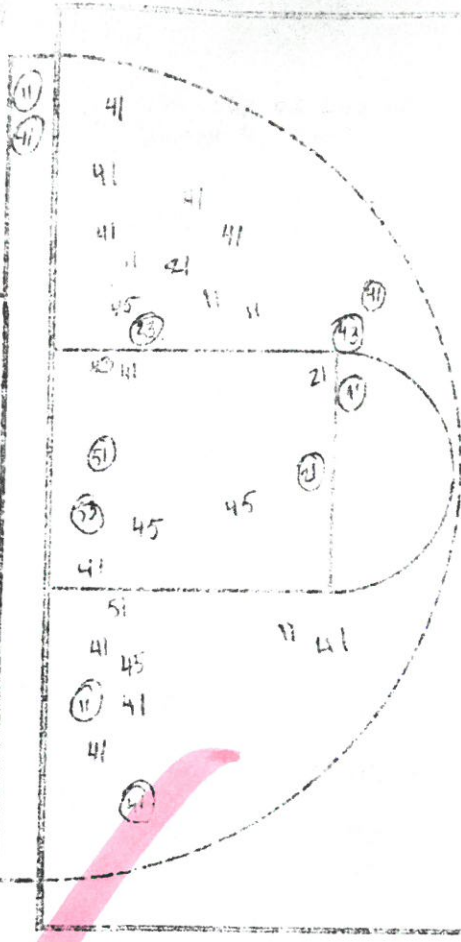
NO.	ARIZONA	FG	FGA	FT	FTA	RB	P	TP
14	DAVIS	3	7	3	5	3	4	9
21	WELTON	3	9	0	0	2	2	6
22	NEENE	3	7	2	3	3	2	8
32	ABOUD	3	5	0	0	4	5	6
44	KORDIK	2	7	0	1	5	2	4
12	McANDREW	0	1	0	0	0	1	0
15	ROOT	6	13	2	3	3	4	14
25	NEWSOM	0	0	0	0	1	0	0
41	HAVSEN	1	4	0	1	2	1	2
43	JACOBS	0	0	0	0	0	0	0
23	LINOSTROM	0	0	1	2	0	0	1
TOTALS		21	63	8	15	23	21	50

PERCENTS 33.3 53.3 10 TEAM REBOUNDS (NOT IN TOTAL)

SCORE BY HALVES: 33-16
 OFFICIALS: MILLER - ~~MARICH~~ MARICH
 ATTENDANCE: 11,012

FOR OVERS

45	30
43	44
11	30
51	24
21	50
53	0
7	30
14	0
30	0
10	14
13	34
12	0
13	0
14	0
15	0
16	0
17	0
18	0



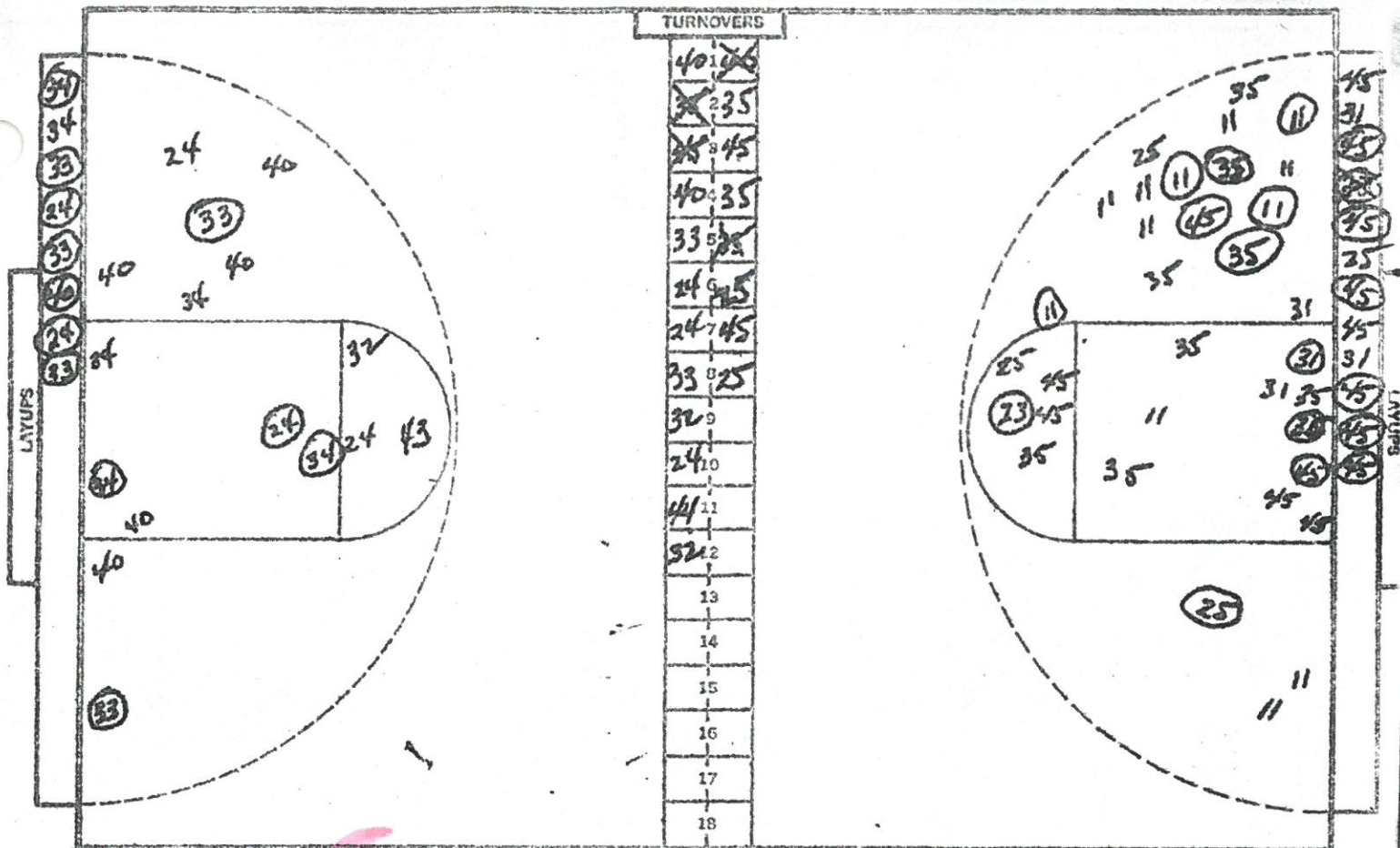
NO.	AGGIES	FG	FGA	FT	FTA	REB	P	TP
11	EVANS	4	9	2	2	4	5	10
41	LANDIS	2	6	0	0	0	1	4
41	TURNER	7	19	5	5	3	2	19
43	GAMBELL	3	5	0	0	2	5	6
45	MOREHEAD	1	9	2	2	2	5	4
51	COLLINS	2	3	5	6	3	5	9
13	HARRIS	0	0	1	2	0	1	1
15	FORD							
23	FRANCO	1	1	0	0	0	1	2
31	ROYBAL							
35	BATES							
53	LEGETT	1	1	0	0	1	1	2
	TOTALS	21	53	15	17	15	26	57

PERCENT'S 39.6 88.2 5 TEAM REBOUNDS (NOT IN TOTAL)

NO.	LOBOS	FG	FGA	FT	FTA	REB	P	TP
10	NELSON	2	8	7	9	5	2	11
24	HOOVER	1	3	3	5	1	1	5
30	MORGAN	6	10	4	5	8	2	16
34	MONROE	3	8	0	0	7	3	6
44	DANIELS	7	9	5	8	9	4	19
14	SANFORD	1	1	6	6	2	3	8
20	SAROPSHIRE							
22	GRIMES							
32	LUND							
42	FISHER							
	TOTALS	20	59	25	33	32	15	65

PERCENTS 51.3 75.8 9 TEAM REBOUNDS (NOT IN TOTAL)

SCORE BY HALVES:
 OFFICIALS: GOODWIN HART
 ATTENDANCE: 14,540

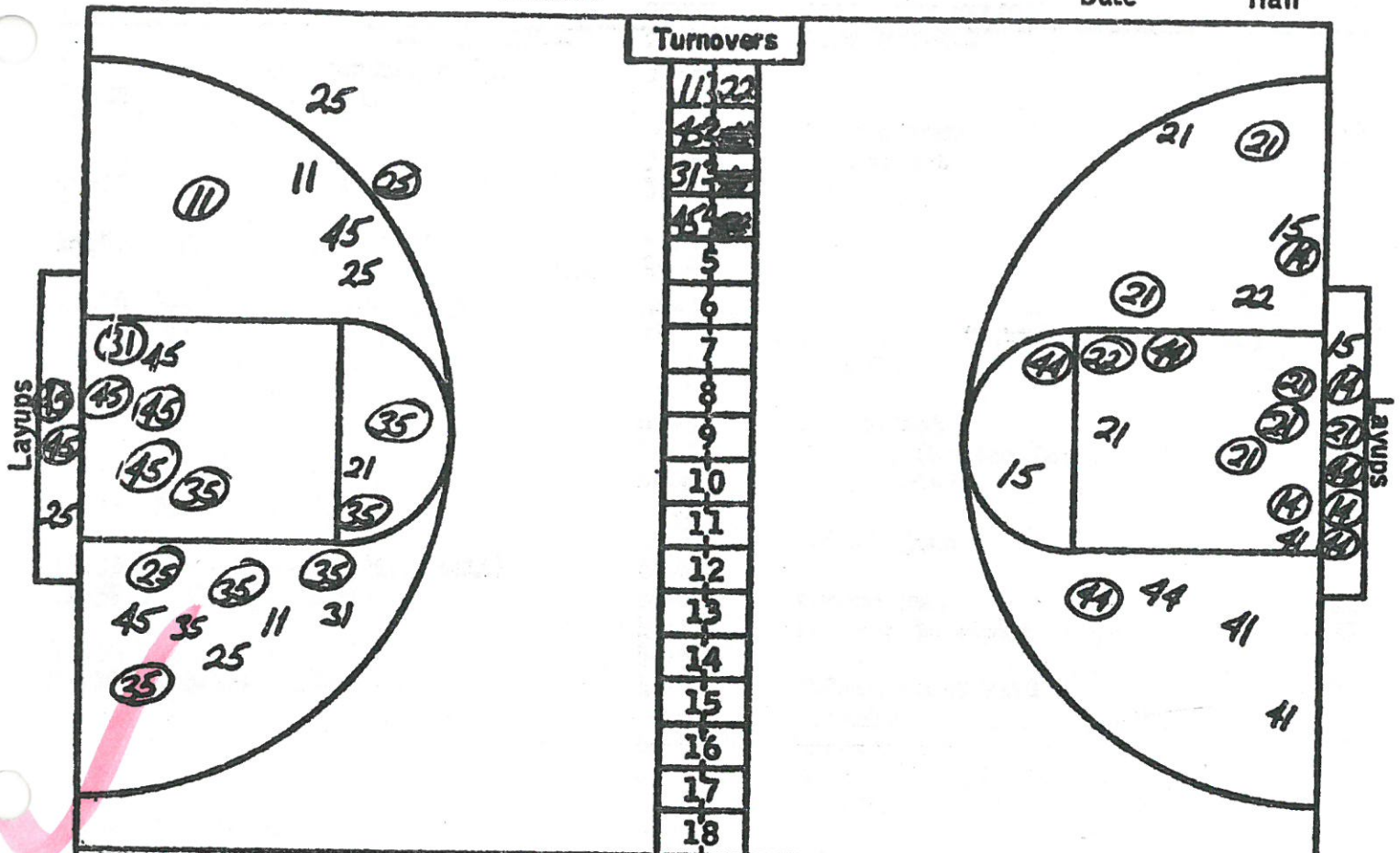


NO.	AIR FORCE	FG	FGA	FT	FTA	RB	P	TP
33	Budinger	6	8	8	10	6	5	20
40	Bebout	6	14	0	1	10	4	12
34	Parsons	5	13	3	5	10	2	13
24	Dowling	4	9	0	0	4	2	8
44	Olive	2	4	4	6	7	1	8
35	Edgerly	0	0	2	2	2	2	2
43	Bensley	0	1	1	2	1	0	1
32	GRAF	0	1	0	0	1	1	0
TOTALS		23	50	18	26	41	17	64
PERCENTS		46.0		69.2		3	TEAM REBOUNDS (NOT IN TOTAL)	

NO.	NEW MEXICO	FG	FGA	FT	FTA	RB	P	TP
31	Morgan	5	16	0	0	14	4	10
35	Monroe	3	11	1	3	6	5	7
45	Daniels	12	24	1	2	13	2	25
11	Nelson	9	18	3	4	3	3	21
25	Hoover	1	7	2	2	0	4	4
55	Burwitz	0	0	0	0	1	2	0
21	Shropshire	0	2	0	0	0	0	0
15	Sanford	1	1	0	0	1	0	2
23	Grimes	2	2	0	0	1	2	4
TOTALS		33	81	7	11	39	22	73
PERCENTS		40.7		63.6		4	TEAM REBOUNDS (NOT IN TOTAL)	

SCORE BY HALVES: *New Mex 29, 31, 13-73 AF 33, 27, 4-64*
 OFFICIALS: Rudy Marich and Glenn Phillips
 ATTENDANCE: 1,888

ARIZONA vs NEW MEXICO AT TUCSON 2/17/67 FINAL
 Home Team Visitors Date Half

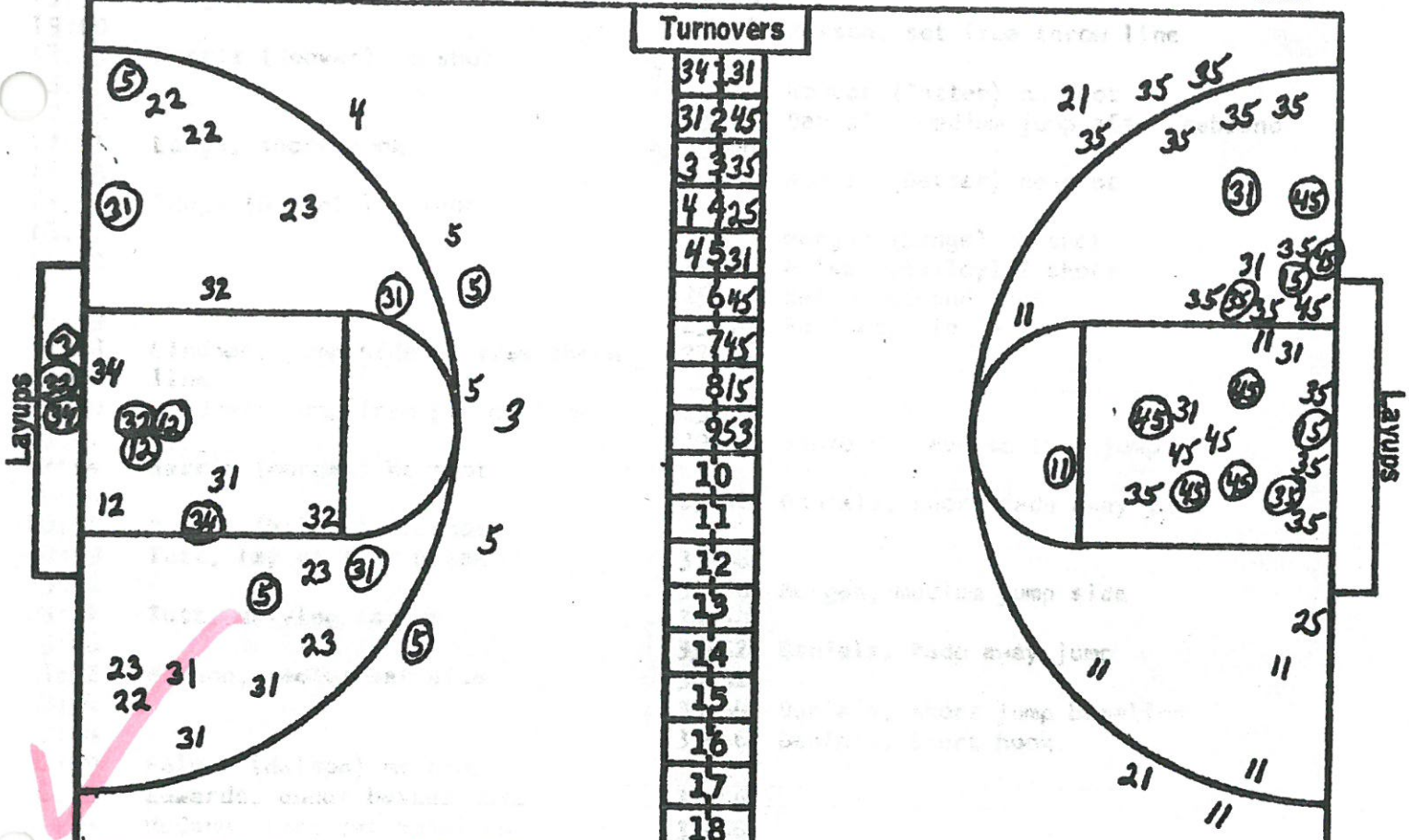


TEAM		SCORE						TEAM		SCORE							
NEW MEXICO		F.G.		F.T.		64		ARIZONA		F.G.		F.T.		70			
No	Name	M	A	M	A	RB	P	FT	No	Name	M	A	M	A	RB	P	FT
35	MURPHY	7	12	2	2	4	4	16	37	ABOLD	0	4	0	0	1	2	0
31	MORGAN	2	7	0	0	6	4	4	4	DAVIS	8	12	2	2	8	1	18
45	DANIELS	12	22	2	2	14	2	26	44	KORDIK	6	9	2	2	9	3	14
11	NELSON	3	9	2	4	2	5	8	22	GREENE	5	10	5	6	3	4	15
25	HOOVER	4	14	0	1	5	2	8	41	HANSEN	0	7	0	0	4	2	0
35	BURWITZ	1	1	0	0	0	2	2	15	ROOT	2	6	3	3	5	3	7
21	SHROPSHIRE	0	2	0	0	0	0	0	21	WELTON	6	10	4	8	2	3	10
23	GRIMES	0	0	0	1	1	5	0									
TOTALS		29	67	6	10	32	21	64	TOTALS		27	50	16	21	32	19	70
Percentages		44.3		60.0		8			Percentages		46.6		76.2		6		
Team Rebounds								Team Rebounds									

Halftime Score NEW MEXICO 30 ARIZONA 28

Officials IRV BROWN AND GLENN PHILLIPS Attendance 3304

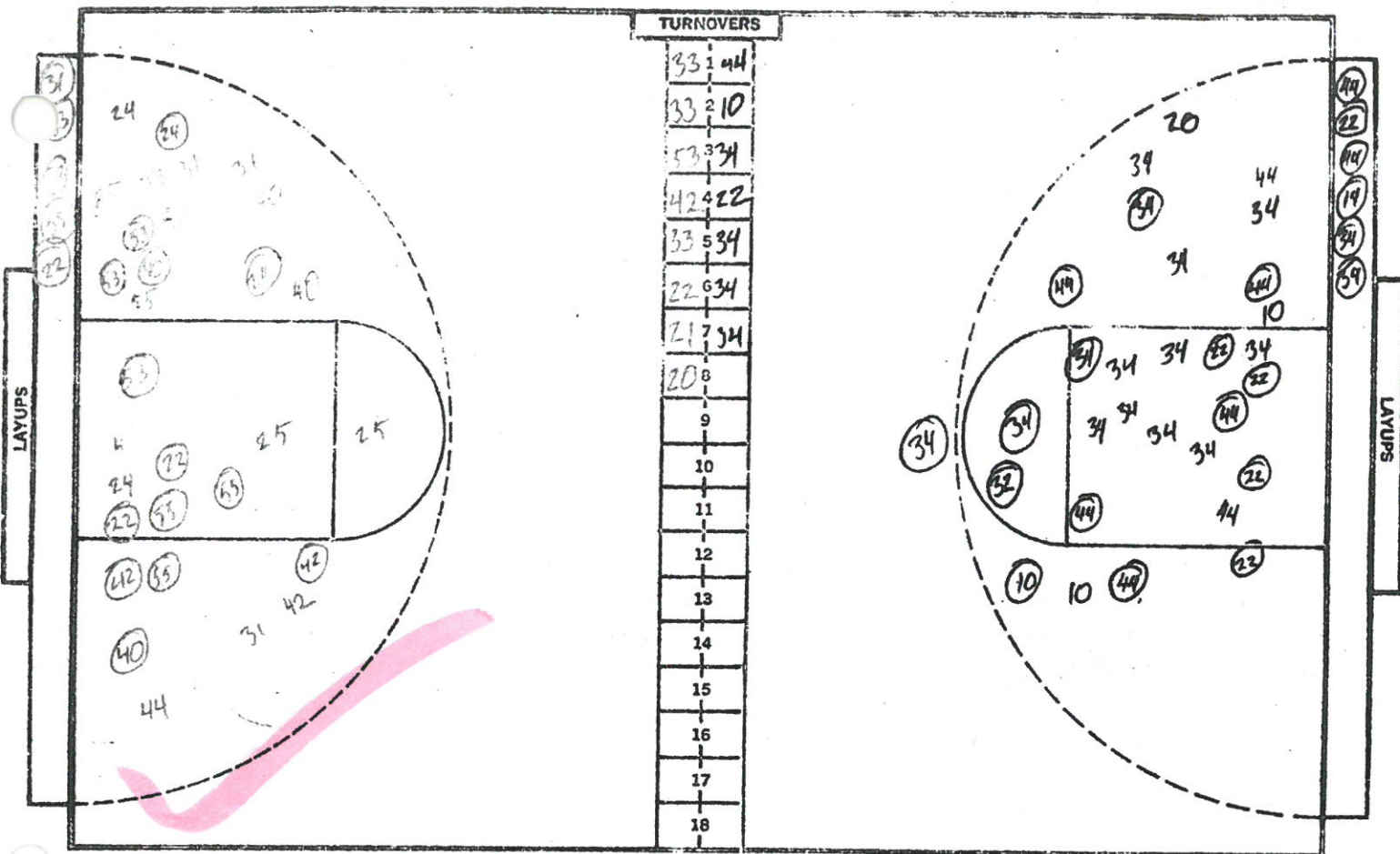
ASU vs NEW MEXICO AT TEMPE, ARIZONA 2/18/67 SECOND Half
 Home Team Visitors Date Half



TEAM ASU		SCORE → 50					TEAM NEW MEXICO		SCORE → 64										
MIN.	No	Name	M	A	M	A	RB	PFT	MIN.	No	Name	M	A	M	A	RB	PFT	MIN.	
26	12	Edwards	2	7	1	2	7	4	5	39	39	Monroe	8	24	2	2	10	2	18
31	22	Harris	3	9	1	2	4	1	7	36	36	Morgan	3	9	0	0	6	2	6
29	31	Lindner	4	10	0	0	6	0	8	35	35	Winters	8	19	3	4	10	3	19
32	3	Datter	4	8	0	0	0	4	8	39	39	Hoover	3	4	1	2	7	2	7
32	23	Balley	2	7	0	0	6	2	4	40	40	Nelson	3	13	4	4	7	3	10
6	4	Palmer	0	1	0	0	1	0	0	5	5	Sanford	2	2	0	1	1	0	4
10	5	McCann	4	7	0	0	0	0	8	2	2	Grimes	0	0	0	1	1	1	0
4	21	Brantley	0	0	0	0	0	0	0	2	2	Shropshire	0	2	0	0	0	0	0
5	24	Hackey	1	2	0	0	0	1	2			Lund							
	29	Ryan										Fisher							
11	32	Tutt	2	5	0	0	2	0	4	1	1	Lopez	0	0	0	0	0	0	1
14	24	Lange	2	5	0	0	5	2	4			Burwitz	0	0	0	0	0	0	1
TOTALS →			24	62	2	4	31	15	50	TOTALS →			27	73	10	14	42		64
Percentages			.387	.500	4	Team Rebounds			Percentages			.370	.714	13	Team Rebounds				

Halftime Score A.S.U. 21 NEW MEXICO 36

Officials REF.-WAYNE COTTLE UMP.-LARRY VARNELL Attendance 3086



NO.	COUGARS	FG	FGA	FT	FTA	RB	P	TP
25	JIMAS	3	7	2	3	4	8	8
31	ROBERTS	5	9	1	1	4	3	11
33	LUNO	3	11	1	2	5	3	7
40	HILL	3	8	5	5	4	0	10
53	EAKINS	4	5	0	0	1	3	8
55	RAYMOND	5	8	3	3	2	4	13
24	JAMES	3	5	0	1	1	2	6
20	PARSONS							
21	SCHOUTEN							
22	HOUSE	4	4	0	0	0	4	8
23	DRESSER	0	1	0	0	0	2	0
41	LOVEDAY	0	0	0	0	0	1	
42	LVTHGOE	2	5	0	0	3	1	4
44	FISHER	0	1	0	0	2	0	0
TOTALS		32	64	11	20	32	27	75

PERCENTS 50 55 8 TEAM REBOUNDS (NOT IN TOTAL)

NO.	LOBOS	FG	FGA	FT	FTA	RB	P	TP
10	NELSON	2	6	0	1	2	4	4
24	HOOVER	0	2	0	0	1	1	0
30	MORGAN	1	2	0	0	2	5	2
34	MONROE	19	39	3	6	10	4	41
44	DANIELS	8	13	10	13	10	4	26
14	SANFORD	3	5	2	4	5	4	8
20	SHROPSHIRE	0	1	0	0	0	1	0
22	GRIMES	6	8	0	1	10	1	12
32	LUNO	1	1	0	0	0	0	2
42	FISHER	0	0	2	2	0	0	2
52	LOPEZ	0	0	0	0	0	0	0
54	BURWITZ	0	0	0	0	0	0	0
50	JONES	0	0	0	0	0	0	0
TOTALS		40	77	17	27	40	24	97

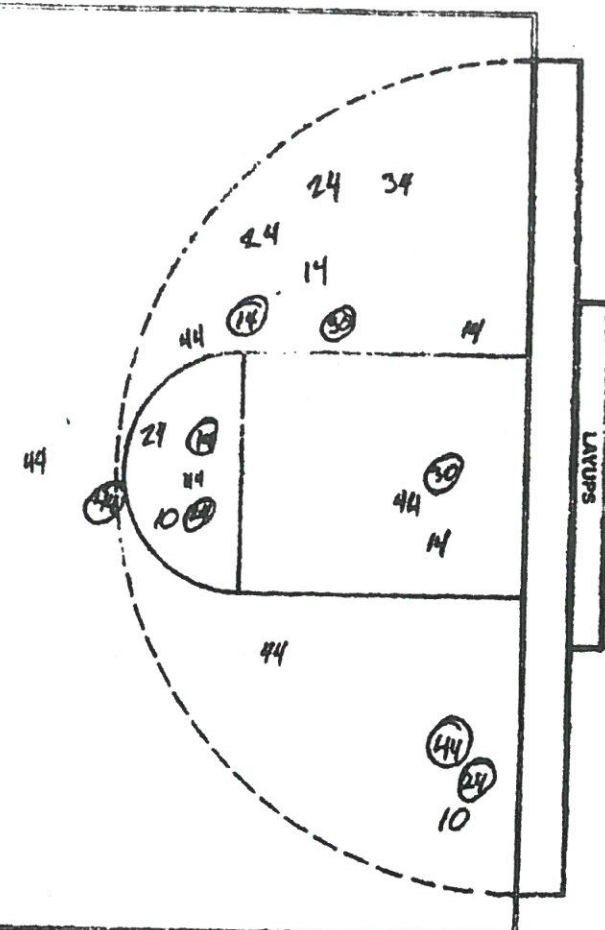
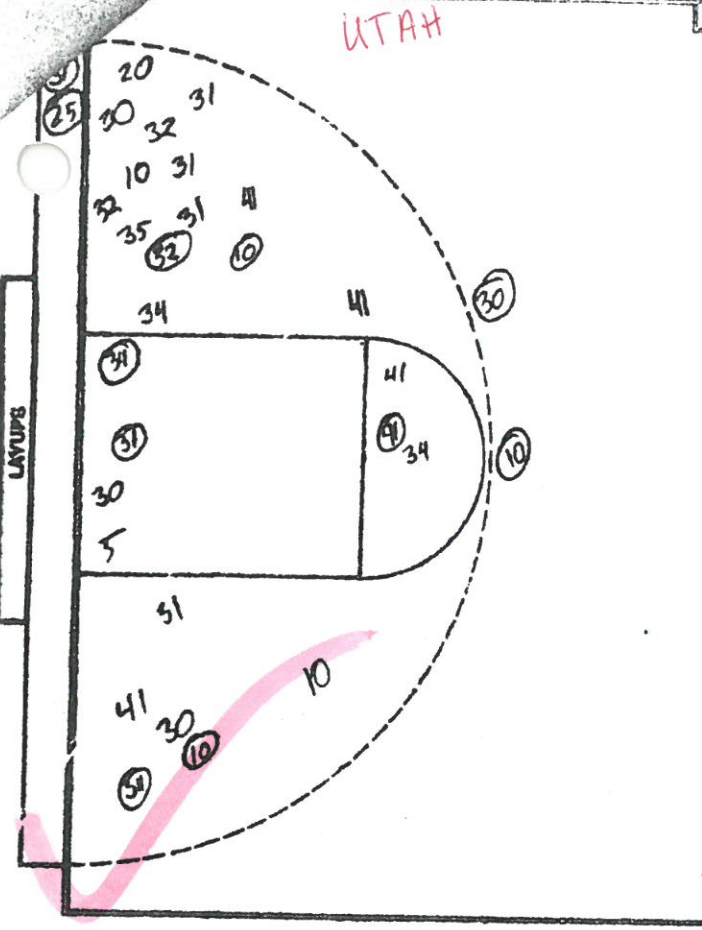
PERCENTS 51.9 63.0 8 TEAM REBOUNDS (NOT IN TOTAL)

SCORE BY HALVES:
OFFICIALS: Irv Brown and William Ikard

UTAH

TURNOVERS

31	24
41	10
32	30
10	410
10	5
6	
7	
8	
9	
10	
11	
12	
13	
14	
15	
16	
17	
18	



NO.	REDSKINS	FG	FGA	FT	FTA	RB	P	TP
10	JACKSON	5	11	1	2	9	4	11
20	MACKAY	0	3	0	0	3	3	0
31	OCKEL	2	8	3	4	2	5	7
34	SIMON	4	9	2	4	2	4	10
41	MENYARD	3	10	4	6	4	4	10
5	ETNYRE	0	1	0	0		1	0
13	STEENBLIK	0	0	0	0	1	0	0
14	TAYLOR	0	0	0	0		1	0
25	STRIKE	1	1	0	0		2	2
30	ENGLISH	2	9	4	4	7	3	9
32	DENSON	2	7	2	2	6	1	6
35	CUNNINGHAM	0	2	2	2	2	2	2
TOTALS		19	61	18	24	36	30	56
PERCENTS		31.1		75.0		4	TEAM REBOUNDS (NOT IN TOTAL)	

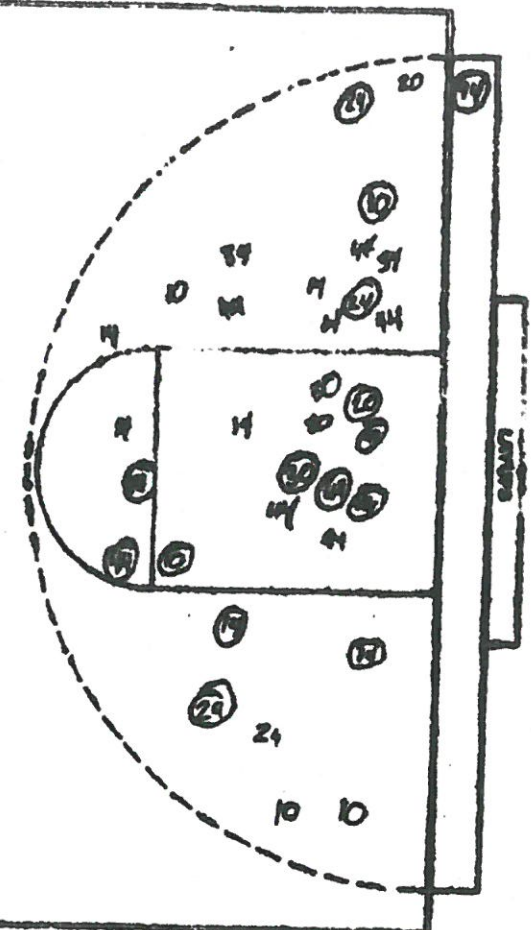
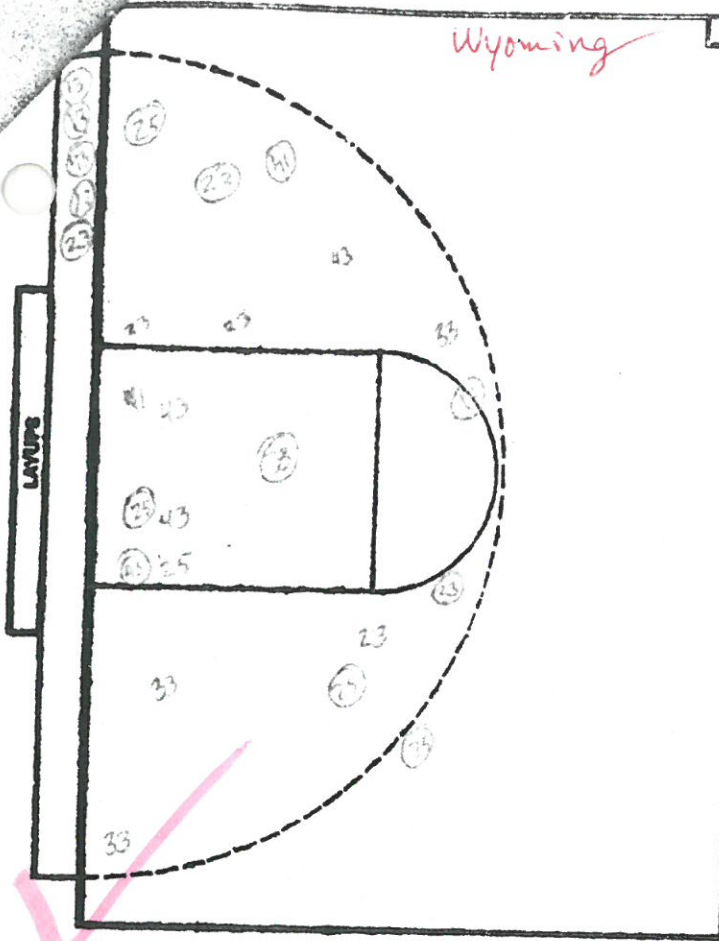
NO.	LOBOS	FG	FGA	FT	FTA	RB	P	TP
10	NELSON	5	13	2	2	6	1	12
24	HOOVER	2	6	8	10	3	1	10
30	MORGAN	3	4	0	1	9	4	6
34	MONROE	0	3	0	0	2	4	0
44	DANIELS	6	14	10	12	7	4	22
14	SANFORD	3	8	0	4	5	3	6
20	SHROPSHIRE	0	1	2	2	2	3	2
22	GRIMES	1	2	2	2	7	1	4
32	LUND							
42	FISHER							
54	BURWITZ	0	0	0	0	1	2	0
TOTALS		20	57	24	35	42	22	64
PERCENTS		39.2		66.7		8	TEAM REBOUNDS (NOT IN TOTAL)	

SCORE BY HALVES: 33-21
 OFFICIALS: MARICH & MILLER
 ATTENDANCE: 13,866

Wyoming

TURNOVERS

25	34
13	24
43	22
25	4
5	
6	
7	
8	
9	
10	
11	
12	
13	
14	
15	
16	
17	
18	



NO.		FG	FGA	FT	FTA	RB	P	TP
13	WILSON	5	8	4	4	3	2	14
23	HALL	5	13	4	5	2	1	11
25	ASBURY	5	9	7	8	1	7	17
33	EBERLE	2	2	2	2	5	2	6
43	VONKROCK	2	6	3	4	2	9	7
15	POUCH							
21	PELO							
31	MARTINDALE							
35	JOHNSON							
41	NELSON	1	3	5	5	3	0	7
TOTALS		29	46	25	28	16	24	65
PERCENTS		43.5		89.3				

NO.		FG	FGA	FT	FTA	RB	P	TP
10	NELSON	4	9	4	4	0	3	12
24	HOOVER	4	6	0	0	1	2	8
30	MORGAN	5	8	0	0	4	13	10
34	MONROE	0	0	1	2	5	6	1
44	DANIELS	13	26	0	2	4	11	28
14	SANFORD	2	7	0	1	1	4	4
20	SHROPSHIRE	1	4	1	2	5	2	3
22	GRIMES	0	0	0	1	3	0	0
34	BURWITZ	0	0	0	0	0	0	0
TOTALS		29	66	6	12	23	41	60
PERCENTS		43.9		50				

SCORE BY HALVES: 30-21
 OFFICIALS: COMBS & BARLOW
 AVERAGE: 15,060

COLLEGE BASKETBALL STATISTICS

OFFICIAL SCORER'S REPORT

<u>NEW MEXICO</u>	FGM	FGA	FTM	FTA	REB	AST	PF	PTS
MORGAN	4	6	7	9	16	0	3	15
MONROE	3	20	3	6	5	5	4	9
DANIELS	7	14	6	10	14	1	⑤	20
NELSON	7	12	1	2	3	4	4	15
HOOVER	0	4	1	2	2	2	2	1
SHROPSHIRE	0	0	0	0	0	0	0	0
SANFORD	1	2	4	5	3	0	1	6
FISHER	0	0	0	0	0	0	0	0
Team Rebounds: <u>5</u> Total	22	58	22	34	48	12	19	66

FG% 37.9 FT% 64.7

<u>SYRACUSE</u>	FGM	FGA	FTM	FTA	REB	AST	PF	PTS
HARPER	2	7	0	1	8	4	4	4
HICKER	7	10	2	5	5	0	⑤	16
DEAN	7	14	7	10	11	0	4	21
CORNWALL	4	9	5	5	6	11	1	13
LUDD	1	2	0	0	0	1	⑤	2
RINGELMANN	2	3	0	0	1	2	2	4
KOUWE	2	5	0	0	0	1	3	4
HAMBLÉN	0	1	0	0	0	0	0	0
BALUKAS	0	0	0	0	0	0	1	0
Team Rebounds: <u>2</u> Total	25	51	14	21	33	19	25	64

FG% 49.0 FT% 66.7

Date MARCH 11, 1967 Place M.S.G. Attendance 11,578

Refs. JOE DE BONIS
CHARLES DIEHL

Score by periods	1	2	OT	OT	TOT
NEW MEXICO	31	35	—	—	66
SYRACUSE	23	41	—	—	64

OFFICIAL SCORER'S REPORT

<u>NEW MEXICO</u>	FGM	FGA	FTM	FTA	REB	AST	PF	PTS	
MORGAN	1	2	1	1	3	1	4	3	
MONROE	7	28	0	0	12	2	2	14	
DANIELS	8	18	3	7	17	0	2	19	
NELSON	7	18	1	1	3	6	4	15	
HOOVER	2	8	0	0	3	3	0	4	
SANFORD	2	3	1	3	8	0	0	5	
GRIMES	0	0	0	0	1	0	0	0	
Team Rebounds: <u>3</u>	Total		27	77	6	12	50	12	60

FG% 35.1 FT% 50.0

<u>RUTGERS</u>	FGM	FGA	FTM	FTA	REB	AST	PF	PTS	
STEWART	2	3	0	1	4	3	1	4	
HARLEY	2	4	3	3	5	1	(5)	7	
GREACEN	6	12	5	5	10	3	4	17	
LLOYD	9	19	5	5	6	6	1	23	
VALVANO	7	12	0	0	2	3	1	14	
CLARK	0	0	0	0	0	0	0	0	
Team Rebounds: <u>4</u>	Total		26	50	13	14	31	16	65

FG% 52.0 FT% 92.9

Date MARCH 14, 1967 Place MADISON SQUARE GARDEN Attendance _____

Refs. Jim Hernjak & Hal Grossman

Score by periods	1	2	OT	OT	TOT
NEW MEXICO	25	35	—	—	60
RUTGERS	31	34	—	—	65