



**Officials:** Brent Meaux, James Ford, Ryan McDaniel

**Prairie View - 63**

**Record: 4-8**

NO.	Name	F	Min	FG		3P		FT		Rebounds			Fouls		TP	AS	TO	ST	Blocks		+/-
				M-A	M-A	M-A	M-A	OR	DR	TOT	PF	FD	BS	BA							
0	Yahuza Rasas	F	08:57	0-3	0-0	0-0	0-0	0	0	0	5	1	0	0	0	2	0	0	0	0	-14
4	Will Douglas	G	33:54	3-14	0-0	11-15	3	1	4	2	10	17	2	1	1	0	3	0	3	-27	
10	Jeremiah Gambrell	G	32:55	5-15	2-6	2-2	1	1	2	0	1	14	1	1	0	1	3	0	3	-24	
11	Hegel Augustin	G	16:34	1-8	0-1	0-0	2	2	4	2	1	2	0	1	3	0	4	0	4	-14	
44	Tekorian Smith	G	23:56	1-8	1-5	2-3	0	5	5	3	2	5	1	3	1	0	1	0	1	-28	
33	Mckinley Harris		24:56	1-4	0-1	1-2	0	1	1	3	2	3	2	1	0	1	0	1	0	-19	
23	Brian Myles		11:39	0-0	0-0	0-0	0	3	3	4	2	0	0	0	0	0	2	0	0	-2	
2	Braden Bell		15:31	3-7	1-3	0-1	3	1	4	4	1	7	0	1	2	0	1	0	1	-4	
13	Kyle Harding		28:19	6-12	1-3	2-3	1	3	4	2	2	15	1	2	4	0	2	0	2	-16	
32	Patrick Neal		02:38	0-0	0-0	0-0	0	0	0	1	0	0	0	0	0	0	0	0	0	-5	
5	Kortrijk Miles		00:41	0-0	0-0	0-0	0	0	0	0	0	0	0	0	0	0	0	0	0	-2	
Team							4	6	10			0			1						
<b>Totals</b>				20-71	5-19	18-26	14	23	37	26	22	63	7	13	11	4	14	4	14	-31	

Shooting By Period		
1 <sup>st</sup> FG%	9-35	25.7%
3PT%	2-7	28.6%
FT%	5-8	62.5%
2 <sup>nd</sup> FG%	11-36	30.6%
3PT%	3-12	25.0%
FT%	13-18	72.2%
GM FG%	20-71	28.2%
3PT%	5-19	26.3%
FT%	18-26	69.2%

Dead Ball Rebounds: 0, 0

**Technical Fouls:** Gambrell 1<sup>st</sup>2:40 Smith 2<sup>nd</sup>2:39

**New Mexico - 94**

**Record: 12-0**

NO.	Name	F	Min	FG		3P		FT		Rebounds			Fouls		TP	AS	TO	ST	Blocks		+/-
				M-A	M-A	M-A	M-A	OR	DR	TOT	PF	FD	BS	BA							
24	Morris Udeze	F	24:48	6-10	0-0	4-8	3	11	14	3	7	16	0	3	0	2	2	2	2	24	
53	Josiah Allick	F	17:17	4-6	0-0	0-2	5	3	8	4	2	8	4	3	0	2	0	0	16		
5	Jamal Mashburn, Jr.	G	25:39	6-11	1-3	4-5	0	3	3	1	4	17	3	1	0	0	0	23			
10	Jaelen House	G	27:04	2-6	2-5	4-7	1	4	5	1	4	10	9	2	1	2	1	29			
13	Javonté Johnson	G	25:17	3-7	2-4	0-0	0	5	5	2	1	8	0	2	1	0	0	15			
0	KJ Jenkins		21:56	4-10	3-7	2-2	2	4	6	3	1	13	0	3	1	0	0	9			
34	Birima Seck		08:25	0-0	0-0	0-0	0	3	3	2	0	0	1	1	0	3	0	18			
2	Donovan Dent		21:21	4-7	0-0	6-7	1	3	4	1	4	14	2	4	1	2	0	12			
3	Sebastian Forsling		12:40	2-2	0-0	2-2	4	5	9	4	1	6	1	0	0	1	0	4			
1	Braden Appelhans		10:51	1-5	0-3	0-0	0	2	2	1	0	2	0	0	0	2	0	9			
20	Safi Fino-A-Laself		02:21	0-2	0-1	0-0	0	0	0	0	0	0	0	0	0	0	1	-2			
32	Mac Manzanaras		02:21	0-0	0-0	0-2	0	0	0	0	1	0	0	0	0	0	0	-2			
Team							3	2	5			0			0						
<b>Totals</b>				32-66	8-23	22-35	19	45	64	22	25	94	20	19	4	14	4	31			

Shooting By Period		
1 <sup>st</sup> FG%	15-30	50.0%
3PT%	5-11	45.5%
FT%	12-18	66.7%
2 <sup>nd</sup> FG%	17-36	47.2%
3PT%	3-12	25.0%
FT%	10-17	58.8%
GM FG%	32-66	48.5%
3PT%	8-23	34.8%
FT%	22-35	62.9%

Dead Ball Rebounds: 5, 0

**Technical Fouls:** NONE

	PVAMU	UNM
<b>Biggest lead</b>	0 (1 <sup>st</sup> 20:00)	33 (2 <sup>nd</sup> 2:39)
<b>Best Scoring Run</b>	6 (2 <sup>nd</sup> 14:45)	13 (1 <sup>st</sup> 10:48)
<b>Lead Changes</b>	0	
<b>Times Tied</b>	0	
<b>Time with Lead</b>	00:00	39:41

	PVAMU	UNM
<b>Points from</b>		
<b>Turnovers</b>	16	12
<b>Paint</b>	26	40
<b>Second Chance</b>	8	22
<b>Fast Breaks</b>	25	15
<b>Bench</b>	25	35

	Period by Period Scoring		
	1st	2nd	TOT
<b>PVAMU</b>	25	38	63
<b>UNM</b>	47	47	94



**Prairie View at New Mexico**

12/20/22 The Pit, Albuquerque, NM  
2022-23 Men's Basketball

**Game Time:** 7:00 PM  
**Game Duration:** 2:00  
**Attendance:** 9,425

**Officials:** Brent Meaux, James Ford, Ryan McDaniel

**Period 1**

**Quarter Starters:**

<b>UNM</b>	5 Mashburn, Jr. J	10 House J	13 Johnson J	24 Udeze M	53 Allick J
<b>PVAMU</b>	0 Rasas Y	4 Douglas W	10 Gambrell J	11 Augustin H	44 Smith T

Game Time	UNM	Score	Diff	PVAMU
20:00	24 UDEZE M jumpball won			0 RASAS Y jumpball lost
19:41	5 MASHBURN, JR. J 2pt FG outside the paint, pull up jump shot made (2)	<b>2-0</b>	<b>2</b>	
19:23				44 SMITH T 3pt FG , jump shot missed
19:18				11 AUGUSTIN H offensive rebound (1)
19:17				11 AUGUSTIN H 2pt FG second chance in the paint, layup blocked
19:17	24 UDEZE M block (1)			
19:13				4 DOUGLAS W offensive rebound (1)
19:12				4 DOUGLAS W 2pt FG second chance in the paint, layup blocked
19:12	53 ALLICK J block (1)			
19:09	24 UDEZE M defensive rebound (1)			
19:02	13 JOHNSON J 2pt FG fast break in the paint, layup made (2)	<b>4-0</b>	<b>4</b>	
19:02	10 HOUSE J assist (1)			
18:56	53 ALLICK J foul shooting (1 - 1)			4 DOUGLAS W foul drawn (1)
18:56		<b>4-1</b>	<b>3</b>	4 DOUGLAS W free throw fast break 1 - 2 made (1)
18:55				4 DOUGLAS W free throw fast break 2 - 2 missed
18:54	24 UDEZE M defensive rebound (2)			
18:46				4 DOUGLAS W substitution out
18:46				33 HARRIS M substitution in
18:44	24 UDEZE M 2pt FG in the paint, dunk, made (2)	<b>6-1</b>	<b>5</b>	
18:44	10 HOUSE J assist (2)			
18:44	24 UDEZE M foul drawn (1)			0 RASAS Y foul shooting (1 - 1)
18:44	24 UDEZE M free throw 1 - 1 made (3)	<b>7-1</b>	<b>6</b>	
18:44				33 HARRIS M substitution out
18:44				4 DOUGLAS W substitution in
18:31	53 ALLICK J foul drawn (1)			0 RASAS Y foul offensive (2 - 2)
18:31				0 RASAS Y turnover offensive (1)
18:31				0 RASAS Y substitution out
18:31				23 MYLES B substitution in
18:22	53 ALLICK J turnover 3 seconds (1)			
18:04				4 DOUGLAS W 2pt FG from turnover outside the paint, jump shot blocked
18:04	10 HOUSE J block (1)			
18:00				4 DOUGLAS W offensive rebound (2)
17:55				11 AUGUSTIN H 2pt FG from turnover second chance in the paint, jump shot missed
17:52	24 UDEZE M defensive rebound (3)			
17:38	24 UDEZE M 2pt FG outside the paint, jump shot blocked			
17:38				23 MYLES B block (1)
17:33				10 GAMBRELL J defensive rebound (1)
17:33	5 MASHBURN, JR. J foul shooting (1 - 2)			10 GAMBRELL J foul drawn (1)
17:33		<b>7-2</b>	<b>5</b>	10 GAMBRELL J free throw fast break 1 - 2 made (1)
17:33		<b>7-3</b>	<b>4</b>	10 GAMBRELL J free throw fast break 2 - 2 made (2)



**Prairie View at New Mexico**

12/20/22 The Pit, Albuquerque, NM  
2022-23 Men's Basketball

**Game Time:** 7:00 PM  
**Game Duration:** 2:00  
**Attendance:** 9,425

**Officials:** Brent Meaux, James Ford, Ryan McDaniel

Game Time	UNM	Score	Diff	PVAMU
17:22	53 ALLICK J foul offensive (2 - 3)			23 MYLES B foul drawn (1)
17:22	53 ALLICK J turnover offensive (2)			
17:22	53 ALLICK J substitution out			
17:22	0 JENKINS K substitution in			
17:08				4 DOUGLAS W 2pt FG from turnover outside the paint, jump shot missed
17:04	13 JOHNSON J defensive rebound (1)			
16:54	10 HOUSE J 3pt FG , jump shot missed			
16:52	24 UDEZE M offensive rebound (4)			
16:52	24 UDEZE M foul drawn (2)			23 MYLES B foul shooting (1 - 3)
16:52	24 UDEZE M free throw 1 - 2 missed			
16:52	offensive dead ball rebound (1)			
16:51	24 UDEZE M free throw 2 - 2 missed			
16:50	0 JENKINS K offensive rebound (1)			
16:43	0 JENKINS K 3pt FG second chance, jump shot missed			
16:42	24 UDEZE M offensive rebound (5)			
16:42	24 UDEZE M foul drawn (3)			23 MYLES B foul personal (2 - 4)
16:34	5 MASHBURN, JR. J 2pt FG second chance outside the paint, jump shot missed			
16:32	10 HOUSE J offensive rebound (1)			
16:32	10 HOUSE J foul drawn (1)			23 MYLES B foul shooting (3 - 5)
16:32	10 HOUSE J free throw 1 - 2 made (1)	<b>8-3</b>	<b>5</b>	
16:32				11 AUGUSTIN H substitution out
16:32				23 MYLES B substitution out
16:32				2 BELL B substitution in
16:32				13 HARDING K substitution in
16:31	10 HOUSE J free throw 2 - 2 missed			
16:29				13 HARDING K defensive rebound (1)
16:21		<b>8-5</b>	<b>3</b>	10 GAMBRELL J 2pt FG in the paint, driving layup made (4)
16:07	13 JOHNSON J 3pt FG , jump shot made (5)	<b>11-5</b>	<b>6</b>	
16:07	5 MASHBURN, JR. J assist (1)			
15:41				4 DOUGLAS W 2pt FG outside the paint, jump shot missed
15:36	10 HOUSE J defensive rebound (2)			
15:30	0 JENKINS K 3pt FG , jump shot missed			
15:27				44 SMITH T defensive rebound (1)
15:23				10 GAMBRELL J 3pt FG , jump shot missed
15:19	24 UDEZE M defensive rebound (6)			
15:13	10 HOUSE J 3pt FG fast break, pull up jump shot made (4)	<b>14-5</b>	<b>9</b>	
14:46		<b>14-7</b>	<b>7</b>	13 HARDING K 2pt FG in the paint, layup made (2)
14:40	13 JOHNSON J turnover lost ball (1)			4 DOUGLAS W steal (1)
14:35		<b>14-10</b>	<b>4</b>	13 HARDING K 3pt FG fast break from turnover, jump shot made (5)
14:35				4 DOUGLAS W assist (1)
14:25	24 UDEZE M 2pt FG in the paint, dunk, missed			
14:23				44 SMITH T defensive rebound (2)
14:18				2 BELL B 3pt FG , jump shot missed
14:16	13 JOHNSON J defensive rebound (2)			
14:08	Timeout 30 Sec			
14:08		Timeout media		
14:08	13 JOHNSON J substitution out			



**Prairie View at New Mexico**

12/20/22 The Pit, Albuquerque, NM  
2022-23 Men's Basketball

**Game Time:** 7:00 PM  
**Game Duration:** 2:00  
**Attendance:** 9,425

**Officials:** Brent Meaux, James Ford, Ryan McDaniel

Game Time	UNM	Score	Diff	PVAMU
14:08	34 SECK B substitution in			
13:51	24 UDEZE M foul drawn (4)			2 BELL B foul personal (1 - 6)
13:41	0 JENKINS K 3pt FG , jump shot made (3)	<b>17-10</b>	<b>7</b>	
13:41	10 HOUSE J assist (3)			
13:22				13 HARDING K 2pt FG in the paint, layup blocked
13:22	34 SECK B block (1)			
13:16	5 MASHBURN, JR. J defensive rebound (1)			
13:06	5 MASHBURN, JR. J 2pt FG in the paint, driving layup made (4)	<b>19-10</b>	<b>9</b>	
12:58				44 SMITH T turnover travel (1)
12:58				2 BELL B substitution out
12:58				10 GAMBRELL J substitution out
12:58				44 SMITH T substitution out
12:58				11 AUGUSTIN H substitution in
12:58				23 MYLES B substitution in
12:58				33 HARRIS M substitution in
12:45	0 JENKINS K 3pt FG from turnover, jump shot made (6)	<b>22-10</b>	<b>12</b>	
12:45	10 HOUSE J assist (4)			
12:44				Timeout 60 Sec
12:44	10 HOUSE J substitution out			
12:44	2 DENT D substitution in			
12:26				4 DOUGLAS W 2pt FG in the paint, pull up jump shot missed
12:22	5 MASHBURN, JR. J defensive rebound (2)			
12:15	0 JENKINS K 2pt FG outside the paint, pull up jump shot made (8)	<b>24-10</b>	<b>14</b>	
11:42				33 HARRIS M 2pt FG outside the paint, jump shot missed
11:40				4 DOUGLAS W offensive rebound (3)
11:40				4 DOUGLAS W 2pt FG second chance in the paint, jump shot blocked
11:40	34 SECK B block (2)			
11:40				offensive rebound (9)
11:40				turnover shot clock (3)
11:40	Timeout media			
11:40				11 AUGUSTIN H substitution out
11:40				13 HARDING K substitution out
11:40				23 MYLES B substitution out
11:40				0 RASAS Y substitution in
11:40				32 NEAL P substitution in
11:40				44 SMITH T substitution in
11:15	0 JENKINS K 3pt FG from turnover, jump shot missed			
11:12				44 SMITH T defensive rebound (3)
11:03				44 SMITH T 2pt FG outside the paint, jump shot missed
11:00	34 SECK B defensive rebound (1)			
10:48	5 MASHBURN, JR. J 3pt FG , jump shot made (7)	<b>27-10</b>	<b>17</b>	
10:48	34 SECK B assist (1)			
10:34				44 SMITH T 2pt FG outside the paint, jump shot missed
10:32	defensive rebound (15)			
10:32				32 NEAL P substitution out
10:32				44 SMITH T substitution out
10:32				10 GAMBRELL J substitution in
10:32				11 AUGUSTIN H substitution in



**Prairie View at New Mexico**

12/20/22 The Pit, Albuquerque, NM  
2022-23 Men's Basketball

**Game Time:** 7:00 PM  
**Game Duration:** 2:00  
**Attendance:** 9,425

**Officials:** Brent Meaux, James Ford, Ryan McDaniel

Game Time	UNM	Score	Diff	PVAMU
10:14	2 DENT D turnover bad pass (1)			11 AUGUSTIN H steal (1)
10:06				10 GAMBRELL J 2pt FG from turnover in the paint, layup blocked
10:06	2 DENT D block (1)			
10:01				11 AUGUSTIN H offensive rebound (2)
10:01		<b>27-12</b>	<b>15</b>	11 AUGUSTIN H 2pt FG fast break from turnover second chance in the paint, layup made (2)
09:53	24 UDEZE M foul drawn (5)			0 RASAS Y foul personal (3 - 7)
09:53	5 MASHBURN, JR. J substitution out			
09:53	10 HOUSE J substitution in			
09:53				0 RASAS Y substitution out
09:53				2 BELL B substitution in
09:53	24 UDEZE M 1&1 free throw 1 missed			
09:52				33 HARRIS M defensive rebound (1)
09:52	24 UDEZE M foul personal (1 - 4)			33 HARRIS M foul drawn (1)
09:52	24 UDEZE M substitution out			
09:52	13 JOHNSON J substitution in			
09:31				11 AUGUSTIN H 2pt FG in the paint, layup blocked
09:31	34 SECK B block (3)			
09:29				offensive rebound (13)
09:18				10 GAMBRELL J 2pt FG second chance in the paint, jump shot blocked
09:18	10 HOUSE J block (2)			
09:08				2 BELL B offensive rebound (1)
09:08				2 BELL B 2pt FG second chance in the paint, layup blocked
09:08	2 DENT D block (2)			
09:02	2 DENT D defensive rebound (1)			
09:02	2 DENT D 2pt FG in the paint, layup missed			
09:02				11 AUGUSTIN H defensive rebound (3)
09:02	13 JOHNSON J foul drawn (1)			11 AUGUSTIN H foul offensive (1 - 8)
09:02				11 AUGUSTIN H turnover offensive (1)
08:40	34 SECK B turnover lost ball (1)			2 BELL B steal (1)
08:40	34 SECK B foul personal (1 - 5)			2 BELL B foul drawn (1)
08:40				33 HARRIS M substitution out
08:40				13 HARDING K substitution in
08:19				2 BELL B turnover lost ball (1)
08:19				2 BELL B substitution out
08:19				23 MYLES B substitution in
08:06	2 DENT D foul drawn (1)			13 HARDING K foul personal (1 - 9)
08:06	2 DENT D 1&1 free throw 1 made (1)	<b>28-12</b>	<b>16</b>	
08:06	34 SECK B substitution out			
08:06	24 UDEZE M substitution in			
08:06	2 DENT D 1&1 free throw 2 made (2)	<b>29-12</b>	<b>17</b>	
07:54		<b>29-14</b>	<b>15</b>	13 HARDING K 2pt FG in the paint, floating jump shot made (7)
07:54	24 UDEZE M foul offensive (2 - 6)			23 MYLES B foul drawn (2)
07:54	24 UDEZE M turnover offensive (1)			
07:54	Timeout media			
07:54				23 MYLES B substitution out
07:54				5 MILES K substitution in



**Prairie View at New Mexico**

12/20/22 The Pit, Albuquerque, NM  
2022-23 Men's Basketball

**Game Time:** 7:00 PM  
**Game Duration:** 2:00  
**Attendance:** 9,425

**Officials:** Brent Meaux, James Ford, Ryan McDaniel

Game Time	UNM	Score	Diff	PVAMU
07:38				4 DOUGLAS W 2pt FG from turnover in the paint, jump shot missed
07:35	0 JENKINS K defensive rebound (2)			
07:29	2 DENT D foul drawn (2)			4 DOUGLAS W foul personal (1 - 10)
07:29	2 DENT D free throw 1 - 2 made (3)	<b>30-14</b>	<b>16</b>	
07:29	0 JENKINS K substitution out			
07:29	5 MASHBURN, JR. J substitution in			
07:29	2 DENT D free throw 2 - 2 made (4)	<b>31-14</b>	<b>17</b>	
07:13	13 JOHNSON J foul personal (1 - 7)			4 DOUGLAS W foul drawn (2)
07:13				5 MILES K substitution out
07:13				33 HARRIS M substitution in
07:13		<b>31-15</b>	<b>16</b>	4 DOUGLAS W 1&1 free throw 1 made (2)
07:13		<b>31-16</b>	<b>15</b>	4 DOUGLAS W 1&1 free throw 2 made (3)
06:57	24 UDEZE M turnover travel (2)			
06:44				4 DOUGLAS W 2pt FG from turnover outside the paint, jump shot missed
06:41	24 UDEZE M defensive rebound (7)			
06:30	10 HOUSE J foul drawn (2)			13 HARDING K foul shooting (2 - 11)
06:30	10 HOUSE J free throw 1 - 3 made (5)	<b>32-16</b>	<b>16</b>	
06:30	10 HOUSE J free throw 2 - 3 missed			
06:30	offensive dead ball rebound (2)			
06:30	10 HOUSE J free throw 3 - 3 made (6)	<b>33-16</b>	<b>17</b>	
06:13		<b>33-19</b>	<b>14</b>	10 GAMBRELL J 3pt FG , pull up jump shot made (7)
05:55	10 HOUSE J 2pt FG in the paint, layup blocked			
05:55				10 GAMBRELL J block (1)
05:54	offensive rebound (19)			
05:51	5 MASHBURN, JR. J 2pt FG second chance outside the paint, jump shot missed			
05:49	2 DENT D offensive rebound (2)			
05:45	24 UDEZE M foul drawn (6)			4 DOUGLAS W foul personal (2 - 12)
05:45	24 UDEZE M free throw 1 - 2 missed			
05:45	offensive dead ball rebound (3)			
05:45	24 UDEZE M free throw 2 - 2 made (4)	<b>34-19</b>	<b>15</b>	
05:45	24 UDEZE M substitution out			
05:45	3 FORSLING S substitution in			
05:29				11 AUGUSTIN H 3pt FG , jump shot missed
05:26	3 FORSLING S defensive rebound (1)			
05:21	13 JOHNSON J 2pt FG in the paint, layup missed			
05:20	offensive rebound (22)			
05:15	5 MASHBURN, JR. J foul drawn (1)			33 HARRIS M foul shooting (1 - 13)
05:15	5 MASHBURN, JR. J free throw 1 - 2 made (8)	<b>35-19</b>	<b>16</b>	
05:15	5 MASHBURN, JR. J free throw 2 - 2 made (9)	<b>36-19</b>	<b>17</b>	
05:06				11 AUGUSTIN H 2pt FG in the paint, jump shot missed
05:03	defensive rebound (23)			
05:03	2 DENT D substitution out			
05:03	53 ALLICK J substitution in			
05:03				11 AUGUSTIN H substitution out
05:03				44 SMITH T substitution in
04:47	5 MASHBURN, JR. J 2pt FG outside the paint, jump shot made (11)	<b>38-19</b>	<b>19</b>	



**Prairie View at New Mexico**

12/20/22 The Pit, Albuquerque, NM  
2022-23 Men's Basketball

**Game Time:** 7:00 PM  
**Game Duration:** 2:00  
**Attendance:** 9,425

**Officials:** Brent Meaux, James Ford, Ryan McDaniel

Game Time	UNM	Score	Diff	PVAMU
04:47	3 FORSLING S assist (1)			
04:39				13 HARDING K 2pt FG in the paint, layup missed
04:39				offensive rebound (16)
04:28	53 ALLICK J foul personal (3 - 8)			4 DOUGLAS W foul drawn (3)
04:27				4 DOUGLAS W 1&1 free throw 1 missed
04:26	3 FORSLING S defensive rebound (2)			
04:10	53 ALLICK J 2pt FG in the paint, dunk, made (2)	<b>40-19</b>	<b>21</b>	
04:10	5 MASHBURN, JR. J assist (2)			
03:56				13 HARDING K turnover lost ball (1)
03:56	53 ALLICK J substitution out			
03:56	0 JENKINS K substitution in			
03:56	Timeout media			
03:56				13 HARDING K substitution out
03:56				32 NEAL P substitution in
03:41	13 JOHNSON J 2pt FG from turnover outside the paint, jump shot missed			
03:38	3 FORSLING S offensive rebound (3)			
03:34	10 HOUSE J 3pt FG from turnover second chance, jump shot missed			
03:31	offensive rebound (26)			
03:31	10 HOUSE J substitution out			
03:31	2 DENT D substitution in			
03:15	5 MASHBURN, JR. J 3pt FG from turnover second chance, jump shot missed			
03:12				44 SMITH T defensive rebound (4)
03:09				10 GAMBRELL J turnover lost ball (1)
02:54	0 JENKINS K turnover bad pass (1)			
02:54				32 NEAL P substitution out
02:54				13 HARDING K substitution in
02:42				10 GAMBRELL J 3pt FG from turnover, jump shot missed
02:40	3 FORSLING S defensive rebound (4)			
02:40				10 GAMBRELL J foul class B technical (0 - 13)
02:40	5 MASHBURN, JR. J free throw 1 - 1 made (12)	<b>41-19</b>	<b>22</b>	
02:30	2 DENT D 2pt FG in the paint, driving layup made (6)	<b>43-19</b>	<b>24</b>	
02:14		<b>43-21</b>	<b>22</b>	4 DOUGLAS W 2pt FG outside the paint, pull up jump shot made (5)
02:14				10 GAMBRELL J assist (1)
02:01	2 DENT D turnover lost ball (2)			13 HARDING K steal (1)
01:57		<b>43-23</b>	<b>20</b>	10 GAMBRELL J 2pt FG fast break from turnover in the paint, layup made (9)
01:57				13 HARDING K assist (1)
01:33	2 DENT D 2pt FG in the paint, layup missed			
01:29	3 FORSLING S offensive rebound (5)			
01:29	3 FORSLING S 2pt FG second chance in the paint, layup made (2)	<b>45-23</b>	<b>22</b>	
01:18	5 MASHBURN, JR. J foul drawn (2)			44 SMITH T foul offensive (1 - 14)
01:18				44 SMITH T turnover offensive (2)
01:18				44 SMITH T substitution out
01:18				11 AUGUSTIN H substitution in
01:18				4 DOUGLAS W substitution out
01:18				23 MYLES B substitution in



Official Basketball Play by Play - First Half

### Prairie View at New Mexico

12/20/22 The Pit, Albuquerque, NM  
2022-23 Men's Basketball

**Game Time:** 7:00 PM  
**Game Duration:** 2:00  
**Attendance:** 9,425

**Officials:** Brent Meaux, James Ford, Ryan McDaniel

Game Time	UNM	Score	Diff	PVAMU
01:06	5 MASHBURN, JR. J turnover lost ball (1)			11 AUGUSTIN H steal (2)
01:01				33 HARRIS M 2pt FG from turnover in the paint, dunk, missed
00:55				10 GAMBRELL J offensive rebound (2)
00:46		<b>45-25</b>	<b>20</b>	13 HARDING K 2pt FG from turnover second chance in the paint, driving layup made (9)
00:46	3 FORSLING S foul shooting (1 - 9)			13 HARDING K foul drawn (1)
00:46	3 FORSLING S substitution out			
00:46	34 SECK B substitution in			
00:46				23 MYLES B substitution out
00:46				4 DOUGLAS W substitution in
00:46				13 HARDING K free throw 1 - 1 missed
00:46	34 SECK B defensive rebound (2)			
00:32	5 MASHBURN, JR. J 2pt FG outside the paint, jump shot made (14)	<b>47-25</b>	<b>22</b>	
00:01	13 JOHNSON J steal (1)			13 HARDING K turnover lost ball (2)
<b>END OF PERIOD</b>				
<b>UNM 47-25 PVAMU</b>				





Prairie View at New Mexico

12/20/22 The Pit, Albuquerque, NM  
2022-23 Men's Basketball

Game Time: 7:00 PM  
Game Duration: 2:00  
Attendance: 9,425

Officials: Brent Meaux, James Ford, Ryan McDaniel

Prairie View - 25

NO.	Name	Min	FG			Rebounds			Fouls		TP	AS	TO	ST	Blocks		+/-
			M-A	3P	FT	OR	DR	TOT	PF	FD					BS	BA	
0	Yahuza Rasas	F 03:16	0-0	0-0	0-0	0	0	0	3	0	0	0	1	0	0	0	-7
4	Will Douglas	G 19:26	1-9	0-0	3-5	3	0	3	2	3	5	1	0	1	0	3	-21
10	Jeremiah Gambrell	G 17:34	3-7	1-3	2-2	1	1	2	0	1	9	1	1	0	1	2	-14
11	Hegel Augustin	G 11:33	1-6	0-1	0-0	2	1	3	1	0	2	0	1	2	0	2	-10
44	Tekorian Smith	G 11:55	0-3	0-1	0-0	0	4	4	1	0	0	0	2	0	0	0	-17
33	Mckinley Harris	11:33	0-2	0-0	0-0	0	1	1	1	1	0	0	0	0	0	0	-14
23	Brian Myles	04:14	0-0	0-0	0-0	0	0	0	3	2	0	0	0	0	1	0	-2
2	Braden Bell	05:08	0-2	0-1	0-0	1	0	1	1	1	0	0	1	1	0	1	-4
13	Kyle Harding	12:30	4-6	1-1	0-1	0	1	1	2	1	9	1	2	1	0	1	-16
32	Patrick Neal	02:10	0-0	0-0	0-0	0	0	0	0	0	0	0	0	0	0	0	-3
5	Kortrijk Miles	00:41	0-0	0-0	0-0	0	0	0	0	0	0	0	0	0	0	0	-2
Team						3	0	3			0		1				
<b>Totals</b>			9-35	2-7	5-8	10	8	18	14	9	25	3	9	5	2	9	-22

Shooting By Period		
1st FG%	9-35	25.7%
3PT%	2-7	28.6%
FT%	5-8	62.5%
GM FG%	9-35	25.7%
3PT%	2-7	28.6%
FT%	5-8	62.5%

Dead Ball Rebounds: 0, 0

Technical Fouls: Gambrell 1<sup>st</sup> 2:40

New Mexico - 47

NO.	Name	Min	FG			Rebounds			Fouls		TP	AS	TO	ST	Blocks		+/-
			M-A	3P	FT	OR	DR	TOT	PF	FD					BS	BA	
24	Morris Udeze	F 12:29	1-3	0-0	2-6	2	5	7	2	6	4	0	2	0	1	1	14
53	Josiah Allick	F 03:45	1-1	0-0	0-0	0	0	0	3	1	2	0	2	0	1	0	8
5	Jamal Mashburn, Jr.	G 17:36	5-8	1-2	3-3	0	2	2	1	2	14	2	1	0	0	0	21
10	Jaelen House	G 13:38	1-4	1-3	3-5	1	1	2	0	2	6	4	0	0	2	1	18
13	Javonté Johnson	G 15:44	2-4	1-1	0-0	0	2	2	1	1	5	0	1	1	0	0	11
0	KJ Jenkins	13:49	3-6	2-5	0-0	1	1	2	0	0	8	0	1	0	0	0	13
34	Birima Seck	06:48	0-0	0-0	0-0	0	2	2	1	0	0	1	1	0	3	0	14
2	Donovan Dent	11:12	1-3	0-0	4-4	1	1	2	0	2	6	0	2	0	2	0	6
3	Sebastian Forsling	04:59	1-1	0-0	0-0	2	3	5	1	0	2	1	0	0	0	0	5
Team						3	2	5			0		0				
<b>Totals</b>			15-30	5-11	12-18	10	19	29	9	14	47	8	10	1	9	2	22

Shooting By Period		
1st FG%	15-30	50.0%
3PT%	5-11	45.5%
FT%	12-18	66.7%
GM FG%	15-30	50.0%
3PT%	5-11	45.5%
FT%	12-18	66.7%

Dead Ball Rebounds: 3, 0

Technical Fouls: NONE

	PVAMU	UNM
Biggest lead	0 (1 <sup>st</sup> 20:00)	24 (1 <sup>st</sup> 2:30)
Best Scoring Run	5 (1 <sup>st</sup> 14:35)	13 (1 <sup>st</sup> 10:48)
Lead Changes	0	
Times Tied	0	
Time with Lead	00:00	19:41

	PVAMU	UNM
Points from		
Turnovers	9	5
Paint	12	12
Second Chance	4	6
Fast Breaks	10	5
Bench	9	16

	Period by Period Scoring		
	1st	2nd	TOT
PVAMU	25	38	63
UNM	47	47	94



**Prairie View at New Mexico**

12/20/22 The Pit, Albuquerque, NM  
2022-23 Men's Basketball

**Game Time:** 7:00 PM  
**Game Duration:** 2:00  
**Attendance:** 9,425

**Officials:** Brent Meaux, James Ford, Ryan McDaniel

**Period 2**

**Quarter Starters:**

<b>UNM</b>	5 Mashburn, Jr. J	10 House J	13 Johnson J	24 Udeze M	53 Allick J
<b>PVAMU</b>	0 Rasas Y	4 Douglas W	10 Gambrell J	11 Augustin H	44 Smith T

Game Time	UNM	Score	Diff	PVAMU
20:00	0 JENKINS K substitution out			
20:00	2 DENT D substitution out			
20:00	34 SECK B substitution out			
20:00	10 HOUSE J substitution in			
20:00	24 UDEZE M substitution in			
20:00	53 ALLICK J substitution in			
20:00				13 HARDING K substitution out
20:00				33 HARRIS M substitution out
20:00				0 RASAS Y substitution in
20:00				44 SMITH T substitution in
19:48		<b>47-27</b>	<b>20</b>	4 DOUGLAS W 2pt FG outside the paint, pull up jump shot made (7)
19:48				44 SMITH T assist (1)
19:35	13 JOHNSON J 3pt FG , jump shot made (8)	<b>50-27</b>	<b>23</b>	
19:35	10 HOUSE J assist (5)			
19:28				44 SMITH T 3pt FG , jump shot missed
19:23	10 HOUSE J defensive rebound (3)			
19:19	13 JOHNSON J 3pt FG , jump shot missed			
19:16				11 AUGUSTIN H defensive rebound (4)
19:01				0 RASAS Y 2pt FG outside the paint, jump shot missed
18:57	24 UDEZE M defensive rebound (8)			
18:41	24 UDEZE M 2pt FG in the paint, dunk, made (6)	<b>52-27</b>	<b>25</b>	
18:41	5 MASHBURN, JR. J assist (3)			
18:23				0 RASAS Y 2pt FG outside the paint, jump shot missed
18:21	13 JOHNSON J defensive rebound (3)			
18:14	53 ALLICK J 2pt FG in the paint, layup made (4)	<b>54-27</b>	<b>27</b>	
18:14	10 HOUSE J assist (6)			
17:42				10 GAMBRELL J 2pt FG in the paint, jump shot missed
17:38	24 UDEZE M defensive rebound (9)			
17:34	53 ALLICK J 2pt FG in the paint, dunk, missed			
17:34				defensive rebound (20)
17:34				0 RASAS Y substitution out
17:34				4 DOUGLAS W substitution out
17:34				11 AUGUSTIN H substitution out
17:34				13 HARDING K substitution in
17:34				23 MYLES B substitution in
17:34				33 HARRIS M substitution in
17:34				44 SMITH T substitution out
17:34				2 BELL B substitution in
17:10		<b>54-29</b>	<b>25</b>	2 BELL B 2pt FG in the paint, driving layup made (2)
17:02	24 UDEZE M 2pt FG in the paint, layup missed			
16:59	24 UDEZE M offensive rebound (10)			
16:58	24 UDEZE M 2pt FG second chance in the paint, layup blocked			



**Prairie View at New Mexico**

12/20/22 The Pit, Albuquerque, NM  
2022-23 Men's Basketball

**Game Time:** 7:00 PM  
**Game Duration:** 2:00  
**Attendance:** 9,425

**Officials:** Brent Meaux, James Ford, Ryan McDaniel

Game Time	UNM	Score	Diff	PVAMU
16:58				23 MYLES B block (2)
16:54				13 HARDING K defensive rebound (2)
16:40				10 GAMBRELL J 2pt FG in the paint, layup missed
16:38	24 UDEZE M defensive rebound (11)			
16:32	24 UDEZE M turnover lost ball (3)			13 HARDING K steal (2)
16:27	10 HOUSE J foul shooting (1 - 1)			13 HARDING K foul drawn (2)
16:27		<b>54-30</b>	<b>24</b>	13 HARDING K free throw fast break 1 - 2 made (10)
16:27		<b>54-31</b>	<b>23</b>	13 HARDING K free throw fast break 2 - 2 made (11)
16:13	10 HOUSE J 3pt FG , jump shot missed			
16:10				23 MYLES B defensive rebound (1)
16:07	10 HOUSE J steal (1)			33 HARRIS M turnover bad pass (1)
16:00	5 MASHBURN, JR. J 2pt FG from turnover outside the paint, jump shot missed			
15:57	53 ALLICK J offensive rebound (1)			
15:53	10 HOUSE J 3pt FG from turnover second chance, jump shot made (9)	<b>57-31</b>	<b>26</b>	
15:53	53 ALLICK J assist (1)			
15:40				10 GAMBRELL J 3pt FG , jump shot missed
15:36				13 HARDING K offensive rebound (3)
15:36		<b>57-33</b>	<b>24</b>	13 HARDING K 2pt FG second chance in the paint, layup made (13)
15:26	10 HOUSE J turnover lost ball (1)			2 BELL B steal (2)
15:20		<b>57-35</b>	<b>22</b>	10 GAMBRELL J 2pt FG fast break from turnover in the paint, driving layup made (11)
14:58	53 ALLICK J 2pt FG in the paint, hook shot missed			
14:55				23 MYLES B defensive rebound (2)
14:45		<b>57-37</b>	<b>20</b>	33 HARRIS M 2pt FG in the paint, pull up jump shot made (2)
14:30	5 MASHBURN, JR. J foul drawn (3)			33 HARRIS M foul personal (2 - 1)
14:30	Timeout media			
14:26	10 HOUSE J foul drawn (3)			2 BELL B foul personal (2 - 2)
14:15	24 UDEZE M 2pt FG in the paint, layup made (8)	<b>59-37</b>	<b>22</b>	
14:15	10 HOUSE J assist (7)			
13:52				13 HARDING K 2pt FG in the paint, layup missed
13:50	53 ALLICK J defensive rebound (2)			
13:45	5 MASHBURN, JR. J 2pt FG fast break in the paint, driving layup made (16)	<b>61-37</b>	<b>24</b>	
13:45	53 ALLICK J assist (2)			
13:21				2 BELL B 2pt FG outside the paint, turnaround jump shot missed
13:17	5 MASHBURN, JR. J defensive rebound (3)			
13:15	13 JOHNSON J 3pt FG , jump shot missed			
13:11	53 ALLICK J offensive rebound (3)			
13:06	53 ALLICK J 2pt FG second chance in the paint, dunk, made (6)	<b>63-37</b>	<b>26</b>	
13:06	10 HOUSE J assist (8)			
12:48				13 HARDING K 3pt FG , jump shot missed
12:45	10 HOUSE J defensive rebound (4)			
12:36	5 MASHBURN, JR. J 3pt FG , jump shot missed			
12:32	53 ALLICK J offensive rebound (4)			
12:30	5 MASHBURN, JR. J foul drawn (4)			23 MYLES B foul shooting (4 - 3)
12:30	5 MASHBURN, JR. J free throw 1 - 2 made (17)	<b>64-37</b>	<b>27</b>	
12:30	10 HOUSE J substitution out			



**Prairie View at New Mexico**

12/20/22 The Pit, Albuquerque, NM  
2022-23 Men's Basketball

**Game Time:** 7:00 PM  
**Game Duration:** 2:00  
**Attendance:** 9,425

**Officials:** Brent Meaux, James Ford, Ryan McDaniel

Game Time	UNM	Score	Diff	PVAMU
12:30	13 JOHNSON J substitution out			
12:30	24 UDEZE M substitution out			
12:30	0 JENKINS K substitution in			
12:30	2 DENT D substitution in			
12:30	3 FORSLING S substitution in			
12:30				10 GAMBRELL J substitution out
12:30				23 MYLES B substitution out
12:30				33 HARRIS M substitution out
12:30				0 RASAS Y substitution in
12:30				4 DOUGLAS W substitution in
12:30				11 AUGUSTIN H substitution in
12:29	5 MASHBURN, JR. J free throw 2 - 2 missed			
12:28				defensive rebound (25)
12:13		<b>64-40</b>	<b>24</b>	2 BELL B 3pt FG , jump shot made (5)
12:13				4 DOUGLAS W assist (2)
11:57	53 ALLICK J foul drawn (2)			0 RASAS Y foul shooting (4 - 4)
11:57				Timeout media
11:57	5 MASHBURN, JR. J substitution out			
11:57	10 HOUSE J substitution in			
11:57	53 ALLICK J free throw 1 - 2 missed			
11:57	offensive dead ball rebound (4)			
11:56	53 ALLICK J free throw 2 - 2 missed			
11:56				defensive rebound (26)
11:56	3 FORSLING S foul personal (2 - 2)			4 DOUGLAS W foul drawn (4)
11:45	3 FORSLING S foul shooting (3 - 3)			4 DOUGLAS W foul drawn (5)
11:45		<b>64-41</b>	<b>23</b>	4 DOUGLAS W free throw 1 - 2 made (8)
11:45	3 FORSLING S substitution out			
11:45	24 UDEZE M substitution in			
11:45				0 RASAS Y substitution out
11:45				2 BELL B substitution out
11:45				33 HARRIS M substitution in
11:45				44 SMITH T substitution in
11:45		<b>64-42</b>	<b>22</b>	4 DOUGLAS W free throw 2 - 2 made (9)
11:32	0 JENKINS K turnover bad pass (2)			11 AUGUSTIN H steal (3)
11:25				11 AUGUSTIN H 2pt FG from turnover in the paint, layup blocked
11:25	53 ALLICK J block (2)			
11:21	10 HOUSE J defensive rebound (5)			
11:19	24 UDEZE M 2pt FG fast break in the paint, dunk, made (10)	<b>66-42</b>	<b>24</b>	
11:19	10 HOUSE J assist (9)			
11:11		<b>66-45</b>	<b>21</b>	44 SMITH T 3pt FG fast break, jump shot made (3)
11:11				33 HARRIS M assist (1)
10:51	24 UDEZE M foul drawn (7)			33 HARRIS M foul shooting (3 - 5)
10:51	24 UDEZE M free throw 1 - 2 made (11)	<b>67-45</b>	<b>22</b>	
10:51	0 JENKINS K substitution out			
10:51	1 APPELHANS B substitution in			
10:51				11 AUGUSTIN H substitution out
10:51				10 GAMBRELL J substitution in
10:51	24 UDEZE M free throw 2 - 2 made (12)	<b>68-45</b>	<b>23</b>	



**Prairie View at New Mexico**

12/20/22 The Pit, Albuquerque, NM  
2022-23 Men's Basketball

**Game Time:** 7:00 PM  
**Game Duration:** 2:00  
**Attendance:** 9,425

**Officials:** Brent Meaux, James Ford, Ryan McDaniel

Game Time	UNM	Score	Diff	PVAMU
10:32	1 APPELHANS B foul shooting (1 - 4)			44 SMITH T foul drawn (1)
10:32		<b>68-46</b>	<b>22</b>	44 SMITH T free throw 1 - 3 made (4)
10:32		<b>68-47</b>	<b>21</b>	44 SMITH T free throw 2 - 3 made (5)
10:31				44 SMITH T free throw 3 - 3 missed
10:30	24 UDEZE M defensive rebound (12)			
10:26	53 ALLICK J foul offensive (4 - 5)			4 DOUGLAS W foul drawn (6)
10:26	53 ALLICK J turnover offensive (3)			
10:11				33 HARRIS M 3pt FG from turnover, jump shot missed
10:07	53 ALLICK J defensive rebound (5)			
10:01	1 APPELHANS B 3pt FG , jump shot missed			
09:59				44 SMITH T defensive rebound (5)
09:54				10 GAMBRELL J 2pt FG outside the paint, jump shot missed
09:54				offensive rebound (28)
09:54	24 UDEZE M foul personal (3 - 6)			44 SMITH T foul drawn (2)
09:36				44 SMITH T 2pt FG second chance in the paint, layup blocked
09:36	24 UDEZE M block (2)			
09:32	24 UDEZE M defensive rebound (13)			
09:28	1 APPELHANS B 2pt FG outside the paint, floating jump shot missed			
09:26	53 ALLICK J offensive rebound (6)			
09:24	1 APPELHANS B 2pt FG second chance in the paint, layup made (2)	<b>70-47</b>	<b>23</b>	
09:24	53 ALLICK J assist (3)			
09:17				44 SMITH T 3pt FG , jump shot missed
09:13	53 ALLICK J defensive rebound (7)			
08:57	24 UDEZE M 2pt FG in the paint, dunk, made (14)	<b>72-47</b>	<b>25</b>	
08:57	53 ALLICK J assist (4)			
08:50				10 GAMBRELL J 2pt FG in the paint, layup blocked
08:50	1 APPELHANS B block (1)			
08:46	1 APPELHANS B defensive rebound (1)			
08:42	24 UDEZE M 2pt FG fast break in the paint, alleyoop made (16)	<b>74-47</b>	<b>27</b>	
08:42	2 DENT D assist (1)			
08:26				4 DOUGLAS W 2pt FG in the paint, layup missed
08:20	24 UDEZE M defensive rebound (14)			
08:18	10 HOUSE J turnover lost ball (2)			44 SMITH T steal (1)
08:14				10 GAMBRELL J 3pt FG from turnover, jump shot missed
08:11	2 DENT D defensive rebound (3)			
07:50	1 APPELHANS B 3pt FG , jump shot missed			
07:46	53 ALLICK J offensive rebound (8)			
07:46	53 ALLICK J 2pt FG second chance in the paint, layup made (8)	<b>76-47</b>	<b>29</b>	
07:27		<b>76-50</b>	<b>26</b>	10 GAMBRELL J 3pt FG , jump shot made (14)
07:27				33 HARRIS M assist (2)
07:24	Timeout media			
07:24				4 DOUGLAS W substitution out
07:24				10 GAMBRELL J substitution out
07:24				13 HARDING K substitution out
07:24				33 HARRIS M substitution out
07:24				44 SMITH T substitution out
07:24				0 RASAS Y substitution in
07:24				2 BELL B substitution in



**Prairie View at New Mexico**

12/20/22 The Pit, Albuquerque, NM  
2022-23 Men's Basketball

**Game Time:** 7:00 PM  
**Game Duration:** 2:00  
**Attendance:** 9,425

**Officials:** Brent Meaux, James Ford, Ryan McDaniel

Game Time	UNM	Score	Diff	PVAMU
07:24				11 AUGUSTIN H substitution in
07:24				23 MYLES B substitution in
07:24				32 NEAL P substitution in
06:56	2 DENT D 2pt FG in the paint, floating jump shot made (8)	<b>78-50</b>	<b>28</b>	
06:56	2 DENT D foul drawn (3)			32 NEAL P foul shooting (1 - 6)
06:56	Timeout media			
06:56	24 UDEZE M substitution out			
06:56	3 FORSLING S substitution in			
06:56				32 NEAL P substitution out
06:56				13 HARDING K substitution in
06:56	2 DENT D free throw 1 - 1 made (9)	<b>79-50</b>	<b>29</b>	
06:56				23 MYLES B substitution out
06:56				4 DOUGLAS W substitution in
06:42				0 RASAS Y 2pt FG outside the paint, turnaround jump shot missed
06:39	2 DENT D defensive rebound (4)			
06:28	10 HOUSE J foul drawn (4)			11 AUGUSTIN H foul shooting (2 - 7)
06:28	10 HOUSE J free throw 1 - 2 made (10)	<b>80-50</b>	<b>30</b>	
06:28	53 ALLICK J substitution out			
06:28	0 JENKINS K substitution in			
06:28				11 AUGUSTIN H substitution out
06:28				13 HARDING K substitution out
06:28				10 GAMBRELL J substitution in
06:28				44 SMITH T substitution in
06:28	10 HOUSE J free throw 2 - 2 missed			
06:25				2 BELL B defensive rebound (2)
06:22				4 DOUGLAS W 2pt FG outside the paint, jump shot missed
06:18	0 JENKINS K defensive rebound (3)			
06:01	0 JENKINS K 2pt FG in the paint, jump shot missed			
06:01				defensive rebound (30)
06:01	3 FORSLING S foul personal (4 - 7)			0 RASAS Y foul drawn (1)
06:01	10 HOUSE J substitution out			
06:01	13 JOHNSON J substitution in			
06:01				2 BELL B 1&1 free throw 1 missed
05:58	13 JOHNSON J defensive rebound (4)			
05:42	3 FORSLING S 2pt FG in the paint, dunk, made (4)	<b>82-50</b>	<b>32</b>	
05:42	2 DENT D assist (2)			
05:21				44 SMITH T 3pt FG , jump shot missed
05:19	3 FORSLING S defensive rebound (6)			
05:11	13 JOHNSON J turnover out of bounds (2)			
05:11				2 BELL B substitution out
05:11				13 HARDING K substitution in
04:54	0 JENKINS K foul drawn (1)			0 RASAS Y foul offensive (5 - 8)
04:54				0 RASAS Y turnover offensive (2)
04:54				0 RASAS Y substitution out
04:54				23 MYLES B substitution in
04:44	2 DENT D turnover bad pass (3)			13 HARDING K steal (3)
04:37		<b>82-52</b>	<b>30</b>	13 HARDING K 2pt FG fast break from turnover in the paint, driving layup made (15)
04:28	2 DENT D turnover lost ball (4)			13 HARDING K steal (4)



**Prairie View at New Mexico**

12/20/22 The Pit, Albuquerque, NM  
2022-23 Men's Basketball

**Game Time:** 7:00 PM  
**Game Duration:** 2:00  
**Attendance:** 9,425

**Officials:** Brent Meaux, James Ford, Ryan McDaniel

Game Time	UNM	Score	Diff	PVAMU
04:24	13 JOHNSON J foul shooting (2 - 8)			4 DOUGLAS W foul drawn (7)
04:24		<b>82-53</b>	<b>29</b>	4 DOUGLAS W free throw fast break 1 - 2 made (10)
04:23				4 DOUGLAS W free throw fast break 2 - 2 missed
04:22	13 JOHNSON J defensive rebound (5)			
04:10	2 DENT D 2pt FG in the paint, layup missed			
04:07				23 MYLES B defensive rebound (3)
03:58	2 DENT D foul personal (1 - 9)			4 DOUGLAS W foul drawn (8)
03:58	Timeout media			
03:58	13 JOHNSON J substitution out			
03:58	34 SECK B substitution in			
03:58				10 GAMBRELL J substitution out
03:58				33 HARRIS M substitution in
03:58		<b>82-54</b>	<b>28</b>	4 DOUGLAS W 1&1 free throw 1 made (11)
03:58				4 DOUGLAS W 1&1 free throw 2 missed
03:57	34 SECK B defensive rebound (3)			
03:35	2 DENT D 2pt FG in the paint, driving layup made (11)	<b>84-54</b>	<b>30</b>	
03:18	34 SECK B foul shooting (2 - 10)			4 DOUGLAS W foul drawn (9)
03:18		<b>84-55</b>	<b>29</b>	4 DOUGLAS W free throw 1 - 2 made (12)
03:18		<b>84-56</b>	<b>28</b>	4 DOUGLAS W free throw 2 - 2 made (13)
03:06	0 JENKINS K 3pt FG , jump shot missed			
03:03	3 FORSLING S offensive rebound (7)			
03:01	2 DENT D foul drawn (4)			44 SMITH T foul personal (2 - 9)
03:01	2 DENT D 1&1 free throw 1 made (12)	<b>85-56</b>	<b>29</b>	
03:01				23 MYLES B substitution out
03:01				10 GAMBRELL J substitution in
03:01	2 DENT D 1&1 free throw 2 missed			
03:00				4 DOUGLAS W defensive rebound (4)
02:53	2 DENT D steal (1)			44 SMITH T turnover bad pass (3)
02:48	2 DENT D 2pt FG fast break from turnover in the paint, dunk, made (14)	<b>87-56</b>	<b>31</b>	
02:40	0 JENKINS K steal (1)			4 DOUGLAS W turnover lost ball (1)
02:39				44 SMITH T foul class A technical (3 - 10)
02:39	0 JENKINS K free throw fast break 1 - 2 made (9)	<b>88-56</b>	<b>32</b>	
02:39	0 JENKINS K free throw fast break 2 - 2 made (10)	<b>89-56</b>	<b>33</b>	
02:21				13 HARDING K substitution out
02:21				44 SMITH T substitution out
02:21				2 BELL B substitution in
02:21				11 AUGUSTIN H substitution in
02:21	2 DENT D substitution out			
02:21	20 FINO-A-LASELF S substitution in			
02:21				11 AUGUSTIN H 2pt FG outside the paint, jump shot blocked
02:21	1 APPELHANS B block (2)			
02:21	0 JENKINS K defensive rebound (4)			
02:21	0 JENKINS K foul offensive (1 - 11)			11 AUGUSTIN H foul drawn (1)
02:21	0 JENKINS K turnover offensive (3)			
02:21	Timeout 30 Sec			
02:21	34 SECK B substitution out			
02:21	32 MANZANARES M substitution in			
02:21				11 AUGUSTIN H substitution out



**Prairie View at New Mexico**

12/20/22 The Pit, Albuquerque, NM  
2022-23 Men's Basketball

**Game Time:** 7:00 PM  
**Game Duration:** 2:00  
**Attendance:** 9,425

**Officials:** Brent Meaux, James Ford, Ryan McDaniel

Game Time	UNM	Score	Diff	PVAMU
02:21				13 HARDING K substitution in
02:08				4 DOUGLAS W 2pt FG from turnover outside the paint, jump shot missed
02:04	1 APPELHANS B defensive rebound (2)			
01:50	32 MANZANARES M foul drawn (1)			2 BELL B foul personal (3 - 11)
01:50	32 MANZANARES M free throw 1 - 2 missed			
01:50	offensive dead ball rebound (5)			
01:50	32 MANZANARES M free throw 2 - 2 missed			
01:48				13 HARDING K defensive rebound (4)
01:45	0 JENKINS K foul personal (2 - 12)			4 DOUGLAS W foul drawn (10)
01:45		<b>89-57</b>	<b>32</b>	4 DOUGLAS W free throw fast break 1 - 2 made (14)
01:45		<b>89-58</b>	<b>31</b>	4 DOUGLAS W free throw fast break 2 - 2 made (15)
01:37	1 APPELHANS B 3pt FG , jump shot missed			
01:36				defensive rebound (34)
01:31				13 HARDING K 2pt FG in the paint, layup blocked
01:31	3 FORSLING S block (1)			
01:25				2 BELL B offensive rebound (3)
01:25		<b>89-60</b>	<b>29</b>	2 BELL B 2pt FG second chance in the paint, layup made (7)
01:09	0 JENKINS K 2pt FG outside the paint, jump shot missed			
01:07	3 FORSLING S offensive rebound (8)			
01:07	3 FORSLING S foul drawn (1)			2 BELL B foul personal (4 - 12)
01:07	3 FORSLING S free throw 1 - 2 made (5)	<b>90-60</b>	<b>30</b>	
01:07	3 FORSLING S free throw 2 - 2 made (6)	<b>91-60</b>	<b>31</b>	
01:07				10 GAMBRELL J substitution out
01:07				44 SMITH T substitution in
01:00	0 JENKINS K foul shooting (3 - 13)			33 HARRIS M foul drawn (2)
01:00		<b>91-61</b>	<b>30</b>	33 HARRIS M free throw fast break 1 - 2 made (3)
00:59				33 HARRIS M free throw fast break 2 - 2 missed
00:58				2 BELL B offensive rebound (4)
00:52				13 HARDING K 3pt FG second chance, jump shot missed
00:49	3 FORSLING S defensive rebound (9)			
00:45	20 FINO-A-LASELF S 2pt FG in the paint, layup blocked			
00:45				33 HARRIS M block (1)
00:44				defensive rebound (37)
00:38		<b>91-63</b>	<b>28</b>	4 DOUGLAS W 2pt FG fast break in the paint, driving layup made (17)
00:23	20 FINO-A-LASELF S 3pt FG , jump shot missed			
00:21	0 JENKINS K offensive rebound (5)			
00:13	0 JENKINS K 3pt FG second chance, pull up jump shot made (13)	<b>94-63</b>	<b>31</b>	
00:06				2 BELL B 3pt FG , jump shot missed
00:03	0 JENKINS K defensive rebound (6)			
<b>END OF GAME</b>				
<b>UNM 94-63 PVAMU</b>				





**Prairie View at New Mexico**

12/20/22 The Pit, Albuquerque, NM  
2022-23 Men's Basketball

Game Time: 7:00 PM  
Game Duration: 2:00  
Attendance: 9,425

Officials: Brent Meaux, James Ford, Ryan McDaniel

**Prairie View - 38**

NO.	Name	Min	FG	3P	FT	Rebounds			Fouls		TP	AS	TO	ST	Blocks		+/-
			M-A	M-A	M-A	OR	DR	TOT	PF	FD					BS	BA	
0	Yahuza Rasas	F 05:41	0-3	0-0	0-0	0	0	0	2	1	0	0	1	0	0	0	-7
4	Will Douglas	G 14:28	2-5	0-0	8-10	0	1	1	0	7	12	1	1	0	0	0	-6
10	Jeremiah Gambrell	G 15:21	2-8	1-3	0-0	0	0	0	0	0	5	0	0	0	0	1	-10
11	Hegel Augustin	G 05:01	0-2	0-0	0-0	0	1	1	1	1	0	0	0	1	0	2	-4
44	Tekorian Smith	G 12:01	1-5	1-4	2-3	0	1	1	2	2	5	1	1	1	0	1	-11
2	Braden Bell	10:23	3-5	1-2	0-1	2	1	3	3	0	7	0	0	1	0	0	0
13	Kyle Harding	15:49	2-6	0-2	2-2	1	2	3	0	1	6	0	0	3	0	1	0
23	Brian Myles	07:25	0-0	0-0	0-0	0	3	3	1	0	0	0	0	0	1	0	0
33	Mckinley Harris	13:23	1-2	0-1	1-2	0	0	0	2	1	3	2	1	0	1	0	-5
32	Patrick Neal	00:28	0-0	0-0	0-0	0	0	0	1	0	0	0	0	0	0	0	-2
Team						1	6	7			0		0				
<b>Totals</b>			11-36	3-12	13-18	4	15	19	12	13	38	4	4	6	2	5	-9

Shooting By Period		
2 <sup>nd</sup> FG%	11-36	30.6%
3PT%	3-12	25.0%
FT%	13-18	72.2%
GM FG%	11-36	30.6%
3PT%	3-12	25.0%
FT%	13-18	72.2%

Dead Ball Rebounds: 0, 0

Technical Fouls: Smith 2<sup>nd</sup> 2:39

**New Mexico - 47**

NO.	Name	Min	FG	3P	FT	Rebounds			Fouls		TP	AS	TO	ST	Blocks		+/-
			M-A	M-A	M-A	OR	DR	TOT	PF	FD					BS	BA	
24	Morris Udeze	F 12:19	5-7	0-0	2-2	1	6	7	1	1	12	0	1	0	1	1	10
53	Josiah Allick	F 13:32	3-5	0-0	0-2	5	3	8	1	1	6	4	1	0	1	0	8
5	Jamal Mashburn, Jr.	G 08:03	1-3	0-1	1-2	0	1	1	0	2	3	1	0	0	0	0	2
10	Jaelen House	G 13:26	1-2	1-2	1-2	0	3	3	1	2	4	5	2	1	0	0	11
13	Javonté Johnson	G 09:33	1-3	1-3	0-0	0	3	3	1	0	3	0	1	0	0	0	4
0	KJ Jenkins	08:07	1-4	1-2	2-2	1	3	4	3	1	5	0	2	1	0	0	-4
2	Donovan Dent	10:09	3-4	0-0	2-3	0	2	2	1	2	8	2	2	1	0	0	6
3	Sebastian Forsling	07:41	1-1	0-0	2-2	2	2	4	3	1	4	0	0	0	1	0	-1
1	Braden Appelhans	10:51	1-5	0-3	0-0	0	2	2	1	0	2	0	0	0	2	0	9
34	Birima Seck	01:37	0-0	0-0	0-0	0	1	1	1	0	0	0	0	0	0	0	4
20	Safi Fino-A-Laself	02:21	0-2	0-1	0-0	0	0	0	0	0	0	0	0	0	0	1	-2
32	Mac Manzanaras	02:21	0-0	0-0	0-2	0	0	0	0	1	0	0	0	0	0	0	-2
Team						0	0	0			0		0				
<b>Totals</b>			17-36	3-12	10-17	9	26	35	13	11	47	12	9	3	5	2	9

Shooting By Period		
2 <sup>nd</sup> FG%	17-36	47.2%
3PT%	3-12	25.0%
FT%	10-17	58.8%
GM FG%	17-36	47.2%
3PT%	3-12	25.0%
FT%	10-17	58.8%

Dead Ball Rebounds: 2, 0

Technical Fouls: NONE

	PVAMU	UNM
Biggest lead	0 (1 <sup>st</sup> 20:00)	33 (2 <sup>nd</sup> 2:39)
Best Scoring Run	6 (2 <sup>nd</sup> 14:45)	8 (2 <sup>nd</sup> 7:46)
Lead Changes	0	
Times Tied	0	
Time with Lead	00:00	19:48

	PVAMU	UNM
Points from		
Turnovers	7	7
Paint	14	28
Second Chance	4	16
Fast Breaks	15	10
Bench	16	19

	Period by Period Scoring		
	1st	2nd	TOT
PVAMU	25	38	63
UNM	47	47	94



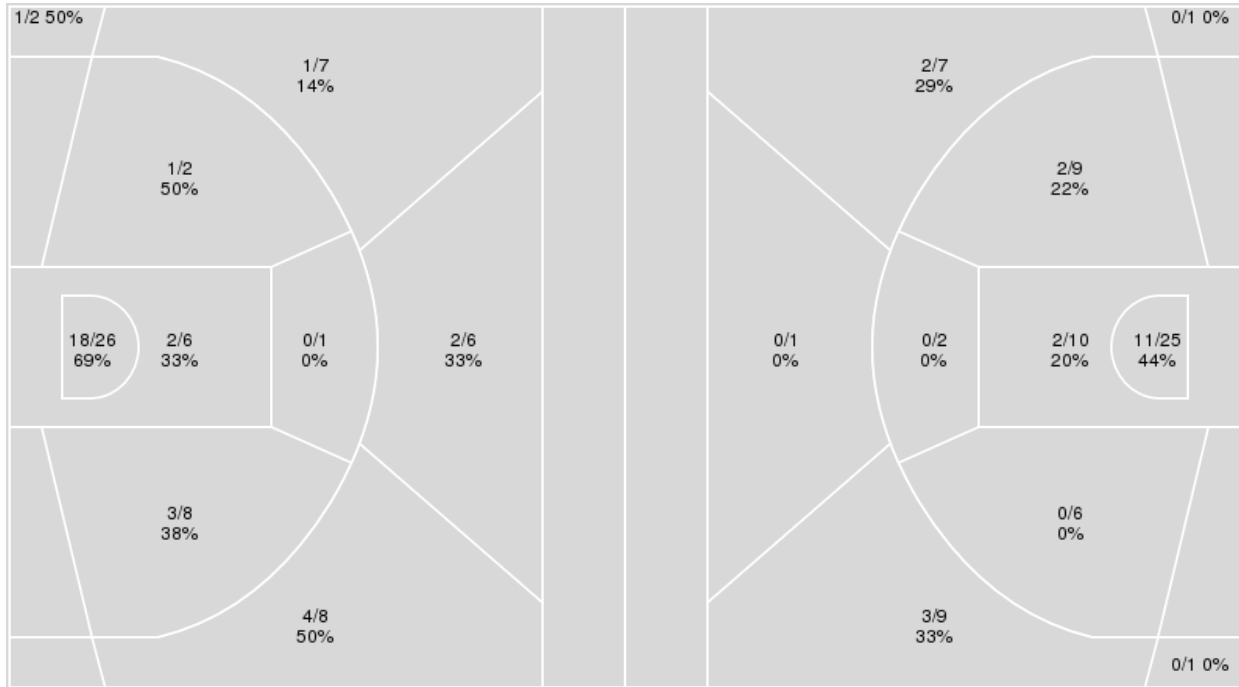
**Officials:** Brent Meaux, James Ford, Ryan McDaniel

{ Players => 0, 1, 2, 3, 4, 5, 10, 11, 13, 20, 21, 24, 32, 34, 53; } FG  
 Types => All; Results => All;

{ Players => 0, 1, 2, 3, 4, 5, 10, 11, 13, 15, 21, 23, 32, 33, 44, 55; } FG  
 Types => All; Results => All;

**New Mexico**

**Prairie View**



New Mexico	M/A	%
Field Goals	32/66	48
2 Points	24/43	56
3 Points	8/23	35
Free Throws	22/35	63

Prairie View	M/A	%
Field Goals	20/71	28
2 Points	15/52	29
3 Points	5/19	26
Free Throws	18/26	69



**Prairie View at New Mexico**

12/20/22 The Pit, Albuquerque, NM  
2022-23 Men's Basketball

Game Time: 7:00 PM  
Game Duration: 2:00  
Attendance: 9,425

Officials: Brent Meaux, James Ford, Ryan McDaniel

**Prairie View**

No	Name	Mins		Score		Points Diff		Points per Min		Assists		Rebounds		Steals		Turnovers	
		On	Off	On	Off	On	Off	On	Off	On	Off	On	Off	On	Off	On	Off
0	Yahuza Rasas	08:57	31:03	9 - 23	54 - 71	-14	-17	1.01	1.74	2	5	10	27	1	10	2	11
2	Braden Bell	15:31	24:29	28 - 32	35 - 62	-4	-27	1.80	1.43	2	5	20	17	4	7	4	9
4	Will Douglas	33:54	06:06	51 - 78	12 - 16	-27	-4	1.50	1.97	7	0	32	5	8	3	12	1
5	Kortrijk Miles	00:41	39:19	0 - 2	63 - 92	-2	-29	0.00	1.60	0	7	0	37	0	11	0	13
10	Jeremiah Gambrell	32:55	07:05	49 - 73	14 - 21	-24	-7	1.49	1.98	5	2	30	7	10	1	12	1
11	Hegel Augustin	16:34	23:26	24 - 38	39 - 56	-14	-17	1.45	1.66	3	4	16	21	4	7	5	8
13	Kyle Harding	28:19	11:41	56 - 72	7 - 22	-16	-15	1.98	0.60	6	1	22	15	9	2	10	3
23	Brian Myles	11:39	28:21	22 - 24	41 - 70	-2	-29	1.89	1.45	0	7	10	27	5	6	2	11
32	Patrick Neal	02:38	37:22	0 - 5	63 - 89	-5	-26	0.00	1.69	0	7	2	35	0	11	1	12
33	Mckinley Harris	24:56	15:04	42 - 61	21 - 33	-19	-12	1.68	1.39	4	3	23	14	8	3	9	4
44	Tekorian Smith	23:56	16:04	34 - 62	29 - 32	-28	-3	1.42	1.80	6	1	20	17	6	5	8	5

**New Mexico**

No	Name	Mins		Score		Points Diff		Points per Min		Assists		Rebounds		Steals		Turnovers	
		On	Off	On	Off	On	Off	On	Off	On	Off	On	Off	On	Off	On	Off
0	KJ Jenkins	21:56	18:04	47 - 38	47 - 25	9	22	2.14	2.60	6	14	32	32	3	1	12	7
1	Braden Appelhans	10:51	29:09	27 - 18	67 - 45	9	22	2.49	2.30	4	16	22	42	2	2	6	13
2	Donovan Dent	21:21	18:39	46 - 34	48 - 29	12	19	2.15	2.57	6	14	31	33	3	1	13	6
3	Sebastian Forsling	12:40	27:20	27 - 23	67 - 40	4	27	2.13	2.45	3	17	21	43	2	2	7	12
5	Jamal Mashburn, Jr.	25:39	14:21	61 - 38	33 - 25	23	8	2.38	2.30	15	5	39	25	2	2	10	9
10	Jaelen House	27:04	12:56	68 - 39	26 - 24	29	2	2.51	2.01	18	2	47	17	1	3	11	8
13	Javonté Johnson	25:17	14:43	53 - 38	41 - 25	15	16	2.10	2.79	13	7	40	24	2	2	14	5
20	Safi Fino-A-Laself	02:21	37:39	5 - 7	89 - 56	-2	33	2.13	2.36	0	20	6	58	0	4	1	18
24	Morris Udeze	24:48	15:12	64 - 40	30 - 23	24	7	2.58	1.97	17	3	41	23	1	3	11	8
32	Mac Manzanares	02:21	37:39	5 - 7	89 - 56	-2	33	2.13	2.36	0	20	5	59	0	4	0	19
34	Birima Seck	08:25	31:35	23 - 5	71 - 58	18	13	2.73	2.25	3	17	9	55	3	1	3	16
53	Josiah Allick	17:17	22:43	44 - 28	50 - 35	16	15	2.55	2.20	15	5	27	37	1	3	7	12

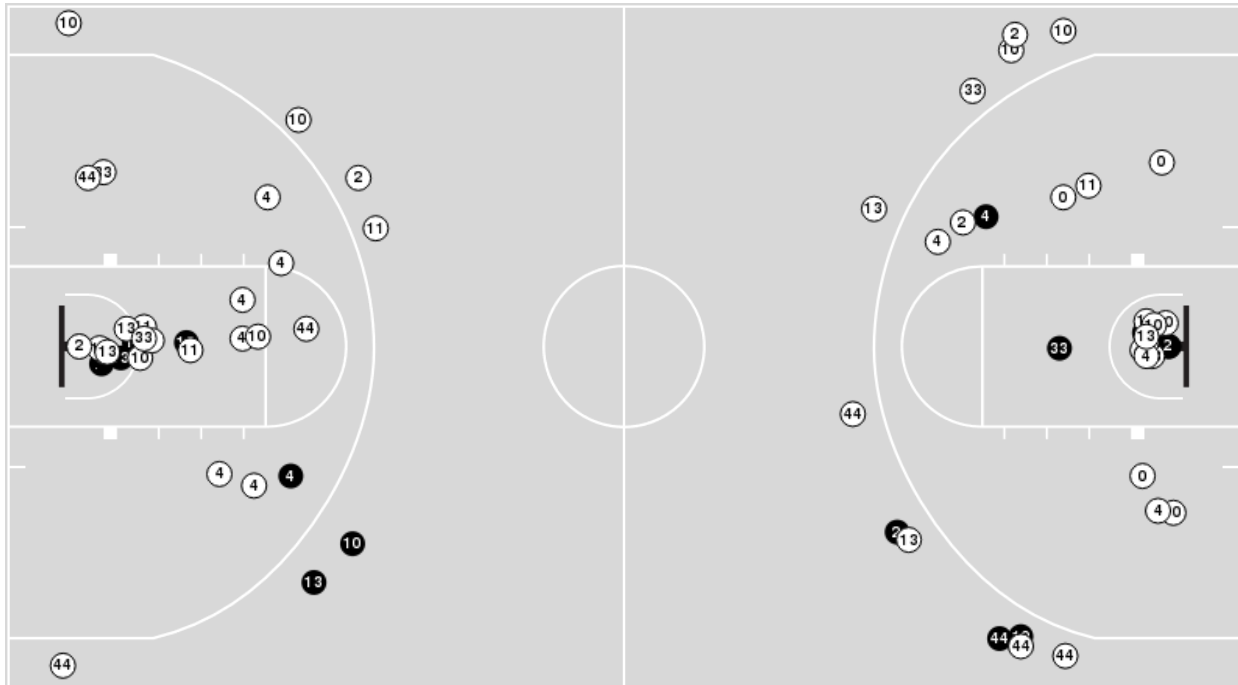


**Officials:** Brent Meaux, James Ford, Ryan McDaniel

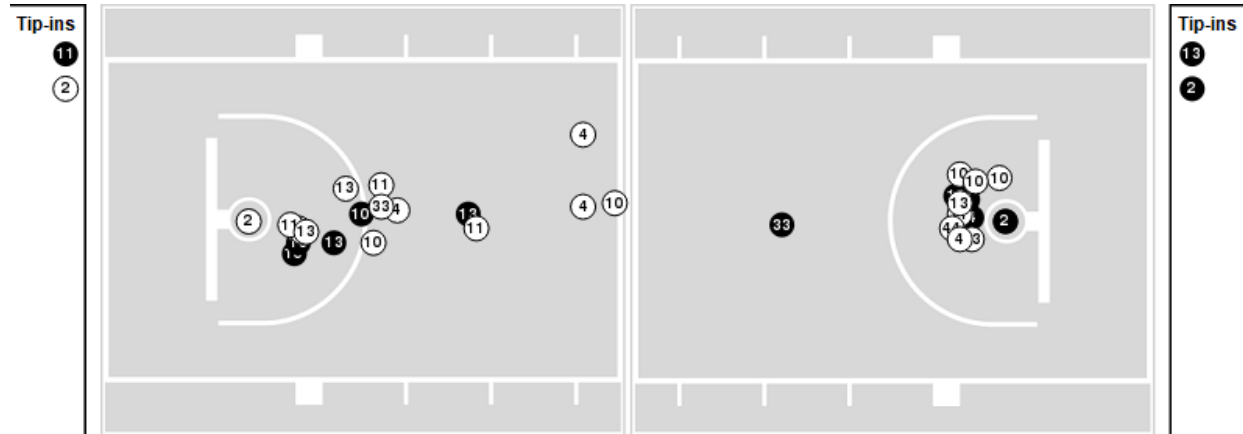
Players => 0, 1, 2, 3, 4, 5, 10, 11, 13, 15, 21, 23, 32, 33, 44, 55 FG Types=> All Results=> All

**Prairie View**

**All Field Goals**



**Blow Up Chart**



● Made ○ Missed N - Player Number

Prairie View	M/A	%
Field Goals	20/71	28
2 Points	15/52	29
3 Points	5/19	26
Free Throws	18/26	69

Prairie View	M/A	%
Points in the Paint	26 (13 / 35)	37
Fast Break Points	25 (16/19)	84
Second Chance Points	8 (4/13)	31
Effective FG%	32	

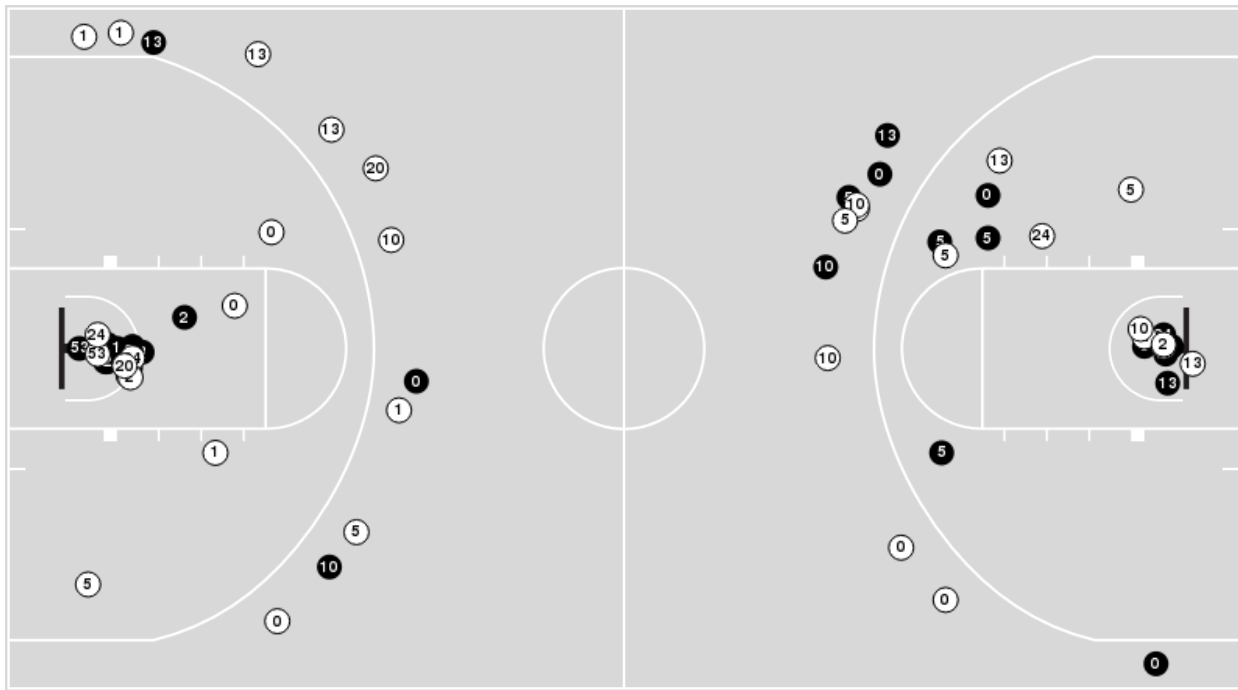


**Officials:** Brent Meaux, James Ford, Ryan McDaniel

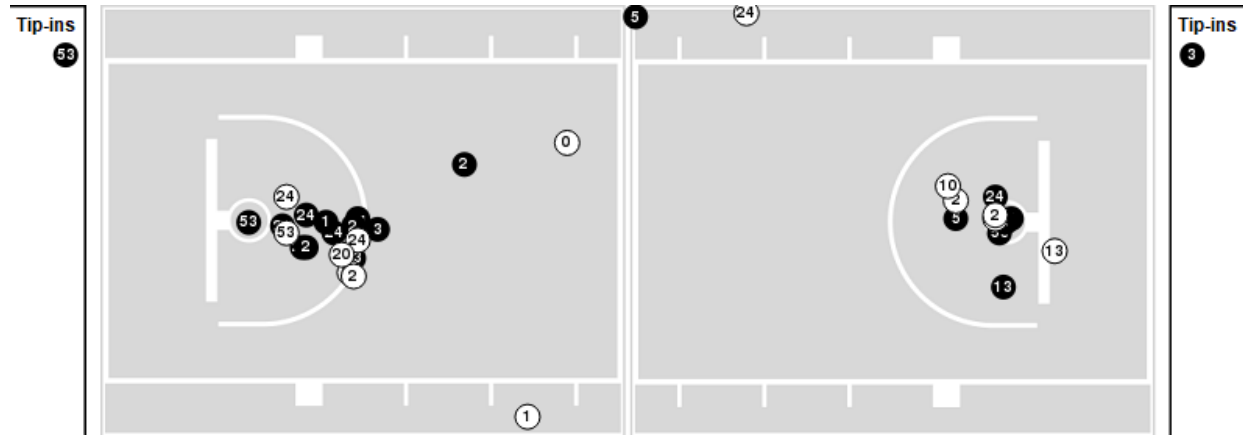
Players => 0, 1, 2, 3, 4, 5, 10, 11, 13, 20, 21, 24, 32, 34, 53 FG Types=>AllResults=>All

### New Mexico

#### All Field Goals



#### Blow Up Chart



● Made ○ Missed N - Player Number

New Mexico	M/A	%
Field Goals	32/66	48
2 Points	24/43	56
3 Points	8/23	35
Free Throws	22/35	63

New Mexico	M/A	%
Points in the Paint	40 (20 / 32)	63
Fast Break Points	15 (8/9)	89
Second Chance Points	22 (14/26)	54
Effective FG%	55	



**Prairie View at New Mexico**

12/20/22 The Pit, Albuquerque, NM  
2022-23 Men's Basketball

**Game Time:** 7:00 PM  
**Game Duration:** 2:00  
**Attendance:** 9,425

**Officials:** Brent Meaux, James Ford, Ryan McDaniel

**Prairie View**

Lineup	Quarter On	Time On	Quarter Off	Time Off	Time on Court	Score	Score Diff	Reb	Stl	Tov	Ass	PPP
0- Rasas Y/ 4- Douglas W/ 10- Gambrell J/ 11- Augustin H/ 44- Smith T/	1	20:00	1	18:46	01:14	1-4	-3	2	0	0	0	0.5319
0- Rasas Y/ 10- Gambrell J/ 11- Augustin H/ 33- Harris M/ 44- Smith T/	1	18:46	1	18:44	00:02	0-3	-3	0	0	0	0	0.0000
0- Rasas Y/ 4- Douglas W/ 10- Gambrell J/ 11- Augustin H/ 44- Smith T/	1	18:44	1	18:31	00:13	0-0	0	0	0	1	0	0.0000
4- Douglas W/ 10- Gambrell J/ 11- Augustin H/ 23- Myles B/ 44- Smith T/	1	18:31	1	16:32	01:59	2-1	1	2	0	0	0	0.6944
2- Bell B/ 4- Douglas W/ 10- Gambrell J/ 13- Harding K/ 44- Smith T/	1	16:32	1	12:58	03:34	7-11	-4	3	1	1	1	0.8750
4- Douglas W/ 11- Augustin H/ 13- Harding K/ 23- Myles B/ 33- Harris M/	1	12:58	1	11:40	01:18	0-5	-5	2	0	1	0	0.0000
0- Rasas Y/ 4- Douglas W/ 32- Neal P/ 33- Harris M/ 44- Smith T/	1	11:40	1	10:32	01:08	0-3	-3	1	0	0	0	0.0000
0- Rasas Y/ 4- Douglas W/ 10- Gambrell J/ 11- Augustin H/ 33- Harris M/	1	10:32	1	09:53	00:39	2-0	2	1	1	0	0	2.0000
2- Bell B/ 4- Douglas W/ 10- Gambrell J/ 11- Augustin H/ 33- Harris M/	1	09:53	1	08:40	01:13	0-0	0	4	1	1	0	0.0000
2- Bell B/ 4- Douglas W/ 10- Gambrell J/ 11- Augustin H/ 13- Harding K/	1	08:40	1	08:19	00:21	0-0	0	0	0	1	0	0.0000
4- Douglas W/ 10- Gambrell J/ 11- Augustin H/ 13- Harding K/ 23- Myles B/	1	08:19	1	07:54	00:25	2-2	0	0	0	0	0	2.0000
4- Douglas W/ 5- Miles K/ 10- Gambrell J/ 11- Augustin H/ 13- Harding K/	1	07:54	1	07:13	00:41	0-2	-2	0	0	0	0	0.0000
4- Douglas W/ 10- Gambrell J/ 11- Augustin H/ 13- Harding K/ 33- Harris M/	1	07:13	1	05:03	02:10	5-5	0	0	0	0	0	1.0246
4- Douglas W/ 10- Gambrell J/ 13- Harding K/ 33- Harris M/ 44- Smith T/	1	05:03	1	03:56	01:07	0-4	-4	1	0	1	0	0.0000
4- Douglas W/ 10- Gambrell J/ 32- Neal P/ 33- Harris M/ 44- Smith T/	1	03:56	1	02:54	01:02	0-0	0	1	0	1	0	0.0000
4- Douglas W/ 10- Gambrell J/ 13- Harding K/ 33- Harris M/ 44- Smith T/	1	02:54	1	01:18	01:36	4-5	-1	0	1	1	2	1.0000
4- Douglas W/ 10- Gambrell J/ 11- Augustin H/ 13- Harding K/ 33- Harris M/	1	01:18	1	01:18	00:00	0-0	0	0	0	0	0	0.0000
10- Gambrell J/ 11- Augustin H/ 13- Harding K/ 23- Myles B/ 33- Harris M/	1	01:18	1	00:46	00:32	2-0	2	1	1	0	0	2.0000
4- Douglas W/ 10- Gambrell J/ 11- Augustin H/ 13- Harding K/ 33- Harris M/	1	00:46	2	20:00	00:46	0-2	-2	0	0	1	0	0.0000
0- Rasas Y/ 4- Douglas W/ 10- Gambrell J/ 11- Augustin H/ 44- Smith T/	2	20:00	2	17:34	02:26	2-7	-5	2	0	0	1	0.4000
10- Gambrell J/ 13- Harding K/ 23- Myles B/ 33- Harris M/ 44- Smith T/	2	17:34	2	17:34	00:00	0-0	0	0	0	0	0	0.0000
2- Bell B/ 10- Gambrell J/ 13- Harding K/ 23- Myles B/ 33- Harris M/	2	17:34	2	12:30	05:04	10-10	0	4	2	1	0	1.0121
0- Rasas Y/ 2- Bell B/ 4- Douglas W/ 11- Augustin H/ 13- Harding K/	2	12:30	2	11:45	00:45	4-0	4	2	0	0	1	2.7778
4- Douglas W/ 11- Augustin H/ 13- Harding K/ 33- Harris M/ 44- Smith T/	2	11:45	2	10:51	00:54	4-3	1	0	1	0	1	1.6393
4- Douglas W/ 10- Gambrell J/ 13- Harding K/ 33- Harris M/ 44- Smith T/	2	10:51	2	07:24	03:27	5-9	-4	2	1	0	1	0.6010
0- Rasas Y/ 2- Bell B/ 11- Augustin H/ 23- Myles B/ 32- Neal P/	2	07:24	2	06:56	00:28	0-2	-2	0	0	0	0	0.0000
0- Rasas Y/ 2- Bell B/ 11- Augustin H/ 13- Harding K/ 23- Myles B/	2	06:56	2	06:56	00:00	0-1	-1	0	0	0	0	0.0000
0- Rasas Y/ 2- Bell B/ 4- Douglas W/ 11- Augustin H/ 13- Harding K/	2	06:56	2	06:28	00:28	0-1	-1	0	0	0	0	0.0000
0- Rasas Y/ 2- Bell B/ 4- Douglas W/ 10- Gambrell J/ 44- Smith T/	2	06:28	2	05:11	01:17	0-2	-2	2	0	0	0	0.0000
0- Rasas Y/ 4- Douglas W/ 10- Gambrell J/ 13- Harding K/ 44- Smith T/	2	05:11	2	04:54	00:17	0-0	0	0	0	1	0	0.0000
4- Douglas W/ 10- Gambrell J/ 13- Harding K/ 23- Myles B/ 44- Smith T/	2	04:54	2	03:58	00:56	3-0	3	1	2	0	0	1.5957
4- Douglas W/ 13- Harding K/ 23- Myles B/ 33- Harris M/ 44- Smith T/	2	03:58	2	03:01	00:57	3-3	0	0	0	0	0	1.7045
4- Douglas W/ 10- Gambrell J/ 13- Harding K/ 33- Harris M/ 44- Smith T/	2	03:01	2	02:21	00:40	0-4	-4	1	0	2	0	0.0000
2- Bell B/ 4- Douglas W/ 10- Gambrell J/ 11- Augustin H/ 33- Harris M/	2	02:21	2	02:21	00:00	0-0	0	0	0	0	0	0.0000
2- Bell B/ 4- Douglas W/ 10- Gambrell J/ 13- Harding K/ 33- Harris M/	2	02:21	2	01:07	01:14	4-2	2	3	0	0	0	1.3889
2- Bell B/ 4- Douglas W/ 13- Harding K/ 33- Harris M/ 44- Smith T/	2	01:07	2	00:00	01:07	3-3	0	2	0	0	0	1.0417



**Prairie View at New Mexico**

12/20/22 The Pit, Albuquerque, NM  
2022-23 Men's Basketball

**Game Time:** 7:00 PM  
**Game Duration:** 2:00  
**Attendance:** 9,425

**Officials:** Brent Meaux, James Ford, Ryan McDaniel

**New Mexico**

Lineup	Quarter On	Time On	Quarter Off	Time Off	Time on Court	Score	Score Diff	Reb	Stl	Tov	Ass	PPP
5- Mashburn, Jr. J/ 10- House J/ 13- Johnson J/ 24- Udeze M/ 53- Allick J/	1	20:00	1	17:22	02:38	7-3	4	3	0	2	2	1.0870
0- Jenkins K/ 5- Mashburn, Jr. J/ 10- House J/ 13- Johnson J/ 24- Udeze M/	1	17:22	1	14:08	03:14	7-7	0	8	0	1	1	1.2153
0- Jenkins K/ 5- Mashburn, Jr. J/ 10- House J/ 24- Udeze M/ 34- Seck B/	1	14:08	1	12:44	01:24	8-0	8	1	0	0	2	2.6667
0- Jenkins K/ 2- Dent D/ 5- Mashburn, Jr. J/ 24- Udeze M/ 34- Seck B/	1	12:44	1	09:53	02:51	5-2	3	3	0	1	1	1.2500
0- Jenkins K/ 2- Dent D/ 10- House J/ 24- Udeze M/ 34- Seck B/	1	09:53	1	09:52	00:01	0-0	0	0	0	0	0	0.0000
0- Jenkins K/ 2- Dent D/ 10- House J/ 13- Johnson J/ 34- Seck B/	1	09:52	1	08:06	01:46	1-0	1	1	0	1	0	0.4098
0- Jenkins K/ 2- Dent D/ 10- House J/ 13- Johnson J/ 24- Udeze M/	1	08:06	1	07:29	00:37	2-2	0	1	0	1	0	1.0638
2- Dent D/ 5- Mashburn, Jr. J/ 10- House J/ 13- Johnson J/ 24- Udeze M/	1	07:29	1	05:45	01:44	4-5	-1	3	0	1	0	1.0989
2- Dent D/ 3- Forsling S/ 5- Mashburn, Jr. J/ 10- House J/ 13- Johnson J/	1	05:45	1	05:03	00:42	2-0	2	3	0	0	0	2.2727
3- Forsling S/ 5- Mashburn, Jr. J/ 10- House J/ 13- Johnson J/ 53- Allick J/	1	05:03	1	03:56	01:07	4-0	4	1	0	0	2	2.0000
0- Jenkins K/ 3- Forsling S/ 5- Mashburn, Jr. J/ 10- House J/ 13- Johnson J/	1	03:56	1	03:31	00:25	0-0	0	2	0	0	0	0.0000
0- Jenkins K/ 2- Dent D/ 3- Forsling S/ 5- Mashburn, Jr. J/ 13- Johnson J/	1	03:31	1	00:46	02:45	5-6	-1	2	0	3	0	0.7764
0- Jenkins K/ 2- Dent D/ 5- Mashburn, Jr. J/ 13- Johnson J/ 34- Seck B/	1	00:46	2	20:00	00:46	2-0	2	1	1	0	0	2.0000
5- Mashburn, Jr. J/ 10- House J/ 13- Johnson J/ 24- Udeze M/ 53- Allick J/	2	20:00	2	12:30	07:30	17-12	5	12	1	2	7	1.1773
0- Jenkins K/ 2- Dent D/ 3- Forsling S/ 5- Mashburn, Jr. J/ 53- Allick J/	2	12:30	2	11:57	00:33	0-3	-3	0	0	0	0	0.0000
0- Jenkins K/ 2- Dent D/ 3- Forsling S/ 10- House J/ 53- Allick J/	2	11:57	2	11:45	00:12	0-1	-1	0	0	0	0	0.0000
0- Jenkins K/ 2- Dent D/ 10- House J/ 24- Udeze M/ 53- Allick J/	2	11:45	2	10:51	00:54	3-4	-1	1	0	1	1	1.2295
1- Appelhans B/ 2- Dent D/ 10- House J/ 24- Udeze M/ 53- Allick J/	2	10:51	2	06:56	03:55	11-5	6	9	0	2	3	1.3033
1- Appelhans B/ 2- Dent D/ 3- Forsling S/ 10- House J/ 53- Allick J/	2	06:56	2	06:28	00:28	2-0	2	1	0	0	0	2.2727
0- Jenkins K/ 1- Appelhans B/ 2- Dent D/ 3- Forsling S/ 10- House J/	2	06:28	2	06:01	00:27	0-0	0	1	0	0	0	0.0000
0- Jenkins K/ 1- Appelhans B/ 2- Dent D/ 3- Forsling S/ 13- Johnson J/	2	06:01	2	03:58	02:03	2-3	-1	3	0	3	1	0.4000
0- Jenkins K/ 1- Appelhans B/ 2- Dent D/ 3- Forsling S/ 34- Seck B/	2	03:58	2	02:21	01:37	7-3	4	2	2	0	0	1.8617
0- Jenkins K/ 1- Appelhans B/ 3- Forsling S/ 20- Fino-A-Laself S/ 34- Seck B/	2	02:21	2	02:21	00:00	0-0	0	1	0	1	0	0.0000
0- Jenkins K/ 1- Appelhans B/ 3- Forsling S/ 20- Fino-A-Laself S/ 32- Manzanares M/	2	02:21	2	00:00	02:21	5-7	-2	5	0	0	0	1.0504



**Prairie View at New Mexico**

12/20/22 The Pit, Albuquerque, NM  
2022-23 Men's Basketball

**Game Time:** 7:00 PM  
**Game Duration:** 2:00  
**Attendance:** 9,425

**Officials:** Brent Meaux, James Ford, Ryan McDaniel

**Prairie View**

Lineup	Time	Score	Score Diff	Pts/Min	Reb	Stl	Tov	Ass	PPP
4- Douglas W/ 10- Gambrell J/ 13- Harding K/ 33- Harris M/ 44- Smith T/	06:50	9-22	-13	1.3171	4	2	4	3	0.5711
2- Bell B/ 10- Gambrell J/ 13- Harding K/ 23- Myles B/ 33- Harris M/	05:04	10-10	0	1.9737	4	2	1	0	1.0121
0- Rasas Y/ 4- Douglas W/ 10- Gambrell J/ 11- Augustin H/ 44- Smith T/	03:53	3-11	-8	0.7725	4	0	1	1	0.3807
2- Bell B/ 4- Douglas W/ 10- Gambrell J/ 13- Harding K/ 44- Smith T/	03:34	7-11	-4	1.9626	3	1	1	1	0.8750
4- Douglas W/ 10- Gambrell J/ 11- Augustin H/ 13- Harding K/ 33- Harris M/	02:56	5-7	-2	1.7045	0	0	1	0	0.7911
4- Douglas W/ 10- Gambrell J/ 11- Augustin H/ 23- Myles B/ 44- Smith T/	01:59	2-1	1	1.0084	2	0	0	0	0.6944
4- Douglas W/ 11- Augustin H/ 13- Harding K/ 23- Myles B/ 33- Harris M/	01:18	0-5	-5	0.0000	2	0	1	0	0.0000
0- Rasas Y/ 2- Bell B/ 4- Douglas W/ 10- Gambrell J/ 44- Smith T/	01:17	0-2	-2	0.0000	2	0	0	0	0.0000
2- Bell B/ 4- Douglas W/ 10- Gambrell J/ 13- Harding K/ 33- Harris M/	01:14	4-2	2	3.2432	3	0	0	0	1.3889
2- Bell B/ 4- Douglas W/ 10- Gambrell J/ 11- Augustin H/ 33- Harris M/	01:13	0-0	0	0.0000	4	1	1	0	0.0000
0- Rasas Y/ 2- Bell B/ 4- Douglas W/ 11- Augustin H/ 13- Harding K/	01:13	4-1	3	3.2877	2	0	0	1	1.6393
0- Rasas Y/ 4- Douglas W/ 32- Neal P/ 33- Harris M/ 44- Smith T/	01:08	0-3	-3	0.0000	1	0	0	0	0.0000
2- Bell B/ 4- Douglas W/ 13- Harding K/ 33- Harris M/ 44- Smith T/	01:07	3-3	0	2.6866	2	0	0	0	1.0417
4- Douglas W/ 10- Gambrell J/ 32- Neal P/ 33- Harris M/ 44- Smith T/	01:02	0-0	0	0.0000	1	0	1	0	0.0000
4- Douglas W/ 13- Harding K/ 23- Myles B/ 33- Harris M/ 44- Smith T/	00:57	3-3	0	3.1579	0	0	0	0	1.7045
4- Douglas W/ 10- Gambrell J/ 13- Harding K/ 23- Myles B/ 44- Smith T/	00:56	3-0	3	3.2143	1	2	0	0	1.5957
4- Douglas W/ 11- Augustin H/ 13- Harding K/ 33- Harris M/ 44- Smith T/	00:54	4-3	1	4.4444	0	1	0	1	1.6393
4- Douglas W/ 5- Miles K/ 10- Gambrell J/ 11- Augustin H/ 13- Harding K/	00:41	0-2	-2	0.0000	0	0	0	0	0.0000
0- Rasas Y/ 4- Douglas W/ 10- Gambrell J/ 11- Augustin H/ 33- Harris M/	00:39	2-0	2	3.0769	1	1	0	0	2.0000
10- Gambrell J/ 11- Augustin H/ 13- Harding K/ 23- Myles B/ 33- Harris M/	00:32	2-0	2	3.7500	1	1	0	0	2.0000
0- Rasas Y/ 2- Bell B/ 11- Augustin H/ 23- Myles B/ 32- Neal P/	00:28	0-2	-2	0.0000	0	0	0	0	0.0000
4- Douglas W/ 10- Gambrell J/ 11- Augustin H/ 13- Harding K/ 23- Myles B/	00:25	2-2	0	4.8000	0	0	0	0	2.0000
2- Bell B/ 4- Douglas W/ 10- Gambrell J/ 11- Augustin H/ 13- Harding K/	00:21	0-0	0	0.0000	0	0	1	0	0.0000
0- Rasas Y/ 4- Douglas W/ 10- Gambrell J/ 13- Harding K/ 44- Smith T/	00:17	0-0	0	0.0000	0	0	1	0	0.0000
0- Rasas Y/ 10- Gambrell J/ 11- Augustin H/ 33- Harris M/ 44- Smith T/	00:02	0-3	-3	0.0000	0	0	0	0	0.0000
10- Gambrell J/ 13- Harding K/ 23- Myles B/ 33- Harris M/ 44- Smith T/	00:00	0-0	0	NaN	0	0	0	0	0.0000
0- Rasas Y/ 2- Bell B/ 11- Augustin H/ 13- Harding K/ 23- Myles B/	00:00	0-1	-1	NaN	0	0	0	0	0.0000





**Prairie View at New Mexico**

12/20/22 The Pit, Albuquerque, NM  
2022-23 Men's Basketball

**Game Time:** 7:00 PM  
**Game Duration:** 2:00  
**Attendance:** 9,425

**Officials:** Brent Meaux, James Ford, Ryan McDaniel

**New Mexico**

Lineup	Time	Score	Score Diff	Pts/Min	Reb	Stl	Tov	Ass	PPP
5- Mashburn, Jr. J/ 10- House J/ 13- Johnson J/ 24- Udeze M/ 53- Allick J/	10:08	24-15	9	2.3684	15	1	4	9	1.1494
1- Appelhans B/ 2- Dent D/ 10- House J/ 24- Udeze M/ 53- Allick J/	03:55	11-5	6	2.8085	9	0	2	3	1.3033
0- Jenkins K/ 5- Mashburn, Jr. J/ 10- House J/ 13- Johnson J/ 24- Udeze M/	03:14	7-7	0	2.1649	8	0	1	1	1.2153
0- Jenkins K/ 2- Dent D/ 5- Mashburn, Jr. J/ 24- Udeze M/ 34- Seck B/	02:51	5-2	3	1.7544	3	0	1	1	1.2500
0- Jenkins K/ 2- Dent D/ 3- Forsling S/ 5- Mashburn, Jr. J/ 13- Johnson J/	02:45	5-6	-1	1.8182	2	0	3	0	0.7764
0- Jenkins K/ 1- Appelhans B/ 3- Forsling S/ 20- Fino-A-Laself S/ 32- Manzanares M/	02:21	5-7	-2	2.1277	5	0	0	0	1.0504
0- Jenkins K/ 1- Appelhans B/ 2- Dent D/ 3- Forsling S/ 13- Johnson J/	02:03	2-3	-1	0.9756	3	0	3	1	0.4000
0- Jenkins K/ 2- Dent D/ 10- House J/ 13- Johnson J/ 34- Seck B/	01:46	1-0	1	0.5660	1	0	1	0	0.4098
2- Dent D/ 5- Mashburn, Jr. J/ 10- House J/ 13- Johnson J/ 24- Udeze M/	01:44	4-5	-1	2.3077	3	0	1	0	1.0989
0- Jenkins K/ 1- Appelhans B/ 2- Dent D/ 3- Forsling S/ 34- Seck B/	01:37	7-3	4	4.3299	2	2	0	0	1.8617
0- Jenkins K/ 5- Mashburn, Jr. J/ 10- House J/ 24- Udeze M/ 34- Seck B/	01:24	8-0	8	5.7143	1	0	0	2	2.6667
3- Forsling S/ 5- Mashburn, Jr. J/ 10- House J/ 13- Johnson J/ 53- Allick J/	01:07	4-0	4	3.5821	1	0	0	2	2.0000
0- Jenkins K/ 2- Dent D/ 10- House J/ 24- Udeze M/ 53- Allick J/	00:54	3-4	-1	3.3333	1	0	1	1	1.2295
0- Jenkins K/ 2- Dent D/ 5- Mashburn, Jr. J/ 13- Johnson J/ 34- Seck B/	00:46	2-0	2	2.6087	1	1	0	0	2.0000
2- Dent D/ 3- Forsling S/ 5- Mashburn, Jr. J/ 10- House J/ 13- Johnson J/	00:42	2-0	2	2.8571	3	0	0	0	2.2727
0- Jenkins K/ 2- Dent D/ 10- House J/ 13- Johnson J/ 24- Udeze M/	00:37	2-2	0	3.2432	1	0	1	0	1.0638
0- Jenkins K/ 2- Dent D/ 3- Forsling S/ 5- Mashburn, Jr. J/ 53- Allick J/	00:33	0-3	-3	0.0000	0	0	0	0	0.0000
1- Appelhans B/ 2- Dent D/ 3- Forsling S/ 10- House J/ 53- Allick J/	00:28	2-0	2	4.2857	1	0	0	0	2.2727
0- Jenkins K/ 1- Appelhans B/ 2- Dent D/ 3- Forsling S/ 10- House J/	00:27	0-0	0	0.0000	1	0	0	0	0.0000
0- Jenkins K/ 3- Forsling S/ 5- Mashburn, Jr. J/ 10- House J/ 13- Johnson J/	00:25	0-0	0	0.0000	2	0	0	0	0.0000
0- Jenkins K/ 2- Dent D/ 3- Forsling S/ 10- House J/ 53- Allick J/	00:12	0-1	-1	0.0000	0	0	0	0	0.0000
0- Jenkins K/ 2- Dent D/ 10- House J/ 24- Udeze M/ 34- Seck B/	00:01	0-0	0	0.0000	0	0	0	0	0.0000
0- Jenkins K/ 1- Appelhans B/ 3- Forsling S/ 20- Fino-A-Laself S/ 34- Seck B/	00:00	0-0	0	NaN	1	0	1	0	0.0000