

THE UNIVERSITY OF NEW MEXICO SOFTBALL

MARCH 17-19 AT UTAH STATE

2023 SCHEDULE

OVERALL: 12-15 • MW: 0-0 • H: 3-1 • A: 1-7 • N: 8-7

DATE	OPPONENT	TIME/SCORE
2/9	at Nicholls	W, 12-3 (5)
LSU Invitational Baton Rouge, La.		
2/10	25/19 Oregon State	L, 2-0
2/10	20/25 at LSU	L, 11-3 (6)
2/11	25/19 Oregon State	W, 8-0 (5)
2/11	20/25 at LSU	L, 11-3 (6)
Dr. Natalicio Memorial Tournament El Paso, Texas		
2/17	Buffalo	W, 11-2 (5)
2/18	Santa Clara	L, 7-2
2/18	Texas Tech	L, 12-7
2/19	at UTEP	Cancelled
2/19	at UTEP	Cancelled
2/23	CSU Bakersfield	W, 8-2
2/23	CSU Bakersfield	W, 10-3
Troy Cox Classic Las Cruces, N.M.		
2/24	4/4 Oklahoma State	L, 12-1 (5)
2/24	Creighton	W, 4-0
2/25	at New Mexico State	L, 7-6
2/25	Nebraska	L, 15-0 (5)
2/26	Nebraska	L, 1-0
3/1	UTEP	L, 2-1 (11)
3/1	UTEP	W, 8-4
Arizona State/GCU Classic Tempe, Ariz.		
3/3	Houston	W, 7-1
3/3	at RV/23 Arizona State	L, 6-2
3/4	12/11 Washington	L, 3-0
3/4	at GCU	L, 6-1
3/5	rv Charlotte	W, 7-6
Texas Tech Invitational Lubbock, Texas		
3/10	Buffalo	W, 6-0
3/10	Manhattan	W, 7-6 (9)
3/11	Buffalo	W, 4-1
3/11	at Texas Tech	L, 14-5 (5)
3/12	at Texas Tech	L, 7-2
3/15	at Weber State	Cancelled
3/17	at Utah State *	4 p.m.
3/18	at Utah State *	12 p.m.
3/19	at Utah State *	12 p.m.
3/24	San José State *	6 p.m.
3/25	San José State *	2 p.m.
3/26	San José State *	12 p.m.
3/28	New Mexico State	3 p.m.
3/31	at Fresno State *	7 p.m.
4/1	at Fresno State *	3 p.m.
4/2	at Fresno State *	1 p.m.
4/6	Boise State *	6 p.m.
4/7	Boise State *	2 p.m.
4/8	Boise State *	12 p.m.
4/15	Colorado State *	2 p.m.
4/16	Colorado State *	12 p.m.
4/21	at San Diego State *	7 p.m.
4/22	at San Diego State *	5 p.m.
4/23	at San Diego State *	1 p.m.
4/28	Nevada *	6 p.m.
4/29	Nevada *	2 p.m.
4/30	Nevada *	11 a.m.
5/5	at UNLV *	4 p.m.
5/6	at UNLV *	1 p.m.
5/11-13	MW Conference Tournament	
	San Diego, Calif.	

Bold denotes home games
 *denotes Mountain West game
 All times listed are Mountain Time
 Game times are subject to change



Record
 12-15, 0-0 MW
Head Coach
 Nicole Dickson
Record at UNM
 12-15, 0-0 (1st year)
Career Record
 181-138 (7th year)



Record
 8-12, 0-0 MW
Last 5 games:
 1-4
Head Coach:
 Steve Johnson
Record at USU
 194-261 (10th year)
Career Record:
 347-425 (16th year)

THE OPPONENT

The Lobos open Mountain West play on the road at Utah State for a three-game series against the Aggies. UNM's last win in Logan was May 14, 2021 with the Lobos winning the series 2-1, however, the Aggies have won the last four games in the series. USU shares three non-conference opponents with the Lobos in Cal State Bakersfield (W, 10-2 (5) and 3-2 (9)), GCU (L, 5-0) and Santa Clara (L, 5-1, 9-3 and 9-6).

vs. Utah State

Overall: 29-27

Last Five: 1-4

Last Game: L, 13-4 (6)

Last Win: 5/14/21 (9-3)

Series Trend: L4

LOBO NOTES

BY THE NUMBERS

- UNM is 8-1 when scoring first and 10-1 when scoring in the 1st inning
- Lobos are 9-0 when leading after the 4th, 6-0 when leading after the 5th and 8-0 when leading after the 6th.
- In UNM's 12 wins, 3 have been of the run-rule variety, the Lobos have scored 10 or more runs in 3 and scored 8 or more runs in 6.
- UNM leads the MW in hits (214), triples (6), total bases (298) and turned double plays (13), is second in batters struck out (137) and third in runs scored (125), RBI (113) and hit-by-pitches (21).
- UNM is 18th in the NCAA in double plays per game (0.48).
- Rachael Hathoot leads the MW in triples with three and has a seven-game hitting streak and 12 game streak of reaching base.
- Five players have a streak of five game or longer of reaching base (Rachael Hathoot- 12, Olivia Birkinshaw-7, Keyannah Chavez-6, Lauren Garcia- 6, Peyton Robinson-5). Hathoot (7) and Robinson (5) have the longest hitting streaks on the team.
- Amber Linton is 12th in the NCAA in strikeouts with 98, sixth in innings pitched (91.1).

30 FOR 30

- The Lobos are a perfect 30-30 in stolen bases this season with 11 players having at least one stolen base.
- Peyton Robinson leads with 13 stolen bases, followed by five from Rachael Hathoot, three from Keyannah Chavez and two for Olivia Birkinshaw. Seven players (Chloe Yeatts, Loran Walker, Emma Bramson, Ashley Archuleta, Janae Cameron, Evany Gonzalez and Grace Rana) have one.
- UNM had four stolen bases in each of the games against Cal State Bakersfield and 19 games with a stolen base, including the last five games. UNM has had multiple stolen bases in six games.

KEEP THEM GUESSING

- UNM has used 25 different lineups this season, using only the same batting order in the first two games and in both games on March 11 against Buffalo and Texas Tech.
- The Lobos have had five different players hit second, five different players hit third, four different players in the cleanup spot, six different players hit fifth, eight different players hit sixth, nine different players hit seventh, eight different players hit eighth and five different players hit ninth.
- Peyton Robinson has hit leadoff in 26 games, with Keyannah Chavez second in 15 games, Rachael Hathoot third in 16 games (including the last 12 and 15 of the last 16) and Lauren Garcia has hit in the cleanup spot in nine of the last 10 games.
- When it comes to the lineup per position, the Lobos have had just three players start all 27 games at the same position: Rachael Hathoot (shortstop), Keyannah Chavez (left) and Peyton Robinson (center).
- Five different players have started at catcher, five different players have started at first, three different players have started at third and four different players have been the DP.
- The Lobos are also versatile in their positions as Emma Bramson has started 16 games at third and five at second and Loran Walker has started six games at third, three at catcher and one game at first. Olivia Birkinshaw has played two games in right field, three as the designated player and played the last five games at third and Chloe Yeatts has started at catcher in 16 games, as the designated player in five and at first in one game.

ANY MEANS NECESSARY

- In UNM's first five games, the Lobos reached base 18 times via either a hit-by-pitch or walk (nine BB, nine HBP).
- The Lobos drew three walks and five hit-by-pitches in the win at Nicholls and had one hit-by-pitch in the first game against Oregon State with four walks.
- UNM has drawn at least one walk and one hit-by-pitch in 13 games, at least one hit-by-pitch in 15 games and at least one walk in 23 games. UNM had a season-high five walks against Buffalo, matching it against Houston and again against Manhattan, and a season-high five hit-by-pitches at Nicholls.
- 10 different players have reached on a HBP and 13 have reached on a walk. Olivia Birkinshaw currently leads with five hit-by-pitches, while Ashley Archuleta leads with nine walks.
- The Lobos are currently third in the MW in HBP with 21.

THE HONOR IS OURS

- New Mexico junior pitcher Amber Linton was named Mountain West Pitcher of the Week and New Mexico senior outfielder Peyton Robinson was named Mountain West Player of the Week following their performances at the Texas Tech Invitational.
- The selection marks the second weekly conference honor for Linton and the first for Robinson.
- Linton was sensational as the pitcher on record for all three of UNM's wins with two complete games and a 0.41 ERA, pitching 17.0 innings, striking out 20 and allowing one run.
- The Indiana native pitched a complete-game shutout in the 6-0 win over Buffalo on Friday, holding the Bulls to three hits while striking out nine, and then entered in the bottom of the seventh in a tied game against Manhattan and pitched 3.0 innings, allowing just one hit and struck out four with no walks or runs allowed in the 7-6 win. In total, she threw 10.0 innings,

OFFENSE

	UNM	USU
AVG.	.296	.237
OB %	.360	.314
SLG%	.412	.345
RUNS AVG.	125 4.6	74 3.7
HITS AVG.	214 7.9	125 6.3
BB AVG.	56 2.1	53 2.7
RBI	113	68
HR	15	11
SB-ATT	30-30	16-17
PITCHING		
ERA	4.91	3.87
SO AVG.	137 5.1	99 4.9
BB AVG.	80 3.0	53 2.7
OPP. AVG.	.305	.252
FIELDING		
DP	13	9
FLD %	.957	.961

2023 QUICK FACTS

TEAM INFORMATION

2022 Overall Record	26-27
2022 MW Record	6-18 (9th)
Letterwinners Returning/Lost	13/10
Pitchers Returning/Lost	2/4
Starters Returning/Lost	6/3
Newcomers	11

PROGRAM HISTORY

First Year of Softball	1978
All-Time Record	1053-1209-3
Mountain West Record	138-323-1
NCAA Tournament Appearances	3
1980 (IAAW), 1981 (IAAW) and 1983 (NCAA)	
Last NCAA Postseason Opponent	Cal State Fullerton
Last NCAA Postseason Result	CSUF won series 2-1
Conference Championships	3
1980 (Intermountain), 1981 (Intermountain) and 1983 (High Country)	

SOFTBALL STAFF

Head Coach	Nicole Dickson (First season)
Record at UNM	12-15
Career Record	181-138 (Seventh season)
Assistant Coach	Morgan Spearman (First season)
Assistant Coach	Skylar Black (First season)
Vol. Asst. Coach	Andrea Howard (First season)
Dir. of Operations	Shelley Black (First season)

GENERAL INFORMATION

Name of School	University of New Mexico
Founded	1889 by Territorial Legislature
Enrollment	25,015
Nickname	Lobos
School Colors	Cherry & Silver
Conference	Mountain West
Affiliation	NCAA Division I
Venue	Lobo Softball Field
Dimensions	205-225-205
Capacity	1,500
President	Dr. Garnett Stokes
Athletic Director	Eddie Nuñez

COMMUNICATIONS

Softball Contact	Allison Weiss
Email	allisonweiss@unm.edu
Cell Phone (Preferred)	(661) 313-5402
Communications Office	(505) 925-5520

DIGITAL MEDIA

Athletics Website	GoLobos.com
Main University Web Site	unm.edu
Conference Website	TheMW.com
Twitter	@UNMLoboSB
Instagram	@UNMLoboSB
Facebook	@UNMLoboSB

INTERVIEW REQUESTS

All interviews with UNM student-athletes and coaches are to be coordinated through the athletics communications office. Interviews may be arranged by contacting Allison Weiss in the athletics communications office (allisonweiss@unm.edu). All interview requests should be made at least 24 hours in advance.

- striking out 13 while walking one and allowing just four hits and no runs between the two games on Friday.
- Buffalo didn't record its first hit until the fourth inning, with Linton already at seven strikeouts by that point. Further, she retired the side in three innings in the game against the Bulls and had at least one strikeout in six of the innings. Against Manhattan, the Lobo struck out two in the seventh and retired the side in the eighth and the ninth with a strikeout in each inning. She pitched her second complete game of the weekend against Buffalo on Saturday, striking out seven in the 4-1 win.
- Linton went 3-1 on the week, pitching in four of UNM's five games and finished with 23 strikeouts in 19.0 innings pitched.
- Robinson reached base with a hit in all five games, including three games with multiple hits (one with two and two games with three hits) and led the Lobos with a .588 batting average and on-base percentage and team-high 10 hits, four runs scored and 11 total bases. In addition, she was second on the team in slugging percentage at .647 and was 2-2 with runners in scoring position and 6-7 in successfully advancing runners on the week. On the base paths, she went 4-4 on the week in stolen bases to lead the team, with three of the stolen bases leading to Robinson later coming around to score.
- The outfielder played a large role in UNM's win over Manhattan as her double in the top of the ninth scored the winning run, fouling off six-straight pitches with two outs before putting the ball in play. She also reached on a bunt in the second and stole second, eventually scoring as part of a three-run, five-hit inning that put UNM up 4-3. Later on in the game, Robinson reached on a bunt to put two runners on to start the sixth inning against the Jaspers, with the Lobos following that up with two more singles to bring UNM within one run.

THE COMEBACK x2

- The Lobos have twice rallied late in a game to earn the win: the 7-6 win over Charlotte and the 7-6 win over Manhattan.
- The Lobos trailed four times against Charlotte and responded each time to either tie or take the lead. The Niners again took the lead in the top of the sixth on three-straight singles, all with two outs, although the lead was short lived as Olivia Birkinshaw led off the bottom half with a home run to center. Lauren Garcia followed that up by reaching on an error by the Charlotte right fielder, taking second on the play, and Chloe Yeatts put the Lobos back in front at 5-4 with a single to the outfield. Charlotte reclaimed the lead in the top of the seventh on a two-run home run and down to their final two outs, Keyannah Chavez got the rally started with a single through the left side and Rachael Hathoot drove her in on a double to left field to tie the game at six. Birkinshaw ended the game on the next at-bat with a double of her own scoring Hathoot for the walk-off.
- Trailing 6-4 in the sixth inning against Manhattan, New Mexico had its first four hitters reach with Hathoot scoring Jenna Trim on a ball that dropped in shallow right field to make it a one-run game before the inning came to an end with bases loaded.
- Down to the final two outs and facing a full count, Maddie Boldt tied the game on a home run to center for her fourth of the season. Amber Linton entered in the bottom of the seventh and allowed just an infield single before getting outs two and three on swinging strikeouts to send the game to extra innings. In the ninth, Ashley Archuleta led off with a single to the outfield and following a fielder's choice and a flyout to right, Trim kept the inning going with a four-pitch walk. With the lineup turned over, and after fouling off six pitches, Peyton Robinson hit a double to right center to score Yeatts from second to give UNM its first lead since 4-3 in the second inning. Amber Linton left no chance of a rally, retiring the side to secure the Lobo win.

NEWCOMERS COMING THROUGH

- Newcomers Maddie Boldt, Emmalyn Brinka, Chloe Yeatts and Keyannah Chavez have made an impact in their first season as Lobos.
- In the circle, freshman Brinka threw a complete game to earn her first collegiate win against No. 19 Oregon State, striking out four and allowing two hits in the shutout. Brinka is second on the pitching staff in strikeouts (16), with the third-most innings pitched (29.2) and third-most appearances (11). She earned her first save in the second UTEP game.
- Boldt hit three home runs, a double and a triple with a total of eight RBI the first weekend. The junior had three RBI in Saturday's game against LSU and Oregon State, hitting a triple in the first inning against the Beavers to score two runs and a double in the fourth to score a run. Against the Tigers, Boldt hit a two-run home run and added a RBI to account for all three Lobo runs. She added her third-straight three-RBI game against Buffalo. Boldt has recorded at least one hit and one RBI in eight games, and has hit a home run in four games.
- Boldt led the conference with a 1.214 slugging percentage, three home runs, 17 total bases and 8 RBI in the first week.
- Chavez went 3-4 in the season opener at Nicholls which included a double.
- Yeatts drove in the first two runs of the season on a single through the right side in her first collegiate at-bat. The Oklahoma native hit her first home run in the game one win against Cal State Bakersfield, added her second at NMSU and her third home run at Texas Tech.
- Chavez has started all 27 games in left field and has been second in the batting order in 15 games, including the last seven and 11 of the last 12 games and led off against Washington.
- Yeatts has started in 22 games but played in 26, and has tallied 20 hits, 13 RBI and hitting .290 with a .333 on-base percentage and .435 slugging percentage. She's second on the team in home runs (3), tied for fourth in total bases (30) and fifth in slugging percentage (.435). She's started at catcher in 16 games, designated player in five games and first in one game and has hit cleanup in 10 games. Yeatts has finished with two hits in six games this season and at least one hit in 14 games.

RETURN OF RACHAEL

- Rachael Hathoot returned to the field after missing the 2022 season due to an injury, and has been a major boost for the Lobo infield.
- The Albuquerque native has started in 99 games for the Lobos and has tallied 82 hits and 133 total bases that includes 20 doubles, five triples and seven home runs. Her career batting average is .279, with a .342 on-base percentage and a .452 slugging percentage.
- Hathoot has had 22 multiple hit games and 13 multiple RBI games in her career, including nine multi-hit games and four multi-RBI games this season.
- Hathoot got going at UTEP, with three hits that included two triples, had a .778 slugging percentage and finished with three RBI.
- In the game against NMSU, Hathoot was a single shy of the cycle, hitting a double in the third to score two runs, a triple in the fifth to score a run and hit a home run to start the seventh inning, finishing with a career-high three hits and four RBI.
- In the ASU/GCU Classic, Hathoot hit .458 with a .667 slugging percentage that included 11 hits, four RBI, two doubles and a home run. Hathoot hit a double in the bottom of the 7th with the Lobos down to their final two outs and trailing 6-5 that tied the game at six. She then came around as the winning run on the next at-bat as the Lobos walked off against Charlotte. In the second game against UTEP, the Lobo shortstop hit a three-run home run in the bottom of the 6th against to turn the 5-4 UNM lead to 8-4. She had four multi-hit games with two games with three hits and reached base in all seven games.
- The Lobo leads the team in batting average (.377), slugging percentage (.584), triples (3) and RBI (17) and is second in on-base percentage (.429), doubles (4) and home runs (2) and tied for second in hits (29).
- Hathoot has reached base in the last 12 games and has a seven-game hit streak.
- Among the MW, Hathoot leads in triples (3), is tied for fourth in hits, seventh in batting average, tied for 10th in RBI, 11th in slugging percentage and on-base percentage.

CONSISTENCY IS KEY

- Freshman Keyannah Chavez reached base in the first 10 games this season, and had a six-game hitting streak, both coming to an end in the Oklahoma State game. She's registered a hit in 19 games with nine multi-hit games and reached base in 23 games this season.
- Chavez currently has a six-game streak of reaching base.
- Chavez earned her first conference award after being named the Mountain West Freshman of the Week on Feb. 21. Chavez's accolade came after the freshman led the Lobos at the plate hitting .556 with a .778 slugging percentage (tied for the team high), a team-high .600 on-base percentage, team-high five hits, team-high two doubles and finished with two RBI at UTEP's tournament.
- Chavez leads the team in runs scored (22) and doubles (5), is tied for second in hits (29) and walks (7), is third in on-base percentage (.422) and fourth in batting average (.358).
- In the MW, Chavez is tied for the conference lead in runs scored, tied for fourth in hits, is 10th in batting average and 12th in on-base percentage.

IT STARTS IN THE CIRCLE

- From the time she was hired, Coach Dickson has repeatedly stated that success starts in the circle, and has backed

that up by adding depth.

- It all starts with returner Amber Linton, who has pitched in 17 games with 15 starts. On the season, she has pitched 91.1 total innings, more than double the next Lobo pitcher (Taylor Snow) and more than the other five pitchers combined. She's recorded five or more strikeouts in 10 games this season, seven of which have come in the last nine games.
- Linton leads the MW in strikeouts per game with 98, 31 looking, and with eight wins. Nationally, she is 16th in strikeouts and fourth in innings pitched. She is averaging 5.8 strikeouts per game this season.
- Linton threw her first complete-game shutout in the win over Creighton and struck out nine in back-to-back outings (against Cal State Bakersfield and Creighton). She threw a career-high 11 innings in the first game against UTEP and recorded a career-high 12 strikeouts in the complete-game win against Houston. She pitched her second complete-game shutout against Buffalo on March 10 and has thrown nine complete games.
- In her two years at UNM, Linton has 254 strikeouts, placing her seventh all-time and five away from sixth.
- The RHP pitched a team-high 156.2 innings last season with a team-high 27 starts. She finished with 10+ strikeouts in two games and five or more strikeouts in 14 games.
- Linton's 6.97 strikeouts per game in 2022 was the single-season program record and her 156 strikeouts were the sixth-most in a single-season in program history.
- In addition, the Lobos return Samantha Fohrman, who has thrown in five games and 6.2 innings with two starts. Fohrman got the start in Saturday's game at LSU, going 1.1 innings and allowing one earned run on two hits.
- The Lobos added two freshmen pitchers in Emmalyn Brinka and Bella Mitchell, a redshirt-sophomore transfer in Snow and a junior transfer in Jenna Trim.
- Brinka got the start against Oregon State on Feb. 11 and pitched a complete-game shutout after pitching 2.2 innings of relief in Friday's game against LSU. To date, she's appeared in 11 games with four starts.
- Snow has appeared in 14 game with six starts, and pitched 36.2 innings, the second highest amongst the pitchers in both categories. She struck out two of the three hitters she faced in the fifth in the Feb. 17 against Buffalo to end the game and two in 1.1 innings of work against Santa Clara. Snow has recorded two strikeouts in four games with a season-high three strikeouts at Texas Tech and has had five appearances of not allowing a run.
- Snow entered in relief in the first inning of the second Cal State Bakersfield game and pitched 7.0 scoreless innings to earn her first collegiate win.
- Bella Mitchell made her first appearance in the game against Oklahoma State and struck out four hitters in 2.1 innings.

FULLY CHARGED BATTERY

- In addition to having six pitchers, the Lobos are fully stocked at the catcher position with six catchers, five of which have made at least one start.
- Leslie Romero returned with the most time behind the plate last season, starting at catcher in 24 games. Savana Martinez and Janae Cameron each started in seven games. The Lobos added two freshmen catchers in Chloe Yeatts and Grace Rana.
- Yeatts has started 16 games with Romero starting in four, Loran Walker starting in three and Janae Cameron and Martinez in two.
- Yeatts has thrown out two runners with Romero and Martinez each catching one runner trying to steal.

LOBOS IN THE OUTFIELD

- The Lobos had to replace two key pieces in the outfield with the graduation of Andrea Howard and Taryn Young and found stability in left in Keyannah Chavez and in right in Maddie Boldt.
- Howard started in all 53 games in 2022 and led the team at the plate with a .403 batting average, .531 on-base percentage and .875 slugging percentage, as well as led with 58 hits, 18 home runs, three triples, 57 RBI and 126 total bases.
- Howard held down center for the past four seasons, starting in 171 games.
- Young started all 53 games in right last season and accounted for 57 total bases, 31 hits, seven home runs, 24 RBI and 57 total bases. Young started in 119 games during her Lobo career, all in right.
- The Lobos returned outfielder Peyton Robinson, who has played in 126 games with 125 starts in her three years at UNM and started all 53 games in left last season.
- So far, Chavez (left) and Robinson (center) have started all 27 games and Maddie Boldt playing right in 23 games, Olivia Birkinshaw in two games and Elizabeth Baylor in two.
- The trio (Chavez, Robinson and Boldt) have led the Lobos at the plate, with Chavez and Robinson first and tied for second in hits and tied for second in total bases, and Boldt third with a .526 slugging percentage and third in RBI with 15. Boldt leads with four home runs and is tied for second with seven walks. Robinson also leads the team with 13 stolen bases. Robinson and Chavez have also led in the lineup with Robinson hitting leadoff in 26 games and Chavez in one and Chavez hitting second in 15 games.

NEW ERA IN LOBO SOFTBALL

- Nicole Dickson is in her first season at the helm of the softball program after being hired on June 3, 2022.
- Dickson spent the past six seasons at Stephen F. Austin. Of note, her first win at SFA was against New Mexico, a 5-1 win on Feb. 17, 2017. Her second win was also against UNM, a 3-1 final on Feb. 18, 2017.
- Shortly after being hired, Dickson added Morgan Spearman as an assistant coach, joining her at UNM from SFA. She completed her staff with her second assistant coach in Skylar Black.
- Coach Dickson oversees the pitching group and will occupy the third base coach's box, while Coach Spearman works with the outfielders and oversees the Lobo offense and will be in the first base coach's box when the Lobos are at-bat. Coach Black works with the catchers and the infielders.
- Dickson and staff hit the recruiting trail, adding reinforcements in the circle in Taylor Snow, Jenna Trim and Emmalyn Brinka, as well as a catcher in Chloe Yeatts and an outfielder in Maddie Boldt.

FIRST GAME, FIRST WIN

- Coach Dickson became just the second coach to win in their Lobo coaching debut, doing so with the largest margin of victory (+9). Erica Beach was the other head coach to win in her first game (a 10-2, five inning win against Utah Valley on Feb. 12, 2011).

WHAT'S NEW WITH UNM

- There are a total of 11 newcomers on the 2023 roster, with eight freshmen and three transfers.
- UNM added three pitchers, four outfielders, two catchers, one infielder and a pitcher who can also play infield.

MAKING A STATEMENT FROM THE START

- UNM had its first five hitters reach base in the season opener at Nicholls and scored six runs in the first on four hits, two hit-by-pitches and two walks. UNM added three runs in the third, two in the fourth and one in the fifth to earn the run-rule victory.
- UNM's win was the first season-opening run rule since 2011, a 10-2 win over Utah Valley in five and the fourth in program history (1993, 1992).
- The Lobos picked up a signature win on Feb. 11, defeating No. 19 Oregon State 8-0 in five innings.
- It was UNM's first win over a ranked opponent since No. 23 Nebraska back on March 19, 2016 (a 6-3 win) and the first done in run-rule fashion since Feb. 23, 2012, a 15-3 win over another Power 5 opponent in No. 14/16 Texas A&M in six. Historically, it was UNM's ninth win over a ranked opponent.
- The Lobos needed just two innings to produce their eight runs on eight hits, scoring four in the first and four in the third. Six different Lobos contributed a hit with Chloe Yeatts and Maddie Boldt leading with 2-3 outings at the plate with Boldt driving in three RBI, while Olivia Birkinshaw added three RBI on a pinch-hit double in the fourth. Six of UNM's runs came with two outs.

JUMP RIGHT IN

- UNM opened the season on the road with two Power 5 opponents who made the NCAA Tournament last season, including a team that advanced to the WCWS.
- The Lobos faced Oregon State and LSU opening weekend, with OSU coming off of a 39-22 season in which the Beavers defeated Ohio State and Tennessee in the Knoxville regional and swept Stanford in the Super Regionals to earn a spot as one of the final eight teams in Oklahoma City.
- Oregon State finished the season ranked 10th by ESPN.com and USA Softball and 8th in the USA Today / NFCA rankings.
- LSU went 34-23 last season and was selected to the NCAA Tournament in the Tempe Regional. The Tigers lost their first two games, including to MW opponent San Diego State.

NO LET UP IN NON-CONFERENCE

- The Lobos will play a total of eight teams that made the NCAA Tournament a season ago, three teams that advanced to the Super Regionals and two teams that made the WCWS in the non-conference portion of their schedule. MW opponent San Diego State will make nine NCAA Tournament teams on the 2023 schedule overall.
- UNM plays at least one Power 5 school every non-conference tournament, which includes a total of seven schools from four of the Power 5 conferences. Of those, two are from the Big 12, three from the Pac-12, and one each from the Big Ten and SEC.
- The Lobos will face the aforementioned LSU (SEC) and Oregon State (Pac-12), Oklahoma State (Big 12), Nebraska (Big Ten), Arizona State (Pac-12), Washington (Pac-12) and Texas Tech (Big 12).
- In addition, the Lobos will play Weber State (Big Sky) and GCU (WAC), who both made the NCAA Tournament after winning its respective conference tournaments.
- Of the teams that UNM will play in the non-conference, nine finished with 30-plus wins last season with three finishing with 40-plus wins.
- UNM will play schools from 15 different conferences, spanning from coast-to-coast, and includes the Southland, SEC, Pac-12, MAC, WCC, Big 12, C-USA, Big West, BIG East, WAC, Big 10, American, MAAC and Big Sky.
- Of UNM's non-conference opponents, four were ranked in the ESPN/ USA Softball Collegiate Top 25 preseason rankings. Oklahoma State was the highest-ranked team at No. 3, Washington was No. 16, LSU No. 20 and Oregon State No. 25.
- In the Softball America Preseason Top 25, Oklahoma State was No. 2, Washington was No. 17, Oregon State was No. 24 and Arizona State was No. 25.
- In the USA Today/NFCA preseason rankings, Oklahoma State was picked No. 3, Washington No. 14, Oregon State No. 19, Arizona State No. 22 and LSU No. 25. Nebraska was receiving votes.
- Oklahoma State will be the third ranked team that the Lobos will play thus far, joining LSU and Oregon State, but will be the highest ranked team at No. 4.

IT'S NOT HOW YOU START...

- UNM was picked eighth in the MW Preseason Coaches' Poll with 23 points. The Lobos were 2 points behind a three-way tie for fifth with Fresno State, Nevada and San José State and two points ahead of Utah State.

CALL HER COACH HOWARD

- She may have hung up her cleats as a collegiate player, but Andrea Howard's time as a Lobo isn't over. UNM head softball coach Nicole Dickson announced the addition of Howard as a volunteer assistant coach in September, with Howard assisting with the outfield and hitting.
- Howard graduated as the program's all-time leader in home runs and total bases, second in career slugging percentage, runs-batted-in and walks and fourth in on-base percentage.
- Through her 222 games as a Lobo, starting in 221, Howard recorded 47 home runs, 380 total bases, 147 RBI, 123 walks and carried a slugging percentage of .637 and an on-base percentage of .427.
- She was a three-time All-Mountain West honoree, became the only two-time first team Academic All-American in program history and is a three-time CoSIDA All-American, and was considered for the NCAA Woman of the Year Award as the sole representative of the Mountain West.



0
Evany Gonzalez
INF • 5-1 • FR. • L/R
Alvin, Texas



2
Savana Martinez
C • 5-3 • RS-SO. • R/R
Albuquerque, N.M.



3
Rachael Hathoot
INF • 5-8 • RS-JR. • R/R
Albuquerque, N.M.



4
Jenna Trim
P/UT • 5-10 • JR. • R/R
North Curl Curl, Australia



5
Emmalyn Brinka
P • 6-0 • FR. • R/R
Chandler, Ariz.



7
Ashley Archuleta
INF • 5-4 • SO. • L/R
Rio Rancho, N.M.



8
Bella Mitchell
P • 5-6 • FR. • R/R
New Braunfels, Texas



9
Seleste Compian
OF • 5-1 • FR. • L/R
Rosenberg, Texas



12
Savannah Braun
OF • 5-10 • JR. • R/R
Tualatin, Ore.



13
Elizabeth Baylor
OF • 5-8 • FR. • R/R
Richmond, Texas



14
Taylor Snow
P • 5-10 • R-SO. • R/R
Columbia, La.



16
Leslie Romero
C • 5-6 • SR. • R/R
Gonzales, Calif.



17
Amber Linton
P • 6-0 • JR. • R/R
Franklin, Ind.



18
Grace Rana
C • 5-6 • FR. • R/R
Queen Creek, Ariz.



20
Emma Bramson
INF • 5-7 • SO. • R/R
Valencia, Calif.



21
Peyton Robinson
OF • 5-6 • SR. • L/R
Saginaw, Texas



24
Diamond Sandoval
OF • 5-3 • SO. • R/R
Norwalk, Calif.



25
Chloe Yeatts
C • 5-9 • FR. • R/R
Ardmore, Okla.



27
Olivia Birkinshaw
OF • 5-10 • SO. • R/R
Santa Margarita, Calif.



28
Samantha Fohrman
P • 5-7 • SR. • R/R
Cottage Grove, Minn.



34
Maddie Boldt
OF • 5-8 • JR. • R/R
Round Rock, Texas



38
Keyannah Chavez
OF • 5-1 • FR. • L/L
Leander, Texas



42
Loran Walker
C • 5-6 • RS-FR. • R/R
Meridian, Idaho



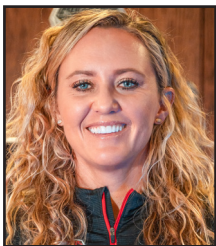
44
Lauren Garcia
INF • 5-11 • RS-FR. • R/R
El Paso, Texas



55
Janae Cameron
C • 5-9 • SR. • R/R
Windsor, Colo.



77
Reyann Tuck
1B • 6-0 • SR. • R/R
Hillsboro, Ore.



Nicole Dickson
Head Coach



Morgan Spearman
Assistant Coach



Skylar Black
Assistant Coach



Andrea Howard
Volunteer Ast.



Shelley Black
Dir. of Operations



Kelly Trevino
Athletic Trainer



NUMERICAL ROSTER

#	NAME	POS	HT	YR	B/T	HOMETOWN (PREVIOUS SCHOOL)
0	Evany Gonzalez	INF	5-1	Fr.	L/R	Alvin, Texas (Lutheran South Academy)
2	Savana Martinez	C	5-3	RS-So.	R/R	Albuquerque, N.M. (Rio Rancho HS)
3	Rachael Hathoot	INF	5-8	RS-Jr.	R/R	Albuquerque, N.M. (La Cueva HS)
4	Jenna Trim	P/UT	5-10	Jr.	R/R	North Curl Curl, NSW, Australia (Pensacola State)
5	Emmalyn Brinka	P	6-0	Fr.	R/R	Chandler, Ariz.(Corona del Sol HS)
7	Ashley Archuleta	INF	5-4	So.	L/R	Rio Rancho, N.M. (Cleveland HS)
8	Bella Mitchell	P	5-6	Fr.	R/R	New Braunfels, Texas (Canyon HS)
9	Seleste Compian	OF	5-1	Fr.	L/R	Rosenberg, Texas (George Ranch HS)
12	Savannah Braun	OF	5-10	Jr.	R/R	Tualatin, Ore. (Tualatin HS)
13	Elizabeth Baylor	OF	5-8	Fr.	R/R	Richmond, Texas (Churchill Fulshear HS)
14	Taylor Snow	P	5-10	RS-So.	R/R	Columbia, La. (Louisiana)
16	Leslie Romero	C	5-4	Sr.	R/R	Gonzales, Calif. (Salinas HS)
17	Amber Linton	P	6-0	Jr.	R/R	Franklin, Ind. (Indiana)
18	Grace Rana	C	5-6	Fr.	R/R	Queen Creek, Ariz. (Queen Creek HS)
20	Emma Bramson	INF	5-7	So.	R/R	Valencia, Calif. (Valencia HS)
21	Peyton Robinson	OF	5-6	Sr.	L/R	Saginaw, Texas (Southern Nazarene)
24	Diamond Sandoval	OF	5-3	Jr.	R/R	Norwalk, Calif. (St. Paul HS)
25	Chloe Yeatts	C	5-9	Fr.	R/R	Ardmore, Okla. (Lone Grove HS)
27	Olivia Birkinshaw	OF	5-10	So.	R/R	Santa Margarita, Calif. (Mission Viejo HS)
28	Samantha Fohrman	P	5-7	Sr.	R/R	Cottage Grove, Minn. (Georgian Court)
34	Maddie Boldt	OF	5-8	Jr.	R/R	Round Rock, Texas (Incarnate Word)
38	Keyannah Chavez	OF	5-1	Fr.	L/L	Leander, Texas (Glen HS)
42	Loran Walker	C	5-6	RS-Fr.	R/R	Meridian, Idaho (Rocky Mountain HS)
44	Lauren Garcia	INF	5-11	RS-Fr.	R/R	El Paso, Texas (Montwood HS)
55	Janae Cameron	C	5-9	Sr.	R/R	Windsor, Colo. (Nebraska Omaha)
77	Reyan Tuck	1B	6-0	Sr.	R/R	Hillsboro, Ore. (Towson)

COACHING STAFF

Head Coach: Nicole Dickson	1st season	Eastern New Mexico
Assistant Coach: Morgan Spearman	1st season	Angelo State
Assistant Coach: Skylar Black	1st season	Stephen F. Austin
Volunteer Assistant: Andrea Howard	1st season	New Mexico
Director of Ops: Shelley Black	1st season	Stephen F. Austin

HOME

ARIZONA (2)

Emmalyn Brinka, Grace Rana

AUSTRALIA (1)

Jenna Trim

CALIFORNIA (4)

Olivia Birkinshaw, Emma Bramson, Leslie Romero, Diamond Sandoval

COLORADO (1)

Janae Cameron

IDAHO (1)

Loran Walker

INDIANA (1)

Amber Linton

LOUISIANA (1)

Taylor Snow

MINNESOTA (1)

Samantha Fohrman

NEW MEXICO (3)

Ashley Archuleta, Rachael Hathoot, Savana Martinez

OKLAHOMA (1)

Chloe Yeatts

OREGON (2)

Savannah Braun, Reyan Tuck

TEXAS (8)

Elizabeth Baylor, Maddie Boldt, Keyannah Chavez, Seleste Compian, Lauren Garcia, Evany Gonzalez, Bella Mitchell, Peyton Robinson

PRONUNCIATION GUIDE

3	RACHAEL HATHOOT	Ray-chel HAT-hoot
9	Seleste COMPAN	CALM-pee-ON
12	Savannah BRAUN	BRAWN
18	Grace RANA	RAIN-ah
25	Chloe YEATTS	Rhymes with Gates
28	Samantha FOHRMAN	FOUR-mihn
42	LORAN Walker	Lauren
77	REYAN Tuck	REE-ann

CLASS

SENIORS (5) (*Super Senior)

55	Janae Cameron*	C
28	Samantha Fohrman	RHP
21	Peyton Robinson*	OF
16	Leslie Romero	C
77	Reyan Tuck*	1B

JUNIORS (6)

34	Maddie Boldt	OF
12	Savannah Braun	OF
3	Rachael Hathoot (R-Jr.)	INF
17	Amber Linton	RHP
24	Diamond Sandoval	OF
4	Jenna Trim	RHP/UTL

SOPHOMORES (5)

7	Ashley Archuleta	INF
27	Olivia Birkinshaw	OF
20	Emma Bramson	INF
2	Savana Martinez (R-So.)	C
14	Taylor Snow (R-So.)	RHP

FRESHMEN (10)

13	Elizabeth Baylor	OF
5	Emmalyn Brinka	RHP
38	Keyannah Chavez	OF
9	Seleste Compian	OF
44	Lauren Garcia (R-Fr.)	INF
00	Evany Gonzalez	INF
8	Bella Mitchell	RHP
18	Grace Rana	C
42	Loran Walker	C
25	Chloe Yeatts	C

POSITIONAL BREAKDOWN

PITCHERS (6)

4	Jenna Trim
5	Emmalyn Brinka
8	Bella Mitchell
14	Taylor Snow
17	Amber Linton
28	Samantha Fohrman

CATCHERS (6)

2	Savana Martinez
16	Leslie Romero
18	Grace Rana
25	Chloe Yeatts
42	Loran Walker
55	Janae Cameron

INFIELDERS (6)

00	Evany Gonzalez
3	Rachael Hathoot
7	Ashley Archuleta
20	Emma Bramson
44	Lauren Garcia
77	Reyan Tuck

OUTFIELDERS (8)

9	Seleste Compian
12	Savannah Braun
13	Elizabeth Baylor
24	Diamond Sandoval
21	Peyton Robinson
27	Olivia Birkinshaw
34	Maddie Boldt
38	Keyannah Chavez

UTILITY (1)

4	Jenna Trim
---	------------

HEAD COACH NICOLE DICKSON



Nicole Dickson enters her first season at The University of New Mexico and became the sixth head coach in program history when she was hired on June 3, 2022.

Dickson spent the last six seasons as the head coach at Stephen F. Austin, with the Ladyjacks surpassing 30 wins in four of five seasons and were on pace for another stellar result in the shortened 2020 season with a 19-4 record. Through her six seasons, Dickson compiled a 169-123 record and was named the 2021 Southland Conference Coach of the Year. Under her leadership, SFA had 20 all-conference selections, as well as two hitter of the year and pitcher of the year selections, a player of the year and a freshman of the year.

In 2021, the program set three program records. SFA's 25 league wins and just two conference losses were a program best, with the team setting another program record with 18 consecutive wins.

In the shortened 2020 season, Dickson and the Ladyjacks went 19-4 and set a program record with a then-13 consecutive wins with a NCAA Division I best nine true road wins.

In the 2019, SFA went 36-23, compiling wins over Power Five programs Illinois, Mississippi State, Indiana and Baylor.

Before taking the helm at SFA, Dickson gained experience as the head coach at Tyler Junior College (2013-16) and a spent a year as the head coach at Paris Junior College (2012-13). Dickson got her start in coaching as a graduate assistant at Hardin-Simmons in 2008 before getting her first coaching job as an assistant coach at Howard College in 2010.

Dickson earned a B.S. in health and physical education from Eastern New Mexico in 2008 and earned a master's in sports management and kinesiology from Hardin-Simmons in 2009.

Coach Dickson has several ties to New Mexico. She pitched at Eastern New Mexico from 2007-08 and umpired in the summers in Albuquerque while in college.

In addition, Coach Dickson's first win at SFA was against UNM (a 5-1 win on Feb. 17, 2017).

YEAR-BY-YEAR

YEAR	SCHOOL	OVERALL	CONFERENCE
2023	New Mexico	12-15 (.444)	0-0
2022	Stephen F. Austin	31-27 (.534)	18-6 (.750)
2021	Stephen F. Austin	35-12 (.745)	25-2 (.926)
2020	Stephen F. Austin	19-4 (.826)	3-0 (1.000)
2019	Stephen F. Austin	36-23 (.610)	18-9 (.667)
2018	Stephen F. Austin	31-24 (.564)	18-9 (.667)
2017	Stephen F. Austin	17-33 (.340)	9-15 (.375)
2016	Tyler JC	60-6 (.909)	27-1 (.964)
2015	Tyler JC	39-18 (.684)	18-10 (.643)
2014	Tyler JC	Hired to start softball program	
2013	Paris JC		
2012	Paris JC		

COACHING HISTORY

2017-22: Stephen F. Austin, Head Coach
 2013-16: Tyler Junior College, Head Coach
 2012-13: Paris Junior College, Head Coach
 2010-12: Howard College, Assistant Coach
 2008-09: Hardin-Simmons, Graduate Assistant

RANKED WINS

No. 16	Indiana	1-0	3/1/19
No. 24	Mississippi St.	1-0	2/10/19
No. 25	Illinois	7-2	2/23/19
No. 19	Oregon State	8-0 (5)	2/11/23

COACH DICKSON ALL-TIME RECORDS

OPPONENT	Series	H	A	N
Abilene Christian	9-9	2-4	7-5	
Arizona State	0-1		0-1	
Arkansas-Pine Bluff	1-0			1-0
Austin Peay	1-0			1-0
Baylor	1-3	0-1	1-2	
Belmont	1-0			1-0
Bowling Green	0-1			0-1
Buffalo	3-0			3-0
Butler	1-1			1-1
Cal State Bakersfield	2-0	2-0		
Central Arkansas	6-6	2-1	4-4	0-1
Charlotte	1-0			1-0
Coppin State	1-0			1-0
Creighton	1-0			1-0
Drake	1-0			1-0
Evansville	0-1			0-1
Georgia State	0-1			0-1
Grambling State	1-0			1-0
Grand Canyon	1-3		0-1	1-2
Hofstra	1-0			1-0
Houston	1-2		0-2	1-0
Houston Baptist	10-2	7-2	3-0	
Illinois	1-0			1-0
Illinois State	0-1			0-1
Incarnate Word	11-1	2-1	9-0	
Indiana	1-0			1-0
Jackson State	3-0	1-0		2-0
Jacksonville	1-1			1-1
Jacksonville St.	1-0			1-0
Kansas	0-3			0-3
Kent State	1-0			1-0
Lamar	15-6	7-5	8-1	
Louisiana	0-2		0-2	
Louisiana-Monroe	6-3	1-1	4-2	1-0
LSU	0-6		0-6	
Louisiana Tech	2-4	2-1	0-2	0-1
Manhattan	1-0			1-0
Maryland	1-0			1-0
McNeese	4-9	4-3	0-4	0-2
Memphis	3-0	2-0		1-0
Middle Tennessee	4-0	1-0		3-0
Mississippi State	1-3		1-3	
Mississippi Valley	2-1			2-1
Missouri	0-1		0-1	
Missouri State	1-5		0-1	1-4
Nebraska	0-2			0-2
New Mexico	2-0			2-0
New Mexico State	0-1		0-1	
Nicholls	5-5	4-2	1-3	
North Texas	0-4		0-4	
Northern Iowa	2-0			2-0
Northwestern State	8-3	6-3	1-0	1-0
Oklahoma State	0-1			0-1
Ole Miss	0-3		0-3	
Oregon	0-1			0-1
Oregon State	1-1			1-1
Pitt	0-1			0-1
Prairie View	6-0	2-0	4-0	
Purdue	2-0			2-0
Sam Houston State	13-6	5-1	8-4	0-1
Santa Clara	0-1			0-1
Seattle	2-0			2-0
South Alabama	2-3		2-3	
South Dakota State	0-1			0-1
Southeastern La.	1-3		1-2	0-1
Southern	3-0			3-0
Southern Illinois	0-1			0-1
Southern Miss	1-1		1-1	
Syracuse	0-1			0-1
Tarleton State	6-2	2-1	3-0	1-1
Tennessee Tech	1-1			1-1
Texas Arlington	2-3	1-1	1-2	
Texas A&M	0-5		0-5	
Texas A&M-CC	8-1	3-0	5-1	
Texas Southern	8-0	3-0	4-0	1-0
Texas Tech	0-4		0-2	0-2
UMKC	0-2			0-2
USC Upstate	0-1			0-1
UTEP	1-1	1-1		
UT Martin	1-0			1-0
Valparaiso	1-0			1-0
Washington	0-1			0-1
Western Kentucky	0-2			0-2
Western Michigan	3-0			3-0
TOTAL	181-138	60-28	68-68	53-42

ASSISTANT COACH MORGAN SPEARMAN



Morgan Spearman enters her first season as an assistant coach with the Lobos after joining the program in June 2022.

In her role with UNM, Spearman's primary responsibilities will be hitting and outfield with recruiting as a secondary responsibility.

"We have worked together for five years now and balance each other well," stated Dickson. "Her strengths include player development and teaching the game, with an incredible work ethic and task efficiency, and preparation with scouting and practice plans. I'm excited to have her join UNM Softball."

As mentioned, the new Lobo coach has worked with Dickson for the past five seasons at Stephen F. Austin, working with the Ladyjack outfielders and hitters as well as handled team travel and program operations.

Working with Dickson, Spearman was instrumental to the Ladyjacks' success in winning the Southland Conference in 2021 and the WAC Southwest Division in 2022 and in accumulating 30-plus wins in four of the past five seasons. Working with the hitters, Spearman developed the 2021 Southland Hitter of the Year along with three named to the All-Southland First Team, two placed on the All-Southland Second Team and one on the All-Southland Third Team in 2021. This past year, Spearman helped two players earn All-WAC Second Team honors.

During her time at SFA, the Ladyjacks had two hitter of the year selections.

Previous to serving as the assistant coach at SFA, Spearman was an assistant coach at Eastern New Mexico from 2016-17 and was a graduate assistant at her alma mater, Angelo State, from 2014-16.

Spearman played collegiately at Angelo State from 2011-14, earning All-America honors in 2013 and 2014. Further, she was named to the first team all-region and a NFCA Third Team All-American in 2013 and in 2014, was named to the NFCA All-America First Team and named the Division II Softball Player of the Year Honda Cup Award winner. An outfielder, Spearman was the Lone Star Conference Player of the Year in 2014, and broke Angelo State and Lone Star Conference single-season records her senior season after hitting .506.

ASSISTANT COACH SKYLAR BLACK



Skylar Black enters his first year as an assistant coach at UNM after being hired in July 2022.

As a former catcher at Stephen F. Austin, Black will oversee the catcher position and serve as the infield coach with the Lobos.

Black joins the program after serving as a volunteer assistant coach at SFA with the baseball team, where he garnered experience working with the catchers and was the secondary infield coach.

"I have worked with Skylar for two years, so he knows our expectations and culture," stated Dickson. "He's a high-character individual that is hard working and can teach and develop players defensively, which is what we need."

As aforementioned, Black was a catcher for the Lumberjacks. His senior season, Black was named to the 2021 All-Southland Conference Second Team after leading the team in total RBI (34), home runs (seven), total bases (74) and slugging percentage (.510). As a sophomore, he split time as catcher, first base and designated hitter.

After graduation, Black spent a season with the Missoula Paddle-Heads in the Pioneer League.

BY MONTH

BATTING

MONTH	AVG.	G	AB	R	H	2B	3B	HR	RBI	TB	SLG%	BB	SO	OB%	SF	SH	SB	SBA
Feb.	.286	15	377	75	108	13	5	9	67	158	.419	32	74	.361	5	4	20	20
March	.306	12	346	50	106	14	1	6	46	140	.405	24	50	.358	4	9	10	10
April																		
May																		

PITCHING

Month	ERA	W-L	G	CG	SHO	SV	IP	H	R	ER	SO	BB	2B	3B	HR	AVG.	WP	HBP
Feb.	5.57	6-9	15	6	2	0	88.0	116	88	70	68	51	31	1	10	.305	7	14
March	4.13	6-6	12	5	1	1	83.0	100	56	49	69	29	12	2	9	.304	3	11
April																		
May																		

UNM WHEN HOME/AWAY/NEUTRAL

STAT	HOME (4)	AWAY (8)	NEUTRAL (15)
RUNS	27	34	64
Opp	11	65	68
BAVG.	.341	.308	.274
Opp	.250	.408	.266
HITS	43	66	105
Opp	29	84	103
HR	3	8	4
SO	6	39	79
Opp	20	23	94
BB	10	12	34
Opp	13	21	46
ERA	1.75	9.07	4.05
Opp	5.07	4.20	3.71

SERIES HISTORY

UTAH STATE

Series Record: 29-27

3/31/78	W	8-7	4/6/90	L	7-2
4/7/79	W	2-0	4/6/90	W	5-4
4/7/79	W	3-2	2/18/01	W	5-4
4/4/80	L	3-0	3/1/13	W	4-2
4/4/80	W	5-4	4/25/14	L	12-11
5/10/80	W	3-2 (9)	4/26/14	W	20-3 (5)
5/10/80	W	2-1 (8)	4/27/14	W	6-4
4/18/81	W	2-1	3/20/15	L	4-0
4/24/81	L	3-0	3/21/15	W	8-7
4/24/81	L	1-0	3/22/15	W	12-2 (6)
4/9/82	L	10-2	3/14/16	L	7-4
4/9/83	L	2-0	3/15/16	W	13-6
4/13/84	W	2-1	3/16/16	W	4-0
4/13/84	L	1-0	4/21/17	L	9-7
5/11/84	L	6-2	4/22/17	W	9-5
3/28/85	L	1-0 (10)	4/23/17	L	5-2
5/1/85	W	3-0	4/20/18	L	1-0
5/1/85	W	3-1	4/21/18	W	8-5
5/4/85	L	5-3	4/22/18	L	5-1
4/11/86	W	1-0	4/5/19	L	7-6
4/11/86	L	4-2	4/6/19	W	6-3
4/18/87	L	14-1	4/7/19	L	8-0 (5)
4/18/87	L	7-1	5/14/21	W	9-4
3/5/88	L	6-0	5/14/21	W	9-3
4/15/88	W	2-1	5/15/21	L	5-4
4/15/88	W	8-2	3/25/22	L	5-4
4/22/89	W	7-1	3/26/22	L	4-2
4/22/89	W	3-1	3/27/22	L	13-4 (6)

LOBOS IN THE NCAA

Double plays per game: 18th
 Batting avg.: 60th

Amber Linton: 6th in innings pitched, 12th in strikeouts, 36th in wins
 Rachael Hathoot: 19th in triples, 79th in hits
 Peyton Robinson: 38th in stolen bases, 37th in hits, 85th in stolen bases per game
 Keyannah Chavez: 79th in hits

MW PLAYER OF THE WEEK

Peyton Robinson, March 14

MW PITCHER OF THE WEEK

Amber Linton, March 14

MW FRESHMAN OF THE WEEK

Keyannah Chavez, Feb. 21

MILESTONE TRACKER

Amber Linton: 254 strikeouts at UNM (7th in program history, 5 from 6th)
 Rachael Hathoot: 82 career hits (18 from 100)/ 99 games played, 99 games started



GAME-BY-GAME STARTERS**BY POSITION**

DATE	OPPONENT	SP	C	1B	2B	SS	3B	LF	CF	RF	DP
2/9	Nicholls	Linton	Yeatts	Tuck	Archuleta	Hathoot	Bramson	Chavez	Robinson	Boldt	Garcia
2/10	Oregon State	Linton	Yeatts	Tuck	Archuleta	Hathoot	Bramson	Chavez	Robinson	Boldt	Garcia
2/10	LSU	Snow	S. Martinez	Garcia	Archuleta	Hathoot	Bramson	Chavez	Robinson	Boldt	Yeatts
2/11	Oregon State	Brinka	Yeatts	Tuck	Archuleta	Hathoot	Bramson	Chavez	Robinson	Boldt	Romero
2/11	LSU	Fohrman	Romero	Yeatts	Archuleta	Hathoot	Bramson	Chavez	Robinson	Boldt	Birkinshaw
2/17	Buffalo	Linton	Romero	Garcia	Archuleta	Hathoot	Bramson	Chavez	Robinson	Boldt	Yeatts
2/18	Santa Clara	Brinka	Yeatts	Garcia	Archuleta	Hathoot	Bramson	Chavez	Robinson	Boldt	Romero
2/18	Texas Tech	Linton	Walker	Tuck	Archuleta	Hathoot	Bramson	Chavez	Robinson	Boldt	Garcia
2/23	CS Bakersfield	Linton	Yeatts	Trim	Archuleta	Hathoot	Bramson	Chavez	Robinson	Boldt	Garcia
2/23	CS Bakersfield	Snow	Romero	Trim	Bramson	Hathoot	Walker	Chavez	Robinson	Birkinshaw	Yeatts
2/24	Oklahoma St.	Brinka	Cameron	Trim	Bramson	Hathoot	Walker	Chavez	Robinson	Boldt	Yeatts
2/24	Creighton	Linton	Yeatts	Trim	Archuleta	Hathoot	Walker	Chavez	Robinson	Boldt	Garcia
2/25	NM State	Linton	Yeatts	Walker	Archuleta	Hathoot	Bramson	Chavez	Robinson	Boldt	Garcia
2/25	Nebraska	Snow	Cameron	Tuck	Bramson	Hathoot	Walker	Chavez	Robinson	Boldt	Yeatts
2/26	Nebraska	Linton	Yeatts	Trim	Bramson	Hathoot	Walker	Chavez	Robinson	Boldt	Birkinshaw
3/1	UTEP	Linton	Yeatts	Trim	Bramson	Hathoot	Walker	Chavez	Robinson	Boldt	Birkinshaw
3/1	UTEP	Snow	Yeatts	Tuck	Archuleta	Hathoot	Bramson	Chavez	Robinson	Boldt	Garcia
3/3	Houston	Linton	Walker	Tuck	Archuleta	Hathoot	Bramson	Chavez	Robinson	Boldt	Garcia
3/3	Arizona State	Brinka	Martinez	Tuck	Archuleta	Hathoot	Bramson	Chavez	Robinson	Boldt	Garcia
3/4	Washington	Snow	Walker	Tuck	Archuleta	Hathoot	Bramson	Chavez	Robinson	Boldt	Garcia
3/4	GCU	Linton	Yeatts	Tuck	Archuleta	Hathoot	Bramson	Chavez	Robinson	Baylor	Garcia
3/5	Charlotte	Linton	Yeatts	Trim	Archuleta	Hathoot	Bramson	Chavez	Robinson	Birkinshaw	Garcia
3/10	Buffalo	Linton	Yeatts	Trim	Archuleta	Hathoot	Birkinshaw	Chavez	Robinson	Boldt	Garcia
3/10	Manhattan	Snow	Romero	Trim	Archuleta	Hathoot	Birkinshaw	Chavez	Robinson	Boldt	Garcia
3/11	Buffalo	Linton	Yeatts	Trim	Archuleta	Hathoot	Birkinshaw	Chavez	Robinson	Boldt	Garcia
3/11	Texas Tech	Snow	Yeatts	Trim	Archuleta	Hathoot	Birkinshaw	Chavez	Robinson	Boldt	Garcia
3/12	Texas Tech	Linton	Yeatts	Trim	Archuleta	Hathoot	Birkinshaw	Chavez	Robinson	Baylor	Garcia
3/17	Utah State										
3/18	Utah State										
3/19	Utah State										
3/24	San José State										
3/25	San José State										
3/26	San José State										
3/28	NM State										
3/31	Fresno State										
4/1	Fresno State										
4/2	Fresno State										
4/6	Boise State										
4/7	Boise State										
4/8	Boise State										
4/15	Colorado State										
4/16	Colorado State										
4/19	GCU										
4/21	San Diego State										
4/22	San Diego State										
4/23	San Diego State										
4/28	Nevada										
4/29	Nevada										
4/30	Nevada										
5/5	UNLV										
5/6	UNLV										

BREAKDOWN

SP	C	1B	2B	SS	3B	LF	CF	RF	DP
Linton (15)	Yeatts (16)	Trim (12)	Archuleta (22)	Hathoot (27)	Bramson (16)	Chavez (27)	Robinson (27)	Boldt (23)	Garcia (17)
Snow (6)	Romero (4)	Tuck (10)	Bramson (5)		Walker (6)			Baylor (2)	Yeatts (5)
Brinka (4)	Walker (3)	Garcia (3)			Birkinshaw (5)			Birkinshaw (2)	Birkinshaw (3)
Fohrman (2)	Cameron (2)	Walker (1)							Romero (2)
	Martinez (2)	Yeatts (1)							

GAME-BY-GAME STARTERS

BY BATTING ORDER

DATE	OPPONENT	1	2	3	4	5	6	7	8	9
2/9	Nicholls	Robinson	Archuleta	Garcia	Yeatts	Bramson	Tuck	Boldt	Chavez	Hathoot
2/10	Oregon State	Robinson	Archuleta	Garcia	Yeatts	Bramson	Tuck	Boldt	Chavez	Hathoot
2/10	LSU	Robinson	Archuleta	Garcia	Yeatts	Bramson	Boldt	Chavez	Martinez	Hathoot
2/11	Oregon State	Robinson	Archuleta	Romero	Yeatts	Bramson	Tuck	Boldt	Chavez	Hathoot
2/11	LSU	Robinson	Romero	Yeatts	Birkinshaw	Bramson	Archuleta	Boldt	Chavez	Hathoot
2/17	Buffalo	Robinson	Archuleta	Romero	Garcia	Yeatts	Bramson	Boldt	Chavez	Hathoot
2/18	Santa Clara	Robinson	Romero	Garcia	Yeatts	Bramson	Boldt	Chavez	Hathoot	Archuleta
2/18	Texas Tech	Robinson	Hathoot	Walker	Garcia	Bramson	Tuck	Boldt	Chavez	Archuleta
2/23	CS Bakersfield	Robinson	Chavez	Hathoot	Garcia	Yeatts	Bramson	Trim	Boldt	Archuleta
2/23	CS Bakersfield	Robinson	Hathoot	Walker	Yeatts	Romero	Trim	Bramson	Birkinshaw	Chavez
2/24	Oklahoma St.	Robinson	Hathoot	Walker	Yeatts	Bramson	Trim	Boldt	Cameron	Chavez
2/24	Creighton	Robinson	Chavez	Hathoot	Walker	Garcia	Yeatts	Trim	Boldt	Archuleta
2/25	NM State	Robinson	Chavez	Hathoot	Walker	Garcia	Yeatts	Bramson	Boldt	Archuleta
2/25	Nebraska	Robinson	Chavez	Hathoot	Yeatts	Bramson	Tuck	Walker	Boldt	Cameron
2/26	Nebraska	Robinson	Hathoot	Yeatts	Birkinshaw	Walker	Bramson	Trim	Boldt	Chavez
3/1	UTEP	Robinson	Chavez	Hathoot	Yeatts	Walker	Birkinshaw	Bramson	Boldt	Trim
3/1	UTEP	Robinson	Chavez	Hathoot	Yeatts	Garcia	Bramson	Tuck	Boldt	Archuleta
3/3	Houston	Robinson	Chavez	Hathoot	Garcia	Walker	Bramson	Tuck	Boldt	Archuleta
3/3	Arizona State	Robinson	Chavez	Hathoot	Garcia	Bramson	Tuck	Boldt	Martinez	Archuleta
3/4	Washington	Chavez	Robinson	Hathoot	Garcia	Bramson	Walker	Tuck	Boldt	Archuleta
3/4	GCU	Robinson	Chavez	Hathoot	Garcia	Bramson	Yeatts	Tuck	Baylor	Archuleta
3/5	Charlotte	Robinson	Chavez	Hathoot	Birkinshaw	Garcia	Yeatts	Bramson	Trim	Archuleta
3/10	Buffalo	Robinson	Chavez	Hathoot	Garcia	Birkinshaw	Yeatts	Archuleta	Boldt	Trim
3/10	Manhattan	Robinson	Chavez	Hathoot	Garcia	Birkinshaw	Archuleta	Romero	Boldt	Trim
3/11	Buffalo	Robinson	Chavez	Hathoot	Garcia	Birkinshaw	Archuleta	Yeatts	Boldt	Trim
3/11	Texas Tech	Robinson	Chavez	Hathoot	Garcia	Birkinshaw	Archuleta	Yeatts	Boldt	Trim
3/12	Texas Tech	Robinson	Chavez	Hathoot	Garcia	Birkinshaw	Archuleta	Yeatts	Baylor	Trim
3/17	Utah State									
3/18	Utah State									
3/19	Utah State									
3/24	San José State									
3/25	San José State									
3/26	San José State									
3/28	NM State									
3/31	Fresno State									
4/1	Fresno State									
4/2	Fresno State									
4/6	Boise State									
4/7	Boise State									
4/8	Boise State									
4/15	Colorado State									
4/16	Colorado State									
4/21	San Diego State									
4/22	San Diego State									
4/23	San Diego State									
4/28	Nevada									
4/29	Nevada									
4/30	Nevada									
5/5	UNLV									
5/6	UNLV									

BREAKDOWN

LEADOFF

Robinson (26)
Chavez (1)

2ND

Chavez (15)
Archuleta (5)
Hathoot (4)
Romero (2)
Robinson (1)

3RD

Hathoot (16)
Garcia (4)
Walker (3)
Romero (2)
Yeatts (2)

CLEANUP

Garcia (12)
Yeatts (10)
Birkinshaw (3)
Walker (2)

5TH

Bramson (12)
Birkinshaw (5)
Garcia (4)
Walker (3)
Yeatts (2)
Romero (1)

6TH

Tuck (6)
Archuleta (5)
Bramson (5)
Yeatts (5)
Boldt (2)
Trim (2)
Birkinshaw (1)
Walker (1)

7TH

Boldt (8)
Bramson (4)
Tuck (4)
Trim (3)
Yeatts (3)
Chavez (2)
Archuleta (1)
Romero (1)
Walker (1)

8TH

Boldt (13)
Chavez (6)
Baylor (2)
Martinez (2)
Birkinshaw (1)
Cameron (1)
Hathoot (1)
Trim (1)

9TH

Archuleta (11)
Hathoot (6)
Trim (6)
Chavez (3)
Cameron (1)



NEW MEXICO OVERALL STATISTICS

Record: 12-15 Home: 3-1 Away: 1-7 Neutral: 8-7 MW: 0-0

Player	avg	gp-gs	ab	r	h	2b	3b	hr	rbi	tb	slg%	bb	hp	so	gdp	ob%	sf	sh	sb-att	po	a	e	fld%	
3 HATHOOT, Rachael	.377	27-27	77	18	29	4	3	2	17	45	.584	5	2	11	0	.429	0	2	5-5	43	57	7	.935	
27 BIRKINSHAW, Olivia	.364	21-10	33	8	12	2	0	1	8	17	.515	1	5	4	0	.450	1	0	2-2	9	6	3	.833	
21 ROBINSON, Peyton	.360	27-27	89	16	32	2	0	0	7	34	.382	3	2	8	0	.394	0	5	13-13	35	2	0	1.000	
38 CHAVEZ, Keyannah	.358	27-27	81	22	29	5	0	0	8	34	.420	7	2	8	0	.422	0	3	3-3	31	2	2	.943	
44 GARCIA, Lauren	.328	26-20	67	4	22	3	0	1	16	28	.418	6	3	8	1	.408	0	0	0-0	15	0	0	1.000	
4 TRIM, Jenna	.294	16-12	34	7	10	3	1	1	4	18	.529	6	0	5	0	.400	0	0	0-0	79	2	1	.988	
25 YEATTS, Chloe	.290	26-22	69	9	20	1	0	3	13	30	.435	4	1	8	1	.333	1	0	1-1	107	5	2	.982	
20 BRAMSON, Emma	.283	21-21	60	7	17	2	0	1	6	22	.367	2	1	11	0	.308	2	1	1-1	25	31	4	.933	
34 BOLDT, Maddie	.228	25-23	57	9	13	3	1	4	15	30	.526	7	0	16	0	.303	2	1	0-0	15	1	1	.941	
7 ARCHULETA, Ashley	.214	24-22	56	9	12	1	1	1	7	18	.321	9	0	18	0	.323	0	1	1-1	39	41	3	.964	
42 WALKER, Loran	.179	17-10	28	4	5	0	0	1	6	8	.286	3	3	9	1	.306	2	0	1-1	28	12	3	.930	

77 TUCK, Reyan	.240	15-10	25	2	6	1	0	0	4	7	.280	0	1	4	0	.259	1	0	0-0	59	1	4	.938	
13 BAYLOR, Elizabeth	.200	11-2	10	0	2	0	0	0	1	2	.200	0	0	5	0	.200	0	0	0-0	7	1	0	1.000	
55 CAMERON, Janae	.200	7-2	5	0	1	0	0	0	0	1	.200	2	0	2	0	.429	0	0	1-1	5	0	0	1.000	
16 ROMERO, Leslie	.160	15-6	25	3	4	0	0	0	1	4	.160	1	1	1	0	.222	0	0	0-0	13	1	0	1.000	
2 MARTINEZ, Savana	.000	5-2	5	0	0	0	0	0	0	0	.000	0	0	5	0	.000	0	0	0-0	2	1	1	.750	
0 GONZALEZ, Evany	.000	8-0	1	3	0	0	0	0	0	0	.000	0	0	1	0	.000	0	0	1-1	0	0	0	.000	
24 SANDOVAL, Diamond	.000	1-0	1	0	0	0	0	0	0	0	.000	0	0	0	0	.000	0	0	0-0	0	0	0	.000	
18 RANA, Grace	.000	13-0	0	4	0	0	0	0	0	0	.000	0	0	0	0	.000	0	0	1-1	0	0	0	.000	
Totals	.296	27	723	125	214	27	6	15	113	298	.412	56	21	124	3	.360	9	13	30-30	513	195	32	.957	
Opponents	.305	27	709	144	216	43	3	19	130	322	.454	80	25	137	7	.391	6	12	29-33	520	192	30	.960	

LOB - Team (177), Opp (175). DPs turned - Team (13), Opp (6).

(All games Sorted by Earned run avg)

Player	era	w-l	app	gs	cg	sho	sv	ip	h	r	er	bb	so	2b	3b	hr	b/avg	wp	hp	bk	sfa	sha
17 LINTON, Amber	3.30	8-7	17	15	9	2/0	0	91.1	93	48	43	37	98	17	0	7	.260	0	14	0	0	10
14 SNOW, Taylor	4.77	3-3	14	6	1	0/0	0	36.2	47	26	25	12	15	10	1	4	.305	2	2	0	2	0
4 TRIM, Jenna	5.25	0-0	2	0	0	0/0	0	4.0	6	3	3	1	0	2	1	1	.353	0	1	0	0	1
5 BRINKA, Emmalyn	7.31	1-4	11	4	1	1/0	1	29.2	53	40	31	13	16	11	1	4	.398	2	1	0	3	1
28 FOHRMAN, Samant	10.50	0-1	5	2	0	0/0	0	6.2	13	19	10	11	4	2	0	2	.371	2	4	0	1	0
8 MITCHELL, Bella	21.00	0-0	3	0	0	0/0	0	2.2	4	8	8	6	4	1	0	1	.333	4	3	0	0	0
Totals	4.91	12-15	27	27	11	3/0	1	171.0	216	144	120	80	137	43	3	19	.305	10	25	0	6	12
Opponents	4.08	15-12	27	27	8	4/2	4	173.1	214	125	101	56	124	27	6	15	.296	16	21	0	9	13

PB - Team (4), YEATTS 2, WALKER 1, CAMERON 1, Opp (6). SBA/ATT - YEATTS (16-18), LINTON (17-17), BRINKA (5-8), SNOW (5-6), ROMERO (4-5), MARTINEZ, S. (4-5), WALKER (5-5), FOHRMAN (1-1), TRIM (1-1).

LAST WEEK STATS

Record: 3-2 Home: 0-0 Away: 0-2 Neutral: 3-0 MW: 0-0

Player	avg	gp-gs	ab	r	h	2b	3b	hr	rbi	tb	slg%	bb	hp	so	gdp	ob%	sf	sh	sb-att	po	a	e	fld%	
21 ROBINSON, Peyton	.588	5-5	17	4	10	1	0	0	1	11	.647	0	0	3	0	.588	0	3	4-4	5	1	0	1.000	
44 GARCIA, Lauren	.438	5-5	16	0	7	1	0	0	5	8	.500	2	0	1	0	.500	0	0	0-0	0	0	0	.000	
3 HATHOOT, Rachael	.412	5-5	17	3	7	1	0	0	3	8	.471	0	1	1	0	.444	0	0	0-0	9	12	2	.913	
38 CHAVEZ, Keyannah	.375	5-5	16	3	6	1	0	0	2	7	.438	3	0	4	0	.474	0	1	1-1	5	1	0	1.000	
4 TRIM, Jenna	.333	5-5	12	3	4	1	0	1	1	8	.667	3	0	0	0	.467	0	0	0-0	28	0	1	.966	
27 BIRKINSHAW, Olivia	.286	5-5	14	3	4	0	0	0	2	4	.286	0	2	2	0	.353	1	0	1-1	6	6	2	.857	
25 YEATTS, Chloe	.250	5-4	12	2	3	0	0	1	3	6	.500	0	0	2	0	.231	1	0	0-0	28	0	0	1.000	
34 BOLDT, Maddie	.250	5-4	12	2	3	1	0	1	2	7	.583	0	0	1	0	.250	0	1	0-0	2	0	0	1.000	
7 ARCHULETA, Ashley	.214	5-5	14	3	3	0	1	1	4	8	.571	2	0	5	0	.313	0	0	0-0	10	7	1	.944	

13 BAYLOR, Elizabeth	.250	5-1	4	0	1	0	0	0	1	1	.250	0	0	1	0	.250	0	0	0-0	3	0	0	1.000	
16 ROMERO, Leslie	.000	2-1	3	0	0	0	0	0	0	0	.000	0	0	0	0	.000	0	0	0-0	1	0	0	1.000	
42 WALKER, Loran	.000	3-0	3	0	0	0	0	0	0	0	.000	0	0	0	0	.000	0	0	0-0	2	1	1	.750	
18 RANA, Grace	.000	2-0	0	1	0	0	0	0	0	0	.000	0	0	0	0	.000	0	0	0-0	0	0	0	.000	
0 GONZALEZ, Evany	.000	2-0	0	0	0	0	0	0	0	0	.000	0	0	0	0	.000	0	0	0-0	0	0	0	.000	
Totals	.343	5	140	24	48	6	1	4	24	68	.486	10	3	20	0	.394	2	5	6-6	99	32	7	.949	
Opponents	.324	5	139	28	45	7	1	4	26	66	.475	10	4	30	3	.381	2	0	2-2	102	45	5	.967	

LOB - Team (34), Opp (28). DPs turned - Team (5), Opp (3).

(TTU Invitational Sorted by Earned run avg)

Player	era	w-l	app	gs	cg	sho	sv	ip	h	r	er	bb	so	2b	3b	hr	b/avg	wp	hp	bk	sfa	sha
17 LINTON, Amber	2.21	3-1	4	3	2	1/0	0	19.0	18	6	6	6	23	3	0	1	.254	0	3	0	0	0
14 SNOW, Taylor	4.38	0-0	3	2	0	0/0	0	8.0	10	6	5	1	4	2	1	1	.294	1	0	0	1	0
28 FOHRMAN, Samant	8.40	0-0	1	0	0	0/0	0	1.2	5	5	2	1	1	0	0	2	.500	1	0	0	1	0
5 BRINKA, Emmalyn	10.50	0-1	2	0	0	0/0	0	4.0	9	6	6	1	2	1	0	0	.450	0	0	0	0	0

8 MITCHELL, Bella	99.00	0-0	1	0	0	0/0	0	0.1	3	5	5	1	0	1	0	0	.750	0	1	0	0	0
Totals	5.09	3-2	5	5	2	1/0	0	33.0	45	28	24	10	30	7	1	4	.324	2	4	0	2	0
Opponents	4.53	2-3	5	5	2	0/0	0	34.0	48	24	22	10	20	6	1	4	.343	1	3	0	2	5

PB - Team (2), YEATTS 1, WALKER 1. SBA/ATT - BRINKA (2-2), WALKER (2-2).



GAME-BY-GAME STATISTICS

BATTING

Date	Opponent	ab	r	h	rbi	2b	3b	hr	tb	bb	ibb	sb	cs	hbp	sac	sf	gdp	k	po	a	e	lob	avg
Feb 09	at Nicholls	26	12	12	12	2	0	1	17	3	0	3	0	5	0	1	0	2	15	7	2	8	.462
Feb 10	vs Oregon St.	23	0	3	0	0	0	0	3	4	0	1	0	1	1	0	0	9	18	9	0	8	.306
Feb 10	at LSU	23	3	5	3	0	0	2	11	1	0	0	0	0	0	0	0	7	17	5	0	3	.278
Feb 11	vs Oregon St.	21	8	8	7	2	1	0	12	1	0	2	0	2	0	1	0	4	15	8	1	5	.301
Feb 11	at LSU	29	3	10	3	0	0	1	13	0	0	0	0	1	0	0	0	3	16	9	2	9	.311
Feb 17	vs Buffalo	24	11	10	11	3	1	0	15	5	0	1	0	1	1	1	0	7	15	0	0	6	.329
Feb 18	vs Santa Clara	27	2	4	2	0	0	0	4	2	0	0	0	0	0	0	0	1	21	5	2	6	.301
Feb 18	vs Texas Tech	31	7	8	5	1	1	0	11	2	0	2	0	1	1	1	0	8	21	9	1	8	.294
Feb 23	CAL STATE BAKER	27	8	10	6	1	1	1	16	2	0	4	0	2	1	0	1	2	21	8	0	6	.303
Feb 23	CAL STATE BAKER	28	10	12	8	1	0	1	16	4	0	4	0	1	0	1	1	0	21	8	2	6	.317
Feb 24	vs Oklahoma State	16	1	1	0	0	0	0	1	1	0	1	0	1	0	0	0	10	12	2	1	2	.302
Feb 24	vs Creighton	22	4	5	4	0	0	1	8	3	0	1	0	0	0	0	0	3	21	7	1	3	.296
Feb 25	at NM State	33	6	11	6	2	1	2	21	1	0	1	0	0	0	0	0	7	18	8	1	7	.300
Feb 25	vs Nebraska	19	0	4	0	0	0	0	4	0	0	0	0	0	0	0	0	8	15	9	0	4	.295
Feb 26	vs Nebraska	28	0	5	0	1	0	0	6	3	0	0	0	0	0	0	0	3	18	7	1	10	.286
Mar 01	MINERS	41	1	10	1	0	0	0	10	3	0	1	0	0	1	1	0	3	33	16	0	12	.282
Mar 01	MINERS	30	8	11	6	1	0	1	15	1	0	1	0	0	2	0	0	1	21	11	1	7	.288
Mar 03	vs Houston	28	7	11	6	2	0	0	13	5	0	1	0	1	1	1	0	2	21	7	2	11	.294
Mar 03	at Arizona State	25	2	5	1	0	0	0	5	3	0	0	0	1	0	0	1	5	18	8	1	6	.289
Mar 04	vs UW	23	0	2	0	0	0	0	2	1	0	1	0	0	0	0	0	8	18	5	4	3	.281
Mar 04	at Grand Canyon	29	1	8	1	1	0	0	9	0	0	0	0	1	0	0	0	4	18	6	2	8	.280
Mar 05	vs Charlotte	30	7	11	7	4	0	1	18	1	0	0	0	0	0	0	0	7	21	9	1	5	.285
Mar 10	vs Buffalo	25	6	10	6	1	1	0	13	0	0	2	0	0	0	2	0	1	21	6	0	3	.289
Mar 10	vs Manhattan	40	7	14	7	3	0	1	20	5	0	1	0	1	1	0	0	3	27	11	3	13	.293
Mar 11	vs Buffalo	26	4	9	4	0	0	1	12	1	0	1	0	1	3	0	0	5	21	6	1	6	.295
Mar 11	at Texas Tech	24	5	8	5	1	0	1	12	1	0	1	0	1	0	0	0	6	12	5	3	6	.297
Mar 12	at Texas Tech	25	2	7	2	1	0	1	11	3	0	1	0	0	1	0	0	5	18	4	0	6	.296
Totals		723	125	214	113	27	6	15	298	56	0	30	0	21	13	9	3	124	513	195	32	177	.296

PITCHING

Date	Opponent	ip	h	r	er	bb	so	2b	3b	hr	wp	bk	hbp	dp	ibb	score	w-l	sv	era
Feb 09	at Nicholls	5.0	3	3	3	3	3	0	0	1	0	0	0	1	0	12-3	1-0	0	4.20
Feb 10	vs Oregon St.	6.0	7	2	2	2	4	2	0	0	0	0	0	0	0	0-2	1-1	0	3.18
Feb 10	at LSU	5.2	16	11	11	4	1	2	0	0	1	0	0	0	0	3-11	1-2	0	6.72
Feb 11	vs Oregon St.	5.0	2	0	0	2	4	1	0	0	0	0	0	0	0	8-0	2-2	0	5.17
Feb 11	at LSU	5.1	11	11	8	5	2	2	0	2	0	0	3	0	0	3-11	2-3	0	6.22
Feb 17	vs Buffalo	5.0	3	2	2	4	8	0	0	0	0	0	0	0	0	11-2	3-3	0	5.69
Feb 18	vs Santa Clara	7.0	7	7	3	5	8	4	0	0	0	0	2	1	0	2-7	3-4	0	5.21
Feb 18	vs Texas Tech	7.0	16	12	11	5	3	5	0	2	0	0	0	0	0	7-12	3-5	0	6.09
Feb 23	CAL STATE BAKER	7.0	3	2	2	2	9	1	0	0	0	0	1	1	0	8-2	4-5	0	5.55
Feb 23	CAL STATE BAKER	7.0	8	3	1	4	1	3	0	0	0	0	1	1	0	10-3	5-5	0	5.02
Feb 24	vs Oklahoma State	4.0	11	12	5	3	4	2	0	2	1	0	2	1	0	1-12	5-6	0	5.25
Feb 24	vs Creighton	7.0	4	0	0	1	9	1	0	0	0	0	0	0	0	4-0	6-6	0	4.73
Feb 25	at NM State	6.0	8	7	7	0	5	2	0	2	0	0	1	0	0	6-7	6-7	0	5.00
Feb 25	vs Nebraska	5.0	13	15	15	9	1	4	1	1	5	0	2	0	0	0-15	6-8	0	5.98
Feb 26	vs Nebraska	6.0	4	1	1	2	6	2	0	0	0	0	2	0	0	0-1	6-9	0	5.65
Mar 01	MINERS	11.0	11	2	2	3	8	2	0	0	0	0	1	0	0	1-2	6-10	0	5.16
Mar 01	MINERS	7.0	7	4	3	4	2	0	0	1	0	0	1	2	0	8-4	7-10	1	5.02
Mar 03	vs Houston	7.0	3	1	1	4	12	1	0	0	0	0	1	0	0	7-1	8-10	1	4.77
Mar 03	at Arizona State	6.0	11	6	6	1	0	1	1	1	1	0	1	0	0	2-6	8-11	1	4.88
Mar 04	vs UW	6.0	4	3	3	1	2	1	0	0	0	0	0	0	0	0-3	8-12	1	4.82
Mar 04	at Grand Canyon	6.0	10	6	5	3	5	0	0	1	0	0	0	1	0	1-6	8-13	1	4.86
Mar 05	vs Charlotte	7.0	9	6	5	3	10	0	0	2	0	0	3	0	0	7-6	9-13	1	4.87
Mar 10	vs Buffalo	7.0	3	0	0	1	9	1	0	0	0	0	0	1	0	6-0	10-13	1	4.63
Mar 10	vs Manhattan	9.0	11	6	6	1	7	1	1	1	0	0	0	1	0	7-6	11-13	1	4.64
Mar 11	vs Buffalo	7.0	6	1	1	3	7	1	0	0	0	0	2	1	0	4-1	12-13	1	4.48
Mar 11	at Texas Tech	4.0	13	14	10	3	1	2	0	2	1	0	1	1	0	5-14	12-14	1	4.79
Mar 12	at Texas Tech	6.0	12	7	7	2	6	2	0	1	1	0	1	1	0	2-7	12-15	1	4.91
Totals		171.0	216	144	120	80	137	43	3	19	10	0	25	13	0	125-144	12-15	1	4.91

RECORD AND INNING BREAKDOWN

Score by innings	1	2	3	4	5	6	7	8	9	EX	Total
New Mexico	27	12	30	13	15	22	5	0	1	0	125
Opponents	37	19	38	14	13	20	2	0	0	1	144

Record when ...

Overall	12-15	After 4 leading	9-0
Conference	0-0 trailing	1-13
Non-Conference	12-15 tied	2-2
Home games	3-1	After 5 leading	6-0
Away games	1-7 trailing	1-12
Neutral site	8-7 tied	2-0
Day games	11-12	After 6 leading	8-0
Night games	1-3 trailing	1-10
vs Left starter	2-1 tied	0-0
vs Right starter	10-14	Hit 0 home runs	4-10
1-Run games	2-3	... 1 home run	8-3
2-Run games	0-1	... 2+ home runs	0-2
5+Run games	7-9	Opponent 0 home runs	8-6
Extra innings	1-1 1 home run	3-4
Shutouts	3-4 2+ HRs	1-5
Scoring 0-2 runs	0-10	Made 0 errors	3-5
..... 3-5 runs	2-3	... 1 error	5-5
..... 6-9 runs	7-2	... 2+ errors	4-5
..... 10+ runs	3-0	Opp. made 0 errors	3-8
Opponent 0-2 runs	7-3 1 error	4-4
..... 3-5 runs	3-1 2+ errors	5-3
..... 6-9 runs	2-5	Out-hit opponent	12-2
..... 10+ runs	0-6	Out-hit by opponent	0-13
Scored in 1st inning	10-1	Hits are tied	0-0
Opp. scored in 1st	4-10		
Scores first	8-1		
Opp. scores first	4-14		

Record when team scores:

Runs	0	1	2	3	4	5	6	7	8	9	10+
W-L	0-4	0-3	0-3	0-2	2-0	0-1	1-1	3-1	3-0	0-0	3-0

Record when opponent scores:

Runs	0	1	2	3	4	5	6	7	8	9	10+
W-L	3-0	2-1	2-2	2-1	1-0	0-0	2-2	0-3	0-0	0-0	0-6

Record when leading after:

Inn.	1	2	3	4	5	6
W-L	8-0	9-0	8-0	9-0	6-0	8-0

Record when trailing after:

Inn.	1	2	3	4	5	6
W-L	1-10	1-11	2-13	1-13	1-12	1-10

Record when tied after:

Inn.	1	2	3	4	5	6
W-L	3-5	2-4	2-2	2-2	2-0	0-0

GAME-BY-GAME STATISTICS

TEAM SITUATION

Date	Opponent	Total h/ab	vs Left	vs Right	With Runners	Bases Empty	Bases Loaded	With 2-outs	With RBI-op	Reach as Leadoff	3rd and LT 2out	and LOB
Feb 09	at Nicholls	12-26	7-16	5-10	9-16	3-10	2-4	7-13	8-15	2-5	3-3	8
Feb 10	vs Oregon St.	3-23	0-0	3-23	1-12	2-11	0-0	1-8	1-8	2-7	0-1	8
Feb 10	at LSU	5-23	0-0	5-23	1-4	4-19	0-0	3-9	1-3	1-6	0-1	3
Feb 11	vs Oregon St.	8-21	0-0	8-21	5-14	3-7	1-1	3-8	3-11	2-4	1-3	5
Feb 11	at LSU	10-29	0-0	10-29	5-13	5-16	0-4	5-11	2-8	1-6	1-2	9
Feb 17	vs Buffalo	10-24	0-6	10-18	9-20	1-4	2-2	7-12	7-15	2-6	2-4	6
Feb 18	vs Santa Clara	4-27	0-0	4-27	2-9	2-18	0-1	1-8	2-8	0-7	1-1	6
Feb 18	vs Texas Tech	8-31	0-0	8-31	6-20	2-11	2-4	0-9	5-17	4-7	3-7	8
Feb 23	CAL STATE BAKERSFIE	10-27	0-0	10-27	5-15	5-12	0-0	2-8	4-11	3-6	1-2	6
Feb 23	CAL STATE BAKERSFIE	12-28	0-0	12-28	8-17	4-11	1-4	2-7	7-14	2-6	3-6	6
Feb 24	vs Oklahoma State	1-16	1-16	0-0	1-5	0-11	0-0	0-5	1-4	1-5	0-2	2
Feb 24	vs Creighton	5-22	0-0	5-22	4-11	1-11	1-1	3-8	2-5	2-6	0-0	3
Feb 25	at NM State	11-33	0-0	11-33	6-13	5-20	0-0	5-13	3-9	1-7	1-2	7
Feb 25	vs Nebraska	4-19	0-0	4-19	1-4	3-15	0-0	4-9	0-1	0-5	0-0	4
Feb 26	vs Nebraska	5-28	0-0	5-28	2-19	3-9	0-2	0-8	1-11	4-7	0-1	10
Mar 01	MINERS	10-41	0-0	10-41	3-15	7-26	0-2	4-15	1-7	1-11	1-2	12
Mar 01	MINERS	11-30	0-0	11-30	7-17	4-13	0-1	1-9	6-13	3-6	1-2	7
Mar 03	vs Houston	11-28	0-0	11-28	8-21	3-7	0-2	4-11	5-13	3-6	1-4	11
Mar 03	at Arizona State	5-25	0-0	5-25	3-15	2-10	0-4	1-7	3-11	3-7	1-3	5
Mar 04	vs UW	2-23	0-0	2-23	0-6	2-17	0-0	1-8	0-2	1-7	0-0	3
Mar 04	at Grand Canyon	8-29	0-0	8-29	3-18	5-11	0-2	0-7	1-11	3-7	1-3	8
Mar 05	vs Charlotte	11-30	0-0	11-30	7-14	4-16	0-0	3-9	4-8	1-7	0-0	4
Mar 10	vs Buffalo	10-25	10-25	0-0	7-13	3-12	0-0	2-7	6-10	4-6	4-5	2
Mar 10	vs Manhattan	14-40	0-0	14-40	10-22	4-18	1-6	2-12	8-18	3-9	2-5	13
Mar 11	vs Buffalo	9-26	0-0	9-26	3-11	6-15	0-0	3-9	2-5	3-7	0-1	6
Mar 11	at Texas Tech	8-24	0-0	8-24	4-11	4-13	1-3	5-11	3-8	1-5	1-1	6
Mar 12	at Texas Tech	7-25	0-0	7-25	3-12	4-13	0-1	3-9	2-6	3-7	0-1	6
Totals		214-723	18-63	196-660	123-367	91-356	11-44	72-250	88-252	56-175	28-62	174
		.296	.286	.297	.335	.256	.250	.288	.349	.320	.452	

SITUATIONAL BREAKDOWN

Player	vs left			vs right			w/runners			w/bases empty			w/bases loaded			as leadoff			fly	gnd	fly/
	h	ab	avg	h	ab	avg	h	ab	avg	h	ab	avg	h	ab	avg	rch	op	pct	out	out	gnd
7 ARCHULETA, As	1	5	.200	11	51	.216	7	30	.233	5	26	.192	0	4	.000	4	11	.364	7	17	0.4
13 BAYLOR, Elizabe	1	1	1.000	1	9	.111	2	3	.667	0	7	.000	0	0	---	0	4	.000	1	2	0.5
27 BIRKINSHAW, Ol	1	2	.500	11	31	.355	7	21	.333	5	12	.417	1	5	.200	5	8	.625	13	5	2.6
34 BOLDT, Maddie	2	7	.286	11	50	.220	7	28	.250	6	29	.207	0	2	.000	5	19	.263	20	9	2.2
20 BRAMSON, Emm	1	2	.500	16	58	.276	12	36	.333	5	24	.208	0	0	---	2	9	.222	17	17	1.0
55 CAMERON, Jana	0	1	.000	1	4	.250	1	2	.500	0	3	.000	0	0	---	0	1	.000	0	2	0.0
38 CHAVEZ, Keyan	4	8	.500	25	73	.342	14	41	.341	15	40	.375	0	3	.000	3	9	.333	26	19	1.4
44 GARCIA, Lauren	3	6	.500	19	61	.311	17	39	.436	5	28	.179	2	7	.286	7	20	.350	17	18	0.9
0 GONZALEZ, Evan	0	0	---	0	1	.000	0	1	.000	0	0	---	0	0	---	0	0	---	0	0	0.0
3 HATHOOT, Rach	1	7	.143	28	70	.400	18	44	.409	11	33	.333	2	6	.333	8	14	.571	14	19	0.7
2 MARTINEZ, Sava	0	0	---	0	5	.000	0	2	.000	0	3	.000	0	0	---	0	2	.000	0	0	0.0
21 ROBINSON, Peyt	2	7	.286	30	82	.366	14	24	.583	18	65	.277	1	2	.500	13	44	.295	14	36	0.4
16 ROMERO, Leslie	0	3	.000	4	22	.182	2	12	.167	2	13	.154	1	5	.200	2	5	.400	11	7	1.6
24 SANDOVAL, Dia	0	0	---	0	1	.000	0	0	---	0	1	.000	0	0	---	0	0	---	0	1	0.0
4 TRIM, Jenna	0	3	.000	10	31	.323	2	12	.167	8	22	.364	1	1	1.000	2	6	.333	11	8	1.4
77 TUCK, Reyan	1	3	.333	5	22	.227	4	14	.286	2	11	.182	0	0	---	1	4	.250	5	10	0.5
42 WALKER, Loran	0	1	.000	5	27	.185	5	18	.278	0	10	.000	1	4	.250	1	7	.143	12	3	4.0
25 YEATTS, Chloe	1	7	.143	19	62	.306	11	40	.275	9	29	.310	2	5	.400	3	12	.250	25	16	1.6
Totals	18	63	.286	196	66	.297	123	36	.335	91	35	.256	11	44	.250	56	17	.320	193	189	1.0
Opponents	0	0	---	216	70	.305	118	38	.307	98	32	.302	6	29	.207	71	17	.401	156	196	0.8

Player	pinch hitting			w/runners in scoring pos			w/runner on 3r and LT 2 out			with 2 outs			success adv runners			2- rnrns					
	h	ab	avg	h	ab	avg	rbi	op	pct	h	ab	avg	adv	op	pct	rbi	w/o	lob	rch	rch	kl
7 ARCHULETA, As	0	0	---	6	25	.240	1	4	.250	2	22	.091	13	34	.382	2	3	29	3	2	8
13 BAYLOR, Elizabe	0	2	.000	1	2	.500	0	0	---	1	5	.200	2	3	.667	1	0	2	0	0	0
27 BIRKINSHAW, Ol	3	8	.375	3	12	.250	2	6	.333	6	11	.545	13	24	.542	4	8	6	0	1	0
34 BOLDT, Maddie	0	1	.000	6	20	.300	5	7	.714	7	20	.350	15	31	.484	8	10	13	2	1	5
20 BRAMSON, Emm	0	0	---	6	23	.261	3	5	.600	7	22	.318	20	40	.500	1	5	15	0	6	4
55 CAMERON, Jana	1	3	.333	0	0	---	0	0	---	0	2	.000	2	3	.667	0	0	1	0	1	1
38 CHAVEZ, Keyan	0	0	---	11	28	.393	2	4	.500	8	34	.235	22	47	.468	4	6	24	2	0	2
44 GARCIA, Lauren	1	5	.200	13	29	.448	2	8	.250	7	18	.389	25	43	.581	9	3	14	2	0	0
0 GONZALEZ, Evan	0	0	---	0	1	.000	0	0	---	0	1	.000	0	1	.000	0	0	2	0	0	0
3 HATHOOT, Rach	0	0	---	12	30	.400	5	7	.714	8	27	.296	28	48	.583	4	3	10	5	6	4
2 MARTINEZ, Sava	0	1	.000	0	0	---	0	0	---	0	2	.000	0	2	.000	0	0	2	0	0	2
21 ROBINSON, Peyt	0	0	---	12	17	.706	0	4	.000	10	17	.588	21	29	.724	7	11	1	4	1	5
16 ROMERO, Leslie	1	4	.250	2	10	.200	0	4	.000	2	9	.222	6	13	.462	1	0	10	2	2	1
24 SANDOVAL, Dia	0	1	.000	0	0	---	0	0	---	0	1	.000	0	0	---	0	0	0	0	0	0
4 TRIM, Jenna	0	2	.000	2	8	.250	0	1	.000	2	11	.182	8	16	.500	3	1	6	0	2	1
77 TUCK, Reyan	2	2	1.000	4	10	.400	2	2	1.000	2	9	.222	8	15	.533	1	4	6	1	1	2
42 WALKER, Loran	1	4	.250	3	10	.300	4	6	.667	1	8	.125	8	21	.381	0	4	8	1	1	3
25 YEATTS, Chloe	0	1	.000	7	27	.259	2	4	.500	9	31	.290	19	43	.442	8	7	25	1	4	3
Totals	9	34	.265	88	25	.349	28	62	.452	72	25	.288	210	41	.508	53	65	177	23	28	41
Opponents	4	27	.148	70	25	.280	34	59	.576	70	23	.299	229	43	.522	59	63	175	19	43	51

Success Advancing Runners = percentage of times the batter advanced at least one runner during a plate appearance
 #Rnrs Adv w/Out = TOTAL number of runners advanced when the player made an out

NEW MEXICO SOFTBALL

Batting avg		
1. 3 HATHOOT, Rachael		.377
2. 27 BIRKINSHAW, Olivia		.364
3. 21 ROBINSON, Peyton		.360
4. 38 CHAVEZ, Keyannah		.358
5. 44 GARCIA, Lauren		.328

Runs scored		
1. 38 CHAVEZ, Keyannah		22
2. 3 HATHOOT, Rachael		18
3. 21 ROBINSON, Peyton		16
4. 3 tied at.....		9

Doubles		
1. 38 CHAVEZ, Keyannah		5
2. 3 HATHOOT, Rachael		4
3. 44 GARCIA, Lauren		3
4 TRIM, Jenna		3
34 BOLDT, Maddie		3

Total bases		
1. 3 HATHOOT, Rachael		45
2. 21 ROBINSON, Peyton		34
38 CHAVEZ, Keyannah		34
4. 25 YEATTS, Chloe		30
34 BOLDT, Maddie		30

Sac bunts		
1. 21 ROBINSON, Peyton		5
2. 38 CHAVEZ, Keyannah		3
3. 3 HATHOOT, Rachael		2
4. 3 tied at.....		1

Caught stealing

Strikeouts		
1. 7 ARCHULETA, Ashley		18
2. 34 BOLDT, Maddie		16
3. 20 BRAMSON, Emma		11
3 HATHOOT, Rachael		11
5. 42 WALKER, Loran		9

At bats		
1. 21 ROBINSON, Peyton		89
2. 38 CHAVEZ, Keyannah		81
3. 3 HATHOOT, Rachael		77
4. 25 YEATTS, Chloe		69
5. 44 GARCIA, Lauren		67

Games as sub		
1. 18 RANA, Grace		13
2. 27 BIRKINSHAW, Olivia		11
3. 13 BAYLOR, Elizabeth		9
16 ROMERO, Leslie		9
5. 0 GONZALEZ, Evany		8

Fielding pct		
1. 21 ROBINSON, Peyton		1.000
44 GARCIA, Lauren		1.000
16 ROMERO, Leslie		1.000
13 BAYLOR, Elizabeth		1.000
55 CAMERON, Janae		1.000

Assists		
1. 3 HATHOOT, Rachael		57
2. 7 ARCHULETA, Ashley		41
3. 20 BRAMSON, Emma		31
4. 17 LINTON, Amber		23
5. 42 WALKER, Loran		12

Stolen bases against		
1. 17 LINTON, Amber		17
2. 25 YEATTS, Chloe		16
3. 14 SNOW, Taylor		5
42 WALKER, Loran		5
5 BRINKA, Emmalyn		5

Passed balls		
1. 25 YEATTS, Chloe		2
2. 42 WALKER, Loran		1
55 CAMERON, Janae		1

Slugging pct		
1. 3 HATHOOT, Rachael		.584
2. 4 TRIM, Jenna		.529
3. 34 BOLDT, Maddie		.526
4. 27 BIRKINSHAW, Olivia		.515
5. 25 YEATTS, Chloe		.435

Hits		
1. 21 ROBINSON, Peyton		32
2. 38 CHAVEZ, Keyannah		29
3 HATHOOT, Rachael		29
4. 44 GARCIA, Lauren		22
5. 25 YEATTS, Chloe		20

Triples		
1. 3 HATHOOT, Rachael		3
2. 7 ARCHULETA, Ashley		1
4 TRIM, Jenna		1
34 BOLDT, Maddie		1

Walks		
1. 7 ARCHULETA, Ashley		9
2. 38 CHAVEZ, Keyannah		7
34 BOLDT, Maddie		7
4. 4 TRIM, Jenna		6
44 GARCIA, Lauren		6

Sac flies		
1. 42 WALKER, Loran		2
34 BOLDT, Maddie		2
20 BRAMSON, Emma		2
4. 3 tied at.....		1

Steal attempts		
1. 21 ROBINSON, Peyton		13
2. 3 HATHOOT, Rachael		5
3. 38 CHAVEZ, Keyannah		3
4. 27 BIRKINSHAW, Olivia		2
5. 7 tied at.....		1

Grounded into DP		
1. 42 WALKER, Loran		1
44 GARCIA, Lauren		1
25 YEATTS, Chloe		1

Games played		
1. 38 CHAVEZ, Keyannah		27
21 ROBINSON, Peyton		27
3 HATHOOT, Rachael		27
4. 44 GARCIA, Lauren		26
25 YEATTS, Chloe		26

Chances		
1. 25 YEATTS, Chloe		114
2. 3 HATHOOT, Rachael		107
3. 7 ARCHULETA, Ashley		83
4. 4 TRIM, Jenna		82
5. 77 TUCK, Reyann		64

Errors		
1. 3 HATHOOT, Rachael		7
2. 20 BRAMSON, Emma		4
77 TUCK, Reyann		4
4. 3 tied at.....		3

Caught stealing by		
1. 5 BRINKA, Emmalyn		3
2. 25 YEATTS, Chloe		2
3. 2 MARTINEZ, Savana		1
14 SNOW, Taylor		1
16 ROMERO, Leslie		1

Catchers interference

On base pct		
1. 27 BIRKINSHAW, Olivia		.450
2. 3 HATHOOT, Rachael		.429
3. 38 CHAVEZ, Keyannah		.422
4. 44 GARCIA, Lauren		.408
5. 4 TRIM, Jenna		.400

Runs batted in		
1. 3 HATHOOT, Rachael		17
2. 44 GARCIA, Lauren		16
3. 34 BOLDT, Maddie		15
4. 25 YEATTS, Chloe		13
5. 2 tied at.....		8

Home runs		
1. 34 BOLDT, Maddie		4
2. 25 YEATTS, Chloe		3
3. 3 HATHOOT, Rachael		2
4. 6 tied at.....		1

Hit by pitch		
1. 27 BIRKINSHAW, Olivia		5
2. 42 WALKER, Loran		3
44 GARCIA, Lauren		3
4. 3 tied at.....		2

Stolen bases		
1. 21 ROBINSON, Peyton		13
2. 3 HATHOOT, Rachael		5
3. 38 CHAVEZ, Keyannah		3
4. 27 BIRKINSHAW, Olivia		2
5. 7 tied at.....		1

Stolen base pct		
1. 21 ROBINSON, Peyton		1.000
38 CHAVEZ, Keyannah		1.000
3 HATHOOT, Rachael		1.000
25 YEATTS, Chloe		1.000
20 BRAMSON, Emma		1.000

Total plate appearances		
1. 21 ROBINSON, Peyton		99
2. 38 CHAVEZ, Keyannah		93
3. 3 HATHOOT, Rachael		86
4. 44 GARCIA, Lauren		76
5. 25 YEATTS, Chloe		75

Game starts		
1. 38 CHAVEZ, Keyannah		27
21 ROBINSON, Peyton		27
3 HATHOOT, Rachael		27
4. 34 BOLDT, Maddie		23
5. 2 tied at.....		22

Putouts		
1. 25 YEATTS, Chloe		107
2. 4 TRIM, Jenna		79
3. 77 TUCK, Reyann		59
4. 3 HATHOOT, Rachael		43
5. 7 ARCHULETA, Ashley		39

Fielding double plays		
1. 4 TRIM, Jenna		9
2. 3 HATHOOT, Rachael		8
3. 7 ARCHULETA, Ashley		5
4. 20 BRAMSON, Emma		2
77 TUCK, Reyann		2

Steal attempts against		
1. 25 YEATTS, Chloe		18
2. 17 LINTON, Amber		17
3. 5 BRINKA, Emmalyn		8
4. 14 SNOW, Taylor		6
5. 3 tied at.....		5



Earned run avg	
1. 17 LINTON, Amber	3.30
2. 14 SNOW, Taylor	4.77
3. 4 TRIM, Jenna	5.25
4. 5 BRINKA, Emmalyn	7.31
5. 28 FOHRMAN, Samantha	10.50

Wins	
1. 17 LINTON, Amber	8
2. 14 SNOW, Taylor	3
3. 5 BRINKA, Emmalyn	1

Innings pitched	
1. 17 LINTON, Amber	91.1
2. 14 SNOW, Taylor	36.2
3. 5 BRINKA, Emmalyn	29.2
4. 28 FOHRMAN, Samantha	6.2
5. 4 TRIM, Jenna	4.0

Games started	
1. 17 LINTON, Amber	15
2. 14 SNOW, Taylor	6
3. 5 BRINKA, Emmalyn	4
4. 28 FOHRMAN, Samantha	2

Wild pitches	
1. 8 MITCHELL, Bella	4
2. 5 BRINKA, Emmalyn	2
14 SNOW, Taylor	2
28 FOHRMAN, Samantha	2

Intentional BB allowed	
------------------------	--

Sac bunts allowed	
1. 17 LINTON, Amber	10
2. 4 TRIM, Jenna	1
5 BRINKA, Emmalyn	1

Runs allowed	
1. 4 TRIM, Jenna	3
2. 8 MITCHELL, Bella	8
3. 28 FOHRMAN, Samantha	19
4. 14 SNOW, Taylor	26
5. 5 BRINKA, Emmalyn	40

Doubles allowed	
1. 8 MITCHELL, Bella	1
2. 4 TRIM, Jenna	2
28 FOHRMAN, Samantha	2
4. 14 SNOW, Taylor	10
5. 5 BRINKA, Emmalyn	11

Opposing bat avg	
1. 17 LINTON, Amber	.260
2. 14 SNOW, Taylor	.305
3. 8 MITCHELL, Bella	.333
4. 4 TRIM, Jenna	.353
5. 28 FOHRMAN, Samantha	.371

Losses	
1. 17 LINTON, Amber	7
2. 5 BRINKA, Emmalyn	4
3. 14 SNOW, Taylor	3
4. 28 FOHRMAN, Samantha	1

Batters struck out	
1. 17 LINTON, Amber	98
2. 5 BRINKA, Emmalyn	16
3. 14 SNOW, Taylor	15
4. 8 MITCHELL, Bella	4
28 FOHRMAN, Samantha	4

Games finished	
1. 14 SNOW, Taylor	7
2. 5 BRINKA, Emmalyn	5
3. 4 tied at.....	1

Balks	
-------	--

Runners picked off	
--------------------	--

Sac flies allowed	
1. 5 BRINKA, Emmalyn	3
2. 14 SNOW, Taylor	2
3. 28 FOHRMAN, Samantha	1

Earned runs allowed	
1. 4 TRIM, Jenna	3
2. 8 MITCHELL, Bella	8
3. 28 FOHRMAN, Samantha	10
4. 14 SNOW, Taylor	25
5. 5 BRINKA, Emmalyn	31

Triples allowed	
1. 8 MITCHELL, Bella	0
17 LINTON, Amber	0
28 FOHRMAN, Samantha	0
4. 5 BRINKA, Emmalyn	1
14 SNOW, Taylor	1

Won-loss pct	
1. 17 LINTON, Amber	.533
2. 14 SNOW, Taylor	.500
3. 5 BRINKA, Emmalyn	.200
4. 28 FOHRMAN, Samantha	.000
5. 8 MITCHELL, Bella	.000

Saves	
1. 5 BRINKA, Emmalyn	1

Appearances	
1. 17 LINTON, Amber	17
2. 14 SNOW, Taylor	14
3. 5 BRINKA, Emmalyn	11
4. 28 FOHRMAN, Samantha	5
5. 8 MITCHELL, Bella	3

Games in relief	
1. 14 SNOW, Taylor	8
2. 5 BRINKA, Emmalyn	7
3. 28 FOHRMAN, Samantha	3
8 MITCHELL, Bella	3
5. 2 tied at.....	2

Hit batters	
1. 17 LINTON, Amber	14
2. 28 FOHRMAN, Samantha	4
3. 8 MITCHELL, Bella	3
4. 14 SNOW, Taylor	2
5. 2 tied at.....	1

Batters SO out looking	
1. 17 LINTON, Amber	31
2. 5 BRINKA, Emmalyn	9
3. 14 SNOW, Taylor	6
4. 8 MITCHELL, Bella	3
5. 28 FOHRMAN, Samantha	2

Hits allowed	
1. 8 MITCHELL, Bella	4
2. 4 TRIM, Jenna	6
3. 28 FOHRMAN, Samantha	13
4. 14 SNOW, Taylor	47
5. 5 BRINKA, Emmalyn	53

Walks allowed	
1. 4 TRIM, Jenna	1
2. 8 MITCHELL, Bella	6
3. 28 FOHRMAN, Samantha	11
4. 14 SNOW, Taylor	12
5. 5 BRINKA, Emmalyn	13

Home runs allowed	
1. 8 MITCHELL, Bella	1
4 TRIM, Jenna	1
3. 28 FOHRMAN, Samantha	2
4. 5 BRINKA, Emmalyn	4
14 SNOW, Taylor	4

Multiple Hit Games	2	3	4	5+	Total
21 ROBINSON, Peyton	4	5	-	-	9
3 HATHOOT, Rachael	6	3	-	-	9
38 CHAVEZ, Keyannah	8	1	-	-	9
44 GARCIA, Lauren	5	2	-	-	7
25 YEATTS, Chloe	6	-	-	-	6
20 BRAMSON, Emma	4	-	-	-	4
4 TRIM, Jenna	3	-	-	-	3
7 ARCHULETA, Ashley	2	-	-	-	2
34 BOLDT, Maddie	2	-	-	-	2
42 WALKER, Loran	1	-	-	-	1
27 BIRKINSHAW, Olivia	-	1	-	-	1
TEAM	41	12	0	0	53

Multiple RBI Games	2	3	4	5+	Total
44 GARCIA, Lauren	3	1	1	-	5
3 HATHOOT, Rachael	2	1	1	-	4
34 BOLDT, Maddie	-	3	-	-	3
25 YEATTS, Chloe	2	1	-	-	3
42 WALKER, Loran	1	1	-	-	2
38 CHAVEZ, Keyannah	2	-	-	-	2
7 ARCHULETA, Ashley	1	1	-	-	2
27 BIRKINSHAW, Olivia	1	1	-	-	2
4 TRIM, Jenna	1	-	-	-	1
77 TUCK, Reyan	1	-	-	-	1
21 ROBINSON, Peyton	-	1	-	-	1
20 BRAMSON, Emma	1	-	-	-	1
TEAM	15	10	2	0	27

Hitting Streaks	Longest	Current
3 HATHOOT, Rachael	7	7
38 CHAVEZ, Keyannah	6	1
44 GARCIA, Lauren	5	-
21 ROBINSON, Peyton	5	5
25 YEATTS, Chloe	4	1
34 BOLDT, Maddie	4	-
27 BIRKINSHAW, Olivia	4	1
42 WALKER, Loran	3	-
7 ARCHULETA, Ashley	3	-
20 BRAMSON, Emma	3	2
16 ROMERO, Leslie	3	-
77 TUCK, Reyan	3	-
4 TRIM, Jenna	2	2
13 BAYLOR, Elizabeth	2	-
55 CAMERON, Janae	1	-

Reached Base Streaks	Longest	Current
3 HATHOOT, Rachael	12	12
38 CHAVEZ, Keyannah	10	6
44 GARCIA, Lauren	8	6
27 BIRKINSHAW, Olivia	7	7
21 ROBINSON, Peyton	6	5
42 WALKER, Loran	6	-
34 BOLDT, Maddie	6	-
7 ARCHULETA, Ashley	4	-
4 TRIM, Jenna	4	4
25 YEATTS, Chloe	4	1
16 ROMERO, Leslie	4	-
77 TUCK, Reyan	3	-
20 BRAMSON, Emma	3	2
55 CAMERON, Janae	2	-
13 BAYLOR, Elizabeth	2	-

CONFERENCE STANDINGS

Team	MOUNTAIN WEST						ALL GAMES									
	W	L	Pct.	H	A	N	W	L	T	Pct.	H	A	N	Streak	Last 10	
Nevada	0	0	.000	0-0	0-0	0-0	18	2	0	.900	1-0	5-2	12-0	W8	9-1	
San Diego State	0	0	.000	0-0	0-0	0-0	15	7	0	.682	11-3	1-0	3-4	W2	6-4	
Colorado State	0	0	.000	0-0	0-0	0-0	14	7	0	.667	0-0	3-4	11-3	W1	6-4	
UNLV	0	0	.000	0-0	0-0	0-0	14	11	0	.560	6-5	0-2	8-4	L1	5-5	
Boise State	0	0	.000	0-0	0-0	0-0	12	10	0	.545	3-0	1-4	8-6	W4	5-5	
New Mexico	0	0	.000	0-0	0-0	0-0	12	15	0	.444	3-1	1-7	8-7	L2	5-5	
San José State	0	0	.000	0-0	0-0	0-0	10	14	0	.417	7-5	1-1	2-8	W2	4-6	
Utah State	0	0	.000	0-0	0-0	0-0	8	12	0	.400	0-0	3-5	5-7	W1	3-7	
Fresno State	0	0	.000	0-0	0-0	0-0	8	13	0	.381	5-5	1-2	2-6	W1	2-8	

MW INDIVIDUAL LEADERBOARD

BATTING AVERAGE

7. Rachael Hathoot (.377)
9. Peyton Robinson (.360)
10. Keyannah Chavez (.358)

SLUGGING PERCENTAGE

11. Rachael Hathoot (.584)
20. Chloe Yeatts (.435)

ON-BASE PERCENTAGE

11. Rachael Hathoot (.429)
12. Keyannah Chavez (.422)

HITS

T-1. Peyton Robinson (32)
T-4. Keyannah Chavez (29)
Rachael Hathoot (29)
T-13. Lauren Garcia (22)

HIT BY PITCH

T-3. Olivia Birkinshaw (5)
T-8. Lauren Garcia (3)
T-15. Keyannah Chavez (2)
Peyton Robinson (2)
Rachael Hathoot (2)

STOLEN BASES

3. Peyton Robinson (13)
T-13. Rachael Hathoot (5)

RBI

T-10. Rachael Hathoot (17)
T-14. Lauren Garcia (16)
T-17. Maddie Boldt (15)

DOUBLES

T-5. Keyannah Chavez (5)
T-16. Rachael Hathoot (4)

TRIPLES

1. Rachael Hathoot (3)
T-4. Maddie Boldt (1)
Jenna Trim (1)
Ashley Archuleta (1)

HOME RUNS

T-9. Maddie Boldt (4)
T-17. Chloe Yeatts (3)

TOTAL BASES

T-4. Rachael Hathoot (45)
T-15. Peyton Robinson (34)
Keyannah Chavez (34)

PITCHING EARNED RUN AVERAGE

11. Amber Linton (3.30)

INNINGS PITCHED

1. Amber Linton (91.1)
16. Taylor Snow (36.2)

STRIKEOUTS

1. Amber Linton (98)

STRIKEOUTS LOOKING

1. Amber Linton (31)

WINS

1. Amber Linton (8)
T-14. Taylor Snow (3)

MW TEAM LEADERBOARD

HITTING

TB: 1st
H: 1st
3B: T-1st
Sac Bunts: 2nd
SF: T-2nd
HBP: 3rd
R: 3rd
RBI: 3rd
K: 3rd
BA: 4th
SB: 4th
2B: 5th
HRs: 5th
SLG %: 5th
OB %: 6th
BB: 7th

PITCHING

K: 2nd
ERA: 7th
BB: T-7th
B/AVG.: 8th
R: 9th

FIELDING

FLD DP: 1st
FLD %: 9th

THE 2023 LOBOS



0 Evany Gonzalez

FR • INF • 5-1 • L/R
Alvin, Texas (Lutheran South Academy)

SEASON BESTS

Hits	
Doubles	
Triples	
Home Runs	
RBI	
Runs	1 3x, last: Charlotte, 3-5-23
Walks	
Stolen Bases	1 Oklahoma State, 2-24-23

CAREER BESTS

Hits	
Doubles	
Triples	
Home Runs	
RBI	
Runs	Same
Walks	
Stolen Bases	Same

STREAKS

	Current	Career Best
Hitting		
On-Base		

MULTI-HIT GAMES

	2	3	4	5+	TOTAL
2023					

MULTI-RBI GAMES

	2	3	4	5+	TOTAL
2023					

2023 GAME-BY-GAME

DATE	OPPONENT	POS	AB	R	H	TB	2B	3B	HR	RBI	BB	HBP	SO	SB-ATT	E
2/23	CSU Bakersfield	pr	0	1	0	0	0	0	0	0	0	0	0	0-0	0
2/24	Oklahoma State	pr	0	0	0	0	0	0	0	0	0	0	0	1-1	0
2/25	NM State	2b	1	0	0	0	0	0	0	0	0	0	1	0-0	0
3/1	UTEP	pr	0	0	0	0	0	0	0	0	0	0	0	0-0	0
3/1	UTEP	pr	0	1	0	0	0	0	0	0	0	0	0	0-0	0
3/5	Charlotte	pr	0	1	0	0	0	0	0	0	0	0	0	0-0	0
3/10	Manhattan	pr	0	0	0	0	0	0	0	0	0	0	0	0-0	0
3/12	Texas Tech	pr	0	0	0	0	0	0	0	0	0	0	0	0-0	0
3/17	Utah State														
3/18	Utah State														
3/19	Utah State														
3/24	San José State														
3/25	San José State														
3/26	San José State														
3/28	NM State														
3/31	Fresno State														
4/1	Fresno State														
4/2	Fresno State														
4/6	Boise State														
4/7	Boise State														
4/8	Boise State														
4/15	Colorado State														
4/16	Colorado State														
4/21	San Diego State														
4/22	San Diego State														
4/23	San Diego State														
4/28	Nevada														
4/29	Nevada														
4/30	Nevada														
5/5	UNLV														
5/6	UNLV														
			0	1	3	0	0	0	0	0	0	0	1	1-1	0

CAREER STATS

SEASON	GP	GS	AVG.	AB	R	H	2B	3B	HR	RBI	TB	SLG%	BB	SO	HBP	OB%	SF	SH	SB-SA	PO	A	E	FLD%
2023	8	0	.000	1	3	0	0	0	0	0	0	.000	0	1	0	.000	0	0	1-1	0	0	0	.000
TOTAL	8	0	.000	1	3	0	0	0	0	0	0	.000	0	1	0	.000	0	0	1-1	0	0	0	.000

HIGHLIGHTS

- Majoring in mechanical engineering
- Named first team all-district, first team all-state
- Played for the Hotshots

THE 2023 LOBOS



2 Savana Martinez

RS-SO • C • 5-3 • R/R
Albuquerque, N.M. (Rio Rancho HS)

SEASON BESTS

Hits		
Doubles		
Triples		
Home Runs		
RBI		
Runs		
Walks		
Runner CS	1	Arizona State, 3/3/23

CAREER BESTS

Hits	2	Maine, 3/12/23
Doubles	1	Wisconsin, 3/13/22
Triples		
Home Runs		
RBI	1	2x, last:Nevada, 4/23/22
Runs	1	2x, last: Wisconsin, 3/13/22
Walks	1	3x, last: Colorado State, 4/9/22
Runner CS	1	2x, last: Arizona St., 3/3/23

STREAKS

	Current	Career Best
Hitting		2
On-Base		3

MULTI-HIT GAMES

	2	3	4	5+	TOTAL
2022	1	-	-	-	1
2023					

MULTI-RBI GAMES

	2	3	4	5+	TOTAL
2022	-	-	-	-	-
2023					

2023 GAME-BY-GAME

DATE	OPPONENT	POS	AB	R	H	TB	2B	3B	HR	RBI	BB	HBP	SO	SB-ATT	E
2/10	LSU	*c	1	0	0	0	0	0	0	0	0	0	1	0-0	0
2/23	CSU Bakersfield	c	1	0	0	0	0	0	0	0	0	0	1	0-0	0
2/25	Nebraska	ph	1	0	0	0	0	0	0	0	0	0	1	0-0	0
3/3	Arizona State	*c	1	0	0	0	0	0	0	0	0	0	1	0-0	0
3/4	Washington	c	1	0	0	0	0	0	0	0	0	0	1	0-0	1
3/17	Utah State														
3/18	Utah State														
3/19	Utah State														
3/24	San José State														
3/25	San José State														
3/26	San José State														
3/28	NM State														
3/31	Fresno State														
4/1	Fresno State														
4/2	Fresno State														
4/6	Boise State														
4/7	Boise State														
4/8	Boise State														
4/15	Colorado State														
4/16	Colorado State														
4/21	San Diego State														
4/22	San Diego State														
4/23	San Diego State														
4/28	Nevada														
4/29	Nevada														
4/30	Nevada														
5/5	UNLV														
5/6	UNLV														
			2	5	0	0	0	0	0	0	0	0	5	0-0	1

CAREER STATS

SEASON	GP	GS	AVG.	AB	R	H	2B	3B	HR	RBI	TB	SLG%	BB	SO	HBP	OB%	SF	SH	SB-SA	PO	A	E	FLD%
2022	12	7	.200	20	2	4	2	0	0	2	6	.300	3	7	0	.304	0	0	0-0	33	1	0	1.000
2023	5	2	.000	5	0	0	0	0	0	0	0	.000	0	5	0	.000	0	0	0-0	2	1	1	.750
TOTAL	17	9	.160	25	2	4	2	0	0	2	6	.240	3	12	0	.250	0	0	0-0	35	2	1	.974

HIGHLIGHTS

- Started 7 games at catcher last season
- Hit 8th in 5 games and 9th in 2 games last season
- First collegiate hit and RBI came against Maine on March 12, 2022

THE 2023 LOBOS



3 Rachael Hathoot

RS-JR • INF • 5-8 • R/R
Albuquerque, N.M. (La Cueva HS)

SEASON BESTS

Hits	3	3x, last: Houston, 3-3-23
Doubles	1	4x, last: Buffalo, 3-10-23
Triples	1	3x, last: NMSU, 2-25-23
Home Runs	1	2x, last: UTEP, 3-1-23
RBI	4	NMSU, 2-25-23
Runs	2	6x, last: Charlotte, 3-5-23
Walks	1	5x, last: Washington, 3-4-23
Stolen Bases	1	5x, last: Washington, 3-4-23

CAREER BESTS

Hits	3	Same
Doubles	2	2x, last: San José State, 5-8-21
Triples	1	5x, last: NMSU, 2-25-23
Home Runs	1	7x, last: UTEP, 3-1-23
RBI	4	NMSU, 2-25-23
Runs	2	14x, last: Charlotte, 3-5-23
Walks	2	Weber State, 2-7-20
Stolen Bases	2	Texas, 3-20-21

STREAKS

	Current	Career Best
Hitting	7	7
On-Base	12	12

MULTI-HIT GAMES

	2	3	4	5+	TOTAL
2020	5	-	-	-	5
2021	8	-	-	-	8
2023	6	3	-	-	9

MULTI-RBI GAMES

	2	3	4	5+	TOTAL
2020	4	-	-	-	4
2021	4	1	-	-	5
2023	2	1	1	-	4

2023 GAME-BY-GAME

DATE	OPPONENT	POS	AB	R	H	TB	2B	3B	HR	RBI	BB	HBP	SO	SB-ATT	E	
2/9	Nicholls	*ss	1	0	0	0	0	0	0	1	0	1	0	0-0	2	
2/10	Oregon State	*ss	1	0	0	0	0	0	0	0	0	0	0	0-0	0	
2/10	LSU	*ss	1	0	0	0	0	0	0	0	0	0	0	0-0	0	
2/11	Oregon State	*ss	1	0	0	0	0	0	0	0	0	0	0	0-0	0	
2/11	LSU	*ss	2	0	1	1	0	0	0	0	0	0	0	0-0	0	
2/17	Buffalo	*ss	2	1	1	3	0	1	0	1	1	0	1	1-1	0	
2/18	Santa Clara	*ss	3	0	0	0	0	0	0	0	0	0	0	0-0	2	
2/18	Texas Tech	*ss	4	2	2	4	0	1	0	2	0	0	1	1-1	0	
2/23	CSU Bakersfield	*ss	4	0	1	1	0	0	0	1	0	0	0	1-1	0	
2/23	CSU Bakersfield	*ss	3	2	2	2	0	0	0	1	1	0	0	1-1	0	
2/24	Oklahoma State	*ss	2	0	0	0	0	0	0	0	0	0	2	0-0	0	
2/24	Creighton	*ss	2	1	0	0	0	0	0	0	1	0	0	0-0	0	
2/25	NM State	*ss	4	2	3	9	1	1	1	4	0	0	0	0-0	0	
2/25	Nebraska	*ss	2	0	1	1	0	0	0	0	0	0	1	0-0	0	
2/26	Nebraska	*ss	4	0	0	0	0	0	0	0	0	0	1	0-0	0	
3/1	UTEP	*ss	5	0	3	3	0	0	0	0	0	0	1	0-0	0	
3/1	UTEP	*ss	4	2	2	5	0	0	1	3	0	0	0	0-0	0	
3/3	Houston	*ss	3	2	3	3	0	0	0	0	0	0	0	0-0	0	
3/3	Arizona State	*ss	2	1	0	0	0	0	0	0	1	0	0	0-0	0	
3/4	Washington	*ss	2	0	0	0	0	0	0	0	1	0	1	1-1	1	
3/4	GCU	*ss	4	0	1	2	1	0	0	0	0	0	1	0-0	0	
3/5	Charlotte	*ss	4	2	2	3	1	0	0	1	0	0	1	0-0	0	
3/10	Buffalo	*ss	3	0	1	2	1	0	0	0	0	0	0	0-0	0	
3/10	Manhattan	*ss	4	1	2	2	0	0	0	2	0	1	0	0-0	1	
3/11	Buffalo	*ss	4	1	2	2	0	0	0	0	0	0	1	0-0	1	
3/11	Texas Tech	*ss	3	1	1	1	0	0	0	1	0	0	0	0-0	0	
3/12	Texas Tech	*ss	3	0	1	1	0	0	0	0	0	0	0	0-0	0	
3/17	Utah State															
3/18	Utah State															
3/19	Utah State															
3/24	San José State															
3/25	San José State															
3/26	San José State															
3/28	NM State															
3/31	Fresno State															
4/1	Fresno State															
4/2	Fresno State															
4/6	Boise State															
4/7	Boise State															
4/8	Boise State															
4/15	Colorado State															
4/16	Colorado State															
4/21	San Diego State															
4/22	San Diego State															
4/23	San Diego State															
4/28	Nevada															
4/29	Nevada															
4/30	Nevada															
5/5	UNLV															
5/6	UNLV															
			27	77	18	29	45	4	3	2	17	5	2	11	5-5	7

CAREER STATS

SEASON	GP	GS	AVG.	AB	R	H	2B	3B	HR	RBI	TB	SLG%	BB	SO	HBP	OB%	SF	SH	SB-SA	PO	A	E	FLD%
2020	26	26	.250	84	19	21	6	2	1	12	34	.405	7	8	3	.330	0	2	0-1	38	47	6	.934
2021	46	46	.241	133	18	32	10	0	4	20	54	.406	9	25	2	.299	0	2	9-12	96	79	11	.941
2023	27	27	.377	77	18	29	4	3	2	17	45	.584	5	11	2	.429	0	2	5-5	43	57	7	.935
TOTAL	99	99	.279	294	55	82	20	5	7	49	133	.452	21	44	7	.342	0	6	14-18	177	183	24	.938

HIGHLIGHTS

- Missed 2022 season due to injury
- Has started every game in her 3 years
- Started all 46 games, playing second for 42 games and catcher for 4 in 2021
- Named Mountain West Player of the Week on May 11, 2021
- Started all 26 games at third base as a freshman
- Hit leadoff in 14 games and 2nd in 12 games as a freshman, hit leadoff in 8 games, 3rd in 3, cleanup in 27 games, 5th in 6 games and 6th in 2 games as a sophomore
- Double majoring in speech and hearing sciences and psychology

THE 2023 LOBOS



4 Jenna Trim

JR • P/UT • 5-7 • R/R
North Curl Curl, NSW, Australia
(Pensacola State)

SEASON BESTS (MIN. 3.0 IP)

IP (high)	2.0	Nebraska, 2-25-23
H (low)	3	Nebraska, 2-25-23
R (low)	1	Nebraska, 2-25-23
ER (low)	1	Nebraska, 2-25-23
BB (low)	1	Nebraska, 2-25-23
SO (high)		
BF (high)		
NP (high)	29	Nebraska, 2-25-23

CAREER BESTS (MIN. 3.0 IP)

IP (high)	Same
H (low)	Same
R (low)	Same
ER (low)	Same
BB (low)	Same
SO (high)	
BF (high)	Same
NP (high)	Same

SEASON BESTS

Hits	2	3x, last: Texas Tech, 3-11-23
Doubles	1	3x, last: Texas Tech, 3-12-23
Triples	1	CSUB, 2-23-23
Home Runs	1	Texas Tech, 3-11-23
RBI	2	CSUB, 2-23-23
Runs	2	2x, last: Texas Tech, 3-11-23
Walks	2	Manhattan, 3-10-23
Stolen Bases		

STREAKS

	Current	Career Best
Hitting	2	2
Reach Base	4	4

MULTI-HIT GAMES

	2	3	4	5+	TOTAL
2023	3				3

MULTI-RBI GAMES

	2	3	4	5+	TOTAL
2023	1				1

PITCHING SUPERLATIVES (MIN. 4.0 IP)

	Season	Career
5+ K		
10+ K		
1 R or Less		
Shutout		

2023 GAME-BY-GAME

DATE	OPPONENT	POS	AB	R	H	TB	2B	3B	HR	RBI	BB	HBP	SO	SB-ATT	E	
2/10	LSU	ph	1	0	0	0	0	0	0	0	0	0	0	0	0	
2/17	Buffalo	ph	1	0	0	0	0	0	0	0	0	0	1	0-0	0	
2/23	CSU Bakersfield	*1b	3	2	2	5	1	1	0	0	0	0	1	0-0	0	
2/23	CSU Bakersfield	*1b	3	1	2	2	0	0	0	2	1	0	0	0-0	0	
2/24	Oklahoma State	*1b	1	0	0	0	0	0	0	0	0	0	1	0-0	0	
2/24	Creighton	*1b	2	0	0	0	0	0	0	0	0	0	1	0-0	0	
2/26	Nebraska	*1b	1	0	0	0	0	0	0	0	1	0	0	0-0	0	
3/1	UTEP	*1b	5	0	0	0	0	0	0	0	0	0	0	0-0	0	
3/3	Houston	pr/lb	0	0	0	0	0	0	0	0	1	0	0	0-0	0	
3/4	GCU	1b	2	1	1	1	0	0	0	0	0	0	0	0-0	0	
3/5	Charlotte	*1b	3	0	1	2	1	0	0	1	0	0	1	0-0	0	
3/10	Buffalo	*1b	2	0	0	0	0	0	0	0	0	0	0	0-0	0	
3/10	Manhattan	*1b	3	1	1	1	0	0	0	0	2	0	0	0-0	0	
3/11	Buffalo	*1b	2	0	0	0	0	0	0	0	1	0	0	0-0	0	
3/11	Texas Tech	*1b	2	2	2	5	0	0	1	1	0	0	0	0-0	1	
3/12	Texas Tech	*1b	3	0	1	2	1	0	0	0	0	0	0	0-0	0	
3/17	Utah State															
3/18	Utah State															
3/19	Utah State															
3/24	San José State															
3/25	San José State															
3/26	San José State															
3/28	NM State															
3/31	Fresno State															
4/1	Fresno State															
4/2	Fresno State															
4/6	Boise State															
4/7	Boise State															
4/8	Boise State															
4/15	Colorado State															
4/16	Colorado State															
4/21	San Diego State															
4/22	San Diego State															
4/23	San Diego State															
4/28	Nevada															
4/29	Nevada															
4/30	Nevada															
5/5	UNLV															
5/6	UNLV															
			12	34	7	10	18	3	1	1	4	6	0	5	0-0	1

HITTING CAREER STATS (AT UNM)

SEASON	GP	GS	AVG.	AB	R	H	2B	3B	HR	RBI	TB	SLG%	BB	SO	HBP	OB%	SF	SH	SB-SA	PO	A	E	FLD%
2023	16	12	.294	34	7	10	3	1	1	4	18	.529	6	5	0	.400	0	0	0-0	79	2	1	.988
TOTAL	16	12	.294	34	7	10	3	1	1	4	18	.529	6	5	0	.400	0	0	0-0	79	2	1	.988

PITCHING CAREER STATS (AT UNM)

SEASON	GS	APP	CG	W-L	ERA	SHO	SV	IP	H	R	ER	BB	SO	2B	3B	HR	BF	NP-STK	WP	HBP
2023	0	2	0	0-0	5.25	0	0	4.0	6	3	3	1	0	2	1	1	20	31-20	0	1
TOTAL	0	2	0	0-0	5.25	0	0	4.0	6	3	3	1	0	2	1	1	20	31-20	0	1

HIGHLIGHTS

- Signed with UNM on July 5, 2022
- Can pitch and play infield- has pitched in 2 games and started at first in 12 games
- Spent first two years at Pensacola State

THE 2023 LOBOS



5 Emmalyn Brinka

FR • P • 6-0 • R/R

Chandler, Ariz. (Corona del Sol HS)

SEASON BESTS (MIN. 3.0 IP)

IP (high)	5.0	Oregon State, 2-11-23
H (low)	2	Oregon State, 2-11-23
R (low)	0	Oregon State, 2-11-23
ER (low)	0	Oregon State, 2-11-23
BB (low)	0	NMSU, 2-25-23
SO (high)	5	NMSU, 2-25-23
BF (high)	20	2x, last: Oklahoma St, 2-24-23
NP (high)	77	Oklahoma State, 2-24-23

CAREER BESTS (MIN. 3.0 IP)

IP (high)	Same
H (low)	Same
R (low)	Same
ER (low)	Same
BB (low)	Same
SO (high)	Same
BF (high)	Same
NP (high)	Same

PITCHING SUPERLATIVES (MIN. 4.0 IP)

	Season	Career
5+ K	1	1
10+ K		
1 R or Less	1	1
Shutout	1	1

2023 GAME-BY-GAME

DATE	OPPONENT	W-L	ERA	CG	IP	H	R	ER	BB	SO	2B	3B	HR	BF	HBP
2/10	LSU	--	18.38	0	2.2	9	7	7	2	1	2	0	0	19	0
2/11	Oregon State	1-0	0.00	1	5.0	2	0	0	2	4	1	0	0	20	0
2/18	Santa Clara	0-1	3.82	0	3.2	5	3	2	2	4	3	0	0	17	0
2/18	Texas Tech	--	42.00	0	0.2	3	4	4	1	0	1	0	1	6	0
2/24	Oklahoma State	0-1	9.00	0	2.1	10	10	3	2	0	2	0	1	20	1
2/25	NM State	--	6.00	0	4.2	5	4	4	0	5	0	0	2	18	0
3/1	UTEP	--	2.33	0	3.0	3	2	1	2	0	0	0	0	12	0
3/3	Arizona State	0-1	9.33	0	3.0	7	4	4	1	0	1	1	0	16	0
3/4	GCU	--	0.00	0	0.2	0	0	0	0	0	0	0	0	2	0
3/10	Manhattan	--	5.25	0	4.0	6	3	3	1	2	0	0	0	18	0
3/11	Texas Tech	0-1	0.00	0	0.0	3	3	3	0	0	1	0	0	3	0
3/17	Utah State														
3/18	Utah State														
3/19	Utah State														
3/24	San José State														
3/25	San José State														
3/26	San José State														
3/28	NM State														
3/31	Fresno State														
4/1	Fresno State														
4/2	Fresno State														
4/6	Boise State														
4/7	Boise State														
4/8	Boise State														
4/15	Colorado State														
4/16	Colorado State														
4/21	San Diego State														
4/22	San Diego State														
4/23	San Diego State														
4/28	Nevada														
4/29	Nevada														
4/30	Nevada														
5/5	UNLV														
5/6	UNLV														
		1-4	7.31	1	29.2	53	40	31	13	16	11	1	4	151	1

CAREER STATS

SEASON	GS	APP	CG	W-L	ERA	SHO	SV	IP	H	R	ER	BB	SO	2B	3B	HR	BF	NP-STK	WP	HBP	PO	A	E	FLD%
2023	4	11	1	1-4	7.31	1	1	29.2	53	40	31	13	16	11	1	4	151	587-335	2	1	0	6	0	1.000
TOTAL	4	11	1	1-4	7.31	1	1	29.2	53	40	31	13	16	11	1	4	151	587-335	2	1	0	6	0	1.000

HIGHLIGHTS

- Signed with UNM on July 29, 2022
- First collegiate start was against Oregon State, pitching a complete game shutout
- Played for Storm Telesco
- Majoring in business administration

THE 2023 LOBOS



7 Ashley Archuleta

SO • INF • 5-4 • R/R
Rio Rancho, N.M. (Cleveland HS)

SEASON BESTS

Hits	2	2x, last: GCU, 3-4-23
Doubles	1	UTEP, 3-1-23
Triples	1	Buffalo, 3-10-23
Home Runs	1	Buffalo, 3-11-23
RBI	3	Buffalo, 3-11-23
Runs	2	Buffalo, 3-10-23
Walks	2	2x, last: Manhattan, 3-10-23
Stolen Bases	1	Creighton, 2-24-23

CAREER BESTS

Hits	3	3x, last: at SJSU, 3-20-22
Doubles	2	NMSU, 3-8-22
Triples	1	2x, last: Buffalo, 3-10-23
Home Runs	2	Fresno State, 4-15-22
RBI	4	Fresno State, 4-15-22
Runs	2	7x, last: Buffalo, 3-10-23
Walks	3	Nevada, 4-23-22
Stolen Bases	1	2x, last: Creighton, 2-24-23

STREAKS

	Current	Career Best
Hitting		13
On-Base		22

MULTI-HIT GAMES

	2	3	4	5+	TOTAL
2022	12	3			15
2023	2				2

MULTI-RBI GAMES

	2	3	4	5+	TOTAL
2022	3	1	1		5
2023	1	1			2

2023 GAME-BY-GAME

DATE	OPPONENT	POS	AB	R	H	TB	2B	3B	HR	RBI	BB	HBP	SO	SB-ATT	E
2/9	Nicholls	*2b	2	1	0	0	0	0	0	2	2	0	0	0-0	0
2/10	Oregon State	*2b	3	0	1	1	0	0	0	0	1	0	1	0-0	0
2/10	LSU	*2b	3	0	0	0	0	0	0	0	0	0	3	0-0	0
2/11	Oregon State	*2b	3	1	1	1	0	0	0	0	0	0	1	0-0	0
2/11	LSU	*2b	3	1	1	1	0	0	0	0	0	0	0	0-0	1
2/17	Buffalo	*2b	2	1	0	0	0	0	0	0	1	0	2	0-0	0
2/18	Santa Clara	*2b	2	0	0	0	0	0	0	0	0	0	0	0-0	0
2/18	Texas Tech	*2b	2	1	0	0	0	0	0	0	0	0	1	0-0	1
2/23	CSU Bakersfield	*2b	2	0	0	0	0	0	0	0	0	0	0	0-0	0
2/24	Oklahoma State	2b	1	1	0	0	0	0	0	0	1	0	1	0-0	0
2/24	Creighton	*2b	2	0	1	1	0	0	0	0	0	0	0	1-1	0
2/25	NM State	*2b	1	0	0	0	0	0	0	0	0	0	0	0-0	0
3/1	UTEP	ph/2b	1	0	0	0	0	0	0	0	1	0	0	0-0	0
3/1	UTEP	*2b	3	0	1	2	1	0	0	1	0	0	1	0-0	0
3/3	Houston	*2b	3	0	0	0	0	0	0	0	1	0	0	0-0	0
3/3	Arizona State	*2b	3	0	2	2	0	0	0	0	0	0	0	0-0	0
3/4	Washington	*2b	1	0	0	0	0	0	0	0	0	0	0	0-0	0
3/4	GCU	*2b	3	0	2	2	0	0	0	0	0	0	1	0-0	0
3/5	Charlotte	*2b	2	0	0	0	0	0	0	0	0	0	2	0-0	0
3/10	Buffalo	*2b	3	2	1	3	0	1	0	1	0	0	1	0-0	0
3/10	Manhattan	*2b	3	0	1	1	0	0	0	0	2	0	0	0-0	1
3/11	Buffalo	*2b	3	1	1	4	0	0	1	3	0	0	1	0-0	0
3/11	Texas Tech	*2b	3	0	0	0	0	0	0	0	0	0	2	0-0	0
3/12	Texas Tech	*2b	2	0	0	0	0	0	0	0	0	0	1	0-0	0
3/17	Utah State														
3/18	Utah State														
3/19	Utah State														
3/24	San José State														
3/25	San José State														
3/26	San José State														
3/28	NM State														
3/31	Fresno State														
4/1	Fresno State														
4/2	Fresno State														
4/6	Boise State														
4/7	Boise State														
4/8	Boise State														
4/15	Colorado State														
4/16	Colorado State														
4/21	San Diego State														
4/22	San Diego State														
4/23	San Diego State														
4/28	Nevada														
4/29	Nevada														
4/30	Nevada														
5/5	UNLV														
5/6	UNLV														
			22	56	9	12	18	1	1	1	7	9	0	18	1-1 3

CAREER STATS

SEASON	GP	GS	AVG.	AB	R	H	2B	3B	HR	RBI	TB	SLG%	BB	SO	HBP	OB%	SF	SH	SB-SA	PO	A	E	FLD%
2022	53	53	.326	172	29	56	9	1	2	21	73	.424	20	36	3	.405	0	1	1-1	86	100	15	.926
2023	24	22	.214	56	9	12	1	1	1	7	18	.321	9	18	0	.323	0	1	1-1	39	41	3	.964
TOTAL	77	75	.298	228	38	68	10	2	3	28	91	.399	29	54	3	.385	0	2	2-2	125	141	18	.937

HIGHLIGHTS

- All-Conference First Team in 2022
- Played 51 games at second, 1 game at shortstop and 1 game as DP last season
- Led off in 29 games, hit 2nd in 21 games, 4th in 2 games, 6th in 1 game
- 2nd on the team in total bases (73), hits (56) and doubles (9) as a freshman

THE 2023 LOBOS



8 **Bella Mitchell**

FR • P • 5-6 • R/R
New Braunfels, Texas (Canyon HS)

SEASON BESTS

IP (high)	1.2	Oklahoma State, 2-24-23
H (low)	0	Nebraska, 2-25-23
R (low)	1	Nebraska, 2-25-23
ER (low)	1	Nebraska, 2-25-23
BB (low)	1	Oklahoma State, 2-24-23
SO (high)	4	Oklahoma State, 2-24-23
BF (high)	8	Oklahoma State, 2-24-23
NP (high)	36	Oklahoma State, 2-24-23

CAREER BESTS

IP (high)	Same
H (low)	Same
R (low)	Same
ER (low)	Same
BB (low)	Same
SO (high)	Same
BF (high)	Same
NP (high)	Same

PITCHING SUPERLATIVES (MIN. 4.0 IP)

	Season	Career
5+ K		
10+ K		
1 R or Less		
Shutout		

2023 GAME-BY-GAME

DATE	OPPONENT	W-L	ERA	CG	IP	H	R	ER	BB	SO	2B	3B	HR	BF	HBP
2/24	Oklahoma State	--	8.40	0	1.2	1	2	2	1	4	0	0	1	8	1
2/25	Nebraska	--	10.50	0	0.2	0	1	1	4	0	0	0	0	7	1
3/11	Texas Tech	--	105.00	0	0.1	3	5	5	1	0	1	0	0	6	1
3/17	Utah State														
3/18	Utah State														
3/19	Utah State														
3/24	San José State														
3/25	San José State														
3/26	San José State														
3/28	NM State														
3/31	Fresno State														
4/1	Fresno State														
4/2	Fresno State														
4/6	Boise State														
4/7	Boise State														
4/8	Boise State														
4/15	Colorado State														
4/16	Colorado State														
4/21	San Diego State														
4/22	San Diego State														
4/23	San Diego State														
4/28	Nevada														
4/29	Nevada														
4/30	Nevada														
5/5	UNLV														
5/6	UNLV														
			21.00	0	2.2	4	8	8	6	4	1	0	1	21	3

CAREER STATS

SEASON	GS	APP	CG	W-L	ERA	SHO	SV	IP	H	R	ER	BB	SO	2B	3B	HR	BF	NP-STK	WP	HBP	PO	A	E	FLD%
2023	0	3	0	0-0	21.00	0	0	2.2	4	8	8	6	4	1	0	1	21	58-30	4	3	0	0	0	.000
TOTAL	0	3	0	0-0	21.00	0	0	2.2	4	8	8	6	4	1	0	1	21	58-30	4	3	0	0	0	.000

HIGHLIGHTS

- Theatre major
- Named the District 5A Pitcher of the Year and was all-academic 2019-21
- District champions in 2019, placing fourth in the state



THE 2023 LOBOS



9 Seleste Compian

FR • OF • 5-1 • L/R
Rosenberg, Texas (George Ranch HS)

SEASON BESTS

Hits
Doubles
Triples
Home Runs
RBI
Runs
Walks
Stolen Bases

CAREER BESTS

Hits
Doubles
Triples
Home Runs
RBI
Runs
Walks
Stolen Bases

STREAKS

Current Career Best
Hitting
On-Base

MULTI-HIT GAMES

	2	3	4	5+	TOTAL
2023					

MULTI-RBI GAMES

	2	3	4	5+	TOTAL
2023					

2023 GAME-BY-GAME

DATE	OPPONENT	POS	AB	R	H	TB	2B	3B	HR	RBI	BB	HBP	SO	SB-ATT	E
3/17	Utah State														
3/18	Utah State														
3/19	Utah State														
3/24	San José State														
3/25	San José State														
3/26	San José State														
3/28	NM State														
3/31	Fresno State														
4/1	Fresno State														
4/2	Fresno State														
4/6	Boise State														
4/7	Boise State														
4/8	Boise State														
4/15	Colorado State														
4/16	Colorado State														
4/21	San Diego State														
4/22	San Diego State														
4/23	San Diego State														
4/28	Nevada														
4/29	Nevada														
4/30	Nevada														
5/5	UNLV														
5/6	UNLV														

CAREER STATS

HIGHLIGHTS

- Undecided on major
- Played for the Texas Bombers
- All-district infielder in 2021 and honorable mention all-district infielder in 2019

THE 2023 LOBOS



12 Savannah Braun

JR • OF • 5-10 • R/R
Tualatin, Ore. (Tualatin HS)

SEASON BESTS

Hits
Doubles
Triples
Home Runs
RBI
Runs
Walks
Stolen Bases

CAREER BESTS

Hits 1 4x, last: NMSU, 3-22-22
Doubles
Triples
Home Runs 1 at NMSU, 3-22-22
RBI 3 at NMSU, 3-22-22
Runs 1 2x, last: at NMSU, 3-22-22
Walks 1 3x, last: Maine, 3-12-22
Total Bases 4 at NMSU, 3/22/23

STREAKS

	Current	Career Best
Hitting		2
On-Base		2

MULTI-HIT GAMES

	2	3	4	5+	TOTAL
2021	-	-	-	-	-
2022	-	-	-	-	-
2023					

MULTI-RBI GAMES

	2	3	4	5+	TOTAL
2021	-	-	-	-	-
2022	-	1	-	-	1
2023					

2023 GAME-BY-GAME

DATE	OPPONENT	POS	AB	R	H	TB	2B	3B	HR	RBI	BB	HBP	SO	SB-ATT	E
3/17	Utah State														
3/18	Utah State														
3/19	Utah State														
3/24	San José State														
3/25	San José State														
3/26	San José State														
3/28	NM State														
3/31	Fresno State														
4/1	Fresno State														
4/2	Fresno State														
4/6	Boise State														
4/7	Boise State														
4/8	Boise State														
4/15	Colorado State														
4/16	Colorado State														
4/21	San Diego State														
4/22	San Diego State														
4/23	San Diego State														
4/28	Nevada														
4/29	Nevada														
4/30	Nevada														
5/5	UNLV														
5/6	UNLV														

CAREER STATS

SEASON	GP	GS	AVG.	AB	R	H	2B	3B	HR	RBI	TB	SLG%	BB	SO	HBP	OB%	SF	SH	SB-SA	PO	A	E	FLD%
2021	4	1	.500	4	0	2	0	0	0	0	2	.500	2	2	0	.667	0	0	0-0	0	0	0	.000
2022	5	0	.500	4	2	2	0	0	1	4	5	1.250	1	0	0	.600	0	0	0-0	0	0	0	.000
TOTAL	9	1	.500	8	2	4	0	0	1	4	7	.875	3	2	0	.636	0	0	0-0	0	0	0	.000

HIGHLIGHTS

- Hit a pinch-hit 3-run HR at New Mexico on March 22 for her first collegiate HR
- Hit against Tarleton on Feb. 27 ended the game in a run-rule win
- Start was as the designated player against Utah State on May 15, 2021

THE 2023 LOBOS



13 Elizabeth Baylor

FR • OF • 5-8 • R/R
 Richmond, Texas (Churchill Fulshear HS)

SEASON BESTS

Hits	1	2x, last: Buffalo, 3-10-23
Doubles		
Triples		
Home Runs		
RBI	1	Buffalo, 3-10-23
Runs		
Walks		
Stolen Bases		

CAREER BESTS

Hits	Same
Doubles	
Triples	
Home Runs	
RBI	Same
Runs	
Walks	
Stolen Bases	

STREAKS

	Current	Career Best
Hitting		2
On-Base		2

MULTI-HIT GAMES

	2	3	4	5+	TOTAL
2023					

MULTI-RBI GAMES

	2	3	4	5+	TOTAL
2023					

2023 GAME-BY-GAME

DATE	OPPONENT	POS	AB	R	H	TB	2B	3B	HR	RBI	BB	HBP	SO	SB-ATT	E	
2/11	LSU	ph	1	0	0	0	0	0	0	0	0	0	1	0-0	0	
2/18	Texas Tech	pr	0	0	0	0	0	0	0	0	0	0	0	0-0	0	
2/24	Creighton	ph	1	0	0	0	0	0	0	0	0	0	1	0-0	0	
2/25	NM State	pr	0	0	0	0	0	0	0	0	0	0	0	0-0	0	
2/25	Nebraska	rf	1	0	0	0	0	0	0	0	0	0	1	0-0	0	
3/4	GCU	*rf	3	0	1	1	0	0	0	0	0	0	1	0-0	0	
3/10	Buffalo	rf	1	0	1	1	0	0	0	1	0	0	0	0-0	0	
3/10	Manhattan	pr/rf	0	0	0	0	0	0	0	0	0	0	0	0-0	0	
3/11	Buffalo	rf	0	0	0	0	0	0	0	0	0	0	0	0-0	0	
3/11	Texas Tech	rf	1	0	0	0	0	0	0	0	0	0	0	0-0	0	
3/12	Texas Tech	*rf	2	0	0	0	0	0	0	0	0	0	1	0-0	0	
3/17	Utah State															
3/18	Utah State															
3/19	Utah State															
3/24	San José State															
3/25	San José State															
3/26	San José State															
3/28	NM State															
3/31	Fresno State															
4/1	Fresno State															
4/2	Fresno State															
4/6	Boise State															
4/7	Boise State															
4/8	Boise State															
4/15	Colorado State															
4/16	Colorado State															
4/21	San Diego State															
4/22	San Diego State															
4/23	San Diego State															
4/28	Nevada															
4/29	Nevada															
4/30	Nevada															
5/5	UNLV															
5/6	UNLV															
			2	10	0	2	2	0	0	0	1	0	0	5	0-0	0

CAREER STATS

SEASON	GP	GS	AVG.	AB	R	H	2B	3B	HR	RBI	TB	SLG%	BB	SO	HBP	OB%	SF	SH	SB-SA	PO	A	E	FLD%
2023	11	2	.200	10	0	2	0	0	0	1	2	.200	0	5	0	.200	0	0	0-0	7	1	0	1.000
TOTAL	11	2	.200	10	0	2	0	0	0	1	2	.200	0	5	0	.200	0	0	0-0	7	1	0	1.000

HIGHLIGHTS

- First collegiate hit came against GCU on March 4
- Psychology major
- Played for the Houston Power, Aces Express and Texas Bombers.
- Named to the 4A Second Team All-District and the 5A Second Team All-District and was the school record holder for stolen bases

THE 2023 LOBOS



14 Taylor Snow

RS-SO • P • 5-10 • R/R
Columbia, La.. (Louisiana)

SEASON BESTS

IP (high)	7.0	CSUB, 2-23-23
H (low)	0	2x, last: Santa Clara, 2-18-23
R (low)	0	5x, last: Charlotte, 3-5-23
ER (low)	0	5x, last: Charlotte, 3-5-23
BB (low)	0	6x, last: Texas Tech, 3-12-23
SO (high)	3	Texas Tech, 3-12-23
BF (high)	29	CSUB, 2-23-23
NP (high)	101	CSUB, 2-23-23

CAREER BESTS

IP (high)	Same
H (low)	Same
R (low)	Same
ER (low)	Same
BB (low)	Same
SO (high)	Same
BF (high)	Same
NP (high)	Same

PITCHING SUPERLATIVES (MIN. 4.0 IP)

	Season	Career
5+ K		
10+ K		
1 R or Less	1	1
Shutout		

2023 GAME-BY-GAME

DATE	OPPONENT	W-L	ERA	CG	IP	H	R	ER	BB	SO	2B	3B	HR	BF	HBP
2/10	LSU	0-1	9.33	0	3.0	7	4	4	2	0	0	0	0	17	0
2/11	LSU	--	10.5	0	0.2	2	1	1	0	0	2	0	0	4	0
2/17	Buffalo	--	0.00	0	1.0	0	0	0	0	2	0	0	0	3	0
2/18	Santa Clara	--	0.00	0	1.1	0	0	0	1	2	0	0	0	5	0
2/18	Texas Tech	--	4.67	0	3.0	4	2	2	2	1	1	0	1	15	0
2/23	CSU Bakersfield	1-0	.000	0	7.0	6	0	0	2	1	2	0	0	29	1
2/25	Nebraska	0-1	84.00	0	0.2	8	8	8	0	0	2	0	1	10	0
3/1	UTEP	1-0	3.50	0	4.0	4	2	2	2	2	0	0	1	18	1
3/3	Arizona State	--	0.00	0	1.0	1	0	0	0	0	0	0	0	4	0
3/4	Washington	0-1	3.50	1	6.0	4	3	3	1	2	1	0	0	24	0
3/5	Charlotte	1-0	0.00	0	1.0	1	0	0	1	1	0	0	0	5	0
3/10	Manhattan	--	10.50	0	2.0	4	3	3	0	1	1	1	1	12	0
3/11	Texas Tech	--	0.00	0	2.0	2	1	0	1	0	0	0	0	8	0
3/12	Texas Tech	--	3.50	0	4.0	4	2	2	0	3	1	0	0	16	0
3/17	Utah State														
3/18	Utah State														
3/19	Utah State														
3/24	San José State														
3/25	San José State														
3/26	San José State														
3/28	NM State														
3/31	Fresno State														
4/1	Fresno State														
4/2	Fresno State														
4/6	Boise State														
4/7	Boise State														
4/8	Boise State														
4/15	Colorado State														
4/16	Colorado State														
4/21	San Diego State														
4/22	San Diego State														
4/23	San Diego State														
4/28	Nevada														
4/29	Nevada														
4/30	Nevada														
5/5	UNLV														
5/6	UNLV														
		3-3	4.77	1	36.2	47	26	25	12	15	10	1	4	170	2

CAREER STATS

SEASON	GS	APP	CG	W-L	ERA	SHO	SV	IP	H	R	ER	BB	SO	2B	3B	HR	BF	NP-STK	WP	HBP	PO	A	E	FLD%
2023	6	14	1	3-3	4.77	0	0	36.2	47	26	25	12	15	10	1	4	170	610-364	2	2	0	3	0	.000
TOTAL	6	14	1	3-3	4.77	0	0	36.2	47	26	25	12	15	10	1	4	170	610-364	2	2	0	3	0	.000

HIGHLIGHTS

- First collegiate start came at LSU
- First signee for Coach Dickson and staff (signed June 17, 2022)
- Redshirted at Louisiana
- Was a three-time first team all-state and all-district pitcher and pitched the Tigers to three consecutive state championship game appearances, earning the title her freshman season

THE 2023 LOBOS



16 Leslie Romero

SR • C • 5-4 • R/R
Gonzales, Calif. (Salinas HS)

SEASON BESTS

Hits	1	4x, last: Nebraska, 2-26-23
Doubles		
Triples		
Home Runs		
RBI	1	Buffalo, 2-17-23
Runs	2	Buffalo, 2-17-23
Walks	1	LSU, 2-10-23
Total Bases	1	4x, last: Nebraska, 2-26-23

CAREER BESTS

Hits	3	2x, last: Nevada (4/22/23)
Doubles	2	Nevada (4/22/23)
Triples		
Home Runs	1	2x, last: NMSU, 3-22-22
RBI	6	NMSU, 3-22-22
Runs	2	2x, last: Buffalo, 2-17-23
Walks	1	13x, last: LSU, 2-10-23
Total Bases	7	NMSU, 3-22-22

STREAKS

	Current	Career Best
Hitting		6
On-Base		6

MULTI-HIT GAMES

	2	3	4	5+	TOTAL
2019	-	-	-	-	-
2020	2	-	-	-	2
2022	11	2	-	-	13
2023					

MULTI-RBI GAMES

	2	3	4	5+	TOTAL
2019	-	-	-	-	-
2020	1	-	-	-	1
2022	-	1	-	1	2
2023					

2023 GAME-BY-GAME

DATE	OPPONENT	POS	AB	R	H	TB	2B	3B	HR	RBI	BB	HBP	SO	SB-ATT	E	
2/9	Nicholls	ph/c	1	0	0	0	0	0	0	0	0	0	0	0	0	
2/10	Oregon State	ph/c	0	0	0	0	0	0	0	0	0	0	0	0	0	
2/10	LSU	dp	0	0	0	0	0	0	0	0	1	0	0	0	0	
2/11	Oregon State	*dp	3	1	1	1	0	0	0	0	0	0	0	0	0	
2/11	LSU	*c	4	0	1	1	0	0	0	0	0	0	0	0	0	
2/17	Buffalo	*c	3	2	1	1	0	0	0	1	0	0	0	0	0	
2/18	Santa Clara	*dp	3	0	0	0	0	0	0	0	0	0	0	0	0	
2/18	Texas Tech	ph	1	0	0	0	0	0	0	0	0	0	0	0	0	
2/23	CSU Bakersfield	*c	3	0	0	0	0	0	0	0	0	1	0	0	0	
2/24	Oklahoma State	ph	1	0	0	0	0	0	0	0	0	0	1	0	0	
2/25	NM State	2b	1	0	0	0	0	0	0	0	0	0	0	0	0	
2/25	Nebraska	c	1	0	0	0	0	0	0	0	0	0	0	0	0	
2/26	Nebraska	ph	1	0	1	1	0	0	0	0	0	0	0	0	0	
3/10	Buffalo	ph	1	0	0	0	0	0	0	0	0	0	0	0	0	
3/10	Manhattan	*c	2	0	0	0	0	0	0	0	0	0	0	0	0	
3/17	Utah State															
3/18	Utah State															
3/19	Utah State															
3/24	San José State															
3/25	San José State															
3/26	San José State															
3/28	NM State															
3/31	Fresno State															
4/1	Fresno State															
4/2	Fresno State															
4/6	Boise State															
4/7	Boise State															
4/8	Boise State															
4/15	Colorado State															
4/16	Colorado State															
4/21	San Diego State															
4/22	San Diego State															
4/23	San Diego State															
4/28	Nevada															
4/29	Nevada															
4/30	Nevada															
5/5	UNLV															
5/6	UNLV															
			6	25	3	4	4	0	0	0	1	1	1	1	0-0	0

CAREER STATS

SEASON	GP	GS	AVG.	AB	R	H	2B	3B	HR	RBI	TB	SLG%	BB	SO	HBP	OB%	SF	SH	SB-SA	PO	A	E	FLD%
2019	10	2	.000	12	0	0	0	0	0	0	0	.000	0	5	0	.000	0	0	0-0	2	0	0	1.000
2020	15	12	.219	32	4	7	2	0	0	3	9	.281	1	4	0	.235	1	1	0-0	35	2	1	.974
2022	50	46	.271	144	13	39	10	0	2	23	55	.382	11	18	0	.313	5	0	2-2	150	4	1	.994
2023	15	6	.160	25	3	4	0	0	0	1	4	.160	1	1	1	.222	0	0	0-0	13	1	0	1.000
TOTAL	90	66	.235	213	20	50	12	0	2	27	68	.319	13	28	1	.275	6	1	2-2	200	7	2	.990

HIGHLIGHTS

- Started 24 games at catcher, 22 games at DP in 2022
- Hit 2nd in 9 games, 3rd in 6 games, cleanup in 10 games, 5th in 8 games, 6th in 3 games, 8th in 8 games, 9th in 2 games in 2022

THE 2023 LOBOS



17 Amber Linton

JR • P • 6-0 • R/R
Franklin, Ind. (Indiana)

SEASON BESTS (MIN. 3.0 IP)

IP (high)	11.0	UTEP, 3-1-23
H (low)	1	Manhattan, 3-10-23
R (low)	0	3x, last: Man., 3-10-23
ER (low)	0	3x, last: Man., 3-10-23
BB (low)	0	Manhattan, 3-10-23
SO (high)	12	Houston, 3-3-23
BF (high)	48	UTEP, 3-1-23
NP (high)	184	UTEP, 3-1-23

CAREER BESTS (MIN. 3.0 IP)

IP (high)	Same
H (low)	0 Boise State, 5-8-22
R (low)	0 4x, last: Man., 3-10-23
ER (low)	0 6x, last: Man., 3-10-23
BB (low)	0 4x, last: Man., 3-10-23
SO (high)	Same
BF (high)	Same
NP (high)	Same

PITCHING SUPERLATIVES (MIN. 4.0 IP)

	Season	Career
5+ K	10	24
10+ K	1	3
1 R or Less	6	10
Shutout	1	2

2023 GAME-BY-GAME

DATE	OPPONENT	W-L	ERA	CG	IP	H	R	ER	BB	SO	2B	3B	HR	BF	HBP	
2/9	Nicholls	1-0	4.20	1	5.0	3	3	3	3	3	0	0	1	21	0	
2/10	Oregon State	0-1	2.33	1	6.0	7	2	2	2	4	2	0	0	27	0	
2/11	LSU	--	12.60	0	3.1	7	8	6	3	2	0	0	2	24	2	
2/17	Buffalo	1-0	3.50	0	4.0	3	2	2	4	6	0	0	0	19	0	
2/18	Texas Tech	0-1	10.50	0	3.1	9	6	5	2	2	3	0	0	22	0	
2/23	CSU Bakersfield	1-0	2.00	1	7.0	3	2	2	2	9	1	0	0	26	1	
2/24	Creighton	1-0	0.00	1	7.0	4	0	0	1	9	1	0	0	27	0	
2/25	NM State	0-1	10.50	0	1.1	3	3	2	0	0	2	0	0	8	1	
2/26	Nebraska	0-1	1.17	1	6.0	4	1	1	2	6	2	0	0	28	2	
3/1	UTEP	0-1	1.27	1	11.0	11	2	2	3	8	2	0	0	48	1	
3/3	Houston	1-0	1.00	1	7.0	3	1	1	4	12	1	0	0	31	1	
3/4	GCU	0-1	6.56	0	5.1	10	6	5	3	5	0	0	1	28	0	
3/5	Charlotte	--	5.83	0	6.0	8	6	5	2	9	0	0	2	30	3	
3/10	Buffalo	1-0	0.00	1	7.0	3	0	0	1	9	1	0	0	24	0	
3/10	Manhattan	1-0	0.00	0	3.0	1	0	0	0	4	0	0	0	10	0	
3/11	Buffalo	1-0	1.00	1	7.0	6	1	1	3	7	1	0	0	30	2	
3/12	Texas Tech	0-1	17.50	0	2.0	8	5	5	2	3	1	0	1	16	1	
3/17	Utah State															
3/18	Utah State															
3/19	Utah State															
3/24	San José State															
3/25	San José State															
3/26	San José State															
3/28	NM State															
3/31	Fresno State															
4/1	Fresno State															
4/2	Fresno State															
4/6	Boise State															
4/7	Boise State															
4/8	Boise State															
4/15	Colorado State															
4/16	Colorado State															
4/21	San Diego State															
4/22	San Diego State															
4/23	San Diego State															
4/28	Nevada															
4/29	Nevada															
4/30	Nevada															
5/5	UNLV															
5/6	UNLV															
			8-7	3.22	9	91.1	93	48	42	37	98	17	0	7	419	14

CAREER STATS

SEASON	GS	APP	CG	W-L	ERA	SHO	SV	IP	H	R	ER	BB	SO	2B	3B	HR	BF	NP-STK	HBP
2021	4	19	0	4-3	3.79	0	0	44.1	52	33	24	24	21	12	2	2	214	159-82	5
2022	27	38	7	12-14	4.02	0	3	156.2	181	125	90	73	156	22	4	6	779	2512-1503	36
2023	15	17	9	8-7	3.22	2	0	91.1	93	48	42	37	98	14	0	7	419	1747-1060	14
TOTAL	46	74	16	24-24	3.74	2	3	292.1	326	206	156	134	275	51	6	15	1412	4418-2645	55

HIGHLIGHTS

- 6.97 strikeouts per game in 2022 was the single-season program record
- 156 strikeouts last season were the 6th most in a single-season in program history
- Named MW Pitcher of the Week on March 1, 2022 and March 14, 2023
- Pitched a team-high 156.2 innings with team-high 7 complete games and 3 saves
- Struck out 10 batters in the first game of the season last season, a win over Oregon St. and has recorded 10+ strikeouts in three games in her career

THE 2023 LOBOS



18 Grace Rana

FR • C • 5-6 • R/R
Queen Creek, Ariz. (Queen Creek HS)

SEASON BESTS

Hits	
Doubles	
Triples	
Home Runs	
RBI	
Runs	1 4x, last: Buffalo, 3-10-23
Walks	
Stolen Bases	1 Oregon State 2-11-23

CAREER BESTS

Hits	
Doubles	
Triples	
Home Runs	
RBI	
Runs	Same
Walks	
Stolen Bases	Same

STREAKS

	Current	Career Best
Hitting		
On-Base		

MULTI-HIT GAMES

	2	3	4	5+	TOTAL
2023					

MULTI-RBI GAMES

	2	3	4	5+	TOTAL
2023					

2023 GAME-BY-GAME

DATE	OPPONENT	POS	AB	R	H	TB	2B	3B	HR	RBI	BB	HBP	SO	SB-ATT	E
2/9	Nicholls	pr	0	0	0	0	0	0	0	0	0	0	0	0-0	0
2/10	Oregon State	pr	0	0	0	0	0	0	0	0	0	0	0	0-0	0
2/11	Oregon State	pr	0	0	0	0	0	0	0	0	0	0	0	1-1	0
2/11	LSU	pr	0	1	0	0	0	0	0	0	0	0	0	0-0	0
2/17	Buffalo	pr	0	1	0	0	0	0	0	0	0	0	0	0-0	0
2/18	Santa Clara	pr	0	0	0	0	0	0	0	0	0	0	0	0-0	0
2/18	Texas Tech	pr	0	0	0	0	0	0	0	0	0	0	0	0-0	0
2/23	CSU Bakersfield	pr	0	0	0	0	0	0	0	0	0	0	0	0-0	0
2/25	NM State	pr	0	0	0	0	0	0	0	0	0	0	0	0-0	0
3/3	Houston	pr	0	0	0	0	0	0	0	0	0	0	0	0-0	0
3/5	Charlotte	pr	0	1	0	0	0	0	0	0	0	0	0	0-0	0
3/10	Buffalo	pr	0	1	0	0	0	0	0	0	0	0	0	0-0	0
3/11	Buffalo	pr	0	0	0	0	0	0	0	0	0	0	0	0-0	0
3/17	Utah State														
3/18	Utah State														
3/19	Utah State														
3/24	San José State														
3/25	San José State														
3/26	San José State														
3/28	NM State														
3/31	Fresno State														
4/1	Fresno State														
4/2	Fresno State														
4/6	Boise State														
4/7	Boise State														
4/8	Boise State														
4/15	Colorado State														
4/16	Colorado State														
4/21	San Diego State														
4/22	San Diego State														
4/23	San Diego State														
4/28	Nevada														
4/29	Nevada														
4/30	Nevada														
5/5	UNLV														
5/6	UNLV														
			0	4	0	0	0	0	0	0	0	0	0	1-1	0

CAREER STATS

SEASON	GP	GS	AVG.	AB	R	H	2B	3B	HR	RBI	TB	SLG%	BB	SO	HBP	OB%	SF	SH	SB-SA	PO	A	E	FLD%
2023	13	0	.000	0	4	0	0	0	0	0	0	.000	0	0	0	.000	0	0	1-1	0	0	0	.000
TOTAL	13	0	.000	0	4	0	0	0	0	0	0	.000	0	0	0	.000	0	0	1-1	0	0	0	.000

HIGHLIGHTS

- Psychology major
- Named to the All-Region Second Team in 2019
- Played for the AZ Hotshots- Delsante

THE 2023 LOBOS



20 Emma Bramson

SO • INF • 5-7 • R/R
Valencia, Calif. (Valencia HS)

SEASON BESTS

Hits	2	4x, last: Houston, 3-3-23
Doubles	1	2x, last: CSUB, 2-23-23
Triples		
Home Runs	1	at LSU, 2-10-23
RBI	2	Houston, 3-3-23
Runs	2	at Nicholls, 2-9-23
Walks	1	2x, last: Nebraska, 2-26-23
Stolen Bases	1	at Nicholls, 2-9-23

CAREER BESTS

Hits	3	UC Santa Barbara, 3-3-22
Doubles	1	6x, last: CSUB, 2-23-23
Triples		
Home Runs	2	UC Santa Barbara, 3-3-22
RBI	5	UC Santa Barbara, 3-3-22
Runs	3	at New Mexico State, 3-22-22
Walks	3	at New Mexico State, 3-22-22
Stolen Bases	1	at Nicholls 2-9-23

STREAKS

	Current	Career Best
Hitting	2	3
On-Base	2	9

MULTI-HIT GAMES

	2	3	4	5+	TOTAL
2022	9	1	-	-	10
2023	4				4

MULTI-RBI GAMES

	2	3	4	5+	TOTAL
2022	3	-	-	1	4
2023	1				1

2023 GAME-BY-GAME

DATE	OPPONENT	POS	AB	R	H	TB	2B	3B	HR	RBI	BB	HBP	SO	SB-ATT	E
2/9	Nicholls	*3b	3	2	1	1	0	0	0	0	0	1	1	1-1	0
2/10	Oregon State	*3b	3	0	0	0	0	0	0	0	0	0	2	0-0	0
2/10	LSU	*3b	3	1	2	5	0	0	1	1	0	0	0	0-0	0
2/11	Oregon State	*3b	2	0	0	0	0	0	0	1	0	0	1	0-0	0
2/11	LSU	*3b	3	0	2	2	0	0	0	0	0	0	0	0-0	1
2/17	Buffalo	*3b	2	1	1	2	1	0	0	0	0	0	1	0-0	0
2/18	Santa Clara	*3b	2	1	0	0	0	0	0	0	1	0	0	0-0	0
2/18	Texas Tech	*3b	4	0	0	0	0	0	0	0	0	0	0	0-0	0
2/23	CSU Bakersfield	*3b	3	1	1	1	0	0	0	0	0	0	0	0-0	0
2/23	CSU Bakersfield	*2b	4	1	1	2	1	0	0	1	0	0	0	0-0	0
2/24	Oklahoma State	*2b	0	0	0	0	0	0	0	0	0	0	0	0-0	1
2/25	NM State	*3b	4	0	1	1	0	0	0	0	0	0	1	0-0	0
2/25	Nebraska	*2b	2	0	0	0	0	0	0	0	0	0	2	0-0	0
2/26	Nebraska	*2b	2	0	1	1	0	0	0	0	1	0	0	0-0	1
3/1	UTEP	*2b/3b	5	0	2	2	0	0	0	0	0	0	0	0-0	0
3/1	UTEP	*3b	3	0	0	0	0	0	0	0	0	0	0	0-0	0
3/3	Houston	*3b	3	0	2	2	0	0	0	2	0	0	0	0-0	0
3/3	Arizona State	*3b	3	0	1	1	0	0	0	1	0	0	0	0-0	0
3/4	Washington	*3b/2b	3	0	0	0	0	0	0	0	0	0	1	0-0	0
3/4	GCU	*3b	3	0	1	1	0	0	0	0	0	0	1	0-0	1
3/5	Charlotte	*3b	3	0	1	1	0	0	0	0	0	0	1	0-0	0
3/17	Utah State														
3/18	Utah State														
3/19	Utah State														
3/24	San José State														
3/25	San José State														
3/26	San José State														
3/28	NM State														
3/31	Fresno State														
4/1	Fresno State														
4/2	Fresno State														
4/6	Boise State														
4/7	Boise State														
4/8	Boise State														
4/15	Colorado State														
4/16	Colorado State														
4/21	San Diego State														
4/22	San Diego State														
4/23	San Diego State														
4/28	Nevada														
4/29	Nevada														
4/30	Nevada														
5/5	UNLV														
5/6	UNLV														

21 60 7 17 22 2 0 1 6 2 1 11 1-1 4

CAREER STATS

SEASON	GP	GS	AVG.	AB	R	H	2B	3B	HR	RBI	TB	SLG%	BB	SO	HBP	OB%	SF	SH	SB-SA	PO	A	E	FLD%
2022	46	46	.245	139	24	34	4	0	6	23	56	.403	11	20	1	.301	2	1	0-0	45	69	9	.926
2023	21	21	.283	60	7	17	2	0	1	6	22	.367	2	11	1	.308	2	1	1-1	25	31	4	.933
TOTAL	67	67	.256	199	31	51	6	0	7	29	78	.392	13	31	2	.303	4	2	1-1	70	100	13	.929

HIGHLIGHTS

- Named MW Freshman of the Week on Feb. 22, 2022
- Hit 5th in 26 games, 4th in 13, 9th in 3, 2nd in 2, 6th in 1, 8th in 1 last season
- Played 25 games at third base and 21 games at shortstop last season
- 4th in slugging percentage (.403), tied for 3rd in RBI (23), 5th in batting average (.245)
- Nursing major

THE 2023 LOBOS



21 Peyton Robinson

SR • OF • 5-6 • L/R
Saginaw, Texas (Southern Nazarene)

SEASON BESTS

Hits	3	5x, last: Texas Tech, 3-11-23
Doubles	1	2x, last: Manhattan, 3-10-23
Triples		
Home Runs		
RBI	3	at Nicholls 2-9-23
Runs	2	3x, last: CSUB, 2-23-23
Walks	1	3x, last: Houston, 3-3-23
Stolen Bases	2	2x, last: CSUB, 2-23-23

CAREER BESTS (AT UNM)

Hits	4	Maine, 3-12-22
Doubles	1	7x, last: Manhattan, 3-10-23
Triples	1	2x, last: at NMSU, 3-22-22
Home Runs		
RBI	3	at Nicholls 2-9-23
Runs	2	17x, last: CSUB, 2-23-23
Walks	2	2x, last: at BYU, 4-1-22
Stolen Bases	2	2x, last: CSUB, 2-23-23

STREAKS

	Current	Career Best
Hitting	5	21
On-Base	5	21

MULTI-HIT GAMES

	2	3	4	5+	TOTAL
2021	5	2	-	-	7
2022	8	1	1	-	10
2023	4	5			9

MULTI-RBI GAMES

	2	3	4	5+	TOTAL
2021	-	-	-	-	-
2022	2	-	-	-	2
2023		1			1

2023 GAME-BY-GAME

DATE	OPPONENT	POS	AB	R	H	TB	2B	3B	HR	RBI	BB	HBP	SO	SB-ATT	E	
2/9	Nicholls	*cf	3	2	3	3	0	0	0	3	0	1	0	2-2	0	
2/10	Oregon State	*cf	4	0	2	2	0	0	0	0	0	0	0	1-1	0	
2/10	LSU	*cf	3	0	1	1	0	0	0	1	0	0	1	0-0	0	
2/11	Oregon State	*cf	3	1	1	1	0	0	0	0	0	0	0	0-0	0	
2/11	LSU	*cf	4	0	1	1	0	0	0	0	0	0	1	0-0	0	
2/17	Buffalo	*cf	2	1	0	0	0	0	0	0	1	0	0	0-0	0	
2/18	Santa Clara	*cf	3	0	0	0	0	0	0	0	0	0	0	0-0	0	
2/18	Texas Tech	*cf	3	2	2	2	0	0	0	0	0	0	0	0-0	0	
2/23	CSU Bakersfield	*cf	3	2	2	2	0	0	0	1	0	1	0	2-2	0	
2/23	CSU Bakersfield	*cf	4	1	3	3	0	0	0	1	0	0	0	1-1	0	
2/24	Oklahoma State	*cf	2	0	0	0	0	0	0	0	0	0	1	0-0	0	
2/24	Creighton	*cf	3	0	0	0	0	0	0	0	0	0	0	0-0	0	
2/25	NM State	*cf	4	1	1	1	0	0	0	0	0	0	0	0-0	0	
2/25	Nebraska	*cf	2	0	0	0	0	0	0	0	0	0	1	0-0	0	
2/26	Nebraska	*cf	4	0	1	2	1	0	0	0	0	0	0	0-0	0	
3/1	UTEP	*cf	6	0	3	3	0	0	0	0	0	0	0	1-1	0	
3/1	UTEP	*cf	3	1	1	1	0	0	0	0	1	0	0	1-1	0	
3/3	Houston	*cf	3	1	0	0	0	0	0	0	1	0	0	1-1	0	
3/3	Arizona State	*cf	3	0	0	0	0	0	0	0	0	0	0	0-0	0	
3/4	Washington	*cf	3	0	0	0	0	0	0	0	0	0	1	0-0	0	
3/4	GCU	*cf	4	0	1	1	0	0	0	0	0	0	0	0-0	0	
3/5	Charlotte	*cf	3	0	0	0	0	0	0	0	0	0	0	0-0	0	
3/10	Buffalo	*cf	3	1	1	1	0	0	0	0	0	0	0	1-1	0	
3/10	Manhattan	*cf	5	1	3	4	1	0	0	1	0	0	1	1-1	0	
3/11	Buffalo	*cf	3	1	1	1	0	0	0	0	0	0	1	1-1	0	
3/11	Texas Tech	*cf	3	1	3	3	0	0	0	0	0	0	0	1-1	0	
3/12	Texas Tech	*cf	3	0	2	2	0	0	0	0	0	0	1	0-0	0	
3/17	Utah State															
3/18	Utah State															
3/19	Utah State															
3/24	San José State															
3/25	San José State															
3/26	San José State															
3/28	NM State															
3/31	Fresno State															
4/1	Fresno State															
4/2	Fresno State															
4/6	Boise State															
4/7	Boise State															
4/8	Boise State															
4/15	Colorado State															
4/16	Colorado State															
4/21	San Diego State															
4/22	San Diego State															
4/23	San Diego State															
4/28	Nevada															
4/29	Nevada															
4/30	Nevada															
5/5	UNLV															
5/6	UNLV															
			27	89	16	32	34	2	0	0	7	3	2	8	13-13	0

CAREER STATS

SEASON	GP	GS	AVG.	AB	R	H	2B	3B	HR	RBI	TB	SLG%	BB	SO	HBP	OB%	SF	SH	SB-SA	PO	A	E	FLD%
2019	53	46	.281	139	27	39	4	1	0	6	45	.324	6	11	0	.320	0	6	20-23	60	3	2	.969
2020	23	23	.459	74	29	34	4	1	0	9	40	.541	7	3	0	.500	1	7	22-26	28	2	0	1.000
2021	46	45	.250	124	19	31	3	0	0	3	34	.274	9	21	0	.296	2	6	4-5	43	2	1	.978
2022	53	53	.336	143	36	48	2	2	0	5	54	.378	17	18	1	.410	0	9	8-10	57	3	3	.952
2023	27	27	.360	89	16	32	2	0	0	7	34	.382	3	8	2	.394	0	5	13-13	35	2	0	1.000
TOTAL	203	194	.323	570	127	184	15	4	0	30	207	.363	45	62	3	.374	3	33	67-77	223	12	6	.975

HIGHLIGHTS

- Named MW Player of the Week on March 14, 2023
- Graduated in May 2022 with a BBA in business administration.
- Started all 53 games in left in 2022
- Hit leadoff in 21 games, 2nd in 6 games and 9th in 26 games in 2022
- Started 21 games in left, 1 game in right and 23 games as DP in 2021
- Hit leadoff in 27 games, 8th in 3 games and 9th in 15 games in 2021
- Started her collegiate career at Southern Nazarene

THE 2023 LOBOS



24 Diamond Sandoval

JR • OF • 5-3 • R/R
Norwalk, Calif. (St. Paul HS)

SEASON BESTS

Hits
Doubles
Triples
Home Runs
RBI
Runs
Walks
Stolen Bases

CAREER BESTS

Hits 2 Maine, 3-12-22
Doubles 1 2x, last: Utah State, 3-27-22
Triples 1 Maine, 3-12-22
Home Runs
RBI 2 2x, last: Maine, 3-12-22
Runs 1 9x, last: at NMSU, 3-22-22
Walks 1 5x, last: Utah St., 3-27-22
Stolen Bases

STREAKS

	Current	Career Best
Hitting		2
On-Base		3

MULTI-HIT GAMES

	2	3	4	5+	TOTAL
2021	-	-	-	-	-
2022	1	-	-	-	1
2023					

MULTI-RBI GAMES

	2	3	4	5+	TOTAL
2021	-	-	-	-	-
2022	2	-	-	-	2
2023					

2023 GAME-BY-GAME

DATE	OPPONENT	POS	AB	R	H	TB	2B	3B	HR	RBI	BB	HBP	SO	SB-ATT	E
3/4	Washington	ph	1	0	0	0	0	0	0	0	0	0	0	0-0	0
3/17	Utah State														
3/18	Utah State														
3/19	Utah State														
3/24	San José State														
3/25	San José State														
3/26	San José State														
3/28	NM State														
3/31	Fresno State														
4/1	Fresno State														
4/2	Fresno State														
4/6	Boise State														
4/7	Boise State														
4/8	Boise State														
4/15	Colorado State														
4/16	Colorado State														
4/21	San Diego State														
4/22	San Diego State														
4/23	San Diego State														
4/28	Nevada														
4/29	Nevada														
4/30	Nevada														
5/5	UNLV														
5/6	UNLV														
			1	0	0	0	0	0	0	0	0	0	0	0-0	0

CAREER STATS

SEASON	GP	GS	AVG.	AB	R	H	2B	3B	HR	RBI	TB	SLG%	BB	SO	HBP	OB%	SF	SH	SB-SA	PO	A	E	FLD%
2021	14	2	.125	16	3	2	0	0	0	1	2	.125	3	5	0	.263	0	0	0-0	0	0	0	.000
2022	20	6	.231	26	4	6	2	1	0	4	10	.385	2	7	0	.286	0	0	0-0	0	0	0	.000
2023	1	0	.000	1	0	0	0	0	0	0	0	.000	0	0	0	.000	0	0	0-0	0	0	0	.000
TOTAL	35	8	.186	43	7	8	2	1	0	5	12	.279	5	12	0	.271	0	0	0-0	0	0	0	.000

HIGHLIGHTS

- Started 6 games last season all at DP
- Hit 6th in 3 games and 8th in 3 games
- Recorded first collegiate hit against San José State on May 8, 2021, which resulted in a RBI

THE 2023 LOBOS



25 Chloe Yeatts

FR • C • 5-9 • R/R

Ardmore, Okla. (Lone Grove HS)

SEASON BESTS

Hits	2	6x, last: Buffalo, 3-11-23
Doubles	1	NMSU, 2-25-23
Triples		
Home Runs	1	3x, last: Texas Tech 3-12-23
RBI	3	at Nicholls 2-9-23
Runs	2	Oregon State 2-11-23
Walks	1	4x, last: Charlotte, 3-5-23
Stolen Bases	1	NMSU, 2-25-23

CAREER BESTS

Hits	Same
Doubles	Same
Triples	
Home Runs	Same
RBI	Same
Runs	Same
Walks	Same
Stolen Bases	Same

STREAKS

	Current	Career Best
Hitting	1	4
On-Base	1	4

MULTI-HIT GAMES

	2	3	4	5+	TOTAL
2023	6				6

MULTI-RBI GAMES

	2	3	4	5+	TOTAL
2023	2	1			3

2023 GAME-BY-GAME

DATE	OPPONENT	POS	AB	R	H	TB	2B	3B	HR	RBI	BB	HBP	SO	SB-ATT	E	
2/9	Nicholls	*c	3	1	2	2	0	0	0	3	0	0	0	0-0	0	
2/10	Oregon State	*c	2	0	0	0	0	0	0	0	1	0	0	0-0	0	
2/10	LSU	*dp/c	3	0	0	0	0	0	0	0	0	0	0	0-0	0	
2/11	Oregon State	*c	3	2	2	2	0	0	0	0	0	0	0	0-0	0	
2/11	LSU	*1b/dp	4	0	2	2	0	0	0	0	0	0	0	0-0	0	
2/17	Buffalo	*dp	4	1	2	2	0	0	0	1	0	0	1	0-0	0	
2/18	Santa Clara	*c	3	0	1	1	0	0	0	0	0	0	0	0-0	0	
2/18	Texas Tech	ph	1	0	0	0	0	0	0	0	0	0	1	0-0	0	
2/23	CSU Bakersfield	*c/dp	4	1	1	4	0	0	1	1	0	0	0	0-0	0	
2/23	CSU Bakersfield	*dp	2	0	0	0	0	0	0	0	0	0	0	0-0	0	
2/24	Oklahoma State	*dp/c	2	0	0	0	0	0	0	0	0	0	2	0-0	0	
2/24	Creighton	*c	3	0	1	1	0	0	0	2	0	0	0	0-0	0	
2/25	NM State	*c	3	1	2	6	1	0	1	1	1	0	1	1-1	1	
2/25	Nebraska	*dp	2	0	1	1	0	0	0	0	0	0	0	0-0	0	
2/26	Nebraska	*c	4	0	0	0	0	0	0	0	0	0	0	0-0	0	
3/1	UTEP	*c	3	0	0	0	0	0	0	0	0	0	0	0-0	0	
3/1	UTEP	*c	4	0	0	0	0	0	0	0	0	0	0	0-0	0	
3/3	Houston	ph/c	1	1	1	1	0	0	0	0	0	1	0	0-0	0	
3/3	Arizona State	c	1	0	0	0	0	0	0	0	1	0	1	0-0	0	
3/4	GCU	*c	3	0	1	1	0	0	0	0	0	0	0	0-0	0	
3/5	Charlotte	*c	2	0	1	1	0	0	0	1	1	0	0	0-0	1	
3/10	Buffalo	*c	2	0	0	0	0	0	0	1	0	0	0	0-0	0	
3/10	Manhattan	c	1	1	0	0	0	0	0	0	0	0	0	0-0	0	
3/11	Buffalo	*c	3	0	2	2	0	0	0	0	0	0	0	0-0	0	
3/11	Texas Tech	*c	3	0	0	0	0	0	0	0	0	0	1	0-0	0	
3/12	Texas Tech	*c	3	1	1	4	0	0	1	2	0	0	1	0-0	0	
3/17	Utah State															
3/18	Utah State															
3/19	Utah State															
3/24	San José State															
3/25	San José State															
3/26	San José State															
3/28	NM State															
3/31	Fresno State															
4/1	Fresno State															
4/2	Fresno State															
4/6	Boise State															
4/7	Boise State															
4/8	Boise State															
4/15	Colorado State															
4/16	Colorado State															
4/21	San Diego State															
4/22	San Diego State															
4/23	San Diego State															
4/28	Nevada															
4/29	Nevada															
4/30	Nevada															
5/5	UNLV															
5/6	UNLV															
			22	69	9	20	30	1	0	3	13	4	1	8	1-1	2

CAREER STATS

SEASON	GP	GS	AVG.	AB	R	H	2B	3B	HR	RBI	TB	SLG%	BB	SO	HBP	OB%	SF	SH	SB-SA	PO	A	E	FLD%
2023	26	22	.290	69	9	20	1	0	3	13	30	.435	4	8	1	.333	1	0	1-1	107	5	2	.982
TOTAL	26	22	.290	69	9	20	1	0	3	13	30	.435	4	8	1	.333	1	0	1-1	107	5	2	.982

HIGHLIGHTS

- First collegiate hit and RBI came against Nicholls in her first collegiate at-bat
- Signed with UNM on July 22, 2022
- Majoring in secondary education
- High school team won the 2021 Oklahoma 4A state championship in 2021 after finishing runner-up in 2020 and winning regionals in 2019 and 2018
- Named 2021 Oklahoma All-State Catcher, 2021 Conference Offensive Player of the Year and was a nominee for 2021 Gatorade Oklahoma Softball Player of the Year

THE 2023 LOBOS



27 Olivia Birkinshaw

SO • OF • 5-10 • R/R
Santa Margarita, Calif. (Mission Viejo HS)

SEASON BESTS

Hits	3	Charlotte, 3-5-23
Doubles	1	2x, last: Charlotte, 3-5-23
Triples		
Home Runs	1	Charlotte, 3-5-23
RBI	3	Oregon State 2-11-23
Runs	2	Charlotte, 3-5-23
Walks	1	Nebraska, 2-26-23
Stolen Bases	1	2x, last: Texas Tech, 3-12-23

CAREER BESTS

Hits	Same
Doubles	1 5x, last: Charlotte, 3-5-23
Triples	1 at Lamar, 2-19-22
Home Runs	1 2x, last: Charlotte, 3-5-23
RBI	Same
Runs	2 3x, last: Charlotte, 3-5-23
Walks	1 7x, last: Nebraska, 2-26-23
Stolen Bases	1 3x, last: Texas Tech, 3-12-23

STREAKS

	Current	Career Best
Hitting	1	3
On-Base	7	7

MULTI-HIT GAMES

	2	3	4	5+	TOTAL
2022	2	-	-	-	2
2023		1			1

MULTI-RBI GAMES

	2	3	4	5+	TOTAL
2022	-	-	-	-	-
2023	1	1			2

2023 GAME-BY-GAME

DATE	OPPONENT	POS	AB	R	H	TB	2B	3B	HR	RBI	BB	HBP	SO	SB-ATT	E
2/9	Nicholls	ph	1	1	1	1	0	0	0	0	0	0	0	0-0	0
2/10	Oregon State	ph	1	0	0	0	0	0	0	0	0	0	0	0-0	0
2/11	Oregon State	ph	1	0	1	2	1	0	0	3	0	0	0	0-0	0
2/11	LSU	*dp	0	0	0	0	0	0	0	0	1	0	0	0-0	0
2/18	Santa Clara	ph	1	0	0	0	0	0	0	1	0	0	0	0-0	0
2/18	Texas Tech	ph	0	1	0	0	0	0	0	0	1	0	0	0-0	0
2/23	CSU Bakersfield	rf	0	0	0	0	0	0	0	0	0	0	0	0-0	0
2/23	CSU Bakersfield	*rf	2	1	1	1	0	0	0	0	0	0	0	1-1	1
2/25	NM State	ph	1	0	0	0	0	0	0	0	0	0	0	0-0	0
2/25	Nebraska	ph	1	0	1	1	0	0	0	0	0	0	0	0-0	0
2/26	Nebraska	*dp/rf	3	0	1	1	0	0	0	0	1	0	0	0-0	0
3/1	UTEP	*dp	2	0	0	0	0	0	0	0	0	0	0	0-0	0
3/3	Houston	ph	1	0	0	0	0	0	0	0	0	0	1	0-0	0
3/3	Arizona State	ph	1	0	0	0	0	0	0	0	0	0	0	0-0	0
3/4	GCU	ph	0	0	0	0	0	0	0	0	1	0	0	0-0	0
3/5	Charlotte	*rf	4	2	3	7	1	0	1	2	0	0	1	0-0	0
3/10	Buffalo	*3b	2	1	1	1	0	0	1	0	0	0	0	0-0	0
3/10	Manhattan	*3b	5	0	1	1	0	0	0	1	0	0	1	0-0	0
3/11	Buffalo	*3b	2	1	1	1	0	0	0	0	1	0	0	0-0	0
3/11	Texas Tech	*3b	2	0	0	0	0	0	0	0	0	1	1	0-0	2
3/12	Texas Tech	*3b	3	1	1	1	0	0	0	0	0	0	0	1-1	0
3/17	Utah State														
3/18	Utah State														
3/19	Utah State														
3/24	San José State														
3/25	San José State														
3/26	San José State														
3/28	NM State														
3/31	Fresno State														
4/1	Fresno State														
4/2	Fresno State														
4/6	Boise State														
4/7	Boise State														
4/8	Boise State														
4/15	Colorado State														
4/16	Colorado State														
4/21	San Diego State														
4/22	San Diego State														
4/23	San Diego State														
4/28	Nevada														
4/29	Nevada														
4/30	Nevada														
5/5	UNLV														
5/6	UNLV														

10 33 8 12 17 2 0 1 8 1 5 4 2-2 3

CAREER STATS

SEASON	GP	GS	AVG.	AB	R	H	2B	3B	HR	RBI	TB	SLG%	BB	SO	HBP	OB%	SF	SH	SB-SA	PO	A	E	FLD%
2022	28	18	.175	57	7	10	3	1	1	3	18	.316	6	23	4	.299	0	1	1-1	20	11	3	.912
2023	21	10	.364	33	8	12	2	0	1	8	17	.515	1	4	5	.450	1	0	2-2	9	6	3	.833
TOTAL	49	28	.244	90	15	22	5	1	2	11	35	.389	7	27	9	.355	1	1	3-3	29	17	6	.885

HIGHLIGHTS

- Started 18 games, 11 at DP, 4 at third and 3 at first
- Hit 4th in 7 games, 6th in 7 games and 8th in 4 games
- First collegiate hit came against Arizona on Feb. 13; First collegiate HR came in a pinch-hit appearance against Utah State on March 25

THE 2023 LOBOS



28 Samantha Fohrman

SR • P • 5-7 • R/R
Cottage Grove, Minn. (Georgian Court)

SEASON BESTS

IP (high)	2.0	Santa Clara, 2-18-23
H (low)	2	4x, last: Nebraska, 2-25-23
R (low)	2	at LSU 2-11-23
ER (low)	1	3x, last: CSUB, 2-23-23
BB (low)	1	Texas Tech, 3-11-23
SO (high)	2	Santa Clara, 2-18-23
BF (high)	14	Santa Clara, 2-18-23
NP (high)	61	Santa Clara, 2-18-23

CAREER BESTS

IP (high)	5.0	Wagner, 3-4-22
H (low)	2	5x, last: Nebraska, 2-25-23
R (low)	1	Alabama, 2-13-22
ER (low)	0	Lamar, 2-19-22
BB (low)	0	3x, last: Wagner, 3-4-22
SO (high)	2	Santa Clara, 2-18-23
BF (high)	19	Wagner, 3-4-22
NP (high)	61	Santa Clara, 2-18-23

PITCHING SUPERLATIVES (MIN. 4.0 IP)

	Season	Career
5+ K	-	-
10+ K	-	-
1 R or Less	-	-
Shutout	-	-

2023 GAME-BY-GAME

DATE	OPPONENT	W-L	ERA	CG	IP	H	R	ER	BB	SO	2B	3B	HR	BF	HBP
2/11	LSU	0-1	5.25	0	1.1	2	2	1	2	0	0	0	0	9	1
2/18	Santa Clara	-	3.50	0	2.0	2	4	1	2	2	1	0	0	14	2
2/23	CSU Bakersfield	-	0.00	0	0.0	2	3	1	2	0	1	0	0	4	0
2/25	Nebraska	-	21.00	0	1.2	2	5	5	4	1	0	0	0	12	1
3/11	Texas Tech	--	8.40	0	1.2	5	5	2	1	1	0	0	2	12	0
3/17	Utah State														
3/18	Utah State														
3/19	Utah State														
3/24	San José State														
3/25	San José State														
3/26	San José State														
3/28	NM State														
3/31	Fresno State														
4/1	Fresno State														
4/2	Fresno State														
4/6	Boise State														
4/7	Boise State														
4/8	Boise State														
4/15	Colorado State														
4/16	Colorado State														
4/21	San Diego State														
4/22	San Diego State														
4/23	San Diego State														
4/28	Nevada														
4/29	Nevada														
4/30	Nevada														
5/5	UNLV														
5/6	UNLV														
		0-1	10.50	0	6.2	13	19	10	11	4	2	0	2	51	4

CAREER STATS

SEASON	GS	APP	CG	W-L	ERA	SHO	SV	IP	H	R	ER	BB	SO	2B	3B	HR	BF	NP-STK	WP	HBP	PO	A	E	FLD%
2020	6	9	1	2-6	4.76	0	0	39.2	52	39	27	25	33	5	1	5	214	675-402	4	5	1	7	1	.889
2021	20	28	11	14-2	1.67	4	1	108.2	73	30	26	40	145	18	0	4	449	1533-1002	6	6	5	11	1	.941
2022	2	3	0	1-0	2.33	0	0	9.0	11	5	3	0	2	4	0	0	38	80-46	0	1	0	3	0	1.000
2023	2	5	0	0-1	10.50	0	0	6.2	12	19	10	11	4	2	0	2	51	209-97	2	4	0	0	0	.000
TOTAL	30	45	12	17-9	2.82	4	1	164.0	149	93	66	76	184	29	1	11	752	2497-1547	12	16	6	21	2	.931

HIGHLIGHTS

- Pitched in just three games, with two starts, before season-ending injury in 2022
- Pitched 5.0 innings in the win against Wagner College for first win as a Lobo
- Started her career at Georgian Court, joined UNM prior to 2022 season

THE 2023 LOBOS



34 Maddie Boldt

JR • OF • 5-8 • R/R
Round Rock, Texas (Incarnate Word)

SEASON BESTS

Hits	2	2x, last: Manhattan, 3-10-23
Doubles	1	3x, last: Manhattan, 3-10-23
Triples	1	Oregon State, 2-11-23
Home Runs	1	4x, last: Manhattan, 3-10-23
RBI	3	3x, last: Buffalo, 2-17-23
Runs	2	Manhattan, 3-10-23
Walks	1	7x, last: Houston, 3-3-23
Stolen Bases		

CAREER BESTS

Hits	3	2x, last: Colgate, 2-26-22
Doubles	2	2x, last: Lamar, 4-8-21
Triples	1	4x, last: Oregon State, 2-11-23
Home Runs	2	McNeese, 4-23-21
RBI	3	4x, last: Buffalo, 2-17-23
Runs	2	12x, last: Manhattan, 3-10-23
Walks	3	2x, last: McNeese, 4-24-21
Stolen Bases	1	5x, last: HBU, 4-9-22

STREAKS

	Current	Career Best
Hitting		4
On-Base		8

MULTI-HIT GAMES

	2	3	4	5+	TOTAL
2020	-	1	-	-	1
2021	9	-	-	-	9
2022	6	1	-	-	7
2023	2				2

MULTI-RBI GAMES

	2	3	4	5+	TOTAL
2020	1	-	-	-	1
2021	4	1	-	-	5
2022	7	-	-	-	7
2023		3			3

2023 GAME-BY-GAME

DATE	OPPONENT	POS	AB	R	H	TB	2B	3B	HR	RBI	BB	HBP	SO	SB-ATT	E
2/9	Nicholls	*rf	3	1	1	4	0	0	1	1	1	0	1	0-0	0
2/10	Oregon State	*rf	2	0	0	0	0	0	0	0	1	0	1	0-0	0
2/10	LSU	*rf	3	1	1	4	0	0	1	1	0	0	1	0-0	0
2/11	Oregon State	*rf	3	1	2	5	1	1	0	3	0	0	1	0-0	0
2/11	LSU	*rf	3	1	1	4	0	0	1	3	0	0	1	0-0	0
2/17	Buffalo	*rf	2	0	1	2	1	0	0	3	0	0	1	0-0	0
2/18	Santa Clara	*rf	3	0	0	0	0	0	0	0	0	0	0	0-0	0
2/18	Texas Tech	*rf	3	0	0	0	0	0	0	0	1	0	2	0-0	0
2/23	CSU Bakersfield	*rf	2	1	1	1	0	0	0	1	1	0	0	0-0	0
2/23	CSU Bakersfield	rf	0	0	0	0	0	0	0	1	0	0	0	0-0	0
2/24	Oklahoma State	*rf	2	0	0	0	0	0	0	0	0	0	1	0-0	0
2/24	Creighton	*rf	1	0	0	0	0	0	0	0	1	0	0	0-0	0
2/25	NM State	*rf	2	0	0	0	0	0	0	0	0	0	2	0-0	0
2/25	Nebraska	*rf	1	0	1	1	0	0	0	0	0	0	0	0-0	0
2/26	Nebraska	*rf	2	0	0	0	0	0	0	0	0	0	1	0-0	0
3/1	UTEP	*rf	4	0	0	0	0	0	0	0	0	0	0	0-0	0
3/1	UTEP	*rf	3	1	1	1	0	0	0	0	0	0	0	0-0	1
3/3	Houston	*rf	2	0	0	0	0	0	0	0	1	0	1	0-0	0
3/3	Arizona State	*rf	2	1	0	0	0	0	0	0	1	0	1	0-0	0
3/4	Washington	*rf	2	0	1	1	0	0	0	0	0	0	1	0-0	0
3/10	Buffalo	*rf	2	0	1	1	0	0	0	1	0	0	0	0-0	0
3/10	Manhattan	*rf	5	2	2	6	1	0	1	1	0	0	0	0-0	0
3/11	Buffalo	*rf	2	0	0	0	0	0	0	0	0	0	0	0-0	0
3/11	Texas Tech	*rf	2	0	0	0	0	0	0	0	0	0	1	0-0	0
3/12	Texas Tech	ph	1	0	0	0	0	0	0	0	0	0	0	0-0	0
3/17	Utah State														
3/18	Utah State														
3/19	Utah State														
3/24	San José State														
3/25	San José State														
3/26	San José State														
3/28	NM State														
3/31	Fresno State														
4/1	Fresno State														
4/2	Fresno State														
4/6	Boise State														
4/7	Boise State														
4/8	Boise State														
4/15	Colorado State														
4/16	Colorado State														
4/21	San Diego State														
4/22	San Diego State														
4/23	San Diego State														
4/28	Nevada														
4/29	Nevada														
4/30	Nevada														
5/5	UNLV														
5/6	UNLV														
			23	57	9	13	30	3	1	4	15	7	0	16	0-0 1

CAREER STATS

SEASON	GP	GS	AVG.	AB	R	H	2B	3B	HR	RBI	TB	SLG%	BB	SO	HBP	OB%	SF	SH	SB-SA	PO	A	E	FLD%
2020	20	15	.205	39	8	8	3	1	0	6	13	.333	6	8	0	.311	0	0	2-3	12	1	2	.867
2021	40	40	.265	117	21	31	7	0	7	18	59	.504	14	34	1	.343	2	0	1-2	70	0	3	.959
2022	49	47	.221	136	24	30	8	2	10	23	72	.529	2	40	2	.291	1	0	2-6	71	8	0	1.000
2023	25	23	.228	57	9	13	3	1	4	15	30	.526	7	16	0	.303	2	1	0-0	15	1	1	.941
TOTAL	134	125	.235	349	62	82	21	4	21	62	174	.499	39	98	3	.313	5	1	5-11	168	10	6	.967

HIGHLIGHTS

- Played first 3 seasons at Incarnate Word
- Led the team with 10 HRs, tied for the team high in doubles (8) and triples (2) and was second in TB at 72 in 2022
- Liberal arts major

THE 2023 LOBOS



38 Keyannah Chavez

FR • OF • 5-1 • L/L
Leander, Texas (Glen HS)

SEASON BESTS

Hits	3	at Nicholls, 2-9-23
Doubles	1	5x, last: Manhattan, 3-10-23
Triples		
Home Runs		
RBI	2	2x, last: Manhattan, 3-10-23
Runs	3	at Nicholls, 2-9-23
Walks	1	7x, last: Texas Tech, 3-12-23
Stolen Bases	1	2x, last: Buffalo, 3-10-23

CAREER BESTS

Hits	Same
Doubles	Same
Triples	
Home Runs	
RBI	Same
Runs	Same
Walks	Same
Stolen Bases	Same

STREAKS

	Current	Career Best
Hitting	1	6
On-Base	6	10

MULTI-HIT GAMES

	2	3	4	5+	TOTAL
2023	8	1			9

MULTI-RBI GAMES

	2	3	4	5+	TOTAL
2023	2				2

2023 GAME-BY-GAME

DATE	OPPONENT	POS	AB	R	H	TB	2B	3B	HR	RBI	BB	HBP	SO	SB-ATT	E	
2/9	Nicholls	*lf	4	3	3	4	1	0	0	0	0	0	0	0-0	0	
2/10	Oregon State	*lf	2	0	0	0	0	0	0	0	0	1	2	0-0	0	
2/10	LSU	*lf	2	1	1	1	0	0	0	0	0	0	0	0-0	0	
2/11	Oregon State	*lf	1	1	0	0	0	0	0	0	0	1	0	0-0	0	
2/11	LSU	*lf	3	0	1	1	0	0	0	0	0	0	0	0-0	0	
2/17	Buffalo	*lf	2	1	1	2	1	0	0	1	1	0	0	0-0	0	
2/18	Santa Clara	*lf	3	1	2	2	0	0	1	0	0	0	0	0-0	0	
2/18	Texas Tech	*lf	4	1	2	3	1	0	0	0	0	0	0	0-0	0	
2/23	CSU Bakersfield	*lf	3	1	1	1	0	0	0	2	1	0	0	1-1	0	
2/23	CSU Bakersfield	*lf	3	1	1	1	0	0	0	0	0	0	0	1-1	1	
2/24	Oklahoma State	*lf	2	0	0	0	0	0	0	0	0	0	0	0-0	0	
2/24	Creighton	*lf	2	1	0	0	0	0	0	0	1	0	0	0-0	0	
2/25	NM State	*lf	4	2	2	2	0	0	0	0	0	0	0	0-0	0	
2/25	Nebraska	*lf	2	0	0	0	0	0	0	0	0	0	0	0-0	0	
2/26	Nebraska	*lf	2	0	1	1	0	0	0	0	0	0	0	0-0	0	
3/1	UTEP	*lf	3	1	1	1	0	0	0	0	1	0	1	0-0	0	
3/1	UTEP	*lf	3	2	2	2	0	0	0	0	0	0	0	0-0	0	
3/3	Houston	*lf	4	2	2	3	1	0	0	1	0	0	0	0-0	0	
3/3	Arizona State	*lf	4	0	1	1	0	0	0	0	0	0	1	0-0	0	
3/4	Washington	*lf	3	0	0	0	0	0	0	0	0	0	0	0-0	1	
3/4	GCU	*lf	4	0	0	0	0	0	0	1	0	0	0	0-0	0	
3/5	Charlotte	*lf	4	1	2	2	0	0	0	0	0	0	0	0-0	0	
3/10	Buffalo	*lf	3	1	2	2	0	0	0	0	0	0	0	1-1	0	
3/10	Manhattan	*lf	5	1	2	3	1	0	0	2	1	0	0	0-0	0	
3/11	Buffalo	*lf	3	0	1	1	0	0	0	0	0	0	2	0-0	0	
3/11	Texas Tech	*lf	2	1	0	0	0	0	0	0	1	0	1	0-0	0	
3/12	Texas Tech	*lf	3	0	1	1	0	0	0	0	1	0	1	0-0	0	
3/17	Utah State															
3/18	Utah State															
3/19	Utah State															
3/24	San José State															
3/25	San José State															
3/26	San José State															
3/28	NM State															
3/31	Fresno State															
4/1	Fresno State															
4/2	Fresno State															
4/6	Boise State															
4/7	Boise State															
4/8	Boise State															
4/15	Colorado State															
4/16	Colorado State															
4/21	San Diego State															
4/22	San Diego State															
4/23	San Diego State															
4/28	Nevada															
4/29	Nevada															
4/30	Nevada															
5/5	UNLV															
5/6	UNLV															
			27	81	22	29	34	5	0	0	8	7	2	8	3-3	2

CAREER STATS

SEASON	GP	GS	AVG.	AB	R	H	2B	3B	HR	RBI	TB	SLG%	BB	SO	HBP	OB%	SF	SH	SB-SA	PO	A	E	FLD%
2023	27	27	.358	81	22	29	5	0	0	8	34	.420	7	8	2	.422	0	3	3-3	31	2	2	.943
TOTAL	27	27	.358	81	22	29	5	0	0	8	34	.420	7	8	2	.422	0	3	3-3	31	2	2	.943

HIGHLIGHTS

- Named MW Freshman of the Week on Feb. 21
- First collegiate hit came against Nicholls in her first collegiate at-bat
- Criminology major
- Mother (Cassandra) and cousin (Anthony Chavez) graduated from UNM. Mother played at UNM from 2001-06 and was a middle infielder
- Played for the Texas Bombers- Gold

THE 2023 LOBOS



42 Loran Walker

RS-FR • C • 5-6 • R/R
Meridian, Idaho (Rocky Mountain HS)

SEASON BESTS

Hits	2	CSUB, 2-23-23
Doubles		
Triples		
Home Runs	1	CSUB, 2-23-23
RBI	3	Texas Tech, 2-18-23
Runs	2	CSUB, 2-23-23
Walks	1	3x, last: Houston, 3-3-23
Stolen Bases	1	Texas Tech, 2-18-23

CAREER BESTS

Hits	Same
Doubles	
Triples	
Home Runs	Same
RBI	Same
Runs	Same
Walks	Same
Stolen Bases	Same

STREAKS

	Current	Career Best
Hitting		3
On-Base		6

MULTI-HIT GAMES

	2	3	4	5+	TOTAL
2023	1				1

MULTI-RBI GAMES

	2	3	4	5+	TOTAL
2023	1	1			2

2023 GAME-BY-GAME

DATE	OPPONENT	POS	AB	R	H	TB	2B	3B	HR	RBI	BB	HBP	SO	SB-ATT	E
2/17	Buffalo	ph	0	1	0	0	0	0	0	0	0	1	0	0-0	0
2/18	Santa Clara	ph	1	0	1	1	0	0	0	0	0	0	0	0-0	0
2/18	Texas Tech	*c	3	0	1	1	0	0	0	3	0	0	1	1-1	0
2/23	CSU Bakersfield	*3b	3	2	2	5	0	0	1	2	1	0	0	0-0	0
2/24	Oklahoma State	*3b	1	0	0	0	0	0	0	0	0	1	0	0-0	0
2/24	Creighton	*3b	3	1	1	1	0	0	0	0	0	0	1	0-0	1
2/25	NM State	*1b	2	0	0	0	0	0	0	0	0	0	2	0-0	0
2/25	Nebraska	*3b	1	0	0	0	0	0	0	0	0	0	1	0-0	0
2/26	Nebraska	*3b	3	0	0	0	0	0	0	0	0	0	0	0-0	0
3/1	UTEP	*3b/c	3	0	0	0	0	0	0	1	1	0	1	0-0	0
3/3	Houston	*c	1	0	0	0	0	0	0	0	1	0	0	0-0	0
3/3	Arizona State	ph/1b	1	0	0	0	0	0	0	0	0	1	0	0-0	0
3/4	Washington	*c/3b	2	0	0	0	0	0	0	0	0	0	2	0-0	1
3/5	Charlotte	ph	1	0	0	0	0	0	0	0	0	0	1	0-0	0
3/10	Manhattan	c	2	0	0	0	0	0	0	0	0	0	0	0-0	1
3/11	Texas Tech	3b	0	0	0	0	0	0	0	0	0	0	0	0-0	0
3/12	Texas Tech	ph	1	0	0	0	0	0	0	0	0	0	0	0-0	0
3/17	Utah State														
3/18	Utah State														
3/19	Utah State														
3/24	San José State														
3/25	San José State														
3/26	San José State														
3/28	NM State														
3/31	Fresno State														
4/1	Fresno State														
4/2	Fresno State														
4/6	Boise State														
4/7	Boise State														
4/8	Boise State														
4/15	Colorado State														
4/16	Colorado State														
4/21	San Diego State														
4/22	San Diego State														
4/23	San Diego State														
4/28	Nevada														
4/29	Nevada														
4/30	Nevada														
5/5	UNLV														
5/6	UNLV														

10 28 4 5 8 0 0 1 6 3 3 9 1-1 3

CAREER STATS

SEASON	GP	GS	AVG.	AB	R	H	2B	3B	HR	RBI	TB	SLG%	BB	SO	HBP	OB%	SF	SH	SB-SA	PO	A	E	FLD%
2023	17	10	.179	28	4	5	0	0	1	6	8	.286	3	9	3	.306	2	0	1-1	28	12	3	.930
TOTAL	17	10	.179	28	4	5	0	0	1	6	8	.286	3	9	3	.306	2	0	1-1	28	12	3	.930

HIGHLIGHTS

- Did not play in 2022
- Played for the ID Sliders, ID Crossfire, Explosion
- Majoring in East Asian Studies

THE 2023 LOBOS



44 Lauren Garcia

RS-FR • INF • 5-11 • R/R
El Paso, Texas (Montwood HS)

SEASON BESTS

Hits	3	2x, last: UTEP, 3-1-23
Doubles	1	3x, last: Texas Tech, 3-11-23
Triples		
Home Runs	1	Creighton, 2-24-23
RBI	4	Buffalo, 2-17-23
Runs	1	4x, last: Houston, 3-3-23
Walks	2	Texas Tech, 3-12-23
Stolen Bases		

CAREER BESTS

Hits	Same
Doubles	
Triples	
Home Runs	Same
RBI	Same
Runs	Same
Walks	Same
Stolen Bases	

STREAKS

	Current	Career Best
Hitting		5
On-Base	6	8

MULTI-HIT GAMES

	2	3	4	5+	TOTAL
2023	5	2			7

MULTI-RBI GAMES

	2	3	4	5+	TOTAL
2023	3	1	1		5

2023 GAME-BY-GAME

DATE	OPPONENT	POS	AB	R	H	TB	2B	3B	HR	RBI	BB	HBP	SO	SB-ATT	E	
2/9	Nicholls	*dp	2	1	0	0	0	0	0	0	0	2	0	0-0	0	
2/10	Oregon State	*dp	2	0	0	0	0	0	0	0	1	0	2	0-0	0	
2/10	LSU	*lb	3	0	0	0	0	0	0	0	0	0	1	0-0	0	
2/11	LSU	lb	2	0	0	0	0	0	0	0	0	0	0	0-0	0	
2/17	Buffalo	*lb	3	1	3	3	0	0	4	0	0	0	0	0-0	0	
2/18	Santa Clara	*lb	2	0	0	0	0	0	0	0	1	0	0	0-0	0	
2/18	Texas Tech	*dp	3	0	0	0	0	0	0	1	0	0	1	0-0	0	
2/23	CSU Bakersfield	*dp	1	0	0	0	0	0	0	0	1	0	0	0-0	0	
2/23	CSU Bakersfield	ph/dp	1	0	0	0	0	0	0	1	0	0	0	0-0	0	
2/24	Oklahoma State	ph	1	0	1	1	0	0	0	0	0	0	0	0-0	0	
2/24	Creighton	*dp	3	1	2	5	0	0	1	2	0	0	0	0-0	0	
2/25	NM State	*dp	4	0	1	1	0	0	0	0	0	0	0	0-0	0	
2/25	Nebraska	ph	1	0	0	0	0	0	0	0	0	0	1	0-0	0	
2/26	Nebraska	ph	2	0	0	0	0	0	0	0	0	0	1	0-0	0	
3/1	UTEP	ph/dp	3	0	0	0	0	0	0	0	0	0	0	0-0	0	
3/1	UTEP	*dp	4	0	3	3	0	0	1	0	0	0	0	0-0	0	
3/3	Houston	*dp	4	1	2	3	1	0	2	0	0	0	0	0-0	0	
3/3	Arizona State	*dp	3	0	1	1	0	0	0	0	0	0	0	0-0	0	
3/4	Washington	*dp	3	0	1	1	0	0	0	0	0	0	1	0-0	0	
3/4	GCU	*dp	2	0	0	0	0	0	0	0	0	0	0	0-0	0	
3/5	Charlotte	*dp	3	0	1	2	1	0	2	0	0	0	0	0-0	0	
3/10	Buffalo	*dp	3	0	2	2	0	0	1	0	0	0	0	0-0	0	
3/10	Manhattan	*dp	5	0	2	2	0	0	0	0	0	0	1	0-0	0	
3/11	Buffalo	*dp	4	0	1	1	0	0	1	0	0	0	0	0-0	0	
3/11	Texas Tech	*dp	3	0	2	3	1	0	3	0	0	0	0	0-0	0	
3/12	Texas Tech	*dp	1	0	0	0	0	0	0	0	2	0	0	0-0	0	
3/17	Utah State															
3/18	Utah State															
3/19	Utah State															
3/24	San José State															
3/25	San José State															
3/26	San José State															
3/28	NM State															
3/31	Fresno State															
4/1	Fresno State															
4/2	Fresno State															
4/6	Boise State															
4/7	Boise State															
4/8	Boise State															
4/15	Colorado State															
4/16	Colorado State															
4/21	San Diego State															
4/22	San Diego State															
4/23	San Diego State															
4/28	Nevada															
4/29	Nevada															
4/30	Nevada															
5/5	UNLV															
5/6	UNLV															
			20	67	4	22	28	3	0	1	16	6	3	8	0-0	0

CAREER STATS

SEASON	GP	GS	AVG.	AB	R	H	2B	3B	HR	RBI	TB	SLG%	BB	SO	HBP	OB%	SF	SH	SB-SA	PO	A	E	FLD%
2023	26	20	.328	67	4	22	3	0	1	16	28	.418	6	8	3	.408	0	0	0-0	15	0	0	1.000
TOTAL	26	20	.328	67	4	22	3	0	1	16	28	.418	6	8	3	.408	0	0	0-0	15	0	0	1.000

HIGHLIGHTS

- Missed 2022 season due to injury
- Biology major
- Named El Paso County Softball Player of the Year her senior year and Max Preps All-American Second Team in 2021

THE 2023 LOBOS



55 Janae Cameron

SR • C • 5-9 • R/R
Windsor, Colo. (Nebraska Omaha)

SEASON BESTS

Hits	1	CSUB, 2-23-23
Doubles		
Triples		
Home Runs		
RBI		
Runs		
Walks	1	2x, last: Buffalo, 2-17-23
Stolen Bases	1	Oregon State, 2-11-23

CAREER BESTS (AT UNM)

Hits	2	2x, last: at Boise St., 5-6-22
Doubles	1	2x, last: at Boise St., 5-6-22
Triples		
Home Runs	1	2x, last: UNLV, 4-30-22
RBI	2	Southern Utah, 2-12-22
Runs	1	8x, last: at Boise St., 5-8-22
Walks	1	8x, last: Buffalo, 2-17-23
Stolen Bases		Same

STREAKS

	Current	Career Best
Hitting		2
On-Base		4

MULTI-HIT GAMES

	2	3	4	5+	TOTAL
2019	4	-	1	-	5
2020	2	2	-	-	4
2021	1	-	-	-	1
2022	2	-	-	-	2
2023					

MULTI-RBI GAMES

	2	3	4	5+	TOTAL
2019	2	1	1	-	4
2020	2	2	-	-	4
2021	1	-	-	-	1
2022	1	-	-	-	1
2023					

2023 GAME-BY-GAME

DATE	OPPONENT	POS	AB	R	H	TB	2B	3B	HR	RBI	BB	HBP	SO	SB-ATT	E
2/11	Oregon State	ph	0	0	0	0	0	0	0	0	1	0	0	1-1	0
2/17	Buffalo	c	0	0	0	0	0	0	0	0	1	0	0	0-0	0
2/18	Santa Clara	ph	1	0	0	0	0	0	0	0	0	0	1	0-0	0
2/23	CSU Bakersfield	ph/c	1	0	1	1	0	0	0	0	0	0	0	0-0	0
2/24	Oklahoma State	*c/dp	1	0	0	0	0	0	0	0	0	0	1	0-0	0
2/25	Nebraska	*c	1	0	0	0	0	0	0	0	0	0	0	0-0	0
3/5	Charlotte	ph	1	0	0	0	0	0	0	0	0	0	0	0-0	0
3/17	Utah State														
3/18	Utah State														
3/19	Utah State														
3/24	San José State														
3/25	San José State														
3/26	San José State														
3/28	NM State														
3/31	Fresno State														
4/1	Fresno State														
4/2	Fresno State														
4/6	Boise State														
4/7	Boise State														
4/8	Boise State														
4/15	Colorado State														
4/16	Colorado State														
4/21	San Diego State														
4/22	San Diego State														
4/23	San Diego State														
4/28	Nevada														
4/29	Nevada														
4/30	Nevada														
5/5	UNLV														
5/6	UNLV														

2 5 0 1 1 0 0 0 0 2 0 2 1-1 0

CAREER STATS

SEASON	GP	GS	AVG.	AB	R	H	2B	3B	HR	RBI	TB	SLG%	BB	SO	HBP	OB%	SF	SH	SB-SA	PO	A	E	FLD%
2019	46	45	.223	103	10	23	5	0	2	15	34	.330	13	20	1	.311	2	2	0-0	129	32	5	.970
2020	22	22	.333	57	8	19	6	0	2	14	31	.544	6	6	1	.406	0	3	0-0	77	10	1	.989
2021	30	18	.268	56	5	15	2	0	2	5	23	.411	7	7	0	.349	0	1	0-0	80	9	1	.989
2022	21	14	.222	45	8	10	2	0	2	6	18	.400	6	17	0	.314	0	0	0-0	38	2	2	.952
2023	7	2	.200	5	0	1	0	0	0	1	2	.200	2	2	0	.429	0	0	1-1	5	0	0	1.000
TOTAL	126	101	.256	266	31	68	15	0	8	40	107	.402	34	52	2	.342	2	6	1-1	329	53	9	.977

HIGHLIGHTS

- Played at Nebraska Omaha from 2019-21
- Started at catcher in 7 games and at DP in 7 games in 2022
- Hit 4th in 2 games, 5th in 1 game, 6th in 1 game, 7th in 1 game and 8th in 9 games in 2022
- Ended 2022 on a 3-game on-base streak
- Majoring in liberal arts

THE 2023 LOBOS



77 Reyan Tuck

SR • 1B • 6-0 • R/R
Hillsboro, Ore. (Towson)

SEASON BESTS

Hits	1	6x, last: Houston, 3-3-23
Doubles	1	at Nicholls, 2-9-23
Triples		
Home Runs		
RBI	2	at Nicholls, 2-9-23
Runs	1	2x, last: UTEP, 3-1-23
Walks		
Stolen Bases		

CAREER BESTS

Hits	3	vs. Dixie St., 3-11-22
Doubles	2	vs. Fresno St., 4-15-22
Triples		
Home Runs		
RBI	2	3x, last: Maine, 3-12-22
Runs	1	15x, last: at Boise State, 5-8-22
Walks	1	16x, last: San Diego St., 5-12-22
Stolen Bases	1	Northern Colorado, 2-15-20

STREAKS

	Current	Career Best
Hitting		9
On-Base		12

MULTI-HIT GAMES

	2	3	4	5+	TOTAL
2019	-	-	-	-	0
2020	1	-	-	-	1
2021	2	-	-	-	2
2022	5	1	-	-	6
2023					

MULTI-RBI GAMES

	2	3	4	5+	TOTAL
2019	-	-	-	-	0
2020	1	-	-	-	1
2021	1	-	-	-	1
2022	3	-	-	-	3
2023	1				1

2023 GAME-BY-GAME

DATE	OPPONENT	POS	AB	R	H	TB	2B	3B	HR	RBI	BB	HBP	SO	SB-ATT	E	
2/9	Nicholls	*1b	3	0	1	2	1	0	0	2	0	0	0	0	0-0	0
2/10	Oregon State	*1b	3	0	0	0	0	0	0	0	0	0	1	0-0	0	0
2/10	LSU	1b	0	0	0	0	0	0	0	0	0	0	0	0-0	0	0
2/11	Oregon State	*1b	1	1	0	0	0	0	0	0	0	1	1	0-0	1	1
2/17	Buffalo	1b	1	0	0	0	0	0	0	0	0	0	0	0-0	0	0
2/18	Santa Clara	1b	0	0	0	0	0	0	0	0	0	0	0	0-0	0	0
2/18	Texas Tech	*1b	3	0	1	1	0	0	0	0	0	0	1	0-0	0	0
2/25	NM State	ph/1b	2	0	1	1	0	0	0	1	0	0	0	0-0	0	0
2/25	Nebraska	*1b	1	0	0	0	0	0	0	0	0	0	0	0-0	0	0
3/1	UTEP	ph	1	0	1	1	0	0	0	0	0	0	0	0-0	0	0
3/1	UTEP	*1b	3	1	1	1	0	0	0	1	0	0	0	0-0	0	0
3/3	Houston	*1b	3	0	1	1	0	0	0	0	0	0	0	0-0	1	1
3/3	Arizona State	*1b	1	0	0	0	0	0	0	0	0	0	1	0-0	1	1
3/4	Washington	*1b	2	0	0	0	0	0	0	0	0	0	0	0-0	0	0
3/4	GCU	*1b	1	0	0	0	0	0	0	0	0	0	0	0-0	1	1
3/17	Utah State															
3/18	Utah State															
3/19	Utah State															
3/24	San José State															
3/25	San José State															
3/26	San José State															
3/28	NM State															
3/31	Fresno State															
4/1	Fresno State															
4/2	Fresno State															
4/6	Boise State															
4/7	Boise State															
4/8	Boise State															
4/15	Colorado State															
4/16	Colorado State															
4/21	San Diego State															
4/22	San Diego State															
4/23	San Diego State															
4/28	Nevada															
4/29	Nevada															
4/30	Nevada															
5/5	UNLV															
5/6	UNLV															

10 25 2 6 7 1 0 0 4 0 1 4 0-0 4

CAREER STATS

SEASON	GP	GS	AVG.	AB	R	H	2B	3B	HR	RBI	TB	SLG%	BB	SO	HBP	OB%	SF	SH	SB-SA	PO	A	E	FLD%
2019	10	6	.158	19	1	3	1	0	0	2	4	.211	0	7	1	.200	0	0	0-0	6	5	5	.688
2020	16	14	.211	38	1	8	1	0	0	4	9	.237	1	5	0	.214	3	0	1-1	69	1	0	1.000
2021	34	34	.212	85	5	18	7	0	0	7	25	.294	4	17	5	.284	1	1	0-0	216	9	5	.978
2022	51	50	.243	140	9	34	6	0	0	14	40	.286	11	29	0	.294	2	3	0-0	330	11	6	.983
2023	15	10	.240	25	2	6	1	0	0	4	7	.280	0	4	1	.259	1	0	0-0	59	1	4	.938
TOTAL	126	114	.225	307	18	69	16	0	0	31	85	.277	16	62	7	.273	7	4	1-1	680	27	20	.972

HIGHLIGHTS

- Played at Towson her freshman year
- Started at first in 50 games in 2022
- Hit 6th in 2 games, 7th in 48 games in 2022
- Working on her master's degree in project management