

THE UNIVERSITY OF NEW MEXICO SOFTBALL

MARCH 24-26 vs SAN JOSÉ STATE

2023 SCHEDULE

OVERALL: 13-17 • MW: 1-2 • H: 3-1 • A: 2-9 • N: 8-7

DATE	OPPONENT	TIME/SCORE
2/9	at Nicholls	W, 12-3 (5)
LSU Invitational Baton Rouge, La.		
2/10	25/19 Oregon State	L, 2-0
2/10	20/25 at LSU	L, 11-3 (6)
2/11	25/19 Oregon State	W, 8-0 (5)
2/11	20/25 at LSU	L, 11-3 (6)
Dr. Natalicio Memorial Tournament El Paso, Texas		
2/17	Buffalo	W, 11-2 (5)
2/18	Santa Clara	L, 7-2
2/18	Texas Tech	L, 12-7
2/19	at UTEP	Cancelled
2/19	at UTEP	Cancelled
2/23	CSU Bakersfield	W, 8-2
2/23	CSU Bakersfield	W, 10-3
Troy Cox Classic Las Cruces, N.M.		
2/24	4/4 Oklahoma State	L, 12-1 (5)
2/24	Creighton	W, 4-0
2/25	at New Mexico State	L, 7-6
2/25	Nebraska	L, 15-0 (5)
2/26	Nebraska	L, 1-0
3/1	UTEP	L, 2-1 (11)
3/1	UTEP	W, 8-4
Arizona State/GCU Classic Tempe, Ariz.		
3/3	Houston	W, 7-1
3/3	at RV/23 Arizona State	L, 6-2
3/4	12/11 Washington	L, 3-0
3/4	at GCU	L, 6-1
3/5	rv Charlotte	W, 7-6
Texas Tech Invitational Lubbock, Texas		
3/10	Buffalo	W, 6-0
3/10	Manhattan	W, 7-6 (9)
3/11	Buffalo	W, 4-1
3/11	at Texas Tech	L, 14-5 (5)
3/12	at Texas Tech	L, 7-2
3/15	at Weber State	Cancelled
3/17	at Utah State *	L, 5-4 (10)
3/18	at Utah State *	L, 8-0 (5)
3/19	at Utah State *	W, 15-13
3/24	San José State *	6 p.m.
3/25	San José State *	2 p.m.
3/26	San José State *	12 p.m.
3/28	New Mexico State	3 p.m.
3/31	at Fresno State *	7 p.m.
4/1	at Fresno State *	3 p.m.
4/2	at Fresno State *	1 p.m.
4/6	Boise State *	6 p.m.
4/7	Boise State *	2 p.m.
4/8	Boise State *	12 p.m.
4/15	Colorado State *	2 p.m.
4/16	Colorado State *	12 p.m.
4/21	at San Diego State *	7 p.m.
4/22	at San Diego State *	5 p.m.
4/23	at San Diego State *	1 p.m.
4/28	Nevada *	6 p.m.
4/29	Nevada *	2 p.m.
4/30	Nevada *	11 a.m.
5/5	at UNLV *	4 p.m.
5/6	at UNLV *	1 p.m.
5/11-13	MW Conference Tournament	
San Diego, Calif.		

Bold denotes home games
*denotes Mountain West game
All times listed are Mountain Time
Game times are subject to change



Record
13-17, 1-2 MW
Head Coach
Nicole Dickson
Record at UNM
13-17, 1-2 (1st year)
Career Record
182-140 (7th year)



Record
14-15, 2-1 MW
Last 5 games:
4-1
Head Coach:
Tammy Lohmann
Record at SJSU
45-67 (3rd year)
Career Record:
48-69 (4th year)

OFFENSE

	UNM	SJSU
AVG.	.295	.275
OB %	.366	.354
SLG%	.416	.394
RUNS AVG.	144 4.8	115 4.0
HITS AVG.	240 8.0	195 6.7
BB AVG.	74 2.5	78 2.7
RBI	129	96
HR	17	12
SB-ATT	31-32	43-50
PITCHING		
ERA	5.20	5.01
SO AVG.	161 5.4	145 5.0
BB AVG.	90 3.0	118 4.1
OPP. AVG.	.316	.281
FIELDING		
DP	14	4
FLD %	.958	.958

THE OPPONENT

For the first time in 13 games, the Lobos are home to host the Spartans in a three-game series starting Friday. The Spartans have won six of their last seven games and won two of three in their series against Nevada. The last time the Lobos played the Spartans in Albuquerque, the Lobos won two of three. San José State shares two non-conference opponents with UNM in Washington (L, 10-0, 5 innings) and LSU (L, 12-6).

vs. San José State

Overall: 19-26

Last Five: 3-2

Last Game: L, 3/20/22 (4-3 / 11)

Last Win: 3/18/22 (2-1 / 8)

Series Trend: L2

LOBO NOTES

BY THE NUMBERS

- UNM is 9-1 when scoring first and 11-1 when scoring in the 1st inning
- Lobos are 9-1 when leading after the 4th, 6-0 when leading after the 5th and 9-0 when leading after the 6th.
- UNM is outscoring opponents 28-20 in the 6th inning and 6-2 in the 7th inning
- The Lobos have scored 10+ runs in four games this season with a season-high 15 runs and a season-high 18 hits in the last game at Utah State.
- UNM leads the MW in hits (240), triples (7), assists (216), putouts (574), batters struck out (161) and turned double plays (14), is second in total bases (338) and runs scored (144) and third in RBI (129) and hit-by-pitches (22).
- UNM is 20th in the NCAA in double plays per game (0.47) and 60th in batting average (.295).
- Rachael Hathoot leads the MW in triples with three and is second in total bases (53), is tied for third in hits (33) and fifth in batting average (.375) and tied for sixth in RBI (20). Entering the series, she has a 10-game hitting streak and 15 game streak of reaching base. Peyton Robinson leads the conference in hits (37) and Keyannah Chavez is tied for the lead in runs scored (25).
- Two players have a streak of five game or longer of reaching base (Rachael Hathoot- 15, Keyannah Chavez-9, Peyton Robinson-8). Hathoot (10) and Robinson (8) have the longest hitting streaks on the team.
- Amber Linton is 13th in the NCAA in strikeouts with 120, fifth in innings pitched (107.0) and 43rd in wins (9).
- Peyton Robinson is 30th in the NCAA in hits and Rachael Hathoot is 29th in triples (3).

STEAL YOUR BASE

- The Lobos are 31-32 in stolen bases this season after starting 31-31 with 11 players having at least one stolen base.
- Peyton Robinson leads with 13 stolen bases, followed by five from Rachael Hathoot, four from Keyannah Chavez and two for Olivia Birkinshaw. Seven players (Chloe Yeatts, Loran Walker, Emma Bramson, Ashley Archuleta, Janae Cameron, Evany Gonzalez and Grace Rana) have one.
- UNM had four stolen bases in each of the games against Cal State Bakersfield and 19 games with a stolen base, including in six of the last eight games. UNM has had multiple stolen bases in six games.
- The Lobos already have more stolen bases to date than the season total in each of the last seven years.

KEEP THEM GUESSING

- UNM has used 28 different lineups this season, using only the same batting order in the first two games and in both games on March 11 against Buffalo and Texas Tech.
- The Lobos have had five different players hit second, five different players hit third, four different players in the cleanup spot, eight different players hit fifth, eight different players hit sixth, 10 different players hit seventh, 10 different players hit eighth and six different players hit ninth.
- Peyton Robinson has hit leadoff in 29 games, with Keyannah Chavez second in 17 games, Rachael Hathoot third in 19 games (including the last 15 and 18 of the last 19) and Lauren Garcia has hit in the cleanup spot in 12 of the last 13 games.
- When it comes to the lineup per position, the Lobos have had just three players start all 30 games at the same position: Rachael Hathoot (shortstop), Keyannah Chavez (left) and Peyton Robinson (center).
- Five different players have started at catcher, six different players have started at first, three different players have started at third and in right and four different players have been the DP.
- The Lobos are also versatile in their positions as Emma Bramson has started 19 games at third and five at second and Loran Walker has started six games at third, three at catcher and one game at first. Olivia Birkinshaw has played two games in right field, three as the designated player, two games at first and five games at third and Chloe Yeatts has started at catcher in 19 games, as the designated player in five and at first in one game.

OPEN THE RECORD BOOK

- In the March 19th win at Utah State, the Lobos finished with 18 hits, 15 runs and struck out 14 Aggies.
- The 18 hits were the most since the Lobos had 21 against Howard back in 2018 and the 15 runs were the most since 2019 against UTEP.
- The 14 strikeouts by Amber Linton were the most in a game since 2013, when Lauren Soles struck out 14 against Siena.
- The 11.0 innings pitched by Linton against the Miners back on March 1 were the most innings pitched by a Lobo since Soles threw 10.0 innings back in 2016 against San Diego State.

THE COMEBACK x3

- The Lobos have three times rallied late in a game to earn the win: the 7-6 win over Charlotte, the 7-6 win over Manhattan and the 15-13 win over Utah State.
- CHARLOTTE:** The Lobos trailed four times against Charlotte and responded each time to either tie or take the lead. The Niners again took the lead in the top of the sixth on three-straight singles, all with two outs, although the lead was short lived as Olivia Birkinshaw led off the bottom half with a home run to center. Lauren Garcia followed that up by reaching on an error by the Charlotte right fielder, taking second on the play, and Chloe Yeatts put the Lobos back in front at 5-4 with a single to the outfield. Charlotte reclaimed the lead in the top of the seventh on a two-run home run and down to their final two outs, Keyannah

2023 QUICK FACTS

TEAM INFORMATION

2022 Overall Record	26-27
2022 MW Record	6-18 (9th)
Letterwinners Returning/Lost	13/10
Pitchers Returning/Lost	2/4
Starters Returning/Lost	6/3
Newcomers	11

PROGRAM HISTORY

First Year of Softball	1978
All-Time Record	1054-1211-3
Mountain West Record	139-325-1
NCAA Tournament Appearances	3
1980 (IAAW), 1981 (IAAW) and 1983 (NCAA)	
Last NCAA Postseason Opponent	Cal State Fullerton
Last NCAA Postseason Result	CSUF won series 2-1
Conference Championships	3
1980 (Intermountain), 1981 (Intermountain) and 1983 (High Country)	

SOFTBALL STAFF

Head Coach	Nicole Dickson (First season)
Record at UNM	13-17
Career Record	182-140 (Seventh season)
Assistant Coach	Morgan Spearman (First season)
Assistant Coach	Skylar Black (First season)
Vol. Asst. Coach	Andrea Howard (First season)
Dir. of Operations	Shelley Black (First season)

GENERAL INFORMATION

Name of School	University of New Mexico
Founded	1889 by Territorial Legislature
Enrollment	25,015
Nickname	Lobos
School Colors	Cherry & Silver
Conference	Mountain West
Affiliation	NCAA Division I
Venue	Lobo Softball Field
Dimensions	205-225-205
Capacity	1,500
President	Dr. Garnett Stokes
Athletic Director	Eddie Nuñez

COMMUNICATIONS

Softball Contact	Allison Weiss
Email	allisonweiss@unm.edu
Cell Phone (Preferred)	(661) 313-5402
Communications Office	(505) 925-5520

DIGITAL MEDIA

Athletics Website	GoLobos.com
Main University Web Site	unm.edu
Conference Website	TheMW.com
Twitter	@UNMLoboSB
Instagram	@UNMLoboSB
Facebook	@UNMLoboSB

INTERVIEW REQUESTS

All interviews with UNM student-athletes and coaches are to be coordinated through the athletics communications office. Interviews may be arranged by contacting Allison Weiss in the athletics communications office (allisonweiss@unm.edu). All interview requests should be made at least 24 hours in advance.

Chavez got the rally started with a single through the left side and Rachael Hathoot drove her in on a double to left field to tie the game at six. Birkinshaw ended the game on the next at-bat with a double of her own scoring Hathoot for the walk-off.

- MANHATTAN:** Trailing 6-4 in the sixth inning against Manhattan, New Mexico had its first four hitters reach with Hathoot scoring Jenna Trim on a ball that dropped in shallow right field to make it a one-run game before the inning came to an end with bases loaded. Down to the final two outs and facing a full count, Maddie Boldt tied the game on a home run to center for her fourth of the season. Amber Linton entered in the bottom of the seventh and allowed just an infield single before getting outs two and three on swinging strikeouts to send the game to extra innings. In the ninth, Ashley Archuleta led off with a single to the outfield and following a fielder's choice and a flyout to right, Trim kept the inning going with a four-pitch walk. With the lineup turned over, and after fouling off six pitches, Peyton Robinson hit a double to right center to score Yeatts from second to give UNM its first lead since 4-3 in the second inning. Amber Linton left no chance of a rally, retiring the side to secure the Lobo win.
- UTAH STATE:** The Lobos rallied to complete two comebacks in Sunday's game, using an eight-run third inning and scoring six unanswered runs between the fifth and sixth innings to win 15-13 over Utah State. The Aggies added six runs in the bottom of the second, but the Lobos had an answer of their own in the top of the third with eight runs on eight hits. Emma Bramson led off with a double, the first of two for her in the inning, with Peyton Robinson laying down a bunt and Bramson scoring on a throwing error by the Aggie first baseman on the play. After Ashley Archuleta reached on a fielder's choice, Rachael Hathoot hit a double to right to move the Lobo around to third and following a walk for Garcia that loaded the bases, Keyannah Chavez was hit by a pitch to score another run. Maddie Boldt put UNM right back in the game with one swing, hitting her fifth home run of the season to clear the bases and pull the Lobos within one at 8-7. After an Aggie pitching change, Chloe Yeatts kept the rally going with a single to right and Bramson hit a double to left to put two more runners in scoring position. With the lineup turned over, Robinson gave the Lobos their first lead since 1-0 with a single to left center that scored both runners for the final runs of the inning. Utah State responded with five runs on seven hits to go back in front 13-9 in the bottom of the third. They were the final runs that the Aggies would score as the Lobos pitched four scoreless innings while the Lobos continued to string together hits and runs in the fifth and sixth. UNM needed just two at-bats to score a run in the fifth as Bramson reached on a single to right and moved to second on a wild pitch, with Robinson scoring her on a single to right, taking second on an error by the right fielder. Chavez started the rally in the sixth, reaching on a bunt, Boldt followed with a single to left and after Jenna Trim walked to load the bases, Savana Martinez brought the first run of the inning in on a bloop to right. A single to right by Bramson scored Boldt and Archuleta singled to left two at-bats later to score Trim to tie the game. Hathoot gave the Lobos the lead on the next at-bat with a single to center that scored Bramson and Robinson.

FRESHMEN IN NAME ONLY

- Freshmen Emmalyn Brinka, Chloe Yeatts and Keyannah Chavez have made an impact in their first season as Lobos.
- In the circle, RHP Brinka threw a complete game to earn her first collegiate win against No. 19 Oregon State, striking out four and allowing two hits in the shutout. Brinka is second on the pitching staff in strikeouts (16), with the third-most innings pitched (29.2) and third-most appearances (11). She earned her first save in the second UTEP game.
- Chavez went 3-4 in the season opener at Nicholls which included a double. Chavez has started all 30 games in left field and has been second in the batting order in 17 games, including nine of the last 10 and led off against Washington.
- Yeatts drove in the first two runs of the season on a single through the right side in her first collegiate at-bat. The Oklahoma native hit her first home run in the game one win against Cal State Bakersfield, added her second at NMSU and her third home run at Texas Tech. Yeatts has started in 25 games but played in 29, and has tallied 21 hits, 13 RBI and hitting .280 with a .329 on-base percentage and .413 slugging percentage. She's tied for second on the team in home runs (3), fourth in RBI. She's started at catcher in 19 games, designated player in five games and first in one game and has hit cleanup in 10 games. Yeatts has finished with two hits in six games this season and at least one hit in 15 games.

CONSISTENCY IS KEY

- Freshman Keyannah Chavez reached base in the first 10 games this season, and had a six-game hitting streak, both coming to an end in the Oklahoma State game. She's registered a hit in 20 games with nine multi-hit games and reached base in 26 games this season.
- Chavez currently has a nine-game streak of reaching base.
- Chavez earned her first conference award after being named the Mountain West Freshman of the Week on Feb. 21. Chavez's accolade came after the freshman led the Lobos at the plate hitting .556 with a .778 slugging percentage (tied for the team high), a team-high .600 on-base percentage, team-high five hits, team-high two doubles and finished with two RBI at UTEP's tournament.
- Chavez leads the team in runs scored (22) and doubles (5), is tied for second in hits (29) and walks (7), is third in on-base percentage (.422) and fourth in batting average (.358).
- In the MW, Chavez is tied for the conference lead in runs scored, seventh in hits, tied for 12th in batting average and 14th in on-base percentage.

RETURN OF RACHAEL

- Rachael Hathoot returned to the field after missing the 2022 season due to an injury, and has been a major boost for the Lobo infield.
- The Albuquerque native has started in 102 games for the Lobos and has tallied 86 hits and 141 total bases that includes 21 doubles, five triples and eight home runs. Her career batting average is .282, with a .344 on-base percentage and a .462 slugging percentage.
- Hathoot has had 23 multiple hit games and 14 multiple RBI games in her career, including 10 multi-hit games and five multi-RBI games this season.
- Hathoot got going at UTEP, with three hits that included two triples, had a .778 slugging percentage and finished with three RBI.
- In the game against NMSU, Hathoot was a single shy of the cycle, hitting a double in the third to score two runs, a triple in the fifth to score a run and hit a home run to start the seventh inning, finishing with a career-high three hits and four RBI.
- In the ASU/GCU Classic, Hathoot hit .458 with a .667 slugging percentage that included 11 hits, four RBI, two doubles and a home run. Hathoot hit a double in the bottom of the 7th with the Lobos down to their final two outs and trailing 6-5 that tied the game at six. She then came around as the winning run on the next at-bat as the Lobos walked off against Charlotte. In the second game against UTEP, the Lobo shortstop hit a three-run home run in the bottom of the 6th against to turn the 5-4 UNM lead to 8-4. She had four multi-hit games with two games with three hits and reached base in all seven games.
- The Lobo leads the team in batting average (.375), slugging percentage (.602), on-base percentage (.427), triples (3) and RBI (20) and is tied for the team lead in doubles (5), second in hits (33) and tied for second in home runs (3).
- Hathoot has reached base in the last 15 games and has a 10-game hit streak.
- Among the MW, Hathoot leads in triples (3) and total bases (53), is tied for third in hits, fifth in batting average, tied for sixth in RBI, ninth in slugging percentage and 10th in on-base percentage.

IT STARTS IN THE CIRCLE

- From the time she was hired, Coach Dickson has repeatedly stated that success starts in the circle, and has backed that up by adding depth.
- It all starts with returner Amber Linton, who has pitched in 19 games with 17 starts. On the season, she has pitched 107.0 total innings, more than double the next Lobo pitcher (Taylor Snow) and more than the other five pitchers combined. She's recorded five or more strikeouts in 12 games this season, nine of which have come in the last 11 games.
- Linton leads the MW in strikeouts per game with 120 (43 more than the second-highest total), 37 looking, and with nine wins. Nationally, she is 13th in strikeouts and fifth in innings pitched.
- The Indiana native is averaging 7.85 strikeouts per game this season.
- Linton threw her first complete-game shutout in the win over Creighton and struck out nine in back-to-back outings (against Cal State Bakersfield and Creighton). She threw a career-high 11 innings in the first game against UTEP and recorded a then-career-high 12 strikeouts in the complete-game win against Houston. She pitched her second complete-game shutout against Buffalo on March 10 and has thrown 10 complete games. She set a new career high in strikeouts with 14 in the first game against Utah State after throwing 9.1 innings.
- In her two years at UNM, Linton has 276 strikeouts, placing her sixth all-time.
- The RHP pitched a team-high 156.2 innings last season with a team-high 27 starts. She finished with 10+ strikeouts in two games and five or more strikeouts in 14 games.
- Linton's 6.97 strikeouts per game in 2022 was the single-season program record and her 156 strikeouts were the sixth-most in a single-season in program history.
- In addition, the Lobos return Samantha Fohrman, who has thrown in five games and 6.2 innings with two starts. Fohrman got the start in Saturday's game at LSU, going 1.1 innings and allowing one earned run on two hits.
- The Lobos added two freshmen pitchers in Emmalyn Brinka and Bella Mitchell, a redshirt-sophomore transfer in Snow and a junior transfer in Jenna Trim.

- Brinka got the start against Oregon State on Feb. 11 and pitched a complete-game shutout after pitching 2.2 innings of relief in Friday's game against LSU. To date, she's appeared in 12 games with four starts and has thrown 29.2 innings.
- Snow has appeared in 16 game with seven starts, and pitched 41.1 innings, the second highest amongst the pitchers in both categories. She struck out two of the three hitters she faced in the fifth in the Feb. 17 against Buffalo to end the game and two in 1.1 innings of work against Santa Clara. Snow has recorded two strikeouts in four games with a season-high three strikeouts at Texas Tech and has had five appearances of not allowing a run.
- Snow entered in relief in the first inning of the second Cal State Bakersfield game and pitched 7.0 scoreless innings to earn her first collegiate win.
- Bella Mitchell made her first appearance in the game against Oklahoma State and struck out four hitters in 2.1 innings.

FULLY CHARGED BATTERY

- In addition to having six pitchers, the Lobos are fully stocked at the catcher position with six catchers, five of which have made at least one start.
- Leslie Romero returned with the most time behind the plate last season, starting at catcher in 24 games. Savana Martinez and Janae Cameron each started in seven games. The Lobos added two freshmen catchers in Chloe Yeatts and Grace Rana.
- Yeatts has started 19 games with Romero starting in four, Loran Walker starting in three and Janae Cameron and Martinez in two.
- Yeatts has thrown out two runners with Romero and Martinez each catching one runner trying to steal.

LOBOS IN THE OUTFIELD

- The Lobos returned outfielder Peyton Robinson, who has played in 129 games with 128 starts in her three years at UNM and started all 53 games in left last season.
- So far, Keyannah Chavez (left) and Peyton Robinson (center) have started all 30 games with Maddie Boldt starting in right in 25 games, Olivia Birkinshaw in three games and Elizabeth Baylor in two.
- The trio (Chavez, Robinson and Boldt) have led the Lobos at the plate, with Robinson second and Chavez third in batting average and total bases, and second (Chavez) and third (Robinson) in on-base percentage. Robinson leads the team (and the MW) in hits with 37 with Chavez third at 30 and Chavez leads in runs scored with 25 with Robinson third at 17.
- Boldt is second on the team in slugging percentage (.547) and in RBI (19) and leads with five home runs, including a grand slam against Utah State.
- Chavez is tied for the team lead with 11 walks with Boldt third with 10 and Boldt is tied with Chavez in total bases with 35.

ANY MEANS NECESSARY

- In UNM's first five games, the Lobos reached base 18 times via either a hit-by-pitch or walk (nine BB, nine HBP).
- The Lobos drew three walks and five hit-by-pitches in the win at Nicholls and had one hit-by-pitch in the first game against Oregon State with four walks.
- UNM has drawn at least one walk and one hit-by-pitch in 14 games, at least one hit-by-pitch in 16 games and at least one walk in 26 games. UNM had a season-high 11 walks in the first game at Utah State and a season-high five hit-by-pitches at Nicholls.
- 10 different players have reached on a HBP and 13 have reached on a walk. Olivia Birkinshaw currently leads with five hit-by-pitches, while Ashley Archuleta leads with nine walks.
- The Lobos are currently third in the MW in HBP with 21.

BIG INNINGS

- The eight runs scored in the 3rd inning of the third game at Utah State was the most runs scored in an inning this season, coming off of eight hits.
- Four times this season the Lobos have scored five or more runs in an inning with two of them against the Aggies. The Lobos also scored five runs in the sixth inning to take the lead after trailing 13-10. UNM also scored seven runs in the 3rd inning against Buffalo on Feb. 17 and six runs in the first inning of the season opener at Nicholls.

THE HONOR IS OURS

- New Mexico junior pitcher Amber Linton was named Mountain West Pitcher of the Week and New Mexico senior outfielder Peyton Robinson was named Mountain West Player of the Week following their performances at the Texas Tech Invitational. Keyannah Chavez earned Mountain West Freshman of the Week on Feb. 21.
- The selection marks the second weekly conference honor for Linton and the first for Robinson and Chavez.

NEW ERA IN LOBO SOFTBALL

- Nicole Dickson is in her first season at the helm of the softball program after being hired on June 3, 2022.
- Dickson spent the past six seasons at Stephen F. Austin. Of note, her first win at SFA was against New Mexico, a 5-1 win on Feb. 17, 2017. Her second win was also against UNM, a 3-1 final on Feb. 18, 2017.
- Shortly after being hired, Dickson added Morgan Spearman as an assistant coach, joining her at UNM from SFA. She completed her staff with her second assistant coach in Skylar Black.
- Coach Dickson oversees the pitching group and will occupy the third base coach's box, while Coach Spearman works with the outfielders and oversees the Lobo offense and will be in the first base coach's box when the Lobos are at-bat. Coach Black works with the catchers and the infielders.
- Dickson and staff hit the recruiting trail, adding reinforcements in the circle in Taylor Snow, Jenna Trim and Emmalyn Brinka, as well as a catcher in Chloe Yeatts and an outfielder in Maddie Boldt.

FIRST GAME, FIRST WIN

- Coach Dickson became just the second coach to win in their Lobo coaching debut, doing so with the largest margin of victory (+9). Erica Beach was the other head coach to win in her first game (a 10-2, five inning win against Utah Valley on Feb. 12, 2011).

WHAT'S NEW WITH UNM

- There are a total of 11 newcomers on the 2023 roster, with eight freshmen and three transfers.
- UNM added three pitchers, four outfielders, two catchers, one infielder and a pitcher who can also play infield.

MAKING A STATEMENT FROM THE START

- UNM had its first five hitters reach base in the season opener at Nicholls and scored six runs in the first on four hits, two hit-by-pitches and two walks. UNM added three runs in the third, two in the fourth and one in the fifth to earn the run-rule victory.
- UNM's win was the first season-opening run rule since 2011, a 10-2 win over Utah Valley in five and the fourth in program history (1993, 1992).
- The Lobos picked up a signature win on Feb. 11, defeating No. 19 Oregon State 8-0 in five innings.
- It was UNM's first win over a ranked opponent since No. 23 Nebraska back on March 19, 2016 (a 6-3 win) and the first done in run-rule fashion since Feb. 23, 2012, a 15-3 win over another Power 5 opponent in No. 14/16 Texas A&M in six. Historically, it was UNM's ninth win over a ranked opponent.
- The Lobos needed just two innings to produce their eight runs on eight hits, scoring four in the first and four in the third. Six different Lobos contributed a hit with Chloe Yeatts and Maddie Boldt leading with 2-3 outings at the plate with Boldt driving in three RBI, while Olivia Birkinshaw added three RBI on a pinch-hit double in the fourth. Six of UNM's runs came with two outs.

JUMP RIGHT IN

- UNM opened the season on the road with two Power 5 opponents who made the NCAA Tournament last season, including a team that advanced to the WCWS.
- The Lobos faced Oregon State and LSU opening weekend, with OSU coming off of a 39-22 season in which the Beavers defeated Ohio State and Tennessee in the Knoxville regional and swept Stanford in the Super Regionals to earn a spot as one of the final eight teams in Oklahoma City.
- Oregon State finished the season ranked 10th by ESPN.com and USA Softball and 8th in the USA Today / NFCA rankings.
- LSU went 34-23 last season and was selected to the NCAA Tournament in the Tempe Regional. The Tigers lost their first two games, including to MW opponent San Diego State.

NO LET UP IN NON-CONFERENCE

- The Lobos played a total of eight teams that made the NCAA Tournament a season ago, three teams that advanced to the Super Regionals and two teams that made the WCWS in the non-conference portion of their schedule. MW opponent San Diego State will make nine NCAA Tournament teams on the 2023 schedule overall.
- UNM played at least one Power 5 school every non-conference tournament, which included a total of seven schools from four of the Power 5 conferences. Of those, two are from the Big 12, three from the Pac-12, and one each from the Big Ten and SEC.
- The Lobos faced the aforementioned LSU (SEC) and Oregon State (Pac-12), Oklahoma State (Big 12), Nebraska (Big Ten), Arizona State (Pac-12), Washington (Pac-12) and Texas Tech (Big 12).
- In addition, the Lobos played GCU (WAC), which the Lobos made the NCAA Tournament after winning its conference tournament.
- Of the teams that UNM played in the non-conference, nine finished with 30-plus wins last season with three finishing with 40-plus wins.
- UNM played schools from 14 different conferences, spanning from coast-to-coast, and includes the Southland, SEC, Pac-12, MAC, WCC, Big 12, C-USA, Big West, BIG East, WAC, Big 10, American and MAAC.
- Of UNM's non-conference opponents, four were ranked in the ESPN/ USA Softball Collegiate Top 25 preseason rankings. Oklahoma State was the highest-ranked team at No. 3, Washington was No. 16, LSU No. 20 and Oregon State No. 25.
- In the Softball America Preseason Top 25, Oklahoma State was No. 2, Washington was No. 17, Oregon State was No. 24 and Arizona State was No. 25.
- In the USA Today/NFCA preseason rankings, Oklahoma State was picked No. 3, Washington No. 14, Oregon State No. 19, Arizona State No. 22 and LSU No. 25. Nebraska was receiving votes.
- Oklahoma State was the third ranked team that the Lobos have played thus far, joining LSU and Oregon State, but was the highest ranked team at No. 4.

IT'S NOT HOW YOU START...

- UNM was picked eighth in the MW Preseason Coaches' Poll with 23 points. The Lobos were 2 points behind a three-way tie for fifth with Fresno State, Nevada and San José State and two points ahead of Utah State.

CALL HER COACH HOWARD

- She may have hung up her cleats as a collegiate player, but Andrea Howard's time as a Lobo isn't over. UNM head softball coach Nicole Dickson announced the addition of Howard as a volunteer assistant coach in September, with Howard assisting with the outfield and hitting.
- Howard graduated as the program's all-time leader in home runs and total bases, second in career slugging percentage, runs-batted-in and walks and fourth in on-base percentage.
- Through her 222 games as a Lobo, starting in 221, Howard recorded 47 home runs, 380 total bases, 147 RBI, 123 walks and carried a slugging percentage of .637 and an on-base percentage of .427.
- She was a three-time All-Mountain West honoree, became the only two-time first team Academic All-American in program history and is a three-time CoSIDA All-American, and was considered for the NCAA Woman of the Year Award as the sole representative of the Mountain West.



0
Evany Gonzalez
INF • 5-1 • FR. • L/R
Alvin, Texas



2
Savana Martinez
C • 5-3 • RS-SO. • R/R
Albuquerque, N.M.



3
Rachael Hathoot
INF • 5-8 • RS-JR. • R/R
Albuquerque, N.M.



4
Jenna Trim
P/UT • 5-10 • JR. • R/R
North Curl Curl, Australia



5
Emmalyn Brinka
P • 6-0 • FR. • R/R
Chandler, Ariz.



7
Ashley Archuleta
INF • 5-4 • SO. • L/R
Rio Rancho, N.M.



8
Bella Mitchell
P • 5-6 • FR. • R/R
New Braunfels, Texas



9
Seleste Compian
OF • 5-1 • FR. • L/R
Rosenberg, Texas



12
Savannah Braun
OF • 5-10 • JR. • R/R
Tualatin, Ore.



13
Elizabeth Baylor
OF • 5-8 • FR. • R/R
Richmond, Texas



14
Taylor Snow
P • 5-10 • R-SO. • R/R
Columbia, La.



16
Leslie Romero
C • 5-6 • SR. • R/R
Gonzales, Calif.



17
Amber Linton
P • 6-0 • JR. • R/R
Franklin, Ind.



18
Grace Rana
C • 5-6 • FR. • R/R
Queen Creek, Ariz.



20
Emma Bramson
INF • 5-7 • SO. • R/R
Valencia, Calif.



21
Peyton Robinson
OF • 5-6 • SR. • L/R
Saginaw, Texas



24
Diamond Sandoval
OF • 5-3 • SO. • R/R
Norwalk, Calif.



25
Chloe Yeatts
C • 5-9 • FR. • R/R
Ardmore, Okla.



27
Olivia Birkinshaw
OF • 5-10 • SO. • R/R
Santa Margarita, Calif.



28
Samantha Fohrman
P • 5-7 • SR. • R/R
Cottage Grove, Minn.



34
Maddie Boldt
OF • 5-8 • JR. • R/R
Round Rock, Texas



38
Keyannah Chavez
OF • 5-1 • FR. • L/L
Leander, Texas



42
Loran Walker
C • 5-6 • RS-FR. • R/R
Meridian, Idaho



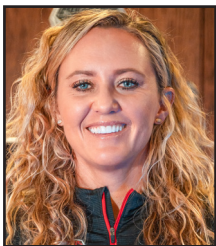
44
Lauren Garcia
INF • 5-11 • RS-FR. • R/R
El Paso, Texas



55
Janae Cameron
C • 5-9 • SR. • R/R
Windsor, Colo.



77
Reyann Tuck
1B • 6-0 • SR. • R/R
Hillsboro, Ore.



Nicole Dickson
Head Coach



Morgan Spearman
Assistant Coach



Skylar Black
Assistant Coach



Andrea Howard
Volunteer Ast.



Shelley Black
Dir. of Operations



Kelly Trevino
Athletic Trainer



NUMERICAL ROSTER

#	NAME	POS	HT	YR	B/T	HOMETOWN (PREVIOUS SCHOOL)
0	Evany Gonzalez	INF	5-1	Fr.	L/R	Alvin, Texas (Lutheran South Academy)
2	Savana Martinez	C	5-3	RS-So.	R/R	Albuquerque, N.M. (Rio Rancho HS)
3	Rachael Hathoot	INF	5-8	RS-Jr.	R/R	Albuquerque, N.M. (La Cueva HS)
4	Jenna Trim	P/UT	5-10	Jr.	R/R	North Curl Curl, NSW, Australia (Pensacola State)
5	Emmalyn Brinka	P	6-0	Fr.	R/R	Chandler, Ariz.(Corona del Sol HS)
7	Ashley Archuleta	INF	5-4	So.	L/R	Rio Rancho, N.M. (Cleveland HS)
8	Bella Mitchell	P	5-6	Fr.	R/R	New Braunfels, Texas (Canyon HS)
9	Seleste Compian	OF	5-1	Fr.	L/R	Rosenberg, Texas (George Ranch HS)
12	Savannah Braun	OF	5-10	Jr.	R/R	Tualatin, Ore. (Tualatin HS)
13	Elizabeth Baylor	OF	5-8	Fr.	R/R	Richmond, Texas (Churchill Fulshear HS)
14	Taylor Snow	P	5-10	RS-So.	R/R	Columbia, La. (Louisiana)
16	Leslie Romero	C	5-4	Sr.	R/R	Gonzales, Calif. (Salinas HS)
17	Amber Linton	P	6-0	Jr.	R/R	Franklin, Ind. (Indiana)
18	Grace Rana	C	5-6	Fr.	R/R	Queen Creek, Ariz. (Queen Creek HS)
20	Emma Bramson	INF	5-7	So.	R/R	Valencia, Calif. (Valencia HS)
21	Peyton Robinson	OF	5-6	Sr.	L/R	Saginaw, Texas (Southern Nazarene)
24	Diamond Sandoval	OF	5-3	Jr.	R/R	Norwalk, Calif. (St. Paul HS)
25	Chloe Yeatts	C	5-9	Fr.	R/R	Ardmore, Okla. (Lone Grove HS)
27	Olivia Birkinshaw	OF	5-10	So.	R/R	Santa Margarita, Calif. (Mission Viejo HS)
28	Samantha Fohrman	P	5-7	Sr.	R/R	Cottage Grove, Minn. (Georgian Court)
34	Maddie Boldt	OF	5-8	Jr.	R/R	Round Rock, Texas (Incarnate Word)
38	Keyannah Chavez	OF	5-1	Fr.	L/L	Leander, Texas (Glen HS)
42	Loran Walker	C	5-6	RS-Fr.	R/R	Meridian, Idaho (Rocky Mountain HS)
44	Lauren Garcia	INF	5-11	RS-Fr.	R/R	El Paso, Texas (Montwood HS)
55	Janae Cameron	C	5-9	Sr.	R/R	Windsor, Colo. (Nebraska Omaha)
77	Reyan Tuck	1B	6-0	Sr.	R/R	Hillsboro, Ore. (Towson)

COACHING STAFF

Head Coach: Nicole Dickson	1st season	Eastern New Mexico
Assistant Coach: Morgan Spearman	1st season	Angelo State
Assistant Coach: Skylar Black	1st season	Stephen F. Austin
Volunteer Assistant: Andrea Howard	1st season	New Mexico
Director of Ops: Shelley Black	1st season	Stephen F. Austin

HOME

ARIZONA (2)

Emmalyn Brinka, Grace Rana

AUSTRALIA (1)

Jenna Trim

CALIFORNIA (4)

Olivia Birkinshaw, Emma Bramson, Leslie Romero, Diamond Sandoval

COLORADO (1)

Janae Cameron

IDAHO (1)

Loran Walker

INDIANA (1)

Amber Linton

LOUISIANA (1)

Taylor Snow

MINNESOTA (1)

Samantha Fohrman

NEW MEXICO (3)

Ashley Archuleta, Rachael Hathoot, Savana Martinez

OKLAHOMA (1)

Chloe Yeatts

OREGON (2)

Savannah Braun, Reyan Tuck

TEXAS (8)

Elizabeth Baylor, Maddie Boldt, Keyannah Chavez, Seleste Compian, Lauren Garcia, Evany Gonzalez, Bella Mitchell, Peyton Robinson

PRONUNCIATION GUIDE

3	RACHAEL HATHOOT	Ray-chel HAT-hoot
9	Seleste COMPAN	CALM-pee-ON
12	Savannah BRAUN	BRAWN
18	Grace RANA	RAIN-ah
25	Chloe YEATTS	Rhymes with Gates
28	Samantha FOHRMAN	FOUR-mihn
42	LORAN Walker	Lauren
77	REYAN Tuck	REE-ann

CLASS

SENIORS (5) (*Super Senior)

55	Janae Cameron*	C
28	Samantha Fohrman	RHP
21	Peyton Robinson*	OF
16	Leslie Romero	C
77	Reyan Tuck*	1B

JUNIORS (6)

34	Maddie Boldt	OF
12	Savannah Braun	OF
3	Rachael Hathoot (R-Jr.)	INF
17	Amber Linton	RHP
24	Diamond Sandoval	OF
4	Jenna Trim	RHP/UTL

SOPHOMORES (5)

7	Ashley Archuleta	INF
27	Olivia Birkinshaw	OF
20	Emma Bramson	INF
2	Savana Martinez (R-So.)	C
14	Taylor Snow (R-So.)	RHP

FRESHMEN (10)

13	Elizabeth Baylor	OF
5	Emmalyn Brinka	RHP
38	Keyannah Chavez	OF
9	Seleste Compian	OF
44	Lauren Garcia (R-Fr.)	INF
00	Evany Gonzalez	INF
8	Bella Mitchell	RHP
18	Grace Rana	C
42	Loran Walker	C
25	Chloe Yeatts	C

POSITIONAL BREAKDOWN

PITCHERS (6)

4	Jenna Trim
5	Emmalyn Brinka
8	Bella Mitchell
14	Taylor Snow
17	Amber Linton
28	Samantha Fohrman

CATCHERS (6)

2	Savana Martinez
16	Leslie Romero
18	Grace Rana
25	Chloe Yeatts
42	Loran Walker
55	Janae Cameron

INFIELDERS (6)

00	Evany Gonzalez
3	Rachael Hathoot
7	Ashley Archuleta
20	Emma Bramson
44	Lauren Garcia
77	Reyan Tuck

OUTFIELDERS (8)

9	Seleste Compian
12	Savannah Braun
13	Elizabeth Baylor
24	Diamond Sandoval
21	Peyton Robinson
27	Olivia Birkinshaw
34	Maddie Boldt
38	Keyannah Chavez

UTILITY (1)

4	Jenna Trim
---	------------

HEAD COACH NICOLE DICKSON



Nicole Dickson enters her first season at The University of New Mexico and became the sixth head coach in program history when she was hired on June 3, 2022.

Dickson spent the last six seasons as the head coach at Stephen F. Austin, with the Ladyjacks surpassing 30 wins in four of five seasons and were on pace for another stellar result in the shortened 2020 season with a 19-4 record. Through her six seasons, Dickson compiled a 169-123 record and was named the 2021 Southland Conference Coach of the Year. Under her leadership, SFA had 20 all-conference selections, as well as two hitter of the year and pitcher of the year selections, a player of the year and a freshman of the year.

In 2021, the program set three program records. SFA's 25 league wins and just two conference losses were a program best, with the team setting another program record with 18 consecutive wins.

In the shortened 2020 season, Dickson and the Ladyjacks went 19-4 and set a program record with a then-13 consecutive wins with a NCAA Division I best nine true road wins.

In the 2019, SFA went 36-23, compiling wins over Power Five programs Illinois, Mississippi State, Indiana and Baylor.

Before taking the helm at SFA, Dickson gained experience as the head coach at Tyler Junior College (2013-16) and a spent a year as the head coach at Paris Junior College (2012-13). Dickson got her start in coaching as a graduate assistant at Hardin-Simmons in 2008 before getting her first coaching job as an assistant coach at Howard College in 2010.

Dickson earned a B.S. in health and physical education from Eastern New Mexico in 2008 and earned a master's in sports management and kinesiology from Hardin-Simmons in 2009.

Coach Dickson has several ties to New Mexico. She pitched at Eastern New Mexico from 2007-08 and umpired in the summers in Albuquerque while in college.

In addition, Coach Dickson's first win at SFA was against UNM (a 5-1 win on Feb. 17, 2017).

YEAR-BY-YEAR

YEAR	SCHOOL	OVERALL	CONFERENCE
2023	New Mexico	13-17 (.433)	1-2 (.333)
2022	Stephen F. Austin	31-27 (.534)	18-6 (.750)
2021	Stephen F. Austin	35-12 (.745)	25-2 (.926)
2020	Stephen F. Austin	19-4 (.826)	3-0 (1.000)
2019	Stephen F. Austin	36-23 (.610)	18-9 (.667)
2018	Stephen F. Austin	31-24 (.564)	18-9 (.667)
2017	Stephen F. Austin	17-33 (.340)	9-15 (.375)
2016	Tyler JC	60-6 (.909)	27-1 (.964)
2015	Tyler JC	39-18 (.684)	18-10 (.643)
2014	Tyler JC	Hired to start softball program	
2013	Paris JC		
2012	Paris JC		

COACHING HISTORY

2017-22: Stephen F. Austin, Head Coach
 2013-16: Tyler Junior College, Head Coach
 2012-13: Paris Junior College, Head Coach
 2010-12: Howard College, Assistant Coach
 2008-09: Hardin-Simmons, Graduate Assistant

RANKED WINS

No. 16 Indiana 1-0 3/1/19
 No. 24 Mississippi St. 1-0 2/10/19
 No. 25 Illinois 7-2 2/23/19
 No. 19 Oregon State 8-0 (5) 2/11/23

COACH DICKSON ALL-TIME RECORDS

OPPONENT	Series	H	A	N
Abilene Christian	9-9	2-4	7-5	
Arizona State	0-1		0-1	
Arkansas-Pine Bluff	1-0			1-0
Austin Peay	1-0			1-0
Baylor	1-3	0-1	1-2	
Belmont	1-0			1-0
Bowling Green	0-1			0-1
Buffalo	3-0			3-0
Butler	1-1			1-1
Cal State Bakersfield	2-0	2-0		
Central Arkansas	6-6	2-1	4-4	0-1
Charlotte	1-0			1-0
Coppin State	1-0			1-0
Creighton	1-0			1-0
Drake	1-0			1-0
Evansville	0-1			0-1
Georgia State	0-1			0-1
Grambling State	1-0			1-0
Grand Canyon	1-3		0-1	1-2
Hofstra	1-0			1-0
Houston	1-2		0-2	1-0
Houston Baptist	10-2	7-2	3-0	
Illinois	1-0			1-0
Illinois State	0-1			0-1
Incarnate Word	11-1	2-1	9-0	
Indiana	1-0			1-0
Jackson State	3-0	1-0		2-0
Jacksonville	1-1			1-1
Jacksonville St.	1-0			1-0
Kansas	0-3			0-3
Kent State	1-0			1-0
Lamar	15-6	7-5	8-1	
Louisiana	0-2		0-2	
Louisiana-Monroe	6-3	1-1	4-2	1-0
LSU	0-6		0-6	
Louisiana Tech	2-4	2-1	0-2	0-1
Manhattan	1-0			1-0
Maryland	1-0			1-0
McNeese	4-9	4-3	0-4	0-2
Memphis	3-0	2-0		1-0
Middle Tennessee	4-0	1-0		3-0
Mississippi State	1-3		1-3	
Mississippi Valley	2-1			2-1
Missouri	0-1		0-1	
Missouri State	1-5		0-1	1-4
Nebraska	0-2			0-2
New Mexico	2-0			2-0
New Mexico State	0-1		0-1	
Nicholls	5-5	4-2	1-3	
North Texas	0-4		0-4	
Northern Iowa	2-0			2-0
Northwestern State	8-3	6-3	1-0	1-0
Oklahoma State	0-1			0-1
Ole Miss	0-3		0-3	
Oregon	0-1			0-1
Oregon State	1-1			1-1
Pitt	0-1			0-1
Prairie View	6-0	2-0	4-0	
Purdue	2-0			2-0
Sam Houston State	13-6	5-1	8-4	0-1
Santa Clara	0-1			0-1
Seattle	2-0			2-0
South Alabama	2-3		2-3	
South Dakota State	0-1			0-1
Southeastern La.	1-3		1-2	0-1
Southern	3-0			3-0
Southern Illinois	0-1			0-1
Southern Miss	1-1		1-1	
Syracuse	0-1			0-1
Tarleton State	6-2	2-1	3-0	1-1
Tennessee Tech	1-1			1-1
Texas Arlington	2-3	1-1	1-2	
Texas A&M	0-5		0-5	
Texas A&M-CC	8-1	3-0	5-1	
Texas Southern	8-0	3-0	4-0	1-0
Texas Tech	0-4		0-2	0-2
UMKC	0-2			0-2
USC Upstate	0-1			0-1
UTEP	1-1	1-1		
Utah State	1-2		1-2	
UT Martin	1-0			1-0
Valparaiso	1-0			1-0
Washington	0-1			0-1
Western Kentucky	0-2			0-2
Western Michigan	3-0			3-0
TOTAL	182-140	60-28	69-70	53-42

ASSISTANT COACH MORGAN SPEARMAN



Morgan Spearman enters her first season as an assistant coach with the Lobos after joining the program in June 2022.

In her role with UNM, Spearman's primary responsibilities will be hitting and outfield with recruiting as a secondary responsibility.

"We have worked together for five years now and balance each other well," stated Dickson. "Her strengths include player development and teaching the game, with an incredible work ethic and task efficiency, and preparation with scouting and practice plans. I'm excited to have her join UNM Softball."

As mentioned, the new Lobo coach has worked with Dickson for the past five seasons at Stephen F. Austin, working with the Ladyjack outfielders and hitters as well as handled team travel and program operations.

Working with Dickson, Spearman was instrumental to the Ladyjacks' success in winning the Southland Conference in 2021 and the WAC Southwest Division in 2022 and in accumulating 30-plus wins in four of the past five seasons. Working with the hitters, Spearman developed the 2021 Southland Hitter of the Year along with three named to the All-Southland First Team, two placed on the All-Southland Second Team and one on the All-Southland Third Team in 2021. This past year, Spearman helped two players earn All-WAC Second Team honors.

During her time at SFA, the Ladyjacks had two hitter of the year selections.

Previous to serving as the assistant coach at SFA, Spearman was an assistant coach at Eastern New Mexico from 2016-17 and was a graduate assistant at her alma mater, Angelo State, from 2014-16.

Spearman played collegiately at Angelo State from 2011-14, earning All-America honors in 2013 and 2014. Further, she was named to the first team all-region and a NFCA Third Team All-American in 2013 and in 2014, was named to the NFCA All-America First Team and named the Division II Softball Player of the Year Honda Cup Award winner. An outfielder, Spearman was the Lone Star Conference Player of the Year in 2014, and broke Angelo State and Lone Star Conference single-season records her senior season after hitting .506.

ASSISTANT COACH SKYLAR BLACK



Skylar Black enters his first year as an assistant coach at UNM after being hired in July 2022.

As a former catcher at Stephen F. Austin, Black will oversee the catcher position and serve as the infield coach with the Lobos.

Black joins the program after serving as a volunteer assistant coach at SFA with the baseball team, where he garnered experience working with the catchers and was the secondary infield coach.

"I have worked with Skylar for two years, so he knows our expectations and culture," stated Dickson. "He's a high-character individual that is hard working and can teach and develop players defensively, which is what we need."

As aforementioned, Black was a catcher for the Lumberjacks. His senior season, Black was named to the 2021 All-Southland Conference Second Team after leading the team in total RBI (34), home runs (seven), total bases (74) and slugging percentage (.510). As a sophomore, he split time as catcher, first base and designated hitter.

After graduation, Black spent a season with the Missoula Paddle-Heads in the Pioneer League.

BY MONTH

BATTING

MONTH	AVG.	G	AB	R	H	2B	3B	HR	RBI	TB	SLG%	BB	SO	OB%	SF	SH	SB	SBA
Feb.	.286	15	377	75	108	13	5	9	67	158	.419	32	74	.361	5	4	20	20
March	.303	15	436	69	132	20	2	8	62	180	.413	42	73	.370	4	11	11	12
April																		
May																		

PITCHING

Month	ERA	W-L	G	CG	SHO	SV	IP	H	R	ER	SO	BB	2B	3B	HR	AVG.	WP	HBP
Feb.	5.57	6-9	15	6	2	0	88.0	116	88	70	68	51	31	1	10	.305	7	14
March	4.81	7-8	15	6	1	1	103.1	140	82	71	93	39	19	2	16	.326	4	12
April																		
May																		

UNM WHEN HOME/AWAY/NEUTRAL

STAT	HOME (4)	AWAY (11)	NEUTRAL (15)
RUNS	27	53	64
Opp	11	91	68
BAVG.	.341	.303	.274
Opp	.250	.404	.266
HITS	43	92	105
Opp	29	124	103
HR	3	10	4
SO	6	62	79
Opp	20	47	94
BB	10	30	34
Opp	13	31	46
ERA	1.75	8.60	4.05
Opp	5.07	4.67	3.71

SERIES HISTORY

SAN JOSÉ STATE

Series Record: 19-26

3/28/87	L	4-0	5/13/16	L	9-0 (6)
3/22/91	W	5-3	5/14/16	L	5-3
3/23/91	W	7-2	4/28/17	L	7-6
3/28/97	L	8-6	4/30/17	L	10-1
3/28/97	W	6-0	4/30/17	L	7-1
4/20/97	W	3-0	4/27/18	L	3-1
4/20/97	W	7-1	4/28/18	L	2-1
4/4/98	W	9-0	4/29/18	L	3-1
4/4/98	W	3-2	5/3/19	L	10-4
4/26/98	L	9-1	5/4/19	L	11-0 (5)
4/27/98	W	7-6	5/5/19	L	10-0 (6)
4/2/99	W	6-0	5/8/21	L	13-5
4/3/99	W	9-3	5/8/21	W	10-2 (5)
4/3/99	W	10-3	5/9/21	W	5-4
2/24/06	L	2-1	3/18/22	W	2-1 (8)
2/25/06	W	2-0	3/19/22	L	8-0 (6)
2/26/10	L	6-1	3/20/22	L	4-3 (11)
2/27/10	W	2-0			
3/16/11	L	3-1			
3/16/11	W	10-0 (6)			
2/8/13	L	9-0 (6)			
4/11/14	W	9-4 (10)			
4/12/14	L	10-1 (5)			
4/13/14	L	5-0			
5/7/15	L	12-9			
5/8/15	W	14-0 (5)			
5/9/15	L	8-0 (5)			
5/12/16	L	4-1			

LOBOS IN THE NCAA

Double plays per game: 20th
 Batting avg.: 60th

Amber Linton: 5th in innings pitched, 13th in strikeouts, 43rd in wins
 Rachael Hathoot: 29th in triples, 88th in hits
 Peyton Robinson: 30th in hits, 67th in stolen bases

MW PLAYER OF THE WEEK

Peyton Robinson, March 14

MW PITCHER OF THE WEEK

Amber Linton, March 14

MW FRESHMAN OF THE WEEK

Keyannah Chavez, Feb. 21

MILESTONE TRACKER

Amber Linton: 276 strikeouts at UNM (6th in program history)
 Rachael Hathoot: 86 career hits (14 from 100)/ 102 games played, 102 games started



GAME-BY-GAME STARTERS**BY POSITION**

DATE	OPPONENT	SP	C	1B	2B	SS	3B	LF	CF	RF	DP
2/9	Nicholls	Linton	Yeatts	Tuck	Archuleta	Hathoot	Bramson	Chavez	Robinson	Boldt	Garcia
2/10	Oregon State	Linton	Yeatts	Tuck	Archuleta	Hathoot	Bramson	Chavez	Robinson	Boldt	Garcia
2/10	LSU	Snow	S. Martinez	Garcia	Archuleta	Hathoot	Bramson	Chavez	Robinson	Boldt	Yeatts
2/11	Oregon State	Brinka	Yeatts	Tuck	Archuleta	Hathoot	Bramson	Chavez	Robinson	Boldt	Romero
2/11	LSU	Fohrman	Romero	Yeatts	Archuleta	Hathoot	Bramson	Chavez	Robinson	Boldt	Birkinshaw
2/17	Buffalo	Linton	Romero	Garcia	Archuleta	Hathoot	Bramson	Chavez	Robinson	Boldt	Yeatts
2/18	Santa Clara	Brinka	Yeatts	Garcia	Archuleta	Hathoot	Bramson	Chavez	Robinson	Boldt	Romero
2/18	Texas Tech	Linton	Walker	Tuck	Archuleta	Hathoot	Bramson	Chavez	Robinson	Boldt	Garcia
2/23	CS Bakersfield	Linton	Yeatts	Trim	Archuleta	Hathoot	Bramson	Chavez	Robinson	Boldt	Garcia
2/23	CS Bakersfield	Snow	Romero	Trim	Bramson	Hathoot	Walker	Chavez	Robinson	Birkinshaw	Yeatts
2/24	Oklahoma St.	Brinka	Cameron	Trim	Bramson	Hathoot	Walker	Chavez	Robinson	Boldt	Yeatts
2/24	Creighton	Linton	Yeatts	Trim	Archuleta	Hathoot	Walker	Chavez	Robinson	Boldt	Garcia
2/25	NM State	Linton	Yeatts	Walker	Archuleta	Hathoot	Bramson	Chavez	Robinson	Boldt	Garcia
2/25	Nebraska	Snow	Cameron	Tuck	Bramson	Hathoot	Walker	Chavez	Robinson	Boldt	Yeatts
2/26	Nebraska	Linton	Yeatts	Trim	Bramson	Hathoot	Walker	Chavez	Robinson	Boldt	Birkinshaw
3/1	UTEP	Linton	Yeatts	Trim	Bramson	Hathoot	Walker	Chavez	Robinson	Boldt	Birkinshaw
3/1	UTEP	Snow	Yeatts	Tuck	Archuleta	Hathoot	Bramson	Chavez	Robinson	Boldt	Garcia
3/3	Houston	Linton	Walker	Tuck	Archuleta	Hathoot	Bramson	Chavez	Robinson	Boldt	Garcia
3/3	Arizona State	Brinka	Martinez	Tuck	Archuleta	Hathoot	Bramson	Chavez	Robinson	Boldt	Garcia
3/4	Washington	Snow	Walker	Tuck	Archuleta	Hathoot	Bramson	Chavez	Robinson	Boldt	Garcia
3/4	GCU	Linton	Yeatts	Tuck	Archuleta	Hathoot	Bramson	Chavez	Robinson	Baylor	Garcia
3/5	Charlotte	Linton	Yeatts	Trim	Archuleta	Hathoot	Bramson	Chavez	Robinson	Birkinshaw	Garcia
3/10	Buffalo	Linton	Yeatts	Trim	Archuleta	Hathoot	Birkinshaw	Chavez	Robinson	Boldt	Garcia
3/10	Manhattan	Snow	Romero	Trim	Archuleta	Hathoot	Birkinshaw	Chavez	Robinson	Boldt	Garcia
3/11	Buffalo	Linton	Yeatts	Trim	Archuleta	Hathoot	Birkinshaw	Chavez	Robinson	Boldt	Garcia
3/11	Texas Tech	Snow	Yeatts	Trim	Archuleta	Hathoot	Birkinshaw	Chavez	Robinson	Boldt	Garcia
3/12	Texas Tech	Linton	Yeatts	Trim	Archuleta	Hathoot	Birkinshaw	Chavez	Robinson	Baylor	Garcia
3/17	Utah State	Linton	Yeatts	Trim	Archuleta	Hathoot	Bramson	Chavez	Robinson	Birkinshaw	Garcia
3/18	Utah State	Snow	Yeatts	Birkinshaw	Archuleta	Hathoot	Bramson	Chavez	Robinson	Boldt	Garcia
3/19	Utah State	Linton	Yeatts	Birkinshaw	Archuleta	Hathoot	Bramson	Chavez	Robinson	Boldt	Garcia
3/24	San José State										
3/25	San José State										
3/26	San José State										
3/28	NM State										
3/31	Fresno State										
4/1	Fresno State										
4/2	Fresno State										
4/6	Boise State										
4/7	Boise State										
4/8	Boise State										
4/15	Colorado State										
4/16	Colorado State										
4/19	GCU										
4/21	San Diego State										
4/22	San Diego State										
4/23	San Diego State										
4/28	Nevada										
4/29	Nevada										
4/30	Nevada										
5/5	UNLV										
5/6	UNLV										

BREAKDOWN

SP	C	1B	2B	SS	3B	LF	CF	RF	DP
Linton (17)	Yeatts (19)	Trim (13)	Archuleta (25)	Hathoot (30)	Bramson (19)	Chavez (30)	Robinson (30)	Boldt (25)	Garcia (20)
Snow (7)	Romero (4)	Tuck (10)	Bramson (5)		Walker (6)			Birkinshaw (3)	Yeatts (5)
Brinka (4)	Walker (3)	Garcia (3)			Birkinshaw (5)			Baylor (2)	Birkinshaw (3)
Fohrman (2)	Cameron (2)	Birkinshaw (2)							Romero (2)
	Martinez (2)	Walker (1)							
		Yeatts (1)							

GAME-BY-GAME STARTERS

BY BATTING ORDER

DATE	OPPONENT	1	2	3	4	5	6	7	8	9
2/9	Nicholls	Robinson	Archuleta	Garcia	Yeatts	Bramson	Tuck	Boldt	Chavez	Hathoot
2/10	Oregon State	Robinson	Archuleta	Garcia	Yeatts	Bramson	Tuck	Boldt	Chavez	Hathoot
2/10	LSU	Robinson	Archuleta	Garcia	Yeatts	Bramson	Boldt	Chavez	Martinez	Hathoot
2/11	Oregon State	Robinson	Archuleta	Romero	Yeatts	Bramson	Tuck	Boldt	Chavez	Hathoot
2/11	LSU	Robinson	Romero	Yeatts	Birkinshaw	Bramson	Archuleta	Boldt	Chavez	Hathoot
2/17	Buffalo	Robinson	Archuleta	Romero	Garcia	Yeatts	Bramson	Boldt	Chavez	Hathoot
2/18	Santa Clara	Robinson	Romero	Garcia	Yeatts	Bramson	Boldt	Chavez	Hathoot	Archuleta
2/18	Texas Tech	Robinson	Hathoot	Walker	Garcia	Bramson	Tuck	Boldt	Chavez	Archuleta
2/23	CS Bakersfield	Robinson	Chavez	Hathoot	Garcia	Yeatts	Bramson	Trim	Boldt	Archuleta
2/23	CS Bakersfield	Robinson	Hathoot	Walker	Yeatts	Romero	Trim	Bramson	Birkinshaw	Chavez
2/24	Oklahoma St.	Robinson	Hathoot	Walker	Yeatts	Bramson	Trim	Boldt	Cameron	Chavez
2/24	Creighton	Robinson	Chavez	Hathoot	Walker	Garcia	Yeatts	Trim	Boldt	Archuleta
2/25	NM State	Robinson	Chavez	Hathoot	Walker	Garcia	Yeatts	Bramson	Boldt	Archuleta
2/25	Nebraska	Robinson	Chavez	Hathoot	Yeatts	Bramson	Tuck	Walker	Boldt	Cameron
2/26	Nebraska	Robinson	Hathoot	Yeatts	Birkinshaw	Walker	Bramson	Trim	Boldt	Chavez
3/1	UTEP	Robinson	Chavez	Hathoot	Yeatts	Walker	Birkinshaw	Bramson	Boldt	Trim
3/1	UTEP	Robinson	Chavez	Hathoot	Yeatts	Garcia	Bramson	Tuck	Boldt	Archuleta
3/3	Houston	Robinson	Chavez	Hathoot	Garcia	Walker	Bramson	Tuck	Boldt	Archuleta
3/3	Arizona State	Robinson	Chavez	Hathoot	Garcia	Bramson	Tuck	Boldt	Martinez	Archuleta
3/4	Washington	Chavez	Robinson	Hathoot	Garcia	Bramson	Walker	Tuck	Boldt	Archuleta
3/4	GCU	Robinson	Chavez	Hathoot	Garcia	Bramson	Yeatts	Tuck	Baylor	Archuleta
3/5	Charlotte	Robinson	Chavez	Hathoot	Birkinshaw	Garcia	Yeatts	Bramson	Trim	Archuleta
3/10	Buffalo	Robinson	Chavez	Hathoot	Garcia	Birkinshaw	Yeatts	Archuleta	Boldt	Trim
3/10	Manhattan	Robinson	Chavez	Hathoot	Garcia	Birkinshaw	Archuleta	Romero	Boldt	Trim
3/11	Buffalo	Robinson	Chavez	Hathoot	Garcia	Birkinshaw	Archuleta	Yeatts	Boldt	Trim
3/11	Texas Tech	Robinson	Chavez	Hathoot	Garcia	Birkinshaw	Archuleta	Yeatts	Boldt	Trim
3/12	Texas Tech	Robinson	Chavez	Hathoot	Garcia	Birkinshaw	Archuleta	Yeatts	Baylor	Trim
3/17	Utah State	Robinson	Chavez	Hathoot	Garcia	Birkinshaw	Yeatts	Archuleta	Bramson	Trim
3/18	Utah State	Robinson	Chavez	Hathoot	Garcia	Archuleta	Birkinshaw	Boldt	Yeatts	Bramson
3/19	Utah State	Robinson	Archuleta	Hathoot	Garcia	Chavez	Boldt	Birkinshaw	Yeatts	Bramson
3/24	San José State									
3/25	San José State									
3/26	San José State									
3/28	NM State									
3/31	Fresno State									
4/1	Fresno State									
4/2	Fresno State									
4/6	Boise State									
4/7	Boise State									
4/8	Boise State									
4/15	Colorado State									
4/16	Colorado State									
4/21	San Diego State									
4/22	San Diego State									
4/23	San Diego State									
4/28	Nevada									
4/29	Nevada									
4/30	Nevada									
5/5	UNLV									
5/6	UNLV									

BREAKDOWN

LEADOFF

Robinson (29)
Chavez (1)

2ND

Chavez (17)
Archuleta (6)
Hathoot (4)
Romero (2)
Robinson (1)

3RD

Hathoot (19)
Garcia (4)
Walker (3)
Romero (2)
Yeatts (2)

CLEANUP

Garcia (15)
Yeatts (10)
Birkinshaw (3)
Walker (2)

5TH

Bramson (12)
Birkinshaw (6)
Garcia (4)
Walker (3)
Yeatts (2)
Archuleta (1)
Chavez (1)
Romero (1)

6TH

Tuck (6)
Yeatts (6)
Archuleta (5)
Bramson (5)
Boldt (3)
Birkinshaw (2)
Trim (2)
Walker (1)

7TH

Boldt (9)
Bramson (4)
Tuck (4)
Trim (3)
Yeatts (3)
Archuleta (2)
Chavez (2)
Birkinshaw (1)
Romero (1)
Walker (1)

8TH

Boldt (13)
Chavez (6)
Baylor (2)
Martinez (2)
Yeatts (2)
Birkinshaw (1)
Bramson (1)
Cameron (1)
Hathoot (1)
Trim (1)

9TH

Archuleta (11)
Trim (7)
Hathoot (6)
Bramson (2)
Chavez (3)
Cameron (1)



NEW MEXICO OVERALL STATISTICS

Record: 13-17 Home: 3-1 Away: 2-9 Neutral: 8-7 MW: 1-2

Player	avg	gp-gs	ab	r	h	2b	3b	hr	rbi	tb	slg%	bb	hp	so	gdp	ob%	sf	sh	sb-att	po	a	e	fld%	
3 HATHOOT, Rachael	.375	30-30	88	20	33	5	3	3	20	53	.602	6	2	12	0	.427	0	3	5-5	46	62	8	.931	
21 ROBINSON, Peyton	.370	30-30	100	17	37	2	0	0	10	39	.390	5	2	8	0	.411	0	6	13-14	38	2	0	1.000	
38 CHAVEZ, Keyannah	.333	30-30	90	25	30	5	0	0	9	35	.389	11	3	12	0	.423	0	3	4-4	36	3	2	.951	
44 GARCIA, Lauren	.325	29-23	77	5	25	5	0	1	17	33	.429	7	3	9	1	.402	0	0	0-0	15	0	0	1.000	
27 BIRKINSHAW, Olivia	.316	24-13	38	8	12	2	0	1	8	17	.447	1	5	5	0	.400	1	0	2-2	13	6	3	.864	
20 BRAMSON, Emma	.309	24-24	68	11	21	4	0	1	7	28	.412	5	1	13	0	.355	2	1	1-1	26	34	5	.923	
25 YEATTS, Chloe	.280	29-25	75	10	21	1	0	3	13	31	.413	5	1	11	1	.329	1	0	1-1	124	5	2	.985	
7 ARCHULETA, Ashley	.258	27-25	66	11	17	2	2	1	9	26	.394	11	0	18	0	.364	0	1	1-1	46	47	3	.969	
4 TRIM, Jenna	.244	18-13	41	8	10	3	1	1	4	18	.439	7	0	8	0	.354	0	0	0-0	89	4	2	.979	
34 BOLDT, Maddie	.234	28-25	64	12	15	3	1	5	19	35	.547	10	0	19	0	.329	2	1	0-0	17	2	1	.950	

77 TUCK, Reyan	.231	17-10	26	2	6	1	0	0	4	7	.269	0	1	5	0	.250	1	0	0-0	59	1	4	.938	
55 CAMERON, Janae	.200	7-2	5	0	1	0	0	0	0	1	.200	2	0	2	0	.429	0	0	1-1	5	0	0	1.000	
13 BAYLOR, Elizabeth	.182	12-2	11	0	2	0	0	0	1	2	.182	0	0	6	0	.182	0	0	0-0	7	1	0	1.000	
42 WALKER, Loran	.172	19-10	29	4	5	0	0	1	6	8	.276	3	3	10	1	.297	2	0	1-1	28	12	3	.930	
16 ROMERO, Leslie	.160	15-6	25	3	4	0	0	0	1	4	.160	1	1	1	0	.222	0	0	0-0	13	1	0	1.000	
2 MARTINEZ, Savana	.143	7-2	7	0	1	0	0	0	1	1	.143	0	0	6	0	.143	0	0	0-0	11	1	1	.923	
24 SANDOVAL, Diamond	.000	2-0	2	0	0	0	0	0	0	0	.000	0	0	1	0	.000	0	0	0-0	0	0	0	.000	
0 GONZALEZ, Evany	.000	9-0	1	4	0	0	0	0	0	0	.000	0	0	1	0	.000	0	0	1-1	0	0	0	.000	
18 RANA, Grace	.000	13-0	0	4	0	0	0	0	0	0	.000	0	0	0	0	.000	0	0	1-1	0	0	0	.000	
Totals	.295	30	813	144	240	33	7	17	129	338	.416	74	22	147	3	.366	9	15	31-32	574	216	35	.958	
Opponents	.316	30	810	170	256	50	3	26	155	390	.481	90	26	161	8	.399	6	13	31-35	586	217	33	.961	

LOB - Team (203), Opp (201). DPs turned - Team (14), Opp (6).

(All games Sorted by Earned run avg)

Player	era	w-l	app	gs	cg	sho	sv	ip	h	r	er	bb	so	2b	3b	hr	b/avg	wp	hp	bk	sfa	sha
17 LINTON, Amber	3.47	9-8	19	17	10	2/0	0	107.0	115	61	53	44	120	19	0	10	.269	1	15	0	0	11
14 SNOW, Taylor	5.42	3-4	16	7	1	0/0	0	41.1	58	34	32	15	17	13	1	7	.324	2	2	0	2	0
5 BRINKA, Emmalyn	7.79	1-4	12	4	1	1/0	1	29.2	57	42	33	13	16	12	1	4	.416	2	1	0	3	1
28 FOHRMAN, Samant	10.50	0-1	5	2	0	0/0	0	6.2	13	19	10	11	4	2	0	2	.371	2	4	0	1	0
4 TRIM, Jenna	10.50	0-0	3	0	0	0/0	0	4.0	9	6	6	1	0	3	1	2	.450	0	1	0	0	1
8 MITCHELL, Bella	21.00	0-0	3	0	0	0/0	0	2.2	4	8	8	6	4	1	0	1	.333	4	3	0	0	0
Totals	5.20	13-17	30	30	12	3/0	1	191.1	256	170	142	90	161	50	3	26	.316	11	26	0	6	13
Opponents	4.26	17-13	30	30	9	5/2	4	195.1	240	144	119	74	147	33	7	17	.295	18	22	0	9	15

PB - Team (4), YEATTS 2, WALKER 1, CAMERON 1, Opp (6). SBA/ATT - LINTON (19-19), YEATTS (17-19), BRINKA (5-8), MARTINEZ, S. (5-6), SNOW (5-6), ROMERO (4-5), WALKER (5-5), FOHRMAN (1-1), TRIM (1-1).

LAST WEEK STATS

Record: 1-2 Home: 0-0 Away: 1-2 MW: 1-2

Player	avg	gp-gs	ab	r	h	2b	3b	hr	rbi	tb	slg%	bb	hp	so	gdp	ob%	sf	sh	sb-att	po	a	e	fld%	
7 ARCHULETA, Ashley	.500	3-3	10	2	5	1	1	0	2	8	.800	2	0	0	0	.583	0	0	0-0	7	6	0	1.000	
20 BRAMSON, Emma	.500	3-3	8	4	4	2	0	0	1	6	.750	3	0	2	0	.636	0	0	0-0	1	3	1	.800	
21 ROBINSON, Peyton	.455	3-3	11	1	5	0	0	0	3	5	.455	2	0	0	0	.538	0	1	0-1	3	0	0	1.000	
3 HATHOOT, Rachael	.364	3-3	11	2	4	1	0	1	3	8	.727	1	0	1	0	.417	0	1	0-0	3	5	1	.889	
44 GARCIA, Lauren	.300	3-3	10	1	3	2	0	0	1	5	.500	1	0	1	0	.364	0	0	0-0	0	0	0	.000	
34 BOLDT, Maddie	.286	3-2	7	3	2	0	0	1	4	5	.714	3	0	3	0	.500	0	0	0-0	2	1	0	1.000	
25 YEATTS, Chloe	.167	3-3	6	1	1	0	0	0	0	1	.167	1	0	3	0	.286	0	0	0-0	17	0	0	1.000	
38 CHAVEZ, Keyannah	.111	3-3	9	3	1	0	0	0	1	1	.111	4	1	4	0	.429	0	0	1-1	5	1	0	1.000	
4 TRIM, Jenna	.000	2-1	7	1	0	0	0	0	0	0	.000	1	0	3	0	.125	0	0	0-0	10	2	1	.923	
27 BIRKINSHAW, Olivia	.000	3-3	5	0	0	0	0	0	0	0	.000	0	0	1	0	.000	0	0	0-0	4	0	0	1.000	

2 MARTINEZ, Savana	.500	2-0	2	0	1	0	0	0	1	1	.500	0	0	1	0	.500	0	0	0-0	9	0	0	1.000	
24 SANDOVAL, Diamond	.000	1-0	1	0	0	0	0	0	0	0	.000	0	0	1	0	.000	0	0	0-0	0	0	0	.000	
13 BAYLOR, Elizabeth	.000	1-0	1	0	0	0	0	0	0	0	.000	0	0	1	0	.000	0	0	0-0	0	0	0	.000	
77 TUCK, Reyan	.000	2-0	1	0	0	0	0	0	0	0	.000	0	0	1	0	.000	0	0	0-0	0	0	0	.000	
42 WALKER, Loran	.000	2-0	1	0	0	0	0	0	0	0	.000	0	0	1	0	.000	0	0	0-0	0	0	0	.000	
0 GONZALEZ, Evany	.000	1-0	0	1	0	0	0	0	0	0	.000	0	0	0	0	.000	0	0	0-0	0	0	0	.000	
Totals	.289	3	90	19	26	6	1	2	16	40	.444	18	1	23	0	.413	0	2	1-2	61	21	3	.965	
Opponents	.396	3	101	26	40	7	0	7	25	68	.673	10	1	24	1	.455	0	1	2-2	66	25	3	.968	

LOB - Team (26), Opp (26). DPs turned - Team (1).

(Sorted by Earned run avg)

Player	era	w-l	app	gs	cg	sho	sv	ip	h	r	er	bb	so	2b	3b	hr	b/avg	wp	hp	bk	sfa	sha
17 LINTON, Amber	4.47	1-1	2	2	1	0/0	0	15.2	22	13	10	7	22	2	0	3	.319	1	1	0	0	1
14 SNOW, Taylor	10.50	0-1	2	1	0	0/0	0	4.2	11	8	7	3	2	3	0	3	.440	0	0	0	0	0

5 BRINKA, Emmalyn	99.00	0-0	1	0	0	0/0	0	0.0	4	2	2	0	0	1	0	0	1.000	0	0	0	0	0
4 TRIM, Jenna	99.00	0-0	1	0	0	0/0	0	0.0	3	3	3	0	0	1	0	1	1.000	0	0	0	0	0
Totals	7.57	1-2	3	3	1	0/0	0	20.1	40	26	22	10	24	7	0	7	.396	1	1	0	0	1
Opponents	5.73	2-1	3	3	1	1/0	0	22.0	26	19	18	18	23	6	1	2	.289	2	1	0	0	2

SBA/ATT - LINTON (2-2), YEATTS (1-1), MARTINEZ, S. (1-1).



GAME-BY-GAME STATISTICS

BATTING

Date	Opponent	ab	r	h	rbi	2b	3b	hr	tb	bb	ibb	sb	cs	hbp	sac	sf	gdp	k	po	a	e	lob	avg
Feb 09	at Nicholls	26	12	12	12	2	0	1	17	3	0	3	0	5	0	1	0	2	15	7	2	8	.462
Feb 10	vs Oregon St.	23	0	3	0	0	0	0	3	4	0	1	0	1	1	0	0	9	18	9	0	8	.306
Feb 10	at LSU	23	3	5	3	0	0	2	11	1	0	0	0	0	0	0	0	7	17	5	0	3	.278
Feb 11	vs Oregon St.	21	8	8	7	2	1	0	12	1	0	2	0	2	0	1	0	4	15	8	1	5	.301
Feb 11	at LSU	29	3	10	3	0	0	1	13	0	0	0	0	1	0	0	0	3	16	9	2	9	.311
Feb 17	vs Buffalo	24	11	10	11	3	1	0	15	5	0	1	0	1	1	1	0	7	15	0	0	6	.329
Feb 18	vs Santa Clara	27	2	4	2	0	0	0	4	2	0	0	0	0	0	0	0	1	21	5	2	6	.301
Feb 18	vs Texas Tech	31	7	8	5	1	1	0	11	2	0	2	0	1	1	1	0	8	21	9	1	8	.294
Feb 23	CAL STATE BAKER	27	8	10	6	1	1	1	16	2	0	4	0	2	1	0	1	2	21	8	0	6	.303
Feb 23	CAL STATE BAKER	28	10	12	8	1	0	1	16	4	0	4	0	1	0	1	1	0	21	8	2	6	.317
Feb 24	vs Oklahoma State	16	1	1	0	0	0	0	1	1	0	1	0	1	0	0	0	10	12	2	1	2	.302
Feb 24	vs Creighton	22	4	5	4	0	0	1	8	3	0	1	0	0	0	0	0	3	21	7	1	3	.296
Feb 25	at NM State	33	6	11	6	2	1	2	21	1	0	1	0	0	0	0	0	7	18	8	1	7	.300
Feb 25	vs Nebraska	19	0	4	0	0	0	0	4	0	0	0	0	0	0	0	0	8	15	9	0	4	.295
Feb 26	vs Nebraska	28	0	5	0	1	0	0	6	3	0	0	0	0	0	0	0	3	18	7	1	10	.286
Mar 01	MINERS	41	1	10	1	0	0	0	10	3	0	1	0	0	1	1	0	3	33	16	0	12	.282
Mar 01	MINERS	30	8	11	6	1	0	1	15	1	0	1	0	0	2	0	0	1	21	11	1	7	.288
Mar 03	vs Houston	28	7	11	6	2	0	0	13	5	0	1	0	1	1	1	0	2	21	7	2	11	.294
Mar 03	at Arizona State	25	2	5	1	0	0	0	5	3	0	0	0	1	0	0	1	5	18	8	1	6	.289
Mar 04	vs UW	23	0	2	0	0	0	0	2	1	0	1	0	0	0	0	0	8	18	5	4	3	.281
Mar 04	at Grand Canyon	29	1	8	1	1	0	0	9	0	0	0	0	1	0	0	0	4	18	6	2	8	.280
Mar 05	vs Charlotte	30	7	11	7	4	0	1	18	1	0	0	0	0	0	0	0	7	21	9	1	5	.285
Mar 10	vs Buffalo	25	6	10	6	1	1	0	13	0	0	2	0	0	0	2	0	1	21	6	0	3	.289
Mar 10	vs Manhattan	40	7	14	7	3	0	1	20	5	0	1	0	1	1	0	0	3	27	11	3	13	.293
Mar 11	vs Buffalo	26	4	9	4	0	0	1	12	1	0	1	0	1	3	0	0	5	21	6	1	6	.295
Mar 11	at Texas Tech	24	5	8	5	1	0	1	12	1	0	1	0	1	0	0	0	6	12	5	3	6	.297
Mar 12	at Texas Tech	25	2	7	2	1	0	1	11	3	0	1	0	0	1	0	0	5	18	4	0	6	.296
*Mar 17	at Utah State	34	4	5	2	2	0	1	10	11	0	1	0	0	2	0	0	16	28	8	1	13	.289
*Mar 18	at Utah State	17	0	3	0	0	1	0	5	4	0	0	1	0	0	0	0	1	12	7	1	6	.287
*Mar 19	at Utah State	39	15	18	14	4	0	1	25	3	0	0	0	1	0	0	0	6	21	6	1	7	.295
Totals		813	144	240	129	33	7	17	338	74	0	31	1	22	15	9	3	147	574	216	35	203	.295

GAME-BY-GAME STATISTICS

PITCHING

Date	Opponent	ip	h	r	er	bb	so	2b	3b	hr	wp	bk	hbp	dp	ibb	score	w-l	sv	era
Feb 09	at Nicholls	5.0	3	3	3	3	3	0	0	1	0	0	0	1	0	12-3	1-0	0	4.20
Feb 10	vs Oregon St.	6.0	7	2	2	2	4	2	0	0	0	0	0	0	0	0-2	1-1	0	3.18
Feb 10	at LSU	5.2	16	11	11	4	1	2	0	0	1	0	0	0	0	3-11	1-2	0	6.72
Feb 11	vs Oregon St.	5.0	2	0	0	2	4	1	0	0	0	0	0	0	0	8-0	2-2	0	5.17
Feb 11	at LSU	5.1	11	11	8	5	2	2	0	2	0	0	3	0	0	3-11	2-3	0	6.22
Feb 17	vs Buffalo	5.0	3	2	2	4	8	0	0	0	0	0	0	0	0	11-2	3-3	0	5.69
Feb 18	vs Santa Clara	7.0	7	7	3	5	8	4	0	0	0	0	2	1	0	2-7	3-4	0	5.21
Feb 18	vs Texas Tech	7.0	16	12	11	5	3	5	0	2	0	0	0	0	0	7-12	3-5	0	6.09
Feb 23	CAL STATE BAKER	7.0	3	2	2	2	9	1	0	0	0	0	1	1	0	8-2	4-5	0	5.55
Feb 23	CAL STATE BAKER	7.0	8	3	1	4	1	3	0	0	0	0	1	1	0	10-3	5-5	0	5.02
Feb 24	vs Oklahoma State	4.0	11	12	5	3	4	2	0	2	1	0	2	1	0	1-12	5-6	0	5.25
Feb 24	vs Creighton	7.0	4	0	0	1	9	1	0	0	0	0	0	0	0	4-0	6-6	0	4.73
Feb 25	at NM State	6.0	8	7	7	0	5	2	0	2	0	0	1	0	0	6-7	6-7	0	5.00
Feb 25	vs Nebraska	5.0	13	15	15	9	1	4	1	1	5	0	2	0	0	0-15	6-8	0	5.98
Feb 26	vs Nebraska	6.0	4	1	1	2	6	2	0	0	0	0	2	0	0	0-1	6-9	0	5.65
Mar 01	MINERS	11.0	11	2	2	3	8	2	0	0	0	0	1	0	0	1-2	6-10	0	5.16
Mar 01	MINERS	7.0	7	4	3	4	2	0	0	1	0	0	1	2	0	8-4	7-10	1	5.02
Mar 03	vs Houston	7.0	3	1	1	4	12	1	0	0	0	0	1	0	0	7-1	8-10	1	4.77
Mar 03	at Arizona State	6.0	11	6	6	1	0	1	1	1	1	0	1	0	0	2-6	8-11	1	4.88
Mar 04	vs UW	6.0	4	3	3	1	2	1	0	0	0	0	0	0	0	0-3	8-12	1	4.82
Mar 04	at Grand Canyon	6.0	10	6	5	3	5	0	0	1	0	0	0	1	0	1-6	8-13	1	4.86
Mar 05	vs Charlotte	7.0	9	6	5	3	10	0	0	2	0	0	3	0	0	7-6	9-13	1	4.87
Mar 10	vs Buffalo	7.0	3	0	0	1	9	1	0	0	0	0	0	1	0	6-0	10-13	1	4.63
Mar 10	vs Manhattan	9.0	11	6	6	1	7	1	1	1	0	0	0	1	0	7-6	11-13	1	4.64
Mar 11	vs Buffalo	7.0	6	1	1	3	7	1	0	0	0	0	2	1	0	4-1	12-13	1	4.48
Mar 11	at Texas Tech	4.0	13	14	10	3	1	2	0	2	1	0	1	1	0	5-14	12-14	1	4.79
Mar 12	at Texas Tech	6.0	12	7	7	2	6	2	0	1	1	0	1	1	0	2-7	12-15	1	4.91
*Mar 17	at Utah State	9.1	11	5	4	3	14	2	0	1	1	0	1	1	0	4-5	12-16	1	4.81
*Mar 18	at Utah State	4.0	13	8	7	3	1	4	0	1	0	0	0	0	0	0-8	12-17	1	4.97
*Mar 19	at Utah State	7.0	16	13	11	4	9	1	0	5	0	0	0	0	0	15-13	13-17	1	5.20
Totals		191.1	256	170	142	90	161	50	3	26	11	0	26	14	0	144-170	13-17	1	5.20

RECORD AND INNING BREAKDOWN

Score by innings	1	2	3	4	5	6	7	8	9	EX	Total
New Mexico	28	12	38	15	16	28	6	0	1	0	144
Opponents	41	27	43	16	19	20	2	0	0	2	170

Record when ...

Overall	13-17	After 4 leading	9-1
Conference	1-2 trailing	2-14
Non-Conference	12-15 tied	2-2
Home games	3-1	After 5 leading	6-0
Away games	2-9 trailing	2-13
Neutral site	8-7 tied	2-0
Day games	12-14	After 6 leading	9-0
Night games	1-3 trailing	1-11
vs Left starter	2-1 tied	0-0
vs Right starter	11-16	Hit 0 home runs	4-11
1-Run games	2-4	... 1 home run	9-4
2-Run games	1-1	... 2+ home runs	0-2
5+Run games	7-10	Opponent 0 home runs	8-6
Extra innings	1-2 1 home run	3-6
Shutouts	3-5 2+ HRs	2-5
Scoring 0-2 runs	0-11	Made 0 errors	3-5
..... 3-5 runs	2-4	... 1 error	6-7
..... 6-9 runs	7-2	... 2+ errors	4-5
..... 10+ runs	4-0	Opp. made 0 errors	3-9
Opponent 0-2 runs	7-3 1 error	4-5
..... 3-5 runs	3-2 2+ errors	6-3
..... 6-9 runs	2-6	Out-hit opponent	13-2
..... 10+ runs	1-6	Out-hit by opponent	0-15
Scored in 1st inning	11-1	Hits are tied	0-0
Opp. scored in 1st	5-12		
Scores first	9-1		
Opp. scores first	4-16		

Record when team scores:

Runs	0	1	2	3	4	5	6	7	8	9	10+
W-L	0-5	0-3	0-3	0-2	2-1	0-1	1-1	3-1	3-0	0-0	4-0

Record when opponent scores:

Runs	0	1	2	3	4	5	6	7	8	9	10+
W-L	3-0	2-1	2-2	2-1	1-0	0-1	2-2	0-3	0-1	0-0	1-6

Record when leading after:

Inn.	1	2	3	4	5	6
W-L	8-0	9-0	8-0	9-1	6-0	9-0

Record when trailing after:

Inn.	1	2	3	4	5	6
W-L	2-12	2-13	3-15	2-14	2-13	1-11

Record when tied after:

Inn.	1	2	3	4	5	6
W-L	3-5	2-4	2-2	2-2	2-0	0-0

GAME-BY-GAME STATISTICS

TEAM SITUATION

Date	Opponent	Total h/ab	vs Left	vs Right	With Runners	Bases Empty	Bases Loaded	With 2-outs	With RBI-op	Reach as Leadoff	3rd and LT 2out	LOB
Feb 09	at Nicholls	12-26	7-16	5-10	9-16	3-10	2-4	7-13	8-15	2-5	3-3	8
Feb 10	vs Oregon St.	3-23	0-0	3-23	1-12	2-11	0-0	1-8	1-8	2-7	0-1	8
Feb 10	at LSU	5-23	0-0	5-23	1-4	4-19	0-0	3-9	1-3	1-6	0-1	3
Feb 11	vs Oregon St.	8-21	0-0	8-21	5-14	3-7	1-1	3-8	3-11	2-4	1-3	5
Feb 11	at LSU	10-29	0-0	10-29	5-13	5-16	0-4	5-11	2-8	1-6	1-2	9
Feb 17	vs Buffalo	10-24	0-6	10-18	9-20	1-4	2-2	7-12	7-15	2-6	2-4	6
Feb 18	vs Santa Clara	4-27	0-0	4-27	2-9	2-18	0-1	1-8	2-8	0-7	1-1	6
Feb 18	vs Texas Tech	8-31	0-0	8-31	6-20	2-11	2-4	0-9	5-17	4-7	3-7	8
Feb 23	CAL STATE BAKERSFIE	10-27	0-0	10-27	5-15	5-12	0-0	2-8	4-11	3-6	1-2	6
Feb 23	CAL STATE BAKERSFIE	12-28	0-0	12-28	8-17	4-11	1-4	2-7	7-14	2-6	3-6	6
Feb 24	vs Oklahoma State	1-16	1-16	0-0	1-5	0-11	0-0	0-5	1-4	1-5	0-2	2
Feb 24	vs Creighton	5-22	0-0	5-22	4-11	1-11	1-1	3-8	2-5	2-6	0-0	3
Feb 25	at NM State	11-33	0-0	11-33	6-13	5-20	0-0	5-13	3-9	1-7	1-2	7
Feb 25	vs Nebraska	4-19	0-0	4-19	1-4	3-15	0-0	4-9	0-1	0-5	0-0	4
Feb 26	vs Nebraska	5-28	0-0	5-28	2-19	3-9	0-2	0-8	1-11	4-7	0-1	10
Mar 01	MINERS	10-41	0-0	10-41	3-15	7-26	0-2	4-15	1-7	1-11	1-2	12
Mar 01	MINERS	11-30	0-0	11-30	7-17	4-13	0-1	1-9	6-13	3-6	1-2	7
Mar 03	vs Houston	11-28	0-0	11-28	8-21	3-7	0-2	4-11	5-13	3-6	1-4	11
Mar 03	at Arizona State	5-25	0-0	5-25	3-15	2-10	0-4	1-7	3-11	3-7	1-3	5
Mar 04	vs UW	2-23	0-0	2-23	0-6	2-17	0-0	1-8	0-2	1-7	0-0	3
Mar 04	at Grand Canyon	8-29	0-0	8-29	3-18	5-11	0-2	0-7	1-11	3-7	1-3	8
Mar 05	vs Charlotte	11-30	0-0	11-30	7-14	4-16	0-0	3-9	4-8	1-7	0-0	4
Mar 10	vs Buffalo	10-25	10-25	0-0	7-13	3-12	0-0	2-7	6-10	4-6	4-5	2
Mar 10	vs Manhattan	14-40	0-0	14-40	10-22	4-18	1-6	2-12	8-18	3-9	2-5	13
Mar 11	vs Buffalo	9-26	0-0	9-26	3-11	6-15	0-0	3-9	2-5	3-7	0-1	6
Mar 11	at Texas Tech	8-24	0-0	8-24	4-11	4-13	1-3	5-11	3-8	1-5	1-1	6
Mar 12	at Texas Tech	7-25	0-0	7-25	3-12	4-13	0-1	3-9	2-6	3-7	0-1	6
*Mar 17	at Utah State	5-34	0-0	5-34	1-19	4-15	0-1	1-11	1-14	5-10	0-2	13
*Mar 18	at Utah State	3-17	0-0	3-17	1-8	2-9	0-0	0-5	0-4	1-5	0-1	6
*Mar 19	at Utah State	18-39	0-0	18-39	13-24	5-15	5-6	7-14	8-15	2-7	4-5	7
Totals		240-813	18-63	222-750	138-418	102-395	16-51	80-280	97-285	64-197	32-70	200
		.295	.286	.296	.330	.258	.314	.286	.340	.325	.457	

SITUATIONAL BREAKDOWN

Player	vs left			vs right			w/runners			w/bases empty			w/bases loaded			as leadoff			fly	gnd	fly/
	h	ab	avg	h	ab	avg	h	ab	avg	h	ab	avg	h	ab	avg	rch	op	pct	out	out	gnd
7 ARCHULETA, As	1	5	.200	16	61	.262	10	36	.278	7	30	.233	1	5	.200	5	13	.385	8	21	0.4
13 BAYLOR, Elizabe	1	1	1.000	1	10	.100	2	3	.667	0	8	.000	0	0	---	0	4	.000	1	2	0.5
27 BIRKINSHAW, OI	1	2	.500	11	36	.306	7	24	.292	5	14	.357	1	5	.200	5	9	.556	16	6	2.7
34 BOLDT, Maddie	2	7	.286	13	57	.228	9	32	.281	6	32	.188	1	3	.333	6	21	.286	20	11	1.8
20 BRAMSON, Emm	1	2	.500	20	66	.303	14	40	.350	7	28	.250	1	1	1.000	3	11	.273	17	19	0.9
55 CAMERON, Jana	0	1	.000	1	4	.250	1	2	.500	0	3	.000	0	0	---	0	1	.000	0	2	0.0
38 CHAVEZ, Keyan	4	8	.500	26	82	.317	14	46	.304	16	44	.364	0	3	.000	4	11	.364	29	20	1.5
44 GARCIA, Lauren	3	6	.500	22	71	.310	18	45	.400	7	32	.219	2	7	.286	8	23	.348	18	22	0.8
0 GONZALEZ, Evan	0	0	---	0	1	.000	0	1	.000	0	0	---	0	0	---	0	0	---	0	0	0.0
3 HATHOOT, Rach	1	7	.143	32	81	.395	21	52	.404	12	36	.333	3	7	.429	9	16	.563	17	23	0.7
2 MARTINEZ, Sava	0	0	---	1	7	.143	1	4	.250	0	3	.000	1	1	1.000	0	2	.000	0	0	0.0
21 ROBINSON, Peyt	2	7	.286	35	93	.376	17	29	.586	20	71	.282	1	3	.333	15	48	.313	16	41	0.4
16 ROMERO, Leslie	0	3	.000	4	22	.182	2	12	.167	2	13	.154	1	5	.200	2	5	.400	11	7	1.6
24 SANDOVAL, Dia	0	0	---	0	2	.000	0	1	.000	0	1	.000	0	0	---	0	0	---	0	1	0.0
4 TRIM, Jenna	0	3	.000	10	38	.263	2	15	.133	8	26	.308	1	1	1.000	2	8	.250	13	10	1.3
77 TUCK, Reyan	1	3	.333	5	23	.217	4	15	.267	2	11	.182	0	1	.000	1	4	.250	5	10	0.5
42 WALKER, Loran	0	1	.000	5	28	.179	5	19	.263	0	10	.000	1	4	.250	1	7	.143	12	3	4.0
25 YEATTS, Chloe	1	7	.143	20	68	.294	11	42	.262	10	33	.303	2	5	.400	3	14	.214	25	18	1.4
Totals	18	63	.286	222	75	.296	138	41	.330	102	39	.258	16	51	.314	64	19	.325	208	216	1.0
Opponents	0	0	---	256	81	.316	143	44	.319	113	36	.312	7	31	.226	83	19	.417	171	215	0.8

Player	pinch hitting			w/runners in scoring pos			w/runner on 3r and LT 2 out			with 2 outs			success adv runners			2- rnrns					
	h	ab	avg	h	ab	avg	rbi	op	pct	h	ab	avg	adv	op	pct	rbi	w/o	lob	rch	rch	kl
7 ARCHULETA, As	0	0	---	8	29	.276	1	4	.250	5	26	.192	18	41	.439	4	4	31	3	3	8
13 BAYLOR, Elizabe	0	2	.000	1	2	.500	0	0	---	1	5	.200	2	3	.667	1	0	2	0	0	0
27 BIRKINSHAW, OI	3	8	.375	3	15	.200	2	7	.286	6	12	.500	13	27	.481	4	8	8	0	1	0
34 BOLDT, Maddie	0	1	.000	7	22	.318	6	8	.750	7	20	.350	18	35	.514	8	11	13	2	1	5
20 BRAMSON, Emm	0	0	---	7	25	.280	4	6	.667	8	26	.308	24	46	.522	1	5	17	0	6	6
55 CAMERON, Jana	1	3	.333	0	0	---	0	0	---	0	2	.000	2	3	.667	0	0	1	0	1	1
38 CHAVEZ, Keyan	0	0	---	11	31	.355	3	5	.600	8	38	.211	24	54	.444	4	6	29	2	0	2
44 GARCIA, Lauren	1	5	.200	13	33	.394	2	9	.222	8	21	.381	28	49	.571	10	3	18	2	2	0
0 GONZALEZ, Evan	0	0	---	0	1	.000	0	0	---	0	1	.000	0	1	.000	0	0	2	0	0	0
3 HATHOOT, Rach	0	0	---	13	33	.394	5	7	.714	9	32	.281	33	57	.579	6	5	14	5	7	5
2 MARTINEZ, Sava	0	1	.000	1	2	.500	1	1	1.000	0	3	.000	1	4	.250	0	0	3	0	0	2
21 ROBINSON, Peyt	0	0	---	15	22	.682	0	5	.000	11	19	.579	27	36	.750	9	13	3	4	2	5
16 ROMERO, Leslie	1	4	.250	2	10	.200	0	4	.000	2	9	.222	6	13	.462	1	0	10	2	2	1
24 SANDOVAL, Dia	0	2	.000	0	0	---	0	0	---	0	2	.000	0	1	.000	0	0	1	0	0	0
4 TRIM, Jenna	0	3	.000	2	10	.200	0	1	.000	2	13	.154	9	20	.450	3	1	7	0	2	2
77 TUCK, Reyan	2	3	.667	4	11	.364	2	3	.667	2	9	.222	8	16	.500	1	4	6	1	1	2
42 WALKER, Loran	1	5	.200	3	10	.300	4	6	.667	1	8	.125	8	22	.364	0	4	8	1	1	3
25 YEATTS, Chloe	0	1	.000	7	29	.241	2	4	.500	10	34	.294	19	45	.422	8	7	27	1	4	3
Totals	9	38	.237	97	28	.340	32	70	.457	80	28	.286	240	47	.507	60	71	203	23	33	45
Opponents	4	28	.143	86	29	.292	40	68	.588	77	26	.293	263	50	.521	65	71	201	22	47	57

Success Advancing Runners = percentage of times the batter advanced at least one runner during a plate appearance
 #Rnr Adv w/Out = TOTAL number of runners advanced when the player made an out

NEW MEXICO SOFTBALL

Batting avg		
1. 3 HATHOOT, Rachael		.375
2. 21 ROBINSON, Peyton		.370
3. 38 CHAVEZ, Keyannah		.333
4. 44 GARCIA, Lauren		.325
5. 27 BIRKINSHAW, Olivia		.316

Runs scored		
1. 38 CHAVEZ, Keyannah		25
2. 3 HATHOOT, Rachael		20
3. 21 ROBINSON, Peyton		17
4. 34 BOLDT, Maddie		12
5. 2 tied at.....		11

Doubles		
1. 3 HATHOOT, Rachael		5
38 CHAVEZ, Keyannah		5
44 GARCIA, Lauren		5
4. 20 BRAMSON, Emma		4
5. 2 tied at.....		3

Total bases		
1. 3 HATHOOT, Rachael		53
2. 21 ROBINSON, Peyton		39
3. 38 CHAVEZ, Keyannah		35
34 BOLDT, Maddie		35
5. 44 GARCIA, Lauren		33

Sac bunts		
1. 21 ROBINSON, Peyton		6
2. 3 HATHOOT, Rachael		3
38 CHAVEZ, Keyannah		3
4. 3 tied at.....		1

Caught stealing		
1. 21 ROBINSON, Peyton		1

Strikeouts		
1. 34 BOLDT, Maddie		19
2. 7 ARCHULETA, Ashley		18
3. 20 BRAMSON, Emma		13
4. 3 HATHOOT, Rachael		12
38 CHAVEZ, Keyannah		12

At bats		
1. 21 ROBINSON, Peyton		100
2. 38 CHAVEZ, Keyannah		90
3. 3 HATHOOT, Rachael		88
4. 44 GARCIA, Lauren		77
5. 25 YEATTS, Chloe		75

Games as sub		
1. 18 RANA, Grace		13
2. 27 BIRKINSHAW, Olivia		11
3. 13 BAYLOR, Elizabeth		10
4. 3 tied at.....		9

Fielding pct		
1. 21 ROBINSON, Peyton		1.000
44 GARCIA, Lauren		1.000
16 ROMERO, Leslie		1.000
13 BAYLOR, Elizabeth		1.000
55 CAMERON, Janae		1.000

Assists		
1. 3 HATHOOT, Rachael		62
2. 7 ARCHULETA, Ashley		47
3. 20 BRAMSON, Emma		34
4. 17 LINTON, Amber		26
5. 42 WALKER, Loran		12

Stolen bases against		
1. 17 LINTON, Amber		19
2. 25 YEATTS, Chloe		17
3. 4 tied at.....		5

Passed balls		
1. 25 YEATTS, Chloe		2
2. 42 WALKER, Loran		1
55 CAMERON, Janae		1

Slugging pct		
1. 3 HATHOOT, Rachael		.602
2. 34 BOLDT, Maddie		.547
3. 27 BIRKINSHAW, Olivia		.447
4. 4 TRIM, Jenna		.439
5. 44 GARCIA, Lauren		.429

Hits		
1. 21 ROBINSON, Peyton		37
2. 3 HATHOOT, Rachael		33
3. 38 CHAVEZ, Keyannah		30
4. 44 GARCIA, Lauren		25
5. 2 tied at.....		21

Triples		
1. 3 HATHOOT, Rachael		3
2. 7 ARCHULETA, Ashley		2
3. 4 TRIM, Jenna		1
34 BOLDT, Maddie		1

Walks		
1. 38 CHAVEZ, Keyannah		11
7 ARCHULETA, Ashley		11
3. 34 BOLDT, Maddie		10
4. 44 GARCIA, Lauren		7
4 TRIM, Jenna		7

Sac flies		
1. 34 BOLDT, Maddie		2
42 WALKER, Loran		2
20 BRAMSON, Emma		2
4. 3 tied at.....		1

Steal attempts		
1. 21 ROBINSON, Peyton		14
2. 3 HATHOOT, Rachael		5
3. 38 CHAVEZ, Keyannah		4
4. 27 BIRKINSHAW, Olivia		2
5. 7 tied at.....		1

Grounded into DP		
1. 44 GARCIA, Lauren		1
25 YEATTS, Chloe		1
42 WALKER, Loran		1

Games played		
1. 21 ROBINSON, Peyton		30
38 CHAVEZ, Keyannah		30
3 HATHOOT, Rachael		30
4. 25 YEATTS, Chloe		29
44 GARCIA, Lauren		29

Chances		
1. 25 YEATTS, Chloe		131
2. 3 HATHOOT, Rachael		116
3. 7 ARCHULETA, Ashley		96
4. 4 TRIM, Jenna		95
5. 20 BRAMSON, Emma		65

Errors		
1. 3 HATHOOT, Rachael		8
2. 20 BRAMSON, Emma		5
3. 77 TUCK, Reyann		4
4. 3 tied at.....		3

Caught stealing by		
1. 5 BRINKA, Emmalyn		3
2. 25 YEATTS, Chloe		2
3. 16 ROMERO, Leslie		1
2 MARTINEZ, Savana		1
14 SNOW, Taylor		1

Catchers interference		
-----------------------	--	--

On base pct		
1. 3 HATHOOT, Rachael		.427
2. 38 CHAVEZ, Keyannah		.423
3. 21 ROBINSON, Peyton		.411
4. 44 GARCIA, Lauren		.402
5. 27 BIRKINSHAW, Olivia		.400

Runs batted in		
1. 3 HATHOOT, Rachael		20
2. 34 BOLDT, Maddie		19
3. 44 GARCIA, Lauren		17
4. 25 YEATTS, Chloe		13
5. 21 ROBINSON, Peyton		10

Home runs		
1. 34 BOLDT, Maddie		5
2. 25 YEATTS, Chloe		3
3 HATHOOT, Rachael		3
4. 6 tied at.....		1

Hit by pitch		
1. 27 BIRKINSHAW, Olivia		5
2. 38 CHAVEZ, Keyannah		3
44 GARCIA, Lauren		3
42 WALKER, Loran		3
5. 2 tied at.....		2

Stolen bases		
1. 21 ROBINSON, Peyton		13
2. 3 HATHOOT, Rachael		5
3. 38 CHAVEZ, Keyannah		4
4. 27 BIRKINSHAW, Olivia		2
5. 7 tied at.....		1

Stolen base pct		
1. 38 CHAVEZ, Keyannah		1.000
3 HATHOOT, Rachael		1.000
25 YEATTS, Chloe		1.000
20 BRAMSON, Emma		1.000
7 ARCHULETA, Ashley		1.000

Total plate appearances		
1. 21 ROBINSON, Peyton		113
2. 38 CHAVEZ, Keyannah		107
3. 3 HATHOOT, Rachael		99
4. 44 GARCIA, Lauren		87
5. 25 YEATTS, Chloe		82

Game starts		
1. 38 CHAVEZ, Keyannah		30
21 ROBINSON, Peyton		30
3 HATHOOT, Rachael		30
4. 3 tied at.....		25

Putouts		
1. 25 YEATTS, Chloe		124
2. 4 TRIM, Jenna		89
3. 77 TUCK, Reyann		59
4. 7 ARCHULETA, Ashley		46
3 HATHOOT, Rachael		46

Fielding double plays		
1. 4 TRIM, Jenna		10
2. 3 HATHOOT, Rachael		9
3. 7 ARCHULETA, Ashley		6
4. 77 TUCK, Reyann		2
20 BRAMSON, Emma		2

Steal attempts against		
1. 17 LINTON, Amber		19
25 YEATTS, Chloe		19
3. 5 BRINKA, Emmalyn		8
4. 14 SNOW, Taylor		6
2 MARTINEZ, Savana		6



Earned run avg		Opposing bat avg		Won-loss pct	
1. 17 LINTON, Amber	3.47	1. 17 LINTON, Amber	.269	1. 17 LINTON, Amber	.529
2. 14 SNOW, Taylor	5.42	2. 14 SNOW, Taylor	.324	2. 14 SNOW, Taylor	.429
3. 5 BRINKA, Emmalyn	7.79	3. 8 MITCHELL, Bella	.333	3. 5 BRINKA, Emmalyn	.200
4. 28 FOHRMAN, Samantha	10.50	4. 28 FOHRMAN, Samantha	.371	4. 28 FOHRMAN, Samantha	.000
4 TRIM, Jenna	10.50	5. 5 BRINKA, Emmalyn	.416	5. 8 MITCHELL, Bella	.000
Wins		Losses		Saves	
1. 17 LINTON, Amber	9	1. 17 LINTON, Amber	8	1. 5 BRINKA, Emmalyn	1
2. 14 SNOW, Taylor	3	2. 14 SNOW, Taylor	4		
3. 5 BRINKA, Emmalyn	1	5 BRINKA, Emmalyn	4		
		4. 28 FOHRMAN, Samantha	1		
Innings pitched		Batters struck out		Appearances	
1. 17 LINTON, Amber	107.0	1. 17 LINTON, Amber	120	1. 17 LINTON, Amber	19
2. 14 SNOW, Taylor	41.1	2. 14 SNOW, Taylor	17	2. 14 SNOW, Taylor	16
3. 5 BRINKA, Emmalyn	29.2	3. 5 BRINKA, Emmalyn	16	3. 5 BRINKA, Emmalyn	12
4. 28 FOHRMAN, Samantha	6.2	4. 8 MITCHELL, Bella	4	4. 28 FOHRMAN, Samantha	5
5. 4 TRIM, Jenna	4.0	28 FOHRMAN, Samantha	4	5. 2 tied at.....	3
Games started		Games finished		Games in relief	
1. 17 LINTON, Amber	17	1. 14 SNOW, Taylor	7	1. 14 SNOW, Taylor	9
2. 14 SNOW, Taylor	7	2. 5 BRINKA, Emmalyn	6	2. 5 BRINKA, Emmalyn	8
3. 5 BRINKA, Emmalyn	4	3. 4 TRIM, Jenna	2	3. 8 MITCHELL, Bella	3
4. 28 FOHRMAN, Samantha	2	4. 3 tied at.....	1	28 FOHRMAN, Samantha	3
				4 TRIM, Jenna	3
Wild pitches		Balks		Hit batters	
1. 8 MITCHELL, Bella	4			1. 17 LINTON, Amber	15
2. 14 SNOW, Taylor	2			2. 28 FOHRMAN, Samantha	4
28 FOHRMAN, Samantha	2			3. 8 MITCHELL, Bella	3
5 BRINKA, Emmalyn	2			4. 14 SNOW, Taylor	2
5. 17 LINTON, Amber	1			5. 2 tied at.....	1
Intentional BB allowed		Runners picked off		Batters SO out looking	
				1. 17 LINTON, Amber	37
				2. 5 BRINKA, Emmalyn	9
				3. 14 SNOW, Taylor	6
				4. 8 MITCHELL, Bella	3
				5. 28 FOHRMAN, Samantha	2
Sac bunts allowed		Sac flies allowed		Hits allowed	
1. 17 LINTON, Amber	11	1. 5 BRINKA, Emmalyn	3	1. 8 MITCHELL, Bella	4
2. 4 TRIM, Jenna	1	2. 14 SNOW, Taylor	2	2. 4 TRIM, Jenna	9
5 BRINKA, Emmalyn	1	3. 28 FOHRMAN, Samantha	1	3. 28 FOHRMAN, Samantha	13
				4. 5 BRINKA, Emmalyn	57
				5. 14 SNOW, Taylor	58
Runs allowed		Earned runs allowed		Walks allowed	
1. 4 TRIM, Jenna	6	1. 4 TRIM, Jenna	6	1. 4 TRIM, Jenna	1
2. 8 MITCHELL, Bella	8	2. 8 MITCHELL, Bella	8	2. 8 MITCHELL, Bella	6
3. 28 FOHRMAN, Samantha	19	3. 28 FOHRMAN, Samantha	10	3. 28 FOHRMAN, Samantha	11
4. 14 SNOW, Taylor	34	4. 14 SNOW, Taylor	32	4. 5 BRINKA, Emmalyn	13
5. 5 BRINKA, Emmalyn	42	5. 5 BRINKA, Emmalyn	33	5. 14 SNOW, Taylor	15
Doubles allowed		Triples allowed		Home runs allowed	
1. 8 MITCHELL, Bella	1	1. 8 MITCHELL, Bella	0	1. 8 MITCHELL, Bella	1
2. 28 FOHRMAN, Samantha	2	28 FOHRMAN, Samantha	0	2. 28 FOHRMAN, Samantha	2
3. 4 TRIM, Jenna	3	17 LINTON, Amber	0	4 TRIM, Jenna	2
4. 5 BRINKA, Emmalyn	12	4. 14 SNOW, Taylor	1	4. 5 BRINKA, Emmalyn	4
5. 14 SNOW, Taylor	13	5 BRINKA, Emmalyn	1	5. 14 SNOW, Taylor	7

Multiple Hit Games	2	3	4	5+	Total
21 ROBINSON, Peyton	4	6	-	-	10
3 HATHOOT, Rachael	7	3	-	-	10
38 CHAVEZ, Keyannah	8	1	-	-	9
44 GARCIA, Lauren	6	2	-	-	8
25 YEATTS, Chloe	6	-	-	-	6
20 BRAMSON, Emma	4	-	1	-	5
7 ARCHULETA, Ashley	4	-	-	-	4
34 BOLDT, Maddie	3	-	-	-	3
4 TRIM, Jenna	3	-	-	-	3
42 WALKER, Loran	1	-	-	-	1
27 BIRKINSHAW, Olivia	-	1	-	-	1
TEAM	46	13	1	0	60

Multiple RBI Games	2	3	4	5+	Total
44 GARCIA, Lauren	3	1	1	-	5
3 HATHOOT, Rachael	3	1	1	-	5
34 BOLDT, Maddie	-	3	1	-	4
25 YEATTS, Chloe	2	1	-	-	3
42 WALKER, Loran	1	1	-	-	2
27 BIRKINSHAW, Olivia	1	1	-	-	2
38 CHAVEZ, Keyannah	2	-	-	-	2
21 ROBINSON, Peyton	-	2	-	-	2
7 ARCHULETA, Ashley	1	1	-	-	2
77 TUCK, Reyan	1	-	-	-	1
4 TRIM, Jenna	1	-	-	-	1
20 BRAMSON, Emma	1	-	-	-	1
TEAM	16	11	3	0	30

Hitting Streaks	Longest	Current
3 HATHOOT, Rachael	10	10
21 ROBINSON, Peyton	8	8
38 CHAVEZ, Keyannah	6	1
44 GARCIA, Lauren	5	1
25 YEATTS, Chloe	4	1
27 BIRKINSHAW, Olivia	4	-
34 BOLDT, Maddie	4	1
20 BRAMSON, Emma	3	1
42 WALKER, Loran	3	-
77 TUCK, Reyan	3	-
16 ROMERO, Leslie	3	-
7 ARCHULETA, Ashley	3	3
13 BAYLOR, Elizabeth	2	-
4 TRIM, Jenna	2	-
2 MARTINEZ, Savana	1	1
55 CAMERON, Janae	1	-

Reached Base Streaks	Longest	Current
3 HATHOOT, Rachael	15	15
38 CHAVEZ, Keyannah	10	9
21 ROBINSON, Peyton	8	8
44 GARCIA, Lauren	8	1
27 BIRKINSHAW, Olivia	7	-
42 WALKER, Loran	6	-
34 BOLDT, Maddie	6	3
16 ROMERO, Leslie	4	-
4 TRIM, Jenna	4	1
25 YEATTS, Chloe	4	2
7 ARCHULETA, Ashley	4	3
20 BRAMSON, Emma	3	1
77 TUCK, Reyan	3	-
55 CAMERON, Janae	2	-
13 BAYLOR, Elizabeth	2	-
2 MARTINEZ, Savana	1	1

CONFERENCE STANDINGS

Team	MOUNTAIN WEST						ALL GAMES								
	W	L	Pct.	H	A	N	W	L	T	Pct.	H	A	N	Streak	Last 10
Boise State	3	0	1.000	0-0	3-0	0-0	16	10	0	.615	3-0	5-4	8-6	W8	7-3
Colorado State	2	1	.667	2-1	0-0	0-0	16	8	0	.667	2-1	3-4	11-3	W1	7-3
San José State	2	1	.667	2-1	0-0	0-0	14	15	0	.483	11-6	1-1	2-8	W1	7-3
Utah State	2	1	.667	2-1	0-0	0-0	10	13	0	.435	2-1	3-5	5-7	L1	6-4
Nevada	1	2	.333	0-0	1-2	0-0	20	4	0	.833	2-0	6-4	12-0	W1	8-2
San Diego State	1	2	.333	0-0	1-2	0-0	16	9	0	.640	11-3	2-2	3-4	L1	6-4
New Mexico	1	2	.333	0-0	1-2	0-0	13	17	0	.433	3-1	2-9	8-7	W1	4-6
Fresno State	0	0	.000	0-0	0-0	0-0	10	16	0	.385	5-5	3-5	2-6	W2	5-5
UNLV	0	3	.000	0-3	0-0	0-0	14	14	0	.500	6-8	0-1	8-5	L4	3-7

MW INDIVIDUAL LEADERBOARD

BATTING AVERAGE

5. Rachael Hathoot (.375)
 7. Peyton Robinson (.370)
 T-12. Keyannah Chavez (.333)

SLUGGING PERCENTAGE

9. Rachael Hathoot (.602)

ON-BASE PERCENTAGE

10. Rachael Hathoot (.427)
 14. Keyannah Chavez (.423)
 17. Peyton Robinson (.411)

HITS

1. Peyton Robinson (37)
 T-3. Rachael Hathoot (33)
 7. Keyannah Chavez (30)
 T-12. Lauren Garcia (25)

HIT BY PITCH

T-3. Olivia Birkinshaw (5)
 T-8. Lauren Garcia (3)
 Keyannah Chavez (3)
 T-17. Peyton Robinson (2)
 Rachael Hathoot (2)

STOLEN BASES

T-4. Peyton Robinson (13)
 T-15. Rachael Hathoot (5)

RBI

T-6. Rachael Hathoot (20)
 T-11. Maddie Boldt (19)
 19. Lauren Garcia (17)

DOUBLES

T-13. Keyannah Chavez (5)

TRIPLES

1. Rachael Hathoot (3)
 T-2. Ashley Archuleta (2)
 T-8. Maddie Boldt (1)
 Jenna Trim (1)

HOME RUNS

T-9. Maddie Boldt (5)

TOTAL BASES

2. Rachael Hathoot (53)
 18. Peyton Robinson (39)

WALKS

T-15. Keyannah Chavez (11)
 Ashley Archuleta (11)

PITCHING EARNED RUN AVERAGE

12. Amber Linton (3.47)

INNINGS PITCHED

1. Amber Linton (107.0)
 16. Taylor Snow (41.1)

STRIKEOUTS

1. Amber Linton (120)

STRIKEOUTS LOOKING

1. Amber Linton (37)

WINS

1. Amber Linton (9)
 T-15. Taylor Snow (3)

MW TEAM LEADERBOARD

HITTING

Sac Bunts: T-1st
 H:1st
 3B: 2nd
 TB: 2nd
 R: 2nd
 SF: 3rd
 HBP: 3rd
 RBI: 3rd
 K: 3rd
 2B: T-4th
 BA: 5th
 SB: 5th
 SLG %: 5th
 OB %: 5th
 HRs: 6th
 BB:7th

PITCHING

K: 1st
 BB: 5th
 ERA: 8th
 B/AVG.: 9th
 R: 9th

FIELDING

FLD DP: 1st
 A: 1st
 FLD %: 8th

THE 2023 LOBOS



0 Evany Gonzalez

FR • INF • 5-1 • L/R
Alvin, Texas (Lutheran South Academy)

SEASON BESTS

Hits	
Doubles	
Triples	
Home Runs	
RBI	
Runs	1 4x, last: Utah State, 3-17-23
Walks	
Stolen Bases	1 Oklahoma State, 2-24-23

CAREER BESTS

Hits	
Doubles	
Triples	
Home Runs	
RBI	
Runs	Same
Walks	
Stolen Bases	Same

STREAKS

Current	Career Best
Hitting	
On-Base	

MULTI-HIT GAMES

	2	3	4	5+	TOTAL
2023					

MULTI-RBI GAMES

	2	3	4	5+	TOTAL
2023					

2023 GAME-BY-GAME

DATE	OPPONENT	POS	AB	R	H	TB	2B	3B	HR	RBI	BB	HBP	SO	SB-ATT	E
2/23	CSU Bakersfield	pr	0	1	0	0	0	0	0	0	0	0	0	0-0	0
2/24	Oklahoma State	pr	0	0	0	0	0	0	0	0	0	0	0	1-1	0
2/25	NM State	2b	1	0	0	0	0	0	0	0	0	0	1	0-0	0
3/1	UTEP	pr	0	0	0	0	0	0	0	0	0	0	0	0-0	0
3/1	UTEP	pr	0	1	0	0	0	0	0	0	0	0	0	0-0	0
3/5	Charlotte	pr	0	1	0	0	0	0	0	0	0	0	0	0-0	0
3/10	Manhattan	pr	0	0	0	0	0	0	0	0	0	0	0	0-0	0
3/12	Texas Tech	pr	0	0	0	0	0	0	0	0	0	0	0	0-0	0
3/17	Utah State	pr	0	1	0	0	0	0	0	0	0	0	0	0-0	0
3/24	San José State														
3/25	San José State														
3/26	San José State														
3/28	NM State														
3/31	Fresno State														
4/1	Fresno State														
4/2	Fresno State														
4/6	Boise State														
4/7	Boise State														
4/8	Boise State														
4/15	Colorado State														
4/16	Colorado State														
4/21	San Diego State														
4/22	San Diego State														
4/23	San Diego State														
4/28	Nevada														
4/29	Nevada														
4/30	Nevada														
5/5	UNLV														
5/6	UNLV														
			0	1	4	0	0	0	0	0	0	0	1	1-1	0

CAREER STATS

SEASON	GP	GS	AVG.	AB	R	H	2B	3B	HR	RBI	TB	SLG%	BB	SO	HBP	OB%	SF	SH	SB-SA	PO	A	E	FLD%
2023	9	0	.000	1	4	0	0	0	0	0	0	.000	0	1	0	.000	0	0	1-1	0	0	0	.000
TOTAL	9	0	.000	1	4	0	0	0	0	0	0	.000	0	1	0	.000	0	0	1-1	0	0	0	.000

HIGHLIGHTS

- Majoring in mechanical engineering
- Named first team all-district, first team all-state
- Played for the Hotshots

THE 2023 LOBOS



2 Savana Martinez

RS-SO • C • 5-3 • R/R
Albuquerque, N.M. (Rio Rancho HS)

SEASON BESTS

Hits	1	Utah State, 3-19-23
Doubles		
Triples		
Home Runs		
RBI	1	Utah State, 3-19-23
Runs		
Walks		
Runner CS	1	Arizona State, 3-3-23

CAREER BESTS

Hits	2	Maine, 3-12-23
Doubles	1	Wisconsin, 3-13-22
Triples		
Home Runs		
RBI	1	3x, last: Utah State, 3-19-23
Runs	1	2x, last: Wisconsin, 3-13-22
Walks	1	3x, last: Colorado State, 4-9-22
Runner CS	1	2x, last: Arizona St., 3-3-23

STREAKS

	Current	Career Best
Hitting	1	2
On-Base	1	3

MULTI-HIT GAMES

	2	3	4	5+	TOTAL
2022	1	-	-	-	1
2023					

MULTI-RBI GAMES

	2	3	4	5+	TOTAL
2022	-	-	-	-	-
2023					

2023 GAME-BY-GAME

DATE	OPPONENT	POS	AB	R	H	TB	2B	3B	HR	RBI	BB	HBP	SO	SB-ATT	E	
2/10	LSU	*c	1	0	0	0	0	0	0	0	0	0	1	0-0	0	
2/23	CSU Bakersfield	c	1	0	0	0	0	0	0	0	0	0	1	0-0	0	
2/25	Nebraska	ph	1	0	0	0	0	0	0	0	0	0	1	0-0	0	
3/3	Arizona State	*c	1	0	0	0	0	0	0	0	0	0	1	0-0	0	
3/4	Washington	c	1	0	0	0	0	0	0	0	0	0	1	0-0	1	
3/17	Utah State	c	1	0	0	0	0	0	0	0	0	0	1	0-0	0	
3/19	Utah State	c	1	0	1	1	0	0	0	1	0	0	0	0-0	0	
3/24	San José State															
3/25	San José State															
3/26	San José State															
3/28	NM State															
3/31	Fresno State															
4/1	Fresno State															
4/2	Fresno State															
4/6	Boise State															
4/7	Boise State															
4/8	Boise State															
4/15	Colorado State															
4/16	Colorado State															
4/21	San Diego State															
4/22	San Diego State															
4/23	San Diego State															
4/28	Nevada															
4/29	Nevada															
4/30	Nevada															
5/5	UNLV															
5/6	UNLV															
			2	7	0	1	1	0	0	0	1	0	0	6	0-0	1

CAREER STATS

SEASON	GP	GS	AVG.	AB	R	H	2B	3B	HR	RBI	TB	SLG%	BB	SO	HBP	OB%	SF	SH	SB-SA	PO	A	E	FLD%
2022	12	7	.200	20	2	4	2	0	0	2	6	.300	3	7	0	.304	0	0	0-0	33	1	0	1.000
2023	7	2	.143	7	0	1	0	0	0	1	1	.143	0	6	0	.143	0	0	0-0	11	1	1	.923
TOTAL	19	9	.185	27	2	5	2	0	0	2	7	.259	3	13	0	.267	0	0	0-0	44	2	1	.979

HIGHLIGHTS

- Started 7 games at catcher last season
- Hit 8th in 5 games and 9th in 2 games last season
- First collegiate hit and RBI came against Maine on March 12, 2022

THE 2023 LOBOS



3 Rachael Hathoot

RS-JR • INF • 5-8 • R/R
Albuquerque, N.M. (La Cueva HS)

SEASON BESTS

Hits	3	3x, last: Houston, 3-3-23
Doubles	1	5x, last: Utah State, 3-19-23
Triples	1	3x, last: NMSU, 2-25-23
Home Runs	1	3x, last: Utah State, 3-17-23
RBI	4	NMSU, 2-25-23
Runs	2	6x, last: Charlotte, 3-5-23
Walks	1	6x, last: Utah State, 3-17-23
Stolen Bases	1	5x, last: Washington, 3-4-23

CAREER BESTS

Hits	Same	
Doubles	2	2x, last: San José State, 5-8-21
Triples	1	5x, last: NMSU, 2-25-23
Home Runs	1	8x, last: Utah State, 3-17-23
RBI	Same	
Runs	2	14x, last: Charlotte, 3-5-23
Walks	2	Weber State, 2-7-20
Stolen Bases	2	Texas, 3-20-21

STREAKS

	Current	Career Best
Hitting	10	10
On-Base	15	15

MULTI-HIT GAMES

	2	3	4	5+	TOTAL
2020	5	-	-	-	5
2021	8	-	-	-	8
2023	7	3	-	-	10

MULTI-RBI GAMES

	2	3	4	5+	TOTAL
2020	4	-	-	-	4
2021	4	1	-	-	5
2023	3	1	1	-	5

2023 GAME-BY-GAME

DATE	OPPONENT	POS	AB	R	H	TB	2B	3B	HR	RBI	BB	HBP	SO	SB-ATT	E	
2/9	Nicholls	*ss	1	0	0	0	0	0	0	1	0	1	0	0-0	2	
2/10	Oregon State	*ss	1	0	0	0	0	0	0	0	0	0	0	0-0	0	
2/10	LSU	*ss	1	0	0	0	0	0	0	0	0	0	0	0-0	0	
2/11	Oregon State	*ss	1	0	0	0	0	0	0	0	0	0	0	0-0	0	
2/11	LSU	*ss	2	0	1	1	0	0	0	0	0	0	0	0-0	0	
2/17	Buffalo	*ss	2	1	1	3	0	1	0	1	1	0	1	1-1	0	
2/18	Santa Clara	*ss	3	0	0	0	0	0	0	0	0	0	0	0-0	2	
2/18	Texas Tech	*ss	4	2	2	4	0	1	0	2	0	0	1	1-1	0	
2/23	CSU Bakersfield	*ss	4	0	1	1	0	0	0	1	0	0	0	1-1	0	
2/23	CSU Bakersfield	*ss	3	2	2	2	0	0	0	1	1	0	0	1-1	0	
2/24	Oklahoma State	*ss	2	0	0	0	0	0	0	0	0	0	2	0-0	0	
2/24	Creighton	*ss	2	1	0	0	0	0	0	0	1	0	0	0-0	0	
2/25	NM State	*ss	4	2	3	9	1	1	1	4	0	0	0	0-0	0	
2/25	Nebraska	*ss	2	0	1	1	0	0	0	0	0	0	1	0-0	0	
2/26	Nebraska	*ss	4	0	0	0	0	0	0	0	0	0	1	0-0	0	
3/1	UTEP	*ss	5	0	3	3	0	0	0	0	0	0	1	0-0	0	
3/1	UTEP	*ss	4	2	2	5	0	0	1	3	0	0	0	0-0	0	
3/3	Houston	*ss	3	2	3	3	0	0	0	0	0	0	0	0-0	0	
3/3	Arizona State	*ss	2	1	0	0	0	0	0	0	1	0	0	0-0	0	
3/4	Washington	*ss	2	0	0	0	0	0	0	0	1	0	1	1-1	1	
3/4	GCU	*ss	4	0	1	2	1	0	0	0	0	0	1	0-0	0	
3/5	Charlotte	*ss	4	2	2	3	1	0	0	1	0	0	1	0-0	0	
3/10	Buffalo	*ss	3	0	1	2	1	0	0	0	0	0	0	0-0	0	
3/10	Manhattan	*ss	4	1	2	2	0	0	0	2	0	1	0	0-0	1	
3/11	Buffalo	*ss	4	1	2	2	0	0	0	0	0	0	1	0-0	1	
3/11	Texas Tech	*ss	3	1	1	1	0	0	0	1	0	0	0	0-0	0	
3/12	Texas Tech	*ss	3	0	1	1	0	0	0	0	0	0	0	0-0	0	
3/17	Utah State	*ss	3	1	1	4	0	0	1	1	1	0	0	0-0	0	
3/18	Utah State	*ss	3	0	1	1	0	0	0	0	0	0	0	0-0	0	
3/19	Utah State	*ss	5	1	2	3	1	0	0	2	0	0	1	0-0	1	
3/24	San José State															
3/25	San José State															
3/26	San José State															
3/28	NM State															
3/31	Fresno State															
4/1	Fresno State															
4/2	Fresno State															
4/6	Boise State															
4/7	Boise State															
4/8	Boise State															
4/15	Colorado State															
4/16	Colorado State															
4/21	San Diego State															
4/22	San Diego State															
4/23	San Diego State															
4/28	Nevada															
4/29	Nevada															
4/30	Nevada															
5/5	UNLV															
5/6	UNLV															
			30	88	20	33	53	5	3	3	20	6	2	12	5-5	8

CAREER STATS

SEASON	GP	GS	AVG.	AB	R	H	2B	3B	HR	RBI	TB	SLG%	BB	SO	HBP	OB%	SF	SH	SB-SA	PO	A	E	FLD%
2020	26	26	.250	84	19	21	6	2	1	12	34	.405	7	8	3	.330	0	2	0-1	38	47	6	.934
2021	46	46	.241	133	18	32	10	0	4	20	54	.406	9	25	2	.299	0	2	9-12	96	79	11	.941
2023	30	30	.375	88	20	33	5	3	3	20	53	.602	6	12	2	.427	0	3	5-5	46	62	8	.931
TOTAL	102	102	.282	305	57	86	21	5	8	52	141	.462	22	45	7	.344	0	7	14-18	180	188	25	.936

HIGHLIGHTS

- Missed 2022 season due to injury
- Has started every game in her 3 years
- Started all 46 games, playing second for 42 games and catcher for 4 in 2021
- Named Mountain West Player of the Week on May 11, 2021
- Started all 26 games at third base as a freshman
- Hit leadoff in 14 games and 2nd in 12 games as a freshman, hit leadoff in 8 games, 3rd in 3, cleanup in 27 games, 5th in 6 games and 6th in 2 games as a sophomore
- Double majoring in speech and hearing sciences and psychology

THE 2023 LOBOS



4 Jenna Trim

JR • P/UT • 5-7 • R/R
 North Curl Curl, NSW, Australia
 (Pensacola State)

SEASON BESTS (MIN. 3.0 IP)

IP (high)
 H (low)
 R (low)
 ER (low)
 BB (low)
 SO (high)
 BF (high)
 NP (high)

CAREER BESTS (MIN. 3.0 IP)

IP (high)
 H (low)
 R (low)
 ER (low)
 BB (low)
 SO (high)
 BF (high)
 NP (high)

SEASON BESTS

Hits	2	3x, last: Texas Tech, 3-11-23
Doubles	1	3x, last: Texas Tech, 3-12-23
Triples	1	CSUB, 2-23-23
Home Runs	1	Texas Tech, 3-11-23
RBI	2	CSUB, 2-23-23
Runs	2	2x, last: Texas Tech, 3-11-23
Walks	2	Manhattan, 3-10-23
Stolen Bases		

STREAKS

	Current	Career Best
Hitting		2
Reach Base	1	4

MULTI-HIT GAMES

	2	3	4	5+	TOTAL
2023	3				3

MULTI-RBI GAMES

	2	3	4	5+	TOTAL
2023	1				1

PITCHING SUPERLATIVES (MIN. 4.0 IP)

	Season	Career
5+ K		
10+ K		
1 R or Less		
Shutout		

2023 GAME-BY-GAME

DATE	OPPONENT	POS	AB	R	H	TB	2B	3B	HR	RBI	BB	HBP	SO	SB-ATT	E	
2/10	LSU	ph	1	0	0	0	0	0	0	0	0	0	0	0	0	
2/17	Buffalo	ph	1	0	0	0	0	0	0	0	0	0	1	0-0	0	
2/23	CSU Bakersfield	*1b	3	2	2	5	1	1	0	0	0	0	1	0-0	0	
2/23	CSU Bakersfield	*1b	3	1	2	2	0	0	0	2	1	0	0	0-0	0	
2/24	Oklahoma State	*1b	1	0	0	0	0	0	0	0	0	0	1	0-0	0	
2/24	Creighton	*1b	2	0	0	0	0	0	0	0	0	0	1	0-0	0	
2/26	Nebraska	*1b	1	0	0	0	0	0	0	0	1	0	0	0-0	0	
3/1	UTEP	*1b	5	0	0	0	0	0	0	0	0	0	0	0-0	0	
3/3	Houston	pr/lb	0	0	0	0	0	0	0	0	1	0	0	0-0	0	
3/4	GCU	1b	2	1	1	1	0	0	0	0	0	0	0	0-0	0	
3/5	Charlotte	*1b	3	0	1	2	1	0	0	1	0	0	1	0-0	0	
3/10	Buffalo	*1b	2	0	0	0	0	0	0	0	0	0	0	0-0	0	
3/10	Manhattan	*1b	3	1	1	1	0	0	0	0	2	0	0	0-0	0	
3/11	Buffalo	*1b	2	0	0	0	0	0	0	0	1	0	0	0-0	0	
3/11	Texas Tech	*1b	2	2	2	5	0	0	1	1	0	0	0	0-0	1	
3/12	Texas Tech	*1b	3	0	1	2	1	0	0	0	0	0	0	0-0	0	
3/17	Utah State	*1b	4	0	0	0	0	0	0	0	0	0	3	0-0	1	
3/19	Utah State	ph/lb/p	3	1	0	0	0	0	0	0	1	0	0	0-0	0	
3/24	San José State															
3/25	San José State															
3/26	San José State															
3/28	NM State															
3/31	Fresno State															
4/1	Fresno State															
4/2	Fresno State															
4/6	Boise State															
4/7	Boise State															
4/8	Boise State															
4/15	Colorado State															
4/16	Colorado State															
4/21	San Diego State															
4/22	San Diego State															
4/23	San Diego State															
4/28	Nevada															
4/29	Nevada															
4/30	Nevada															
5/5	UNLV															
5/6	UNLV															
			13	41	8	10	18	3	1	1	4	7	0	8	0-0	2

HITTING CAREER STATS (AT UNM)

SEASON	GP	GS	AVG.	AB	R	H	2B	3B	HR	RBI	TB	SLG%	BB	SO	HBP	OB%	SF	SH	SB-SA	PO	A	E	FLD%
2023	18	13	.244	41	8	10	3	1	1	4	18	.439	7	8	0	.354	0	0	0-0	89	4	2	.979
TOTAL	18	13	.244	41	8	10	3	1	1	4	18	.439	7	8	0	.354	0	0	0-0	89	4	2	.979

PITCHING CAREER STATS (AT UNM)

SEASON	GS	APP	CG	W-L	ERA	SHO	SV	IP	H	R	ER	BB	SO	2B	3B	HR	BF	NP-STK	WP	HBP
2023	0	3	0	0-0	10.50	0	0	4.0	9	6	6	1	0	3	1	2	23	73-43	0	1
TOTAL	0	3	0	0-0	10.50	0	0	4.0	9	6	6	1	0	3	1	2	23	73-43	0	1

HIGHLIGHTS

- Signed with UNM on July 5, 2022
- Can pitch and play infield- has pitched in 2 games and started at first in 12 games
- Spent first two years at Pensacola State

THE 2023 LOBOS



5 Emmalyn Brinka

FR • P • 6-0 • R/R

Chandler, Ariz. (Corona del Sol HS)

SEASON BESTS (MIN. 3.0 IP)

IP (high)	5.0	Oregon State, 2-11-23
H (low)	2	Oregon State, 2-11-23
R (low)	0	Oregon State, 2-11-23
ER (low)	0	Oregon State, 2-11-23
BB (low)	0	NMSU, 2-25-23
SO (high)	5	NMSU, 2-25-23
BF (high)	20	2x, last: Oklahoma St, 2-24-23
NP (high)	77	Oklahoma State, 2-24-23

CAREER BESTS (MIN. 3.0 IP)

IP (high)	Same
H (low)	Same
R (low)	Same
ER (low)	Same
BB (low)	Same
SO (high)	Same
BF (high)	Same
NP (high)	Same

PITCHING SUPERLATIVES (MIN. 4.0 IP)

	Season	Career
5+ K	1	1
10+ K		
1 R or Less	1	1
Shutout	1	1

2023 GAME-BY-GAME

DATE	OPPONENT	W-L	ERA	CG	IP	H	R	ER	BB	SO	2B	3B	HR	BF	HBP
2/10	LSU	--	18.38	0	2.2	9	7	7	2	1	2	0	0	19	0
2/11	Oregon State	1-0	0.00	1	5.0	2	0	0	2	4	1	0	0	20	0
2/18	Santa Clara	0-1	3.82	0	3.2	5	3	2	2	4	3	0	0	17	0
2/18	Texas Tech	--	42.00	0	0.2	3	4	4	1	0	1	0	1	6	0
2/24	Oklahoma State	0-1	9.00	0	2.1	10	10	3	2	0	2	0	1	20	1
2/25	NM State	--	6.00	0	4.2	5	4	4	0	5	0	0	2	18	0
3/1	UTEP	--	2.33	0	3.0	3	2	1	2	0	0	0	0	12	0
3/3	Arizona State	0-1	9.33	0	3.0	7	4	4	1	0	1	1	0	16	0
3/4	GCU	--	0.00	0	0.2	0	0	0	0	0	0	0	0	2	0
3/10	Manhattan	--	5.25	0	4.0	6	3	3	1	2	0	0	0	18	0
3/11	Texas Tech	0-1	0.00	0	0.0	3	3	3	0	0	1	0	0	3	0
3/18	Utah State	--	0.00	0	0.0	4	2	2	0	0	1	0	0	4	0
3/24	San José State														
3/25	San José State														
3/26	San José State														
3/28	NM State														
3/31	Fresno State														
4/1	Fresno State														
4/2	Fresno State														
4/6	Boise State														
4/7	Boise State														
4/8	Boise State														
4/15	Colorado State														
4/16	Colorado State														
4/21	San Diego State														
4/22	San Diego State														
4/23	San Diego State														
4/28	Nevada														
4/29	Nevada														
4/30	Nevada														
5/5	UNLV														
5/6	UNLV														
		1-4	7.79	1	29.2	57	42	33	13	16	12	1	4	155	1

CAREER STATS

SEASON	GS	APP	CG	W-L	ERA	SHO	SV	IP	H	R	ER	BB	SO	2B	3B	HR	BF	NP-STK	WP	HBP	PO	A	E	FLD%
2023	4	12	1	1-4	7.79	1	1	29.2	57	42	33	13	16	12	1	4	155	599-341	2	1	0	6	0	1.000
TOTAL	4	12	1	1-4	7.79	1	1	29.2	57	42	33	13	16	12	1	4	155	599-341	2	1	0	6	0	1.000

HIGHLIGHTS

- Signed with UNM on July 29, 2022
- First collegiate start was against Oregon State, pitching a complete game shutout
- Played for Storm Telesco
- Majoring in business administration

THE 2023 LOBOS



7 Ashley Archuleta

SO • INF • 5-4 • R/R
Rio Rancho, N.M. (Cleveland HS)

SEASON BESTS

Hits	2	4x, last: Utah State, 3-19-23
Doubles	1	2x, last: Utah State, 3-17-23
Triples	1	2x, last: Utah State, 3-18-23
Home Runs	1	Buffalo, 3-11-23
RBI	3	Buffalo, 3-11-23
Runs	2	2x, last: Utah State, 3-19-23
Walks	2	2x, last: Manhattan, 3-10-23
Stolen Bases	1	Creighton, 2-24-23

CAREER BESTS

Hits	3	3x, last: at SJSU, 3-20-22
Doubles	2	NMSU, 3-8-22
Triples	1	3x, last: Utah State, 3-18-23
Home Runs	2	Fresno State, 4-15-22
RBI	4	Fresno State, 4-15-22
Runs	2	8x, last: Utah State, 3-19-23
Walks	3	Nevada, 4-23-22
Stolen Bases	1	2x, last: Creighton, 2-24-23

STREAKS

	Current	Career Best
Hitting	3	13
On-Base	3	22

MULTI-HIT GAMES

	2	3	4	5+	TOTAL
2022	12	3			15
2023	4				4

MULTI-RBI GAMES

	2	3	4	5+	TOTAL
2022	3	1	1		5
2023	1	1			2

2023 GAME-BY-GAME

DATE	OPPONENT	POS	AB	R	H	TB	2B	3B	HR	RBI	BB	HBP	SO	SB-ATT	E
2/9	Nicholls	*2b	2	1	0	0	0	0	0	2	2	0	0	0-0	0
2/10	Oregon State	*2b	3	0	1	1	0	0	0	0	1	0	1	0-0	0
2/10	LSU	*2b	3	0	0	0	0	0	0	0	0	0	3	0-0	0
2/11	Oregon State	*2b	3	1	1	1	0	0	0	0	0	0	1	0-0	0
2/11	LSU	*2b	3	1	1	1	0	0	0	0	0	0	0	0-0	1
2/17	Buffalo	*2b	2	1	0	0	0	0	0	0	1	0	2	0-0	0
2/18	Santa Clara	*2b	2	0	0	0	0	0	0	0	0	0	0	0-0	0
2/18	Texas Tech	*2b	2	1	0	0	0	0	0	0	0	0	1	0-0	1
2/23	CSU Bakersfield	*2b	2	0	0	0	0	0	0	0	0	0	0	0-0	0
2/24	Oklahoma State	2b	1	1	0	0	0	0	0	0	1	0	1	0-0	0
2/24	Creighton	*2b	2	0	1	1	0	0	0	0	0	0	0	1-1	0
2/25	NM State	*2b	1	0	0	0	0	0	0	0	0	0	0	0-0	0
3/1	UTEP	ph/2b	1	0	0	0	0	0	0	0	1	0	0	0-0	0
3/1	UTEP	*2b	3	0	1	2	1	0	0	1	0	0	1	0-0	0
3/3	Houston	*2b	3	0	0	0	0	0	0	0	1	0	0	0-0	0
3/3	Arizona State	*2b	3	0	2	2	0	0	0	0	0	0	0	0-0	0
3/4	Washington	*2b	1	0	0	0	0	0	0	0	0	0	0	0-0	0
3/4	GCU	*2b	3	0	2	2	0	0	0	0	0	0	1	0-0	0
3/5	Charlotte	*2b	2	0	0	0	0	0	0	0	0	0	2	0-0	0
3/10	Buffalo	*2b	3	2	1	3	0	1	0	1	0	0	1	0-0	0
3/10	Manhattan	*2b	3	0	1	1	0	0	0	0	2	0	0	0-0	1
3/11	Buffalo	*2b	3	1	1	4	0	0	1	3	0	0	1	0-0	0
3/11	Texas Tech	*2b	3	0	0	0	0	0	0	0	0	0	2	0-0	0
3/12	Texas Tech	*2b	2	0	0	0	0	0	0	0	0	0	1	0-0	0
3/17	Utah State	*2b	4	0	2	3	1	0	0	1	1	0	0	0-0	0
3/18	Utah State	*2b	2	0	1	3	0	1	0	0	0	0	0	0-0	0
3/19	Utah State	*2b	4	2	2	2	0	0	0	1	1	0	0	0-0	0
3/24	San José State														
3/25	San José State														
3/26	San José State														
3/28	NM State														
3/31	Fresno State														
4/1	Fresno State														
4/2	Fresno State														
4/6	Boise State														
4/7	Boise State														
4/8	Boise State														
4/15	Colorado State														
4/16	Colorado State														
4/21	San Diego State														
4/22	San Diego State														
4/23	San Diego State														
4/28	Nevada														
4/29	Nevada														
4/30	Nevada														
5/5	UNLV														
5/6	UNLV														
			25	66	11	17	26	2	2	1	9	11	0	18	1-1 3

CAREER STATS

SEASON	GP	GS	AVG.	AB	R	H	2B	3B	HR	RBI	TB	SLG%	BB	SO	HBP	OB%	SF	SH	SB-SA	PO	A	E	FLD%
2022	53	53	.326	172	29	56	9	1	2	21	73	.424	20	36	3	.405	0	1	1-1	86	100	15	.926
2023	27	25	.258	66	11	17	2	2	1	9	26	.394	11	18	0	.364	0	1	1-1	46	47	3	.969
TOTAL	80	78	.298	238	40	73	11	3	3	30	99	.416	31	54	3	.393	0	2	2-2	132	147	18	.939

HIGHLIGHTS

- All-Conference First Team in 2022
- Played 51 games at second, 1 game at shortstop and 1 game as DP last season
- Led off in 29 games, hit 2nd in 21 games, 4th in 2 games, 6th in 1 game
- 2nd on the team in total bases (73), hits (56) and doubles (9) as a freshman

THE 2023 LOBOS



8 Bella Mitchell

FR • P • 5-6 • R/R
New Braunfels, Texas (Canyon HS)

SEASON BESTS

IP (high)	1.2	Oklahoma State, 2-24-23
H (low)	0	Nebraska, 2-25-23
R (low)	1	Nebraska, 2-25-23
ER (low)	1	Nebraska, 2-25-23
BB (low)	1	Oklahoma State, 2-24-23
SO (high)	4	Oklahoma State, 2-24-23
BF (high)	8	Oklahoma State, 2-24-23
NP (high)	36	Oklahoma State, 2-24-23

CAREER BESTS

IP (high)	Same
H (low)	Same
R (low)	Same
ER (low)	Same
BB (low)	Same
SO (high)	Same
BF (high)	Same
NP (high)	Same

PITCHING SUPERLATIVES (MIN. 4.0 IP)

	Season	Career
5+ K		
10+ K		
1 R or Less		
Shutout		

2023 GAME-BY-GAME

DATE	OPPONENT	W-L	ERA	CG	IP	H	R	ER	BB	SO	2B	3B	HR	BF	HBP
2/24	Oklahoma State	--	8.40	0	1.2	1	2	2	1	4	0	0	1	8	1
2/25	Nebraska	--	10.50	0	0.2	0	1	1	4	0	0	0	0	7	1
3/11	Texas Tech	--	105.00	0	0.1	3	5	5	1	0	1	0	0	6	1
3/24	San José State														
3/25	San José State														
3/26	San José State														
3/28	NM State														
3/31	Fresno State														
4/1	Fresno State														
4/2	Fresno State														
4/6	Boise State														
4/7	Boise State														
4/8	Boise State														
4/15	Colorado State														
4/16	Colorado State														
4/21	San Diego State														
4/22	San Diego State														
4/23	San Diego State														
4/28	Nevada														
4/29	Nevada														
4/30	Nevada														
5/5	UNLV														
5/6	UNLV														
			21.00	0	2.2	4	8	8	6	4	1	0	1	21	3

CAREER STATS

SEASON	GS	APP	CG	W-L	ERA	SHO	SV	IP	H	R	ER	BB	SO	2B	3B	HR	BF	NP-STK	WP	HBP	PO	A	E	FLD%
2023	0	3	0	0-0	21.00	0	0	2.2	4	8	8	6	4	1	0	1	21	58-30	4	3	0	0	0	.000
TOTAL	0	3	0	0-0	21.00	0	0	2.2	4	8	8	6	4	1	0	1	21	58-30	4	3	0	0	0	.000

HIGHLIGHTS

- Theatre major
- Named the District 5A Pitcher of the Year and was all-academic 2019-21
- District champions in 2019, placing fourth in the state



THE 2023 LOBOS



9 Seleste Compian

FR • OF • 5-1 • L/R
Rosenberg, Texas (George Ranch HS)

SEASON BESTS

Hits
Doubles
Triples
Home Runs
RBI
Runs
Walks
Stolen Bases

CAREER BESTS

Hits
Doubles
Triples
Home Runs
RBI
Runs
Walks
Stolen Bases

STREAKS

Current Career Best
Hitting
On-Base

MULTI-HIT GAMES

	2	3	4	5+	TOTAL
2023					

MULTI-RBI GAMES

	2	3	4	5+	TOTAL
2023					

2023 GAME-BY-GAME

DATE	OPPONENT	POS	AB	R	H	TB	2B	3B	HR	RBI	BB	HBP	SO	SB-ATT	E
3/24	San José State														
3/25	San José State														
3/26	San José State														
3/28	NM State														
3/31	Fresno State														
4/1	Fresno State														
4/2	Fresno State														
4/6	Boise State														
4/7	Boise State														
4/8	Boise State														
4/15	Colorado State														
4/16	Colorado State														
4/21	San Diego State														
4/22	San Diego State														
4/23	San Diego State														
4/28	Nevada														
4/29	Nevada														
4/30	Nevada														
5/5	UNLV														
5/6	UNLV														

CAREER STATS

HIGHLIGHTS

- Undecided on major
- Played for the Texas Bombers
- All-district infielder in 2021 and honorable mention all-district infielder in 2019

THE 2023 LOBOS



12 Savannah Braun

JR • OF • 5-10 • R/R
Tualatin, Ore. (Tualatin HS)

SEASON BESTS

Hits
Doubles
Triples
Home Runs
RBI
Runs
Walks
Stolen Bases

CAREER BESTS

Hits 1 4x, last: NMSU, 3-22-22
Doubles
Triples
Home Runs 1 at NMSU, 3-22-22
RBI 3 at NMSU, 3-22-22
Runs 1 2x, last: at NMSU, 3-22-22
Walks 1 3x, last: Maine, 3-12-22
Total Bases 4 at NMSU, 3/22/23

STREAKS

	Current	Career Best
Hitting		2
On-Base		2

MULTI-HIT GAMES

	2	3	4	5+	TOTAL
2021	-	-	-	-	-
2022	-	-	-	-	-
2023					

MULTI-RBI GAMES

	2	3	4	5+	TOTAL
2021	-	-	-	-	-
2022	-	1	-	-	1
2023					

2023 GAME-BY-GAME

DATE	OPPONENT	POS	AB	R	H	TB	2B	3B	HR	RBI	BB	HBP	SO	SB-ATT	E
3/24	San José State														
3/25	San José State														
3/26	San José State														
3/28	NM State														
3/31	Fresno State														
4/1	Fresno State														
4/2	Fresno State														
4/6	Boise State														
4/7	Boise State														
4/8	Boise State														
4/15	Colorado State														
4/16	Colorado State														
4/21	San Diego State														
4/22	San Diego State														
4/23	San Diego State														
4/28	Nevada														
4/29	Nevada														
4/30	Nevada														
5/5	UNLV														
5/6	UNLV														

CAREER STATS

SEASON	GP	GS	AVG.	AB	R	H	2B	3B	HR	RBI	TB	SLG%	BB	SO	HBP	OB%	SF	SH	SB-SA	PO	A	E	FLD%
2021	4	1	.500	4	0	2	0	0	0	2	.500	2	2	0	.667	0	0	0-0	0	0	0	.000	
2022	5	0	.500	4	2	2	0	0	1	4	5	1.250	1	0	0	.600	0	0	0-0	0	0	0	.000
TOTAL	9	1	.500	8	2	4	0	0	1	4	7	.875	3	2	0	.636	0	0	0-0	0	0	0	.000

HIGHLIGHTS

- Hit a pinch-hit 3-run HR at New Mexico on March 22 for her first collegiate HR
- Hit against Tarleton on Feb. 27 ended the game in a run-rule win
- Start was as the designated player against Utah State on May 15, 2021

THE 2023 LOBOS



13 Elizabeth Baylor

FR • OF • 5-8 • R/R
Richmond, Texas (Churchill Fulshear HS)

SEASON BESTS

Hits	1	2x, last: Buffalo, 3-10-23
Doubles		
Triples		
Home Runs		
RBI	1	Buffalo, 3-10-23
Runs		
Walks		
Stolen Bases		

CAREER BESTS

Hits	Same
Doubles	
Triples	
Home Runs	
RBI	Same
Runs	
Walks	
Stolen Bases	

STREAKS

	Current	Career Best
Hitting		2
On-Base		2

MULTI-HIT GAMES

	2	3	4	5+	TOTAL
2023					

MULTI-RBI GAMES

	2	3	4	5+	TOTAL
2023					

2023 GAME-BY-GAME

DATE	OPPONENT	POS	AB	R	H	TB	2B	3B	HR	RBI	BB	HBP	SO	SB-ATT	E
2/11	LSU	ph	1	0	0	0	0	0	0	0	0	0	1	0-0	0
2/18	Texas Tech	pr	0	0	0	0	0	0	0	0	0	0	0	0-0	0
2/24	Creighton	ph	1	0	0	0	0	0	0	0	0	0	1	0-0	0
2/25	NM State	pr	0	0	0	0	0	0	0	0	0	0	0	0-0	0
2/25	Nebraska	rf	1	0	0	0	0	0	0	0	0	0	1	0-0	0
3/4	GCU	*rf	3	0	1	1	0	0	0	0	0	0	1	0-0	0
3/10	Buffalo	rf	1	0	1	1	0	0	0	1	0	0	0	0-0	0
3/10	Manhattan	pr/rf	0	0	0	0	0	0	0	0	0	0	0	0-0	0
3/11	Buffalo	rf	0	0	0	0	0	0	0	0	0	0	0	0-0	0
3/11	Texas Tech	rf	1	0	0	0	0	0	0	0	0	0	0	0-0	0
3/12	Texas Tech	*rf	2	0	0	0	0	0	0	0	0	0	1	0-0	0
3/17	Utah State	pr/dp	1	0	0	0	0	0	0	0	0	0	1	0-0	0
3/24	San José State														
3/25	San José State														
3/26	San José State														
3/28	NM State														
3/31	Fresno State														
4/1	Fresno State														
4/2	Fresno State														
4/6	Boise State														
4/7	Boise State														
4/8	Boise State														
4/15	Colorado State														
4/16	Colorado State														
4/21	San Diego State														
4/22	San Diego State														
4/23	San Diego State														
4/28	Nevada														
4/29	Nevada														
4/30	Nevada														
5/5	UNLV														
5/6	UNLV														
			2	11	0	2	2	0	0	1	0	0	6	0-0	0

CAREER STATS

SEASON	GP	GS	AVG.	AB	R	H	2B	3B	HR	RBI	TB	SLG%	BB	SO	HBP	OB%	SF	SH	SB-SA	PO	A	E	FLD%
2023	12	2	.182	10	0	2	0	0	0	1	2	.182	0	6	0	.182	0	0	0-0	7	1	0	1.000
TOTAL	12	2	.182	10	0	2	0	0	0	1	2	.182	0	6	0	.182	0	0	0-0	7	1	0	1.000

HIGHLIGHTS

- First collegiate hit came against GCU on March 4
- Psychology major
- Played for the Houston Power, Aces Express and Texas Bombers.
- Named to the 4A Second Team All-District and the 5A Second Team All-District and was the school record holder for stolen bases

THE 2023 LOBOS



14 Taylor Snow

RS-SO • P • 5-10 • R/R
Columbia, La.. (Louisiana)

SEASON BESTS

IP (high)	7.0	CSUB, 2-23-23
H (low)	0	2x, last: Santa Clara, 2-18-23
R (low)	0	5x, last: Charlotte, 3-5-23
ER (low)	0	5x, last: Charlotte, 3-5-23
BB (low)	0	6x, last: Texas Tech, 3-12-23
SO (high)	3	Texas Tech, 3-12-23
BF (high)	29	CSUB, 2-23-23
NP (high)	101	CSUB, 2-23-23

CAREER BESTS

IP (high)	Same
H (low)	Same
R (low)	Same
ER (low)	Same
BB (low)	Same
SO (high)	Same
BF (high)	Same
NP (high)	Same

PITCHING SUPERLATIVES (MIN. 4.0 IP)

	Season	Career
5+ K		
10+ K		
1 R or Less	1	1
Shutout		

2023 GAME-BY-GAME

DATE	OPPONENT	W-L	ERA	CG	IP	H	R	ER	BB	SO	2B	3B	HR	BF	HBP
2/10	LSU	0-1	9.33	0	3.0	7	4	4	2	0	0	0	0	17	0
2/11	LSU	--	10.5	0	0.2	2	1	1	0	0	2	0	0	4	0
2/17	Buffalo	--	0.00	0	1.0	0	0	0	0	2	0	0	0	3	0
2/18	Santa Clara	--	0.00	0	1.1	0	0	0	1	2	0	0	0	5	0
2/18	Texas Tech	--	4.67	0	3.0	4	2	2	2	1	1	0	1	15	0
2/23	CSU Bakersfield	1-0	.000	0	7.0	6	0	0	2	1	2	0	0	29	1
2/25	Nebraska	0-1	84.00	0	0.2	8	8	8	0	0	2	0	1	10	0
3/1	UTEP	1-0	3.50	0	4.0	4	2	2	2	2	0	0	1	18	1
3/3	Arizona State	--	0.00	0	1.0	1	0	0	0	0	0	0	0	4	0
3/4	Washington	0-1	3.50	1	6.0	4	3	3	1	2	1	0	0	24	0
3/5	Charlotte	1-0	0.00	0	1.0	1	0	0	1	1	0	0	0	5	0
3/10	Manhattan	--	10.50	0	2.0	4	3	3	0	1	1	1	1	12	0
3/11	Texas Tech	--	0.00	0	2.0	2	1	0	1	0	0	0	0	8	0
3/12	Texas Tech	--	3.50	0	4.0	4	2	2	0	3	1	0	0	16	0
3/18	Utah State	0-1	8.75	0	4.0	9	6	5	3	1	3	0	1	24	0
3/19	Utah State	--	21.00	0	0.2	2	2	2	0	1	0	0	2	4	0
3/24	San José State														
3/25	San José State														
3/26	San José State														
3/28	NM State														
3/31	Fresno State														
4/1	Fresno State														
4/2	Fresno State														
4/6	Boise State														
4/7	Boise State														
4/8	Boise State														
4/15	Colorado State														
4/16	Colorado State														
4/21	San Diego State														
4/22	San Diego State														
4/23	San Diego State														
4/28	Nevada														
4/29	Nevada														
4/30	Nevada														
5/5	UNLV														
5/6	UNLV														
		3-4	5.42	1	41.1	58	34	32	15	17	13	1	7	198	2

CAREER STATS

SEASON	GS	APP	CG	W-L	ERA	SHO	SV	IP	H	R	ER	BB	SO	2B	3B	HR	BF	NP-STK	WP	HBP	PO	A	E	FLD%
2023	7	16	1	3-4	5.42	0	0	41.1	58	34	32	15	17	13	1	7	198	719-428	2	2	0	3	0	1.000
TOTAL	7	16	1	3-4	5.42	0	0	41.1	58	34	32	15	17	13	1	7	198	719-428	2	2	0	3	0	1.000

HIGHLIGHTS

- First collegiate start came at LSU
- First signee for Coach Dickson and staff (signed June 17, 2022)
- Redshirted at Louisiana
- Was a three-time first team all-state and all-district pitcher and pitched the Tigers to three consecutive state championship game appearances, earning the title her freshman season

THE 2023 LOBOS



16 Leslie Romero

SR • C • 5-4 • R/R
Gonzales, Calif. (Salinas HS)

SEASON BESTS

Hits	1	4x, last: Nebraska, 2-26-23
Doubles		
Triples		
Home Runs		
RBI	1	Buffalo, 2-17-23
Runs	2	Buffalo, 2-17-23
Walks	1	LSU, 2-10-23
Total Bases	1	4x, last: Nebraska, 2-26-23

CAREER BESTS

Hits	3	2x, last: Nevada (4/22/23)
Doubles	2	Nevada (4/22/23)
Triples		
Home Runs	1	2x, last: NMSU, 3-22-22
RBI	6	NMSU, 3-22-22
Runs	2	2x, last: Buffalo, 2-17-23
Walks	1	13x, last: LSU, 2-10-23
Total Bases	7	NMSU, 3-22-22

STREAKS

	Current	Career Best
Hitting		6
On-Base		6

MULTI-HIT GAMES

	2	3	4	5+	TOTAL
2019	-	-	-	-	-
2020	2	-	-	-	2
2022	11	2	-	-	13
2023					

MULTI-RBI GAMES

	2	3	4	5+	TOTAL
2019	-	-	-	-	-
2020	1	-	-	-	1
2022	-	1	-	1	2
2023					

2023 GAME-BY-GAME

DATE	OPPONENT	POS	AB	R	H	TB	2B	3B	HR	RBI	BB	HBP	SO	SB-ATT	E	
2/9	Nicholls	ph/c	1	0	0	0	0	0	0	0	0	0	0	0-0	0	
2/10	Oregon State	ph/c	0	0	0	0	0	0	0	0	0	0	0	0-0	0	
2/10	LSU	dp	0	0	0	0	0	0	0	0	1	0	0	0-0	0	
2/11	Oregon State	*dp	3	1	1	1	0	0	0	0	0	0	0	0-0	0	
2/11	LSU	*c	4	0	1	1	0	0	0	0	0	0	0	0-0	0	
2/17	Buffalo	*c	3	2	1	1	0	0	0	1	0	0	0	0-0	0	
2/18	Santa Clara	*dp	3	0	0	0	0	0	0	0	0	0	0	0-0	0	
2/18	Texas Tech	ph	1	0	0	0	0	0	0	0	0	0	0	0-0	0	
2/23	CSU Bakersfield	*c	3	0	0	0	0	0	0	0	0	1	0	0-0	0	
2/24	Oklahoma State	ph	1	0	0	0	0	0	0	0	0	0	1	0-0	0	
2/25	NM State	2b	1	0	0	0	0	0	0	0	0	0	0	0-0	0	
2/25	Nebraska	c	1	0	0	0	0	0	0	0	0	0	0	0-0	0	
2/26	Nebraska	ph	1	0	1	1	0	0	0	0	0	0	0	0-0	0	
3/10	Buffalo	ph	1	0	0	0	0	0	0	0	0	0	0	0-0	0	
3/10	Manhattan	*c	2	0	0	0	0	0	0	0	0	0	0	0-0	0	
3/24	San José State															
3/25	San José State															
3/26	San José State															
3/28	NM State															
3/31	Fresno State															
4/1	Fresno State															
4/2	Fresno State															
4/6	Boise State															
4/7	Boise State															
4/8	Boise State															
4/15	Colorado State															
4/16	Colorado State															
4/21	San Diego State															
4/22	San Diego State															
4/23	San Diego State															
4/28	Nevada															
4/29	Nevada															
4/30	Nevada															
5/5	UNLV															
5/6	UNLV															
			6	25	3	4	4	0	0	0	1	1	1	1	0-0	0

CAREER STATS

SEASON	GP	GS	AVG.	AB	R	H	2B	3B	HR	RBI	TB	SLG%	BB	SO	HBP	OB%	SF	SH	SB-SA	PO	A	E	FLD%
2019	10	2	.000	12	0	0	0	0	0	0	0	.000	0	5	0	.000	0	0	0-0	2	0	0	1.000
2020	15	12	.219	32	4	7	2	0	0	3	9	.281	1	4	0	.235	1	1	0-0	35	2	1	.974
2022	50	46	.271	144	13	39	10	0	2	23	55	.382	11	18	0	.313	5	0	2-2	150	4	1	.994
2023	15	6	.160	25	3	4	0	0	1	4	4	.160	1	1	1	.222	0	0	0-0	13	1	0	1.000
TOTAL	90	66	.235	213	20	50	12	0	2	27	68	.319	13	28	1	.275	6	1	2-2	200	7	2	.990

HIGHLIGHTS

- Started 24 games at catcher, 22 games at DP in 2022
- Hit 2nd in 9 games, 3rd in 6 games, cleanup in 10 games, 5th in 8 games, 6th in 3 games, 8th in 8 games, 9th in 2 games in 2022

THE 2023 LOBOS



17 Amber Linton

JR • P • 6-0 • R/R
Franklin, Ind. (Indiana)

SEASON BESTS (MIN. 3.0 IP)

IP (high)	11.0	UTEP, 3-1-23
H (low)	1	Manhattan, 3-10-23
R (low)	0	3x, last: Man., 3-10-23
ER (low)	0	3x, last: Man., 3-10-23
BB (low)	0	Manhattan, 3-10-23
SO (high)	14	Utah State, 3-17-23
BF (high)	48	UTEP, 3-1-23
NP (high)	201	Utah State, 3-17-23

CAREER BESTS (MIN. 3.0 IP)

IP (high)	Same
H (low)	0 Boise State, 5-8-22
R (low)	0 4x, last: Man., 3-10-23
ER (low)	0 6x, last: Man., 3-10-23
BB (low)	0 4x, last: Man., 3-10-23
SO (high)	Same
BF (high)	Same
NP (high)	Same

PITCHING SUPERLATIVES (MIN. 4.0 IP)

	Season	Career
5+ K	12	26
10+ K	2	4
1 R or Less	6	10
Shutout	2	2

2023 GAME-BY-GAME

DATE	OPPONENT	W-L	ERA	CG	IP	H	R	ER	BB	SO	2B	3B	HR	BF	HBP	
2/9	Nicholls	1-0	4.20	1	5.0	3	3	3	3	3	0	0	1	21	0	
2/10	Oregon State	0-1	2.33	1	6.0	7	2	2	2	4	2	0	0	27	0	
2/11	LSU	--	12.60	0	3.1	7	8	6	3	2	0	0	2	24	2	
2/17	Buffalo	1-0	3.50	0	4.0	3	2	2	4	6	0	0	0	19	0	
2/18	Texas Tech	0-1	10.50	0	3.1	9	6	5	2	2	3	0	0	22	0	
2/23	CSU Bakersfield	1-0	2.00	1	7.0	3	2	2	2	9	1	0	0	26	1	
2/24	Creighton	1-0	0.00	1	7.0	4	0	0	1	9	1	0	0	27	0	
2/25	NM State	0-1	10.50	0	1.1	3	3	3	0	0	2	0	0	8	1	
2/26	Nebraska	0-1	1.17	1	6.0	4	1	1	2	6	2	0	0	28	2	
3/1	UTEP	0-1	1.27	1	11.0	11	2	2	3	8	2	0	0	48	1	
3/3	Houston	1-0	1.00	1	7.0	3	1	1	4	12	1	0	0	31	1	
3/4	GCU	0-1	6.56	0	5.1	10	6	5	3	5	0	0	1	28	0	
3/5	Charlotte	--	5.83	0	6.0	8	6	5	2	9	0	0	2	30	3	
3/10	Buffalo	1-0	0.00	1	7.0	3	0	0	1	9	1	0	0	24	0	
3/10	Manhattan	1-0	0.00	0	3.0	1	0	0	0	4	0	0	0	10	0	
3/11	Buffalo	1-0	1.00	1	7.0	6	1	1	3	7	1	0	0	30	2	
3/12	Texas Tech	0-1	17.50	0	2.0	8	5	5	2	3	1	0	1	16	1	
3/17	Utah State	0-1	3.00	1	9.1	11	5	4	3	14	2	0	1	44	1	
3/19	Utah State	1-0	6.63	0	6.1	11	8	6	4	8	0	0	2	34	0	
3/24	San José State															
3/25	San José State															
3/26	San José State															
3/28	NM State															
3/31	Fresno State															
4/1	Fresno State															
4/2	Fresno State															
4/6	Boise State															
4/7	Boise State															
4/8	Boise State															
4/15	Colorado State															
4/16	Colorado State															
4/21	San Diego State															
4/22	San Diego State															
4/23	San Diego State															
4/28	Nevada															
4/29	Nevada															
4/30	Nevada															
5/5	UNLV															
5/6	UNLV															
			9-8	3.47	10	107.0	115	61	53	44	120	19	0	10	497	14

CAREER STATS

SEASON	GS	APP	CG	W-L	ERA	SHO	SV	IP	H	R	ER	BB	SO	2B	3B	HR	BF	NP-STK	HBP
2021	4	19	0	4-3	3.79	0	0	44.1	52	33	24	24	21	12	2	2	214	159-82	5
2022	27	38	7	12-14	4.02	0	3	156.2	181	125	90	73	156	22	4	6	779	2512-1503	36
2023	17	19	10	9-8	3.47	2	0	107.0	115	61	53	44	120	19	0	10	497	2100-1272	15
TOTAL	48	76	17	25-25	3.79	2	3	308.0	348	219	167	141	297	53	6	18	1490	4771-2857	55

HIGHLIGHTS

- 6.97 strikeouts per game in 2022 was the single-season program record
- Averaging 7.85 strikeouts per game this season
- 156 strikeouts last season were the 6th most in a single-season in program history
- Named MW Pitcher of the Week on March 1, 2022 and March 14, 2023
- Pitched a team-high 156.2 innings with team-high 7 complete games and 3 saves last season
- Struck out 10 batters in the first game of the season last season, a win over Oregon St. and has recorded 10+ strikeouts in four games in her career

THE 2023 LOBOS



18 Grace Rana

FR • C • 5-6 • R/R
Queen Creek, Ariz. (Queen Creek HS)

SEASON BESTS

Hits	
Doubles	
Triples	
Home Runs	
RBI	
Runs	1 4x, last: Buffalo, 3-10-23
Walks	
Stolen Bases	1 Oregon State 2-11-23

CAREER BESTS

Hits	
Doubles	
Triples	
Home Runs	
RBI	
Runs	Same
Walks	
Stolen Bases	Same

STREAKS

	Current	Career Best
Hitting		
On-Base		

MULTI-HIT GAMES

	2	3	4	5+	TOTAL
2023					

MULTI-RBI GAMES

	2	3	4	5+	TOTAL
2023					

2023 GAME-BY-GAME

DATE	OPPONENT	POS	AB	R	H	TB	2B	3B	HR	RBI	BB	HBP	SO	SB-ATT	E
2/9	Nicholls	pr	0	0	0	0	0	0	0	0	0	0	0	0-0	0
2/10	Oregon State	pr	0	0	0	0	0	0	0	0	0	0	0	0-0	0
2/11	Oregon State	pr	0	0	0	0	0	0	0	0	0	0	0	1-1	0
2/11	LSU	pr	0	1	0	0	0	0	0	0	0	0	0	0-0	0
2/17	Buffalo	pr	0	1	0	0	0	0	0	0	0	0	0	0-0	0
2/18	Santa Clara	pr	0	0	0	0	0	0	0	0	0	0	0	0-0	0
2/18	Texas Tech	pr	0	0	0	0	0	0	0	0	0	0	0	0-0	0
2/23	CSU Bakersfield	pr	0	0	0	0	0	0	0	0	0	0	0	0-0	0
2/25	NM State	pr	0	0	0	0	0	0	0	0	0	0	0	0-0	0
3/3	Houston	pr	0	0	0	0	0	0	0	0	0	0	0	0-0	0
3/5	Charlotte	pr	0	1	0	0	0	0	0	0	0	0	0	0-0	0
3/10	Buffalo	pr	0	1	0	0	0	0	0	0	0	0	0	0-0	0
3/11	Buffalo	pr	0	0	0	0	0	0	0	0	0	0	0	0-0	0
3/24	San José State														
3/25	San José State														
3/26	San José State														
3/28	NM State														
3/31	Fresno State														
4/1	Fresno State														
4/2	Fresno State														
4/6	Boise State														
4/7	Boise State														
4/8	Boise State														
4/15	Colorado State														
4/16	Colorado State														
4/21	San Diego State														
4/22	San Diego State														
4/23	San Diego State														
4/28	Nevada														
4/29	Nevada														
4/30	Nevada														
5/5	UNLV														
5/6	UNLV														
			0	4	0	0	0	0	0	0	0	0	0	1-1	0

CAREER STATS

SEASON	GP	GS	AVG.	AB	R	H	2B	3B	HR	RBI	TB	SLG%	BB	SO	HBP	OB%	SF	SH	SB-SA	PO	A	E	FLD%
2023	13	0	.000	0	4	0	0	0	0	0	0	.000	0	0	0	.000	0	0	1-1	0	0	0	.000
TOTAL	13	0	.000	0	4	0	0	0	0	0	0	.000	0	0	0	.000	0	0	1-1	0	0	0	.000

HIGHLIGHTS

- Psychology major
- Named to the All-Region Second Team in 2019
- Played for the AZ Hotshots- Delsante

THE 2023 LOBOS



20 Emma Bramson

SO • INF • 5-7 • R/R
Valencia, Calif. (Valencia HS)

SEASON BESTS

Hits	4	Utah State, 3-19-23
Doubles	2	Utah State, 3-19-23
Triples		
Home Runs	1	at LSU, 2-10-23
RBI	2	Houston, 3-3-23
Runs	4	Utah State, 3-19-23
Walks	3	Utah State, 3-17-23
Stolen Bases	1	at Nicholls, 2-9-23

CAREER BESTS

Hits	Same
Doubles	Same
Triples	
Home Runs	2 UC Santa Barbara, 3-3-22
RBI	5 UC Santa Barbara, 3-3-22
Runs	Same
Walks	3 2x, last: Utah State, 3-17-23
Stolen Bases	Same

STREAKS

	Current	Career Best
Hitting	1	3
On-Base	1	9

MULTI-HIT GAMES

	2	3	4	5+	TOTAL
2022	9	1	-	-	10
2023	4		1		5

MULTI-RBI GAMES

	2	3	4	5+	TOTAL
2022	3	-	-	1	4
2023	1				1

2023 GAME-BY-GAME

DATE	OPPONENT	POS	AB	R	H	TB	2B	3B	HR	RBI	BB	HBP	SO	SB-ATT	E
2/9	Nicholls	*3b	3	2	1	1	0	0	0	0	0	1	1	1-1	0
2/10	Oregon State	*3b	3	0	0	0	0	0	0	0	0	0	2	0-0	0
2/10	LSU	*3b	3	1	2	5	0	0	1	1	0	0	0	0-0	0
2/11	Oregon State	*3b	2	0	0	0	0	0	0	1	0	0	1	0-0	0
2/11	LSU	*3b	3	0	2	2	0	0	0	0	0	0	0	0-0	1
2/17	Buffalo	*3b	2	1	1	2	1	0	0	0	0	0	1	0-0	0
2/18	Santa Clara	*3b	2	1	0	0	0	0	0	0	1	0	0	0-0	0
2/18	Texas Tech	*3b	4	0	0	0	0	0	0	0	0	0	0	0-0	0
2/23	CSU Bakersfield	*3b	3	1	1	1	0	0	0	0	0	0	0	0-0	0
2/23	CSU Bakersfield	*2b	4	1	1	2	1	0	0	1	0	0	0	0-0	0
2/24	Oklahoma State	*2b	0	0	0	0	0	0	0	0	0	0	0	0-0	1
2/25	NM State	*3b	4	0	1	1	0	0	0	0	0	0	1	0-0	0
2/25	Nebraska	*2b	2	0	0	0	0	0	0	0	0	0	2	0-0	0
2/26	Nebraska	*2b	2	0	1	1	0	0	0	0	1	0	0	0-0	1
3/1	UTEP	*2b/3b	5	0	2	2	0	0	0	0	0	0	0	0-0	0
3/1	UTEP	*3b	3	0	0	0	0	0	0	0	0	0	0	0-0	0
3/3	Houston	*3b	3	0	2	2	0	0	0	2	0	0	0	0-0	0
3/3	Arizona State	*3b	3	0	1	1	0	0	0	1	0	0	0	0-0	0
3/4	Washington	*3b/2b	3	0	0	0	0	0	0	0	0	0	1	0-0	0
3/4	GCU	*3b	3	0	1	1	0	0	0	0	0	0	1	0-0	1
3/5	Charlotte	*3b	3	0	1	1	0	0	0	0	0	0	1	0-0	0
3/17	Utah State	*3b	2	0	0	0	0	0	0	0	3	0	2	0-0	0
3/18	Utah State	*3b	2	0	0	0	0	0	0	0	0	0	0	0-0	1
3/19	Utah State	*3b	4	4	4	6	2	0	0	1	0	0	0	0-0	0
3/24	San José State														
3/25	San José State														
3/26	San José State														
3/28	NM State														
3/31	Fresno State														
4/1	Fresno State														
4/2	Fresno State														
4/6	Boise State														
4/7	Boise State														
4/8	Boise State														
4/15	Colorado State														
4/16	Colorado State														
4/21	San Diego State														
4/22	San Diego State														
4/23	San Diego State														
4/28	Nevada														
4/29	Nevada														
4/30	Nevada														
5/5	UNLV														
5/6	UNLV														

24 68 11 21 28 4 0 1 7 5 1 13 1-1 5

CAREER STATS

SEASON	GP	GS	AVG.	AB	R	H	2B	3B	HR	RBI	TB	SLG%	BB	SO	HBP	OB%	SF	SH	SB-SA	PO	A	E	FLD%
2022	46	46	.245	139	24	34	4	0	6	23	56	.403	11	20	1	.301	2	1	0-0	45	69	9	.926
2023	24	24	.309	68	11	21	4	0	1	7	28	.412	5	13	1	.355	2	1	1-1	26	34	5	.923
TOTAL	70	70	.266	207	35	55	8	0	7	30	84	.406	16	33	2	.319	4	2	1-1	71	103	14	.926

HIGHLIGHTS

- Named MW Freshman of the Week on Feb. 22, 2022
- Hit 5th in 26 games, 4th in 13, 9th in 3, 2nd in 2, 6th in 1, 8th in 1 last season
- Played 25 games at third base and 21 games at shortstop last season
- 4th in slugging percentage (.403), tied for 3rd in RBI (23), 5th in batting average (.245)
- Nursing major

THE 2023 LOBOS



21 Peyton Robinson

SR • OF • 5-6 • L/R
Saginaw, Texas (Southern Nazarene)

SEASON BESTS

Hits	3	6x, last: Utah State, 3-19-23
Doubles	1	2x, last: Manhattan, 3-10-23
Triples		
Home Runs		
RBI	3	2x, last: Utah State, 3-19-23
Runs	2	3x, last: CSUB, 2-23-23
Walks	1	5x, last: Utah State, 3-18-23
Stolen Bases	2	2x, last: CSUB, 2-23-23

CAREER BESTS (AT UNM)

Hits	4	Maine, 3-12-22
Doubles	1	7x, last: Manhattan, 3-10-23
Triples	1	2x, last: at NMSU, 3-22-22
Home Runs		
RBI	Same	
Runs	2	17x, last: CSUB, 2-23-23
Walks	2	2x, last: at BYU, 4-1-22
Stolen Bases	2	2x, last: CSUB, 2-23-23

STREAKS

	Current	Career Best
Hitting	8	21
On-Base	8	21

MULTI-HIT GAMES

	2	3	4	5+	TOTAL
2021	5	2	-	-	7
2022	8	1	1	-	10
2023	4	6			10

MULTI-RBI GAMES

	2	3	4	5+	TOTAL
2021	-	-	-	-	-
2022	2	-	-	-	2
2023		2			2

2023 GAME-BY-GAME

DATE	OPPONENT	POS	AB	R	H	TB	2B	3B	HR	RBI	BB	HBP	SO	SB-ATT	E	
2/9	Nicholls	*cf	3	2	3	3	0	0	0	3	0	1	0	2-2	0	
2/10	Oregon State	*cf	4	0	2	2	0	0	0	0	0	0	0	1-1	0	
2/10	LSU	*cf	3	0	1	1	0	0	0	1	0	0	1	0-0	0	
2/11	Oregon State	*cf	3	1	1	1	0	0	0	0	0	0	0	0-0	0	
2/11	LSU	*cf	4	0	1	1	0	0	0	0	0	0	1	0-0	0	
2/17	Buffalo	*cf	2	1	0	0	0	0	0	0	1	0	0	0-0	0	
2/18	Santa Clara	*cf	3	0	0	0	0	0	0	0	0	0	0	0-0	0	
2/18	Texas Tech	*cf	3	2	2	2	0	0	0	0	0	0	0	0-0	0	
2/23	CSU Bakersfield	*cf	3	2	2	2	0	0	0	1	0	1	0	2-2	0	
2/23	CSU Bakersfield	*cf	4	1	3	3	0	0	0	1	0	0	0	1-1	0	
2/24	Oklahoma State	*cf	2	0	0	0	0	0	0	0	0	0	1	0-0	0	
2/24	Creighton	*cf	3	0	0	0	0	0	0	0	0	0	0	0-0	0	
2/25	NM State	*cf	4	1	1	1	0	0	0	0	0	0	0	0-0	0	
2/25	Nebraska	*cf	2	0	0	0	0	0	0	0	0	0	1	0-0	0	
2/26	Nebraska	*cf	4	0	1	2	1	0	0	0	0	0	0	0-0	0	
3/1	UTEP	*cf	6	0	3	3	0	0	0	0	0	0	0	1-1	0	
3/1	UTEP	*cf	3	1	1	1	0	0	0	0	1	0	0	1-1	0	
3/3	Houston	*cf	3	1	0	0	0	0	0	0	1	0	0	1-1	0	
3/3	Arizona State	*cf	3	0	0	0	0	0	0	0	0	0	0	0-0	0	
3/4	Washington	*cf	3	0	0	0	0	0	0	0	0	0	1	0-0	0	
3/4	GCU	*cf	4	0	1	1	0	0	0	0	0	0	0	0-0	0	
3/5	Charlotte	*cf	3	0	0	0	0	0	0	0	0	0	0	0-0	0	
3/10	Buffalo	*cf	3	1	1	1	0	0	0	0	0	0	0	1-1	0	
3/10	Manhattan	*cf	5	1	3	4	1	0	0	1	0	0	1	1-1	0	
3/11	Buffalo	*cf	3	1	1	1	0	0	0	0	0	0	1	1-1	0	
3/11	Texas Tech	*cf	3	1	3	3	0	0	0	0	0	0	0	1-1	0	
3/12	Texas Tech	*cf	3	0	2	2	0	0	0	0	0	0	1	0-0	0	
3/17	Utah State	*cf	4	0	1	1	0	0	0	0	1	0	0	0-0	0	
3/18	Utah State	*cf	2	0	1	1	0	0	0	0	1	0	0	0-1	0	
3/19	Utah State	*cf	5	1	3	3	0	0	0	3	0	0	0	0-0	0	
3/24	San José State															
3/25	San José State															
3/26	San José State															
3/28	NM State															
3/31	Fresno State															
4/1	Fresno State															
4/2	Fresno State															
4/6	Boise State															
4/7	Boise State															
4/8	Boise State															
4/15	Colorado State															
4/16	Colorado State															
4/21	San Diego State															
4/22	San Diego State															
4/23	San Diego State															
4/28	Nevada															
4/29	Nevada															
4/30	Nevada															
5/5	UNLV															
5/6	UNLV															
			30	100	17	37	39	2	0	0	10	5	2	8	13-14	0

CAREER STATS

SEASON	GP	GS	AVG.	AB	R	H	2B	3B	HR	RBI	TB	SLG%	BB	SO	HBP	OB%	SF	SH	SB-SA	PO	A	E	FLD%
2019	53	46	.281	139	27	39	4	1	0	6	45	.324	6	11	0	.320	0	6	20-23	60	3	2	.969
2020	23	23	.459	74	29	34	4	1	0	9	40	.541	7	3	0	.500	1	7	22-26	28	2	0	1.000
2021	46	45	.250	124	19	31	3	0	0	3	34	.274	9	21	0	.296	2	6	4-5	43	2	1	.978
2022	53	53	.336	143	36	48	2	2	0	5	54	.378	17	18	1	.410	0	9	8-10	57	3	3	.952
2023	30	30	.370	100	17	37	2	0	0	10	39	.390	5	8	2	.411	0	6	13-14	38	2	0	1.000
TOTAL	206	197	.325	581	128	189	15	4	0	33	212	.365	47	62	3	.377	3	34	67-78	226	12	6	.975

HIGHLIGHTS

- Named MW Player of the Week on March 14, 2023
- Graduated in May 2022 with a BBA in business administration.
- Started all 53 games in left in 2022
- Hit leadoff in 21 games, 2nd in 6 games and 9th in 26 games in 2022
- Started 21 games in left, 1 game in right and 23 games as DP in 2021
- Hit leadoff in 27 games, 8th in 3 games and 9th in 15 games in 2021
- Started her collegiate career at Southern Nazarene

THE 2023 LOBOS



24 Diamond Sandoval

JR • OF • 5-3 • R/R
Norwalk, Calif. (St. Paul HS)

SEASON BESTS

Hits
Doubles
Triples
Home Runs
RBI
Runs
Walks
Stolen Bases

CAREER BESTS

Hits 2 Maine, 3-12-22
Doubles 1 2x, last: Utah State, 3-27-22
Triples 1 Maine, 3-12-22
Home Runs
RBI 2 2x, last: Maine, 3-12-22
Runs 1 9x, last: at NMSU, 3-22-22
Walks 1 5x, last: Utah St., 3-27-22
Stolen Bases

STREAKS

	Current	Career Best
Hitting		2
On-Base		3

MULTI-HIT GAMES

	2	3	4	5+	TOTAL
2021	-	-	-	-	-
2022	1	-	-	-	1
2023					

MULTI-RBI GAMES

	2	3	4	5+	TOTAL
2021	-	-	-	-	-
2022	2	-	-	-	2
2023					

2023 GAME-BY-GAME

DATE	OPPONENT	POS	AB	R	H	TB	2B	3B	HR	RBI	BB	HBP	SO	SB-ATT	E
3/4	Washington	ph	1	0	0	0	0	0	0	0	0	0	0	0-0	0
3/17	Utah State	ph	1	0	0	0	0	0	0	0	0	0	1	0-0	0
3/24	San José State														
3/25	San José State														
3/26	San José State														
3/28	NM State														
3/31	Fresno State														
4/1	Fresno State														
4/2	Fresno State														
4/6	Boise State														
4/7	Boise State														
4/8	Boise State														
4/15	Colorado State														
4/16	Colorado State														
4/21	San Diego State														
4/22	San Diego State														
4/23	San Diego State														
4/28	Nevada														
4/29	Nevada														
4/30	Nevada														
5/5	UNLV														
5/6	UNLV														
			2	0	0	0	0	0	0	0	0	0	1	0-0	0

CAREER STATS

SEASON	GP	GS	AVG.	AB	R	H	2B	3B	HR	RBI	TB	SLG%	BB	SO	HBP	OB%	SF	SH	SB-SA	PO	A	E	FLD%
2021	14	2	.125	16	3	2	0	0	0	1	2	.125	3	5	0	.263	0	0	0-0	0	0	0	.000
2022	20	6	.231	26	4	6	2	1	0	4	10	.385	2	7	0	.286	0	0	0-0	0	0	0	.000
2023	2	0	.000	2	0	0	0	0	0	0	0	.000	0	1	0	.000	0	0	0-0	0	0	0	.000
TOTAL	36	8	.182	44	7	8	2	1	0	5	12	.273	5	13	0	.265	0	0	0-0	0	0	0	.000

HIGHLIGHTS

- Started 6 games last season all at DP
- Hit 6th in 3 games and 8th in 3 games
- Recorded first collegiate hit against San José State on May 8, 2021, which resulted in a RBI

THE 2023 LOBOS



25 Chloe Yeatts

FR • C • 5-9 • R/R
Ardmore, Okla. (Lone Grove HS)

SEASON BESTS

Hits	2	6x, last: Buffalo, 3-11-23
Doubles	1	NMSU, 2-25-23
Triples		
Home Runs	1	3x, last: Texas Tech 3-12-23
RBI	3	at Nicholls 2-9-23
Runs	2	Oregon State 2-11-23
Walks	1	5x, last: Utah State, 3-18-23
Stolen Bases	1	NMSU, 2-25-23

CAREER BESTS

Hits	Same
Doubles	Same
Triples	
Home Runs	Same
RBI	Same
Runs	Same
Walks	Same
Stolen Bases	Same

STREAKS

	Current	Career Best
Hitting	1	4
On-Base	2	4

MULTI-HIT GAMES

	2	3	4	5+	TOTAL
2023	6				6

MULTI-RBI GAMES

	2	3	4	5+	TOTAL
2023	2	1			3

2023 GAME-BY-GAME

DATE	OPPONENT	POS	AB	R	H	TB	2B	3B	HR	RBI	BB	HBP	SO	SB-ATT	E	
2/9	Nicholls	*c	3	1	2	2	0	0	0	3	0	0	0	0-0	0	
2/10	Oregon State	*c	2	0	0	0	0	0	0	0	1	0	0	0-0	0	
2/10	LSU	*dp/c	3	0	0	0	0	0	0	0	0	0	0	0-0	0	
2/11	Oregon State	*c	3	2	2	2	0	0	0	0	0	0	0	0-0	0	
2/11	LSU	*1b/dp	4	0	2	2	0	0	0	0	0	0	0	0-0	0	
2/17	Buffalo	*dp	4	1	2	2	0	0	0	1	0	0	1	0-0	0	
2/18	Santa Clara	*c	3	0	1	1	0	0	0	0	0	0	0	0-0	0	
2/18	Texas Tech	ph	1	0	0	0	0	0	0	0	0	0	1	0-0	0	
2/23	CSU Bakersfield	*c/dp	4	1	1	4	0	0	1	1	0	0	0	0-0	0	
2/23	CSU Bakersfield	*dp	2	0	0	0	0	0	0	0	0	0	0	0-0	0	
2/24	Oklahoma State	*dp/c	2	0	0	0	0	0	0	0	0	0	2	0-0	0	
2/24	Creighton	*c	3	0	1	1	0	0	0	2	0	0	0	0-0	0	
2/25	NM State	*c	3	1	2	6	1	0	1	1	1	0	1	1-1	1	
2/25	Nebraska	*dp	2	0	1	1	0	0	0	0	0	0	0	0-0	0	
2/26	Nebraska	*c	4	0	0	0	0	0	0	0	0	0	0	0-0	0	
3/1	UTEP	*c	3	0	0	0	0	0	0	0	0	0	0	0-0	0	
3/1	UTEP	*c	4	0	0	0	0	0	0	0	0	0	0	0-0	0	
3/3	Houston	ph/c	1	1	1	1	0	0	0	0	0	1	0	0-0	0	
3/3	Arizona State	c	1	0	0	0	0	0	0	0	1	0	1	0-0	0	
3/4	GCU	*c	3	0	1	1	0	0	0	0	0	0	0	0-0	0	
3/5	Charlotte	*c	2	0	1	1	0	0	0	1	1	0	0	0-0	1	
3/10	Buffalo	*c	2	0	0	0	0	0	0	1	0	0	0	0-0	0	
3/10	Manhattan	c	1	1	0	0	0	0	0	0	0	0	0	0-0	0	
3/11	Buffalo	*c	3	0	2	2	0	0	0	0	0	0	0	0-0	0	
3/11	Texas Tech	*c	3	0	0	0	0	0	0	0	0	0	1	0-0	0	
3/12	Texas Tech	*c	3	1	1	4	0	0	1	2	0	0	1	0-0	0	
3/17	Utah State	*c	2	0	0	0	0	0	0	0	0	0	2	0-0	0	
3/18	Utah State	*c	1	0	0	0	0	0	0	0	1	0	0	0-0	0	
3/19	Utah State	*c	3	1	1	1	0	0	0	0	0	0	1	0-0	0	
3/24	San José State															
3/25	San José State															
3/26	San José State															
3/28	NM State															
3/31	Fresno State															
4/1	Fresno State															
4/2	Fresno State															
4/6	Boise State															
4/7	Boise State															
4/8	Boise State															
4/15	Colorado State															
4/16	Colorado State															
4/21	San Diego State															
4/22	San Diego State															
4/23	San Diego State															
4/28	Nevada															
4/29	Nevada															
4/30	Nevada															
5/5	UNLV															
5/6	UNLV															
			25	75	10	21	31	1	0	3	13	5	1	11	1-1	2

CAREER STATS

SEASON	GP	GS	AVG.	AB	R	H	2B	3B	HR	RBI	TB	SLG%	BB	SO	HBP	OB%	SF	SH	SB-SA	PO	A	E	FLD%
2023	29	25	.280	75	10	21	1	0	3	13	31	.413	5	11	1	.329	1	0	1-1	124	5	2	.985
TOTAL	29	25	.280	75	10	21	1	0	3	13	31	.413	5	11	1	.329	1	0	1-1	124	5	2	.985

HIGHLIGHTS

- First collegiate hit and RBI came against Nicholls in her first collegiate at-bat
- Signed with UNM on July 22, 2022
- Majoring in secondary education
- High school team won the 2021 Oklahoma 4A state championship in 2021 after finishing runner-up in 2020 and winning regionals in 2019 and 2018
- Named 2021 Oklahoma All-State Catcher, 2021 Conference Offensive Player of the Year and was a nominee for 2021 Gatorade Oklahoma Softball Player of the Year

THE 2023 LOBOS



27 Olivia Birkinshaw

SO • OF • 5-10 • R/R
Santa Margarita, Calif. (Mission Viejo HS)

SEASON BESTS

Hits	3	Charlotte, 3-5-23
Doubles	1	2x, last: Charlotte, 3-5-23
Triples		
Home Runs	1	Charlotte, 3-5-23
RBI	3	Oregon State 2-11-23
Runs	2	Charlotte, 3-5-23
Walks	1	Nebraska, 2-26-23
Stolen Bases	1	2x, last: Texas Tech, 3-12-23

CAREER BESTS

Hits	Same
Doubles	1 5x, last: Charlotte, 3-5-23
Triples	1 at Lamar, 2-19-22
Home Runs	1 2x, last: Charlotte, 3-5-23
RBI	Same
Runs	2 3x, last: Charlotte, 3-5-23
Walks	1 7x, last: Nebraska, 2-26-23
Stolen Bases	1 3x, last: Texas Tech, 3-12-23

STREAKS

	Current	Career Best
Hitting		4
On-Base		7

MULTI-HIT GAMES

	2	3	4	5+	TOTAL
2022	2	-	-	-	2
2023		1			1

MULTI-RBI GAMES

	2	3	4	5+	TOTAL
2022	-	-	-	-	-
2023	1	1			2

2023 GAME-BY-GAME

DATE	OPPONENT	POS	AB	R	H	TB	2B	3B	HR	RBI	BB	HBP	SO	SB-ATT	E
2/9	Nicholls	ph	1	1	1	1	0	0	0	0	0	0	0	0	0
2/10	Oregon State	ph	1	0	0	0	0	0	0	0	0	0	0	0	0
2/11	Oregon State	ph	1	0	1	2	1	0	0	3	0	0	0	0	0
2/11	LSU	*dp	0	0	0	0	0	0	0	0	1	0	0	0	0
2/18	Santa Clara	ph	1	0	0	0	0	0	0	1	0	0	0	0	0
2/18	Texas Tech	ph	0	1	0	0	0	0	0	0	1	0	0	0	0
2/23	CSU Bakersfield	rf	0	0	0	0	0	0	0	0	0	0	0	0	0
2/23	CSU Bakersfield	*rf	2	1	1	1	0	0	0	0	0	0	0	1	1
2/25	NM State	ph	1	0	0	0	0	0	0	0	0	0	0	0	0
2/25	Nebraska	ph	1	0	1	1	0	0	0	0	0	0	0	0	0
2/26	Nebraska	*dp/rf	3	0	1	1	0	0	0	0	1	0	0	0	0
3/1	UTEP	*dp	2	0	0	0	0	0	0	0	0	0	0	0	0
3/3	Houston	ph	1	0	0	0	0	0	0	0	0	0	1	0	0
3/3	Arizona State	ph	1	0	0	0	0	0	0	0	0	0	0	0	0
3/4	GCU	ph	0	0	0	0	0	0	0	0	1	0	0	0	0
3/5	Charlotte	*rf	4	2	3	7	1	0	1	2	0	0	1	0	0
3/10	Buffalo	*3b	2	1	1	1	0	0	1	0	0	0	0	0	0
3/10	Manhattan	*3b	5	0	1	1	0	0	0	1	0	0	1	0	0
3/11	Buffalo	*3b	2	1	1	1	0	0	0	0	1	0	0	0	0
3/11	Texas Tech	*3b	2	0	0	0	0	0	0	0	1	0	1	0	2
3/12	Texas Tech	*3b	3	1	1	1	0	0	0	0	0	0	0	1	1
3/17	Utah State	*rf	2	0	0	0	0	0	0	0	0	0	0	0	0
3/18	Utah State	*1b	2	0	0	0	0	0	0	0	0	0	0	0	0
3/19	Utah State	*1b	1	0	0	0	0	0	0	0	0	0	1	0	0
3/24	San José State														
3/25	San José State														
3/26	San José State														
3/28	NM State														
3/31	Fresno State														
4/1	Fresno State														
4/2	Fresno State														
4/6	Boise State														
4/7	Boise State														
4/8	Boise State														
4/15	Colorado State														
4/16	Colorado State														
4/21	San Diego State														
4/22	San Diego State														
4/23	San Diego State														
4/28	Nevada														
4/29	Nevada														
4/30	Nevada														
5/5	UNLV														
5/6	UNLV														

13 38 8 12 17 2 0 1 8 1 5 5 2-2 3

CAREER STATS

SEASON	GP	GS	AVG.	AB	R	H	2B	3B	HR	RBI	TB	SLG%	BB	SO	HBP	OB%	SF	SH	SB-SA	PO	A	E	FLD%
2022	28	18	.175	57	7	10	3	1	1	3	18	.316	6	23	4	.299	0	1	1-1	20	11	3	.912
2023	24	13	.316	38	8	12	2	0	1	8	17	.447	1	5	5	.400	1	0	2-2	13	6	3	.864
TOTAL	52	31	.232	95	15	22	5	1	2	11	35	.368	7	28	9	.339	1	1	3-3	33	17	6	.893

HIGHLIGHTS

- Started 18 games, 11 at DP, 4 at third and 3 at first
- Hit 4th in 7 games, 6th in 7 games and 8th in 4 games
- First collegiate hit came against Arizona on Feb. 13; First collegiate HR came in a pinch-hit appearance against Utah State on March 25

THE 2023 LOBOS



28 Samantha Fohrman

SR • P • 5-7 • R/R
Cottage Grove, Minn. (Georgian Court)

SEASON BESTS

IP (high)	2.0	Santa Clara, 2-18-23
H (low)	2	4x, last: Nebraska, 2-25-23
R (low)	2	at LSU 2-11-23
ER (low)	1	3x, last: CSUB, 2-23-23
BB (low)	1	Texas Tech, 3-11-23
SO (high)	2	Santa Clara, 2-18-23
BF (high)	14	Santa Clara, 2-18-23
NP (high)	61	Santa Clara, 2-18-23

CAREER BESTS

IP (high)	5.0	Wagner, 3-4-22
H (low)	2	5x, last: Nebraska, 2-25-23
R (low)	1	Alabama, 2-13-22
ER (low)	0	Lamar, 2-19-22
BB (low)	0	3x, last: Wagner, 3-4-22
SO (high)	2	Santa Clara, 2-18-23
BF (high)	19	Wagner, 3-4-22
NP (high)	61	Santa Clara, 2-18-23

PITCHING SUPERLATIVES (MIN. 4.0 IP)

	Season	Career
5+ K	-	-
10+ K	-	-
1 R or Less	-	-
Shutout	-	-

2023 GAME-BY-GAME

DATE	OPPONENT	W-L	ERA	CG	IP	H	R	ER	BB	SO	2B	3B	HR	BF	HBP
2/11	LSU	0-1	5.25	0	1.1	2	2	1	2	0	0	0	0	9	1
2/18	Santa Clara	-	3.50	0	2.0	2	4	1	2	2	1	0	0	14	2
2/23	CSU Bakersfield	-	0.00	0	0.0	2	3	1	2	0	1	0	0	4	0
2/25	Nebraska	-	21.00	0	1.2	2	5	5	4	1	0	0	0	12	1
3/11	Texas Tech	--	8.40	0	1.2	5	5	2	1	1	0	0	2	12	0
3/24	San José State														
3/25	San José State														
3/26	San José State														
3/28	NM State														
3/31	Fresno State														
4/1	Fresno State														
4/2	Fresno State														
4/6	Boise State														
4/7	Boise State														
4/8	Boise State														
4/15	Colorado State														
4/16	Colorado State														
4/21	San Diego State														
4/22	San Diego State														
4/23	San Diego State														
4/28	Nevada														
4/29	Nevada														
4/30	Nevada														
5/5	UNLV														
5/6	UNLV														
		0-1	10.50	0	6.2	13	19	10	11	4	2	0	2	51	4

CAREER STATS

SEASON	GS	APP	CG	W-L	ERA	SHO	SV	IP	H	R	ER	BB	SO	2B	3B	HR	BF	NP-STK	WP	HBP	PO	A	E	FLD%
2020	6	9	1	2-6	4.76	0	0	39.2	52	39	27	25	33	5	1	5	214	675-402	4	5	1	7	1	.889
2021	20	28	11	14-2	1.67	4	1	108.2	73	30	26	40	145	18	0	4	449	1533-1002	6	6	5	11	1	.941
2022	2	3	0	1-0	2.33	0	0	9.0	11	5	3	0	2	4	0	0	38	80-46	0	1	0	3	0	1.000
2023	2	5	0	0-1	10.50	0	0	6.2	12	19	10	11	4	2	0	2	51	209-97	2	4	0	0	0	.000
TOTAL	30	45	12	17-9	2.82	4	1	164.0	149	93	66	76	184	29	1	11	752	2497-1547	12	16	6	21	2	.931

HIGHLIGHTS

- Pitched in just three games, with two starts, before season-ending injury in 2022
- Pitched 5.0 innings in the win against Wagner College for first win as a Lobo
- Started her career at Georgian Court, joined UNM prior to 2022 season

THE 2023 LOBOS



34 Maddie Boldt

JR • OF • 5-8 • R/R
Round Rock, Texas (Incarinate Word)

SEASON BESTS

Hits	2	3x, last: Utah State, 3-19-23
Doubles	1	3x, last: Manhattan, 3-10-23
Triples	1	Oregon State, 2-11-23
Home Runs	1	5x, last: Utah State, 3-19-23
RBI	4	Utah State, 3-19-23
Runs	2	2x, last: Utah State, 3-19-23
Walks	2	Utah State, 3-17-23
Stolen Bases		

CAREER BESTS

Hits	3	2x, last: Colgate, 2-26-22
Doubles	2	2x, last: Lamar, 4-8-21
Triples	1	4x, last: Oregon State, 2-11-23
Home Runs	2	McNeese, 4-23-21
RBI		Same
Runs	2	13x, last: Utah State, 3-19-23
Walks	3	2x, last: McNeese, 4-24-21
Stolen Bases	1	5x, last: HBU, 4-9-22

STREAKS

	Current	Career Best
Hitting	1	4
On-Base	3	8

MULTI-HIT GAMES

	2	3	4	5+	TOTAL
2020	-	1	-	-	1
2021	9	-	-	-	9
2022	6	1	-	-	7
2023	3				3

MULTI-RBI GAMES

	2	3	4	5+	TOTAL
2020	1	-	-	-	1
2021	4	1	-	-	5
2022	7	-	-	-	7
2023		3	1		4

2023 GAME-BY-GAME

DATE	OPPONENT	POS	AB	R	H	TB	2B	3B	HR	RBI	BB	HBP	SO	SB-ATT	E	
2/9	Nicholls	*rf	3	1	1	4	0	0	1	1	1	0	1	0-0	0	
2/10	Oregon State	*rf	2	0	0	0	0	0	0	0	1	0	1	0-0	0	
2/10	LSU	*rf	3	1	1	4	0	0	1	1	0	0	1	0-0	0	
2/11	Oregon State	*rf	3	1	2	5	1	1	0	3	0	0	1	0-0	0	
2/11	LSU	*rf	3	1	1	4	0	0	1	3	0	0	1	0-0	0	
2/17	Buffalo	*rf	2	0	1	2	1	0	0	3	0	0	1	0-0	0	
2/18	Santa Clara	*rf	3	0	0	0	0	0	0	0	0	0	0	0-0	0	
2/18	Texas Tech	*rf	3	0	0	0	0	0	0	0	1	0	2	0-0	0	
2/23	CSU Bakersfield	*rf	2	1	1	1	0	0	0	1	1	0	0	0-0	0	
2/23	CSU Bakersfield	rf	0	0	0	0	0	0	0	1	0	0	0	0-0	0	
2/24	Oklahoma State	*rf	2	0	0	0	0	0	0	0	0	0	1	0-0	0	
2/24	Creighton	*rf	1	0	0	0	0	0	0	0	1	0	0	0-0	0	
2/25	NM State	*rf	2	0	0	0	0	0	0	0	0	0	2	0-0	0	
2/25	Nebraska	*rf	1	0	1	1	0	0	0	0	0	0	0	0-0	0	
2/26	Nebraska	*rf	2	0	0	0	0	0	0	0	0	0	1	0-0	0	
3/1	UTEP	*rf	4	0	0	0	0	0	0	0	0	0	0	0-0	0	
3/1	UTEP	*rf	3	1	1	1	0	0	0	0	0	0	0	0-0	1	
3/3	Houston	*rf	2	0	0	0	0	0	0	0	1	0	1	0-0	0	
3/3	Arizona State	*rf	2	1	0	0	0	0	0	0	1	0	1	0-0	0	
3/4	Washington	*rf	2	0	1	1	0	0	0	0	0	0	1	0-0	0	
3/10	Buffalo	*rf	2	0	1	1	0	0	0	1	0	0	0	0-0	0	
3/10	Manhattan	*rf	5	2	2	6	1	0	1	1	0	0	0	0-0	0	
3/11	Buffalo	*rf	2	0	0	0	0	0	0	0	0	0	0	0-0	0	
3/11	Texas Tech	*rf	2	0	0	0	0	0	0	0	0	0	1	0-0	0	
3/12	Texas Tech	ph	1	0	0	0	0	0	0	0	0	0	0	0-0	0	
3/17	Utah State	rf	1	1	0	0	0	0	0	0	2	0	1	0-0	0	
3/18	Utah State	*rf	1	0	0	0	0	0	0	0	0	0	1	0-0	0	
3/19	Utah State	*rf	5	2	2	5	0	0	1	4	0	0	1	0-0	0	
3/24	San José State															
3/25	San José State															
3/26	San José State															
3/28	NM State															
3/31	Fresno State															
4/1	Fresno State															
4/2	Fresno State															
4/6	Boise State															
4/7	Boise State															
4/8	Boise State															
4/15	Colorado State															
4/16	Colorado State															
4/21	San Diego State															
4/22	San Diego State															
4/23	San Diego State															
4/28	Nevada															
4/29	Nevada															
4/30	Nevada															
5/5	UNLV															
5/6	UNLV															
			25	64	12	15	35	3	1	5	19	10	0	19	0-0	1

CAREER STATS

SEASON	GP	GS	AVG.	AB	R	H	2B	3B	HR	RBI	TB	SLG%	BB	SO	HBP	OB%	SF	SH	SB-SA	PO	A	E	FLD%
2020	20	15	.205	39	8	8	3	1	0	6	13	.333	6	8	0	.311	0	0	2-3	12	1	2	.867
2021	40	40	.265	117	21	31	7	0	7	18	59	.504	14	34	1	.343	2	0	1-2	70	0	3	.959
2022	49	47	.221	136	24	30	8	2	10	23	72	.529	2	40	2	.291	1	0	2-6	71	8	0	1.000
2023	28	25	.234	64	12	15	3	1	5	19	35	.547	10	19	0	.329	2	1	0-0	17	2	1	.950
TOTAL	137	127	.236	356	65	84	21	4	22	66	179	.503	42	101	3	.318	5	1	5-11	170	11	6	.968

HIGHLIGHTS

- Played first 3 seasons at Incarnate Word
- Led the team with 10 HRs, tied for the team high in doubles (8) and triples (2) and was second in TB at 72 in 2022
- Liberal arts major

THE 2023 LOBOS



38 Keyannah Chavez

FR • OF • 5-1 • L/L
Leander, Texas (Glen HS)

SEASON BESTS

Hits	3	at Nicholls, 2-9-23
Doubles	1	5x, last: Manhattan, 3-10-23
Triples		
Home Runs		
RBI	2	2x, last: Manhattan, 3-10-23
Runs	3	at Nicholls, 2-9-23
Walks	3	Utah State, 3-17-23
Stolen Bases	1	4x, last: Utah State, 3-17-23

CAREER BESTS

Hits	Same
Doubles	Same
Triples	
Home Runs	
RBI	Same
Runs	Same
Walks	Same
Stolen Bases	Same

STREAKS

	Current	Career Best
Hitting	1	6
On-Base	9	10

MULTI-HIT GAMES

	2	3	4	5+	TOTAL
2023	8	1			9

MULTI-RBI GAMES

	2	3	4	5+	TOTAL
2023	2				2

2023 GAME-BY-GAME

DATE	OPPONENT	POS	AB	R	H	TB	2B	3B	HR	RBI	BB	HBP	SO	SB-ATT	E	
2/9	Nicholls	*lf	4	3	3	4	1	0	0	0	0	0	0	0	0	
2/10	Oregon State	*lf	2	0	0	0	0	0	0	0	0	1	2	0-0	0	
2/10	LSU	*lf	2	1	1	1	0	0	0	0	0	0	0	0-0	0	
2/11	Oregon State	*lf	1	1	0	0	0	0	0	0	0	1	0	0-0	0	
2/11	LSU	*lf	3	0	1	1	0	0	0	0	0	0	0	0-0	0	
2/17	Buffalo	*lf	2	1	1	2	1	0	0	1	1	0	0	0-0	0	
2/18	Santa Clara	*lf	3	1	2	2	0	0	1	0	0	0	0	0-0	0	
2/18	Texas Tech	*lf	4	1	2	3	1	0	0	0	0	0	0	0-0	0	
2/23	CSU Bakersfield	*lf	3	1	1	1	0	0	0	2	1	0	0	1-1	0	
2/23	CSU Bakersfield	*lf	3	1	1	1	0	0	0	0	0	0	0	1-1	1	
2/24	Oklahoma State	*lf	2	0	0	0	0	0	0	0	0	0	0	0-0	0	
2/24	Creighton	*lf	2	1	0	0	0	0	0	0	1	0	0	0-0	0	
2/25	NM State	*lf	4	2	2	2	0	0	0	0	0	0	0	0-0	0	
2/25	Nebraska	*lf	2	0	0	0	0	0	0	0	0	0	0	0-0	0	
2/26	Nebraska	*lf	2	0	1	1	0	0	0	0	0	0	0	0-0	0	
3/1	UTEP	*lf	3	1	1	1	0	0	0	0	1	0	1	0-0	0	
3/1	UTEP	*lf	3	2	2	2	0	0	0	0	0	0	0	0-0	0	
3/3	Houston	*lf	4	2	2	3	1	0	0	1	0	0	0	0-0	0	
3/3	Arizona State	*lf	4	0	1	1	0	0	0	0	0	0	1	0-0	0	
3/4	Washington	*lf	3	0	0	0	0	0	0	0	0	0	0	0-0	1	
3/4	GCU	*lf	4	0	0	0	0	0	0	1	0	0	0	0-0	0	
3/5	Charlotte	*lf	4	1	2	2	0	0	0	0	0	0	0	0-0	0	
3/10	Buffalo	*lf	3	1	2	2	0	0	0	0	0	0	0	1-1	0	
3/10	Manhattan	*lf	5	1	2	3	1	0	0	2	1	0	0	0-0	0	
3/11	Buffalo	*lf	3	0	1	1	0	0	0	0	0	0	2	0-0	0	
3/11	Texas Tech	*lf	2	1	0	0	0	0	0	0	1	0	1	0-0	0	
3/12	Texas Tech	*lf	3	0	1	1	0	0	0	0	1	0	1	0-0	0	
3/17	Utah State	*lf	3	1	0	0	0	0	0	0	3	0	2	1-1	0	
3/18	Utah State	*lf	2	0	0	0	0	0	0	0	1	0	0	0-0	0	
3/19	Utah State	*lf	4	2	1	1	0	0	0	1	0	1	2	0-0	0	
3/24	San José State															
3/25	San José State															
3/26	San José State															
3/28	NM State															
3/31	Fresno State															
4/1	Fresno State															
4/2	Fresno State															
4/6	Boise State															
4/7	Boise State															
4/8	Boise State															
4/15	Colorado State															
4/16	Colorado State															
4/21	San Diego State															
4/22	San Diego State															
4/23	San Diego State															
4/28	Nevada															
4/29	Nevada															
4/30	Nevada															
5/5	UNLV															
5/6	UNLV															
			30	90	25	30	35	5	0	0	9	11	3	12	4-4	2

CAREER STATS

SEASON	GP	GS	AVG.	AB	R	H	2B	3B	HR	RBI	TB	SLG%	BB	SO	HBP	OB%	SF	SH	SB-SA	PO	A	E	FLD%
2023	30	30	.333	90	25	30	5	0	0	9	35	.389	11	12	3	.423	0	3	4-4	41	3	2	.951
TOTAL	30	30	.333	90	25	30	5	0	0	9	35	.389	11	12	3	.423	0	3	4-4	41	3	2	.951

HIGHLIGHTS

- Named MW Freshman of the Week on Feb. 21
- First collegiate hit came against Nicholls in her first collegiate at-bat
- Criminology major
- Mother (Cassandra) and cousin (Anthony Chavez) graduated from UNM. Mother played at UNM from 2001-06 and was a middle infielder
- Played for the Texas Bombers- Gold

THE 2023 LOBOS



42 Loran Walker

RS-FR • C • 5-6 • R/R
Meridian, Idaho (Rocky Mountain HS)

SEASON BESTS

Hits	2	CSUB, 2-23-23
Doubles		
Triples		
Home Runs	1	CSUB, 2-23-23
RBI	3	Texas Tech, 2-18-23
Runs	2	CSUB, 2-23-23
Walks	1	3x, last: Houston, 3-3-23
Stolen Bases	1	Texas Tech, 2-18-23

CAREER BESTS

Hits	Same
Doubles	
Triples	
Home Runs	Same
RBI	Same
Runs	Same
Walks	Same
Stolen Bases	Same

STREAKS

	Current	Career Best
Hitting		3
On-Base		6

MULTI-HIT GAMES

	2	3	4	5+	TOTAL
2023	1				1

MULTI-RBI GAMES

	2	3	4	5+	TOTAL
2023	1	1			2

2023 GAME-BY-GAME

DATE	OPPONENT	POS	AB	R	H	TB	2B	3B	HR	RBI	BB	HBP	SO	SB-ATT	E	
2/17	Buffalo	ph	0	1	0	0	0	0	0	0	0	1	0	0-0	0	
2/18	Santa Clara	ph	1	0	1	1	0	0	0	0	0	0	0	0-0	0	
2/18	Texas Tech	*c	3	0	1	1	0	0	0	3	0	0	1	1-1	0	
2/23	CSU Bakersfield	*3b	3	2	2	5	0	0	1	2	1	0	0	0-0	0	
2/24	Oklahoma State	*3b	1	0	0	0	0	0	0	0	0	1	0	0-0	0	
2/24	Creighton	*3b	3	1	1	1	0	0	0	0	0	0	1	0-0	1	
2/25	NM State	*1b	2	0	0	0	0	0	0	0	0	0	2	0-0	0	
2/25	Nebraska	*3b	1	0	0	0	0	0	0	0	0	0	1	0-0	0	
2/26	Nebraska	*3b	3	0	0	0	0	0	0	0	0	0	0	0-0	0	
3/1	UTEP	*3b/c	3	0	0	0	0	0	0	1	1	0	1	0-0	0	
3/3	Houston	*c	1	0	0	0	0	0	0	0	1	0	0	0-0	0	
3/3	Arizona State	ph/1b	1	0	0	0	0	0	0	0	0	1	0	0-0	0	
3/4	Washington	*c/3b	2	0	0	0	0	0	0	0	0	0	2	0-0	1	
3/5	Charlotte	ph	1	0	0	0	0	0	0	0	0	0	1	0-0	0	
3/10	Manhattan	c	2	0	0	0	0	0	0	0	0	0	0	0-0	1	
3/11	Texas Tech	3b	0	0	0	0	0	0	0	0	0	0	0	0-0	0	
3/12	Texas Tech	ph	1	0	0	0	0	0	0	0	0	0	0	0-0	0	
3/17	Utah State	ph	1	0	0	0	0	0	0	0	0	0	1	0-0	0	
3/18	Utah State	3b	0	0	0	0	0	0	0	0	0	0	0	0-0	0	
3/24	San José State															
3/25	San José State															
3/26	San José State															
3/28	NM State															
3/31	Fresno State															
4/1	Fresno State															
4/2	Fresno State															
4/6	Boise State															
4/7	Boise State															
4/8	Boise State															
4/15	Colorado State															
4/16	Colorado State															
4/21	San Diego State															
4/22	San Diego State															
4/23	San Diego State															
4/28	Nevada															
4/29	Nevada															
4/30	Nevada															
5/5	UNLV															
5/6	UNLV															
			10	29	4	5	8	0	0	1	6	3	3	10	1-1	3

CAREER STATS

SEASON	GP	GS	AVG.	AB	R	H	2B	3B	HR	RBI	TB	SLG%	BB	SO	HBP	OB%	SF	SH	SB-SA	PO	A	E	FLD%
2023	19	10	.172	29	4	5	0	0	1	6	8	.276	3	10	3	.297	2	0	1-1	28	12	3	.930
TOTAL	19	10	.172	29	4	5	0	0	1	6	8	.276	3	10	3	.297	2	0	1-1	28	12	3	.930

HIGHLIGHTS

- Did not play in 2022
- Played for the ID Sliders, ID Crossfire, Explosion
- Majoring in East Asian Studies

THE 2023 LOBOS



44 Lauren Garcia

RS-FR • INF • 5-11 • R/R
El Paso, Texas (Montwood HS)

SEASON BESTS

Hits	3	2x, last: UTEP, 3-1-23
Doubles	1	5x, last: Utah State, 3-19-23
Triples		
Home Runs	1	Creighton, 2-24-23
RBI	4	Buffalo, 2-17-23
Runs	1	5x, last: Utah State, 3-19-23
Walks	2	Texas Tech, 3-12-23
Stolen Bases		

CAREER BESTS

Hits	Same
Doubles	Same
Triples	
Home Runs	Same
RBI	Same
Runs	Same
Walks	Same
Stolen Bases	

STREAKS

	Current	Career Best
Hitting	1	5
On-Base	1	8

MULTI-HIT GAMES

	2	3	4	5+	TOTAL
2023	6	2			8

MULTI-RBI GAMES

	2	3	4	5+	TOTAL
2023	3	1	1		5

2023 GAME-BY-GAME

DATE	OPPONENT	POS	AB	R	H	TB	2B	3B	HR	RBI	BB	HBP	SO	SB-ATT	E	
2/9	Nicholls	*dp	2	1	0	0	0	0	0	0	0	2	0	0-0	0	
2/10	Oregon State	*dp	2	0	0	0	0	0	0	0	1	0	2	0-0	0	
2/10	LSU	*lb	3	0	0	0	0	0	0	0	0	0	1	0-0	0	
2/11	LSU	lb	2	0	0	0	0	0	0	0	0	0	0	0-0	0	
2/17	Buffalo	*lb	3	1	3	3	0	0	4	0	0	0	0	0-0	0	
2/18	Santa Clara	*lb	2	0	0	0	0	0	0	0	1	0	0	0-0	0	
2/18	Texas Tech	*dp	3	0	0	0	0	0	0	1	0	0	1	0-0	0	
2/23	CSU Bakersfield	*dp	1	0	0	0	0	0	0	0	1	0	0	0-0	0	
2/23	CSU Bakersfield	ph/dp	1	0	0	0	0	0	0	1	0	0	0	0-0	0	
2/24	Oklahoma State	ph	1	0	1	1	0	0	0	0	0	0	0	0-0	0	
2/24	Creighton	*dp	3	1	2	5	0	0	1	2	0	0	0	0-0	0	
2/25	NM State	*dp	4	0	1	1	0	0	0	0	0	0	0	0-0	0	
2/25	Nebraska	ph	1	0	0	0	0	0	0	0	0	0	1	0-0	0	
2/26	Nebraska	ph	2	0	0	0	0	0	0	0	0	0	1	0-0	0	
3/1	UTEP	ph/dp	3	0	0	0	0	0	0	0	0	0	0	0-0	0	
3/1	UTEP	*dp	4	0	3	3	0	0	1	0	0	0	0	0-0	0	
3/3	Houston	*dp	4	1	2	3	1	0	2	0	0	0	0	0-0	0	
3/3	Arizona State	*dp	3	0	1	1	0	0	0	0	0	0	0	0-0	0	
3/4	Washington	*dp	3	0	1	1	0	0	0	0	0	0	1	0-0	0	
3/4	GCU	*dp	2	0	0	0	0	0	0	0	0	0	0	0-0	0	
3/5	Charlotte	*dp	3	0	1	2	1	0	2	0	0	0	0	0-0	0	
3/10	Buffalo	*dp	3	0	2	2	0	0	1	0	0	0	0	0-0	0	
3/10	Manhattan	*dp	5	0	2	2	0	0	0	0	0	0	1	0-0	0	
3/11	Buffalo	*dp	4	0	1	1	0	0	1	0	0	0	0	0-0	0	
3/11	Texas Tech	*dp	3	0	2	3	1	0	3	0	0	0	0	0-0	0	
3/12	Texas Tech	*dp	1	0	0	0	0	0	0	0	2	0	0	0-0	0	
3/17	Utah State	*dp	4	0	1	2	1	0	0	0	0	0	1	0-0	0	
3/18	Utah State	*dp	2	0	0	0	0	0	0	0	0	0	0	0-0	0	
3/19	Utah State	*dp	4	1	2	3	1	0	1	1	0	0	0	0-0	0	
3/24	San José State															
3/25	San José State															
3/26	San José State															
3/28	NM State															
3/31	Fresno State															
4/1	Fresno State															
4/2	Fresno State															
4/6	Boise State															
4/7	Boise State															
4/8	Boise State															
4/15	Colorado State															
4/16	Colorado State															
4/21	San Diego State															
4/22	San Diego State															
4/23	San Diego State															
4/28	Nevada															
4/29	Nevada															
4/30	Nevada															
5/5	UNLV															
5/6	UNLV															
			23	77	5	25	33	5	0	1	17	7	3	9	0-0	0

CAREER STATS

SEASON	GP	GS	AVG.	AB	R	H	2B	3B	HR	RBI	TB	SLG%	BB	SO	HBP	OB%	SF	SH	SB-SA	PO	A	E	FLD%
2023	29	23	.325	77	5	25	5	0	1	17	33	.429	7	9	3	.402	0	0	0-0	15	0	0	1.000
TOTAL	29	23	.325	77	5	25	5	0	1	17	33	.429	7	9	3	.402	0	0	0-0	15	0	0	1.000

HIGHLIGHTS

- Missed 2022 season due to injury
- Biology major
- Named El Paso County Softball Player of the Year her senior year and Max Preps All-American Second Team in 2021

THE 2023 LOBOS



55 Janae Cameron

SR • C • 5-9 • R/R
Windsor, Colo. (Nebraska Omaha)

SEASON BESTS

Hits	1	CSUB, 2-23-23
Doubles		
Triples		
Home Runs		
RBI		
Runs		
Walks	1	2x, last: Buffalo, 2-17-23
Stolen Bases	1	Oregon State, 2-11-23

CAREER BESTS (AT UNM)

Hits	2	2x, last: at Boise St., 5-6-22
Doubles	1	2x, last: at Boise St., 5-6-22
Triples		
Home Runs	1	2x, last: UNLV, 4-30-22
RBI	2	Southern Utah, 2-12-22
Runs	1	8x, last: at Boise St., 5-8-22
Walks	1	8x, last: Buffalo, 2-17-23
Stolen Bases		Same

STREAKS

	Current	Career Best
Hitting		2
On-Base		4

MULTI-HIT GAMES

	2	3	4	5+	TOTAL
2019	4	-	1	-	5
2020	2	2	-	-	4
2021	1	-	-	-	1
2022	2	-	-	-	2
2023					

MULTI-RBI GAMES

	2	3	4	5+	TOTAL
2019	2	1	1	-	4
2020	2	2	-	-	4
2021	1	-	-	-	1
2022	1	-	-	-	1
2023					

2023 GAME-BY-GAME

DATE	OPPONENT	POS	AB	R	H	TB	2B	3B	HR	RBI	BB	HBP	SO	SB-ATT	E
2/11	Oregon State	ph	0	0	0	0	0	0	0	0	1	0	0	1-1	0
2/17	Buffalo	c	0	0	0	0	0	0	0	0	1	0	0	0-0	0
2/18	Santa Clara	ph	1	0	0	0	0	0	0	0	0	0	1	0-0	0
2/23	CSU Bakersfield	ph/c	1	0	1	1	0	0	0	0	0	0	0	0-0	0
2/24	Oklahoma State	*c/dp	1	0	0	0	0	0	0	0	0	0	1	0-0	0
2/25	Nebraska	*c	1	0	0	0	0	0	0	0	0	0	0	0-0	0
3/5	Charlotte	ph	1	0	0	0	0	0	0	0	0	0	0	0-0	0
3/24	San José State														
3/25	San José State														
3/26	San José State														
3/28	NM State														
3/31	Fresno State														
4/1	Fresno State														
4/2	Fresno State														
4/6	Boise State														
4/7	Boise State														
4/8	Boise State														
4/15	Colorado State														
4/16	Colorado State														
4/21	San Diego State														
4/22	San Diego State														
4/23	San Diego State														
4/28	Nevada														
4/29	Nevada														
4/30	Nevada														
5/5	UNLV														
5/6	UNLV														
			2	5	0	1	1	0	0	0	2	0	2	1-1	0

CAREER STATS

SEASON	GP	GS	AVG.	AB	R	H	2B	3B	HR	RBI	TB	SLG%	BB	SO	HBP	OB%	SF	SH	SB-SA	PO	A	E	FLD%
2019	46	45	.223	103	10	23	5	0	2	15	34	.330	13	20	1	.311	2	2	0-0	129	32	5	.970
2020	22	22	.333	57	8	19	6	0	2	14	31	.544	6	6	1	.406	0	3	0-0	77	10	1	.989
2021	30	18	.268	56	5	15	2	0	2	5	23	.411	7	7	0	.349	0	1	0-0	80	9	1	.989
2022	21	14	.222	45	8	10	2	0	2	6	18	.400	6	17	0	.314	0	0	0-0	38	2	2	.952
2023	7	2	.200	5	0	1	0	0	0	1	1	.200	2	2	0	.429	0	0	1-1	5	0	0	1.000
TOTAL	126	101	.256	266	31	68	15	0	8	40	107	.402	34	52	2	.342	2	6	1-1	329	53	9	.977

HIGHLIGHTS

- Played at Nebraska Omaha from 2019-21
- Started at catcher in 7 games and at DP in 7 games in 2022
- Hit 4th in 2 games, 5th in 1 game, 6th in 1 game, 7th in 1 game and 8th in 9 games in 2022
- Ended 2022 on a 3-game on-base streak
- Majoring in liberal arts

THE 2023 LOBOS



77 **Reyann Tuck**

SR • 1B • 6-0 • R/R
Hillsboro, Ore. (Towson)

SEASON BESTS

Hits	1	6x, last: Houston, 3-3-23
Doubles	1	at Nicholls, 2-9-23
Triples		
Home Runs		
RBI	2	at Nicholls, 2-9-23
Runs	1	2x, last: UTEP, 3-1-23
Walks		
Stolen Bases		

CAREER BESTS

Hits	3	vs. Dixie St., 3-11-22
Doubles	2	vs. Fresno St., 4-15-22
Triples		
Home Runs		
RBI	2	3x, last: Maine, 3-12-22
Runs	1	15x, last: at Boise State, 5-8-22
Walks	1	16x, last: San Diego St., 5-12-22
Stolen Bases	1	Northern Colorado, 2-15-20

STREAKS

	Current	Career Best
Hitting		9
On-Base		12

MULTI-HIT GAMES

	2	3	4	5+	TOTAL
2019	-	-	-	-	0
2020	1	-	-	-	1
2021	2	-	-	-	2
2022	5	1	-	-	6
2023					

MULTI-RBI GAMES

	2	3	4	5+	TOTAL
2019	-	-	-	-	0
2020	1	-	-	-	1
2021	1	-	-	-	1
2022	3	-	-	-	3
2023	1				1

2023 GAME-BY-GAME

DATE	OPPONENT	POS	AB	R	H	TB	2B	3B	HR	RBI	BB	HBP	SO	SB-ATT	E	
2/9	Nicholls	*1b	3	0	1	2	1	0	0	2	0	0	0	0	0-0	0
2/10	Oregon State	*1b	3	0	0	0	0	0	0	0	0	0	1	0-0	0	0
2/10	LSU	1b	0	0	0	0	0	0	0	0	0	0	0	0-0	0	0
2/11	Oregon State	*1b	1	1	0	0	0	0	0	0	0	1	1	0-0	1	1
2/17	Buffalo	1b	1	0	0	0	0	0	0	0	0	0	0	0-0	0	0
2/18	Santa Clara	1b	0	0	0	0	0	0	0	0	0	0	0	0-0	0	0
2/18	Texas Tech	*1b	3	0	1	1	0	0	0	0	0	0	1	0-0	0	0
2/25	NM State	ph/1b	2	0	1	1	0	0	0	1	0	0	0	0-0	0	0
2/25	Nebraska	*1b	1	0	0	0	0	0	0	0	0	0	0	0-0	0	0
3/1	UTEP	ph	1	0	1	1	0	0	0	0	0	0	0	0-0	0	0
3/1	UTEP	*1b	3	1	1	1	0	0	0	1	0	0	0	0-0	0	0
3/3	Houston	*1b	3	0	1	1	0	0	0	0	0	0	0	0-0	1	1
3/3	Arizona State	*1b	1	0	0	0	0	0	0	0	0	0	1	0-0	1	1
3/4	Washington	*1b	2	0	0	0	0	0	0	0	0	0	0	0-0	0	0
3/4	GCU	*1b	1	0	0	0	0	0	0	0	0	0	0	0-0	1	1
3/17	Utah State	ph	1	0	0	0	0	0	0	0	0	0	1	0-0	0	0
3/19	Utah State	1b	0	0	0	0	0	0	0	0	0	0	0	0-0	0	0
3/24	San José State															
3/25	San José State															
3/26	San José State															
3/28	NM State															
3/31	Fresno State															
4/1	Fresno State															
4/2	Fresno State															
4/6	Boise State															
4/7	Boise State															
4/8	Boise State															
4/15	Colorado State															
4/16	Colorado State															
4/21	San Diego State															
4/22	San Diego State															
4/23	San Diego State															
4/28	Nevada															
4/29	Nevada															
4/30	Nevada															
5/5	UNLV															
5/6	UNLV															
			10	25	2	6	7	1	0	0	4	0	1	4	0-0	4

CAREER STATS

SEASON	GP	GS	AVG.	AB	R	H	2B	3B	HR	RBI	TB	SLG%	BB	SO	HBP	OB%	SF	SH	SB-SA	PO	A	E	FLD%
2019	10	6	.158	19	1	3	1	0	0	2	4	.211	0	7	1	.200	0	0	0-0	6	5	5	.688
2020	16	14	.211	38	1	8	1	0	0	4	9	.237	1	5	0	.214	3	0	1-1	69	1	0	1.000
2021	34	34	.212	85	5	18	7	0	0	7	25	.294	4	17	5	.284	1	1	0-0	216	9	5	.978
2022	51	50	.243	140	9	34	6	0	0	14	40	.286	11	29	0	.294	2	3	0-0	330	11	6	.983
2023	15	10	.240	25	2	6	1	0	0	4	7	.280	0	4	1	.259	1	0	0-0	59	1	4	.938
TOTAL	126	114	.225	307	18	69	16	0	0	31	85	.277	16	62	7	.273	7	4	1-1	680	27	20	.972

HIGHLIGHTS

- Played at Towson her freshman year
- Started at first in 50 games in 2022
- Hit 6th in 2 games, 7th in 48 games in 2022
- Working on her master's degree in project management