

THE UNIVERSITY OF NEW MEXICO WOMEN'S BASKETBALL

NOVEMBER 15 | vs TEXAS A&M-COMMERCE | 7 P.M. | THE PIT

2023-24 SCHEDULE

OVERALL: 3-0 • MW: 0-0 • H: 2-0 • A: 1-0 • N: 0-0

DATE	OPPONENT	TIME/SCORE
10/22	Eastern New Mexico (Exh.)	W, 77-57
10/29	Adams State (Exh.)	W, 60-45
11/6	Texas Southern	W, 76-59
11/9	at Pepperdine	W, 57-48
11/12	Tarleton State	W, 64-55
11/15	Texas A&M-Commerce	7 p.m.
11/23	Montana State%	7 p.m.
11/24	Georgia Tech%	4:30 p.m.
11/28	Eastern Illinois	7 p.m.
12/2	New Mexico State	1 p.m.
12/4	Mississippi Valley State	7 p.m.
12/7	Southern Utah	7 p.m.
12/10	Hampton	2 p.m.
12/17	Western New Mexico	2 p.m.
12/22	at Gonzaga	2 p.m.
12/30	at Nevada*	2 p.m.
1/6	Boise State*	2 p.m.
1/10	Utah State*	7 p.m.
1/13	at Colorado State*	1 p.m.
1/17	Wyoming*	7 p.m.
1/20	at UNLV*	3 p.m.
1/24	Fresno State*	7 p.m.
1/27	at Air Force*	1 p.m.
1/31	at San José State*	12 p.m.
2/3	UNLV*	2 p.m.
2/7	at San Diego State*	12 p.m.
2/10	Colorado State*	12 p.m.
2/14	San José State*	7 p.m.
2/21	at Boise State*	6:30 p.m.
2/24	at Wyoming*	2 p.m.
2/28	San Diego State*	7 p.m.
3/2	Nevada*	2 p.m.
3/5	at Fresno State*	7 p.m.
3/10-13	MW Tournament	TBA

BOLD: Home * : Mountain West
All times are Mountain Time

QUICK POINTS BY THE NUMBERS

» 3-0 start for 4th time in 5 years
» 3 Lobos averaging double figures (Augmon, Cumber, Wilson)
» 6 newcomers on the roster (3 freshmen, 3 transfers)
» Led for 39:21 against Tarleton, 36:30 at Pepperdine and 37:53 against Texas Southern
» Outscoring opponents 39-15 in fast-break points
» Outscoring opponents in the 1st (51-27), 2nd (47-43) & 3rd (47-40) quarters and 197-162 overall; tied at 52 in 4th quarter
» Outscoring opponents 106-64 in paint
» +11.7 scoring margin, +6.3 rebounding margin



New Mexico Lobos
3-0, 0-0 MW
Head Coach: Mike Bradbury
Record at UNM: 144-78 (8th year)
Career Record: 322-195 (17th year)

Series History

Overall: UNM leads 1-0
Home Record: 0-0
Current Streak: W1
Last Meeting: 11/26/22 (W, 78-71)

Broadcast Information

TV: MW Network
Radio: KNML
Live Stats: GoLobos.com/wbbstats



Texas A&M-Commerce Lions
2-0, 0-0 SLC
Head Coach: Valerie King
Record at TAMC: 2-0 (1st year)
Career Record: Same

PROJECTED STARTERS (BASED ON LAST GAME)

#	Name	POS.	HT.	YR.	NOTE
3	Nyah Wilson	G	5-8	Jr.	Career-high 20 pts vs TSU; career-high 9 reb. vs Tar.
12	Aniyah Augmon	G	5-8	Jr.	2 games scoring 15+ pts; career-high 8 steals at Pepp.
22	Charlotte Kohl	C	6-5	Gr.	Averaging 6.7 rpg
30	Paula Reus	F	6-1	Jr.	Scored in double figures last game; averaging 9.7 ppg
33	Viané Cumber	G	5-10	Jr.	Tied career high w/ 22 pts in opener; 2 games 10+ pts

LOBO NOTES

DEFENSE DELIVERS

Twice this season the Lobos have held their opponents to five or fewer points in a quarter.

In the win at Pepperdine, the Lobos held the Waves to four points in first quarter and without a point up until the 1:09 mark. Further, UNM held the Waves to 18 points in the first 20 minutes, with the last time that the Lobos held a team below 20 points in the first half was against Louisiana-Monroe on Nov. 27, 2021 (17 points). Pepperdine missed its first eight shots of the game and UNM forced two shot clock violations in that timespan. The Lobos were able to further expand their lead to 16 in the second quarter in part to a 6-0 Lobo run and holding Pepperdine to a 3:06 scoring drought. In the fourth quarter, Pepperdine scored its first points with 6:54 left in the game.

Against Tarleton State, the Lobos held the Texans to five points in the third quarter, outscoring them 20-5. UNM scored the first eight points of the quarter, ultimately going on a 10-1 run through the first 6:05. UNM later scored 10-straight points in a span of 1:55 for its best run of the game to build its largest lead of the contest at 53-31, taking a 53-33 lead into the final 10 minutes.

STARTING FAST

UNM is starting the season playing four games in 10 days, starting with Texas Southern on Nov. 6 and ending with Texas A&M-Commerce on Nov. 15. After that, the Lobos have a week break until their next game against Montana State in Cancun.

THREE'S COMPANY

The Lobos have had three players score in double figures in two of the three games this season, with Nyah Wilson and Viané Cumber reaching double figures in both games, and Paula Reus and Aniyah Augmon once.

The trio of Cumber, Augmon and Wilson all scored in double figures in the season opener, accounting for 59 of UNM's 76 points and matched Texas Southern's total team point total.

Cumber took over in the fourth quarter, scoring 13 of her game-high 22 points in the final 10 minutes, while Wilson and Augmon were effective early, reaching double figures in the first 20 minutes to finish with a career-high 20 points and 17 points, respectively. Wilson and Augmon were also facilitators, with Augmon leading with a game- and career-high six assists and Wilson finishing with the second most on the team with three. Additionally, Wilson was 4-4 from three-point range with Cumber also making four.

It marked the first time that UNM had two 20-point scorers in a game since 2022, and was the third time this season that all three scored double-digit points.

In Sunday's win, Cumber, Wilson and Reus all finished in double figures with Reus and Wilson tying for the team- and game-high at 16 points, with Cumber contributing 12 points that included three, three-pointers.

Wilson (14.7), Cumber (14.3) and Augmon (11.7) are all averaging double figures on the season, with Reus close at 9.7.

ON ANY GIVEN NIGHT

The Lobos have been led in scoring and in rebounds by different players in the three games this season.

Viané Cumber (22 points) and Charlotte Kohl (nine rebounds) led in the season opener, Aniyah Augmon (16 points and nine rebounds) led at Pepperdine and Paula Reus and Nyah Wilson (16 points each) and Wilson (nine rebounds) led against Tarleton State.

BATTLE ON THE BOARDS

While the sample size is small, the Lobos have shown their ability to control the boards, outrebounding their



» Eight NCAA Tournament Appearances | 1998, 2002, 2003, 2004, 2005, 2006, 2007, 2008 «
» Five Mountain West Tournament Championships | 2003, 2004, 2005, 2007, 2008 «

THE UNIVERSITY OF NEW MEXICO

Location.....Albuquerque, N.M.
 Founded.....1889 by Territorial Legislature
 Enrollment.....22,225
 Nickname.....Lobos
 Colors.....Cherry (PMS 200) & Silver (PMS Cool Gray 6)
 Conference.....Mountain West Conference
 National Affiliation.....NCAA Division I
 President.....Dr. Garnett Stokes
 Vice President/Director of Athletics.....Eddie Nuñez
 Asst. Vice President/Deputy A.D.....David Williams
 Interim SWA.....Amy Beggin
 Faculty Representative.....Karen Gaudreault, Ph.D

FACILITY INFORMATION

Facility.....The Pit
 Capacity.....15,411
 Age.....Built in 1966 (Renovated in 2009-10)
 All-Time Home Record.....464-220 (.678)

PROGRAM HISTORY

First Season.....1974-75
 Overall Record.....743-584 (.560)
 Overall MW Record.....231-155 (.598)
 Postseason Tournament Appearances.....20
 NCAA Tournament Appearances.....8
 Last NCAA Postseason Appearance.....2022-23 (WNIT)
 Last NCAA Postseason Opponent.....Washington
 Last NCAA Postseason Result.....L, 67-56
 MW Regular Season Championships.....3
(2003-04, 2004-05, 2020-21)
 MW Tournament Championships.....5
(2002-03, 2003-04, 2004-05, 2006-07, 2007-08)

TEAM INFORMATION

2022-23 Overall Record.....21-13
 2022-23 Mountain West Record.....12-6
 2021-22 Mountain West Season Finish.....T-3rd
 2022-23 MW Tournament Finish.....Quarterfinal
 Letterwinners Returning | Lost.....6 | 6
 Starters Returning | Lost.....1 | 4

- » Three Mountain West Regular-Season Championships
- » Five Mountain West Tournament Championships
- » Seven NCAA Tournament Appearances Since 2001-02
- » Mountain West Attendance Leader 21 Seasons in a Row
- » WBCA Academic Top 25 Eight Times Since 2004-05

COACHING STAFF

Head Coach: Mike Bradbury (Chattanooga, 1993)
 Record at UNM (Years): 144-78 (8th season)
 Career Record (Years): 322-195 (17th season)
 Associate H.C.: Keith Freeman (2nd season)
 Alma Mater: Huntington College, 1986
 Assistant Coach: Nike McClure (2nd season)
 Alma Mater: New Mexico, 2019
 Assistant Coach: Mackenzie Novak (1st season)
 Alma Mater: Bethel University, 2021
 Graduate Assistant: Jaisa Nunn (1st season)
 Dir. of Operations: Hanna Hudson (2nd season)
 Dir. of Player Development: Isaiah Fernandez (2nd season)
 Athletic Trainer: Lexi Smith (3rd season)
 Strength Coach: Leila Petewon (1st season)

MISCELLANEOUS INFORMATION

2022-23 Total Attendance.....80,328
 2022-23 Average Attendance.....4,725
 2022-23 NCAA Attendance Rank.....18th
 2022-23 Mountain West Attendance Rank.....1st

MULTIMEDIA INFORMATION

Athletics Website.....www.GoLobos.com
 Main University Web Site.....www.unm.edu
 Conference Web Site.....www.TheMW.com
 Facebook.....www.facebook.com/NewMexicoLobos
 Twitter.....@UNMLobos

MEDIA RELATIONS

Women's Basketball Contact.....Allison Weiss
 Cell Phone (Preferred).....661-313-5402
 Email.....allisonweiss@unm.edu

INTERVIEW REQUESTS

All interviews with UNM student-athletes and coaches should be coordinated through the athletics communications office. Interviews may be arranged by contacting Allison Weiss in the athletics communications office (allisonweiss@unm.edu). All interview requests should be made at least 24 hours in advance.

The University of New Mexico Athletics
 1414 University Drive
 Albuquerque, N.M. 87106



@UNMLoboWBB



NEW MEXICO WOMEN'S BASKETBALL

GAME 4: NEW MEXICO vs TEXAS A&M-COMMERCE

opponents 133-114 with three players averaging over six rebounds a game and six players averaging over five rebounds a game.

Charlotte Kohl and Paula Reus are tied for the team lead with 20 rebounds (6.7 per game) and Reus recording seven rebounds in each of the last two games. Kohl had an 18-rebound outing in the final exhibition against Adams State, had a team-high eight rebounds in the first exhibition and grabbed nine against Texas Southern to start the season.

UNM outrebounded Texas Southern 49-36 (+13), Tarleton State 45-35 (+10), Adams State 56-25 (+31) and Eastern New Mexico 48-26 (+22).

PAINT POINTS

UNM outscored opponents in the paint in all three games this season, with a +24 margin against Texas Southern (38-14), +8 margin at Pepperdine (34-26) and +10 margin against Tarleton State (34-24).

GET AHEAD, STAY AHEAD

So far this season, the Lobos have led for:
•37:53 and led after each quarter against Texas Southern
•36:30 and never trailed at Pepperdine
•39:21 and never trailed against Tarleton State

UNM is outscoring opponents 51-27 (+24) in the first quarter and 98-70 (+28) through the first two quarters. The Lobos have held the lead heading into the fourth quarter in all three games, outscoring opponents 145-110 (+35) through three quarters.

In 2022-23, the Lobos were 18-4 on the season when leading after the first quarter and 18-4 overall when leading at the half. When leading at the end of the third quarter, the Lobos were 19-4 overall last season.

HOME COURT ADVANTAGE

The Pit has proven to be a home court advantage for the Lobos of late.

UNM has gone 33-4 over the last three years: 2-0 this season, 14-3 last season and 17-1 the year prior, which doesn't include going 2-0 in the only two home games in 2020-21.

Coach Mike Bradbury is 90-24 in The Pit in his eight years at UNM.

Entering the season, UNM has gone 119-43 (.735) in The Pit with seven seasons with 10-plus home wins and three seasons with 15-plus wins in the last 10 years.

In the past seven years under Bradbury, the Lobos have led the MW in attendance in six (with the lone year the COVID season when UNM had two home games without any fans in attendance).

UNM finished 18th in the NCAA last season in attendance and has finished in the top 20 six times in the last seven years (exception was 2020-21 COVID season).

THE CUMBER EFFECT

After Vianè Cumber entered the starting lineup against Colorado State on Jan. 26 last season, the Lobo scored double figures in nine of the games including four of the last five. The New Mexico native made six three-pointers and finished with 20 points in the last game of the season at Washington, her second game with 20 or more points last season.

Cumber picked right up in the first game of the 2023-24 season, tying her career high with 22 points that included four three-pointers. It was her 12th career game making four or more three-pointers.

Cumber has scored in double figures in two of the three games this year, leading the Lobos in scoring in the season opener.

She added three more three-pointers at Pepperdine and again against Tarleton to give her 35 career games making a three-pointer, 28 career games with multiple three-pointers and her 17th career game making three or more three-pointers, and her 10th-straight game with at least one.

In three years, Cumber has scored in double figures 21 times and 20 or more points three times.

Further, the Lobo guard currently leads the MW in three-pointers per game with 3.33, and is ninth in the NCAA in three-pointers with 10.

WHAT A DEBUT FOR WILSON

Nyah Wilson made quite the first impression in her first games as a Lobo, finishing in double figures in two of the three games and setting several career highs.

In her first true game as a Lobo, Wilson finished with 20 points, four rebounds, three assists and a steal. The Dallas, Texas, native went 5-8 from the floor, a perfect 4-4 from behind the arc and nearly perfect at the free-throw line going 6-7.

Her 20 points set a career high, as did her five made field goals, her four made three-pointers and four attempts.

She added 16 points against Tarleton, setting a career high in rebounds (nine), made free throws (eight) and minutes played (33).

Further, in three games, she's surpassed her season totals in each of her two years at Syracuse, scoring 36 points her freshman season and 32 points her sophomore season.

STEAL THE SHOW

Aniyah Augmon was credited with 11 steals in the first week of the season, with eight at Pepperdine and three against Tarleton State. Her 11 steals currently lead the MW and is ninth in the NCAA.

Her eight steals tied for the second most in a game by a Lobo in program history, with the last time it was done Feb. 8, 1998 by Tamika Stukes. Augmon had four steals in the first 20 minutes with three in the second quarter, which the four alone would have been a career high for the junior. She added two in the fourth quarter, including a steal and layup with 2:04 remaining in the game to make it 50-42 after Pepperdine closed within three at 45-42 with 2:37 to play.

She added two steals in the fourth quarter against Tarleton State 1:09 apart, with both resulting in fast-break points.

In her three years at UNM, she's had 14 games with multiple steals.

ALL ABOUT AUGMON

Beyond her career-high eight steals, Aniyah Augmon showcased her all-around ability to take over a game at Pepperdine, leading the Lobos with 16 points, nine rebounds and three assists.

Augmon had a career-high four steals through the first 20 minutes and scored eight points in the second quarter alone, and was the first player to reach double figures on a drive to the basket early in the third quarter. The Lobo junior had eight points, six rebounds and four steals in the final 20 minutes.

In the season opener, Augmon finished with 17 points, six rebounds, and a game- and career-high six assists.

She is currently ranked 33rd in the NCAA in assists (14).

20/10 AGAIN

Last season, the Lobos finished with 20 wins, the second-straight year with 20 wins and the fourth time under Coach Mike Bradbury.

In addition, the Lobos surpassed 10 wins in the MW, the third-straight year and sixth overall in Bradbury's seven years at UNM.

PRIDE OF NEW MEXICO

The Lobos have three New Mexico natives on the roster in redshirt-freshman Natalia Chavez and sophomore Jaelyn Bates and junior Vianè Cumber.

In addition, the Lobos have a New Mexico Gatorade Player of the Year winner in Cumber, with Cumber winning in 2019-20 and 2020-21.

Recent Lobo Amaya Brown won in 2015-16 and 2017-18 and Jaedyn De La Cerda won in 2016-17, meaning the winner in five of the last seven years were Lobos.

ROSTER UPDATE

Redshirt-freshman Hannah Robbins has decided to leave the team.

ABOUT TEXAS A&M-COMMERCE

Texas A&M-Commerce enters the game 2-0 following wins over LeTourneau (96-41) and UNT-Dallas (80-56). The Lions are led by Jordyn Newsome (21.0 ppg), one of three in double figures (Mary Delgado (15.5 ppg) and Mia Deck (10.5 ppg)).

Defensively, Dorian Norris leads with an average of 7.5 rebounds per game, while Olivia Russell has a team-high three blocks and Delgado leads with five steals.

The Lions have started the same five in both games (Newsome, Deck, Ahmya Boyce, Jamy De Kock and Russell) and were picked to finish eighth in the Southland Conference in Coach Valerie King's first season.

In addition to longtime Lobo assistant coach now turned Texas A&M-Commerce head coach King, there will be another familiar face in former Lobo and New Mexico native Jaedyn De La Cerda, who serves as the director of operations.

LAST TIME IT HAPPENED (UNM)

As A Team

Scored 100 Points:	111 - vs. Utah State (2-25-23)
Scored 90 Points:	98 - at Utah State (1-28-23)
Scored Fewer Than 50 Points:	42 - at UNLV (1-11-17)
Scored Fewer Than 40 Points:	38 - at Colorado St. (1-3-15)
Won by 50 Points:	+56 (W, 111-55) - vs. Utah State (2-25-23)
Won by 40 Points:	+48 (W, 92-44) - vs. Northern NM (12-10-19)
Won By 30 Points:	+38 (W, 98-60) - at Utah State (1-28-23)
Lost By 30 Points:	-37 (L, 47-84) - at (RV) Arizona St. (12-14-19)
Lost By 40 Points:	-42 (L, 63-105) - at Oklahoma (12-16-17)
Shot 60% or Better:	61.2% - vs. Pacific (11-9-01)
Shot Less Than 30%:	29.6 (21-71) - vs. Mississippi State (12-21-22)
Shot 60% 3FG or Better:	64.0% (16-25) - at Fresno State (2-28-23)
Shot Less Than 20% 3FG:	18.5% (5-27) - at Boise State (2-9-23)
Made 15 3-Pointers:	16 - at Fresno State (2-28-23)
Shot 90% on FTs (10 or more):	91.7 (11-12) - vs. Texas Southern (11-6-23)
Shot Less Than 40% On FTs:	14.3% (1-7) - at UTEP (11-30-17)
Had 50 Rebounds:	55 - vs. Utah State (2-25-23)
Had 20 Offensive Rebounds:	21 - vs. Northern New Mexico (11-12-21)
Had 25 Assists:	25 - vs. Utah State (2-25-23)
Had 20 Turnovers:	25 - at Air Force (2-23-23)
Had Less Than 10 Turnovers:	7 - San Diego State (3-6-23)
Had 10 Steals:	10 - at Air Force (2-23-23)
Had 10 Blocks:	11 - vs. Houston Baptist (11-23-21)
Had Two 20-Point Scorers:	vs. Texas Southern (11-6-23)
	Nyah Wilson (20) and Viané Cumber (22)
Had Three 20-Point Scorers:	vs. Grand Canyon (3-16-22)
	LaTascya Duff (27), Jaedyn De La Cerda (22) and Shaiquel McGruder (20)
Had 7 Double-Digit Scorers:	vs. Utah State (2-25-23)
Had 6 Double-Digit Scorers:	at Arkansas-Pine Bluff (12-17-20)
Had 5 Double-Digit Scorers:	vs. San Diego State (3-6-23)
Had No Double-Digit Scorers:	vs. (RV) Arizona St. (12-14-19)
Had Two 10+ Rebounders:	vs. Nevada (3-1-20)
	Shaiquel McGruder (17) and Antonia Anderson (10)
Scored 50 Points In 1st Half:	56 - at Utah State (1-28-23)
Scored 50 Points In 2nd Half:	52 - vs. South Carolina State (12-29-22)
Scored 60 Points in a 2nd Half:	62 - vs. Utah State (2-25-23)
Scored 20 Or Fewer Points In 1st Half:	13 - at NMSU (11-15-22)
Scored 20 Or Fewer Points In 2nd Half:	17 - at UNLV (1-15-21)
Lowest Pts Scored in Quarter:	2 - at NMSU (11-15-22)
Failed To Make a 3FG:	at (RV) Arizona St. (12-14-19)
Defeated a Ranked Team:	W, 88-87 vs. No. 16 Marquette (11-13-17)
Lost To a Ranked Team:	L, 77-60 vs. No. 14 Arizona (12-4-22)
Won an OT Game:	W, 74-71 at Wyoming (2-8-20)
Lost an OT Game:	L, 83-77 vs Arizona State (11-20-22)
Won a 2OT Game:	W, 89-85 at Houston (11-24-18)
Lost a 2OT Game:	L, 69-65 vs. Fresno St. (1-2-16)

As An Individual

Had a Triple-Double:	Aisia Robertson (28 pts, 11 rebs, 11 assists)
	at Houston (11-24-18)
Had a Double-Double (Pts/Reb):	Shaiquel McGruder (18 pts, 10 reb)
	vs. Northern Arizona (3-16-23)
Had a Double-Double (Pts/Asst):	LaTora Duff (13 pts & 10 asts)
	vs. Arizona State (11-20-22)
Had a Double-Double (Reb/Asst):	Cherise Beynon (13 reb, 10 asts)
	vs. Fairleigh Dickinson (11-12-16)
Scored 20+ Pts with 10+ Rebs:	Shaiquel McGruder (25 pts & 14 reb)
	vs. Boise State (1-21-23)
Scored 30 Points:	LaTascya Duff (30 pts) at Utah State (1-28-23)
Scored 40 Points:	Cherise Beynon (41) at SDSU (1-20-18)
Scored 30 Points (MW Only):	LaTascya Duff (30 pts) at Utah State (1-28-23)
Scored 40 points (MW Only):	Cherise Beynon (41)
	at San Diego St. (1-20-18)
Had 20+ Rebounds:	Richelle van der Keijl (20) vs. New Mexico St. (11-15-16)
Had 15+ Rebounds:	Shaiquel McGruder (15) vs. UNLV (1-3-22)
Had 15+ Assists:	Aisia Robertson (16) vs. Oklahoma (11-28-18)
Had 5+ Steals:	Aniyah Augmom (8) at Pepperdine (11-9-23)
Had 5+ Blocks:	Shaiquel McGruder (5) at Wyoming (1-5-23)

LAST TIME IT HAPPENED (OPP)

As A Team

Scored 100 Points:	105 - Oklahoma (12-16-17)
Scored 90 Points:	93 - UNLV (2-2-23)
Scored Less Than 50 Points:	48 - Pepperdine (11-9-23)
Scored Less Than 40 Points:	40 - Northern New Mexico (11-12-21)
Shot 50% Or Better:	50.8% (31-61) - San Diego State (3-6-23)
Shot Less Than 30%:	28.0% (23-82) - Houston (11-12-22)
Shot 50% 3FG Or Better:	50.0% (7-14) - Texas Tech (11-28-21)
Shot Less Than 20% 3FG:	14.3% (2-14) - Pepperdine (11-9-23)
Made 15 3-Pointers:	15 - San José St. (1-22-20)
Shot 90% On FTs (10 or more):	92.3% (12-13) - Houston (11-12-22)
Shot Less Than 50% On FTs:	45.5% (5-11) - Boise State (2-19-22)
Had 50 Rebounds:	53 - Mississippi State (12-21-22)
Had 20 Offensive Rebounds:	24 - Houston (11-12-22)
Had 25 Assists:	26 - Houston (11-20-21)
Had 20 Turnovers:	27 - Old Dominion (12-20-22)
Had 30 Turnovers:	30 - Northern NM (11-15-17)
Had Less Than 10 Turnovers:	8 - Fresno State (2-28-23)
Had 10 Steals:	16 - Air Force (2-23-23)
Had 10 Blocks:	12 - Boise State (1-21-23)
Had Two 20-Point Scorers:	UNLV (1-14-23)
	Desi-Rae Young (22) and Alyssa Durazo-Frescas (20)
Had 6 Double-Digit Scorers:	San Diego State (3-6-23)
Had 5 Double-Digit Scorers:	UNLV (2-2-23)
Had No Double-Digit Scorers:	Louisiana-Monroe (11-27-21)
Had Two 10+ Rebounders:	Arizona State (11-20-22)
	Kayla Mokwuah (13) and Treasure Hunt (15)
Scored 50+ Points In 1st Half:	54 - San José St. (1-22-20)
Scored 50+ Points In 2nd Half:	50 - Colorado State (3-8-22)
Scored 20 Or Less Points In 1st Half:	18 - Pepperdine (11-9-23)
Scored 20 Or Less In 2nd Half:	19 - Northern New Mexico (11-12-21)
Scored Less Than 10 Points in Quarter:	5 - Tarleton State (11-12-23)
Failed To Make a 3FG:	0-1 by San Diego State (2-18-15)

As An Individual

Had a Double-Double (Pts/Reb):	Andjela Bigovic (12 pts, 16 reb.)
	Tarleton State (11-12-23)
Had a Double-Double (Pts/Asst):	Haley Cavinder (21 pts, 11 asts.)
	Fresno State (1-22-22)
Had a Double-Double (Pts/Steals):	Jasmyne Harris (28 pts & 10 steals)
	Houston (11-28-18)
Had 20+ Points & 10+ Rebounds:	Elodie Lalotte (20 pts, 12 reb.)
	Boise State (1-21-23)
Scored 30 Points:	Essence Booker (31) - UNLV (1-27-22)
Scored 30 Points (MW Only):	Essence Booker (31) - UNLV (1-27-22)
Had 20+ Rebounds:	Kaylee Johnson (22) - No. 1 Stanford (11-24-14)
Had 15+ Rebounds:	Andjela Bigovic (16) - Tarleton State (11-12-23)
Had 10+ Assists:	Haley Cavinder (11) - Fresno State (11-22-22)
Had 5+ Steals:	Jo Huntimer (6) - Air Force (2-23-23)
Had 5+ Blocks:	Abby Muse (8) - Boise St. (1-21-23)

GAME 4: NEW MEXICO vs TEXAS A&M-COMMERCE

STATS

STAT COMPARISON

TAMC		UNM
88.0	Points Per Game	65.7
45.1	FG%	40.1
44.6	3FG%	29.7
74.2	FT%	77.8
12.5	Made 3-pt PG	6.3
48.0	Rebounds PG	44.3
17.0	Turnovers PG	15.3
24.0	Assists PG	13.0
4.0	Blocks PG	2.3
12.0	Steals PG	7.7
48.5	Scoring Defense	54.0
29.2	FG% Defense	32.7
28.6	3FG% Defense	25.0
+12.0	Rebound Margin	+6.3

UNM WHEN HOME/AWAY/NEUTRAL

STAT	HOME (2)	AWAY (1)	NEUTRAL ()
PPG	70.0	57.0	
Opp PPG	57.0	48.0	
FG %	.423	.359	
3FG%	.341	.217	
3 FG MPG	7.0	5.0	
FT%	.880	.545	
Opp FG%	.328	.323	
Opp 3FG%	.276	.143	
RPG	47.0	39.0	
Opp RPG	35.5	43.0	
APG	14.5	10.0	
SPG	7.0	9.0	
TOV	17.0	12.0	

SPECIALTY STAT COMPARISON

(UNM/Opp.)

Opp.	Paint	Off TO	2nd Chance	Fast Break	Bench
Texas Southern	38/14	15/18	11/11	17/6	2/28
Pepperdine	34/26	13/10	11/10	7/0	13/12
Tarleton St.	34/24	17/8	6/11	15/9	12/14
Texas A&M-Com.					
Montana St.					
Georgia Tech					
Eastern Illinois					
NMSU					
MVSU					
Southern Utah					
Hampton					
Western N.M.					
Gonzaga					
Nevada					
Boise St.					
Utah St.					
Colorado St.					
Wyoming					
UNLV					
Fresno St.					
Air Force					
San José St.					
UNLV					
San Diego St.					
Colorado St.					
San José St.					
Boise St.					
Wyoming					
San Diego St.					
Nevada					
Fresno St.					

UNM STARTING LINEUPS (GAME)

Game	G	G	G	F	C
Texas Southern	Wilson	Augmon	Cumber	Reus	Kohl
Pepperdine	Wilson	Augmon	Cumber	Reus	Kohl
Tarleton State	Wilson	Augmon	Cumber	Reus	Kohl
Texas A&M-Commerce					
Montana State					
Georgia Tech					
Eastern Illinois					
New Mexico State					
Mississippi Valley State					
Southern Utah					
Hampton					
Western New Mexico					
Gonzaga					
Nevada					
Boise State					
Utah State					
Colorado State					
Wyoming					
UNLV					
Fresno State					
Air Force					
San José State					
UNLV					
San Diego State					
Colorado State					
San José State					
Boise State					
Wyoming					
San Diego State					
Nevada					
Fresno State					

UNM STARTING LINEUPS (RECORD)

Wilson, Augmon, Kohl, Reus, Cumber 3-0

DOUBLE-DOUBLE TRACKER

CAREER DOUBLE-DOUBLES

	2023-24	Career
Aniyah Augmon	-	3
Hulda Joaquim	-	2
Paula Reus	-	1
Charlotte Kohl	-	1

20-POINT TRACKER

Viané Cumber	22 pts	Texas Southern (11/6)
Nyah Wilson	20 pts	Texas Southern (11/6)

GAME 4: NEW MEXICO vs TEXAS A&M-COMMERCE

Team (AP/Coaches)	CONFERENCE						OVERALL							
	W	L	Pct.	Home	Away	Neutral	W	L	Pct.	Home	Away	Neutral	Last 10	Strk
New Mexico	0	0	.000	0-0	0-0	0-0	3	0	1.000	2-0	1-0	0-0	8-2	W3
Boise State	0	0	.000	0-0	0-0	0-0	2	0	1.000	2-0	0-0	0-0	7-3	W2
Colorado State	0	0	.000	0-0	0-0	0-0	2	0	1.000	2-0	0-0	0-0	6-4	W2
Fresno State	0	0	.000	0-0	0-0	0-0	2	0	1.000	2-0	0-0	0-0	4-6	W2
UNLV (RV)	0	0	.000	0-0	0-0	0-0	2	0	1.000	1-0	1-0	0-0	9-1	W2
San José State	0	0	.000	0-0	0-0	0-0	2	1	.667	2-1	0-0	0-0	5-5	W2
Air Force	0	0	.000	0-0	0-0	0-0	1	1	.500	1-0	0-1	0-0	2-8	L1
Nevada	0	0	.000	0-0	0-0	0-0	1	1	.500	1-0	0-1	0-0	2-8	L1
Wyoming	0	0	.000	0-0	0-0	0-0	1	1	.500	1-1	0-0	0-0	7-3	L1
San Diego State	0	0	.000	0-0	0-0	0-0	1	2	.333	1-1	0-1	0-0	4-6	W1
Utah State	0	0	.000	0-0	0-0	0-0	0	2	.000	0-1	0-1	0-0	0-10	L15
^ MW Regular Season Champions		% MW Tournament Champion												

MOUNTAIN WEST STATISTICS2023-24 MW PLAYERS OF THE WEEK

TEAM	All	Conference
Assists per Game	T-4th (13.0)	
3-Pt FG Made	5th (6.3)	
FG %	5th (.401)	
3-PT FG %	6th (.297)	
Free Throw %	5th (.778)	
Scoring	6th (65.7)	
Scoring Margin	5th (+11.7)	
Scoring Defense	4th (54.0)	
Steals per Game	6th (7.7)	
FG % Defense	4th (.327)	
3-Pt FG % Defense	4th (.250)	
Assist/Turnover Ratio	5th (0.9)	
Rebounding Margin	3rd (+6.3)	
Blocks per Game	T-7th (2.3)	
INDIVIDUAL	All	Conference
Scoring		
Nyah Wilson	8th (14.7)	
Vianè Cumber	10th (14.3)	
Aniyah Augmon	15th (11.7)	
Rebounding		
Charlotte Kohl	T-11th (6.7)	
Paula Reus	T-11th (6.7)	
Aniyah Augmon	T-15th (6.0)	
FG %		
Aniyah Augmon	7th (.441)	
Vianè Cumber	9th (.381)	
3-Point FG Made		
Vianè Cumber	T-1st (3.3)	
3-Point FG %		
Vianè Cumber	6th (.370)	
Steals		
Aniyah Augmon	4th (3.7)	
Assists		
Aniyah Augmon	2nd (4.7)	
Blocks		
Charlotte Kohl	T-8th (1.0)	

NCAA STATISTICS

TEAM	
Free-Throw %	60th
Field Goal % Defense	60th
Rebounds Per Game	66th
Scoring Defense	69th
INDIVIDUAL	
Aniyah Augmon	
Steals	9th
Assists	33rd
Steals Per Game	41st
Field Goals	143rd
Charlotte Kohl	
Rebounds	144th
Blocks	142nd
Nyah Wilson	
Free Throws	21st
Points	117th
Vianè Cumber	
3-point Attempts	6th
3-pointers	9th
Field Goal Attempts	33rd
3-Pointers Per Game	46th
Minutes Per Game	71st
Field Goals	110th
Points	137th
Paula Reus	
Rebounds	144th

SERIES HISTORY

TEXAS A&M-COMMERCE

H: 0-0; A: 1-0; N: 0-0

11/26/22 W 78-71 A

LOBOS RECORD WHEN...

	Overall	In MW
Overall	3-0	0-0
At home	2-0	0-0
On the road	1-0	0-0
At neutral sites	0-0	0-0
After a win	2-0	0-0
After a loss	0-0	0-0
In overtime	0-0	0-0
vs. ranked opponents	0-0	0-0
Games decided by 1-4 points	0-0	0-0
Games decided by 5-9 points	2-0	0-0
Games decided by 10-19 points	1-0	0-0
Games decided by 20+ points	0-0	0-0
Leading after Q1	3-0	0-0
Trailing after Q1	0-0	0-0
Tied after Q1	0-0	0-0
Leading at half	3-0	0-0
Trailing at half	0-0	0-0
Tied at half	0-0	0-0
Leading after Q3	3-0	0-0
Trailing after Q3	0-0	0-0
Tied after Q3	0-0	0-0
Shooting 50% or better	0-0	0-0
Shooting between 40-49.9%	2-0	0-0
Shooting less than 40%	1-0	0-0
Opponent shoots 50% or better	0-0	0-0
Opponent shoots b/w 40-49.9%	0-0	0-0
Opponent shoots b/w 30-39.9%	3-0	0-0
Opponent shoots less than 30%	0-0	0-0
UNM higher FG%	3-0	0-0
Opponent higher FG%	0-0	0-0
FG% Tied	0-0	0-0
UNM outrebounds	2-0	0-0
Opponent outrebounds	1-0	0-0
Rebounds tied	0-0	0-0
UNM more made free throws	2-0	0-0
Opponent more made free throws	0-0	0-0
Made free throws tied	1-0	0-0
UNM 3FG% higher	2-0	0-0
Opponent 3FG% higher	1-0	0-0
3FG% tied	0-0	0-0
UNM has more fouls	2-0	0-0
Opponent has more fouls	1-0	0-0
Fouls are tied	0-0	0-0
UNM more turnovers	2-0	0-0
Opponent more turnovers	1-0	0-0
Turnovers tied	0-0	0-0
Scoring less than 50 points	0-0	0-0
Scoring 50-59 points	1-0	0-0
Scoring 60-69 points	1-0	0-0
Scoring 70-79 points	1-0	0-0
Scoring 80-89 points	0-0	0-0
Scoring 90-99 points	0-0	0-0
Scoring 100+ points	0-0	0-0
Allowing 40 points or less	0-0	0-0
Allowing 41-49 points	1-0	0-0
Allowing 50-59 points	2-0	0-0
Allowing 60-69 points	0-0	0-0
Allowing 70-79 points	0-0	0-0
Allowing 80-89 points	0-0	0-0
Allowing 90+ points	0-0	0-0
In November	3-0	0-0
In December	0-0	0-0
In January	0-0	0-0
In February	0-0	0-0
In March	0-0	0-0

2023-24 roster



Nahawa Diarra Berthe
G | 5-9 | JR.
Barcelona, Spain



Natalia Chavez
G | 5-10 | R-FR.
Cochiti Pueblo, N.M.



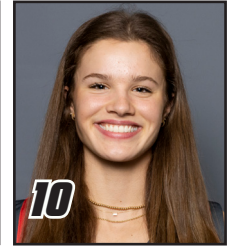
Nyah Wilson
G | 5-8 | JR.
Dallas, Texas



Gianna McManaman
PG | 5-7 | FR.
Chapel Hill, N.C.



Lara Langermann
G | 5-7 | FR.
Breckerfeld, Germany



Paris Lauro
F | 6-1 | FR.
Dallas, Texas



Aniyah Augmon
G | 5-8 | JR.
San José, Calif.



Hulda Joaquim
F | 6-1 | SR.
Maputo, Mozambique



Jaelyn Bates
PG | 5-7 | FR.
Albuquerque, N.M.



Mackenzie Curtis
G | 5-9 | SO.
Lakeside, Calif.



Charlotte Kohl
C | 6-5 | GR.
Giessen, Germany



Paula Reus
F | 6-1 | JR.
Palma de Mallorca,
Spain



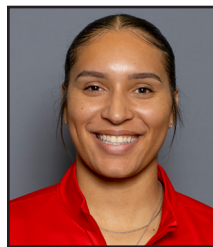
Vianè Cumber
G | 5-10 | JR.
Albuquerque, N.M.



Mike Bradbury
Head Coach



Keith Freeman
Assoc. Head Coach



Nike McClure
Assistant Coach



Mackenzie Novak
Assistant Coach



Jaisa Nunn
Graduate Assistant



Hanna Hudson
Director of Operations



Isaiah Fernandez
Director of Player
Development

NUMERICAL

#	Name	Pos	Ht	Yr	Hometown (Previous School)
1	Nahawa Diarra Berthe	G	5-9	Jr.	Barcelona, Spain (Odessa College)
2	Natalia Chavez	G	5-10	RS-Fr.	Cochiti Pueblo, N.M. (Volcano Vista HS)
3	Nyah Wilson	G	5-8	Jr.	Dallas, Texas (Syracuse)
4	Gianna McManaman	PG	5-7	Fr.	Chapel Hill, N.C. (Northwood HS)
5	Lara Langermann	G	5-7	Fr.	Breckerfeld, Germany (Theodor-Heuss-Gymnasium Hagen)
10	Paris Lauro	F	6-1	Fr.	Dallas, Texas (Highland Park HS)
12	Aniyah Augmon	G	5-8	Jr.	San José, Calif. (Woodside Priory School)
14	Hulda Joaquim	F	6-1	Sr.	Maputo, Mozambique (Seward County CC)
15	Jaelyn Bates	PG	5-7	So.	Albuquerque, N.M. (Volcano Vista HS)
21	Mackenzie Curtis	G	5-9	RS-So.	Lakeside, Calif. (El Capitan HS)
22	Charlotte Kohl	C	6-5	Sr.	Giessen, Germany (Mississippi State)
30	Paula Reus	F	6-1	Jr.	Palma de Mallorca, Spain (IES Joaquim Blume)
33	Vianè Cumber	G	5-10	Jr.	Albuquerque, N.M. (Sandia HS)

ALPHABETICAL

#	Name	Pos	Ht	Yr	Hometown (Previous School)
12	Aniyah Augmon	G	5-8	Jr.	San José, Calif. (Woodside Priory School)
15	Jaelyn Bates	PG	5-7	So.	Albuquerque, N.M. (Volcano Vista HS)
2	Natalia Chavez	G	5-10	RS-Fr.	Cochiti Pueblo, N.M. (Volcano Vista HS)
33	Vianè Cumber	G	5-10	Jr.	Albuquerque, N.M. (Sandia HS)
21	Mackenzie Curtis	G	5-9	RS-So.	Lakeside, Calif. (El Capitan HS)
1	Nahawa Diarra Berthe	G	5-9	Jr.	Barcelona, Spain (Odessa College)
14	Hulda Joaquim	F	6-1	Sr.	Maputo, Mozambique (Seward County CC)
22	Charlotte Kohl	C	6-5	Sr.	Giessen, Germany (Mississippi State)
5	Lara Langermann	G	5-7	Fr.	Breckerfeld, Germany (Theodor-Heuss-Gymnasium Hagen)
10	Paris Lauro	F	6-1	Fr.	Dallas, Texas (Highland Park HS)
4	Gianna McManaman	PG	5-7	Fr.	Chapel Hill, N.C. (Northwood HS)
30	Paula Reus	F	6-1	Jr.	Palma de Mallorca, Spain (IES Joaquim Blume)
3	Nyah Wilson	G	5-8	Jr.	Dallas, Texas (Syracuse)

STAFF

Mike Bradbury	Head Coach
Keith Freeman	Associate Head Coach
Nike McClure	Assistant Coach
Mackenzie Novak	Assistant Coach
Jaissa Nunn	Graduate Assistant
Hanna Hudson	Director of Operations
Isaiah Fernandez	Director of Player Development
Leila Petewon	Assistant Director of Athletic Performance (WBB)
Lexi Smith	Assistant Athletic Trainer (WBB)

pronunciation guide

audio pronunciations available online

NAHAWA DIARRA BERTHE	Na-HA-wa D-are-a Bear-TAY
NYAH Wilson	Neye-ah
LARA LANGERMANN	La-Rah Lane-GRR-man
PARIS LAURO	Loro (rhymes with Zorro)
HULDA JOAQUIM	Ulda JOY-key-m
PAULA REUS	Rey-OOSE (rhymes with goose)
VIANE Cumber	V-UH-nay

by eligibility

Seniors (2)	
14 Hulda Joaquim	F
22 Charlotte Kohl (Gr.)	C

Juniors (5)	
1 Nahawa Diarra Berthe	G
3 Nyah Wilson	G
12 Aniyah Augmon	G
30 Paula Reus	F
33 Vianè Cumber	G

Sophomores (2)	
15 Jaelyn Bates	PG
21 Mackenzie Curtis (RS)	G

Freshmen (4 (1 Redshirt))	
2 Natalia Chavez (RS)	G
4 Gianna McManaman	PG
5 Lara Langermann	G
10 Paris Lauro	F

home state

California (2)	
12 Aniyah Augmon	G
21 Mackenzie Curtis	G

North Carolina (1)	
4 Gianna McManaman	PG

New Mexico (3)	
2 Natalia Chavez	G
15 Jaelyn Bates	PG
33 Vianè Cumber	G

Texas (2)	
3 Nyah Wilson	G
10 Paris Lauro	F

international

1 Nahawa Diarra Berthe (Spain)	G
5 Lara Langermann (Germany)	G
14 Hulda Joaquim (Mozambique)	C
22 Charlotte Kohl (Germany)	F
30 Paula Reus (Spain)	F



MIKE BRADBURY

RECORD AT UNM: 144-78 (8TH SEASON)

CAREER RECORD: 322-195 (17TH SEASON)

NOTEWORTHY:

- Named the sixth head coach in program history on March 31, 2016
- 26 wins in 2021-22 tied for most wins in program history
- Led UNM to 25 wins in 2017-18; tied for second-most wins in program history
- Led UNM to 20+ wins in four seasons, and .500 or better in six
- Earned his 100th win at UNM on Nov. 30, 2021; only the second coach in program history to reach 100. Earned his 300th career win on Nov. 22, 2022 against Western N.M.

Mike Bradbury enters his seventh season as head coach for The University of New Mexico women's basketball team. In his previous six seasons at the helm, Bradbury has guided the Lobos to a 120-65 (.649) overall record. Three times in his tenure (2017-18, 2018-19 and 2021-22) the Lobos eclipsed the 20-win mark, with the Lobos tying the program record for most wins in a single season with 26 in 2021-22. The consecutive 20-plus win seasons under Bradbury were the first for the program since the 2007-08 – 2008-09 seasons.

Additionally, Bradbury became just the second coach in UNM history to win 100 games with a win over Grambling on Nov. 30, 2021.

The Lobos have sustained success under Bradbury, with the program establishing several program records during the 2021-22 season. UNM set the program record in made three-pointers (346), a program-best 171 made three-pointers in conference season, as well as a program-record 596 assists on the season and 292 in conference games. In addition, the Lobos made a program-high 523 field goals in conference and scored the most points in conference in program history with 1,413 points. On Jan. 6 at Utah State, the Lobos set the program record and the MW record in made three-pointers in a game with 21, and three games later made 19 three-pointers for the second most in a game in program history. The Lobos also went on a nine-game win streak, the second longest in program history.

New Mexico ranked in the top 10 in the NCAA in made three-pointers (third), made three-pointers per game (fifth, 9.6 per game) and in assists (10th). In total, UNM ranked in the top 30 in nine categories, including scoring offense

(14th, 76.7 points per game), assists per game (16th, 16.6 per game), assist/turnover ratio (18th, 1.21), field-goal percentage (19th, 45.1 percent), blocked shots (25th, 147) and three-point field-goal percentage (30th, 35.1 percent).

UNM added six postseason Mountain West honors with a conference-high three all-conference players in Antonia Anderson, Shaiquel McGruder and Jaedyn De La Cerda, an honorable mention in LaTora Duff, an all-defensive player in McGruder and an all-freshman in Paula Reus. The Lobos have had 12 conference selections in the last two seasons.

Further, five Lobos finished the 2021-22 season averaging double figures in points per game.

In the 2020-21 season, Bradbury led the Lobos to a Mountain West regular season championship, the first outright in program history and the first regular season title since the 2004-05 season. In addition, the Lobos were selected for the WNIT for the third time in four years.



The Lobos produced one of the most prolific offenses not only in the conference, but in the country, finishing among the top 25 in several categories. Among them, UNM finished fourth in the NCAA in made three-pointers per game (10.2), sixth in assist-turnover ratio (1.40), ninth in scoring offense (81.2 points per game), 14th in fewest turnovers per game (12.0) and assists per game (16.8) and 22nd in scoring margin (12.7). The Lobos led the Mountain West in scoring offense, scoring margin, assists per game, turnover margin, assist-turnover ratio and made three-pointers as well as second in field-goal percentage and steals per game.

UNM set a program record in scoring with 120 points against Arkansas-Pine Bluff on

Dec. 17, 2020 and in the process, made 17 three-pointers, falling just one short of tying the program record. Further, the Lobos registered 90-plus points in five games and 80-plus points in 11 of the 20 games on the season.

Four Lobos finished the 2020-21 season averaging double figures in points per game with six players finishing in double figures in scoring in two games (the only times it has been accomplished in program history), five players in five games and four in seven games.

As a result of UNM's successful season, five players were named to the All-Mountain West Team with LaTascya Duff also earning the superlative of Sixth Person of the Year. Duff was just the second Lobo to win the sixth person award. Making the all-conference team for the first time were Duff, Jaedyn De La Cerda and Antonia Anderson, as well as Shaiquel McGruder earning all-defensive and Ahlise Hurst earning the honorable mention distinction.

In his time at UNM, Bradbury has coached 13 All-Mountain West performers with Cherise Beynon, Jayla Everett, Jaisa Nunn, Aisia Robertson and Richelle van der Keijl joining De La Cerda, Duff, McGruder, Hurst and Anderson in making the All-Mountain West Team. Tesha Buck, Mykiel Burleson and Nike McClure have also earned MW recognition with Buck being the 2017-18 Newcomer of the Year, Burleson being named to the All-Freshman team in 2016-17 and McClure landing on the All-Defensive team in 2018-19.

In terms of major individual awards, Bradbury has coached the league's Newcomer of the Year each of his first three seasons in charge of the Lobos with van der Keijl earning the award in 2016-17, Buck in 2017-18 and Robertson in 2018-19. Additionally, Bradbury has coached the MW Player of the Year in Nunn (2018-19) and the Freshman of the Year in Everett (2018-19) as well as Sixth Person of the Year in Duff (2020-21).

CAREER HEAD COACHING YEAR-BY-YEAR

2007-08	11-19 (9-11)	Morehead State
2008-09	17-14 (11-7)	Morehead State
2009-10	22-11 (14-4)	Morehead State
2010-11	20-13 (11-7)	Wright State
2011-12	21-13 (12-6)	Wright State
2012-13	12-18 (6-10)	Wright State
2013-14	26-9 (12-4)	Wright State
2014-15	25-9 (12-4)	Wright State
2015-16	24-11 (12-6)	Wright State
2016-17	15-15 (10-8)	New Mexico
2017-18	25-11 (10-8)	New Mexico
2018-19	24-7 (14-4)	New Mexico
2019-20	15-17 (6-12)	New Mexico
2020-21	15-5 (11-3)	New Mexico
2021-22	26-10 (14-4)	New Mexico
2022-23	21-13 (12-6)	New Mexico
2023-24	3-0 (0-0)	New Mexico
Total	322-195 (176-104)	

EDUCATION

UT-Chattanooga - B.S. Recreation (1993)

COACHING EXPERIENCE

1991-93	Student Assistant	Chattanooga
1993-94	Assistant Coach	Chattanooga
1994-95	Assistant Coach	East Tennessee
1995-96	Assistant Coach	VCU
1996-02	Assistant Coach	Cincinnati
2002-07	Assistant Coach	Xavier
2007-10	Head Coach	Morehead State
2010-16	Head Coach	Wright State
2016-pres.	Head Coach	New Mexico

HEAD COACHING RECORD

2007-10	Morehead State	50-44 (.532)
2010-16	Wright State	128-73 (.637)
2016-pres.	New Mexico	144-78 (.649)
17 years		322-195 (.623)

RANKED OPPONENTS

#16 Marquette	11/13/17	W, 88-87
#23 West Virginia	11/29/19	L, 73-60
#6 Arizona	12/12/21	L, 77-60
#14 Arizona	12/4/22	L, 77-60

ALL-TIME SERIES UNDER COACH BRADBURY

OPPONENT	Series	H	A	N
Abilene Christian	1-0	1-0		
Air Force	10-2	5-1	4-1	1-0
Arizona	0-2	0-1	0-1	
Arkansas-Pine Bluff	1-0		1-0	
Arizona State	0-2	0-1	0-1	
Auburn	0-1	0-1		
Ball State	0-1	0-1		
Boise State	5-7	4-1	1-5	0-1
California Baptist	0-1			0-1
Colorado State	9-5	7-1	2-3	0-1
Denver	0-1	0-1		
Fairleigh Dickinson	1-0	1-0		
Fresno State	8-6	4-1	3-3	1-2
Grambling State	1-0	1-0		
Grand Canyon	1-0	1-0		
Hartford	1-0	1-0		
Houston	3-1	2-0	1-1	
Houston Baptist	1-0	1-0		
Illinois	1-0	1-0		
Lamar	2-0	2-0		
Louisiana-Monroe	1-0			1-0
Loyola Marymount	0-1	0-1		
Marquette	1-1	1-0	0-1	
Midwestern State	1-0		1-0	
Minnesota	0-1	0-1		
Mississippi State	0-1			0-1
Missouri	1-0			1-0
Navy	1-0	1-0		
Nevada	10-3	5-0	5-2	0-1
New Mexico State	10-2	6-0	4-2	
Nicholls	1-0		1-0	
Northern Arizona	3-0	2-0	1-0	
Northern New Mexico	4-0	4-0		
Oklahoma	1-1	1-0	0-1	
Old Dominion	1-0			1-0
Oregon State	0-1		0-1	
Pepperdine	1-0		1-0	
Prairie View A&M	1-0	1-0		
Providence	1-0	1-0		
Rice	1-0	1-0		
Sacramento State	1-0	1-0		
Saint Mary's	1-0	1-0		
Sam Houston State	1-0		1-0	
San Diego	1-0	1-0		
San Diego State	8-8	4-1	3-5	1-2
San Jose State	8-3	4-1	3-2	1-0
SMU	1-0	1-0		
South Carolina State	1-0	1-0		
Southern Utah	0-1		0-1	
St. Joseph's	0-1	0-1		
Stephen F. Austin	1-1	1-0		0-1
Tarleton State	1-0	1-0		
TCU	0-1	0-1		
Texas A&M-Commerce	1-0		1-0	
Texas State	1-0	1-0		
Texas Southern	1-0	1-0		
Texas Tech	1-2	1-0	0-1	0-1
Tulsa	0-1	0-1		
UC Irvine	1-0	1-0		
UC Riverside	1-0	1-0		
UNLV	4-10	2-4	2-6	
Utah State	13-0	5-0	8-0	
UTEP	5-0	4-0	1-0	
Washington	0-1		0-1	
West Virginia	0-1			0-1
Western Michigan	1-0	1-0		
Western New Mexico	1-0	1-0		
Wichita State	1-0	1-0		
Wyoming	5-8	2-4	3-3	0-1
	144-78	90-24	47-41	7-13

#1

NAHAWA DIARRA BERTHE

G | 5-9 | JR | Barcelona, Spain (Odessa College)



PPG	FG %	3PT %	FT %	RPG	APG	SPG	BPG	MPG
0.0	.000	--	--	2.0	2.0	--	--	8.2

NOTEWORTHY

- » First season at the DI level after spending past two seasons at Odessa
- » Started all 25 games for the Wranglers last season, averaging 29.6 minutes per game, 10.8 points per game, 4.2 rebounds per game, 2.6 assists per game and 2.3 steals per game
- » Scored in double figures in 16 games and recorded five or more rebounds in nine games

GAME-BY-GAME STATISTICS

Opponent	Date	GS	MIN	Total		3-Pointers		Free throws		Rebounds				PF				PTS	
				FG-FGA	PCT	3FG-3FGA	PCT	FT-FTA	PCT	OFF	DEF	TOT	AVG	PF	A	TO	BLK	STL	PTS
Texas Southern	11/06/2023		08:14	0-2	.000	0-0	.000	0-0	.000	1	1	2	2.0	0	2	2	0	0	0
Totals		0	08:14	0-2	.000	0-0	.000	0-0	.000	1	1	2	2.0	0	2	2	0	0	0

TOP PERFORMANCES

Points	Season	
	MW	
	Career	
FGM	Season	
	MW	
	Career	
FGA	Season	2, Texas Southern (11/6)
	MW	
	Career	2, Texas Southern (11/6)
3PT FGM	Season	
	MW	
	Career	
3PT FGA	Season	
	MW	
	Career	
FTM	Season	
	MW	
	Career	
FTA	Season	
	MW	
	Career	
Reb.	Season	2, Texas Southern (11/6)
	MW	
	Career	2, Texas Southern (11/6)
Asts.	Season	2, Texas Southern (11/6)
	MW	
	Career	2, Texas Southern (11/6)
Blocks	Season	
	MW	
	Career	
Steals	Season	
	MW	
	Career	
TO	Season	
	MW	
	Career	
Min.	Season	8, Texas Southern (11/6)
	MW	
	Career	8, Texas Southern (11/6)

PRODUCTION TRACKER

2023-24 Career

- Double-Double
- Scored 10+ pts
- Scored 20+ pts
- 10+ reb
- 3+ 3-pt

CAREER STATISTICS

				Field Goals		3-Point		F-Throws		Rebounds									Scoring	
SEASON	TEAM	GP-GS	MIN/AVG	FG-FGA	FG%	3FG-3FGA	3FG%	FT-FTA	FT%	OFF	DEF	TOT	AVG	PF-FO	A	TO	BLK	STL	PTS	AVG
2023-24	UNM	1-0	8/8.2	0-2	.000	0-0	.000	0-0	.000	1	1	2	2.0	0-0	2	2	0	0	0	0.0
TOTAL		1-0	8/8.2	0-2	.000	0-0	.000	0-0	.000	1	1	2	2.0	0-0	2	2	0	0	0	0.0

#2

NATALIA CHAVEZ

G | 5-10 | R-FR | Cochiti Pueblo, N.M. (Volcano Vista HS)



PPG	FG %	3PT %	FT %	RPG	APG	SPG	BPG	MPG
0.0	.000	.000	--	0.0	0.0	0.0	0.0	3.0

NOTEWORTHY

- REDSHIRTED LAST SEASON
- » Named the 1-5A District Player of the Year in 2019-20 and 2020-21, while also earning first team all-state and first team all-metro during that time span
 - » Reached the 1,000-point career milestone in 2021
 - » Was up for an ESPY award for her game-winning half-court shot to win the 5A title
 - »Majoring in business administration

GAME-BY-GAME STATISTICS

Opponent	Date	GS	MIN	Total		3-Pointers		Free throws		Rebounds				PF				PTS		AVG
				FG-FGA	PCT	3FG-3FGA	PCT	FT-FTA	PCT	OFF	DEF	TOT	AVG	PF	A	TO	BLK	STL	PTS	
Texas Southern	11/06/2023		03:02	0-1	.000	0-1	.000	0-0	.000	0	0	0	0.0	0	0	0	0	0	0	0.0
Totals		0	03:02	0-1	.000	0-1	.000	0-0	.000	0	0	0	0.0	0	0	0	0	0	0	0.0

TOP PERFORMANCES

Points	Season	
	MW	
	Career	
FGM	Season	
	MW	
	Career	
FGA	Season	1, Texas Southern (11/6)
	MW	
	Career	1, Texas Southern (11/6)
3PT FGM	Season	
	MW	
	Career	
3PT FGA	Season	1, Texas Southern (11/6)
	MW	
	Career	1, Texas Southern (11/6)
FTM	Season	
	MW	
	Career	
FTA	Season	
	MW	
	Career	
Reb.	Season	
	MW	
	Career	
Asts.	Season	
	MW	
	Career	
Blocks	Season	
	MW	
	Career	
Steals	Season	
	MW	
	Career	
TO	Season	
	MW	
	Career	
Min.	Season	3, Texas Southern (11/6)
	MW	
	Career	3, Texas Southern (11/6)

PRODUCTION TRACKER

2023-24 Career

- Double-Double
- Scored 10+ pts
- Scored 20+ pts
- 10+ reb
- 3+ 3-pt

CAREER STATISTICS

				Field Goals		3-Point		F-Throws		Rebounds									Scoring	
SEASON	TEAM	GP-GS	MIN/AVG	FG-FGA	FG%	3FG-3FGA	3FG%	FT-FTA	FT%	OFF	DEF	TOT	AVG	PF-FO	A	TO	BLK	STL	PTS	AVG
2023-24	UNM	1-0	3/3.0	0-1	.000	0-1	.000	0-0	.000	0	0	0	0.0	0-0	0	0	0	0	0	0.0
TOTAL		1-0	3/3.0	0-1	.000	0-1	.000	0-0	.000	0	0	0	0.0	0-0	0	0	0	0	0	0.0

#3

NYAH WILSON

G | 5-8 | JR | Dallas, Texas (Syracuse)



PPG	FG %	3PT %	FT %	RPG	APG	SPG	BPG	MPG
14.7	.414	.571	.889	5.3	2.3	0.3	0.0	31.6

NOTEWORTHY

- » Appeared in 20 games as a sophomore and 20 games with one start as a freshman at Syracuse
- » Graduated from Duncanville High School and was a four-star recruit by ESPN HoopGurlz, a McDonald's All-America nominee and was on the Terrific 25 rankings as a sophomore
- » Liberal arts major

TOP PERFORMANCES

Points	Season MW	20, Texas Southern (11/6)
	Career	20, Texas Southern (11/6)
FGM	Season MW	5, Texas Southern (11/6)
	Career	5, Texas Southern (11/6)
FGA	Season MW	11, Tarleton St. (11/12)
	Career	11, Tarleton St. (11/12)
3PT FGM	Season MW	4, Texas Southern (11/6)
	Career	4, Texas Southern (11/6)
3PT FGA	Season MW	4, Texas Southern (11/6)
	Career	4, Texas Southern (11/6)
FTM	Season MW	8, Tarleton St. (11/12)
	Career	8, Tarleton St. (11/12)
FTA	Season MW	9, Tarleton St. (11/12)
	Career	9, Tarleton St. (11/12)
Reb.	Season MW	9, Tarleton St. (11/12)
	Career	9, Tarleton St. (11/12)
Asts.	Season MW	3, Texas Southern (11/6)
	Career	4, Cornell (12/8/21)
Blocks	Season MW	
	Career	
Steals	Season MW	1, Texas Southern (11/6)
	Career	2, done 2x
TO	Season MW	1, 2x
	Career	0, done 26x
Min.	Season MW	33, Tarleton St. (11/12)
	Career	33, Tarleton St. (11/12)

GAME-BY-GAME STATISTICS

Opponent	Date	GS	MIN	Total		3-Pointers		Free throws		Rebounds											
				FG-FGA	PCT	3FG-3FGA	PCT	FT-FTA	PCT	OFF	DEF	TOT	AVG	PF	A	TO	BLK	STL	PTS	AVG	
Texas Southern	11/06/2023	*	32:08	5-8	.625	4-4	1.000	6-7	.857	1	3	4	4.0	2	3	3	0	1	20	20.0	
at Pepperdine	11/09/2023	*	29:20	3-10	.300	0-2	.000	2-2	1.000	0	3	3	3.5	4	2	1	0	0	8	14.0	
Tarleton St.	11/12/2023	*	33:25	4-11	.364	0-1	.000	8-9	.889	0	9	9	5.3	1	2	1	0	0	16	14.7	
Totals		3	94:53	12-29	.414	4-7	.571	16-18	.889	1	15	16	5.3	7	7	5	0	1	44	14.7	

PRODUCTION TRACKER

2023-24 Career

Double-Double		
Scored 10+ pts	2	2
Scored 20+ pts	1	1
10+ reb		
3+ 3-pt	1	1

CAREER STATISTICS

				Field Goals		3-Point		F-Throws		Rebounds									Scoring	
SEASON	TEAM	GP-GS	MIN/AVG	FG-FGA	FG%	3FG-3FGA	3FG%	FT-FTA	FT%	OFF	DEF	TOT	AVG	PF-FO	A	TO	BLK	STL	PTS	AVG
2021-22	SU	20-1	179/9.0	16-46	.348	1-9	.111	3-9	.333	3	9	12	0.6	16-0	16	13	0	7	36	1.8
2022-23	SU	20-0	115/5.7	12-22	.545	0-2	.000	8-11	.727	4	12	16	0.8	12-0	8	9	0	7	32	1.6
2023-24	UNM	3-3	95/31.6	12-29	.414	4-7	.571	16-18	.889	1	15	16	5.3	7-0	7	5	0	1	44	14.7
TOTAL FOR UNM		3-3	95/31.6	12-29	.414	4-7	.571	16-18	.889	1	15	16	5.3	7-0	7	5	0	1	44	14.7
TOTAL		43-4	389/9.0	40-97	.412	5-18	.278	27-38	.711	8	36	44	1.0	35-0	31	27	0	15	112	2.6

#4

GIANNA MCMANAMAN

PG | 5-7 | FR | Chapel Hill, N.C. (Northwood HS)



PPG	FG %	3PT %	FT %	RPG	APG	SPG	BPG	MPG
--	--	--	--	--	--	--	--	--

NOTEWORTHY

- » Won conference championships in 2019-20, 2020-21 and 2021-22 and won a state championship in 2021-22
- » Averaged 12 ppg, 5 apg, 4 rpg and shot 43 percent from three-point range in high school
- » Is the fourth member of her family to attend UNM, joining her mother (Lia McManaman), grandfather (Robert Sanchez), grandmother (Bonnie Sanchez)
- » Majoring in exercise science

GAME-BY-GAME STATISTICS

TOP PERFORMANCES

Points	Season MW Career
FGM	Season MW Career
FGA	Season MW Career
3PT FGM	Season MW Career
3PT FGA	Season MW Career
FTM	Season MW Career
FTA	Season MW Career
Reb.	Season MW Career
Asts.	Season MW Career
Blocks	Season MW Career
Steals	Season MW Career
TO	Season MW Career
Min.	Season MW Career

PRODUCTION TRACKER

2023-24 Career

- Double-Double
- Scored 10+ pts
- Scored 20+ pts
- 10+ reb
- 3+ 3-pt

CAREER STATISTICS

#5

LARA LANGERMANN

G | 5-7 | FR | Breckerfeld, Germany (Theodor-Heuss-Gymnasium Hagen)



PPG	FG %	3PT %	FT %	RPG	APG	SPG	BPG	MPG
3.0	.300	.286	.333	2.0	0.7	0.7	0.0	18.0

NOTEWORTHY

- » Recently played for the U18 and U20 German National Team over the summer.
- » Played for VfL Viactiv AstroLadies Bochum, a Division 2 team in the Damen Basketballbundesliga, the BasketGirls Ruhr in the Weibliche Nachwuchsbundesliga (WNBL), a first German under 18 league, and for VfL Viactiv AstroLadies Bochum in the Damen Basketballbundesliga, as well as Herner TC.
- » Majoring in exercise science

TOP PERFORMANCES

Points	Season	9, Pepperdine (11/9)
	MW	
	Career	9, Pepperdine (11/9)
FGM	Season	3, Pepperdine (11/9)
	MW	
	Career	3, Pepperdine (11/9)
FGA	Season	6, Pepperdine (11/9)
	MW	
	Career	6, Pepperdine (11/9)
3PT FGM	Season	2, Pepperdine (11/9)
	MW	
	Career	2, Pepperdine (11/9)
3PT FGA	Season	4, Pepperdine (11/9)
	MW	
	Career	4, Pepperdine (11/9)
FTM	Season	1, Pepperdine (11/9)
	MW	
	Career	1, Pepperdine (11/9)
FTA	Season	3, Pepperdine (11/9)
	MW	
	Career	3, Pepperdine (11/9)
Reb.	Season	3, Pepperdine (11/9)
	MW	
	Career	3, Pepperdine (11/9)
Asts.	Season	2, Pepperdine (11/9)
	MW	
	Career	2, Pepperdine (11/9)
Blocks	Season	
	MW	
	Career	
Steals	Season	1, 2x
	MW	
	Career	1, 2x
TO	Season	0, 2x
	MW	
	Career	0, 2x
Min.	Season	22, Pepperdine (11/9)
MW		
	Career	22, Pepperdine (11/9)

GAME-BY-GAME STATISTICS

Opponent	Date	GS	MIN	Total		3-Pointers		Free throws		Rebounds											
				FG-FGA	PCT	3FG-3FGA	PCT	FT-FTA	PCT	OFF	DEF	TOT	AVG	PF	A	TO	BLK	STL	PTS	AVG	
Texas Southern	11/06/2023		12:36	0-1	.000	0-1	.000	0-0	.000	0	1	1	1.0	1	0	3	0	1	0	0.0	
at Pepperdine	11/09/2023		22:29	3-6	.500	2-4	.500	1-3	.333	0	3	3	2.0	1	2	0	0	1	9	4.5	
Tarleton St.	11/12/2023		19:02	0-3	.000	0-2	.000	0-0	.000	1	1	2	2.0	1	0	0	0	0	0	3.0	
Totals		0	54:07	3-10	.300	2-7	.286	1-3	.333	1	5	6	2.0	3	2	3	0	2	9	3.0	

PRODUCTION TRACKER

2023-24 Career

Double-Double
Scored 10+ pts
Scored 20+ pts
10+ reb
3+ 3-pt

CAREER STATISTICS

				Field Goals		3-Point		F-Throws		Rebounds										Scoring	
SEASON	TEAM	GP-GS	MIN/AVG	FG-FGA	FG%	3FG-3FGA	3FG%	FT-FTA	FT%	OFF	DEF	TOT	AVG	PF-FO	A	TO	BLK	STL	PTS	AVG	
2023-24	UNM	3-0	54/18.0	3-10	.300	2-7	.286	1-3	.333	1	5	6	2.0	3-0	2	3	0	2	9	3.0	
TOTAL		3-0	54/18.0	3-10	.300	2-7	.286	1-3	.333	1	5	6	2.0	3-0	2	3	0	2	9	3.0	



PARIS LAURO

F | 6-1 | FR | Dallas, Texas (Highland Park HS)



PPG	FG %	3PT %	FT %	RPG	APG	SPG	BPG	MPG
0.0	--	--	--	0.0	0.0	0.0	0.0	1.4

NOTEWORTHY

- » Averaged 17.3 ppg, 8.3 rpg, 2.0 bpg her junior season and 23.6 ppg, 8.0 rpg and 1.8 bpg and was named the District 7-6A Most Valuable Player her senior season.
- » Named to the TABC 5A All-Region Team, named Offensive Player of the Year for District 13-5A and earned academic all-district her junior year
- » Majoring in exercise science

GAME-BY-GAME STATISTICS

Opponent	Date	GS	MIN	Total		3-Pointers		Free throws		Rebounds							
				FG-FGA	PCT	3FG-3FGA	PCT	FT-FTA	PCT	OFF	DEF	TOT	AVG	PF	A	TO	BLK
Texas Southern	11/06/2023		01:25	0-0	.000	0-0	.000	0-0	.000	0	0	0	0.0	1	0	0	0
Totals		0	01:25	0-0	.000	0-0	.000	0-0	.000	0	0	0	0.0	1	0	0	0

TOP PERFORMANCES

Points	Season	
	MW	
	Career	
FGM	Season	
	MW	
	Career	
FGA	Season	
	MW	
	Career	
3PT FGM	Season	
	MW	
	Career	
3PT FGA	Season	
	MW	
	Career	
FTM	Season	
	MW	
	Career	
FTA	Season	
	MW	
	Career	
Reb.	Season	
	MW	
	Career	
Asts.	Season	
	MW	
	Career	
Blocks	Season	
	MW	
	Career	
Steals	Season	
	MW	
	Career	
TO	Season	
	MW	
	Career	
Min.	Season	1, Texas Southern (11/6)
	MW	
	Career	1, Texas Southern (11/6)

PRODUCTION TRACKER

2023-24 Career

- Double-Double
- Scored 10+ pts
- Scored 20+ pts
- 10+ reb
- 3+ 3-pt

CAREER STATISTICS

				Field Goals		3-Point		F-Throws		Rebounds									Scoring	
SEASON	TEAM	GP-GS	MIN/AVG	FG-FGA	FG%	3FG-3FGA	3FG%	FT-FTA	FT%	OFF	DEF	TOT	AVG	PF-FO	A	TO	BLK	STL	PTS	AVG
2023-24	UNM	1-0	1/1.4	0-0	.000	0-0	.000	0-0	.000	0	0	0	0.0	1-0	0	0	0	0	0	0.0
TOTAL		1-0	1/1.4	0-0	.000	0-0	.000	0-0	.000	0	0	0	0.0	1-0	0	0	0	0	0	0.0

#12

ANIYAH AUGMON

G | 5-8 | JR | San José, Calif. (Woodside Priory School)



PPG	FG %	3PT %	FT %	RPG	APG	SPG	BPG	MPG
11.7	.441	.167	.667	6.0	4.7	3.7	0.3	31.4

NOTEWORTHY

- » 8 steals at Pepperdine tied for the second most by a Lobo in program history, which was last done on Feb. 8, 1998.
- » Averaged 21.2 minutes per game, 7.1 points per game, 4.4 rebounds per game, 1.9 assists per game, 0.7 steals per game, 0.2 blocks per game and shot 44.0% from the floor last season
- » Recorded career-high 5 assists against Old Dominion and matched it at Wyoming
- » Scored in double figures in 8 conference games
- » Career-high 18 points against UNLV after having a then-career-high 11 against Nevada
- » Perfect 3-3 from three at UNLV, perfect 6-6 from free-throw line against Boise State
- » First career double-double at UNLV with a team-high 18 points and team-high 10 rebounds. Second came at Utah State with 12 points and career-high 13 rebounds and third came at Air Force with team-high 17 points and team-high 11 rebounds
- » 10 or more rebounds in 4 games
- » Played in 33 games with 1 start (at Houston) as a freshman
- » Liberal arts major

GAME-BY-GAME STATISTICS

Opponent	Date	GS	MIN	Total		3-Pointers		Free throws		Rebounds				Points			
				FG-FGA	PCT	3FG-3FGA	PCT	FT-FTA	PCT	OFF	DEF	TOT	AVG	PF	A	TO	BLK
Texas Southern	11/06/2023	*	30:37	7-11	.636	1-2	.500	2-2	1.000	0	6	6	6.0	0	6	5	0
at Pepperdine	11/09/2023	*	36:40	7-17	.412	0-3	.000	2-4	.500	1	8	9	7.5	2	3	4	0
Tarleton St.	11/12/2023	*	26:47	1-6	.167	0-1	.000	0-0	.000	0	3	3	6.0	3	5	3	1
Totals		3	94:04	15-34	.441	1-6	.167	4-6	.667	1	17	18	6.0	5	14	12	1

TOP PERFORMANCES

Points	Season	17, Texas Southern (11/6)
	MW	18, UNLV (1/14/23)
	Career	18, UNLV (1/14/23)
FGM	Season	7, 2x
	MW	7, San Diego St. (2/4/23)
	Career	7, 3x
FGA	Season	17, Pepperdine (11/9)
	MW	13, Colorado St. (1/26/23)
	Career	17, Pepperdine (11/9)
3PT FGM	Season	1, Texas Southern (11/6)
	MW	3, UNLV (1/14/23)
	Career	3, UNLV (1/14/23)
3PT FGA	Season	3, Pepperdine (11/9)
	MW	4, Colorado St. (1/26/23)
	Career	4, Colorado St. (1/26/23)
FTM	Season	2, 2x
	MW	8, Nevada (2/11/23)
	Career	8, Nevada (2/11/23)
FTA	Season	4, Pepperdine (11/9)
	MW	10, Air Force (2/23/23)
	Career	10, Air Force (2/23/23)
Reb.	Season	9, Pepperdine (11/9)
	MW	13, Utah State (1/28/23)
	Career	13, Utah State (1/28/23)
Asts.	Season	6, Texas Southern (11/6)
	MW	5, Wyoming (1/5/23)
	Career	5, 2x
Blocks	Season	1, Tarleton St. (11/12)
	MW	1, 5x
	Career	1, 7x
Steals	Season	8, Pepperdine (11/9)
	MW	3, Air Force (2/23/23)
	Career	8, Pepperdine (11/9)
TO	Season	3, Tarleton St. (11/12)
	MW	0, 13x
	Career	0, done 15x
Min.	Season	37, Pepperdine (11/9)
	MW	30, 2x
	Career	37, Pepperdine (11/9)

PRODUCTION TRACKER

2023-24 Career

Double-Double	3
Scored 10+ pts	2
Scored 20+ pts	10
10+ reb	5
3+ 3-pt	1

CAREER STATISTICS

				Field Goals		3-Point		F-Throws		Rebounds				Scoring			
SEASON	TEAM	GP-GS	MIN/AVG	FG-FGA	FG%	3FG-3FGA	3FG%	FT-FTA	FT%	OFF	DEF	TOT	AVG	PF-FO	A	TO	BLK
2021-22	UNM	33-1	312/9.5	15-35	.429	1-9	.111	15-23	.652	17	46	63	1.9	31-0	21	27	1
2022-23	UNM	31-2	657/21.2	77-175	.440	11-37	.297	54-77	.701	49	86	135	4.4	63-1	60	74	6
2023-24	UNM	3-3	94/31.4	15-34	.441	1-6	.167	4-6	.667	1	17	18	6.0	5-0	14	12	1
TOTAL		67-6	1063/15.9	107-244	.439	13-52	.250	73-106	.689	67	149	216	3.2	99-1	95	113	8

#14

HULDA JOAQUIM

F | 6-1 | SR | Maputo, Mozambique (Seward County CC)



PPG	FG %	3PT %	FT %	RPG	APG	SPG	BPG	MPG
4.0	.545	--	--	4.3	0.7	0.3	0.0	15.4

NOTEWORTHY

- » Second season with the Lobos
- » Averaged 6.2 minutes per game, 2.2 points per game, 1.4 rebounds per game, 0.3 steals per game and 0.5 blocks per game last season, playing in 13 games.
- » Scored a season-high nine points against Western New Mexico, while also having season-high three steals, two blocks and six rebounds
- » Majoring in business administration

GAME-BY-GAME STATISTICS

Opponent	Date	GS	MIN	Total		3-Pointers		Free throws		Rebounds							
				FG-FGA	PCT	3FG-3FGA	PCT	FT-FTA	PCT	OFF	DEF	TOT	AVG	PF	A	TO	BLK
Texas Southern	11/06/2023		09:30	1-4	.250	0-0	.000	0-0	.000	3	2	5	5.0	0	0	1	0
at Pepperdine	11/09/2023		13:29	2-3	.667	0-0	.000	0-0	.000	2	0	2	3.5	1	0	0	0
Tarleton St.	11/12/2023		23:11	3-4	.750	0-0	.000	0-0	.000	3	3	6	4.3	2	2	2	0
Totals		0	46:10	6-11	.545	0-0	.000	0-0	.000	8	5	13	4.3	3	2	3	0

TOP PERFORMANCES

Points	Season	6, Tarleton St. (11/12)
	MW	5, Utah State (2/25/23)
	Career	9, Western N.M. (11/22/22)
FGM	Season	3, Tarleton St. (11/12)
	MW	2, Utah State (2/25/23)
	Career	4, Western N.M. (11/22/22)
FGA	Season	4, 2x
	MW	5, Utah State (2/25/23)
	Career	9, Western N.M. (11/22/22)
3PT FGM	Season	
	MW	1, Utah State (2/25/23)
	Career	1, 2x
3PT FGA	Season	
	MW	2, Utah State (2/25/23)
	Career	2, Utah State (2/25/23)
FTM	Season	
	MW	1, UNLV (1/14/23)
	Career	2, SCSU (12/29/22)
FTA	Season	
	MW	2, UNLV (1/14/23)
	Career	2, 3x
Reb.	Season	6, Tarleton St. (11/12)
	MW	3, 2x
	Career	6, 2x
Asts.	Season	2, Tarleton St. (11/12)
	MW	1, 2x
	Career	2, Tarleton St. (11/12)
Blocks	Season	
	MW	2, Utah State (2/25/23)
	Career	2, 2x
Steals	Season	1, Texas Southern (11/6)
	MW	1, UNLV (1/14/23)
	Career	3, Western N.M. (11/22/22)
TO	Season	0, Pepperdine (11/9)
	MW	0, 6x
	Career	0, 12x
Min.	Season	23, Tarleton St. (11/12)
	MW	12, Utah State (2/25/23)
	Career	23, Tarleton St. (11/12)

PRODUCTION TRACKER

2023-24 Career

Double-Double
 Scored 10+ pts
 Scored 20+ pts
 10+ reb
 3+ 3-pt

CAREER STATISTICS

				Field Goals		3-Point		F-Throws		Rebounds									Scoring		
SEASON	TEAM	GP-GS	MIN	AVG	FG-FGA	FG%	3FG-3FGA	3FG%	FT-FTA	FT%	OFF	DEF	TOT	AVG	PF-FO	A	TO	BLK	STL	PTS	AVG
2022-23	UNM	13-0	80	6.2	11-26	.423	2-6	.333	4-6	.667	9	9	18	1.4	2-0	3	3	6	4	28	2.2
2023-24	UNM	3-0	46	15.4	6-11	.545	0-0	.000	0-0	.000	8	5	13	4.3	3-0	2	3	0	1	12	4.0
TOTAL		16-0	127	7.9	17-37	.459	2-6	.333	4-6	.667	17	14	31	1.9	5-0	5	6	6	5	40	2.5

#15

JAELYN BATES

PG | 5-7 | SO | Albuquerque, N.M. (Volcano Vista HS)



PPG	FG %	3PT %	FT %	RPG	APG	SPG	BPG	MPG
--	--	--	--	--	--	--	--	--

NOTEWORTHY

- » Averaged 10.1 minutes per game, 3.1 points per game, 1.3 assists per game, 0.4 steals per game, playing in 22 games last season
- » Scored in double figures in 4 games last season
- » Perfect 4-4 from 3 against S. Carolina State
- » 7 games with multiple assists, 8 games with at least 1 steal

- » Won back-to-back District 1-5A championships and won the 2019 and 2020 1-5A District tournament
- » Named first team all-district, first team all-metro, second team all-state, was named the District Tournament Player of the Game, District 1-5A Player of the Year and was named the Volcano Vista Winter Sports Female Athlete of the Year in 2019
- » Biochemistry major

GAME-BY-GAME STATISTICS

TOP PERFORMANCES

Points	Season MW	11, Utah State (2/25/23)
	Career	16, SCSU (12/29/22)
FGM	Season MW	4, Utah State (2/25/23)
	Career	6, SCSU (12/29/22)
FGA	Season MW	6, Utah State (2/25/23)
	Career	15, Southern Utah (11/7/23)
3PT FGM	Season MW	3, Utah State (2/25/23)
	Career	4, SCSU (12/29/22)
3PT FGA	Season MW	5, Utah State (2/25/23)
	Career	9, Southern Utah (11/7/23)
FTM	Season MW	1, UNLV (1/14/23)
	Career	1, 2x
FTA	Season MW	2, 2x
	Career	2, 3x
Reb.	Season MW	3, UNLV (1/14/23)
	Career	5, Western N.M. (11/22/22)
Asts.	Season MW	3, 2x
	Career	8, Western N.M. (11/22/22)
Blocks	Season MW	2, Utah State (2/25/23)
	Career	2, Utah State (2/25/23)
Steals	Season MW	1, 2x
	Career	2, Western N.M. (11/22/22)
TO	Season MW	
	Career	0, 9x
Min.	Season MW	17, Wyoming (1/5/23)
	Career	33, Western N.M.(11/22/22)

PRODUCTION TRACKER

2023-24 Career

Double-Double	
Scored 10+ pts	4
Scored 20+ pts	
10+ reb	
3+ 3-pt	2

CAREER STATISTICS

				Field Goals		3-Point		F-Throws		Rebounds								Scoring		
SEASON	TEAM	GP-GS	MIN/AVG	FG-FGA	FG%	3FG-3FGA	3FG%	FT-FTA	FT%	OFF	DEF	TOT	AVG	PF-FO	A	TO	BLK	STL	PTS	AVG
2022-23	UNM	22-1	222/10.1	27-67	.403	13-41	.317	2-7	.286	1	19	20	0.9	15-0	29	21	3	9	69	3.1
TOTAL		22-1	222/10.1	27-67	.403	13-41	.317	2-7	.286	1	19	20	0.9	15-0	29	21	3	9	69	3.1

#21

MACKENZIE CURTIS

G | 5-9 | R-SO | Lakeside, Calif. (El Capitan HS)



PPG	FG %	3PT %	FT %	RPG	APG	SPG	BPG	MPG
--	--	--	--	--	--	--	--	--

NOTEWORTHY

REDSHIRTED LAST SEASON

- » Finished in double figures in first college appearance
- » Played in 21 games, and averaged 5.9 minutes per game freshman season.
- » Scored in six games with a season-high 12 points and two assists against Northern New Mexico with season-high three, three-pointers
- » Averaged 22.2 points, 9.5 rebounds, 3.3 assists, 3.5 steals and 1.0 blocks per game in high school
- » Four-time team MVP, three-time league MVP, four-time San Diego Union Tribune Scholar-Athlete
- » Named First-Team All-CIF in 2020 and Second Team All-CIF in 2019
- » No. 1 scorer in San Diego for two years and No. 3 in California for scoring in the class of 2021
- » Education major

GAME-BY-GAME STATISTICS

TOP PERFORMANCES

Points	Season	
	MW	3, Utah State (2/16/22)
	Career	12, N. N.M. (11/12/21)
FGM	Season	
	MW	1, 2x
	Career	3, N. N.M. (11/12/21)
FGA	Season	
	MW	4, Boise State (2/19/22)
	Career	10, N. N.M. (11/12/21)
3PT FGM	Season	
	MW	1, Utah State (2/16/22)
	Career	3, N. N.M. (11/12/21)
3PT FGA	Season	
	MW	2, Utah State (2/16/22)
	Career	7, N. N.M. (11/12/21)
FTM	Season	
	MW	2, Utah State (2/16/22)
	Career	3, N. N.M. (11/12/21)
FTA	Season	
	MW	2, Utah State (2/16/22)
	Career	4, N. N.M. (11/12/21)
Reb.	Season	
	MW	1, 3x
	Career	3, 2x
Asts.	Season	
	MW	1, 3x
	Career	2, N. N.M. (11/12/21)
Blocks	Season	
	MW	
	Career	
Steals	Season	
	MW	1, Utah State (1/6/22)
	Career	1, Utah State (1/6/22)
TO	Season	
	MW	0, 11x
	Career	0, 12x
Min.	Season	
	MW	11, Colorado St. (1/15/22)
	Career	19, N. N.M. (11/12/21)

PRODUCTION TRACKER

2023-24 Career

Double-Double	
Scored 10+ pts	1
Scored 20+ pts	
10+ reb	
3+ 3-pt	1

CAREER STATISTICS

				Field Goals		3-Point		F-Throws		Rebounds								Scoring		
SEASON	TEAM	GP-GS	MIN/AVG	FG-FGA	FG%	3FG-3FGA	3FG%	FT-FTA	FT%	OFF	DEF	TOT	AVG	PF-FO	A	TO	BLK	STL	PTS	AVG
2021-22	UNM	21-0	123/5.9	7-36	.194	5-25	.200	5-6	.833	1	9	10	0.5	16-0	6	7	0	1	24	1.1
TOTAL		21-0	123/5.9	7-36	.194	5-25	.200	5-6	.833	1	9	10	0.5	16-0	6	7	0	1	24	1.1

#22

CHARLOTTE KOHL

C | 6-5 | GR | Giessen, Germany (Mississippi State)



PPG	FG %	3PT %	FT %	RPG	APG	SPG	BPG	MPG
6.3	.438	--	.833	6.7	1.3	0.7	1.0	22.6

NOTEWORTHY

- » First year with the Lobos after graduating from Mississippi State. Has two years of eligibility remaining.
- » Played in 55 games with 14 starts at MSU
- » Averaged 2.4 points, 3.2 rebounds and 0.8 blocks per game while shooting a team-high .537 from the field her sophomore season.
- » First career double-double was against Arkansas with 10 points and 18 rebounds during her sophomore season.
- » Graduated with a degree in psychology.

GAME-BY-GAME STATISTICS

Opponent	Date	GS	MIN	Total		3-Pointers		Free throws		Rebounds							
				FG-FGA	PCT	3FG-3FGA	PCT	FT-FTA	PCT	OFF	DEF	TOT	AVG	PF	FO	A	TO
Texas Southern	11/06/2023	*	25:51	2-6	.333	0-0	.000	2-2	1.000	3	6	9	9.0	1	1	2	3
at Pepperdine	11/09/2023	*	26:31	3-6	.500	0-0	.000	1-2	.500	5	1	6	7.5	3	0	4	0
Tarleton St.	11/12/2023	*	15:34	2-4	.500	0-0	.000	2-2	1.000	1	4	5	6.7	4	3	1	0
Totals		3	67:56	7-16	.438	0-0	.000	5-6	.833	9	11	20	6.7	8	4	7	3

TOP PERFORMANCES

Points	Season	7, Pepperdine (11/9)
	MW	
	Career	10, Arkansas (2/27/22)
FGM	Season	3, Pepperdine (11/9)
	MW	
	Career	4, 3x
FGA	Season	6, 2x
	MW	
	Career	8, ULM (11/29/22)
3PT FGM	Season	
	MW	
	Career	
3PT FGA	Season	
	MW	
	Career	1, 7x
FTM	Season	2, 2x
	MW	
	Career	3, 3x
FTA	Season	2, 3x
	MW	
	Career	5, Florida A&M (12/15/22)
Reb.	Season	9, Texas Southern (11/6)
	MW	
	Career	18, Arkansas (2/27/22)
Asts.	Season	3, Tarleton St. (11/12)
	MW	
	Career	3, Tarleton St. (11/12)
Blocks	Season	3, Texas Southern (11/6)
	MW	
	Career	3, 3x
Steals	Season	1, 2x
	MW	
	Career	2, Ole Miss (2/13/22)
TO	Season	1, Tarleton St. (11/12)
	MW	
	Career	0, 31x
Min.	Season	26, Pepperdine (11/9)
	MW	
	Career	34, Kentucky (2/15/22)

PRODUCTION TRACKER

2023-24 Career

Double-Double	1
Scored 10+ pts	1
Scored 20+ pts	
10+ reb	2
3+ 3-pt	

CAREER STATISTICS

				Field Goals		3-Point		F-Throws		Rebounds										Scoring	
SEASON	TEAM	GP-GS	MIN/AVG	FG-FGA	FG%	3FG-3FGA	3FG%	FT-FTA	FT%	OFF	DEF	TOT	AVG	PF-FO	A	TO	BLK	STL	PTS	AVG	
2020-21	MSU	5-0	27/5.4	1-7	.143	0-2	.000	2-4	.500	3	2	5	1.0	4-0	3	5	1	0	4	0.8	
2021-22	MSU	29-11	396/13.7	29-54	.537	0-5	.000	13-29	.448	45	49	94	3.2	50-1	7	16	23	6	71	2.4	
2022-23	MSU	21-3	138/6.6	10-27	.370	0-0	.000	4-9	.444	6	14	20	1.0	26-0	5	13	6	2	24	1.1	
2023-24	UNM	3-3	68/22.6	7-16	.438	0-0	.000	5-6	.833	9	11	20	6.7	8-0	4	7	3	2	19	6.3	
TOTAL FOR UNM		3-3	68/22.6	7-16	.438	0-0	.000	5-6	.833	9	11	20	6.7	8-0	4	7	3	2	19	6.3	
TOTAL		58-17	629/10.8	47-104	.452	0-7	.000	24-48	.500	63	76	139	2.4	88-1	19	41	33	10	118	2.0	

#30

PAULA REUS

F | 6-1 | JR | Palma de Mallorca, Spain (IES Joaquim Blume)



PPG	FG %	3PT %	FT %	RPG	APG	SPG	BPG	MPG
9.7	.406	.167	1.000	6.7	2.0	1.0	0.3	32.9

NOTEWORTHY

- » Mountain West All-Freshman Team
- » MW Freshman of the Week Jan. 24, 2022 and Feb. 21, 2022
- » Played in 33 games with 22 starts and averaged 24.8 minutes per game, 8.0 points per game, 4.3 rebounds per game, 1.8 assists per game, 0.7 steals per game and 0.4 blocks per game last season
- » First career double-double against New Mexico State (11 pts, 10 reb.) last season
- » 13 games scoring in double figures, at least 1 steal in 17 games, 11 games with at least 1 block, 14 games with multiple assists
- » 8 games scoring double figures freshman season
- » Team-high 15 points at No. 6 Arizona, making her first seven shots of the game
- » At least 1 steal in 17 games, 1 block in 10 games. Multiple steals in 5 games, multiple blocks in 4 games
- » Played on the U16 Spanish national team at the U16 FIBA 2019 European Championship, finishing third
- » Played for Barça CBS LF2, winning the regular season championship, and qualified for the finals
- » Liberal arts major

GAME-BY-GAME STATISTICS

Opponent	Date	GS	MIN	Total		3-Pointers		Free throws		Rebounds							
				FG-FGA	PCT	3FG-3FGA	PCT	FT-FTA	PCT	OFF	DEF	TOT	AVG	PF	A	TO	BLK
Texas Southern	11/06/2023	*	27:57	4-9	.444	0-2	.000	1-1	1.000	2	4	6	6.0	1	2	0	0
at Pepperdine	11/09/2023	*	36:18	2-11	.182	0-5	.000	0-0	.000	2	5	7	6.5	2	3	3	0
Tarleton St.	11/12/2023	*	34:31	7-12	.583	2-5	.400	0-0	.000	0	7	7	6.7	3	1	3	1
Totals			3 98:46	13-32	.406	2-12	.167	1-1	1.000	4	16	20	6.7	6	6	6	1

TOP PERFORMANCES

Points	Season	16, Tarleton St. (11/12)
	MW	19, Fresno St. (1/22/22)
	Career	19, Fresno St. (1/22/22)
FGM	Season	7, Tarleton St. (11/12)
	MW	8, Fresno St. (1/22/22)
	Career	8, Fresno St. (1/22/22)
FGA	Season	12, Tarleton St. (11/12)
	MW	14, 2x
	Career	14, 2x
3PT FGM	Season	2, Tarleton St. (11/12)
	MW	4, Colorado St. (1/15/22)
	Career	5, Texas A&M-C (11/26/22)
3PT FGA	Season	5, 2x
	MW	10, Colorado St. (1/15/22)
	Career	10, Colorado St. (1/15/22)
FTM	Season	1, Texas Southern (11/6)
	MW	5, San Diego St. (2/4/23)
	Career	5, San Diego St. (2/4/23)
FTA	Season	1, Texas Southern (11/6)
	MW	8, San Diego St. (2/4/23)
	Career	8, San Diego St. (2/4/23)
Reb.	Season	7, 2x
	MW	10, Colorado St. (1/7/23)
	Career	10, 2x
Asts.	Season	3, Pepperdine (11/9)
	MW	4, 2x
	Career	7, Houston (11/20/21)
Blocks	Season	1, Tarleton St. (11/12)
	MW	2, Utah State (2/16/22)
	Career	3, Texas A&M-C (11/26/22)
Steals	Season	2, Tarleton St. (11/12)
	MW	2, 2x
	Career	4, 2x
TO	Season	0, Texas Southern (11/6)
	MW	0, 8x
	Career	0, 16x
Min.	Season	36, Pepperdine (11/9)
	MW	32, Wyoming (1/5/23)
	Career	38, 2x

PRODUCTION TRACKER

2023-24 Career

Double-Double	1
Scored 10+ pts	1 22
Scored 20+ pts	
10+ reb	2
3+ 3-pt	3

CAREER STATISTICS

				Field Goals		3-Point		F-Throws		Rebounds									Scoring		
SEASON	TEAM	GP-GS	MIN	AVG	FG-FGA	FG%	3FG-3FGA	3FG%	FT-FTA	FT%	OFF	DEF	TOT	AVG	PF-FO	A	TO	BLK	STL	PTS	AVG
2021-22	UNM	34-2	662	19.5	93-212	.439	18-67	.269	30-37	.811	25	109	134	3.9	48-0	61	51	15	21	234	6.9
2022-23	UNM	33-22	819	24.8	100-223	.448	35-96	.365	28-38	.737	20	121	141	4.3	56-1	60	59	14	24	263	8.0
2023-24	UNM	3-3	99	32.9	13-32	.406	2-12	.167	1-1	1.000	4	16	20	6.7	6-0	6	6	1	3	29	9.7
TOTAL		70-27	1580	22.6	206-467	.441	55-175	.314	59-76	.776	49	246	295	4.2	110-1	127	116	30	48	526	7.5

#33

VIANÈ CUMBER

G | 5-10 | JR | Albuquerque, N.M. (Sandia HS)



PPG	FG %	3PT %	FT %	RPG	APG	SPG	BPG	MPG
14.3	.381	.370	.500	5.0	0.3	0.3	0.0	35.4

NOTEWORTHY

» MW Freshman of the Week Nov. 15, 2021

» Played in 33 games with 15 starts, including last 14 games last season
 » Averaged 22.9 minutes per game, 9.2 points per game, 2.9 rebounds per game, 0.9 assists per game, 0.5 steals per game her sophomore season
 » Shot 40.6% from three-point range with 21 games with multiple three-pointers. Includes two games with 6 three-pointers, 10 games with four or more three-pointers
 » Scored in double figures in 16 games with 2 games with 20 or more points

» 2019-20 and 2020-21 New Mexico Gatorade Girls Basketball Player of the Year
 » Twice named MaxPreps New Mexico High School Girls Basketball Player of the Year
 » Named the best high school basketball player in New Mexico by MaxPreps
 » Averaged 26.5 points, 9.3 rebounds, 2.2 assists and 1.5 steals her senior season and 22.4 points, 10.6 rebounds, 2.5 assists and 3.3 steals as a junior
 » Led her team to a pair of district championships in 2018 and 2019
 » Liberal arts major

GAME-BY-GAME STATISTICS

Opponent	Date	GS	MIN	Total		3-Pointers		Free throws		Rebounds				PF				PTS		AVG
				FG-FGA	PCT	3FG-3FGA	PCT	FT-FTA	PCT	OFF	DEF	TOT	AVG	PF	A	TO	BLK	STL	PTS	
Texas Southern	11/06/2023	*	35:44	9-18	.500	4-9	.444	0-0	.000	1	5	6	6.0	2	1	2	0	1	22	22.0
at Pepperdine	11/09/2023	*	35:13	3-11	.273	3-9	.333	0-0	.000	0	2	2	4.0	2	0	0	0	9	15.5	
Tarleton St.	11/12/2023	*	35:19	4-13	.308	3-9	.333	1-2	.500	2	5	7	5.0	2	0	2	0	12	14.3	
Totals		3	106:16	16-42	.381	10-27	.370	1-2	.500	3	12	15	5.0	6	1	4	0	1	43	14.3

TOP PERFORMANCES

Points	Season	22, Texas Southern (11/6)
	MW	14, San José St. (1/24/22)
	Career	22, 2x
FGM	Season	9, Texas Southern (11/6)
	MW	
	Career	9, Texas Southern (11/6)
FGA	Season	18, Texas Southern (11/6)
	MW	16, San José St. (2/18/23)
	Career	18, Texas Southern (11/6)
3PT FGM	Season	4, Texas Southern (11/6)
	MW	5, 2x
	Career	6, 2x
3PT FGA	Season	9, 3x
	MW	11, San José St. (2/18/23)
	Career	12, Washington (3/19/23)
FTM	Season	1, Tarleton St. (11/12)
	MW	4, Colorado St. (1/26/23)
	Career	4, Colorado St. (1/26/23)
FTA	Season	2, Tarleton St. (11/12)
	MW	4, 2x
	Career	4, 2x
Reb.	Season	7, Tarleton St. (11/12)
	MW	9, Wyoming (2/16/23)
	Career	9, Wyoming (2/16/23)
Asts.	Season	1, Texas Southern (11/6)
	MW	4, 2x
	Career	4, 2x
Blocks	Season	
	MW	1, 2x
	Career	1, 4x
Steals	Season	1, Texas Southern (11/6)
	MW	2, Utah State (2/25/23)
	Career	4, Western N.M. (11/22/22)
TO	Season	0, Pepperdine (11/9)
	MW	0, 14x
	Career	0, 26x
Min.	Season	35, 3x
	MW	37, Colorado St. (1/26/23)
	Career	40, Washington (3/19/23)

PRODUCTION TRACKER

2023-24 Career

Double-Double		
Scored 10+ pts	2	21
Scored 20+ pts	1	3
10+ reb		
3+ 3-pt	3	17

CAREER STATISTICS

				Field Goals		3-Point		F-Throws		Rebounds								Scoring		
SEASON	TEAM	GP-GS	MIN/AVG	FG-FGA	FG%	3FG-3FGA	3FG%	FT-FTA	FT%	OFF	DEF	TOT	AVG	PF-FO	A	TO	BLK	STL	PTS	AVG
2021-22	UNM	18-1	198/11.0	25-62	.403	15-45	.333	2-2	1.000	4	25	29	1.6	6-0	5	10	1	5	67	3.7
2022-23	UNM	33-15	757/22.9	107-249	.430	73-180	.406	18-22	.818	5	90	95	2.9	39-0	30	32	3	17	305	9.2
2023-24	UNM	3-3	106/35.4	16-42	.381	10-27	.370	1-2	.500	3	12	15	5.0	6-0	1	4	0	1	43	14.3
TOTAL		54-19	1061/19.6	148-353	.419	98-252	.389	21-26	.808	12	127	139	2.6	51-0	36	46	4	23	415	7.7

SEASON STATS

Game Records

Record	Overall	Home	Away	Neutral
ALL GAMES	3-0	2-0	1-0	0-0
CONFERENCE	0-0	0-0	0-0	0-0
NON-CONFERENCE	3-0	2-0	1-0	0-0

Score by Periods

Team	1st	2nd	3rd	4th	OT	TOT
New Mexico	51	47	47	52	0	197
Opponents	27	43	40	52	0	162

Team Box Score

No.	Player				Total		3-Point		F-Throw		Rebounds													
		GP-GS	MIN	AVG	FG-FGA	FG%	3FG-3FGA	3FG%	FT-FTA	FT%	OFF	DEF	TOT	AVG	PF	DQ	A	TO	BLK	STL	PTS	AVG		
3	WILSON, Nyah	3-3	94:53	31.6	12-29	.414	4-7	.571	16-18	.889	1	15	16	5.3	7	0	7	5	0	1	44	14.7		
33	CUMBER, Vianè	3-3	106:16	35.4	16-42	.381	10-27	.370	1-2	.500	3	12	15	5.0	6	0	1	4	0	1	43	14.3		
12	AUGMON, Aniyah	3-3	94:04	31.4	15-34	.441	1-6	.167	4-6	.667	1	17	18	6.0	5	0	14	12	1	11	35	11.7		
30	REUS, Paula	3-3	98:46	32.9	13-32	.406	2-12	.167	1-1	1.000	4	16	20	6.7	6	0	6	6	1	3	29	9.7		
22	KOHL, Charlotte	3-3	67:56	22.6	7-16	.438	0-0	.000	5-6	.833	9	11	20	6.7	8	0	4	7	3	2	19	6.3		
14	JOAQUIM, Hulda	3-0	46:10	15.4	6-11	.545	0-0	.000	0-0	.000	8	5	13	4.3	3	0	2	3	0	1	12	4.0		
24	ROBBINS, Hannah	2-0	25:06	12.6	3-10	.300	0-4	.000	0-0	.000	2	8	10	5.0	1	0	1	3	2	2	6	3.0		
5	LANGERMANN, Lara	3-0	54:07	18.0	3-10	.300	2-7	.286	1-3	.333	1	5	6	2.0	3	0	2	3	0	2	9	3.0		
1	DIARRA BERTHE, Nahawa	1-0	08:14	8.2	0-2	.000	0-0	.000	0-0	.000	1	1	2	2.0	0	0	2	2	0	0	0	0.0		
10	LAURO, Paris	1-0	01:25	1.4	0-0	.000	0-0	.000	0-0	.000	0	0	0	0.0	1	0	0	0	0	0	0	0.0		
2	CHAVEZ, Natalia	1-0	03:02	3.0	0-1	.000	0-1	.000	0-0	.000	0	0	0	0.0	0	0	0	0	0	0	0	0.0		
Team											7	6	13				1							
Total		3	600		75-187	.401	19-64	.297	28-36	.778	37	96	133	44.3	40	0	39	46	7	23	197	65.7		
Opponents		3	600		64-196	.327	18-72	.250	16-24	.667	38	76	114	38.0	36	1	29	45	11	18	162	54.0		

Team Statistics

	UNM	OPP
Scoring	197	162
Points per game	65.7	54.0
Scoring margin	+11.7	-
Field goals-att	75-187	64-196
Field goal pct	.401	.327
3 point fg-att	19-64	18-72
3-point FG pct	.297	.250
3-pt FG made per game	6.3	6.0
Free throws-att	28-36	16-24
Free throw pct	.778	.667
F-Throws made per game	9.3	5.3
Rebounds	133	114
Rebounds per game	44.3	38.0
Rebounding margin	+6.3	-
Assists	39	29
Assists per game	13.0	9.7
Turnovers	46	45
Turnovers per game	15.3	15.0
Turnover margin	-0.3	-
Assist/turnover ratio	0.8	0.6
Steals	23	18
Steals per game	7.7	6.0
Blocks	7	11
Blocks per game	2.3	3.7
Winning streak	3	-
Home win streak	2	-
Attendance	9681	113
Home games-Avg/Game	2-4841	1-113
Neutral site-Avg/Game	-	0-0

Team Results

Date	Opponent		Score	Att.
11/06/2023	Texas Southern	W	76-59	5055
11/09/2023	at Pepperdine	W	57-48	113
11/12/2023	Tarleton St.	W	64-55	4626

NEW MEXICO GAME-BY-GAME LEADERS

Date	Opponent		Score	Att.	High Points	High Rebounds
11/06/2023	Texas Southern	W	76-59	5055	(22) CUMBER, Vianè	(9) KOHL, Charlotte
11/09/2023	at Pepperdine	W	57-48	113	(16) AUGMON, Aniyah	(9) AUGMON, Aniyah
11/12/2023	Tarleton St.	W	64-55	4626	(16) REUS, Paula	(9) WILSON, Nyah
					(16) WILSON, Nyah	

NEW MEXICO GAME-BY-GAME

				Total		3-Pointers		Free throws		Rebounds											
Opponent	Date	Score		FG-FGA	PCT	3FG-3FGA	PCT	FT-FTA	PCT	OFF	DEF	TOT	AVG	PF	A	TO	BLK	STL	PTS	AVG	
Texas Southern	11/06/2023	76-59	W	28-64	.438	9-22	.409	11-12	.917	12	37	49	49.0	9	15	19	5	8	76	76.0	
at Pepperdine	11/09/2023	57-48	W	23-64	.359	5-23	.217	6-11	.545	15	24	39	44.0	15	10	12	0	9	57	66.5	
Tarleton St.	11/12/2023	64-55	W	24-59	.407	5-19	.263	11-13	.846	10	35	45	44.3	16	14	15	2	6	64	65.7	
Total		197		75-187	.401	19-64	.297	28-36	.778	37	96	133	44.3	40	39	46	7	23	197	65.7	

OPPONENT GAME-BY-GAME

				Total		3-Pointers		Free throws		Rebounds											
Opponent	Date	Score		FG-FGA	PCT	3FG-3FGA	PCT	FT-FTA	PCT	OFF	DEF	TOT	AVG	PF	A	TO	BLK	STL	PTS	AVG	
Texas Southern	11/06/2023	76-59	W	23-71	.324	8-31	.258	5-6	.833	11	25	36	36.0	12	11	14	5	7	59	59.0	
at Pepperdine	11/09/2023	57-48	W	20-62	.323	2-14	.143	6-8	.750	17	26	43	39.5	12	10	17	4	6	48	53.5	
Tarleton St.	11/12/2023	64-55	W	21-63	.333	8-27	.296	5-10	.500	10	25	35	38.0	12	8	14	2	5	55	54.0	
Total		162		64-196	.327	18-72	.250	16-24	.667	38	76	114	38.0	36	29	45	11	18	162	54.0	

NEW MEXICO INDIVIDUAL GAME HIGHS

POINTS	22 20 17 16 16 16	Vianè Cumber vs Texas Southern (11/06/2023) Nyah Wilson vs Texas Southern (11/06/2023) Aniyah Augmon vs Texas Southern (11/06/2023) Paula Reus vs Tarleton St. (11/12/2023) Nyah Wilson vs Tarleton St. (11/12/2023) Aniyah Augmon at Pepperdine (11/09/2023)
FIELD GOALS MADE	9 7 7 7	Vianè Cumber vs Texas Southern (11/06/2023) Paula Reus vs Tarleton St. (11/12/2023) Aniyah Augmon at Pepperdine (11/09/2023) Aniyah Augmon vs Texas Southern (11/06/2023)
FIELD GOAL ATTEMPTS	18 17	Vianè Cumber vs Texas Southern (11/06/2023) Aniyah Augmon at Pepperdine (11/09/2023)
FIELD GOAL PERCENTAGE (min 5 made)	.636 (7-11) .625 (5-8)	Aniyah Augmon vs Texas Southern (11/06/2023) Nyah Wilson vs Texas Southern (11/06/2023)
3 PT FG MADE	4 4	Nyah Wilson vs Texas Southern (11/06/2023) Vianè Cumber vs Texas Southern (11/06/2023)
3 PT FG ATTEMPTS	9 9 9	Vianè Cumber vs Tarleton St. (11/12/2023) Vianè Cumber at Pepperdine (11/09/2023) Vianè Cumber vs Texas Southern (11/06/2023)
3 PT FG PERCENTAGE (min 2 made)	1.000 (4-4) .500 (2-4)	Nyah Wilson vs Texas Southern (11/06/2023) Lara Langermann at Pepperdine (11/09/2023)
FREE THROWS MADE	8 6	Nyah Wilson vs Tarleton St. (11/12/2023) Nyah Wilson vs Texas Southern (11/06/2023)
FREE THROW ATTEMPTS	9 7	Nyah Wilson vs Tarleton St. (11/12/2023) Nyah Wilson vs Texas Southern (11/06/2023)
FREE THROW PERCENTAGE (min 3 made)	.889 (8-9) .857 (6-7)	Nyah Wilson vs Tarleton St. (11/12/2023) Nyah Wilson vs Texas Southern (11/06/2023)
REBOUNDS	9 9 9	Nyah Wilson vs Tarleton St. (11/12/2023) Aniyah Augmon at Pepperdine (11/09/2023) Charlotte Kohl vs Texas Southern (11/06/2023)
ASSISTS	6 5	Aniyah Augmon vs Texas Southern (11/06/2023) Aniyah Augmon vs Tarleton St. (11/12/2023)
STEALS	8 3	Aniyah Augmon at Pepperdine (11/09/2023) Aniyah Augmon vs Tarleton St. (11/12/2023)
BLOCKED SHOTS	3 2	Charlotte Kohl vs Texas Southern (11/06/2023) Hannah Robbins vs Texas Southern (11/06/2023)
TURNOVERS	5 4 4	Aniyah Augmon vs Texas Southern (11/06/2023) Charlotte Kohl at Pepperdine (11/09/2023) Aniyah Augmon at Pepperdine (11/09/2023)
FOULS	4 4	Charlotte Kohl vs Tarleton St. (11/12/2023) Nyah Wilson at Pepperdine (11/09/2023)

NEW MEXICO GAME HIGHS

POINTS	76		Texas Southern (11/06/2023)
	64		Tarleton St. (11/12/2023)
	57		at Pepperdine (11/09/2023)
FIELD GOALS MADE	28		Texas Southern (11/06/2023)
	24		Tarleton St. (11/12/2023)
FIELD GOAL ATTEMPTS	64		at Pepperdine (11/09/2023)
	64		Texas Southern (11/06/2023)
FIELD GOAL PERCENTAGE	.438	(28-64)	Texas Southern (11/06/2023)
	.407	(24-59)	Tarleton St. (11/12/2023)
3 PT FG MADE	9		Texas Southern (11/06/2023)
	5		Tarleton St. (11/12/2023)
	5		at Pepperdine (11/09/2023)
3 PT FG ATTEMPTS	23		at Pepperdine (11/09/2023)
	22		Texas Southern (11/06/2023)
3 PT FG PERCENTAGE	.409	(9-22)	Texas Southern (11/06/2023)
	.263	(5-19)	Tarleton St. (11/12/2023)
FREE THROWS MADE	11		Tarleton St. (11/12/2023)
	11		Texas Southern (11/06/2023)
FREE THROW ATTEMPTS	13		Tarleton St. (11/12/2023)
	12		Texas Southern (11/06/2023)
FREE THROW PERCENTAGE	.917	(11-12)	Texas Southern (11/06/2023)
	.846	(11-13)	Tarleton St. (11/12/2023)
REBOUNDS	49		Texas Southern (11/06/2023)
	45		Tarleton St. (11/12/2023)
ASSISTS	15		Texas Southern (11/06/2023)
	14		Tarleton St. (11/12/2023)
STEALS	9		at Pepperdine (11/09/2023)
	8		Texas Southern (11/06/2023)
BLOCKED SHOTS	5		Texas Southern (11/06/2023)
	2		Tarleton St. (11/12/2023)
TURNOVERS	19		Texas Southern (11/06/2023)
	15		Tarleton St. (11/12/2023)
FOULS	16		Tarleton St. (11/12/2023)
	15		at Pepperdine (11/09/2023)

NEW MEXICO GAME-BY-GAME POINTS-REBOUNDS-ASSISTS

Opponent	Date	Score		1	2	3	5	10	12	14	22	24	30	33
				DIARRA BER	CHAVEZ,NAT	WILSON,NYA	LANGERMANN	LAURO,PARI	AUGMON,ANI	JOAQUIM,HU	KOHL,CHARL	ROBBINS,HA	REUS,PAULA	CUMBER,VIA
Texas Southern	11/06/2023	76-59	W	0-2-2	0-0-0	20-4-3	0-1-0	0-0-0	17-6-6	2-5-0	6-9-1	0-6-0	9-6-2	22-6-1
at Pepperdine	11/09/2023	57-48	W	DNP	DNP	8-3-2	9-3-2	DNP	16-9-3	4-2-0	7-6-0	DNP	4-7-3	9-2-0
Tarleton St.	11/12/2023	64-55	W	DNP	DNP	16-9-2	0-2-0	DNP	2-3-5	6-6-2	6-5-3	6-4-1	16-7-1	12-7-0

NEW MEXICO LEADERBOARD

Points

##	Player	G	Pts	Pts/G
3	Wilson, Nyah	3	44	14.7
33	Cumber, Vianè	3	43	14.3
12	Augmon, Aniyah	3	35	11.7
30	Reus, Paula	3	29	9.7
22	Kohl, Charlotte	3	19	6.3
14	Joaquim, Hulda	3	12	4.0
5	Langermann, Lara	3	9	3.0
24	Robbins, Hannah	2	6	3.0

Scoring Average

##	Player	G	Pts	Pts/G
3	Wilson, Nyah	3	44	14.7
33	Cumber, Vianè	3	43	14.3
12	Augmon, Aniyah	3	35	11.7
30	Reus, Paula	3	29	9.7
22	Kohl, Charlotte	3	19	6.3
14	Joaquim, Hulda	3	12	4.0
24	Robbins, Hannah	2	6	3.0
5	Langermann, Lara	3	9	3.0

Field Goal Percentage

##	Player	FG	Att	Pct
14	Joaquim, Hulda	6	11	.545
12	Augmon, Aniyah	15	34	.441
22	Kohl, Charlotte	7	16	.438
3	Wilson, Nyah	12	29	.414
30	Reus, Paula	13	32	.406
33	Cumber, Vianè	16	42	.381
24	Robbins, Hannah	3	10	.300
5	Langermann, Lara	3	10	.300

Field Goal Attempts

##	Player	G	Att	Att/G
33	Cumber, Vianè	3	42	14.0
12	Augmon, Aniyah	3	34	11.3
30	Reus, Paula	3	32	10.7
3	Wilson, Nyah	3	29	9.7
22	Kohl, Charlotte	3	16	5.3

Field Goals Made

##	Player	G	Made	Made/G
33	Cumber, Vianè	3	16	5.3
12	Augmon, Aniyah	3	15	5.0
30	Reus, Paula	3	13	4.3
3	Wilson, Nyah	3	12	4.0
22	Kohl, Charlotte	3	7	2.3

3-Point FG Percentage

##	Player	3FG	Att	Pct
3	Wilson, Nyah	4	7	.571
33	Cumber, Vianè	10	27	.370
5	Langermann, Lara	2	7	.286
12	Augmon, Aniyah	1	6	.167
30	Reus, Paula	2	12	.167

3-Point FG Attempts

##	Player	G	Att	Att/G
33	Cumber, Vianè	3	27	9.0
30	Reus, Paula	3	12	4.0
3	Wilson, Nyah	3	7	2.3
5	Langermann, Lara	3	7	2.3
12	Augmon, Aniyah	3	6	2.0

3-Point FG Made

##	Player	G	Made	Made/G
33	Cumber, Vianè	3	10	3.3
3	Wilson, Nyah	3	4	1.3
30	Reus, Paula	3	2	0.7
5	Langermann, Lara	3	2	0.7
12	Augmon, Aniyah	3	1	0.3

NEW MEXICO LEADERBOARD

Free Throw Percentage

##	Player	Made	Att	Pct
30	Reus, Paula	1	1	1.000
3	Wilson, Nyah	16	18	.889
22	Kohl, Charlotte	5	6	.833
12	Augmon, Aniyah	4	6	.667
33	Cumber, Vianè	1	2	.500
5	Langermann, Lara	1	3	.333

Free Throw Attempts

##	Player	G	Att	Att/G
3	Wilson, Nyah	3	18	6.0
12	Augmon, Aniyah	3	6	2.0
22	Kohl, Charlotte	3	6	2.0
5	Langermann, Lara	3	3	1.0
33	Cumber, Vianè	3	2	0.7

Free Throws Made

##	Player	G	Made	Made/G
3	Wilson, Nyah	3	16	5.3
22	Kohl, Charlotte	3	5	1.7
12	Augmon, Aniyah	3	4	1.3
33	Cumber, Vianè	3	1	0.3
30	Reus, Paula	3	1	0.3

Rebounds

##	Player	G	Reb	Reb/G
30	Reus, Paula	3	20	6.7
22	Kohl, Charlotte	3	20	6.7
12	Augmon, Aniyah	3	18	6.0
3	Wilson, Nyah	3	16	5.3
33	Cumber, Vianè	3	15	5.0

Assists

##	Player	G	Ast	Ast/G
12	Augmon, Aniyah	3	14	4.7
3	Wilson, Nyah	3	7	2.3
30	Reus, Paula	3	6	2.0
22	Kohl, Charlotte	3	4	1.3
14	Joaquim, Hulda	3	2	0.7

Rebounds Average

##	Player	G	Reb	Reb/G
30	Reus, Paula	3	20	6.7
22	Kohl, Charlotte	3	20	6.7
12	Augmon, Aniyah	3	18	6.0
3	Wilson, Nyah	3	16	5.3
33	Cumber, Vianè	3	15	5.0

Steals

##	Player	G	Stl	Stl/G
12	Augmon, Aniyah	3	11	3.7
30	Reus, Paula	3	3	1.0
22	Kohl, Charlotte	3	2	0.7
24	Robbins, Hannah	2	2	1.0
5	Langermann, Lara	3	2	0.7

Offensive Rebounds

##	Player	G	OReb	OReb/G
22	Kohl, Charlotte	3	9	3.0
14	Joaquim, Hulda	3	8	2.7
30	Reus, Paula	3	4	1.3
33	Cumber, Vianè	3	3	1.0
24	Robbins, Hannah	2	2	1.0

Blocked Shots

##	Player	G	Blk	Blk/G
22	Kohl, Charlotte	3	3	1.0
24	Robbins, Hannah	2	2	1.0
12	Augmon, Aniyah	3	1	0.3
30	Reus, Paula	3	1	0.3

Defensive Rebounds

##	Player	G	DReb	DReb/G
12	Augmon, Aniyah	3	17	5.7
30	Reus, Paula	3	16	5.3
3	Wilson, Nyah	3	15	5.0
33	Cumber, Vianè	3	12	4.0
22	Kohl, Charlotte	3	11	3.7

Minutes

##	Player	G	Min	Min/G
33	Cumber, Vianè	3	106	35:25
30	Reus, Paula	3	99	32:55
3	Wilson, Nyah	3	95	31:38
12	Augmon, Aniyah	3	94	31:21
22	Kohl, Charlotte	3	68	22:39