

THE UNIVERSITY OF NEW MEXICO WOMEN'S BASKETBALL

NOVEMBER 9 | AT PEPPERDINE

2023-24 SCHEDULE

OVERALL: 1-0 • MW: 0-0 • H: 1-0 • A: 0-0 • N: 0-0

DATE	OPPONENT	TIME/SCORE
10/22	Eastern New Mexico (Exh.)	W, 77-57
10/29	Adams State (Exh.)	W, 60-45
11/6	Texas Southern	W, 76-59
11/9	at Pepperdine	7 p.m.
11/12	Tarleton State	2 p.m.
11/15	Texas A&M-Commerce	7 p.m.
11/23	Montana State%	7 p.m.
11/24	Georgia Tech%	4:30 p.m.
11/28	Eastern Illinois	7 p.m.
12/2	New Mexico State	1 p.m.
12/4	Mississippi Valley State	7 p.m.
12/7	Southern Utah	7 p.m.
12/10	Hampton	2 p.m.
12/17	Western New Mexico	2 p.m.
12/22	at Gonzaga	2 p.m.
12/30	at Nevada*	2 p.m.
1/6	Boise State*	2 p.m.
1/10	Utah State*	7 p.m.
1/13	at Colorado State*	1 p.m.
1/17	Wyoming*	7 p.m.
1/20	at UNLV*	3 p.m.
1/24	Fresno State*	7 p.m.
1/27	at Air Force*	1 p.m.
1/31	at San José State*	12 p.m.
2/3	UNLV*	2 p.m.
2/7	at San Diego State*	12 p.m.
2/10	Colorado State*	12 p.m.
2/14	San José State*	7 p.m.
2/21	at Boise State*	TBA
2/24	at Wyoming*	2 p.m.
2/28	San Diego State*	7 p.m.
3/2	Nevada*	2 p.m.
3/5	at Fresno State*	7 p.m.
3/10-13	MW Tournament	TBA

BOLD: Home * : Mountain West
All times are Mountain Time

QUICK POINTS BY THE NUMBERS

- » Averaged 73.9 points last season
- » 6 newcomers on the roster (3 freshmen, 3 transfers)
- » 3 Lobos in double figures in both exhibitions and season opener (Cumber, Augmon and Wilson)
- » Outrebounded 2 exhibition opponents 104-51 (52.0 rpg). Averaged 36.5 rebounds last season.
- » Made 9 (ENMU) and 7 (ASU) 3-pointers in 2 exhibitions (8.0 average per game). Averaged 8.5 per game last season.



New Mexico Lobos

Record
1-0, 0-0 MW

Head Coach: Mike Bradbury
Record at UNM: 142-78 (8th year)
Career Record: 320-195 (17th year)

Game Information	
Game Number: 2	
Date: Nov. 9 @ 6 p.m. PT	
Location: Malibu, Calif.	
Series History	
Overall:	Series tied 2-2
Away Record:	0-0
Current Streak:	W1
Last Meeting:	12/12/15 (W, 60-52)
Broadcast Information	
TV:	ESPN+
Radio:	KNML
Live Stats:	GoLobos.com/wbbstats



Pepperdine Waves

Record
1-0, 0-0 WCC

Head Coach: Kelsey Keizer
Record at Pepp.: 1-0 (1st year)
Career Record: Same

PROJECTED STARTERS (BASED ON LAST GAME)

#	Name	POS.	HT.	YR.	NOTE
3	Nyah Wilson	G	5-8	Jr.	Career-high 20 pts in opener; went 4-4 from 3
12	Aniyah Augmon	G	5-8	Jr.	Scored 17 pts in opener w/ career-high 6 assists
22	Charlotte Kohl	C	6-5	Gr.	Led Lobos in rebounds in all 3 games; 18 vs. Adams St.
30	Paula Reus	F	6-1	Jr.	9 pts, 6 reb & 2 asts in opener
33	Vianè Cumber	G	5-10	Jr.	Tied career high with 22 pts in opener; 13 pts in 4th

LOBO NOTES

SEASON OPENER

Following Monday's win, UNM is 7-1 in season openers and 6-0 when opening the season at home under Coach Bradbury.

THREE'S COMPANY

The trio of Vianè Cumber, Aniyah Augmon and Nyah Wilson all scored in double figures in Monday's season opener, accounting for 59 of UNM's 76 points and matched Texas Southern's total team point total.

Cumber took over in the fourth quarter, scoring 13 of her game-high 22 points in the final 10 minutes, while Wilson and Augmon were effective early, reaching double figures in the first 20 minutes to finish with a career-high 20 points and 17 points, respectively. Wilson and Augmon were also facilitators, with Augmon leading with a game- and career-high six assists and Wilson finishing with the second most on the team with three. Additionally, Wilson was 4-4 from three-point range with Cumber also making four.

It marked the first time that UNM had two 20-point scorers in a game since 2022, and was the third time this season that all three scored double-digit points.

THE CUMBER EFFECT

After Vianè Cumber entered the starting lineup against Colorado State on Jan. 26 last season, the Lobo scored double figures in nine of the games including four of the last five. The New Mexico native made six three-pointers and finished with 20 points in the last game of the season at Washington, her second game with 20 or more points last season.

Cumber picked right up in the first game of the 2023-24 season, tying her career high with 22 points that included four three-pointers. It was her 33rd career game making a three-pointer, 26th career game with multiple three-pointers, her 12th career game making four or more three-pointers and her eighth-straight game with at least one.

When taking into account the exhibitions, Cumber has scored in double figures in all three games, scoring 16 points in both exhibitions, and when combined with Monday's stat line, she's led the Lobos in scoring in all three games.

In three years, Cumber has scored in double figures 20 times and 20 or more points three times.

WHAT A DEBUT FOR WILSON

Nyah Wilson made quite the first impression in her first true game as a Lobo, finishing with 20 points, four rebounds, three assists and a steal. The Dallas, Texas, native went 5-8 from the floor, but was a perfect 4-4 from behind the arc and nearly perfect at the free-throw line going 6-7.

Her 20 points set a career high, as did her five made field goals, her four made three-pointers and four attempts, her six made free throws and her seven attempts. The 32 minutes was also a career high.

Further, her 20 points were more than half of her season totals that she scored in each of her two years at Syracuse, scoring 36 points her freshman season and 32 points her sophomore season.



» Eight NCAA Tournament Appearances | 1998, 2002, 2003, 2004, 2005, 2006, 2007, 2008 «
» Five Mountain West Tournament Championships | 2003, 2004, 2005, 2007, 2008 «

THE UNIVERSITY OF NEW MEXICO

Location.....Albuquerque, N.M.
 Founded.....1889 by Territorial Legislature
 Enrollment.....22,225
 Nickname.....Lobos
 Colors.....Cherry (PMS 200) & Silver (PMS Cool Gray 6)
 Conference.....Mountain West Conference
 National Affiliation.....NCAA Division I
 President.....Dr. Garnett Stokes
 Vice President/Director of Athletics.....Eddie Nuñez
 Asst. Vice President/Deputy A.D.....David Williams
 Interim SWA.....Amy Beggin
 Faculty Representative.....Karen Gaudreault, Ph.D

FACILITY INFORMATION

Facility.....The Pit
 Capacity.....15,411
 Age.....Built in 1966 (Renovated in 2009-10)
 All-Time Home Record.....463-220 (.677)

PROGRAM HISTORY

First Season.....1974-75
 Overall Record.....741-584 (.559)
 Overall MW Record.....231-155 (.598)
 Postseason Tournament Appearances.....20
 NCAA Tournament Appearances.....8
 Last NCAA Postseason Appearance.....2022-23 (WNIT)
 Last NCAA Postseason Opponent.....Washington
 Last NCAA Postseason Result.....L, 67-56
 MW Regular Season Championships.....3
(2003-04, 2004-05, 2020-21)
 MW Tournament Championships.....5
(2002-03, 2003-04, 2004-05, 2006-07, 2007-08)

TEAM INFORMATION

2022-23 Overall Record.....21-13
 2022-23 Mountain West Record.....12-6
 2021-22 Mountain West Season Finish.....T-3rd
 2022-23 MW Tournament Finish.....Quarterfinal
 Letterwinners Returning | Lost.....6 | 6
 Starters Returning | Lost.....1 | 4

- » Three Mountain West Regular-Season Championships
- » Five Mountain West Tournament Championships
- » Seven NCAA Tournament Appearances Since 2001-02
- » Mountain West Attendance Leader 21 Seasons in a Row
- » WBCA Academic Top 25 Eight Times Since 2004-05

COACHING STAFF

Head Coach: Mike Bradbury (Chattanooga, 1993)
 Record at UNM (Years): 142-78 (8th season)
 Career Record (Years): 320-195 (17th season)
 Associate H.C.: Keith Freeman (2nd season)
 Alma Mater: Huntington College, 1986
 Assistant Coach: Nike McClure (2nd season)
 Alma Mater: New Mexico, 2019
 Assistant Coach: Mackenzie Novak (1st season)
 Alma Mater: Bethel University, 2021
 Graduate Assistant: Jaisa Nunn (1st season)
 Dir. of Operations: Hanna Hudson (2nd season)
 Dir. of Player Development: Isaiah Fernandez (2nd season)
 Athletic Trainer: Lexi Smith (3rd season)
 Strength Coach: Leila Petewon (1st season)

MISCELLANEOUS INFORMATION

2022-23 Total Attendance.....80,328
 2022-23 Average Attendance.....4,725
 2022-23 NCAA Attendance Rank.....18th
 2022-23 Mountain West Attendance Rank.....1st

MULTIMEDIA INFORMATION

Athletics Website.....www.GoLobos.com
 Main University Web Site.....www.unm.edu
 Conference Web Site.....www.TheMW.com
 Facebook.....www.facebook.com/NewMexicoLobos
 Twitter.....@UNMLobos

MEDIA RELATIONS

Women's Basketball Contact.....Allison Weiss
 Cell Phone (Preferred).....661-313-5402
 Email.....allisonweiss@unm.edu

INTERVIEW REQUESTS

All interviews with UNM student-athletes and coaches should be coordinated through the athletics communications office. Interviews may be arranged by contacting Allison Weiss in the athletics communications office (allisonweiss@unm.edu). All interview requests should be made at least 24 hours in advance.

The University of New Mexico Athletics
 1414 University Drive
 Albuquerque, N.M. 87106



@UNMLoboWBB



NEW MEXICO WOMEN'S BASKETBALL

Wilson scored seven points in the first quarter, reaching double figures on a three-pointer with 3:39 remaining in the second quarter that doubled UNM's lead at 28-14.

NOT LIKE LAST YEAR'S LOBOS

The Lobos showcased a different look from the makeup of last year's roster.

While the lineup in the season opener featured five upperclassmen in four juniors and a graduate transfer, it also featured two newcomers in Charlotte Kohl and Nyah Wilson and a new starting point guard in Aniyah Augmon, who had started three games entering this season.

New personnel have provided a new look and a new style of play for this year's team. UNM added three transfers in the offseason, starting with a 6-5 graduate transfer in Kohl, who provides collegiate experience and a physical presence inside as well as a guard in Wilson, a transfer from Syracuse who brings an attack the rim mindset to compliment Augmon, and Nahawa Diarra Berthe, a quick and athletic guard.

In addition, the Lobos added three freshmen in Lara Langermann, Paris Lauro and Gianna McManaman, with McManaman and Langermann capable of handling the ball and a forward in Lauro who's shot can extend beyond the perimeter.

Langermann, Lauro and Diarra Berthe all entered the game on Monday, as did redshirt freshmen Natalia Chavez and Hannah Robbins.

SOMETHING TO RELY ON

What the Lobos do return, though, is veteran leadership and experience in Viané Cumber, Paula Reus and Augmon, who entered the season with a combined 43 starts between the trio.

Cumber emerged last year, making a jump from her freshman to sophomore season making 15 starts. Last season saw the Albuquerque native go from 67 points her first year to 305 her second year, in field goals made (from 25 to 107) and in three-pointers, going from 15 to 73. She also made a jump in rebounds (from 29 to 95), assists (5 to 30) and in steals (from 5 to 17).

In addition, Cumber shot 40.6% from three-point range with 21 games with multiple three-pointers, including two games with six three-pointers and 10 games with four or more three-pointers. She scored in double figures in 16 games with two games with 20 or more points.

Reus played in 67 games over the past two years with 24 starts, 22 coming last season. As a sophomore, the Lobo averaged 8.0 points and 4.3 rebounds per game, shooting 44.8% from the floor and averaged 24.8 minutes per game. On the season, the Palma de Mallorca, Spain, native scored in double figures in 13 games with one double-double, had at least one steal in 17 games and was third on the team in rebounds (141) and second in blocks (14).

Augmon has appeared in 64 games throughout the past two seasons with three starts, and averaged 7.1 points per game and 4.4 rebounds per game as a sophomore, while shooting 44.0% from the floor and averaging 21.2 minutes per game.

The Lobo guard scored in double figures in eight games with three double-doubles. In addition, she had four games with 10-plus rebounds, led the team in rebounding in five games and tied for the team high in one, and led the team in scoring in two games and tied for the team high in one.

In addition, the Lobos also return three players who redshirted a season ago in redshirt-sophomore Mackenzie Curtis and redshirt-freshmen Natalia Chavez and Hannah Robbins, with Robbins earning Preseason Freshman of the Year last season before deciding to redshirt, and Jaelyn Bates and Hulda Joaquim, who saw time off of the bench a season ago.

BATTLE ON THE BOARDS

While the sample size is small, the Lobos have shown their ability to control the boards in the season opener and two exhibitions this season, outrebounding their opponents 153-87. Newcomer Charlotte Kohl has led the Lobos in all three contests in rebounds that included an 18-rebound outing in the final exhibition against Adams State. Kohl also had a team-high eight rebounds in the first exhibition and grabbed nine against Texas Southern to start the season.

UNM outrebounded Texas Southern 49-36 (+13), Adams State 56-25 (+31) and Eastern New Mexico 48-26 (+22).

PAINT POINTS

UNM outscored opponents in the season opener and both exhibitions, with a +24 margin against Texas Southern (38-14), +16 margin in the

exhibition against Eastern New Mexico (42-26) and an overall +46 margin.

20/10 AGAIN

Last season, the Lobos finished with 20 wins, the second-straight year with 20 wins and the fourth time under Coach Mike Bradbury.

In addition, the Lobos surpassed 10 wins in the MW, the third-straight year and sixth overall in Bradbury's seven years at UNM.

HOME COURT ADVANTAGE

The Pit has proven to be a home court advantage for the Lobos of late, with five seasons with an 80% or better winning percentage in the last 10 years.

In the last 10 years, UNM has gone 119-43 (.735) in The Pit with seven seasons with 10-plus home wins and three seasons with 15-plus wins.

UNM has gone 31-4 over the last two years, 14-3 last season and 17-1 the year prior, which doesn't include going 2-0 in the only two home games in 2020-21.

In Coach Bradbury's seven years, the Lobos have led the MW in attendance in six (with the lone year the COVID season when UNM had two home games without any fans in attendance).

UNM finished 18th in the NCAA last season in attendance and has finished in the top 20 six times in the last seven years (exception was 2020-21 COVID season).

GET AHEAD, STAY AHEAD

In 2022-23, the Lobos were 18-4 on the season when leading after the first quarter and 18-4 overall when leading at the half. When leading at the end of the third quarter, the Lobos were 19-4 overall last season.

In the first game of the season, the Lobos led for 37:53 and led after each quarter.

PRIDE OF NEW MEXICO

The Lobos have four New Mexico natives on the roster in freshmen Natalia Chavez and Jaelyn Bates, sophomore Viané Cumber, and while her hometown is listed as Phoenix, Arizona, Hannah Robbins was born in Albuquerque.

In addition, the Lobos have a New Mexico Gatorade Player of the Year winner in Cumber, with Cumber winning in 2019-20 and 2020-21.

Recent Lobo Amaya Brown won in 2015-16 and 2017-18 and Jaedyn De La Cerda won in 2016-17, meaning the winner in five of the last seven years were Lobos.

ABOUT PEPPERDINE

Pepperdine opened the season with a 63-58 win over UC Irvine at home on Tuesday. Myra Gordon led with 17 points, joined in double figures by Addi Melone at 11 points, while Jane Nwaba led on the boards with 11 rebounds. Gordon also led with five assists and five steals.

The Waves went 11-19 season last season, finishing ninth in the West Coast Conference, and feature 10 new players on this year's roster.

Nwaba is Pepperdine's top returning scorer (9.3 points per game) and rebounder (6.1 per game), and is also Pepperdine's only returning starter from last season.

Historically, UNM is 2-2 all-time against the Waves, but has never played Pepperdine in Malibu. The four meetings have all been closely contested with the largest margin of victory being 12, an 81-69 win for UNM. The other three meetings were within single digits.

LAST TIME IT HAPPENED (UNM) LAST TIME IT HAPPENED (OPP)

As A Team

Scored 100 Points:	111 - vs. Utah State (2-25-23)
Scored 90 Points:	98 - at Utah State (1-28-23)
Scored Fewer Than 50 Points:	42 - at UNLV (1-11-17)
Scored Fewer Than 40 Points:	38 - at Colorado St. (1-3-15)
Won by 50 Points:	+56 (W, 111-55) - vs. Utah State (2-25-23)
Won by 40 Points:	+48 (W, 92-44) - vs. Northern NM (12-10-19)
Won By 30 Points:	+38 (W, 98-60) - at Utah State (1-28-23)
Lost By 30 Points:	-37 (L, 47-84) - at (RV) Arizona St. (12-14-19)
Lost By 40 Points:	-42 (L, 63-105) - at Oklahoma (12-16-17)
Shot 60% or Better:	61.2% - vs. Pacific (11-9-01)
Shot Less Than 30%:	29.6 (21-71) - vs. Mississippi State (12-21-22)
Shot 60% 3FG or Better:	64.0% (16-25) - at Fresno State (2-28-23)
Shot Less Than 20% 3FG:	18.5% (5-27) - at Boise State (2-9-23)
Made 15 3-Pointers:	16 - at Fresno State (2-28-23)
Shot 90% on FTs (10 or more):	91.7 (11-12) - vs. Texas Southern (11-6-23)
Shot Less Than 40% On FTs:	14.3% (1-7) - at UTEP (11-30-17)
Had 50 Rebounds:	55 - vs. Utah State (2-25-23)
Had 20 Offensive Rebounds:	21 - vs. Northern New Mexico (11-12-21)
Had 25 Assists:	25 - vs. Utah State (2-25-23)
Had 20 Turnovers:	25 - at Air Force (2-23-23)
Had Less Than 10 Turnovers:	7 - San Diego State (3-6-23)
Had 10 Steals:	10 - at Air Force (2-23-23)
Had 10 Blocks:	11 - vs. Houston Baptist (11-23-21)
Had Two 20-Point Scorers:	vs. Texas Southern (11-6-23)
	Nyah Wilson (20) and Viané Cumber (22)
Had Three 20-Point Scorers:	vs. Grand Canyon (3-16-22)
	LaTascya Duff (27), Jaedyn De La Cerda (22) and Shaiquel McGruder (20)
Had 7 Double-Digit Scorers:	vs. Utah State (2-25-23)
Had 6 Double-Digit Scorers:	at Arkansas-Pine Bluff (12-17-20)
Had 5 Double-Digit Scorers:	vs. San Diego State (3-6-23)
Had No Double-Digit Scorers:	vs. (RV) Arizona St. (12-14-19)
Had Two 10+ Rebounders:	vs. Nevada (3-1-20)
	Shaiquel McGruder (17) and Antonia Anderson (10)
Scored 50 Points In 1st Half:	56 - at Utah State (1-28-23)
Scored 50 Points In 2nd Half:	52 - vs. South Carolina State (12-29-22)
Scored 60 Points in a 2nd Half:	62 - vs. Utah State (2-25-23)
Scored 20 Or Fewer Points In 1st Half:	13 - at NMSU (11-15-22)
Scored 20 Or Fewer Points In 2nd Half:	17 - at UNLV (1-15-21)
Lowest Pts Scored in Quarter:	2 - at NMSU (11-15-22)
Failed To Make a 3FG:	at (RV) Arizona St. (12-14-19)
Defeated a Ranked Team:	W, 88-87 vs. No. 16 Marquette (11-13-17)
Lost To a Ranked Team:	L, 77-60 vs. No. 14 Arizona (12-4-22)
Won an OT Game:	W, 74-71 at Wyoming (2-8-20)
Lost an OT Game:	L, 83-77 vs Arizona State (11-20-22)
Won a 2OT Game:	W, 89-85 at Houston (11-24-18)
Lost a 2OT Game:	L, 69-65 vs. Fresno St. (1-2-16)

As An Individual

Had a Triple-Double:	Aisia Robertson (28 pts, 11 rebs, 11 assists)
	at Houston (11-24-18)
Had a Double-Double (Pts/Reb):	Shaiquel McGruder (18 pts, 10 reb)
	vs. Northern Arizona (3-16-23)
Had a Double-Double (Pts/Asst):	LaTora Duff (13 pts & 10 asts)
	vs. Arizona State (11-20-22)
Had a Double-Double (Reb/Asst):	Cherise Beynon (13 reb, 10 asts)
	vs. Fairleigh Dickinson (11-12-16)
Scored 20+ Pts with 10+ Rebs:	Shaiquel McGruder (25 pts & 14 reb)
	vs. Boise State (1-21-23)
Scored 30 Points:	LaTascya Duff (30 pts) at Utah State (1-28-23)
Scored 40 Points:	Cherise Beynon (41) at SDSU (1-20-18)
Scored 30 Points (MW Only):	LaTascya Duff (30 pts) at Utah State (1-28-23)
Scored 40 points (MW Only):	Cherise Beynon (41)
	at San Diego St. (1-20-18)
Had 20+ Rebounds:	Richelle van der Keijl (20) vs. New Mexico St. (11-15-16)
Had 15+ Rebounds:	Shaiquel McGruder (15) vs. UNLV (1-3-22)
Had 15+ Assists:	Aisia Robertson (16) vs. Oklahoma (11-28-18)
Had 5+ Steals:	LaTora Duff (5) at Boise State (2-9-23)
Had 5+ Blocks:	Shaiquel McGruder (5) at Wyoming (1-5-23)

As A Team

Scored 100 Points:	105 - Oklahoma (12-16-17)
Scored 90 Points:	93 - UNLV (2-2-23)
Scored Less Than 50 Points:	45 - Louisiana-Monroe (11-27-21)
Scored Less Than 40 Points:	40 - Northern New Mexico (11-12-21)
Shot 50% Or Better:	50.8% (31-61) - San Diego State (3-6-23)
Shot Less Than 30%:	28.0% (23-82) - Houston (11-12-22)
Shot 50% 3FG Or Better:	50.0% (7-14) - Texas Tech (11-28-21)
Shot Less Than 20% 3FG:	16.7 % (3-18) - Wyoming (2-16-23)
Made 15 3-Pointers:	15 - San José St. (1-22-20)
Shot 90% On FTs (10 or more):	92.3% (12-13) - Houston (11-12-22)
Shot Less Than 50% On FTs:	45.5% (5-11) - Boise State (2-19-22)
Had 50 Rebounds:	53 - Mississippi State (12-21-22)
Had 20 Offensive Rebounds:	24 - Houston (11-12-22)
Had 25 Assists:	26 - Houston (11-20-21)
Had 20 Turnovers:	27 - Old Dominion (12-20-22)
Had 30 Turnovers:	30 - Northern NM (11-15-17)
Had Less Than 10 Turnovers:	8 - Fresno State (2-28-23)
Had 10 Steals:	16 - Air Force (2-23-23)
Had 10 Blocks:	12 - Boise State (1-21-23)
Had Two 20-Point Scorers:	UNLV (1-14-23)
	Desi-Rae Young (22) and Alyssa Durazo-Frescas (20)
Had 6 Double-Digit Scorers:	San Diego State (3-6-23)
Had 5 Double-Digit Scorers:	UNLV (2-2-23)
Had No Double-Digit Scorers:	Louisiana-Monroe (11-27-21)
Had Two 10+ Rebounders:	Arizona State (11-20-22)
	Kayla Mokwuah (13) and Treasure Hunt (15)
Scored 50+ Points In 1st Half:	54 - San José St. (1-22-20)
Scored 50+ Points In 2nd Half:	50 - Colorado State (3-8-22)
Scored 20 Or Less Points In 1st Half:	17 - Louisiana-Monroe (11-27-21)
Scored 20 Or Less In 2nd Half:	19 - Northern New Mexico (11-12-21)
Scored Less Than 10 Points in Quarter:	8 - Air Force (2-23-23)
Failed To Make a 3FG:	0-1 by San Diego State (2-18-15)

As An Individual

Had a Double-Double (Pts/Reb):	Abby Muse (11 pts, 12 reb.)
	Boise State (2-9-23)
Had a Double-Double (Pts/Asst):	Haley Cavinder (21 pts, 11 asts.)
	Fresno State (1-22-22)
Had a Double-Double (Pts/Steals):	Jasmyne Harris (28 pts & 10 steals)
	Houston (11-28-18)
Had 20+ Points & 10+ Rebounds:	Elodie Lalotte (20 pts, 12 reb.)
	Boise State (1-21-23)
Scored 30 Points:	Essence Booker (31) - UNLV (1-27-22)
Scored 30 Points (MW Only):	Essence Booker (31) - UNLV (1-27-22)
Had 20+ Rebounds:	Kaylee Johnson (22) - No. 1 Stanford (11-24-14)
Had 15+ Rebounds:	Desi-Rae Young (16) - UNLV (1-14-23)
Had 10+ Assists:	Haley Cavinder (11) - Fresno State (1-22-22)
Had 5+ Steals:	Jo Huntimer (6)
	Air Force (2-23-23)
Had 5+ Blocks:	Abby Muse (8) - Boise St. (1-21-23)

GAME 2: NEW MEXICO AT PEPPERDINE

UNM STARTING LINEUPS (GAME)

Game	G	G	G	F	C
Texas Southern	Wilson	Augmon	Cumber	Reus	Kohl
Pepperdine					
Tarleton					
Texas A&M-Commerce					
Montana State					
Georgia Tech					
Eastern Illinois					
New Mexico State					
Mississippi Valley State					
Southern Utah					
Hampton					
Western New Mexico					
Gonzaga					
Nevada					
Boise State					
Utah State					
Colorado State					
Wyoming					
UNLV					
Fresno State					
Air Force					
San José State					
UNLV					
San Diego State					
Colorado State					
San José State					
Boise State					
Wyoming					
San Diego State					
Nevada					
Fresno State					

STATS

STAT COMPARISON

PEPP		UNM
63.0	Points Per Game	76.0
50.0	FG%	43.8
50.0	3FG%	40.9
54.5	FT%	91.7
7.0	Made 3-pt PG	9.0
37.0	Rebounds PG	49.0
24.0	Turnovers PG	19.0
16.0	Assists PG	15.0
3.0	Blocks PG	5.0
10.0	Steals PG	8.0
58.0	Scoring Defense	59.0
28.6	FG% Defense	32.4
27.3	3FG% Defense	25.8
0.0	Rebound Margin	+13.0

UNM WHEN HOME/AWAY/NEUTRAL

STAT	HOME (1)	AWAY ()	NEUTRAL ()
PPG	76.0		
Opp PPG	59.0		
FG %	.438		
3FG%	.409		
3 FG MPG	9.0		
FT%	.917		
Opp FG%	.324		
Opp 3FG%	.258		
RPG	49.0		
Opp RPG	36.0		
APG	15.0		
SPG	8.0		
TOV	19.0		

SPECIALTY STAT COMPARISON

(UNM/Opp.)

Opp.	Paint	Off TO	2nd Chance	Fast Break	Bench
Texas Southern	38/14	15/18	11/11	17/6	2/28
Pepperdine					
Tarleton					
Texas A&M-Com.					
Montana St.					
Georgia Tech					
Eastern Illinois					
NMSU					
MVSU					
Southern Utah					
Hampton					
Western N.M.					
Gonzaga					
Nevada					
Boise St.					
Utah St.					
Colorado St.					
Wyoming					
UNLV					
Fresno St.					
Air Force					
San José St.					
UNLV					
San Diego St.					
Colorado St.					
San José St.					
Boise St.					
Wyoming					
San Diego St.					
Nevada					
Fresno St.					

UNM STARTING LINEUPS (RECORD)

Wilson, Augmon, Kohl, Reus, Cumber 1-0

DOUBLE-DOUBLE TRACKER

CAREER DOUBLE-DOUBLES

	2023-24	Career
Aniyah Augmon	-	3
Hulda Joaquim	-	2
Paula Reus	-	1
Charlotte Kohl	-	1

20-POINT TRACKER

Viané Cumber	22 pts	Texas Southern (11/6)
Nyah Wilson	20 pts	Texas Southern (11/6)

GAME 2: NEW MEXICO
AT PEPPERDINE

Team (AP/Coaches)	CONFERENCE						OVERALL								
	W	L	Pct.	Home	Away	Neutral	W	L	Pct.	Home	Away	Neutral	Last 10	Strk	
Air Force	0	0	.000	0-0	0-0	0-0	1	0	1.000	1-0	0-0	0-0	3-7	W1	
Boise State	0	0	.000	0-0	0-0	0-0	1	0	1.000	1-0	0-0	0-0	7-3	W1	
Colorado State	0	0	.000	0-0	0-0	0-0	1	0	1.000	1-0	0-0	0-0	6-4	W1	
Fresno State	0	0	.000	0-0	0-0	0-0	1	0	1.000	1-0	0-0	0-0	3-7	W1	
New Mexico	0	0	.000	0-0	0-0	0-0	1	0	1.000	1-0	0-0	0-0	8-2	W1	
UNLV (RV)	0	0	.000	0-0	0-0	0-0	1	0	1.000	0-0	1-0	0-0	9-1	W1	
Wyoming	0	0	.000	0-0	0-0	0-0	1	0	1.000	1-0	0-0	0-0	7-3	W1	
Nevada	0	0	.000	0-0	0-0	0-0	0	0	.000	0-0	0-0	0-0	2-8	L1	
San Diego State	0	0	.000	0-0	0-0	0-0	0	1	.000	0-0	0-1	0-0	5-5	L3	
San José State	0	0	.000	0-0	0-0	0-0	0	1	.000	0-1	0-0	0-0	3-7	L2	
Utah State	0	0	.000	0-0	0-0	0-0	0	1	.000	0-0	0-1	0-0	0-10	L14	
^ MW Regular Season Champions		% MW Tournament Champion													

SERIES HISTORY

PEPPERDINE (2-2)

H: 2-1 A: 0-0 N: 0-1

11/30/79	L	80-72	N
3/12/99	W	81-69	H
11/26/11	L	59-50 (OT)	H
12/12/15	W	60-52	H

LOBOS RECORD WHEN...

	Overall	In MW
Overall	1-0	0-0
At home	1-0	0-0
On the road	0-0	0-0
At neutral sites	0-0	0-0
After a win	0-0	0-0
After a loss	0-0	0-0
In overtime	0-0	0-0
vs. ranked opponents	0-0	0-0
Games decided by 1-4 points	0-0	0-0
Games decided by 5-9 points	0-0	0-0
Games decided by 10-19 points	1-0	0-0
Games decided by 20+ points	0-0	0-0
Leading after Q1	1-0	0-0
Trailing after Q1	0-0	0-0
Tied after Q1	0-0	0-0
Leading at half	1-0	0-0
Trailing at half	0-0	0-0
Tied at half	0-0	0-0
Leading after Q3	1-0	0-0
Trailing after Q3	0-0	0-0
Tied after Q3	0-0	0-0
Shooting 50% or better	0-0	0-0
Shooting between 40-49.9%	1-0	0-0
Shooting less than 40%	0-0	0-0
Opponent shoots 50% or better	0-0	0-0
Opponent shoots b/w 40-49.9%	0-0	0-0
Opponent shoots b/w 30-39.9%	1-0	0-0
Opponent shoots less than 30%	0-0	0-0
UNM higher FG%	1-0	0-0
Opponent higher FG%	0-0	0-0
FG% Tied	0-0	0-0
UNM outrebounds	1-0	0-0
Opponent outrebounds	0-0	0-0
Rebounds tied	0-0	0-0
UNM more made free throws	1-0	0-0
Opponent more made free throws	0-0	0-0
Made free throws tied	0-0	0-0
UNM 3FG% higher	1-0	0-0
Opponent 3FG% higher	0-0	0-0
3FG% tied	0-0	0-0
UNM has more fouls	0-0	0-0
Opponent has more fouls	1-0	0-0
Fouls are tied	0-0	0-0
UNM more turnovers	1-0	0-0
Opponent more turnovers	0-0	0-0
Turnovers tied	0-0	0-0
Scoring less than 50 points	0-0	0-0
Scoring 50-59 points	0-0	0-0
Scoring 60-69 points	0-0	0-0
Scoring 70-79 points	1-0	0-0
Scoring 80-89 points	0-0	0-0
Scoring 90-99 points	0-0	0-0
Scoring 100+ points	0-0	0-0
Allowing 40 points or less	0-0	0-0
Allowing 41-49 points	0-0	0-0
Allowing 50-59 points	1-0	0-0
Allowing 60-69 points	0-0	0-0
Allowing 70-79 points	0-0	0-0
Allowing 80-89 points	0-0	0-0
Allowing 90+ points	0-0	0-0
In November	1-0	0-0
In December	0-0	0-0
In January	0-0	0-0
In February	0-0	0-0
In March	0-0	0-0

MOUNTAIN WEST STATISTICS

TEAM	All	Conference
Assists per Game		
3-Pt FG Made		
FG %		
3-PT FG %		
Blocks per Game		
Scoring		
Scoring Margin		
Steals per Game		
FG % Defense		
3-Pt FG % Defense		
Free Throw %		
Turnover Margin		
Assist/Turnover Ratio		
Scoring Defense		
Rebounding Margin		
INDIVIDUAL	All	Conference
Scoring		
Rebounding		
FG %		
3-Point FG Made		
Steals		
Blocks		

NCAA STATISTICS

TEAM
INDIVIDUAL

2023-24 MW PLAYERS OF THE WEEK

2023-24 ROSTER



1
Nahawa Diarra Berthe
G | 5-9 | JR.
Barcelona, Spain



2
Natalia Chavez
G | 5-10 | R-FR.
Cochiti Pueblo, N.M.



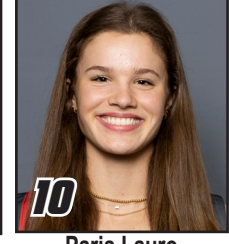
3
Nyah Wilson
G | 5-8 | JR.
Dallas, Texas



4
Gianna McManaman
PG | 5-7 | FR.
Chapel Hill, N.C.



5
Lara Langermann
G | 5-7 | FR.
Breckersfeld, Germany



10
Paris Lauro
F | 6-1 | FR.
Dallas, Texas



12
Aniyah Augmon
G | 5-8 | JR.
San José, Calif.



14
Hulda Joaquim
F | 6-1 | SR.
Maputo, Mozambique



15
Jaelyn Bates
PG | 5-7 | FR.
Albuquerque, N.M.



21
Mackenzie Curtis
G | 5-9 | SO.
Lakeside, Calif.



22
Charlotte Kohl
C | 6-5 | GR.
Giessen, Germany



24
Hannah Robbins
G | 6-0 | R-FR.
Phoenix, Ariz.



30
Paula Reus
F | 6-1 | JR.
Palma de Mallorca,
Spain



33
Vianè Cumber
G | 5-10 | JR.
Albuquerque, N.M.



Mike Bradbury
Head Coach



Keith Freeman
Assoc. Head Coach



Nike McClure
Assistant Coach



Mackenzie Novak
Assistant Coach



Jaisa Nunn
Graduate Assistant



Hanna Hudson
Director of Operations



Isaiah Fernandez
Director of Player
Development

NUMERICAL

#	Name	Pos	Ht	Yr	Hometown (Previous School)
1	Nahawa Diarra Berthe	G	5-9	Jr.	Barcelona, Spain (Odessa College)
2	Natalia Chavez	G	5-10	RS-Fr.	Cochiti Pueblo, N.M. (Volcano Vista HS)
3	Nyah Wilson	G	5-8	Jr.	Dallas, Texas (Syracuse)
4	Gianna McManaman	PG	5-7	Fr.	Chapel Hill, N.C. (Northwood HS)
5	Lara Langermann	G	5-7	Fr.	Breckerfeld, Germany (Theodor-Heuss-Gymnasium Hagen)
10	Paris Lauro	F	6-1	Fr.	Dallas, Texas (Highland Park HS)
12	Aniyah Augmon	G	5-8	Jr.	San José, Calif. (Woodside Priory School)
14	Hulda Joaquim	F	6-1	Sr.	Maputo, Mozambique (Seward County CC)
15	Jaelyn Bates	PG	5-7	So.	Albuquerque, N.M. (Volcano Vista HS)
21	Mackenzie Curtis	G	5-9	RS-So.	Lakeside, Calif. (El Capitan HS)
22	Charlotte Kohl	C	6-5	Sr.	Giessen, Germany (Mississippi State)
24	Hannah Robbins	G	6-0	RS-Fr.	Phoenix, Ariz. (PHH Prep)
30	Paula Reus	F	6-1	Jr.	Palma de Mallorca, Spain (IES Joaquim Blume)
33	Vianè Cumber	G	5-10	Jr.	Albuquerque, N.M. (Sandia HS)

ALPHABETICAL

#	Name	Pos	Ht	Yr	Hometown (Previous School)
12	Aniyah Augmon	G	5-8	Jr.	San José, Calif. (Woodside Priory School)
15	Jaelyn Bates	PG	5-7	So.	Albuquerque, N.M. (Volcano Vista HS)
2	Natalia Chavez	G	5-10	RS-Fr.	Cochiti Pueblo, N.M. (Volcano Vista HS)
33	Vianè Cumber	G	5-10	Jr.	Albuquerque, N.M. (Sandia HS)
21	Mackenzie Curtis	G	5-9	RS-So.	Lakeside, Calif. (El Capitan HS)
1	Nahawa Diarra Berthe	G	5-9	Jr.	Barcelona, Spain (Odessa College)
14	Hulda Joaquim	F	6-1	Sr.	Maputo, Mozambique (Seward County CC)
22	Charlotte Kohl	C	6-5	Sr.	Giessen, Germany (Mississippi State)
5	Lara Langermann	G	5-7	Fr.	Breckerfeld, Germany (Theodor-Heuss-Gymnasium Hagen)
10	Paris Lauro	F	6-1	Fr.	Dallas, Texas (Highland Park HS)
4	Gianna McManaman	PG	5-7	Fr.	Chapel Hill, N.C. (Northwood HS)
30	Paula Reus	F	6-1	Jr.	Palma de Mallorca, Spain (IES Joaquim Blume)
24	Hannah Robbins	G	6-0	RS-Fr.	Phoenix, Ariz. (PHH Prep)
3	Nyah Wilson	G	5-8	Jr.	Dallas, Texas (Syracuse)

STAFF

Mike Bradbury	Head Coach
Keith Freeman	Associate Head Coach
Nike McClure	Assistant Coach
Mackenzie Novak	Assistant Coach
Jaissa Nunn	Graduate Assistant
Hanna Hudson	Director of Operations
Isaiah Fernandez	Director of Player Development
Leila Petewon	Assistant Director of Athletic Performance (WBB)
Lexi Smith	Assistant Athletic Trainer (WBB)

pronunciation guide

audio pronunciations available online

NAHAWA DIARRA BERTHE	Na-HA-wa D-are-a Bear-TAY
NYAH Wilson	Neye-ah
LARA LANGERMANN	La-Rah Lane-GRR-man
PARIS LAURO	Loro (rhymes with Zorro)
HULDA JOAQUIM	Ulda JOY-key-m
PAULA REUS	Rey-OOSE (rhymes with goose)
VIANE Cumber	V-UH-nay

by eligibility

Seniors (2)

14 Hulda Joaquim	F
22 Charlotte Kohl (Gr.)	C

Juniors (5)

1 Nahawa Diarra Berthe	G
3 Nyah Wilson	G
12 Aniyah Augmon	G
30 Paula Reus	F
33 Vianè Cumber	G

Sophomores (2)

15 Jaelyn Bates	PG
21 Mackenzie Curtis (RS)	G

Freshmen (5 (2 Redshirt))

2 Natalia Chavez (RS)	G
4 Gianna McManaman	PG
5 Lara Langermann	G
10 Paris Lauro	F
42 Hannah Robbins (RS)	G

home state

Arizona (1)	
42 Hannah Robbins	G

California (2)

12 Aniyah Augmon	G
21 Mackenzie Curtis	G

North Carolina (1)

4 Gianna McManaman	PG
--------------------	----

New Mexico (3)

2 Natalia Chavez	G
15 Jaelyn Bates	PG
33 Vianè Cumber	G

Texas (2)

3 Nyah Wilson	G
10 Paris Lauro	F

international

1 Nahawa Diarra Berthe (Spain)	G
5 Lara Langermann (Germany)	G
14 Hulda Joaquim (Mozambique)	F
22 Charlotte Kohl (Germany)	C
30 Paula Reus (Spain)	F



MIKE BRADBURY

RECORD AT UNM: 142-78 (8TH SEASON)

CAREER RECORD: 320-195 (17TH SEASON)

NOTEWORTHY:

- Named the sixth head coach in program history on March 31, 2016
- 26 wins last season tied for most wins in program history
- Led UNM to 25 wins in 2017-18; tied for second-most wins in program history
- Led UNM to 20+ wins in four seasons, and .500 or better in six
- Earned his 100th win at UNM on Nov. 30, 2021; only the second coach in program history to reach 100. Earned his 300th career win on Nov. 22, 2022 against Western N.M.

Mike Bradbury enters his seventh season as head coach for The University of New Mexico women's basketball team. In his previous six seasons at the helm, Bradbury has guided the Lobos to a 120-65 (.649) overall record. Three times in his tenure (2017-18, 2018-19 and 2021-22) the Lobos eclipsed the 20-win mark, with the Lobos tying the program record for most wins in a single season with 26 in 2021-22. The consecutive 20-plus win seasons under Bradbury were the first for the program since the 2007-08 – 2008-09 seasons.

Additionally, Bradbury became just the second coach in UNM history to win 100 games with a win over Grambling on Nov. 30, 2021.

The Lobos have sustained success under Bradbury, with the program establishing several program records during the 2021-22 season. UNM set the program record in made three-pointers (346), a program-best 171 made three-pointers in conference season, as well as a program-record 596 assists on the season and 292 in conference games. In addition, the Lobos made a program-high 523 field goals in conference and scored the most points in conference in program history with 1,413 points. On Jan. 6 at Utah State, the Lobos set the program record and the MW record in made three-pointers in a game with 21, and three games later made 19 three-pointers for the second most in a game in program history. The Lobos also went on a nine-game win streak, the second longest in program history.

New Mexico ranked in the top 10 in the NCAA in made three-pointers (third), made three-pointers per game (fifth, 9.6 per game) and in assists (10th). In total, UNM ranked in the top 30 in nine cat-

egories, including scoring offense (14th, 76.7 points per game), assists per game (16th, 16.6 per game), assist/turnover ratio (18th, 1.21), field-goal percentage (19th, 45.1 percent), blocked shots (25th, 147) and three-point field-goal percentage (30th, 35.1 percent).

UNM added six postseason Mountain West honors with a conference-high three all-conference players in Antonia Anderson, Shaiquel McGruder and Jaedyn De La Cerda, an honorable mention in LaTora Duff, an all-defensive player in McGruder and an all-freshman in Paula Reus. The Lobos have had 12 conference selections in the last two seasons.

Further, five Lobos finished the 2021-22 season averaging double figures in points per game.

In the 2020-21 season, Bradbury led the Lobos to a Mountain West regular season championship, the first outright in program history and the first regular season title since the 2004-05 season. In addition, the Lobos were selected for the WNIT for the third time in four years.



The Lobos produced one of the most prolific offenses not only in the conference, but in the country, finishing among the top 25 in several categories. Among them, UNM finished fourth in the NCAA in made three-pointers per game (10.2), sixth in assist-turnover ratio (1.40), ninth in scoring offense (81.2 points per game), 14th in fewest turnovers per game (12.0) and assists per game (16.8) and 22nd in scoring margin (12.7). The Lobos led the Mountain West in scoring offense, scoring margin, assists per game, turnover margin, assist-turnover ratio and made three-pointers as well as second in field-goal percentage and steals per game.

UNM set a program record in scoring with 120 points against Arkansas-Pine Bluff on Dec. 17, 2020 and in the process, made 17 three-pointers, falling just one short of tying the program record. Further, the Lobos registered 90-plus points in five games and 80-plus points in 11 of the 20 games on the season.

Four Lobos finished the 2020-21 season averaging double figures in points per game with six players finishing in double figures in scoring in two games (the only times it has been accomplished in program history), five players in five games and four in seven games.

As a result of UNM's successful season, five players were named to the All-Mountain West Team with LaTascya Duff also earning the superlative of Sixth Person of the Year. Duff was just the second Lobo to win the sixth person award. Making the all-conference team for the first time were Duff, Jaedyn De La Cerda and Antonia Anderson, as well as Shaiquel McGruder earning all-defensive and Ahlise Hurst earning the honorable mention distinction.

In his time at UNM, Bradbury has coached 13 All-Mountain West performers with Cherise Beynon, Jayla Everett, Jaisa Nunn, Aisia Robertson and Richelle van der Keijl joining De La Cerda, Duff, McGruder, Hurst and Anderson in making the All-Mountain West Team. Tesha Buck, Mykiel Burleson and Nike McClure have also earned MW recognition with Buck being the 2017-18 Newcomer of the Year, Burleson being named to the All-Freshman team in 2016-17 and McClure landing on the All-Defensive team in 2018-19.

In terms of major individual awards, Bradbury has coached the league's Newcomer of the Year each of his first three seasons in charge of the Lobos with van der Keijl earning the award in 2016-17, Buck in 2017-18 and Robertson in 2018-19. Additionally, Bradbury has coached the MW Player of the Year in Nunn (2018-19) and the Freshman of the Year in Everett (2018-19) as well as Sixth Person of the Year in Duff (2020-21).

CAREER HEAD COACHING YEAR-BY-YEAR

2007-08	11-19 (9-11)	Morehead State
2008-09	17-14 (11-7)	Morehead State
2009-10	22-11 (14-4)	Morehead State
2010-11	20-13 (11-7)	Wright State
2011-12	21-13 (12-6)	Wright State
2012-13	12-18 (6-10)	Wright State
2013-14	26-9 (12-4)	Wright State
2014-15	25-9 (12-4)	Wright State
2015-16	24-11 (12-6)	Wright State
2016-17	15-15 (10-8)	New Mexico
2017-18	25-11 (10-8)	New Mexico
2018-19	24-7 (14-4)	New Mexico
2019-20	15-17 (6-12)	New Mexico
2020-21	15-5 (11-3)	New Mexico
2021-22	26-10 (14-4)	New Mexico
2022-23	21-13 (12-6)	New Mexico
2023-24	1-0 (0-0)	New Mexico
Total	320-195 (176-104)	

EDUCATION

UT-Chattanooga - B.S. Recreation (1993)

COACHING EXPERIENCE

1991-93	Student Assistant	Chattanooga
1993-94	Assistant Coach	Chattanooga
1994-95	Assistant Coach	East Tennessee
1995-96	Assistant Coach	VCU
1996-02	Assistant Coach	Cincinnati
2002-07	Assistant Coach	Xavier
2007-10	Head Coach	Morehead State
2010-16	Head Coach	Wright State
2016-pres.	Head Coach	New Mexico

HEAD COACHING RECORD

2007-10	Morehead State	50-44 (.532)
2010-16	Wright State	128-73 (.637)
2016-pres.	New Mexico	142-78 (.645)
17 years		320-195 (.621)

ALL-TIME SERIES UNDER COACH BRADBURY

OPPONENT	Series	H	A	N
Abilene Christian	1-0	1-0		
Air Force	10-2	5-1	4-1	1-0
Arizona	0-2	0-1	0-1	
Arkansas-Pine Bluff	1-0		1-0	
Arizona State	0-2	0-1	0-1	
Auburn	0-1	0-1		
Ball State	0-1	0-1		
Boise State	5-7	4-1	1-5	0-1
California Baptist	0-1			0-1
Colorado State	9-5	7-1	2-3	0-1
Denver	0-1	0-1		
Fairleigh Dickinson	1-0	1-0		
Fresno State	8-6	4-1	3-3	1-2
Grambling State	1-0	1-0		
Grand Canyon	1-0	1-0		
Hartford	1-0	1-0		
Houston	3-1	2-0	1-1	
Houston Baptist	1-0	1-0		
Illinois	1-0	1-0		
Lamar	2-0	2-0		
Louisiana-Monroe	1-0			1-0
Loyola Marymount	0-1	0-1		
Marquette	1-1	1-0	0-1	
Midwestern State	1-0		1-0	
Minnesota	0-1	0-1		
Mississippi State	0-1			0-1
Missouri	1-0			1-0
Navy	1-0	1-0		
Nevada	10-3	5-0	5-2	0-1
New Mexico State	10-2	6-0	4-2	
Nicholls	1-0		1-0	
Northern Arizona	3-0	2-0	1-0	
Northern New Mexico	4-0	4-0		
Oklahoma	1-1	1-0	0-1	
Old Dominion	1-0			1-0
Oregon State	0-1		0-1	
Prairie View A&M	1-0	1-0		
Providence	1-0	1-0		
Rice	1-0	1-0		
Sacramento State	1-0	1-0		
Saint Mary's	1-0	1-0		
Sam Houston State	1-0		1-0	
San Diego	1-0	1-0		
San Diego State	8-8	4-1	3-5	1-2
San Jose State	8-3	4-1	3-2	1-0
SMU	1-0	1-0		
South Carolina State	1-0	1-0		
Southern Utah	0-1		0-1	
St. Joseph's	0-1	0-1		
Stephen F. Austin	1-1	1-0		0-1
TCU	0-1	0-1		
Texas A&M-Commerce	1-0		1-0	
Texas State	1-0	1-0		
Texas Southern	1-0	1-0		
Texas Tech	1-2	1-0	0-1	0-1
Tulsa	0-1	0-1		
UC Irvine	1-0	1-0		
UC Riverside	1-0	1-0		
UNLV	4-10	2-4	2-6	
Utah State	13-0	5-0	8-0	
UTEP	5-0	4-0	1-0	
Washington	0-1		0-1	
West Virginia	0-1			0-1
Western Michigan	1-0	1-0		
Western New Mexico	1-0	1-0		
Wichita State	1-0	1-0		
Wyoming	5-8	2-4	3-3	0-1
	142-78	89-24	46-41	7-13

RANKED OPPONENTS

#16 Marquette	11/13/17	W, 88-87
#23 West Virginia	11/29/19	L, 73-60
#6 Arizona	12/12/21	L, 77-60
#14 Arizona	12/4/22	L, 77-60

#1

NAHAWA DIARRA BERTHE

G | 5-9 | JR | Barcelona, Spain (Odessa College)



PPG	FG %	3PT %	FT %	RPG	APG	SPG	BPG	MPG
0.0	.000	--	--	2.0	2.0	--	--	8.2

NOTEWORTHY

- » First season at the DI level after spending past two seasons at Odessa
- » Started all 25 games for the Wranglers last season, averaging 29.6 minutes per game, 10.8 points per game, 4.2 rebounds per game, 2.6 assists per game and 2.3 steals per game
- » Scored in double figures in 16 games and recorded five or more rebounds in nine games

GAME-BY-GAME STATISTICS

Opponent	Date	GS	MIN	Total		3-Pointers		Free throws		Rebounds				PF				PTS	
				FG-FGA	PCT	3FG-3FGA	PCT	FT-FTA	PCT	OFF	DEF	TOT	AVG	PF	A	TO	BLK	STL	PTS
Texas Southern	11/06/2023		08:14	0-2	.000	0-0	.000	0-0	.000	1	1	2	2.0	0	2	2	0	0	0
Totals		0	08:14	0-2	.000	0-0	.000	0-0	.000	1	1	2	2.0	0	2	2	0	0	0

TOP PERFORMANCES

Points	Season	
	MW	
	Career	
FGM	Season	
	MW	
	Career	
FGA	Season	2, Texas Southern (11/6)
	MW	
	Career	2, Texas Southern (11/6)
3PT FGM	Season	
	MW	
	Career	
3PT FGA	Season	
	MW	
	Career	
FTM	Season	
	MW	
	Career	
FTA	Season	
	MW	
	Career	
Reb.	Season	2, Texas Southern (11/6)
	MW	
	Career	2, Texas Southern (11/6)
Asts.	Season	2, Texas Southern (11/6)
	MW	
	Career	2, Texas Southern (11/6)
Blocks	Season	
	MW	
	Career	
Steals	Season	
	MW	
	Career	
TO	Season	
	MW	
	Career	
Min.	Season	8, Texas Southern (11/6)
	MW	
	Career	8, Texas Southern (11/6)

PRODUCTION TRACKER

2023-24 Career

- Double-Double
- Scored 10+ pts
- Scored 20+ pts
- 10+ reb
- 3+ 3-pt

CAREER STATISTICS

				Field Goals		3-Point		F-Throws		Rebounds								Scoring		
SEASON	TEAM	GP-GS	MIN/AVG	FG-FGA	FG%	3FG-3FGA	3FG%	FT-FTA	FT%	OFF	DEF	TOT	AVG	PF-FO	A	TO	BLK	STL	PTS	AVG
2023-24	UNM	1-0	8/8.2	0-2	.000	0-0	.000	0-0	.000	1	1	2	2.0	0-0	2	2	0	0	0	0.0
TOTAL		1-0	8/8.2	0-2	.000	0-0	.000	0-0	.000	1	1	2	2.0	0-0	2	2	0	0	0	0.0

#2

NATALIA CHAVEZ

G | 5-10 | R-FR | Cochiti Pueblo, N.M. (Volcano Vista HS)



PPG	FG %	3PT %	FT %	RPG	APG	SPG	BPG	MPG
0.0	.000	.000	--	0.0	0.0	0.0	0.0	3.0

NOTEWORTHY

- REDSHIRTED LAST SEASON
- » Named the 1-5A District Player of the Year in 2019-20 and 2020-21, while also earning first team all-state and first team all-metro during that time span
 - » Reached the 1,000-point career milestone in 2021
 - » Was up for an ESPY award for her game-winning half-court shot to win the 5A title
 - »Majoring in business administration

GAME-BY-GAME STATISTICS

			Total		3-Pointers		Free throws		Rebounds											
Opponent	Date	GS	MIN	FG-FGA	PCT	3FG-3FGA	PCT	FT-FTA	PCT	OFF	DEF	TOT	AVG	PF	A	TO	BLK	STL	PTS	AVG
Texas Southern	11/06/2023		03:02	0-1	.000	0-1	.000	0-0	.000	0	0	0	0.0	0	0	0	0	0	0	0.0
Totals		0	03:02	0-1	.000	0-1	.000	0-0	.000	0	0	0	0.0	0	0	0	0	0	0	0.0

TOP PERFORMANCES

Points	Season	
	MW	
	Career	
FGM	Season	
	MW	
	Career	
FGA	Season	1, Texas Southern (11/6)
	MW	
	Career	1, Texas Southern (11/6)
3PT FGM	Season	
	MW	
	Career	
3PT FGA	Season	1, Texas Southern (11/6)
	MW	
	Career	1, Texas Southern (11/6)
FTM	Season	
	MW	
	Career	
FTA	Season	
	MW	
	Career	
Reb.	Season	
	MW	
	Career	
Asts.	Season	
	MW	
	Career	
Blocks	Season	
	MW	
	Career	
Steals	Season	
	MW	
	Career	
TO	Season	
	MW	
	Career	
Min.	Season	3, Texas Southern (11/6)
	MW	
	Career	3, Texas Southern (11/6)

PRODUCTION TRACKER

2023-24 Career

- Double-Double
- Scored 10+ pts
- Scored 20+ pts
- 10+ reb
- 3+ 3-pt

CAREER STATISTICS

				Field Goals		3-Point		F-Throws		Rebounds										Scoring	
SEASON	TEAM	GP-GS	MIN/AVG	FG-FGA	FG%	3FG-3FGA	3FG%	FT-FTA	FT%	OFF	DEF	TOT	AVG	PF-FO	A	TO	BLK	STL	PTS	AVG	
2023-24	UNM	1-0	3/3.0	0-1	.000	0-1	.000	0-0	.000	0	0	0	0.0	0-0	0	0	0	0	0	0.0	
TOTAL		1-0	3/3.0	0-1	.000	0-1	.000	0-0	.000	0	0	0	0.0	0-0	0	0	0	0	0	0.0	

#3

NYAH WILSON

G | 5-8 | JR | Dallas, Texas (Syracuse)



PPG	FG %	3PT %	FT %	RPG	APG	SPG	BPG	MPG
20.0	.625	1.00	.857	4.0	3.0	1.0	0.0	32.1

NOTEWORTHY

- » Appeared in 20 games as a sophomore and 20 games with one start as a freshman at Syracuse
- » Graduated from Duncanville High School and was a four-star recruit by ESPN HoopGurlz, a McDonald's All-America nominee and was on the Terrific 25 rankings as a sophomore
- » Liberal arts major

GAME-BY-GAME STATISTICS

Opponent	Date	GS	MIN	Total		3-Pointers		Free throws		Rebounds											
				FG-FGA	PCT	3FG-3FGA	PCT	FT-FTA	PCT	OFF	DEF	TOT	AVG	PF	A	TO	BLK	STL	PTS	AVG	
Texas Southern	11/06/2023	*	32:08	5-8	.625	4-4	1.000	6-7	.857	1	3	4	4.0	2	3	3	0	1	20	20.0	
Totals		1	32:08	5-8	.625	4-4	1.000	6-7	.857	1	3	4	4.0	2	3	3	0	1	20	20.0	

TOP PERFORMANCES

Points	Season MW	20, Texas Southern (11/6)
	Career	20, Texas Southern (11/6)
FGM	Season MW	5, Texas Southern (11/6)
	Career	5, Texas Southern (11/6)
FGA	Season MW	2, Texas Southern (11/6)
	Career	9, C. Conn. St (12/5/21)
3PT FGM	Season MW	4, Texas Southern (11/6)
	Career	4, Texas Southern (11/6)
3PT FGA	Season MW	4, Texas Southern (11/6)
	Career	4, Texas Southern (11/6)
FTM	Season MW	6, Texas Southern (11/6)
	Career	6, Texas Southern (11/6)
FTA	Season MW	7, Texas Southern (11/6)
	Career	7, Texas Southern (11/6)
Reb.	Season MW	4, Texas Southern (11/6)
	Career	5, Pittsburgh (2/23/23)
Asts.	Season MW	3, Texas Southern (11/6)
	Career	4, Cornell (12/8/21)
Blocks	Season MW	
	Career	
Steals	Season MW	1, Texas Southern (11/6)
	Career	2, done 2x
TO	Season MW	3, Texas Southern (11/6)
	Career	0, done 26x
Min.	Season MW	32, Texas Southern (11/6)
	Career	32, Texas Southern (11/6)

PRODUCTION TRACKER

2023-24 Career

Double-Double		
Scored 10+ pts	1	1
Scored 20+ pts	1	1
10+ reb		
3+ 3-pt	1	1

CAREER STATISTICS

				Field Goals		3-Point		F-Throws		Rebounds								Scoring		
SEASON	TEAM	GP-GS	MIN/AVG	FG-FGA	FG%	3FG-3FGA	3FG%	FT-FTA	FT%	OFF	DEF	TOT	AVG	PF-FO	A	TO	BLK	STL	PTS	AVG
2021-22	SU	20-1	179/9.0	16-46	.348	1-9	.111	3-9	.333	3	9	12	0.6	16-0	16	13	0	7	36	1.8
2022-23	SU	20-0	115/5.7	12-22	.545	0-2	.000	8-11	.727	4	12	16	0.8	12-0	8	9	0	7	32	1.6
2023-24	UNM	1-1	32/32.1	5-8	.625	4-4	1.000	6-7	.857	1	3	4	4.0	2-0	3	3	0	1	20	20.0
TOTAL FOR UNM		1-1	32/32.1	5-8	.625	4-4	1.000	6-7	.857	1	3	4	4.0	2-0	3	3	0	1	20	20.0
TOTAL		41-2	326/8.0	33-76	.434	5-15	.333	17-27	.630	8	24	32	0.8	30-0	27	25	0	15	88	2.1

#4

GIANNA MCMANAMAN

PG | 5-7 | FR | Chapel Hill, N.C. (Northwood HS)



PPG	FG %	3PT %	FT %	RPG	APG	SPG	BPG	MPG
--	--	--	--	--	--	--	--	--

NOTEWORTHY

- » Won conference championships in 2019-20, 2020-21 and 2021-22 and won a state championship in 2021-22
- » Averaged 12 ppg, 5 apg, 4 rpg and shot 43 percent from three-point range in high school
- » Is the fourth member of her family to attend UNM, joining her mother (Lia McManaman), grandfather (Robert Sanchez), grandmother (Bonnie Sanchez)
- » Majoring in exercise science

GAME-BY-GAME STATISTICS

TOP PERFORMANCES

Points	Season MW Career
FGM	Season MW Career
FGA	Season MW Career
3PT FGM	Season MW Career
3PT FGA	Season MW Career
FTM	Season MW Career
FTA	Season MW Career
Reb.	Season MW Career
Asts.	Season MW Career
Blocks	Season MW Career
Steals	Season MW Career
TO	Season MW Career
Min.	Season MW Career

PRODUCTION TRACKER

2023-24 Career

- Double-Double
- Scored 10+ pts
- Scored 20+ pts
- 10+ reb
- 3+ 3-pt

CAREER STATISTICS

#5

LARA LANGERMANN

G | 5-7 | FR | Breckerfeld, Germany (Theodor-Heuss-Gymnasium Hagen)



PPG	FG %	3PT %	FT %	RPG	APG	SPG	BPG	MPG
0.0	.000	.000	--	1.0	0.0	1.0	0.0	12.6

NOTEWORTHY

- » Recently played for the U18 and U20 German National Team over the summer.
- » Played for VfL Viactiv AstroLadies Bochum, a Division 2 team in the Damen Basketballbundesliga, the BasketGirls Ruhr in the Weibliche Nachwuchsbundesliga (WNBL), a first German under 18 league, and for VfL Viactiv AstroLadies Bochum in the Damen Basketballbundesliga, as well as Herner TC.
- » Majoring in exercise science

TOP PERFORMANCES

Points	Season	1, Texas Southern (11/6)
	MW	
	Career	1, Texas Southern (11/6)
FGM	Season	
	MW	
	Career	
FGA	Season	1, Texas Southern (11/6)
	MW	
	Career	1, Texas Southern (11/6)
3PT FGM	Season	
	MW	
	Career	
3PT FGA	Season	1, Texas Southern (11/6)
	MW	
	Career	1, Texas Southern (11/6)
FTM	Season	
	MW	
	Career	
FTA	Season	
	MW	
	Career	
Reb.	Season	1, Texas Southern (11/6)
	MW	
	Career	1, Texas Southern (11/6)
Asts.	Season	
	MW	
	Career	
Blocks	Season	
	MW	
	Career	
Steals	Season	1, Texas Southern (11/6)
	MW	
	Career	1, Texas Southern (11/6)
TO	Season	3, Texas Southern (11/6)
	MW	
	Career	3, Texas Southern (11/6)
Min.	Season	13, Texas Southern (11/6)
	MW	
	Career	13, Texas Southern (11/6)

GAME-BY-GAME STATISTICS

Opponent	Date	GS	MIN	Total		3-Pointers		Free throws		Rebounds											
				FG-FGA	PCT	3FG-3FGA	PCT	FT-FTA	PCT	OFF	DEF	TOT	AVG	PF	A	TO	BLK	STL	PTS	AVG	
Texas Southern	11/06/2023		12:36	0-1	.000	0-1	.000	0-0	.000	0	1	1	1.0	1	0	3	0	1	0	0.0	
Totals		0	12:36	0-1	.000	0-1	.000	0-0	.000	0	1	1	1.0	1	0	3	0	1	0	0.0	

PRODUCTION TRACKER

2023-24 Career

Double-Double
Scored 10+ pts
Scored 20+ pts
10+ reb
3+ 3-pt

CAREER STATISTICS

				Field Goals		3-Point		F-Throws		Rebounds								Scoring		
SEASON	TEAM	GP-GS	MIN/AVG	FG-FGA	FG%	3FG-3FGA	3FG%	FT-FTA	FT%	OFF	DEF	TOT	AVG	PF-FO	A	TO	BLK	STL	PTS	AVG
2023-24	UNM	1-0	13/12.6	0-1	.000	0-1	.000	0-0	.000	0	1	1	1.0	1-0	0	3	0	1	0	0.0
TOTAL		1-0	13/12.6	0-1	.000	0-1	.000	0-0	.000	0	1	1	1.0	1-0	0	3	0	1	0	0.0



PARIS LAURO

F | 6-1 | FR | Dallas, Texas (Highland Park HS)



PPG	FG %	3PT %	FT %	RPG	APG	SPG	BPG	MPG
0.0	--	--	--	0.0	0.0	0.0	0.0	1.4

NOTEWORTHY

- » Averaged 17.3 ppg, 8.3 rpg, 2.0 bpg her junior season and 23.6 ppg, 8.0 rpg and 1.8 bpg and was named the District 7-6A Most Valuable Player her senior season.
- » Named to the TABC 5A All-Region Team, named Offensive Player of the Year for District 13-5A and earned academic all-district her junior year
- » Majoring in exercise science

GAME-BY-GAME STATISTICS

Opponent	Date	GS	MIN	Total		3-Pointers		Free throws		Rebounds							
				FG-FGA	PCT	3FG-3FGA	PCT	FT-FTA	PCT	OFF	DEF	TOT	AVG	PF	A	TO	BLK
Texas Southern	11/06/2023		01:25	0-0	.000	0-0	.000	0-0	.000	0	0	0	0.0	1	0	0	0
Totals		0	01:25	0-0	.000	0-0	.000	0-0	.000	0	0	0	0.0	1	0	0	0

TOP PERFORMANCES

Points	Season	
	MW	
	Career	
FGM	Season	
	MW	
	Career	
FGA	Season	
	MW	
	Career	
3PT FGM	Season	
	MW	
	Career	
3PT FGA	Season	
	MW	
	Career	
FTM	Season	
	MW	
	Career	
FTA	Season	
	MW	
	Career	
Reb.	Season	
	MW	
	Career	
Asts.	Season	
	MW	
	Career	
Blocks	Season	
	MW	
	Career	
Steals	Season	
	MW	
	Career	
TO	Season	
	MW	
	Career	
Min.	Season	1, Texas Southern (11/6)
	MW	
	Career	1, Texas Southern (11/6)

PRODUCTION TRACKER

2023-24 Career

- Double-Double
- Scored 10+ pts
- Scored 20+ pts
- 10+ reb
- 3+ 3-pt

CAREER STATISTICS

				Field Goals		3-Point		F-Throws		Rebounds									Scoring	
SEASON	TEAM	GP-GS	MIN/AVG	FG-FGA	FG%	3FG-3FGA	3FG%	FT-FTA	FT%	OFF	DEF	TOT	AVG	PF-FO	A	TO	BLK	STL	PTS	AVG
2023-24	UNM	1-0	1/1.4	0-0	.000	0-0	.000	0-0	.000	0	0	0	0.0	1-0	0	0	0	0	0	0.0
TOTAL		1-0	1/1.4	0-0	.000	0-0	.000	0-0	.000	0	0	0	0.0	1-0	0	0	0	0	0	0.0

#12

ANIYAH AUGMON
G | 5-8 | JR | San José, Calif. (Woodside Priory School)



PPG	FG %	3PT %	FT %	RPG	APG	SPG	BPG	MPG
17.0	.636	.500	1.000	6.0	6.0	0.0	0.0	30.6

NOTEWORTHY

- » Averaged 21.2 minutes per game, 7.1 points per game, 4.4 rebounds per game, 1.9 assists per game, 0.7 steals per game, 0.2 blocks per game and shot 44.0% from the floor last season
- » Recorded career-high 5 assists against Old Dominion and matched it at Wyoming
- » Scored in double figures in 8 conference games
- » Career-high 18 points against UNLV after having a then-career-high 11 against Nevada
- » Perfect 3-3 from three at UNLV, perfect 6-6 from free-throw line against Boise State
- » First career double-double at UNLV with a team-high 18 points and team-high 10 rebounds. Second came at Utah State with 12 points and career-high 13 rebounds and third came at Air Force with team-high 17 points and team-high 11 rebounds
- » 10 or more rebounds in 4 games
- » Played in 33 games with 1 start (at Houston) as a freshman
- » Liberal arts major

GAME-BY-GAME STATISTICS

Opponent	Date	GS	MIN	Total		3-Pointers		Free throws		Rebounds											
				FG-FGA	PCT	3FG-3FGA	PCT	FT-FTA	PCT	OFF	DEF	TOT	AVG	PF	A	TO	BLK	STL	PTS	AVG	
Texas Southern	11/06/2023	*	30:37	7-11	.636	1-2	.500	2-2	1.000	0	6	6	6.0	0	6	5	0	0	17	17.0	
Totals		1	30:37	7-11	.636	1-2	.500	2-2	1.000	0	6	6	6.0	0	6	5	0	0	17	17.0	

TOP PERFORMANCES

Points	Season	17, Texas Southern (11/6)
	MW	18, UNLV (1/14/23)
	Career	18, UNLV (1/14/23)
FGM	Season	7, Texas Southern (11/6)
	MW	7, San Diego St. (2/4/23)
	Career	7, 2x
FGA	Season	11, Texas Southern (11/6)
	MW	13, Colorado St. (1/26/23)
	Career	14, No. Arizona (3/16/23)
3PT FGM	Season	1, Texas Southern (11/6)
	MW	3, UNLV (1/14/23)
	Career	3, UNLV (1/14/23)
3PT FGA	Season	2, Texas Southern (11/6)
	MW	4, Colorado St. (1/26/23)
	Career	4, Colorado St. (1/26/23)
FTM	Season	2, Texas Southern (11/6)
	MW	8, Nevada (2/11/23)
	Career	8, Nevada (2/11/23)
FTA	Season	2, Texas Southern (11/6)
	MW	10, Air Force (2/23/23)
	Career	10, Air Force (2/23/23)
Reb.	Season	6, Texas Southern (11/6)
	MW	13, Utah State (1/28/23)
	Career	13, Utah State (1/28/23)
Asts.	Season	6, Texas Southern (11/6)
	MW	5, Wyoming (1/5/23)
	Career	5, 2x
Blocks	Season	
	MW	1, 5x
	Career	1, 6x
Steals	Season	
	MW	3, Air Force (2/23/23)
	Career	3, 5x
TO	Season	5, Texas Southern (11/6)
	MW	0, 13x
	Career	0, done 15x
Min.	Season	31, Texas Southern (11/6)
	MW	30, 2x
	Career	33, No. Arizona (3/16/23)

PRODUCTION TRACKER

2023-24 Career

Double-Double	3
Scored 10+ pts	1
Scored 20+ pts	
10+ reb	5
3+ 3-pt	1

CAREER STATISTICS

				Field Goals		3-Point		F-Throws		Rebounds										Scoring	
SEASON	TEAM	GP-GS	MIN/AVG	FG-FGA	FG%	3FG-3FGA	3FG%	FT-FTA	FT%	OFF	DEF	TOT	AVG	PF-FO	A	TO	BLK	STL	PTS	AVG	
2021-22	UNM	33-1	312/9.5	15-35	.429	1-9	.111	15-23	.652	17	46	63	1.9	31-0	21	27	1	24	46	1.4	
2022-23	UNM	31-2	657/21.2	77-175	.440	11-37	.297	54-77	.701	49	86	135	4.4	63-1	60	74	6	23	219	7.1	
2023-24	UNM	1-1	31/30.6	7-11	.636	1-2	.500	2-2	1.000	0	6	6	6.0	0-0	6	5	0	0	17	17.0	
TOTAL		65-4	1000/15.4	99-221	.448	13-48	.271	71-102	.696	66	138	204	3.1	94-1	87	106	7	47	282	4.3	

#14

HULDA JOAQUIM

F | 6-1 | SR | Maputo, Mozambique (Seward County CC)



PPG	FG %	3PT %	FT %	RPG	APG	SPG	BPG	MPG
2.0	.250	--	--	5.0	0.0	1.0	0.0	9.5

NOTEWORTHY

- » Second season with the Lobos
- » Averaged 6.2 minutes per game, 2.2 points per game, 1.4 rebounds per game, 0.3 steals per game and 0.5 blocks per game last season, playing in 13 games.
- » Scored a season-high nine points against Western New Mexico, while also having season-high three steals, two blocks and six rebounds
- » Majoring in business administration

GAME-BY-GAME STATISTICS

Opponent	Date	GS	MIN	Total		3-Pointers		Free throws		Rebounds							
				FG-FGA	PCT	3FG-3FGA	PCT	FT-FTA	PCT	OFF	DEF	TOT	AVG	PF	A	TO	BLK
Texas Southern	11/06/2023		09:30	1-4	.250	0-0	.000	0-0	.000	3	2	5	5.0	0	0	1	0
Totals		0	09:30	1-4	.250	0-0	.000	0-0	.000	3	2	5	5.0	0	0	1	0

TOP PERFORMANCES

Points	Season	2, Texas Southern (11/6)
	MW	5, Utah State (2/25/23)
	Career	9, Western N.M. (11/22/22)
FGM	Season	1, Texas Southern (11/6)
	MW	2, Utah State (2/25/23)
	Career	4, Western N.M. (11/22/22)
FGA	Season	4, Texas Southern (11/6)
	MW	5, Utah State (2/25/23)
	Career	9, Western N.M. (11/22/22)
3PT FGM	Season	
	MW	1, Utah State (2/25/23)
	Career	1, 2x
3PT FGA	Season	
	MW	2, Utah State (2/25/23)
	Career	2, Utah State (2/25/23)
FTM	Season	
	MW	1, UNLV (1/14/23)
	Career	2, SCSU (12/29/22)
FTA	Season	
	MW	2, UNLV (1/14/23)
	Career	2, 3x
Reb.	Season	5, Texas Southern (11/6)
	MW	3, 2x
	Career	6, Western N.M. (11/22/22)
Asts.	Season	
	MW	1, 2x
	Career	1, 3x
Blocks	Season	
	MW	2, Utah State (2/25/23)
	Career	2, 2x
Steals	Season	1, Texas Southern (11/6)
	MW	1, UNLV (1/14/23)
	Career	3, Western N.M. (11/22/22)
TO	Season	1, Texas Southern (11/6)
	MW	0, 6x
	Career	0, 11x
Min.	Season	10, Texas Southern (11/6)
	MW	12, Utah State (2/25/23)
	Career	18, Western N.M. (11/22/22)

PRODUCTION TRACKER

2023-24 Career

Double-Double
 Scored 10+ pts
 Scored 20+ pts
 10+ reb
 3+ 3-pt

CAREER STATISTICS

				Field Goals		3-Point		F-Throws		Rebounds									Scoring	
SEASON	TEAM	GP-GS	MIN/AVG	FG-FGA	FG%	3FG-3FGA	3FG%	FT-FTA	FT%	OFF	DEF	TOT	AVG	PF-FO	A	TO	BLK	STL	PTS	AVG
2022-23	UNM	13-0	80/6.2	11-26	.423	2-6	.333	4-6	.667	9	9	18	1.4	2-0	3	3	6	4	28	2.2
2023-24	UNM	1-0	10/9.5	1-4	.250	0-0	.000	0-0	.000	3	2	5	5.0	0-0	0	1	0	1	2	2.0
TOTAL		14-0	90/6.4	12-30	.400	2-6	.333	4-6	.667	12	11	23	1.6	2-0	3	4	6	5	30	2.1

#15

JAELYN BATES

PG | 5-7 | SO | Albuquerque, N.M. (Volcano Vista HS)



PPG	FG %	3PT %	FT %	RPG	APG	SPG	BPG	MPG
--	--	--	--	--	--	--	--	--

NOTEWORTHY

» Averaged 10.1 minutes per game, 3.1 points per game, 1.3 assists per game, 0.4 steals per game, playing in 22 games last season

» Scored in double figures in 4 games last season

» Perfect 4-4 from 3 against S. Carolina State

» 7 games with multiple assists, 8 games with at least 1 steal

» Won back-to-back District 1-5A championships and won the 2019 and 2020 1-5A District tournament

» Named first team all-district, first team all-metro, second team all-state, was named the District Tournament Player of the Game, District 1-5A Player of the Year and was named the Volcano Vista Winter Sports Female Athlete of the Year in 2019

» Biochemistry major

TOP PERFORMANCES

Points	Season MW	11, Utah State (2/25/23)
	Career	16, SCSU (12/29/22)
FGM	Season MW	4, Utah State (2/25/23)
	Career	6, SCSU (12/29/22)
FGA	Season MW	6, Utah State (2/25/23)
	Career	15, Southern Utah (11/7/23)
3PT FGM	Season MW	3, Utah State (2/25/23)
	Career	4, SCSU (12/29/22)
3PT FGA	Season MW	5, Utah State (2/25/23)
	Career	9, Southern Utah (11/7/23)
FTM	Season MW	1, UNLV (1/14/23)
	Career	1, 2x
FTA	Season MW	2, 2x
	Career	2, 3x
Reb.	Season MW	3, UNLV (1/14/23)
	Career	5, Western N.M. (11/22/22)
Asts.	Season MW	3, 2x
	Career	8, Western N.M. (11/22/22)
Blocks	Season MW	2, Utah State (2/25/23)
	Career	2, Utah State (2/25/23)
Steals	Season MW	1, 2x
	Career	2, Western N.M. (11/22/22)
TO	Season MW	
	Career	0, 9x
Min.	Season MW	17, Wyoming (1/5/23)
	Career	33, Western N.M.(11/22/22)

PRODUCTION TRACKER

2023-24 Career

Double-Double	
Scored 10+ pts	4
Scored 20+ pts	
10+ reb	
3+ 3-pt	2

GAME-BY-GAME STATISTICS

CAREER STATISTICS

				Field Goals		3-Point		F-Throws		Rebounds									Scoring	
SEASON	TEAM	GP-GS	MIN/AVG	FG-FGA	FG%	3FG-3FGA	3FG%	FT-FTA	FT%	OFF	DEF	TOT	AVG	PF-FO	A	TO	BLK	STL	PTS	AVG
2022-23	UNM	22-1	222/10.1	27-67	.403	13-41	.317	2-7	.286	1	19	20	0.9	15-0	29	21	3	9	69	3.1
TOTAL		22-1	222/10.1	27-67	.403	13-41	.317	2-7	.286	1	19	20	0.9	15-0	29	21	3	9	69	3.1

#21

MACKENZIE CURTIS

G | 5-9 | R-SO | Lakeside, Calif. (El Capitan HS)



PPG	FG %	3PT %	FT %	RPG	APG	SPG	BPG	MPG
--	--	--	--	--	--	--	--	--

NOTEWORTHY

- REDSHIRTED LAST SEASON
- » Finished in double figures in first college appearance
 - » Played in 21 games, and averaged 5.9 minutes per game freshman season.
 - » Scored in six games with a season-high 12 points and two assists against Northern New Mexico with season-high three, three-pointers
 - » Averaged 22.2 points, 9.5 rebounds, 3.3 assists, 3.5 steals and 1.0 blocks per game in high school
 - » Four-time team MVP, three-time league MVP, four-time San Diego Union Tribune Scholar-Athlete
 - » Named First-Team All-CIF in 2020 and Second Team All-CIF in 2019
 - » No. 1 scorer in San Diego for two years and No. 3 in California for scoring in the class of 2021
 - » Education major

GAME-BY-GAME STATISTICS

TOP PERFORMANCES

Points	Season	
	MW	3, Utah State (2/16/22)
	Career	12, N. N.M. (11/12/21)
FGM	Season	
	MW	1, 2x
	Career	3, N. N.M. (11/12/21)
FGA	Season	
	MW	4, Boise State (2/19/22)
	Career	10, N. N.M. (11/12/21)
3PT FGM	Season	
	MW	1, Utah State (2/16/22)
	Career	3, N. N.M. (11/12/21)
3PT FGA	Season	
	MW	2, Utah State (2/16/22)
	Career	7, N. N.M. (11/12/21)
FTM	Season	
	MW	2, Utah State (2/16/22)
	Career	3, N. N.M. (11/12/21)
FTA	Season	
	MW	2, Utah State (2/16/22)
	Career	4, N. N.M. (11/12/21)
Reb.	Season	
	MW	1, 3x
	Career	3, 2x
Asts.	Season	
	MW	1, 3x
	Career	2, N. N.M. (11/12/21)
Blocks	Season	
	MW	
	Career	
Steals	Season	
	MW	1, Utah State (1/6/22)
	Career	1, Utah State (1/6/22)
TO	Season	
	MW	0, 11x
	Career	0, 12x
Min.	Season	
	MW	11, Colorado St. (1/15/22)
	Career	19, N. N.M. (11/12/21)

PRODUCTION TRACKER

2023-24 Career

Double-Double	
Scored 10+ pts	1
Scored 20+ pts	
10+ reb	
3+ 3-pt	1

CAREER STATISTICS

				Field Goals		3-Point		F-Throws		Rebounds											Scoring	
SEASON	TEAM	GP-GS	MIN/AVG	FG-FGA	FG%	3FG-3FGA	3FG%	FT-FTA	FT%	OFF	DEF	TOT	AVG	PF-FO	A	TO	BLK	STL	PTS	AVG		
2021-22	UNM	21-0	123/5.9	7-36	.194	5-25	.200	5-6	.833	1	9	10	0.5	16-0	6	7	0	1	24	1.1		
TOTAL		21-0	123/5.9	7-36	.194	5-25	.200	5-6	.833	1	9	10	0.5	16-0	6	7	0	1	24	1.1		

#22

CHARLOTTE KOHL
C | 6-5 | GR | Giessen, Germany (Mississippi State)



PPG	FG %	3PT %	FT %	RPG	APG	SPG	BPG	MPG
6.0	.333	--	1.000	9.0	1.0	1.0	3.0	25.9

NOTEWORTHY

- » First year with the Lobos after graduating from Mississippi State. Has two years of eligibility remaining.
- » Played in 55 games with 14 starts at MSU
- » Averaged 2.4 points, 3.2 rebounds and 0.8 blocks per game while shooting a team-high .537 from the field her sophomore season.
- » First career double-double was against Arkansas with 10 points and 18 rebounds during her sophomore season.
- » Graduated with a degree in psychology.

GAME-BY-GAME STATISTICS

				Total		3-Pointers		Free throws		Rebounds										
Opponent	Date	GS	MIN	FG-FGA	PCT	3FG-3FGA	PCT	FT-FTA	PCT	OFF	DEF	TOT	AVG	PF	A	TO	BLK	STL	PTS	AVG
Texas Southern	11/06/2023	*	25:51	2-6	.333	0-0	.000	2-2	1.000	3	6	9	9.0	1	1	2	3	1	6	6.0
Totals		1	25:51	2-6	.333	0-0	.000	2-2	1.000	3	6	9	9.0	1	1	2	3	1	6	6.0

TOP PERFORMANCES

Points	Season	6, Texas Southern (11/6)
	MW	
FGM	Season	2, Texas Southern (11/6)
	MW	
FGA	Season	6, Texas Southern (11/6)
	MW	
3PT FGM	Season	8, ULM (11/29/22)
	MW	
3PT FGA	Season	
	MW	
FTM	Season	1, 7x
	MW	
FTA	Season	2, Texas Southern (11/6)
	MW	
Reb.	Season	3, 3x
	MW	
Asts.	Season	2, Texas Southern (11/6)
	MW	
Blocks	Season	3, 3x
	MW	
Steals	Season	1, Texas Southern (11/6)
	MW	
TO	Season	2, Ole Miss (2/13/22)
	MW	
Min.	Season	2, Texas Southern (11/6)
	MW	
	Season	26, Texas Southern (11/6)
	MW	
	Season	34, Kentucky (2/15/22)
	MW	

PRODUCTION TRACKER

2023-24 Career

Double-Double	1
Scored 10+ pts	1
Scored 20+ pts	
10+ reb	2
3+ 3-pt	

CAREER STATISTICS

				Field Goals		3-Point		F-Throws		Rebounds										Scoring	
SEASON	TEAM	GP-GS	MIN/AVG	FG-FGA	FG%	3FG-3FGA	3FG%	FT-FTA	FT%	OFF	DEF	TOT	AVG	PF-FO	A	TO	BLK	STL	PTS	AVG	
2020-21	MSU	5-0	27/5.4	1-7	.143	0-2	.000	2-4	.500	3	2	5	1.0	4-0	3	5	1	0	4	0.8	
2021-22	MSU	29-11	396/13.7	29-54	.537	0-5	.000	13-29	.448	45	49	94	3.2	50-1	7	16	23	6	71	2.4	
2022-23	MSU	21-3	138/6.6	10-27	.370	0-0	.000	4-9	.444	6	14	20	1.0	26-0	5	13	6	2	24	1.1	
2023-24	UNM	1-1	26/25.9	2-6	.333	0-0	.000	2-2	1.000	3	6	9	9.0	1-0	1	2	3	1	6	6.0	
TOTAL FOR UNM		1-1	26/25.9	2-6	.333	0-0	.000	2-2	1.000	3	6	9	9.0	1-0	1	2	3	1	6	6.0	
TOTAL		56-15	587/10.5	42-94	.447	0-7	.000	21-44	.477	57	71	128	2.3	81-1	16	36	33	9	105	1.9	

#24

HANNAH ROBBINS

G | 6-0 | R-FR | Phoenix, Ariz. (PHH Prep)



PPG	FG %	3PT %	FT %	RPG	APG	SPG	BPG	MPG
0.0	.000	.000	--	6.0	0.0	2.0	2.0	12.9

NOTEWORTHY

REDSHIRTED LAST SEASON
»Named the MW Preseason Freshman of the Year last season
»Averaged 16.5 points, 7.4 rebounds, 3.1 steals and 1.1 blocks per game as a sophomore
»Averaged 16 points, eight rebounds, three steals and two blocks per game her junior year with PHH Prep
» Father (Rob Robbins) played basketball at New Mexico from 1987-91 and wore #42, which was her number her freshman season
» Business major

GAME-BY-GAME STATISTICS

Opponent	Date	GS	MIN	Total		3-Pointers		Free throws		Rebounds							
				FG-FGA	PCT	3FG-3FGA	PCT	FT-FTA	PCT	OFF	DEF	TOT	AVG	PF	A	TO	BLK
Texas Southern	11/06/2023		12:56	0-4	.000	0-3	.000	0-0	.000	0	6	6	6.0	1	0	1	2
Totals		0	12:56	0-4	.000	0-3	.000	0-0	.000	0	6	6	6.0	1	0	1	2

TOP PERFORMANCES

Points	Season	
	MW	
	Career	
FGM	Season	
	MW	
	Career	
FGA	Season	4, Texas Southern (11/6)
	MW	
	Career	4, Texas Southern (11/6)
3PT FGM	Season	
	MW	
	Career	
3PT FGA	Season	3, Texas Southern (11/6)
	MW	
	Career	3, Texas Southern (11/6)
FTM	Season	
	MW	
	Career	
FTA	Season	
	MW	
	Career	
Reb.	Season	6, Texas Southern (11/6)
	MW	
	Career	6, Texas Southern (11/6)
Asts.	Season	
	MW	
	Career	
Blocks	Season	2, Texas Southern (11/6)
	MW	
	Career	2, Texas Southern (11/6)
Steals	Season	2, Texas Southern (11/6)
	MW	
	Career	2, Texas Southern (11/6)
TO	Season	1, Texas Southern (11/6)
	MW	
	Career	1, Texas Southern (11/6)
Min.	Season	13, Texas Southern (11/6)
	MW	
	Career	13, Texas Southern (11/6)

PRODUCTION TRACKER

2023-24 Career

Double-Double
Scored 10+ pts
Scored 20+ pts
10+ reb
3+ 3-pt

CAREER STATISTICS

				Field Goals		3-Point		F-Throws		Rebounds									Scoring	
SEASON	TEAM	GP-GS	MIN/AVG	FG-FGA	FG%	3FG-3FGA	3FG%	FT-FTA	FT%	OFF	DEF	TOT	AVG	PF-FO	A	TO	BLK	STL	PTS	AVG
2023-24	UNM	1-0	13/12.9	0-4	.000	0-3	.000	0-0	.000	0	6	6	6.0	1-0	0	1	2	2	0	0.0
TOTAL		1-0	13/12.9	0-4	.000	0-3	.000	0-0	.000	0	6	6	6.0	1-0	0	1	2	2	0	0.0

#30

PAULA REUS

F | 6-1 | JR | Palma de Mallorca, Spain (IES Joaquim Blume)



PPG	FG %	3PT %	FT %	RPG	APG	SPG	BPG	MPG
9.0	.444	.000	1.000	6.0	2.0	1.0	0.0	28.0

NOTEWORTHY

» Mountain West All-Freshman Team

» MW Freshman of the Week Jan. 24, 2022 and Feb. 21, 2022

» Played in 33 games with 22 starts and averaged 24.8 minutes per game, 8.0 points per game, 4.3 rebounds per game, 1.8 assists per game, 0.7 steals per game and 0.4 blocks per game last season

» First career double-double against New Mexico State (11 pts, 10 reb.) last season

» 13 games scoring in double figures, at least 1 steal in 17 games, 11 games with at least 1 block, 14 games with multiple assists

» 8 games scoring double figures freshman season

» Team-high 15 points at No. 6 Arizona, making her first seven shots of the game

» At least 1 steal in 14 games, 1 block in 10 games. Multiple steals in 5 games, multiple blocks in 4 games

» Played on the U16 Spanish national team at the U16 FIBA 2019 European Championship, finishing third

» Played for Barça CBS LF2, winning the regular season championship, and qualified for the finals

» Liberal arts major

GAME-BY-GAME STATISTICS

Opponent	Date	GS	MIN	Total		3-Pointers		Free throws		Rebounds							
				FG-FGA	PCT	3FG-3FGA	PCT	FT-FTA	PCT	OFF	DEF	TOT	AVG	PF	A	TO	BLK
Texas Southern	11/06/2023	*	27:57	4-9	.444	0-2	.000	1-1	1.000	2	4	6	6.0	1	2	0	0
Totals			1 27:57	4-9	.444	0-2	.000	1-1	1.000	2	4	6	6.0	1	2	0	0

TOP PERFORMANCES

Points	Season	9, Texas Southern (11/6)
	MW	19, Fresno St. (1/22/22)
	Career	19, Fresno St. (1/22/22)
FGM	Season	4, Texas Southern (11/6)
	MW	8, Fresno St. (1/22/22)
	Career	8, Fresno St. (1/22/22)
FGA	Season	9, Texas Southern (11/6)
	MW	14, 2x
	Career	14, 2x
3PT FGM	Season	4, Colorado St. (1/15/22)
	MW	5, Texas A&M-C (1/26/22)
	Career	5, Texas A&M-C (1/26/22)
3PT FGA	Season	2, Texas Southern (11/6)
	MW	10, Colorado St. (1/15/22)
	Career	10, Colorado St. (1/15/22)
FTM	Season	1, Texas Southern (11/6)
	MW	5, San Diego St. (2/4/23)
	Career	5, San Diego St. (2/4/23)
FTA	Season	1, Texas Southern (11/6)
	MW	8, San Diego St. (2/4/23)
	Career	8, San Diego St. (2/4/23)
Reb.	Season	6, Texas Southern (11/6)
	MW	10, Colorado St. (1/7/23)
	Career	10, 2x
Asts.	Season	2, Texas Southern (11/6)
	MW	4, 2x
	Career	7, Houston (11/20/21)
Blocks	Season	2, Utah State (2/16/22)
	MW	3, Texas A&M-C (11/26/22)
	Career	3, Texas A&M-C (11/26/22)
Steals	Season	1, Texas Southern (11/6)
	MW	2, 2x
	Career	4, 2x
TO	Season	0, Texas Southern (11/6)
	MW	0, 8x
	Career	0, 16x
Min.	Season	28, Texas Southern (11/6)
	MW	32, Wyoming (1/5/23)
	Career	38, 2x

PRODUCTION TRACKER

2023-24 Career

Double-Double	1
Scored 10+ pts	21
Scored 20+ pts	
10+ reb	2
3+ 3-pt	3

CAREER STATISTICS

				Field Goals		3-Point		F-Throws		Rebounds										Scoring	
SEASON	TEAM	GP-GS	MIN	AVG	FG-FGA	FG%	3FG-3FGA	3FG%	FT-FTA	FT%	OFF	DEF	TOT	AVG	PF-FO	A	TO	BLK	STL	PTS	AVG
2021-22	UNM	34-2	662	19.5	93-212	.439	18-67	.269	30-37	.811	25	109	134	3.9	48-0	61	51	15	21	234	6.9
2022-23	UNM	33-22	819	24.8	100-223	.448	35-96	.365	28-38	.737	20	121	141	4.3	56-1	60	59	14	24	263	8.0
2023-24	UNM	1-1	28	28.0	4-9	.444	0-2	.000	1-1	1.000	2	4	6	6.0	1-0	2	0	0	1	9	9.0
TOTAL		68-25	1509	22.2	197-444	.444	53-165	.321	59-76	.776	47	234	281	4.1	105-1	123	110	29	46	506	7.4

#33

VIANÈ CUMBER
G | 5-10 | JR | Albuquerque, N.M. (Sandia HS)



PPG	FG %	3PT %	FT %	RPG	APG	SPG	BPG	MPG
22.0	.500	.444	--	6.0	1.0	1.0	0.0	35.7

NOTEWORTHY

- » MW Freshman of the Week Nov. 15, 2021
- » Played in 33 games with 15 starts, including last 14 games last season
- » Averaged 22.9 minutes per game, 9.2 points per game, 2.9 rebounds per game, 0.9 assists per game, 0.5 steals per game her sophomore season
- » Shot 40.6% from three-point range with 21 games with multiple three-pointers. Includes two games with 6 three-pointers, 10 games with four or more three-pointers
- » Scored in double figures in 16 games with 2 games with 20 or more points
- » 2019-20 and 2020-21 New Mexico Gatorade Girls Basketball Player of the Year
- » Twice named MaxPreps New Mexico High School Girls Basketball Player of the Year
- » Named the best high school basketball player in New Mexico by MaxPreps
- » Averaged 26.5 points, 9.3 rebounds, 2.2 assists and 1.5 steals her senior season and 22.4 points, 10.6 rebounds, 2.5 assists and 3.3 steals as a junior
- » Led her team to a pair of district championships in 2018 and 2019
- » Liberal arts major

GAME-BY-GAME STATISTICS

Opponent	Date	GS	MIN	Total		3-Pointers		Free throws		Rebounds											
				FG-FGA	PCT	3FG-3FGA	PCT	FT-FTA	PCT	OFF	DEF	TOT	AVG	PF	A	TO	BLK	STL	PTS	AVG	
Texas Southern	11/06/2023	*	35:44	9-18	.500	4-9	.444	0-0	.000	1	5	6	6.0	2	1	2	0	1	22	22.0	
Totals		1	35:44	9-18	.500	4-9	.444	0-0	.000	1	5	6	6.0	2	1	2	0	1	22	22.0	

TOP PERFORMANCES

Points	Season	22, Texas Southern (11/6)
	MW	14, San José St. (1/24/22)
	Career	22, 2x
FGM	Season	9, Texas Southern (11/6)
	MW	
	Career	9, Texas Southern (11/6)
FGA	Season	18, Texas Southern (11/6)
	MW	16, San José St. (2/18/23)
	Career	18, Texas Southern (11/6)
3PT FGM	Season	4, Texas Southern (11/6)
	MW	5, 2x
	Career	6, 2x
3PT FGA	Season	9, Texas Southern (11/6)
	MW	11, San José St. (2/18/23)
	Career	12, Washington (3/19/23)
FTM	Season	
	MW	4, Colorado St. (1/26/23)
	Career	4, Colorado St. (1/26/23)
FTA	Season	
	MW	4, 2x
	Career	4, 2x
Reb.	Season	6, Texas Southern (11/6)
	MW	9, Wyoming (2/16/23)
	Career	9, Wyoming (2/16/23)
Asts.	Season	1, Texas Southern (11/6)
	MW	4, 2x
	Career	4, 2x
Blocks	Season	
	MW	1, 2x
	Career	1, 4x
Steals	Season	1, Texas Southern (11/6)
	MW	2, Utah State (2/25/23)
	Career	4, Western N.M. (11/22/22)
TO	Season	2, Texas Southern (11/6)
	MW	0, 14x
	Career	0, 25x
Min.	Season	36, Texas Southern (11/6)
	MW	37, Colorado St. (1/26/23)
	Career	40, Washington (3/19/23)

PRODUCTION TRACKER

2023-24 Career

Double-Double		
Scored 10+ pts	1	20
Scored 20+ pts	1	3
10+ reb		
3+ 3-pt	1	15

CAREER STATISTICS

				Field Goals		3-Point		F-Throws		Rebounds										Scoring	
SEASON	TEAM	GP-GS	MIN/AVG	FG-FGA	FG%	3FG-3FGA	3FG%	FT-FTA	FT%	OFF	DEF	TOT	AVG	PF-FO	A	TO	BLK	STL	PTS	AVG	
2021-22	UNM	18-1	198/11.0	25-62	.403	15-45	.333	2-2	1.000	4	25	29	1.6	6-0	5	10	1	5	67	3.7	
2022-23	UNM	33-15	757/22.9	107-249	.430	73-180	.406	18-22	.818	5	90	95	2.9	39-0	30	32	3	17	305	9.2	
2023-24	UNM	1-1	36/35.7	9-18	.500	4-9	.444	0-0	.000	1	5	6	6.0	2-0	1	2	0	1	22	22.0	
TOTAL		52-17	990/19.0	141-329	.429	92-234	.393	20-24	.833	10	120	130	2.5	47-0	36	44	4	23	394	7.6	

SEASON STATS

Game Records

Record	Overall	Home	Away	Neutral
ALL GAMES	1-0	1-0	0-0	0-0
CONFERENCE	0-0	0-0	0-0	0-0
NON-CONFERENCE	1-0	1-0	0-0	0-0

Score by Periods

Team	1st	2nd	3rd	4th	OT	TOT
New Mexico	19	16	16	25	0	76
Opponents	12	12	19	16	0	59

Team Box Score

No. Player					Total		3-Point		F-Throw		Rebounds											
		GP-GS	MIN	AVG	FG-FGA	FG%	3FG-3FGA	3FG%	FT-FTA	FT%	OFF	DEF	TOT	AVG	PF	DQ	A	TO	BLK	STL	PTS	AVG
33	CUMBER, Vianè	1-1	35:44	35.7	9-18	.500	4-9	.444	0-0	.000	1	5	6	6.0	2	0	1	2	0	1	22	22.0
3	WILSON, Nyah	1-1	32:08	32.1	5-8	.625	4-4	1.000	6-7	.857	1	3	4	4.0	2	0	3	3	0	1	20	20.0
12	AUGMON, Aniyah	1-1	30:37	30.6	7-11	.636	1-2	.500	2-2	1.000	0	6	6	6.0	0	0	6	5	0	0	17	17.0
30	REUS, Paula	1-1	27:57	28.0	4-9	.444	0-2	.000	1-1	1.000	2	4	6	6.0	1	0	2	0	0	1	9	9.0
22	KOHL, Charlotte	1-1	25:51	25.9	2-6	.333	0-0	.000	2-2	1.000	3	6	9	9.0	1	0	1	2	3	1	6	6.0
14	JOAQUIM, Hulda	1-0	09:30	9.5	1-4	.250	0-0	.000	0-0	.000	3	2	5	5.0	0	0	0	1	0	1	2	2.0
24	ROBBINS, Hannah	1-0	12:56	12.9	0-4	.000	0-3	.000	0-0	.000	0	6	6	6.0	1	0	0	1	2	2	0	0.0
5	LANGERMANN, Lara	1-0	12:36	12.6	0-1	.000	0-1	.000	0-0	.000	0	1	1	1.0	1	0	0	3	0	1	0	0.0
1	DIARRA BERTHE, Nahawa	1-0	08:14	8.2	0-2	.000	0-0	.000	0-0	.000	1	1	2	2.0	0	0	2	2	0	0	0	0.0
10	LAURO, Paris	1-0	01:25	1.4	0-0	.000	0-0	.000	0-0	.000	0	0	0	0.0	1	0	0	0	0	0	0	0.0
2	CHAVEZ, Natalia	1-0	03:02	3.0	0-1	.000	0-1	.000	0-0	.000	0	0	0	0.0	0	0	0	0	0	0	0	0.0
Team											1	3	4									
Total		1	200		28-64	.438	9-22	.409	11-12	.917	12	37	49	49.0	9	0	15	19	5	8	76	76.0
Opponents		1	200		23-71	.324	8-31	.258	5-6	.833	11	25	36	36.0	12	0	11	14	5	7	59	59.0

Team Statistics

	UNM	OPP
Scoring	76	59
Points per game	76.0	59.0
Scoring margin	+17.0	-
Field goals-att	28-64	23-71
Field goal pct	.438	.324
3 point fg-att	9-22	8-31
3-point FG pct	.409	.258
3-pt FG made per game	9.0	8.0
Free throws-att	11-12	5-6
Free throw pct	.917	.833
F-Throws made per game	11.0	5.0
Rebounds	49	36
Rebounds per game	49.0	36.0
Rebounding margin	+13.0	-
Assists	15	11
Assists per game	15.0	11.0
Turnovers	19	14
Turnovers per game	19.0	14.0
Turnover margin	-5.0	-
Assist/turnover ratio	0.8	0.8
Steals	8	7
Steals per game	8.0	7.0
Blocks	5	5
Blocks per game	5.0	5.0
Winning streak	1	-
Home win streak	1	-
Attendance	5055	0
Home games-Avg/Game	1-5055	0-0
Neutral site-Avg/Game	-	0-0

Team Results

Date	Opponent		Score	Att.
11/06/2023	Texas Southern	W	76-59	5055

MW STATS

Game Records

Record	Overall	Home	Away	Neutral
ALL GAMES	12-6	8-1	4-5	0-0
CONFERENCE	12-6	8-1	4-5	0-0
NON-CONFERENCE	0-0	0-0	0-0	0-0

Score by Periods

Team	1st	2nd	3rd	4th	OT	TOT
New Mexico	367	330	325	341	0	1363
Opponents	332	269	317	305	0	1223

Team Box Score

No.	Player				Total		3-Point		F-Throw		Rebounds													
		GP-GS	MIN	AVG	FG-FGA	FG%	3FG-3FGA	3FG%	FT-FTA	FT%	OFF	DEF	TOT	AVG	PF	DQ	A	TO	BLK	STL	PTS	AVG		
4	DUFF, LaTascya	18-18	605:58	33.7	73-155	.471	51-112	.455	46-49	.939	2	50	52	2.9	28	0	45	34	5	20	243	13.5		
13	MCGRUDER, Shaiquel	18-18	538:03	29.9	91-187	.487	5-25	.200	37-51	.725	50	73	123	6.8	27	0	20	21	25	25	224	12.4		
5	DUFF, LaTora	18-18	577:15	32.1	66-167	.395	21-81	.259	51-61	.836	8	53	61	3.4	37	1	87	50	3	18	204	11.3		
12	AUGMON, Aniyah	18-0	397:04	22.1	58-119	.487	9-24	.375	46-60	.767	34	62	96	5.3	35	1	35	41	4	19	171	9.5		
3	BROWN, Amaya	18-18	455:43	25.3	66-148	.446	6-18	.333	29-37	.784	25	79	104	5.8	39	0	21	27	1	15	167	9.3		
33	CUMBER, Vianè	18-11	453:15	25.2	59-147	.401	39-102	.382	8-9	.889	3	51	54	3.0	23	0	22	19	2	5	165	9.2		
30	REUS, Paula	17-7	393:17	23.1	52-108	.481	17-45	.378	15-21	.714	8	67	75	4.4	23	0	26	23	4	8	136	8.0		
10	VAN BENNEKOM, Kath	8-0	40:60	5.1	10-13	.769	1-1	1.000	2-2	1.000	1	8	9	1.1	4	0	0	1	0	0	23	2.9		
15	BATES, Jaelyn	12-0	86:06	7.2	8-20	.400	5-16	.313	1-4	.250	0	7	7	0.6	4	0	10	6	3	2	22	1.8		
14	JOAQUIM, Hulda	7-0	33:39	4.8	3-8	.375	1-3	.333	1-2	.500	1	6	7	1.0	1	0	2	2	2	1	8	1.1		
24	JOHNSON, Nia	4-0	18:41	4.7	0-3	.000	0-0	.000	0-0	.000	0	0	0	0.0	3	0	2	1	0	0	0	0.0		
Team											24	47	71					11						
Total		18	3600		486-1075	.452	155-427	.363	236-296	.797	156	503	659	36.6	224	2	270	236	49	113	1363	75.7		
Opponents		18	3600		483-1151	.420	111-378	.294	146-209	.699	184	457	641	35.6	278	5	253	218	75	125	1223	67.9		

Team Statistics

	UNM	OPP
Scoring	1363	1223
Points per game	75.7	67.9
Scoring margin	+7.8	-
Field goals-att	486-1075	483-1151
Field goal pct	.452	.420
3 point fg-att	155-427	111-378
3-point FG pct	.363	.294
3-pt FG made per game	8.6	6.2
Free throws-att	236-296	146-209
Free throw pct	.797	.699
F-Throws made per game	13.1	8.1
Rebounds	659	641
Rebounds per game	36.6	35.6
Rebounding margin	+1.0	-
Assists	270	253
Assists per game	15.0	14.1
Turnovers	236	218
Turnovers per game	13.1	12.1
Turnover margin	-1.0	-
Assist/turnover ratio	1.1	1.2
Steals	113	125
Steals per game	6.3	6.9
Blocks	49	75
Blocks per game	2.7	4.2
Winning streak	6	-
Home win streak	4	-
Attendance	43897	13642
Home games-Avg/Game	9-4877	9-1516
Neutral site-Avg/Game	-	0-0

Team Results

Date	Opponent		Score	Att.
01/01/2023	Air Force	W	70-58	4834
01/05/2023	at Wyoming	L	69-78	1942
01/07/2023	at Colorado St.	L	65-76	1373
01/11/2023	Nevada	W	88-58	4607
01/14/2023	at UNLV	L	63-79	1276
01/19/2023	at San Diego St.	L	61-65	4150
01/21/2023	Boise St.	W	76-68	5032
01/26/2023	Colorado St.	W	64-59	4582
01/28/2023	at Utah St.	W	98-60	362
02/02/2023	UNLV	L	75-93	4738
02/04/2023	San Diego St.	W	83-78	5143
02/09/2023	at Boise St.	L	62-69	757
02/11/2023	at Nevada	W	79-71	1484
02/16/2023	Wyoming	W	71-62	4668
02/18/2023	San Jose St.	W	70-61	4856
02/23/2023	at Air Force	W	70-65	368
02/25/2023	Utah St.	W	111-55	5437
02/28/2023	at Fresno St.	W	88-68	1930

NEW MEXICO GAME-BY-GAME LEADERS

Date	Opponent		Score	Att.	High Points	High Rebounds
11/06/2023	Texas Southern	W	76-59	5055	(22) CUMBER, Vianè	(9) KOHL, Charlotte

NEW MEXICO GAME-BY-GAME

				Total		3-Pointers		Free throws		Rebounds											
Opponent	Date	Score		FG-FGA	PCT	3FG-3FGA	PCT	FT-FTA	PCT	OFF	DEF	TOT	AVG	PF	A	TO	BLK	STL	PTS	AVG	
Texas Southern	11/06/2023	76-59	W	28-64	.438	9-22	.409	11-12	.917	12	37	49	49.0	9	15	19	5	8	76	76.0	
Total		76		28-64	.438	9-22	.409	11-12	.917	12	37	49	49.0	9	15	19	5	8	76	76.0	

OPPONENT GAME-BY-GAME

				Total		3-Pointers		Free throws		Rebounds											
Opponent	Date	Score		FG-FGA	PCT	3FG-3FGA	PCT	FT-FTA	PCT	OFF	DEF	TOT	AVG	PF	A	TO	BLK	STL	PTS	AVG	
Texas Southern	11/06/2023	76-59	W	23-71	.324	8-31	.258	5-6	.833	11	25	36	36.0	12	11	14	5	7	59	59.0	
Total		59		23-71	.324	8-31	.258	5-6	.833	11	25	36	36.0	12	11	14	5	7	59	59.0	

NEW MEXICO INDIVIDUAL GAME HIGHS

POINTS	22		Vianè Cumber vs Texas Southern (11/06/2023)
	20		Nyah Wilson vs Texas Southern (11/06/2023)
	17		Aniyah Augmon vs Texas Southern (11/06/2023)
	9		Paula Reus vs Texas Southern (11/06/2023)
	6		Charlotte Kohl vs Texas Southern (11/06/2023)
FIELD GOALS MADE	9		Vianè Cumber vs Texas Southern (11/06/2023)
	7		Aniyah Augmon vs Texas Southern (11/06/2023)
FIELD GOAL ATTEMPTS	18		Vianè Cumber vs Texas Southern (11/06/2023)
	11		Aniyah Augmon vs Texas Southern (11/06/2023)
FIELD GOAL PERCENTAGE (min 5 made)	.636	(7-11)	Aniyah Augmon vs Texas Southern (11/06/2023)
	.625	(5-8)	Nyah Wilson vs Texas Southern (11/06/2023)
3 PT FG MADE	4		Nyah Wilson vs Texas Southern (11/06/2023)
	4		Vianè Cumber vs Texas Southern (11/06/2023)
3 PT FG ATTEMPTS	9		Vianè Cumber vs Texas Southern (11/06/2023)
	4		Nyah Wilson vs Texas Southern (11/06/2023)
3 PT FG PERCENTAGE (min 2 made)	1.000	(4-4)	Nyah Wilson vs Texas Southern (11/06/2023)
	.444	(4-9)	Vianè Cumber vs Texas Southern (11/06/2023)
FREE THROWS MADE	6		Nyah Wilson vs Texas Southern (11/06/2023)
	2		Charlotte Kohl vs Texas Southern (11/06/2023)
	2		Aniyah Augmon vs Texas Southern (11/06/2023)
FREE THROW ATTEMPTS	7		Nyah Wilson vs Texas Southern (11/06/2023)
	2		Charlotte Kohl vs Texas Southern (11/06/2023)
	2		Aniyah Augmon vs Texas Southern (11/06/2023)
FREE THROW PERCENTAGE (min 3 made)	.857	(6-7)	Nyah Wilson vs Texas Southern (11/06/2023)
REBOUNDS	9		Charlotte Kohl vs Texas Southern (11/06/2023)
	6		Hannah Robbins vs Texas Southern (11/06/2023)
	6		Vianè Cumber vs Texas Southern (11/06/2023)
	6		Paula Reus vs Texas Southern (11/06/2023)
	6		Aniyah Augmon vs Texas Southern (11/06/2023)
ASSISTS	6		Aniyah Augmon vs Texas Southern (11/06/2023)
	3		Nyah Wilson vs Texas Southern (11/06/2023)
STEALS	2		Hannah Robbins vs Texas Southern (11/06/2023)
	1		Nyah Wilson vs Texas Southern (11/06/2023)
	1		Charlotte Kohl vs Texas Southern (11/06/2023)
	1		Vianè Cumber vs Texas Southern (11/06/2023)
	1		Hulda Joaquim vs Texas Southern (11/06/2023)
	1		Paula Reus vs Texas Southern (11/06/2023)
	1		Lara Langermann vs Texas Southern (11/06/2023)
BLOCKED SHOTS	3		Charlotte Kohl vs Texas Southern (11/06/2023)
	2		Hannah Robbins vs Texas Southern (11/06/2023)
TURNOVERS	5		Aniyah Augmon vs Texas Southern (11/06/2023)
	3		Nyah Wilson vs Texas Southern (11/06/2023)
	3		Lara Langermann vs Texas Southern (11/06/2023)
FOULS	2		Nyah Wilson vs Texas Southern (11/06/2023)
	2		Vianè Cumber vs Texas Southern (11/06/2023)

NEW MEXICO GAME HIGHS

POINTS	76	Texas Southern (11/06/2023)
FIELD GOALS MADE	28	Texas Southern (11/06/2023)
FIELD GOAL ATTEMPTS	64	Texas Southern (11/06/2023)
FIELD GOAL PERCENTAGE	.438 (28-64)	Texas Southern (11/06/2023)
3 PT FG MADE	9	Texas Southern (11/06/2023)
3 PT FG ATTEMPTS	22	Texas Southern (11/06/2023)
3 PT FG PERCENTAGE	.409 (9-22)	Texas Southern (11/06/2023)
FREE THROWS MADE	11	Texas Southern (11/06/2023)
FREE THROW ATTEMPTS	12	Texas Southern (11/06/2023)
FREE THROW PERCENTAGE	.917 (11-12)	Texas Southern (11/06/2023)
REBOUNDS	49	Texas Southern (11/06/2023)
ASSISTS	15	Texas Southern (11/06/2023)
STEALS	8	Texas Southern (11/06/2023)
BLOCKED SHOTS	5	Texas Southern (11/06/2023)
TURNOVERS	19	Texas Southern (11/06/2023)
FOULS	9	Texas Southern (11/06/2023)

NEW MEXICO GAME-BY-GAME POINTS-REBOUNDS-ASSISTS

Opponent	Date	Score	1	2	3	5	10	12	14	22	24	30	33
			DIARRA BER	CHAVEZ,NAT	WILSON,NYA	LANGERMANN	LAURO,PARI	AUGMON,ANI	JOAQUIM,HU	KOHL,CHARL	ROBBINS,HA	REUS,PAULA	CUMBER,VIA
Texas Southern	11/06/2023	76-59 W	0-2-2	0-0-0	20-4-3	0-1-0	0-0-0	17-6-6	2-5-0	6-9-1	0-6-0	9-6-2	22-6-1

NEW MEXICO LEADERBOARD

Points

##	Player	G	Pts	Pts/G
33	Cumber, Vianè	1	22	22.0
3	Wilson, Nyah	1	20	20.0
12	Augmon, Aniyah	1	17	17.0
30	Reus, Paula	1	9	9.0
22	Kohl, Charlotte	1	6	6.0
14	Joaquim, Hulda	1	2	2.0

Field Goal Percentage

##	Player	FG	Att	Pct
12	Augmon, Aniyah	7	11	.636
3	Wilson, Nyah	5	8	.625
33	Cumber, Vianè	9	18	.500
30	Reus, Paula	4	9	.444
22	Kohl, Charlotte	2	6	.333
14	Joaquim, Hulda	1	4	.250

3-Point FG Percentage

##	Player	3FG	Att	Pct
3	Wilson, Nyah	4	4	1.000
12	Augmon, Aniyah	1	2	.500
33	Cumber, Vianè	4	9	.444

Scoring Average

##	Player	G	Pts	Pts/G
33	Cumber, Vianè	1	22	22.0
3	Wilson, Nyah	1	20	20.0
12	Augmon, Aniyah	1	17	17.0
30	Reus, Paula	1	9	9.0
22	Kohl, Charlotte	1	6	6.0
14	Joaquim, Hulda	1	2	2.0

Field Goal Attempts

##	Player	G	Att	Att/G
33	Cumber, Vianè	1	18	18.0
12	Augmon, Aniyah	1	11	11.0
30	Reus, Paula	1	9	9.0
3	Wilson, Nyah	1	8	8.0
22	Kohl, Charlotte	1	6	6.0

Field Goals Made

##	Player	G	Made	Made/G
33	Cumber, Vianè	1	9	9.0
12	Augmon, Aniyah	1	7	7.0
3	Wilson, Nyah	1	5	5.0
30	Reus, Paula	1	4	4.0
22	Kohl, Charlotte	1	2	2.0

3-Point FG Attempts

##	Player	G	Att	Att/G
33	Cumber, Vianè	1	9	9.0
3	Wilson, Nyah	1	4	4.0
24	Robbins, Hannah	1	3	3.0
12	Augmon, Aniyah	1	2	2.0
30	Reus, Paula	1	2	2.0

3-Point FG Made

##	Player	G	Made	Made/G
33	Cumber, Vianè	1	4	4.0
3	Wilson, Nyah	1	4	4.0
12	Augmon, Aniyah	1	1	1.0

NEW MEXICO LEADERBOARD

Free Throw Percentage

##	Player	Made	Att	Pct
12	Augmon, Aniyah	2	2	1.000
30	Reus, Paula	1	1	1.000
22	Kohl, Charlotte	2	2	1.000
3	Wilson, Nyah	6	7	.857

Free Throw Attempts

##	Player	G	Att	Att/G
3	Wilson, Nyah	1	7	7.0
12	Augmon, Aniyah	1	2	2.0
22	Kohl, Charlotte	1	2	2.0
30	Reus, Paula	1	1	1.0

Free Throws Made

##	Player	G	Made	Made/G
3	Wilson, Nyah	1	6	6.0
12	Augmon, Aniyah	1	2	2.0
22	Kohl, Charlotte	1	2	2.0
30	Reus, Paula	1	1	1.0

Rebounds

##	Player	G	Reb	Reb/G
22	Kohl, Charlotte	1	9	9.0
33	Cumber, Vianè	1	6	6.0
12	Augmon, Aniyah	1	6	6.0
30	Reus, Paula	1	6	6.0
24	Robbins, Hannah	1	6	6.0

Assists

##	Player	G	Ast	Ast/G
12	Augmon, Aniyah	1	6	6.0
3	Wilson, Nyah	1	3	3.0
30	Reus, Paula	1	2	2.0
1	Diarra Berthe, Nahawa	1	2	2.0
33	Cumber, Vianè	1	1	1.0

Rebounds Average

##	Player	G	Reb	Reb/G
22	Kohl, Charlotte	1	9	9.0
33	Cumber, Vianè	1	6	6.0
12	Augmon, Aniyah	1	6	6.0
30	Reus, Paula	1	6	6.0
24	Robbins, Hannah	1	6	6.0

Steals

##	Player	G	Stl	Stl/G
24	Robbins, Hannah	1	2	2.0
33	Cumber, Vianè	1	1	1.0
3	Wilson, Nyah	1	1	1.0
30	Reus, Paula	1	1	1.0
22	Kohl, Charlotte	1	1	1.0

Offensive Rebounds

##	Player	G	OReb	OReb/G
22	Kohl, Charlotte	1	3	3.0
14	Joaquim, Hulda	1	3	3.0
30	Reus, Paula	1	2	2.0
33	Cumber, Vianè	1	1	1.0
3	Wilson, Nyah	1	1	1.0

Blocked Shots

##	Player	G	Blk	Blk/G
22	Kohl, Charlotte	1	3	3.0
24	Robbins, Hannah	1	2	2.0

Defensive Rebounds

##	Player	G	DReb	DReb/G
12	Augmon, Aniyah	1	6	6.0
22	Kohl, Charlotte	1	6	6.0
24	Robbins, Hannah	1	6	6.0
33	Cumber, Vianè	1	5	5.0
30	Reus, Paula	1	4	4.0

Minutes

##	Player	G	Min	Min/G
33	Cumber, Vianè	1	36	35:44
3	Wilson, Nyah	1	32	32:08
12	Augmon, Aniyah	1	31	30:37
30	Reus, Paula	1	28	27:57
22	Kohl, Charlotte	1	26	25:51