

# THE UNIVERSITY OF NEW MEXICO WOMEN'S BASKETBALL

NOVEMBER 28 | vs EASTERN ILLINOIS | 7 P.M. | THE PIT

## 2023-24 SCHEDULE

OVERALL: 4-2 • MW: 0-0 • H: 3-0 • A: 1-0 • N: 0-2

DATE	OPPONENT	TIME/SCORE
10/22	Eastern New Mexico (Exh.)	W, 77-57
10/29	Adams State (Exh.)	W, 60-45
11/6	Texas Southern	W, 76-59
11/9	at Pepperdine	W, 57-48
11/12	Tarleton State	W, 64-55
11/15	Texas A&M-Commerce	W, 75-74
11/23	Montana State%	L, 75-57
11/24	Georgia Tech%	L, 66-55
11/28	Eastern Illinois	7 p.m.
12/2	New Mexico State	1 p.m.
12/4	Mississippi Valley State	7 p.m.
12/7	Southern Utah	7 p.m.
12/10	Hampton	2 p.m.
12/17	Western New Mexico	2 p.m.
12/22	at Gonzaga	2 p.m.
12/30	at Nevada*	2 p.m.
1/6	Boise State*	2 p.m.
1/10	Utah State*	7 p.m.
1/13	at Colorado State*	1 p.m.
1/17	Wyoming*	7 p.m.
1/20	at UNLV*	3 p.m.
1/24	Fresno State*	7 p.m.
1/27	at Air Force*	1 p.m.
1/31	at San José State*	12 p.m.
2/3	UNLV*	2 p.m.
2/7	at San Diego State*	12 p.m.
2/10	Colorado State*	12 p.m.
2/14	San José State*	7 p.m.
2/21	at Boise State*	6:30 p.m.
2/24	at Wyoming*	2 p.m.
2/28	San Diego State*	7 p.m.
3/2	Nevada*	2 p.m.
3/5	at Fresno State*	7 p.m.
3/10-13	MW Tournament	TBA

**BOLD:** Home \* : Mountain West  
All times are Mountain Time

### QUICK POINTS BY THE NUMBERS

- 3 Lobos averaging double figures (Augmon, Cumber, Wilson)
- 4 times Lobo scored 20+ points
- 5 games in double figures for Augmon, 4 games for Wilson
- 6 newcomers on the roster (3 freshmen, 3 transfers)
- Led for 39:21 against Tarleton, 36:30 at Pepperdine and 37:53 against Texas Southern
- Outscoring opponents 74-36 in fast-break points
- Outscoring opponents in the 1st (101-80), 2nd (90-88) & 384-377 overall
- Outscoring opponents 206-156 in paint
- 53.6% of points scored in paint
- +1.2 scoring margin, +2.3 rebounding margin



**New Mexico Lobos**  
4-2, 0-0 MW  
Head Coach: Mike Bradbury  
Record at UNM: 145-80 (8th year)  
Career Record: 323-197 (17th year)

#### Series History

Overall: First meeting  
Neutral Record: N/A  
Current Streak: N/A  
Last Meeting: N/A

#### Broadcast Information

TV: MW Network  
Radio: KNML  
Live Stats: GoLobos.com/wbbstats



**Eastern Illinois Panthers**  
1-4, 0-0 OVC  
Head Coach: Matt Bollant  
Record at EIU: 82-97 (7th year)  
Career Record: 425-246 (22nd year)

### PROJECTED STARTERS (BASED ON LAST GAME)

#	Name	POS.	HT.	YR.	NOTE
3	Nyah Wilson	G	5-8	Jr.	15+ pts in 4 games; career-high 9 reb. vs Tar.
12	Aniyah Augmon	G	5-8	Jr.	15+ pts in 4 games; career-high 8 steals at Pepp.
22	Charlotte Kohl	C	6-5	Gr.	Double-double vs. TAMUC with 20 reb.; avg. 8.3 rpg
30	Paula Reus	F	6-1	Jr.	Scored in double figures in 2 games; avg. 8.8 ppg
33	Viané Cumber	G	5-10	Jr.	8 3-pointers vs. Montana St., 3+ 3's in 4 games

### LOBO NOTES

#### THREE'S COMPANY

The Lobos have had three players score in double figures in two games, with Nyah Wilson and Viané Cumber reaching double figures in both games, and Paula Reus and Aniyah Augmon once.

The trio of Cumber, Augmon and Wilson all scored in double figures in the season opener, accounting for 59 of UNM's 76 points and matched Texas Southern's total team point total.

Cumber took over in the fourth quarter, scoring 13 of her game-high 22 points in the final 10 minutes, while Wilson and Augmon were effective early, reaching double figures in the first 20 minutes to finish with a career-high 20 points and 17 points, respectively. Wilson and Augmon were also facilitators, with Augmon leading with a game- and career-high six assists and Wilson finishing with the second most on the team with three. Additionally, Wilson was 4-4 from three-point range with Cumber also making four.

It marked the first time that UNM had two 20-point scorers in a game since 2022.

The Texas A&M-Commerce game followed a similar storyline in that Wilson took over in the fourth quarter to score 15 of her career-high 22 points on 6-8 shooting. Wilson opened fourth with a driving layup and the Lobos continued to rely on the junior with Wilson making three consecutive layups as well as a three-pointer to tie the game at 63. Wilson ultimately scored the first 11 points of the fourth quarter for the Lobos, with her final points starting a 6-0 run that gave UNM a 69-65 lead.

The Lobos also have three averaging double figures on the season with Wilson at 14.8 ppg, Viané Cumber at 13.2, and Augmon at 13.2. Wilson and Augmon have scored double digits four and five times, respectively, (twice with 20 or more points for Wilson), while Cumber has scored in double figures in three games, twice with 20-plus points.

#### ON ANY GIVEN NIGHT

The Lobos have been led in scoring by four different players and in rebounds by seven different players in the games this season.

Viané Cumber (22 points) and Charlotte Kohl (nine rebounds) led in the season opener, Aniyah Augmon (16 points and nine rebounds) led at Pepperdine and Paula Reus and Nyah Wilson (16 points each) and Wilson (nine rebounds) led against Tarleton State. In the game against Texas A&M-Commerce, Wilson led on her own with 22 points, and Kohl led in rebounds for the second time this season with a career-high 20 rebounds. In the game against Montana State, Cumber led with a career-best 24 points with Kohl leading on the boards with seven. In the last game against Georgia Tech, Augmon and Wilson tied for the team high with 17 points and four players tied for the team high in rebounds with four in Paula Reus, Cumber, Hulda Joaquim and Nahawa Diarra Berthe.

#### BATTLE ON THE BOARDS

While the sample size is small, the Lobos have shown their ability to control the boards, outrebounding their opponents 244-230 (+14), outrebounding opponents in three games.

Charlotte Kohl leads the team with 50 rebounds (8.3 per game) with Paula Reus second with an average of 6.2 rpg. Kohl had a 20-rebound performance, an 18-rebound outing in the final exhibition against Adams State, had a team-high eight rebounds in the first exhibition and grabbed nine against Texas Southern to start the season. Of her 50 rebounds, 23 are on the offensive end and her 3.83 offensive boards per game are the second most in the conference.

UNM outrebounded Texas Southern 49-36 (+13), Tarleton State 45-35 (+10), Texas A&M-Commerce 47-33 (+14), Adams State 56-25 (+31) and Eastern New Mexico 48-26 (+22).

The Lobos are ranked 87th in the NCAA in rebounds per game (40.7), an improvement from last season in which the Lobos finished 177th in the NCAA in rebounds per game with 36.5. In addition, the Lobos have made an improvement in rebounding margin, finishing last season 246th at -2.0, compared to this season where the Lobos are currently ranked 152nd with an +2.3 rebounding margin. UNM is ranked 71st in defensive rebounds per game at 28.2.

#### PAINT POINTS

UNM outscored opponents in the paint in five games this season and by a 206-156 (+50) margin, with a +24 margin against Texas Southern (38-14), +8 margin at Pepperdine (34-26), a +10 margin against Tarleton State (34-24), a +22 margin against Texas A&M-Commerce (50-28) and a +2 margin (32-30) against Georgia Tech. UNM has scored 206 of its 384 points (53.6%) in the paint thus far.

#### GET AHEAD, STAY AHEAD

So far this season, the Lobos have led for:  
• 37:53 and led after each quarter against Texas Southern  
• 36:30 and never trailed at Pepperdine

@UNMLOBOWBB

» Eight NCAA Tournament Appearances | 1998, 2002, 2003, 2004, 2005, 2006, 2007, 2008 «  
» Five Mountain West Tournament Championships | 2003, 2004, 2005, 2007, 2008 «

## THE UNIVERSITY OF NEW MEXICO

Location.....Albuquerque, N.M.  
 Founded.....1889 by Territorial Legislature  
 Enrollment.....22,225  
 Nickname.....Lobos  
 Colors.....Cherry (PMS 200) & Silver (PMS Cool Gray 6)  
 Conference.....Mountain West Conference  
 National Affiliation.....NCAA Division I  
 President.....Dr. Garnett Stokes  
 Vice President/Director of Athletics.....Eddie Nuñez  
 Asst. Vice President/Deputy A.D.....David Williams  
 Interim SWA.....Amy Beggin  
 Faculty Representative.....Karen Gaudreault, Ph.D

## FACILITY INFORMATION

Facility.....The Pit  
 Capacity.....15,411  
 Age.....Built in 1966 (Renovated in 2009-10)  
 All-Time Home Record.....465-220 (.679)

## PROGRAM HISTORY

First Season.....1974-75  
 Overall Record.....744-586 (.559)  
 Overall MW Record.....231-155 (.598)  
 Postseason Tournament Appearances.....20  
 NCAA Tournament Appearances.....8  
 Last NCAA Postseason Appearance.....2022-23 (WNIT)  
 Last NCAA Postseason Opponent.....Washington  
 Last NCAA Postseason Result.....L, 67-56  
 MW Regular Season Championships.....3  
 .....(2003-04, 2004-05, 2020-21)  
 MW Tournament Championships.....5  
 .....(2002-03, 2003-04, 2004-05, 2006-07, 2007-08)

## TEAM INFORMATION

2022-23 Overall Record.....21-13  
 2022-23 Mountain West Record.....12-6  
 2021-22 Mountain West Season Finish.....T-3rd  
 2022-23 MW Tournament Finish.....Quarterfinal  
 Letterwinners Returning | Lost.....6 | 6  
 Starters Returning | Lost.....1 | 4

- » Three Mountain West Regular-Season Championships
- » Five Mountain West Tournament Championships
- » Seven NCAA Tournament Appearances Since 2001-02
- » Mountain West Attendance Leader 21 Seasons in a Row
- » WBCA Academic Top 25 Eight Times Since 2004-05

## COACHING STAFF

Head Coach: Mike Bradbury (Chattanooga, 1993)  
 Record at UNM (Years): 145-80 (8th season)  
 Career Record (Years): 323-197 (17th season)  
 Associate H.C.: Keith Freeman (2nd season)  
 Alma Mater: Huntington College, 1986  
 Assistant Coach: Nike McClure (2nd season)  
 Alma Mater: New Mexico, 2019  
 Assistant Coach: Mackenzie Novak (1st season)  
 Alma Mater: Bethel University, 2021  
 Graduate Assistant: Jaisa Nunn (1st season)  
 Dir. of Operations: Hanna Hudson (2nd season)  
 Dir. of Player Development: Isaiah Fernandez (2nd season)  
 Athletic Trainer: Lexi Smith (3rd season)  
 Strength Coach: Leila Petewon (1st season)

## MISCELLANEOUS INFORMATION

2022-23 Total Attendance.....80,328  
 2022-23 Average Attendance.....4,725  
 2022-23 NCAA Attendance Rank.....18th  
 2022-23 Mountain West Attendance Rank.....1st

## MULTIMEDIA INFORMATION

Athletics Website.....www.GoLobos.com  
 Main University Web Site.....www.unm.edu  
 Conference Web Site.....www.TheMW.com  
 Facebook.....www.facebook.com/NewMexicoLobos  
 Twitter.....@UNMLobos

## MEDIA RELATIONS

Women's Basketball Contact.....Allison Weiss  
 Cell Phone (Preferred).....661-313-5402  
 Email.....allisonweiss@unm.edu

### INTERVIEW REQUESTS

All interviews with UNM student-athletes and coaches should be coordinated through the athletics communications office. Interviews may be arranged by contacting Allison Weiss in the athletics communications office (allisonweiss@unm.edu). All interview requests should be made at least 24 hours in advance.

The University of New Mexico Athletics  
 1414 University Drive  
 Albuquerque, N.M. 87106

•39:21 and never trailed against Tarleton State. UNM is outscoring opponents 101-80 (+21) in the first quarter and 191-168 (+23) through the first two quarters. The Lobos have held the lead heading into the fourth quarter in three of six games, outscoring opponents 279-271 (+8) through three quarters.

In 2022-23, the Lobos were 18-4 on the season when leading after the first quarter and 18-4 overall when leading at the half. When leading at the end of the third quarter, the Lobos were 19-4 overall last season.

#### DEFENSE DELIVERS

Twice this season the Lobos have held their opponents to five or fewer points in a quarter.

In the win at Pepperdine, the Lobos held the Waves to four points in first quarter and without a point up until the 1:09 mark. Further, UNM held the Waves to 18 points in the first 20 minutes, with the last time that the Lobos held a team below 20 points in the first half was against Louisiana-Monroe on Nov. 27, 2021 (17 points). Pepperdine missed its first eight shots of the game and UNM forced two shot clock violations in that timespan. The Lobos were able to further expand their lead to 16 in the second quarter in part to a 6-0 Lobo run and holding Pepperdine to a 3:06 scoring drought. In the fourth quarter, Pepperdine scored its first points with 6:54 left in the game.

Against Tarleton State, the Lobos held the Texans to five points in the third quarter, outscoring them 20-5. UNM scored the first eight points of the quarter, ultimately going on a 10-1 run through the first 6:05. UNM later scored 10-straight points in a span of 1:55 for its best run of the game to build its largest lead of the contest at 53-31, taking a 53-33 lead into the final 10 minutes.

In addition to holding opponents to low point totals, the Lobos have also relied on defense to close out games. In the last game against Texas A&M-Commerce, UNM held the Lions the final 1:41 and for the final 27 seconds as the Lions had the ball for the final shot.

#### FOUR-FOR-FOUR DEAL

UNM had a season-high four players finish in double figures in the game against Texas A&M-Commerce, led by a career-high 22 from Nyah Wilson. Aniyah Augmon scored 16, Charlotte Kohl finished with 16 and Paula Reus added 11.

#### CALL ON KOHL

Charlotte Kohl finished with a dominating stat line of a career-high 14 points, career-high 20 rebounds (10 offensive), career-high four blocks and an assist for her first double-double of the season and second of her career against Texas A&M-Commerce.

Kohl registered the double-double by halftime and became the first Lobo to have 20 rebounds in a game since Richelle van der Keijl had 20 against New Mexico State exactly seven years prior on Nov. 15, 2016. Prior to that, the last Lobo to collect 20 rebounds was Amanda Adamson against Texas Tech on Dec. 13, 2008.

Of note, five of her 10 offensive rebounds translated to 11 of UNM's 16 second-chance points, eight of which were scored by Kohl and the three-pointer she had the assist on.

Her 20 rebounds in a game are the most by a MW player this season.

She was named the Mountain West Player of the Week on Nov. 20 for the first weekly conference award in her collegiate career.

#### V FOR THREE

Viané Cumber scored a game- and career-high 24 points behind a career-high eight three-pointers against Montana State, knocking down her first three three-point attempts for her fourth time this season and for the 18th time in her career with three or more three-pointers in a game. Cumber made five three pointers in the first quarter alone.

Her eight three-pointers tied for the third-most in a game in program history and was the seventh time a player historically has made eight or more three-pointers in a game.

#### THE CUMBER EFFECT

After Viané Cumber entered the starting lineup against Colorado State on Jan. 26 last season, the Lobo scored double figures in nine of the games including four of the last five. The New Mexico native made six three-pointers and finished with 20 points in the last game of the season at Washington, her second game with 20 or more points last season.

Cumber picked right up in the first game of the 2023-24 season, tying her career high with 22 points that included four three-pointers. It was her 12th career game making four or more three-pointers.

Cumber has scored in double figures in three games this year with nine in two, leading the Lobos in scoring twice.

She added three more three-pointers at Pepperdine, three again against Tarleton and a career-best eight against Montana State to give her 29 career games with multiple three-pointers and her 18th career game making three or more three-pointers.

Following a three against Georgia Tech, she's had 13-straight games with at least one and made a three in 38 games with 29 games with multiple threes in her career.

In three years, Cumber has scored in double figures 22 times and 20 or more points four times.

Further, the Lobo guard currently is second in the MW in three-pointers per game with 3.33, and is 10th in the NCAA in three-pointers per game and 18th in three-pointers with 20. She also leads the MW in minutes played at 35.1 per game.

#### WILSON'S WORLD

Nyah Wilson made quite the first impression in her first games as a Lobo, finishing in double figures in four games with 20 or more points in two games, and setting several career highs.

In her first true game as a Lobo, Wilson finished with 20 points, four rebounds, three assists and a steal. The Dallas, Texas, native went 5-8 from the floor, a perfect

4-4 from behind the arc and nearly perfect at the free-throw line going 6-7. Her 20 points set a then-career high, as did her five made field goals, her four made three-pointers and four attempts. She later bested that with 22 points on nine made field goals against Texas A&M-Commerce, scoring 15 points in the fourth quarter.

She added 16 points against Tarleton, setting a career high in rebounds (nine), made free throws (eight) and minutes played (33). She improved her career best in free throws, going 9-10 in the game against Georgia Tech.

Further, in six games, she's scored 89 points and surpassed her season totals in each of her two years at Syracuse, scoring 36 points her freshman season and 32 points her sophomore season.

#### STEAL THE SHOW

Aniyah Augmon was credited with 11 steals in the first week of the season, with eight at Pepperdine and three against Tarleton State.

Her eight steals tied for the second most in a game by a Lobo in program history, with the last time it was done Feb. 8, 1998 by Tamika Stukes. Augmon had four steals in the first 20 minutes with three in the second quarter, which the four alone would have been a career high for the junior. She added two in the fourth quarter, including a steal and layup with 2:04 remaining in the game to make it 50-42 after Pepperdine closed within three at 45-42 with 2:37 to play.

She added two steals in the fourth quarter against Tarleton State 1:09 apart, with both resulting in fast-break points. Last week, she finished with six steals in the two games, two against Montana State and four against Georgia Tech.

In her three years at UNM, she's had 16 games with multiple steals and 34 games with a steal. She currently is third in the MW in steals per game at 2.8 as well as 35th in steals (17) and 40th in steals per game in the NCAA.

#### ALL ABOUT AUGMON

Beyond her career-high eight steals, Aniyah Augmon showcased her all-around ability to take over a game at Pepperdine, leading the Lobos with 16 points, nine rebounds and three assists.

Augmon had a career-high four steals through the first 20 minutes and scored eight points in the second quarter alone, and was the first player to reach double figures on a drive to the basket early in the third quarter. The Lobo junior had eight points, six rebounds and four steals in the final 20 minutes.

In the season opener, Augmon finished with 17 points, six rebounds, and a game- and career-high six assists.

She has scored in double figures in five games this season, including in the last three (16 against Texas A&M-Commerce, 11 against Montana State and 17 against Georgia Tech). In addition, she's currently fourth in the MW in assists per game (4.2).

Augmon is ranked fourth in assists per game (4.2), third in steals per game (2.8), tied for 10th in scoring (13.2) and 18th in rebounds per game (5.3) in the MW.

#### HOME COURT ADVANTAGE

The Pit has proven to be a home court advantage for the Lobos of late.

UNM has gone 34-4 over the last three years: 3-0 this season, 14-3 last season and 17-1 the year prior, which doesn't include going 2-0 in the only two home games in 2020-21.

Coach Mike Bradbury is 91-24 in The Pit in his eight years at UNM.

Entering the season, UNM has gone 119-43 (.735) in The Pit with seven seasons with 10-plus home wins and three seasons with 15-plus wins in the last 10 years.

In the past seven years under Bradbury, the Lobos have led the MW in attendance in six (with the lone year the COVID season when UNM had two home games without any fans in attendance).

UNM finished 18th in the NCAA last season in attendance and has finished in the top 20 six times in the last seven years (exception was 2020-21 COVID season).

#### 20/10 AGAIN

Last season, the Lobos finished with 20 wins, the second-straight year with 20 wins and the fourth time under Coach Mike Bradbury.

In addition, the Lobos surpassed 10 wins in the MW, the third-straight year and sixth overall in Bradbury's seven years at UNM.

#### PRIDE OF NEW MEXICO

The Lobos have three New Mexico natives on the roster in redshirt-freshman Natalia Chavez and sophomore Jaelyn Bates and junior Viané Cumber.

In addition, the Lobos have a New Mexico Gatorade Player of the Year winner in Cumber, with Cumber winning in 2019-20 and 2020-21.

Recent Lobo Amaya Brown won in 2015-16 and 2017-18 and Jaedyn De La Cerna won in 2016-17, meaning the winner in five of the last seven years were Lobos.

#### ABOUT EASTERN ILLINOIS

The Panthers are 1-4 on the season with a win over Valparaiso (75-62) and losses to Nicholls (63-55), Fresno State (70-60), Indiana (96-43) and IUPUI (77-72). EIU went 21-8, 14-4 in the Ohio Valley Conference last season.

EIU is averaging 61.0 points per game, while allowing 73.6 ppg, and is led by three in double figures in Macy McGlone (13.8), Lalani Ellis (12.8) and Miah Monahan (10.4), with McGlone also leading in rebounds per game at 8.4. McGlone has scored in double figures in four of the five games, including the last three, with a double-double (19 pts, 12 reb.) in the last game against Fresno State. Ellis has scored 20-plus points twice this season.

McGlone, Monahan and Ellie Buzzelle have started all five games with Ellis starting four, Ellie Colson starting three, Charita Lewis starting two and Taris Thornton starting one game.

## LAST TIME IT HAPPENED (UNM)

### As A Team

Scored 100 Points:	111 - vs. Utah State (2-25-23)
Scored 90 Points:	98 - at Utah State (1-28-23)
Scored Fewer Than 50 Points:	42 - at UNLV (1-11-17)
Scored Fewer Than 40 Points:	38 - at Colorado St. (1-3-15)
Won by 50 Points:	+56 (W, 111-55) - vs. Utah State (2-25-23)
Won by 40 Points:	+48 (W, 92-44) - vs. Northern NM (12-10-19)
Won By 30 Points:	+38 (W, 98-60) - at Utah State (1-28-23)
Lost By 30 Points:	-37 (L, 47-84) - at (RV) Arizona St. (12-14-19)
Lost By 40 Points:	-42 (L, 63-105) - at Oklahoma (12-16-17)
Shot 60% or Better:	61.2% - vs. Pacific (11-9-01)
Shot Less Than 30%:	29.6 (21-71) - vs. Mississippi State (12-21-22)
Shot 60% 3FG or Better:	64.0% (16-25) - at Fresno State (2-28-23)
Shot Less Than 20% 3FG:	6.7% (1-15) - vs Georgia Tech (11-24-23)
Made 15 3-Pointers:	16 - at Fresno State (2-28-23)
Shot 90% on FTs (10 or more):	91.7 (11-12) - vs. Texas Southern (11-6-23)
Shot Less Than 40% On FTs:	14.3% (1-7) - at UTEP (11-30-17)
Had 50 Rebounds:	55 - vs. Utah State (2-25-23)
Had 20 Offensive Rebounds:	21 - vs. Northern New Mexico (11-12-21)
Had 25 Assists:	25 - vs. Utah State (2-25-23)
Had 20 Turnovers:	25 - at Air Force (2-23-23)
Had Less Than 10 Turnovers:	7 - San Diego State (3-6-23)
Had 10 Steals:	10 - at Air Force (2-23-23)
Had 10 Blocks:	11 - vs. Houston Baptist (11-23-21)
Had Two 20-Point Scorers:	vs. Texas Southern (11-6-23)
	Nyah Wilson (20) and Viané Cumber (22)
Had Three 20-Point Scorers:	vs. Grand Canyon (3-16-22)
	LaTascya Duff (27), Jaedyn De La Cerda (22) and Shaiquel McGruder (20)
Had 7 Double-Digit Scorers:	vs. Utah State (2-25-23)
Had 6 Double-Digit Scorers:	at Arkansas-Pine Bluff (12-17-20)
Had 5 Double-Digit Scorers:	vs. San Diego State (3-6-23)
Had No Double-Digit Scorers:	vs. (RV) Arizona St. (12-14-19)
Had Two 10+ Rebounders:	vs. Nevada (3-1-20)
	Shaiquel McGruder (17) and Antonia Anderson (10)
Scored 50 Points In 1st Half:	56 - at Utah State (1-28-23)
Scored 50 Points In 2nd Half:	52 - vs. South Carolina State (12-29-22)
Scored 60 Points in a 2nd Half:	62 - vs. Utah State (2-25-23)
Scored 20 Or Fewer Points In 1st Half:	20 - vs Georgia Tech (11-24-23)
Scored 20 Or Fewer Points In 2nd Half:	17 - at UNLV (1-15-21)
Lowest Pts Scored in Quarter:	2 - at NMSU (11-15-22)
Failed To Make a 3FG:	at (RV) Arizona St. (12-14-19)
Defeated a Ranked Team:	W, 88-87 vs. No. 16 Marquette (11-13-17)
Lost To a Ranked Team:	L, 77-60 vs. No. 14 Arizona (12-4-22)
Won an OT Game:	W, 74-71 at Wyoming (2-8-20)
Lost an OT Game:	L, 83-77 vs Arizona State (11-20-22)
Won a 2OT Game:	W, 89-85 at Houston (11-24-18)
Lost a 2OT Game:	L, 69-65 vs. Fresno St. (1-2-16)

### As An Individual

Had a Triple-Double:	Aisia Robertson (28 pts, 11 rebs, 11 assists)
	at Houston (11-24-18)
Had a Double-Double (Pts/Reb):	Charlotte Kohl (14 pts, 20 reb)
	vs. Texas A&M-Commerce (11-15-23)
Had a Double-Double (Pts/Asst):	LaTora Duff (13 pts & 10 asts)
	vs. Arizona State (11-20-22)
Had a Double-Double (Reb/Asst):	Cherise Beynon (13 reb, 10 asts)
	vs. Fairleigh Dickinson (11-12-16)
Scored 20+ Pts with 10+ Rebs:	Shaiquel McGruder (25 pts & 14 reb)
	vs. Boise State (1-21-23)
Scored 30 Points:	LaTascya Duff (30 pts) at Utah State (1-28-23)
Scored 40 Points:	Cherise Beynon (41) at SDSU (1-20-18)
Scored 30 Points (MW Only):	LaTascya Duff (30 pts) at Utah State (1-28-23)
Scored 40 points (MW Only):	Cherise Beynon (41)
	at San Diego St. (1-20-18)
Had 20+ Rebounds:	Charlotte Kohl (20) vs. Texas A&M-Commerce (11-15-23)
Had 15+ Rebounds:	Shaiquel McGruder (15) vs. UNLV (1-3-22)
Had 15+ Assists:	Aisia Robertson (16) vs. Oklahoma (11-28-18)
Had 5+ Steals:	Aniyah Augmom (8) at Pepperdine (11-9-23)
Had 5+ Blocks:	Shaiquel McGruder (5) at Wyoming (1-5-23)

## LAST TIME IT HAPPENED (OPP)

### As A Team

Scored 100 Points:	105 - Oklahoma (12-16-17)
Scored 90 Points:	93 - UNLV (2-2-23)
Scored Less Than 50 Points:	48 - Pepperdine (11-9-23)
Scored Less Than 40 Points:	40 - Northern New Mexico (11-12-21)
Shot 50% Or Better:	51.8% (29-56) - Montana State (11-23-23)
Shot Less Than 30%:	28.0% (23-82) - Houston (11-12-22)
Shot 50% 3FG Or Better:	50.0% (7-14) - Texas Tech (11-28-21)
Shot Less Than 20% 3FG:	14.3% (2-14) - Pepperdine (11-9-23)
Made 15 3-Pointers:	15 - San José St. (1-22-20)
Shot 90% On FTs (10 or more):	90.0% (9-10) - Georgia Tech (11-24-23)
Shot Less Than 50% On FTs:	45.5% (5-11) - Boise State (2-19-22)
Had 50 Rebounds:	53 - Mississippi State (12-21-22)
Had 20 Offensive Rebounds:	24 - Houston (11-12-22)
Had 25 Assists:	26 - Houston (11-20-21)
Had 20 Turnovers:	27 - Old Dominion (12-20-22)
Had 30 Turnovers:	30 - Northern NM (11-15-17)
Had Less Than 10 Turnovers:	8 - Fresno State (2-28-23)
Had 10 Steals:	16 - Air Force (2-23-23)
Had 10 Blocks:	12 - Boise State (1-21-23)
Had Two 20-Point Scorers:	UNLV (1-14-23)
	Desi-Rae Young (22) and Alyssa Durazo-Frescas (20)
Had 6 Double-Digit Scorers:	San Diego State (3-6-23)
Had 5 Double-Digit Scorers:	UNLV (2-2-23)
Had No Double-Digit Scorers:	Louisiana-Monroe (11-27-21)
Had Two 10+ Rebounders:	Arizona State (11-20-22)
	Kayla Mokwuah (13) and Treasure Hunt (15)
Scored 50+ Points In 1st Half:	54 - San José St. (1-22-20)
Scored 50+ Points In 2nd Half:	50 - Colorado State (3-8-22)
Scored 20 Or Less Points In 1st Half:	18 - Pepperdine (11-9-23)
Scored 20 Or Less In 2nd Half:	19 - Northern New Mexico (11-12-21)
Scored Less Than 10 Points in Quarter:	5 - Tarleton State (11-12-23)
Failed To Make a 3FG:	0-1 by San Diego State (2-18-15)

### As An Individual

Had a Double-Double (Pts/Reb):	Tonie Morgan (13 pts, 12 reb.)
	Georgia Tech (11-24-23)
Had a Double-Double (Pts/Asst):	Haley Cavinder (21 pts, 11 asts.)
	Fresno State (11-22-22)
Had a Double-Double (Pts/Steals):	Jasmyne Harris (28 pts & 10 steals)
	Houston (11-28-18)
Had 20+ Points & 10+ Rebounds:	Lexi Deden (23 pts, 14 reb.)
	Montana State (11-23-23)
Scored 30 Points:	Essence Booker (31) - UNLV (1-27-22)
Scored 30 Points (MW Only):	Essence Booker (31) - UNLV (1-27-22)
Had 20+ Rebounds:	Kaylee Johnson (22) - No. 1 Stanford (11-24-14)
Had 15+ Rebounds:	Andjela Bigovic (16) - Tarleton State (11-12-23)
Had 10+ Assists:	Haley Cavinder (11) - Fresno State (11-22-22)
Had 5+ Steals:	Jo Huntimer (6) - Air Force (2-23-23)
Had 5+ Blocks:	Abby Muse (8) - Boise St. (1-21-23)



## GAME 7: NEW MEXICO vs EASTERN ILLINOIS

### STATS

#### STAT COMPARISON

EIU		UNM
61.0	Points Per Game	64.0
41.6	FG%	39.0
24.1	3FG%	26.4
71.0	FT%	66.3
3.8	Made 3-pt PG	5.5
34.6	Rebounds PG	40.7
20.2	Turnovers PG	15.7
13.0	Assists PG	10.3
2.2	Blocks PG	2.3
6.0	Steals PG	7.2
73.6	Scoring Defense	62.8
46.9	FG% Defense	38.7
36.2	3FG% Defense	28.5
-0.2	Rebound Margin	+2.3

#### UNM WHEN HOME/AWAY/NEUTRAL

STAT	HOME (3)	AWAY (1)	NEUTRAL (2)
PPG	71.7	57.0	56.0
Opp PPG	62.7	48.0	70.5
FG %	.435	.359	.336
3FG%	.309	.217	.234
3 FG MPG	5.7	5.0	5.5
FT%	.711	.545	.633
Opp FG%	.360	.323	.466
Opp 3FG%	.320	.143	.268
RPG	47.0	39.0	32.0
Opp RPG	34.7	43.0	41.5
APG	12.0	10.0	8.0
SPG	5.7	9.0	8.5
TOV	17.3	12.0	15.0

#### SPECIALTY STAT COMPARISON

##### (UNM/Opp.)

Opp.	Paint	Off TO	2nd Chance	Fast Break	Bench
Texas Southern	38/14	15/18	11/11	17/6	2/28
Pepperdine	34/26	13/10	11/10	7/0	13/12
Tarleton St.	34/24	17/8	6/11	15/9	12/14
Texas A&M-Com.	50/28	14/13	16/8	10/13	3/31
Montana St.	18/34	11/20	7/4	10/6	7/18
Georgia Tech	32/30	7/12	3/13	15/2	6/13
Eastern Illinois					
NMSU					
MVSU					
Southern Utah					
Hampton					
Western N.M.					
Gonzaga					
Nevada					
Boise St.					
Utah St.					
Colorado St.					
Wyoming					
UNLV					
Fresno St.					
Air Force					
San José St.					
UNLV					
San Diego St.					
Colorado St.					
San José St.					
Boise St.					
Wyoming					
San Diego St.					
Nevada					
Fresno St.					

#### UNM STARTING LINEUPS (GAME)

Game	G	G	G	F	C
Texas Southern	Wilson	Augmon	Cumber	Reus	Kohl
Pepperdine	Wilson	Augmon	Cumber	Reus	Kohl
Tarleton State	Wilson	Augmon	Cumber	Reus	Kohl
Texas A&M-Commerce	Wilson	Augmon	Cumber	Reus	Kohl
Montana State	Wilson	Augmon	Cumber	Reus	Kohl
Georgia Tech	Wilson	Augmon	Cumber	Reus	Kohl
Eastern Illinois					
New Mexico State					
Mississippi Valley State					
Southern Utah					
Hampton					
Western New Mexico					
Gonzaga					
Nevada					
Boise State					
Utah State					
Colorado State					
Wyoming					
UNLV					
Fresno State					
Air Force					
San José State					
UNLV					
San Diego State					
Colorado State					
San José State					
Boise State					
Wyoming					
San Diego State					
Nevada					
Fresno State					

#### UNM STARTING LINEUPS (RECORD)

Wilson, Augmon, Kohl, Reus, Cumber ..... 4-2

#### DOUBLE-DOUBLE TRACKER

Charlotte Kohl (14 pts, 20 reb).....Texas A&M-Commerce (11/15)

#### CAREER DOUBLE-DOUBLES

	2023-24	Career
Aniyah Augmon	-	3
Hulda Joaquim	-	2
Paula Reus	-	1
Charlotte Kohl	1	2

#### 20-POINT TRACKER

Viané Cumber.....	22 pts.....	Texas Southern (11/6)
Nyah Wilson.....	20 pts.....	Texas Southern (11/6)
Nyah Wilson.....	22 pts.....	Texas A&M-Commerce (11/15)
Viané Cumber.....	24 pts.....	Montana State (11/23)

GAME 7: NEW MEXICO vs EASTERN ILLINOIS

Team (AP/Coaches)	CONFERENCE						OVERALL							
	W	L	Pct.	Home	Away	Neutral	W	L	Pct.	Home	Away	Neutral	Last 10	Strk
UNLV (RV/RV)	0	0	.000	0-0	0-0	0-0	6	0	1.000	4-0	2-0	0-0	9-1	W6
Colorado State	0	0	.000	0-0	0-0	0-0	5	0	1.000	4-0	1-0	0-0	7-3	W5
Boise State	0	0	.000	0-0	0-0	0-0	5	1	.833	4-0	0-0	1-1	7-3	W1
Fresno State	0	0	.000	0-0	0-0	0-0	5	2	.714	4-0	0-2	1-0	5-5	W1
Nevada	0	0	.000	0-0	0-0	0-0	4	2	.667	2-1	0-1	2-0	5-5	W2
New Mexico	0	0	.000	0-0	0-0	0-0	4	2	.667	3-0	1-0	0-2	6-4	L2
San Diego State	0	0	.000	0-0	0-0	0-0	4	2	.667	3-1	1-1	0-0	6-4	W4
Wyoming	0	0	.000	0-0	0-0	0-0	3	2	.600	2-1	1-1	0-0	6-4	W1
Air Force	0	0	.000	0-0	0-0	0-0	4	3	.571	3-0	0-1	1-2	5-5	L2
Utah State	0	0	.000	0-0	0-0	0-0	3	3	.500	2-1	1-2	0-0	3-7	W1
San José State	0	0	.000	0-0	0-0	0-0	3	4	.429	2-1	1-1	0-2	5-5	L2
^ MW Regular Season Champions	% MW Tournament Champion													

^ MW Regular Season Champions      % MW Tournament Champion

MOUNTAIN WEST STATISTICS

2023-24 MW PLAYERS OF THE WEEK

TEAM			CHARLOTTE KOHL - NOVEMBER 20
	All	Conference	
Rebounding Margin	5th (+2.3)		
3-Pt FG % Defense	6th (.285)		
3-Pt FG Made	7th (5.5)		
Scoring	7th (64.0)		
Scoring Margin	7th (+1.2)		
FG % Defense	T-7th (.387)		
Blocks per Game	9th (2.3)		
Scoring Defense	9th (62.8)		
Steals per Game	9th (7.2)		
FG %	9th (.390)		
3-PT FG %	9th (.264)		
Assist/Turnover Ratio	9th (0.7)		
Free Throw %	10th (.663)		
Assists per Game	10th (10.3)		
INDIVIDUAL	All	Conference	
Scoring			
Nyah Wilson	4th (14.8)		
Vianè Cumber	T-10th (13.2)		
Aniyah Augmon	T-10th (13.2)		
Rebounding			
Charlotte Kohl	3rd (8.3)		
Paula Reus	12th (6.2)		
Aniyah Augmon	18th (5.3)		
FG %			
Aniyah Augmon	6th (.444)		
3-Point FG Made			
Vianè Cumber	2nd (3.3)		
3-Point FG %			
Vianè Cumber	3rd (.377)		
Steals			
Aniyah Augmon	3rd (2.8)		
Assists			
Aniyah Augmon	4th (4.2)		
Blocks			
Charlotte Kohl	T-3rd (1.7)		

NCAA STATISTICS

TEAM		
Rebounds Per Game	85th	
Rebounds (Def.) Per Game	74th	
INDIVIDUAL		
Aniyah Augmon		
Steals	31st	
Steals Per Game	47th	
Charlotte Kohl		
Blocks	50th	
Blocks Per Game	60th	
Rebounds Per Game	95th	
Rebounds	100th	
Nyah Wilson		
Free Throws	32nd	
Free Throw Attempts	37th	
Points	170th	
Vianè Cumber		
3-Pointers Per Game	13th	
3-Point Attempts	13th	
3-Pointers	15th	
Minutes Per Game	60th	

**SERIES HISTORY**

**EASTERN ILLINOIS**  
FIRST MEETING

**LOBOS RECORD WHEN...**

	<b>Overall</b>	<b>In MW</b>
Overall	4-2	0-0
At home	3-0	0-0
On the road	1-0	0-0
At neutral sites	0-2	0-0
After a win	3-1	0-0
After a loss	0-1	0-0
In overtime	0-0	0-0
vs. ranked opponents	0-0	0-0
Games decided by 1-4 points	1-0	0-0
Games decided by 5-9 points	2-0	0-0
Games decided by 10-19 points	1-2	0-0
Games decided by 20+ points	0-0	0-0
Leading after Q1	3-1	0-0
Trailing after Q1	1-1	0-0
Tied after Q1	0-0	0-0
Leading at half	4-0	0-0
Trailing at half	0-2	0-0
Tied at half	0-0	0-0
Leading after Q3	3-0	0-0
Trailing after Q3	1-2	0-0
Tied after Q3	0-0	0-0
Shooting 50% or better	0-0	0-0
Shooting between 40-49.9%	3-0	0-0
Shooting less than 40%	1-2	0-0
Opponent shoots 50% or better	0-1	0-0
Opponent shoots b/w 40-49.9%	1-1	0-0
Opponent shoots b/w 30-39.9%	3-0	0-0
Opponent shoots less than 30%	0-0	0-0
UNM higher FG%	4-0	0-0
Opponent higher FG%	0-2	0-0
FG% Tied	0-0	0-0
UNM outrebounds	3-0	0-0
Opponent outrebounds	1-2	0-0
Rebounds tied	0-0	0-0
UNM more made free throws	2-1	0-0
Opponent more made free throws	0-1	0-0
Made free throws tied	2-0	0-0
UNM 3FG% higher	2-0	0-0
Opponent 3FG% higher	2-2	0-0
3FG% tied	0-0	0-0
UNM has more fouls	2-0	0-0
Opponent has more fouls	2-2	0-0
Fouls are tied	0-0	0-0
UNM more turnovers	3-1	0-0
Opponent more turnovers	1-1	0-0
Turnovers tied	0-0	0-0
Scoring less than 50 points	0-0	0-0
Scoring 50-59 points	1-2	0-0
Scoring 60-69 points	1-0	0-0
Scoring 70-79 points	2-0	0-0
Scoring 80-89 points	0-0	0-0
Scoring 90-99 points	0-0	0-0
Scoring 100+ points	0-0	0-0
Allowing 40 points or less	0-0	0-0
Allowing 41-49 points	1-0	0-0
Allowing 50-59 points	2-0	0-0
Allowing 60-69 points	0-1	0-0
Allowing 70-79 points	1-1	0-0
Allowing 80-89 points	0-0	0-0
Allowing 90+ points	0-0	0-0
In November	4-2	0-0
In December	0-0	0-0
In January	0-0	0-0
In February	0-0	0-0
In March	0-0	0-0

## 2023-24 roster



**Nahawa Diarra Berthe**  
G | 5-9 | JR.  
Barcelona, Spain



**Natalia Chavez**  
G | 5-10 | R-FR.  
Cochiti Pueblo, N.M.



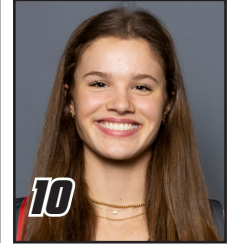
**Nyah Wilson**  
G | 5-8 | JR.  
Dallas, Texas



**Gianna McManaman**  
PG | 5-7 | FR.  
Chapel Hill, N.C.



**Lara Langermann**  
G | 5-7 | FR.  
Breckersfeld, Germany



**Paris Lauro**  
F | 6-1 | FR.  
Dallas, Texas



**Aniyah Augmon**  
G | 5-8 | JR.  
San José, Calif.



**Hulda Joaquim**  
F | 6-1 | SR.  
Maputo, Mozambique



**Jaelyn Bates**  
PG | 5-7 | FR.  
Albuquerque, N.M.



**Mackenzie Curtis**  
G | 5-9 | SO.  
Lakeside, Calif.



**Charlotte Kohl**  
C | 6-5 | GR.  
Giessen, Germany



**Paula Reus**  
F | 6-1 | JR.  
Palma de Mallorca,  
Spain



**Vianè Cumber**  
G | 5-10 | JR.  
Albuquerque, N.M.



**Mike Bradbury**  
Head Coach



**Keith Freeman**  
Assoc. Head Coach



**Nike McClure**  
Assistant Coach



**Mackenzie Novak**  
Assistant Coach



**Jaisa Nunn**  
Graduate Assistant



**Hanna Hudson**  
Director of Operations



**Isaiah Fernandez**  
Director of Player  
Development



## NUMERICAL

#	Name	Pos	Ht	Yr	Hometown (Previous School)
1	Nahawa Diarra Berthe	G	5-9	Jr.	Barcelona, Spain (Odessa College)
2	Natalia Chavez	G	5-10	RS-Fr.	Cochiti Pueblo, N.M. (Volcano Vista HS)
3	Nyah Wilson	G	5-8	Jr.	Dallas, Texas (Syracuse)
4	Gianna McManaman	PG	5-7	Fr.	Chapel Hill, N.C. (Northwood HS)
5	Lara Langermann	G	5-7	Fr.	Breckerfeld, Germany (Theodor-Heuss-Gymnasium Hagen)
10	Paris Lauro	F	6-1	Fr.	Dallas, Texas (Highland Park HS)
12	Aniyah Augmon	G	5-8	Jr.	San José, Calif. (Woodside Priory School)
14	Hulda Joaquim	F	6-1	Sr.	Maputo, Mozambique (Seward County CC)
15	Jaelyn Bates	PG	5-7	So.	Albuquerque, N.M. (Volcano Vista HS)
21	Mackenzie Curtis	G	5-9	RS-So.	Lakeside, Calif. (El Capitan HS)
22	Charlotte Kohl	C	6-5	Sr.	Giessen, Germany (Mississippi State)
30	Paula Reus	F	6-1	Jr.	Palma de Mallorca, Spain (IES Joaquim Blume)
33	Vianè Cumber	G	5-10	Jr.	Albuquerque, N.M. (Sandia HS)

## ALPHABETICAL

#	Name	Pos	Ht	Yr	Hometown (Previous School)
12	Aniyah Augmon	G	5-8	Jr.	San José, Calif. (Woodside Priory School)
15	Jaelyn Bates	PG	5-7	So.	Albuquerque, N.M. (Volcano Vista HS)
2	Natalia Chavez	G	5-10	RS-Fr.	Cochiti Pueblo, N.M. (Volcano Vista HS)
33	Vianè Cumber	G	5-10	Jr.	Albuquerque, N.M. (Sandia HS)
21	Mackenzie Curtis	G	5-9	RS-So.	Lakeside, Calif. (El Capitan HS)
1	Nahawa Diarra Berthe	G	5-9	Jr.	Barcelona, Spain (Odessa College)
14	Hulda Joaquim	F	6-1	Sr.	Maputo, Mozambique (Seward County CC)
22	Charlotte Kohl	C	6-5	Sr.	Giessen, Germany (Mississippi State)
5	Lara Langermann	G	5-7	Fr.	Breckerfeld, Germany (Theodor-Heuss-Gymnasium Hagen)
10	Paris Lauro	F	6-1	Fr.	Dallas, Texas (Highland Park HS)
4	Gianna McManaman	PG	5-7	Fr.	Chapel Hill, N.C. (Northwood HS)
30	Paula Reus	F	6-1	Jr.	Palma de Mallorca, Spain (IES Joaquim Blume)
3	Nyah Wilson	G	5-8	Jr.	Dallas, Texas (Syracuse)

## STAFF

Mike Bradbury	Head Coach
Keith Freeman	Associate Head Coach
Nike McClure	Assistant Coach
Mackenzie Novak	Assistant Coach
Jaissa Nunn	Graduate Assistant
Hanna Hudson	Director of Operations
Isaiah Fernandez	Director of Player Development
Leila Petewon	Assistant Director of Athletic Performance (WBB)
Lexi Smith	Associate Athletic Trainer (WBB)

## pronunciation guide

audio pronunciations available online

NAHAWA DIARRA BERTHE	Na-HA-wa D-are-a Bear-TAY
NYAH Wilson	Neye-ah
LARA LANGERMANN	La-Rah Lane-GRR-man
PARIS LAURO	Loro (rhymes with Zorro)
HULDA JOAQUIM	Ulda JOY-key-m
PAULA REUS	Rey-OOSE (rhymes with goose)
VIANE Cumber	V-UH-nay

## by eligibility

Seniors (2)	
14 Hulda Joaquim	F
22 Charlotte Kohl (Gr.)	C

Juniors (5)	
1 Nahawa Diarra Berthe	G
3 Nyah Wilson	G
12 Aniyah Augmon	G
30 Paula Reus	F
33 Vianè Cumber	G

Sophomores (2)	
15 Jaelyn Bates	PG
21 Mackenzie Curtis (RS)	G

Freshmen (4 (1 Redshirt))	
2 Natalia Chavez (RS)	G
4 Gianna McManaman	PG
5 Lara Langermann	G
10 Paris Lauro	F

## home state

California (2)	
12 Aniyah Augmon	G
21 Mackenzie Curtis	G

North Carolina (1)	
4 Gianna McManaman	PG

New Mexico (3)	
2 Natalia Chavez	G
15 Jaelyn Bates	PG
33 Vianè Cumber	G

Texas (2)	
3 Nyah Wilson	G
10 Paris Lauro	F

## international

1 Nahawa Diarra Berthe (Spain)	G
5 Lara Langermann (Germany)	G
14 Hulda Joaquim (Mozambique)	C
22 Charlotte Kohl (Germany)	F
30 Paula Reus (Spain)	F



## MIKE BRADBURY

**RECORD AT UNM: 145-80 (8TH SEASON)**  
**CAREER RECORD: 323-197 (17TH SEASON)**

### NOTEWORTHY:

- Named the sixth head coach in program history on March 31, 2016
- 26 wins in 2021-22 tied for most wins in program history
- Led UNM to 25 wins in 2017-18; tied for second-most wins in program history
- Led UNM to 20+ wins in four seasons, and .500 or better in six
- Earned his 100th win at UNM on Nov. 30, 2021; only the second coach in program history to reach 100. Earned his 300th career win on Nov. 22, 2022 against Western N.M.

Mike Bradbury enters his eighth season as head coach for The University of New Mexico women's basketball team. In his previous seven seasons at the helm, Bradbury has guided the Lobos to a 141-78 (.644) and 77-45 (.631) in conference. Four times in his tenure (2017-18, 2018-19, 2021-22 and 2022-23) the Lobos eclipsed the 20-win mark, with the Lobos tying the program record for most wins in a single season with 26 in 2021-22. Further, the 25 wins in 2017-18 were tied for the second-most wins in program history. The consecutive 20-plus win seasons under Bradbury in 2017-18 and 2018-19 were the first for the program since the 2007-08 – 2008-09 seasons.

Additionally, Bradbury became just the second coach in UNM history to win 100 games with a win over Grambling on Nov. 30, 2021.

The Lobos have sustained success under Bradbury as historically, UNM has finished either first or second in the conference in scoring offense in the last six years (four times first). In Bradbury's time at UNM, the Lobos have finished with 15 or made three-pointers 11 times and hold the top-five spots in three-pointers per game in program history.

In the most recent season, UNM finished 15th in the NCAA in made three-pointers per game at 8.5 per game, with 12 games with double-digit three-pointers. Of the 12 games, UNM made 18 (against South Carolina State) and three games with 16 (twice against Utah State and at Fresno State).

During the 2021-22 season, the program established several program records. UNM set the program record in made three-pointers (346), a program-best 171 made three-pointers in conference season, as well as a pro-

gram-record 596 assists on the season and 292 in conference games. In addition, the Lobos made a program-high 523 field goals in conference and scored the most points in conference in program history with 1,413 points. On Jan. 6 at Utah State, the Lobos set the program record and the MW record in made three-pointers in a game with 21, and three games later made 19 three-pointers for the second most in a game in program history. The Lobos also went on a nine-game win streak, the second longest in program history.

New Mexico ranked in the top 10 in the NCAA in made three-pointers (third), made three-pointers per game (fifth, 9.6 per game) and in assists (10th). In total, UNM ranked in the top 30 in nine categories, including scoring offense (14th, 76.7 points per game), assists per game (16th, 16.6 per game), assist/turnover ratio (18th, 1.21), field-goal percentage (19th, 45.1 percent), blocked shots (25th, 147) and three-point field-goal percentage (30th, 35.1 percent).



UNM added six postseason Mountain West honors with a conference-high three all-conference players in Antonia Anderson, Shaiquel McGruder and Jaedyn De La Cerda, an honorable mention in LaTora Duff, an all-defensive player in McGruder and an all-freshman in Paula Reus. The Lobos have had 12 conference selections in the last two seasons.

Further, five Lobos finished the 2021-22 season averaging double figures in points per game.

In the 2020-21 season, Bradbury led the Lobos to a Mountain West regular season championship, the first outright in program history and the first regular season title since the 2004-05 season. In addition, the Lobos were selected for the WNIT for the third

time in four years.

The Lobos produced one of the most prolific offenses not only in the conference, but in the country, finishing among the top 25 in several categories. Among them, UNM finished fourth in the NCAA in made three-pointers per game (10.2), sixth in assist-turnover ratio (1.40), ninth in scoring offense (81.2 points per game), 14th in fewest turnovers per game (12.0) and assists per game (16.8) and 22nd in scoring margin (12.7). The Lobos led the Mountain West in scoring offense, scoring margin, assists per game, turnover margin, assist-turnover ratio and made three-pointers as well as second in field-goal percentage and steals per game.

UNM set a program record in scoring with 120 points against Arkansas-Pine Bluff on Dec. 17, 2020 and in the process, made 17 three-pointers, falling just one short of tying the program record. Further, the Lobos registered 90-plus points in five games and 80-plus points in 11 of the 20 games on the season.

Four Lobos finished the 2020-21 season averaging double figures in points per game with six players finishing in double figures in scoring in two games (the only times it has been accomplished in program history), five players in five games and four in seven games.

As a result of UNM's successful season, five players were named to the All-Mountain West Team with LaTascya Duff also earning the superlative of Sixth Person of the Year. Duff was just the second Lobo to win the sixth person award. Making the all-conference team for the first time were Duff, Jaedyn De La Cerda and Antonia Anderson, as well as Shaiquel McGruder earning all-defensive and Ahlise Hurst earning the honorable mention distinction.

In his time at UNM, Bradbury has coached 13 All-Mountain West performers with Cherise Beynon, Jayla Everett, Jaisa Nunn, Aisia Robertson and Richelle van der Keijl joining De La Cerda, Duff, McGruder, Hurst and Anderson in making the All-Mountain West Team. Tesha Buck, Mykiel Burleson and Nike McClure have also earned MW recognition with Buck being the 2017-18 Newcomer of the Year, Burleson being named to the All-Freshman team in 2016-17 and McClure landing on the All-Defensive team in 2018-19.

In terms of major individual awards, Bradbury has coached the league's Newcomer of the Year each of his first three seasons in charge of the Lobos with van der Keijl earning the award in 2016-17, Buck in 2017-18 and Robertson in 2018-19. Additionally, Bradbury has coached the MW Player of the Year in Nunn (2018-19) and the Freshman of the Year in Everett (2018-19) as well as Sixth Person of the Year in Duff (2020-21).

## CAREER HEAD COACHING YEAR-BY-YEAR

2007-08	11-19 (9-11)	Morehead State
2008-09	17-14 (11-7)	Morehead State
2009-10	22-11 (14-4)	Morehead State
2010-11	20-13 (11-7)	Wright State
2011-12	21-13 (12-6)	Wright State
2012-13	12-18 (6-10)	Wright State
2013-14	26-9 (12-4)	Wright State
2014-15	25-9 (12-4)	Wright State
2015-16	24-11 (12-6)	Wright State
2016-17	15-15 (10-8)	New Mexico
2017-18	25-11 (10-8)	New Mexico
2018-19	24-7 (14-4)	New Mexico
2019-20	15-17 (6-12)	New Mexico
2020-21	15-5 (11-3)	New Mexico
2021-22	26-10 (14-4)	New Mexico
2022-23	21-13 (12-6)	New Mexico
2023-24	4-2 (0-0)	New Mexico
Total	323-197 (176-104)	

## EDUCATION

UT-Chattanooga - B.S. Recreation (1993)

## COACHING EXPERIENCE

1991-93	Student Assistant	Chattanooga
1993-94	Assistant Coach	Chattanooga
1994-95	Assistant Coach	East Tennessee
1995-96	Assistant Coach	VCU
1996-02	Assistant Coach	Cincinnati
2002-07	Assistant Coach	Xavier
2007-10	Head Coach	Morehead State
2010-16	Head Coach	Wright State
2016-pres.	Head Coach	New Mexico

## HEAD COACHING RECORD

2007-10	Morehead State	50-44 (.532)
2010-16	Wright State	128-73 (.637)
2016-pres.	New Mexico	145-80 (.644)
17 years		323-197 (.621)

### RANKED OPPONENTS

#16 Marquette	11/13/17	W, 88-87
#23 West Virginia	11/29/19	L, 73-60
#6 Arizona	12/12/21	L, 77-60
#14 Arizona	12/4/22	L, 77-60

### ALL-TIME SERIES UNDER COACH BRADBURY

OPPONENT	Series	H	A	N
Abilene Christian	1-0	1-0		
Air Force	10-2	5-1	4-1	1-0
Arizona	0-2	0-1	0-1	
Arkansas-Pine Bluff	1-0		1-0	
Arizona State	0-2	0-1	0-1	
Auburn	0-1	0-1		
Ball State	0-1	0-1		
Boise State	5-7	4-1	1-5	0-1
California Baptist	0-1			0-1
Colorado State	9-5	7-1	2-3	0-1
Denver	0-1	0-1		
Fairleigh Dickinson	1-0	1-0		
Fresno State	8-6	4-1	3-3	1-2
Georgia Tech	0-1			0-1
Grambling State	1-0	1-0		
Grand Canyon	1-0	1-0		
Hartford	1-0	1-0		
Houston	3-1	2-0	1-1	
Houston Baptist	1-0	1-0		
Illinois	1-0	1-0		
Lamar	2-0	2-0		
Louisiana-Monroe	1-0			1-0
Loyola Marymount	0-1	0-1		
Marquette	1-1	1-0	0-1	
Midwestern State	1-0		1-0	
Minnesota	0-1	0-1		
Mississippi State	0-1			0-1
Missouri	1-0			1-0
Montana State	0-1			0-1
Navy	1-0	1-0		
Nevada	10-3	5-0	5-2	0-1
New Mexico State	10-2	6-0	4-2	
Nicholls	1-0		1-0	
Northern Arizona	3-0	2-0	1-0	
Northern New Mexico	4-0	4-0		
Oklahoma	1-1	1-0	0-1	
Old Dominion	1-0			1-0
Oregon State	0-1		0-1	
Pepperdine	1-0		1-0	
Prairie View A&M	1-0	1-0		
Providence	1-0	1-0		
Rice	1-0	1-0		
Sacramento State	1-0	1-0		
Saint Mary's	1-0	1-0		
Sam Houston State	1-0		1-0	
San Diego	1-0	1-0		
San Diego State	8-8	4-1	3-5	1-2
San Jose State	8-3	4-1	3-2	1-0
SMU	1-0	1-0		
South Carolina State	1-0	1-0		
Southern Utah	0-1		0-1	
St. Joseph's	0-1	0-1		
Stephen F. Austin	1-1	1-0		0-1
Tarleton State	1-0	1-0		
TCU	0-1	0-1		
Texas A&M-Commerce	2-0	1-0	1-0	
Texas State	1-0	1-0		
Texas Southern	1-0	1-0		
Texas Tech	1-2	1-0	0-1	0-1
Tulsa	0-1	0-1		
UC Irvine	1-0	1-0		
UC Riverside	1-0	1-0		
UNLV	4-10	2-4	2-6	
Utah State	13-0	5-0	8-0	
UTEP	5-0	4-0	1-0	
Washington	0-1		0-1	
West Virginia	0-1			0-1
Western Michigan	1-0	1-0		
Western New Mexico	1-0	1-0		
Wichita State	1-0	1-0		
Wyoming	5-8	2-4	3-3	0-1
	145-80	91-24	47-41	7-15

#1

# NAHAWA DIARRA BERTHE

G | 5-9 | JR | Barcelona, Spain (Odessa College)



PPG	FG %	3PT %	FT %	RPG	APG	SPG	BPG	MPG
1.5	.250	.000	.000	1.8	1.0	0.5	--	12.8

## NOTEWORTHY

- » First season at the DI level after spending past two seasons at Odessa
- » Started all 25 games for the Wranglers last season, averaging 29.6 minutes per game, 10.8 points per game, 4.2 rebounds per game, 2.6 assists per game and 2.3 steals per game
- » Scored in double figures in 16 games and recorded five or more rebounds in nine games

## GAME-BY-GAME STATISTICS

Opponent	Date	GS	MIN	Total		3-Pointers		Free throws		Rebounds											
				FG-FGA	PCT	3FG-3FGA	PCT	FT-FTA	PCT	OFF	DEF	TOT	AVG	PF	A	TO	BLK	STL	PTS	AVG	
Texas Southern	11/06/2023		08:14	0-2	.000	0-0	.000	0-0	.000	1	1	2	2.0	0	2	2	0	0	0	0.0	
Tex. A&M-Commerce	11/15/2023		13:03	0-3	.000	0-1	.000	0-0	.000	0	0	0	1.0	2	1	0	0	1	0	0.0	
vs Montana St.	11/23/2023		11:09	0-2	.000	0-1	.000	0-2	.000	0	1	1	1.0	0	1	0	0	1	0	0.0	
vs Georgia Tech	11/24/2023		18:41	3-5	.600	0-0	.000	0-0	.000	1	3	4	1.8	2	0	2	0	0	6	1.5	
Totals		0	51:08	3-12	.250	0-2	.000	0-2	.000	2	5	7	1.8	4	4	4	0	2	6	1.5	

## TOP PERFORMANCES

Points	Season	6, Georgia Tech (11/24)
	MW	
	Career	6, Georgia Tech (11/24)
FGM	Season	3, Georgia Tech (11/24)
	MW	
	Career	3, Georgia Tech (11/24)
FGA	Season	5, Georgia Tech (11/24)
	MW	
	Career	5, Georgia Tech (11/24)
3PT FGM	Season	
	MW	
	Career	
3PT FGA	Season	1, 2x
	MW	
	Career	1, 2x
FTM	Season	
	MW	
	Career	
FTA	Season	2, Montana State (11/23)
	MW	
	Career	2, Montana State (11/23)
Reb.	Season	4, Georgia Tech (11/24)
	MW	
	Career	4, Georgia Tech (11/24)
Asts.	Season	2, Texas Southern (11/6)
	MW	
	Career	2, Texas Southern (11/6)
Blocks	Season	
	MW	
	Career	
Steals	Season	1, 2x
	MW	
	Career	1, 2x
TO	Season	0, 2x
	MW	
	Career	0, 2x
Min.	Season	18, Georgia Tech (11/24)
	MW	
	Career	18, Georgia Tech (11/24)

## PRODUCTION TRACKER

2023-24 Career

Double-Double  
Scored 10+ pts  
Scored 20+ pts  
10+ reb  
3+ 3-pt

## CAREER STATISTICS

				Field Goals		3-Point		F-Throws		Rebounds								Scoring		
SEASON	TEAM	GP-GS	MIN/AVG	FG-FGA	FG%	3FG-3FGA	3FG%	FT-FTA	FT%	OFF	DEF	TOT	AVG	PF-FO	A	TO	BLK	STL	PTS	AVG
2023-24	UNM	4-0	51/12.8	3-12	.250	0-2	.000	0-2	.000	2	5	7	1.8	4-0	4	4	0	2	6	1.5
TOTAL		4-0	51/12.8	3-12	.250	0-2	.000	0-2	.000	2	5	7	1.8	4-0	4	4	0	2	6	1.5



#2

NATALIA CHAVEZ

G | 5-10 | R-FR | Cochiti Pueblo, N.M. (Volcano Vista HS)



PPG	FG %	3PT %	FT %	RPG	APG	SPG	BPG	MPG
0.0	.000	.000	--	0.0	0.3	0.0	0.0	3.7

NOTEWORTHY

- REDSHIRTED LAST SEASON
- » Named the 1-5A District Player of the Year in 2019-20 and 2020-21, while also earning first team all-state and first team all-metro during that time span
  - » Reached the 1,000-point career milestone in 2021
  - » Was up for an ESPY award for her game-winning half-court shot to win the 5A title
  - »Majoring in business administration

GAME-BY-GAME STATISTICS

Opponent	Date	GS	MIN	Total		3-Pointers		Free throws		Rebounds										
				FG-FGA	PCT	3FG-3FGA	PCT	FT-FTA	PCT	OFF	DEF	TOT	AVG	PF	A	TO	BLK	STL	PTS	AVG
Texas Southern	11/06/2023		03:02	0-1	.000	0-1	.000	0-0	.000	0	0	0	0.0	0	0	0	0	0	0	0.0
Tex. A&M-Commerce	11/15/2023		04:46	0-0	.000	0-0	.000	0-0	.000	0	0	0	0.0	0	0	0	0	0	0	0.0
vs Montana St.	11/23/2023		03:12	0-1	.000	0-1	.000	0-0	.000	0	0	0	0.0	0	1	1	0	0	0	0.0
Totals		0	10:60	0-2	.000	0-2	.000	0-0	.000	0	0	0	0.0	0	1	1	0	0	0	0.0

TOP PERFORMANCES

Points	Season	
	MW	
	Career	
FGM	Season	
	MW	
	Career	
FGA	Season	1, 2x
	MW	
	Career	1, 2x
3PT FGM	Season	
	MW	
	Career	
3PT FGA	Season	1, 2x
	MW	
	Career	1, 2x
FTM	Season	
	MW	
	Career	
FTA	Season	
	MW	
	Career	
Reb.	Season	
	MW	
	Career	
Asts.	Season	1, Montana State (11/23)
	MW	
	Career	1, Montana State (11/23)
Blocks	Season	
	MW	
	Career	
Steals	Season	
	MW	
	Career	
TO	Season	0, 2x
	MW	
	Career	0, 2x
Min.	Season	4, Texas A&M-Com. (11/15)
	MW	
	Career	4, Texas A&M-Com. (11/15)

PRODUCTION TRACKER

2023-24 Career

- Double-Double
- Scored 10+ pts
- Scored 20+ pts
- 10+ reb
- 3+ 3-pt

CAREER STATISTICS

				Field Goals		3-Point		F-Throws		Rebounds									Scoring	
SEASON	TEAM	GP-GS	MIN/AVG	FG-FGA	FG%	3FG-3FGA	3FG%	FT-FTA	FT%	OFF	DEF	TOT	AVG	PF-FO	A	TO	BLK	STL	PTS	AVG
2023-24	UNM	3-0	11/3.7	0-2	.000	0-2	.000	0-0	.000	0	0	0	0.0	0-0	1	1	0	0	0	0.0
TOTAL		3-0	11/3.7	0-2	.000	0-2	.000	0-0	.000	0	0	0	0.0	0-0	1	1	0	0	0	0.0

#3

# NYAH WILSON

G | 5-8 | JR | Dallas, Texas (Syracuse)



PPG	FG %	3PT %	FT %	RPG	APG	SPG	BPG	MPG
14.8	.403	.385	.789	3.8	1.3	0.7	0.0	29.7

## NOTEWORTHY

- » Appeared in 20 games as a sophomore and 20 games with one start as a freshman at Syracuse
- » Graduated from Duncanville High School and was a four-star recruit by ESPN HoopGurlz, a McDonald's All-America nominee and was on the Terrific 25 rankings as a sophomore
- » Liberal arts major

## TOP PERFORMANCES

Points	Season MW	22, Texas A&M-Com.(11/15)
	Career	22, Texas A&M-Com.(11/15)
FGM	Season MW	9, Texas A&M-Com. (11/15)
	Career	9, Texas A&M-Com. (11/15)
FGA	Season MW	16, Georgia Tech (11/24)
	Career	16, Georgia Tech (11/24)
3PT FGM	Season MW	4, Texas Southern (11/6)
	Career	4, Texas Southern (11/6)
3PT FGA	Season MW	4, Texas Southern (11/6)
	Career	4, Texas Southern (11/6)
FTM	Season MW	9, Georgia Tech (11/24)
	Career	9, Georgia Tech (11/24)
FTA	Season MW	10, Georgia Tech (11/24)
	Career	10, Georgia Tech (11/24)
Reb.	Season MW	9, Tarleton St. (11/12)
	Career	9, Tarleton St. (11/12)
Asts.	Season MW	3, Texas Southern (11/6)
	Career	4, Cornell (12/8/21)
Blocks	Season MW	
	Career	
Steals	Season MW	1, Texas Southern (11/6)
	Career	2, done 2x
TO	Season MW	0, Montana State (11/23)
	Career	0, done 27x
Min.	Season MW	34, Georgia Tech (11/24)
	Career	34, Georgia Tech (11/24)

## GAME-BY-GAME STATISTICS

Opponent	Date	GS	MIN	Total		3-Pointers		Free throws		Rebounds											
				FG-FGA	PCT	3FG-3FGA	PCT	FT-FTA	PCT	OFF	DEF	TOT	AVG	PF	A	TO	BLK	STL	PTS	AVG	
Texas Southern	11/06/2023	*	32:08	5-8	.625	4-4	1.000	6-7	.857	1	3	4	4.0	2	3	3	0	1	20	20.0	
at Pepperdine	11/09/2023	*	29:20	3-10	.300	0-2	.000	2-2	1.000	0	3	3	3.5	4	2	1	0	0	8	14.0	
Tarleton St.	11/12/2023	*	33:25	4-11	.364	0-1	.000	8-9	.889	0	9	9	5.3	1	2	1	0	0	16	14.7	
Tex. A&M-Commerce	11/15/2023	*	27:42	9-13	.692	1-1	1.000	3-7	.429	0	2	2	4.5	3	0	5	0	0	22	16.5	
vs Montana St.	11/23/2023	*	20:43	2-9	.222	0-2	.000	2-3	.667	1	1	2	4.0	4	1	0	0	2	6	14.4	
vs Georgia Tech	11/24/2023	*	34:56	4-16	.250	0-3	.000	9-10	.900	0	3	3	3.8	2	0	1	0	1	17	14.8	
Totals		6	178:13	27-67	.403	5-13	.385	30-38	.789	2	21	23	3.8	16	8	11	0	4	89	14.8	

## PRODUCTION TRACKER

2023-24 Career

Double-Double		
Scored 10+ pts	4	4
Scored 20+ pts	2	2
10+ reb		
3+ 3-pt	1	1

## CAREER STATISTICS

				Field Goals		3-Point		F-Throws		Rebounds									Scoring	
SEASON	TEAM	GP-GS	MIN/AVG	FG-FGA	FG%	3FG-3FGA	3FG%	FT-FTA	FT%	OFF	DEF	TOT	AVG	PF-FO	A	TO	BLK	STL	PTS	AVG
2021-22	SU	20-1	179/9.0	16-46	.348	1-9	.111	3-9	.333	3	9	12	0.6	16-0	16	13	0	7	36	1.8
2022-23	SU	20-0	115/5.7	12-22	.545	0-2	.000	8-11	.727	4	12	16	0.8	12-0	8	9	0	7	32	1.6
2023-24	UNM	6-6	178/29.7	27-67	.403	5-13	.385	30-38	.789	2	21	23	3.8	16-0	8	11	0	4	89	14.8
TOTAL FOR UNM		6-6	178/29.7	27-67	.403	5-13	.385	30-38	.789	2	21	23	3.8	16-0	8	11	0	4	89	14.8
TOTAL		46-7	472/10.3	55-135	.407	6-24	.250	41-58	.707	9	42	51	1.1	44-0	32	33	0	18	157	3.4

#4

GIANNA MCMANAMAN

PG | 5-7 | FR | Chapel Hill, N.C. (Northwood HS)



PPG	FG %	3PT %	FT %	RPG	APG	SPG	BPG	MPG
--	--	--	--	--	--	--	--	--

NOTEWORTHY

- » Won conference championships in 2019-20, 2020-21 and 2021-22 and won a state championship in 2021-22
- » Averaged 12 ppg, 5 apg, 4 rpg and shot 43 percent from three-point range in high school
- » Is the fourth member of her family to attend UNM, joining her mother (Lia McManaman), grandfather (Robert Sanchez), grandmother (Bonnie Sanchez)
- » Majoring in exercise science

GAME-BY-GAME STATISTICS

TOP PERFORMANCES

Points	Season MW Career
FGM	Season MW Career
FGA	Season MW Career
3PT FGM	Season MW Career
3PT FGA	Season MW Career
FTM	Season MW Career
FTA	Season MW Career
Reb.	Season MW Career
Asts.	Season MW Career
Blocks	Season MW Career
Steals	Season MW Career
TO	Season MW Career
Min.	Season MW Career

PRODUCTION TRACKER

2023-24 Career

- Double-Double
- Scored 10+ pts
- Scored 20+ pts
- 10+ reb
- 3+ 3-pt

CAREER STATISTICS

#5

# LARA LANGERMANN

G | 5-7 | FR | Breckerfeld, Germany (Theodor-Heuss-Gymnasium Hagen)



PPG	FG %	3PT %	FT %	RPG	APG	SPG	BPG	MPG
2.5	.278	.231	.500	1.3	0.7	0.3	0.0	15.6

## NOTEWORTHY

- » Recently played for the U18 and U20 German National Team over the summer.
- » Played for VfL Viactiv AstroLadies Bochum, a Division 2 team in the Damen Basketballbundesliga, the BasketGirls Ruhr in the Weibliche Nachwuchsbundesliga (WNBL), a first German under 18 league, and for VfL Viactiv AstroLadies Bochum in the Damen Basketballbundesliga, as well as Herner TC.
- » Majoring in exercise science

## TOP PERFORMANCES

Points	Season	9, Pepperdine (11/9)
	MW	
	Career	9, Pepperdine (11/9)
FGM	Season	3, Pepperdine (11/9)
	MW	
	Career	3, Pepperdine (11/9)
FGA	Season	6, 2x
	MW	
	Career	6, 2x
3PT FGM	Season	2, Pepperdine (11/9)
	MW	
	Career	2, Pepperdine (11/9)
3PT FGA	Season	5, Montana State (11/23)
	MW	
	Career	5, Montana State (11/23)
FTM	Season	1, 2x
	MW	
	Career	1, 2x
FTA	Season	3, Pepperdine (11/9)
	MW	
	Career	3, Pepperdine (11/9)
Reb.	Season	3, Pepperdine (11/9)
	MW	
	Career	3, Pepperdine (11/9)
Asts.	Season	2, Pepperdine (11/9)
	MW	
	Career	2, Pepperdine (11/9)
Blocks	Season	
	MW	
	Career	
Steals	Season	1, 2x
	MW	
	Career	1, 2x
TO	Season	0, 3x
	MW	
	Career	0, 3x
Min.	Season	24, Montana State (11/23)
MW		
	Career	24, Montana State (11/23)

## GAME-BY-GAME STATISTICS

Opponent	Date	GS	MIN	Total		3-Pointers		Free throws		Rebounds				PF	A	TO	BLK	STL	PTS	AVG
				FG-FGA	PCT	3FG-3FGA	PCT	FT-FTA	PCT	OFF	DEF	TOT	AVG							
Texas Southern	11/06/2023		12:36	0-1	.000	0-1	.000	0-0	.000	0	1	1	1.0	1	0	3	0	1	0	0.0
at Pepperdine	11/09/2023		22:29	3-6	.500	2-4	.500	1-3	.333	0	3	3	2.0	1	2	0	0	1	9	4.5
Tarleton St.	11/12/2023		19:02	0-3	.000	0-2	.000	0-0	.000	1	1	2	2.0	1	0	0	0	0	0	3.0
Tex. A&M-Commerce	11/15/2023		14:53	1-2	.500	1-1	1.000	0-0	.000	0	1	1	1.8	3	1	3	0	0	3	3.0
vs Montana St.	11/23/2023		24:12	1-6	.167	0-5	.000	1-1	1.000	0	1	1	1.6	0	1	2	0	0	3	3.0
vs Georgia Tech	11/24/2023		00:35	0-0	.000	0-0	.000	0-0	.000	0	0	0	1.3	0	0	0	0	0	0	2.5
<b>Totals</b>		<b>0</b>	<b>93:47</b>	<b>5-18</b>	<b>.278</b>	<b>3-13</b>	<b>.231</b>	<b>2-4</b>	<b>.500</b>	<b>1</b>	<b>7</b>	<b>8</b>	<b>1.3</b>	<b>6</b>	<b>4</b>	<b>8</b>	<b>0</b>	<b>2</b>	<b>15</b>	<b>2.5</b>

## PRODUCTION TRACKER

2023-24 Career

Double-Double  
Scored 10+ pts  
Scored 20+ pts  
10+ reb  
3+ 3-pt

## CAREER STATISTICS

				Field Goals		3-Point		F-Throws		Rebounds				Scoring						
SEASON	TEAM	GP-GS	MIN/AVG	FG-FGA	FG%	3FG-3FGA	3FG%	FT-FTA	FT%	OFF	DEF	TOT	AVG	PF-FO	A	TO	BLK	STL	PTS	AVG
2023-24	UNM	6-0	94/15.6	5-18	.278	3-13	.231	2-4	.500	1	7	8	1.3	6-0	4	8	0	2	15	2.5
<b>TOTAL</b>		<b>6-0</b>	<b>94/15.6</b>	<b>5-18</b>	<b>.278</b>	<b>3-13</b>	<b>.231</b>	<b>2-4</b>	<b>.500</b>	<b>1</b>	<b>7</b>	<b>8</b>	<b>1.3</b>	<b>6-0</b>	<b>4</b>	<b>8</b>	<b>0</b>	<b>2</b>	<b>15</b>	<b>2.5</b>



PARIS LAURO

F | 6-1 | FR | Dallas, Texas (Highland Park HS)



PPG	FG %	3PT %	FT %	RPG	APG	SPG	BPG	MPG
0.0	--	--	--	0.0	0.0	0.0	0.0	1.5

NOTEWORTHY

- » Averaged 17.3 ppg, 8.3 rpg, 2.0 bpg her junior season and 23.6 ppg, 8.0 rpg and 1.8 bpg and was named the District 7-6A Most Valuable Player her senior season.
- » Named to the TABC 5A All-Region Team, named Offensive Player of the Year for District 13-5A and earned academic all-district her junior year
- » Majoring in exercise science

GAME-BY-GAME STATISTICS

Opponent	Date	GS	MIN	Total		3-Pointers		Free throws		Rebounds							
				FG-FGA	PCT	3FG-3FGA	PCT	FT-FTA	PCT	OFF	DEF	TOT	AVG	PF	A	TO	BLK
Texas Southern	11/06/2023		01:25	0-0	.000	0-0	.000	0-0	.000	0	0	0	0.0	1	0	0	0
vs Montana St.	11/23/2023		01:30	0-0	.000	0-0	.000	0-0	.000	0	0	0	0.0	0	0	0	0
Totals		0	02:55	0-0	.000	0-0	.000	0-0	.000	0	0	0	0.0	1	0	0	0

TOP PERFORMANCES

Points	Season	
	MW	
	Career	
FGM	Season	
	MW	
	Career	
FGA	Season	
	MW	
	Career	
3PT FGM	Season	
	MW	
	Career	
3PT FGA	Season	
	MW	
	Career	
FTM	Season	
	MW	
	Career	
FTA	Season	
	MW	
	Career	
Reb.	Season	
	MW	
	Career	
Asts.	Season	
	MW	
	Career	
Blocks	Season	
	MW	
	Career	
Steals	Season	
	MW	
	Career	
TO	Season	0, 2x
	MW	
	Career	0, 2x
Min.	Season	1, 2x
	MW	
	Career	1, 2x

PRODUCTION TRACKER

2023-24 Career

- Double-Double
- Scored 10+ pts
- Scored 20+ pts
- 10+ reb
- 3+ 3-pt

CAREER STATISTICS

				Field Goals		3-Point		F-Throws		Rebounds									Scoring	
SEASON	TEAM	GP-GS	MIN/AVG	FG-FGA	FG%	3FG-3FGA	3FG%	FT-FTA	FT%	OFF	DEF	TOT	AVG	PF-FO	A	TO	BLK	STL	PTS	AVG
2023-24	UNM	2-0	3/1.5	0-0	.000	0-0	.000	0-0	.000	0	0	0	0.0	1-0	0	0	0	0	0	0.0
TOTAL		2-0	3/1.5	0-0	.000	0-0	.000	0-0	.000	0	0	0	0.0	1-0	0	0	0	0	0	0.0



#12

# ANIYAH AUGMON

G | 5-8 | JR | San José, Calif. (Woodside Priory School)



PPG	FG %	3PT %	FT %	RPG	APG	SPG	BPG	MPG
13.2	.444	.083	.700	5.3	4.2	2.8	0.2	33.2

## NOTEWORTHY

» 8 steals at Pepperdine tied for the second most by a Lobo in program history, which was last done on Feb. 8, 1998.

» Averaged 21.2 minutes per game, 7.1 points per game, 4.4 rebounds per game, 1.9 assists per game, 0.7 steals per game, 0.2 blocks per game and shot 44.0% from the floor last season

» Scored in double figures in 8 conference games

» Career-high 18 points against UNLV after having a then-career-high 11 against Nevada

» Perfect 3-3 from three at UNLV, perfect 6-6 from free-throw line against Boise State

» First career double-double at UNLV with a team-high 18 points and team-high 10 rebounds. Second came at Utah State with 12 points and career-high 13 rebounds and third came at Air Force with team-high 17 points and team-high 11 rebounds

» 10 or more rebounds in 4 games

» Played in 33 games with 1 start (at Houston) as a freshman

» Liberal arts major

## GAME-BY-GAME STATISTICS

Opponent	Date	GS	MIN	Total		3-Pointers		Free throws		Rebounds				PF		A	TO	BLK	STL	PTS	AVG
				FG-FGA	PCT	3FG-3FGA	PCT	FT-FTA	PCT	OFF	DEF	TOT	AVG								
Texas Southern	11/06/2023	*	30:37	7-11	.636	1-2	.500	2-2	1.000	0	6	6	6.0	0	6	5	0	0	17	17.0	
at Pepperdine	11/09/2023	*	36:40	7-17	.412	0-3	.000	2-4	.500	1	8	9	7.5	2	3	4	0	8	16	16.5	
Tarleton St.	11/12/2023	*	26:47	1-6	.167	0-1	.000	0-0	.000	0	3	3	6.0	3	5	3	1	3	2	11.7	
Tex. A&M-Commerce	11/15/2023	*	35:35	6-11	.545	0-1	.000	4-4	1.000	2	2	4	5.5	2	2	5	0	0	16	12.8	
vs Montana St.	11/23/2023	*	36:27	5-11	.455	0-1	.000	1-2	.500	2	4	6	5.6	1	5	6	0	2	11	12.4	
vs Georgia Tech	11/24/2023	*	33:02	6-16	.375	0-4	.000	5-8	.625	0	4	4	5.3	2	4	6	0	4	17	13.2	
Totals		6	199:08	32-72	.444	1-12	.083	14-20	.700	5	27	32	5.3	10	25	29	1	17	79	13.2	

## TOP PERFORMANCES

Points	Season	17, 2x
	MW	18, UNLV (1/14/23)
	Career	18, UNLV (1/14/23)
FGM	Season	7, 2x
	MW	7, San Diego St. (2/4/23)
	Career	7, 3x
FGA	Season	17, Pepperdine (11/9)
	MW	13, Colorado St. (1/26/23)
	Career	17, Pepperdine (11/9)
3PT FGM	Season	1, Texas Southern (11/6)
	MW	3, UNLV (1/14/23)
	Career	3, UNLV (1/14/23)
3PT FGA	Season	4, Georgia Tech (11/24)
	MW	4, Colorado St. (1/26/23)
	Career	4, 2x
FTM	Season	5, Georgia Tech (11/24)
	MW	8, Nevada (2/11/23)
	Career	8, Nevada (2/11/23)
FTA	Season	8, Georgia Tech (11/24)
	MW	10, Air Force (2/23/23)
	Career	10, Air Force (2/23/23)
Reb.	Season	9, Pepperdine (11/9)
	MW	13, Utah State (1/28/23)
	Career	13, Utah State (1/28/23)
Asts.	Season	6, Texas Southern (11/6)
	MW	5, Wyoming (1/5/23)
	Career	5, 2x
Blocks	Season	1, Tarleton St. (11/12)
	MW	1, 5x
	Career	1, 7x
Steals	Season	8, Pepperdine (11/9)
	MW	3, Air Force (2/23/23)
	Career	8, Pepperdine (11/9)
TO	Season	3, Tarleton St. (11/12)
	MW	0, 13x
	Career	0, done 15x
Min.	Season	36, 2x
	MW	30, 2x
	Career	36, 2x

## PRODUCTION TRACKER

2023-24 Career

Double-Double	3
Scored 10+ pts	5
Scored 20+ pts	
10+ reb	5
3+ 3-pt	1

## CAREER STATISTICS

				Field Goals		3-Point		F-Throws		Rebounds										Scoring	
SEASON	TEAM	GP-GS	MIN/AVG	FG-FGA	FG%	3FG-3FGA	3FG%	FT-FTA	FT%	OFF	DEF	TOT	AVG	PF-FO	A	TO	BLK	STL	PTS	AVG	
2021-22	UNM	33-1	312/9.5	15-35	.429	1-9	.111	15-23	.652	17	46	63	1.9	31-0	21	27	1	24	46	1.4	
2022-23	UNM	31-2	657/21.2	77-175	.440	11-37	.297	54-77	.701	49	86	135	4.4	63-1	60	74	6	23	219	7.1	
2023-24	UNM	6-6	199/33.2	32-72	.444	1-12	.083	14-20	.700	5	27	32	5.3	10-0	25	29	1	17	79	13.2	
TOTAL		70-9	1168/16.7	124-282	.440	13-58	.224	83-120	.692	71	159	230	3.3	104-1	106	130	8	64	344	4.9	

#14

HULDA JOAQUIM

F | 6-1 | SR | Maputo, Mozambique (Seward County CC)



PPG	FG %	3PT %	FT %	RPG	APG	SPG	BPG	MPG
2.2	.500	--	.333	3.8	0.3	0.3	0.0	13.9

NOTEWORTHY

- » Second season with the Lobos
- » Averaged 6.2 minutes per game, 2.2 points per game, 1.4 rebounds per game, 0.3 steals per game and 0.5 blocks per game last season, playing in 13 games.
- » Scored a season-high nine points against Western New Mexico, while also having season-high three steals, two blocks and six rebounds
- » Majoring in business administration

GAME-BY-GAME STATISTICS

Opponent	Date	GS	MIN	Total		3-Pointers		Free throws		Rebounds											
				FG-FGA	PCT	3FG-3FGA	PCT	FT-FTA	PCT	OFF	DEF	TOT	AVG	PF	A	TO	BLK	STL	PTS	AVG	
Texas Southern	11/06/2023		09:30	1-4	.250	0-0	.000	0-0	.000	3	2	5	5.0	0	0	1	0	1	2	2.0	
at Pepperdine	11/09/2023		13:29	2-3	.667	0-0	.000	0-0	.000	2	0	2	3.5	1	0	0	0	0	4	3.0	
Tarleton St.	11/12/2023		23:11	3-4	.750	0-0	.000	0-0	.000	3	3	6	4.3	2	2	2	0	0	6	4.0	
Tex. A&M-Commerce	11/15/2023		07:49	0-0	.000	0-0	.000	0-0	.000	1	2	3	4.0	0	0	0	0	0	0	3.0	
vs Montana St.	11/23/2023		14:04	0-0	.000	0-0	.000	1-3	.333	2	1	3	3.8	0	0	0	0	1	1	2.6	
vs Georgia Tech	11/24/2023		15:17	0-1	.000	0-0	.000	0-0	.000	2	2	4	3.8	0	0	0	0	0	0	2.2	
Totals		0	83:20	6-12	.500	0-0	.000	1-3	.333	13	10	23	3.8	3	2	3	0	2	13	2.2	

TOP PERFORMANCES

Points	Season	6, Tarleton St. (11/12)
	MW	5, Utah State (2/25/23)
	Career	9, Western N.M. (11/22/22)
FGM	Season	3, Tarleton St. (11/12)
	MW	2, Utah State (2/25/23)
	Career	4, Western N.M. (11/22/22)
FGA	Season	4, 2x
	MW	5, Utah State (2/25/23)
	Career	9, Western N.M. (11/22/22)
3PT FGM	Season	
	MW	1, Utah State (2/25/23)
	Career	1, 2x
3PT FGA	Season	
	MW	2, Utah State (2/25/23)
	Career	2, Utah State (2/25/23)
FTM	Season	1, Montana State (11/23)
	MW	1, UNLV (1/14/23)
	Career	2, SCSU (12/29/22)
FTA	Season	3, Montana State (11/23)
	MW	2, UNLV (1/14/23)
	Career	3, Montana State (11/23)
Reb.	Season	6, Tarleton St. (11/12)
	MW	3, 2x
	Career	6, 2x
Asts.	Season	2, Tarleton St. (11/12)
	MW	1, 2x
	Career	2, Tarleton St. (11/12)
Blocks	Season	
	MW	2, Utah State (2/25/23)
	Career	2, 2x
Steals	Season	1, Texas Southern (11/6)
	MW	1, UNLV (1/14/23)
	Career	3, Western N.M. (11/22/22)
TO	Season	0, 4x
	MW	0, 6x
	Career	0, 15x
Min.	Season	23, Tarleton St. (11/12)
	MW	12, Utah State (2/25/23)
	Career	23, Tarleton St. (11/12)

PRODUCTION TRACKER

2023-24 Career

- Double-Double
- Scored 10+ pts
- Scored 20+ pts
- 10+ reb
- 3+ 3-pt

CAREER STATISTICS

				Field Goals		3-Point		F-Throws		Rebounds										Scoring	
SEASON	TEAM	GP-GS	MIN	AVG	FG-FGA	FG%	3FG-3FGA	3FG%	FT-FTA	FT%	OFF	DEF	TOT	AVG	PF-FO	A	TO	BLK	STL	PTS	AVG
2022-23	UNM	13-0	80	6.2	11-26	.423	2-6	.333	4-6	.667	9	9	18	1.4	2-0	3	3	6	4	28	2.2
2023-24	UNM	6-0	83	13.9	6-12	.500	0-0	.000	1-3	.333	13	10	23	3.8	3-0	2	3	0	2	13	2.2
TOTAL		19-0	164	8.6	17-38	.447	2-6	.333	5-9	.556	22	19	41	2.2	5-0	5	6	6	6	41	2.2

**#15**

# JAELYN BATES

PG | 5-7 | SO | Albuquerque, N.M. (Volcano Vista HS)



PPG	FG %	3PT %	FT %	RPG	APG	SPG	BPG	MPG
3.0	1.000	1.000	--	0.0	0.0	0.0	0.0	3.6

## NOTEWORTHY

- » Averaged 10.1 minutes per game, 3.1 points per game, 1.3 assists per game, 0.4 steals per game, playing in 22 games last season
- » Scored in double figures in 4 games last season
- » Perfect 4-4 from 3 against S. Carolina State
- » 7 games with multiple assists, 8 games with at least 1 steal

- » Won back-to-back District 1-5A championships and won the 2019 and 2020 1-5A District tournament
- » Named first team all-district, first team all-metro, second team all-state, was named the District Tournament Player of the Game, District 1-5A Player of the Year and was named the Volcano Vista Winter Sports Female Athlete of the Year in 2019
- » Biochemistry major

## GAME-BY-GAME STATISTICS

Opponent	Date	GS	MIN	Total		3-Pointers		Free throws		Rebounds				PF				PTS	AVG
				FG-FGA	PCT	3FG-3FGA	PCT	FT-FTA	PCT	OFF	DEF	TOT	AVG	A	TO	BLK	STL		
vs Montana St.	11/23/2023		03:33	1-1	1.000	1-1	1.000	0-0	.000	0	0	0	0.0	1	0	1	0	0	3
<b>Totals</b>		<b>0</b>	<b>03:33</b>	<b>1-1</b>	<b>1.000</b>	<b>1-1</b>	<b>1.000</b>	<b>0-0</b>	<b>.000</b>	<b>0</b>	<b>0</b>	<b>0</b>	<b>0.0</b>	<b>1</b>	<b>0</b>	<b>1</b>	<b>0</b>	<b>0</b>	<b>3</b>

## TOP PERFORMANCES

Points	Season MW	3, Montana State (11/23)
	Career	11, Utah State (2/25/23)
		16, SCSU (12/29/22)
FGM	Season MW	1, Montana State (11/23)
	Career	4, Utah State (2/25/23)
		6, SCSU (12/29/22)
FGA	Season MW	1, Montana State (11/23)
	Career	6, Utah State (2/25/23)
		15, Southern Utah (11/7/23)
3PT FGM	Season MW	1, Montana State (11/23)
	Career	3, Utah State (2/25/23)
		4, SCSU (12/29/22)
3PT FGA	Season MW	1, Montana State (11/23)
	Career	5, Utah State (2/25/23)
		9, Southern Utah (11/7/23)
FTM	Season MW	1, UNLV (1/14/23)
	Career	1, 2x
FTA	Season MW	2, 2x
	Career	2, 3x
Reb.	Season MW	3, UNLV (1/14/23)
	Career	5, Western N.M. (11/22/22)
Asts.	Season MW	3, 2x
	Career	8, Western N.M. (11/22/22)
Blocks	Season MW	2, Utah State (2/25/23)
	Career	2, Utah State (2/25/23)
Steals	Season MW	1, 2x
	Career	2, Western N.M. (11/22/22)
TO	Season MW	1, Montana State (11/23)
	Career	0, 9x
Min.	Season MW	3, Montana State (11/23)
	Career	17, Wyoming (1/5/23)
		33, Western N.M.(11/22/22)

## PRODUCTION TRACKER

2023-24 Career

Double-Double	
Scored 10+ pts	4
Scored 20+ pts	
10+ reb	
3+ 3-pt	2

## CAREER STATISTICS

				Field Goals		3-Point		F-Throws		Rebounds									Scoring	
SEASON	TEAM	GP-GS	MIN/AVG	FG-FGA	FG%	3FG-3FGA	3FG%	FT-FTA	FT%	OFF	DEF	TOT	AVG	PF-FO	A	TO	BLK	STL	PTS	AVG
2022-23	UNM	22-1	222/10.1	27-67	.403	13-41	.317	2-7	.286	1	19	20	0.9	15-0	29	21	3	9	69	3.1
2023-24	UNM	1-0	4/3.6	1-1	1.000	1-1	1.000	0-0	.000	0	0	0	0.0	1-0	0	1	0	0	3	3.0
TOTAL		23-1	225/9.8	28-68	.412	14-42	.333	2-7	.286	1	19	20	0.9	16-0	29	22	3	9	72	3.1

#21

MACKENZIE CURTIS

G | 5-9 | R-SO | Lakeside, Calif. (El Capitan HS)



PPG	FG %	3PT %	FT %	RPG	APG	SPG	BPG	MPG
0.0	--	--	--	0.0	0.0	0.0	0.0	5.7

NOTEWORTHY

REDSHIRTED LAST SEASON

- » Finished in double figures in first college appearance
- » Played in 21 games, and averaged 5.9 minutes per game freshman season.
- » Scored in six games with a season-high 12 points and two assists against Northern New Mexico with season-high three, three-pointers
- » Averaged 22.2 points, 9.5 rebounds, 3.3 assists, 3.5 steals and 1.0 blocks per game in high school
- » Four-time team MVP, three-time league MVP, four-time San Diego Union Tribune Scholar-Athlete
- » Named First-Team All-CIF in 2020 and Second Team All-CIF in 2019
- » No. 1 scorer in San Diego for two years and No. 3 in California for scoring in the class of 2021
- » Education major

GAME-BY-GAME STATISTICS

Opponent	Date	GS	MIN	Total		3-Pointers		Free throws		Rebounds										
				FG-FGA	PCT	3FG-3FGA	PCT	FT-FTA	PCT	OFF	DEF	TOT	AVG	PF	A	TO	BLK	STL	PTS	AVG
vs Georgia Tech	11/24/2023		05:44	0-0	.000	0-0	.000	0-0	.000	0	0	0	0.0	1	0	0	0	0	0	0.0
Totals		0	05:44	0-0	.000	0-0	.000	0-0	.000	0	0	0	0.0	1	0	0	0	0	0	0.0

TOP PERFORMANCES

Points	Season	
	MW	3, Utah State (2/16/22)
	Career	12, N. N.M. (11/12/21)
FGM	Season	
	MW	1, 2x
	Career	3, N. N.M. (11/12/21)
FGA	Season	
	MW	4, Boise State (2/19/22)
	Career	10, N. N.M. (11/12/21)
3PT FGM	Season	
	MW	1, Utah State (2/16/22)
	Career	3, N. N.M. (11/12/21)
3PT FGA	Season	
	MW	2, Utah State (2/16/22)
	Career	7, N. N.M. (11/12/21)
FTM	Season	
	MW	2, Utah State (2/16/22)
	Career	3, N. N.M. (11/12/21)
FTA	Season	
	MW	2, Utah State (2/16/22)
	Career	4, N. N.M. (11/12/21)
Reb.	Season	
	MW	1, 3x
	Career	3, 2x
Asts.	Season	
	MW	1, 3x
	Career	2, N. N.M. (11/12/21)
Blocks	Season	
	MW	
	Career	
Steals	Season	
	MW	1, Utah State (1/6/22)
	Career	1, Utah State (1/6/22)
TO	Season	
	MW	0, 11x
	Career	0, 12x
Min.	Season	5, Georgia Tech (11/24)
	MW	11, Colorado St. (1/15/22)
	Career	19, N. N.M. (11/12/21)

PRODUCTION TRACKER

2023-24 Career

Double-Double	
Scored 10+ pts	1
Scored 20+ pts	
10+ reb	
3+ 3-pt	1

CAREER STATISTICS

				Field Goals		3-Point		F-Throws		Rebounds											Scoring	
SEASON	TEAM	GP-GS	MIN/AVG	FG-FGA	FG%	3FG-3FGA	3FG%	FT-FTA	FT%	OFF	DEF	TOT	AVG	PF-FO	A	TO	BLK	STL	PTS	AVG		
2021-22	UNM	21-0	123/5.9	7-36	.194	5-25	.200	5-6	.833	1	9	10	0.5	16-0	6	7	0	1	24	1.1		
2023-24	UNM	1-0	6/5.7	0-0	.000	0-0	.000	0-0	.000	0	0	0	0.0	1-0	0	0	0	0	0	0.0		
TOTAL		22-0	129/5.8	7-36	.194	5-25	.200	5-6	.833	1	9	10	0.5	17-0	6	7	0	1	24	1.1		

#22

# CHARLOTTE KOHL

C | 6-5 | GR | Giessen, Germany (Mississippi State)



PPG	FG %	3PT %	FT %	RPG	APG	SPG	BPG	MPG
6.8	.472	.000	.700	8.3	0.8	0.7	1.7	24.9

## NOTEWORTHY

- » First year with the Lobos after graduating from Mississippi State. Has two years of eligibility remaining.
- » First Lobo with 20 rebounds in a game since Nov. 15, 2016 (Richelle van der Keijl (20))
- » 4 games with a block, 3 games with multiple blocks
- » Played in 55 games with 14 starts at MSU
- » Averaged 2.4 points, 3.2 rebounds and 0.8 blocks per game while shooting a team-high .537 from the field her sophomore season.
- » First career double-double was against Arkansas with 10 points and 18 rebounds during her sophomore season.
- » Graduated with a degree in psychology.

## GAME-BY-GAME STATISTICS

Opponent	Date	GS	MIN	Total		3-Pointers		Free throws		Rebounds				PF		A		BLK		STL		PTS		AVG
				FG-FGA	PCT	3FG-3FGA	PCT	FT-FTA	PCT	OFF	DEF	TOT	AVG	PF	A	TO	BLK	STL	PTS					
Texas Southern	11/06/2023	*	25:51	2-6	.333	0-0	.000	2-2	1.000	3	6	9	9.0	1	1	2	3	1	6	6.0				
at Pepperdine	11/09/2023	*	26:31	3-6	.500	0-0	.000	1-2	.500	5	1	6	7.5	3	0	4	0	0	7	6.5				
Tarleton St.	11/12/2023	*	15:34	2-4	.500	0-0	.000	2-2	1.000	1	4	5	6.7	4	3	1	0	1	6	6.3				
Tex. A&M-Commerce	11/15/2023	*	32:11	6-11	.545	0-1	.000	2-3	.667	10	10	20	10.0	1	1	0	4	0	14	8.3				
vs Montana St.	11/23/2023	*	24:39	0-4	.000	0-0	.000	0-0	.000	4	3	7	9.4	5	0	4	2	1	0	6.6				
vs Georgia Tech	11/24/2023	*	24:43	4-5	.800	0-0	.000	0-1	.000	0	3	3	8.3	4	0	1	1	1	8	6.8				
Totals		6	149:29	17-36	.472	0-1	.000	7-10	.700	23	27	50	8.3	18	5	12	10	4	41	6.8				

## TOP PERFORMANCES

Points	Season	14, Texas A&M-Com. (11/15)
	MW	
FGM	Season	6, Texas A&M-Com. (11/15)
	MW	
FGA	Season	11, Texas A&M-Com. (11/15)
	MW	
3PT FGM	Season	
	MW	
3PT FGA	Season	1, Texas A&M-Com. (11/15)
	MW	
FTM	Season	2, 3x
	MW	
FTA	Season	3, Texas A&M-Com. (11/15)
	MW	
Reb.	Season	20, Texas A&M-C (11/15)
	MW	
Asts.	Season	3, Tarleton St. (11/12)
	MW	
Blocks	Season	4, Texas A&M-Com. (11/15)
	MW	
Steals	Season	1, 4x
	MW	
TO	Season	0, Texas A&M-Com. (11/15)
	MW	
Min.	Season	32, Texas A&M-Com.(11/15)
	MW	
	Career	34, Kentucky (2/15/22)

## PRODUCTION TRACKER

2023-24 Career

Double-Double	1	2
Scored 10+ pts	1	2
Scored 20+ pts		
10+ reb	1	3
3+ 3-pt		

## CAREER STATISTICS

				Field Goals		3-Point		F-Throws		Rebounds				Scoring	
SEASON	TEAM	GP-GS	MIN/AVG	FG-FGA	FG%	3FG-3FGA	3FG%	FT-FTA	FT%	OFF	DEF	TOT	AVG	PF	PTS
2020-21	MSU	5-0	27/5.4	1-7	.143	0-2	.000	2-4	.500	3	2	5	1.0	4-0	3
2021-22	MSU	29-11	396/13.7	29-54	.537	0-5	.000	13-29	.448	45	49	94	3.2	50-1	7
2022-23	MSU	21-3	138/6.6	10-27	.370	0-0	.000	4-9	.444	6	14	20	1.0	26-0	5
2023-24	UNM	6-6	149/24.9	17-36	.472	0-1	.000	7-10	.700	23	27	50	8.3	18-1	5
<b>TOTAL FOR UNM</b>	<b>6-6</b>	<b>149/24.9</b>	<b>17-36</b>	<b>.472</b>	<b>0-1</b>	<b>.000</b>	<b>7-10</b>	<b>.700</b>	<b>23</b>	<b>27</b>	<b>50</b>	<b>8.3</b>	<b>18-1</b>	<b>5</b>	<b>12</b>
<b>TOTAL</b>	<b>61-20</b>	<b>711/11.7</b>	<b>57-124</b>	<b>.460</b>	<b>0-8</b>	<b>.000</b>	<b>26-52</b>	<b>.500</b>	<b>77</b>	<b>92</b>	<b>169</b>	<b>2.8</b>	<b>98-2</b>	<b>20</b>	<b>46</b>



#30

PAULA REUS

F | 6-1 | JR | Palma de Mallorca, Spain (IES Joaquim Blume)



PPG	FG %	3PT %	FT %	RPG	APG	SPG	BPG	MPG
8.8	.358	.125	.400	6.2	1.7	0.8	0.2	31.0

NOTEWORTHY

- » Mountain West All-Freshman Team
- » MW Freshman of the Week Jan. 24, 2022 and Feb. 21, 2022
- » Played in 33 games with 22 starts and averaged 24.8 minutes per game, 8.0 points per game, 4.3 rebounds per game, 1.8 assists per game, 0.7 steals per game and 0.4 blocks per game last season
- » First career double-double against New Mexico State (11 pts, 10 reb.) last season
- » 13 games scoring in double figures, at least 1 steal in 17 games, 11 games with at least 1 block, 14 games with multiple assists
- » 8 games scoring double figures freshman season
- » Team-high 15 points at No. 6 Arizona, making her first seven shots of the game
- » At least 1 steal in 17 games, 1 block in 10 games. Multiple steals in 5 games, multiple blocks in 4 games
- » Played on the U16 Spanish national team at the U16 FIBA 2019 European Championship, finishing third
- » Played for Barça CBS LF2, winning the regular season championship, and qualified for the finals
- » Liberal arts major

GAME-BY-GAME STATISTICS

Opponent	Date	GS	MIN	Total		3-Pointers		Free throws		Rebounds											
				FG-FGA	PCT	3FG-3FGA	PCT	FT-FTA	PCT	OFF	DEF	TOT	AVG	PF	A	TO	BLK	STL	PTS	AVG	
Texas Southern	11/06/2023	*	27:57	4-9	.444	0-2	.000	1-1	1.000	2	4	6	6.0	1	2	0	0	1	9	9.0	
at Pepperdine	11/09/2023	*	36:18	2-11	.182	0-5	.000	0-0	.000	2	5	7	6.5	2	3	3	0	0	4	6.5	
Tarleton St.	11/12/2023	*	34:31	7-12	.583	2-5	.400	0-0	.000	0	7	7	6.7	3	1	3	1	2	16	9.7	
Tex. A&M-Commerce	11/15/2023	*	35:14	5-14	.357	0-2	.000	1-4	.250	1	7	8	7.0	1	1	3	0	1	11	10.0	
vs Montana St.	11/23/2023	*	23:34	4-12	.333	1-6	.167	0-0	.000	1	4	5	6.6	2	3	4	0	0	9	9.8	
vs Georgia Tech	11/24/2023	*	28:29	2-9	.222	0-4	.000	0-0	.000	0	4	4	6.2	4	0	1	0	1	4	8.8	
Totals		6	186:03	24-67	.358	3-24	.125	2-5	.400	6	31	37	6.2	13	10	14	1	5	53	8.8	

TOP PERFORMANCES

Points	Season	16, Tarleton St. (11/12)
	MW	19, Fresno St. (1/22/22)
	Career	19, Fresno St. (1/22/22)
FGM	Season	7, Tarleton St. (11/12)
	MW	8, Fresno St. (1/22/22)
	Career	8, Fresno St. (1/22/22)
FGA	Season	14, Texas A&M-Com.(11/15)
	MW	14, 2x
	Career	14, 3x
3PT FGM	Season	2, Tarleton St. (11/12)
	MW	4, Colorado St. (1/15/22)
	Career	5, Texas A&M-C (1/26/22)
3PT FGA	Season	6, Montana State (11/23)
	MW	10, Colorado St. (1/15/22)
	Career	10, Colorado St. (1/15/22)
FTM	Season	1, 2x
	MW	5, San Diego St. (2/4/23)
	Career	5, San Diego St. (2/4/23)
FTA	Season	4, Texas A&M-Com.(11/15)
	MW	8, San Diego St. (2/4/23)
	Career	8, San Diego St. (2/4/23)
Reb.	Season	8, Texas A&M-Com.(11/15)
	MW	10, Colorado St. (1/7/23)
	Career	10, 2x
Asts.	Season	3, 2x
	MW	4, 2x
	Career	7, Houston (11/20/21)
Blocks	Season	1, Tarleton St. (11/12)
	MW	2, Utah State (2/16/22)
	Career	3, Texas A&M-C (11/26/22)
Steals	Season	2, Tarleton St. (11/12)
	MW	2, 2x
	Career	4, 2x
TO	Season	0, Texas Southern (11/6)
	MW	0, 8x
	Career	0, 16x
Min.	Season	36, Pepperdine (11/9)
	MW	32, Wyoming (1/5/23)
	Career	38, 2x

PRODUCTION TRACKER

2023-24 Career

Double-Double	1
Scored 10+ pts	2 23
Scored 20+ pts	
10+ reb	2
3+ 3-pt	3

CAREER STATISTICS

				Field Goals		3-Point		F-Throws		Rebounds										Scoring	
SEASON	TEAM	GP-GS	MIN/AVG	FG-FGA	FG%	3FG-3FGA	3FG%	FT-FTA	FT%	OFF	DEF	TOT	AVG	PF-FO	A	TO	BLK	STL	PTS	AVG	
2021-22	UNM	34-2	662/19.5	93-212	.439	18-67	.269	30-37	.811	25	109	134	3.9	48-0	61	51	15	21	234	6.9	
2022-23	UNM	33-22	819/24.8	100-223	.448	35-96	.365	28-38	.737	20	121	141	4.3	56-1	60	59	14	24	263	8.0	
2023-24	UNM	6-6	186/31.0	24-67	.358	3-24	.125	2-5	.400	6	31	37	6.2	13-0	10	14	1	5	53	8.8	
TOTAL		73-30	1667/22.8	217-502	.432	56-187	.299	60-80	.750	51	261	312	4.3	117-1	131	124	30	50	550	7.5	

#33

# VIANÈ CUMBER

G | 5-10 | JR | Albuquerque, N.M. (Sandia HS)



PPG	FG %	3PT %	FT %	RPG	APG	SPG	BPG	MPG
13.2	.363	.377	.250	4.3	0.3	0.8	0.0	35.1

## NOTEWORTHY

» MW Freshman of the Week Nov. 15, 2021

» Played in 33 games with 15 starts, including last 14 games last season  
 » Averaged 22.9 minutes per game, 9.2 points per game, 2.9 rebounds per game, 0.9 assists per game, 0.5 steals per game her sophomore season  
 » Shot 40.6% from three-point range with 21 games with multiple three-pointers. Includes two games with 6 three-pointers, 10 games with four or more three-pointers  
 » Scored in double figures in 16 games with 2 games with 20 or more points

» 2019-20 and 2020-21 New Mexico Gatorade Girls Basketball Player of the Year  
 » Twice named MaxPreps New Mexico High School Girls Basketball Player of the Year  
 » Named the best high school basketball player in New Mexico by MaxPreps  
 » Averaged 26.5 points, 9.3 rebounds, 2.2 assists and 1.5 steals her senior season and 22.4 points, 10.6 rebounds, 2.5 assists and 3.3 steals as a junior  
 » Led her team to a pair of district championships in 2018 and 2019  
 » Liberal arts major

## GAME-BY-GAME STATISTICS

Opponent	Date	GS	MIN	Total		3-Pointers		Free throws		Rebounds										
				FG-FGA	PCT	3FG-3FGA	PCT	FT-FTA	PCT	OFF	DEF	TOT	AVG	PF	A	TO	BLK	STL	PTS	AVG
Texas Southern	11/06/2023	*	35:44	9-18	.500	4-9	.444	0-0	.000	1	5	6	6.0	2	1	2	0	1	22	22.0
at Pepperdine	11/09/2023	*	35:13	3-11	.273	3-9	.333	0-0	.000	0	2	2	4.0	2	0	0	0	9	15.5	
Tarleton St.	11/12/2023	*	35:19	4-13	.308	3-9	.333	1-2	.500	2	5	7	5.0	2	0	2	0	12	14.3	
Tex. A&M-Commerce	11/15/2023	*	28:47	4-14	.286	1-7	.143	0-2	.000	2	2	4	4.8	2	1	1	0	1	9	13.0
vs Montana St.	11/23/2023	*	36:57	8-17	.471	8-15	.533	0-0	.000	0	3	3	4.4	1	0	0	0	2	24	15.2
vs Georgia Tech	11/24/2023	*	38:33	1-7	.143	1-4	.250	0-0	.000	0	4	4	4.3	0	0	1	0	1	3	13.2
Totals		6	210:33	29-80	.363	20-53	.377	1-4	.250	5	21	26	4.3	9	2	6	0	5	79	13.2

## TOP PERFORMANCES

Points	Season	24, Montana State (11/23)
	MW	14, San José St. (1/24/22)
	Career	24, Montana State (11/23)
FGM	Season	9, Texas Southern (11/6)
	MW	
	Career	9, Texas Southern (11/6)
FGA	Season	18, Texas Southern (11/6)
	MW	16, San José St. (2/18/23)
	Career	18, Texas Southern (11/6)
3PT FGM	Season	8, Montana State (11/23)
	MW	5, 2x
	Career	8, Montana State (11/23)
3PT FGA	Season	15, Montana State (11/23)
	MW	11, San José St. (2/18/23)
	Career	15, Montana State (11/23)
FTM	Season	1, Tarleton St. (11/12)
	MW	4, Colorado St. (1/26/23)
	Career	4, Colorado St. (1/26/23)
FTA	Season	2, 2x
	MW	4, 2x
	Career	4, 2x
Reb.	Season	7, Tarleton St. (11/12)
	MW	9, Wyoming (2/16/23)
	Career	9, Wyoming (2/16/23)
Asts.	Season	1, 2x
	MW	4, 2x
	Career	4, 2x
Blocks	Season	
	MW	1, 2x
	Career	1, 4x
Steals	Season	2, Montana State (11/23)
	MW	2, Utah State (2/25/23)
	Career	4, Western N.M. (11/22/22)
TO	Season	0, 2x
	MW	0, 14x
	Career	0, 27x
Min.	Season	38, Georgia Tech (11/24)
	MW	37, Colorado St. (1/26/23)
	Career	40, Washington (3/19/23)

## PRODUCTION TRACKER

2023-24 Career

Double-Double		
Scored 10+ pts	3	22
Scored 20+ pts	2	4
10+ reb		
3+ 3-pt	4	18

## CAREER STATISTICS

				Field Goals		3-Point		F-Throws		Rebounds								Scoring			
SEASON	TEAM	GP-GS	MIN	AVG	FG-FGA	FG%	3FG-3FGA	3FG%	FT-FTA	FT%	OFF	DEF	TOT	AVG	PF-FO	A	TO	BLK	STL	PTS	AVG
2021-22	UNM	18-1	198	11.0	25-62	.403	15-45	.333	2-2	1.000	4	25	29	1.6	6-0	5	10	1	5	67	3.7
2022-23	UNM	33-15	757	22.9	107-249	.430	73-180	.406	18-22	.818	5	90	95	2.9	39-0	30	32	3	17	305	9.2
2023-24	UNM	6-6	211	35.1	29-80	.363	20-53	.377	1-4	.250	5	21	26	4.3	9-0	2	6	0	5	79	13.2
TOTAL		57-22	1165	20.4	161-391	.412	108-278	.388	21-28	.750	14	136	150	2.6	54-0	37	48	4	27	451	7.9

SEASON STATS

Game Records

Record	Overall	Home	Away	Neutral
ALL GAMES	4-2	3-0	1-0	0-2
CONFERENCE	0-0	0-0	0-0	0-0
NON-CONFERENCE	4-2	3-0	1-0	0-2

Score by Periods

Team	1st	2nd	3rd	4th	OT	TOT
New Mexico	101	90	88	105	0	384
Opponents	80	88	103	106	0	377

Team Box Score

No.	Player				Total		3-Point		F-Throw		Rebounds													
		GP-GS	MIN	AVG	FG-FGA	FG%	3FG-3FGA	3FG%	FT-FTA	FT%	OFF	DEF	TOT	AVG	PF	DQ	A	TO	BLK	STL	PTS	AVG		
3	WILSON, Nyah	6-6	178:13	29.7	27-67	.403	5-13	.385	30-38	.789	2	21	23	3.8	16	0	8	11	0	4	89	14.8		
33	CUMBER, Vianè	6-6	210:33	35.1	29-80	.363	20-53	.377	1-4	.250	5	21	26	4.3	9	0	2	6	0	5	79	13.2		
12	AUGMON, Aniyah	6-6	199:08	33.2	32-72	.444	1-12	.083	14-20	.700	5	27	32	5.3	10	0	25	29	1	17	79	13.2		
30	REUS, Paula	6-6	186:03	31.0	24-67	.358	3-24	.125	2-5	.400	6	31	37	6.2	13	0	10	14	1	5	53	8.8		
22	KOHL, Charlotte	6-6	149:29	24.9	17-36	.472	0-1	.000	7-10	.700	23	27	50	8.3	18	1	5	12	10	4	41	6.8		
24	ROBBINS, Hannah	2-0	25:06	12.6	3-10	.300	0-4	.000	0-0	.000	2	8	10	5.0	1	0	1	3	2	2	6	3.0		
15	BATES, Jaelyn	1-0	03:33	3.6	1-1	1.000	1-1	1.000	0-0	.000	0	0	0	0.0	1	0	0	1	0	0	3	3.0		
5	LANGERMANN, Lara	6-0	93:47	15.6	5-18	.278	3-13	.231	2-4	.500	1	7	8	1.3	6	0	4	8	0	2	15	2.5		
14	JOAQUIM, Hulda	6-0	83:20	13.9	6-12	.500	0-0	.000	1-3	.333	13	10	23	3.8	3	0	2	3	0	2	13	2.2		
1	DIARRA BERTHE, Nahawa	4-0	51:08	12.8	3-12	.250	0-2	.000	0-2	.000	2	5	7	1.8	4	0	4	4	0	2	6	1.5		
21	CURTIS, Mackenzie	1-0	05:44	5.7	0-0	.000	0-0	.000	0-0	.000	0	0	0	0.0	1	0	0	0	0	0	0	0.0		
2	CHAVEZ, Natalia	3-0	10:60	3.7	0-2	.000	0-2	.000	0-0	.000	0	0	0	0.0	0	0	1	1	0	0	0	0.0		
10	LAURO, Paris	2-0	02:55	1.5	0-0	.000	0-0	.000	0-0	.000	0	0	0	0.0	1	0	0	0	0	0	0	0.0		
Team											16	12	28					2						
Total		6	1200		147-377	.390	33-125	.264	57-86	.663	75	169	244	40.7	83	1	62	94	14	43	384	64.0		
Opponents		6	1200		147-380	.387	37-130	.285	46-63	.730	68	162	230	38.3	94	1	76	92	17	33	377	62.8		

Team Statistics

	UNM	OPP
Scoring	384	377
Points per game	64.0	62.8
Scoring margin	+1.2	-
Field goals-att	147-377	147-380
Field goal pct	.390	.387
3 point fg-att	33-125	37-130
3-point FG pct	.264	.285
3-pt FG made per game	5.5	6.2
Free throws-att	57-86	46-63
Free throw pct	.663	.730
F-Throws made per game	9.5	7.7
Rebounds	244	230
Rebounds per game	40.7	38.3
Rebounding margin	+2.3	-
Assists	62	76
Assists per game	10.3	12.7
Turnovers	94	92
Turnovers per game	15.7	15.3
Turnover margin	-0.3	-
Assist/turnover ratio	0.7	0.8
Steals	43	33
Steals per game	7.2	5.5
Blocks	14	17
Blocks per game	2.3	2.8
Winning streak	0	-
Home win streak	3	-
Attendance	14399	113
Home games-Avg/Game	3-4800	1-113
Neutral site Avg/Game		2-150

Team Results

Date	Opponent		Score	Att.
11/06/2023	Texas Southern	W	76-59	5055
11/09/2023	at Pepperdine	W	57-48	113
11/12/2023	Tarleton St.	W	64-55	4626
11/15/2023	Tex. A&M-Commerce	W	75-74	4718
11/23/2023	vs Montana St.	L	57-75	166
11/24/2023	vs Georgia Tech	L	55-66	150

## LAST WEEK STATS

### Game Records

Record	Overall	Home	Away	Neutral
ALL GAMES	0-2	0-0	0-0	0-2
CONFERENCE	0-0	0-0	0-0	0-0
NON-CONFERENCE	0-2	0-0	0-0	0-2

### Score by Periods

Team	1st	2nd	3rd	4th	OT	TOT
New Mexico	30	21	29	32	0	112
Opponents	32	29	43	37	0	141

### Team Box Score

No.	Player				Total		3-Point		F-Throw		Rebounds													
		GP-GS	MIN	AVG	FG-FGA	FG%	3FG-3FGA	3FG%	FT-FTA	FT%	OFF	DEF	TOT	AVG	PF	DQ	A	TO	BLK	STL	PTS	AVG		
12	AUGMON, Aniyah	2-2	69:29	34.7	11-27	.407	0-5	.000	6-10	.600	2	8	10	5.0	3	0	9	12	0	6	28	14.0		
33	CUMBER, Vianè	2-2	75:30	37.7	9-24	.375	9-19	.474	0-0	.000	0	7	7	3.5	1	0	0	1	0	3	27	13.5		
3	WILSON, Nyah	2-2	55:39	27.8	6-25	.240	0-5	.000	11-13	.846	1	4	5	2.5	6	0	1	1	0	3	23	11.5		
30	REUS, Paula	2-2	52:03	26.0	6-21	.286	1-10	.100	0-0	.000	1	8	9	4.5	6	0	3	5	0	1	13	6.5		
22	KOHL, Charlotte	2-2	49:22	24.7	4-9	.444	0-0	.000	0-1	.000	4	6	10	5.0	9	1	0	5	3	2	8	4.0		
1	DIARRA BERTHE, Nahawa	2-0	29:51	14.9	3-7	.429	0-1	.000	0-2	.000	1	4	5	2.5	2	0	1	2	0	1	6	3.0		
15	BATES, Jaelyn	1-0	03:33	3.6	1-1	1.000	1-1	1.000	0-0	.000	0	0	0	0.0	1	0	0	1	0	0	3	3.0		
5	LANGERMANN, Lara	2-0	24:47	12.4	1-6	.167	0-5	.000	1-1	1.000	0	1	1	0.5	0	0	1	2	0	0	3	1.5		
14	JOAQUIM, Hulda	2-0	29:21	14.7	0-1	.000	0-0	.000	1-3	.333	4	3	7	3.5	0	0	0	0	0	1	1	0.5		
21	CURTIS, Mackenzie	1-0	05:44	5.7	0-0	.000	0-0	.000	0-0	.000	0	0	0	0.0	1	0	0	0	0	0	0	0.0		
10	LAURO, Paris	1-0	01:30	1.5	0-0	.000	0-0	.000	0-0	.000	0	0	0	0.0	0	0	0	0	0	0	0	0.0		
2	CHAVEZ, Natalia	1-0	03:12	3.2	0-1	.000	0-1	.000	0-0	.000	0	0	0	0.0	0	0	1	1	0	0	0	0.0		
Team											6	4	10											
Total		2	400		41-122	.336	11-47	.234	19-30	.633	19	45	64	32.0	29	1	16	30	3	17	112	56.0		
Opponents		2	400		55-118	.466	11-41	.268	20-24	.833	19	64	83	41.5	39	0	36	33	5	9	141	70.5		

### Team Statistics

	UNM	OPP
<b>Scoring</b>	<b>112</b>	<b>141</b>
Points per game	56.0	70.5
Scoring margin	-14.5	-
<b>Field goals-att</b>	<b>41-122</b>	<b>55-118</b>
Field goal pct	.336	.466
<b>3 point fg-att</b>	<b>11-47</b>	<b>11-41</b>
3-point FG pct	.234	.268
3-pt FG made per game	5.5	5.5
<b>Free throws-att</b>	<b>19-30</b>	<b>20-24</b>
Free throw pct	.633	.833
F-Throws made per game	9.5	10.0
<b>Rebounds</b>	<b>64</b>	<b>83</b>
Rebounds per game	32.0	41.5
Rebounding margin	-9.5	-
<b>Assists</b>	<b>16</b>	<b>36</b>
Assists per game	8.0	18.0
<b>Turnovers</b>	<b>30</b>	<b>33</b>
Turnovers per game	15.0	16.5
Turnover margin	+1.5	-
Assist/turnover ratio	0.5	1.1
<b>Steals</b>	<b>17</b>	<b>9</b>
Steals per game	8.5	4.5
<b>Blocks</b>	<b>3</b>	<b>5</b>
Blocks per game	1.5	2.5
<b>Winning streak</b>	<b>0</b>	<b>-</b>
Home win streak	0	-
<b>Attendance</b>	<b>0</b>	<b>0</b>
Home games-Avg/Game	0-0	0-0
Neutral site-Avg/Game	-	2-158

### Team Results

Date	Opponent		Score	Att.
11/23/2023	vs Montana St.	L	57-75	166
11/24/2023	vs Georgia Tech	L	55-66	150

## NEW MEXICO GAME-BY-GAME LEADERS

Date	Opponent		Score	Att.	High Points	High Rebounds
11/06/2023	Texas Southern	W	76-59	5055	(22) CUMBER, Vianè	(9) KOHL, Charlotte
11/09/2023	at Pepperdine	W	57-48	113	(16) AUGMON, Aniyah	(9) AUGMON, Aniyah
11/12/2023	Tarleton St.	W	64-55	4626	(16) REUS, Paula	(9) WILSON, Nyah
					(16) WILSON, Nyah	
11/15/2023	Tex. A&M-Commerce	W	75-74	4718	(22) WILSON, Nyah	(20) KOHL, Charlotte
11/23/2023	vs Montana St.	L	57-75	166	(24) CUMBER, Vianè	(7) KOHL, Charlotte
11/24/2023	vs Georgia Tech	L	55-66	150	(17) AUGMON, Aniyah	(4) AUGMON, Aniyah
					(17) WILSON, Nyah	(4) REUS, Paula
						(4) CUMBER, Vianè
						(4) JOAQUIM, Hulda
						(4) DIARRA BERTHE, Nahawa



## NEW MEXICO GAME-BY-GAME

				Total		3-Pointers		Free throws		Rebounds											
Opponent	Date	Score		FG-FGA	PCT	3FG-3FGA	PCT	FT-FTA	PCT	OFF	DEF	TOT	AVG	PF	A	TO	BLK	STL	PTS	AVG	
Texas Southern	11/06/2023	76-59	W	28-64	.438	9-22	.409	11-12	.917	12	37	49	49.0	9	15	19	5	8	76	76.0	
at Pepperdine	11/09/2023	57-48	W	23-64	.359	5-23	.217	6-11	.545	15	24	39	44.0	15	10	12	0	9	57	66.5	
Tarleton St.	11/12/2023	64-55	W	24-59	.407	5-19	.263	11-13	.846	10	35	45	44.3	16	14	15	2	6	64	65.7	
Tex. A&M-Commerce	11/15/2023	75-74	W	31-68	.456	3-14	.214	10-20	.500	19	28	47	45.0	14	7	18	4	3	75	68.0	
vs Montana St.	11/23/2023	57-75	L	21-63	.333	10-32	.313	5-11	.455	13	19	32	42.4	14	12	18	2	9	57	65.8	
vs Georgia Tech	11/24/2023	55-66	L	20-59	.339	1-15	.067	14-19	.737	6	26	32	40.7	15	4	12	1	8	55	64.0	
Total		384		147-377	.390	33-125	.264	57-86	.663	75	169	244	40.7	83	62	94	14	43	384	64.0	

## OPPONENT GAME-BY-GAME

				Total		3-Pointers		Free throws		Rebounds											
Opponent	Date	Score		FG-FGA	PCT	3FG-3FGA	PCT	FT-FTA	PCT	OFF	DEF	TOT	AVG	PF	A	TO	BLK	STL	PTS	AVG	
Texas Southern	11/06/2023	76-59	W	23-71	.324	8-31	.258	5-6	.833	11	25	36	36.0	12	11	14	5	7	59	59.0	
at Pepperdine	11/09/2023	57-48	W	20-62	.323	2-14	.143	6-8	.750	17	26	43	39.5	12	10	17	4	6	48	53.5	
Tarleton St.	11/12/2023	64-55	W	21-63	.333	8-27	.296	5-10	.500	10	25	35	38.0	12	8	14	2	5	55	54.0	
Tex. A&M-Commerce	11/15/2023	75-74	W	28-66	.424	8-17	.471	10-15	.667	11	22	33	36.8	19	11	14	1	6	74	59.0	
vs Montana St.	11/23/2023	57-75	L	29-56	.518	6-18	.333	11-14	.786	8	28	36	36.6	17	23	17	5	7	75	62.2	
vs Georgia Tech	11/24/2023	55-66	L	26-62	.419	5-23	.217	9-10	.900	11	36	47	38.3	22	13	16	0	2	66	62.8	
Total		377		147-380	.387	37-130	.285	46-63	.730	68	162	230	38.3	94	76	92	17	33	377	62.8	

## NEW MEXICO INDIVIDUAL GAME HIGHS

<b>POINTS</b>	24		Vianè Cumber vs Montana St. (N) (11/23/2023)
	22		Nyah Wilson vs Tex. A&M-Commerce (11/15/2023)
	22		Vianè Cumber vs Texas Southern (11/06/2023)
	20		Nyah Wilson vs Texas Southern (11/06/2023)
	17		Nyah Wilson vs Georgia Tech (N) (11/24/2023)
	17		Aniyah Augmon vs Georgia Tech (N) (11/24/2023)
	17		Aniyah Augmon vs Texas Southern (11/06/2023)
<b>FIELD GOALS MADE</b>	9		Nyah Wilson vs Tex. A&M-Commerce (11/15/2023)
	9		Vianè Cumber vs Texas Southern (11/06/2023)
<b>FIELD GOAL ATTEMPTS</b>	18		Vianè Cumber vs Texas Southern (11/06/2023)
	17		Vianè Cumber vs Montana St. (N) (11/23/2023)
	17		Aniyah Augmon at Pepperdine (11/09/2023)
<b>FIELD GOAL PERCENTAGE (min 5 made)</b>	.692	(9-13)	Nyah Wilson vs Tex. A&M-Commerce (11/15/2023)
	.636	(7-11)	Aniyah Augmon vs Texas Southern (11/06/2023)
<b>3 PT FG MADE</b>	8		Vianè Cumber vs Montana St. (N) (11/23/2023)
	4		Nyah Wilson vs Texas Southern (11/06/2023)
	4		Vianè Cumber vs Texas Southern (11/06/2023)
<b>3 PT FG ATTEMPTS</b>	15		Vianè Cumber vs Montana St. (N) (11/23/2023)
	9		Vianè Cumber vs Tarleton St. (11/12/2023)
	9		Vianè Cumber at Pepperdine (11/09/2023)
	9		Vianè Cumber vs Texas Southern (11/06/2023)
<b>3 PT FG PERCENTAGE (min 2 made)</b>	1.000	(4-4)	Nyah Wilson vs Texas Southern (11/06/2023)
	.533	(8-15)	Vianè Cumber vs Montana St. (N) (11/23/2023)
<b>FREE THROWS MADE</b>	9		Nyah Wilson vs Georgia Tech (N) (11/24/2023)
	8		Nyah Wilson vs Tarleton St. (11/12/2023)
<b>FREE THROW ATTEMPTS</b>	10		Nyah Wilson vs Georgia Tech (N) (11/24/2023)
	9		Nyah Wilson vs Tarleton St. (11/12/2023)
<b>FREE THROW PERCENTAGE (min 3 made)</b>	1.000	(4-4)	Aniyah Augmon vs Tex. A&M-Commerce (11/15/2023)
	.900	(9-10)	Nyah Wilson vs Georgia Tech (N) (11/24/2023)
<b>REBOUNDS</b>	20		Charlotte Kohl vs Tex. A&M-Commerce (11/15/2023)
	9		Nyah Wilson vs Tarleton St. (11/12/2023)
	9		Aniyah Augmon at Pepperdine (11/09/2023)
	9		Charlotte Kohl vs Texas Southern (11/06/2023)
<b>ASSISTS</b>	6		Aniyah Augmon vs Texas Southern (11/06/2023)
	5		Aniyah Augmon vs Montana St. (N) (11/23/2023)
	5		Aniyah Augmon vs Tarleton St. (11/12/2023)
<b>STEALS</b>	8		Aniyah Augmon at Pepperdine (11/09/2023)
	4		Aniyah Augmon vs Georgia Tech (N) (11/24/2023)
<b>BLOCKED SHOTS</b>	4		Charlotte Kohl vs Tex. A&M-Commerce (11/15/2023)
	3		Charlotte Kohl vs Texas Southern (11/06/2023)
<b>TURNOVERS</b>	6		Aniyah Augmon vs Georgia Tech (N) (11/24/2023)
	6		Aniyah Augmon vs Montana St. (N) (11/23/2023)
<b>FOULS</b>	5		Charlotte Kohl vs Montana St. (N) (11/23/2023)
	4		Charlotte Kohl vs Georgia Tech (N) (11/24/2023)
	4		Paula Reus vs Georgia Tech (N) (11/24/2023)
	4		Nyah Wilson vs Montana St. (N) (11/23/2023)
	4		Charlotte Kohl vs Tarleton St. (11/12/2023)
	4		Nyah Wilson at Pepperdine (11/09/2023)

## NEW MEXICO GAME HIGHS

<b>POINTS</b>	76 75 64 57 57	Texas Southern (11/06/2023) Tex. A&M-Commerce (11/15/2023) Tarleton St. (11/12/2023) vs Montana St. (N) (11/23/2023) at Pepperdine (11/09/2023)
<b>FIELD GOALS MADE</b>	31 28	Tex. A&M-Commerce (11/15/2023) Texas Southern (11/06/2023)
<b>FIELD GOAL ATTEMPTS</b>	68 64 64	Tex. A&M-Commerce (11/15/2023) at Pepperdine (11/09/2023) Texas Southern (11/06/2023)
<b>FIELD GOAL PERCENTAGE</b>	.456 (31-68) .438 (28-64)	Tex. A&M-Commerce (11/15/2023) Texas Southern (11/06/2023)
<b>3 PT FG MADE</b>	10 9	vs Montana St. (N) (11/23/2023) Texas Southern (11/06/2023)
<b>3 PT FG ATTEMPTS</b>	32 23	vs Montana St. (N) (11/23/2023) at Pepperdine (11/09/2023)
<b>3 PT FG PERCENTAGE</b>	.409 (9-22) .313 (10-32)	Texas Southern (11/06/2023) vs Montana St. (N) (11/23/2023)
<b>FREE THROWS MADE</b>	14 11 11	vs Georgia Tech (N) (11/24/2023) Tarleton St. (11/12/2023) Texas Southern (11/06/2023)
<b>FREE THROW ATTEMPTS</b>	20 19	Tex. A&M-Commerce (11/15/2023) vs Georgia Tech (N) (11/24/2023)
<b>FREE THROW PERCENTAGE</b>	.917 (11-12) .846 (11-13)	Texas Southern (11/06/2023) Tarleton St. (11/12/2023)
<b>REBOUNDS</b>	49 47	Texas Southern (11/06/2023) Tex. A&M-Commerce (11/15/2023)
<b>ASSISTS</b>	15 14	Texas Southern (11/06/2023) Tarleton St. (11/12/2023)
<b>STEALS</b>	9 9	vs Montana St. (N) (11/23/2023) at Pepperdine (11/09/2023)
<b>BLOCKED SHOTS</b>	5 4	Texas Southern (11/06/2023) Tex. A&M-Commerce (11/15/2023)
<b>TURNOVERS</b>	19 18 18	Texas Southern (11/06/2023) vs Montana St. (N) (11/23/2023) Tex. A&M-Commerce (11/15/2023)
<b>FOULS</b>	16 15 15	Tarleton St. (11/12/2023) vs Georgia Tech (N) (11/24/2023) at Pepperdine (11/09/2023)

## NEW MEXICO GAME-BY-GAME POINTS-REBOUNDS-ASSISTS

Opponent	Date	Score	1	2	3	5	10	12	14	15	21	22	24
			DIARRA BERCHAVEZ, NAT WILSON, NYA LANGERMANN LAURO, PARI AUGMON, ANI JOAQUIM, HUBATES, JAEEL CURTIS, MAC KOHL, CHARL ROBBINS, HARRIS										
Texas Southern	11/06/2023	76-59 W	0-2-2	0-0-0	20-4-3	0-1-0	0-0-0	17-6-6	2-5-0	DNP	DNP	6-9-1	0-6-0
at Pepperdine	11/09/2023	57-48 W	DNP	DNP	8-3-2	9-3-2	DNP	16-9-3	4-2-0	DNP	DNP	7-6-0	DNP
Tarleton St.	11/12/2023	64-55 W	DNP	DNP	16-9-2	0-2-0	DNP	2-3-5	6-6-2	DNP	DNP	6-5-3	6-4-1
Tex. A&M-Commerce	11/15/2023	75-74 W	0-0-1	0-0-0	22-2-0	3-1-1	DNP	16-4-2	0-3-0	DNP	DNP	14-20-1	DNP
vs Montana St.	11/23/2023	57-75 L	0-1-1	0-0-1	6-2-1	3-1-1	0-0-0	11-6-5	1-3-0	3-0-0	DNP	0-7-0	DNP
vs Georgia Tech	11/24/2023	55-66 L	6-4-0	DNP	17-3-0	0-0-0	DNP	17-4-4	0-4-0	DNP	0-0-0	8-3-0	DNP
Opponent	Date	Score	30	33									
			REUS, PAULA CUMBER, VIANE										
Texas Southern	11/06/2023	76-59 W	9-6-2	22-6-1									
at Pepperdine	11/09/2023	57-48 W	4-7-3	9-2-0									
Tarleton St.	11/12/2023	64-55 W	16-7-1	12-7-0									
Tex. A&M-Commerce	11/15/2023	75-74 W	11-8-1	9-4-1									
vs Montana St.	11/23/2023	57-75 L	9-5-3	24-3-0									
vs Georgia Tech	11/24/2023	55-66 L	4-4-0	3-4-0									

## NEW MEXICO LEADERBOARD

### Points

##	Player	G	Pts	Pts/G
3	Wilson, Nyah	6	89	14.8
33	Cumber, Vianè	6	79	13.2
12	Augmon, Aniyah	6	79	13.2
30	Reus, Paula	6	53	8.8
22	Kohl, Charlotte	6	41	6.8
5	Langermann, Lara	6	15	2.5
14	Joaquim, Hulda	6	13	2.2
24	Robbins, Hannah	2	6	3.0
1	Diarra Berthe, Nahawa	4	6	1.5
15	Bates, Jaelyn	1	3	3.0

### Scoring Average

##	Player	G	Pts	Pts/G
3	Wilson, Nyah	6	89	14.8
33	Cumber, Vianè	6	79	13.2
12	Augmon, Aniyah	6	79	13.2
30	Reus, Paula	6	53	8.8
22	Kohl, Charlotte	6	41	6.8
24	Robbins, Hannah	2	6	3.0
15	Bates, Jaelyn	1	3	3.0
5	Langermann, Lara	6	15	2.5
14	Joaquim, Hulda	6	13	2.2
1	Diarra Berthe, Nahawa	4	6	1.5

### Field Goal Percentage

##	Player	FG	Att	Pct
15	Bates, Jaelyn	1	1	1.000
14	Joaquim, Hulda	6	12	.500
22	Kohl, Charlotte	17	36	.472
12	Augmon, Aniyah	32	72	.444
3	Wilson, Nyah	27	67	.403
33	Cumber, Vianè	29	80	.363
30	Reus, Paula	24	67	.358
24	Robbins, Hannah	3	10	.300
5	Langermann, Lara	5	18	.278
1	Diarra Berthe, Nahawa	3	12	.250

### Field Goal Attempts

##	Player	G	Att	Att/G
33	Cumber, Vianè	6	80	13.3
12	Augmon, Aniyah	6	72	12.0
3	Wilson, Nyah	6	67	11.2
30	Reus, Paula	6	67	11.2
22	Kohl, Charlotte	6	36	6.0

### Field Goals Made

##	Player	G	Made	Made/G
12	Augmon, Aniyah	6	32	5.3
33	Cumber, Vianè	6	29	4.8
3	Wilson, Nyah	6	27	4.5
30	Reus, Paula	6	24	4.0
22	Kohl, Charlotte	6	17	2.8

### 3-Point FG Percentage

##	Player	3FG	Att	Pct
15	Bates, Jaelyn	1	1	1.000
3	Wilson, Nyah	5	13	.385
33	Cumber, Vianè	20	53	.377
5	Langermann, Lara	3	13	.231
30	Reus, Paula	3	24	.125
12	Augmon, Aniyah	1	12	.083

### 3-Point FG Attempts

##	Player	G	Att	Att/G
33	Cumber, Vianè	6	53	8.8
30	Reus, Paula	6	24	4.0
3	Wilson, Nyah	6	13	2.2
5	Langermann, Lara	6	13	2.2
12	Augmon, Aniyah	6	12	2.0

### 3-Point FG Made

##	Player	G	Made	Made/G
33	Cumber, Vianè	6	20	3.3
3	Wilson, Nyah	6	5	0.8
30	Reus, Paula	6	3	0.5
5	Langermann, Lara	6	3	0.5
12	Augmon, Aniyah	6	1	0.2

## NEW MEXICO LEADERBOARD

## Free Throw Percentage

##	Player	Made	Att	Pct
3	Wilson, Nyah	30	38	.789
12	Augmon, Aniyah	14	20	.700
22	Kohl, Charlotte	7	10	.700
5	Langermann, Lara	2	4	.500
30	Reus, Paula	2	5	.400
14	Joaquim, Hulda	1	3	.333
33	Cumber, Vianè	1	4	.250

## Free Throw Attempts

##	Player	G	Att	Att/G
3	Wilson, Nyah	6	38	6.3
12	Augmon, Aniyah	6	20	3.3
22	Kohl, Charlotte	6	10	1.7
30	Reus, Paula	6	5	0.8
33	Cumber, Vianè	6	4	0.7

## Free Throws Made

##	Player	G	Made	Made/G
3	Wilson, Nyah	6	30	5.0
12	Augmon, Aniyah	6	14	2.3
22	Kohl, Charlotte	6	7	1.2
30	Reus, Paula	6	2	0.3
5	Langermann, Lara	6	2	0.3

## Rebounds

##	Player	G	Reb	Reb/G
22	Kohl, Charlotte	6	50	8.3
30	Reus, Paula	6	37	6.2
12	Augmon, Aniyah	6	32	5.3
33	Cumber, Vianè	6	26	4.3
3	Wilson, Nyah	6	23	3.8

## Assists

##	Player	G	Ast	Ast/G
12	Augmon, Aniyah	6	25	4.2
30	Reus, Paula	6	10	1.7
3	Wilson, Nyah	6	8	1.3
22	Kohl, Charlotte	6	5	0.8
5	Langermann, Lara	6	4	0.7

## Rebounds Average

##	Player	G	Reb	Reb/G
22	Kohl, Charlotte	6	50	8.3
30	Reus, Paula	6	37	6.2
12	Augmon, Aniyah	6	32	5.3
24	Robbins, Hannah	2	10	5.0
33	Cumber, Vianè	6	26	4.3

## Steals

##	Player	G	Stl	Stl/G
12	Augmon, Aniyah	6	17	2.8
33	Cumber, Vianè	6	5	0.8
30	Reus, Paula	6	5	0.8
3	Wilson, Nyah	6	4	0.7
22	Kohl, Charlotte	6	4	0.7

## Offensive Rebounds

##	Player	G	OReb	OReb/G
22	Kohl, Charlotte	6	23	3.8
14	Joaquim, Hulda	6	13	2.2
30	Reus, Paula	6	6	1.0
33	Cumber, Vianè	6	5	0.8
12	Augmon, Aniyah	6	5	0.8

## Blocked Shots

##	Player	G	Blk	Blk/G
22	Kohl, Charlotte	6	10	1.7
24	Robbins, Hannah	2	2	1.0
12	Augmon, Aniyah	6	1	0.2
30	Reus, Paula	6	1	0.2

## Defensive Rebounds

##	Player	G	DReb	DReb/G
30	Reus, Paula	6	31	5.2
12	Augmon, Aniyah	6	27	4.5
22	Kohl, Charlotte	6	27	4.5
3	Wilson, Nyah	6	21	3.5
33	Cumber, Vianè	6	21	3.5

## Minutes

##	Player	G	Min	Min/G
33	Cumber, Vianè	6	211	35:05
12	Augmon, Aniyah	6	199	33:11
30	Reus, Paula	6	186	31:01
3	Wilson, Nyah	6	178	29:42
22	Kohl, Charlotte	6	149	24:55