

# THE UNIVERSITY OF NEW MEXICO WOMEN'S BASKETBALL

JANUARY 17 | vs WYOMING | 7 P.M. | THE PIT

## 2023-24 SCHEDULE

OVERALL: 11-6 • MW: 2-2 • H: 9-2 • A: 2-2 • N: 0-2

DATE	OPPONENT	TIME/SCORE
10/22	Eastern New Mexico (Exh.)	W, 77-57
10/29	Adams State (Exh.)	W, 60-45
11/6	Texas Southern	W, 76-59
11/9	at Pepperdine	W, 57-48
11/12	Tarleton State	W, 64-55
11/15	Texas A&M-Commerce	W, 75-74
11/23	Montana State%	L, 75-57
11/24	Georgia Tech%	L, 66-55
11/28	Eastern Illinois	W, 81-78 (OT)
12/2	New Mexico State	W, 67-52
12/4	Mississippi Valley State	W, 68-45
12/7	Southern Utah	L, 58-40
12/10	Hampton	W, 68-55
12/17	Western New Mexico	W, 71-47
12/22	at No. 20 Gonzaga	L, 67-56
12/30	at Nevada*	W, 69-59
1/6	Boise State*	L, 64-56
1/10	Utah State*	W, 71-67
1/13	at Colorado State*	L, 61-55
1/17	Wyoming*	7 p.m.
1/20	at No. 25 UNLV*	3 p.m.
1/24	Fresno State*	7 p.m.
1/27	at Air Force*	1 p.m.
1/31	at San José State*	12 p.m.
2/3	UNLV*	2 p.m.
2/7	at San Diego State*	12 p.m.
2/10	Colorado State*	12 p.m.
2/14	San José State*	7 p.m.
2/21	at Boise State*	6:30 p.m.
2/24	at Wyoming*	2 p.m.
2/28	San Diego State*	7 p.m.
3/2	Nevada*	2 p.m.
3/5	at Fresno State*	7 p.m.
3/10-13	MW Tournament	TBA

**BOLD:** Home \* : Mountain West  
All times are Mountain Time

### QUICK POINTS BY THE NUMBERS

- 4 Lobos averaging double figures (Augmon, Cumber, Reus, Wilson) on the season and in conference play
- 8 times a Lobo has scored 20+ points
- 12 games in double figures for Augmon, 11 for Wilson, 10 for Reus
- 8-2 when Reus scores in double figures, 8-3 when Wilson scores in double figures, 8-4 when Augmon scores in double figures
- Kohl: 27th in NCAA in blocks, 34th in blocks per game
- 35th in NCAA in rebounds per game, 23rd in def. rebounds per game
- 42-6 at home over the last 4 years
- Led for 39:21 vs. Tarleton, 36:30 at Pepperdine, 37:53 vs. Texas Southern, 32:47 vs. NMSU, 39:34 vs. MVSU, 38:06 vs. Hampton, 38:39 vs. WNMU, 37:54 at Nevada, 32:14 vs. Utah St.
- Outscoring opponents 186-130 in fast-break points
- Outscoring opponents 163-110 in second-chance points
- Outscoring opponents in the 1st (260-226), 2nd (267-236), 4th (290-286) & 1086-1030 overall
- Outscoring opponents 530-404 in paint
- 48.8% of points scored in paint
- +3.3 scoring margin, +3.9 rebounding margin



**New Mexico Lobos**  
11-6, 2-2 MW  
Head Coach: Mike Bradbury  
Record at UNM: 152-84 (8th year)  
Career Record: 330-201 (17th year)

#### Series History

Overall: UNM leads 44-39  
Home Record: UNM leads 27-17  
Current Streak: W1  
Last Meeting: 2/16/23 (W, 71-62)

#### Broadcast Information

TV: MW Network  
Radio: KNML  
Live Stats: GoLobos.com/wbbstats



**Wyoming Cowboys**  
9-6, 4-0 MW  
Head Coach: Heather Ezell  
Record at UW: 32-17 (2nd year)  
Career Record: Same

## PROJECTED STARTERS

#	NAME	POS.	HT.	YR.	NOTE
3	Nyah Wilson	G	5-8	Jr.	20+ pts in 4 games; career-high 11 reb. vs SUU
12	Aniyah Augmon	G	5-8	Jr.	15+ pts in 6 games; career-high 8 steals at Pepp.
22	Charlotte Kohl	C	6-5	Gr.	3 dbl-dbls; 20 reb. vs TAMUC & MVSU; avg. 8.1 rpg
30	Paula Reus	F	6-1	Jr.	Scored 10+ pts. in 5 of last 7 games; avg. 11.6 ppg
33	Vianè Cumber	G	5-10	Jr.	3-pointer in 20 of last 21 games; 8 vs. Montana St.

## LOBO NOTES

#### FOUR-FOR-FOUR DEAL

UNM has had a season-high four players finish in double figures five times this season. Paula Reus and Aniyah Augmon were involved in all five instances, with Nyah Wilson in four of the games, Charlotte Kohl in three, Vianè Cumber in two and Mackenzie Curtis involved in one game.

The first time came in the game against Texas A&M-Commerce, led by a career-high 22 from Wilson. Augmon scored 16, Kohl finished with 16 and Reus added 11. The second time came in the game against Eastern Illinois behind a career-high 25 points from Reus, 21 points for Wilson, 14 points from Cumber and 10 from Augmon. In the game against New Mexico State, Reus and Kohl shared the team high in points at 15 (a career high for Kohl), Wilson scored 13 points and Augmon scored 10 points. In the game against Hampton, Reus and Kohl each scored 14 points with Augmon and Curtis scoring 11 apiece. Augmon led with 15 points against Boise State, joined by 11 apiece from Reus and Wilson and 10 from Cumber.

UNM also has four players averaging double figures led by Wilson (12.9 ppg), Cumber (11.9 ppg) and Augmon and Reus (tied at 11.6 ppg). The trend has continued in conference play with all four averaging double figures led by Wilson at 16.3 ppg, Augmon 14.3 ppg, Cumber 12.0 ppg and Reus 10.0 ppg. Augmon and Wilson have scored in double figures in all four conference games, with Cumber in the last three.

#### ON ANY GIVEN NIGHT

The Lobos have been led in scoring by five different players (with five games of players sharing the team high) and in rebounds by five different players with two games of multiple players sharing the team lead this season.

Vianè Cumber has led in scoring in four games, Nyah Wilson in three games, Aniyah Augmon and Paula Reus in two games, and Charlotte Kohl once. Reus has led or tied for the team lead in points six times this season. On the boards, Kohl has led in six games, Cumber four times, Augmon and Wilson in two each and Reus in one game. Cumber has led in rebounding in the last two games and in three of the last four.

In conference, UNM has been led in scoring by a different player in three of the four games: Wilson (Nevada and Colorado State), Augmon (Boise State) and Cumber (Utah State), with Cumber leading in rebounds against Nevada, Utah State and Colorado State, and Kohl against Boise State.

#### CONSISTENT CONTRIBUTORS

Aniyah Augmon has scored in double figures in a team-high 12 games, while Nyah Wilson has scored in double figures in 11 games (with scoring 20 or more points in four games) and Paula Reus in 10 games. Reus has scored in double figures in five of the last seven and nine of the last 11, and Augmon and Wilson in the last four games. Charlotte Kohl has scored in double figures five times and has three double-doubles on the season. Vianè Cumber has scored in double figures in eight games with three games with 20-plus points.

UNM is 8-2 when Reus scores in double figures, 8-3 when Wilson scores in double figures and 8-4 when Augmon scores in double figures.

#### GET THE REBOUND

The Lobos have shown their ability to control the boards, outrebounding their opponents 717-651 (+66) and outrebounding opponents in 10 games.

Charlotte Kohl leads the team with 138 rebounds (8.1 per game), with two 20-rebound performances, an 18-rebound outing in the final exhibition against Adams State, and grabbed nine against Texas Southern to start the season. She's had 10-plus rebounds in four games this season. Of her rebounds, 57 are on the offensive end and her 3.4 offensive boards per game are the second most in the conference. Kohl is fourth in the MW in rebounds per game as well as 65th in the NCAA in rebounds.

UNM outrebounded Texas Southern 49-36 (+13), Tarleton State 45-35 (+10), Texas A&M-Commerce 47-33 (+14), Eastern Illinois 47-46 (+1), New Mexico State 47-33 (+14), Mississippi Valley State 56-39 (+17), Western New Mexico 42-36 (+6), No. 20 Gonzaga 35-30 (+5), Nevada 40-38 (+2) and Colorado State 45-29 (+16).

The Lobos are ranked 35th in the NCAA in rebounds per game (42.2), an improvement of 142 spots from last season in which the Lobos finished 177th in the NCAA in rebounds per game with 36.5. In addition, the Lobos have made an improvement in rebounding margin, finishing last season 246th at -2.0, compared to this season where the Lobos are currently ranked 108th with an +3.9 rebounding margin. UNM is ranked 23rd in defensive rebounds per game at 29.9. Among MW teams, UNM leads in rebounds per game and is second in defensive rebounds per game.

   @UNMLOBOWBB

» Eight NCAA Tournament Appearances | 1998, 2002, 2003, 2004, 2005, 2006, 2007, 2008 «  
» Five Mountain West Tournament Championships | 2003, 2004, 2005, 2007, 2008 «

## THE UNIVERSITY OF NEW MEXICO

Location.....Albuquerque, N.M.  
 Founded.....1889 by Territorial Legislature  
 Enrollment.....22,225  
 Nickname.....Lobos  
 Colors.....Cherry (PMS 200) & Silver (PMS Cool Gray 6)  
 Conference.....Mountain West Conference  
 National Affiliation.....NCAA Division I  
 President.....Dr. Garnett Stokes  
 Vice President/Director of Athletics.....Eddie Nuñez  
 Asst. Vice President/Deputy A.D.....David Williams  
 Interim SWA.....Amy Beggin  
 Faculty Representative.....Karen Gaudreault, Ph.D

## FACILITY INFORMATION

Facility.....The Pit  
 Capacity.....15,411  
 Age.....Built in 1966 (Renovated in 2009-10)  
 All-Time Home Record.....471-222 (.680)

## PROGRAM HISTORY

First Season.....1974-75  
 Overall Record.....751-590 (.560)  
 Overall MW Record.....233-157 (.597)  
 Postseason Tournament Appearances.....20  
 NCAA Tournament Appearances.....8  
 Last NCAA Postseason Appearance.....2022-23 (WNIT)  
 Last NCAA Postseason Opponent.....Washington  
 Last NCAA Postseason Result.....L, 67-56  
 MW Regular Season Championships.....3  
 .....(2003-04, 2004-05, 2020-21)  
 MW Tournament Championships.....5  
 .....(2002-03, 2003-04, 2004-05, 2006-07, 2007-08)

## TEAM INFORMATION

2022-23 Overall Record.....21-13  
 2022-23 Mountain West Record.....12-6  
 2021-22 Mountain West Season Finish.....T-3rd  
 2022-23 MW Tournament Finish.....Quarterfinal  
 Letterwinners Returning | Lost.....6 | 6  
 Starters Returning | Lost.....1 | 4

- » Three Mountain West Regular-Season Championships
- » Five Mountain West Tournament Championships
- » Seven NCAA Tournament Appearances Since 2001-02
- » Mountain West Attendance Leader 21 Seasons in a Row
- » WBCA Academic Top 25 Eight Times Since 2004-05

## COACHING STAFF

Head Coach: Mike Bradbury (Chattanooga, 1993)  
 Record at UNM (Years): 152-84 (8th season)  
 Career Record (Years): 330-201 (17th season)  
 Associate H.C.: Keith Freeman (2nd season)  
 Alma Mater: Huntington College, 1986  
 Assistant Coach: Nike McClure (2nd season)  
 Alma Mater: New Mexico, 2019  
 Assistant Coach: Mackenzie Novak (1st season)  
 Alma Mater: Bethel University, 2021  
 Graduate Assistant: Jaisa Nunn (1st season)  
 Dir. of Operations: Hanna Hudson (2nd season)  
 Dir. of Player Development: Isaiah Fernandez (2nd season)  
 Athletic Trainer: Lexi Smith (3rd season)  
 Strength Coach: Leila Petewon (1st season)

## MISCELLANEOUS INFORMATION

2022-23 Total Attendance.....80,328  
 2022-23 Average Attendance.....4,725  
 2022-23 NCAA Attendance Rank.....18th  
 2022-23 Mountain West Attendance Rank.....1st

## MULTIMEDIA INFORMATION

Athletics Website.....www.GoLobos.com  
 Main University Web Site.....www.unm.edu  
 Conference Web Site.....www.TheMW.com  
 Facebook.....www.facebook.com/NewMexicoLobos  
 Twitter.....@UNMLobos

## MEDIA RELATIONS

Women's Basketball Contact.....Allison Weiss  
 Cell Phone (Preferred).....661-313-5402  
 Email.....allisonweiss@unm.edu

### INTERVIEW REQUESTS

All interviews with UNM student-athletes and coaches should be coordinated through the athletics communications office. Interviews may be arranged by contacting Allison Weiss in the athletics communications office (allisonweiss@unm.edu). All interview requests should be made at least 24 hours in advance.

The University of New Mexico Athletics  
 1155 University Drive  
 Albuquerque, N.M. 87106

## GAME 18: NEW MEXICO vs WYOMING

### CHARLOTTE'S BOARD

Charlotte Kohl became the first Lobo since 1978 to record multiple games of 20 rebounds, which was last done by Carol Moreland. Kohl brought down 20 rebounds in the game against Texas A&M-Commerce and again in the game against Mississippi Valley State.

In addition, she is one of three DI players to have multiple games with 20 rebounds (Saylor Poffenbarger, Arkansas and Lauren Gustin, BYU).

### GET AHEAD, STAY AHEAD

UNM has never trailed in a game five times and has led for over 36 minutes in a game seven times this season.

So far this season, the Lobos have led for:

- 37:53 and led after each quarter against Texas Southern
- 36:30 and never trailed at Pepperdine
- 39:21 and never trailed against Tarleton State
- 32:47 and led after each quarter against New Mexico State
- 39:34 and led after each quarter against Mississippi Valley State
- 38:06 and never trailed against Hampton
- 38:39 and never trailed against Western New Mexico
- 37:54 and never trailed against Nevada

UNM is outscoring opponents 260-226 (+34) in the first quarter and 527 -462 (+65) through the first two quarters. UNM is also outscoring opponents 1086-1030 (+56) overall.

In 2022-23, the Lobos were 18-4 on the season when leading after the first quarter and 18-4 overall when leading at the half. When leading at the end of the third quarter, the Lobos were 19-4 overall last season. This season, UNM is 9-1 when leading after the first quarter, 9-0 when leading at the half and 9-0 when leading after the third quarter.

### PAINT POINTS

UNM has outscored opponents in the paint in 13 games and by a 530-404 (+126) margin.

To date, the Lobos finished with a +24 margin against Texas Southern (38-14), +8 margin at Pepperdine (34-26), a +10 margin against Tarleton State (34-24), a +22 margin against Texas A&M-Commerce (50-28), a +2 margin (32-30) against Georgia Tech, a +16 margin against Eastern Illinois (36-20), a +26 margin against New Mexico State (42-16), a +10 margin against Mississippi Valley State (32-22), a +8 margin against Hampton (18-10), a +4 margin against Western New Mexico (30-26), a +12 (42-30) margin at Nevada, a +8 margin against Boise State (24-16) and a +12 margin at Colorado State (30-18).

UNM has scored 48.8% of its points (530 of 1086) in the paint this season with nine games scoring 50% or more of its total points in the paint. The Lobos had a season high of 50 paint points against Texas A&M-Commerce.

### SHOWING RANGE

While the Lobos have found success in the paint, they have also found their footing from behind the arc, finishing with double-digit three-pointers in four of the last seven games.

UNM made a season-high 11 in the game against Hampton and again against Utah State, and 10 against Western New Mexico and No. 20 Gonzaga. UNM also had 10 against Montana State.

Vianè Cumber leads the Lobos with 38 three-pointers with Paula Reus (22) and Nyah Wilson (16) also in double figures. Cumber has made three or more three-pointers six times this season, with Reus and Wilson making three or more three times and Paris Lauro two times.

### SHARE THE BALL

The Lobos finished with a season-high 21 assists in the game against Utah State to go with 20 assists in the game against Hampton and 19 against Western New Mexico and Mississippi Valley State.

UNM assisted on 21 of the 26 made baskets (80.8%) against Utah State, 20 of the 23 made baskets (87.0%) against Hampton, 19 of the 25 made baskets (76.0%) against Western New Mexico, and on 19 of its 27 made baskets (70.4%) against Mississippi Valley State.

On the season, the Lobos have assisted on 55.2% of made baskets and averaging 13.1 assists per game. UNM is averaging 14.0 assists in conference play, tied for third.

### PAULA FINDING HER STRIDE

Paula Reus has found her stride of late, scoring in double figures in five of the last seven games and nine of the last 11. She set her career high in points with 25 against Eastern Illinois, making a season-high four three-pointers.

Reus has scored in double digits 10 times this season and 31 times in her three years. UNM is 8-2 this season and 23-8 all-time when Reus reaches double figures.

She has been close to a double-double several times with four games of eight rebounds and 15 points and nine rebounds in the WNMU game, has had at least one steal in six of the last seven games with two games with two steals in that span, and has been a facilitator with five assists in two games.

Reus is second on the team in points (198, 11.6 ppg) but leads in made field goals (77), and is second in three-pointers (22), assists (37, 2.2 apg), blocks (6, 0.4 bpg), and rebounds (102, 6.0 rpg). She is also third in steals with 18 with a steal in eight of the last nine games.

### DEFENSE DELIVERS

Seven times this season the Lobos have held their opponents to single digits in a quarter, five times in the first quarter. In addition, UNM has held an opponent to under 20 points in the first two quarters three times this season.

In the win at Pepperdine, the Lobos held the Waves to four points in first quarter and without a point up until the 1:09 mark. Further, UNM held the Waves to 18 points in the first 20 minutes, with the last time that the Lobos held a team below 20 points in the first half was against Louisiana-Monroe on Nov. 27, 2021 (17 points). Pepperdine missed its first eight shots of the game and UNM forced two shot clock violations in that timespan. The Lobos were able to further expand their lead to 16 in the second quarter in part to a 6-0 Lobo run and holding Pepperdine to a 3:06 scoring drought. In the fourth quarter, Pepperdine scored its first points with 6:54 left in the game.

Against Tarleton State, the Lobos held the Texans to five points in the third quarter, outscoring them 20-5. UNM scored the first eight points of the quarter, ultimately going on a 10-1 run through the first 6:05. UNM later scored 10-straight points in a span of 1:55 for its best run of the game to build its largest lead of the contest at 53-31, taking a 53-33 lead into the final 10 minutes.

In the game against New Mexico State, the Lobos held the Aggies to six points in the first quarter and to 19 points in the first 20 minutes. It was the second time this season that the Lobos have held an opponent to under 20 points in the first half. The Lobos held the Aggies scoreless for the final 3:48 of the first quarter and for 4:24 in the second quarter.

Against Mississippi Valley State, the Lobos held MVSU to under 15 points in all four quarters with two quarters of 11 points, 13 points in the first quarter and 10 points in the fourth quarter.

In the game against Hampton, UNM scored the first 12 points of the game while holding the Lady Pirates scoreless for the first 5:24. The Lobos led 18-2 with 3:40 remaining with Hampton's final points of the quarter coming at the 2:22 mark. UNM led 21-7 through the first 10 minutes.

UNM scored the first eight points and held Western New Mexico without a point for the first 5:53, eventually building a 13-point lead of 17-4 behind a 7-0 run and led 19-9 at the end of the first. The Mustangs scored 10 points in the second quarter for the third instance of holding opponents under 20 points in the first 20 minutes.

In the conference opener at Nevada, the Lobos held the Wolf Pack to nine points and 20% (3-15) shooting from the floor in the first quarter.

At Colorado State, UNM held the Rams scoreless for 5:33 in the second quarter, allowing just four points on 2-17 shooting (11.8%).

In addition to holding opponents to low point totals, the Lobos have also relied on defense to close out games. In the game against Texas A&M-Commerce, UNM held the Lions scoreless the final 1:41 and for the final 27 seconds as the Lions had the ball for the final shot. In the game against Eastern Illinois, the Lobos closed the game on a 7-0 run over the final 1:05 of overtime and got two pivotal stops with under 30 seconds. In the game against Utah State, the Lobos used a 6-0 run to take a 69-64 lead and held the Aggies scoreless for 1:30 in the final two minutes.

UNM is also seventh in the NCAA in fouls per game, fouling an average of 12.8 per game, the fewest in the MW.

### THE CUMBER EFFECT

After Vianè Cumber entered the starting lineup against Colorado State on Jan. 26 last season, the Lobo scored double figures in nine of the games including four of the last five. The New Mexico native made six three-pointers and finished with 20 points in the last game of the season at Washington, her second game with 20 or more points last season.

Cumber picked right up in the first game of the 2023-24 season, tying her career high with 22 points that included four three-pointers. It was her 12th career game making four or more three-pointers.

Cumber has scored in double figures in eight games this year with nine points in two, leading the Lobos in scoring four times. The Lobo junior has also registered two double-doubles this season, with 14 points and a career-high 14 rebounds against Eastern Illinois and 21 points and 11 rebounds against Utah State. In MW games, Cumber is averaging 12.0 ppg and 8.3 rpg with 2.5 made three-pointers a game.

Among one of the best three-point shooters in the conference, she has made three or more three-pointers six times this season: four in the season opener, three at Pepperdine and again against Tarleton State, a career-best eight against Montana State, two against Eastern Illinois and five against No. 20 Gonzaga and Utah State.

Her 2.7 made three-pointers per game is the second highest in the MW and her 33.3% from behind the arc is third among MW players. She is 44th in the NCAA in three-point attempts and 37th in three-pointers per game.

While she didn't make a three against New Mexico State, following a three against Eastern Illinois, she had 14-straight games with at least one three-pointer and has made a three-pointer in 20 of the last 21 games she's played in.

In her career, she has made a three in 45 games with 34 games with multiple threes and 20 games making three or more three-pointers.

Further, Cumber has scored in double figures 27 times and 20 or more points five times (three times came this year).

### V FOR THREE

Vianè Cumber scored a game- and career-high 24 points behind a career-high eight three-pointers against Montana State, knocking down her first three three-point attempts and made five three pointers in the first quarter alone.

Her eight three-pointers tied for the third-most in a game in program history and was the seventh time a player historically has made eight or more three-pointers in a game. It is also tied for the most three-pointers by a MW player this season.

### WILSON'S WORLD

Nyah Wilson has made quite the first impression in her first season as a Lobo, finishing in double figures in 11 games, with 20 or more points in four games, and setting several career highs.

In her first true game as a Lobo, Wilson finished with 20 points, four rebounds, three assists and a steal. The Dallas, Texas, native went 5-8 from the floor, a perfect 4-4 from behind the arc and nearly perfect at the free-throw line going 6-7. Her 20 points set a then-career high, as did her five made field goals, her four made three-pointers and four attempts.

She later bested that with 22 points on nine made field goals against Texas A&M-Commerce, scoring 15 points in the fourth quarter.

She added 16 points against Tarleton, setting a career high in rebounds (nine), made free throws (eight) and minutes played (33). She improved her career best in free throws, going 9-10 in the game against Georgia Tech and had a career-high 11 rebounds against Southern Utah, the first time with double-digit rebounds in her career.

## 2023-24 LOBO WOMEN'S BASKETBALL

## GAME 18: NEW MEXICO vs WYOMING

In her first MW game at Nevada, Wilson went 9-12 at the free-throw line and finished with a team-high 21 points to go with eight rebounds, three assists and her first career block. In the game against Boise State, Wilson went 3-4 from three-point range and tied for the team high with two steals. Against Utah State, Wilson again finished in double figures with 16 points, with perhaps no basket bigger than the three-pointer she hit with 1:17 remaining to put UNM up 66-64 for the final lead change. Wilson created a career-high three steals, her fourth time in the last five games with multiple steals. She continued her streak of double-digit points and multiple steals at Colorado State with 17 points, going 7-11 from the floor and was credited with two steals.

On the season, she's scored 219 points (12.9 ppg) for the team high in points and second in steals with 19. She is 10th in the MW in points per game and sixth in free-throw percentage (.756). Wilson has made the third-most free throws and taken the fourth-most free throws amongst MW players. In conference play, Wilson is averaging 16.3 ppg and has scored in double figures in all four games.

### STEAL THE SHOW

Aniyah Augmon was credited with 11 steals in the first week of the season, with eight at Pepperdine and three against Tarleton State and was a sign of things to come for the Lobo junior.

Her eight steals tied for the second most in a game by a Lobo in program history, with the last time it was done Feb. 8, 1998 by Tamika Stukes. Augmon had four steals in the first 20 minutes with three in the second quarter, which the four alone would have been a career high for the junior. She added two in the fourth quarter, including a steal and layup with 2:04 remaining in the game to make it 50-42 after Pepperdine closed within three at 45-42 with 2:37 to play.

She added two steals in the fourth quarter against Tarleton State 1:09 apart, with both resulting in fast-break points. She finished with six steals in the two games of the Cancun Challenge, two against Montana State and four against Georgia Tech.

Augmon has recorded multiple steals in 10 games with three more against Eastern Illinois, Hampton and Utah State, five against New Mexico State, two against Boise State and four against Colorado State. She's had five or more steals in two games.

In her three years at UNM, she's had 22 games with multiple steals, 10 of which came this season, and 40 games with a steal. She currently is fifth in the MW in steals per game at 2.3 and her 37 steals are 18 more than the second-highest player on the team.

It took her eight games to surpass her season total of steals from her freshman (24) and sophomore (23) seasons.

### ALL ABOUT AUGMON

Beyond her ability to impact a game with steals, Aniyah Augmon has scored in double figures in a team-high 11 games this season, including a stretch of five consecutive games (16 against Texas A&M-Commerce, 11 against Montana State, 17 against Georgia Tech, 10 against Eastern Illinois and 10 against New Mexico State).

She showcased her all-around ability to take over a game at Pepperdine, leading the Lobos with 16 points, nine rebounds and three assists.

Augmon had a career-high four steals through the first 20 minutes and scored eight points in the second quarter alone, and was the first player to reach double figures on a drive to the basket early in the third quarter. The Lobo junior had eight points, six rebounds and four steals in the final 20 minutes.

In the season opener, Augmon finished with 17 points, six rebounds, and a game- and career-high six assists.

In addition to being sixth in steals per game, Augmon is ranked fourth in assists per game (4.3), 17th in scoring (11.6) and 16th in rebounds per game (5.6) in the MW. In MW games, she's ninth in points per game (14.3) after scoring double figures in all four games, second in assists per game (5.8), tied for second in steals per game (2.3) and tied for 15th in rebounds per game (5.3).

She's recorded 15-plus points in six games with six assists three times and nine rebounds twice with eight games with six or more rebounds this season.

Augmon recorded her first double-double of the season and the fourth of her career against Utah State behind a career-high 10 assists and 13 points.

### HOT HANDS

Against Texas Southern, Vianè Cumber took over in the fourth quarter, scoring 13 of her game-high 22 points in the final 10 minutes, going 5-7 from the floor and 3-4 from three-point range.

The Texas A&M-Commerce game followed a similar storyline in that Nyah Wilson took over in the fourth quarter to score 15 of her career-high 22 points on 6-8 shooting. Wilson opened fourth with a driving layup and the Lobos continued to rely on the junior with Wilson making three consecutive layups as well as a three-pointer to tie the game at 63. Wilson ultimately scored the first 11 points of the fourth quarter for the Lobos, with her final points starting a 6-0 run that gave UNM a 69-65 lead.

Against Eastern Illinois, Paula Reus finished with a career-high 25 points, 17 of which came in the third and fourth quarters. She scored 10 points in the fourth quarter on 4-5 shooting and two three-pointers. In the overtime period, Cumber scored seven points, including the go-ahead basket with 32 seconds remaining and two free throws with seven seconds on the clock.

Wilson scored nine of her 13 points, Reus scored 10 of her 15 points and Augmon scored seven of her 10 points in the final two quarters against New Mexico State.

In the game against Boise State, Aniyah Augmon scored the first seven points of the third quarter for the Lobos, scoring 12 of her 15 points in the final 20 minutes.

Against Utah State, the Lobos turned a two-point halftime deficit into a 37-30 lead behind four consecutive three-pointers with Cumber responsible for two and Reus and Augmon making one. UNM's lead reached double digits on Wilson free throws, expanding to 14 at 46-32 on another Cumber three-pointer at the 4:51 mark in what amounted to a 21-5 run.

Augmon scored seven of UNM's nine points in the first quarter at CSU and Cumber scored 10 points in the fourth quarter after going 4-6 from the floor and 2-2 from three-point range.

### HOME COURT ADVANTAGE

The Pit has proven to be a home court advantage for the Lobos of late.

UNM has gone 42-6 (.875) over the last four years: 9-2 this season, 14-3 last season and 17-1 the year prior, while also going 2-0 in the only two home games in 2020-21.

Coach Mike Bradbury is 97-26 in The Pit in his eight years at UNM.

Entering the season, UNM has gone 119-43 (.735) in The Pit with seven seasons with 10-plus home wins and three seasons with 15-plus wins in the last 10 years.

In the past seven years under Bradbury, the Lobos have led the Mountain West in attendance in six (with the lone year the COVID season when UNM had two home games without any fans in attendance).

UNM finished 18th in the NCAA last season in attendance and has finished in the top 20 six times in the last seven years (exception was 2020-21 COVID season).

So far this season, UNM is 17th in the NCAA in attendance and leads the Mountain West.

### CALL ON KOHL

Charlotte Kohl finished with a dominating stat line of a career-high 14 points, career-high 20 rebounds (10 offensive), career-high four blocks and an assist for her first double-double of the season and second of her career against Texas A&M-Commerce.

Kohl registered the double-double by halftime and became the first Lobo to have 20 rebounds in a game since Richelle van der Keijl had 20 against New Mexico State exactly seven years prior on Nov. 15, 2016. Prior to that, the last Lobo to collect 20 rebounds was Amanda Adamson against Texas Tech on Dec. 13, 2008.

Of note, five of her 10 offensive rebounds translated to 11 of UNM's 16 second-chance points, eight of which were scored by Kohl and the three-pointer she had the assist on.

Her 20 rebounds in a game are the most by a MW player this season.

She was named the Mountain West Player of the Week on Nov. 20 for the first weekly conference award in her collegiate career.

Kohl bested that performance against Mississippi Valley State with a career-high 16 points, matched her career high in rebounds with another 20 rebounds and set a career high in blocks with five. She was an efficient 7-9 from the floor and 2-2 from the free-throw line and recorded her double-double by half with 11 rebounds and 10 points.

### PARIS PICKS UP AN AWARD

Paris Lauro was named the Mountain West Freshman of the Week on Dec. 26, earning her first weekly conference honor.

In UNM's lone game of the week at No. 20 Gonzaga, the Dallas, Texas native made three, three-pointers and added a season-high four rebounds, a block and was credited with her first assist while playing a season-high 21:44 off of the bench. It was the second-straight game with three or more three-pointers by the freshman, who has seen her minutes increase in each of her seven appearances this season.

Lauro was especially productive in the third quarter, going 3-4 from behind the arc and added two rebounds, accounting for all three made three-pointers and nine of UNM's 11 points in the quarter. In addition, she recorded her first assist as a Lobo in the first quarter on a Vianè Cumber three that put UNM up 14-10 and her second block of the season late in the fourth quarter.

The announcement marks the second conference award for New Mexico this season, with Lauro joining Charlotte Kohl who was named the Mountain West Player of the Week on Nov. 20. Lauro is also the first Lobo freshman to earn the accolade since Paula Reus won it back on Feb. 21, 2022.

### 20/10 AGAIN

Last season, the Lobos finished with 20 wins, the second-straight year with 20 wins and the fourth time under Coach Mike Bradbury.

In addition, the Lobos surpassed 10 wins in the MW, the third-straight year and sixth overall in Bradbury's seven years at UNM.

### PRIDE OF NEW MEXICO

The Lobos have three New Mexico natives on the roster in redshirt-freshman Natalia Chavez and sophomore Jaelyn Bates and junior Vianè Cumber.

In addition, the Lobos have a New Mexico Gatorade Player of the Year winner in Cumber, with Cumber winning in 2019-20 and 2020-21.

Recent Lobo Amaya Brown won in 2015-16 and 2017-18 and Jaedyn De La Cerda won in 2016-17, meaning the winner in five of the last seven years were Lobos.

### ABOUT WYOMING

Wyoming enters the game 9-6 on the season and 4-0 in conference with wins over Boise State (61-47), Utah State (54-48), Air Force (68-51) and San Diego State (72-55). The Cowgirls are led in scoring by two in double figures, Allyson Fertig (13.7 ppg) and Malene Pedersen (10.0 ppg). Fertig also leads the team in rebounds (11.9, 7.9 rpg), blocks (25) and field-goal percentage (58.7%). Fertig's field-goal percentage is second in the MW and 25th in the NCAA.

In conference games, Wyoming is led in scoring by Tess Barnes at 12.3 points per game, followed by Fertig at 12.0 and Emily Mellema at 11.0.

The Cowgirls are averaging 63.8 points per game in conference and 64.1 points per game on the season, and have among the best scoring defense in the MW, allowing a conference-best 50.3 points per game against conference opponents and 59.8 points per game on the season, which ranks second in the MW.

Three Cowgirls have started all 15 games in Fertig, Barnes and Mellema with Pedersen and Ola Ustowska starting in 14.



## LAST TIME IT HAPPENED (UNM)

### As A Team

Scored 100 Points:	111 - vs. Utah State (2-25-23)
Scored 90 Points:	98 - at Utah State (1-28-23)
Scored Fewer Than 50 Points:	40 - vs Southern Utah (12-7-23)
Scored Fewer Than 40 Points:	38 - at Colorado St. (1-3-15)
Won by 50 Points:	+56 (W, 111-55) - vs. Utah State (2-25-23)
Won by 40 Points:	+48 (W, 92-44) - vs. Northern N.M. (12-10-19)
Won By 30 Points:	+38 (W, 98-60) - at Utah State (1-28-23)
Lost By 30 Points:	-37 (L, 47-84) - at (RV) Arizona St. (12-14-19)
Lost By 40 Points:	-42 (L, 63-105) - at Oklahoma (12-16-17)
Shot 60% or Better:	61.2% - vs. Pacific (11-9-01)
Shot Less Than 30%:	27.3% (15-55) - vs Southern Utah (12-7-23)
Shot 60% 3FG or Better:	64.0% (16-25) - at Fresno State (2-28-23)
Shot Less Than 20% 3FG:	18.2% (2-11) - vs Southern Utah (12-7-23)
Made 15 3-Pointers:	16 - at Fresno State (2-28-23)
Shot 90% on FTs (10 or more):	91.7 (11-12) - vs. Texas Southern (11-6-23)
Shot Less Than 40% On FTs:	14.3% (1-7) - at UTEP (11-30-17)
Had 50 Rebounds:	56 - vs. Mississippi Valley State (12-4-23)
Had 20 Offensive Rebounds:	21 - vs. Northern N.M. (11-12-21)
Had 25 Assists:	25 - vs. Utah State (2-25-23)
Had 20 Turnovers:	25 - at Air Force (2-23-23)
Had Less Than 10 Turnovers:	7 - vs. Utah State (1-10-24)
Had 10 Steals:	12 - vs. Utah State (1-10-24)
Had 10 Blocks:	11 - vs. Houston Baptist (11-23-21)
Had Two 20-Point Scorers:	vs. Eastern Illinois (11-28-23)
	Nyah Wilson (21) and Paula Reus (25)
Had Three 20-Point Scorers:	vs. Grand Canyon (3-16-22)
	LaTascya Duff (27), Jaedyn De La Cerda (22) and Shaiquel McGruder (20)
Had 7 Double-Digit Scorers:	vs. Utah State (2-25-23)
Had 6 Double-Digit Scorers:	at Arkansas-Pine Bluff (12-17-20)
Had 5 Double-Digit Scorers:	vs. San Diego State (3-6-23)
Had No Double-Digit Scorers:	vs. (RV) Arizona St. (12-14-19)
Had Two 10+ Rebounders:	vs. Nevada (3-1-20)
	Shaiquel McGruder (17) and Antonia Anderson (10)
Scored 50 Points In 1st Half:	56 - at Utah State (1-28-23)
Scored 50 Points In 2nd Half:	52 - vs. South Carolina State (12-29-22)
Scored 60 Points in a 2nd Half:	62 - vs. Utah State (2-25-23)
Scored 20 Or Fewer Points In 1st Half:	18 - vs Colorado State (1-13-24)
Scored 20 Or Fewer Points In 2nd Half:	19 - vs Southern Utah (12-7-23)
Scored Less Than 10 Points in a Quarter:	9 - vs Colorado State (1-13-24)
Failed To Make a 3FG:	at (RV) Arizona St. (12-14-19)
Defeated a Ranked Team:	W, 88-87 vs. No. 16 Marquette (11-13-17)
Lost To a Ranked Team:	L, 67-56 at No. 20 Gonzaga (12-22-23)
Won an OT Game:	W, 81-78 vs. Eastern Illinois (11-28-23)
Lost an OT Game:	L, 83-77 vs Arizona State (11-20-22)
Won a 2OT Game:	W, 89-85 at Houston (11-24-18)
Lost a 2OT Game:	L, 69-65 vs. Fresno St. (1-2-16)

### As An Individual

Had a Triple-Double:	Aisia Robertson (28 pts, 11 rebs, 11 assists)
	at Houston (11-24-18)
Had a Double-Double (Pts/Reb):	Vianè Cumber (21 pts, 11 reb)
	vs. Utah State (1-10-24)
Had a Double-Double (Pts/Asst):	Aniyah Augmon (13 pts & 10 assists)
	vs. Utah State (1-10-24)
Had a Double-Double (Reb/Asst):	Cherise Beynon (13 reb, 10 assists)
	vs. Fairleigh Dickinson (11-12-16)
Scored 20+ Pts with 10+ Rebs:	Vianè Cumber (21 pts, 11 reb)
	vs. Utah State (1-10-24)
Scored 30 Points:	LaTascya Duff (30 pts) at Utah State (1-28-23)
Scored 40 Points:	Cherise Beynon (41) at SDSU (1-20-18)
Scored 30 Points (MW Only):	LaTascya Duff (30 pts) at Utah State (1-28-23)
Scored 40 points (MW Only):	Cherise Beynon (41)
	at San Diego St. (1-20-18)
Had 20+ Rebounds:	Charlotte Kohl (20) vs. Mississippi Valley State (12-4-23)
Had 15+ Rebounds:	Shaiquel McGruder (15) vs. UNLV (1-3-22)
Had 15+ Assists:	Aisia Robertson (16) vs. Oklahoma (11-28-18)
Had 5+ Steals:	Aniyah Augmon (5) vs. New Mexico State (12-2-23)
Had 5+ Blocks:	Charlotte Kohl (5) vs. Mississippi Valley State (12-4-23)

## LAST TIME IT HAPPENED (OPP)

### As A Team

Scored 100 Points:	105 - Oklahoma (12-16-17)
Scored 90 Points:	93 - UNLV (2-2-23)
Scored Less Than 50 Points:	47 - Western N.M. (12-17-23)
Scored Less Than 40 Points:	40 - Northern N.M. (11-12-21)
Shot 50% Or Better:	51.8% (29-56) - Montana State (11-23-23)
Shot Less Than 30%:	29.6% (16-54) - Hampton (12-10-23)
Shot 50% 3FG Or Better:	52.9% (9-17) - Gonzaga (12-22-23)
Shot Less Than 20% 3FG:	14.3% (2-14) - Western N.M. (12-17-23)
Made 15 3-Pointers:	15 - San José St. (1-22-20)
Shot 90% On FTs (10 or more):	90.0% (9-10) - Georgia Tech (11-24-23)
Shot Less Than 50% On FTs:	33.3% (3-9) - Mississippi Valley State (12-4-23)
Had 50 Rebounds:	53 - Mississippi State (12-21-22)
Had 20 Offensive Rebounds:	24 - Houston (11-12-22)
Had 25 Assists:	26 - Houston (11-20-21)
Had 20 Turnovers:	21 - Utah State (1-10-24)
Had 30 Turnovers:	30 - Northern NM (11-15-17)
Had Less Than 10 Turnovers:	7 - Nevada (12-30-23)
Had 10 Steals:	12 - Western N.M. (12-17-23)
Had 10 Blocks:	12 - Boise State (1-21-23)
Had Two 20-Point Scorers:	UNLV (1-14-23)
	Desi-Rae Young (22) and Alyssa Durazo-Frescas (20)
Had 6 Double-Digit Scorers:	San Diego State (3-6-23)
Had 5 Double-Digit Scorers:	UNLV (2-2-23)
Had No Double-Digit Scorers:	Western N.M. (12-17-23)
Had Two 10+ Rebounders:	Arizona State (11-20-22)
	Kayla Mokwuah (13) and Treasure Hunt (15)
Scored 50+ Points In 1st Half:	54 - San José St. (1-22-20)
Scored 50+ Points In 2nd Half:	50 - Colorado State (3-8-22)
Scored 20 Or Less Points In 1st Half:	19 - Western N.M. (12-17-23)
Scored 20 Or Less In 2nd Half:	19 - Northern N.M. (11-12-21)
Scored Less Than 10 Points in Quarter:	4 - Colorado State (1-13-24)
Failed To Make a 3FG:	0-1 by San Diego State (2-18-15)

### As An Individual

Had a Double-Double (Pts/Reb):	Arlisha Boston (11 pts, 10 reb)
	Hampton (12-10-23)
Had a Double-Double (Pts/Asst):	Miah Monahan (16 pts, 10 asts.)
	Eastern Illinois (11-28-23)
Had a Double-Double (Pts/Steals):	Jasmyne Harris (28 pts & 10 steals)
	Houston (11-28-18)
Had 20+ Points & 10+ Rebounds:	Macy McGlone (29 pts, 14 reb.)
	Eastern Illinois (11-28-23)
Scored 30 Points:	Essence Booker (31) - UNLV (1-27-22)
Scored 30 Points (MW Only):	Essence Booker (31) - UNLV (1-27-22)
Had 20+ Rebounds:	Kaylee Johnson (22) - No. 1 Stanford (11-24-14)
Had 15+ Rebounds:	Andjela Bigovic (16) - Tarleton State (11-12-23)
Had 10+ Assists:	Miah Monahan (10) - Eastern Illinois (11-28-23)
Had 5+ Steals:	Jo Huntimer (6) - Air Force (2-23-23)
Had 5+ Blocks:	Gracie Johnson (5) - Utah State (1-10-24)

GAME 18: NEW MEXICO vs WYOMING

STATS

STAT COMPARISON

UW		UNM
64.1	Points Per Game	63.9
45.1	FG%	37.4
28.0	3FG%	27.7
76.0	FT%	67.7
5.4	Made 3-pt PG	6.7
34.9	Rebounds PG	42.2
13.2	Turnovers PG	14.2
14.0	Assists PG	13.1
3.2	Blocks PG	3.2
6.5	Steals PG	7.3
59.8	Scoring Defense	60.6
41.0	FG% Defense	38.0
28.2	3FG% Defense	31.1
+4.1	Rebound Margin	+3.9

UNM WHEN HOME/AWAY/NEUTRAL

STAT	HOME (11)	AWAY (4)	NEUTRAL (2)
PPG	67.0	59.3	56.0
Opp PPG	59.5	58.8	70.5
FG %	.377	.385	.336
3FG%	.291	.256	.234
3 FG MPG	7.3	5.8	5.5
FT%	.693	.654	.633
Opp FG%	.365	.378	.466
Opp 3FG%	.313	.325	.268
RPG	44.9	39.8	32.0
Opp RPG	38.9	35.0	41.5
APG	14.9	10.5	8.0
SPG	7.8	5.3	8.5
TOV	14.0	14.5	15.0

SPECIALTY STAT COMPARISON

Opp.	Paint	Off TO	2nd Chance	Fast Break	Bench
Texas Southern	38/14	15/18	11/11	17/6	2/28
Pepperdine	34/26	13/10	11/10	7/0	13/12
Tarleton St.	34/24	17/8	6/11	15/9	12/14
Texas A&M-Com.	50/28	14/13	16/8	10/13	3/31
Montana St.	18/34	11/20	7/4	10/6	7/18
Georgia Tech	32/30	7/12	3/13	15/2	6/13
Eastern Illinois	36/20	22/15	15/9	16/16	2/14
NMSU	42/16	16/10	15/4	11/2	12/32
MVSU	32/22	13/11	20/3	12/10	13/25
Southern Utah	24/28	9/16	11/4	2/3	8/7
Hampton	18/10	14/9	6/7	13/7	24/25
Western N.M.	30/26	25/17	12/5	10/18	34/30
Gonzaga	20/24	6/17	5/1	1/1	11/6
Nevada	42/30	11/14	2/8	13/9	9/28
Boise St.	24/16	1/10	4/4	3/11	0/12
Utah St.	26/38	21/8	8/8	20/10	9/32
Colorado St.	30/18	9/14	11/0	11/7	0/25
Wyoming					
UNLV					
Fresno St.					
Air Force					
San José St.					
UNLV					
San Diego St.					
Colorado St.					
San José St.					
Boise St.					
Wyoming					
San Diego St.					
Nevada					
Fresno St.					

UNM STARTING LINEUPS (GAME)

Game	G	G	G	F	C
Texas Southern	Wilson	Augmon	Cumber	Reus	Kohl
Pepperdine	Wilson	Augmon	Cumber	Reus	Kohl
Tarleton State	Wilson	Augmon	Cumber	Reus	Kohl
Texas A&M-Commerce	Wilson	Augmon	Cumber	Reus	Kohl
Montana State	Wilson	Augmon	Cumber	Reus	Kohl
Georgia Tech	Wilson	Augmon	Cumber	Reus	Kohl
Eastern Illinois	Wilson	Augmon	Cumber	Reus	Kohl
New Mexico State	Wilson	Augmon	Cumber	Reus	Kohl
Mississippi Valley State	Wilson	Augmon	Langermann	Reus	Kohl
Southern Utah	Wilson	Augmon	Langermann	Reus	Kohl
Hampton	Wilson	Augmon	Langermann	Reus	Kohl
Western New Mexico	Wilson	Diarra Berthe	Cumber	Reus	Kohl
Gonzaga	Wilson	Augmon	Cumber	Reus	Kohl
Nevada	Wilson	Augmon	Cumber	Reus	Kohl
Boise State	Wilson	Augmon	Cumber	Reus	Kohl
Utah State	Wilson	Augmon	Cumber	Reus	Kohl
Colorado State	Wilson	Augmon	Cumber	Reus	Kohl
Wyoming					
UNLV					
Fresno State					
Air Force					
San José State					
UNLV					
San Diego State					
Colorado State					
San José State					
Boise State					
Wyoming					
San Diego State					
Nevada					
Fresno State					

UNM STARTING LINEUPS (RECORD)

Wilson, Augmon, Kohl, Reus, Cumber	8-5
Wilson, Langermann, Augmon, Kohl, Reus	2-1
Wilson, Diarra Berthe, Cumber, Kohl, Reus	1-0

DOUBLE-DOUBLE TRACKER

Charlotte Kohl (14 pts, 20 reb)	Texas A&M-Commerce (11/15)
Viané Cumber (14 pts, 14 reb)	Eastern Illinois (11/28)
Charlotte Kohl (15 pts, 13 reb)	New Mexico State (12/2)
Charlotte Kohl (16 pts, 20 reb)	Mississippi Valley St. (12/4)
Viané Cumber (21 pts, 11 reb)	Utah State (1/10)
Aniyah Augmon (13 pts, 10 asts)	Utah State (1/10)

CAREER DOUBLE-DOUBLES

	2023-24	Career
Aniyah Augmon	1	4
Charlotte Kohl	3	4
Viané Cumber	2	2
Hulda Joaquim	-	2
Paula Reus	-	1

20-POINT TRACKER

Viané Cumber	22 pts	Texas Southern (11/6)
Nyah Wilson	20 pts	Texas Southern (11/6)
Nyah Wilson	22 pts	Texas A&M-Commerce (11/15)
Viané Cumber	24 pts	Montana State (11/23)
Paula Reus	25 pts	Eastern Illinois (11/28)
Nyah Wilson	21 pts	Eastern Illinois (11/28)
Nyah Wilson	21 pts	Nevada (12/30)
Viané Cumber	21 pts	Utah State (1/10)

Team (AP/Coaches)	CONFERENCE						OVERALL							
	W	L	Pct.	Home	Away	Neutral	W	L	Pct.	Home	Away	Neutral	Last 10	Strk
UNLV (25/25)	4	0	1.000	2-0	2-0	0-0	14	1	.933	7-0	7-1	0-0	9-1	W5
Wyoming	4	0	1.000	2-0	2-0	0-0	9	6	.600	5-2	3-3	1-1	6-4	W4
Fresno State	3	2	.600	2-1	1-1	0-0	10	8	.556	8-3	1-4	1-1	5-5	W1
Colorado State	2	2	.500	1-1	1-1	0-0	11	4	.733	6-2	4-2	1-0	6-4	W2
Boise State	2	2	.500	1-1	1-1	0-0	11	6	.647	8-1	1-3	2-2	5-5	W2
New Mexico	2	2	.500	1-1	1-1	0-0	11	6	.647	9-2	2-2	0-2	6-4	L1
Nevada	2	2	.500	0-2	2-0	0-0	8	9	.471	4-4	2-3	2-2	3-7	W1
San Diego State	2	3	.400	2-0	0-3	0-0	11	7	.611	6-3	3-4	2-0	7-3	L2
Air Force	2	3	.400	1-2	1-1	0-0	9	9	.500	7-3	2-4	0-2	5-5	L1
San José State	1	3	.250	0-2	1-1	0-0	6	10	.375	3-3	3-6	0-1	3-7	L2
Utah State	0	5	.000	0-2	0-3	0-0	3	13	.188	2-6	1-7	0-0	0-10	L10
^ MW Regular Season Champions		% MW Tournament Champion												

MOUNTAIN WEST STATISTICS

TEAM	All	Conference
Rebounds/ Game	1st (42.2)	2nd (41.0)
Def. Rebounds/Game	2nd (29.9)	1st (31.3)
Scoring Defense	3rd (60.6)	3rd (62.8)
FG % Defense	3rd (.380)	4th (.391)
Off. Rebounds/Game	3rd (12.3)	6th (9.8)
Rebounding Margin	4th (+3.9)	4th (+3.0)
Blocks per Game	5th (3.2)	6th (3.3)
3-Pt FG Made	5th (6.7)	5th (6.8)
Assist/Turnover Ratio	6th (0.9)	4th (1.1)
Scoring	6th (63.9)	7th (62.8)
3-Pt FG % Defense	6th (.311)	8th (.330)
Scoring Margin	6th (+3.3)	6th (0.0)
Assists per Game	6th (13.1)	T-3rd (14.0)
Steals per Game	6th (7.3)	5th (6.8)
Free Throw %	9th (.677)	9th (.644)
FG %	9th (.374)	T-9th (.375)
3-PT FG %	10th (.277)	11th (.278)

INDIVIDUAL	All	Conference
<b>Scoring</b>		
Nyah Wilson	10th (12.9)	6th (16.3)
Vianè Cumber	14th (11.9)	T-15th (12.0)
Paula Reus	16th (11.7)	--
Aniyah Augmon	17th (11.6)	9th (14.3)
<b>Rebounding</b>		
Charlotte Kohl	4th (8.1)	6th (8.3)
Paula Reus	T-10th (6.0)	T-17th (5.0)
Vianè Cumber	T-10th (6.0)	6th (8.3)
Aniyah Augmon	16th (5.6)	T-15th (5.3)
<b>FG%</b>		
Nyah Wilson	--	4th (.535)
Aniyah Augmon	--	9th (.468)
<b>Free Throw %</b>		
Nyah Wilson	6th (.756)	9th (.722)
Aniyah Augmon	--	10th (.714)
<b>3-Point FG %</b>		
Vianè Cumber	3rd (.333)	5th (.286)
<b>3-Point FG Made</b>		
Vianè Cumber	2nd (2.7)	T-4th (2.5)
Nyah Wilson	--	T-13th (1.5)
<b>Steals</b>		
Aniyah Augmon	5th (2.3)	T-9th (1.7)
Nyah Wilson	--	T-9th (1.7)
Paula Reus	--	T-13th (1.3)
<b>Assists</b>		
Aniyah Augmon	4th (4.3)	2nd (5.8)
Nyah Wilson	--	15th (2.5)
<b>Blocks</b>		
Charlotte Kohl	2nd (2.0)	3rd (2.0)
<b>Minutes</b>		
Vianè Cumber	2nd (34.2)	2nd (37.4)
Aniyah Augmon	5th (33.0)	5th (34.7)
Paula Reus	9th (31.6)	12th (32.7)
Nyah Wilson	15th (29.6)	10th (33.4)

2023-24 MW PLAYERS OF THE WEEK

<b>PLAYER OF THE WEEK</b>	<b>FRESHMAN OF THE WEEK</b>
CHARLOTTE KOHL - NOV. 20	PARIS LAURO - DEC. 26

NCAA STATISTICS

TEAM	
Fouls Per Game	7th
Rebounds (Def.) Per Game	23rd
Rebounds Per Game	35th
3-Point Attempts Per Game	47th
<b>INDIVIDUAL</b>	
<b>Vianè Cumber</b>	
3-Point Attempts	44th
3-Pointers Per Game	37th
<b>Charlotte Kohl</b>	
Blocks	27th
Blocks Per Game	34th
Rebounds	65th
<b>Nyah Wilson</b>	
Free Throws	92nd
Free Throw Attempts	98th

**SERIES HISTORY**

**WYOMING (44-39)**  
H: 27-17 A: 13-26 N: 3-1

**UNM'S RECORD WHEN...**

	Overall	In MW
Overall	11-6	2-2
At home	9-2	1-1
On the road	2-2	1-1
At neutral sites	0-2	0-0
After a win	6-5	0-2
After a loss	4-1	1-0
In overtime	1-0	0-0
vs. ranked opponents	0-1	0-0
Games decided by 1-4 points	3-0	1-0
Games decided by 5-9 points	2-2	0-2
Games decided by 10-19 points	4-4	1-0
Games decided by 20+ points	2-0	0-0
Leading after Q1	9-1	2-0
Trailing after Q1	2-5	0-2
Tied after Q1	0-0	0-0
Leading at half	9-0	1-0
Trailing at half	2-6	1-2
Tied at half	0-0	0-0
Leading after Q3	9-0	2-0
Trailing after Q3	2-6	0-2
Tied after Q3	0-0	0-0
Shooting 50% or better	0-0	0-0
Shooting between 40-49.9%	4-0	1-0
Shooting less than 40%	7-6	1-2
Opponent shoots 50% or better	0-1	0-0
Opponent shoots b/w 40-49.9%	3-3	1-1
Opponent shoots b/w 30-39.9%	6-2	1-1
Opponent shoots less than 30%	2-0	0-0
UNM higher FG%	9-0	1-0
Opponent higher FG%	2-6	1-2
FG% Tied	0-0	0-0
UNM outrebounds	8-2	1-1
Opponent outrebounds	3-3	1-1
Rebounds tied	0-1	0-0
UNM more made free throws	7-3	1-1
Opponent more made free throws	2-3	1-1
Made free throws tied	2-0	0-0
UNM 3FG% higher	5-0	2-0
Opponent 3FG% higher	6-6	0-2
3FG% tied	0-0	0-0
UNM has more fouls	4-2	0-1
Opponent has more fouls	7-4	2-1
Fouls are tied	0-0	0-0
UNM more turnovers	5-5	1-2
Opponent more turnovers	5-1	1-0
Turnovers tied	1-0	0-0
Scoring less than 50 points	0-1	0-0
Scoring 50-59 points	1-5	0-2
Scoring 60-69 points	5-0	1-0
Scoring 70-79 points	4-0	1-0
Scoring 80-89 points	1-0	0-0
Scoring 90-99 points	0-0	0-0
Scoring 100+ points	0-0	0-0
Allowing 40 points or less	0-0	0-0
Allowing 41-49 points	3-0	0-0
Allowing 50-59 points	5-1	1-0
Allowing 60-69 points	1-4	1-2
Allowing 70-79 points	2-1	0-0
Allowing 80-89 points	0-0	0-0
Allowing 90+ points	0-0	0-0
In November	5-2	0-0
In December	5-2	1-0
In January	1-2	1-2
In February	0-0	0-0
In March	0-0	0-0

2/1/75	L	65-45	A
1/24/76	W	63-44	H
1/15/77	W	61-58	A
2/3/78	W	70-57	H
2/10/79	L	55-53	A
1/11/80	L	65-63	A
2/9/80	W	63-60	H
1/12/81	L	82-72	A
2/13/81	W	69-66	H
1/30/82	W	79-56	H
2/11/82	L	79-71	A
2/10/83	L	76-72	A
3/8/83	W	56-55	H
2/11/84	W	62-41	A
3/7/84	W	68-62	H
2/7/85	W	68-65	A
3/9/85	W	90-79	H
2/6/86	W	64-59	H
3/8/86	L	58-57	A
2/5/87	L	68-54	A
2/28/87	W	66-60	H
1/25/92	L	74-45	H
2/25/92	L	81-54	A
2/6/93	L	69-57	A
3/4/93	L	75-52	H
1/15/94	L	69-58	A
2/27/94	L	70-54	H
1/14/95	L	78-53	H
2/23/95	L	73-67	A
1/13/96	L	70-64	A
2/24/96	W	84-74(20T)	H
3/6/96	W	76-59	H
1/11/98	W	72-45	H
2/5/98	W	60-46	A
1/27/00	W	76-61	A
2/24/00	W	88-52	H
1/25/01	W	57-53	A
2/24/01	W	65-54	H
2/2/02	W	56-41	H
2/28/02	W	70-61	A
1/25/03	L	71-58	A
2/20/03	W	70-37	H
2/7/04	W	61-56	A
3/4/04	W	58-39	H
3/12/04	W	51-44	N
2/3/05	W	62-49	H
3/5/05	W	65-48	A
1/15/06	W	62-39	H
2/15/06	L	59-52	A
1/4/07	L	54-51	A
2/4/07	W	50-43	H
3/9/07	W	65-53	N
1/9/08	L	58-52	H
2/10/08	L	70-55	A
2/4/09	L	54-52	A
3/7/09	W	63-45	H
1/16/10	W	74-61	H
2/17/10	L	78-55	A
1/8/11	L	63-53	H
2/8/11	L	78-65	A
3/9/11	W	67-61	N
1/14/12	L	62-50	H
2/11/12	W	60-57	A
1/30/13	L	72-54	H
3/2/13	L	72-50	A
1/8/14	W	75-65	H
2/5/14	L	79-75	A
1/24/15	W	60-54	H
3/6/15	W	66-55	A
1/16/16	L	66-48	A
1/21/17	L	68-52	A
2/25/17	L	60-58	H
1/10/18	L	55-66	A
2/21/18	L	62-63	H
3/6/18	L	66-69	N
1/19/19	W	78-75	A
3/7/19	W	57-50	H
12/7/19	L	66-73	H
2/8/20	W	74-71(OT)	A
1/13/22	W	85-76	A
2/5/22	L	60-59	H
1/5/23	L	78-69	A
2/16/23	W	71-62	H



# 2023-24 roster



**Nahawa Diarra Berthe**  
G | 5-9 | JR.  
Barcelona, Spain



**Natalia Chavez**  
G | 5-10 | R-FR.  
Cochiti Pueblo, N.M.



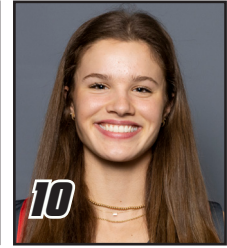
**Nyah Wilson**  
G | 5-8 | JR.  
Dallas, Texas



**Gianna McManaman**  
PG | 5-7 | FR.  
Chapel Hill, N.C.



**Lara Langermann**  
G | 5-7 | FR.  
Breckersfeld, Germany



**Paris Lauro**  
F | 6-1 | FR.  
Dallas, Texas



**Aniyah Augmon**  
G | 5-8 | JR.  
San José, Calif.



**Hulda Joaquim**  
F | 6-1 | SR.  
Maputo, Mozambique



**Jaelyn Bates**  
PG | 5-7 | FR.  
Albuquerque, N.M.



**Mackenzie Curtis**  
G | 5-9 | SO.  
Lakeside, Calif.



**Charlotte Kohl**  
C | 6-5 | GR.  
Giessen, Germany



**Paula Reus**  
F | 6-1 | JR.  
Palma de Mallorca, Spain



**Vianè Cumber**  
G | 5-10 | JR.  
Albuquerque, N.M.



**Mike Bradbury**  
Head Coach



**Keith Freeman**  
Assoc. Head Coach



**Nike McClure**  
Assistant Coach



**Mackenzie Novak**  
Assistant Coach



**Jaisa Nunn**  
Graduate Assistant



**Hanna Hudson**  
Director of Operations



**Isaiah Fernandez**  
Director of Player Development

## NUMERICAL

#	Name	Pos	Ht	Yr	Hometown (Previous School)
1	Nahawa Diarra Berthe	G	5-9	Jr.	Barcelona, Spain (Odessa College)
2	Natalia Chavez	G	5-10	RS-Fr.	Cochiti Pueblo, N.M. (Volcano Vista HS)
3	Nyah Wilson	G	5-8	Jr.	Dallas, Texas (Syracuse)
4	Gianna McManaman	PG	5-7	Fr.	Chapel Hill, N.C. (Northwood HS)
5	Lara Langermann	G	5-7	Fr.	Breckerfeld, Germany (Theodor-Heuss-Gymnasium Hagen)
10	Paris Lauro	F	6-1	Fr.	Dallas, Texas (Highland Park HS)
12	Aniyah Augmon	G	5-8	Jr.	San José, Calif. (Woodside Priory School)
14	Hulda Joaquim	F	6-1	Sr.	Maputo, Mozambique (Seward County CC)
15	Jaelyn Bates	PG	5-7	So.	Albuquerque, N.M. (Volcano Vista HS)
21	Mackenzie Curtis	G	5-9	RS-So.	Lakeside, Calif. (El Capitan HS)
22	Charlotte Kohl	C	6-5	Gr.	Giessen, Germany (Mississippi State)
30	Paula Reus	F	6-1	Jr.	Palma de Mallorca, Spain (IES Joaquim Blume)
33	Vianè Cumber	G	5-10	Jr.	Albuquerque, N.M. (Sandia HS)

## ALPHABETICAL

#	Name	Pos	Ht	Yr	Hometown (Previous School)
12	Aniyah Augmon	G	5-8	Jr.	San José, Calif. (Woodside Priory School)
15	Jaelyn Bates	PG	5-7	So.	Albuquerque, N.M. (Volcano Vista HS)
2	Natalia Chavez	G	5-10	RS-Fr.	Cochiti Pueblo, N.M. (Volcano Vista HS)
33	Vianè Cumber	G	5-10	Jr.	Albuquerque, N.M. (Sandia HS)
21	Mackenzie Curtis	G	5-9	RS-So.	Lakeside, Calif. (El Capitan HS)
1	Nahawa Diarra Berthe	G	5-9	Jr.	Barcelona, Spain (Odessa College)
14	Hulda Joaquim	F	6-1	Sr.	Maputo, Mozambique (Seward County CC)
22	Charlotte Kohl	C	6-5	Gr.	Giessen, Germany (Mississippi State)
5	Lara Langermann	G	5-7	Fr.	Breckerfeld, Germany (Theodor-Heuss-Gymnasium Hagen)
10	Paris Lauro	F	6-1	Fr.	Dallas, Texas (Highland Park HS)
4	Gianna McManaman	PG	5-7	Fr.	Chapel Hill, N.C. (Northwood HS)
30	Paula Reus	F	6-1	Jr.	Palma de Mallorca, Spain (IES Joaquim Blume)
3	Nyah Wilson	G	5-8	Jr.	Dallas, Texas (Syracuse)

## STAFF

Mike Bradbury	Head Coach
Keith Freeman	Associate Head Coach
Nike McClure	Assistant Coach
Mackenzie Novak	Assistant Coach
Jaissa Nunn	Graduate Assistant
Hanna Hudson	Director of Operations
Isaiah Fernandez	Director of Player Development
Leila Petewon	Assistant Director of Athletic Performance (WBB)
Lexi Smith	Associate Athletic Trainer (WBB)

## pronunciation guide

audio pronunciations available online

NAHAWA DIARRA BERTHE	Na-HA-wa D-are-a Bear-TAY
NYAH Wilson	Neye-ah
LARA LANGERMANN	La-Rah Lane-GRR-man
PARIS LAURO	Loro (rhymes with Zorro)
HULDA JOAQUIM	Ulda JOY-key-m
PAULA REUS	Rey-OOSE (rhymes with goose)
VIANE Cumber	V-UH-nay

## by eligibility

Seniors (2)	
14 Hulda Joaquim	F
22 Charlotte Kohl (Gr.)	C

Juniors (5)	
1 Nahawa Diarra Berthe	G
3 Nyah Wilson	G
12 Aniyah Augmon	G
30 Paula Reus	F
33 Vianè Cumber	G

Sophomores (2)	
15 Jaelyn Bates	PG
21 Mackenzie Curtis (RS)	G

Freshmen (4 (1 Redshirt))	
2 Natalia Chavez (RS)	G
4 Gianna McManaman	PG
5 Lara Langermann	G
10 Paris Lauro	F

## home state

California (2)	
12 Aniyah Augmon	G
21 Mackenzie Curtis	G

North Carolina (1)	
4 Gianna McManaman	PG

New Mexico (3)	
2 Natalia Chavez	G
15 Jaelyn Bates	PG
33 Vianè Cumber	G

Texas (2)	
3 Nyah Wilson	G
10 Paris Lauro	F

## international

1 Nahawa Diarra Berthe (Spain)	G
5 Lara Langermann (Germany)	G
14 Hulda Joaquim (Mozambique)	F
22 Charlotte Kohl (Germany)	C
30 Paula Reus (Spain)	F



## MIKE BRADBURY

### RECORD AT UNM: 152-84 (8TH SEASON)

### CAREER RECORD: 330-201 (17TH SEASON)

#### NOTEWORTHY:

- Named the sixth head coach in program history on March 31, 2016
- 26 wins in 2021-22 tied for most wins in program history
- Led UNM to 25 wins in 2017-18; tied for second-most wins in program history
- Led UNM to 20+ wins in four seasons, and .500 or better in six
- Earned his 100th win at UNM on Nov. 30, 2021; only the second coach in program history to reach 100. Earned his 300th career win on Nov. 22, 2022 against Western N.M.

Mike Bradbury enters his eighth season as head coach for The University of New Mexico women's basketball team. In his previous seven seasons at the helm, Bradbury has guided the Lobos to a 141-78 (.644) and 77-45 (.631) in conference. Four times in his tenure (2017-18, 2018-19, 2021-22 and 2022-23) the Lobos eclipsed the 20-win mark, with the Lobos tying the program record for most wins in a single season with 26 in 2021-22. Further, the 25 wins in 2017-18 were tied for the second-most wins in program history. The consecutive 20-plus win seasons under Bradbury in 2017-18 and 2018-19 were the first for the program since the 2007-08 – 2008-09 seasons.

Additionally, Bradbury became just the second coach in UNM history to win 100 games with a win over Grambling on Nov. 30, 2021.

The Lobos have sustained success under Bradbury as historically, UNM has finished either first or second in the conference in scoring offense in the last six years (four times first). In Bradbury's time at UNM, the Lobos have finished with 15 or made three-pointers 11 times and hold the top-five spots in three-pointers per game in program history.

In the most recent season, UNM finished 15th in the NCAA in made three-pointers per game at 8.5 per game, with 12 games with double-digit three-pointers. Of the 12 games, UNM made 18 (against South Carolina State) and three games with 16 (twice against Utah State and at Fresno State).

During the 2021-22 season, the program established several program records. UNM set the program record in made three-pointers (346), a program-best 171 made three-pointers in conference season, as well as a pro-

gram-record 596 assists on the season and 292 in conference games. In addition, the Lobos made a program-high 523 field goals in conference and scored the most points in conference in program history with 1,413 points. On Jan. 6 at Utah State, the Lobos set the program record and the MW record in made three-pointers in a game with 21, and three games later made 19 three-pointers for the second most in a game in program history. The Lobos also went on a nine-game win streak, the second longest in program history.

New Mexico ranked in the top 10 in the NCAA in made three-pointers (third), made three-pointers per game (fifth, 9.6 per game) and in assists (10th). In total, UNM ranked in the top 30 in nine categories, including scoring offense (14th, 76.7 points per game), assists per game (16th, 16.6 per game), assist/turnover ratio (18th, 1.21), field-goal percentage (19th, 45.1 percent), blocked shots (25th, 147) and three-point field-goal percentage (30th, 35.1 percent).



UNM added six postseason Mountain West honors with a conference-high three all-conference players in Antonia Anderson, Shaiquel McGruder and Jaedyn De La Cerda, an honorable mention in LaTora Duff, an all-defensive player in McGruder and an all-freshman in Paula Reus. The Lobos have had 12 conference selections in the last two seasons.

Further, five Lobos finished the 2021-22 season averaging double figures in points per game.

In the 2020-21 season, Bradbury led the Lobos to a Mountain West regular season championship, the first outright in program history and the first regular season title since the 2004-05 season. In addition, the Lobos were selected for the WNIT for the third

## **GAME 18: NEW MEXICO vs WYOMING**

---

time in four years.

The Lobos produced one of the most prolific offenses not only in the conference, but in the country, finishing among the top 25 in several categories. Among them, UNM finished fourth in the NCAA in made three-pointers per game (10.2), sixth in assist-turnover ratio (1.40), ninth in scoring offense (81.2 points per game), 14th in fewest turnovers per game (12.0) and assists per game (16.8) and 22nd in scoring margin (12.7). The Lobos led the Mountain West in scoring offense, scoring margin, assists per game, turnover margin, assist-turnover ratio and made three-pointers as well as second in field-goal percentage and steals per game.

UNM set a program record in scoring with 120 points against Arkansas-Pine Bluff on Dec. 17, 2020 and in the process, made 17 three-pointers, falling just one short of tying the program record. Further, the Lobos registered 90-plus points in five games and 80-plus points in 11 of the 20 games on the season.

Four Lobos finished the 2020-21 season averaging double figures in points per game with six players finishing in double figures in scoring in two games (the only times it has been accomplished in program history), five players in five games and four in seven games.

As a result of UNM's successful season, five players were named to the All-Mountain West Team with LaTascya Duff also earning the superlative of Sixth Person of the Year. Duff was just the second Lobo to win the sixth person award. Making the all-conference team for the first time were Duff, Jaedyn De La Cerda and Antonia Anderson, as well as Shaiquel McGruder earning all-defensive and Ahlise Hurst earning the honorable mention distinction.

In his time at UNM, Bradbury has coached 13 All-Mountain West performers with Cherise Beynon, Jayla Everett, Jaisa Nunn, Aisia Robertson and Richelle van der Keijl joining De La Cerda, Duff, McGruder, Hurst and Anderson in making the All-Mountain West Team. Tesha Buck, Mykiel Burleson and Nike McClure have also earned MW recognition with Buck being the 2017-18 Newcomer of the Year, Burleson being named to the All-Freshman team in 2016-17 and McClure landing on the All-Defensive team in 2018-19.

In terms of major individual awards, Bradbury has coached the league's Newcomer of the Year each of his first three seasons in charge of the Lobos with van der Keijl earning the award in 2016-17, Buck in 2017-18 and Robertson in 2018-19. Additionally, Bradbury has coached the MW Player of the Year in Nunn (2018-19) and the Freshman of the Year in Everett (2018-19) as well as Sixth Person of the Year in Duff (2020-21).



## CAREER HEAD COACHING YEAR-BY-YEAR

2007-08	11-19 (9-11)	Morehead State
2008-09	17-14 (11-7)	Morehead State
2009-10	22-11 (14-4)	Morehead State
2010-11	20-13 (11-7)	Wright State
2011-12	21-13 (12-6)	Wright State
2012-13	12-18 (6-10)	Wright State
2013-14	26-9 (12-4)	Wright State
2014-15	25-9 (12-4)	Wright State
2015-16	24-11 (12-6)	Wright State
2016-17	15-15 (10-8)	New Mexico
2017-18	25-11 (10-8)	New Mexico
2018-19	24-7 (14-4)	New Mexico
2019-20	15-17 (6-12)	New Mexico
2020-21	15-5 (11-3)	New Mexico
2021-22	26-10 (14-4)	New Mexico
2022-23	21-13 (12-6)	New Mexico
2023-24	11-6 (2-2)	New Mexico
Total	330-201 (178-106)	

## EDUCATION

UT-Chattanooga - B.S. Recreation (1993)

## COACHING EXPERIENCE

1991-93	Student Assistant	Chattanooga
1993-94	Assistant Coach	Chattanooga
1994-95	Assistant Coach	East Tennessee
1995-96	Assistant Coach	VCU
1996-02	Assistant Coach	Cincinnati
2002-07	Assistant Coach	Xavier
2007-10	Head Coach	Morehead State
2010-16	Head Coach	Wright State
2016-pres.	Head Coach	New Mexico

## HEAD COACHING RECORD

2007-10	Morehead State	50-44 (.532)
2010-16	Wright State	128-73 (.637)
2016-pres.	New Mexico	152-84 (.644)
17 years		330-201 (.621)

### RANKED OPPONENTS

#16 Marquette	11/13/17	W, 88-87
#23 West Virginia	11/29/19	L, 73-60
#6 Arizona	12/12/21	L, 77-60
#14 Arizona	12/4/22	L, 77-60
#20 Gonzaga	12/22/23	L, 67-56

### ALL-TIME SERIES UNDER COACH BRADBURY

OPPONENT	Series	H	A	N
Abilene Christian	1-0	1-0		
Air Force	10-2	5-1	4-1	1-0
Arizona	0-2	0-1	0-1	
Arkansas-Pine Bluff	1-0		1-0	
Arizona State	0-2	0-1	0-1	
Auburn	0-1	0-1		
Ball State	0-1	0-1		
Boise State	5-8	4-2	1-5	0-1
California Baptist	0-1			0-1
Colorado State	9-6	7-1	2-4	0-1
Denver	0-1	0-1		
Eastern Illinois	1-0	1-0		
Fairleigh Dickinson	1-0	1-0		
Fresno State	8-6	4-1	3-3	1-2
Georgia Tech	0-1			0-1
Gonzaga	0-1		0-1	
Grambling State	1-0	1-0		
Grand Canyon	1-0	1-0		
Hampton	1-0	1-0		
Hartford	1-0	1-0		
Houston	3-1	2-0	1-1	
Houston Baptist	1-0	1-0		
Illinois	1-0	1-0		
Lamar	2-0	2-0		
Louisiana-Monroe	1-0			1-0
Loyola Marymount	0-1	0-1		
Marquette	1-1	1-0	0-1	
Midwestern State	1-0		1-0	
Minnesota	0-1	0-1		
Mississippi State	0-1			0-1
Mississippi Valley State	1-0	1-0		
Missouri	1-0			1-0
Montana State	0-1			0-1
Navy	1-0	1-0		
Nevada	11-3	5-0	6-2	0-1
New Mexico State	11-2	7-0	4-2	
Nicholls	1-0		1-0	
Northern Arizona	3-0	2-0	1-0	
Northern New Mexico	4-0	4-0		
Oklahoma	1-1	1-0	0-1	
Old Dominion	1-0			1-0
Oregon State	0-1		0-1	
Pepperdine	1-0		1-0	
Prairie View A&M	1-0	1-0		
Providence	1-0	1-0		
Rice	1-0	1-0		
Sacramento State	1-0	1-0		
Saint Mary's	1-0	1-0		
Sam Houston State	1-0		1-0	
San Diego	1-0	1-0		
San Diego State	8-8	4-1	3-5	1-2
San Jose State	8-3	4-1	3-2	1-0
SMU	1-0	1-0		
South Carolina State	1-0	1-0		
Southern Utah	0-2	0-1	0-1	
St. Joseph's	0-1	0-1		
Stephen F. Austin	1-1	1-0		0-1
Tarleton State	1-0	1-0		
TCU	0-1	0-1		
Texas A&M-Commerce	2-0	1-0	1-0	
Texas State	1-0	1-0		
Texas Southern	1-0	1-0		
Texas Tech	1-2	1-0	0-1	0-1
Tulsa	0-1	0-1		
UC Irvine	1-0	1-0		
UC Riverside	1-0	1-0		
UNLV	4-10	2-4	2-6	
Utah State	14-0	6-0	8-0	
UTEP	5-0	4-0	1-0	
Washington	0-1		0-1	
West Virginia	0-1			0-1
Western Michigan	1-0	1-0		
Western New Mexico	2-0	2-0		
Wichita State	1-0	1-0		
Wyoming	5-8	2-4	3-3	0-1
	152-84	97-26	48-43	7-15





NAHAWA DIARRA BERTHE

G | 5-9 | JR | Barcelona, Spain (Odessa College)



PPG	FG %	3PT %	FT %	RPG	APG	SPG	BPG	MPG
1.4	.229	.000	.667	1.4	1.2	0.6	0.0	10.5

NOTEWORTHY

- » First season at the DI level after spending past two seasons at Odessa
- » Started all 25 games for the Wranglers last season, averaging 29.6 minutes per game, 10.8 points per game, 4.2 rebounds per game, 2.6 assists per game and 2.3 steals per game
- » Scored in double figures in 16 games and recorded five or more rebounds in nine games

GAME-BY-GAME STATISTICS

Opponent	Date	GS	MIN	Total		3-Pointers		Free throws		Rebounds										
				FG-FGA	PCT	3FG-3FGA	PCT	FT-FTA	PCT	OFF	DEF	TOT	AVG	PF	A	TO	BLK	STL	PTS	AVG
Texas Southern	11/06/2023		08:14	0-2	.000	0-0	.000	0-0	.000	1	1	2	2.0	0	2	2	0	0	0	0.0
Tex. A&M-Commerce	11/15/2023		13:03	0-3	.000	0-1	.000	0-0	.000	0	0	0	1.0	2	1	0	0	1	0	0.0
vs Montana St.	11/23/2023		11:09	0-2	.000	0-1	.000	0-2	.000	0	1	1	1.0	0	1	0	0	1	0	0.0
vs Georgia Tech	11/24/2023		18:41	3-5	.600	0-0	.000	0-0	.000	1	3	4	1.8	2	0	2	0	0	6	1.5
Eastern Ill.	11/28/2023		04:16	0-2	.000	0-2	.000	0-0	.000	0	0	0	1.4	1	0	0	0	0	0	1.2
New Mexico St.	12/02/2023		11:30	1-2	.500	0-1	.000	2-2	1.000	1	1	2	1.5	1	0	2	0	0	4	1.7
Mississippi Val.	12/04/2023		21:03	2-6	.333	0-3	.000	0-0	.000	1	1	2	1.6	0	4	0	0	2	4	2.0
Southern Utah	12/07/2023		08:07	0-1	.000	0-0	.000	0-0	.000	0	0	0	1.4	1	1	1	0	1	0	1.8
Hampton	12/10/2023		05:35	1-2	.500	0-0	.000	0-0	.000	0	1	1	1.3	0	1	0	0	0	2	1.8
Western N.M.	12/17/2023	*	23:18	0-3	.000	0-0	.000	2-2	1.000	2	1	3	1.5	1	5	3	0	4	2	1.8
at Gonzaga	12/22/2023		05:52	1-4	.250	0-2	.000	0-0	.000	0	1	1	1.5	0	0	0	0	0	2	1.8
at Nevada	12/30/2023		02:50	0-0	.000	0-0	.000	0-0	.000	0	0	0	1.3	0	2	0	0	0	0	1.7
Boise St.	01/06/2024		06:46	0-3	.000	0-2	.000	0-0	.000	0	0	0	1.2	0	0	0	0	0	0	1.5
at Colorado St.	01/13/2024		06:09	0-0	.000	0-0	.000	0-0	.000	1	2	3	1.4	0	0	0	0	0	0	1.4
Totals		1	146:33	8-35	.229	0-12	.000	4-6	.667	7	12	19	1.4	8	17	10	0	9	20	1.4

TOP PERFORMANCES

Points	Season MW	6, Georgia Tech (11/24)
	Career	6, Georgia Tech (11/24)
FGM	Season MW	3, Georgia Tech (11/24)
	Career	3, Georgia Tech (11/24)
FGA	Season MW	6, Mississippi Valley (12/4)
	Career	3, Boise State (1/6)
	Career	6, Mississippi Valley (12/4)
3PT FGM	Season MW	
	Career	
3PT FGA	Season MW	3, Mississippi Valley (12/4)
	Career	2, Boise State (1/6)
	Career	3, Mississippi Valley (12/4)
FTM	Season MW	2, 2x
	Career	2, 2x
FTA	Season MW	2, 3x
	Career	2, 3x
Reb.	Season MW	4, Georgia Tech (11/24)
	Career	3, Colorado State (1/13)
	Career	4, Georgia Tech (11/24)
Asts.	Season MW	5, Western N.M. (12/17)
	Career	2, Nevada (12/30)
	Career	5, Western N.M. (12/17)
Blocks	Season MW	
	Career	
Steals	Season MW	4, Western N.M. (12/17)
	Career	4, Western N.M. (12/17)
TO	Season MW	0, 9x
	Career	0, 3x
	Career	0, 9x
Min.	Season MW	23, Western N.M. (12/17)
	Career	6, Boise State (1/6)
	Career	23, Western N.M. (12/17)

PRODUCTION TRACKER

2023-24 Career

- Double-Double
- Scored 10+ pts
- Scored 20+ pts
- 10+ reb
- 3+ 3-pt

CAREER STATISTICS

				Field Goals		3-Point		F-Throws		Rebounds				Scoring						
SEASON	TEAM	GP-GS	MIN/AVG	FG-FGA	FG%	3FG-3FGA	3FG%	FT-FTA	FT%	OFF	DEF	TOT	AVG	PF-FO	A	TO	BLK	STL	PTS	AVG
2023-24	UNM	14-1	147/10.5	8-35	.229	0-12	.000	4-6	.667	7	12	19	1.4	8-0	17	10	0	9	20	1.4
TOTAL		14-1	147/10.5	8-35	.229	0-12	.000	4-6	.667	7	12	19	1.4	8-0	17	10	0	9	20	1.4

#2

NATALIA CHAVEZ

G | 5-10 | R-FR | Cochiti Pueblo, N.M. (Volcano Vista HS)



PPG	FG %	3PT %	FT %	RPG	APG	SPG	BPG	MPG
1.3	.235	.154	--	1.0	0.4	0.4	0.0	7.1

NOTEWORTHY

- REDSHIRTED LAST SEASON
- » Named the 1-5A District Player of the Year in 2019-20 and 2020-21, while also earning first team all-state and first team all-metro during that time span
  - » Reached the 1,000-point career milestone in 2021
  - » Was up for an ESPY award for her game-winning half-court shot to win the 5A title
  - »Majoring in business administration

GAME-BY-GAME STATISTICS

Opponent	Date	GS	MIN	Total		3-Pointers		Free throws		Rebounds				PF				PTS	AVG
				FG-FGA	PCT	3FG-3FGA	PCT	FT-FTA	PCT	OFF	DEF	TOT	AVG	A	TO	BLK	STL		
Texas Southern	11/06/2023		03:02	0-1	.000	0-1	.000	0-0	.000	0	0	0	0.0	0	0	0	0	0	0.0
Tex. A&M-Commerce	11/15/2023		04:46	0-0	.000	0-0	.000	0-0	.000	0	0	0	0.0	0	0	0	0	0	0.0
vs Montana St.	11/23/2023		03:12	0-1	.000	0-1	.000	0-0	.000	0	0	0	0.0	0	1	1	0	0	0.0
New Mexico St.	12/02/2023		06:40	0-0	.000	0-0	.000	0-0	.000	0	0	0	0.0	0	0	0	1	0	0.0
Mississippi Val.	12/04/2023		05:55	0-1	.000	0-1	.000	0-0	.000	0	0	0	0.0	0	1	1	0	0	0.0
Southern Utah	12/07/2023		10:00	0-3	.000	0-2	.000	0-0	.000	0	3	3	0.5	0	0	0	0	0	0.0
Hampton	12/10/2023		08:56	1-4	.250	1-4	.250	0-0	.000	0	3	3	0.9	2	0	0	0	3	0.4
Western N.M.	12/17/2023		14:01	3-7	.429	1-4	.250	0-0	.000	0	2	2	1.0	0	1	3	0	2	1.3
Totals		0	56:32	4-17	.235	2-13	.154	0-0	.000	0	8	8	1.0	2	3	5	0	3	1.3

TOP PERFORMANCES

Points	Season MW	7, Western N.M. (12/17)
	Career	7, Western N.M. (12/17)
FGM	Season MW	3, Western N.M. (12/17)
	Career	3, Western N.M. (12/17)
FGA	Season MW	7, Western N.M. (12/17)
	Career	7, Western N.M. (12/17)
3PT FGM	Season MW	1, 2x
	Career	1, 2x
3PT FGA	Season MW	4, 2x
	Career	4, 2x
FTM	Season MW	
	Career	
FTA	Season MW	
	Career	
Reb.	Season MW	3, 2x
	Career	3, 2x
Asts.	Season MW	1, 3x
	Career	1, 3x
Blocks	Season MW	
	Career	
Steals	Season MW	2, Western N.M. (12/17)
	Career	2, Western N.M. (12/17)
TO	Season MW	0, 5x
	Career	0, 5x
Min.	Season MW	14, Western N.M. (12/17)
	Career	14, Western N.M. (12/17)

PRODUCTION TRACKER

2023-24 Career

- Double-Double
- Scored 10+ pts
- Scored 20+ pts
- 10+ reb
- 3+ 3-pt

CAREER STATISTICS

				Field Goals		3-Point		F-Throws		Rebounds										Scoring	
SEASON	TEAM	GP-GS	MIN/AVG	FG-FGA	FG%	3FG-3FGA	3FG%	FT-FTA	FT%	OFF	DEF	TOT	AVG	PF-FO	A	TO	BLK	STL	PTS	AVG	
2023-24	UNM	8-0	57/7.1	4-17	.235	2-13	.154	0-0	.000	0	8	8	1.0	2-0	3	5	0	3	10	1.3	
TOTAL		8-0	57/7.1	4-17	.235	2-13	.154	0-0	.000	0	8	8	1.0	2-0	3	5	0	3	10	1.3	

#3

NYAH WILSON

G | 5-8 | JR | Dallas, Texas (Syracuse)



PPG	FG %	3PT %	FT %	RPG	APG	SPG	BPG	MPG
12.9	.377	.356	.756	4.4	1.4	1.1	0.1	29.6

NOTEWORTHY

- » Team-high 4 games scoring 20+ points, 11 games 10+ points including last 4 games
- » UNM is 8-3 when Wilson reaches double figures
- » Appeared in 20 games as a sophomore and 20 games with one start as a freshman at Syracuse
- » Graduated from Duncanville High School and was a four-star recruit by ESPN HoopGurlz, a McDonald’s All-America nominee and was on the Terrific 25 rankings as a sophomore

TOP PERFORMANCES

Points	Season	22, Texas A&M-Com.(11/15)
	MW	21, Nevada (12/30)
	Career	22, Texas A&M-Com.(11/15)
FGM	Season	9, Texas A&M-Com. (11/15)
	MW	7, Colorado State (1/13)
	Career	9, Texas A&M-Com. (11/15)
FGA	Season	20, Eastern Illinois (11/28)
	MW	12, 2x
	Career	20, Eastern Illinois (11/28)
3PT FGM	Season	4, Texas Southern (11/6)
	MW	3, Boise State (1/6)
	Career	4, Texas Southern (11/6)
3PT FGA	Season	9, Mississippi Valley (12/4)
	MW	4, 2x
	Career	9, Mississippi Valley (12/4)
FTM	Season	9, 2x
	MW	9, Nevada (12/30)
	Career	9, 2x
FTA	Season	12, Nevada (12/30)
	MW	12, Nevada (12/30)
	Career	12, Nevada (12/30)
Reb.	Season	11, Southern Utah (12/7)
	MW	8, Nevada (12/30)
	Career	11, Southern Utah (12/7)
Asts.	Season	3, 3x
	MW	3, 2x
	Career	4, Cornell (12/8/21)
Blocks	Season	1, Nevada (12/30)
	MW	1, Nevada (12/30)
	Career	1, Nevada (12/30)
Steals	Season	3, Utah State (1/10)
	MW	3, Utah State (1/10)
	Career	3, Utah State (1/10)
TO	Season	0, 2x
	MW	0, Utah State (1/10)
	Career	0, 28x
Min.	Season	40, Eastern Illinois (11/28)
	MW	35, 2x
	Career	40, Eastern Illinois (11/28)

GAME-BY-GAME STATISTICS

Opponent	Date	GS	MIN	Total		3-Pointers		Free throws		Rebounds				PF	A	TO	BLK	STL	PTS	AVG
				FG-FGA	PCT	3FG-3FGA	PCT	FT-FTA	PCT	OFF	DEF	TOT	AVG							
Texas Southern	11/06/2023	*	32:08	5-8	.625	4-4	1.000	6-7	.857	1	3	4	4.0	2	3	3	0	1	20	20.0
at Pepperdine	11/09/2023	*	29:20	3-10	.300	0-2	.000	2-2	1.000	0	3	3	3.5	4	2	1	0	0	8	14.0
Tarleton St.	11/12/2023	*	33:25	4-11	.364	0-1	.000	8-9	.889	0	9	9	5.3	1	2	1	0	0	16	14.7
Tex. A&M-Commerce	11/15/2023	*	27:42	9-13	.692	1-1	1.000	3-7	.429	0	2	2	4.5	3	0	5	0	0	22	16.5
vs Montana St.	11/23/2023	*	20:43	2-9	.222	0-2	.000	2-3	.667	1	1	2	4.0	4	1	0	0	2	6	14.4
vs Georgia Tech	11/24/2023	*	34:56	4-16	.250	0-3	.000	9-10	.900	0	3	3	3.8	2	0	1	0	1	17	14.8
Eastern Ill.	11/28/2023	*	40:08	7-20	.350	1-5	.200	6-6	1.000	3	4	7	4.3	2	1	2	0	1	21	15.7
New Mexico St.	12/02/2023	*	24:19	5-15	.333	1-2	.500	2-3	.667	1	2	3	4.1	4	0	3	0	1	13	15.4
Mississippi Val.	12/04/2023	*	29:58	5-16	.313	3-9	.333	1-2	.500	1	4	5	4.2	1	2	3	0	1	14	15.2
Southern Utah	12/07/2023	*	31:35	2-13	.154	0-2	.000	1-2	.500	5	6	11	4.9	1	2	2	0	1	5	14.2
Hampton	12/10/2023	*	10:19	0-3	.000	0-2	.000	0-0	.000	0	2	2	4.6	3	0	1	0	0	0	12.9
Western N.M.	12/17/2023	*	21:18	0-4	.000	0-1	.000	5-8	.625	1	3	4	4.6	1	0	1	0	2	5	12.3
at Gonzaga	12/22/2023	*	33:20	3-10	.300	0-1	.000	1-1	1.000	2	3	5	4.6	3	0	3	0	2	7	11.8
at Nevada	12/30/2023	*	35:05	6-12	.500	0-0	.000	9-12	.750	1	7	8	4.9	1	3	2	1	0	21	12.5
Boise St.	01/06/2024	*	32:45	4-8	.500	3-4	.750	0-0	.000	0	2	2	4.7	4	2	3	0	2	11	12.4
Utah St.	01/10/2024	*	30:11	6-12	.500	2-4	.500	2-2	1.000	0	0	0	4.4	3	3	0	0	3	16	12.6
at Colorado St.	01/13/2024	*	35:37	7-11	.636	1-2	.500	2-4	.500	1	3	4	4.4	4	2	5	0	2	17	12.9
Totals			17 502:48	72-191	.377	16-45	.356	59-78	.756	17	57	74	4.4	43	23	36	1	19	219	12.9

PRODUCTION TRACKER

2023-24 Career

Double-Double		
Scored 10+ pts	11	11
Scored 20+ pts	4	4
10+ reb	1	1
3+ 3-pt	3	3

CAREER STATISTICS

				Field Goals		3-Point		F-Throws		Rebounds				Scoring						
SEASON	TEAM	GP-GS	MIN/AVG	FG-FGA	FG%	3FG-3FGA	3FG%	FT-FTA	FT%	OFF	DEF	TOT	AVG	PF-FO	A	TO	BLK	STL	PTS	AVG
2021-22	SU	20-1	179/9.0	16-46	.348	1-9	.111	3-9	.333	3	9	12	0.6	16-0	16	13	0	7	36	1.8
2022-23	SU	20-0	115/5.7	12-22	.545	0-2	.000	8-11	.727	4	12	16	0.8	12-0	8	9	0	7	32	1.6
2023-24	UNM	17-17	503/29.6	72-191	.377	16-45	.356	59-78	.756	17	57	74	4.4	43-0	23	36	1	19	219	12.9
TOTAL FOR UNM		17-17	503/29.6	72-191	.377	16-45	.356	59-78	.756	17	57	74	4.4	43-0	23	36	1	19	219	12.9
TOTAL		57-18	797/14.0	100-259	.386	17-56	.304	70-98	.714	24	78	102	1.8	71-0	47	58	1	33	287	5.0

#4

# GIANNA MCMANAMAN

PG | 5-7 | FR | Chapel Hill, N.C. (Northwood HS)



PPG	FG %	3PT %	FT %	RPG	APG	SPG	BPG	MPG
--	--	--	--	--	--	--	--	--

## NOTEWORTHY

- » Won conference championships in 2019-20, 2020-21 and 2021-22 and won a state championship in 2021-22
- » Averaged 12 ppg, 5 apg, 4 rpg and shot 43 percent from three-point range in high school
- » Is the fourth member of her family to attend UNM, joining her mother (Lia McManaman), grandfather (Robert Sanchez), grandmother (Bonnie Sanchez)
- » Majoring in exercise science

## GAME-BY-GAME STATISTICS

### TOP PERFORMANCES

Points	Season MW Career
FGM	Season MW Career
FGA	Season MW Career
3PT FGM	Season MW Career
3PT FGA	Season MW Career
FTM	Season MW Career
FTA	Season MW Career
Reb.	Season MW Career
Asts.	Season MW Career
Blocks	Season MW Career
Steals	Season MW Career
TO	Season MW Career
Min.	Season MW Career

### PRODUCTION TRACKER

2023-24 Career

Double-Double  
Scored 10+ pts  
Scored 20+ pts  
10+ reb  
3+ 3-pt

## CAREER STATISTICS

#5

LARA LANGERMANN

G | 5-7 | FR | Breckerfeld, Germany (Theodor-Heuss-Gymnasium Hagen)



PPG	FG %	3PT %	FT %	RPG	APG	SPG	BPG	MPG
2.2	.245	.184	.667	1.4	0.9	0.2	0.0	18.0

NOTEWORTHY

- » Recently played for the U18 and U20 German National Team over the summer.
- » Played for VfI Viactiv AstroLadies Bochum, a Division 2 team in the Damen Basketballbundesliga, the BasketGirls Ruhr in the Weibliche Nachwuchsbundesliga (WNBL), a first German under 18 league, and for VfI Viactiv AstroLadies Bochum in the Damen Basketballbundesliga, as well as Herner TC.
- » Majoring in exercise science

TOP PERFORMANCES

Points	Season	9, Pepperdine (11/9)
	MW	3, Utah State (1/10)
	Career	9, Pepperdine (11/9)
FGM	Season	3, Pepperdine (11/9)
	MW	1, 2x
	Career	3, Pepperdine (11/9)
FGA	Season	7, 2x
	MW	4, Utah State (1/10)
	Career	7, 2x
3PT FGM	Season	2, 2x
	MW	1, Utah State (1/10)
	Career	2, 2x
3PT FGA	Season	6, Mississippi Valley (12/4)
	MW	4, Utah State (1/10)
	Career	6, Mississippi Valley (12/4)
FTM	Season	2, Western N.M. (12/17)
	MW	
	Career	2, Western N.M. (12/17)
FTA	Season	3, Pepperdine (11/9)
	MW	
	Career	3, Pepperdine (11/9)
Reb.	Season	3, 3x
	MW	1, 3x
	Career	3, 3x
Asts.	Season	3, Mississippi Valley (12/4)
	MW	1, Boise State (1/6)
	Career	3, Mississippi Valley (12/4)
Blocks	Season	
	MW	
	Career	
Steals	Season	1, 3x
	MW	
	Career	1, 3x
TO	Season	0, 8x
	MW	0, 2x
	Career	0, 8x
Min.	Season	32, New Mexico St. (12/2)
	MW	15, Utah State (1/10)
	Career	32, New Mexico St. (12/2)

GAME-BY-GAME STATISTICS

Opponent	Date	GS	MIN	Total		3-Pointers		Free throws		Rebounds										
				FG-FGA	PCT	3FG-3FGA	PCT	FT-FTA	PCT	OFF	DEF	TOT	AVG	PF	A	TO	BLK	STL	PTS	AVG
Texas Southern	11/06/2023		12:36	0-1	.000	0-1	.000	0-0	.000	0	1	1	1.0	1	0	3	0	1	0	0.0
at Pepperdine	11/09/2023		22:29	3-6	.500	2-4	.500	1-3	.333	0	3	3	2.0	1	2	0	0	1	9	4.5
Tarleton St.	11/12/2023		19:02	0-3	.000	0-2	.000	0-0	.000	1	1	2	2.0	1	0	0	0	0	0	3.0
Tex. A&M-Commerce	11/15/2023		14:53	1-2	.500	1-1	1.000	0-0	.000	0	1	1	1.8	3	1	3	0	0	3	3.0
vs Montana St.	11/23/2023		24:12	1-6	.167	0-5	.000	1-1	1.000	0	1	1	1.6	0	1	2	0	0	3	3.0
vs Georgia Tech	11/24/2023		00:35	0-0	.000	0-0	.000	0-0	.000	0	0	0	1.3	0	0	0	0	0	0	2.5
Eastern Ill.	11/28/2023		06:44	0-0	.000	0-0	.000	0-0	.000	0	0	0	1.1	0	0	0	0	0	0	2.1
New Mexico St.	12/02/2023		32:18	2-7	.286	2-5	.400	0-0	.000	0	2	2	1.3	1	1	0	0	0	6	2.6
Mississippi Val.	12/04/2023	*	31:11	1-7	.143	0-6	.000	0-0	.000	0	3	3	1.4	2	3	1	0	1	2	2.6
Southern Utah	12/07/2023	*	30:38	1-4	.250	0-0	.000	0-0	.000	0	3	3	1.6	4	2	1	0	0	2	2.5
Hampton	12/10/2023	*	29:09	2-4	.500	1-3	.333	0-0	.000	0	2	2	1.6	4	2	3	0	0	5	2.7
Western N.M.	12/17/2023		15:28	0-1	.000	0-1	.000	2-2	1.000	0	1	1	1.6	1	2	0	0	0	2	2.7
at Gonzaga	12/22/2023		20:14	0-5	.000	0-4	.000	0-0	.000	0	1	1	1.5	0	0	1	0	0	0	2.5
at Nevada	12/30/2023		12:23	1-1	1.000	0-0	.000	0-0	.000	0	0	0	1.4	0	0	0	0	0	2	2.4
Boise St.	01/06/2024		11:20	0-1	.000	0-1	.000	0-0	.000	0	1	1	1.4	0	1	1	0	0	0	2.3
Utah St.	01/10/2024		15:30	1-4	.250	1-4	.250	0-0	.000	0	1	1	1.4	1	0	2	0	0	3	2.3
at Colorado St.	01/13/2024		06:37	0-1	.000	0-1	.000	0-0	.000	1	0	1	1.4	0	0	0	0	0	0	2.2
Totals			3 305:19	13-53	.245	7-38	.184	4-6	.667	2	21	23	1.4	19	15	17	0	3	37	2.2

PRODUCTION TRACKER

2023-24 Career

Double-Double  
 Scored 10+ pts  
 Scored 20+ pts  
 10+ reb  
 3+ 3-pt

CAREER STATISTICS

				Field Goals		3-Point		F-Throws		Rebounds									Scoring	
SEASON	TEAM	GP-GS	MIN/AVG	FG-FGA	FG%	3FG-3FGA	3FG%	FT-FTA	FT%	OFF	DEF	TOT	AVG	PF-FO	A	TO	BLK	STL	PTS	AVG
2023-24	UNM	17-3	305/18.0	13-53	.245	7-38	.184	4-6	.667	2	21	23	1.4	19-0	15	17	0	3	37	2.2
TOTAL		17-3	305/18.0	13-53	.245	7-38	.184	4-6	.667	2	21	23	1.4	19-0	15	17	0	3	37	2.2





PARIS LAURO  
F | 6-1 | FR | Dallas, Texas (Highland Park HS)



PPG	FG %	3PT %	FT %	RPG	APG	SPG	BPG	MPG
4.0	.472	.429	.500	1.9	0.2	0.2	0.3	10.1

**NOTEWORTHY**

- » Named MW Freshman of the Week on Dec. 26
- » Averaged 17.3 ppg, 8.3 rpg, 2.0 bpg her junior season and 23.6 ppg, 8.0 rpg and 1.8 bpg and was named the District 7-6A Most Valuable Player her senior season.
- » Named to the TABC 5A All-Region Team, named Offensive Player of the Year for District 13-5A and earned academic all-district her junior year
- » Majoring in exercise science

GAME-BY-GAME STATISTICS

Opponent	Date	GS	MIN	Total		3-Pointers		Free throws		Rebounds				PF A TO BLK STL PTS AVG						
				FG-FGA	PCT	3FG-3FGA	PCT	FT-FTA	PCT	OFF	DEF	TOT	AVG	PF	A	TO	BLK	STL	PTS	AVG
Texas Southern	11/06/2023		01:25	0-0	.000	0-0	.000	0-0	.000	0	0	0	0.0	1	0	0	0	0	0	0.0
vs Montana St.	11/23/2023		01:30	0-0	.000	0-0	.000	0-0	.000	0	0	0	0.0	0	0	0	0	0	0	0.0
Mississippi Val.	12/04/2023		02:45	1-1	1.000	0-0	.000	0-0	.000	0	2	2	0.7	1	0	0	0	0	2	0.7
Southern Utah	12/07/2023		05:30	1-2	.500	0-0	.000	0-0	.000	0	0	0	0.5	0	0	0	1	0	2	1.0
Hampton	12/10/2023		09:26	2-2	1.000	0-0	.000	1-2	.500	2	0	2	0.8	0	0	0	0	1	5	1.8
Western N.M.	12/17/2023		19:34	5-6	.833	4-5	.800	0-0	.000	0	2	2	1.0	2	0	2	0	1	14	3.8
at Gonzaga	12/22/2023		21:44	3-8	.375	3-8	.375	0-0	.000	1	3	4	1.4	0	1	0	1	0	9	4.6
at Nevada	12/30/2023		19:09	3-6	.500	1-3	.333	0-0	.000	0	3	3	1.6	1	0	0	0	0	7	4.9
Boise St.	01/06/2024		07:49	0-2	.000	0-0	.000	0-0	.000	0	0	0	1.4	0	0	0	1	0	0	4.3
Utah St.	01/10/2024		11:22	2-7	.286	1-3	.333	0-0	.000	1	5	6	1.9	2	1	1	0	0	5	4.4
at Colorado St.	01/13/2024		10:56	0-2	.000	0-2	.000	0-0	.000	0	2	2	1.9	1	0	1	0	0	0	4.0
Totals		0	111:10	17-36	.472	9-21	.429	1-2	.500	4	17	21	1.9	8	2	4	3	2	44	4.0

TOP PERFORMANCES

Points	Season	14, Western N.M. (12/17)
	MW	7, Nevada (12/30)
	Career	14, Western N.M. (12/17)
FGM	Season	5, Western N.M. (12/17)
	MW	3, Nevada (12/30)
	Career	5, Western N.M. (12/17)
FGA	Season	8, Gonzaga (12/22)
	MW	7, Utah State (1/10)
	Career	8, Gonzaga (12/22)
3PT FGM	Season	4, Western N.M. (12/17)
	MW	1, 2x
	Career	4, Western N.M. (12/17)
3PT FGA	Season	8, Gonzaga (12/22)
	MW	3, 2x
	Career	8, Gonzaga (12/22)
FTM	Season	1, Hampton (12/10)
	MW	
	Career	1, Hampton (12/10)
FTA	Season	2, Hampton (12/10)
	MW	
	Career	2, Hampton (12/10)
Reb.	Season	6, Utah State (1/10)
	MW	6, Utah State (1/10)
	Career	6, Utah State (1/10)
Asts.	Season	1, 2x
	MW	1, Utah State (1/10)
	Career	1, 2x
Blocks	Season	1, 3x
	MW	1, Boise State (1/6)
	Career	1, 3x
Steals	Season	1, 2x
	MW	
	Career	1, 2x
TO	Season	0, 8x
	MW	0, 2x
	Career	0, 8x
Min.	Season	21, Gonzaga (12/22)
	MW	19, Nevada (12/30)
	Career	21, Gonzaga (12/22)

PRODUCTION TRACKER

2023-24 Career

Double-Double		
Scored 10+ pts	1	1
Scored 20+ pts		
10+ reb		
3+ 3-pt	2	2

CAREER STATISTICS

				Field Goals		3-Point		F-Throws		Rebounds										Scoring	
SEASON	TEAM	GP-GS	MIN	AVG	FG-FGA	FG%	3FG-3FGA	3FG%	FT-FTA	FT%	OFF	DEF	TOT	AVG	PF-FO	A	TO	BLK	STL	PTS	AVG
2023-24	UNM	11-0	111	10.1	17-36	.472	9-21	.429	1-2	.500	4	17	21	1.9	8-0	2	4	3	2	44	4.0
TOTAL		11-0	111	10.1	17-36	.472	9-21	.429	1-2	.500	4	17	21	1.9	8-0	2	4	3	2	44	4.0

#12

ANIYAH AUGMON  
 G | 5-8 | JR | San José, Calif. (Woodside Priory School)



PPG	FG %	3PT %	FT %	RPG	APG	SPG	BPG	MPG
11.6	.411	.200	.623	5.6	4.3	2.3	0.3	32.9

NOTEWORTHY

- » 8 steals at Pepperdine tied for the second most by a Lobo in program history, which was last done on Feb. 8, 1998.
- » 22 games with multiple steals and 40 games with a steal in her 3 years
- » Scored in double figures 12 times this season, including last 4 and 5 of last 6 games
- » UNM is 8-4 when Augmon reaches double figures this season
- » Averaged 21.2 minutes per game, 7.1 points per game, 4.4 rebounds per game, 1.9 assists per game, 0.7 steals per game, 0.2 blocks per game and shot 44.0% from the floor last season
- » Scored in double figures in 8 conference games
- » Career-high 18 points against UNLV after having a then-career-high 11 against Nevada
- » Perfect 3-3 from three at UNLV, perfect 6-6 from free-throw line against Boise State
- » First career double-double at UNLV with a team-high 18 points and team-high 10 rebounds. Second came at Utah State with 12 points and career-high 13 rebounds and third came at Air Force with team-high 17 points and team-high 11 rebounds
- » 10 or more rebounds in 4 games
- » Played in 33 games with 1 start (at Houston) as a freshman
- » Liberal arts major

GAME-BY-GAME STATISTICS

Opponent	Date	GS	MIN	Total		3-Pointers		Free throws		Rebounds				PF	A	TO	BLK	STL	PTS	AVG
				FG-FGA	PCT	3FG-3FGA	PCT	FT-FTA	PCT	OFF	DEF	TOT	AVG							
Texas Southern	11/06/2023	*	30:37	7-11	.636	1-2	.500	2-2	1.000	0	6	6	6.0	0	6	5	0	0	17	17.0
at Pepperdine	11/09/2023	*	36:40	7-17	.412	0-3	.000	2-4	.500	1	8	9	7.5	2	3	4	0	8	16	16.5
Tarleton St.	11/12/2023	*	26:47	1-6	.167	0-1	.000	0-0	.000	0	3	3	6.0	3	5	3	1	3	2	11.7
Tex. A&M-Commerce	11/15/2023	*	35:35	6-11	.545	0-1	.000	4-4	1.000	2	2	4	5.5	2	2	5	0	0	16	12.8
vs Montana St.	11/23/2023	*	36:27	5-11	.455	0-1	.000	1-2	.500	2	4	6	5.6	1	5	6	0	2	11	12.4
vs Georgia Tech	11/24/2023	*	33:02	6-16	.375	0-4	.000	5-8	.625	0	4	4	5.3	2	4	6	0	4	17	13.2
Eastern Ill.	11/28/2023	*	44:10	4-16	.250	1-5	.200	1-2	.500	3	5	8	5.7	1	6	6	2	3	10	12.7
New Mexico St.	12/02/2023	*	34:12	3-10	.300	0-3	.000	4-5	.800	2	4	6	5.8	2	3	5	0	5	10	12.4
Mississippi Val.	12/04/2023	*	22:13	3-8	.375	1-4	.250	0-4	.000	2	2	4	5.6	2	2	1	1	0	7	11.8
Southern Utah	12/07/2023	*	22:43	1-6	.167	0-1	.000	2-6	.333	0	3	3	5.3	1	0	4	0	0	4	11.0
Hampton	12/10/2023	*	33:19	4-9	.444	3-5	.600	0-0	.000	2	7	9	5.6	3	4	3	0	3	11	11.0
at Gonzaga	12/22/2023	*	32:28	3-7	.429	0-2	.000	2-2	1.000	3	4	7	5.8	2	6	1	0	0	8	10.8
at Nevada	12/30/2023	*	32:02	6-8	.750	0-1	.000	2-4	.500	0	4	4	5.6	2	2	3	0	0	14	11.0
Boise St.	01/06/2024	*	35:47	6-13	.462	1-4	.250	2-4	1.000	1	4	5	5.6	1	5	3	0	2	15	11.3
Utah St.	01/10/2024	*	35:20	4-9	.444	1-3	.333	4-6	.667	2	4	6	5.6	2	10	2	0	3	13	11.4
at Colorado St.	01/13/2024	*	35:48	6-17	.353	1-5	.200	2-2	1.000	1	5	6	5.6	3	6	7	0	4	15	11.6
Totals			16 527:10	72-175	.411	9-45	.200	33-53	.623	21	69	90	5.6	29	69	64	4	37	186	11.6

TOP PERFORMANCES

Points	Season	17, 2x
	MW	18, UNLV (1/14/23)
	Career	18, UNLV (1/14/23)
FGM	Season	7, 2x
	MW	7, San Diego St. (2/4/23)
	Career	7, 3x
FGA	Season	17, 2x
	MW	17, Colorado State (1/13)
	Career	17, 2x
3PT FGM	Season	3, Hampton (12/10)
	MW	3, UNLV (1/14/23)
	Career	3, 2x
3PT FGA	Season	5, 3x
	MW	5, Colorado State (1/13)
	Career	5, 3x
FTM	Season	5, Georgia Tech (11/24)
	MW	8, Nevada (2/11/23)
	Career	8, Nevada (2/11/23)
FTA	Season	8, Georgia Tech (11/24)
	MW	10, Air Force (2/23/23)
	Career	10, Air Force (2/23/23)
Reb.	Season	9, 2x
	MW	13, Utah State (1/28/23)
	Career	13, Utah State (1/28/23)
Asts.	Season	10, Utah State (1/10)
	MW	10, Utah State (1/10)
	Career	10, Utah State (1/10)
Blocks	Season	2, Eastern Illinois (11/28)
	MW	1, 5x
	Career	2, Eastern Illinois (11/28)
Steals	Season	8, Pepperdine (11/9)
	MW	4, Colorado State (1/13)
	Career	8, Pepperdine (11/9)
TO	Season	1, 2x
	MW	0, 13x
	Career	0, done 15x
Min.	Season	44, Eastern Illinois (11/28)
	MW	35, 3x
	Career	44, Eastern Illinois (11/28)

PRODUCTION TRACKER

2023-24 Career

Double-Double	1	4
Scored 10+ pts	12	20
Scored 20+ pts		
10+ reb		5
3+ 3-pt	1	2

CAREER STATISTICS

				Field Goals		3-Point		F-Throws		Rebounds								Scoring		
SEASON	TEAM	GP-GS	MIN/AVG	FG-FGA	FG%	3FG-3FGA	3FG%	FT-FTA	FT%	OFF	DEF	TOT	AVG	PF-FO	A	TO	BLK	STL	PTS	AVG
2021-22	UNM	33-1	312/9.5	15-35	.429	1-9	.111	15-23	.652	17	46	63	1.9	31-0	21	27	1	24	46	1.4
2022-23	UNM	31-2	657/21.2	77-175	.440	11-37	.297	54-77	.701	49	86	135	4.4	63-1	60	74	6	23	219	7.1
2023-24	UNM	16-16	527/32.9	72-175	.411	9-45	.200	33-53	.623	21	69	90	5.6	29-0	69	64	4	37	186	11.6
TOTAL		80-19	1496/18.7	164-385	.426	21-91	.231	102-153	.667	87	201	288	3.6	123-1	150	165	11	84	451	5.6

#14

HULDA JOAQUIM

F | 6-1 | SR | Maputo, Mozambique (Seward County CC)



PPG	FG %	3PT %	FT %	RPG	APG	SPG	BPG	MPG
1.2	.242	.000	.600	3.3	0.6	0.2	0.1	10.3

NOTEWORTHY

- » Second season with the Lobos
- » Averaged 6.2 minutes per game, 2.2 points per game, 1.4 rebounds per game, 0.3 steals per game and 0.5 blocks per game last season, playing in 13 games.
- » Scored a season-high nine points against Western New Mexico, while also having season-high three steals, two blocks and six rebounds
- » Majoring in business administration

GAME-BY-GAME STATISTICS

Opponent	Date	GS	MIN	Total		3-Pointers		Free throws		Rebounds				Points			
				FG-FGA	PCT	3FG-3FGA	PCT	FT-FTA	PCT	OFF	DEF	TOT	AVG	PF	A	TO	BLK
Texas Southern	11/06/2023		09:30	1-4	.250	0-0	.000	0-0	.000	3	2	5	5.0	0	0	1	0
at Pepperdine	11/09/2023		13:29	2-3	.667	0-0	.000	0-0	.000	2	0	2	3.5	1	0	0	0
Tarleton St.	11/12/2023		23:11	3-4	.750	0-0	.000	0-0	.000	3	3	6	4.3	2	2	2	0
Tex. A&M-Commerce	11/15/2023		07:49	0-0	.000	0-0	.000	0-0	.000	1	2	3	4.0	0	0	0	0
vs Montana St.	11/23/2023		14:04	0-0	.000	0-0	.000	1-3	.333	2	1	3	3.8	0	0	0	1
vs Georgia Tech	11/24/2023		15:17	0-1	.000	0-0	.000	0-0	.000	2	2	4	3.8	0	0	0	0
Eastern Ill.	11/28/2023		13:56	0-2	.000	0-0	.000	2-2	1.000	1	2	3	3.7	2	0	1	0
New Mexico St.	12/02/2023		13:17	1-3	.333	0-0	.000	0-0	.000	3	4	7	4.1	2	1	0	0
Mississippi Val.	12/04/2023		11:06	0-4	.000	0-0	.000	0-0	.000	3	3	6	4.3	0	2	0	0
Southern Utah	12/07/2023		07:30	0-2	.000	0-0	.000	0-0	.000	1	0	1	4.0	0	0	0	1
Hampton	12/10/2023		01:05	0-1	.000	0-0	.000	0-0	.000	0	0	0	3.6	0	0	0	0
Western N.M.	12/17/2023		16:26	1-3	.333	0-1	.000	0-0	.000	1	5	6	3.8	0	4	2	1
at Gonzaga	12/22/2023		00:14	0-0	.000	0-0	.000	0-0	.000	0	0	0	3.5	0	0	0	0
Boise St.	01/06/2024		01:01	0-0	.000	0-0	.000	0-0	.000	1	0	1	3.4	0	0	0	0
Utah St.	01/10/2024		07:04	0-5	.000	0-0	.000	0-0	.000	2	3	5	3.5	0	0	0	1
at Colorado St.	01/13/2024		09:13	0-1	.000	0-0	.000	0-0	.000	0	1	1	3.3	1	1	1	0
Totals			0 164:12	8-33	.242	0-1	.000	3-5	.600	25	28	53	3.3	8	10	7	2

CAREER STATISTICS

		Field Goals		3-Point		F-Throws		Rebounds				Scoring	
SEASON	TEAM	GP-GS	MIN/AVG	FG-FGA	FG%	3FG-3FGA	3FG%	FT-FTA	FT%	OFF	DEF	TOT	AVG
2022-23	UNM	13-0	80/6.2	11-26	.423	2-6	.333	4-6	.667	9	9	18	1.4
2023-24	UNM	16-0	164/10.3	8-33	.242	0-1	.000	3-5	.600	25	28	53	3.3
TOTAL		29-0	245/8.4	19-59	.322	2-7	.286	7-11	.636	34	37	71	2.4

TOP PERFORMANCES

Points	Season	6, Tarleton St. (11/12)
	MW	5, Utah State (2/25/23)
	Career	9, Western N.M. (11/22/22)
FGM	Season	3, Tarleton St. (11/12)
	MW	2, Utah State (2/25/23)
	Career	4, Western N.M. (11/22/22)
FGA	Season	5, Utah State (1/10)
	MW	5, 2x
	Career	9, Western N.M. (11/22/22)
3PT FGM	Season	1, Utah State (2/25/23)
	MW	1, 2x
	Career	
3PT FGA	Season	1, Western N.M. (12/17)
	MW	2, Utah State (2/25/23)
	Career	2, Utah State (2/25/23)
FTM	Season	2, Eastern Illinois (11/28)
	MW	1, UNLV (1/14/23)
	Career	2, 2x
FTA	Season	3, Montana State (11/23)
	MW	2, UNLV (1/14/23)
	Career	3, Montana State (11/23)
Reb.	Season	7, New Mexico St. (12/2)
	MW	5, Utah State (1/10)
	Career	7, New Mexico St. (12/2)
Asts.	Season	4, Western N.M. (12/17)
	MW	1, 3x
	Career	4, Western N.M. (12/17)
Blocks	Season	1, 2x
	MW	2, Utah State (2/25/23)
	Career	2, 2x
Steals	Season	1, 3x
	MW	1, UNLV (1/14/23)
	Career	3, Western N.M. (11/22/22)
TO	Season	0, 11x
	MW	0, 8x
	Career	0, 22x
Min.	Season	23, Tarleton St. (11/12)
	MW	12, Utah State (2/25/23)
	Career	23, Tarleton St. (11/12)

PRODUCTION TRACKER

2023-24 Career

- Double-Double
- Scored 10+ pts
- Scored 20+ pts
- 10+ reb
- 3+ 3-pt

#15

JAELYN BATES

PG | 5-7 | SO | Albuquerque, N.M. (Volcano Vista HS)



PPG	FG %	3PT %	FT %	RPG	APG	SPG	BPG	MPG
3.5	.259	.238	.500	1.5	1.8	0.7	0.0	14.1

NOTEWORTHY

- » Averaged 10.1 minutes per game, 3.1 points per game, 1.3 assists per game, 0.4 steals per game, playing in 22 games last season
- » Scored in double figures in 4 games last season
- » Perfect 4-4 from 3 against S. Carolina State
- » 7 games with multiple assists, 8 games with at least 1 steal
- » Won back-to-back District 1-5A championships and won the 2019 and 2020 1-5A District tournament
- » Named first team all-district, first team all-metro, second team all-state, was named the District Tournament Player of the Game, District 1-5A Player of the Year and was named the Volcano Vista Winter Sports Female Athlete of the Year in 2019
- » Biochemistry major

GAME-BY-GAME STATISTICS

Opponent	Date	GS	MIN	Total		3-Pointers		Free throws		Rebounds				PF	A	TO	BLK	STL	PTS	AVG
				FG-FGA	PCT	3FG-3FGA	PCT	FT-FTA	PCT	OFF	DEF	TOT	AVG							
vs Montana St.	11/23/2023		03:33	1-1	1.000	1-1	1.000	0-0	.000	0	0	0	0.0	1	0	1	0	0	3	3.0
Mississippi Val.	12/04/2023		14:37	2-6	.333	1-4	.250	0-0	.000	0	0	0	0.0	2	2	1	0	2	5	4.0
Southern Utah	12/07/2023		21:27	1-3	.333	1-3	.333	0-0	.000	0	2	2	0.7	0	3	1	0	0	3	3.7
Hampton	12/10/2023		23:26	1-9	.111	1-8	.125	0-0	.000	1	5	6	2.0	2	4	1	0	2	3	3.5
Western N.M.	12/17/2023		16:42	2-6	.333	1-4	.250	2-4	.500	0	0	0	1.6	0	2	1	0	0	7	4.2
Utah St.	01/10/2024		04:40	0-2	.000	0-1	.000	0-0	.000	1	0	1	1.5	0	0	1	0	0	0	3.5
Totals		0	84:25	7-27	.259	5-21	.238	2-4	.500	2	7	9	1.5	5	11	6	0	4	21	3.5

TOP PERFORMANCES

Points	Season	7, Western N.M. (12/17)
	MW	11, Utah State (2/25/23)
	Career	16, SCSU (12/29/22)
FGM	Season	2, 2x
	MW	4, Utah State (2/25/23)
	Career	6, SCSU (12/29/22)
FGA	Season	9, Hampton (12/10)
	MW	6, Utah State (2/25/23)
	Career	15, Southern Utah (11/7/23)
3PT FGM	Season	1, 5x
	MW	3, Utah State (2/25/23)
	Career	4, SCSU (12/29/22)
3PT FGA	Season	8, Hampton (12/10)
	MW	5, Utah State (2/25/23)
	Career	9, Southern Utah (11/7/23)
FTM	Season	2, Western N.M. (12/17)
	MW	1, UNLV (1/14/23)
	Career	2, Western N.M. (12/17)
FTA	Season	4, Western N.M. (12/17)
	MW	2, 2x
	Career	4, Western N.M. (12/17)
Reb.	Season	6, Hampton (12/10)
	MW	3, UNLV (1/14/23)
	Career	6, Hampton (12/10)
Asts.	Season	4, Hampton (12/10)
	MW	3, 2x
	Career	8, Western N.M. (11/22/22)
Blocks	Season	
	MW	2, Utah State (2/25/23)
	Career	2, Utah State (2/25/23)
Steals	Season	2, 2x
	MW	1, 2x
	Career	2, 3x
TO	Season	1, 6x
	MW	0, 6x
	Career	0, 9x
Min.	Season	23, Hampton (12/10)
	MW	17, Wyoming (1/5/23)
	Career	33, Western N.M.(11/22/22)

PRODUCTION TRACKER

2023-24 Career

Double-Double	
Scored 10+ pts	4
Scored 20+ pts	
10+ reb	
3+ 3-pt	2

CAREER STATISTICS

				Field Goals		3-Point		F-Throws		Rebounds				Scoring						
SEASON	TEAM	GP-GS	MIN/AVG	FG-FGA	FG%	3FG-3FGA	3FG%	FT-FTA	FT%	OFF	DEF	TOT	AVG	PF-FO	A	TO	BLK	STL	PTS	AVG
2022-23	UNM	22-1	222/10.1	27-67	.403	13-41	.317	2-7	.286	1	19	20	0.9	15-0	29	21	3	9	69	3.1
2023-24	UNM	6-0	84/14.1	7-27	.259	5-21	.238	2-4	.500	2	7	9	1.5	5-0	11	6	0	4	21	3.5
TOTAL		28-1	306/10.9	34-94	.362	18-62	.290	4-11	.364	3	26	29	1.0	20-0	40	27	3	13	90	3.2

#21

MACKENZIE CURTIS

G | 5-9 | R-SO | Lakeside, Calif. (El Capitan HS)



PPG	FG %	3PT %	FT %	RPG	APG	SPG	BPG	MPG
2.7	.294	.308	.833	0.7	0.6	0.3	0.1	8.0

NOTEWORTHY

REDSHIRTED LAST SEASON

- » Finished in double figures in first college appearance
- » Played in 21 games, and averaged 5.9 minutes per game freshman season.
- » Scored in six games with a season-high 12 points and two assists against Northern New Mexico with season-high three, three-pointers
- » Averaged 22.2 points, 9.5 rebounds, 3.3 assists, 3.5 steals and 1.0 blocks per game in high school
- » Four-time team MVP, three-time league MVP, four-time San Diego Union Tribune Scholar-Athlete
- » Named First-Team All-CIF in 2020 and Second Team All-CIF in 2019
- » No. 1 scorer in San Diego for two years and No. 3 in California for scoring in the class of 2021
- » Education major

GAME-BY-GAME STATISTICS

Opponent	Date	GS	MIN	Total		3-Pointers		Free throws		Rebounds										
				FG-FGA	PCT	3FG-3FGA	PCT	FT-FTA	PCT	OFF	DEF	TOT	AVG	PF	A	TO	BLK	STL	PTS	AVG
vs Georgia Tech	11/24/2023		05:44	0-0	.000	0-0	.000	0-0	.000	0	0	0	0.0	1	0	0	0	0	0	0.0
Mississippi Val.	12/04/2023		05:21	0-0	.000	0-0	.000	2-2	1.000	0	1	1	0.5	0	0	1	1	0	2	1.0
Southern Utah	12/07/2023		07:41	1-2	.500	1-1	1.000	0-0	.000	0	2	2	1.0	0	0	0	0	0	3	1.7
Hampton	12/10/2023		21:01	3-11	.273	3-10	.300	2-2	1.000	0	0	0	0.8	1	4	2	0	1	11	4.0
Western N.M.	12/17/2023		11:30	1-2	.500	0-1	.000	0-0	.000	0	1	1	0.8	0	0	1	0	1	2	3.6
Boise St.	01/06/2024		01:23	0-0	.000	0-0	.000	0-0	.000	0	0	0	0.7	0	0	0	0	0	0	3.0
Utah St.	01/10/2024		03:14	0-2	.000	0-1	.000	1-2	.500	1	0	1	0.7	0	0	1	0	0	1	2.7
Totals		0	55:53	5-17	.294	4-13	.308	5-6	.833	1	4	5	0.7	2	4	5	1	2	19	2.7

TOP PERFORMANCES

Points	Season	11, Hampton (12/10)
	MW	3, Utah State (2/16/22)
	Career	12, N. N.M. (11/12/21)
FGM	Season	3, Hampton (12/10)
	MW	1, 2x
	Career	3, 2x
FGA	Season	11, Hampton (12/10)
	MW	4, Boise State (2/19/22)
	Career	11, Hampton (12/10)
3PT FGM	Season	3, Hampton (12/10)
	MW	1, Utah State (2/16/22)
	Career	3, 2x
3PT FGA	Season	10, Hampton (12/10)
	MW	2, Utah State (2/16/22)
	Career	10, Hampton (12/10)
FTM	Season	2, 2x
	MW	1, Utah State (2/16/22)
	Career	3, N. N.M. (11/12/21)
FTA	Season	2, 3x
	MW	2, 2x
	Career	4, N. N.M. (11/12/21)
Reb.	Season	2, Southern Utah (12/7)
	MW	1, 4x
	Career	3, 2x
Asts.	Season	4, Hampton (12/10)
	MW	1, 3x
	Career	4, Hampton (12/10)
Blocks	Season	1, Mississippi Valley (12/4)
	MW	
	Career	1, Mississippi Valley (12/4)
Steals	Season	1, 2x
	MW	1, Utah State (1/6/22)
	Career	1, 3x
TO	Season	0, 2x
	MW	0, 11x
	Career	0, 14x
Min.	Season	21, Hampton (12/10)
	MW	11, Colorado St. (1/15/22)
	Career	21, Hampton (12/10)

PRODUCTION TRACKER

2023-24 Career

Double-Double		
Scored 10+ pts	1	2
Scored 20+ pts		
10+ reb		
3+ 3-pt	1	2

CAREER STATISTICS

				Field Goals		3-Point		F-Throws		Rebounds											Scoring	
SEASON	TEAM	GP-GS	MIN/AVG	FG-FGA	FG%	3FG-3FGA	3FG%	FT-FTA	FT%	OFF	DEF	TOT	AVG	PF-FO	A	TO	BLK	STL	PTS	AVG		
2021-22	UNM	21-0	123/5.9	7-36	.194	5-25	.200	5-6	.833	1	9	10	0.5	16-0	6	7	0	1	24	1.1		
2023-24	UNM	7-0	56/8.0	5-17	.294	4-13	.308	5-6	.833	1	4	5	0.7	2-0	4	5	1	2	19	2.7		
TOTAL		28-0	179/6.4	12-53	.226	9-38	.237	10-12	.833	2	13	15	0.5	18-0	10	12	1	3	43	1.5		



#22

CHARLOTTE KOHL  
 C | 6-5 | GR | Giessen, Germany (Mississippi State)



PPG	FG %	3PT %	FT %	RPG	APG	SPG	BPG	MPG
8.2	.495	.333	.625	8.1	0.6	0.6	2.0	25.3

NOTEWORTHY

- » First year with the Lobos after graduating from Mississippi State. Has two years of eligibility remaining.
- » First Lobo with 20 rebounds in a game since Nov. 15, 2016 (Richelle van der Keijl (20))
- » First Lobo with multiple 20 rebound games in a season since Carol Moreland (1978)
- » 15 games with a block, including last 14 games, 10 games with multiple blocks, 3 games with 4 or more blocks
- » UNM is 4-1 when Kohl scores in double figures
- » Played in 55 games with 14 starts at MSU
- » Averaged 2.4 points, 3.2 rebounds and 0.8 blocks per game while shooting a team-high .537 from the field her sophomore season
- » First career double-double was against Arkansas with 10 points and 18 rebounds during her sophomore season.
- » Graduated with a degree in psychology

GAME-BY-GAME STATISTICS

Opponent	Date	GS	MIN	Total		3-Pointers		Free throws		Rebounds				PF	A	TO	BLK	STL	PTS	AVG
				FG-FGA	PCT	3FG-3FGA	PCT	FT-FTA	PCT	OFF	DEF	TOT	AVG							
Texas Southern	11/06/2023	*	25:51	2-6	.333	0-0	.000	2-2	1.000	3	6	9	9.0	1	1	2	3	1	6	6.0
at Pepperdine	11/09/2023	*	26:31	3-6	.500	0-0	.000	1-2	.500	5	1	6	7.5	3	0	4	0	0	7	6.5
Tarleton St.	11/12/2023	*	15:34	2-4	.500	0-0	.000	2-2	1.000	1	4	5	6.7	4	3	1	0	1	6	6.3
Tex. A&M-Commerce	11/15/2023	*	32:11	6-11	.545	0-1	.000	2-3	.667	10	10	20	10.0	1	1	0	4	0	14	8.3
vs Montana St.	11/23/2023	*	24:39	0-4	.000	0-0	.000	0-0	.000	4	3	7	9.4	5	0	4	2	1	0	6.6
vs Georgia Tech	11/24/2023	*	24:43	4-5	.800	0-0	.000	0-1	.000	0	3	3	8.3	4	0	1	1	1	8	6.8
Eastern Ill.	11/28/2023	*	31:04	3-5	.600	1-1	1.000	2-3	.667	3	3	6	8.0	4	0	0	2	0	9	7.1
New Mexico St.	12/02/2023	*	24:59	6-11	.545	0-0	.000	3-4	.750	7	6	13	8.6	3	0	0	4	0	15	8.1
Mississippi Val.	12/04/2023	*	26:09	7-9	.778	0-0	.000	2-2	1.000	7	13	20	9.9	1	0	1	5	0	16	9.0
Southern Utah	12/07/2023	*	25:19	5-10	.500	0-0	.000	2-3	.667	4	2	6	9.5	0	1	2	1	1	12	9.3
Hampton	12/10/2023	*	30:34	3-5	.600	0-0	.000	8-12	.667	2	4	6	9.2	3	0	0	1	0	14	9.7
Western N.M.	12/17/2023	*	21:46	4-7	.571	0-0	.000	0-2	.000	3	3	6	8.9	2	2	0	2	3	8	9.6
at Gonzaga	12/22/2023	*	10:47	1-3	.333	0-0	.000	0-0	.000	1	1	2	8.4	5	0	1	1	0	2	9.0
at Nevada	12/30/2023	*	26:09	0-3	.000	0-0	.000	1-2	.500	1	5	6	8.2	4	2	0	1	0	1	8.4
Boise St.	01/06/2024	*	28:48	3-5	.600	0-1	.000	3-4	.750	2	8	10	8.3	1	0	2	2	0	9	8.5
Utah St.	01/10/2024	*	30:14	2-7	.286	0-0	.000	1-3	.333	3	2	5	8.1	3	0	0	2	3	5	8.3
at Colorado St.	01/13/2024	*	24:18	3-8	.375	1-3	.333	1-3	.333	1	7	8	8.1	1	0	1	3	0	8	8.2
<b>Totals</b>			<b>17 429:37</b>	<b>54-109</b>	<b>.495</b>	<b>2-6</b>	<b>.333</b>	<b>30-48</b>	<b>.625</b>	<b>57</b>	<b>81</b>	<b>138</b>	<b>8.1</b>	<b>45</b>	<b>10</b>	<b>19</b>	<b>34</b>	<b>11</b>	<b>140</b>	<b>8.2</b>

CAREER STATISTICS

				Field Goals		3-Point		F-Throws		Rebounds				Scoring						
SEASON	TEAM	GP-GS	MIN/AVG	FG-FGA	FG%	3FG-3FGA	3FG%	FT-FTA	FT%	OFF	DEF	TOT	AVG	PF-FO	A	TO	BLK	STL	PTS	AVG
2020-21	MSU	5-0	27/5.4	1-7	.143	0-2	.000	2-4	.500	3	2	5	1.0	4-0	3	5	1	0	4	0.8
2021-22	MSU	29-11	396/13.7	29-54	.537	0-5	.000	13-29	.448	45	49	94	3.2	50-1	7	16	23	6	71	2.4
2022-23	MSU	21-3	138/6.6	10-27	.370	0-0	.000	4-9	.444	6	14	20	1.0	26-0	5	13	6	2	24	1.1
2023-24	UNM	17-17	430/25.3	54-109	.495	2-6	.333	30-48	.625	57	81	138	8.1	45-2	10	19	34	11	140	8.2
<b>TOTAL FOR UNM</b>		<b>17-17</b>	<b>430/25.3</b>	<b>54-109</b>	<b>.495</b>	<b>2-6</b>	<b>.333</b>	<b>30-48</b>	<b>.625</b>	<b>57</b>	<b>81</b>	<b>138</b>	<b>8.1</b>	<b>45-2</b>	<b>10</b>	<b>19</b>	<b>34</b>	<b>11</b>	<b>140</b>	<b>8.2</b>
<b>TOTAL</b>		<b>72-31</b>	<b>991/13.8</b>	<b>94-197</b>	<b>.477</b>	<b>2-13</b>	<b>.154</b>	<b>49-90</b>	<b>.544</b>	<b>111</b>	<b>146</b>	<b>257</b>	<b>3.6</b>	<b>125-3</b>	<b>25</b>	<b>53</b>	<b>64</b>	<b>19</b>	<b>239</b>	<b>3.3</b>

TOP PERFORMANCES

Points	Season	16, Mississippi Valley (12/4)
	MW	9, Boise State (1/6)
	Career	16, Mississippi Valley (12/4)
FGM	Season	7, Mississippi Valley (12/4)
	MW	3, 2x
	Career	7, Mississippi Valley (12/4)
FGA	Season	11, 2x
	MW	8, Colorado State (1/13)
	Career	11, 2x
3PT FGM	Season	1, 2x
	MW	1, Colorado State (1/13)
	Career	1, 2x
3PT FGA	Season	3, Colorado State (1/13)
	MW	3, Colorado State (1/13)
	Career	3, Colorado State (1/13)
FTM	Season	8, Hampton (12/10)
	MW	3, Boise State (1/6)
	Career	8, Hampton (12/10)
FTA	Season	12, Hampton (12/10)
	MW	4, Boise State (1/6)
	Career	12, Hampton (12/10)
Reb.	Season	20, 2x
	MW	10, Boise State (1/6)
	Career	20, 2x
Asts.	Season	3, Tarleton St. (11/12)
	MW	2, Nevada (12/30)
	Career	3, Tarleton St. (11/12)
Blocks	Season	5, Mississippi Valley (12/4)
	MW	3, Colorado State (1/13)
	Career	5, Mississippi Valley (12/4)
Steals	Season	3, 2x
	MW	3, Utah State (1/10)
	Career	3, 2x
TO	Season	0, 7x
	MW	0, 2x
	Career	0, 38x
Min.	Season	32, Texas A&M-Com.(11/15)
	MW	30, Utah State (1/10)
	Career	34, Kentucky (2/15/22)

PRODUCTION TRACKER

	2023-24	Career
Double-Double	3	4
Scored 10+ pts	5	6
Scored 20+ pts		
10+ reb	4	6
3+ 3-pt		



PAULA REUS

F | 6-1 | JR | Palma de Mallorca, Spain (IES Joaquim Blume)



PPG	FG %	3PT %	FT %	RPG	APG	SPG	BPG	MPG
11.6	.403	.278	.733	6.0	2.2	1.1	0.4	31.6

NOTEWORTHY

- » Mountain West All-Freshman Team
- » MW Freshman of the Week Jan. 24, 2022 and Feb. 21, 2022
- » Scored in double figures in 5 of last 7 games, 8 of the last 11 games, at least 1 steal in 8 of last 9 games
- » UNM 8-2 when Reus reaches double figures this season
- » Played in 33 games with 22 starts and averaged 24.8 minutes per game, 8.0 points per game, 4.3 rebounds per game, 1.8 assists per game, 0.7 steals per game and 0.4 blocks per game last season
- » First career double-double against New Mexico State (11 pts, 10 reb.) last season
- » 13 games scoring in double figures, at least 1 steal in 17 games, 11 games with at least 1 block, 14 games with multiple assists
- » 8 games scoring double figures freshman season
- » Team-high 15 points at No. 6 Arizona, making her first seven shots of the game
- » At least 1 steal in 17 games, 1 block in 10 games. Multiple steals in 5 games, multiple blocks in 4 games
- » Played on the U16 Spanish national team at the U16 FIBA 2019 European Championship, finishing third
- » Played for Barça CBS LF2, winning the regular season championship, and qualified for the finals
- » Liberal arts major

GAME-BY-GAME STATISTICS

Opponent	Date	GS	MIN	Total		3-Pointers		Free throws		Rebounds											
				FG-FGA	PCT	3FG-3FGA	PCT	FT-FTA	PCT	OFF	DEF	TOT	AVG	PF	A	TO	BLK	STL	PTS	AVG	
Texas Southern	11/06/2023	*	27:57	4-9	.444	0-2	.000	1-1	1.000	2	4	6	6.0	1	2	0	0	1	9	9.0	
at Pepperdine	11/09/2023	*	36:18	2-11	.182	0-5	.000	0-0	.000	2	5	7	6.5	2	3	3	0	0	4	6.5	
Tarleton St.	11/12/2023	*	34:31	7-12	.583	2-5	.400	0-0	.000	0	7	7	6.7	3	1	3	1	2	16	9.7	
Tex. A&M-Commerce	11/15/2023	*	35:14	5-14	.357	0-2	.000	1-4	.250	1	7	8	7.0	1	1	3	0	1	11	10.0	
vs Montana St.	11/23/2023	*	23:34	4-12	.333	1-6	.167	0-0	.000	1	4	5	6.6	2	3	4	0	0	9	9.8	
vs Georgia Tech	11/24/2023	*	28:29	2-9	.222	0-4	.000	0-0	.000	0	4	4	6.2	4	0	1	0	1	4	8.8	
Eastern Ill.	11/28/2023	*	41:18	8-15	.533	4-10	.400	5-6	.833	1	2	3	5.7	3	2	1	0	1	25	11.1	
New Mexico St.	12/02/2023	*	35:04	6-12	.500	1-5	.200	2-2	1.000	0	8	8	6.0	2	5	2	1	0	15	11.6	
Mississippi Val.	12/04/2023	*	29:42	6-12	.500	3-8	.375	1-1	1.000	0	8	8	6.2	0	3	3	0	1	16	12.1	
Southern Utah	12/07/2023	*	29:30	3-9	.333	0-2	.000	3-3	1.000	1	4	5	6.1	0	1	5	2	1	9	11.8	
Hampton	12/10/2023	*	27:11	6-12	.500	2-5	.400	0-0	.000	1	7	8	6.3	2	5	2	0	2	14	12.0	
Western N.M.	12/17/2023	*	20:53	6-16	.375	3-4	.750	0-0	.000	5	4	9	6.5	0	1	4	0	2	15	12.3	
at Gonzaga	12/22/2023	*	36:24	4-9	.444	2-4	.500	1-2	.500	1	3	4	6.3	1	1	2	2	1	11	12.2	
at Nevada	12/30/2023	*	35:12	6-11	.545	1-3	.333	4-5	.800	0	5	5	6.2	1	1	4	0	1	17	12.5	
Boise St.	01/06/2024	*	35:55	3-11	.273	2-5	.400	3-4	.750	0	5	5	6.1	0	3	2	0	0	11	12.4	
Utah St.	01/10/2024	*	24:09	3-10	.300	1-5	.200	0-0	.000	0	5	5	6.1	1	4	0	0	3	7	12.1	
at Colorado St.	01/13/2024	*	35:33	2-7	.286	0-4	.000	1-2	.500	2	3	5	6.0	0	1	0	0	1	5	11.6	
Totals		17	536:54	77-191	.403	22-79	.278	22-30	.733	17	85	102	6.0	23	37	39	6	18	198	11.6	

CAREER STATISTICS

			Field Goals		3-Point		F-Throws		Rebounds										Scoring	
SEASON	TEAM	GP-GS	MIN/AVG	FG-FGA	FG%	3FG-3FGA	3FG%	FT-FTA	FT%	OFF	DEF	TOT	AVG	PF-FO	A	TO	BLK	STL	PTS	AVG
2021-22	UNM	34-2	662/19.5	93-212	.439	18-67	.269	30-37	.811	25	109	134	3.9	48-0	61	51	15	21	234	6.9
2022-23	UNM	33-22	819/24.8	100-223	.448	35-96	.365	28-38	.737	20	121	141	4.3	56-1	60	59	14	24	263	8.0
2023-24	UNM	17-17	537/31.6	77-191	.403	22-79	.278	22-30	.733	17	85	102	6.0	23-0	37	39	6	18	198	11.6
TOTAL		84-41	2018/24.0	270-626	.431	75-242	.310	80-105	.762	62	315	377	4.5	127-1	158	149	35	63	695	8.3

TOP PERFORMANCES

Points	Season	25, Eastern Illinois (11/28)
	MW	19, Fresno St. (1/22/22)
	Career	25, Eastern Illinois (11/28)
FGM	Season	8, Eastern Illinois (11/28)
	MW	8, Fresno St. (1/22/22)
	Career	8, 2x
FGA	Season	16, Western N.M. (12/17)
	MW	14, 2x
	Career	16, Western N.M. (12/17)
3PT FGM	Season	4, Eastern Illinois (11/28)
	MW	4, Colorado St. (1/15/22)
	Career	5, Texas A&M-C (11/26/22)
3PT FGA	Season	10, Eastern Illinois (11/28)
	MW	10, Colorado St. (1/15/22)
	Career	10, 2x
FTM	Season	5, Eastern Illinois (11/28)
	MW	5, San Diego St. (2/4/23)
	Career	5, 2x
FTA	Season	6, Eastern Illinois (11/28)
	MW	8, San Diego St. (2/4/23)
	Career	8, San Diego St. (2/4/23)
Reb.	Season	9, Western N.M. (12/17)
	MW	10, Colorado St. (1/7/23)
	Career	10, 2x
Asts.	Season	5, 2x
	MW	4, 3x
	Career	7, Houston (11/20/21)
Blocks	Season	2, 2x
	MW	2, Utah State (2/16/22)
	Career	3, Texas A&M-C (11/26/22)
Steals	Season	3, Utah State (1/10)
	MW	3, Utah State (1/10)
	Career	4, 2x
TO	Season	0, 3x
	MW	0, 10x
	Career	0, 18x
Min.	Season	41, Eastern Illinois (11/28)
	MW	35, 3x
	Career	41, Eastern Illinois (11/28)

PRODUCTION TRACKER

2023-24 Career

Double-Double	1
Scored 10+ pts	10
Scored 20+ pts	1
10+ reb	2
3+ 3-pt	3

#33

**VIANÉ CUMBER**  
 G | 5-10 | JR | Albuquerque, N.M. (Sandia HS)



PPG	FG %	3PT %	FT %	RPG	APG	SPG	BPG	MPG
11.9	.343	.333	.500	6.0	1.4	0.8	0.1	34.2

NOTEWORTHY

- » MW Freshman of the Week Nov. 15, 2021
- » Scored in double figures in last 3 games, 4 of last 5
- » 8 three-pointers against Montana State tied for the third-most in a game in program history and was the seventh time a player historically has made eight or more three-pointers in a game.
- » At least 1 three-pointer in 20 of the last 21 games she's played in.
- » Played in 33 games with 15 starts, including last 14 games last season
- » Averaged 22.9 minutes per game, 9.2 points per game, 2.9 rebounds per game, 0.9 assists per game, 0.5 steals per game her sophomore season
- » Shot 40.6% from three-point range with 21 games with multiple three-pointers. Includes two games with 6 three-pointers, 10 games with four or more three-pointers
- » Scored in double figures in 16 games with 2 games with 20 or more points
- » 2019-20 and 2020-21 New Mexico Gatorade Girls Basketball Player of the Year
- » Twice named MaxPreps New Mexico High School Girls Basketball Player of the Year
- » Named the best high school basketball player in New Mexico by MaxPreps
- » Averaged 26.5 points, 9.3 rebounds, 2.2 assists and 1.5 steals her senior season and 22.4 points, 10.6 rebounds, 2.5 assists and 3.3 steals as a junior
- » Led her team to a pair of district championships in 2018 and 2019
- » Liberal arts major

GAME-BY-GAME STATISTICS

Opponent	Date	GS	MIN	Total		3-Pointers		Free throws		Rebounds											PTS	AVG
				FG-FGA	PCT	3FG-3FGA	PCT	FT-FTA	PCT	OFF	DEF	TOT	AVG	PF	A	TO	BLK	STL				
Texas Southern	11/06/2023	*	35:44	9-18	.500	4-9	.444	0-0	.000	1	5	6	6.0	2	1	2	0	1	22	22.0		
at Pepperdine	11/09/2023	*	35:13	3-11	.273	3-9	.333	0-0	.000	0	2	2	4.0	2	0	0	0	0	9	15.5		
Tarleton St.	11/12/2023	*	35:19	4-13	.308	3-9	.333	1-2	.500	2	5	7	5.0	2	0	2	0	0	12	14.3		
Tex. A&M-Commerce	11/15/2023	*	28:47	4-14	.286	1-7	.143	0-2	.000	2	2	4	4.8	2	1	1	0	1	9	13.0		
vs Montana St.	11/23/2023	*	36:57	8-17	.471	8-15	.533	0-0	.000	0	3	3	4.4	1	0	0	0	2	24	15.2		
vs Georgia Tech	11/24/2023	*	38:33	1-7	.143	1-4	.250	0-0	.000	0	4	4	4.3	0	0	1	0	1	3	13.2		
Eastern Ill.	11/28/2023	*	43:24	5-16	.313	2-8	.250	2-2	1.000	1	13	14	5.7	0	5	1	0	1	14	13.3		
New Mexico St.	12/02/2023	*	17:41	1-4	.250	0-2	.000	0-0	.000	0	1	1	5.1	1	2	1	0	1	2	11.9		
Western N.M.	12/17/2023	*	19:04	3-9	.333	1-5	.200	0-0	.000	1	2	3	4.9	1	2	1	0	1	7	11.3		
at Gonzaga	12/22/2023	*	38:57	5-13	.385	5-11	.455	2-2	1.000	1	6	7	5.1	4	2	2	0	0	17	11.9		
at Nevada	12/30/2023	*	37:10	3-11	.273	1-6	.167	0-0	.000	0	9	9	5.5	2	0	1	0	0	7	11.5		
Boise St.	01/06/2024	*	38:26	4-14	.286	2-12	.167	0-0	.000	0	4	4	5.3	1	2	1	1	2	10	11.3		
Utah St.	01/10/2024	*	38:16	8-22	.364	5-12	.417	0-2	.000	4	7	11	5.8	4	3	0	1	0	21	12.1		
at Colorado St.	01/13/2024	*	35:49	4-12	.333	2-5	.400	0-0	.000	3	6	9	6.0	2	2	2	0	1	10	11.9		
<b>Totals</b>			<b>14</b>	<b>479:20</b>	<b>62-181</b>	<b>.343</b>	<b>38-114</b>	<b>.333</b>	<b>5-10</b>	<b>.500</b>	<b>15</b>	<b>69</b>	<b>84</b>	<b>6.0</b>	<b>24</b>	<b>20</b>	<b>15</b>	<b>2</b>	<b>11</b>	<b>167</b>	<b>11.9</b>	

TOP PERFORMANCES

Points	Season	24, Montana State (11/23)
	MW	21, Utah State (1/10)
	Career	24, Montana State (11/23)
FGM	Season	9, Texas Southern (11/6)
	MW	8, Utah State (1/10)
	Career	9, Texas Southern (11/6)
FGA	Season	22, Utah State (1/10)
	MW	22, Utah State (1/10)
	Career	22, Utah State (1/10)
3PT FGM	Season	8, Montana State (11/23)
	MW	5, 3x
	Career	8, Montana State (11/23)
3PT FGA	Season	15, Montana State (11/23)
	MW	12, 2x
	Career	15, Montana State (11/23)
FTM	Season	2, 2x
	MW	4, Colorado St. (1/26/23)
	Career	4, Colorado St. (1/26/23)
FTA	Season	2, 5x
	MW	4, 2x
	Career	4, 2x
Reb.	Season	14, Eastern Illinois (11/28)
	MW	11, Utah State (1/10)
	Career	14, Eastern Illinois (11/28)
Asts.	Season	5, Eastern Illinois (11/28)
	MW	4, 2x
	Career	5, Eastern Illinois (11/28)
Blocks	Season	1, 2x
	MW	1, 4x
	Career	1, 6x
Steals	Season	2, 2x
	MW	2, 2x
	Career	4, Western N.M. (11/22/22)
TO	Season	0, 3x
	MW	0, 15x
	Career	0, 28x
Min.	Season	43, Eastern Illinois (11/28)
	MW	38, 2x
	Career	43, Eastern Illinois (11/28)

PRODUCTION TRACKER

	2023-24	Career
Double-Double	2	2
Scored 10+ pts	8	27
Scored 20+ pts	3	5
10+ reb	2	2
3+ 3-pt	6	20

CAREER STATISTICS

				Field Goals		3-Point		F-Throws		Rebounds											Scoring	
SEASON	TEAM	GP-GS	MIN/AVG	FG-FGA	FG%	3FG-3FGA	3FG%	FT-FTA	FT%	OFF	DEF	TOT	AVG	PF-FO	A	TO	BLK	STL	PTS	AVG		
2021-22	UNM	18-1	198/11.0	25-62	.403	15-45	.333	2-2	1.000	4	25	29	1.6	6-0	5	10	1	5	67	3.7		
2022-23	UNM	33-15	757/22.9	107-249	.430	73-180	.406	18-22	.818	5	90	95	2.9	39-0	30	32	3	17	305	9.2		
2023-24	UNM	14-14	479/34.2	62-181	.343	38-114	.333	5-10	.500	15	69	84	6.0	24-0	20	15	2	11	167	11.9		
TOTAL		65-30	1434/22.1	194-492	.394	126-339	.372	25-34	.735	24	184	208	3.2	69-0	55	57	6	33	539	8.3		

SEASON STATS

Game Records

Record	Overall	Home	Away	Neutral
ALL GAMES	11-6	9-2	2-2	0-2
CONFERENCE	2-2	1-1	1-1	0-0
NON-CONFERENCE	9-4	8-1	1-1	0-2

Score by Periods

Team	1st	2nd	3rd	4th	OT	TOT
New Mexico	260	267	254	290	15	1086
Opponents	226	236	270	286	12	1030

Team Box Score

No.	Player				Total		3-Point		F-Throw		Rebounds													
		GP-GS	MIN	AVG	FG-FGA	FG%	3FG-3FGA	3FG%	FT-FTA	FT%	OFF	DEF	TOT	AVG	PF	DQ	A	TO	BLK	STL	PTS	AVG		
3	WILSON, Nyah	17-17	502:48	29.6	72-191	.377	16-45	.356	59-78	.756	17	57	74	4.4	43	0	23	36	1	19	219	12.9		
33	CUMBER, Vianè	14-14	479:20	34.2	62-181	.343	38-114	.333	5-10	.500	15	69	84	6.0	24	0	20	15	2	11	167	11.9		
30	REUS, Paula	17-17	536:54	31.6	77-191	.403	22-79	.278	22-30	.733	17	85	102	6.0	23	0	37	39	6	18	198	11.6		
12	AUGMON, Aniyah	16-16	527:10	32.9	72-175	.411	9-45	.200	33-53	.623	21	69	90	5.6	29	0	69	64	4	37	186	11.6		
22	KOHL, Charlotte	17-17	429:37	25.3	54-109	.495	2-6	.333	30-48	.625	57	81	138	8.1	45	2	10	19	34	11	140	8.2		
10	LAURO, Paris	11-0	111:10	10.1	17-36	.472	9-21	.429	1-2	.500	4	17	21	1.9	8	0	2	4	3	2	44	4.0		
15	BATES, Jaelyn	6-0	84:25	14.1	7-27	.259	5-21	.238	2-4	.500	2	7	9	1.5	5	0	11	6	0	4	21	3.5		
24	ROBBINS, Hannah	2-0	25:06	12.6	3-10	.300	0-4	.000	0-0	.000	2	8	10	5.0	1	0	1	3	2	2	6	3.0		
21	CURTIS, Mackenzie	7-0	55:53	8.0	5-17	.294	4-13	.308	5-6	.833	1	4	5	0.7	2	0	4	5	1	2	19	2.7		
5	LANGERMANN, Lara	17-3	305:19	18.0	13-53	.245	7-38	.184	4-6	.667	2	21	23	1.4	19	0	15	17	0	3	37	2.2		
1	DIARRA BERTHE, Nahawa	14-1	146:33	10.5	8-35	.229	0-12	.000	4-6	.667	7	12	19	1.4	8	0	17	10	0	9	20	1.4		
2	CHAVEZ, Natalia	8-0	56:32	7.1	4-17	.235	2-13	.154	0-0	.000	0	8	8	1.0	2	0	3	5	0	3	10	1.3		
14	JOAQUIM, Hulda	16-0	164:12	10.3	8-33	.242	0-1	.000	3-5	.600	25	28	53	3.3	8	0	10	7	2	3	19	1.2		
Team											39	42	81					12						
Total		17	3425		402-1075	.374	114-412	.277	168-248	.677	209	508	717	42.2	217	2	222	242	55	124	1086	63.9		
Opponents		17	3425		396-1043	.380	114-367	.311	124-177	.701	157	494	651	38.3	249	3	222	248	67	108	1030	60.6		

Team Statistics

	UNM	OPP
Scoring	1086	1030
Points per game	63.9	60.6
Scoring margin	+3.3	-
Field goals-att	402-1075	396-1043
Field goal pct	.374	.380
3 point fg-att	114-412	114-367
3-point FG pct	.277	.311
3-pt FG made per game	6.7	6.7
Free throws-att	168-248	124-177
Free throw pct	.677	.701
F-Throws made per game	9.9	7.3
Rebounds	717	651
Rebounds per game	42.2	38.3
Rebounding margin	+3.9	-
Assists	222	222
Assists per game	13.1	13.1
Turnovers	242	248
Turnovers per game	14.2	14.6
Turnover margin	+0.4	-
Assist/turnover ratio	0.9	0.9
Steals	124	108
Steals per game	7.3	6.4
Blocks	55	67
Blocks per game	3.2	3.9
Winning streak	0	-
Home win streak	1	-
Attendance	53235	8286
Home games-Avg/Game	11-4840	4-2072
Neutral site-Avg/Game	-	2-158

Team Results

Date	Opponent		Score	Att.
11/06/2023	Texas Southern	W	76-59	5055
11/09/2023	at Pepperdine	W	57-48	113
11/12/2023	Tarleton St.	W	64-55	4626
11/15/2023	Tex. A&M-Commerce	W	75-74	4718
11/23/2023	vs Montana St.	L	57-75	166
11/24/2023	vs Georgia Tech	L	55-66	150
11/28/2023	Eastern Ill.	Wot	81-78	4471
12/02/2023	New Mexico St.	W	67-52	5379
12/04/2023	Mississippi Val.	W	68-45	4514
12/07/2023	Southern Utah	L	40-58	4526
12/10/2023	Hampton	W	68-55	4638
12/17/2023	Western N.M.	W	71-47	4889
12/22/2023	at Gonzaga	L	56-67	5241
12/30/2023	at Nevada	W	69-59	1444
01/06/2024	Boise St.	L	56-64	5715
01/10/2024	Utah St.	W	71-67	4704
01/13/2024	at Colorado St.	L	55-61	1488

MOUNTAIN WEST STATS

Game Records

Record	Overall	Home	Away	Neutral
ALL GAMES	2-2	1-1	1-1	0-0
CONFERENCE	2-2	1-1	1-1	0-0
NON-CONFERENCE	0-0	0-0	0-0	0-0

Score by Periods

Team	1st	2nd	3rd	4th	OT	TOT
New Mexico	53	55	68	75	0	251
Opponents	52	51	71	77	0	251

Team Box Score

No.	Player				Total		3-Point		F-Throw		Rebounds													
		GP-GS	MIN	AVG	FG-FGA	FG%	3FG-3FGA	3FG%	FT-FTA	FT%	OFF	DEF	TOT	AVG	PF	DQ	A	TO	BLK	STL	PTS	AVG		
3	WILSON, Nyah	4-4	133:38	33.4	23-43	.535	6-10	.600	13-18	.722	2	12	14	3.5	12	0	10	10	1	7	65	16.3		
12	AUGMON, Aniyah	4-4	138:57	34.7	22-47	.468	3-13	.231	10-14	.714	4	17	21	5.3	8	0	23	15	0	9	57	14.3		
33	CUMBER, Vianè	4-4	149:41	37.4	19-59	.322	10-35	.286	0-2	.000	7	26	33	8.3	9	0	7	4	2	3	48	12.0		
30	REUS, Paula	4-4	130:49	32.7	14-39	.359	4-17	.235	8-11	.727	2	18	20	5.0	2	0	9	6	0	5	40	10.0		
22	KOHL, Charlotte	4-4	109:30	27.4	8-23	.348	1-4	.250	6-12	.500	7	22	29	7.3	9	0	2	3	8	3	23	5.8		
10	LAURO, Paris	4-0	49:16	12.3	5-17	.294	2-8	.250	0-0	.000	1	10	11	2.8	4	0	1	2	1	0	12	3.0		
5	LANGERMANN, Lara	4-0	45:50	11.5	2-7	.286	1-6	.167	0-0	.000	1	2	3	0.8	1	0	1	3	0	0	5	1.3		
21	CURTIS, Mackenzie	2-0	04:37	2.3	0-2	.000	0-1	.000	1-2	.500	1	0	1	0.5	0	0	0	1	0	0	1	0.5		
15	BATES, Jaelyn	1-0	04:40	4.7	0-2	.000	0-1	.000	0-0	.000	1	0	1	1.0	0	0	0	1	0	0	0	0.0		
14	JOAQUIM, Hulda	3-0	17:18	5.8	0-6	.000	0-0	.000	0-0	.000	3	4	7	2.3	1	0	1	1	1	0	0	0.0		
1	DIARRA BERTHE, Nahawa	3-0	15:45	5.2	0-3	.000	0-2	.000	0-0	.000	1	2	3	1.0	0	0	2	0	0	0	0	0.0		
Team											9	12	21					5						
Total		4	800		93-248	.375	27-97	.278	38-59	.644	39	125	164	41.0	46	0	56	51	13	27	251	62.8		
Opponents		4	800		95-243	.391	31-94	.330	30-41	.732	27	125	152	38.0	62	1	50	50	18	27	251	62.8		

Team Statistics

	UNM	OPP
<b>Scoring</b>	<b>251</b>	<b>251</b>
Points per game	62.8	62.8
Scoring margin	0.0	-
<b>Field goals-att</b>	<b>93-248</b>	<b>95-243</b>
Field goal pct	.375	.391
<b>3 point fg-att</b>	<b>27-97</b>	<b>31-94</b>
3-point FG pct	.278	.330
3-pt FG made per game	6.8	7.8
<b>Free throws-att</b>	<b>38-59</b>	<b>30-41</b>
Free throw pct	.644	.732
F-Throws made per game	9.5	7.5
<b>Rebounds</b>	<b>164</b>	<b>152</b>
Rebounds per game	41.0	38.0
Rebounding margin	+3.0	-
<b>Assists</b>	<b>56</b>	<b>50</b>
Assists per game	14.0	12.5
<b>Turnovers</b>	<b>51</b>	<b>50</b>
Turnovers per game	12.8	12.5
Turnover margin	-0.3	-
Assist/turnover ratio	1.1	1.0
<b>Steals</b>	<b>27</b>	<b>27</b>
Steals per game	6.8	6.8
<b>Blocks</b>	<b>13</b>	<b>18</b>
Blocks per game	3.3	4.5
<b>Winning streak</b>	<b>0</b>	<b>-</b>
Home win streak	1	-
<b>Attendance</b>	<b>10419</b>	<b>2932</b>
Home games-Avg/Game	2-5210	2-1466
Neutral site-Avg/Game	-	0-0

Team Results

Date	Opponent		Score	Att.
12/30/2023	at Nevada	W	69-59	1444
01/06/2024	Boise St.	L	56-64	5715
01/10/2024	Utah St.	W	71-67	4704
01/13/2024	at Colorado St.	L	55-61	1488



# LAST WEEK STATS

## Game Records

Record	Overall	Home	Away	Neutral
ALL GAMES	1-1	1-0	0-1	0-0
CONFERENCE	1-1	1-0	0-1	0-0
NON-CONFERENCE	0-0	0-0	0-0	0-0

## Score by Periods

Team	1st	2nd	3rd	4th	OT	TOT
New Mexico	25	18	37	46	0	126
Opponents	31	21	33	43	0	128

## Team Box Score

No.	Player				Total		3-Point		F-Throw		Rebounds												
		GP-GS	MIN	AVG	FG-FGA	FG%	3FG-3FGA	3FG%	FT-FTA	FT%	OFF	DEF	TOT	AVG	PF	DQ	A	TO	BLK	STL	PTS	AVG	
3	WILSON, Nyah	2-2	65:48	32.9	13-23	.565	3-6	.500	4-6	.667	1	3	4	2.0	7	0	5	5	0	5	33	16.5	
33	CUMBER, Vianè	2-2	74:05	37.0	12-34	.353	7-17	.412	0-2	.000	7	13	20	10.0	6	0	5	2	1	1	31	15.5	
12	AUGMON, Aniyah	2-2	71:08	35.6	10-26	.385	2-8	.250	6-8	.750	3	9	12	6.0	5	0	16	9	0	7	28	14.0	
22	KOHL, Charlotte	2-2	54:32	27.3	5-15	.333	1-3	.333	2-6	.333	4	9	13	6.5	4	0	0	1	5	3	13	6.5	
30	REUS, Paula	2-2	59:42	29.8	5-17	.294	1-9	.111	1-2	.500	2	8	10	5.0	1	0	5	0	0	4	12	6.0	
10	LAURO, Paris	2-0	22:18	11.2	2-9	.222	1-5	.200	0-0	.000	1	7	8	4.0	3	0	1	2	0	0	5	2.5	
5	LANGERMANN, Lara	2-0	22:07	11.1	1-5	.200	1-5	.200	0-0	.000	1	1	2	1.0	1	0	0	2	0	0	3	1.5	
21	CURTIS, Mackenzie	1-0	03:14	3.2	0-2	.000	0-1	.000	1-2	.500	1	0	1	1.0	0	0	0	1	0	0	1	1.0	
15	BATES, Jaelyn	1-0	04:40	4.7	0-2	.000	0-1	.000	0-0	.000	1	0	1	1.0	0	0	0	1	0	0	0	0.0	
14	JOAQUIM, Hulda	2-0	16:17	8.1	0-6	.000	0-0	.000	0-0	.000	2	4	6	3.0	1	0	1	1	1	0	0	0.0	
1	DIARRA BERTHE, Nahawa	1-0	06:09	6.2	0-0	.000	0-0	.000	0-0	.000	1	2	3	3.0	0	0	0	0	0	0	0	0.0	
Team											5	5	10				1						
Total		2	400		48-139	.345	16-55	.291	14-26	.538	29	61	90	45.0	28	0	33	25	7	20	126	63.0	
Opponents		2	400		46-113	.407	15-43	.349	21-28	.750	10	68	78	39.0	28	0	25	32	14	11	128	64.0	

## Team Statistics

	UNM	OPP
<b>Scoring</b>	<b>126</b>	<b>128</b>
Points per game	63.0	64.0
Scoring margin	-1.0	-
<b>Field goals-att</b>	<b>48-139</b>	<b>46-113</b>
Field goal pct	.345	.407
<b>3 point fg-att</b>	<b>16-55</b>	<b>15-43</b>
3-point FG pct	.291	.349
3-pt FG made per game	8.0	7.5
<b>Free throws-att</b>	<b>14-26</b>	<b>21-28</b>
Free throw pct	.538	.750
F-Throws made per game	7.0	10.5
<b>Rebounds</b>	<b>90</b>	<b>78</b>
Rebounds per game	45.0	39.0
Rebounding margin	+6.0	-
<b>Assists</b>	<b>33</b>	<b>25</b>
Assists per game	16.5	12.5
<b>Turnovers</b>	<b>25</b>	<b>32</b>
Turnovers per game	12.5	16.0
Turnover margin	+3.5	-
Assist/turnover ratio	1.3	0.8
<b>Steals</b>	<b>20</b>	<b>11</b>
Steals per game	10.0	5.5
<b>Blocks</b>	<b>7</b>	<b>14</b>
Blocks per game	3.5	7.0
<b>Winning streak</b>	<b>0</b>	<b>-</b>
Home win streak	1	-
<b>Attendance</b>	<b>4704</b>	<b>1488</b>
Home games-Avg/Game	1-4704	1-1488
Neutral site-Avg/Game	-	0-0

## Team Results

Date	Opponent		Score	Att.
01/10/2024	Utah St.	W	71-67	4704
01/13/2024	at Colorado St.	L	55-61	1488

## NEW MEXICO GAME-BY-GAME LEADERS

Date	Opponent		Score	Att.	High Points	High Rebounds
11/06/2023	Texas Southern	W	76-59	5055	(22) CUMBER, Vianè	(9) KOHL, Charlotte
11/09/2023	at Pepperdine	W	57-48	113	(16) AUGMON, Aniyah	(9) AUGMON, Aniyah
11/12/2023	Tarleton St.	W	64-55	4626	(16) REUS, Paula (16) WILSON, Nyah	(9) WILSON, Nyah
11/15/2023	Tex. A&M-Commerce	W	75-74	4718	(22) WILSON, Nyah	(20) KOHL, Charlotte
11/23/2023	vs Montana St.	L	57-75	166	(24) CUMBER, Vianè	(7) KOHL, Charlotte
11/24/2023	vs Georgia Tech	L	55-66	150	(17) AUGMON, Aniyah	(4) AUGMON, Aniyah
					(17) WILSON, Nyah	(4) REUS, Paula
						(4) CUMBER, Vianè
						(4) JOAQUIM, Hulda
						(4) DIARRA BERTHE, Nahawa
11/28/2023	Eastern Ill.	Wot	81-78	4471	(25) REUS, Paula	(14) CUMBER, Vianè
12/02/2023	New Mexico St.	W	67-52	5379	(15) KOHL, Charlotte (15) REUS, Paula	(13) KOHL, Charlotte
12/04/2023	Mississippi Val.	W	68-45	4514	(16) KOHL, Charlotte (16) REUS, Paula	(20) KOHL, Charlotte
12/07/2023	Southern Utah	L	40-58	4526	(12) KOHL, Charlotte	(11) WILSON, Nyah
12/10/2023	Hampton	W	68-55	4638	(14) KOHL, Charlotte (14) REUS, Paula	(9) AUGMON, Aniyah
12/17/2023	Western N.M.	W	71-47	4889	(15) REUS, Paula	(9) REUS, Paula
12/22/2023	at Gonzaga	L	56-67	5241	(17) CUMBER, Vianè	(7) AUGMON, Aniyah
						(7) CUMBER, Vianè
12/30/2023	at Nevada	W	69-59	1444	(21) WILSON, Nyah	(9) CUMBER, Vianè
01/06/2024	Boise St.	L	56-64	5715	(15) AUGMON, Aniyah	(10) KOHL, Charlotte
01/10/2024	Utah St.	W	71-67	4704	(21) CUMBER, Vianè	(11) CUMBER, Vianè
01/13/2024	at Colorado St.	L	55-61	1488	(17) WILSON, Nyah	(9) CUMBER, Vianè

# NEW MEXICO GAME-BY-GAME POINTS-REBOUNDS-ASSISTS

Opponent	Date	Score		1	2	3	5	10	12	14	15	21	22	24
				DIARRA BER	CHAVEZ,NAT	WILSON,NYA	LANGERMANN	LAURO,PARI	AUGMON,ANI	JOAQUIM,HU	BATES,JAEL	CURTIS,MAC	KOHL,CHARL	ROBBINS,HA
Texas Southern	11/06/2023	76-59	W	0-2-2	0-0-0	20-4-3	0-1-0	0-0-0	17-6-6	2-5-0	DNP	DNP	6-9-1	0-6-0
at Pepperdine	11/09/2023	57-48	W	DNP	DNP	8-3-2	9-3-2	DNP	16-9-3	4-2-0	DNP	DNP	7-6-0	DNP
Tarleton St.	11/12/2023	64-55	W	DNP	DNP	16-9-2	0-2-0	DNP	2-3-5	6-6-2	DNP	DNP	6-5-3	6-4-1
Tex. A&M-Commerce	11/15/2023	75-74	W	0-0-1	0-0-0	22-2-0	3-1-1	DNP	16-4-2	0-3-0	DNP	DNP	14-20-1	DNP
vs Montana St.	11/23/2023	57-75	L	0-1-1	0-0-1	6-2-1	3-1-1	0-0-0	11-6-5	1-3-0	3-0-0	DNP	0-7-0	DNP
vs Georgia Tech	11/24/2023	55-66	L	6-4-0	DNP	17-3-0	0-0-0	DNP	17-4-4	0-4-0	DNP	0-0-0	8-3-0	DNP
Eastern Ill.	11/28/2023	81-78	Wot	0-0-0	DNP	21-7-1	0-0-0	DNP	10-8-6	2-3-0	DNP	DNP	9-6-0	DNP
New Mexico St.	12/02/2023	67-52	W	4-2-0	0-0-0	13-3-0	6-2-1	DNP	10-6-3	2-7-1	DNP	DNP	15-13-0	DNP
Mississippi Val.	12/04/2023	68-45	W	4-2-4	0-0-1	14-5-2	2-3-3	2-2-0	7-4-2	0-6-2	5-0-2	2-1-0	16-20-0	DNP
Southern Utah	12/07/2023	40-58	L	0-0-1	0-3-0	5-11-2	2-3-2	2-0-0	4-3-0	0-1-0	3-2-3	3-2-0	12-6-1	DNP
Hampton	12/10/2023	68-55	W	2-1-1	3-3-0	0-2-0	5-2-2	5-2-0	11-9-4	0-0-0	3-6-4	11-0-4	14-6-0	DNP
Western N.M.	12/17/2023	71-47	W	2-3-5	7-2-1	5-4-0	2-1-2	14-2-0	DNP	2-6-4	7-0-2	2-1-0	8-6-2	DNP
at Gonzaga	12/22/2023	56-67	L	2-1-0	DNP	7-5-0	0-1-0	9-4-1	8-7-6	0-0-0	DNP	DNP	2-2-0	DNP
at Nevada	12/30/2023	69-59	W	0-0-2	DNP	21-8-3	2-0-0	7-3-0	14-4-2	DNP	DNP	DNP	1-6-2	DNP
Boise St.	01/06/2024	56-64	L	0-0-0	DNP	11-2-2	0-1-1	0-0-0	15-5-5	0-1-0	DNP	0-0-0	9-10-0	DNP
Utah St.	01/10/2024	71-67	W	DNP	DNP	16-0-3	3-1-0	5-6-1	13-6-10	0-5-0	0-1-0	1-1-0	5-5-0	DNP
at Colorado St.	01/13/2024	55-61	L	0-3-0	DNP	17-4-2	0-1-0	0-2-0	15-6-6	0-1-1	DNP	DNP	8-8-0	DNP

Opponent	Date	Score		30	33
				REUS,PAULA	CUMBER,VIA
Texas Southern	11/06/2023	76-59	W	9-6-2	22-6-1
at Pepperdine	11/09/2023	57-48	W	4-7-3	9-2-0
Tarleton St.	11/12/2023	64-55	W	16-7-1	12-7-0
Tex. A&M-Commerce	11/15/2023	75-74	W	11-8-1	9-4-1
vs Montana St.	11/23/2023	57-75	L	9-5-3	24-3-0
vs Georgia Tech	11/24/2023	55-66	L	4-4-0	3-4-0
Eastern Ill.	11/28/2023	81-78	Wot	25-3-2	14-14-5
New Mexico St.	12/02/2023	67-52	W	15-8-5	2-1-2
Mississippi Val.	12/04/2023	68-45	W	16-8-3	DNP
Southern Utah	12/07/2023	40-58	L	9-5-1	DNP
Hampton	12/10/2023	68-55	W	14-8-5	DNP
Western N.M.	12/17/2023	71-47	W	15-9-1	7-3-2
at Gonzaga	12/22/2023	56-67	L	11-4-1	17-7-2
at Nevada	12/30/2023	69-59	W	17-5-1	7-9-0
Boise St.	01/06/2024	56-64	L	11-5-3	10-4-2
Utah St.	01/10/2024	71-67	W	7-5-4	21-11-3
at Colorado St.	01/13/2024	55-61	L	5-5-1	10-9-2

NEW MEXICO GAME-BY-GAME

				Total		3-Pointers		Free throws		Rebounds											
Opponent	Date	Score		FG-FGA	PCT	3FG-3FGA	PCT	FT-FTA	PCT	OFF	DEF	TOT	AVG	PF	A	TO	BLK	STL	PTS	AVG	
Texas Southern	11/06/2023	76-59	W	28-64	.438	9-22	.409	11-12	.917	12	37	49	49.0	9	15	19	5	8	76	76.0	
at Pepperdine	11/09/2023	57-48	W	23-64	.359	5-23	.217	6-11	.545	15	24	39	44.0	15	10	12	0	9	57	66.5	
Tarleton St.	11/12/2023	64-55	W	24-59	.407	5-19	.263	11-13	.846	10	35	45	44.3	16	14	15	2	6	64	65.7	
Tex. A&M-Commerce	11/15/2023	75-74	W	31-68	.456	3-14	.214	10-20	.500	19	28	47	45.0	14	7	18	4	3	75	68.0	
vs Montana St.	11/23/2023	57-75	L	21-63	.333	10-32	.313	5-11	.455	13	19	32	42.4	14	12	18	2	9	57	65.8	
vs Georgia Tech	11/24/2023	55-66	L	20-59	.339	1-15	.067	14-19	.737	6	26	32	40.7	15	4	12	1	8	55	64.0	
Eastern Ill.	11/28/2023	81-78	Wot	27-76	.355	9-31	.290	18-21	.857	14	33	47	41.6	13	14	11	4	6	81	66.4	
New Mexico St.	12/02/2023	67-52	W	25-64	.391	4-18	.222	13-16	.813	16	31	47	42.3	16	12	13	5	8	67	66.5	
Mississippi Val.	12/04/2023	68-45	W	27-70	.386	8-35	.229	6-11	.545	16	40	56	43.8	9	19	12	7	7	68	66.7	
Southern Utah	12/07/2023	40-58	L	15-55	.273	2-11	.182	8-14	.571	14	27	41	43.5	7	10	16	4	5	40	64.0	
Hampton	12/10/2023	68-55	W	23-62	.371	11-37	.297	11-16	.688	8	33	41	43.3	20	20	12	1	9	68	64.4	
Western N.M.	12/17/2023	71-47	W	25-64	.391	10-26	.385	11-18	.611	15	27	42	43.2	8	19	18	3	16	71	64.9	
at Gonzaga	12/22/2023	56-67	L	20-59	.339	10-32	.313	6-7	.857	12	23	35	42.5	15	10	15	4	3	56	64.2	
at Nevada	12/30/2023	69-59	W	25-52	.481	3-13	.231	16-23	.696	4	36	40	42.4	11	10	13	2	1	69	64.6	
Boise St.	01/06/2024	56-64	L	20-57	.351	8-29	.276	8-10	.800	6	28	34	41.8	7	13	13	4	6	56	64.0	
Utah St.	01/10/2024	71-67	W	26-80	.325	11-33	.333	8-15	.533	17	28	45	42.0	16	21	7	4	12	71	64.4	
at Colorado St.	01/13/2024	55-61	L	22-59	.373	5-22	.227	6-11	.545	12	33	45	42.2	12	12	18	3	8	55	63.9	
Total		1086		402-1075	.374	114-412	.277	168-248	.677	209	508	717	42.2	217	222	242	55	124	1086	63.9	

OPPONENT GAME-BY-GAME

				Total		3-Pointers		Free throws		Rebounds											
Opponent	Date	Score		FG-FGA	PCT	3FG-3FGA	PCT	FT-FTA	PCT	OFF	DEF	TOT	AVG	PF	A	TO	BLK	STL	PTS	AVG	
Texas Southern	11/06/2023	76-59	W	23-71	.324	8-31	.258	5-6	.833	11	25	36	36.0	12	11	14	5	7	59	59.0	
at Pepperdine	11/09/2023	57-48	W	20-62	.323	2-14	.143	6-8	.750	17	26	43	39.5	12	10	17	4	6	48	53.5	
Tarleton St.	11/12/2023	64-55	W	21-63	.333	8-27	.296	5-10	.500	10	25	35	38.0	12	8	14	2	5	55	54.0	
Tex. A&M-Commerce	11/15/2023	75-74	W	28-66	.424	8-17	.471	10-15	.667	11	22	33	36.8	19	11	14	1	6	74	59.0	
vs Montana St.	11/23/2023	57-75	L	29-56	.518	6-18	.333	11-14	.786	8	28	36	36.6	17	23	17	5	7	75	62.2	
vs Georgia Tech	11/24/2023	55-66	L	26-62	.419	5-23	.217	9-10	.900	11	36	47	38.3	22	13	16	0	2	66	62.8	
Eastern Ill.	11/28/2023	81-78	Wot	29-71	.408	12-37	.324	8-10	.800	10	36	46	39.4	17	22	17	8	7	78	65.0	
New Mexico St.	12/02/2023	67-52	W	21-59	.356	5-16	.313	5-7	.714	9	24	33	38.6	15	12	13	1	6	52	63.4	
Mississippi Val.	12/04/2023	68-45	W	19-65	.292	4-12	.333	3-9	.333	10	29	39	38.7	12	9	11	6	8	45	61.3	
Southern Utah	12/07/2023	40-58	L	25-63	.397	8-28	.286	0-0	.000	11	30	41	38.9	15	14	11	7	7	58	61.0	
Hampton	12/10/2023	68-55	W	16-54	.296	6-19	.316	17-28	.607	8	36	44	39.4	11	7	18	3	8	55	60.5	
Western N.M.	12/17/2023	71-47	W	19-56	.339	2-14	.143	7-9	.778	9	27	36	39.1	14	11	26	3	12	47	59.3	
at Gonzaga	12/22/2023	56-67	L	25-52	.481	9-17	.529	8-10	.800	5	25	30	38.4	9	21	10	4	0	67	59.9	
at Nevada	12/30/2023	69-59	W	24-70	.343	5-22	.227	6-10	.600	12	26	38	38.4	21	10	7	2	7	59	59.9	
Boise St.	01/06/2024	56-64	L	25-60	.417	11-29	.379	3-3	1.000	5	31	36	38.2	13	15	11	2	9	64	60.1	
Utah St.	01/10/2024	71-67	W	24-56	.429	5-16	.313	14-19	.737	8	41	49	38.9	17	9	21	7	6	67	60.6	
at Colorado St.	01/13/2024	55-61	L	22-57	.386	10-27	.370	7-9	.778	2	27	29	38.3	11	16	11	7	5	61	60.6	
Total		1030		396-1043	.380	114-367	.311	124-177	.701	157	494	651	38.3	249	222	248	67	108	1030	60.6	

## NEW MEXICO INDIVIDUAL GAME HIGHS

<b>POINTS</b>	25		Paula Reus vs Eastern Ill. (11/28/2023)
	24		Vianè Cumber vs Montana St. (N) (11/23/2023)
	22		Nyah Wilson vs Tex. A&M-Commerce (11/15/2023)
	22		Vianè Cumber vs Texas Southern (11/06/2023)
	21		Vianè Cumber vs Utah St. (01/10/2024)
	21		Nyah Wilson at Nevada (12/30/2023)
	21		Nyah Wilson vs Eastern Ill. (11/28/2023)
<b>FIELD GOALS MADE</b>	9		Nyah Wilson vs Tex. A&M-Commerce (11/15/2023)
	9		Vianè Cumber vs Texas Southern (11/06/2023)
<b>FIELD GOAL ATTEMPTS</b>	22		Vianè Cumber vs Utah St. (01/10/2024)
	20		Nyah Wilson vs Eastern Ill. (11/28/2023)
<b>FIELD GOAL PERCENTAGE (min 5 made)</b>	.833	(5-6)	Paris Lauro vs Western N.M. (12/17/2023)
	.778	(7-9)	Charlotte Kohl vs Mississippi Val. (12/04/2023)
<b>3 PT FG MADE</b>	8		Vianè Cumber vs Montana St. (N) (11/23/2023)
	5		Vianè Cumber vs Utah St. (01/10/2024)
	5		Vianè Cumber at Gonzaga (12/22/2023)
<b>3 PT FG ATTEMPTS</b>	15		Vianè Cumber vs Montana St. (N) (11/23/2023)
	12		Vianè Cumber vs Utah St. (01/10/2024)
	12		Vianè Cumber vs Boise St. (01/06/2024)
<b>3 PT FG PERCENTAGE (min 2 made)</b>	1.000	(4-4)	Nyah Wilson vs Texas Southern (11/06/2023)
	.800	(4-5)	Paris Lauro vs Western N.M. (12/17/2023)
<b>FREE THROWS MADE</b>	9		Nyah Wilson at Nevada (12/30/2023)
	9		Nyah Wilson vs Georgia Tech (N) (11/24/2023)
<b>FREE THROW ATTEMPTS</b>	12		Nyah Wilson at Nevada (12/30/2023)
	12		Charlotte Kohl vs Hampton (12/10/2023)
<b>FREE THROW PERCENTAGE (min 3 made)</b>	1.000	(6-6)	Nyah Wilson vs Eastern Ill. (11/28/2023)
	1.000	(4-4)	Aniyah Augmon vs Tex. A&M-Commerce (11/15/2023)
	1.000	(3-3)	Paula Reus vs Southern Utah (12/07/2023)
<b>REBOUNDS</b>	20		Charlotte Kohl vs Mississippi Val. (12/04/2023)
	20		Charlotte Kohl vs Tex. A&M-Commerce (11/15/2023)
<b>ASSISTS</b>	10		Aniyah Augmon vs Utah St. (01/10/2024)
	6		Aniyah Augmon at Colorado St. (01/13/2024)
	6		Aniyah Augmon at Gonzaga (12/22/2023)
	6		Aniyah Augmon vs Eastern Ill. (11/28/2023)
	6		Aniyah Augmon vs Texas Southern (11/06/2023)
<b>STEALS</b>	8		Aniyah Augmon at Pepperdine (11/09/2023)
	5		Aniyah Augmon vs New Mexico St. (12/02/2023)
<b>BLOCKED SHOTS</b>	5		Charlotte Kohl vs Mississippi Val. (12/04/2023)
	4		Charlotte Kohl vs New Mexico St. (12/02/2023)
	4		Charlotte Kohl vs Tex. A&M-Commerce (11/15/2023)
<b>TURNOVERS</b>	7		Aniyah Augmon at Colorado St. (01/13/2024)
	6		Aniyah Augmon vs Eastern Ill. (11/28/2023)
	6		Aniyah Augmon vs Georgia Tech (N) (11/24/2023)
	6		Aniyah Augmon vs Montana St. (N) (11/23/2023)
<b>FOULS</b>	5		Charlotte Kohl at Gonzaga (12/22/2023)
	5		Charlotte Kohl vs Montana St. (N) (11/23/2023)



## NEW MEXICO TEAM GAME HIGHS

<b>POINTS</b>	81	Eastern Ill. (11/28/2023)
	76	Texas Southern (11/06/2023)
	75	Tex. A&M-Commerce (11/15/2023)
	71	Utah St. (01/10/2024)
	71	Western N.M. (12/17/2023)
<b>FIELD GOALS MADE</b>	31	Tex. A&M-Commerce (11/15/2023)
	28	Texas Southern (11/06/2023)
<b>FIELD GOAL ATTEMPTS</b>	80	Utah St. (01/10/2024)
	76	Eastern Ill. (11/28/2023)
<b>FIELD GOAL PERCENTAGE</b>	.481 (25-52)	at Nevada (12/30/2023)
	.456 (31-68)	Tex. A&M-Commerce (11/15/2023)
<b>3 PT FG MADE</b>	11	Utah St. (01/10/2024)
	11	Hampton (12/10/2023)
<b>3 PT FG ATTEMPTS</b>	37	Hampton (12/10/2023)
	35	Mississippi Val. (12/04/2023)
<b>3 PT FG PERCENTAGE</b>	.409 (9-22)	Texas Southern (11/06/2023)
	.385 (10-26)	Western N.M. (12/17/2023)
<b>FREE THROWS MADE</b>	18	Eastern Ill. (11/28/2023)
	16	at Nevada (12/30/2023)
<b>FREE THROW ATTEMPTS</b>	23	at Nevada (12/30/2023)
	21	Eastern Ill. (11/28/2023)
<b>FREE THROW PERCENTAGE</b>	.917 (11-12)	Texas Southern (11/06/2023)
	.857 (18-21)	Eastern Ill. (11/28/2023)
	.857 (6-7)	at Gonzaga (12/22/2023)
<b>REBOUNDS</b>	56	Mississippi Val. (12/04/2023)
	49	Texas Southern (11/06/2023)
<b>ASSISTS</b>	21	Utah St. (01/10/2024)
	20	Hampton (12/10/2023)
<b>STEALS</b>	16	Western N.M. (12/17/2023)
	12	Utah St. (01/10/2024)
<b>BLOCKED SHOTS</b>	7	Mississippi Val. (12/04/2023)
	5	New Mexico St. (12/02/2023)
	5	Texas Southern (11/06/2023)
<b>TURNOVERS</b>	19	Texas Southern (11/06/2023)
	18	at Colorado St. (01/13/2024)
	18	Western N.M. (12/17/2023)
	18	vs Montana St. (N) (11/23/2023)
	18	Tex. A&M-Commerce (11/15/2023)
<b>FOULS</b>	20	Hampton (12/10/2023)
	16	Utah St. (01/10/2024)
	16	New Mexico St. (12/02/2023)
	16	Tarleton St. (11/12/2023)

## NEW MEXICO LEADERBOARD

## Points

##	Player	G	Pts	Pts/G
3	Wilson, Nyah	17	219	12.9
30	Reus, Paula	17	198	11.6
12	Augmon, Aniyah	16	186	11.6
33	Cumber, Vianè	14	167	11.9
22	Kohl, Charlotte	17	140	8.2
10	Lauro, Paris	11	44	4.0
5	Langermann, Lara	17	37	2.2
15	Bates, Jaelyn	6	21	3.5
1	Diarra Berthe, Nahawa	14	20	1.4
21	Curtis, Mackenzie	7	19	2.7
14	Joaquim, Hulda	16	19	1.2
2	Chavez, Natalia	8	10	1.3
24	Robbins, Hannah	2	6	3.0

## Field Goal Percentage

##	Player	FG	Att	Pct
22	Kohl, Charlotte	54	109	.495
10	Lauro, Paris	17	36	.472
12	Augmon, Aniyah	72	175	.411
30	Reus, Paula	77	191	.403
3	Wilson, Nyah	72	191	.377
33	Cumber, Vianè	62	181	.343
24	Robbins, Hannah	3	10	.300
21	Curtis, Mackenzie	5	17	.294
15	Bates, Jaelyn	7	27	.259
5	Langermann, Lara	13	53	.245
14	Joaquim, Hulda	8	33	.242
2	Chavez, Natalia	4	17	.235
1	Diarra Berthe, Nahawa	8	35	.229

## Scoring Average

##	Player	G	Pts	Pts/G
3	Wilson, Nyah	17	219	12.9
33	Cumber, Vianè	14	167	11.9
30	Reus, Paula	17	198	11.6
12	Augmon, Aniyah	16	186	11.6
22	Kohl, Charlotte	17	140	8.2
10	Lauro, Paris	11	44	4.0
15	Bates, Jaelyn	6	21	3.5
24	Robbins, Hannah	2	6	3.0
21	Curtis, Mackenzie	7	19	2.7
5	Langermann, Lara	17	37	2.2
1	Diarra Berthe, Nahawa	14	20	1.4
2	Chavez, Natalia	8	10	1.3
14	Joaquim, Hulda	16	19	1.2

## Field Goal Attempts

##	Player	G	Att	Att/G
3	Wilson, Nyah	17	191	11.2
30	Reus, Paula	17	191	11.2
33	Cumber, Vianè	14	181	12.9
12	Augmon, Aniyah	16	175	10.9
22	Kohl, Charlotte	17	109	6.4

## Field Goals Made

##	Player	G	Made	Made/G
30	Reus, Paula	17	77	4.5
3	Wilson, Nyah	17	72	4.2
12	Augmon, Aniyah	16	72	4.5
33	Cumber, Vianè	14	62	4.4
22	Kohl, Charlotte	17	54	3.2

## NEW MEXICO LEADERBOARD

## 3-Point FG Percentage

##	Player	3FG	Att	Pct
10	Lauro, Paris	9	21	.429
3	Wilson, Nyah	16	45	.356
33	Cumber, Vianè	38	114	.333
22	Kohl, Charlotte	2	6	.333
21	Curtis, Mackenzie	4	13	.308
30	Reus, Paula	22	79	.278
15	Bates, Jaelyn	5	21	.238
12	Augmon, Aniyah	9	45	.200
5	Langermann, Lara	7	38	.184
2	Chavez, Natalia	2	13	.154

## Free Throw Percentage

##	Player	Made	Att	Pct
21	Curtis, Mackenzie	5	6	.833
3	Wilson, Nyah	59	78	.756
30	Reus, Paula	22	30	.733
5	Langermann, Lara	4	6	.667
1	Diarra Berthe, Nahawa	4	6	.667
22	Kohl, Charlotte	30	48	.625
12	Augmon, Aniyah	33	53	.623
14	Joaquim, Hulda	3	5	.600
33	Cumber, Vianè	5	10	.500
10	Lauro, Paris	1	2	.500
15	Bates, Jaelyn	2	4	.500

## Rebounds

##	Player	G	Reb	Reb/G
22	Kohl, Charlotte	17	138	8.1
30	Reus, Paula	17	102	6.0
12	Augmon, Aniyah	16	90	5.6
33	Cumber, Vianè	14	84	6.0
3	Wilson, Nyah	17	74	4.4

## Rebounds Average

##	Player	G	Reb	Reb/G
22	Kohl, Charlotte	17	138	8.1
33	Cumber, Vianè	14	84	6.0
30	Reus, Paula	17	102	6.0
12	Augmon, Aniyah	16	90	5.6
24	Robbins, Hannah	2	10	5.0

## 3-Point FG Attempts

##	Player	G	Att	Att/G
33	Cumber, Vianè	14	114	8.1
30	Reus, Paula	17	79	4.6
3	Wilson, Nyah	17	45	2.6
12	Augmon, Aniyah	16	45	2.8
5	Langermann, Lara	17	38	2.2

## 3-Point FG Made

##	Player	G	Made	Made/G
33	Cumber, Vianè	14	38	2.7
30	Reus, Paula	17	22	1.3
3	Wilson, Nyah	17	16	0.9
12	Augmon, Aniyah	16	9	0.6
10	Lauro, Paris	11	9	0.8

## Free Throw Attempts

##	Player	G	Att	Att/G
3	Wilson, Nyah	17	78	4.6
12	Augmon, Aniyah	16	53	3.3
22	Kohl, Charlotte	17	48	2.8
30	Reus, Paula	17	30	1.8
33	Cumber, Vianè	14	10	0.7

## Free Throws Made

##	Player	G	Made	Made/G
3	Wilson, Nyah	17	59	3.5
12	Augmon, Aniyah	16	33	2.1
22	Kohl, Charlotte	17	30	1.8
30	Reus, Paula	17	22	1.3
33	Cumber, Vianè	14	5	0.4

## Assists

##	Player	G	Ast	Ast/G
12	Augmon, Aniyah	16	69	4.3
30	Reus, Paula	17	37	2.2
3	Wilson, Nyah	17	23	1.4
33	Cumber, Vianè	14	20	1.4
1	Diarra Berthe, Nahawa	14	17	1.2

## Steals

##	Player	G	Stl	Stl/G
12	Augmon, Aniyah	16	37	2.3
3	Wilson, Nyah	17	19	1.1
30	Reus, Paula	17	18	1.1
33	Cumber, Vianè	14	11	0.8
22	Kohl, Charlotte	17	11	0.6

## NEW MEXICO LEADERBOARD

## Offensive Rebounds

##	Player	G	OReb	OReb/G
22	Kohl, Charlotte	17	57	3.4
14	Joaquim, Hulda	16	25	1.6
12	Augmon, Aniyah	16	21	1.3
3	Wilson, Nyah	17	17	1.0
30	Reus, Paula	17	17	1.0

## Defensive Rebounds

##	Player	G	DReb	DReb/G
30	Reus, Paula	17	85	5.0
22	Kohl, Charlotte	17	81	4.8
33	Cumber, Vianè	14	69	4.9
12	Augmon, Aniyah	16	69	4.3
3	Wilson, Nyah	17	57	3.4

## Fouls

##	Player	G	PF	PF/G
22	Kohl, Charlotte	17	45	2.6
3	Wilson, Nyah	17	43	2.5
12	Augmon, Aniyah	16	29	1.8
33	Cumber, Vianè	14	24	1.7
30	Reus, Paula	17	23	1.4

## Foul Outs

##	Player	G	FO
22	Kohl, Charlotte	17	2

## Blocked Shots

##	Player	G	Blk	Blk/G
22	Kohl, Charlotte	17	34	2.0
30	Reus, Paula	17	6	0.4
12	Augmon, Aniyah	16	4	0.3
10	Lauro, Paris	11	3	0.3
33	Cumber, Vianè	14	2	0.1

## Minutes

##	Player	G	Min	Min/G
30	Reus, Paula	17	537	31:35
12	Augmon, Aniyah	16	527	32:57
3	Wilson, Nyah	17	503	29:35
33	Cumber, Vianè	14	479	34:14
22	Kohl, Charlotte	17	430	25:16

## Turnovers

##	Player	G	TO	TO/G
12	Augmon, Aniyah	16	64	4.0
30	Reus, Paula	17	39	2.3
3	Wilson, Nyah	17	36	2.1
22	Kohl, Charlotte	17	19	1.1
5	Langermann, Lara	17	17	1.0