

# THE UNIVERSITY OF NEW MEXICO WOMEN'S BASKETBALL

NOVEMBER 4 | vs NORTHERN ARIZONA | THE PIT

## 2024-25 SCHEDULE

OVERALL: 0-0 • MW: 0-0 • H: 0-0 • A: 0-0 • N: 0-0

DATE	OPPONENT	TIME/SCORE
10/20	New Mexico Highlands (Exh.)	W, 93-67
10/26	Western Colorado (Exh.)	W, 78-54
11/4	Northern Arizona	11 a.m.
11/7	Morehead State	7 p.m.
11/12	at Texas Tech	5 p.m.
11/15	Western New Mexico	7 p.m.
11/20	South Carolina State	7 p.m.
11/24	Gonzaga	1 p.m.
11/27	UC Irvine	7 p.m.
12/1	North Texas	1 p.m.
12/6	New Mexico State	7 p.m.
12/8	at New Mexico State	2 p.m.
12/15	Pepperdine	2 p.m.
12/19	Sacramento State	7 p.m.
12/21	Abilene Christian	1 p.m.
12/29	at Air Force*	1 p.m.
1/1	Nevada*	2 p.m.
1/4	at San Diego State*	2 p.m.
1/8	Wyoming*	7 p.m.
1/11	UNLV*	2 p.m.
1/18	at Colorado State*	1 p.m.
1/22	at Utah State*	6 p.m.
1/25	Fresno State*	2 p.m.
1/28	at Boise State*	6:30 p.m.
2/1	San Diego State*	2 p.m.
2/4	Colorado State*	8:30 p.m.
2/8	at UNLV*	3 p.m.
2/13	Boise State*	7 p.m.
2/19	at San José State*	8 p.m.
2/22	Utah State*	2 p.m.
2/26	at Wyoming*	6:30 p.m.
3/1	at Fresno State*	2 p.m.
3/4	Air Force*	7 p.m.
3/9-3/12 MW Tournament		

**BOLD:** Home \* : Mountain West

All times are Mountain Time

### QUICK POINTS BY THE NUMBERS

- 10 newcomers and 4 returners
- 8 underclassmen and 6 upperclassmen
- 22 home games on the schedule
- Picked 6th in the MW Preseason Poll
- 14-4 at home last season



#### New Mexico Lobos

0-0, 0-0 MW  
Head Coach: Mike Bradbury  
Record at UNM: 162-89 (9th year)  
Career Record: 340-206 (18th year)

#### Series History

Overall: UNM leads 23-6  
Home Record: UNM leads 17-2  
Current Streak: W9  
Last Meeting: 3/16/23 (W, 72-64)

#### Broadcast Information

TV: MW Network  
Radio: KNML  
Live Stats: GoLobos.com/wbbstats



#### Northern Arizona Lumberjacks

0-0, 0-0 Big Sky  
Head Coach: Loree Payne  
Record at NAU: 109-108 (8th year)  
Career Record: 239-166 (15th year)

## LOBO NOTES

### SEASON OPENER STATS

UNM is 7-1 in season openers and 6-0 when opening the season at home under Coach Mike Bradbury. The Lobos have outscored their opponents 641-507 (+134) in season openers and average 80.1 points per game in season openers under Bradbury.

Monday will be the fourth time in program history that UNM opens the season against NAU, with the Lobos 2-1 in those games. The Lobos last opened the season against Northern Arizona in 2012, a 68-57 UNM win. The other times were in 1998, a 67-49 UNM win and in 1991, an 81-56 NAU win.

### NAU SERIES HISTORY

UNM is 23-6 all-time against NAU, 17-2 at home and has won the last nine games in the series. The series started in 1975 with a 65-37 Lobo win, the start of a 12-game win streak for UNM to begin the series that spanned from 1975 to 1984.

The Lobos last played the Lumberjacks in the first round of the WNIT in 2023, a 72-64 Lobo win in The Pit.

Coach Mike Bradbury is 3-0 all-time against NAU, 2-0 at home. In the three meetings, UNM has outscored NAU 239-195 (+44) and by a 79.7-65.0 ppg average.

### THIS ONE'S FOR THE KIDS

Monday's game is a Field Trip game for UNM in which approximately 662 kids from 10 elementary schools in the Albuquerque Public Schools system will be in attendance.

### A WHOLE NEW TEAM

The 2024-25 Lobos will have a different look than a season ago, with 10 newcomers on the roster. Of the 10, four are freshmen and six are transfers.

UNM returns one starter from a season ago in Viané Cumber, who averaged 11.4 points per game, 6.0 rebounds per game, both career bests, as well as had a career-best 39 assists, 22 steals and five blocks last season. Entering their sophomore seasons, Lara Langermann and Paris Lauro return after making 32 appearances with six starts and 22 appearances, respectively. Hulda Joaquim begins her third year with the Lobos and played in 31 games last year for a combined 44 games during her Lobo career.

Joining the Lobos in the offseason were freshmen Reza Po, Joana Magalhães, Nayli Padilla and Lilli Hakkarainen. The Lobos are a relatively young team with eight of the 14 underclassmen, however, of the 14, eight also bring Division I collegiate experience with the addition of transfers Drew Jordon (Wagner), Clarissa Craig (Cincinnati), Amhyia Moreland (San José State) and Alyssa Hargrove (Austin Peay) to compliment the four Lobo returners.

### ROSTER BREAKDOWN

The roster breaks down to 4 freshmen (28.6%), 4 sophomores (28.6%), 1 junior (7.1%), 4 seniors (28.6%) and 1 graduate student (7.1%). Eight of the 14 are underclassmen (57.1%) with six upperclassmen (42.9%).

### AROUND THE WORLD

The roster breaks down further to span across the globe with seven countries represented and seven U.S. states with 12 different languages spoken. UNM has players from six international countries in Germany, Republic Democratic of Congo, Spain, Portugal, Mozambique, Finland as well as a greater U.S. footprint with Washington DC, North Carolina, Ohio, California, Texas, Indiana and New Mexico.

### DÉJÀ VU

UNM was picked to finish sixth in the MW preseason poll for the second-straight season.



» Eight NCAA Tournament Appearances | 1998, 2002, 2003, 2004, 2005, 2006, 2007, 2008 «  
» Five Mountain West Tournament Championships | 2003, 2004, 2005, 2007, 2008 «

## THE UNIVERSITY OF NEW MEXICO

Location.....Albuquerque, N.M.  
 Founded.....1889 by Territorial Legislature  
 Enrollment.....22,225  
 Nickname.....Lobos  
 Colors.....Cherry (PMS 200) & Silver (PMS Cool Gray 6)  
 Conference.....Mountain West Conference  
 National Affiliation.....NCAA Division I  
 President.....Dr. Garnett Stokes  
 Interim Director of Athletics.....David Williams  
 Interim Deputy AD.....Jalen Dominguez  
 Deputy Title IX Coordinator/SWA.....Amy Beggin  
 Faculty Representative.....Karen Gaudreault, Ph.D

## FACILITY INFORMATION

Facility.....The Pit  
 Capacity.....15,411  
 Age.....Built in 1966 (Renovated in 2009-10)  
 All-Time Home Record.....476-224 (.680)

## PROGRAM HISTORY

First Season.....1974-75  
 Overall Record.....759-598 (.559)  
 Overall MW Record.....270-176 (.605)  
 Postseason Tournament Appearances.....20  
 NCAA Tournament Appearances.....8  
 Last NCAA Postseason Appearance.....2022-23 (WNIT)  
 Last NCAA Postseason Opponent.....Washington  
 Last NCAA Postseason Result.....L, 67-56  
 MW Regular Season Championships.....3  
 .....(2003-04, 2004-05, 2020-21)  
 MW Tournament Championships.....5  
 .....(2002-03, 2003-04, 2004-05, 2006-07, 2007-08)

## TEAM INFORMATION

2023-24 Overall Record.....21-11  
 2023-24 Mountain West Record.....12-6  
 2023-24 Mountain West Season Finish.....2nd  
 2023-24 MW Tournament Finish.....Quarterfinal  
 Letterwinners Returning | Lost.....4 | 8  
 Starters Returning | Lost.....1 | 4

- » Three Mountain West Regular-Season Championships
- » Five Mountain West Tournament Championships
- » Seven NCAA Tournament Appearances Since 2001-02
- » Mountain West Attendance Leader 21 Seasons in a Row
- » WBCA Academic Top 25 Eight Times Since 2004-05

## COACHING STAFF

Head Coach: Mike Bradbury (Chattanooga, 1993)  
 Record at UNM (Years): 162-89 (9th season)  
 Career Record (Years): 340-206 (18th season)  
 Associate H.C.: Keith Freeman (3rd season)  
 Alma Mater: Huntington College, 1986  
 Assistant Coach: Nike McClure (3rd season)  
 Alma Mater: New Mexico, 2019  
 Assistant Coach: Mackenzie Novak (2nd season)  
 Alma Mater: Bethel University, 2021  
 Graduate Assistant: Jaisa Nunn (2nd season)  
 Dir. of Operations: Hanna Hudson (3rd season)  
 Dir. of Player Development: Isaiah Fernandez (3rd season)  
 Athletic Trainer: Lexi Smith (4th season)  
 Strength Coach: Emily Meinert (1st season)

## MISCELLANEOUS INFORMATION

2023-24 Total Attendance.....90,187  
 2023-24 Average Attendance.....5,010  
 2023-24 NCAA Attendance Rank.....24th  
 2023-24 Mountain West Attendance Rank.....1st

## MULTIMEDIA INFORMATION

Athletics Website.....www.GoLobos.com  
 Main University Web Site.....www.unm.edu  
 Conference Web Site.....www.TheMW.com  
 Facebook.....www.facebook.com/NewMexicoLobos  
 Twitter.....@UNMLobos

## MEDIA RELATIONS

Women's Basketball Contact.....Allison Weiss  
 Cell Phone (Preferred).....661-313-5402  
 Email.....allisonweiss@unm.edu

### INTERVIEW REQUESTS

All interviews with UNM student-athletes and coaches should be coordinated through the athletics communications office. Interviews may be arranged by contacting Allison Weiss in the athletics communications office (allisonweiss@unm.edu). All interview requests should be made at least 24 hours in advance.

The University of New Mexico Athletics  
 1155 University Drive  
 Albuquerque, N.M. 87106

## GAME 1: NEW MEXICO vs NORTHERN ARIZONA

UNM received 172 points, with the Lobos receiving 168 points in last year's preseason poll before finishing second in the final standings. The Lobos were picked ahead of Nevada (125 points), Air Force (116 points), Fresno State (109 points), San José State (60 points) and Utah State (41 points), with San Diego State above them in fifth (218 points). UNLV was picked as the preseason favorite with 21 first-place votes and 298 points, followed by Wyoming (three first-place votes, 251 points), Colorado State (four first-place votes, 248 points), Boise State (221 points) and the aforementioned San Diego State.

### STILL THE ONE

The lone returning starter from a season ago, Viané Cumber was selected to the Preseason All-Mountain West Team. Cumber was one of 10 players selected to the preseason team, marking the first conference selection of her career. Entering her fourth year at UNM, the Albuquerque native has appeared in 80 games with 45 starts, including starting all 29 games she played in last season.

Cumber is coming off a season in which she averaged 11.4 points per game, 6.0 rebounds per game, both career bests, as well as had a career-best 39 assists, 22 steals and five blocks. A three-point threat, the Lobo guard made 70 last season, bringing her career total to 158 and her career three-point percentage to 36.0.

Against MW opponents, Cumber averaged 11.4 points per game, 6.7 rebounds per game, and finished in double figures in 12 games with two games with 20-plus points. She registered two double-doubles against Utah State (21 points, 11 rebounds) and at San Diego State (10 points, 11 rebounds) and made at least one three-pointer in all but two conference games. She made multiple three-pointers in 13 MW games and five or more in three, including six three-pointers at UNLV with the sixth one the game winner to give her 22 points.

She led the Lobos in scoring in six games and tied for the team high in one, and led the team in rebounds in seven games while tied for the team high in four.

Cumber enters the season on the verge of a couple of reachable milestones with 702 points (298 away from 1,000) and 158 three-pointers, eighth all-time in program history. She is 81 from tying the program record of 239 set by LaTascya Duff and would have to average roughly two to three three-pointers per game.

### SUMMER ABROAD

Two Lobos spent their summer with their respective national teams, playing in the FIBA U20 Women's EuroBasket in Klaipeda and Vilnius, Lithuania.

Lara Langermann played for the German National Team, finishing in fourth place after losing to France in the semifinals and Italy in the third-place game. Lilli Hakkarainen played for the Finnish National Team.

Langermann and Hakkarainen faced each other in the round of 16 with Germany winning 90-60. Langermann scored 11 points on 4-5 shooting, 3-4 from three-point range, while Hakkarainen finished with five points and three rebounds.

Hakkarainen finished the tournament averaging 6.1 ppg, 4.0 rpg, 1.9 apg and 0.7 spg while playing 24.4 mpg. Langermann finished averaging 4.4 ppg, 1.3 rpg, 1.6 apg, 0.7 spg in 14.3 mpg.

### POINT OF EMPHASIS

UNM enters the season having to replace its point guard from a season ago in Aniyah Augmon. The Lobos have options in freshmen Reza Po and Joana Magalhães, returning sophomore Lara Langermann and senior Alyssa Hargrove.

All four got reps in the two exhibitions at the one.

Augmon led the Lobos with 109 assists and averaged 33.7 minutes per game last season, with two games with 10 assists. Not only was she a leader on the court, she was also a consistent scorer, scoring in double figures in 26 games and 20-plus points in three games, finishing with three double-doubles.

### HELLO FROM THE OTHER SIDE

Amhyia Moreland spent the last two seasons at MW opponent San José State.

Against the Lobos, Moreland scored 19 points on 8-13 shooting with four rebounds and two steals at The Pit on Feb. 14 and scored eight points on the other two occasions she played her future team (both were in San Jose). Moreland averaged 11.6 ppg and 5.9 rpg last season with the Spartans.

### MAKE YOURSELF AT HOME

The Lobos have a total of 22 home games on the schedule with two

exhibitions, 11 non-conference and nine MW games.

In the opening month, UNM has six home games with two separate three-game homestands broken up by a trip to Texas Tech. UNM has five home games in December with one road trip to Las Cruces and New Mexico State.

UNM has four home games in both January and February and close the MW schedule at home against Air Force on March 4.

The Lobos went 14-4 at home last season and 45-8 (85%) at home in the last three years.

### 20/10 AGAIN

The Lobos are coming off a 21-11 overall record, 12-6 record in the MW to finish second in the standings. It marked the fourth consecutive year with at least 10 conference wins and the seventh time in Coach Mike Bradbury's eight years at UNM. The Lobos reached 20 wins for the third consecutive year and the fifth time under Bradbury.

Only UNM, CSU and UNLV have reached the 20-win mark in each of the last three years. In addition, only UNM and UNLV have won 10 or more MW games in each of the last four years.

### FROM 0-60

A pattern emerged last season centered around the No. 60. 60 was the magic number for the Lobos as UNM was 19-1 when scoring 60 or more points and 14-2 when allowing fewer than 60 points. In conference games, UNM was 11-1 when scoring 60 or more and 7-1 when allowing fewer than 60 points.

### OTHER TRENDS

While it is a completely new team, the Lobos developed some trends:

- 6-2 in games decided by 1-4 points
- 12-2 when shooting 40% or better
- 19-1 when scoring 60 or more points
- 17-3 when UNM had a higher FG% and 13-2 with a higher 3-point FG% than its opponent
- 12x UNM had a higher FG% and higher 3-point % FG than its opponent in the same game
- 13-4 when outrebounding opponent
- 14-3 when leading after the 1st quarter, 15-1 when leading at the half and 16-2 when leading after the 3rd

### THE CUMBER EFFECT

Viané Cumber scored in double figures in 17 games last year with four games of 20-plus points, leading the Lobos in scoring six times. The Lobo also registered three double-doubles, with 14 points and a career-high 14 rebounds against Eastern Illinois, 21 points and 11 rebounds against Utah State and 11 rebounds and 10 points at San Diego State.

Among one of the best three-point shooters in the conference, she made three or more three-pointers 10 times: two against Eastern Illinois and SJSU, three at Pepperdine, against Tarleton State and Fresno State, four in the season opener, five against No. 20 Gonzaga, Utah State and Nevada, six against No. 25 UNLV and a career-best eight against Montana State.

In her career, she has made a three in 58 games with 44 games with multiple threes and 24 games making three or more three-pointers.

Further, Cumber has scored in double figures 36 times and 20 or more points six times entering this season.

## LAST TIME IT HAPPENED (UNM)

### As A Team

Scored 100 Points:	111 - vs. Utah State (2-25-23)
Scored 90 Points:	98 - at Utah State (1-28-23)
Scored Fewer Than 50 Points:	40 - vs Southern Utah (12-7-23)
Scored Fewer Than 40 Points:	38 - at Colorado St. (1-3-15)
Won by 50 Points:	+56 (W, 111-55) - vs. Utah State (2-25-23)
Won by 40 Points:	+48 (W, 92-44) - vs. Northern N.M. (12-10-19)
Won By 30 Points:	+38 (W, 98-60) - at Utah State (1-28-23)
Lost By 30 Points:	-37 (L, 47-84) - at (RV) Arizona St. (12-14-19)
Lost By 40 Points:	-42 (L, 63-105) - at Oklahoma (12-16-17)
Shot 60% or Better:	61.2% - vs. Pacific (11-9-01)
Shot Less Than 30%:	27.3% (15-55) - vs Southern Utah (12-7-23)
Shot 60% 3FG or Better:	64.0% (16-25) - at Fresno State (2-28-23)
Shot Less Than 20% 3FG:	17.6% (3-17) - vs San Diego State (3-11-24)
Made 15 3-Pointers:	16 - at Fresno State (2-28-23)
Shot 90% on FTs (10 or more):	91.7 (11-12) - vs. Texas Southern (11-6-23)
Shot Less Than 40% On FTs:	33.3% (4-12) - vs UNLV (2-3-24)
Had 50 Rebounds:	52 - at Air Force (1-27-24)
Had 20 Offensive Rebounds:	21 - vs. Northern N.M. (11-12-21)
Had 25 Assists:	25 - vs. Utah State (2-25-23)
Had 20 Turnovers:	23 - at Air Force (1-27-24)
Had Less Than 10 Turnovers:	8 - vs. San Jose State (2-14-24)
Had 10 Steals:	10 - vs. San Diego State (3-11-24)
Had 10 Blocks:	11 - vs. Houston Baptist (11-23-21)
Had Two 20-Point Scorers:	vs. Fresno State (1-24-24)
	Nyah Wilson (24) and Paula Reus (20)
Had Three 20-Point Scorers:	vs. Grand Canyon (3-16-22)
	LaTascya Duff (27), Jaedyn De La Cerda (22) and Shaiquel McGruder (20)
Had 7 Double-Digit Scorers:	vs. Utah State (2-25-23)
Had 6 Double-Digit Scorers:	at Arkansas-Pine Bluff (12-17-20)
Had 5 Double-Digit Scorers:	vs. Nevada (3-2-24)
Had No Double-Digit Scorers:	vs. (RV) Arizona St. (12-14-19)
Had Two 10+ Rebounders:	at Air Force (1-27-24)
	Charlotte Kohl (13) and Nyah Wilson (10)
Scored 50 Points In 1st Half:	51 - vs. Nevada (3-2-24)
Scored 50 Points In 2nd Half:	52 - vs. South Carolina State (12-29-22)
Scored 60 Points in a 2nd Half:	62 - vs. Utah State (2-25-23)
Scored 20 Or Fewer Points In 1st Half:	20 - vs UNLV (2-3-24)
Scored 20 Or Fewer Points In 2nd Half:	19 - vs Southern Utah (12-7-23)
Scored Less Than 10 Points in a Quarter:	7 - vs. San Diego State (3-11-24)
Failed To Make a 3FG:	at (RV) Arizona St. (12-14-19)
Defeated a Ranked Team:	W, 69-66 vs. No. 25 UNLV (1-20-24)
Lost To a Ranked Team:	L, 67-56 at No. 20 Gonzaga (12-22-23)
Won an OT Game:	W, 81-78 vs. Eastern Illinois (11-28-23)
Lost an OT Game:	L, 83-77 vs Arizona State (11-20-22)
Won a 2OT Game:	W, 89-85 at Houston (11-24-18)
Lost a 2OT Game:	L, 69-65 vs. Fresno St. (1-2-16)

### As An Individual

Had a Triple-Double:	Aisia Robertson (28 pts, 11 rebs, 11 assists)
	at Houston (11-24-18)
Had a Double-Double (Pts/Reb):	vs. Colorado State (2-10-24)
	Aniyah Augmon (22 pts, 16 reb)
Had a Double-Double (Pts/Asst):	Aniyah Augmon (15 pts & 10 assists)
	vs. Nevada (3-2-24)
Had a Double-Double (Reb/Asst):	Cherise Beynon (13 reb, 10 assists)
	vs. Fairleigh Dickinson (11-12-16)
Scored 20+ Pts with 10+ Rebs:	Aniyah Augmon (22 pts, 16 reb)
	vs. Colorado State (2-10-24)
Scored 30 Points:	Nyah Wilson (33 pts) at Fresno State (3-5-24)
Scored 40 Points:	Cherise Beynon (41) at SDSU (1-20-18)
Scored 30 Points (MW Only):	Nyah Wilson (33 pts) at Fresno State (3-5-24)
Scored 40 points (MW Only):	Cherise Beynon (41)
	at San Diego St. (1-20-18)
Had 20+ Rebounds:	Charlotte Kohl (20) vs. Mississippi Valley State (12-4-23)
Had 15+ Rebounds:	Aniyah Augmon (16) vs. Colorado State (2-10-24)
Had 15+ Assists:	Aisia Robertson (16) vs. Oklahoma (11-28-18)
Had 5+ Steals:	Aniyah Augmon (5) vs. Wyoming (1-17-24)
Had 5+ Blocks:	Charlotte Kohl (5) vs. Mississippi Valley State (12-4-23)

## LAST TIME IT HAPPENED (OPP)

### As A Team

Scored 100 Points:	105 - Oklahoma (12-16-17)
Scored 90 Points:	93 - UNLV (2-2-23)
Scored Less Than 50 Points:	46 - Colorado State (2-10-24)
Scored Less Than 40 Points:	40 - Northern N.M. (11-12-21)
Shot 50% Or Better:	51.8% (29-56) - Montana State (11-23-23)
Shot Less Than 30%:	27.0% (20-74) - Air Force (1-27-24)
Shot 50% 3FG Or Better:	52.9% (9-17) - Gonzaga (12-22-23)
Shot Less Than 20% 3FG:	14.3% (2-14) - San Diego State (2-28-24)
Made 15 3-Pointers:	15 - San José St. (1-22-20)
Shot 90% On FTs (10 or more):	91.7% (11-12) - San Diego State (2-28-24)
Shot Less Than 50% On FTs:	33.3% (3-9) - Mississippi Valley State (12-4-23)
Had 50 Rebounds:	53 - Mississippi State (12-21-22)
Had 20 Offensive Rebounds:	24 - Houston (11-12-22)
Had 25 Assists:	26 - Houston (11-20-21)
Had 20 Turnovers:	20 - San Diego State (3-11-24)
Had 30 Turnovers:	30 - Northern NM (11-15-17)
Had Less Than 10 Turnovers:	9 - Nevada (3-2-24)
Had 10 Steals:	11 - Wyoming (2-24-24)
Had 10 Blocks:	11 - Boise State (2-21-24)
Had Two 20-Point Scorers:	UNLV (1-14-23)
	Desi-Rae Young (22) and Alyssa Durazo-Frescas (20)
Had 6 Double-Digit Scorers:	San Diego State (3-6-23)
Had 5 Double-Digit Scorers:	UNLV (2-2-23)
Had No Double-Digit Scorers:	San José State (1-31-24)
Had Two 10+ Rebounders:	UNLV (2-3-24)
	Desi-Rae Young (10) and Alyssa Brown (11)
Scored 50+ Points In 1st Half:	54 - San José St. (1-22-20)
Scored 50+ Points In 2nd Half:	50 - Colorado State (3-8-22)
Scored 20 Or Less Points In 1st Half:	18 - Wyoming (2-24-24)
Scored 20 Or Less In 2nd Half:	19 - Fresno State (3-5-24)
Scored Less Than 10 Points in Quarter:	8- Fresno State (3-5-24)
Failed To Make a 3FG:	0-1 by San Diego State (2-18-15)

### As An Individual

Had a Double-Double (Pts/Reb):	Kim Villalobos (12 pts, 14 reb)
	San Diego State (3-11-24)
Had a Double-Double (Pts/Asst):	Miah Monahan (16 pts, 10 asts.)
	Eastern Illinois (11-28-23)
Had a Double-Double (Pts/Steals):	Jasmyne Harris (28 pts & 10 steals)
	Houston (11-28-18)
Had 20+ Points & 10+ Rebounds:	Desi-Rae Young (27 pts, 10 reb)
	UNLV (2-3-24)
Scored 30 Points:	Essence Booker (31) - UNLV (1-27-22)
Scored 30 Points (MW Only):	Essence Booker (31) - UNLV (1-27-22)
Had 20+ Rebounds:	Kaylee Johnson (22) - No. 1 Stanford (11-24-14)
Had 15+ Rebounds:	Andjela Bigovic (16) - Tarleton State (11-12-23)
Had 10+ Assists:	Miah Monahan (10) - Eastern Illinois (11-28-23)
Had 5+ Steals:	Jo Huntimer (6) - Air Force (2-23-23)
Had 5+ Blocks:	Gracie Johnson (5) - Utah State (1-10-24)

GAME 1: NEW MEXICO vs NORTHERN ARIZONA

UNM STARTING LINEUPS (GAME)

Game	G	G	G	F	C
Northern Arizona					
Morehead State					
Texas Tech					
Western New Mexico.					
South Carolina State					
Gonzaga					
UC Irvine					
North Texas					
New Mexico State					
New Mexico State					
Pepperdine					
Sacramento State					
Abilene Christian					
Air Force					
Nevada					
San Diego State					
Wyoming					
UNLV					
Colorado State					
Utah State					
Fresno State					
Boise State					
San Diego State					
Colorado State					
UNLV					
Boise State					
San José State					
Utah State					
Wyoming					
Fresno State.					
Air Force					

STATS

STAT COMPARISON (last season)

NAU		UNM
75.3	Points Per Game	64.7
42.1	FG%	39.6
33.8	3FG%	30.8
78.2	FT%	70.2
7.7	Made 3-pt PG	6.8
39.1	Rebounds PG	39.4
13.5	Turnovers PG	14.2
16.0	Assists PG	11.8
3.5	Blocks PG	2.8
7.6	Steals PG	7.0
70.1	Scoring Defense	60.8
41.4	FG% Defense	38.3
31.9	3FG% Defense	30.2
2.1	Rebound Margin	+2.3

UNM WHEN HOME/AWAY/NEUTRAL

STAT	HOME	AWAY	NEUTRAL
PPG			
Opp PPG			
FG %			
3FG%			
3 FG MPG			
FT%			
Opp FG%			
Opp 3FG%			
RPG			
Opp RPG			
APG			
SPG			
TOV			

SPECIALTY STAT COMPARISON

(UNM/Opp.)

Opp.	Paint	Off TO	2nd Chance	Fast Break	Bench
Northern Arizona					
Morehead State					
Texas Tech					
Western New Mexico					
South Carolina State					
Gonzaga					
UC Irvine					
North Texas					
New Mexico State					
New Mexico State					
Pepperdine					
Sacramento State					
Abilene Christian					
Air Force					
Nevada					
San Diego State					
Wyoming					
UNLV					
Colorado State					
Utah State					
Fresno State					
Boise State					
San Diego State					
Colorado State					
UNLV					
Boise State					
San José State					
Utah State					
Wyoming					
Fresno State.					
Air Force					

UNM STARTING LINEUPS (RECORD)

DOUBLE-DOUBLE TRACKER

CAREER DOUBLE-DOUBLES

Viané Cumber	2024-25	Career 3
--------------	---------	-------------

20-POINT TRACKER

MOUNTAIN WEST STATISTICS

TEAM	All	Conference
Def. Rebounds/Game		
Rebounds/Game		
FG % Defense		
Rebounding Margin		
3-Pt FG % Defense		
Scoring Defense		
Scoring Margin		
3-Pt FG Made		
Scoring		
Steals per Game		
Off. Rebounds/Game		
Blocks per Game		
Assist/Turnover Ratio		
FG %		
Assists per Game		
3-PT FG %		
Free Throw %		

INDIVIDUAL	All	Conference
Scoring		
Rebounding		
FG%		
Free Throw %		
3-Point FG Made		
Steals		
Assists		
Blocks		
Minutes		

2024-25 MW PLAYERS OF THE WEEK

PLAYER OF THE WEEK      FRESHMAN OF THE WEEK

NCAA STATISTICS

TEAM
INDIVIDUAL

## UNM'S RECORD WHEN...

	Overall	In MW
Overall		
At home		
On the road		
At neutral sites		
After a win		
After a loss		
In overtime		
vs. ranked opponents		
Games decided by 1-4 points		
Games decided by 5-9 points		
Games decided by 10-19 points		
Games decided by 20+ points		
Leading after Q1		
Trailing after Q1		
Tied after Q1		
Leading at half		
Trailing at half		
Tied at half		
Leading after Q3		
Trailing after Q3		
Tied after Q3		
Shooting 50% or better		
Shooting between 40-49.9%		
Shooting less than 40%		
Opponent shoots 50% or better		
Opponent shoots b/w 40-49.9%		
Opponent shoots b/w 30-39.9%		
Opponent shoots less than 30%		
UNM higher FG%		
Opponent higher FG%		
FG% Tied		
UNM outrebounds		
Opponent outrebounds		
Rebounds tied		
UNM more made free throws		
Opponent more made free throws		
Made free throws tied		
UNM 3FG% higher		
Opponent 3FG% higher		
3FG% tied		
UNM has more fouls		
Opponent has more fouls		
Fouls are tied		
UNM more turnovers		
Opponent more turnovers		
Turnovers tied		
Scoring less than 50 points		
Scoring 50-59 points		
Scoring 60-69 points		
Scoring 70-79 points		
Scoring 80-89 points		
Scoring 90-99 points		
Scoring 100+ points		
Allowing 40 points or less		
Allowing 41-49 points		
Allowing 50-59 points		
Allowing 60-69 points		
Allowing 70-79 points		
Allowing 80-89 points		
Allowing 90+ points		
In November		
In December		
In January		
In February		
In March		

## SERIES HISTORY

### NORTHERN ARIZONA (23-6)

H: 17-2; A: 6-4; N: 0-0

2/13/75	W	65-37	H
2/22/76	W	49-46	A
2/11/77	W	69-54	H
2/25/78	W	79-64	H
3/3/79	W	106-81	A
11/28/80	W	84-72	H
11/27/81	W	84-71	H
1/21/82	W	80-72	A
12/3/82	W	74-52	H
1/22/83	W	70-60	A
11/26/83	W	72-70 (OT)	A
1/21/84	W	80-74	H
12/1/84	L	93-71	A
1/19/85	W	68-60	H
1/11/86	L	41-37	H
11/23/91	L	81-56	A
1/2/93	W	86-66	H
11/29/93	L	74-52	A
1/7/95	L	75-65	H
1/6/96	L	73-70	A
12/3/96	W	71-61	H
11/14/98	W	67-49	H
12/21/06	W	62-51	H
11/24/09	W	72-40	H
11/9/12	W	68-57	H
12/21/14	W	56-37	H
12/8/18	W	84-55	A
11/8/19	W	83-76	H
3/16/23	W	72-64	H



**GAME 1: NEW MEXICO vs NORTHERN ARIZONA**



**1**  
**Lydie Mwamba**  
G | 5-11 | JR.  
Republic Democratic of  
Congo



**3**  
**Destinee Hooks**  
G | 5-9 | SO.  
Indianapolis, Ind.



**4**  
**Alyssa Hargrove**  
G | 5-9 | SR.  
Dayton, Ohio



**5**  
**Lara Langermann**  
G | 5-7 | SO.  
Breckerfeld, Germany



**10**  
**Paris Lauro**  
F | 6-1 | SO.  
Dallas, Texas



**11**  
**Nayli Padilla**  
G | 5-11 | FR.  
Barrio de La Salud, Spain



**13**  
**Joana Magalhães**  
G | 5-5 | FR.  
Lisbon, Portugal



**14**  
**Hulda Joaquim**  
F | 6-1 | GR.  
Maputo, Mozambique



**15**  
**Drew Jordan**  
G | 5-11 | SO.  
Washington, DC



**21**  
**Reza Po**  
G | 5-3 | FR.  
San Bruno, Calif.



**24**  
**Amhyia Moreland**  
F | 6-1 | SR.  
Charlotte, N.C.



**33**  
**Vianè Cumber**  
G | 5-10 | SR.  
Albuquerque, N.M.



**40**  
**Clarissa Craig**  
F/C | 6-3 | SR.  
Cincinnati, Ohio



**45**  
**Lilli Hakkarainen**  
G | 5-7 | FR.  
Kotka, Finland



**Mike Bradbury**  
Head Coach



**Keith Freeman**  
Assoc. Head Coach



**Nike McClure**  
Assistant Coach



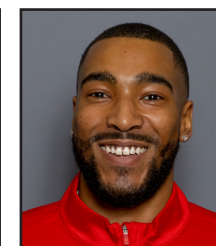
**Mackenzie Novak**  
Assistant Coach



**Jaisa Nunn**  
Graduate Assistant



**Hanna Hudson**  
Director of Operations



**Isaiah Fernandez**  
Director of Player Development



# GAME 1: NEW MEXICO vs NORTHERN ARIZONA

## NUMERICAL

#	Name	Pos	Ht	Yr	Hometown (Previous School)
1	Lydie Mwamba	G	5-9	Jr.	Republic Democratic of Congo (Trinity Valley CC)
3	Destinee Hooks	G	5-9	So.	Indianapolis, Ind. (Vincennes)
4	Alyssa Hargrove	G	5-8	Sr.	Dayton, Ohio (Austin Peay State)
5	Lara Langermann	G	5-7	So.	Breckerfeld, Germany (Theodor-Heuss-Gymnasium Hagen)
10	Paris Lauro	F	6-0	So.	Dallas, Texas (Highland Park HS)
11	Nayli Padilla	G	5-9	Fr.	Barrio de La Salud, Spain (IES Tarahales)
13	Joana Magalhães	G	5-5	Fr.	Lisbon, Portugal (Quinta Do Marquês)
14	Hulda Joaquim	F	6-1	Gr.	Maputo, Mozambique (Seward County CC)
15	Drew Jordon	G	5-11	So.	Washington, DC (Wagner)
21	Reza Po	G	5-2	Fr.	San Bruno, Calif. (Sacred Heart Cathedral)
24	Amhyia Moreland	F	6-1	Sr.	Charlotte, N.C. (San José State)
33	Vianè Cumber	G	5-11	Sr.	Albuquerque, N.M. (Sandia HS)
40	Clarissa Craig	F/C	6-3	Sr.	Cincinnati, Ohio (Cincinnati)
45	Lilli Hakkarainen	G	5-7	Fr.	Kotka, Finland (Mäkelänrinne Upper Secondary School)

## ALPHABETICAL

#	Name	Pos	Ht	Yr	Hometown (Previous School)
40	Clarissa Craig	F/C	6-3	Sr.	Cincinnati, Ohio (Cincinnati)
33	Vianè Cumber	G	5-11	Sr.	Albuquerque, N.M. (Sandia HS)
45	Lilli Hakkarainen	G	5-7	Fr.	Kotka, Finland (Mäkelänrinne Upper Secondary School)
4	Alyssa Hargrove	G	5-8	Sr.	Dayton, Ohio (Austin Peay State)
3	Destinee Hooks	G	5-9	So.	Indianapolis, Ind. (Vincennes)
14	Hulda Joaquim	F	6-1	Gr.	Maputo, Mozambique (Seward County CC)
15	Drew Jordon	G	5-11	So.	Washington, DC (Wagner)
5	Lara Langermann	G	5-7	So.	Breckerfeld, Germany (Theodor-Heuss-Gymnasium Hagen)
10	Paris Lauro	F	6-0	So.	Dallas, Texas (Highland Park HS)
13	Joana Magalhães	G	5-5	Fr.	Lisbon, Portugal (Quinta Do Marquês)
24	Amhyia Moreland	F	6-1	Sr.	Charlotte, N.C. (San José State)
1	Lydie Mwamba	G	5-9	Jr.	Republic Democratic of Congo (Trinity Valley CC)
11	Nayli Padilla	G	5-9	Fr.	Barrio de La Salud, Spain (IES Tarahales)
21	Reza Po	G	5-2	Fr.	San Bruno, Calif. (Sacred Heart Cathedral)

## STAFF

Mike Bradbury	Head Coach
Keith Freeman	Associate Head Coach
Nike McClure	Assistant Coach
Mackenzie Novak	Assistant Coach
Jaissa Nunn	Graduate Assistant
Hanna Hudson	Director of Operations
Isaiah Fernandez	Director of Player Development
Lexi Smith	Associate Athletic Trainer (WBB)
Emily Meinert	Assistant Director of Athletic Performance (WBB)

## by eligibility

Grad Student (1)	
14 Hulda Joaquim	F

## Seniors (4)

4 Alyssa Hargrove	G
24 Amhyia Moreland	F
33 Vianè Cumber	G
40 Clarissa Craig	F/C

## Juniors (1)

1 Lydie Mwamba	G
----------------	---

## Sophomores (4)

3 Destinee Hooks	G
5 Lara Langermann	G
10 Paris Lauro	F
15 Drew Jordon	G

## Freshmen (4)

11 Nayli Padilla	G
13 Joana Magalhães	G
21 Reza Po	G
45 Lilli Hakkarainen	G

## home state

California (1)	
21 Reza Po	G

## Indiana (1)

3 Destinee Hooks	G
------------------	---

## North Carolina (1)

24 Amhyia Moreland	F
--------------------	---

## New Mexico (1)

33 Vianè Cumber	G
-----------------	---

## Ohio (2)

4 Alyssa Hargrove	G
40 Clarissa Craig	F/C

## Texas (1)

10 Paris Lauro	F
----------------	---

## Washington DC (1)

15 Drew Jordon	G
----------------	---

## international

1 Lydie Mwamba (Republic Democratic of Congo)
5 Lara Langermann (Germany)
11 Nayli Padilla (Spain)
13 Joana Magalhães (Portugal)
14 Hulda Joaquim (Mozambique)
45 Lilli Hakkarainen (Finland)

## PRONUNCIATIONS

Audio pronunciations are also available on their roster bios online

LARA LANGERMANN	La-Rah Lane-GRR-man
Paris LAURO	Loro (rhymes with Zorro)
NAYLI PADILLA	Nay-LEE PA-dee-ya
Joana MAGALHAES	Ma-ga-LANE-SHH
HULDA JOAQUIM	UI-da JOY-key-m
VIANE Cumber	V-UH-nay (like DNA but VNA)
Lilli HAKKARAINEN	HAWK-KERR-rine-in

*Lobos*



LANGUAGES SPOKEN :  
 PORTUGUESE, GERMAN, SPANISH, FINNISH, SWEDISH, CHINESE, FRENCH, ENGLISH,  
 LINGALA, SWAHILI, TSHILUBA, CHANGANA

A R O U N D T H E W O R L D  
**LOBOS WOMEN'S**  
*Basketball*





## MIKE BRADBURY

### RECORD AT UNM: 162-89 (9TH SEASON)

### CAREER RECORD: 340-206 (17TH SEASON)

#### NOTEWORTHY:

- Named the sixth head coach in program history on March 31, 2016
- 26 wins in 2021-22 tied for most wins in program history
- Led UNM to 25 wins in 2017-18; tied for second-most wins in program history
- Led UNM to 20+ wins in five seasons, and .500 or better in seven
- Earned his 100th win at UNM on Nov. 30, 2021; only the second coach in program history to reach 100. Earned his 300th career win on Nov. 22, 2022 against Western N.M.

Mike Bradbury enters his ninth season as head coach for The University of New Mexico women's basketball team. In his previous eight seasons at the helm, Bradbury has guided the Lobos to a 162-89 (.645) and 89-51 (.636) in conference and became just the second coach in UNM history to win 100 games with a win over Grambling on Nov. 30, 2021.

Five times in his tenure (2017-18, 2018-19, 2021-22, 2022-23, 2023-24) the Lobos eclipsed the 20-win mark, with the Lobos tying the program record for most wins in a single season with 26 in 2021-22. Further, the 25 wins in 2017-18 were tied for the second-most wins in program history. The consecutive 20-plus win seasons under Bradbury in 2017-18 and 2018-19 were the first for the program since the 2007-08 – 2008-09 seasons.

Further, the last time the Lobos finished with 20-plus wins in three consecutive seasons was 2006-07, 2007-08 and 2008-09.

Of note, there are only three Mountain West teams that have won 20 games in each of the last three years (UNM, UNLV and CSU), and in the last four years, only two MW teams that have won 10 or more conference games all four years (UNM and UNLV).

The Lobos have sustained success under Bradbury as historically, UNM has finished either first or second in the conference in scoring offense in six of the last seven years (four times first). In Bradbury's time at UNM, the Lobos have finished with 15 or made three-pointers 11 times and hold the top-five spots in three-pointers per game in program history.

During the most recent season, the Lobos were among the most consistent defensive teams in the country, ranking 14th in defensive rebounds per game and 10th in the fewest fouls per game. On an individual level, the Lobos garnered several awards with five Mountain West Player of the Week selections, the most since the 2018-19 season, as well as earning MW Newcomer of the Year (Nyah Wilson), MW Defensive Player of the Year (Aniyah Augmon), two All-Mountain West Team selections in Augmon and Wilson, an All-Defensive Team selection for Augmon and a MW Coach of the Year selection for Bradbury.

Wilson became the seventh Lobo to earn Newcomer of the Year and the fourth under Bradbury, with the last one back in 2018-19. Augmon became only the second Lobo to win Defensive Player of the Year, joining Porche Torrance who won in 2011-12. The

selection marked the first Coach of the Year award for Bradbury and the third for a New Mexico coach.

In his time at UNM, Bradbury has coached 19 All-Mountain West performers, six on the All-Defensive Team and three on the All-Newcomer/Freshman Team.

In terms of major individual awards, Bradbury coached the league's Newcomer of the Year each of his first three seasons in charge of the Lobos with Richelle van der Keijl earning the award in 2016-17, Tesha Buck in 2017-18 and Aisia Robertson in 2018-19. Additionally, Bradbury has coached the MW Player of the Year in Jaisa Nunn (2018-19) and the Freshman of the Year in Jayla Everett (2018-19) as well as Sixth Person of the Year in LaTascya Duff (2020-21).

Further, a Lobo has been named Mountain West Player of the Week 20 times during his tenure, with four named Freshman of the Week.

In the 2022-23 season, UNM finished 15th in the NCAA in made three-pointers per game at 8.5 per game, with 12 games with double-digit three-pointers. Of the 12 games, UNM made 18 (against South Carolina State) and three games with 16 (twice against Utah State and at Fresno State).

During the 2021-22 season, the program established several program records. UNM set the program record in made three-pointers (346), a program-best 171 made three-pointers in conference season, as well as a program-record 596 assists on the season and 292 in conference games. In addition, the Lobos made a program-high 523 field goals in conference and scored the most points in conference in program history with 1,413 points. On Jan. 6 at Utah State, the Lobos set the program record and the MW record in made three-pointers in a game with 21, and three games later made 19 three-pointers for the second most in a game in program history. The Lobos also went on a nine-game win streak, the second longest in program history.

New Mexico ranked in the top 10 in the NCAA in made three-pointers (third), made three-pointers per game (fifth, 9.6 per game) and in assists (10th). In total, UNM ranked in the top 30 in nine categories, including scoring offense (14th, 76.7 points per game), assists per game (16th, 16.6 per game), assist/turnover ratio (18th, 1.21), field-goal percentage (19th, 45.1 percent), blocked shots (25th, 147) and three-point field-goal percentage (30th, 35.1 percent).



## GAME 1: NEW MEXICO vs NORTHERN ARIZONA

---

UNM added six postseason Mountain West honors with a conference-high three all-conference players in Antonia Anderson, Shaiquel McGruder and Jaedyn De La Cerda, an honorable mention in LaTora Duff, an all-defensive player in McGruder and an all-freshman in Paula Reus. The Lobos have had 12 conference selections in the last two seasons.

Further, five Lobos finished the 2021-22 season averaging double figures in points per game.

In the 2020-21 season, Bradbury led the Lobos to a Mountain West regular season championship, the first outright in program history and the first regular season title since the 2004-05 season. In addition, the Lobos were selected for the WNIT for the third time in four years.

The Lobos produced one of the most prolific offenses not only in the conference, but in the country, finishing among the top 25 in several categories. Among them, UNM finished fourth in the NCAA in made three-pointers per game (10.2), sixth in assist-turnover ratio (1.40), ninth in scoring offense (81.2 points per game), 14th in fewest turnovers per game (12.0) and assists per game (16.8) and 22nd in scoring margin (12.7). The Lobos led the Mountain West in scoring offense, scoring margin, assists per game, turnover margin, assist-turnover ratio and made three-pointers as well as second in field-goal percentage and steals per game.

UNM set a program record in scoring with 120 points against Arkansas-Pine Bluff on Dec. 17, 2020 and in the process, made 17 three-pointers, falling just one short of tying the program record. Further, the Lobos registered 90-plus points in five games and 80-plus points in 11 of the 20 games on the season.

Four Lobos finished the 2020-21 season averaging double figures in points per game with six players finishing in double figures in scoring in two games (the only times it has been accomplished in program history), five players in five games and four in seven games.

As a result of UNM's successful season, five players were named to the All-Mountain West Team with LaTascya Duff also earning the superlative of Sixth Person of the Year. Duff was just the second Lobo to win the sixth person award. Making the all-conference team for the first time were Duff, Jaedyn De La Cerda and Antonia Anderson, as well as Shaiquel McGruder earning all-defensive and Ahlise Hurst earning the honorable mention distinction.

In his third year at the helm, Bradbury continued to put his mark on the program while also continuing to bring Lobo women's basketball back to national prominence. Overall, Bradbury's 2018-19 team went 24-7 and earned a bid to the WNIT for a second-straight season. It marked the first time since the 2008-09 – 2009-10 seasons that the program made consecutive trips to the postseason.

Prior to coming to Albuquerque, Bradbury built a successful nine year run as a Division-I head coach with stops at Morehead State (Morehead, Ky.) and Wright State (Dayton, Ohio). Most recently with the Raiders, Bradbury led his squad to five 20-win seasons, including each of his final three seasons. During that time, Wright State has amassed a 75-28 record, the best amongst the 13 Division I programs in the state of Ohio.

Overall at Wright State, Bradbury had five winning seasons, all of which were 20-plus win seasons, in six years – a feat made all the more remarkable as Wright State had just one winning season in the previous 22 before his arrival. In the previous 37 seasons of women's basketball at Wright State, the Raider program had tallied 20 wins just once before Bradbury led the team to 20 wins in five of his six seasons.

His most prominent three-year run at Wright State started in 2013-14, when the Raiders won a school-record 26 games on the way to a 26-9 season and the program's first-ever appearance in the NCAA Tournament. That season saw the Raiders finish second in the Horizon League and win its first Horizon League Tournament. It also featured the program's first road win at perennial league power Wisconsin-Green Bay. Kim Demmings was named the Horizon League Player of the Year and Tournament MVP, and it marked the first time in school history the program had a pair of first team All-Conference selections.

He followed up that by earning Horizon League Coach of the Year in 2014-15 after a 25-9 season that saw his squad lose its Horizon League Preseason Player of the Year less than two minutes into the season opener. The Raiders just missed a second straight NCAA Tournament appearance, falling in overtime in the conference championship game. The team did make its first appearance in the Women's NIT as the league's automatic qualifier, and in 2015-16, the team made it back-to-back WNIT appearances after a 24-11 season, earning the program's first at-large bid.

Those three seasons are the three winningest seasons in the history of Wright State women's basketball.

In his first two seasons at Wright State, he led the team to a 20-13 campaign and a 21-13 mark and berths in the Women's Basketball Invitational, the first NCAA Division I postseason berths for the program. Overall, Bradbury has coached three Horizon League Players of the Year (all in his last three seasons), six first-team All-Horizon League players, three second-team members and four All-Freshman team members.

Prior to his time at Wright State, Bradbury was the head coach at Morehead State where he led the Division I program to a 50-44 mark in three seasons, including a watershed 22-11 season, which was the second-most wins in Morehead State history and the most wins by the Eagles in the previous 38 years.

At Morehead State he coached one Ohio Valley Conference Player of the Year, along with one first-team All-OVC pick (two seasons) and three second-team All-OVC picks.

Bradbury also spent time as an assistant coach at Xavier (2002-06), Cincinnati (1996-02), VCU (1995-96), East Tennessee State (1994-95) and Chattanooga (1991-94). In his 30 seasons as an assistant and as a head coach, Bradbury's teams have finished below .500 only three times.

## GAME 1: NEW MEXICO vs NORTHERN ARIZONA

### CAREER HEAD COACHING YEAR-BY-YEAR

2007-08	11-19 (9-11)	Morehead State
2008-09	17-14 (11-7)	Morehead State
2009-10	22-11 (14-4)	Morehead State
2010-11	20-13 (11-7)	Wright State
2011-12	21-13 (12-6)	Wright State
2012-13	12-18 (6-10)	Wright State
2013-14	26-9 (12-4)	Wright State
2014-15	25-9 (12-4)	Wright State
2015-16	24-11 (12-6)	Wright State
2016-17	15-15 (10-8)	New Mexico
2017-18	25-11 (10-8)	New Mexico
2018-19	24-7 (14-4)	New Mexico
2019-20	15-17 (6-12)	New Mexico
2020-21	15-5 (11-3)	New Mexico
2021-22	26-10 (14-4)	New Mexico
2022-23	21-13 (12-6)	New Mexico
2023-24	21-11 (12-6)	New Mexico
Total	340-206 (162-89, 89-51 at UNM)	

### EDUCATION

UT-Chattanooga - B.S. Recreation (1993)

### COACHING EXPERIENCE

1991-93	Student Assistant	Chattanooga
1993-94	Assistant Coach	Chattanooga
1994-95	Assistant Coach	East Tennessee
1995-96	Assistant Coach	VCU
1996-02	Assistant Coach	Cincinnati
2002-07	Assistant Coach	Xavier
2007-10	Head Coach	Morehead State
2010-16	Head Coach	Wright State
2016-pres.	Head Coach	New Mexico

### HEAD COACHING RECORD

2007-10	Morehead State	50-44 (.532)
2010-16	Wright State	128-73 (.637)
2016-pres.	New Mexico	162-89 (.645)
18 years		340-206 (.623)

### RANKED OPPONENTS

#16 Marquette	11/13/17	W, 88-87
#23 West Virginia	11/29/19	L, 73-60
#6 Arizona	12/12/21	L, 77-60
#14 Arizona	12/4/22	L, 77-60
#20 Gonzaga	12/22/23	L, 67-56
#25 UNLV	1/20/24	W, 69-66

### ALL-TIME SERIES UNDER COACH BRADBURY AT UNM

OPPONENT	Series	H	A	N
Abilene Christian	1-0	1-0		
Air Force	11-2	5-1	5-1	1-0
Arizona	0-2	0-1	0-1	
Arkansas-Pine Bluff	1-0		1-0	
Arizona State	0-2	0-1	0-1	
Auburn	0-1	0-1		
Ball State	0-1	0-1		
Boise State	5-9	4-2	1-6	0-1
California Baptist	0-1			0-1
Colorado State	10-6	8-1	2-4	0-1
Denver	0-1	0-1		
Eastern Illinois	1-0	1-0		
Fairleigh Dickinson	1-0	1-0		
Fresno State	10-6	5-1	4-3	1-2
Georgia Tech	0-1			0-1
Gonzaga	0-1		0-1	
Grambling State	1-0	1-0		
Grand Canyon	1-0	1-0		
Hampton	1-0	1-0		
Hartford	1-0	1-0		
Houston	3-1	2-0	1-1	
Houston Baptist	1-0	1-0		
Illinois	1-0	1-0		
Lamar	2-0	2-0		
Louisiana-Monroe	1-0			1-0
Loyola Marymount	0-1	0-1		
Marquette	1-1	1-0	0-1	
Midwestern State	1-0		1-0	
Minnesota	0-1	0-1		
Mississippi State	0-1			0-1
Mississippi Valley State	1-0	1-0		
Missouri	1-0			1-0
Montana State	0-1			0-1
Navy	1-0	1-0		
Nevada	11-4	5-1	6-2	0-1
New Mexico State	11-2	7-0	4-2	
Nicholls	1-0		1-0	
Northern Arizona	3-0	2-0	1-0	
Northern New Mexico	4-0	4-0		
Oklahoma	1-1	1-0	0-1	
Old Dominion	1-0			1-0
Oregon State	0-1		0-1	
Pepperdine	1-0		1-0	
Prairie View A&M	1-0	1-0		
Providence	1-0	1-0		
Rice	1-0	1-0		
Sacramento State	1-0	1-0		
Saint Mary's	1-0	1-0		
Sam Houston State	1-0		1-0	
San Diego	1-0	1-0		
San Diego State	9-10	5-1	3-6	1-3
San Jose State	10-3	5-1	4-2	1-0
SMU	1-0	1-0		
South Carolina State	1-0	1-0		
Southern Utah	0-2	0-1	0-1	
St. Joseph's	0-1	0-1		
Stephen F. Austin	1-1	1-0		0-1
Tarleton State	1-0	1-0		
TCU	0-1	0-1		
Texas A&M-Commerce	2-0	1-0	1-0	
Texas State	1-0	1-0		
Texas Southern	1-0	1-0		
Texas Tech	1-2	1-0	0-1	0-1
Tulsa	0-1	0-1		
UC Irvine	1-0	1-0		
UC Riverside	1-0	1-0		
UNLV	5-11	2-5	3-6	
Utah State	14-0	6-0	8-0	
UTEP	5-0	4-0	1-0	
Washington	0-1		0-1	
West Virginia	0-1			0-1
Western Michigan	1-0	1-0		
Western New Mexico	2-0	2-0		
Wichita State	1-0	1-0		
Wyoming	7-8	3-4	4-3	0-1
	162-89	102-28	53-45	7-16





LYDIE MWAMBA

G | 5-9 | JR | Republic Democratic of Congo (Trinity Valley CC)



PPG	FG %	3PT %	FT %	RPG	APG	SPG	BPG	MPG
--	--	--	--	--	--	--	--	--

NOTEWORTHY

- Played the past 2 seasons at Trinity Valley Community College
- Named NJCAA Second Team All-American and Second Team All-Conference
- Averaged 4.7 points per game, shooting 44.4% from the floor and averaged 12.1 minutes per game in 34 games with 10 starts her freshman season
- in all 33 games, and averaged 16.9 points per game, shot 47.9% and improved her rebounding to 6.8 boards a game from 2.2 her freshman season, going from 76 to 225 total rebounds as a sophomore
- Majoring in liberal arts and integrative studies
- Speaks five languages: French, English, Lingala, Swahili and Tshiluba

GAME-BY-GAME STATISTICS

TOP PERFORMANCES

Points	Season MW Career
FGM	Season MW Career
FGA	Season MW Career
3PT FGM	Season MW Career
3PT FGA	Season MW Career
FTM	Season MW Career
FTA	Season MW Career
Reb.	Season MW Career
Asts.	Season MW Career
Blocks	Season MW Career
Steals	Season MW Career
TO	Season MW Career
Min.	Season MW Career

PRODUCTION TRACKER

2024-25 Career

- Double-Double
- Scored 10+ pts
- Scored 20+ pts
- 10+ reb
- 3+ 3-pt

CAREER STATISTICS

#3

## DESTINEE HOOKS

G | 5-9 | SO | Indianapolis, Ind. (Vincennes)



PPG	FG %	3PT %	FT %	RPG	APG	SPG	BPG	MPG
--	--	--	--	--	--	--	--	--

### NOTEWORTHY

- Averaged 21.1 points per game, 6.5 rebounds per game, 5.0 assists per game, 2.9 steals per game and 1.1 blocks per game as a freshman
- Points per game ranked sixth in the NJCAA, was 17th in assists per game and 28th in steals per game
- Freshman of the Year, Player of the Year and Region 24 Player of the Year
- Scored in double figures 19 times with 11 games with 20-plus points and four games scoring 30-plus points
- Majoring in liberal arts and integrative studies

### TOP PERFORMANCES

Points	Season MW Career
FGM	Season MW Career
FGA	Season MW Career
3PT FGM	Season MW Career
3PT FGA	Season MW Career
FTM	Season MW Career
FTA	Season MW Career
Reb.	Season MW Career
Asts.	Season MW Career
Blocks	Season MW Career
Steals	Season MW Career
TO	Season MW Career
Min.	Season MW Career

### PRODUCTION TRACKER

2024-25 Career

Double-Double  
Scored 10+ pts  
Scored 20+ pts  
10+ reb  
3+ 3-pt

### GAME-BY-GAME STATISTICS

### CAREER STATISTICS

#4

ALYSSA HARGROVE

G | 5-8 | SR | Dayton, Ohio (Austin Peay State University)



PPG	FG %	3PT %	FT %	RPG	APG	SPG	BPG	MPG
--	--	--	--	--	--	--	--	--

NOTEWORTHY

- Spent last season at Austin Peay State after playing 2 seasons at Stetson
- Appeared in 32 games and averaged 20.0 minutes per game, 4.3 points per game, 2.3 rebounds per game, 1.0 steal per game and 1.5 assists per game a APSU last year
- Credited with a steal in 18 games with consecutive games with 5 steals and multiple steals in 8 games last season
- Scored an average of 10.6 points per game, 2.3 assists per game and 2.6 rebounds per game as a sophomore at Stetson
- Majoring in liberal arts and integrative studies

GAME-BY-GAME STATISTICS

TOP PERFORMANCES

Points	Season	
	MW	
	Career	25, Furman (11/19/22)
FGM	Season	
	MW	
	Career	10, 2x, last: Furman (11/19/22)
FGA	Season	
	MW	
	Career	16, Furman (11/19/22)
3PT FGM	Season	
	MW	
	Career	3, 3x, last:UCSD (11/26/22)
3PT FGA	Season	
	MW	
	Career	8, UCSD (11/26/22)
FTM	Season	
	MW	
	Career	6, La. Tech (11/25/22)
FTA	Season	
	MW	
	Career	9, La., Tech (11/25/22)
Reb.	Season	
	MW	
	Career	8, 2x, last: North Fla. (2/26/22)
Asts.	Season	
	MW	
	Career	6, Albany (11/27/22)
Blocks	Season	
	MW	
	Career	2, 3x, last: Cleveland St. (11/22/23)
Steals	Season	
	MW	
	Career	6, Johnson (FL) (11/9/21)
TO	Season	
	MW	
	Career	0, 4x
Min.	Season	
	MW	
	Career	38, 2x, last: FGCU (3/9/22)

PRODUCTION TRACKER

	2024-25	Career
Double-Double		
Scored 10+ pts		17
Scored 20+ pts		2
10+ reb		
3+ 3-pt		3

CAREER STATISTICS

				Field Goals		3-Point		F-Throws		Rebounds										Scoring	
SEASON	TEAM	GP-GS	MIN/AVG	FG-FGA	FG%	3FG-3FGA	3FG%	FT-FTA	FT%	OFF	DEF	TOT	AVG	PF-FO	A	TO	BLK	STL	PTS	AVG	
2021-22	Stet	31-15	850/27.4	89-221	.403	18-78	.231	52-69	.754	21	98	119	3.8	65-1	47	66	10	44	248	8.0	
2022-23	Stet	9-6	229/25.4	35-82	.427	9-31	.290	16-26	.615	7	16	23	2.6	25-1	21	26	2	10	95	10.6	
2023-24	APSU	32-0	638/19.9	46-115	.400	15-46	.326	29-42	.690	11	62	73	2.3	80-2	35	60	11	32	136	4.3	
TOTAL FOR UNM		0-0	0/0.0	0-0	.000	0-0	.000	0-0	.000	0	0	0	0.0	0-0	0	0	0	0	0	0.0	
TOTAL		72-21	1717/23.8	170-418	.407	42-155	.271	97-137	.708	39	176	215	3.0	170-4	103	152	23	86	479	6.7	

#5

# LARA LANGERMANN

G | 5-7 | SO | Breckerfeld, Germany (Theodor-Heuss-Gymnasium Hagen)



PPG	FG %	3PT %	FT %	RPG	APG	SPG	BPG	MPG
--	--	--	--	--	--	--	--	--

## NOTEWORTHY

- Played for the U18 and U20 German National Team
- Played for VfL Viactiv AstroLadies Bochum, a Division 2 team in the Damen Basketballbundesliga, the BasketGirls Ruhr in the Weibliche Nachwuchsbundesliga (WNBL), a first German under 18 league, and for VfL Viactiv AstroLadies Bochum in the Damen Basketballbundesliga, as well as Herner TC.
- Majoring in exercise science

## TOP PERFORMANCES

Points	Season	
	MW	13, San José St. (1/31/24)
FGM	Career	13, San José St. (1/31/24)
	Season	
	MW	4, 2x
	Career	4, 2x
FGA	Season	
	MW	7, Wyoming (2/24/24)
	Career	7, 3x
3PT FGM	Season	
	MW	3, 2x
	Career	3, 2x
3PT FGA	Season	
	MW	5, Wyoming (2/24/24)
	Career	6, Mississippi Valley (12/4/23)
FTM	Season	
	MW	3, San Diego St. (2/28/24)
	Career	3, San Diego St. (2/28/24)
FTA	Season	
	MW	3, San Diego St. (2/28/24)
	Career	3, 2x
Reb.	Season	
	MW	5, Wyoming (2/24/24)
	Career	5, Wyoming (2/24/24)
Asts.	Season	
	MW	2, 3x
	Career	3, Mississippi Valley (12/4/23)
Blocks	Season	
	MW	
	Career	
Steals	Season	
	MW	2, San Diego St. (2/7/24)
	Career	2, San Diego St. (2/7/24)
TO	Season	
	MW	0, 7x
	Career	0, 13x
Min.	Season	
	MW	34, Boise St. (2/21/24)
	Career	34, Boise St. (2/21/24)

## PRODUCTION TRACKER

2024-25 Career

Double-Double	
Scored 10+ pts	2
Scored 20+ pts	
10+ reb	
3+ 3-pt	2 2

## GAME-BY-GAME STATISTICS

## CAREER STATISTICS

				Field Goals		3-Point		F-Throws		Rebounds										Scoring	
SEASON	TEAM	GP-GS	MIN/AVG	FG-FGA	FG%	3FG-3FGA	3FG%	FT-FTA	FT%	OFF	DEF	TOT	AVG	PF-FO	A	TO	BLK	STL	PTS	AVG	
2023-24	UNM	32-6	645/20.2	31-97	.320	20-69	.290	15-21	.714	4	41	45	1.4	44-0	26	33	0	11	97	3.0	
TOTAL		32-6	645/20.2	31-97	.320	20-69	.290	15-21	.714	4	41	45	1.4	44-0	26	33	0	11	97	3.0	

#10

PARIS LAURO

F | 6-0 | SO | Dallas, Texas (Highland Park HS)



PPG	FG %	3PT %	FT %	RPG	APG	SPG	BPG	MPG
--	--	--	--	--	--	--	--	--

NOTEWORTHY

- Named MW Freshman of the Week on Dec. 26 last season
- Averaged 17.3 ppg, 8.3 rpg, 2.0 bpg her junior season and 23.6 ppg, 8.0 rpg and 1.8 bpg and was named the District 7-6A Most Valuable Player her senior season.
- Named to the TABC 5A All-Region Team, named Offensive Player of the Year for District 13-5A and earned academic all-district her junior year
- Majoring in exercise science

GAME-BY-GAME STATISTICS

TOP PERFORMANCES

Points	Season	7, Nevada (12/30/23)	
	Career	14, Western N.M. (12/17/23)	
FGM	Season	3, Nevada (12/30/23)	
	Career	5, Western N.M. (12/17/23)	
FGA	Season	7, Utah State (1/10/24)	
	Career	8, Gonzaga (12/22/23)	
3PT FGM	Season	1, 3x	
	Career	4, Western N.M. (12/17/23)	
3PT FGA	Season	3, 2x	
	Career	8, Gonzaga (12/22/23)	
FTM	Season	1, Nevada (3/2/24)	
	Career	1, 2x	
FTA	Season	1, Nevada (3/2/24)	
	Career	2, Hampton (12/10/23)	
Reb.	Season	6, Utah State (1/10/24)	
	Career	6, Utah State (1/10/24)	
Asts.	Season	1, 2x	
	Career	1, 3x	
Blocks	Season	1, 2x	
	Career	1, 4x	
Steals	Season	1, 2x	
	Career	1, 2x	
TO	Season	0, 10x	
	Career	0, 17x	
Min.	Season	19, Nevada (12/30/23)	
	Career	21, Gonzaga (12/22/23)	

PRODUCTION TRACKER

2024-25 Career

Double-Double	
Scored 10+ pts	1
Scored 20+ pts	
10+ reb	
3+ 3-pt	2

CAREER STATISTICS

				Field Goals		3-Point		F-Throws		Rebounds										Scoring	
SEASON	TEAM	GP-GS	MIN/AVG	FG-FGA	FG%	3FG-3FGA	3FG%	FT-FTA	FT%	OFF	DEF	TOT	AVG	PF-FO	A	TO	BLK	STL	PTS	AVG	
2023-24	UNM	22-0	152/6.9	19-47	.404	10-27	.370	2-3	.667	6	22	28	1.3	9-0	3	6	4	2	50	2.3	
TOTAL		22-0	152/6.9	19-47	.404	10-27	.370	2-3	.667	6	22	28	1.3	9-0	3	6	4	2	50	2.3	





NAYLI PADILLA

G | 5-9 | FR | Barrio de La Salud, Spain (IES Tarahales)



PPG	FG %	3PT %	FT %	RPG	APG	SPG	BPG	MPG
--	--	--	--	--	--	--	--	--

NOTEWORTHY

- Played for Tenerife Central, CB Santa Cruz, Spar Gran Canaria in Spain
- Majoring in business administration

GAME-BY-GAME STATISTICS

TOP PERFORMANCES

Points	Season MW Career
FGM	Season MW Career
FGA	Season MW Career
3PT FGM	Season MW Career
3PT FGA	Season MW Career
FTM	Season MW Career
FTA	Season MW Career
Reb.	Season MW Career
Asts.	Season MW Career
Blocks	Season MW Career
Steals	Season MW Career
TO	Season MW Career
Min.	Season MW Career

PRODUCTION TRACKER

2024-25 Career

- Double-Double
- Scored 10+ pts
- Scored 20+ pts
- 10+ reb
- 3+ 3-pt

CAREER STATISTICS

#13

JOANA MAGALHÃES

G | 5-5 | FR | Lisbon, Portugal (Quinta Do Marquês)



PPG	FG %	3PT %	FT %	RPG	APG	SPG	BPG	MPG
--	--	--	--	--	--	--	--	--

NOTEWORTHY

- Played for CRC Quinta Dos Lombos and won the national championship in 2023-24. Also won a championship while at Quinta Do Marquês in 2021-22.
- Majoring in business administration

GAME-BY-GAME STATISTICS

TOP PERFORMANCES

Points	Season MW Career
FGM	Season MW Career
FGA	Season MW Career
3PT FGM	Season MW Career
3PT FGA	Season MW Career
FTM	Season MW Career
FTA	Season MW Career
Reb.	Season MW Career
Asts.	Season MW Career
Blocks	Season MW Career
Steals	Season MW Career
TO	Season MW Career
Min.	Season MW Career

PRODUCTION TRACKER

2024-25 Career

- Double-Double
- Scored 10+ pts
- Scored 20+ pts
- 10+ reb
- 3+ 3-pt

CAREER STATISTICS

#14

HULDA JOAQUIM

F | 6-1 | GR | Maputo, Mozambique (Seward County CC)



PPG	FG %	3PT %	FT %	RPG	APG	SPG	BPG	MPG
--	--	--	--	--	--	--	--	--

NOTEWORTHY

- Third season with the Lobos
- Played in 31 games, averaging 15.4 minutes per game, 2.3 points per game, 4.2 rebounds per game, 0.7 assists per game, 0.4 steals per game and 0.3 blocks per game last season
- Working on her master's in project management after graduating with a degree in business administration with a minor in economics

GAME-BY-GAME STATISTICS

TOP PERFORMANCES

Points	Season MW	8, UNLV (1/20/24)
	Career	9, 2x, last: San Diego St. (3/11/24)
FGM	Season MW	4, San Diego St. (3/11/24)
	Career	4, 2x, last: San Diego St. (3/11/24)
FGA	Season MW	5, 2x
	Career	9, Western N.M. (11/22/22)
3PT FGM	Season MW	2, UNLV (1/20/24)
	Career	2, UNLV (1/20/24)
3PT FGA	Season MW	3, UNLV (1/20/24)
	Career	3, UNLV (1/20/24)
FTM	Season MW	4, San Diego St. (2/28/24)
	Career	4, San Diego St. (2/28/24)
FTA	Season MW	4, San Diego St. (2/28/24)
	Career	4, San Diego St. (2/28/24)
Reb.	Season MW	12, Colorado St. (2/10/24)
	Career	12, Colorado St. (2/10/24)
Asts.	Season MW	2, Nevada (3/2/24)
	Career	4, Western N.M. (12/17/24)
Blocks	Season MW	2, Utah State (2/25/23)
	Career	2, 2x
Steals	Season MW	2, 3x
	Career	3, Western N.M. (11/22/22)
TO	Season MW	0, 17x
	Career	0, 31x
Min.	Season MW	30, Colorado St. (2/10/24)
	Career	30, Colorado St. (2/10/24)

PRODUCTION TRACKER

2024-25 Career

Double-Double	
Scored 10+ pts	
Scored 20+ pts	
10+ reb	2
3+ 3-pt	

CAREER STATISTICS

				Field Goals		3-Point		F-Throws		Rebounds										Scoring	
SEASON	TEAM	GP-GS	MIN/AVG	FG-FGA	FG%	3FG-3FGA	3FG%	FT-FTA	FT%	OFF	DEF	TOT	AVG	PF-FO	A	TO	BLK	STL	PTS	AVG	
2022-23	UNM	13-0	80/6.2	11-26	.423	2-6	.333	4-6	.667	9	9	18	1.4	2-0	3	3	6	4	28	2.2	
2023-24	UNM	31-0	478/15.4	30-74	.405	3-10	.300	9-14	.643	52	78	130	4.2	41-1	21	13	8	11	72	2.3	
TOTAL		44-0	558/12.7	41-100	.410	5-16	.313	13-20	.650	61	87	148	3.4	43-1	24	16	14	15	100	2.3	

#15

DREW JORDON

G | 5-11 | SO | Washington, DC (Wagner)



PPG	FG %	3PT %	FT %	RPG	APG	SPG	BPG	MPG
--	--	--	--	--	--	--	--	--

NOTEWORTHY

- Appeared in all 28 games and made one start against Sacred Heart last season
- Averaged 6.0 points per game, shooting 40.9% from the floor, and averaged 1.9 rebounds per game, while playing 16.3 minutes per game as a freshman
- Led Wagner with 54 made free throws, going 54-69 from the line to lead the Seahawks in free-throw percentage
- Finished in double figures in 4 games, recorded a steal in 14 games with 3 games with 3 steals and 5 games with multiple steals, as well as 10 games with a block
- Majoring in psychology

GAME-BY-GAME STATISTICS

TOP PERFORMANCES

Points	Season MW	Career	17, LIU (2/24/24)
FGM	Season MW	Career	7, LIU (2/24/24)
FGA	Season MW	Career	12, Saint Elizabeth (12/30/23)
3PT FGM	Season MW	Career	1, 3x, last: Sacred Heart (2/17/24)
3PT FGA	Season MW	Career	3, Saint Elizabeth (12/30/23)
FTM	Season MW	Career	7, 2x, last: Sacred Heart (1/21/24)
FTA	Season MW	Career	11, Sacred Heart (1/21/24)
Reb.	Season MW	Career	6, Saint Peter's (12/6/23)
Asts.	Season MW	Career	3, 3x, last: FDU (3/2/24)
Blocks	Season MW	Career	2, Stonehill (2/3/24)
Steals	Season MW	Career	3, 3x, last: FDU (3/2/24)
TO	Season MW	Career	0, 6x
Min.	Season MW	Career	27, 2x, last: Saint Peter's (12/6/23)

PRODUCTION TRACKER

2024-25 Career

Double-Double	
Scored 10+ pts	4
Scored 20+ pts	
10+ reb	
3+ 3-pt	

CAREER STATISTICS

				Field Goals		3-Point		F-Throws		Rebounds										Scoring	
SEASON	TEAM	GP-GS	MIN/AVG	FG-FGA	FG%	3FG-3FGA	3FG%	FT-FTA	FT%	OFF	DEF	TOT	AVG	PF-FO	A	TO	BLK	STL	PTS	AVG	
2023-24	WC	28-1	462/16.5	56-137	.409	3-18	.167	54-69	.783	16	38	54	1.9	61-1	23	48	11	22	169	6.0	
TOTAL FOR UNM		0-0	0/0.0	0-0	.000	0-0	.000	0-0	.000	0	0	0	0.0	0-0	0	0	0	0	0	0.0	
TOTAL		28-1	462/16.5	56-137	.409	3-18	.167	54-69	.783	16	38	54	1.9	61-1	23	48	11	22	169	6.0	

#21

REZA PO

G | 5-2 | FR | San Bruno, Calif. (Sacred Heart Cathedral)



PPG	FG %	3PT %	FT %	RPG	APG	SPG	BPG	MPG
2.2	.316	.333	.833	0.5	0.4	0.2	0.1	5.8

NOTEWORTHY

- Named West Coast Athletic League honorable mention her sophomore season and following her junior season, was named to the West Coast Athletic League first team and the San Francisco Chronicle Women's Basketball Player of the Year
- Averaged 12.2 points per game, 4.0 rebounds per game, 3.8 assists per game, 1.6 steals per game, while drawing 0.4 charges per game as a junior
- Majoring in criminology

GAME-BY-GAME STATISTICS

TOP PERFORMANCES

Points	Season MW Career
FGM	Season MW Career
FGA	Season MW Career
3PT FGM	Season MW Career
3PT FGA	Season MW Career
FTM	Season MW Career
FTA	Season MW Career
Reb.	Season MW Career
Asts.	Season MW Career
Blocks	Season MW Career
Steals	Season MW Career
TO	Season MW Career
Min.	Season MW Career

PRODUCTION TRACKER

2024-25 Career

- Double-Double
- Scored 10+ pts
- Scored 20+ pts
- 10+ reb
- 3+ 3-pt

CAREER STATISTICS



#24

AMHYIA MORELAND

F | 6-1 | SR | Charlotte, N.C. (San José State)



PPG	FG %	3PT %	FT %	RPG	APG	SPG	BPG	MPG
--	--	--	--	--	--	--	--	--

NOTEWORTHY

- Played the last 2 seasons at San José State and 1 year at Old Dominion
- Started in 25 games while playing in 30 last season
- Averaged 11.6 points per game, shooting 54.0% from the floor and 42.9% from behind the arc
- Made a team-high 148 field goals and scored a team-high 347 points
- Produced 20 double-digit games with a season-high 26 points against Bethesda on 13-17 shooting
- Majoring in psychology

GAME-BY-GAME STATISTICS

TOP PERFORMANCES

Points	Season	
	MW	
FGM	Season	
	MW	
FGA	Season	
	MW	
3PT FGM	Season	
	MW	
3PT FGA	Season	
	MW	
FTM	Season	
	MW	
FTA	Season	
	MW	
Reb.	Season	
	MW	
Asts.	Season	
	MW	
Blocks	Season	
	MW	
Steals	Season	
	MW	
TO	Season	
	MW	
Min.	Season	
	MW	

PRODUCTION TRACKER

	2024-25	Career
Double-Double		3
Scored 10+ pts		24
Scored 20+ pts		1
10+ reb		3
3+ 3-pt		

CAREER STATISTICS

				Field Goals		3-Point		F-Throws		Rebounds												Scoring	
SEASON	TEAM	GP-GS	MIN/AVG	FG-FGA	FG%	3FG-3FGA	3FG%	FT-FTA	FT%	OFF	DEF	TOT	AVG	PF-FO	A	TO	BLK	STL	PTS	AVG			
2021-22	ODU	19-0	117/6.1	10-26	.385	0-0	.000	7-15	.467	16	21	37	1.9	27-0	3	18	10	5	27	1.4			
2022-23	SJSU	30-10	509/17.0	59-144	.410	1-1	1.000	40-58	.690	52	62	114	3.8	109-6	7	55	24	22	159	5.3			
2023-24	SJSU	30-25	645/21.5	148-274	.540	3-7	.429	48-77	.623	86	91	177	5.9	102-3	24	63	42	25	347	11.6			
TOTAL FOR UNM		0-0	0/0.0	0-0	.000	0-0	.000	0-0	.000	0	0	0	0.0	0-0	0	0	0	0	0	0.0			
TOTAL		79-35	1270/16.1	217-444	.489	4-8	.500	95-150	.633	154	174	328	4.2	238-9	34	136	76	52	533	6.7			



VIANÈ CUMBER  
G | 5-11 | SR | Albuquerque, N.M. (Sandia HS)



PPG	FG %	3PT %	FT %	RPG	APG	SPG	BPG	MPG
--	--	--	--	--	--	--	--	--

NOTEWORTHY

- Selected to the Preseason MW Team
- MW Freshman of the Week Nov. 15, 2021
- Scored in double figures in 17 games, 4x this season with 20+ points last season
- Averaged 11.4 ppg, 33.6 mpg, 6.0 rpg, 2.4 3FG last season
- 8 three-pointers against Montana State tied for the third-most in a game in program history and was the seventh time a player historically has made eight or more three-pointers in a game.
- At least 1 three-pointer in 33 of the last 36 games she's played in.
- Averaged 22.9 minutes per game, 9.2 points per game, 2.9 rebounds per game, 0.9 assists per game, 0.5 steals per game her sophomore season
- Shot 40.6% from three-point range with 21 games with multiple three-pointers. Includes two games with 6 three-pointers, 10 games with four or more three-pointers
- 2019-20 and 2020-21 New Mexico Gatorade Girls Basketball Player of the Year
- Twice named MaxPreps New Mexico High School Girls Basketball Player of the Year
- Named the best high school basketball player in New Mexico by MaxPreps
- Averaged 26.5 points, 9.3 rebounds, 2.2 assists and 1.5 steals her senior season and 22.4 points, 10.6 rebounds, 2.5 assists and 3.3 steals as a junior
- Led her team to a pair of district championships in 2018 and 2019
- Majoring in psychology

GAME-BY-GAME STATISTICS

TOP PERFORMANCES

Points	Season	
	MW	22, UNLV (1/20)
	Career	24, Montana State (11/23)
FGM	Season	
	MW	8, 2x
	Career	9, Texas Southern (11/6)
FGA	Season	
	MW	22, Utah State (1/10)
	Career	22, Utah State (1/10)
3PT FGM	Season	
	MW	6, UNLV (1/20)
	Career	8, Montana State (11/23)
3PT FGA	Season	
	MW	12, 2x
	Career	15, Montana State (11/23)
FTM	Season	
	MW	4, 2x
	Career	4, 2x
FTA	Season	5, 2x
	MW	5, 2x
	Career	5, 2x
Reb.	Season	
	MW	11, 2x
	Career	14, Eastern Illinois (11/28)
Asts.	Season	
	MW	5, Fresno State (1/24)
	Career	5, 2x
Blocks	Season	
	MW	1, 7x
	Career	1, 9x
Steals	Season	
	MW	2, 3x
	Career	4, Western N.M. (11/22/22)
TO	Season	
	MW	0, 21x
	Career	0, 34x
Min.	Season	
	MW	40, Boise St. (2/21)
	Career	43, Eastern Illinois (11/28)

PRODUCTION TRACKER

2024-25 Career

Double-Double	3
Scored 10+ pts	36
Scored 20+ pts	6
10+ reb	3
3+ 3-pt	24

CAREER STATISTICS

				Field Goals		3-Point		F-Throws		Rebounds									Scoring	
SEASON	TEAM	GP-GS	MIN/AVG	FG-FGA	FG%	3FG-3FGA	3FG%	FT-FTA	FT%	OFF	DEF	TOT	AVG	PF-FO	A	TO	BLK	STL	PTS	AVG
2021-22	UNM	18-1	198/11.0	25-62	.403	15-45	.333	2-2	1.000	4	25	29	1.6	6-0	5	10	1	5	67	3.7
2022-23	UNM	33-15	757/22.9	107-249	.430	73-180	.406	18-22	.818	5	90	95	2.9	39-0	30	32	3	17	305	9.2
2023-24	UNM	29-29	975/33.6	119-331	.360	70-214	.327	22-30	.733	18	157	175	6.0	48-0	39	35	5	22	330	11.4
TOTAL		80-45	1930/24.1	251-642	.391	158-439	.360	42-54	.778	27	272	299	3.7	93-0	74	77	9	44	702	8.8

#40

CLARISSA CRAIG

F/C | 6-3 | SR | Cincinnati, Ohio (Cincinnati)



PPG	FG %	3PT %	FT %	RPG	APG	SPG	BPG	MPG
--	--	--	--	--	--	--	--	--

NOTEWORTHY

- Played the last 3 seasons at Cincinnati
- Averaged 4.5 points and 2.2 rebounds per game while averaging 12.7 minutes per game last season
- Finished in double figures in three games, twice against Big 12 opponents with 13 points at Oklahoma behind 5-7 shooting and again with 12 points at UCF that included 4-4 shooting from the floor
- Majoring in liberal arts and integrative studies

GAME-BY-GAME STATISTICS

TOP PERFORMANCES

Points	Season	
	MW	
FGM	Season	
	MW	
FGA	Season	
	MW	
3PT FGM	Season	
	MW	
3PT FGA	Season	
	MW	
FTM	Season	
	MW	
FTA	Season	
	MW	
Reb.	Season	
	MW	
Asts.	Season	
	MW	
Blocks	Season	
	MW	
Steals	Season	
	MW	
TO	Season	
	MW	
Min.	Season	
	MW	

PRODUCTION TRACKER

	2024-25	Career
Double-Double		1
Scored 10+ pts		13
Scored 20+ pts		
10+ reb		1
3+ 3-pt		

CAREER STATISTICS

				Field Goals		3-Point		F-Throws		Rebounds										Scoring	
SEASON	TEAM	GP-GS	MIN/AVG	FG-FGA	FG%	3FG-3FGA	3FG%	FT-FTA	FT%	OFF	DEF	TOT	AVG	PF-FO	A	TO	BLK	STL	PTS	AVG	
2021-22	UC	28-1	332/11.9	35-88	.398	0-0	.000	20-29	.690	18	24	42	1.5	52-0	5	30	5	6	90	3.2	
2022-23	UC	28-17	573/20.5	69-122	.566	0-2	.000	50-65	.769	46	51	97	3.5	79-4	8	48	15	11	188	6.7	
2023-24	UC	21-0	267/12.7	30-60	.500	0-1	.000	35-45	.778	17	30	47	2.2	48-0	4	24	2	8	95	4.5	
TOTAL FOR UNM		0-0	0/0.0	0-0	.000	0-0	.000	0-0	.000	0	0	0	0.0	0-0	0	0	0	0	0	0.0	
TOTAL		77-18	1172/15.2	134-270	.496	0-3	.000	105-139	.755	81	105	186	2.4	179-4	17	102	22	25	373	4.8	

#45

LILLI HAKKARAINEN

G | 5-7 | FR | Kotka, Finland (Mäkelänrinne Upper Secondary School)



PPG	FG %	3PT %	FT %	RPG	APG	SPG	BPG	MPG
--	--	--	--	--	--	--	--	--

NOTEWORTHY

- Spent past two seasons with HBA-Märsky (Helsinki Basketball Academy) in the Naisten Korisliiga, the highest tier league in Finland
- In the 2022-2023 season, was a vice-captain in 2022-23 and captain in 2023-24
- Averaged 11.0 ppg, 5.2 rpg and 1.8 apg and 25:41 minutes per game...
- Won the women's Finnish Championship and the Finnish Cup with Peli-Karhut in 2021-22
- Played 37 games with the Youth Finnish National Team
- Majoring in pharmacy
- Speaks Finnish and Swedish

GAME-BY-GAME STATISTICS

TOP PERFORMANCES

Points	Season MW Career
FGM	Season MW Career
FGA	Season MW Career
3PT FGM	Season MW Career
3PT FGA	Season MW Career
FTM	Season MW Career
FTA	Season MW Career
Reb.	Season MW Career
Asts.	Season MW Career
Blocks	Season MW Career
Steals	Season MW Career
TO	Season MW Career
Min.	Season MW Career

PRODUCTION TRACKER

2024-25 Career

- Double-Double
- Scored 10+ pts
- Scored 20+ pts
- 10+ reb
- 3+ 3-pt

CAREER STATISTICS

2023-24 SEASON STATS

Game Records

Record	Overall	Home	Away	Neutral
ALL GAMES	21-11	14-4	7-4	0-3
CONFERENCE	12-6	6-3	6-3	0-0
NON-CONFERENCE	9-5	8-1	1-1	0-3

Score by Periods

Team	1st	2nd	3rd	4th	OT	TOT
New Mexico	483	502	517	554	15	2071
Opponents	429	493	501	510	12	1945

Team Box Score

No.	Player				Total		3-Point		F-Throw		Rebounds													
		GP-GS	MIN	AVG	FG-FGA	FG%	3FG-3FGA	3FG%	FT-FTA	FT%	OFF	DEF	TOT	AVG	PF	DQ	A	TO	BLK	STL	PTS	AVG		
3	WILSON, Nyah	32-32	1011:28	31.6	171-414	.413	29-83	.349	124-170	.729	32	112	144	4.5	75	0	65	74	6	41	495	15.5		
12	AUGMON, Aniyah	30-30	1009:31	33.7	139-340	.409	24-89	.270	89-131	.679	26	150	176	5.9	52	0	109	123	4	63	391	13.0		
33	CUMBER, Vianè	29-29	975:05	33.6	119-331	.360	70-214	.327	22-30	.733	18	157	175	6.0	48	0	39	35	5	22	330	11.4		
30	REUS, Paula	31-30	1008:59	32.5	131-319	.411	43-128	.336	41-55	.745	25	144	169	5.5	48	0	56	77	13	35	346	11.2		
22	KOHL, Charlotte	32-32	704:37	22.0	72-146	.493	2-11	.182	44-68	.647	77	123	200	6.3	75	2	15	37	47	17	190	5.9		
5	LANGERMANN, Lara	32-6	645:19	20.2	31-97	.320	20-69	.290	15-21	.714	4	41	45	1.4	44	0	26	33	0	11	97	3.0		
24	ROBBINS, Hannah	2-0	25:06	12.6	3-10	.300	0-4	.000	0-0	.000	2	8	10	5.0	1	0	1	3	2	2	6	3.0		
15	BATES, Jaelyn	8-0	86:37	10.8	7-27	.259	5-21	.238	2-4	.500	2	7	9	1.1	5	0	11	8	0	4	21	2.6		
14	JOAQUIM, Hulda	31-0	477:45	15.4	30-74	.405	3-10	.300	9-14	.643	52	78	130	4.2	41	1	21	13	8	11	72	2.3		
10	LAURO, Paris	22-0	151:59	6.9	19-47	.404	10-27	.370	2-3	.667	6	22	28	1.3	9	0	3	6	4	2	50	2.3		
21	CURTIS, Mackenzie	11-0	58:31	5.3	6-19	.316	5-15	.333	5-6	.833	1	4	5	0.5	2	0	4	6	1	2	22	2.0		
2	CHAVEZ, Natalia	12-0	86:60	7.2	8-24	.333	6-19	.316	1-2	.500	0	13	13	1.1	3	0	5	6	0	3	23	1.9		
1	DIARRA, Nahawa	19-1	183:02	9.6	12-43	.279	0-15	.000	4-6	.667	10	15	25	1.3	13	0	21	11	0	10	28	1.5		
Team											58	73	131					23						
Total		32	6425		748-1891	.396	217-705	.308	358-510	.702	313	947	1260	39.4	416	3	376	455	90	223	2071	64.7		
Opponents		32	6425		749-1956	.383	215-713	.302	232-334	.695	298	888	1186	37.1	497	7	426	451	118	206	1945	60.8		

Team Statistics

	UNM	OPP
Scoring	2071	1945
Points per game	64.7	60.8
Scoring margin	+3.9	-
Field goals-att	748-1891	749-1956
Field goal pct	.396	.383
3 point fg-att	217-705	215-713
3-point FG pct	.308	.302
3-pt FG made per game	6.8	6.7
Free throws-att	358-510	232-334
Free throw pct	.702	.695
F-Throws made per game	11.2	7.3
Rebounds	1260	1186
Rebounds per game	39.4	37.1
Rebounding margin	+2.3	-
Assists	376	426
Assists per game	11.8	13.3
Turnovers	455	451
Turnovers per game	14.2	14.1
Turnover margin	-0.1	-
Assist/turnover ratio	0.8	0.9
Steals	223	206
Steals per game	7.0	6.4
Blocks	90	118
Blocks per game	2.8	3.7
Winning streak	0	-
Home win streak	0	-
Attendance	90187	20231
Home games-Avg/Game	18-5010	11-1839
Neutral site-Avg/Game	-	3-1000

Team Results

Date	Opponent		Score	Att.
11/06/2023	Texas Southern	W	76-59	5055
11/09/2023	at Pepperdine	W	57-48	113
11/12/2023	Tarleton St.	W	64-55	4626
11/15/2023	Tex. A&M-Commerce	W	75-74	4718
11/23/2023	vs Montana St.	L	57-75	166
11/24/2023	vs Georgia Tech	L	55-66	150
11/28/2023	Eastern Ill.	Wot	81-78	4471
12/02/2023	New Mexico St.	W	67-52	5379
12/04/2023	Mississippi Val.	W	68-45	4514
12/07/2023	Southern Utah	L	40-58	4526
12/10/2023	Hampton	W	68-55	4638
12/17/2023	Western N.M.	W	71-47	4889
12/22/2023	at Gonzaga	L	56-67	5241
12/30/2023	at Nevada	W	69-59	1444
01/06/2024	Boise St.	L	56-64	5715
01/10/2024	Utah St.	W	71-67	4704
01/13/2024	at Colorado St.	L	55-61	1488
01/17/2024	Wyoming	W	68-61	4744
01/20/2024	at UNLV	W	69-66	1188
01/24/2024	Fresno St.	W	84-77	4716
01/27/2024	at Air Force	W	66-51	688
01/31/2024	at San Jose St.	W	65-54	220
02/03/2024	UNLV	L	56-62	6018
02/07/2024	at San Diego St.	L	53-60	4206
02/10/2024	Colorado St.	W	62-46	5103
02/14/2024	San Jose St.	W	72-51	4807
02/21/2024	at Boise St.	L	55-58	1454
02/24/2024	at Wyoming	W	59-58	3166
02/28/2024	San Diego St.	W	66-63	5261
03/02/2024	Nevada	L	82-83	6303
03/05/2024	at Fresno St.	W	72-58	1023
03/11/2024	at San Diego St.	L	56-67	2682



2023-24 MOUNTAIN WEST STATS

Game Records

Record	Overall	Home	Away	Neutral
ALL GAMES	12-6	6-3	6-3	0-0
CONFERENCE	12-6	6-3	6-3	0-0
NON-CONFERENCE	0-0	0-0	0-0	0-0

Score by Periods

Team	1st	2nd	3rd	4th	OT	TOT
New Mexico	263	275	324	318	0	1180
Opponents	237	287	292	283	0	1099

Team Box Score

No.	Player				Total		3-Point		F-Throw		Rebounds											
		GP-GS	MIN	AVG	FG-FGA	FG%	3FG-3FGA	3FG%	FT-FTA	FT%	OFF	DEF	TOT	AVG	PF	DQ	A	TO	BLK	STL	PTS	AVG
3	WILSON, Nyah	18-18	606:55	33.7	115-250	.460	18-45	.400	71-100	.710	16	66	82	4.6	41	0	52	46	6	26	319	17.7
12	AUGMON, Aniyah	17-17	584:52	34.4	85-202	.421	18-55	.327	64-88	.727	9	91	100	5.9	29	0	61	68	0	33	252	14.8
33	CUMBER, Vianè	18-18	617:14	34.3	74-200	.370	41-129	.318	17-22	.773	10	111	121	6.7	32	0	25	24	5	13	206	11.4
30	REUS, Paula	17-16	574:10	33.8	67-161	.416	24-63	.381	25-34	.735	10	76	86	5.1	26	0	26	43	7	20	183	10.8
22	KOHL, Charlotte	18-18	375:33	20.9	26-60	.433	1-9	.111	20-32	.625	27	63	90	5.0	38	0	7	21	20	9	73	4.1
5	LANGERMANN, Lara	18-3	361:55	20.1	20-49	.408	14-35	.400	10-13	.769	3	22	25	1.4	25	0	12	16	0	8	64	3.6
2	CHAVEZ, Natalia	4-0	30:28	7.6	4-7	.571	4-6	.667	1-2	.500	0	5	5	1.3	1	0	2	1	0	0	13	3.3
14	JOAQUIM, Hulda	17-0	302:34	17.8	18-43	.419	3-9	.333	5-6	.833	29	50	79	4.6	31	1	10	6	6	7	44	2.6
10	LAURO, Paris	14-0	88:11	6.3	7-27	.259	3-14	.214	1-1	1.000	3	15	18	1.3	5	0	2	4	2	0	18	1.3
21	CURTIS, Mackenzie	5-0	06:45	1.3	1-4	.250	1-3	.333	1-2	.500	1	0	1	0.2	0	0	0	2	0	0	4	0.8
1	DIARRA BERTHE, Nahawa	7-0	44:31	6.4	2-8	.250	0-4	.000	0-0	.000	4	4	8	1.1	2	0	6	0	0	0	4	0.6
15	BATES, Jaelyn	3-0	06:52	2.3	0-2	.000	0-1	.000	0-0	.000	1	0	1	0.3	0	0	0	3	0	0	0	0.0
Team											26	40	66					15				
Total		18	3600		419-1013	.414	127-373	.340	215-300	.717	139	543	682	37.9	230	1	203	249	46	116	1180	65.6
Opponents		18	3600		423-1100	.385	124-420	.295	129-185	.697	156	486	642	35.7	290	4	235	233	65	119	1099	61.1

Team Statistics

	UNM	OPP
Scoring	1180	1099
Points per game	65.6	61.1
Scoring margin	+4.5	-
Field goals-att	419-1013	423-1100
Field goal pct	.414	.385
3 point fg-att	127-373	124-420
3-point FG pct	.340	.295
3-pt FG made per game	7.1	6.9
Free throws-att	215-300	129-185
Free throw pct	.717	.697
F-Throws made per game	11.9	7.2
Rebounds	682	642
Rebounds per game	37.9	35.7
Rebounding margin	+2.2	-
Assists	203	235
Assists per game	11.3	13.1
Turnovers	249	233
Turnovers per game	13.8	12.9
Turnover margin	-0.9	-
Assist/turnover ratio	0.8	1.0
Steals	116	119
Steals per game	6.4	6.6
Blocks	46	65
Blocks per game	2.6	3.6
Winning streak	1	-
Home win streak	0	-
Attendance	47371	14877
Home games-Avg/Game	9-5263	9-1653
Neutral site-Avg/Game	-	0-0

Team Results

Date	Opponent		Score	Att.
12/30/2023	at Nevada	W	69-59	1444
01/06/2024	Boise St.	L	56-64	5715
01/10/2024	Utah St.	W	71-67	4704
01/13/2024	at Colorado St.	L	55-61	1488
01/17/2024	Wyoming	W	68-61	4744
01/20/2024	at UNLV	W	69-66	1188
01/24/2024	Fresno St.	W	84-77	4716
01/27/2024	at Air Force	W	66-51	688
01/31/2024	at San Jose St.	W	65-54	220
02/03/2024	UNLV	L	56-62	6018
02/07/2024	at San Diego St.	L	53-60	4206
02/10/2024	Colorado St.	W	62-46	5103
02/14/2024	San Jose St.	W	72-51	4807
02/21/2024	at Boise St.	L	55-58	1454
02/24/2024	at Wyoming	W	59-58	3166
02/28/2024	San Diego St.	W	66-63	5261
03/02/2024	Nevada	L	82-83	6303
03/05/2024	at Fresno St.	W	72-58	1023

## NEW MEXICO GAME-BY-GAME LEADERS

Date	Opponent		Score	Att.	High Points	High Rebounds
11/06/2023	Texas Southern	W	76-59	5055	(22) CUMBER, Vianè	(9) KOHL, Charlotte
11/09/2023	at Pepperdine	W	57-48	113	(16) AUGMON, Aniyah	(9) AUGMON, Aniyah
11/12/2023	Tarleton St.	W	64-55	4626	(16) REUS, Paula	(9) WILSON, Nyah
					(16) WILSON, Nyah	
11/15/2023	Tex. A&M-Commerce	W	75-74	4718	(22) WILSON, Nyah	(20) KOHL, Charlotte
11/23/2023	vs Montana St.	L	57-75	166	(24) CUMBER, Vianè	(7) KOHL, Charlotte
11/24/2023	vs Georgia Tech	L	55-66	150	(17) AUGMON, Aniyah	(4) AUGMON, Aniyah
					(17) WILSON, Nyah	(4) REUS, Paula
						(4) CUMBER, Vianè
						(4) JOAQUIM, Hulda
						(4) DIARRA, Nahawa
11/28/2023	Eastern Ill.	Wot	81-78	4471	(25) REUS, Paula	(14) CUMBER, Vianè
12/02/2023	New Mexico St.	W	67-52	5379	(15) KOHL, Charlotte	(13) KOHL, Charlotte
					(15) REUS, Paula	
12/04/2023	Mississippi Val.	W	68-45	4514	(16) KOHL, Charlotte	(20) KOHL, Charlotte
					(16) REUS, Paula	
12/07/2023	Southern Utah	L	40-58	4526	(12) KOHL, Charlotte	(11) WILSON, Nyah
12/10/2023	Hampton	W	68-55	4638	(14) KOHL, Charlotte	(9) AUGMON, Aniyah
					(14) REUS, Paula	
12/17/2023	Western N.M.	W	71-47	4889	(15) REUS, Paula	(9) REUS, Paula
12/22/2023	at Gonzaga	L	56-67	5241	(17) CUMBER, Vianè	(7) AUGMON, Aniyah
						(7) CUMBER, Vianè
12/30/2023	at Nevada	W	69-59	1444	(21) WILSON, Nyah	(9) CUMBER, Vianè
01/06/2024	Boise St.	L	56-64	5715	(15) AUGMON, Aniyah	(10) KOHL, Charlotte
01/10/2024	Utah St.	W	71-67	4704	(21) CUMBER, Vianè	(11) CUMBER, Vianè
01/13/2024	at Colorado St.	L	55-61	1488	(17) WILSON, Nyah	(9) CUMBER, Vianè
01/17/2024	Wyoming	W	68-61	4744	(23) WILSON, Nyah	(6) CUMBER, Vianè
01/20/2024	at UNLV	W	69-66	1188	(22) CUMBER, Vianè	(7) AUGMON, Aniyah
						(7) CUMBER, Vianè
01/24/2024	Fresno St.	W	84-77	4716	(24) WILSON, Nyah	(8) REUS, Paula
01/27/2024	at Air Force	W	66-51	688	(24) WILSON, Nyah	(13) KOHL, Charlotte
01/31/2024	at San Jose St.	W	65-54	220	(14) WILSON, Nyah	(8) CUMBER, Vianè
02/03/2024	UNLV	L	56-62	6018	(25) WILSON, Nyah	(7) JOAQUIM, Hulda
02/07/2024	at San Diego St.	L	53-60	4206	(21) WILSON, Nyah	(11) CUMBER, Vianè
02/10/2024	Colorado St.	W	62-46	5103	(22) AUGMON, Aniyah	(16) AUGMON, Aniyah
02/14/2024	San Jose St.	W	72-51	4807	(17) CUMBER, Vianè	(11) JOAQUIM, Hulda
02/21/2024	at Boise St.	L	55-58	1454	(15) CUMBER, Vianè	(9) WILSON, Nyah
					(15) WILSON, Nyah	
02/24/2024	at Wyoming	W	59-58	3166	(11) REUS, Paula	(7) CUMBER, Vianè
					(11) WILSON, Nyah	(7) JOAQUIM, Hulda
02/28/2024	San Diego St.	W	66-63	5261	(20) AUGMON, Aniyah	(8) REUS, Paula
						(8) WILSON, Nyah
03/02/2024	Nevada	L	82-83	6303	(21) REUS, Paula	(7) JOAQUIM, Hulda
03/05/2024	at Fresno St.	W	72-58	1023	(33) WILSON, Nyah	(6) KOHL, Charlotte
						(6) WILSON, Nyah
03/11/2024	vs San Diego St.	L	56-67	2683	(22) WILSON, Nyah	(7) AUGMON, Aniyah

# NEW MEXICO GAME-BY-GAME POINTS-REBOUNDS-ASSISTS

Opponent	Date	Score		1	2	3	5	10	12	14	15	21	22	24
				DIARRA,NAH	CHAVEZ,NAT	WILSON,NYA	LANGERMANN	LAURO,PARI	AUGMON,ANI	JOAQUIM,HU	BATES,JAEL	CURTIS,MAC	KOHL,CHARL	ROBBINS,HA
Texas Southern	11/06/2023	76-59	W	0-2-2	0-0-0	20-4-3	0-1-0	0-0-0	17-6-6	2-5-0	DNP	DNP	6-9-1	0-6-0
at Pepperdine	11/09/2023	57-48	W	DNP	DNP	8-3-2	9-3-2	DNP	16-9-3	4-2-0	DNP	DNP	7-6-0	DNP
Tarleton St.	11/12/2023	64-55	W	DNP	DNP	16-9-2	0-2-0	DNP	2-3-5	6-6-2	DNP	DNP	6-5-3	6-4-1
Tex. A&M-Commerce	11/15/2023	75-74	W	0-0-1	0-0-0	22-2-0	3-1-1	DNP	16-4-2	0-3-0	DNP	DNP	14-20-1	DNP
vs Montana St.	11/23/2023	57-75	L	0-1-1	0-0-1	6-2-1	3-1-1	0-0-0	11-6-5	1-3-0	3-0-0	DNP	0-7-0	DNP
vs Georgia Tech	11/24/2023	55-66	L	6-4-0	DNP	17-3-0	0-0-0	DNP	17-4-4	0-4-0	DNP	0-0-0	8-3-0	DNP
Eastern Ill.	11/28/2023	81-78	Wot	0-0-0	DNP	21-7-1	0-0-0	DNP	10-8-6	2-3-0	DNP	DNP	9-6-0	DNP
New Mexico St.	12/02/2023	67-52	W	4-2-0	0-0-0	13-3-0	6-2-1	DNP	10-6-3	2-7-1	DNP	DNP	15-13-0	DNP
Mississippi Val.	12/04/2023	68-45	W	4-2-4	0-0-1	14-5-2	2-3-3	2-2-0	7-4-2	0-6-2	5-0-2	2-1-0	16-20-0	DNP
Southern Utah	12/07/2023	40-58	L	0-0-1	0-3-0	5-11-2	2-3-2	2-0-0	4-3-0	0-1-0	3-2-3	3-2-0	12-6-1	DNP
Hampton	12/10/2023	68-55	W	2-1-1	3-3-0	0-2-0	5-2-2	5-2-0	11-9-4	0-0-0	3-6-4	11-0-4	14-6-0	DNP
Western N.M.	12/17/2023	71-47	W	2-3-5	7-2-1	5-4-0	2-1-2	14-2-0	DNP	2-6-4	7-0-2	2-1-0	8-6-2	DNP
at Gonzaga	12/22/2023	56-67	L	2-1-0	DNP	7-5-0	0-1-0	9-4-1	8-7-6	0-0-0	DNP	DNP	2-2-0	DNP
at Nevada	12/30/2023	69-59	W	0-0-2	DNP	21-8-3	2-0-0	7-3-0	14-4-2	DNP	DNP	DNP	1-6-2	DNP
Boise St.	01/06/2024	56-64	L	0-0-0	DNP	11-2-2	0-1-1	0-0-0	15-5-5	0-1-0	DNP	0-0-0	9-10-0	DNP
Utah St.	01/10/2024	71-67	W	DNP	DNP	16-0-3	3-1-0	5-6-1	13-6-10	0-5-0	0-1-0	1-1-0	5-5-0	DNP
at Colorado St.	01/13/2024	55-61	L	0-3-0	DNP	17-4-2	0-1-0	0-2-0	15-6-6	0-1-1	DNP	DNP	8-8-0	DNP
Wyoming	01/17/2024	68-61	W	DNP	DNP	23-3-2	0-0-1	0-0-0	22-4-1	5-3-0	DNP	DNP	2-5-0	DNP
at UNLV	01/20/2024	69-66	W	DNP	DNP	10-2-1	2-4-1	0-0-0	15-7-7	8-4-0	DNP	DNP	5-4-1	DNP
Fresno St.	01/24/2024	84-77	W	DNP	DNP	24-4-2	2-1-2	0-0-0	18-5-1	2-3-0	DNP	DNP	2-1-0	DNP
at Air Force	01/27/2024	66-51	W	DNP	DNP	24-10-2	1-0-0	0-1-0	10-9-1	2-2-1	0-0-0	0-0-0	10-13-0	DNP
at San Jose St.	01/31/2024	65-54	W	DNP	DNP	14-5-2	13-1-0	0-2-0	13-3-6	2-1-0	0-0-0	0-0-0	1-7-0	DNP
UNLV	02/03/2024	56-62	L	DNP	DNP	25-3-1	0-0-2	0-1-0	15-4-2	0-7-1	DNP	DNP	2-4-0	DNP
at San Diego St.	02/07/2024	53-60	L	DNP	6-3-0	21-7-6	3-2-1	0-1-0	DNP	2-3-1	DNP	DNP	4-4-1	DNP
Colorado St.	02/10/2024	62-46	W	DNP	DNP	9-2-4	6-3-0	DNP	22-16-2	0-12-1	DNP	DNP	0-2-0	DNP
San Jose St.	02/14/2024	72-51	W	0-1-0	3-0-1	16-3-2	0-0-0	0-1-1	12-5-5	4-11-1	DNP	3-0-0	8-3-1	DNP
at Boise St.	02/21/2024	55-58	L	DNP	4-1-1	15-9-4	4-3-2	DNP	12-8-2	2-5-0	DNP	DNP	3-4-1	DNP
at Wyoming	02/24/2024	59-58	W	2-1-3	DNP	11-0-3	9-5-1	DNP	10-5-0	3-7-1	DNP	DNP	7-4-1	DNP
San Diego St.	02/28/2024	66-63	W	DNP	DNP	19-8-3	3-0-0	DNP	20-7-0	4-4-0	DNP	DNP	4-2-0	DNP
Nevada	03/02/2024	82-83	L	0-0-0	DNP	10-6-4	10-2-0	3-1-0	15-4-10	6-7-2	DNP	DNP	0-2-0	DNP
at Fresno St.	03/05/2024	72-58	W	2-3-1	0-1-0	33-6-6	6-1-1	3-0-0	11-2-1	4-3-1	DNP	DNP	2-6-0	DNP
vs San Diego St.	03/11/2024	56-67	L	4-1-0	DNP	22-2-0	1-0-0	0-0-0	10-7-2	9-5-2	DNP	0-0-0	0-1-0	DNP

Opponent	Date	Score		30	33
				REUS,PAULA	CUMBER,VIA
Texas Southern	11/06/2023	76-59	W	9-6-2	22-6-1
at Pepperdine	11/09/2023	57-48	W	4-7-3	9-2-0
Tarleton St.	11/12/2023	64-55	W	16-7-1	12-7-0
Tex. A&M-Commerce	11/15/2023	75-74	W	11-8-1	9-4-1
vs Montana St.	11/23/2023	57-75	L	9-5-3	24-3-0
vs Georgia Tech	11/24/2023	55-66	L	4-4-0	3-4-0
Eastern Ill.	11/28/2023	81-78	Wot	25-3-2	14-14-5
New Mexico St.	12/02/2023	67-52	W	15-8-5	2-1-2
Mississippi Val.	12/04/2023	68-45	W	16-8-3	DNP
Southern Utah	12/07/2023	40-58	L	9-5-1	DNP
Hampton	12/10/2023	68-55	W	14-8-5	DNP
Western N.M.	12/17/2023	71-47	W	15-9-1	7-3-2
at Gonzaga	12/22/2023	56-67	L	11-4-1	17-7-2
at Nevada	12/30/2023	69-59	W	17-5-1	7-9-0
Boise St.	01/06/2024	56-64	L	11-5-3	10-4-2
Utah St.	01/10/2024	71-67	W	7-5-4	21-11-3
at Colorado St.	01/13/2024	55-61	L	5-5-1	10-9-2
Wyoming	01/17/2024	68-61	W	12-3-0	4-6-0
at UNLV	01/20/2024	69-66	W	7-6-1	22-7-1
Fresno St.	01/24/2024	84-77	W	20-8-3	16-6-5
at Air Force	01/27/2024	66-51	W	12-6-0	7-7-0
at San Jose St.	01/31/2024	65-54	W	9-5-2	13-8-1
UNLV	02/03/2024	56-62	L	2-4-1	12-6-0
at San Diego St.	02/07/2024	53-60	L	7-2-0	10-11-2
Colorado St.	02/10/2024	62-46	W	13-5-1	12-4-1
San Jose St.	02/14/2024	72-51	W	9-5-4	17-4-2
at Boise St.	02/21/2024	55-58	L	DNP	15-7-1
at Wyoming	02/24/2024	59-58	W	11-4-1	6-7-3
San Diego St.	02/28/2024	66-63	W	11-8-1	5-7-0
Nevada	03/02/2024	82-83	L	21-6-3	17-5-0
at Fresno St.	03/05/2024	72-58	W	9-4-0	2-3-2
vs San Diego St.	03/11/2024	56-67	L	5-1-2	5-3-1

GAME 1: NEW MEXICO vs NORTHERN ARIZONA

# NEW MEXICO GAME-BY-GAME

				Total		3-Pointers		Free throws		Rebounds											
Opponent	Date	Score		FG-FGA	PCT	3FG-3FGA	PCT	FT-FTA	PCT	OFF	DEF	TOT	AVG	PF	A	TO	BLK	STL	PTS	AVG	
Texas Southern	11/06/2023	76-59	W	28-64	.438	9-22	.409	11-12	.917	12	37	49	49.0	9	15	19	5	8	76	76.0	
at Pepperdine	11/09/2023	57-48	W	23-64	.359	5-23	.217	6-11	.545	15	24	39	44.0	15	10	12	0	9	57	66.5	
Tarleton St.	11/12/2023	64-55	W	24-59	.407	5-19	.263	11-13	.846	10	35	45	44.3	16	14	15	2	6	64	65.7	
Tex. A&M-Commerce	11/15/2023	75-74	W	31-68	.456	3-14	.214	10-20	.500	19	28	47	45.0	14	7	18	4	3	75	68.0	
vs Montana St.	11/23/2023	57-75	L	21-63	.333	10-32	.313	5-11	.455	13	19	32	42.4	14	12	18	2	9	57	65.8	
vs Georgia Tech	11/24/2023	55-66	L	20-59	.339	1-15	.067	14-19	.737	6	26	32	40.7	15	4	12	1	8	55	64.0	
Eastern Ill.	11/28/2023	81-78	Wot	27-76	.355	9-31	.290	18-21	.857	14	33	47	41.6	13	14	11	4	6	81	66.4	
New Mexico St.	12/02/2023	67-52	W	25-64	.391	4-18	.222	13-16	.813	16	31	47	42.3	16	12	13	5	8	67	66.5	
Mississippi Val.	12/04/2023	68-45	W	27-70	.386	8-35	.229	6-11	.545	16	40	56	43.8	9	19	12	7	7	68	66.7	
Southern Utah	12/07/2023	40-58	L	15-55	.273	2-11	.182	8-14	.571	14	27	41	43.5	7	10	16	4	5	40	64.0	
Hampton	12/10/2023	68-55	W	23-62	.371	11-37	.297	11-16	.688	8	33	41	43.3	20	20	12	1	9	68	64.4	
Western N.M.	12/17/2023	71-47	W	25-64	.391	10-26	.385	11-18	.611	15	27	42	43.2	8	19	18	3	16	71	64.9	
at Gonzaga	12/22/2023	56-67	L	20-59	.339	10-32	.313	6-7	.857	12	23	35	42.5	15	10	15	4	3	56	64.2	
at Nevada	12/30/2023	69-59	W	25-52	.481	3-13	.231	16-23	.696	4	36	40	42.4	11	10	13	2	1	69	64.6	
Boise St.	01/06/2024	56-64	L	20-57	.351	8-29	.276	8-10	.800	6	28	34	41.8	7	13	13	4	6	56	64.0	
Utah St.	01/10/2024	71-67	W	26-80	.325	11-33	.333	8-15	.533	17	28	45	42.0	16	21	7	4	12	71	64.4	
at Colorado St.	01/13/2024	55-61	L	22-59	.373	5-22	.227	6-11	.545	12	33	45	42.2	12	12	18	3	8	55	63.9	
Wyoming	01/17/2024	68-61	W	22-42	.524	3-10	.300	21-28	.750	3	21	24	41.2	12	4	15	5	10	68	64.1	
at UNLV	01/20/2024	69-66	W	27-64	.422	10-28	.357	5-7	.714	9	28	37	40.9	15	12	11	3	9	69	64.4	
Fresno St.	01/24/2024	84-77	W	28-54	.519	7-15	.467	21-25	.840	6	25	31	40.5	11	13	7	3	6	84	65.4	
at Air Force	01/27/2024	66-51	W	19-45	.422	2-9	.222	26-32	.813	12	40	52	41.0	12	4	23	4	2	66	65.4	
at San Jose St.	01/31/2024	65-54	W	22-52	.423	9-24	.375	12-16	.750	4	29	33	40.6	12	11	14	2	6	65	65.4	
UNLV	02/03/2024	56-62	L	24-59	.407	4-19	.211	4-12	.333	5	31	36	40.4	17	7	10	2	9	56	65.0	
at San Diego St.	02/07/2024	53-60	L	22-59	.373	7-22	.318	2-3	.667	3	33	36	40.3	16	11	17	2	5	53	64.5	
Colorado St.	02/10/2024	62-46	W	24-52	.462	8-19	.421	6-13	.462	4	42	46	40.5	8	9	18	3	2	62	64.4	
San Jose St.	02/14/2024	72-51	W	24-63	.381	11-24	.458	13-15	.867	13	25	38	40.4	9	17	8	1	5	72	64.7	
at Boise St.	02/21/2024	55-58	L	19-61	.311	6-22	.273	11-18	.611	10	32	42	40.4	11	11	13	0	6	55	64.3	
at Wyoming	02/24/2024	59-58	W	21-51	.412	11-25	.440	6-7	.857	8	27	35	40.3	12	13	17	1	4	59	64.1	
San Diego St.	02/28/2024	66-63	W	18-49	.367	2-14	.143	28-34	.824	5	33	38	40.2	20	4	18	6	12	66	64.2	
Nevada	03/02/2024	82-83	L	30-62	.484	13-29	.448	9-13	.692	13	25	38	40.1	14	19	16	0	7	82	64.8	
at Fresno St.	03/05/2024	72-58	W	26-52	.500	7-16	.438	13-18	.722	5	27	32	39.8	15	12	11	1	6	72	65.0	
vs San Diego St.	03/11/2024	56-67	L	20-51	.392	3-17	.176	13-21	.619	4	21	25	39.4	15	7	15	2	10	56	64.7	
Total		2071		748-1891	.396	217-705	.308	358-510	.702	313	947	1260	39.4	416	376	455	90	223	2071	64.7	
Opponents		1945		749-1956	.383	215-713	.302	232-334	.695	298	888	1186	37.1	497	426	451	118	206	1945	60.8	

## 2023-24 NEW MEXICO INDIVIDUAL GAME HIGHS

POINTS	33		Nyah Wilson at Fresno St. (03/05/2024)
	25		Nyah Wilson vs UNLV (02/03/2024)
	25		Paula Reus vs Eastern Ill. (11/28/2023)
	24		Nyah Wilson at Air Force (01/27/2024)
	24		Nyah Wilson vs Fresno St. (01/24/2024)
	24		Vianè Cumber vs Montana St. (N) (11/23/2023)
FIELD GOALS MADE	11		Nyah Wilson at Fresno St. (03/05/2024)
	11		Nyah Wilson vs UNLV (02/03/2024)
FIELD GOAL ATTEMPTS	24		Nyah Wilson at San Diego St. (02/07/2024)
	22		Vianè Cumber vs Utah St. (01/10/2024)
FIELD GOAL PERCENTAGE (min 5 made)	.833	(5-6)	Paris Lauro vs Western N.M. (12/17/2023)
	.778	(7-9)	Charlotte Kohl vs Mississippi Val. (12/04/2023)
3 PT FG MADE	8		Vianè Cumber vs Montana St. (N) (11/23/2023)
	6		Vianè Cumber at UNLV (01/20/2024)
3 PT FG ATTEMPTS	15		Vianè Cumber vs Montana St. (N) (11/23/2023)
	12		Vianè Cumber vs Utah St. (01/10/2024)
	12		Vianè Cumber vs Boise St. (01/06/2024)
3 PT FG PERCENTAGE (min 2 made)	1.000	(4-4)	Paula Reus vs Fresno St. (01/24/2024)
	1.000	(4-4)	Nyah Wilson vs Texas Southern (11/06/2023)
	1.000	(2-2)	Nyah Wilson at Fresno St. (03/05/2024)
	1.000	(2-2)	Natalia Chavez at San Diego St. (02/07/2024)
FREE THROWS MADE	10		Nyah Wilson at Air Force (01/27/2024)
	10		Nyah Wilson vs Fresno St. (01/24/2024)
FREE THROW ATTEMPTS	13		Aniyah Augmon vs Wyoming (01/17/2024)
	12		Nyah Wilson at Fresno St. (03/05/2024)
	12		Nyah Wilson vs San Diego St. (02/28/2024)
	12		Nyah Wilson at Air Force (01/27/2024)
	12		Nyah Wilson vs Fresno St. (01/24/2024)
	12		Nyah Wilson at Nevada (12/30/2023)
	12		Charlotte Kohl vs Hampton (12/10/2023)
FREE THROW PERCENTAGE (min 3 made)	1.000	(6-6)	Nyah Wilson vs Eastern Ill. (11/28/2023)
	1.000	(4-4)	Aniyah Augmon at Fresno St. (03/05/2024)
	1.000	(4-4)	Hulda Joaquim vs San Diego St. (02/28/2024)
	1.000	(4-4)	Aniyah Augmon vs San Jose St. (02/14/2024)
	1.000	(4-4)	Aniyah Augmon vs Tex. A&M-Commerce (11/15/2023)
	1.000	(3-3)	Lara Langermann vs San Diego St. (02/28/2024)
	1.000	(3-3)	Charlotte Kohl at Wyoming (02/24/2024)
	1.000	(3-3)	Vianè Cumber at San Jose St. (01/31/2024)
	1.000	(3-3)	Paula Reus at Air Force (01/27/2024)
	1.000	(3-3)	Paula Reus vs Southern Utah (12/07/2023)
REBOUNDS	20		Charlotte Kohl vs Mississippi Val. (12/04/2023)
	20		Charlotte Kohl vs Tex. A&M-Commerce (11/15/2023)
ASSISTS	10		Aniyah Augmon vs Nevada (03/02/2024)
	10		Aniyah Augmon vs Utah St. (01/10/2024)
STEALS	8		Aniyah Augmon at Pepperdine (11/09/2023)
	5		Aniyah Augmon vs Wyoming (01/17/2024)
	5		Aniyah Augmon vs New Mexico St. (12/02/2023)
BLOCKED SHOTS	5		Charlotte Kohl vs Mississippi Val. (12/04/2023)
	4		Charlotte Kohl vs San Diego St. (02/28/2024)
	4		Charlotte Kohl vs New Mexico St. (12/02/2023)
	4		Charlotte Kohl vs Tex. A&M-Commerce (11/15/2023)

## 2023-24 NEW MEXICO TEAM GAME HIGHS

POINTS	84	Fresno St. (01/24/2024)
	82	Nevada (03/02/2024)
	81	Eastern Ill. (11/28/2023)
	76	Texas Southern (11/06/2023)
	75	Tex. A&M-Commerce (11/15/2023)
FIELD GOALS MADE	31	Tex. A&M-Commerce (11/15/2023)
	30	Nevada (03/02/2024)
FIELD GOAL ATTEMPTS	80	Utah St. (01/10/2024)
	76	Eastern Ill. (11/28/2023)
FIELD GOAL PERCENTAGE	.524 (22-42)	Wyoming (01/17/2024)
	.519 (28-54)	Fresno St. (01/24/2024)
3 PT FG MADE	13	Nevada (03/02/2024)
	11	at Wyoming (02/24/2024)
	11	San Jose St. (02/14/2024)
	11	Utah St. (01/10/2024)
	11	Hampton (12/10/2023)
3 PT FG ATTEMPTS	37	Hampton (12/10/2023)
	35	Mississippi Val. (12/04/2023)
3 PT FG PERCENTAGE	.467 (7-15)	Fresno St. (01/24/2024)
	.458 (11-24)	San Jose St. (02/14/2024)
FREE THROWS MADE	28	San Diego St. (02/28/2024)
	26	at Air Force (01/27/2024)
FREE THROW ATTEMPTS	34	San Diego St. (02/28/2024)
	32	at Air Force (01/27/2024)
FREE THROW PERCENTAGE	.917 (11-12)	Texas Southern (11/06/2023)
	.867 (13-15)	San Jose St. (02/14/2024)
REBOUNDS	56	Mississippi Val. (12/04/2023)
	52	at Air Force (01/27/2024)
ASSISTS	21	Utah St. (01/10/2024)
	20	Hampton (12/10/2023)
STEALS	16	Western N.M. (12/17/2023)
	12	San Diego St. (02/28/2024)
	12	Utah St. (01/10/2024)
BLOCKED SHOTS	7	Mississippi Val. (12/04/2023)
	6	San Diego St. (02/28/2024)
TURNOVERS	23	at Air Force (01/27/2024)
	19	Texas Southern (11/06/2023)
FOULS	20	San Diego St. (02/28/2024)
	20	Hampton (12/10/2023)



## 2023-24 NEW MEXICO LEADERBOARD

## Points

##	Player	G	Pts	Pts/G
3	Wilson, Nyah	32	495	15.5
12	Augmon, Aniyah	30	391	13.0
30	Reus, Paula	31	346	11.2
33	Cumber, Vianè	29	330	11.4
22	Kohl, Charlotte	32	190	5.9
5	Langermann, Lara	32	97	3.0
14	Joaquim, Hulda	31	72	2.3
10	Lauro, Paris	22	50	2.3
1	Diarra, Nahawa	19	28	1.5
2	Chavez, Natalia	12	23	1.9
21	Curtis, Mackenzie	11	22	2.0
15	Bates, Jaelyn	8	21	2.6
24	Robbins, Hannah	2	6	3.0

## Scoring Average

##	Player	G	Pts	Pts/G
3	Wilson, Nyah	32	495	15.5
12	Augmon, Aniyah	30	391	13.0
33	Cumber, Vianè	29	330	11.4
30	Reus, Paula	31	346	11.2
22	Kohl, Charlotte	32	190	5.9
5	Langermann, Lara	32	97	3.0
24	Robbins, Hannah	2	6	3.0
15	Bates, Jaelyn	8	21	2.6
14	Joaquim, Hulda	31	72	2.3
10	Lauro, Paris	22	50	2.3
21	Curtis, Mackenzie	11	22	2.0
2	Chavez, Natalia	12	23	1.9
1	Diarra, Nahawa	19	28	1.5

## Field Goal Percentage

##	Player	FG	Att	Pct
22	Kohl, Charlotte	72	146	.493
3	Wilson, Nyah	171	414	.413
30	Reus, Paula	131	319	.411
12	Augmon, Aniyah	139	340	.409
14	Joaquim, Hulda	30	74	.405
10	Lauro, Paris	19	47	.404
33	Cumber, Vianè	119	331	.360
2	Chavez, Natalia	8	24	.333
5	Langermann, Lara	31	97	.320
21	Curtis, Mackenzie	6	19	.316
24	Robbins, Hannah	3	10	.300
1	Diarra, Nahawa	12	43	.279
15	Bates, Jaelyn	7	27	.259

## Field Goal Attempts

##	Player	G	Att	Att/G
3	Wilson, Nyah	32	414	12.9
12	Augmon, Aniyah	30	340	11.3
33	Cumber, Vianè	29	331	11.4
30	Reus, Paula	31	319	10.3
22	Kohl, Charlotte	32	146	4.6

## Field Goals Made

##	Player	G	Made	Made/G
3	Wilson, Nyah	32	171	5.3
12	Augmon, Aniyah	30	139	4.6
30	Reus, Paula	31	131	4.2
33	Cumber, Vianè	29	119	4.1
22	Kohl, Charlotte	32	72	2.3

## 2023-24 NEW MEXICO LEADERBOARD

### 3-Point FG Percentage

##	Player	3FG	Att	Pct
10	Lauro, Paris	10	27	.370
3	Wilson, Nyah	29	83	.349
30	Reus, Paula	43	128	.336
21	Curtis, Mackenzie	5	15	.333
33	Cumber, Vianè	70	214	.327
2	Chavez, Natalia	6	19	.316
14	Joaquim, Hulda	3	10	.300
5	Langermann, Lara	20	69	.290
12	Augmon, Aniyah	24	89	.270
15	Bates, Jaelyn	5	21	.238
22	Kohl, Charlotte	2	11	.182

### 3-Point FG Attempts

##	Player	G	Att	Att/G
33	Cumber, Vianè	29	214	7.4
30	Reus, Paula	31	128	4.1
12	Augmon, Aniyah	30	89	3.0
3	Wilson, Nyah	32	83	2.6
5	Langermann, Lara	32	69	2.2

### 3-Point FG Made

##	Player	G	Made	Made/G
33	Cumber, Vianè	29	70	2.4
30	Reus, Paula	31	43	1.4
3	Wilson, Nyah	32	29	0.9
12	Augmon, Aniyah	30	24	0.8
5	Langermann, Lara	32	20	0.6

### Free Throw Percentage

##	Player	Made	Att	Pct
21	Curtis, Mackenzie	5	6	.833
30	Reus, Paula	41	55	.745
33	Cumber, Vianè	22	30	.733
3	Wilson, Nyah	124	170	.729
5	Langermann, Lara	15	21	.714
12	Augmon, Aniyah	89	131	.679
10	Lauro, Paris	2	3	.667
1	Diarra, Nahawa	4	6	.667
22	Kohl, Charlotte	44	68	.647
14	Joaquim, Hulda	9	14	.643
15	Bates, Jaelyn	2	4	.500
2	Chavez, Natalia	1	2	.500

### Free Throw Attempts

##	Player	G	Att	Att/G
3	Wilson, Nyah	32	170	5.3
12	Augmon, Aniyah	30	131	4.4
22	Kohl, Charlotte	32	68	2.1
30	Reus, Paula	31	55	1.8
33	Cumber, Vianè	29	30	1.0

### Free Throws Made

##	Player	G	Made	Made/G
3	Wilson, Nyah	32	124	3.9
12	Augmon, Aniyah	30	89	3.0
22	Kohl, Charlotte	32	44	1.4
30	Reus, Paula	31	41	1.3
33	Cumber, Vianè	29	22	0.8

### Rebounds

##	Player	G	Reb	Reb/G
22	Kohl, Charlotte	32	200	6.3
12	Augmon, Aniyah	30	176	5.9
33	Cumber, Vianè	29	175	6.0
30	Reus, Paula	31	169	5.5
3	Wilson, Nyah	32	144	4.5

### Assists

##	Player	G	Ast	Ast/G
12	Augmon, Aniyah	30	109	3.6
3	Wilson, Nyah	32	65	2.0
30	Reus, Paula	31	56	1.8
33	Cumber, Vianè	29	39	1.3
5	Langermann, Lara	32	26	0.8

### Rebounds Average

##	Player	G	Reb	Reb/G
22	Kohl, Charlotte	32	200	6.3
33	Cumber, Vianè	29	175	6.0
12	Augmon, Aniyah	30	176	5.9
30	Reus, Paula	31	169	5.5
24	Robbins, Hannah	2	10	5.0

### Steals

##	Player	G	Stl	Stl/G
12	Augmon, Aniyah	30	63	2.1
3	Wilson, Nyah	32	41	1.3
30	Reus, Paula	31	35	1.1
33	Cumber, Vianè	29	22	0.8
22	Kohl, Charlotte	32	17	0.5

## 2023-24 NEW MEXICO LEADERBOARD

## Offensive Rebounds

##	Player	G	OReb	OReb/G
22	Kohl, Charlotte	32	77	2.4
14	Joaquim, Hulda	31	52	1.7
3	Wilson, Nyah	32	32	1.0
12	Augmon, Aniyah	30	26	0.9
30	Reus, Paula	31	25	0.8

## Blocked Shots

##	Player	G	Blk	Blk/G
22	Kohl, Charlotte	32	47	1.5
30	Reus, Paula	31	13	0.4
14	Joaquim, Hulda	31	8	0.3
3	Wilson, Nyah	32	6	0.2
33	Cumber, Vianè	29	5	0.2

## Defensive Rebounds

##	Player	G	DReb	DReb/G
33	Cumber, Vianè	29	157	5.4
12	Augmon, Aniyah	30	150	5.0
30	Reus, Paula	31	144	4.6
22	Kohl, Charlotte	32	123	3.8
3	Wilson, Nyah	32	112	3.5

## Minutes

##	Player	G	Min	Min/G
3	Wilson, Nyah	32	1011	31:36
12	Augmon, Aniyah	30	1010	33:39
30	Reus, Paula	31	1009	32:33
33	Cumber, Vianè	29	975	33:37
22	Kohl, Charlotte	32	705	22:01

## Fouls

##	Player	G	PF	PF/G
3	Wilson, Nyah	32	75	2.3
22	Kohl, Charlotte	32	75	2.3
12	Augmon, Aniyah	30	52	1.7
33	Cumber, Vianè	29	48	1.7
30	Reus, Paula	31	48	1.5

## Turnovers

##	Player	G	TO	TO/G
12	Augmon, Aniyah	30	123	4.1
30	Reus, Paula	31	77	2.5
3	Wilson, Nyah	32	74	2.3
22	Kohl, Charlotte	32	37	1.2
33	Cumber, Vianè	29	35	1.2

## Foul Outs

##	Player	G	FO
22	Kohl, Charlotte	32	2
14	Joaquim, Hulda	31	1